

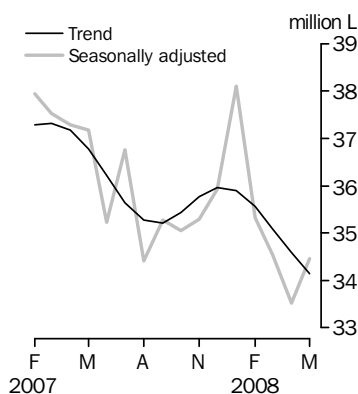
# SALES OF AUSTRALIAN WINE AND BRANDY BY WINEMAKERS

EMBARGO: 11.30AM (CANBERRA TIME) MON 7 JUL 2008

## KEY FIGURES

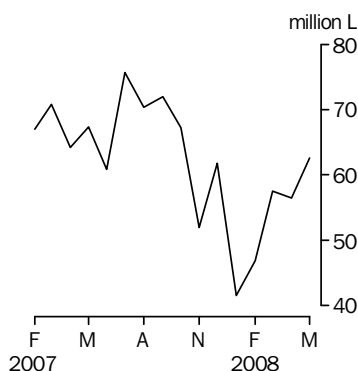
### Australian produced wine

Domestic sales



### Australian produced wine

Exports  
Original



May 2008	Apr 2008 to May 2008	May 2007 to May 2008
'000 L	% change	% change

### TREND ESTIMATES

#### Australian produced wine

Domestic wine sales	34 135	-1.3	-7.2
White table wine sales	16 552	-1.7	-6.6
Red and rosé table wine sales	12 579	-0.7	-5.9

### SEASONALLY ADJUSTED

#### Australian produced wine

Domestic wine sales	34 462	2.8	-7.3
White table wine sales	16 399	-0.5	-9.8
Red and rosé table wine sales	12 846	4.0	-3.3

## KEY POINTS

### AUSTRALIAN WINE DOMESTIC SALES

#### DOMESTIC WINE SALES

- The trend estimate for domestic sales of Australian produced wine was 34.1 million litres in May 2008, a decrease of 1.3% from April 2008.
- The seasonally adjusted estimate for domestic sales of Australian produced wine was 34.5 million litres in May 2008, an increase of 2.8% on April 2008 and a fall of 7.3% on May last year.

#### WHITE TABLE WINE

- The trend estimate for domestic sales of Australian produced white wine fell by 1.7% to 16.6 million litres this month and was 6.6% lower than the same time last year.
- The seasonally adjusted estimate for domestic sales of Australian produced white wine was 16.4 million litres in May 2008, a decrease of 0.5% on April 2008 and 9.8% lower than May 2007.

#### RED/ROSÉ TABLE WINE

- The trend estimate for domestic sales of Australian produced red and rosé wine fell by 0.7% to 12.6 million litres this month and was 5.9% lower than May 2007.
- The seasonally adjusted estimate for domestic sales of Australian produced red and rosé wine was 12.8 million litres in May 2008, an increase of 4.0% on April 2008.

### AUSTRALIAN WINE EXPORTS

- Exports of Australian produced wine increased by 10.8% this month to 62.6 million litres. The value of the exported wine in May 2008 was \$224.1 million. Australia exported 725.0 million litres, with a total value of \$2.7 billion in the twelve months ending May 2008. This was a fall of 8.7% in volume and a decrease of 5.1% in value over the corresponding period to May 2007.

## INQUIRIES

For further information about these and related statistics, contact the National Information and Referral Service on 1300 135 070 or Damian Sparkes on Adelaide (08) 8237 7425.

# NOTES

## FORTHCOMING ISSUES

<i>ISSUE</i>	<i>RELEASE DATE</i>
June 2008	7 August 2008
July 2008	8 September 2008
August 2008	9 October 2008
September 2008	6 November 2008
October 2008	4 December 2008
November 2008	9 January 2009



## DATA NOTES

There are no notes about the data.

## ROUNDING

Where figures have been rounded, discrepancies may occur between sums of the component items and totals.



## ABBREVIATIONS

\$m	million dollars
ABS	Australian Bureau of Statistics
AWBC	Australian Wine and Brandy Corporation
f.o.b.	free on board
HS	Harmonized Commodity Description and Coding System (Harmonized System)
L	litre
L al	litres of alcohol

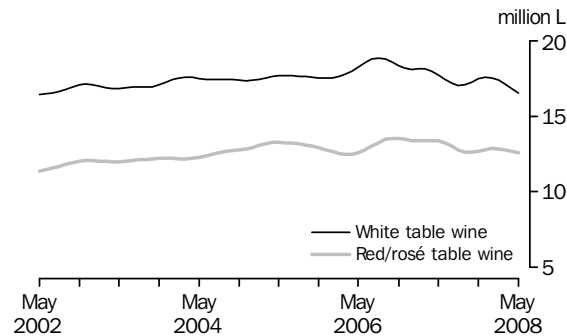
Brian Pink  
Australian Statistician

# DOMESTIC AUSTRALIAN TABLE WINE SALES TREND

## TOTAL WHITE AND RED/ROSÉ TABLE WINE

The trend estimate for white table wine sales decreased by 1.7% from last month to 16.6 million litres. The trend estimate for red and rosé wine sales was 12.6 million litres which was 0.7% lower than April 2008.

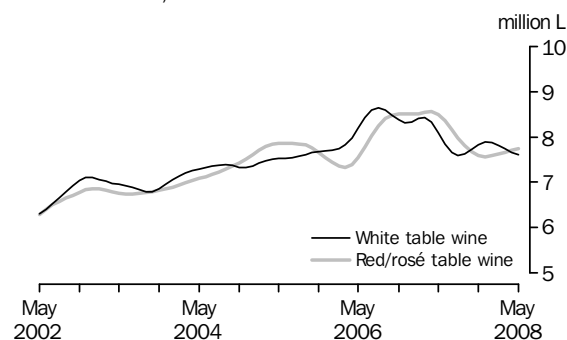
### TOTAL WHITE AND RED/ROSÉ TABLE WINE: Trend



## TABLE WINE, GLASS CONTAINER LESS THAN 2 LITRES

The trend estimate for sales of white table wine in glass containers of less than 2 litres decreased by 0.7% from last month, the fifth consecutive month of decreases following four months of increases. The trend estimate for red and rosé wine sales in glass containers of less than 2 litres increased 0.5% on last month, the fifth consecutive month of increases.

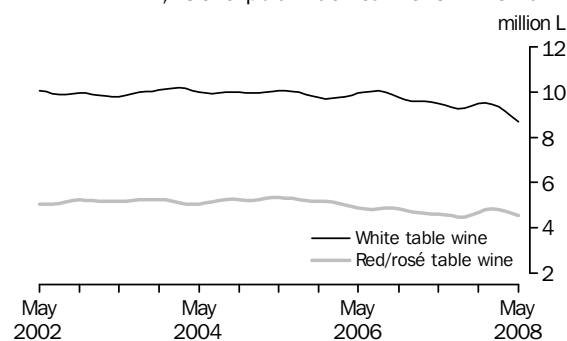
### TABLE WINE, Glass container less than 2 litres: Trend



## TABLE WINE, SOFT PACK CONTAINERS

The trend estimate for domestic sales of white table wine in soft packs fell this month, showing a decrease of 2.6%. The trend estimate for red and rosé wine sales in soft packs fell by 2.2% this month, the fourth consecutive month of decreases.

### TABLE WINE, Soft pack containers: Trend

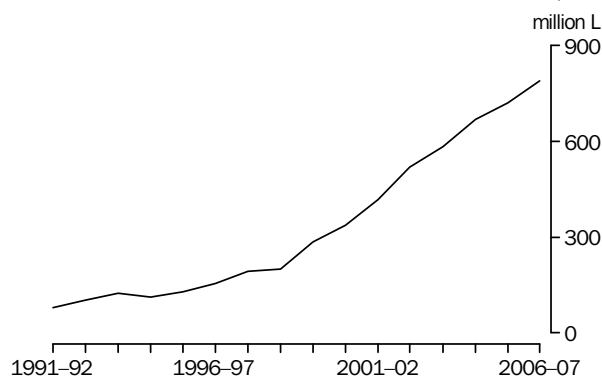


## EXPORTS OF AUSTRALIAN PRODUCED WINE

### ANNUAL EXPORTS OF AUSTRALIAN PRODUCED WINE

The graph below shows that there continues to be strong growth in the quantity of exports of Australian produced wine. Apart from a fall in 1994-95, the 1990s saw a steady increase in Australian wine exported. The 1992-93 period saw Australia export more than 100 million litres for the first time. Six years later, in the 1998-99 period, wine exports exceeded 200 million litres for the first time. From this period wine exports grew rapidly, with more than 300 million litres of wine sold to overseas markets during 2000-01, reaching a total export volume of 786.9 million litres in 2006-07. The volume of Australian made wine exported in 2006-07 was 9.0% more than the volume in 2005-06. Further, this export volume for 2006-07 was more than double the volume in 2000-01 and ten times the amount exported in 1991-92.

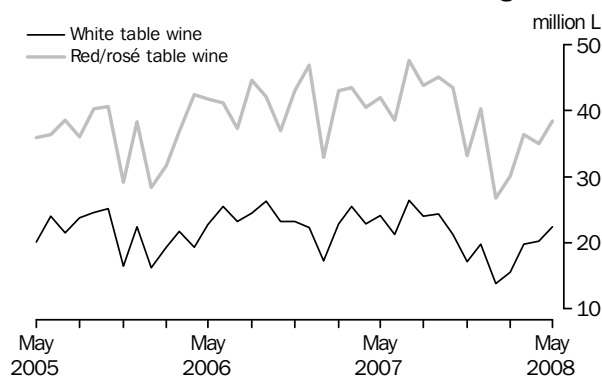
### EXPORTS OF AUSTRALIAN PRODUCED WINE, Annual totals: **Original**



### EXPORTS OF WHITE AND RED/ROSÉ TABLE WINE

In original terms, 62.6 million litres of Australian produced wine were exported in May 2008, an increase of 10.8% on April 2008 but a fall of 7.2% on May 2007. In May 2008, 22.4 million litres of Australian produced white table wine were exported, an increase of 10.3% on last month and a fall of 7.1% on May 2007. Australian producers exported 38.5 million litres of red and rosé table wine in May 2008, an increase of 10.0% from last month and an 8.3% decrease on May 2007.

### EXPORTS OF TABLE WINE BY TYPE: **Original**

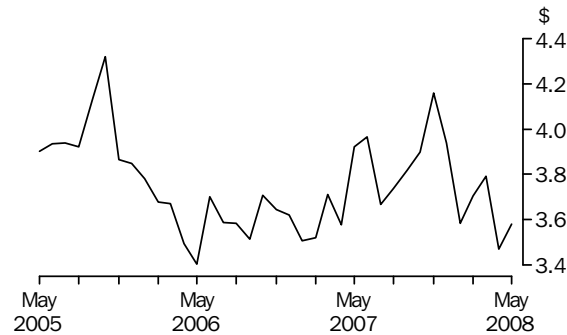


## EXPORTS OF AUSTRALIAN PRODUCED WINE *continued*

### UNIT VALUE OF WINE EXPORTS

In original terms, the value of the wine exported this month (62.6 million litres) was \$224.1m, an increase of 14.3% in value from April 2008. The average value of Australian wine exported in May 2008 was \$3.58 per litre, up from \$3.47 per litre last month but down from \$3.92 per litre in May 2007.

#### UNIT VALUE OF WINE EXPORTS: **Original**



### DIFFERENCES BETWEEN ABS AND AWBC WINE EXPORT FIGURES

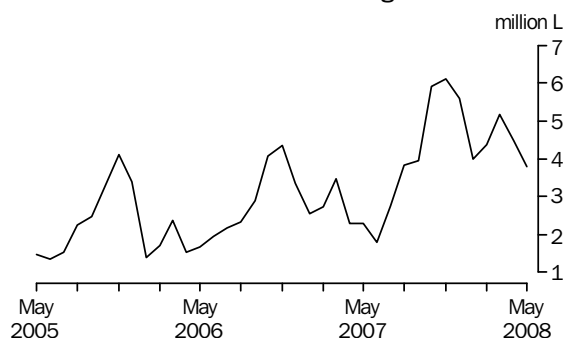
The value of wine exports reported in this publication is derived by the Australian Bureau of Statistics (ABS) from customs export records and the ABS converts the value on the day of shipment, at the daily conversion rate (see paragraph 10 of the Explanatory Notes for more detail). The Australian Wine and Brandy Corporation (AWBC) also report the value of exports and the exporter makes the conversion when submitting wine for export approval. With the AWBC method, it is expected that some of the conversions will occur at hedged rates. This does not occur with the ABS method. For May, the value reported by the ABS was \$224.1m, while the AWBC value was \$225.9m. When the Australian exchange rate is moving significantly the alternative methods will result in diverging valuations.

# IMPORTS AND DISPOSALS OF AUSTRALIAN PRODUCED WINE

## WINE IMPORTS CLEARED FOR HOME CONSUMPTION

In original terms, 3.8 million litres of wine, valued at \$29.9 million were imported in May 2008, a fall of 15.4% in quantity and a decrease of 1.9% in value on April 2008. The average value of wine imports cleared for home consumption in May 2008 was \$7.91 per litre, up from \$6.82 per litre in April 2008.

### WINE IMPORTS CLEARED: Original



## DISPOSALS OF AUSTRALIAN PRODUCED WINE AND WINE AVAILABLE FOR CONSUMPTION IN AUSTRALIA

The original data for the March quarter 2008 shows that wine available for consumption in Australia increased 1.3% on the same quarter in 2007. Domestic sales of Australian wine decreased 3.7%, and wine imports increased 54.7%. Total disposals of Australian produced wine decreased by 16.5% on the same quarter in 2007 with exports falling 22.8%.

<i>Period</i>	<i>Domestic sales of Australian produced wine (A)</i> '000 L	<i>Wine imports cleared for home consumption (B)</i> '000 L	<i>Wine available for consumption (A + B)</i> '000 L	<i>Exports of Australian produced wine (C)</i> '000 L	<i>Total disposals of Australian produced wine (A + C)</i> '000 L
2004-05	430 131	22 139	452 270	669 720	1 099 851
2005-06	432 372	24 369	456 741	721 771	1 154 143
2006-07	447 832	34 275	482 107	786 926	1 234 758
Mar qtr 2007	93 032	8 751	101 783	189 084	282 116
Mar qtr 2008	89 552	r13 534	r103 086	r145 946	r235 498

r revised

## DOMESTIC SALES OF AUSTRALIAN WINE, By container type

Period	WHITE TABLE WINE			RED AND ROSÉ TABLE WINE			Total table wine	Total other wine	Total wine
	Glass less than 2 litres	Soft packs(a)	Total(b)	Glass less than 2 litres	Soft packs(a)	Total(b)			
	'000 L	'000 L	'000 L	'000 L	'000 L	'000 L			
ORIGINAL									
<b>2004-05</b>	89 477	118 803	209 348	91 146	63 032	155 491	364 836	65 293	<b>430 131</b>
<b>2005-06</b>	92 951	118 220	212 558	91 821	61 116	154 237	366 796	65 575	<b>432 372</b>
<b>2006-07</b>	100 294	116 195	218 468	101 915	57 276	161 894	380 362	67 470	<b>447 832</b>
<b>2007</b>									
May	7 739	10 941	18 833	9 044	5 413	14 765	33 598	5 217	<b>38 815</b>
June	6 651	7 721	14 475	8 932	4 564	13 834	28 308	4 314	<b>32 623</b>
July	7 122	9 725	17 117	10 020	5 873	16 257	33 374	5 135	<b>38 509</b>
August	7 216	9 237	16 555	9 193	5 209	14 610	31 165	4 829	<b>35 994</b>
September	7 625	9 882	17 677	7 675	4 633	12 573	30 250	5 765	<b>36 015</b>
October	9 136	9 353	18 588	8 133	4 608	13 301	31 889	7 819	<b>39 708</b>
November	10 909	9 992	21 170	9 451	4 788	14 617	35 787	8 472	<b>44 259</b>
December	9 230	9 430	18 858	7 945	4 261	12 548	31 406	8 040	<b>39 446</b>
<b>2008</b>									
January	6 037	8 087	14 257	4 559	3 183	8 134	22 391	3 534	<b>25 925</b>
February	6 904	10 180	17 286	5 677	4 446	10 679	27 964	3 739	<b>31 703</b>
March	7 328	8 724	16 465	6 580	4 132	10 888	27 352	4 572	<b>31 924</b>
April	7 201	8 992	16 445	7 424	4 681	12 286	28 731	4 289	<b>33 020</b>
May	7 229	8 712	16 089	8 661	4 956	13 932	30 021	4 651	<b>34 672</b>
SEASONALLY ADJUSTED									
<b>2007</b>									
May	8 151	9 852	18 175	8 158	4 793	13 282	31 457	5 721	<b>37 178</b>
June	7 994	8 667	16 769	8 331	4 554	13 235	30 004	5 219	<b>35 223</b>
July	7 367	9 583	17 308	8 770	4 704	13 821	31 129	5 630	<b>36 759</b>
August	7 535	9 111	16 788	8 002	4 349	12 566	29 354	5 050	<b>34 404</b>
September	7 535	9 748	17 459	7 440	4 499	12 247	29 706	5 569	<b>35 275</b>
October	7 790	9 125	17 026	7 378	4 414	12 239	29 265	5 789	<b>35 054</b>
November	7 872	9 030	17 114	7 691	4 517	12 531	29 645	5 645	<b>35 290</b>
December	7 723	9 497	17 344	7 813	4 801	12 950	30 294	5 642	<b>35 936</b>
<b>2008</b>									
January	8 533	10 093	18 768	7 843	5 421	13 698	32 466	5 640	<b>38 106</b>
February	7 538	9 652	17 401	7 137	4 910	12 728	30 129	5 187	<b>35 316</b>
March	7 656	8 723	16 793	7 685	4 428	12 378	29 171	5 367	<b>34 538</b>
April	7 389	8 843	16 479	7 682	4 546	12 356	28 835	4 687	<b>33 522</b>
May	7 842	8 394	16 399	7 997	4 502	12 846	29 245	5 217	<b>34 462</b>
TREND									
<b>2007</b>									
May	8 085	9 484	17 720	8 495	4 616	13 361	31 081	5 686	<b>36 767</b>
June	7 838	9 416	17 429	8 352	4 596	13 231	30 660	5 555	<b>36 215</b>
July	7 661	9 329	17 183	8 164	4 534	13 006	30 189	5 459	<b>35 648</b>
August	7 590	9 262	17 046	7 982	4 483	12 784	29 830	5 445	<b>35 275</b>
September	7 620	9 285	17 082	7 812	4 492	12 633	29 715	5 500	<b>35 215</b>
October	7 720	9 369	17 247	7 679	4 571	12 603	29 850	5 589	<b>35 439</b>
November	7 831	9 471	17 457	7 587	4 694	12 668	30 125	5 640	<b>35 765</b>
December	7 895	9 513	17 579	7 562	4 805	12 781	30 360	5 603	<b>35 963</b>
<b>2008</b>									
January	7 879	9 464	17 543	7 592	4 852	12 861	30 404	5 493	<b>35 897</b>
February	7 812	9 332	17 372	7 626	4 823	12 845	30 217	5 345	<b>35 562</b>
March	7 735	9 132	17 115	7 656	4 742	12 760	29 875	5 206	<b>35 081</b>
April	7 665	8 910	16 834	7 702	4 644	12 670	29 504	5 089	<b>34 593</b>
May	7 613	8 681	16 552	7 744	4 541	12 579	29 131	5 004	<b>34 135</b>

(a) Soft pack containers include all collapsible packs, plastic or otherwise.

(b) Components do not add to total. The difference between the components and total is 'wine in other containers' (see Glossary).

## DOMESTIC SALES OF AUSTRALIAN WINE: Percentage change from previous period

Period	WHITE TABLE WINE			RED AND ROSÉ TABLE WINE					
	Glass less than 2 litres	Soft packs(a)	Total	Glass less than 2 litres	Soft packs(a)	Total	Total table wine	Total other wine	Total wine
	%	%	%	%	%	%	%	%	%
ORIGINAL									
<b>2004-05</b>	6.2	-1.8	0.7	10.0	0.4	5.7	2.8	4.7	<b>3.1</b>
<b>2005-06</b>	3.9	-0.5	1.5	0.7	-3.0	-0.8	0.5	0.4	<b>0.5</b>
<b>2006-07</b>	7.9	-1.7	2.8	11.0	-6.3	5.0	3.7	2.9	<b>3.6</b>
<b>2007</b>									
May	3.6	17.4	11.5	22.4	21.6	23.2	16.3	1.2	<b>14.0</b>
June	-14.1	-29.4	-23.1	-1.2	-15.7	-6.3	-15.7	-17.3	<b>-16.0</b>
July	7.1	26.0	18.3	12.2	28.7	17.5	17.9	19.0	<b>18.0</b>
August	1.3	-5.0	-3.3	-8.3	-11.3	-10.1	-6.6	-6.0	<b>-6.5</b>
September	5.7	7.0	6.8	-16.5	-11.1	-13.9	-2.9	19.4	<b>0.1</b>
October	19.8	-5.4	5.2	6.0	-0.5	5.8	5.4	35.6	<b>10.3</b>
November	19.4	6.8	13.9	16.2	3.9	9.9	12.2	8.4	<b>11.5</b>
December	-15.4	-5.6	-10.9	-15.9	-11.0	-14.2	-12.2	-5.1	<b>-10.9</b>
<b>2008</b>									
January	-34.6	-14.2	-24.4	-42.6	-25.3	-35.2	-28.7	-56.0	<b>-34.3</b>
February	14.4	25.9	21.2	24.5	39.7	31.3	24.9	5.8	<b>22.3</b>
March	6.1	-14.3	-4.7	15.9	-7.1	2.0	-2.2	22.3	<b>0.7</b>
April	-1.7	3.1	-0.1	12.8	13.3	12.8	5.0	-6.2	<b>3.4</b>
May	0.4	-3.1	-2.2	16.7	5.9	13.4	4.5	8.4	<b>5.0</b>
SEASONALLY ADJUSTED									
<b>2007</b>									
May	-0.6	1.3	0.8	-3.9	5.8	1.2	1.0	-6.6	<b>-0.3</b>
June	-1.9	-12.0	-7.7	2.1	-5.0	-0.4	-4.6	-8.8	<b>-5.3</b>
July	-7.8	10.6	3.2	5.3	3.3	4.4	3.7	7.9	<b>4.4</b>
August	2.3	-4.9	-3.0	-8.8	-7.5	-9.1	-5.7	-10.3	<b>-6.4</b>
September	—	7.0	4.0	-7.0	3.4	-2.5	1.2	10.3	<b>2.5</b>
October	3.4	-6.4	-2.5	-0.8	-1.9	-0.1	-1.5	3.9	<b>-0.6</b>
November	1.1	-1.0	0.5	4.2	2.3	2.4	1.3	-2.5	<b>0.7</b>
December	-1.9	5.2	1.3	1.6	6.3	3.3	2.2	-0.1	<b>1.8</b>
<b>2008</b>									
January	10.5	6.3	8.2	0.4	12.9	5.8	7.2	—	<b>6.0</b>
February	-11.7	-4.4	-7.3	-9.0	-9.4	-7.1	-7.2	-8.0	<b>-7.3</b>
March	1.6	-9.6	-3.5	7.7	-9.8	-2.7	-3.2	3.5	<b>-2.2</b>
April	-3.5	1.4	-1.9	—	2.7	-0.2	-1.2	-12.7	<b>-2.9</b>
May	6.1	-5.1	-0.5	4.1	-1.0	4.0	1.4	11.3	<b>2.8</b>
TREND									
<b>2007</b>									
May	-2.8	-0.6	-1.5	-0.8	-0.1	-0.3	-1.0	-1.8	<b>-1.1</b>
June	-3.1	-0.7	-1.6	-1.7	-0.4	-1.0	-1.4	-2.3	<b>-1.5</b>
July	-2.3	-0.9	-1.4	-2.3	-1.4	-1.7	-1.5	-1.7	<b>-1.6</b>
August	-0.9	-0.7	-0.8	-2.2	-1.1	-1.7	-1.2	-0.3	<b>-1.0</b>
September	0.4	0.3	0.2	-2.1	0.2	-1.2	-0.4	1.0	<b>-0.2</b>
October	1.3	0.9	1.0	-1.7	1.8	-0.2	0.5	1.6	<b>0.6</b>
November	1.4	1.1	1.2	-1.2	2.7	0.5	0.9	0.9	<b>0.9</b>
December	0.8	0.4	0.7	-0.3	2.4	0.9	0.8	-0.7	<b>0.6</b>
<b>2008</b>									
January	-0.2	-0.5	-0.2	0.4	1.0	0.6	0.1	-2.0	<b>-0.2</b>
February	-0.8	-1.4	-1.0	0.4	-0.6	-0.1	-0.6	-2.7	<b>-0.9</b>
March	-1.0	-2.1	-1.5	0.4	-1.7	-0.7	-1.1	-2.6	<b>-1.4</b>
April	-0.9	-2.4	-1.6	0.6	-2.1	-0.7	-1.2	-2.3	<b>-1.4</b>
May	-0.7	-2.6	-1.7	0.5	-2.2	-0.7	-1.3	-1.7	<b>-1.3</b>

— nil or rounded to zero (including null cells)

(a) Soft pack containers include all collapsible packs, plastic or otherwise.



## DOMESTIC SALES OF AUSTRALIAN WINE AND BRANDY BY WINEMAKERS

<i>Period</i>	<i>Table</i>	<i>Fortified</i>	<i>Sparkling bottle fermentation (a)</i>	<i>Sparkling bulk fermentation (a)</i>	<i>Carbonated</i>	<i>Other wine products (b)</i>	<i>Vermouth</i>	<i>Brandy (c)</i>
	'000 L	'000 L	'000 L	'000 L	'000 L	'000 L	'000 L	'000 L al
<b>2004-05</b>	364 836	19 934	22 988	15 410	4 206	2 547	208	576
<b>2005-06</b>	366 796	18 510	23 128	16 659	4 248	2 833	197	535
<b>2006-07</b>	380 362	17 388	23 265	16 618	7 081	2 947	172	510
<b>2007</b>								
May	33 598	1 755	1 454	912	854	226	15	34
June	28 308	1 581	1 179	782	524	237	11	36
July	33 374	1 941	1 529	753	531	368	13	52
August	31 165	1 565	1 491	870	595	296	12	46
September	30 250	1 458	1 935	1 467	673	217	14	29
October	31 889	1 342	3 137	1 973	1 066	289	12	55
November	35 787	1 999	2 985	2 166	989	315	18	55
December	31 406	1 405	3 209	2 075	1 005	331	15	78
<b>2008</b>								
January	22 391	852	1 249	680	531	214	8	29
February	27 964	1 123	1 063	761	611	170	10	22
March	27 352	1 122	1 327	1 151	736	226	11	33
April	28 731	1 241	1 330	891	598	217	12	32
May	30 021	1 594	1 261	1 012	549	225	11	38

(a) Spritzig table wines are included with table wine.

(c) Quantities on which excise duty was paid.

(b) See paragraph 4 of the Explanatory Notes and Glossary.

## DOMESTIC SALES OF AUSTRALIAN FORTIFIED WINE BY WINEMAKERS

	<i>Sherry in glass less than 2 litres</i>	<i>Port in glass less than 2 litres</i>	<i>Other in glass less than 2 litres (a)</i>	<i>Soft packs</i>	<i>All other containers (b)</i>	<b><i>Total fortified</i></b>
	'000 L	'000 L	'000 L	'000 L	'000 L	'000 L
<b>2004-05</b>	1 879	3 932	368	8 931	4 825	<b>19 934</b>
<b>2005-06</b>	1 751	3 785	366	8 279	4 325	<b>18 510</b>
<b>2006-07</b>	1 662	3 452	439	7 864	3 973	<b>17 388</b>
<b>2007</b>						
May	159	335	54	796	412	<b>1 755</b>
June	146	329	36	787	283	<b>1 581</b>
July	194	381	51	900	414	<b>1 941</b>
August	165	323	39	667	370	<b>1 565</b>
September	147	279	41	658	334	<b>1 458</b>
October	np	256	np	502	398	<b>1 342</b>
November	np	386	np	617	652	<b>1 999</b>
December	np	348	np	506	328	<b>1 405</b>
<b>2008</b>						
January	93	140	21	400	197	<b>852</b>
February	88	163	24	585	263	<b>1 123</b>
March	np	247	np	470	296	<b>1 122</b>
April	118	243	26	575	278	<b>1 241</b>
May	139	346	28	693	387	<b>1 594</b>

np not available for publication but included in totals where applicable, unless otherwise indicated

(b) Includes tankers, cans and rigid containers including glass 2 litres and over.

(a) Includes muscat, madiera, tokay and white port.

## EXPORTS OF AUSTRALIAN PRODUCED WINE(a), By wine type

Period	WINE TYPE						Total wine
	White table	Red/rosé table	Total table	Fortified wine	Sparkling wine	Other	
QUANTITY ('000 L)							
<b>2004-05</b>	233 898	420 615	654 513	2 069	12 445	693	<b>669 720</b>
<b>2005-06</b>	258 794	445 319	704 113	2 587	14 338	733	<b>721 771</b>
<b>2006-07</b>	276 565	491 589	768 154	2 781	15 366	625	<b>786 926</b>
<b>2007</b>							
March	25 511	43 457	68 968	204	1 503	110	<b>70 786</b>
April	22 850	40 520	63 369	264	534	30	<b>64 197</b>
May	24 083	41 954	66 038	204	1 121	40	<b>67 402</b>
June	21 246	38 535	59 780	166	971	19	<b>60 936</b>
July	26 454	47 588	74 042	244	1 344	55	<b>75 686</b>
August	24 065	43 855	67 920	305	2 069	128	<b>70 422</b>
September	24 402	45 153	69 554	253	2 157	51	<b>72 015</b>
October	21 230	43 465	64 695	180	2 244	103	<b>67 222</b>
November	r17 176	r33 217	r50 394	217	1 296	82	<b>r51 988</b>
December	19 742	40 297	60 039	172	1 434	108	<b>61 752</b>
<b>2008</b>							
January	13 844	26 823	40 667	128	752	41	<b>41 588</b>
February	15 526	30 057	45 583	85	1 102	83	<b>46 852</b>
March	19 757	36 430	r56 186	205	960	156	<b>r57 506</b>
April	r20 281	r34 976	r55 257	r100	r922	r168	<b>r56 446</b>
May	22 368	38 457	60 825	228	1 351	163	<b>62 567</b>
VALUE (b) (\$'000)							
<b>2004-05</b>	843 033	1 787 050	2 630 083	12 653	67 502	4 910	<b>2 715 149</b>
<b>2005-06</b>	862 756	1 791 760	2 654 516	15 229	81 138	4 366	<b>2 755 249</b>
<b>2006-07</b>	845 501	1 930 310	2 775 810	14 707	83 213	3 154	<b>2 876 885</b>
<b>2007</b>							
March	74 428	178 556	252 984	1 211	8 107	492	<b>262 794</b>
April	70 532	155 287	225 819	924	2 777	189	<b>229 708</b>
May	79 049	179 061	258 110	1 098	4 943	218	<b>264 369</b>
June	71 194	164 613	235 807	977	4 786	143	<b>241 714</b>
July	82 531	186 798	269 329	1 612	6 361	384	<b>277 686</b>
August	82 607	169 197	251 805	1 639	9 268	563	<b>263 275</b>
September	80 355	182 204	262 558	1 391	10 556	495	<b>275 000</b>
October	75 490	175 649	251 139	1 360	9 006	599	<b>262 104</b>
November	r60 104	r146 750	206 853	1 526	7 031	770	<b>216 181</b>
December	67 454	167 059	234 513	1 091	6 591	991	<b>243 186</b>
<b>2008</b>							
January	45 461	98 356	143 816	878	4 017	440	<b>149 151</b>
February	48 805	118 465	167 271	738	5 063	467	<b>173 539</b>
March	r64 488	r146 209	r210 697	r1 057	5 146	1 166	<b>r218 066</b>
April	r62 715	r127 085	r189 800	r712	r4 530	r998	<b>r196 041</b>
May	68 297	147 706	216 003	1 115	6 002	933	<b>224 053</b>

r revised

(a) Exports may include sales made by exporters other than winemakers.

(b) See paragraph 8 of the Explanatory Notes.

Source: ABS data available on request, International Trade database

## EXPORTS AND IMPORTS OF BRANDY

Period	EXPORTS (a)		IMPORTS (b)	
	Quantity	Value(c)	Quantity	Value(c)
	'000 L al	\$'000	'000 L al	\$'000
<b>2004-05</b>	18	913	519	9 054
<b>2005-06</b>	38	2 037	457	7 796
<b>2006-07</b>	8	216	447	8 968
<b>2007</b>				
March	—	5	32	470
April	2	23	28	564
May	—	1	49	650
June	—	—	29	680
July	—	1	38	722
August	—	—	39	1 002
September	—	—	32	690
October	—	—	42	1 167
November	3	31	49	1 354
December	—	7	62	1 530
<b>2008</b>				
January	—	2	25	819
February	—	24	24	564
March	—	1	38	559
April	—	1	24	565
May	—	2	38	771

— nil or rounded to zero (including null cells)

(a) Exports may include sales made by exporters other than winemakers. From March 2004 to July 2006 the Brandy exports included some re-exports due to confidentiality restrictions. From August 2006 the Brandy export figure does not include re-exports.

(b) Imports cleared for home consumption. See paragraph 6 of the Explanatory Notes.

(c) See paragraphs 8 and 9 of the Explanatory Notes.

Source: ABS data available on request, International Trade database

	WINE TYPE						TOTAL WINE	
	White table	Red/rosé table	Total table	Fortified	Sparkling	Other	Quantity	Value(b)
	'000 L	'000 L	'000 L	'000 L	'000 L	'000 L	'000 L	\$'000
EXPORTS (c)								
United Kingdom	9 505	12 326	21 831	65	737	27	22 659	72 166
United States of America	5 968	11 406	17 374	43	138	11	17 565	62 588
Canada	812	2 454	3 266	26	28	—	3 320	17 583
Germany, Federal Republic of	586	783	1 369	—	—	8	1 377	3 267
New Zealand	508	1 206	1 714	45	139	4	1 902	8 228
Netherlands	989	1 256	2 245	—	38	—	2 283	6 527
Denmark	588	1 978	2 566	1	1	—	2 567	5 737
Belgium	688	1 017	1 705	1	25	—	1 730	3 768
China (excluding Taiwan Province)	174	1 159	1 333	1	18	12	1 363	6 536
Ireland	866	1 008	1 875	—	32	—	1 907	7 333
Sweden	266	405	670	—	9	1	680	2 950
Japan	211	472	683	1	89	3	775	4 015
France	118	223	341	—	—	—	341	680
Singapore	133	379	512	—	13	12	537	4 991
Hong Kong	70	318	388	—	7	10	405	3 155
Norway	68	198	266	—	10	—	276	1 073
Finland	108	125	233	—	12	—	246	912
United Arab Emirates	112	153	265	2	9	—	276	1 257
Malaysia	43	201	244	2	1	1	248	2 065
Taiwan (Province of China)	16	115	132	1	5	12	149	1 240
Total other countries(d)	539	1 276	1 815	41	43	63	1 962	7 983
<b>Total all countries</b>	<b>22 368</b>	<b>38 457</b>	<b>60 825</b>	<b>228</b>	<b>1 351</b>	<b>163</b>	<b>62 567</b>	<b>224 053</b>

## IMPORTS (e)

New Zealand	1 684	169	1 853	—	25	21	1 899	15 715
Italy	62	103	165	—	86	13	264	1 839
France	169	114	284	1	158	2	445	9 693
Portugal	5	12	16	4	—	16	36	144
Spain	5	9	14	3	3	—	19	217
Chile	73	6	79	—	16	—	95	149
Germany, Federal Republic of	21	2	24	—	—	12	35	195
South Africa	251	17	268	—	—	—	268	209
Total other countries(d)	496	201	697	—	1	26	725	1 781
<b>Total All Countries</b>	<b>2 766</b>	<b>633</b>	<b>3 400</b>	<b>7</b>	<b>289</b>	<b>90</b>	<b>3 786</b>	<b>29 942</b>

— nil or rounded to zero (including null cells)

(a) For details on the selection of countries see paragraph 7 of the Explanatory Notes.

(b) See paragraphs 8 and 9 of the Explanatory notes.

(c) Exports may include sales made by exporters other than winemakers.

(d) Includes other countries as detailed in *Standard Australian Classification of Countries (SACC)* (cat. no. 1269.0).

(e) Imports cleared for home consumption. See paragraph 6 of the Explanatory Notes.

Source: ABS data available on request, International Trade database

## EXPORTS OF AUSTRALIAN WINE(a), By region

Period	Oceania and Antarctica	Europe and the Former USSR	Southeast Asia	Northeast Asia	Northern America	Other(b)	Total All Regions	European Union(c)
QUANTITY ('000 L)								
<b>2004-05</b>	26 615	374 626	13 230	17 279	233 171	4 798	<b>669 720</b>	368 011
<b>2005-06</b>	28 563	393 895	10 819	27 655	253 851	6 987	<b>721 771</b>	387 913
<b>2006-07</b>	38 318	423 032	14 876	40 769	262 120	7 811	<b>786 926</b>	415 516
<b>2007</b>								
March	3 777	40 392	1 133	3 517	21 365	602	<b>70 786</b>	39 569
April	4 083	40 325	1 093	2 150	15 930	616	<b>64 197</b>	39 704
May	3 183	39 694	1 127	2 697	20 091	610	<b>67 402</b>	39 088
June	2 428	33 261	1 012	2 592	21 121	520	<b>60 936</b>	33 013
July	3 353	42 108	751	3 268	25 302	904	<b>75 686</b>	41 597
August	2 673	43 424	1 057	2 852	19 629	787	<b>70 422</b>	42 990
September	2 899	39 840	971	1 896	25 673	736	<b>72 015</b>	39 415
October	2 592	40 699	1 386	2 384	19 480	680	<b>67 222</b>	40 102
November	2 277	25 673	1 264	2 717	19 635	r423	<b>r51 988</b>	25 343
December	1 135	30 546	1 399	3 358	24 631	683	<b>61 752</b>	30 140
<b>2008</b>								
January	1 127	23 879	835	1 601	13 535	611	<b>41 588</b>	23 415
February	1 258	27 785	1 013	2 348	13 738	710	<b>46 852</b>	27 331
March	1 708	33 240	1 159	2 332	18 423	644	<b>r57 506</b>	32 845
April	r1 533	r33 139	r1 122	r2 657	r17 255	740	<b>r56 446</b>	r32 554
May	2 026	34 543	1 169	2 836	20 895	1 098	<b>62 567</b>	34 076
VALUE(d) (\$'000)								
<b>2004-05</b>	104 390	1 316 533	74 717	93 667	1 106 231	19 611	<b>2 715 149</b>	1 287 727
<b>2005-06</b>	104 745	1 328 880	76 232	109 242	1 109 856	26 294	<b>2 755 249</b>	1 301 499
<b>2006-07</b>	111 967	1 385 398	88 665	148 823	1 111 964	30 067	<b>2 876 885</b>	1 356 059
<b>2007</b>								
March	11 517	135 740	7 869	13 594	91 282	2 792	<b>262 794</b>	132 518
April	9 606	121 369	8 697	11 278	76 567	2 191	<b>229 708</b>	119 102
May	8 536	129 310	8 402	14 580	100 863	2 680	<b>264 369</b>	126 960
June	7 138	101 402	9 572	13 354	107 853	2 396	<b>241 714</b>	100 514
July	9 892	131 804	5 382	13 841	113 604	3 163	<b>277 686</b>	129 549
August	9 076	143 245	7 306	15 131	85 412	3 105	<b>263 275</b>	141 257
September	11 500	133 836	5 874	11 244	109 376	3 171	<b>275 000</b>	131 883
October	10 843	135 338	8 658	13 877	90 719	2 669	<b>262 104</b>	132 525
November	8 800	82 602	7 343	14 721	100 454	r2 262	<b>216 181</b>	81 281
December	4 714	95 907	8 263	19 777	111 288	3 236	<b>243 186</b>	94 187
<b>2008</b>								
January	4 323	74 900	5 794	9 425	51 946	2 763	<b>149 151</b>	73 200
February	5 107	86 438	7 248	13 796	58 119	2 830	<b>173 539</b>	85 183
March	r7 342	115 947	9 263	12 517	70 070	2 928	<b>r218 066</b>	114 170
April	r6 357	r95 585	r7 709	r14 823	r67 851	3 716	<b>r196 041</b>	r93 643
May	8 841	106 570	9 356	15 769	80 202	3 316	<b>224 053</b>	104 578

r revised

(a) Exports may include sales made by exporters other than winemakers.

(b) Includes ships' stores and other countries as detailed in Standard Australian Classification of Countries (SACC) (cat. no. 1269.0).

(c) The 'European Union' is not additional to the total and is a component of the 'Europe and the former USSR' region. Includes all 25 current members of the European Union.

(d) See paragraph 8 of the Explanatory Notes.

Source: ABS data available on request, International Trade database

## IMPORTS CLEARED (a), Selected Countries(b)

	New Zealand	Italy	France	Portugal	Spain	Chile	Germany, Federal Republic of	South Africa	Total other countries	Total All Countries
QUANTITY ('000 L)										
<b>2004-05</b>	9 479	4 937	3 492	418	684	387	448	179	2 115	<b>22 139</b>
<b>2005-06</b>	11 853	4 821	4 136	854	786	339	350	299	929	<b>24 369</b>
<b>2006-07</b>	18 142	5 544	5 354	482	947	586	901	517	1 802	<b>34 275</b>
<b>2007</b>										
March	1 932	537	412	22	66	54	334	50	71	<b>3 479</b>
April	1 381	368	257	46	30	47	41	—	126	<b>2 296</b>
May	1 382	407	287	36	40	15	40	—	87	<b>2 294</b>
June	951	241	282	33	95	1	21	7	158	<b>1 788</b>
July	1 368	378	377	26	53	2	40	20	481	<b>2 746</b>
August	2 045	696	689	33	73	36	44	93	122	<b>3 832</b>
September	2 083	855	461	84	156	9	59	52	191	<b>3 950</b>
October	2 715	820	1 009	39	107	640	47	171	356	<b>5 904</b>
November	3 159	731	1 032	126	207	163	46	135	504	<b>6 103</b>
December	1 642	r1 074	818	120	79	1 057	30	102	673	<b>5 596</b>
<b>2008</b>										
January	1 399	r400	555	32	106	909	43	177	372	<b>r3 992</b>
February	2 397	334	390	18	110	679	19	9	414	<b>4 372</b>
March	1 705	474	480	97	109	496	87	1 026	696	<b>5 171</b>
April	1 679	462	461	67	79	226	82	186	1 231	<b>4 473</b>
May	1 899	264	445	36	19	95	35	268	725	<b>3 786</b>
VALUE (c) (\$'000)										
<b>2004-05</b>	80 088	25 105	66 958	1 535	3 868	1 314	1 964	779	6 629	<b>188 240</b>
<b>2005-06</b>	98 220	24 703	72 547	2 392	3 894	1 382	1 885	1 174	5 067	<b>211 263</b>
<b>2006-07</b>	155 913	32 081	97 134	2 050	4 900	2 439	3 347	1 389	7 769	<b>307 023</b>
<b>2007</b>										
March	15 643	2 786	7 614	137	393	193	931	122	372	<b>28 192</b>
April	11 490	2 160	6 028	186	208	191	190	7	1 051	<b>21 511</b>
May	12 110	2 692	6 639	142	197	42	172	3	475	<b>22 472</b>
June	7 987	1 500	7 880	200	253	18	160	36	571	<b>18 604</b>
July	11 736	2 391	6 642	91	295	7	226	58	1 078	<b>22 524</b>
August	17 990	4 560	13 993	148	494	129	230	224	886	<b>38 655</b>
September	18 706	4 958	8 465	282	977	52	380	163	814	<b>34 796</b>
October	23 811	4 864	19 640	177	610	1 278	243	448	1 030	<b>52 101</b>
November	r25 430	3 778	20 529	524	981	399	220	515	1 372	<b>r53 749</b>
December	15 222	r5 089	17 136	403	383	1 546	154	341	1 538	<b>r41 811</b>
<b>2008</b>										
January	12 643	r2 470	11 000	114	786	1 404	197	465	739	<b>r29 817</b>
February	21 512	2 034	r9 089	70	903	830	138	45	437	<b>r35 056</b>
March	16 100	2 423	9 409	454	802	487	468	1 431	1 105	<b>32 678</b>
April	14 567	2 705	9 834	219	306	r423	310	794	1 359	<b>r30 517</b>
May	15 715	1 839	9 693	144	217	149	195	209	1 781	<b>29 942</b>

— nil or rounded to zero (including null cells)

r revised

(a) Imports cleared for home consumption. See paragraph 6 of the Explanatory Notes.

(b) For details on the selection of countries see paragraph 7 of the Explanatory Notes.

(c) See paragraph 9 of the Explanatory Notes

Source: ABS data available on request, International Trade database

## IMPORTS CLEARED BY WINE TYPE(a)

Period	WINE TYPE						Total wine
	White table	Red/Rosé table	Table wine	Fortified wine	Sparkling wine	Other wine	
QUANTITY ('000 L)							
<b>2004-05</b>	10 502	4 280	14 782	253	5 187	1 918	<b>22 139</b>
<b>2005-06</b>	11 819	6 176	17 995	124	4 936	1 313	<b>24 369</b>
<b>2006-07</b>	19 003	6 487	25 490	123	7 000	1 662	<b>34 275</b>
<b>2007</b>							
March	1 880	918	2 798	6	612	63	<b>3 479</b>
April	1 421	369	1 790	9	403	94	<b>2 296</b>
May	1 412	471	1 883	22	327	62	<b>2 294</b>
June	971	303	1 274	10	342	162	<b>1 788</b>
July	1 476	722	2 199	20	322	205	<b>2 746</b>
August	2 196	569	2 765	4	988	75	<b>3 832</b>
September	2 213	724	2 937	23	799	192	<b>3 950</b>
October	3 458	831	4 289	12	1 210	393	<b>5 904</b>
November	3 551	1 322	4 873	14	1 084	132	<b>6 103</b>
December	2 286	1 704	3 990	19	r1 107	480	<b>5 596</b>
<b>2008</b>							
January	2 705	564	r3 269	15	r548	161	<b>r3 992</b>
February	3 283	469	3 752	1	514	104	<b>4 372</b>
March	2 271	2 200	4 471	18	423	259	<b>5 171</b>
April	2 869	913	3 783	7	527	157	<b>4 473</b>
May	2 766	633	3 400	7	289	90	<b>3 786</b>
VALUE (b) (\$'000)							
<b>2004-05</b>	78 428	30 510	108 937	1 728	68 063	9 512	<b>188 240</b>
<b>2005-06</b>	97 196	36 781	133 977	917	70 311	6 058	<b>211 263</b>
<b>2006-07</b>	155 180	46 720	201 900	1 154	97 533	6 437	<b>307 023</b>
<b>2007</b>							
March	15 308	4 918	20 225	89	7 538	339	<b>28 192</b>
April	11 117	3 232	14 349	70	6 723	369	<b>21 511</b>
May	11 991	3 986	15 977	85	6 164	246	<b>22 472</b>
June	7 450	3 205	10 655	146	7 273	531	<b>18 604</b>
July	12 541	3 828	16 368	73	5 297	786	<b>22 524</b>
August	18 242	5 729	23 971	57	14 318	308	<b>38 655</b>
September	19 331	5 616	24 947	160	8 827	862	<b>34 796</b>
October	23 931	6 189	30 120	100	20 564	1 317	<b>52 101</b>
November	r26 583	7 186	r33 769	193	19 096	691	<b>r53 749</b>
December	16 815	5 785	22 601	131	r17 289	1 791	<b>r41 811</b>
<b>2008</b>							
January	15 166	r4 887	r20 052	149	r8 181	1 434	<b>r29 817</b>
February	20 580	4 276	24 856	10	r9 799	392	<b>r35 056</b>
March	18 061	5 702	23 763	209	7 506	1 200	<b>32 678</b>
April	r16 110	4 244	r20 355	86	9 220	856	<b>r30 517</b>
May	17 875	5 613	23 487	93	6 000	361	<b>29 942</b>

r revised

(a) Imports cleared for home consumption. See paragraph 6 of the Explanatory Notes.

(b) See paragraph 9 of the Explanatory Notes

Source: ABS data available on request, International Trade database



## EXPLANATORY NOTES

### INTRODUCTION

**1** The information shown in this publication for the domestic sales of Australian produced wine is obtained directly from winemakers by means of a mail collection. The brandy sales figures shown represent quantities on which excise duty was paid, i.e. the quantity of brandy released for sale. Statistics relating to import clearances and exports are based on information provided to the Australian Customs Service by importers, exporters and their agents.

### SCOPE AND COVERAGE

**2** The information on domestic sales of Australian produced wine is obtained from 97 winemaking enterprises with sales of 250,000 litres or more in either of the previous two financial years. These account for approximately 92% of total wine sales. All sales data are collected on an Australia-wide basis only and state figures are therefore not available.

**3** Tables 1, 3 & 4 include all sales by winemakers (within the scope of the collection) with the exception of exports, sales for ships' stores, sales of imported wine and brandy and inter-winery sales, the last exclusion being necessary to avoid duplication in the published figures. From July 1998 the definition for table wine in the glass container categories changed from '1 litre and under' to 'less than 2 litres'. This series has been retained as the contribution of the over 1 litre but under 2 litres containers (such as table wine in magnum sized bottles) is believed to have been less than 1%. There is an expectation this contribution will increase in the future. This has a consequential effect for the 'other containers' category which includes glass containers 2 litres and over from July 1998 (prior to this it was glass over 1 litre). This series will also be retained.

**4** From July 2000, the category 'Flavoured wine' has been changed to 'Other wine products'. This change reflects the inclusion of de-alcoholised, low and reduced alcohol wines in the category. These wine types were previously included in 'Table wine'. While it is expected that the effect on the 'Table wine' series resulting from this change will be insignificant, care should be taken in comparing 'Flavoured wine' with 'Other wine products'.

### IMPORTS AND EXPORTS

**5** Figures relating to international trade in wine and brandy are presented in tables 5–10 to provide a basis for assessing the overall wine market. ABS procedures are designed to ensure that sufficient editing is undertaken to guarantee the quality and integrity of trade statistics to at least the six-digit Harmonized Commodity Description and Coding System (HS) level. After the release of monthly trade statistics, the ABS may receive a number of client requests to investigate cases of possible misreporting. Most relate to potential errors at the more detailed levels of the commodity classification. Client requests for data investigations of this type will be undertaken free of charge if data at the six-digit level of the HS are affected. Otherwise investigations will only be considered if the value of the aggregate data queried exceeds \$250,000 in each month queried, and the cost of the investigation is met by the client.

**6** Imports cleared for home consumption (including re-imports, that is, goods originating in Australia that have been exported but then returned to source) comprise those goods entered for home consumption, together with goods cleared from Customs warehouses. Exports of Australian produce are defined as exports of goods, materials or articles which have been produced, manufactured or partly manufactured in Australia. Due to a change in the Customs Tariff codes implemented in July 1999 and July 2000, the wine type categories are not necessarily comparable with earlier data.

**7** In order to retain stability in the time-series of data, the selection of countries for which exports and imports data has been presented has been based upon the level of annual imports or exports from the previous financial year.

**8** The value of exports is the free on board (f.o.b.) transactions value of the goods expressed in Australian dollars. The ABS converts foreign currency f.o.b. values to

## EXPLANATORY NOTES *continued*

### IMPORTS AND EXPORTS

*continued*

Australian dollars using the exchange rate prevailing on the date of departure shown on the export manifest.

**9** The value of imports is the Australian customs value. Goods are valued at the point of containerisation (in most cases) or the port of shipment, or at the customs frontier of the exporting country, whichever comes first.

**10** For details of currency conversion procedures for wine export values, please refer to 2.34 and 2.35 of *International Merchandise Trade, Australia; Concepts, Sources and Methods, 2001* (cat. no. 5489.0). Goods invoiced in one of six major foreign currencies are converted to Australian dollars by the Australian Bureau of Statistics. Sales in other foreign currencies are converted by the exporter to Australian dollars.

### SEASONALLY ADJUSTED AND TREND ESTIMATES

**11** Seasonal adjustment is a means of removing the estimated effects of normal seasonal variation from the series so that the effects of other influences can be more clearly recognised. Seasonal adjustment does not remove from the series the effect of irregular influences (e.g. abnormal weather and industrial disputes).

**12** The seasonally adjusted estimates in this publication have been produced using a concurrent methodology whereby the seasonal factors are revised each month to take into account the seasonality exhibited by the latest observation. A more detailed review is conducted annually.

**13** The revision properties of the seasonally adjusted and trend estimates have been improved by the use of autoregressive integrated moving average (ARIMA) modelling. ARIMA modelling relies on the characteristics of the series being analysed to project future period data. The ARIMA model is assessed as part of the annual reanalysis. For more information on the details of ARIMA modelling see feature article: Use of ARIMA modelling to reduce revisions in the October 2004 issue of *Australian Economic Indicators* (cat. no. 1350.0).

**14** The smoothing of seasonally adjusted series to create trend estimates is a means of reducing the impact of the irregular component of the series. The trend estimates of wine sales have been derived by applying a 13-term Henderson weighted moving average to the seasonally adjusted series.

**15** For further information, see *Information Paper: A Guide to Interpreting Time Series — Monitoring Trends* (cat. no. 1349.0) or contact the Director, Time Series Analysis on Canberra (02) 6252 6354 or via e-mail at [time.series.analysis@abs.gov.au](mailto:time.series.analysis@abs.gov.au).

### ACKNOWLEDGMENT

**16** ABS publications draw extensively on information provided freely by individuals, businesses, governments and other organisations. Their continued cooperation is very much appreciated: without it, the wide range of statistics published by the ABS would not be available. Information received by the ABS is treated in strict confidence as required by the *Census and Statistics Act 1905*.

### RELATED PUBLICATIONS

**17** Another ABS publication which may be of interest is the *Australian Wine and Grape Industry* (cat. no. 1329.0). This is a statistical compendium of Australia's wine and grape industries containing information on: area of vines and production of grapes by region; wine production and grapes crushed by region; structure of the wine manufacturing industries; stocks of wine held by winemakers at 30 June; domestic wine sales; exports and imports of wine; price indexes of grapes and wine; consumption of wine and world comparisons.

**18** Current publications and other products by the ABS are listed on the ABS web site. The ABS also issues a daily Release Advice on the web site which details products to be released in the week ahead.

## GLOSSARY

<b>Carbonated wine</b>	Wine which has dissolved carbon dioxide and the carbon dioxide is added artificially to the wine.
<b>Domestic sales</b>	All sales of Australian produced wine by winemakers within the scope of the survey whether they be wholesale or retail sales, or bulk sales to other wineries outside of the scope of the survey. Excluded are inter-winery sales, sales to ships' stores and the volume of imported wine blended with Australian wine and sold domestically.
<b>Exports</b>	Exports of wine to overseas ports including sales made by exporters and wine producers.
<b>Fortified wine</b>	Wine to which grape spirit, brandy or both has been added, thereby adding alcoholic strength and precluding further fermentation. Fortified wine must contain at least 150 millilitres/litre and not more than 200 millilitres/litre of ethanol at 20° Centigrade.
<b>Grape spirit</b>	Spirit obtained from the distillation of wine or by-products of winemaking or the fermented liquor of a mash of dried grapes and contains methanol in a proportion not exceeding 3 grams per litre at 20° Centigrade of the ethanol content.
<b>Imports cleared for home consumption</b>	Imported goods brought into the country for consumption or further processing, but excluding goods imported with the reasonable expectation of re-export within a limited time.
<b>Other containers</b>	All other wine packaging except glass bottles containing less than 2 litres and soft packs. Included in this category are glass containers greater than 2 litres, cans and bulk wine in tankers or other such containers.
<b>Other wine products</b>	Products such as flavoured wine, cocktails, marsala, aperitif and tonic wines. De-alcoholised, low and reduced alcohol wines are also included.
<b>Soft packs</b>	A container type including all collapsible packs whether plastic or of other material.
<b>Sparkling</b>	A product consisting of wine that by complete or partial fermentation of contained sugars has become surcharged with carbon dioxide.
<b>Table wine</b>	A product of the complete or partial fermentation of fresh grapes or products derived solely from fresh grapes.
<b>Total other wine</b>	Includes fortified wines such as sherry, port, muscat, maderia, tokay and white port etc., sparkling wines both bottle and bulk fermented, carbonated wine, vermouth and other wine products such as flavoured wine, cocktails, marsala, aperitif and tonic wines, de-alcoholised and low or reduced alcohol wines.

## FOR MORE INFORMATION . . .

*INTERNET*      **www.abs.gov.au** the ABS website is the best place for data from our publications and information about the ABS.

### INFORMATION AND REFERRAL SERVICE

Our consultants can help you access the full range of information published by the ABS that is available free of charge from our website. Information tailored to your needs can also be requested as a 'user pays' service. Specialists are on hand to help you with analytical or methodological advice.

*PHONE*                      1300 135 070

*EMAIL*                      [client.services@abs.gov.au](mailto:client.services@abs.gov.au)

*FAX*                              1300 135 211

*POST*                          Client Services, ABS, GPO Box 796, Sydney NSW 2001

## FREE ACCESS TO STATISTICS

All statistics on the ABS website can be downloaded free of charge.

*WEB ADDRESS*      [www.abs.gov.au](http://www.abs.gov.au)