



# ***TOURIST ACCOMMODATION*** AUSTRALIA

EMBARGO: 11.30AM (CANBERRA TIME) FRI 30 JUN 2006

## **C O N T E N T S**

	<i>page</i>
Notes .....	2
Summary of findings .....	3
List of tables .....	8

## **ADDITIONAL INFORMATION**

Explanatory notes .....	56
Glossary .....	61

## **I N Q U I R I E S**

For further information about these and related statistics, contact the National Information and Referral Service on 1300 135 070.

# NOTES

## FORTHCOMING ISSUES

<i>ISSUE (Quarter)</i>	<i>RELEASE DATE</i>
June 2006	29 September 2006
September 2006	9 January 2007

## CYCLONE LARRY

Cyclone Larry occurred on 20 March 2006 in the Far North Queensland Tourism region. The impact on demand for accommodation for the March quarter 2006 was not significant.

## MELBOURNE COMMONWEALTH GAMES

The Melbourne Commonwealth games, held in the March quarter 2006 had minimal impact on the room occupancy rate at the national level. The effect of the Commonwealth games was consistent with demand patterns for the Sydney Olympic games.

## ABOUT THIS PUBLICATION

This publication presents results from the March quarter 2006 Survey of Tourist Accommodation (STA) for the following categories of establishments:

- licensed hotels and resorts with facilities and 5 or more rooms
- motels, private hotels and guest houses with facilities and 5 or more rooms
- serviced apartments with 5 or more units
- caravan parks with 40 or more powered sites
- holiday flats, units and houses of letting entities with 15 or more rooms or units
- visitor hostels with 25 or more bed spaces.

## ABBREVIATIONS

'000	thousand
\$/000	thousand dollars
AAA	Australian Automobile Association
ABS	Australian Bureau of Statistics
ACT	Australian Capital Territory
ASGC	Australian Standard Geographical Classification
cat. no.	Catalogue number
GST	goods and services tax
no.	number
NSW	New South Wales
NT	Northern Territory
qtr	quarter
Qld	Queensland
SA	South Australia
SLA	statistical local area
STA	Survey of Tourist Accommodation
Tas.	Tasmania
Vic.	Victoria
WA	Western Australia

Dennis Trewin  
Australian Statistician

## SUMMARY OF FINDINGS

### SEASONALLY ADJUSTED AND TREND

*Hotels, motels and serviced apartments with 15 or more rooms*

### KEY FIGURES, Seasonally adjusted and trend—Australia

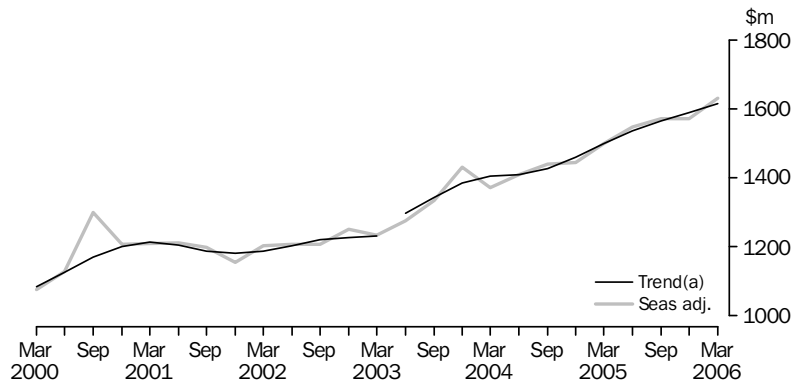
	Mar Qtr 2005	Dec Qtr 2005	Mar Qtr 2006
<b>Seasonally Adjusted</b>			
Room occupancy rate (%)	63.3	62.7	64.2
Takings from accommodation ('000)	1 497 459	1 570 818	1 630 514
<b>Trend</b>			
Room occupancy rate (%)	63.0	63.1	63.5
Takings from accommodation ('000)	1 498 211	1 589 427	1 613 963

### ACCOMMODATION TAKINGS

The trend estimate of the total accommodation takings for hotels, motels and serviced apartments with 15 or more rooms continued to increase. In March quarter 2006, it increased by 1.5% to \$1,614.0 million compared with December quarter 2005.

The seasonally adjusted estimate of the total accommodation takings rose by 3.8% to \$1,630.5 million from December quarter 2005 to March quarter 2006.

### ACCOMMODATION TAKINGS, Seasonally adjusted and trend—Australia



(a) Break in time series between the March and June quarters 2003. See Explanatory Notes.

### ROOM OCCUPANCY RATE

The trend estimate of the room occupancy rate for hotels, motels and serviced apartments with 15 or more rooms for the March quarter 2006 (63.5%) increased by 0.4 percentage points over the December quarter 2005.

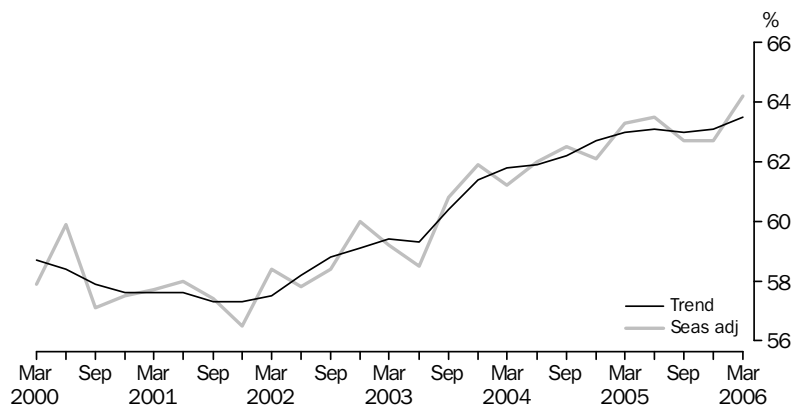
## SUMMARY OF FINDINGS *continued*

*Hotels, motels and serviced apartments with 15 or more rooms continued*

### ROOM OCCUPANCY RATE *continued*

The seasonally adjusted estimate of the room occupancy rate increased by 1.5 percentage points to 64.2% from December quarter 2005 to March quarter 2006.

### ROOM OCCUPANCY RATE (a), Seasonally adjusted and trend—Australia



(a) Room occupancy rates are not subject to a break in series.

Seasonally adjusted and trend data are not yet available for hotels, motels and serviced apartments with 5 to 14 rooms or 5 or more rooms.

### ORIGINAL

*Hotels, motels and serviced apartments*

The original estimates are impacted by seasonal variations and irregular or non-seasonal influences. Comparisons between quarters should be made with caution.

### KEY FIGURES, Original—Australia

	December Qtr 2005	March Qtr 2006
<b>Hotels, motels and serviced apartments with 5 to 14 rooms</b>		
Rooms (no.)	19 293	18 971
Room nights occupied ('000)	807.5	798.3
Room occupancy rate (%)	46.0	47.3
Takings from accommodation (\$'000)	71 657	72 685
Average takings per room night occupied (\$)	88.7	91.0
<b>Hotels, motels and serviced apartments with 15 or more rooms</b>		
Rooms (no.)	212 784	212 598
Room nights occupied ('000)	12 543.5	12 225.5
Room occupancy rate (%)	64.5	64.2
Takings from accommodation (\$'000)	1 650 876	1 649 208
Average takings per room night occupied (\$)	131.6	134.9
<b>Hotels, motels and serviced apartments with 5 or more rooms</b>		
Rooms (no.)	232 077	231 569
Room nights occupied ('000)	13 351.0	13 023.8
Room occupancy rate (%)	63.0	62.8
Takings from accommodation (\$'000)	1 722 533	1 721 893
Average takings per room night occupied (\$)	129.0	132.2

## SUMMARY OF FINDINGS *continued*

*Hotels, motels and serviced apartments continued*

### ACCOMMODATION TAKINGS

In March quarter 2006, accommodation takings for hotels, motels and serviced apartments with 5 or more rooms were \$1,721.9 million. The average takings per room night occupied for these establishments were \$132.21.

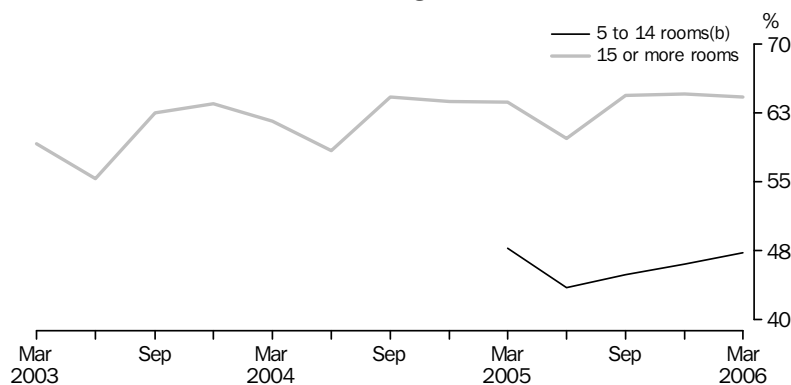
Accommodation takings for hotels, motels and serviced apartments with 15 or more rooms for March quarter were \$1,649.2 million, at an average of \$134.90 per room night occupied. For establishments with 5 to 14 rooms, accommodation takings were \$72.7 million, at an average of \$91.05 per room night occupied.

The contributions to accommodation takings in March quarter 2006 for hotels, motels and serviced apartments with 5 or more rooms were highest in New South Wales (\$574.5 million) and Queensland (\$434.2 million).

### ROOM OCCUPANCY RATE

The room occupancy rate for hotels, motels and serviced apartments with 5 or more rooms was 62.8% in March quarter 2006.

#### ROOM OCCUPANCY RATE (a), Original—Australia



(a) Room occupancy rates are not subject to a break in series.

(b) These establishments were included in the survey from March quarter 2005 onwards.

For hotels, motels and serviced apartments with 15 or more rooms, the room occupancy rate was 64.2%, while for 5 to 14 room hotels, motels and serviced apartments, the room occupancy rate was 47.3%.

### ROOM NIGHTS OCCUPIED

Total room nights occupied were 13.0 million in March quarter 2006 for hotels, motels and serviced apartments with 5 or more rooms. Room nights occupied were highest in New South Wales (4.1 million) and Queensland (3.5 million).

For hotels, motels and serviced apartments with 15 or more rooms, room nights occupied were 12.2 million in March quarter 2006, while for establishments with 5 to 14 rooms, room nights occupied were 0.8 million.

## SUMMARY OF FINDINGS *continued*

*Hotels, motels and serviced apartments continued*

### AVERAGE LENGTH OF STAY

The average length of stay in March quarter 2006 for hotels, motels and serviced apartments with 15 or more rooms was 2.3 days. For establishments with 5 to 14 rooms, the average length of stay for March quarter was 1.8 days.

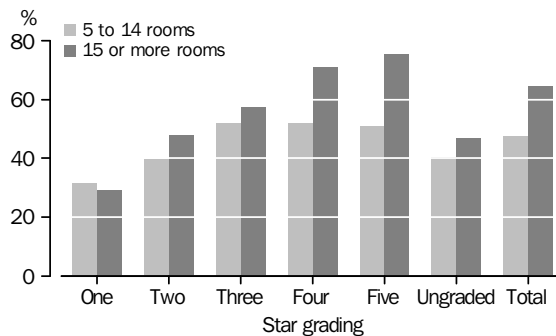
Queensland (2.8 days) reported the longest average length of stay for hotels, motels and serviced apartments with 15 or more rooms, followed by the Australian Capital Territory and Western Australia (2.4 days). The shortest average length of stay was in Tasmania and Northern Territory (2.0 days).

### STAR GRADING

In March quarter 2006, the room occupancy rate for five-star hotels, motels and serviced apartments with 5 or more rooms was 75.1% compared with 30.0% for one-star. For hotels, motels and serviced apartments with 15 or more rooms, the room occupancy rate was 75.2% for five-star establishments compared with 29.1% for one-star.

For establishments with 5 to 14 rooms, three-star (51.8%) and four-star (51.6%) establishments had the highest room occupancy rates, compared with one-star establishments at 31.7%.

ROOM OCCUPANCY RATE, Star grading—March Qtr 2006



## SUMMARY OF FINDINGS *continued*

*Caravan parks, holiday flats, units and houses, and visitor hostels*

### KEY FIGURES, Australia

	Dec Qtr 2005	Mar Qtr 2006
<b>Caravan parks</b>		
Capacity (no.)	237 328	237 490
Site nights occupied ('000)	10 879	11 120
Site occupancy rate (%)	50.1	52.1
Takings from accommodation (\$'000)	213 168	226 027
<b>Holiday flats, units and houses</b>		
Capacity (no.)	28 392	28 714
Unit nights occupied ('000)	1 343	1 351
Unit occupancy rate (%)	51.6	52.4
Takings from accommodation (\$'000)	150 755	156 184
<b>Visitor hostels</b>		
Capacity (no.)	48 332	48 042
Guest nights occupied ('000)	2 110	2 325
Bed occupancy rate (%)	47.6	54.1
Takings from accommodation (\$'000)	49 893	53 337

### ACCOMMODATION TAKINGS

In March quarter 2006, accommodation takings for caravan parks were \$226.0 million. New South Wales (\$89.3 million) had the highest accommodation takings for all caravan parks for March quarter 2006.

Short-term caravan park accommodation takings were \$189.2 million in March quarter 2006, while takings for long-term caravan parks were \$36.8 million in that quarter.

Accommodation takings for holiday flats, units and houses were \$156.2 million in March quarter 2006. For visitor hostels, accommodation takings were \$53.3 million.

### OCCUPANCY RATE

The site occupancy rate for all caravan parks in March quarter 2006 was 52.1%.

Short-term caravan park site occupancy rates were 48.5%, while the rate for long-term caravan parks was 76.6% in March quarter 2006.

For holiday flats, units and houses, the unit occupancy rate was 52.4% in March quarter 2006.

The bed occupancy rate for visitor hostels in March quarter 2006 was 54.1%. New South Wales (64.2%), Queensland (56.6%) and Western Australia (56.4%) had the highest bed occupancy rates for visitor hostels in March quarter 2006.

## LIST OF TABLES

page

### AUSTRALIA

#### ORIGINAL, SEASONALLY ADJUSTED AND TREND

- 1** Hotels, motels and serviced apartments with 15 or more rooms . . . . . 9

#### SUMMARY

- 2** Hotels, motels and serviced apartments . . . . . 10  
**3** Licensed hotels and resorts . . . . . 12  
**4** Motels, private hotels and guest houses . . . . . 14  
**5** Serviced apartments . . . . . 16  
**6** Caravan parks . . . . . 18  
**7** Holiday flats, units and houses . . . . . 20  
**8** Visitor hostels . . . . . 22

#### STAR GRADING

- 9** Hotels, motels and serviced apartments with 5-14 rooms . . . . . 23  
**10** Hotels, motels and serviced apartments with 15 or more rooms . . . . . 25  
**11** Hotels, motels and serviced apartments with 5 or more rooms . . . . . 27

### STATES AND TERRITORIES

- 12** Hotels, motels and serviced apartments with 5-14 rooms . . . . . 29  
**13** Hotels, motels and serviced apartments with 15 or more rooms . . . . . 32  
**14** Hotels, motels and serviced apartments with 5 or more rooms . . . . . 36  
**15** Caravan parks, short-term . . . . . 39  
**16** Caravan parks, long-term . . . . . 42  
**17** Caravan parks, total . . . . . 45  
**18** Holiday flats, units and houses, real estate agents . . . . . 48  
**19** Holiday flats, units and houses, other letting entities . . . . . 50  
**20** Holiday flats, units and houses, total . . . . . 52  
**21** Visitor hostels . . . . . 54



Period	ORIGINAL		SEASONALLY ADJUSTED		TREND	
	Room occupancy rate	Takings from accommodation(a)	Room occupancy rate	Takings from accommodation(a)	Room occupancy rate	Takings from accommodation(a)
	%	'000	%	'000	%	'000
<b>2002</b>						
September Quarter	59.6	1 236 869	58.4	1 207 092	58.8	1 219 274
December Quarter	61.7	1 314 053	60.0	1 250 725	59.1	1 225 753
<b>2003</b>						
March Quarter	59.1	1 244 695	59.2	1 234 202	59.4	1 231 868
June Quarter	55.3	1 159 500	58.5	1 275 407	59.3	1 297 058
September Quarter	62.5	1 373 488	60.8	1 334 753	60.4	1 342 979
December Quarter	63.5	1 499 344	61.9	1 430 852	61.4	1 383 994
<b>2004</b>						
March Quarter	61.6	1 398 573	61.2	1 372 401	61.8	1 403 600
June Quarter	58.4	1 277 463	62.0	1 409 454	61.9	1 409 667
September Quarter	64.2	1 485 716	62.5	1 438 629	62.2	1 425 377
December Quarter	63.7	1 513 029	62.1	1 444 374	62.7	1 459 139
<b>2005</b>						
March Quarter	63.6	1 525 330	63.3	1 497 459	63.0	1 498 211
June Quarter	59.7	1 395 043	63.5	1 547 461	63.1	1 536 182
September Quarter	64.4	1 618 246	62.7	1 569 850	63.0	1 565 198
December Quarter	64.5	1 650 876	62.7	1 570 818	63.1	1 589 427
<b>2006</b>						
March Quarter	64.2	1 649 208	64.2	1 630 514	63.5	1 613 963

(a) Break in time series between the March and June quarters 2003. See Explanatory Notes.

## SUMMARY OF HOTELS, MOTELS AND SERVICED APARTMENTS, Australia

<i>Period</i>	<i>Establishments</i> no.	<i>Rooms</i> no.	<i>Bed spaces</i> no.	<i>Persons employed</i> no.	<i>Room nights occupied</i> '000	<i>Room occupancy rate</i> %
HOTELS MOTELS AND SERVICED APARTMENTS WITH 5 TO 14 ROOMS						
<b>2005</b>						
March Quarter	2 130	20 115	58 771	13 000	854.1	47.8
June Quarter	2 115	20 001	58 461	12 680	787.3	43.5
September Quarter	2 061	19 583	57 173	12 454	806.3	44.9
December Quarter	2 018	19 293	56 539	12 705	807.5	46.0
<b>2006</b>						
March Quarter	1 983	18 971	56 164	12 279	798.3	47.3
<b>Year ended March 2006</b>	..	..	..	..	3 199.5	45.4
HOTELS MOTELS AND SERVICED APARTMENTS WITH 15 OR MORE ROOMS						
<b>2004</b>						
December Quarter	3 973	205 495	586 217	112 416	11 994.4	63.7
<b>2005</b>						
March Quarter	4 137	209 022	596 242	113 164	11 841.3	63.6
June Quarter	4 151	209 823	596 395	112 991	11 342.3	59.7
September Quarter	4 172	211 646	601 697	114 947	12 535.4	64.4
December Quarter	4 169	212 784	603 192	114 808	12 543.5	64.5
<b>2006</b>						
March Quarter	4 187	212 598	607 385	114 042	12 225.5	64.2
<b>Year ended March 2005</b>	..	..	..	..	46 731.3	62.5
<b>Year ended March 2006</b>	..	..	..	..	48 646.6	63.2
HOTELS MOTELS AND SERVICED APARTMENTS WITH 5 OR MORE ROOMS						
<b>2005</b>						
March Quarter	6 267	229 137	655 013	126 164	12 695.3	62.2
June Quarter	6 266	229 824	654 856	125 671	12 129.6	58.3
September Quarter	6 233	231 229	658 870	127 401	13 341.7	62.8
December Quarter	6 187	232 077	659 731	127 513	13 351.0	63.0
<b>2006</b>						
March Quarter	6 170	231 569	663 549	126 321	13 023.8	62.8
<b>Year ended March 2006</b>	..	..	..	..	51 846.1	61.7
.. not applicable						

<i>Period</i>	<i>Guest nights occupied</i> '000	<i>Bed occupancy rate</i> %	<i>Guest arrivals</i> '000	<i>Average length of stay</i> days	<i>Takings from accommodation</i> \$'000
.....					
HOTELS MOTELS AND SERVICED APARTMENTS WITH 5 TO 14 ROOMS					
<b>2005</b>					
March Quarter	1 648.8	31.7	904.4	1.8	75 613
June Quarter	1 438.4	27.2	824.2	1.7	65 607
September Quarter	1 502.3	28.6	841.3	1.8	69 336
December Quarter	1 520.0	29.6	843.8	1.8	71 657
<b>2006</b>					
March Quarter	1 511.2	30.3	822.6	1.8	72 685
<b>Year ended March 2006</b>	<b>5 971.8</b>	<b>28.9</b>	<b>3 331.9</b>	<b>1.8</b>	<b>279 284</b>
.....					
HOTELS MOTELS AND SERVICED APARTMENTS WITH 15 OR MORE ROOMS					
<b>2004</b>					
December Quarter	21 845.3	40.7	9 639.2	2.3	1 513 029
<b>2005</b>					
March Quarter	21 829.9	41.1	9 341.2	2.3	1 525 330
June Quarter	19 630.0	36.4	8 947.5	2.2	1 395 043
September Quarter	22 495.5	40.7	9 853.1	2.3	1 618 246
December Quarter	22 545.3	41.0	9 771.8	2.3	1 650 876
<b>2006</b>					
March Quarter	21 994.2	40.5	9 465.5	2.3	1 649 208
<b>Year ended March 2005</b>	<b>84 848.6</b>	<b>39.8</b>	<b>37 245.6</b>	<b>2.3</b>	<b>5 801 539</b>
<b>Year ended March 2006</b>	<b>86 665.0</b>	<b>39.6</b>	<b>38 037.9</b>	<b>2.3</b>	<b>6 313 374</b>
.....					
HOTELS MOTELS AND SERVICED APARTMENTS WITH 5 OR MORE ROOMS					
<b>2005</b>					
March Quarter	23 478.6	40.3	10 245.6	2.3	1 600 943
June Quarter	21 068.4	35.6	9 771.8	2.2	1 460 650
September Quarter	23 997.7	39.6	10 694.4	2.2	1 687 582
December Quarter	24 065.3	40.0	10 615.6	2.3	1 722 533
<b>2006</b>					
March Quarter	23 505.4	39.6	10 288.1	2.3	1 721 893
<b>Year ended March 2006</b>	<b>92 636.8</b>	<b>38.7</b>	<b>41 369.8</b>	<b>2.2</b>	<b>6 592 658</b>

## SUMMARY OF LICENSED HOTELS AND RESORTS, Australia

<i>Period</i>	<i>Establishments</i>	<i>Rooms</i>	<i>Bed spaces</i>	<i>Persons employed</i>	<i>Room nights occupied</i>	<i>Room occupancy rate</i>
	no.	no.	no.	no.	'000	%
.....						
LICENSED HOTELS WITH 5 TO 14 ROOMS						
<b>2005</b>						
March Quarter	496	4 600	12 049	7 747	150.9	36.8
June Quarter	491	4 573	12 100	7 525	139.9	33.8
September Quarter	478	4 478	11 864	7 431	148.9	36.2
December Quarter	478	4 487	11 969	7 706	155.0	37.7
<b>2006</b>						
March Quarter	467	4 406	11 903	7 493	155.1	39.2
<b>Year ended March 2006</b>	..	..	..	..	598.9	36.7
.....						
LICENSED HOTELS WITH 15 OR MORE ROOMS						
<b>2004</b>						
December Quarter	786	78 574	205 304	69 883	5 035.1	70.0
<b>2005</b>						
March Quarter	816	79 114	206 172	69 759	4 908.5	69.7
June Quarter	820	79 353	205 730	69 485	4 629.7	64.5
September Quarter	820	80 073	206 787	70 484	5 109.4	69.4
December Quarter	812	80 134	206 756	70 560	5 167.3	70.5
<b>2006</b>						
March Quarter	816	79 706	206 960	69 705	4 972.5	69.6
<b>Year ended March 2005</b>	..	..	..	..	19 471.7	68.0
<b>Year ended March 2006</b>	..	..	..	..	19 879.0	68.5
.....						
LICENSED HOTELS WITH 5 OR MORE ROOMS						
<b>2005</b>						
March Quarter	1 312	83 714	218 221	77 506	5 059.4	67.9
June Quarter	1 311	83 926	217 830	77 010	4 769.6	62.8
September Quarter	1 298	84 551	218 651	77 915	5 258.3	67.6
December Quarter	1 290	84 621	218 725	78 266	5 322.3	68.8
<b>2006</b>						
March Quarter	1 283	84 112	218 863	77 198	5 127.7	68.0
<b>Year ended March 2006</b>	..	..	..	..	20 477.8	66.8
.....						
..	not applicable					

SUMMARY OF LICENSED HOTELS AND RESORTS, Australia *continued*

<i>Period</i>	<i>Guest nights occupied</i> '000	<i>Bed occupancy rate</i> %	<i>Guest arrivals</i> '000	<i>Average length of stay</i> days	<i>Takings from accommodation</i> \$'000
---------------	--	--	-----------------------------------	---	---

## LICENSED HOTELS WITH 5 TO 14 ROOMS

<b>2005</b>					
March Quarter	236.6	22.1	137.6	1.7	9 709
June Quarter	213.9	19.5	131.4	1.6	8 864
September Quarter	228.3	20.9	136.7	1.7	9 561
December Quarter	239.2	21.8	144.1	1.7	10 187
<b>2006</b>					
March Quarter	240.5	22.5	138.4	1.7	10 412
<b>Year ended March 2006</b>	<b>921.9</b>	<b>21.2</b>	<b>550.6</b>	<b>1.7</b>	<b>39 023</b>

## LICENSED HOTELS WITH 15 OR MORE ROOMS

<b>2004</b>					
December Quarter	8 330.4	44.4	3 653.7	2.3	749 901
<b>2005</b>					
March Quarter	8 157.9	44.5	3 456.8	2.4	749 365
June Quarter	7 272.8	39.1	3 352.1	2.2	674 905
September Quarter	8 320.0	43.8	3 656.3	2.3	777 192
December Quarter	8 417.2	44.6	3 644.0	2.3	809 598
<b>2006</b>					
March Quarter	8 110.2	43.8	3 507.8	2.3	801 350
<b>Year ended March 2005</b>	<b>32 081.9</b>	<b>43.1</b>	<b>13 905.4</b>	<b>2.3</b>	<b>2 847 894</b>
<b>Year ended March 2006</b>	<b>32 120.2</b>	<b>42.8</b>	<b>14 160.1</b>	<b>2.3</b>	<b>3 063 046</b>

## LICENSED HOTELS WITH 5 OR MORE ROOMS

<b>2005</b>					
March Quarter	8 394.6	43.3	3 594.4	2.3	759 074
June Quarter	7 486.8	38.1	3 483.4	2.1	683 769
September Quarter	8 548.3	42.5	3 793.1	2.3	786 753
December Quarter	8 656.4	43.4	3 788.1	2.3	819 785
<b>2006</b>					
March Quarter	8 350.6	42.6	3 646.2	2.3	811 762
<b>Year ended March 2006</b>	<b>33 042.1</b>	<b>41.6</b>	<b>14 710.7</b>	<b>2.2</b>	<b>3 102 069</b>

## SUMMARY OF MOTELS, PRIVATE HOTELS AND GUEST HOUSES, Australia

<i>Period</i>	<i>Establishments</i> no.	<i>Rooms</i> no.	<i>Bed spaces</i> no.	<i>Persons employed</i> no.	<i>Room nights occupied</i> '000	<i>Room occupancy rate</i> %
.....						
<b>MOTELS AND GUEST HOUSES WITH 5 TO 14 ROOMS</b>						
<b>2005</b>						
March Quarter	1 287	12 488	35 487	4 150	545.0	49.4
June Quarter	1 280	12 466	35 227	4 064	512.2	45.5
September Quarter	1 246	12 182	34 332	3 923	510.4	45.7
December Quarter	1 212	11 925	33 785	3 948	504.8	46.8
<b>2006</b>						
March Quarter	1 193	11 744	33 705	3 791	497.6	47.8
<b>Year ended March 2006</b>	..	..	..	..	2 025.1	46.4
.....						
<b>MOTELS AND GUEST HOUSES WITH 15 OR MORE ROOMS</b>						
<b>2004</b>						
December Quarter	2 390	85 185	246 227	28 771	4 330.7	55.6
<b>2005</b>						
March Quarter	2 473	86 060	248 577	29 334	4 240.0	55.4
June Quarter	2 476	86 442	249 619	29 381	4 216.6	54.0
September Quarter	2 485	86 440	250 100	29 875	4 573.9	57.6
December Quarter	2 485	86 798	249 385	29 477	4 490.4	56.7
<b>2006</b>						
March Quarter	2 491	86 584	250 908	29 646	4 392.8	56.8
<b>Year ended March 2005</b>	..	..	..	..	16 991.0	55.1
<b>Year ended March 2006</b>	..	..	..	..	17 673.6	56.3
.....						
<b>MOTELS AND GUEST HOUSES WITH 5 OR MORE ROOMS</b>						
<b>2005</b>						
March Quarter	3 760	98 548	284 064	33 484	4 785.0	54.6
June Quarter	3 756	98 908	284 846	33 445	4 728.9	52.9
September Quarter	3 731	98 622	284 432	33 798	5 084.3	56.1
December Quarter	3 697	98 723	283 170	33 425	4 995.2	55.5
<b>2006</b>						
March Quarter	3 684	98 328	284 613	33 437	4 890.4	55.7
<b>Year ended March 2006</b>	..	..	..	..	19 698.7	55.1
.....						
..	not applicable					

<i>Period</i>	<i>Guest nights occupied</i> '000	<i>Bed occupancy rate</i> %	<i>Guest arrivals</i> '000	<i>Average length of stay</i> days	<i>Takings from accommodation</i> \$'000
---------------	--	--	-----------------------------------	---	---

## MOTELS AND GUEST HOUSES WITH 5 TO 14 ROOMS

<b>2005</b>					
March Quarter	1 013.1	32.4	626.7	1.6	47 461
June Quarter	902.7	28.4	565.5	1.6	42 030
September Quarter	915.4	29.1	573.7	1.6	43 424
December Quarter	919.7	30.1	572.2	1.6	44 374
<b>2006</b>					
March Quarter	908.3	30.5	554.0	1.6	44 545
<b>Year ended March 2006</b>	<b>3 646.1</b>	<b>29.5</b>	<b>2 265.4</b>	<b>1.6</b>	<b>174 373</b>

## MOTELS AND GUEST HOUSES WITH 15 OR MORE ROOMS

<b>2004</b>					
December Quarter	7 656.2	34.0	4 291.1	1.8	412 426
<b>2005</b>					
March Quarter	7 622.3	34.5	4 181.8	1.8	413 752
June Quarter	7 132.7	31.6	4 040.5	1.8	400 281
September Quarter	8 003.2	34.8	4 455.8	1.8	452 358
December Quarter	7 783.3	34.3	4 337.3	1.8	443 827
<b>2006</b>					
March Quarter	7 656.2	34.2	4 219.3	1.8	445 993
<b>Year ended March 2005</b>	<b>30 072.2</b>	<b>33.7</b>	<b>16 869.3</b>	<b>1.8</b>	<b>1 613 210</b>
<b>Year ended March 2006</b>	<b>30 575.4</b>	<b>33.7</b>	<b>17 052.8</b>	<b>1.8</b>	<b>1 742 460</b>

## MOTELS AND GUEST HOUSES WITH 5 OR MORE ROOMS

<b>2005</b>					
March Quarter	8 635.4	34.3	4 808.5	1.8	461 214
June Quarter	8 035.4	31.2	4 605.9	1.7	442 312
September Quarter	8 918.6	34.1	5 029.5	1.8	495 783
December Quarter	8 703.0	33.8	4 909.5	1.8	488 201
<b>2006</b>					
March Quarter	8 564.5	33.8	4 773.3	1.8	490 538
<b>Year ended March 2006</b>	<b>34 221.5</b>	<b>33.2</b>	<b>19 318.2</b>	<b>1.8</b>	<b>1 916 833</b>

## SUMMARY OF SERVICED APARTMENTS, Australia

<i>Period</i>	<i>Establishments</i>	<i>Rooms</i>	<i>Bed spaces</i>	<i>Persons employed</i>	<i>Room nights occupied</i>	<i>Room occupancy rate</i>
	no.	no.	no.	no.	'000	%
.....						
SERVICED APARTMENTS WITH 5 TO 14 ROOMS						
<b>2005</b>						
March Quarter	347	3 027	11 235	1 103	158.2	58.4
June Quarter	344	2 962	11 134	1 091	135.1	50.1
September Quarter	337	2 923	10 977	1 100	147.1	54.8
December Quarter	328	2 881	10 785	1 051	147.7	56.0
<b>2006</b>						
March Quarter	323	2 821	10 556	995	145.7	57.5
<b>Year ended March 2006</b>	..	..	..	..	575.5	54.6
.....						
SERVICED APARTMENTS WITH 15 OR MORE ROOMS						
<b>2004</b>						
December Quarter	797	41 736	134 686	13 762	2 628.6	68.6
<b>2005</b>						
March Quarter	848	43 848	141 493	14 071	2 692.8	68.4
June Quarter	855	44 028	141 046	14 125	2 495.9	62.4
September Quarter	867	45 133	144 810	14 588	2 852.1	68.7
December Quarter	872	45 852	147 051	14 771	2 885.8	68.7
<b>2006</b>						
March Quarter	880	46 308	149 517	14 691	2 860.1	68.7
<b>Year ended March 2005</b>	..	..	..	..	10 268.6	67.1
<b>Year ended March 2006</b>	..	..	..	..	11 094.1	67.2
.....						
SERVICED APARTMENTS WITH 5 OR MORE ROOMS						
<b>2005</b>						
March Quarter	1 195	46 875	152 728	15 174	2 850.9	67.8
June Quarter	1 199	46 990	152 180	15 216	2 631.1	61.7
September Quarter	1 204	48 056	155 787	15 688	2 999.2	67.9
December Quarter	1 200	48 733	157 836	15 822	3 033.5	68.0
<b>2006</b>						
March Quarter	1 203	49 129	160 073	15 686	3 005.8	68.1
<b>Year ended March 2006</b>	..	..	..	..	11 669.6	66.4
.....						
..	not applicable					



SUMMARY OF SERVICED APARTMENTS, Australia *continued*

<i>Period</i>	<i>Guest nights occupied</i> '000	<i>Bed occupancy rate</i> %	<i>Guest arrivals</i> '000	<i>Average length of stay</i> days	<i>Takings from accommodation</i> \$'000
.....					
SERVICED APARTMENTS WITH 5 TO 14 ROOMS					
<b>2005</b>					
March Quarter	399.0	39.7	140.1	2.8	18 443
June Quarter	321.8	31.7	127.4	2.5	14 713
September Quarter	358.5	35.6	130.9	2.7	16 351
December Quarter	361.1	36.6	127.5	2.8	17 096
<b>2006</b>					
March Quarter	362.4	38.2	130.1	2.8	17 728
<b>Year ended March 2006</b>	<b>1 403.8</b>	<b>35.5</b>	<b>515.9</b>	<b>2.7</b>	<b>65 888</b>
.....					
SERVICED APARTMENTS WITH 15 OR MORE ROOMS					
<b>2004</b>					
December Quarter	5 858.7	47.4	1 694.4	3.5	350 702
<b>2005</b>					
March Quarter	6 049.6	47.7	1 702.6	3.6	362 213
June Quarter	5 224.4	40.8	1 555.0	3.4	319 856
September Quarter	6 172.4	46.3	1 741.0	3.5	388 695
December Quarter	6 344.8	47.1	1 790.4	3.5	397 451
<b>2006</b>					
March Quarter	6 227.8	46.4	1 738.4	3.6	401 865
<b>Year ended March 2005</b>	<b>22 694.6</b>	<b>45.9</b>	<b>6 470.9</b>	<b>3.5</b>	<b>1 340 435</b>
<b>Year ended March 2006</b>	<b>23 969.4</b>	<b>45.2</b>	<b>6 824.9</b>	<b>3.5</b>	<b>1 507 868</b>
.....					
SERVICED APARTMENTS WITH 5 OR MORE ROOMS					
<b>2005</b>					
March Quarter	6 448.6	47.1	1 842.6	3.5	380 656
June Quarter	5 546.2	40.2	1 682.4	3.3	334 569
September Quarter	6 530.9	45.6	1 871.9	3.5	405 046
December Quarter	6 705.9	46.4	1 918.0	3.5	414 548
<b>2006</b>					
March Quarter	6 590.2	45.8	1 868.6	3.5	419 593
<b>Year ended March 2006</b>	<b>25 373.2</b>	<b>44.5</b>	<b>7 340.9</b>	<b>3.5</b>	<b>1 573 756</b>

## CAPACITY

Period	Establishments no.	CAPACITY				Total capacity no.
		On-site vans no.	Other powered sites no.	Unpowered sites no.	Cabins, flats units and villas no.	
CARAVAN PARKS, SHORT TERM (b)						
<b>2005</b>						
March Quarter	1 523	13 942	131 200	39 731	24 791	209 664
June Quarter	1 521	13 563	131 162	39 574	25 160	209 459
September Quarter	1 504	14 055	128 427	38 974	25 005	206 461
December Quarter	1 495	13 930	128 398	39 231	25 191	206 750
<b>2006</b>						
March Quarter	1 483	13 277	128 939	39 714	25 255	207 185
<b>Year ended March 2006</b>	..	..	..	..	..	..
CARAVAN PARKS, LONG TERM (b)						
<b>2005</b>						
March Quarter	247	4 814	18 582	2 075	6 146	31 617
June Quarter	247	4 858	18 561	2 036	6 226	31 681
September Quarter	240	4 372	18 224	2 256	6 005	30 857
December Quarter	239	4 173	18 117	2 079	6 209	30 578
<b>2006</b>						
March Quarter	235	4 254	17 764	2 074	6 213	30 305
<b>Year ended March 2006</b>	..	..	..	..	..	..
CARAVAN PARKS, TOTAL						
<b>2005</b>						
March Quarter	1 770	18 756	149 782	41 806	30 937	241 281
June Quarter	1 768	18 421	149 723	41 610	31 386	241 140
September Quarter	1 744	18 427	146 651	41 230	31 010	237 318
December Quarter	1 734	18 103	146 515	41 310	31 400	237 328
<b>2006</b>						
March Quarter	1 718	17 531	146 703	41 788	31 468	237 490
<b>Year ended March 2006</b>	..	..	..	..	..	..

.. not applicable

(b) For definitions of short-term and long-term caravan parks, see Glossary.

(a) Comprising establishments with 40 or more powered sites and cabins, flats, units and villas.

SUMMARY OF CARAVAN PARKS (a), Australia *continued*

<i>Period</i>	<i>Persons employed</i>	<i>Sites occupied by long-term guests</i>	<i>Other sites permanently reserved</i>	<i>Site nights occupied</i>	<i>Site occupancy rate</i>	<i>Takings from accommodation</i>
<i>no.</i>	<i>no.</i>	<i>no.</i>	<i>'000</i>	<i>%</i>	<i>\$'000</i>	
<b>CARAVAN PARKS, SHORT TERM (b)</b>						
<b>2005</b>						
March Quarter	8 731	19 192	41 175	9 259.1	49.2	183 107
June Quarter	8 683	19 482	41 283	8 832.6	46.6	154 516
September Quarter	8 493	19 408	41 358	9 208.7	49.1	169 549
December Quarter	8 689	19 038	41 405	8 790.0	46.5	175 370
<b>2006</b>						
March Quarter	8 636	19 156	40 624	9 032.9	48.5	189 208
<b>Year ended March 2006</b>	..	..	..	35 864.3	47.7	688 643
<b>CARAVAN PARKS, LONG TERM (b)</b>						
<b>2005</b>						
March Quarter	1 334	18 528	1 560	2 175.0	76.4	35 978
June Quarter	1 381	18 362	1 649	2 155.9	74.8	34 001
September Quarter	1 300	18 051	1 560	2 130.0	75.0	36 766
December Quarter	1 327	17 687	1 498	2 088.9	74.4	37 799
<b>2006</b>						
March Quarter	1 320	17 594	1 567	2 086.6	76.6	36 819
<b>Year ended March 2006</b>	..	..	..	8 461.4	75.2	145 384
<b>CARAVAN PARKS, TOTAL</b>						
<b>2005</b>						
March Quarter	10 065	37 720	42 735	11 434.1	52.8	219 085
June Quarter	10 064	37 844	42 932	10 988.6	50.4	188 516
September Quarter	9 793	37 459	42 918	11 338.7	52.5	206 315
December Quarter	10 016	36 725	42 903	10 878.9	50.1	213 168
<b>2006</b>						
March Quarter	9 956	36 750	42 191	11 119.5	52.1	226 027
<b>Year ended March 2006</b>	..	..	..	44 325.7	51.2	834 026

.. not applicable

(a) Comprising establishments with 40 or more powered sites and cabins, flats, units and villas.

(b) For definitions of short-term and long-term caravan parks, see Glossary.

Period	CAPACITY					
	Letting entities(a)	Single bedroom	Multiple bedroom	Total	Bed spaces	Persons employed(b)
	no.	no.	no.	no.	no.	no.
REAL ESTATE AGENTS						
<b>2005</b>						
March Quarter	164	638	12 945	13 583	71 934	..
June Quarter	166	640	12 833	13 473	70 274	..
September Quarter	170	606	13 123	13 729	74 671	..
December Quarter	168	603	13 354	13 957	75 846	..
<b>2006</b>						
March Quarter	166	664	13 490	14 154	76 305	..
<b>Year ended March 2006</b>	..	..	..	..	..	..
OTHER LETTING ENTITIES						
<b>2005</b>						
March Quarter	422	3 978	10 707	14 685	59 959	2 645
June Quarter	416	3 917	10 546	14 463	59 605	2 640
September Quarter	412	4 159	10 077	14 236	57 397	2 599
December Quarter	415	4 113	10 322	14 435	58 331	2 650
<b>2006</b>						
March Quarter	418	4 383	10 177	14 560	58 849	2 402
<b>Year ended March 2006</b>	..	..	..	..	..	..
HOLIDAY FLATS, UNITS AND HOUSES, TOTAL						
<b>2005</b>						
March Quarter	586	4 616	23 652	28 268	131 893	..
June Quarter	582	4 557	23 379	27 936	129 879	..
September Quarter	582	4 765	23 200	27 965	132 068	..
December Quarter	583	4 716	23 676	28 392	134 177	..
<b>2006</b>						
March Quarter	584	5 047	23 667	28 714	135 154	..
<b>Year ended March 2006</b>	..	..	..	..	..	..

.. not applicable

(a) The number of owners, managers or real estate agents with 15 or more self-contained units.

(b) Employment numbers exclude real estate agents and their employees.

<i>Period</i>	<i>Unit nights occupied</i> '000	<i>Unit occupancy rate</i> %	<i>Unit lettings</i> '000	<i>Average length of stay</i> days	<i>Takings from accommodation</i> \$'000
.....					
<b>REAL ESTATE AGENTS</b>					
<b>2005</b>					
March Quarter	510.5	41.8	86.3	5.9	51 241
June Quarter	321.7	26.2	57.8	5.6	23 728
September Quarter	392.0	31.0	66.4	5.9	33 668
December Quarter	437.7	34.1	84.0	5.2	45 320
<b>2006</b>					
March Quarter	492.6	38.7	81.7	6.0	52 386
<b>Year ended March 2006</b>	<b>1 644.0</b>	<b>32.6</b>	<b>289.9</b>	<b>5.7</b>	<b>155 101</b>
.....					
<b>OTHER LETTING ENTITIES</b>					
<b>2005</b>					
March Quarter	861.3	65.2	253.4	3.4	102 597
June Quarter	735.1	56.1	231.7	3.2	75 884
September Quarter	919.0	70.3	271.3	3.4	102 317
December Quarter	905.4	68.6	296.4	3.1	105 436
<b>2006</b>					
March Quarter	858.2	65.7	287.0	3.0	103 799
<b>Year ended March 2006</b>	<b>3 417.6</b>	<b>65.2</b>	<b>1 086.4</b>	<b>3.1</b>	<b>387 435</b>
.....					
<b>HOLIDAY FLATS, UNITS AND HOUSES, TOTAL</b>					
<b>2005</b>					
March Quarter	1 371.8	54.0	339.7	4.0	153 838
June Quarter	1 056.8	41.7	289.6	3.6	99 612
September Quarter	1 310.9	51.0	337.7	3.9	135 985
December Quarter	1 343.1	51.6	380.4	3.5	150 755
<b>2006</b>					
March Quarter	1 350.8	52.4	368.7	3.7	156 184
<b>Year ended March 2006</b>	<b>5 061.7</b>	<b>49.2</b>	<b>1 376.3</b>	<b>3.7</b>	<b>542 536</b>

## SUMMARY OF VISITOR HOSTELS(a), Australia

	<i>Establishments</i>	<i>Bed spaces</i>	<i>Persons employed</i>	<i>Guest arrivals</i>	<i>Guest nights occupied</i>	<i>Takings from accommodation</i>	<i>Bed occupancy rate</i>	<i>Average length of stay</i>
	no.	no.	no.	no.	no.	\$'000	%	days
<b>2005</b>								
March Quarter	463	47 621	3 499	858 118	2 245 535	52 883	52.7	2.6
June Quarter	456	47 503	3 420	780 776	1 939 362	43 184	45.2	2.5
September Quarter	452	48 226	3 404	770 540	2 010 095	46 328	45.5	2.6
December Quarter	456	48 332	3 337	822 041	2 110 213	49 893	47.6	2.6
<b>2006</b>								
March Quarter	451	48 042	3 281	843 472	2 324 677	53 337	54.1	2.8
<b>Year ended March 2006</b>	..	..	..	3 216 829	8 384 347	192 743	48.1	2.6

.. not applicable

(a) Comprising establishments with 25 or more bed spaces.

## STAR GRADING

<i>Period</i>	1	2	3	4	5	<i>Ungraded</i>	<i>Total</i>
---------------	---	---	---	---	---	-----------------	--------------

## ESTABLISHMENTS, CAPACITY AND EMPLOYMENT (no.)

**March Quarter 2005**

Establishments	102	348	830	409	23	418	2 130
Rooms	953	3 337	8 565	3 323	178	3 759	20 115
Bed spaces	2 328	9 752	25 356	9 790	480	11 065	58 771
Persons employed	1 077	2 871	3 558	1 501	110	3 883	13 000

**March Quarter 2006**

Establishments	84	318	849	390	19	323	1 983
Rooms	780	3 075	8 769	3 257	154	2 936	18 971
Bed spaces	1 969	9 038	26 523	9 656	402	8 576	56 164
Persons employed	877	2 651	3 763	1 565	90	3 333	12 279

## ROOM NIGHTS OCCUPIED ('000)

**2005**

<i>March Quarter</i>	25.8	119.6	406.5	157.1	8.6	136.5	854.1
----------------------	------	-------	-------	-------	-----	-------	-------

**2006**

January	7.4	37.9	144.5	54.4	2.6	34.6	281.4
February	6.9	32.9	119.3	44.9	2.1	31.1	237.2
March	7.9	38.5	143.1	52.0	2.4	35.8	279.7
<i>March Quarter</i>	22.2	109.3	407.0	151.3	7.0	101.5	798.3

## ROOM OCCUPANCY RATE (%)

**2005**

<i>March Quarter</i>	30.9	40.2	53.1	52.7	53.4	41.9	47.8
----------------------	------	------	------	------	------	------	------

**2006**

January	30.7	40.1	53.4	54.1	53.9	39.9	48.4
February	31.8	38.3	48.8	49.4	48.6	40.0	45.2
March	32.6	40.4	52.9	51.1	49.3	41.4	48.0
<i>March Quarter</i>	31.7	39.7	51.8	51.6	50.7	40.4	47.3

## GUEST NIGHTS OCCUPIED ('000)

**2005**

<i>March Quarter</i>	41.6	208.1	778.3	346.2	17.2	257.3	1 648.8
----------------------	------	-------	-------	-------	------	-------	---------

**2006**

January	11.8	69.5	296.8	128.8	4.9	65.9	577.7
February	10.1	54.4	211.1	92.2	3.9	53.3	425.0
March	11.5	64.9	257.7	107.9	4.3	62.2	508.5
<i>March Quarter</i>	33.4	188.8	765.5	329.0	13.1	181.4	1 511.2

## BED OCCUPANCY RATE (%)

**2005**

<i>March Quarter</i>	20.7	24.1	34.4	39.4	39.9	27.0	31.7
----------------------	------	------	------	------	------	------	------

**2006**

January	19.3	25.0	36.3	43.2	39.3	26.3	33.6
February	18.3	21.7	28.5	34.2	34.4	23.7	27.4
March	18.8	23.2	31.5	35.8	34.4	24.8	29.5
<i>March Quarter</i>	18.8	23.3	32.2	37.8	36.1	25.0	30.3

continued

Period	STAR GRADING						Total
	1	2	3	4	5	Ungraded	
GUEST ARRIVALS ('000)							
<b>2005</b>							
March Quarter	25.6	127.5	453.2	160.0	8.6	129.4	904.4
<b>2006</b>							
January	6.6	41.4	162.4	55.5	2.3	33.7	302.0
February	5.7	32.5	124.2	44.8	1.9	28.0	237.0
March	6.5	38.5	150.9	52.1	2.3	33.3	283.6
March Quarter	18.8	112.4	437.5	152.4	6.5	95.0	822.6
AVERAGE LENGTH OF STAY (days)							
<b>2005</b>							
March Quarter	1.6	1.6	1.7	2.2	2.0	2.0	1.8
<b>2006</b>							
January	1.8	1.7	1.8	2.3	2.1	2.0	1.9
February	1.8	1.7	1.7	2.1	2.0	1.9	1.8
March	1.8	1.7	1.7	2.1	1.9	1.9	1.8
March Quarter	1.8	1.7	1.7	2.2	2.0	1.9	1.8
TAKINGS FROM ACCOMMODATION (\$'000)							
<b>2005</b>							
March Quarter	1 542	7 560	32 424	20 947	1 700	11 440	75 613
<b>2006</b>							
January	420	2 546	12 559	8 189	529	3 224	27 467
February	362	2 057	9 436	6 037	399	2 442	20 733
March	424	2 426	11 315	7 052	436	2 832	24 485
March Quarter	1 206	7 028	33 310	21 279	1 364	8 498	72 685
AVERAGE TAKINGS PER ROOM NIGHT OCCUPIED (\$)							
<b>2005</b>							
March Quarter	59.7	63.2	79.8	133.3	198.6	83.8	88.5
<b>2006</b>							
January	56.6	67.1	86.9	150.6	205.5	93.3	97.6
February	52.2	62.6	79.1	134.5	190.2	78.5	87.4
March	53.8	63.1	79.0	135.6	185.5	79.0	87.5
March Quarter	54.2	64.3	81.8	140.7	194.2	83.7	91.0
AVERAGE TAKINGS PER ROOM NIGHT AVAILABLE (\$)							
<b>2005</b>							
March Quarter	18.5	25.4	42.4	70.3	106.1	35.2	42.4
<b>2006</b>							
January	17.4	26.9	46.4	81.5	110.8	37.2	47.3
February	16.6	24.0	38.6	66.4	92.4	31.4	39.5
March	17.5	25.5	41.8	69.3	91.4	32.7	42.0
March Quarter	17.2	25.5	42.4	72.6	98.4	33.9	43.0



## STAR GRADING

<i>Period</i>	1	2	3	4	5	<i>Ungraded</i>	<i>Total</i>
---------------	---	---	---	---	---	-----------------	--------------

## ESTABLISHMENTS, CAPACITY AND EMPLOYMENT (no.)

## March Quarter 2005

Establishments	47	316	2 009	1 431	119	215	4 137
Rooms	1 367	9 722	72 353	94 854	24 587	6 139	209 022
Bed spaces	4 604	27 676	211 026	274 579	61 448	16 909	596 242
Persons employed	594	3 720	24 732	47 109	34 190	2 819	113 164

## March Quarter 2006

Establishments	51	304	2 050	1 461	107	214	4 187
Rooms	1 501	9 584	73 366	98 970	22 921	6 256	212 598
Bed spaces	4 911	27 224	215 741	285 781	56 760	16 968	607 385
Persons employed	572	3 684	24 508	50 006	32 298	2 974	114 042

## ROOM NIGHTS OCCUPIED ('000)

## 2005

<i>March Quarter</i>	37.4	400.1	3 669.2	5 843.7	1 647.1	243.7	11 841.3
----------------------	------	-------	---------	---------	---------	-------	----------

## 2006

January	12.8	136.2	1 244.3	2 068.3	498.2	83.7	4 043.5
February	11.1	123.8	1 151.3	1 968.4	515.4	78.7	3 848.7
March	13.3	146.0	1 351.9	2 197.5	536.3	88.2	4 333.3
<i>March Quarter</i>	37.2	406.1	3 747.5	6 234.2	1 550.0	250.6	12 225.5

## ROOM OCCUPANCY RATE (%)

## 2005

<i>March Quarter</i>	32.0	46.8	57.1	68.7	74.5	47.5	63.6
----------------------	------	------	------	------	------	------	------

## 2006

January	29.2	46.3	55.0	67.5	70.2	45.3	61.7
February	27.5	46.5	56.4	71.0	80.4	47.2	64.9
March	30.5	49.5	59.8	71.6	75.6	47.7	66.0
<i>March Quarter</i>	29.1	47.5	57.1	70.0	75.2	46.7	64.2

## GUEST NIGHTS OCCUPIED ('000)

## 2005

<i>March Quarter</i>	61.8	715.1	6 906.0	10 998.0	2 724.4	424.7	21 829.9
----------------------	------	-------	---------	----------	---------	-------	----------

## 2006

January	21.3	253.5	2 502.4	4 290.5	885.1	149.9	8 102.8
February	16.8	216.1	1 976.5	3 364.1	786.1	121.0	6 480.7
March	20.7	254.3	2 351.6	3 817.9	829.4	136.8	7 410.7
<i>March Quarter</i>	58.8	724.0	6 830.5	11 472.5	2 500.7	407.7	21 994.2

## BED OCCUPANCY RATE (%)

## 2005

<i>March Quarter</i>	16.0	29.6	36.8	44.7	49.3	30.7	41.1
----------------------	------	------	------	------	------	------	------

## 2006

January	15.3	30.6	37.6	48.5	50.4	30.6	43.3
February	13.0	28.8	32.9	42.0	49.5	27.4	38.3
March	15.0	30.6	35.4	43.1	47.2	27.9	39.6
<i>March Quarter</i>	14.4	30.0	35.4	44.6	49.0	28.7	40.5

STAR GRADING							
<i>Period</i>	1	2	3	4	5	<i>Ungraded</i>	<i>Total</i>
GUEST ARRIVALS ('000)							
<b>2005</b>							
<i>March Quarter</i>	37.8	404.5	3 383.8	4 301.5	1 031.9	181.6	9 341.2
<b>2006</b>							
January	13.1	150.7	1 186.0	1 561.1	328.9	65.4	3 305.1
February	10.1	124.6	989.5	1 389.9	322.5	56.0	2 892.6
March	11.7	147.1	1 164.1	1 554.9	330.7	59.2	3 267.8
<i>March Quarter</i>	34.9	422.4	3 339.7	4 506.0	982.1	180.5	9 465.5
AVERAGE LENGTH OF STAY (days)							
<b>2005</b>							
<i>March Quarter</i>	1.6	1.8	2.0	2.6	2.6	2.3	2.3
<b>2006</b>							
January	1.6	1.7	2.1	2.7	2.7	2.3	2.5
February	1.7	1.7	2.0	2.4	2.4	2.2	2.2
March	1.8	1.7	2.0	2.5	2.5	2.3	2.3
<i>March Quarter</i>	1.7	1.7	2.0	2.5	2.5	2.3	2.3
TAKINGS FROM ACCOMMODATION (\$'000)							
<b>2005</b>							
<i>March Quarter</i>	2 167	28 694	343 670	780 645	346 259	23 896	1 525 330
<b>2006</b>							
January	798	10 117	122 681	302 173	111 548	9 033	556 351
February	696	8 842	105 665	271 366	113 326	7 918	507 812
March	837	10 737	127 657	313 949	122 828	9 036	585 045
<i>March Quarter</i>	2 331	29 696	356 003	887 488	347 702	25 987	1 649 208
AVERAGE TAKINGS PER ROOM NIGHT OCCUPIED (\$)							
<b>2005</b>							
<i>March Quarter</i>	58.0	71.7	93.7	133.6	210.2	98.1	128.8
<b>2006</b>							
January	62.2	74.3	98.6	146.1	223.9	108.0	137.6
February	63.0	71.4	91.8	137.9	219.9	100.5	131.9
March	62.7	73.5	94.4	142.9	229.0	102.5	135.0
<i>March Quarter</i>	62.6	73.1	95.0	142.4	224.3	103.7	134.9
AVERAGE TAKINGS PER ROOM NIGHT AVAILABLE (\$)							
<b>2005</b>							
<i>March Quarter</i>	18.5	33.6	53.4	91.8	156.7	46.5	81.9
<b>2006</b>							
January	18.2	34.4	54.3	98.6	157.2	48.9	84.9
February	17.3	33.2	51.7	97.9	176.8	47.5	85.7
March	19.2	36.4	56.5	102.4	173.1	48.9	89.2
<i>March Quarter</i>	18.3	34.7	54.2	99.7	168.8	48.5	86.6

## STAR GRADING

<i>Period</i>	1	2	3	4	5	<i>Ungraded</i>	<i>Total</i>
---------------	---	---	---	---	---	-----------------	--------------

## ESTABLISHMENTS, CAPACITY AND EMPLOYMENT (no.)

## March Quarter 2005

Establishments	149	664	2 839	1 840	142	633	6 267
Rooms	2 320	13 059	80 918	98 177	24 765	9 898	229 137
Bed spaces	6 932	37 428	236 382	284 369	61 928	27 974	655 013
Persons employed	1 671	6 591	28 290	48 610	34 300	6 702	126 164

## March Quarter 2006

Establishments	135	622	2 899	1 851	126	537	6 170
Rooms	2 281	12 659	82 135	102 227	23 075	9 192	231 569
Bed spaces	6 880	36 262	242 264	295 437	57 162	25 544	663 549
Persons employed	1 449	6 335	28 271	51 571	32 388	6 307	126 321

## ROOM NIGHTS OCCUPIED ('000)

## 2005

<i>March Quarter</i>	63.2	519.7	4 075.7	6 000.9	1 655.7	380.2	12 695.3
----------------------	------	-------	---------	---------	---------	-------	----------

## 2006

January	20.2	174.2	1 388.8	2 122.7	500.8	118.2	4 325.0
February	18.0	156.7	1 270.6	2 013.2	517.5	109.8	4 085.9
March	21.2	184.5	1 495.1	2 249.5	538.7	124.0	4 613.0
<i>March Quarter</i>	59.5	515.3	4 154.5	6 385.5	1 557.0	352.1	13 023.8

## ROOM OCCUPANCY RATE (%)

## 2005

<i>March Quarter</i>	31.6	45.1	56.6	68.2	74.4	45.3	62.2
----------------------	------	------	------	------	------	------	------

## 2006

January	29.7	44.8	54.9	67.1	70.1	43.6	60.6
February	29.0	44.5	55.6	70.3	80.2	44.9	63.3
March	31.3	47.3	59.1	71.0	75.4	45.7	64.6
<i>March Quarter</i>	30.0	45.6	56.5	69.4	75.1	44.7	62.8

## GUEST NIGHTS OCCUPIED ('000)

## 2005

<i>March Quarter</i>	103.4	923.2	7 684.3	11 344.1	2 741.6	682.0	23 478.6
----------------------	-------	-------	---------	----------	---------	-------	----------

## 2006

January	33.1	323.0	2 799.2	4 419.4	890.0	215.8	8 680.6
February	26.9	270.5	2 187.6	3 456.3	790.0	174.4	6 905.7
March	32.2	319.2	2 609.3	3 925.8	833.7	198.9	7 919.2
<i>March Quarter</i>	92.2	912.7	7 596.1	11 801.5	2 513.7	589.1	23 505.4

## BED OCCUPANCY RATE (%)

## 2005

<i>March Quarter</i>	17.6	28.2	36.6	44.5	49.3	29.2	40.3
----------------------	------	------	------	------	------	------	------

## 2006

January	16.5	29.2	37.5	48.3	50.3	29.2	42.5
February	14.6	27.0	32.4	41.8	49.4	26.1	37.4
March	16.1	28.7	35.0	42.9	47.1	26.9	38.7
<i>March Quarter</i>	15.8	28.3	35.0	44.4	48.9	27.4	39.6

## STAR GRADING

<i>Period</i>	1	2	3	4	5	<i>Ungraded</i>	<i>Total</i>
---------------	---	---	---	---	---	-----------------	--------------

## GUEST ARRIVALS ('000)

<b>2005</b>							
<i>March Quarter</i>	63.4	532.0	3 837.0	4 461.6	1 040.6	311.0	10 245.6
<b>2006</b>							
January	19.7	192.1	1 348.4	1 616.6	331.2	99.1	3 607.1
February	15.8	157.1	1 113.7	1 434.7	324.4	83.9	3 129.6
March	18.2	185.5	1 315.0	1 607.0	333.0	92.5	3 551.4
<i>March Quarter</i>	53.7	534.8	3 777.1	4 658.4	988.6	275.5	10 288.1

## AVERAGE LENGTH OF STAY (days)

<b>2005</b>							
<i>March Quarter</i>	1.6	1.7	2.0	2.5	2.6	2.2	2.3
<b>2006</b>							
January	1.7	1.7	2.1	2.7	2.7	2.2	2.4
February	1.7	1.7	2.0	2.4	2.4	2.1	2.2
March	1.8	1.7	2.0	2.4	2.5	2.2	2.2
<i>March Quarter</i>	1.7	1.7	2.0	2.5	2.5	2.1	2.3

## TAKINGS FROM ACCOMMODATION (\$'000)

<b>2005</b>							
<i>March Quarter</i>	3 709	36 254	376 094	801 592	347 958	35 336	1 600 943
<b>2006</b>							
January	1 218	12 663	135 241	310 363	112 077	12 258	583 818
February	1 058	10 899	115 101	277 403	113 725	10 360	528 546
March	1 260	13 163	138 972	321 001	123 265	11 868	609 529
<i>March Quarter</i>	3 537	36 725	389 314	908 767	349 066	34 485	1 721 893

## AVERAGE TAKINGS PER ROOM NIGHT OCCUPIED (\$)

<b>2005</b>							
<i>March Quarter</i>	58.7	69.8	92.3	133.6	210.2	92.9	126.1
<b>2006</b>							
January	60.2	72.7	97.4	146.2	223.8	103.7	135.0
February	58.8	69.6	90.6	137.8	219.8	94.3	129.4
March	59.4	71.3	93.0	142.7	228.8	95.7	132.1
<i>March Quarter</i>	59.5	71.3	93.7	142.3	224.2	97.9	132.2

## AVERAGE TAKINGS PER ROOM NIGHT AVAILABLE (\$)

<b>2005</b>							
<i>March Quarter</i>	18.5	31.5	52.3	91.1	156.3	42.1	78.4
<b>2006</b>							
January	17.9	32.6	53.4	98.1	156.9	45.2	81.8
February	17.1	31.0	50.3	96.9	176.2	42.4	81.9
March	18.6	33.8	54.9	101.3	172.5	43.8	85.3
<i>March Quarter</i>	17.9	32.5	53.0	98.8	168.3	43.8	83.0

Period	New South Wales	Victoria	Queensland	South Australia	Western Australia	Tasmania	Northern Territory	Australian Capital Territory	Australia
ESTABLISHMENTS (no.)									
<b>2005</b>									
June Quarter	664	512	472	174	134	137	19	3	2 115
September Quarter	656	498	466	162	133	132	12	2	2 061
December Quarter	641	485	455	163	132	128	12	2	2 018
<b>2006</b>									
March Quarter	631	475	445	161	130	126	13	2	1 983
ROOMS (no.)									
<b>2005</b>									
June Quarter	6 479	4 869	4 642	1 582	1 113	np	197	np	20 001
September Quarter	6 443	4 739	4 606	1 504	1 095	np	128	np	19 583
December Quarter	6 329	4 657	4 523	1 524	1 080	1 041	np	np	19 293
<b>2006</b>									
March Quarter	6 225	4 561	4 418	1 521	1 084	1 005	np	np	18 971
BED SPACES (no.)									
<b>2005</b>									
June Quarter	18 654	13 870	14 555	4 269	3 550	np	565	np	58 461
September Quarter	18 688	13 421	14 299	4 065	3 485	np	347	np	57 173
December Quarter	18 538	13 106	14 036	4 194	3 434	2 839	np	np	56 539
<b>2006</b>									
March Quarter	18 282	12 993	13 995	4 219	3 426	2 821	np	np	56 164
PERSONS EMPLOYED (no.)									
<b>2005</b>									
June Quarter	3 443	2 969	2 488	1 813	1 012	np	91	np	12 680
September Quarter	3 324	2 951	2 599	1 695	962	np	67	np	12 454
December Quarter	3 429	2 991	2 648	1 787	915	876	np	np	12 705
<b>2006</b>									
March Quarter	3 242	2 852	2 515	1 773	995	843	np	np	12 279
ROOM NIGHTS OCCUPIED ('000)									
<b>2005</b>									
June Quarter	246.7	180.0	219.7	51.2	43.0	np	7.8	np	787.3
September Quarter	259.3	165.4	250.3	50.7	46.0	np	4.4	np	806.3
December Quarter	253.2	183.0	222.4	55.7	45.4	43.7	np	np	807.5
<b>2006</b>									
March Quarter	249.2	191.5	200.3	56.2	42.2	55.2	np	np	798.3
ROOM OCCUPANCY RATE (%)									
<b>2005</b>									
June Quarter	42.2	40.9	52.0	35.6	42.6	np	43.6	np	43.5
September Quarter	43.8	38.0	59.2	36.8	45.9	np	37.6	np	44.9
December Quarter	44.2	43.4	53.6	39.8	46.6	45.8	np	np	46.0
<b>2006</b>									
March Quarter	45.0	47.0	50.7	41.0	45.1	61.3	np	np	47.3

np not available for publication but included in totals where applicable, unless otherwise indicated

<i>Period</i>	<i>New South Wales</i>	<i>Victoria</i>	<i>Queensland</i>	<i>South Australia</i>	<i>Western Australia</i>	<i>Tasmania</i>	<i>Northern Territory</i>	<i>Australian Capital Territory</i>	<i>Australia</i>
GUEST NIGHTS OCCUPIED ('000)									
<b>2005</b>									
June Quarter	445.2	325.9	406.0	86.1	87.8	np	16.4	np	1 438.4
September Quarter	483.8	306.0	464.8	87.8	96.0	np	8.3	np	1 502.3
December Quarter	477.7	344.7	415.2	97.3	95.2	81.4	np	np	1 520.0
<b>2006</b>									
March Quarter	470.9	369.7	370.2	94.3	88.6	110.8	np	np	1 511.2
BED OCCUPANCY RATE (%)									
<b>2005</b>									
June Quarter	26.5	26.0	30.7	22.2	27.1	np	31.9	np	27.2
September Quarter	28.2	24.8	35.4	23.6	30.1	np	25.9	np	28.6
December Quarter	28.5	29.1	32.3	25.3	30.6	31.2	np	np	29.6
<b>2006</b>									
March Quarter	29.0	31.9	29.6	24.8	30.0	43.8	np	np	30.3
GUEST ARRIVALS ('000)									
<b>2005</b>									
June Quarter	278.9	188.6	217.2	46.2	41.4	np	8.2	np	824.2
September Quarter	293.1	180.0	234.8	49.9	44.3	np	5.0	np	841.3
December Quarter	282.5	205.7	207.2	52.9	42.0	48.4	np	np	843.8
<b>2006</b>									
March Quarter	269.3	206.1	185.8	53.5	38.2	65.2	np	np	822.6
AVERAGE LENGTH OF STAY ( <i>days</i> )									
<b>2005</b>									
June Quarter	1.6	1.7	1.9	1.9	2.1	np	2.0	np	1.7
September Quarter	1.7	1.7	2.0	1.8	2.2	np	1.6	np	1.8
December Quarter	1.7	1.7	2.0	1.8	2.3	1.7	np	np	1.8
<b>2006</b>									
March Quarter	1.7	1.8	2.0	1.8	2.3	1.7	np	np	1.8
TAKINGS FROM ACCOMMODATION (\$'000)									
<b>2005</b>									
June Quarter	20 737	15 542	16 205	3 976	4 423	np	692	np	65 607
September Quarter	23 501	14 843	19 231	3 890	4 773	np	274	np	69 336
December Quarter	22 818	16 803	17 694	4 545	4 992	4 528	np	np	71 657
<b>2006</b>									
March Quarter	23 222	17 628	15 954	4 757	4 769	6 112	np	np	72 685
AVERAGE TAKINGS PER ROOM NIGHT OCCUPIED (\$)									
<b>2005</b>									
June Quarter	84.1	86.3	73.8	77.6	102.9	np	88.6	np	83.3
September Quarter	90.6	89.7	76.8	76.7	103.6	np	61.8	np	86.0
December Quarter	90.1	91.8	79.5	81.6	109.9	103.5	np	np	88.7
<b>2006</b>									
March Quarter	93.2	92.1	79.6	84.7	113.1	110.7	np	np	91.0

np not available for publication but included in totals where applicable, unless otherwise indicated

<i>Period</i>	<i>New South Wales</i>	<i>Victoria</i>	<i>Queensland</i>	<i>South Australia</i>	<i>Western Australia</i>	<i>Tasmania</i>	<i>Northern Territory</i>	<i>Australian Capital Territory</i>	<i>Australia</i>
AVERAGE TAKINGS PER ROOM NIGHT AVAILABLE (\$)									
<b>2005</b>									
June Quarter	35.4	35.3	38.4	27.6	43.8	np	38.6	np	36.3
September Quarter	39.7	34.1	45.5	28.2	47.6	np	23.3	np	38.6
December Quarter	39.8	39.9	42.7	32.5	51.2	47.5	np	np	40.8
<b>2006</b>									
March Quarter	41.9	43.3	40.4	34.8	51.0	67.9	np	np	43.0

np not available for publication but included in totals where applicable, unless otherwise indicated

<i>Period</i>	<i>New South Wales</i>	<i>Victoria</i>	<i>Queensland</i>	<i>South Australia</i>	<i>Western Australia</i>	<i>Tasmania</i>	<i>Northern Territory</i>	<i>Australian Capital Territory</i>	<i>Australia</i>
<b>ESTABLISHMENTS (no.)</b>									
<b>2004</b>									
December Quarter	1 346	741	1 010	242	344	144	90	56	3 973
<b>2005</b>									
March Quarter	1 393	776	1 058	255	351	153	93	58	4 137
June Quarter	1 396	780	1 063	257	350	154	93	58	4 151
September Quarter	1 406	781	1 069	258	350	154	95	59	4 172
December Quarter	1 405	781	1 069	254	355	153	94	58	4 169
<b>2006</b>									
March Quarter	1 416	786	1 073	251	352	157	94	58	4 187
<b>ROOMS (no.)</b>									
<b>2004</b>									
December Quarter	64 624	35 353	55 473	11 487	20 937	6 228	6 514	4 879	205 495
<b>2005</b>									
March Quarter	65 986	36 371	56 610	11 741	20 646	6 331	6 399	4 938	209 022
June Quarter	66 227	36 443	56 652	11 779	20 890	6 401	6 472	4 959	209 823
September Quarter	67 506	36 535	56 896	11 873	20 807	6 519	6 541	4 969	211 646
December Quarter	67 757	36 681	57 127	11 726	21 687	6 419	6 477	4 910	212 784
<b>2006</b>									
March Quarter	68 062	37 087	56 843	11 661	21 036	6 520	6 488	4 901	212 598
<b>BED SPACES (no.)</b>									
<b>2004</b>									
December Quarter	180 179	95 549	170 636	32 072	57 310	18 311	18 672	13 488	586 217
<b>2005</b>									
March Quarter	184 025	98 571	173 322	32 375	57 073	18 555	18 769	13 552	596 242
June Quarter	183 885	98 663	173 124	32 581	56 981	18 528	18 977	13 656	596 395
September Quarter	186 668	98 992	174 612	32 970	56 996	18 565	19 062	13 832	601 697
December Quarter	186 259	99 226	175 723	32 173	58 741	18 614	18 873	13 583	603 192
<b>2006</b>									
March Quarter	189 188	100 882	176 667	32 087	57 356	18 962	18 901	13 342	607 385
<b>PERSONS EMPLOYED (no.)</b>									
<b>2004</b>									
December Quarter	32 265	21 228	32 217	7 027	9 922	4 399	2 833	2 525	112 416
<b>2005</b>									
March Quarter	32 744	21 529	31 612	7 202	10 078	4 606	2 845	2 548	113 164
June Quarter	32 735	21 608	31 425	7 199	9 968	4 421	3 163	2 472	112 991
September Quarter	34 076	21 650	31 736	7 241	10 082	4 555	3 072	2 535	114 947
December Quarter	33 813	21 659	31 790	7 280	10 265	4 643	2 979	2 379	114 808
<b>2006</b>									
March Quarter	33 477	21 709	31 224	7 201	10 235	4 708	3 013	2 475	114 042



<i>Period</i>	<i>New South Wales</i>	<i>Victoria</i>	<i>Queensland</i>	<i>South Australia</i>	<i>Western Australia</i>	<i>Tasmania</i>	<i>Northern Territory</i>	<i>Australian Capital Territory</i>	<i>Australia</i>
<b>ROOM NIGHTS OCCUPIED ('000)</b>									
<b>2004</b>									
December Quarter	3 756.7	2 003.3	3 432.1	648.5	1 174.6	354.9	327.1	297.2	11 994.4
<b>2005</b>									
March Quarter	3 816.5	2 141.5	3 139.5	639.8	1 129.4	414.5	265.7	294.4	11 841.3
June Quarter	3 488.3	1 953.6	3 197.1	599.6	1 119.6	303.0	368.7	312.5	11 342.3
September Quarter	3 849.4	2 011.8	3 783.8	630.2	1 214.0	265.4	456.5	324.3	12 535.4
December Quarter	3 906.0	2 126.0	3 556.9	664.0	1 274.2	363.9	331.5	320.9	12 543.5
<b>2006</b>									
March Quarter	3 850.9	2 197.4	3 262.2	673.9	1 224.7	428.0	278.3	310.1	12 225.5
<b>Year ended March 2005</b>	14 682.4	7 894.0	13 309.9	2 473.1	4 465.8	1 305.0	1 397.0	1 204.0	46 731.3
<b>Year ended March 2006</b>	15 094.6	8 288.8	13 799.9	2 567.8	4 832.5	1 360.2	1 435.1	1 267.8	48 646.6
<b>ROOM OCCUPANCY RATE (%)</b>									
<b>2004</b>									
December Quarter	63.8	62.1	67.3	61.4	61.3	61.9	54.6	66.4	63.7
<b>2005</b>									
March Quarter	65.4	66.3	62.0	60.6	61.0	72.8	46.3	66.2	63.6
June Quarter	58.5	59.4	62.0	56.0	59.1	52.1	63.2	69.2	59.7
September Quarter	62.0	60.0	72.3	57.8	63.5	44.3	75.9	70.9	64.4
December Quarter	63.5	63.7	67.8	61.6	64.0	61.6	55.7	71.0	64.5
<b>2006</b>									
March Quarter	63.4	66.4	63.8	64.2	64.7	74.0	47.7	70.3	64.2
<b>Year ended March 2005</b>	62.6	61.1	65.8	57.7	59.7	57.4	59.2	67.3	62.5
<b>Year ended March 2006</b>	61.9	62.4	66.5	59.8	62.8	57.9	60.7	70.4	63.2
<b>GUEST NIGHTS OCCUPIED ('000)</b>									
<b>2004</b>									
December Quarter	6 605.3	3 391.3	6 999.8	1 078.9	2 077.4	646.5	558.3	487.7	21 845.3
<b>2005</b>									
March Quarter	6 846.8	3 725.7	6 464.7	1 068.9	1 990.7	806.7	447.9	478.5	21 829.9
June Quarter	5 856.9	3 199.1	6 131.6	942.3	1 835.5	540.3	633.0	491.4	19 630.0
September Quarter	6 730.0	3 375.0	7 500.0	989.7	2 050.4	463.2	817.1	570.3	22 495.5
December Quarter	6 849.3	3 572.1	7 128.6	1 098.1	2 170.2	654.8	556.2	516.1	22 545.3
<b>2006</b>									
March Quarter	6 746.8	3 754.7	6 480.7	1 114.2	2 109.8	826.8	476.9	484.4	21 994.2
<b>Year ended March 2005</b>	25 924.0	13 432.1	26 823.4	4 069.1	7 769.3	2 415.8	2 425.7	1 989.2	84 848.6
<b>Year ended March 2006</b>	26 182.9	13 900.9	27 240.8	4 144.3	8 165.8	2 485.0	2 483.2	2 062.2	86 665.0
<b>BED OCCUPANCY RATE (%)</b>									
<b>2004</b>									
December Quarter	40.3	39.0	44.6	36.6	39.6	38.4	32.5	39.4	40.7
<b>2005</b>									
March Quarter	42.2	42.7	41.6	36.7	38.9	48.3	26.7	39.2	41.1
June Quarter	35.4	36.0	38.9	31.8	35.5	32.1	37.0	39.5	36.4
September Quarter	39.2	37.2	46.7	32.6	39.2	27.2	46.6	44.8	40.7
December Quarter	40.6	39.7	44.2	37.1	40.2	38.2	32.1	41.3	41.0
<b>2006</b>									
March Quarter	40.1	41.8	40.8	38.6	40.9	49.2	28.0	40.3	40.5
<b>Year ended March 2005</b>	39.8	38.5	43.2	34.0	37.7	36.3	35.5	40.3	39.8
<b>Year ended March 2006</b>	38.8	38.7	42.7	35.0	39.0	36.7	36.0	41.5	39.6

<i>Period</i>	<i>New South Wales</i>	<i>Victoria</i>	<i>Queensland</i>	<i>South Australia</i>	<i>Western Australia</i>	<i>Tasmania</i>	<i>Northern Territory</i>	<i>Australian Capital Territory</i>	<i>Australia</i>
<b>GUEST ARRIVALS ('000)</b>									
<b>2004</b>									
December Quarter	3 184.6	1 623.6	2 563.3	526.8	869.5	351.8	300.8	218.8	9 639.2
<b>2005</b>									
March Quarter	3 193.0	1 674.5	2 288.1	511.8	811.4	432.6	223.0	206.8	9 341.2
June Quarter	2 978.2	1 554.3	2 395.3	472.1	756.3	289.1	296.3	206.0	8 947.5
September Quarter	3 241.7	1 619.9	2 739.5	506.3	872.7	247.9	384.8	240.3	9 853.1
December Quarter	3 239.8	1 670.7	2 602.3	522.3	906.2	342.7	281.9	205.8	9 771.8
<b>2006</b>									
March Quarter	3 171.3	1 691.3	2 344.1	533.2	872.6	416.8	237.7	198.4	9 465.5
<b>Year ended March 2005</b>	12 503.7	6 290.4	9 804.0	1 979.0	3 236.4	1 291.5	1 267.2	873.4	37 245.6
<b>Year ended March 2006</b>	12 631.0	6 536.2	10 081.1	2 034.0	3 407.8	1 296.6	1 200.7	850.6	38 037.9
<b>AVERAGE LENGTH OF STAY (days)</b>									
<b>2004</b>									
December Quarter	2.1	2.1	2.7	2.0	2.4	1.8	1.9	2.2	2.3
<b>2005</b>									
March Quarter	2.1	2.2	2.8	2.1	2.5	1.9	2.0	2.3	2.3
June Quarter	2.0	2.1	2.6	2.0	2.4	1.9	2.1	2.4	2.2
September Quarter	2.1	2.1	2.7	2.0	2.3	1.9	2.1	2.4	2.3
December Quarter	2.1	2.1	2.7	2.1	2.4	1.9	2.0	2.5	2.3
<b>2006</b>									
March Quarter	2.1	2.2	2.8	2.1	2.4	2.0	2.0	2.4	2.3
<b>Year ended March 2005</b>	2.1	2.1	2.7	2.1	2.4	1.9	1.9	2.3	2.3
<b>Year ended March 2006</b>	2.1	2.1	2.7	2.0	2.4	1.9	2.1	2.4	2.3
<b>TAKINGS FROM ACCOMMODATION (\$'000)</b>									
<b>2004</b>									
December Quarter	507 387	258 123	427 385	71 221	134 200	40 835	39 492	34 387	1 513 029
<b>2005</b>									
March Quarter	533 042	291 678	386 039	70 527	129 037	48 749	30 911	35 347	1 525 330
June Quarter	455 050	249 554	378 395	63 114	129 486	34 488	46 413	38 543	1 395 043
September Quarter	527 909	273 252	475 123	67 918	143 553	29 882	60 885	39 725	1 618 246
December Quarter	550 487	289 807	461 511	74 426	151 796	44 112	39 971	38 766	1 650 876
<b>2006</b>									
March Quarter	551 237	326 867	418 231	79 946	148 824	53 282	31 635	39 186	1 649 208
<b>Year ended March 2005</b>	1 954 942	1 023 386	1 600 213	265 334	500 207	146 953	168 748	141 755	5 801 539
<b>Year ended March 2006</b>	2 084 682	1 139 480	1 733 261	285 404	573 658	161 764	178 904	156 220	6 313 374
<b>AVERAGE TAKINGS PER ROOM NIGHT OCCUPIED (\$)</b>									
<b>2004</b>									
December Quarter	135.1	128.9	124.5	109.8	114.2	115.1	120.7	115.7	126.1
<b>2005</b>									
March Quarter	139.7	136.2	123.0	110.2	114.3	117.6	116.4	120.1	128.8
June Quarter	130.5	127.7	118.4	105.3	115.7	113.8	125.9	123.3	123.0
September Quarter	137.1	135.8	125.6	107.8	118.2	112.6	133.4	122.5	129.1
December Quarter	140.9	136.3	129.8	112.1	119.1	121.2	120.6	120.8	131.6
<b>2006</b>									
March Quarter	143.1	148.8	128.2	118.6	121.5	124.5	113.7	126.4	134.9
<b>Year ended March 2005</b>	133.1	129.6	120.2	107.3	112.0	112.6	120.8	117.7	124.1
<b>Year ended March 2006</b>	138.1	137.5	125.6	111.1	118.7	118.9	124.7	123.2	129.8

<i>Period</i>	<i>New South Wales</i>	<i>Victoria</i>	<i>Queensland</i>	<i>South Australia</i>	<i>Western Australia</i>	<i>Tasmania</i>	<i>Northern Territory</i>	<i>Australian Capital Territory</i>	<i>Australia</i>
AVERAGE TAKINGS PER ROOM NIGHT AVAILABLE (\$)									
<b>2004</b>									
December Quarter	86.1	80.0	83.7	67.4	70.0	71.3	65.9	76.9	80.4
<b>2005</b>									
March Quarter	91.3	90.4	76.2	66.8	69.7	85.6	53.9	79.5	81.9
June Quarter	76.3	75.9	73.4	58.9	68.3	59.4	79.5	85.4	73.5
September Quarter	85.0	81.5	90.8	62.2	75.1	49.9	101.2	86.9	83.2
December Quarter	89.4	86.9	88.0	69.0	76.2	74.7	67.2	85.8	84.9
<b>2006</b>									
March Quarter	90.8	98.7	81.8	76.2	78.6	92.2	54.2	88.8	86.6
<b>Year ended March 2005</b>	83.4	79.3	79.1	61.9	66.9	64.6	71.6	79.2	77.6
<b>Year ended March 2006</b>	85.4	85.8	83.5	66.5	74.6	68.9	75.7	86.7	82.1

Period	New South Wales	Victoria	Queensland	South Australia	Western Australia	Tasmania	Northern Territory	Australian Capital Territory	Australia
ESTABLISHMENTS (no.)									
<b>2005</b>									
June Quarter	2 060	1 292	1 535	431	484	291	112	61	6 266
September Quarter	2 062	1 279	1 535	420	483	286	107	61	6 233
December Quarter	2 046	1 266	1 524	417	487	281	106	60	6 187
<b>2006</b>									
March Quarter	2 047	1 261	1 518	412	482	283	107	60	6 170
ROOMS (no.)									
<b>2005</b>									
June Quarter	72 706	41 312	61 294	13 361	22 003	np	6 669	np	229 824
September Quarter	73 949	41 274	61 502	13 377	21 902	np	6 669	np	231 229
December Quarter	74 086	41 338	61 650	13 250	22 767	7 460	np	np	232 077
<b>2006</b>									
March Quarter	74 287	41 648	61 261	13 182	22 120	7 525	np	np	231 569
BED SPACES (no.)									
<b>2005</b>									
June Quarter	202 539	112 533	187 679	36 850	60 531	np	19 542	np	654 856
September Quarter	205 356	112 413	188 911	37 035	60 481	np	19 409	np	658 870
December Quarter	204 797	112 332	189 759	36 367	62 175	21 453	np	np	659 731
<b>2006</b>									
March Quarter	207 470	113 875	190 662	36 306	60 782	21 783	np	np	663 549
PERSONS EMPLOYED (no.)									
<b>2005</b>									
June Quarter	36 178	24 577	33 913	9 012	10 980	np	3 254	np	125 671
September Quarter	37 400	24 601	34 335	8 936	11 044	np	3 139	np	127 401
December Quarter	37 242	24 650	34 438	9 067	11 180	5 519	np	np	127 513
<b>2006</b>									
March Quarter	36 719	24 561	33 739	8 974	11 230	5 551	np	np	126 321
ROOM NIGHTS OCCUPIED ('000)									
<b>2005</b>									
June Quarter	3 735.0	2 133.6	3 416.7	650.9	1 162.5	np	376.6	np	12 129.6
September Quarter	4 108.7	2 177.3	4 034.1	681.0	1 260.1	np	460.9	np	13 341.7
December Quarter	4 159.2	2 309.0	3 779.3	719.8	1 319.6	407.6	np	np	13 351.0
<b>2006</b>									
March Quarter	4 100.1	2 388.8	3 462.5	730.1	1 266.9	483.2	np	np	13 023.8
ROOM OCCUPANCY RATE (%)									
<b>2005</b>									
June Quarter	57.0	57.2	61.3	53.6	58.2	np	62.6	np	58.3
September Quarter	60.4	57.5	71.3	55.4	62.6	np	75.1	np	62.8
December Quarter	61.8	61.4	66.8	59.1	63.2	59.4	np	np	63.0
<b>2006</b>									
March Quarter	61.9	64.3	62.8	61.5	63.8	72.3	np	np	62.8

np not available for publication but included in totals where applicable, unless otherwise indicated

<i>Period</i>	<i>New South Wales</i>	<i>Victoria</i>	<i>Queensland</i>	<i>South Australia</i>	<i>Western Australia</i>	<i>Tasmania</i>	<i>Northern Territory</i>	<i>Australian Capital Territory</i>	<i>Australia</i>
GUEST NIGHTS OCCUPIED ('000)									
<b>2005</b>									
June Quarter	6 302.1	3 525.0	6 537.6	1 028.4	1 923.2	np	649.4	np	21 068.4
September Quarter	7 213.8	3 680.9	7 964.7	1 077.5	2 146.4	np	825.3	np	23 997.7
December Quarter	7 326.9	3 916.8	7 543.8	1 195.4	2 265.5	736.2	np	np	24 065.3
<b>2006</b>									
March Quarter	7 217.7	4 124.4	6 850.9	1 208.5	2 198.4	937.6	np	np	23 505.4
BED OCCUPANCY RATE (%)									
<b>2005</b>									
June Quarter	34.6	34.8	38.3	30.7	35.0	np	36.9	np	35.6
September Quarter	38.2	35.7	45.8	31.7	38.6	np	46.2	np	39.6
December Quarter	39.5	38.5	43.3	35.7	39.7	37.3	np	np	40.0
<b>2006</b>									
March Quarter	39.1	40.7	39.9	37.0	40.3	48.5	np	np	39.6
GUEST ARRIVALS ('000)									
<b>2005</b>									
June Quarter	3 257.1	1 742.9	2 612.4	518.3	797.6	np	304.5	np	9 771.8
September Quarter	3 534.8	1 799.8	2 974.2	556.3	916.9	np	389.9	np	10 694.4
December Quarter	3 522.3	1 876.3	2 809.5	575.2	948.2	391.2	np	np	10 615.6
<b>2006</b>									
March Quarter	3 440.6	1 897.5	2 529.8	586.6	910.8	482.1	np	np	10 288.1
AVERAGE LENGTH OF STAY (days)									
<b>2005</b>									
June Quarter	1.9	2.0	2.5	2.0	2.4	np	2.1	np	2.2
September Quarter	2.0	2.0	2.7	1.9	2.3	np	2.1	np	2.2
December Quarter	2.1	2.1	2.7	2.1	2.4	1.9	np	np	2.3
<b>2006</b>									
March Quarter	2.1	2.2	2.7	2.1	2.4	1.9	np	np	2.3
TAKINGS FROM ACCOMMODATION (\$'000)									
<b>2005</b>									
June Quarter	475 787	265 097	394 601	67 090	133 909	np	47 105	np	1 460 650
September Quarter	551 410	288 095	494 354	71 808	148 325	np	61 158	np	1 687 582
December Quarter	573 305	306 610	479 205	78 971	156 788	48 640	np	np	1 722 533
<b>2006</b>									
March Quarter	574 459	344 495	434 185	84 704	153 593	59 395	np	np	1 721 893
AVERAGE TAKINGS PER ROOM NIGHT OCCUPIED (\$)									
<b>2005</b>									
June Quarter	127.4	124.2	115.5	103.1	115.2	np	125.1	np	120.4
September Quarter	134.2	132.3	122.5	105.5	117.7	np	132.7	np	126.5
December Quarter	137.8	132.8	126.8	109.7	118.8	119.3	np	np	129.0
<b>2006</b>									
March Quarter	140.1	144.2	125.4	116.0	121.2	122.9	np	np	132.2

np not available for publication but included in totals where applicable, unless otherwise indicated

<i>Period</i>	<i>New South Wales</i>	<i>Victoria</i>	<i>Queensland</i>	<i>South Australia</i>	<i>Western Australia</i>	<i>Tasmania</i>	<i>Northern Territory</i>	<i>Australian Capital Territory</i>	<i>Australia</i>
AVERAGE TAKINGS PER ROOM NIGHT AVAILABLE (\$)									
<b>2005</b>									
June Quarter	72.6	71.1	70.7	55.2	67.1	np	78.3	np	70.2
September Quarter	81.1	76.1	87.4	58.4	73.7	np	99.7	np	79.4
December Quarter	85.2	81.6	84.7	64.8	75.0	70.9	np	np	81.3
<b>2006</b>									
March Quarter	86.7	92.7	78.8	71.4	77.4	88.9	np	np	83.0

np not available for publication but included in totals where applicable, unless otherwise indicated

Period	New South Wales	Victoria	Queensland	South Australia	Western Australia	Tasmania	Northern Territory	Australian Capital Territory	Australia
ESTABLISHMENTS (no.)									
<b>2005</b>									
March Quarter	466	369	269	140	181	46	49	3	1 523
June Quarter	463	367	268	141	184	45	50	3	1 521
September Quarter	460	364	265	138	180	45	49	3	1 504
December Quarter	455	366	263	137	178	45	48	3	1 495
<b>2006</b>									
March Quarter	449	363	262	136	177	45	48	3	1 483
ON-SITE VANS (no.)									
<b>2005</b>									
March Quarter	6 604	3 005	2 146	456	1 271	np	np	np	13 942
June Quarter	6 513	3 059	1 861	387	1 323	np	np	np	13 563
September Quarter	6 952	2 971	1 934	431	1 361	np	np	np	14 055
December Quarter	6 806	3 012	1 784	454	1 452	np	89	np	13 930
<b>2006</b>									
March Quarter	6 630	2 670	1 772	403	1 363	np	np	np	13 277
OTHER POWERED SITES (no.)									
<b>2005</b>									
March Quarter	42 479	33 998	19 617	12 190	15 615	np	np	np	131 200
June Quarter	42 114	33 628	19 669	12 307	15 981	np	np	np	131 162
September Quarter	41 170	32 609	19 522	12 142	15 557	np	np	np	128 427
December Quarter	41 495	33 034	19 300	11 981	15 281	np	4 286	np	128 398
<b>2006</b>									
March Quarter	41 498	33 585	19 222	12 027	15 321	np	np	np	128 939
UNPOWERED SITES (no.)									
<b>2005</b>									
March Quarter	11 797	9 607	5 852	4 364	3 447	np	np	np	39 731
June Quarter	11 692	9 492	5 810	4 419	3 366	np	np	np	39 574
September Quarter	11 246	9 615	5 866	4 185	3 352	np	np	np	38 974
December Quarter	11 373	9 615	5 727	4 452	3 367	np	2 669	np	39 231
<b>2006</b>									
March Quarter	11 380	9 848	5 713	4 404	3 620	np	np	np	39 714
CABINS FLATS, UNITS AND VILLAS (no.)									
<b>2005</b>									
March Quarter	9 569	4 703	3 909	2 286	2 674	np	np	np	24 791
June Quarter	9 666	4 695	4 059	2 340	2 727	np	np	np	25 160
September Quarter	9 779	4 813	3 955	2 278	2 520	np	np	np	25 005
December Quarter	9 739	5 043	3 983	2 240	2 489	np	949	np	25 191
<b>2006</b>									
March Quarter	9 594	4 967	4 054	2 292	2 612	np	np	np	25 255
TOTAL CAPACITY (no.)									
<b>2005</b>									
March Quarter	70 449	51 313	31 524	19 296	23 007	np	np	np	209 664
June Quarter	69 985	50 874	31 399	19 453	23 397	np	np	np	209 459
September Quarter	69 147	50 008	31 277	19 036	22 790	np	np	np	206 461
December Quarter	69 413	50 704	30 794	19 127	22 589	np	7 993	np	206 750
<b>2006</b>									
March Quarter	69 102	51 070	30 761	19 126	22 916	np	np	np	207 185

np not available for publication but included in totals where applicable, unless otherwise indicated

(a) Comprising establishments with 40 or more powered sites and cabins, flats, units and villas.

<i>Period</i>	<i>New South Wales</i>	<i>Victoria</i>	<i>Queensland</i>	<i>South Australia</i>	<i>Western Australia</i>	<i>Tasmania</i>	<i>Northern Territory</i>	<i>Australian Capital Territory</i>	<i>Australia</i>
PERSONS EMPLOYED (no.)									
<b>2005</b>									
March Quarter	2 925	1 765	1 402	780	1 073	np	np	np	8 731
June Quarter	2 783	1 685	1 459	761	1 130	np	np	np	8 683
September Quarter	2 755	1 606	1 413	768	1 112	np	np	np	8 493
December Quarter	2 929	1 757	1 372	742	1 085	np	464	np	8 689
<b>2006</b>									
March Quarter	2 885	1 729	1 372	751	1 082	np	np	np	8 636
SITES OCCUPIED BY LONG-TERM GUESTS (no.)									
<b>2005</b>									
March Quarter	6 332	3 519	4 622	1 039	2 538	np	np	np	19 192
June Quarter	6 608	3 044	4 904	1 143	2 709	np	np	np	19 482
September Quarter	6 457	3 012	5 061	963	2 875	np	np	np	19 408
December Quarter	6 467	3 111	4 744	1 023	2 710	np	500	np	19 038
<b>2006</b>									
March Quarter	6 447	3 146	4 855	1 059	2 706	np	np	np	19 156
OTHER SITES PERMANENTLY RESERVED (no.)									
<b>2005</b>									
March Quarter	19 794	14 999	1 203	2 213	2 097	np	np	np	41 175
June Quarter	20 069	14 686	1 226	2 312	2 127	np	np	np	41 283
September Quarter	19 937	14 979	1 138	2 385	1 989	np	np	np	41 358
December Quarter	19 808	15 190	1 119	2 354	1 967	np	50	np	41 405
<b>2006</b>									
March Quarter	19 889	14 816	963	2 252	1 861	np	np	np	40 624
SITE NIGHTS OCCUPIED ('000)									
<b>2005</b>									
March Quarter	3 680.0	2 476.6	1 139.2	743.1	869.2	np	np	np	9 259.1
June Quarter	3 388.7	2 065.6	1 363.1	638.6	920.1	np	np	np	8 832.6
September Quarter	3 322.4	2 010.3	1 740.5	565.1	1 032.8	np	np	np	9 208.7
December Quarter	3 482.0	2 205.4	1 201.1	655.6	875.6	np	160.3	np	8 790.0
<b>2006</b>									
March Quarter	3 623.1	2 436.1	1 032.5	736.9	848.9	np	np	np	9 032.9
SITE OCCUPANCY RATE (%)									
<b>2005</b>									
March Quarter	58.1	53.7	40.3	42.8	42.3	np	np	np	49.2
June Quarter	53.2	45.7	47.7	36.1	43.3	np	np	np	46.6
September Quarter	52.3	45.7	60.5	32.4	49.3	np	np	np	49.1
December Quarter	54.5	48.1	42.4	37.3	42.3	np	22.0	np	46.5
<b>2006</b>									
March Quarter	58.3	53.0	37.4	42.8	41.2	np	np	np	48.5

np not available for publication but included in totals where applicable, unless otherwise indicated

(a) Comprising establishments with 40 or more powered sites and cabins, flats, units and villas.



<i>Period</i>	<i>New South Wales</i>	<i>Victoria</i>	<i>Queensland</i>	<i>South Australia</i>	<i>Western Australia</i>	<i>Tasmania</i>	<i>Northern Territory</i>	<i>Australian Capital Territory</i>	<i>Australia</i>
TAKINGS FROM ACCOMMODATION (\$'000)									
<b>2005</b>									
March Quarter	75 460	36 701	25 576	16 331	19 731	np	np	np	183 107
June Quarter	52 686	24 687	31 275	12 519	20 196	np	np	np	154 516
September Quarter	52 572	25 015	42 250	11 168	23 678	np	np	np	169 549
December Quarter	68 601	32 574	29 151	14 123	21 490	np	4 896	np	175 370
<b>2006</b>									
March Quarter	76 700	40 057	24 147	16 699	21 627	np	np	np	189 208

np not available for publication but included in totals where applicable, unless otherwise indicated

(a) Comprising establishments with 40 or more powered sites and cabins, flats, units and villas.

<i>Period</i>	<i>New South Wales</i>	<i>Victoria</i>	<i>Queensland</i>	<i>South Australia</i>	<i>Western Australia</i>	<i>Tasmania</i>	<i>Northern Territory</i>	<i>Australian Capital Territory</i>	<i>Australia</i>
<b>ESTABLISHMENTS (no.)</b>									
<b>2005</b>									
March Quarter	82	47	78	9	25	1	4	1	247
June Quarter	82	47	78	9	25	1	4	1	247
September Quarter	79	46	76	9	25	1	4	—	240
December Quarter	79	46	75	9	25	1	4	—	239
<b>2006</b>									
March Quarter	78	44	74	9	25	1	4	—	235
<b>ON-SITE VANS (no.)</b>									
<b>2005</b>									
March Quarter	1 420	497	2 277	156	345	np	np	np	4 814
June Quarter	1 492	504	2 236	159	348	np	np	np	4 858
September Quarter	1 347	461	2 035	165	347	np	np	—	4 372
December Quarter	1 210	463	1 987	157	340	np	np	—	4 173
<b>2006</b>									
March Quarter	1 223	442	2 072	159	342	np	np	—	4 254
<b>OTHER POWERED SITES (no.)</b>									
<b>2005</b>									
March Quarter	6 543	3 833	4 942	815	2 096	np	np	np	18 582
June Quarter	6 409	3 799	5 066	815	2 118	np	np	np	18 561
September Quarter	6 058	3 784	5 074	814	2 131	np	np	—	18 224
December Quarter	6 138	3 791	4 936	814	2 067	np	np	—	18 117
<b>2006</b>									
March Quarter	6 009	3 675	4 768	811	2 126	np	np	—	17 764
<b>UNPOWERED SITES (no.)</b>									
<b>2005</b>									
March Quarter	814	421	458	106	195	np	np	np	2 075
June Quarter	834	402	450	105	164	np	np	np	2 036
September Quarter	844	360	461	121	202	np	np	—	2 256
December Quarter	855	352	465	121	205	np	np	—	2 079
<b>2006</b>									
March Quarter	838	353	463	121	218	np	np	—	2 074
<b>CABINS FLATS, UNITS AND VILLAS (no.)</b>									
<b>2005</b>									
March Quarter	2 181	1 429	1 699	221	572	np	np	np	6 146
June Quarter	2 223	1 446	1 719	220	573	np	np	np	6 226
September Quarter	2 137	1 279	1 717	221	602	np	np	—	6 005
December Quarter	2 172	1 381	1 703	232	673	np	np	—	6 209
<b>2006</b>									
March Quarter	2 219	1 369	1 736	233	608	np	np	—	6 213

— nil or rounded to zero (including null cells)

np not available for publication but included in totals where applicable, unless otherwise indicated

(a) Comprising establishments with 40 or more powered sites and cabins, flats, units and villas.

<i>Period</i>	<i>New South Wales</i>	<i>Victoria</i>	<i>Queensland</i>	<i>South Australia</i>	<i>Western Australia</i>	<i>Tasmania</i>	<i>Northern Territory</i>	<i>Australian Capital Territory</i>	<i>Australia</i>
TOTAL CAPACITY (no.)									
<b>2005</b>									
March Quarter	10 958	6 180	9 376	1 298	3 208	np	np	np	31 617
June Quarter	10 958	6 151	9 471	1 299	3 203	np	np	np	31 681
September Quarter	10 386	5 884	9 287	1 321	3 282	np	np	—	30 857
December Quarter	10 375	5 987	9 091	1 324	3 285	np	np	—	30 578
<b>2006</b>									
March Quarter	10 289	5 839	9 039	1 324	3 294	np	np	—	30 305
PERSONS EMPLOYED (no.)									
<b>2005</b>									
March Quarter	452	237	438	40	144	np	np	np	1 334
June Quarter	456	239	476	46	141	np	np	np	1 381
September Quarter	426	232	442	43	137	np	np	—	1 300
December Quarter	446	231	434	53	142	np	np	—	1 327
<b>2006</b>									
March Quarter	423	233	449	47	147	np	np	—	1 320
SITES OCCUPIED BY LONG-TERM GUESTS (no.)									
<b>2005</b>									
March Quarter	5 811	3 536	6 331	726	1 872	np	np	np	18 528
June Quarter	5 869	3 327	6 189	777	1 953	np	np	np	18 362
September Quarter	5 540	3 260	6 280	839	1 988	np	np	—	18 051
December Quarter	5 532	3 255	6 034	733	1 975	np	np	—	17 687
<b>2006</b>									
March Quarter	5 479	3 216	6 070	684	1 987	np	np	—	17 594
OTHER SITES PERMANENTLY RESERVED (no.)									
<b>2005</b>									
March Quarter	1 002	338	118	—	28	np	np	np	1 560
June Quarter	1 018	386	126	—	33	np	np	np	1 649
September Quarter	892	404	153	5	39	np	np	—	1 560
December Quarter	906	344	150	—	19	np	np	—	1 498
<b>2006</b>									
March Quarter	855	332	263	—	21	np	np	—	1 567
SITE NIGHTS OCCUPIED ('000)									
<b>2005</b>									
March Quarter	730.6	423.8	688.1	81.0	211.7	np	np	np	2 175.0
June Quarter	727.2	384.7	700.1	81.4	218.5	np	np	np	2 155.9
September Quarter	690.5	373.2	711.4	93.3	229.1	np	np	—	2 130.0
December Quarter	701.6	379.2	672.5	82.0	228.3	np	np	—	2 088.9
<b>2006</b>									
March Quarter	692.5	405.5	653.1	80.6	221.0	np	np	—	2 086.6

— nil or rounded to zero (including null cells)

np not available for publication but included in totals where applicable, unless otherwise indicated

(a) Comprising establishments with 40 or more powered sites and cabins, flats, units and villas.

<i>Period</i>	<i>New South Wales</i>	<i>Victoria</i>	<i>Queensland</i>	<i>South Australia</i>	<i>Western Australia</i>	<i>Tasmania</i>	<i>Northern Territory</i>	<i>Australian Capital Territory</i>	<i>Australia</i>
---------------	------------------------	-----------------	-------------------	------------------------	--------------------------	-----------------	---------------------------	-------------------------------------	------------------

## SITE OCCUPANCY RATE (%)

<b>2005</b>									
March Quarter	74.1	76.2	81.5	69.3	73.3	np	np	np	76.4
June Quarter	72.9	68.7	81.2	68.9	75.0	np	np	np	74.8
September Quarter	72.3	69.0	83.3	76.7	75.9	np	np	—	75.0
December Quarter	73.5	69.5	80.4	67.3	75.5	np	np	—	74.4
<b>2006</b>									
March Quarter	74.8	77.4	80.3	67.7	74.6	np	np	—	76.6

## TAKINGS FROM ACCOMMODATION (\$'000)

<b>2005</b>									
March Quarter	12 623	6 105	11 813	1 349	3 605	np	np	np	35 978
June Quarter	11 263	5 424	11 986	1 291	3 597	np	np	np	34 001
September Quarter	11 649	6 134	12 998	1 497	4 069	np	np	—	36 766
December Quarter	12 793	6 406	12 688	1 349	4 206	np	np	—	37 799
<b>2006</b>									
March Quarter	12 595	6 270	12 021	1 377	4 130	np	np	—	36 819

— nil or rounded to zero (including null cells)

(a) Comprising establishments with 40 or more powered sites and

np not available for publication but included in totals where applicable, unless otherwise indicated

cabins, flats, units and villas.

Period	New South Wales	Victoria	Queensland	South Australia	Western Australia	Tasmania	Northern Territory	Australian Capital Territory	Australia
<b>ESTABLISHMENTS (no.)</b>									
<b>2005</b>									
March Quarter	548	416	347	149	206	47	53	4	1 770
June Quarter	545	414	346	150	209	46	54	4	1 768
September Quarter	539	410	341	147	205	46	53	3	1 744
December Quarter	534	412	338	146	203	46	52	3	1 734
<b>2006</b>									
March Quarter	527	407	336	145	202	46	52	3	1 718
<b>ON-SITE VANS (no.)</b>									
<b>2005</b>									
March Quarter	8 024	3 502	4 423	612	1 616	270	149	160	18 756
June Quarter	8 005	3 563	4 097	546	1 671	240	139	160	18 421
September Quarter	8 299	3 432	3 969	596	1 708	np	98	np	18 427
December Quarter	8 016	3 475	3 771	611	1 792	np	np	np	18 103
<b>2006</b>									
March Quarter	7 853	3 112	3 844	562	1 705	292	np	np	17 531
<b>OTHER POWERED SITES (no.)</b>									
<b>2005</b>									
March Quarter	49 022	37 831	24 559	13 005	17 711	2 849	4 429	376	149 782
June Quarter	48 523	37 427	24 735	13 122	18 099	2 858	4 586	373	149 723
September Quarter	47 228	36 393	24 596	12 956	17 688	np	4 585	np	146 651
December Quarter	47 633	36 825	24 236	12 795	17 348	np	np	np	146 515
<b>2006</b>									
March Quarter	47 507	37 260	23 990	12 838	17 447	2 809	np	np	146 703
<b>UNPOWERED SITES (no.)</b>									
<b>2005</b>									
March Quarter	12 611	10 028	6 310	4 470	3 642	1 674	2 671	400	41 806
June Quarter	12 526	9 894	6 260	4 524	3 530	1 621	2 855	400	41 610
September Quarter	12 090	9 975	6 327	4 306	3 554	np	2 960	np	41 230
December Quarter	12 228	9 967	6 192	4 573	3 572	np	np	np	41 310
<b>2006</b>									
March Quarter	12 218	10 201	6 176	4 525	3 838	1 727	np	np	41 788
<b>CABINS FLATS, UNITS AND VILLAS (no.)</b>									
<b>2005</b>									
March Quarter	11 750	6 132	5 608	2 507	3 246	638	960	96	30 937
June Quarter	11 889	6 141	5 778	2 560	3 300	645	977	96	31 386
September Quarter	11 916	6 092	5 672	2 499	3 122	np	960	np	31 010
December Quarter	11 911	6 424	5 686	2 472	3 162	np	np	np	31 400
<b>2006</b>									
March Quarter	11 813	6 336	5 790	2 525	3 220	671	np	np	31 468

np not available for publication but included in totals where applicable, unless otherwise indicated

(a) Comprising establishments with 40 or more powered sites and cabins, flats, units and villas.

<i>Period</i>	<i>New South Wales</i>	<i>Victoria</i>	<i>Queensland</i>	<i>South Australia</i>	<i>Western Australia</i>	<i>Tasmania</i>	<i>Northern Territory</i>	<i>Australian Capital Territory</i>	<i>Australia</i>
TOTAL CAPACITY (no.)									
<b>2005</b>									
March Quarter	81 407	57 493	40 900	20 594	26 215	5 431	8 209	1 032	241 281
June Quarter	80 943	57 025	40 870	20 752	26 600	5 364	8 557	1 029	241 140
September Quarter	79 533	55 892	40 564	20 357	26 072	np	8 603	np	237 318
December Quarter	79 788	56 691	39 885	20 451	25 874	np	np	np	237 328
<b>2006</b>									
March Quarter	79 391	56 909	39 800	20 450	26 210	5 499	np	np	237 490
PERSONS EMPLOYED (no.)									
<b>2005</b>									
March Quarter	3 377	2 002	1 840	820	1 217	268	475	66	10 065
June Quarter	3 239	1 924	1 935	807	1 271	242	559	87	10 064
September Quarter	3 181	1 838	1 855	811	1 249	np	520	np	9 793
December Quarter	3 375	1 988	1 806	795	1 227	np	np	np	10 016
<b>2006</b>									
March Quarter	3 308	1 962	1 821	798	1 229	270	np	np	9 956
SITES OCCUPIED BY LONG-TERM GUESTS (no.)									
<b>2005</b>									
March Quarter	12 143	7 055	10 953	1 765	4 410	466	681	247	37 720
June Quarter	12 477	6 371	11 093	1 920	4 662	364	710	247	37 844
September Quarter	11 997	6 272	11 341	1 802	4 863	np	701	np	37 459
December Quarter	11 999	6 366	10 778	1 756	4 685	np	np	np	36 725
<b>2006</b>									
March Quarter	11 926	6 362	10 925	1 743	4 693	290	np	np	36 750
OTHER SITES PERMANENTLY RESERVED (no.)									
<b>2005</b>									
March Quarter	20 796	15 337	1 321	2 213	2 125	920	18	5	42 735
June Quarter	21 087	15 072	1 352	2 312	2 160	943	1	5	42 932
September Quarter	20 829	15 383	1 291	2 390	2 028	np	22	np	42 918
December Quarter	20 714	15 534	1 269	2 354	1 986	np	np	np	42 903
<b>2006</b>									
March Quarter	20 744	15 148	1 226	2 252	1 882	919	np	np	42 191
SITE NIGHTS OCCUPIED ('000)									
<b>2005</b>									
March Quarter	4 410.6	2 900.4	1 827.3	824.1	1 080.9	248.6	107.1	35.2	11 434.1
June Quarter	4 115.9	2 450.2	2 063.2	720.0	1 138.6	172.1	296.7	31.8	10 988.6
September Quarter	4 012.8	2 383.6	2 451.9	658.4	1 262.0	np	402.0	np	11 338.7
December Quarter	4 183.6	2 584.5	1 873.6	737.6	1 103.9	np	np	np	10 878.9
<b>2006</b>									
March Quarter	4 315.5	2 841.6	1 685.6	817.5	1 069.9	246.6	np	np	11 119.5

np not available for publication but included in totals where applicable, unless otherwise indicated

(a) Comprising establishments with 40 or more powered sites and cabins, flats, units and villas.

<i>Period</i>	<i>New South Wales</i>	<i>Victoria</i>	<i>Queensland</i>	<i>South Australia</i>	<i>Western Australia</i>	<i>Tasmania</i>	<i>Northern Territory</i>	<i>Australian Capital Territory</i>	<i>Australia</i>
---------------	------------------------	-----------------	-------------------	------------------------	--------------------------	-----------------	---------------------------	-------------------------------------	------------------

## SITE OCCUPANCY RATE (%)

<b>2005</b>									
March Quarter	60.2	56.1	49.8	44.5	46.2	51.5	14.8	37.8	52.8
June Quarter	55.9	48.2	55.5	38.1	47.1	35.9	38.1	34.0	50.4
September Quarter	54.9	48.3	65.7	35.3	52.6	np	50.8	np	52.5
December Quarter	57.0	50.4	51.1	39.3	46.6	np	np	np	50.1
<b>2006</b>									
March Quarter	60.4	55.5	47.1	44.4	45.4	50.3	np	np	52.1

## TAKINGS FROM ACCOMMODATION (\$'000)

<b>2005</b>									
March Quarter	88 084	42 806	37 389	17 679	23 336	5 645	3 298	848	219 085
June Quarter	63 948	30 111	43 260	13 810	23 793	3 355	9 537	701	188 516
September Quarter	64 221	31 149	55 248	12 665	27 746	np	12 286	np	206 315
December Quarter	81 394	38 980	41 839	15 472	25 696	np	np	np	213 168
<b>2006</b>									
March Quarter	89 294	46 328	36 168	18 076	25 758	6 254	np	np	226 027

np not available for publication but included in totals where applicable, unless otherwise indicated

(a) Comprising establishments with 40 or more powered sites and cabins, flats, units and villas.

<i>Period</i>	<i>New South Wales</i>	<i>Victoria</i>	<i>Queensland</i>	<i>South Australia</i>	<i>Western Australia</i>	<i>Tasmania</i>	<i>Northern Territory</i>	<i>Australian Capital Territory</i>	<i>Australia</i>
---------------	------------------------	-----------------	-------------------	------------------------	--------------------------	-----------------	---------------------------	-------------------------------------	------------------

LETTING ENTITIES (a) (no.)

<b>2005</b>									
March Quarter	95	15	43	8	2	1	—	—	164
June Quarter	95	16	44	8	2	1	—	—	166
September Quarter	98	17	44	8	2	1	—	—	170
December Quarter	97	17	43	8	2	1	—	—	168
<b>2006</b>									
March Quarter	98	16	41	8	2	1	—	—	166

SINGLE BEDROOM HOLIDAY FLATS, UNITS AND HOUSES (no.)

<b>2005</b>									
March Quarter	387	69	164	np	np	np	—	—	638
June Quarter	403	46	173	np	np	np	—	—	640
September Quarter	406	32	153	np	np	np	—	—	606
December Quarter	393	37	159	np	np	np	—	—	603
<b>2006</b>									
March Quarter	392	100	158	np	np	np	—	—	664

MULTIPLE BEDROOM HOLIDAY FLATS, UNITS AND HOUSES (no.)

<b>2005</b>									
March Quarter	7 578	1 604	2 847	np	np	np	—	—	12 945
June Quarter	7 554	1 440	2 924	np	np	np	—	—	12 833
September Quarter	7 559	1 643	3 029	np	np	np	—	—	13 123
December Quarter	7 581	1 790	3 081	np	np	np	—	—	13 354
<b>2006</b>									
March Quarter	7 808	1 761	3 002	np	np	np	—	—	13 490

TOTAL HOLIDAY FLATS, UNITS AND HOUSES (no.)

<b>2005</b>									
March Quarter	7 965	1 673	3 011	np	np	np	—	—	13 583
June Quarter	7 957	1 486	3 097	np	np	np	—	—	13 473
September Quarter	7 965	1 675	3 182	np	np	np	—	—	13 729
December Quarter	7 974	1 827	3 240	np	np	np	—	—	13 957
<b>2006</b>									
March Quarter	8 200	1 861	3 160	np	np	np	—	—	14 154

BED SPACES (no.)

<b>2005</b>									
March Quarter	40 019	11 452	14 793	np	np	np	—	—	71 934
June Quarter	39 703	10 674	14 244	np	np	np	—	—	70 274
September Quarter	42 309	11 864	14 843	np	np	np	—	—	74 671
December Quarter	42 387	12 487	14 955	np	np	np	—	—	75 846
<b>2006</b>									
March Quarter	43 543	11 725	14 985	np	np	np	—	—	76 305

— nil or rounded to zero (including null cells)

np not available for publication but included in totals where applicable, unless otherwise indicated

(a) The number of owners, managers or real estate agents with 15 or more self-contained units.



<i>Period</i>	<i>New South Wales</i>	<i>Victoria</i>	<i>Queensland</i>	<i>South Australia</i>	<i>Western Australia</i>	<i>Tasmania</i>	<i>Northern Territory</i>	<i>Australian Capital Territory</i>	<i>Australia</i>
UNIT NIGHTS OCCUPIED ('000)									
<b>2005</b>									
March Quarter	291.5	49.0	137.1	np	np	np	—	—	510.5
June Quarter	183.4	11.7	108.0	np	np	np	—	—	321.7
September Quarter	201.3	10.4	164.3	np	np	np	—	—	392.0
December Quarter	248.7	11.9	159.1	np	np	np	—	—	437.7
<b>2006</b>									
March Quarter	279.2	21.7	159.2	np	np	np	—	—	492.6
UNIT OCCUPANCY RATE (%)									
<b>2005</b>									
March Quarter	40.7	32.5	50.6	np	np	np	—	—	41.8
June Quarter	25.3	8.7	38.3	np	np	np	—	—	26.2
September Quarter	27.5	6.7	56.1	np	np	np	—	—	31.0
December Quarter	33.9	7.1	53.4	np	np	np	—	—	34.1
<b>2006</b>									
March Quarter	37.8	13.0	56.0	np	np	np	—	—	38.7
UNIT LETTINGS ('000)									
<b>2005</b>									
March Quarter	40.4	14.2	25.1	np	np	np	—	—	86.3
June Quarter	28.9	3.8	22.5	np	np	np	—	—	57.8
September Quarter	32.9	2.2	27.8	np	np	np	—	—	66.4
December Quarter	42.1	2.9	36.0	np	np	np	—	—	84.0
<b>2006</b>									
March Quarter	43.5	4.9	28.2	np	np	np	—	—	81.7
AVERAGE LENGTH OF STAY ( <i>days</i> )									
<b>2005</b>									
March Quarter	7.2	3.5	5.5	np	np	np	—	—	5.9
June Quarter	6.4	3.1	4.8	np	np	np	—	—	5.6
September Quarter	6.1	4.6	5.9	np	np	np	—	—	5.9
December Quarter	5.9	4.2	4.4	np	np	np	—	—	5.2
<b>2006</b>									
March Quarter	6.4	4.5	5.7	np	np	np	—	—	6.0
TAKINGS FROM ACCOMMODATION (\$'000)									
<b>2005</b>									
March Quarter	29 987	4 463	13 334	np	np	np	—	—	51 241
June Quarter	12 352	1 004	8 524	np	np	np	—	—	23 728
September Quarter	17 168	1 625	13 388	np	np	np	—	—	33 668
December Quarter	26 633	1 340	15 289	np	np	np	—	—	45 320
<b>2006</b>									
March Quarter	31 269	3 166	14 313	np	np	np	—	—	52 386

— nil or rounded to zero (including null cells)

np not available for publication but included in totals where applicable, unless otherwise indicated

<i>Period</i>	<i>New South Wales</i>	<i>Victoria</i>	<i>Queensland</i>	<i>South Australia</i>	<i>Western Australia</i>	<i>Tasmania</i>	<i>Northern Territory</i>	<i>Australian Capital Territory</i>	<i>Australia</i>
---------------	------------------------	-----------------	-------------------	------------------------	--------------------------	-----------------	---------------------------	-------------------------------------	------------------

## LETTING ENTITIES (a) (no.)

<b>2005</b>									
March Quarter	66	17	300	7	20	7	2	3	422
June Quarter	63	17	298	7	19	7	2	3	416
September Quarter	55	17	302	7	19	7	2	3	412
December Quarter	55	17	304	7	20	7	2	3	415
<b>2006</b>									
March Quarter	56	17	306	7	20	7	2	3	418

## SINGLE BEDROOM HOLIDAY FLATS, UNITS AND HOUSES (no.)

<b>2005</b>									
March Quarter	480	232	2 799	np	np	np	np	np	3 978
June Quarter	450	244	2 751	np	np	np	np	np	3 917
September Quarter	404	254	2 945	np	np	np	np	np	4 159
December Quarter	408	253	2 912	np	np	np	np	np	4 113
<b>2006</b>									
March Quarter	447	250	3 107	np	np	np	np	np	4 383

## MULTIPLE BEDROOM HOLIDAY FLATS, UNITS AND HOUSES (no.)

<b>2005</b>									
March Quarter	1 478	560	7 515	np	np	np	np	np	10 707
June Quarter	1 465	554	7 394	np	np	np	np	np	10 546
September Quarter	1 040	557	7 385	np	np	np	np	np	10 077
December Quarter	1 029	559	7 591	np	np	np	np	np	10 322
<b>2006</b>									
March Quarter	1 047	566	7 457	np	np	np	np	np	10 177

## TOTAL HOLIDAY FLATS, UNITS AND HOUSES (no.)

<b>2005</b>									
March Quarter	1 958	792	10 314	np	np	np	np	np	14 685
June Quarter	1 915	798	10 145	np	np	np	np	np	14 463
September Quarter	1 444	811	10 330	np	np	np	np	np	14 236
December Quarter	1 437	812	10 503	np	np	np	np	np	14 435
<b>2006</b>									
March Quarter	1 494	816	10 564	np	np	np	np	np	14 560

## BED SPACES (no.)

<b>2005</b>									
March Quarter	9 368	3 235	39 122	np	np	np	np	np	59 959
June Quarter	9 457	3 374	38 783	np	np	np	np	np	59 605
September Quarter	6 229	3 346	39 870	np	np	np	np	np	57 397
December Quarter	6 148	3 383	40 824	np	np	np	np	np	58 331
<b>2006</b>									
March Quarter	6 477	3 424	40 572	np	np	np	np	np	58 849

np not available for publication but included in totals where applicable, unless otherwise indicated

(a) The number of owners, managers or real estate agents with 15 or more self-contained units.

<i>Period</i>	<i>New South Wales</i>	<i>Victoria</i>	<i>Queensland</i>	<i>South Australia</i>	<i>Western Australia</i>	<i>Tasmania</i>	<i>Northern Territory</i>	<i>Australian Capital Territory</i>	<i>Australia</i>
PERSONS EMPLOYED (no.)									
<b>2005</b>									
March Quarter	536	203	1 458	np	np	np	np	np	2 645
June Quarter	584	222	1 432	np	np	np	np	np	2 640
September Quarter	541	235	1 413	np	np	np	np	np	2 599
December Quarter	543	230	1 448	np	np	np	np	np	2 650
<b>2006</b>									
March Quarter	454	216	1 308	np	np	np	np	np	2 402
UNIT NIGHTS OCCUPIED ('000)									
<b>2005</b>									
March Quarter	103.1	47.3	610.2	np	np	np	np	np	861.3
June Quarter	69.6	40.0	538.6	np	np	np	np	np	735.1
September Quarter	67.8	45.2	707.3	np	np	np	np	np	919.0
December Quarter	75.5	42.0	676.9	np	np	np	np	np	905.4
<b>2006</b>									
March Quarter	86.1	42.0	619.8	np	np	np	np	np	858.2
UNIT OCCUPANCY RATE (%)									
<b>2005</b>									
March Quarter	58.5	67.7	65.7	np	np	np	np	np	65.2
June Quarter	40.2	58.4	58.3	np	np	np	np	np	56.1
September Quarter	52.0	60.5	74.4	np	np	np	np	np	70.3
December Quarter	57.1	62.5	70.1	np	np	np	np	np	68.6
<b>2006</b>									
March Quarter	64.0	61.1	65.2	np	np	np	np	np	65.7
UNIT LETTINGS ('000)									
<b>2005</b>									
March Quarter	31.7	12.3	182.1	np	np	np	np	np	253.4
June Quarter	25.4	9.1	172.9	np	np	np	np	np	231.7
September Quarter	22.0	10.6	205.8	np	np	np	np	np	271.3
December Quarter	27.5	10.9	223.5	np	np	np	np	np	296.4
<b>2006</b>									
March Quarter	29.8	9.7	216.2	np	np	np	np	np	287.0
AVERAGE LENGTH OF STAY (days)									
<b>2005</b>									
March Quarter	3.3	3.8	3.4	np	np	np	np	np	3.4
June Quarter	2.7	4.4	3.1	np	np	np	np	np	3.2
September Quarter	3.1	4.3	3.4	np	np	np	np	np	3.4
December Quarter	2.7	3.8	3.0	np	np	np	np	np	3.1
<b>2006</b>									
March Quarter	2.9	4.3	2.9	np	np	np	np	np	3.0
TAKINGS FROM ACCOMMODATION (\$'000)									
<b>2005</b>									
March Quarter	15 302	5 812	70 018	np	np	np	np	np	102 597
June Quarter	8 109	4 754	54 754	np	np	np	np	np	75 884
September Quarter	9 368	6 115	77 796	np	np	np	np	np	102 317
December Quarter	10 179	5 396	79 248	np	np	np	np	np	105 436
<b>2006</b>									
March Quarter	12 227	5 562	74 633	np	np	np	np	np	103 799

np not available for publication but included in totals where applicable, unless otherwise indicated

Period	New South Wales	Victoria	Queensland	South Australia	Western Australia	Tasmania	Northern Territory	Australian Capital Territory	Australia
--------	-----------------	----------	------------	-----------------	-------------------	----------	--------------------	------------------------------	-----------

## LETTING ENTITIES (a) (no.)

<b>2005</b>									
March Quarter	161	32	343	15	22	8	2	3	586
June Quarter	158	33	342	15	21	8	2	3	582
September Quarter	153	34	346	15	21	8	2	3	582
December Quarter	152	34	347	15	22	8	2	3	583
<b>2006</b>									
March Quarter	154	33	347	15	22	8	2	3	584

## SINGLE BEDROOM HOLIDAY FLATS, UNITS AND HOUSES (no.)

<b>2005</b>									
March Quarter	867	301	2 963	107	250	40	np	np	4 616
June Quarter	853	290	2 924	109	254	38	np	np	4 557
September Quarter	810	286	3 098	112	322	48	np	np	4 765
December Quarter	801	290	3 071	106	313	46	np	np	4 716
<b>2006</b>									
March Quarter	839	350	3 265	106	308	46	np	np	5 047

## MULTIPLE BEDROOM HOLIDAY FLATS, UNITS AND HOUSES (no.)

<b>2005</b>									
March Quarter	9 056	2 164	10 362	911	856	137	np	np	23 652
June Quarter	9 019	1 994	10 318	897	842	145	np	np	23 379
September Quarter	8 599	2 200	10 414	865	817	141	np	np	23 200
December Quarter	8 610	2 349	10 672	891	846	144	np	np	23 676
<b>2006</b>									
March Quarter	8 855	2 327	10 459	910	852	144	np	np	23 667

## TOTAL HOLIDAY FLATS, UNITS AND HOUSES (no.)

<b>2005</b>									
March Quarter	9 923	2 465	13 325	1 018	1 106	177	np	np	28 268
June Quarter	9 872	2 284	13 242	1 006	1 096	183	np	np	27 936
September Quarter	9 409	2 486	13 512	977	1 139	189	np	np	27 965
December Quarter	9 411	2 639	13 743	997	1 159	190	np	np	28 392
<b>2006</b>									
March Quarter	9 694	2 677	13 724	1 016	1 160	190	np	np	28 714

## BED SPACES (no.)

<b>2005</b>									
March Quarter	49 387	14 687	53 915	5 753	6 306	804	np	np	131 893
June Quarter	49 160	14 048	53 027	5 591	6 184	829	np	np	129 879
September Quarter	48 538	15 210	54 713	5 581	6 164	823	np	np	132 068
December Quarter	48 535	15 870	55 779	5 935	6 125	894	np	np	134 177
<b>2006</b>									
March Quarter	50 020	15 149	55 557	5 973	6 230	894	np	np	135 154

## UNIT NIGHTS OCCUPIED ('000)

<b>2005</b>									
March Quarter	394.6	96.2	747.2	42.8	61.7	11.3	np	np	1 371.8
June Quarter	253.0	51.8	646.7	26.9	51.6	7.7	np	np	1 056.8
September Quarter	269.1	55.6	871.6	23.1	63.6	7.7	np	np	1 310.9
December Quarter	324.2	53.9	836.0	27.5	74.4	10.0	np	np	1 343.1
<b>2006</b>									
March Quarter	365.3	63.7	779.0	42.3	69.4	12.9	np	np	1 350.8

np not available for publication but included in totals where applicable, unless otherwise indicated

(a) The number of owners, managers or real estate agents with 15 or more self-contained units.

<i>Period</i>	<i>New South Wales</i>	<i>Victoria</i>	<i>Queensland</i>	<i>South Australia</i>	<i>Western Australia</i>	<i>Tasmania</i>	<i>Northern Territory</i>	<i>Australian Capital Territory</i>	<i>Australia</i>
UNIT OCCUPANCY RATE (%)									
<b>2005</b>									
March Quarter	44.2	43.7	62.3	46.7	62.0	71.0	np	np	54.0
June Quarter	28.2	25.4	53.7	29.4	51.7	46.5	np	np	41.7
September Quarter	31.2	24.3	70.1	25.7	60.7	44.3	np	np	51.0
December Quarter	37.4	22.9	66.2	30.0	69.7	57.1	np	np	51.6
<b>2006</b>									
March Quarter	41.9	27.0	63.1	46.2	66.5	75.7	np	np	52.4
UNIT LETTINGS ('000)									
<b>2005</b>									
March Quarter	72.1	26.5	207.2	10.7	14.3	5.1	np	np	339.7
June Quarter	54.3	12.9	195.4	7.3	11.3	3.5	np	np	289.6
September Quarter	54.9	12.8	233.6	6.9	20.4	3.9	np	np	337.7
December Quarter	69.5	13.8	259.5	6.0	22.1	5.3	np	np	380.4
<b>2006</b>									
March Quarter	73.3	14.6	244.3	7.9	18.6	6.2	np	np	368.7
AVERAGE LENGTH OF STAY (days)									
<b>2005</b>									
March Quarter	5.5	3.6	3.6	4.0	4.3	2.2	np	np	4.0
June Quarter	4.7	4.0	3.3	3.7	4.6	2.2	np	np	3.6
September Quarter	4.9	4.3	3.7	3.3	3.1	2.0	np	np	3.9
December Quarter	4.7	3.9	3.2	4.6	3.4	1.9	np	np	3.5
<b>2006</b>									
March Quarter	5.0	4.4	3.2	5.4	3.7	2.1	np	np	3.7
TAKINGS FROM ACCOMMODATION (\$'000)									
<b>2005</b>									
March Quarter	45 289	10 275	83 352	4 468	7 562	1 109	np	np	153 838
June Quarter	20 461	5 757	63 278	2 654	4 683	646	np	np	99 612
September Quarter	26 536	7 741	91 184	2 190	5 265	645	np	np	135 985
December Quarter	36 811	6 736	94 538	2 915	7 106	889	np	np	150 755
<b>2006</b>									
March Quarter	43 495	8 728	88 946	4 769	7 016	1 315	np	np	156 184

np not available for publication but included in totals where applicable, unless otherwise indicated

<i>Period</i>	<i>New South Wales</i>	<i>Victoria</i>	<i>Queensland</i>	<i>South Australia</i>	<i>Western Australia</i>	<i>Tasmania</i>	<i>Northern Territory</i>	<i>Australian Capital Territory</i>	<i>Australia</i>
<b>ESTABLISHMENTS (no.)</b>									
<b>2005</b>									
March Quarter	106	67	133	30	72	25	25	5	463
June Quarter	103	67	132	29	70	24	26	5	456
September Quarter	104	67	131	27	67	24	27	5	452
December Quarter	105	70	130	29	67	24	26	5	456
<b>2006</b>									
March Quarter	107	70	127	27	65	24	26	5	451
<b>BED SPACES (no.)</b>									
<b>2005</b>									
March Quarter	11 594	8 194	14 426	2 552	5 176	1 909	2 974	796	47 621
June Quarter	11 245	8 259	14 460	2 573	5 118	1 849	3 201	798	47 503
September Quarter	11 297	8 369	14 671	2 354	5 161	1 919	3 650	805	48 226
December Quarter	11 436	8 486	14 666	2 420	5 184	1 816	3 565	759	48 332
<b>2006</b>									
March Quarter	11 669	8 923	13 718	2 337	4 984	1 888	3 571	952	48 042
<b>PERSONS EMPLOYED (no.)</b>									
<b>2005</b>									
March Quarter	669	464	1 337	134	323	167	311	94	3 499
June Quarter	679	448	1 247	118	323	156	346	103	3 420
September Quarter	674	442	1 302	103	321	149	319	94	3 404
December Quarter	721	463	1 231	107	304	161	252	98	3 337
<b>2006</b>									
March Quarter	716	487	1 145	113	322	156	260	82	3 281
<b>GUEST NIGHTS OCCUPIED (no.)</b>									
<b>2005</b>									
March Quarter	662 554	376 797	678 745	96 129	235 251	72 383	86 329	37 347	2 245 535
June Quarter	502 848	255 873	713 766	72 336	210 680	29 839	128 428	25 592	1 939 362
September Quarter	512 151	234 277	749 202	66 323	193 813	19 672	193 296	41 361	2 010 095
December Quarter	615 328	327 039	696 058	85 871	208 494	37 572	112 451	27 400	2 110 213
<b>2006</b>									
March Quarter	670 795	414 230	699 028	88 683	253 170	64 593	97 204	36 974	2 324 677
<b>BED OCCUPANCY RATE (%)</b>									
<b>2005</b>									
March Quarter	63.9	51.7	52.6	41.9	50.7	42.1	32.3	52.1	52.7
June Quarter	49.6	34.4	54.6	30.9	45.2	17.9	44.1	35.2	45.2
September Quarter	49.3	30.8	55.8	30.6	40.8	11.4	57.6	55.8	45.5
December Quarter	58.5	42.5	51.6	38.6	43.7	22.5	34.3	39.2	47.6
<b>2006</b>									
March Quarter	64.2	52.6	56.6	42.2	56.4	38.0	30.7	43.2	54.1
<b>GUEST ARRIVALS (no.)</b>									
<b>2005</b>									
March Quarter	223 276	119 437	296 358	36 333	76 633	38 969	52 079	15 033	858 118
June Quarter	195 397	78 962	306 061	24 828	79 755	14 654	69 234	11 885	780 776
September Quarter	193 785	70 814	309 562	24 297	62 200	9 267	81 805	18 810	770 540
December Quarter	228 104	98 806	300 366	29 433	76 148	20 563	53 028	15 593	822 041
<b>2006</b>									
March Quarter	235 359	129 114	268 987	29 779	82 486	30 759	41 839	25 149	843 472

(a) Comprising establishments with 25 or more bed spaces.

<i>Period</i>	<i>New South Wales</i>	<i>Victoria</i>	<i>Queensland</i>	<i>South Australia</i>	<i>Western Australia</i>	<i>Tasmania</i>	<i>Northern Territory</i>	<i>Australian Capital Territory</i>	<i>Australia</i>
---------------	------------------------	-----------------	-------------------	------------------------	--------------------------	-----------------	---------------------------	-------------------------------------	------------------

AVERAGE LENGTH OF STAY (*days*)

<b>2005</b>									
March Quarter	3.0	3.2	2.3	2.6	3.1	1.9	1.7	2.5	2.6
June Quarter	2.6	3.2	2.3	2.9	2.6	2.0	1.9	2.2	2.5
September Quarter	2.6	3.3	2.4	2.7	3.1	2.1	2.4	2.2	2.6
December Quarter	2.7	3.3	2.3	2.9	2.7	1.8	2.1	1.8	2.6
<b>2006</b>									
March Quarter	2.9	3.2	2.6	3.0	3.1	2.1	2.3	1.5	2.8

TAKINGS FROM ACCOMMODATION (\$'000)

<b>2005</b>									
March Quarter	17 248	9 470	14 913	1 992	4 879	1 470	2 007	905	52 883
June Quarter	12 633	6 527	14 424	1 380	4 220	562	2 794	644	43 184
September Quarter	13 087	6 124	16 075	1 192	3 898	384	4 555	1 013	46 328
December Quarter	16 707	8 150	15 035	1 634	4 337	772	2 529	730	49 893
<b>2006</b>									
March Quarter	17 761	10 423	13 661	1 813	5 403	1 205	2 076	994	53 337

(a) Comprising establishments with 25 or more bed spaces.

## EXPLANATORY NOTES

### INTRODUCTION

**1** This publication presents data from the quarterly Survey of Tourist Accommodation (STA). The STA is a mailout collection that completely enumerates all in-scope accommodation establishments within Australia.

### SCOPE

**2** From March quarter 2005, the scope of the STA comprises the following categories of establishments:

- licensed hotels and resorts with facilities and 5 or more rooms
- motels, private hotels and guest houses with facilities and 5 or more rooms
- serviced apartments with 5 or more units
- caravan parks with 40 or more powered sites
- holiday flats, units and houses of letting entities with 15 or more rooms or units
- visitor hostels with 25 or more bed spaces.

**3** With the exception of caravan parks, these establishments provide predominantly short-term non-residential accommodation, i.e. accommodation which is not leased, and which is provided to guests who would generally stay for periods of less than two months. Some of these establishments also provide long-term residential accommodation. The amount of such activity is considered to be insignificant and is included in the data presented in this publication.

**4** Caravan parks provide either short-term or long-term accommodation. If a caravan park has the majority of sites occupied by paying guests who have stayed continuously for two months or more during the survey period, the caravan park is classified as long-term. Data for caravan parks are presented by short-term and long-term in this publication.

**5** Previous to March quarter 2005, the scope of the STA comprised:

- licensed hotels and resorts with facilities and 15 or more rooms
- motels, private hotels and guest houses with facilities and 15 or more rooms
- serviced apartments with 15 or more units.

**6** For the four quarters of 2000 and 2003, the scope of the STA was expanded to include:

- caravan parks with 40 or more powered sites
- holiday flats, units and houses of letting entities with 15 or more rooms or units
- visitor hostels with 25 or more bed spaces.

### COVERAGE

**7** The main source of coverage is from the Australian Automobile Association through AAA Tourism Pty Ltd. This is supplemented by notification of new tourism developments and their likely opening dates in selected guides, major tourism journals and periodicals and newspapers. Periodic comparison with lists of accommodation establishments provided by the various tourism organisations and industry associations is also undertaken.

### TAKINGS FROM ACCOMMODATION

**8** From 1 July 2000, takings from accommodation include gross revenue from the provision of accommodation, including GST. Takings from meals are excluded. Where businesses are unable to provide the data inclusive of GST, it is automatically adjusted by the ABS prior to aggregation and release in output.

### STAR GRADING

**9** Star grade classifications of establishments are continuously revised by AAA Tourism Pty Ltd. This should be taken into account when making comparisons over time. Any queries regarding the star grading process should be directed to AAA Tourism Pty Ltd on (03) 8601 2200 or email [enquiries@aaatourism.com.au](mailto:enquiries@aaatourism.com.au).

**10** Data by star grade for states and territories are no longer presented in this publication. These data are included in the data cubes that accompany this publication: *Tourist Accommodation, Small Area Data* (cat. no. 8635.0.55.002 for national data and cat. no. 8635.1.55.001 – 8635.8.55.001 for state/territory data).



## EXPLANATORY NOTES *continued*

### STATISTICAL GEOGRAPHY

**11** Small area statistics for 2006 are classified to the Australian Standard Geographical Classification (ASGC), 2005 Edition (cat. no. 1216.0). Data are coded to the statistical local area (SLA) level.

**12** These SLA data are aggregated to tourism regions as defined by relevant state and territory tourism organisations. Tourism regions are reviewed annually and are subject to boundary and name changes. Where changes have occurred care should be taken when making comparisons with previously published data at this level.

**13** Data by tourism regions are no longer presented in this publication. Small area data are provided in the data cubes that accompany this publication: *Tourist Accommodation, Small Area Data* (cat. no. 8635.0.55.002 for national data and cat. no. 8635.1.55.001 – 8635.8.55.001 for state/territory data).

**14** Details of SLAs, the composition of tourism regions and maps of tourism regions are provided in the ABS publication *Tourism Region Maps and Concordance Files, Australia* (cat. no. 9503.0.55.001) available from the ABS web site <[www.abs.gov.au](http://www.abs.gov.au)>.

### DATA QUALITY

**15** The survey does not have a sample component and the data are not subject to sampling variability. However, other inaccuracies collectively referred to as non-sampling error may affect the data. These non-sampling errors may arise from a number of sources, including:

- errors in the reporting of data by providers
- errors in the process of capturing data
- imputation for missing data
- definition and classification errors
- incomplete coverage.

**16** Every effort has been made to reduce non-sampling error to a minimum by careful design and testing of questionnaires, and efficient operating procedures and systems used to compile statistics.

### Response rates

**17** The March quarter 2006 response rates were:

#### RESPONSE RATES

<i>Activity</i>	<i>March Qtr 2006</i>
<i>Activity</i>	%
Licensed hotels with facilities	
with 5 to 14 rooms	81.9
with 15 or more rooms	86.9
with 5 or more rooms	85.5
Motels and guest houses	
with 5 to 14 rooms	84.9
with 15 or more rooms	86.5
with 5 or more rooms	86.4
Serviced apartments	
with 5 to 14 rooms	88.1
with 15 or more rooms	89.0
with 5 or more rooms	88.8
Hotels, motels and serviced apartments	
with 5 to 14 rooms	84.7
with 15 or more rooms	87.1
with 5 or more rooms	86.6
Caravan parks	86.6
Holiday flats, units and houses	89.7
Visitor hostels	84.0

## EXPLANATORY NOTES *continued*

### Imputation rates

**18** Missing data items are replaced by imputed values based on reported data. Average quarterly movements are applied to previously reported data for each non-responding unit to estimate values for missing data items. Only if previously reported data are not available, then data from a similar unit is used as a 'donor' for the missing data items. (Note that donor imputation was often used for non-responding units for hotels, motels and serviced apartments with 5 to 14 rooms as previous data was usually unavailable.)

**19** The March quarter 2006 imputation rates were:

### IMPUTATION RATES

<i>Activity</i>	<i>Nights occupied (a)</i>	<i>Takings from accommodation</i>
	%	%
Licensed hotels with facilities		
with 5 to 14 rooms	15.4	14.4
with 15 or more rooms	3.4	2.5
with 5 or more rooms	3.8	2.7
Motels and guest houses		
with 5 to 14 rooms	12.4	14.7
with 15 or more rooms	10.3	9.6
with 5 or more rooms	10.6	10.1
Serviced apartments		
with 5 to 14 rooms	11.4	12.2
with 15 or more rooms	7.0	6.6
with 5 or more rooms	7.2	6.8
Hotels, motels and serviced apartments		
with 5 to 14 rooms	12.8	14.0
with 15 or more rooms	6.7	5.4
with 5 or more rooms	7.1	5.8
Caravan parks	10.9	9.5
Holiday flats, units and houses	7.8	7.8
Visitor hostels	16.3	11.6

(a) Based on room nights for hotels, motels and serviced apartments; site nights for caravan parks; unit nights for holiday flats, units and houses; and guest nights for visitor hostels.

### BREAK IN TIME SERIES

**20** In June quarter 2003, the ABS identified 132 licensed hotels with facilities, motels and guest houses and serviced apartments with 15 or more rooms which had been operating for a number of quarters but were not on the STA frame. These additional establishments were included in the STA from June quarter 2003.

**21** The ABS also identified 74 caravan parks which were operating in the March quarter 2003 but were not on the STA frame. These caravan parks were included in the June, September and December quarter 2003 data, but not in the March quarter 2003 data.

**22** The addition of these establishments resulted in a break in time series between March and June quarters 2003. The impact of the break in time series for hotels, motels and serviced apartments is explained in Appendix 1, *Tourist Accommodation, Australia, December quarter 2003* (cat. no. 8635.0). The impact of the break in series for caravan parks is explained in the Appendix of *Tourist Accommodation, Australia, Expanded Scope Collection, Year ended 31 December quarter 2003* (cat. no. 8635.0.55.001). Particular care needs to be taken for all calculations of percentage changes that cross the break in series.

## EXPLANATORY NOTES *continued*

### SEASONAL ADJUSTMENT

**23** Seasonal adjustment is a means of removing the estimated effects of normal seasonal variation from the original time series so that the effect of other influences on the series may be more clearly recognised. Seasonal adjustment procedures do not aim to remove the irregular or non-seasonal influences which may be present in any particular quarter. Irregular influences that are highly volatile can make it difficult to interpret the movement of the series even after adjustment for seasonal variation, and cannot be assumed to indicate changes in the trend.

**24** The way in which seasonally adjusted and trend estimates were calculated changed from a Forward Factor methodology to a Concurrent methodology in March quarter 2003. The Forward Factor method relied on an annual analysis of the original time series to estimate seasonal factors that were to be applied in the forthcoming four quarters. Under this method the projected seasonal factors, or forward factors, were not updated until the next annual analysis. The Concurrent methodology uses the most up to date original time series available at each reference period to estimate seasonal factors thus eliminating the need to use projected seasonal factors.

### TREND ESTIMATES

**25** Smoothing the seasonally adjusted series reduces the impact of the irregular component of the seasonally adjusted series and creates the trend estimates. The trend estimates are derived by applying a 7-term Henderson moving average to the quarterly seasonally adjusted series. The Henderson moving average used in the middle of the time series is symmetric but, as the end of a time series is approached, asymmetric forms of the symmetric moving average are applied. Unlike the weights of the standard 7-term Henderson moving average, the weights used with the quarterly data have been tailored to suit the particular characteristics of individual series.

**26** While these techniques enable trend estimates for the latest period to be produced, the process does result in revisions to the trend estimates in recent quarters, particularly as additional original estimates become available. For further information refer to *Information Paper: A Guide to Interpreting Time Series - Monitoring Trends, 2003* (cat. no. 1349.0) available at the ABS web site <[www.abs.gov.au](http://www.abs.gov.au)>.

### CONFIDENTIALISATION OF DATA

**27** Under the Census and Statistics Act, when releasing statistics the ABS is required to do this in a manner that is "not likely" (in a legal sense) to enable the identification of a particular person or organisation. A number of techniques are used to do this, including suppression of information. To ensure provider confidentiality in the Survey of Tourist Accommodation, the ABS uses a computerised process known as Disclosure Avoidance Analysis System (DAAS) to confidentialise the entire tourist accommodation dataset each quarter. This process not only ensures that data are suppressed to ensure individual establishments cannot be identified, but also suppresses data in other (consequential) cells to ensure data cannot be derived through deduction from the information available.

**28** While the scope and coverage of the Survey of Tourist Accommodation has been expanded, priority has been given to maintaining the integrity and continuity of the core collection (hotels, motels and guest houses, and serviced apartments with 15 or more rooms). In order to maximise data released from the core collection series and the new components of the expanded scope collection (hotels, motels and guest houses, and serviced apartments with 5-14 rooms), the 'total' series (5 or more rooms) has been used for any consequential confidentiality required where possible.

**29** The DAAS process begins by confidentialising at the Statistical Local Area (SLA) level, then across Tourism regions, then at the state level and finally the national level. If there is an SLA that has been made confidential then another SLA will have to be made confidential within that Tourism region to protect the confidentiality of the providers in the SLA that was originally made confidential. Depending on the number of SLAs in the Tourism region the whole Tourism region may need to be made confidential. As a

## EXPLANATORY NOTES *continued*

### CONFIDENTIALISATION OF DATA *continued*

consequence of this, then at least one more Tourism region within a state or territory will also be confidentialised. This may also occur at the state/territory level.

### USER AGGREGATION OF DATA

**30** The results of any user-aggregated data across time periods should be viewed with caution, due to the possibility of non-inclusion of confidentialised data (see the above section for more information re confidentialisation). Where one or more cells contributing to a total have been confidentialised (ie, contains the value of n.p.), the resulting aggregated total will be incorrect. However, some broader levels of data may not be affected by confidentialised cells.

**31** Where data can be aggregated (ie, no confidentialised cells are included) for calendar and financial year/s purposes, Establishments, Rooms, Persons employed and Bed spaces data items should not be aggregated. For these items it is recommended that for calendar years, the value of the December quarter is used, and for financial years, the value of the June quarter is used.

**32** Any data items that have been derived from other items collected in the survey cannot be aggregated (ie, all those with labels ending in 'rate' or commencing with 'average'). These items must be re-derived based on the aggregation of each of the quarterly items collected in the survey used to derive the rate or average (see Glossary for formulas).

**33** Users are cautioned against deriving any non-standard aggregations (eg, aggregation of selected star gradings such as 4-star and 5-star; aggregation of selected geographical areas such as capital city areas and balance of state; aggregation of selected activities such as hotels and motels combined). This is because data are confidentialised based on the standard data item structure.

### EFFECTS OF ROUNDING

**34** Where figures have been rounded, discrepancies may occur between totals and the sum of the component items.

### RELATED PUBLICATIONS

**35** Other ABS publications and products which may be of interest are outlined below. Please note, older publications may no longer be available through ABS bookshops but are available through ABS libraries. All publications released from 1998 onwards are available on the ABS web site <[www.abs.gov.au](http://www.abs.gov.au)>.

*Tourist Accommodation, Small Area Data* (cat. no. 8635.0.55.002) (data cube for Australia – issued quarterly)

*Tourist Accommodation, Small Area Data* (cat. no. 8635.1.55.001–8635.8.55.001) (data cubes for each state/territory – issued quarterly)

*Tourism Region Maps and Concordance Files, Australia* (cat. no. 9503.0.55.001) (annual)

*Tourist Accommodation, Australia, Expanded Scope Collection* (cat. no. 8635.0.55.001) (irregular)

*Short-term Visitor Arrivals Estimates, Australia* (cat. no. 3401.0.55.001) (issued monthly)

*Overseas Arrivals and Departures, Australia* (cat. no. 3401.0) (issued monthly)

*Australian National Accounts, Tourism Satellite Account* (cat. no. 5249.0) (annual)

*Directory of Tourism Statistics, 2001* (cat. no. 1130.0) (irregular)

**36** Current publications and other products released by the ABS are listed in the *Catalogue of Publications and Products* (cat. no. 1101.0). The catalogue is available from any ABS office or the ABS web site <[www.abs.gov.au](http://www.abs.gov.au)>. The ABS also issues a daily Release Advice on the web site which details products to be released in the week ahead.

### ABS DATA AVAILABLE ON REQUEST

**37** As well as the statistics included in this publication, the ABS has other relevant data available on request. Inquiries should be made to the National Information and Referral Service on 1300 135 070.

## GLOSSARY

<b>Average length of stay</b>	<p>Average number of days each guest stayed during the reference period. It is a derived item calculated by dividing the number of guest nights occupied by the number of guest arrivals with the result expressed as a number of days,</p> $\text{Average length of stay(days)} = \frac{\text{Guest nights occupied}}{\text{Guest arrivals}}$
<b>Average takings per available room night</b>	<p>The takings from accommodation divided by the total number of room nights available for the survey period,</p> $\text{Average takings per available room night(\$)} = \frac{\text{Takings from accommodation}}{\text{Room nights available}}$
<b>Average takings per room night occupied</b>	<p>The takings from accommodation divided by the total number of room nights occupied for the survey period,</p> $\text{Average takings per room night occupied(\$)} = \frac{\text{Takings from accommodation}}{\text{Room nights occupied}}$
<b>Bed occupancy rate</b>	<p>The bed occupancy rate represents bed occupancy expressed as a percentage of total capacity available during the survey period,</p> $\text{Bed occupancy rate (\%)} = \frac{\text{Guest nights occupied}}{\text{Guest nights available}} * 100$
<b>Bed spaces</b>	<p>The maximum number of bed spaces normally in place available to accommodate paying guests during the survey period. Three-quarter beds are counted as one bed space; double beds as two bed spaces. Cots and divans not normally used as beds are excluded.</p>
<b>Cabins, flats, units and villas</b>	<p>The maximum number of cabins, flats, units and villas available at caravan parks for accommodating paying guests during the survey period.</p>
<b>Capacity</b>	<p>Capacity in terms of rooms/units/apartments/suites, visitor hostel bed spaces, holiday flats/units/houses or caravan park sites is the maximum number available to accommodate paying guests on the last day of the survey period. Capacity closed temporarily for seasonal reasons is included.</p>
<b>Caravan park sites</b>	<p>The measure of total caravan park capacity available for accommodating paying guests during the survey period. Includes on-site vans, other powered sites, unpowered sites and cabins, flats, units and villas.</p>
<b>Caravan parks</b>	<p>Establishments with 40 or more powered sites and cabins, flats, units and villas which provide either short-term or long-term accommodation to the general public and which provide powered sites for caravans and toilet, shower and laundry facilities for guests.</p>
<b>Caravan parks, long-term</b>	<p>Caravan parks where the majority of paying guests occupied sites for periods of two months or more.</p>
<b>Caravan parks, short-term</b>	<p>Caravan parks where the majority of paying guests occupied sites for periods of less than two months.</p>
<b>Establishments</b>	<p>The number of licensed hotels and resorts, motels and guest houses, serviced apartments, caravan parks and visitor hostels within the scope of the survey which operated for any part of the survey period, or which closed temporarily for the quarter for seasonal reasons.</p>
<b>Guest arrivals</b>	<p>The total number of paying guests counted only on the first night they stayed at the accommodation establishment during the survey period.</p> <p>For holiday flats, units and houses this is the same as unit lettings.</p> <p>This data item is not collected for caravan parks.</p>
<b>Guest nights available</b>	<p>The total number of nights available to all paying guests during the survey period.</p> <p>This is derived from the number of bed spaces multiplied by the number of days for which they were available during the survey period. For establishments closing (other than for seasonal reasons) or opening during this period, operating periods only are included.</p>

## GLOSSARY *continued*

<b>Guest nights occupied</b>	The total number of paying guests counted on each night they stayed at the accommodation establishment during the survey period.
<b>Holiday flats, units and houses</b>	The total number of holiday flats, units and houses (excluding establishments predominantly operated on a time-share basis) operated by letting entities (i.e. owners, managers or real estate agents) who have sole letting rights to at least 15 flats, units or houses for short-term letting. These flats, units or houses should be mainly self-contained in terms of cooking, bath (or shower) and toilet facilities and should not have breakfast available for guests. Data for holiday flats, units or houses include short-term owner operators as well as paying guest accommodation.
<b>Hotels</b>	See licensed hotels and resorts with facilities.
<b>Letting entities</b>	For holiday flats, units and houses, the number of owners, managers or real estate agents within the scope of the survey who operated for any part of the survey period.
<b>Licensed hotels and resorts with facilities</b>	Establishments with five or more rooms which are licensed to operate a public bar and which provide accommodation on a room/suite basis, with a bath/shower and toilet in most guest rooms, but which do not have full cooking facilities (i.e. hot plates and oven/microwave) in most guest rooms.
<b>Motels, private hotels and guest houses with facilities</b>	Establishments with five or more rooms which are not licensed to operate a public bar, and which provide accommodation on a room/suite basis, with a bath/shower and toilet in most guest rooms, but which do not have full cooking facilities (i.e. hot plates and oven/microwave) in most guest rooms.
<b>Multiple bedroom holiday flats, units and houses</b>	The total number of holiday flats, units and houses available with multiple bedrooms.
<b>Occupancy</b>	Occupancy in terms of room nights, unit nights or site nights occupied refers to the total number of nights each room, unit or caravan park was occupied during the survey period.  Occupancy in terms of guest nights refers to the total number of paying guests counted on each night they stayed at the accommodation establishment during the survey period.
<b>On-site vans</b>	The maximum number of vans owned or leased by the establishment for the purpose of providing accommodation to the general public.
<b>Other powered sites</b>	The maximum number of sites with provision for connection to electric power supply, available at caravan parks for accommodating paying guests during the survey period, excluding powered sites occupied by on-site vans, and cabins, flats, units and villas.
<b>Other sites permanently reserved</b>	The total number of powered and unpowered sites, on-site vans and cabins, flats, units and villas continuously let for two months or more on the last day of the survey period to tenants who occupy the sites only on a casual or sporadic basis.
<b>Persons employed</b>	The total number of persons working at each accommodation establishment at the end of the survey period (including working proprietors and those working on other than accommodation activities). This data item is not applicable to holiday flats, units and houses let by real estate agents.
<b>Room nights available</b>	The number of rooms/units available multiplied by the number of days for which they were available during the survey period. For establishments closing (other than for seasonal reasons) or opening during this period, operating periods only are included.
<b>Room nights occupied</b>	The number of nights each guest room/unit was occupied by a paying guest during the survey period.
<b>Room occupancy rate</b>	The room occupancy rate represents room occupancy expressed as a percentage of total capacity available during the survey period, $\text{Room occupancy rate (\%)} = \frac{\text{Room nights occupied}}{\text{Room nights available}} * 100$

## GLOSSARY *continued*

<b>Room occupancy rate</b> <i>continued</i>	providing that, for establishments closing (other than for seasonal reasons) or opening during the survey period, the denominator of the above expression includes only operating periods.
<b>Rooms</b>	The maximum number of rooms available for accommodating short-term paying guests at each licensed hotel and resort, motel and guest house and serviced apartment during the survey period. Units, apartments and suites are treated as rooms for these types of establishments in these survey results.
<b>Serviced apartments</b>	Establishments with five or more units which mostly comprise self-contained units at the same location, and which are available on a unit/apartment basis to the general public for a minimum of one night. The units should have full cooking facilities (i.e. hot plates and oven/microwave), refrigerator and bath/shower and toilet facilities; all bed linen and towels should be provided, and daily servicing (i.e. cleaning and bed making) must be available through the on-site management, although this service may not necessarily be used.
<b>Single bedroom holiday flats, units and houses</b>	The total number of holiday flats, units and houses available with a single bedroom.
<b>Site nights available</b>	The number of caravan park sites available multiplied by the number of days for which they were available during the survey period. For establishments closing (other than for seasonal reasons) or opening during this period, operating periods only are included.
<b>Site nights occupied</b>	The total number of nights each caravan park site was occupied during the survey period.
<b>Site occupancy rate</b>	<p>The site occupancy rate for caravan parks represents site occupancy expressed as a percentage of total capacity available during the survey period,</p> $\text{Site occupancy rate (\%)} = \frac{\text{Site nights occupied}}{\text{Site nights available}} * 100$ <p>providing that, for establishments closing (other than for seasonal reasons) or opening during the survey period, the denominator of the above expression includes only operating periods.</p>
<b>Sites occupied by long-term guests</b>	The total number of caravan park sites occupied on the last day at the end of the survey period by guests who have stayed continuously for two months or more.
<b>Star grading</b>	<p>The grading of hotels, motels and guest houses with facilities and serviced apartments is based on the classification system owned by AAA Tourism Pty Ltd. The gradings are allocated according to a points system based on the amenities and facilities available to guests. Details of the grading scheme are contained in the publication <i>Accommodation Guide</i> published by AAA Tourism Pty Ltd for each of the individual Australian Motoring Organisations. For the purpose of classifying establishments to a star grading in this publication, 'half' star gradings are ignored (e.g. a two and a half star grading has been shown as two star).</p> <p>While coverage has significantly improved, some establishments (including some competing in the four and five star markets and having significant takings) still remain outside the star grading scheme. These establishments have been given a star grading of 'ungraded'.</p>
<b>Takings from accommodation</b>	<p>Since 1 July 2000, takings from accommodation include gross revenue from the provision of accommodation, including GST. Takings from meals are excluded. In cases where takings from accommodation data cannot be provided inclusive of GST the amount of GST payable is estimated and the data revised accordingly.</p> <p>Takings from accommodation for each month generally represent the takings received during that month. Where payments are received in advance of, or after the provision of accommodation to guests, the monthly figure for takings from accommodation may not necessarily bear a direct relationship to the number of guests accommodated during the month.</p>

## GLOSSARY *continued*

<b>Unit lettings</b>	The total number of times a holiday flat, unit or house was occupied by a new tenant, counted only on the first night it was occupied by the new tenant. This is the equivalent of guest arrivals.
<b>Unit nights available</b>	The number of holiday flats, units and houses available multiplied by the number of days for which they were available during the survey period. For establishments closing (other than for seasonal reasons) or opening during this period, operating periods only are included.
<b>Unit nights occupied</b>	The total number of nights each holiday flat, unit or house was occupied during the survey period.
<b>Unit occupancy rate</b>	<p>The unit occupancy rate for holiday flats, units and houses represents unit occupancy expressed as a percentage of total capacity available during the survey period,</p> $\text{Unit occupancy rate (\%)} = \frac{\text{Unit nights occupied}}{\text{Unit nights available}} * 100$ <p>providing that, for letting entities closing (other than for seasonal reasons) or opening during the survey period, the denominator of the above expression includes only operating periods.</p>
<b>Unpowered sites</b>	The maximum number of sites with no provision for connection to electric power supply, available at caravan parks for accommodating paying guests during the survey period.
<b>Visitor hostels</b>	Establishments with 25 or more bed spaces which provide accommodation to visitors on a bed basis (rather than by room). This category does not include establishments providing charity type accommodation (e.g. Salvation Army hostels) nor hotels, motels and guest houses without in-room facilities which provide accommodation on a per room basis.









## FOR MORE INFORMATION . . .

*INTERNET* **www.abs.gov.au** the ABS web site is the best place for data from our publications and information about the ABS.

*LIBRARY* A range of ABS publications are available from public and tertiary libraries Australia wide. Contact your nearest library to determine whether it has the ABS statistics you require, or visit our web site for a list of libraries.

## INFORMATION AND REFERRAL SERVICE

Our consultants can help you access the full range of information published by the ABS that is available free of charge from our web site, or purchase a hard copy publication. Information tailored to your needs can also be requested as a 'user pays' service. Specialists are on hand to help you with analytical or methodological advice.

*PHONE* 1300 135 070

*EMAIL* [client.services@abs.gov.au](mailto:client.services@abs.gov.au)

*FAX* 1300 135 211

*POST* Client Services, ABS, GPO Box 796, Sydney NSW 2001

## FREE ACCESS TO STATISTICS

All ABS statistics can be downloaded free of charge from the ABS web site.

*WEB ADDRESS* [www.abs.gov.au](http://www.abs.gov.au)



2863500003067

ISSN 1031 0770

RRP \$31.00