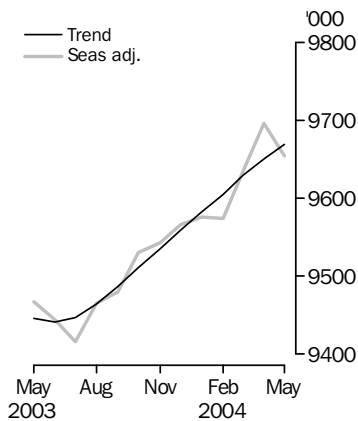


# LABOUR FORCE

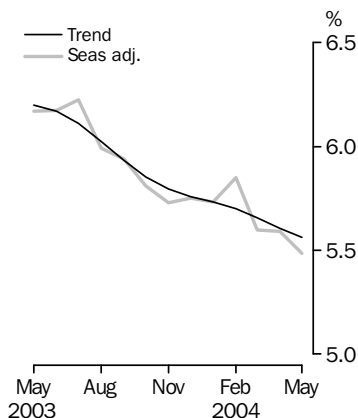
AUSTRALIA

EMBARGO: 11.30AM (CANBERRA TIME) THURS 10 JUN 2004

## Employed Persons



## Unemployment rate



## KEY FIGURES

	Apr 2004	May 2004	Apr 04 to May 04	May 03 to May 04
<b>Trend</b>				
Employed persons ('000)	9 651.1	9 669.5	18.4	2.4 %
Unemployed persons ('000)	573.2	569.3	-3.9	-8.8 %
Unemployment rate (%)	5.6	5.6	0.0 pts	-0.6 pts
Participation rate (%)	63.7	63.7	0.0 pts	0.1 pts
<b>Seasonally Adjusted</b>				
Employed persons ('000)	9 696.3	9 655.2	-41.1	2.0 %
Unemployed persons ('000)	574.3	560.5	-13.8	-10.0 %
Unemployment rate (%)	5.6	5.5	-0.1 pts	-0.7 pts
Participation rate (%)	63.9	63.5	-0.4 pts	-0.2 pts

## KEY POINTS

### TREND ESTIMATES (MONTHLY CHANGE)

- EMPLOYMENT increased to 9,669,500.
- UNEMPLOYMENT decreased to 569,300.
- UNEMPLOYMENT RATE remained at 5.6%.
- PARTICIPATION RATE remained at 63.7%.

### SEASONALLY ADJUSTED ESTIMATES (MONTHLY CHANGE)

#### EMPLOYMENT

- decreased by 41,100 to 9,655,200. Full-time employment decreased by 42,600 to 6,895,700 while part-time employment increased by 1,500 to 2,759,500.

#### UNEMPLOYMENT

- decreased by 13,800 to 560,500. The number of persons looking for full-time work decreased by 8,900 to 415,000 and the number of persons looking for part-time work decreased by 4,900 to 145,500.

#### UNEMPLOYMENT RATE

- decreased by 0.1 percentage point to 5.5%. The male unemployment rate decreased by 0.1 percentage point, but the rounded estimate remained at 5.5%. The female rate decreased by 0.2 percentage points to 5.5%.

#### PARTICIPATION RATE

- decreased by 0.4 percentage points to 63.5%.

## INQUIRIES

- For further information about these and related statistics, contact the National Information and Referral Service on 1300 135 070 or Michael Johnson on Canberra (02) 6252 6525.

# NOTES

## FORTHCOMING ISSUES

<i>ISSUE</i>	<i>RELEASE DATE</i>
June 2004	8 July 2004
July 2004	12 August 2004
August 2004	9 September 2004
September 2004	7 October 2004
October 2004	11 November 2004
November 2004	9 December 2004



## CAI IMPLEMENTATION

In October 2003, the ABS began the progressive implementation of computer assisted interviewing (CAI) into the LFS. Under CAI, interviewers record responses directly onto an electronic questionnaire in a laptop computer.

For the period October 2003 to January 2004 the CAI method was used on a random 10% sub-sample of survey interviews. The remaining 90% of interviews each month were conducted using the traditional 'pen and paper' method.

The sub-sample of survey interviews conducted using the CAI method was increased to 40% in February 2004 in New South Wales, Victoria, South Australia and the Australian Capital Territory, and remained at 40% in March 2004. In the remaining states and the Northern Territory, the proportion of interviews using the CAI method stayed at 10% for February and March 2004. The CAI method was used for 40% of interviews for all states and territories in April and May 2004, and will increase to 70% in June 2004.

Implementation of the CAI interviewing method is not expected to affect published estimates in any meaningful way. Nonetheless, the ABS is monitoring the situation carefully and has conducted a range of analyses on each month's data. These analyses have confirmed that any effect that the change in interview method may have had on survey responses to date has not materially affected the aggregate estimates for any month.

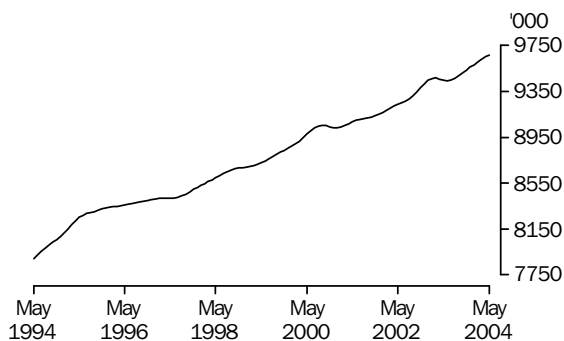
Subject to further analysis continuing to confirm that the change in method is not having a significant impact on survey estimates, the ABS intends to progressively increase the use of CAI. Users will continue to be informed of the progress of CAI implementation, including the results of further analyses, through updates in this publication.

Susan Linacre  
Acting Australian Statistician

# PRINCIPAL LABOUR FORCE SERIES TREND ESTIMATES

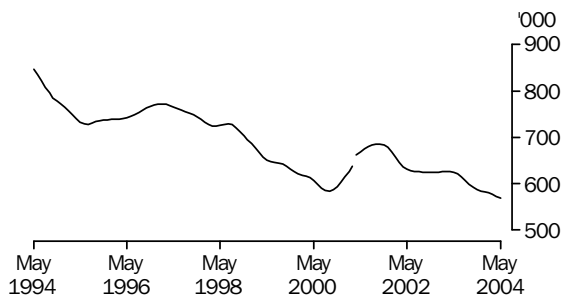
## EMPLOYED PERSONS

The trend estimate of employed persons generally rose from a low of 7,637,500 in December 1992 to 9,054,500 in September 2000. The trend estimate then fell slightly to 9,033,700 in December 2000, before rising to 9,466,800 in March 2003. The trend estimate then fell for three months, before rising to stand at 9,669,500 in May 2004.



## UNEMPLOYED PERSONS

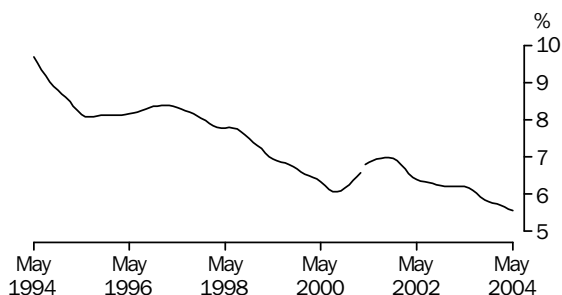
The trend estimate of unemployed persons fell rapidly from 920,800 in September 1993 to 728,200 in July 1995. The trend estimate then rose to 771,600 in February 1997, before falling to 584,000 in September 2000. After rising to 685,700 in October 2001, the trend estimate has generally fallen to stand at 569,300 in May 2004.



Series break at April 2001; see paragraph 12 of Explanatory Notes.

## UNEMPLOYMENT RATE

The trend unemployment rate fell rapidly from 10.7% in August 1993 to 8.1% in July 1995. The trend estimate then rose slowly to 8.4% in February 1997, before falling to 6.1% in September 2000. After rising to 7.0% in September 2001, the trend estimate has generally fallen to stand at 5.6% in May 2004.



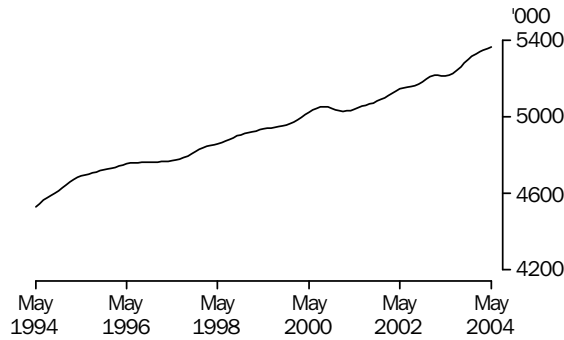
Series break at April 2001; see paragraph 12 of Explanatory Notes.

# EMPLOYED PERSONS TREND ESTIMATES

## EMPLOYED MALES

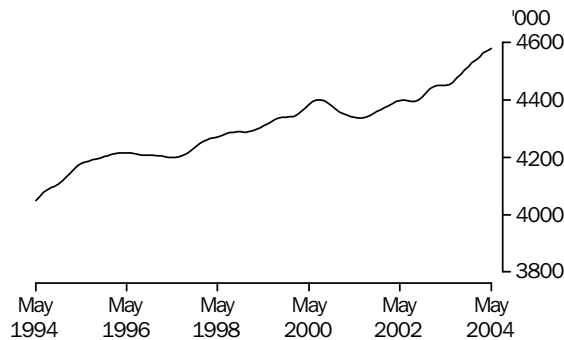
### TOTAL

From a low of 4,392,700 in December 1992, the trend estimate of employed males rose to 5,054,100 in September 2000. The trend then fell to 5,030,700 in February 2001, before generally rising to stand at 5,364,600 in May 2004.



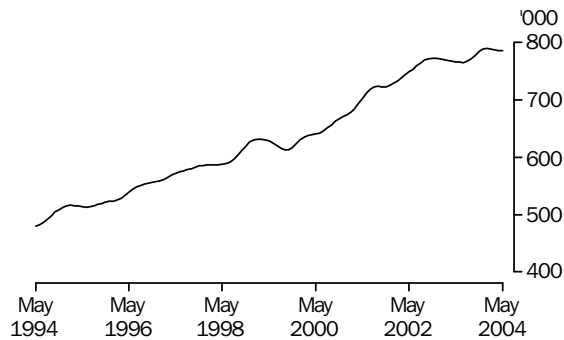
### MALES EMPLOYED FULL TIME

From a low of 3,939,500 in November 1992, the trend estimate of males employed full time rose to 4,216,000 in April 1996. After remaining stable for a year, the trend then rose to 4,400,700 in August 2000. The trend then fell to 4,336,500 in July 2001, before generally rising to stand at 4,579,200 in May 2004.



### MALES EMPLOYED PART TIME

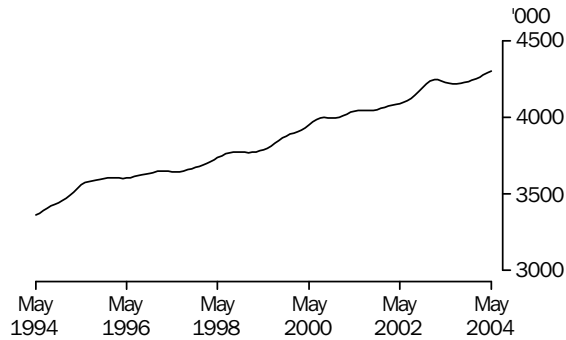
The trend estimate of males employed part time has risen 64% over the last 10 years, rising from 479,700 in May 1994 to 785,300 in May 2004.



EMPLOYED FEMALES

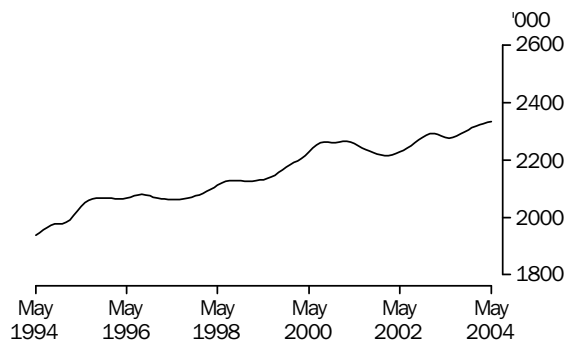
TOTAL

The trend estimate of employed females rose from 3,244,700 in December 1992 to 4,247,400 in March 2003, with strong growth before mid 1995 and in late 2002. The trend estimate then fell to 4,220,200 in July 2003, before rising to stand at 4,304,900 in May 2004.



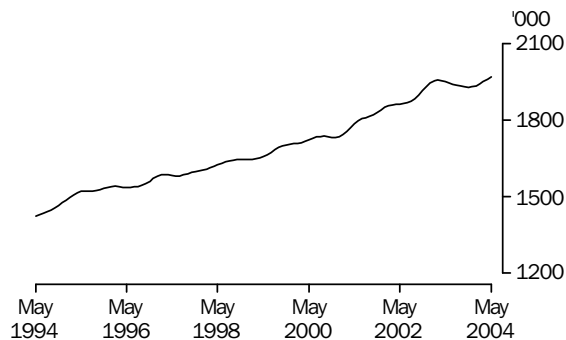
FEMALES EMPLOYED FULL TIME

Apart from a flat period between mid 1995 and mid 1997, the trend estimate of females employed full time rose from 1,865,500 in August 1992 to 2,266,400 in March 2001. The trend then decreased to 2,216,500 in February 2002, before generally rising to stand at 2,334,300 in May 2004.



FEMALES EMPLOYED PART TIME

The trend estimate of females employed part time has risen steadily over the last 10 years. The May 2004 trend estimate of 1,970,600 is 38% higher than the May 1994 estimate of 1,422,900.



# LABOUR FORCE STATUS (AGED 15 & OVER): Trend

	EMPLOYED			UNEMPLOYED		Labour force	UNEMPLOYMENT RATE		Participation rate
	Full time	Part time	Total	Looking for f/t work	Total		Looking for f/t work	Total	
	'000	'000	'000	'000	'000		'000	%	
MALES									
May 2001	4 338.4	702.5	5 040.8	319.5	383.7	5 424.6	6.9	7.1	72.0
May 2002	4 398.0	748.5	5 146.4	300.2	363.8	5 510.3	6.4	6.6	72.0
2003									
May	4 449.0	766.5	5 215.5	284.5	345.9	5 561.4	6.0	6.2	71.5
June	4 452.8	765.4	5 218.2	281.4	342.6	5 560.8	5.9	6.2	71.4
July	4 462.0	765.3	5 227.2	276.8	337.2	5 564.4	5.8	6.1	71.4
August	4 475.4	767.2	5 242.6	270.7	329.6	5 572.3	5.7	5.9	71.4
September	4 490.2	771.9	5 262.1	264.3	321.6	5 583.7	5.6	5.8	71.4
October	4 503.9	778.4	5 282.3	258.8	315.0	5 597.3	5.4	5.6	71.5
November	4 516.7	784.3	5 301.0	255.1	311.2	5 612.1	5.3	5.5	71.6
December	4 528.7	788.1	5 316.9	253.5	310.1	5 627.0	5.3	5.5	71.7
2004									
January	4 540.0	789.5	5 329.6	253.7	310.8	5 640.4	5.3	5.5	71.8
February	4 551.5	788.9	5 340.5	254.7	311.9	5 652.3	5.3	5.5	71.8
March	4 562.5	787.6	5 350.2	255.8	312.6	5 662.8	5.3	5.5	71.8
April	4 572.0	786.4	5 358.4	256.7	312.9	5 671.3	5.3	5.5	71.9
May	4 579.2	785.3	5 364.6	258.0	313.6	5 678.1	5.3	5.5	71.9
FEMALES									
May 2001	2 257.0	1 785.5	4 042.5	177.1	285.4	4 327.9	7.3	6.6	55.3
May 2002	2 228.1	1 863.3	4 091.4	173.0	267.0	4 358.4	7.2	6.1	54.9
2003									
May	2 278.9	1 951.5	4 230.4	182.6	278.5	4 509.0	7.4	6.2	56.0
June	2 276.8	1 946.1	4 222.9	181.6	278.3	4 501.3	7.4	6.2	55.8
July	2 278.4	1 941.8	4 220.2	180.1	277.8	4 498.0	7.3	6.2	55.7
August	2 283.5	1 938.4	4 221.9	178.4	277.2	4 499.1	7.2	6.2	55.7
September	2 290.9	1 934.2	4 225.1	176.6	276.7	4 501.8	7.2	6.1	55.6
October	2 298.4	1 930.4	4 228.8	175.0	276.3	4 505.1	7.1	6.1	55.6
November	2 306.2	1 928.6	4 234.8	173.4	275.5	4 510.2	7.0	6.1	55.6
December	2 312.8	1 930.2	4 243.0	172.3	274.2	4 517.2	6.9	6.1	55.6
2004									
January	2 318.0	1 934.9	4 252.9	171.2	272.1	4 525.0	6.9	6.0	55.6
February	2 322.6	1 942.7	4 265.3	169.5	268.8	4 534.1	6.8	5.9	55.6
March	2 327.0	1 952.2	4 279.2	167.4	264.6	4 543.8	6.7	5.8	55.7
April	2 331.2	1 961.5	4 292.7	165.3	260.3	4 553.0	6.6	5.7	55.7
May	2 334.3	1 970.6	4 304.9	162.7	255.8	4 560.7	6.5	5.6	55.8
PERSONS									
May 2001	6 595.4	2 488.0	9 083.3	496.6	669.2	9 752.5	7.0	6.9	63.5
May 2002	6 626.0	2 611.8	9 237.8	473.2	630.8	9 868.6	6.7	6.4	63.3
2003									
May	6 727.9	2 718.0	9 446.0	467.0	624.4	10 070.4	6.5	6.2	63.6
June	6 729.6	2 711.6	9 441.1	463.0	620.9	10 062.0	6.4	6.2	63.5
July	6 740.3	2 707.1	9 447.4	456.9	615.0	10 062.4	6.3	6.1	63.4
August	6 759.0	2 705.6	9 464.5	449.1	606.8	10 071.4	6.2	6.0	63.4
September	6 781.1	2 706.1	9 487.2	440.9	598.3	10 085.5	6.1	5.9	63.4
October	6 802.3	2 708.8	9 511.1	433.8	591.4	10 102.4	6.0	5.9	63.4
November	6 822.9	2 712.8	9 535.7	428.5	586.7	10 122.4	5.9	5.8	63.4
December	6 841.6	2 718.3	9 559.9	425.9	584.3	10 144.2	5.9	5.8	63.5
2004									
January	6 858.0	2 724.5	9 582.5	424.9	582.9	10 165.4	5.8	5.7	63.5
February	6 874.1	2 731.6	9 605.7	424.2	580.7	10 186.4	5.8	5.7	63.6
March	6 889.6	2 739.8	9 629.4	423.2	577.2	10 206.6	5.8	5.7	63.6
April	6 903.1	2 747.9	9 651.1	422.0	573.2	10 224.3	5.8	5.6	63.7
May	6 913.5	2 756.0	9 669.5	420.7	569.3	10 238.8	5.7	5.6	63.7

LABOUR FORCE STATUS (AGED 15 & OVER): Seasonally Adjusted

	EMPLOYED			UNEMPLOYED			UNEMPLOYMENT RATE			Participation rate
	Full time	Part time	Total	Looking for f/t work	Total	Labour force	Looking for f/t work	Total		
	'000	'000	'000	'000	'000	'000	%	%	%	
MALES										
May 2001	4 344.1	701.5	5 045.6	316.2	383.0	5 428.6	6.8	7.1	72.1	
May 2002	4 423.1	727.3	5 150.4	300.5	366.3	5 516.7	6.4	6.6	72.1	
2003										
May	4 456.9	761.9	5 218.8	284.8	345.7	5 564.5	6.0	6.2	71.5	
June	4 447.4	764.5	5 211.9	283.3	348.5	5 560.4	6.0	6.3	71.4	
July	4 447.4	769.8	5 217.2	278.6	339.4	5 556.6	5.9	6.1	71.3	
August	4 483.7	761.1	5 244.8	268.5	326.6	5 571.4	5.7	5.9	71.4	
September	4 493.2	769.5	5 262.7	264.1	319.7	5 582.4	5.6	5.7	71.4	
October	4 508.8	777.4	5 286.3	264.3	320.3	5 606.6	5.5	5.7	71.6	
November	4 519.4	781.0	5 300.4	246.9	302.5	5 603.0	5.2	5.4	71.5	
December	4 522.9	801.2	5 324.1	250.5	306.7	5 630.8	5.2	5.4	71.7	
2004										
January	4 540.7	791.6	5 332.3	254.4	311.4	5 643.7	5.3	5.5	71.8	
February	4 542.5	789.9	5 332.5	259.6	319.9	5 652.4	5.4	5.7	71.8	
March	4 567.9	779.1	5 347.0	254.6	309.8	5 656.8	5.3	5.5	71.8	
April	4 589.9	783.7	5 373.6	256.5	314.7	5 688.3	5.3	5.5	72.1	
May	4 567.5	790.1	5 357.6	257.5	309.7	5 667.2	5.3	5.5	71.7	
FEMALES										
May 2001	2 259.7	1 779.3	4 039.0	180.2	288.3	4 327.2	7.4	6.7	55.3	
May 2002	2 229.8	1 857.4	4 087.2	162.3	259.6	4 346.8	6.8	6.0	54.8	
2003										
May	2 291.4	1 957.1	4 248.5	180.5	277.0	4 525.5	7.3	6.1	56.2	
June	2 269.8	1 962.1	4 231.9	181.8	273.1	4 505.0	7.4	6.1	55.9	
July	2 276.7	1 922.2	4 198.9	184.2	285.9	4 484.8	7.5	6.4	55.6	
August	2 277.8	1 942.8	4 220.6	174.7	276.7	4 497.4	7.1	6.2	55.6	
September	2 293.1	1 924.4	4 217.5	182.2	279.2	4 496.7	7.4	6.2	55.6	
October	2 299.4	1 944.4	4 243.9	168.3	267.4	4 511.2	6.8	5.9	55.7	
November	2 308.3	1 934.4	4 242.7	174.0	277.4	4 520.1	7.0	6.1	55.7	
December	2 316.2	1 926.5	4 242.7	173.5	277.2	4 519.9	7.0	6.1	55.6	
2004										
January	2 324.5	1 919.0	4 243.4	170.1	271.1	4 514.5	6.8	6.0	55.5	
February	2 309.0	1 932.9	4 241.9	172.8	275.1	4 517.0	7.0	6.1	55.4	
March	2 323.1	1 964.4	4 287.6	166.4	261.7	4 549.3	6.7	5.8	55.8	
April	2 348.4	1 974.2	4 322.6	167.4	259.6	4 582.2	6.7	5.7	56.1	
May	2 328.2	1 969.4	4 297.6	157.6	250.8	4 548.5	6.3	5.5	55.6	
PERSONS										
May 2001	6 603.8	2 480.9	9 084.6	496.5	671.3	9 755.9	7.0	6.9	63.5	
May 2002	6 652.8	2 584.7	9 237.5	462.8	625.9	9 863.5	6.5	6.3	63.3	
2003										
May	6 748.3	2 719.0	9 467.3	465.3	622.7	10 090.0	6.5	6.2	63.7	
June	6 717.2	2 726.6	9 443.8	465.1	621.6	10 065.4	6.5	6.2	63.5	
July	6 724.2	2 691.9	9 416.1	462.8	625.2	10 041.3	6.4	6.2	63.3	
August	6 761.5	2 703.9	9 465.4	443.3	603.4	10 068.7	6.2	6.0	63.4	
September	6 786.3	2 693.9	9 480.2	446.3	598.9	10 079.1	6.2	5.9	63.3	
October	6 808.3	2 721.9	9 530.1	432.5	587.7	10 117.8	6.0	5.8	63.5	
November	6 827.7	2 715.4	9 543.2	420.9	579.9	10 123.1	5.8	5.7	63.4	
December	6 839.2	2 727.6	9 566.8	424.1	583.9	10 150.7	5.8	5.8	63.5	
2004										
January	6 865.2	2 710.5	9 575.7	424.5	582.5	10 158.2	5.8	5.7	63.5	
February	6 851.5	2 722.9	9 574.4	432.4	595.0	10 169.4	5.9	5.9	63.5	
March	6 891.1	2 743.5	9 634.6	421.0	571.5	10 206.1	5.8	5.6	63.6	
April	6 938.3	2 758.0	9 696.3	423.9	574.3	10 270.6	5.8	5.6	63.9	
May	6 895.7	2 759.5	9 655.2	415.0	560.5	10 215.7	5.7	5.5	63.5	

# LABOUR FORCE STATUS (AGED 15 & OVER): Original

	EMPLOYED			UNEMPLOYED			UNEMPLOYMENT RATE			Participation rate	
	Full time	Part time	Total	Looking for f/t work	Total	Labour force	Not in labour force	Civilian population aged 15 and over	Looking for f/t work		Total
	'000	'000	'000	'000	'000	'000	'000	'000	%		%
MALES											
May 2001	4 319.8	712.6	5 032.4	313.9	382.0	5 414.3	2 118.8	7 533.1	6.8	7.1	71.9
May 2002	4 399.6	738.0	5 137.6	298.7	366.0	5 503.6	2 152.2	7 655.8	6.4	6.7	71.9
2003											
May	4 433.8	773.0	5 206.9	282.9	345.3	5 552.1	2 225.1	7 777.2	6.0	6.2	71.4
June	4 417.7	792.9	5 210.6	279.7	340.1	5 550.7	2 236.4	7 787.2	6.0	6.1	71.3
July	4 447.4	780.4	5 227.8	261.3	315.3	5 543.1	2 253.9	7 797.0	5.5	5.7	71.1
August	4 433.1	772.4	5 205.5	257.8	309.3	5 514.8	2 292.1	7 807.0	5.5	5.6	70.6
September	4 522.0	766.8	5 288.8	262.2	321.0	5 609.9	2 206.9	7 816.8	5.5	5.7	71.8
October	4 513.5	790.2	5 303.6	253.9	304.3	5 608.0	2 220.0	7 828.0	5.3	5.4	71.6
November	4 512.0	771.2	5 283.2	235.6	284.1	5 567.3	2 271.9	7 839.2	5.0	5.1	71.0
December	4 605.2	788.1	5 393.2	248.0	306.7	5 699.9	2 150.5	7 850.4	5.1	5.4	72.6
2004											
January	4 546.5	750.2	5 296.7	282.7	343.5	5 640.2	2 220.6	7 860.8	5.9	6.1	71.8
February	4 562.9	760.7	5 323.6	286.5	353.1	5 676.7	2 194.7	7 871.4	5.9	6.2	72.1
March	4 558.2	783.0	5 341.1	256.8	319.5	5 660.6	2 221.1	7 881.8	5.3	5.6	71.8
April	4 543.7	798.9	5 342.6	257.0	320.6	5 663.3	2 228.2	7 891.5	5.4	5.7	71.8
May	4 544.2	801.7	5 345.9	255.5	308.8	5 654.6	2 246.7	7 901.3	5.3	5.5	71.6
FEMALES											
May 2001	2 235.2	1 798.1	4 033.3	183.7	292.7	4 326.1	3 496.5	7 822.6	7.6	6.8	55.3
May 2002	2 209.3	1 874.6	4 083.8	165.3	264.2	4 348.0	3 583.7	7 931.7	7.0	6.1	54.8
2003											
May	2 272.1	1 973.4	4 245.5	183.2	281.8	4 527.3	3 526.0	8 053.3	7.5	6.2	56.2
June	2 230.4	2 013.9	4 244.3	179.8	268.4	4 512.6	3 550.5	8 063.1	7.5	5.9	56.0
July	2 289.0	1 922.8	4 211.8	166.1	256.6	4 468.5	3 604.9	8 073.4	6.8	5.7	55.3
August	2 234.8	1 956.1	4 191.0	163.5	259.8	4 450.7	3 632.9	8 083.7	6.8	5.8	55.1
September	2 334.7	1 942.8	4 277.5	179.1	275.2	4 552.8	3 541.2	8 093.9	7.1	6.0	56.2
October	2 296.2	1 952.3	4 248.5	159.1	253.8	4 502.3	3 603.2	8 105.5	6.5	5.6	55.5
November	2 307.6	1 943.9	4 251.5	165.3	256.1	4 507.6	3 609.4	8 117.0	6.7	5.7	55.5
December	2 368.4	1 921.2	4 289.6	178.5	279.5	4 569.1	3 559.5	8 128.6	7.0	6.1	56.2
2004											
January	2 348.2	1 813.3	4 161.5	186.1	286.8	4 448.3	3 690.7	8 139.0	7.3	6.4	54.7
February	2 321.6	1 894.8	4 216.4	196.3	316.5	4 532.9	3 616.7	8 149.6	7.8	7.0	55.6
March	2 318.0	1 967.7	4 285.7	171.9	282.0	4 567.6	3 592.4	8 160.0	6.9	6.2	56.0
April	2 307.6	1 971.3	4 278.9	166.6	262.7	4 541.7	3 627.7	8 169.4	6.7	5.8	55.6
May	2 310.1	1 984.8	4 294.9	159.1	254.9	4 549.7	3 629.0	8 178.7	6.4	5.6	55.6
PERSONS											
May 2001	6 555.0	2 510.7	9 065.7	497.6	674.7	9 740.4	5 615.2	15 355.6	7.1	6.9	63.4
May 2002	6 608.9	2 612.5	9 221.5	463.9	630.2	9 851.7	5 735.9	15 587.5	6.6	6.4	63.2
2003											
May	6 705.9	2 746.4	9 452.3	466.1	627.1	10 079.4	5 751.0	15 830.5	6.5	6.2	63.7
June	6 648.1	2 806.7	9 454.8	459.5	608.5	10 063.3	5 787.0	15 850.3	6.5	6.0	63.5
July	6 736.4	2 703.2	9 439.6	427.4	572.0	10 011.6	5 858.8	15 870.4	6.0	5.7	63.1
August	6 667.9	2 728.5	9 396.5	421.3	569.1	9 965.5	5 925.1	15 890.6	5.9	5.7	62.7
September	6 856.7	2 709.6	9 566.3	441.3	596.3	10 162.6	5 748.1	15 910.7	6.0	5.9	63.9
October	6 809.7	2 742.5	9 552.2	412.9	558.1	10 110.3	5 823.2	15 933.5	5.7	5.5	63.5
November	6 819.6	2 715.1	9 534.8	400.9	540.2	10 074.9	5 881.3	15 956.2	5.6	5.4	63.1
December	6 973.5	2 709.3	9 682.8	426.5	586.2	10 269.0	5 710.0	15 978.9	5.8	5.7	64.3
2004											
January	6 894.7	2 563.5	9 458.2	468.9	630.3	10 088.5	5 911.4	15 999.8	6.4	6.2	63.1
February	6 884.5	2 655.5	9 540.0	482.9	669.6	10 209.6	5 811.4	16 020.9	6.6	6.6	63.7
March	6 876.1	2 750.7	9 626.8	428.7	601.5	10 228.3	5 813.6	16 041.8	5.9	5.9	63.8
April	6 851.4	2 770.2	9 621.6	423.6	583.4	10 204.9	5 855.9	16 060.8	5.8	5.7	63.5
May	6 854.2	2 786.5	9 640.7	414.6	563.6	10 204.3	5 875.7	16 080.0	5.7	5.5	63.5



LABOUR FORCE STATUS (AGED 15 & OVER)—New South Wales

	TREND					SEASONALLY ADJUSTED					Civilian population aged 15 and over
	Employed full time	Total employed	Total unemployed	Unemployment rate	Participation rate	Employed full time	Total employed	Total unemployed	Unemployment rate	Participation rate	
	'000	'000	'000	%	%	'000	'000	'000	%	%	'000
MALES											
May 2001	1 475.8	1 702.4	109.6	6.0	70.8	1 476.7	1 703.3	110.6	6.1	70.9	2 558.0
May 2002	1 484.3	1 724.8	118.1	6.4	71.0	1 498.2	1 727.7	118.1	6.4	71.2	2 594.1
2003											
May	1 489.8	1 738.9	114.2	6.2	70.7	1 493.8	1 739.6	116.7	6.3	70.8	2 622.7
June	1 491.3	1 736.5	113.5	6.1	70.5	1 491.1	1 742.2	115.2	6.2	70.8	2 625.1
July	1 495.8	1 737.8	111.2	6.0	70.4	1 481.8	1 720.2	114.5	6.2	69.8	2 627.4
August	1 502.4	1 743.4	107.4	5.8	70.4	1 511.7	1 748.8	104.7	5.6	70.5	2 629.7
September	1 509.3	1 751.6	103.1	5.6	70.5	1 509.7	1 747.1	101.5	5.5	70.2	2 632.0
October	1 514.8	1 760.3	99.5	5.4	70.6	1 516.3	1 768.8	100.7	5.4	71.0	2 634.6
November	1 518.5	1 768.0	97.6	5.2	70.7	1 525.4	1 770.3	95.3	5.1	70.7	2 637.3
December	1 520.5	1 773.3	97.1	5.2	70.9	1 513.9	1 770.5	95.5	5.1	70.7	2 639.9
2004											
January	1 521.0	1 775.8	97.6	5.2	70.9	1 523.1	1 780.3	97.0	5.2	71.0	2 642.3
February	1 521.5	1 776.7	98.2	5.2	70.9	1 516.2	1 773.2	101.7	5.4	70.9	2 644.8
March	1 521.9	1 777.1	98.7	5.3	70.9	1 526.4	1 780.0	98.5	5.2	71.0	2 647.1
April	1 522.2	1 776.9	99.1	5.3	70.8	1 526.0	1 777.5	98.8	5.3	70.8	2 649.1
May	1 522.0	1 776.6	99.6	5.3	70.8	1 517.5	1 772.5	98.8	5.3	70.6	2 651.1
FEMALES											
May 2001	793.3	1 350.2	81.4	5.7	54.0	789.3	1 350.9	79.5	5.6	54.0	2 650.9
May 2002	769.6	1 353.8	84.5	5.9	53.6	774.8	1 350.4	83.3	5.8	53.5	2 681.9
2003											
May	781.0	1 400.8	88.5	5.9	54.9	788.1	1 408.5	87.8	5.9	55.2	2 711.0
June	780.1	1 398.8	88.4	5.9	54.8	780.7	1 401.0	86.1	5.8	54.8	2 713.1
July	780.5	1 397.7	88.6	6.0	54.7	775.6	1 391.8	93.7	6.3	54.7	2 715.5
August	782.4	1 397.4	89.0	6.0	54.7	783.5	1 394.0	87.1	5.9	54.5	2 717.8
September	785.8	1 397.1	89.2	6.0	54.6	785.5	1 400.5	89.3	6.0	54.8	2 720.1
October	789.7	1 397.2	88.6	6.0	54.6	788.7	1 398.0	88.3	5.9	54.6	2 722.8
November	794.3	1 398.6	87.0	5.9	54.5	795.1	1 403.2	88.7	5.9	54.7	2 725.6
December	798.2	1 401.5	85.3	5.7	54.5	796.2	1 397.3	85.2	5.7	54.3	2 728.3
2004											
January	800.3	1 405.2	84.0	5.6	54.5	806.3	1 401.0	86.2	5.8	54.5	2 730.9
February	800.6	1 409.8	83.2	5.6	54.6	799.6	1 405.1	79.1	5.3	54.3	2 733.5
March	799.6	1 414.7	83.1	5.5	54.7	801.8	1 421.4	79.7	5.3	54.9	2 736.1
April	797.8	1 419.2	83.5	5.6	54.9	801.0	1 426.6	85.6	5.7	55.2	2 738.1
May	795.4	1 422.7	84.2	5.6	55.0	785.6	1 418.0	88.0	5.8	55.0	2 740.1
PERSONS											
May 2001	2 269.2	3 052.6	190.9	5.9	62.3	2 266.0	3 054.3	190.1	5.9	62.3	5 208.9
May 2002	2 253.9	3 078.7	202.6	6.2	62.2	2 273.0	3 078.0	201.4	6.1	62.2	5 276.1
2003											
May	2 270.8	3 139.7	202.8	6.1	62.7	2 282.0	3 148.0	204.5	6.1	62.9	5 333.7
June	2 271.5	3 135.3	201.9	6.1	62.5	2 271.7	3 143.2	201.4	6.0	62.7	5 338.3
July	2 276.3	3 135.5	199.8	6.0	62.4	2 257.4	3 112.0	208.2	6.3	62.1	5 342.9
August	2 284.8	3 140.8	196.5	5.9	62.4	2 295.2	3 142.8	191.7	5.7	62.4	5 347.5
September	2 295.1	3 148.7	192.3	5.8	62.4	2 295.2	3 147.6	190.8	5.7	62.4	5 352.1
October	2 304.6	3 157.5	188.1	5.6	62.4	2 305.0	3 166.8	189.1	5.6	62.6	5 357.5
November	2 312.8	3 166.6	184.6	5.5	62.5	2 320.5	3 173.5	184.0	5.5	62.6	5 362.9
December	2 318.7	3 174.8	182.4	5.4	62.5	2 310.1	3 167.8	180.7	5.4	62.4	5 368.3
2004											
January	2 321.2	3 181.0	181.6	5.4	62.6	2 329.5	3 181.3	183.1	5.4	62.6	5 373.2
February	2 322.0	3 186.5	181.4	5.4	62.6	2 315.8	3 178.3	180.8	5.4	62.5	5 378.2
March	2 321.6	3 191.8	181.8	5.4	62.7	2 328.1	3 201.4	178.2	5.3	62.8	5 383.2
April	2 320.0	3 196.0	182.6	5.4	62.7	2 326.9	3 204.1	184.4	5.4	62.9	5 387.2
May	2 317.4	3 199.3	183.7	5.4	62.8	2 303.1	3 190.6	186.8	5.5	62.6	5 391.2

LABOUR FORCE STATUS (AGED 15 & OVER)—Victoria

	TREND					SEASONALLY ADJUSTED					Civilian population aged 15 and over '000
	Employed full time	Total employed	Total unemployed	Unemployment rate	Participation rate	Employed full time	Total employed	Total unemployed	Unemployment rate	Participation rate	
	'000	'000	'000	%	%	'000	'000	'000	%	%	
MALES											
May 2001	1 093.6	1 274.2	84.0	6.2	72.7	1 094.5	1 275.9	81.9	6.0	72.7	1 867.1
May 2002	1 102.1	1 284.1	81.9	6.0	72.1	1 109.7	1 287.9	81.5	6.0	72.3	1 894.1
2003											
May	1 099.7	1 290.3	79.6	5.8	71.2	1 097.2	1 288.8	81.6	6.0	71.2	1 924.0
June	1 102.0	1 294.0	78.9	5.7	71.3	1 101.6	1 288.8	80.4	5.9	71.1	1 926.3
July	1 104.9	1 299.1	77.3	5.6	71.4	1 105.6	1 300.2	79.6	5.8	71.5	1 928.7
August	1 107.3	1 304.5	75.1	5.4	71.4	1 109.0	1 303.2	73.0	5.3	71.3	1 931.1
September	1 108.6	1 309.4	73.1	5.3	71.5	1 111.6	1 317.5	72.9	5.2	71.9	1 933.5
October	1 109.1	1 312.9	72.0	5.2	71.5	1 114.6	1 313.3	71.7	5.2	71.5	1 936.6
November	1 109.9	1 315.1	72.2	5.2	71.5	1 104.3	1 311.5	68.4	5.0	71.1	1 939.6
December	1 112.0	1 316.7	73.6	5.3	71.6	1 104.0	1 318.1	73.9	5.3	71.6	1 942.7
2004											
January	1 115.8	1 318.6	75.5	5.4	71.7	1 116.7	1 315.7	79.0	5.7	71.7	1 945.5
February	1 120.5	1 321.3	77.4	5.5	71.8	1 124.5	1 321.6	78.0	5.6	71.8	1 948.2
March	1 125.2	1 324.2	79.0	5.6	71.9	1 124.8	1 321.8	75.9	5.4	71.6	1 951.0
April	1 129.3	1 327.0	80.4	5.7	72.1	1 134.7	1 333.8	82.6	5.8	72.5	1 953.3
May	1 132.9	1 329.4	81.6	5.8	72.2	1 128.8	1 327.2	81.2	5.8	72.0	1 955.7
FEMALES											
May 2001	560.2	1 004.5	71.6	6.7	54.7	565.1	1 004.0	77.0	7.1	55.0	1 966.1
May 2002	551.9	1 022.8	62.2	5.7	54.5	548.0	1 026.2	60.5	5.6	54.5	1 992.3
2003											
May	561.0	1 057.0	66.8	5.9	55.6	562.7	1 061.0	70.0	6.2	55.9	2 022.4
June	557.3	1 050.9	67.5	6.0	55.2	553.3	1 052.6	68.7	6.1	55.4	2 024.7
July	555.1	1 046.9	67.4	6.0	55.0	556.1	1 045.7	64.9	5.8	54.8	2 027.2
August	554.7	1 045.3	66.7	6.0	54.8	553.6	1 039.1	66.8	6.0	54.5	2 029.6
September	556.5	1 045.4	66.1	5.9	54.7	554.4	1 047.4	62.6	5.6	54.6	2 032.0
October	560.1	1 047.2	65.9	5.9	54.7	556.6	1 045.9	69.2	6.2	54.8	2 035.0
November	564.6	1 051.1	66.1	5.9	54.8	570.3	1 054.7	65.2	5.8	55.0	2 037.8
December	569.0	1 055.8	66.1	5.9	55.0	568.7	1 053.8	68.2	6.1	55.0	2 040.8
2004											
January	573.0	1 060.3	65.6	5.8	55.1	574.6	1 060.2	61.7	5.5	54.9	2 043.6
February	576.4	1 064.2	64.6	5.7	55.2	578.3	1 063.5	67.6	6.0	55.3	2 046.4
March	579.6	1 067.6	63.4	5.6	55.2	575.4	1 069.7	62.8	5.5	55.3	2 049.2
April	582.7	1 070.3	61.9	5.5	55.2	580.0	1 075.4	65.3	5.7	55.6	2 051.5
May	585.1	1 071.9	60.7	5.4	55.2	591.7	1 066.8	55.6	5.0	54.7	2 053.8
PERSONS											
May 2001	1 653.7	2 278.6	155.6	6.4	63.5	1 659.6	2 279.9	158.9	6.5	63.6	3 833.1
May 2002	1 653.9	2 306.9	144.2	5.9	63.1	1 657.7	2 314.1	142.0	5.8	63.2	3 886.5
2003											
May	1 660.7	2 347.4	146.5	5.9	63.2	1 660.0	2 349.8	151.6	6.1	63.4	3 946.4
June	1 659.3	2 344.9	146.4	5.9	63.1	1 654.8	2 341.4	149.1	6.0	63.0	3 951.1
July	1 660.0	2 346.1	144.7	5.8	63.0	1 661.7	2 345.9	144.6	5.8	63.0	3 955.9
August	1 662.0	2 349.8	141.8	5.7	62.9	1 662.6	2 342.3	139.9	5.6	62.7	3 960.7
September	1 665.1	2 354.8	139.2	5.6	62.9	1 666.0	2 365.0	135.5	5.4	63.1	3 965.5
October	1 669.2	2 360.1	137.9	5.5	62.9	1 671.1	2 359.2	140.9	5.6	63.0	3 971.5
November	1 674.5	2 366.1	138.3	5.5	63.0	1 674.6	2 366.2	133.6	5.3	62.8	3 977.5
December	1 681.1	2 372.5	139.6	5.6	63.1	1 672.7	2 371.9	142.0	5.6	63.1	3 983.5
2004											
January	1 688.7	2 379.0	141.1	5.6	63.2	1 691.2	2 375.9	140.8	5.6	63.1	3 989.0
February	1 696.9	2 385.5	142.0	5.6	63.3	1 702.8	2 385.1	145.6	5.8	63.4	3 994.6
March	1 704.9	2 391.8	142.4	5.6	63.4	1 700.2	2 391.5	138.7	5.5	63.3	4 000.2
April	1 712.0	2 397.3	142.3	5.6	63.4	1 714.6	2 409.2	147.8	5.8	63.8	4 004.8
May	1 718.0	2 401.3	142.3	5.6	63.5	1 720.5	2 394.0	136.9	5.4	63.1	4 009.5

LABOUR FORCE STATUS (AGED 15 & OVER)—Queensland

	TREND					SEASONALLY ADJUSTED					Civilian population aged 15 and over
	Employed full time	Total employed	Total unemp-loyed	Unemp-loyment rate	Partici-pation rate	Employed full time	Total employed	Total unemp-loyed	Unemp-loyment rate	Partici-pation rate	
	'000	'000	'000	%	%	'000	'000	'000	%	%	
MALES											
May 2001	794.2	924.2	91.4	9.0	72.7	795.8	926.3	97.2	9.5	73.3	1 396.6
May 2002	824.4	972.0	76.3	7.3	73.1	824.1	969.4	78.8	7.5	73.1	1 434.8
2003											
May	839.3	989.7	71.5	6.7	72.0	845.9	994.0	68.6	6.5	72.1	1 474.0
June	839.1	990.0	70.9	6.7	71.8	828.3	986.6	71.0	6.7	71.6	1 477.2
July	841.0	992.3	70.2	6.6	71.8	840.8	989.8	71.2	6.7	71.7	1 480.3
August	845.7	996.6	68.8	6.5	71.8	848.1	995.7	70.0	6.6	71.8	1 483.4
September	852.4	1 002.4	67.0	6.3	71.9	852.9	1 003.7	65.8	6.2	71.9	1 486.5
October	860.5	1 008.6	65.2	6.1	72.1	857.9	1 009.2	70.3	6.5	72.5	1 489.7
November	868.8	1 014.6	63.8	5.9	72.2	866.2	1 015.1	58.7	5.5	71.9	1 492.9
December	876.0	1 020.0	63.0	5.8	72.4	881.7	1 022.3	60.9	5.6	72.4	1 496.0
2004											
January	881.7	1 024.6	62.9	5.8	72.5	885.8	1 024.7	61.2	5.6	72.4	1 499.3
February	886.4	1 029.1	62.9	5.8	72.7	884.9	1 029.5	67.9	6.2	73.0	1 502.6
March	890.1	1 033.6	62.7	5.7	72.8	887.3	1 026.8	63.9	5.9	72.4	1 505.9
April	893.1	1 037.7	62.2	5.7	72.9	894.6	1 043.5	61.4	5.6	73.2	1 509.0
May	895.0	1 041.2	62.1	5.6	73.0	894.9	1 043.1	59.1	5.4	72.9	1 512.3
FEMALES											
May 2001	413.1	759.9	69.5	8.4	57.5	416.0	759.1	71.4	8.6	57.6	1 443.0
May 2002	424.5	771.9	65.8	7.9	56.8	423.5	771.4	65.3	7.8	56.7	1 475.4
2003											
May	431.6	811.7	64.9	7.4	57.9	434.8	816.6	63.9	7.3	58.1	1 515.0
June	433.6	813.2	63.5	7.2	57.7	433.0	814.6	63.1	7.2	57.8	1 518.4
July	436.5	816.1	61.7	7.0	57.7	434.9	813.6	62.9	7.2	57.6	1 521.8
August	439.6	819.8	60.0	6.8	57.7	436.9	819.0	60.8	6.9	57.7	1 525.2
September	442.2	823.3	58.7	6.7	57.7	452.2	821.9	60.4	6.8	57.7	1 528.6
October	444.0	825.7	58.1	6.6	57.7	438.4	828.3	52.4	6.0	57.5	1 532.0
November	445.0	826.8	58.2	6.6	57.6	442.7	829.6	58.5	6.6	57.8	1 535.5
December	445.2	826.8	58.7	6.6	57.5	449.1	828.3	59.1	6.7	57.7	1 538.9
2004											
January	445.2	826.1	59.2	6.7	57.4	448.4	826.1	61.6	6.9	57.6	1 542.0
February	445.3	825.5	59.2	6.7	57.3	440.0	820.5	59.6	6.8	57.0	1 545.2
March	445.8	825.5	58.7	6.6	57.1	443.3	824.3	59.4	6.7	57.1	1 548.4
April	446.4	826.0	57.9	6.5	57.0	450.2	827.0	57.2	6.5	57.0	1 551.4
May	446.7	826.9	56.7	6.4	56.9	447.1	830.8	54.4	6.1	56.9	1 554.4
PERSONS											
May 2001	1 207.2	1 684.1	161.0	8.7	65.0	1 211.7	1 685.4	168.6	9.1	65.3	2 839.5
May 2002	1 248.8	1 743.9	142.1	7.5	64.8	1 247.5	1 740.8	144.1	7.6	64.8	2 910.2
2003											
May	1 270.8	1 801.4	136.3	7.0	64.8	1 280.7	1 810.6	132.4	6.8	65.0	2 989.0
June	1 272.8	1 803.2	134.4	6.9	64.7	1 261.2	1 801.2	134.1	6.9	64.6	2 995.6
July	1 277.5	1 808.4	131.9	6.8	64.6	1 275.7	1 803.3	134.1	6.9	64.5	3 002.1
August	1 285.3	1 816.5	128.8	6.6	64.7	1 284.9	1 814.6	130.8	6.7	64.7	3 008.6
September	1 294.7	1 825.7	125.7	6.4	64.7	1 305.1	1 825.6	126.2	6.5	64.7	3 015.1
October	1 304.5	1 834.4	123.4	6.3	64.8	1 296.3	1 837.5	122.7	6.3	64.9	3 021.6
November	1 313.8	1 841.4	122.0	6.2	64.8	1 308.9	1 844.7	117.3	6.0	64.8	3 028.3
December	1 321.3	1 846.8	121.7	6.2	64.9	1 330.7	1 850.6	120.0	6.1	64.9	3 034.9
2004											
January	1 326.9	1 850.7	122.1	6.2	64.9	1 334.2	1 850.8	122.8	6.2	64.9	3 041.3
February	1 331.7	1 854.6	122.1	6.2	64.9	1 325.0	1 850.0	127.4	6.4	64.9	3 047.9
March	1 335.9	1 859.1	121.4	6.1	64.8	1 330.6	1 851.1	123.4	6.2	64.6	3 054.3
April	1 339.5	1 863.8	120.1	6.1	64.8	1 344.8	1 870.5	118.5	6.0	65.0	3 060.4
May	1 341.7	1 868.1	118.7	6.0	64.8	1 342.0	1 874.0	113.5	5.7	64.8	3 066.7

LABOUR FORCE STATUS (AGED 15 & OVER)—South Australia

	TREND					SEASONALLY ADJUSTED					Civilian population aged 15 and over
	Employed full time	Total employed	Total unemployed	Unemployment rate	Participation rate	Employed full time	Total employed	Total unemployed	Unemployment rate	Participation rate	
	'000	'000	'000	%	%	'000	'000	'000	%	%	
MALES											
May 2001	316.6	372.6	34.3	8.4	68.3	318.7	374.3	34.3	8.4	68.6	595.4
May 2002	323.4	383.9	30.1	7.3	69.0	323.8	384.5	29.7	7.2	69.0	600.2
2003											
May	339.1	395.0	28.5	6.7	69.9	338.3	395.3	28.5	6.7	69.9	605.9
June	339.3	396.1	27.8	6.6	69.9	343.9	396.8	29.1	6.8	70.2	606.3
July	339.0	396.7	27.2	6.4	69.9	339.8	398.3	27.2	6.4	70.1	606.8
August	338.2	396.9	26.7	6.3	69.8	336.7	397.1	25.5	6.0	69.6	607.2
September	336.7	396.7	26.6	6.3	69.7	335.3	395.9	25.5	6.0	69.4	607.6
October	335.2	396.5	26.8	6.3	69.6	335.3	394.4	27.3	6.5	69.3	608.2
November	334.2	396.4	27.3	6.4	69.6	334.6	396.6	27.6	6.5	69.7	608.7
December	334.1	396.5	27.7	6.5	69.6	335.2	398.3	28.7	6.7	70.1	609.3
2004											
January	334.4	396.6	28.0	6.6	69.6	332.0	397.3	27.6	6.5	69.7	609.7
February	334.8	396.8	28.1	6.6	69.6	332.1	394.3	28.2	6.7	69.2	610.2
March	335.2	396.8	28.1	6.6	69.6	340.5	397.7	27.5	6.5	69.6	610.7
April	335.5	396.9	28.1	6.6	69.5	335.1	397.0	28.6	6.7	69.6	611.2
May	335.8	396.8	28.0	6.6	69.5	334.4	397.0	27.8	6.5	69.4	611.7
FEMALES											
May 2001	155.6	302.9	20.5	6.4	52.0	155.6	303.3	21.5	6.6	52.2	621.7
May 2002	150.4	309.8	20.4	6.2	52.8	153.2	311.3	20.0	6.0	52.9	625.7
2003											
May	166.5	323.3	19.9	5.8	54.4	165.6	324.9	19.9	5.8	54.7	630.5
June	166.1	323.3	20.3	5.9	54.5	164.3	323.2	20.3	5.9	54.4	630.9
July	165.4	322.9	20.7	6.0	54.4	167.8	322.3	21.0	6.1	54.4	631.3
August	164.4	322.2	21.1	6.1	54.3	162.8	322.2	20.8	6.1	54.3	631.6
September	162.8	321.1	21.5	6.3	54.2	165.0	322.2	22.0	6.4	54.5	632.0
October	160.5	320.0	22.0	6.4	54.1	160.5	320.8	21.3	6.2	54.1	632.6
November	157.9	319.2	22.4	6.6	54.0	157.8	317.2	22.0	6.5	53.6	633.1
December	155.9	318.9	22.5	6.6	53.9	155.8	318.8	22.4	6.6	53.9	633.6
2004											
January	154.8	319.2	22.1	6.5	53.8	153.4	318.8	23.0	6.7	53.9	634.0
February	154.5	319.8	21.5	6.3	53.8	150.7	318.7	24.1	7.0	54.0	634.4
March	154.7	320.5	20.7	6.1	53.8	155.8	322.1	18.4	5.4	53.7	634.7
April	155.1	321.2	19.9	5.8	53.7	159.5	322.3	18.5	5.4	53.7	635.2
May	155.7	321.8	19.1	5.6	53.7	154.5	320.7	19.6	5.8	53.5	635.6
PERSONS											
May 2001	472.2	675.6	54.8	7.5	60.0	474.3	677.6	55.8	7.6	60.3	1 217.2
May 2002	473.8	693.7	50.5	6.8	60.7	477.0	695.8	49.7	6.7	60.8	1 226.0
2003											
May	505.5	718.3	48.4	6.3	62.0	503.9	720.2	48.4	6.3	62.2	1 236.4
June	505.4	719.4	48.2	6.3	62.0	508.3	719.9	49.3	6.4	62.2	1 237.2
July	504.4	719.6	47.9	6.2	62.0	507.7	720.6	48.2	6.3	62.1	1 238.0
August	502.6	719.0	47.8	6.2	61.9	499.5	719.3	46.3	6.0	61.8	1 238.8
September	499.5	717.8	48.1	6.3	61.8	500.4	718.1	47.5	6.2	61.8	1 239.6
October	495.6	716.5	48.8	6.4	61.7	495.8	715.2	48.6	6.4	61.6	1 240.7
November	492.1	715.6	49.7	6.5	61.6	492.4	713.8	49.7	6.5	61.5	1 241.8
December	489.9	715.4	50.2	6.6	61.6	491.0	717.1	51.1	6.6	61.8	1 242.9
2004											
January	489.1	715.8	50.1	6.5	61.6	485.3	716.1	50.6	6.6	61.7	1 243.7
February	489.2	716.5	49.6	6.5	61.6	482.8	712.9	52.3	6.8	61.5	1 244.6
March	489.9	717.3	48.8	6.4	61.5	496.3	719.9	45.9	6.0	61.5	1 245.4
April	490.6	718.0	47.9	6.3	61.5	494.6	719.3	47.2	6.2	61.5	1 246.3
May	491.5	718.6	47.2	6.2	61.4	488.8	717.7	47.4	6.2	61.3	1 247.3

	TREND					SEASONALLY ADJUSTED					Civilian population aged 15 and over '000
	Employed full time '000	Total employed '000	Total unemp-loyed '000	Unemp-loyment rate %	Partici-pation rate %	Employed full time '000	Total employed '000	Total unemp-loyed '000	Unemp-loyment rate %	Partici-pation rate %	
MALES											
May 2001	442.5	515.5	43.2	7.7	75.4	440.4	514.1	40.5	7.3	74.8	741.5
May 2002	447.8	527.1	39.4	7.0	75.1	450.3	526.3	42.3	7.4	75.4	754.5
2003											
May	463.5	543.1	34.3	5.9	75.1	464.2	543.9	34.3	5.9	75.2	768.6
June	463.5	543.4	34.1	5.9	75.0	464.6	545.6	33.6	5.8	75.2	769.9
July	464.2	543.5	34.1	5.9	74.9	460.3	542.9	32.9	5.7	74.7	771.2
August	465.8	544.0	34.2	5.9	74.8	464.0	542.3	33.7	5.8	74.6	772.5
September	467.9	545.1	34.1	5.9	74.9	469.3	544.9	36.0	6.2	75.1	773.8
October	469.7	546.9	33.7	5.8	74.9	469.9	544.1	34.3	5.9	74.6	775.2
November	470.6	548.8	33.0	5.7	74.9	473.4	549.2	33.2	5.7	75.0	776.6
December	470.8	550.7	31.9	5.5	74.9	473.6	555.9	30.7	5.2	75.4	778.0
2004											
January	470.5	552.1	30.8	5.3	74.8	467.9	551.9	31.1	5.3	74.8	779.2
February	470.3	553.3	29.9	5.1	74.7	466.4	551.0	29.2	5.0	74.3	780.5
March	470.6	554.3	29.2	5.0	74.6	469.1	552.0	30.0	5.2	74.5	781.7
April	471.1	555.3	28.7	4.9	74.6	476.7	557.3	28.0	4.8	74.7	783.1
May	471.6	556.1	28.4	4.9	74.6	471.0	557.4	28.8	4.9	74.7	784.4
FEMALES											
May 2001	210.4	408.9	30.6	7.0	58.4	209.1	408.7	31.2	7.1	58.5	752.4
May 2002	207.8	414.0	23.0	5.3	57.1	207.5	410.7	23.2	5.3	56.7	765.1
2003											
May	213.0	419.7	26.0	5.8	57.2	216.2	421.3	24.7	5.5	57.2	779.7
June	213.5	418.6	26.8	6.0	57.0	216.7	422.1	25.0	5.6	57.2	781.0
July	214.1	417.9	27.7	6.2	56.9	213.8	417.0	31.7	7.1	57.4	782.4
August	214.7	417.3	28.4	6.4	56.9	209.7	418.8	28.0	6.3	57.0	783.7
September	215.2	416.8	28.9	6.5	56.8	214.0	410.5	27.4	6.3	55.8	785.1
October	215.5	416.7	29.2	6.6	56.7	218.9	419.9	28.6	6.4	57.0	786.6
November	215.7	417.4	29.3	6.6	56.7	218.4	418.6	29.7	6.6	56.9	788.1
December	215.8	419.1	29.1	6.5	56.8	215.1	418.9	30.5	6.8	56.9	789.5
2004											
January	215.9	421.8	28.6	6.3	56.9	216.3	422.2	27.7	6.2	56.9	790.8
February	216.6	425.1	27.7	6.1	57.2	212.2	420.3	28.6	6.4	56.7	792.1
March	218.0	428.7	26.7	5.9	57.4	215.7	428.4	26.7	5.9	57.4	793.3
April	219.9	432.4	25.7	5.6	57.6	222.9	435.4	24.8	5.4	57.9	794.7
May	222.0	436.0	24.7	5.4	57.9	226.0	439.6	24.2	5.2	58.3	796.1
PERSONS											
May 2001	652.9	924.5	73.8	7.4	66.8	649.5	922.8	71.7	7.2	66.6	1 493.9
May 2002	655.6	941.2	62.4	6.2	66.0	657.8	937.1	65.4	6.5	66.0	1 519.6
2003											
May	676.6	962.8	60.3	5.9	66.1	680.4	965.3	59.0	5.8	66.2	1 548.2
June	677.0	962.0	60.9	6.0	66.0	681.2	967.7	58.6	5.7	66.2	1 550.9
July	678.3	961.3	61.8	6.0	65.9	674.1	959.9	64.6	6.3	65.9	1 553.5
August	680.6	961.3	62.6	6.1	65.8	673.7	961.1	61.6	6.0	65.7	1 556.2
September	683.1	962.0	63.0	6.1	65.7	683.3	955.5	63.4	6.2	65.4	1 558.8
October	685.2	963.6	62.9	6.1	65.7	688.8	964.0	62.9	6.1	65.8	1 561.7
November	686.3	966.2	62.3	6.1	65.7	691.8	967.8	62.9	6.1	65.9	1 564.6
December	686.5	969.8	61.0	5.9	65.8	688.7	974.8	61.2	5.9	66.1	1 567.5
2004											
January	686.4	973.9	59.4	5.7	65.8	684.2	974.2	58.9	5.7	65.8	1 570.0
February	686.9	978.3	57.6	5.6	65.9	678.6	971.3	57.7	5.6	65.4	1 572.5
March	688.6	983.0	55.9	5.4	66.0	684.9	980.4	56.7	5.5	65.8	1 575.0
April	691.0	987.7	54.4	5.2	66.1	699.6	992.7	52.8	5.1	66.3	1 577.7
May	693.6	992.0	53.1	5.1	66.2	697.0	997.0	53.0	5.0	66.4	1 580.5

LABOUR FORCE STATUS (AGED 15 & OVER)—Tasmania

	TREND					SEASONALLY ADJUSTED					Civilian population aged 15 and over
	Employed full time	Total employed	Total unemployed	Unemployment rate	Participation rate	Employed full time	Total employed	Total unemployed	Unemployment rate	Participation rate	
	'000	'000	'000	%	%	'000	'000	'000	%	%	
MALES											
May 2001	95.1	110.1	12.4	10.1	67.5	95.2	110.9	11.9	9.7	67.7	181.5
May 2002	93.1	108.8	11.8	9.8	66.0	92.0	108.3	12.3	10.2	66.0	182.7
2003											
May	96.0	112.4	11.0	8.9	66.7	96.4	113.2	10.9	8.8	67.1	185.0
June	96.4	112.9	10.5	8.5	66.6	95.8	111.5	12.2	9.8	66.8	185.1
July	96.8	113.3	10.1	8.2	66.6	97.3	113.9	8.1	6.6	65.8	185.4
August	97.1	113.5	9.9	8.0	66.5	97.4	113.8	10.1	8.2	66.8	185.6
September	97.3	113.6	9.8	7.9	66.4	97.2	113.5	9.6	7.8	66.2	185.8
October	97.5	113.7	9.7	7.8	66.3	97.3	114.1	10.1	8.2	66.8	186.1
November	97.9	114.0	9.6	7.8	66.4	98.1	113.7	10.4	8.4	66.6	186.3
December	98.2	114.5	9.5	7.7	66.5	97.1	113.6	8.7	7.1	65.5	186.6
2004											
January	98.7	115.2	9.4	7.5	66.7	100.0	115.3	9.1	7.3	66.6	186.9
February	99.2	116.0	9.2	7.3	66.9	99.0	116.2	9.3	7.4	67.0	187.1
March	99.6	116.8	9.1	7.2	67.2	99.3	117.6	9.4	7.4	67.8	187.4
April	100.0	117.4	9.0	7.1	67.4	100.1	117.5	9.2	7.2	67.5	187.6
May	100.3	117.9	8.9	7.0	67.5	100.6	117.3	8.5	6.8	67.0	187.8
FEMALES											
May 2001	42.9	88.7	6.9	7.2	50.1	42.4	89.0	6.2	6.5	49.8	191.0
May 2002	42.2	89.3	7.0	7.3	50.2	42.2	89.4	6.5	6.8	50.0	192.0
2003											
May	45.6	92.3	7.3	7.3	51.3	46.0	93.2	7.4	7.4	51.8	194.2
June	46.3	92.9	6.9	6.9	51.3	45.9	91.3	7.0	7.1	50.6	194.4
July	46.9	93.5	6.6	6.6	51.4	47.7	93.0	6.7	6.7	51.2	194.7
August	47.4	94.2	6.3	6.3	51.6	47.5	95.0	6.1	6.0	51.9	195.0
September	47.7	94.8	6.1	6.1	51.7	47.8	95.1	5.9	5.9	51.8	195.2
October	47.7	95.2	6.1	6.0	51.8	47.7	95.8	5.9	5.8	52.1	195.5
November	47.4	95.4	6.1	6.0	51.8	47.0	95.1	6.2	6.1	51.7	195.7
December	47.0	95.3	6.2	6.1	51.8	47.9	94.7	6.6	6.6	51.7	196.0
2004											
January	46.5	95.2	6.2	6.1	51.7	47.1	95.9	5.7	5.6	51.8	196.2
February	46.1	95.1	6.2	6.1	51.6	44.5	94.3	6.6	6.5	51.4	196.4
March	45.8	95.0	6.2	6.1	51.4	45.9	95.7	6.0	5.9	51.7	196.7
April	45.5	94.8	6.2	6.1	51.3	46.0	95.0	5.9	5.9	51.2	196.9
May	45.4	94.7	6.2	6.2	51.2	45.5	94.1	6.6	6.5	51.1	197.1
PERSONS											
May 2001	137.9	198.9	19.3	8.8	58.6	137.6	199.9	18.1	8.3	58.5	372.5
May 2002	135.2	198.1	18.8	8.7	57.9	134.2	197.7	18.9	8.7	57.8	374.8
2003											
May	141.6	204.7	18.3	8.2	58.8	142.4	206.4	18.3	8.2	59.3	379.2
June	142.7	205.8	17.4	7.8	58.8	141.7	202.8	19.1	8.6	58.5	379.6
July	143.7	206.8	16.7	7.5	58.8	144.9	206.8	14.8	6.7	58.3	380.1
August	144.5	207.7	16.2	7.2	58.8	144.9	208.9	16.2	7.2	59.1	380.5
September	145.0	208.4	15.9	7.1	58.9	145.0	208.6	15.5	6.9	58.8	381.0
October	145.3	208.9	15.7	7.0	58.9	144.9	210.0	16.1	7.1	59.2	381.5
November	145.3	209.4	15.7	7.0	58.9	145.0	208.8	16.7	7.4	59.0	382.1
December	145.2	209.9	15.7	6.9	59.0	145.0	208.3	15.3	6.9	58.5	382.6
2004											
January	145.2	210.4	15.6	6.9	59.0	147.1	211.2	14.8	6.5	59.0	383.0
February	145.3	211.1	15.4	6.8	59.1	143.5	210.5	15.9	7.0	59.0	383.5
March	145.4	211.7	15.3	6.7	59.1	145.2	213.3	15.5	6.8	59.6	384.0
April	145.5	212.2	15.2	6.7	59.1	146.0	212.5	15.1	6.6	59.2	384.5
May	145.7	212.6	15.1	6.6	59.2	146.0	211.5	15.1	6.7	58.9	384.9

	TREND					Civilian population aged 15 and over
	Employed full time	Total employed	Total unemployed	Unemployment rate	Participation rate	
	'000	'000	'000	%	%	
MALES						
May 2001	44.1	52.3	4.2	7.5	77.5	73.0
May 2002	44.7	55.4	3.3	5.6	79.9	73.5
2003						
May	44.6	54.4	3.6	6.2	78.5	73.8
June	44.3	54.0	3.4	5.9	77.7	73.7
July	44.0	53.7	3.2	5.6	77.0	73.8
August	43.7	53.5	3.0	5.3	76.5	73.9
September	43.5	53.5	2.9	5.1	76.3	74.0
October	43.3	53.6	2.8	4.9	76.4	73.9
November	43.4	53.8	2.7	4.8	76.5	73.8
December	43.5	53.9	2.6	4.6	76.5	73.7
2004						
January	43.8	53.9	2.5	4.4	76.4	73.7
February	43.9	53.7	2.5	4.4	76.2	73.7
March	44.0	53.5	2.5	4.4	75.9	73.7
April	44.1	53.2	2.6	4.6	75.7	73.8
May	44.1	53.0	2.7	4.8	75.5	73.9
FEMALES						
May 2001	30.4	43.8	2.6	5.6	67.2	69.0
May 2002	29.2	44.9	2.0	4.2	67.7	69.2
2003						
May	28.5	41.9	3.1	6.9	65.0	69.3
June	28.5	41.4	3.1	7.0	64.2	69.2
July	28.4	41.0	3.1	7.0	63.5	69.3
August	28.2	40.9	3.0	6.7	63.3	69.3
September	28.2	41.1	2.8	6.4	63.4	69.3
October	28.3	41.6	2.7	6.0	63.9	69.3
November	28.5	42.3	2.5	5.6	64.7	69.4
December	28.7	43.0	2.4	5.3	65.5	69.4
2004						
January	28.9	43.6	2.3	5.0	66.1	69.5
February	29.2	44.0	2.2	4.9	66.5	69.5
March	29.4	44.3	2.2	4.8	66.9	69.6
April	29.6	44.5	2.3	4.8	67.1	69.6
May	29.8	44.6	2.3	4.9	67.4	69.7
PERSONS						
May 2001	74.5	96.1	6.8	6.6	72.5	142.0
May 2002	73.9	100.3	5.3	5.0	74.0	142.7
2003						
May	73.1	96.3	6.7	6.5	72.0	143.1
June	72.8	95.4	6.5	6.4	71.2	143.0
July	72.4	94.6	6.3	6.2	70.5	143.0
August	71.9	94.4	6.0	5.9	70.1	143.2
September	71.6	94.6	5.7	5.7	70.1	143.3
October	71.6	95.3	5.4	5.4	70.3	143.2
November	71.8	96.1	5.2	5.1	70.8	143.2
December	72.2	96.9	5.0	4.9	71.2	143.1
2004						
January	72.7	97.5	4.8	4.7	71.4	143.2
February	73.1	97.7	4.7	4.6	71.5	143.2
March	73.4	97.8	4.7	4.6	71.5	143.3
April	73.7	97.7	4.8	4.7	71.5	143.4
May	73.9	97.7	5.0	4.9	71.5	143.6

	TREND					Civilian population aged 15 and over
	Employed full time	Total employed	Total unemployed	Unemployment rate	Participation rate	
	'000	'000	'000	%	%	
MALES						
May 2001	74.8	88.0	6.1	6.4	78.4	120.0
May 2002	76.3	89.2	4.5	4.9	77.0	121.8
2003						
May	75.0	90.6	4.3	4.6	77.1	123.3
June	74.7	90.6	4.2	4.4	76.8	123.4
July	74.7	90.6	4.0	4.2	76.7	123.5
August	74.8	90.7	4.0	4.2	76.6	123.6
September	75.0	90.9	4.0	4.2	76.7	123.7
October	75.2	91.2	3.9	4.2	76.8	123.8
November	75.3	91.7	3.9	4.1	77.1	124.0
December	75.5	92.1	3.9	4.1	77.4	124.1
2004						
January	75.7	92.4	3.9	4.1	77.6	124.2
February	75.9	92.6	4.0	4.1	77.7	124.2
March	76.2	92.8	3.9	4.1	77.8	124.3
April	76.4	92.9	3.9	4.0	77.8	124.3
May	76.5	92.8	3.8	4.0	77.7	124.4
FEMALES						
May 2001	51.2	82.1	3.9	4.5	66.9	128.5
May 2002	52.9	84.4	3.5	4.0	67.6	130.0
2003						
May	51.9	83.4	3.5	4.1	66.2	131.2
June	52.0	83.1	3.6	4.2	66.0	131.3
July	52.2	83.0	3.7	4.2	66.0	131.4
August	52.3	83.2	3.7	4.3	66.1	131.5
September	52.3	83.5	3.7	4.2	66.3	131.6
October	52.4	83.9	3.6	4.1	66.4	131.8
November	52.6	84.3	3.4	3.9	66.4	131.9
December	53.0	84.5	3.2	3.7	66.4	132.1
2004						
January	53.3	84.6	3.1	3.5	66.4	132.1
February	53.5	84.6	3.0	3.4	66.4	132.1
March	53.3	84.7	2.9	3.4	66.4	132.1
April	53.0	84.8	2.9	3.3	66.4	132.0
May	52.7	84.9	2.8	3.2	66.5	132.0
PERSONS						
May 2001	125.9	170.1	9.9	5.5	72.4	248.5
May 2002	129.2	173.6	8.0	4.4	72.1	251.8
2003						
May	126.8	174.0	7.9	4.3	71.5	254.5
June	126.7	173.7	7.8	4.3	71.2	254.7
July	126.9	173.7	7.7	4.2	71.1	254.9
August	127.1	173.9	7.7	4.2	71.2	255.1
September	127.3	174.4	7.7	4.2	71.3	255.3
October	127.6	175.1	7.5	4.1	71.5	255.6
November	128.0	175.9	7.3	4.0	71.6	255.9
December	128.5	176.5	7.2	3.9	71.7	256.2
2004						
January	129.0	177.0	7.0	3.8	71.8	256.3
February	129.4	177.3	7.0	3.8	71.9	256.3
March	129.5	177.5	6.9	3.7	71.9	256.4
April	129.4	177.7	6.8	3.7	71.9	256.4
May	129.2	177.7	6.7	3.6	71.9	256.4



	EMPLOYED			UNEMPLOYED			UNEMPLOYMENT RATE			Participation rate	
	Full time	Part time	Total	Looking for f/t work	Total	Labour force	Not in labour force	Civilian population aged 15 and over	Looking for f/t work		Total
	'000	'000	'000	'000	'000	'000	'000	'000	%		%
MALES											
New South Wales	1 503.3	264.8	1 768.1	85.4	98.2	1 866.3	784.8	2 651.1	5.4	5.3	70.4
Victoria	1 124.0	199.4	1 323.3	64.7	82.2	1 405.5	550.2	1 955.7	5.4	5.8	71.9
Queensland	890.3	152.0	1 042.3	45.2	57.0	1 099.3	413.0	1 512.3	4.8	5.2	72.7
South Australia	333.9	61.8	395.7	24.6	29.1	424.8	186.9	611.7	6.9	6.8	69.4
Western Australia	473.3	82.4	555.7	22.7	27.5	583.1	201.3	784.4	4.6	4.7	74.3
Tasmania	100.8	16.0	116.8	6.6	7.6	124.4	63.5	187.8	6.1	6.1	66.2
Northern Territory	42.3	9.9	52.2	3.5	3.6	55.8	18.1	73.9	7.5	6.5	75.5
Australian Capital Territory	76.2	15.5	91.7	2.9	3.7	95.4	29.0	124.4	3.7	3.9	76.7
<b>Australia</b>	<b>4 544.2</b>	<b>801.7</b>	<b>5 345.9</b>	<b>255.5</b>	<b>308.8</b>	<b>5 654.6</b>	<b>2 246.7</b>	<b>7 901.3</b>	<b>5.3</b>	<b>5.5</b>	<b>71.6</b>
FEMALES											
New South Wales	778.5	636.9	1 415.4	52.5	87.8	1 503.1	1 236.9	2 740.1	6.3	5.8	54.9
Victoria	582.3	483.5	1 065.8	34.2	54.8	1 120.6	933.2	2 053.8	5.6	4.9	54.6
Queensland	443.6	390.9	834.5	36.4	54.7	889.2	665.2	1 554.4	7.6	6.2	57.2
South Australia	154.0	166.3	320.4	11.9	19.0	339.4	296.2	635.6	7.2	5.6	53.4
Western Australia	225.1	209.4	434.5	15.6	26.0	460.5	335.5	796.1	6.5	5.7	57.9
Tasmania	45.6	49.9	95.5	4.3	6.4	101.9	95.3	197.1	8.6	6.3	51.7
Northern Territory	30.2	13.8	44.0	2.0	2.9	46.9	22.8	69.7	6.2	6.2	67.3
Australian Capital Territory	50.7	34.1	84.8	2.2	3.3	88.1	43.9	132.0	4.2	3.7	66.7
<b>Australia</b>	<b>2 310.1</b>	<b>1 984.8</b>	<b>4 294.9</b>	<b>159.1</b>	<b>254.9</b>	<b>4 549.7</b>	<b>3 629.0</b>	<b>8 178.7</b>	<b>6.4</b>	<b>5.6</b>	<b>55.6</b>
PERSONS											
New South Wales	2 281.8	901.7	3 183.5	137.9	186.0	3 369.4	2 021.7	5 391.2	5.7	5.5	62.5
Victoria	1 706.3	682.9	2 389.2	98.9	137.0	2 526.1	1 483.4	4 009.5	5.5	5.4	63.0
Queensland	1 333.9	542.9	1 876.8	81.6	111.7	1 988.5	1 078.2	3 066.7	5.8	5.6	64.8
South Australia	488.0	228.1	716.1	36.5	48.1	764.2	483.1	1 247.3	7.0	6.3	61.3
Western Australia	698.4	291.8	990.2	38.3	53.5	1 043.7	536.8	1 580.5	5.2	5.1	66.0
Tasmania	146.3	65.9	212.3	10.8	14.0	226.2	158.7	384.9	6.9	6.2	58.8
Northern Territory	72.6	23.6	96.2	5.5	6.5	102.7	40.8	143.6	7.0	6.4	71.6
Australian Capital Territory	126.9	49.6	176.5	5.1	6.9	183.4	72.9	256.4	3.9	3.8	71.6
<b>Australia</b>	<b>6 854.2</b>	<b>2 786.5</b>	<b>9 640.7</b>	<b>414.6</b>	<b>563.6</b>	<b>10 204.3</b>	<b>5 875.7</b>	<b>16 080.0</b>	<b>5.7</b>	<b>5.5</b>	<b>63.5</b>

	EMPLOYED		UNEMPLOYED		UNEMPLOYMENT RATE		Participation rate	Employment to population ratio	Unemployment to population ratio — looking for full-time work
	Full time	Total	Looking for f/t work	Total	Looking for f/t work	Total			
	'000	'000	'000	'000	%	%			
MALES									
May 2001	140.3	336.6	44.1	78.0	23.9	18.8	60.5	49.1	6.4
May 2002	142.0	328.0	36.8	72.3	20.6	18.1	57.9	47.4	5.3
2003									
May	142.1	331.3	36.9	71.5	20.6	17.8	57.6	47.3	5.3
June	141.4	330.5	36.8	71.5	20.7	17.8	57.4	47.2	5.3
July	141.8	331.0	36.8	71.0	20.6	17.7	57.3	47.2	5.2
August	143.5	333.6	36.5	70.0	20.3	17.4	57.5	47.5	5.2
September	146.4	338.0	36.0	68.6	19.7	16.9	57.8	48.1	5.1
October	149.7	343.5	35.2	67.1	19.1	16.3	58.3	48.8	5.0
November	153.0	348.8	34.6	66.0	18.4	15.9	58.9	49.5	4.9
December	155.3	352.8	34.3	65.6	18.1	15.7	59.3	50.0	4.9
2004									
January	156.1	354.8	34.6	65.9	18.1	15.7	59.6	50.2	4.9
February	155.8	355.8	35.3	66.5	18.5	15.7	59.8	50.3	5.0
March	154.9	356.3	36.2	67.2	18.9	15.9	59.9	50.4	5.1
April	153.4	356.4	37.0	67.6	19.4	15.9	59.9	50.3	5.2
May	151.9	356.2	37.7	68.2	19.9	16.1	59.9	50.3	5.3
FEMALES									
May 2001	86.5	332.5	29.0	69.3	25.1	17.3	60.9	50.4	4.4
May 2002	76.6	331.6	28.1	61.8	26.8	15.7	59.3	50.0	4.2
2003									
May	82.9	348.2	27.0	58.9	24.6	14.5	60.6	51.8	4.0
June	83.7	347.3	26.4	58.7	23.9	14.5	60.4	51.6	3.9
July	84.0	346.7	25.8	58.9	23.5	14.5	60.2	51.5	3.8
August	83.9	346.5	25.7	59.8	23.5	14.7	60.3	51.4	3.8
September	83.3	346.6	25.9	61.0	23.7	15.0	60.4	51.4	3.8
October	82.1	346.7	26.4	62.3	24.3	15.2	60.5	51.3	3.9
November	81.1	347.4	27.1	63.3	25.0	15.4	60.7	51.3	4.0
December	81.1	349.0	27.9	63.9	25.6	15.5	60.9	51.5	4.1
2004									
January	82.2	351.5	28.8	64.2	25.9	15.4	61.3	51.8	4.2
February	84.1	354.6	29.6	64.2	26.0	15.3	61.7	52.2	4.4
March	86.4	358.0	30.2	64.1	25.9	15.2	62.1	52.7	4.4
April	88.7	361.3	30.7	63.9	25.7	15.0	62.5	53.1	4.5
May	90.6	364.1	30.8	63.5	25.4	14.9	62.8	53.5	4.5
PERSONS									
May 2001	226.9	669.1	73.1	147.3	24.4	18.0	60.7	49.7	5.4
May 2002	218.7	659.6	64.9	134.1	22.9	16.9	58.6	48.7	4.8
2003									
May	225.0	679.5	64.0	130.5	22.1	16.1	59.1	49.5	4.7
June	225.1	677.8	63.1	130.1	21.9	16.1	58.8	49.3	4.6
July	225.8	677.7	62.6	129.9	21.7	16.1	58.8	49.3	4.6
August	227.4	680.1	62.2	129.8	21.5	16.0	58.9	49.4	4.5
September	229.6	684.6	61.8	129.5	21.2	15.9	59.1	49.7	4.5
October	231.8	690.1	61.6	129.3	21.0	15.8	59.4	50.0	4.5
November	234.1	696.2	61.6	129.3	20.8	15.7	59.8	50.4	4.5
December	236.4	701.8	62.2	129.5	20.8	15.6	60.1	50.7	4.5
2004									
January	238.4	706.3	63.3	130.1	21.0	15.5	60.4	51.0	4.6
February	239.9	710.5	64.9	130.8	21.3	15.5	60.7	51.3	4.7
March	241.2	714.3	66.4	131.3	21.6	15.5	61.0	51.5	4.8
April	242.1	717.6	67.6	131.5	21.8	15.5	61.2	51.7	4.9
May	242.5	720.3	68.5	131.7	22.0	15.5	61.3	51.8	4.9

	EMPLOYED		UNEMPLOYED		UNEMPLOYMENT RATE		Participation rate	Employment to population ratio	Unemployment to population ratio — looking for full-time work
	Full time	Total	Looking for f/t work	Total	Looking for f/t work	Total			
	'000	'000	'000	'000	%	%			
MALES									
May 2001	138.8	338.9	43.0	78.1	23.7	18.7	60.8	49.4	6.3
May 2002	142.5	325.4	37.0	73.2	20.6	18.4	57.6	47.0	5.4
2003									
May	144.7	340.2	37.4	72.0	20.6	17.5	58.9	48.6	5.3
June	138.6	326.4	35.5	71.7	20.4	18.0	56.8	46.6	5.1
July	139.9	322.1	35.1	70.3	20.1	17.9	55.9	45.9	5.0
August	142.2	336.6	37.7	70.1	21.0	17.2	58.0	48.0	5.4
September	145.8	337.0	39.2	70.8	21.2	17.4	58.1	48.0	5.6
October	152.3	344.8	36.1	69.7	19.2	16.8	58.9	49.0	5.1
November	153.6	349.0	30.7	60.2	16.7	14.7	58.1	49.5	4.4
December	153.3	354.9	33.6	64.8	18.0	15.4	59.5	50.3	4.8
2004									
January	159.3	357.9	34.6	67.4	17.8	15.9	60.2	50.7	4.9
February	155.6	352.3	36.1	65.7	18.8	15.7	59.1	49.8	5.1
March	156.1	359.0	37.6	70.2	19.4	16.4	60.7	50.8	5.3
April	155.6	354.6	35.7	66.9	18.7	15.9	59.5	50.1	5.0
May	145.7	355.2	38.0	66.6	20.7	15.8	59.5	50.1	5.4
FEMALES									
May 2001	86.0	333.7	27.2	68.6	24.1	17.1	60.9	50.5	4.1
May 2002	77.8	331.5	28.1	61.9	26.5	15.7	59.3	49.9	4.2
2003									
May	83.2	347.8	26.1	57.5	23.8	14.2	60.3	51.7	3.9
June	83.8	347.2	26.4	57.8	24.0	14.3	60.2	51.6	3.9
July	88.8	349.6	23.3	55.8	20.8	13.8	60.2	51.9	3.5
August	82.1	342.8	28.6	65.4	25.8	16.0	60.6	50.9	4.2
September	83.6	344.4	26.5	59.3	24.1	14.7	59.9	51.1	3.9
October	78.8	350.1	24.4	60.8	23.6	14.8	60.8	51.8	3.6
November	83.5	350.8	27.0	63.5	24.4	15.3	61.2	51.8	4.0
December	82.4	346.3	28.0	64.3	25.3	15.7	60.6	51.1	4.1
2004									
January	82.4	348.5	28.8	65.3	25.9	15.8	61.0	51.4	4.3
February	77.3	351.3	30.5	65.4	28.3	15.7	61.3	51.7	4.5
March	84.3	360.0	30.4	63.0	26.5	14.9	62.2	53.0	4.5
April	99.3	368.8	30.4	62.3	23.5	14.4	63.4	54.2	4.5
May	88.3	361.3	30.3	64.5	25.5	15.1	62.5	53.0	4.4
PERSONS									
May 2001	224.8	672.6	70.2	146.7	23.8	17.9	60.9	50.0	5.2
May 2002	220.3	656.9	65.1	135.1	22.8	17.1	58.4	48.5	4.8
2003									
May	227.9	688.0	63.5	129.4	21.8	15.8	59.6	50.1	4.6
June	222.4	673.6	61.9	129.4	21.8	16.1	58.4	49.0	4.5
July	228.7	671.7	58.3	126.1	20.3	15.8	58.0	48.9	4.2
August	224.3	679.4	66.3	135.5	22.8	16.6	59.2	49.4	4.8
September	229.5	681.3	65.7	130.1	22.3	16.0	58.9	49.5	4.8
October	231.2	694.9	60.5	130.6	20.8	15.8	59.9	50.4	4.4
November	237.1	699.8	57.7	123.7	19.6	15.0	59.6	50.7	4.2
December	235.7	701.2	61.6	129.0	20.7	15.5	60.0	50.7	4.5
2004									
January	241.7	706.5	63.4	132.7	20.8	15.8	60.6	51.0	4.6
February	232.9	703.6	66.6	131.0	22.2	15.7	60.2	50.8	4.8
March	240.4	719.0	68.0	133.2	22.1	15.6	61.4	51.8	4.9
April	254.9	723.4	66.1	129.2	20.6	15.2	61.4	52.1	4.8
May	234.0	716.4	68.2	131.0	22.6	15.5	61.0	51.5	4.9

	EMPLOYED			UNEMPLOYED			UNEMPLOYMENT RATE			Unemployment to population ratio — looking for full-time work		
	Full time	Part time	Total	Looking for f/t work	Total	Labour force	Not in labour force	Civilian population aged 15-19	Looking for f/t work	Total	Participation rate	Unemployment to population ratio — looking for full-time work
	'000	'000	'000	'000	'000	'000	'000	'000	%	%	%	%
NOT ATTENDING FULL-TIME EDUCATION												
<b>Males</b>												
May 2001	130.9	40.9	171.8	35.9	39.3	211.1	21.1	232.2	21.5	18.6	90.9	15.5
May 2002	134.6	39.1	173.7	31.4	32.8	206.4	22.2	228.6	18.9	15.9	90.3	13.8
May 2003	136.2	41.2	177.4	29.6	33.6	210.9	21.8	232.7	17.9	15.9	90.6	12.7
May 2004	137.8	39.9	177.7	31.6	32.5	210.2	28.9	239.1	18.7	15.5	87.9	13.2
<b>Females</b>												
May 2001	78.4	47.4	125.8	21.6	24.4	150.2	27.7	177.9	21.6	16.3	84.4	12.2
May 2002	72.5	55.4	127.8	25.2	27.9	155.7	29.8	185.6	25.8	17.9	83.9	13.6
May 2003	78.9	52.7	131.7	23.5	25.2	156.9	28.9	185.9	22.9	16.1	84.4	12.6
May 2004	80.5	59.4	139.9	26.6	28.5	168.5	25.6	194.1	24.8	16.9	86.8	13.7
<b>Persons</b>												
May 2001	209.3	88.3	297.6	57.6	63.7	361.4	48.8	410.1	21.6	17.6	88.1	14.0
May 2002	207.1	94.4	301.5	56.7	60.7	362.2	52.0	414.2	21.5	16.7	87.4	13.7
May 2003	215.1	93.9	309.1	53.1	58.8	367.9	50.7	418.6	19.8	16.0	87.9	12.7
May 2004	218.3	99.4	317.6	58.2	61.0	378.7	54.5	433.1	21.1	16.1	87.4	13.4
ATTENDING FULL-TIME EDUCATION												
<b>Males</b>												
May 2001	*2.7	155.7	158.4	4.4	37.4	195.7	257.9	453.6	61.7	19.1	43.2	1.0
May 2002	*2.8	139.8	142.6	*3.2	39.1	181.7	281.3	463.0	*52.8	21.5	39.2	*0.7
May 2003	*3.5	149.0	152.5	5.4	37.0	189.5	277.6	467.1	60.5	19.5	40.6	1.2
May 2004	*3.1	163.2	166.3	*3.9	32.9	199.2	270.5	469.7	*55.9	16.5	42.4	*0.8
<b>Females</b>												
May 2001	*3.1	201.0	204.1	6.1	43.5	247.6	234.7	482.4	66.1	17.6	51.3	1.3
May 2002	*1.6	198.1	199.7	*2.9	33.8	233.5	244.9	478.3	*64.7	14.5	48.8	*0.6
May 2003	*0.6	211.1	211.7	*2.5	32.2	243.8	242.4	486.2	*81.0	13.2	50.2	*0.5
May 2004	*4.0	212.6	216.6	*3.4	35.9	252.5	234.5	487.0	*45.7	14.2	51.8	*0.7
<b>Persons</b>												
May 2001	5.8	356.6	362.5	10.5	80.9	443.4	492.6	936.0	64.2	18.2	47.4	1.1
May 2002	4.4	337.9	342.3	6.1	72.9	415.2	526.1	941.3	58.0	17.6	44.1	0.6
May 2003	*4.1	360.1	364.2	7.9	69.2	433.4	519.9	953.3	65.7	16.0	45.5	0.8
May 2004	7.1	375.8	383.0	7.3	68.7	451.7	505.0	956.7	50.7	15.2	47.2	0.8
TOTAL												
<b>Males</b>												
May 2001	133.7	196.5	330.2	40.3	76.7	406.9	279.0	685.8	23.2	18.8	59.3	5.9
May 2002	137.4	178.8	316.2	34.6	71.9	388.2	303.5	691.6	20.1	18.5	56.1	5.0
May 2003	139.7	190.2	329.9	35.0	70.6	400.5	299.4	699.8	20.0	17.6	57.2	5.0
May 2004	140.9	203.1	344.0	35.5	65.4	409.4	299.3	708.7	20.1	16.0	57.8	5.0
<b>Females</b>												
May 2001	81.5	248.4	329.9	27.7	67.9	397.9	262.4	660.3	25.4	17.1	60.3	4.2
May 2002	74.1	253.5	327.5	28.2	61.6	389.2	274.7	663.9	27.6	15.8	58.6	4.2
May 2003	79.5	263.8	343.4	26.0	57.4	400.8	271.3	672.1	24.6	14.3	59.6	3.9
May 2004	84.5	272.1	356.6	30.0	64.4	421.0	260.1	681.1	26.2	15.3	61.8	4.4
<b>Persons</b>												
May 2001	215.2	445.0	660.1	68.0	144.6	804.7	541.4	1 346.1	24.0	18.0	59.8	5.1
May 2002	211.5	432.3	643.8	62.8	133.6	777.3	578.2	1 355.5	22.9	17.2	57.3	4.6
May 2003	219.2	454.0	673.2	60.9	128.0	801.2	570.7	1 371.9	21.8	16.0	58.4	4.4
May 2004	225.4	475.2	700.6	65.5	129.8	830.4	559.5	1 389.8	22.5	15.6	59.7	4.7

\* estimate is subject to sampling variability too high for most practical purposes

	EMPLOYED			UNEMPLOYED			UNEMPLOYMENT RATE			Unemployment to population ratio — looking for full-time work		
	Full time	Part time	Total	Looking for f/t work	Total	Labour force	Not in labour force	Civilian population aged 15-19	Looking for f/t work	Total	Participation rate	Unemployment to population ratio — looking for full-time work
	'000	'000	'000	'000	'000	'000	'000	'000	%	%	%	%
NOT ATTENDING FULL-TIME EDUCATION												
New South Wales	69.7	26.6	96.3	20.6	20.9	117.2	18.3	135.5	22.8	17.8	86.5	15.2
Victoria	37.3	20.9	58.2	10.1	11.0	69.3	10.8	80.1	21.3	15.9	86.5	12.6
Queensland	52.2	24.6	76.8	12.4	13.5	90.3	9.8	100.0	19.2	14.9	90.2	12.4
South Australia	15.9	9.9	25.8	6.1	6.4	32.2	4.7	36.9	27.7	19.9	87.3	16.5
Western Australia	30.5	11.1	41.7	5.2	5.4	47.0	5.6	52.6	14.6	11.4	89.3	9.9
Tasmania	7.4	2.5	9.9	1.4	1.4	11.3	1.5	12.8	15.5	12.0	87.9	10.6
Northern Territory	2.1	2.1	4.2	1.7	1.7	5.9	3.1	8.9	45.3	29.1	65.7	19.1
Australian Capital Territory	3.2	1.5	4.8	*0.8	*0.8	5.6	*0.7	6.3	*20.1	*14.7	88.7	*13.0
<b>Australia</b>	<b>218.3</b>	<b>99.4</b>	<b>317.6</b>	<b>58.2</b>	<b>61.0</b>	<b>378.7</b>	<b>54.5</b>	<b>433.1</b>	<b>21.1</b>	<b>16.1</b>	<b>87.4</b>	<b>13.4</b>
ATTENDING FULL-TIME EDUCATION												
New South Wales	*0.8	126.7	127.4	*4.2	22.8	150.3	170.1	320.4	*84.8	15.2	46.9	*1.3
Victoria	*1.7	95.9	97.6	*0.9	16.6	114.2	143.8	258.0	*35.5	14.5	44.3	*0.4
Queensland	*2.1	75.2	77.3	*0.2	13.5	90.8	82.8	173.6	*10.5	14.8	52.3	*0.1
South Australia	*0.5	24.7	25.3	*0.7	5.3	30.6	36.7	67.2	*57.0	17.4	45.5	*1.0
Western Australia	*1.5	36.9	38.4	*0.6	7.7	46.1	47.2	93.3	*29.6	16.8	49.4	*0.7
Tasmania	*0.1	6.8	6.9	*0.6	1.7	8.6	13.0	21.6	*81.5	19.3	39.8	*2.9
Northern Territory	*0.1	1.8	1.9	*—	*0.2	2.1	3.1	5.2	*—	*8.5	40.0	*—
Australian Capital Territory	*0.3	7.8	8.1	*—	*1.0	9.1	8.3	17.4	*—	*10.7	52.1	*—
<b>Australia</b>	<b>7.1</b>	<b>375.8</b>	<b>383.0</b>	<b>7.3</b>	<b>68.7</b>	<b>451.7</b>	<b>505.0</b>	<b>956.7</b>	<b>50.7</b>	<b>15.2</b>	<b>47.2</b>	<b>0.8</b>
TOTAL												
New South Wales	70.4	153.3	223.8	24.8	43.7	267.5	188.4	455.9	26.0	16.3	58.7	5.4
Victoria	39.0	116.9	155.8	11.0	27.6	183.5	154.6	338.1	22.0	15.1	54.3	3.3
Queensland	54.3	99.8	154.1	12.6	26.9	181.1	92.6	273.6	18.9	14.9	66.2	4.6
South Australia	16.4	34.7	51.0	6.8	11.7	62.7	41.4	104.1	29.2	18.7	60.3	6.5
Western Australia	32.0	48.0	80.1	5.8	13.1	93.2	52.8	145.9	15.4	14.1	63.8	4.0
Tasmania	7.5	9.3	16.8	2.0	3.0	19.8	14.5	34.4	20.8	15.2	57.7	5.7
Northern Territory	2.2	3.9	6.1	1.7	1.9	7.9	6.2	14.1	43.7	23.7	56.2	12.1
Australian Capital Territory	3.5	9.3	12.8	*0.8	1.8	14.6	9.0	23.7	*18.8	12.2	61.8	*3.5
<b>Australia</b>	<b>225.4</b>	<b>475.2</b>	<b>700.6</b>	<b>65.5</b>	<b>129.8</b>	<b>830.4</b>	<b>559.5</b>	<b>1 389.8</b>	<b>22.5</b>	<b>15.6</b>	<b>59.7</b>	<b>4.7</b>

\* estimate is subject to sampling variability too high for most practical purposes

— nil or rounded to zero (including null cells)

# WHAT IF...? REVISIONS TO TREND ESTIMATES

## EFFECT OF NEW SEASONALLY ADJUSTED ESTIMATES ON TREND ESTIMATES

### TREND REVISIONS

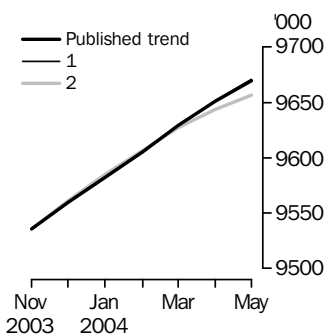
Each time new seasonally adjusted estimates become available, trend estimates are revised. This revision is a combined result of the concurrent seasonal adjustment process and the application of surrogates of the Henderson average to the seasonally adjusted series (see paragraphs 18 to 24 of Explanatory Notes).

The examples in the tables below show two illustrative scenarios and the consequent revisions to previous trend estimates of employment and the unemployment rate. The revisions in the scenarios below are only due to the use of surrogates of the Henderson average, as the impact of revision of the seasonally adjusted estimates can not be estimated in advance.

- (1) The June seasonally adjusted estimate is *higher* than the May estimate by:  
0.27% for employment  
1.80% for the unemployment rate
- (2) The June seasonally adjusted estimate is *lower* than the May estimate by:  
0.27% for employment  
1.80% for the unemployment rate

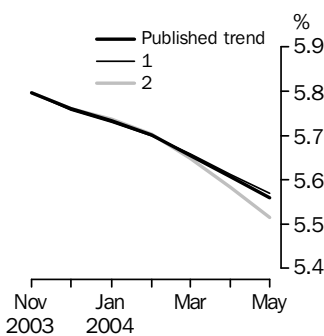
The percentage changes of 0.27% and 1.80% were chosen because they represent the average absolute monthly percentage changes in employment and the unemployment rate respectively.

### EMPLOYMENT



	Trend as published	WHAT IF NEXT MONTH'S SEASONALLY ADJUSTED ESTIMATE IS:	
		(1) 9681.3 i.e. rises by 0.27%	(2) 9629.1 i.e. falls by 0.27%
<b>2004</b>			
February	9 605.7	9 605.8	9 606.7
March	9 629.4	9 629.3	9 626.9
April	9 651.1	9 651.6	9 643.9
May	9 669.5	9 670.9	9 656.4

### UNEMPLOYMENT RATE



	Trend as published	WHAT IF NEXT MONTH'S SEASONALLY ADJUSTED ESTIMATE IS:	
		(1) 5.6 i.e. rises by 1.80%	(2) 5.4 i.e. falls by 1.80%
<b>2004</b>			
February	5.7	5.7	5.7
March	5.7	5.7	5.6
April	5.6	5.6	5.6
May	5.6	5.6	5.5

## EXPLANATORY NOTES

### INTRODUCTION

**1** This publication contains estimates of the civilian labour force derived from the Labour Force Survey component of the Monthly Population Survey. More detailed estimates are released one week after this publication in various electronic formats - see *Labour Force, Australia, Detailed - Electronic Delivery* (cat. no. 6291.0.55.001).

### CONCEPTS, SOURCES AND METHODS

**2** The conceptual framework used in Australia's Labour Force Survey aligns closely with the standards and guidelines set out in Resolutions of International Conferences of Labour Statisticians. Descriptions of the underlying concepts and structure of Australia's labour force statistics, and the sources and methods used in compiling the estimates, are presented in *Labour Statistics: Concepts, Sources and Methods* (cat. no. 6102.0) which is also available on the ABS web site <<http://www.abs.gov.au>> (About Statistics—Concepts and Classifications).

### MONTHLY POPULATION SURVEY

**3** The population survey is based on a multi-stage area sample of private dwellings (currently about 30,000 houses, flats, etc.) and a list sample of non-private dwellings (hotels, motels, etc.), and covers about 0.45% of the population of Australia. The information is obtained from the occupants of selected dwellings by specially trained interviewers. The information obtained relates to the week before the interview (i.e. the reference week).

**4** Households selected for the Labour Force Survey are interviewed each month for 8 months, with one eighth of the sample being replaced each month. The first interview is conducted face-to-face. Subsequent interviews are conducted by telephone (if acceptable to the respondent).

**5** The interviews are generally conducted during the two weeks beginning on the Monday between the 6th and 12th of each month. Each year, to deal with operational difficulties involved with collecting and processing the Labour Force Survey around the Christmas and New Year holiday period, interviews for December start four weeks after November interviews start, and January interviews start five weeks after December interviews start. As a result, January interviewing may commence as early as the 8th or as late as the 14th, depending on the year. Occasionally, circumstances that present significant operational difficulties for survey collection can result in a change to the normal pattern for the start of interviewing.

**6** Estimates from the Labour Force Survey are published first in this publication 31 days after the commencement of interviews for that month, with the exception of estimates for each December which are published 38 days after the commencement of interviews.

### SCOPE OF SURVEY

**7** The Labour Force Survey includes all persons aged 15 years and over except members of the permanent defence forces, certain diplomatic personnel of overseas governments customarily excluded from census and estimated population counts, overseas residents in Australia, and members of non-Australian defence forces (and their dependants) stationed in Australia.

### COVERAGE

**8** In the Labour Force Survey, coverage rules are applied which aim to ensure that each person is associated with only one dwelling, and hence has only one chance of selection. The coverage rules are necessarily a balance between theoretical and operational considerations. Nevertheless, the chance of a person being enumerated at two separate dwellings in the survey is considered to be negligible.

## EXPLANATORY NOTES *continued*

### POPULATION BENCHMARKS

**9** Labour Force Survey estimates are calculated in such a way as to add up to independent estimates of the civilian population aged 15 and over (population benchmarks). From February 2004, labour force estimates have been compiled using benchmarks based on the results of the 2001 Census of Population and Housing. Revisions were made to historical estimates from January 1999 to January 2004.

### COMPARABILITY OF SERIES

**10** From April 1986, the definition of employed persons was changed to include persons who worked without pay between 1 and 14 hours per week in a family business or on a farm (i.e. contributing family workers). For further information, see paragraphs 36 and 37 of the Explanatory Notes to the February 1987 issue of *Labour Force, Australia* (cat. no. 6203.0).

**11** The ABS introduced telephone interviewing into the Labour Force Survey in August 1996. Implementation was phased in for each new sample group from August 1996 to February 1997. During the period of implementation, the new method produced different estimates than would have been obtained under the old methodology. The effect dissipated over the final months of implementation and was no longer discernible from February 1997. The estimates for February 1997 and onwards are directly comparable to estimates for periods prior to August 1996. For further details, see the feature article in the June 1997 issue of *Labour Force, Australia* (cat. no. 6203.0).

**12** From April 2001 the Labour Force Survey has been conducted using a redesigned questionnaire containing additional data items and some minor definitional changes. The definition of unemployed persons was changed to include all persons who were waiting to start work and were available to start in the reference week. This change was introduced in February 2004, when historical unit record data were revised from April 2001 to January 2004. This revision created a small trend break at April 2001 in unemployed persons and unemployment rate series. For further details, see *Information Paper: Forthcoming Changes to Labour Force Statistics* (cat. no. 6292.0).

**13** Core labour force series were revised in April 2001 for the period April 1986 to March 2001 for the remaining definitional changes introduced with the redesigned questionnaire, to reduce the impact of the changes on labour force series. For further details, see *Information Paper: Implementing the Redesigned Labour Force Survey Questionnaire* (cat. no. 6295.0) and *Information Paper: Questionnaires Used in the Labour Force Survey* (cat. no. 6232.0).

### SURVEY SAMPLE REDESIGN

**14** The Labour Force Survey sample was last reselected using information collected in the 2001 Census of Population and Housing.

**15** The bulk of the new sample was phased in over the period November 2002 to June 2003, with one eighth of this portion of the sample being introduced every month. The remainder of the sample (about 18% of the total), which covers less settled areas of Australia and non-private dwellings was rotated in full for New South Wales, Victoria, Tasmania, Northern Territory and Australian Capital Territory in November 2002, and for Queensland, South Australia and Western Australia in December 2002. Such a pattern of implementation means that any changes to labour force estimates due to differences between the two samples, or any other influences, were spread over the eight months.

**16** For further details, see *Information Paper: Labour Force Survey Sample Design* (cat. no. 6269.0) and *Technical Report: New Labour Force Survey sample selections: analysis of the effect on estimates* in the October 2003 issue of *Australian Labour Market Statistics* (cat. no. 6105.0).



## EXPLANATORY NOTES *continued*

### RELIABILITY OF ESTIMATES

**17** Two types of error are possible in an estimate based on a sample survey: sampling error and non-sampling error.

*Sampling error* occurs because a sample, rather than the entire population, is surveyed. One measure of the likely difference resulting from not including all dwellings in the survey is given by the standard error. There are about two chances in three that a sample estimate will differ by less than one standard error from the figure that would have been obtained if all dwellings had been included in the survey, and about nineteen chances in twenty that the difference will be less than two standard errors. Standard errors of estimates for the latest month and of estimates of movements since the previous month are shown on pages 27 and 28. Standard errors of other estimates and other movements may be determined by using information in *Information Paper: Labour Force Survey Standard Errors* (cat. no. 6298.0) which is available free on the ABS web site <<http://www.abs.gov.au>> (About Statistics—Information Papers).

*Non sampling error* arises from inaccuracies in collecting, recording and processing the data. Every effort is made to minimise reporting error by the careful design of questionnaires, intensive training and supervision of interviewers, and efficient data processing procedures.

### SEASONAL ADJUSTMENT AND TREND ESTIMATION

**18** Seasonal adjustment is a means of removing the estimated effects of normal seasonal variation from the series so that the effects of other influences on the series can be more clearly recognised. Seasonal adjustment does not aim to remove the irregular or non-seasonal influences which may be present in any particular month. This means that month-to-month movements of the seasonally adjusted estimates may not be reliable indicators of trend behaviour.

**19** The Labour Force Survey uses the concurrent seasonal adjustment method to derive seasonal factors. Concurrent seasonal adjustment uses data up to the current month to estimate seasonal factors for the current and all previous months. This process can result in revisions each month to estimates for earlier periods. However, in most instances, the only noticeable revisions will be to the seasonally adjusted estimates for the previous month and one year prior to the current month.

**20** Seasonal adjustment is able to remove the effect of events which occur at the same time in the survey every year. However, there are some events, like holidays, which are not always at the same time in the survey cycle or which are not at the same time across Australia. The effects of these types of events on LFS estimates cannot in all cases be removed, because the pattern of their effects cannot be determined. However, two events which are adjusted for in the seasonally adjusted series are the January interview start date and the timing of Easter.

**21** For more information on concurrent seasonal adjustment and survey proximity to holiday periods, see *Information Paper: Forthcoming Changes to Labour Force Statistics* (cat. no. 6292.0).

**22** While seasonal factors for the complete time series are estimated each month, they will continue to be reviewed annually at a more detailed level to take into account each additional year's original data. This annual review will not normally result in significant changes to published estimates. The review will be conducted in February each year with the results released in the February issue of this publication.

**23** The smoothing of seasonally adjusted series to produce 'trend' series reduces the impact of the irregular component of the seasonally adjusted series. These trend estimates are derived by applying a 13-term Henderson-weighted moving average to all months except the last six. The last six monthly trend estimates are obtained by applying surrogates of the Henderson average to the seasonally adjusted series. Trend estimates are used to analyse the underlying behaviour of a series over time.

## EXPLANATORY NOTES *continued*

### SEASONAL ADJUSTMENT AND TREND ESTIMATION *continued*

**24** While this smoothing technique enables estimates to be produced for the latest month, it does result in revisions in addition to those caused by the revision of seasonally adjusted estimates. Generally, revisions due to the use of surrogates of the Henderson average become smaller, and after 3 months have a negligible impact on the series.

**25** Trend estimates are published for the Northern Territory in table 10 and for the Australian Capital Territory in table 11. Unadjusted series for the two territories have shown, historically, a high degree of variability, which can lead to considerable revisions to the seasonally adjusted estimates each month when seasonal factors are estimated. For this reason, seasonally adjusted estimates are not currently published for the two Territories. In addition, caution should be exercised in the interpretation of trend estimates for the two territories, particularly for the three most recent months, where revisions may be relatively large.

**26** For further information, see *A Guide to Interpreting Time Series—Monitoring 'Trends': an Overview* (cat. no. 1348.0) or contact the Assistant Director, Time Series Analysis on (02) 6252 6345.

### RELATED PUBLICATIONS

**27** Users may also wish to refer to *Australian Labour Market Statistics* (cat. no. 6105.0). This publication contains additional tables and a detailed list of related publications. For further information about this publication, please contact the Assistant Director, Labour Market Statistics on (02) 6252 7636.

**28** ABS Information about the labour market can be found on the Labour theme page on the ABS web site <<http://www.abs.gov.au>> (Themes—People, Labour), or from ABS Bookshops.

**29** Current publications and other products released by the ABS are listed in the *Catalogue of Publications and Products* (cat. no. 1101.0). The Catalogue is available from any ABS office or the ABS web site <<http://www.abs.gov.au>> (Products and Services). The ABS also issues a daily Release Advice on the web site (Information on Releases) which details products to be released in the week ahead.

### DATA AVAILABLE ON REQUEST

**30** As well as the statistics included in this and related publications, the ABS may have other relevant data available. Inquiries should be made to Michael Johnson on (02) 6252 6525 or to any ABS office.

### EFFECTS OF ROUNDING

**31** Estimates have been rounded and discrepancies may occur between sums of the component items and totals.

**32** Estimates of movement shown in this publication are obtained by taking the difference of unrounded estimates. The movement estimate is then rounded to one decimal place. Therefore where a discrepancy occurs between the reported movement and the difference of the rounded estimates, the reported movement will be more accurate.

### SYMBOLS AND OTHER USAGES

**33** SYMBOLS AND OTHER USAGES  
pts percentage points

## STANDARD ERRORS

### STANDARD ERRORS

The estimates in this publication are based on information gained from the occupants of a sample survey of dwellings. Because the entire population is not surveyed, the published estimates are subject to sampling error. The most common way of quantifying such sampling error is to calculate the standard error for the published estimate or statistic. For more information, see paragraph 17 of the Explanatory Notes.

### LEVEL ESTIMATES

To illustrate, let us say the published level estimate for employed persons aged 15 to 19 is 700,000. The calculated standard error in this case is 9,800. The standard error is then used to interpret the level estimate of 700,000. For instance, the standard error of 9,800 indicates that:

- There are approximately two chances in three that the real value falls within the range 690,200 to 709,800 (700,000 + or - 9,800)
- There are approximately nineteen chances in twenty that the real value falls within the range 680,400 to 719,600 (700,000 + or - 19,600).

The real value in this case is the result we would obtain if we could enumerate the total population.

The following table shows the standard errors for this month's level estimates.

										AUSTRALIA		
										Males	Females	Persons
		NSW	Vic.	Qld	SA	WA	Tas.	NT	ACT			
<b>Aged 15 and over</b>												
Employed												
Full time	'000	18.5	14.1	11.2	5.1	5.5	1.9	1.3	1.8	21.7	15.9	28.9
Part time	'000	11.1	8.8	7.9	3.7	4.1	1.4	0.8	1.2	10.4	15.0	17.2
Total	'000	22.8	17.0	12.7	5.9	6.1	2.1	1.4	2.1	24.1	21.0	38.9
Unemployed												
Looking for f/t work	'000	5.1	3.9	3.7	1.8	2.0	0.7	0.5	0.5	6.7	5.6	8.1
Looking for p/t work	'000	3.7	2.8	2.4	1.1	1.4	0.4	0.3	0.3	3.7	4.7	5.5
Total	'000	5.6	4.4	4.2	2.0	2.3	0.8	0.5	0.5	7.2	6.7	9.1
Labour force	'000	23.6	17.6	13.0	6.0	6.2	2.2	1.4	2.1	25.0	21.7	41.2
Not in labour force	'000	17.3	13.1	10.3	5.0	5.1	1.9	1.0	1.4	15.7	19.2	25.7
Unemployment rate												
Looking for f/t work	pts	0.2	0.2	0.3	0.3	0.3	0.4	0.6	0.4	0.1	0.2	0.1
Looking for p/t work	pts	0.4	0.4	0.4	0.5	0.5	0.6	1.0	0.6	0.4	0.2	0.2
Total	pts	0.2	0.2	0.2	0.3	0.2	0.3	0.5	0.3	0.1	0.1	0.1
Participation rate	pts	0.4	0.4	0.4	0.5	0.4	0.6	1.0	0.8	0.3	0.3	0.3
<b>Aged 15 - 19</b>												
Employed												
Full time	'000	4.2	2.9	3.1	1.3	1.9	0.6	0.3	0.4	5.4	4.5	6.4
Part time	'000	5.3	4.1	4.0	1.8	2.2	0.7	0.4	0.6	6.2	6.9	8.5
Total	'000	6.0	4.6	4.8	2.1	2.6	0.8	0.5	0.7	7.5	7.6	9.9
Unemployed												
Looking for f/t work	'000	2.9	1.7	1.7	0.9	1.0	0.4	0.3	0.2	3.2	2.9	4.1
Looking for p/t work	'000	2.6	2.1	1.8	0.8	1.0	0.3	0.1	0.3	2.9	3.1	4.0
Total	'000	3.5	2.5	2.3	1.1	1.3	0.4	0.3	0.3	4.1	4.0	5.2
Labour force	'000	6.4	4.9	5.1	2.2	2.8	0.9	0.6	0.7	8.0	8.1	10.6
Not in labour force	'000	5.6	4.6	3.9	1.9	2.3	0.8	0.5	0.6	7.1	6.8	9.1
Unemployment rate												
Looking for f/t work	pts	3.0	3.5	2.5	3.9	2.5	3.7	7.9	5.7	1.8	2.6	1.4
Looking for p/t work	pts	1.5	1.5	1.5	2.0	1.9	2.6	3.1	2.6	1.3	1.0	0.7
Total	pts	1.3	1.4	1.3	1.8	1.4	2.1	4.0	2.2	1.0	1.0	0.6
Participation rate	pts	1.4	1.5	1.9	2.2	1.9	2.6	3.9	3.1	1.1	1.2	0.8
Unemployment to population ratio — looking for f/t work												
	pts	0.6	0.5	0.6	0.9	0.7	1.0	2.2	1.1	0.4	0.4	0.3

## STANDARD ERRORS *continued*

### MOVEMENT ESTIMATES

The following example illustrates how to use the standard error to interpret a movement estimate. Let us say that one month the published level estimate for females employed part time in Australia is 1,890,000; the next month the published level estimate is 1,900,000. The calculated standard error for the movement estimate is 10,300. The standard error is then used to interpret the published movement estimate of 10,000. For instance, the standard error of 10,300 indicates that:

- There are approximately two chances in three that the real movement between the two months falls within the range -300 to 20,300 (10,000 + or - 10,300)
- There are approximately nineteen chances in twenty that the real movement falls within the range -10,600 to 30,600 (10,000 + or - 20,600).

The following table shows the standard errors for this month's movement estimates.

		AUSTRALIA										
		NSW	Vic.	Qld	SA	WA	Tas.	NT	ACT	Males	Females	Persons
<b>Aged 15 and over</b>												
Employed												
Full time	'000	9.9	7.6	6.9	3.1	3.9	1.3	1.1	1.0	14.2	11.1	16.4
Part time	'000	7.3	5.6	5.1	2.4	2.9	1.0	0.7	0.8	7.6	10.6	11.9
Total	'000	11.1	8.5	7.8	3.6	4.4	1.4	1.2	1.1	15.0	13.9	18.5
Unemployed												
Looking for f/t work	'000	3.9	3.0	2.7	1.3	1.5	0.5	0.4	0.4	5.1	4.4	6.1
Looking for p/t work	'000	2.7	2.1	2.0	0.9	1.1	0.3	0.2	0.3	3.1	3.6	4.3
Total	'000	4.3	3.3	3.0	1.4	1.7	0.6	0.4	0.4	5.5	5.1	6.8
Labour force	'000	11.3	8.7	7.9	3.7	4.5	1.5	1.2	1.2	15.3	14.2	18.9
Not in labour force	'000	9.5	7.3	6.4	3.1	3.6	1.3	0.9	0.9	11.0	13.1	15.5
Unemployment rate												
Looking for f/t work	pts	0.2	0.2	0.2	0.2	0.2	0.3	0.5	0.3	0.1	0.2	0.1
Looking for p/t work	pts	0.3	0.3	0.3	0.4	0.4	0.5	0.9	0.6	0.4	0.2	0.1
Total	pts	0.1	0.1	0.2	0.2	0.2	0.2	0.4	0.2	0.1	0.1	0.1
Participation rate	pts	0.2	0.2	0.3	0.3	0.3	0.4	0.9	0.5	0.2	0.2	0.1
<b>Aged 15 - 19</b>												
Employed												
Full time	'000	3.2	2.3	2.3	1.0	1.4	0.5	0.3	0.3	4.3	3.6	5.1
Part time	'000	4.0	3.1	2.8	1.2	1.7	0.5	0.4	0.5	4.7	5.2	6.3
Total	'000	4.6	3.4	3.3	1.4	1.9	0.6	0.4	0.5	5.7	5.8	7.4
Unemployed												
Looking for f/t work	'000	2.2	1.4	1.5	0.7	0.8	0.3	0.3	0.2	2.5	2.4	3.1
Looking for p/t work	'000	2.0	1.6	1.5	0.7	0.9	0.2	0.1	0.2	2.5	2.5	3.2
Total	'000	2.6	1.9	1.9	0.9	1.1	0.3	0.3	0.3	3.2	3.1	4.0
Labour force	'000	4.8	3.6	3.5	1.5	2.0	0.6	0.5	0.5	6.1	6.1	7.8
Not in labour force	'000	4.3	3.4	2.7	1.3	1.7	0.6	0.4	0.4	5.4	5.1	6.7
Unemployment rate												
Looking for f/t work	pts	2.3	2.5	2.0	3.0	2.2	3.0	6.6	5.2	1.4	2.1	1.1
Looking for p/t work	pts	1.2	1.2	1.4	1.7	1.6	2.2	2.7	2.0	1.1	0.8	0.6
Total	pts	1.0	1.0	1.0	1.4	1.1	1.7	3.4	1.8	0.8	0.7	0.5
Participation rate	pts	1.1	1.1	1.3	1.5	1.4	1.8	3.3	2.2	0.9	0.9	0.6
Unemployment to population ratio — looking for f/t work												
	pts	0.5	0.4	0.5	0.7	0.6	0.8	1.8	1.0	0.4	0.3	0.2

## GLOSSARY

<b>Actively looking for work</b>	Includes writing, telephoning or applying in person to an employer for work; answering an advertisement for a job; checking factory noticeboards or the touchscreens at the Centrelink offices; being registered with Centrelink as a jobseeker; checking or registering with any other employment agency; advertising or tendering for work; and contacting friends or relatives.
<b>Attending full-time education</b>	Persons aged 15 to 24 years enrolled at secondary or high school or enrolled as a full time student at a Technical and Further Education (TAFE) college, university, or other educational institution in the reference week.
<b>Attending school</b>	Persons aged 15 to 19 years enrolled at secondary or high school in the reference week.
<b>Attending tertiary educational institution full time</b>	Persons aged 15 to 24 years enrolled full time at a TAFE college, university, or other educational institution in the reference week, except those persons aged 15 to 19 years who were still attending school.
<b>Civilian population aged 15 years and over</b>	All usual residents of Australia aged 15 years and over except members of the permanent defence forces, certain diplomatic personnel of overseas governments customarily excluded from census and estimated population counts, overseas residents in Australia, and members of non-Australian defence forces (and their dependants) stationed in Australia.
<b>Employed</b>	All persons aged 15 years and over who, during the reference week: <ul style="list-style-type: none"><li>■ worked for one hour or more for pay, profit, commission or payment in kind in a job or business, or on a farm (comprising employees, employers and own account workers); or</li><li>■ worked for one hour or more without pay in a family business or on a farm (i.e. contributing family workers); or</li><li>■ were employees who had a job but were not at work and were:<ul style="list-style-type: none"><li>■ away from work for less than four weeks up to the end of the reference week; or</li><li>■ away from work for more than four weeks up to the end of the reference week and received pay for some or all of the four week period to the end of the reference week; or</li><li>■ away from work as a standard work or shift arrangement; or</li><li>■ on strike or locked out; or</li><li>■ on workers' compensation and expected to return to their job; or</li></ul></li><li>■ were employers or own account workers, who had a job, business or farm, but were not at work.</li></ul>
<b>Employment to population ratio</b>	For any group, the number of employed persons expressed as a percentage of the civilian population in the same group.
<b>Full-time workers</b>	Employed persons who usually worked 35 hours or more a week (in all jobs) and those who, although usually working less than 35 hours a week, worked 35 hours or more during the reference week.
<b>Labour force</b>	For any group, persons who were employed or unemployed, as defined.
<b>Labour force status</b>	A classification of the civilian population aged 15 years and over into employed, unemployed or not in the labour force, as defined. The definitions conform closely to the international standard definitions adopted by the International Conferences of Labour Statisticians.
<b>Not in labour force</b>	Persons who were not in the categories employed or unemployed as defined.
<b>Participation rate</b>	For any group, the labour force expressed as a percentage of the civilian population aged 15 years and over in the same group.
<b>Part-time workers</b>	Employed persons who usually worked less than 35 hours a week (in all jobs) and either did so during the reference week, or were not at work in the reference week.

## GLOSSARY *continued*

---

<b>Seasonally adjusted series</b>	A time series of estimates with the estimated effects of normal seasonal variation removed. See Explanatory Notes 18 to 22 for more detail.
<b>Trend series</b>	A smoothed seasonally adjusted series of estimates. See Explanatory Notes 23 to 25 for more detail.
<b>Unemployed</b>	Persons aged 15 years and over who were not employed during the reference week, and: <ul style="list-style-type: none"><li>■ had actively looked for full-time or part-time work at any time in the four weeks up to the end of the reference week and were available for work in the reference week; or</li><li>■ were waiting to start a new job within four weeks from the end of the reference week and could have started in the reference week if the job had been available then.</li></ul>
<b>Unemployed looking for full-time work</b>	Unemployed persons who: <ul style="list-style-type: none"><li>■ actively looked for full-time work; or</li><li>■ were waiting to start a new full-time job.</li></ul>
<b>Unemployed looking for part-time work</b>	Unemployed persons who: <ul style="list-style-type: none"><li>■ actively looked for part-time work only; or</li><li>■ were waiting to start a new part-time job.</li></ul>
<b>Unemployment rate</b>	For any group, the number of unemployed persons expressed as a percentage of the labour force in the same group.
<b>Unemployment to population ratio</b>	For any group, the number of unemployed persons expressed as a percentage of the civilian population in the same group.



## FOR MORE INFORMATION . . .

- INTERNET* **www.abs.gov.au** the ABS web site is the best place to start for access to summary data from our latest publications, information about the ABS, advice about upcoming releases, our catalogue, and Australia Now—a statistical profile.
- LIBRARY* A range of ABS publications is available from public and tertiary libraries Australia-wide. Contact your nearest library to determine whether it has the ABS statistics you require, or visit our web site for a list of libraries.
- CPI INFOLINE* For current and historical Consumer Price Index data, call 1902 981 074 (call cost 77c per minute).
- DIAL-A-STATISTIC* For the latest figures for National Accounts, Balance of Payments, Labour Force, Average Weekly Earnings, Estimated Resident Population and the Consumer Price Index call 1900 986 400 (call cost 77c per minute).

## INFORMATION SERVICE

Data already published that can be provided within five minutes will be free of charge. Our information consultants can also help you to access the full range of ABS information—ABS user pays services can be tailored to your needs, time frame and budget. Publications may be purchased. Specialists are on hand to help you with analytical or methodological advice.

- PHONE* 1300 135 070
- EMAIL* client.services@abs.gov.au
- FAX* 1300 135 211
- POST* Client Services, ABS, GPO Box 796, Sydney NSW 2001

## WHY NOT SUBSCRIBE?

ABS subscription services provide regular, convenient and prompt deliveries of selected ABS publications and products as they are released. Email delivery of monthly and quarterly publications is available.

- PHONE* 1300 366 323
- EMAIL* subscriptions@abs.gov.au
- FAX* (03) 9615 7848
- POST* Subscription Services, ABS, GPO Box 2796Y, Melbourne Vic 3001



2620200005049

ISSN 1448 2819

RRP \$22.00