



TOURIST ACCOMMODATION AUSTRALIA

EMBARGO: 11:30AM (CANBERRA TIME) FRI 20 SEP 2002

JUNE QTR KEY FIGURES

LICENSED HOTELS	June Qtr 2001	June Qtr 2002	change
Rooms available (no.)	78 050	78 183	0.2 %
Room nights occupied ('000)	4 212	4 138	-1.7 %
Room occupancy rate (%)	59.3	58.2	-1.1 pts
Takings from accommodation (\$'000)	569 936	557 622	-2.2 %
Takings per room night occupied (\$)	135.3	134.7	-0.6 \$

MOTELS AND GUEST HOUSES

Rooms available (no.)	84 093	83 558	-0.6 %
Room nights occupied ('000)	3 894	3 843	-1.3 %
Room occupancy rate (%)	50.9	50.5	-0.4 pts
Takings from accommodation (\$'000)	336 607	331 210	-1.6 %
Takings per room night occupied (\$)	86.4	86.2	-0.2 \$

SERVICED APARTMENTS

Rooms available (no.)	34 401	35 113	2.1 %
Room nights occupied ('000)	1 767	1 842	4.3 %
Room occupancy rate (%)	56.4	57.7	1.3 pts
Takings from accommodation (\$'000)	204 794	211 243	3.1 %
Takings per room night occupied (\$)	115.9	114.7	-1.2 \$

JUNE QTR KEY POINTS

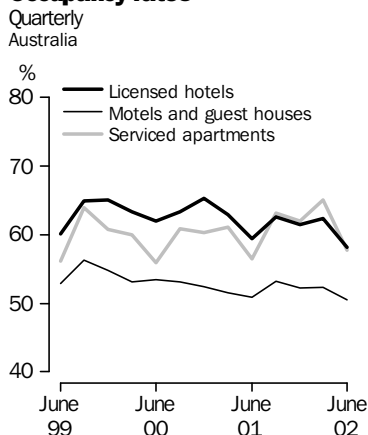
OCCUPANCY RATES DOWN, CAPACITY STABLE

- In June quarter 2002 room occupancy rates for licensed hotels, motels and guest houses and serviced apartments combined fell by 0.4 percentage points compared to June quarter 2001. The June quarter 2002 occupancy rate for licensed hotels, motels and guest houses is at its lowest since June quarter 1999. Serviced apartments' room occupancy rate continued to rise, with a 1.3 percentage point increase between the June quarter 2001 and June quarter 2002.
- The fall in occupancy rates reflects a 0.5% decrease in actual room nights occupied. Licensed hotels decreased by 1.7% while motels and guest houses decreased by 1.3%. Serviced apartments recorded a 4.3% increase in room nights occupied in June quarter 2002 compared to June quarter 2001.
- There was a marginal increase in capacity with guest rooms up 0.2% compared to June quarter 2001. The number of rooms in serviced apartments and licensed hotels increased by 2.1% and 0.2% respectively, while the number of rooms in motels and guest houses dropped by 0.6%.

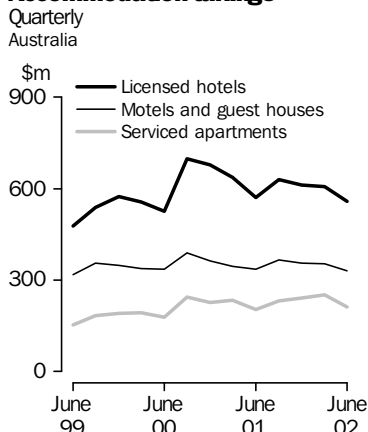
TAKINGS DOWN

- Takings from accommodation for licensed hotels, motels and guest houses and serviced apartments fell by 1.0% in June quarter 2002 compared with June quarter 2001. The Australian Capital Territory recorded a fall in takings of 11.3% after a record high in the June quarter 2001. States to record increased takings compared to June quarter 2001 were Tasmania (up 2.5%), South Australia (up 1.6%), Queensland (up 0.8%) and New South Wales (up 0.6%).

Occupancy rates



Accommodation takings



- For further information about these and related statistics, contact Neil McKellar-Stewart on 07 3222 6364, or the National Information and Referral Service on 1300 135 070.

NOTES

FORTHCOMING ISSUES

<i>ISSUE</i>	<i>RELEASE DATE</i>
September Quarter 2002	20 December 2002
December Quarter 2002	21 March 2003

INTRODUCTION

This publication contains the results of the quarterly Survey of Tourist Accommodation (STA). The STA includes hotels, motels, guest houses and serviced apartments with 15 or more rooms.

SYMBOLS AND OTHER

USAGES

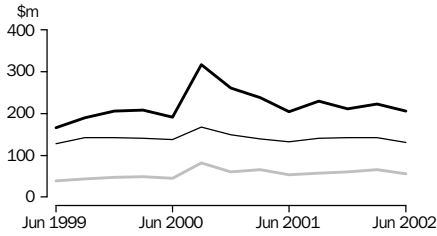
n.a.	not available
n.p.	not available for publication but included in totals where applicable
pts	percentage points change
r	revised
..	not applicable
—	nil or rounded to zero

Dennis Trewin
Australian Statistician

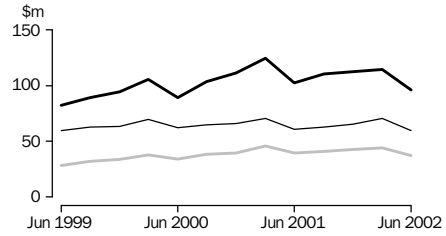
ACCOMMODATION TAKINGS

Licensed hotels
 Motels and guest houses
 Serviced apartments

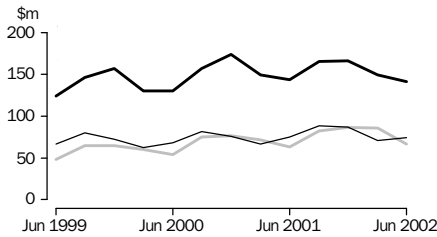
NEW SOUTH WALES



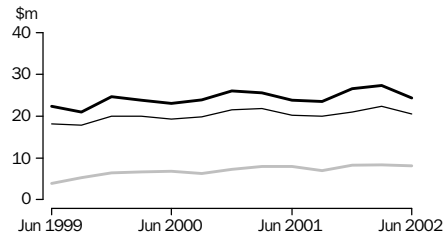
VICTORIA



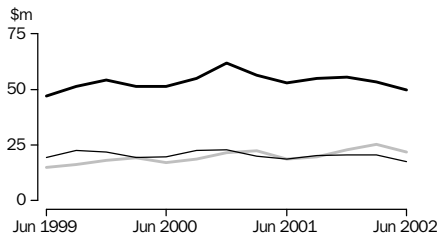
QUEENSLAND



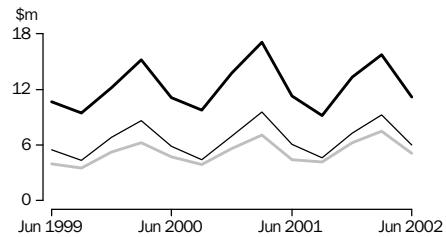
SOUTH AUSTRALIA



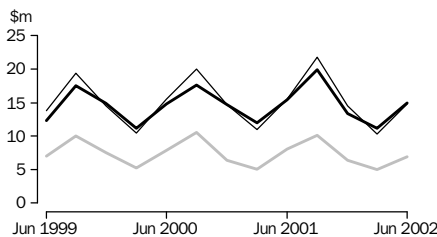
WESTERN AUSTRALIA



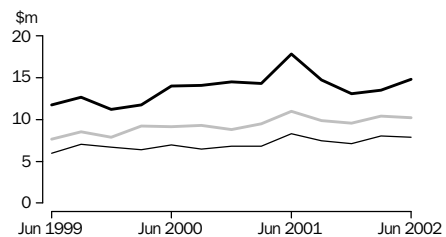
TASMANIA



NORTHERN TERRITORY



AUSTRALIAN CAPITAL TERRITORY



LIST OF TABLES

Page

1	Summary of hotels, motels, guest houses and serviced apartments	5
	Hotels, motels, guest houses and serviced apartments, by star grading	
2	Australia	6
3	New South Wales	8
4	Victoria	10
5	Queensland	12
6	South Australia	14
7	Western Australia	16
8	Tasmania	18
9	Northern Territory	20
10	Australian Capital Territory	22
	Hotels, motels, guest houses and serviced apartments, by tourism region	
11	New South Wales	24
12	Victoria	26
13	Queensland	28
14	South Australia	30
15	Western Australia	31
16	Tasmania	32
17	Northern Territory and Australian Capital Territory	33

1

SUMMARY OF HOTELS, MOTELS, GUEST HOUSES AND SERVICED APARTMENTS (a)—Australia

<i>Period</i>	<i>Establishments</i> no.	<i>Guest rooms</i> no.	<i>Bed spaces</i> no.	<i>Persons employed</i> no.	<i>Room nights occupied</i> '000	<i>Room occupancy rate</i> %	<i>Guest nights</i> '000	<i>Bed occupancy rate</i> %	<i>Guest arrivals</i> '000	<i>Average length of stay</i> days	<i>Takings from accommodation</i> \$'000
LICENSED HOTELS WITH FACILITIES											
2001											
March quarter	781	77 626	205 020	72 670	4 387	62.9	7 294	39.6	3 034	2.4	636 858
June quarter	778	78 050	205 656	72 226	4 212	59.3	6 854	36.6	2 984	2.3	569 936
September quarter	776	78 241	205 546	71 620	4 506	62.6	7 509	39.7	3 175	2.4	628 608
December quarter	781	78 574	206 592	70 663	4 437	61.5	7 426	39.1	3 139	2.4	611 507
2002											
March quarter	781	78 163	203 474	69 888	4 390	62.4	7 355	40.2	3 094	2.4	607 768
June quarter	776	78 183	204 368	69 872	4 138	58.2	6 657	35.8	2 957	2.3	557 622
Year ended June 2001	17 652	62.7	28 979	38.8	12 082	2.4	2 583 268
Year ended June 2002	17 472	61.2	28 946	38.7	12 365	2.3	2 405 505
MOTELS AND GUEST HOUSES WITH FACILITIES											
2001											
March quarter	2 400	84 432	248 795	29 917	3 907	51.5	6 982	31.2	3 856	1.8	345 954
June quarter	2 398	84 093	247 928	29 368	3 894	50.9	6 746	29.9	3 788	1.8	336 607
September quarter	2 394	84 021	246 834	29 740	4 113	53.2	7 313	32.2	4 076	1.8	365 585
December quarter	2 400	84 430	247 776	29 288	4 055	52.2	7 187	31.6	4 079	1.8	355 294
2002											
March quarter	2 401	84 284	246 608	29 123	3 968	52.3	7 158	32.3	3 942	1.8	354 023
June quarter	2 382	83 558	244 723	28 733	3 843	50.5	6 594	29.6	3 760	1.8	331 210
Year ended June 2001	16 027	52.0	28 180	31.0	15 579	1.8	1 433 572
Year ended June 2002	15 978	52.1	28 252	31.4	15 857	1.8	1 406 112
SERVICED APARTMENTS											
2001											
March quarter	649	34 501	115 146	11 872	1 894	61.1	4 183	40.4	1 142	3.7	235 295
June quarter	649	34 401	114 636	11 532	1 767	56.4	3 752	36.0	1 071	3.5	204 794
September quarter	646	34 467	114 391	11 459	2 000	63.1	4 361	41.4	1 175	3.7	232 329
December quarter	657	35 129	117 192	11 799	2 003	62.0	4 498	41.7	1 225	3.7	242 753
2002											
March quarter	668	35 412	117 872	11 808	2 070	65.0	4 659	44.0	1 248	3.7	252 201
June quarter	668	35 113	116 329	11 565	1 842	57.7	3 854	36.4	1 120	3.4	211 243
Year ended June 2001	7 374	59.7	16 015	38.5	4 400	3.6	909 807
Year ended June 2002	7 916	61.9	17 371	40.9	4 768	3.6	938 525
TOTAL ESTABLISHMENTS											
2001											
March quarter	3 830	196 559	568 961	114 459	10 189	57.7	18 459	36.1	8 031	2.3	1 218 107
June quarter	3 825	196 544	568 220	113 126	9 873	55.2	17 352	33.6	7 843	2.2	1 111 337
September quarter	3 816	196 729	566 771	112 819	10 619	58.7	19 182	36.8	8 427	2.3	1 226 522
December quarter	3 838	198 133	571 560	111 750	10 496	57.6	19 111	36.4	8 444	2.3	1 209 554
2002											
March quarter	3 850	197 859	567 954	110 819	10 428	58.6	19 171	37.5	8 283	2.3	1 213 991
June quarter	3 826	196 854	565 420	110 170	9 824	54.8	17 105	33.2	7 836	2.2	1 100 074
Year ended June 2001	41 053	57.5	73 175	35.3	32 060	2.3	4 926 647
Year ended June 2002	41 367	57.4	74 569	36.0	32 990	2.3	4 750 142

(a) Comprising establishments with 15 or more rooms or units. See Explanatory Notes, paragraph 7.

STAR GRADING

Period	Licensed hotels with facilities	Motels and guest houses	Serviced apartments	1	2	3	4	5	Ungraded	Total
ESTABLISHMENTS, CAPACITY AND EMPLOYMENT (number)										
June quarter 2001										
Establishments	778	2 398	649	62	457	1 866	899	98	443	3 825
Guest rooms	78 050	84 093	34 401	2 009	13 252	71 054	70 819	23 542	15 868	196 544
Bed spaces	205 656	247 928	114 636	6 391	39 041	210 769	205 793	60 366	45 860	568 220
Persons employed	72 226	29 368	11 532	800	5 176	26 883	38 787	34 993	6 487	113 126
June quarter 2002										
Establishments	776	2 382	668	62	449	1 855	944	105	411	3 826
Guest rooms	78 183	83 558	35 113	2 168	13 386	69 950	72 740	24 396	14 214	196 854
Bed spaces	204 368	244 723	116 329	6 735	39 166	206 163	208 475	63 119	41 762	565 420
Persons employed	69 872	28 733	11 565	789	5 096	26 037	38 064	34 320	5 864	110 170
ROOM NIGHTS OCCUPIED ('000)										
2001										
June quarter	4 211.9	3 894.0	1 767.0	62.6	515.4	3 343.8	3 953.8	1 377.3	620.0	9 872.9
2002										
April	1 404.5	1 325.5	638.5	24.9	182.8	1 124.4	1 366.6	472.2	197.5	3 368.5
May	1 434.2	1 296.3	607.2	24.1	178.2	1 080.1	1 377.4	485.5	192.5	3 337.8
June	1 299.6	1 221.2	596.7	24.7	172.7	1 015.7	1 280.6	430.1	193.8	3 117.5
June quarter	4 138.3	3 843.0	1 842.4	73.8	533.6	3 220.2	4 024.6	1 387.9	583.7	9 823.7
ROOM OCCUPANCY RATES (%)										
2001										
June quarter	59.3	50.9	56.4	34.2	42.8	51.7	61.4	64.3	42.9	55.2
2002										
April	59.9	52.9	60.6	38.3	45.5	53.6	62.6	64.5	46.3	57.0
May	59.2	50.0	55.8	35.8	42.9	49.8	61.1	64.2	43.7	54.7
June	55.4	48.7	56.6	38.0	43.0	48.4	58.7	58.9	45.5	52.8
June quarter	58.2	50.5	57.7	37.4	43.8	50.6	60.8	62.6	45.2	54.8
GUEST NIGHTS ('000)										
2001										
June quarter	6 853.9	6 745.9	3 752.0	99.5	915.9	6 079.2	6 871.5	2 265.2	1 120.5	17 351.8
2002										
April	2 316.4	2 350.9	1 402.2	40.5	327.0	2 061.4	2 476.0	798.7	365.8	6 069.4
May	2 227.9	2 137.4	1 202.3	39.1	297.7	1 846.3	2 287.2	760.8	336.5	5 567.6
June	2 112.6	2 106.1	1 249.1	41.6	303.6	1 823.4	2 235.8	706.7	356.6	5 467.7
June quarter	6 656.8	6 594.4	3 853.5	121.2	928.2	5 731.2	6 999.0	2 266.1	1 059.0	17 104.8
BED OCCUPANCY RATES (%)										
2001										
June quarter	36.6	29.9	36.0	17.1	25.8	31.7	36.7	41.2	26.8	33.6
2002										
April	37.8	32.0	40.2	20.1	27.8	33.3	39.6	42.2	29.2	35.8
May	35.2	28.2	33.3	18.7	24.5	28.9	35.4	38.9	26.0	31.8
June	34.5	28.7	35.8	20.6	25.8	29.5	35.7	37.4	28.5	32.2
June quarter	35.8	29.6	36.4	19.8	26.0	30.5	36.9	39.5	27.9	33.2

(a) Comprising establishments with 15 or more rooms or units. See Explanatory Notes, paragraph 7.

STAR GRADING

Period	Licensed hotels with facilities	Motels and guest houses	Serviced apartments	1	2	3	4	5	Ungraded	Total
GUEST ARRIVALS ('000)										
2001										
June quarter	2 983.8	3 788.5	1 070.9	56.8	524.0	3 066.8	2 883.7	883.7	428.2	7 843.2
2002										
April	1 004.9	1 339.0	395.6	27.9	184.4	1 084.2	1 000.2	296.6	146.2	2 739.6
May	996.7	1 219.1	358.4	27.3	166.3	969.9	972.2	300.4	137.9	2 574.1
June	955.1	1 201.4	366.0	28.7	167.9	955.2	936.7	287.0	146.9	2 522.5
June quarter	2 956.7	3 759.5	1 120.0	84.0	518.7	3 009.3	2 909.1	884.0	431.1	7 836.2
AVERAGE LENGTH OF STAY (days)										
2001										
June quarter	2.3	1.8	3.5	1.8	1.7	2.0	2.4	2.6	2.6	2.2
2002										
June quarter	2.3	1.8	3.4	1.4	1.8	1.9	2.4	2.6	2.5	2.2
TAKINGS FROM ACCOMMODATION (\$'000)										
2001										
June quarter	569 936	336 607	204 794	4 188	33 024	288 972	481 425	249 007	54 720	1 111 337
2002										
April	192 900	115 578	75 054	1 464	11 821	97 227	164 479	90 475	18 066	383 532
May	196 448	110 370	68 869	1 389	11 203	91 063	164 326	90 620	17 085	375 687
June	168 273	105 263	67 320	1 741	11 148	86 416	149 170	74 862	17 519	340 856
June quarter	557 622	331 210	211 243	4 594	34 171	274 707	477 975	255 957	52 671	1 100 074
AVERAGE TAKINGS PER ROOM NIGHT OCCUPIED (\$)										
2001										
June quarter	135.3	86.4	115.9	66.9	64.1	86.4	121.8	180.8	88.3	112.6
2002										
April	137.3	87.2	117.5	58.7	64.7	86.5	120.4	191.6	91.5	113.9
May	137.0	85.1	113.4	57.7	62.9	84.3	119.3	186.6	88.8	112.6
June	129.5	86.2	112.8	70.4	64.6	85.1	116.5	174.1	90.4	109.3
June quarter	134.7	86.2	114.7	62.3	64.0	85.3	118.8	184.4	90.2	112.0
AVERAGE TAKINGS PER AVAILABLE ROOM NIGHT (\$)										
2001										
June quarter	80.2	44.0	65.4	22.9	27.4	44.7	74.7	116.2	37.9	62.1
2002										
April	82.2	46.1	71.3	22.5	29.4	46.3	75.4	123.6	42.4	64.9
May	81.1	42.6	63.3	20.7	27.0	42.0	72.9	119.8	38.8	61.6
June	71.8	42.0	63.9	26.8	27.8	41.2	68.4	102.5	41.1	57.7
June quarter	78.4	43.6	66.1	23.3	28.1	43.2	72.2	115.4	40.7	61.4

(a) Comprising establishments with 15 or more rooms or units. See Explanatory Notes, paragraph 7.

STAR GRADING

<i>Period</i>	<i>Licensed hotels with facilities</i>	<i>Motels and guest houses</i>	<i>Serviced apartments</i>	1	2	3	4	5	<i>Ungraded</i>	<i>Total</i>
ESTABLISHMENTS, CAPACITY AND EMPLOYMENT (number)										
June quarter 2001										
Establishments	198	994	134	31	177	704	220	26	168	1 326
Guest rooms	25 033	32 835	7 620	1 187	5 079	25 682	21 000	6 893	5 647	65 488
Bed spaces	62 049	97 424	25 002	4 187	14 969	74 988	57 737	15 733	16 861	184 475
Persons employed	20 924	11 320	2 781	357	1 720	9 034	12 136	9 762	2 016	35 025
June quarter 2002										
Establishments	196	983	134	31	181	696	229	25	151	1 313
Guest rooms	24 296	32 211	7 565	1 172	5 324	25 039	20 949	6 742	4 846	64 072
Bed spaces	59 436	95 055	24 038	4 083	15 397	72 542	56 601	15 166	14 740	178 529
Persons employed	19 747	11 074	2 747	375	1 747	8 615	11 785	9 302	1 744	33 568
ROOM NIGHTS OCCUPIED ('000)										
2001										
<i>June quarter</i>	1 357.3	1 497.4	369.0	35.3	214.4	1 213.4	1 193.6	384.4	182.7	3 223.7
2002										
April	465.0	520.1	140.0	11.3	77.7	417.7	418.4	140.7	59.2	1 125.1
May	481.5	495.0	135.7	10.9	74.0	400.8	423.2	144.8	58.4	1 112.2
June	409.6	463.5	126.9	11.2	68.4	368.1	379.0	112.3	60.9	1 000.0
<i>June quarter</i>	1 356.0	1 478.7	402.6	33.4	220.2	1 186.7	1 220.7	397.9	178.5	3 237.3
ROOM OCCUPANCY RATES (%)										
2001										
<i>June quarter</i>	59.6	50.1	53.2	32.7	46.4	51.9	62.5	61.3	35.5	54.1
2002										
April	63.8	53.8	61.7	32.1	48.7	55.6	66.6	69.6	40.7	58.5
May	63.9	49.6	57.9	30.0	44.9	51.6	65.2	69.3	38.9	56.0
June	56.2	48.0	55.9	31.9	42.8	49.0	60.3	55.5	41.9	52.0
<i>June quarter</i>	61.3	50.4	58.5	31.3	45.4	52.1	64.0	64.9	40.5	55.5
GUEST NIGHTS ('000)										
2001										
<i>June quarter</i>	2 150.7	2 604.1	717.9	53.6	389.5	2 175.7	1 928.4	606.5	319.0	5 472.6
2002										
April	746.6	943.7	290.8	18.2	142.4	762.7	719.0	231.8	106.9	1 981.1
May	730.1	821.8	252.3	17.1	126.6	675.1	667.2	218.3	99.9	1 804.2
June	655.7	802.5	253.1	19.6	126.1	652.8	624.4	177.4	110.9	1 711.2
<i>June quarter</i>	2 132.4	2 567.9	796.2	54.9	395.1	2 090.6	2 010.7	627.5	317.8	5 496.5
BED OCCUPANCY RATES (%)										
2001										
<i>June quarter</i>	38.1	29.4	31.6	14.1	28.6	31.9	36.7	42.4	20.8	32.6
2002										
April	41.9	33.1	40.3	14.9	30.8	35.0	42.3	51.0	24.2	37.0
May	39.6	27.9	33.9	13.5	26.5	30.0	38.0	46.4	21.9	32.6
June	36.8	28.1	35.1	16.0	27.3	30.0	36.8	39.0	25.1	32.0
<i>June quarter</i>	39.4	29.7	36.4	14.8	28.2	31.7	39.0	45.5	23.7	33.8

(a) Comprising establishments with 15 or more rooms or units. See Explanatory Notes, paragraph 7.

STAR GRADING

Period	Licensed hotels with facilities	Motels and guest houses	Serviced apartments	1	2	3	4	5	Ungraded	Total
GUEST ARRIVALS ('000)										
2001										
June quarter	917.2	1 583.3	233.5	31.8	234.5	1 201.1	875.3	250.4	140.8	2 733.9
2002										
April	304.3	587.2	92.4	12.3	88.3	443.2	309.5	82.9	47.8	983.9
May	309.3	514.6	85.1	12.2	77.5	391.2	300.4	82.9	44.9	909.1
June	282.7	504.9	84.2	13.2	75.5	378.9	281.6	72.3	50.3	871.8
June quarter	896.2	1 606.7	261.8	37.6	241.3	1 213.3	891.4	238.1	143.1	2 764.7
AVERAGE LENGTH OF STAY (days)										
2001										
June quarter	2.3	1.6	3.1	1.7	1.7	1.8	2.2	2.4	2.3	2.0
2002										
June quarter	2.4	1.6	3.0	1.5	1.6	1.7	2.3	2.6	2.2	2.0
TAKINGS FROM ACCOMMODATION (\$'000)										
2001										
June quarter	203 743	132 209	52 316	2 662	13 724	109 444	162 684	84 418	15 337	388 268
2002										
April	70 875	46 401	19 591	737	5 059	36 789	55 831	32 935	5 517	136 867
May	75 434	43 016	18 429	687	4 620	34 847	56 795	34 646	5 285	136 879
June	58 847	41 087	17 033	1 026	4 281	32 265	49 064	24 597	5 734	116 967
June quarter	205 156	130 504	55 053	2 450	13 960	103 901	161 690	92 177	16 535	390 713
AVERAGE TAKINGS PER ROOM NIGHT OCCUPIED (\$)										
2001										
June quarter	150.1	88.3	141.8	75.4	64.0	90.2	136.3	219.6	84.0	120.4
2002										
April	152.4	89.2	139.9	65.4	65.1	88.1	133.4	234.0	93.3	121.7
May	156.7	86.9	135.8	63.1	62.4	86.9	134.2	239.2	90.5	123.1
June	143.7	88.6	134.2	91.4	62.6	87.6	129.5	219.0	94.1	117.0
June quarter	151.3	88.3	136.7	73.4	63.4	87.6	132.5	231.7	92.6	120.7
AVERAGE TAKINGS PER AVAILABLE ROOM NIGHT (\$)										
2001										
June quarter	89.4	44.3	75.4	24.6	29.7	46.9	85.1	134.6	29.8	65.2
2002										
April	97.2	48.0	86.3	21.0	31.7	49.0	88.8	162.8	37.9	71.2
May	100.2	43.1	78.6	18.9	28.0	44.9	87.5	165.8	35.2	68.9
June	80.7	42.5	75.0	29.2	26.8	43.0	78.1	121.6	39.4	60.9
June quarter	92.8	44.5	80.0	23.0	28.8	45.6	84.8	150.2	37.5	67.0

(a) Comprising establishments with 15 or more rooms or units. See Explanatory Notes, paragraph 7.

4

HOTELS, MOTELS, GUEST HOUSES AND SERVICED APARTMENTS (a)—Vic.

STAR GRADING

<i>Period</i>	<i>Licensed hotels with facilities</i>	<i>Motels and guest houses</i>	<i>Serviced apartments</i>	1	2	3	4	5	<i>Ungraded</i>	<i>Total</i>
ESTABLISHMENTS, CAPACITY AND EMPLOYMENT (number)										
June quarter 2001										
Establishments	128	494	83	8	68	369	201	20	39	705
Guest rooms	12 165	15 501	4 629	259	1 720	11 545	12 988	4 184	1 599	32 295
Bed spaces	28 760	45 097	14 009	741	5 307	33 079	34 753	9 205	4 781	87 866
Persons employed	14 659	5 606	1 743	81	692	4 192	7 026	9 160	857	22 008
June quarter 2002										
Establishments	131	494	87	8	64	373	205	20	42	712
Guest rooms	12 572	15 480	4 842	315	1 676	11 767	13 102	4 174	1 860	32 894
Bed spaces	29 892	44 855	14 790	907	5 134	33 317	35 348	9 316	5 515	89 537
Persons employed	14 169	5 332	1 707	105	687	4 194	6 408	8 840	974	21 208
ROOM NIGHTS OCCUPIED ('000)										
2001										
<i>June quarter</i>	683.4	657.4	278.7	9.3	49.5	507.3	733.5	244.9	75.0	1 619.6
2002										
April	232.4	240.6	97.3	5.2	18.8	184.7	249.8	82.5	29.3	570.3
May	230.1	222.1	90.0	4.8	15.9	166.0	242.2	85.6	27.6	542.1
June	208.6	198.6	87.8	4.9	14.6	151.3	221.8	76.8	25.6	495.0
<i>June quarter</i>	671.1	661.3	275.1	14.9	49.3	502.0	713.7	244.9	82.5	1 607.4
ROOM OCCUPANCY RATES (%)										
2001										
<i>June quarter</i>	61.7	46.6	66.2	39.6	31.6	48.3	62.1	64.3	51.6	55.1
2002										
April	61.6	51.8	67.0	54.6	37.4	52.3	63.5	65.9	52.5	57.8
May	59.0	46.3	59.9	49.5	30.6	45.5	59.6	66.1	47.9	53.2
June	55.3	42.8	60.4	51.4	29.1	42.9	56.4	61.3	45.9	50.2
<i>June quarter</i>	58.7	46.9	62.4	51.8	32.3	46.9	59.9	64.5	48.8	53.7
GUEST NIGHTS ('000)										
2001										
<i>June quarter</i>	1 047.2	1 138.1	514.0	16.2	89.8	908.6	1 186.5	364.4	133.8	2 699.3
2002										
April	355.3	424.9	186.5	9.5	34.6	333.2	415.5	121.4	52.6	966.7
May	335.3	368.7	157.1	9.0	27.9	279.8	375.9	121.1	47.4	861.1
June	318.8	338.6	162.2	8.3	25.6	262.5	362.4	114.5	46.4	819.6
<i>June quarter</i>	1 009.4	1 132.2	505.8	26.7	88.2	875.5	1 153.7	357.0	146.3	2 647.3
BED OCCUPANCY RATES (%)										
2001										
<i>June quarter</i>	40.0	27.7	40.3	24.0	18.6	30.2	37.5	43.5	30.8	33.8
2002										
April	39.6	31.6	42.0	34.7	22.5	33.3	39.2	43.4	31.8	36.0
May	36.2	26.5	34.3	31.9	17.6	27.1	34.3	41.9	27.7	31.0
June	35.6	25.2	36.6	30.3	16.6	26.3	34.2	41.0	28.0	30.5
<i>June quarter</i>	37.1	27.7	37.6	32.3	18.9	28.9	35.9	42.1	29.2	32.5

(a) Comprising establishments with 15 or more rooms or units. See Explanatory Notes, paragraph 7.

4 HOTELS, MOTELS, GUEST HOUSES AND SERVICED APARTMENTS (a)—Vic. *continued*

STAR GRADING

Period	Licensed hotels with facilities	Motels and guest houses	Serviced apartments	1	2	3	4	5	Ungraded	Total
GUEST ARRIVALS ('000)										
2001										
June quarter	511.7	666.0	152.4	11.4	53.9	483.5	564.6	167.5	49.3	1 330.1
2002										
April	176.7	250.4	55.4	8.5	20.2	178.9	202.6	52.4	19.9	482.5
May	170.7	217.9	50.4	8.0	16.1	152.1	190.4	53.5	18.9	439.1
June	164.7	201.8	51.5	7.5	15.2	144.0	180.5	52.2	18.6	418.0
June quarter	512.2	670.2	157.3	24.1	51.5	475.1	573.4	158.1	57.5	1 339.6
AVERAGE LENGTH OF STAY (days)										
2001										
June quarter	2.0	1.7	3.4	1.4	1.7	1.9	2.1	2.2	2.7	2.0
2002										
June quarter	2.0	1.7	3.2	1.1	1.7	1.8	2.0	2.3	2.5	2.0
TAKINGS FROM ACCOMMODATION (\$'000)										
2001										
June quarter	102 671	60 679	39 207	588	3 098	44 482	94 383	49 875	10 131	202 556
2002										
April	33 221	21 832	13 447	304	1 262	16 023	31 314	15 898	3 699	68 500
May	33 396	19 761	12 270	273	1 047	13 935	30 131	16 480	3 562	65 428
June	29 336	17 908	11 831	267	1 017	12 978	27 388	14 119	3 307	59 075
June quarter	95 954	59 501	37 549	843	3 326	42 937	88 833	46 497	10 568	193 004
AVERAGE TAKINGS PER ROOM NIGHT OCCUPIED (\$)										
2001										
June quarter	150.2	92.3	140.7	63.0	62.6	87.7	128.7	203.7	135.0	125.1
2002										
April	143.0	90.7	138.3	58.9	67.2	86.8	125.4	192.6	126.3	120.1
May	145.1	89.0	136.4	56.4	65.9	83.9	124.4	192.6	128.9	120.7
June	140.7	90.2	134.7	54.9	69.4	85.8	123.5	183.8	129.2	119.4
June quarter	143.0	90.0	136.5	56.8	67.4	85.5	124.5	189.8	128.1	120.1
AVERAGE TAKINGS PER AVAILABLE ROOM NIGHT (\$)										
2001										
June quarter	92.7	43.0	93.1	25.0	19.8	42.3	79.9	131.0	69.6	68.9
2002										
April	88.1	47.0	92.6	32.2	25.1	45.4	79.7	127.0	66.3	69.4
May	85.7	41.2	81.7	27.9	20.1	38.2	74.2	127.4	61.8	64.2
June	77.8	38.6	81.4	28.2	20.2	36.8	69.7	112.8	59.3	59.9
June quarter	83.9	42.2	85.2	29.4	21.8	40.1	74.5	122.4	62.4	64.5

(a) Comprising establishments with 15 or more rooms or units. See Explanatory Notes, paragraph 7.

STAR GRADING

Period	Licensed hotels with facilities	Motels and guest houses	Serviced apartments	1	2	3	4	5	Ungraded	Total
	ESTABLISHMENTS, CAPACITY AND EMPLOYMENT (number)									
June quarter 2001										
Establishments	167	513	274	9	96	417	293	32	107	954
Guest rooms	20 516	18 343	13 420	209	2 405	15 360	21 879	8 067	4 359	52 279
Bed spaces	62 247	54 328	46 028	571	7 302	48 765	68 256	24 819	12 890	162 603
Persons employed	20 124	6 438	3 979	97	1 063	5 858	10 491	11 415	1 617	30 541
June quarter 2002										
Establishments	170	513	286	9	95	417	317	36	95	969
Guest rooms	20 806	18 433	13 588	283	2 570	15 055	22 987	8 455	3 477	52 827
Bed spaces	62 660	53 830	46 413	766	7 863	47 497	70 389	25 954	10 434	162 903
Persons employed	20 004	6 283	3 783	88	1 077	5 647	10 430	11 545	1 283	30 070
ROOM NIGHTS OCCUPIED ('000)										
2001										
June quarter	1 119.6	943.6	657.4	7.6	96.0	771.3	1 170.8	475.7	199.2	2 720.6
2002										
April	356.5	295.9	236.3	4.1	35.3	237.0	404.0	151.3	57.0	888.7
May	368.9	314.1	223.3	4.1	36.0	241.8	413.6	154.7	56.3	906.4
June	357.0	323.1	227.8	4.3	38.1	253.0	407.7	148.5	56.3	907.8
June quarter	1 082.4	933.1	687.4	12.5	109.4	731.7	1 225.3	454.5	169.5	2 702.9
ROOM OCCUPANCY RATES (%)										
2001										
June quarter	60.0	56.6	53.8	40.0	43.9	55.2	58.8	64.8	50.2	57.2
2002										
April	57.1	53.5	58.0	48.0	45.8	52.5	58.6	59.6	54.6	56.1
May	57.2	55.0	53.0	46.8	45.2	51.8	58.0	59.0	52.2	55.3
June	57.2	58.4	55.9	50.9	49.4	56.0	59.1	58.5	54.0	57.3
June quarter	57.2	55.6	55.6	48.5	46.8	53.4	58.6	59.1	53.6	56.2
GUEST NIGHTS ('000)										
2001										
June quarter	2 061.0	1 651.7	1 586.1	14.1	167.3	1 488.6	2 345.8	890.1	393.0	5 298.9
2002										
April	673.0	523.8	574.7	6.4	64.9	451.7	839.6	291.8	117.1	1 771.5
May	640.4	521.3	486.2	6.5	62.1	433.9	766.8	270.6	108.0	1 647.9
June	652.2	572.2	523.8	6.9	68.1	483.4	801.7	274.6	113.4	1 748.2
June quarter	1 965.6	1 617.3	1 584.6	19.8	195.1	1 369.0	2 408.2	837.0	338.5	5 167.5
BED OCCUPANCY RATES (%)										
2001										
June quarter	36.4	33.5	37.9	27.1	25.2	33.6	37.8	39.4	33.5	35.8
2002										
April	35.8	32.4	41.3	27.6	27.5	31.7	39.8	37.5	37.4	36.2
May	33.0	31.2	33.8	27.4	25.5	29.5	35.1	33.6	33.4	32.6
June	34.7	35.4	37.6	30.0	28.9	33.9	38.0	35.3	36.2	35.8
June quarter	34.5	33.0	37.5	28.3	27.3	31.7	37.6	35.4	35.6	34.9

(a) Comprising establishments with 15 or more rooms or units. See Explanatory Notes, paragraph 7.

5

HOTELS, MOTELS, GUEST HOUSES AND SERVICED APARTMENTS (a)—Qld *continued*

STAR GRADING

Period	Licensed hotels with facilities	Motels and guest houses	Serviced apartments	1	2	3	4	5	Ungraded	Total
GUEST ARRIVALS ('000)										
2001										
June quarter	757.2	829.6	385.0	4.8	94.3	636.5	815.2	295.8	125.3	1 971.8
2002										
April	241.6	255.3	138.5	3.0	31.6	193.9	264.3	101.2	41.2	635.3
May	244.6	262.7	129.3	3.1	31.8	190.2	269.4	102.0	40.0	636.6
June	249.1	287.1	138.2	3.4	35.2	213.8	275.0	104.6	42.4	674.4
June quarter	735.3	805.1	405.9	9.5	98.7	598.0	808.8	307.9	123.6	1 946.3
AVERAGE LENGTH OF STAY (days)										
2001										
June quarter	2.7	2.0	4.1	2.9	1.8	2.3	2.9	3.0	3.1	2.7
2002										
June quarter	2.7	2.0	3.9	2.1	2.0	2.3	3.0	2.7	2.7	2.7
TAKINGS FROM ACCOMMODATION (\$'000)										
2001										
June quarter	142 244	74 937	63 035	365	5 774	61 074	120 914	74 533	17 556	280 217
2002										
April	49 373	23 862	23 859	203	2 225	19 285	43 113	27 415	4 855	97 095
May	47 580	24 896	20 951	205	2 173	18 829	42 709	25 059	4 450	93 427
June	44 690	25 775	21 602	216	2 414	19 884	41 651	23 415	4 487	92 068
June quarter	141 643	74 533	66 413	624	6 813	57 999	127 473	75 889	13 793	282 590
AVERAGE TAKINGS PER ROOM NIGHT OCCUPIED (\$)										
2001										
June quarter	127.0	79.4	95.9	48.0	60.2	79.2	103.3	156.7	88.2	103.0
2002										
April	138.5	80.6	101.0	49.7	63.0	81.4	106.7	181.2	85.2	109.3
May	129.0	79.3	93.8	49.9	60.4	77.9	103.3	162.0	79.1	103.1
June	125.2	79.8	94.8	49.9	63.4	78.6	102.2	157.7	79.7	101.4
June quarter	130.9	79.9	96.6	49.9	62.3	79.3	104.0	167.0	81.4	104.6
AVERAGE TAKINGS PER AVAILABLE ROOM NIGHT (\$)										
2001										
June quarter	76.2	45.0	51.6	19.2	26.4	43.7	60.7	101.5	44.3	58.9
2002										
April	79.1	43.2	58.5	23.9	28.9	42.7	62.5	108.1	46.5	61.3
May	73.8	43.6	49.7	23.4	27.3	40.3	59.9	95.6	41.3	57.0
June	71.6	46.6	53.0	25.4	31.3	44.0	60.4	92.3	43.0	58.1
June quarter	74.8	44.4	53.7	24.2	29.1	42.3	60.9	98.6	43.6	58.8

(a) Comprising establishments with 15 or more rooms or units. See Explanatory Notes, paragraph 7.

STAR GRADING

Period	Licensed hotels with facilities	Motels and guest houses	Serviced apartments	1	2	3	4	5	Ungraded	Total
ESTABLISHMENTS, CAPACITY AND EMPLOYMENT (number)										
June quarter 2001										
Establishments	61	146	27	6	51	116	47	4	10	234
Guest rooms	4 066	5 230	1 300	143	1 505	4 439	2 975	1 263	271	10 596
Bed spaces	10 148	15 716	4 552	342	4 173	13 048	9 514	2 572	767	30 416
Persons employed	4 010	1 965	483	133	754	2 267	1 898	1 263	143	6 458
June quarter 2002										
Establishments	62	145	29	5	50	113	51	6	11	236
Guest rooms	4 364	5 234	1 357	121	1 479	4 167	3 359	1 572	257	10 955
Bed spaces	10 645	15 658	4 608	299	4 131	12 374	10 118	3 256	733	30 911
Persons employed	4 020	1 987	486	86	743	2 184	1 934	1 367	179	6 493
ROOM NIGHTS OCCUPIED ('000)										
2001										
June quarter	207.0	240.1	74.8	2.6	53.4	210.1	164.1	81.7	10.1	521.9
2002										
April	78.1	88.1	30.4	1.0	19.4	74.0	67.2	31.5	3.5	196.6
May	76.5	83.0	26.7	1.0	18.1	68.9	63.7	31.4	3.1	186.3
June	64.8	69.1	23.9	0.8	18.1	57.4	51.8	26.1	3.4	157.7
June quarter	219.4	240.2	81.0	2.9	55.6	200.3	182.8	89.0	10.0	540.6
ROOM OCCUPANCY RATES (%)										
2001										
June quarter	55.9	50.5	63.2	19.9	39.0	52.0	60.6	71.1	40.8	54.1
2002										
April	59.7	56.1	74.7	28.1	43.7	59.2	66.7	66.7	45.4	59.8
May	56.6	51.2	63.6	26.7	39.4	53.3	61.2	64.5	39.5	54.9
June	50.0	44.0	58.6	22.9	40.8	46.0	51.4	57.1	44.1	48.2
June quarter	55.4	50.4	65.6	25.9	41.3	52.8	59.8	62.8	43.0	54.3
GUEST NIGHTS ('000)										
2001										
June quarter	304.6	404.6	149.8	4.4	91.8	364.5	273.1	107.2	17.9	859.0
2002										
April	115.5	150.2	61.5	1.6	32.9	132.0	113.0	41.3	6.3	327.2
May	109.0	132.7	49.6	1.6	28.9	113.9	100.5	41.4	5.1	291.4
June	92.1	110.0	45.8	1.3	28.8	95.8	82.2	34.1	5.7	248.0
June quarter	316.6	392.9	157.0	4.6	90.7	341.7	295.7	116.8	17.1	866.6
BED OCCUPANCY RATES (%)										
2001										
June quarter	33.0	28.3	36.2	14.0	24.2	30.7	31.5	45.8	25.7	31.0
2002										
April	36.2	32.0	44.5	18.1	26.6	35.6	37.2	42.3	28.8	35.3
May	33.0	27.3	34.8	17.4	22.6	29.7	32.0	41.0	22.5	30.4
June	29.1	23.4	33.2	14.8	23.3	25.8	27.1	36.0	25.8	26.8
June quarter	32.8	27.6	37.4	16.8	24.1	30.3	32.1	39.8	25.7	30.8

(a) Comprising establishments with 15 or more rooms or units. See Explanatory Notes, paragraph 7.

STAR GRADING

<i>Period</i>	<i>Licensed hotels with facilities</i>	<i>Motels and guest houses</i>	<i>Serviced apartments</i>	<i>1</i>	<i>2</i>	<i>3</i>	<i>4</i>	<i>5</i>	<i>Ungraded</i>	<i>Total</i>
GUEST ARRIVALS ('000)										
2001										
<i>June quarter</i>	160.3	225.8	46.2	2.4	54.8	193.9	120.5	53.6	7.0	432.3
2002										
April	61.1	86.3	16.4	1.0	19.3	73.5	48.0	19.8	2.1	163.8
May	58.2	74.8	13.4	0.9	17.2	63.4	41.8	21.2	1.9	146.4
June	51.3	65.7	12.5	0.8	17.0	56.1	35.8	17.8	2.0	129.4
<i>June quarter</i>	170.6	226.8	42.3	2.7	53.6	193.0	125.5	58.9	6.1	439.6
AVERAGE LENGTH OF STAY (days)										
2001										
<i>June quarter</i>	1.9	1.8	3.2	1.8	1.7	1.9	2.3	2.0	2.6	2.0
2002										
<i>June quarter</i>	1.9	1.7	3.7	1.7	1.7	1.8	2.4	2.0	2.8	2.0
TAKINGS FROM ACCOMMODATION (\$'000)										
2001										
<i>June quarter</i>	23 849	20 289	7 959	119	3 167	16 908	19 096	12 079	728	52 096
2002										
April	8 850	7 570	3 110	41	1 141	6 019	7 582	4 474	272	19 529
May	8 753	7 085	2 660	38	1 077	5 518	7 176	4 460	230	18 498
June	6 759	5 828	2 308	33	1 120	4 536	5 630	3 332	243	14 895
<i>June quarter</i>	24 362	20 482	8 078	112	3 338	16 074	20 388	12 266	745	52 923
AVERAGE TAKINGS PER ROOM NIGHT OCCUPIED (\$)										
2001										
<i>June quarter</i>	115.2	84.5	106.4	45.8	59.3	80.5	116.4	147.9	72.4	99.8
2002										
April	113.3	86.0	102.2	40.1	58.9	81.4	112.7	142.2	77.7	99.3
May	114.4	85.3	99.5	37.5	59.6	80.1	112.6	141.9	73.1	99.3
June	104.4	84.4	96.8	39.8	61.8	79.0	108.7	127.6	71.5	94.5
<i>June quarter</i>	111.0	85.3	99.7	39.1	60.0	80.2	111.5	137.8	74.2	97.9
AVERAGE TAKINGS PER AVAILABLE ROOM NIGHT (\$)										
2001										
<i>June quarter</i>	64.5	42.6	67.3	9.1	23.1	41.9	70.5	105.1	29.5	54.0
2002										
April	67.6	48.2	76.4	11.3	25.7	48.1	75.2	94.9	35.3	59.4
May	64.7	43.7	63.2	10.0	23.5	42.7	68.9	91.5	28.9	54.5
June	52.2	37.1	56.7	9.1	25.2	36.3	55.9	72.8	31.6	45.5
<i>June quarter</i>	61.6	43.0	65.4	10.1	24.8	42.4	66.7	86.6	31.9	53.2

(a) Comprising establishments with 15 or more rooms or units. See Explanatory Notes, paragraph 7.

7

HOTELS, MOTELS, GUEST HOUSES AND SERVICED APARTMENTS (a)—WA

STAR GRADING

<i>Period</i>	<i>Licensed hotels with facilities</i>	<i>Motels and guest houses</i>	<i>Serviced apartments</i>	<i>1 and Ungraded</i>	<i>2</i>	<i>3</i>	<i>4</i>	<i>5</i>	<i>Total</i>
ESTABLISHMENTS, CAPACITY AND EMPLOYMENT (number)									
June quarter 2001									
Establishments	132	126	69	87	23	135	70	12	327
Guest rooms	9 519	5 659	3 881	2 852	776	7 445	5 626	2 360	19 059
Bed spaces	24 102	15 383	12 910	7 139	1 988	20 516	16 438	6 314	52 395
Persons employed	6 616	1 727	1 302	1 428	360	2 783	2 860	2 214	9 645
June quarter 2002									
Establishments	128	122	70	79	20	133	74	14	320
Guest rooms	9 424	5 509	4 148	2 511	664	7 399	5 830	2 677	19 081
Bed spaces	23 873	14 918	14 396	6 520	1 658	20 291	17 018	7 700	53 187
Persons employed	6 200	1 695	1 538	1 205	313	2 688	2 962	2 265	9 433
ROOM NIGHTS OCCUPIED ('000)									
2001									
<i>June quarter</i>	483.5	235.2	184.4	105.6	30.5	328.5	300.5	138.0	903.1
2002									
April	154.5	77.2	68.7	30.5	9.2	107.3	101.5	51.9	300.3
May	154.5	75.9	63.7	27.9	10.3	105.1	100.2	50.7	294.1
June	149.8	68.6	64.3	27.6	9.9	97.7	99.6	47.8	282.7
<i>June quarter</i>	458.7	221.7	196.7	86.0	29.3	310.1	301.3	150.5	877.1
ROOM OCCUPANCY RATES (%)									
2001									
<i>June quarter</i>	55.8	45.7	52.2	40.7	43.2	48.5	58.7	64.3	52.1
2002									
April	54.6	46.7	55.2	40.5	46.1	48.3	58.0	64.6	52.5
May	52.9	44.5	49.6	35.9	49.8	45.8	55.4	61.1	49.7
June	53.0	41.7	51.7	37.0	49.4	44.0	57.0	59.6	49.4
<i>June quarter</i>	53.5	44.3	52.1	37.8	48.5	46.1	56.8	61.8	50.5
GUEST NIGHTS ('000)									
2001									
<i>June quarter</i>	715.8	382.5	382.0	162.6	47.6	552.8	496.0	221.4	1 480.3
2002									
April	236.3	125.5	155.9	48.4	14.3	181.6	180.8	92.5	517.7
May	230.6	115.0	133.1	40.8	14.2	168.8	171.0	83.8	478.6
June	224.2	108.6	136.3	41.5	14.8	162.0	171.0	79.8	469.1
<i>June quarter</i>	691.1	349.0	425.3	130.6	43.3	512.4	522.8	256.2	1 465.4
BED OCCUPANCY RATES (%)									
2001									
<i>June quarter</i>	32.6	27.3	32.5	25.0	26.3	29.6	33.2	38.5	31.0
2002									
April	33.0	28.0	36.1	24.7	28.8	29.8	35.4	40.0	32.4
May	31.2	24.9	29.8	20.2	27.7	26.8	32.4	35.1	29.0
June	31.3	24.3	31.6	21.3	29.7	26.6	33.5	34.6	29.4
<i>June quarter</i>	31.8	25.7	32.5	22.1	28.7	27.8	33.8	36.6	30.3

(a) Comprising establishments with 15 or more rooms or units. See Explanatory Notes, paragraph 7.

7 HOTELS, MOTELS, GUEST HOUSES AND SERVICED APARTMENTS (a)—WA *continued*

STAR GRADING

Period	Licensed hotels with facilities	Motels and guest houses	Serviced apartments	1 and Ungraded	2	3	4	5	Total
GUEST ARRIVALS ('000)									
2001									
June quarter	329.9	182.9	119.5	67.0	21.9	244.4	219.1	79.9	632.4
2002									
April	111.1	59.0	46.6	20.8	7.0	85.0	71.5	32.4	216.6
May	109.4	54.6	39.4	18.2	6.7	79.9	68.1	30.6	203.5
June	111.3	50.6	39.5	18.7	6.7	76.6	68.3	31.1	201.4
June quarter	331.8	164.3	125.5	57.8	20.4	241.5	207.9	94.0	621.6
AVERAGE LENGTH OF STAY (days)									
2001									
June quarter	2.2	2.1	3.2	2.4	2.2	2.3	2.3	2.8	2.3
2002									
June quarter	2.1	2.1	3.4	2.3	2.1	2.1	2.5	2.7	2.4
TAKINGS FROM ACCOMMODATION (\$'000)									
2001									
June quarter	52 890	18 647	18 803	7 031	2 235	26 410	34 926	19 740	90 341
2002									
April	16 855	6 200	7 860	2 261	680	8 916	11 602	7 457	30 916
May	16 901	5 911	6 893	2 001	701	8 424	11 468	7 111	29 705
June	15 833	5 436	7 128	2 051	706	7 912	11 153	6 575	28 397
June quarter	49 589	17 548	21 881	6 314	2 087	25 252	34 223	21 142	89 018
AVERAGE TAKINGS PER ROOM NIGHT OCCUPIED (\$)									
2001									
June quarter	109.4	79.3	102.0	66.6	73.2	80.4	116.2	143.1	100.0
2002									
April	109.1	80.3	114.4	74.2	74.1	83.1	114.4	143.7	102.9
May	109.4	77.8	108.2	71.7	68.4	80.2	114.5	140.2	101.0
June	105.7	79.2	110.9	74.2	71.6	81.0	111.9	137.4	100.5
June quarter	108.1	79.1	111.2	73.4	71.3	81.4	113.6	140.5	101.5
AVERAGE TAKINGS PER AVAILABLE ROOM NIGHT (\$)									
2001									
June quarter	61.1	36.2	53.2	27.1	31.6	39.0	68.2	91.9	52.1
2002									
April	59.6	37.5	63.2	30.0	34.1	40.2	66.3	92.8	54.0
May	57.9	34.6	53.6	25.8	34.1	36.7	63.5	85.7	50.2
June	56.0	33.0	57.3	27.4	35.4	35.6	63.8	81.9	49.7
June quarter	57.8	35.1	58.0	27.7	34.5	37.5	64.5	86.8	51.3

(a) Comprising establishments with 15 or more rooms or units. See Explanatory Notes, paragraph 7.

STAR GRADING

<i>Period</i>	<i>Licensed hotels with facilities</i>	<i>Motels and guest houses</i>	<i>Serviced apartments</i>	<i>1 and ungraded</i>	<i>2</i>	<i>3</i>	<i>4 and 5</i>	<i>Total</i>
ESTABLISHMENTS, CAPACITY AND EMPLOYMENT (number)								
June quarter 2001								
Establishments	54	50	25	10	16	71	32	129
Guest rooms	2 913	1 684	881	264	514	2 634	2 066	5 478
Bed spaces	8 046	5 241	3 219	814	1 346	8 152	6 194	16 506
Persons employed	2 751	627	418	171	239	1 219	2 167	3 796
June quarter 2002								
Establishments	52	49	26	11	13	71	32	127
Guest rooms	2 879	1 648	1 030	295	454	2 620	2 188	5 557
Bed spaces	7 964	5 061	3 544	964	1 167	8 063	6 375	16 569
Persons employed	2 676	628	481	207	181	1 188	2 209	3 785
ROOM NIGHTS OCCUPIED ('000)								
2001								
<i>June quarter</i>	118.9	68.8	39.6	7.1	12.0	101.4	106.8	227.3
2002								
April	47.3	29.0	19.1	4.2	5.6	42.7	42.8	95.3
May	43.6	24.1	14.9	3.3	4.9	34.9	39.5	82.6
June	33.5	16.6	12.1	3.0	3.9	25.0	30.3	62.2
<i>June quarter</i>	124.3	69.7	46.0	10.5	14.4	102.6	112.5	240.1
ROOM OCCUPANCY RATES (%)								
2001								
<i>June quarter</i>	44.9	44.9	49.4	29.7	25.7	42.3	56.8	45.6
2002								
April	54.8	58.8	61.7	47.4	41.1	54.4	65.4	57.2
May	48.8	47.3	46.5	36.0	34.9	43.0	58.2	47.9
June	38.7	33.6	39.2	34.2	28.5	31.8	46.1	37.3
<i>June quarter</i>	47.5	46.5	49.1	39.2	34.8	43.0	56.6	47.5
GUEST NIGHTS ('000)								
2001								
<i>June quarter</i>	192.4	130.5	85.5	15.4	19.6	198.0	175.4	408.4
2002								
April	77.2	53.4	42.0	9.5	8.3	84.0	70.8	172.6
May	64.1	42.1	28.2	6.6	6.9	62.0	59.0	134.5
June	51.9	30.2	25.8	7.2	5.1	47.9	47.8	108.0
<i>June quarter</i>	193.2	125.7	96.0	23.3	20.3	193.9	177.6	415.0
BED OCCUPANCY RATES (%)								
2001								
<i>June quarter</i>	26.3	27.4	29.2	20.9	16.0	26.7	31.1	27.2
2002								
April	32.3	35.3	39.5	32.9	23.8	34.7	37.1	34.8
May	26.0	26.8	25.7	22.0	19.1	24.8	29.8	26.2
June	21.7	19.9	24.3	24.8	14.6	19.8	25.0	21.7
<i>June quarter</i>	26.7	27.3	29.8	26.5	19.1	26.4	30.6	27.5

(a) Comprising establishments with 15 or more rooms or units. See Explanatory Notes, paragraph 7.

STAR GRADING

Period	Licensed hotels with facilities	Motels and guest houses	Serviced apartments	1 and ungraded	2	3	4 and 5	Total
GUEST ARRIVALS ('000)								
2001								
June quarter	104.9	72.7	37.5	8.1	11.6	111.4	84.0	215.2
2002								
April	43.6	30.3	18.1	4.7	4.2	48.4	34.8	92.1
May	35.5	22.8	12.8	3.3	2.7	34.9	30.3	71.2
June	28.6	16.4	10.7	3.1	2.0	25.7	24.8	55.6
June quarter	107.8	69.5	41.6	11.2	8.8	109.0	89.8	218.8
AVERAGE LENGTH OF STAY (days)								
2001								
June quarter	1.8	1.8	2.3	1.9	1.7	1.8	2.1	1.9
2002								
June quarter	1.8	1.8	2.3	2.1	2.3	1.8	2.0	1.9
TAKINGS FROM ACCOMMODATION (\$'000)								
2001								
June quarter	11 301	6 057	4 398	611	661	8 001	12 483	21 755
2002								
April	4 297	2 551	2 159	380	296	3 519	4 811	9 006
May	3 965	2 036	1 699	282	233	2 746	4 439	7 701
June	2 876	1 419	1 296	252	175	1 952	3 212	5 591
June quarter	11 139	6 006	5 153	914	704	8 217	12 463	22 298
AVERAGE TAKINGS PER ROOM NIGHT OCCUPIED (\$)								
2001								
June quarter	95.0	88.0	111.1	85.5	55.1	78.9	116.9	95.7
2002								
April	90.9	88.1	113.2	90.6	52.9	82.3	112.5	94.5
May	91.0	84.3	114.4	85.7	47.5	78.7	112.4	93.2
June	86.0	85.5	107.0	83.2	45.0	78.2	106.1	89.9
June quarter	89.6	86.2	111.9	86.9	49.0	80.1	110.7	92.9
AVERAGE TAKINGS PER AVAILABLE ROOM NIGHT (\$)								
2001								
June quarter	42.6	39.5	54.9	25.4	14.1	33.4	66.4	43.6
2002								
April	49.7	51.8	69.9	43.0	21.7	44.8	73.5	54.1
May	44.4	39.9	53.2	30.8	16.6	33.8	65.4	44.7
June	33.3	28.7	41.9	28.5	12.8	24.8	48.9	33.5
June quarter	42.5	40.1	55.0	34.1	17.0	34.5	62.7	44.1

(a) Comprising establishments with 15 or more rooms or units. See Explanatory Notes, paragraph 7.

STAR GRADING

Period	Licensed hotels with facilities	Motels and guest houses	Serviced apartments	1 and Ungraded	2	3	4 and 5	Total
ESTABLISHMENTS, CAPACITY AND EMPLOYMENT (number)								
June quarter 2001								
Establishments	23	50	17	22	19	33	16	90
Guest rooms	1 935	3 155	1 150	719	774	2 465	2 282	6 240
Bed spaces	5 469	9 540	3 723	2 006	2 372	7 634	6 720	18 732
Persons employed	1 864	1 134	396	291	260	1 004	1 839	3 394
June quarter 2002								
Establishments	23	49	17	22	19	32	16	89
Guest rooms	1 975	3 189	1 133	781	773	2 459	2 284	6 297
Bed spaces	5 332	9 615	3 696	2 109	2 403	7 613	6 518	18 643
Persons employed	1 756	1 097	374	279	262	983	1 703	3 227
ROOM NIGHTS OCCUPIED ('000)								
2001								
June quarter	113.2	157.0	67.6	28.9	33.6	125.0	150.3	337.9
2002								
April	34.9	44.0	17.1	9.3	9.1	36.9	40.7	96.1
May	39.2	49.4	21.7	11.0	11.4	38.9	49.1	110.3
June	38.3	51.6	24.7	12.0	12.5	40.1	49.9	114.5
June quarter	112.4	145.0	63.5	32.3	33.0	115.9	139.8	320.9
ROOM OCCUPANCY RATES (%)								
2001								
June quarter	64.3	54.7	64.6	44.2	47.7	55.7	72.4	59.5
2002								
April	58.9	46.0	50.3	39.9	39.4	50.0	59.5	50.8
May	64.0	50.0	61.9	45.4	47.4	51.0	69.4	56.5
June	64.6	53.9	72.5	51.0	53.9	54.4	72.9	60.6
June quarter	62.5	50.0	61.6	45.4	46.9	51.8	67.3	56.0
GUEST NIGHTS ('000)								
2001								
June quarter	178.8	267.8	131.8	52.7	57.6	228.0	240.1	578.5
2002								
April	55.9	76.7	32.7	16.2	14.3	70.5	64.3	165.2
May	60.2	82.2	39.8	19.2	17.7	70.1	75.2	182.2
June	61.1	89.3	47.6	21.2	20.3	76.2	80.3	198.0
June quarter	177.2	248.1	120.0	56.6	52.2	216.8	219.8	545.3
BED OCCUPANCY RATES (%)								
2001								
June quarter	35.9	30.8	38.9	28.9	26.7	32.8	39.3	33.9
2002								
April	35.0	26.6	29.5	25.6	19.8	30.9	32.9	29.5
May	36.4	27.6	34.7	29.3	23.7	29.7	37.2	31.5
June	38.2	31.0	42.9	33.5	28.1	33.4	41.1	35.4
June quarter	36.5	28.4	35.7	29.5	23.9	31.3	37.1	32.1

(a) Comprising establishments with 15 or more rooms or units. See Explanatory Notes, paragraph 7.

STAR GRADING

<i>Period</i>	<i>Licensed hotels with facilities</i>	<i>Motels and guest houses</i>	<i>Serviced apartments</i>	<i>1 and Ungraded</i>	<i>2</i>	<i>3</i>	<i>4 and 5</i>	<i>Total</i>
GUEST ARRIVALS ('000)								
2001								
<i>June quarter</i>	95.5	144.2	45.1	24.1	34.5	122.5	103.7	284.8
2002								
April	33.2	45.7	11.4	7.2	8.4	41.1	33.5	90.3
May	33.1	47.2	13.6	8.4	9.8	39.5	36.2	94.0
June	32.8	51.0	14.9	9.6	11.6	41.1	36.5	98.8
<i>June quarter</i>	99.2	143.9	39.9	25.3	29.8	121.7	106.2	283.0
AVERAGE LENGTH OF STAY (days)								
2001								
<i>June quarter</i>	1.9	1.9	2.9	2.2	1.7	1.9	2.3	2.0
2002								
<i>June quarter</i>	1.8	1.7	3.0	2.2	1.8	1.8	2.1	1.9
TAKINGS FROM ACCOMMODATION (\$'000)								
2001								
<i>June quarter</i>	15 429	15 502	8 111	2 188	2 574	14 987	19 291	39 041
2002								
April	4 781	4 577	1 676	657	636	4 472	5 269	11 034
May	5 181	4 963	2 450	860	859	4 543	6 332	12 594
June	5 002	5 231	2 777	1 020	960	4 712	6 319	13 011
<i>June quarter</i>	14 964	14 771	6 903	2 537	2 455	13 728	17 919	36 639
AVERAGE TAKINGS PER ROOM NIGHT OCCUPIED (\$)								
2001								
<i>June quarter</i>	136.3	98.7	120.0	75.7	76.6	119.9	128.3	115.6
2002								
April	136.9	103.9	98.1	70.4	69.7	121.3	129.3	114.9
May	132.2	100.5	112.7	78.2	75.7	116.9	128.9	114.2
June	130.6	101.4	112.7	85.3	76.7	117.4	126.5	113.6
<i>June quarter</i>	133.1	101.9	108.7	78.5	74.4	118.5	128.2	114.2
AVERAGE TAKINGS PER AVAILABLE ROOM NIGHT (\$)								
2001								
<i>June quarter</i>	87.6	54.0	77.5	33.4	36.6	66.8	92.9	68.8
2002								
April	80.7	47.8	49.3	28.1	27.4	60.6	76.9	58.4
May	84.6	50.2	69.7	35.5	35.8	59.6	89.4	64.5
June	84.4	54.7	81.7	43.5	41.4	63.9	92.2	68.9
<i>June quarter</i>	83.3	50.9	67.0	35.7	34.9	61.3	86.2	63.9

(a) Comprising establishments with 15 or more rooms or units. See Explanatory Notes, paragraph 7.

STAR GRADING

<i>Period</i>	<i>Licensed hotels with facilities</i>	<i>Motels and guest houses</i>	<i>Serviced apartments</i>	<i>1 and ungraded</i>	<i>2</i>	<i>3</i>	<i>4 and 5</i>	<i>Total</i>
ESTABLISHMENTS, CAPACITY AND EMPLOYMENT (number)								
June quarter 2001								
Establishments	15	25	20	8	7	21	24	60
Guest rooms	1 903	1 686	1 520	368	479	1 484	2 778	5 109
Bed spaces	4 835	5 199	5 193	1 152	1 584	4 587	7 904	15 227
Persons employed	1 278	551	430	96	88	526	1 549	2 259
June quarter 2002								
Establishments	14	27	19	9	7	20	24	60
Guest rooms	1 867	1 854	1 450	464	446	1 444	2 817	5 171
Bed spaces	4 566	5 731	4 844	1 427	1 413	4 466	7 835	15 141
Persons employed	1 300	637	449	128	86	538	1 634	2 386
ROOM NIGHTS OCCUPIED ('000)								
2001								
<i>June quarter</i>	128.9	94.3	95.5	19.2	26.0	86.7	186.9	318.7
2002								
April	35.9	30.6	29.7	7.9	7.7	24.1	56.5	96.2
May	39.9	32.6	31.1	8.0	7.7	23.9	64.1	103.7
June	38.2	30.1	29.3	8.5	7.2	23.1	59.0	97.7
<i>June quarter</i>	114.1	93.3	90.2	24.4	22.5	71.0	179.6	297.6
ROOM OCCUPANCY RATES (%)								
2001								
<i>June quarter</i>	74.4	61.5	69.1	57.4	59.6	64.2	73.9	68.6
2002								
April	64.1	55.0	68.3	57.1	57.3	55.6	66.9	62.0
May	69.0	56.7	69.3	56.0	55.3	53.3	73.4	64.7
June	68.3	54.1	67.4	60.7	53.7	53.2	69.8	63.0
<i>June quarter</i>	67.2	55.3	68.3	57.9	55.4	54.0	70.1	63.2
GUEST NIGHTS ('000)								
2001								
<i>June quarter</i>	203.5	166.5	184.8	37.3	52.7	163.0	301.8	554.8
2002								
April	56.7	52.7	58.2	13.6	15.2	45.7	93.0	167.5
May	58.2	53.7	55.9	14.6	13.4	42.7	97.2	167.8
June	56.5	54.8	54.4	16.0	14.8	42.8	92.1	165.7
<i>June quarter</i>	171.4	161.3	168.5	44.2	43.4	131.3	282.2	501.1
BED OCCUPANCY RATES (%)								
2001								
<i>June quarter</i>	46.2	35.2	39.1	35.6	36.6	39.0	42.0	40.0
2002								
April	41.4	30.7	40.0	31.8	35.9	34.1	39.6	36.9
May	41.1	30.2	37.2	32.9	30.5	30.9	40.0	35.8
June	41.3	31.9	37.4	37.4	34.8	32.0	39.2	36.5
<i>June quarter</i>	41.2	30.9	38.2	34.0	33.7	32.3	39.6	36.4

(a) Comprising establishments with 15 or more rooms or units. See Explanatory Notes, paragraph 7.

STAR GRADING

<i>Period</i>	<i>Licensed hotels with facilities</i>	<i>Motels and guest houses</i>	<i>Serviced apartments</i>	<i>1 and ungraded</i>	<i>2</i>	<i>3</i>	<i>4 and 5</i>	<i>Total</i>
GUEST ARRIVALS ('000)								
2001								
<i>June quarter</i>	107.1	83.9	51.6	13.0	18.5	73.5	137.6	242.6
2002								
April	33.4	24.8	16.9	5.4	5.5	20.1	44.0	75.1
May	35.8	24.4	14.2	5.4	4.5	18.7	45.8	74.4
June	34.5	24.0	14.5	5.8	4.8	18.9	43.4	73.0
<i>June quarter</i>	103.7	73.2	45.7	16.7	14.7	57.8	133.3	222.5
AVERAGE LENGTH OF STAY (days)								
2001								
<i>June quarter</i>	1.9	2.0	3.6	2.9	2.8	2.2	2.2	2.3
2002								
<i>June quarter</i>	1.7	2.2	3.7	2.6	2.9	2.3	2.1	2.3
TAKINGS FROM ACCOMMODATION (\$'000)								
2001								
<i>June quarter</i>	17 809	8 287	10 965	1 593	1 792	7 666	26 010	37 062
2002								
April	4 647	2 586	3 351	603	522	2 204	7 255	10 584
May	5 238	2 701	3 516	602	492	2 220	8 141	11 455
June	4 930	2 577	3 345	625	476	2 175	7 576	10 852
<i>June quarter</i>	14 815	7 864	10 212	1 830	1 490	6 599	22 971	32 890
AVERAGE TAKINGS PER ROOM NIGHT OCCUPIED (\$)								
2001								
<i>June quarter</i>	138.1	87.9	114.8	82.9	69.0	88.4	139.2	116.3
2002								
April	129.4	84.5	112.8	76.0	68.1	91.6	128.3	110.0
May	131.2	82.9	112.9	74.8	64.3	93.1	127.0	110.5
June	128.9	85.6	114.1	73.9	66.3	94.3	128.4	111.1
<i>June quarter</i>	129.8	84.3	113.3	74.9	66.2	93.0	127.9	110.5
AVERAGE TAKINGS PER AVAILABLE ROOM NIGHT (\$)								
2001								
<i>June quarter</i>	102.8	54.0	79.3	47.6	41.1	56.8	102.9	79.7
2002								
April	83.0	46.5	77.0	43.3	39.0	50.9	85.8	68.2
May	90.5	47.0	78.2	41.8	35.6	49.6	93.2	71.5
June	88.0	46.3	76.9	44.9	35.6	50.2	89.6	70.0
<i>June quarter</i>	87.2	46.6	77.4	43.3	36.7	50.2	89.6	69.9

(a) Comprising establishments with 15 or more rooms or units. See Explanatory Notes, paragraph 7.

Period	South Coast	Illawarra	Sydney	Snowy Mountains	Capital Country	The Murray	Riverina	Explorer Country
ESTABLISHMENTS, CAPACITY AND EMPLOYMENT (number)								
June quarter 2001								
Establishments	81	33	297	59	68	99	67	121
Guest rooms	1 989	1 124	33 629	2 357	2 141	2 873	1 896	3 519
Bed spaces	6 173	3 515	83 960	9 335	6 267	9 038	5 647	10 689
Persons employed	623	629	22 053	867	861	909	666	1 215
June quarter 2002								
Establishments	82	32	288	57	67	98	69	120
Guest rooms	2 006	1 110	32 004	2 280	2 110	2 836	1 950	3 577
Bed spaces	6 061	3 625	78 790	8 855	6 002	8 872	5 764	10 641
Persons employed	656	628	20 521	739	867	924	642	1 187
ROOM NIGHTS OCCUPIED ('000)								
2001								
June quarter	74.1	55.1	1 866.5	37.3	103.8	130.9	94.0	165.5
2002								
April	30.3	17.5	631.0	9.9	34.0	52.3	34.5	60.2
May	25.5	17.0	647.9	8.0	32.4	43.2	33.9	56.4
June	22.3	16.4	559.8	16.2	29.8	38.7	30.3	55.9
June quarter	78.2	50.9	1 838.7	34.1	96.2	134.1	98.8	172.5
ROOM OCCUPANCY RATES (%)								
2001								
June quarter	40.9	53.9	61.0	17.4	53.3	50.1	54.5	51.7
2002								
April	50.3	52.7	65.7	14.5	53.7	61.5	59.0	56.1
May	41.1	49.4	65.3	11.3	49.5	49.1	56.1	50.9
June	37.1	49.2	58.3	23.6	47.1	45.4	51.9	52.1
June quarter	42.8	50.4	63.1	16.4	50.1	52.0	55.7	53.0
GUEST NIGHTS ('000)								
2001								
June quarter	137.5	89.9	3 026.4	86.7	183.5	240.6	151.9	294.8
2002								
April	57.4	30.0	1 044.8	20.4	60.9	101.5	59.1	111.2
May	43.6	25.6	1 009.3	15.6	54.8	75.6	51.3	93.7
June	38.0	27.2	914.1	41.3	52.5	69.8	46.9	103.5
June quarter	139.1	82.9	2 968.3	77.4	168.3	247.0	157.3	308.4
GUEST ARRIVALS ('000)								
2001								
June quarter	79.6	46.3	1 246.5	38.2	115.2	138.7	104.7	208.0
2002								
April	34.0	15.0	414.4	10.6	41.2	57.9	41.5	77.9
May	25.1	13.3	419.4	8.2	36.6	45.3	35.3	65.1
June	24.0	12.8	384.3	16.5	35.0	42.4	32.9	69.0
June quarter	83.1	41.1	1 218.1	35.3	112.7	145.6	109.7	212.0
TAKINGS FROM ACCOMMODATION (\$'000)								
2001								
June quarter	5 794	5 790	267 939	3 848	9 453	9 886	7 249	12 643
2002								
April	2 494	1 913	91 738	887	3 256	4 190	2 763	4 669
May	1 931	1 842	96 056	657	3 091	3 329	2 641	4 281
June	1 742	1 799	76 784	2 310	2 891	2 988	2 393	4 303
June quarter	6 167	5 554	264 578	3 853	9 239	10 508	7 797	13 253

<i>Period</i>	<i>Hunter</i>	<i>North Coast NSW</i>	<i>Northern Rivers Tropical NSW</i>	<i>Big Sky Country</i>	<i>The Living Outback</i>	<i>Central Coast</i>	<i>Blue Mountains</i>
ESTABLISHMENTS, CAPACITY AND EMPLOYMENT (number)							
June quarter 2001							
Establishments	100	124	76	90	38	40	33
Guest rooms	3 867	3 772	2 114	2 484	950	1 528	1 245
Bed spaces	12 221	12 144	6 621	7 425	2 779	5 144	3 517
Persons employed	2 078	1 493	646	856	294	844	991
June quarter 2002							
Establishments	100	126	74	91	38	39	32
Guest rooms	3 995	3 875	2 106	2 536	946	1 495	1 246
Bed spaces	12 478	12 205	6 634	7 620	2 721	4 843	3 418
Persons employed	2 207	1 669	648	857	275	816	932
ROOM NIGHTS OCCUPIED ('000)							
2001							
<i>June quarter</i>	164.2	163.2	92.0	114.5	43.5	57.0	62.0
2002							
April	61.5	65.7	30.6	41.3	15.8	20.2	20.2
May	63.6	58.2	32.7	39.7	16.8	18.0	19.0
June	58.2	53.2	30.7	36.3	15.0	17.8	19.3
<i>June quarter</i>	183.3	177.1	94.0	117.3	47.6	56.0	58.5
ROOM OCCUPANCY RATES (%)							
2001							
<i>June quarter</i>	46.7	47.5	47.8	50.6	50.3	41.0	54.7
2002							
April	51.3	56.5	48.4	54.3	55.5	45.0	54.0
May	51.3	48.5	50.1	50.5	57.2	38.9	49.1
June	48.5	45.7	48.6	47.7	52.9	39.7	51.7
<i>June quarter</i>	50.4	50.2	49.0	50.8	55.2	41.2	51.6
GUEST NIGHTS ('000)							
2001							
<i>June quarter</i>	295.8	307.0	169.7	193.3	71.2	112.4	111.8
2002							
April	115.1	140.5	60.1	72.9	27.2	42.3	37.6
May	109.2	106.7	59.0	66.0	27.8	32.6	33.2
June	102.9	102.8	55.6	62.5	25.3	34.1	34.6
<i>June quarter</i>	327.3	350.0	174.6	201.5	80.3	109.0	105.3
GUEST ARRIVALS ('000)							
2001							
<i>June quarter</i>	177.6	181.9	98.6	131.3	42.8	61.0	63.4
2002							
April	63.9	78.4	35.8	50.6	16.7	20.9	25.1
May	60.9	63.0	36.0	45.5	16.1	18.0	21.3
June	57.6	64.7	33.4	43.5	15.4	18.4	22.1
<i>June quarter</i>	182.4	206.0	105.1	139.6	48.2	57.2	68.6
TAKINGS FROM ACCOMMODATION (\$'000)							
2001							
<i>June quarter</i>	18 267	13 941	7 408	8 276	2 875	6 682	8 218
2002							
April	7 158	6 007	2 622	3 101	1 093	2 393	2 581
May	6 979	4 861	2 580	2 989	1 151	1 997	2 496
June	6 536	4 341	2 415	2 786	1 017	1 885	2 775
<i>June quarter</i>	20 673	15 210	7 618	8 875	3 261	6 275	7 851

Period	Melbourne	Wimmera	Mallee	Western	Western Grampians	Bendigo Loddon	Peninsula	Central Murray	Goulburn	High Country
ESTABLISHMENTS, CAPACITY AND EMPLOYMENT (number)										
June quarter 2001										
Establishments	237	6	41	52	20	31	21	21	27	70
Guest rooms	19 050	117	1 230	1 379	481	782	737	560	689	1 879
Bed spaces	47 638	335	3 709	4 199	1 384	2 354	2 016	1 623	1 999	6 834
Persons employed	16 051	29	480	707	218	352	392	147	363	767
June quarter 2002										
Establishments	242	6	41	54	19	30	20	23	27	72
Guest rooms	19 390	115	1 227	1 467	471	761	714	603	700	1 919
Bed spaces	49 166	333	3 673	4 387	1 350	2 294	1 911	1 712	1 990	6 735
Persons employed	15 200	30	459	698	194	355	396	170	362	758
ROOM NIGHTS OCCUPIED ('000)										
2001										
June quarter	1 122.4	4.1	53.5	58.5	20.9	37.8	26.1	22.0	28.7	49.7
2002										
April	374.0	1.3	20.6	24.8	8.5	13.1	9.6	10.0	10.8	19.6
May	363.9	1.3	20.0	21.0	7.1	12.4	8.9	8.5	9.5	16.5
June	339.9	1.3	18.8	16.9	6.4	12.1	7.9	8.1	9.7	13.8
June quarter	1 077.8	3.9	59.3	62.7	22.0	37.6	26.4	26.6	30.0	50.0
ROOM OCCUPANCY RATES (%)										
2001										
June quarter	64.7	38.4	47.8	46.6	47.8	53.1	38.9	43.1	45.8	29.1
2002										
April	64.3	36.8	55.8	56.4	60.3	57.5	45.0	55.1	51.3	34.1
May	60.5	37.5	52.5	46.1	48.8	52.4	40.0	45.4	43.7	27.8
June	58.4	36.6	51.0	38.4	45.0	53.1	36.7	44.9	46.3	24.0
June quarter	61.1	37.0	53.1	47.0	51.3	54.3	40.6	48.5	47.1	28.6
GUEST NIGHTS ('000)										
2001										
June quarter	1 820.5	6.5	89.5	110.4	33.2	65.5	42.1	38.8	44.8	101.8
2002										
April	611.6	2.1	35.6	47.6	13.9	24.7	16.9	17.3	16.9	40.0
May	563.8	2.3	31.8	35.6	11.0	21.2	15.7	13.5	14.1	31.6
June	551.4	1.9	31.4	29.6	10.3	21.1	15.0	13.0	14.2	30.0
June quarter	1 726.8	6.3	98.8	112.8	35.2	67.0	47.6	43.8	45.2	101.6
GUEST ARRIVALS ('000)										
2001										
June quarter	783.3	4.8	54.6	69.6	25.5	43.2	24.2	24.6	31.0	55.9
2002										
April	266.8	1.6	23.0	29.3	10.5	16.0	9.2	10.4	11.6	20.7
May	256.4	1.5	20.0	21.8	8.4	13.9	8.7	8.5	9.8	17.2
June	252.5	1.5	19.8	18.8	7.6	13.8	7.6	7.9	9.4	15.9
June quarter	775.7	4.5	62.8	70.0	26.5	43.8	25.5	26.7	30.8	53.8
TAKINGS FROM ACCOMMODATION (\$'000)										
2001										
June quarter	158 445	240	3 944	5 435	1 716	3 222	3 432	1 703	2 194	4 355
2002										
April	50 842	78	1 560	2 412	762	1 182	1 184	807	883	1 747
May	49 866	88	1 448	1 830	617	1 087	1 060	663	765	1 414
June	45 202	77	1 439	1 483	560	1 124	902	641	783	1 403
June quarter	145 909	244	4 448	5 725	1 939	3 393	3 147	2 111	2 431	4 564

Period	Lakes	Gippsland	Melbourne East	Geelong	Macedon	Spa Country	Ballarat	Central Highlands	Upper Yarra	Murray East	Phillip Island
ESTABLISHMENTS, CAPACITY AND EMPLOYMENT (number)											
June quarter 2001											
Establishments	24	35	12	23	3	5	26	14	13	13	11
Guest rooms	667	1 035	357	813	72	118	887	343	422	305	372
Bed spaces	1 960	3 045	860	2 203	163	291	2 763	1 078	1 075	932	1 405
Persons employed	225	287	369	428	74	77	497	79	263	72	131
June quarter 2002											
Establishments	23	34	13	23	3	5	25	15	11	15	11
Guest rooms	618	1 016	462	801	72	126	872	357	389	439	375
Bed spaces	1 820	2 955	1 147	2 158	163	303	2 750	1 140	1 002	1 217	1 331
Persons employed	250	327	414	409	46	129	456	102	203	113	137
ROOM NIGHTS OCCUPIED ('000)											
2001											
June quarter	22.4	32.2	11.6	32.7	2.7	5.3	38.6	13.2	12.4	12.3	12.5
2002											
April	9.0	13.3	4.4	13.2	0.5	1.9	14.4	5.4	4.2	6.4	5.4
May	6.9	14.1	5.5	12.9	0.9	1.7	13.3	5.1	4.2	5.5	3.1
June	5.2	12.3	3.9	10.7	1.0	1.6	11.0	4.0	3.1	4.4	2.9
June quarter	21.0	39.6	13.8	36.8	2.4	5.2	38.7	14.4	11.6	16.3	11.4
ROOM OCCUPANCY RATES (%)											
2001											
June quarter	36.9	34.2	35.7	44.2	40.5	49.5	47.8	42.2	32.3	44.2	36.9
2002											
April	48.3	43.5	31.4	54.9	24.5	49.7	54.9	50.1	36.3	48.8	48.1
May	35.9	44.6	38.7	51.8	39.2	43.8	49.4	46.2	34.9	40.1	26.4
June	28.1	40.3	27.9	44.7	45.0	42.8	42.2	36.9	26.7	33.1	26.1
June quarter	37.4	42.8	32.7	50.4	36.3	45.4	48.8	44.4	32.7	40.7	33.5
GUEST NIGHTS ('000)											
2001											
June quarter	40.3	49.2	17.7	52.2	3.3	9.1	78.8	25.6	20.4	21.6	28.1
2002											
April	16.1	19.6	6.5	20.1	0.6	3.3	30.9	10.8	6.8	11.4	13.7
May	10.9	19.0	7.4	20.4	1.0	2.7	25.9	9.8	6.7	9.6	7.2
June	8.4	17.2	5.7	16.3	1.1	2.9	22.6	7.2	5.0	7.7	7.7
June quarter	35.4	55.8	19.7	56.8	2.7	9.0	79.4	27.8	18.5	28.6	28.6
GUEST ARRIVALS ('000)											
2001											
June quarter	26.2	32.3	11.7	31.0	2.0	6.3	45.6	16.8	11.6	13.8	16.0
2002											
April	11.0	12.1	4.4	11.7	0.5	2.3	17.4	6.6	3.5	7.6	6.3
May	7.6	11.4	4.7	11.7	0.7	1.7	14.9	6.3	3.8	6.0	4.2
June	6.2	10.9	4.0	10.1	0.6	1.7	12.6	4.8	2.7	5.5	4.1
June quarter	24.7	34.4	13.0	33.6	1.7	5.7	44.9	17.6	10.0	19.1	14.6
TAKINGS FROM ACCOMMODATION (\$'000)											
2001											
June quarter	1 588	2 325	1 342	3 331	295	777	3 447	998	1 588	875	1 302
2002											
April	681	936	530	1 131	62	307	1 376	430	505	491	593
May	512	1 043	617	1 289	99	276	1 204	368	490	396	296
June	396	880	498	988	97	264	1 040	288	375	336	300
June quarter	1 589	2 858	1 645	3 408	258	847	3 621	1 086	1 370	1 223	1 188

Period	Gold Coast	Brisbane	Sunshine Coast	Hervey Bay/ Maryborough	Darling Downs	Bundaberg
ESTABLISHMENTS, CAPACITY AND EMPLOYMENT (number)						
June quarter 2001						
Establishments	149	162	97	42	64	25
Guest rooms	13 184	9 734	4 501	1 571	1 634	620
Bed spaces	43 572	26 945	15 388	5 376	5 182	1 878
Persons employed	8 492	6 946	2 245	724	599	175
June quarter 2002						
Establishments	147	162	101	44	63	27
Guest rooms	13 028	9 719	4 670	1 601	1 606	685
Bed spaces	42 292	26 882	16 126	5 393	4 988	2 057
Persons employed	8 354	6 547	2 181	723	599	224
ROOM NIGHTS OCCUPIED ('000)						
2001						
June quarter	699.5	593.9	173.8	59.2	76.7	31.3
2002						
April	235.2	179.9	72.1	20.0	26.6	10.7
May	218.0	211.2	62.7	21.0	27.8	11.5
June	216.0	200.8	62.9	20.8	28.0	10.6
June quarter	669.1	592.0	197.7	61.8	82.4	32.8
ROOM OCCUPANCY RATES (%)						
2001						
June quarter	58.3	67.2	42.4	41.4	51.6	55.5
2002						
April	60.2	61.7	51.4	41.7	55.1	52.1
May	54.0	70.1	43.3	42.3	55.9	54.2
June	55.3	68.9	44.9	43.3	58.1	51.5
June quarter	56.4	66.9	46.5	42.4	56.4	52.6
GUEST NIGHTS ('000)						
2001						
June quarter	1 610.3	942.0	453.7	110.0	135.8	53.9
2002						
April	549.2	289.0	188.9	37.4	46.6	18.7
May	462.2	317.8	144.1	36.9	46.4	19.6
June	475.8	320.3	150.0	38.3	49.4	18.8
June quarter	1 487.2	927.1	483.0	112.6	142.3	57.1
GUEST ARRIVALS ('000)						
2001						
June quarter	458.0	428.4	147.1	61.6	92.4	35.1
2002						
April	157.5	121.3	56.0	20.2	31.2	11.3
May	149.1	130.9	48.8	20.6	31.1	12.0
June	150.9	136.2	50.7	21.5	32.5	12.1
June quarter	457.5	388.3	155.5	62.4	94.9	35.3
TAKINGS FROM ACCOMMODATION (\$'000)						
2001						
June quarter	70 025	61 796	20 162	4 264	5 741	2 492
2002						
April	25 839	18 561	8 478	1 359	2 046	840
May	22 056	22 545	6 842	1 393	2 207	848
June	21 245	21 001	6 540	1 408	2 184	781
June quarter	69 139	62 108	21 860	4 159	6 438	2 469

Period	Fitzroy	Mackay Whitsundays (a)	Northern (a)	Tropical North Queensland	Outback	Great Barrier Reef (b)
ESTABLISHMENTS, CAPACITY AND EMPLOYMENT (number)						
June quarter 2001						
Establishments	86	52	24	48	153	52
Guest rooms	3 187	1 764	2 321	2 206	10 133	1 424
Bed spaces	9 908	5 209	8 173	6 392	30 551	4 029
Persons employed	1 586	937	1 804	1 365	5 139	529
June quarter 2002						
Establishments	85	51	27	48	159	55
Guest rooms	3 166	1 647	2 625	2 216	10 368	1 496
Bed spaces	9 549	4 779	8 922	6 455	31 188	4 272
Persons employed	1 477	821	2 178	1 295	5 119	552
ROOM NIGHTS OCCUPIED ('000)						
2001						
June quarter	166.5	86.8	102.9	126.1	532.9	70.8
2002						
April	52.4	26.4	37.9	35.4	169.9	22.3
May	53.0	27.0	35.3	42.2	170.9	25.8
June	55.3	28.3	33.2	43.1	182.1	27.0
June quarter	160.6	81.6	106.4	120.6	522.9	75.0
ROOM OCCUPANCY RATES (%)						
2001						
June quarter	57.4	54.1	48.7	62.8	57.8	54.7
2002						
April	55.1	53.4	48.1	53.2	54.6	49.6
May	54.0	52.9	43.4	61.4	53.2	55.7
June	58.2	57.2	42.1	64.8	58.5	60.1
June quarter	55.7	54.5	44.5	59.8	55.4	55.1
GUEST NIGHTS ('000)						
2001						
June quarter	274.2	136.4	222.9	201.0	1 050.8	107.8
2002						
April	85.7	43.5	84.5	58.3	336.6	33.2
May	78.9	42.7	70.8	67.5	322.2	38.8
June	92.1	48.8	74.4	74.0	362.9	43.4
June quarter	256.8	135.0	229.7	199.8	1 021.7	115.4
GUEST ARRIVALS ('000)						
2001						
June quarter	140.9	60.2	73.0	101.0	307.7	66.5
2002						
April	43.0	20.9	24.7	27.5	101.6	20.3
May	41.1	21.5	23.2	32.6	102.8	22.8
June	48.1	23.7	25.3	35.7	111.2	26.5
June quarter	132.2	66.1	73.2	95.8	315.6	69.6
TAKINGS FROM ACCOMMODATION (\$'000)						
2001						
June quarter	13 679	6 326	16 115	10 970	63 577	5 069
2002						
April	4 487	2 255	6 765	3 054	21 738	1 672
May	4 264	2 154	5 490	3 755	19 929	1 944
June	4 370	2 255	4 746	3 661	21 878	1 998
June quarter	13 121	6 664	17 001	10 470	63 546	5 614

(a) Changes in the Statistical Local Areas making up these Tourism Regions have resulted in changes to previously published figures.

(b) Includes those parts of other Tourism Regions which fall within the Great Barrier Reef geographic area. Great Barrier Reef (TR) data is not included in Queensland totals because the establishments in this Region are included in the figures for other Tourism Regions.

Period	Limestone Coast	Murray-lands	Fleurieu Peninsula	Adelaide	Adelaide Hills	Barossa	Riverland	Clare Valley	Flinders Ranges	Outback SA	Eyre Peninsula	Yorke Peninsula	Kangaroo Island
ESTABLISHMENTS, CAPACITY AND EMPLOYMENT (number)													
June quarter 2001													
Establishments	32	4	16	86	4	9	14	4	19	8	24	8	6
Guest rooms	935	96	515	5 791	132	366	507	128	652	388	769	147	170
Bed spaces	2 800	303	1 658	16 283	326	1 018	1 535	402	1 948	1 071	2 170	444	458
Persons employed	440	37	293	3 563	131	254	504	75	264	196	526	68	107
June quarter 2002													
Establishments	34	4	14	91	4	9	14	4	19	8	23	7	5
Guest rooms	978	96	497	6 195	132	364	498	128	652	385	754	126	150
Bed spaces	2 936	302	1 577	16 884	335	1 046	1 487	406	1 935	1 061	2 121	413	408
Persons employed	422	45	236	3 629	133	325	513	76	294	181	485	64	90
ROOM NIGHTS OCCUPIED ('000)													
2001													
June quarter	41.1	4.1	14.1	324.0	6.3	16.1	22.8	6.8	28.8	14.8	31.7	5.1	6.4
2002													
April	16.4	1.7	6.5	121.6	2.5	6.2	8.1	3.2	10.1	4.5	11.0	1.8	2.9
May	16.0	1.4	4.8	114.4	2.2	6.1	8.7	3.0	10.5	4.5	11.1	1.7	2.1
June	11.9	1.3	3.6	95.2	1.9	4.8	8.0	2.4	10.5	5.3	10.3	1.4	1.2
June quarter	44.3	4.3	14.9	331.3	6.5	17.1	24.7	8.5	31.1	14.2	32.4	4.9	6.2
ROOM OCCUPANCY RATES (%)													
2001													
June quarter	48.3	46.4	30.2	61.5	52.2	48.3	49.5	58.3	48.5	41.8	45.3	38.2	41.1
2002													
April	56.0	59.4	43.8	65.5	61.9	56.9	54.4	82.3	51.9	39.0	48.6	47.9	63.4
May	52.6	46.2	31.0	59.6	53.3	54.0	56.1	74.9	51.7	37.4	47.4	42.8	46.2
June	40.5	43.7	24.3	51.6	46.8	43.7	53.2	62.6	53.7	45.7	45.7	37.1	27.4
June quarter	49.8	49.7	33.0	58.9	54.0	51.6	54.6	73.3	52.4	40.7	47.3	42.6	45.6
GUEST NIGHTS ('000)													
2001													
June quarter	67.3	7.3	29.6	522.2	12.8	29.4	38.1	12.8	48.0	23.6	46.5	8.4	13.0
2002													
April	28.1	3.2	14.0	196.3	5.2	11.2	13.7	5.8	17.2	7.3	16.8	3.1	5.2
May	25.2	2.3	10.0	173.8	4.0	10.7	13.7	5.4	16.7	7.3	15.8	2.8	3.8
June	18.2	2.2	7.3	147.9	3.6	8.2	12.1	4.3	16.8	8.7	14.3	2.2	2.3
June quarter	71.5	7.6	31.3	518.0	12.8	30.1	39.5	15.6	50.6	23.4	46.8	8.1	11.3
GUEST ARRIVALS ('000)													
2001													
June quarter	41.0	5.0	17.3	222.2	6.1	18.5	25.2	8.3	32.2	14.8	29.0	5.3	7.3
2002													
April	18.3	2.3	8.5	80.9	2.3	7.1	9.2	3.9	11.2	5.1	10.4	2.0	2.5
May	14.8	1.5	5.7	74.1	2.1	6.6	8.9	3.6	10.3	5.4	10.1	1.5	1.9
June	11.7	1.5	5.0	64.8	1.8	5.2	7.7	3.0	10.6	6.1	9.2	1.7	1.1
June quarter	44.8	5.3	19.2	219.9	6.2	18.9	25.8	10.6	32.1	16.6	29.6	5.2	5.4
TAKINGS FROM ACCOMMODATION (\$'000)													
2001													
June quarter	2 979	249	1 317	36 777	654	1 721	1 581	630	1 977	1 174	2 162	333	540
2002													
April	1 310	115	577	13 442	264	703	528	299	722	365	804	120	281
May	1 204	93	406	12 858	242	604	566	294	741	360	815	113	203
June	908	86	305	9 999	205	506	527	224	769	422	745	85	113
June quarter	3 422	294	1 287	36 299	711	1 813	1 620	817	2 232	1 147	2 365	318	597

Period	South East	Goldfields	Midwest	Gascoyne	Pilbara	Kimberley	Perth	Peel	South West	Great Southern	Wheatbelt
ESTABLISHMENTS, CAPACITY AND EMPLOYMENT (number)											
June quarter 2001											
Establishments	10	25	25	11	19	27	102	8	57	21	22
Guest rooms	277	1 071	876	504	1 455	1 301	9 359	452	2 372	776	616
Bed spaces	830	2 792	2 344	1 347	3 051	3 805	25 539	1 520	7 356	2 322	1 489
Persons employed	127	447	352	188	460	566	5 582	162	1 257	286	218
June quarter 2002											
Establishments	10	22	25	11	18	27	98	7	60	21	21
Guest rooms	296	986	871	499	1 365	1 589	9 270	345	2 493	790	577
Bed spaces	909	2 596	2 387	1 326	2 863	4 597	25 785	1 221	7 734	2 351	1 418
Persons employed	130	391	352	216	494	703	5 343	138	1 149	304	213
ROOM NIGHTS OCCUPIED ('000)											
2001											
June quarter	11.4	46.2	36.7	21.4	68.5	63.6	502.9	14.3	90.9	27.6	19.6
2002											
April	4.5	13.2	11.5	8.0	19.3	18.1	167.7	4.4	37.9	9.8	6.0
May	3.8	14.3	12.2	8.7	21.2	24.7	161.2	3.5	30.9	8.0	5.6
June	3.1	13.5	11.6	7.2	20.0	28.8	154.0	3.6	28.8	7.4	4.9
June quarter	11.4	41.0	35.3	23.9	60.5	71.5	482.9	11.4	97.5	25.2	16.5
ROOM OCCUPANCY RATES (%)											
2001											
June quarter	45.3	47.4	46.0	46.7	51.8	53.7	59.1	34.8	42.1	39.1	34.9
2002											
April	50.5	44.8	44.1	53.2	47.1	37.9	60.3	42.1	50.7	41.5	34.5
May	41.2	46.7	45.3	56.5	50.2	50.1	56.1	32.7	39.9	32.8	31.5
June	35.1	45.6	44.3	48.0	48.7	60.4	55.5	34.4	38.4	31.1	28.0
June quarter	42.3	45.7	44.6	52.6	48.7	49.5	57.3	36.4	43.0	35.1	31.4
GUEST NIGHTS ('000)											
2001											
June quarter	17.9	62.2	59.3	36.3	84.4	114.4	815.3	32.9	184.9	46.3	26.4
2002											
April	7.6	19.3	18.9	14.1	22.6	31.0	283.9	9.5	85.5	16.4	8.7
May	5.7	19.5	19.3	13.6	24.5	42.8	264.3	7.2	61.5	12.5	7.7
June	4.4	19.0	18.2	11.2	24.1	52.5	256.1	7.5	57.4	12.0	6.7
June quarter	17.8	57.8	56.4	38.9	71.2	126.4	804.3	24.2	204.4	40.9	23.1
GUEST ARRIVALS ('000)											
2001											
June quarter	8.2	29.5	31.5	14.2	30.8	46.6	322.1	15.0	91.5	25.6	17.4
2002											
April	3.6	10.2	10.3	5.6	7.7	10.1	109.8	4.6	39.6	9.4	5.7
May	3.0	10.5	10.7	5.6	8.5	13.1	105.7	3.8	30.2	7.6	4.8
June	2.3	9.8	9.6	4.7	8.5	16.7	105.9	4.2	27.8	7.0	4.8
June quarter	8.8	30.5	30.6	16.0	24.8	40.0	321.5	12.5	97.6	24.0	15.3
TAKINGS FROM ACCOMMODATION (\$'000)											
2001											
June quarter	795	3 753	2 702	1 681	5 481	6 682	55 332	1 268	9 013	2 420	1 214
2002											
April	347	1 130	895	639	1 656	2 067	18 408	426	4 042	916	391
May	276	1 209	963	695	1 908	2 903	17 427	317	2 942	704	360
June	214	1 134	869	551	1 741	3 621	16 218	312	2 748	659	328
June quarter	837	3 474	2 726	1 885	5 306	8 592	52 053	1 055	9 733	2 279	1 079

Period	Greater Hobart	Southern (a)	East Coast (a)	Northern (a)	Greater Launceston	North West	West Coast
ESTABLISHMENTS, CAPACITY AND EMPLOYMENT (number)							
June quarter 2001							
Establishments	38	5	12	3	30	31	10
Guest rooms	2 056	144	448	91	1 347	976	416
Bed spaces	5 858	442	1 578	243	4 365	2 778	1 242
Persons employed	1 704	79	216	47	1 080	512	158
June quarter 2002							
Establishments	37	5	11	3	30	31	10
Guest rooms	2 156	144	426	93	1 352	970	416
Bed spaces	5 924	421	1 496	279	4 376	2 839	1 234
Persons employed	1 760	65	202	49	1 038	490	181
ROOM NIGHTS OCCUPIED ('000)							
2001							
June quarter	102.6	4.4	13.1	2.4	60.5	30.6	13.8
2002							
April	38.9	2.2	6.1	1.2	25.4	14.3	7.3
May	37.7	1.2	3.9	0.9	21.8	12.7	4.4
June	26.4	1.0	3.3	0.7	18.1	9.9	2.8
June quarter	103.1	4.3	13.3	2.8	65.3	36.8	14.5
ROOM OCCUPANCY RATES (%)							
2001							
June quarter	54.8	33.5	32.0	29.4	49.4	34.4	36.5
2002							
April	60.2	49.8	47.4	44.6	62.6	49.4	58.3
May	56.4	26.7	29.7	31.0	51.9	42.1	34.3
June	40.8	22.6	26.1	24.7	44.6	33.9	22.3
June quarter	52.5	33.0	34.3	33.4	53.0	41.8	38.2
GUEST NIGHTS ('000)							
2001							
June quarter	181.4	9.0	27.7	4.8	109.3	50.5	25.7
2002							
April	70.7	4.6	12.4	2.6	45.2	24.2	12.9
May	61.6	2.4	7.3	1.7	35.7	18.7	7.1
June	45.9	2.0	7.2	1.7	31.3	15.5	4.3
June quarter	178.2	8.9	27.0	6.1	112.2	58.4	24.2
GUEST ARRIVALS ('000)							
2001							
June quarter	77.5	6.7	20.1	3.1	57.2	32.2	18.3
2002							
April	29.5	3.7	9.4	1.8	24.5	14.2	9.0
May	26.7	1.8	5.6	1.2	20.5	11.2	4.3
June	20.5	1.3	4.5	0.9	17.5	8.4	2.6
June quarter	76.6	6.8	19.6	4.0	62.4	33.7	15.8
TAKINGS FROM ACCOMMODATION (\$'000)							
2001							
June quarter	10 703	339	1 284	204	5 465	2 756	1 004
2002							
April	3 869	182	627	97	2 368	1 323	540
May	3 884	104	358	70	1 937	1 049	299
June	2 508	84	308	54	1 600	838	199
June quarter	10 261	370	1 293	221	5 905	3 210	1 038

(a) Changes in the Statistical Local Areas making up these Tourism Regions have resulted in changes to previously published figures.

Period	Darwin	Kakadu	Arnhem	Katherine	Tablelands	Petermann	Alice Springs	MacDonnell	Daly	Canberra
ESTABLISHMENTS, CAPACITY AND EMPLOYMENT (number)										
June quarter 2001										
Establishments	34	4	3	10	7	7	22	2	1	60
Guest rooms	2 596	n.p.	n.p.	529	250	n.p.	1 610	n.p.	n.p.	5 109
Bed spaces	7 677	n.p.	n.p.	1 495	712	n.p.	4 880	n.p.	n.p.	15 227
Persons employed	1 555	n.p.	n.p.	188	64	n.p.	749	n.p.	n.p.	2 259
June quarter 2002										
Establishments	35	4	3	10	6	6	22	2	1	60
Guest rooms	2 645	n.p.	83	547	n.p.	n.p.	1 623	n.p.	n.p.	5 171
Bed spaces	7 777	n.p.	284	1 546	n.p.	n.p.	4 939	n.p.	n.p.	15 141
Persons employed	1 409	n.p.	56	194	n.p.	n.p.	772	n.p.	n.p.	2 386
ROOM NIGHTS OCCUPIED ('000)										
2001										
June quarter	157.6	n.p.	n.p.	19.9	9.0	n.p.	87.5	n.p.	n.p.	318.7
2002										
April	42.3	n.p.	0.7	6.2	n.p.	n.p.	24.9	n.p.	n.p.	96.2
May	55.9	n.p.	1.1	8.3	n.p.	n.p.	25.1	n.p.	n.p.	103.7
June	59.6	n.p.	1.2	9.2	n.p.	n.p.	25.1	n.p.	n.p.	97.7
June quarter	157.8	n.p.	3.0	23.6	n.p.	n.p.	75.0	n.p.	n.p.	297.6
ROOM OCCUPANCY RATES (%)										
2001										
June quarter	66.7	n.p.	n.p.	41.4	39.7	n.p.	59.7	n.p.	n.p.	68.6
2002										
April	53.3	n.p.	27.6	37.5	n.p.	n.p.	51.1	n.p.	n.p.	62.0
May	68.2	n.p.	41.0	49.0	n.p.	n.p.	49.8	n.p.	n.p.	64.7
June	75.2	n.p.	48.8	56.0	n.p.	n.p.	51.5	n.p.	n.p.	63.0
June quarter	65.6	n.p.	39.2	47.5	n.p.	n.p.	50.8	n.p.	n.p.	63.2
GUEST NIGHTS ('000)										
2001										
June quarter	261.1	n.p.	n.p.	37.3	15.0	n.p.	141.4	n.p.	n.p.	554.8
2002										
April	65.8	n.p.	1.1	10.7	n.p.	n.p.	43.1	n.p.	n.p.	167.5
May	86.7	n.p.	1.6	14.0	n.p.	n.p.	41.4	n.p.	n.p.	167.8
June	97.3	n.p.	1.8	15.9	n.p.	n.p.	43.4	n.p.	n.p.	165.7
June quarter	249.7	n.p.	4.4	40.7	n.p.	n.p.	127.9	n.p.	n.p.	501.1
GUEST ARRIVALS ('000)										
2001										
June quarter	103.3	n.p.	n.p.	25.2	12.3	n.p.	65.2	n.p.	n.p.	242.6
2002										
April	30.4	n.p.	0.5	7.7	n.p.	n.p.	20.5	n.p.	n.p.	75.1
May	37.5	n.p.	0.7	9.8	n.p.	n.p.	19.6	n.p.	n.p.	74.4
June	39.9	n.p.	0.8	10.9	n.p.	n.p.	20.3	n.p.	n.p.	73.0
June quarter	107.8	n.p.	2.0	28.4	n.p.	n.p.	60.4	n.p.	n.p.	222.5
TAKINGS FROM ACCOMMODATION (\$'000)										
2001										
June quarter	16 979	n.p.	n.p.	1 468	702	n.p.	7 338	n.p.	n.p.	37 062
2002										
April	4 052	n.p.	109	430	n.p.	n.p.	2 117	n.p.	n.p.	10 584
May	6 039	n.p.	164	590	n.p.	n.p.	2 166	n.p.	n.p.	11 455
June	6 568	n.p.	204	646	n.p.	n.p.	2 123	n.p.	n.p.	10 852
June quarter	16 659	n.p.	477	1 666	n.p.	n.p.	6 406	n.p.	n.p.	32 890

EXPLANATORY NOTES

INTRODUCTION

- 1** This publication contains data from the ABS quarterly Survey of Tourist Accommodation (STA). The STA is a mailout collection that completely enumerates all in-scope accommodation establishments.
- 2** From the March quarter 1998, the scope and collection strategy for the STA was changed to include only significant accommodation establishments (these are defined below).

SCOPE

- 3** On a quarterly basis, the STA includes hotels, resorts, motels, guest houses and serviced apartments with 15 or more rooms or units.
- 4** Every third year beginning with 2000, the STA expands to also include:
 - holiday flats, units and houses of letting entities with 15 or more rooms or units;
 - caravan parks with 40 or more powered sites;
 - visitor hostels with 25 or more bed spaces.
- 5** The short-term non-residential accommodation which is in scope of the STA is accommodation which is not leased, and which is provided to guests who would generally stay for periods of less than two months.
- 6** Some establishments also provide long-term residential accommodation. For hotels, motels, guest houses and serviced apartments, the amount of such activity is considered to be insignificant and is included in the data presented in this publication.

DEFINITIONS OF ACCOMMODATION ESTABLISHMENTS

- 7** The STA includes the following categories of establishments which provide predominantly short-term non-residential accommodation to the general public:
 - hotels and resorts with facilities - establishments with 15 or more rooms which are licensed to operate a public bar and which provide accommodation on a room/suite basis, with a bath/shower and toilet in most guest rooms, but which do not have full cooking facilities (i.e. hot plates and oven/microwave) in most guest rooms;
 - motels, private hotels and guest houses with facilities - establishments with 15 or more rooms which are not licensed to operate a public bar, and which provide accommodation on a room/suite basis, with a bath/shower and toilet in most guest rooms, but which do not have full cooking facilities (i.e. hot plates and oven/microwave) in most guest rooms;
 - serviced apartments - establishments with 15 or more units which mostly comprise self-contained units at the same location, and which are available on a unit/apartment basis to the general public for a minimum of one night; the units should have full cooking facilities (i.e. hot plates and oven/microwave), refrigerator and bath/shower and toilet facilities; all bed linen and towels should be provided, and daily servicing (i.e. cleaning and bed making) must be available through the on-site management, although this service need not necessarily be used.

EXPLANATORY NOTES *continued*

CLASSIFICATION CHANGES	<p>8 As a result of the separate classification of serviced apartments from the March quarter 1998, there have been several changes to definitions of accommodation units. Some units, which were formerly in categories such as hotels, motels or holiday flats, units and houses are now classified as serviced apartments. A small number of establishments which were previously classified as motels have been reclassified as holiday flats, units and houses and are therefore no longer in scope of the quarterly STA, except as described in paragraph 4.</p>
COVERAGE	<p>9 Coverage is comprehensive and from the September quarter 1999, is obtained from the Australian Automobile Association accommodation guide, supplied as an electronic file, which is updated twice yearly. This is supplemented by notification of new tourism developments and their likely opening dates in selected guides, major tourism journals and periodicals and newspapers. Periodic comparison with lists of accommodation establishments provided by the various tourism commissions and industry associations is also undertaken.</p>
DATA QUALITY	<p>10 The survey does not have a sample component and the data are not subject to sampling variability. However, other inaccuracies collectively referred to as non-sampling error may affect the data. These non-sampling errors may arise from a number of sources, including:</p> <ul style="list-style-type: none">■ errors in the reporting of data by respondents;■ errors in the process of capturing data;■ estimation for missing data; and■ definition and classification errors. <p>Every effort has been made to reduce non-sampling error to a minimum by careful design and testing of questionnaires, and efficient operating procedures and systems used to compile statistics.</p> <p>11 The June quarter 2002 response rates were:</p> <ul style="list-style-type: none">■ 94% licensed hotels■ 93% motels and guest houses■ 94% serviced apartments
TAKINGS FROM ACCOMMODATION	<p>12 From 1 July 2000, takings from accommodation include gross revenue from the provision of accommodation, including GST. Takings from meals are excluded. Where businesses are unable to provide the data inclusive of GST, it is automatically adjusted by the ABS prior to aggregation and release in output.</p>

EXPLANATORY NOTES *continued*

REGIONAL DATA

13 Survey results are aggregated to tourism regions as defined by relevant state and territory tourist commissions or equivalent organisations. Tourism regions are reviewed annually and are subject to boundary and name changes. Where changes have occurred care should be taken when making comparisons with previously published data at this level.

Details of the composition of tourism regions and major changes to tourism regions can be found in *Tourist Accommodation, Small Area Data* standard data service products for each state/territory (cat. no. 8635.n.40.001) issued quarterly. Outline maps of tourism regions are also provided in these small area data products.

ANNUAL CAPACITY DATA

14 ABS releases counts of accommodation establishments and their capacity as at the end of December each year in respect of the pre-1998 scope of the survey (but recognising serviced apartments separately) as follows:

- hotels, motels and guest houses and serviced apartments with facilities and having five or more rooms;
- holiday flats, units and houses (other than those included with serviced apartments) which are operated by owners, managers or real estate agents who have sole letting rights to at least five flats, units or houses for short term letting;
- all caravan parks regardless of size; and
- all visitor hostels regardless of size.

15 As a result of classification changes applied from March quarter 1998 onward, data will not be comparable with that previously published for particular accommodation types.

16 These counts are published annually in a quarterly issue of *Tourism Indicators, Australia* (cat. no. 8634.0).

STATISTICS AVAILABLE ON REQUEST

17 The ABS makes tourist accommodation data available on request, including statistics for past quarters, for specific areas and specific data items. For example, detailed employment statistics showing the number of full-time, part-time or casual employees may be available. Normally such data are made available on a fee for service basis.

RELATED PUBLICATIONS

18 Other ABS publications and products which may be of interest include:

Directory of Tourism Statistics, 2001 cat. no. 1130.0 (irregular)

Overseas Arrivals and Departures, Australia cat. no. 3401.0 (issued monthly)

Tourism Indicators, Australia cat. no. 8634.0 (issued quarterly)

Tourist Accommodation, Small Area Data cat. no. 8635.n.40.001 standard data service (SDS) products for each state/territory (except the ACT) (issued quarterly).

19 Current publications and other products released by the ABS are listed in the *Catalogue of Publications and Products* (cat. no. 1101.0). The catalogue is available from any ABS office or the ABS web site <<http://www.abs.gov.au>>. The ABS also issues a daily release advice on the web site which details products to be released in the week ahead.

EFFECTS OF ROUNDING

20 Where figures have been rounded, discrepancies may occur between totals and the sum of the component items.

GLOSSARY

Average length of stay Average length of stay is expressed in numbers of days and calculated by dividing *Guest nights* by *Guest arrivals*.

Bed spaces Three-quarter beds are counted as one bed space; double beds as two bed spaces. Cots are excluded.

Capacity Capacity in terms of *Guest rooms/units* or *Bed spaces* is the maximum number available to accommodate paying guests during the survey period. Capacity closed temporarily for seasonal reasons is included.

Establishments The number of hotels, motels and guest houses and serviced apartments within the scope of the survey which operated for any part of the survey period, or which closed temporarily for the quarter for seasonal reasons.

Guest arrivals The total number of paying guests counted only on the first night they stayed at the accommodation establishment during the survey period.

Guest rooms The maximum number of rooms available at each establishment during the survey period for accommodating short-term paying guests. Units and apartments within serviced apartments are treated as rooms in these survey results.

Occupancy Occupancy in terms of *Room nights* refers to the total number of nights each guest room or unit was occupied during the survey period.

Occupancy in terms of *Guest nights* refers to the total number of paying guests counted on each night they stayed at the accommodation establishment during the survey period.

Occupancy rates *Occupancy rates* represent occupancy expressed as a percentage of total capacity available during the survey period, e.g. for the period

$$\text{Room occupancy rate (\%)} = \frac{\text{Room nights occupied}}{(\text{Guest rooms}) \times (\text{No. of days in the period})} \times 100$$

providing that, for establishments closing (other than for seasonal reasons) or opening during the survey period, the denominator of the above expression includes only operating periods.

Persons employed The total number of persons working at each accommodation establishment at the end of the survey period (including working proprietors and those working on other than accommodation activities).

Room nights available The number of guest rooms/units available multiplied by the number of days for which they were available during the survey period. For establishments closing (other than for seasonal reasons) or opening during this period, operating periods only are included.

Star grading The grading of hotels, motels and guest houses with facilities and serviced apartments based on the classification system used by members of the Australian Automobile Association (AAA). The gradings are allocated according to a points system based on the amenities and facilities available to guests. Details of the grading scheme are contained in the RACV-RAASA members' publication *Accommodation Australia*, or the individual tour guides produced by members of the AAA. For the purpose of classifying establishments to a star grading in this publication, 'half' star gradings are ignored (e.g. a two and a half star grading has been shown as two star).

From the September quarter 1999, some (very few) large establishments not star graded by the AAA have been allocated a star grade by the ABS for Survey of Tourist Accommodation statistical tabulation purposes.

Takings from accommodation Since 1 July 2001, takings from accommodation include gross revenue from the provision of accommodation, including GST. Takings from meals are excluded. In cases where takings from accommodation data cannot be provided inclusive of GST the amount of GST payable is estimated and the data revised accordingly.

Prior to 1 July 2001, takings from accommodation for some jurisdictions included bed taxes. From 1 July bed taxes were abolished being replaced by GST. Takings from accommodation for each month generally represent the takings received during that month. Where payments are received in advance of, or after, the provision of accommodation to guests, the monthly figure for takings from accommodation may not necessarily bear a direct relationship to the number of guests accommodated during the month.

FOR MORE INFORMATION...

- INTERNET* **www.abs.gov.au** the ABS web site is the best place to start for access to summary data from our latest publications, information about the ABS, advice about upcoming releases, our catalogue, and Australia Now—a statistical profile.
- LIBRARY* A range of ABS publications is available from public and tertiary libraries Australia-wide. Contact your nearest library to determine whether it has the ABS statistics you require, or visit our web site for a list of libraries.
- CPI INFOLINE* For current and historical Consumer Price Index data, call 1902 981 074 (call cost 77c per minute).
- DIAL-A-STATISTIC* For the latest figures for National Accounts, Balance of Payments, Labour Force, Average Weekly Earnings, Estimated Resident Population and the Consumer Price Index call 1900 986 400 (call cost 77c per minute).

INFORMATION SERVICE

Data which have been published and can be provided within five minutes are free of charge. Our information consultants can also help you to access the full range of ABS information—ABS user-pays services can be tailored to your needs, time frame and budget. Publications may be purchased. Specialists are on hand to help you with analytical or methodological advice.

- PHONE* **1300 135 070**
- EMAIL* **client.services@abs.gov.au**
- FAX* 1300 135 211
- POST* Client Services, ABS, GPO Box 796, Sydney 1041

WHY NOT SUBSCRIBE?

ABS subscription services provide regular, convenient and prompt deliveries of ABS publications and products as they are released. Email delivery of monthly and quarterly publications is available.

- PHONE* 1300 366 323
- EMAIL* subscriptions@abs.gov.au
- FAX* 03 9615 7848
- POST* Subscription Services, ABS, GPO Box 2796Y, Melbourne 3001



2863500006020
ISSN 1031-0770

RRP \$22.00