

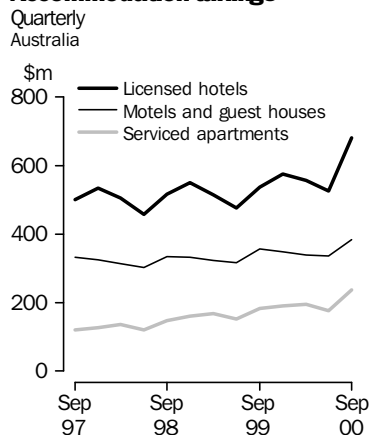


TOURIST ACCOMMODATION AUSTRALIA

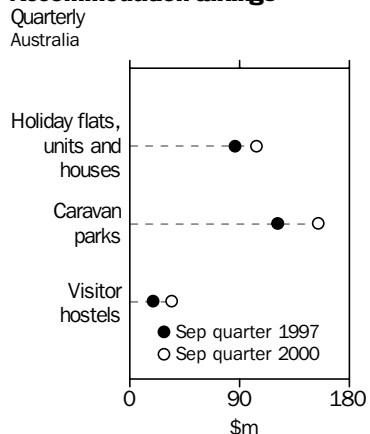
EMBARGO: 11:30AM (CANBERRA TIME) FRIDAY 15 DEC 2000

SEPTEMBER QTR KEY FIGURES

Accommodation takings



Accommodation takings



LICENSED HOTELS	Sep Qtr 1999	Sep Qtr 2000	change
Rooms available (no.)	72 265	76 607	6.0 %
Room occupancy rate (%)	64.9	63.3	-1.6 pts
Takings from accommodation (\$'000)	537 904	681 214	26.6 %
Average takings per room night occupied (\$)	125.7	153.2	27.5 %

MOTELS AND GUEST HOUSES

Rooms available (no.)	85 267	85 078	-0.2 %
Room occupancy rate (%)	56.3	53.1	-3.2 pts
Takings from accommodation (\$'000)	356 224	383 303	7.6 %
Average takings per room night occupied (\$)	80.8	92.5	11.7 %

SERVICED APARTMENTS

Rooms available (no.)	29 308	33 394	13.9 %
Room occupancy rate (%)	63.9	60.9	-3.0 pts
Takings from accommodation (\$'000)	183 666	237 641	29.4 %
Average takings per room night occupied (\$)	107.8	127.8	20.0 %

HOLIDAY FLATS, UNITS AND HOUSES

	Sep Qtr 1997	Sep Qtr 2000	change
Units, etc. available (no.)	27 418	28 232	3.0 %
Unit occupancy rate (%)	52.9	49.2	-3.7 pts
Takings from accommodation (\$'000)	86 219	104 345	21.0 %
Average takings per unit night occupied (\$)	64.6	82.0	17.4 %

CARAVAN PARKS

Sites, cabins, etc. available (no.)	253 950	245 019	-3.5 %
Site occupancy rate (%)	47.3	49.6	2.3 pts
Takings from accommodation (\$'000)	121 041	154 908	28.0 %
Average takings per site night occupied (\$)	11.0	13.9	2.9 %

VISITOR HOSTELS

Bed spaces available (no.)	30 128	40 336	33.9 %
Bed occupancy rate (%)	47.6	48.0	0.4 pts
Takings from accommodation (\$'000)	19 238	34 718	80.5 %
Average takings per guest night occupied (\$)	14.6	19.5	4.9 %

- For further information about these and related statistics contact Paull Hoffmann on 07 3222 6201 or the National Information Service on 1300 135 070.

PLEASE NOTE:
Some of the figures in this publication have been affected by the GST.
See Data Notes on page 2.

NOTES

FORTHCOMING ISSUES

ISSUE

RELEASE DATE

December Quarter 2000 23 March 2001

INTRODUCTION

For the four quarters of 2000, the scope of the Survey of Tourist Accommodation (STA) has been expanded. Over this period the following accommodation sectors will be covered:

- hotels, motels, guest houses and serviced apartments with 15 or more rooms;
- holiday flats, units and houses operated by owners, managers or real estate agents who have sole letting rights to at least 15 flats, units or houses for short term letting;
- caravan parks with 40 or more powered sites, cabins, etc; and
- visitor hostels with 25 or more bed spaces.

DATA NOTES

ABS statistical series are being impacted to varying degrees as a result of The New Tax System (TNTS), introduced in Australia from 1 July 2000. TNTS included the removal of Wholesale Sales Tax and the introduction of a Goods and Services Tax (GST). A wide range of ABS data series will reflect significant immediate and subsequent impacts.

In this publication, and in future issues, 'takings from accommodation' after 1 July 2000 will be on a GST inclusive basis. Therefore care should be taken when comparing takings data from this issue with takings data from previous issues.

There are significant increases in 'takings from accommodation' for the September quarter 2000, for the following reasons:

- From 1 July 2000 the reported figures include GST.
- The Olympics in the month of September has had an impact on demand for accommodation and on tariffs, particularly in New South Wales.

HISTORICAL COMPARISONS

Statistics for hotels, motels, guest houses and serviced apartments are presented for the last 6 quarters to allow for comparison over time. However, data for caravan parks, holiday flats, units and houses and visitor hostels are compared with the corresponding period in 1997 when the data were last collected.

DATA REVISIONS

A revision has been made to June quarter 2000 data for the number of establishments, guest rooms and takings from accommodation for licensed hotels and serviced apartments in New South Wales (and hence Australia). This is due to a classification revision made to an accommodation establishment after the release of initial estimates. Please refer to Table 1 in this issue.

SYMBOLS AND OTHER USAGES

- n.a. not available
- n.p. not available for publication but included in totals where applicable
- r revised
- .. not applicable
- nil or rounded to zero

D. Trewin
Australian Statistician

ANALYSES AND COMMENTS

HOTELS, MOTELS AND SERVICED APARTMENTS

Strong growth in supply of serviced apartments continued with rooms available up 13.9% in September quarter 2000 compared with September quarter 1999. An increase in capacity of 6.0% for licensed hotels and a decrease of 0.2% for motels and guest houses also occurred over the same period.

The total number of room nights occupied increased slightly (up 0.5%) in the September quarter 2000 for hotels, motels and serviced apartments when compared with the September quarter 1999. Because the demand for accommodation has not matched the increase in supply, room occupancy rates for these accommodation types have decreased over the same period.

Occupancy rates in licensed hotels, motels and guest houses and serviced apartments decreased nationally in September quarter 2000 when compared to September quarter 1999. The room occupancy rate for licensed hotels fell 1.6 percentage points to 63.3%. The occupancy rate for motels and guest houses (53.1%) decreased by 3.2 percentage points, while the room occupancy rate for serviced apartments dropped 3.0 percentage points to 60.9%.

Takings from accommodation for licensed hotels, motels and guest houses and serviced apartments increased significantly for each accommodation type in September quarter 2000 when compared with September quarter 1999. The average takings per room night rose from \$126 to \$153 for licensed hotels, \$81 to \$93 for motels and guest houses and from \$108 to \$128 for serviced apartments.

HOLIDAY FLATS, UNITS AND HOUSES, CARAVAN PARKS AND VISITOR HOSTELS

The availability of holiday flats, units and houses nationally in the September quarter 2000 increased by 3.0% when compared with September quarter 1997.

The capacity of caravan parks fell nationally by 3.5% between September quarter 1997 and September quarter 2000. Between September quarter 1997 and September quarter 2000 cabins in caravan parks increased from 17,517 to 23,942 and the number of on-site vans fell from 17,268 to 15,756. Other powered and unpowered sites fell by 13,844 over the same period. These changes correspond to an increase in takings over the three year period of 28.0%.

The availability of visitor hostel bed spaces nationally in the September quarter 2000 increased 33.9% when compared with September quarter 1997.

NEW SOUTH WALES AND THE OLYMPICS

While demand for accommodation across Australia increased slightly, the number of room nights occupied in New South Wales hotels, motels, guest houses and serviced apartments increased by 5.9% when compared with the September quarter 1999. Other States that showed increases in demand were Victoria (up 1.2%) and South Australia (up 1.1%). All other States showed decreases, most significantly the Northern Territory with a decrease of 9.9%.

ANALYSES AND COMMENTS

For the September quarter 2000, room occupancy rates in New South Wales were lower than those recorded in September quarter 1999 (down by 1.4 percentage points to 59.7%). However, during the month of September the occupancy rate was 66.8%, up 3.1 percentage points on the same time last year. Licensed hotels recorded the highest occupancy rate of 77.9%, followed by serviced apartments (68.7%) and motels and guest houses (58.3%).

The impact of the Olympics in New South Wales is more obvious in the results for takings from accommodation which also includes the effect of GST. When compared to September quarter 1999, takings from accommodation in New South Wales increased by 63.6% for licensed hotels, 17.1% for motels and guest houses and 81.0% for serviced apartments. The month of September accounted for 48.9% of the quarters takings. Average takings per room night occupied were \$209 compared with the average takings for the quarter of \$157 per room night occupied.

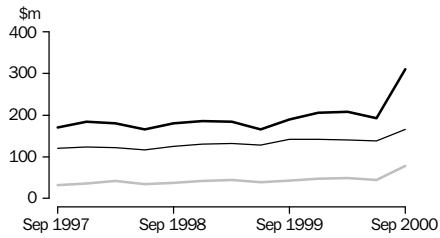
The Sydney Tourism Region (TR) experienced a 12.2% increase in room nights occupied in hotels, motels, guest houses and serviced apartments between September quarter 1999 and September quarter 2000. Room supply increased by 14.3% over the same period resulting in a 2 percentage points fall in occupancy. Takings increased by 66.6% when compared with September quarter 1999. (For a more detailed breakdown of data in Sydney TR see *Tourist Accommodation, Small Area Data New South Wales* Standard Data Service (SDS) (Cat. no. 8635.1.40.001)).

While the Sydney TR showed a decrease in occupancy rates for the September quarter (down to 69.6%), the occupancy rate in the month of September for hotels, motels, guest houses and serviced apartments was 81.0%. The occupancy rates for the month of September for holiday flats, units and houses (87.8%), caravan parks (70.5%) and visitor hostels (71.2%), were much higher than the national occupancy rates for these accommodation types.

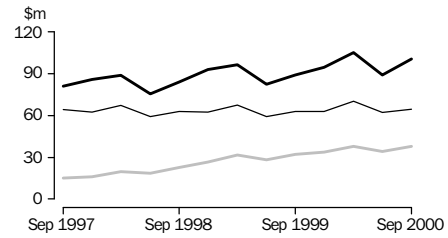
ACCOMMODATION TAKINGS

Licensed hotels
 Motels and guest houses
 Serviced apartments

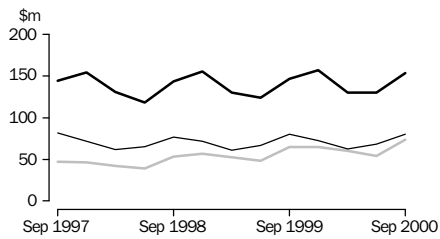
NEW SOUTH WALES



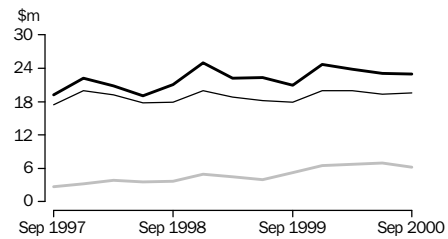
VICTORIA



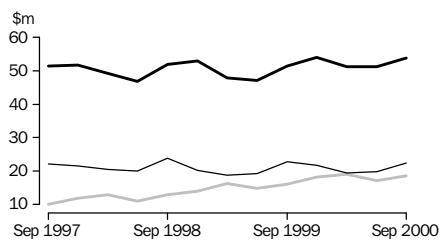
QUEENSLAND



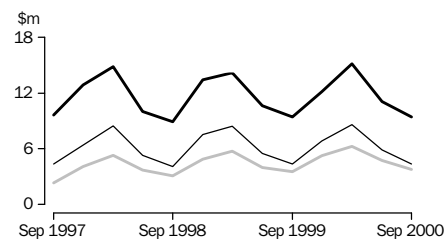
SOUTH AUSTRALIA



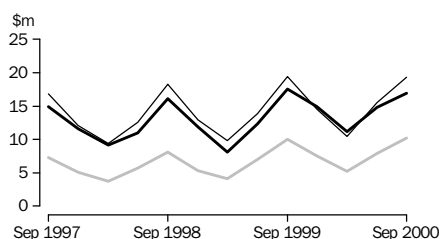
WESTERN AUSTRALIA



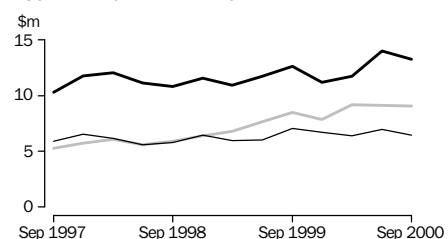
TASMANIA



NORTHERN TERRITORY



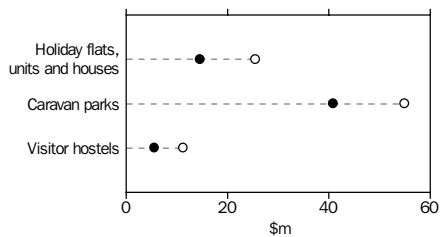
AUSTRALIAN CAPITAL TERRITORY



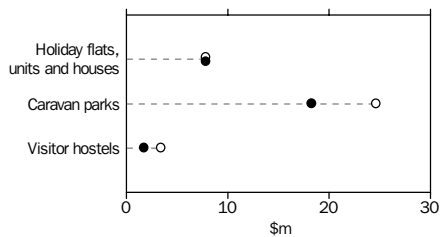
ACCOMMODATION TAKINGS

● September quarter 1997 ○ September quarter 2000

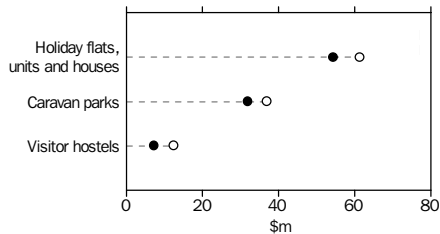
NEW SOUTH WALES



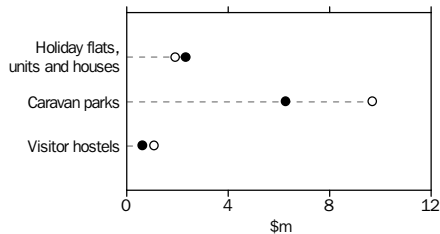
VICTORIA



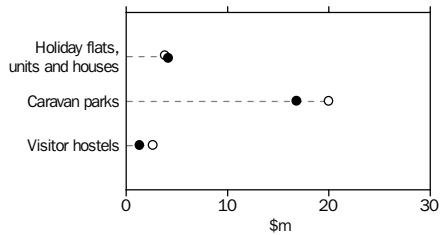
QUEENSLAND



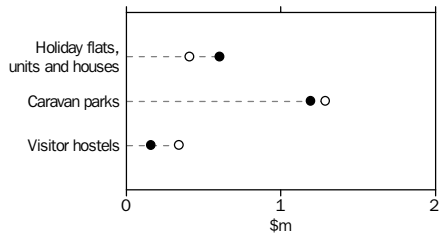
SOUTH AUSTRALIA



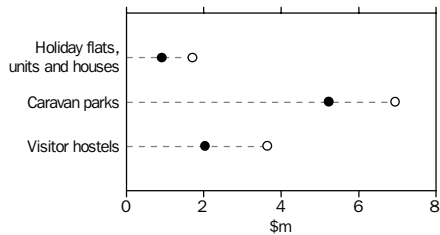
WESTERN AUSTRALIA



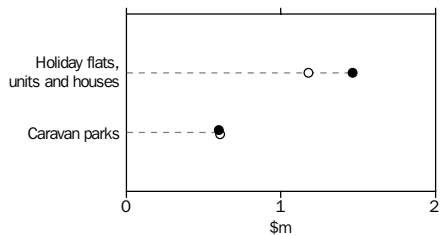
TASMANIA



NORTHERN TERRITORY



AUSTRALIAN CAPITAL TERRITORY



LIST OF TABLES

Page

	Summary of accommodation establishments	
1	Hotels, motels, guest houses and serviced apartments, Australia	8
2	Holiday flats, units and houses, Australia	9
3	Caravan parks, Australia	10
4	Visitor hostels, Australia	11
	Hotels, motels, guest houses and serviced apartments, by star grading	
5	Australia	12
6	New South Wales	14
7	Victoria	16
8	Queensland	18
9	South Australia	20
10	Western Australia	22
11	Tasmania	24
12	Northern Territory	26
13	Australian Capital Territory	28
	Hotels, motels, guest houses and serviced apartments, by Tourism Region	
14	New South Wales	30
15	Victoria	32
16	Queensland	34
17	South Australia	36
18	Western Australia	37
19	Tasmania	38
20	Northern Territory and Australian Capital Territory	39
	Holiday flats, units and houses: States, Territories and Australia	
21	Real estate agents	40
22	Other letting entities	41
23	Total	42
	Caravan parks: States, Territories and Australia	
24	Short-term	43
25	Long-term	44
26	Total	45
	Visitor hostels	
27	States, Territories and Australia	46

Period	Establish- ments no.	Guest rooms no.	Bed spaces no.	Persons employed no.	Room nights occupied '000	Room occupancy rate %	Guest nights '000	Bed occupancy rate %	Guest arrivals '000	Average length of stay days	Takings from accom- modation \$'000
LICENSED HOTELS WITH FACILITIES											
1999											
June quarter	747	71 908	194 135	70 079	3 902	60.1	6 301	35.9	2 759	2.3	476 859
September quarter	753	72 265	194 757	71 644	4 281	64.9	7 122	40.0	3 074	2.3	537 904
December quarter	766	73 416	196 329	72 872	4 389	65.1	7 239	40.1	3 148	2.3	574 687
2000											
March quarter	767	73 760	197 179	72 728	4 239	63.3	6 950	38.9	2 989	2.3	556 825
June quarter	r 767	r 74 302	r 197 513	r 72 517	r 4 177	r 62.0	r 6 668	r 37.2	r 2 946	r 2.3	r 525 795
September quarter	774	76 607	203 977	73 695	4 447	63.3	7 261	38.8	2 955	2.5	681 214
Year ended September 1999	16 381	63.0	26 882	38.3	11 562	2.3	2 079 307
Year ended September 2000	17 251	63.4	28 118	38.8	12 038	2.3	2 338 520
MOTELS AND GUEST HOUSES WITH FACILITIES											
1999											
June quarter	2 398	84 972	253 031	30 629	4 080	52.9	7 074	30.8	3 907	1.8	316 845
September quarter	2 396	85 267	253 219	31 872	4 411	56.3	7 791	33.5	4 278	1.8	356 224
December quarter	2 413	86 019	255 588	31 429	4 328	54.8	7 578	32.3	4 163	1.8	347 480
2000											
March quarter	2 411	85 821	254 335	31 464	4 138	53.1	7 295	31.6	3 947	1.8	337 890
June quarter	2 412	86 091	254 578	31 341	4 176	53.4	7 214	31.2	3 977	1.8	335 620
September quarter	2 412	85 078	251 929	31 342	4 142	53.1	7 286	31.5	3 980	1.8	383 303
Year ended September 1999	16 821	54.4	29 618	32.2	16 273	1.8	1 327 167
Year ended September 2000	16 784	53.6	29 373	31.6	16 066	1.8	1 404 294
SERVICED APARTMENTS											
1999											
June quarter	575	28 423	99 507	10 183	1 445	56.2	3 038	33.8	852	3.6	152 662
September quarter	582	29 308	102 314	10 670	1 704	63.9	3 709	39.8	955	3.9	183 666
December quarter	600	30 644	107 748	10 851	1 696	60.8	3 673	37.3	1 002	3.7	190 280
2000											
March quarter	611	31 542	107 951	10 807	1 712	60.0	3 792	38.8	995	3.8	193 602
June quarter	r 626	r 32 437	r 110 381	r 11 400	r 1 647	r 55.9	r 3 488	r 34.8	r 923	r 3.8	r 178 063
September quarter	641	33 394	113 130	11 466	1 860	60.9	4 041	39.0	1 044	3.9	237 641
Year ended September 1999	6 112	60.4	13 207	37.2	3 552	3.7	663 901
Year ended September 2000	6 915	59.4	14 994	37.5	3 965	3.8	799 587
TOTAL HOTELS, MOTELS, GUEST HOUSES AND SERVICED APARTMENTS											
1999											
June quarter	3 720	185 303	546 673	110 891	9 427	56.2	16 412	33.1	7 518	2.2	946 366
September quarter	3 731	186 840	550 290	114 186	10 396	60.8	18 623	37.0	8 307	2.2	1 077 794
December quarter	3 779	190 079	559 665	115 152	10 414	59.7	18 490	36.0	8 313	2.2	1 112 447
2000											
March quarter	3 789	191 123	559 465	114 999	10 088	58.2	18 037	35.5	7 931	2.3	1 088 317
June quarter	3 805	192 830	562 472	115 258	10 000	57.1	17 370	34.0	7 847	2.2	1 039 478
September quarter	3 827	195 079	569 036	116 503	10 449	58.4	18 589	35.6	7 979	2.3	1 302 158
Year ended September 1999	39 313	58.6	69 707	35.3	31 386	2.2	4 070 374
Year ended September 2000	40 950	58.4	72 486	35.3	32 069	2.3	4 542 401

(a) Comprising establishments with 15 or more rooms or units (see Explanatory Notes).

2

SUMMARY OF HOLIDAY FLATS, UNITS AND HOUSES—AUSTRALIA

FLATS, UNITS AND HOUSES.

Period	Letting entities(a)	Single bedroom	Multiple bedroom	Total	Bed spaces	Persons employed(b)	Unit nights occupied	Unit occupancy rate	Unit lettings	Average length of stay	Takeings from accommodation
	no.	no.	no.	no.	no.	no.	'000.	%.	'000	days	\$'000
REAL ESTATE AGENTS											
1997											
March quarter	222	690	13 244	13 934	69 368	—	567	45.3	71	7.9	33 021
June quarter	213	656	12 493	13 149	65 543	—	337	28.3	46	7.2	14 545
September quarter	211	665	12 472	13 137	66 020	—	450	37.2	55	8.2	20 658
2000											
March quarter	197	744	12 790	13 534	68 737	—	570	46.3	77	7.4	37 969
June quarter	190	702	12 284	12 986	67 428	—	377	31.9	61	6.2	20 725
September quarter	191	803	12 969	13 772	73 471	—	440	34.8	61	7.2	32 814
OTHER LETTING ENTITIES											
1997											
March quarter	428	3 743	10 205	13 948	55 777	2 757	786	62.6	159	4.9	63 658
June quarter	435	3 810	10 355	14 165	56 956	2 647	663	51.5	147	4.5	48 796
September quarter	439	3 806	10 475	14 281	57 299	2 742	885	67.4	167	5.3	65 560
2000											
March quarter	446	4 132	10 587	14 719	58 458	2 701	819	61.4	171	4.8	68 140
June quarter	445	4 187	10 301	14 488	58 836	2 673	704	53.5	157	4.5	53 232
September quarter	440	4 186	10 274	14 460	58 652	2 781	834	62.8	186	4.5	71 532
TOTAL HOLIDAY FLATS, UNITS AND HOUSES											
1997											
March quarter	650	4 433	23 449	27 882	125 145	2 757	1 354	54.0	231	5.9	96 679
June quarter	648	4 466	22 848	27 314	122 499	2 647	999	40.3	193	5.2	63 340
September quarter	650	4 471	22 947	27 418	123 319	2 742	1 335	52.9	222	6.0	86 219
2000											
March quarter	643	4 876	23 377	28 253	127 195	2 701	1 389	54.2	249	5.6	106 110
June quarter	635	4 889	22 585	27 474	126 264	2 673	1 082	43.3	218	5.0	73 957
September quarter	631	4 989	23 243	28 232	132 123	2 781	1 273	49.2	247	5.1	104 345

(a) The number of owners, managers or real estate agents with 15 or more self-contained units (see Explanatory Notes).

(b) Employment numbers exclude real estate agents and their employees.

CAPACITY.....

Period	Establish- ments no.	On-site vans no.	Other powered sites no.	Un- powered sites no.	Cabins, etc. no.	Total capacity no.	Persons employed no.	Sites occupied by	Other sites	Site	Site	Takings
								long-term guests no.	permanently reserved no.	nights occupied '000	occupancy rate %	from accom- modation \$'000
SHORT-TERM CARAVAN PARKS (b)												
1997												
March quarter	1 185	7 680	116 035	40 556	9 932	174 203	5 485	9 625	42 228	7 520	48.0	84 199
June quarter	1 186	7 453	115 687	40 519	10 020	173 679	5 366	9 548	41 855	6 662	42.2	61 293
September quarter	1 216	7 767	118 012	40 805	10 687	177 271	5 568	10 173	42 083	7 149	43.9	73 547
2000												
March quarter	1 197	8 421	114 419	34 982	14 401	172 223	6 122	10 734	43 422	7 765	49.6	99 515
June quarter	1 203	7 932	114 403	35 341	15 006	172 682	6 072	11 050	43 367	7 320	46.7	83 508
September quarter	1 194	7 607	114 785	35 444	15 138	172 974	6 142	10 987	43 409	7 361	46.3	98 151
LONG-TERM CARAVAN PARKS (b)												
1997												
March quarter	704	9 980	51 972	11 674	6 980	80 606	3 017	33 010	2 173	3 901	53.8	47 035
June quarter	701	9 939	51 796	11 797	7 075	80 607	3 038	32 583	2 255	3 875	52.8	46 300
September quarter	669	9 501	49 472	10 876	6 830	76 679	2 880	32 072	2 003	3 888	55.1	47 494
2000												
March quarter	630	10 345	43 266	8 926	9 257	71 794	2 941	28 359	2 498	3 603	55.1	49 310
June quarter	615	8 500	45 762	9 266	9 061	72 589	2 791	28 643	1 734	3 589	54.3	48 764
September quarter	609	8 149	45 894	9 198	8 804	72 045	2 844	28 562	1 731	3 809	57.5	56 756
TOTAL CARAVAN PARKS												
1997												
March quarter	1 889	17 660	168 007	52 230	16 912	254 809	8 502	42 635	44 401	11 421	49.8	131 234
June quarter	1 887	17 392	167 483	52 316	17 095	254 286	8 404	42 131	44 110	10 538	45.5	107 593
September quarter	1 885	17 268	167 484	51 681	17 517	253 950	8 448	42 245	44 086	11 038	47.3	121 041
2000												
March quarter	1 827	18 766	157 685	43 908	23 658	244 017	9 063	39 093	45 920	11 368	51.2	148 825
June quarter	1 818	16 432	160 165	44 607	24 067	245 271	8 863	39 693	45 101	10 909	48.9	132 272
September quarter	1 803	15 756	160 679	44 642	23 942	245 019	8 986	39 549	45 140	11 171	49.6	154 908

(a) Comprising establishments with 40 or more powered sites and cabins, etc (see Explanatory Notes).

(b) For definitions of short-term and long-term caravan parks (see Glossary).

4

SUMMARY OF VISITOR HOSTELS (a)—AUSTRALIA

<i>Period</i>	<i>Establishments</i>	<i>Bed spaces</i>	<i>Persons employed</i>	<i>Guest nights</i>	<i>Bed occupancy rate</i>	<i>Guest arrivals</i>	<i>Average length of stay</i>	<i>Takings from accommodation</i>
	no.	no.	no.	no.	%	no.	days	\$'000
1997								
March quarter	388	30 291	1 863	1 313 991	48.9	490 568	2.7	18 498
June quarter	383	29 831	1 899	1 237 166	45.7	464 215	2.7	17 656
September quarter	389	30 128	1 985	1 315 598	47.6	526 191	2.5	19 238
2000								
March quarter	478	39 792	3 300	1 810 102	50.4	670 190	2.7	30 664
June quarter	467	39 415	2 855	1 753 161	48.9	658 884	2.7	29 624
September quarter	466	40 336	3 071	1 778 447	48.0	693 191	2.6	34 718

(a) Comprising establishments with 25 or more bed spaces (see Explanatory Notes).

STAR GRADING

Period	Licensed hotels with facilities	Motels and guest houses	Serviced apartments	1	2	3	4	5	Ungraded	Total
ESTABLISHMENTS, CAPACITY AND EMPLOYMENT (number)										
September quarter 1999										
Establishments	753	2 396	582	71	556	1 866	727	75	436	3 731
Guest rooms	72 265	85 267	29 308	2 124	16 092	71 195	61 490	18 642	17 297	186 840
Bed spaces	194 757	253 219	102 314	6 481	48 331	213 917	181 792	49 787	49 982	550 290
Persons employed	71 644	31 872	10 670	897	6 856	28 341	39 762	30 677	7 653	114 186
September quarter 2000										
Establishments	774	2 412	641	60	473	1 859	862	93	480	3 827
Guest rooms	76 607	85 078	33 394	1 969	13 593	71 543	67 960	22 402	17 612	195 079
Bed spaces	203 977	251 929	113 130	6 345	39 939	212 809	200 424	58 707	50 812	569 036
Persons employed	73 695	31 342	11 466	780	5 553	28 166	39 694	35 322	6 988	116 503
ROOM NIGHTS OCCUPIED ('000)										
1999										
September quarter	4 280.8	4 410.6	1 704.3	90.0	702.0	3 761.2	3 878.5	1 198.6	765.3	10 395.6
2000										
July	1 436.9	1 366.5	607.4	27.6	184.8	1 169.7	1 328.2	445.1	255.6	3 410.9
August	1 497.6	1 367.5	610.0	28.3	182.5	1 175.9	1 349.9	479.5	259.0	3 475.1
September	1 512.0	1 408.4	642.2	27.2	192.7	1 241.4	1 351.2	473.7	276.4	3 562.6
September quarter	4 446.6	4 142.4	1 859.7	83.1	560.0	3 587.0	4 029.3	1 398.3	790.9	10 448.6
ROOM OCCUPANCY RATES (%)										
1999										
September quarter	64.9	56.3	63.9	46.1	47.4	57.6	68.6	70.4	50.1	60.8
2000										
July	60.8	52.0	59.2	45.2	43.9	52.9	63.2	64.2	48.3	56.7
August	63.2	52.1	59.4	47.0	43.3	53.2	64.1	69.0	49.0	57.7
September	66.0	55.3	64.1	46.7	47.4	57.9	66.5	70.5	52.4	61.0
September quarter	63.3	53.1	60.9	46.3	44.9	54.6	64.6	67.9	49.9	58.4
GUEST NIGHTS ('000)										
1999										
September quarter	7 122.2	7 790.9	3 709.4	196.2	1 279.0	6 937.6	6 849.1	1 958.5	1 402.1	18 622.5
2000										
July	2 372.6	2 435.1	1 344.8	61.8	336.4	2 180.2	2 367.8	722.2	484.3	6 152.5
August	2 414.8	2 315.3	1 281.9	63.3	319.1	2 080.9	2 302.8	766.3	479.5	6 012.0
September	2 474.0	2 535.8	1 414.5	55.6	350.6	2 311.6	2 416.1	776.9	513.6	6 424.3
September quarter	7 261.4	7 286.2	4 041.3	180.7	1 006.1	6 572.7	7 086.6	2 265.4	1 477.4	18 588.8
BED OCCUPANCY RATES (%)										
1999										
September quarter	40.0	33.5	39.8	32.9	28.8	35.3	41.0	43.0	31.7	37.0
2000										
July	37.7	31.3	38.5	31.4	27.2	33.1	38.2	39.7	31.4	35.0
August	38.3	29.7	36.7	32.6	25.8	31.6	37.1	42.1	31.1	34.2
September	40.6	33.6	41.7	29.6	29.4	36.3	40.3	44.1	33.7	37.7
September quarter	38.8	31.5	39.0	31.2	27.4	33.6	38.5	42.0	32.1	35.6

(a) Comprising establishments with 15 or more rooms or units (see Explanatory Notes).

STAR GRADING

Period	Licensed hotels with facilities	Motels and guest houses	Serviced apartments	1	2	3	4	5	Ungraded	Total
GUEST ARRIVALS ('000)										
1999										
September quarter	3 074.0	4 277.5	955.1	80.3	735.0	3 466.0	2 796.0	695.7	533.6	8 306.6
2000										
July	1 013.5	1 348.1	352.9	28.0	199.7	1 064.3	953.3	285.2	184.0	2 714.4
August	1 024.9	1 274.3	332.7	28.2	186.3	1 021.4	925.1	288.0	183.1	2 632.0
September	916.4	1 357.4	358.7	25.9	204.7	1 081.8	886.0	248.6	185.5	2 632.5
September quarter	2 954.8	3 979.8	1 044.3	82.0	590.7	3 167.5	2 764.4	821.7	552.6	7 978.9
AVERAGE LENGTH OF STAY (days)										
1999										
September quarter	2.3	1.8	3.9	2.4	1.7	2.0	2.4	2.8	2.6	2.2
2000										
September quarter	2.5	1.8	3.9	2.2	1.7	2.1	2.6	2.8	2.7	2.3
TAKINGS FROM ACCOMMODATION (\$'000)										
1999										
September quarter	537 904	356 224	183 666	6 520	44 114	304 518	448 254	202 498	71 889	1 077 794
2000										
July	193 040	121 685	71 377	2 336	12 241	104 403	162 154	79 741	25 227	386 102
August	205 674	122 176	70 873	2 466	12 102	104 956	164 760	86 575	27 863	398 722
September	282 500	139 443	95 392	2 302	13 602	134 405	209 142	123 396	34 487	517 334
September quarter	681 214	383 303	237 641	7 104	37 945	343 765	536 056	289 711	87 577	1 302 158
AVERAGE TAKINGS PER ROOM NIGHT OCCUPIED (\$)										
1999										
September quarter	125.7	80.8	107.8	72.4	62.8	81.0	115.6	168.9	93.9	103.7
2000										
July	134.3	89.0	117.5	84.7	66.2	89.3	122.1	179.2	98.7	113.2
August	137.3	89.3	116.2	87.0	66.3	89.3	122.1	180.6	107.6	114.7
September	186.8	99.0	148.5	84.6	70.6	108.3	154.8	260.5	124.8	145.2
September quarter	153.2	92.5	127.8	85.5	67.8	95.8	133.0	207.2	110.7	124.6
AVERAGE TAKINGS PER AVAILABLE ROOM NIGHT (\$)										
1999										
September quarter	81.6	45.5	68.8	33.4	29.8	46.6	79.3	119.0	47.0	63.1
2000										
July	81.6	46.3	69.5	38.3	29.1	47.2	77.1	115.0	47.7	64.1
August	86.8	46.5	69.1	40.9	28.7	47.5	78.2	124.7	52.7	66.2
September	123.4	54.7	95.2	39.5	33.5	62.7	102.9	183.6	65.4	88.6
September quarter	97.0	49.1	77.8	39.6	30.4	52.4	85.9	140.6	55.2	72.8

(a) Comprising establishments with 15 or more rooms or units (see Explanatory Notes).

STAR GRADING

Period	Licensed hotels with facilities	Motels and guest houses	Serviced apartments	1	2	3	4	5	Ungraded	Total
ESTABLISHMENTS, CAPACITY AND EMPLOYMENT (number)										
September quarter 1999										
Establishments	178	997	122	35	208	664	187	18	185	1 297
Guest rooms	21 144	33 422	5 675	1 202	5 975	23 333	17 489	4 947	7 295	60 241
Bed spaces	52 611	100 208	20 400	4 135	18 031	69 362	48 838	11 506	21 347	173 219
Persons employed	19 949	12 462	2 289	398	2 187	8 767	11 832	8 547	2 969	34 700
September quarter 2000										
Establishments	191	1 002	133	28	177	698	213	23	187	1 326
Guest rooms	24 241	33 432	7 327	1 077	4 939	25 979	19 540	6 226	7 239	65 000
Bed spaces	60 291	99 899	24 854	3 915	14 832	76 421	54 323	14 363	21 190	185 044
Persons employed	22 239	12 505	2 728	329	1 795	10 076	12 848	9 811	2 613	37 472
ROOM NIGHTS OCCUPIED ('000)										
1999										
September quarter	1 311.7	1 709.2	324.1	55.4	265.1	1 232.0	1 145.1	323.1	324.3	3 345.0
2000										
July	477.2	526.7	123.1	16.8	68.7	430.6	392.9	117.2	100.7	1 126.9
August	476.4	521.1	119.0	17.0	67.9	422.9	384.3	121.2	103.1	1 116.5
September	565.8	583.0	151.0	15.6	76.3	494.4	437.8	151.7	124.0	1 299.9
September quarter	1 519.3	1 630.8	393.2	49.5	212.8	1 347.9	1 215.1	390.2	327.8	3 543.3
ROOM OCCUPANCY RATES (%)										
1999										
September quarter	69.3	55.6	63.4	50.1	48.2	57.6	71.2	73.1	51.5	61.1
2000										
July	64.2	51.2	56.4	50.4	44.9	53.7	65.4	60.7	48.5	56.6
August	63.7	50.7	54.5	51.0	44.4	52.8	63.5	62.8	49.7	56.0
September	77.9	58.3	68.7	48.4	52.0	63.5	74.7	81.2	57.3	66.8
September quarter	68.5	53.3	59.9	50.0	47.0	56.6	67.8	68.1	51.9	59.7
GUEST NIGHTS ('000)										
1999										
September quarter	2 109.0	3 064.7	650.3	139.7	489.7	2 222.5	1 853.4	489.9	628.7	5 824.0
2000										
July	763.5	961.3	254.6	43.6	127.6	783.0	649.4	174.6	201.2	1 979.4
August	751.7	890.3	227.2	44.1	121.1	726.5	599.5	175.6	202.5	1 869.2
September	853.9	1 053.7	277.2	36.0	140.9	886.2	681.0	214.2	226.5	2 184.7
September quarter	2 369.0	2 905.3	759.0	123.7	389.6	2 395.7	1 929.9	564.4	630.1	6 033.3
BED OCCUPANCY RATES (%)										
1999										
September quarter	44.7	33.3	35.5	36.7	29.5	34.9	41.2	47.5	34.1	36.9
2000										
July	41.2	31.2	33.8	36.0	27.8	33.2	38.8	39.2	32.2	34.8
August	40.4	28.9	30.2	36.3	26.4	30.8	35.6	39.4	32.5	32.8
September	47.3	35.2	37.2	30.6	32.0	38.7	41.8	49.7	35.8	39.4
September quarter	42.9	31.8	33.7	34.3	28.7	34.2	38.7	42.7	33.5	35.7

(a) Comprising establishments with 15 or more rooms or units (see Explanatory Notes).

STAR GRADING

Period	Licensed hotels with facilities	Motels and guest houses	Serviced apartments	1	2	3	4	5	Ungraded	Total
GUEST ARRIVALS ('000)										
1999										
September quarter	876.0	1 789.3	190.9	48.6	282.7	1 240.5	871.5	165.1	247.8	2 856.2
2000										
July	312.3	569.7	76.8	17.7	80.8	420.5	288.1	69.8	82.0	958.8
August	302.4	526.4	68.6	17.5	74.3	387.1	269.3	67.2	82.1	897.5
September	247.2	576.7	67.9	14.9	85.5	414.8	240.9	54.4	81.2	891.7
September quarter	861.9	1 672.8	213.3	50.1	240.6	1 222.3	798.3	191.4	245.3	2 748.0
AVERAGE LENGTH OF STAY (days)										
1999										
September quarter	2.4	1.7	3.4	2.9	1.7	1.8	2.1	3.0	2.5	2.0
2000										
September quarter	2.7	1.7	3.6	2.5	1.6	2.0	2.4	2.9	2.6	2.2
TAKINGS FROM ACCOMMODATION (\$'000)										
1999										
September quarter	189 972	141 670	43 372	4 879	16 996	105 597	147 543	65 371	34 629	375 014
2000										
July	73 819	48 398	18 433	1 692	4 619	41 227	54 610	27 125	11 377	140 650
August	76 364	48 192	18 492	1 793	4 652	40 784	53 956	28 152	13 711	143 048
September	160 611	69 342	41 592	1 617	6 015	71 601	103 438	68 299	20 575	271 546
September quarter	310 794	165 932	78 518	5 103	15 286	153 612	212 004	123 576	45 663	555 244
AVERAGE TAKINGS PER ROOM NIGHT OCCUPIED (\$)										
1999										
September quarter	144.8	82.9	133.8	88.1	64.1	85.7	128.9	202.3	106.8	112.1
2000										
July	154.7	91.9	149.7	100.6	67.3	95.7	139.0	231.4	113.0	124.8
August	160.3	92.5	155.4	105.3	68.5	96.4	140.4	232.2	132.9	128.1
September	283.9	118.9	275.4	103.4	78.8	144.8	236.2	450.1	166.0	208.9
September quarter	204.6	101.8	199.7	103.1	71.8	114.0	174.5	316.7	139.3	156.7
AVERAGE TAKINGS PER AVAILABLE ROOM NIGHT (\$)										
1999										
September quarter	100.3	46.1	84.9	44.1	30.9	49.4	91.7	147.9	55.0	68.5
2000										
July	99.3	47.1	84.5	50.7	30.2	51.4	90.8	140.5	54.7	70.7
August	102.1	46.9	84.7	53.7	30.4	50.9	89.1	145.9	66.1	71.7
September	221.2	69.3	189.2	50.1	41.0	92.0	176.5	365.7	95.0	139.5
September quarter	140.2	54.3	119.6	51.5	33.8	64.5	118.2	215.7	72.3	93.6

(a) Comprising establishments with 15 or more rooms or units (see Explanatory Notes).

7

HOTELS, MOTELS, GUEST HOUSES AND SERVICED APARTMENTS (a)—Vic.

STAR GRADING

<i>Period</i>	<i>Licensed hotels with facilities</i>	<i>Motels and guest houses</i>	<i>Serviced apartments</i>	<i>1</i>	<i>2</i>	<i>3</i>	<i>4</i>	<i>5</i>	<i>Ungraded</i>	<i>Total</i>
ESTABLISHMENTS, CAPACITY AND EMPLOYMENT (number)										
September quarter 1999										
Establishments	123	503	72	11	92	388	152	10	45	698
Guest rooms	10 831	16 158	3 945	240	2 466	12 506	10 921	2 978	1 823	30 934
Bed spaces	26 336	47 132	12 015	644	7 677	35 942	29 155	6 694	5 371	85 483
Persons employed	14 201	6 048	1 531	154	995	4 735	6 318	8 609	969	21 780
September quarter 2000										
Establishments	126	500	77	8	75	372	188	16	44	703
Guest rooms	11 371	15 655	4 132	270	2 000	11 648	12 124	3 577	1 539	31 158
Bed spaces	27 301	45 778	12 640	776	5 964	33 506	32 650	8 019	4 804	85 719
Persons employed	14 269	5 895	1 620	73	797	4 371	6 925	8 945	673	21 784
ROOM NIGHTS OCCUPIED ('000)										
1999										
September quarter	629.8	711.9	247.8	7.1	76.9	571.7	666.0	190.9	76.9	1 589.5
2000										
July	231.4	226.5	91.5	3.0	20.4	174.0	248.1	77.1	26.9	549.5
August	233.4	222.6	89.1	2.7	20.1	170.5	244.8	81.2	25.8	545.2
September	209.1	221.3	83.7	3.4	22.0	171.3	221.1	72.4	24.0	514.1
September quarter	674.0	670.5	264.3	9.1	62.6	515.8	714.0	230.6	76.7	1 608.7
ROOM OCCUPANCY RATES (%)										
1999										
September quarter	63.3	48.0	68.5	32.0	33.9	49.8	66.3	69.7	47.0	56.0
2000										
July	65.7	46.8	71.4	36.0	33.0	48.3	66.0	69.5	57.0	57.0
August	66.4	46.0	69.6	35.6	32.4	47.3	65.1	73.2	54.6	56.6
September	61.4	47.1	67.5	46.1	36.7	49.0	60.8	67.5	51.9	55.0
September quarter	64.5	46.6	69.5	39.0	34.0	48.2	64.0	70.1	54.5	56.2
GUEST NIGHTS ('000)										
1999										
September quarter	954.4	1 233.4	455.2	11.6	143.7	1 033.1	1 048.5	274.8	131.2	2 642.9
2000										
July	349.4	397.3	172.2	3.9	38.2	324.7	393.8	110.1	48.3	919.0
August	348.6	372.6	157.7	3.6	38.1	304.5	372.8	114.0	45.9	878.9
September	317.5	393.8	154.5	4.6	40.3	317.7	360.8	100.4	42.1	865.8
September quarter	1 015.5	1 163.8	484.4	12.1	116.6	946.9	1 127.4	324.5	136.3	2 663.8
BED OCCUPANCY RATES (%)										
1999										
September quarter	39.5	28.5	41.3	19.6	20.3	31.3	39.1	44.6	27.2	33.7
2000										
July	41.3	28.1	43.9	16.2	20.7	31.3	38.9	44.3	32.7	34.6
August	41.3	26.3	40.2	16.6	20.6	29.4	36.8	45.9	31.0	33.1
September	38.9	28.7	40.8	22.1	22.5	31.6	36.8	41.7	29.2	33.7
September quarter	40.5	27.7	41.7	18.2	21.3	30.8	37.5	44.0	31.0	33.8

(a) Comprising establishments with 15 or more rooms or units (see Explanatory Notes).

7 HOTELS, MOTELS, GUEST HOUSES AND SERVICED APARTMENTS (a)—Vic. *continued*

STAR GRADING

Period	Licensed hotels with facilities	Motels and guest houses	Serviced apartments	1	2	3	4	5	Ungraded	Total
GUEST ARRIVALS ('000)										
1999										
September quarter	457.2	698.4	133.0	6.7	87.1	534.3	502.3	115.7	42.4	1 288.6
2000										
July	162.9	225.4	56.5	3.1	22.7	163.0	190.2	48.6	17.3	444.9
August	162.8	212.0	51.4	2.8	21.9	157.3	178.3	49.4	16.5	426.2
September	142.2	228.1	50.7	3.3	24.3	164.8	171.3	41.7	15.4	420.9
September quarter	467.9	665.5	158.6	9.3	69.0	485.0	539.8	139.7	49.2	1 292.0
AVERAGE LENGTH OF STAY (days)										
1999										
September quarter	2.1	1.8	3.4	1.7	1.6	1.9	2.1	2.4	3.1	2.1
2000										
September quarter	2.2	1.7	3.1	1.3	1.7	2.0	2.1	2.3	2.8	2.1
TAKINGS FROM ACCOMMODATION (\$'000)										
1999										
September quarter	89 198	62 939	31 969	399	4 820	48 721	82 939	37 470	9 758	184 105
2000										
July	33 799	22 126	13 145	190	1 434	16 314	32 160	15 314	3 658	69 070
August	34 657	21 860	12 693	167	1 450	16 078	31 962	16 014	3 538	69 209
September	32 149	20 515	11 971	225	1 516	15 069	28 665	15 845	3 314	64 634
September quarter	100 605	64 501	37 808	582	4 400	47 460	92 788	47 174	10 510	202 914
AVERAGE TAKINGS PER ROOM NIGHT OCCUPIED (\$)										
1999										
September quarter	141.6	88.4	129.0	56.4	62.6	85.2	124.5	196.3	126.9	115.8
2000										
July	146.0	97.7	143.6	62.9	70.1	93.8	129.6	198.7	136.2	125.7
August	148.5	98.2	142.4	62.1	72.1	94.3	130.5	197.3	136.9	127.0
September	153.7	92.7	143.1	66.8	68.8	88.0	129.7	218.9	138.3	125.7
September quarter	149.3	96.2	143.1	64.1	70.3	92.0	129.9	204.5	137.1	126.1
AVERAGE TAKINGS PER AVAILABLE ROOM NIGHT (\$)										
1999										
September quarter	89.7	42.4	88.4	18.1	21.2	42.4	82.6	136.8	59.6	64.9
2000										
July	95.9	45.7	102.6	22.6	23.1	45.3	85.6	138.1	77.6	71.6
August	98.5	45.1	99.1	22.1	23.4	44.6	85.0	144.4	74.8	71.8
September	94.5	43.7	96.6	30.8	25.3	43.1	78.8	147.7	71.8	69.2
September quarter	96.3	44.9	99.5	25.0	23.9	44.4	83.2	143.3	74.7	70.9

(a) Comprising establishments with 15 or more rooms or units (see Explanatory Notes).

STAR GRADING

Period	Licensed hotels with facilities	Motels and guest houses	Serviced apartments	1	2	3	4	5	Ungraded	Total
ESTABLISHMENTS, CAPACITY AND EMPLOYMENT (number)										
September quarter 1999										
Establishments	170	510	242	12	127	436	237	28	82	922
Guest rooms	20 622	18 360	12 172	327	3 359	16 384	20 569	6 762	3 753	51 154
Bed spaces	64 090	54 941	43 265	797	10 376	52 856	66 134	20 837	11 296	162 296
Persons employed	20 985	6 761	4 043	122	1 605	6 524	13 094	8 906	1 538	31 789
September quarter 2000										
Establishments	172	513	273	10	100	414	287	32	115	958
Guest rooms	20 668	18 370	13 517	251	2 452	15 317	22 019	8 167	4 349	52 555
Bed spaces	63 543	54 698	46 638	692	7 396	48 782	69 879	25 526	12 604	164 879
Persons employed	20 280	6 510	4 159	120	1 178	5 928	10 720	11 385	1 618	30 949
ROOM NIGHTS OCCUPIED ('000)										
1999										
September quarter	1 251.6	1 109.0	695.4	13.6	168.1	1 001.9	1 289.9	412.8	169.5	3 055.9
2000										
July	400.4	346.5	241.3	3.3	36.4	294.9	427.9	157.9	67.8	988.2
August	427.2	344.5	252.6	3.6	34.8	294.8	443.1	176.4	71.4	1 024.3
September	391.6	322.7	255.5	3.6	35.0	281.3	422.5	156.8	70.7	969.9
September quarter	1 219.2	1 013.8	749.4	10.6	106.3	871.0	1 293.5	491.1	209.9	2 982.4
ROOM OCCUPANCY RATES (%)										
1999										
September quarter	66.0	65.7	62.4	45.3	54.4	66.5	68.2	66.4	50.0	65.0
2000										
July	62.6	60.9	57.6	43.0	47.9	62.1	62.7	62.6	50.3	60.7
August	66.7	60.5	60.3	46.8	45.8	62.1	64.9	69.7	53.0	62.9
September	63.8	58.6	63.0	48.2	47.6	61.2	64.6	64.0	54.2	61.8
September quarter	64.4	60.0	60.3	46.0	47.1	61.8	64.1	65.4	52.5	61.8
GUEST NIGHTS ('000)										
1999										
September quarter	2 393.5	1 987.2	1 720.8	20.8	305.9	1 970.5	2 676.3	805.2	322.8	6 101.5
2000										
July	759.5	617.9	601.1	6.5	65.9	582.3	893.4	298.7	131.7	1 978.5
August	780.3	590.3	605.3	7.0	61.2	549.5	896.1	329.3	132.8	1 975.8
September	765.7	595.3	663.5	7.1	65.2	566.8	923.8	318.3	143.4	2 024.6
September quarter	2 305.5	1 803.5	1 869.9	20.6	192.2	1 698.5	2 713.3	946.4	407.9	5 978.9
BED OCCUPANCY RATES (%)										
1999										
September quarter	40.6	39.4	43.4	28.4	32.0	40.6	44.0	42.0	31.6	40.9
2000										
July	38.6	36.4	41.6	30.2	28.7	38.5	41.2	37.9	33.7	38.7
August	39.6	34.8	41.9	32.5	26.7	36.3	41.4	41.6	34.0	38.7
September	40.6	36.3	47.4	34.2	29.4	38.7	44.5	41.6	37.9	41.1
September quarter	39.6	35.8	43.6	32.3	28.2	37.8	42.4	40.3	35.2	39.5

(a) Comprising establishments with 15 or more rooms or units (see Explanatory Notes).

STAR GRADING

Period	Licensed hotels with facilities	Motels and guest houses	Serviced apartments	1	2	3	4	5	Ungraded	Total
GUEST ARRIVALS ('000)										
1999										
September quarter	880.4	968.7	359.2	9.8	166.0	828.3	866.5	241.3	96.3	2 208.3
2000										
July	283.7	305.4	125.5	2.3	39.1	239.1	286.8	105.8	41.6	714.6
August	286.1	285.9	120.7	2.5	35.6	222.5	282.8	106.9	42.3	692.7
September	259.2	288.3	137.6	2.6	37.3	229.2	278.7	93.6	43.7	685.1
September quarter	829.0	879.6	383.8	7.3	112.0	690.8	848.3	306.3	127.7	2 092.4
AVERAGE LENGTH OF STAY (days)										
1999										
September quarter	2.7	2.1	4.8	2.1	1.8	2.4	3.1	3.3	3.4	2.8
2000										
September quarter	2.8	2.1	4.9	2.8	1.7	2.5	3.2	3.1	3.2	2.9
TAKINGS FROM ACCOMMODATION (\$'000)										
1999										
September quarter	146 789	80 287	64 895	481	10 163	73 618	129 066	64 428	14 216	291 971
2000										
July	48 617	27 613	23 594	174	2 233	23 433	44 581	23 642	5 762	99 824
August	53 853	27 568	23 982	188	2 136	23 276	45 962	27 550	6 291	105 403
September	51 021	25 645	25 886	194	2 156	23 112	45 098	25 652	6 340	102 552
September quarter	153 491	80 826	73 461	555	6 524	69 820	135 641	76 844	18 394	307 778
AVERAGE TAKINGS PER ROOM NIGHT OCCUPIED (\$)										
1999										
September quarter	117.3	72.4	93.3	35.3	60.4	73.5	100.1	156.1	83.9	95.5
2000										
July	121.4	79.7	97.8	51.9	61.3	79.5	104.2	149.7	85.0	101.0
August	126.1	80.0	95.0	51.7	61.3	78.9	103.7	156.2	88.1	102.9
September	130.3	79.5	101.3	53.4	61.6	82.2	106.7	163.6	89.7	105.7
September quarter	125.9	79.7	98.0	52.3	61.4	80.2	104.9	156.5	87.6	103.2
AVERAGE TAKINGS PER AVAILABLE ROOM NIGHT (\$)										
1999										
September quarter	77.4	47.6	58.2	16.0	32.9	48.9	68.2	103.6	41.9	62.1
2000										
July	76.0	48.5	56.3	22.3	29.4	49.3	65.3	93.7	42.7	61.3
August	84.1	48.4	57.2	24.2	28.1	49.0	67.3	108.8	46.7	64.7
September	83.1	46.5	63.8	25.7	29.3	50.3	68.9	104.7	48.6	65.3
September quarter	81.0	47.8	59.1	24.1	28.9	49.5	67.2	102.4	46.0	63.7

(a) Comprising establishments with 15 or more rooms or units (see Explanatory Notes).

STAR GRADING

Period	Licensed hotels with facilities	Motels and guest houses	Serviced apartments	1	2	3	4	5	Ungraded	Total
ESTABLISHMENTS, CAPACITY AND EMPLOYMENT (number)										
September quarter 1999										
Establishments	62	146	23	5	51	124	38	4	9	231
Guest rooms	3 988	5 175	1 084	129	1 471	4 768	2 360	1 155	364	10 247
Bed spaces	10 257	15 784	3 861	348	4 058	14 060	7 707	2 626	1 103	29 902
Persons employed	3 994	2 060	451	106	798	2 412	1 651	1 278	260	6 505
September quarter 2000										
Establishments	60	147	26	6	52	117	44	4	10	233
Guest rooms	4 070	5 218	1 211	146	1 503	4 511	2 802	1 263	274	10 499
Bed spaces	10 206	15 785	4 268	375	4 207	13 244	8 996	2 572	865	30 259
Persons employed	3 898	1 996	453	135	689	2 204	1 891	1 295	133	6 347
ROOM NIGHTS OCCUPIED ('000)										
1999										
September quarter	212.8	241.6	56.0	3.6	56.6	228.2	132.8	77.0	12.1	510.4
2000										
July	66.5	74.7	20.9	0.8	18.4	66.2	46.7	25.9	4.0	162.1
August	73.3	81.9	21.0	1.0	19.2	71.3	51.4	29.4	3.9	176.2
September	69.8	86.4	21.5	1.3	21.4	74.5	49.9	26.6	4.0	177.6
September quarter	209.6	242.9	63.4	3.1	59.1	212.0	148.0	81.9	11.9	516.0
ROOM OCCUPANCY RATES (%)										
1999										
September quarter	58.0	50.7	60.2	30.3	41.8	52.0	61.2	72.5	45.1	54.5
2000										
July	53.2	46.2	55.8	17.3	39.6	47.7	53.8	66.3	47.5	50.0
August	58.6	50.6	55.9	22.8	41.2	51.4	59.2	75.0	45.4	54.3
September	57.2	55.2	59.2	29.7	47.5	55.0	59.3	70.1	49.0	56.4
September quarter	56.3	50.6	56.9	23.2	42.7	51.3	57.4	70.4	47.3	53.5
GUEST NIGHTS ('000)										
1999										
September quarter	323.7	407.6	112.7	5.7	94.6	405.5	215.2	102.4	20.8	844.1
2000										
July	98.3	125.9	42.3	1.3	31.8	113.2	78.3	32.8	9.0	266.4
August	102.8	129.3	39.7	1.8	31.9	114.5	79.1	36.4	8.2	271.8
September	107.9	152.8	43.0	2.2	38.8	130.9	86.0	36.8	9.0	303.6
September quarter	308.9	408.0	125.0	5.3	102.4	358.7	243.5	106.0	26.2	841.9
BED OCCUPANCY RATES (%)										
1999										
September quarter	34.3	28.1	33.5	17.8	25.3	31.3	30.3	42.4	25.2	30.9
2000										
July	31.5	25.7	32.0	11.2	24.4	27.9	28.1	41.2	33.6	28.5
August	32.9	26.4	30.0	15.4	24.4	28.2	28.4	45.6	30.6	29.1
September	35.2	32.3	33.6	19.2	30.7	33.0	31.9	47.7	34.6	33.4
September quarter	33.2	28.1	31.8	15.2	26.5	29.6	29.4	44.8	32.9	30.3

(a) Comprising establishments with 15 or more rooms or units (see Explanatory Notes).

STAR GRADING

<i>Period</i>	<i>Licensed hotels with facilities</i>	<i>Motels and guest houses</i>	<i>Serviced apartments</i>	<i>1</i>	<i>2</i>	<i>3</i>	<i>4</i>	<i>5</i>	<i>Ungraded</i>	<i>Total</i>
GUEST ARRIVALS ('000)										
1999										
<i>September quarter</i>	171.8	235.5	35.8	3.6	58.2	223.7	99.4	50.6	7.6	443.1
2000										
<i>July</i>	53.2	74.9	11.9	0.9	20.2	64.4	33.9	17.7	2.8	139.9
<i>August</i>	55.6	74.5	13.2	1.1	19.6	63.5	37.1	19.5	2.6	143.4
<i>September</i>	57.1	87.5	14.2	1.5	23.4	74.7	39.5	16.8	2.9	158.8
<i>September quarter</i>	165.9	236.8	39.3	3.5	63.1	202.6	110.5	53.9	8.4	442.1
AVERAGE LENGTH OF STAY (days)										
1999										
<i>September quarter</i>	1.9	1.7	3.1	1.6	1.6	1.8	2.2	2.0	2.7	1.9
2000										
<i>September quarter</i>	1.9	1.7	3.2	1.5	1.6	1.8	2.2	2.0	3.1	1.9
TAKINGS FROM ACCOMMODATION (\$'000)										
1999										
<i>September quarter</i>	20 959	17 812	5 265	153	2 845	16 226	14 084	9 660	1 069	44 037
2000										
<i>July</i>	7 161	5 979	2 049	40	1 002	4 918	5 217	3 700	313	15 190
<i>August</i>	7 940	6 659	2 076	57	1 075	5 327	5 795	4 135	285	16 675
<i>September</i>	7 786	6 910	2 031	62	1 219	5 617	5 558	3 958	312	16 727
<i>September quarter</i>	22 888	19 548	6 156	159	3 297	15 862	16 571	11 793	910	48 591
AVERAGE TAKINGS PER ROOM NIGHT OCCUPIED (\$)										
1999										
<i>September quarter</i>	98.5	73.7	94.1	42.5	50.2	71.1	106.0	125.4	88.6	86.3
2000										
<i>July</i>	107.7	80.1	97.9	51.1	54.4	74.3	111.6	142.6	77.4	93.7
<i>August</i>	108.3	81.3	98.9	55.2	56.0	74.7	112.7	140.8	73.8	94.6
<i>September</i>	111.6	80.0	94.5	47.6	56.9	75.4	111.5	149.1	77.6	94.2
<i>September quarter</i>	109.2	80.5	97.1	51.0	55.8	74.8	112.0	144.1	76.3	94.2
AVERAGE TAKINGS PER AVAILABLE ROOM NIGHT (\$)										
1999										
<i>September quarter</i>	57.1	37.4	56.6	12.9	21.0	37.0	64.9	90.9	39.9	47.0
2000										
<i>July</i>	57.3	37.0	54.6	8.8	21.5	35.5	60.1	94.5	36.8	46.8
<i>August</i>	63.4	41.2	55.3	12.6	23.1	38.3	66.7	105.6	33.5	51.4
<i>September</i>	63.8	44.1	55.9	14.1	27.0	41.5	66.1	104.5	38.0	53.1
<i>September quarter</i>	61.5	40.7	55.3	11.8	23.8	38.4	64.3	101.5	36.1	50.4

(a) Comprising establishments with 15 or more rooms or units (see Explanatory Notes).

STAR GRADING

<i>Period</i>	<i>Licensed hotels with facilities</i>	<i>Motels and guest houses</i>	<i>Serviced apartments</i>	<i>1</i>	<i>2</i>	<i>3</i>	<i>4</i>	<i>5</i>	<i>Ungraded</i>	<i>Total</i>
ESTABLISHMENTS, CAPACITY AND EMPLOYMENT (number)										
September quarter 1999										
Establishments	128	116	64	4	32	128	52	11	81	308
Guest rooms	9 064	5 516	3 224	91	984	7 301	4 704	2 025	2 699	17 804
Bed spaces	23 307	14 974	11 786	226	2 467	20 291	13 522	6 382	7 179	50 067
Persons employed	6 733	2 103	1 070	56	586	2 874	2 725	2 217	1 448	9 906
September quarter 2000										
Establishments	133	124	69	3	26	131	64	14	88	326
Guest rooms	9 510	5 824	3 718	67	919	7 423	5 365	2 394	2 884	19 052
Bed spaces	23 972	15 748	12 666	159	2 312	20 417	15 578	6 516	7 404	52 386
Persons employed	6 906	2 037	1 242	45	466	2 783	2 855	2 551	1 485	10 185
ROOM NIGHTS OCCUPIED ('000)										
1999										
September quarter	516.5	275.0	169.8	2.3	46.0	365.3	300.8	132.2	114.8	961.4
2000										
July	156.2	80.6	60.0	0.5	13.1	105.1	95.1	48.5	34.5	296.8
August	172.4	85.6	59.0	0.7	13.7	113.2	104.0	51.8	33.6	317.0
September	169.9	95.5	66.3	0.8	15.1	124.6	104.6	50.3	36.4	331.7
September quarter	498.5	261.7	185.3	2.0	41.9	342.9	303.7	150.7	104.5	945.5
ROOM OCCUPANCY RATES (%)										
1999										
September quarter	61.9	54.3	57.8	27.5	51.2	54.6	69.5	71.0	46.3	58.8
2000										
July	53.0	44.6	52.1	23.3	46.0	45.7	57.2	65.4	38.6	50.3
August	58.5	47.4	51.2	35.2	48.1	49.2	62.5	69.8	37.5	53.7
September	59.5	54.7	59.5	37.3	54.7	55.9	65.0	70.1	42.1	58.0
September quarter	57.0	48.8	54.2	31.9	49.5	50.2	61.5	68.4	39.4	53.9
GUEST NIGHTS ('000)										
1999										
September quarter	772.3	437.9	362.9	3.8	75.0	632.3	483.1	195.6	183.2	1 573.0
2000										
July	230.8	130.8	133.8	0.9	21.5	180.7	161.7	78.3	52.4	495.5
August	250.4	133.5	119.9	1.3	21.0	184.2	165.2	81.3	50.8	503.8
September	257.7	160.4	144.1	1.3	23.6	216.3	178.2	83.8	59.2	562.2
September quarter	738.9	424.7	397.9	3.5	66.0	581.2	505.1	243.3	162.4	1 561.5
BED OCCUPANCY RATES (%)										
1999										
September quarter	36.0	31.8	33.7	18.2	33.2	34.0	38.8	33.3	27.7	34.2
2000										
July	31.1	26.8	34.1	18.8	30.0	28.5	33.5	38.7	22.8	30.5
August	33.7	27.3	30.5	26.3	29.2	29.1	34.2	40.2	22.1	31.0
September	35.8	34.0	37.9	26.8	34.0	35.3	38.1	42.9	26.6	35.8
September quarter	33.5	29.3	34.1	23.9	31.1	30.9	35.2	40.6	23.8	32.4

(a) Comprising establishments with 15 or more rooms or units (see Explanatory Notes).

STAR GRADING

Period	Licensed hotels with facilities	Motels and guest houses	Serviced apartments	STAR GRADING						Ungraded	Total
				1	2	3	4	5			
GUEST ARRIVALS ('000)											
1999											
September quarter	377.1	230.6	101.7	3.0	41.4	293.5	200.4	84.7	86.4	709.4	
2000											
July	109.4	66.3	39.5	0.8	10.4	85.2	64.6	28.9	25.3	215.2	
August	117.9	67.5	37.1	1.0	11.0	90.2	67.5	28.6	24.3	222.5	
September	117.5	81.0	46.3	0.9	11.8	101.7	73.2	28.9	28.3	244.9	
September quarter	344.7	214.9	123.0	2.7	33.2	277.1	205.4	86.4	77.9	682.6	
AVERAGE LENGTH OF STAY (days)											
1999											
September quarter	2.0	1.9	3.6	1.2	1.8	2.2	2.4	2.3	2.1	2.2	
2000											
September quarter	2.1	2.0	3.2	1.3	2.0	2.1	2.5	2.8	2.1	2.3	
TAKINGS FROM ACCOMMODATION (\$'000)											
1999											
September quarter	51 340	22 740	16 163	118	3 128	27 758	34 680	17 200	7 360	90 243	
2000											
July	16 974	7 045	6 088	33	986	8 488	11 028	7 432	2 140	30 106	
August	18 741	7 340	5 778	51	985	8 996	11 874	7 813	2 140	31 859	
September	18 131	8 013	6 775	48	1 107	9 969	11 972	7 474	2 350	32 919	
September quarter	53 846	22 397	18 641	131	3 077	27 453	34 873	22 719	6 630	94 884	
AVERAGE TAKINGS PER ROOM NIGHT OCCUPIED (\$)											
1999											
September quarter	99.4	82.7	95.2	51.3	68.0	76.0	115.3	130.1	64.1	93.9	
2000											
July	108.6	87.4	101.4	67.4	75.2	80.8	115.9	153.1	62.0	101.4	
August	108.7	85.8	98.0	69.2	71.9	79.5	114.2	150.8	63.8	100.5	
September	106.7	83.9	102.2	63.6	73.4	80.0	114.5	148.5	64.6	99.2	
September quarter	108.0	85.6	100.6	66.7	73.5	80.1	114.8	150.8	63.5	100.3	
AVERAGE TAKINGS PER AVAILABLE ROOM NIGHT (\$)											
1999											
September quarter	61.6	44.9	55.0	14.1	34.8	41.5	80.1	92.3	29.6	55.2	
2000											
July	57.6	39.0	52.8	15.7	34.6	36.9	66.3	100.1	23.9	51.0	
August	63.6	40.7	50.1	24.4	34.6	39.1	71.4	105.3	23.9	53.9	
September	63.5	45.9	60.7	23.7	40.1	44.8	74.4	104.1	27.2	57.6	
September quarter	61.5	41.8	54.5	21.2	36.4	40.2	70.7	103.2	25.0	54.1	

(a) Comprising establishments with 15 or more rooms or units (see Explanatory Notes).

STAR GRADING

Period	Licensed hotels with facilities	Motels and guest houses	Serviced apartments	1 and ungraded	2	3	4 and 5	Total
ESTABLISHMENTS, CAPACITY AND EMPLOYMENT (number)								
September quarter 1999								
Establishments	54	51	24	8	17	71	33	129
Guest rooms	2 897	1 751	857	247	473	2 598	2 187	5 505
Bed spaces	7 926	5 409	3 395	552	1 218	8 252	6 708	16 730
Persons employed	2 767	651	393	82	249	1 200	2 280	3 811
September quarter 2000								
Establishments	54	51	25	9	16	73	32	130
Guest rooms	2 909	1 749	876	291	439	2 738	2 066	5 534
Bed spaces	8 023	5 441	3 330	838	1 126	8 494	6 336	16 794
Persons employed	2 842	665	427	143	233	1 245	2 313	3 934
ROOM NIGHTS OCCUPIED ('000)								
1999								
September quarter	110.9	58.1	36.5	5.0	10.1	83.8	106.6	205.5
2000								
July	30.3	15.7	10.8	1.8	3.2	22.5	29.4	56.8
August	35.3	16.5	11.1	1.7	3.1	24.3	33.9	63.0
September	36.9	20.3	14.0	2.4	3.0	31.6	34.2	71.2
September quarter	102.5	52.6	35.9	5.8	9.3	78.3	97.5	191.0
ROOM OCCUPANCY RATES (%)								
1999								
September quarter	41.8	36.2	46.3	21.8	23.3	35.2	53.1	40.7
2000								
July	33.7	29.0	39.7	19.9	23.2	26.5	45.9	33.1
August	39.2	31.4	40.9	18.3	23.0	29.1	53.0	37.0
September	42.2	40.1	53.3	27.3	23.1	39.3	55.1	43.4
September quarter	38.3	33.4	44.6	21.8	23.1	31.5	51.3	37.8
GUEST NIGHTS ('000)								
1999								
September quarter	177.7	108.9	75.0	8.2	14.2	164.5	174.7	361.5
2000								
July	46.4	28.7	21.9	3.9	4.1	43.4	45.6	97.0
August	53.7	29.9	21.4	3.3	4.0	45.8	51.9	105.0
September	61.3	41.2	32.5	6.0	4.1	66.0	58.9	135.0
September quarter	161.4	99.8	75.8	13.2	12.1	155.2	156.5	337.0
BED OCCUPANCY RATES (%)								
1999								
September quarter	24.5	21.9	24.0	16.1	12.7	21.7	28.4	23.6
2000								
July	18.7	17.0	21.2	15.2	11.7	16.5	23.2	18.6
August	21.6	18.3	20.7	12.8	11.4	17.7	26.4	20.4
September	25.5	26.0	32.6	23.8	12.1	26.4	31.0	27.1
September quarter	21.9	20.3	24.7	17.2	11.7	20.1	26.8	22.0

(a) Comprising establishments with 15 or more rooms or units (see Explanatory Notes).

STAR GRADING

Period	Licensed hotels with facilities	Motels and guest houses	Serviced apartments	1 and ungraded	2	3	4 and 5	Total
GUEST ARRIVALS ('000)								
1999								
September quarter	95.7	62.8	32.6	2.7	8.2	89.0	91.2	191.1
2000								
July	24.6	15.8	8.8	1.7	2.0	23.4	22.1	49.2
August	27.5	17.0	9.2	1.6	2.0	25.9	24.4	53.8
September	33.9	23.2	13.8	3.0	2.3	37.3	28.3	70.9
September quarter	86.1	56.0	31.8	6.3	6.3	86.5	74.8	173.9
AVERAGE LENGTH OF STAY (days)								
1999								
September quarter	1.9	1.7	2.3	3.0	1.7	1.8	1.9	1.9
2000								
September quarter	1.9	1.8	2.4	2.1	1.9	1.8	2.1	1.9
TAKINGS FROM ACCOMMODATION (\$'000)								
1999								
September quarter	9 429	4 363	3 500	255	416	5 660	10 961	17 292
2000								
July	2 768	1 311	1 138	149	137	1 641	3 291	5 218
August	3 376	1 345	1 164	128	127	1 772	3 857	5 885
September	3 321	1 702	1 459	200	130	2 321	3 832	6 483
September quarter	9 465	4 359	3 762	477	395	5 734	10 980	17 585
AVERAGE TAKINGS PER ROOM NIGHT OCCUPIED (\$)								
1999								
September quarter	85.0	75.1	95.9	51.3	41.1	67.5	102.8	84.1
2000								
July	91.2	83.4	105.6	82.9	43.6	73.0	111.8	91.8
August	95.6	81.3	104.7	77.2	40.6	73.1	113.7	93.5
September	90.1	83.7	104.1	83.8	42.9	73.4	112.1	91.1
September quarter	92.3	82.9	104.7	81.6	42.4	73.2	112.6	92.1
AVERAGE TAKINGS PER AVAILABLE ROOM NIGHT (\$)								
1999								
September quarter	35.5	27.2	44.4	11.2	9.6	23.8	54.6	34.2
2000								
July	30.7	24.2	41.9	16.5	10.1	19.3	51.4	30.4
August	37.4	25.6	42.9	14.2	9.3	21.3	60.2	34.6
September	38.1	33.6	55.5	22.9	9.9	28.9	61.8	39.5
September quarter	35.4	27.7	46.7	17.8	9.8	23.1	57.8	34.8

(a) Comprising establishments with 15 or more rooms or units (see Explanatory Notes).

STAR GRADING

<i>Period</i>	<i>Licensed hotels with facilities</i>	<i>Motels and guest houses</i>	<i>Serviced apartments</i>	<i>1 and Ungraded</i>	<i>2</i>	<i>3</i>	<i>4 and 5</i>	<i>Total</i>
ESTABLISHMENTS, CAPACITY AND EMPLOYMENT (number)								
September quarter 1999								
Establishments	24	47	18	19	22	33	15	89
Guest rooms	2 002	3 093	1 134	598	960	2 625	2 046	6 229
Bed spaces	5 622	9 142	3 342	1 681	2 862	7 912	5 651	18 106
Persons employed	1 770	1 162	454	291	326	1 165	1 604	3 386
September quarter 2000								
Establishments	23	50	18	22	19	34	16	91
Guest rooms	1 937	3 153	1 168	675	780	2 531	2 272	6 258
Bed spaces	5 554	9 373	3 850	1 943	2 360	7 599	6 875	18 777
Persons employed	1 717	1 174	404	273	243	1 062	1 717	3 295
ROOM NIGHTS OCCUPIED ('000)								
1999								
September quarter	140.8	212.2	90.1	35.7	57.7	183.2	166.5	443.0
2000								
July	40.9	68.6	30.8	14.2	15.8	54.9	55.5	140.3
August	45.0	69.3	30.8	13.9	15.1	57.2	58.9	145.1
September	35.9	54.5	23.5	10.1	11.3	42.9	49.5	113.9
September quarter	121.7	192.5	85.1	38.2	42.2	155.0	163.9	399.3
ROOM OCCUPANCY RATES (%)								
1999								
September quarter	77.0	74.9	86.3	65.0	65.3	76.3	89.0	77.7
2000								
July	68.1	70.2	85.1	67.7	65.3	69.9	78.8	72.3
August	74.9	70.9	85.1	66.5	62.4	72.9	83.6	74.8
September	61.8	57.6	67.1	49.9	48.4	56.5	72.7	60.7
September quarter	68.3	66.4	79.2	61.5	58.8	66.6	78.4	69.4
GUEST NIGHTS ('000)								
1999								
September quarter	227.6	380.2	185.7	67.7	105.0	343.1	277.7	793.5
2000								
July	70.9	122.4	64.8	27.4	29.1	109.8	91.8	258.1
August	79.3	123.5	62.5	26.4	26.3	115.3	97.3	265.3
September	62.0	94.9	48.5	19.0	20.6	86.9	79.0	205.5
September quarter	212.2	340.8	175.9	72.9	76.0	312.0	268.1	729.0
BED OCCUPANCY RATES (%)								
1999								
September quarter	44.3	45.4	60.4	43.8	39.9	47.3	53.8	47.8
2000								
July	41.2	42.1	54.3	45.5	39.8	46.6	43.1	44.3
August	46.1	42.5	52.4	43.9	36.0	48.9	45.6	45.6
September	37.2	33.8	42.0	32.6	29.1	38.1	38.3	36.5
September quarter	41.5	39.5	49.7	40.8	35.0	44.6	42.4	42.2

(a) Comprising establishments with 15 or more rooms or units (see Explanatory Notes).

STAR GRADING

Period	Licensed hotels with facilities	Motels and guest houses	Serviced apartments	1 and Ungraded	2	3	4 and 5	Total
GUEST ARRIVALS ('000)								
1999								
September quarter	125.2	199.7	58.1	32.0	65.4	176.8	108.9	383.0
2000								
July	38.5	60.7	20.5	11.7	18.1	50.6	39.3	119.7
August	44.5	64.4	19.9	11.2	15.8	58.0	43.8	128.7
September	34.3	47.6	15.9	9.2	12.5	42.5	33.6	97.7
September quarter	117.3	172.6	56.3	32.1	46.4	151.0	116.6	346.1
AVERAGE LENGTH OF STAY (days)								
1999								
September quarter	1.8	1.9	3.2	2.1	1.6	1.9	2.6	2.1
2000								
September quarter	1.8	2.0	3.1	2.3	1.6	2.1	2.3	2.1
TAKINGS FROM ACCOMMODATION (\$'000)								
1999								
September quarter	17 562	19 364	9 977	2 803	4 445	19 004	20 651	46 903
2000								
July	5 720	7 032	3 733	1 220	1 270	6 501	7 495	16 486
August	6 443	7 145	3 767	1 213	1 162	6 896	8 084	17 355
September	4 713	5 134	2 726	843	874	4 869	5 988	12 574
September quarter	16 877	19 311	10 227	3 276	3 305	18 266	21 567	46 415
AVERAGE TAKINGS PER ROOM NIGHT OCCUPIED (\$)								
1999								
September quarter	124.8	91.3	110.8	78.4	77.1	103.8	124.0	105.9
2000								
July	139.9	102.5	121.1	86.1	80.4	118.5	135.0	117.5
August	143.2	103.1	122.3	87.1	77.1	120.5	137.3	119.6
September	131.3	94.2	116.0	83.4	77.1	113.5	120.9	110.4
September quarter	138.6	100.3	120.2	85.8	78.3	117.9	131.6	116.2
AVERAGE TAKINGS PER AVAILABLE ROOM NIGHT (\$)								
1999								
September quarter	96.1	68.3	95.6	51.0	50.3	79.2	110.4	82.2
2000								
July	95.3	71.9	103.1	58.3	52.5	82.9	106.4	85.0
August	107.3	73.1	104.0	58.0	48.1	87.9	114.8	89.5
September	81.1	54.3	77.8	41.6	37.3	64.1	87.9	67.0
September quarter	94.7	66.6	95.2	52.8	46.1	78.4	103.2	80.6

(a) Comprising establishments with 15 or more rooms or units (see Explanatory Notes).

STAR GRADING

<i>Period</i>	<i>Licensed hotels with facilities</i>	<i>Motels and guest houses</i>	<i>Serviced apartments</i>	<i>1 and ungraded</i>	<i>2</i>	<i>3</i>	<i>4 and 5</i>	<i>Total</i>
ESTABLISHMENTS, CAPACITY AND EMPLOYMENT (number)								
September quarter 1999								
Establishments	14	26	17	11	7	22	17	57
Guest rooms	1 717	1 792	1 217	653	404	1 680	1 989	4 726
Bed spaces	4 608	5 629	4 250	1 784	1 642	5 242	5 819	14 487
Persons employed	1 245	625	439	157	110	664	1 378	2 309
September quarter 2000								
Establishments	15	25	20	10	8	20	22	60
Guest rooms	1 901	1 677	1 445	519	561	1 396	2 547	5 023
Bed spaces	5 087	5 207	4 884	1 592	1 742	4 346	7 498	15 178
Persons employed	1 544	560	433	128	152	497	1 760	2 537
ROOM NIGHTS OCCUPIED ('000)								
1999								
<i>September quarter</i>	106.6	93.6	84.6	35.0	21.4	95.1	133.3	284.9
2000								
July	34.0	27.1	29.0	8.8	8.8	21.7	50.7	90.1
August	34.6	26.0	27.4	8.8	8.6	21.7	49.0	88.0
September	33.0	24.6	26.7	7.4	8.5	20.8	47.6	84.3
<i>September quarter</i>	101.6	77.8	83.1	25.0	25.9	64.2	147.3	262.4
ROOM OCCUPANCY RATES (%)								
1999								
<i>September quarter</i>	67.5	58.3	76.6	62.6	57.7	61.6	73.4	66.4
2000								
July	57.7	52.2	64.6	54.9	50.8	50.1	64.2	57.9
August	58.7	50.1	61.1	54.5	49.5	50.1	62.0	56.5
September	57.9	48.9	61.6	47.8	50.4	49.7	62.3	56.0
<i>September quarter</i>	58.1	50.4	62.5	52.4	50.2	50.0	62.9	56.8
GUEST NIGHTS ('000)								
1999								
<i>September quarter</i>	164.2	171.1	146.7	54.0	50.9	166.1	211.0	482.0
2000								
July	53.8	50.7	54.1	15.8	18.2	43.1	81.5	158.6
August	48.0	45.8	48.1	15.2	15.6	40.6	70.6	142.0
September	48.1	43.6	51.1	13.0	17.2	40.8	71.9	142.9
<i>September quarter</i>	150.0	140.2	153.3	44.0	51.0	124.5	223.9	443.5
BED OCCUPANCY RATES (%)								
1999								
<i>September quarter</i>	38.7	33.7	37.8	34.9	33.7	34.4	39.6	36.5
2000								
July	34.1	31.4	35.7	32.1	33.8	32.0	35.0	33.7
August	30.4	28.4	31.8	30.8	29.0	30.1	30.4	30.2
September	31.5	27.9	34.9	27.3	32.8	31.3	32.0	31.4
<i>September quarter</i>	32.0	29.3	34.1	30.1	31.8	31.1	32.5	31.8

(a) Comprising establishments with 15 or more rooms or units (see Explanatory Notes).

STAR GRADING

<i>Period</i>	<i>Licensed hotels with facilities</i>	<i>Motels and guest houses</i>	<i>Serviced apartments</i>	<i>1 and ungraded</i>	<i>2</i>	<i>3</i>	<i>4 and 5</i>	<i>Total</i>
GUEST ARRIVALS ('000)								
1999								
<i>September quarter</i>	90.7	92.5	43.7	26.9	26.1	79.8	94.1	226.9
2000								
<i>July</i>	28.9	29.9	13.3	4.8	6.5	18.2	42.6	72.0
<i>August</i>	28.0	26.7	12.5	5.8	6.1	17.0	38.3	67.2
<i>September</i>	25.0	25.1	12.4	4.3	7.6	16.9	33.8	62.6
<i>September quarter</i>	82.0	81.7	38.2	14.9	20.2	52.1	114.7	201.8
AVERAGE LENGTH OF STAY (days)								
1999								
<i>September quarter</i>	1.8	1.8	3.4	2.0	2.0	2.1	2.2	2.1
2000								
<i>September quarter</i>	1.8	1.7	4.0	3.0	2.5	2.4	2.0	2.2
TAKINGS FROM ACCOMMODATION (\$'000)								
1999								
<i>September quarter</i>	12 656	7 048	8 525	2 290	1 302	7 935	16 701	28 229
2000								
<i>July</i>	4 182	2 180	3 196	817	559	1 881	6 301	9 558
<i>August</i>	4 299	2 067	2 923	767	516	1 827	6 179	9 289
<i>September</i>	4 767	2 182	2 951	709	585	1 848	6 757	9 900
<i>September quarter</i>	13 248	6 429	9 070	2 293	1 661	5 556	19 237	28 747
AVERAGE TAKINGS PER ROOM NIGHT OCCUPIED (\$)								
1999								
<i>September quarter</i>	118.7	75.3	100.7	65.5	60.8	83.4	125.3	99.1
2000								
<i>July</i>	123.0	80.3	110.4	92.5	63.3	86.7	124.2	106.1
<i>August</i>	124.2	79.4	106.7	87.4	60.0	84.3	126.2	105.5
<i>September</i>	144.4	88.7	110.5	95.4	69.1	88.9	141.9	117.4
<i>September quarter</i>	130.4	82.7	109.2	91.6	64.1	86.6	130.6	109.5
AVERAGE TAKINGS PER AVAILABLE ROOM NIGHT (\$)								
1999								
<i>September quarter</i>	80.1	43.9	77.1	40.9	35.0	51.3	92.0	65.8
2000								
<i>July</i>	71.0	41.9	71.3	50.8	32.2	43.5	79.8	61.4
<i>August</i>	72.9	39.8	65.2	47.7	29.7	42.2	78.3	59.7
<i>September</i>	83.6	43.4	68.1	45.6	34.8	44.1	88.4	65.7
<i>September quarter</i>	75.8	41.7	68.2	48.0	32.2	43.3	82.1	62.2

(a) Comprising establishments with 15 or more rooms or units (see Explanatory Notes).

Period	South Coast	Illawarra	Sydney	Snowy Mountains	Capital Country	Murray	Riverina	Central West
ESTABLISHMENTS, CAPACITY AND EMPLOYMENT (number)								
September quarter 1999								
Establishments	82	55	273	60	45	97	69	120
Guest rooms	2 037	1 824	29 025	2 391	1 441	2 808	1 934	3 425
Bed spaces	6 379	5 482	74 229	9 140	4 312	9 014	5 749	10 657
Persons employed	620	1 100	21 213	929	489	867	674	1 259
September quarter 2000								
Establishments	80	55	295	60	45	98	68	122
Guest rooms	1 946	1 798	33 171	2 391	1 447	2 840	1 937	3 528
Bed spaces	6 030	5 344	84 236	9 423	4 352	9 114	5 722	10 949
Persons employed	607	1 061	23 939	908	455	928	659	1 262
ROOM NIGHTS OCCUPIED ('000)								
1999								
September quarter	68.1	93.3	1 865.9	130.0	66.4	115.3	95.4	176.4
2000								
July	20.7	31.0	647.6	47.1	19.7	34.6	29.8	55.5
August	20.3	28.8	640.8	52.4	19.8	35.0	30.4	54.4
September	24.0	32.9	805.3	32.8	23.5	42.6	33.1	60.5
September quarter	65.1	92.6	2 093.6	132.3	63.0	112.1	93.3	170.5
ROOM OCCUPANCY RATES (%)								
1999								
September quarter	36.6	55.6	71.6	59.1	50.1	44.6	53.6	56.0
2000								
July	34.4	55.6	64.4	63.6	44.0	39.3	49.6	50.8
August	33.7	51.6	63.5	70.7	44.2	39.7	50.6	49.8
September	41.1	60.9	81.0	45.7	54.0	49.9	57.0	57.2
September quarter	36.3	56.0	69.6	60.1	47.3	42.9	52.3	52.5
GUEST NIGHTS ('000)								
1999								
September quarter	122.6	166.8	3 002.1	373.9	126.8	207.5	156.0	330.5
2000								
July	37.4	53.2	1 043.8	137.6	37.9	64.2	48.9	104.4
August	34.9	47.5	996.5	150.5	34.9	61.6	46.0	92.8
September	45.4	57.8	1 215.1	91.1	44.3	80.8	57.4	122.3
September quarter	117.8	158.5	3 255.4	379.2	117.1	206.6	152.3	319.5
GUEST ARRIVALS ('000)								
1999								
September quarter	75.5	92.9	1 177.1	120.9	90.2	135.8	110.1	245.7
2000								
July	23.4	28.9	404.0	47.7	25.2	40.7	35.7	76.6
August	22.7	26.3	385.7	51.5	24.3	39.3	32.1	67.6
September	29.1	30.5	313.5	30.4	31.3	49.5	41.1	86.7
September quarter	75.2	85.7	1 103.2	129.6	80.8	129.6	108.9	230.9
TAKINGS FROM ACCOMMODATION (\$'000)								
1999								
September quarter	4 240	9 604	247 543	22 540	4 409	7 762	6 335	12 036
2000								
July	1 498	3 486	93 851	8 829	1 472	2 573	2 212	4 173
August	1 455	3 219	96 194	10 804	1 427	2 550	2 214	3 965
September	1 829	4 487	222 333	5 427	1 846	3 159	2 531	4 617
September quarter	4 781	11 192	412 378	25 060	4 745	8 283	6 957	12 755

Period	Hunter	Mid North Coast	Holiday Coast	Northern Rivers	New England/ North West	Outback	Central Coast	Blue Mountains
ESTABLISHMENTS, CAPACITY AND EMPLOYMENT (number)								
September quarter 1999								
Establishments	95	85	46	75	88	37	37	33
Guest rooms	3 490	2 173	1 759	2 002	2 425	905	1 337	1 265
Bed spaces	11 157	6 752	6 000	6 216	7 316	2 611	4 551	3 654
Persons employed	2 046	758	979	628	865	268	910	1 095
September quarter 2000								
Establishments	96	85	45	77	89	38	39	34
Guest rooms	3 711	2 223	1 738	2 166	2 479	948	1 371	1 306
Bed spaces	11 822	7 027	5 843	6 803	7 457	2 717	4 611	3 594
Persons employed	2 123	744	971	668	838	296	899	1 114
ROOM NIGHTS OCCUPIED ('000)								
1999								
September quarter	167.8	95.8	82.3	90.8	127.2	47.4	60.1	63.0
2000								
July	57.2	29.3	28.0	31.8	37.7	14.5	19.0	23.5
August	56.5	28.6	25.7	31.6	39.0	15.2	18.2	19.7
September	54.5	31.9	29.1	32.7	39.7	15.1	21.2	21.1
September quarter	168.3	89.8	82.8	96.1	116.4	44.9	58.4	64.2
ROOM OCCUPANCY RATES (%)								
1999								
September quarter	52.2	47.9	50.8	49.3	57.0	57.0	48.9	54.1
2000								
July	49.7	43.1	51.9	47.4	49.3	50.0	44.7	57.9
August	49.1	42.2	47.8	47.0	50.8	52.1	42.8	48.7
September	49.0	48.3	55.9	51.5	53.4	53.1	51.6	53.7
September quarter	49.3	44.5	51.8	48.6	51.2	51.7	46.3	53.5
GUEST NIGHTS ('000)								
1999								
September quarter	294.0	173.8	169.4	165.2	218.7	81.4	116.4	119.0
2000								
July	106.1	56.9	57.8	59.0	64.8	26.4	34.2	46.7
August	95.8	50.6	48.9	55.7	63.9	24.3	30.6	34.7
September	100.4	65.1	62.4	65.0	72.5	27.1	38.5	39.5
September quarter	302.3	172.5	169.2	179.8	201.2	77.7	103.4	120.8
GUEST ARRIVALS ('000)								
1999								
September quarter	170.5	114.7	92.4	100.0	162.3	55.7	55.9	56.7
2000								
July	57.5	38.7	32.1	38.0	48.5	17.5	18.5	25.8
August	55.2	34.2	27.2	34.9	45.0	15.6	16.7	19.4
September	56.2	41.2	34.9	40.1	53.6	17.8	18.2	17.6
September quarter	168.8	114.0	94.1	113.0	147.1	50.9	53.5	62.8
TAKINGS FROM ACCOMMODATION (\$'000)								
1999								
September quarter	16 787	6 410	6 277	5 989	8 301	2 740	6 121	7 920
2000								
July	6 546	2 234	2 241	2 336	2 726	960	2 204	3 309
August	6 235	2 177	2 024	2 235	2 813	961	2 030	2 745
September	6 345	2 612	2 598	2 589	2 859	1 016	3 501	3 797
September quarter	19 126	7 023	6 862	7 161	8 399	2 936	7 735	9 851

Period	Melbourne	Wimmera	Mallee	Western	Western Grampians	Bendigo Loddon	Peninsula	Central Murray	Goulburn	High Country
ESTABLISHMENTS, CAPACITY AND EMPLOYMENT (number)										
September quarter 1999										
Establishments	225	6	41	56	21	30	20	21	27	71
Guest rooms	17 767	117	1 251	1 521	492	742	645	559	695	1 911
Bed spaces	45 059	334	3 767	4 777	1 441	2 275	1 744	1 691	2 052	6 994
Persons employed	15 720	28	476	756	202	343	370	158	388	873
September quarter 2000										
Establishments	228	6	42	54	20	31	21	21	27	72
Guest rooms	17 847	117	1 263	1 428	482	784	723	560	694	1 927
Bed spaces	45 106	334	3 807	4 351	1 387	2 384	1 879	1 690	2 034	7 075
Persons employed	15 617	32	491	739	207	357	373	154	373	880
ROOM NIGHTS OCCUPIED ('000)										
1999										
September quarter	1 079.9	4.4	57.6	59.1	21.1	32.1	23.2	21.7	31.4	78.0
2000										
July	384.0	1.2	16.2	16.3	6.4	12.5	7.7	6.2	10.9	29.0
August	379.3	1.6	17.0	15.4	6.6	11.0	7.5	5.6	10.3	31.2
September	350.3	1.4	21.1	18.8	6.7	11.4	6.6	6.8	10.1	21.1
September quarter	1 113.7	4.2	54.3	50.4	19.8	34.9	21.8	18.6	31.3	81.3
ROOM OCCUPANCY RATES (%)										
1999										
September quarter	66.2	41.3	50.0	42.8	46.6	47.5	39.0	42.2	49.4	44.4
2000										
July	69.4	31.9	41.4	36.8	43.1	51.2	34.1	35.9	50.8	49.2
August	68.6	44.2	43.5	35.4	44.5	45.4	33.6	32.4	48.0	52.8
September	65.4	40.5	55.7	44.7	46.6	48.6	30.5	40.4	48.4	36.5
September quarter	67.8	38.8	46.7	38.9	44.7	48.4	32.8	36.1	49.1	46.2
GUEST NIGHTS ('000)										
1999										
September quarter	1 690.4	7.0	101.0	114.7	34.3	55.5	39.0	39.0	48.6	198.2
2000										
July	607.0	1.9	27.6	30.6	10.5	22.1	11.5	11.3	18.1	78.5
August	579.9	2.4	26.6	27.8	10.2	17.6	10.7	9.7	15.5	80.6
September	553.7	2.3	38.1	37.2	11.5	20.4	10.3	13.2	16.5	52.9
September quarter	1 740.5	6.6	92.3	95.6	32.2	60.1	32.6	34.1	50.1	212.1
GUEST ARRIVALS ('000)										
1999										
September quarter	722.2	5.1	63.1	72.6	26.8	41.6	18.3	26.7	34.9	81.0
2000										
July	258.8	1.6	17.8	22.3	8.3	14.4	7.3	8.0	10.9	31.8
August	248.8	1.7	16.5	19.9	8.0	11.8	6.8	7.0	10.2	35.7
September	229.5	1.8	22.0	25.9	9.0	14.4	6.2	9.1	11.3	24.3
September quarter	737.1	5.1	56.4	68.1	25.3	40.6	20.4	24.1	32.5	91.8
TAKINGS FROM ACCOMMODATION (\$'000)										
1999										
September quarter	139 233	216	3 604	4 687	1 470	2 509	2 653	1 523	2 124	12 023
2000										
July	52 336	64	1 180	1 387	473	1 029	839	513	808	5 080
August	52 275	88	1 202	1 317	512	895	875	442	750	5 587
September	49 861	79	1 465	1 710	542	915	742	552	723	2 837
September quarter	154 472	231	3 847	4 415	1 528	2 839	2 456	1 507	2 280	13 504

Period	Lakes	Gippsland	Melbourne East	Geelong	Macedon	Spa Country	Ballarat	Central Highlands	Upper Yarra	Murray East	Phillip Island
ESTABLISHMENTS, CAPACITY AND EMPLOYMENT (number)											
September quarter 1999											
Establishments	25	36	14	22	3	5	24	15	13	14	9
Guest rooms	681	1 040	427	695	91	118	797	359	425	320	281
Bed spaces	2 014	3 018	1 017	2 037	195	354	2 516	1 131	1 075	978	1 014
Persons employed	260	338	421	345	62	64	404	111	251	74	136
September quarter 2000											
Establishments	25	34	14	22	4	5	26	14	13	14	10
Guest rooms	670	1 021	448	691	115	118	875	337	422	319	317
Bed spaces	2 010	3 061	1 039	2 114	243	300	2 688	1 041	1 086	977	1 113
Persons employed	251	298	441	358	95	105	456	88	285	70	114
ROOM NIGHTS OCCUPIED ('000)											
1999											
September quarter	18.9	31.3	14.7	30.3	3.0	4.8	33.5	13.0	11.5	11.6	8.4
2000											
July	5.5	10.7	4.9	10.6	1.4	1.5	11.6	3.2	3.5	3.2	2.8
August	5.6	10.6	5.4	10.9	1.3	1.6	10.9	3.5	3.6	3.7	2.4
September	6.8	8.9	4.6	8.9	0.9	1.5	12.7	4.4	3.6	4.0	3.4
September quarter	17.9	30.3	15.0	30.4	3.6	4.6	35.2	11.1	10.7	10.9	8.7
ROOM OCCUPANCY RATES (%)											
1999											
September quarter	30.5	32.7	37.5	47.4	35.4	44.6	45.6	39.3	29.4	39.5	32.5
2000											
July	26.6	33.9	35.6	49.5	40.1	41.2	43.6	30.9	27.0	32.8	28.4
August	26.9	33.6	39.1	50.7	36.2	44.7	40.9	33.3	27.2	37.0	24.8
September	33.8	29.1	34.5	43.1	25.5	41.0	48.3	43.6	28.3	41.9	36.2
September quarter	29.1	32.2	36.4	47.8	34.0	42.3	44.2	35.8	27.5	37.2	29.7
GUEST NIGHTS ('000)											
1999											
September quarter	35.2	45.0	22.2	47.0	3.4	8.4	71.2	24.0	18.9	20.6	19.5
2000											
July	9.7	14.7	7.1	16.7	1.7	2.4	23.4	5.7	6.1	5.7	6.7
August	9.7	14.7	7.5	16.6	1.5	2.5	21.6	6.4	5.5	5.8	6.1
September	12.8	13.2	7.0	15.3	1.0	2.4	28.4	8.8	6.1	7.0	7.8
September quarter	32.2	42.6	21.7	48.6	4.3	7.3	73.4	20.9	17.6	18.5	20.6
GUEST ARRIVALS ('000)											
1999											
September quarter	25.7	28.5	13.1	27.7	2.2	5.2	41.4	15.1	10.8	13.3	13.1
2000											
July	7.0	8.8	4.1	9.7	1.1	1.9	15.0	4.3	3.6	4.0	4.0
August	7.0	9.3	4.5	9.3	0.8	1.9	12.5	4.1	3.5	3.5	3.0
September	8.8	8.6	4.1	9.0	0.7	1.5	16.5	5.9	3.5	4.3	4.4
September quarter	22.8	26.8	12.8	28.0	2.6	5.3	44.0	14.4	10.7	11.8	11.5
TAKINGS FROM ACCOMMODATION (\$'000)											
1999											
September quarter	1 183	2 051	1 464	2 528	310	565	2 562	848	1 150	668	734
2000											
July	397	792	550	965	178	237	1 028	247	486	226	255
August	402	759	611	966	171	275	966	246	417	240	212
September	490	646	522	809	104	209	1 103	341	399	264	321
September quarter	1 290	2 197	1 683	2 740	453	721	3 096	834	1 302	730	788

Period	Gold Coast	Brisbane	Sunshine Coast	Hervey Bay/ Maryborough	Darling Downs	Bundaberg
ESTABLISHMENTS, CAPACITY AND EMPLOYMENT (number)						
September quarter 1999						
Establishments	146	157	89	44	60	23
Guest rooms	13 112	9 564	4 097	1 597	1 524	549
Bed spaces	43 319	28 046	14 349	5 417	4 776	1 672
Persons employed	8 505	7 107	2 279	761	586	189
September quarter 2000						
Establishments	154	161	97	43	64	24
Guest rooms	13 345	9 764	4 415	1 608	1 635	588
Bed spaces	44 404	27 176	15 104	5 491	5 207	1 753
Persons employed	8 258	7 082	2 296	706	623	180
ROOM NIGHTS OCCUPIED ('000)						
1999						
September quarter	738.6	583.9	203.0	86.1	85.4	32.0
2000						
July	229.1	212.2	62.4	24.0	26.8	10.2
August	248.7	208.9	63.1	25.9	26.7	9.3
September	254.6	186.7	74.5	26.3	29.5	9.7
September quarter	732.4	607.8	199.9	76.2	83.0	29.1
ROOM OCCUPANCY RATES (%)						
1999						
September quarter	61.2	66.7	53.9	58.6	60.9	63.4
2000						
July	55.4	70.1	45.6	48.2	52.9	55.8
August	60.1	69.0	46.1	51.9	52.7	50.8
September	63.6	63.7	56.2	54.5	60.1	54.8
September quarter	59.7	67.7	49.2	51.5	55.2	53.8
GUEST NIGHTS ('000)						
1999						
September quarter	1 708.7	921.8	506.4	176.6	156.3	53.9
2000						
July	540.0	341.4	157.9	47.0	46.8	18.5
August	563.4	327.9	152.4	45.4	44.6	15.1
September	624.5	308.8	204.2	49.6	55.1	16.9
September quarter	1 727.9	978.1	514.5	142.1	146.5	50.5
GUEST ARRIVALS ('000)						
1999						
September quarter	453.9	423.1	154.0	92.7	108.4	36.4
2000						
July	149.4	138.4	48.1	21.8	33.3	12.2
August	144.4	136.7	47.0	23.3	30.9	10.7
September	155.4	125.4	56.3	24.9	39.2	10.9
September quarter	449.2	400.5	151.4	70.0	103.4	33.8
TAKINGS FROM ACCOMMODATION (\$'000)						
1999						
September quarter	66 648	54 186	22 250	6 298	5 533	2 204
2000						
July	22 889	20 790	6 420	1 768	2 023	774
August	24 858	20 401	6 818	2 000	1 961	690
September	26 514	18 310	8 492	2 247	2 262	748
September quarter	74 261	59 501	21 730	6 015	6 246	2 212

<i>Period</i>	<i>Fitzroy</i>	<i>Mackay</i>	<i>Whitsundays</i>	<i>Northern</i>	<i>Tropical North Queensland</i>	<i>Outback</i>	<i>Great Barrier Reef</i>
ESTABLISHMENTS, CAPACITY AND EMPLOYMENT (number)							
September quarter 1999							
Establishments	79	52	18	55	149	50	19
Guest rooms	3 012	1 698	2 295	2 392	9 970	1 344	2 752
Bed spaces	9 750	4 996	8 361	6 951	30 927	3 732	9 440
Persons employed	1 690	999	2 085	1 535	5 490	563	2 800
September quarter 2000							
Establishments	84	52	19	55	152	53	18
Guest rooms	3 142	1 687	2 440	2 394	10 108	1 429	2 719
Bed spaces	10 144	4 963	8 747	6 949	30 875	4 066	9 264
Persons employed	1 604	952	1 878	1 502	5 346	522	2 460
ROOM NIGHTS OCCUPIED ('000)							
1999							
<i>September quarter</i>	169.2	100.6	136.3	164.8	675.7	80.1	161.1
2000							
July	55.9	30.9	37.0	52.7	218.1	28.9	41.3
August	53.5	31.0	44.1	49.1	235.5	28.5	51.6
September	52.6	32.5	45.4	42.8	192.3	23.2	54.2
<i>September quarter</i>	161.9	94.5	126.5	144.6	645.8	80.6	147.1
ROOM OCCUPANCY RATES (%)							
1999							
<i>September quarter</i>	61.4	64.4	64.9	74.9	73.7	64.7	63.6
2000							
July	57.4	59.1	49.0	71.1	69.8	65.2	49.5
August	54.9	59.3	58.3	66.1	75.1	64.4	61.2
September	55.8	64.3	67.8	59.5	63.4	54.0	71.9
<i>September quarter</i>	56.0	60.9	58.0	65.6	69.5	61.3	60.5
GUEST NIGHTS ('000)							
1999							
<i>September quarter</i>	290.8	174.3	310.1	263.5	1 412.3	126.6	360.9
2000							
July	96.4	49.1	96.9	86.2	452.7	45.6	103.2
August	86.2	46.2	94.7	76.9	480.6	42.3	104.4
September	95.3	56.0	102.8	72.5	402.8	36.0	118.2
<i>September quarter</i>	278.0	151.3	294.5	235.5	1 336.1	123.9	325.7
GUEST ARRIVALS ('000)							
1999							
<i>September quarter</i>	151.9	74.9	86.3	130.7	413.7	82.2	90.5
2000							
July	53.3	22.1	27.4	43.4	136.8	28.4	23.9
August	47.4	21.1	25.6	38.4	142.3	25.1	23.7
September	49.2	22.8	27.2	35.5	116.4	21.8	26.3
<i>September quarter</i>	149.9	66.0	80.3	117.3	395.5	75.2	73.9
TAKINGS FROM ACCOMMODATION (\$'000)							
1999							
<i>September quarter</i>	13 163	6 767	19 147	12 689	77 928	5 157	27 473
2000							
July	4 548	2 179	5 322	4 459	26 617	2 034	7 071
August	4 294	2 199	6 663	4 128	29 377	2 015	9 419
September	4 614	2 407	7 617	3 667	24 039	1 634	10 448
<i>September quarter</i>	13 456	6 785	19 603	12 254	80 033	5 683	26 937

Period	South East	Murraylands	Fleurieu Peninsula	Adelaide	Barossa Valley	Riverland	Mid North	Flinders Ranges	Far North	Eyre Peninsula	Yorke Peninsula	Kangaroo Island
ESTABLISHMENTS, CAPACITY AND EMPLOYMENT (number)												
September quarter 1999												
Establishments	32	4	13	89	8	14	5	19	8	25	8	6
Guest rooms	915	96	447	5 649	351	520	144	652	378	793	151	151
Bed spaces	2 774	304	1 389	16 109	1 051	1 544	425	1 983	1 101	2 339	431	452
Persons employed	406	44	230	3 755	286	489	95	298	190	558	59	95
September quarter 2000												
Establishments	32	4	13	91	9	14	5	19	8	24	8	6
Guest rooms	929	96	438	5 909	366	499	143	649	388	766	149	167
Bed spaces	2 800	301	1 378	16 628	1 025	1 535	445	1 951	1 080	2 202	441	473
Persons employed	417	36	219	3 694	271	483	85	286	207	496	59	94
ROOM NIGHTS OCCUPIED ('000)												
1999												
September quarter	35.9	3.6	12.6	319.4	11.5	21.7	7.9	33.7	19.3	35.9	4.2	4.8
2000												
July	11.1	1.2	4.4	101.8	4.8	6.3	2.0	11.6	6.3	10.1	1.3	1.2
August	11.4	1.2	3.0	113.1	4.8	6.7	2.0	12.9	5.5	12.5	1.3	1.7
September	13.2	1.3	4.0	110.4	4.6	7.4	2.7	13.3	5.5	12.1	1.6	1.7
September quarter	35.7	3.7	11.4	325.3	14.2	20.4	6.7	37.8	17.4	34.8	4.1	4.6
ROOM OCCUPANCY RATES (%)												
1999												
September quarter	42.6	40.8	30.6	61.4	44.8	45.4	59.9	56.1	55.5	49.2	30.0	34.8
2000												
July	38.5	40.5	32.5	55.9	42.2	40.6	44.2	57.9	52.5	42.6	27.2	24.1
August	39.7	39.8	22.1	62.1	42.5	43.5	46.0	64.1	46.0	52.8	27.3	32.2
September	47.3	44.2	30.3	62.3	42.0	49.4	62.7	68.1	47.4	52.7	34.7	33.4
September quarter	41.8	41.5	28.2	60.1	42.2	44.4	50.8	63.3	48.6	49.3	29.7	29.9
GUEST NIGHTS ('000)												
1999												
September quarter	58.2	6.5	28.1	517.0	20.0	34.4	13.3	57.0	40.3	53.3	6.7	9.3
2000												
July	17.2	1.9	10.6	163.5	8.5	10.7	3.8	20.1	11.1	14.5	2.0	2.6
August	16.0	2.0	6.5	172.2	7.9	10.5	3.5	21.3	9.4	17.5	1.9	3.1
September	22.5	2.2	9.3	186.1	8.3	12.6	5.2	24.0	9.2	18.4	2.6	3.3
September quarter	55.6	6.1	26.4	521.7	24.7	33.9	12.5	65.4	29.8	50.4	6.5	8.9
GUEST ARRIVALS ('000)												
1999												
September quarter	37.5	5.2	16.5	227.9	13.2	22.9	9.8	39.6	23.3	37.2	4.3	5.5
2000												
July	11.2	1.4	6.1	73.0	4.6	7.0	2.7	14.0	7.7	9.5	1.3	1.4
August	10.9	1.4	4.2	75.7	6.2	6.9	2.6	14.2	6.4	11.8	1.2	1.8
September	14.6	1.6	6.2	79.7	5.6	8.9	3.5	16.7	6.2	12.4	1.7	1.7
September quarter	36.7	4.4	16.5	228.3	16.5	22.9	8.9	44.9	20.3	33.7	4.2	5.0
TAKINGS FROM ACCOMMODATION (\$'000)												
1999												
September quarter	2 203	206	918	31 261	1 004	1 338	588	2 259	1 497	2 141	238	384
2000												
July	796	67	353	10 833	473	392	175	785	476	664	76	101
August	806	69	234	12 104	510	444	178	868	428	824	82	129
September	949	75	324	11 877	397	493	235	919	409	804	101	143
September quarter	2 551	211	911	34 814	1 379	1 330	588	2 571	1 313	2 292	259	373

Period	South East	Goldfields	Midwest	Gascoyne	Pilbara	Kimberley	Perth	Peel	South West	Great Southern	Wheatbelt
ESTABLISHMENTS, CAPACITY AND EMPLOYMENT (number)											
September quarter 1999											
Establishments	10	23	24	9	17	27	95	5	56	19	23
Guest rooms	296	1 051	814	427	1 108	1 488	8 816	245	2 230	708	621
Bed spaces	876	2 734	2 168	1 194	2 507	4 420	24 696	883	7 004	2 054	1 531
Persons employed	137	448	366	197	498	848	5 573	113	1 200	291	235
September quarter 2000											
Establishments	10	25	25	11	19	27	102	6	58	19	24
Guest rooms	294	1 065	881	503	1 419	1 505	9 278	288	2 419	717	683
Bed spaces	863	2 736	2 327	1 356	2 996	4 269	25 455	1 085	7 531	2 114	1 654
Persons employed	129	443	374	202	462	926	5 619	152	1 297	296	285
ROOM NIGHTS OCCUPIED ('000)											
1999											
September quarter	13.6	46.7	41.3	26.1	52.8	104.9	519.9	9.7	95.4	25.6	25.4
2000											
July	3.3	14.8	10.8	9.0	22.2	33.4	157.6	3.9	27.7	6.5	7.5
August	3.6	14.3	13.6	9.1	25.2	36.2	168.8	3.6	26.5	7.2	8.7
September	5.0	17.5	14.5	7.9	23.7	27.7	181.4	4.4	31.7	8.9	9.0
September quarter	11.9	46.5	38.9	26.0	71.2	97.3	507.8	12.0	86.0	22.7	25.3
ROOM OCCUPANCY RATES (%)											
1999											
September quarter	49.8	48.2	55.1	66.5	52.2	76.7	64.3	43.0	46.5	39.2	44.5
2000											
July	35.9	44.9	39.4	57.5	50.5	71.7	54.8	44.2	37.0	29.4	35.4
August	39.9	43.2	49.9	58.6	57.4	77.5	58.7	40.4	35.4	32.5	41.3
September	56.4	54.7	55.0	52.3	55.8	61.3	65.2	51.0	43.7	41.5	44.0
September quarter	44.0	47.5	48.0	56.2	54.5	70.3	59.5	45.2	38.7	34.4	40.2
GUEST NIGHTS ('000)											
1999											
September quarter	21.2	67.8	71.1	43.6	72.1	183.5	834.3	20.9	178.1	44.8	35.6
2000											
July	4.7	21.3	19.0	15.7	27.8	66.8	250.1	10.1	59.0	10.4	10.5
August	5.1	20.5	22.4	15.1	31.5	67.2	260.3	8.3	50.7	10.6	12.2
September	8.3	26.8	24.9	14.2	29.4	53.4	299.7	10.4	67.4	14.9	13.0
September quarter	18.2	68.6	66.3	45.0	88.6	187.3	810.0	28.8	177.1	35.9	35.7
GUEST ARRIVALS ('000)											
1999											
September quarter	13.9	36.7	43.3	21.7	40.4	71.6	336.3	11.5	80.2	27.7	26.1
2000											
July	2.3	10.8	11.1	6.8	12.3	24.4	101.6	4.5	28.2	6.5	6.8
August	2.6	10.9	13.5	6.5	14.5	25.1	103.7	4.3	26.2	7.0	8.2
September	4.5	13.7	15.5	6.6	12.9	19.1	113.2	5.0	35.1	9.9	9.5
September quarter	9.4	35.3	40.2	19.9	39.7	68.6	318.5	13.7	89.5	23.4	24.5
TAKINGS FROM ACCOMMODATION (\$'000)											
1999											
September quarter	837	3 739	2 767	1 910	4 088	12 660	52 366	857	7 684	1 937	1 397
2000											
July	227	1 274	813	679	1 604	4 402	17 226	360	2 551	538	435
August	253	1 163	1 044	693	1 808	4 728	18 385	289	2 343	584	568
September	346	1 437	1 119	626	1 753	3 631	19 284	379	3 021	731	594
September quarter	826	3 873	2 975	1 998	5 165	12 761	54 895	1 028	7 914	1 852	1 597

Period	Greater Hobart	Southern	East Coast	Northern	Greater Launceston	North West	West Coast
ESTABLISHMENTS, CAPACITY AND EMPLOYMENT (number)							
September quarter 1999							
Establishments	38	14	4	2	30	32	9
Guest rooms	2 085	459	n.p.	n.p.	1 355	986	397
Bed spaces	6 008	1 581	n.p.	n.p.	4 483	2 858	1 141
Persons employed	1 638	228	n.p.	n.p.	1 122	566	162
September quarter 2000							
Establishments	39	14	4	2	30	31	10
Guest rooms	2 124	458	n.p.	n.p.	1 349	970	411
Bed spaces	6 117	1 576	n.p.	n.p.	4 445	2 762	1 228
Persons employed	1 716	228	n.p.	n.p.	1 170	528	174
ROOM NIGHTS OCCUPIED ('000)							
1999							
September quarter	98.3	11.5	n.p.	n.p.	54.6	28.6	8.2
2000							
July	28.6	2.7	n.p.	n.p.	14.1	8.3	2.1
August	31.7	3.0	n.p.	n.p.	15.9	8.3	2.7
September	33.0	4.6	n.p.	n.p.	18.8	9.7	3.4
September quarter	93.3	10.3	n.p.	n.p.	48.9	26.4	8.2
ROOM OCCUPANCY RATES (%)							
1999							
September quarter	51.2	27.9	n.p.	n.p.	43.8	31.5	22.9
2000							
July	43.4	19.0	n.p.	n.p.	33.8	27.6	16.5
August	49.4	21.4	n.p.	n.p.	38.1	27.6	21.4
September	53.3	33.2	n.p.	n.p.	46.5	33.5	27.7
September quarter	48.6	24.4	n.p.	n.p.	39.4	29.5	21.8
GUEST NIGHTS ('000)							
1999							
September quarter	169.2	23.6	n.p.	n.p.	97.5	47.8	14.2
2000							
July	49.4	5.2	n.p.	n.p.	23.9	13.1	3.3
August	53.3	5.9	n.p.	n.p.	26.0	13.2	4.0
September	61.7	9.8	n.p.	n.p.	36.7	17.0	6.4
September quarter	164.3	21.0	n.p.	n.p.	86.6	43.3	13.7
GUEST ARRIVALS ('000)							
1999							
September quarter	73.2	17.5	n.p.	n.p.	55.4	27.8	10.9
2000							
July	19.2	3.8	n.p.	n.p.	14.8	7.6	2.3
August	20.7	4.5	n.p.	n.p.	16.2	7.9	2.7
September	25.2	7.4	n.p.	n.p.	21.0	10.2	4.6
September quarter	65.1	15.7	n.p.	n.p.	52.1	25.7	9.6
TAKINGS FROM ACCOMMODATION (\$'000)							
1999							
September quarter	8 766	934	n.p.	n.p.	4 483	2 312	525
2000							
July	2 806	229	n.p.	n.p.	1 247	714	158
August	3 244	263	n.p.	n.p.	1 396	721	182
September	3 224	404	n.p.	n.p.	1 620	850	268
September quarter	9 274	896	n.p.	n.p.	4 263	2 286	608

Period	Darwin	Kakadu	Amhem	Katherine	Tablelands	Petermann	Alice Springs	MacDonnell	Daly	Canberra
ESTABLISHMENTS, CAPACITY AND EMPLOYMENT (number)										
September quarter 1999										
Establishments	35	3	3	10	7	7	22	1	1	57
Guest rooms	2 653	n.p.	n.p.	497	252	n.p.	1 623	n.p.	n.p.	4 726
Bed spaces	7 351	n.p.	n.p.	1 400	682	n.p.	4 946	n.p.	n.p.	14 487
Persons employed	1 619	n.p.	n.p.	221	84	n.p.	800	n.p.	n.p.	2 309
September quarter 2000										
Establishments	35	4	3	10	7	7	22	2	1	60
Guest rooms	2 619	n.p.	83	528	250	n.p.	1 610	n.p.	n.p.	5 023
Bed spaces	7 750	n.p.	283	1 455	708	n.p.	4 928	n.p.	n.p.	15 178
Persons employed	1 534	n.p.	51	210	58	n.p.	726	n.p.	n.p.	2 537
ROOM NIGHTS OCCUPIED ('000)										
1999										
September quarter	218.3	n.p.	n.p.	30.2	11.8	n.p.	97.2	n.p.	n.p.	284.9
2000										
July	71.8	n.p.	1.2	9.9	2.8	n.p.	31.6	n.p.	n.p.	90.1
August	72.1	n.p.	1.2	10.3	3.0	n.p.	31.3	n.p.	n.p.	88.0
September	57.0	n.p.	1.3	7.2	2.5	n.p.	26.3	n.p.	n.p.	84.3
September quarter	201.0	n.p.	3.7	27.4	8.4	n.p.	89.1	n.p.	n.p.	262.4
ROOM OCCUPANCY RATES (%)										
1999										
September quarter	90.0	n.p.	n.p.	66.1	51.0	n.p.	65.6	n.p.	n.p.	66.4
2000										
July	88.5	n.p.	45.0	60.8	36.2	n.p.	63.3	n.p.	n.p.	57.9
August	88.8	n.p.	48.0	62.8	39.3	n.p.	62.7	n.p.	n.p.	56.5
September	72.6	n.p.	52.7	45.5	33.8	n.p.	54.4	n.p.	n.p.	56.0
September quarter	83.4	n.p.	48.5	56.5	36.5	n.p.	60.2	n.p.	n.p.	56.8
GUEST NIGHTS ('000)										
1999										
September quarter	372.1	n.p.	n.p.	55.4	21.6	n.p.	174.2	n.p.	n.p.	482.0
2000										
July	124.7	n.p.	1.7	19.9	5.2	n.p.	58.3	n.p.	n.p.	158.6
August	123.5	n.p.	2.1	20.0	4.8	n.p.	54.6	n.p.	n.p.	142.0
September	94.1	n.p.	2.0	15.0	4.4	n.p.	45.8	n.p.	n.p.	142.9
September quarter	342.2	n.p.	5.9	54.9	14.4	n.p.	158.8	n.p.	n.p.	443.5
GUEST ARRIVALS ('000)										
1999										
September quarter	133.8	n.p.	n.p.	39.1	18.6	n.p.	88.6	n.p.	n.p.	226.9
2000										
July	46.4	n.p.	0.7	12.9	4.3	n.p.	26.4	n.p.	n.p.	72.0
August	49.4	n.p.	0.8	12.3	3.7	n.p.	26.0	n.p.	n.p.	67.2
September	37.5	n.p.	0.9	8.7	3.1	n.p.	20.7	n.p.	n.p.	62.6
September quarter	133.4	n.p.	2.3	33.8	11.1	n.p.	73.1	n.p.	n.p.	201.8
TAKINGS FROM ACCOMMODATION (\$'000)										
1999										
September quarter	22 397	n.p.	n.p.	2 090	734	n.p.	7 466	n.p.	n.p.	28 229
2000										
July	8 205	n.p.	167	762	185	n.p.	2 594	n.p.	n.p.	9 558
August	8 340	n.p.	188	770	201	n.p.	2 646	n.p.	n.p.	9 289
September	5 855	n.p.	186	556	171	n.p.	2 188	n.p.	n.p.	9 900
September quarter	22 400	n.p.	542	2 087	557	n.p.	7 428	n.p.	n.p.	28 747

	New South Wales	Victoria	Queensland	South Australia	Western Australia	Tasmania	Northern Territory	Australian Capital Territory	Australia
LETTING ENTITIES, CAPACITY AND EMPLOYMENT									
September quarter 1997									
Letting entities(a)	115	14	68	8	4	—	—	2	211
Flats, units and houses									
Single bedroom	375	20	228	6	n.p.	—	—	n.p.	665
Multiple bedroom	6 740	695	4 170	500	n.p.	—	—	n.p.	12 472
Total	7 115	715	4 398	506	n.p.	—	—	n.p.	13 137
Bed spaces	36 682	4 499	19 971	3 079	n.p.	—	—	n.p.	66 020
September quarter 2000									
Letting entities(a)	108	11	59	8	4	—	—	1	191
Flats, units and houses									
Single bedroom	508	17	233	11	n.p.	—	—	n.p.	803
Multiple bedroom	7 585	843	3 718	564	n.p.	—	—	n.p.	12 969
Total	8 093	860	3 951	575	n.p.	—	—	n.p.	13 772
Bed spaces	44 843	5 350	18 691	3 321	n.p.	—	—	n.p.	73 471
UNIT NIGHTS OCCUPIED ('000)									
1997									
September quarter	187.8	4.6	229.1	6.7	n.p.	—	—	n.p.	449.7
2000									
July	67.5	1.8	62.5	2.8	n.p.	—	—	n.p.	139.3
August	56.8	2.2	61.0	2.0	n.p.	—	—	n.p.	126.1
September	103.4	2.0	61.3	3.2	n.p.	—	—	n.p.	174.2
September quarter	227.6	6.0	184.7	8.0	n.p.	—	—	n.p.	439.5
UNIT OCCUPANCY RATES (%)									
1997									
September quarter	28.7	7.0	56.6	14.5	n.p.	—	—	n.p.	37.2
2000									
July	26.9	6.8	51.0	15.8	n.p.	—	—	n.p.	32.6
August	22.9	8.3	49.8	11.1	n.p.	—	—	n.p.	29.7
September	43.1	7.6	51.7	18.8	n.p.	—	—	n.p.	42.5
September quarter	30.8	7.6	50.8	15.2	n.p.	—	—	n.p.	34.8
UNIT LETTINGS ('000)									
1997									
September quarter	26.8	1.0	24.1	1.2	n.p.	—	—	n.p.	54.8
2000									
July	9.8	0.4	8.7	0.5	n.p.	—	—	n.p.	20.3
August	8.4	0.4	7.5	0.4	n.p.	—	—	n.p.	17.4
September	12.3	0.4	9.2	0.7	n.p.	—	—	n.p.	23.6
September quarter	30.5	1.2	25.4	1.6	n.p.	—	—	n.p.	61.3
AVERAGE LENGTH OF STAY (days)									
1997									
September quarter	7.0	4.7	9.5	5.8	n.p.	—	—	n.p.	8.2
2000									
September quarter	7.5	5.1	7.3	5.1	n.p.	—	—	n.p.	7.2
TAKINGS FROM ACCOMMODATION (\$'000)									
1997									
September quarter	8 530	558	9 844	294	n.p.	—	—	n.p.	20 658
2000									
July	3 848	257	3 802	204	n.p.	—	—	n.p.	8 440
August	3 019	172	3 492	144	n.p.	—	—	n.p.	7 194
September	12 373	147	4 027	238	n.p.	—	—	n.p.	17 180
September quarter	19 240	576	11 320	586	n.p.	—	—	n.p.	32 814

(a) The number of real estate agents with 15 or more self-contained units (see Explanatory Notes).

	New South Wales	Victoria	Queensland	South Australia	Western Australia	Tasmania	Northern Territory	Australian Capital Territory	Australia
LETTING ENTITIES, CAPACITY AND EMPLOYMENT									
September quarter 1997									
Letting entities(a)	49	22	296	17	30	14	4	7	439
Flats, units and houses									
Single bedroom	494	464	2 227	131	n.p.	58	73	n.p.	3 806
Multiple bedroom	816	598	7 344	420	n.p.	223	93	n.p.	10 475
Total	1 310	1 062	9 571	551	n.p.	281	166	n.p.	14 281
Bed spaces	5 409	3 984	37 442	2 315	n.p.	1 333	650	n.p.	57 299
Persons employed	440	324	1 443	119	n.p.	73	35	n.p.	2 742
September quarter 2000									
Letting entities(a)	50	18	321	11	22	10	4	4	440
Flats, units and houses									
Single bedroom	445	349	2 787	123	n.p.	50	103	n.p.	4 186
Multiple bedroom	875	581	7 605	181	n.p.	164	93	n.p.	10 274
Total	1 320	930	10 392	304	n.p.	214	196	n.p.	14 460
Bed spaces	5 823	3 732	41 127	1 427	n.p.	1 012	820	n.p.	58 652
Persons employed	490	280	1 589	78	n.p.	55	41	n.p.	2 781
UNIT NIGHTS OCCUPIED ('000)									
1997									
September quarter	62.5	61.2	645.7	28.8	n.p.	10.9	11.1	n.p.	885.3
2000									
July	18.6	18.4	205.9	5.2	n.p.	1.7	5.2	n.p.	273.0
August	17.6	18.2	206.8	6.0	n.p.	1.5	5.5	n.p.	270.4
September	22.4	18.8	215.5	6.4	n.p.	3.1	4.3	n.p.	290.2
September quarter	58.6	55.4	628.3	17.5	n.p.	6.3	15.0	n.p.	833.6
UNIT OCCUPANCY RATES (%)									
1997									
September quarter	52.1	62.6	73.4	56.8	n.p.	42.3	72.5	n.p.	67.4
2000									
July	46.7	63.9	63.9	54.7	n.p.	25.4	85.4	n.p.	61.1
August	44.5	63.2	64.2	63.2	n.p.	23.3	90.3	n.p.	60.5
September	56.5	67.3	69.2	70.0	n.p.	47.6	73.4	n.p.	67.0
September quarter	49.2	64.8	65.7	62.6	n.p.	31.9	83.1	n.p.	62.8
UNIT LETTINGS ('000)									
1997									
September quarter	14.9	15.1	104.2	9.6	n.p.	4.1	2.5	n.p.	167.2
2000									
July	5.4	4.1	40.9	2.1	n.p.	0.8	2.2	n.p.	61.0
August	4.9	3.6	37.8	1.3	n.p.	0.9	2.3	n.p.	55.5
September	5.9	4.2	47.2	2.3	n.p.	1.7	2.1	n.p.	69.6
September quarter	16.2	11.9	125.9	5.7	n.p.	3.4	6.6	n.p.	186.1
AVERAGE LENGTH OF STAY (days)									
1997									
September quarter	4.2	4.0	6.2	3.0	n.p.	2.7	4.5	n.p.	5.3
2000									
September quarter	3.6	4.6	5.0	3.1	n.p.	1.9	2.3	n.p.	4.5
TAKINGS FROM ACCOMMODATION (\$'000)									
1997									
September quarter	6 061	7 248	44 492	2 037	n.p.	605	932	n.p.	65 560
2000									
July	1 718	2 381	15 816	399	n.p.	110	626	n.p.	22 378
August	1 656	2 496	16 104	451	n.p.	100	639	n.p.	22 502
September	2 877	2 348	18 763	486	n.p.	201	446	n.p.	26 651
September quarter	6 251	7 225	50 683	1 336	n.p.	411	1 711	n.p.	71 532

(a) The number of owners or managers with 15 or more self-contained units (see Explanatory Notes).

	New South Wales	Victoria	Queensland	South Australia	Western Australia	Tasmania	Northern Territory	Australian Capital Territory	Australia
LETTING ENTITIES, CAPACITY AND EMPLOYMENT									
September quarter 1997									
Letting entities(a)	164	36	364	25	34	14	4	9	650
Flats, units and houses									
Single bedroom	869	484	2 455	137	297	58	73	98	4 471
Multiple bedroom	7 556	1 293	11 514	920	1 109	223	93	239	22 947
Total	8 425	1 777	13 969	1 057	1 406	281	166	337	27 418
Bed spaces	42 091	8 483	57 413	5 394	6 680	1 333	650	1 275	123 319
Persons employed(b)	440	324	1 443	119	254	73	35	54	2 742
September quarter 2000									
Letting entities(a)	158	29	380	19	26	10	4	5	631
Flats, units and houses									
Single bedroom	953	366	3 020	134	297	50	103	66	4 989
Multiple bedroom	8 460	1 424	11 323	745	859	164	93	175	23 243
Total	9 413	1 790	14 343	879	1 156	214	196	241	28 232
Bed spaces	50 666	9 082	59 818	4 748	5 037	1 012	820	940	132 123
Persons employed(b)	490	280	1 589	78	202	55	41	46	2 781
UNIT NIGHTS OCCUPIED ('000)									
1997									
September quarter	250.4	65.8	874.8	35.5	66.1	10.9	11.1	20.4	1 335.1
2000									
July	86.1	20.3	268.4	8.0	17.6	1.7	5.2	5.1	412.3
August	74.4	20.5	267.8	7.9	14.3	1.5	5.5	4.5	396.4
September	125.7	20.7	276.8	9.6	19.5	3.1	4.3	4.6	464.4
September quarter	286.2	61.4	813.0	25.5	51.5	6.3	15.0	14.2	1 273.1
UNIT OCCUPANCY RATES (%)									
1997									
September quarter	32.3	40.2	68.1	36.5	51.1	42.3	72.5	65.7	52.9
2000									
July	29.6	36.5	60.4	29.3	49.2	25.4	85.4	68.1	47.2
August	25.9	36.9	60.2	29.1	39.9	23.3	90.3	60.4	45.5
September	45.0	38.6	64.4	36.5	56.4	47.6	73.4	63.6	55.0
September quarter	33.4	37.3	61.6	31.6	48.4	31.9	83.1	64.0	49.2
UNIT LETTINGS ('000)									
1997									
September quarter	41.8	16.1	128.4	10.8	12.2	4.1	2.5	6.2	222.0
2000									
July	15.2	4.5	49.6	2.7	4.6	0.8	2.2	1.8	81.3
August	13.3	4.1	45.3	1.6	4.0	0.9	2.3	1.5	72.9
September	18.2	4.6	56.4	3.0	5.7	1.7	2.1	1.5	93.2
September quarter	46.7	13.1	151.3	7.3	14.4	3.4	6.6	4.7	247.4
AVERAGE LENGTH OF STAY (days)									
1997									
September quarter	6.0	4.1	6.8	3.3	5.4	2.7	4.5	3.3	6.0
2000									
September quarter	6.1	4.7	5.4	3.5	3.6	1.9	2.3	3.0	5.1
TAKINGS FROM ACCOMMODATION (\$'000)									
1997									
September quarter	14 592	7 806	54 336	2 330	4 154	605	932	1 464	86 219
2000									
July	5 566	2 639	19 618	602	1 220	110	626	436	30 818
August	4 676	2 668	19 596	595	1 032	100	639	392	29 696
September	15 250	2 495	22 789	725	1 576	201	446	349	43 831
September quarter	25 492	7 802	62 003	1 922	3 828	411	1 711	1 177	104 345

(a) The number of owners, managers or real estate agents with 15 or more self-contained units (see Explanatory Notes).

(b) Employment numbers exclude real estate agents and their employees.

	New South Wales	Victoria	Queensland	South Australia	Western Australia	Tasmania	Northern Territory	Australian Capital Territory	Australia
ESTABLISHMENTS, CAPACITY AND EMPLOYMENT									
September quarter 1997									
Establishments	378	338	163	134	138	35	30	—	1 216
Capacity									
On-site vans	2 881	1 622	1 254	719	1 014	166	111	—	7 767
Other powered sites	42 723	34 773	11 970	11 590	11 948	2 457	2 551	—	118 012
Unpowered sites	12 485	10 762	5 797	5 000	3 219	1 267	2 275	—	40 805
Cabins, flats, etc.	3 508	2 503	1 645	1 505	1 006	306	214	—	10 687
Total Capacity	61 597	49 660	20 666	18 814	17 187	4 196	5 151	—	177 271
Sites occupied by long-term guests	3 719	1 681	2 196	721	1 353	169	334	—	10 173
Other sites permanently reserved	21 156	15 089	758	1 737	2 280	1 055	8	—	42 083
Persons employed	1 913	1 273	802	561	696	141	182	—	5 568
September quarter 2000									
Establishments	405	330	140	128	127	37	25	2	1 194
Capacity									
On-site vans	3 044	1 749	1 106	516	799	n.p.	135	n.p.	7 607
Other powered sites	43 313	33 849	10 567	11 165	11 301	n.p.	1 927	n.p.	114 785
Unpowered sites	11 541	9 577	4 667	3 695	2 561	n.p.	1 916	n.p.	35 444
Cabins, flats, etc.	6 123	3 214	1 862	1 743	1 411	n.p.	348	n.p.	15 138
Total Capacity	64 021	48 389	18 202	17 119	16 072	n.p.	4 326	n.p.	172 974
Sites occupied by long-term guests	4 527	1 950	1 900	864	1 386	n.p.	187	n.p.	10 987
Other sites permanently reserved	21 169	15 936	728	2 168	2 310	n.p.	2	n.p.	43 409
Persons employed	2 278	1 350	734	573	764	n.p.	225	n.p.	6 142
SITE NIGHTS OCCUPIED ('000)									
1997									
September quarter	2 883.8	1 772.6	1 010.6	404.6	729.8	132.4	215.5	—	7 149.4
2000									
July	1 002.1	632.1	316.2	159.9	229.9	n.p.	85.7	n.p.	2 473.6
August	989.6	632.2	304.9	159.3	230.1	n.p.	66.0	n.p.	2 429.9
September	1 042.8	650.8	260.5	182.1	221.2	n.p.	49.3	n.p.	2 457.8
September quarter	3 034.4	1 915.0	881.6	501.3	681.1	n.p.	200.9	n.p.	7 361.3
SITE OCCUPANCY RATES (%)									
1997									
September quarter	50.9	38.9	53.4	23.5	46.2	34.3	45.5	—	43.9
2000									
July	50.5	42.1	56.0	30.1	46.1	n.p.	63.9	n.p.	46.1
August	49.9	42.1	54.0	30.0	46.2	n.p.	49.2	n.p.	45.3
September	54.3	44.8	47.7	35.5	45.9	n.p.	38.0	n.p.	47.4
September quarter	51.5	43.0	52.6	31.8	46.1	n.p.	50.5	n.p.	46.3
TAKINGS FROM ACCOMMODATION (\$'000)									
1997									
September quarter	25 843	12 839	15 297	4 999	9 733	859	3 977	—	73 547
2000									
July	13 092	6 794	5 946	2 494	3 673	n.p.	1 714	n.p.	34 066
August	10 813	5 079	5 301	2 371	3 533	n.p.	1 307	n.p.	28 742
September	15 158	6 479	5 089	3 210	3 725	n.p.	1 054	n.p.	35 344
September quarter	39 063	18 352	16 337	8 074	10 932	n.p.	4 075	n.p.	98 151

(a) Comprising establishments with 40 or more powered sites and cabins, etc. (see Explanatory Notes).

	New South Wales	Victoria	Queensland	South Australia	Western Australia	Tasmania	Northern Territory	Australian Capital Territory	Australia
ESTABLISHMENTS, CAPACITY AND EMPLOYMENT									
September quarter 1997									
Establishments	209	109	219	29	76	10	13	4	669
Capacity									
On-site vans	2 977	1 546	3 571	181	887	112	164	63	9 501
Other powered sites	16 270	6 893	15 409	2 295	6 218	559	1 370	458	49 472
Unpowered sites	3 490	1 404	2 737	587	1 420	353	466	419	10 876
Cabins, flats, etc.	1 848	1 225	2 229	298	924	123	89	94	6 830
Total Capacity	24 585	11 068	23 946	3 361	9 449	1 147	2 089	1 034	76 679
Sites occupied by long-term guests	10 153	4 340	11 370	1 246	3 845	191	676	251	32 072
Other sites permanently reserved	1 110	349	238	30	232	31	13	—	2 003
Persons employed	912	363	977	102	371	46	65	44	2 880
September quarter 2000									
Establishments	162	94	222	22	79	7	21	2	609
Capacity									
On-site vans	2 247	1 153	3 550	154	824	n.p.	118	n.p.	8 149
Other powered sites	12 444	6 210	15 548	2 133	6 612	n.p.	2 132	n.p.	45 894
Unpowered sites	1 931	1 113	2 863	530	1 469	n.p.	837	n.p.	9 198
Cabins, flats, etc.	2 522	1 607	2 812	292	1 171	n.p.	288	n.p.	8 804
Total Capacity	19 144	10 083	24 773	3 109	10 076	n.p.	3 375	n.p.	72 045
Sites occupied by long-term guests	8 561	4 183	10 212	1 127	3 448	n.p.	653	n.p.	28 562
Other sites permanently reserved	851	251	362	65	153	n.p.	30	n.p.	1 731
Persons employed	772	365	1 034	90	386	n.p.	149	n.p.	2 844
SITE NIGHTS OCCUPIED ('000)									
1997									
September quarter	1 237.3	490.2	1 401.1	134.5	463.2	27.2	100.2	34.8	3 888.5
2000									
July	351.3	156.4	489.8	45.1	177.8	n.p.	71.3	n.p.	1 307.7
August	349.6	155.6	476.1	45.2	175.3	n.p.	61.4	n.p.	1 278.7
September	354.4	158.8	440.4	44.0	163.3	n.p.	46.0	n.p.	1 223.0
September quarter	1 055.3	470.7	1 406.3	134.2	516.4	n.p.	178.7	n.p.	3 809.4
SITE OCCUPANCY RATES (%)									
1997									
September quarter	54.7	48.1	63.6	43.5	53.3	25.7	52.1	36.6	55.1
2000									
July	59.2	50.0	63.8	46.8	56.9	n.p.	68.2	n.p.	58.6
August	58.9	49.8	62.0	46.9	56.1	n.p.	58.7	n.p.	57.3
September	61.7	52.5	59.7	47.1	54.0	n.p.	45.5	n.p.	56.7
September quarter	59.9	50.7	61.8	46.9	55.7	n.p.	57.6	n.p.	57.5
TAKINGS FROM ACCOMMODATION (\$'000)									
1997									
September quarter	14 946	5 414	16 526	1 266	7 085	330	1 251	676	47 494
2000									
July	5 062	2 043	7 113	529	3 136	n.p.	1 171	n.p.	19 244
August	4 993	2 021	6 895	542	3 039	n.p.	946	n.p.	18 614
September	5 791	2 179	6 595	527	2 860	n.p.	740	n.p.	18 898
September quarter	15 846	6 243	20 603	1 598	9 035	n.p.	2 858	n.p.	56 756

(a) Comprising establishments with 40 or more powered sites and cabins, etc. (see Explanatory Notes).

	New South Wales	Victoria	Queensland	South Australia	Western Australia	Tasmania	Northern Territory	Australian Capital Territory	Australia
ESTABLISHMENTS, CAPACITY AND EMPLOYMENT									
September quarter 1997									
Establishments	587	447	382	163	214	45	43	4	1 885
Capacity									
On-site vans	5 858	3 168	4 825	900	1 901	278	275	63	17 268
Other powered sites	58 993	41 666	27 379	13 885	18 166	3 016	3 921	458	167 484
Unpowered sites	15 975	12 166	8 534	5 587	4 639	1 620	2 741	419	51 681
Cabins, flats, etc.	5 356	3 728	3 874	1 803	1 930	429	303	94	17 517
<i>Total Capacity</i>	<i>86 182</i>	<i>60 728</i>	<i>44 612</i>	<i>22 175</i>	<i>26 636</i>	<i>5 343</i>	<i>7 240</i>	<i>1 034</i>	<i>253 950</i>
Sites occupied by long-term guests	13 872	6 021	13 566	1 967	5 198	360	1 010	251	42 245
Other sites permanently reserved	22 266	15 438	996	1 767	2 512	1 086	21	—	44 086
Persons employed	2 825	1 636	1 779	663	1 067	187	247	44	8 448
September quarter 2000									
Establishments	567	424	362	150	206	44	46	4	1 803
Capacity									
On-site vans	5 291	2 902	4 656	670	1 623	289	253	72	15 756
Other powered sites	55 757	40 059	26 115	13 298	17 913	3 032	4 059	446	160 679
Unpowered sites	13 472	10 690	7 530	4 225	4 030	1 542	2 753	400	44 642
Cabins, flats, etc.	8 645	4 821	4 674	2 035	2 582	442	636	107	23 942
<i>Total Capacity</i>	<i>83 165</i>	<i>58 472</i>	<i>42 975</i>	<i>20 228</i>	<i>26 148</i>	<i>5 305</i>	<i>7 701</i>	<i>1 025</i>	<i>245 019</i>
Sites occupied by long-term guests	13 088	6 133	12 112	1 991	4 834	329	840	222	39 549
Other sites permanently reserved	22 020	16 187	1 090	2 233	2 463	1 115	32	—	45 140
Persons employed	3 050	1 715	1 768	663	1 150	193	374	73	8 986
SITE NIGHTS OCCUPIED ('000)									
1997									
September quarter	4 121.1	2 262.8	2 411.7	539.1	1 193.0	159.5	315.8	34.8	11 037.8
2000									
July	1 353.3	788.5	806.0	205.0	407.6	53.6	157.0	10.2	3 781.3
August	1 339.1	787.7	780.9	204.5	405.3	54.1	127.4	9.5	3 708.6
September	1 397.2	809.5	700.9	226.1	384.5	56.5	95.3	10.8	3 680.8
September quarter	4 089.7	2 385.8	2 287.8	635.6	1 197.5	164.2	379.7	30.4	11 170.7
SITE OCCUPANCY RATES (%)									
1997									
September quarter	52.0	40.6	58.9	26.5	48.7	32.5	47.4	36.6	47.3
2000									
July	52.5	43.5	60.5	32.7	50.3	32.6	65.7	32.2	49.8
August	51.9	43.5	58.6	32.6	50.0	32.9	53.4	29.8	48.8
September	56.0	46.1	54.6	37.3	49.0	35.5	41.3	35.0	50.1
September quarter	53.5	44.3	57.9	34.2	49.8	33.7	53.6	32.3	49.6
TAKINGS FROM ACCOMMODATION (\$'000)									
1997									
September quarter	40 789	18 253	31 823	6 265	16 818	1 189	5 228	676	121 041
2000									
July	18 154	8 837	13 058	3 023	6 809	328	2 885	216	53 310
August	15 805	7 100	12 197	2 912	6 573	354	2 254	161	47 356
September	20 950	8 658	11 684	3 736	6 585	602	1 795	232	54 242
September quarter	54 909	24 595	36 939	9 672	19 967	1 284	6 933	609	154 908

(a) Comprising establishments with 40 or more powered sites and cabins, etc. (see Explanatory Notes).

	New South Wales	Victoria	Queensland	South Australia	Western Australia	Tasmania	Northern Territory	Australian Capital Territory(b)	Australia
ESTABLISHMENTS, CAPACITY AND EMPLOYMENT									
September quarter 1997									
Establishments	81	41	127	34	47	27	32	—	389
Bed spaces	6 598	3 468	9 736	2 299	3 077	1 707	3 243	—	30 128
Persons employed	394	205	820	157	140	99	170	—	1 985
September quarter 2000									
Establishments	106	63	145	27	70	25	30	—	466
Bed spaces	10 020	5 882	13 051	1 994	4 437	1 758	3 194	—	40 336
Persons employed	671	364	1 227	104	243	145	317	—	3 071
GUEST NIGHTS									
1997									
September quarter	338 567	101 281	520 266	58 674	103 316	13 255	180 239	—	1 315 598
2000									
July	151 948	59 305	254 063	20 789	56 553	4 976	71 561	—	619 195
August	142 712	54 591	238 608	19 569	51 283	5 179	65 913	—	577 855
September	173 430	57 797	210 972	22 065	57 032	8 450	51 651	—	581 397
September quarter	468 090	171 693	703 643	62 423	164 868	18 605	189 125	—	1 778 447
BED OCCUPANCY RATES (%)									
1997									
September quarter	56.2	31.7	58.3	27.7	36.5	8.5	60.4	—	47.6
2000									
July	49.1	32.5	62.8	33.6	41.1	9.3	72.3	—	49.6
August	46.2	29.9	59.0	31.7	37.3	9.5	66.6	—	46.3
September	57.7	33.1	53.9	36.9	42.8	16.0	53.9	—	48.1
September quarter	50.9	31.8	58.6	34.0	40.4	11.6	64.4	—	48.0
GUEST ARRIVALS									
1997									
September quarter	115 225	49 213	189 699	28 464	33 650	8 599	101 341	—	526 191
2000									
July	56 642	19 620	103 138	10 015	15 103	2 955	37 705	—	245 178
August	52 664	17 745	95 686	8 541	14 509	3 179	33 904	—	226 228
September	58 495	19 353	84 894	9 970	17 313	5 041	26 719	—	221 785
September quarter	167 801	56 718	283 718	28 526	46 925	11 175	98 328	—	693 191
AVERAGE LENGTH OF STAY (DAYS)									
1997									
September quarter	2.9	2.1	2.7	2.1	3.1	1.5	1.8	—	2.5
2000									
July	2.7	3.0	2.5	2.1	3.7	1.7	1.9	—	2.5
August	2.7	3.1	2.5	2.3	3.5	1.6	1.9	—	2.6
September	3.0	3.0	2.5	2.2	3.3	1.7	1.9	—	2.6
September quarter	2.8	3.0	2.5	2.2	3.5	1.7	1.9	—	2.6
TAKINGS FROM ACCOMMODATION (\$'000)									
1997									
September quarter	5 527	1 696	7 200	647	1 312	160	2 695	—	19 238
2000									
July	3 171	1 167	4 461	302	899	92	1 370	—	11 461
August	3 093	1 110	4 221	298	837	92	1 285	—	10 936
September	5 027	1 113	3 761	330	938	155	996	—	12 321
September quarter	11 291	3 390	12 442	930	2 673	340	3 652	—	34 718

(a) Comprising establishments with 25 or more bed spaces (see Explanatory Notes).

(b) Australian Capital Territory data included with New South Wales.

EXPLANATORY NOTES

INTRODUCTION

- 1** This publication contains data from the ABS quarterly Survey of Tourist Accommodation (STA). The STA is a mailout collection that completely enumerates all in-scope accommodation establishments.
- 2** From the March quarter 1998, the scope and collection strategy for the STA were changed to include only significant accommodation establishments. Data series presented in this publication which relate to the 1997 calendar year have been recompiled on the basis of the new scope.

SCOPE

- 3** On a quarterly basis the STA includes hotels, motels, guest houses and serviced apartments with 15 or more rooms.
- 4** Every third year, beginning with 2000 the STA has been expanded to also include:
 - holiday flats, units and houses of letting entities with 15 or more rooms or units;
 - caravan parks with 40 or more powered sites;
 - visitor hostels with 25 or more bed spaces.
- 5** The short-term non-residential accommodation, which is in scope of this survey, is accommodation which is not let out on a lease basis, and which is let out to guests who would generally, although not necessarily, stay for periods of less than two months.
- 6** Some establishments included in the survey such as caravan parks also provide long-term residential accommodation. For hotels, motels and guest houses, the amount of such activity is considered to be insignificant and is included in the data presented in this publication. For serviced apartments, only short-term non-residential accommodation is included.

DEFINITIONS OF ACCOMMODATION ESTABLISHMENTS

- 7** The STA includes the following categories of establishments which provide predominantly short-term non-residential accommodation to the general public:
 - hotels and resorts with facilities - establishments with 15 or more rooms which are licensed to operate a public bar and which provide accommodation on a room/suite basis, with a bath/shower and toilet in most guest rooms, but which do not have full cooking facilities (i.e. hot plates and oven/microwave) in most guest rooms;
 - motels, private hotels and guest houses with facilities - establishments with 15 or more rooms which are not licensed to operate a public bar, and which provide accommodation on a room/suite basis, with a bath/shower and toilet in most guest rooms, but which do not have full cooking facilities (i.e. hot plates and oven/microwave) in most guest rooms;
 - serviced apartments - establishments with 15 or more units which mostly comprise self-contained units at the same location, and which are available on a unit/apartment basis to the general public for a minimum of one night. The units should have full cooking facilities (i.e. hot plates and oven/microwave), refrigerator and bath/shower and toilet facilities; all bed linen and towels should be provided, and daily servicing (i.e. cleaning and bed making) must be available through the on-site management, although this service may not necessarily be used.

EXPLANATORY NOTES *continued*

- holiday flats, units and houses - (excluding establishments predominantly operated on a time-share basis) which are operated by owners, managers or real estate agents who have sole letting rights to at least 15 flats, units or houses for short-term letting. They are mainly self-contained in terms of cooking, bath (or shower) and toilet facilities and do not have breakfast available for guests. Data for holiday flats units or houses include short-term owner operation as well as paying guest occupation.
- caravan parks - establishments with 40 or more powered sites and cabins, etc. which provide either short-term or long-term accommodation to the general public and which provide powered sites for caravans and toilet, shower and laundry facilities for guests.
- visitor hostels - establishments with 25 or more bed spaces which provide accommodation to visitors on a bed basis (rather than by room). This category does not include establishments providing charity type accommodation (e.g. Salvation Army hostels) nor hotels, motels and guest houses without in-room facilities which provide accommodation on a per room basis.

CLASSIFICATION CHANGES

8 As a result of the separate classification of serviced apartments from the March quarter 1998, there have been several changes to definitions of accommodation units. Some units, which were formerly in categories such as hotels, motels or holiday flats, units and houses are now classified as serviced apartments. A small number of establishments which were previously classified as motels have been reclassified as holiday flats, units and houses and are therefore no longer in scope of the quarterly STA, except as described in paragraph 4.

COVERAGE

9 Coverage is comprehensive and from the September quarter 1999, is obtained from the Australian Automobile Association accommodation guide, supplied as an electronic file, which is updated twice yearly. This is supplemented by notification of new tourism developments and their likely opening dates in selected guides, major tourism journals and periodicals and newspapers. Periodic comparison with lists of accommodation establishments provided by the various Tourism Commissions and Industry Associations is also undertaken.

DATA QUALITY

10 The survey does not have a sample component and the data are not subject to sampling variability. However, other inaccuracies collectively referred to as non-sampling error may affect the data. These non-sampling errors may arise from a number of sources, including:

- errors in the reporting of data by respondents;
- errors in the process of capturing data;
- estimation for missing data; and
- definition and classification errors.

Every effort has been made to reduce non-sampling error to a minimum by careful design and testing of questionnaires, and efficient operating procedures and systems used to compile statistics.

11 The September quarter 2000 response rates were:

- 92% licensed hotels, motels and guest houses, serviced apartments.
- 93% holiday flats, units and houses,
- 93% caravan parks.
- 86% visitor hostels.

EXPLANATORY NOTES *continued*

REGIONAL DATA

12 Survey results are aggregated to Tourism Regions as defined by relevant State and Territory Tourist Commissions or equivalent organisations. Details of the composition of Tourism Regions, including maps, are available on request.

ANNUAL CAPACITY DATA

13 ABS releases counts of accommodation establishments and their capacity as at the end of December each year in respect of the pre-1998 scope of the survey (but recognising serviced apartments separately) as follows:

- hotels, motels and guest houses and serviced apartments with facilities and having five or more rooms;
- holiday flats, units and houses (other than those included with serviced apartments) which are operated by owners, managers or real estate agents who have sole letting rights to at least five flats, units or houses for short term letting;
- all caravan parks regardless of size; and
- all visitor hostels regardless of size.

14 As a result of classification changes applied from March quarter 1998 onward, data will not be comparable with that previously published for particular accommodation types.

15 These counts are published annually in a quarterly issue of *Tourism Indicators, Australia* (Cat. no. 8634.0). Counts in respect of December 1999 were published in the June quarter 2000 edition.

UNPUBLISHED STATISTICS

16 The ABS may make available on request certain unpublished tourist accommodation statistics, including statistics for past quarters and for specific areas and more detailed information for specific data items. For example, detailed employment statistics showing the number of full-time, part-time or casual employees may be available.

RELATED PUBLICATIONS

17 Other ABS publications and products which may be of interest include:

Directory of Tourism Statistics, 2000 (Cat. no. 1130.0) (irregular)

Overseas Arrivals and Departures, Australia (Cat. no. 3401.0) (issued monthly)

Tourism Indicators, Australia (Cat. no. 8634.0) (issued quarterly)

Tourist Accommodation, Small Area Data Standard Data Service (SDS)

products for each State/Territory (except the ACT) (Cat. no. 8635.n.40.001) (issued quarterly).

18 Current publications produced by the ABS are listed in the *Catalogue of Publications and Products* (Cat. no. 1101.0). The ABS also issues the *Release Advice* (Cat. no. 1105.0) on Tuesdays and Fridays which lists publications to be released in the next few days. Both are available from any ABS office or the ABS web site.

EFFECTS OF ROUNDING

19 Where figures have been rounded, discrepancies may occur between totals and the sum of the component items.

GLOSSARY

Average length of stay	<p>Average length of stay is expressed in numbers of days and calculated:</p> <ul style="list-style-type: none"> • for hotels, motels and guest houses and serviced apartments, by dividing <i>Guest nights</i> by <i>Guest arrivals</i>. • for holiday flats, units and houses, by dividing <i>Unit nights occupied</i> by <i>Unit lettings</i>.
Bed spaces	Three-quarter beds are counted as one bed space; double beds as two bed spaces. Cots are excluded.
Capacity	Capacity in terms of <i>Guest rooms</i> , <i>serviced apartment units</i> , <i>visitor hostel bed spaces</i> , <i>holiday units</i> or <i>caravan park sites</i> is the maximum number available to accommodate paying guests during the survey period. Capacity closed temporarily for seasonal reasons is included.
Caravan park sites	Includes <i>On-site vans</i> , <i>Other powered sites</i> , <i>Unpowered sites</i> and <i>Cabins</i> , etc.
Establishments	For hotels, motels and guest houses and serviced apartments, caravan parks and visitor hostels, the number of establishments within the scope of the survey which operated for any part of the survey period, or which closed temporarily for the quarter for seasonal reasons.
Guest arrivals	The total number of paying guests counted only on the first night they stayed at the accommodation establishment during the survey period.
Guest nights	The total number of paying guests counted on each night they stayed at the accommodation establishment during the survey period.
Guest rooms	The maximum number of rooms available at each establishment during the survey period for accommodating short-term paying guests. Units and apartments within serviced apartments are treated as rooms in these survey results.
Letting entities	For holiday flats, units and houses, the number of owners, managers or real estate agents within the scope of the survey who operated for any part of the survey period.
Long-term caravan parks	Caravan parks where the majority of paying guests occupied sites for periods of more than two months.
Occupancy	<p>Occupancy in terms of <i>Room nights</i>, <i>Unit nights</i> or <i>Site nights occupied</i> refers to the total number of nights each guest room, serviced apartment unit, holiday unit or caravan park site was occupied during the survey period.</p> <p>Occupancy in terms of <i>Guest nights</i> refers to the total number of paying guests counted on each night they stayed at the accommodation establishment during the survey period.</p>
Occupancy rates	<p><i>Occupancy rates</i> represent occupancy expressed as a percentage of total capacity available during the survey period, e.g. for the period</p> $\text{Room occupancy rate (\%)} = \frac{\text{Room nights occupied}}{(\text{Guest rooms}) \times (\text{No. of days in the period})} \times 100$ <p>providing that, for establishments closing (other than for seasonal reasons) or opening during the survey period, the denominator of the above expression includes only operating periods.</p>

GLOSSARY *continued*

Other sites permanently reserved	The total number of powered and unpowered sites, on-site vans and cabins, etc. continuously let for two months or more of the survey period to tenants who occupy the sites only on a casual or sporadic basis.
Persons employed	The total number of persons working at each accommodation establishment at the end of the survey period (including working proprietors and those working on other than accommodation activities).
Room nights available	The number of guest rooms/units available multiplied by the number of days for which they were available during the survey period. For establishments closing (other than for seasonal reasons) or opening during this period, operating periods only are included.
Serviced apartment units	Units and apartments within serviced apartments are treated as rooms in these survey results.
Short-term caravan parks	Caravan parks where the majority of paying guests occupy sites for periods of less than two months.
Site nights available	The total number of nights each caravan park site was occupied during the survey period.
Sites occupied by long-term guests	The total number of sites, etc. occupied at the end of the survey period by guests who have stayed continuously for 2 months or more.
Star grading	<p>The grading of hotels, motels and guest houses with facilities and serviced apartments based on the classification system used by members of the Australian Automobile Association (AAA). The gradings are allocated according to a points system based on the amenities and facilities available to guests. Details of the grading scheme are contained in the RACV-RAASA members' publication <i>Accommodation Australia</i>, or the individual State guides. For the purpose of classifying establishments to a star grading in this publication, 'half' star gradings are ignored (e.g. a two and a half star grading has been shown as two star).</p> <p>From the June quarter 1999, some (very few) large establishments not star graded by the AAA have been allocated a star grade by the ABS for Survey of Tourist Accommodation statistical tabulation purposes.</p>
Takings from accommodation	<p>Since 1 July 2000, takings from accommodation include gross revenue from the provision of accommodation, including GST. Takings from meals are excluded.</p> <p>Prior to 1 July 2000, takings from accommodation for some jurisdictions included bed taxes. From 1 July bed taxes were abolished being replaced by GST. Takings from accommodation for each month generally represent the takings received during that month. Where payments are received in advance of, or after, the provision of accommodation to guests, the monthly figure for takings from accommodation may not necessarily bear a direct relationship to the number of guests accommodated during the month.</p>
Unit lettings	The total number of times a holiday flat, unit or house was occupied by a new tenant, counted only on the first night it was occupied by the new tenant.
Unit nights	The total number of nights each holiday flat, unit or house was occupied during the survey period.

FOR MORE INFORMATION...

- INTERNET* **www.abs.gov.au** the ABS web site is the best place to start for access to summary data from our latest publications, information about the ABS, advice about upcoming releases, our catalogue, and Australia Now—a statistical profile.
- LIBRARY* A range of ABS publications is available from public and tertiary libraries Australia-wide. Contact your nearest library to determine whether it has the ABS statistics you require, or visit our web site for a list of libraries.
- CPI INFOLINE* For current and historical Consumer Price Index data, call 1902 981 074 (call cost 77c per minute).
- DIAL-A-STATISTIC* For the latest figures for National Accounts, Balance of Payments, Labour Force, Average Weekly Earnings, Estimated Resident Population and the Consumer Price Index call 1900 986 400 (call cost 77c per minute).

INFORMATION SERVICE

Data which have been published and can be provided within five minutes are free of charge. Our information consultants can also help you to access the full range of ABS information—ABS user-pays services can be tailored to your needs, time frame and budget. Publications may be purchased. Specialists are on hand to help you with analytical or methodological advice.

- PHONE* **1300 135 070**
- EMAIL* **client.services@abs.gov.au**
- FAX* 1300 135 211
- POST* Client Services, ABS, GPO Box 796, Sydney 1041

WHY NOT SUBSCRIBE?

ABS subscription services provide regular, convenient and prompt deliveries of ABS publications and products as they are released. Email delivery of monthly and quarterly publications is available.

- PHONE* 1300 366 323
- EMAIL* subscriptions@abs.gov.au
- FAX* 03 9615 7848
- POST* Subscription Services, ABS, GPO Box 2796Y, Melbourne 3001



2863500009007
ISSN 1031-0770

RRP \$21.00

© Commonwealth of Australia 2000

Produced by the Australian Bureau of Statistics