



CORRECTIVE SERVICES

AUSTRALIA

EMBARGO: 11:30AM (CANBERRA TIME) THURS 26 JUN 2003

CONTENTS

	<i>page</i>
Notes	2
Summary of findings	3
TABLES	
1 Persons in prison custody	7
2 Persons in prison custody, by sex and type of prison custody	9
3 Persons in prison custody, by legal status and sentence type	15
4 Sentenced receptions into prison custody, by type of sentence ..	19
5 Indigenous persons in prison custody, by sex	20
6 Indigenous persons in prison custody, by legal status and sentence type	23
7 Persons in periodic detention, by sex	27
8 Federal sentenced persons in prison custody, by sex	29
9 Persons in community-based corrections, by sex	30
10 Persons in community-based corrections, by type of order	32
ADDITIONAL INFORMATION	
Explanatory Notes	34
Appendix	39
Glossary	40

- For further information about these and related statistics, contact Julie Cole on Melbourne 03 9615 7381 or the National Information and Referral Service on 1300 135 070.

NOTES

FORTHCOMING ISSUES	ISSUE	RELEASE DATE
	June 2003	25 September 2003
	September 2003	18 December 2003



ABOUT THIS PUBLICATION This publication presents information on persons in custody and community-based corrections. The statistics are derived from information collected by the Australian Bureau of Statistics from administrative records held by corrective services agencies in each state and territory, and from the Federal Attorney-General's Department for details on federal prisoners. Details are provided for each state and territory on numbers and imprisonment rates by type of custody (i.e. open or secure custody or periodic detention). Information is also presented on prisoner numbers by legal status (sentenced or unsentenced) and by sentence type, for all prisoners and for Indigenous prisoners, together with the number of sentenced receptions into custody and the number of federal prisoners.

Data for Queensland may be revised. In particular, the data associated with legal status and sentence type (tables 3 and 6) are subject to review.

The ABS acknowledges the valuable contribution of the Board of Management, the Advisory Group of the National Corrective Services Statistics Unit and the staff of the various agencies that provide the statistics that are presented in this publication.

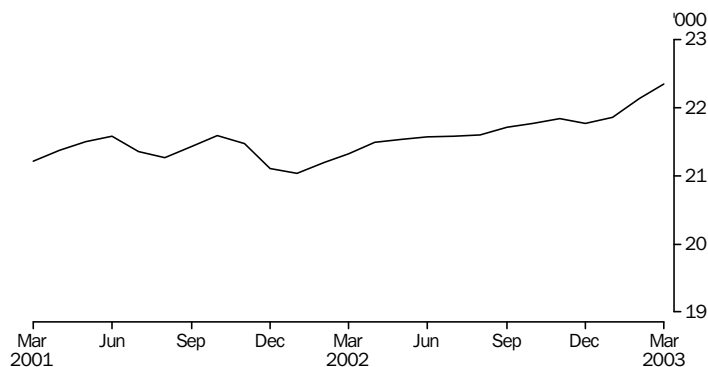
CHANGES IN THIS ISSUE Imprisonment rate data for the Australian Capital Territory (ACT) are now included in the publication and are calculated on the basis of the total number of ACT prisoners (i.e. ACT prisoners held in New South Wales (NSW) prisons, and ACT prisoners held in the ACT) divided by the estimated resident ACT adult population and multiplied by 100,000. For NSW, the imprisonment rate is now based on the count of NSW prisoners, excluding ACT prisoners held in NSW prisons, divided by the estimated resident NSW adult population and multiplied by 100,000. Time series data have also been derived on this basis. Previously, NSW imprisonment rates included ACT prisoners held in NSW prisons, which had the effect of slightly overstating the NSW imprisonment rate.

R. W. Edwards
Acting Australian Statistician

SUMMARY OF FINDINGS

NUMBER OF PRISONERS

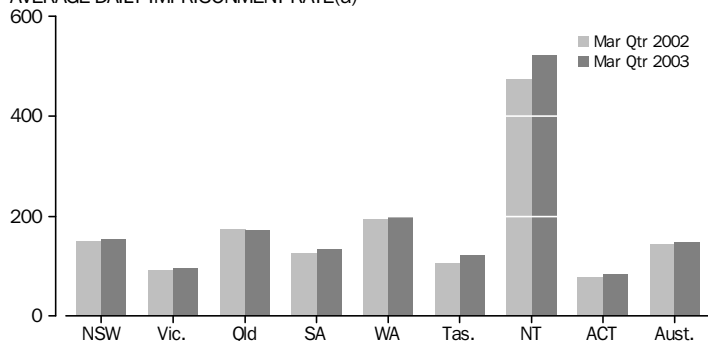
PERSONS IN PRISON CUSTODY, Average daily number—Australia



In the March quarter 2003 the average daily number of prisoners in Australia was 22,114, an increase of 322 (1%) on the December quarter 2002. The average daily number of prisoners in Australia increased by 927 (4%) over the year from the March quarter 2002.

RATES PER 100,000 ADULTS

AVERAGE DAILY IMPRISONMENT RATE(a)



(a) Rate per 100,000 adult population

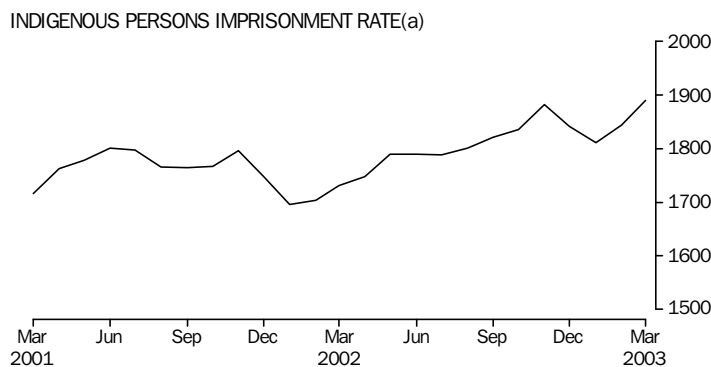
Nationally, the average daily imprisonment rate was 147 prisoners per 100,000 adult population during the March quarter 2003, an increase of 3% since the March quarter 2002. The Northern Territory had the highest imprisonment rate per 100,000 adult population, with a rate of 522, representing a 10% increase since the March quarter 2002 (the Indigenous prisoner population in the Northern Territory increased by 31% over this same time period). This increase in the Northern Territory has mainly occurred in the December 2002 and March 2003 quarters. The next highest imprisonment rates were recorded in Western Australia, Queensland and New South Wales (200, 172 and 154 prisoners per 100,000 adult population respectively).

SUMMARY OF FINDINGS *continued*

SEX

Of the average daily number of prisoners in Australia in the March quarter 2003, 20,645 (93%) were male and 1,470 (7%) were female. The number of female prisoners increased by 130 (10%) since the March quarter 2002. During the same period, the number of male prisoners increased by 799 (4%).

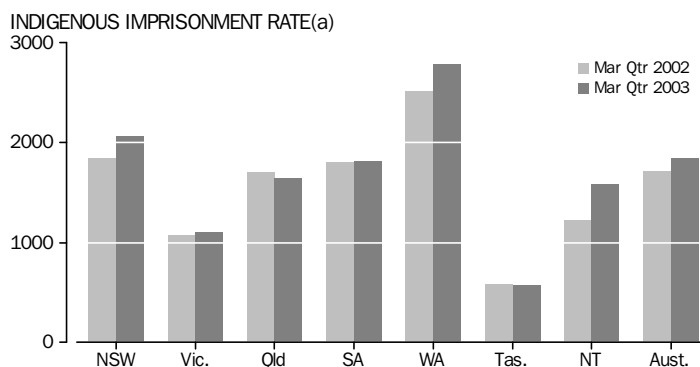
INDIGENOUS PRISONERS



(a) Rate per 100,000 adult Indigenous population.

The national rate of imprisonment for Indigenous persons for the March quarter 2003 was 1,849 per 100,000 adult Indigenous population, an increase of 8% since the March quarter 2002.

Further information on the interpretation of statistics on Indigenous persons in prison custody is provided in the Appendix on page 39 of this publication.



(a) Rate per 100,000 adult Indigenous population, based on first day of month

The highest rate of imprisonment for Indigenous persons was recorded in Western Australia (2,782 Indigenous persons per 100,000 adult Indigenous population) followed by New South Wales (2,066), South Australia (1,821) and Queensland (1,647). The Northern Territory recorded the highest proportional increase in the Indigenous rate of imprisonment (31%) between the March quarters 2002 and 2003. Queensland and Tasmania both recorded decreases in the Indigenous rate of imprisonment since the March quarter 2002 of 3% and 2% respectively.

SUMMARY OF FINDINGS *continued*

INDIGENOUS PRISONERS *continued*

Nationally, the Indigenous rate of imprisonment was 16 times the non-Indigenous rate. The highest ratios of Indigenous to non-Indigenous rates of imprisonment were recorded in Western Australia and South Australia with Indigenous rates of imprisonment 21 and 17 times the non-Indigenous rates respectively. In Western Australia, in the March quarter 2003, proportionally more Indigenous persons were sentenced to imprisonment than non-Indigenous persons, mostly in relation to 'driving/traffic', 'against the person' and 'justice/good order' offences.

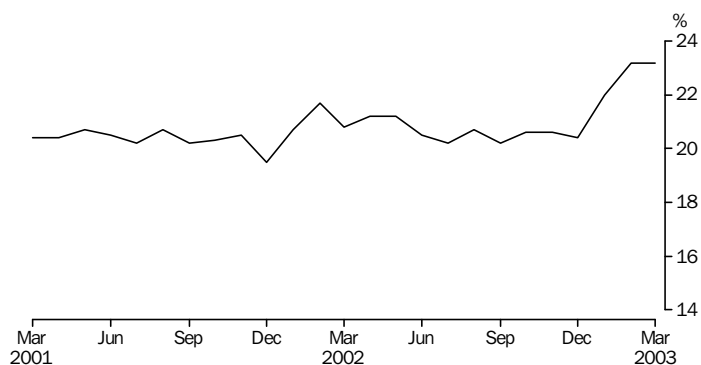
TYPE OF CUSTODY

In the March quarter 2003, the average daily number of prisoners in secure prison custody was 16,184 (73%). The remaining prisoners were held in open prison custody. The highest proportions of prisoners held in secure custody were recorded in Victoria (90%) and South Australia (88%). The states and territories with the lowest proportions of prisoners in secure prison custody were the Australian Capital Territory (including Australian Capital Territory prisoners held in New South Wales prisons) with 51% and New South Wales with 55%. All female prisoners in South Australia, Tasmania and the Northern Territory were held in secure prison custody.

LEGAL STATUS AND SENTENCE TYPE

Of the total prison population of 21,945, the average number of unsentenced prisoners on the first day of the month was 5,008 (23%) for the March quarter 2003 compared with 21% in the December quarter 2002. South Australia had the highest proportion of unsentenced prisoners (36%). The lowest proportion of unsentenced prisoners was recorded in Western Australia (16%).

PERSONS IN PRISON CUSTODY, Proportion unsentenced



SENTENCED RECEPTIONS

In the March quarter 2003, there were 6,149 sentenced receptions in Australia. The number of sentenced receptions decreased by 123 (2%) compared with the March quarter 2002, and there were 743 (11%) less than in the December quarter 2002. While most states and territories recorded decreases in sentenced receptions between the March quarters 2002 and 2003, the Northern Territory and Western Australia recorded increases of 64% and 14%, respectively.

SUMMARY OF FINDINGS *continued*

PERIODIC DETENTION

Periodic detention is a form of custody only used in New South Wales and the Australian Capital Territory. Prisoners on periodic detention are required to be held in custody for only two consecutive days each week. During the March quarter 2003 there was an average daily number of 844 persons in New South Wales and 73 persons in the Australian Capital Territory held in periodic detention. This was a decrease of 65 (7%) on the March quarter 2002 and a decrease of 6% since the December quarter 2002.

FEDERAL PRISONERS

In the March quarter 2003 there were 712 federal prisoners in Australia, a decrease of 92 (11%) since the March quarter 2002 and a decrease of 30 since the December quarter 2002. The Northern Territory recorded the largest actual and proportional decrease in federal prisoners of 63 (56%) between the March quarters 2002 and 2003. This decrease in the Northern Territory is a result of a decline in imprisonments for federal offences associated with the illegal entry of persons into Australia.

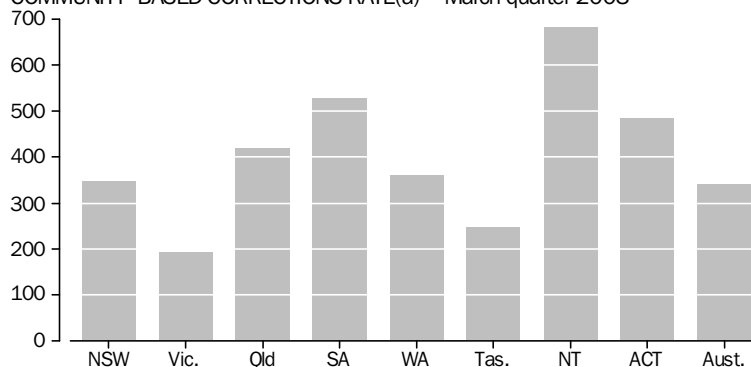
PERSONS IN COMMUNITY-BASED CORRECTIONS

In the March quarter 2003, the number of persons in community-based corrections in Australia was 51,191, a decrease of 2,845 (5%) since the March quarter 2002 and a decrease of 1,956 (4%) since the December quarter 2002. Of these persons, 41,672 (81%) were male and 9,189 (18%) were female. During the same period, males comprised 93% and females 7% of the prison population.

Rates per 100,000 adults

Nationally, the rate of persons in community-based corrections was 340 persons per 100,000 adult population for the March quarter 2003. This is a 7% decrease on the rate of persons in community-based corrections in the March quarter 2002, and a 4% decrease from the December quarter 2002.

COMMUNITY-BASED CORRECTIONS RATE(a)—March quarter 2003



(a) Rate per 100,000 adult population

Type of order

The most common orders served for community-based corrections were sentenced probation (30,503) followed by community service (11,841) and parole (8,626). Sentenced probation was the most common order served in each of the jurisdictions.

1

PERSONS IN PRISON CUSTODY

Period	NSW(a)	Vic.	Qld	SA	WA	Tas.	NT	ACT in ACT(b)	ACT in NSW(a)(c)	ACT Total(d)	Aust.(a)
AVERAGE DAILY NUMBER											
2000	7 329	3 153	4 848	1 298	3 055	398	633	52	150	202	20 766
2001	7 656	3 380	4 685	1 391	3 078	366	688	62	146	207	21 306
2002	7 705	3 550	4 854	1 470	2 803	423	675	58	133	190	21 538
2002											
March quarter	7 602	3 439	4 819	1 448	2 807	378	653	41	143	184	21 187
June quarter	7 682	3 519	4 907	1 481	2 810	414	661	58	134	192	21 533
September quarter	7 765	3 585	4 847	1 476	2 786	441	669	63	123	186	21 631
December quarter	7 767	3 655	4 843	1 474	2 809	459	715	70	130	200	21 792
2003											
March quarter	7 920	3 628	4 881	1 567	2 895	432	721	71	135	206	22 114
2002											
January	7 550	3 449	4 755	1 423	2 795	376	656	32	151	183	21 036
February	7 624	3 419	4 842	1 452	2 805	369	644	46	141	187	21 201
March	7 634	3 448	4 863	1 470	2 820	388	657	44	137	181	21 324
April	7 677	3 483	4 907	1 470	2 842	396	658	58	137	195	21 492
May	7 661	3 533	4 911	1 484	2 810	416	662	58	133	191	21 535
June	7 709	3 541	4 902	1 489	2 779	431	664	58	132	190	21 573
July	7 739	3 553	4 863	1 502	2 774	424	664	61	124	185	21 580
August	7 761	3 579	4 841	1 476	2 772	438	668	65	122	187	21 601
September	7 797	3 625	4 837	1 449	2 811	461	674	62	123	184	21 715
October	7 756	3 681	4 840	1 465	2 798	468	697	63	130	193	21 769
November	7 772	3 668	4 847	1 488	2 803	464	724	73	132	205	21 838
December	7 773	3 616	4 843	1 469	2 827	445	725	73	129	202	21 771
2003											
January	7 853	3 615	4 821	1 516	2 853	434	698	67	141	208	21 857
February	7 948	3 639	4 867	1 566	2 901	427	720	74	133	207	22 143
March	7 962	3 632	4 955	1 619	2 931	433	744	71	132	203	22 346

(a) Prior to the September quarter 2000, all full-time prisoners sentenced in the ACT were held in NSW prisons. Since the September quarter 2000, some ACT-sentenced fine default only prisoners have been held in the ACT. The ACT in NSW figures are a subset of the NSW figures and are not separately counted in the Australian totals—see Explanatory Notes, paragraph 12.

(b) Refers to unsentenced persons in ACT prison custody and, from the September quarter 2000, may include some sentenced fine default only prisoners.

(c) The figures are a single count taken on a specific day of the month and are not an average of the daily prisoner population for that month.

(d) ACT in ACT figures and ACT in NSW figures may not add to ACT total due to rounding.

1

PERSONS IN PRISON CUSTODY *continued*

<i>Period</i>	<i>NSW(a)</i>	<i>Vic.</i>	<i>Qld</i>	<i>SA</i>	<i>WA</i>	<i>Tas.</i>	<i>NT</i>	<i>ACT(b)</i>	<i>Aust.</i>
RATE PER 100,000 ADULT POPULATION									
2000	147.6	85.9	180.3	113.7	219.0	111.7	464.5	86.8	143.3
2001	152.5	90.6	170.8	121.1	216.8	103.3	502.8	88.2	145.0
2002	150.9	94.1	173.5	126.3	195.1	119.7	484.2	78.7	144.3
2002									
March quarter	150.2	91.3	173.5	125.5	195.5	107.3	473.4	77.6	142.9
June quarter	150.3	93.7	176.0	127.1	196.3	117.1	473.1	79.0	144.5
September quarter	151.8	94.9	172.9	126.4	193.8	124.4	478.8	76.1	144.6
December quarter	151.3	96.5	171.6	126.0	194.7	129.4	510.8	81.9	145.2
2003									
March quarter	154.2	95.6	171.8	133.8	199.7	121.6	522.3	84.5	147.0
2002									
January	149.0	91.6	171.2	123.3	194.7	106.7	475.7	77.5	141.9
February	150.7	90.8	174.4	125.8	195.3	104.8	467.5	79.2	143.0
March	151.0	91.6	175.1	127.4	196.4	110.2	476.5	76.3	143.8
April	150.2	92.7	176.0	126.2	198.6	111.8	470.7	80.4	144.2
May	149.9	94.0	176.2	127.4	196.3	117.5	473.7	78.5	144.5
June	150.9	94.2	175.8	127.8	194.1	121.9	474.9	78.1	144.8
July	151.2	94.1	173.5	128.7	192.9	119.7	475.4	76.0	144.3
August	151.7	94.8	172.7	126.4	192.8	123.6	478.6	76.8	144.4
September	152.4	96.0	172.6	124.1	195.5	130.1	482.4	75.6	145.2
October	151.1	97.2	171.5	125.2	193.9	132.0	498.2	79.2	145.0
November	151.4	96.8	171.8	127.2	194.2	130.8	516.9	84.1	145.5
December	151.4	95.5	171.6	125.6	196.0	125.5	517.6	82.6	145.1
2003									
January	152.8	95.2	169.7	129.4	196.8	122.4	505.9	85.4	145.3
February	154.8	95.8	171.3	133.7	200.1	120.4	521.9	84.9	147.2
March	155.1	95.6	174.4	138.2	202.2	122.0	538.9	83.2	148.5

(a) Data for NSW exclude ACT prisoners held in NSW prisons.

(b) Data for ACT include ACT prisoners held in ACT as well as ACT prisoners held in NSW—see Explanatory Notes, paragraph 14.

2

PERSONS IN PRISON CUSTODY, By sex and type of prison custody

Prison custody and sex	NSW(a)	Vic.	Qld	SA	WA	Tas.	NT	ACT in ACT(b)	ACT in NSW(a)(c)	ACT Total(d)	Aust.(a)
AVERAGE DAILY NUMBER											
Males											
Secure prison custody											
2000	3 754	2 631	3 721	1 055	1 862	296	494	45	41	86	13 858
2001	3 910	2 809	3 690	1 156	1 873	274	528	58	43	101	14 298
2002	3 939	2 945	4 000	1 203	1 858	305	523	55	39	93	14 829
2002											
March quarter	3 917	2 870	3 964	1 177	1 806	281	503	39	39	78	14 556
June quarter	3 944	2 931	4 065	1 210	1 863	295	510	56	41	97	14 874
September quarter	3 914	2 964	4 037	1 210	1 887	319	525	59	37	96	14 916
December quarter	3 982	3 013	3 934	1 215	1 874	326	555	64	38	102	14 963
2003											
March quarter	4 070	3 028	3 914	1 284	1 884	313	576	68	34	103	15 137
January	4 041	3 017	3 874	1 238	1 863	310	552	65	33	98	14 959
February	4 106	3 041	3 909	1 283	1 890	314	577	72	34	106	15 191
March	4 068	3 027	3 958	1 330	1 901	316	598	68	36	104	15 266
Open prison custody											
2000	3 119	326	834	172	953	81	123	..	97	97	5 608
2001	3 251	334	706	153	986	73	141	..	89	89	5 643
2002	3 268	348	556	179	745	86	132	..	86	86	5 314
2002											
March quarter	3 217	325	553	181	807	77	131	..	95	95	5 291
June quarter	3 236	337	539	184	751	87	132	..	85	85	5 266
September quarter	3 337	369	516	176	697	86	123	..	79	79	5 304
December quarter	3 281	363	616	173	727	95	140	..	83	83	5 395
2003											
March quarter	3 334	323	659	188	792	88	124	..	93	93	5 508
January	3 303	320	649	185	770	95	129	..	100	100	5 451
February	3 327	320	650	190	793	85	121	..	91	91	5 487
March	3 373	328	676	190	812	84	121	..	89	89	5 583
Total prison custody											
2000	6 873	2 957	4 555	1 228	2 815	377	617	45	138	183	19 466
2001	7 161	3 143	4 396	1 308	2 859	347	669	58	132	190	19 941
2002	7 207	3 293	4 556	1 382	2 603	392	655	55	124	179	20 143
2002											
March quarter	7 134	3 195	4 517	1 358	2 613	358	634	39	133	172	19 846
June quarter	7 180	3 267	4 604	1 395	2 614	382	643	56	126	182	20 140
September quarter	7 251	3 334	4 553	1 386	2 584	405	648	59	116	175	20 220
December quarter	7 264	3 375	4 551	1 388	2 601	421	695	64	121	186	20 359
2003											
March quarter	7 405	3 351	4 572	1 472	2 676	401	699	68	128	196	20 645
January	7 344	3 337	4 523	1 423	2 633	405	681	65	133	198	20 410
February	7 433	3 361	4 559	1 473	2 683	399	698	72	125	197	20 678
March	7 441	3 355	4 634	1 520	2 713	400	719	68	125	193	20 849

- (a) Prior to the September quarter 2000, all full-time prisoners sentenced in the ACT were held in NSW prisons. Since the September quarter 2000, some ACT-sentenced fine default only prisoners have been held in the ACT. The ACT in NSW figures are a subset of the NSW figures and are not separately counted in the Australian totals—see Explanatory Notes, paragraph 12.
- (b) Refers to unsentenced persons in ACT prison custody and, from the September quarter 2000, may include some sentenced fine default only prisoners.
- (c) The figures are a single count taken on a specific day of the month and are not an average of the daily prisoner population for that month.
- (d) ACT in ACT figures and ACT in NSW figures may not add to ACT total due to rounding.

<i>Prison custody and sex</i>	<i>NSW(a)</i>	<i>Vic.</i>	<i>Qld</i>	<i>SA</i>	<i>WA</i>	<i>Tas.</i>	<i>NT</i>	<i>ACT in ACT(b)</i>	<i>ACT in NSW(a)(c)</i>	<i>ACT Total(d)</i>	<i>Aust.(a)</i>
AVERAGE DAILY NUMBER											
Females											
Secure prison custody											
2000	288	157	231	70	158	22	16	7	—	7	949
2001	299	189	241	83	139	20	18	4	1	5	993
2002	268	206	252	88	114	32	19	3	—	4	983
2002											
March quarter	259	193	260	91	117	20	19	2	—	2	961
June quarter	271	201	260	86	119	32	18	2	—	2	990
September quarter	273	200	246	90	109	36	21	4	—	4	978
December quarter	267	229	243	86	112	38	20	5	1	6	1 000
2003											
March quarter	274	227	262	95	135	30	21	2	—	2	1 047
January	269	229	251	93	133	29	18	2	—	2	1 024
February	275	229	262	93	139	28	22	2	—	2	1 049
March	279	223	272	99	134	33	25	3	—	3	1 068
Open prison custody											
2000	168	39	62	..	82	12	12	351
2001	196	49	48	..	79	12	12	371
2002	230	51	46	..	86	8	8	412
2002											
March quarter	209	52	42	..	77	10	10	379
June quarter	232	51	43	..	77	8	8	403
September quarter	241	51	48	..	92	7	7	432
December quarter	237	51	49	..	97	8	8	433
2003											
March quarter	241	51	47	..	84	8	8	423
January	240	49	47	..	87	8	8	423
February	241	49	46	..	80	8	8	416
March	242	54	49	..	84	7	7	429
Total prison custody											
2000	456	196	293	70	240	22	16	7	12	19	1 300
2001	495	238	289	83	219	20	18	4	13	17	1 365
2002	497	257	298	88	200	32	19	3	8	12	1 395
2002											
March quarter	468	245	302	91	194	20	19	2	10	12	1 340
June quarter	503	252	303	86	197	32	18	2	8	10	1 393
September quarter	514	252	294	90	201	36	21	4	7	11	1 411
December quarter	504	280	293	86	208	38	20	5	9	14	1 434
2003											
March quarter	515	278	309	95	219	30	21	2	8	10	1 470
January	510	278	298	93	219	29	18	2	8	10	1 447
February	515	278	308	93	219	28	22	2	8	10	1 465
March	520	277	321	99	218	33	25	3	7	10	1 497

(a) Prior to the September quarter 2000, all full-time prisoners sentenced in the ACT were held in NSW prisons. Since the September quarter 2000, some ACT-sentenced fine default only prisoners have been held in the ACT. The ACT in NSW figures are a subset of the NSW figures and are not separately counted in the Australian totals—see Explanatory Notes, paragraph 12.

(b) Refers to unsentenced persons in ACT prison custody and, from the September quarter 2000, may include some sentenced fine default only prisoners.

(c) The figures are a single count taken on a specific day of the month and are not an average of the daily prisoner population for that month.

(d) ACT in ACT figures and ACT in NSW figures may not add to ACT total due to rounding.

<i>Prison custody and sex</i>	<i>NSW(a)</i>	<i>Vic.</i>	<i>Qld</i>	<i>SA</i>	<i>WA</i>	<i>Tas.</i>	<i>NT</i>	<i>ACT in ACT(b)</i>	<i>ACT in NSW(a)(c)</i>	<i>ACT Total(d)</i>	<i>Aust.(a)</i>
AVERAGE DAILY NUMBER											
Persons											
Secure prison custody											
2000	4 041	2 788	3 952	1 126	2 020	317	511	52	41	93	14 807
2001	4 209	2 998	3 931	1 238	2 013	293	546	62	44	105	15 291
2002	4 207	3 151	4 252	1 291	1 972	337	543	58	39	97	15 811
2002											
March quarter	4 176	3 063	4 224	1 267	1 923	301	522	41	39	79	15 517
June quarter	4 215	3 132	4 325	1 297	1 982	327	529	58	41	99	15 864
September quarter	4 188	3 165	4 283	1 300	1 997	354	545	63	37	100	15 894
December quarter	4 249	3 242	4 178	1 301	1 985	364	575	70	39	108	15 964
2003											
March quarter	4 345	3 255	4 175	1 379	2 019	343	597	71	34	105	16 184
January	4 310	3 246	4 125	1 331	1 995	339	570	67	33	100	15 983
February	4 381	3 270	4 171	1 376	2 028	342	599	74	34	108	16 241
March	4 347	3 250	4 230	1 429	2 035	349	623	71	36	107	16 334
Open prison custody											
2000	3 287	365	896	172	1 035	81	123	..	109	109	5 959
2001	3 447	382	753	153	1 065	73	141	..	102	102	6 015
2002	3 498	400	602	179	831	86	132	..	94	94	5 726
2002											
March quarter	3 426	376	595	181	884	77	131	..	104	104	5 670
June quarter	3 468	387	582	184	828	87	132	..	93	93	5 669
September quarter	3 577	421	564	176	789	86	123	..	86	86	5 737
December quarter	3 518	413	666	173	824	95	140	..	92	92	5 828
2003											
March quarter	3 575	373	706	188	875	88	124	..	101	101	5 930
January	3 543	369	696	185	857	95	129	..	108	108	5 874
February	3 568	369	696	190	873	85	121	..	99	99	5 902
March	3 615	382	725	190	896	84	121	..	96	96	6 012
Total prison custody											
2000	7 329	3 153	4 848	1 298	3 055	398	633	52	150	202	20 766
2001	7 656	3 380	4 685	1 391	3 078	366	688	62	146	207	21 306
2002	7 705	3 550	4 854	1 470	2 803	423	675	58	133	190	21 538
2002											
March quarter	7 602	3 439	4 819	1 448	2 807	378	653	41	143	184	21 187
June quarter	7 682	3 519	4 907	1 481	2 810	414	661	58	134	192	21 533
September quarter	7 765	3 585	4 847	1 476	2 786	441	669	63	123	186	21 631
December quarter	7 767	3 655	4 843	1 474	2 809	459	715	70	130	200	21 792
2003											
March quarter	7 920	3 628	4 881	1 567	2 895	432	721	71	135	206	22 114
January	7 853	3 615	4 821	1 516	2 853	434	698	67	141	208	21 857
February	7 948	3 639	4 867	1 566	2 901	427	720	74	133	207	22 143
March	7 962	3 632	4 955	1 619	2 931	433	744	71	132	203	22 346

(a) Prior to the September quarter 2000, all full-time prisoners sentenced in the ACT were held in NSW prisons. Since the September quarter 2000, some ACT-sentenced fine default only prisoners have been held in the ACT. The ACT in NSW figures are a subset of the NSW figures and are not separately counted in the Australian totals—see Explanatory Notes, paragraph 12.

(b) Refers to unsentenced persons in ACT prison custody and, from the September quarter 2000, may include some sentenced fine default only prisoners.

(c) The figures are a single count taken on a specific day of the month and are not an average of the daily prisoner population for that month.

(d) ACT in ACT figures and ACT in NSW figures may not add to ACT total due to rounding.

<i>Prison custody and sex</i>	<i>NSW(a)</i>	<i>Vic.</i>	<i>Qld</i>	<i>SA</i>	<i>WA</i>	<i>Tas.</i>	<i>NT</i>	<i>ACT(b)</i>	<i>Aust.</i>
RATE PER 100,000 ADULT POPULATION									
Males									
Secure prison custody									
2000	155.0	146.4	278.8	189.0	267.0	170.3	678.6	74.7	194.0
2001	159.3	153.7	271.2	205.6	264.0	158.9	724.9	86.7	197.3
2002	158.2	160.2	290.3	211.3	260.1	177.7	714.3	78.6	202.4
2002									
March quarter	158.3	155.3	288.0	208.4	251.6	164.4	685.6	66.2	198.9
June quarter	158.4	160.5	296.6	212.5	262.3	171.5	696.6	81.5	203.6
September quarter	156.9	161.5	293.0	212.0	264.6	185.2	716.9	80.4	203.4
December quarter	159.2	163.6	283.8	212.4	261.7	189.3	757.1	85.9	203.4
2003									
March quarter	162.8	163.6	280.0	224.0	262.0	181.5	792.7	85.2	205.0
January	161.6	163.0	277.2	216.1	259.0	179.6	760.1	82.6	202.6
February	164.2	164.3	279.7	223.9	262.7	181.9	794.6	89.2	205.7
March	162.6	163.6	283.2	232.1	264.3	183.1	823.6	87.1	206.7
Open prison custody									
2000	126.2	18.1	62.5	30.8	136.7	46.8	168.4	84.4	78.5
2001	130.2	18.2	51.9	27.2	138.9	42.6	193.9	76.9	77.9
2002	129.1	19.0	40.4	31.4	104.3	50.2	179.5	72.3	72.5
2002									
March quarter	127.5	17.6	40.2	32.0	112.5	45.2	177.9	80.9	72.3
June quarter	127.9	18.4	39.3	32.4	105.7	50.6	180.8	72.0	72.1
September quarter	131.9	20.1	37.5	30.8	97.7	50.1	168.3	66.4	72.3
December quarter	129.1	19.7	44.5	30.2	101.6	54.9	191.0	70.0	73.3
2003									
March quarter	130.7	17.4	47.1	32.9	110.1	51.2	170.1	78.5	74.6
January	129.2	17.3	45.4	32.3	107.1	55.4	177.1	84.0	73.8
February	130.5	17.3	45.5	33.2	110.3	49.5	167.0	76.5	74.3
March	132.4	17.7	48.4	33.2	112.8	48.7	166.1	74.8	75.6
Total prison custody									
2000	281.2	164.6	341.2	219.9	403.7	217.1	847.1	159.2	272.5
2001	289.6	171.9	323.1	232.8	402.9	201.4	918.9	163.6	275.1
2002	287.3	179.2	330.7	242.7	364.4	227.9	893.8	150.9	274.9
2002									
March quarter	285.8	172.9	328.2	240.5	364.0	209.6	863.5	147.1	271.2
June quarter	286.3	178.9	335.9	244.9	368.0	222.0	877.5	153.6	275.7
September quarter	288.8	181.6	330.5	242.8	362.3	235.3	885.3	146.9	275.7
December quarter	288.3	183.3	328.2	242.6	363.3	244.1	948.1	156.0	276.7
2003									
March quarter	293.5	181.1	327.2	256.9	372.0	232.8	962.9	164.7	279.6
January	290.8	180.3	323.6	248.3	366.1	235.0	937.2	166.6	276.4
February	294.7	181.6	326.2	257.1	373.0	231.4	961.6	165.7	280.0
March	295.0	181.3	331.6	265.3	377.2	231.8	989.7	161.9	282.3

(a) Data for NSW exclude ACT prisoners held in NSW prisons.

(b) Data for ACT include ACT prisoners held in ACT as well as ACT prisoners held in NSW—see Explanatory Notes, paragraph 14.

<i>Prison custody and sex</i>	<i>NSW(a)</i>	<i>Vic.</i>	<i>Qld</i>	<i>SA</i>	<i>WA</i>	<i>Tas.</i>	<i>NT</i>	<i>ACT(b)</i>	<i>Aust.</i>
RATE PER 100,000 ADULT POPULATION									
Females									
Secure prison custody									
2000	11.6	8.4	17.0	12.0	22.7	11.9	25.8	6.0	12.9
2001	11.9	10.0	17.5	14.1	19.6	10.7	28.4	4.0	13.3
2002	10.5	10.6	17.8	14.8	15.8	17.4	29.5	2.8	12.9
2002									
March quarter	10.3	10.1	18.6	15.4	16.3	11.1	29.3	1.5	12.8
June quarter	10.6	10.4	18.3	14.5	16.5	17.8	27.7	1.7	13.0
September quarter	10.7	10.3	17.2	15.0	15.1	19.5	31.1	3.2	12.8
December quarter	10.4	11.8	17.0	14.3	15.4	21.0	29.9	4.9	13.1
2003									
March quarter	10.7	11.7	18.1	15.9	18.5	16.7	32.8	1.9	13.7
January	10.5	11.8	17.4	15.5	18.2	16.0	26.9	1.6	13.4
February	10.7	11.8	18.2	15.5	19.0	15.6	33.4	1.4	13.7
March	10.9	11.5	18.8	16.5	18.3	18.3	38.2	2.6	13.9
Open prison custody									
2000	6.3	2.1	4.6	..	11.8	10.1	4.8
2001	7.3	2.6	3.4	..	11.2	10.5	5.0
2002	8.7	2.6	3.2	..	11.9	6.7	5.4
2002									
March quarter	7.9	2.7	3.0	..	10.7	8.1	5.1
June quarter	8.7	2.6	3.0	..	10.7	6.4	5.3
September quarter	9.1	2.6	3.4	..	12.7	5.6	5.7
December quarter	8.9	2.6	3.4	..	13.3	6.7	5.7
2003									
March quarter	9.1	2.6	3.3	..	11.5	6.1	5.5
January	9.1	2.5	3.3	..	11.9	6.4	5.5
February	9.1	2.5	3.2	..	10.9	6.4	5.4
March	9.1	2.8	3.4	..	11.5	5.6	5.6
Total prison custody									
2000	18.0	10.4	21.6	12.0	34.5	11.9	25.8	16.1	17.7
2001	19.3	12.5	20.9	14.1	30.8	10.7	28.4	14.5	18.3
2002	19.2	13.3	21.0	14.8	27.7	17.4	29.5	9.5	18.4
2002									
March quarter	18.2	12.8	21.6	15.4	27.0	11.1	29.3	9.6	17.9
June quarter	19.3	13.0	21.4	14.5	27.2	17.8	27.7	8.1	18.3
September quarter	19.8	13.0	20.6	15.0	27.8	19.5	31.1	8.8	18.5
December quarter	19.2	14.4	20.4	14.3	28.7	21.0	29.9	11.5	18.7
2003									
March quarter	19.8	14.3	21.4	15.9	29.9	16.7	32.8	8.0	19.2
January	19.5	14.3	20.6	15.5	30.1	16.0	26.9	8.0	18.9
February	19.8	14.3	21.3	15.5	29.9	15.6	33.4	7.8	19.1
March	20.0	14.2	22.2	16.5	29.8	18.3	38.2	8.2	19.5

(a) Data for NSW exclude ACT prisoners held in NSW prisons.

(b) Data for ACT include ACT prisoners held in ACT as well as ACT prisoners held in NSW—see Explanatory Notes, paragraph 14.

<i>Prison custody and sex</i>	<i>NSW(a)</i>	<i>Vic.</i>	<i>Qld</i>	<i>SA</i>	<i>WA</i>	<i>Tas.</i>	<i>NT</i>	<i>ACT(b)</i>	<i>Aust.</i>
RATE PER 100,000 ADULT POPULATION									
Persons									
Secure prison custody									
2000	82.2	75.9	146.9	98.6	144.8	89.0	374.5	39.9	102.2
2001	84.6	80.4	143.3	107.8	141.8	82.6	399.5	44.9	104.1
2002	83.1	83.5	152.0	110.9	137.2	95.3	389.7	39.9	106.0
2002									
March quarter	83.3	81.3	152.1	109.8	133.9	85.4	378.7	33.5	104.7
June quarter	83.1	83.3	155.1	111.3	138.5	92.5	378.3	40.6	106.5
September quarter	82.4	83.8	152.8	111.4	138.9	100.1	390.5	40.9	106.3
December quarter	83.4	85.6	148.0	111.2	137.6	102.8	410.8	44.4	106.4
2003									
March quarter	85.4	85.7	147.0	117.7	139.3	96.8	432.7	43.0	107.6
January	84.7	85.5	145.2	113.6	137.7	95.5	412.7	41.1	106.3
February	86.1	86.1	146.8	117.5	139.9	96.4	434.0	44.3	108.0
March	85.4	85.6	148.9	122.0	140.4	98.4	451.5	43.8	108.6
Open prison custody									
2000	65.3	9.9	33.3	15.1	74.2	22.7	90.0	46.8	41.1
2001	67.9	10.2	27.5	13.3	75.0	20.7	103.3	43.3	40.9
2002	67.8	10.6	21.5	15.3	57.8	24.4	94.4	38.8	38.4
2002									
March quarter	66.9	10.0	21.4	15.7	61.6	21.9	94.7	44.1	38.2
June quarter	67.2	10.3	20.9	15.8	57.8	24.6	94.8	38.4	38.0
September quarter	69.3	11.1	20.1	15.1	54.9	24.4	88.2	35.3	38.4
December quarter	67.9	10.9	23.6	14.8	57.1	26.7	100.0	37.5	38.8
2003									
March quarter	68.8	9.8	24.8	16.1	60.4	24.9	89.5	41.5	39.4
January	68.1	9.7	24.5	15.8	59.1	26.9	93.2	44.3	39.0
February	68.7	9.7	24.5	16.2	60.2	24.1	87.9	40.6	39.2
March	69.7	10.1	25.5	16.2	61.8	23.7	87.4	39.4	40.0
Total prison custody									
2000	147.6	85.9	180.3	113.7	219.0	111.7	464.5	86.8	143.3
2001	152.5	90.6	170.8	121.1	216.8	103.3	502.8	88.2	145.0
2002	150.9	94.1	173.5	126.3	195.1	119.7	484.2	78.7	144.3
2002									
March quarter	150.2	91.3	173.5	125.5	195.5	107.3	473.4	77.6	142.9
June quarter	150.3	93.7	176.0	127.1	196.3	117.1	473.1	79.0	144.5
September quarter	151.8	94.9	172.9	126.4	193.8	124.4	478.8	76.1	144.6
December quarter	151.3	96.5	171.6	126.0	194.7	129.4	510.8	81.9	145.2
2003									
March quarter	154.2	95.6	171.8	133.8	199.7	121.6	522.3	84.5	147.0
January	152.8	95.2	169.7	129.4	196.8	122.4	505.9	85.4	145.3
February	154.8	95.8	171.3	133.7	200.1	120.4	521.9	84.9	147.2
March	155.1	95.6	174.4	138.2	202.2	122.0	538.9	83.2	148.5

(a) Data for NSW exclude ACT prisoners held in NSW prisons.

(b) Data for ACT include ACT prisoners held in ACT as well as ACT prisoners held in NSW—see Explanatory Notes, paragraph 14.

3

PERSONS IN PRISON CUSTODY, By legal status and sentence type

Legal status and sentence type	NSW(a)	Vic.	Qld(b)	SA	WA	Tas.	NT	ACT in ACT(c)	ACT in NSW(a)	ACT Total(d)	Aust.(a)
NUMBER ON FIRST DAY OF MONTH											
Unsentenced											
2000(e)	1 495	459	702	364	451	73	160	54	3	57	3 755
2001(e)	1 650	512	913	476	494	61	139	65	3	68	4 309
2002(e)	1 666	621	963	492	471	77	110	54	2	55	4 452
2002											
March quarter(e)	1 686	630	950	460	491	66	111	46	—	46	4 441
June quarter(e)	1 641	615	964	523	517	90	111	49	—	49	4 509
September quarter(e)	1 621	607	981	488	465	76	101	46	2	48	4 386
December quarter(e)	1 717	631	955	494	412	75	115	72	5	77	4 471
2003											
March quarter(e)	1 850	671	1 230	544	451	80	124	58	—	58	5 008
January	1 825	650	1 166	485	417	76	113	58	—	58	4 790
February	1 872	687	1 246	547	481	78	127	53	—	53	5 091
March	1 852	676	1 279	600	456	86	132	62	—	62	5 143
Sentenced											
Fine default only											
2000(e)	3	3	193	3	55	13	14	1	—	1	285
2001(e)	2	—	4	2	49	24	20	1	—	1	104
2002(e)	2	1	4	1	45	14	3	2	—	2	71
2002											
March quarter(e)	1	1	1	1	41	11	11	1	—	1	67
June quarter(e)	6	1	2	—	31	10	1	1	—	1	52
September quarter(e)	—	1	4	1	41	24	—	3	—	4	75
December quarter(e)	1	—	7	1	66	12	—	2	—	2	89
2003											
March quarter(e)	—	—	20	1	77	7	2	1	—	1	108
January	1	—	25	1	76	11	1	3	—	3	118
February	—	—	15	2	78	3	2	—	—	—	100
March	—	—	21	—	76	7	2	—	—	—	106
Other sentenced											
2000(e)	5 842	2 680	3 910	941	2 529	258	459	..	147	147	16 619
2001(e)	6 030	2 864	3 741	921	2 546	241	529	..	142	142	16 872
2002(e)	6 059	2 921	3 863	983	2 289	289	564	..	131	131	16 967
2002											
March quarter(e)	5 915	2 808	3 821	989	2 265	252	537	..	143	143	16 588
June quarter(e)	6 078	2 883	3 911	961	2 272	312	555	..	133	133	16 972
September quarter(e)	6 152	2 955	3 850	990	2 280	287	569	..	121	121	17 083
December quarter(e)	6 090	3 040	3 871	991	2 338	302	594	..	125	125	17 225
2003											
March quarter(e)	6 052	2 950	3 646	973	2 330	289	589	..	134	134	16 829
January	6 035	2 964	3 677	987	2 312	276	590	..	140	140	16 841
February	6 060	2 915	3 609	965	2 309	307	579	..	132	132	16 744
March	6 060	2 970	3 652	968	2 370	283	599	..	130	130	16 902

(a) Prior to the September quarter 2000, all full-time prisoners sentenced in the ACT were held in NSW prisons. Since the September quarter 2000, some ACT-sentenced fine default only prisoners have been held in the ACT. The ACT in NSW figures are a subset of the NSW figures and are not separately counted in the Australian totals—see Explanatory Notes, paragraph 12.

(b) Queensland data subject to revision—see Explanatory Notes, paragraph 23.

(c) Refers to unsentenced persons in ACT prison custody and, from the September quarter 2000, may include some sentenced fine default only prisoners.

(d) ACT in ACT figures and ACT in NSW figures may not add to ACT total due to rounding.

(e) Figures for the quarter and year for first day of month counts are calculated as a simple average—see Explanatory Notes, paragraph 5.

3

PERSONS IN PRISON CUSTODY, By legal status and sentence type *continued*

Legal status and sentence type	NSW(a)	Vic.	Qld(b)	SA	WA	Tas.	NT	ACT in ACT(c)	ACT in NSW(a)	ACT Total(d)	Aust.(a)
NUMBER ON FIRST DAY OF MONTH											
Total sentenced											
2000(e)	5 845	2 683	4 103	944	2 584	271	473	1	147	148	16 904
2001(e)	6 033	2 864	3 746	922	2 595	265	549	1	142	143	16 975
2002(e)	6 061	2 922	3 867	984	2 334	303	567	2	131	133	17 038
2002											
March quarter(e)	5 916	2 809	3 823	990	2 306	263	547	1	143	144	16 655
June quarter(e)	6 084	2 883	3 913	962	2 303	322	556	1	133	134	17 024
September quarter(e)	6 152	2 956	3 854	991	2 322	312	569	3	121	125	17 159
December quarter(e)	6 091	3 040	3 878	992	2 404	314	594	2	126	127	17 314
2003											
March quarter(e)	6 052	2 950	3 666	974	2 407	296	591	1	134	135	16 937
January	6 036	2 964	3 702	988	2 388	287	591	3	140	143	16 959
February	6 060	2 915	3 624	967	2 387	310	581	—	132	132	16 844
March	6 060	2 970	3 673	968	2 446	290	601	—	130	130	17 008
Total											
2000(e)	7 340	3 141	4 804	1 307	3 035	344	633	55	150	205	20 659
2001(e)	7 683	3 377	4 658	1 398	3 089	326	688	66	145	211	21 284
2002(e)	7 727	3 543	4 830	1 475	2 805	380	676	55	132	188	21 490
2002											
March quarter(e)	7 602	3 439	4 773	1 450	2 797	329	658	48	143	191	21 096
June quarter(e)	7 725	3 498	4 877	1 485	2 820	412	667	50	133	183	21 533
September quarter(e)	7 773	3 563	4 835	1 479	2 787	388	670	50	123	173	21 545
December quarter(e)	7 808	3 671	4 833	1 486	2 815	389	710	74	130	204	21 786
2003											
March quarter(e)	7 902	3 621	4 897	1 518	2 858	376	715	59	134	193	21 945
January	7 861	3 614	4 868	1 473	2 805	363	704	61	140	201	21 749
February	7 932	3 602	4 870	1 514	2 868	388	708	53	132	185	21 935
March	7 912	3 646	4 952	1 568	2 902	376	733	62	130	192	22 151

(a) Prior to the September quarter 2000, all full-time prisoners sentenced in the ACT were held in NSW prisons. Since the September quarter 2000, some ACT-sentenced fine default only prisoners have been held in the ACT. The ACT in NSW figures are a subset of the NSW figures and are not separately counted in the Australian totals—see Explanatory Notes, paragraph 12.

(b) Queensland data subject to revision—see Explanatory Notes, paragraph 23.

(c) Refers to unsentenced persons in ACT prison custody and, from the September quarter 2000, may include some sentenced fine default only prisoners.

(d) ACT in ACT figures and ACT in NSW figures may not add to ACT total due to rounding.

(e) Figures for the quarter and year for first day of month counts are calculated as a simple average—see Explanatory Notes, paragraph 5.

3

PERSONS IN PRISON CUSTODY, By legal status and sentence type *continued*

<i>Legal status and sentence type</i>	<i>NSW(a)</i>	<i>Vic.</i>	<i>Qld(b)</i>	<i>SA</i>	<i>WA</i>	<i>Tas.</i>	<i>NT</i>	<i>ACT(c)</i>	<i>Aust.</i>
RATE PER 100,000 ADULT POPULATION									
Unsentenced									
2000(d)	30.7	12.5	26.1	31.8	32.3	20.4	117.0	24.4	25.9
2001(d)	33.4	13.7	33.3	41.4	34.8	17.2	101.4	28.9	29.3
2002(d)	33.2	16.5	34.4	42.2	32.8	21.7	78.6	22.8	29.8
2002									
March quarter(d)	34.0	16.7	34.2	39.9	34.2	18.7	80.5	19.6	30.0
June quarter(d)	32.7	16.4	34.6	44.9	36.1	25.3	79.4	20.2	30.3
September quarter(d)	32.2	16.1	35.0	41.8	32.4	21.5	72.1	19.7	29.3
December quarter(d)	33.9	16.6	33.9	42.3	28.5	21.2	82.4	31.5	29.8
2003									
March quarter(d)	36.6	17.7	43.4	46.4	31.1	22.5	89.9	23.7	33.3
January	36.2	17.1	41.0	41.4	28.8	21.4	81.9	23.8	31.8
February	37.1	18.1	43.9	46.7	33.2	22.0	92.0	21.7	33.8
March	36.7	17.8	45.0	51.2	31.5	24.2	95.7	25.4	34.2
Sentenced									
Fine default only									
2000(d)	0.1	0.1	7.2	0.2	3.9	3.7	10.5	0.5	2.0
2001(d)	—	—	0.2	0.1	3.5	6.8	14.9	0.5	0.7
2002(d)	—	—	0.1	0.1	3.1	4.0	2.3	0.8	0.5
2002									
March quarter(d)	—	—	—	0.1	2.9	3.1	7.7	0.6	0.5
June quarter(d)	0.1	—	0.1	—	2.1	2.8	1.0	0.3	0.3
September quarter(d)	—	—	0.1	0.1	2.9	6.9	0.2	1.5	0.5
December quarter(d)	—	—	0.3	0.1	4.6	3.3	0.2	0.7	0.6
2003									
March quarter(d)	—	—	0.7	0.1	5.3	2.0	1.2	0.4	0.7
January	—	—	0.9	0.1	5.2	3.1	0.7	1.2	0.8
February	—	—	0.5	0.2	5.4	0.8	1.4	—	0.7
March	—	—	0.7	—	5.2	2.0	1.4	—	0.7
Other sentenced									
2000(d)	117.1	73.0	145.4	82.4	181.3	72.2	336.5	63.1	114.7
2001(d)	119.6	76.8	136.4	80.1	179.3	67.9	386.6	60.3	114.8
2002(d)	118.1	77.4	138.1	84.4	159.3	81.6	404.5	54.0	113.7
2002									
March quarter(d)	116.2	74.6	137.6	85.7	157.8	71.6	389.3	60.4	111.9
June quarter(d)	118.4	76.7	140.3	82.5	158.7	88.2	396.9	54.9	113.9
September quarter(d)	119.8	78.2	137.3	84.8	158.6	81.1	407.2	49.6	114.2
December quarter(d)	118.2	80.2	137.2	84.7	162.0	85.3	424.2	51.3	114.8
2003									
March quarter(d)	117.3	77.7	128.3	83.1	160.8	81.3	427.1	55.0	111.9
January	116.8	78.1	129.4	84.3	159.5	77.8	427.5	57.4	112.0
February	117.5	76.8	127.0	82.4	159.3	86.5	419.6	54.2	111.3
March	117.5	78.2	128.5	82.6	163.5	79.7	434.1	53.3	112.4

(a) Data for NSW exclude ACT prisoners held in NSW prisons.

(b) Queensland data subject to revision—see Explanatory Notes, paragraph 23.

(c) Data for ACT include ACT prisoners held in ACT as well as ACT prisoners held in NSW.

(d) Figures for the quarter and year for first day of month counts are calculated as a simple average—see Explanatory Notes, paragraph 5.

3

PERSONS IN PRISON CUSTODY, By legal status and sentence type *continued*

Legal status and
sentence type

NSW(a)

Vic.

Qld(b)

SA

WA

Tas.

NT

ACT(c)

Aust.

RATE PER 100,000 ADULT POPULATION

Total sentenced									
2000(d)	117.1	73.1	152.6	82.6	185.2	75.9	347.0	63.6	116.7
2001(d)	119.6	76.8	136.5	80.3	182.8	74.7	401.6	60.8	115.5
2002(d)	118.2	77.5	138.2	84.5	162.4	85.6	406.7	54.8	114.2
2002									
March quarter(d)	116.2	74.6	137.7	85.8	160.6	74.8	397.1	61.0	112.3
June quarter(d)	118.5	76.7	140.4	82.6	160.9	91.0	397.8	55.1	114.3
September quarter(d)	119.8	78.3	137.5	84.9	161.5	88.0	407.4	51.1	114.7
December quarter(d)	118.2	80.2	137.4	84.8	166.6	88.5	424.5	52.0	115.4
2003									
March quarter(d)	117.3	77.7	129.0	83.2	166.1	83.3	428.3	55.4	112.6
January	116.8	78.1	130.3	84.4	164.7	80.9	428.3	58.7	112.7
February	117.5	76.8	127.6	82.6	164.7	87.3	421.0	54.2	112.0
March	117.5	78.2	129.3	82.6	168.7	81.7	435.5	53.7	113.1
Total									
2000(d)	147.8	85.6	178.6	114.5	217.6	96.3	464.1	88.0	142.6
2001(d)	153.1	90.5	169.8	121.7	217.6	91.9	502.9	89.7	144.9
2002(d)	151.4	93.9	172.6	126.7	195.2	107.3	485.3	77.5	144.0
2002									
March quarter(d)	150.2	91.3	171.9	125.7	194.8	93.5	477.6	80.6	142.3
June quarter(d)	151.2	93.1	175.0	127.5	197.0	116.4	477.3	75.3	144.5
September quarter(d)	151.9	94.3	172.5	126.7	193.8	109.5	479.5	70.8	144.0
December quarter(d)	152.1	96.9	171.3	127.0	195.1	109.7	506.9	83.5	145.1
2003									
March quarter(d)	153.9	95.3	172.4	129.6	197.2	105.8	518.1	79.1	145.9
January	153.0	95.2	171.3	125.8	193.5	102.3	510.2	82.5	144.6
February	154.5	94.9	171.4	129.3	197.9	109.3	513.1	75.9	145.8
March	154.2	96.0	174.3	133.9	200.2	105.9	531.2	78.8	147.3

(a) Data for NSW exclude ACT prisoners held in NSW prisons.

(b) Queensland data subject to revision—see Explanatory Notes, paragraph 23.

(c) Data for ACT include ACT prisoners held in ACT as well as ACT prisoners held in NSW.

(d) Figures for the quarter and year for first day of month counts are calculated as a simple average—see Explanatory Notes, paragraph 5.

4

SENTENCED RECEPTIONS INTO PRISON CUSTODY, By type of sentence

Sentence type	NSW(a)	Vic.(b)	Qld	SA	WA	Tas.	NT	ACT in ACT	ACT in NSW(a)	ACT Total	Aust.(a)
NUMBER											
Fine default only											
2000	75	29	3 290	130	537	162	378	41	2	43	4 642
2001	79	8	69	50	757	333	358	72	2	74	1 726
2002	52	5	33	24	671	211	6	107	4	111	1 109
2002											
March quarter	16	1	12	5	131	33	—	21	1	22	219
June quarter	7	—	8	9	99	63	2	15	1	16	203
September quarter	r14	1	7	2	199	76	2	46	1	47	r347
December quarter	15	3	6	8	242	39	2	25	1	26	340
2003											
March quarter	12	1	5	9	197	21	5	23	1	24	273
January	6	—	2	6	77	11	3	11	—	11	116
February	1	1	2	1	64	3	1	4	—	4	77
March	5	—	1	2	56	7	1	8	1	9	80
Other sentenced											
2000	7 917	4 012	8 872	1 156	3 552	588	768	..	155	155	26 865
2001	7 895	3 856	6 590	1 261	3 253	475	709	..	144	144	24 039
2002	7 922	4 167	7 885	1 097	2 890	603	770	..	106	106	25 334
2002											
March quarter	1 957	925	1 891	287	720	111	162	..	20	20	6 053
June quarter	2 080	1 061	1 888	238	717	148	169	..	28	28	6 301
September quarter	1 857	1 126	2 049	257	759	181	199	..	22	22	6 428
December quarter	2 028	1 055	2 057	315	694	163	240	..	36	36	6 552
2003											
March quarter	1 775	932	1 792	236	772	109	260	..	14	14	5 876
January	541	233	469	74	252	28	64	..	2	2	1 661
February	603	361	595	72	269	43	89	..	3	3	2 032
March	631	338	728	90	251	38	107	..	9	9	2 183
Total sentenced											
2000	7 992	4 041	12 162	1 286	4 089	750	1 146	41	157	198	31 507
2001	7 974	3 864	6 659	1 311	4 010	808	1 067	72	146	218	25 765
2002	7 974	4 172	7 918	1 121	3 561	814	776	107	110	217	26 443
2002											
March quarter	1 973	926	1 903	292	851	144	162	21	21	42	6 272
June quarter	2 087	1 061	1 896	247	816	211	171	15	29	44	6 504
September quarter	1 871	1 127	2 056	259	958	257	201	46	23	69	6 775
December quarter	2 043	1 058	2 063	323	936	202	242	25	37	62	6 892
2003											
March quarter	1 787	933	1 797	245	969	130	265	23	15	38	6 149
January	547	233	471	80	329	39	67	11	2	13	1 777
February	604	362	597	73	333	46	90	4	3	7	2 109
March	636	338	729	92	307	45	108	8	10	18	2 263

(a) Prior to the September quarter 2000, all full-time prisoners sentenced in the ACT were held in NSW prisons. Since the September quarter 2000, some ACT-sentenced fine default only prisoners have been held in the ACT. The ACT in NSW figures are a subset of the NSW figures and are not separately counted in the Australian totals—see Explanatory Notes, paragraph 12.

(b) Victorian figures do not include prisoners whose status changed from unsentenced to sentenced during the period.

5

INDIGENOUS PERSONS IN PRISON CUSTODY, By sex(a)(b)(c)

Sex	NSW(d)	Vic.	Qld	SA	WA	Tas.	NT	ACT in ACT(e)	ACT in NSW(d)	ACT Total(f)	Aust.(g)
NUMBER ON FIRST DAY OF MONTH											
Males											
2000(g)	1 032	124	999	185	881	42	386	6	7	13	3 656
2001(g)	1 077	132	1 005	212	923	41	416	9	8	17	3 814
2002(g)	1 218	145	1 073	226	814	55	445	7	12	19	3 981
2002											
March quarter(g)	1 119	136	1 078	226	803	54	392	3	11	14	3 811
June quarter(g)	1 203	149	1 096	212	808	55	429	6	11	17	3 958
September quarter(g)	1 254	148	1 082	225	800	49	452	6	10	16	4 017
December quarter(g)	1 295	147	1 036	239	842	60	505	15	14	29	4 138
2003											
March quarter(g)	1 289	148	1 071	234	896	52	524	9	13	22	4 223
January	1 261	140	1 067	226	866	53	515	12	16	28	4 140
February	1 291	144	1 075	233	894	53	514	5	12	17	4 209
March	1 315	159	1 072	244	928	49	543	10	10	20	4 320
Females											
2000(g)	111	11	76	13	95	1	11	1	3	4	319
2001(g)	134	14	79	17	96	2	11	1	3	4	354
2002(g)	140	16	84	21	74	5	12	1	2	3	354
2002											
March quarter(g)	127	19	86	22	73	2	12	1	2	3	341
June quarter(g)	136	16	86	20	77	5	12	—	3	3	352
September quarter(g)	147	15	88	23	69	7	11	1	2	3	362
December quarter(g)	149	15	78	21	76	8	13	1	2	3	360
2003											
March quarter(g)	138	15	85	21	95	4	13	1	2	3	373
January	135	15	81	21	98	5	8	1	2	3	364
February	140	16	83	21	96	4	14	1	2	3	375
March	138	15	92	22	91	3	17	1	1	2	379
Persons											
2000(g)	1 143	134	1 075	199	977	43	398	6	10	16	3 974
2001(g)	1 211	146	1 083	230	1 019	43	427	10	11	21	4 168
2002(g)	1 357	161	1 157	247	887	60	457	8	14	22	4 335
2002											
March quarter(g)	1 245	155	1 165	248	876	56	404	4	13	17	4 152
June quarter(g)	1 339	165	1 181	232	885	60	442	6	14	20	4 310
September quarter(g)	1 401	163	1 170	248	869	56	463	7	12	19	4 379
December quarter(g)	1 444	162	1 113	260	918	68	518	16	16	32	4 499
2003											
March quarter(g)	1 427	163	1 157	256	991	56	537	10	14	24	4 596
January	1 396	155	1 148	247	964	58	523	13	18	31	4 504
February	1 431	160	1 158	254	990	57	528	6	14	20	4 584
March	1 453	174	1 164	266	1 019	52	560	11	11	22	4 699

(a) Some rates and ratios in this table have not been published—see Explanatory Notes, paragraph 22.

(b) Persons in custody are asked their Indigenous status during reception into custody—see Explanatory Notes, paragraphs 10–11.

(c) See Appendix—Interpretation of Indigenous Statistics.

(d) Prior to the September quarter 2000, all full-time prisoners sentenced in the ACT were held in NSW prisons. Since the September quarter 2000, some ACT-sentenced fine default only prisoners have been held in the ACT. The ACT in NSW figures are a subset of the NSW figures and are not separately counted in the Australian totals—see Explanatory Notes, paragraph 12.

(e) Refers to unsentenced persons in ACT prison custody and, from the September quarter 2000, may include some sentenced fine default only prisoners.

(f) ACT in ACT figures and ACT in NSW figures may not add to ACT total due to rounding.

(g) Figures for the quarter and year for first day of the month counts are calculated as a simple average—see Explanatory Notes, paragraph 5.

Sex	NSW(d)	Vic.	Qld	SA	WA	Tas.	NT	ACT(e)	Aust.
RATE PER 100,000 ADULT INDIGENOUS POPULATION									
Males									
2000(f)	3 367.0	1 814.1	3 228.2	3 024.9	5 489.3	n.p.	2 460.9	n.p.	3 278.1
2001(f)	3 420.7	1 889.9	3 154.6	3 395.5	5 611.1	n.p.	2 580.3	n.p.	3 335.7
2002(f)	3 762.2	2 029.9	3 281.3	3 542.3	4 829.9	n.p.	2 742.1	n.p.	3 407.4
2002									
March quarter(f)	3 455.2	1 905.0	3 297.7	3 546.2	4 767.6	n.p.	2 416.2	n.p.	3 261.4
June quarter(f)	3 718.3	2 082.5	3 350.7	3 331.8	4 799.2	n.p.	2 648.6	n.p.	3 387.8
September quarter(f)	3 880.5	2 073.1	3 309.9	3 535.7	4 751.7	n.p.	2 788.4	n.p.	3 438.3
December quarter(f)	3 994.8	2 059.1	3 167.2	3 755.4	5 001.1	n.p.	3 115.4	n.p.	3 541.9
2003									
March quarter(f)	3 888.3	2 023.4	3 184.0	3 597.4	5 199.6	n.p.	3 166.9	n.p.	3 527.9
January	3 792.8	1 918.3	3 171.2	3 469.5	5 025.5	n.p.	3 112.5	n.p.	3 458.5
February	3 896.4	1 973.1	3 194.9	3 576.9	5 188.0	n.p.	3 106.5	n.p.	3 516.2
March	3 975.6	2 178.7	3 186.0	3 745.8	5 385.3	n.p.	3 281.8	n.p.	3 608.9
Females									
2000(f)	323.9	148.6	225.5	193.4	557.8	n.p.	68.6	n.p.	264.7
2001(f)	385.8	195.0	226.8	244.6	548.5	n.p.	65.6	n.p.	287.4
2002(f)	395.1	220.9	237.5	291.0	410.5	n.p.	71.8	n.p.	281.0
2002									
March quarter(f)	357.3	256.4	242.9	295.5	408.2	n.p.	70.8	n.p.	270.9
June quarter(f)	383.1	219.8	241.0	268.3	428.6	n.p.	72.8	n.p.	279.6
September quarter(f)	417.6	206.0	247.6	313.7	384.1	n.p.	66.9	n.p.	287.3
December quarter(f)	422.4	201.5	218.5	286.5	421.2	n.p.	76.7	n.p.	286.2
2003									
March quarter(f)	382.6	206.9	233.3	283.4	516.7	n.p.	75.4	n.p.	289.2
January	374.2	202.4	221.5	279.0	533.0	n.p.	n.p.	n.p.	282.4
February	388.3	215.9	227.0	279.0	522.1	n.p.	81.2	n.p.	291.0
March	385.4	202.4	251.6	292.2	494.9	n.p.	98.6	n.p.	294.1
Persons									
2000(f)	1 778.7	966.9	1 663.6	1 521.4	2 945.2	464.0	1 234.4	n.p.	1 713.7
2001(f)	1 839.4	1 029.7	1 629.6	1 717.5	2 997.8	459.9	1 293.4	n.p.	1 754.0
2002(f)	2 009.6	1 116.6	1 696.0	1 803.0	2 548.9	635.5	1 377.3	n.p.	1 785.9
2002									
March quarter(f)	1 842.7	1 072.7	1 706.6	1 807.3	2 517.5	590.4	1 217.5	n.p.	1 710.4
June quarter(f)	1 982.3	1 142.0	1 731.0	1 692.9	2 543.4	636.4	1 332.1	n.p.	1 775.7
September quarter(f)	2 078.0	1 130.5	1 714.9	1 812.1	2 497.4	597.5	1 397.4	n.p.	1 804.0
December quarter(f)	2 135.4	1 121.2	1 631.4	1 899.7	2 637.2	717.7	1 562.3	n.p.	1 853.3
2003									
March quarter(f)	2 065.8	1 108.2	1 647.3	1 820.7	2 782.3	576.6	1 589.6	n.p.	1 848.7
January	2 015.6	1 053.8	1 634.9	1 759.0	2 706.5	600.8	1 548.2	n.p.	1 811.9
February	2 072.6	1 087.8	1 649.2	1 808.9	2 779.5	590.4	1 563.0	n.p.	1 844.1
March	2 109.2	1 182.9	1 657.7	1 894.3	2 860.9	538.6	1 657.7	n.p.	1 890.3

(a) Some rates and ratios in this table have not been published—see Explanatory Notes, paragraph 22.

(b) Persons in custody are asked their Indigenous status during reception into custody—see Explanatory Notes, paragraphs 10–11.

(c) See Appendix—Interpretation of Indigenous Statistics.

(d) Data for NSW exclude ACT prisoners held in NSW prisons.

(e) Data for ACT include ACT prisoners held in ACT as well as ACT prisoners held in NSW.

(f) Figures for the quarter and year for first day of the month counts are calculated as a simple average—see Explanatory Notes, paragraph 5.

5

INDIGENOUS PERSONS IN PRISON CUSTODY, By sex(a)(b)(c) *continued*

Sex	NSW(d)	Vic.	Qld	SA	WA	Tas.	NT	ACT(e)	Aust.
RATIO OF INDIGENOUS TO NON-INDIGENOUS RATES OF IMPRISONMENT									
Males									
2000(f)	13.9	11.5	12.0	15.9	19.5	n.p.	6.1	n.p.	14.7
2001(f)	13.7	11.4	12.4	17.1	20.0	n.p.	5.8	n.p.	14.8
2002(f)	15.5	11.8	12.8	17.2	18.8	n.p.	7.4	n.p.	15.2
2002									
March quarter(f)	14.2	11.4	13.1	17.4	18.5	n.p.	5.6	n.p.	14.7
June quarter(f)	15.3	12.2	12.9	15.8	18.3	n.p.	6.9	n.p.	15.1
September quarter(f)	16.1	12.0	12.9	17.1	18.5	n.p.	8.1	n.p.	15.4
December quarter(f)	16.6	11.6	12.3	18.3	19.8	n.p.	9.7	n.p.	15.8
2003									
March quarter(f)	15.9	11.7	12.4	17.0	21.0	n.p.	10.4	n.p.	15.8
January	15.5	11.1	12.4	16.9	20.5	n.p.	10.0	n.p.	15.5
February	15.9	11.4	12.5	17.0	20.8	n.p.	10.1	n.p.	15.7
March	16.3	12.5	12.2	17.2	21.5	n.p.	11.1	n.p.	16.1
Females									
2000(f)	23.4	15.0	14.1	19.4	26.6	n.p.	6.3	n.p.	19.6
2001(f)	26.6	16.6	14.7	22.0	30.8	n.p.	4.7	n.p.	20.8
2002(f)	28.0	17.8	15.1	25.7	23.3	n.p.	4.4	n.p.	20.2
2002									
March quarter(f)	26.3	22.4	15.4	25.4	24.6	n.p.	4.2	n.p.	20.2
June quarter(f)	26.2	18.1	15.0	23.1	25.0	n.p.	6.0	n.p.	19.9
September quarter(f)	28.9	17.0	16.2	28.1	20.8	n.p.	3.7	n.p.	20.6
December quarter(f)	30.6	14.7	13.8	26.1	23.0	n.p.	4.2	n.p.	20.0
2003									
March quarter(f)	26.0	15.3	14.1	25.0	29.1	n.p.	5.2	n.p.	19.7
January	25.6	15.0	13.3	26.2	30.6	n.p.	3.7	n.p.	19.6
February	26.1	15.9	14.3	24.6	28.8	n.p.	4.9	n.p.	19.8
March	26.4	14.9	14.8	24.3	28.0	n.p.	6.8	n.p.	19.6
Persons									
2000(f)	14.1	11.8	11.7	15.5	19.5	5.4	5.5	n.p.	14.6
2001(f)	14.1	11.8	12.2	16.7	20.1	5.6	5.1	n.p.	14.8
2002(f)	15.9	12.4	12.6	16.9	18.6	6.8	6.7	n.p.	15.3
2002									
March quarter(f)	14.5	12.3	12.8	17.1	18.4	7.4	5.0	n.p.	14.7
June quarter(f)	15.7	12.8	12.7	15.6	18.4	6.2	6.3	n.p.	15.1
September quarter(f)	16.5	12.5	12.8	17.0	18.3	6.2	7.2	n.p.	15.5
December quarter(f)	17.0	12.1	12.1	17.9	19.6	7.7	8.7	n.p.	15.8
2003									
March quarter(f)	16.2	12.1	12.2	16.7	21.1	6.2	9.3	n.p.	15.8
January	15.8	11.5	12.2	16.6	20.8	6.8	8.9	n.p.	15.5
February	16.2	12.0	12.3	16.6	20.9	6.2	9.0	n.p.	15.7
March	16.6	12.9	12.1	16.8	21.5	5.7	10.0	n.p.	16.0

(a) Some rates and ratios in this table have not been published—see Explanatory Notes, paragraph 22.

(b) Persons in custody are asked their Indigenous status during reception into custody—see Explanatory Notes paragraphs 10–11.

(c) See Appendix—Interpretation of Indigenous Statistics.

(d) Data for NSW exclude ACT prisoners held in NSW prisons.

(e) Data for ACT include ACT prisoners held in ACT as well as ACT prisoners held in NSW.

(f) Figures for the quarter and year for first day of the month counts are calculated as a simple average—see Explanatory Notes, paragraph 5.

Legal status and sentence type	NSW(d)	Vic.	Qld(e)	SA	WA	Tas.	NT	ACT in ACT(f)	ACT in NSW(d)	ACT Total(g)	Aust.(d)
NUMBER ON FIRST DAY OF MONTH											
Unsentenced											
2000(h)	214	27	154	66	133	8	69	6	—	6	676
2001(h)	250	32	173	85	159	12	86	10	1	10	807
2002(h)	290	35	189	92	146	15	83	8	—	9	856
2002											
March quarter(h)	282	41	201	97	150	14	78	3	—	3	867
June quarter(h)	287	39	195	86	161	16	84	6	—	6	874
September quarter(h)	279	28	200	93	144	14	79	7	—	7	844
December quarter(h)	312	31	160	89	128	14	89	16	1	17	839
2003											
March quarter(h)	330	42	219	103	168	10	95	10	—	10	977
January	311	39	194	89	162	11	81	13	—	13	900
February	339	43	232	100	178	10	98	6	—	6	1 006
March	339	45	231	119	164	10	106	11	—	11	1 025
Sentenced											
Fine default only											
2000(h)	1	—	43	1	24	—	11	—	—	—	81
2001(h)	—	—	—	—	30	1	15	—	—	—	47
2002(h)	—	—	—	—	28	1	1	—	—	—	30
2002											
March quarter(h)	—	—	—	—	25	—	5	—	—	—	31
June quarter(h)	—	—	—	—	17	1	—	—	—	—	18
September quarter(h)	—	—	—	—	25	1	—	—	—	—	27
December quarter(h)	—	—	—	—	43	1	—	—	—	—	45
2003											
March quarter(h)	—	—	2	—	47	—	—	—	—	—	49
January	—	—	2	—	47	—	—	—	—	—	49
February	—	—	1	1	43	—	—	—	—	—	45
March	—	—	2	—	51	—	—	—	—	—	53
Other sentenced											
2000(h)	928	107	878	132	819	35	318	..	10	10	3 217
2001(h)	961	114	910	144	830	31	326	..	11	11	3 315
2002(h)	1 067	126	968	156	714	45	373	..	13	13	3 449
2002											
March quarter(h)	964	113	963	150	701	42	320	..	13	13	3 254
June quarter(h)	1 052	126	986	146	707	43	357	..	14	14	3 418
September quarter(h)	1 122	135	970	155	700	41	384	..	12	12	3 508
December quarter(h)	1 131	131	953	171	747	52	429	..	15	15	3 614
2003											
March quarter(h)	1 097	121	936	153	776	45	442	..	14	14	3 570
January	1 085	116	952	158	755	47	442	..	18	18	3 555
February	1 092	117	925	153	769	47	430	..	14	14	3 533
March	1 114	129	931	147	804	42	454	..	11	11	3 621

(a) Some rates in this table have not been published—see Explanatory Notes, paragraph 22.

(b) Persons in custody are asked their Indigenous status during reception into custody—see Explanatory Notes, paragraphs 10–11.

(c) See Appendix—Interpretation of Indigenous Statistics.

(d) Prior to the September quarter 2000, all full-time prisoners sentenced in the ACT were held in NSW prisons. Since the September quarter 2000, some ACT-sentenced fine default only prisoners have been held in the ACT. The ACT in NSW figures are a subset of the NSW figures and are not separately counted in the Australian totals—see Explanatory Notes, paragraph 12.

(e) Queensland data subject to revision—see Explanatory Notes, paragraph 23.

(f) Refers to unsentenced persons in ACT prison custody and, from the September quarter 2000, may include some sentenced fine default only prisoners.

(g) ACT in ACT figures and ACT in NSW figures may not add to ACT total due to rounding.

(h) Figures for the quarter and year for first day of the month counts are calculated as a simple average—see Explanatory Notes, paragraph 5.

Legal status and sentence type	NSW(d)	Vic.	Qld(e)	SA	WA	Tas.	NT	ACT in ACT(f)	ACT in NSW(d)	ACT Total(g)	Aust.(d)
NUMBER ON FIRST DAY OF MONTH											
Total sentenced											
2000(h)	929	107	921	132	844	36	329	—	10	10	3 298
2001(h)	961	114	910	144	860	32	341	—	11	11	3 361
2002(h)	1 067	126	969	156	742	45	374	—	13	14	3 479
2002											
March quarter(h)	964	113	964	150	726	42	326	—	13	14	3 285
June quarter(h)	1 052	126	986	146	725	44	357	—	14	14	3 436
September quarter(h)	1 122	135	971	155	725	42	384	—	12	12	3 535
December quarter(h)	1 131	131	954	171	790	54	429	—	15	15	3 659
2003											
March quarter(h)	1 097	121	938	153	823	45	442	—	14	14	3 619
January	1 085	116	954	158	802	47	442	—	18	18	3 604
February	1 092	117	926	154	812	47	430	—	14	14	3 578
March	1 114	129	933	147	855	42	454	—	11	11	3 674
Total											
2000(h)	1 143	134	1 075	199	977	43	398	6	10	16	3 974
2001(h)	1 211	146	1 083	230	1 019	43	427	10	11	21	4 168
2002(h)	1 357	161	1 157	247	887	60	457	8	14	22	4 335
2002											
March quarter(h)	1 245	155	1 165	248	876	56	404	4	13	17	4 152
June quarter(h)	1 339	165	1 181	232	885	60	442	6	14	20	4 310
September quarter(h)	1 401	163	1 170	248	869	56	463	7	12	19	4 379
December quarter(h)	1 444	162	1 113	260	918	68	518	16	16	32	4 499
2003											
March quarter(h)	1 427	163	1 157	256	991	56	537	10	14	24	4 596
January	1 396	155	1 148	247	964	58	523	13	18	31	4 504
February	1 431	160	1 158	254	990	57	528	6	14	20	4 584
March	1 453	174	1 164	266	1 019	52	560	11	11	22	4 699

(a) Some rates in this table have not been published—see Explanatory Notes, paragraph 22.

(b) Persons in custody are asked their Indigenous status during reception into custody—see Explanatory Notes, paragraphs 10–11.

(c) See Appendix—Interpretation of Indigenous Statistics.

(d) Prior to the September quarter 2000, all full-time prisoners sentenced in the ACT were held in NSW prisons. Since the September quarter 2000, some ACT-sentenced fine default only prisoners have been held in the ACT. The ACT in NSW figures are a subset of the NSW figures and are not separately counted in the Australian totals—see Explanatory Notes, paragraph 12.

(e) Queensland data subject to revision—see Explanatory Notes, paragraph 23.

(f) Refers to unsentenced persons in ACT prison custody and, from the September quarter 2000, may include some sentenced fine default only prisoners.

(g) ACT in ACT figures and ACT in NSW figures may not add to ACT total due to rounding.

(h) Figures for the quarter and year for first day of the month counts are calculated as a simple average—see Explanatory Notes, paragraph 5.

Legal status and sentence type	NSW(d)	Vic.	Qld(e)	SA	WA	Tas.	NT	ACT(f)	Aust.
RATES PER 100,000 ADULT INDIGENOUS POPULATION									
Unsentenced									
2000(g)	335.3	195.5	238.0	508.4	400.9	82.1	212.8	n.p.	291.7
2001(g)	382.9	225.0	260.3	638.8	466.8	124.3	261.4	n.p.	339.5
2002(g)	433.1	241.0	276.7	667.7	418.7	153.8	249.3	n.p.	352.7
2002									
March quarter(g)	421.3	286.7	294.5	710.3	431.9	148.5	235.3	n.p.	357.2
June quarter(g)	428.8	270.5	285.7	627.6	461.6	169.7	254.4	n.p.	360.1
September quarter(g)	416.8	194.2	292.6	681.1	413.7	148.5	238.3	n.p.	347.7
December quarter(g)	465.7	212.7	234.0	651.9	367.7	148.5	269.4	n.p.	345.8
2003									
March quarter(g)	482.2	287.8	311.9	731.1	471.7	107.0	281.2	n.p.	393.0
January	454.9	265.1	276.3	633.8	454.8	113.9	239.8	n.p.	362.1
February	495.8	292.3	330.4	712.1	499.7	103.6	290.1	n.p.	404.7
March	495.8	305.9	329.0	847.5	460.4	103.6	313.8	n.p.	412.3
Sentenced									
Fine default only									
2000(g)	n.p.	n.p.	66.4	n.p.	73.1	n.p.	35.4	n.p.	34.7
2001(g)	n.p.	n.p.	n.p.	n.p.	89.2	n.p.	44.5	n.p.	19.6
2002(g)	n.p.	n.p.	n.p.	n.p.	79.5	n.p.	n.p.	n.p.	12.5
2002									
March quarter(g)	n.p.	n.p.	n.p.	n.p.	71.8	n.p.	n.p.	n.p.	12.8
June quarter(g)	n.p.	n.p.	n.p.	n.p.	49.8	n.p.	n.p.	n.p.	7.4
September quarter(g)	n.p.	n.p.	n.p.	n.p.	71.8	n.p.	n.p.	n.p.	11.0
December quarter(g)	n.p.	n.p.	n.p.	n.p.	124.5	n.p.	n.p.	n.p.	18.7
2003									
March quarter(g)	n.p.	n.p.	n.p.	n.p.	132.0	n.p.	n.p.	n.p.	19.7
January	n.p.	n.p.	n.p.	n.p.	132.0	n.p.	n.p.	n.p.	19.7
February	n.p.	n.p.	n.p.	n.p.	120.7	n.p.	n.p.	n.p.	18.1
March	n.p.	n.p.	n.p.	n.p.	143.2	n.p.	n.p.	n.p.	21.3
Other sentenced									
2000(g)	1 442.5	770.2	1 359.2	1 007.9	2 471.1	378.3	986.1	n.p.	1 387.3
2001(g)	1 456.2	804.1	1 368.9	1 077.5	2 441.8	327.6	987.5	n.p.	1 395.0
2002(g)	1 576.5	875.6	1 418.9	1 134.7	2 050.7	473.8	1 123.7	n.p.	1 420.7
2002									
March quarter(g)	1 421.4	786.0	1 411.6	1 097.0	2 013.8	441.9	966.1	n.p.	1 340.4
June quarter(g)	1 553.5	871.5	1 445.3	1 065.4	2 032.0	459.6	1 077.7	n.p.	1 408.3
September quarter(g)	1 661.2	936.3	1 421.9	1 131.1	2 011.9	438.4	1 158.2	n.p.	1 445.3
December quarter(g)	1 669.7	908.5	1 396.9	1 245.4	2 145.0	555.1	1 292.9	n.p.	1 488.9
2003									
March quarter(g)	1 583.6	820.4	1 333.0	1 087.2	2 178.7	469.6	1 308.4	n.p.	1 436.0
January	1 560.7	788.6	1 355.8	1 125.2	2 119.7	486.8	1 308.4	n.p.	1 430.1
February	1 576.8	795.4	1 317.3	1 089.6	2 159.0	486.8	1 272.9	n.p.	1 421.3
March	1 613.3	877.0	1 325.9	1 046.9	2 257.3	435.1	1 343.9	n.p.	1 456.7

(a) Some rates in this table have not been published—see Explanatory Notes, paragraph 22.

(b) Persons in custody are asked their Indigenous status during reception into custody—see Explanatory Notes paragraphs 10–11.

(c) See Appendix—Interpretation of Indigenous Statistics.

(d) Data for NSW exclude ACT prisoners held in NSW prisons.

(e) Queensland data subject to revision—see Explanatory Notes, paragraph 23.

(f) Data for ACT include ACT prisoners held in ACT as well as ACT prisoners held in NSW.

(g) Figures for the quarter and year for first day of the month counts are calculated on a simple average—see Explanatory Notes, paragraph 5.

6

INDIGENOUS PERSONS IN PRISON CUSTODY, By legal status and sentence type(a)(b)(c) *continued*

Legal status and sentence type	NSW(d)	Vic.	Qld(e)	SA	WA	Tas.	NT	ACT(f)	Aust.
RATES PER 100,000 ADULT INDIGENOUS POPULATION									
Total sentenced									
2000(g)	1 443.4	771.4	1 425.6	1 013.0	2 544.3	381.9	1 021.6	n.p.	1 422.0
2001(g)	1 456.6	804.6	1 369.3	1 078.7	2 531.0	335.6	1 032.0	n.p.	1 414.5
2002(g)	1 576.5	875.6	1 419.3	1 135.3	2 130.2	481.7	1 128.0	n.p.	1 433.2
2002									
March quarter(g)	1 421.4	786.0	1 412.1	1 097.0	2 085.7	441.9	982.2	n.p.	1 353.2
June quarter(g)	1 553.5	871.5	1 445.3	1 065.4	2 081.8	466.7	1 077.7	n.p.	1 415.7
September quarter(g)	1 661.2	936.3	1 422.3	1 131.1	2 083.8	449.0	1 159.2	n.p.	1 456.3
December quarter(g)	1 669.7	908.5	1 397.4	1 247.8	2 269.5	569.2	1 292.9	n.p.	1 507.5
2003									
March quarter(g)	1 583.6	820.4	1 335.4	1 089.6	2 310.6	469.6	1 308.4	n.p.	1 455.7
January	1 560.7	788.6	1 358.6	1 125.2	2 251.7	486.8	1 308.4	n.p.	1 449.8
February	1 576.8	795.4	1 318.8	1 096.7	2 279.7	486.8	1 272.9	n.p.	1 439.4
March	1 613.3	877.0	1 328.7	1 046.9	2 400.5	435.1	1 343.9	n.p.	1 478.0
Total									
2000(g)	1 778.7	966.9	1 663.6	1 521.4	2 945.2	464.0	1 234.4	n.p.	1 713.7
2001(g)	1 839.4	1 029.7	1 629.6	1 717.5	2 997.8	459.9	1 293.4	n.p.	1 754.0
2002(g)	2 009.6	1 116.6	1 696.0	1 803.0	2 548.9	635.5	1 377.3	n.p.	1 785.9
2002									
March quarter(g)	1 842.7	1 072.7	1 706.6	1 807.3	2 517.5	590.4	1 217.5	n.p.	1 710.4
June quarter(g)	1 982.3	1 142.0	1 731.0	1 692.9	2 543.4	636.4	1 332.1	n.p.	1 775.7
September quarter(g)	2 078.0	1 130.5	1 714.9	1 812.1	2 497.4	597.5	1 397.4	n.p.	1 804.0
December quarter(g)	2 135.4	1 121.2	1 631.4	1 899.7	2 637.2	717.7	1 562.3	n.p.	1 853.3
2003									
March quarter(g)	2 065.8	1 108.2	1 647.3	1 820.7	2 782.3	576.6	1 589.6	n.p.	1 848.7
January	2 015.6	1 053.8	1 634.9	1 759.0	2 706.5	600.8	1 548.2	n.p.	1 811.9
February	2 072.6	1 087.8	1 649.2	1 808.9	2 779.5	590.4	1 563.0	n.p.	1 844.1
March	2 109.2	1 182.9	1 657.7	1 894.3	2 860.9	538.6	1 657.7	n.p.	1 890.3

(a) Some rates in this table have not been published—see Explanatory Notes, paragraph 22.

(b) Persons in custody are asked their Indigenous status during reception into custody—see Explanatory Notes, paragraphs 10–11.

(c) See Appendix—Interpretation of Indigenous Statistics.

(d) Data for NSW exclude ACT prisoners held in NSW prisons.

(e) Queensland data subject to revision—see Explanatory Notes, paragraph 23.

(f) Data for ACT include ACT prisoners held in ACT as well as ACT prisoners held in NSW.

(g) Figures for the quarter and year for first day of the month counts are calculated on a simple average—see Explanatory Notes, paragraph 5.

7

PERSONS IN PERIODIC DETENTION, By sex

Sex	NSW	ACT	Aust.(a)
AVERAGE DAILY NUMBER(b)			
Males			
2000	1 107	69	1 176
2001	974	66	1 040
2002	831	66	897
2002			
March quarter	857	56	914
June quarter	814	64	878
September quarter	825	72	897
December quarter	830	70	900
2003			
March quarter	782	68	850
January	828	68	896
February	765	67	831
March	751	71	822
Females			
2000	109	6	115
2001	87	4	91
2002	68	4	72
2002			
March quarter	65	3	68
June quarter	68	4	73
September quarter	71	5	77
December quarter	67	5	72
2003			
March quarter	62	5	67
January	66	5	71
February	62	5	67
March	59	5	64
Persons			
2000	1 216	75	1 291
2001	1 061	70	1 130
2002	899	70	969
2002			
March quarter	922	60	982
June quarter	883	68	951
September quarter	896	77	973
December quarter	897	75	972
2003			
March quarter	844	73	917
January	894	71	965
February	826	72	898
March	811	76	886

(a) Periodic detention is a form of custody only used in NSW and the ACT.

(b) See Explanatory Notes, paragraph 2.

7

PERSONS IN PERIODIC DETENTION, By sex *continued*

Sex	NSW	ACT	Aust.(a)
RATE PER 100,000 ADULT POPULATION			
Males			
2000	46.2	60.0	16.5
2001	40.1	56.5	14.3
2002	33.7	55.5	12.2
2002			
March quarter	35.0	48.2	12.5
June quarter	33.0	54.0	12.0
September quarter	33.4	60.3	12.2
December quarter	33.5	59.1	12.2
2003			
March quarter	31.5	57.4	11.5
January	33.4	56.9	12.1
February	30.8	55.9	11.3
March	30.3	59.3	11.1
Females			
2000	4.4	5.3	1.6
2001	3.5	3.3	1.2
2002	2.7	3.6	1.0
2002			
March quarter	2.6	2.7	0.9
June quarter	2.7	3.6	1.0
September quarter	2.8	4.2	1.0
December quarter	2.6	3.8	0.9
2003			
March quarter	2.4	4.0	0.9
January	2.6	4.0	0.9
February	2.4	4.0	0.9
March	2.3	4.0	0.8
Persons			
2000	25.0	32.3	8.9
2001	21.5	29.6	7.7
2002	17.9	29.0	6.5
2002			
March quarter	18.6	25.2	6.6
June quarter	17.6	28.2	6.4
September quarter	17.8	31.5	6.5
December quarter	17.8	30.7	6.5
2003			
March quarter	16.7	29.8	6.1
January	17.7	29.0	6.4
February	16.4	29.3	6.0
March	16.1	31.0	5.9

(a) Periodic detention is a form of custody only used in NSW and the ACT.

NUMBER ON FIRST DAY OF MONTH.....

	NSW	Vic.	Qld	SA	WA	Tas.	NT	ACT	Aust.
MALES									
2000(b)	296	76	84	24	120	2	37	5	645
2001(b)	293	84	68	19	138	3	105	6	717
2002(b)	299	77	63	19	138	4	88	4	692
2002									
March quarter(b)	304	80	68	16	140	3	111	5	727
June quarter(b)	299	77	62	20	137	4	98	5	701
September quarter(b)	296	77	58	21	136	5	80	3	676
December quarter(b)	297	75	64	17	139	5	62	3	663
2003									
March quarter(b)	299	74	59	18	130	4	45	3	633
January	299	76	56	17	141	3	47	3	642
February	298	76	57	20	125	4	46	3	629
March	301	71	64	18	124	4	43	3	628
FEMALES									
2000(b)	27	5	13	6	13	2	—	1	67
2001(b)	31	6	16	4	16	1	1	—	75
2002(b)	32	8	13	3	14	1	3	1	75
2002									
March quarter(b)	31	6	18	3	16	1	1	1	77
June quarter(b)	33	6	14	3	14	1	1	—	72
September quarter(b)	33	10	9	3	13	1	4	1	74
December quarter(b)	34	11	12	3	12	1	5	1	79
2003									
March quarter(b)	34	9	13	4	12	1	4	1	79
January	35	10	9	3	11	1	4	1	74
February	35	9	14	5	13	1	4	1	82
March	33	9	15	5	13	1	3	1	80
PERSONS									
2000(b)	323	82	97	30	133	5	38	6	712
2001(b)	324	90	84	24	154	4	105	7	792
2002(b)	331	85	77	22	152	5	91	5	767
2002									
March quarter(b)	334	86	86	19	156	5	112	5	804
June quarter(b)	332	83	76	23	151	4	99	5	773
September quarter(b)	329	86	67	24	149	6	84	4	750
December quarter(b)	331	86	77	20	151	6	67	4	742
2003									
March quarter(b)	334	84	72	23	142	5	49	4	712
January	334	86	65	20	152	4	51	4	716
February	333	85	71	25	138	5	50	4	711
March	334	80	79	23	137	5	46	4	708

(a) This table shows prisoners by the state or territory in which they were sentenced, not where they were held in custody.

(b) Figures for the quarter and year for first day of the month counts are calculated as a simple average—see Explanatory notes, paragraph 5.

NUMBER ON FIRST DAY OF MONTH.....

	NSW	Vic.	Qld	SA	WA	Tas.	NT	ACT(b)	Aust.
MALES									
2001(c)	15 088	5 232	13 301	5 020	3 997	791	1 040	1 073	45 544
2002(c)	14 778	5 430	11 061	5 403	4 177	726	818	1 036	43 428
2002									
March quarter(c)	14 754	5 151	11 537	5 622	4 256	761	827	1 067	43 975
June quarter(c)	14 753	5 277	11 146	5 676	4 169	730	809	1 096	43 656
September quarter(c)	14 774	5 433	10 831	5 188	4 147	696	813	972	42 854
December quarter(c)	14 831	5 859	10 729	5 126	4 137	715	823	1 009	43 228
2003									
March quarter(c)	14 749	5 964	9 406	4 949	4 039	703	845	1 016	41 672
January	14 699	5 911	9 408	4 996	4 071	700	838	1 014	41 637
February	14 740	5 934	9 401	4 937	4 028	694	852	1 031	41 617
March	14 809	6 048	9 408	4 915	4 017	716	846	1 002	41 761
FEMALES									
2001(c)	2 685	1 111	3 455	1 256	1 161	164	139	236	10 206
2002(c)	2 610	1 205	2 908	1 311	1 164	171	90	194	9 652
2002									
March quarter(c)	2 615	1 175	3 034	1 333	1 193	166	91	221	9 828
June quarter(c)	2 575	1 205	2 888	1 324	1 156	168	86	211	9 612
September quarter(c)	2 608	1 181	2 925	1 302	1 127	174	86	168	9 571
December quarter(c)	2 641	1 259	2 788	1 282	1 178	175	98	175	9 596
2003									
March quarter(c)	2 604	1 260	2 481	1 197	1 205	177	98	166	9 189
January	2 626	1 246	2 470	1 226	1 201	173	97	166	9 205
February	2 590	1 263	2 494	1 185	1 206	176	98	165	9 177
March	2 597	1 271	2 479	1 181	1 207	183	100	166	9 184
PERSONS(d)									
2001(c)	17 897	6 462	16 756	6 325	5 158	956	1 179	1 310	56 042
2002(c)	17 488	6 755	13 969	6 764	5 341	896	908	1 230	53 350
2002									
March quarter(c)	17 432	6 413	14 571	7 037	5 449	926	918	1 288	54 036
June quarter(c)	17 406	6 583	14 034	7 077	5 325	898	895	1 307	53 525
September quarter(c)	17 502	6 743	13 756	6 510	5 274	871	899	1 140	52 694
December quarter(c)	17 610	7 281	13 516	6 430	5 315	890	921	1 184	53 147
2003									
March quarter(c)	17 509	7 373	11 887	6 173	5 243	881	944	1 181	51 191
January	17 476	7 317	11 878	6 248	5 272	873	935	1 180	51 179
February	17 491	7 313	11 895	6 150	5 234	870	950	1 196	51 099
March	17 561	7 488	11 887	6 121	5 224	899	946	1 168	51 294

(a) With the exception of Tasmania, the number of persons in community-based corrections includes those persons with breached or suspended orders—see Explanatory Notes, paragraph 6.

(b) Prior to the September quarter 2002 some over enumeration may have occurred.

(c) Figures for the quarter and year for first day of the month counts are calculated as a simple average—see Explanatory Notes, paragraph 5.

(d) Includes persons whose sex is unknown.

RATE PER 100,000 ADULT POPULATION.....

	NSW	Vic.	Qld	SA	WA	Tas.	NT	ACT(b)	Aust.
MALES									
2001(c)	621.7	286.2	977.8	893.2	563.3	459.5	1 428.0	923.0	628.3
2002(c)	599.5	295.5	802.8	949.1	584.7	422.3	1 116.4	875.1	592.6
2002									
March quarter(c)	602.3	278.8	838.3	995.9	593.0	445.4	1 127.3	911.3	601.0
June quarter(c)	598.8	289.0	813.2	996.6	586.8	424.5	1 104.8	925.3	597.7
September quarter(c)	598.0	295.9	786.1	908.8	581.3	404.4	1 110.8	817.1	584.4
December quarter(c)	598.7	318.1	773.8	895.9	577.8	415.0	1 122.4	847.5	587.5
2003									
March quarter(c)	594.8	322.3	673.0	863.8	561.5	408.0	1 164.0	853.7	564.3
January	592.8	319.4	673.2	871.9	566.0	406.1	1 153.9	852.3	563.9
February	594.4	320.7	672.7	861.6	560.0	402.6	1 173.2	866.6	563.6
March	597.2	326.8	673.2	857.8	558.5	415.3	1 164.9	842.2	565.6
FEMALES									
2001(c)	107.5	58.4	249.8	213.9	163.5	90.0	217.5	198.1	137.1
2002(c)	102.3	62.3	204.9	220.4	161.0	93.9	136.4	156.7	127.1
2002									
March quarter(c)	103.9	61.3	216.6	226.2	166.2	91.3	141.2	184.8	130.9
June quarter(b)	100.7	62.4	203.8	222.5	160.3	92.4	128.8	169.2	126.6
September quarter(c)	101.7	60.8	205.2	218.3	155.6	95.8	129.4	134.7	125.5
December quarter(c)	102.8	64.7	194.2	214.6	162.1	96.0	146.5	139.5	125.4
2003									
March quarter(c)	101.4	64.7	171.9	200.1	165.0	97.2	150.4	132.8	120.0
January	102.3	64.0	171.1	204.9	164.5	94.8	148.4	133.1	120.2
February	100.9	64.9	172.8	198.1	165.1	96.4	149.9	132.3	119.8
March	101.2	65.3	171.7	197.4	165.3	100.3	153.0	133.1	119.9
PERSONS(d)									
2001(c)	363.4	173.3	610.8	550.4	363.4	269.4	862.4	557.2	381.4
2002(c)	348.5	179.1	499.4	581.1	371.7	253.4	651.9	508.2	357.5
2002									
March quarter(c)	351.0	170.3	524.7	609.8	379.5	263.0	666.2	544.2	364.5
June quarter(c)	346.6	175.2	503.4	607.5	372.0	253.9	640.4	537.8	359.2
September quarter(c)	347.6	178.5	490.7	557.7	366.8	245.8	643.7	467.5	352.3
December quarter(c)	348.9	192.2	479.0	549.8	368.3	251.0	657.6	484.5	354.1
2003									
March quarter(c)	346.9	194.2	418.4	527.0	361.7	248.1	683.8	484.7	340.3
January	346.3	192.7	418.1	533.4	363.7	246.0	677.6	484.2	340.2
February	346.6	192.6	418.7	525.1	361.1	245.1	688.4	490.7	339.7
March	348.0	197.2	418.4	522.6	360.4	253.3	685.5	479.2	341.0

(a) With the exception of Tasmania, the number of persons in community-based corrections includes those persons with breached or suspended orders—see Explanatory Notes, paragraph 6.

(b) Prior to the September quarter 2002 some over enumeration may have occurred.

(c) Figures for the quarter and year for first day of the month counts are calculated as a simple average—see Explanatory Notes, paragraph 5.

(d) Includes persons whose sex is unknown.

10

PERSONS IN COMMUNITY-BASED CORRECTIONS, By type of order(a)

Sex	NSW	Vic.	Qld	SA	WA	Tas.	NT	ACT	Aust.
NUMBER ON FIRST DAY OF MONTH									
Restricted movement									
2001(b)	180	..	167	177	81	..	36	—	640
2002(b)	203	..	81	211	84	..	37	2	617
2002									
March quarter(b)	154	..	83	185	89	..	29	1	540
June quarter(b)	189	..	77	191	80	..	30	1	568
September quarter(b)	224	..	72	218	96	..	38	2	651
December quarter(b)	246	..	91	248	73	..	51	2	712
2003									
March quarter(b)	230	..	80	226	75	..	61	3	675
January	230	..	95	224	72	..	56	3	680
February	231	..	80	223	79	..	63	3	679
March	229	..	65	232	75	..	63	2	666
Reparation									
Fine option									
2001(b)	118	1 088	5 166	1 657	502	67	204	..	8 802
2002(b)	81	1 107	2 632	1 891	398	95	25	..	6 228
2002									
March quarter(b)	110	993	3 073	1 964	416	80	58	..	6 694
June quarter(b)	106	1 077	2 710	1 908	367	98	24	..	6 290
September quarter(b)	81	1 003	2 464	1 928	376	100	12	..	5 965
December quarter(b)	28	1 353	2 282	1 763	432	101	6	..	5 964
2003									
March quarter(b)	1	1 564	2 097	1 540	467	101	4	..	5 775
January	—	1 546	2 040	1 611	455	100	6	..	5 758
February	2	1 519	2 120	1 528	465	102	4	..	5 740
March	2	1 627	2 132	1 480	481	101	3	..	5 826
Community service									
2001(b)	4 983	894	2 109	1 405	2 201	348	301	183	12 423
2002(b)	4 508	915	2 116	1 534	2 329	379	242	159	12 180
2002									
March quarter(b)	4 472	850	2 192	1 340	2 417	391	236	176	12 074
June quarter(b)	4 536	919	2 159	1 371	2 342	385	245	159	12 116
September quarter(b)	4 547	938	2 091	1 711	2 277	380	246	149	12 340
December quarter(b)	4 476	952	2 023	1 712	2 278	361	239	150	12 192
2003									
March quarter(b)	4 471	898	1 930	1 606	2 203	339	246	147	11 841
January	4 436	896	1 943	1 632	2 251	332	239	153	11 882
February	4 455	891	1 938	1 602	2 182	331	244	149	11 792
March	4 523	907	1 910	1 585	2 176	354	255	139	11 849

(a) If a person has more than one type of order, they are counted against each order in this table. If a person has more than one order of the same order type, they are counted once in the order type. With the exception of Tasmania, the number of persons in community-based corrections includes those persons with breached or suspended orders—see Explanatory Notes, paragraph 6.

(b) Figures for the quarter and year for first day of the month counts are calculated as a simple average—see Explanatory Notes paragraph 5.

Sex	NSW	Vic.	Qld	SA	WA	Tas.	NT	ACT	Aust.
NUMBER ON FIRST DAY OF MONTH									
Supervision (compliance)									
Parole									
2001(b)	3 421	1 008	1 477	921	1 204	107	175	139	8 451
2002(b)	3 450	1 198	1 252	904	1 303	88	163	133	8 491
2002									
March quarter(b)	3 416	1 153	1 318	879	1 317	99	163	142	8 488
June quarter(b)	3 371	1 173	1 256	877	1 335	91	165	153	8 421
September quarter(b)	3 455	1 220	1 234	921	1 286	79	161	117	8 472
December quarter(b)	3 559	1 247	1 202	937	1 272	83	163	120	8 583
2003									
March quarter(b)	3 578	1 301	1 130	969	1 284	88	159	116	8 626
January	3 566	1 304	1 149	955	1 275	90	161	119	8 619
February	3 589	1 293	1 125	965	1 289	89	161	119	8 630
March	3 579	1 307	1 117	987	1 287	86	156	111	8 630
Bail									
2001(b)	169	219	1	158	547
2002(b)	175	300	3	197	675
2002									
March quarter(b)	162	226	3	176	567
June quarter(b)	170	283	3	194	650
September quarter(b)	192	333	3	223	750
December quarter(b)	177	356	3	196	732
2003									
March quarter(b)	184	412	3	168	767
January	184	413	3	159	759
February	185	406	3	171	765
March	183	416	3	175	777
Sentenced probation									
2001(b)	11 246	3 646	7 837	2 397	3 156	535	519	831	30 167
2002(b)	11 178	3 725	7 888	2 641	3 342	438	465	812	30 488
2002									
March quarter(b)	11 252	3 605	7 905	2 443	3 434	457	456	794	30 347
June quarter(b)	11 145	3 614	7 832	2 447	3 335	430	450	800	30 054
September quarter(b)	11 108	3 763	7 895	2 848	3 303	416	463	797	30 593
December quarter(b)	11 206	3 918	7 919	2 825	3 297	448	489	855	30 957
2003									
March quarter(b)	11 040	3 783	7 851	2 761	3 226	460	503	879	30 503
January	11 066	3 761	7 856	2 765	3 289	456	502	880	30 575
February	11 024	3 779	7 846	2 748	3 194	455	507	885	30 438
March	11 029	3 809	7 852	2 769	3 196	469	500	873	30 497

(a) If a person has more than one type of order, they are counted against each order in this table. If a person has more than one order of the same order type, they are counted once in the order type. With the exception of Tasmania, the number of persons in community-based corrections includes those persons with breached or suspended orders—see Explanatory Notes, paragraph 6.

(b) Figures for the quarter and year for first day of the month counts are calculated as a simple average—see Explanatory Notes, paragraph 5.

EXPLANATORY NOTES

INTRODUCTION

1 This publication presents statistical series on persons held in either adult corrective services custody or who are serving community-based orders in Australia. It contains data on the number of persons by their sex, type of custody, legal status and sentence type; the number of sentenced persons received into corrective services custody each month; the number of Indigenous persons in corrective services custody by their sex, legal status and sentence type, and the number of federal prisoners.

2 Statistics presented in this publication are compiled in three ways:

- Average daily prisoner population: Counts taken on each day of the month are summed and divided by the number of days in that month to determine the average daily prisoner population for that month. The average daily periodic detainee population is a count of persons on periodic detention on each day a centre is open, divided by the number of days a centre is open.
- Sentenced prisoner reception figures: Counts are provided each month on the number of receptions where a prisoner is received as a sentenced prisoner plus the number of changes of legal status from unsentenced to sentenced.
- First day of the month prisoner population: Counts of prisoner populations, taken on or near the first day of the month (see Explanatory Notes, paragraphs 4 and 5).

3 Although national standards and classifications are used in the compilation of these statistics, some discrepancies remain between the states and territories. These are due to legislative and procedural differences between jurisdictions and the way that these differences are reflected in agencies' administrative data systems. As part of its development strategy, the ABS is working with corrective services agencies to minimise the effect of these differences.

REFERENCE PERIOD/DATE

4 For the average daily prisoner population and the sentenced prisoner receptions counts, the reference period is the complete reference month. For all other information in the publication, the reference date is the first day of the month. However, not all states and territories report strictly according to this 'first day of the month' rule:

- The Western Australian and Victorian prison population and Australian Capital Territory prisoners in New South Wales prisons are counted as at midnight on the last day of the month. In these cases the figures provided are taken to represent the prison population at the beginning of the following month to align with practices in other states and territories.
- The New South Wales prison population is counted on the first Sunday of the month.
- In January 1999 ACT Corrections commenced sending some unsentenced prisoners to New South Wales prisons. These unsentenced ACT in NSW prisoners are shown on a daily average basis in Table 3.

5 Calculation of figures for the entire quarter and entire year varies depending on the counting unit and method of counting prisoners. These figures may be subject to rounding:

- Average daily figures: Figures are calculated by weighting the average according to the number of days in each month or year.
- First day of the month: Figures are simple averages. Quarterly figures for each month are added and the total is divided by three; for yearly figures, the figures for each month are added and the total divided by twelve.
- Sentenced receptions: Figures are totals of each month.

SCOPE

6 The scope of the statistics in this publication includes all persons remanded or sentenced to adult custodial corrective services agencies or who are serving community-based orders in each state and territory in Australia, including Work Outreach Camps and Community Custody Centres in Queensland.

Community-based corrections includes those persons with breached or suspended orders, with the exception of Tasmania.

7 In all states and territories except Victoria and Queensland, persons remanded or sentenced to adult custody are aged 18 years and over. Persons under 18 years are treated as juveniles in most Australian courts and are not remanded or sentenced to custody in adult prisons, other than in exceptional circumstances. However, in Victoria and Queensland, 'adult' refers to persons aged 17 years and over.

DATA SOURCE

8 Statistics in this publication are derived from information collected by the ABS from administrative records held by corrective services agencies within each state and territory. Statistics on federal prisoners are derived from records kept by the Criminal Law Division of the Commonwealth Attorney-General's Department.

9 The Australian Capital Territory Corrective Services Department has advised that the numbers of Indigenous prisoners sentenced in Australian Capital Territory courts and held in New South Wales prisons had been under reported. This under reporting was resolved from April 2000. No adjustments to data prior to April 2000 were able to be made.

INDIGENOUS IDENTIFICATION

10 In all states and territories persons are asked during entry into custody whether they identify as Aboriginal or Torres Strait Islander. It is uncommon for corrective services agencies to collect Indigenous status information from sources other than the person's own identification.

11 Some persons in custody are recorded as of unknown Indigenous status on corrective services agencies' information systems, but unknown Indigenous status has not been provided for this collection. Such persons are designated as non-Indigenous. It is intended that unknown Indigenous status will be collected from these systems in future.

AUSTRALIAN CAPITAL TERRITORY PRISONERS

12 The Australian Capital Territory has a detention centre for unsentenced prisoners and a periodic detention centre. With the exception of some sentenced fine default only prisoners, persons sentenced to full-time custody by Australian Capital Territory criminal courts are held in New South Wales prisons.

13 During 2000 the Australian Capital Territory commenced detaining prisoners sentenced for fine default only at their centre for unsentenced persons. To provide greater understanding of the number of prisoners attributed to the Australian Capital Territory, while presenting an accurate picture of the New South Wales prisoner population, statistics relating to Australian Capital Territory prisoners in New South Wales prisons are presented as a subset of the New South Wales figures.

AUSTRALIAN CAPITAL TERRITORY PRISONERS *continued*

14 Imprisonment rate data for the Australian Capital Territory are now included in the publication and are calculated on the basis of the total number of ACT prisoners (i.e. ACT prisoners held in NSW prisons, and ACT prisoners held in the ACT) divided by the estimated resident ACT adult population and multiplied by 100,000. For New South Wales, the imprisonment rate is now based on the count of NSW prisoners, excluding ACT prisoners held in NSW prisons, divided by the estimated resident NSW adult population and multiplied by 100,000. Time series data have also been derived on this basis. Previously, New South Wales imprisonment rates included ACT prisoners held in NSW prisons, which had the effect of slightly overstating the NSW imprisonment rate.

RATES AND RATIOS

15 Imprisonment rates enable comparison of prisoner numbers across states and territories. Prisoner rates are expressed per 100,000 adult population.

16 For the purpose of this publication the population figures used in the calculation of rates are for persons aged 18 years and over for all states and territories except Victoria and Queensland where the population used is persons aged 17 and over (see Explanatory Notes, paragraph 7).

17 Rates for the Indigenous adult population in this publication are based on revised projections for 30 June 2002 (refer *Experimental Projections of the Aboriginal and Torres Strait Islander Population 30 June 1996 to 30 June 2006* (cat. no. 3231.0)). These projections are in turn based on the results of the 1996 Census of Population and Housing.

18 Two series of these projections have been published. The so-called 'higher series' takes into account a possible change in propensity for people to identify themselves as Indigenous since the 1996 Population Census and estimates this from the 1991–1996 inter-censal period. The lower series assumes no such change has taken place since 1996. The lower of the two series was used in calculating rates for the Indigenous adult population in this publication. This is because, after discussions with representatives of corrective services agencies, it was felt that the propensity to identify as Indigenous has not increased to the same extent in the prison environment as might have occurred in the wider community.

19 Rates for the total adult prisoner population and persons in community-based corrections are calculated using the Estimated Resident Population (ERP) for each of the states and territories (refer *Australian Demographic Statistics* (cat. no. 3101.0)). As the population changes over time the denominator used for the calculation of rates varies, depending on the reference period. Rates are calculated using ERP for two quarters prior to their respective quarters. Thus for the March quarter 2003, ERP for the September quarter 2002 was used in the calculation of rates. This approach uses the latest ERP available at the time of publication.

20 The ratio of imprisonment rates of Indigenous persons to non-Indigenous persons is calculated by dividing the Indigenous imprisonment rate for each period and state or territory by the corresponding non-Indigenous imprisonment rate.

EXPLANATORY NOTES *continued*

RATES AND RATIOS *continued*

21 The ratio indicates the extent to which the imprisonment rates of Indigenous persons exceed the imprisonment rates of non-Indigenous persons. A ratio of 20.0 indicates that, for the given state or territory, the imprisonment rate of Indigenous persons per 100,000 adult population is 20 times that of the imprisonment rate of non-Indigenous persons.

22 In some instances Indigenous rates and ratios have not been published. Where this occurs, the cell concerned contains the symbol 'n.p.' This happens where, either the number of persons in custody is less than 10, or where the denominator population on which the rate is calculated is less than 5,000. This has been done because such rates and ratios vary widely from month to month with small variations in numbers of persons, and therefore may give an inaccurate reflection of the relative involvement of Indigenous persons in custody.

SIGNIFICANT EVENTS

23 Data for Queensland may be revised. In particular, the data associated with legal status and sentence type (tables 3 and 6) are subject to review.

24 During 2002 the following factors in Western Australia have impacted on the prisoner population: an increase in the acquittal and dismissal rates in courts; greater use by the courts of suspended imprisonment and community orders as penalties; and a decrease in the breach rate for early release orders. The impact of these factors has been proportionally greater on the number of Indigenous prisoners who tend to be convicted of offences which attract shorter sentences.

25 During the March quarter 2003 in Western Australia there has been an increase in the number of Indigenous persons sentenced to imprisonment by the courts, mostly in relation to 'Driving/Traffic', 'Against the Person' and 'Justice/Good Order' offences.

26 During the 2001–02 financial year, Tasmania recorded a large increase in the number of unsentenced prisoners. This overall increase was due to an increase in lodgments in the Supreme Court coupled with the move by police to more actively oppose bail. The variation over the period is explained primarily by the availability of judicial resources. A Supreme Court Judge was allocated to a long running trial in the March and June quarters of 2002—this represented 25% of the judicial resources allocated to crime by the court. There was also a reduction in the number of magistrates available in the Court of Petty Sessions due to a number of long running coronial inquests.

RELATED PUBLICATIONS

ABS publications

27 Other ABS publications which may be of interest include:

Australian Standard Offence Classification, 1997 (ASOC) (cat. no. 1234.0)—irregular

Crime and Safety, Australia (cat. no. 4509.0)—irregular

Criminal Courts, Australia (cat. no. 4513.0)—annual

Prisoners in Australia (cat. no. 4517.0)—annual

Recorded Crime—Victims, Australia (cat. no. 4510.0)—annual

EXPLANATORY NOTES *continued*

ABS publications *continued*

28 Current publications and other products released by the ABS are listed in the *Catalogue of Publications and Products* (cat. no. 1101.0). The Catalogue is available from any ABS office or the ABS web site <<http://www.abs.gov.au>>. The ABS also issues a daily Release Advice on the web site which details products to be released in the week ahead.

SYMBOLS AND OTHER USAGES

ABS	Australian Bureau of Statistics
ACT	Australian Capital Territory
Aust.	Australia
ERP	Estimated Resident Population
n.a.	not available
NCCJS	National Centre for Crime and Justice Statistics
n.p.	not available for publication but included in totals where applicable, unless otherwise stated
NSW	New South Wales
NT	Northern Territory
Qld	Queensland
r	figures or series revised since previous issue
SA	South Australia
Tas.	Tasmania
Vic.	Victoria
WA	Western Australia
..	not applicable
—	nil or rounded ot zero

Where figures have been rounded discrepancies may occur between the sum of component items and the total.

APPENDIX Interpretation of Indigenous Statistics

INTRODUCTION

Tables 5 and 6 in this publication provide nationally comparable statistics on imprisonment of Aboriginal and Torres Strait Islander (Indigenous) people. There are a number of issues that bear on the statistical measures of Indigenous imprisonment. This technical appendix provides advice on how these statistics should be interpreted.

NUMBERS

The first and most basic measure of Indigenous imprisonment is the *number of persons imprisoned*. Imprisoned persons are classified as Indigenous if they identify themselves as Aboriginal or Torres Strait Islander at the time they are received into prison custody. These statistics in *Corrective Services Australia* are derived from administrative records held by corrective services agencies in each jurisdiction. The accuracy of the Indigenous component of the statistics is dependent upon the quality of the information collected by these agencies.

PROPORTIONS

The second measure is the Indigenous *proportion of the prisoner population*. This relates the number of Indigenous persons in custody to the total number of persons in custody, and provides a basis for comparing the composition of the prison population across jurisdictions.

RATES

The third measure of Indigenous imprisonment is the *rate of imprisonment*, that is the number of Indigenous prisoners per 100,000 adults in the Indigenous population. The number of persons imprisoned in any jurisdiction is partly a function of the size of the population in that jurisdiction. All other things being equal, a jurisdiction such as the Northern Territory with a large Indigenous population will have a larger number of Indigenous prisoners than a jurisdiction such as Tasmania with a small Indigenous population. The rate of imprisonment provides a basis for comparing the relative likelihood that any Indigenous adult in a state or territory will be imprisoned.

RATIOS

The fourth measure of Indigenous imprisonment is the *ratio of Indigenous to non-Indigenous imprisonment*. Australian states and territories have widely varying rates of imprisonment. Hence, the likelihood that any Indigenous adult will be imprisoned in any jurisdiction is partly a function of the overall likelihood of imprisonment in that jurisdiction. This ratio provides a measure of how much more likely it is that an Indigenous adult in a particular jurisdiction will be imprisoned compared with his or her non-Indigenous counterparts.

GLOSSARY

Community-based corrections	This refers to the community-based management of court-ordered sanctions, post-prison administrative arrangements and fine conversions for offenders, which principally involve the provision of one or more of the following activities: supervision, programmes or community work.
Corrective services custody	Confinement in a place intended primarily for the purpose of confining prisoners, such as a prison, prison farm, Periodic Detention Centre or Community Custody Centre.
Federal sentenced prisoner	Persons charged and sentenced under a Commonwealth statute. For the purposes of this publication federal sentenced prisoners are those persons who are recognised by the Criminal Law Division of the Commonwealth Attorney-General's Department as having been charged and sentenced under a Commonwealth statute. Federal sentenced prisoners are counted by the state or territory in which they were sentenced, not necessarily where they were held in custody.
Fine default only	A sentence type indicating that, at the time, the prisoner is serving a sentence for default of a fine and nothing else.
Full-time custody	A type of custody where a prisoner is required to be held in custody on a full-time basis.
Indigenous prisoner	A prisoner who identifies as either Aboriginal or Torres Strait Islander.
Legal status	An offender may be either sentenced or unsentenced depending on the warrant(s) or court order(s) which provide the legal basis for the detention of the offender in custody.
Open custody	A custodial regime for managing prisoners which does not require them to be confined by a secure perimeter physical barrier, irrespective of whether a physical barrier exists.
Other sentenced	A sentence type indicating that, at the time, a person is serving a sentence other than, or in addition to, a fine default sentence.
Periodic detention	A type of custody or order where a sentenced prisoner is required to be held in custody for two consecutive days in a one-week period.
Prisoner	A person held in custody. For the purposes of this collection, prisoners are those whose confinement is the responsibility of a corrective services agency.
Reparation	Reparation refers to all offenders with a community service order or fine option that requires them to undertake unpaid work.
Restricted movement	This refers to offenders who are subject to a system of restricted movement including supervision and/or electronic monitoring.
Secure custody	A custodial regime for managing prisoners that requires them to be confined by a secure physical barrier.
Sentenced	A legal status indicating that a person has received a custodial order from a court in response to a conviction for a criminal offence.

Sentenced prisoner reception Includes persons who enter corrective services custody from the community, having received a sentence of imprisonment as an outcome of a court proceeding. It also includes persons who are sentenced to custody while in custody on remand (i.e. change status from a remand to a sentenced prisoner). Sentenced prisoners in custody who receive a further sentence of imprisonment are not counted as sentenced receptions.

Two types of sentenced prisoner reception are distinguished:

- A *fine default only* reception is a sentenced reception where a person enters custody as a result of defaulting on the payment of a fine.
- An *other sentenced reception* is a sentenced reception (including changes of status from unsentenced to sentenced) for anything other than a fine default only reception.

Note that Victorian reception figures do not include prisoners who change status from unsentenced to sentenced in the period.

Supervision (compliance) This includes community-based orders other than those categorised as restricted movement or reparation (e.g. parole, bail and sentenced probation).

Unsentenced A legal status indicating that a person is confined to custody while awaiting the outcome of their trial. Some sentenced prisoners may also be "remanded in custody", (i.e. are unsentenced) in relation to other offences pending a court hearing. In such cases, these prisoners are counted as sentenced.

FOR MORE INFORMATION...

- INTERNET* **www.abs.gov.au** the ABS web site is the best place to start for access to summary data from our latest publications, information about the ABS, advice about upcoming releases, our catalogue, and Australia Now—a statistical profile.
- LIBRARY* A range of ABS publications is available from public and tertiary libraries Australia-wide. Contact your nearest library to determine whether it has the ABS statistics you require, or visit our web site for a list of libraries.
- CPI INFOLINE* For current and historical Consumer Price Index data, call 1902 981 074 (call cost 77c per minute).
- DIAL-A-STATISTIC* For the latest figures for National Accounts, Balance of Payments, Labour Force, Average Weekly Earnings, Estimated Resident Population and the Consumer Price Index call 1900 986 400 (call cost 77c per minute).

INFORMATION SERVICE

Data which have been published and can be provided within five minutes are free of charge. Our information consultants can also help you to access the full range of ABS information—ABS user-pays services can be tailored to your needs, time frame and budget. Publications may be purchased. Specialists are on hand to help you with analytical or methodological advice.

- PHONE* **1300 135 070**
- EMAIL* **client.services@abs.gov.au**
- FAX* 1300 135 211
- POST* Client Services, ABS, GPO Box 796, Sydney 2001

WHY NOT SUBSCRIBE?

ABS subscription services provide regular, convenient and prompt deliveries of ABS publications and products as they are released. Email delivery of monthly and quarterly publications is available.

- PHONE* 1300 366 323
- EMAIL* subscriptions@abs.gov.au
- FAX* 03 9615 7848
- POST* Subscription Services, ABS, GPO Box 2796Y, Melbourne 3001



2451200003038
ISSN 1440-5997

RRP \$22.00