

2017.6

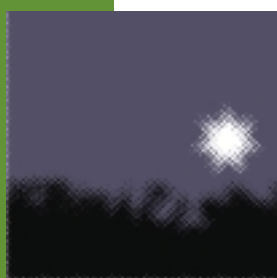
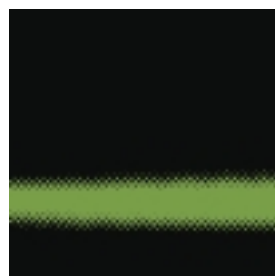


Census of Population and Housing

Selected Education and Labour Force Characteristics for Statistical Local Areas

Tasmania

2001



Census of Population and Housing

Selected Education and Labour Force Characteristics for Statistical Local Areas

Tasmania

2001

Stevan R. Matheson
Regional Director, Tasmania

AUSTRALIAN BUREAU OF STATISTICS

EMBARGO: 11.30AM (CANBERRA TIME) TUES 18 FEB 2003

ABS Catalogue No. 2017.6

ISBN 0 642 47811 2

© Commonwealth of Australia 2003

This work is copyright. Apart from any use as permitted under the *Copyright Act 1968*, no part may be reproduced by any process without prior written permission from the Commonwealth. Requests and inquiries concerning reproduction and rights in this publication should be addressed to The Manager, Intermediary Management, Australian Bureau of Statistics, Locked Bag 10, Belconnen ACT 2616, by telephone (02) 6252 6998, fax (02) 6252 7102, or email <intermediary.management@abs.gov.au>.

In all cases the ABS must be acknowledged as the source when reproducing or quoting any part of an ABS publication or other product.

Produced by the Australian Bureau of Statistics

INQUIRIES

- For further information about these and related statistics, contact the National Information and Referral Service on 1300 135 070.

CONTENTS

page

Introduction	iv
Summary of findings	1

TABLES

List of tables	6
Main tables	7
Basic Community Profile	29

ADDITIONAL INFORMATION

Explanatory Notes	40
Appendix: Census Products and Services	44
Glossary	47

MAPS

Statistical Subdivisions and Statistical Local Areas, 2001 edition	50
Statistical Subdivisions and Statistical Local Areas, 2001 edition, Enlargement 1	52
Statistical Subdivisions and Statistical Local Areas, 2001 edition, Enlargement 2	53

INTRODUCTION

STATISTICS PRESENTED IN THIS PUBLICATION

This publication presents a range of education and labour force statistics produced from the 2001 Census of Population and Housing for Tasmania. For comparative purposes, it includes 1996 Census data presented on 2001 Census geography.

The tables in this publication provide selected characteristics of the population for Statistical Divisions (SDs), Statistical Subdivisions (SSDs) and Statistical Local Areas (SLAs). The purpose of these tables is to allow a broad comparison of characteristics between geographic areas.

This publication also contains the Basic Community Profile (BCP) for Tasmania. This set of tables is provided to illustrate the wide range of data available from the Census. The BCP consists of 33 tables. This publication contains tables 22 to 33 which focus on education and labour force characteristics. The remainder of the BCP, tables 1 to 21, is published in *Census of Population and Housing: Selected Social and Housing Characteristics for Statistical Local Areas, Tasmania* (cat. no. 2015.6).

The statistics in this publication are presented on the basis of where people were counted on Census Night ('as enumerated' counts).

One of the important features of the Census is that it describes the characteristics of Australia's population for small geographic areas and small population groups. While not available in this publication, data at the smallest geographic level (Collection District) are available in a range of census products. For more information on these products, please refer to the Appendix—Census Products and Services. Concepts and definitions used in this publication are explained in the Glossary and more detailed information is available in the *2001 Census Dictionary* (cat. no. 2901.0). The Explanatory Notes in this publication provide a discussion of the scope and coverage of the Census, the different measures of population, and the limitations of census data.

This publication is one of a series of publications which provide data at the SLA level for each state and territory. A similar publication is also available for the whole of Australia, providing data at SSD level. See the Appendix—Census Products and Services for more information.

SUMMARY OF FINDINGS

LABOUR FORCE

In Tasmania, the labour force decreased from 204,676 to 203,048 persons aged 15 years and over, a fall of 0.8%. This was the only decrease of all states and territories, compared with an increase of 6.6% for Australia.

EMPLOYED

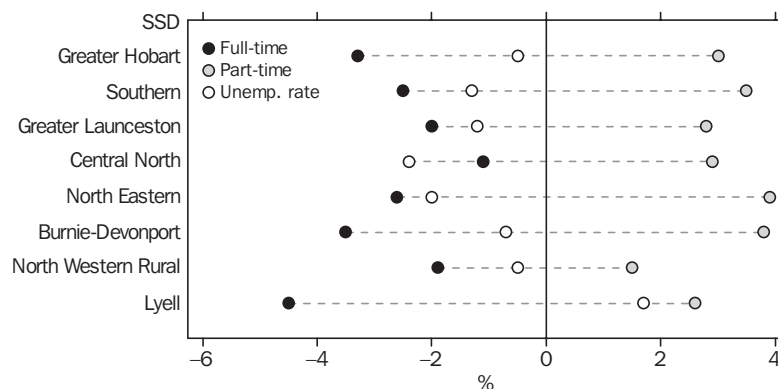
In 2001, there were 182,522 employed persons of which 111,134 were full-time workers and 66,030 were part-time. This represented an increase of 0.2% (311 persons) since 1996 which is the smallest increase of all states and territories.

Full-time/Part-time

In 2001, there was a fall in the proportion of full-time workers who represented 54.7% of the labour force, down from 57.6% in 1996.

In the period 1996 to 2001, the number of persons employed part-time grew from 60,219 in 1996 to 66,030 in 2001, an increase of 9.6%, compared with 17.6% for Australia. These workers represented 32.5% of the labour force in 2001, compared with 29.4% in 1996.

FULL/PART-TIME EMPLOYED AND UNEMPLOYMENT RATE,
Difference in proportions of the labour force— 1996 to 2001



Source: 1996 and 2001 Censuses, ABS

The Lyell SSD recorded a large decrease in full-time workers, as a proportion of the labour force, since 1996 (to 58.7% from 63.2%) and also the only increase in unemployment (to 11.6% from 9.9%). Every other SSD in Tasmania experienced a decrease in both the full-time employment rate and the unemployment rate, while part-time employment rose. The Off-Shore Areas & Migratory SSD experienced a large decline in full-time employment to 50.1% from 76.9%.

The North Eastern SSD recorded the largest increase in the proportion of part-time workers since 1996, (to 32.7% from 28.8%) followed by Burnie-Devonport (to 32.1% from 28.3%) and Southern (to 33.9% from 30.4%). The Off-Shore Areas & Migratory SSD experienced a large rise (to 30.5% from 15.1%).

In 2001, the highest proportions of full-time workers, as a proportion of persons in the labour force, were recorded in the Statistical Local Areas (SLAs) of Launceston - Inner (71.1%), King Island (67.0%) and Latrobe - Pt B (62.0%) all outside Greater Hobart. Hobart - Inner (56.6%), Kingborough - Pt A (56.4%) and Hobart -Remainder (56.0%) were the highest within Greater Hobart.

Concentrations of part-time workers, as proportions of persons in the labour force, were recorded in the SLAs of Tasman (43.5%), Kingborough - Pt B (40.7%), Flinders (38.1%),

SUMMARY OF FINDINGS *continued*

Full-time/Part-time continued

Glamorgan/Spring Bay (37.6%) and Break O'Day (36.8%), all outside Greater Hobart. The highest within Greater Hobart was Kingborough - Pt A (35.1%).

Occupation

In 2001, the largest occupation groups were Professionals (30,778 persons or 16.9%), Intermediate Clerical, Sales and Service Workers (30,489 persons or 16.7%), Tradespersons and Related Workers (22,695 persons or 12.4%) and Associate Professionals (21,164 persons or 11.6%). These proportions are similar to those in 1996.

Within Greater Hobart SLAs, the highest proportion of employed people were working as Professionals. Hobart - Remainder (33.8%) was the highest, followed by Hobart - Inner (24.5%), Kingborough - Pt A (23.8%) and Clarence (18.5%). The highest proportions outside Greater Hobart were in Launceston - Inner (25.6%), Kingborough - Pt B (23.9%), West Tamar - Pt A (19.5%) and Launceston - Pt B (18.0%). The Off-Shore Areas & Migratory SLA recorded a high proportion with 17.0%.

Intermediate Clerical, Sales and Service Workers were dispersed throughout the State. The SLAs of Glenorchy (20.9%), Sorell - Pt A (18.6%), Clarence (18.5%) and Kingborough - Pt A (18.4%) recorded the highest proportions within Greater Hobart, while Meander Valley - Pt A (20.9%), Launceston - Pt B (18.6%) and Burnie - Pt A (17.5%) recorded the highest proportions outside Greater Hobart.

The SLAs of Brighton (17.6%), Derwent Valley - Pt A (16.4%) and Glenorchy (16.0%), all within Greater Hobart, recorded the highest proportions of persons working as Tradespersons and Related Workers. West Coast (16.4%), George Town - Pt A (16.1%), and Southern Midlands (15.9%) recorded the highest outside Greater Hobart.

High proportions of persons working as Associate Professionals were recorded outside Greater Hobart in the SLAs of Launceston - Inner (19.7%), Glamorgan/Spring Bay (14.7%) and Meander Valley - Pt A (13.5%). The SLAs of Hobart - Inner, Hobart - Remainder (both 13.7%) and Clarence (13.6%) recorded the highest proportions within Greater Hobart. The Off-Shore Areas & Migratory SLA recorded a high proportion with 15.4%.

Industry

In 2001, the four largest industries of employment in Tasmania were Retail Trade (27,354 persons or 15.0%), Health and Community Services (21,261 persons or 11.6%) Manufacturing (21,125 persons or 11.6%), and Education (15,040 persons or 8.2%). These were also the top four industries in Tasmania in 1996.

Since 1996 there has been an increase in the proportions of persons working in Retail Trade (to 15.0% from 13.7%), Property and Business Services (to 7.7% from 6.6%), Health and Community Services (to 11.6% from 10.9%) and Accommodation, Cafes and Restaurants (to 5.2% from 4.6%). Industries which experienced a decline in proportion included Government Administration and Defence (to 5.3% from 6.6%), Construction (to 5.1% from 5.9%) and Manufacturing (to 11.6% from 12.2%).

SUMMARY OF FINDINGS *continued*

Industry continued

At the SLA level, high proportions of persons employed in Retail Trade were recorded throughout the State. Meander Valley - Pt A (19.4%), Burnie - Pt A (18.9%), Devonport (17.7%) and Launceston - Pt B (17.3%) outside Greater Hobart, and Glenorchy (18.3%) and Brighton (17.7%) within Greater Hobart recorded the highest proportions.

Health and Community Services recorded high proportions of employed persons both in metropolitan and regional SLAs. Within Greater Hobart, these were the SLAs of Derwent Valley - Pt A (18.3%), Hobart - Remainder (14.1%), and Kingborough - Pt A (13.4%).

Outside Greater Hobart, SLAs recording high proportions of persons employed in this industry were Derwent Valley - Pt B (16.6%), Launceston - Pt C (13.7%) and Burnie - Pt A (13.2%).

Most of the highest proportions of persons employed in Manufacturing were recorded in SLAs outside Greater Hobart including George Town - Pt A (31.0%), George Town - Pt B (28.2%), Circular Head (21.1%) and Dorset (18.6%). The highest within Greater Hobart was Derwent Valley - Pt A (19.5%).

The highest proportions of persons employed in Education were in the SLAs of Hobart - Remainder (12.6%), West Tamar - Pt A (10.9%), Kingborough - Pt A (10.8%), Kingborough - Pt B (10.0%) and Central Coast - Pt A (9.7%).

UNEMPLOYMENT

The number of unemployed persons decreased (8.6%) to 20,526 in 2001 from 22,465 in 1996. The unemployment rate fell to 10.1% in 2001 from 11.0% in 1996. The unemployment rate was 7.4% for Australia in 2001.

While the number of unemployed persons looking for full-time work fell by 13.9% (to 15,639 in 2001 from 18,172 in 1996), those unemployed persons looking for part-time work increased by 13.8% (to 4,887 in 2001 from 4,293 in 1996).

At the SSD level, the largest declines in the unemployment rates between 1996 and 2001 were recorded in Central North (to 9.6% from 12.0%) and North Eastern (to 10.2% from 12.2%). Lyell experienced the only increase (to 11.6% from 9.9%).

In 2001, SLAs with the highest unemployment rates in Greater Hobart were Brighton (16.3%) and Derwent Valley - Pt A (14.2%). Outside Greater Hobart, Break O'Day (16.2%), Kentish (15.9%), Derwent Valley - Pt B (14.0%) and Burnie - Pt A (13.6%) recorded the highest unemployment rates.

For those aged 15–24 years, the unemployment rate decreased to 19.2% in 2001 from 19.6% in 1996. This compares with a fall to 13.8% in 2001 from 15.7% in 1996 in Australia.

The highest youth unemployment rates recorded in SLAs outside Greater Hobart were Kentish (30.6%), Sorell - Pt B (27.3%), Kingborough - Pt B (26.7%), Derwent Valley - Pt B (25.7%) and Central Highlands (25.5%). Brighton (30.4%) and Derwent Valley - Pt A (27.9%) had the highest youth unemployment rates within Greater Hobart.

NON-SCHOOL QUALIFICATION

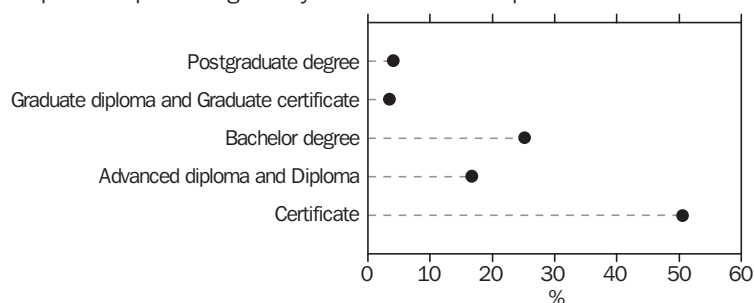
Level of Education

In 2001, there were 107,454 persons aged 15 years and over with a qualification, accounting for 30.1% of all persons aged 15 years and over in Tasmania. Between 1996 and 2001 this proportion rose from 25.8% (an increase of 15,959 persons). This compares with a rise to 34.7% from 30.0% for Australia.

SUMMARY OF FINDINGS *continued*

Level of Education *continued*

NON-SCHOOL QUALIFICATION: LEVEL OF EDUCATION, Proportion of persons aged 15 years and over with a qualification—2001



Source: 2001 Census, ABS

Of those with a qualification, 50.5% (54,314 persons) held a Certificate, 25.2% (27,132 persons) held a Bachelor Degree, 16.7% (17,892 persons) held an Advanced Diploma and Diploma, and 7.6% (8,116 persons) held a Postgraduate Degree or Graduate Diploma and Graduate Certificate as their highest level of qualification.

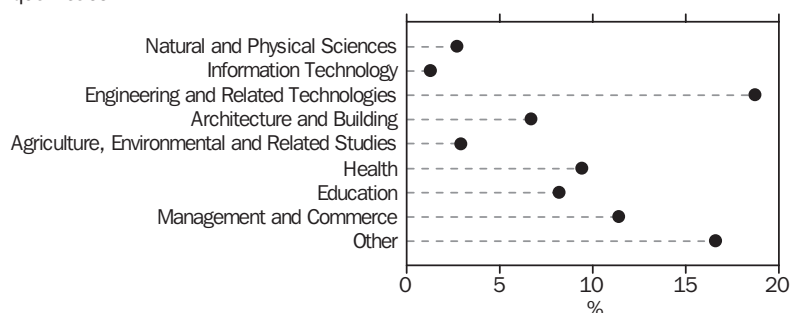
The highest proportions of persons aged 15 years and over with a Bachelor Degree or higher as their highest level of qualification were found within Greater Hobart in the SLAs of Hobart - Remainder (26.1%), Kingborough - Pt A (17.0%) and Hobart - Inner (13.5%). Launceston - Inner (22.7%) and Kingborough - Pt B (15.6%) recorded the highest proportions outside Greater Hobart. The SLA of Off-Shore Areas & Migratory recorded 13.5%.

High proportions of the population aged 15 years and over with an Advanced Diploma and Diploma were recorded outside Greater Hobart in the SLAs of Launceston - Inner (7.8%), Kingborough - Pt B (7.6%) and West Tamar - Pt A (6.3%). The SLAs of Hobart - Remainder (7.6%) and Kingborough - Pt A (7.5%) recorded the highest within Greater Hobart. The SLA of Off-Shore Areas & Migratory recorded 7.8%.

Proportions of persons with a Certificate as their highest level of qualification were generally recorded outside Greater Hobart. The SLAs of Latrobe - Pt B (19.9%), West Tamar - Pt B (19.6%), Sorell - Pt B and West Coast (both 19.3%) registered the highest proportions. Sorell - Pt A (17.7%) and Kingborough - Pt A (15.8%) were the highest within Greater Hobart. The Off-Shore Areas and Migratory SLA recorded a high proportion of the population with a Certificate with 21.8%.

Field of Study

NON-SCHOOL QUALIFICATION: FIELD OF STUDY, Proportion of persons aged 15 years and over with a qualification— 2001



Source: 2001 Census, ABS

SUMMARY OF FINDINGS *continued*

Field of Study *continued*

Of all persons aged 15 years and over with a qualification, qualifications were most commonly held in the fields of Engineering and Related Technologies (27,591 persons or 18.7%), Management and Commerce (16,877 persons or 11.4%), Health (13,950 persons or 9.4%), and Education (12,170 persons or 8.2%). Other, which includes Society and Culture, Creative Arts, Food, Hospitality and Personal Services, and Mixed Programmes (24,534 persons or 16.6%) also recorded a high proportion.

LIST OF TABLES

page

MAIN TABLES

1	Labour force characteristics, by Statistical Local Area	7
2	Occupation, by Statistical Local Area	10
3	Industry of employment, by Statistical Local Area	14
4	Non-school qualification: level of education, by Statistical Local Area	20
5	Non-school qualification: field of study, by Statistical Local Area	22
6	Statistical Local Areas, ranked by unemployment rate	26
7	Statistical Local Areas, ranked by participation rate	27
8	Statistical Local Areas, ranked by proportion of persons aged 15 years and over with a qualification	28

BASIC COMMUNITY PROFILE TABLES

B22	Selected characteristics (second release processing), persons	30
B23	Non-school qualification: level of education by sex, persons aged 15 years and over	30
B24	Non-school qualification: field of study by sex, persons aged 15 years and over	31
B25	Age by labour force status (full-time/part-time) by sex, persons aged 15 years and over	32
B26	Industry by age by sex, employed persons	33
B27	Occupation by age by sex, employed persons	35
B28	Method of travel to work by sex, employed persons	36
B29	Number of motor vehicles and number of motorbikes/motor scooters, occupied private dwellings	37
B30	Weekly family income by family type, families in occupied private dwellings	38
B31	Weekly household income by household type, occupied private dwellings	38
B32	Household type by number of persons usually resident, occupied private dwellings	39
B33	Selected averages	39

LABOUR FORCE CHARACTERISTICS, by Statistical Local Area(a)

Geographic area	EMPLOYED			UNEMPLOYED LOOKING FOR			Not in the labour force	UNEMPLOYMENT RATE	
	Full-time(b)	Part-time	Total(c)	Full-time work	Part-time work	Total		Aged 15-24 years	Aged 15 years and over
	no.	no.	no.	no.	no.	no.	no.	%	%
GREATER HOBART (SD)									
Greater Hobart (SSD)									
Brighton (M)	2 510	1 444	4 108	646	155	801	3 749	30.4	16.3
Clarence (C)	12 073	7 202	19 822	1 427	440	1 867	14 609	18.8	8.6
Derwent Valley (M) - Pt A	1 275	777	2 137	293	60	353	2 090	27.9	14.2
Glenorchy (C)	9 852	5 707	16 131	1 634	436	2 070	14 263	20.3	11.4
Hobart (C) - Inner	206	124	335	21	8	29	382	10.6	8.0
Hobart (C) - Remainder	13 168	8 060	21 717	1 182	609	1 791	13 525	16.0	7.6
Kingborough (M) - Pt A	6 880	4 279	11 430	502	260	762	6 959	14.3	6.3
Sorell (M) - Pt A	2 276	1 433	3 819	323	91	414	2 866	19.9	9.8
Total Greater Hobart (SSD) 2001	48 240	29 026	79 499	6 028	2 059	8 087	58 443	18.7	9.2
Total Greater Hobart (SSD) 1996	50 773	26 218	78 515	6 789	1 678	8 467	57 555	18.6	9.7
TOTAL GREATER HOBART (SD) 2001	48 240	29 026	79 499	6 028	2 059	8 087	58 443	18.7	9.2
TOTAL GREATER HOBART (SD) 1996	50 773	26 218	78 515	6 789	1 678	8 467	57 555	18.6	9.7
SOUTHERN (SD)									
Southern (SSD)									
Central Highlands (M)	590	272	893	94	24	118	748	25.5	11.7
Derwent Valley (M) - Pt B	652	363	1 039	139	30	169	869	25.7	14.0
Glamorgan/Spring Bay (M)	810	631	1 492	140	44	184	1 448	20.2	11.0
Huon Valley (M)	2 794	1 823	4 770	465	120	585	4 041	18.1	10.9
Kingborough (M) - Pt B	484	424	938	82	21	103	815	26.7	9.9
Sorell (M) - Pt B	207	138	350	36	9	45	274	27.3	11.4
Southern Midlands (M)	1 321	680	2 097	203	50	253	1 651	21.5	10.8
Tasman (M)	367	388	787	78	26	104	796	21.1	11.7
Total Southern (SSD) 2001	7 225	4 719	12 366	1 237	324	1 561	10 642	20.9	11.2
Total Southern (SSD) 1996	7 681	4 286	12 355	1 449	313	1 762	10 200	22.9	12.5
TOTAL SOUTHERN (SD) 2001	7 225	4 719	12 366	1 237	324	1 561	10 642	20.9	11.2
TOTAL SOUTHERN (SD) 1996	7 681	4 286	12 355	1 449	313	1 762	10 200	22.9	12.5
NORTHERN (SD)									
Greater Launceston (SSD)									
George Town (M) - Pt A	1 109	600	1 769	223	47	270	1 758	23.3	13.2
Launceston (C) - Inner	189	64	253	8	5	13	51	18.0	4.9
Launceston (C) - Pt B	13 932	8 335	22 846	2 061	780	2 841	18 329	20.0	11.1
Meander Valley (M) - Pt A	2 275	1 234	3 578	146	57	203	1 745	12.2	5.4
Northern Midlands (M) - Pt A	1 822	1 009	2 910	194	71	265	2 015	16.2	8.3
West Tamar (M) - Pt A	4 366	2 751	7 299	475	159	634	5 257	16.0	8.0
Total Greater Launceston (SSD) 2001	23 693	13 993	38 656	3 107	1 119	4 226	29 155	18.7	9.9
Total Greater Launceston (SSD) 1996	24 617	12 822	38 240	3 753	1 022	4 775	30 552	19.6	11.1
Central North (SSD)									
George Town (M) - Pt B	252	106	364	34	9	43	314	20.0	10.6
Launceston (C) - Pt C	682	425	1 151	94	24	118	727	20.2	9.3
Meander Valley (M) - Pt B	2 329	1 328	3 781	336	88	424	3 079	13.0	10.1
Northern Midlands (M) - Pt B	1 122	528	1 718	130	38	168	1 415	17.1	8.9
West Tamar (M) - Pt B	465	270	757	57	19	76	439	13.9	9.1
Total Central North (SSD) 2001	4 850	2 657	7 771	651	178	829	5 974	15.3	9.6
Total Central North (SSD) 1996	5 027	2 448	7 690	870	180	1 050	6 223	20.3	12.0

(a) Applicable to persons aged 15 years and over.

(b) Full-time is defined as having worked 35 hours or more in all jobs in the week prior to Census Night.

(c) Includes employed persons who did not state their hours worked and persons who stated they were employed, but worked nil hours in the week prior to Census Night.

Geographic area	EMPLOYED			UNEMPLOYED LOOKING FOR			Not in the labour force	UNEMPLOYMENT RATE	
	Full-time(b)	Part-time	Total(c)	Full-time work	Part-time work	Total		Aged 15-24 years	Aged 15 years and over
	no.	no.	no.	no.	no.	no.	no.	%	%
NORTHERN (SD) <i>cont.</i>									
North Eastern (SSD)									
Break O'Day (M)	897	746	1 699	270	59	329	2 210	23.9	16.2
Dorset (M)	1 852	902	2 870	163	51	214	2 068	13.0	6.9
Flinders (M)	247	174	433	17	7	24	209	11.4	5.3
Total North Eastern (SSD) 2001	2 996	1 822	5 002	450	117	567	4 487	16.1	10.2
Total North Eastern (SSD) 1996	3 137	1 599	4 880	536	142	678	4 542	20.2	12.2
TOTAL NORTHERN (SD) 2001	31 539	18 472	51 429	4 208	1 414	5 622	39 616	18.2	9.9
TOTAL NORTHERN (SD) 1996	32 781	16 869	50 810	5 159	1 344	6 503	41 317	19.7	11.3
MERSEY-LYELL (SD)									
Burnie-Devonport (SSD)									
Burnie (C) - Pt A	3 487	2 176	5 824	741	179	920	5 287	21.8	13.6
Central Coast (M) - Pt A	3 651	2 185	6 015	642	196	838	5 672	24.4	12.2
Devonport (C)	5 213	3 060	8 522	934	292	1 226	7 557	22.7	12.6
Latrobe (M) - Pt A	1 718	1 012	2 814	265	68	333	2 330	18.5	10.6
Waratah/Wynyard (M) - Pt A	2 130	1 418	3 661	409	93	502	3 527	22.5	12.1
Total Burnie-Devonport (SSD) 2001	16 199	9 851	26 836	2 991	828	3 819	24 373	22.4	12.5
Total Burnie-Devonport (SSD) 1996	18 016	9 057	27 730	3 524	709	4 233	25 300	21.9	13.2
North Western Rural (SSD)									
Burnie (C) - Pt B	537	267	835	75	24	99	513	17.3	10.6
Central Coast (M) - Pt B	810	412	1 285	120	38	158	759	21.5	10.9
Circular Head (M)	2 150	1 112	3 403	227	62	289	1 958	13.5	7.8
Kentish (M)	1 161	649	1 864	293	59	352	1 625	30.6	15.9
King Island (M)	638	242	912	32	8	40	358	8.1	4.2
Latrobe (M) - Pt B	215	97	321	21	5	26	146	19.3	7.5
Waratah/Wynyard (M) - Pt B	674	346	1 053	128	23	151	686	21.0	12.5
Total North Western Rural (SSD) 2001	6 185	3 125	9 673	896	219	1 115	6 045	18.6	10.3
Total North Western Rural (SSD) 1996	6 509	3 016	9 804	992	195	1 187	6 251	16.6	10.8
Lyell (SSD)									
West Coast (M)	1 513	695	2 277	260	39	299	1 452	20.3	11.6
Total Lyell (SSD) 2001	1 513	695	2 277	260	39	299	1 452	20.3	11.6
Total Lyell (SSD) 1996	1 858	717	2 648	240	50	290	1 629	14.9	9.9
TOTAL MERSEY-LYELL (SD) 2001	23 897	13 671	38 786	4 147	1 086	5 233	31 870	21.5	11.9
TOTAL MERSEY-LYELL (SD) 1996	26 383	12 790	40 182	4 756	954	5 710	33 180	20.4	12.4
OFF-SHORE AREAS & MIGRATORY (SD)									
Off-Shore Areas & Migratory (SSD)									
Off-Shore Areas & Migratory	233	142	442	19	4	23	240	10.8	4.9
Total Off-Shore Areas & Migratory (SSD) 2001	233	142	442	19	4	23	240	10.8	4.9
Total Off-Shore Areas & Migratory (SSD) 1996	286	56	349	19	4	23	163	18.0	6.2
TOTAL OFF-SHORE AREAS & MIGRATORY (SD) 2001	233	142	442	19	4	23	240	10.8	4.9
TOTAL OFF-SHORE AREAS & MIGRATORY (SD) 1996	286	56	349	19	4	23	163	18.0	6.2
TOTAL TASMANIA 2001	111 134	66 030	182 522	15 639	4 887	20 526	140 811	19.2	10.1
TOTAL TASMANIA 1996	117 904	60 219	182 211	18 172	4 293	22 465	142 415	19.6	11.0

(a) Applicable to persons aged 15 years and over.

(b) Full-time is defined as having worked 35 hours or more in all jobs in the week prior to Census Night.

(c) Includes employed persons who did not state their hours worked and persons who stated they were employed, but worked nil hours in the week prior to Census Night.

OCCUPATION, by Statistical Local Area(a)

Geographic area	Managers and Administrators	Professionals	Associate Professionals	Tradespersons and Related Workers	Advanced Clerical and Service Workers	Intermediate Clerical, Sales and Service Workers	Intermediate Production and Transport Workers
GREATER HOBART (SD)							
Greater Hobart (SSD)							
Brighton (M)	201	282	388	724	100	729	526
Clarence (C)	1 454	3 669	2 687	2 408	696	3 672	1 191
Derwent Valley (M) - Pt A	59	208	216	350	44	383	348
Glenorchy (C)	671	1 538	1 756	2 579	444	3 370	1 611
Hobart (C) - Inner	55	82	46	21	9	58	9
Hobart (C) - Remainder	1 973	7 343	2 974	1 427	578	3 721	568
Kingborough (M) - Pt A	975	2 724	1 523	1 200	391	2 104	562
Sorell (M) - Pt A	261	418	398	561	112	710	398
Total Greater Hobart (SSD) 2001	5 649	16 264	9 988	9 270	2 374	14 747	5 213
Total Greater Hobart (SSD) 1996	5 822	15 561	8 813	10 120	2 660	14 683	5 387
TOTAL GREATER HOBART (SD) 2001	5 649	16 264	9 988	9 270	2 374	14 747	5 213
TOTAL GREATER HOBART (SD) 1996	5 822	15 561	8 813	10 120	2 660	14 683	5 387
SOUTHERN (SD)							
Southern (SSD)							
Central Highlands (M)	186	56	95	119	18	68	112
Derwent Valley (M) - Pt B	67	129	111	157	24	173	143
Glamorgan/Spring Bay (M)	171	168	219	140	37	166	219
Huon Valley (M)	498	568	483	576	113	641	530
Kingborough (M) - Pt B	134	224	98	112	19	121	68
Sorell (M) - Pt B	71	42	43	43	6	42	32
Southern Midlands (M)	363	171	174	333	65	282	236
Tasman (M)	112	104	91	86	16	129	70
Total Southern (SSD) 2001	1 602	1 462	1 314	1 566	298	1 622	1 410
Total Southern (SSD) 1996	1 737	1 416	1 117	1 558	286	1 554	1 480
TOTAL SOUTHERN (SD) 2001	1 602	1 462	1 314	1 566	298	1 622	1 410
TOTAL SOUTHERN (SD) 1996	1 737	1 416	1 117	1 558	286	1 554	1 480
NORTHERN (SD)							
Greater Launceston (SSD)							
George Town (M) - Pt A	94	158	168	284	31	214	251
Launceston (C) - Inner	39	65	50	16	3	41	9
Launceston (C) - Pt B	1 315	4 108	2 449	2 741	653	4 256	2 019
Meander Valley (M) - Pt A	241	470	483	471	132	749	293
Northern Midlands (M) - Pt A	222	351	341	461	80	471	287
West Tamar (M) - Pt A	578	1 425	929	956	236	1 211	585
Total Greater Launceston (SSD) 2001	2 489	6 577	4 420	4 929	1 135	6 942	3 444
Total Greater Launceston (SSD) 1996	2 721	6 376	3 959	5 370	1 326	6 408	3 773
Central North (SSD)							
George Town (M) - Pt B	55	38	30	50	9	37	57
Launceston (C) - Pt C	137	165	79	172	33	171	145
Meander Valley (M) - Pt B	713	432	371	415	111	525	446
Northern Midlands (M) - Pt B	405	164	146	220	36	155	161
West Tamar (M) - Pt B	94	111	76	108	26	101	85
Total Central North (SSD) 2001	1 404	910	702	965	215	989	894
Total Central North (SSD) 1996	1 493	865	633	1 020	215	904	884
North Eastern (SSD)							
Break O'Day (M)	180	213	228	192	34	201	250
Dorset (M)	506	259	213	286	77	286	455
Flinders (M)	112	52	36	57	5	47	31
Total North Eastern (SSD) 2001	798	524	477	535	116	534	736
Total North Eastern (SSD) 1996	859	502	453	570	120	479	768
TOTAL NORTHERN (SD) 2001	4 691	8 011	5 599	6 429	1 466	8 465	5 074
TOTAL NORTHERN (SD) 1996	5 073	7 743	5 045	6 960	1 661	7 791	5 425

(a) Applicable to employed persons only.

<i>Geographic area</i>	<i>Elementary Clerical, Sales and Service Workers</i>	<i>Labourers and Related Workers</i>	<i>Total(b)</i>
GREATER HOBART (SD)			
Greater Hobart (SSD)			
Brighton (M)	528	534	4 108
Clarence (C)	2 168	1 495	19 822
Derwent Valley (M) - Pt A	230	245	2 137
Glenorchy (C)	2 051	1 715	16 131
Hobart (C) - Inner	32	18	335
Hobart (C) - Remainder	1 890	868	21 717
Kingborough (M) - Pt A	1 078	687	11 430
Sorell (M) - Pt A	460	426	3 819
<i>Total Greater Hobart (SSD) 2001</i>	<i>8 437</i>	<i>5 988</i>	<i>79 499</i>
<i>Total Greater Hobart (SSD) 1996</i>	<i>7 302</i>	<i>6 003</i>	<i>78 515</i>
TOTAL GREATER HOBART (SD) 2001	8 437	5 988	79 499
TOTAL GREATER HOBART (SD) 1996	7 302	6 003	78 515
SOUTHERN (SD)			
Southern (SSD)			
Central Highlands (M)	38	169	893
Derwent Valley (M) - Pt B	80	134	1 039
Glamorgan/Spring Bay (M)	103	235	1 492
Huon Valley (M)	344	912	4 770
Kingborough (M) - Pt B	48	96	938
Sorell (M) - Pt B	12	56	350
Southern Midlands (M)	144	269	2 097
Tasman (M)	48	115	787
<i>Total Southern (SSD) 2001</i>	<i>817</i>	<i>1 986</i>	<i>12 366</i>
<i>Total Southern (SSD) 1996</i>	<i>766</i>	<i>1 901</i>	<i>12 355</i>
TOTAL SOUTHERN (SD) 2001	817	1 986	12 366
TOTAL SOUTHERN (SD) 1996	766	1 901	12 355
NORTHERN (SD)			
Greater Launceston (SSD)			
George Town (M) - Pt A	166	349	1 769
Launceston (C) - Inner	17	9	254
Launceston (C) - Pt B	2 780	2 071	22 846
Meander Valley (M) - Pt A	417	256	3 578
Northern Midlands (M) - Pt A	343	310	2 910
West Tamar (M) - Pt A	728	522	7 299
<i>Total Greater Launceston (SSD) 2001</i>	<i>4 451</i>	<i>3 517</i>	<i>38 656</i>
<i>Total Greater Launceston (SSD) 1996</i>	<i>3 837</i>	<i>3 416</i>	<i>38 240</i>
Central North (SSD)			
George Town (M) - Pt B	17	60	364
Launceston (C) - Pt C	83	142	1 151
Meander Valley (M) - Pt B	288	399	3 781
Northern Midlands (M) - Pt B	122	274	1 718
West Tamar (M) - Pt B	56	73	757
<i>Total Central North (SSD) 2001</i>	<i>566</i>	<i>948</i>	<i>7 771</i>
<i>Total Central North (SSD) 1996</i>	<i>510</i>	<i>899</i>	<i>7 690</i>
North Eastern (SSD)			
Break O'Day (M)	146	211	1 699
Dorset (M)	190	540	2 870
Flinders (M)	18	67	433
<i>Total North Eastern (SSD) 2001</i>	<i>354</i>	<i>818</i>	<i>5 002</i>
<i>Total North Eastern (SSD) 1996</i>	<i>274</i>	<i>690</i>	<i>4 880</i>
TOTAL NORTHERN (SD) 2001	5 371	5 283	51 429
TOTAL NORTHERN (SD) 1996	4 621	5 005	50 810

(a) Applicable to employed persons only.

(b) Includes 'Inadequately described' and 'Not stated'.

OCCUPATION, by Statistical Local Area(a) *continued*

Geographic area	Managers and Administrators	Professionals	Associate Professionals	Tradespersons and Related Workers	Advanced Clerical and Service Workers	Intermediate Clerical, Sales and Service Workers	Intermediate Production and Transport Workers
MERSEY-LYELL (SD)							
Burnie-Devonport (SSD)							
Burnie (C) - Pt A	303	842	684	796	162	1 020	629
Central Coast (M) - Pt A	432	913	687	846	167	939	675
Devonport (C)	524	1 156	961	1 185	253	1 389	1 001
Latrobe (M) - Pt A	275	356	287	431	96	384	336
Waratah/Wynyard (M) - Pt A	250	501	414	543	85	572	425
Total Burnie-Devonport (SSD) 2001	1 784	3 768	3 033	3 801	763	4 304	3 066
Total Burnie-Devonport (SSD) 1996	2 076	3 830	2 764	4 269	951	4 184	3 310
North Western Rural (SSD)							
Burnie (C) - Pt B	120	83	82	128	31	119	131
Central Coast (M) - Pt B	333	162	98	171	31	148	124
Circular Head (M)	670	291	279	345	77	337	486
Kentish (M)	277	185	190	263	53	241	220
King Island (M)	226	78	79	104	19	75	84
Latrobe (M) - Pt B	102	24	29	38	9	24	27
Waratah/Wynyard (M) - Pt B	195	134	104	143	24	119	140
Total North Western Rural (SSD) 2001	1 923	957	861	1 192	244	1 063	1 212
Total North Western Rural (SSD) 1996	2 069	997	731	1 231	264	1 018	1 280
Lyell (SSD)							
West Coast (M)	131	241	301	374	36	243	415
Total Lyell (SSD) 2001	131	241	301	374	36	243	415
Total Lyell (SSD) 1996	139	342	267	498	47	317	472
TOTAL MERSEY-LYELL (SD) 2001	3 838	4 966	4 195	5 367	1 043	5 610	4 693
TOTAL MERSEY-LYELL (SD) 1996	4 284	5 169	3 762	5 998	1 262	5 519	5 062
OFF-SHORE AREAS & MIGRATORY (SD)							
Off-Shore Areas & Migratory (SSD)							
Off-Shore Areas & Migratory	53	75	68	63	39	45	43
Total Off-Shore Areas & Migratory (SSD) 2001	53	75	68	63	39	45	43
Total Off-Shore Areas & Migratory (SSD) 1996	21	81	53	62	35	23	53
TOTAL OFF-SHORE AREAS & MIGRATORY (SD) 2001	53	75	68	63	39	45	43
TOTAL OFF-SHORE AREAS & MIGRATORY (SD) 1996	21	81	53	62	35	23	53
TOTAL TASMANIA 2001	15 833	30 778	21 164	22 695	5 220	30 489	16 433
TOTAL TASMANIA 1996	16 937	29 970	18 790	24 698	5 904	29 570	17 407

(a) Applicable to employed persons only.

<i>Geographic area</i>	<i>Elementary Clerical, Sales and Service Workers</i>	<i>Labourers and Related Workers</i>	<i>Total(b)</i>
MERSEY-LYELL (SD)			
Burnie-Devonport (SSD)			
Burnie (C) - Pt A	679	584	5 824
Central Coast (M) - Pt A	605	629	6 015
Devonport (C)	927	940	8 522
Latrobe (M) - Pt A	258	328	2 814
Waratah/Wynyard (M) - Pt A	389	387	3 661
<i>Total Burnie-Devonport (SSD) 2001</i>	<i>2 858</i>	<i>2 868</i>	<i>26 836</i>
<i>Total Burnie-Devonport (SSD) 1996</i>	<i>2 683</i>	<i>2 780</i>	<i>27 730</i>
North Western Rural (SSD)			
Burnie (C) - Pt B	59	65	835
Central Coast (M) - Pt B	68	117	1 285
Circular Head (M)	217	654	3 403
Kentish (M)	167	220	1 864
King Island (M)	39	192	912
Latrobe (M) - Pt B	21	42	321
Waratah/Wynyard (M) - Pt B	55	122	1 053
<i>Total North Western Rural (SSD) 2001</i>	<i>626</i>	<i>1 412</i>	<i>9 673</i>
<i>Total North Western Rural (SSD) 1996</i>	<i>559</i>	<i>1 308</i>	<i>9 804</i>
Lyell (SSD)			
West Coast (M)	161	321	2 277
<i>Total Lyell (SSD) 2001</i>	<i>161</i>	<i>321</i>	<i>2 277</i>
<i>Total Lyell (SSD) 1996</i>	<i>164</i>	<i>309</i>	<i>2 648</i>
TOTAL MERSEY-LYELL (SD) 2001	3 645	4 601	38 786
TOTAL MERSEY-LYELL (SD) 1996	3 406	4 397	40 182
OFF-SHORE AREAS & MIGRATORY (SD)			
Off-Shore Areas & Migratory (SSD)			
Off-Shore Areas & Migratory	20	24	442
<i>Total Off-Shore Areas & Migratory (SSD) 2001</i>	<i>20</i>	<i>24</i>	<i>442</i>
<i>Total Off-Shore Areas & Migratory (SSD) 1996</i>	<i>8</i>	<i>7</i>	<i>351</i>
TOTAL OFF-SHORE AREAS & MIGRATORY (SD) 2001	20	24	442
TOTAL OFF-SHORE AREAS & MIGRATORY (SD) 1996	8	7	351
TOTAL TASMANIA 2001	18 290	17 882	182 522
TOTAL TASMANIA 1996	16 103	17 313	182 213

(a) Applicable to employed persons only.

(b) Includes 'Inadequately described' and 'Not stated'.

INDUSTRY OF EMPLOYMENT, by Statistical Local Area(a)

<i>Geographic area</i>	<i>Agriculture, Forestry and Fishing</i>	<i>Mining</i>	<i>Manufacturing</i>	<i>Electricity, Gas and Water Supply</i>	<i>Construction</i>	<i>Wholesale Trade</i>
GREATER HOBART (SD)						
Greater Hobart (SSD)						
Brighton (M)	115	6	687	34	313	214
Clarence (C)	412	41	1 622	264	1 160	835
Derwent Valley (M) - Pt A	96	—	416	45	108	70
Glenorchy (C)	166	15	2 241	230	916	795
Hobart (C) - Inner	4	—	22	6	11	17
Hobart (C) - Remainder	301	24	1 214	297	635	574
Kingborough (M) - Pt A	340	18	922	156	641	413
Sorell (M) - Pt A	196	19	425	50	258	191
<i>Total Greater Hobart (SSD) 2001</i>	<i>1 630</i>	<i>123</i>	<i>7 549</i>	<i>1 082</i>	<i>4 042</i>	<i>3 109</i>
<i>Total Greater Hobart (SSD) 1996</i>	<i>1 441</i>	<i>163</i>	<i>7 789</i>	<i>351</i>	<i>4 801</i>	<i>3 265</i>
<i>TOTAL GREATER HOBART (SD) 2001</i>	<i>1 630</i>	<i>123</i>	<i>7 549</i>	<i>1 082</i>	<i>4 042</i>	<i>3 109</i>
<i>TOTAL GREATER HOBART (SD) 1996</i>	<i>1 441</i>	<i>163</i>	<i>7 789</i>	<i>351</i>	<i>4 801</i>	<i>3 265</i>
SOUTHERN (SD)						
Southern (SSD)						
Central Highlands (M)	374	—	56	39	45	16
Derwent Valley (M) - Pt B	154	—	143	21	50	34
Glamorgan/Spring Bay (M)	321	4	150	3	71	69
Huon Valley (M)	964	8	613	24	254	233
Kingborough (M) - Pt B	113	—	95	8	63	40
Sorell (M) - Pt B	81	3	43	3	25	21
Southern Midlands (M)	496	7	239	17	112	83
Tasman (M)	168	—	33	4	31	16
<i>Total Southern (SSD) 2001</i>	<i>2 671</i>	<i>21</i>	<i>1 372</i>	<i>118</i>	<i>651</i>	<i>512</i>
<i>Total Southern (SSD) 1996</i>	<i>2 807</i>	<i>42</i>	<i>1 281</i>	<i>86</i>	<i>713</i>	<i>376</i>
<i>TOTAL SOUTHERN (SD) 2001</i>	<i>2 671</i>	<i>21</i>	<i>1 372</i>	<i>118</i>	<i>651</i>	<i>512</i>
<i>TOTAL SOUTHERN (SD) 1996</i>	<i>2 807</i>	<i>42</i>	<i>1 281</i>	<i>86</i>	<i>713</i>	<i>376</i>
NORTHERN (SD)						
Greater Launceston (SSD)						
George Town (M) - Pt A	56	6	548	19	92	74
Launceston (C) - Inner	7	3	26	4	7	29
Launceston (C) - Pt B	471	54	2 770	128	1 016	1 286
Meander Valley (M) - Pt A	72	10	431	22	198	271
Northern Midlands (M) - Pt A	194	6	340	31	154	220
West Tamar (M) - Pt A	218	84	877	57	411	327
<i>Total Greater Launceston (SSD) 2001</i>	<i>1 018</i>	<i>161</i>	<i>4 992</i>	<i>261</i>	<i>1 878</i>	<i>2 207</i>
<i>Total Greater Launceston (SSD) 1996</i>	<i>836</i>	<i>142</i>	<i>5 556</i>	<i>112</i>	<i>2 127</i>	<i>2 343</i>
Central North (SSD)						
George Town (M) - Pt B	67	—	103	3	23	15
Launceston (C) - Pt C	159	—	183	7	68	57
Meander Valley (M) - Pt B	837	16	415	19	176	213
Northern Midlands (M) - Pt B	609	—	143	23	74	74
West Tamar (M) - Pt B	80	24	102	6	50	38
<i>Total Central North (SSD) 2001</i>	<i>1 752</i>	<i>44</i>	<i>946</i>	<i>58</i>	<i>391</i>	<i>397</i>
<i>Total Central North (SSD) 1996</i>	<i>1 789</i>	<i>53</i>	<i>926</i>	<i>25</i>	<i>424</i>	<i>348</i>
North Eastern (SSD)						
Break O'Day (M)	340	74	79	15	73	58
Dorset (M)	811	6	533	14	109	121
Flinders (M)	152	—	12	5	28	14
<i>Total North Eastern (SSD) 2001</i>	<i>1 303</i>	<i>80</i>	<i>624</i>	<i>34</i>	<i>210</i>	<i>193</i>
<i>Total North Eastern (SSD) 1996</i>	<i>1 252</i>	<i>93</i>	<i>681</i>	<i>13</i>	<i>265</i>	<i>143</i>
<i>TOTAL NORTHERN (SD) 2001</i>	<i>4 073</i>	<i>285</i>	<i>6 562</i>	<i>353</i>	<i>2 479</i>	<i>2 797</i>
<i>TOTAL NORTHERN (SD) 1996</i>	<i>3 877</i>	<i>288</i>	<i>7 163</i>	<i>150</i>	<i>2 816</i>	<i>2 834</i>

— nil or rounded to zero (including null cells)

(a) Applicable to employed persons only.

Geographic area	Retail Trade	Accommodation, Cafes and Restaurants	Transport and Storage	Communication Services	Finance and Insurance	Property and Business Services
GREATER HOBART (SD)						
Greater Hobart (SSD)						
Brighton (M)	728	174	208	79	68	289
Clarence (C)	3 071	931	655	386	751	1 814
Derwent Valley (M) - Pt A	300	92	87	24	31	103
Glenorchy (C)	2 944	785	734	337	431	1 170
Hobart (C) - Inner	45	35	7	3	13	33
Hobart (C) - Remainder	2 722	1 619	556	351	708	2 694
Kingborough (M) - Pt A	1 624	469	334	279	348	1 128
Sorell (M) - Pt A	632	169	196	97	72	263
Total Greater Hobart (SSD) 2001	12 066	4 274	2 777	1 556	2 422	7 494
Total Greater Hobart (SSD) 1996	10 736	3 579	2 434	1 470	2 928	6 332
TOTAL GREATER HOBART (SD) 2001	12 066	4 274	2 777	1 556	2 422	7 494
TOTAL GREATER HOBART (SD) 1996	10 736	3 579	2 434	1 470	2 928	6 332
SOUTHERN (SD)						
Southern (SSD)						
Central Highlands (M)	48	61	35	6	3	24
Derwent Valley (M) - Pt B	101	44	36	12	14	44
Glamorgan/Spring Bay (M)	153	231	66	10	11	54
Huon Valley (M)	584	172	166	65	64	290
Kingborough (M) - Pt B	82	49	36	20	12	57
Sorell (M) - Pt B	40	12	18	3	3	14
Southern Midlands (M)	237	73	102	22	29	100
Tasman (M)	59	126	45	4	—	18
Total Southern (SSD) 2001	1 304	768	504	142	134	601
Total Southern (SSD) 1996	1 153	744	474	165	179	481
TOTAL SOUTHERN (SD) 2001	1 304	768	504	142	134	601
TOTAL SOUTHERN (SD) 1996	1 153	744	474	165	179	481
NORTHERN (SD)						
Greater Launceston (SSD)						
George Town (M) - Pt A	224	77	92	19	20	125
Launceston (C) - Inner	29	31	9	—	11	24
Launceston (C) - Pt B	3 952	1 258	1 189	315	741	1 810
Meander Valley (M) - Pt A	693	179	210	57	160	225
Northern Midlands (M) - Pt A	473	126	174	48	71	206
West Tamar (M) - Pt A	1 221	320	324	110	201	576
Total Greater Launceston (SSD) 2001	6 592	1 991	1 998	549	1 204	2 966
Total Greater Launceston (SSD) 1996	5 951	1 760	1 670	488	1 127	2 597
Central North (SSD)						
George Town (M) - Pt B	22	10	21	3	3	18
Launceston (C) - Pt C	130	33	54	11	15	68
Meander Valley (M) - Pt B	473	165	175	35	41	182
Northern Midlands (M) - Pt B	181	82	62	13	10	56
West Tamar (M) - Pt B	105	22	38	8	9	51
Total Central North (SSD) 2001	911	312	350	68	78	375
Total Central North (SSD) 1996	901	260	260	67	115	291
North Eastern (SSD)						
Break O'Day (M)	224	145	49	28	12	73
Dorset (M)	312	102	131	26	21	96
Flinders (M)	35	20	18	4	—	21
Total North Eastern (SSD) 2001	571	267	198	58	34	190
Total North Eastern (SSD) 1996	468	270	154	66	70	149
TOTAL NORTHERN (SD) 2001	8 074	2 570	2 546	675	1 316	3 531
TOTAL NORTHERN (SD) 1996	7 320	2 290	2 084	621	1 312	3 037

— nil or rounded to zero (including null cells)

(a) Applicable to employed persons only.

<i>Geographic area</i>	<i>Government Administration and Defence</i>	<i>Education</i>	<i>Health and Community Services</i>	<i>Other(b)</i>	<i>Total</i>
GREATER HOBART (SD)					
Greater Hobart (SSD)					
Brighton (M)	197	206	417	247	4 108
Clarence (C)	1 541	1 760	2 438	1 615	19 822
Derwent Valley (M) - Pt A	101	100	391	117	2 137
Glenorchy (C)	1 068	852	1 906	1 066	16 131
Hobart (C) - Inner	44	24	32	28	335
Hobart (C) - Remainder	2 006	2 732	3 069	1 774	21 717
Kingborough (M) - Pt A	905	1 230	1 533	848	11 430
Sorell (M) - Pt A	226	220	453	278	3 819
<i>Total Greater Hobart (SSD) 2001</i>	<i>6 088</i>	<i>7 124</i>	<i>10 239</i>	<i>5 973</i>	<i>79 499</i>
<i>Total Greater Hobart (SSD) 1996</i>	<i>8 087</i>	<i>6 920</i>	<i>9 271</i>	<i>5 949</i>	<i>78 515</i>
<i>TOTAL GREATER HOBART (SD) 2001</i>	<i>6 088</i>	<i>7 124</i>	<i>10 239</i>	<i>5 973</i>	<i>79 499</i>
<i>TOTAL GREATER HOBART (SD) 1996</i>	<i>8 087</i>	<i>6 920</i>	<i>9 271</i>	<i>5 949</i>	<i>78 515</i>
SOUTHERN (SD)					
Southern (SSD)					
Central Highlands (M)	45	30	47	28	894
Derwent Valley (M) - Pt B	56	73	172	54	1 039
Glamorgan/Spring Bay (M)	60	81	92	69	1 492
Huon Valley (M)	243	312	415	204	4 770
Kingborough (M) - Pt B	63	94	109	64	938
Sorell (M) - Pt B	15	16	25	26	353
Southern Midlands (M)	113	103	185	97	2 097
Tasman (M)	33	59	62	108	786
<i>Total Southern (SSD) 2001</i>	<i>628</i>	<i>768</i>	<i>1 107</i>	<i>650</i>	<i>12 366</i>
<i>Total Southern (SSD) 1996</i>	<i>725</i>	<i>772</i>	<i>1 025</i>	<i>682</i>	<i>12 355</i>
<i>TOTAL SOUTHERN (SD) 2001</i>	<i>628</i>	<i>768</i>	<i>1 107</i>	<i>650</i>	<i>12 366</i>
<i>TOTAL SOUTHERN (SD) 1996</i>	<i>725</i>	<i>772</i>	<i>1 025</i>	<i>682</i>	<i>12 355</i>
NORTHERN (SD)					
Greater Launceston (SSD)					
George Town (M) - Pt A	37	94	157	68	1 769
Launceston (C) - Inner	9	18	22	20	254
Launceston (C) - Pt B	726	2 145	2 976	1 409	22 846
Meander Valley (M) - Pt A	110	241	430	202	3 578
Northern Midlands (M) - Pt A	94	191	330	166	2 910
West Tamar (M) - Pt A	250	796	912	438	7 299
<i>Total Greater Launceston (SSD) 2001</i>	<i>1 226</i>	<i>3 485</i>	<i>4 827</i>	<i>2 303</i>	<i>38 656</i>
<i>Total Greater Launceston (SSD) 1996</i>	<i>1 342</i>	<i>3 011</i>	<i>4 720</i>	<i>2 848</i>	<i>38 240</i>
Central North (SSD)					
George Town (M) - Pt B	4	26	25	10	365
Launceston (C) - Pt C	40	83	157	55	1 150
Meander Valley (M) - Pt B	103	226	409	171	3 781
Northern Midlands (M) - Pt B	41	98	130	55	1 716
West Tamar (M) - Pt B	36	53	79	31	757
<i>Total Central North (SSD) 2001</i>	<i>224</i>	<i>486</i>	<i>800</i>	<i>322</i>	<i>7 771</i>
<i>Total Central North (SSD) 1996</i>	<i>246</i>	<i>472</i>	<i>684</i>	<i>376</i>	<i>7 690</i>
North Eastern (SSD)					
Break O'Day (M)	69	135	161	89	1 699
Dorset (M)	81	163	170	85	2 870
Flinders (M)	28	25	43	20	432
<i>Total North Eastern (SSD) 2001</i>	<i>178</i>	<i>323</i>	<i>374</i>	<i>194</i>	<i>5 002</i>
<i>Total North Eastern (SSD) 1996</i>	<i>155</i>	<i>323</i>	<i>336</i>	<i>178</i>	<i>4 880</i>
<i>TOTAL NORTHERN (SD) 2001</i>	<i>1 628</i>	<i>4 294</i>	<i>6 001</i>	<i>2 819</i>	<i>51 429</i>
<i>TOTAL NORTHERN (SD) 1996</i>	<i>1 743</i>	<i>3 806</i>	<i>5 740</i>	<i>3 402</i>	<i>50 810</i>

(a) Applicable to employed persons only.

(b) Includes 'Cultural and Recreational Services', 'Personal and Other Services', 'Non-Classifiable Economic Units' and 'Not stated'.

Geographic area	Agriculture, Forestry and Fishing	Mining	Manufacturing	Electricity, Gas and Water Supply	Construction	Wholesale Trade
MERSEY-LYELL (SD)						
Burnie-Devonport (SSD)						
Burnie (C) - Pt A	161	83	823	23	266	289
Central Coast (M) - Pt A	356	69	833	36	383	295
Devonport (C)	355	30	1 344	63	479	498
Latrobe (M) - Pt A	299	16	417	13	190	145
Waratah/Wynyard (M) - Pt A	248	61	491	14	195	209
Total Burnie-Devonport (SSD) 2001	1 419	259	3 908	149	1 513	1 436
Total Burnie-Devonport (SSD) 1996	1 314	267	4 318	178	1 732	1 469
North Western Rural (SSD)						
Burnie (C) - Pt B	138	17	118	5	52	44
Central Coast (M) - Pt B	378	8	164	7	71	48
Circular Head (M)	901	38	718	13	129	213
Kentish (M)	326	13	285	17	108	90
King Island (M)	267	—	168	11	49	38
Latrobe (M) - Pt B	123	—	38	3	15	13
Waratah/Wynyard (M) - Pt B	212	107	109	—	56	54
Total North Western Rural (SSD) 2001	2 345	183	1 600	56	480	500
Total North Western Rural (SSD) 1996	2 457	173	1 597	54	458	410
Lyell (SSD)						
West Coast (M)	86	677	105	28	144	37
Total Lyell (SSD) 2001	86	677	105	28	144	37
Total Lyell (SSD) 1996	72	874	82	34	170	75
TOTAL MERSEY-LYELL (SD) 2001	3 850	1 119	5 613	233	2 137	1 973
TOTAL MERSEY-LYELL (SD) 1996	3 843	1 314	5 997	266	2 360	1 954
OFF-SHORE AREAS & MIGRATORY (SD)						
Off-Shore Areas & Migratory (SSD)						
Off-Shore Areas & Migratory	37	3	29	3	17	11
Total Off-Shore Areas & Migratory (SSD) 2001	37	3	29	3	17	11
Total Off-Shore Areas & Migratory (SSD) 1996	9	3	9	—	6	10
TOTAL OFF-SHORE AREAS & MIGRATORY (SD) 2001	37	3	29	3	17	11
TOTAL OFF-SHORE AREAS & MIGRATORY (SD) 1996	9	3	9	—	6	10
TOTAL TASMANIA 2001	12 261	1 550	21 125	1 787	9 326	8 402
TOTAL TASMANIA 1996	11 977	1 810	22 239	853	10 696	8 439

— nil or rounded to zero (including null cells)

(a) Applicable to employed persons only.

Geographic area	Retail Trade	Accommodation, Cafes and Restaurants	Transport and Storage	Communication Services	Finance and Insurance	Property and Business Services
MERSEY-LYELL (SD)						
Burnie-Devonport (SSD)						
Burnie (C) - Pt A	1 103	236	308	71	117	465
Central Coast (M) - Pt A	1 013	235	281	70	112	402
Devonport (C)	1 508	370	522	90	142	661
Latrobe (M) - Pt A	413	132	170	25	50	171
Waratah/Wynyard (M) - Pt A	556	144	199	46	47	250
Total Burnie-Devonport (SSD) 2001	4 593	1 117	1 480	302	468	1 949
Total Burnie-Devonport (SSD) 1996	4 448	1 092	1 455	292	644	1 686
North Western Rural (SSD)						
Burnie (C) - Pt B	116	24	54	6	14	36
Central Coast (M) - Pt B	114	23	68	12	10	60
Circular Head (M)	384	153	105	26	27	119
Kentish (M)	228	152	78	22	20	81
King Island (M)	82	46	32	6	5	24
Latrobe (M) - Pt B	32	4	10	3	3	14
Waratah/Wynyard (M) - Pt B	94	34	45	11	11	52
Total North Western Rural (SSD) 2001	1 050	436	392	85	89	386
Total North Western Rural (SSD) 1996	1 043	406	379	80	117	406
Lyell (SSD)						
West Coast (M)	238	270	91	17	10	105
Total Lyell (SSD) 2001	238	270	91	17	10	105
Total Lyell (SSD) 1996	231	241	88	19	34	79
TOTAL MERSEY-LYELL (SD) 2001	5 881	1 823	1 963	404	567	2 440
TOTAL MERSEY-LYELL (SD) 1996	5 722	1 739	1 922	391	795	2 171
OFF-SHORE AREAS & MIGRATORY (SD)						
Off-Shore Areas & Migratory (SSD)						
Off-Shore Areas & Migratory	29	23	109	4	4	47
Total Off-Shore Areas & Migratory (SSD) 2001	29	23	109	4	4	47
Total Off-Shore Areas & Migratory (SSD) 1996	13	4	157	10	3	75
TOTAL OFF-SHORE AREAS & MIGRATORY (SD) 2001	29	23	109	4	4	47
TOTAL OFF-SHORE AREAS & MIGRATORY (SD) 1996	13	4	157	10	3	75
TOTAL TASMANIA 2001	27 354	9 458	7 899	2 781	4 443	14 113
TOTAL TASMANIA 1996	24 944	8 356	7 071	2 657	5 217	12 096

(a) Applicable to employed persons only.

INDUSTRY OF EMPLOYMENT, by Statistical Local Area(a) *continued*

<i>Geographic area</i>	<i>Government Administration and Defence</i>	<i>Education</i>	<i>Health and Community Services</i>	<i>Other(b)</i>	<i>Total</i>
MERSEY-LYELL (SD)					
Burnie-Devonport (SSD)					
Burnie (C) - Pt A	220	427	771	287	5 824
Central Coast (M) - Pt A	230	583	687	275	6 015
Devonport (C)	300	653	844	432	8 522
Latrobe (M) - Pt A	91	170	301	145	2 814
Waratah/Wynyard (M) - Pt A	143	308	473	174	3 661
<i>Total Burnie-Devonport (SSD) 2001</i>	<i>984</i>	<i>2 141</i>	<i>3 076</i>	<i>1 313</i>	<i>26 836</i>
<i>Total Burnie-Devonport (SSD) 1996</i>	<i>991</i>	<i>2 159</i>	<i>3 076</i>	<i>1 279</i>	<i>27 730</i>
North Western Rural (SSD)					
Burnie (C) - Pt B	27	43	76	36	835
Central Coast (M) - Pt B	29	90	103	51	1 285
Circular Head (M)	63	194	173	83	3 403
Kentish (M)	45	97	159	87	1 864
King Island (M)	31	51	54	25	912
Latrobe (M) - Pt B	7	14	28	10	323
Waratah/Wynyard (M) - Pt B	35	79	101	26	1 052
<i>Total North Western Rural (SSD) 2001</i>	<i>237</i>	<i>568</i>	<i>694</i>	<i>318</i>	<i>9 673</i>
<i>Total North Western Rural (SSD) 1996</i>	<i>274</i>	<i>555</i>	<i>640</i>	<i>265</i>	<i>9 804</i>
Lyell (SSD)					
West Coast (M)	69	135	118	102	2 277
<i>Total Lyell (SSD) 2001</i>	<i>69</i>	<i>135</i>	<i>118</i>	<i>102</i>	<i>2 277</i>
<i>Total Lyell (SSD) 1996</i>	<i>117</i>	<i>170</i>	<i>153</i>	<i>89</i>	<i>2 648</i>
TOTAL MERSEY-LYELL (SD) 2001	1 290	2 844	3 888	1 733	38 786
TOTAL MERSEY-LYELL (SD) 1996	1 382	2 884	3 869	1 633	40 182
OFF-SHORE AREAS & MIGRATORY (SD)					
Off-Shore Areas & Migratory (SSD)					
Off-Shore Areas & Migratory	58	10	26	23	447
<i>Total Off-Shore Areas & Migratory (SSD) 2001</i>	<i>58</i>	<i>10</i>	<i>26</i>	<i>23</i>	<i>447</i>
<i>Total Off-Shore Areas & Migratory (SSD) 1996</i>	<i>8</i>	<i>8</i>	<i>13</i>	<i>15</i>	<i>351</i>
TOTAL OFF-SHORE AREAS & MIGRATORY (SD) 2001	58	10	26	23	447
TOTAL OFF-SHORE AREAS & MIGRATORY (SD) 1996	8	8	13	15	351
TOTAL TASMANIA 2001	9 692	15 040	21 261	11 198	182 522
TOTAL TASMANIA 1996	11 945	14 390	19 918	11 681	182 213

(a) Applicable to employed persons only.

(b) Includes 'Cultural and Recreational Services', 'Personal and Other Services', 'Non-Classifiable Economic Units' and 'Not stated'.

NON-SCHOOL QUALIFICATION: LEVEL OF EDUCATION, by Statistical Local Area(a)

<i>Geographic area</i>	<i>Postgraduate Degree</i>	<i>Graduate Diploma/ Graduate Certificate</i>	<i>Bachelor Degree</i>	<i>Advanced Diploma and Diploma</i>	<i>Certificate</i>	<i>Total persons 15 years and over(b)</i>	<i>15 years and over with qualification</i>
	no.	no.	no.	no.	no.	no.	%
GREATER HOBART (SD)							
Greater Hobart (SSD)							
Brighton (M)	17	25	202	208	1 310	8 881	19.8
Clarence (C)	418	469	3 060	2 210	5 885	37 424	32.2
Derwent Valley (M) - Pt A	14	17	124	135	665	4 760	20.1
Glenorchy (C)	150	150	1 233	1 256	5 288	33 783	23.9
Hobart (C) - Inner	18	18	84	48	102	892	30.3
Hobart (C) - Remainder	1 603	1 013	7 420	2 903	4 398	38 402	45.1
Kingborough (M) - Pt A	528	403	2 399	1 466	3 082	19 533	40.3
Sorell (M) - Pt A	28	61	289	302	1 295	7 304	27.0
<i>Total Greater Hobart (SSD) 2001</i>	<i>2 776</i>	<i>2 156</i>	<i>14 811</i>	<i>8 528</i>	<i>22 025</i>	<i>150 979</i>	<i>33.3</i>
<i>Total Greater Hobart (SSD) 1996</i>	<i>2 191</i>	<i>2 043</i>	<i>11 532</i>	<i>8 562</i>	<i>17 900</i>	<i>147 590</i>	<i>28.6</i>
TOTAL GREATER HOBART (SD) 2001	2 776	2 156	14 811	8 528	22 025	150 979	33.3
TOTAL GREATER HOBART (SD) 1996	2 191	2 043	11 532	8 562	17 900	147 590	28.6
SOUTHERN (SD)							
Southern (SSD)							
Central Highlands (M)	8	13	88	67	198	1 839	20.3
Derwent Valley (M) - Pt B	8	8	101	63	329	2 132	23.9
Glamorgan/Spring Bay (M)	20	25	174	135	456	3 289	24.6
Huon Valley (M)	96	91	517	428	1 436	9 857	26.1
Kingborough (M) - Pt B	62	37	202	147	328	1 925	40.3
Sorell (M) - Pt B	3	6	34	36	134	694	30.7
Southern Midlands (M)	14	17	147	129	540	4 128	20.5
Tasman (M)	29	21	97	80	269	1 766	28.1
<i>Total Southern (SSD) 2001</i>	<i>240</i>	<i>218</i>	<i>1 360</i>	<i>1 085</i>	<i>3 690</i>	<i>25 630</i>	<i>25.7</i>
<i>Total Southern (SSD) 1996</i>	<i>143</i>	<i>198</i>	<i>965</i>	<i>1 107</i>	<i>2 911</i>	<i>24 989</i>	<i>21.3</i>
TOTAL SOUTHERN (SD) 2001	240	218	1 360	1 085	3 690	25 630	25.7
TOTAL SOUTHERN (SD) 1996	143	198	965	1 107	2 911	24 989	21.3
NORTHERN (SD)							
Greater Launceston (SSD)							
George Town (M) - Pt A	14	12	131	124	620	4 021	22.4
Launceston (C) - Inner	11	8	65	29	57	370	45.9
Launceston (C) - Pt B	517	423	3 655	2 183	6 784	45 891	29.6
Meander Valley (M) - Pt A	39	44	373	273	1 045	5 747	30.9
Northern Midlands (M) - Pt A	33	37	311	230	867	5 358	27.6
West Tamar (M) - Pt A	193	152	1 193	854	2 428	13 627	35.4
<i>Total Greater Launceston (SSD) 2001</i>	<i>807</i>	<i>676</i>	<i>5 728</i>	<i>3 693</i>	<i>11 801</i>	<i>75 014</i>	<i>30.3</i>
<i>Total Greater Launceston (SSD) 1996</i>	<i>722</i>	<i>637</i>	<i>4 544</i>	<i>4 061</i>	<i>9 697</i>	<i>74 860</i>	<i>26.3</i>
Central North (SSD)							
George Town (M) - Pt B	—	7	24	42	110	753	24.3
Launceston (C) - Pt C	12	21	129	96	355	2 068	29.6
Meander Valley (M) - Pt B	43	53	396	342	1 009	7 609	24.2
Northern Midlands (M) - Pt B	22	13	161	187	460	3 418	24.7
West Tamar (M) - Pt B	5	15	91	68	257	1 311	33.3
<i>Total Central North (SSD) 2001</i>	<i>83</i>	<i>109</i>	<i>801</i>	<i>735</i>	<i>2 191</i>	<i>15 160</i>	<i>25.9</i>
<i>Total Central North (SSD) 1996</i>	<i>91</i>	<i>120</i>	<i>566</i>	<i>719</i>	<i>1 766</i>	<i>15 209</i>	<i>21.4</i>

— nil or rounded to zero (including null cells)

(a) Applicable to persons aged 15 years and over.

(b) Includes 'Level of education inadequately described', 'Level of education not stated' and persons who have a qualification that is out of the scope of the

Australian Standard Classification of Education and persons with no qualifications.

Geographic area	Postgraduate Degree	Graduate Diploma/ Graduate Certificate	Bachelor Degree	Advanced Diploma and Diploma	Certificate	Total persons 15 years and over(b)	15 years and over with qualification
	no.	no.	no.	no.	no.	no.	%
NORTHERN (SD) <i>cont.</i>							
North Eastern (SSD)							
Break O'Day (M)	21	31	216	158	641	4 434	24.1
Dorset (M)	23	22	261	162	733	5 377	22.3
Flinders (M)	6	12	46	37	97	688	28.8
Total North Eastern (SSD) 2001	50	65	523	357	1 471	10 499	23.5
Total North Eastern (SSD) 1996	31	66	374	389	1 211	10 381	19.9
TOTAL NORTHERN (SD) 2001	940	850	7 052	4 785	15 463	100 673	28.9
TOTAL NORTHERN (SD) 1996	844	823	5 484	5 169	12 674	100 450	24.9
MERSEY-LYELL (SD)							
Burnie-Devonport (SSD)							
Burnie (C) - Pt A	65	68	646	549	1 962	12 572	26.2
Central Coast (M) - Pt A	68	101	669	613	2 153	13 250	27.2
Devonport (C)	103	105	886	879	2 946	18 102	27.2
Latrobe (M) - Pt A	27	33	285	255	964	5 650	27.7
Waratah/Wynyard (M) - Pt A	36	64	384	348	1 262	8 015	26.1
Total Burnie-Devonport (SSD) 2001	299	371	2 870	2 644	9 287	57 589	26.9
Total Burnie-Devonport (SSD) 1996	262	392	2 205	2 720	8 006	58 339	23.3
North Western Rural (SSD)							
Burnie (C) - Pt B	8	14	55	52	280	1 476	27.7
Central Coast (M) - Pt B	9	16	125	88	426	2 279	29.1
Circular Head (M)	6	34	200	174	797	5 818	20.8
Kentish (M)	22	31	179	167	658	4 057	26.1
King Island (M)	9	14	74	64	247	1 344	30.4
Latrobe (M) - Pt B	—	6	20	16	100	502	28.3
Waratah/Wynyard (M) - Pt B	9	19	105	97	352	1 946	29.9
Total North Western Rural (SSD) 2001	63	134	758	658	2 860	17 422	25.7
Total North Western Rural (SSD) 1996	51	109	608	795	2 343	17 581	22.2
Lyell (SSD)							
West Coast (M)	24	20	193	127	806	4 175	28.0
Total Lyell (SSD) 2001	24	20	193	127	806	4 175	28.0
Total Lyell (SSD) 1996	21	31	229	135	799	4 695	25.9
TOTAL MERSEY-LYELL (SD) 2001	386	525	3 821	3 429	12 953	79 186	26.7
TOTAL MERSEY-LYELL (SD) 1996	334	532	3 042	3 650	11 148	80 615	23.2
OFF-SHORE AREAS & MIGRATORY (SD)							
Off-Shore Areas & Migratory (SSD)							
Off-Shore Areas & Migratory	14	11	88	65	183	838	43.1
Total Off-Shore Areas & Migratory (SSD) 2001	14	11	88	65	183	838	43.1
Total Off-Shore Areas & Migratory (SSD) 1996	5	6	42	70	120	589	41.3
TOTAL OFF-SHORE AREAS & MIGRATORY (SD) 2001	14	11	88	65	183	838	43.1
TOTAL OFF-SHORE AREAS & MIGRATORY (SD) 1996	5	6	42	70	120	589	41.3
TOTAL TASMANIA 2001	4 356	3 760	27 132	17 892	54 314	357 306	30.1
TOTAL TASMANIA 1996	3 517	3 602	21 065	18 558	44 753	354 233	25.8

— nil or rounded to zero (including null cells)

(a) Applicable to persons aged 15 years and over.

(b) Includes 'Level of education inadequately described', 'Level of education not stated' and persons who have a qualification that is out of the scope of the

Australian Standard Classification of Education and persons with no qualifications.

NON-SCHOOL QUALIFICATION: FIELD OF STUDY, by Statistical Local Area(a)(b)

<i>Geographic area</i>	<i>Natural and Physical Sciences</i>	<i>Information Technology</i>	<i>Engineering and Related Technologies</i>	<i>Architecture and Building</i>	<i>Agriculture, Environmental and Related Studies</i>	<i>Health</i>	<i>Education</i>
GREATER HOBART (SD)							
Greater Hobart (SSD)							
Brighton (M)	26	29	645	253	41	161	88
Clarence (C)	374	208	2 925	1 179	288	1 515	1 495
Derwent Valley (M) - Pt A	7	11	340	131	25	186	51
Glenorchy (C)	168	173	2 593	1 012	158	795	583
Hobart (C) - Inner	8	5	39	19	9	37	27
Hobart (C) - Remainder	1 329	426	2 468	837	507	2 619	2 163
Kingborough (M) - Pt A	495	139	1 625	652	257	1 127	973
Sorell (M) - Pt A	41	22	619	250	67	221	169
Total Greater Hobart (SSD) 2001	2 448	1 013	11 254	4 333	1 352	6 661	5 549
Total Greater Hobart (SSD) 1996	2 136	531	10 760	4 312	1 086	6 436	5 076
TOTAL GREATER HOBART (SD) 2001	2 448	1 013	11 254	4 333	1 352	6 661	5 549
TOTAL GREATER HOBART (SD) 1996	2 136	531	10 760	4 312	1 086	6 436	5 076
SOUTHERN (SD)							
Southern (SSD)							
Central Highlands (M)	10	—	87	34	64	43	28
Derwent Valley (M) - Pt B	14	4	163	56	36	84	32
Glamorgan/Spring Bay (M)	36	3	245	85	62	78	106
Huon Valley (M)	110	37	692	246	196	287	263
Kingborough (M) - Pt B	30	12	180	71	40	122	103
Sorell (M) - Pt B	9	3	62	29	17	21	23
Southern Midlands (M)	19	5	246	109	66	107	85
Tasman (M)	11	—	132	60	49	65	66
Total Southern (SSD) 2001	239	65	1 807	690	530	807	706
Total Southern (SSD) 1996	173	35	1 593	638	455	756	666
TOTAL SOUTHERN (SD) 2001	239	65	1 807	690	530	807	706
TOTAL SOUTHERN (SD) 1996	173	35	1 593	638	455	756	666
NORTHERN (SD)							
Greater Launceston (SSD)							
George Town (M) - Pt A	24	10	380	83	23	87	79
Launceston (C) - Inner	8	6	25	12	6	20	20
Launceston (C) - Pt B	380	273	3 343	1 226	448	1 839	1 623
Meander Valley (M) - Pt A	45	34	507	158	36	207	176
Northern Midlands (M) - Pt A	32	13	449	159	72	189	161
West Tamar (M) - Pt A	145	81	1 305	425	193	644	653
Total Greater Launceston (SSD) 2001	634	417	6 009	2 063	778	2 986	2 712
Total Greater Launceston (SSD) 1996	596	257	5 909	2 078	613	3 001	2 549
Central North (SSD)							
George Town (M) - Pt B	4	—	70	14	17	27	21
Launceston (C) - Pt C	20	4	197	63	46	72	66
Meander Valley (M) - Pt B	37	18	454	159	193	312	201
Northern Midlands (M) - Pt B	13	5	174	71	129	101	94
West Tamar (M) - Pt B	15	3	131	43	19	51	51
Total Central North (SSD) 2001	89	29	1 026	350	404	563	433
Total Central North (SSD) 1996	98	25	947	335	385	523	393

— nil or rounded to zero (including null cells)

(b) Excludes schooling up to year 12.

(a) Applicable to persons aged 15 years and over.

<i>Geographic area</i>	<i>Management and Commerce</i>	<i>Other(c)</i>	<i>Total persons 15 years and over with qualification(d)</i>
GREATER HOBART (SD)			
Greater Hobart (SSD)			
Brighton (M)	285	380	2 681
Clarence (C)	2 254	2 687	16 383
Derwent Valley (M) - Pt A	122	171	1 549
Glenorchy (C)	1 406	1 821	12 136
Hobart (C) - Inner	59	81	494
Hobart (C) - Remainder	2 774	5 191	21 295
Kingborough (M) - Pt A	1 292	1 858	9 693
Sorell (M) - Pt A	314	454	2 755
<i>Total Greater Hobart (SSD) 2001</i>	<i>8 506</i>	<i>12 643</i>	<i>66 986</i>
<i>Total Greater Hobart (SSD) 1996</i>	<i>6 527</i>	<i>10 050</i>	<i>59 559</i>
<i>TOTAL GREATER HOBART (SD) 2001</i>	<i>8 506</i>	<i>12 643</i>	<i>66 986</i>
<i>TOTAL GREATER HOBART (SD) 1996</i>	<i>6 527</i>	<i>10 050</i>	<i>59 559</i>
SOUTHERN (SD)			
Southern (SSD)			
Central Highlands (M)	58	78	593
Derwent Valley (M) - Pt B	61	104	767
Glamorgan/Spring Bay (M)	96	178	1 256
Huon Valley (M)	347	615	3 759
Kingborough (M) - Pt B	85	176	987
Sorell (M) - Pt B	19	45	270
Southern Midlands (M)	109	161	1 237
Tasman (M)	43	125	732
<i>Total Southern (SSD) 2001</i>	<i>818</i>	<i>1 482</i>	<i>9 602</i>
<i>Total Southern (SSD) 1996</i>	<i>591</i>	<i>1 094</i>	<i>8 257</i>
<i>TOTAL SOUTHERN (SD) 2001</i>	<i>818</i>	<i>1 482</i>	<i>9 602</i>
<i>TOTAL SOUTHERN (SD) 1996</i>	<i>591</i>	<i>1 094</i>	<i>8 257</i>
NORTHERN (SD)			
Greater Launceston (SSD)			
George Town (M) - Pt A	118	154	1 394
Launceston (C) - Inner	48	31	237
Launceston (C) - Pt B	2 135	3 210	18 817
Meander Valley (M) - Pt A	373	331	2 371
Northern Midlands (M) - Pt A	224	296	2 050
West Tamar (M) - Pt A	766	937	6 261
<i>Total Greater Launceston (SSD) 2001</i>	<i>3 664</i>	<i>4 959</i>	<i>31 130</i>
<i>Total Greater Launceston (SSD) 1996</i>	<i>2 955</i>	<i>3 876</i>	<i>28 153</i>
Central North (SSD)			
George Town (M) - Pt B	15	26	270
Launceston (C) - Pt C	68	119	847
Meander Valley (M) - Pt B	272	412	2 773
Northern Midlands (M) - Pt B	125	202	1 193
West Tamar (M) - Pt B	53	87	551
<i>Total Central North (SSD) 2001</i>	<i>533</i>	<i>846</i>	<i>5 633</i>
<i>Total Central North (SSD) 1996</i>	<i>374</i>	<i>613</i>	<i>4 899</i>

(a) Applicable to persons aged 15 years and over.

(b) Excludes schooling up to year 12.

(c) Includes 'Field of study inadequately described', 'Society and Culture', 'Creative Arts', 'Food, Hospitality and Personal Services', and 'Mixed Field Programmes'.

(d) Includes 'Field of study not stated'.

Geographic area	Natural and Physical Sciences	Information Technology	Engineering and Related Technologies	Architecture and Building	Agriculture, Environmental and Related Studies	Health	Education
NORTHERN (SD) <i>cont.</i>							
North Eastern (SSD)							
Break O'Day (M)	30	9	322	120	67	135	124
Dorset (M)	31	12	335	110	141	156	153
Flinders (M)	6	—	40	20	19	28	35
Total North Eastern (SSD) 2001	67	22	697	250	227	319	312
Total North Eastern (SSD) 1996	66	9	638	243	175	333	326
TOTAL NORTHERN (SD) 2001	790	468	7 732	2 663	1 409	3 868	3 457
TOTAL NORTHERN (SD) 1996	760	291	7 494	2 656	1 173	3 857	3 268
MERSEY-LYELL (SD)							
Burnie-Devonport (SSD)							
Burnie (C) - Pt A	86	64	992	297	89	451	336
Central Coast (M) - Pt A	61	49	1 078	412	121	410	501
Devonport (C)	83	114	1 416	582	147	551	608
Latrobe (M) - Pt A	28	19	472	180	74	251	183
Waratah/Wynyard (M) - Pt A	31	26	687	171	112	301	242
Total Burnie-Devonport (SSD) 2001	289	272	4 645	1 642	543	1 964	1 870
Total Burnie-Devonport (SSD) 1996	356	151	4 500	1 728	450	1 977	1 812
North Western Rural (SSD)							
Burnie (C) - Pt B	10	4	167	32	24	47	30
Central Coast (M) - Pt B	10	10	206	61	73	77	75
Circular Head (M)	29	21	354	109	142	139	142
Kentish (M)	27	14	325	107	57	120	108
King Island (M)	8	—	136	42	40	48	59
Latrobe (M) - Pt B	—	3	47	17	16	20	11
Waratah/Wynyard (M) - Pt B	16	10	230	50	44	72	60
Total North Western Rural (SSD) 2001	102	63	1 465	418	396	523	485
Total North Western Rural (SSD) 1996	122	29	1 364	414	363	556	525
Lyell (SSD)							
West Coast (M)	43	9	563	127	23	83	84
Total Lyell (SSD) 2001	43	9	563	127	23	83	84
Total Lyell (SSD) 1996	54	10	636	137	23	110	102
TOTAL MERSEY-LYELL (SD) 2001	434	344	6 673	2 187	962	2 570	2 439
TOTAL MERSEY-LYELL (SD) 1996	532	190	6 500	2 279	836	2 643	2 439
OFF-SHORE AREAS & MIGRATORY (SD)							
Off-Shore Areas & Migratory (SSD)							
Off-Shore Areas & Migratory	25	7	125	33	15	44	19
Total Off-Shore Areas & Migratory (SSD) 2001	25	7	125	33	15	44	19
Total Off-Shore Areas & Migratory (SSD) 1996	20	7	116	27	7	18	8
TOTAL OFF-SHORE AREAS & MIGRATORY (SD) 2001	25	7	125	33	15	44	19
TOTAL OFF-SHORE AREAS & MIGRATORY (SD) 1996	20	7	116	27	7	18	8
TOTAL TASMANIA 2001	3 936	1 897	27 591	9 906	4 268	13 950	12 170
TOTAL TASMANIA 1996	3 621	1 054	26 463	9 912	3 557	13 710	11 457

— nil or rounded to zero (including null cells)

(b) Excludes schooling up to year 12.

(a) Applicable to persons aged 15 years and over.

Geographic area	Management and Commerce	Other(c)	Total persons 15 years and over with qualification(d)
NORTHERN (SD) <i>cont.</i>			
North Eastern (SSD)			
Break O'Day (M)	105	249	1 602
Dorset (M)	151	216	1 799
Flinders (M)	24	39	272
Total North Eastern (SSD) 2001	280	504	3 674
Total North Eastern (SSD) 1996	214	366	3 280
TOTAL NORTHERN (SD) 2001	4 477	6 309	40 437
TOTAL NORTHERN (SD) 1996	3 543	4 855	36 332
MERSEY-LYELL (SD)			
Burnie-Devonport (SSD)			
Burnie (C) - Pt A	560	647	4 776
Central Coast (M) - Pt A	525	692	5 357
Devonport (C)	803	973	7 047
Latrobe (M) - Pt A	219	287	2 211
Waratah/Wynyard (M) - Pt A	251	432	3 058
Total Burnie-Devonport (SSD) 2001	2 358	3 031	22 449
Total Burnie-Devonport (SSD) 1996	1 930	2 380	20 545
North Western Rural (SSD)			
Burnie (C) - Pt B	50	58	533
Central Coast (M) - Pt B	73	123	903
Circular Head (M)	150	228	1 781
Kentish (M)	152	239	1 582
King Island (M)	41	75	567
Latrobe (M) - Pt B	23	23	192
Waratah/Wynyard (M) - Pt B	51	85	755
Total North Western Rural (SSD) 2001	540	831	6 316
Total North Western Rural (SSD) 1996	464	613	5 783
Lyell (SSD)			
West Coast (M)	139	166	1 580
Total Lyell (SSD) 2001	139	166	1 580
Total Lyell (SSD) 1996	141	171	1 753
TOTAL MERSEY-LYELL (SD) 2001	3 037	4 028	30 345
TOTAL MERSEY-LYELL (SD) 1996	2 535	3 164	28 081
OFF-SHORE AREAS & MIGRATORY (SD)			
Off-Shore Areas & Migratory (SSD)			
Off-Shore Areas & Migratory	39	72	545
Total Off-Shore Areas & Migratory (SSD) 2001	39	72	545
Total Off-Shore Areas & Migratory (SSD) 1996	23	43	395
TOTAL OFF-SHORE AREAS & MIGRATORY (SD) 2001	39	72	545
TOTAL OFF-SHORE AREAS & MIGRATORY (SD) 1996	23	43	395
TOTAL TASMANIA 2001	16 877	24 534	147 915
TOTAL TASMANIA 1996	13 219	19 206	132 624

(a) Applicable to persons aged 15 years and over.

(b) Excludes schooling up to year 12.

(c) Includes 'Field of study inadequately described', 'Society and Culture', 'Creative Arts', 'Food, Hospitality and Personal Services', and 'Mixed Field Programmes'.

(d) Includes 'Field of study not stated'.

STATISTICAL LOCAL AREAS, Ranked by unemployment rate(a)

		Unemployment rate	Unemployed
Rank		%	persons
.....			
1	Brighton (M)	16.3	801
2	Break O'Day (M)	16.2	329
3	Kentish (M)	15.9	352
4	Derwent Valley (M) - Pt A	14.2	353
5	Derwent Valley (M) - Pt B	14.0	169
6	Burnie (C) - Pt A	13.6	920
7	George Town (M) - Pt A	13.2	270
8	Devonport (C)	12.6	1 226
9	Waratah/Wynyard (M) - Pt B	12.5	151
10	Central Coast (M) - Pt A	12.2	838
11	Waratah/Wynyard (M) - Pt A	12.1	502
12	Tasman (M)	11.7	104
13	Central Highlands (M)	11.7	118
14	West Coast (M)	11.6	299
15	Sorell (M) - Pt B	11.4	45
16	Glenorchy (C)	11.4	2 070
17	Launceston (C) - Pt B	11.1	2 841
18	Glamorgan/Spring Bay (M)	11.0	184
19	Central Coast (M) - Pt B	10.9	158
20	Huon Valley (M)	10.9	585
21	Southern Midlands (M)	10.8	253
22	Burnie (C) - Pt B	10.6	99
23	Latrobe (M) - Pt A	10.6	333
24	George Town (M) - Pt B	10.6	43
25	Meander Valley (M) - Pt B	10.1	424
26	Kingborough (M) - Pt B	9.9	103
27	Sorell (M) - Pt A	9.8	414
28	Launceston (C) - Pt C	9.3	118
29	West Tamar (M) - Pt B	9.1	76
30	Northern Midlands (M) - Pt B	8.9	168
31	Clarence (C)	8.6	1 867
32	Northern Midlands (M) - Pt A	8.3	265
33	West Tamar (M) - Pt A	8.0	634
34	Hobart (C) - Inner	8.0	29
35	Circular Head (M)	7.8	289
36	Hobart (C) - Remainder	7.6	1 791
37	Latrobe (M) - Pt B	7.5	26
38	Dorset (M)	6.9	214
39	Kingborough (M) - Pt A	6.3	762
40	Meander Valley (M) - Pt A	5.4	203
41	Flinders (M)	5.3	24
42	Off-Shore Areas & Migratory	4.9	23
43	Launceston (C) - Inner	4.9	13
44	King Island (M)	4.2	40

(a) Applicable to persons aged 15 years and over.

STATISTICAL LOCAL AREAS, Ranked by participation rate(a)

<i>Rank</i>	<i>Participation rate</i>
<i>%</i>	
1 King Island (M)	70.6
2 Latrobe (M) - Pt B	69.1
3 Launceston (C) - Inner	68.5
4 Flinders (M)	66.4
5 Meander Valley (M) - Pt A	65.7
6 West Tamar (M) - Pt B	63.5
7 Circular Head (M)	63.3
8 Central Coast (M) - Pt B	63.2
9 Burnie (C) - Pt B	63.0
10 Kingborough (M) - Pt A	62.1
11 Waratah/Wynyard (M) - Pt B	61.9
12 West Coast (M)	61.3
13 Launceston (C) - Pt C	61.2
14 Hobart (C) - Remainder	60.3
15 Northern Midlands (M) - Pt A	59.1
16 West Tamar (M) - Pt A	58.0
17 Sorell (M) - Pt A	57.9
18 Clarence (C)	57.8
19 Dorset (M)	57.2
20 Southern Midlands (M)	56.9
21 Sorell (M) - Pt B	56.7
22 Derwent Valley (M) - Pt B	56.5
23 Latrobe (M) - Pt A	55.7
24 Launceston (C) - Pt B	55.6
25 Brighton (M)	55.3
26 Northern Midlands (M) - Pt B	55.2
27 Meander Valley (M) - Pt B	55.2
28 Off-Shore Areas & Migratory	55.0
29 Central Highlands (M)	54.9
30 Huon Valley (M)	54.2
31 Kentish (M)	54.2
32 George Town (M) - Pt B	53.8
33 Glenorchy (C)	53.8
34 Devonport (C)	53.7
35 Kingborough (M) - Pt B	53.7
36 Burnie (C) - Pt A	53.5
37 Derwent Valley (M) - Pt A	52.3
38 Waratah/Wynyard (M) - Pt A	51.8
39 Central Coast (M) - Pt A	51.6
40 George Town (M) - Pt A	50.6
41 Glamorgan/Spring Bay (M)	50.3
42 Tasman (M)	50.0
43 Break O'Day (M)	45.7
44 Hobart (C) - Inner	38.6

(a) Applicable to persons aged 15 years and over.

STATISTICAL LOCAL AREAS, Ranked by proportion of persons aged 15 years and over with a qualification(a)

Rank	15 years and over with qualification	
	%	
1	Launceston (C) - Inner	45.9
2	Hobart (C) - Remainder	45.1
3	Off-Shore Areas & Migratory	43.1
4	Kingborough (M) - Pt A	40.3
5	Kingborough (M) - Pt B	40.3
6	West Tamar (M) - Pt A	35.4
7	West Tamar (M) - Pt B	33.3
8	Clarence (C)	32.2
9	Meander Valley (M) - Pt A	30.9
10	Sorell (M) - Pt B	30.7
11	King Island (M)	30.4
12	Hobart (C) - Inner	30.3
13	Waratah/Wynyard (M) - Pt B	29.9
14	Launceston (C) - Pt C	29.6
15	Launceston (C) - Pt B	29.6
16	Central Coast (M) - Pt B	29.1
17	Flinders (M)	28.8
18	Latrobe (M) - Pt B	28.3
19	Tasman (M)	28.1
20	West Coast (M)	28.0
21	Burnie (C) - Pt B	27.7
22	Latrobe (M) - Pt A	27.7
23	Northern Midlands (M) - Pt A	27.6
24	Central Coast (M) - Pt A	27.2
25	Devonport (C)	27.2
26	Sorell (M) - Pt A	27.0
27	Burnie (C) - Pt A	26.2
28	Waratah/Wynyard (M) - Pt A	26.1
29	Kentish (M)	26.1
30	Huon Valley (M)	26.1
31	Northern Midlands (M) - Pt B	24.7
32	Glamorgan/Spring Bay (M)	24.6
33	George Town (M) - Pt B	24.3
34	Meander Valley (M) - Pt B	24.2
35	Break O'Day (M)	24.1
36	Glenorchy (C)	23.9
37	Derwent Valley (M) - Pt B	23.9
38	George Town (M) - Pt A	22.4
39	Dorset (M)	22.3
40	Circular Head (M)	20.8
41	Southern Midlands (M)	20.5
42	Central Highlands (M)	20.3
43	Derwent Valley (M) - Pt A	20.1
44	Brighton (M)	19.8

(a) Includes the broad levels 'Postgraduate Degree', 'Graduate Diploma and Graduate Certificate', 'Bachelor Degree', 'Advanced Diploma and Diploma', and 'Certificate'.

BASIC COMMUNITY PROFILE

ABOUT THE BASIC COMMUNITY PROFILE

The key characteristics from the Census are summarised in a set of 33 standard tables which make up the Basic Community Profile (BCP).

The first 21 tables (B01–B21) provide a range of social, demographic and housing characteristics from the Census and are published for Australia and each state and territory in *Census of Population and Housing: Selected Social and Housing Characteristics for Statistical Local Areas* (cat. nos 2015.0–8). Similar BCP tables are available for other geographic areas, including Collection Districts, Local Government Areas, Postal Areas and Suburbs.

The remainder of the BCP series (B22–B33) are included in this publication and provide education and labour force related data.

BCPs for Statistical Local Areas are available from our web site free of charge.

For further information about the Community Profile Series, please refer to the Appendix—Census Products and Services.

SELECTED CHARACTERISTICS (SECOND RELEASE PROCESSING), Persons (excluding overseas visitors)

	Males	Females	Persons
Employed:(a)			
Full-time(b)	74 107	37 027	111 134
Part-time	21 601	44 429	66 030
Not stated(c)	3 136	2 222	5 358
Total	98 844	83 678	182 522
Unemployed(a)	13 179	7 347	20 526
Total labour force(a)	112 023	91 025	203 048
Not in the labour force(a)	55 246	85 565	140 811
Unemployment rate(a) (%)	11.8	8.1	10.1
Same address 1 year ago(d)	175 073	181 422	356 495
Different address 1 year ago(d)	37 985	40 227	78 212
Same address 5 years ago(e)	119 911	123 554	243 465
Different address 5 years ago(e)	80 301	85 886	166 187

- (a) Applicable to persons aged 15 years and over.
 (b) Full-time is defined as having worked 35 hours or more in all jobs in the week prior to Census Night.
 (c) Includes persons who did not state their hours worked.
 (d) Excludes persons less than 1 year of age.
 (e) Excludes persons less than 5 years of age.

NON-SCHOOL QUALIFICATION: LEVEL OF EDUCATION BY SEX(a), Persons aged 15 years and over (excluding overseas visitors)

	Males	Females	Persons
Postgraduate Degree	2 705	1 651	4 356
Graduate Diploma and Graduate Certificate	1 447	2 313	3 760
Bachelor Degree	11 547	15 585	27 132
Advanced Diploma and Diploma	7 910	9 982	17 892
Certificate	39 896	14 418	54 314
Not stated(b)	17 532	22 929	40 461
Not applicable(c)	92 112	117 279	209 391
Total	173 149	184 157	357 306

- (a) Excludes schooling up to Year 12.
 (b) Includes 'Inadequately described'.
 (c) Includes persons who do not have a qualification and persons who have a qualification out of scope of the Australian Standard Classification of Education.

NON-SCHOOL QUALIFICATION: FIELD OF STUDY BY SEX(a),
Persons aged 15 years and over (excluding overseas visitors)

	<i>Males</i>	<i>Females</i>	<i>Persons</i>
Natural and Physical Sciences	2 447	1 489	3 936
Information Technology	1 412	485	1 897
Engineering and Related Technologies	26 201	1 390	27 591
Architecture and Building	9 616	290	9 906
Agriculture, Environmental and Related Studies	3 292	976	4 268
Health	2 841	11 109	13 950
Education	3 220	8 950	12 170
Management and Commerce	6 693	10 184	16 877
Society and Culture	4 004	7 538	11 542
Creative Arts	1 560	2 255	3 815
Food, Hospitality and Personal Services	3 411	4 355	7 766
Mixed Field Programmes	31	52	83
Field of Study inadequately described	757	571	1 328
Not stated	15 552	17 234	32 786
Not applicable(b)	92 112	117 279	209 391
Total	173 149	184 157	357 306

(a) Excludes schooling up to Year 12.

(b) Includes persons who do not have a qualification and persons who have a qualification out of scope of the Australian Standard Classification of Education.

AGE BY LABOUR FORCE STATUS (FULL-TIME/PART-TIME) BY SEX,
Persons aged 15 years and over (excluding overseas visitors)

	EMPLOYED WORKING				UNEMPLOYED LOOKING FOR			Total labour force	Not in the labour force	Not stated(c)	Total
	Full- time(a)	Part- time	Not stated(b)	Total employed	Full- time work	Part- time work	Total unemployed				
MALES											
15–19 years	2 629	2 927	336	5 892	1 387	595	1 982	7 874	8 600	433	16 907
20–24 years	5 848	2 534	328	8 710	1 918	304	2 222	10 932	2 265	339	13 536
25–34 years	16 560	3 874	643	21 077	2 831	273	3 104	24 181	3 197	713	28 091
35–44 years	21 154	4 250	741	26 145	2 151	284	2 435	28 580	3 961	778	33 319
45–54 years	19 208	4 097	555	23 860	1 854	216	2 070	25 930	5 395	661	31 986
55–64 years	7 733	2 880	334	10 947	1 060	251	1 311	12 258	9 710	576	22 544
65 years and over	975	1 039	199	2 213	35	20	55	2 268	22 118	2 380	26 766
Total	74 107	21 601	3 136	98 844	11 236	1 943	13 179	112 023	55 246	5 880	173 149
FEMALES											
15–19 years	1 724	4 417	278	6 419	775	703	1 478	7 897	8 008	350	16 255
20–24 years	4 237	3 593	183	8 013	848	389	1 237	9 250	3 920	304	13 474
25–34 years	8 534	8 397	380	17 311	920	670	1 590	18 901	10 420	726	30 047
35–44 years	9 255	13 154	497	22 906	920	634	1 554	24 460	10 055	767	35 282
45–54 years	10 024	10 250	441	20 715	713	395	1 108	21 823	9 747	660	32 230
55–64 years	2 970	3 977	270	7 217	213	135	348	7 565	14 088	704	22 357
65 years and over	283	641	173	1 097	14	18	32	1 129	29 327	4 056	34 512
Total	37 027	44 429	2 222	83 678	4 403	2 944	7 347	91 025	85 565	7 567	184 157
PERSONS											
15–19 years	4 353	7 344	614	12 311	2 162	1 298	3 460	15 771	16 608	783	33 162
20–24 years	10 085	6 127	511	16 723	2 766	693	3 459	20 182	6 185	643	27 010
25–34 years	25 094	12 271	1 023	38 388	3 751	943	4 694	43 082	13 617	1 439	58 138
35–44 years	30 409	17 404	1 238	49 051	3 071	918	3 989	53 040	14 016	1 545	68 601
45–54 years	29 232	14 347	996	44 575	2 567	611	3 178	47 753	15 142	1 321	64 216
55–64 years	10 703	6 857	604	18 164	1 273	386	1 659	19 823	23 798	1 280	44 901
65 years and over	1 258	1 680	372	3 310	49	38	87	3 397	51 445	6 436	61 278
Total	111 134	66 030	5 358	182 522	15 639	4 887	20 526	203 048	140 811	13 447	357 306

(a) Full-time is defined as having worked 35 hours or more in all jobs during the week prior to Census Night.

(b) Includes employed persons who did not state their hours worked.

(c) Includes persons who did not state their labour force status.

	15-19 years	20-24 years	25-34 years	35-44 years	45-54 years	55-64 years	65 years and over	Total
MALES								
Agriculture, Forestry and Fishing	458	720	1 821	2 156	1 985	1 311	606	9 057
Mining	15	71	400	513	321	104	11	1 435
Manufacturing	811	1 603	4 177	4 772	3 355	1 438	171	16 327
Electricity, Gas and Water Supply	12	65	298	478	470	145	4	1 472
Construction	388	700	1 792	2 528	2 035	800	74	8 317
Wholesale Trade	334	609	1 512	1 636	1 320	652	96	6 159
Retail Trade	2 174	1 807	2 707	2 580	2 268	1 195	210	12 941
Accommodation, Cafes and Restaurants	480	653	758	630	650	365	92	3 628
Transport and Storage	96	267	1 103	1 712	1 703	862	116	5 859
Communication Services	20	102	360	544	469	118	17	1 630
Finance and Insurance	24	112	442	458	442	173	30	1 681
Property and Business Services	249	621	1 514	1 936	2 042	972	219	7 553
Government Administration and Defence	70	213	906	1 498	1 721	614	69	5 091
Education	87	249	732	1 331	1 809	724	74	5 006
Health and Community Services	80	195	795	1 277	1 311	521	109	4 288
Cultural and Recreational Services	190	234	442	508	502	225	45	2 146
Personal and Other Services	136	240	856	1 022	948	381	68	3 651
Non-Classifiable Economic Units	73	87	185	209	223	127	22	926
Not stated	195	162	277	357	286	220	180	1 677
Total	5 892	8 710	21 077	26 145	23 860	10 947	2 213	98 844
FEMALES								
Agriculture, Forestry and Fishing	93	164	522	882	841	515	187	3 204
Mining	3	21	39	25	19	7	—	114
Manufacturing	235	408	1 115	1 396	1 188	406	50	4 798
Electricity, Gas and Water Supply	9	35	128	84	51	8	—	315
Construction	34	66	225	336	249	86	13	1 009
Wholesale Trade	136	214	505	674	526	164	24	2 243
Retail Trade	3 429	2 102	2 625	2 930	2 338	857	132	14 413
Accommodation, Cafes and Restaurants	827	943	1 154	1 295	1 140	414	57	5 830
Transport and Storage	77	228	604	563	395	150	23	2 040
Communication Services	28	137	322	326	275	59	4	1 151
Finance and Insurance	105	363	884	767	548	87	8	2 762
Property and Business Services	348	723	1 572	1 804	1 535	506	72	6 560
Government Administration and Defence	71	302	1 181	1 433	1 205	373	36	4 601
Education	85	468	1 677	3 176	3 433	1 114	81	10 034
Health and Community Services	275	978	3 091	5 453	5 305	1 735	136	16 973
Cultural and Recreational Services	156	261	436	556	524	208	23	2 164
Personal and Other Services	281	467	875	731	640	214	29	3 237
Non-Classifiable Economic Units	34	49	99	128	159	75	38	582
Not stated	193	84	257	347	344	239	183	1 647
Total	6 419	8 013	17 311	22 906	20 715	7 217	1 096	83 677

— nil or rounded to zero (including null cells)

	15-19 years	20-24 years	25-34 years	35-44 years	45-54 years	55-64 years	65 years and over	Total
PERSONS								
Agriculture, Forestry and Fishing	551	884	2 343	3 038	2 826	1 826	793	12 261
Mining	18	92	439	538	340	111	11	1 549
Manufacturing	1 046	2 011	5 292	6 168	4 543	1 844	221	21 125
Electricity, Gas and Water Supply	21	100	426	562	521	153	4	1 787
Construction	422	766	2 017	2 864	2 284	886	87	9 326
Wholesale Trade	470	823	2 017	2 310	1 846	816	120	8 402
Retail Trade	5 603	3 909	5 332	5 510	4 606	2 052	342	27 354
Accommodation, Cafes and Restaurants	1 307	1 596	1 912	1 925	1 790	779	149	9 458
Transport and Storage	173	495	1 707	2 275	2 098	1 012	139	7 899
Communication Services	48	239	682	870	744	177	21	2 781
Finance and Insurance	129	475	1 326	1 225	990	260	38	4 443
Property and Business Services	597	1 344	3 086	3 740	3 577	1 478	291	14 113
Government Administration and Defence	141	515	2 087	2 931	2 926	987	105	9 692
Education	172	717	2 409	4 507	5 242	1 838	155	15 040
Health and Community Services	355	1 173	3 886	6 730	6 616	2 256	245	21 261
Cultural and Recreational Services	346	495	878	1 064	1 026	433	68	4 310
Personal and Other Services	417	707	1 731	1 753	1 588	595	97	6 888
Non-Classifiable Economic Units	107	136	284	337	382	202	60	1 508
Not stated	388	246	534	704	630	459	363	3 324
<i>Total</i>	<i>12 311</i>	<i>16 723</i>	<i>38 388</i>	<i>49 051</i>	<i>44 575</i>	<i>18 164</i>	<i>3 309</i>	<i>182 521</i>

	15-19 years	20-24 years	25-34 years	35-44 years	45-54 years	55-64 years	65 years and over	Total
MALES								
Managers and Administrators	116	313	1 688	3 294	3 733	1 878	695	11 717
Professionals	143	780	2 817	3 871	4 094	1 728	349	13 782
Associate Professionals	279	698	2 502	3 133	3 267	1 359	214	11 452
Tradespersons and Related Workers	1 388	2 358	4 958	5 290	3 881	1 647	195	19 717
Advanced Clerical and Service Workers	7	36	143	195	218	104	31	734
Intermediate Clerical, Sales and Service Workers	364	888	1 991	2 101	2 068	793	105	8 310
Intermediate Production and Transport Workers	661	1 158	3 210	4 312	3 310	1 607	180	14 438
Elementary Clerical, Sales and Service Workers	1 357	965	1 117	1 019	962	567	105	6 092
Labourers and Related Workers	1 395	1 372	2 308	2 407	1 875	944	159	10 460
Inadequately described	52	60	179	317	306	174	30	1 118
Not stated	130	82	164	206	146	146	150	1 024
Total	5 892	8 710	21 077	26 145	23 860	10 947	2 213	98 844
FEMALES								
Managers and Administrators	24	137	662	1 190	1 268	634	201	4 116
Professionals	110	1 009	3 783	5 253	5 041	1 647	153	16 996
Associate Professionals	263	781	2 150	2 821	2 735	861	101	9 712
Tradespersons and Related Workers	289	407	712	695	618	221	36	2 978
Advanced Clerical and Service Workers	134	314	954	1 263	1 252	494	75	4 486
Intermediate Clerical, Sales and Service Workers	1 444	2 710	4 963	6 232	5 096	1 586	148	22 179
Intermediate Production and Transport Workers	150	173	454	624	428	149	17	1 995
Elementary Clerical, Sales and Service Workers	3 293	1 879	2 150	2 311	1 816	648	101	12 198
Labourers and Related Workers	569	515	1 214	2 159	2 144	735	86	7 422
Inadequately described	23	47	122	164	142	81	19	598
Not stated	120	41	147	194	175	161	160	998
Total	6 419	8 013	17 311	22 906	20 715	7 217	1 097	83 678
PERSONS								
Managers and Administrators	140	450	2 350	4 484	5 001	2 512	896	15 833
Professionals	253	1 789	6 600	9 124	9 135	3 375	502	30 778
Associate Professionals	542	1 479	4 652	5 954	6 002	2 220	315	21 164
Tradespersons and Related Workers	1 677	2 765	5 670	5 985	4 499	1 868	231	22 695
Advanced Clerical and Service Workers	141	350	1 097	1 458	1 470	598	106	5 220
Intermediate Clerical, Sales and Service Workers	1 808	3 598	6 954	8 333	7 164	2 379	253	30 489
Intermediate Production and Transport Workers	811	1 331	3 664	4 936	3 738	1 756	197	16 433
Elementary Clerical, Sales and Service Workers	4 650	2 844	3 267	3 330	2 778	1 215	206	18 290
Labourers and Related Workers	1 964	1 887	3 522	4 566	4 019	1 679	245	17 882
Inadequately described	75	107	301	481	448	255	49	1 716
Not stated	250	123	311	400	321	307	310	2 022
Total	12 311	16 723	38 388	49 051	44 575	18 164	3 310	182 522

METHOD OF TRAVEL TO WORK BY SEX,
Employed persons (excluding overseas visitors)

	Males	Females	Persons
One method only:			
Train	23	9	32
Bus	1 950	2 237	4 187
Ferry	35	21	56
Tram(a)	9	6	15
Taxi	244	172	416
Car, as driver	62 674	47 567	110 241
Car, as passenger	5 794	6 851	12 645
Truck	2 652	88	2 740
Motorbike/motor scooter	764	61	825
Bicycle	966	179	1 145
Other	893	243	1 136
Walked only	5 462	4 608	10 070
Total	81 466	62 042	143 508
Two methods:			
Train and Bus	5	6	11
Train and other (excluding bus)	8	3	11
Bus and other (excluding train)	285	399	684
Other two methods	1 340	651	1 991
Total	1 638	1 059	2 697
Three methods:			
Train and other two methods	7	3	10
Bus and other two methods (excluding train)	31	32	63
Other three methods	74	25	99
Total	112	60	172
Worked at home	5 041	5 232	10 273
Did not go to work	9 003	13 733	22 736
Not stated	1 584	1 553	3 137
Total	98 844	83 679	182 523

(a) Includes light rail.

Dwellings

Number of households with:

No motor vehicle and:

No motorbikes/motor scooters	13 449
1 motorbike/motor scooter	116
2 or more motorbikes/motor scooters	35
Not stated	4 311
<i>Total</i>	<i>17 911</i>

1 motor vehicle and:

No motorbikes/motor scooters	21 566
1 motorbike/motor scooter	1 861
2 or more motorbikes/motor scooters	211
Not stated	45 651
<i>Total</i>	<i>69 289</i>

2 motor vehicles and:

No motorbikes/motor scooters	19 442
1 motorbike/motor scooter	3 288
2 or more motorbikes/motor scooters	607
Not stated	37 454
<i>Total</i>	<i>60 791</i>

3 motor vehicles and:

No motorbikes/motor scooters	6 862
1 motorbike/motor scooter	2 123
2 or more motorbikes/motor scooters	647
Not stated	14 219
<i>Total</i>	<i>23 851</i>

Number of motor vehicles not stated and:

No motorbikes/motor scooters	135
1 motorbike/motor scooter	87
2 motorbikes/motor scooters	23
Not stated	9 085
<i>Total</i>	<i>9 330</i>

Total **181 172**

WEEKLY FAMILY INCOME BY FAMILY TYPE, Families in occupied private dwellings

	<i>Couple family with children</i>	<i>Couple family without children</i>	<i>One parent family</i>	<i>Other family</i>	<i>Total</i>
Negative/Nil income	89	207	79	17	392
\$1-\$199	130	259	757	30	1 176
\$200-\$299	201	487	2 233	68	2 989
\$300-\$399	1 973	9 906	4 073	250	16 202
\$400-\$499	2 763	5 431	3 384	331	11 909
\$500-\$599	3 107	2 934	1 855	152	8 048
\$600-\$699	4 064	4 414	1 518	139	10 135
\$700-\$799	3 476	2 326	1 085	120	7 007
\$800-\$999	7 599	4 583	1 419	173	13 774
\$1,000-\$1,199	5 746	3 444	901	121	10 212
\$1,200-\$1,499	7 172	3 814	490	75	11 551
\$1,500-\$1,999	6 216	3 599	322	51	10 188
\$2,000 or more	3 942	2 008	83	18	6 051
Partial income not stated(a)	7 062	2 986	1 612	63	11 723
All incomes not stated(b)	695	1 276	665	85	2 721
Total	54 235	47 674	20 476	1 693	124 078

(a) Includes families where at least one, but not all, member(s) aged 15 years and over did not state an income and/or at least one family member aged 15 years and over was temporarily absent.

(b) Includes families where no members present stated an income.

WEEKLY HOUSEHOLD INCOME BY HOUSEHOLD TYPE, Occupied private dwellings(a)

	<i>Family households</i>	<i>Non-family households</i>	<i>Total</i>
Negative/Nil income	367	450	817
\$1-\$199	1 038	8 343	9 381
\$200-\$299	2 697	15 019	17 716
\$300-\$399	15 589	4 691	20 280
\$400-\$499	11 697	4 548	16 245
\$500-\$599	7 990	3 760	11 750
\$600-\$699	10 094	2 751	12 845
\$700-\$799	7 036	2 208	9 244
\$800-\$999	13 746	3 064	16 810
\$1,000-\$1,199	10 250	2 141	12 391
\$1,200-\$1,499	11 713	474	12 187
\$1,500-\$1,999	10 352	926	11 278
\$2,000 or more	6 235	184	6 419
Partial income stated(b)	11 842	423	12 265
All incomes not stated(c)	2 659	3 580	6 239
Total	123 305	52 562	175 867

(a) Excludes 'Other not classifiable households' and 'Visitor only households'.

(b) Includes families where at least one, but not all, member(s) aged 15 years and over did not state an income and/or at least one family member aged 15 years and over was temporarily absent.

(c) Includes households where no members present stated an income.

HOUSEHOLD TYPE BY NUMBER OF PERSONS USUALLY RESIDENT(a), Occupied private dwellings(b)

NON-FAMILY HOUSEHOLDS

	<i>Family households</i>	<i>Lone person household</i>	<i>Group household</i>	<i>Total</i>
--	------------------------------	--------------------------------------	----------------------------	--------------

Number of persons usually resident:

One	..	47 353	..	47 353
Two	57 096	..	4 183	61 279
Three	26 109	..	717	26 826
Four	25 119	..	241	25 360
Five	10 694	..	50	10 744
Six or more	4 287	..	18	4 305

Total	123 305	47 353	5 209	175 867
--------------	----------------	---------------	--------------	----------------

.. not applicable

- (a) Includes partners, children, and co-tenants (in group households) who were temporarily absent on Census Night. A maximum of 3 temporary absentees can be counted in each household.
- (b) Excludes 'Non-classifiable households' and 'Visitor only households'.

SELECTED AVERAGES (a)

Median age(b)	36
Median monthly housing loan repayments	\$600–\$799
Median weekly rent	\$100–\$149
Median weekly individual income	\$300–\$399
Median weekly family income	\$700–\$799
Median weekly household income	\$600–\$699
Mean household size (persons)	2.5

- (a) Refer to 'Explanatory Notes' for further detail on Selected Averages.

- (b) Excludes 'Overseas visitors'.

EXPLANATORY NOTES

SCOPE AND COVERAGE

1 The 2001 Census of Population and Housing was held on 7 August 2001. Australia's first national Census was held in 1911 and since 1961 a census has been taken every five years, a frequency which is specified in the *Census and Statistics Act 1905*. The objective of the Census is to count the number of people in Australia on Census Night, identifying their key characteristics and those of the dwellings in which they live.

2 The Census aims to count every person who spent Census Night in Australia. This includes Australian residents in Antarctica and people in the territories of Jervis Bay, Cocos (Keeling) Islands and Christmas Island. The other Australian External Territories, Norfolk Island and minor islands such as Heard and McDonald Islands, are outside the scope of the Australian Census. The only people in Australia on Census Night who are excluded from the Census are foreign diplomats and their families.

3 The Census includes people on vessels in or between Australian ports, on board long distance trains, buses or aircraft and on oil or gas rigs off the Australian coast. People entering Australia before midnight on Census Night are counted while people leaving an Australian port for an overseas destination before midnight on Census Night are not. Visitors to Australia are included regardless of how long they have been in the country or how long they plan to stay. However, for people who intend to be in Australia less than one year, only basic demographic data are available. The Census includes homeless people and people camping out.

4 All occupied dwellings are counted in the Census with the exception of diplomatic dwellings. Unoccupied private dwellings are also counted with the exception of unoccupied dwellings in caravan parks, marinas and manufactured home estates, and units in accommodation for the retired or aged (self-care). Unoccupied residences of owners, managers or caretakers of such establishments are counted.

5 Details about the 2001 Census content, collection operations, confidentiality and privacy protection, processing and evaluation activities are contained in *2001 Census of Population and Housing: Nature and Content* (cat. no. 2008.0).

STATISTICAL LOCAL AREA BOUNDARIES

6 The boundaries of Statistical Local Areas (SLAs) are revised from time to time to accord with changes to Local Government Area (LGA) boundaries and to meet needs for small area information. The boundaries shown in this publication are those applying at the time of the 2001 Census. Further information on geographic classifications is contained in *Statistical Geography: Volume 1—Australian Standard Geographical Classification (ASGC), 2001* (cat. no. 1216.0).

BASIC COMMUNITY PROFILE TABLES B22 TO B33

7 Tables numbered B22 to B33 contained in this publication are from the *Census of Population and Housing: Basic Community Profile* (cat. no. 2001.0). These tables are available in hardcopy or electronic format for all standard census geographic areas. For more information about the Community Profiles please refer to the Appendix.

ABS POPULATION ESTIMATES

8 This publication contains population counts based on a 'place of enumeration' basis. 'Place of enumeration' means where the person was counted on Census Night. The Census can provide person counts based on 'place of usual residence' for Collection Districts (CDs) and aggregations of CDs.

EXPLANATORY NOTES *continued*

ABS POPULATION ESTIMATES *continued*

9 The Estimated Resident Population (ERP) is the official Australian Bureau of Statistics (ABS) estimate of the Australian population. The ERP is based on results of the Census of Population and Housing. It is compiled as at 30 June of each census year and updated quarterly between censuses. The intercensal estimates of the resident population are revised following the next census.

10 The ERP is derived from census usual residence counts, by making the following three important adjustments:

- An adjustment for census net underenumeration (or undercount). The level of underenumeration is derived from the Post Enumeration Survey which is conducted soon after the Census, and from estimates based on demographic analysis.
- The inclusion of an estimated number of Australian residents who are temporarily overseas on Census Night and are therefore not covered by the Australian Census. The number of such people is estimated from statistics on overseas arrivals and departures.
- The third adjustment occurs because the Census does not fall on 30 June. For example, the 2001 Census was held on 7 August. Back dating of population estimates from 7 August to 30 June is accomplished using data from birth and death registrations, overseas arrivals and departures, and estimates of interstate migration, for the period 1 July to 7 August.

11 ABS population estimates are published in *Australian Demographic Statistics* (cat. no. 3101.0), produced quarterly, and in *Population by Age and Sex, Australian States and Territories* (cat. no. 3201.0) produced annually. ERPs for SLAs are published in *Regional Population Growth, Australia and New Zealand* (cat. no. 3218.0).

12 The ABS also provides projections (based on different assumptions as to future fertility, mortality and migration) of the resident population of Australia, states and territories. These projections are published every two years in *Population Projections, Australia* (cat. no. 3222.0).

DATA LIMITATIONS

13 Census data are subject to a number of inaccuracies resulting from errors by respondents or mistakes in collection or processing. Whilst many of these are corrected by careful processing procedures, some still remain. The effect of the remaining errors is generally slight, although it may be more important for small groups in the population. The main kinds of error to keep in mind are:

- *Partial non-response*: In some cases where an answer is not provided to a question an answer is imputed (often from other information on the form). In other cases a 'Not stated' code is allocated.
- *Processing error*: While such errors can occur in any processing system, quality management is used continuously to improve the quality of processed data, and to identify and correct data of unacceptable quality.
- *Random adjustment*: Table cells containing small values are randomly adjusted or suppressed to avoid releasing information about particular individuals, families, or households. The effects of these adjustments are statistically insignificant.
- *Respondent error*: Because processing procedures cannot detect or repair all errors made by people in completing the forms, some remain in final data.
- *Undercount*: Although the Census aims to count each person, there are some people who are missed and others who are counted more than once. The data in this publication are not adjusted for the net undercount.

EXPLANATORY NOTES *continued*

DATA LIMITATIONS *continued*

14 Further information on data quality is provided progressively in *Census Update* and in *2001 Census Papers*.

OVERSEAS VISITORS

15 Overseas visitors are defined differently for the 2001 Census. For the 1996 Census overseas visitors were defined as any person who stated they would be in Australia for less than 6 months. For the 2001 Census they are defined as any person who stated they would be in Australia for less than 12 months. Data for overseas visitors are restricted to age, sex and marital status.

LABOUR FORCE STATISTICS

16 The labour force statistics collected from the Census are valuable in providing data for small groups of the population. They are not to be confused with the statistics from the monthly Labour Force Survey, which are only available at state, territory and capital city level.

17 Census figures differ from the survey figures because of differences in scope, questionnaire design and collection procedures. For more information refer to *Census Working Paper 99/2—1996 Census: Labour Force Status* and the *2001 Census Fact Sheet—Labour Force Status*.

18 Official monthly labour force statistics are published in *Labour Force, Australia* (cat. no. 6203.0), produced monthly.

CALCULATIONS OF PROPORTIONS

19 When calculating the proportion of the population with a particular characteristic, 'Not stated' responses are included in the denominator. For example in table 4 the proportion of persons aged 15 years and over with qualification for each geographic area is calculated by dividing the number of persons who stated that they had a non-school qualification by the total population of the geographic area and expressing the result as a percentage. The total population includes the category 'Not stated'.

20 For census variables which include data for overseas visitors i.e. age, sex and marital status, the category 'Overseas visitor' is also included in the denominator.

CALCULATION OF MEDIANS

21 A median is a measure of central tendency. It is a mid value which divides a population distribution into two, with half the observations falling below it and half above it. Unlike averages (means) medians are not usually skewed by extreme observations.

22 There are a number of issues to be aware of:

- The categories 'Not stated' and 'Not applicable' are not included in the calculation of medians.
- The category 'Overseas visitor', is excluded in the calculation of all medians in this publication.
- If a median falls into a category that has a text-only label, then a value of '0' is used for that category. For this publication this is only relevant to the calculation of median income, as the income classification includes categories 'Nil income' and 'Negative income'.
- When calculating a median on a classification containing ranges, the median may fall into a range which is open-ended. In this case, the median would be set to the number in the label. For example, in the calculation of 'Median weekly individual income', if the median was to fall in the last range *\$1,500 or more*, then \$1,500 would be allocated as the median.

EXPLANATORY NOTES *continued*

CALCULATION OF MEDIANS

continued

- 'Median monthly housing loan repayment' and 'Median weekly rent' are based on the ranged variables HLRD01 and RNTD01 respectively. This is due to difficulties associated with the large number of small cells when using individual dollar values to perform these calculations. An adjustment has been made to HLRD01, with the range *\$1,500 and over* changed to *\$1,500–\$1,999* and an additional range *\$2,000 and over* added.

SELECTED AVERAGES

- 23** 'Median monthly housing loan repayments' is applicable to occupied private dwellings being purchased and includes dwellings being purchased under a rent/buy scheme.
- 24** 'Median weekly rent' is applicable to occupied private dwellings being rented. It excludes dwellings being occupied rent free, Visitor only households and Non-classifiable households.
- 25** 'Median weekly individual income' is applicable to persons aged 15 years and over.
- 26** 'Median weekly family income' is applicable to families in occupied private dwellings. It excludes families where at least one family member aged 15 years and over did not state an income, and families where at least one family member aged 15 years and over was temporarily absent.
- 27** 'Median weekly household income' is applicable to occupied private dwellings. It excludes households where at least one member aged 15 years and over did not state an income, and households where at least one member aged 15 years and over was temporarily absent.
- 28** 'Mean household size' is applicable to occupied private dwellings. It is based on the number of persons usually resident in the dwelling. It includes partners, children, and co-tenants (in group households) who were temporarily absent on Census Night. A maximum of three temporary absentees can be counted in each household. It excludes Non-classifiable households.

UNADJUSTED DOLLARS

- 29** The 1996 Census dollar values for 'Median weekly individual income', 'Median monthly housing loan repayments' and 'Median weekly rent' have not been adjusted into 2001 dollars.

ABBREVIATIONS

ABS	Australian Bureau of Statistics
ASGC	Australian Standard Geographical Classification
BCP	Basic Community Profile
C	City
CD	Collection District
ERP	estimated resident population
GIS	geographic information system
LGA	Local Government Area
M	Municipality
no.	number
Pt	Part
SD	Statistical Division
SLA	Statistical Local Area
SSD	Statistical Subdivision

APPENDIX CENSUS PRODUCTS AND SERVICES

2001 PRODUCTS AND SERVICES

A wide range of products and services are available from the 2001 Census of Population and Housing. Brief descriptions of these are included below. For more detailed information on the 2001 Census range of products and services, please refer to the *2001 Directory of Census Statistics* (cat. no. 2910.0).

Census products fall into two broad types: reference products and data products. Most of the reference products from the 2001 Census are available free of charge from the ABS web site.

CENSUS REFERENCE PRODUCTS

2001 Census Dictionary

The *2001 Census Dictionary* (cat. no. 2901.0) is a comprehensive reference guide to the 2001 Census of Population and Housing. The Dictionary includes a complete listing of 2001 Census classifications. It describes new topics introduced for 2001 and highlights classification changes that have occurred since the 1996 Census. The Dictionary also explains the concepts relevant to census collection, processing and output of data.

How Australia Takes a Census

How Australia Takes a Census (cat. no. 2903.0) provides information about the history of the census, the planning process and the way in which the census is conducted.

Geographic Classifications and Codes

Statistical Geography: Volume 1—Australian Standard Geographical Classification (ASGC) 2001 Census Edition (cat. no. 1216.0) provides information about the names and codes of the standard geographic areas used in the 2001 Census. *Statistical Geography: Volume 2—Census Geographic Areas Australia 2001 Census Edition* (cat. no. 2905.0) and *Statistical Geography: Volume 3—Australian Standard Geographical Classification (ASGC) Urban Centres/Localities: 2001 Census Edition* (cat. no. 2909.0) provide information on additional geographic areas.

2001 Census Statistical Local Area Maps

These reference maps show the Statistical Local Areas (SLAs) from the 2001 Census. Each map shows the boundary of an SLA and the Collection District boundaries contained within.

Digital Boundaries

Census boundaries are made available electronically as *Digital Boundaries*. They include all of the Australian Standard Geographical Classification (ASGC), Urban Centres and Localities, and Census-specific areas.

CENSUS DATA PRODUCTS

Census Snapshots

Census Snapshots are a new product designed to provide a summary overview for selected geographic areas and are available from the ABS web site, free of charge. *Census Snapshots* contain subsets of Community Profile data, including person counts, age and birthplace, presented in a narrative form for easy access by a wide audience. A *2001 Census Snapshot* for Australia is also available to celebrate the Centenary of Federation.

Estimated Resident Population

The Estimated Resident Population (ERP) is the official ABS population estimate. It is based on census usual residence counts, and is updated quarterly using births, deaths and migration data.

Two publications containing ERP data, based on 2001 Census figures are:

- *Australian Demographic Statistics — 2001 Census Edition*, cat. no. 3101.0
- *Regional Population Growth, Australia — 2001 Census Edition*, cat. no. 3218.0.

Selected Characteristics

The *Census of Population and Housing* suite of publications contains data and commentary on various person and dwelling characteristics from the 2001 Census at selected geographic levels. There are three series of publications in the suite with the following subtitles:

APPENDIX CENSUS PRODUCTS AND SERVICES *continued*

Selected Characteristics *continued*

- *Selected Social and Housing Characteristics, Australia 2001*, cat. no. 2015.0
- *Selected Social and Housing Characteristics for Statistical Local Areas 2001*, cat. nos 2015.1–8
- *Selected Characteristics for Urban Centres and Localities, Australia 2001*, cat. no. 2016.0
- *Selected Characteristics for Urban Centres and Localities 2001*, cat. nos 2016.1–7
- *Selected Education and Labour Force Characteristics, Australia 2001*, cat. no. 2017.0
- *Selected Education and Labour Force Characteristics for Statistical Local Areas 2001*, cat. nos 2017.1–8.

Community Profile Series

The Community Profile Series provides detailed and comprehensive census characteristics of people, families and dwellings for small areas. This series is available for all standard census geographic areas, and is available in hardcopy and electronic formats.

The series comprises six Community Profiles:

- *Basic Community Profile* (cat. no. 2001.0) contains 33 tables of detailed data covering dwelling, household and family topics. This profile is available for all standard census geographic areas, Commonwealth and State Electoral Divisions, Postal Areas, and Suburbs, for the states/territories and Australia.
- *Indigenous Profile* (cat. no. 2002.0) contains 29 tables of key Census characteristics for Aboriginal and Torres Strait Islander people, for all ASGC areas from Statistical Local Area (SLA) level to whole of Australia, as well as Indigenous Areas and Aboriginal and Torres Strait Islander Commission (ATSIC) regions.
- *Time Series Community Profile* (cat. no. 2003.0) contains 22 tables comparing data from the 1991, 1996 and 2001 Censuses where the classifications are comparable. Data are presented on 2001 geographic boundaries.
- *Usual Residents Profile* (cat. no. 2004.0) contains 28 tables of data for persons usually resident in the selected area. This is the only community profile based on place of usual residence.
- *Expanded Community Profile* (cat. no. 2005.0) contains 49 tables available for SLAs and larger areas, comprising more detailed versions of some of the Basic Community Profile tables, plus additional tables.
- *Working Population Profile* (cat. no. 2006.0) contains 19 tables of labour force and related data on the characteristics of employed people.

Classification Counts

Classification Counts (cat. nos 2022.0–8) provide frequency counts for 2001 Census variables in complete classificatory detail, for every state/territory and Capital City Statistical Division, cross-classified by sex where applicable.

CLIB2001

CLIB2001 is an electronic product provided free of charge to public libraries through the ABS Library Extension Program. The product contains a large volume of tabulated data and software that allows access, display and printing of the data. For 2001 this product will be available as both a CD-ROM and (limited access) Internet-based product. *CLIB2001* comprises the complete 2001 Census Community Profile Series and Classification Counts.

CDATA 2001

CDATA 2001 is a CD-ROM product which contains a large volume of tabulated census data, digital boundaries and base map data, with software to produce tables, maps and graphs of the data. The product is available at the Australia and state/territory levels.

APPENDIX CENSUS PRODUCTS AND SERVICES *continued*

CDATA 2001 continued

There are two *CDATA 2001* products available, offering different levels of functionality:

CDATA 2001—Full Geographic Information System (GIS): This version is aimed at the expert GIS user who requires detailed spatial data analysis using Structured Query Language, geocoding and importation of 'client own' data.

CDATA 2001—Quickbuild: This version has been designed for GIS users with more basic spatial analysis requirements. It allows users to produce data reports, graphs and/or maps. The product is aimed at inexperienced or intermediate GIS users. *CDATA 2001—Quickbuild* users will also have the option to upgrade to *CDATA 2001—Full GIS* if so desired.

Social Atlas Series

The *Social Atlas* (cat. nos 2030.0–8) publications feature colour maps of the key social, demographic and economic characteristics of each capital city. These will be released from November 2002.

AUSTRALIA IN PROFILE—A REGIONAL ANALYSIS

Australia in Profile—A Regional Analysis (cat. no. 2032.0) provides commentary and data on a number of key social indicators from the 2001 Census, with the focus on regional distributions and comparisons.

CONSULTANCY SERVICES

The following census specific services are available:

- *Customised Profiles Service* provides community profile data tailored to your needs, on a variety of media.
- *Customised Table Service* provides detailed cross-classified tables tailored to your needs on a variety of media.
- *Customised Geographic Data Reports Service* provides tabular geographic data which relate specifically to the census Geographic Areas and their characteristics (e.g. area).
- *Customised Mapping Service* provides both Customised Thematic Maps and Customised Reference Maps on request.

GLOSSARY

General descriptions of terms and concepts used in this publication are provided below. Tables are also footnoted where applicable for additional clarity. Detailed definitions of classifications and concepts are available in the *2001 Census Dictionary* (cat. no. 2901.0).

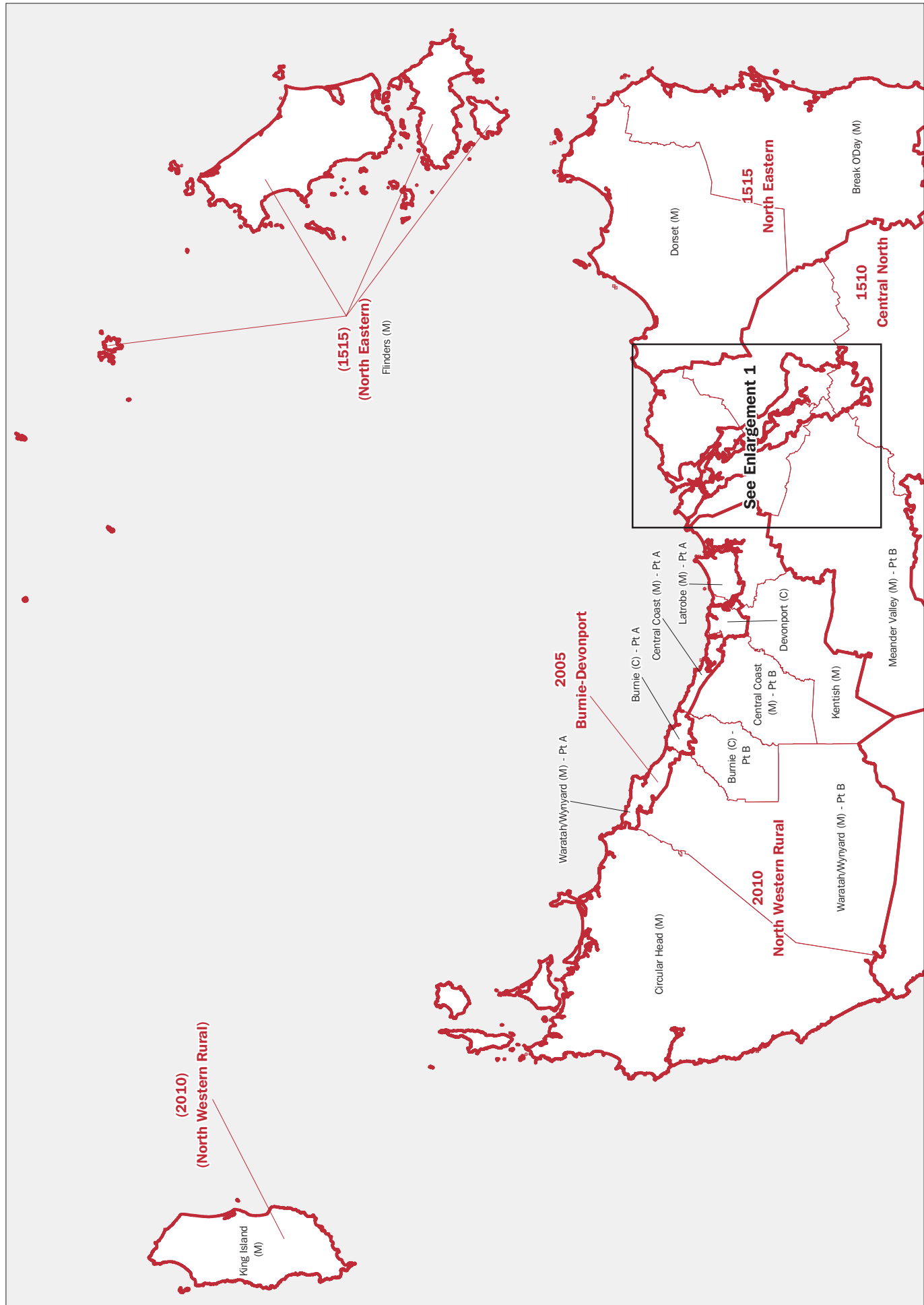
Couple family	This is a family based on two persons who are in a registered or de facto marriage and who are usually resident in the same household. The family may include any number of dependents, non-dependents and/or other related individuals. As it is not necessary for a parent-child relationship to be formed, a couple family can consist of a couple without children.
Family	A family is defined by the ABS as two or more persons, one of whom is at least 15 years of age, who are related by blood, marriage (registered or de facto), adoption, step or fostering, and who are usually resident in the same household. The basis of a family is formed by identifying either a couple, parent-child or other blood relationship. Information on persons temporarily absent on Census Night is considered in family coding.
Full-time/Part-time employment	<p>This variable is based on the number of hours worked in all jobs held by employed people during the week before Census Night. It excludes any time off but includes any overtime or extra time worked:</p> <ul style="list-style-type: none"> ■ Part-time workers: employed people who worked up to 34 hours ■ Full-time workers: employed people who worked 35 hours or more.
Geographic areas	<p>The tables in this publication are at the levels of Statistical Local Area, Statistical Subdivision and Statistical Division, as defined by the 2001 Census edition of the Australian Standard Geographical Classification (ASGC).</p> <p><i>Statistical Local Area (SLA)</i>: These areas consist of one or more Collection Districts and cover, in aggregate, the whole of Australia without gaps or overlaps.</p> <p><i>Statistical Subdivision (SSD)</i>: These areas consist of one or more SLAs and cover, in aggregate, the whole of Australia without gaps or overlaps.</p> <p><i>Statistical Division (SD)</i>: These areas consist of one or more SSDs and cover, in aggregate, the whole of Australia without gaps or overlaps. They do not cross state or territory boundaries. However, the Other Territories, Jervis Bay Territory and the Territories of Christmas Island and Cocos (Keeling) Islands together form one SD. Capital city SDs are predominantly urban in character and the boundaries are delineated to contain the anticipated urban development of the capital cities (and associated urban centres) for a period of at least 20 years.</p> <p>SDs outside the capital city are designed to be relatively homogeneous regions characterised by identifiable social and economic links between the inhabitants and the economic units in the region, under the unifying influence of one or more major towns or cities.</p> <p><i>State/territory (STE)</i>: States and territories consist of one or more SDs and are the largest type of spatial unit in the ASGC. The six Australian states and five territories which are part of geographic Australia and included in the 2001 ASGC are New South Wales, Victoria, Queensland, South Australia, Western Australia, Tasmania, Northern Territory, Australian Capital Territory, Jervis Bay Territory and the external Territories of Christmas Island and Cocos (Keeling) Islands. In the ASGC, Jervis Bay Territory, the Territory of Christmas Island and the Territory of Cocos (Keeling) Islands are combined to form Other Territories (OT).</p> <p>For this series of publications, data for Other Territories are published down to SSD level in 2017.0 (Australia), and down to SLA in 2017.1 (New South Wales) for Jervis Bay Territory and 2017.5 (Western Australia) for Christmas Island and Cocos (Keeling) Islands.</p>

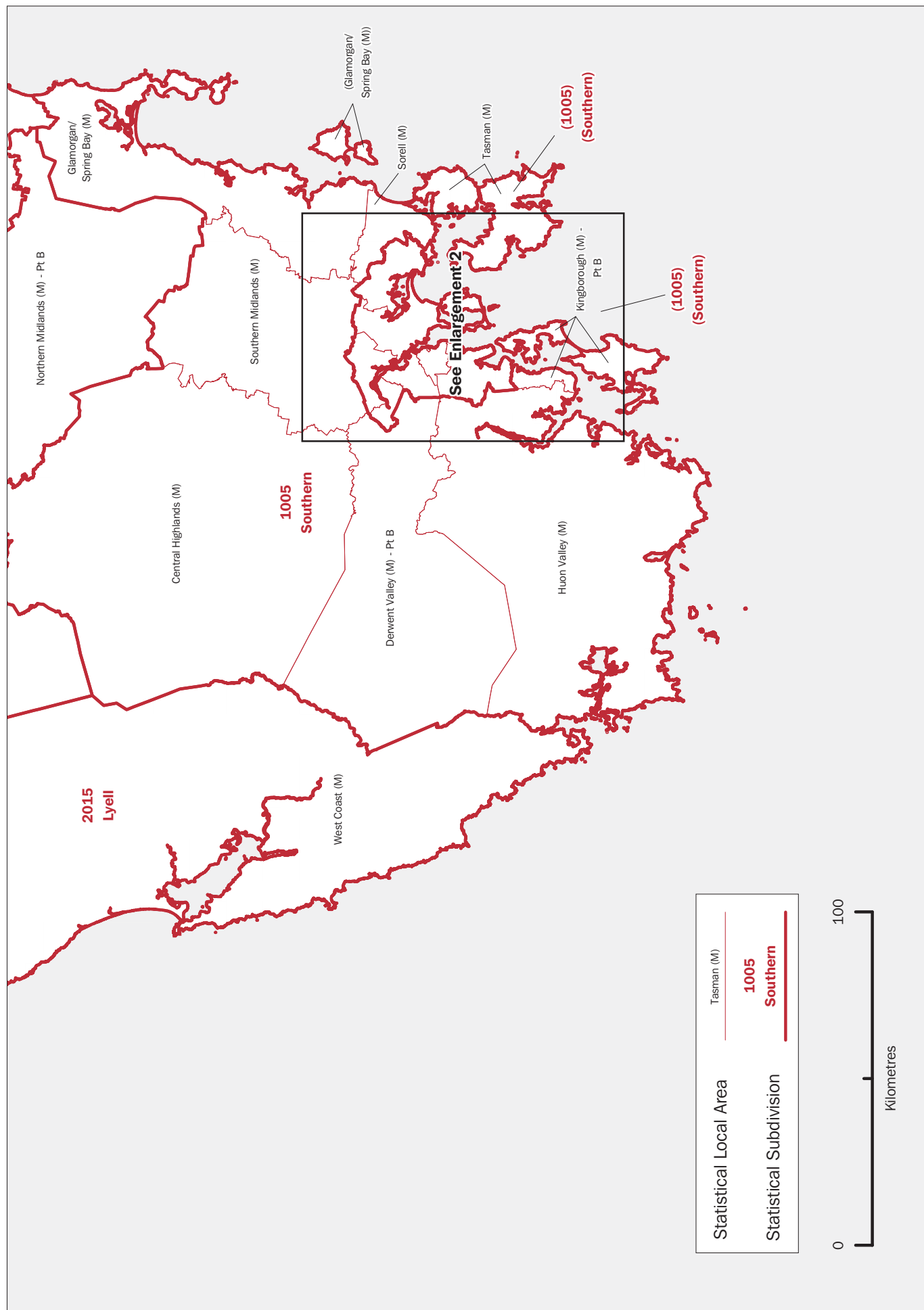
GLOSSARY *continued*

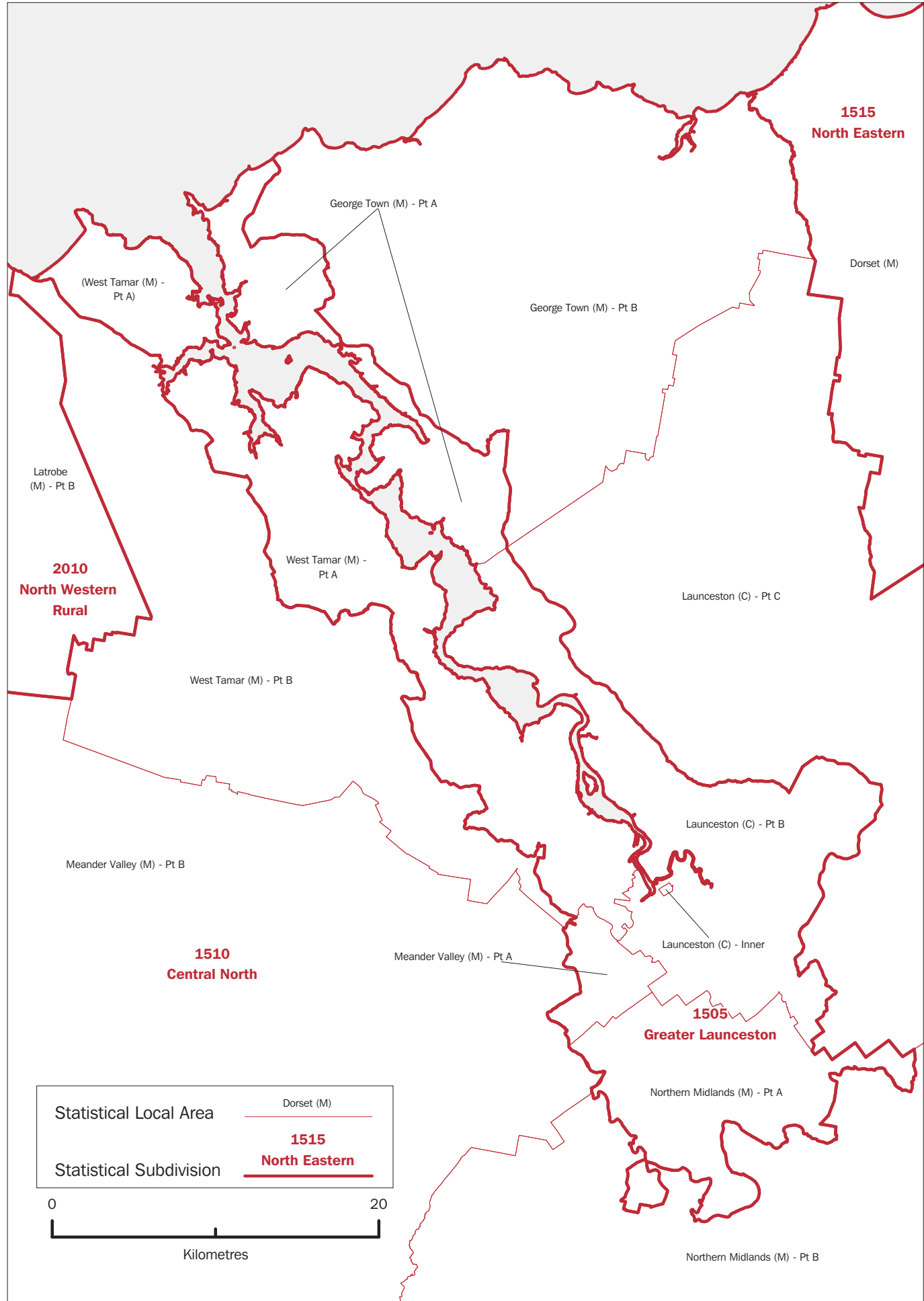
Geographic areas <i>continued</i>	More information about definitions, and lists of codes and names of the geographic areas can be found in <i>Statistical Geography Volume 1—Australian Standard Geographical Classification (ASGC) 2001</i> (cat. no. 1216.0).
Household	<p>A household is defined as a group of two or more related or unrelated people who usually reside in the same dwelling, who regard themselves as a household, and who make common provision for food or other essentials for living; or a person living in a dwelling who makes provision for his/her own food and other essentials for living, without combining with any other person.</p> <p>Under this definition, in a group house where occupants share the dwelling, each occupant who usually supplies his/her own food should be counted as a separate household and issued with a separate Household Form. In practice, however, most such households usually only complete one form.</p>
Household income	<p>Household income is the sum of the individual incomes of each resident present in the household on Census Night. If any resident aged 15 years or over is temporarily absent, or does not state their income, then household income is not derived for that household.</p> <p>Although visitors' incomes are excluded in the calculation of household income, household income is still calculated for households that comprise only visitors, in order to collect data on household incomes in holiday resorts.</p>
Income	<p>People aged 15 years and over are asked to indicate their usual gross weekly income by selecting an income range on the census form. There are 16 options ranging from 'Negative income', 'Nil income' through to '\$1,500 or more per week'. For example, a person with a gross weekly income of \$650 per week would tick the range '\$600–\$699 per week'. Gross weekly income is the income before tax, superannuation, health insurance, or other deductions are made. Gross income includes: family allowance, parenting payment, pensions, unemployment benefits, student allowances, maintenance (child support), superannuation, wages, salary, overtime, dividends, rents received, interest received, business or farm income (less operation expenses) and worker's compensation received.</p>
Industry (of employment)	This variable describes the industries in which employed people (aged 15 years and over) work, and is coded to the <i>Australian and New Zealand Standard Industrial Classification (ANZSIC), 1993</i> (cat. no. 1292.0).
Labour force	The labour force is made up of employed and unemployed people aged 15 years and over.
Labour force status	<p>Labour force status identifies whether a person aged 15 years or over is employed, unemployed or not in the labour force.</p> <p><i>Employed</i> — includes those people who, during the week prior to Census Night, work for payment or profit; have a job from which they are on leave or otherwise temporarily absent; are on strike or stood down temporarily; or work as unpaid helpers in a family business.</p> <p><i>Unemployed</i> — includes people who, during the week prior to Census Night, do not have a job but are actively looking for work (either full-time or part-time) and are available to start work.</p> <p><i>Not in the labour force</i> — includes people aged 15 years and over who are not employed or unemployed as defined above. This includes people who are retired, pensioners and people engaged solely in home duties.</p>
Non-School Qualification: Field of Study	This variable describes the field of study of the highest completed non-school qualification.

GLOSSARY *continued*

Non-School Qualification: Field of Study <i>continued</i>	The full classification for levels of education and fields of education, together with an explanation of the conceptual basis of the classification, can be found in the publication <i>Australian Standard Classification of Education (ASCED)</i> (cat. no. 1272.0).
Non-School Qualification: Level of Education	<p>This variable describes the level of education of the highest completed non-school qualification (e.g. bachelor degree, diploma).</p> <p>The full classification for levels of education and fields of education, together with an explanation of the conceptual basis of the classification, can be found in the publication <i>Australian Standard Classification of Education (ASCED)</i> (cat. no. 1272.0).</p>
Occupation	This variable describes the main job held by employed people (aged 15 years and over) during the week prior to Census Night, and is coded using the ASCO — <i>Australian Standard Classification of Occupations, Second Edition, 1996</i> (cat. no. 1220.0).
One parent family	A one parent family consists of a lone parent with at least one child (regardless of age) who is usually resident in the household. The family may also include any number of other related individuals.
Unemployment rate	The unemployment rate is the number of unemployed people expressed as a percentage of the labour force.









FOR MORE INFORMATION . . .

<i>INTERNET</i>	www.abs.gov.au the ABS web site is the best place to start for access to summary data from our latest publications, information about the ABS, advice about upcoming releases, our catalogue, and Australia Now—a statistical profile.
<i>LIBRARY</i>	A range of ABS publications is available from public and tertiary libraries Australia-wide. Contact your nearest library to determine whether it has the ABS statistics you require, or visit our web site for a list of libraries.
<i>CPI INFOLINE</i>	For current and historical Consumer Price Index data, call 1902 981 074 (call cost 77c per minute).
<i>DIAL-A-STATISTIC</i>	For the latest figures for National Accounts, Balance of Payments, Labour Force, Average Weekly Earnings, Estimated Resident Population and the Consumer Price Index call 1900 986 400 (call cost 77c per minute).

INFORMATION SERVICE

Data that is already published and can be provided within five minutes is free of charge. Our information consultants can also help you to access the full range of ABS information—ABS user-pays services can be tailored to your needs, time frame and budget. Publications may be purchased. Specialists are on hand to help you with analytical or methodological advice.

<i>PHONE</i>	1300 135 070
<i>EMAIL</i>	client.services@abs.gov.au
<i>FAX</i>	1300 135 211
<i>POST</i>	Client Services, ABS, GPO Box 796, Sydney NSW 1041

WHY NOT SUBSCRIBE?

ABS subscription services provide regular, convenient and prompt deliveries of ABS publications and products as they are released. Email delivery of monthly and quarterly publications is available.

<i>PHONE</i>	1300 366 323
<i>EMAIL</i>	subscriptions@abs.gov.au
<i>FAX</i>	03 9615 7848
<i>POST</i>	Subscription Services, ABS, GPO Box 2796Y, Melbourne Vic 3001



2201760001018

ISBN 0 642 47811 2

Recommended retail price \$28.00
© Commonwealth of Australia 2003
Produced by the
Australian Bureau of Statistics