

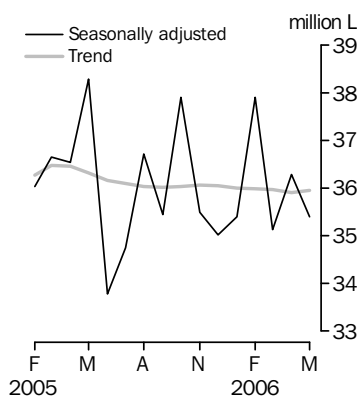
# SALES OF AUSTRALIAN WINE AND BRANDY BY WINEMAKERS

EMBARGO: 11.30AM (CANBERRA TIME) FRI 14 JUL 2006

## KEY FIGURES

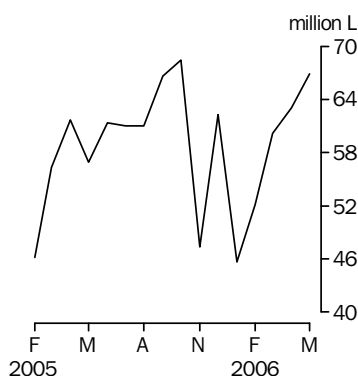
### Australian produced wine

Domestic sales



### Australian produced wine

Exports  
Original



May 2006 '000 L	Apr 2006 to May 2006 % change	May 2005 to May 2006 % change
-----------------------	-------------------------------------	-------------------------------------

### TREND ESTIMATES

#### Australian produced wine

Domestic wine sales	35 958	0.1	-1.0
White table wine sales	17 961	0.6	1.8
Red and rosé table wine sales	12 509	-0.5	-5.8

### SEASONALLY ADJUSTED

#### Australian produced wine

Domestic wine sales	35 392	-2.5	-7.5
White table wine sales	17 904	-0.2	-3.7
Red and rosé table wine sales	12 446	-1.0	-12.2

## KEY POINTS

### TREND ESTIMATES

- The trend estimate for domestic sales of Australian produced wine increased 0.1% in May 2006.
- The trend estimate for domestic sales of white table wine increased for the sixth consecutive month, up 0.6% in May 2006. The trend for red and rosé table wine decreased for the thirteenth consecutive month, down 0.5% in May 2006.

### SEASONALLY ADJUSTED ESTIMATES

- The seasonally adjusted estimate for domestic sales of Australian produced wine was 35.4 million litres in May 2006, a decrease of 2.5% on April 2006.
- The seasonally adjusted estimate for domestic sales of white table wine decreased 0.2% on April 2006, while red and rosé table wine decreased 1.0%.
- The seasonally adjusted estimate for other wines declined 12.8% on April 2006 and was a significant contributor to the overall decline in domestic wine sales.

### ORIGINAL ESTIMATES

- In original terms, 35.9 million litres of Australian produced wine were sold domestically by winemakers in May 2006 an increase of 5.6% on April 2006, but a decreased 5.4% on May 2005.
- Exports of Australian produced wine increased 6.1% on April 2006 to 66.9 million litres in May 2006. Australia exported 716.1 million litres with a value of \$2.7 billion in the twelve months ending May 2006, an increase of 7.8% in volume and 1.0% in value over the corresponding period to May 2005.

## INQUIRIES

For further information about these and related statistics, contact the National Information and Referral Service on 1300 135 070 or Damian Sparkes on Adelaide (08) 8237 7425.

# NOTES

## FORTHCOMING ISSUES

<i>ISSUE</i>	<i>RELEASE DATE</i>
June 2006	11 August 2006
July 2006	8 September 2006
August 2006	4 October 2006
September 2006	6 November 2006
October 2006	4 December 2006
November 2006	10 January 2007



## CHANGES IN THIS ISSUE

As previously advised in the April issue, the June and July 2006 publications have been changed to a later date due to delays in the release of wine import and export data.

## DATA NOTES

There are no data notes in this issue.

## ROUNDING

Where figures have been rounded, discrepancies may occur between sums of the component items and totals.



## ABBREVIATIONS

\$m	million dollars
ABS	Australian Bureau of Statistics
AWBC	Australian Wine and Brandy Corporation
f.o.b.	free on board
HS	Harmonized Commodity Description and Coding System (Harmonized System)
L	litre
L al	litres of alcohol

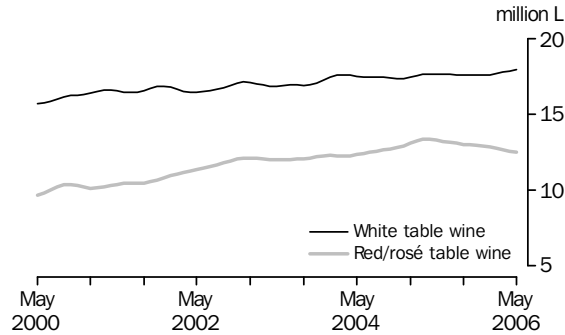
Dennis Trewin  
Australian Statistician

# DOMESTIC AUSTRALIAN TABLE WINE SALES TREND

## TOTAL WHITE AND RED/ROSÉ TABLE WINE

The trend for total sales of white table wine is showing small rises over the past six months. In contrast, the trend for total red and rosé wine sales has been in decline for the past 13 months.

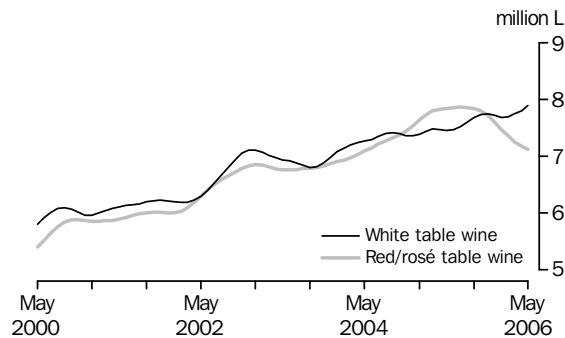
TOTAL WHITE AND RED/ROSÉ TABLE WINE: Trend



## TABLE WINE, GLASS CONTAINER LESS THAN 2 LITRES

The trend estimate for sales of white table wine in glass containers of less than 2 litres increased 1.2% on April 2006, the fourth consecutive month of increase. The trend estimate for red and rosé wine sales in glass containers of less than 2 litres decreased 0.8% on April 2006, continuing the decline that commenced in August 2005.

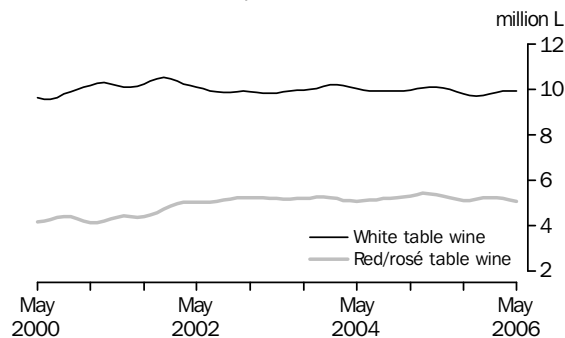
TABLE WINE, Glass container less than 2 litres: Trend



## TABLE WINE, SOFT PACK CONTAINERS

The trend estimate for domestic sales of white table wine in soft packs has remained virtually unchanged for the past four years. The trend estimate for red and rosé wine in soft packs has fallen for the past four months.

TABLE WINE, Soft pack containers: Trend

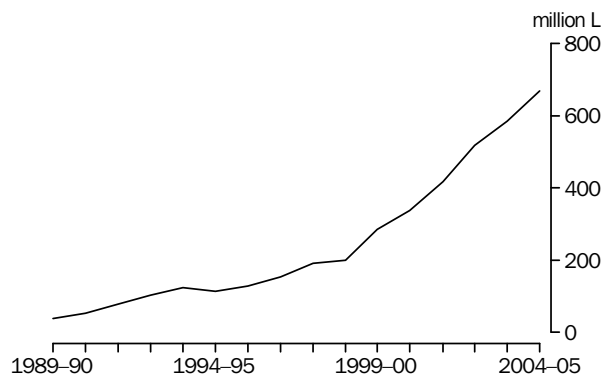


## EXPORTS OF AUSTRALIAN PRODUCED WINE

### ANNUAL EXPORTS OF AUSTRALIAN PRODUCED WINE

The graph below shows that there has been steady growth in the quantity of exports of Australian produced wine over the last fifteen years. In 1989–90, 38.1 million litres of wine were exported. Exports gradually grew over the next three years to reach over 100 million litres in 1992–93. By 1998–99 exports had reached 200.9 million litres. Since then there has been rapid growth with 284.9 million litres of wine exported in 1999–2000, a 41.8% rise on 1998–99. Over the following three years there were rises of 18.7%, 23.7% and 24.0% respectively. Wine exports continued to rise in 2003–04 reaching 584.3 million litres, a 12.7% increase on 2002–03. In 2004–05 exports totalled 669.7 million litres, an increase of 14.6% on 2003–04.

### EXPORTS OF AUSTRALIAN PRODUCED WINE, Annual totals: **Original**



### EXPORTS OF WHITE AND RED/ROSÉ TABLE WINE

In original terms, 66.9 million litres of Australian produced wine were exported in May 2006, an increase of 6.1% on April 2006 and 17.6% on May 2005. In May 2006, 23.3 million litres of Australian produced white table wine were exported, an increase of 20.4% on April 2006 and 16.1% on May 2005. Australia exported 42.3 million litres of Australian produced red and rosé table wine in May 2006, a decrease of 0.4% on April 2006, but an increase of 17.7% on May 2005.

### EXPORTS OF TABLE WINE BY TYPE: **Original**

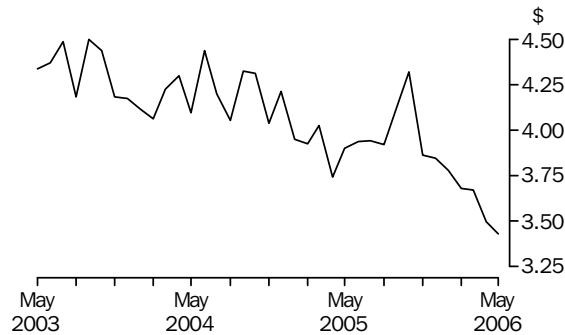


## EXPORTS OF AUSTRALIAN PRODUCED WINE *continued*

### UNIT VALUE OF WINE EXPORTS

In original terms, 66.9 million litres of wine valued at \$229.5m were exported in May 2006, an increase of 6.1% in quantity and 4.0% in value on April 2006. The average value of Australian wine exported in May 2006 was \$3.43 per litre, down from \$3.90 per litre in May 2005 and \$3.50 per litre in April 2006.

#### UNIT VALUE OF WINE EXPORTS: Original



### DIFFERENCES BETWEEN ABS AND AWBC WINE EXPORT FIGURES

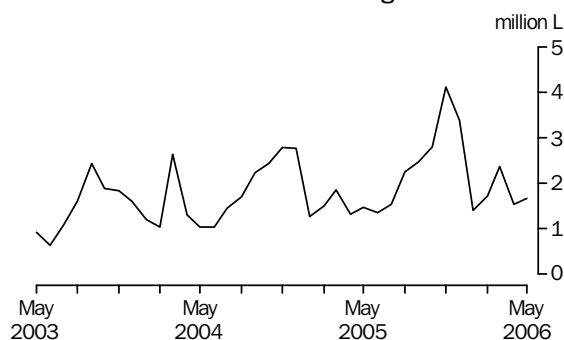
The value of wine exports reported in this publication is derived by the Australian Bureau of Statistics (ABS) from customs export records and the ABS converts the value on the day of shipment, at the daily conversion rate (see paragraph 10 of the Explanatory Notes for more detail). The Australian Wine and Brandy Corporation (AWBC) also report the value of exports and the exporter makes the conversion when submitting wine for export approval. With the AWBC method, it is expected that some of the conversions will occur at hedged rates. This does not occur with the ABS method. For May, the value reported by the ABS was \$229.5m, while the AWBC value was \$236.3m. When the Australian exchange rate is moving significantly the alternative methods will result in diverging valuations.

# IMPORTS AND DISPOSALS OF AUSTRALIAN PRODUCED WINE

## WINE IMPORTS CLEARED FOR HOME CONSUMPTION

In original terms, 1.7 million litres of wine, valued at \$15.8 million were imported in May 2006, an increase of 8.8% in quantity and 7.3% in value on April 2006. The average value of wine imports cleared for home consumption in May 2006 was \$9.45 per litre, up from \$8.30 per litre in May 2005.

### WINE IMPORTS CLEARED: Original



## DISPOSALS OF AUSTRALIAN PRODUCED WINE AND WINE AVAILABLE FOR CONSUMPTION IN AUSTRALIA

The original data for the March quarter 2006 shows that wine available for consumption in Australia increased 1.7% on the same quarter in 2005. Domestic sales of Australian wine increased 0.8%, and wine imports increased 19.0%. Total disposals of Australian produced wine increased by 4.3% on the same quarter in 2005 with exports increasing by 6.4%.

<i>Period</i>	<i>Domestic sales of Australian produced wine (A)</i> '000 L	<i>Wine imports cleared for home consumption (B)</i> '000 L	<i>Wine available for consumption (A + B)</i> '000 L	<i>Exports of Australian produced wine (C)</i> '000 L	<i>Total disposals of Australian produced wine (A + C)</i> '000 L
2002-03	402 479	17 112	419 591	518 595	921 074
2003-04	417 378	18 737	436 115	584 319	1 001 697
2004-05	430 131	22 139	452 270	669 720	1 099 851
Mar Qtr 2005	87 766	4 609	92 375	148 361	236 127
Mar Qtr 2006	88 464	5 485	93 949	r157 894	r246 358

r revised

## DOMESTIC SALES OF AUSTRALIAN WINE, By container type

Period	WHITE TABLE WINE			RED AND ROSÉ TABLE WINE			Total table wine	Total other wine	Total wine
	Glass less than 2 litres	Soft packs(a)	Total(b)	Glass less than 2 litres	Soft packs(a)	Total(b)			
	'000 L	'000 L	'000 L	'000 L	'000 L	'000 L			
ORIGINAL									
<b>2002-03</b>	81 678	118 893	201 631	79 752	62 788	142 835	344 465	58 010	<b>402 479</b>
<b>2003-04</b>	84 225	120 935	207 962	82 832	62 795	147 074	355 037	62 338	<b>417 378</b>
<b>2004-05</b>	89 477	118 803	209 348	91 146	63 032	155 491	364 836	65 293	<b>430 131</b>
<b>2005</b>									
May	7 100	10 884	18 032	8 951	6 113	15 109	33 141	4 810	<b>37 951</b>
June	6 213	7 886	14 237	8 116	4 949	13 132	27 369	4 462	<b>31 831</b>
July	6 885	9 874	16 829	8 811	6 252	15 132	31 961	5 042	<b>37 003</b>
August	7 162	10 566	17 819	8 654	6 440	15 141	32 961	5 213	<b>38 174</b>
September	8 104	9 703	17 917	8 679	5 514	14 284	32 201	5 794	<b>37 995</b>
October	8 760	9 686	18 530	8 111	5 452	13 614	32 144	7 499	<b>39 643</b>
November	10 815	11 575	22 502	10 105	5 733	15 950	38 452	8 004	<b>46 456</b>
December	9 557	9 559	19 294	8 154	4 555	12 779	32 074	8 221	<b>40 295</b>
<b>2006</b>									
January	5 017	7 199	12 318	3 744	2 794	6 570	18 887	3 048	<b>21 936</b>
February	6 800	9 929	16 863	5 791	4 481	10 360	27 223	3 749	<b>30 972</b>
March	8 033	10 755	18 977	6 605	4 970	11 676	30 653	4 903	<b>35 556</b>
April	7 419	9 583	17 058	6 684	4 943	11 986	29 044	4 952	<b>33 996</b>
May	7 222	10 589	17 951	7 727	5 375	13 327	31 278	4 637	<b>35 915</b>
SEASONALLY ADJUSTED									
<b>2005</b>									
May	7 776	10 745	18 583	8 373	5 731	14 183	32 766	5 512	<b>38 278</b>
June	7 352	8 426	15 903	7 686	4 888	12 627	28 530	5 259	<b>33 789</b>
July	7 017	9 573	16 685	7 740	5 121	12 927	29 612	5 132	<b>34 744</b>
August	7 554	10 674	18 347	7 967	5 192	13 185	31 532	5 185	<b>36 717</b>
September	7 676	9 489	17 283	7 795	4 993	12 861	30 144	5 311	<b>35 455</b>
October	8 521	9 632	18 256	7 905	5 352	13 301	31 557	6 350	<b>37 907</b>
November	7 579	9 639	17 333	7 766	5 073	12 955	30 288	5 201	<b>35 489</b>
December	7 382	9 557	17 034	7 541	5 048	12 658	29 692	5 330	<b>35 022</b>
<b>2006</b>									
January	7 550	9 705	17 397	7 326	5 122	12 528	29 925	5 475	<b>35 400</b>
February	7 796	10 603	18 539	7 621	5 896	13 679	32 218	5 680	<b>37 898</b>
March	7 771	9 459	17 380	6 928	4 991	12 156	29 536	5 588	<b>35 124</b>
April	7 933	9 954	17 936	7 369	4 987	12 570	30 506	5 785	<b>36 291</b>
May	7 825	9 893	17 904	7 063	4 969	12 446	30 350	5 042	<b>35 392</b>
TREND									
<b>2005</b>									
May	7 457	10 094	17 638	7 844	5 371	13 279	30 917	5 395	<b>36 312</b>
June	7 470	10 051	17 618	7 854	5 304	13 208	30 826	5 337	<b>36 163</b>
July	7 520	9 991	17 616	7 865	5 239	13 149	30 765	5 330	<b>36 095</b>
August	7 595	9 891	17 595	7 858	5 168	13 074	30 669	5 371	<b>36 040</b>
September	7 678	9 791	17 580	7 839	5 114	13 006	30 586	5 435	<b>36 021</b>
October	7 736	9 724	17 574	7 794	5 120	12 976	30 550	5 493	<b>36 043</b>
November	7 749	9 702	17 567	7 712	5 174	12 957	30 524	5 541	<b>36 065</b>
December	7 722	9 736	17 576	7 598	5 228	12 915	30 491	5 561	<b>36 052</b>
<b>2006</b>									
January	7 685	9 799	17 606	7 470	5 249	12 840	30 446	5 553	<b>35 999</b>
February	7 692	9 873	17 690	7 356	5 238	12 758	30 448	5 536	<b>35 984</b>
March	7 742	9 916	17 786	7 258	5 197	12 669	30 455	5 520	<b>35 975</b>
April	7 795	9 929	17 855	7 174	5 133	12 574	30 429	5 482	<b>35 911</b>
May	7 892	9 934	17 961	7 116	5 079	12 509	30 470	5 488	<b>35 958</b>

(a) Soft pack containers include all collapsible packs, plastic or otherwise.

(b) Components do not add to total. The difference between the components and total is 'wine in other containers' (see Glossary).

## DOMESTIC SALES OF AUSTRALIAN WINE AND BRANDY BY WINEMAKERS

	Table	Fortified	Sparkling bottle fermentation (a)	Sparkling bulk fermentation (a)	Carbonated	Other wine products (b)	Vermouth	Brandy (c)
Period	'000 L	'000 L	'000 L	'000 L	'000 L	'000 L	'000 L	'000 L at
<b>2002-03</b>	344 465	20 842	22 991	8 627	2 799	2 498	252	651
<b>2003-04</b>	355 037	21 201	21 555	13 121	3 468	2 738	255	618
<b>2004-05</b>	364 836	19 934	22 988	15 410	4 206	2 547	208	576
<b>2005</b>								
May	33 141	1 800	1 440	1 095	255	204	16	47
June	27 369	1 777	1 231	982	273	184	15	41
July	31 961	2 107	1 453	876	332	258	16	49
August	32 961	1 891	1 576	1 159	299	272	16	54
September	32 201	1 498	2 162	1 490	398	229	17	47
October	32 144	1 739	3 089	2 052	374	227	18	52
November	38 452	1 552	3 134	2 448	574	278	17	54
December	32 074	1 532	3 342	2 513	485	330	20	73
<b>2006</b>								
January	18 887	854	1 042	708	243	188	13	26
February	27 223	1 133	1 345	737	349	171	14	30
March	30 653	1 286	1 783	1 297	308	214	16	34
April	29 044	1 557	1 624	1 244	304	207	16	38
May	31 278	1 690	1 421	987	309	211	18	43

(a) Spritzig table wines are included with table wine.

(c) Quantities on which excise duty was paid.

(b) See paragraph 4 of the Explanatory Notes and Glossary.



## DOMESTIC SALES OF AUSTRALIAN FORTIFIED WINE BY WINEMAKERS

	<i>Sherry in glass less than 2 litres</i>	<i>Port in glass less than 2 litres</i>	<i>Other in glass less than 2 litres (a)</i>	<i>Soft packs</i>	<i>All other containers(b)</i>	<b><i>Total fortified</i></b>
	'000 L	'000 L	'000 L	'000 L	'000 L	'000 L
<b>2002-03</b>	2 227	4 075	320	8 856	5 369	<b>20 842</b>
<b>2003-04</b>	2 041	4 296	377	9 042	5 447	<b>21 201</b>
<b>2004-05</b>	1 879	3 932	368	8 931	4 825	<b>19 934</b>
<b>2005</b>						
May	161	341	25	837	436	<b>1 800</b>
June	149	336	60	826	405	<b>1 777</b>
July	204	424	32	951	496	<b>2 107</b>
August	137	439	31	884	399	<b>1 891</b>
September	140	301	27	641	388	<b>1 498</b>
October	252	345	34	607	502	<b>1 739</b>
November	132	364	29	719	308	<b>1 552</b>
December	153	410	55	608	306	<b>1 532</b>
<b>2006</b>						
January	91	151	20	389	203	<b>854</b>
February	103	173	16	545	295	<b>1 133</b>
March	109	236	27	634	279	<b>1 286</b>
April	123	286	22	786	340	<b>1 557</b>
May	168	312	34	799	378	<b>1 690</b>

(a) Includes muscat, madiera, tokay and white port.

(b) Includes tankers, cans and rigid containers including glass 2 litres and over.

## EXPORTS OF AUSTRALIAN PRODUCED WINE(a), By wine type

Period	WINE TYPE						Total wine
	White table	Red/rosé table(b)	Total table	Fortified wine	Sparkling wine	Other	
QUANTITY ('000 L)							
<b>2002-03</b>	193 736	312 881	506 617	3 034	7 933	1 010	<b>518 595</b>
<b>2003-04</b>	206 487	364 767	571 254	2 512	9 805	749	<b>584 319</b>
<b>2004-05</b>	233 898	420 615	654 513	2 069	12 445	693	<b>669 720</b>
<b>2005</b>							
March	18 107	37 134	55 241	134	834	107	<b>56 316</b>
April	20 496	40 041	60 536	217	906	16	<b>61 675</b>
May	20 079	35 930	56 009	186	651	42	<b>56 889</b>
June	23 982	36 376	60 357	198	727	39	<b>61 321</b>
July	21 471	38 553	60 023	138	817	37	<b>61 015</b>
August	23 825	36 054	59 880	204	900	54	<b>61 037</b>
September	24 618	40 273	64 891	167	1 578	28	<b>66 663</b>
October	25 177	40 577	65 754	151	2 524	49	<b>68 478</b>
November	16 422	29 241	45 663	165	1 473	80	<b>47 382</b>
December	22 376	38 332	60 708	231	1 274	54	<b>62 267</b>
<b>2006</b>							
January	16 268	28 391	r44 659	196	683	98	<b>45 637</b>
February	19 306	31 695	51 001	257	828	40	<b>52 127</b>
March	r21 711	r36 826	r58 537	185	1 314	95	<b>r60 131</b>
April	r19 369	r42 435	r61 804	r346	r906	47	<b>r63 103</b>
May	23 315	42 272	65 587	375	890	73	<b>66 925</b>
VALUE (c) (\$'000)							
<b>2002-03</b>	788 239	1 561 361	2 349 600	18 266	48 934	6 346	<b>2 423 145</b>
<b>2003-04</b>	793 900	1 628 008	2 421 908	13 665	53 346	4 740	<b>2 493 659</b>
<b>2004-05</b>	843 033	1 787 050	2 630 083	12 653	67 502	4 910	<b>2 715 149</b>
<b>2005</b>							
March	64 966	155 151	220 116	1 112	4 672	731	<b>226 632</b>
April	71 325	153 330	224 655	1 087	4 975	153	<b>230 870</b>
May	70 136	146 349	216 485	1 174	3 834	414	<b>221 907</b>
June	75 410	160 712	236 122	1 086	3 910	207	<b>241 326</b>
July	76 664	158 133	234 797	1 055	4 275	264	<b>240 391</b>
August	81 746	151 005	232 751	1 262	5 049	324	<b>239 387</b>
September	87 510	177 864	265 374	1 242	8 394	211	<b>275 220</b>
October	94 488	185 816	280 304	1 802	13 397	302	<b>295 804</b>
November	52 650	121 109	173 759	1 093	7 820	425	<b>183 097</b>
December	71 980	157 252	229 232	1 386	8 521	430	<b>239 569</b>
<b>2006</b>							
January	56 651	r111 085	r167 736	758	3 680	382	<b>r172 556</b>
February	59 698	125 506	185 203	1 304	5 054	161	<b>191 723</b>
March	r68 817	r142 298	r211 116	1 370	7 519	738	<b>r220 742</b>
April	r63 547	r149 595	r213 142	1 803	r5 331	341	<b>r220 618</b>
May	71 180	151 085	222 265	1 164	5 748	342	<b>229 519</b>

r revised

(a) Exports may include sales made by exporters other than winemakers.

(b) Includes 'Other table wine'.

(c) See paragraph 8 of the Explanatory Notes.

## EXPORTS AND IMPORTS OF BRANDY

Period	EXPORTS (a)		IMPORTS (b)	
	Quantity	Value(c)	Quantity	Value(c)
	'000 L al	\$'000	'000 L al	\$'000
<b>2002-03</b>	21	172	557	9 570
<b>2003-04</b>	11	323	540	10 425
<b>2004-05</b>	18	913	519	9 054
<b>2005</b>				
March	—	62	32	465
April	—	27	29	507
May	1	18	31	512
June	1	140	49	744
July	5	170	37	579
August	2	56	44	966
September	1	12	55	838
October	4	113	37	794
November	10	378	57	1 054
December	4	269	55	1 179
<b>2006</b>				
January	3	61	43	710
February	2	380	30	387
March	2	136	45	517
April	1	r144	26	384
May	3	129	34	696

— nil or rounded to zero (including null cells)

r revised

(a) Exports may include sales made by exporters other than winemakers.

(b) Imports cleared for home consumption. See paragraph 6 of the Explanatory Notes.

(c) See paragraphs 8 and 9 of the Explanatory Notes.

## EXPORTS AND IMPORTS, Selected countries(a)—May 2006

Country	WINE TYPE						TOTAL WINE	
	White table	Red/rosé table(b)	Total table	Fortified	Sparkling	Other	Quantity	Value(c)
	'000 L	'000 L	'000 L	'000 L	'000 L	'000 L	'000 L	\$'000
EXPORTS (d)								
United Kingdom	9 227	11 468	20 696	11	352	—	21 058	72 224
United States of America	6 975	13 088	20 063	23	134	—	20 220	78 664
New Zealand	514	1 123	1 637	24	90	60	1 811	7 261
Canada	748	2 915	3 664	44	68	—	3 775	16 487
Germany, Federal Republic of	805	1 318	2 123	—	1	2	2 126	4 262
Netherlands	629	1 674	2 303	1	38	—	2 341	5 959
Denmark	463	2 044	2 507	14	7	—	2 528	5 179
Ireland	301	431	732	1	23	—	755	3 694
Sweden	238	852	1 090	—	8	—	1 099	4 311
Belgium	595	1 103	1 698	—	12	—	1 710	2 956
Japan	155	376	531	2	59	—	591	3 415
Switzerland	15	55	70	1	—	—	71	474
France	226	372	598	228	2	—	827	1 513
Singapore	94	267	362	11	7	6	386	3 290
Norway	11	212	223	—	15	—	238	1 045
Hong Kong	70	222	292	1	8	3	304	2 388
Malaysia	34	134	168	—	1	—	169	1 813
Finland	82	240	322	1	—	—	322	1 341
Thailand	31	78	109	—	4	—	113	822
United Arab Emirates	98	110	208	1	9	1	219	895
Total other countries(e)	2 004	4 189	6 193	13	53	1	6 260	11 527
<b>Total all countries</b>	<b>23 315</b>	<b>42 272</b>	<b>65 587</b>	<b>375</b>	<b>890</b>	<b>73</b>	<b>66 925</b>	<b>229 519</b>
IMPORTS (f)								
New Zealand	727	82	809	—	8	1	818	7 199
Italy	29	150	179	—	93	4	276	1 410
France	78	105	183	—	119	1	304	5 013
Spain	11	31	42	2	30	—	74	441
Portugal	—	9	9	1	—	21	32	127
United Kingdom	—	—	—	—	29	—	29	1 080
Germany, Federal Republic of	25	11	36	—	—	16	52	243
Greece	1	2	3	—	—	4	7	16
Total other countries(e)	28	29	57	1	9	9	76	255
<b>Total all countries</b>	<b>899</b>	<b>420</b>	<b>1 319</b>	<b>4</b>	<b>289</b>	<b>58</b>	<b>1 670</b>	<b>15 783</b>

— nil or rounded to zero (including null cells)

(a) For details on the selection of countries see paragraph 7 of the Explanatory Notes.

(b) Includes 'Other table wine'.

(c) See paragraphs 8 and 9 of the Explanatory Notes.

(d) Exports may include sales made by exporters other than winemakers.

(e) Includes other countries as detailed in *Standard Australian Classification of Countries (SACC)* (cat. no. 1269.0).

(f) Imports cleared for home consumption. See paragraph 6 of the Explanatory Notes.

## EXPORTS OF AUSTRALIAN WINE(a), By region

Period	Oceania and Antarctica	Europe and the former USSR	South-East Asia	North-East Asia	Northern America	Other(b)	Total all regions	European Union(c)
QUANTITY ('000 L)								
<b>2002-03</b>	33 499	290 011	7 249	9 152	175 321	3 364	<b>518 595</b>	281 933
<b>2003-04</b>	28 615	322 546	9 333	12 398	207 970	3 457	<b>584 319</b>	313 948
<b>2004-05</b>	26 615	374 626	13 230	17 279	233 171	4 798	<b>669 720</b>	368 011
<b>2005</b>								
March	2 075	28 610	1 389	1 350	22 474	418	<b>56 316</b>	28 189
April	2 010	35 282	855	1 523	21 521	485	<b>61 675</b>	34 773
May	2 194	26 465	2 747	1 222	23 840	421	<b>56 889</b>	25 908
June	1 902	36 926	795	1 512	19 831	355	<b>61 321</b>	36 289
July	2 695	36 786	682	1 399	18 967	487	<b>61 015</b>	36 257
August	1 500	36 407	743	1 898	20 191	298	<b>61 037</b>	35 526
September	2 889	40 392	1 034	1 560	20 466	321	<b>66 663</b>	40 055
October	3 058	40 231	1 063	1 479	22 219	428	<b>68 478</b>	39 627
November	3 309	19 735	1 120	1 667	21 184	367	<b>47 382</b>	19 304
December	1 640	28 680	1 095	2 600	27 840	413	<b>62 267</b>	28 036
<b>2006</b>								
January	1 126	25 267	599	875	17 399	371	<b>45 637</b>	24 843
February	2 874	31 678	1 063	1 755	14 112	644	<b>52 127</b>	31 203
March	3 010	r35 634	937	1 538	17 480	1 532	<b>r60 131</b>	r35 012
April	r2 489	r32 931	777	4 898	r21 414	r592	<b>r63 103</b>	r32 554
May	1 866	33 495	848	6 044	24 005	667	<b>66 925</b>	33 084
VALUE (d) (\$'000)								
<b>2002-03</b>	107 376	1 184 324	52 246	57 470	1 007 724	14 006	<b>2 423 145</b>	1 141 847
<b>2003-04</b>	106 839	1 165 185	61 869	74 274	1 071 017	14 474	<b>2 493 659</b>	1 133 062
<b>2004-05</b>	104 390	1 316 533	74 717	93 667	1 106 231	19 611	<b>2 715 149</b>	1 287 727
<b>2005</b>								
March	7 801	93 948	6 613	8 258	108 074	1 937	<b>226 632</b>	92 312
April	7 920	112 579	6 815	8 424	93 252	1 880	<b>230 870</b>	110 401
May	8 712	91 115	5 866	6 211	108 189	1 813	<b>221 907</b>	88 772
June	8 037	116 334	5 163	7 321	103 086	1 385	<b>241 326</b>	113 602
July	10 044	124 810	4 750	8 013	90 812	1 961	<b>240 391</b>	121 340
August	6 414	125 828	5 378	9 617	90 609	1 541	<b>239 387</b>	122 433
September	10 627	142 941	6 480	8 731	104 596	1 845	<b>275 220</b>	140 775
October	14 244	152 319	6 670	8 614	111 312	2 645	<b>295 804</b>	149 187
November	14 132	64 036	7 779	9 146	86 125	1 879	<b>183 097</b>	62 451
December	6 844	92 299	7 316	11 543	119 674	1 892	<b>239 569</b>	90 232
<b>2006</b>								
January	4 157	r83 584	4 393	4 885	73 701	1 837	<b>r172 556</b>	r81 499
February	7 615	104 626	6 091	7 503	63 302	2 586	<b>191 723</b>	102 786
March	8 404	r121 401	8 046	9 268	71 242	2 381	<b>r220 742</b>	r118 914
April	r6 990	r101 173	5 551	10 825	r93 664	r2 415	<b>r220 618</b>	r99 525
May	7 682	104 783	7 271	12 357	95 178	2 247	<b>229 519</b>	102 562

r revised

(a) Exports may include sales made by exporters other than winemakers.

(b) Includes ships' stores and other countries as detailed in *Standard Australian Classification of Countries (SACC)* (cat. no. 1269.0).

(c) The 'European Union' is not additional to the total and is a component of the 'Europe and the former USSR' region. Includes all 25 current members of the European Union.

(d) See paragraph 8 of the Explanatory Notes.

## IMPORTS CLEARED (a), Selected countries(b)

Period	New Zealand	Italy	France	Spain	Portugal	United Kingdom	Germany, Federal Republic of	Greece	Other	Total all countries
	'000 L	'000 L	'000 L	'000 L	'000 L	'000 L	'000 L	'000 L	'000 L	'000 L
<b>2002-03</b>	4 929	4 844	2 728	501	463	400	368	357	2 523	<b>17 112</b>
<b>2003-04</b>	5 629	4 672	3 064	564	621	20	354	313	3 501	<b>18 737</b>
<b>2004-05</b>	9 479	4 937	3 492	684	418	31	448	285	2 364	<b>22 139</b>
<b>2005</b>										
March	905	356	234	73	60	—	66	18	133	<b>1 845</b>
April	607	247	247	15	21	6	41	10	133	<b>1 326</b>
May	695	255	196	100	23	2	48	20	131	<b>1 469</b>
June	545	257	352	11	33	—	27	36	94	<b>1 355</b>
July	553	491	255	24	42	1	25	32	108	<b>1 531</b>
August	1 104	527	278	77	76	2	29	27	126	<b>2 245</b>
September	1 419	448	322	120	26	4	50	17	56	<b>2 463</b>
October	1 374	629	427	10	39	7	60	10	240	<b>2 796</b>
November	1 951	933	690	100	71	18	39	26	294	<b>4 121</b>
December	1 964	523	489	117	185	1	19	23	63	<b>3 385</b>
<b>2006</b>										
January	454	289	402	36	106	—	37	13	58	<b>1 395</b>
February	693	342	306	114	115	—	26	13	107	<b>1 716</b>
March	1 279	384	411	48	46	10	33	18	146	<b>2 375</b>
April	783	288	213	36	87	—	19	30	79	<b>1 535</b>
May	818	276	304	74	32	29	52	7	76	<b>1 670</b>

— nil or rounded to zero (including null cells)

(a) Imports cleared for home consumption. See paragraph 6 of the Explanatory Notes.

(b) For details on the selection of countries see paragraph 7 of the Explanatory Notes.

## IMPORTS CLEARED BY WINE TYPE(a)

Period	WINE TYPE						Total wine
	White table	Red/Rosé table(b)	Table wine	Fortified wine	Sparkling wine	Other wine	
QUANTITY ('000 L)							
<b>2002-03</b>	6 446	4 624	11 070	190	3 851	2 001	<b>17 112</b>
<b>2003-04</b>	7 703	4 114	11 817	734	4 787	1 399	<b>18 737</b>
<b>2004-05</b>	10 502	4 280	14 782	253	5 187	1 918	<b>22 139</b>
<b>2005</b>							
March	992	344	1 336	19	363	125	<b>1 845</b>
April	659	321	980	16	237	93	<b>1 326</b>
May	727	342	1 068	19	273	109	<b>1 469</b>
June	725	267	991	12	234	117	<b>1 355</b>
July	591	355	946	16	390	180	<b>1 531</b>
August	1 065	543	1 608	9	536	92	<b>2 245</b>
September	1 436	443	1 878	12	510	63	<b>2 463</b>
October	1 177	425	1 602	9	988	198	<b>2 796</b>
November	1 897	903	2 800	16	987	318	<b>4 121</b>
December	1 382	1 182	2 563	19	644	160	<b>3 385</b>
<b>2006</b>							
January	486	407	893	18	322	162	<b>1 395</b>
February	812	495	1 307	2	325	82	<b>1 716</b>
March	1 421	560	1 982	21	300	72	<b>2 375</b>
April	860	375	1 235	5	214	81	<b>1 535</b>
May	899	420	1 319	4	289	58	<b>1 670</b>
VALUE (c) (\$'000)							
<b>2002-03</b>	47 504	27 733	75 237	1 179	53 703	9 088	<b>139 207</b>
<b>2003-04</b>	50 345	29 541	79 886	2 065	64 995	5 459	<b>152 405</b>
<b>2004-05</b>	78 428	30 510	108 937	1 728	68 063	9 512	<b>188 240</b>
<b>2005</b>							
March	7 530	1 950	9 479	106	4 295	602	<b>14 483</b>
April	5 712	2 369	8 081	156	4 585	467	<b>13 288</b>
May	5 340	2 664	8 005	123	3 585	476	<b>12 189</b>
June	5 240	2 035	7 275	62	3 965	557	<b>11 859</b>
July	4 806	2 930	7 736	163	5 118	770	<b>13 787</b>
August	8 887	4 277	13 164	43	6 425	426	<b>20 059</b>
September	11 315	2 877	14 191	97	7 763	289	<b>22 341</b>
October	8 451	2 799	11 251	189	10 405	1 078	<b>22 923</b>
November	14 710	4 778	19 488	97	10 466	1 665	<b>31 716</b>
December	10 625	4 579	15 204	148	10 255	762	<b>26 369</b>
<b>2006</b>							
January	r4 703	r2 292	r6 996	129	6 236	729	<b>r14 089</b>
February	7 700	2 590	10 290	21	4 318	327	<b>14 956</b>
March	12 208	3 209	15 417	87	r4 553	290	<b>r20 347</b>
April	r7 174	2 804	r9 978	42	4 347	345	<b>r14 711</b>
May	7 696	3 007	10 703	56	4 748	276	<b>15 783</b>

r revised

(a) Imports cleared for home consumption. See paragraph 5 of the Explanatory Notes.

(b) Includes "Other table wine".

(c) See paragraph 9 of the Explanatory Notes

## EXPLANATORY NOTES

### INTRODUCTION

**1** The information shown in this publication for the domestic sales of Australian produced wine is obtained directly from winemakers by means of a mail collection. The brandy sales figures shown represent quantities on which excise duty was paid, i.e. the quantity of brandy released for sale. Statistics relating to import clearances and exports are based on information provided to the Australian Customs Service by importers, exporters and their agents.

### SCOPE AND COVERAGE

**2** The information on domestic sales of Australian produced wine is obtained from winemaking enterprises with sales of 250,000 litres or more in either of the previous two financial years. These account for approximately 94% of total wine sales. All sales data are collected on an Australia-wide basis only and state figures are therefore not available.

**3** Tables 1–3 include all sales by winemakers (within the scope of the collection) with the exception of exports, sales for ships' stores, sales of imported wine and brandy and inter-winery sales, the last exclusion being necessary to avoid duplication in the published figures. From July 1998 the definition for table wine in the glass container categories changed from '1 litre and under' to 'less than 2 litres'. This series has been retained as the contribution of the over 1 litre but under 2 litres containers (such as table wine in magnum sized bottles) is believed to have been less than 1%. There is an expectation this contribution will increase in the future. This has a consequential effect for the 'other containers' category which includes glass containers 2 litres and over from July 1998 (prior to this it was glass over 1 litre). This series will also be retained.

**4** From July 2000, the category 'Flavoured wine' has been changed to 'Other wine products'. This change reflects the inclusion of de-alcoholised, low and reduced alcohol wines in the category. These wine types were previously included in 'Table wine'. While it is expected that the effect on the 'Table wine' series resulting from this change will be insignificant, care should be taken in comparing 'Flavoured wine' with 'Other wine products'.

### IMPORTS AND EXPORTS

**5** Figures relating to international trade in wine and brandy are presented in tables 4–9 to provide a basis for assessing the overall wine market. ABS procedures are designed to ensure that sufficient editing is undertaken to guarantee the quality and integrity of trade statistics to at least the six-digit Harmonized Commodity Description and Coding System (HS) level. After the release of monthly trade statistics, the ABS may receive a number of client requests to investigate cases of possible misreporting. Most relate to potential errors at the more detailed levels of the commodity classification. Client requests for data investigations of this type will be undertaken free of charge if data at the six-digit level of the HS are affected. Otherwise investigations will only be considered if the value of the aggregate data queried exceeds \$250,000 in each month queried, and the cost of the investigation is met by the client.

**6** Imports cleared for home consumption (including re-imports, that is, goods originating in Australia that have been exported but then returned to source) comprise those goods entered for home consumption, together with goods cleared from Customs warehouses. Exports of Australian produce are defined as exports of goods, materials or articles which have been produced, manufactured or partly manufactured in Australia. Due to a change in the Customs Tariff codes implemented in July 1999 and July 2000, the wine type categories are not necessarily comparable with earlier data.

**7** In order to retain stability in the time-series of data, the selection of countries for which exports and imports data has been presented has been based upon the level of annual imports or exports from the previous financial year.



## EXPLANATORY NOTES *continued*

### IMPORTS AND EXPORTS

*continued*

**8** The value of exports is the free on board (f.o.b.) transactions value of the goods expressed in Australian dollars. The ABS converts foreign currency f.o.b. values to Australian dollars using the exchange rate prevailing on the date of departure shown on the export manifest.

**9** The value of imports is the Australian customs value. Goods are valued at the point of containerisation (in most cases) or the port of shipment, or at the customs frontier of the exporting country, whichever comes first.

**10** For details of currency conversion procedures for wine export values, please refer to 2.34 and 2.35 of *International Merchandise Trade, Australia; Concepts, Sources and Methods, 2001* (cat. no. 5489.0). Goods invoiced in one of six major foreign currencies are converted to Australian dollars by the Australian Bureau of Statistics. Sales in other foreign currencies are converted by the exporter to Australian dollars.

### SEASONALLY ADJUSTED AND TREND ESTIMATES

**11** Seasonal adjustment is a means of removing the estimated effects of normal seasonal variation from the series so that the effects of other influences can be more clearly recognised. Seasonal adjustment does not remove from the series the effect of irregular influences (e.g. abnormal weather and industrial disputes).

**12** The seasonally adjusted estimates in this publication have been produced using a concurrent methodology whereby the seasonal factors are revised each month to take into account the seasonality exhibited by the latest observation. A more detailed review is conducted annually.

**13** The overall degree of revision to the seasonally adjusted estimates is expected to be less on average than would be the case with annual reanalysis only. However, the nature of the seasonal adjustment process is such that the magnitude of some revisions resulting from each adjustment may be quite significant, especially towards the end of the series. For this reason additional care should be exercised when interpreting movements in seasonally adjusted data for recent months.

**14** The smoothing of seasonally adjusted series to create trend estimates is a means of reducing the impact of the irregular component of the series. The trend estimates of wine sales have been derived by applying a 13-term Henderson weighted moving average to the seasonally adjusted series.

**15** For further information, see *Information Paper: A Guide to Interpreting Time Series — Monitoring Trends* (cat. no. 1349.0) or contact the Director, Time Series Analysis on Canberra (02) 6252 5132.

### ACKNOWLEDGMENT

**16** ABS publications draw extensively on information provided freely by individuals, businesses, governments and other organisations. Their continued cooperation is very much appreciated: without it, the wide range of statistics published by the ABS would not be available. Information received by the ABS is treated in strict confidence as required by the *Census and Statistics Act 1905*.

### RELATED PUBLICATIONS

**17** Another ABS publication which may be of interest is the *Australian Wine and Grape Industry* (cat. no. 1329.0). This is a statistical compendium of Australia's wine and grape industries containing information on: area of vines and production of grapes by region; wine production and grapes crushed by region; structure of the wine manufacturing industries; stocks of wine held by winemakers at 30 June; domestic wine sales; exports and imports of wine; price indexes of grapes and wine; consumption of wine and world comparisons.

**18** Current publications and other products by the ABS are listed in the *Catalogue of Publications and Products* (cat. no. 1101.0). The Catalogue is available from any ABS office or the ABS web site <<http://www.abs.gov.au>>. The ABS also issues a daily Release Advice on the web site which details products to be released in the week ahead.

## GLOSSARY

---

<b>Carbonated wine</b>	Wine which has dissolved carbon dioxide and the carbon dioxide is added artificially to the wine.
<b>Domestic sales</b>	All sales of Australian produced wine by winemakers within the scope of the survey whether they be wholesale or retail sales, or bulk sales to other wineries outside of the scope of the survey. Excluded are inter-winery sales, sales to ships' stores and the volume of imported wine blended with Australian wine and sold domestically.
<b>Exports</b>	Exports of wine to overseas ports including sales made by exporters and wine producers.
<b>Fortified wine</b>	Wine to which grape spirit, brandy or both has been added, thereby adding alcoholic strength and precluding further fermentation. Fortified wine must contain at least 150 millilitres/litre and not more than 200 millilitres/litre of ethanol at 20° Centigrade.
<b>Grape spirit</b>	Spirit obtained from the distillation of wine or by-products of winemaking or the fermented liquor of a mash of dried grapes and contains methanol in a proportion not exceeding 3 grams per litre at 20° Centigrade of the ethanol content.
<b>Imports cleared for home consumption</b>	Imported goods brought into the country for consumption or further processing, but excluding goods imported with the reasonable expectation of re-export within a limited time.
<b>Other containers</b>	All other wine packaging except glass bottles containing less than 2 litres and soft packs. Included in this category are glass containers greater than 2 litres, cans and bulk wine in tankers or other such containers.
<b>Other wine products</b>	Products such as flavoured wine, cocktails, marsala, aperitif and tonic wines. De-alcoholised, low and reduced alcohol wines are also included.
<b>Soft packs</b>	A container type including all collapsible packs whether plastic or of other material.
<b>Sparkling</b>	A product consisting of wine that by complete or partial fermentation of contained sugars has become surcharged with carbon dioxide.
<b>Table wine</b>	A product of the complete or partial fermentation of fresh grapes or products derived solely from fresh grapes.
<b>Total other wine</b>	Includes fortified wines such as sherry, port, muscat, maderia, tokay and white port etc., sparkling wines both bottle and bulk fermented, carbonated wine, vermouth and other wine products such as flavoured wine, cocktails, marsala, aperitif and tonic wines, de-alcoholised and low or reduced alcohol wines.



## FOR MORE INFORMATION . . .

*INTERNET*      **www.abs.gov.au** the ABS web site is the best place for data from our publications and information about the ABS.

*LIBRARY*      A range of ABS publications are available from public and tertiary libraries Australia wide. Contact your nearest library to determine whether it has the ABS statistics you require, or visit our web site for a list of libraries.

## INFORMATION AND REFERRAL SERVICE

Our consultants can help you access the full range of information published by the ABS that is available free of charge from our web site, or purchase a hard copy publication. Information tailored to your needs can also be requested as a 'user pays' service. Specialists are on hand to help you with analytical or methodological advice.

*PHONE*                      1300 135 070

*EMAIL*                      [client.services@abs.gov.au](mailto:client.services@abs.gov.au)

*FAX*                              1300 135 211

*POST*                              Client Services, ABS, GPO Box 796, Sydney NSW 2001

## FREE ACCESS TO STATISTICS

All ABS statistics can be downloaded free of charge from the ABS web site.

*WEB ADDRESS*      [www.abs.gov.au](http://www.abs.gov.au)



2850400005062

ISSN 0819 0968

RRP \$23.00