

# LIVESTOCK PRODUCTS

AUSTRALIA

EMBARGO: 11:30AM (CANBERRA TIME) TUES 11 NOV 2003

## SEPTEMBER QTR KEY FIGURES

### TREND ESTIMATES

	Sep Qtr 2002 '000	Jun Qtr 2003 '000	Sep Qtr 2003 '000
Number slaughtered			
Cattle	2 047.6	1 952.7	1 894.8
Calves	278.6	285.2	263.0
Sheep	3 893.8	2 620.3	2 105.7
Lambs	4 260.5	4 067.0	3 916.5
Pigs	1 417.8	1 443.9	1 438.9
Chickens	107 313.1	104 432.5	105 490.0

	Sep Qtr 2002 tonnes	Jun Qtr 2003 tonnes	Sep Qtr 2003 tonnes
Meat produced			
Beef	524 726	487 944	475 680
Veal	8 937	9 501	9 090
Mutton	76 751	52 070	43 090
Lamb	83 689	80 762	78 764
Pig meat	102 968	106 013	105 555
Chicken meat	177 208	169 651	169 142
Wool receivals	139 622	105 634	102 175

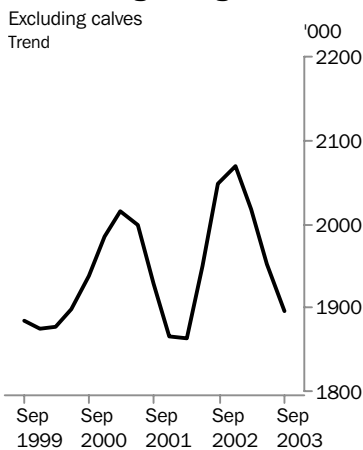
	Jun Qtr 2002 ML	Mar Qtr 2003 ML	Jun Qtr 2003 ML
Whole milk intake by factories	2 886	2 502	2 453

## SEPTEMBER QTR KEY POINTS

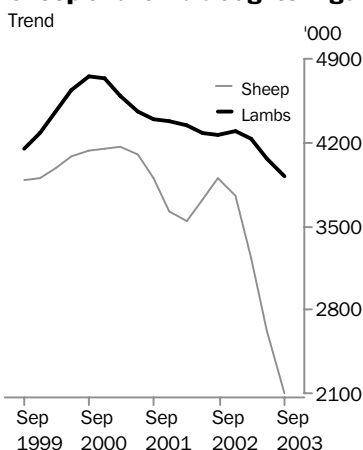
### TREND ESTIMATES

- The trend estimate for beef production for September quarter 2003 fell by 3% to 476,000 tonnes, the lowest quarterly estimate since March quarter 1998.
- In September quarter 2003, the trend estimate for the number of sheep slaughtered fell by 20% to 2.1 million, the lowest quarterly estimate since March quarter 1984.
- The trend estimate for the number of pigs slaughtered for September quarter 2003 dropped marginally to 1.4 million after 11 consecutive quarterly increases.

### Cattle slaughtering



### Sheep and lamb slaughtering



## INQUIRIES

- For further information about these and related statistics, contact Frank Costin on Hobart (03) 6222 5838, or the National Information and Referral Service on 1300 135 070.

# NOTES

## FORTHCOMING ISSUES

*ISSUE (Quarter)*

*RELEASE DATE*

December 2003

12 February 2004

March 2004

13 May 2004



## CHANGES IN THIS ISSUE

There are no changes in this issue.

## FORTHCOMING CHANGES

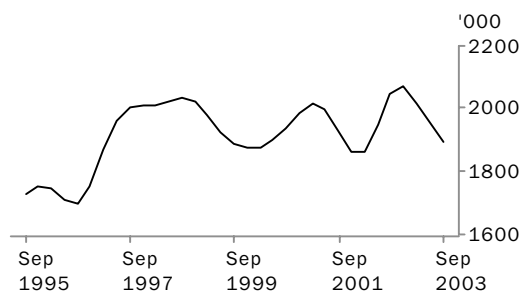
There are no forthcoming changes.



Dennis Trewin  
Australian Statistician

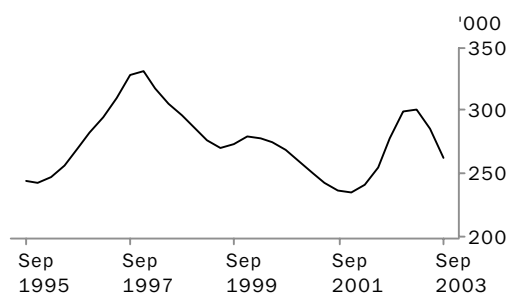
# LIVESTOCK SLAUGHTERED: Trend

## CATTLE (EXCLUDING CALVES)



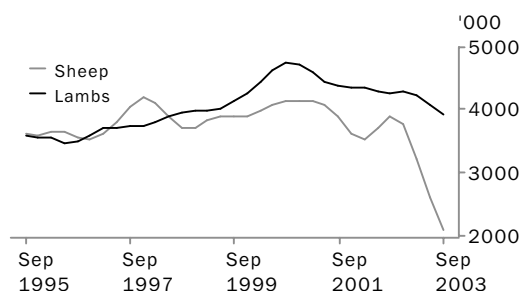
The trend estimate for the number of cattle slaughtered in September quarter 2003 fell by 3% to 1.9 million. Useful rains in some areas and falling feed grain prices have allowed producers to hold onto stock.

## CALVES



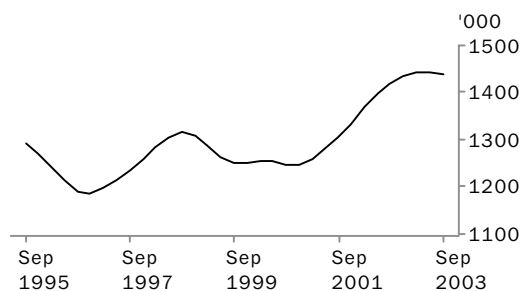
The trend estimate for the number of calves slaughtered in September quarter 2003 fell by 8% to 263,000, in line with the pattern of reduced turnoff for cattle.

## SHEEP AND LAMBS



Tight supply saw the trend estimate for sheep slaughtered in September quarter 2003 fall by 20% to 2.1 million, the lowest quarterly estimate since March 1984. The number of lambs slaughtered fell by 4% to 3.9 million, due to low numbers of new season lambs.

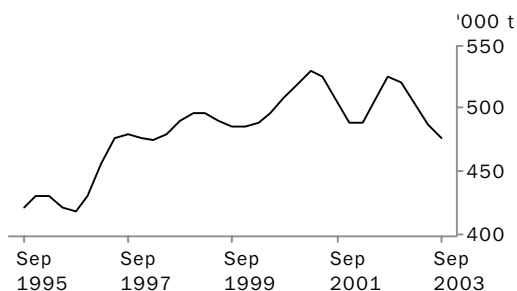
## PIGS



The trend estimate for the number of pigs slaughtered in September quarter 2003 dropped marginally to 1.4 million, after 11 consecutive quarterly increases.

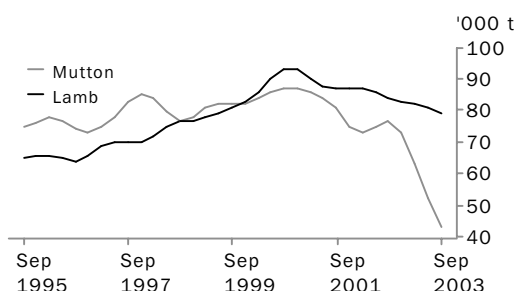
# MEAT PRODUCTION: Trend

## BEEF



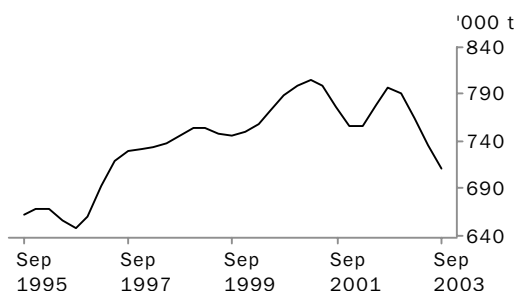
The trend estimate for beef production fell by 3% to 476,000 tonnes in September quarter 2003, in line with the change in cattle slaughter numbers.

## MUTTON AND LAMB



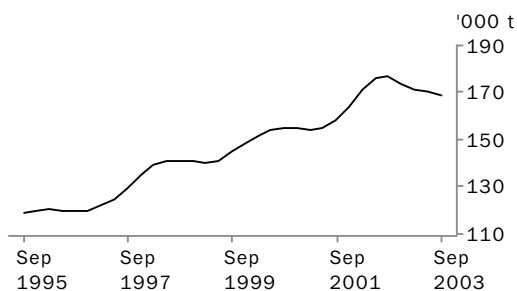
The trend estimate for mutton production fell by 17% to 43,100 tonnes, as sheep slaughterings continued to fall. The trend estimate for lamb production fell by 2% to 78,800 tonnes.

## TOTAL RED MEAT



The trend estimate for total red meat production fell by 3% to 712,000 tonnes in September quarter 2003. Decreases were reported for all categories of red meat.

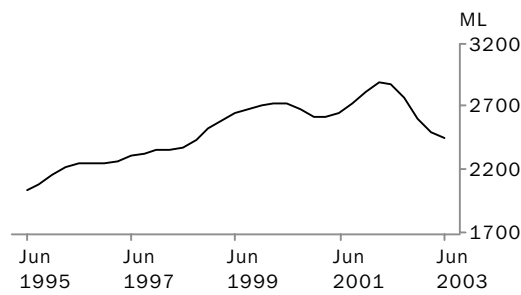
## CHICKEN MEAT



The trend estimate for chicken meat production in September quarter 2003 fell marginally to 169,000 tonnes. This was the fourth consecutive quarterly decrease after a long period of generally sustained growth.

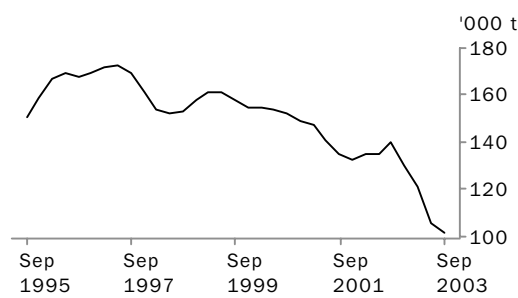
# LIVESTOCK PRODUCTS: Trend

WHOLE MILK INTAKE BY FACTORIES



The trend estimate for whole milk intake by factories fell by 2% to 2.5 billion litres in June quarter 2003, with the prolonged drought continuing to reduce milk production levels.

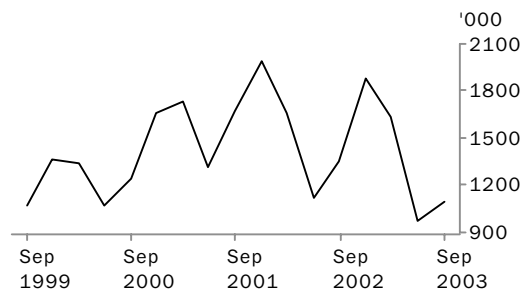
BROKERS AND DEALERS RECEIVALS OF TAXABLE WOOL



The trend estimates for wool receivals by brokers and dealers fell by 3% to 102,000 tonnes. The effects of the long drought, and reduced overseas demand continued to affect wool production levels.

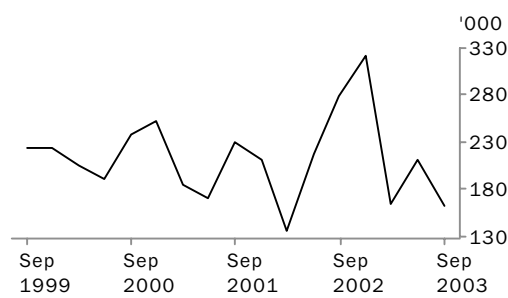
# LIVESTOCK EXPORTS: Original

## EXPORTS OF LIVE SHEEP



Live sheep exports increased by 13% to 1.1 million in September quarter 2003, with demand from Middle Eastern markets still strong. Gross value of live sheep exports increased to \$78.0 million. Unit value remained steady at \$71.38.

## EXPORTS OF LIVE CATTLE



Drought and oversupply in some Asian markets saw live cattle exports fall by 23% to 163,000 in September quarter 2003. The 10% decrease in unit value (to \$499.78), combined with the decline in export numbers, saw gross value of live cattle exports fall to \$81.6 million.

## LIVESTOCK SLAUGHTERED, Australia(a): All Series

Quarter	Bulls, bullocks and steers '000	Cows and heifers '000	Total cattle (excluding calves) '000	Calves '000	Sheep '000	Lambs '000	Pigs '000	Chickens '000
ORIGINAL								
<b>2002</b>								
June	1 038.0	1 049.9	2 087.9	236.4	3 234.1	4 349.9	1 462.0	107 212.4
September	1 056.0	1 021.6	2 077.7	538.1	3 692.6	4 040.0	1 439.5	105 278.6
December	1 065.2	1 017.1	2 082.3	189.1	4 078.8	4 438.8	1 393.7	108 860.1
<b>2003</b>								
March	941.4	950.5	1 891.9	157.6	3 614.5	4 307.7	1 408.4	103 360.2
June	943.7	1 087.2	2 030.9	261.0	2 271.4	4 083.3	1 500.1	101 682.1
September	951.2	997.9	1 949.1	486.7	1 902.5	3 658.6	1 437.9	105 746.9
SEASONALLY ADJUSTED								
<b>2002</b>								
June	1 038.4	955.0	1 993.4	255.0	3 584.8	4 302.9	1 406.6	108 634.5
September	1 018.2	1 003.0	2 021.2	277.5	4 109.2	4 187.7	1 432.3	106 748.1
December	1 037.1	1 093.0	2 130.1	294.4	3 786.8	4 308.9	1 396.9	105 706.9
<b>2003</b>								
March	997.8	991.2	1 989.0	319.8	3 264.9	4 333.4	1 474.8	103 693.6
June	950.8	996.0	1 946.8	281.2	2 516.1	4 029.3	1 443.0	102 999.6
September	917.1	978.7	1 895.8	251.8	2 091.2	3 816.9	1 421.9	107 362.1
TREND ESTIMATES								
<b>2002</b>								
June	1 001.2	949.0	1 950.2	255.7	3 714.1	4 285.2	1 397.1	107 683.2
September	1 031.6	1 016.0	2 047.6	278.6	3 893.8	4 260.5	1 417.8	107 313.1
December	1 027.5	1 042.3	2 069.8	299.5	3 761.3	4 293.2	1 434.1	105 304.5
<b>2003</b>								
March	994.1	1 024.0	2 018.1	300.5	3 232.9	4 222.3	1 442.6	104 171.0
June	957.1	995.6	1 952.7	285.2	2 620.3	4 067.0	1 443.9	104 432.5
September	925.0	969.8	1 894.8	263.0	2 105.7	3 916.5	1 438.9	105 490.0

(a) For more information refer to paragraphs 5 to 9 of the Explanatory Notes.

## LIVESTOCK PRODUCTS, Australia(a): All Series

## RED MEAT.....

Quarter	Beef	Veal	Mutton	Lamb	Pig meat	Total red meat	Chicken meat	Whole milk intake by factories	Brokers and dealers receipts of taxable wool
	tonnes	tonnes	tonnes	tonnes	tonnes	tonnes	tonnes	ML	tonnes
ORIGINAL									
<b>2002</b>									
June	541 710	8 336	63 379	88 842	107 563	809 830	176 257	2 072	97 519
September	534 915	15 146	73 819	77 861	105 343	807 084	175 634	2 582	156 296
December	527 190	5 526	81 076	84 944	100 008	798 744	178 450	3 615	161 385
<b>2003</b>									
March	473 184	8 594	69 589	85 222	102 714	739 303	171 463	2 349	113 419
June	499 323	8 953	43 734	81 381	111 490	744 881	164 280	1 781	71 921
September	489 378	12 836	39 910	72 929	106 120	721 174	169 979	n.y.a.	121 679
SEASONALLY ADJUSTED									
<b>2002</b>									
June	519 346	8 432	72 263	87 463	102 156	789 660	177 732	2 958	132 151
September	522 265	9 902	81 026	81 840	103 960	798 993	177 077	2 697	137 370
December	527 932	7 384	73 271	82 378	101 459	792 424	173 523	2 634	135 821
<b>2003</b>									
March	500 445	11 698	63 811	84 508	108 730	769 192	173 093	2 445	119 985
June	483 961	9 055	49 830	80 384	105 939	729 169	165 999	2 481	99 588
September	477 688	8 410	43 247	77 284	103 983	710 612	171 723	n.y.a.	106 785
TREND									
<b>2002</b>									
June	507 611	8 517	74 742	85 665	101 428	777 963	175 920	2 886	135 269
September	524 726	8 937	76 751	83 689	102 968	797 071	177 208	2 765	139 622
December	520 785	9 444	73 234	83 102	104 614	791 179	174 478	2 605	129 883
<b>2003</b>									
March	504 075	9 689	63 153	82 294	105 735	764 946	171 362	2 502	120 567
June	487 944	9 501	52 070	80 762	106 013	736 290	169 651	2 453	105 634
September	475 680	9 090	43 090	78 764	105 555	712 179	169 142	n.y.a.	102 175

(a) For more information refer to paragraphs 5 to 9 and 13 to 15 of the Explanatory Notes.



NUMBER OF LIVESTOCK SLAUGHTERED(a), Bulls, Bullocks and Steers: All Series

	<i>New South Wales</i>	<i>Victoria</i>	<i>Queensland</i>	<i>South Australia</i>	<i>Western Australia</i>	<i>Tasmania</i>	<i>Australia</i>
<i>Quarter</i>	'000	'000	'000	'000	'000	'000	'000
ORIGINAL							
<b>2002</b>							
June	216.5	150.1	566.0	47.4	36.9	20.9	1 038.0
September	233.1	135.2	591.1	38.1	39.0	19.2	1 056.0
December	261.8	168.4	517.5	42.9	55.5	18.9	1 065.2
<b>2003</b>							
March	247.8	172.1	408.4	46.6	43.0	23.2	941.4
June	218.9	154.3	476.8	38.9	36.0	18.6	943.7
September	180.7	137.5	547.3	31.8	40.6	13.1	951.2
SEASONALLY ADJUSTED							
<b>2002</b>							
June	218.0	158.1	557.9	49.1	41.1	20.2	1 038.4
September	230.7	154.7	518.7	44.3	42.1	22.5	1 018.2
December	263.7	157.4	515.0	40.4	45.4	20.1	1 037.1
<b>2003</b>							
March	242.1	157.6	485.9	41.9	45.1	19.7	997.8
June	224.7	162.2	470.3	40.2	40.1	18.1	950.8
September	179.0	156.1	478.8	37.1	42.5	15.4	917.1
TREND ESTIMATES							
<b>2002</b>							
June	218.7	156.5	519.0	46.9	39.4	20.8	1 001.2
September	238.6	155.8	527.2	44.9	43.4	21.2	1 031.6
December	251.1	157.2	512.1	42.3	44.5	20.9	1 027.5
<b>2003</b>							
March	242.6	158.5	489.1	40.8	43.8	19.5	994.1
June	219.1	159.2	477.8	39.6	42.5	17.7	957.1
September	190.4	158.6	471.1	38.4	41.3	16.3	925.0

(a) For more information refer to paragraph 4 of the Explanatory Notes.

## NUMBER OF LIVESTOCK SLAUGHTERED(a), Cows and Heifers: All Series

	<i>New South Wales</i>	<i>Victoria</i>	<i>Queensland</i>	<i>South Australia</i>	<i>Western Australia</i>	<i>Tasmania</i>	<i>Australia</i>
<i>Quarter</i>	'000	'000	'000	'000	'000	'000	'000
ORIGINAL							
<b>2002</b>							
June	281.0	216.9	424.9	41.6	53.9	30.4	1 049.9
September	246.6	249.0	412.6	41.9	56.7	13.8	1 021.6
December	249.1	267.4	352.0	50.5	68.8	28.3	1 017.1
<b>2003</b>							
March	238.2	247.7	308.9	49.2	71.5	33.9	950.5
June	235.1	256.4	448.0	50.9	58.9	36.8	1 087.2
September	219.2	220.4	437.5	32.5	61.7	25.6	997.9
SEASONALLY ADJUSTED							
<b>2002</b>							
June	262.6	217.0	364.3	39.4	58.2	25.0	955.0
September	257.0	257.8	377.5	45.1	58.6	18.8	1 003.0
December	253.1	263.1	400.8	52.1	65.0	30.0	1 093.0
<b>2003</b>							
March	245.7	243.1	359.0	47.0	68.3	30.6	991.2
June	218.7	256.9	383.7	48.3	63.5	30.3	996.0
September	222.9	227.6	399.7	35.1	63.8	35.0	978.7
TREND ESTIMATES							
<b>2002</b>							
June	255.3	222.2	355.9	40.6	57.4	20.1	949.0
September	258.5	246.7	380.6	45.5	61.0	23.7	1 016.0
December	253.2	258.9	382.9	49.4	64.1	27.2	1 042.3
<b>2003</b>							
March	240.2	254.3	379.5	48.7	65.8	29.9	1 024.0
June	228.2	244.9	382.4	44.6	65.3	32.3	995.6
September	218.4	236.4	389.6	39.7	63.9	33.4	969.8

(a) For more information refer to paragraph 4 of the Explanatory Notes.

## NUMBER OF LIVESTOCK SLAUGHTERED(a), Total Cattle (excluding Calves): All Series

	<i>New South Wales</i>	<i>Victoria</i>	<i>Queensland</i>	<i>South Australia</i>	<i>Western Australia</i>	<i>Tasmania</i>	<i>Australia</i>
<i>Quarter</i>	'000	'000	'000	'000	'000	'000	'000
ORIGINAL							
<b>2002</b>							
June	497.5	367.0	990.9	88.9	90.8	51.3	2 087.9
September	479.7	384.2	1 003.7	80.1	95.7	32.9	2 077.7
December	510.9	435.7	869.5	93.4	124.3	47.2	2 082.3
<b>2003</b>							
March	486.0	419.8	717.3	95.8	114.5	57.2	1 891.9
June	453.9	410.7	924.8	89.8	94.8	55.5	2 030.9
September	399.8	357.8	984.8	64.3	102.2	38.7	1 949.1
SEASONALLY ADJUSTED							
<b>2002</b>							
June	480.6	375.1	922.2	88.5	99.3	45.3	1 993.4
September	487.8	412.5	896.2	89.4	100.6	41.3	2 021.2
December	516.8	420.5	915.8	92.4	110.4	50.2	2 130.1
<b>2003</b>							
March	487.8	400.7	844.9	88.9	113.4	50.3	1 989.0
June	443.5	419.1	854.0	88.6	103.5	48.4	1 946.8
September	401.9	383.6	878.5	72.2	106.3	50.4	1 895.8
TREND ESTIMATES							
<b>2002</b>							
June	473.9	378.7	874.9	87.5	96.8	40.9	1 950.2
September	497.1	402.5	907.8	90.3	104.5	44.9	2 047.6
December	504.2	416.1	895.0	91.7	108.6	48.1	2 069.8
<b>2003</b>							
March	482.8	412.8	868.6	89.5	109.5	49.4	2 018.1
June	447.3	404.1	860.1	84.2	107.8	50.0	1 952.7
September	408.8	395.0	860.8	78.2	105.3	49.7	1 894.8

(a) For more information refer to paragraph 4 of the Explanatory Notes.

## NUMBER OF LIVESTOCK SLAUGHTERED(a), Calves: All Series

	<i>New South Wales</i>	<i>Victoria</i>	<i>Queensland</i>	<i>South Australia</i>	<i>Western Australia</i>	<i>Tasmania</i>	<i>Australia</i>
<i>Quarter</i>	'000	'000	'000	'000	'000	'000	'000
ORIGINAL							
<b>2002</b>							
June	63.2	139.6	27.5	2.8	1.2	1.9	236.4
September	66.2	413.4	23.2	3.3	1.3	30.4	538.1
December	30.1	127.1	21.1	2.4	1.4	6.8	189.1
<b>2003</b>							
March	83.4	44.5	24.7	2.4	1.3	1.1	157.6
June	66.4	164.2	23.0	2.9	1.3	2.9	261.0
September	63.1	362.9	23.4	2.2	1.3	33.7	486.7
SEASONALLY ADJUSTED							
<b>2002</b>							
June	57.5	156.3	25.6	2.4	1.2	7.5	255.0
September	68.1	175.2	23.0	2.7	1.3	9.7	277.5
December	35.1	231.3	23.4	3.2	1.3	12.2	294.4
<b>2003</b>							
March	77.8	223.4	24.3	2.7	1.3	16.7	319.8
June	60.4	183.5	21.5	2.6	1.4	11.7	281.2
September	65.0	154.7	23.2	1.9	1.2	10.8	251.8
TREND ESTIMATES							
<b>2002</b>							
June	56.9	163.0	24.5	2.6	1.3	7.8	255.7
September	56.8	189.3	24.2	2.8	1.3	9.9	278.6
December	57.3	214.0	23.5	2.9	1.3	12.9	299.5
<b>2003</b>							
March	60.7	213.1	23.1	2.8	1.3	13.9	300.5
June	64.8	190.5	22.8	2.4	1.3	13.0	285.2
September	68.5	162.5	22.5	2.0	1.3	11.5	263.0

(a) For more information refer to paragraph 4 of the Explanatory Notes.

## NUMBER OF LIVESTOCK SLAUGHTERED(a), Sheep: All Series

	<i>New South Wales</i>	<i>Victoria</i>	<i>Queensland</i>	<i>South Australia</i>	<i>Western Australia</i>	<i>Tasmania</i>	<i>Australia</i>
<i>Quarter</i>	'000	'000	'000	'000	'000	'000	'000
ORIGINAL							
<b>2002</b>							
June	1 323.0	814.5	366.5	333.8	317.7	78.6	3 234.1
September	1 594.5	876.7	345.0	429.2	394.3	53.0	3 692.6
December	1 636.0	1 111.9	300.7	463.5	496.3	70.4	4 078.8
<b>2003</b>							
March	1 236.8	1 009.9	269.3	359.2	590.8	148.6	3 614.5
June	814.9	642.7	227.0	180.0	290.5	116.3	2 271.4
September	673.3	541.6	156.5	185.2	274.7	71.3	1 902.5
SEASONALLY ADJUSTED							
<b>2002</b>							
June	1 423.4	920.5	346.1	408.1	417.7	73.8	3 584.8
September	1 627.2	1 021.0	348.9	489.0	437.6	86.6	4 109.2
December	1 560.7	1 008.6	315.7	415.1	436.2	73.8	3 786.8
<b>2003</b>							
March	1 186.1	875.1	269.6	303.1	490.2	105.7	3 264.9
June	878.5	726.6	213.9	220.5	385.7	113.1	2 516.1
September	686.0	630.4	158.6	208.2	303.4	116.2	2 091.2
TREND ESTIMATES							
<b>2002</b>							
June	1 492.3	960.3	345.6	415.7	423.6	69.9	3 714.1
September	1 563.6	993.7	342.5	450.3	434.6	77.3	3 893.8
December	1 483.5	978.0	315.8	409.0	455.5	87.9	3 761.3
<b>2003</b>							
March	1 220.8	876.5	267.7	319.3	442.2	98.8	3 232.9
June	921.9	746.8	214.6	240.8	393.8	110.6	2 620.3
September	674.1	632.9	166.9	189.6	332.5	119.6	2 105.7

(a) For more information refer to paragraph 4 of the Explanatory Notes.

## NUMBER OF LIVESTOCK SLAUGHTERED(a), Lambs: All Series

	<i>New South Wales</i>	<i>Victoria</i>	<i>Queensland</i>	<i>South Australia</i>	<i>Western Australia</i>	<i>Tasmania</i>	<i>Australia</i>
<i>Quarter</i>	'000	'000	'000	'000	'000	'000	'000
ORIGINAL							
<b>2002</b>							
June	1 163.2	1 717.2	104.8	775.4	478.6	110.6	4 349.9
September	1 145.0	1 688.3	111.9	558.9	437.1	98.9	4 040.0
December	1 103.8	1 891.1	71.2	734.6	547.2	91.0	4 438.8
<b>2003</b>							
March	1 102.5	1 685.8	81.8	820.1	521.8	95.7	4 307.7
June	1 037.5	1 639.6	75.3	727.6	514.9	88.4	4 083.3
September	903.5	1 478.3	96.1	574.2	501.0	105.5	3 658.6
SEASONALLY ADJUSTED							
<b>2002</b>							
June	1 140.5	1 759.8	104.7	712.9	475.3	116.2	4 302.9
September	1 140.0	1 739.0	97.1	625.5	483.1	92.4	4 187.7
December	1 124.5	1 757.7	78.5	733.9	498.6	94.3	4 308.9
<b>2003</b>							
March	1 100.3	1 715.4	87.6	803.1	525.8	94.5	4 333.4
June	1 024.6	1 686.0	75.0	669.0	512.1	93.0	4 029.3
September	900.8	1 528.5	83.0	648.6	553.6	98.4	3 816.9
TREND ESTIMATES							
<b>2002</b>							
June	1 158.2	1 750.4	103.0	707.6	463.8	102.7	4 285.2
September	1 141.0	1 749.3	91.9	686.9	482.0	99.5	4 260.5
December	1 126.9	1 750.8	85.2	721.0	502.6	94.7	4 293.2
<b>2003</b>							
March	1 082.4	1 714.8	81.4	736.0	514.4	93.0	4 222.3
June	1 011.9	1 651.7	80.1	708.9	528.6	95.1	4 067.0
September	949.4	1 584.6	80.6	659.0	540.2	96.3	3 916.5

(a) For more information refer to paragraph 4 of the Explanatory Notes.

## NUMBER OF LIVESTOCK SLAUGHTERED(a), Pigs: All Series

	<i>New South Wales</i>	<i>Victoria</i>	<i>Queensland</i>	<i>South Australia</i>	<i>Western Australia</i>	<i>Tasmania</i>	<i>Australia</i>
<i>Quarter</i>	'000	'000	'000	'000	'000	'000	'000
ORIGINAL							
<b>2002</b>							
June	492.3	252.0	313.3	224.5	164.7	13.3	1 462.0
September	473.0	258.3	307.0	220.6	166.3	12.1	1 439.5
December	470.5	261.2	280.5	208.0	158.4	13.0	1 393.7
<b>2003</b>							
March	441.5	244.4	317.8	220.3	171.3	11.1	1 408.4
June	475.7	269.4	329.5	235.2	176.4	11.6	1 500.1
September	453.9	248.0	335.7	215.8	170.6	11.6	1 437.9
SEASONALLY ADJUSTED							
<b>2002</b>							
June	481.1	243.6	299.6	207.0	156.6	12.3	1 406.6
September	462.5	259.7	310.8	225.4	165.8	12.2	1 432.3
December	468.5	257.3	279.6	226.6	165.3	13.1	1 396.9
<b>2003</b>							
March	464.8	256.0	328.8	215.9	174.0	11.8	1 474.8
June	463.8	261.1	315.5	219.6	167.9	10.8	1 443.0
September	442.0	245.9	341.7	218.0	170.7	11.8	1 421.9
TREND ESTIMATES							
<b>2002</b>							
June	473.6	251.1	296.5	204.8	156.0	12.4	1 397.1
September	470.3	252.2	299.8	221.6	163.3	12.4	1 417.8
December	467.4	258.1	302.4	224.9	168.4	12.4	1 434.1
<b>2003</b>							
March	464.3	258.3	311.3	221.0	169.9	11.9	1 442.6
June	458.3	255.1	324.8	218.2	170.4	11.5	1 443.9
September	449.0	251.2	339.0	217.2	170.7	11.2	1 438.9

(a) For more information refer to paragraph 4 of the Explanatory Notes.

## NUMBER OF CHICKENS SLAUGHTERED(a): All Series

	<i>New South Wales</i>	<i>Victoria</i>	<i>Queensland</i>	<i>South Australia</i>	<i>Western Australia</i>	<i>Australia</i>
<i>Quarter</i>	'000	'000	'000	'000	'000	'000
ORIGINAL						
<b>2002</b>						
June	39 955.7	29 041.4	18 676.1	n.p.	n.p.	107 212.4
September	39 172.0	28 625.5	18 477.3	n.p.	n.p.	105 278.6
December	38 943.3	30 632.3	19 686.2	n.p.	n.p.	108 860.1
<b>2003</b>						
March	36 188.5	29 496.2	18 703.4	n.p.	n.p.	103 360.2
June	35 613.2	29 138.0	18 282.3	n.p.	n.p.	101 682.1
September	38 377.1	29 312.9	19 209.3	n.p.	n.p.	105 746.9
SEASONALLY ADJUSTED						
<b>2002</b>						
June	40 473.5	29 263.2	18 941.1	n.p.	n.p.	108 634.5
September	39 275.6	29 251.2	19 044.5	n.p.	n.p.	106 748.1
December	38 423.2	29 353.1	18 873.9	n.p.	n.p.	105 706.9
<b>2003</b>						
March	36 209.2	29 840.2	18 698.8	n.p.	n.p.	103 693.6
June	36 063.8	29 365.3	18 528.7	n.p.	n.p.	102 999.6
September	38 651.8	29 876.6	19 804.9	n.p.	n.p.	107 362.1
TREND ESTIMATES						
<b>2002</b>						
June	40 218.6	28 913.6	18 765.8	n.p.	n.p.	107 683.2
September	39 501.9	29 373.6	19 012.3	n.p.	n.p.	107 313.1
December	37 882.8	29 516.5	18 850.5	n.p.	n.p.	105 304.5
<b>2003</b>						
March	36 893.6	29 558.0	18 740.4	n.p.	n.p.	104 171.0
June	36 836.7	29 654.3	18 937.3	n.p.	n.p.	104 432.5
September	37 408.6	29 736.8	19 321.0	n.p.	n.p.	105 490.0

(a) For more information refer to paragraphs 8 and 9 of the Explanatory Notes.



## NUMBER OF LIVESTOCK SLAUGHTERED(a): Original

<i>Financial year</i>	<i>New South Wales</i>	<i>Victoria</i>	<i>Queensland</i>	<i>South Australia</i>	<i>Western Australia</i>	<i>Tasmania</i>	<i>Australia</i>
	'000	'000	'000	'000	'000	'000	'000
<b>BULLS, BULLOCKS AND STEERS</b>							
<b>2000-01</b>	767.1	632.0	2 266.6	179.7	187.0	90.2	<b>4 126.9</b>
<b>2001-02</b>	820.5	630.6	2 150.0	182.0	137.7	80.6	<b>4 002.4</b>
<b>2002-03</b>	961.6	630.0	1 993.7	166.6	173.4	79.9	<b>4 006.3</b>
<b>COWS AND HEIFERS</b>							
<b>2000-01</b>	1 060.8	891.9	1 390.1	137.0	228.4	94.2	<b>3 813.8</b>
<b>2001-02</b>	992.1	800.6	1 364.2	150.6	230.6	79.4	<b>3 621.7</b>
<b>2002-03</b>	968.9	1 020.5	1 521.6	192.5	255.9	112.9	<b>4 076.4</b>
<b>TOTAL CATTLE (excluding calves)</b>							
<b>2000-01</b>	1 827.9	1 523.9	3 656.6	316.7	415.4	184.4	<b>7 940.7</b>
<b>2001-02</b>	1 812.6	1 431.1	3 514.1	332.6	368.3	160.0	<b>7 624.1</b>
<b>2002-03</b>	1 930.5	1 650.4	3 515.2	359.1	429.3	192.8	<b>8 082.7</b>
<b>CALVES</b>							
<b>2000-01</b>	226.0	608.9	135.1	11.6	5.6	49.7	<b>1 037.5</b>
<b>2001-02</b>	205.7	597.0	99.7	9.6	6.0	44.6	<b>963.3</b>
<b>2002-03</b>	246.1	749.3	92.1	11.0	5.3	41.2	<b>1 145.8</b>
<b>SHEEP</b>							
<b>2000-01</b>	5 857.6	4 193.3	1 489.2	1 488.2	3 235.0	364.7	<b>16 628.0</b>
<b>2001-02</b>	5 712.7	3 819.5	1 334.0	1 337.7	1 961.3	275.8	<b>14 441.0</b>
<b>2002-03</b>	5 282.2	3 641.2	1 142.0	1 431.8	1 771.8	388.3	<b>13 657.3</b>
<b>LAMBS</b>							
<b>2000-01</b>	4 203.2	8 090.0	1 024.1	2 875.1	2 020.0	416.1	<b>18 628.5</b>
<b>2001-02</b>	4 558.8	6 997.4	627.6	2 933.4	1 856.6	426.4	<b>17 400.2</b>
<b>2002-03</b>	4 388.8	6 904.8	340.3	2 841.1	2 021.0	374.0	<b>16 869.8</b>
<b>PIGS</b>							
<b>2000-01</b>	1 739.5	1 065.6	1 078.4	525.7	542.6	57.6	<b>5 016.3</b>
<b>2001-02</b>	1 885.0	1 042.1	1 133.7	690.0	591.4	53.1	<b>5 402.4</b>
<b>2002-03</b>	1 860.6	1 033.2	1 234.8	884.1	672.3	47.7	<b>5 741.7</b>
<b>CHICKENS</b>							
<b>2000-01</b>	151 686.8	104 080.0	68 002.0	n.p.	n.p.	n.p.	<b>398 868.6</b>
<b>2001-02</b>	156 682.0	109 311.2	70 940.6	n.p.	n.p.	n.p.	<b>415 555.6</b>
<b>2002-03</b>	149 917.0	117 892.0	75 149.3	n.p.	n.p.	n.p.	<b>419 181.0</b>

(a) For more information refer to paragraphs 4, 5 and 7 to 9 of the Explanatory Notes.

## RED MEAT PRODUCED(a), Beef: All Series

	<i>New South Wales</i>	<i>Victoria</i>	<i>Queensland</i>	<i>South Australia</i>	<i>Western Australia</i>	<i>Tasmania</i>	<i>Australia</i>
<i>Quarter</i>	<i>tonnes</i>	<i>tonnes</i>	<i>tonnes</i>	<i>tonnes</i>	<i>tonnes</i>	<i>tonnes</i>	<i>tonnes</i>
ORIGINAL							
<b>2002</b>							
June	126 511	86 931	269 953	22 539	21 774	13 706	<b>541 710</b>
September	121 725	87 609	274 019	19 663	23 061	8 553	<b>534 915</b>
December	125 017	98 065	236 320	23 357	31 301	12 850	<b>527 190</b>
<b>2003</b>							
March	116 215	94 683	194 376	23 930	28 061	15 644	<b>473 184</b>
June	108 541	89 867	242 235	21 413	22 650	14 328	<b>499 323</b>
September	95 483	80 324	262 870	15 611	24 687	10 120	<b>489 378</b>
SEASONALLY ADJUSTED							
<b>2002</b>							
June	120 569	90 143	253 444	22 730	24 516	12 307	<b>519 346</b>
September	124 873	94 307	243 549	22 592	24 632	11 285	<b>522 265</b>
December	127 195	93 735	245 638	22 425	26 370	13 124	<b>527 932</b>
<b>2003</b>							
March	115 006	89 343	229 846	21 792	28 467	13 556	<b>500 445</b>
June	105 117	93 174	227 168	21 606	25 485	12 927	<b>483 961</b>
September	98 074	86 332	233 118	17 984	25 400	13 365	<b>477 688</b>
TREND ESTIMATES							
<b>2002</b>							
June	120 756	89 634	240 294	22 406	23 646	11 198	<b>507 611</b>
September	125 135	92 680	246 949	22 674	25 491	12 121	<b>524 726</b>
December	123 666	93 393	241 849	22 559	26 589	12 832	<b>520 785</b>
<b>2003</b>							
March	115 901	91 852	233 702	21 843	26 910	13 164	<b>504 075</b>
June	106 460	90 079	230 032	20 632	26 435	13 329	<b>487 944</b>
September	98 640	88 588	228 468	19 322	25 567	13 230	<b>475 680</b>

(a) For more information refer to paragraphs 4 to 6 of the Explanatory Notes.

## RED MEAT PRODUCED(a), Veal: All Series

	<i>New South Wales</i>	<i>Victoria</i>	<i>Queensland</i>	<i>South Australia</i>	<i>Western Australia</i>	<i>Tasmania</i>	<i>Australia</i>
<i>Quarter</i>	<i>tonnes</i>	<i>tonnes</i>	<i>tonnes</i>	<i>tonnes</i>	<i>tonnes</i>	<i>tonnes</i>	<i>tonnes</i>
ORIGINAL							
<b>2002</b>							
June	4 072	2 742	1 315	77	71	46	8 336
September	4 228	9 076	1 063	92	84	590	15 146
December	1 749	2 590	893	76	69	138	5 526
<b>2003</b>							
March	6 233	1 003	1 160	85	71	30	8 594
June	4 283	3 339	1 087	88	77	67	8 953
September	3 775	7 079	1 168	69	80	653	12 836
SEASONALLY ADJUSTED							
<b>2002</b>							
June	3 652	3 084	1 252	70	75	160	8 432
September	4 453	3 902	1 062	81	79	196	9 902
December	2 040	4 633	1 008	95	66	231	7 384
<b>2003</b>							
March	5 762	4 428	1 089	88	74	303	11 698
June	3 851	3 735	1 039	80	82	235	9 055
September	3 982	3 066	1 160	61	75	216	8 410
TREND ESTIMATES							
<b>2002</b>							
June	3 577	3 622	1 171	75	79	166	8 517
September	3 651	3 971	1 111	83	73	196	8 937
December	3 851	4 343	1 043	90	72	243	9 444
<b>2003</b>							
March	4 136	4 293	1 045	88	74	261	9 689
June	4 304	3 797	1 085	78	77	252	9 501
September	4 356	3 291	1 127	67	79	230	9 090

(a) For more information refer to paragraphs 4 to 6 of the Explanatory Notes.

## RED MEAT PRODUCED(a), Mutton: All Series

	<i>New South Wales</i>	<i>Victoria</i>	<i>Queensland</i>	<i>South Australia</i>	<i>Western Australia</i>	<i>Tasmania</i>	<i>Australia</i>
<i>Quarter</i>	<i>tonnes</i>	<i>tonnes</i>	<i>tonnes</i>	<i>tonnes</i>	<i>tonnes</i>	<i>tonnes</i>	<i>tonnes</i>
ORIGINAL							
<b>2002</b>							
June	26 557	15 324	6 800	6 936	6 255	1 505	63 379
September	33 082	16 277	6 185	9 351	7 912	1 011	73 819
December	32 791	21 198	5 662	10 073	9 981	1 371	81 076
<b>2003</b>							
March	24 143	18 676	4 623	7 521	11 740	2 885	69 589
June	16 090	11 400	4 271	3 948	5 797	2 227	43 734
September	14 676	10 475	3 231	4 527	5 619	1 382	39 910
SEASONALLY ADJUSTED							
<b>2002</b>							
June	29 312	17 940	6 402	8 951	8 319	1 428	72 263
September	33 011	18 696	6 386	10 438	8 748	1 672	81 026
December	30 746	18 486	5 827	8 650	8 662	1 442	73 271
<b>2003</b>							
March	23 542	16 548	4 637	6 475	9 821	2 030	63 811
June	17 788	13 353	4 013	5 104	7 787	2 178	49 830
September	14 625	12 027	3 344	4 986	6 179	2 274	43 247
TREND ESTIMATES							
<b>2002</b>							
June	30 866	18 339	6 485	9 112	8 470	1 355	74 742
September	31 482	18 563	6 300	9 593	8 662	1 495	76 751
December	29 471	18 038	5 676	8 622	9 078	1 698	73 234
<b>2003</b>							
March	24 282	16 242	4 824	6 864	8 852	1 909	63 153
June	18 678	13 987	4 006	5 443	7 936	2 141	52 070
September	14 220	11 963	3 408	4 599	6 830	2 304	43 090

(a) For more information refer to paragraphs 4 to 6 of the Explanatory Notes.

## RED MEAT PRODUCED(a), Lamb: All Series

	<i>New South Wales</i>	<i>Victoria</i>	<i>Queensland</i>	<i>South Australia</i>	<i>Western Australia</i>	<i>Tasmania</i>	<i>Australia</i>
<i>Quarter</i>	<i>tonnes</i>	<i>tonnes</i>	<i>tonnes</i>	<i>tonnes</i>	<i>tonnes</i>	<i>tonnes</i>	<i>tonnes</i>
ORIGINAL							
<b>2002</b>							
June	23 514	33 997	2 024	17 732	9 366	2 209	<b>88 842</b>
September	22 126	31 844	2 076	11 493	8 326	1 996	<b>77 861</b>
December	21 230	35 157	1 294	14 864	10 581	1 817	<b>84 944</b>
<b>2003</b>							
March	21 559	32 005	1 474	17 947	10 365	1 871	<b>85 222</b>
June	20 389	31 693	1 439	15 809	10 296	1 755	<b>81 381</b>
September	17 773	28 863	1 843	12 379	9 935	2 136	<b>72 929</b>
SEASONALLY ADJUSTED							
<b>2002</b>							
June	22 913	34 167	2 023	15 947	9 180	2 298	<b>87 463</b>
September	22 110	32 823	1 768	13 326	9 292	1 892	<b>81 840</b>
December	21 774	33 287	1 462	14 900	9 688	1 881	<b>82 378</b>
<b>2003</b>							
March	21 474	32 501	1 569	17 403	10 442	1 836	<b>84 508</b>
June	19 969	31 953	1 432	14 218	10 100	1 833	<b>80 384</b>
September	17 790	29 926	1 590	14 502	11 095	2 015	<b>77 284</b>
TREND ESTIMATES							
<b>2002</b>							
June	22 990	33 819	1 945	15 540	8 964	2 049	<b>85 665</b>
September	22 359	33 329	1 707	14 690	9 319	1 998	<b>83 689</b>
December	21 872	33 058	1 561	15 106	9 788	1 885	<b>83 102</b>
<b>2003</b>							
March	21 045	32 459	1 495	15 556	10 129	1 836	<b>82 294</b>
June	19 798	31 575	1 502	15 322	10 498	1 886	<b>80 762</b>
September	18 577	30 683	1 539	14 605	10 783	1 939	<b>78 764</b>

(a) For more information refer to paragraphs 4 to 6 of the Explanatory Notes.

## RED MEAT PRODUCED(a), Pig Meat: All Series

	<i>New South Wales</i>	<i>Victoria</i>	<i>Queensland</i>	<i>South Australia</i>	<i>Western Australia</i>	<i>Tasmania</i>	<i>Australia</i>
<i>Quarter</i>	<i>tonnes</i>	<i>tonnes</i>	<i>tonnes</i>	<i>tonnes</i>	<i>tonnes</i>	<i>tonnes</i>	<i>tonnes</i>
ORIGINAL							
<b>2002</b>							
June	37 888	17 630	24 194	15 718	11 267	773	<b>107 563</b>
September	35 465	18 302	23 922	15 531	11 311	701	<b>105 343</b>
December	35 048	17 961	20 743	14 865	10 557	730	<b>100 008</b>
<b>2003</b>							
March	33 017	16 819	24 247	16 345	11 563	626	<b>102 714</b>
June	36 716	19 023	25 522	17 405	12 058	659	<b>111 490</b>
September	34 471	17 848	26 157	15 415	11 465	656	<b>106 120</b>
SEASONALLY ADJUSTED							
<b>2002</b>							
June	36 299	16 968	22 850	14 262	10 687	711	<b>102 156</b>
September	34 691	18 501	23 695	15 834	11 024	702	<b>103 960</b>
December	35 289	17 661	21 139	16 385	11 162	737	<b>101 459</b>
<b>2003</b>							
March	35 225	17 820	25 406	16 012	11 915	673	<b>108 730</b>
June	35 113	18 360	24 130	16 116	11 420	607	<b>105 939</b>
September	33 416	17 659	26 138	15 588	11 257	668	<b>103 983</b>
TREND ESTIMATES							
<b>2002</b>							
June	35 664	17 620	22 509	14 261	10 541	720	<b>101 428</b>
September	35 351	17 662	22 806	15 628	11 013	711	<b>102 968</b>
December	35 219	17 954	23 100	16 248	11 392	703	<b>104 614</b>
<b>2003</b>							
March	35 096	17 994	23 843	16 200	11 543	674	<b>105 735</b>
June	34 697	17 952	24 906	15 966	11 522	647	<b>106 013</b>
September	33 990	17 970	25 892	15 739	11 391	636	<b>105 555</b>

(a) For more information refer to paragraphs 4 to 6 of the Explanatory Notes.

## TOTAL RED MEAT PRODUCED(a): All Series

	<i>New South Wales</i>	<i>Victoria</i>	<i>Queensland</i>	<i>South Australia</i>	<i>Western Australia</i>	<i>Tasmania</i>	<i>Australia</i>
<i>Quarter</i>	<i>tonnes</i>	<i>tonnes</i>	<i>tonnes</i>	<i>tonnes</i>	<i>tonnes</i>	<i>tonnes</i>	<i>tonnes</i>
ORIGINAL							
<b>2002</b>							
June	218 544	156 625	304 287	63 002	48 733	18 239	<b>809 830</b>
September	216 626	163 108	307 264	56 131	50 694	12 852	<b>807 084</b>
December	215 835	174 970	264 912	63 235	62 490	16 905	<b>798 744</b>
<b>2003</b>							
March	201 167	163 185	225 880	65 829	61 801	21 057	<b>739 303</b>
June	186 019	155 321	274 554	58 663	50 878	19 037	<b>744 881</b>
September	166 179	144 589	295 269	48 001	51 786	14 947	<b>721 174</b>
SEASONALLY ADJUSTED							
<b>2002</b>							
June	212 745	162 302	285 971	61 960	52 777	16 904	<b>789 660</b>
September	219 138	168 229	276 460	62 271	53 775	15 747	<b>798 993</b>
December	217 044	167 802	275 074	62 455	55 948	17 415	<b>792 424</b>
<b>2003</b>							
March	201 009	160 640	262 547	61 770	60 719	18 398	<b>769 192</b>
June	181 838	160 575	257 782	57 124	54 874	17 780	<b>729 169</b>
September	167 887	149 010	265 350	53 121	54 006	18 538	<b>710 612</b>
TREND ESTIMATES							
<b>2002</b>							
June	213 853	163 034	272 404	61 394	51 700	15 488	<b>777 963</b>
September	217 978	166 205	278 873	62 668	54 558	16 521	<b>797 071</b>
December	214 079	166 786	273 229	62 625	56 919	17 361	<b>791 179</b>
<b>2003</b>							
March	200 460	162 840	264 909	60 551	57 508	17 844	<b>764 946</b>
June	183 937	157 390	261 531	57 441	56 468	18 255	<b>736 290</b>
September	169 783	152 495	260 434	54 332	54 650	18 339	<b>712 179</b>

(a) For more information refer to paragraphs 4 to 6 of the Explanatory Notes.

## CHICKEN MEAT PRODUCED(a): All Series

	<i>New South Wales</i>	<i>Victoria</i>	<i>Queensland</i>	<i>South Australia</i>	<i>Western Australia</i>	<i>Australia</i>
<i>Quarter</i>	<i>tonnes</i>	<i>tonnes</i>	<i>tonnes</i>	<i>tonnes</i>	<i>tonnes</i>	<i>tonnes</i>
ORIGINAL						
<b>2002</b>						
June	71 110	49 116	26 886	n.p.	n.p.	176 257
September	69 583	49 518	28 299	n.p.	n.p.	175 634
December	65 052	54 613	29 584	n.p.	n.p.	178 450
<b>2003</b>						
March	62 927	51 239	28 540	n.p.	n.p.	171 463
June	58 882	49 071	27 904	n.p.	n.p.	164 280
September	62 524	49 055	29 003	n.p.	n.p.	169 979
SEASONALLY ADJUSTED						
<b>2002</b>						
June	71 561	49 195	27 345	n.p.	n.p.	177 732
September	69 291	51 207	28 630	n.p.	n.p.	177 077
December	64 671	52 121	28 349	n.p.	n.p.	173 523
<b>2003</b>						
March	62 851	51 949	28 986	n.p.	n.p.	173 093
June	59 600	49 114	28 391	n.p.	n.p.	165 999
September	62 278	50 743	29 309	n.p.	n.p.	171 723
TREND ESTIMATES						
<b>2002</b>						
June	70 497	48 900	27 186	n.p.	n.p.	175 920
September	68 982	51 212	28 257	n.p.	n.p.	177 208
December	65 440	51 894	28 687	n.p.	n.p.	174 478
<b>2003</b>						
March	62 562	51 279	28 693	n.p.	n.p.	171 362
June	61 171	50 500	28 811	n.p.	n.p.	169 651
September	60 832	49 941	29 041	n.p.	n.p.	169 142

(a) For more information refer to paragraphs 8 and 9 of the Explanatory Notes.



## MEAT PRODUCED(a): Original

<i>Financial year</i>	<i>New South Wales</i> tonnes	<i>Victoria</i> tonnes	<i>Queensland</i> tonnes	<i>South Australia</i> tonnes	<i>Western Australia</i> tonnes	<i>Tasmania</i> tonnes	<i>Australia</i> tonnes
<b>BEEF</b>							
<b>2000-01</b>	461 380	354 819	1 034 624	82 533	100 524	48 771	<b>2 085 952</b>
<b>2001-02</b>	460 964	342 898	972 749	85 882	88 593	43 923	<b>1 996 167</b>
<b>2002-03</b>	471 498	370 223	946 950	88 362	105 074	51 376	<b>2 034 613</b>
<b>VEAL</b>							
<b>2000-01</b>	14 214	11 842	5 684	307	382	996	<b>33 474</b>
<b>2001-02</b>	12 992	11 998	4 852	278	377	899	<b>31 446</b>
<b>2002-03</b>	16 493	16 007	4 202	341	300	826	<b>38 220</b>
<b>MUTTON</b>							
<b>2000-01</b>	126 838	84 016	28 401	36 103	64 936	7 232	<b>347 526</b>
<b>2001-02</b>	121 844	74 425	24 801	30 342	39 481	5 416	<b>296 308</b>
<b>2002-03</b>	106 106	67 552	20 741	30 893	35 431	7 495	<b>268 218</b>
<b>LAMB</b>							
<b>2000-01</b>	82 907	157 898	19 648	61 893	37 070	8 014	<b>367 430</b>
<b>2001-02</b>	91 401	136 325	11 851	64 285	35 618	8 466	<b>347 947</b>
<b>2002-03</b>	85 304	130 699	6 284	60 114	39 568	7 439	<b>329 407</b>
<b>PIG MEAT</b>							
<b>2000-01</b>	130 371	78 954	78 500	36 679	36 781	3 583	<b>365 168</b>
<b>2001-02</b>	144 146	73 652	85 940	48 329	39 996	3 159	<b>395 534</b>
<b>2002-03</b>	140 247	72 105	94 434	64 147	45 490	2 715	<b>419 555</b>
<b>TOTAL RED MEAT</b>							
<b>2000-01</b>	815 710	687 529	1 166 857	217 514	239 693	68 596	<b>3 199 550</b>
<b>2001-02</b>	831 347	639 298	1 100 193	229 116	204 065	61 863	<b>3 067 401</b>
<b>2002-03</b>	819 648	656 586	1 072 611	243 857	225 863	69 851	<b>3 090 013</b>
<b>CHICKEN MEAT</b>							
<b>2000-01</b>	244 302	175 773	93 863	n.p.	n.p.	n.p.	<b>619 406</b>
<b>2001-02</b>	273 445	180 993	99 316	n.p.	n.p.	n.p.	<b>667 471</b>
<b>2002-03</b>	256 445	204 440	114 327	n.p.	n.p.	n.p.	<b>689 826</b>

(a) For more information refer to paragraphs 4 to 9 of the Explanatory Notes.

## EXPORTS OF FRESH, FROZEN AND PROCESSED MEAT, Australia(a): Original

Period	FRESH, CHILLED OR FROZEN MEAT.....									PROCESSED MEAT.	
	<i>Beef bone -in</i>	<i>Beef bone -out</i>	<i>Veal bone -in</i>	<i>Veal bone -out</i>	<i>Mutton bone -in</i>	<i>Mutton bone -out</i>	<i>Lamb bone -in</i>	<i>Lamb bone -out</i>	<i>Pork</i>	<i>Bacon and ham</i>	<i>Canned meat</i>
	tonnes	tonnes	tonnes	tonnes	tonnes	tonnes	tonnes	tonnes	tonnes	tonnes	tonnes
<b>2000-01</b>	42 000	940 312	2 078	6 440	127 841	63 754	103 652	12 328	43 939	280	14 884
<b>2001-02</b>	34 126	892 317	2 424	7 119	113 894	52 072	104 565	13 794	58 964	122	15 724
<b>2002-03</b>	37 467	894 448	3 675	6 458	109 345	52 275	87 860	14 081	62 927	351	17 048
<b>2002</b>											
June	8 954	244 051	628	1 431	22 736	13 239	26 213	3 624	15 135	17	3 993
September	10 707	233 039	971	2 254	25 439	14 136	21 865	2 989	15 779	48	4 146
December	11 134	254 434	1 145	2 211	37 952	16 754	21 787	2 789	16 321	128	3 849
<b>2003</b>											
March	7 554	193 089	685	837	29 679	12 567	21 552	4 003	15 492	53	3 518
June	8 072	213 887	873	1 157	16 275	8 819	22 656	4 300	15 335	121	5 536
September	8 046	204 209	1 025	1 928	13 908	6 801	18 726	3 669	14 973	117	6 617

(a) For more information refer to paragraphs 10 and 11 of the Explanatory Notes.

## EXPORTS OF LIVE SHEEP AND CATTLE, Australia(a): Original

<i>Period</i>	<i>Number</i>	<i>Gross weight</i>	<i>Gross value</i>	<i>Unit value</i>
	'000	'000 tonnes	\$'000	\$
SHEEP				
<b>2000-01</b>	5 936.0	283.6	257 661	43.41
<b>2001-02</b>	6 443.2	318.0	391 705	60.79
<b>2002-03</b>	5 843.2	273.0	408 235	69.87
<b>2002</b>				
June	1 120.7	59.0	75 591	67.45
September	1 357.8	64.8	97 537	71.84
December	1 884.9	91.5	125 645	66.66
<b>2003</b>				
March	1 632.0	72.1	115 340	70.67
June	968.4	44.6	69 714	71.99
September	1 093.1	52.3	78 025	71.38
CATTLE				
<b>2000-01</b>	845.8	314.3	481 827	569.66
<b>2001-02</b>	797.0	293.5	525 535	659.41
<b>2002-03</b>	977.0	362.6	569 528	582.96
<b>2002</b>				
June	217.8	75.5	135 875	623.90
September	278.4	100.5	160 046	574.88
December	322.3	114.5	191 991	595.78
<b>2003</b>				
March	164.7	57.8	100 131	608.14
June	211.7	89.8	117 360	554.48
September	163.2	51.7	81 572	499.78

(a) For more information refer to paragraph 12 of the Explanatory Notes.

## WHOLE MILK INTAKE, By Factories(a): All Series

	New South Wales(b)	Victoria	Queensland	South Australia	Western Australia	Tasmania	Australia(c)
Quarter	ML	ML	ML	ML	ML	ML	ML
ORIGINAL							
<b>2002</b>							
March	317	1 873	178	173	93	195	2 829
June	313	1 226	174	157	97	106	2 072
September	340	1 666	197	171	108	100	2 582
December	365	2 490	186	221	109	245	3 615
<b>2003</b>							
March	299	1 458	171	178	89	154	2 349
June	297	971	166	163	97	87	1 781
SEASONALLY ADJUSTED							
<b>2002</b>							
March	335	1 959	182	181	100	176	2 933
June	346	1 971	189	182	101	169	2 958
September	333	1 749	188	174	102	151	2 697
December	324	1 694	176	184	104	152	2 634
<b>2003</b>							
March	315	1 528	176	189	96	141	2 445
June	328	1 550	180	186	101	136	2 481
TREND ESTIMATES							
<b>2002</b>							
March	339	1 912	187	179	100	170	2 887
June	340	1 912	187	179	102	166	2 886
September	334	1 807	184	180	102	158	2 765
December	325	1 669	180	182	101	148	2 605
<b>2003</b>							
March	321	1 576	177	186	100	142	2 502
June	322	1 528	177	189	99	138	2 453

(a) For more information refer to paragraph 13 of the Explanatory Notes.

(b) New South Wales total includes Australian Capital Territory.

(c) Australian total excludes Northern Territory.

Source: Original series data from Dairy Australia.

## MARKET MILK SALES, By Factories(a): All Series

	New South Wales(b)	Victoria	Queensland	South Australia	Western Australia	Tasmania	Australia(c)
Quarter	ML	ML	ML	ML	ML	ML	ML
ORIGINAL							
<b>2002</b>							
March	155	112	100	45	48	12	472
June	161	114	100	45	48	13	481
September	156	119	103	47	50	13	488
December	153	119	100	45	49	13	479
<b>2003</b>							
March	152	114	99	44	49	13	470
June	155	120	100	46	52	13	486
SEASONALLY ADJUSTED							
<b>2002</b>							
March	158	116	101	46	49	13	483
June	160	113	101	45	47	12	479
September	155	116	101	46	50	13	480
December	153	119	100	45	49	13	479
<b>2003</b>							
March	154	117	101	45	50	13	480
June	154	121	101	46	51	13	485
TREND ESTIMATES							
<b>2002</b>							
March	157	115	101	45	48	12	478
June	157	115	101	45	49	12	480
September	156	116	101	45	49	13	480
December	154	117	101	45	50	13	480
<b>2003</b>							
March	153	119	101	45	50	13	481
June	154	120	101	45	51	13	483

(a) For more information refer to paragraph 13 of the Explanatory Notes.

(b) New South Wales total includes Australian Capital Territory.

(c) Australian total excludes Northern Territory.

Source: Original series data from Dairy Australia.

## BROKERS AND DEALERS RECEIVALS OF TAXABLE WOOL(a): All Series

Quarter	New South Wales	Victoria	Queensland	South Australia	Western Australia	Tasmania	Australia	% of total received by brokers
	tonnes	tonnes	tonnes	tonnes	tonnes	tonnes	tonnes	%
ORIGINAL								
<b>2002</b>								
June	31 557	24 921	8 145	13 927	15 661	3 306	<b>97 519</b>	82.1
September	59 456	36 459	6 618	21 866	27 506	4 392	<b>156 296</b>	79.3
December	52 242	45 598	3 895	22 519	32 221	4 910	<b>161 385</b>	74.8
<b>2003</b>								
March	33 604	27 060	3 418	13 169	33 493	2 674	<b>113 419</b>	76.8
June	22 836	19 327	4 357	7 500	15 519	2 381	<b>71 921</b>	81.8
September	40 255	27 624	6 017	18 115	27 007	2 661	<b>121 679</b>	84.1
SEASONALLY ADJUSTED								
<b>2002</b>								
June	40 923	36 956	6 751	18 717	24 623	4 181	<b>132 151</b>	..
September	48 997	34 880	5 107	18 692	25 606	4 088	<b>137 370</b>	..
December	45 606	32 239	6 025	19 163	29 260	3 528	<b>135 821</b>	..
<b>2003</b>								
March	38 697	31 367	4 031	14 403	27 927	3 560	<b>119 985</b>	..
June	29 637	28 597	3 596	10 083	24 659	3 017	<b>99 588</b>	..
September	32 266	26 445	4 639	15 463	25 445	2 527	<b>106 785</b>	..
TREND ESTIMATES								
<b>2002</b>								
June	41 142	37 542	6 582	20 767	24 914	4 320	<b>135 269</b>	..
September	48 667	35 426	5 890	19 333	26 269	4 037	<b>139 622</b>	..
December	44 256	32 625	5 059	16 967	27 262	3 713	<b>129 883</b>	..
<b>2003</b>								
March	40 241	30 740	4 459	14 713	27 032	3 381	<b>120 567</b>	..
June	30 767	28 717	4 101	13 022	26 012	3 014	<b>105 634</b>	..
September	30 483	27 067	3 974	12 854	25 058	2 737	<b>102 175</b>	..

(a) For more information refer to paragraphs 14 and 15 of the Explanatory Notes.

## LIVESTOCK PRODUCTS(a): Original

Financial year	New South Wales	Victoria	Queensland	South Australia	Western Australia	Tasmania	Australia
----------------	-----------------	----------	------------	-----------------	-------------------	----------	-----------

## WHOLE MILK INTAKE BY FACTORIES (ML)(b)

<b>2000-01</b>	1 326	6 777	760	699	393	590	<b>10 545</b>
<b>2001-02</b>	1 343	7 405	744	715	393	672	<b>11 271</b>
<b>2002-03</b>	1 301	6 584	719	733	403	585	<b>10 326</b>

## MARKET MILK SALES BY FACTORIES (ML)(b)(c)

<b>2000-01</b>	630	455	393	199	192	50	<b>1 920</b>
<b>2001-02</b>	622	459	402	184	192	50	<b>1 909</b>
<b>2002-03</b>	616	473	403	181	200	51	<b>1 924</b>

## BROKERS AND DEALERS RECEIVALS OF TAXABLE WOOL (Tonnes)

<b>2000-01</b>	182 882	148 333	40 723	89 739	115 475	12 709	<b>589 861</b>
<b>2001-02</b>	163 926	142 338	30 188	83 144	103 028	14 268	<b>536 891</b>
<b>2002-03</b>	168 138	128 444	18 287	65 054	108 739	14 357	<b>503 020</b>

(a) For more information refer to paragraph 13 to 15 of the Explanatory Notes.

(b) New South Wales includes Australian Capital Territory. Australian total excludes Northern Territory.

(c) Interstate transfers of UHT milk have been included in their state of destination.

Source: Original series data from Dairy Australia.

# WHAT IF...? REVISIONS TO TREND ESTIMATES

## EFFECT OF NEW SEASONALLY ADJUSTED ESTIMATES ON TREND ESTIMATES

Each time new seasonally adjusted estimates become available, trend estimates are revised (see paragraphs 20 and 21 of the Explanatory Notes).

### TREND REVISIONS

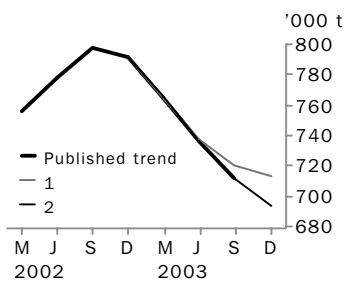
The graphs and tables which follow present the effect of two possible new seasonally adjusted estimates on the previous trend estimates:

**1** The December Quarter 2003 seasonally adjusted estimate is higher than the September Quarter 2003 estimate by the percentage shown.

**2** The December Quarter 2003 seasonally adjusted estimate is lower than the September Quarter 2003 estimate by the percentage shown.

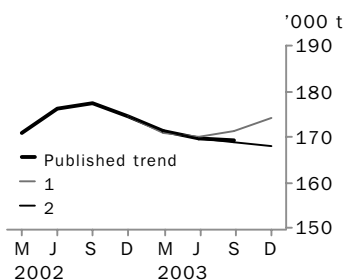
These percentages were chosen because they represent the average absolute quarterly percentage change for these series over the last ten years.

### RED MEAT PRODUCTION



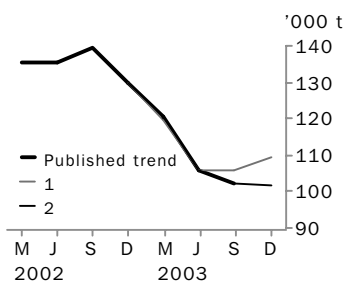
	TREND AS PUBLISHED		WHAT IF NEXT QUARTER'S SEASONALLY ADJUSTED ESTIMATE:			
	number	% change	<b>1</b> <i>rises by 3% on Sep Qtr 2003</i>		<b>2</b> <i>falls by 3% on Sep Qtr 2003</i>	
	number	% change	number	% change	number	% change
Sep Qtr 2002	797 071	2.5	797 070	2.5	797 070	2.5
Dec Qtr 2002	791 179	-0.7	791 180	-0.7	791 180	-0.7
Mar Qtr 2003	764 946	-3.3	763 890	-3.4	765 727	-3.2
Jun Qtr 2003	736 290	-3.7	737 014	-3.5	736 346	-3.8
Sep Qtr 2003	712 179	-3.3	720 297	-2.3	711 444	-3.4
Dec Qtr 2003	—	—	713 403	-1.0	693 039	-2.6

### CHICKEN MEAT PRODUCTION



	TREND AS PUBLISHED		WHAT IF NEXT QUARTER'S SEASONALLY ADJUSTED ESTIMATE:			
	number	% change	<b>1</b> <i>rises by 4% on Sep Qtr 2003</i>		<b>2</b> <i>falls by 4% on Sep Qtr 2003</i>	
	number	% change	number	% change	number	% change
Sep Qtr 2002	177 208	0.7	177 208	0.7	177 208	0.7
Dec Qtr 2002	174 478	-1.5	174 478	-1.5	174 478	-1.5
Mar Qtr 2003	171 362	-1.8	170 835	-2.1	171 360	-1.8
Jun Qtr 2003	169 651	-1.0	169 843	-0.6	169 661	-1.0
Sep Qtr 2003	169 142	-0.3	171 306	0.9	168 783	-0.5
Dec Qtr 2003	—	—	174 078	1.6	168 094	-0.4

### WOOL RECEIVALS



	TREND AS PUBLISHED		WHAT IF NEXT QUARTER'S SEASONALLY ADJUSTED ESTIMATE:			
	number	% change	<b>1</b> <i>rises by 9% on Sep Qtr 2003</i>		<b>2</b> <i>falls by 9% on Sep Qtr 2003</i>	
	number	% change	number	% change	number	% change
Sep Qtr 2002	139 622	3.2	139 740	3.3	139 740	3.3
Dec Qtr 2002	129 883	-7.0	129 893	-7.0	129 893	-7.0
Mar Qtr 2003	120 567	-7.2	119 681	-7.9	120 432	-7.3
Jun Qtr 2003	105 634	-12.4	105 941	-11.5	105 654	-12.3
Sep Qtr 2003	102 175	-3.3	105 764	-0.2	102 359	-3.1
Dec Qtr 2003	—	—	109 176	3.2	101 875	-0.5



# WHAT IF...? REVISIONS TO TREND ESTIMATES

## EFFECT OF NEW SEASONALLY ADJUSTED ESTIMATES ON TREND ESTIMATES

Readers should exercise care when interpreting trend estimates. The last three trend estimates, in particular, are likely to be revised when new seasonally adjusted estimates become available.

### TREND REVISIONS

The graph and tables which follow present the effect of two possible scenarios on the previous trend estimates:

**1** The September Quarter 2003 seasonally adjusted estimate is higher than the June Quarter 2003 estimate by:

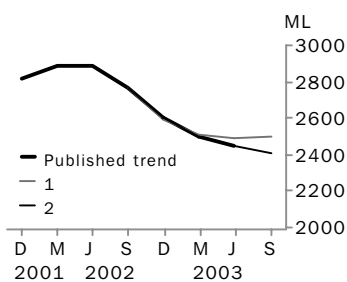
- +2% for whole milk intake by factories.

**2** The September Quarter 2003 seasonally adjusted estimate is lower than the June Quarter 2003 estimate by:

- 2% for whole milk intake by factories.

These percentages were chosen because they represent the average absolute quarterly percentage change for these series over the last ten years.

### WHOLE MILK INTAKE BY FACTORIES



	TREND AS PUBLISHED		WHAT IF NEXT QUARTER'S SEASONALLY ADJUSTED ESTIMATE:			
	number	% change	<b>1</b> <i>rises by 2% on Jun Qtr 2003</i>		<b>2</b> <i>falls by 2% on Jun Qtr 2003</i>	
	number	% change	number	% change	number	% change
Jun Qtr 2002	2 886	0.0	2 887	0.0	2 887	0.0
Sep Qtr 2002	2 765	-4.2	2 764	-4.3	2 764	-4.3
Dec Qtr 2002	2 605	-5.8	2 594	-6.2	2 603	-5.8
Mar Qtr 2003	2 502	-4.0	2 506	-3.4	2 503	-3.8
Jun Qtr 2003	2 453	-2.0	2 490	-0.6	2 449	-2.2
Sep Qtr 2003	—	—	2 503	0.5	2 413	-1.5

## EXPLANATORY NOTES

### INTRODUCTION

- 1** This publication contains information on livestock slaughterings, meat production, exports of live sheep and live cattle, exports of fresh, frozen and processed meat, and whole milk intake by factories, market milk sales by factories and receivals of taxable wool by wool brokers and dealers.
- 2** The figures shown in this publication have been revised where necessary and as a consequence may not agree with similar data shown in previous publications.
- 3** Where figures have been rounded, discrepancies may occur between sums of the component items and totals.
- 4** Unless indicated otherwise, Australian totals include data for all states and both territories.

### LIVESTOCK SLAUGHTERINGS AND MEAT PRODUCTION

- 5** The statistics on slaughterings for red meat production are based on a monthly collection from abattoirs and other major slaughtering establishments and include estimates of animals slaughtered on farms and by country butchers and other small slaughtering establishments.
- 6** Red meat is shown in carcass weight and excludes offal.
- 7** Care should be taken when using this information as the figures only relate to slaughterings for human consumption and do not include animals condemned, slaughtered for pet food or those killed for boiling down.
- 8** Poultry slaughterings and meat produced statistics have been compiled from quarterly returns supplied by commercial poultry slaughtering establishments and comprise boilers, fryers and roasters. Many small producers are excluded from the collection; however, the statistics represent a high level of coverage. Tasmanian, Northern Territory and Australian Capital Territory data are excluded from the Australian total.
- 9** Chicken meat is shown in dressed weight of whole birds, pieces and giblets. Some slaughterings and meat production statistics for 'Ducks and Drakes' and 'Other Fowls and Turkeys' are available by contacting the ABS on Hobart 03 6222 5974 or by writing to GPO Box 66, Hobart Tasmania 7001 (Attention: Agriculture Section).

### EXPORTS OF FRESH, FROZEN AND PROCESSED MEAT

- 10** Table 20 shows exports of fresh, frozen and processed meat, excluding offal. International trade statistics are compiled by the ABS from information submitted by exporters and importers or their agents to the Australian Customs Service. Factors can be applied to beef, veal, mutton and lamb bone-out figures to derive bone-in carcass weight which, when added to bone-in figures, show total exports in carcass weight. The factor for beef and veal is 1.5 and for mutton and lamb, 2.0. This information is sourced from Department of Agriculture, Fisheries and Forestry—Australia.
- 11** Beef also includes buffalo meat. Bacon and ham shown is the cured carcass weight of smoked or cooked bacon and ham. It also includes the stated net weight of packs of canned bacon and ham. Canned meat is shown as the canned weight and excludes canned bacon and ham.

### LIVE SHEEP AND CATTLE EXPORTS

- 12** Table 21 contains statistics of the number of live sheep and cattle exported, the gross weight, gross value and unit value. The unit value is obtained by dividing the gross value by the number of animals exported. Sheep and cattle exported for breeding are excluded.

## EXPLANATORY NOTES

MILK	<p><b>13</b> Tables 2, 22, 23 and 25 contain statistics collected by Dairy Australia. Whole milk intake by factories includes the whole milk equivalent of farm cream intake. Market milk sales includes white, flavoured, high and low fat milk and UHT milk.</p>
WOOL RECEIVALS	<p><b>14</b> The statistics in tables 2, 24 and 25 show the amount of taxable wool received by brokers and purchased by dealers from wool producers. It excludes wool received by brokers on which tax has already been paid by other dealers (private buyers) or brokers.</p> <p><b>15</b> The information shown is on the basis of the state in which wool has actually been received and does not necessarily reflect the production of wool in that state.</p>
SEASONAL ADJUSTMENT	<p><b>16</b> Seasonal adjustment is a means of removing the estimated effects of normal seasonal variation from the series so that the effects of other influences can be more clearly recognised.</p> <p><b>17</b> In the seasonal adjustment of the livestock estimates, account has been taken of both normal seasonal factors and 'trading-day' effects, where significant, (arising from the varying length of each quarter and the varying numbers of Sundays, Mondays, Tuesdays etc. in the quarter). Adjustments are also made for the effects of change in the date of Easter holidays, again, where significant. Seasonal adjustment does not remove from the series the effect of irregular influences (e.g. abnormal weather, industrial disputes).</p> <p><b>18</b> The state component series have been seasonally adjusted independently. Therefore, the adjusted components may not add to the Australian group totals.</p> <p><b>19</b> As happens with all seasonally adjusted series, the seasonal factors are reviewed annually to take account of each additional year's data.</p>
TREND ESTIMATES	<p><b>20</b> A trend estimate is obtained by reducing the irregular component from the seasonally adjusted series. In this publication trend estimates are generally derived by applying a seven term Henderson moving average to the seasonally adjusted series. The seven term Henderson, (like all Henderson averages) is symmetric, but as the end of a time series is approached, asymmetric forms of the average are applied. Unlike the weights of the standard seven term Henderson moving average, the weights employed here have been tailored to suit the particular characteristics of individual series. While the asymmetric weights enable the trend to be calculated for recent quarters, it does result in revisions to the estimates for the most recent three quarters as additional observations become available. Revisions of trend estimates will also occur with revisions to the original data and re-estimation of seasonal factors.</p> <p><b>21</b> Sensitivity analysis indicates the potential magnitude and direction of revisions created to the last three estimates. It aims to show how a specified movement in the seasonally adjusted data in the next period will affect the trend path of the time series. By showing how sensitive the trend estimates are to the addition of new data, the analysis provides information which can be used in the assessment of the trend's stability.</p> <p><b>22</b> For further information, see <i>Information Paper: A Guide to Interpreting Time Series — Monitoring 'Trends', an Overview</i> (cat. no. 1348.0) or contact the Assistant Director, Time Series Analysis on Canberra 02 6252 6345.</p>

## EXPLANATORY NOTES

---

### RELATED PUBLICATIONS

**23** Current publications and other products released by the ABS are listed in the *Catalogue of Publications and Products* (cat. no. 1101.0). The Catalogue is available from any ABS office or the ABS web site <<http://www.abs.gov.au>>. The ABS also issues a daily Release Advice on the web site which details products to be released in the week ahead.

### GENERAL ACKNOWLEDGMENT

ABS publications draw extensively on information provided freely by individuals, businesses, governments and other organisations. Their continued cooperation is very much appreciated. Without it, the wide range of statistics published by the ABS would not be available. Information received by the ABS is treated in strict confidence as required by the *Census and Statistics Act 1905*.

### SYMBOLS AND OTHER USAGES

billion	thousand million
ML	million litres
n.y.a.	not yet available
n.p.	not published
t	tonnes
..	not applicable







## FOR MORE INFORMATION...

- INTERNET* **www.abs.gov.au** the ABS web site is the best place to start for access to summary data from our latest publications, information about the ABS, advice about upcoming releases, our catalogue, and Australia Now—a statistical profile.
- LIBRARY* A range of ABS publications is available from public and tertiary libraries Australia-wide. Contact your nearest library to determine whether it has the ABS statistics you require, or visit our web site for a list of libraries.
- CPI INFOLINE* For current and historical Consumer Price Index data, call 1902 981 074 (call cost 77c per minute).
- DIAL-A-STATISTIC* For the latest figures for National Accounts, Balance of Payments, Labour Force, Average Weekly Earnings, Estimated Resident Population and the Consumer Price Index call 1900 986 400 (call cost 77c per minute).

## INFORMATION SERVICE

Data which have been published and can be provided within five minutes are free of charge. Our information consultants can also help you to access the full range of ABS information—ABS user-pays services can be tailored to your needs, time frame and budget. Publications may be purchased. Specialists are on hand to help you with analytical or methodological advice.

- PHONE* **1300 135 070**
- EMAIL* **client.services@abs.gov.au**
- FAX* 1300 135 211
- POST* Client Services, ABS, GPO Box 796, Sydney 2001

## WHY NOT SUBSCRIBE?

ABS subscription services provide regular, convenient and prompt deliveries of ABS publications and products as they are released. Email delivery of monthly and quarterly publications is available.

- PHONE* 1300 366 323
- EMAIL* subscriptions@abs.gov.au
- FAX* 03 9615 7848
- POST* Subscription Services, ABS, GPO Box 2796Y, Melbourne 3001



2721500009031  
ISSN 0728-4047

RRP \$22.00