

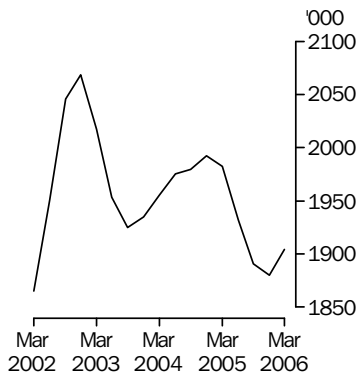
LIVESTOCK PRODUCTS

AUSTRALIA

EMBARGO: 11.30AM (CANBERRA TIME) TUES 16 MAY 2006

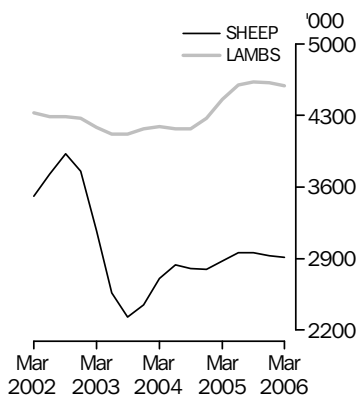
Cattle slaughtering

Excluding calves
Trend



Sheep and lamb slaughtering

Trend



KEY FIGURES

TREND ESTIMATES

	Mar Qtr 2005 '000	Dec Qtr 2005 '000	Mar Qtr 2006 '000
Number slaughtered			
Cattle	1 982.8	1 880.4	1 904.6
Calves	208.2	209.5	209.4
Sheep	2 873.6	2 929.7	2 912.9
Lambs	4 457.6	4 618.8	4 589.2
Pigs	1 330.9	1 334.6	1 332.7
Chickens	108 818.6	109 700.4	109 632.2

	Mar Qtr 2005 tonnes	Dec Qtr 2005 tonnes	Mar Qtr 2006 tonnes
Meat produced			
Beef	530 538	509 971	516 495
Veal	6 936	6 923	6 732
Mutton	59 727	60 454	60 046
Lamb	91 739	94 035	93 119
Pig meat	97 078	96 895	96 408
Chicken meat	189 146	192 035	192 588
Wool receivals	120 212	120 511	121 425

	Dec Qtr 2004 ML	Sep Qtr 2005 ML	Dec Qtr 2005 ML
Whole milk intake by factories	2 518	2 547	2 497

KEY POINTS

TREND ESTIMATES

- In March quarter 2006, the trend estimate for the number of cattle slaughtered rose slightly to 1.9 million.
- In March quarter 2006, the trend estimate for the number of sheep slaughtered decreased slightly to 2.9 million.
- In March quarter 2006, the trend estimate for the number of lambs slaughtered decreased slightly to 4.6 million.
- In March quarter 2006, the trend estimate for pigs slaughtered remained steady at 1.3 million.

INQUIRIES

For further information about these and related statistics, contact the National Information and Referral Service on 1300 135 070 or Frank Costin on Hobart (03) 6222 5838.

NOTES

FORTHCOMING ISSUES

ISSUE (Quarter)

RELEASE DATE

June 2006

14 August 2006

September 2006

14 November 2006

.....

CHANGES IN THIS ISSUE

There are no changes in this issue.

FORTHCOMING CHANGES

There are no forthcoming changes.

.....

ABBREVIATIONS

ABS Australian Bureau of Statistics

ML megalitre

t tonne

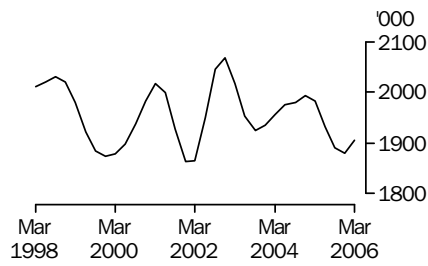
UHT ultra heat treated

Dennis Trewin

Australian Statistician

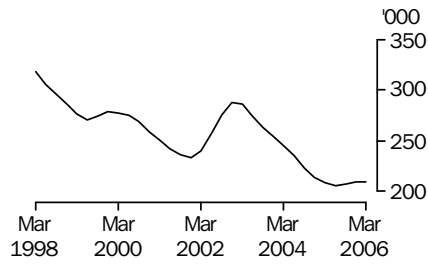
LIVESTOCK SLAUGHTERED TREND

CATTLE (EXCLUDING CALVES)



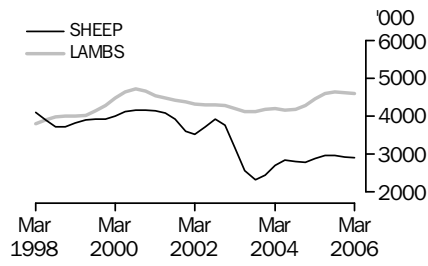
The trend estimate for the number of cattle slaughtered in March quarter 2006 rose slightly to 1.9 million.

CALVES



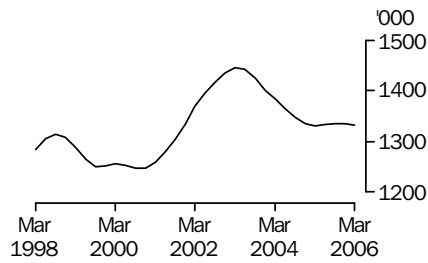
The trend estimate for the number of calves slaughtered in March quarter 2006 remained steady at 209,000.

SHEEP AND LAMBS



In March quarter 2006, the trend estimate for the number of sheep slaughtered decreased slightly to 2.9 million. The number of lambs slaughtered decreased slightly to 4.6 million.

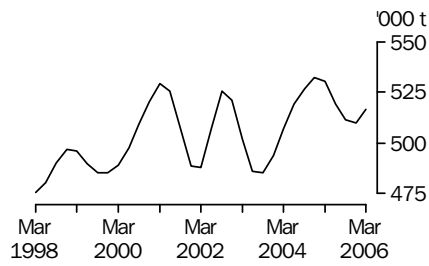
PIGS



In March quarter 2006, the trend estimate for the number of pigs slaughtered remained steady at 1.3 million.

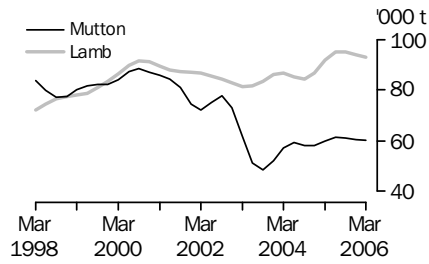
MEAT PRODUCTION TREND

BEEF



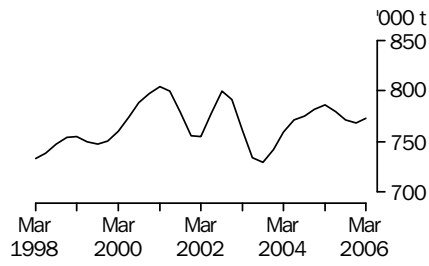
In March quarter 2006, the trend estimate for beef production rose slightly to 516,000 tonnes.

MUTTON AND LAMB



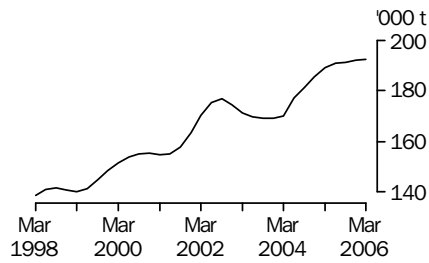
In March quarter 2006, the trend estimate for mutton production decreased slightly to 60,000 tonnes. The trend estimate for lamb production decreased slightly to 93,100 tonnes.

TOTAL RED MEAT



The trend estimate for red meat production increased slightly to 773,000 tonnes in March quarter 2006, due to increased beef production for the quarter.

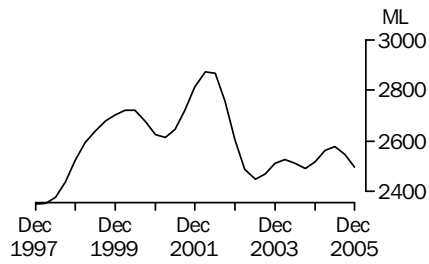
CHICKEN MEAT



The trend estimate for chicken meat production in March quarter 2006 remained steady at 193,000 tonnes.

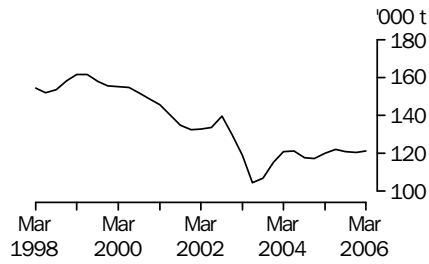
LIVESTOCK PRODUCTS TREND

WHOLE MILK INTAKE BY FACTORIES



The trend estimate for whole milk intake by factories in December quarter 2005 fell by 2% to 2.5 billion litres.

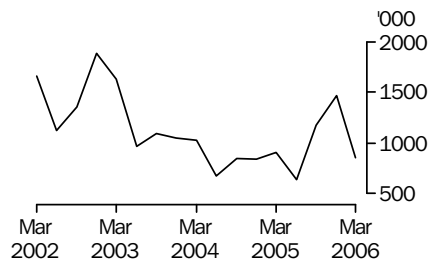
BROKERS AND DEALERS RECEIVALS OF TAXABLE WOOL



The trend estimate for wool receivals by brokers and dealers in March quarter 2006 rose slightly to 121,000 tonnes.

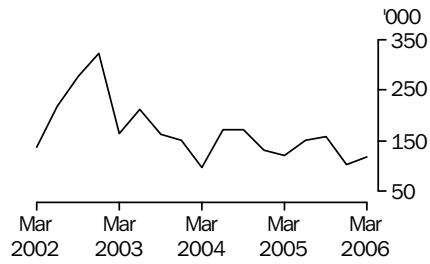
LIVESTOCK EXPORTS ORIGINAL

EXPORTS OF LIVE SHEEP



Live sheep exports fell by 42% to 854,000 in March quarter 2006. This coupled with a fall in unit value (to \$65.60) saw gross value of live sheep exports decrease by 45% to \$56 million.

EXPORTS OF LIVE CATTLE



In March quarter 2006, live cattle exports rose by 15% to 118,000. However, a 14% decrease in unit value (to \$621.95) saw the gross value of live cattle exports remain steady at \$73.6 million.

LIST OF TABLES AND GRAPHS

page

OVERVIEW

1	Livestock slaughtered, Australia	9
2	Livestock products, Australia	10

LIVESTOCK SLAUGHTERINGS

3	Number of livestock slaughtered, bulls, bullocks and steers, by state	11
4	Number of livestock slaughtered, cows and heifers, by state	12
5	Number of livestock slaughtered, total cattle (excluding calves), by state	13
6	Number of livestock slaughtered, calves, by state	14
7	Number of livestock slaughtered, sheep, by state	15
8	Number of livestock slaughtered, lambs, by state	16
9	Number of livestock slaughtered, pigs, by state	17
10	Number of chickens slaughtered, by state	18
11	Number of livestock slaughtered, financial year, by state	19

MEAT PRODUCED

12	Red meat produced, beef, by state	20
13	Red meat produced, veal, by state	21
14	Red meat produced, mutton, by state	22
15	Red meat produced, lamb, by state	23
16	Red meat produced, pig meat, by state	24
17	Total red meat produced, by state	25
18	Chicken meat produced, by state	26
19	Meat produced, financial year, by state	27

EXPORTS OF MEAT AND LIVE ANIMALS

20	Exports of fresh, frozen and processed meat, Australia	28
21	Exports of live sheep and cattle, Australia	29

LIVESTOCK PRODUCTS

22	Whole milk intake by factories, by state	30
23	Market milk sales by factories, by state	31
24	Brokers and dealers receivals of taxable wool, by state	32
25	Livestock products, financial year, by state	33

LIVESTOCK SLAUGHTERED, Australia(a): All Series

Quarter	Bulls, bullocks and steers '000	Cows and heifers '000	Cattle (excluding calves) '000	Calves '000	Sheep '000	Lambs '000	Pigs '000	Chickens '000
ORIGINAL								
2004								
December	1 105.2	829.4	1 934.6	151.8	3 014.7	4 554.6	1 303.7	118 723.1
2005								
March	1 007.6	807.5	1 815.2	98.1	3 139.4	4 362.4	1 298.6	104 658.7
June	1 138.1	1 008.4	2 146.5	204.1	2 943.2	4 815.8	1 380.0	107 851.1
September	1 102.8	772.0	1 874.7	376.0	2 403.0	4 333.0	1 338.1	108 849.6
December	1 045.7	761.2	1 806.9	145.0	3 150.8	4 716.6	1 324.0	111 539.9
2006								
March	1 039.2	844.4	1 883.6	105.5	3 417.8	4 711.9	1 275.5	109 832.3
SEASONALLY ADJUSTED								
2004								
December	1 079.7	888.7	1 968.4	224.2	2 746.3	4 366.3	1 330.9	115 431.6
2005								
March	1 088.1	864.6	1 952.7	195.0	2 768.7	4 344.2	1 339.9	105 154.8
June	1 120.6	904.3	2 024.9	214.9	3 179.1	4 697.5	1 324.8	109 465.5
September	1 064.7	756.5	1 821.2	201.5	2 860.8	4 674.5	1 335.5	110 036.8
December	1 021.6	815.8	1 837.4	212.7	2 863.3	4 520.0	1 344.2	108 625.1
2006								
March	1 097.7	885.9	1 983.6	209.4	3 012.8	4 636.2	1 323.1	110 184.3
TREND								
2004								
December	1 090.9	901.8	1 992.7	214.2	2 792.5	4 274.1	1 335.4	108 973.4
2005								
March	1 102.1	880.7	1 982.8	208.2	2 873.6	4 457.6	1 330.9	108 818.6
June	1 089.2	842.5	1 931.7	205.5	2 954.6	4 597.0	1 332.9	108 552.2
September	1 070.9	819.6	1 890.4	207.2	2 955.5	4 632.2	1 335.0	109 073.8
December	1 058.9	821.6	1 880.4	209.5	2 929.7	4 618.8	1 334.6	109 700.4
2006								
March	1 061.1	843.6	1 904.6	209.4	2 912.9	4 589.2	1 332.7	109 632.2

(a) For more information refer to paragraphs 5, and 7 to 9 of the Explanatory Notes.

LIVESTOCK PRODUCTS, Australia(a): All Series

Quarter	RED MEAT						Chicken meat tonnes	Whole milk intake by factories ML	Brokers and dealers receipts of taxable wool tonnes
	Beef tonnes	Veal tonnes	Mutton tonnes	Lamb tonnes	Pig meat tonnes	Total red meat tonnes			
ORIGINAL									
2004									
December	518 616	5 851	65 349	91 169	94 180	775 163	195 330	3 380	136 722
2005									
March	490 359	4 798	64 894	91 516	93 109	744 675	178 055	2 466	113 652
June	572 088	7 253	58 873	100 849	101 894	840 957	197 362	1 909	97 376
September	504 729	10 024	49 322	88 187	98 956	751 217	188 782	2 387	129 320
December	495 343	5 679	68 032	94 236	94 298	757 588	190 998	3 379	135 655
2006									
March	510 564	4 924	69 585	97 232	91 047	773 353	196 817	nya	124 574
SEASONALLY ADJUSTED									
2004									
December	522 393	7 417	57 299	88 425	97 846	773 380	189 688	2 472	117 084
2005									
March	527 188	6 498	57 749	90 541	97 011	778 987	180 443	2 576	116 834
June	536 020	7 184	65 889	96 944	96 603	802 640	199 508	2 640	130 000
September	498 481	6 847	58 800	96 017	97 935	758 080	189 745	2 510	117 277
December	499 389	7 141	59 442	91 535	96 824	754 331	186 778	2 484	116 636
2006									
March	534 182	6 558	61 935	94 314	96 003	792 992	198 302	nya	126 666
TREND									
2004									
December	532 345	7 182	58 001	86 870	97 263	781 661	185 444	2 518	117 209
2005									
March	530 538	6 936	59 727	91 739	97 078	786 018	189 146	2 562	120 212
June	519 064	6 904	61 281	95 062	97 200	779 511	190 863	2 577	121 956
September	511 237	6 971	61 083	95 029	97 154	771 474	191 352	2 547	120 978
December	509 971	6 923	60 454	94 035	96 895	768 278	192 035	2 497	120 511
2006									
March	516 495	6 732	60 046	93 119	96 408	772 800	192 588	nya	121 425

nya not yet available

(a) For more information refer to paragraphs 5 to 9 and 13 to 15 of the Explanatory Notes.

NUMBER OF LIVESTOCK SLAUGHTERED (a), Bulls, bullocks and steers: All Series

Quarter	New South Wales	Victoria	Queensland	South Australia	Western Australia	Tasmania	Australia
	'000	'000	'000	'000	'000	'000	'000
ORIGINAL							
2004							
December	214.9	159.3	584.0	56.3	61.8	28.5	1 105.2
2005							
March	226.9	160.5	484.7	51.7	52.5	31.0	1 007.6
June	248.6	143.2	608.1	48.1	64.1	25.7	1 138.1
September	224.4	124.1	657.2	34.7	42.3	19.7	1 102.8
December	218.1	157.5	546.9	48.1	53.3	21.5	1 045.7
2006							
March	238.4	158.7	519.1	54.9	46.7	21.0	1 039.2
SEASONALLY ADJUSTED							
2004							
December	217.5	150.4	574.2	50.7	51.5	29.0	1 079.7
2005							
March	227.9	148.2	580.8	46.4	53.4	27.3	1 088.1
June	240.9	145.2	603.0	49.0	71.6	24.9	1 120.6
September	228.4	142.2	577.2	43.9	45.8	23.2	1 064.7
December	220.5	148.9	536.8	43.0	44.5	21.7	1 021.6
2006							
March	230.2	146.6	622.4	49.5	47.5	18.6	1 097.7
TREND							
2004							
December	221.8	152.3	577.6	47.7	54.5	28.5	1 090.9
2005							
March	229.9	147.2	590.3	48.6	58.5	27.1	1 102.1
June	232.8	145.0	583.9	46.8	58.3	25.3	1 089.2
September	230.4	145.0	575.2	45.2	53.2	23.2	1 070.9
December	226.5	146.1	575.0	45.3	47.0	21.2	1 058.9
2006							
March	224.3	147.3	585.6	46.4	43.0	19.4	1 061.1

(a) For more information refer to paragraphs 4, 5 and 7 of the Explanatory Notes.

NUMBER OF LIVESTOCK SLAUGHTERED (a), Cows and heifers: All Series

Quarter	New South Wales	Victoria	Queensland	South Australia	Western Australia	Tasmania	Australia
	'000	'000	'000	'000	'000	'000	'000
ORIGINAL							
2004							
December	195.8	222.2	281.1	42.6	64.9	21.8	829.4
2005							
March	169.9	210.1	285.9	43.6	73.6	23.5	807.5
June	202.5	245.2	415.7	44.8	71.7	27.5	1 008.4
September	136.9	188.4	332.6	25.6	63.8	23.7	772.0
December	162.8	198.6	272.3	40.9	61.1	24.4	761.2
2006							
March	170.9	208.5	325.2	44.3	61.5	32.9	844.4
SEASONALLY ADJUSTED							
2004							
December	194.3	222.7	328.9	42.1	65.2	24.0	888.7
2005							
March	179.2	211.8	336.2	41.3	69.2	22.9	864.6
June	189.2	238.1	345.9	41.6	74.8	22.7	904.3
September	140.1	191.9	304.1	30.2	64.8	27.3	756.5
December	161.4	199.4	319.3	40.2	61.6	27.1	815.8
2006							
March	174.4	210.0	381.5	41.8	57.8	29.4	885.9
TREND							
2004							
December	194.1	227.7	336.7	42.7	69.4	23.9	901.8
2005							
March	186.1	222.4	335.5	41.1	70.0	23.2	880.7
June	170.7	215.0	326.2	38.0	70.0	23.9	842.5
September	161.1	207.7	323.0	36.6	66.9	25.8	819.6
December	159.7	202.1	333.3	37.8	61.9	27.7	821.6
2006							
March	164.0	200.4	354.6	40.1	58.1	29.2	843.6

(a) For more information refer to paragraphs 4, 5 and 7 of the Explanatory Notes.

NUMBER OF LIVESTOCK SLAUGHTERED(a), Total cattle (excluding calves): All Series

Quarter	New South Wales	Victoria	Queensland	South Australia	Western Australia	Tasmania	Australia
	'000	'000	'000	'000	'000	'000	'000
ORIGINAL							
2004							
December	410.7	381.6	865.1	98.9	126.6	50.3	1 934.6
2005							
March	396.8	370.6	770.6	95.3	126.1	54.5	1 815.2
June	451.1	388.4	1 023.8	92.9	135.8	53.1	2 146.5
September	361.3	312.5	989.8	60.3	106.1	43.4	1 874.7
December	380.9	356.1	819.2	89.0	114.4	45.9	1 806.9
2006							
March	409.4	367.2	844.3	99.2	108.3	53.9	1 883.6
SEASONALLY ADJUSTED							
2004							
December	411.8	373.1	903.0	92.8	116.7	53.0	1 968.4
2005							
March	407.1	360.0	916.9	87.7	122.6	50.2	1 952.7
June	430.1	383.3	948.9	90.6	146.5	47.6	2 024.9
September	368.5	334.1	881.2	74.1	110.6	50.5	1 821.2
December	381.9	348.3	856.1	83.2	106.2	48.8	1 837.4
2006							
March	404.5	356.6	1 003.9	91.3	105.3	47.9	1 983.6
TREND							
2004							
December	415.9	379.9	914.3	90.3	123.9	52.4	1 992.7
2005							
March	416.1	369.7	925.7	89.7	128.4	50.3	1 982.8
June	403.5	360.0	910.1	84.8	128.3	49.2	1 931.7
September	391.4	352.7	898.2	81.8	120.2	49.0	1 890.4
December	386.2	348.1	908.4	83.1	109.0	48.9	1 880.4
2006							
March	388.3	347.8	940.2	86.5	101.1	48.7	1 904.6

(a) For more information refer to paragraphs 4, 5 and 7 of the Explanatory Notes.

NUMBER OF LIVESTOCK SLAUGHTERED (a), Calves: All Series

Quarter	New South Wales	Victoria	Queensland	South Australia	Western Australia	Tasmania	Australia
	'000	'000	'000	'000	'000	'000	'000
ORIGINAL							
2004							
December	45.7	80.7	15.0	1.0	1.1	8.0	151.8
2005							
March	49.1	28.7	17.2	1.2	0.9	0.9	98.1
June	55.6	121.6	21.1	1.6	1.1	3.0	204.1
September	50.5	277.2	16.5	1.3	1.1	29.2	376.0
December	48.0	73.7	14.0	0.9	1.0	7.3	145.0
2006							
March	50.8	36.9	14.9	1.1	0.7	0.9	105.5
SEASONALLY ADJUSTED							
2004							
December	49.7	135.2	16.7	1.4	1.1	11.7	224.2
2005							
March	48.7	129.8	17.4	1.3	1.1	11.3	195.0
June	51.1	129.9	19.2	1.3	1.1	10.9	214.9
September	51.3	123.8	16.2	1.2	1.0	9.9	201.5
December	52.0	122.3	15.6	1.2	1.0	10.4	212.7
2006							
March	50.7	166.1	15.0	1.1	0.8	11.6	209.4
TREND							
2004							
December	49.7	134.2	17.9	1.3	1.1	11.4	214.2
2005							
March	49.7	131.0	17.8	1.3	1.1	11.1	208.2
June	50.4	125.4	17.7	1.3	1.1	10.7	205.5
September	51.3	126.0	17.0	1.2	1.0	10.4	207.2
December	51.5	135.3	15.8	1.2	0.9	10.6	209.5
2006							
March	51.2	149.1	14.6	1.1	0.8	11.1	209.4

(a) For more information refer to paragraphs 4, 5 and 7 of the Explanatory Notes.

NUMBER OF LIVESTOCK SLAUGHTERED (a), Sheep: All Series

Quarter	New South Wales	Victoria	Queensland	South Australia	Western Australia	Tasmania	Australia
	'000	'000	'000	'000	'000	'000	'000
ORIGINAL							
2004							
December	934.0	886.6	226.6	264.7	606.0	96.7	3 014.7
2005							
March	933.6	945.3	227.2	284.7	651.6	97.1	3 139.4
June	965.7	960.9	245.0	216.6	468.5	86.5	2 943.2
September	697.6	791.2	208.0	218.2	442.1	45.8	2 403.0
December	933.9	1 007.1	233.3	337.9	576.7	61.9	3 150.8
2006							
March	1 081.0	1 073.4	252.6	302.8	609.9	98.1	3 417.8
SEASONALLY ADJUSTED							
2004							
December	886.6	802.2	226.5	224.3	530.9	97.0	2 746.3
2005							
March	874.7	826.1	223.7	251.9	533.3	76.6	2 768.7
June	971.4	1 036.0	244.9	264.3	591.4	80.5	3 179.1
September	791.2	961.1	212.0	251.2	526.3	71.2	2 860.8
December	884.9	911.4	232.2	284.8	502.7	62.0	2 863.3
2006							
March	1 010.3	939.1	248.9	269.7	500.6	72.7	3 012.8
TREND							
2004							
December	873.2	822.3	226.2	240.6	549.8	82.8	2 792.5
2005							
March	891.4	879.9	230.3	245.0	550.4	84.6	2 873.6
June	887.7	949.9	228.2	256.5	553.4	77.6	2 954.6
September	874.6	966.7	227.9	265.5	538.5	70.7	2 955.5
December	898.9	945.9	232.2	271.0	513.2	68.2	2 929.7
2006							
March	946.3	914.5	239.6	275.5	489.8	67.1	2 912.9

(a) For more information refer to paragraphs 4, 5 and 7 of the Explanatory Notes.

NUMBER OF LIVESTOCK SLAUGHTERED (a), Lambs: All Series

Quarter	New South Wales	Victoria	Queensland	South Australia	Western Australia	Tasmania	Australia
	'000	'000	'000	'000	'000	'000	'000
ORIGINAL							
2004							
December	1 049.2	1 839.6	72.1	853.9	639.4	100.4	4 554.6
2005							
March	1 057.0	1 692.8	62.4	870.8	575.6	103.7	4 362.4
June	1 111.8	1 861.0	78.0	951.8	674.0	139.3	4 815.8
September	966.9	1 755.0	70.2	694.2	705.4	141.3	4 333.0
December	1 047.5	1 947.4	65.4	843.5	695.8	117.1	4 716.6
2006							
March	1 068.8	1 904.9	64.9	876.2	675.6	121.4	4 711.9
SEASONALLY ADJUSTED							
2004							
December	1 046.8	1 719.9	77.5	814.2	598.3	107.6	4 366.3
2005							
March	1 048.7	1 752.7	69.5	802.3	591.6	110.4	4 344.2
June	1 107.8	1 853.7	72.2	885.0	663.6	127.2	4 697.5
September	982.2	1 828.2	64.5	879.5	745.5	136.3	4 674.5
December	1 043.9	1 819.9	70.0	803.6	653.9	125.5	4 520.0
2006							
March	1 038.4	1 930.1	72.5	806.6	694.0	125.7	4 636.2
TREND							
2004							
December	1 046.0	1 714.5	70.2	778.1	598.2	104.4	4 274.1
2005							
March	1 063.4	1 773.7	70.3	833.8	617.8	114.5	4 457.6
June	1 055.0	1 813.4	69.1	865.2	663.2	125.6	4 597.0
September	1 037.8	1 835.7	68.4	856.9	692.6	130.1	4 632.2
December	1 028.0	1 859.2	69.3	832.0	695.9	129.6	4 618.8
2006							
March	1 028.8	1 884.2	70.8	801.3	685.6	126.4	4 589.2

(a) For more information refer to paragraphs 4, 5 and 7 of the Explanatory Notes.

NUMBER OF LIVESTOCK SLAUGHTERED (a), Pigs: All Series

Quarter	New South Wales	Victoria	Queensland	South Australia	Western Australia	Tasmania	Australia
	'000	'000	'000	'000	'000	'000	'000
ORIGINAL							
2004							
December	392.5	210.3	314.6	218.5	152.6	13.3	1 303.7
2005							
March	382.7	198.6	318.1	229.8	157.9	9.9	1 298.6
June	423.5	203.3	329.5	245.2	165.9	10.8	1 380.0
September	424.6	181.8	314.1	250.5	155.0	10.4	1 338.1
December	421.6	192.2	302.7	251.4	143.4	11.1	1 324.0
2006							
March	374.1	195.3	300.4	246.9	147.1	10.0	1 275.5
SEASONALLY ADJUSTED							
2004							
December	398.3	211.9	322.9	231.0	160.5	12.2	1 330.9
2005							
March	401.6	204.6	325.6	233.2	160.1	10.4	1 339.9
June	405.1	195.2	316.7	229.0	158.8	11.3	1 324.8
September	419.4	184.5	314.4	251.7	152.2	10.4	1 335.5
December	426.6	193.8	309.1	267.5	151.0	10.2	1 344.2
2006							
March	393.8	200.9	309.1	246.3	148.9	10.7	1 323.1
TREND							
2004							
December	402.3	216.4	322.6	222.4	162.6	11.4	1 335.4
2005							
March	400.6	203.1	322.4	230.7	160.0	11.3	1 330.9
June	409.4	193.2	318.9	239.7	156.9	10.8	1 332.9
September	416.4	190.6	313.9	248.9	153.9	10.5	1 335.0
December	415.0	192.6	310.4	256.0	150.8	10.4	1 334.6
2006							
March	407.9	197.6	308.3	258.3	148.4	10.3	1 332.7

(a) For more information refer to paragraphs 4, 5 and 7 of the Explanatory Notes.

NUMBER OF CHICKENS SLAUGHTERED(a): All Series

Quarter	New South Wales	Victoria	Queensland	South Australia	Western Australia	Australia
	'000	'000	'000	'000	'000	'000
ORIGINAL						
2004						
December	40 401.4	33 740.6	22 856.1	np	np	118 723.1
2005						
March	34 263.7	30 463.9	20 383.2	np	np	104 658.7
June	36 306.7	31 025.2	20 656.3	np	np	107 851.1
September	37 957.7	29 610.1	21 212.8	np	np	108 849.6
December	37 118.0	31 130.2	22 124.3	np	np	111 539.9
2006						
March	37 320.5	30 892.3	20 744.4	np	np	109 832.3
SEASONALLY ADJUSTED						
2004						
December	39 832.8	33 007.3	21 492.6	np	np	115 431.6
2005						
March	34 591.3	30 205.0	20 812.1	np	np	105 154.8
June	36 677.7	31 222.5	21 347.6	np	np	109 465.5
September	37 734.7	30 725.9	21 250.6	np	np	110 036.8
December	36 811.4	30 310.4	20 964.4	np	np	108 625.1
2006						
March	37 480.4	30 788.8	21 024.7	np	np	110 184.3
TREND						
2004						
December	37 489.0	30 174.8	20 973.8	np	np	108 973.4
2005						
March	36 787.9	30 533.0	21 290.7	np	np	108 818.6
June	36 489.3	30 752.9	21 212.3	np	np	108 552.2
September	36 885.5	30 748.9	21 158.7	np	np	109 073.8
December	37 368.6	30 631.4	21 097.4	np	np	109 700.4
2006						
March	37 347.8	30 516.6	20 968.0	np	np	109 632.2

np not available for publication but included in totals where applicable, unless otherwise indicated

(a) For more information refer to paragraphs 8 and 9 of the Explanatory Notes.

NUMBER OF LIVESTOCK SLAUGHTERED (a): Original

Financial year	New South Wales '000	Victoria '000	Queensland '000	South Australia '000	Western Australia '000	Tasmania '000	Australia '000
BULLS, BULLOCKS AND STEERS							
2002-03	961.6	630.0	1 993.7	166.6	173.4	79.9	4 006.3
2003-04	794.0	613.5	2 049.9	178.6	200.4	98.3	3 935.7
2004-05	925.8	600.2	2 330.6	191.1	228.7	109.2	4 386.9
COWS AND HEIFERS							
2002-03	968.9	1 020.5	1 521.6	192.5	255.9	112.9	4 076.4
2003-04	822.2	943.1	1 514.4	164.4	262.5	106.5	3 817.2
2004-05	774.6	915.5	1 359.8	168.0	281.8	94.9	3 598.7
CATTLE (excluding calves)							
2002-03	1 930.5	1 650.4	3 515.2	359.1	429.3	192.8	8 082.7
2003-04	1 616.1	1 556.6	3 564.2	342.9	462.9	204.7	7 752.9
2004-05	1 700.4	1 515.7	3 690.5	359.1	510.5	204.1	7 985.6
CALVES							
2002-03	246.1	749.3	92.1	11.0	5.3	41.2	1 145.8
2003-04	221.9	659.2	84.7	7.2	4.7	47.3	1 025.8
2004-05	201.2	539.0	73.3	5.3	4.3	44.1	867.9
SHEEP							
2002-03	5 282.2	3 641.2	1 142.0	1 431.8	1 771.8	388.3	13 657.3
2003-04	3 310.0	3 078.9	892.8	947.5	1 845.4	346.3	10 420.7
2004-05	3 548.4	3 465.4	918.9	979.1	2 205.2	325.6	11 442.6
LAMBS							
2002-03	4 388.8	6 904.8	340.3	2 841.1	2 021.0	374.0	16 869.8
2003-04	4 047.4	6 471.4	261.5	2 970.6	2 391.8	419.2	16 561.8
2004-05	4 110.4	6 787.1	287.2	3 236.2	2 466.7	442.9	17 330.6
PIGS							
2002-03	1 860.6	1 033.2	1 234.8	884.1	672.3	47.7	5 741.7
2003-04	1 751.1	973.1	1 318.1	820.9	674.4	44.2	5 591.2
2004-05	1 614.6	847.3	1 285.4	894.8	647.0	45.6	5 342.5
CHICKENS							
2002-03	149 917.0	117 892.0	75 149.3	np	np	np	419 181.0
2003-04	149 358.7	120 345.9	77 472.0	np	np	np	423 742.0
2004-05	147 973.2	124 726.5	84 086.2	np	np	np	437 640.9

np not available for publication but included in totals where applicable, unless otherwise indicated

(a) For more information refer to paragraphs 4, 5 and 7 to 9 of the Explanatory Notes.

RED MEAT PRODUCED(a), Beef: All Series

Quarter	New South Wales tonnes	Victoria tonnes	Queensland tonnes	South Australia tonnes	Western Australia tonnes	Tasmania tonnes	Australia tonnes
ORIGINAL							
2004							
December	106 301	93 276	246 510	25 797	32 317	14 138	518 616
2005							
March	105 848	88 486	222 552	25 085	32 581	15 528	490 359
June	115 970	93 618	286 728	24 547	36 289	14 643	572 088
September	92 934	74 588	283 425	15 005	26 452	12 029	504 729
December	100 107	86 952	241 303	23 195	30 467	13 037	495 343
2006							
March	107 390	88 475	244 613	25 933	28 829	15 041	510 564
SEASONALLY ADJUSTED							
2004							
December	106 594	90 767	255 903	23 727	29 266	14 491	522 393
2005							
March	107 918	86 667	263 558	22 700	31 334	13 625	527 188
June	110 510	91 846	268 004	24 353	39 871	13 710	536 020
September	95 521	80 011	253 237	18 887	27 896	14 703	498 481
December	100 306	84 726	248 852	21 202	27 690	13 388	499 389
2006							
March	105 346	84 549	291 345	23 485	27 684	13 186	534 182
TREND							
2004							
December	107 722	91 395	259 032	23 199	31 423	14 463	532 345
2005							
March	108 357	89 014	263 355	23 370	33 297	14 025	530 538
June	105 077	86 659	259 857	22 236	33 688	13 935	519 064
September	101 696	84 763	257 720	21 232	31 464	13 968	511 237
December	100 608	83 644	262 690	21 297	28 345	13 726	509 971
2006							
March	101 757	83 409	273 981	22 040	26 122	13 329	516 495

(a) For more information refer to paragraphs 4 to 7 of the Explanatory Notes.

RED MEAT PRODUCED(a), Veal: All Series

	New South Wales	Victoria	Queensland	South Australia	Western Australia	Tasmania	Australia
Quarter	tonnes	tonnes	tonnes	tonnes	tonnes	tonnes	tonnes
ORIGINAL							
2004							
December	2 968	1 857	736	38	74	164	5 851
2005							
March	3 131	742	797	39	51	25	4 798
June	3 589	2 501	970	49	61	70	7 253
September	3 243	5 276	802	42	79	570	10 024
December	3 145	1 555	720	33	65	150	5 679
2006							
March	3 291	836	678	36	46	25	4 924
SEASONALLY ADJUSTED							
2004							
December	3 229	3 030	811	46	74	233	7 417
2005							
March	3 046	2 884	802	41	60	205	6 498
June	3 322	2 612	896	43	61	241	7 184
September	3 343	2 435	790	40	69	198	6 847
December	3 397	2 514	788	39	64	209	7 141
2006							
March	3 227	3 222	689	37	49	204	6 558
TREND							
2004							
December	3 197	2 957	845	45	63	218	7 182
2005							
March	3 182	2 823	833	42	64	223	6 936
June	3 250	2 607	836	41	65	219	6 904
September	3 334	2 529	818	40	64	213	6 971
December	3 345	2 680	767	39	61	207	6 923
2006							
March	3 293	2 928	708	37	56	200	6 732

(a) For more information refer to paragraphs 4 to 7 of the Explanatory Notes.

RED MEAT PRODUCED(a), Mutton: All Series

Quarter	New South Wales	Victoria	Queensland	South Australia	Western Australia	Tasmania	Australia
	tonnes	tonnes	tonnes	tonnes	tonnes	tonnes	tonnes
ORIGINAL							
2004							
December	21 718	18 397	4 953	6 292	12 066	1 922	65 349
2005							
March	20 571	18 408	4 607	6 536	12 880	1 893	64 894
June	19 961	18 367	4 689	4 915	9 279	1 662	58 873
September	14 723	15 022	4 310	4 845	9 515	907	49 322
December	21 115	20 118	5 048	7 671	12 845	1 235	68 032
2006							
March	22 770	19 999	5 055	6 861	13 042	1 858	69 585
SEASONALLY ADJUSTED							
2004							
December	19 817	15 904	4 762	5 186	10 459	1 887	57 299
2005							
March	19 466	16 022	4 646	5 843	10 617	1 497	57 749
June	20 903	20 967	4 689	6 176	11 904	1 565	65 889
September	16 571	18 396	4 461	5 566	11 203	1 420	58 800
December	19 225	17 367	4 832	6 296	11 073	1 212	59 442
2006							
March	21 472	17 409	5 110	6 165	10 790	1 385	61 935
TREND							
2004							
December	19 203	16 106	4 733	5 589	10 858	1 612	58 001
2005							
March	19 591	17 417	4 692	5 677	10 937	1 648	59 727
June	19 242	18 771	4 590	5 876	11 293	1 523	61 281
September	18 696	18 791	4 641	5 984	11 355	1 390	61 083
December	19 178	17 977	4 802	6 059	11 106	1 330	60 454
2006							
March	20 231	16 932	4 995	6 173	10 797	1 297	60 046

(a) For more information refer to paragraphs 4 to 7 of the Explanatory Notes.

<i>Quarter</i>	<i>New South Wales</i>	<i>Victoria</i>	<i>Queensland</i>	<i>South Australia</i>	<i>Western Australia</i>	<i>Tasmania</i>	<i>Australia</i>
tonnes	tonnes	tonnes	tonnes	tonnes	tonnes	tonnes	tonnes
ORIGINAL							
2004							
December	20 812	36 524	1 420	18 060	12 380	1 972	91 169
2005							
March	21 422	34 866	1 193	20 252	11 693	2 091	91 516
June	22 916	37 224	1 525	22 441	13 866	2 876	100 849
September	19 616	34 928	1 374	14 877	14 544	2 848	88 187
December	20 621	38 183	1 257	17 409	14 364	2 402	94 236
2006							
March	21 605	38 995	1 224	19 052	13 910	2 445	97 232
SEASONALLY ADJUSTED							
2004							
December	20 903	34 447	1 535	17 737	11 675	2 126	88 425
2005							
March	21 073	35 826	1 347	18 257	12 011	2 251	90 541
June	22 566	36 637	1 393	20 097	13 483	2 600	96 944
September	20 221	36 791	1 257	19 695	15 443	2 735	96 017
December	20 680	35 980	1 356	17 123	13 616	2 591	91 535
2006							
March	20 837	39 027	1 385	17 113	14 275	2 564	94 314
TREND							
2004							
December	20 835	34 510	1 345	17 048	11 795	2 099	86 870
2005							
March	21 441	35 701	1 353	18 726	12 397	2 310	91 739
June	21 464	36 331	1 341	19 597	13 572	2 550	95 062
September	21 062	36 630	1 328	19 051	14 303	2 649	95 029
December	20 690	37 138	1 338	18 007	14 412	2 643	94 035
2006							
March	20 527	37 803	1 361	17 024	14 199	2 587	93 119

(a) For more information refer to paragraphs 4 to 7 of the Explanatory Notes.

RED MEAT PRODUCED(a), Pig meat: All Series

<i>Quarter</i>	<i>New South Wales</i>	<i>Victoria</i>	<i>Queensland</i>	<i>South Australia</i>	<i>Western Australia</i>	<i>Tasmania</i>	<i>Australia</i>
tonnes	tonnes	tonnes	tonnes	tonnes	tonnes	tonnes	tonnes
ORIGINAL							
2004							
December	28 477	15 230	23 337	16 112	10 220	719	94 180
2005							
March	28 168	14 688	23 049	15 773	10 793	561	93 109
June	31 935	15 265	25 042	17 504	11 453	615	101 894
September	31 385	13 653	23 392	19 178	10 667	600	98 956
December	29 278	13 699	22 107	18 805	9 709	628	94 298
2006							
March	25 851	14 421	22 015	18 093	10 027	570	91 047
SEASONALLY ADJUSTED							
2004							
December	29 386	15 685	24 052	17 402	10 926	674	97 846
2005							
March	29 820	15 164	24 420	16 024	10 962	590	97 011
June	30 000	14 624	23 724	16 042	10 817	638	96 603
September	30 927	13 598	22 845	19 182	10 445	597	97 935
December	30 039	13 917	22 890	20 283	10 386	578	96 824
2006							
March	27 534	15 098	23 228	18 162	10 169	610	96 003
TREND							
2004							
December	29 600	16 029	24 249	15 013	11 046	633	97 263
2005							
March	29 744	15 119	24 085	15 771	10 923	632	97 078
June	30 328	14 325	23 644	17 154	10 742	613	97 200
September	30 339	14 031	23 171	18 503	10 545	600	97 154
December	29 598	14 143	22 951	19 296	10 342	596	96 895
2006							
March	28 482	14 566	22 991	19 404	10 184	593	96 408

(a) For more information refer to paragraphs 4 to 7 of the Explanatory Notes.

TOTAL RED MEAT PRODUCED(a): All Series

Quarter	New South Wales	Victoria	Queensland	South Australia	Western Australia	Tasmania	Australia
	tonnes	tonnes	tonnes	tonnes	tonnes	tonnes	tonnes
ORIGINAL							
2004							
December	180 276	165 284	276 956	66 300	67 058	18 916	775 163
2005							
March	179 140	157 189	252 197	67 686	67 998	20 097	744 675
June	194 371	166 975	318 954	69 457	70 949	19 866	840 957
September	161 901	143 467	313 302	53 948	61 256	16 954	751 217
December	174 267	160 506	270 434	67 113	67 449	17 453	757 588
2006							
March	180 908	162 726	273 585	69 975	65 853	19 939	773 353
SEASONALLY ADJUSTED							
2004							
December	179 929	159 833	287 063	64 098	62 400	19 411	773 380
2005							
March	181 323	156 563	294 773	62 865	64 984	18 168	778 987
June	187 301	166 686	298 706	66 711	76 136	18 754	802 640
September	166 583	151 231	282 590	63 370	65 056	19 653	758 080
December	173 647	154 504	278 718	64 943	62 829	17 978	754 331
2006							
March	178 416	159 305	321 757	64 962	62 967	17 949	792 992
TREND							
2004							
December	180 557	160 997	290 204	60 894	65 185	19 025	781 661
2005							
March	182 315	160 074	294 318	63 586	67 618	18 838	786 018
June	179 361	158 693	290 268	64 904	69 360	18 840	779 511
September	175 127	156 744	287 678	64 810	67 731	18 820	771 474
December	173 419	155 582	292 548	64 698	64 266	18 502	768 278
2006							
March	174 290	155 638	304 036	64 678	61 358	18 006	772 800

(a) For more information refer to paragraphs 4 to 7 of the Explanatory Notes.

CHICKEN MEAT PRODUCED(a): All Series

Quarter	New South Wales	Victoria	Queensland	South Australia	Western Australia	Australia
	tonnes	tonnes	tonnes	tonnes	tonnes	tonnes
ORIGINAL						
2004						
December	69 342	56 172	34 816	np	np	195 330
2005						
March	59 514	54 924	31 001	np	np	178 055
June	72 537	58 058	32 002	np	np	197 362
September	68 926	50 901	36 896	np	np	188 782
December	68 920	54 125	34 239	np	np	190 998
2006						
March	73 276	54 226	35 531	np	np	196 817
SEASONALLY ADJUSTED						
2004						
December	68 313	54 371	32 660	np	np	189 688
2005						
March	60 763	54 610	32 244	np	np	180 443
June	73 148	58 375	32 887	np	np	199 508
September	67 837	53 298	36 513	np	np	189 745
December	68 409	52 472	32 504	np	np	186 778
2006						
March	74 292	53 810	36 529	np	np	198 302
TREND						
2004						
December	65 514	54 086	31 887	np	np	185 444
2005						
March	66 633	55 812	32 826	np	np	189 146
June	67 838	55 838	33 626	np	np	190 863
September	69 182	54 599	34 270	np	np	191 352
December	70 579	53 368	34 859	np	np	192 035
2006						
March	71 483	52 518	35 377	np	np	192 588

np not available for publication but included in totals where applicable, unless otherwise indicated

(a) For more information refer to paragraphs 8 and 9 of the Explanatory Notes.

MEAT PRODUCED(a): Original

<i>Financial year</i>	<i>New South Wales</i> tonnes	<i>Victoria</i> tonnes	<i>Queensland</i> tonnes	<i>South Australia</i> tonnes	<i>Western Australia</i> tonnes	<i>Tasmania</i> tonnes	<i>Australia</i> tonnes
BEEF							
2002-03	471 498	370 223	946 950	88 362	105 074	51 376	2 034 613
2003-04	401 926	361 323	974 715	86 755	116 555	55 454	1 997 848
2004-05	440 720	363 226	1 046 410	93 049	131 407	56 859	2 132 810
VEAL							
2002-03	16 493	16 007	4 202	341	300	826	38 220
2003-04	14 277	15 076	4 253	234	258	947	35 093
2004-05	12 941	11 393	3 451	176	250	886	29 147
MUTTON							
2002-03	106 106	67 552	20 741	30 893	35 431	7 495	268 218
2003-04	73 335	60 055	19 021	23 369	37 094	6 839	219 713
2004-05	77 517	68 026	18 899	22 721	43 842	6 351	237 356
LAMB							
2002-03	85 304	130 699	6 284	60 114	39 568	7 439	329 407
2003-04	82 149	130 772	5 127	67 753	47 212	8 436	341 448
2004-05	82 550	135 948	5 564	72 157	49 122	8 950	354 290
PIG MEAT							
2002-03	140 247	72 105	94 434	64 147	45 490	2 715	419 555
2003-04	129 800	70 289	99 774	57 960	45 190	2 457	405 898
2004-05	119 085	62 740	96 365	63 525	43 999	2 538	388 598
TOTAL RED MEAT							
2002-03	819 648	656 586	1 072 611	243 857	225 863	69 851	3 090 013
2003-04	701 486	637 515	1 102 890	236 071	246 309	74 134	3 000 002
2004-05	732 812	641 332	1 170 689	251 627	268 620	75 584	3 142 201
CHICKEN MEAT							
2002-03	256 445	204 440	114 327	np	np	np	689 826
2003-04	247 755	205 348	117 889	np	np	np	693 602
2004-05	265 716	219 508	128 669	np	np	np	750 029

np not available for publication but included in totals where applicable, unless otherwise indicated

(a) For more information refer to paragraphs 4 to 9 in the Explanatory Notes.

Period	FRESH, CHILLED OR FROZEN MEAT									PROCESSED MEAT	
	Beef bone-in tonnes	Beef bone-out tonnes	Veal bone-in tonnes	Veal bone-out tonnes	Mutton bone-in tonnes	Mutton bone-out tonnes	Lamb bone-in tonnes	Lamb bone-out tonnes	Pork tonnes	Bacon and ham tonnes	Canned meat tonnes
2002-03	37 467	894 430	3 675	6 458	109 345	52 275	87 907	14 082	62 927	351	17 048
2003-04	32 069	852 412	2 893	6 262	86 539	42 722	100 537	18 326	50 667	558	24 705
2004-05	44 636	959 391	3 320	5 775	101 740	41 790	106 518	21 699	43 495	449	22 835
2004											
December	12 022	252 729	792	1 357	27 898	11 686	29 707	5 072	10 741	136	6 293
2005											
March	12 372	200 576	618	830	29 372	9 645	26 923	5 348	10 036	72	4 985
June	13 035	260 437	1 144	1 302	26 578	11 257	31 758	7 413	10 876	127	5 774
September	14 627	227 460	1 029	2 110	18 616	7 986	27 520	6 319	10 528	105	5 734
December	13 795	229 705	810	1 514	32 027	12 989	32 871	6 328	10 117	90	5 474
2006											
March	11 420	196 053	645	615	30 214	10 166	26 760	6 203	11 102	38	4 388

(a) For more information refer to paragraphs 10 and 11 of the Explanatory Notes.

<i>Period</i>	<i>Number</i>	<i>Gross weight</i>	<i>Gross value</i>	<i>Unit value</i>
	'000	'000 tonnes	\$'000	\$
.....				
SHEEP				
2002-03	5 843.2	273.0	408 235	69.87
2003-04	3 842.7	188.2	266 457	69.34
2004-05	3 233.2	166.1	206 678	63.92
2004				
December	839.8	42.2	53 946	64.24
2005				
March	904.6	44.3	55 415	61.26
June	639.4	31.1	39 228	61.35
September	1 173.7	60.0	82 397	70.20
December	1 465.8	72.1	101 472	69.22
2006				
March	854.3	43.8	56 047	65.60
.....				
CATTLE				
2002-03	976.6	362.5	569 288	582.95
2003-04	581.5	192.0	317 850	546.65
2004-05	573.7	191.7	374 060	652.01
2004				
December	131.0	45.3	95 115	725.95
2005				
March	120.2	40.6	77 020	640.98
June	150.6	48.5	90 040	597.97
September	157.6	55.7	96 100	609.81
December	102.8	33.4	73 944	719.55
2006				
March	118.4	35.5	73 647	621.95

(a) For more information refer to paragraph 12 of the Explanatory Notes.

WHOLE MILK INTAKE, By Factories(a)(b): All Series

	<i>New South Wales</i>	<i>Victoria</i>	<i>Queensland</i>	<i>South Australia</i>	<i>Western Australia</i>	<i>Tasmania</i>	Australia
<i>Quarter</i>	ML	ML	ML	ML	ML	ML	ML
ORIGINAL							
2004							
September	307	1 535	167	160	102	98	2 369
December	347	2 314	166	204	110	240	3 380
2005							
March	289	1 617	145	165	88	162	2 466
June	274	1 147	142	149	96	101	1 909
September	309	1 556	168	149	103	103	2 387
December	353	2 308	168	206	109	235	3 379
SEASONALLY ADJUSTED							
2004							
September	302	1 622	158	170	97	148	2 497
December	304	1 591	156	170	101	150	2 472
2005							
March	307	1 705	152	168	96	148	2 576
June	307	1 751	153	171	101	157	2 640
September	302	1 637	158	158	99	156	2 510
December	314	1 592	160	171	100	147	2 484
TREND							
2004							
September	303	1 615	157	171	97	149	2 492
December	304	1 642	155	170	98	149	2 518
2005							
March	305	1 686	153	168	99	151	2 562
June	305	1 698	154	167	99	154	2 577
September	307	1 664	157	166	100	153	2 547
December	309	1 610	160	166	100	152	2 497

(a) For more information refer to paragraph 13 of the Explanatory Notes.

(b) Data for Australian Capital Territory are included in New South Wales; data for Northern Territory are included in South Australia.

Source: Original series data from Dairy Australia.

MARKET MILK SALES, By Factories(a)(b): All Series

	<i>New South Wales</i>	<i>Victoria</i>	<i>Queensland</i>	<i>South Australia</i>	<i>Western Australia</i>	<i>Tasmania</i>	<i>Australia</i>
<i>Quarter</i>	ML	ML	ML	ML	ML	ML	ML
ORIGINAL							
2004							
September	160	122	108	51	54	13	508
December	158	123	107	50	55	14	506
2005							
March	159	118	106	48	52	13	497
June	164	121	109	49	54	13	511
September	167	123	112	51	56	14	521
December	161	122	110	51	52	13	510
SEASONALLY ADJUSTED							
2004							
September	158	120	105	49	52	13	499
December	159	123	107	50	55	14	507
2005							
March	161	122	108	49	53	13	507
June	163	120	109	49	54	13	509
September	164	120	109	50	54	13	511
December	163	121	110	51	53	13	511
TREND							
2004							
September	158	121	105	50	52	13	500
December	159	122	107	50	54	13	504
2005							
March	161	122	108	50	54	13	508
June	163	121	109	50	54	13	510
September	163	121	110	50	54	13	510
December	164	121	110	50	53	13	511

(a) For more information refer to paragraph 13 of the Explanatory Notes.

(b) Data for Australian Capital Territory are included in New South Wales; data for Northern Territory are included in South Australia.

Source: Original series data from Dairy Australia.

BROKERS AND DEALERS RECEIVALS OF TAXABLE WOOL(a): All Series

Quarter	New South Wales	Victoria	Queensland	South Australia	Western Australia	Tasmania	Australia	% of total received by brokers
	tonnes	tonnes	tonnes	tonnes	tonnes	tonnes	tonnes	%
ORIGINAL								
2004								
December	43 432	36 591	4 333	19 815	28 563	3 988	136 722	80.0
2005								
March	32 051	28 550	3 462	14 438	32 900	2 251	113 652	81.2
June	31 397	26 120	5 716	13 327	18 070	2 747	97 376	77.0
September	42 735	29 417	7 562	17 387	28 538	3 682	129 320	79.7
December	41 196	36 097	4 655	18 460	31 371	3 875	135 655	79.5
2006								
March	35 337	30 607	3 642	13 973	38 810	2 205	124 574	79.4
SEASONALLY ADJUSTED								
2004								
December	38 707	27 933	5 384	15 936	26 195	2 930	117 084	..
2005								
March	36 294	30 283	4 546	16 023	26 695	2 992	116 834	..
June	39 215	35 149	5 380	19 739	27 313	3 203	130 000	..
September	35 799	29 307	5 640	14 807	28 103	3 621	117 277	..
December	36 723	27 637	5 799	14 872	28 799	2 807	116 636	..
2006								
March	39 976	32 368	4 668	15 380	31 348	2 926	126 666	..
TREND								
2004								
December	37 215	29 303	4 873	16 479	26 655	2 683	117 209	..
2005								
March	37 606	30 896	5 119	17 079	26 556	2 956	120 212	..
June	37 378	31 677	5 305	17 113	27 167	3 318	121 956	..
September	37 040	30 736	5 526	16 288	28 133	3 254	120 978	..
December	37 557	29 816	5 467	15 246	29 331	3 095	120 511	..
2006								
March	38 351	29 848	5 128	14 721	30 454	2 922	121 425	..

.. not applicable

(a) For more information refer to paragraphs 4, 14 and 15 of the Explanatory Notes.

<i>Financial year</i>	<i>New South Wales</i>	<i>Victoria</i>	<i>Queensland</i>	<i>South Australia</i>	<i>Western Australia</i>	<i>Tasmania</i>	<i>Australia</i>
.....							
WHOLE MILK INTAKE BY FACTORIES (b) (ML)							
2002-03	1 301	6 585	720	733	404	585	10 328
2003-04	1 271	6 434	674	703	403	590	10 075
2004-05	1 218	6 613	619	679	396	600	10 125
.....							
MARKET MILK SALES BY FACTORIES (b) (ML)							
2002-03	616	473	404	181	200	51	1 925
2003-04	628	484	411	196	204	52	1 976
2004-05	641	485	429	199	215	53	2 022
.....							
BROKERS AND DEALERS RECEIVALS OF TAXABLE WOOL (Tonnes)							
2002-03	168 138	128 444	18 287	65 054	108 739	14 357	503 020
2003-04	140 815	119 667	17 127	66 982	109 853	13 138	467 582
2004-05	149 193	120 360	20 217	67 516	107 054	10 881	475 221

(a) For more information refer to paragraphs 13 to 15 of the Explanatory Notes.

(b) Data for Australian Capital Territory are included in New South Wales; data for Northern Territory are included in South Australia.

Source: Original series milk data from Dairy Australia.

WHAT IF...? REVISIONS TO TREND ESTIMATES

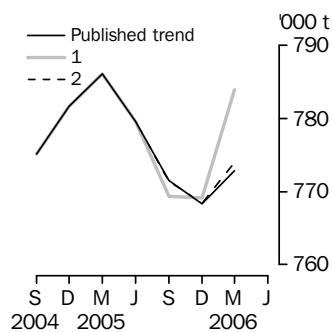
EFFECT OF NEW SEASONALLY ADJUSTED ESTIMATES ON TREND ESTIMATES

TREND REVISIONS

Recent seasonally adjusted and trend estimates are likely to be revised when original estimates for subsequent quarters become available. The approximate effects of possible scenarios on trend estimates are presented below. These illustrate the impact on trend estimates if next quarter's seasonally adjusted estimate either rises or falls by a certain percentage (based on the historical average of movements in seasonally adjusted estimates).

For further information, see paragraphs 20 to 22 of the Explanatory Notes.

RED MEAT PRODUCTION

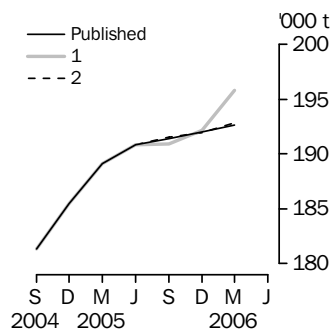


WHAT IF NEXT QUARTER'S SEASONALLY ADJUSTED ESTIMATE:

	<u>Trend as published</u>		<u>(1) rises by 2.2% on Mar Qtr 2006</u>		<u>(2) falls by 2.2% on Mar Qtr 2006</u>	
	number	% change	number	% change	number	% change
Mar Qtr 2005	786 018	0.6	786 017	0.6	786 017	0.6
Jun Qtr 2005	779 511	-0.8	779 511	-0.8	779 511	-0.8
Sep Qtr 2005	771 474	-1.0	769 371	-1.3	771 421	-1.0
Dec Qtr 2005	768 278	-0.4	769 106	—	768 361	-0.4
Mar Qtr 2006	772 800	0.6	783 877	1.9	773 997	0.7

— nil or rounded to zero (including null cells)

CHICKEN MEAT PRODUCTION

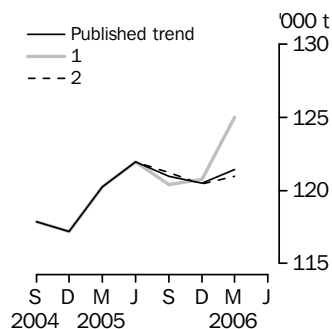


WHAT IF NEXT QUARTER'S SEASONALLY ADJUSTED ESTIMATE:

	<u>Trend as published</u>		<u>(1) rises by 2.6% on Mar Qtr 2006</u>		<u>(2) falls by 2.6% on Mar Qtr 2006</u>	
	number	% change	number	% change	number	% change
Mar Qtr 2005	189 146	2.0	189 146	2.0	189 146	2.0
Jun Qtr 2005	190 863	0.9	190 863	0.9	190 863	0.9
Sep Qtr 2005	191 352	0.3	190 895	—	191 501	0.3
Dec Qtr 2005	192 035	0.4	192 167	0.7	191 947	0.2
Mar Qtr 2006	192 588	0.3	195 771	1.9	192 852	0.5

— nil or rounded to zero (including null cells)

WOOL RECEIVALS

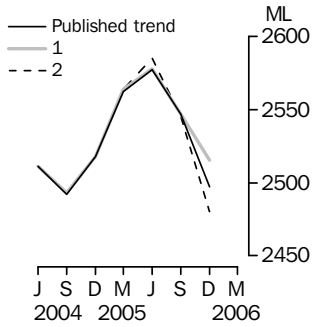


WHAT IF NEXT QUARTER'S SEASONALLY ADJUSTED ESTIMATE:

	<u>Trend as published</u>		<u>(1) rises by 5.6% on Mar Qtr 2006</u>		<u>(2) falls by 5.6% on Mar Qtr 2006</u>	
	number	% change	number	% change	number	% change
Mar Qtr 2005	120 212	2.6	120 212	2.6	120 212	2.6
Jun Qtr 2005	121 956	1.5	121 956	1.5	121 956	1.5
Sep Qtr 2005	120 978	-0.8	120 394	-1.3	121 228	-0.6
Dec Qtr 2005	120 511	-0.4	120 776	0.3	120 435	-0.7
Mar Qtr 2006	121 425	0.8	124 981	3.5	120 941	0.4

WHAT IF...? REVISIONS TO TREND ESTIMATES *continued*

WHOLE MILK INTAKE BY FACTORIES



WHAT IF NEXT QUARTER'S SEASONALLY ADJUSTED ESTIMATE:

	<i>Trend as published</i>		<i>(1) rises by 2.5% on Dec Qtr 2005</i>		<i>(2) falls by 2.5% on Dec Qtr 2005</i>	
	number	% change	number	% change	number	% change
Dec Qtr 2004	2 518	1.0	2 518	1.0	2 518	1.0
Mar Qtr 2005	2 562	1.7	2 564	1.8	2 564	1.8
Jun Qtr 2005	2 577	0.6	2 578	0.5	2 585	0.8
Sep Qtr 2005	2 547	-1.2	2 547	-1.2	2 545	-1.5
Dec Qtr 2005	2 497	-2.0	2 515	-1.3	2 480	-2.6

EXPLANATORY NOTES

INTRODUCTION

1 This publication contains information on livestock slaughterings, meat production, exports of live sheep and live cattle, exports of fresh, frozen and processed meat, and whole milk intake by factories, market milk sales by factories and receivals of taxable wool by wool brokers and dealers.

2 The figures shown in this publication have been revised where necessary and as a consequence may not agree with similar data shown in previous publications.

3 Where figures have been rounded, discrepancies may occur between sums of the component items and totals.

4 Unless indicated otherwise, Australian totals include data for all states and both territories.

LIVESTOCK SLAUGHTERINGS AND MEAT PRODUCTION

5 The statistics on slaughterings for red meat production are based on a monthly collection from abattoirs and other major slaughtering establishments and include estimates of animals slaughtered on farms and by country butchers and other small slaughtering establishments.

6 Red meat is shown in carcass weight and excludes offal.

7 Care should be taken when using this information as the figures only relate to slaughterings for human consumption and do not include animals condemned, slaughtered for pet food or those killed for boiling down.

8 Poultry slaughterings and meat produced statistics have been compiled from quarterly returns supplied by commercial poultry slaughtering establishments and comprise boilers, fryers and roasters. Many small producers are excluded from the collection; however, the statistics represent a high level of coverage. Tasmanian, Northern Territory and Australian Capital Territory data are excluded from the Australian total.

9 Chicken meat is shown in dressed weight of whole birds, pieces and giblets. Some slaughterings and meat production statistics for 'Ducks and Drakes' and 'Other Fowls and Turkeys' are available by contacting the ABS on Hobart (03) 6222 5838 or by writing to GPO Box 66, Hobart Tasmania 7001 (Attention: Agriculture Section).

EXPORTS OF FRESH, FROZEN AND PROCESSED MEAT

10 Table 20 shows exports of fresh, frozen and processed meat. International trade statistics are compiled by the ABS from information submitted by exporters and importers or their agents to the Australian Customs Service. Factors can be applied to beef, veal, mutton and lamb bone-out figures to derive bone-in carcass weight which, when added to bone-in figures, shows total exports in carcass weight. The factor for beef and veal is 1.5 and for mutton and lamb, 2.0. This information is sourced from Department of Agriculture, Fisheries and Forestry – Australia.

11 Beef also includes buffalo meat. Bacon and ham shown is the cured carcass weight of smoked or cooked bacon and ham. It also includes the stated net weight of packs of canned bacon and ham. Canned meat is shown as the canned weight and excludes canned bacon and ham.

LIVE SHEEP AND CATTLE EXPORTS

12 Table 21 contains statistics of the number of live sheep and cattle exported, the gross weight, gross value and unit value. The unit value is obtained by dividing the gross value by the number of animals exported. Sheep and cattle exported for breeding are excluded.

MILK

13 Tables 2, 22, 23 and 25 contain statistics collected by Dairy Australia. Whole milk intake by factories includes the whole milk equivalent of farm cream intake. Market milk sales includes white, flavoured, high and low fat milk and UHT milk. Interstate transfers of UHT milk have been included in their state of destination.

EXPLANATORY NOTES *continued*

WOOL RECEIVALS

14 The statistics in tables 2, 24 and 25 show the amount of taxable wool received by brokers and purchased by dealers from wool producers. It excludes wool received by brokers on which tax has already been paid by other dealers (private buyers) or brokers.

15 The information shown is on the basis of the state in which wool has actually been received and does not necessarily reflect the production of wool in that state.

SEASONAL ADJUSTMENT

16 Seasonal adjustment is a means of removing the estimated effects of normal seasonal variation from the series so that the effects of other influences can be more clearly recognised.

17 In the seasonal adjustment of the livestock estimates, account has been taken of both normal seasonal factors and 'trading day' effects, where significant, (arising from the varying length of each quarter and the varying numbers of Sundays, Mondays, Tuesdays etc. in the quarter). Adjustments are also made for the effects of change in the date of Easter holidays, again, where significant. Seasonal adjustment does not remove from the series the effect of irregular influences (e.g. abnormal weather, industrial disputes).

18 The state component series have been seasonally adjusted independently. Therefore, the adjusted components may not add to the Australian group totals.

19 In this publication the seasonally adjusted estimates are produced by the concurrent seasonal adjustment method which takes account of the latest available original estimates. This method improves the estimation of seasonal factors and therefore, the seasonally adjusted and trend estimates for the current and previous quarters. As a result of this improvement, revisions to the seasonally adjusted and trend estimates will be observed for recent periods. In most instances the only noticeable revisions will be to the previous quarter and the same quarter one year ago. A more detailed review is conducted annually prior to the September quarter release, using data up to and including the June quarter. The concurrent seasonal adjustment methodology replaces the forward factor methodology used previously.

TREND ESTIMATES

20 A trend estimate is obtained by reducing the irregular component from the seasonally adjusted series. In this publication trend estimates are generally derived by applying a 7-term Henderson moving average to the seasonally adjusted series. The 7-term Henderson, (like all Henderson averages) is symmetric, but as the end of a time series is approached, asymmetric forms of the average are applied. Unlike the weights of the standard 7-term Henderson moving average, the weights employed here have been tailored to suit the particular characteristics of individual series. While the asymmetric weights enable the trend to be calculated for recent quarters, it does result in revisions to the estimates for the most recent three quarters as additional observations become available. Revisions of trend estimates will also occur with revisions to the original data and re-estimation of seasonal factors.

21 Sensitivity analysis indicates the potential magnitude and direction of revisions created to the last three estimates. It aims to show how a specified movement in the seasonally adjusted data in the next period will affect the trend path of the time series. By showing how sensitive the trend estimates are to the addition of new data, the analysis provides information which can be used in the assessment of the trend's stability.

22 For further information, see *Information Paper: A Guide to Interpreting Time Series – Monitoring 'Trends', an Overview* (cat. no. 1348.0) or contact the Assistant Director, Time Series Analysis on Canberra (02) 6252 6345.

EXPLANATORY NOTES *continued*

RELATED PUBLICATIONS

23 Current publications and other products released by the ABS are listed in the *Catalogue of Publications and Products* (cat. no. 1101.0). The Catalogue is available from any ABS office or the ABS web site <<http://www.abs.gov.au>>. The ABS also issues a daily Release Advice on the web site which details products to be released in the week ahead.

GENERAL ACKNOWLEDGMENT

24 ABS publications draw extensively on information provided freely by individuals, businesses, governments and other organisations. Their continued cooperation is very much appreciated. Without it, the wide range of statistics published by the ABS would not be available. Information received by the ABS is treated in strict confidence as required by the *Census and Statistics Act 1905*.

FOR MORE INFORMATION . . .

- INTERNET* **www.abs.gov.au** the ABS web site is the best place for data from our publications and information about the ABS.
- LIBRARY* A range of ABS publications are available from public and tertiary libraries Australia wide. Contact your nearest library to determine whether it has the ABS statistics you require, or visit our web site for a list of libraries.

INFORMATION AND REFERRAL SERVICE

Our consultants can help you access the full range of information published by the ABS that is available free of charge from our web site, or purchase a hard copy publication. Information tailored to your needs can also be requested as a 'user pays' service. Specialists are on hand to help you with analytical or methodological advice.

- PHONE* 1300 135 070
- EMAIL* client.services@abs.gov.au
- FAX* 1300 135 211
- POST* Client Services, ABS, GPO Box 796, Sydney NSW 2001

FREE ACCESS TO STATISTICS

All ABS statistics can be downloaded free of charge from the ABS web site.

- WEB ADDRESS* www.abs.gov.au



2721500003060

ISSN 0728 4047

RRP \$26.00