

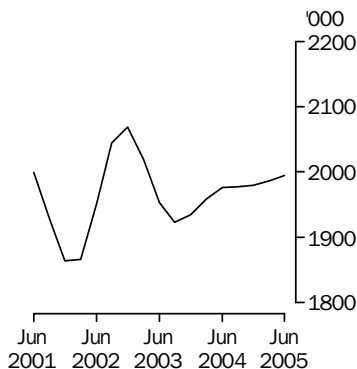
# LIVESTOCK PRODUCTS

AUSTRALIA

EMBARGO: 11.30AM (CANBERRA TIME) FRI 12 AUG 2005

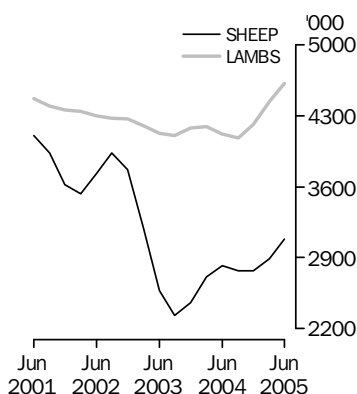
## Cattle slaughtering

Excluding calves  
Trend



## Sheep and lamb slaughtering

Trend



## KEY FIGURES

### TREND ESTIMATES

	Jun Qtr 2004	Mar Qtr 2005	Jun Qtr 2005
	'000	'000	'000
Number slaughtered			
Cattle	1 976.7	1 986.3	1 994.6
Calves	240.4	213.4	211.9
Sheep	2 818.8	2 888.1	3 078.0
Lambs	4 116.9	4 443.0	4 615.7
Pigs	1 364.5	1 331.2	1 327.2
Chickens	107 102.1	109 355.1	108 103.6

	Jun Qtr 2004	Mar Qtr 2005	Jun Qtr 2005
	tonnes	tonnes	tonnes
Meat produced			
Beef	519 688	532 046	534 725
Veal	8 299	7 028	6 981
Mutton	58 973	60 206	64 163
Lamb	84 307	91 133	95 683
Pig meat	98 938	96 819	96 357
Chicken meat	178 366	188 710	193 488
Wool receivals	121 917	121 141	127 146

	Mar Qtr 2004	Dec Qtr 2004	Mar Qtr 2005
	ML	ML	ML
Whole milk intake by factories	2 536	2 507	2 521

## KEY POINTS

### TREND ESTIMATES

- In June quarter 2005, the trend estimate for the number of cattle slaughtered remained steady at 2.0 million.
- The trend estimate for the number of lambs slaughtered in June quarter 2005 rose by 4% to 4.6 million, the highest quarterly trend estimate since December quarter 2000.
- The trend estimate for chicken meat produced in June quarter 2005 rose by 3% to a record 193,000 tonnes.
- In June quarter 2005, the trend estimate for wool receivals rose by 5% to 127,000 tonnes, the highest trend estimate since December quarter 2002.

## INQUIRIES

For further information about these and related statistics, contact the National Information and Referral Service on 1300 135 070 or Frank Costin on Hobart (03) 6222 5838.

# NOTES

## FORTHCOMING ISSUES

*ISSUE (Quarter)*

*RELEASE DATE*

September 2005

14 November 2005

December 2005

14 February 2006

.....

## CHANGES IN THIS ISSUE

There are no changes in this issue.

## FORTHCOMING CHANGES

There are no forthcoming changes.

.....

## ABBREVIATIONS

ABS Australian Bureau of Statistics

ML megalitre

t tonne

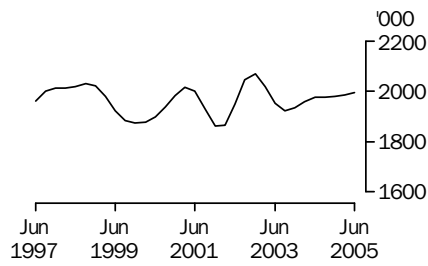
UHT ultra heat treated

Dennis Trewin

Australian Statistician

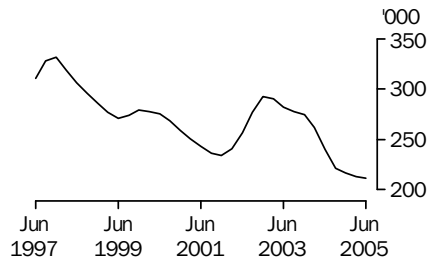
## LIVESTOCK SLAUGHTERED TREND

### CATTLE (EXCLUDING CALVES)



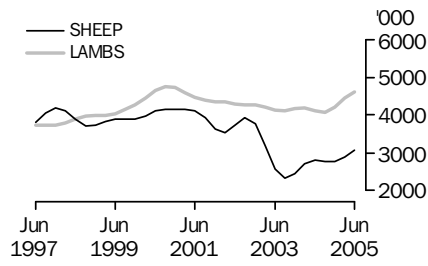
The trend estimate for the number of cattle slaughtered in June quarter 2005 remained steady at 2.0 million.

### CALVES



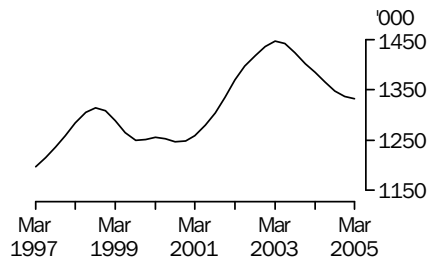
The trend estimate for the number of calves slaughtered in June quarter 2005 fell slightly to 212,000.

### SHEEP AND LAMBS



In June quarter 2005, the trend estimate for the number of sheep slaughtered increased by 7% to 3.1 million. The number of lambs slaughtered increased by 4% to 4.6 million.

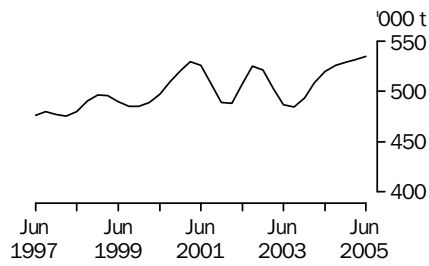
### PIGS



In June quarter 2005, the trend estimate for the number of pigs slaughtered remained steady at 1.3 million.

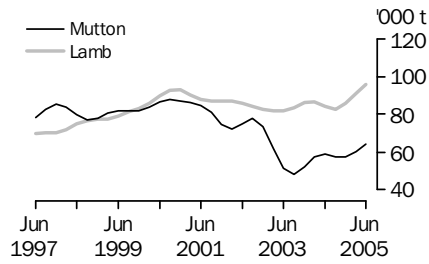
## MEAT PRODUCTION TREND

### BEEF



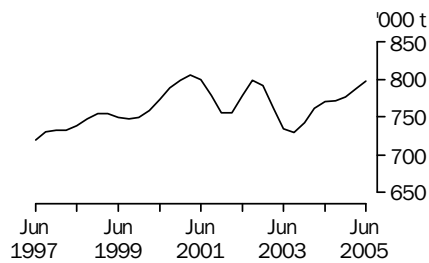
In June quarter 2005, the trend estimate for beef production increased slightly to 535,000 tonnes.

### MUTTON AND LAMB



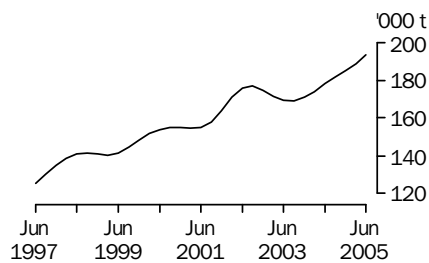
In June quarter 2005, the trend estimate for mutton production increased by 7% to 64,200 tonnes, while the estimate for lamb production increased by 5% to 95,700 tonnes.

### TOTAL RED MEAT



The trend estimate for red meat production increased to 798,000 tonnes in June quarter 2005, due mainly to increases in mutton and lamb production.

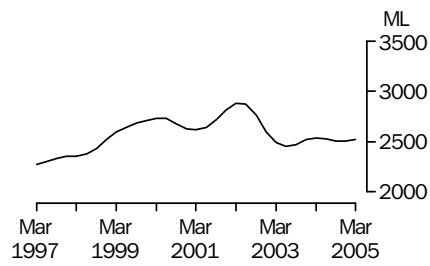
### CHICKEN MEAT



The trend estimate for chicken meat production in June quarter 2005 rose by 3% to 193,000 tonnes.

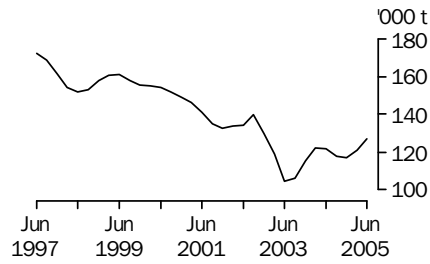
## LIVESTOCK PRODUCTS TREND

### WHOLE MILK INTAKE BY FACTORIES



The trend estimate for whole milk intake by factories in March quarter 2005 increased slightly to 2.5 billion litres.

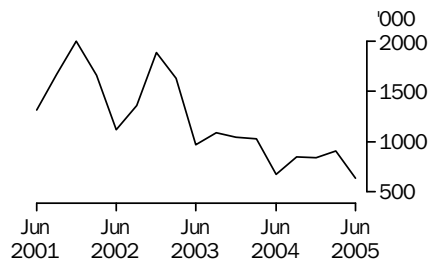
### BROKERS AND DEALERS RECEIVALS OF TAXABLE WOOL



The trend estimate for wool receivals by brokers and dealers in June quarter 2005 rose by 5% to 127,000 tonnes.

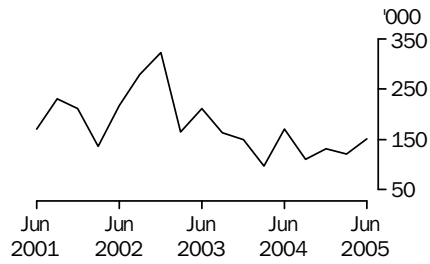
## LIVESTOCK EXPORTS ORIGINAL

### EXPORTS OF LIVE SHEEP



Live sheep exports fell by 29% to 639,000 in June quarter 2005. Gross value also fell by 29% for the quarter, down to \$39.2 million. Unit value remained steady at \$61.35.

### EXPORTS OF LIVE CATTLE



In June quarter 2005, live cattle exports rose by 25% to 150,000. However, a 6% drop in unit value (down to \$600.50) saw the gross value of live cattle exports rise by only 17% to \$90.4 million.

## LIST OF TABLES

page

### OVERVIEW

<b>1</b>	Livestock slaughtered, Australia	9
<b>2</b>	Livestock products, Australia	10

### LIVESTOCK SLAUGHTERINGS

<b>3</b>	Number of livestock slaughtered, bulls, bullocks and steers, by state	11
<b>4</b>	Number of livestock slaughtered, cows and heifers, by state	12
<b>5</b>	Number of livestock slaughtered, total cattle (excluding calves), by state	13
<b>6</b>	Number of livestock slaughtered, calves, by state	14
<b>7</b>	Number of livestock slaughtered, sheep, by state	15
<b>8</b>	Number of livestock slaughtered, lambs, by state	16
<b>9</b>	Number of livestock slaughtered, pigs, by state	17
<b>10</b>	Number of chickens slaughtered, by state	18
<b>11</b>	Number of livestock slaughtered, financial year, by state	19

### MEAT PRODUCED

<b>12</b>	Red meat produced, beef, by state	20
<b>13</b>	Red meat produced, veal, by state	21
<b>14</b>	Red meat produced, mutton, by state	22
<b>15</b>	Red meat produced, lamb, by state	23
<b>16</b>	Red meat produced, pig meat, by state	24
<b>17</b>	Total red meat produced, by state	25
<b>18</b>	Chicken meat produced, by state	26
<b>19</b>	Meat produced, financial year, by state	27

### EXPORTS OF MEAT AND LIVE ANIMALS

<b>20</b>	Exports of fresh, frozen and processed meat, Australia	28
<b>21</b>	Exports of live sheep and cattle, Australia	29

### LIVESTOCK PRODUCTS

<b>22</b>	Whole milk intake by factories, by state	30
<b>23</b>	Market milk sales by factories, by state	31
<b>24</b>	Brokers and dealers receivals of taxable wool, by state	32
<b>25</b>	Livestock products, financial year, by state	33





## LIVESTOCK SLAUGHTERED, Australia(a): All Series

Quarter	Bulls, bullocks and steers	Cows and heifers	Cattle (excluding calves)	Calves	Sheep	Lambs	Pigs	Chickens
	'000	'000	'000	'000	'000	'000	'000	'000
ORIGINAL								
<b>2004</b>								
March	950.4	898.4	1 848.8	126.1	3 076.2	4 285.5	1 352.3	106 367.5
June	1 016.3	1 004.5	2 020.8	218.1	2 708.4	4 236.9	1 424.1	104 147.4
September	1 135.9	953.4	2 089.3	413.9	2 345.3	3 597.7	1 360.1	106 408.0
December	1 105.2	829.4	1 934.6	151.8	3 014.7	4 554.6	1 303.7	118 723.1
<b>2005</b>								
March	1 007.6	807.5	1 815.2	98.1	3 139.4	4 362.4	1 297.5	104 658.7
June	1 138.1	1 008.4	2 146.5	204.1	2 943.2	4 815.8	1 377.8	107 851.1
SEASONALLY ADJUSTED								
<b>2004</b>								
March	1 012.1	954.4	1 966.5	257.6	2 745.6	4 261.2	1 387.7	105 695.1
June	1 021.6	918.1	1 939.7	233.4	2 937.0	4 199.8	1 367.6	105 598.1
September	1 100.2	928.5	2 028.6	216.1	2 687.3	3 847.5	1 341.9	108 152.7
December	1 068.9	883.7	1 952.6	229.7	2 724.0	4 337.1	1 332.3	115 249.9
<b>2005</b>								
March	1 096.0	875.7	1 971.7	200.2	2 836.6	4 381.9	1 338.8	104 884.0
June	1 120.5	903.7	2 024.1	218.3	3 186.1	4 724.6	1 322.9	109 425.7
TREND								
<b>2004</b>								
March	1 007.2	951.6	1 958.8	262.0	2 711.2	4 191.0	1 384.6	105 253.8
June	1 044.2	932.5	1 976.7	240.4	2 818.8	4 116.9	1 364.5	107 102.1
September	1 068.0	909.3	1 977.3	221.3	2 765.2	4 079.8	1 346.8	109 529.7
December	1 085.9	894.3	1 980.2	216.7	2 766.4	4 213.7	1 336.7	110 108.7
<b>2005</b>								
March	1 099.0	887.3	1 986.3	213.4	2 888.1	4 443.0	1 331.2	109 355.1
June	1 108.0	886.6	1 994.6	211.9	3 078.0	4 615.7	1 327.2	108 103.6

(a) For more information refer to paragraphs 5, and 7 to 9 of the Explanatory Notes.

## LIVESTOCK PRODUCTS, Australia(a): All Series

Quarter	RED MEAT						Chicken meat tonnes	Whole milk intake by factories ML	Brokers and dealers receivals of taxable wool tonnes
	Beef tonnes	Veal tonnes	Mutton tonnes	Lamb tonnes	Pig meat tonnes	Total red meat tonnes			
ORIGINAL									
<b>2004</b>									
March	483 454	6 644	64 694	89 804	96 531	741 128	172 068	2 442	117 290
June	527 514	7 821	54 684	88 430	104 697	783 145	175 791	1 832	92 900
September	551 747	11 246	48 240	70 757	99 416	781 405	179 282	2 370	127 458
December	518 616	5 851	65 349	91 169	94 180	775 163	195 330	3 379	136 722
<b>2005</b>									
March	490 359	4 798	64 894	91 516	92 929	744 496	178 055	2 467	113 652
June	572 088	7 253	58 873	100 849	101 546	840 608	197 362	nya	97 349
SEASONALLY ADJUSTED									
<b>2004</b>									
March	512 330	8 926	58 396	87 905	100 453	768 010	173 599	2 531	123 058
June	509 620	8 049	61 387	86 850	99 196	765 102	177 427	2 550	126 728
September	540 400	7 502	54 970	77 097	97 423	777 392	181 117	2 491	113 600
December	518 361	7 452	57 238	87 595	97 760	768 406	189 311	2 475	115 741
<b>2005</b>									
March	532 849	6 573	59 251	90 972	96 787	786 432	181 003	2 562	119 653
June	539 309	7 310	66 042	97 328	96 158	806 147	199 218	nya	131 493
TREND									
<b>2004</b>									
March	508 267	8 987	57 480	86 746	100 071	761 551	173 896	2 536	122 020
June	519 688	8 299	58 973	84 307	98 938	770 205	178 366	2 525	121 917
September	525 377	7 533	57 410	82 751	98 054	771 125	182 015	2 507	117 895
December	528 781	7 208	57 532	85 665	97 352	776 538	184 889	2 507	116 933
<b>2005</b>									
March	532 046	7 028	60 206	91 133	96 819	787 232	188 710	2 521	121 141
June	534 725	6 981	64 163	95 683	96 357	797 909	193 488	nya	127 146

nya not yet available

(a) For more information refer to paragraphs 5 to 9 and 13 to 15 of the Explanatory Notes.

## NUMBER OF LIVESTOCK SLAUGHTERED (a), Bulls, bullocks and steers: All Series

Quarter	New South Wales	Victoria	Queensland	South Australia	Western Australia	Tasmania	Australia
	'000	'000	'000	'000	'000	'000	'000
ORIGINAL							
<b>2004</b>							
March	208.7	170.5	442.0	48.1	50.6	30.3	<b>950.4</b>
June	203.0	160.8	535.1	41.6	46.0	29.5	<b>1 016.3</b>
September	235.4	137.2	653.8	34.9	50.3	24.0	<b>1 135.9</b>
December	214.9	159.3	584.0	56.3	61.8	28.5	<b>1 105.2</b>
<b>2005</b>							
March	226.9	160.5	484.7	51.7	52.5	31.0	<b>1 007.6</b>
June	248.6	143.2	608.1	48.1	64.1	25.7	<b>1 138.1</b>
SEASONALLY ADJUSTED							
<b>2004</b>							
March	203.8	156.2	529.7	43.5	51.2	25.7	<b>1 012.1</b>
June	207.0	165.0	529.4	42.8	51.3	29.5	<b>1 021.6</b>
September	236.4	156.6	575.6	42.6	55.1	28.1	<b>1 100.2</b>
December	214.7	151.9	572.6	51.2	51.0	29.4	<b>1 068.9</b>
<b>2005</b>							
March	230.8	147.2	581.7	46.7	53.5	26.5	<b>1 096.0</b>
June	243.5	146.6	601.8	49.4	71.6	25.5	<b>1 120.5</b>
TREND							
<b>2004</b>							
March	203.9	157.3	527.0	44.7	52.0	26.8	<b>1 007.2</b>
June	214.1	159.9	544.8	43.7	52.7	28.7	<b>1 044.2</b>
September	220.7	158.0	560.6	44.7	51.6	28.9	<b>1 068.0</b>
December	225.8	152.5	575.6	47.3	53.3	28.3	<b>1 085.9</b>
<b>2005</b>							
March	231.2	148.1	586.9	48.7	58.1	27.0	<b>1 099.0</b>
June	237.0	146.0	594.4	49.2	64.5	25.9	<b>1 108.0</b>

(a) For more information refer to paragraphs 4, 5 and 7 of the Explanatory Notes.

## NUMBER OF LIVESTOCK SLAUGHTERED (a), Cows and heifers: All Series

Quarter	New South Wales	Victoria	Queensland	South Australia	Western Australia	Tasmania	Australia
	'000	'000	'000	'000	'000	'000	'000
ORIGINAL							
<b>2004</b>							
March	190.5	243.4	318.1	45.4	71.2	28.8	<b>898.4</b>
June	194.3	245.9	423.9	43.6	67.5	28.4	<b>1 004.5</b>
September	206.5	238.0	377.2	37.0	71.6	22.1	<b>953.4</b>
December	195.8	222.2	281.1	42.6	64.9	21.8	<b>829.4</b>
<b>2005</b>							
March	169.9	210.1	285.9	43.6	73.6	23.5	<b>807.5</b>
June	202.5	245.2	415.7	44.8	71.7	27.5	<b>1 008.4</b>
SEASONALLY ADJUSTED							
<b>2004</b>							
March	196.4	244.9	379.2	43.3	67.3	25.4	<b>954.4</b>
June	184.4	242.3	358.7	42.2	71.5	24.6	<b>918.1</b>
September	210.4	242.5	340.4	40.5	72.1	27.8	<b>928.5</b>
December	194.4	219.7	322.4	42.2	64.7	23.9	<b>883.7</b>
<b>2005</b>							
March	177.8	212.2	341.3	41.8	69.4	22.7	<b>875.7</b>
June	192.9	240.7	351.5	43.3	76.0	22.1	<b>903.7</b>
TREND							
<b>2004</b>							
March	200.4	239.7	377.0	41.5	67.3	25.4	<b>951.6</b>
June	196.5	243.9	357.8	42.3	70.1	25.5	<b>932.5</b>
September	195.8	234.9	339.5	41.6	69.7	25.7	<b>909.3</b>
December	193.8	225.2	333.3	41.6	68.7	24.6	<b>894.3</b>
<b>2005</b>							
March	188.7	223.0	337.7	42.2	70.0	23.1	<b>887.3</b>
June	184.0	226.9	346.6	42.9	72.7	21.6	<b>886.6</b>

(a) For more information refer to paragraphs 4, 5 and 7 of the Explanatory Notes.

## NUMBER OF LIVESTOCK SLAUGHTERED(a), Total cattle (excluding calves): All Series

Quarter	New South Wales	Victoria	Queensland	South Australia	Western Australia	Tasmania	Australia
	'000	'000	'000	'000	'000	'000	'000
ORIGINAL							
<b>2004</b>							
March	399.2	413.9	760.1	93.5	121.7	59.0	<b>1 848.8</b>
June	397.3	406.7	959.0	85.2	113.4	57.9	<b>2 020.8</b>
September	441.8	375.1	1 030.9	72.0	122.0	46.1	<b>2 089.3</b>
December	410.7	381.6	865.1	98.9	126.6	50.3	<b>1 934.6</b>
<b>2005</b>							
March	396.8	370.6	770.6	95.3	126.1	54.5	<b>1 815.2</b>
June	451.1	388.4	1 023.8	92.9	135.8	53.1	<b>2 146.5</b>
SEASONALLY ADJUSTED							
<b>2004</b>							
March	400.3	401.1	908.9	86.8	118.4	51.2	<b>1 966.5</b>
June	391.4	407.3	888.0	85.0	122.8	54.1	<b>1 939.7</b>
September	446.8	399.1	916.0	83.1	127.1	55.9	<b>2 028.6</b>
December	409.1	371.6	895.0	93.4	115.8	53.2	<b>1 952.6</b>
<b>2005</b>							
March	408.6	359.4	923.0	88.5	122.9	49.2	<b>1 971.7</b>
June	436.5	387.3	953.2	92.6	147.6	47.6	<b>2 024.1</b>
TREND							
<b>2004</b>							
March	404.3	397.0	903.9	86.2	119.3	52.3	<b>1 958.8</b>
June	410.6	403.8	902.6	85.9	122.9	54.2	<b>1 976.7</b>
September	416.6	392.9	900.1	86.2	121.3	54.6	<b>1 977.3</b>
December	419.7	377.7	908.9	88.9	122.0	52.9	<b>1 980.2</b>
<b>2005</b>							
March	419.9	371.1	924.6	91.0	128.1	50.1	<b>1 986.3</b>
June	421.0	372.9	941.0	92.1	137.2	47.5	<b>1 994.6</b>

(a) For more information refer to paragraphs 4, 5 and 7 of the Explanatory Notes.

## NUMBER OF LIVESTOCK SLAUGHTERED (a), Calves: All Series

Quarter	New South Wales	Victoria	Queensland	South Australia	Western Australia	Tasmania	Australia
	'000	'000	'000	'000	'000	'000	'000
ORIGINAL							
<b>2004</b>							
March	56.6	45.5	19.5	1.7	1.3	1.3	<b>126.1</b>
June	55.2	135.5	20.6	2.0	1.1	3.6	<b>218.1</b>
September	50.8	307.9	20.1	1.5	1.2	32.2	<b>413.9</b>
December	45.7	80.7	15.0	1.0	1.1	8.0	<b>151.8</b>
<b>2005</b>							
March	49.1	28.7	17.2	1.2	0.9	0.9	<b>98.1</b>
June	55.6	121.6	21.1	1.6	1.1	3.0	<b>204.1</b>
SEASONALLY ADJUSTED							
<b>2004</b>							
March	55.4	208.7	19.8	1.8	1.3	17.0	<b>257.6</b>
June	50.8	150.0	19.1	1.7	1.2	13.9	<b>233.4</b>
September	51.8	136.0	19.5	1.3	1.1	10.6	<b>216.1</b>
December	50.2	131.2	16.6	1.3	1.1	12.8	<b>229.7</b>
<b>2005</b>							
March	48.2	130.5	17.4	1.3	1.1	10.7	<b>200.2</b>
June	51.1	134.8	19.5	1.3	1.0	11.5	<b>218.3</b>
TREND							
<b>2004</b>							
March	55.0	185.0	20.9	1.7	1.2	15.1	<b>262.0</b>
June	52.6	165.0	19.4	1.6	1.2	14.1	<b>240.4</b>
September	50.6	139.5	18.2	1.4	1.1	12.3	<b>221.3</b>
December	49.9	130.5	17.7	1.3	1.1	11.4	<b>216.7</b>
<b>2005</b>							
March	49.7	131.3	17.8	1.3	1.1	11.4	<b>213.4</b>
June	49.7	132.6	18.4	1.3	1.1	11.4	<b>211.9</b>

(a) For more information refer to paragraphs 4, 5 and 7 of the Explanatory Notes.

# 7

## NUMBER OF LIVESTOCK SLAUGHTERED (a), Sheep: All Series

Quarter	New South Wales	Victoria	Queensland	South Australia	Western Australia	Tasmania	Australia
	'000	'000	'000	'000	'000	'000	'000
ORIGINAL							
<b>2004</b>							
March	950.6	918.1	227.2	268.0	604.1	108.1	<b>3 076.2</b>
June	954.8	813.8	212.8	208.5	452.4	66.1	<b>2 708.4</b>
September	715.1	672.7	220.1	213.1	479.1	45.2	<b>2 345.3</b>
December	934.0	886.6	226.6	264.7	606.0	96.7	<b>3 014.7</b>
<b>2005</b>							
March	933.6	945.3	227.2	284.7	651.6	97.1	<b>3 139.4</b>
June	965.7	960.9	245.0	216.6	468.5	86.5	<b>2 943.2</b>
SEASONALLY ADJUSTED							
<b>2004</b>							
March	909.3	804.1	225.8	234.1	505.3	81.7	<b>2 745.6</b>
June	990.9	882.7	209.2	255.0	586.4	66.0	<b>2 937.0</b>
September	767.0	819.3	222.1	240.2	541.2	71.6	<b>2 687.3</b>
December	881.2	794.5	229.6	229.3	529.2	92.2	<b>2 724.0</b>
<b>2005</b>							
March	895.7	829.0	225.7	249.6	544.0	78.3	<b>2 836.6</b>
June	997.5	1 040.1	241.7	265.4	605.1	81.4	<b>3 186.1</b>
TREND							
<b>2004</b>							
March	868.1	802.2	224.8	244.2	508.9	80.1	<b>2 711.2</b>
June	906.0	842.9	219.5	245.5	556.6	72.1	<b>2 818.8</b>
September	869.7	823.0	218.7	239.6	550.7	75.0	<b>2 765.2</b>
December	860.6	821.5	225.5	240.1	543.0	81.0	<b>2 766.4</b>
<b>2005</b>							
March	907.5	875.4	232.0	247.3	554.7	83.4	<b>2 888.1</b>
June	980.3	965.3	237.0	259.8	583.1	82.3	<b>3 078.0</b>

(a) For more information refer to paragraphs 4, 5 and 7 of the Explanatory Notes.

## NUMBER OF LIVESTOCK SLAUGHTERED (a), Lambs: All Series

Quarter	New South Wales	Victoria	Queensland	South Australia	Western Australia	Tasmania	Australia
	'000	'000	'000	'000	'000	'000	'000
ORIGINAL							
<b>2004</b>							
March	1 087.9	1 624.9	56.7	813.0	598.7	104.1	<b>4 285.5</b>
June	989.5	1 621.6	72.1	776.6	663.0	114.1	<b>4 236.9</b>
September	892.5	1 393.7	74.7	559.7	577.7	99.5	<b>3 597.7</b>
December	1 049.2	1 839.6	72.1	853.9	639.4	100.4	<b>4 554.6</b>
<b>2005</b>							
March	1 057.0	1 692.8	62.4	870.8	575.6	103.7	<b>4 362.4</b>
June	1 111.8	1 861.0	78.0	951.8	674.0	139.3	<b>4 815.8</b>
SEASONALLY ADJUSTED							
<b>2004</b>							
March	1 056.2	1 650.5	63.5	759.4	613.5	107.4	<b>4 261.2</b>
June	995.2	1 660.8	68.7	717.6	647.0	109.1	<b>4 199.8</b>
September	902.9	1 449.2	66.1	711.6	633.8	96.7	<b>3 847.5</b>
December	1 053.7	1 708.1	77.7	804.6	588.1	105.2	<b>4 337.1</b>
<b>2005</b>							
March	1 060.5	1 755.3	70.2	813.2	590.2	110.1	<b>4 381.9</b>
June	1 098.3	1 863.6	74.0	880.5	656.3	128.8	<b>4 724.6</b>
TREND							
<b>2004</b>							
March	1 025.7	1 626.1	63.8	741.4	618.1	106.1	<b>4 191.0</b>
June	986.4	1 593.6	66.7	726.9	634.7	104.6	<b>4 116.9</b>
September	972.7	1 582.6	70.0	737.7	622.5	102.2	<b>4 079.8</b>
December	1 009.4	1 649.2	72.3	778.0	606.1	104.8	<b>4 213.7</b>
<b>2005</b>							
March	1 062.7	1 757.6	73.3	828.0	608.3	113.2	<b>4 443.0</b>
June	1 096.7	1 850.7	73.8	868.1	625.6	122.5	<b>4 615.7</b>

(a) For more information refer to paragraphs 4, 5 and 7 of the Explanatory Notes.



## NUMBER OF LIVESTOCK SLAUGHTERED (a), Pigs: All Series

Quarter	New South Wales	Victoria	Queensland	South Australia	Western Australia	Tasmania	Australia
	'000	'000	'000	'000	'000	'000	'000
ORIGINAL							
<b>2004</b>							
March	414.6	233.7	320.9	202.3	167.7	10.7	<b>1 352.3</b>
June	443.1	247.7	335.4	211.5	173.8	10.2	<b>1 424.1</b>
September	415.9	235.2	323.1	201.3	170.6	11.6	<b>1 360.1</b>
December	392.5	210.3	314.6	218.5	152.6	13.3	<b>1 303.7</b>
<b>2005</b>							
March	382.7	198.6	318.1	229.8	156.8	9.9	<b>1 297.5</b>
June	423.5	203.3	329.5	245.2	163.7	10.8	<b>1 377.8</b>
SEASONALLY ADJUSTED							
<b>2004</b>							
March	429.5	240.9	326.3	198.8	168.7	11.6	<b>1 387.7</b>
June	425.1	240.2	324.1	198.2	166.9	9.9	<b>1 367.6</b>
September	414.1	230.2	318.3	202.9	167.4	11.5	<b>1 341.9</b>
December	397.1	211.3	323.4	234.5	160.2	12.5	<b>1 332.3</b>
<b>2005</b>							
March	400.6	205.8	324.8	232.0	159.5	10.7	<b>1 338.8</b>
June	405.4	196.8	319.0	227.5	157.6	10.6	<b>1 322.9</b>
TREND							
<b>2004</b>							
March	432.0	241.9	328.6	198.9	168.8	10.9	<b>1 384.6</b>
June	422.8	237.9	323.0	199.4	167.7	10.9	<b>1 364.5</b>
September	411.3	227.9	321.4	210.6	165.2	11.4	<b>1 346.8</b>
December	403.6	215.7	322.1	223.6	162.1	11.6	<b>1 336.7</b>
<b>2005</b>							
March	400.6	204.8	322.4	231.2	159.3	11.3	<b>1 331.2</b>
June	401.4	196.0	321.9	233.6	156.9	10.6	<b>1 327.2</b>

(a) For more information refer to paragraphs 4, 5 and 7 of the Explanatory Notes.

## NUMBER OF CHICKENS SLAUGHTERED(a): All Series

Quarter	New South Wales	Victoria	Queensland	South Australia	Western Australia	Australia
	'000	'000	'000	'000	'000	'000
ORIGINAL						
<b>2004</b>						
March	37 155.1	30 319.2	19 761.1	np	np	<b>106 367.5</b>
June	37 029.2	29 621.5	18 213.7	np	np	<b>104 147.4</b>
September	37 001.4	29 496.7	20 190.6	np	np	<b>106 408.0</b>
December	40 401.4	33 740.6	22 856.1	np	np	<b>118 723.1</b>
<b>2005</b>						
March	34 263.7	30 463.9	20 383.2	np	np	<b>104 658.7</b>
June	36 306.7	31 025.2	20 656.3	np	np	<b>107 851.1</b>
SEASONALLY ADJUSTED						
<b>2004</b>						
March	36 969.1	29 940.1	19 654.1	np	np	<b>105 695.1</b>
June	37 318.9	29 955.2	18 765.2	np	np	<b>105 598.1</b>
September	37 222.0	30 281.2	20 684.0	np	np	<b>108 152.7</b>
December	39 784.5	32 755.5	21 547.5	np	np	<b>115 249.9</b>
<b>2005</b>						
March	34 517.7	30 118.2	20 676.7	np	np	<b>104 884.0</b>
June	36 588.1	31 393.7	21 313.4	np	np	<b>109 425.7</b>
TREND						
<b>2004</b>						
March	36 761.7	29 880.5	19 295.1	np	np	<b>105 253.8</b>
June	37 331.1	30 204.3	19 630.1	np	np	<b>107 102.1</b>
September	37 946.2	30 828.1	20 354.7	np	np	<b>109 529.7</b>
December	37 521.7	31 237.0	20 955.0	np	np	<b>110 108.7</b>
<b>2005</b>						
March	36 690.3	31 272.2	21 205.3	np	np	<b>109 355.1</b>
June	35 819.8	31 127.6	21 157.4	np	np	<b>108 103.6</b>

np not available for publication but included in totals where applicable, unless otherwise indicated

(a) For more information refer to paragraphs 8 and 9 of the Explanatory Notes.

## NUMBER OF LIVESTOCK SLAUGHTERED (a): Original

Financial year	New South Wales '000	Victoria '000	Queensland '000	South Australia '000	Western Australia '000	Tasmania '000	Australia '000
<b>BULLS, BULLOCKS AND STEERS</b>							
2002-03	961.6	630.0	1 993.7	166.6	173.4	79.9	<b>4 006.3</b>
2003-04	794.0	613.5	2 049.9	178.6	200.4	98.3	<b>3 935.7</b>
2004-05	925.8	600.2	2 330.6	191.1	228.7	109.2	<b>4 386.9</b>
<b>COWS AND HEIFERS</b>							
2002-03	968.9	1 020.5	1 521.6	192.5	255.9	112.9	<b>4 076.4</b>
2003-04	822.2	943.1	1 514.4	164.4	262.5	106.5	<b>3 817.2</b>
2004-05	774.6	915.5	1 359.8	168.0	281.8	94.9	<b>3 598.7</b>
<b>CATTLE (excluding calves)</b>							
2002-03	1 930.5	1 650.4	3 515.2	359.1	429.3	192.8	<b>8 082.7</b>
2003-04	1 616.1	1 556.6	3 564.2	342.9	462.9	204.7	<b>7 752.9</b>
2004-05	1 700.4	1 515.7	3 690.5	359.1	510.5	204.1	<b>7 985.6</b>
<b>CALVES</b>							
2002-03	246.1	749.3	92.1	11.0	5.3	41.2	<b>1 145.8</b>
2003-04	221.9	659.2	84.7	7.2	4.7	47.3	<b>1 025.8</b>
2004-05	201.2	539.0	73.3	5.3	4.3	44.1	<b>867.9</b>
<b>SHEEP</b>							
2002-03	5 282.2	3 641.2	1 142.0	1 431.8	1 771.8	388.3	<b>13 657.3</b>
2003-04	3 310.0	3 078.9	892.8	947.5	1 845.4	346.3	<b>10 420.7</b>
2004-05	3 548.4	3 465.4	918.9	979.1	2 205.2	325.6	<b>11 442.6</b>
<b>LAMBS</b>							
2002-03	4 388.8	6 904.8	340.3	2 841.1	2 021.0	374.0	<b>16 869.8</b>
2003-04	4 047.4	6 471.4	261.5	2 970.6	2 391.8	419.2	<b>16 561.8</b>
2004-05	4 110.4	6 787.1	287.2	3 236.2	2 466.7	442.9	<b>17 330.6</b>
<b>PIGS</b>							
2002-03	1 860.6	1 033.2	1 234.8	884.1	672.3	47.7	<b>5 741.7</b>
2003-04	1 751.1	973.1	1 318.1	820.9	674.4	44.2	<b>5 591.2</b>
2004-05	1 614.6	847.3	1 285.4	894.8	643.7	45.6	<b>5 339.2</b>
<b>CHICKENS</b>							
2002-03	149 917.0	117 892.0	75 149.3	np	np	np	<b>419 181.0</b>
2003-04	149 358.7	120 345.9	77 472.0	np	np	np	<b>423 742.0</b>
2004-05	147 973.2	124 726.5	84 086.2	np	np	np	<b>437 640.9</b>

np not available for publication but included in totals where applicable, unless otherwise indicated

(a) For more information refer to paragraphs 4, 5 and 7 to 9 of the Explanatory Notes.

Quarter	New South Wales	Victoria	Queensland	South Australia	Western Australia	Tasmania	Australia
	tonnes	tonnes	tonnes	tonnes	tonnes	tonnes	tonnes
ORIGINAL							
<b>2004</b>							
March	102 004	98 075	211 490	24 027	31 198	16 385	<b>483 454</b>
June	101 535	95 009	265 058	21 651	28 307	15 667	<b>527 514</b>
September	112 602	87 845	290 620	17 620	30 219	12 550	<b>551 747</b>
December	106 301	93 276	246 510	25 797	32 317	14 138	<b>518 616</b>
<b>2005</b>							
March	105 848	88 486	222 552	25 085	32 581	15 528	<b>490 359</b>
June	115 970	93 618	286 728	24 547	36 289	14 643	<b>572 088</b>
SEASONALLY ADJUSTED							
<b>2004</b>							
March	101 571	93 841	251 929	22 041	29 816	14 231	<b>512 330</b>
June	99 525	95 790	249 283	21 663	31 049	14 531	<b>509 620</b>
September	114 950	94 340	256 402	20 861	32 633	15 890	<b>540 400</b>
December	106 607	90 376	255 586	24 172	29 300	14 408	<b>518 361</b>
<b>2005</b>							
March	109 554	84 830	265 391	23 082	31 026	13 497	<b>532 849</b>
June	109 581	94 051	269 748	24 446	39 865	13 579	<b>539 309</b>
TREND							
<b>2004</b>							
March	101 781	91 795	249 383	21 908	30 206	14 180	<b>508 267</b>
June	104 530	95 051	252 378	21 811	31 260	14 934	<b>519 688</b>
September	107 860	93 573	254 220	21 930	30 710	15 092	<b>525 377</b>
December	109 631	90 312	258 483	22 862	31 057	14 589	<b>528 781</b>
<b>2005</b>							
March	109 530	89 140	263 946	23 721	33 130	13 890	<b>532 046</b>
June	108 623	89 918	268 826	24 257	36 246	13 315	<b>534 725</b>

(a) For more information refer to paragraphs 4 to 7 of the Explanatory Notes.

## RED MEAT PRODUCED(a), Veal: All Series

	<i>New South Wales</i>	<i>Victoria</i>	<i>Queensland</i>	<i>South Australia</i>	<i>Western Australia</i>	<i>Tasmania</i>	<b><i>Australia</i></b>
<i>Quarter</i>	tonnes	tonnes	tonnes	tonnes	tonnes	tonnes	tonnes
ORIGINAL							
<b>2004</b>							
March	3 643	1 815	1 019	55	63	36	<b>6 644</b>
June	3 547	3 062	999	62	55	82	<b>7 821</b>
September	3 252	6 293	949	50	63	627	<b>11 246</b>
December	2 968	1 857	736	38	74	164	<b>5 851</b>
<b>2005</b>							
March	3 131	742	797	39	51	25	<b>4 798</b>
June	3 589	2 501	970	49	61	70	<b>7 253</b>
SEASONALLY ADJUSTED							
<b>2004</b>							
March	3 460	6 574	996	58	66	315	<b>8 926</b>
June	3 277	3 597	940	55	59	274	<b>8 049</b>
September	3 366	2 835	928	45	56	214	<b>7 502</b>
December	3 298	2 847	825	46	77	252	<b>7 452</b>
<b>2005</b>							
March	2 978	2 656	779	41	53	216	<b>6 573</b>
June	3 320	2 946	912	43	64	231	<b>7 310</b>
TREND							
<b>2004</b>							
March	3 515	4 700	1 051	55	61	288	<b>8 987</b>
June	3 383	4 037	959	53	61	274	<b>8 299</b>
September	3 276	3 081	882	49	62	244	<b>7 533</b>
December	3 224	2 727	845	45	63	230	<b>7 208</b>
<b>2005</b>							
March	3 179	2 759	832	43	63	228	<b>7 028</b>
June	3 167	2 831	847	42	62	229	<b>6 981</b>

(a) For more information refer to paragraphs 4 to 7 of the Explanatory Notes.

<i>Quarter</i>	<i>New South Wales</i>	<i>Victoria</i>	<i>Queensland</i>	<i>South Australia</i>	<i>Western Australia</i>	<i>Tasmania</i>	<i>Australia</i>
tonnes	tonnes	tonnes	tonnes	tonnes	tonnes	tonnes	tonnes
ORIGINAL							
<b>2004</b>							
March	21 157	17 886	4 838	6 605	12 086	2 122	<b>64 694</b>
June	20 127	14 923	4 479	4 919	8 932	1 304	<b>54 684</b>
September	15 267	12 855	4 650	4 977	9 617	873	<b>48 240</b>
December	21 718	18 397	4 953	6 292	12 066	1 922	<b>65 349</b>
<b>2005</b>							
March	20 571	18 408	4 607	6 536	12 880	1 893	<b>64 894</b>
June	19 961	18 367	4 689	4 915	9 279	1 662	<b>58 873</b>
SEASONALLY ADJUSTED							
<b>2004</b>							
March	20 387	15 742	4 866	5 864	10 159	1 601	<b>58 396</b>
June	21 722	17 156	4 460	6 248	11 703	1 310	<b>61 387</b>
September	16 105	15 547	4 769	5 564	10 776	1 396	<b>54 970</b>
December	19 947	15 764	4 810	5 263	10 477	1 814	<b>57 238</b>
<b>2005</b>							
March	19 865	16 200	4 644	5 826	10 802	1 521	<b>59 251</b>
June	21 466	21 090	4 689	6 246	12 116	1 576	<b>66 042</b>
TREND							
<b>2004</b>							
March	19 427	15 718	4 830	6 073	10 225	1 587	<b>57 480</b>
June	19 877	16 350	4 706	5 962	11 121	1 420	<b>58 973</b>
September	18 973	15 875	4 675	5 637	10 948	1 471	<b>57 410</b>
December	18 944	16 023	4 726	5 561	10 781	1 586	<b>57 532</b>
<b>2005</b>							
March	20 012	17 368	4 722	5 742	11 034	1 625	<b>60 206</b>
June	21 480	19 449	4 670	6 095	11 606	1 595	<b>64 163</b>

(a) For more information refer to paragraphs 4 to 7 of the Explanatory Notes.

Quarter	New South Wales	Victoria	Queensland	South Australia	Western Australia	Tasmania	Australia
	tonnes	tonnes	tonnes	tonnes	tonnes	tonnes	tonnes
ORIGINAL							
<b>2004</b>							
March	22 353	33 344	1 116	19 341	11 592	2 059	<b>89 804</b>
June	20 199	33 055	1 438	18 144	13 246	2 348	<b>88 430</b>
September	17 400	27 334	1 426	11 403	11 183	2 011	<b>70 757</b>
December	20 812	36 524	1 420	18 060	12 380	1 972	<b>91 169</b>
<b>2005</b>							
March	21 422	34 866	1 193	20 252	11 693	2 091	<b>91 516</b>
June	22 916	37 224	1 525	22 441	13 866	2 876	<b>100 849</b>
SEASONALLY ADJUSTED							
<b>2004</b>							
March	21 592	33 389	1 253	17 773	11 887	2 170	<b>87 905</b>
June	20 105	33 529	1 353	16 210	12 733	2 188	<b>86 850</b>
September	17 742	28 973	1 258	14 986	12 371	1 945	<b>77 097</b>
December	21 089	34 072	1 501	17 518	11 464	2 090	<b>87 595</b>
<b>2005</b>							
March	21 279	35 750	1 404	18 578	11 994	2 209	<b>90 972</b>
June	22 421	36 873	1 430	20 064	13 304	2 662	<b>97 328</b>
TREND							
<b>2004</b>							
March	20 930	33 072	1 261	17 085	12 135	2 141	<b>86 746</b>
June	19 891	32 121	1 301	16 264	12 375	2 101	<b>84 307</b>
September	19 360	31 753	1 356	16 049	12 158	2 042	<b>82 751</b>
December	20 120	33 122	1 404	17 038	11 976	2 097	<b>85 665</b>
<b>2005</b>							
March	21 383	35 265	1 433	18 581	12 198	2 287	<b>91 133</b>
June	22 347	36 874	1 447	19 784	12 704	2 504	<b>95 683</b>

(a) For more information refer to paragraphs 4 to 7 of the Explanatory Notes.

## RED MEAT PRODUCED(a), Pig meat: All Series

Quarter	New South Wales	Victoria	Queensland	South Australia	Western Australia	Tasmania	Australia
	tonnes	tonnes	tonnes	tonnes	tonnes	tonnes	tonnes
ORIGINAL							
<b>2004</b>							
March	30 329	16 884	23 198	14 172	11 252	593	<b>96 531</b>
June	32 956	18 250	25 868	15 162	11 781	566	<b>104 697</b>
September	30 504	17 557	24 936	14 135	11 533	643	<b>99 416</b>
December	28 477	15 230	23 337	16 112	10 220	719	<b>94 180</b>
<b>2005</b>							
March	28 168	14 688	23 049	15 773	10 614	561	<b>92 929</b>
June	31 935	15 265	25 042	17 504	11 105	615	<b>101 546</b>
SEASONALLY ADJUSTED							
<b>2004</b>							
March	31 766	17 621	24 453	13 949	11 348	645	<b>100 453</b>
June	31 037	17 666	24 654	14 077	11 215	548	<b>99 196</b>
September	30 130	17 009	24 055	14 149	11 241	630	<b>97 423</b>
December	29 318	15 528	24 003	17 581	10 868	683	<b>97 760</b>
<b>2005</b>							
March	29 718	15 338	24 426	15 997	10 883	611	<b>96 787</b>
June	30 023	14 752	23 885	16 010	10 590	599	<b>96 158</b>
TREND							
<b>2004</b>							
March	31 797	17 596	24 793	13 908	11 310	606	<b>100 071</b>
June	30 914	17 479	24 372	14 102	11 268	602	<b>98 938</b>
September	30 086	16 814	24 206	15 101	11 142	624	<b>98 054</b>
December	29 687	15 948	24 152	16 054	10 977	640	<b>97 352</b>
<b>2005</b>							
March	29 650	15 225	24 113	16 442	10 803	633	<b>96 819</b>
June	29 824	14 676	24 097	16 378	10 637	608	<b>96 357</b>

(a) For more information refer to paragraphs 4 to 7 of the Explanatory Notes.



## TOTAL RED MEAT PRODUCED(a): All Series

Quarter	New South Wales	Victoria	Queensland	South Australia	Western Australia	Tasmania	Australia
	tonnes	tonnes	tonnes	tonnes	tonnes	tonnes	tonnes
ORIGINAL							
<b>2004</b>							
March	179 487	168 004	241 661	64 200	66 191	21 195	<b>741 128</b>
June	178 365	164 299	297 841	59 938	62 322	19 968	<b>783 145</b>
September	179 025	151 884	322 582	48 184	62 615	16 704	<b>781 405</b>
December	180 276	165 284	276 956	66 300	67 058	18 916	<b>775 163</b>
<b>2005</b>							
March	179 140	157 189	252 197	67 686	67 819	20 097	<b>744 496</b>
June	194 371	166 975	318 954	69 457	70 600	19 866	<b>840 608</b>
SEASONALLY ADJUSTED							
<b>2004</b>							
March	178 776	167 167	283 497	59 685	63 276	18 962	<b>768 010</b>
June	175 666	167 738	280 690	58 253	66 759	18 851	<b>765 102</b>
September	182 293	158 704	287 412	55 605	67 077	20 075	<b>777 392</b>
December	180 259	158 587	286 725	64 580	62 186	19 247	<b>768 406</b>
<b>2005</b>							
March	183 394	154 774	296 644	63 524	64 758	18 054	<b>786 432</b>
June	186 811	169 712	300 664	66 809	75 939	18 647	<b>806 147</b>
TREND							
<b>2004</b>							
March	177 450	162 881	281 318	59 029	63 937	18 802	<b>761 551</b>
June	178 595	165 038	283 716	58 192	66 085	19 331	<b>770 205</b>
September	179 555	161 096	285 339	58 766	65 020	19 473	<b>771 125</b>
December	181 606	158 132	289 610	61 560	64 854	19 142	<b>776 538</b>
<b>2005</b>							
March	183 754	159 757	295 046	64 529	67 228	18 663	<b>787 232</b>
June	185 441	163 748	299 887	66 556	71 255	18 251	<b>797 909</b>

(a) For more information refer to paragraphs 4 to 7 of the Explanatory Notes.

## CHICKEN MEAT PRODUCED(a): All Series

Quarter	New South Wales	Victoria	Queensland	South Australia	Western Australia	Australia
	tonnes	tonnes	tonnes	tonnes	tonnes	tonnes
ORIGINAL						
<b>2004</b>						
March	58 710	54 627	28 890	np	np	<b>172 068</b>
June	63 053	49 810	29 587	np	np	<b>175 791</b>
September	64 322	50 354	30 849	np	np	<b>179 282</b>
December	69 342	56 172	34 816	np	np	<b>195 330</b>
<b>2005</b>						
March	59 514	54 924	31 001	np	np	<b>178 055</b>
June	72 537	58 058	32 002	np	np	<b>197 362</b>
SEASONALLY ADJUSTED						
<b>2004</b>						
March	59 095	55 118	29 463	np	np	<b>173 599</b>
June	63 592	50 169	30 198	np	np	<b>177 427</b>
September	64 361	52 045	31 118	np	np	<b>181 117</b>
December	68 087	53 602	33 204	np	np	<b>189 311</b>
<b>2005</b>						
March	61 008	55 330	31 615	np	np	<b>181 003</b>
June	73 067	58 586	32 694	np	np	<b>199 218</b>
TREND						
<b>2004</b>						
March	61 151	51 989	29 469	np	np	<b>173 896</b>
June	62 903	51 996	30 327	np	np	<b>178 366</b>
September	64 361	52 093	31 425	np	np	<b>182 015</b>
December	65 296	53 433	32 121	np	np	<b>184 889</b>
<b>2005</b>						
March	66 592	55 782	32 424	np	np	<b>188 710</b>
June	68 902	57 812	32 515	np	np	<b>193 488</b>

np not available for publication but included in totals where applicable, unless otherwise indicated

(a) For more information refer to paragraphs 8 and 9 of the Explanatory Notes.

## MEAT PRODUCED(a): Original

<i>Financial year</i>	<i>New South Wales</i> tonnes	<i>Victoria</i> tonnes	<i>Queensland</i> tonnes	<i>South Australia</i> tonnes	<i>Western Australia</i> tonnes	<i>Tasmania</i> tonnes	<i>Australia</i> tonnes
BEEF							
2002-03	471 498	370 223	946 950	88 362	105 074	51 376	<b>2 034 613</b>
2003-04	401 926	361 323	974 715	86 755	116 555	55 454	<b>1 997 848</b>
2004-05	440 720	363 226	1 046 410	93 049	131 407	56 859	<b>2 132 810</b>
VEAL							
2002-03	16 493	16 007	4 202	341	300	826	<b>38 220</b>
2003-04	14 277	15 076	4 253	234	258	947	<b>35 093</b>
2004-05	12 941	11 393	3 451	176	250	886	<b>29 147</b>
MUTTON							
2002-03	106 106	67 552	20 741	30 893	35 431	7 495	<b>268 218</b>
2003-04	73 335	60 055	19 021	23 369	37 094	6 839	<b>219 713</b>
2004-05	77 517	68 026	18 899	22 721	43 842	6 351	<b>237 356</b>
LAMB							
2002-03	85 304	130 699	6 284	60 114	39 568	7 439	<b>329 407</b>
2003-04	82 149	130 772	5 127	67 753	47 212	8 436	<b>341 448</b>
2004-05	82 550	135 948	5 564	72 157	49 122	8 950	<b>354 290</b>
PIG MEAT							
2002-03	140 247	72 105	94 434	64 147	45 490	2 715	<b>419 555</b>
2003-04	129 800	70 289	99 774	57 960	45 190	2 457	<b>405 898</b>
2004-05	119 085	62 740	96 365	63 525	43 471	2 538	<b>388 070</b>
TOTAL RED MEAT							
2002-03	819 648	656 586	1 072 611	243 857	225 863	69 851	<b>3 090 013</b>
2003-04	701 486	637 515	1 102 890	236 071	246 309	74 134	<b>3 000 002</b>
2004-05	732 812	641 332	1 170 689	251 627	268 092	75 584	<b>3 141 673</b>
CHICKEN MEAT							
2002-03	256 445	204 440	114 327	np	np	np	<b>689 826</b>
2003-04	247 755	205 348	117 889	np	np	np	<b>693 602</b>
2004-05	265 716	219 508	128 669	np	np	np	<b>750 029</b>

np not available for publication but included in totals where applicable, unless otherwise indicated

(a) For more information refer to paragraphs 4 to 9 in the Explanatory Notes.

Period	FRESH, CHILLED OR FROZEN MEAT									PROCESSED MEAT	
	Beef bone-in tonnes	Beef bone-out tonnes	Veal bone-in tonnes	Veal bone-out tonnes	Mutton bone-in tonnes	Mutton bone-out tonnes	Lamb bone-in tonnes	Lamb bone-out tonnes	Pork tonnes	Bacon and ham tonnes	Canned meat tonnes
<b>2002-03</b>	37 467	894 430	3 675	6 458	109 345	52 275	87 907	14 082	62 927	351	17 048
<b>2003-04</b>	32 069	852 412	2 893	6 262	86 539	42 722	100 537	18 326	50 667	558	24 705
<b>2004-05</b>	44 658	959 985	3 318	5 782	102 167	41 810	106 814	21 732	43 588	449	22 829
<b>2004</b>											
March	6 996	183 077	487	982	24 575	12 034	25 026	4 674	11 579	136	5 920
June	8 468	240 695	611	1 371	22 790	13 095	26 320	5 712	11 914	114	6 015
September	7 208	245 649	767	2 286	17 892	9 203	18 130	3 866	11 842	114	5 783
December	12 022	252 729	792	1 357	27 898	11 686	29 707	5 072	10 741	136	6 293
<b>2005</b>											
March	12 372	200 596	618	830	29 496	9 645	26 968	5 348	10 036	72	4 985
June	13 057	261 011	1 142	1 309	26 881	11 276	32 008	7 446	10 969	127	5 768

(a) For more information refer to paragraphs 10 and 11 of the Explanatory Notes.

## EXPORTS OF LIVE SHEEP AND CATTLE, Australia(a): Original

<i>Period</i>	<i>Number</i>	<i>Gross weight</i>	<i>Gross value</i>	<i>Unit value</i>
	'000	'000 tonnes	\$'000	\$
.....				
SHEEP				
<b>2002-03</b>	5 843.2	273.0	408 235	69.87
<b>2003-04</b>	3 842.7	188.2	266 457	69.34
<b>2004-05</b>	3 233.2	166.1	206 678	63.92
<b>2004</b>				
March	1 028.9	50.4	68 609	66.68
June	675.9	32.4	44 830	66.33
September	849.4	48.5	58 088	68.38
December	839.8	42.2	53 946	64.24
<b>2005</b>				
March	904.6	44.3	55 415	61.26
June	639.4	31.1	39 228	61.35
.....				
CATTLE				
<b>2002-03</b>	976.6	362.5	569 288	582.95
<b>2003-04</b>	581.5	192.0	317 850	546.65
<b>2004-05</b>	512.7	171.0	333 276	650.01
<b>2004</b>				
March	96.7	32.4	54 772	566.17
June	171.2	58.1	97 673	570.44
September	110.3	36.8	70 766	641.33
December	131.0	45.3	95 115	725.95
<b>2005</b>				
March	120.9	40.6	77 020	637.26
June	150.5	48.3	90 375	600.50

(a) For more information refer to paragraph 12 of the Explanatory Notes.

## WHOLE MILK INTAKE, By Factories(a)(b): All Series

	<i>New South Wales</i>	<i>Victoria</i>	<i>Queensland</i>	<i>South Australia</i>	<i>Western Australia</i>	<i>Tasmania</i>	<b><i>Australia</i></b>
<i>Quarter</i>	ML	ML	ML	ML	ML	ML	ML
ORIGINAL							
<b>2003</b>							
December	367	2 326	182	213	113	231	<b>3 431</b>
<b>2004</b>							
March	302	1 546	161	172	93	168	<b>2 442</b>
June	274	1 070	147	156	91	95	<b>1 832</b>
September	308	1 535	167	160	101	98	<b>2 370</b>
December	347	2 314	165	204	110	240	<b>3 379</b>
<b>2005</b>							
March	289	1 618	144	166	88	162	<b>2 467</b>
SEASONALLY ADJUSTED							
<b>2003</b>							
December	321	1 600	172	178	105	145	<b>2 521</b>
<b>2004</b>							
March	315	1 619	166	179	100	152	<b>2 531</b>
June	307	1 665	159	175	95	149	<b>2 550</b>
September	302	1 618	158	167	97	149	<b>2 491</b>
December	304	1 593	156	170	102	150	<b>2 475</b>
<b>2005</b>							
March	306	1 693	150	170	96	147	<b>2 562</b>
TREND							
<b>2003</b>							
December	320	1 599	171	179	103	146	<b>2 518</b>
<b>2004</b>							
March	314	1 631	165	177	100	149	<b>2 536</b>
June	308	1 634	161	174	98	150	<b>2 525</b>
September	304	1 627	157	171	98	150	<b>2 507</b>
December	304	1 632	155	169	98	149	<b>2 507</b>
<b>2005</b>							
March	305	1 649	152	169	98	148	<b>2 521</b>

(a) For more information refer to paragraph 13 of the Explanatory Notes.

(b) Data for Australian Capital Territory are included in New South Wales; data for Northern Territory are included in South Australia.

Source: Original series data from Dairy Australia.

## MARKET MILK SALES, By Factories(a)(b): All Series

	<i>New South Wales</i>	<i>Victoria</i>	<i>Queensland</i>	<i>South Australia</i>	<i>Western Australia</i>	<i>Tasmania</i>	<b><i>Australia</i></b>
<i>Quarter</i>	ML	ML	ML	ML	ML	ML	ML
ORIGINAL							
<b>2003</b>							
December	156	121	102	48	51	13	<b>491</b>
<b>2004</b>							
March	155	119	103	49	52	13	<b>491</b>
June	158	120	103	49	50	13	<b>493</b>
September	159	122	108	51	52	13	<b>504</b>
December	157	123	106	50	51	14	<b>501</b>
<b>2005</b>							
March	158	117	106	48	50	13	<b>492</b>
SEASONALLY ADJUSTED							
<b>2003</b>							
December	157	120	102	49	51	13	<b>493</b>
<b>2004</b>							
March	156	122	103	50	52	13	<b>496</b>
June	157	121	103	49	50	13	<b>493</b>
September	158	119	105	49	51	13	<b>495</b>
December	158	122	107	50	51	13	<b>502</b>
<b>2005</b>							
March	160	122	108	49	51	13	<b>502</b>
TREND							
<b>2003</b>							
December	157	121	102	49	51	13	<b>494</b>
<b>2004</b>							
March	157	121	103	49	51	13	<b>494</b>
June	157	121	104	49	51	13	<b>495</b>
September	158	121	105	49	51	13	<b>497</b>
December	158	121	106	50	51	13	<b>500</b>
<b>2005</b>							
March	159	122	108	50	51	13	<b>503</b>

(a) For more information refer to paragraph 13 of the Explanatory Notes.

(b) Data for Australian Capital Territory are included in New South Wales; data for Northern Territory are included in South Australia.

Source: Original series data from Dairy Australia.

## BROKERS AND DEALERS RECEIVALS OF TAXABLE WOOL(a): All Series

Quarter	New South Wales	Victoria	Queensland	South Australia	Western Australia	Tasmania	Australia	% of total received by brokers
	tonnes	tonnes	tonnes	tonnes	tonnes	tonnes	tonnes	%
ORIGINAL								
<b>2004</b>								
March	32 387	29 160	4 099	16 355	33 052	2 237	<b>117 290</b>	83.0
June	30 633	24 001	3 652	11 528	19 657	3 429	<b>92 900</b>	78.1
September	42 313	29 087	6 706	19 936	27 521	1 896	<b>127 458</b>	84.1
December	43 432	36 591	4 333	19 815	28 563	3 988	<b>136 722</b>	80.0
<b>2005</b>								
March	32 051	28 550	3 462	14 438	32 900	2 251	<b>113 652</b>	81.2
June	31 395	26 118	5 716	13 303	18 070	2 747	<b>97 349</b>	77.0
SEASONALLY ADJUSTED								
<b>2004</b>								
March	37 666	32 434	4 988	17 965	27 038	2 969	<b>123 058</b>	..
June	39 147	33 133	3 162	16 778	30 339	4 168	<b>126 728</b>	..
September	34 338	28 387	5 186	16 920	26 813	1 954	<b>113 600</b>	..
December	38 235	27 165	5 680	15 961	25 846	2 854	<b>115 741</b>	..
<b>2005</b>								
March	37 338	31 617	4 234	16 154	27 379	2 933	<b>119 653</b>	..
June	40 075	35 770	5 075	19 400	27 899	3 275	<b>131 493</b>	..
TREND								
<b>2004</b>								
March	36 801	31 620	4 372	17 633	28 236	3 358	<b>122 020</b>	..
June	37 387	31 395	4 374	17 247	28 316	3 200	<b>121 917</b>	..
September	36 990	29 392	4 709	16 460	27 516	2 827	<b>117 895</b>	..
December	36 995	29 071	5 003	16 339	26 823	2 703	<b>116 933</b>	..
<b>2005</b>								
March	38 101	31 212	5 011	17 041	26 894	2 882	<b>121 141</b>	..
June	39 419	34 157	4 762	17 988	27 619	3 201	<b>127 146</b>	..

.. not applicable

(a) For more information refer to paragraphs 4, 14 and 15 of the Explanatory Notes.



<i>Financial year</i>	<i>New South Wales</i>	<i>Victoria</i>	<i>Queensland</i>	<i>South Australia</i>	<i>Western Australia</i>	<i>Tasmania</i>	<b><i>Australia</i></b>
-----------------------	------------------------	-----------------	-------------------	------------------------	--------------------------	-----------------	-------------------------

.....  
**WHOLE MILK INTAKE BY FACTORIES (b) (ML)**

2001-02	1 343	7 405	744	715	393	672	<b>11 271</b>
2002-03	1 301	6 585	720	733	404	585	<b>10 328</b>
2003-04	1 271	6 434	674	703	403	590	<b>10 075</b>

.....  
**MARKET MILK SALES BY FACTORIES (b) (ML)**

2001-02	622	459	402	184	192	50	<b>1 909</b>
2002-03	616	473	404	181	200	51	<b>1 925</b>
2003-04	628	484	411	196	204	52	<b>1 976</b>

.....  
**BROKERS AND DEALERS RECEIVALS OF TAXABLE WOOL (Tonnes)**

2002-03	168 138	128 444	18 287	65 054	108 739	14 357	<b>503 020</b>
2003-04	140 815	119 667	17 127	66 982	109 854	13 138	<b>467 583</b>
2004-05	149 192	120 346	20 217	67 492	107 054	10 881	<b>475 181</b>

.....  
 (a) For more information refer to paragraphs 13 to 15 of the Explanatory Notes.

(b) Data for Australian Capital Territory are included in New South Wales; data for Northern Territory are included in South Australia.

Source: Original series milk data from Dairy Australia.

# WHAT IF...? REVISIONS TO TREND ESTIMATES

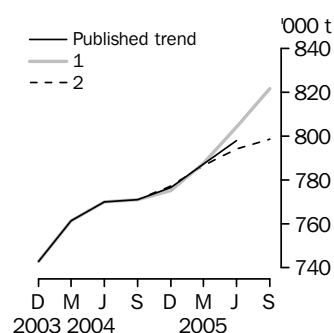
## EFFECT OF NEW SEASONALLY ADJUSTED ESTIMATES ON TREND ESTIMATES

### TREND REVISIONS

Recent seasonally adjusted and trend estimates are likely to be revised when original estimates for subsequent quarters become available. The approximate effects of possible scenarios on trend estimates are presented below. These illustrate the impact on trend estimates if next quarter's seasonally adjusted estimate either rises or falls by a certain percentage (based on the historical average of movements in seasonally adjusted estimates).

For further information, see paragraphs 20 to 22 of the Explanatory Notes.

### RED MEAT PRODUCTION

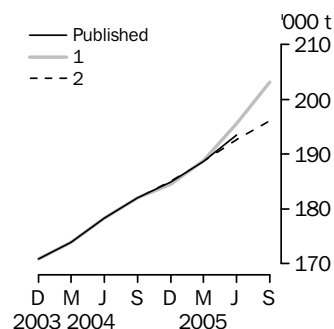


#### WHAT IF NEXT QUARTER'S SEASONALLY ADJUSTED ESTIMATE:

	<u>Trend as published</u>		<u>(1) rises by 3% on Jun Qtr 2005</u>		<u>(2) falls by 3% on Jun Qtr 2005</u>	
	number	% change	number	% change	number	% change
Jun Qtr 2004	770 205	1.1	770 205	1.1	770 205	1.1
Sep Qtr 2004	771 125	0.1	771 124	0.1	771 124	0.1
Dec Qtr 2004	776 538	0.7	775 127	0.5	777 211	0.8
Mar Qtr 2005	787 232	1.4	787 567	1.6	786 809	1.2
Jun Qtr 2005	797 909	1.4	804 348	2.1	794 304	1.0
Sep Qtr 2005	..	..	821 862	2.2	798 760	0.6

.. not applicable

### CHICKEN MEAT PRODUCTION



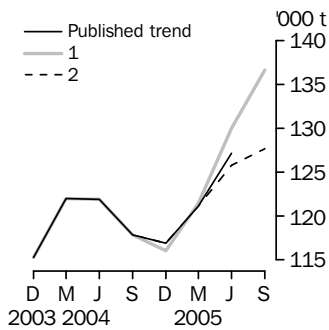
#### WHAT IF NEXT QUARTER'S SEASONALLY ADJUSTED ESTIMATE:

	<u>Trend as published</u>		<u>(1) rises by 4% on Jun Qtr 2005</u>		<u>(2) falls by 4% on Jun Qtr 2005</u>	
	number	% change	number	% change	number	% change
Jun Qtr 2004	178 366	2.6	178 367	2.6	178 367	2.6
Sep Qtr 2004	182 015	2.0	182 014	2.0	182 014	2.0
Dec Qtr 2004	184 889	1.6	184 469	1.3	185 078	1.7
Mar Qtr 2005	188 710	2.1	188 839	2.4	188 628	1.9
Jun Qtr 2005	193 488	2.5	195 555	3.6	192 628	2.1
Sep Qtr 2005	..	..	203 079	3.8	196 136	1.8

.. not applicable

# WHAT IF...? REVISIONS TO TREND ESTIMATES *continued*

## WOOL RECEIVALS



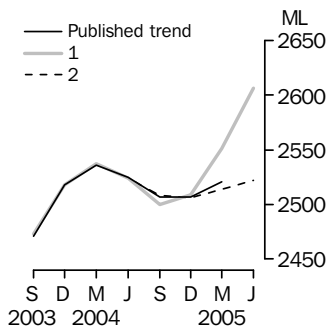
### WHAT IF NEXT QUARTER'S

#### SEASONALLY ADJUSTED ESTIMATE:

	<u>Trend as published</u>		<u>(1) rises by 9% on Jun Qtr 2005</u>		<u>(2) falls by 9% on Jun Qtr 2005</u>	
	number	% change	number	% change	number	% change
Jun Qtr 2004	121 917	-0.1	121 917	-0.1	121 917	-0.1
Sep Qtr 2004	117 895	-3.3	117 895	-3.3	117 895	-3.3
Dec Qtr 2004	116 933	-0.8	116 044	-1.6	116 909	-0.8
Mar Qtr 2005	121 141	3.6	121 474	4.7	121 120	3.6
Jun Qtr 2005	127 146	5.0	130 008	7.0	125 814	3.9
Sep Qtr 2005	..	..	136 644	5.1	127 653	1.5

.. not applicable

## WHOLE MILK INTAKE BY FACTORIES



### WHAT IF NEXT QUARTER'S

#### SEASONALLY ADJUSTED ESTIMATE:

	<u>Trend as published</u>		<u>(1) rises by 2% on Mar Qtr 2005</u>		<u>(2) falls by 2% on Mar Qtr 2005</u>	
	number	% change	number	% change	number	% change
Mar Qtr 2004	2 536	0.7	2 537	0.8	2 537	0.8
Jun Qtr 2004	2 525	-0.4	2 524	-0.5	2 524	-0.5
Sep Qtr 2004	2 507	-0.7	2 500	-1.0	2 508	-0.6
Dec Qtr 2004	2 507	—	2 509	0.4	2 506	-0.1
Mar Qtr 2005	2 521	0.6	2 551	1.7	2 514	0.3
Jun Qtr 2005	..	..	2 606	2.2	2 522	0.3

.. not applicable

— nil or rounded to zero (including null cells)

## EXPLANATORY NOTES

### INTRODUCTION

**1** This publication contains information on livestock slaughterings, meat production, exports of live sheep and live cattle, exports of fresh, frozen and processed meat, and whole milk intake by factories, market milk sales by factories and receivals of taxable wool by wool brokers and dealers.

**2** The figures shown in this publication have been revised where necessary and as a consequence may not agree with similar data shown in previous publications.

**3** Where figures have been rounded, discrepancies may occur between sums of the component items and totals.

**4** Unless indicated otherwise, Australian totals include data for all states and both territories.

### LIVESTOCK SLAUGHTERINGS AND MEAT PRODUCTION

**5** The statistics on slaughterings for red meat production are based on a monthly collection from abattoirs and other major slaughtering establishments and include estimates of animals slaughtered on farms and by country butchers and other small slaughtering establishments.

**6** Red meat is shown in carcass weight and excludes offal.

**7** Care should be taken when using this information as the figures only relate to slaughterings for human consumption and do not include animals condemned, slaughtered for pet food or those killed for boiling down.

**8** Poultry slaughterings and meat produced statistics have been compiled from quarterly returns supplied by commercial poultry slaughtering establishments and comprise boilers, fryers and roasters. Many small producers are excluded from the collection; however, the statistics represent a high level of coverage. Tasmanian, Northern Territory and Australian Capital Territory data are excluded from the Australian total.

**9** Chicken meat is shown in dressed weight of whole birds, pieces and giblets. Some slaughterings and meat production statistics for 'Ducks and Drakes' and 'Other Fowls and Turkeys' are available by contacting the ABS on Hobart (03) 6222 5974 or by writing to GPO Box 66, Hobart Tasmania 7001 (Attention: Agriculture Section).

### EXPORTS OF FRESH, FROZEN AND PROCESSED MEAT

**10** Table 20 shows exports of fresh, frozen and processed meat. International trade statistics are compiled by the ABS from information submitted by exporters and importers or their agents to the Australian Customs Service. Factors can be applied to beef, veal, mutton and lamb bone-out figures to derive bone-in carcass weight which, when added to bone-in figures, shows total exports in carcass weight. The factor for beef and veal is 1.5 and for mutton and lamb, 2.0. This information is sourced from Department of Agriculture, Fisheries and Forestry – Australia.

**11** Beef also includes buffalo meat. Bacon and ham shown is the cured carcass weight of smoked or cooked bacon and ham. It also includes the stated net weight of packs of canned bacon and ham. Canned meat is shown as the canned weight and excludes canned bacon and ham.

### LIVE SHEEP AND CATTLE EXPORTS

**12** Table 21 contains statistics of the number of live sheep and cattle exported, the gross weight, gross value and unit value. The unit value is obtained by dividing the gross value by the number of animals exported. Sheep and cattle exported for breeding are excluded.

### MILK

**13** Tables 2, 22, 23 and 25 contain statistics collected by Dairy Australia. Whole milk intake by factories includes the whole milk equivalent of farm cream intake. Market milk sales includes white, flavoured, high and low fat milk and UHT milk. Interstate transfers of UHT milk have been included in their state of destination.

## EXPLANATORY NOTES *continued*

### WOOL RECEIVALS

**14** The statistics in tables 2, 24 and 25 show the amount of taxable wool received by brokers and purchased by dealers from wool producers. It excludes wool received by brokers on which tax has already been paid by other dealers (private buyers) or brokers.

**15** The information shown is on the basis of the state in which wool has actually been received and does not necessarily reflect the production of wool in that state.

### SEASONAL ADJUSTMENT

**16** Seasonal adjustment is a means of removing the estimated effects of normal seasonal variation from the series so that the effects of other influences can be more clearly recognised.

**17** In the seasonal adjustment of the livestock estimates, account has been taken of both normal seasonal factors and 'trading day' effects, where significant, (arising from the varying length of each quarter and the varying numbers of Sundays, Mondays, Tuesdays etc. in the quarter). Adjustments are also made for the effects of change in the date of Easter holidays, again, where significant. Seasonal adjustment does not remove from the series the effect of irregular influences (e.g. abnormal weather, industrial disputes).

**18** The state component series have been seasonally adjusted independently. Therefore, the adjusted components may not add to the Australian group totals.

**19** In this publication the seasonally adjusted estimates are produced by the concurrent seasonal adjustment method which takes account of the latest available original estimates. This method improves the estimation of seasonal factors and therefore, the seasonally adjusted and trend estimates for the current and previous quarters. As a result of this improvement, revisions to the seasonally adjusted and trend estimates will be observed for recent periods. In most instances the only noticeable revisions will be to the previous quarter and the same quarter one year ago. A more detailed review is conducted annually prior to the September quarter release, using data up to and including the June quarter. The concurrent seasonal adjustment methodology replaces the forward factor methodology used previously.

### TREND ESTIMATES

**20** A trend estimate is obtained by reducing the irregular component from the seasonally adjusted series. In this publication trend estimates are generally derived by applying a 7-term Henderson moving average to the seasonally adjusted series. The 7-term Henderson, (like all Henderson averages) is symmetric, but as the end of a time series is approached, asymmetric forms of the average are applied. Unlike the weights of the standard 7-term Henderson moving average, the weights employed here have been tailored to suit the particular characteristics of individual series. While the asymmetric weights enable the trend to be calculated for recent quarters, it does result in revisions to the estimates for the most recent three quarters as additional observations become available. Revisions of trend estimates will also occur with revisions to the original data and re-estimation of seasonal factors.

**21** Sensitivity analysis indicates the potential magnitude and direction of revisions created to the last three estimates. It aims to show how a specified movement in the seasonally adjusted data in the next period will affect the trend path of the time series. By showing how sensitive the trend estimates are to the addition of new data, the analysis provides information which can be used in the assessment of the trend's stability.

**22** For further information, see *Information Paper: A Guide to Interpreting Time Series – Monitoring 'Trends', an Overview* (cat. no. 1348.0) or contact the Assistant Director, Time Series Analysis on Canberra (02) 6252 6345.

## EXPLANATORY NOTES *continued*

---

### RELATED PUBLICATIONS

**23** Current publications and other products released by the ABS are listed in the *Catalogue of Publications and Products* (cat. no. 1101.0). The Catalogue is available from any ABS office or the ABS web site <<http://www.abs.gov.au>>. The ABS also issues a daily Release Advice on the web site which details products to be released in the week ahead.

### GENERAL ACKNOWLEDGMENT

**24** ABS publications draw extensively on information provided freely by individuals, businesses, governments and other organisations. Their continued cooperation is very much appreciated. Without it, the wide range of statistics published by the ABS would not be available. Information received by the ABS is treated in strict confidence as required by the *Census and Statistics Act 1905*.



## FOR MORE INFORMATION . . .

- INTERNET* **www.abs.gov.au** the ABS web site is the best place to start for access to summary data from our latest publications, information about the ABS, advice about upcoming releases, our catalogue, and Australia Now—a statistical profile.
- LIBRARY* A range of ABS publications is available from public and tertiary libraries Australia-wide. Contact your nearest library to determine whether it has the ABS statistics you require, or visit our web site for a list of libraries.
- CPI INFOLINE* For current and historical Consumer Price Index data, call 1902 981 074 (call cost 77c per minute).
- DIAL-A-STATISTIC* This service now provides only current Consumer Price Index statistics call 1900 986 400 (call cost 77c per minute).

## INFORMATION SERVICE

Data already published that can be provided within five minutes will be free of charge. Our information consultants can also help you to access the full range of ABS information—ABS user pays services can be tailored to your needs, time frame and budget. Publications may be purchased. Specialists are on hand to help you with analytical or methodological advice.

- PHONE* 1300 135 070
- EMAIL* [client.services@abs.gov.au](mailto:client.services@abs.gov.au)
- FAX* 1300 135 211
- POST* Client Services, ABS, GPO Box 796, Sydney NSW 2001

## FREE ACCESS TO PUBLICATIONS

All ABS publications can be downloaded free of charge from the ABS web site.

- WEB ADDRESS* [www.abs.gov.au](http://www.abs.gov.au)



2721500006054

ISSN 0728 4047

RRP \$24.00