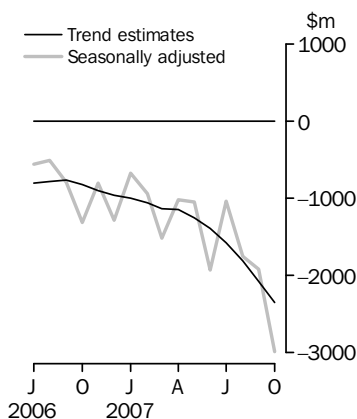


# INTERNATIONAL TRADE IN GOODS AND SERVICES

AUSTRALIA

EMBARGO: 11.30AM (CANBERRA TIME) MON 3 DEC 2007

## Balance on Goods and Services



## KEY FIGURES

	August 2007 \$m	September 2007 \$m	October 2007 \$m	Sep 07 to Oct 07 % change
<b>TREND ESTIMATES</b>				
Balance on goods and services	-1 816	-2 075	-2 355	..
Credits (exports of goods & services)	18 056	17 924	17 757	-1
Debits (imports of goods & services)	19 872	20 000	20 112	1
<b>SEASONALLY ADJUSTED</b>				
Balance on goods and services	-1 756	-1 916	-2 983	..
Credits (exports of goods & services)	18 606	17 850	17 235	-3
Debits (imports of goods & services)	20 362	19 766	20 219	2

.. not applicable

## KEY POINTS

### TREND ESTIMATES

- The provisional trend estimate of the balance on goods and services was a deficit of \$2,355m in October 2007, an increase of \$280m on the revised deficit in September.
- Goods and services credits fell \$167m (1%) to \$17,757m. Goods and services debits rose \$112m (1%) to \$20,112m.

### SEASONALLY ADJUSTED ESTIMATES

- In seasonally adjusted terms, the balance on goods and services was a deficit of \$2,983m in October, an increase of \$1,067m on the revised deficit in September.
- Goods and services credits fell \$615m (3%) to \$17,235m. Non-rural and other goods fell \$545m (5%) and rural goods fell \$99m (5%). Services credits rose \$29m (1%).
- Goods and services debits rose \$453m (2%) to \$20,219m. Intermediate and other goods rose \$624m (8%), capital goods fell \$191m (5%) and consumption goods fell \$69m (1%). Services debits rose \$89m (2%).

### ORIGINAL ESTIMATES

- In original terms, the October 2007 balance on goods and services was a deficit of \$3,992m, an increase of \$1,935m on the deficit in September. Goods and services credits rose \$67m and goods and services debits rose \$2,002m (10%).
- In the four months to October, exports of non-rural and other goods were up \$210m while rural goods were down \$1,234m (14%) on the corresponding period in 2006-07.
- In October 2007, the Australian dollar appreciated strongly against major currencies.

## INQUIRIES

For further information about these and related statistics, contact the National Information and Referral Service on 1300 135 070 or Selvi Sekhar on Canberra (02) 6252 5540.

# NOTES

## FORTHCOMING ISSUES

<i>ISSUE</i>	<i>RELEASE DATE</i>
November 2007	10 January 2008
December 2007	4 February 2008
January 2008	6 March 2008
February 2008	7 April 2008
March 2008	6 May 2008
April 2008	5 June 2008

## REVISIONS

Revisions were made to the merchandise trade series to incorporate the latest available data. There were no revisions to the balance of payments series in original terms. However, the seasonally adjusted and trend estimates have been revised due to the use of concurrent seasonal adjustment (see paragraph 8 in Explanatory Notes).

## ABBREVIATIONS

\$b	billion (thousand million) dollars
\$m	million dollars
ABS	Australian Bureau of Statistics
APEC	Asia Pacific Economic Co-operation
ASEAN	Association of South-East Asian Nations
n.e.s.	not elsewhere specified
n.i.e.	not included elsewhere
OECD	Organisation for Economic Co-operation and Development
SAR	Special Administrative Region
SITC	Standard International Trade Classification

Brian Pink  
Australian Statistician

# CONTENTS

page

Time series data . . . . . 4

## ANALYSIS

Analysis and comments . . . . . 5

## TABLES

### INTERNATIONAL TRADE IN GOODS AND SERVICES – BALANCE OF PAYMENTS BASIS

<b>1</b>	Goods and services, summary, seasonally adjusted and trend estimates . . . . .	9
<b>2</b>	Goods and services, summary, original . . . . .	10
<b>3</b>	Goods credits, original . . . . .	11
<b>4</b>	Goods debits, original . . . . .	12
<b>5</b>	Goods credits, seasonally adjusted . . . . .	13
<b>6</b>	Goods debits, seasonally adjusted . . . . .	14
<b>7</b>	Goods credits, trend estimates . . . . .	15
<b>8</b>	Goods debits, trend estimates . . . . .	16
<b>9</b>	Services, summary, original . . . . .	17
<b>10</b>	Services, summary, seasonally adjusted and trend estimates . . . . .	18
<b>11</b>	Services, original, quarterly . . . . .	19

### INTERNATIONAL MERCHANDISE TRADE – RECORDED TRADE BASIS

<b>12</b>	International merchandise exports, by commodity . . . . .	20
<b>13</b>	International merchandise imports, by commodity . . . . .	23
<b>14</b>	International merchandise trade, by country and country groups . . . . .	26
<b>15</b>	International merchandise trade, by state . . . . .	27

### OTHER TABLES

<b>16</b>	Period average exchange rates per Australian dollar . . . . .	28
-----------	---	----

## OTHER INFORMATION

Explanatory Notes . . . . .	29
Appendix - Related articles . . . . .	33

## TIME SERIES DATA

### TIME SERIES DATA

Data available free on the ABS web site <<http://www.abs.gov.au>> include longer time series of tables in this publication and additional spreadsheets and data cubes below:

31 Merchandise exports by Broad Economic Category (BEC)

32 Merchandise exports by industry of origin (ANZSIC)

33 Merchandise imports by Broad Economic Category (BEC)

34 Merchandise imports by Balance of Payments Broad Economic Category (BoPBEC)

35 Merchandise imports by industry of origin (ANZSIC)

36 Merchandise exports, state by country and country groups

37 Merchandise imports, state by country and country groups

91 Monthly seasonal adjustment factors and forward factors for 12 months.

Trade in Services data cubes are usually updated on an annual basis - with the March issue of 5368.0 for calendar year and with the September issue for financial year.

Financial year (cat. no. 5368.0.55.003)

1 International trade in services, credits, state by financial year

2 International trade in services, credits, financial year by state

3 International trade in services, debits, state by financial year

4 International trade in services, debits, financial year by state

5 International trade in services, credits, financial year by country and service

6 International trade in services, credits, service by financial year and by country

7 International trade in services, debits, financial year by country and service

8 International trade in services, debits, service by financial year and by country

9 International trade in services, financial year by detailed service

Calendar year (cat. no. 5368.0.55.004)

1 International trade in services, credits, state by calendar year

2 International trade in services, credits, calendar year by state

3 International trade in services, debits, state by calendar year

4 International trade in services, debits, calendar year by state

5 International trade in services, credits, calendar year by country and service

6 International trade in services, credits, service by calendar year and by country

7 International trade in services, debits, calendar year by country and service

8 International trade in services, debits, service by calendar year and by country

9 International trade in services, calendar year by detailed service

## ANALYSIS AND COMMENTS

### BALANCE ON GOODS AND SERVICES

The trend estimate of the balance on goods and services in October 2007 was a deficit of \$2,355m, an increase of \$280m on the deficit in September.

In seasonally adjusted terms, the balance on goods and services in October 2007 was a deficit of \$2,983m, an increase of \$1,067m on the deficit in September.

In October 2007 the Australian dollar appreciated strongly against major currencies, including appreciating by 6% against United States dollar. Refer to table 16 for details.

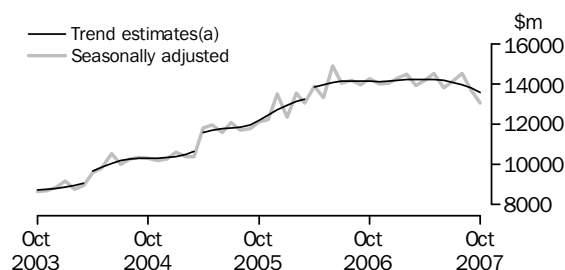
### EXPORTS OF GOODS AND SERVICES

The trend estimate of goods and services credits fell \$167m (1%) between September and October to \$17,757m.

In seasonally adjusted terms, goods and services credits fell \$615m (3%) to \$17,235m. Non-rural goods fell \$703m (7%) and rural goods fell \$99m (5%) while other goods rose \$158m (17%). Services credits rose \$29m (1%).

#### Exports of goods

### GOODS CREDITS



(a) Trend breaks of \$430m to April 2004, \$819m to April 2005 and \$500m to April 2006 have been applied.

### RURAL GOODS

The trend estimate of rural goods exports rose \$7m to \$1,914m.

In seasonally adjusted terms, exports of rural goods fell \$99m (5%) to \$1,893m.

The components contributing to the fall in the seasonally adjusted series were:

- cereal grains and cereal preparations, down \$74m (23%)
- meat and meat preparations, down \$30m (6%)
- other rural, down \$6m (1%).

In original terms, exports of rural goods fell \$59m (3%) to \$1,976m.

### NON-RURAL GOODS

The trend estimate of non-rural goods exports fell \$166m (2%) to \$10,594m.

In seasonally adjusted terms, exports of non-rural goods fell \$703m (7%) to \$10,070m.

The main components contributing to the fall in the seasonally adjusted series were:

- metal ores and minerals, down \$649m (20%)
- metals (excluding non-monetary gold), down \$267m (22%)
- coal, coke and briquettes, down \$202m (11%).

Partly offsetting these effects were:

- other mineral fuels, up \$402m (43%)
- other non-rural, up \$67m (7%).

## ANALYSIS AND COMMENTS *continued*

### Exports of goods *continued*

### NON-RURAL GOODS *continued*

In original terms, exports of non-rural goods fell \$325m (3%) to \$10,559m.

### OTHER GOODS

The trend estimate of other goods exports fell \$39m (3%) to \$1,078m.

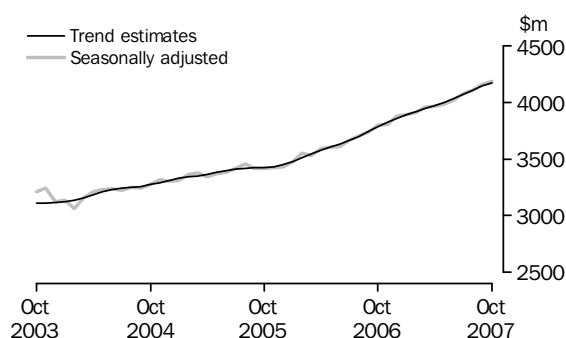
In seasonally adjusted terms, exports of other goods rose \$158m (17%) to \$1,089m.

The main component contributing to the rise in the seasonally adjusted series was non-monetary gold, up \$150m (19%).

In original terms, exports of other goods rose \$155m (17%) to \$1,093m.

### Exports of Services

### SERVICES CREDITS



In trend terms, services credits rose \$30m (1%) to \$4,171m.

Seasonally adjusted, services credits rose \$29m (1%) to \$4,183m.

The components contributing to the rise in the seasonally adjusted estimates were:

- travel services, up \$24m (1%)
- other services, up \$18m (2%).

Partly offsetting this effect was the transportation services component, down \$13m (2%).

Seasonally adjusted, tourism related services credits rose \$26m (1%) to \$2,670m. This series is seasonally adjusted independently to the series that comprise services credits.

### IMPORTS OF GOODS AND SERVICES

The trend estimate of goods and services debits rose \$112m (1%) between September and October to \$20,112m.

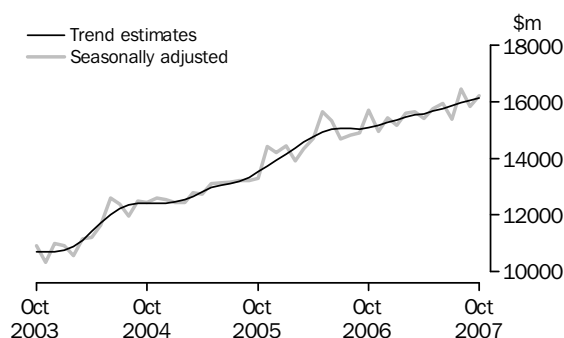
In seasonally adjusted terms, goods and services debits rose \$453m (2%) to \$20,219m.

Intermediate and other merchandise goods rose \$414m (6%), other goods rose \$210m (37%) while capital goods fell \$191m (5%) and consumption goods fell \$69m (1%).

Services debits rose \$89m (2%).

Imports of goods

GOODS DEBITS



CONSUMPTION GOODS

The trend estimate of imports of consumption goods rose \$20m to \$4,718m.

In seasonally adjusted terms, imports of consumption goods fell \$69m (1%) to \$4,698m.

The main components contributing to the fall in the seasonally adjusted estimates were:

- food and beverages, mainly for consumption, down \$59m (9%)
- toys, books and leisure goods, down \$19m (5%).

Partly offsetting these effects was the non-industrial transport equipment component, up \$27m (2%).

In original terms, imports of consumption goods rose \$613m (12%) to \$5,570m.

CAPITAL GOODS

The trend estimate of imports of capital goods rose \$5m to \$3,551m.

In seasonally adjusted terms, imports of capital goods fell \$191m (5%) to \$3,451m.

The main component contributing to the fall in the seasonally adjusted estimates was machinery and industrial equipment, down \$301m (21%).

Partly offsetting this effect were:

- telecommunications equipment, up \$102m (21%)
- civil aircraft, up \$44m.

In original terms, imports of capital goods rose \$117m (3%) to \$3,690m.

INTERMEDIATE AND OTHER MERCHANDISE GOODS

The trend estimate of imports of intermediate and other merchandise goods rose \$67m (1%) to \$7,082m.

In seasonally adjusted terms, imports of intermediate and other merchandise goods rose \$414m (6%) to \$7,268m.

The main components contributing to the rise in the seasonally adjusted estimates were:

- fuels and lubricants, up \$325m (16%)
- processed industrial supplies n.e.s., up \$73m (5%).

## ANALYSIS AND COMMENTS *continued*

### *Imports of goods continued*

### INTERMEDIATE AND OTHER MERCHANDISE GOODS *continued*

Partly offsetting these effects was the organic and inorganic chemicals component, down \$41m (10%).

In original terms, imports of intermediate and other merchandise goods rose \$1,020m (15%) to \$7,693m.

#### OTHER GOODS

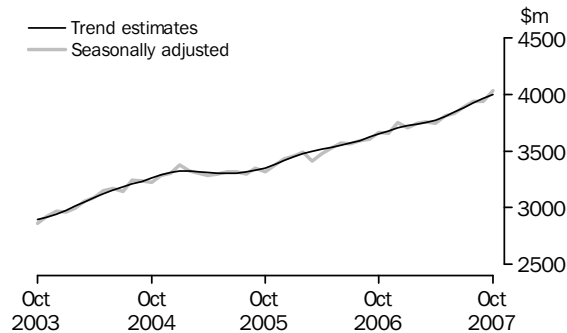
The trend estimate of imports of other goods fell \$14m (2%) to \$766m.

In both original and seasonally adjusted terms, other goods debits rose \$210m (37%) to \$774m.

The main component contributing to the rise in both original and seasonally adjusted estimates was non-monetary gold, up \$205m (47%).

### *Imports of services*

#### SERVICES DEBITS



In trend terms, services debits rose \$33m (1%) to \$3,994m.

Seasonally adjusted, services debits rose \$89m (2%) to \$4,028m.

All components contributed to the rise in the seasonally adjusted estimates with:

- travel services, up \$65m (5%)
- other services, up \$12m (1%)
- transportation services, up \$12m (1%).

Seasonally adjusted, tourism related services debits rose \$66m (3%) to \$2,058m. This series is seasonally adjusted independently to the series that comprise services debits.



GOODS AND SERVICES(a), Summary: **Seasonally Adjusted and Trend Estimates**

Months	BALANCE	CREDITS					DEBITS					
	<i>On goods and services</i>	<i>Total goods and services</i>	<i>Total goods</i>	<i>Rural goods(b)</i>	<i>Non-rural and other goods(b)</i>	<i>Total services</i>	<i>Total goods and services</i>	<i>Total goods</i>	<i>Consumption goods</i>	<i>Capital goods</i>	<i>Intermediate and other goods</i>	<i>Total services</i>
	\$m	\$m	\$m	\$m	\$m	\$m	\$m	\$m	\$m	\$m	\$m	\$m
SEASONALLY ADJUSTED												
<b>2006</b>												
August	-514	17 886	14 184	2 264	11 919	3 702	-18 399	-14 809	-4 434	-3 286	-7 088	-3 590
September	-795	17 694	13 956	2 195	11 761	3 738	-18 489	-14 887	-4 423	-3 283	-7 181	-3 602
October	-1 315	18 048	14 253	2 220	12 033	3 796	-19 364	-15 701	-4 662	-3 519	-7 520	-3 663
November	-805	17 804	14 000	2 213	11 788	3 804	-18 609	-14 952	-4 582	-3 358	-7 012	-3 657
December	-1 283	17 898	14 023	2 101	11 922	3 874	-19 180	-15 432	-4 614	-3 663	-7 155	-3 748
<b>2007</b>												
January	-672	18 205	14 313	2 044	12 268	3 893	-18 877	-15 173	-4 642	-3 470	-7 061	-3 704
February	-937	18 393	14 481	2 079	12 401	3 913	-19 330	-15 584	-4 870	-3 526	-7 188	-3 746
March	-1 520	17 863	13 904	2 038	11 866	3 959	-19 383	-15 629	-4 629	-3 473	-7 528	-3 754
April	-1 022	18 125	14 164	1 967	12 197	3 961	-19 147	-15 405	-4 712	-3 325	-7 368	-3 742
May	-1 045	18 508	14 523	1 954	12 569	3 985	-19 553	-15 743	-4 592	-3 706	-7 445	-3 810
June	-1 933	17 823	13 807	1 841	11 967	4 015	-19 755	-15 923	-4 583	-3 566	-7 774	-3 832
July	-1 041	18 230	14 152	1 934	12 218	4 077	-19 270	-15 378	-4 583	-3 242	-7 552	-3 893
August	-1 756	18 606	14 501	1 858	12 642	4 105	-20 362	-16 427	-4 725	-3 693	-8 010	-3 934
September	-1 916	17 850	13 696	1 992	11 704	4 154	-19 766	-15 827	-4 767	-3 642	-7 418	-3 939
October	-2 983	17 235	13 052	1 893	11 159	4 183	-20 219	-16 191	-4 698	-3 451	-8 042	-4 028
TREND ESTIMATES												
<b>2006</b>												
August	-784	17 857	14 156	2 220	11 936	3 701	-18 641	-15 048	-4 474	-3 294	-7 280	-3 593
September	-769	17 888	14 147	2 220	11 927	3 741	-18 657	-15 036	-4 504	-3 338	-7 194	-3 621
October	-819	17 907	14 125	2 204	11 920	3 782	-18 726	-15 076	-4 549	-3 406	-7 120	-3 650
November	-900	17 938	14 116	2 172	11 944	3 822	-18 839	-15 161	-4 604	-3 463	-7 094	-3 678
December	-962	18 002	14 143	2 134	12 009	3 859	-18 963	-15 261	-4 656	-3 498	-7 107	-3 702
<b>2007</b>												
January	-997	18 084	14 193	2 092	12 101	3 891	-19 081	-15 360	-4 692	-3 515	-7 152	-3 721
February	-1 056	18 125	14 207	2 052	12 156	3 918	-19 181	-15 445	-4 703	-3 510	-7 232	-3 736
March	-1 139	18 156	14 213	2 009	12 204	3 943	-19 295	-15 542	-4 689	-3 498	-7 356	-3 752
April	-1 147	18 193	14 226	1 969	12 256	3 968	-19 340	-15 567	-4 663	-3 491	-7 412	-3 773
May	-1 250	18 219	14 222	1 939	12 284	3 996	-19 469	-15 666	-4 641	-3 497	-7 528	-3 803
June	-1 390	18 207	14 176	1 918	12 259	4 030	-19 597	-15 756	-4 633	-3 512	-7 611	-3 841
July	-1 579	18 155	14 087	1 907	12 180	4 068	-19 734	-15 852	-4 644	-3 527	-7 680	-3 883
August	-1 816	18 056	13 950	1 905	12 045	4 106	-19 872	-15 948	-4 669	-3 538	-7 741	-3 923
September	-2 075	17 924	13 784	1 907	11 876	4 141	-20 000	-16 038	-4 698	-3 546	-7 795	-3 961
October	-2 355	17 757	13 586	1 914	11 673	4 171	-20 112	-16 118	-4 718	-3 551	-7 849	-3 994

(a) For sign conventions, see paragraph 11 of the Explanatory Notes.

(b) For all time periods, estimates for sugar, sugar preparations and honey are included in Non-rural and other goods.

## GOODS AND SERVICES(a), Summary: Original

	BALANCE	CREDITS					DEBITS					
	<i>On goods and services</i>	<i>Total goods and services</i>	<i>Total goods</i>	<i>Rural goods(b)</i>	<i>Non-rural and other goods(b)</i>	<i>Total services</i>	<i>Total goods and services</i>	<i>Total goods</i>	<i>Con-sumption goods</i>	<i>Capital goods</i>	<i>Inter-mediate and other goods</i>	<i>Total services</i>
	\$m	\$m	\$m	\$m	\$m	\$m	\$m	\$m	\$m	\$m	\$m	\$m
FINANCIAL YEAR												
<b>2004-05</b>	<b>-22 626</b>	167 562	127 867	25 687	102 180	39 695	-190 188	-150 873	-47 143	-35 967	-67 763	-39 315
<b>2005-06</b>	<b>-14 520</b>	196 274	154 425	25 312	129 113	41 849	-210 794	-169 716	-50 322	-39 996	-79 398	-41 078
<b>2006-07</b>	<b>-12 010</b>	215 800	169 555	25 117	144 438	46 245	-227 810	-183 443	-55 000	-41 170	-87 273	-44 367
MONTHS												
<b>2006</b>												
August	<b>-784</b>	18 227	14 456	2 261	12 195	3 771	-19 011	-15 481	-4 768	-3 394	-7 319	-3 530
September	<b>-1 484</b>	17 756	14 151	2 266	11 885	3 605	-19 240	-15 336	-4 810	-3 318	-7 208	-3 904
October	<b>-1 787</b>	18 701	14 760	2 277	12 483	3 941	-20 488	-16 666	-5 276	-3 654	-7 736	-3 822
November	<b>-1 563</b>	17 861	13 999	2 213	11 786	3 862	-19 424	-15 881	-5 143	-3 626	-7 112	-3 543
December	<b>-96</b>	18 688	14 799	2 201	12 598	3 889	-18 784	-14 816	-4 351	-3 658	-6 807	-3 968
<b>2007</b>												
January	<b>-2 036</b>	16 559	12 723	1 651	11 072	3 836	-18 595	-14 717	-4 371	-3 229	-7 117	-3 878
February	<b>-237</b>	17 330	13 351	1 978	11 373	3 979	-17 567	-14 281	-4 387	-3 026	-6 868	-3 286
March	<b>-1 026</b>	18 144	14 035	2 155	11 880	4 109	-19 170	-15 539	-4 413	-3 449	-7 677	-3 631
April	<b>-452</b>	17 995	13 967	1 927	12 040	4 028	-18 447	-14 798	-4 330	-3 223	-7 245	-3 649
May	<b>-754</b>	18 688	14 876	2 085	12 791	3 812	-19 442	-15 826	-4 415	-3 821	-7 590	-3 616
June	<b>-1 892</b>	17 667	13 971	1 898	12 073	3 696	-19 559	-15 682	-4 345	-3 745	-7 592	-3 877
July	<b>-900</b>	18 599	14 462	1 900	12 562	4 137	-19 499	-15 457	-4 644	-3 247	-7 566	-4 042
August	<b>-1 991</b>	19 034	14 863	1 864	12 999	4 171	-21 025	-17 104	-5 068	-3 778	-8 258	-3 921
September	<b>-2 057</b>	17 883	13 857	2 035	11 822	4 026	-19 940	-15 767	-4 957	-3 573	-7 237	-4 173
October	<b>-3 992</b>	17 950	13 628	1 976	11 652	4 322	-21 942	-17 727	-5 570	-3 690	-8 467	-4 215
FINANCIAL YEAR TO DATE												
<b>4 months ended</b>												
<b>October</b>												
2006	<b>-3 954</b>	72 868	57 834	9 009	48 825	15 034	-76 822	-61 903	-19 245	-13 393	-29 265	-14 919
2007	<b>-8 940</b>	73 466	56 810	7 775	49 035	16 656	-82 406	-66 055	-20 239	-14 288	-31 528	-16 351

(a) For sign conventions, see paragraph 11 of the Explanatory Notes.

(b) For all time periods, estimates for sugar, sugar preparations and honey are included in Non-rural and other goods.

							4 MONTHS		Change
							ENDED OCTOBER		
	2004-05	2005-06	2006-07	Aug 2007	Sep 2007	Oct 2007	2006	2007	
	\$m	\$m	\$m	\$m	\$m	\$m	\$m	%	
<b>Total goods credits</b>	<b>127 867</b>	<b>154 425</b>	<b>169 555</b>	<b>14 863</b>	<b>13 857</b>	<b>13 628</b>	<b>57 834</b>	<b>56 810</b>	<b>-1.8</b>
<i>Rural goods</i>	25 687	25 312	25 117	1 864	2 035	1 976	9 009	7 775	-13.7
Meat and meat preparations	6 937	6 709	7 078	516	577	551	2 468	2 160	-12.5
Cereal grains and cereal preparations	5 159	4 852	4 171	220	322	223	1 816	1 122	-38.2
Wool and sheepskins	2 838	2 544	3 065	139	228	265	871	833	-4.4
Other rural(a)	10 753	11 207	10 803	989	908	937	3 854	3 660	-5.0
<i>Non-rural goods</i>	94 328	118 164	131 813	11 745	10 884	10 559	44 715	44 590	-0.3
Metal ores and minerals	19 854	28 936	35 348	3 205	3 076	2 812	11 913	12 295	3.2
Coal, coke and briquettes	17 236	24 353	21 928	1 750	1 766	1 619	7 669	6 722	-12.3
Other mineral fuels	11 151	13 220	15 642	1 604	992	1 386	5 651	5 329	-5.7
Metals (excl. non-monetary gold)	8 668	11 278	14 829	1 166	1 189	959	4 624	4 620	-0.1
Machinery	7 488	8 087	8 437	758	809	773	2 917	3 093	6.0
Transport equipment	4 943	5 316	4 645	463	472	483	1 561	1 880	20.4
Other manufactures	14 043	14 926	16 192	1 513	1 512	1 456	5 456	5 938	8.8
Other non-rural (incl. sugar and beverages)	10 945	12 048	14 792	1 286	1 068	1 071	4 924	4 713	-4.3
<i>Other goods</i>	7 852	10 949	12 625	1 254	938	1 093	4 110	4 445	8.2
Goods for processing	241	368	417	19	12	19	119	73	-38.7
Repairs on goods	67	74	90	8	9	8	28	33	17.9
Goods procured in ports by carriers	1 072	1 420	1 379	117	113	112	492	456	-7.3
Non-monetary gold	6 472	9 087	10 739	1 110	804	954	3 471	3 883	11.9

(a) For all time periods, estimates for sugar, sugar preparations and honey are included in Other non-rural.

## GOODS DEBITS(a): Original

							4 MONTHS ENDED OCTOBER		Change
	2004-05	2005-06	2006-07	Aug 2007	Sep 2007	Oct 2007	2006	2007	
	\$m	\$m	\$m	\$m	\$m	\$m	\$m	\$m	
<b>Total goods debits</b>	<b>-150 873</b>	<b>-169 716</b>	<b>-183 443</b>	<b>-17 104</b>	<b>-15 767</b>	<b>-17 727</b>	<b>-61 903</b>	<b>-66 055</b>	<b>6.7</b>
<i>Consumption goods</i>	-47 143	-50 322	-55 000	-5 068	-4 957	-5 570	-19 245	-20 239	5.2
Food and beverages, mainly for consumption	-5 767	-6 170	-7 182	-703	-651	-689	-2 331	-2 623	12.5
Household electrical items	-4 024	-4 291	-4 609	-456	-482	-553	-1 720	-1 906	10.8
Non-industrial transport equipment	-13 003	-13 589	-14 889	-1 276	-1 291	-1 447	-4 969	-5 191	4.5
Textiles, clothing and footwear	-5 811	-6 365	-6 805	-658	-589	-623	-2 450	-2 484	1.4
Toys, books and leisure goods	-3 740	-4 055	-4 330	-403	-453	-490	-1 655	-1 674	1.1
Consumption goods n.e.s.	-14 798	-15 852	-17 185	-1 572	-1 491	-1 768	-6 120	-6 361	3.9
<i>Capital goods</i>	-35 967	-39 996	-41 170	-3 778	-3 573	-3 690	-13 393	-14 288	6.7
Machinery and industrial equipment	-13 409	-14 328	-15 304	-1 408	-1 411	-1 271	-5 165	-5 345	3.5
ADP equipment	-5 761	-6 073	-6 847	-573	-538	-538	-2 216	-2 237	0.9
Telecommunications equipment	-4 568	-5 334	-5 333	-459	-495	-641	-1 799	-2 030	12.8
Civil aircraft	-2 496	-2 967	-1 666	-299	-71	-115	-485	-495	2.1
Industrial transport equipment n.e.s.	-4 981	-5 495	-6 433	-573	-564	-594	-1 780	-2 227	25.1
Capital goods n.e.s.	-4 752	-5 799	-5 587	-466	-494	-531	-1 948	-1 954	0.3
<i>Intermediate and other merchandise goods</i>	-63 730	-72 722	-79 871	-7 374	-6 673	-7 693	-26 576	-28 465	7.1
Food and beverages, mainly for industry	-659	-651	-819	-73	-64	-89	-250	-299	19.6
Primary industrial supplies n.e.s.	-1 052	-1 193	-1 555	-114	-115	-169	-526	-536	1.9
Fuels and lubricants	-14 720	-21 014	-21 433	-2 172	-1 973	-2 298	-7 279	-8 243	13.2
Parts for transport equipment	-7 008	-7 314	-8 355	-817	-685	-757	-2 865	-2 957	3.2
Parts for ADP equipment	-1 787	-1 857	-1 621	-108	-100	-90	-637	-400	-37.2
Other parts for capital goods	-9 485	-10 154	-11 764	-1 025	-960	-1 069	-3 805	-4 075	7.1
Organic and inorganic chemicals	-3 622	-4 134	-4 406	-413	-397	-389	-1 385	-1 582	14.2
Paper and paperboard	-2 313	-2 302	-2 372	-231	-204	-225	-847	-877	3.5
Textile yarn and fabrics	-1 452	-1 361	-1 365	-117	-118	-120	-490	-471	-3.9
Iron and steel	-3 008	-3 239	-3 816	-323	-259	-287	-1 151	-1 200	4.3
Plastics	-2 428	-2 517	-2 958	-262	-259	-280	-964	-1 043	8.2
Processed industrial supplies n.e.s.	-15 142	-15 856	-17 788	-1 600	-1 443	-1 795	-5 825	-6 355	9.1
Other merchandise goods	-1 054	-1 130	-1 619	-119	-96	-125	-552	-427	-22.6
<i>Other goods</i>	-4 033	-6 676	-7 402	-884	-564	-774	-2 689	-3 063	13.9
Goods for processing	-243	-445	-507	-6	-1	-1	-227	-9	-96.0
Repairs on goods	-182	-115	-131	-17	-9	-10	-50	-50	—
Goods procured in ports by carriers	-1 049	-1 406	-1 448	-118	-121	-125	-550	-482	-12.4
Non-monetary gold	-2 559	-4 710	-5 316	-743	-433	-638	-1 862	-2 522	35.4

— nil or rounded to zero (including null cells)

(a) For sign conventions, see paragraph 11 of the Explanatory Notes.

## GOODS CREDITS: Seasonally Adjusted

	Jan 2007	Feb 2007	Mar 2007	Apr 2007	May 2007	Jun 2007	Jul 2007	Aug 2007	Sep 2007	Oct 2007
	\$m	\$m	\$m	\$m	\$m	\$m	\$m	\$m	\$m	\$m
<b>Total goods credits</b>	<b>14 313</b>	<b>14 481</b>	<b>13 904</b>	<b>14 164</b>	<b>14 523</b>	<b>13 807</b>	<b>14 152</b>	<b>14 501</b>	<b>13 696</b>	<b>13 052</b>
<i>Rural goods</i>	2 044	2 079	2 038	1 967	1 954	1 841	1 934	1 858	1 992	1 893
Meat and meat preparations	642	614	586	550	525	504	522	532	545	515
Cereal grains and cereal preparations	280	293	279	288	285	226	372	226	316	242
Wool and sheepskins	267	278	271	267	269	262	223	215	225	236
Other rural(a)	856	896	902	862	874	848	817	885	906	900
<i>Non-rural goods</i>	11 278	11 282	10 875	11 139	11 357	10 676	11 058	11 396	10 773	10 070
Metal ores and minerals	2 897	3 127	2 660	2 980	3 114	2 918	3 153	3 194	3 185	2 536
Coal, coke and briquettes(b)	1 973	1 740	1 813	1 785	1 760	1 667	1 558	1 718	1 792	1 590
Other mineral fuels	1 344	1 282	1 303	1 374	1 274	1 297	1 168	1 523	940	1 342
Metals (excl. non-monetary gold)	1 313	1 337	1 307	1 314	1 347	1 066	1 268	1 175	1 236	969
Machinery	713	694	720	739	729	722	724	721	766	744
Transport equipment	347	411	380	387	434	377	485	437	455	441
Other manufactures	1 412	1 396	1 479	1 263	1 389	1 369	1 415	1 436	1 425	1 409
Other non-rural (incl. sugar and beverages)	1 279	1 295	1 212	1 299	1 309	1 260	1 287	1 191	973	1 040
<i>Other goods</i>	991	1 119	992	1 057	1 213	1 290	1 160	1 246	931	1 089
Goods for processing(c)	36	28	61	9	55	43	23	19	12	19
Repairs on goods(c)	5	6	10	7	9	12	8	8	9	8
Goods procured in ports by carriers	116	113	114	115	112	110	114	109	106	108
Non-monetary gold(c)	834	972	807	926	1 037	1 125	1 015	1 110	804	954

(a) For all time periods, estimates for sugar, sugar preparations and honey are included in Other non-rural.

(b) Only a length-of-month effect has been applied to this component.

(c) This component is not seasonally adjusted.

## GOODS DEBITS(a): Seasonally Adjusted

	Jan 2007	Feb 2007	Mar 2007	Apr 2007	May 2007	Jun 2007	Jul 2007	Aug 2007	Sep 2007	Oct 2007
	\$m	\$m	\$m	\$m	\$m	\$m	\$m	\$m	\$m	\$m
<b>Total goods debits</b>	<b>-15 173</b>	<b>-15 584</b>	<b>-15 629</b>	<b>-15 405</b>	<b>-15 743</b>	<b>-15 923</b>	<b>-15 378</b>	<b>-16 427</b>	<b>-15 827</b>	<b>-16 191</b>
<i>Consumption goods</i>	-4 642	-4 870	-4 629	-4 712	-4 592	-4 583	-4 583	-4 725	-4 767	-4 698
Food and beverages, mainly for consumption	-608	-673	-635	-596	-600	-562	-628	-668	-649	-590
Household electrical items	-357	-384	-383	-348	-397	-409	-419	-419	-441	-426
Non-industrial transport equipment	-1 292	-1 287	-1 269	-1 389	-1 172	-1 168	-1 170	-1 272	-1 283	-1 310
Textiles, clothing and footwear	-557	-602	-553	-564	-568	-579	-565	-574	-580	-570
Toys, books and leisure goods	-370	-375	-382	-371	-373	-367	-345	-354	-368	-349
Consumption goods n.e.s.	-1 457	-1 549	-1 407	-1 444	-1 483	-1 499	-1 456	-1 438	-1 445	-1 454
<i>Capital goods</i>	-3 470	-3 526	-3 473	-3 325	-3 706	-3 566	-3 242	-3 693	-3 642	-3 451
Machinery and industrial equipment	-1 313	-1 290	-1 339	-1 307	-1 227	-1 278	-1 263	-1 260	-1 460	-1 159
ADP equipment	-607	-646	-588	-565	-559	-548	-545	-605	-565	-546
Telecommunications equipment	-449	-400	-427	-439	-469	-470	-444	-468	-484	-586
Civil aircraft(b)	-27	-57	-14	-35	-414	-258	-10	-299	-71	-115
Industrial transport equipment n.e.s.	-609	-678	-620	-529	-574	-549	-524	-596	-576	-566
Capital goods n.e.s.	-465	-454	-485	-450	-463	-463	-456	-466	-487	-479
<i>Intermediate and other merchandise goods</i>	-6 459	-6 477	-7 034	-6 782	-6 904	-6 927	-6 711	-7 126	-6 854	-7 268
Food and beverages, mainly for industry	-65	-68	-69	-70	-70	-71	-70	-71	-64	-86
Primary industrial supplies n.e.s.(c)	-117	-145	-149	-151	-96	-125	-150	-100	-117	-153
Fuels and lubricants(b)	-1 519	-1 512	-1 877	-1 769	-2 059	-2 014	-1 800	-2 172	-1 973	-2 298
Parts for transport equipment	-691	-715	-724	-704	-680	-703	-688	-766	-702	-691
Parts for ADP equipment	-136	-110	-117	-111	-117	-102	-101	-103	-99	-92
Other parts for capital goods	-1 078	-1 007	-1 043	-1 041	-1 018	-987	-979	-989	-982	-995
Organic and inorganic chemicals(c)	-394	-379	-370	-366	-346	-319	-403	-402	-426	-385
Paper and paperboard	-198	-204	-196	-203	-210	-196	-211	-209	-198	-196
Textile yarn and fabrics	-111	-114	-112	-118	-107	-109	-107	-108	-120	-113
Iron and steel	-343	-325	-356	-332	-311	-329	-329	-300	-295	-284
Plastics	-243	-248	-257	-249	-259	-253	-251	-255	-264	-257
Processed industrial supplies n.e.s.	-1 481	-1 567	-1 483	-1 588	-1 524	-1 536	-1 535	-1 532	-1 521	-1 594
Other merchandise goods(b)	-85	-83	-280	-81	-108	-183	-87	-119	-96	-125
<i>Other goods</i>	-602	-711	-494	-586	-541	-847	-841	-884	-564	-774
Goods for processing(b)	-50	-29	-112	-1	-1	-5	-1	-6	-1	-1
Repairs on goods(b)	-10	-17	-11	-8	-10	-10	-14	-17	-9	-10
Goods procured in ports by carriers(b)	-110	-110	-109	-109	-109	-109	-118	-118	-121	-125
Non-monetary gold(d)	-432	-555	-262	-468	-421	-723	-708	-743	-433	-638

(a) For sign conventions, see paragraph 11 of the Explanatory Notes.

(b) These components are not seasonally adjusted.

(c) In using these seasonally adjusted series, care should be exercised because of the difficulties associated with reliably estimating the seasonal pattern.

(d) From October 1995, this component is not seasonally adjusted.

## GOODS CREDITS: Trend Estimates

	Jan 2007	Feb 2007	Mar 2007	Apr 2007	May 2007	Jun 2007	Jul 2007	Aug 2007	Sep 2007	Oct 2007
	\$m	\$m	\$m	\$m	\$m	\$m	\$m	\$m	\$m	\$m
<b>Total goods credits</b>	<b>14 193</b>	<b>14 207</b>	<b>14 213</b>	<b>14 226</b>	<b>14 222</b>	<b>14 176</b>	<b>14 087</b>	<b>13 950</b>	<b>13 784</b>	<b>13 586</b>
<i>Rural goods</i>	2 092	2 052	2 009	1 969	1 939	1 918	1 907	1 905	1 907	1 914
Meat and meat preparations	624	606	582	556	537	526	523	523	524	527
Cereal grains and cereal preparations	302	285	278	278	281	283	283	281	278	273
Wool and sheepskins	265	271	273	269	260	249	239	230	225	221
Other rural(a)	901	889	877	866	861	859	862	870	881	893
<i>Non-rural goods</i>	11 101	11 123	11 122	11 125	11 116	11 077	11 007	10 896	10 760	10 594
Metal ores and minerals	2 961	2 942	2 934	2 962	3 012	3 056	3 072	3 053	3 010	2 930
Coal, coke and briquettes	1 832	1 825	1 799	1 761	1 725	1 698	1 683	1 673	1 665	1 662
Other mineral fuels	1 305	1 309	1 314	1 314	1 305	1 288	1 270	1 252	1 237	1 224
Metals (excl. non-monetary gold)	1 303	1 319	1 315	1 297	1 270	1 237	1 203	1 168	1 132	1 097
Machinery	694	706	717	723	727	729	732	736	741	745
Transport equipment	384	382	387	398	412	425	436	445	452	455
Other manufactures	1 375	1 381	1 381	1 379	1 380	1 386	1 398	1 411	1 421	1 436
Other non-rural (incl. sugar and beverages)	1 247	1 259	1 278	1 291	1 286	1 259	1 214	1 159	1 103	1 046
<i>Other goods</i>	1 000	1 033	1 081	1 131	1 168	1 181	1 174	1 149	1 117	1 078
Goods for processing	32	36	38	39	38	34	28	23	18	16
Repairs on goods	6	7	8	9	9	9	9	9	9	8
Goods procured in ports by carriers	113	114	115	114	113	112	111	110	108	107
Non-monetary gold	848	876	921	970	1 009	1 027	1 025	1 007	982	946

(a) For all time periods, estimates for sugar, sugar preparations and honey are included in Other non-rural.

## GOODS DEBITS(a): Trend Estimates

	Jan 2007	Feb 2007	Mar 2007	Apr 2007	May 2007	Jun 2007	Jul 2007	Aug 2007	Sep 2007	Oct 2007
	\$m	\$m	\$m	\$m	\$m	\$m	\$m	\$m	\$m	\$m
<b>Total goods debits</b>	<b>-15 360</b>	<b>-15 445</b>	<b>-15 542</b>	<b>-15 567</b>	<b>-15 666</b>	<b>-15 756</b>	<b>-15 852</b>	<b>-15 948</b>	<b>-16 038</b>	<b>-16 118</b>
<i>Consumption goods</i>	-4 692	-4 703	-4 689	-4 663	-4 641	-4 633	-4 644	-4 669	-4 698	-4 718
Food and beverages, mainly for consumption	-633	-631	-621	-612	-608	-610	-616	-624	-629	-633
Household electrical items	-380	-373	-373	-379	-390	-402	-413	-423	-431	-437
Non-industrial transport equipment	-1 291	-1 294	-1 282	-1 259	-1 236	-1 222	-1 223	-1 236	-1 255	-1 273
Textiles, clothing and footwear	-571	-571	-569	-569	-569	-570	-571	-573	-574	-574
Toys, books and leisure goods	-368	-373	-375	-373	-369	-364	-360	-357	-354	-353
Consumption goods n.e.s.	-1 449	-1 461	-1 468	-1 471	-1 469	-1 464	-1 461	-1 457	-1 454	-1 447
<i>Capital goods</i>	-3 515	-3 510	-3 498	-3 491	-3 497	-3 512	-3 527	-3 538	-3 546	-3 551
Machinery and industrial equipment	-1 315	-1 309	-1 295	-1 284	-1 281	-1 280	-1 283	-1 287	-1 287	-1 286
ADP equipment	-606	-602	-591	-579	-569	-562	-561	-563	-564	-564
Telecommunications equipment	-434	-432	-434	-438	-445	-456	-470	-486	-504	-523
Civil aircraft	-92	-94	-114	-143	-172	-193	-191	-172	-150	-123
Industrial transport equipment n.e.s.	-600	-607	-601	-586	-569	-558	-556	-561	-567	-574
Capital goods n.e.s.	-468	-465	-462	-461	-461	-462	-465	-469	-473	-479
<i>Intermediate and other merchandise goods</i>	-6 582	-6 657	-6 746	-6 817	-6 863	-6 893	-6 923	-6 966	-7 015	-7 082
Food and beverages, mainly for industry	-69	-68	-69	-69	-69	-70	-70	-71	-73	-75
Primary industrial supplies n.e.s.	-138	-137	-137	-134	-129	-125	-123	-124	-126	-130
Fuels and lubricants	-1 643	-1 685	-1 755	-1 829	-1 900	-1 960	-2 008	-2 053	-2 099	-2 152
Parts for transport equipment	-703	-703	-702	-703	-704	-706	-708	-711	-712	-712
Parts for ADP equipment	-133	-124	-117	-112	-108	-106	-103	-100	-97	-95
Other parts for capital goods	-1 018	-1 032	-1 035	-1 028	-1 015	-1 001	-992	-986	-982	-981
Organic and inorganic chemicals	-357	-359	-359	-360	-362	-367	-377	-390	-401	-409
Paper and paperboard	-196	-198	-201	-203	-205	-205	-205	-204	-202	-200
Textile yarn and fabrics	-114	-114	-113	-111	-110	-110	-110	-111	-112	-113
Iron and steel	-339	-337	-334	-332	-329	-323	-315	-306	-298	-292
Plastics	-249	-251	-252	-253	-254	-254	-255	-256	-258	-259
Processed industrial supplies n.e.s.	-1 498	-1 516	-1 531	-1 539	-1 539	-1 537	-1 537	-1 540	-1 547	-1 550
Other merchandise goods	-126	-134	-141	-144	-138	-129	-120	-113	-108	-114
<i>Other goods</i>	-571	-575	-610	-595	-665	-718	-757	-776	-780	-766
Goods for processing	-50	-66	-76	-2	-5	-5	-4	-3	-1	-2
Repairs on goods	-10	-11	-11	-11	-11	-12	-12	-12	-12	-12
Goods procured in ports by carriers	-113	-110	-109	-109	-110	-112	-115	-118	-121	-123
Non-monetary gold	-397	-389	-415	-474	-539	-589	-625	-643	-646	-629

(a) For sign conventions, see paragraph 11 of the Explanatory Notes.



## SERVICES (a)(b), Summary: Original

	2004-05	2005-06	2006-07	Aug 2007	Sep 2007	Oct 2007	4 MONTHS ENDED OCTOBER		Change
							2006	2007	
							\$m	\$m	
<b>Services credits</b>	<b>39 695</b>	<b>41 849</b>	<b>46 245</b>	<b>4 171</b>	<b>4 026</b>	<b>4 322</b>	<b>15 034</b>	<b>16 656</b>	<b>10.8</b>
<i>Transportation services</i>	8 002	8 208	8 615	760	728	741	2 822	2 992	6.0
Freight	704	608	607	46	47	46	215	185	-14.0
Passenger and other	7 298	7 600	8 008	714	681	695	2 607	2 807	7.7
<i>Travel services</i>	21 440	22 624	25 280	2 322	2 206	2 395	8 191	9 209	12.4
<i>Other services</i>	10 253	11 017	12 350	1 089	1 092	1 186	4 021	4 455	10.8
<b>Services debits</b>	<b>-39 315</b>	<b>-41 078</b>	<b>-44 367</b>	<b>-3 921</b>	<b>-4 173</b>	<b>-4 215</b>	<b>-14 919</b>	<b>-16 351</b>	<b>9.6</b>
<i>Transportation services</i>	-13 796	-14 508	-15 368	-1 330	-1 405	-1 420	-5 184	-5 470	5.5
Freight	-7 500	-7 776	-8 044	-699	-673	-787	-2 724	-2 790	2.4
Passenger and other	-6 296	-6 732	-7 324	-631	-732	-633	-2 460	-2 680	8.9
<i>Travel services</i>	-14 507	-15 090	-15 968	-1 410	-1 569	-1 522	-5 570	-6 064	8.9
<i>Other services</i>	-11 012	-11 480	-13 031	-1 181	-1 199	-1 273	-4 165	-4 817	15.7
<b>Memorandum items:</b>									
Tourism related service credits(c)	25 584	26 728	29 517	2 683	2 533	2 760	9 537	10 626	11.4
Tourism related service debits(c)	-20 287	-21 374	-22 844	-2 006	-2 265	-2 157	-7 882	-8 640	9.6

(a) For sign conventions, see paragraph 11 of the Explanatory Notes.

(b) For more detailed trade in services components, see table 11.

(c) For a more detailed explanation of tourism related services, see paragraphs 18 and 19 of the Explanatory Notes.

	Jan 2007	Feb 2007	Mar 2007	Apr 2007	May 2007	Jun 2007	Jul 2007	Aug 2007	Sep 2007	Oct 2007
	\$m	\$m	\$m	\$m	\$m	\$m	\$m	\$m	\$m	\$m
SEASONALLY ADJUSTED										
<b>Services credits</b>	<b>3 893</b>	<b>3 913</b>	<b>3 959</b>	<b>3 961</b>	<b>3 985</b>	<b>4 015</b>	<b>4 077</b>	<b>4 105</b>	<b>4 154</b>	<b>4 183</b>
Transportation services	736	736	745	710	703	716	746	747	758	745
Freight	50	49	48	47	46	46	47	47	46	45
Passenger and other	686	687	697	663	657	670	699	700	712	699
Travel services	2 133	2 148	2 179	2 186	2 210	2 239	2 237	2 253	2 280	2 304
Other services(b)	1 024	1 029	1 035	1 065	1 073	1 060	1 094	1 106	1 116	1 134
<b>Services debits</b>	<b>-3 704</b>	<b>-3 746</b>	<b>-3 754</b>	<b>-3 742</b>	<b>-3 810</b>	<b>-3 832</b>	<b>-3 893</b>	<b>-3 934</b>	<b>-3 939</b>	<b>-4 028</b>
Transportation services	-1 285	-1 336	-1 308	-1 239	-1 274	-1 273	-1 304	-1 316	-1 344	-1 356
Freight	-670	-670	-674	-671	-666	-662	-663	-674	-701	-705
Passenger and other	-614	-666	-634	-568	-608	-611	-642	-642	-643	-651
Travel services	-1 335	-1 315	-1 345	-1 361	-1 388	-1 402	-1 404	-1 421	-1 383	-1 448
Other services(b)	-1 084	-1 095	-1 101	-1 142	-1 149	-1 156	-1 184	-1 197	-1 211	-1 223
<b>Memorandum items:</b>										
Tourism related service credits(c)	2 501	2 507	2 558	2 553	2 558	2 596	2 592	2 609	2 644	2 670
Tourism related service debits(c)	-1 876	-1 918	-1 967	-1 933	-1 942	-1 986	-1 997	-2 026	-1 992	-2 058

TREND ESTIMATES										
<b>Services credits</b>	<b>3 891</b>	<b>3 918</b>	<b>3 943</b>	<b>3 968</b>	<b>3 996</b>	<b>4 030</b>	<b>4 068</b>	<b>4 106</b>	<b>4 141</b>	<b>4 171</b>
Transportation services	734	731	726	722	722	726	733	741	748	755
Freight	51	49	48	47	47	46	46	46	46	46
Passenger and other	683	682	678	675	675	679	687	695	702	709
Travel services	2 130	2 153	2 174	2 193	2 210	2 227	2 244	2 261	2 277	2 290
Other services	1 027	1 034	1 043	1 053	1 065	1 078	1 091	1 104	1 116	1 125
<b>Services debits</b>	<b>-3 721</b>	<b>-3 736</b>	<b>-3 752</b>	<b>-3 773</b>	<b>-3 803</b>	<b>-3 841</b>	<b>-3 883</b>	<b>-3 923</b>	<b>-3 961</b>	<b>-3 994</b>
Transportation services	-1 310	-1 302	-1 291	-1 280	-1 277	-1 284	-1 299	-1 316	-1 333	-1 351
Freight	-676	-672	-668	-666	-666	-668	-673	-680	-688	-696
Passenger and other	-633	-630	-622	-614	-612	-617	-626	-636	-645	-654
Travel services	-1 326	-1 336	-1 349	-1 364	-1 379	-1 393	-1 403	-1 412	-1 419	-1 424
Other services	-1 086	-1 098	-1 113	-1 129	-1 147	-1 164	-1 181	-1 196	-1 209	-1 219
<b>Memorandum items:</b>										
Tourism related service credits(c)	2 492	2 518	2 539	2 556	2 570	2 584	2 601	2 619	2 636	2 653
Tourism related service debits(c)	-1 921	-1 929	-1 938	-1 948	-1 960	-1 976	-1 993	-2 008	-2 023	-2 037

(a) For sign conventions, see paragraph 11 of the Explanatory Notes.

(b) In using these seasonally adjusted series, care should be exercised because of the difficulties associated with reliably estimating the seasonal pattern.

(c) For a more detailed explanation of tourism related services, see paragraphs 18 and 19 of the Explanatory Notes.

	CREDITS				DEBITS			
	Dec Qtr	Mar Qtr	Jun Qtr	Sep Qtr	Dec Qtr	Mar Qtr	Jun Qtr	Sep Qtr
	2006	2007	2007	2007	2006	2007	2007	2007
	\$m	\$m	\$m	\$m	\$m	\$m	\$m	\$m
<b>Services</b>	<b>11 692</b>	<b>11 924</b>	<b>11 536</b>	<b>12 334</b>	<b>-11 333</b>	<b>-10 795</b>	<b>-11 142</b>	<b>-12 136</b>
Transportation services	2 257	2 280	1 987	2 251	-4 044	-3 761	-3 709	-4 050
Passenger(c)	2 094	2 139	1 845	2 112	-1 661	-1 575	-1 604	-1 854
Freight	163	141	142	139	-2 176	-1 986	-1 916	-2 003
Other(c)	np	np	np	np	-207	-200	-189	-193
Travel services	6 250	6 662	6 328	6 814	-3 958	-3 797	-4 032	-4 542
Business	591	635	619	656	-613	-697	-664	-711
Personal	5 659	6 027	5 709	6 158	-3 345	-3 100	-3 368	-3 831
Education-related	2 480	2 833	3 139	3 495	-166	-172	-177	-261
Other	3 179	3 194	2 570	2 663	-3 179	-2 928	-3 191	-3 570
Communication services(d)	194	190	169	244	-204	-185	-212	-232
Construction services	33	36	32	29	—	—	—	—
Insurance services	176	176	176	181	-225	-225	-225	-233
Financial services	251	251	251	259	-150	-150	-150	-155
Computer and information services	421	335	366	367	-375	-340	-380	-386
Royalties and license fees	221	215	226	202	-856	-811	-840	-917
Other business services	1 534	1 404	1 632	1 605	-1 039	-983	-1 092	-1 118
Merchanting and other trade-related	192	193	211	193	-55	-52	-50	-52
Operational leasing	10	10	12	14	-230	-208	-186	-209
Miscellaneous business, professional and technical	1 332	1 201	1 409	1 398	-754	-723	-856	-857
Legal, accounting, management consulting and public relations	212	214	270	260	-104	-96	-173	-172
Advertising, market research and public opinion polling	57	60	66	51	-36	-40	-53	-26
Research and development	141	118	132	145	-37	-28	-26	-25
Architectural, engineering and other technical services	349	335	375	363	-123	-141	-146	-176
Agriculture, mining and on-site processing	87	88	92	96	-45	-55	-94	-78
Services between affiliated enterprises n.i.e.	356	263	327	316	-272	-204	-212	-220
Other	130	123	147	167	-137	-159	-152	-160
Personal, cultural, and recreational services	154	159	152	168	-269	-340	-262	-311
Audiovisual and related services	38	51	44	56	-224	-266	-237	-279
Personal, cultural and recreational services	116	108	108	112	-45	-74	-25	-32
Government services n.i.e.	201	216	217	214	-213	-203	-240	-192
<b>Memorandum items:</b>								
Tourism related services(e)	7 383	7 880	7 224	7 866	-5 714	-5 462	-5 710	-6 483

— nil or rounded to zero (including null cells)

np not available for publication but included in totals where applicable, unless otherwise indicated

(a) For sign conventions, see paragraph 11 of the Explanatory Notes.

(b) For more information see paragraphs 15 and 16 of the Explanatory Notes.

(c) Passenger transportation credits include other transportation services credits.

(d) Communications services includes other services n.i.e.

(e) For a more detailed explanation of tourism related services, see paragraphs 18 and 19 of the Explanatory Notes.

	Aug 2007	Sep 2007	Oct 2007	Per cent of total merchandise exports(b)	4 MONTHS ENDED OCTOBER	
					2006	2007
					\$m	\$m
MAJOR COMMODITIES						
011 Meat of bovine animals	354	373	349	2.6	1 730	1 443
041 Wheat	104	218	122	0.9	1 246	669
268 Wool and other animal hair	116	202	238	1.8	767	739
281 Iron ore and concentrates	1 485	1 352	1 273	9.4	5 343	5 421
285 Aluminium ore and concentrates	537	542	527	3.9	2 188	2 075
321 Coal, not agglomerated	1 751	1 727	1 617	12.0	7 653	6 683
333 Crude petroleum oils	853	544	764	5.7	2 846	2 822
334 Refined petroleum oils	266	263	281	2.1	1 034	1 104
343 Natural gas	434	311	309	2.3	1 807	1 482
684 Aluminium	509	451	351	2.6	2 016	1 884
781 Passenger motor vehicles	276	280	302	2.2	935	1 100
971 Gold, non-monetary	1 100	790	924	6.8	3 422	3 819
SECTION AND DIVISION OF THE SITC						
0 Food and live animals						
00 Live animals other than fish, crustaceans, molluscs and aquatic invertebrates	105	53	84	0.6	327	315
01 Meat and meat preparations	516	571	551	4.1	2 469	2 154
02 Dairy products and birds' eggs	185	214	280	2.1	819	845
03 Fish (not marine mammals), crustaceans, molluscs and aquatic invertebrates, and preparations thereof	138	114	65	0.5	404	387
04 Cereals and cereal preparations	222	320	223	1.7	1 816	1 122
05 Vegetables and fruit	126	101	85	0.6	512	434
06 Sugars, sugar preparations and honey	25	23	17	0.1	106	87
07 Coffee, tea, cocoa, spices, and manufactures thereof	24	24	20	0.2	83	92
08 Feeding stuff for animals (excl. unmilled cereals)	58	56	64	0.5	280	234
09 Miscellaneous edible products and preparations	38	40	37	0.3	155	152
<i>Total Food and live animals</i>	<i>1 437</i>	<i>1 514</i>	<i>1 427</i>	<i>10.6</i>	<i>6 970</i>	<i>5 822</i>
1 Beverages and tobacco						
11 Beverages	273	286	284	2.1	1 007	1 133
12 Tobacco and tobacco manufactures	12	12	12	0.1	54	51
<i>Total Beverages and tobacco</i>	<i>285</i>	<i>298</i>	<i>297</i>	<i>2.2</i>	<i>1 060</i>	<i>1 185</i>
2 Crude materials, inedible, except fuels						
21 Hides, skins and furskins, raw	62	55	64	0.5	221	233
22 Oil seeds and oleaginous fruits	22	5	17	0.1	64	57
23 Crude rubber (incl. synthetic and reclaimed)	—	1	—	—	1	2
24 Cork and wood	116	93	121	0.9	385	425
25 Pulp and waste paper	20	18	21	0.2	54	76
26 Textile fibres and their wastes (not manufactured into yarn or fabric)	171	270	282	2.1	1 188	960
27 Crude fertilisers (excl. those of Division 56) and crude minerals (excl. coal, petroleum and precious stones)	49	50	41	0.3	175	172
28 Metalliferous ores and metal scrap	3 145	2 996	2 771	20.5	11 726	12 078
29 Crude animal and vegetable materials, n.e.s.	15	16	17	0.1	73	69
<i>Total Crude materials, inedible, except fuels</i>	<i>3 600</i>	<i>3 502</i>	<i>3 335</i>	<i>24.7</i>	<i>13 886</i>	<i>14 072</i>
3 Mineral fuels, lubricants and related materials						
32 Coal, coke and briquettes	1 765	1 754	1 619	12.0	7 669	6 725
33 Petroleum, petroleum products and related materials	1 119	808	1 048	7.8	3 886	3 932
34 Gas, natural and manufactured	595	383	442	3.3	2 220	1 919
<i>Total Mineral fuels, lubricants and related materials</i>	<i>3 479</i>	<i>2 946</i>	<i>3 109</i>	<i>23.0</i>	<i>13 774</i>	<i>12 576</i>

— nil or rounded to zero (including null cells)

(b) Per cent of total merchandise is calculated for the most recent month.

(a) Some SITC sections and divisions exclude commodities subject to a confidentiality restriction. These are included in Division 98. For more information see paragraph 17 of the Explanatory Notes.

	Aug 2007	Sep 2007	Oct 2007	Per cent of total merchandise exports(b)	4 MONTHS ENDED OCTOBER	
					2006	2007
					\$m	\$m
SECTION AND DIVISION OF THE SITC						
4	Animal and vegetable oils, fats and waxes					
41	28	34	29	0.2	74	108
42	7	11	4	—	23	27
43	Fats and oils (processed), waxes and inedible mixtures or preparations, of animal or vegetable origin, n.e.s.					
	5	6	6	—	22	23
	41	51	39	0.3	119	158
5	Chemicals and related products, n.e.s.					
51	11	7	12	0.1	43	37
52	72	64	67	0.5	233	276
53	51	56	49	0.4	213	207
54	359	330	343	2.5	1 232	1 425
55	Essential oils and resinoids and perfume materials; toilet, polishing and cleansing preparations					
	47	46	50	0.4	167	190
56	41	77	41	0.3	71	172
57	35	33	34	0.3	96	129
58	37	26	26	0.2	127	119
59	71	64	80	0.6	267	293
	724	702	703	5.2	2 450	2 848
6	Manufactured goods classified chiefly by material					
61	35	30	33	0.2	144	130
62	24	25	19	0.1	70	86
63	14	12	11	0.1	64	49
64	Paper, paperboard, and articles of paper pulp, of paper or of paperboard					
	59	52	56	0.4	246	229
65	37	35	32	0.2	149	144
66	64	92	67	0.5	320	283
67	122	69	137	1.0	321	398
68	1 041	1 092	822	6.1	4 302	4 190
69	96	100	88	0.7	322	368
	1 491	1 508	1 265	9.4	5 938	5 878
7	Machinery and transport equipment					
71	94	117	106	0.8	446	420
72	156	169	147	1.1	531	618
73	20	19	19	0.1	59	73
74	General industrial machinery and equipment, n.e.s. and machine parts, n.e.s.					
	146	160	149	1.1	565	608
75	116	107	115	0.8	378	449
76	Telecommunications and sound recording and reproducing apparatus and equipment					
	55	59	72	0.5	316	251
77	Electrical machinery, apparatus, appliances, parts (incl. non-electrical counterparts of electrical domestic equip)					
	166	166	161	1.2	604	647
78	381	379	393	2.9	1 258	1 528
79	84	85	89	0.7	303	346
	1 218	1 262	1 249	9.2	4 460	4 940

— nil or rounded to zero (including null cells)

(b) Per cent of total merchandise is calculated for the most recent month.

(a) Some SITC sections and divisions exclude commodities subject to a confidentiality restriction. These are included in Division 98. For more information see paragraph 17 of the Explanatory Notes.

	Aug	Sep	Oct	Per cent	4 MONTHS		
	2007	2007	2007	of total	ENDED OCTOBER		
	\$m	\$m	\$m	merchandise	2006	2007	
				exports(b)	\$m	\$m	
				%			
SECTION AND DIVISION OF THE SITC							
8	Miscellaneous manufactured articles						
81	Prefabricated buildings; sanitary, plumbing, heating and lighting fixtures and fittings, n.e.s.	16	14	15	0.1	43	58
82	Furniture, parts thereof; bedding, mattresses, mattress supports, cushions and similar stuffed furnishings	9	10	12	0.1	51	39
83	Travel goods, handbags and similar containers	2	3	3	—	10	10
84	Articles of apparel and clothing accessories	26	23	22	0.2	89	90
85	Footwear	5	4	4	—	14	17
87	Professional, scientific and controlling instruments and apparatus, n.e.s.	161	158	163	1.2	577	631
88	Photographic apparatus, equipment and supplies and optical goods, n.e.s.; watches and clocks	30	27	28	0.2	124	110
89	Miscellaneous manufactured articles, n.e.s.	207	211	196	1.5	784	820
	<i>Total Miscellaneous manufactured articles</i>	455	450	442	3.3	1 691	1 776
9	Commodities and transactions not classified elsewhere in the SITC						
93	Special transactions and commodities not classified according to kind	106	99	104	0.8	443	417
95	Gold coin whether or not legal tender, and other coin being legal tender	13	14	30	0.2	48	67
96	Coin (excl. gold coin), not being legal tender	—	—	—	—	—	—
97	Gold, non-monetary (excl. gold ores and concentrates)	1 100	790	924	6.8	3 422	3 819
98	Combined confidential items excl. some of SITC 280 (exports only) and some of SITCs 510 and 520 (imports only)	714	580	585	4.3	2 998	2 764
	<i>Total Commodities and transactions not classified elsewhere in the SITC</i>	1 932	1 483	1 644	12.2	6 913	7 067
	<b>Total merchandise exports</b>	<b>14 662</b>	<b>13 716</b>	<b>13 510</b>	<b>100.0</b>	<b>57 260</b>	<b>56 321</b>
	Balance of Payments Adjustments	201	141	118	—	574	489
	Goods credits (exports) on a Balance of Payments Basis	14 863	13 857	13 628	—	57 834	56 810

— nil or rounded to zero (including null cells)

(b) Per cent of total merchandise is calculated for the most recent month.

(a) Some SITC sections and divisions exclude commodities subject to a confidentiality restriction. These are included in Division 98. For more information see paragraph 17 of the Explanatory Notes.

	Aug 2007	Sep 2007	Oct 2007	Per cent of total merchandise imports(b)	4 MONTHS ENDED OCTOBER	
					2006	2007
					\$m	\$m
MAJOR COMMODITIES						
333 Crude petroleum oils	1 368	1 220	1 320	7.6	4 376	5 082
334 Refined petroleum oils	689	665	931	5.4	2 641	2 866
542 Medicaments	562	480	623	3.6	2 273	2 256
641 Paper and paperboard	201	175	191	1.1	735	759
752 Automatic data processing machines	568	533	533	3.1	2 195	2 217
759 Parts and accessories of office machines	180	173	184	1.1	769	726
764 Telecommunications equipment	504	508	634	3.6	1 970	2 149
781 Passenger motor vehicles	1 156	1 143	1 249	7.2	4 414	4 594
782 Motor vehicles for the transport of goods	468	444	463	2.7	1 529	1 802
784 Parts and accessories of motor vehicles	236	213	247	1.4	896	900
792 Aircraft and associated equipment	417	181	223	1.3	918	921
971 Gold, non-monetary	745	433	559	3.2	1 810	2 444

## SECTION AND DIVISION OF THE SITC

0	Food and live animals					
00	Live animals other than fish, crustaceans, molluscs and aquatic invertebrates	7	1	3	—	38 17
01	Meat and meat preparations	31	28	30	0.2	113 118
02	Dairy products and birds' eggs	38	37	40	0.2	140 147
03	Fish (not marine mammals), crustaceans, molluscs and aquatic invertebrates, and preparations thereof	97	117	105	0.6	380 400
04	Cereals and cereal preparations	65	54	58	0.3	200 227
05	Vegetables and fruit	133	110	135	0.8	422 488
06	Sugars, sugar preparations and honey	21	22	25	0.1	72 85
07	Coffee, tea, cocoa, spices, and manufactures thereof	98	83	82	0.5	297 345
08	Feeding stuff for animals (excl. unmilled cereals)	45	36	39	0.2	147 160
09	Miscellaneous edible products and preparations	121	118	107	0.6	389 465
	<i>Total food and live animals</i>	655	608	623	3.6	2 200 2 453
1	Beverages and tobacco					
11	Beverages	130	107	147	0.8	402 469
12	Tobacco and tobacco manufactures	18	16	13	0.1	68 64
	<i>Total beverages and tobacco</i>	148	123	160	0.9	470 533
2	Crude materials, inedible, except fuels					
21	Hides, skins and furskins, raw	—	—	—	—	1 1
22	Oil seeds and oleaginous fruits	4	2	2	—	12 13
23	Crude rubber (incl. synthetic and reclaimed)	15	12	15	0.1	62 56
24	Cork and wood	54	49	65	0.4	188 218
25	Pulp and waste paper	27	31	30	0.2	97 108
26	Textile fibres and their wastes (not manufactured into yarn or fabric)	13	11	14	0.1	52 50
27	Crude fertilisers (excl. those of Division 56) and crude minerals (excl. coal, petroleum and precious stones)	24	13	20	0.1	49 72
28	Metalliferous ores and metal scrap	39	54	93	0.5	255 264
29	Crude animal and vegetable materials, n.e.s.	21	22	28	0.2	89 91
	<i>Total crude materials, inedible, except fuels</i>	197	195	268	1.5	806 873
3	Mineral fuels, lubricants and related materials					
32	Coal, coke and briquettes	1	1	1	—	9 5
33	Petroleum, petroleum products and related materials	2 082	1 929	2 295	13.2	7 151 8 096
34	Gas, natural and manufactured	128	101	46	0.3	356 348
	<i>Total mineral fuels, lubricants and related materials</i>	2 212	2 031	2 342	13.5	7 516 8 448

— nil or rounded to zero (including null cells)

(b) Per cent of total merchandise imports is calculated for the most recent month.

(a) Some SITC sections and divisions exclude commodities subject to a confidentiality restriction. These are included in Division 98. For more information see paragraph 17 of the Explanatory Notes.

				Per cent of total merchandise imports(b)	4 MONTHS ENDED OCTOBER	
	Aug	Sep	Oct		2006	2007
	2007	2007	2007			
	\$m	\$m	\$m	%	\$m	\$m
SECTION AND DIVISION OF THE SITC						
4	Animal and vegetable oils, fats and waxes					
41	Animal oils and fats	3	1	5	—	9 11
42	Fixed vegetable fats and oils, crude, refined or fractionated	35	33	39	0.2	150 155
43	Fats and oils (processed), waxes and inedible mixtures or preparations, of animal or vegetable origin, n.e.s.	6	4	5	—	20 22
	<i>Total animal and vegetable oils, fats and waxes</i>	<i>44</i>	<i>38</i>	<i>50</i>	<i>0.3</i>	<i>179 188</i>
5	Chemicals and related products, n.e.s.					
51	Organic chemicals	324	318	276	1.6	1 020 1 206
52	Inorganic chemicals	90	79	112	0.6	366 377
53	Dyeing, tanning and colouring materials	55	53	58	0.3	207 213
54	Medicinal and pharmaceutical products	698	571	787	4.5	2 693 2 773
55	Essential oils and resinoids and perfume materials; toilet, polishing and cleansing preparations	145	159	156	0.9	574 586
56	Fertilisers (excl. crude)	36	51	64	0.4	182 240
57	Plastics in primary forms	153	150	162	0.9	534 603
58	Plastics in non-primary forms	109	109	118	0.7	429 440
59	Chemical materials and products, n.e.s.	162	135	157	0.9	588 599
	<i>Total chemicals and related products, n.e.s.</i>	<i>1 771</i>	<i>1 624</i>	<i>1 890</i>	<i>10.9</i>	<i>6 594 7 036</i>
6	Manufactured goods classified chiefly by material					
61	Leather, leather manufactures, and dressed furskins, n.e.s.	15	15	16	0.1	44 59
62	Rubber manufactures, n.e.s.	212	188	209	1.2	818 821
63	Cork and wood manufactures (excl. furniture)	56	48	57	0.3	204 210
64	Paper, paperboard, and articles of paper pulp, of paper or of paperboard	263	233	261	1.5	954 1 004
65	Textile yarn, fabrics, made-up articles n.e.s. and related products	221	216	230	1.3	869 867
66	Non-metallic mineral manufactures, n.e.s.	201	199	233	1.3	804 827
67	Iron and steel	323	259	287	1.6	1 151 1 200
68	Non-ferrous metals	141	121	250	1.4	571 628
69	Manufactures of metals, n.e.s.	459	376	414	2.4	1 531 1 644
	<i>Total manufactured goods classified chiefly by material</i>	<i>1 891</i>	<i>1 655</i>	<i>1 957</i>	<i>11.2</i>	<i>6 947 7 261</i>
7	Machinery and transport equipment					
71	Power generating machinery and equipment	446	318	311	1.8	1 267 1 428
72	Machinery specialised for particular industries	658	708	613	3.5	2 369 2 563
73	Metal working machinery	67	69	72	0.4	240 266
74	General industrial machinery and equipment, n.e.s. and machine parts, n.e.s.	842	827	851	4.9	3 345 3 259
75	Office machines and automatic data processing machines	806	763	773	4.4	3 194 3 164
76	Telecommunications and sound recording and reproducing apparatus and equipment	858	941	1 184	6.8	3 517 3 803
77	Electrical machinery, apparatus, appliances, parts (incl. non-electrical counterparts of electrical domestic equipment)	778	751	792	4.5	2 963 3 110
78	Road vehicles (incl. air-cushion vehicles)	2 041	1 991	2 202	12.7	7 514 8 076
79	Transport equipment (excl. road vehicles)	492	293	336	1.9	1 142 1 280
	<i>Total machinery and transport equipment</i>	<i>6 989</i>	<i>6 662</i>	<i>7 133</i>	<i>41.0</i>	<i>25 550 26 949</i>

— nil or rounded to zero (including null cells)

(b) Per cent of total merchandise imports is calculated for the most recent month.

(a) Some SITC sections and divisions exclude commodities subject to a confidentiality restriction. These are included in Division 98. For more information see paragraph 17 of the Explanatory Notes.



	Aug 2007	Sep 2007	Oct 2007	Per cent of total merchandise imports(b)	4 MONTHS ENDED OCTOBER	
					2006	2007
					\$m	\$m
SECTION AND DIVISION OF THE SITC						
8	Miscellaneous manufactured articles					
81	Prefabricated buildings; sanitary, plumbing, heating and lighting fixtures and fittings, n.e.s.					
	58	67	67	0.4	229	246
82	Furniture, parts thereof; bedding, mattresses, mattress supports, cushions and similar stuffed furnishings					
	231	218	252	1.5	843	904
83	Travel goods, handbags and similar containers					
	64	57	72	0.4	227	252
84	Articles of apparel and clothing accessories					
	422	382	405	2.3	1 591	1 614
85	Footwear					
	122	98	99	0.6	441	431
87	Professional, scientific and controlling instruments and apparatus, n.e.s.					
	361	340	371	2.1	1 402	1 433
88	Photographic apparatus, equipment and supplies and optical goods, n.e.s.; watches and clocks					
	118	112	128	0.7	472	473
89	Miscellaneous manufactured articles, n.e.s.					
	805	860	962	5.5	3 455	3 357
	<i>Total miscellaneous manufactured articles</i>					
	2 180	2 133	2 357	13.5	8 659	8 710
9	Commodities and transactions not classified elsewhere in the SITC					
93	Special transactions and commodities not classified according to kind					
	2	3	3	—	12	12
95	Gold coin whether or not legal tender, and other coin being legal tender					
	—	—	—	—	1	1
96	Coin (excl. gold coin), not being legal tender					
	—	—	—	—	—	—
97	Gold, non-monetary (excl. gold ores and concentrates)					
	745	433	559	3.2	1 810	2 444
98	Combined confidential items excl. some of SITC 280 (exports only) and some of SITCs 510 and 520 (imports only)					
	46	45	61	0.4	49	175
	<i>Total commodities and transactions not classified elsewhere in the SITC</i>					
	794	482	623	3.6	1 873	2 632
	<b>Total merchandise imports</b>					
	<b>16 881</b>	<b>15 550</b>	<b>17 403</b>	<b>100.0</b>	<b>60 794</b>	<b>65 083</b>
	Balance of Payments Adjustment					
	223	217	324	..	1 109	972
	Goods Debits (imports) on a Balance of Payments Basis					
	17 104	15 767	17 727	..	61 903	66 055

.. not applicable

— nil or rounded to zero (including null cells)

(a) Some SITC sections and divisions exclude commodities subject to a confidentiality restriction. These are included in Division 98. For more information see paragraph 17 of the Explanatory Notes.

(b) Per cent of total merchandise imports is calculated for the most recent month.

	EXPORTS				IMPORTS				BALANCE OF MERCHANDISE TRADE	
	2006-07	October	4	4	2006-07	October	4	4	2006-07	4
		2007	October	months ended		October	months ended	months ended		months ended
	\$m	\$m	\$m	\$m	\$m	\$m	\$m	\$m	\$m	\$m
Belgium	1 323	82	336	460	1 607	142	541	524	-284	-63
Brazil	853	95	322	329	859	95	303	340	-6	-11
Canada	1 768	150	620	577	2 077	192	704	700	-309	-123
China	22 805	1 899	7 144	7 521	27 140	3 065	9 466	10 607	-4 335	-3 086
Denmark	189	13	72	56	1 138	72	341	279	-949	-223
Egypt(b)	337	8	80	94	17	2	6	7	320	88
Fiji	383	34	149	129	148	12	62	43	235	85
Finland	1 593	94	459	413	848	69	263	291	745	122
France	1 364	87	451	557	3 910	370	1 198	1 608	-2 546	-1 051
Germany	1 444	111	448	477	9 274	812	3 094	3 362	-7 830	-2 885
Hong Kong (Sar of China)	3 038	202	1 056	874	1 419	138	539	529	1 619	345
India	10 102	557	3 613	2 875	1 314	140	446	561	8 788	2 315
Indonesia	4 240	371	1 579	1 359	4 646	431	1 255	1 651	-407	-292
Iran	204	25	57	62	41	3	16	11	163	50
Iraq	96	2	92	6	36	—	20	—	61	6
Ireland	209	22	65	77	2 120	148	679	652	-1 911	-575
Israel	188	22	72	59	640	52	207	192	-451	-133
Italy	1 742	151	660	513	4 869	337	1 626	1 568	-3 127	-1 055
Japan	32 631	2 429	11 484	10 517	17 399	1 779	5 927	5 946	15 231	4 571
Korea, Republic of	13 097	1 043	4 216	4 473	6 012	579	2 122	2 075	7 086	2 397
Kuwait	493	62	160	225	231	39	91	117	262	108
Malaysia	3 103	236	1 046	1 029	6 602	639	2 056	2 625	-3 500	-1 595
Mexico	837	27	315	193	1 102	107	386	388	-266	-194
Netherlands	2 976	211	980	826	1 495	116	505	453	1 481	373
New Zealand	9 434	839	3 323	3 341	5 615	599	1 895	2 226	3 819	1 115
Pakistan	320	51	117	225	151	12	47	47	169	178
Papua New Guinea	1 524	181	490	652	2 215	184	711	894	-692	-242
Philippines	1 056	118	422	442	753	100	268	290	303	152
Saudi Arabia	2 025	198	694	691	943	55	308	297	1 082	394
Singapore	4 638	309	1 865	1 270	10 132	1 073	3 217	3 511	-5 494	-2 240
South Africa	2 316	201	769	927	1 402	109	543	476	914	451
Spain	1 254	55	504	303	1 625	129	483	572	-371	-269
Sweden	351	40	178	156	2 287	199	753	756	-1 936	-600
Switzerland	1 130	28	64	690	1 916	182	660	712	-786	-22
Taiwan	6 189	416	2 115	1 935	4 409	398	1 455	1 505	1 780	430
Thailand	4 256	367	1 325	1 507	7 222	781	2 291	2 705	-2 966	-1 198
Turkey	527	46	123	213	437	27	158	123	90	91
United Arab Emirates	2 392	135	603	1 269	1 751	268	690	880	642	388
United Kingdom	6 146	980	2 202	2 589	7 407	535	2 613	3 304	-1 261	-715
United States of America	9 804	761	3 350	3 249	24 908	2 120	8 476	7 801	-15 103	-4 552
Viet Nam	1 629	85	827	352	4 502	552	1 844	1 601	-2 873	-1 249
Other Countries	8 097	770	2 810	2 809	8 186	741	2 529	2 853	-89	-44
<b>Total</b>	<b>168 102</b>	<b>13 510</b>	<b>57 260</b>	<b>56 321</b>	<b>180 805</b>	<b>17 403</b>	<b>60 794</b>	<b>65 083</b>	<b>-12 703</b>	<b>-8 762</b>
APEC	121 040	9 521	41 527	39 614	128 463	13 027	43 367	45 899	-7 423	-6 285
ASEAN	19 051	1 499	7 110	6 013	34 973	3 670	11 328	12 770	-15 922	-6 757
Developing Countries	87 410	6 720	29 560	28 716	84 722	9 015	28 529	31 636	2 688	-2 920
Least Developed Countries	1 559	123	544	503	246	27	80	84	1 313	419
European Union(c)	19 149	1 916	6 519	6 625	39 020	3 140	12 867	14 235	-19 871	-7 610
OECD	88 283	7 227	30 028	29 849	99 398	8 806	33 471	34 558	-11 114	-4 709

— nil or rounded to zero (including null cells)

(a) See Time series spreadsheets for details of all countries.

(b) Exports of Alumina to Egypt are excluded from country total and included in the 'Other Countries' category.

(c) The European Union includes 27 member countries.

			4 MONTHS ENDED OCTOBER	
	2006-07	October 2007	2006	2007
	\$m	\$m	\$m	\$m
EXPORTS (a)				
New South Wales	28 074	2 258	9 571	9 668
Victoria	20 048	1 733	6 939	6 890
Queensland	35 444	2 548	12 561	11 025
South Australia	9 015	781	2 949	3 418
Western Australia	60 497	4 933	20 085	20 296
Tasmania	3 713	314	1 179	1 216
Northern Territory	4 014	260	1 464	1 199
Australian Capital Territory	8	1	6	4
State not available for publication(b)	809	101	282	294
Re-exports	6 479	580	2 225	2 311
<b>Total exports</b>	<b>168 102</b>	<b>13 510</b>	<b>57 260</b>	<b>56 321</b>
IMPORTS				
New South Wales	69 791	6 793	23 716	25 235
Victoria	51 326	4 809	17 383	18 077
Queensland	27 203	2 764	9 327	10 104
South Australia	6 583	636	2 106	2 294
Western Australia	22 125	2 191	7 056	8 410
Tasmania	614	67	223	235
Northern Territory	2 846	143	981	727
Australian Capital Territory	317	—	1	2
<b>Total imports</b>	<b>180 805</b>	<b>17 403</b>	<b>60 794</b>	<b>65 083</b>

— nil or rounded to zero (including null cells)

(a) State in which the final stage of production or manufacture occurs.

(b) Exports of Alumina to Bahrain, Egypt and Iceland are excluded from the state totals and included in 'State not available for publication category'.

## PERIOD AVERAGE EXCHANGE RATES (a): Per Australian dollar

<i>Period</i>	<i>United States dollar</i>	<i>UK pound sterling</i>	<i>Euro</i>	<i>Japanese yen</i>	<i>Trade-weighted index of value of the A\$(b)</i>
FINANCIAL YEAR					
<b>2004-05</b>	0.7529	0.4052	0.5918	80.45	62.7
<b>2005-06</b>	0.7474	0.4205	0.6143	85.90	63.3
<b>2006-07</b>	0.7863	0.4066	0.6018	93.21	64.8
MONTHS					
<b>2006</b>					
August	0.7630	0.4034	0.5958	88.45	63.7
September	0.7566	0.4009	0.5938	88.58	63.2
October	0.7539	0.4021	0.5975	89.46	63.2
November	0.7721	0.4040	0.5995	90.52	64.0
December	0.7861	0.4002	0.5949	92.05	64.4
<b>2007</b>					
January	0.7839	0.4002	0.6027	94.28	64.7
February	0.7823	0.3993	0.5981	94.29	64.4
March	0.7919	0.4067	0.5980	92.90	64.8
April	0.8263	0.4156	0.6117	98.17	67.1
May	0.8252	0.4157	0.6103	99.58	67.0
June	0.8423	0.4238	0.6274	103.34	68.5
July	0.8675	0.4266	0.6325	105.47	69.7
August	0.8282	0.4123	0.6083	96.63	66.8
September	0.8464	0.4196	0.6088	97.34	67.7
October	0.8984	0.4397	0.6316	104.04	71.0

- (a) These exchange rates and the trade-weighted index are derived using rates provided by the Reserve Bank of Australia in respect of each trading day.
- (b) May 1970 = 100. The Trade-weighted index is reweighted annually on 1 October and on special occasions as required.

## EXPLANATORY NOTES

### INTRODUCTION

**1** This publication presents preliminary estimates of Australia's international trade in goods and services on a balance of payments basis and merchandise import and export statistics on a recorded trade basis.

**2** Merchandise trade statistics on a recorded trade basis are compiled from information submitted by exporters and importers or their agents to the Australian Customs Service (ACS). Adjustments for coverage, timing and valuation are made to recorded trade data to convert them to a balance of payments basis. The main source for services data is the quarterly Survey of International Trade in Services.

**3** More comprehensive quarterly estimates of Australia's trade in goods and services, together with comprehensive details of Australia's balance of payments are included in the quarterly publication, *Balance of Payments and International Investment Position, Australia* (cat. no. 5302.0). Detailed monthly statistics on merchandise trade are available on Time Series Spreadsheets or by subscription to tailored services.

### CONCEPTS, SOURCES AND METHODS

**4** The conceptual framework used in compiling Australia's merchandise trade statistics can be found in *International Merchandise Trade, Australia: Concepts, Sources and Methods, 2001* (cat. no. 5489.0).

**5** The conceptual framework used in compiling Australia's balance of payments statistics is based on the Fifth Edition of the International Monetary Fund's *Balance of Payments Manual* (BPM5,1993). Descriptions of the underlying concepts and structure of the balance of payments and the sources, methods and terms used in compiling the estimates are presented in *Balance of Payments and International Investment Position, Australia: Concepts, Sources and Methods, 1998* (cat. no. 5331.0). To bring merchandise trade statistics on a recorded trade basis to a balance of payments basis, timing adjustments are made to ensure that the transaction is recorded in the period in which ownership changed, rather than in the period in which the transaction was recorded by ACS. Adjustments are also made to account for the change of ownership of goods not included in merchandise trade statistics. Chapter 6 of cat. no. 5331.0 provides more detail on the relationship between statistics on international merchandise trade on a recorded trade basis and on a balance of payments basis.

**6** Both of the Concepts, Sources and Methods publications are available to download for free from the ABS website. Select *Methods, Classifications, Concepts & Standards*, then choose *ABS concepts, classifications and statistical standards* and then the catalogue numbers as above.

### SEASONAL ADJUSTMENT

**7** Monthly original estimates are volatile, being subject to calendar-related and large irregular influences. Seasonally adjusted estimates are derived by estimating and removing from the original series systematic calendar related effects, such as seasonal, trading day length of month and moving holiday influences. All other effects are removed from the original estimates prior to the seasonal adjustment process. Seasonal adjustment does not aim to remove the irregular or non-seasonal influences which may be present in any particular month. These irregular influences may reflect both random economic events and difficulties of statistical recording. The estimates of international trade in goods and services on a balance of payments basis are seasonally adjusted. The merchandise exports and imports statistics on a recorded trade basis are not.

**8** The seasonally adjusted statistics in this publication use the concurrent seasonal adjustment technique and Autoregressive Integrated Moving Average (ARIMA) Modelling to estimate factors for the current and previous months. Under concurrent seasonal adjustment, the estimates of seasonal factors are fine tuned as new original estimates become available each period. The seasonally adjusted estimates are subject to revisions at each reference month as the estimates of seasonal factors are improved.

## EXPLANATORY NOTES *continued*

### ARIMA MODELLING

**9** ARIMA modelling relies on the characteristics of the series being analysed to project future period data. ARIMA modelling is used on a case-by-case basis where it results in reduced revisions to seasonally adjusted series when subsequent data become available. The projected values are temporary, intermediate values, that are only used internally to improve the estimation of the seasonal factors. The projected data do not affect the original estimates and are discarded at the end of the seasonal adjustment process. The ARIMA model is assessed as part of the annual reanalysis and, following the 2007 annual re-analysis, 89% of trade in goods and services time series use an ARIMA model. For more information on the details of ARIMA modelling see Feature article: Use of ARIMA modelling to reduce revisions in the October 2004 issue of *Australian Economic Indicators* (cat. no. 1350.0).

### TREND ESTIMATES

**10** The month-to-month movements of the seasonally adjusted estimates may not be reliable indicators of trend behaviour because they include irregular or non-seasonal movements. Trend estimates are derived by applying a 13-term Henderson moving average to the seasonally adjusted series. The use of a 13-term Henderson average can result in revisions to the estimates for the most recent six months as additional observations become available. Revisions can also occur because of changes in the original data and as a result of the re-estimation of the seasonal factors.

### SIGN CONVENTION

**11** In keeping with balance of payments conventions, where statistics are on a balance of payments basis, credit entries (exports) are shown without sign and debit items (imports) are shown as negative entries. For statistics on a recorded trade basis, both imports and exports are shown without sign. The calculation of percentage changes on balance of payments debit items are made without regard to sign. References to balance of payments debit items in Key Figures, Key Points, and Analysis and Comments are also made without regard to sign.

### COMMODITY BREAKDOWNS OF GOODS

**12** For details of the classification used for goods exports on a balance of payments basis (credits), see table 6.6 in *Balance of Payments and International Investment Position, Australia: Concepts, Sources and Methods, 1998* (cat. no. 5331.0).

**13** Details of the classification of goods imports on a balance of payments basis (debits) are provided in table 6.7 in cat. no. 5331.0.

**14** The recorded trade statistics shown in tables 12 and 13 are classified by the Standard International Trade Classification (SITC). The first section of tables 12 and 13 show the most significant commodities (by value) at the SITC 3 digit level. Imports and exports of goods at a more detailed level are available from the Time Series spreadsheets.

### COMMODITY BREAKDOWNS OF SERVICES

**15** The quarterly detailed services data published in table 11 are consistent with the monthly aggregates shown in table 9.

**16** Monthly indicators for many of the services components that are only surveyed quarterly are not available. In particular, the Freight and Other transportation components of Total services credits are not available for publication on a monthly basis. The estimates for these items shown in table 9 are therefore derived by dividing the quarterly estimate by three. Where quarterly survey data are not available, freight debits are derived directly from imports data for the reference month as a difference between total merchandise cost, insurance and freight (CIF) and free on board (FOB), adjusted to reflect timing and processing adjustments. For freight credits and other transportation credits and debits, estimates are derived by extrapolating the last month's data by an average of movements for the same month over the three previous years.

## EXPLANATORY NOTES *continued*

### CONFIDENTIALITY OF MERCHANDISE TRADE STATISTICS

**17** The release of statistics for certain merchandise trade commodities is restricted in order to prevent the identification of the activities of an individual business, where this is requested by the business concerned. These restrictions do not affect the total value of exports and imports, but they can affect statistics at the country, state and commodity levels. For information on the confidentiality restrictions applied to the merchandise trade statistics in this publication, refer to the current *International merchandise trade: Confidential Commodities List (CCL)* (cat. no. 5372.0.55.001) which can be accessed from ABS web site.

### TOURISM RELATED SERVICES

**18** The tourism related services memorandum items provide timely indicators of the movements in tourism related activities, not an absolute measure of the level of these activities. These series are not compiled on a balance of payments conceptual basis. However, they do provide a reasonable approximation of world tourism related activities.

**19** The memorandum items have been derived by re-aggregating relevant components of the international trade in services series of the balance of payments accounts. The tourism related indicator has been derived by combining total travel services (business, education-related and other personal travel), passenger fares, and the air transport component of other transportation services which relates to agency fees and commission receipts.

### SERVICES BY STATE AND BY PARTNER COUNTRY

**20** Annual services data by state and by partner country are released twice yearly. Calendar year data are usually released with the March issue of this publication and financial year data are released with the September issue. Refer to Time series data for details.

**21** Services credits are classified by the state of provision, while services debits are classified by the state of consumption. The state allocations for transportation, travel and communication services are based on a number of indicators including merchandise trade statistics by state, overseas passenger arrivals and departures by state of clearance and data provided by the Department of Education, Science and Training. The allocation for other services (about 25% of all trade in services) is primarily based on the location of the business reporting the information, which serves as a proxy for the state of provision/consumption of that service. The data should be used with care but are considered suitable for analysis over time.

**22** A comprehensive explanation of the data sources used and the methodology applied in the compilation of partner country statistics is provided in Chapter 17 of *Balance of Payments and International Investment Position, Australia - Concepts, Sources and Methods* (cat. no. 5331.0). Approximately 7% of total services credits and 5% of total services debits for 2006–07 are either confidential, or unable to be allocated to individual countries.

### ABS DATA AVAILABLE

**23** More detailed balance of payments and recorded merchandise trade data, including forward seasonal factors are available as time series spreadsheets or data cubes from the ABS website.

**24** More detailed merchandise trade data by commodity, country and state, and statistics included in this and related publications are available on request. Inquiries should be made to the National Information and Referral Service as shown on the back of this publication.

### RELATED PRODUCTS AND PUBLICATIONS

**25** Users may also wish to refer to the following publications which can be downloaded free of charge from the ABS web site:

- *Balance of Payments and International Investment Position, Australia* (cat. no. 5302.0) – issued quarterly
- *International Merchandise Imports, Australia* (cat. no. 5439.0) – issued monthly

## EXPLANATORY NOTES *continued*

---

### RELATED PRODUCTS AND PUBLICATIONS *continued*

- *International Trade Price Indexes, Australia* (cat. no. 6457.0) – issued quarterly
- *Balance of Payments and International Investment Position, Australia: Concepts, Sources and Methods* (cat. no. 5331.0)
- *Information Paper: Quality of Australian Balance of Payments Statistics* (cat. no. 5342.0)
- *International Merchandise Trade, Australia: Concepts, Sources and Methods* (cat. no. 5489.0)
- *A Guide to Australian Balance of Payments and International Investment Position Statistics* (cat. no. 5362.0.55.001).

**26** Current publications produced by the ABS are listed in the Catalogue of Publications and Products (cat. no. 1101.0). The Catalogue is available from any ABS office or from this site. The ABS also issues a daily Release Advice on the web site which details products to be released in the week ahead.

### CAUTIONARY NOTE

**27** The tables in this publication are presented on two bases. Tables 1–11 contain estimates of Australia's international trade in goods and services which have been adjusted for coverage, valuation and timing to a balance of payments basis. Tables 12–15 contain estimates of merchandise exports and imports based on Australian Customs Service records. Paragraph 5 of the Explanatory Notes provides an explanation of the difference between these bases.

### ROUNDING

**28** Where figures have been rounded, discrepancies may occur between sums of the component items and totals. Percentage movements are calculated from data at the level of precision presented in this publication (i.e. \$m) except for international merchandise trade tables.



## APPENDIX RELATED ARTICLES

<i>Article</i>	<i>Source(a)</i>	<i>Issue</i>
<b>Investment</b>		
Foreign ownership of equity	5302.0	Sep qtr 2006
Kangaroo bonds	5302.0	Sep qtr 2004
Gross external debt	5302.0	Sep qtr 2003
Measuring Australia's foreign currency exposure	5302.0	Dec qtr 2001
<b>Balance of payments</b>		
International comparison of balance of payments statistics	(b) 5363.0	1999–2000
The Sydney Olympic Games Update	5368.0	Jul 2000
The Sydney Olympic Games	5302.0	Sep qtr 1999
<b>Merchandise trade</b>		
Number and characteristics of Australian exporters	5368.0.55.006	2006–2007
New methodology for deriving counts of Australian exports	5368.0	Feb 2006
Export and Import Invoice Currencies, 2005	5368.0	Jun 2005
Australia's Importers, 2003–04	5368.0	Nov 2004
Australia's Exporters, 2003–04	5368.0	Oct 2004
Australia's Trade with the USA	5368.0	Mar 2004
Trade through Australia's ports	5422.0	Sep qtr 2002
Australia's trade in wine	5422.0	Dec qtr 2001
Australia's export markets, 1991–92 to 2000–01	5422.0	Jun qtr 2001
Major commodities traded by Australia, 1991 to 2000	(b) 5422.0	Dec qtr 2000
Australia's trade in crude petroleum	5422.0	Mar qtr 2000
Australia's merchandise trade with the Republic of Korea	5422.0	Sep qtr 1999
Australia's merchandise trade with Japan	5422.0	Mar qtr 1999
Bilateral merchandise trade statistics reconciliation: Australia and the European Union, 1992 to 1997	5422.0	Sep qtr 1998
<b>Trade in services</b>		
International trade in services by partner country, 2006, preliminary	5368.0	Dec 2006
Changes to International Trade in Services Statistics, August 2006	5368.0	Aug 2006
Changes to International trade in services travel statistics	5368.0	Aug 2005
International trade in education services	5302.0	Sep 2001
<b>Finance</b>		
Impact of 2003–2004 farm season on Australian production	1350.0	Oct 2003
Recent trends in construction and first home buyers finance	5609.0	Mar 2002
Household sector data in the financial accounts	5232.0	Mar qtr 2002
Investment Managers	5655.0	Jun qtr 2000
Venture capital, 1999–2000	5611.0	2000–01
<b>Technical information</b>		
Changes on 1 January 2007 to Statistical Codes in the AHECC and the Customs Tariff	1233.0.55.001	Nov 2006
ABS implementation in January 2007 of revisions to international trade classifications, 2007	5368.0.55.005	June 2006
Revised Treatment of Goods for Processing in Merchandise Trade and Balance of Payments Statistics	5368.0	May 2006
Impact of Customs and ABS changes on import statistics from October 2005	5439.0	Oct 2005
ABS Management of the Impact of the Implementation of the Imports Component of the New Customs System	5439.0	Aug 2005
Changes to country and port classifications	5368.0	May 2003
Implementation of New Customs Systems	5368.0	Aug 2004
The effect of customs changes on export statistics	5422.0	Jun qtr 2002
Harmonized system changes	5422.0	Sep qtr 2001
International trade review: data quality and client queries	5422.0	Jun qtr 2000
Data confidentiality	5422.0	Dec qtr 1999

(a) In the ABS web site home page, select Key Products; Papers & Articles; ABS Articles; Feature Articles by Catalogue Number.

(b) This article can be found in pdf format by referring to the Details page of the specified issue of this publication on the ABS web site and click on Download Now.





## FOR MORE INFORMATION . . .

*INTERNET* **www.abs.gov.au** the ABS website is the best place for data from our publications and information about the ABS.

*LIBRARY* A range of ABS publications are available from public and tertiary libraries Australia wide. Contact your nearest library to determine whether it has the ABS statistics you require, or visit our website for a list of libraries.

## INFORMATION AND REFERRAL SERVICE

Our consultants can help you access the full range of information published by the ABS that is available free of charge from our website, or purchase a hard copy publication. Information tailored to your needs can also be requested as a 'user pays' service. Specialists are on hand to help you with analytical or methodological advice.

*PHONE* 1300 135 070  
*EMAIL* [client.services@abs.gov.au](mailto:client.services@abs.gov.au)  
*FAX* 1300 135 211  
*POST* Client Services, ABS, GPO Box 796, Sydney NSW 2001

## FREE ACCESS TO STATISTICS

All statistics on the ABS website can be downloaded free of charge.

*WEB ADDRESS* [www.abs.gov.au](http://www.abs.gov.au)



2536800010072

ISSN 1328 2778

RRP \$26.00