

# **TASMANIAN STATISTICAL INDICATORS**

EMBARGO: 11:30AM (CANBERRA TIME) THURS 10 JUL 2003

## **C O N T E N T S**

	<i>page</i>
Notes .....	2
Main features .....	3
List of tables .....	8

### SUBJECT AREAS

<b>1</b> Population and demography .....	9
<b>2</b> Labour force .....	10
<b>3</b> Wages and prices .....	18
<b>4</b> Production .....	24
<b>5</b> Primary industry .....	25
<b>6</b> Building .....	28
<b>7</b> Finance .....	29
<b>8</b> Tourism .....	31
<b>9</b> Transport .....	34
<b>10</b> Retail trade .....	35
<b>11</b> Overseas trade .....	36
<b>12</b> Australia and state comparisons .....	39
<b>13</b> Tasmanian statistical divisions comparisons .....	41

### ADDITIONAL INFORMATION

Map: Tasmanian statistical divisions .....	43
--	----

## **I N Q U I R I E S**

- For further information about these and related statistics, contact the National Information and Referral Service on 1300 135 070 or Mary Eagle on Hobart (03) 6222 5812.

## NOTES

### FORTHCOMING ISSUES

ISSUE	RELEASE DATE
August 2003	8 August 2003
September 2003	11 September 2003
October 2003	9 October 2003
November 2003	11 November 2003
December 2003	11 December 2003

### INTRODUCTION

1 This publication contains latest figures for a comprehensive range of economic indicators. Statistics shown in this publication are the latest available at the date of preparation and may be subject to revision in subsequent issues. Reference should therefore always be made to the latest issue or to the statistical publication on the specific subject.

### SEASONAL ADJUSTMENT AND TREND ESTIMATION

2 Seasonal adjustment is a means of removing the estimated effects of normal seasonal variation from the series so that the effects of other influences on the series can be more clearly recognised. Seasonal adjustment does not aim to remove the irregular or non-seasonal influences which may be present in any particular month. This means that month-to-month movements of the seasonally adjusted estimates may not be reliable indicators of trend behaviour.

3 The smoothing of seasonally adjusted series reduces the impact of the irregular components of the seasonally adjusted series and creates trend estimates. These trend estimates are derived by applying a 13-term Henderson-weighted moving average to all months except the last six. The last six monthly trend estimates are obtained by applying surrogates of the Henderson average to the seasonally adjusted series.

4 While this smoothing technique enables estimates to be produced for the latest month, it does result in revisions to the most recent months as additional observations become available. Generally, subsequent revisions become smaller and after 3 months have a negligible impact on the series.

5 A number of ABS data series will reflect significant and subsequent impacts of The New Tax System (TNTS), introduced in Australia from 1 July 2000. Further information can be found in *Information Paper: ABS Statistics and The New Tax System* (cat. no. 1358.0).

### SYMBOLS AND OTHER USAGES

\$m	million dollars
m <sup>3</sup>	cubic metre
na	not available
nya	not yet available
. .	not applicable
—	nil or rounded to zero (including null cells)
p	preliminary figure or series subject to revision
r	figure or series revised since previous issue
'000	thousand
%	per cent
*	estimate has a relative standard error of between 25% and 50% and should be used with caution
**	estimate has a relative standard error greater than 50% and is considered too unreliable for general use.

David Brereton  
Acting Regional Director, Tasmania

## MAIN FEATURES

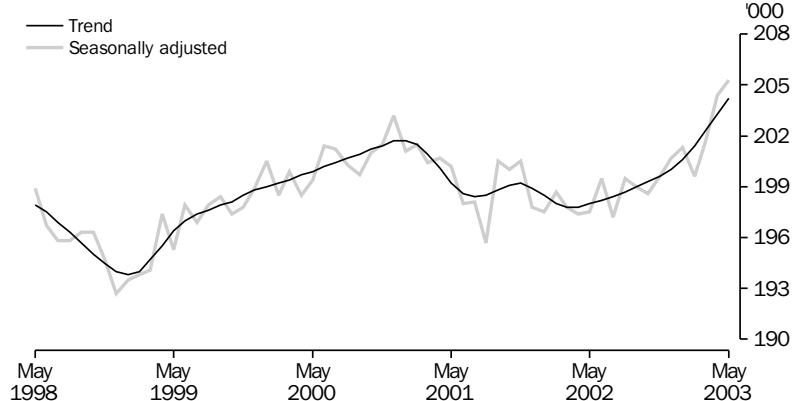
### THE LABOUR FORCE

Trend estimates There were an estimated 222,600 persons (based on *trend* estimates) in the labour force in May 2003 and an estimated 377,500 civilian Tasmanians aged 15 years or more, yielding a labour force participation rate of 59.0%, compared to 57.9% in May 2002. The Australian labour force participation rate for May 2003 was 64.1%, an increase from the May 2002 estimate of 63.6% — see table 36 and *Labour Force, Australia* (cat. no. 6202.0).

For Tasmanian males, the *trend* estimate of the participation rate was 66.9% in May 2003, compared to 66.0% in May 2002. For Tasmanian females, the *trend* estimate of the participation rate was 51.6% in May 2003, compared to 50.2% in May 2002 (see table 3).

### EMPLOYMENT

#### EMPLOYMENT, TASMANIA

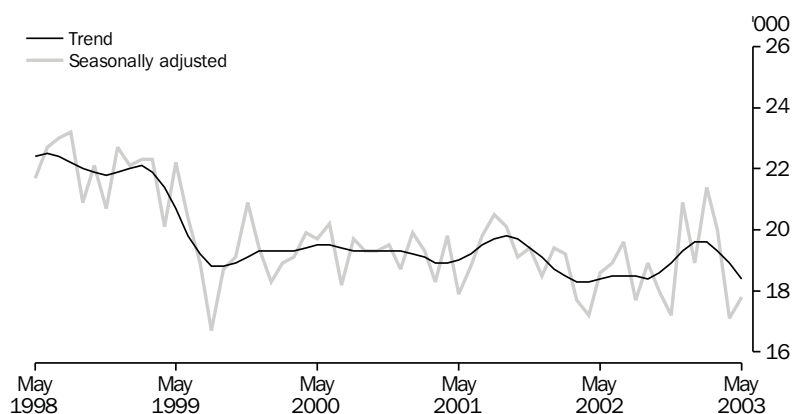


Trend estimates The *trend* estimate of the total number of employed persons in Tasmania in May 2003 was 204,200, compared to 198,000 in May 2002, an increase of 3.1%. Employment over the same period increased in New South Wales by 2.3%, Victoria by 2.1%, Queensland by 3.6%, South Australia by 3.9% and Western Australia by 2.4%. The increase in the national employment figure over the same period was 2.6% — see table 36 and *Labour Force, Australia* (cat. no. 6202.0).

### UNEMPLOYMENT

Trend estimates The *trend* estimate of the number of unemployed persons in Tasmania for May 2003 was 18,400, compared to 18,400 in May 2002. The *trend* estimate of the unemployment rate for May 2003 was 8.3%, a decrease from the May 2002 figure of 8.5%. The Australian *trend* estimate of the unemployment rate was 6.1% in May 2003 compared to 6.3% in May 2002 — see table 3 and 36, and *Labour Force, Australia* (cat. no. 6202.0).

### UNEMPLOYMENT, TASMANIA

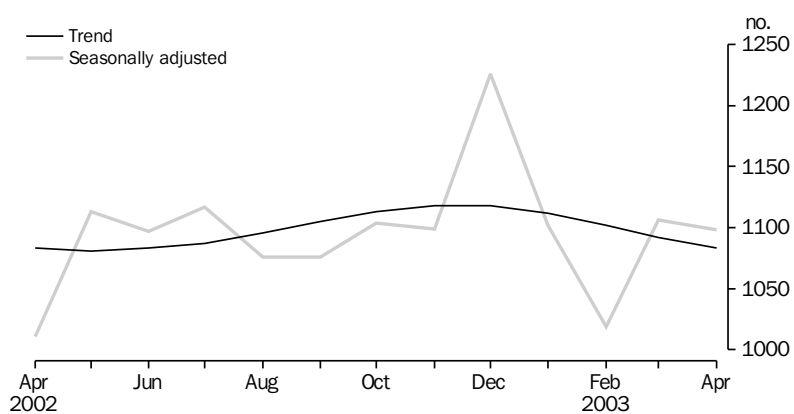


### HOUSING FINANCE

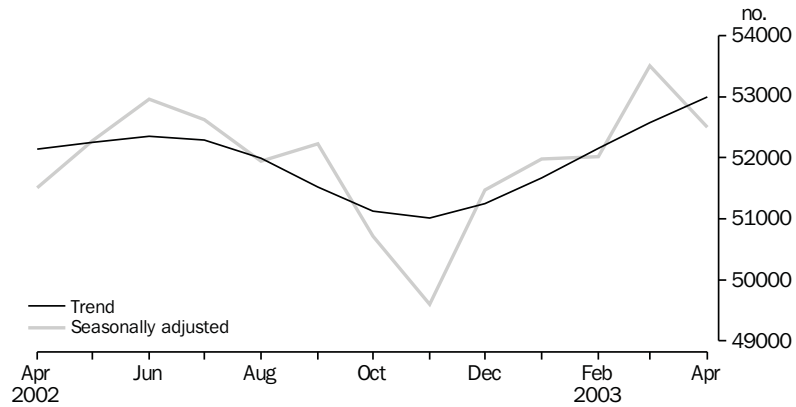
Trend estimates In *trend* terms, the number of housing finance commitments in Tasmania for April 2003 was 1,083, a decrease of 0.8% from the previous month. In the same period, the *trend* estimate for Australia increased by 0.8%.

There was no change in the Tasmanian *trend* estimate between April 2002 and April 2003, while the national *trend* estimate increased by 1.7%. The changes in the number of housing finance commitments over the same period for the other states/territories were New South Wales (-3.7%), Victoria (1.9%), Queensland (10.9%), South Australia (5.4%), Western Australia (2.7%), Northern Territory (11.3%) and Australian Capital Territory (0.6%) — see table 26 and *Housing Finance for Owner Occupation, Australia* (cat. no. 5609.0).

### HOUSING FINANCE, TASMANIA, Number of dwellings



HOUSING FINANCE AUSTRALIA, Number of dwellings



## GOVERNMENT FINANCIAL ESTIMATES

*Government Financial Estimates, Tasmania, Electronic Delivery* (cat. no. 5501.6.55.001) released 9 August 2002, features forward estimates for 2002–03, estimated outcomes for 2001–02, and final data for 2000–01 back to 1998–99, for the Tasmanian State General Government sector, Public Non Financial Corporations and the consolidated Non-Financial Public Sector.

The introduction of the GST, by the Commonwealth Government on 1 July 2000, has seen the elimination of a number of state taxes and in particular the petroleum, liquor and tobacco franchise taxes from 1 July 2000. The decrease in state taxes was accompanied by increases in Commonwealth grants under the arrangements agreed to by the states and the Commonwealth. The abolition of Financial Institutions Duty and the Electricity Levy from 1 July 2001 further reduced state taxes for 2001–02. Collections from duty on conveyances peaked in the year ended 30 June 2002 because of the impact of the Commonwealth Government's grants for First Home Owners. Along with the abolition or reduction in other state taxes, the drop-off in the expected duties on conveyances resulted in state tax collections expected to be lower again in 2002–03.

Expenditure on new fixed assets by Public Non-Financial Corporations in the year ended 30 June 2002, increased dramatically due to the acquisition of the two new Bass Strait ferries at a total cost of \$290m. Increased spending on electricity infrastructure also contributed to the high figure. Capital expenditure for 2002–03 is expected to return to more normal levels.

## BUILDING APPROVALS

Original terms There were 173 dwelling units approved during April 2003, including 146 new houses. This compares to 183 dwelling units approved during March 2003, including 175 new houses. The number of dwelling units approved increased 20.1% from the 144 approvals recorded in April 2002.

BUILDING APPROVALS  
*continued*

At current prices, the value of total building was \$46.8m in April 2003, which was 2.4% above the March 2003 figure of \$45.7m and 82.1% above the April 2002 figure of \$25.7m. Residential building contributed \$26.3m and non-residential building \$20.5m in April 2003 — see table 25 and *Building Approvals, Australia* (cat. no. 8731.0).

SALES OF NEW MOTOR  
VEHICLES

Trend estimates In *trend* terms, there were 1,381 new motor vehicles sold in May 2003, compared to 1,353 sold in April 2003. The number of new motor vehicles sold in May 2003 increased by 9.7% from the May 2002 figure of 1,259. Passenger vehicles represented 60.0% of all new vehicles sold in Tasmania in May 2003. Nationally, the *trend* estimate of new motor vehicles sold in May 2003 was 76,225, an increase of 10.8% from the May 2002 figure of 68,824 — see table 31 and *Sales of New Motor Vehicles, Australia (Electronic Publication)* (cat. no. 9314.0).

RETAIL

Trend estimates In *trend* terms, the estimate of retail turnover in Australia for April 2003 was \$14,719.4m, a 5.3% increase from the April 2002 estimate of \$13,980.1m. In *trend* terms, the estimate of retail turnover in Tasmania for April 2003 was \$301.7m, 4.1% above the figure recorded in April 2002 (\$289.9m) — see table 32 and *Retail Trade, Australia* (cat. no. 8501.0).

CAPITAL EXPENDITURE

Original terms In *original* terms, the estimate of total capital expenditure at current prices for Australia in the March quarter 2003 was \$11,655m, a 19.0% decrease from the December quarter estimate of \$14,395m. In *original* terms, the estimate of total capital expenditure at current prices for Tasmania in the March quarter 2003 was \$222m, a 17.2% decrease from the December quarter 2002 estimate of \$268m.

For Tasmania in the March quarter 2003, the estimate for expenditure on buildings and structures increased by 32.7% and the estimate for expenditure on equipment, plant and machinery decreased by 30.0%. The estimates of expenditure by Mining and Manufacturing each increased in the March quarter — see table 27 and *Private New Capital Expenditure and Expected Expenditure* (cat. no. 5625.0).

LIVESTOCK SLAUGHTERING

Trend estimates In April 2003, the *trend* estimate for Tasmania for the number of cattle and calves slaughtered decreased by 4.9% over the previous month. Over the same period, the *trend* estimate for the number of sheep and lambs slaughtered increased by 2.8% but the *trend* estimate for the number of pigs slaughtered fell by 7.5%.

The *trend* estimate for the number of cattle and calves slaughtered in April 2003 was 22,300, up by 39.5% on the estimate for April 2002 and up by 16.6% on the estimate for April 2001.

LIVESTOCK SLAUGHTERING  
*continued*

The *trend* estimate for the number of sheep and lambs slaughtered in April 2003 was 65,400, up by 16.0% on the estimate for April 2002, and up by 9.6% on the estimate for April 2001.

The *trend* estimate for the number of pigs slaughtered in April 2003 was 3,510, down by 14.3% on the estimate for April 2002, and down by 26.8% on the estimate for April 2001 (see table 21).

OVERSEAS TRADE

The value of Tasmania's exports for the month of April 2003 was \$206m, a decrease of 8% on the month of March 2003. Australia's exports for April 2003 totalled \$8,748m, a decrease of 11% on the previous month.

Tasmania's major export destinations for the month of April 2003 were Japan (\$50.7m), Hong Kong (\$23.0m) and the United States of America (\$21.2m). Major commodity groups exported for the month were non-ferrous metals (\$63.8m), vegetables and fruit (\$14.6m) and dairy products and eggs (\$9.9m).

ESTABLISHED HOUSE PRICE  
INDEX

The Established House Price Index for Hobart increased by 6.7% in the March quarter of 2003, followed by Brisbane with 5.1%. Melbourne recorded the lowest quarterly increase (1.9%).

## LIST OF TABLES

<b>1</b>	Population	9
<b>2</b>	Births, deaths and marriages	9
<b>3</b>	Labour force status	10
<b>4</b>	Labour force status by region, males	11
<b>5</b>	Labour force status by region, females	12
<b>6</b>	Labour force status by region, persons	13
<b>7</b>	Teenage labour market	14
<b>8</b>	All employed persons by occupation	15
<b>9</b>	Employed persons by industry	16
<b>10</b>	Average hours worked	16
<b>11</b>	Job vacancies	17
<b>12</b>	Industrial disputes	17
<b>13</b>	Average weekly earnings of employees	18
<b>14</b>	Indexes of total hourly rates of pay	19
<b>15</b>	Summary of annual movements in wages and prices	20
<b>16</b>	House price index numbers, Hobart	20
<b>17</b>	Consumer price index, Hobart and eight capital cities combined	21
<b>18</b>	Price index of materials used in building other than house building, Hobart	22
<b>19</b>	Production of selected commodities	24
<b>20</b>	Livestock slaughtering: original	25
<b>21</b>	Livestock slaughtering: seasonally adjusted and trend	25
<b>22</b>	Meat production	26
<b>23</b>	Principal mineral concentrates produced	26
<b>24</b>	Sawmills and plywood mills, logs delivered and timber produced	27
<b>25</b>	Building approvals: original	28
<b>26</b>	Secured housing commitments	29
<b>27</b>	Private new capital expenditure by type of asset: original	30
<b>28</b>	Accommodation establishments	31
<b>29</b>	National Parks, person entries	32
<b>30</b>	Tracks in National Parks, walker registrations	33
<b>31</b>	Sales of new motor vehicles	34
<b>32</b>	Turnover of retail establishments at current prices	35
<b>33</b>	Value of overseas trade — Tasmania and Australia	36
<b>34</b>	Merchandise exports by selected countries and country groups	37
<b>35</b>	Merchandise exports by selected commodity groups: original	38
<b>36</b>	Major Statistical Indicators — Australia and state comparisons	39
<b>37</b>	Major Statistical Indicators — Tasmanian Statistical Divisions	41



# 1

## POPULATION — ORIGINAL

	<i>Estimated resident population</i>	<i>Natural increase(a)</i>	<i>Net estimated migration gain</i>	<i>Total population growth</i>	<i>Annual growth rate(b)</i>
	'000	'000	'000	'000	%
<b>1999–2000</b>	471.4	2.1	-2.2	—	—
<b>2000–01</b>	471.8	2.0	-2.0	0.4	0.08
<b>2001–02</b>	472.7	2.1	-1.2	0.9	0.20
<b>2000</b>					
December qtr	471.4	0.6	-0.5	0.1	-0.05
<b>2001</b>					
March qtr	471.8	0.6	-0.2	0.4	0.05
June qtr	471.8	0.4	-0.5	—	0.08
September qtr	471.6	0.2	-0.4	-0.2	0.07
December qtr	472.1	0.8	-0.3	0.5	0.15
<b>2002</b>					
March qtr	472.6	0.6	-0.1	0.5	0.17
June qtr p	472.7	0.5	-0.4	0.1	0.20
September qtr p	473.4	0.6	0.1	0.6	0.37
December qtr p	474.4	0.3	0.7	1.0	0.48

(a) Excess of live births registered over deaths registered (based on usual state of residence).

(b) Percentage growth from same quarter in previous year.

Source: *Australian Demographic Statistics (cat. no. 3101.0)*.

# 2

## BIRTHS, DEATHS AND MARRIAGES(a)

	<i>Births</i>		<i>Deaths</i>		<i>Infant mortality(b)</i>		<i>Marriages</i>	
	<i>no.</i>	<i>rate(c)</i>	<i>no.</i>	<i>rate(d)</i>	<i>no.</i>	<i>rate(e)</i>	<i>no.</i>	<i>rate(f)</i>
<b>1999–2000</b>	5 804	1.82	3 715	7.6	38	6.5	2 648	5.6
<b>2000–01</b>	5 874	1.88	3 827	7.6	43	7.3	2 446	5.2
<b>2001–02</b>	5 975	1.94	3 836	7.4	34	5.7	2 432	5.2
<b>2000</b>								
December qtr	1 548	..	985	..	9	5.8	582	..
<b>2001</b>								
March qtr	1 476	..	887	..	10	6.8	789	..
June qtr	1 402	..	983	..	10	7.1	711	..
September qtr	1 173	..	987	..	11	9.4	346	..
December qtr	1 765	..	956	..	3	1.7	336	..
<b>2002</b>								
March qtr	1 528	..	897	..	11	7.2	1 091	..
June qtr	1 509	..	996	..	9	6.0	659	..
September qtr	1 539	..	981	..	9	5.8	320	..
December qtr	1 440	..	1 108	..	7	4.9	535	..

(a) Usual residents of Tasmania.

(b) Deaths of children under one year of age.

(c) Total fertility rate. The sum of age specific fertility rates (live births at each age of a mother per female population of that age). It represents the number of children a woman would bear during her lifetime if she experienced age-specific fertility rates at each age of her reproductive life.

(d) Standardised death rate. The overall death rate, per 1,000 persons, that would have prevailed in a standard population if it had experienced at each age the death rates of the population being studied. The standard population used in these calculations is all persons in the 1991 Australian population.

(e) Rate per 1,000 live births.

(f) Crude marriage rate is the number of marriages registered during the financial year, per 1,000 estimated resident population at 31 December of that year.

Source: *Australian Demographic Statistics (cat. no. 3101.0)*.

## 3

## LABOUR FORCE STATUS(a) — SEASONALLY ADJUSTED AND TREND

	Seasonally adjusted series(b)				Trend series(b)			
	Employed	Unemployed	Unemployment rate	Participation rate	Employed	Unemployed	Unemployment rate	Participation rate
	'000	'000	%	%	'000	'000	%	%
MALES								
<b>2002</b>								
May	107.5	11.8	9.9	65.8	108.3	11.4	9.5	66.0
June	109.2	11.5	9.5	66.4	108.3	11.4	9.5	65.9
July	107.6	11.5	9.7	65.6	108.6	11.2	9.3	65.9
August	109.4	10.5	8.7	66.0	109.2	10.9	9.1	66.1
September	110.2	11.1	9.2	66.7	109.7	10.8	8.9	66.3
October	109.3	10.5	8.8	65.9	110.1	10.9	9.0	66.5
November	111.6	10.0	8.3	66.9	110.3	11.3	9.3	66.8
December	110.2	12.7	10.3	67.5	110.3	11.7	9.6	67.0
<b>2003</b>								
January	110.5	11.7	9.6	67.1	110.3	12.0	9.8	67.1
February	109.1	13.2	10.8	67.0	110.4	12.1	9.9	67.1
March	110.2	12.6	10.3	67.2	110.6	11.9	9.7	67.1
April	111.8	10.6	8.6	66.9	110.9	11.6	9.4	67.0
May	111.8	10.2	8.4	66.6	111.2	11.2	9.1	66.9
FEMALES								
<b>2002</b>								
May	90.0	6.8	7.0	50.3	89.7	7.0	7.2	50.2
June	90.3	7.4	7.6	50.8	89.9	7.1	7.4	50.4
July	89.6	8.1	8.3	50.7	89.8	7.4	7.6	50.5
August	90.1	7.3	7.5	50.5	89.5	7.6	7.8	50.4
September	88.8	7.8	8.1	50.1	89.3	7.7	7.9	50.3
October	89.3	7.5	7.8	50.2	89.2	7.7	7.9	50.2
November	88.0	7.2	7.5	49.3	89.3	7.6	7.9	50.2
December	90.5	8.3	8.4	51.1	89.7	7.6	7.8	50.4
<b>2003</b>								
January	90.8	7.1	7.3	50.7	90.3	7.6	7.8	50.7
February	90.6	8.1	8.3	51.0	91.0	7.5	7.6	50.9
March	91.5	7.4	7.5	51.0	91.7	7.4	7.5	51.2
April	92.6	6.6	6.6	51.1	92.4	7.3	7.3	51.4
May	93.5	7.6	7.5	52.0	93.0	7.2	7.2	51.6
PERSONS								
<b>2002</b>								
May	197.5	18.6	8.6	57.8	198.0	18.4	8.5	57.9
June	199.5	18.9	8.7	58.4	198.2	18.5	8.5	57.9
July	197.2	19.6	9.0	57.9	198.4	18.5	8.5	58.0
August	199.5	17.7	8.2	58.0	198.7	18.5	8.5	58.0
September	199.0	18.9	8.7	58.2	199.0	18.4	8.5	58.1
October	198.6	18.0	8.3	57.8	199.3	18.6	8.5	58.1
November	199.6	17.2	7.9	57.8	199.6	18.9	8.7	58.3
December	200.7	20.9	9.4	59.1	200.0	19.3	8.8	58.5
<b>2003</b>								
January	201.3	18.9	8.6	58.6	200.6	19.6	8.9	58.6
February	199.6	21.4	9.7	58.8	201.4	19.6	8.9	58.8
March	201.6	20.0	9.0	58.9	202.3	19.3	8.7	58.9
April	204.4	17.1	7.7	58.8	203.3	18.9	8.5	59.0
May	205.3	17.8	8.0	59.1	204.2	18.4	8.3	59.0

(a) For explanation of terms and concepts, refer to *Labour Force, Australia* (cat. no. 6202.0).

(b) Seasonal factors are reviewed annually to take account of each additional year's data. The results of the review are used to compile revised seasonally adjusted and trend estimates each February. Trend estimates for the most recent months are also revised each month; see Notes on page 2.

Source: *Labour Force, Australia* (cat. no. 6202.0).

## 4

## LABOUR FORCE STATUS BY REGION — MALES(a)(b)

	<i>Total employed</i>	<i>Total unemployed</i>	<i>Unemployment rate</i>	<i>Participation rate</i>
	'000	'000	%	%
HOBART AND SOUTHERN STATISTICAL DIVISIONS				
<b>2001</b>				
May	51.2	5.5	9.8	65.6
<b>2002</b>				
May	48.7	5.5	10.2	63.0
<b>2003</b>				
March	51.2	5.0	8.9	65.2
April	52.1	4.7	8.3	64.8
May	52.7	4.3	7.5	64.4
NORTHERN STATISTICAL DIVISION				
<b>2001</b>				
May	35.4	2.5	6.7	70.9
<b>2002</b>				
May	32.2	2.9	8.3	67.4
<b>2003</b>				
March	35.8	4.3	10.6	72.4
April	36.0	3.5	9.0	73.5
May	34.5	2.7	7.2	72.0
MERSEY-LYELL STATISTICAL DIVISION				
<b>2001</b>				
May	24.6	2.7	10.0	66.5
<b>2002</b>				
May	26.9	2.6	8.7	67.8
<b>2003</b>				
March	23.2	2.9	11.2	63.3
April	23.4	2.1	8.1	61.4
May	24.7	2.6	9.5	63.4
TASMANIA				
<b>2001</b>				
May	111.1	10.8	8.9	67.4
<b>2002</b>				
May	107.7	11.0	9.3	65.4
<b>2003</b>				
March	110.2	12.2	9.9	67.0
April	111.5	10.3	8.5	66.6
May	111.9	9.5	7.9	66.3

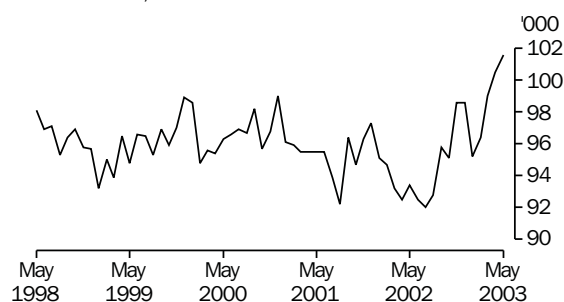
(a) For explanation of terms and concepts, refer to *Labour Force, Australia* (cat. no. 6202.0).

(b) Data in this table are original series, i.e. they are not part of a seasonally adjusted or a trend series. Accordingly, care should be exercised when using these data.

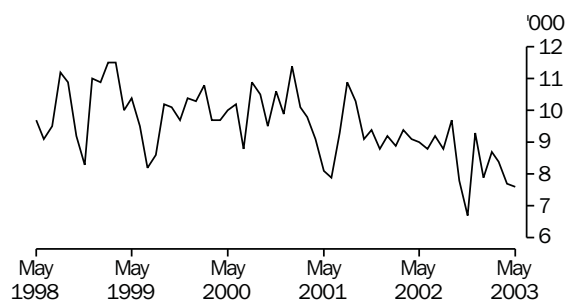
Source: *Labour Force, Selected Summary Tables, Australia* (cat. no. 6291.0.55.001).

## Hobart and Southern Statistical Divisions (see table 6)

EMPLOYMENT, Persons



UNEMPLOYMENT, Persons



## 5

## LABOUR FORCE STATUS BY REGION — FEMALES(a)(b)

	Total employed	Total unemployed	Unemployment rate	Participation rate
	'000	'000	%	%
HOBART AND SOUTHERN STATISTICAL DIVISIONS				
<b>2001</b>				
May	44.3	2.5	5.4	50.4
<b>2002</b>				
May	44.7	3.5	7.2	52.0
<b>2003</b>				
March	47.9	3.4	6.6	54.9
April	48.4	3.0	5.8	54.4
May	48.9	3.3	6.3	54.7
NORTHERN STATISTICAL DIVISIONS				
<b>2001</b>				
May	28.0	1.1	3.9	52.6
<b>2002</b>				
May	25.4	1.8	6.5	50.2
<b>2003</b>				
March	26.3	2.7	9.5	51.7
April	27.5	2.1	6.9	53.7
May	27.8	1.8	6.1	54.9
MERSEY-LYELL STATISTICAL DIVISIONS				
<b>2001</b>				
May	18.0	2.3	11.2	47.5
<b>2002</b>				
May	21.0	1.1	5.2	48.5
<b>2003</b>				
March	17.5	1.8	9.2	43.5
April	18.0	1.3	6.5	43.2
May	17.9	2.0	10.1	44.4
TASMANIA				
<b>2001</b>				
May	90.4	6.0	6.2	50.4
<b>2002</b>				
May	91.0	6.4	6.6	50.7
<b>2003</b>				
March	91.7	7.9	7.9	51.4
April	93.9	6.3	6.3	51.6
May	94.6	7.1	7.0	52.4

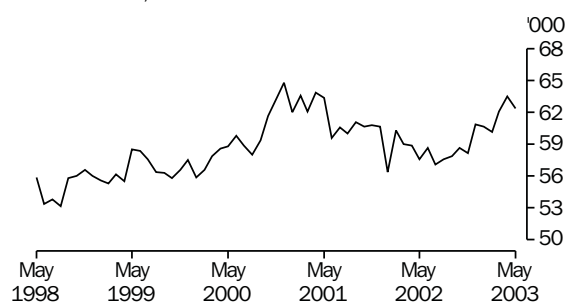
(a) For explanation of terms and concepts, refer to *Labour Force, Australia* (cat. no. 6202.0).

(b) Data in this table are original series, i.e. they are not part of a seasonally adjusted or a trend series. Accordingly, care should be exercised when using these data.

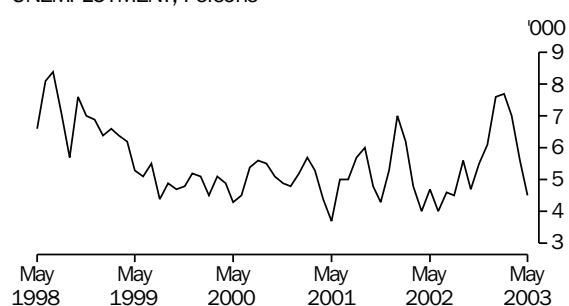
Source: *Labour Force, Selected Summary Tables, Australia* (cat. no. 6291.0.55.001).

## Northern Statistical Division (see table 6)

EMPLOYMENT, Persons



UNEMPLOYMENT, Persons



## 6

## LABOUR FORCE STATUS BY REGION — PERSONS(a)(b)

	Total employed	Total unemployed	Unemployment rate	Participation rate
	'000	'000	%	%
HOBART AND SOUTHERN STATISTICAL DIVISIONS				
<b>2001</b>				
May	95.5	8.1	7.8	57.7
<b>2002</b>				
May	93.4	9.0	8.8	57.3
<b>2003</b>				
March	99.0	8.4	7.8	59.9
April	100.5	7.7	7.1	59.4
May	101.6	7.6	6.9	59.4
NORTHERN STATISTICAL DIVISION				
<b>2001</b>				
May	63.4	3.7	5.5	61.6
<b>2002</b>				
May	57.6	4.7	7.5	58.7
<b>2003</b>				
March	62.1	7.0	10.1	62.0
April	63.5	5.6	8.1	63.5
May	62.4	4.5	6.7	63.3
MERSEY-LYELL STATISTICAL DIVISION				
<b>2001</b>				
May	42.6	5.0	10.5	56.8
<b>2002</b>				
May	47.8	3.7	7.2	57.9
<b>2003</b>				
March	40.7	4.7	10.3	53.0
April	41.4	3.3	7.4	52.0
May	42.6	4.6	9.8	53.7
TASMANIA				
<b>2001</b>				
May	201.5	16.7	7.7	58.6
<b>2002</b>				
May	198.8	17.4	8.1	57.8
<b>2003</b>				
March	201.9	20.1	9.0	58.9
April	205.4	16.6	7.5	58.9
May	206.6	16.7	7.5	59.1

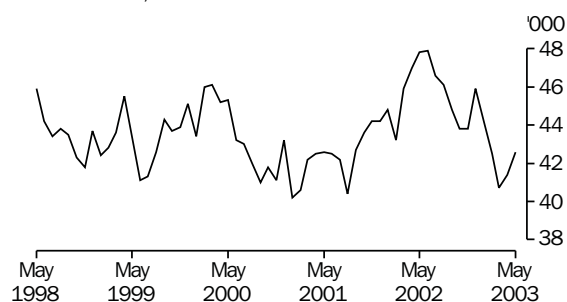
(a) For explanation of terms and concepts, refer to *Labour Force, Australia* (cat. no. 6202.0).

(b) Data in this table are original series, i.e. they are not part of a seasonally adjusted or a trend series. Accordingly, care should be exercised when using these data.

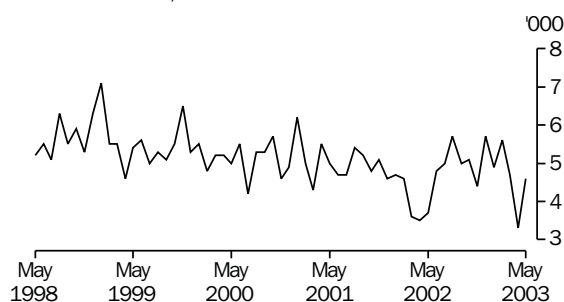
Source: *Labour Force, Selected Summary Tables, Australia* (cat. no. 6291.0.55.001).

## Mersey-Lyell Statistical Division (see table 6)

EMPLOYMENT, Persons



UNEMPLOYMENT, Persons



## 7

## TEENAGE LABOUR MARKET(a)

	<i>Employed</i>		<i>Unemployed</i>		<i>Labour force</i>	<i>Not in labour force</i>	<i>Civilian population aged 15-19</i>	<i>Unemployment rate</i>	<i>Unemployment population ratio</i>	<i>Participation rate</i>
	<i>Full time</i>	<i>Total</i>	<i>Looking for full time work</i>	<i>Total</i>						
	'000	'000	'000	'000						
ATTENDING NEITHER A SCHOOL NOR A TERTIARY INSTITUTION FULL TIME										
<b>2001</b>										
May	6.4	9.3	1.4	1.5	10.8	1.2	12.0	13.8	12.0	89.9
<b>2002</b>										
May	6.9	9.4	1.3	1.4	10.8	1.5	12.3	13.3	12.0	87.9
<b>2003</b>										
March	6.1	9.0	2.0	2.0	11.0	1.6	12.5	18.0	16.0	87.3
April	6.9	9.2	1.8	1.8	11.0	1.5	12.6	16.4	14.0	87.7
May	5.7	8.0	2.0	2.0	10.0	*1.1	11.2	20.2	18.0	89.8
ATTENDING SCHOOL OR A TERTIARY INSTITUTION FULL TIME										
<b>2001</b>										
May	**0.1	7.5	**0.2	*1.1	8.6	13.9	22.5	12.8	5.0	38.2
<b>2002</b>										
May	**0.2	6.4	*0.5	2.2	8.5	13.3	21.9	25.6	10.0	39.1
<b>2003</b>										
March	**0.1	7.7	*0.5	1.4	9.1	12.4	21.5	15.0	6.0	42.2
April	**0.2	7.5	**0.3	1.4	8.9	12.6	21.5	15.5	6.0	41.3
May	**0.1	8.8	**0.4	2.1	10.8	12.1	22.9	19.0	9.0	47.2
TOTAL										
<b>2001</b>										
May	6.5	16.8	1.6	2.6	19.4	15.1	34.5	13.4	8.0	56.2
<b>2002</b>										
May	7.1	15.7	1.8	3.6	19.3	14.8	34.1	18.8	11.0	56.6
<b>2003</b>										
March	6.2	16.7	2.5	3.3	20.0	14.0	34.0	16.6	10.0	58.8
April	7.1	16.7	2.1	3.2	19.9	14.1	34.0	16.0	9.0	58.5
May	5.8	16.8	2.4	4.1	20.8	13.2	34.1	19.6	12.0	61.2

(a) Persons aged 15-19 years. For explanation of terms and concepts, refer to *Labour Force, Australia* (cat. no. 6202.0). Care should be exercised when using these series as some estimates are subject to high sampling variability.

Source: ABS data available on request, *Labour Force, Estimates; Labour Force, Teenage Employment and Unemployment, Australia, Preliminary, Data Report* (cat. no. 6202.0.40.001).

## 8

## ALL EMPLOYED PERSONS BY OCCUPATION(a)(b)

	February 2002			February 2003		
	Persons		Females	Persons		Proportion of total employed
	'000	Males '000		'000	February 2002 %	February 2003 %
<b>Managers and administrators</b>						
Generalist managers	2.1	2.0	**0.1	2.1	1.1	*1.0
Specialist managers	5.3	3.6	*0.9	4.5	2.7	2.3
Farmers and farm managers	5.5	4.6	1.9	6.5	2.8	3.3
<i>Total</i>	12.8	10.2	2.9	13.1	6.5	6.6
<b>Professionals</b>						
Science, building and engineering professionals	4.9	2.7	*0.6	3.4	2.5	1.7
Business and information professionals	5.6	5.4	2.3	7.7	2.8	3.9
Health professionals	7.9	1.6	5.1	6.7	4.0	3.4
Education professionals	8.1	3.5	6.4	9.9	4.1	5.0
Social, arts and miscellaneous professionals	5.3	3.4	3.2	6.7	2.7	3.3
<i>Total</i>	31.8	16.6	17.7	34.3	16.0	17.2
<b>Associate professionals</b>						
Science, engineering and related associate professionals	3.3	2.4	**0.2	2.6	1.7	1.3
Business and administration associate professionals	6.4	3.8	2.8	6.6	3.2	3.3
Managing supervisors (sales and service)	8.8	6.5	3.2	9.6	4.4	4.8
Health and welfare associate professionals	2.0	**0.4	*0.6	*1.0	*1.0	*0.5
Other associate professionals	2.7	1.8	1.1	2.9	1.3	1.4
<i>Total</i>	23.1	14.9	7.9	22.7	11.7	11.4
<b>Tradespersons and related workers</b>						
Mechanical and fabrication engineering tradespersons	5.3	5.2	**0.1	5.2	2.7	2.6
Automotive tradespersons	2.8	2.6	**0.1	2.6	1.4	1.3
Electrical and electronics tradespersons	3.7	4.3	—	4.3	1.9	2.2
Construction tradespersons	4.7	5.8	**0.3	6.1	2.4	3.1
Other tradespersons and related workers	7.7	5.6	2.3	7.9	3.9	4.0
<i>Total</i>	24.1	23.4	2.8	26.2	12.1	13.2
<b>Advanced clerical and service workers</b>						
Secretaries and personal assistants	2.2	—	3.6	3.6	1.1	1.8
Other advanced clerical and service workers	3.4	*0.6	2.2	2.8	1.7	1.4
<i>Total</i>	5.5	*0.6	5.8	6.4	2.8	3.2
<b>Intermediate clerical, sales and service workers</b>						
Intermediate clerical workers	20.0	4.8	15.2	20.1	10.1	10.1
Intermediate sales and related workers	3.6	1.7	1.4	3.1	1.8	1.6
Intermediate service workers	12.8	2.0	9.1	11.1	6.4	5.6
<i>Total</i>	36.3	8.6	25.7	34.3	18.3	17.2
<b>Intermediate production and transport workers</b>						
Intermediate plant operators	6.3	4.8	**0.2	5.0	3.2	2.5
Intermediate machine operators	1.8	1.9	*0.7	2.5	*0.9	1.3
Road and rail transport drivers	5.8	5.6	**0.4	6.0	2.9	3.0
Other intermediate production and transport workers	3.2	4.5	1.2	5.7	1.6	2.9
<i>Total</i>	17.1	16.8	2.5	19.3	8.6	9.7
<b>Elementary clerical, sales and service workers</b>						
Elementary clerks	1.9	*0.5	*0.6	1.1	*1.0	*0.6
Elementary sales workers	19.3	4.8	11.6	16.5	9.8	8.3
Elementary service workers	2.1	1.3	1.7	2.9	*1.0	1.5
<i>Total</i>	23.3	6.6	14.0	20.5	11.8	10.3
<b>Labourers and related workers</b>						
Cleaners	6.7	1.7	4.8	6.4	3.4	3.2
Factory labourers	5.1	3.8	2.0	5.8	2.6	2.9
Other labourers and related workers	12.3	6.2	4.0	10.2	6.2	5.1
<i>Total</i>	24.1	11.6	10.7	22.3	12.2	11.2
<b>Total employed</b>	<b>198.2</b>	<b>109.3</b>	<b>89.8</b>	<b>199.1</b>	<b>100.0</b>	<b>100.0</b>

(a) For explanation of terms and concepts, refer to *Australian Labour Market Statistics* (cat. no. 6105.0).

(b) Classified according to the Australian Standard Classification of Occupations (ASCO), Second edition.

Source: ABS data available on request, *Labour Force, Estimates*.

## 9

### EMPLOYED PERSONS BY INDUSTRY(a)(b)

	<i>Number of Employees</i>				
	<i>February 2002</i>	<i>May 2002</i>	<i>August 2002</i>	<i>November 2002</i>	<i>February 2003</i>
	<i>'000</i>	<i>'000</i>	<i>'000</i>	<i>'000</i>	<i>'000</i>
Agriculture, forestry and fishing	16.5	17.4	16.0	16.2	14.2
Mining	1.8	1.8	1.8	2.2	2.0
Manufacturing	21.0	20.7	21.3	22.0	22.7
Electricity, gas and water supply	2.0	2.2	1.9	2.0	1.8
Construction	10.6	11.3	12.0	11.6	12.1
Wholesale trade	9.4	9.4	7.7	9.3	9.9
Retail trade	32.3	31.5	30.5	31.3	32.6
Accommodation, cafes and restaurants	10.8	9.1	7.5	8.8	11.0
Transport and storage	7.6	8.9	8.9	7.7	7.9
Communication services	3.7	3.0	2.7	2.8	1.9
Finance and insurance	6.1	6.1	5.9	5.2	6.6
Property and business services	15.5	14.6	14.4	14.8	16.1
Government administration and defence	10.3	10.6	11.0	12.1	11.8
Education	13.2	15.3	16.0	16.4	15.1
Health and community services	22.7	23.8	24.1	24.4	20.7
Cultural and recreational services	6.2	4.9	5.9	5.6	5.2
Personal and other services	8.5	8.2	8.8	8.2	7.5
<b>Total all industries</b>	<b>198.2</b>	<b>198.8</b>	<b>196.5</b>	<b>200.6</b>	<b>199.1</b>

(a) For explanation of terms and concepts, refer to *Australian Labour Market Statistics* (cat. no. 6105.0).

(b) Small movements are subject to high sample variability and should be used with caution.

Source: ABS data available on request; *Labour Force Survey*.

## 10

### AVERAGE HOURS WORKED

	<i>Average weekly total hours worked, all employed persons(a)</i>		
	<i>Males</i>	<i>Females</i>	<i>Persons</i>
<b>2001</b>			
November	37.9	27.2	33.1
<b>2002</b>			
February	37.3	25.1	31.9
May	38.8	26.8	33.3
August	38.4	27.1	33.3
November	39.0	27.0	33.7
<b>2003</b>			
February	38.0	25.8	32.5

(a) For explanation of terms and concepts, refer to *Labour Force, Australia* (cat. no. 6203.0).

Source: ABS data available on request; *Labour Force Survey*.



# 11

## JOB VACANCIES(a)(b)

	<i>no.</i>	<i>rate(c)</i>
	'000	%
<b>2001</b>		
November	*1.8	1.1
<b>2002</b>		
February	1.5	0.9
May	*1.7	*1.0
August	*2.2	*1.4
November	*2.1	*1.3
<b>2003</b>		
February	*2.1	*1.2

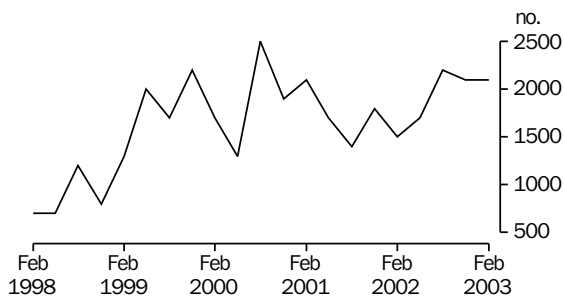
(a) For explanation of terms and concepts, refer to *Job Vacancies, Australia* (cat. no. 6354.0).

(b) Care should be exercised in using these series as some estimates are subject to high sampling variability.

(c) Job vacancies expressed as a percentage of the number of employees plus job vacancies.

Source: *Job Vacancies, Australia* (cat. no. 6354.0).

### JOB VACANCIES, TASMANIA



# 12

## INDUSTRIAL DISPUTES(a) — 12 MONTHS ENDED

<i>12 months ended</i>	<i>Working days lost</i>	<i>Working days lost</i>
		<i>per thousand employees</i>
	'000	<i>no.</i>
<b>2002</b>		
March	3.0	18
April	3.0	17
May	3.0	18
June	3.0	18
July	3.0	18
August	3.1	18
September	3.1	18
October	3.1	18
November	3.2	19
December	3.5	20
<b>2003</b>		
January	3.5	20
February	3.5	20
March	1.7	10

(a) For explanation of terms and concepts, refer to *Industrial Disputes, Australia* (cat. no. 6321.0).

Source: *Industrial Disputes, Australia* (cat. no. 6321.0).

## AVERAGE WEEKLY EARNINGS OF EMPLOYEES(a) — ORIGINAL AND TREND

	Males			Females			Persons		
	Full-time adult ordinary time earnings	Full-time adult total earnings	All males total earnings	Full-time adult ordinary time earnings	Full-time adult total earnings	All females total earnings	Full-time adult ordinary time earnings	Full-time adult total earnings	All employees total earnings
ORIGINAL									
<b>2001</b>									
November	812.00	848.80	720.60	717.40	735.80	457.30	778.70	809.00	584.20
<b>2002</b>									
February	830.50	867.80	711.90	716.10	731.60	458.60	788.80	818.20	582.80
May	828.00	869.40	713.90	720.10	735.70	451.80	790.00	822.40	579.10
August	841.60	877.90	740.20	748.90	762.20	473.80	812.80	841.80	611.50
November	849.80	887.70	767.60	758.40	772.70	490.40	820.80	851.30	628.20
<b>2003</b>									
February	863.00	903.20	780.40	748.30	762.70	481.90	826.00	858.10	629.90
TREND(b)									
<b>2001</b>									
November	809.30	845.50	706.40	710.00	726.30	461.40	774.00	803.00	581.40
<b>2002</b>									
February	822.70	860.50	712.20	717.20	733.70	454.40	785.10	815.50	579.90
May	834.10	872.50	722.80	730.10	746.00	460.20	798.10	828.80	590.30
August	842.10	880.90	741.60	743.10	757.50	473.30	809.30	840.00	607.90
November	849.90	888.90	762.00	751.00	764.10	482.00	818.70	849.30	622.40
<b>2003</b>									
February	857.90	897.30	780.20	754.50	767.00	484.80	826.40	857.50	631.90

(a) For explanation of terms and concepts, refer to *Average Weekly Earnings, Australia* (cat. no. 6302.0).

(b) ABS trend estimates for the most recent months are revised, see Notes on page 2.

Source: *Average Weekly Earnings, Australia* (cat. no. 6302.0).

	Index numbers				Percentage change	
	Jun qtr 2002	Sep qtr 2002	Dec qtr 2002	Mar qtr 2003	Sep qtr 2002 to Dec qtr 2002	Dec qtr 2002 to Mar qtr 2003
SELECTED INDUSTRIES(c)						
Manufacturing	113.6	114.6	115.9	116.3	1.1	0.3
Retail trade	112.0	113.5	114.2	115.0	0.6	0.7
Government administration and defence	112.2	113.5	114.7	115.2	1.1	0.4
Education	118.1	119.3	119.9	120.0	0.5	0.1
Health and community services	112.5	113.1	115.0	115.2	1.7	0.2
<b>All industries(d)</b>	<b>113.7</b>	<b>115.0</b>	<b>116.2</b>	<b>116.6</b>	<b>1.0</b>	<b>0.3</b>
SELECTED OCCUPATIONS						
Professionals	116.0	117.2	118.1	118.3	0.8	0.2
Associate professionals	113.7	115.1	116.6	117.0	1.3	0.3
Tradespersons & related workers	112.6	113.6	114.6	115.0	0.9	0.3
Intermediate clerical, sales & service workers	113.5	114.4	116.1	116.4	1.5	0.3
Intermediate production & transport workers	113.1	115.9	117.0	117.4	0.9	0.3
Elementary clerical, sales & service workers	113.9	114.7	115.5	116.0	0.7	0.4
Labourers & related workers	112.8	113.7	114.7	114.9	0.9	0.2
<b>All occupations</b>	<b>113.7</b>	<b>115.0</b>	<b>116.2</b>	<b>116.6</b>	<b>1.0</b>	<b>0.3</b>

(a) Base of each index: September quarter 1997 = 100.0.

(b) These indexes are a measure of quarterly changes in wage and salary costs for employee jobs. They are one of four sets of indexes that together comprise the Wage Cost Index. For explanation of terms and concepts, refer to *Wage Cost Index, Australia* (cat. no. 6345.0).

(c) Industry is shown at the ANZSIC division level for selected divisions.

(d) Excludes Agriculture, forestry and fishing.

Source: ABS data available on request; Wage Cost Index.

# 15

## SUMMARY OF ANNUAL MOVEMENTS IN WAGES AND PRICES(a), PERCENTAGE CHANGE FROM PREVIOUS YEAR — ORIGINAL

	CPI	Price index of materials used in house building	Price index of materials used in building other than house building	Average weekly total earnings, full-time adult employees(b)
	all groups—Hobart	all groups—Hobart	all groups—Hobart	
	%	%	%	%
<b>1999–2000</b>	1.9	1.3	0.4	2.5
<b>2000–01</b>	5.8	1.8	0.3	3.2
<b>2001–02</b>	2.0	1.9	1.7	—
<b>2001</b>				
March	5.4	1.4	0.8	2.7
June	5.5	0.8	0.3	1.7
September	1.1	1.7	2.0	2.6
December	2.1	1.6	1.2	–4.4
<b>2002</b>				
March	2.3	1.8	1.2	6.1
June	2.7	2.3	2.2	5.2
September	3.5	3.4	2.7	7.2
December	3.1	3.9	2.7	5.2
<b>2003</b>				
March	3.6	4.7	2.1	4.9

(a) See note 5 on page 2 of this issue on the impacts of The New Tax System (TNTS).

(b) March, June, September and December data relates to February, May, August and November survey dates as published in *Average Weekly Earnings, Australia* (cat. no. 6302.0).

Source: ABS data available on request; *Producer Price Index* (cat. no. 6427.0); *Consumer Price Index, Australia* (cat. no. 6401.0); *Average Weekly Earnings, Australia* (cat. no. 6302.0).

# 16

## HOUSE PRICE INDEX NUMBERS(a)(b)

	Established house price index		Project home price index	
	Index	% change(c)	Index	% change(c)
<b>1999–2000</b>	129.0	4.7	126.2	2.4
<b>2000–01</b>	134.2	4.0	140.7	11.5
<b>2001–02</b>	140.1	4.4	145.1	3.1
<b>2001</b>				
March	133.8	0.1	140.5	0.1
June	135.1	1.0	141.8	0.9
September	134.9	–0.1	142.7	0.6
December	138.3	2.5	143.4	0.5
<b>2002</b>				
March	142.1	2.7	144.6	0.8
June	144.9	2.0	149.7	3.5
September	148.9	2.8	152.5	1.9
December	150.8	1.3	154.4	1.2
<b>2003</b>				
March	160.9	6.7	161.2	4.4

(a) Base of each Index: 1989–90 = 100.

(b) Used in calculating the mortgage interest charges component of the Consumer Price Index.

(c) Percentage change over previous period.

Source: *House Price Indexes: Eight Capital Cities* (cat. no. 6416.0).

Hobart

	Food	Clothing and Footwear	Housing	Household furnishings, supplies and services	Transportation	Alcohol and tobacco
<b>2000</b>						
March	127.8	104.9	98.8	120.2	126.6	167.2
June	129.1	105.0	99.2	121.2	129.3	169.9
September	130.9	112.8	105.5	124.5	133.3	179.8
December	132.0	112.9	105.8	124.6	130.4	181.6
<b>2001</b>						
March	134.3	110.7	106.9	125.6	131.4	185.4
June	136.0	112.2	107.2	126.6	134.6	188.6
September	135.7	109.3	107.4	127.3	131.5	189.4
December	138.2	113.9	107.8	126.9	130.4	189.5
<b>2002</b>						
March	140.4	110.9	109.0	127.6	131.3	191.5
June	141.1	113.3	110.3	127.4	135.9	193.0
September	142.0	107.4	112.4	127.7	134.9	195.5
December	143.0	108.3	113.0	127.8	136.3	196.3
<b>2003</b>						
March	146.0	104.3	115.2	127.5	139.0	198.9

Weighted average of eight capital cities

	Health	Education	Hobart	% change over Index, previous period, all groups	Index	% change over previous period
<b>2000</b>						
March	175.1	206.2	125.3	1.0	125.2	0.9
June	177.7	206.2	126.5	1.0	126.2	0.8
September	178.0	206.5	131.3	3.8	130.9	3.7
December	177.4	206.5	131.2	-0.1	131.3	0.3
<b>2001</b>						
March	181.5	215.1	132.1	0.7	132.7	1.1
June	181.4	215.1	133.4	1.0	133.8	0.8
September	180.3	215.0	132.8	-0.4	134.2	0.3
December	180.5	215.0	133.9	0.8	135.4	0.9
<b>2002</b>						
March	185.8	221.9	135.2	1.0	136.6	0.9
June	193.6	221.9	137.0	1.3	137.6	0.7
September	193.4	222.7	137.5	0.4	138.5	0.7
December	192.9	222.7	138.0	0.4	139.5	0.7
<b>2003</b>						
March	200.7	233.2	140.0	1.4	141.3	1.3

(a) Base year: 1989-90 = 100.

(b) Further information on construction of CPI indexes is contained in the bulletin *Australian Consumer Price Index Concepts, Sources and Methods* (cat. no. 6461.0).(c) As a result of the introduction of the 14th Series Australian CPI there have been changes to some groups and restructuring of some others. See Appendix A2 of the September quarter issue 2000 of *Consumer Price Index, Australia* (cat. no. 6401.0) for more information.

(d) See Note 5 on page 2 of this issue on the impacts of The New Tax System (TNTS) introduced on 1 July 2000.

Source: *Consumer Price Index, Australia* (cat. no. 6401.0).

*Index numbers for selected major building materials*

	<i>Structural timber</i>	<i>Clay bricks</i>	<i>Ready mixed concrete</i>	<i>Precast concrete products</i>	<i>Steel decking, cladding etc.</i>	<i>Structural steel</i>
<b>1999-2000</b>	114.4	129.1	118.1	131.6	109.6	128.8
<b>2000-01</b>	120.6	132.6	117.9	131.6	107.6	129.3
<b>2001-02</b>	123.0	137.0	122.7	131.6	104.4	130.2
<b>2001</b>						
March	121.4	131.8	119.4	131.6	108.2	129.4
June	119.1	135.3	116.9	131.6	107.5	129.4
September	122.3	135.3	117.0	131.6	107.7	129.4
December	123.1	135.3	116.7	131.6	105.6	129.4
<b>2002</b>						
March	123.2	137.6	124.0	131.6	102.5	131.0
June	123.4	139.9	133.2	131.6	101.8	131.0
September	124.0	143.9	133.8	131.6	107.8	132.1
December	124.8	144.0	134.0	131.6	107.0	132.1
<b>2003</b>						
March	126.1	147.0	134.0	131.6	113.1	132.1

*Index numbers for selected major building materials*

	<i>Reinforcing steel bar, fabric and mesh</i>	<i>Aluminium windows</i>	<i>Fabricated steel products</i>	<i>Builders hardware</i>	<i>Sand and aggregate</i>	<i>Paint and other coatings</i>	<i>Non-ferrous pipes and fittings</i>
<b>1999-2000</b>	110.5	108.5	114.0	116.0	144.0	133.7	168.2
<b>2000-01</b>	107.8	116.8	114.0	119.3	147.9	135.0	185.6
<b>2001-02</b>	107.9	120.3	114.9	123.4	148.7	137.6	180.9
<b>2001</b>							
March	107.8	120.3	116.1	119.6	151.6	136.2	193.1
June	107.8	120.3	113.9	121.4	148.4	136.2	188.1
September	107.8	120.3	113.9	123.4	147.1	137.6	183.2
December	107.9	120.3	114.4	123.6	147.4	137.4	178.1
<b>2002</b>							
March	107.9	120.3	111.4	123.3	147.4	137.6	182.0
June	107.9	120.3	119.7	123.3	152.9	137.9	180.2
September	110.3	120.3	129.7	123.2	157.2	140.2	176.4
December	110.3	120.3	129.7	123.2	157.2	142.4	176.4
<b>2003</b>							
March	110.7	120.3	126.7	123.2	157.2	141.9	176.4

For footnotes see end of table.

...continued

	<i>All electrical materials</i>		<i>All mechanical services</i>		<i>All plumbing materials</i>	
	<i>Index</i>	<i>% change over previous period</i>	<i>Index</i>	<i>% change over previous period</i>	<i>Index</i>	<i>% change over previous period</i>
<b>1999–2000</b>	117.6	1.6	120.3	1.1	127.0	2.0
<b>2000–01</b>	117.3	–0.3	118.2	–1.7	132.7	4.5
<b>2001–02</b>	118.5	1.0	120.9	2.3	132.4	–0.2
<b>2001</b>						
March	117.8	0.2	118.4	0.3	136.0	3.2
June	117.9	0.1	119.0	0.5	134.0	–1.5
September	118.2	0.3	119.8	0.7	131.8	–1.6
December	118.7	0.4	120.1	0.3	130.4	–1.1
<b>2002</b>						
March	119.5	0.7	121.8	1.4	133.4	2.3
June	117.7	–1.5	122.0	0.2	133.8	0.3
September	117.5	–0.2	122.1	0.1	135.0	0.9
December	117.6	0.1	122.5	0.3	135.3	0.2
<b>2003</b>						
March	117.8	0.2	132.6	0.1	134.8	–0.4
	<i>All groups excluding electrical materials and mechanical services</i>				<i>All groups</i>	
	<i>Index</i>	<i>% change over previous period</i>	<i>Index</i>	<i>% change over previous period</i>	<i>Index</i>	<i>% change over previous period</i>
<b>1999–2000</b>	119.1	0.3	119.0	0.4		
<b>2000–01</b>	120.5	1.2	119.3	0.3		
<b>2001–02</b>	122.1	1.3	121.3	1.7		
<b>2001</b>						
March	121.7	1.3	120.2	0.9		
June	121.3	–0.3	120.1	–0.1		
September	121.2	–0.1	120.3	0.2		
December	121.2	—	120.5	0.2		
<b>2002</b>						
March	122.2	0.8	121.6	0.9		
June	123.8	1.3	122.8	1.0		
September	124.9	0.9	123.5	0.6		
December	125.1	0.2	123.7	0.2		
<b>2003</b>						
March	125.6	0.4	124.2	0.4		

(a) Base year: 1989–90 = 100.

Source: ABS data available on request; *Producer Price Index* (cat. no. 6427.0).

	<i>Dairy products(a)</i>			<i>Staff hours worked</i>	
	<i>Whole milk(b)</i>	<i>Factory butter(c)</i>	<i>Factory cheese</i>	<i>Textile manufacturing(d)</i>	<i>Vegetable preserving</i>
	<i>million litres</i>	<i>tonnes</i>	<i>tonnes</i>	<i>'000</i>	<i>'000</i>
<b>1999–2000</b>	608.6	8 209	33 344	1 032	1 019
<b>2000–01</b>	589.7	5 949	32 355	938	1 037
<b>2001–02</b>	671.4	7 368	35 155	975	1 062
<b>2002</b>					
April	44.5	—	r 2 948	85	108
May	37.4	558	r 2 657	81	99
June	24.2	485	r 1 737	64	93
July	13.8	na	480	97	103
August	r 27.4	na	461	90	83
September	r 58.8	na	3 809	82	72
October	r 82.8	na	2 711	99	82
November	84.4	na	r 3 421	97	99
December	77.7	na	r 4 151	67	118
<b>2003</b>					
January	63.4	na	3 311	70	97
February	48.1	na	3 086	85	134
March	r 42.4	na	3 313	87	131
April	34.8	na	2 147	78	136
		<i>Refined zinc</i>	<i>Metallurgical refining</i>		<i>Electricity</i>
		<i>'000 tonnes</i>	<i>Index(e)</i>		<i>million kW.h</i>
<b>1999–2000</b>		231.7	133.2		10 050
<b>2000–01</b>		233.1	138.4		10 150
<b>2001–02</b>		251.7	140.8		10 210
<b>2002</b>					
April		21.7	144.3		..
May		23.7	150.2		..
June		22.3	142.4		(Jun qtr) 2 650
July		20.2	142.3		..
August		20.0	136.7		..
September		21.6	144.8		(Sep qtr) 2 800
October		19.6	143.7		..
November		20.2	142.2		..
December		21.0	145.7		(Dec qtr) 2 530
<b>2003</b>					
January		21.1	146.7		..
February		19.9	132.8		..
March		22.2	148.0		(Mar qtr) 2 430
April		22.0	145.8		..

(a) Source: Australian Dairy Corporation.

(b) Includes the whole milk equivalent of farm cream intake.

(c) Includes butter equivalent of butter oil. From July 2002 the Australian Dairy Corporation advised that Factory butter production data are confidential.

(d) Includes spinning, weaving and carpet making. Reported by establishments which manufacture textiles only, or manufacture clothing and textiles in the one plant.

(e) Metallurgical refining index (Base year: 1979–80 = 100.0). Output from selected establishments covering the smelting and refining of ferro-alloys, zinc and aluminium. The weighting pattern is based on the establishments' value added as derived from the 1979–80 manufacturing Census. For multi-product establishments, value added was apportioned to products on the basis of gross receipts from each product.

Source: ABS data available on request; Employees Hours Worked Survey; Monthly Production Survey; Manufacturing Survey.



## 20

### LIVESTOCK SLAUGHTERING — ORIGINAL

	Cattle						Pigs
	<i>Bulls, bullocks and steers</i>	<i>Cows and heifers</i>	<i>Calves</i>	<i>Sheep</i>	<i>Lambs</i>		
	'000	'000	'000	'000	'000	'000	
<b>1999–2000</b>	109.0	108.9	62.1	589.9	456.3	70.1	
<b>2000–01</b>	90.2	94.2	49.7	364.7	416.1	57.6	
<b>2001–02</b>	80.6	79.4	44.6	275.8	426.4	53.1	
<b>2001</b>							
April	6.5	8.6	1.1	26.9	25.7	4.9	
<b>2002</b>							
April	6.8	9.1	0.7	21.6	33.5	4.1	
May	8.3	12.4	0.8	30.3	44.9	5.1	
June	5.9	8.9	0.5	26.7	32.3	4.1	
July	4.4	7.5	1.2	19.6	33.8	4.0	
August	10.6	3.5	16.7	17.6	36.0	4.3	
September	4.2	2.7	12.6	15.8	29.1	3.8	
October	5.2	9.5	5.2	18.0	32.6	3.6	
November	7.6	10.8	1.3	24.7	32.6	4.4	
December	6.1	8.0	0.4	27.7	25.8	5.0	
<b>2003</b>							
January	8.4	11.6	0.3	45.2	35.9	4.0	
February	7.8	10.8	0.2	47.9	31.7	3.5	
March	7.0	11.5	0.5	55.5	28.1	3.6	
April	6.1	12.7	1.0	41.4	23.8	3.5	

Source: ABS data available on request; Livestock Slaughtered.

## 21

### LIVESTOCK SLAUGHTERING—SEASONALLY ADJUSTED(a) AND TREND(b)

	Seasonally adjusted						Trend	
	<i>Cattle and calves</i>			<i>Sheep and lambs</i>				<i>Pigs</i>
	'000	'000	'000	'000	'000	'000		'000
<b>2001</b>								
April	18.2	55.1	5.0	19.1	59.7	4.8		
<b>2002</b>								
April	17.0	56.8	4.2	16.0	56.4	4.1		
May	17.6	67.8	4.4	16.3	61.1	4.1		
June	15.8	62.6	3.6	16.6	64.7	4.0		
July	15.6	62.9	3.9	17.0	66.1	4.0		
August	22.3	72.2	4.7	17.8	65.4	4.1		
September	12.6	64.3	3.7	19.1	63.2	4.2		
October	21.5	57.7	3.8	20.9	60.7	4.4		
November	25.0	59.5	5.3	22.6	59.2	4.5		
December	23.0	51.3	4.5	23.7	59.0	4.5		
<b>2003</b>								
January	27.1	63.7	4.8	24.1	60.0	4.3		
February	24.0	60.0	3.9	23.9	61.8	4.1		
March	21.7	70.0	3.3	23.4	63.7	3.8		
April	20.6	63.1	3.4	22.3	65.4	3.5		

(a) Seasonally adjusted factors are reviewed annually to take account of each additional year's original data. The results of the review are used to compile revised seasonally adjusted and trend estimates; see Notes page 2.

(b) ABS trend estimates for the most recent months are revised; see Notes page 2.

Source: ABS data available on request; Livestock Slaughtered.

## 22

### MEAT PRODUCTION(a)

	<i>Beef</i>	<i>Veal</i>	<i>Mutton</i>	<i>Lamb</i>	<i>Pig meat(b)</i>	<i>Total</i>
	<i>tonnes</i>	<i>tonnes</i>	<i>tonnes</i>	<i>tonnes</i>	<i>tonnes</i>	<i>tonnes</i>
<b>1999–2000</b>	57 557	1 236	11 796	8 833	4 403	83 825
<b>2000–01</b>	48 771	996	7 232	8 014	3 583	68 596
<b>2001–02</b>	43 923	899	5 416	8 466	3 159	61 863
<b>2001</b>						
April	3 811	26	525	492	302	5 155
<b>2002</b>						
April	4 290	17	422	669	240	5 637
May	5 542	18	579	906	295	7 341
June	3 874	11	504	634	238	5 261
July	2 871	25	373	679	226	4 173
August	3 716	322	335	726	252	5 351
September	1 967	244	304	591	222	3 328
October	3 825	101	348	690	207	5 171
November	5 041	27	482	634	250	6 433
December	3 984	10	541	493	272	5 300
<b>2003</b>						
January	5 637	9	885	706	223	7 460
February	5 135	7	925	613	196	6 876
March	4 872	14	1 076	552	206	6 720
April	4 765	23	793	461	192	6 233

(a) Carcass weight.

(b) Includes pork used for production of bacon and ham.

Source: ABS data available on request; Livestock Slaughtered.

## 23

### PRINCIPAL MINERAL CONCENTRATES PRODUCED

	<i>Copper</i>	<i>Iron (pellets)</i>	<i>Lead</i>	<i>Lead-zinc</i>	<i>Tin</i>	<i>Zinc</i>
	<i>'000 tonnes</i>	<i>'000 tonnes</i>	<i>'000 tonnes</i>	<i>'000 tonnes</i>	<i>'000 tonnes</i>	<i>'000 tonnes</i>
<b>1999–2000</b>	104.3	2 068.3	98.7	7.9	14.8	311.9
<b>2000–01</b>	105.4	2 027.3	40.6	—	14.8	143.2
<b>2001–02</b>	115.0	2 151.6	35.6	—	12.4	138.7
<b>2001</b>						
March	29.3	534.9	12.1	—	3.9	43.2
June	29.5	447.5	11.2	—	4.3	39.5
September	32.5	487.8	8.9	—	3.1	35.2
December	30.9	554.1	8.4	—	3.6	37.9
<b>2002</b>						
March	28.0	533.5	9.9	—	2.7	33.3
June	23.6	576.3	8.5	—	3.0	32.4
September	34.5	513.1	9.7	—	3.7	39.0
December	25.4	516.3	9.2	—	1.7	93.3
<b>2003</b>						
March	25.6	578.7	12.4	—	2.4	99.0

Source: Mineral Resources Tasmania, Department of Infrastructure, Energy and Resources.

	Tasmanian-grown logs delivered					Sawn, peeled and sliced timber produced(b)				
	<i>Eucalypts</i>	<i>Hardwoods, excluding eucalypts(c)</i>	<i>Plant-ation(d) softwoods</i>	<i>Native soft-woods(e)</i>	<i>Total</i>	<i>Eucalypts</i>	<i>Hardwoods, excluding eucalypts(c)</i>	<i>Plant-ation(d) softwoods</i>	<i>Native soft-woods(e)</i>	<i>Total</i>
	'000 m <sup>3</sup>	'000 m <sup>3</sup>	'000 m <sup>3</sup>	'000 m <sup>3</sup>	'000 m <sup>3</sup>	'000 m <sup>3</sup>	'000 m <sup>3</sup>	'000 m <sup>3</sup>	'000 m <sup>3</sup>	'000 m <sup>3</sup>
<b>1999-2000</b>	510.1	28.8	396.2	0.9	936.9	169.7	5.3	190.6	0.4	366.0
<b>2000-01</b>	468.5	24.8	369.9	2.6	865.8	157.9	6.3	174.1	0.2	338.6
<b>2001-02</b>	513.9	31.7	447.2	0.9	993.8	170.2	8.1	208.9	0.3	387.4
<b>2001</b>										
March	105.3	6.7	91.9	1.8	205.6	37.2	1.5	42.4	0.1	81.2
June	116.3	8.8	91.5	0.2	216.9	37.4	1.8	43.6	—	82.9
September	129.8	5.6	115.9	0.1	251.4	42.1	1.8	50.9	0.1	95.0
December	115.0	8.9	94.3	0.1	218.4	37.8	2.2	48.4	0.1	88.3
<b>2002</b>										
March	116.2	10.3	121.6	0.3	248.5	41.6	2.7	53.6	0.1	97.9
June	152.8	6.9	115.4	0.3	275.4	48.7	1.4	56.0	0.1	106.2
September	143.4	5.4	122.3	0.2	271.3	44.7	1.4	58.8	0.1	105.0
December	142.6	5.3	143.6	1.0	292.5	41.3	1.8	55.9	0.1	99.1
<b>2003</b>										
March	113.8	8.1	124.8	0.5	247.1	36.5	1.6	56.5	0.1	94.6

(a) Separate data for logs delivered and sourced from Crown and Private land is available on request.

(b) Includes plywood, veneer and sliced timber production converted to an equivalent cubic measurement.

(c) Includes blackwood, myrtle, sassafras etc.

(d) Radiata pine.

(e) Includes Huon pine, Celery Top pine and King William pine.

Source: ABS data available on request, Forest Products Survey.

Value(e)

	Dwelling units				Non-residential buildings(d)			Total of all building	
	New houses	New other residential buildings(a)	Other dwelling units created (conversions etc.)(b)	Total dwelling units	New dwelling units	Alterations and additions to residential buildings(c)	Private		Total
	no.	no.	no.	no.	\$m	\$m	\$m		\$m
<b>1999–2000</b>	1 608	230	55	1 893	193.4	50.7	120.7	160.6	404.7
<b>2000–01</b>	1 108	80	10	1 198	127.5	43.1	95.2	152.5	323.0
<b>2001–02</b>	1 878	141	13	2 032	221.0	51.7	113.6	168.0	440.7
<b>2002</b>									
April	137	7	—	144	15.4	3.3	4.1	7.0	25.7
May	161	4	—	165	19.8	4.6	11.3	11.6	36.0
June	164	6	2	172	17.8	3.9	6.1	14.0	35.7
July	174	4	1	179	22.1	5.0	25.9	27.7	54.8
August	172	4	1	177	21.7	5.4	8.1	9.1	36.1
September	172	6	—	178	20.8	4.3	7.6	9.9	35.1
October	151	19	2	172	19.4	6.3	8.5	10.3	36.0
November	142	3	—	145	16.9	3.4	6.2	12.3	32.6
December	189	9	—	198	24.3	5.6	7.4	9.8	39.6
<b>2003</b>									
January	137	2	2	141	18.3	5.2	10.4	15.9	39.4
February	146	4	2	152	18.3	5.1	9.5	17.0	40.4
March	175	7	1	183	22.8	5.6	15.5	17.4	45.7
April	146	23	4	173	22.4	3.9	9.7	20.5	46.8

(a) New individual dwelling units (e.g. flats, home units and villa units).

(b) From alterations and additions to residential building, conversions of non-residential building to residential building etc.

(c) Valued at \$10,000 and over. Includes conversions and dwelling units approved as part of alterations and additions or as part of the construction of non-residential building.

(d) Comprises non-residential building (new plus alterations and additions) valued at \$50,000 and over.

(e) Value data from July 2000 reference month onward are recorded inclusive of GST. See *Building Approvals, Australia* (cat. no. 8731.0) or page 2 of this publication for more details.

Source: *Building Approvals, Australia* (cat. no. 8731.0).

	<i>Total number of dwellings(a)</i>			<i>Total value of commitments(b)</i>		
	<i>Original</i>	<i>Seasonally adjusted</i>	<i>Trend</i>	<i>Original</i>	<i>Seasonally adjusted</i>	<i>Trend</i>
	<i>no.</i>	<i>no.</i>	<i>no.</i>	<i>\$m</i>	<i>\$m</i>	<i>\$m</i>
<b>2002</b>						
April	1 005	1 011	1 083	87	89	93
May	1 303	1 113	1 081	108	95	93
June	1 022	1 097	1 083	88	96	94
July	1 115	1 117	1 087	98	94	94
August	1 114	1 076	1 096	98	94	96
September	990	1 076	1 105	91	96	98
October	1 158	1 104	1 113	105	103	100
November	1 153	1 099	1 118	105	98	103
December	1 174	1 226	1 118	111	111	105
<b>2003</b>						
January	977	1 102	1 112	91	112	106
February	1 015	1 019	1 102	99	99	108
March	1 152	1 106	1 092	114	106	109
April	1 074	1 098	1 083	106	116	110

(a) Includes new dwellings, established dwellings and refinancing. Excludes alterations and additions.

(b) Commitment is a firm offer of housing finance. It either has been, or is normally expected to be, accepted. Includes commitments to provide housing finance to employees and commitments accepted and cancelled in the same month. Excludes alterations and additions. Includes refinancing.

Source: *Housing Finance for Owner Occupation, Australia (cat. no. 5609.0)*

	Asset			Industry			
	<i>Buildings and structures</i>	<i>Equipment, plant and machinery</i>	<i>Total asset</i>	<i>Mining</i>	<i>Manufacturing</i>	<i>Other selected industries</i>	<i>Total all industries</i>
	\$m	\$m	\$m	\$m	\$m	\$m	\$m
<b>1999–2000</b>	98	411	508	54	135	319	508
<b>2000–01</b>	133	466	600	87	162	352	600
<b>2001–02</b>	444	518	962	57	154	752	962
<b>2001</b>							
March	32	95	127	12	33	83	127
June	28	136	164	25	50	89	164
September	67	122	189	15	41	134	189
December	103	107	210	11	42	157	210
<b>2002</b>							
March	136	120	256	17	36	203	256
June	138	169	307	14	35	258	307
September	88	101	189	9	33	147	189
December	r 55	r 213	r 268	13	r 69	r 186	r 268
<b>2003</b>							
March	73	149	222	14	89	119	222

(a) Estimates based on a sample survey and therefore subject to sampling variability. Covers selected industries only — mining, manufacturing, and other selected industries.

(b) Current prices.

(c) See *Private New Capital Expenditure and Expected Expenditure* (cat. no. 5625.0) or page 2 of this issue on the impacts of The New Tax System (TNTS) introduced on 1 July 2000.

(d) There have been significant revisions to all data contained in this issue. For more information see Revisions in this Issue on pages 3 and 4 of *Private New Capital Expenditure and Expected Expenditure, September Quarter 2002* (cat. no. 5625.0).

Source: *Private New Capital Expenditure and Expected Expenditure* (cat. no. 5625.0).

	<i>Establish- ments</i>	<i>Guest rooms</i>	<i>Bed spaces</i>	<i>Persons employed</i>	<i>Room nights occupied</i>	<i>Room occupancy rate</i>	<i>Guest nights</i>	<i>Bed occupancy rate</i>	<i>Guest arrivals</i>	<i>Takings from accommodation(b)</i>
	<i>no.</i>	<i>no.</i>	<i>no.</i>	<i>no.</i>	<i>'000</i>	<i>%</i>	<i>'000</i>	<i>%</i>	<i>'000</i>	<i>\$'000</i>
<b>LICENSED HOTELS WITH FACILITIES</b>										
<b>2001</b>										
December qtr	53	2 900	7 955	2 743	139.5	52.3	226.0	30.9	123.6	13 313
<b>2002</b>										
October	na	na	na	na	49.8	56.1	77.9	32.1	42.9	4 796
November	na	na	na	na	54.6	63.4	84.9	36.1	48.6	4 959
December	na	na	na	na	47.1	52.9	81.5	33.6	45.0	4 713
December qtr	54	2 867	7 831	2 558	151.4	57.4	244.3	33.9	136.5	14 468
<b>MOTELS AND GUEST HOUSES WITH FACILITIES</b>										
<b>2001</b>										
December qtr	49	1 646	5 178	715	79.8	52.7	151.3	31.8	88.6	7 295
<b>2002</b>										
October	na	na	na	na	31.4	56.3	57.3	34.0	31.8	2 912
November	na	na	na	na	32.6	60.4	60.1	36.8	33.1	3 090
December	na	na	na	na	29.5	52.8	58.9	34.9	32.1	2 920
December qtr	55	1 801	5 444	1 019	93.6	56.5	176.3	35.2	97.0	8 921
<b>SERVICED APARTMENTS</b>										
<b>2001</b>										
December qtr	26	1 011	3 458	458	53.2	57.2	110.9	34.9	47.2	6 254
<b>2002</b>										
October	na	na	na	na	22.4	64.1	46.0	38.1	18.1	2 490
November	na	na	na	na	23.9	70.7	47.9	41.0	21.1	2 709
December	na	na	na	na	24.3	69.5	51.6	42.7	21.4	2 623
December qtr	31	1 129	3 895	552	70.7	68.1	145.4	40.6	60.6	7 822
<b>TOTAL ESTABLISHMENTS</b>										
<b>2001</b>										
December qtr	128	5 557	16 591	3 916	272.6	53.3	488.2	32.0	259.4	26 862
<b>2002</b>										
October	na	na	na	na	103.7	57.7	181.2	34.0	92.8	10 198
November	na	na	na	na	111.1	63.9	192.8	37.4	102.9	10 758
December	na	na	na	na	100.9	56.1	192.1	36.1	98.4	10 256
December qtr	140	5 797	17 170	4 129	315.7	59.2	566.1	35.8	294.1	31 211

(a) Comprising establishments with 15 or more rooms or units. For explanation of terms and concepts refer to *Tourist Accommodation, Australia* (cat. no. 8635.0).

(b) 'Takings from accommodation' after 1 July 2000 are recorded inclusive of GST. See *Tourist Accommodation, Australia* (cat. no. 8635.0) or page 2 of this publication for more details.

Source: *Tourist Accommodation, Australia* (cat. no. 8635.0). For more detailed information, see *Tourist Accommodation, Small Area Data, Tasmania* (cat. no. 8635.6.40.001).

## Tasmanian National Park attendance

	<i>Cradle Mountain(b)</i> <i>(Lake Dove)</i>	<i>Lake St Clair(b)</i> <i>(Cynthia Bay)</i>	<i>Mt Field(b)</i>	<i>Freycinet(c)</i>	<i>Narawntapu(d)</i> <i>(Bakers Beach)</i>	<i>Mole Creek Karst(e)</i> <i>(Marakoopa Cave)</i>	<i>Maria Island(f)</i> <i>(Darlington)</i>
	<i>no.</i>	<i>no.</i>	<i>no.</i>	<i>no.</i>	<i>no.</i>	<i>no.</i>	<i>no.</i>
<b>1999–2000</b>	182 100	111 600	130 700	291 000	33 500	29 460	13 213
<b>2000–01</b>	168 700	111 800	138 700	273 000	34 300	26 788	12 820
<b>2001–02</b>	178 600	107 800	133 900	273 300	35 800	26 103	12 598
<b>2002</b>							
May	9 100	5 000	6 800	12 500	1 300	998	616
June	7 100	3 400	4 700	8 500	1 500	1 345	451
July	6 500	3 100	5 500	p 11 400	1 500	1 079	176
August	6 800	2 600	5 200	p 13 700	1 700	772	754
September	11 300	5 900	9 100	p 16 500	1 700	1 505	750
October	14 300	10 300	9 800	p 19 500	2 400	2 328	983
November	17 200	12 300	12 000	p 27 100	4 200	2 711	1 509
December	23 400	14 400	16 700	p 36 600	4 700	4 506	1 479
<b>2003</b>							
January	34 900	22 600	24 900	p 57 800	7 100	4 505	2 025
February	22 700	18 000	16 700	p 39 700	4 000	2 676	1 366
March	24 900	18 500	15 700	p 36 700	4 200	2 632	1 576
April	26 600	16 400	16 300	p 32 400	3 900	2 837	1 344
May	p 11 400	6 700	9 600	na	na	1 652	886

(a) A 'person entry' occurs whenever a visitor enters a National Park. Freycinet data, in particular, reflects repeat entries. Measurement occurs at the designated sites in brackets.

(b) Estimated through a combination of traffic and booth counts.

(c) As of July 2002, estimates of person entries is derived using traffic counts only. As a result, pre and post-July 2002 data are not strictly comparable.

(d) Estimated through traffic counts.

(e) Number of people taken on a guided tour.

(f) The sum of ferry arrivals only. From July 2000, excludes estimated plane passengers. Services disrupted during December 2002.

Source: *Tasmanian Parks and Wildlife Service, Department of Primary Industries, Water and Environment.*



	<i>Overland(b)</i>	<i>South Coast(c)</i>	<i>Freycinet(d)</i>	<i>Port Davey(c)</i>	<i>Frenchmans Cap</i>
	<i>no.</i>	<i>no.</i>	<i>no.</i>	<i>no.</i>	<i>no.</i>
<b>1999–2000</b>	7 240	1 011	2 784	272	807
<b>2000–01</b>	7 273	915	3 002	208	753
<b>2001–02</b>	7 537	1 099	3 512	229	644
<b>2002</b>					
May	147	5	307	1	22
June	79	2	152	1	20
July	38	1	122	—	2
August	46	—	47	—	13
September	141	26	205	—	12
October	222	11	128	—	7
November	670	76	466	16	130
December	1 398	182	372	31	94
<b>2003</b>					
January	1 702	259	810	67	173
February	1 362	185	331	22	151
March	1 170	p 109	276	9	81
April	r 1 140	rp 75	279	10	114
May	p 147	na	p 34	na	na

(a) Numbers include only walkers who registered and represented their intention.

(b) Sum of registrations at Cradle Mt and Lake St Clair.

(c) Sum of registrations to walk the length of the track in any direction, irrespective of starting point.

(d) All overnight walkers registered in the park.

Source: *Tasmanian Parks and Wildlife Service, Department of Primary Industries, Water and Environment.*

	Passenger vehicles	Other vehicles	Total	Change from corresponding month of previous year
	no.	no.	no.	%
ORIGINAL				
<b>1999–2000</b>	9 236	4 708	13 944	..
<b>2000–01</b>	9 944	4 693	14 637	..
<b>2001–02</b>	9 467	5 295	14 762	..
<b>2002</b>				
May	737	606	1 343	18.0
June	673	621	1 294	10.0
July	709	465	1 174	9.5
August	785	526	1 311	11.4
September	756	483	1 239	18.7
October	707	496	1 203	-4.3
November	869	529	1 398	-2.0
December	1 063	521	1 584	-15.4
<b>2003</b>				
January	591	434	1 025	3.6
February	619	450	1 069	-1.9
March	723	495	1 218	11.4
April	631	546	1 177	6.7
May	743	711	1 454	8.3
TREND				
<b>1999–2000</b>	9 216	4 720	13 936	..
<b>2000–01</b>	9 887	4 691	14 579	..
<b>2001–02</b>	9 504	5 266	14 771	..
<b>2002</b>				
May	778	481	1 259	10.9
June	770	495	1 265	13.5
July	760	507	1 267	13.6
August	745	516	1 261	11.1
September	726	522	1 248	6.4
October	712	525	1 237	1.6
November	710	523	1 233	-1.7
December	719	521	1 240	-2.8
<b>2003</b>				
January	737	520	1 257	-1.9
February	761	524	1 285	0.8
March	786	532	1 318	4.4
April	810	543	1 353	7.6
May	829	552	1 381	9.7

(a) These statistics are based on the VFACTS series produced by the Federal Chamber of Automotive Industries. VFACTS reports the numbers of new motor vehicle sales by dealers and direct sales by manufacturers throughout Australia.

Source: Sales of New Motor Vehicles (cat. no. 9314.0.55.001).

								<i>Trend</i>	
								<i>Total(d)</i>	
	Original	Food retailing	Clothing and soft good retailing	Household good retailing	Recreational good retailing	Hospitality and services	Change from corresponding period of previous year		
	\$m	\$m	\$m	\$m	\$m	\$m	\$m	%	
<b>1999-2000</b>	3 074.4	1 325.5	150.5	403.1	180.3	369.6	3 047.7	1.8	
<b>2000-01</b>	3 222.4	1 401.0	158.9	479.7	180.9	377.9	3 230.1	6.0	
<b>2001-02</b>	3 384.3	1 448.5	190.1	519.9	193.0	365.0	3 387.2	4.9	
<b>2002</b>									
April	277.6	122.8	16.6	45.8	16.4	29.9	289.9	5.4	
May	293.0	122.9	16.6	46.4	16.3	30.4	291.4	6.1	
June	275.8	122.5	16.6	47.0	16.2	31.1	292.3	6.7	
July	272.2	121.9	16.6	47.3	16.0	31.9	292.9	7.1	
August	281.0	121.5	16.6	47.3	15.9	32.6	293.5	7.2	
September	269.6	121.4	16.5	47.1	15.8	33.1	294.3	7.1	
October	297.9	121.5	16.4	46.8	15.6	33.2	295.2	6.7	
November	313.1	121.8	16.4	46.7	15.5	33.1	296.3	6.4	
December	387.9	122.0	16.5	46.9	15.4	32.8	297.4	6.0	
<b>2003</b>									
January	299.5	122.1	16.6	47.3	15.3	32.6	298.5	5.6	
February	270.6	122.2	16.8	47.8	15.2	32.5	299.5	5.0	
March	296.8	122.5	16.9	48.3	15.2	32.5	300.7	4.5	
April	298.6	122.6	17.0	48.8	15.2	32.6	301.7	4.1	

(a) Excludes motor vehicles, parts, petrol, etc.

(b) ABS retail seasonally adjusted and trend estimates for earlier periods are revised each month. See *Retail Trade, Australia* (cat. no. 8501.0) for more details.

(c) Data from July 2000 reference month onwards are recorded inclusive of GST. See *Retail Trade, Australia* (cat. no. 8501.0) and page 2 of this publication for more details. A break in the trend series occurred between June and July 2000 because of the impact of The New Tax System on retail turnover.

(d) Includes Department stores and Other retailing.

Source: *Retail Trade, Australia* (cat. no. 8501.0).

	Tasmania				Australia			
	Imports	Imports change over preceding period	Exports	Exports change over preceding period	Imports	Imports change over preceding period	Exports(b)	Exports change over preceding period
	\$m	%	\$m	%	\$m	%	\$m	%
<b>1999-2000</b>	440	8	2 215	10	110 078	13	97 286	13
<b>2000-01</b>	524	19	2 435	10	118 317	7	119 539	23
<b>2001-02</b>	518	-1	2 388	-2	119 649	1	121 108	1
<b>2002</b>								
April	32	11	278	9	10 154	6	9 784	-6
May	46	46	196	-29	10 142	—	10 018	2
June	34	-27	196	—	9 618	-5	9 807	-2
July	322	854	193	-2	11 301	18	10 122	3
August	48	-85	225	17	11 386	1	10 278	2
September	44	-9	185	-18	10 824	-5	9 916	-4
October	42	-5	183	-1	11 893	10	r 10 416	5
November	30	-28	257	r 40	11 637	-2	r 10 000	-4
December	42	37	210	-18	r 12 128	4	r 10 395	4
<b>2003</b>								
January	39	-7	196	-6	10 901	-10	r 8 903	-14
February	47	20	183	-7	r 10 223	-6	r 9 003	1
March	30	-35	224	r 23	r 10 739	5	r 9 844	r 9
April	52	71	206	-8	10 953	2	8 748	-11

(a) It is difficult to get a complete picture of Tasmania's trade performance as imports recorded by the ABS include only goods imported directly into the state from overseas, and reported by the Australian Customs Service. Many of Tasmania's goods imported for direct consumption, or input into further processing industries, arrive via interstate ports, and are not included in this table.

(b) Includes re-exports.

Source: ABS data available on request, *International Trade*.

	European Community			East Asia					Total all countries
	United States of America	United Kingdom	Total European Community	Japan	Korea	Taiwan	Hong Kong	ASEAN(a)	
	\$'000	\$'000	\$'000	\$'000	\$'000	\$'000	\$'000	\$'000	
<b>1999–2000</b>	202 831	19 228	309 082	489 037	133 553	207 233	201 348	383 690	2 214 523
<b>2000–01</b>	229 841	37 169	154 043	573 314	183 972	214 042	252 793	390 642	2 435 416
<b>2001–02</b>	295 301	35 702	129 225	547 903	223 208	153 819	263 275	347 321	2 387 806
<b>2002</b>									
April	14 823	5 695	21 262	35 728	29 027	15 430	17 935	37 481	278 101
May	25 370	3 609	12 306	45 846	13 477	9 788	26 904	23 856	196 135
June	23 373	2 740	6 641	51 516	19 505	20 428	24 126	25 954	195 693
July	15 492	4 089	16 047	39 147	23 290	14 407	21 526	28 475	192 594
August	17 347	3 163	8 830	60 154	20 287	17 078	36 154	30 505	224 729
September	10 027	4 012	16 254	41 879	24 133	9 507	28 449	25 207	184 956
October	14 462	1 175	9 195	53 803	25 511	10 861	11 353	29 069	r 183 035
November	74 124	2 704	7 876	44 174	23 738	15 083	33 495	19 355	r 256 503
December	5 599	2 767	20 498	56 967	18 641	18 777	33 271	25 523	209 654
<b>2003</b>									
January	15 865	2 233	4 036	54 076	21 297	9 256	35 978	24 660	196 348
February	17 040	r 1 730	r 15 102	r 44 205	26 857	r 9 923	r 21 735	r 16 956	r 183 011
March	r 16 842	r 11 302	r 26 871	r 47 074	r 17 598	r 10 041	r 36 893	r 26 382	r 224 381
April	21 221	2 340	17 959	50 678	19 245	14 748	23 017	34 170	205 935

(a) ASEAN member countries are: Brunei, Cambodia, Indonesia, Laos, Malaysia, Myanmar, Philippines, Singapore, Thailand and Viet Nam.

Source: ABS data available on request, International Trade.

	<i>Meat and meat preparations</i>	<i>Dairy product &amp; eggs</i>	<i>Fish, crustaceans and molluscs</i>	<i>Vegetables and fruit</i>	<i>Wood and woodchips(a)</i>	<i>Textile fibres and wastes</i>	<i>Metallic ores and metal scrap</i>
	\$'000	\$'000	\$'000	\$'000	\$'000	\$'000	\$'000
<b>1999-2000</b>	88 298	64 573	145 484	44 689	303 340	22 358	242 584
<b>2000-01</b>	88 773	101 006	176 737	49 788	31 816	21 248	242 366
<b>2001-02</b>	75 541	114 682	174 885	60 759	43 788	23 797	188 273
<b>2002</b>							
April	4 266	10 089	12 805	16 459	3 599	1 030	14 446
May	4 911	9 839	8 402	10 700	6 604	633	20 622
June	6 153	15 304	6 840	6 065	3 698	1 972	17 261
July	4 954	5 878	14 535	4 322	5 441	2 081	18 011
August	6 543	6 449	16 903	2 950	3 116	2 853	15 825
September	4 246	7 112	14 790	2 423	4 404	1 006	10 391
October	4 485	4 384	10 511	r 1 075	3 214	2 583	5 832
November	5 893	6 152	16 506	637	4 281	1 380	r 21 402
December	9 765	10 375	22 076	1 392	4 660	3 630	13 880
<b>2003</b>							
January	5 623	9 204	18 286	2 960	375	706	18 142
February	r 7 371	6 573	11 892	3 507	2 083	4 729	15 509
March	r 7 633	r 11 669	r 11 685	10 158	3 634	r 12 534	13 334
April	7 072	9 946	9 822	14 609	3 457	772	5 782

	<i>Paper and paperboard</i>	<i>Iron and steel</i>	<i>Non-ferrous metals</i>	<i>Road vehicles and transport equipment</i>	<i>Other and combined confidential items(b)</i>	<i>Total all commodity groups</i>
	\$'000	\$'000	\$'000	\$'000	\$'000	\$'000
<b>1999-2000</b>	9 932	10 216	681 903	213 836	387 310	2 214 523
<b>2000-01</b>	3 444	4 209	793 286	107 374	815 368	2 435 416
<b>2001-02</b>	14 208	2 894	762 015	106 156	820 806	2 387 806
<b>2002</b>						
April	1 434	162	69 596	79 582	64 634	278 101
May	702	88	60 215	320	73 098	196 135
June	1 149	245	69 919	577	66 510	195 693
July	1 105	150	64 629	118	71 369	192 594
August	1 246	230	83 106	26	85 482	224 729
September	1 355	258	64 723	21	74 225	184 956
October	1 141	170	62 728	2 743	84 169	r 183 035
November	1 684	152	67 425	62 466	68 483	r 256 503
December	1 726	827	63 776	196	77 351	209 654
<b>2003</b>						
January	2 239	149	65 986	106	72 572	196 348
February	2 723	239	51 372	260	76 753	r 183 011
March	3 168	212	r 65 146	8 190	r 77 019	r 224 381
April	3 909	245	63 759	609	85 954	205 935

(a) Hardwood woodchips exports are confidential for Tasmania from June 2000.

(b) Includes medical & pharmaceutical products from January 2002.

Source: ABS data available on request, *International Trade*.

	NSW	Vic.	Qld	SA	WA	Tas.	Aust.(a)
<b>Population</b>							
Estimated resident population, December 2002 ('000) p	6 671.4	4 902.9	3 750.5	1 524.1	1 940.5	<b>474.4</b>	19 786.6
Proportion of Australian population, December 2002 (%) p	33.7	24.8	19.0	7.7	9.8	<b>2.4</b>	100.0
Population growth rate, 12 months to December 2002 (%) p	0.9	1.4	2.4	0.6	1.4	<b>0.5</b>	1.3
<b>Labour force</b>							
Employment growth, May 2002 to May 2003 (trend series) (%)							
Males	1.3	0.6	2.1	2.9	3.1	<b>2.7</b>	1.6
Females	3.7	4.1	5.6	5.1	1.5	<b>3.7</b>	3.8
Persons	2.3	2.1	3.6	3.9	2.4	<b>3.1</b>	2.6
Unemployment rate (trend series), May 2003 (%)	6.0	5.8	6.9	6.1	5.7	<b>8.3</b>	6.1
Unemployment growth, May 2002 to May 2003 (trend series) (%)	1.3	0.4	-4.3	-5.6	-5.0	—	-1.4
Participation rate (trend series), May 2003 (%)	63.2	63.8	65.1	62.2	66.5	<b>59.0</b>	64.1
Job vacancy rate, February 2003 (%)	1.4	1.3	1.3	1.2	1.6	<b>1.2</b>	1.4
Working days lost through industrial disputes, 12 months to March 2003 (days per '000 employees)	20	44	40	18	39	<b>10</b>	31
<b>Wages and prices</b>							
Average weekly full-time adult employees' total earnings (trend series) February 2003 (\$)							
Males	1 082.20	1 007.00	923.10	919.10	1 011.00	<b>897.30</b>	1 010.90
Females	855.30	820.40	768.90	787.30	763.00	<b>767.00</b>	818.50
Persons	996.20	940.30	868.30	876.30	928.20	<b>857.50</b>	941.50
Average weekly full-time adult employees' total earnings, growth (trend), 12 months to February '03 (%)	5.9	5.1	4.2	3.5	3.3	<b>5.2</b>	5.0
Consumer price index, all groups, annual growth to March quarter 2003 (%) <sup>(b)</sup>	3.0	3.6	3.4	5.0	2.8	<b>3.6</b>	3.4
<b>Building</b>							
% change in the number of total dwelling units approved (original), — in the 12 months ended April 2003, over the same period previous year	3.1	-0.1	9.9	3.1	3.2	<b>4.0</b>	3.9
— April 2002 to April 2003	-29.4	-3.5	-15.7	-30.8	-12.7	<b>20.1</b>	-16.7

For footnotes see end of table.

...continued

	NSW	Vic.	Qld	SA	WA	Tas.	Aust.(a)
<b>Private investment and retail trade</b>							
% change in private new capital expenditure, 12 months ended March 2003 over the same period previous year (original)	1.1	15.9	23.7	33.3	16.3	<b>20.4</b>	14.6
% change in trend estimates turnover of retail establishments, April 2003 (change from corresponding month of the previous year)	5.6	4.4	6.5	6.1	3.6	<b>4.1</b>	5.3
<b>Transport</b>							
% change in number of sales of new motor vehicles in the 12 months ended May 2003 over the same period previous year, (trend)(c)	3.1	6.3	13.3	12.3	6.2	<b>5.0</b>	6.8
<b>Agriculture</b>							
% change in the number of livestock slaughtered 12 months ended April 2003 over the same period previous year (original)							
Cattle and calves	1.0	18.3	-5.6	1.1	2.4	<b>19.4</b>	2.3
Sheep and lambs	-25.6	-7.3	-41.8	-15.9	-1.5	<b>18.2</b>	-15.6
<b>Tourism — room occupancy rates</b>							
Hotels, motels & guest houses, & serviced apartments with facilities, December quarter 2002 (%)	62.1	59.9	64.4	61.1	59.3	<b>59.2</b>	61.7
<b>Australian National and State Accounts</b>							
% change in Domestic (State) Final Demand(d), Chain Volume measures (trend series)							
December quarter 2002 to March quarter 2003	1.1	0.7	1.4	1.0	1.1	<b>0.4</b>	1.1
March quarter 2002 to March quarter 2003	4.9	4.5	7.1	6.0	6.3	<b>3.8</b>	5.4

(a) Australian totals include the ACT and NT, with the exception of Agriculture, which excludes both.

(b) CPI applies to state capitals.

(c) This data is new and replaces the Registration of New Motor Vehicles data. The Australian Bureau of Statistics is no longer collecting and disseminating statistics relating to the registration of new motor vehicles. For more information please refer to the *Information Paper: Developments in New Motor Vehicle Statistics, 2001* (cat. no. 9313.0)

(d) Total of four types of expenditure: Private investment, Private consumption, Government investment, Government consumption.



		Greater Hobart and Southern Statistical Divisions	Northern Statistical Division	Mersey-Lyell Statistical Division	Tasmania
<b>Area(a)</b>	km <sup>2</sup>	25 616	19 980	22 523	68 121
<b>Population</b>					
Estimated resident population, 30 June 1996	no.	230 187	134 047	110 209	474 443
Estimated resident population, 30 June 2002	no.	232 713	133 595	106 417	472 725
Births 2001(b)	no.	3 199	1 815	1 397	6 430
Deaths 2001(b)	no.	1 827	1 148	884	3 876
<b>Labour force (original), May 2003</b>					
Total employed	no.	101 600	62 400	42 600	206 600
Total unemployed	no.	7 600	4 500	4 600	16 700
Unemployment rate	%	6.9	6.7	9.8	7.5
Participation rate	%	59.4	63.3	53.7	59.1
<b>Schools, 2000(c)</b>					
Government	no.	99	58	58	215
Non-government	no.	34	17	16	67
<b>Full-time equivalent School students, 2000(c)</b>					
Government					
Males	no.	15 415.8	9395.0	7 805.3	32 616.1
Females	no.	14 865.6	9 492.4	7 597.5	31 955.5
Total	no.	30 281.4	18 887.4	15 402.8	64 571.6
Non-government					
Males	no.	5 825.2	2 479.1	2 022.2	10 326.5
Females	no.	6 132.9	2 423.5	1 919.2	10 475.6
Total	no.	11 958.1	4 902.6	3 941.4	20 802.1
<b>Educational qualification, 2001 Census(d)</b>					
Postgraduate degree level	no.	3 016	940	386	4 342
Graduate diploma and Graduate certificate level	no.	2 374	850	525	3 749
Batchelor degree level	no.	16 171	7 052	3 821	27 044
Advanced diploma and diploma level	no.	9 613	4 785	3 429	17 827
Certificate level	no.	25 715	15 463	12 953	54 131
<b>Agriculture</b>					
Establishments with agricultural activity, 2000–01 season	no.	1 126	1 534	1 626	4 286
Total area of establishments	ha.	742 247	840 809	323 703	1 906 759
Crops, production, 2000–01 season					
Potatoes	tonnes	8 820	116 029	206 170	331 019
Onions	tonnes	1	13 365	28 849	42 215
Apples	tonnes	42 269	4 043	9 793	56 105
Barley	tonnes	8 048	16 402	1 542	25 992
Livestock, 2000–01 season					
Meat cattle	no.	56 819	169 986	199 655	426 460
Milk cattle	no.	6 682	79 391	123 727	209 800
Sheep and lambs	no.	1 363 695	1 731 700	188 853	3 284 248
Pigs	no.	1 573	16 190	4 339	22 103
Gross value of agricultural production, 2000–01	\$m	159	281	315	755

For footnotes see end of table.

...continued

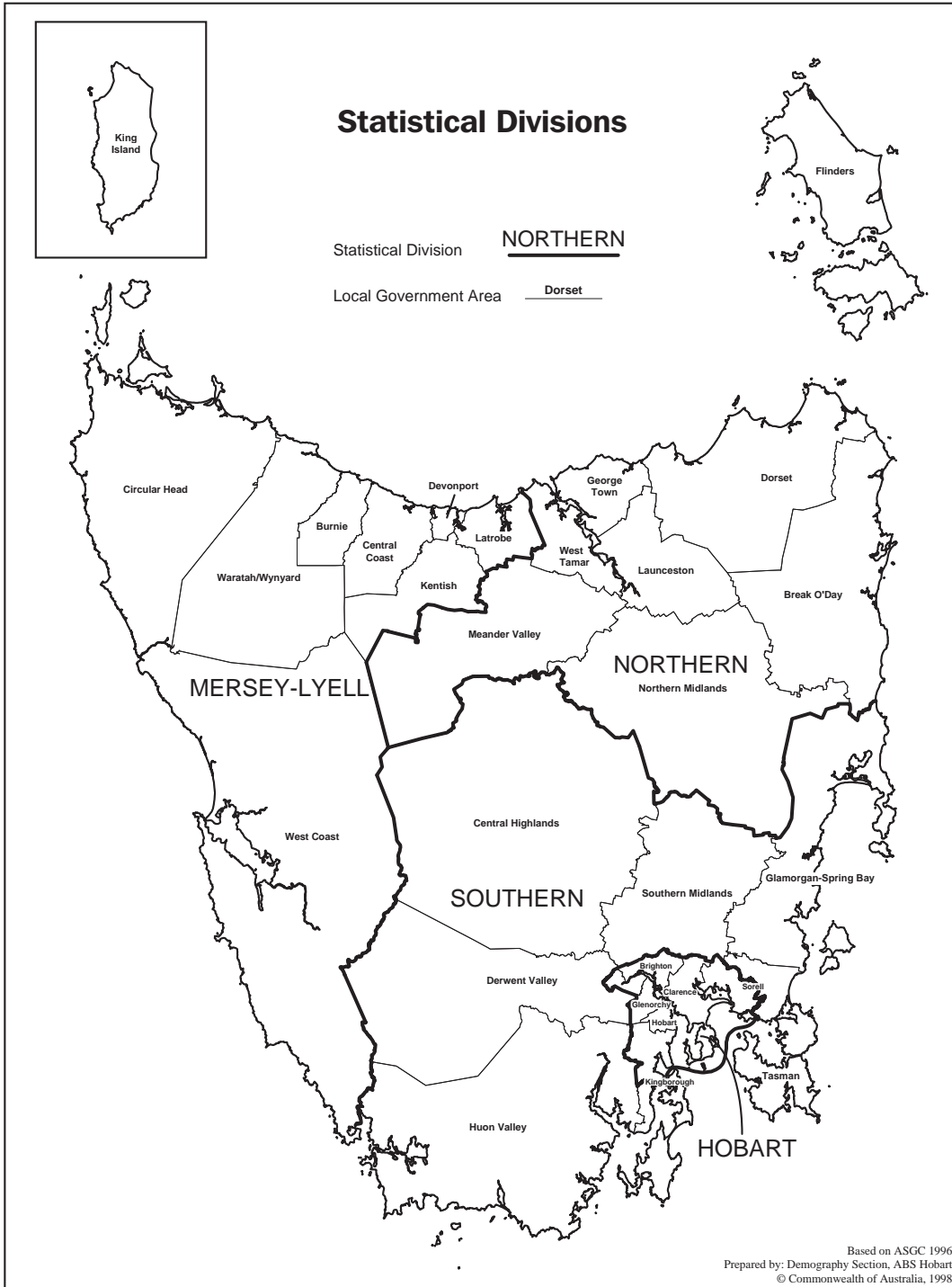
	<i>Unit</i>	<i>Greater Hobart and Southern Statistical Divisions</i>	<i>Northern Statistical Division</i>	<i>Mersey-Lyell Statistical Division</i>	<i>Tasmania</i>
<b>Building, 2001–02</b>					
Total dwelling units approved	no.	1 098	637	297	2 032
Value of total residential building approved	\$'000	150 941	79 427	42 359	272 727
Value of total building approved	\$'000	242 609	121 721	76 380	440 710
<b>Dwellings, Census 2001</b>					
Total dwellings	no.	102 374	59 307	46 364	208 046
Occupied private dwellings	no.	89 156	51 249	40 766	181 172
Fully owned	no.	35 777	21 570	17 984	75 331

(a) Source: Department of Primary Industries, Water and Environment.

(b) Births and deaths are based on usual residence year of registration. Total Tasmania includes usual residence other than Tasmanian Statistical Divisions.

(c) Source: DETYA and Tasmanian Department of Education.

(d) From 2001 the *Australian Standard Classification of Education (ASCED)* (cat. no. 1272.0) replaced the *ABS Classification of Qualifications (ABSCQ)* (cat. no. 1262.0). For further information see ASCED.



## FOR MORE INFORMATION...

- INTERNET* **www.abs.gov.au** the ABS web site is the best place to start for access to summary data from our latest publications, information about the ABS, advice about upcoming releases, our catalogue, and Australia Now—a statistical profile.
- LIBRARY* A range of ABS publications is available from public and tertiary libraries Australia-wide. Contact your nearest library to determine whether it has the ABS statistics you require, or visit our web site for a list of libraries.
- CPI INFOLINE* For current and historical Consumer Price Index data, call 1902 981 074 (call cost 77c per minute).
- DIAL-A-STATISTIC* For the latest figures for National Accounts, Balance of Payments, Labour Force, Average Weekly Earnings, Estimated Resident Population and the Consumer Price Index call 1900 986 400 (call cost 77c per minute).

## INFORMATION SERVICE

Data which have been published and can be provided within five minutes are free of charge. Our information consultants can also help you to access the full range of ABS information—ABS user-pays services can be tailored to your needs, time frame and budget. Publications may be purchased. Specialists are on hand to help you with analytical or methodological advice.

- PHONE* **1300 135 070**
- EMAIL* **client.services@abs.gov.au**
- FAX* 1300 135 211
- POST* Client Services, ABS, GPO Box 796, Sydney 2001

## WHY NOT SUBSCRIBE?

ABS subscription services provide regular, convenient and prompt deliveries of ABS publications and products as they are released. Email delivery of monthly and quarterly publications is available.

- PHONE* 1300 366 323
- EMAIL* subscriptions@abs.gov.au
- FAX* 03 9615 7848
- POST* Subscription Services, ABS, GPO Box 2796Y, Melbourne 3001



2130360007031  
ISSN 1034-1803

RRP \$22.00