

economy

CONSUMER PRICE INDEX, BRISBANE(a)

	2006-07	2007-08
Food	174.4	179.3
Alcohol and tobacco	235.3	243.6
Clothing and footwear	103.1	106.5
Housing	146.4	157.7
Household contents and services	128.0	127.1
Health	227.5	237.9
Transportation	157.0	164.8
Communication	114.4	114.9
Recreation	129.3	131.2
Education	279.9	295.0
Financial and insurance services(b)	102.1	108.8
All groups	158.3	164.8

(a) Unless otherwise specified, base of each index is 1989-90 = 100.

(b) Base: June quarter 2005 = 100.

EXTERNAL MERCHANDISE TRADE

	2006-07	2007-08
	\$m	\$m
Exports		
Foreign	35,440	35,320
Interstate	9,770	10,240
Imports		
Foreign	27,201	32,357
Interstate	23,314	27,479

STATE GOVERNMENT FINANCE

	2005-06	2006-07
	\$m	\$m
Total GFS revenue	38,328	43,171
Total GFS expenses	34,191	40,386

GFS Government Finance Statistics

environment

CLIMATIC DATA, BRISBANE

Month	Unit	2007			2008	
		Dec	Mar	Jun	Jul	Sep
Mean daily maximum	°C	28.5	27.3	22.9	24.5	
Mean daily minimum	°C	20.5	18.1	12.4	14.5	
Rainfall, total	mm	79.2	41.8	121.8	55.6	
Rain days	no.	19	13	10	10	
Mean daily sunshine	hours	6.1	7.6	7.0	8.4	
Strong Wind days, over 50 km/h	no.	3	0	0	1	

Source: Bureau of Meteorology

Data in this publication are subject to revision.

SYMBOLS AND ABBREVIATIONS

°C	degrees Celsius
\$	dollars
GFS	government finance statistics
ha	hectare
mm	millimetres
\$m	million dollars
no.	number
np	not available for publication but included in totals where applicable, unless otherwise indicated.
%	per cent
\$'000	thousand dollars
'000	thousand
^	estimate has a relative standard error of between 10% to 25% and should be used with caution.
*	estimate has a relative standard error of between 25% to 50% and should be used with caution.

ACKNOWLEDGMENTS

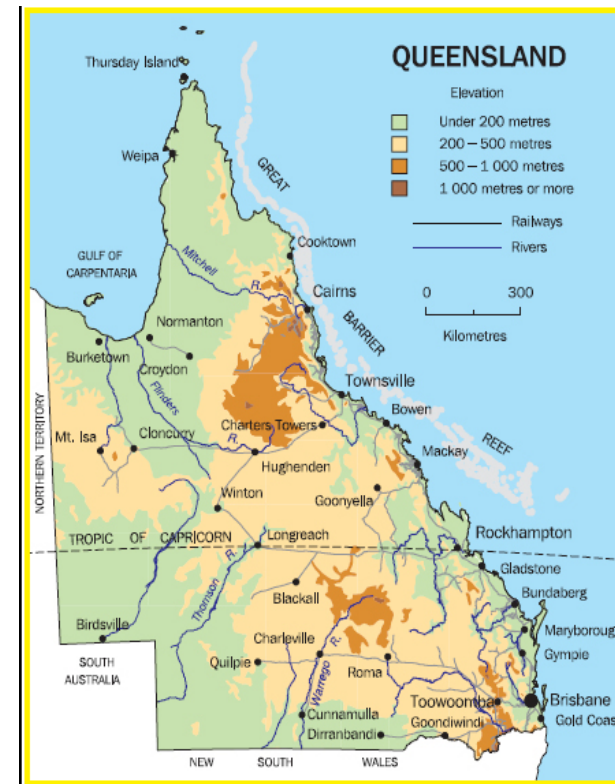
ABS publications draw extensively on information provided freely by individuals, businesses, governments and other organisations. Their continued cooperation is very much appreciated; without it the wide range of statistics published by the ABS would not be available for general use by the community. Information received by the ABS is treated in strict confidence as required by the *Census and Statistics Act 1905*.

GEOGRAPHY

Situated generally between 10° and 29° south latitude and between 138° and 154° east longitude, Queensland occupies the north-eastern portion of the Australian continent. Of the total area of approximately 1.73 million square kilometres, just over half is north of the Tropic of Capricorn. Of the six states of Australia, Queensland ranks second in area and third in population.

GOVERNMENT

Queensland is a constituent state of the Commonwealth of Australia, and observes the Australian Constitution. While returning elected members to both upper and lower houses of the Federal Parliament, Queensland is unique in that its own State Parliament has only one house — the Legislative Assembly. Local government derives its powers from Acts passed by the State Parliament. The capital city is Brisbane.



For more information...

cat. no. 1312.3

INTERNET

www.abs.gov.au

The ABS web site is the best place for data from our publications and information about the ABS. All statistics on the ABS web site can be downloaded free of charge.

LIBRARY

A range of ABS publications is available from public and tertiary libraries Australia wide. Contact your nearest library to determine whether it has the ABS statistics you require, or visit our web site for a list of libraries.

INFORMATION AND REFERRAL SERVICE

Our consultants can help you access the full range of information published by the ABS that is available free of charge from our web site, or purchase a hard copy publication.

Information tailored to your needs can also be requested as a 'user pays' service.

Specialists are on hand to help you with analytical or methodological advice.

PHONE

1300 135 070

EMAIL

clients.services@abs.gov.au

FAX

1300 135 211

WEB ADDRESS

www.abs.gov.au

POST

Client Services, ABS
GPO Box 796
Sydney NSW 2001

Cover: Sunset and windmill, Winton
Photo: *Tourism Queensland*

people

DEMOGRAPHY

	2002	2006	2007
Estimated resident population(a)	'000	'000	'000
Queensland	3,714.8	4,090.9	4,181.4

(a) At 30 June.

Components of population change(a)	no.	no.	no.
Natural increase(b)	24,842	29,562	29,977
Net overseas migration	26,488	32,952	33,536
Net interstate migration	30,035	26,607	27,010

(a) Twelve months ended 30 June.

(b) Excess of births over deaths.

Vital statistics(a)	no.	no.	no.
Births	47,771	52,665	61,249
Deaths	23,968	24,473	25,801
Marriages	21,264	25,043	25,808
Divorces	10,920	12,175	11,058

(a) Twelve months ended 31 December. Vital events are published on a year of registration basis.

Age groups(a)	%	%	%
0-14 years	21	20	20
15-24 years	14	14	14
25-44 years	30	29	28
45-64 years	24	25	25
65 years & over	12	12	12

(a) As proportion of Queensland estimated resident population.

LABOUR MARKET

	2002–03	2006–07	2007–08
Annual averages	'000	'000	'000
Labour force	1,922.2	2,186.6	2,241.0
Employed persons	1,784.6	2,099.3	2,158.5
Unemployed persons	137.6	87.3	82.5
	%	%	%
Unemployment rate	7.2	4.0	3.7
Participation rate	65.0	67.1	67.1

	2003	2007	2008
	'000	'000	'000
Job vacancies, May	19.3	35.6	41.6
	\$	\$	\$
Average weekly earnings, Aug.	657.20	808.50	871.50

REGIONAL POPULATION

	2002	2006	2007
Selected Local Government Areas(a)	'000	'000	'000
Brisbane (City)	917.6	991.3	1,007.9
Bundaberg (City)	45.3	48.6	49.3
Cairns (City)	119.9	136.6	140.9
Caloundra (City)	79.0	93.2	96.1
Charters Towers (City)	8.7	8.5	8.5
Gladstone (City)	27.6	30.9	31.9
Gold Coast (City)	440.9	507.5	524.7
Hervey Bay (City)	44.5	55.2	57.9
Ipswich (City)	128.7	143.7	148.7
Mackay (City)	78.2	90.2	92.2
Maryborough (City)	25.5	27.2	27.3
Mount Isa (City)	20.7	21.1	21.2
Redcliffe (City)	50.5	52.5	53.6
Rockhampton (City)	59.3	62.6	63.2
Roma (Town)	6.7	7.0	7.0
Thuringowa (City)	54.7	63.0	65.8
Toowoomba (City)	91.0	96.2	96.3
Townsville (City)	93.7	102.3	103.7

(a) Estimated resident population at 30 June.

EDUCATION

	2002	2006	2007
	no.	no.	no.
Schools, August	1,726	1,739	1,715
Government	1,291	1,278	1,250
Non-government	435	461	465
Students, August(a)	624,538	662,607	703,937(b)
Government	440,064	455,075	478,883
Non-government	179,523	202,722	219,020

(a) Including full-time and part-time primary and secondary students. The breakdown into government and non-government is available only for full-time students.

(b) Queensland has introduced a Pre-year 1 grade in 2007 following a successful trial from 2003–06. Initially, in 2007, only a half cohort has been enrolled with expectations of full coverage from 2008 onwards.

CRIME AND JUSTICE

	2001–02	2005–06	2006–07
	no.	no.	no.
Total police strength at 30 June(a)	8,053	9,631	9,902
Sentence outcomes in Magistrates Courts	112,922	128,299	128,195
Sentence outcomes in higher courts	5,787	4,778	4,609

(a) Including recruits in training.

Source: Queensland Police Service.

industry

AGRICULTURE(a)

		2005–06	2006–07
Agricultural establishments(b)	no.	28,905	27,656
Area of farms	'000 ha	145,519	143,871
Total area of crops(c)	'000 ha	2,503	2,215

Agricultural Production	'000 tonnes	'000 tonnes
Sugar cane cut for crushing	34,385	33,058
Wheat	1,218	^777
Barley	166	^79
Grain sorghum	1,038	896
Cotton lint	214	69
Peanuts (in shell)	24	^17
Pineapples	153	^165
Bananas	165	189
Citrus fruit	86	^101
Avocados	22	^34
Mangoes	25	^41
Lettuce	53	^85
Potatoes	94	88
Tomatoes	109	121

Livestock(b)	'000	'000
Meat cattle	11,354	11,495
Milk cattle	194	189
Sheep and lambs	4,466	4,378
Pigs	691	695
Chickens for meat production	9,982	11,018
Chickens for egg production	3,464	4,200

Brokers and dealers receipts of taxable wool	tonnes	18,558	15,928
--	--------	--------	--------

Value of agricultural production	\$m	\$m
Crops(d)	4,167.9	4,751.8
Livestock disposals	4,125.2	4,359.5
Livestock products	415.8	420.2
Total	8,708.9	9,531.5

^ estimate has a relative standard error of 10% to 25% and should be used with caution.

(a) Establishments with an estimated value of agricultural operations of \$5,000 or more.

(b) At 30 June.

(c) Excluding crops harvested for hay and seed, and pasture and grasses.

(d) Including pastures and grasses, vegetables, fruit and nuts.

MINING

	2005–06	2006–07
Mineral commodities produced	'000 tonnes	'000 tonnes
Black coal (saleable)	175,774	184,082
Bauxite	16,013	17,229
Copper (metal content)	403	323
Lead (metal content)	507	411
Zinc	837	849
	\$m	\$m

Value of mineral commodities produced	23,788	26,439
---------------------------------------	--------	--------

MANUFACTURING(a)

	2006–07	2006–07
	Employment(b)	Sales & service income(c)
	no.	\$m
Food product mfg	46,970	13,942
Beverage and tobacco product mfg	3,420	2,267
Textile, leather, clothing and footwear mfg	*6,100	^994
Wood product mfg	^13,909	^2,501
Pulp, paper and converted paper product mfg	2,586	986
Printing (including reproduction of recorded media)	^7,083	^1,177
Petroleum and coal product mfg	1,584	np
Basic chemical and chemical product mfg	5,747	3,030
Polymer product and rubber product mfg	^9,230	3,099
Non-metalic mineral product mfg	9,860	3,943
Primary metal and metal product mfg	^17,273	13,501
Fabricated metal product mfg	25,725	6,148
Transport equipment mfg	22,035	4,923
Machinery and equipment mfg	^21,687	5,855
Furniture and other mfg	6,368	np
Total manufacturing	199,577	70,257

np not available for publication but included in totals where applicable, unless otherwise indicated.

^ estimate has a relative standard error of between 10% to 25% and should be used with caution.

* estimate has a relative standard error of between 25% to 50% and should be used with caution.

(a) New ANZSIC Subdivision codes introduced for 2006–07.

(b) At 30 June 2007. Including working proprietors.

(c) Including rent, leasing and hiring income.

BUILDING

	2006–07	2007–08
Number of dwelling unit completions	no.	no.
New houses	25,657	27,186
New other residential building	12,953	12,335
Conversions, etc.	93	120
Total	38,703	39,641

Value of building work completed	\$m	\$m
New houses	5,787	6,532
New other residential building	3,440	3,093
Alterations and additions	1,211	1,267
Non-residential building	6,140	6,244
Total	16,579	17,136

TOURIST ACCOMMODATION(a)

	2006–07	2007–08	
Number of establishments(b)	no.	1,093	1,116
Number of rooms(b)	no.	58,666	60,422
Room occupancy rate	%	67.7	65.9
Guest nights occupied	'000	27,726.9	27,725.6
Takings from accommodation	\$m	1,925	2,076

(a) Hotels, motels and serviced apartments with 15 or more rooms.

(b) At 30 June.

REGISTERED MOTOR VEHICLES(a)

	2006	2007
	'000	'000
Passenger vehicles	2,138.4	2,220.6
Light commercial vehicles	520.1	550.5
Trucks (including non-freight carrying trucks)	104.0	110.3
Motor cycles	110.5	125.6
Total(b)	2,897.9	3,033.4

(a) At 31 March. (b) Including campervans and buses.

RETAIL TURNOVER

	2006–07	2007–08
	\$m	\$m
Food retailing	18,029	20,221
Department stores	3,277	3,540
Clothing and soft goods retailing	2,953	2,661
Household goods retailing	7,297	7,866
Recreational goods retailing	1,619	1,965
Other retailing	4,159	4,633
Hospitality and service industries	8,459	9,011
Total	45,793	49,897