



LIVESTOCK PRODUCTS

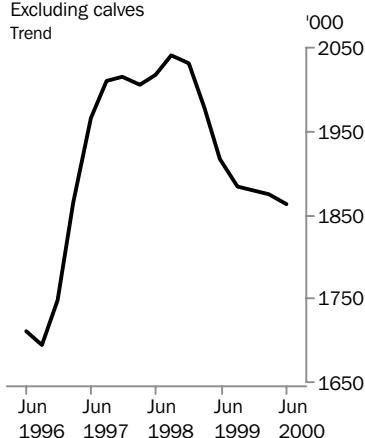
AUSTRALIA

EMBARGO: 11:30AM (CANBERRA TIME) THURS 10 AUG 2000

JUNE QTR KEY FIGURES

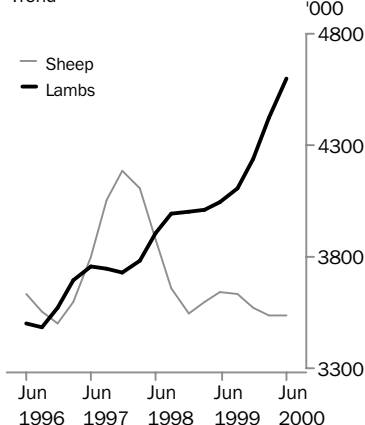
Cattle slaughterings

Excluding calves
Trend



Sheep and lamb slaughterings

Trend



TREND ESTIMATES

	Jun Qtr 1999 '000	Mar Qtr 2000 '000	Jun Qtr 2000 '000
Number slaughtered			
Cattle	1 917.8	1 873.8	1 863.9
Calves	271.6	277.9	278.6
Sheep	3 638.2	3 534.1	3 539.0
Lambs	4 043.9	4 426.3	4 601.9
Pigs	1 266.7	1 260.1	1 274.5
Chickens	94 240.0	98 761.3	100 115.1

	Jun Qtr 1999 tonnes	Mar Qtr 2000 tonnes	Jun Qtr 2000 tonnes
Meat produced			
Beef	488 901	487 768	487 890
Veal	8 776	8 900	8 838
Mutton	76 513	74 559	74 300
Lamb	78 849	87 729	92 184
Pig meat	90 740	91 672	92 579
Chicken meat	141 061	150 691	153 184
Wool receivals	165 094	165 596	176 941

	Mar Qtr 1999 ML	Dec Qtr 1999 ML	Mar Qtr 2000 ML
Whole milk intake by factories	2 611	2 701	2 694

JUNE QTR KEY POINTS

TREND ESTIMATES

- The trend estimate for lamb production in June quarter 2000 was 92,200 tonnes, 5% higher than the March quarter 2000 estimate. This was the highest quarterly figure on record.
- The trend estimate for chicken meat production rose 2% to a record level of 153,000 tonnes in June quarter 2000.
- The trend estimate for the number of cattle slaughtered was 1.9 million, slightly lower than the estimate for March quarter 2000. This was the seventh consecutive fall and the lowest quarterly figure since December quarter 1996.

- For further information about these and related statistics, contact Debbie Thomas on Hobart 03 6222 5939, or the National Information Service on 1300 135 070.

NOTES

FORTHCOMING ISSUES

ISSUE (Quarter)

RELEASE DATE

September 2000

10 November 2000

December 2000

9 February 2001



CHANGES IN THIS ISSUE

There are no changes in this issue.

FORTHCOMING CHANGES

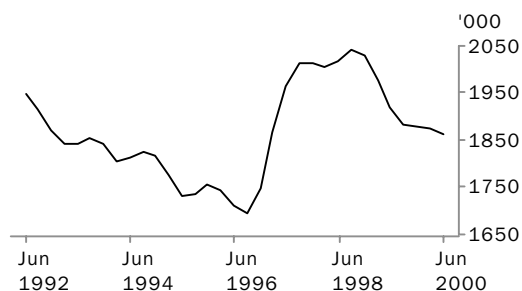
There are no forthcoming changes.



Dennis Trewin
Australian Statistician

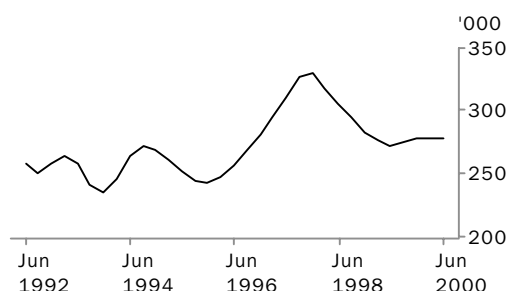
LIVESTOCK SLAUGHTERED: Trend

CATTLE (EXCLUDING CALVES)



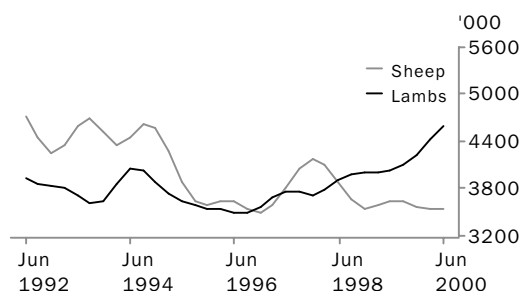
The trend estimate for cattle slaughterings fell slightly in June quarter 2000 to 1.9 million as supplies of cattle remained tight.

CALVES



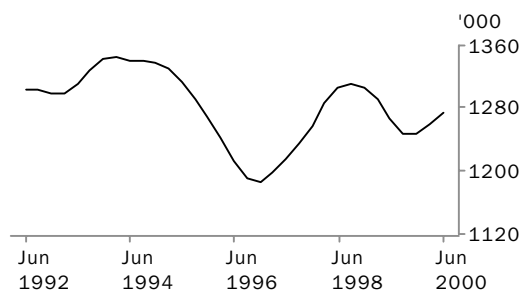
The trend estimate for calf slaughterings rose slightly to 279,000 in June quarter 2000.

SHEEP AND LAMBS



The trend estimate for sheep slaughterings remained steady in June quarter 2000 at 3.5 million. The trend estimate for lamb slaughterings rose 4% to 4.6 million in June quarter 2000. This was the tenth consecutive quarterly rise and the highest quarterly figure since June quarter 1986.

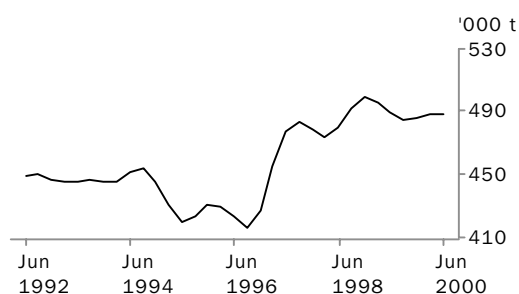
PIGS



The trend estimate for pig slaughterings increased slightly in June quarter 2000 to 1.3 million.

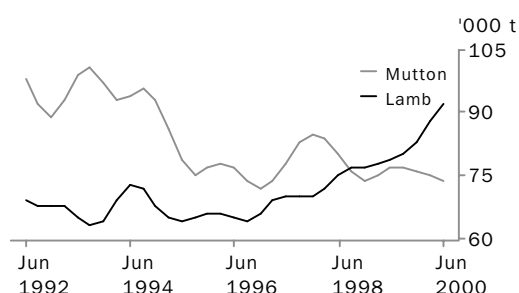
MEAT PRODUCTION: Trend

BEEF



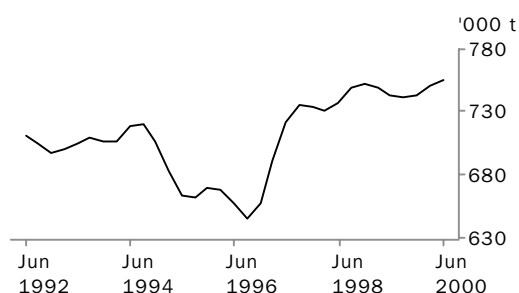
The trend estimate for beef production remained steady at 488,000 tonnes in June quarter 2000.

MUTTON AND LAMB



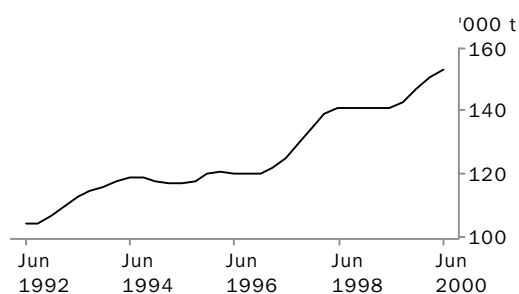
The trend estimate for mutton production in June quarter 2000 fell slightly to 74,300 tonnes. The trend estimate for lamb production rose by 5% to 92,200 tonnes in June quarter 2000, the highest quarterly figure on record.

TOTAL RED MEAT



The trend estimate for total red meat production rose slightly to 756,000 tonnes in June quarter 2000.

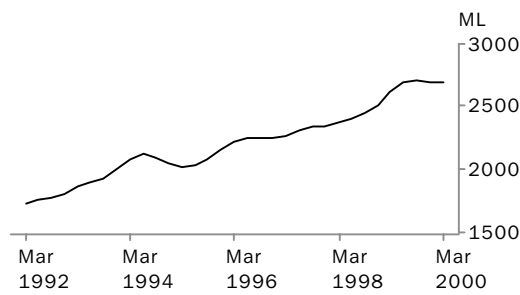
CHICKEN MEAT



The trend estimate for chicken meat production rose by 2% in June quarter 2000 to 153,000 tonnes, which was the highest quarterly chicken meat production figure on record.

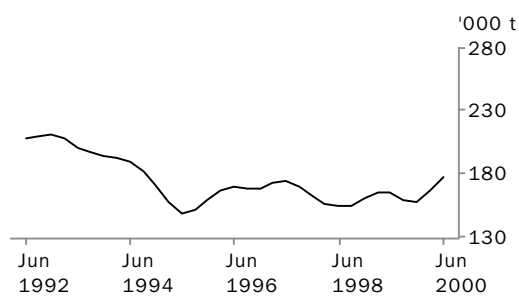
LIVESTOCK PRODUCTS: Trend

WHOLE MILK INTAKE BY FACTORIES



The trend estimate for whole milk intake by factories remained steady in March quarter 2000 at 2.7 billion litres.

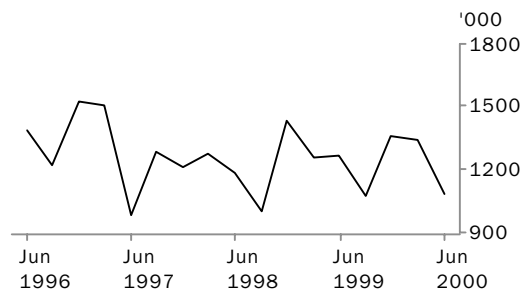
BROKERS AND DEALERS RECEIVALS OF TAXABLE WOOL



The trend estimate for wool receivals by brokers and dealers for June quarter 2000 rose by 7% to 177,000 tonnes as farmers offloaded stocks of wool prior to the end of the financial year.

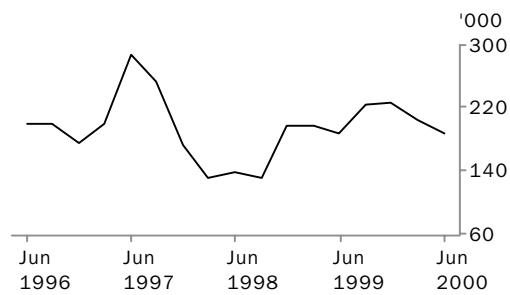
LIVESTOCK EXPORTS: Original

EXPORTS OF LIVE SHEEP



Live sheep exports fell 19% in June quarter 2000 to 1.1 million. Gross value of live sheep exports fell by 18% to \$40.9 million despite a slight increase in unit value (\$37.65).

EXPORTS OF LIVE CATTLE



Live cattle exports fell 8% in June quarter 2000 to 188,000. Unit value (\$519.86) fell by 3% and contributed to an 11% decline in gross value of live cattle exports to \$97.9 million.

LIVESTOCK SLAUGHTERED, Australia(a): All Series

Quarter	Bulls, bullocks and steers	Cows and heifers	Total cattle (excluding calves)	Calves	Sheep	Lambs	Pigs	Chickens
	'000	'000	'000	'000	'000	'000	'000	'000
ORIGINAL								
1999								
March	968.0	972.3	1 940.3	116.6	3 999.8	3 871.9	1 238.0	94 466.7
June	929.2	1 017.4	1 946.5	253.6	3 339.4	3 898.7	1 311.4	92 162.1
September	1 009.2	909.7	1 918.9	565.4	3 239.1	4 221.3	1 253.6	94 143.4
December	1 015.5	831.1	1 846.6	176.0	3 694.2	4 357.8	1 234.2	100 146.8
2000								
March	920.3	885.9	1 806.3	132.8	4 048.3	4 236.2	1 229.4	98 678.2
June	947.6	999.7	1 947.3	255.8	3 327.3	4 683.5	1 307.4	98 804.8
SEASONALLY ADJUSTED								
1999								
March	986.4	1 014.1	2 000.6	258.5	3 538.1	3 982.0	1 307.5	94 493.5
June	931.1	932.1	1 863.2	272.0	3 619.7	4 005.7	1 270.4	93 484.1
September	995.7	903.9	1 899.7	294.1	3 842.6	4 237.9	1 231.8	95 206.3
December	1 010.2	882.3	1 892.5	253.2	3 349.5	4 115.5	1 239.5	97 744.4
2000								
March	936.5	923.4	1 859.9	294.5	3 578.9	4 358.1	1 276.5	98 440.9
June	950.6	916.4	1 867.0	274.9	3 605.8	4 807.7	1 266.2	100 195.2
TREND ESTIMATES								
1999								
March	971.0	1 007.4	1 978.4	276.7	3 597.0	4 010.5	1 291.2	93 735.4
June	972.1	945.7	1 917.8	271.6	3 638.2	4 043.9	1 266.7	94 240.0
September	980.0	903.1	1 883.1	274.6	3 629.9	4 108.1	1 246.9	95 413.3
December	980.7	898.1	1 878.9	277.5	3 569.0	4 234.8	1 247.0	97 099.2
2000								
March	966.2	907.7	1 873.8	277.9	3 534.1	4 426.3	1 260.1	98 761.3
June	945.3	918.6	1 863.9	278.6	3 539.0	4 601.9	1 274.5	100 115.1

(a) For more information refer to paragraphs 5 to 9 of the Explanatory Notes.

LIVESTOCK PRODUCTS, Australia(a): All Series

RED MEAT.....

Quarter	Beef	Veal	Mutton	Lamb	Pig meat	Total red meat	Chicken meat	Whole milk intake by factories	Brokers and dealers receipts of taxable wool
	tonnes	tonnes	tonnes	tonnes	tonnes	tonnes	tonnes	ML	tonnes
ORIGINAL									
1999									
March	491 261	5 693	83 013	75 243	86 948	742 157	140 851	2 529	144 929
June	489 576	9 001	68 253	76 596	96 526	739 951	139 070	1 814	120 243
September	492 782	14 040	68 835	82 346	90 382	748 384	141 684	2 551	180 276
December	482 582	6 689	80 723	84 744	88 357	743 096	151 052	3 731	196 699
2000									
March	472 298	6 397	84 239	84 507	88 130	735 572	150 476	2 674	137 250
June	504 888	8 608	68 450	94 604	95 983	772 534	149 492	n.a.	131 611
SEASONALLY ADJUSTED									
1999									
March	502 157	8 196	73 820	76 963	93 026	754 162	142 569	2 583	165 371
June	476 579	9 069	75 740	78 367	91 573	731 328	141 155	2 754	171 829
September	489 517	9 110	81 588	83 360	88 404	751 979	140 906	2 725	154 001
December	489 287	8 660	71 430	80 085	89 392	738 854	147 944	2 633	158 523
2000									
March	482 309	9 213	74 884	86 492	94 249	747 147	152 433	2 738	156 734
June	491 715	8 679	75 947	96 661	91 043	764 045	151 612	n.a.	189 173
TREND									
1999									
March	495 688	8 951	75 481	77 914	92 340	750 374	140 698	2 611	164 853
June	488 901	8 776	76 513	78 849	90 740	743 779	141 061	2 688	165 094
September	485 072	8 894	76 764	80 351	89 857	740 938	143 315	2 710	158 887
December	486 172	8 984	75 575	83 217	90 434	744 382	146 970	2 701	157 996
2000									
March	487 768	8 900	74 559	87 729	91 672	750 628	150 691	2 694	165 596
June	487 890	8 838	74 300	92 184	92 579	755 791	153 184	n.a.	176 941

(a) For more information refer to paragraphs 5 to 9 and 13 to 15 of the Explanatory Notes.

NUMBER OF LIVESTOCK SLAUGHTERED(a), Bulls, Bullocks and Steers: All Series

	<i>New South Wales</i>	<i>Victoria</i>	<i>Queensland</i>	<i>South Australia</i>	<i>Western Australia</i>	<i>Tasmania</i>	<i>Australia</i>
<i>Quarter</i>	'000	'000	'000	'000	'000	'000	'000
ORIGINAL							
1999							
March	200.5	238.7	431.7	27.9	45.9	23.0	968.0
June	172.8	191.9	463.1	30.1	40.3	28.5	929.2
September	187.3	173.6	536.7	37.1	42.2	26.5	1 009.2
December	196.7	189.0	502.1	44.5	55.8	26.0	1 015.5
2000							
March	192.2	192.9	416.1	46.7	42.3	29.9	920.3
June	178.8	154.7	503.3	41.3	41.2	27.0	947.6
SEASONALLY ADJUSTED							
1999							
March	196.0	215.8	491.2	26.1	46.9	19.8	986.4
June	175.4	198.0	448.4	31.9	45.0	27.6	931.1
September	189.5	196.6	473.0	46.4	48.5	32.7	995.7
December	196.4	183.9	528.8	37.4	44.3	26.1	1 010.2
2000							
March	187.6	173.5	471.7	43.7	43.3	25.7	936.5
June	181.8	159.9	488.3	43.5	46.0	26.2	950.6
TREND ESTIMATES							
1999							
March	189.8	213.2	468.1	29.4	48.4	23.5	971.0
June	185.3	203.8	474.4	33.6	46.7	26.6	972.1
September	187.6	193.7	482.8	39.3	45.7	29.1	980.0
December	190.4	183.8	492.8	42.0	45.2	28.3	980.7
2000							
March	189.3	173.0	494.4	42.6	44.6	26.3	966.2
June	184.3	162.8	486.8	42.7	44.4	25.1	945.3

(a) For more information refer to paragraph 4 of the Explanatory Notes.

NUMBER OF LIVESTOCK SLAUGHTERED(a), Cows and Heifers: All Series

	<i>New South Wales</i>	<i>Victoria</i>	<i>Queensland</i>	<i>South Australia</i>	<i>Western Australia</i>	<i>Tasmania</i>	<i>Australia</i>
<i>Quarter</i>	'000	'000	'000	'000	'000	'000	'000
ORIGINAL							
1999							
March	282.2	221.4	337.5	38.2	61.0	30.9	972.3
June	273.0	196.9	415.2	34.7	53.6	33.5	1 017.4
September	250.7	181.1	355.4	34.9	54.0	21.4	909.7
December	228.0	200.3	287.4	30.6	56.2	25.7	831.1
2000							
March	242.7	208.1	313.3	38.6	52.8	29.3	885.9
June	248.2	224.6	398.1	41.0	49.4	31.2	999.7
SEASONALLY ADJUSTED							
1999							
March	283.8	214.8	382.4	36.4	54.1	28.5	1 014.1
June	254.6	192.1	359.0	32.8	63.4	26.8	932.1
September	258.7	198.8	315.8	38.7	58.1	30.1	903.9
December	236.7	194.0	344.7	30.8	51.2	26.8	882.3
2000							
March	241.5	201.8	354.7	36.9	46.8	27.1	923.4
June	231.3	219.4	344.6	38.7	58.4	25.0	916.4
TREND ESTIMATES							
1999							
March	275.8	218.1	381.5	37.0	58.8	28.5	1 007.4
June	263.5	199.8	355.3	35.1	59.1	28.0	945.7
September	251.6	192.7	336.1	34.2	56.7	28.2	903.1
December	243.5	197.0	338.4	34.8	52.9	27.7	898.1
2000							
March	237.7	204.8	346.2	35.9	51.3	26.6	907.7
June	231.9	212.7	353.2	37.2	53.0	25.3	918.6

(a) For more information refer to paragraph 4 of the Explanatory Notes.

NUMBER OF LIVESTOCK SLAUGHTERED(a), Total Cattle (excluding Calves): All Series

	<i>New South Wales</i>	<i>Victoria</i>	<i>Queensland</i>	<i>South Australia</i>	<i>Western Australia</i>	<i>Tasmania</i>	<i>Australia</i>
<i>Quarter</i>	'000	'000	'000	'000	'000	'000	'000
ORIGINAL							
1999							
March	482.7	460.1	769.2	66.1	106.9	53.9	1 940.3
June	445.7	388.7	878.2	64.9	93.9	62.0	1 946.5
September	438.0	354.6	892.1	72.0	96.1	47.8	1 918.9
December	424.6	389.3	789.5	75.0	112.0	51.6	1 846.6
2000							
March	434.9	400.9	729.5	85.3	95.1	59.2	1 806.3
June	427.0	379.3	901.4	82.3	90.6	58.2	1 947.3
SEASONALLY ADJUSTED							
1999							
March	479.8	430.7	873.5	62.4	100.9	48.3	2 000.6
June	430.0	390.1	807.4	64.7	108.4	54.4	1 863.2
September	448.2	395.4	788.8	85.1	106.6	62.8	1 899.7
December	433.1	377.9	873.5	68.2	95.6	52.9	1 892.5
2000							
March	429.2	375.3	826.4	80.7	90.1	52.8	1 859.9
June	413.2	379.3	832.9	82.2	104.4	51.2	1 867.0
TREND ESTIMATES							
1999							
March	465.6	431.2	849.6	66.4	107.2	52.0	1 978.4
June	448.8	403.6	829.6	68.7	105.8	54.6	1 917.8
September	439.1	386.4	818.9	73.5	102.4	57.3	1 883.1
December	433.9	380.9	831.2	76.8	98.1	56.0	1 878.9
2000							
March	427.0	377.7	840.6	78.5	95.9	52.9	1 873.8
June	416.2	375.4	840.0	80.0	97.5	50.4	1 863.9

(a) For more information refer to paragraph 4 of the Explanatory Notes.

NUMBER OF LIVESTOCK SLAUGHTERED(a), Calves: All Series

	<i>New South Wales</i>	<i>Victoria</i>	<i>Queensland</i>	<i>South Australia</i>	<i>Western Australia</i>	<i>Tasmania</i>	<i>Australia</i>
<i>Quarter</i>	'000	'000	'000	'000	'000	'000	'000
ORIGINAL							
1999							
March	56.1	26.9	26.2	4.9	1.6	0.8	116.6
June	61.0	146.9	33.4	5.8	1.8	4.5	253.6
September	51.3	415.9	33.4	6.2	2.3	56.1	565.4
December	48.3	79.9	32.6	3.2	3.0	8.8	176.0
2000							
March	56.2	32.2	36.6	3.6	2.9	1.2	132.8
June	55.1	150.5	39.1	4.6	2.4	3.9	255.8
SEASONALLY ADJUSTED							
1999							
March	56.2	172.7	26.8	6.4	1.6	15.0	258.5
June	57.5	162.3	31.6	4.4	2.0	13.9	272.0
September	48.3	176.5	32.3	5.2	2.1	19.1	294.1
December	54.8	137.3	34.8	4.4	2.9	12.9	253.2
2000							
March	56.4	205.7	37.6	4.7	3.0	21.5	294.5
June	51.9	167.0	37.0	3.5	2.6	12.1	274.9
TREND ESTIMATES							
1999							
March	58.9	175.8	28.3	5.4	1.7	14.4	276.7
June	54.8	165.1	30.3	5.2	1.9	15.1	271.6
September	52.4	162.7	32.8	4.9	2.3	16.4	274.6
December	53.4	167.8	35.0	4.6	2.7	17.0	277.5
2000							
March	54.1	174.9	36.6	4.3	2.8	16.5	277.9
June	54.6	179.3	37.9	3.8	2.9	15.3	278.6

(a) For more information refer to paragraph 4 of the Explanatory Notes.

NUMBER OF LIVESTOCK SLAUGHTERED(a), Sheep: All Series

	<i>New South Wales</i>	<i>Victoria</i>	<i>Queensland</i>	<i>South Australia</i>	<i>Western Australia</i>	<i>Tasmania</i>	<i>Australia</i>
<i>Quarter</i>	'000	'000	'000	'000	'000	'000	'000
ORIGINAL							
1999							
March	1 445.7	867.2	358.2	591.9	580.7	156.3	3 999.8
June	1 313.3	756.9	338.1	358.6	462.0	110.5	3 339.4
September	1 320.5	767.6	419.4	239.3	407.0	85.4	3 239.1
December	1 336.8	1 012.4	328.6	359.8	504.9	151.8	3 694.2
2000							
March	1 416.5	1 132.4	357.5	377.4	564.5	200.0	4 048.3
June	1 311.7	903.4	318.5	247.3	394.2	152.3	3 327.3
SEASONALLY ADJUSTED							
1999							
March	1 328.6	718.9	338.0	466.8	540.1	113.4	3 538.1
June	1 362.5	906.9	365.2	438.4	510.1	108.8	3 619.7
September	1 471.5	971.3	413.1	329.8	466.2	154.7	3 842.6
December	1 274.3	865.2	329.4	303.7	441.0	145.1	3 349.5
2000							
March	1 300.8	938.8	337.2	297.0	524.7	144.6	3 578.9
June	1 361.3	1 080.8	344.9	303.0	434.5	150.9	3 605.8
TREND ESTIMATES							
1999							
March	1 387.1	777.1	345.7	481.0	495.5	112.6	3 597.0
June	1 381.3	861.0	371.1	412.8	500.7	124.4	3 638.2
September	1 371.7	913.7	375.1	349.2	482.8	138.0	3 629.9
December	1 343.9	928.9	358.0	311.3	471.0	146.8	3 569.0
2000							
March	1 318.1	961.0	340.6	295.8	471.5	148.9	3 534.1
June	1 312.4	1 020.7	330.2	297.1	468.3	147.3	3 539.0

(a) For more information refer to paragraph 4 of the Explanatory Notes.

NUMBER OF LIVESTOCK SLAUGHTERED(a), Lambs: All Series

	<i>New South Wales</i>	<i>Victoria</i>	<i>Queensland</i>	<i>South Australia</i>	<i>Western Australia</i>	<i>Tasmania</i>	<i>Australia</i>
<i>Quarter</i>	'000	'000	'000	'000	'000	'000	'000
ORIGINAL							
1999							
March	909.5	1 667.2	187.2	494.4	478.7	134.9	3 871.9
June	980.4	1 501.0	185.4	598.4	505.5	127.9	3 898.7
September	1 047.0	1 714.5	227.3	568.8	553.4	110.4	4 221.3
December	985.8	1 855.6	205.3	576.2	633.6	101.5	4 357.8
2000							
March	922.2	1 748.9	239.6	657.0	528.6	139.8	4 236.2
June	1 101.8	1 825.1	245.5	832.7	567.5	110.9	4 683.5
SEASONALLY ADJUSTED							
1999							
March	941.6	1 689.7	189.5	501.2	557.1	116.6	3 982.0
June	1 001.7	1 589.7	188.4	569.0	510.1	113.9	4 005.7
September	994.4	1 758.0	209.9	630.5	533.3	137.0	4 237.9
December	981.8	1 698.9	217.6	543.0	570.1	111.2	4 115.5
2000							
March	956.2	1 770.0	242.1	666.9	613.8	120.7	4 358.1
June	1 126.0	1 935.0	249.9	790.2	573.1	98.8	4 807.7
TREND ESTIMATES							
1999							
March	974.2	1 659.1	190.2	530.9	541.5	116.1	4 010.5
June	983.0	1 655.4	194.2	555.0	533.4	121.0	4 043.9
September	980.6	1 684.7	205.1	579.5	540.0	124.1	4 108.1
December	985.3	1 734.2	222.0	610.6	568.0	120.9	4 234.8
2000							
March	1 012.3	1 804.3	237.7	668.0	589.4	113.1	4 426.3
June	1 055.8	1 865.6	249.1	739.0	593.8	104.7	4 601.9

(a) For more information refer to paragraph 4 of the Explanatory Notes.

NUMBER OF LIVESTOCK SLAUGHTERED(a), Pigs: All Series

	<i>New South Wales</i>	<i>Victoria</i>	<i>Queensland</i>	<i>South Australia</i>	<i>Western Australia</i>	<i>Tasmania</i>	<i>Australia</i>
<i>Quarter</i>	'000	'000	'000	'000	'000	'000	'000
ORIGINAL							
1999							
March	331.5	346.7	263.7	126.0	150.3	18.4	1 238.0
June	335.5	394.9	289.6	128.3	138.8	22.1	1 311.4
September	331.1	376.3	268.2	111.8	143.6	20.0	1 253.6
December	340.7	364.8	272.6	109.3	128.0	16.5	1 234.2
2000							
March	349.7	358.7	276.5	120.3	105.8	16.4	1 229.4
June	386.6	344.0	294.0	127.7	136.4	17.3	1 307.4
SEASONALLY ADJUSTED							
1999							
March	351.1	380.2	271.8	129.5	152.4	19.7	1 307.5
June	329.6	379.8	280.0	125.4	131.7	21.0	1 270.4
September	331.6	362.7	266.7	106.5	142.8	20.1	1 231.8
December	328.8	363.6	277.4	114.5	134.3	16.2	1 239.5
2000							
March	368.4	382.5	280.6	122.7	106.2	17.0	1 276.5
June	379.8	330.6	284.3	124.7	129.6	16.5	1 266.2
TREND ESTIMATES							
1999							
March	339.4	384.0	279.0	122.9	144.0	20.1	1 291.2
June	334.8	372.1	272.6	121.7	142.6	20.1	1 266.7
September	330.3	370.3	272.8	115.0	136.2	19.3	1 246.9
December	340.4	368.1	275.7	114.7	128.3	17.7	1 247.0
2000							
March	359.5	361.1	279.8	119.7	122.2	16.6	1 260.1
June	379.5	349.7	284.8	125.4	117.4	16.1	1 274.5

(a) For more information refer to paragraph 4 of the Explanatory Notes.

NUMBER OF CHICKENS SLAUGHTERED(a): All Series

	<i>New South Wales</i>	<i>Victoria</i>	<i>Queensland</i>	<i>South Australia</i>	<i>Western Australia</i>	<i>Australia</i>
<i>Quarter</i>	'000	'000	'000	'000	'000	'000
ORIGINAL						
1999						
March	35 774.0	23 560.8	16 760.1	n.p.	n.p.	94 466.7
June	32 570.1	24 517.7	16 371.5	n.p.	n.p.	92 162.1
September	32 171.0	25 289.5	16 449.0	n.p.	n.p.	94 143.4
December	35 764.0	26 951.9	18 232.3	n.p.	n.p.	100 146.8
2000						
March	35 561.0	26 500.3	17 174.4	n.p.	n.p.	98 678.2
June	36 470.6	26 200.7	17 105.5	n.p.	n.p.	98 804.8
SEASONALLY ADJUSTED						
1999						
March	35 809.3	23 562.6	16 756.5	n.p.	n.p.	94 493.5
June	33 210.7	24 457.0	16 813.9	n.p.	n.p.	93 484.1
September	31 985.5	26 182.7	16 478.7	n.p.	n.p.	95 206.3
December	35 296.4	26 094.2	17 716.6	n.p.	n.p.	97 744.4
2000						
March	35 303.3	26 523.3	17 186.0	n.p.	n.p.	98 440.9
June	37 186.7	26 133.8	17 553.9	n.p.	n.p.	100 195.2
TREND ESTIMATES						
1999						
March	34 860.8	23 864.1	16 555.3	n.p.	n.p.	93 735.4
June	33 596.4	24 660.0	16 753.7	n.p.	n.p.	94 240.0
September	33 221.5	25 668.7	16 939.3	n.p.	n.p.	95 413.3
December	34 219.5	26 231.8	17 193.1	n.p.	n.p.	97 099.2
2000						
March	35 719.4	26 364.8	17 418.6	n.p.	n.p.	98 761.3
June	37 127.2	26 287.8	17 573.0	n.p.	n.p.	100 115.1

(a) For more information refer to paragraphs 8 and 9 of the Explanatory Notes.

NUMBER OF LIVESTOCK SLAUGHTERED(a): Original

	New South Wales	Victoria	Queensland	South Australia	Western Australia	Tasmania	Australia
Quarter	'000	'000	'000	'000	'000	'000	'000
BULLS, BULLOCKS AND STEERS							
1997-1998	956.5	901.4	1 660.9	169.6	196.0	93.4	3 993.6
1998-1999	780.9	852.1	1 807.6	123.1	197.9	94.8	3 870.7
1999-2000	755.0	710.2	1 958.2	169.5	181.5	109.3	3 892.7
COWS AND HEIFERS							
1997-1998	1 182.1	896.6	1 353.7	202.8	252.1	123.6	4 058.1
1998-1999	1 113.6	899.2	1 498.7	154.7	240.8	116.3	4 067.6
1999-2000	969.5	814.0	1 354.2	145.2	212.4	107.6	3 626.4
TOTAL CATTLE (excluding calves)							
1997-1998	2 138.6	1 798.0	3 014.6	372.4	448.1	217.0	8 051.7
1998-1999	1 894.5	1 751.3	3 306.3	277.8	438.7	211.1	7 938.3
1999-2000	1 724.5	1 524.2	3 312.5	314.7	393.9	216.9	7 519.1
CALVES							
1997-1998	306.2	767.2	114.9	20.2	5.6	53.9	1 268.7
1998-1999	242.6	714.4	112.8	20.0	6.4	61.0	1 158.0
1999-2000	210.9	678.5	141.7	17.6	10.5	70.1	1 130.1
SHEEP							
1997-1998	5 902.7	3 285.6	1 277.1	2 655.0	2 717.4	461.0	16 298.8
1998-1999	5 583.2	3 079.6	1 333.8	2 018.3	1 938.0	439.9	14 392.7
1999-2000	5 385.4	3 815.7	1 423.9	1 223.8	1 870.6	589.6	14 309.0
LAMBS							
1997-1998	3 695.2	6 385.7	765.7	1 865.8	1 856.5	423.3	14 992.1
1998-1999	3 913.2	6 699.4	756.7	2 153.5	2 076.4	480.1	16 079.4
1999-2000	4 056.8	7 144.0	917.6	2 634.7	2 283.1	462.6	17 498.9
PIGS							
1997-1998	1 392.0	1 567.7	1 082.7	413.8	550.0	78.1	5 091.3
1998-1999	1 347.1	1 572.8	1 132.4	465.8	568.7	81.2	5 176.3
1999-2000	1 408.1	1 443.7	1 111.2	469.2	513.9	70.1	5 024.6
CHICKENS							
1997-1998	135 651.5	92 935.0	66 129.8	n.p.	n.p.	n.p.	364 233.7
1998-1999	140 794.0	95 543.3	65 989.7	n.p.	n.p.	n.p.	374 979.5
1999-2000	139 966.7	104 942.4	68 961.2	n.p.	n.p.	n.p.	391 773.2

(a) For more information refer to paragraphs 4,5 and 7 to 9 of the Explanatory Notes.

RED MEAT PRODUCED(a), Beef: All Series

	<i>New South Wales</i>	<i>Victoria</i>	<i>Queensland</i>	<i>South Australia</i>	<i>Western Australia</i>	<i>Tasmania</i>	<i>Australia</i>
<i>Quarter</i>	<i>tonnes</i>	<i>tonnes</i>	<i>tonnes</i>	<i>tonnes</i>	<i>tonnes</i>	<i>tonnes</i>	<i>tonnes</i>
ORIGINAL							
1999							
March	114 408	107 166	215 072	14 780	25 840	13 699	491 261
June	105 271	88 812	240 345	14 717	21 592	16 072	489 576
September	105 945	80 139	250 573	17 107	22 568	12 889	492 782
December	107 148	91 365	223 191	18 401	27 780	13 812	482 582
2000							
March	111 490	93 437	206 293	21 743	23 147	15 907	472 298
June	107 374	86 431	251 995	20 750	21 478	15 106	504 888
SEASONALLY ADJUSTED							
1999							
March	112 155	99 224	241 744	13 745	23 882	12 185	502 157
June	103 770	91 397	224 771	14 660	25 638	14 264	476 579
September	109 018	88 377	222 423	20 871	25 261	17 205	489 517
December	108 059	87 769	244 709	16 671	23 803	13 782	489 287
2000							
March	109 125	86 468	231 309	20 278	21 306	14 173	482 309
June	105 958	89 022	235 898	20 613	25 512	13 405	491 715
TREND ESTIMATES							
1999							
March	108 630	98 916	233 670	14 892	25 749	13 259	495 688
June	107 480	92 980	231 340	15 854	25 182	14 416	488 901
September	107 564	88 601	229 841	17 664	24 454	15 340	485 072
December	108 124	87 357	233 303	18 963	23 710	14 967	486 172
2000							
March	108 168	87 452	236 290	19 636	23 273	14 029	487 768
June	107 053	87 935	236 668	20 073	23 654	13 262	487 890

(a) For more information refer to paragraphs 4 to 6 of the Explanatory Notes.

RED MEAT PRODUCED(a), Veal: All Series

	<i>New South Wales</i>	<i>Victoria</i>	<i>Queensland</i>	<i>South Australia</i>	<i>Western Australia</i>	<i>Tasmania</i>	<i>Australia</i>
<i>Quarter</i>	<i>tonnes</i>	<i>tonnes</i>	<i>tonnes</i>	<i>tonnes</i>	<i>tonnes</i>	<i>tonnes</i>	<i>tonnes</i>
ORIGINAL							
1999							
March	3 416	635	1 344	153	108	25	5 693
June	3 830	2 895	1 869	161	133	101	9 001
September	3 086	8 088	1 422	160	180	1 090	14 040
December	2 983	1 643	1 530	92	249	179	6 689
2000							
March	3 461	739	1 815	98	239	33	6 397
June	3 513	2 899	1 783	121	191	88	8 608
SEASONALLY ADJUSTED							
1999							
March	3 431	3 037	1 337	188	119	269	8 196
June	3 509	3 209	1 777	132	148	269	9 069
September	2 933	3 575	1 406	136	160	389	9 110
December	3 460	2 624	1 642	115	235	246	8 660
2000							
March	3 480	3 554	1 807	121	262	356	9 213
June	3 213	3 230	1 695	99	212	233	8 679
TREND ESTIMATES							
1999							
March	3 627	3 310	1 473	161	116	273	8 951
June	3 316	3 193	1 530	150	142	293	8 776
September	3 217	3 181	1 587	132	182	320	8 894
December	3 312	3 183	1 640	120	219	317	8 984
2000							
March	3 362	3 207	1 703	113	239	295	8 900
June	3 387	3 269	1 788	104	243	267	8 838

(a) For more information refer to paragraphs 4 to 6 of the Explanatory Notes.

RED MEAT PRODUCED(a), Mutton: All Series

	<i>New South Wales</i>	<i>Victoria</i>	<i>Queensland</i>	<i>South Australia</i>	<i>Western Australia</i>	<i>Tasmania</i>	<i>Australia</i>
<i>Quarter</i>	<i>tonnes</i>	<i>tonnes</i>	<i>tonnes</i>	<i>tonnes</i>	<i>tonnes</i>	<i>tonnes</i>	<i>tonnes</i>
ORIGINAL							
1999							
March	29 705	17 232	6 957	14 029	11 938	3 152	83 013
June	27 612	14 840	6 399	7 915	9 285	2 203	68 253
September	29 431	15 813	8 038	5 654	8 209	1 690	68 835
December	30 511	21 213	6 706	8 714	10 485	3 094	80 723
2000							
March	31 057	21 994	6 917	8 810	11 458	4 002	84 239
June	27 944	17 693	6 043	5 792	7 975	3 004	68 450
SEASONALLY ADJUSTED							
1999							
March	27 516	14 548	6 523	11 174	11 023	2 312	73 820
June	29 019	18 140	7 158	10 059	10 293	2 090	75 740
September	32 871	19 902	7 918	7 653	9 502	3 170	81 588
December	28 439	17 613	6 553	7 166	9 120	2 968	71 430
2000							
March	28 763	18 574	6 486	7 002	10 572	2 923	74 884
June	29 360	21 607	6 779	7 379	8 834	2 866	75 947
TREND ESTIMATES							
1999							
March	29 228	15 664	6 740	11 417	10 159	2 212	75 481
June	29 642	17 448	7 206	9 629	10 207	2 489	76 513
September	30 248	18 558	7 290	8 091	9 824	2 803	76 764
December	29 904	18 778	6 975	7 286	9 609	2 984	75 575
2000							
March	29 087	19 257	6 647	7 049	9 597	2 977	74 559
June	28 508	20 276	6 490	7 168	9 493	2 865	74 300

(a) For more information refer to paragraphs 4 to 6 of the Explanatory Notes.

RED MEAT PRODUCED(a), Lamb: All Series

	<i>New South Wales</i>	<i>Victoria</i>	<i>Queensland</i>	<i>South Australia</i>	<i>Western Australia</i>	<i>Tasmania</i>	<i>Australia</i>
<i>Quarter</i>	<i>tonnes</i>	<i>tonnes</i>	<i>tonnes</i>	<i>tonnes</i>	<i>tonnes</i>	<i>tonnes</i>	<i>tonnes</i>
ORIGINAL							
1999							
March	18 021	32 019	3 429	10 101	9 100	2 573	75 243
June	19 643	29 209	3 436	12 337	9 465	2 507	76 596
September	20 539	33 468	4 286	11 492	10 388	2 173	82 346
December	19 297	35 817	3 902	11 944	11 839	1 945	84 744
2000							
March	18 222	34 616	4 628	14 475	9 881	2 685	84 507
June	21 903	36 304	4 640	18 757	10 852	2 148	94 604
SEASONALLY ADJUSTED							
1999							
March	18 676	32 196	3 450	10 072	10 519	2 258	76 963
June	20 020	30 257	3 553	11 524	9 488	2 278	78 367
September	19 514	35 247	3 953	13 340	10 043	2 584	83 360
December	19 233	32 849	3 975	11 199	10 726	2 122	80 085
2000							
March	18 924	34 794	4 628	14 452	11 407	2 352	86 492
June	22 332	37 584	4 809	17 492	10 882	1 953	96 661
TREND ESTIMATES							
1999							
March	19 347	31 710	3 565	10 818	10 224	2 273	77 914
June	19 505	31 923	3 619	11 317	10 032	2 321	78 849
September	19 342	32 991	3 815	11 984	10 110	2 389	80 351
December	19 380	34 054	4 158	12 914	10 646	2 317	83 217
2000							
March	19 968	35 278	4 497	14 438	11 067	2 189	87 729
June	20 968	36 217	4 775	16 135	11 175	2 062	92 184

(a) For more information refer to paragraphs 4 to 6 of the Explanatory Notes.

RED MEAT PRODUCED(a), Pig Meat: All Series

	<i>New South Wales</i>	<i>Victoria</i>	<i>Queensland</i>	<i>South Australia</i>	<i>Western Australia</i>	<i>Tasmania</i>	<i>Australia</i>
<i>Quarter</i>	<i>tonnes</i>	<i>tonnes</i>	<i>tonnes</i>	<i>tonnes</i>	<i>tonnes</i>	<i>tonnes</i>	<i>tonnes</i>
ORIGINAL							
1999							
March	23 541	25 120	19 246	8 031	9 752	1 184	86 948
June	25 293	29 514	21 720	8 782	9 649	1 456	96 526
September	24 337	27 998	19 910	7 294	9 457	1 274	90 382
December	24 785	26 897	19 713	7 504	8 366	992	88 357
2000							
March	25 257	26 122	20 331	8 245	7 056	1 027	88 130
June	28 853	25 673	22 083	8 884	9 322	1 110	95 983
SEASONALLY ADJUSTED							
1999							
March	25 770	27 621	20 071	8 392	9 971	1 250	93 026
June	23 961	28 038	20 753	8 432	8 976	1 353	91 573
September	24 014	27 222	19 524	6 854	9 412	1 286	88 404
December	24 348	26 657	20 229	8 009	8 889	1 006	89 392
2000							
March	27 663	28 723	21 199	8 604	7 209	1 084	94 249
June	27 341	24 370	21 097	8 520	8 668	1 030	91 043
TREND ESTIMATES							
1999							
March	24 814	28 036	20 580	8 070	9 470	1 298	92 340
June	24 419	27 442	20 042	8 002	9 470	1 289	90 740
September	24 178	27 504	20 055	7 700	9 096	1 227	89 857
December	25 118	27 375	20 343	7 857	8 550	1 120	90 434
2000							
March	26 543	26 820	20 799	8 302	8 172	1 045	91 672
June	27 747	25 955	21 310	8 728	7 932	1 022	92 579

(a) For more information refer to paragraphs 4 to 6 of the Explanatory Notes.

TOTAL RED MEAT PRODUCED(a): All Series

	<i>New South Wales</i>	<i>Victoria</i>	<i>Queensland</i>	<i>South Australia</i>	<i>Western Australia</i>	<i>Tasmania</i>	<i>Australia</i>
<i>Quarter</i>	<i>tonnes</i>	<i>tonnes</i>	<i>tonnes</i>	<i>tonnes</i>	<i>tonnes</i>	<i>tonnes</i>	<i>tonnes</i>
ORIGINAL							
1999							
March	189 091	182 171	246 049	47 094	56 737	20 634	742 157
June	181 648	165 270	273 769	43 912	50 124	22 339	739 951
September	183 338	165 506	284 230	41 707	50 802	19 117	748 384
December	184 724	176 935	255 042	46 655	58 718	20 023	743 096
2000							
March	189 488	176 908	239 984	53 370	51 781	23 654	735 572
June	189 587	169 001	286 545	54 303	49 819	21 455	772 534
SEASONALLY ADJUSTED							
1999							
March	187 548	176 626	273 125	43 571	55 514	18 274	754 162
June	180 279	171 041	258 012	44 807	54 543	20 254	731 328
September	188 350	174 323	255 224	48 854	54 378	24 634	751 979
December	183 539	167 512	277 108	43 160	52 773	20 124	738 854
2000							
March	187 955	172 113	265 429	50 457	50 756	20 888	747 147
June	188 204	175 813	270 278	54 103	54 108	19 487	764 045
TREND ESTIMATES							
1999							
March	185 646	177 636	266 028	45 358	55 718	19 315	750 374
June	184 362	172 986	263 737	44 952	55 033	20 808	743 779
September	184 549	170 835	262 588	45 571	53 666	22 079	740 938
December	185 838	170 747	266 419	47 140	52 734	21 705	744 382
2000							
March	187 128	172 014	269 936	49 538	52 348	20 535	750 628
June	187 663	173 652	271 031	52 208	52 497	19 478	755 791

(a) For more information refer to paragraphs 4 to 6 of the Explanatory Notes.

CHICKEN MEAT PRODUCED(a): All Series

	<i>New South Wales</i>	<i>Victoria</i>	<i>Queensland</i>	<i>South Australia</i>	<i>Western Australia</i>	<i>Australia</i>
<i>Quarter</i>	<i>tonnes</i>	<i>tonnes</i>	<i>tonnes</i>	<i>tonnes</i>	<i>tonnes</i>	<i>tonnes</i>
ORIGINAL						
1999						
March	56 024	38 033	22 248	n.p.	n.p.	140 851
June	52 201	38 562	22 645	n.p.	n.p.	139 070
September	50 735	39 708	23 269	n.p.	n.p.	141 684
December	56 035	43 557	25 382	n.p.	n.p.	151 052
2000						
March	57 613	42 363	23 208	n.p.	n.p.	150 476
June	56 862	42 511	23 581	n.p.	n.p.	149 492
SEASONALLY ADJUSTED						
1999						
March	57 184	38 313	22 408	n.p.	n.p.	142 569
June	52 509	39 837	22 959	n.p.	n.p.	141 155
September	49 488	39 553	23 354	n.p.	n.p.	140 906
December	55 838	41 999	24 756	n.p.	n.p.	147 944
2000						
March	58 945	42 713	23 382	n.p.	n.p.	152 433
June	57 094	43 939	23 882	n.p.	n.p.	151 612
TREND ESTIMATES						
1999						
March	55 086	38 371	22 181	n.p.	n.p.	140 698
June	52 635	39 276	23 022	n.p.	n.p.	141 061
September	52 466	40 308	23 668	n.p.	n.p.	143 315
December	54 585	41 542	23 943	n.p.	n.p.	146 970
2000						
March	57 213	42 791	23 946	n.p.	n.p.	150 691
June	58 924	43 837	23 818	n.p.	n.p.	153 184

(a) For more information refer to paragraphs 8 and 9 of the Explanatory Notes.

MEAT PRODUCED(a): Original

<i>Financial year</i>	<i>New South Wales</i> tonnes	<i>Victoria</i> tonnes	<i>Queensland</i> tonnes	<i>South Australia</i> tonnes	<i>Western Australia</i> tonnes	<i>Tasmania</i> tonnes	<i>Australia</i> tonnes
BEEF							
1997-1998	473 784	389 086	799 779	80 924	102 482	53 064	1 911 089
1998-1999	437 769	398 815	904 504	62 266	104 979	53 271	1 972 809
1999-2000	431 958	351 372	932 053	78 001	94 973	57 713	1 952 551
VEAL							
1997-1998	20 818	15 579	5 520	734	312	1 149	44 164
1998-1999	15 630	14 225	5 928	611	436	1 241	38 120
1999-2000	13 043	13 370	6 550	471	859	1 391	35 735
MUTTON							
1997-1998	119 709	63 470	24 552	58 554	56 442	9 841	332 568
1998-1999	117 416	61 646	26 040	48 029	39 766	8 724	301 621
1999-2000	118 943	76 713	27 704	28 969	38 127	11 790	302 247
LAMB							
1997-1998	69 822	119 973	13 949	38 224	33 581	8 072	283 621
1998-1999	77 138	128 380	14 138	44 172	39 021	9 222	312 072
1999-2000	79 961	140 205	17 456	56 667	42 960	8 952	346 201
PIG MEAT							
1997-1998	95 590	112 504	81 172	28 489	35 499	4 916	358 489
1998-1999	97 185	114 582	84 065	30 864	37 534	5 242	369 862
1999-2000	103 232	106 690	82 037	31 927	34 201	4 403	362 852
TOTAL RED MEAT							
1997-1998	779 722	700 612	924 972	206 925	228 317	77 041	2 929 932
1998-1999	745 138	717 648	1 034 675	185 943	221 736	77 700	2 994 484
1999-2000	747 136	688 350	1 065 801	196 036	211 121	84 249	2 999 586
CHICKEN MEAT							
1997-1998	211 603	148 288	88 690	n.p.	n.p.	n.p.	543 804
1998-1999	223 222	153 601	88 086	n.p.	n.p.	n.p.	564 270
1999-2000	221 245	168 139	95 439	n.p.	n.p.	n.p.	592 703

(a) For more information refer to paragraphs 4 to 9 of the Explanatory Notes.

EXPORTS OF FRESH, FROZEN AND PROCESSED MEAT, Australia(a): Original

Period	FRESH, CHILLED OR FROZEN MEAT.....								PROCESSED MEAT		
	<i>Beef bone -in</i>	<i>Beef bone -out</i>	<i>Veal bone -in</i>	<i>Veal bone -out</i>	<i>Mutton bone -in</i>	<i>Mutton bone -out</i>	<i>Lamb bone -in</i>	<i>Lamb bone -out</i>	<i>Pork</i>	<i>Bacon and ham</i>	<i>Canned meat</i>
	tonnes	tonnes	tonnes	tonnes	tonnes	tonnes	tonnes	tonnes	tonnes	tonnes	tonnes
1997-1998	46 933	795 942	1 800	5 548	107 839	59 130	62 168	8 750	12 276	149	12 900
1998-1999	61 019	836 576	1 614	6 143	114 745	51 398	71 576	9 334	16 510	168	13 056
1999-2000	45 434	817 370	1 557	7 394	120 715	55 368	86 475	11 043	39 217	88	13 702
1999											
March	20 008	186 650	273	844	32 516	11 489	17 451	2 058	3 355	7	3 337
June	19 161	203 479	606	1 380	29 999	12 536	17 650	2 653	5 992	31	2 857
September	13 061	208 253	356	2 565	21 313	13 669	18 156	2 450	10 358	49	3 080
December	9 027	216 411	601	2 195	34 927	15 248	22 176	2 837	10 136	14	3 471
2000											
March	11 729	178 344	304	1 282	33 412	13 918	20 720	2 618	8 776	13	3 241
June	11 617	214 362	295	1 352	31 062	12 534	25 423	3 137	9 947	11	3 910

(a) For more information refer to paragraphs 10 and 11 of the Explanatory Notes.

EXPORTS OF LIVE SHEEP AND CATTLE, Australia(a): Original

	<i>Number</i>	<i>Gross weight</i>	<i>Gross value</i>	<i>Unit value</i>
<i>Period</i>	'000	'000 tonnes	\$'000	\$
SHEEP				
1997-1998	4 961.1	256.0	193 266	38.96
1998-1999	4 958.7	254.9	181 671	36.64
1999-2000	4 866.7	243.2	180 990	37.19
1999				
March	1 259.3	64.4	45 473	36.11
June	1 264.9	63.9	44 396	35.10
September	1 074.8	55.0	41 216	38.35
December	1 361.5	68.4	48 981	35.98
2000				
March	1 345.1	66.7	49 924	37.12
June	1 085.4	53.1	40 869	37.65
CATTLE				
1997-1998	694.0	255.4	334 058	481.34
1998-1999	713.0	264.7	342 667	480.57
1999-2000	843.2	315.8	430 565	510.66
1999				
March	196.7	75.9	99 569	506.09
June	187.8	67.2	87 326	464.98
September	224.4	83.7	106 678	475.49
December	225.4	85.5	116 010	514.74
2000				
March	205.1	78.0	109 982	536.19
June	188.3	68.6	97 895	519.86

(a) For more information refer to paragraph 12 of the Explanatory Notes.

WHOLE MILK INTAKE, By Factories(a): All Series

Quarter	New South Wales	Victoria	Queensland	South Australia	Western Australia	Tasmania	Australia
	ML	ML	ML	ML	ML	ML	ML
ORIGINAL							
1998							
December	359	2 382	222	195	103	240	3 501
1999							
March	310	1 605	198	150	95	171	2 529
June	293	997	185	143	97	99	1 814
September	346	1 606	219	171	109	100	2 551
December	388	2 535	232	213	105	258	3 731
2000							
March	332	1 697	209	172	98	166	2 674
SEASONALLY ADJUSTED							
1998							
December	318	1 543	206	160	101	143	2 471
1999							
March	320	1 641	202	165	102	153	2 583
June	328	1 783	203	170	100	170	2 754
September	343	1 745	213	166	100	158	2 725
December	344	1 643	215	174	103	154	2 633
2000							
March	344	1 737	213	189	106	149	2 738
TREND ESTIMATES							
1998							
December	319	1 581	207	159	101	148	2 515
1999							
March	322	1 663	204	164	101	157	2 611
June	330	1 724	205	167	100	162	2 688
September	338	1 730	210	170	101	161	2 710
December	344	1 709	214	176	103	155	2 701
2000							
March	346	1 693	216	184	105	150	2 694

(a) For more information refer to paragraph 13 of the Explanatory Notes.

Source: Original series milk data from Australian Dairy Corporation.

MARKET MILK SALES, By Factories(a): All Series

	<i>New South Wales</i>	<i>Victoria</i>	<i>Queensland</i>	<i>South Australia</i>	<i>Western Australia</i>	<i>Tasmania</i>	<i>Australia(b)</i>
<i>Quarter</i>	<i>ML</i>	<i>ML</i>	<i>ML</i>	<i>ML</i>	<i>ML</i>	<i>ML</i>	<i>ML</i>
ORIGINAL							
1998							
December	145	109	96	47	48	12	457
1999							
March	140	105	94	45	47	12	444
June	144	113	95	46	48	12	458
September	144	110	98	47	47	12	459
December	140	111	96	48	47	12	454
2000							
March	136	105	94	46	47	12	439
SEASONALLY ADJUSTED							
1998							
December	145	109	96	46	48	12	457
1999							
March	144	109	96	46	47	12	454
June	143	110	95	46	48	12	454
September	141	109	96	47	48	12	453
December	141	111	97	47	47	12	454
2000							
March	139	109	94	46	47	12	448
TREND ESTIMATES							
1998							
December	145	110	96	46	48	12	458
1999							
March	144	109	96	46	48	12	455
June	143	109	96	46	48	12	454
September	142	110	96	47	48	12	453
December	140	110	96	47	47	12	452
2000							
March	140	109	95	47	47	12	450

(a) For more information refer to paragraph 13 of the Explanatory Notes.

(b) Australian total excludes Australian Capital Territory and interstate transfer of UHT milk.

Source: Original series milk data from Australian Dairy Corporation.

BROKERS AND DEALERS RECEIVALS OF TAXABLE WOOL(a): All Series

Quarter	New South Wales	Victoria	Queensland	South Australia	Western Australia	Tasmania	Australia	% of total received by brokers
	tonnes	tonnes	tonnes	tonnes	tonnes	tonnes	tonnes	tonnes
ORIGINAL								
1999								
March	41 405	30 486	10 564	19 198	40 321	2 955	144 929	83.9
June	35 964	25 516	15 388	16 138	23 838	3 400	120 243	79.5
September	54 347	40 052	16 198	26 667	37 784	5 228	180 276	83.4
December	57 797	54 307	7 254	25 291	45 341	6 710	196 699	81.4
2000								
March	38 552	29 338	9 530	19 033	37 696	3 101	137 250	81.8
June	40 037	27 193	12 665	17 604	30 799	3 312	131 611	78.5
SEASONALLY ADJUSTED								
1999								
March	48 402	39 658	12 082	23 503	37 558	4 170	165 371	..
June	47 430	45 200	13 950	23 583	37 234	4 433	171 829	..
September	44 940	37 613	12 343	22 121	31 897	5 088	154 001	..
December	48 974	34 132	10 175	19 523	41 103	4 616	158 523	..
2000								
March	45 145	38 075	10 920	23 396	35 199	3 998	156 734	..
June	52 657	46 886	11 494	25 604	48 217	4 314	189 173	..
TREND ESTIMATES								
1999								
March	46 742	40 393	13 994	22 860	36 810	4 054	164 853	..
June	47 394	40 960	13 199	22 770	36 374	4 397	165 094	..
September	46 599	38 533	11 897	21 833	35 389	4 636	158 887	..
December	46 794	36 966	11 195	21 550	36 934	4 556	157 996	..
2000								
March	48 282	39 040	10 806	22 802	40 330	4 336	165 596	..
June	50 101	43 216	11 034	24 380	44 043	4 166	176 941	..

(a) For more information refer to paragraphs 14 and 15 of the Explanatory Notes.

LIVESTOCK PRODUCTS: Original

Financial year	New South Wales	Victoria	Queensland	South Australia	Western Australia	Tasmania	Australia
WHOLE MILK INTAKE BY FACTORIES (ML)(a)							
1996-1997	1 192	5 622	797	535	349	529	9 024
1997-1998	1 242	5 866	822	580	386	543	9 438
1998-1999	1 286	6 414	827	643	403	603	10 175
MARKET MILK SALES BY FACTORIES (ML)(a)							
1996-1997	576	452	376	173	193	50	1 820
1997-1998	591	442	379	182	190	49	1 833
1998-1999	578	442	382	185	191	48	1 827
BROKERS AND DEALERS RECEIVALS OF TAXABLE WOOL (Tonnes)(a)							
1997-1998	183 156	152 600	45 906	87 910	153 882	17 265	640 717
1998-1999	181 712	153 981	51 873	89 450	145 515	16 232	638 763
1999-2000	190 733	150 890	45 649	88 596	151 620	18 350	645 837

(a) For more information refer to paragraphs 13 to 15 of the Explanatory Notes.

Source: Original series milk data from Australian Dairy Corporation.

WHAT IF...? REVISIONS TO TREND ESTIMATES

EFFECT OF NEW SEASONALLY ADJUSTED ESTIMATES ON TREND ESTIMATES

Each time new seasonally adjusted estimates become available, trend estimates are revised (see paragraph 21 of the Explanatory Notes).

TREND REVISIONS

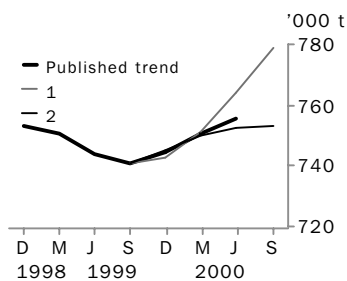
The graphs and tables which follow present the effect of two possible new seasonally adjusted estimates on the previous trend estimates:

1 The September Quarter 2000 seasonally adjusted estimate is higher than the June Quarter 2000 estimate by the percentage shown.

2 The September Quarter 2000 seasonally adjusted estimate is lower than the June Quarter 2000 estimate by the percentage shown.

These percentages were chosen because they represent the average absolute quarterly percentage change for these series over the last ten years.

RED MEAT PRODUCTION

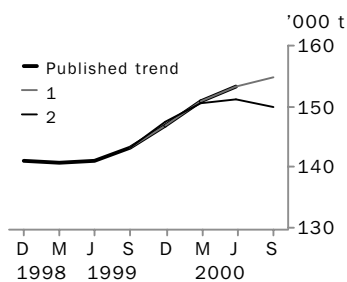


	TREND AS PUBLISHED	number	% change
Jun Qtr 1999	743 779	-0.9	
Sep Qtr 1999	740 938	-0.4	
Dec Qtr 1999	744 382	0.5	
Mar Qtr 2000	750 628	0.8	
Jun Qtr 2000	755 791	0.7	
Sep Qtr 2000	—	—	

WHAT IF NEXT QUARTER'S SEASONALLY ADJUSTED ESTIMATE:

1		2	
<i>rises by 3% on Jun Qtr 2000</i>		<i>falls by 3% on Jun Qtr 2000</i>	
number	% change	number	% change
743 779	-0.9	743 779	-0.9
740 938	-0.4	740 938	-0.4
742 592	0.2	745 015	0.6
751 108	1.1	750 175	0.7
763 927	1.7	752 213	0.3
778 905	2.0	752 889	0.1

CHICKEN MEAT PRODUCTION

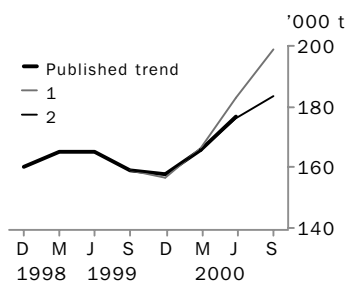


	TREND AS PUBLISHED	number	% change
Jun Qtr 1999	141 061	0.3	
Sep Qtr 1999	143 315	1.6	
Dec Qtr 1999	146 970	2.6	
Mar Qtr 2000	150 691	2.5	
Jun Qtr 2000	153 184	1.7	
Sep Qtr 2000	—	—	

WHAT IF NEXT QUARTER'S SEASONALLY ADJUSTED ESTIMATE:

1		2	
<i>rises by 4% on Jun Qtr 2000</i>		<i>falls by 4% on Jun Qtr 2000</i>	
number	% change	number	% change
141 061	0.3	141 061	0.3
143 314	1.6	143 314	1.6
146 890	2.5	147 335	2.8
150 664	2.6	150 509	2.2
153 197	1.7	151 055	0.4
154 832	1.1	149 752	-0.9

WOOL RECEIVALS



	TREND AS PUBLISHED	number	% change
Jun Qtr 1999	165 094	0.1	
Sep Qtr 1999	158 887	-3.8	
Dec Qtr 1999	157 996	-0.6	
Mar Qtr 2000	165 596	4.8	
Jun Qtr 2000	176 941	6.9	
Sep Qtr 2000	—	—	

WHAT IF NEXT QUARTER'S SEASONALLY ADJUSTED ESTIMATE:

1		2	
<i>rises by 9% on Jun Qtr 2000</i>		<i>falls by 9% on Jun Qtr 2000</i>	
number	% change	number	% change
165 094	0.1	165 094	0.1
158 886	-3.8	158 886	-3.8
156 324	-1.6	157 724	-0.7
166 092	6.2	165 583	5.0
182 753	10.0	176 004	6.3
199 050	8.9	183 526	4.3

WHAT IF...? REVISIONS TO TREND ESTIMATES

EFFECT OF NEW SEASONALLY ADJUSTED ESTIMATES ON TREND ESTIMATES

Readers should exercise care when interpreting trend estimates. The last three trend estimates, in particular, are likely to be revised when new seasonally adjusted estimates become available.

TREND REVISIONS

The graph and tables which follow present the effect of two possible scenarios on the previous trend estimates:

1 The June Quarter 2000 seasonally adjusted estimate is higher than the March Quarter 2000 estimate by:

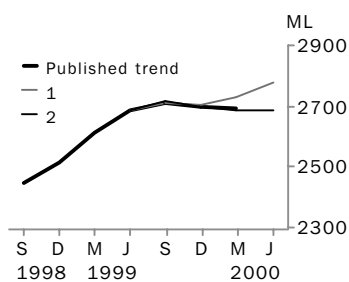
- +2% for whole milk intake by factories.

2 The June Quarter 2000 seasonally adjusted estimate is lower than the March Quarter 2000 estimate by:

- 2% for whole milk intake by factories.

These percentages were chosen because they represent the average absolute quarterly percentage change for these series over the last ten years.

WHOLE MILK INTAKE BY FACTORIES



	TREND AS PUBLISHED		WHAT IF NEXT QUARTER'S SEASONALLY ADJUSTED ESTIMATE:			
	number	% change	1 <i>rises by 2% on Mar Qtr 2000</i>		2 <i>falls by 2% on Mar Qtr 2000</i>	
	number	% change	number	% change	number	% change
Mar Qtr 1999	2 611	3.8	2 611	3.8	2 611	3.8
Jun Qtr 1999	2 688	2.9	2 688	2.9	2 688	2.9
Sep Qtr 1999	2 710	0.8	2 709	0.8	2 717	1.1
Dec Qtr 1999	2 701	-0.3	2 702	-0.3	2 698	-0.7
Mar Qtr 2000	2 694	-0.3	2 727	0.9	2 685	-0.5
Jun Qtr 2000	—	—	2 777	1.8	2 684	0.0

EXPLANATORY NOTES

INTRODUCTION

- 1** This publication contains information on livestock slaughterings, meat production, stocks of frozen meat, exports of live sheep and live cattle, exports of fresh, frozen and processed meat, and whole milk intake by factories, market milk sales by factories and receipts of taxable wool by wool brokers and dealers.
- 2** The figures shown in this publication have been revised where necessary and as a consequence may not agree with similar data shown in previous publications.
- 3** Where figures have been rounded, discrepancies may occur between sums of the component items and totals.
- 4** Unless indicated otherwise, Australian totals include data for all States and both Territories.

LIVESTOCK SLAUGHTERINGS AND MEAT PRODUCTION

- 5** The statistics on slaughterings and meat production are based on a monthly collection from abattoirs and other major slaughtering establishments and include estimates of animals slaughtered on farms and by country butchers and other small slaughtering establishments.
- 6** Red meat is shown in carcass weight and excludes offal.
- 7** Care should be taken when using this information as the figures only relate to slaughterings for human consumption and do not include animals condemned, slaughtered for petfood or those killed for boiling down.
- 8** Poultry slaughterings and meat produced statistics have been compiled from returns supplied by commercial poultry slaughtering establishments and comprise boilers, fryers and roasters. Many small producers are excluded from the collection; however, the statistics represent a high level of coverage. Tasmanian and Northern Territory data are excluded from the Australian total.
- 9** Chicken meat is shown in dressed weight of whole birds, pieces and giblets. Some slaughterings and meat production statistics for 'Ducks and Drakes' and 'Other Fowls and Turkeys' are available by contacting the ABS on Hobart 03 6222 5844 or by writing to GPO Box 66a, Hobart TAS 7001 (Attention: Agriculture Section).

EXPORTS OF FRESH, FROZEN AND PROCESSED MEAT

- 10** Table 20 shows exports of fresh, frozen and processed meat, excluding offal. Factors can be applied to beef, veal, mutton and lamb bone-out figures to derive bone-in carcass weight which, when added to bone-in figures, shows total exports in carcass weight. The factor for beef and veal is 1.5 and for mutton and lamb, 2.0 (Source: Department of Agriculture, Fisheries and Forestry).
- 11** Beef also includes buffalo meat. Bacon and ham shown is the cured carcass weight of smoked or cooked bacon and ham. It also includes the stated net weight of packs of canned bacon and ham. Canned meat is shown as the canned weight and excludes canned bacon and ham.

LIVE SHEEP AND CATTLE EXPORTS

- 12** Table 21 contains statistics of the number of live sheep and cattle exported, the gross weight, gross value and unit value. The unit value is obtained by dividing the gross value by the number of animals exported. Sheep and cattle exported for breeding are excluded.

MILK

- 13** Tables 2, 22, 23 and 25 contain statistics collected by the Australian Dairy Corporation (ADC). Whole milk intake by factories includes the whole milk equivalent of farm cream intake. Market milk sales includes white, flavoured, high and low fat milk and uht milk.

EXPLANATORY NOTES

WOOL RECEIVALS

14 The statistics in Tables 2, 24 and 25 show the amount of taxable wool received by brokers and purchased by dealers from wool producers. It excludes wool received by brokers on which tax has already been paid by other dealers (private buyers) or brokers.

15 The information shown is on the basis of the State in which wool has actually been received and does not necessarily reflect the production of wool in that State.

SEASONAL ADJUSTMENT

16 Seasonal adjustment is a means of removing the estimated effects of normal seasonal variation from the series so that the effects of other influences can be more clearly recognised.

17 In the seasonal adjustment of the livestock estimates, account has been taken of both normal seasonal factors and 'trading-day' effects, where significant, (arising from the varying length of each quarter and the varying numbers of Sundays, Mondays, Tuesdays etc. in the quarter). Adjustments are also made for the effects of change in the date of Easter holidays, again, where significant. Seasonal adjustment does not remove from the series the effect of irregular influences (e.g. abnormal weather, industrial disputes).

18 The State component series have been seasonally adjusted independently. Therefore, the adjusted components may not add to the Australian Group totals.

19 As happens with all seasonally adjusted series, the seasonal factors are reviewed annually to take account of each additional year's data.

TREND ESTIMATES

20 A trend estimate is obtained by reducing the irregular component from the seasonally adjusted series. In this publication trend estimates are generally derived by applying a seven term Henderson moving average to the seasonally adjusted series. The seven term Henderson, (like all Henderson averages) is symmetric, but as the end of a time series is approached, asymmetric forms of the average are applied. Unlike the weights of the standard seven term Henderson moving average, the weights employed here have been tailored to suit the particular characteristics of individual series. While the asymmetric weights enable the trend to be calculated for recent quarters, it does result in revisions to the estimates for the most recent three quarters as additional observations become available. Revisions of trend estimates will also occur with revisions to the original data and re-estimation of seasonal factors.

21 Sensitivity analysis indicates the potential magnitude and direction of revisions created to the last three estimates. It aims to show how a specified movement in the seasonally adjusted data in the next period will affect the trend path of the time series. By showing how sensitive the trend estimates are to the addition of new data, the analysis provides information which can be used in the assessment of the trend's stability.

22 For further information, see *A Guide to Interpreting Time Series—Monitoring 'Trends', an Overview* (Cat. no. 1348.0) or contact the Assistant Director, Time Series Analysis on 02 6252 6345.

RELATED PUBLICATIONS

23 Current publications produced by the ABS are listed in the Catalogue of Publications and Products, Australia (Cat. no. 1101.0). The ABS also issues, on Tuesdays and Fridays, a Release Advice (Cat. no. 1105.0) which lists publications to be released in the next few days. The Catalogue and Release Advice are available from any ABS office.

EXPLANATORY NOTES

SYMBOLS AND OTHER USAGES	billion	thousand million
	M	million
	ML	million litres
	n.a.	not available
	n.p.	not published
	p	preliminary
	t	tonnes
	..	not applicable

FOR MORE INFORMATION...

- INTERNET* **www.abs.gov.au** the ABS web site is the best place to start for access to summary data from our latest publications, information about the ABS, advice about upcoming releases, our catalogue, and Australia Now—a statistical profile.
- LIBRARY* A range of ABS publications is available from public and tertiary libraries Australia-wide. Contact your nearest library to determine whether it has the ABS statistics you require, or visit our web site for a list of libraries.
- CPI INFOLINE* For current and historical Consumer Price Index data, call 1902 981 074 (call cost 77c per minute).
- DIAL-A-STATISTIC* For the latest figures for National Accounts, Balance of Payments, Labour Force, Average Weekly Earnings, Estimated Resident Population and the Consumer Price Index call 1900 986 400 (call cost 77c per minute).

INFORMATION SERVICE

Data which have been published and can be provided within five minutes are free of charge. Our information consultants can also help you to access the full range of ABS information—ABS user-pays services can be tailored to your needs, time frame and budget. Publications may be purchased. Specialists are on hand to help you with analytical or methodological advice.

- PHONE* **1300 135 070**
- EMAIL* **client.services@abs.gov.au**
- FAX* 1300 135 211
- POST* Client Services, ABS, GPO Box 796, Sydney 1041

WHY NOT SUBSCRIBE?

ABS subscription services provide regular, convenient and prompt deliveries of ABS publications and products as they are released. Email delivery of monthly and quarterly publications is available.

- PHONE* 1300 366 323
- EMAIL* subscriptions@abs.gov.au
- FAX* 03 9615 7848
- POST* Subscription Services, ABS, GPO Box 2796Y, Melbourne 3001



2721500004005
ISSN 0728-4047

RRP \$22.00