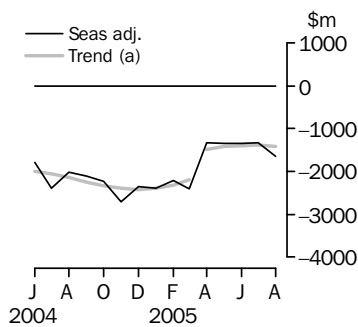


INTERNATIONAL TRADE IN GOODS AND SERVICES

AUSTRALIA

EMBARGO: 11.30AM (CANBERRA TIME) TUES 4 OCT 2005

Balance on goods and services



(a) A trend break of \$600m has been applied to April 2005.

KEY FIGURES

	June 2005	July 2005	August 2005	Jul 05 to Aug 05
	\$m	\$m	\$m	% change
TREND				
Balance on goods & services	-1 398	-1 391	-1 412	..
Credits (exports of goods & services)	14 897	14 980	15 030	-
Debits (imports of goods & services)	16 295	16 371	16 442	-
SEASONALLY ADJUSTED				
Balance on goods & services	-1 344	-1 333	-1 639	..
Credits (exports of goods & services)	14 832	15 227	14 703	-3
Debits (imports of goods & services)	16 176	16 560	16 342	-1

.. not applicable

- nil or rounded to zero (including null cells)

KEY POINTS

TREND ESTIMATES

- The provisional trend estimate of the balance on goods and services was a deficit of \$1,412m in August 2005, an increase of \$21m on the revised deficit in July.
- Goods and services credits rose \$50m to \$15,030m. Goods and services debits rose \$71m to \$16,442m.

SEASONALLY ADJUSTED ESTIMATES

- In seasonally adjusted terms, the balance on goods and services was a deficit of \$1,639m in August, an increase of \$306m on the deficit in July.
- Goods and services credits fell \$524m (3%) to \$14,703m. Non-rural and other goods fell \$474m (5%), and rural goods fell \$61m (3%). Services credits rose \$11m.
- Goods and services debits fell \$218m (1%) to \$16,342m. Intermediate and other goods fell \$213m (3%), capital goods fell \$40m (1%) while consumption goods rose \$50m (1%). Services debits fell \$15m.

ORIGINAL ESTIMATES

- In original terms, the August balance on goods and services was a deficit of \$2,101m, an increase of \$1,228m on the deficit in July. Goods and services credits fell \$300m (2%) and goods and services debits rose \$928m (6%).
- In the two months to August, exports of non-rural and other goods were up \$4.3b (27%) while rural goods were down \$0.5b (11%) on the corresponding period in 2004-05.

INQUIRIES

For further information about these and related statistics, contact the National Information and Referral Service on 1300 135 070 or Tom Jebbink on Canberra (02) 6252 5540.

NOTES

FORTHCOMING ISSUES

ISSUE	RELEASE DATE
September 2005	3 November 2005
October 2005	6 December 2005
November 2005	10 January 2006
December 2005	3 February 2006
January 2006	3 March 2006
February 2006	3 April 2006



REVISIONS

Historical revisions were made to incorporate the latest available data relating to merchandise trade, the quarterly Survey of International Trade in Services and the changes to travel and tourism related services detailed below.

In original terms, these revisions have:

- increased the deficit on goods and services for July 2005 by \$487m
- decreased the deficit on goods and services for 2004-05 by \$509m.

In seasonally adjusted terms, the deficit on goods and services for July 2005 decreased by \$125m.

These revisions will be incorporated into the September quarter issue of *Balance of Payments and International Investment Position, Australia* (cat. no. 5302.0).

CHANGES IN THIS ISSUE

From this issue, the travel services credits and debits series incorporate new methodologies and data sources. Estimates for earlier periods have been recompiled to maintain consistency in the time series. There have been consequential changes to the tourism related services series as travel services are a significant contributor to these series.

Because the changes in the methodologies and data sources affected the seasonal pattern of the series, seasonal re-analysis of the affected series was undertaken.

The largest impact of the new methodologies and data sources on both travel credits and debits has been in the past five years. For 2004-05, travel credits have been revised up \$1.5b from \$17.6b to \$19.1b, while travel debits have been revised up \$1.3b from \$13.5b to \$14.8b.

FEATURE ARTICLES AND CHANGES TO FORTHCOMING ISSUES

Details of feature articles on *International Trade in Services Travel Statistics* and *ABS Management of the Impact of the Implementation of the Imports Component of the New Customs System* and forthcoming changes to seasonal adjustment processes are provided on page four of this publication.

Dennis Trewin
Australian Statistician

CONTENTS

page

Feature articles and changes to forthcoming issues	4
Tables on AusStats	5

ANALYSIS

Analysis and comments	6
---------------------------------	---

TABLES

INTERNATIONAL TRADE IN GOODS AND SERVICES – BALANCE OF PAYMENTS BASIS

1 Goods and services, summary, seasonally adjusted and trend estimates	11
2 Goods and services, summary, original	12
3 Goods credits, original	13
4 Goods debits, original	14
5 Services, summary, original	15
6 Services, summary, seasonally adjusted and trend estimates	16
7 Services, original, quarterly	17

INTERNATIONAL MERCHANDISE TRADE – RECORDED TRADE BASIS

8 International merchandise exports, by commodity	18
9 International merchandise imports, by commodity	21
10 International merchandise trade, by country and country groups	24
11 International merchandise trade, by state	25

OTHER TABLES

12 Period average exchange rates per Australian dollar	26
---	----

OTHER INFORMATION

Explanatory Notes	27
Appendix – Related articles	30

FEATURE ARTICLES AND CHANGES TO FORTHCOMING ISSUES

FEATURE ARTICLES

Travel and tourism related services

A feature article, *Changes to International Trade in Services Travel Statistics*, detailing the changes to travel services credits and debits, has been released on the ABS web site <<http://www.abs.gov.au>>, concurrently with the release of this issue.

Introduction of new customs system

From 12 October 2005 all goods arriving in Australia will be recorded and monitored using Customs' Integrated Cargo System. A feature article, *ABS Management of the Impact of the Implementation of the Imports Component of the New Customs System*, which provides more information, including details of delays to ABS releases, was released on the ABS website on 16 September 2005 with the August 2005 issue of *International Merchandise Imports, Australia* (cat. no. 5439.0).

To access these articles on the web site select *Themes* then *Economy* then *International Trade* then *Topics of Interest*, and go to *Methodological Issues*.

CHANGES TO FORTHCOMING ISSUES

Annual seasonal re-analysis

Seasonally adjusted and trend estimate of the balance on goods and services will be revised in the October 2005 issue of this publication as a result of the annual seasonal re-analysis.

Detailed monthly seasonal adjustment

Currently, monthly goods series are only seasonally adjusted at the broad levels shown in Table 1, while quarterly goods series are seasonally adjusted at a more detailed level in *Balance of Payments and International Investment Position, Australia* (cat. no. 5302.0). From the October 2005 issue of this publication, the monthly goods series will be seasonally adjusted at the same level as the quarterly series, except that other non-rural credits will not be split between beverages, sugar and other in the monthly series.

Introducing seasonal adjustment at the more detailed level will result in revisions to the seasonally adjusted and trend series. As a result of this change there should be greater alignment between the monthly and quarterly series.

Revised forward seasonal factors will be released as part of the electronic versions of the relevant publications (see 5368.0, AusStats Table 20, for monthly seasonal factors, and 5302.0, AusStats Table 95, for quarterly seasonal factors).

These changes will result in the October issue containing additional tables and expanded monthly seasonal factors in the AusStats Table 20. Details of these changes will be provided in the September issue of this publication along with prototypes which will be made available on the ABS web site.

TABLES ON AUSSTATS

TABLES AVAILABLE ON AUSSTATS

Data available on the ABS web site <<http://www.abs.gov.au>> include:

- longer time series of all tables contained in this publication
- additional tables listed below:

Tables 21 to 36 inclusive are updated on an annual basis - with the March issue for calendar year and with the September issue for financial year. Tables 21 to 36 can be downloaded free of charge from the web site.

13 Merchandise exports by Broad Economic Category (BEC)

14 Merchandise exports by industry of origin (ANZSIC)

15 Merchandise imports by Broad Economic Category (BEC)

16 Merchandise imports by Balance of Payments Broad Economic Category (BoPBEC)

17 Merchandise imports by industry of origin (ANZSIC)

18 Merchandise exports, state by country and country groups

19 Merchandise imports, state by country and country groups

20 Monthly forward seasonal adjustment factors

21 International trade in services, credits, state by financial year

22 International trade in services, credits, financial year by state

23 International trade in services, debits, state by financial year

24 International trade in services, debits, financial year by state

25 International trade in services, credits, state by calendar year

26 International trade in services, credits, calendar year by state

27 International trade in services, debits, state by calendar year

28 International trade in services, debits, calendar year by state

29 International trade in services, credits, financial year by country and service

30 International trade in services, credits, service by financial year and by country

31 International trade in services, credits, calendar year by country and service

32 International trade in services, credits, service by calendar year and by country

33 International trade in services, debits, financial year by country and service

34 International trade in services, debits, service by financial year and by country

35 International trade in services, debits, calendar year by country and service

36 International trade in services, debits, service by calendar year and by country.

ANALYSIS AND COMMENTS

BALANCE ON GOODS AND SERVICES

The trend estimate of the balance on goods and services in August 2005 was a deficit of \$1,412m, an increase of \$21m on the deficit in July.

In seasonally adjusted terms, the balance on goods and services in August 2005 was a deficit of \$1,639m, an increase of \$306m on the deficit in July.

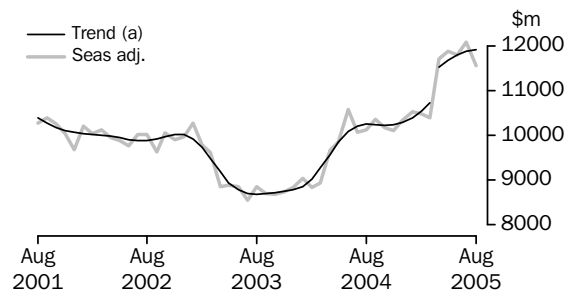
EXPORTS OF GOODS AND SERVICES

The trend estimate of goods and services credits rose \$50m between July and August to \$15,030m.

In seasonally adjusted terms, goods and services credits fell \$524m (3%) to \$14,703m. Non-rural and other goods fell \$474m (5%), rural goods fell \$61m (3%) while services credits rose \$11m.

Exports of goods

GOODS CREDITS



(a) A trend break of \$600m has been applied to April 2005.

RURAL GOODS

The trend estimate of rural goods exports rose \$9m to \$2,117m.

In seasonally adjusted terms, exports of rural goods fell \$61m (3%) to \$2,073m.

In original terms, exports of rural goods fell \$42m (2%) to \$2,050m.

Movements in the original series contributing to the fall in the seasonally adjusted series were:

- meat and meat preparations, down \$82m (13%), compared with an average July to August fall of 2% over the three previous years
- wool and sheepskins, down \$72m (33%), compared with an average July to August fall of 16% over the previous three years.

Partly offsetting these effects were cereal grains and cereal preparations, up \$38m (12%), compared with an average July to August rise of 3% over the previous three years.

ANALYSIS AND COMMENTS *continued*

Exports of goods *continued*

NON-RURAL AND OTHER GOODS

The trend estimate of non-rural and other goods exports rose \$34m to \$9,803m.

In seasonally adjusted terms, exports of non-rural and other goods fell \$474m (5%) to \$9,481m.

In original terms, exports of non-rural and other goods fell \$307m (3%) to \$9,941m.

Movements in the original series contributing to the fall in the seasonally adjusted series were:

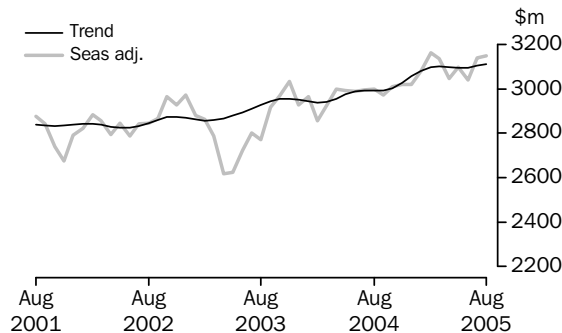
- other mineral fuels, down \$286m (21%), in contrast to an average July to August rise of 1% over the previous three years (with crude oil volumes down 31%)
- coal, coke and briquettes, down \$75m (4%), in contrast to an average July to August rise of 10% over the previous three years (on reduced volumes)
- other non-rural, down \$59m (6%), in contrast to an average July to August rise of 6% over the previous three years
- metal ores and minerals, up \$19m (1%), compared with an average July to August rise of 6% over the previous three years
- transport equipment, unchanged at \$451m, compared with an average July to August rise of 12% over the previous three years.

Partly offsetting these effects were:

- machinery, up \$74m (11%), in contrast to an average July to August fall of 3% over the previous three years
- other goods, up \$63m (10%), compared with an average July to August rise of 2% over the previous three years.

Exports of services

SERVICES CREDITS



In trend terms, services credits rose \$7m to \$3,110m.

Seasonally adjusted, services credits rose \$11m to \$3,149m.

Transportation services, up \$16m (2%) contributed to the rise in the seasonally adjusted series but was partly offset by other services, down \$4m (1%).

Seasonally adjusted, tourism related services credits rose \$12m (1%) to \$2,029m.

ANALYSIS AND COMMENTS *continued*

IMPORTS OF GOODS AND SERVICES

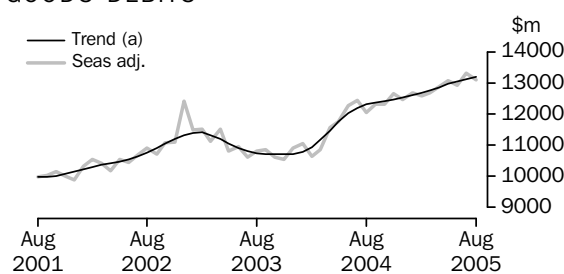
The trend estimate of goods and services debits rose \$71m between July and August to \$16,442m.

In seasonally adjusted terms, goods and services debits fell \$218m (1%) to \$16,342m. Intermediate and other goods fell \$213m (3%), capital goods fell \$40m (1%) while consumption goods rose \$50m (1%).

The value of goods debits in original terms is influenced by the number and composition of trading days in August 2005 compared with July 2005. To account for this difference, downward adjustments of about 6% for intermediate and other goods, about 9% for consumption goods and about 13% for capital goods have been applied prior to deriving the seasonally adjusted series.

Imports of goods

GOODS DEBITS



(a) Trend estimates exclude abnormal imports of aircraft in December 2002.

CONSUMPTION GOODS

The trend estimate of imports of consumption goods rose \$29m (1%) to \$4,048m.

In seasonally adjusted terms, imports of consumption goods rose \$50m (1%) to \$4,090m.

In original terms, imports of consumption goods rose \$468m (12%) to \$4,489m.

The following commodity groups had the largest deviation from their three year average movement:

- consumption goods n.e.s., up \$200m (16%), compared with an average July to August rise of 2% over the previous three years
- non-industrial transport equipment, down \$38m (3%), compared with an average July to August fall of 17% over the previous three years
- food and beverages, up \$93m (21%), compared with an average July to August rise of 3% over the previous three years
- toys, books and leisure goods, up \$89m (29%), compared with an average July to August rise of 10% over the previous three years
- household electrical items, up \$58m (18%), compared with an average July to August rise of 2% over the previous three years
- textiles, clothing and footwear, up \$66m (13%), compared with an average July to August rise of 4% over the previous three years.

CAPITAL GOODS

The trend estimate of imports of capital goods fell \$24m (1%) to \$2,951m.

In seasonally adjusted terms, imports of capital goods fell \$40m (1%) to \$2,928m.

ANALYSIS AND COMMENTS *continued*

Imports of goods continued

CAPITAL GOODS *continued*

In original terms, imports of capital goods rose \$202m (7%) to \$3,158m.

The following commodity groups had the largest deviation from their three year average movement:

- machinery and industrial equipment, up \$123m (10%), compared with an average July to August rise of 13% over the previous three years
- capital goods n.e.s., up \$45m (12%), compared with an average July to August rise of 3% over the previous three years
- industrial transport equipment n.e.s., down \$7m (2%), compared with an average July to August fall of 9% over the previous three years
- telecommunications equipment, up \$70m (20%), in contrast to an average July to August fall of 1% over the previous three years
- civil aircraft, down \$15m (16%).

INTERMEDIATE AND OTHER GOODS

The trend estimate of imports of intermediate and other goods rose \$62m (1%) to \$6,201m.

In seasonally adjusted terms, intermediate and other goods imports fell \$213m (3%) to \$6,088m.

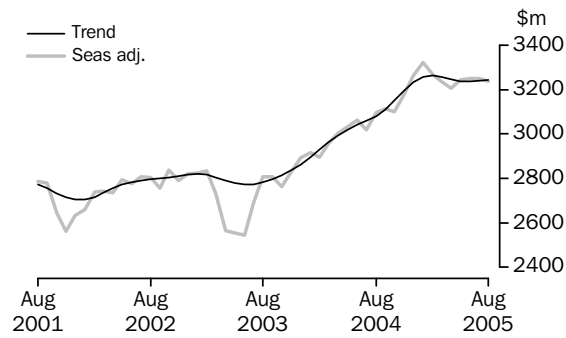
In original terms, imports of intermediate and other goods rose \$192m (3%) to \$5,721m.

The following commodity groups had the largest deviation from their three year average movement:

- fuels and lubricants, down \$139m (9%), in contrast to an average July to August rise of 12% over the previous three years
- other merchandise goods, down \$3m (4%), in contrast to an average July to August rise of 59% over the previous three years
- food and beverages, mainly for industry, down \$9m (15%), compared with an average July to August fall of 9% over the previous three years
- other goods, up \$223m (53%), compared with an average July to August rise of 5% over the previous three years
- parts for transport equipment, up \$51m (9%), in contrast to an average July to August fall of 5% over the previous three years
- organic and inorganic chemicals, up \$35m (11%), in contrast to an average July to August fall of 2% over the previous three years
- iron and steel, up \$59m (21%), compared with an average July to August rise of 9% over the previous three years.

Imports of services

SERVICES DEBITS



In trend terms, services debits rose \$4m to \$3,242m.

Seasonally adjusted, services debits fell \$15m to \$3,236m.

Movements in the seasonally adjusted components contributing to this fall were:

- transportation services, down \$37m (3%)
- other services, down \$7m (1%).

Partly offsetting these effects were travel services, up \$29m (2%).

Seasonally adjusted, tourism related services debits fell \$8m to \$1,710m.

GOODS AND SERVICES (a), Summary: Seasonally Adjusted and Trend Estimates

Months	BALANCE	CREDITS					DEBITS					
	On goods and services	Total goods and services	Total goods	Rural goods (b)	Non-rural and other goods (b)	Total services	Total goods and services	Total goods	Consumption goods	Capital goods	Intermediate and other goods	Total services
	\$m	\$m	\$m	\$m	\$m	\$m	\$m	\$m	\$m	\$m	\$m	\$m
SEASONALLY ADJUSTED												
2004												
June	-1 780	13 560	10 572	2 634	7 938	2 988	-15 340	-12 276	-3 939	-3 097	-5 240	-3 064
July	-2 393	13 058	10 064	2 393	7 671	2 994	-15 451	-12 432	-3 858	-3 174	-5 400	-3 019
August	-2 026	13 113	10 113	2 346	7 767	3 000	-15 139	-12 042	-3 766	-2 908	-5 368	-3 097
September	-2 106	13 332	10 360	2 289	8 071	2 972	-15 438	-12 324	-3 870	-2 894	-5 560	-3 114
October	-2 225	13 184	10 175	2 151	8 024	3 009	-15 409	-12 308	-3 821	-3 060	-5 427	-3 101
November	-2 708	13 126	10 107	2 111	7 996	3 019	-15 834	-12 656	-3 868	-3 115	-5 673	-3 178
December	-2 358	13 366	10 345	2 061	8 284	3 021	-15 724	-12 461	-3 858	-3 025	-5 578	-3 263
2005												
January	-2 397	13 610	10 531	2 047	8 484	3 079	-16 007	-12 686	-4 260	-2 813	-5 613	-3 321
February	-2 218	13 636	10 473	2 093	8 380	3 163	-15 854	-12 586	-4 011	-3 025	-5 550	-3 268
March	-2 404	13 523	10 387	1 890	8 497	3 136	-15 927	-12 691	-4 008	-2 849	-5 834	-3 236
April	-1 332	14 754	11 706	2 110	9 596	3 048	-16 086	-12 882	-3 964	-3 123	-5 795	-3 204
May	-1 341	14 977	11 880	2 082	9 798	3 097	-16 318	-13 076	-3 987	-3 086	-6 003	-3 242
June	-1 344	14 832	11 794	2 124	9 670	3 038	-16 176	-12 926	-3 997	-2 893	-6 036	-3 250
July	-1 333	15 227	12 089	2 134	9 955	3 138	-16 560	-13 309	-4 040	-2 968	-6 301	-3 251
August	-1 639	14 703	11 554	2 073	9 481	3 149	-16 342	-13 106	-4 090	-2 928	-6 088	-3 236
TREND ESTIMATES												
2004												
June	-1 992	13 068	10 080	2 421	7 659	2 988	-15 060	-12 019	-3 842	-2 923	-5 254	-3 041
July	-2 060	13 206	10 213	2 422	7 791	2 993	-15 266	-12 207	-3 857	-2 994	-5 356	-3 059
August	-2 147	13 247	10 254	2 372	7 882	2 993	-15 394	-12 314	-3 847	-3 032	-5 435	-3 080
September	-2 239	13 236	10 243	2 288	7 955	2 993	-15 475	-12 366	-3 840	-3 037	-5 489	-3 109
October	-2 329	13 231	10 228	2 196	8 032	3 003	-15 560	-12 409	-3 862	-3 021	-5 526	-3 151
November	-2 394	13 265	10 239	2 120	8 119	3 026	-15 659	-12 463	-3 910	-2 995	-5 558	-3 196
December	-2 416	13 348	10 293	2 068	8 225	3 055	-15 764	-12 531	-3 966	-2 979	-5 586	-3 233
2005												
January	-2 386	13 475	10 393	2 038	8 355	3 082	-15 861	-12 605	-4 011	-2 975	-5 619	-3 256
February	-2 308	13 636	10 539	2 027	8 512	3 097	-15 944	-12 680	-4 030	-2 976	-5 674	-3 264
March	-2 195	13 824	10 722	2 035	8 687	3 102	-16 019	-12 761	-4 027	-2 978	-5 756	-3 258
April(c)	-1 486	14 620	11 522	2 055	9 467	3 098	-16 106	-12 860	-4 014	-2 988	-5 858	-3 246
May	-1 424	14 776	11 682	2 076	9 606	3 094	-16 200	-12 963	-4 005	-2 994	-5 964	-3 237
June	-1 398	14 897	11 801	2 094	9 707	3 096	-16 295	-13 058	-4 009	-2 988	-6 061	-3 237
July	-1 391	14 980	11 877	2 108	9 769	3 103	-16 371	-13 133	-4 019	-2 975	-6 139	-3 238
August	-1 412	15 030	11 920	2 117	9 803	3 110	-16 442	-13 200	-4 048	-2 951	-6 201	-3 242

(a) For sign conventions, see paragraph 9 of the Explanatory Notes.

(b) For all time periods, estimates for sugar, sugar preparations and honey are included in Non-rural and other goods.

(c) A trend break of \$600m has been applied to Non-rural and other goods credits in April 2005.

GOODS AND SERVICES(a), Summary: Original

	BALANCE	CREDITS					DEBITS					
	<i>On goods and services</i>	<i>Total goods and services</i>	<i>Total goods</i>	<i>Rural goods(b)</i>	<i>Non-rural and other goods(b)</i>	<i>Total services</i>	<i>Total goods and services</i>	<i>Total goods</i>	<i>Con-sumption goods</i>	<i>Capital goods</i>	<i>Inter-mediate and other goods</i>	<i>Total services</i>
	\$m	\$m	\$m	\$m	\$m	\$m	\$m	\$m	\$m	\$m	\$m	\$m
FINANCIAL YEAR												
2002-03	-17 479	149 691	115 800	25 484	90 316	33 891	-167 170	-134 278	-41 228	-31 554	-61 496	-32 892
2003-04	-23 030	144 676	109 504	24 560	84 944	35 172	-167 706	-133 026	-42 916	-32 118	-57 992	-34 680
2004-05	-25 025	164 121	127 597	25 661	101 936	36 524	-189 146	-150 910	-47 140	-35 960	-67 810	-38 236
MONTHS												
2004												
June	-2 432	13 382	10 582	2 607	7 975	2 800	-15 814	-12 728	-3 791	-3 661	-5 276	-3 086
July	-2 541	13 115	10 129	2 379	7 750	2 986	-15 656	-12 462	-3 991	-3 237	-5 234	-3 194
August	-2 000	13 449	10 413	2 300	8 113	3 036	-15 449	-12 345	-3 940	-2 949	-5 456	-3 104
September	-3 094	13 422	10 567	2 293	8 274	2 855	-16 516	-13 121	-4 369	-3 023	-5 729	-3 395
October	-2 272	13 914	10 794	2 269	8 525	3 120	-16 186	-12 918	-4 188	-3 087	-5 643	-3 268
November	-3 344	13 231	10 115	2 137	7 978	3 116	-16 575	-13 506	-4 278	-3 373	-5 855	-3 069
December	-2 116	13 901	10 804	2 158	8 646	3 097	-16 017	-12 628	-3 805	-3 175	-5 648	-3 389
2005												
January	-2 306	12 381	9 319	1 720	7 599	3 062	-14 687	-11 267	-3 716	-2 413	-5 138	-3 420
February	-1 475	12 626	9 489	2 022	7 467	3 137	-14 101	-11 279	-3 713	-2 478	-5 088	-2 822
March	-1 928	13 732	10 532	2 014	8 518	3 200	-15 660	-12 595	-3 699	-2 848	-6 048	-3 065
April	-1 123	14 716	11 612	2 096	9 516	3 104	-15 839	-12 678	-3 881	-2 830	-5 967	-3 161
May	-884	15 116	12 171	2 200	9 971	2 945	-16 000	-12 930	-3 680	-3 199	-6 051	-3 070
June	-1 942	14 518	11 652	2 073	9 579	2 866	-16 460	-13 181	-3 880	-3 348	-5 953	-3 279
July	-873	15 481	12 340	2 092	10 248	3 141	-16 354	-12 923	-4 021	-2 956	-5 946	-3 431
August	-2 101	15 181	11 991	2 050	9 941	3 190	-17 282	-14 008	-4 489	-3 158	-6 361	-3 274
FINANCIAL YEAR TO DATE												
2 months ended August												
2004	-4 541	26 564	20 542	4 679	15 863	6 022	-31 105	-24 807	-7 931	-6 186	-10 690	-6 298
2005	-2 974	30 662	24 331	4 142	20 189	6 331	-33 636	-26 931	-8 510	-6 114	-12 307	-6 705

(a) For sign conventions, see paragraph 9 of the Explanatory Notes.

(b) For all time periods, estimates for sugar, sugar preparations and honey are included in Non-rural and other goods.

GOODS CREDITS: Original

	2002-03	2003-04	2004-05	Jun 2005	Jul 2005	Aug 2005	2 MONTHS ENDED AUGUST		Change
							2004	2005	
							\$m	\$m	
Total goods credits	115 800	109 504	127 597	11 652	12 340	11 991	20 542	24 331	18.4
Rural goods									
Meat and meat preparations	5 655	5 758	6 939	629	619	537	1 103	1 156	4.8
Cereal grains and cereal preparations	4 487	5 094	5 159	290	324	362	1 102	686	-37.7
Wool and sheepskins	3 545	2 778	2 838	241	220	148	428	368	-14.0
Other rural	11 797	10 930	10 725	913	929	1 003	2 046	1 932	-5.6
<i>Total rural goods(a)</i>	<i>25 484</i>	<i>24 560</i>	<i>25 661</i>	<i>2 073</i>	<i>2 092</i>	<i>2 050</i>	<i>4 679</i>	<i>4 142</i>	<i>-11.5</i>
Non-rural goods									
Metal ores and minerals	14 523	14 888	19 820	2 051	2 053	2 072	2 947	4 125	40.0
Coal, coke and briquettes	11 987	11 001	17 236	1 920	2 052	1 977	2 545	4 029	58.3
Other mineral fuels	11 049	8 766	11 151	912	1 361	1 075	1 777	2 436	37.1
Metals (excl. gold)	8 711	7 759	8 664	717	740	729	1 391	1 469	5.6
Machinery	7 362	6 839	7 494	643	665	739	1 246	1 404	12.7
Transport equipment	6 273	5 155	4 934	470	451	451	780	902	15.6
Other manufactures	13 485	13 276	14 041	1 230	1 289	1 257	2 293	2 546	11.0
Other non-rural(a)	8 234	9 286	10 744	1 076	975	916	1 694	1 891	11.6
<i>Total non-rural goods(a)</i>	<i>81 624</i>	<i>76 970</i>	<i>94 084</i>	<i>9 019</i>	<i>9 586</i>	<i>9 216</i>	<i>14 673</i>	<i>18 802</i>	<i>28.1</i>
Other goods									
<i>Total other goods(b)</i>	<i>8 692</i>	<i>7 974</i>	<i>7 852</i>	<i>560</i>	<i>662</i>	<i>725</i>	<i>1 190</i>	<i>1 387</i>	<i>16.6</i>

(a) For all time periods, estimates for sugar, sugar preparations and honey are included in Other non-rural.

(b) Includes non-monetary gold.

GOODS DEBITS(a): Original

	2 MONTHS ENDED AUGUST								
	2002-03	2003-04	2004-05	Jun 2005	Jul 2005	Aug 2005	2004	2005	Change
	\$m	\$m	\$m	\$m	\$m	\$m	\$m	\$m	%
Total goods debits	-134 278	-133 026	-150 910	-13 181	-12 923	-14 008	-24 807	-26 931	8.6
Consumption goods									
Food and beverages, mainly for consumption	-5 067	-5 167	-5 767	-465	-441	-534	-923	-975	5.6
Household electrical items	-3 657	-3 793	-4 021	-277	-315	-373	-734	-688	-6.3
Non-industrial transport equipment	-11 302	-12 326	-13 004	-1 239	-1 178	-1 140	-1 977	-2 318	17.2
Textiles, clothing and footwear	-5 237	-5 078	-5 812	-404	-519	-585	-1 079	-1 104	2.3
Toys, books and leisure goods	-3 740	-3 593	-3 740	-303	-306	-395	-649	-701	8.0
Consumption goods n.e.s.	-12 225	-12 959	-14 796	-1 192	-1 262	-1 462	-2 569	-2 724	6.0
<i>Total consumption goods</i>	<i>-41 228</i>	<i>-42 916</i>	<i>-47 140</i>	<i>-3 880</i>	<i>-4 021</i>	<i>-4 489</i>	<i>-7 931</i>	<i>-8 510</i>	<i>7.3</i>
Capital goods									
Machinery and industrial equipment	-11 007	-11 064	-13 405	-1 061	-1 173	-1 296	-2 192	-2 469	12.6
ADP equipment	-4 908	-5 138	-5 761	-625	-499	-485	-917	-984	7.3
Telecommunications equipment	-3 619	-4 105	-4 567	-399	-344	-414	-852	-758	-11.0
Civil aircraft	-3 887	-3 061	-2 496	-350	-97	-82	-582	-179	-69.2
Industrial transport equipment n.e.s.	-3 881	-4 144	-4 977	-480	-461	-454	-828	-915	10.5
Capital goods n.e.s.	-4 252	-4 606	-4 754	-433	-382	-427	-815	-809	-0.7
<i>Total capital goods</i>	<i>-31 554</i>	<i>-32 118</i>	<i>-35 960</i>	<i>-3 348</i>	<i>-2 956</i>	<i>-3 158</i>	<i>-6 186</i>	<i>-6 114</i>	<i>-1.2</i>
Intermediate and other merchandise goods									
Food and beverages, mainly for industry	-736	-625	-659	-58	-60	-51	-107	-111	3.7
Primary industrial supplies n.e.s.	-1 220	-1 079	-1 052	-87	-70	-103	-166	-173	4.2
Fuels and lubricants	-10 393	-9 917	-14 758	-1 484	-1 529	-1 390	-2 055	-2 919	42.0
Parts for transport equipment	-7 258	-6 548	-7 010	-598	-565	-616	-1 144	-1 181	3.2
Parts for ADP equipment	-2 011	-1 812	-1 787	-160	-153	-147	-321	-300	-6.5
Other parts for capital goods	-8 605	-8 553	-9 489	-809	-809	-857	-1 593	-1 666	4.6
Organic and inorganic chemicals	-3 089	-3 048	-3 622	-273	-316	-351	-556	-667	20.0
Paper and paperboard	-2 326	-2 242	-2 313	-180	-177	-199	-398	-376	-5.5
Textile yarn and fabrics	-1 839	-1 576	-1 453	-116	-115	-121	-289	-236	-18.3
Iron and steel	-1 960	-2 026	-3 010	-260	-283	-342	-406	-625	53.9
Plastics	-2 478	-2 177	-2 428	-186	-189	-209	-379	-398	5.0
Processed industrial supplies n.e.s.	-12 238	-12 029	-14 041	-1 195	-1 192	-1 267	-2 243	-2 459	9.6
Other merchandise goods	-1 710	-1 234	-1 054	-67	-71	-68	-153	-139	-9.2
<i>Total intermediate and other merchandise goods</i>	<i>-55 863</i>	<i>-52 866</i>	<i>-62 676</i>	<i>-5 473</i>	<i>-5 529</i>	<i>-5 721</i>	<i>-9 810</i>	<i>-11 250</i>	<i>14.7</i>
Other goods									
<i>Total other goods(b)</i>	<i>-5 633</i>	<i>-5 126</i>	<i>-5 134</i>	<i>-480</i>	<i>-417</i>	<i>-640</i>	<i>-880</i>	<i>-1 057</i>	<i>20.1</i>

(a) For sign conventions, see paragraph 9 of the Explanatory Notes.

(b) Includes non-monetary gold.

SERVICES (a)(b), Summary: **Original**

							2 MONTHS ENDED AUGUST		Change %
	2002-03	2003-04	2004-05	Jun 2005	Jul 2005	Aug 2005	2004	2005	
	\$m	\$m	\$m	\$m	\$m	\$m	\$m	\$m	
Credits									
Freight	920	830	776	61	59	59	140	118	-15.7
Other transportation	6 538	6 772	7 308	580	626	626	1 206	1 252	3.8
Travel	16 850	18 300	19 074	1 422	1 695	1 745	3 194	3 440	7.7
Other services	9 583	9 270	9 366	803	761	760	1 482	1 521	2.6
Total services credits	33 891	35 172	36 524	2 866	3 141	3 190	6 022	6 331	5.1
Debits									
Freight	-5 808	-6 056	-7 514	-586	-589	-644	-1 173	-1 233	5.1
Other transportation	-5 152	-5 578	-5 728	-514	-537	-472	-969	-1 009	4.1
Travel	-11 013	-12 581	-14 783	-1 300	-1 459	-1 304	-2 465	-2 763	12.1
Other services	-10 919	-10 465	-10 211	-879	-846	-854	-1 691	-1 700	0.5
Total services debits	-32 892	-34 680	-38 236	-3 279	-3 431	-3 274	-6 298	-6 705	6.5
Memorandum items:									
Tourism related service credits(c)	20 901	22 273	23 223	1 724	2 037	2 087	3 898	4 124	5.8
Tourism related service debits(c)	-15 692	-17 703	-19 995	-1 773	-1 952	-1 732	-3 348	-3 684	10.0

(a) For sign conventions, see paragraph 9 of the Explanatory Notes.

(b) For more detailed trade in services by commodity, see table 7.

(c) For a more detailed explanation of tourism related services, see paragraphs 15 and 16 of the Explanatory Notes.

SERVICES (a), Summary: **Seasonally Adjusted and Trend Estimates**

	Nov 2004	Dec 2004	Jan 2005	Feb 2005	Mar 2005	Apr 2005	May 2005	Jun 2005	Jul 2005	Aug 2005
	\$m	\$m	\$m	\$m	\$m	\$m	\$m	\$m	\$m	\$m

SEASONALLY ADJUSTED

Credits

Freight	66	66	63	63	63	61	59	59	60	57
Other transportation	607	618	612	606	620	629	615	622	615	634
Travel	1 560	1 541	1 620	1 699	1 657	1 583	1 641	1 575	1 678	1 677
Other services	786	796	784	795	796	775	782	782	785	781
Total services credits	3 019	3 021	3 079	3 163	3 136	3 048	3 097	3 038	3 138	3 149

Debits

Freight	-651	-663	-707	-646	-590	-629	-613	-617	-624	-597
Other transportation	-480	-497	-479	-496	-481	-490	-482	-471	-476	-466
Travel	-1 231	-1 271	-1 272	-1 248	-1 287	-1 217	-1 276	-1 301	-1 283	-1 312
Other services	-816	-832	-863	-878	-878	-868	-871	-861	-868	-861
Total services debits	-3 178	-3 263	-3 321	-3 268	-3 236	-3 204	-3 242	-3 250	-3 251	-3 236

Memorandum items:

Tourism related service credits(b)	1 902	1 898	1 948	2 007	2 004	1 966	1 979	1 943	2 017	2 029
Tourism related service debits(b)	-1 674	-1 740	-1 698	-1 691	-1 720	-1 710	-1 702	-1 721	-1 718	-1 710

TREND ESTIMATES

Credits

Freight	66	65	64	63	62	61	60	59	59	58
Other transportation	606	609	613	616	618	619	620	622	624	625
Travel	1 568	1 590	1 612	1 627	1 634	1 633	1 631	1 633	1 639	1 646
Other services	786	791	793	791	788	785	783	782	781	781
Total services credits	3 026	3 055	3 082	3 097	3 102	3 098	3 094	3 096	3 103	3 110

Debits

Freight	-651	-659	-658	-649	-636	-624	-616	-612	-609	-610
Other transportation	-482	-486	-488	-488	-487	-484	-480	-477	-473	-469
Travel	-1 229	-1 247	-1 258	-1 263	-1 263	-1 265	-1 271	-1 281	-1 291	-1 301
Other services	-834	-841	-852	-864	-872	-873	-870	-867	-865	-862
Total services debits	-3 196	-3 233	-3 256	-3 264	-3 258	-3 246	-3 237	-3 237	-3 238	-3 242

Memorandum items:

Tourism related service credits(b)	1 907	1 926	1 949	1 967	1 978	1 982	1 984	1 988	1 994	2 001
Tourism related service debits(b)	-1 666	-1 690	-1 705	-1 711	-1 712	-1 711	-1 711	-1 713	-1 715	-1 716

(a) For sign conventions, see paragraph 9 of the Explanatory Notes.

(b) For a more detailed explanation of tourism related services, see paragraphs 15 and 16 of the Explanatory Notes.

	CREDITS				DEBITS			
	Sep Qtr	Dec Qtr	Mar Qtr	Jun Qtr	Sep Qtr	Dec Qtr	Mar Qtr	Jun Qtr
	2004	2004	2005	2005	2004	2004	2005	2005
	\$m	\$m	\$m	\$m	\$m	\$m	\$m	\$m
Services	8 877	9 333	9 399	8 915	-9 693	-9 726	-9 307	-9 510
Transportation services								
Passenger(c)	1 768	1 896	1 884	1 760	-1 293	-1 190	-1 090	-1 279
Freight	210	204	183	179	-1 834	-2 020	-1 820	-1 840
Other(c)	np	np	np	np	-217	-223	-234	-202
<i>Total transportation services</i>	<i>1 978</i>	<i>2 100</i>	<i>2 067</i>	<i>1 939</i>	<i>-3 344</i>	<i>-3 433</i>	<i>-3 144</i>	<i>-3 321</i>
Travel services								
Business	327	301	338	351	-578	-526	-582	-592
Personal								
Education-related	1 821	1 500	1 710	1 871	-234	-152	-172	-144
Other	2 525	2 962	3 012	2 356	-3 015	-3 019	-2 872	-2 897
Total personal	4 346	4 462	4 722	4 227	-3 249	-3 171	-3 044	-3 041
<i>Total travel services</i>	<i>4 673</i>	<i>4 763</i>	<i>5 060</i>	<i>4 578</i>	<i>-3 827</i>	<i>-3 697</i>	<i>-3 626</i>	<i>-3 633</i>
Communication services(d)	205	188	195	186	-186	-176	-160	-171
Construction services	20	20	16	27	—	—	—	—
Insurance services	171	171	171	171	-218	-218	-218	-218
Financial services	251	251	251	251	-146	-146	-146	-146
Computer and information services	289	320	270	270	-266	-286	-239	-240
Royalties and license fees	136	183	138	176	-485	-535	-498	-488
Other business services								
Merchanting and other trade-related	156	182	145	172	-56	-58	-58	-46
Operational leasing	5	4	4	6	-186	-178	-169	-164
Miscellaneous business, professional and technical								
Legal, accounting, management consulting and public relations	115	113	114	138	-84	-79	-65	-96
Advertising, market research and public opinion polling	22	30	26	26	-24	-27	-38	-68
Research and development	77	104	81	98	-37	-41	-34	-49
Architectural, engineering and other technical services	98	119	151	151	-104	-91	-108	-95
Agriculture, mining and on-site processing	30	30	27	33	-24	-23	-14	-29
Services between affiliated enterprises n.i.e.	245	340	239	274	-181	-250	-219	-231
Other	90	105	101	95	-74	-81	-82	-102
Total miscellaneous business, professional and technical	677	841	739	815	-528	-592	-560	-670
<i>Total other business services</i>	<i>838</i>	<i>1 027</i>	<i>888</i>	<i>993</i>	<i>-770</i>	<i>-828</i>	<i>-787</i>	<i>-880</i>
Personal, cultural and recreational services								
Audiovisual and related services	27	25	44	17	-247	-160	-225	-164
Other personal, cultural and recreational services	78	78	79	78	-30	-57	-81	-36
<i>Total other personal, cultural and recreational services</i>	<i>105</i>	<i>103</i>	<i>123</i>	<i>95</i>	<i>-277</i>	<i>-217</i>	<i>-306</i>	<i>-200</i>
Government services n.i.e.	211	207	220	229	-174	-190	-183	-213
Memorandum items:								
Tourism related services(e)	5 686	5 868	6 161	5 508	-5 210	-4 981	-4 817	-4 987

— nil or rounded to zero (including null cells)

np not available for publication but included in totals where applicable, unless otherwise indicated

(a) For sign conventions, see paragraph 9 of Explanatory Notes.

(b) For more information see paragraphs 13 and 14 of the Explanatory Notes.

(c) Passenger transportation credits include other transportation services credits.

(d) Communications services includes other services n.i.e..

(e) For a more detailed explanation of tourism related services, see paragraphs 15 and 16 of the Explanatory Notes.

	Jun	Jul	Aug	Per cent	2 MONTHS		
	2005	2005	2005	of total	ENDED AUGUST		
	\$m	\$m	\$m	merchandise	2004	2005	
				exports (a)			
				%	\$m	\$m	
MAJOR COMMODITIES							
011	Meat of bovine animals	431	435	377	3.2	820	812
041	Wheat	197	253	253	2.1	746	507
268	Wool and other animal hair	212	196	129	1.1	379	325
281	Iron ore and concentrates	1 004	1 018	993	8.4	1 144	2 010
285	Aluminium ore and concentrates	398	397	419	3.5	691	815
321	Coal, not agglomerated	1 912	2 051	1 927	16.3	2 536	3 978
333	Crude petroleum oils	511	711	516	4.4	999	1 226
334	Refined petroleum oils	175	253	260	2.2	343	513
343	Natural gas	268	378	335	2.8	445	713
684	Aluminium	308	370	303	2.6	682	673
781	Passenger motor vehicles	293	276	280	2.4	404	556
971	Gold, non-monetary	344	504	562	4.7	858	1 066

SECTION AND DIVISION OF THE SITC

0	Food and live animals(b)						
00	Live animals other than fish, crustaceans, molluscs and aquatic invertebrates	58	61	73	0.6	128	134
01	Meat and meat preparations	629	619	537	4.5	1 103	1 156
02	Dairy products and birds' eggs	217	187	179	1.5	354	365
03	Fish (not marine mammals), crustaceans, molluscs and aquatic invertebrates, and preparations thereof(b)	100	104	138	1.2	266	242
04	Cereals and cereal preparations(b)	290	324	362	3.1	1 103	687
05	Vegetables and fruit	99	122	149	1.3	268	271
06	Sugars, sugar preparations and honey(b)	18	22	18	0.2	40	40
07	Coffee, tea, cocoa, spices, and manufactures thereof	21	22	23	0.2	52	45
08	Feeding stuff for animals (excl. unmilled cereals)(b)	61	57	58	0.5	168	115
09	Miscellaneous edible products and preparations	39	39	35	0.3	80	74
	<i>Total food and live animals</i>	1 530	1 555	1 572	13.3	3 561	3 127
1	Beverages and tobacco						
11	Beverages	251	250	249	2.1	479	498
12	Tobacco and tobacco manufactures	5	9	8	0.1	19	17
	<i>Total beverages and tobacco</i>	257	258	257	2.2	498	516
2	Crude materials, inedible, except fuels(b)						
21	Hides, skins and furskins, raw(b)	54	52	48	0.4	116	100
22	Oil seeds and oleaginous fruits	16	10	51	0.4	114	61
23	Crude rubber (incl. synthetic and reclaimed)	1	1	1	—	3	2
24	Cork and wood	94	90	69	0.6	168	159
25	Pulp and waste paper	9	10	10	0.1	10	19
26	Textile fibres and their wastes (not manufactured into yarn or fabric)(b)	333	332	271	2.3	614	603
27	Crude fertilisers (excl. those of Division 56) and crude minerals (excl. coal, petroleum and precious stones)	39	42	42	0.4	70	84
28	Metalliferous ores and metal scrap(b)	2 012	2 011	2 030	17.1	2 874	4 041
29	Crude animal and vegetable materials, n.e.s.	25	22	22	0.2	55	43
	<i>Total crude materials, inedible, except fuels</i>	2 582	2 570	2 543	21.5	4 024	5 113
3	Mineral fuels, lubricants and related materials						
32	Coal, coke and briquettes	1 920	2 052	1 927	16.3	2 546	3 979
33	Petroleum, petroleum products and related materials	687	965	778	6.6	1 344	1 742
34	Gas, natural and manufactured	327	498	411	3.5	579	909
	<i>Total mineral fuels, lubricants and related materials</i>	2 934	3 515	3 116	26.3	4 469	6 630

— nil or rounded to zero (including null cells)

(b) Excludes exports commodities subject to a confidentiality restriction. These are included in Division 98.

(a) Per cent of total merchandise exports is calculated for the most recent month.

	Jun 2005	Jul 2005	Aug 2005	Per cent of total merchandise exports (a)	2 MONTHS ENDED AUGUST		
					2004	2005	
					\$m	\$m	
SECTION AND DIVISION OF THE SITC							
4	Animal and vegetable oils, fats and waxes(b)						
41	15	23	11	0.1	50	34	
42	3	5	4	—	9	9	
43	Fats and oils (processed), waxes and inedible mixtures or preparations, of animal or vegetable origin, n.e.s.						
	5	5	4	—	11	9	
	<i>Total animal and vegetable oils, fats and waxes</i>	<i>22</i>	<i>33</i>	<i>19</i>	<i>0.2</i>	<i>69</i>	<i>52</i>
5	Chemicals and related products, n.e.s.(b)						
51	12	9	8	0.1	21	17	
52	47	52	42	0.4	70	94	
53	53	50	50	0.4	108	100	
54	299	299	306	2.6	479	605	
55	Essential oils and resinoids and perfume materials; toilet, polishing and cleansing preparations						
	39	45	37	0.3	68	82	
56	17	15	28	0.2	25	43	
57	24	32	28	0.2	37	60	
58	26	32	28	0.2	51	59	
59	53	57	61	0.5	98	118	
	<i>Total chemicals and related products, n.e.s.</i>	<i>571</i>	<i>591</i>	<i>587</i>	<i>5.0</i>	<i>955</i>	<i>1 178</i>
6	Manufactured goods classified chiefly by material(b)						
61	35	33	32	0.3	84	65	
62	15	14	14	0.1	25	29	
63	22	20	19	0.2	43	40	
64	Paper, paperboard, and articles of paper pulp, of paper or of paperboard						
	58	57	58	0.5	126	115	
65	35	43	37	0.3	83	80	
66	62	62	49	0.4	110	111	
67	86	55	76	0.6	108	132	
68	631	685	653	5.5	1 282	1 339	
69	60	76	68	0.6	140	144	
	<i>Total manufactured goods classified chiefly by material</i>	<i>1 004</i>	<i>1 045</i>	<i>1 007</i>	<i>8.5</i>	<i>2 001</i>	<i>2 052</i>
7	Machinery and transport equipment(b)						
71	79	99	103	0.9	165	202	
72	121	117	192	1.6	210	309	
73	16	13	13	0.1	25	26	
74	General industrial machinery and equipment, n.e.s. and machine parts, n.e.s.(b)						
	127	130	141	1.2	229	271	
75	104	99	98	0.8	180	197	
76	Telecommunications and sound recording and reproducing apparatus and equipment						
	72	70	59	0.5	146	129	
77	Electrical machinery, apparatus, appliances, parts (incl. non-electrical counterparts of electrical domestic equipment)						
	125	134	129	1.1	285	262	
78	390	363	370	3.1	612	733	
79	80	88	81	0.7	168	169	
	<i>Total machinery and transport equipment</i>	<i>1 115</i>	<i>1 112</i>	<i>1 186</i>	<i>10.0</i>	<i>2 020</i>	<i>2 298</i>

— nil or rounded to zero (including null cells)

(a) Per cent of total merchandise exports is calculated for the most recent month.

(b) Excludes exports commodities subject to a confidentiality restriction. These are included in Division 98.

				Per cent of total merchandise exports (a)	2 MONTHS ENDED AUGUST	
	Jun	Jul	Aug		
	2005	2005	2005		2004	2005
	\$m	\$m	\$m	%	\$m	\$m
SECTION AND DIVISION OF THE SITC						
8	Miscellaneous manufactured articles(b)					
81	Prefabricated buildings; sanitary, plumbing, heating and lighting fixtures and fittings, n.e.s.					
	9	11	9	0.1	15	19
82	Furniture, parts thereof; bedding, mattresses, mattress supports, cushions and similar stuffed furnishings					
	9	14	10	0.1	23	24
83	Travel goods, handbags and similar containers					
	2	2	2	—	3	3
84	Articles of apparel and clothing accessories					
	22	23	28	0.2	59	51
85	Footwear(b)					
	4	4	4	—	7	7
87	Professional, scientific and controlling instruments and apparatus, n.e.s.					
	114	128	133	1.1	213	261
88	Photographic apparatus, equipment and supplies and optical goods, n.e.s.; watches and clocks					
	34	27	29	0.2	105	56
89	Miscellaneous manufactured articles, n.e.s.					
	174	179	172	1.5	294	352
	<i>Total miscellaneous manufactured articles</i>					
	368	388	386	3.3	721	774
9	Commodities and transactions not classified elsewhere in the SITC(c)(d)					
93	Special transactions and commodities not classified according to kind					
	176	123	120	1.0	318	243
95	Gold coin whether or not legal tender, and other coin being legal tender					
	5	4	2	—	7	6
96	Coin (excl. gold coin), not being legal tender					
	—	—	—	—	—	—
97	Gold, non-monetary (excl. gold ores and concentrates)					
	344	504	562	4.7	858	1 066
98	Combined confidential items excl. some of SITC 280 (exports only) and some of SITCs 510 and 520 (imports only)(c)(d)					
	663	556	493	4.2	957	1 049
	<i>Total commodities and transactions not classified elsewhere in the SITC</i>					
	1 188	1 187	1 177	9.9	2 140	2 364
Total Merchandise Exports	11 571	12 254	11 851	100.0	20 458	24 105
Balance of Payments Adjustments	81	86	140	. .	84	226
Goods Credits (exports) on a Balance of Payments Basis	11 652	12 340	11 991	. .	20 542	24 331

. . not applicable

— nil or rounded to zero (including null cells)

(a) Per cent of total merchandise exports is calculated for the most recent month.

(b) Excludes exports commodities subject to a confidentiality restriction. These are included in Division 98.

(c) Includes exports commodities subject to a confidentiality restriction.

(d) Includes small value export entries which can not yet be allocated by commodity.

INTERNATIONAL MERCHANDISE IMPORTS, By commodity

				Per cent of total merchandise imports(a)	2 MONTHS ENDED AUGUST	
	Jun	Jul	Aug		
	2005	2005	2005		2004	2005
	\$m	\$m	\$m	%	\$m	\$m
MAJOR COMMODITIES						
333 Crude petroleum oils	901	1 033	867	6.3	1 403	1 900
334 Refined petroleum oils	566	526	516	3.7	591	1 042
542 Medicaments	510	508	550	4.0	944	1 058
641 Paper and paperboard	163	158	172	1.2	352	330
752 Automatic data processing machines	628	502	487	3.5	920	989
759 Parts and accessories of office machines	194	184	186	1.3	377	370
764 Telecommunications equipment	439	406	454	3.3	916	860
781 Passenger motor vehicles	1 133	1 066	997	7.2	1 779	2 063
782 Motor vehicles for the transport of goods	375	356	338	2.4	633	693
784 Parts and accessories of motor vehicles	194	183	210	1.5	390	393
792 Aircraft and associated equipment	281	342	161	1.2	1 007	503
971 Gold, non-monetary	264	176	352	2.6	356	528

SECTION AND DIVISION OF THE SITC

0	Food and live animals					
00	Live animals other than fish, crustaceans, molluscs and aquatic invertebrates	4	3	12	0.1	14 15
01	Meat and meat preparations	36	15	23	0.2	54 38
02	Dairy products and birds' eggs	33	32	31	0.2	56 62
03	Fish (not marine mammals), crustaceans, molluscs and aquatic invertebrates, and preparations thereof	72	66	83	0.6	149 149
04	Cereals and cereal preparations	31	35	46	0.3	76 81
05	Vegetables and fruit	94	92	94	0.7	183 186
06	Sugars, sugar preparations and honey	14	15	19	0.1	29 34
07	Coffee, tea, cocoa, spices, and manufactures thereof	64	63	74	0.5	123 137
08	Feeding stuff for animals (excl. unmilled cereals)	21	29	31	0.2	49 60
09	Miscellaneous edible products and preparations	94	91	101	0.7	171 192
	<i>Total food and live animals</i>	463	441	514	3.7	904 955
1	Beverages and tobacco					
11	Beverages	54	57	85	0.6	124 142
12	Tobacco and tobacco manufactures	12	18	13	0.1	32 30
	<i>Total beverages and tobacco</i>	66	75	97	0.7	156 172
2	Crude materials, inedible, except fuels					
21	Hides, skins and furskins, raw	—	—	—	—	— —
22	Oil seeds and oleaginous fruits	9	8	3	—	5 11
23	Crude rubber (incl. synthetic and reclaimed)	11	11	14	0.1	23 25
24	Cork and wood	45	46	48	0.3	110 94
25	Pulp and waste paper	20	24	12	0.1	40 36
26	Textile fibres and their wastes (not manufactured into yarn or fabric)	12	12	12	0.1	27 24
27	Crude fertilisers (excl. those of Division 56) and crude minerals (excl. coal, petroleum and precious stones)	23	11	16	0.1	29 27
28	Metalliferous ores and metal scrap	23	18	46	0.3	50 64
29	Crude animal and vegetable materials, n.e.s.	18	18	18	0.1	39 35
	<i>Total crude materials, inedible, except fuels</i>	160	147	169	1.2	324 316
3	Mineral fuels, lubricants and related materials(b)					
32	Coal, coke and briquettes	1	1	3	—	5 4
33	Petroleum, petroleum products and related materials(b)	1 505	1 595	1 410	10.2	2 065 3 005
34	Gas, natural and manufactured	23	—	—	—	41 1
	<i>Total mineral fuels, lubricants and related materials</i>	1 529	1 596	1 414	10.3	2 110 3 009

— nil or rounded to zero (including null cells)

(a) Per cent of total merchandise imports is calculated for the most recent month.

(b) Excludes imports commodities subject to a confidentiality restriction. These are included in Division 98.

				Per cent of total merchandise imports(a)	2 MONTHS ENDED AUGUST	
	Jun	Jul	Aug		2004	2005
	2005	2005	2005			
	\$m	\$m	\$m	%	\$m	\$m
SECTION AND DIVISION OF THE SITC						
4	Animal and vegetable oils, fats and waxes					
41	Animal oils and fats	1	1	2	—	4 3
42	Fixed vegetable fats and oils, crude, refined or fractionated	25	25	23	0.2	60 49
43	Fats and oils (processed), waxes and inedible mixtures or preparations, of animal or vegetable origin, n.e.s.	3	3	6	—	8 9
	<i>Total animal and vegetable oils, fats and waxes</i>	29	29	31	0.2	72 60
5	Chemicals and related products, n.e.s.(b)					
51	Organic chemicals	196	209	246	1.8	420 455
52	Inorganic chemicals(b)	78	107	105	0.8	137 212
53	Dyeing, tanning and colouring materials	42	45	47	0.3	92 92
54	Medicinal and pharmaceutical products	594	640	647	4.7	1 140 1 286
55	Essential oils and resinoids and perfume materials; toilet, polishing and cleansing preparations	105	120	139	1.0	236 259
56	Fertilisers (excl. crude)	104	43	69	0.5	118 111
57	Plastics in primary forms	103	105	113	0.8	194 217
58	Plastics in non-primary forms	83	85	96	0.7	185 181
59	Chemical materials and products, n.e.s.	123	125	152	1.1	253 277
	<i>Total chemicals and related products, n.e.s.</i>	1 428	1 478	1 613	11.7	2 777 3 091
6	Manufactured goods classified chiefly by material(b)					
61	Leather, leather manufactures, and dressed furskins, n.e.s.	9	12	14	0.1	30 27
62	Rubber manufactures, n.e.s.(b)	170	161	164	1.2	303 325
63	Cork and wood manufactures (excl. furniture)	42	42	49	0.4	113 91
64	Paper, paperboard, and articles of paper pulp, of paper or of paperboard(b)	200	200	223	1.6	435 423
65	Textile yarn, fabrics, made-up articles n.e.s. and related products	186	185	212	1.5	464 397
66	Non-metallic mineral manufactures, n.e.s.	173	180	187	1.4	362 367
67	Iron and steel(b)	260	283	342	2.5	424 625
68	Non-ferrous metals(b)	82	108	94	0.7	159 201
69	Manufactures of metals, n.e.s.(b)	302	325	363	2.6	639 687
	<i>Total manufactured goods classified chiefly by material</i>	1 424	1 496	1 647	11.9	2 929 3 144
7	Machinery and transport equipment(b)					
71	Power generating machinery and equipment	266	284	294	2.1	535 578
72	Machinery specialised for particular industries	514	543	623	4.5	970 1 166
73	Metal working machinery	59	64	85	0.6	105 149
74	General industrial machinery and equipment, n.e.s. and machine parts, n.e.s.	600	673	745	5.4	1 406 1 418
75	Office machines and automatic data processing machines	870	729	725	5.3	1 399 1 454
76	Telecommunications and sound recording and reproducing apparatus and equipment	703	683	783	5.7	1 570 1 466
77	Electrical machinery, apparatus, appliances, parts (incl. non-electrical counterparts of electrical domestic equipment)(b)	700	635	695	5.0	1 260 1 330
78	Road vehicles (incl. air-cushion vehicles)	1 835	1 747	1 724	12.5	3 066 3 471
79	Transport equipment (excl. road vehicles)	362	413	237	1.7	1 116 649
	<i>Total machinery and transport equipment</i>	5 909	5 771	5 911	42.9	11 428 11 682

— nil or rounded to zero (including null cells)

(a) Per cent of total merchandise imports is calculated for the most recent month.

(b) Excludes imports commodities subject to a confidentiality restriction. These are included in Division 98.

				Per cent	2 MONTHS	
	Jun	Jul	Aug	of total	ENDED AUGUST	
	2005	2005	2005	merchandise	2004	2005
	\$m	\$m	\$m	imports(a)	\$m	\$m
				%		
SECTION AND DIVISION OF THE SITC						
8	Miscellaneous manufactured articles(b)					
81	Prefabricated buildings; sanitary, plumbing, heating and lighting fixtures and fittings, n.e.s.					
	36	39	45	0.3	84	84
82	Furniture, parts thereof; bedding, mattresses, mattress supports, cushions and similar stuffed furnishings					
	146	157	192	1.4	341	348
83	Travel goods, handbags and similar containers					
	40	46	53	0.4	104	98
84	Articles of apparel and clothing accessories					
	275	356	390	2.8	711	746
85	Footwear					
	66	100	110	0.8	204	210
87	Professional, scientific and controlling instruments and apparatus, n.e.s.					
	323	297	317	2.3	638	614
88	Photographic apparatus, equipment and supplies and optical goods, n.e.s.; watches and clocks(b)					
	101	107	125	0.9	245	232
89	Miscellaneous manufactured articles, n.e.s.					
	602	645	794	5.8	1 304	1 440
	<i>Total miscellaneous manufactured articles</i>					
	1 588	1 746	2 027	14.7	3 631	3 773
9	Commodities and transactions not classified elsewhere in the SITC(c)					
93	Special transactions and commodities not classified according to kind					
	2	3	3	—	5	6
95	Gold coin whether or not legal tender, and other coin being legal tender					
	—	—	—	—	1	—
96	Coin (excl. gold coin), not being legal tender					
	—	—	—	—	—	—
97	Gold, non-monetary (excl. gold ores and concentrates)					
	264	176	352	2.6	356	528
98	Combined confidential items excl. some of SITC 280 (exports only) and some of SITCs 510 and 520 (imports only)(c)					
	10	11	7	—	36	18
	<i>Total commodities and transactions not classified elsewhere in the SITC</i>					
	276	190	362	2.6	397	552
Total Merchandise Imports						
	12 872	12 969	13 785	100.0	24 729	26 754
Balance of Payments Adjustment						
	309	-46	223	. .	78	177
Goods Debits (imports) on a Balance of Payments Basis						
	13 181	12 923	14 008	. .	24 807	26 931

. . not applicable

— nil or rounded to zero (including null cells)

(a) Per cent of total merchandise imports is calculated for the most recent month.

(b) Excludes imports commodities subject to a confidentiality restriction. These are included in Division 98.

(c) Includes imports commodities subject to a confidentiality restriction.

	EXPORTS				IMPORTS				BALANCE OF MERCHANDISE TRADE	
	2004-05	August 2005	2	2	2004-05	August 2005	2	2	2004-05	August 2005
			months ended August 2004	months ended August 2005			months ended August 2004	months ended August 2005		
	\$m	\$m	\$m	\$m	\$m	\$m	\$m	\$m	\$m	\$m
Belgium(b)	884	96	126	163	1 179	120	189	239	-295	-76
Brazil	635	78	87	186	643	65	108	143	-8	44
Canada	1 895	90	282	277	1 904	137	315	263	-10	15
China	12 997	1 377	1 822	2 783	19 812	2 004	3 273	3 738	-6 815	-955
Denmark	170	15	31	31	1 044	84	161	153	-874	-122
Egypt(c)	286	44	76	73	14	1	2	2	272	71
Fiji	394	31	67	68	211	18	41	34	183	34
Finland	572	62	117	82	815	63	121	122	-242	-40
France	1 009	61	183	164	4 437	301	960	659	-3 427	-495
Germany	1 315	132	214	271	8 646	805	1 432	1 507	-7 330	-1 236
Hong Kong (Sar of China)	2 709	202	445	426	1 210	124	230	231	1 499	195
India	6 053	642	697	1 366	1 220	119	212	208	4 833	1 158
Indonesia	3 405	334	635	641	3 318	338	500	741	87	-100
Iran	171	19	28	43	24	2	3	4	147	40
Iraq	383	—	103	1	6	—	6	—	377	1
Ireland	179	12	34	25	1 917	180	312	310	-1 738	-284
Israel	173	5	31	20	584	42	84	87	-411	-67
Italy	1 544	96	224	192	4 495	404	811	785	-2 951	-593
Japan	24 931	2 502	4 085	5 092	17 158	1 393	2 834	2 801	7 773	2 291
Korea, Republic of	9 714	866	1 689	1 947	5 004	456	866	821	4 710	1 126
Kuwait	462	54	77	89	164	—	34	36	298	53
Malaysia	2 582	203	433	391	5 920	505	901	996	-3 339	-604
Mexico	686	80	78	125	776	86	114	149	-89	-24
Netherlands	1 791	177	295	381	1 261	117	227	221	530	160
New Zealand	9 161	752	1 598	1 569	5 339	509	867	909	3 821	660
Pakistan	587	28	41	56	146	11	28	21	441	35
Papua New Guinea	1 197	106	176	222	1 735	269	213	411	-539	-189
Philippines	869	61	146	127	699	67	132	109	170	18
Saudi Arabia	1 808	147	290	288	1 409	94	240	111	399	177
Singapore	3 362	290	543	710	7 268	727	1 008	1 408	-3 906	-697
South Africa	1 652	219	278	379	1 328	158	193	310	324	69
Spain	914	103	107	151	1 327	136	260	274	-413	-123
Sweden	280	39	38	75	1 964	177	304	355	-1 683	-279
Switzerland	222	36	59	50	1 481	126	254	239	-1 258	-189
Taiwan	4 885	482	664	929	3 612	329	586	640	1 273	289
Thailand	3 900	424	413	664	4 202	418	637	816	-303	-153
Turkey	279	26	41	95	365	30	59	61	-85	33
United Arab Emirates	1 274	129	253	259	820	30	238	92	454	167
United Kingdom	4 820	382	1 144	772	5 934	701	973	1 243	-1 114	-470
United States of America	9 461	766	1 600	1 478	21 271	1 896	3 613	3 800	-11 810	-2 322
Viet Nam	708	53	130	124	3 098	230	477	593	-2 390	-469
Other Countries(d)	6 470	629	1 075	1 317	5 747	515	912	1 111	723	206
Total	126 789	11 851	20 458	24 105	149 505	13 785	24 729	26 754	-22 716	-2 649
APEC	93 000	8 649	14 830	17 608	103 745	9 644	16 796	18 730	-10 744	-1 122
ASEAN	14 966	1 379	2 319	2 680	25 183	2 348	3 768	4 815	-10 218	-2 135
Developing Countries	62 344	5 972	9 503	12 205	63 784	5 976	10 284	11 619	-1 440	586
Least Developed Countries	1 487	145	276	298	223	16	31	38	1 265	259
European Union(e)	13 813	1 200	2 564	2 419	35 086	3 286	6 068	6 260	-21 273	-3 841
OECD	70 160	6 317	11 997	13 050	88 894	7 952	15 075	15 379	-18 734	-2 329

— nil or rounded to zero (including null cells)

(a) See AusStats for details of all countries.

(b) Prior to July 2003, Belgium and Luxembourg were combined. Belgium-Luxembourg is included in 'Other Countries' up to and including June 2003.

(c) Exports of Alumina to Egypt are excluded from its country total and included in the 'Other Countries' category.

(d) Includes small value exports entries which can not yet be allocated by country.

(e) From July 2004, European Union includes 25 member countries.

			2 MONTHS ENDED AUGUST	
	2004-05	August 2005	2004	2005
	\$m	\$m	\$m	\$m
EXPORTS (a)				
New South Wales	22 992	2 049	3 677	4 163
Victoria	18 514	1 452	3 148	2 942
Queensland	26 363	2 732	4 254	5 718
South Australia	7 641	753	1 363	1 461
Western Australia	38 833	3 842	5 929	7 732
Tasmania	2 635	219	401	438
Northern Territory	2 221	197	377	409
Australian Capital Territory	—	10	—	10
State not available for publication(b)(c)	479	48	65	102
Re-exports	7 110	550	1 244	1 131
Total exports	126 789	11 851	20 458	24 105
IMPORTS				
New South Wales	60 113	5 616	10 009	10 736
Victoria	45 148	4 040	7 702	7 926
Queensland	21 737	2 072	3 497	4 003
South Australia	5 711	544	930	1 072
Western Australia	14 176	1 383	2 191	2 621
Tasmania	600	46	91	89
Northern Territory	1 992	85	307	308
Australian Capital Territory	28	—	2	—
Total imports	149 505	13 785	24 729	26 754

— nil or rounded to zero (including null cells)

(a) State in which the final stage of production or manufacture occurs.

(b) Includes exports which can not yet be allocated by state. These shipments will be appropriately classified as more details become available.

(c) Exports of Alumina to Bahrain, Egypt and Iceland are excluded from the state totals and included in 'State not available for publication' category.

PERIOD AVERAGE EXCHANGE RATES(a): Per Australian dollar

<i>Period</i>	<i>United States dollar</i>	<i>UK pound sterling</i>	<i>Euro</i>	<i>Japanese yen</i>	<i>Trade-weighted index of value of the \$A(b)</i>
FINANCIAL YEAR					
2002-03	0.5848	0.3685	0.5577	70.01	53.5
2003-04	0.7137	0.4102	0.5981	78.91	61.5
2004-05	0.7529	0.4052	0.5918	80.45	62.7
MONTHS					
2004					
June	0.6942	0.3794	0.5714	75.90	59.5
July	0.7164	0.3887	0.5835	78.29	61.1
August	0.7104	0.3903	0.5828	78.37	60.8
September	0.7013	0.3912	0.5743	77.20	59.9
October	0.7331	0.4057	0.5868	79.81	62.0
November	0.7689	0.4139	0.5925	80.61	63.7
December	0.7678	0.3981	0.5735	79.70	62.7
2005					
January	0.7647	0.4071	0.5830	78.98	62.7
February	0.7807	0.4139	0.5999	81.92	64.1
March	0.7859	0.4119	0.5948	82.62	64.2
April	0.7724	0.4078	0.5971	82.94	63.8
May	0.7662	0.4125	0.6033	81.68	63.4
June	0.7667	0.4213	0.6300	83.28	64.4
July	0.7524	0.4294	0.6247	84.24	64.0
August	0.7613	0.4244	0.6193	84.25	64.0

- (a) These exchange rates and the trade-weighted index are derived using rates provided by the Reserve Bank of Australia in respect of each trading day.
- (b) May 1970=100. The trade-weighted index is reweighted annually (on 1 October and will be reflected in the September 2005 issue) and on special occasions if required.

EXPLANATORY NOTES

INTRODUCTION

1 This publication presents preliminary estimates of Australia's international trade in goods and services on a balance of payments basis and merchandise import and export statistics on a recorded trade basis.

2 Merchandise trade statistics on a recorded trade basis are compiled from information submitted by exporters and importers or their agents to the Australian Customs Service (ACS). Adjustments for coverage, timing and valuation are made to recorded trade data to convert them to a balance of payments basis. The main source for services data is the quarterly Survey of International Trade in Services.

3 More comprehensive quarterly estimates of Australia's trade in goods and services, together with comprehensive details of Australia's balance of payments are included in the quarterly publication, *Balance of Payments and International Investment Position, Australia* (cat. no. 5302.0). Detailed monthly statistics on merchandise trade are available on AusStats or by subscription to tailored services.

CONCEPTS, SOURCES AND METHODS

4 The conceptual framework used in compiling Australia's merchandise trade statistics can be found in *International Merchandise Trade, Australia: Concepts, Sources and Methods, 2001* (cat. no. 5489.0).

5 The conceptual framework used in compiling Australia's balance of payments statistics is based on the Fifth Edition of the International Monetary Fund's *Balance of Payments Manual* (BPM5,1993). Descriptions of the underlying concepts and structure of the balance of payments and the sources, methods and terms used in compiling the estimates are presented in *Balance of Payments and International Investment Position, Australia: Concepts, Sources and Methods, 1998* (cat. no. 5331.0). To bring merchandise trade statistics on a recorded trade basis to a balance of payments basis, timing adjustments are made to ensure that the transaction is recorded in the period in which ownership changed, rather than in the period in which the transaction was recorded by ACS. Adjustments are also made to imports to take account of distortions which arise when significant changes occur in the volume of import entries lodged but not yet processed by ACS in a given month. Chapter 6 of cat. no. 5331.0 provides more detail on the relationship between statistics on international merchandise trade on a recorded trade basis and on a balance of payments basis.

6 Both of the Concepts, Sources and Methods publications are available for free from the ABS web site, see <<http://www.abs.gov.au>> – select *About Statistics* then *Concepts & Classifications*.

SEASONAL ADJUSTMENT

7 Monthly original estimates are volatile, being subject to calendar-related and large irregular influences. Seasonally adjusted estimates are derived by estimating and removing systematic calendar related effects, such as seasonal and trading day influences, from the original series. Trading day effects are removed from the original estimates prior to the seasonal adjustment process. Seasonal adjustment does not aim to remove the irregular or non-seasonal influences which may be present in any particular month. These irregular influences may reflect both random economic events and difficulties of statistical recording. The estimates of international trade in goods and services on a balance of payments basis are seasonally adjusted. The merchandise exports and imports statistics on a recorded trade basis are not.

TREND ESTIMATES

8 The month-to-month movements of the seasonally adjusted estimates may not be reliable indicators of trend behaviour because they include irregular or non-seasonal movements. Trend estimates are derived by applying a 13-term Henderson moving average to the seasonally adjusted series. The use of a 13-term Henderson average can result in revisions to the estimates for the most recent six months as additional observations become available. Revisions can also occur because of changes in the original data and as a result of the annual re-estimation of the seasonal factors.

EXPLANATORY NOTES *continued*

SIGN CONVENTION

9 In keeping with balance of payments conventions, where statistics are on a balance of payments basis, credit entries (exports) are shown without sign and debit items (imports) are shown as negative entries. For statistics on a recorded trade basis, both imports and exports are shown without sign. The calculation of percentage changes on balance of payments debit items are made without regard to sign. References to balance of payments debit items in Key Figures, Key Points, and Analysis and Comments are also made without regard to sign.

COMMODITY BREAKDOWNS OF GOODS

10 For details of the classification used for goods exports on a balance of payments basis (credits), see table 6.6 in *Balance of Payments and International Investment Position, Australia: Concepts, Sources and Methods, 1998* (cat. no. 5331.0).

11 Details of the classification of goods imports on a balance of payments basis (debits) are provided in table 6.7 in cat. no. 5331.0. Most of the commodity groups shown in table 4 for goods debits are available for more detailed subgroups from AusStats.

12 The recorded trade statistics shown in tables 8 and 9 are classified by the Standard International Trade Classification 2 (SITC). The first section of tables 8 and 9 show the most significant commodities (by value) at the SITC 3 digit level.

COMMODITY BREAKDOWNS OF SERVICES

13 The quarterly detailed services data published in table 7 are consistent with the monthly aggregates shown in table 5. Services trade data by major partner countries and by Australian state of production/consumption are published on a financial year basis and a calendar year basis.

14 Monthly indicators for many of the services components that are only surveyed quarterly are not available. In particular, the Freight and Other transportation components of Total services credits are not available for publication on a monthly basis. The estimates for these items shown in table 5 are therefore derived by dividing the quarterly estimate by three. Where quarterly survey data are not available, freight debits are derived directly from imports data for the reference month as a difference between total merchandise cost, insurance and freight (CIFE) and free on board (FOB), adjusted to reflect timing and processing adjustments. For freight credits and other transportation credits and debits, estimates are derived by extrapolating the last month's data by an average of movements for the same month over the three previous years.

TOURISM RELATED SERVICES

15 The tourism related services memorandum items provide timely indicators of the movements in tourism related activities, not an absolute measure of the level of these activities. These series are not compiled on a Balance of Payments conceptual basis. However, they do provide a reasonable approximation of world tourism related activities.

16 The memorandum items have been derived by re-aggregating relevant components of the international trade in services series of the balance of payments accounts. The tourism related indicator has been derived by combining total travel services (business, education-related and other personal travel), passenger fares, and the air transport component of other transportation services which relates to agency fees and commission receipts.

SERVICES BY STATE AND BY PARTNER COUNTRY

17 Annual services data by state and by partner country are released twice yearly. Calendar year data are released with the March issue of this publication and financial year data are released with the November issue. The data are available from AusStats.

18 Services credits are classified by the state of provision, while services debits are classified by the state of consumption. The state allocations for transportation, travel and communication services are based on a number of indicators including merchandise trade statistics by state, overseas passenger arrivals and departures by state of clearance and data provided by the Department of Education, Science and Training. The allocation

EXPLANATORY NOTES *continued*

SERVICES BY STATE AND BY PARTNER COUNTRY *continued*

for other services (about 25% of all trade in services) is primarily based on the location of the business reporting the information, which serves as a proxy for the state of provision/consumption of that service. The data should be used with care but are considered suitable for analysis over time.

19 A comprehensive explanation of the data sources used and the methodology applied in the compilation of partner country statistics is provided in Chapter 17 of *Balance of Payments and International Investment Position, Australia - Concepts, Sources and Methods* (cat. no. 5331.0). Approximately 9% of total services credits and 5% of total services debits for 2003-4 are either confidential, or unable to be allocated to individual countries.

RELATED PRODUCTS OR SERVICES

20 More detailed balance of payments and recorded merchandise trade data, including forward seasonal factors, are available from AusStats. Very detailed merchandise trade data by commodity, country and state are available by contacting the National Information and Referral Service, as shown on the back of this publication.

21 Users may also wish to refer to the following publications which can be downloaded free of charge from the ABS web site:

- *Balance of Payments and International Investment Position, Australia* (cat. no. 5302.0) – issued quarterly
- *International Merchandise Imports, Australia* (cat. no. 5439.0) – issued monthly
- *International Trade Price Indexes, Australia* (cat. no. 6457.0) – issued quarterly
- *Balance of Payments and International Investment Position, Australia: Concepts, Sources and Methods* (cat. no. 5331.0)
- *Information Paper: Quality of Australian Balance of Payments Statistics* (cat. no. 5342.0)
- *International Merchandise Trade, Australia: Concepts, Sources and Methods* (cat. no. 5489.0)
- *A Guide to Australian Balance of Payments and International Investment Position Statistics* (cat. no. 5362.0.55.001).

CAUTIONARY NOTE

22 The tables in this publication are presented on two bases. Tables 1–7 contain estimates of Australia's international trade in goods and services which have been adjusted for coverage, valuation and timing to a balance of payments basis. Tables 8–11 contain estimates of merchandise exports and imports based on Australian Customs Service records. Paragraph 5 of the Explanatory Notes provides an explanation of the difference between these bases.

ABBREVIATIONS

\$b	billion (thousand million) dollars
\$m	million dollars
ABS	Australian Bureau of Statistics
APEC	Asia Pacific Economic Co-operation
ASEAN	Association of South-East Asian Nations
n.e.s.	not elsewhere specified
n.i.e.	not included elsewhere
OECD	Organisation for Economic Co-operation and Development
SAR	Special Administrative Region
SITC	Standard International Trade Classification

APPENDIX RELATED ARTICLES

<i>Article</i>	<i>Source</i>	<i>Issue</i>
Investment		
Kangaroo bonds	5302.0	Sep qtr 2004
Foreign ownership of equity	5302.0	Sep qtr 2004
Gross external debt	5302.0	Sep qtr 2003
Measuring Australia's foreign currency exposure	5302.0	Dec qtr 2001
Balance of payments		
International comparison of balance of payments statistics	5363.0	1999–2000
The Sydney Olympic Games Update	5368.0	Jul 2000
The Sydney Olympic Games	5302.0	Sep qtr 1999
Merchandise trade		
Export and Import currencies, 2005	(a) web site	Aug 2005
Australia's Importers, 2003–04	(a) web site	Nov 2004
Australia's Exporters, 2003–04	(a) web site	Oct 2004
Australia's Trade with the USA	(a) web site	Mar 2004
Australia's Exporters, 2002–03	(a) web site	Oct 2003
Australia's Importers, 2002–03	(a) web site	Nov 2003
Export and import currencies, 2003	(a) web site	May 2003
Australia's exporters and importers, 2001–02	5422.0	Dec qtr 2002
Trade through Australia's ports	5422.0	Sep qtr 2002
Australia's trade in wine	5422.0	Dec qtr 2001
Australia's export markets, 1991–92 to 2000–01	5422.0	Jun qtr 2001
Major commodities traded by Australia, 1991 to 2000	5422.0	Dec qtr 2000
Australia's trade in crude petroleum	5422.0	Mar qtr 2000
Australia's merchandise trade with the Republic of Korea	5422.0	Sep qtr 1999
Australia's merchandise trade with Japan	5422.0	Mar qtr 1999
Bilateral merchandise trade statistics reconciliation: Australia and the European Union, 1992 to 1997	5422.0	Sep qtr 1998
Trade in services		
International trade in services travel statistics	(a) web site	Oct 2005
International trade in services by partner country, 2003–04	(a) web site	Nov 2004
International trade in services by State, 2003–04	(a) web site	Nov 2004
International trade in services by partner country, 2003	(a) web site	Mar 2004
International trade in services by State, 2003	(a) web site	Mar 2004
International trade in services by partner country, 2002–03	(a) web site	Oct 2003
International trade in services by State, 2002–03	(a) web site	Oct 2003
Goods and services by region, 2001	5368.0	Feb 2002
International trade in education services	(a) web site	Oct 2002
Finance		
Recent trends in construction and first home buyers finance	5609.0	Mar 2002
Household sector data in the financial accounts	5232.0	Mar qtr 2002
Investment Managers	5655.0	Jun qtr 2000
Venture capital, 1999–2000	5611.0	2000–01
Impact of 2003–2004 farm season on Australian production	5611.0	1999–2000
Globalisation		
Foreign Ownership of Australian Exporters and Importers, 2002–03	5496.0.55.001	2002–03
Australian Outward Foreign Affiliates Trade, 2002–03	5495.0	2002–03
Economic Activity of Foreign Owned Businesses in Australia, 2000–01	5494.0	2000–01
Technical information		
ABS Management of the Impact of the Implementation of the Imports Component of the New Customs System	(a) web site	Sep 2005
Implementation of New Customs Systems	(a) web site	Aug 2004
Changes to country and port classifications	5368.0	May 2003
The effect of customs changes on export statistics	5422.0	Jun qtr 2002
Harmonized system changes	5422.0	Sep qtr 2001
International trade review: data quality and client queries	5422.0	Jun qtr 2000
Data confidentiality	5422.0	Dec qtr 1999

(a) (a) International Trade Theme Page: Select Themes; Economy; International Trade; Topics of Interest.

FOR MORE INFORMATION . . .

- INTERNET* **www.abs.gov.au** the ABS web site is the best place to start for access to summary data from our latest publications, information about the ABS, advice about upcoming releases, our catalogue, and Australia Now—a statistical profile.
- LIBRARY* A range of ABS publications is available from public and tertiary libraries Australia-wide. Contact your nearest library to determine whether it has the ABS statistics you require, or visit our web site for a list of libraries.
- CPI INFOLINE* For current and historical Consumer Price Index data, call 1902 981 074 (call cost 77c per minute).
- DIAL-A-STATISTIC* This service now provides only current Consumer Price Index statistics call 1900 986 400 (call cost 77c per minute).

INFORMATION SERVICE

Data already published that can be provided within five minutes will be free of charge. Our information consultants can also help you to access the full range of ABS information—ABS user pays services can be tailored to your needs, time frame and budget. Publications may be purchased. Specialists are on hand to help you with analytical or methodological advice.

- PHONE* 1300 135 070
- EMAIL* client.services@abs.gov.au
- FAX* 1300 135 211
- POST* Client Services, ABS, GPO Box 796, Sydney NSW 2001

FREE ACCESS TO PUBLICATIONS

All ABS publications can be downloaded free of charge from the ABS web site.

- WEB ADDRESS* www.abs.gov.au



2536800008055

ISSN 1328 2778

RRP \$21.00