



# **SOUTH AUSTRALIAN ECONOMIC INDICATORS**

EMBARGO: 11:30AM (CANBERRA TIME) THURS 1 NOV 2001

## **C O N T E N T S**

	<i>page</i>
Notes.....	2
REVIEW	
Overview .....	3
Selected features .....	4
TABLES	
List of tables .....	5
Statistical summary .....	6
State summary .....	8
State accounts .....	9
International trade .....	10
Consumption and investment .....	14
Production .....	16
Consumer price index .....	20
Labour force and demography .....	21
Average weekly earnings .....	24
Financial markets .....	25
ADDITIONAL INFORMATION	
Publications source index .....	26

- For further information about these and related statistics, contact Treva Richards on Adelaide 08 8237 7338, or the National Information and Referral Service on 1300 135 070.

## NOTES

### FORTHCOMING ISSUES

<i>ISSUE</i>	<i>RELEASE DATE</i>
December 2001	3 December 2001
January 2002	20 December 2001
February 2002	1 February 2002
March 2002	1 March 2002
April 2002	2 April 2002
May 2002	1 May 2002

### ABOUT THIS PUBLICATION

*South Australian Economic Indicators* is a monthly publication which contains the latest available data at the time of preparation for a range of statistical series that have been identified as indicators of economic activity in this State. In a number of cases the figures presented are preliminary and subject to revision in subsequent issues.

### SYMBOLS AND OTHER USAGES

n.a.	not available
n.y.a.	not yet available
*	subject to sampling variability too high for most practical purposes
..	not applicable
0, 0.0	nil, or rounded to zero

### ROUNDING

Where figures have been rounded, discrepancies may occur between sums of the component items and totals.

### INFORMATION

All data are original, unless otherwise stated. More detailed information on each series, including explanatory and technical notes, can be obtained from other Australian Bureau of Statistics publications or alternative data sources. To assist those seeking further information, the series presented in the statistical and State summaries provides a reference to the Publication Source Index which is at the end of this publication.

Steve Crabb  
Regional Director  
South Australia

## OVERVIEW

The data in this Overview are presented in trend terms, unless otherwise stated.

### INTERNATIONAL TRADE

The value of South Australian merchandise exports in original terms for the month of August was \$758.6m. This was an increase of 9.3% on the value for July and an increase of 17.8% on August 2000.

The value of South Australian merchandise imports in original terms for the month of August was \$585.1m. This was an increase of 54.5% on the value for July and an increase of 25.5% on August 2000.

### CONSUMPTION AND INVESTMENT

South Australia's retail turnover increased by 11.6% over the 12 months to August. Retail turnover for August was \$1,030.2m.

There were 4,101 new motor vehicle registrations in August, a decline of 5.2% on August last year.

Private new capital expenditure in the June Quarter was \$590m, a decline of 12.1% on June Quarter 2000.

### HOUSING

The number of dwelling units approved in August was 824, a rise of 6.7% on July and the eleventh consecutive monthly rise since September 2000.

### CONSUMER PRICE INDEX

The Consumer Price Index (All Groups) for Adelaide increased by 0.1% to 135.3 in the September Quarter of 2001, and by 2.3% over the level recorded twelve months previously. This result is no longer affected by the direct or first round effects of The New Tax System, particularly the introduction of the goods and services tax.

### LABOUR FORCE AND DEMOGRAPHY

The estimate of employed persons in South Australia rose to 676,700 in September but remains lower than the level of twelve months ago (681,500).

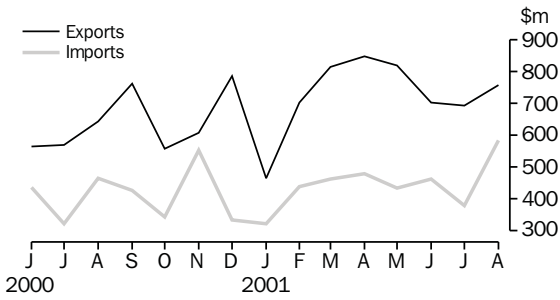
The unemployment rate for South Australia fell to 7.4% in September (from 7.5% in August).

### FINANCIAL MARKETS

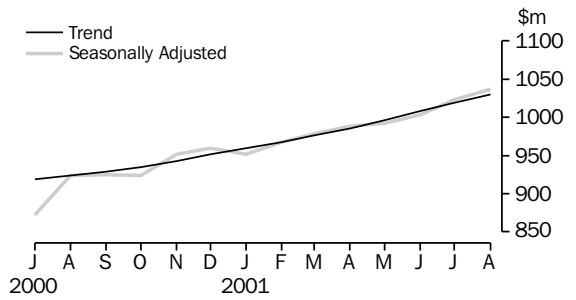
Total secured housing finance commitments (excluding alterations and additions) has continued to rise to reach \$478.0m in August. This was a 3.0% increase on July and 30.6% higher than August 2000.

# SELECTED FEATURES

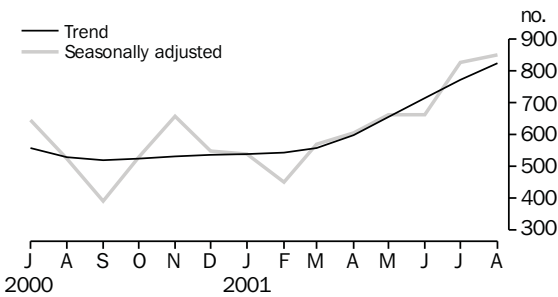
MERCHANDISE EXPORTS AND IMPORTS



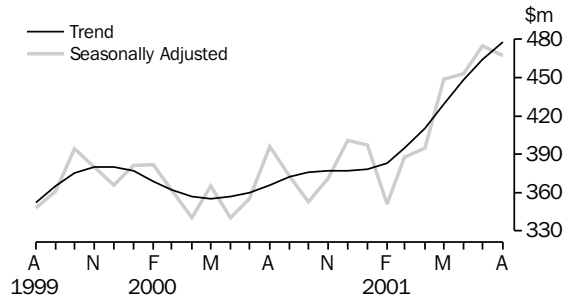
RETAIL TURNOVER



DWELLING UNITS APPROVED

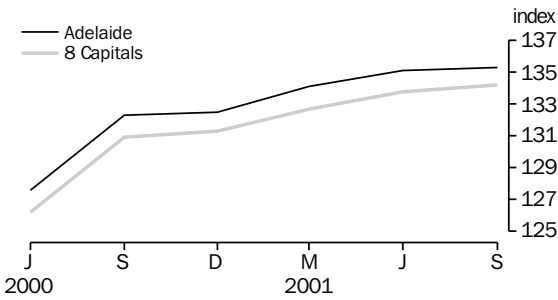


SECURED HOUSING FINANCE COMMITMENTS(a)

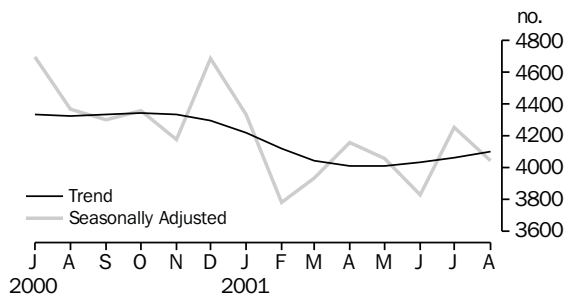


(a) Excludes alterations and additions. Includes refinancing.

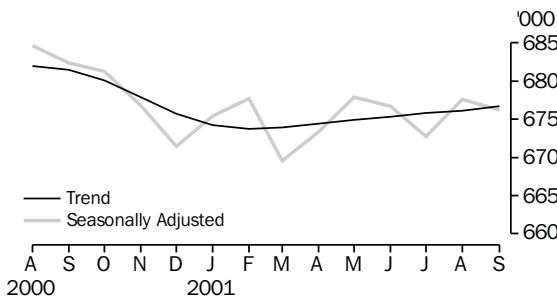
CONSUMER PRICE INDEX



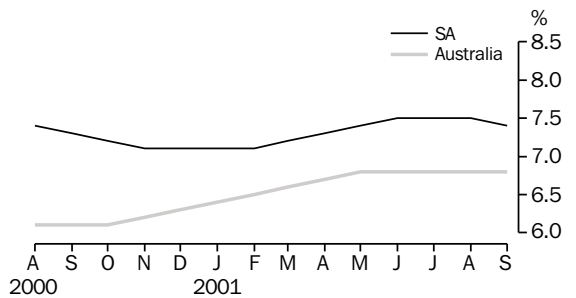
NEW MOTOR VEHICLE REGISTRATIONS



EMPLOYED PERSONS



UNEMPLOYMENT RATE—TREND



## LIST OF TABLES

			Page
STATISTICAL SUMMARY	<b>1</b>	Statistical summary	6
	<b>2</b>	State summary	8
STATE ACCOUNTS	<b>3</b>	State accounts at current prices	9
	<b>4</b>	State accounts at chain volume measures	9
INTERNATIONAL TRADE	<b>5</b>	Merchandise exports, by selected commodity group	10
	<b>6</b>	Merchandise exports, by selected countries and country groups	11
	<b>7</b>	Merchandise exports, by industry of origin	12
	<b>8</b>	Merchandise imports, by selected commodity group	13
CONSUMPTION AND INVESTMENT	<b>9</b>	Turnover of retail establishments, by industry—trend	14
	<b>10</b>	New motor vehicle registrations, by type of vehicle	14
	<b>11</b>	Actual private new capital expenditure, by selected industry and type of asset	15
	<b>12</b>	Tourist accommodation	15
PRODUCTION	<b>13</b>	Building approvals	16
	<b>14</b>	Building commencements	17
	<b>15</b>	Value of building work done and completed during period	18
	<b>16</b>	Production, livestock products and selected commodities	19
CONSUMER PRICE INDEX	<b>17</b>	Consumer price index, by group—Adelaide	20
LABOUR FORCE AND DEMOGRAPHY	<b>18</b>	Estimated resident population and components of population change	21
	<b>19</b>	Births, deaths, marriages and divorces	21
	<b>20</b>	Civilian labour force status	22
	<b>21</b>	Civilian labour force, unemployment and participation rates	23
AVERAGE WEEKLY EARNINGS	<b>22</b>	Average weekly earnings of employees	24
FINANCIAL MARKETS	<b>23</b>	Secured housing finance commitments	25
	<b>24</b>	Finance commitments	25

Indicator	Period	South Australia			Australia			SA as a % of Aust.	Source index
		Number	% change from		Number	% change from			
			Previous period	Same period previous year		Previous period	Same period previous year		
<b>State accounts</b>									
Domestic final demand									
Current prices trend (\$m)	Jun qtr 01	11 815	1.4	4.9	170 525	1.3	4.2	6.9	(1)
Chain volume measures trend (\$m)	Jun qtr 01	11 250	0.6	1.1	162 043	0.7	0.3	6.9	(1)
Private final consumption expenditure									
Current prices trend (\$m)	Jun qtr 01	7 386	1.6	8.8	103 435	1.8	7.9	7.1	(1)
Chain volume measures trend (\$m)	Jun qtr 01	6 986	0.9	4.5	97 700	1.1	3.4	7.2	(1)
Private gross fixed capital formation									
Current prices trend (\$m)	Jun qtr 01	1 785	1.6	-3.9	28 355	0.2	-6.9	6.3	(1)
Chain volume measures trend (\$m)	Jun qtr 01	1 715	1.0	-6.5	27 113	-0.2	-10.5	6.3	(1)
Compensation of employees									
Current prices trend (\$m)	Jun qtr 01	5 329	1.3	5.1	82 152	1.2	5.8	6.5	(1)
<b>International accounts</b>									
Exports (\$m)	Aug 01	758.6	9.3	17.8	10 539.1	-0.5	12.4	7.2	(2)
Imports (\$m)	Aug 01	585.1	54.5	25.5	10 537.1	9.2	-1.7	5.6	(2)
<b>Consumption and investment</b>									
Retail turnover									
Current prices original (\$m)	Aug 01	1 007.6	1.7	12.5	13 400.6	1.5	8.9	7.5	(3)
Current prices trend (\$m)	Aug 01	1 030.2	1.0	11.6	13 667.7	0.5	8.5	7.5	(3)
Chain volume measures original (\$m)	Jun qtr 01	2 696.7	3.6	2.9	36 243.4	2.1	1.1	7.4	(3)
New motor vehicle registrations									
Original (no.)	Aug 01	4 169	0.7	-5.1	66 844	-2.3	-12.5	6.4	(4)
Trend (no.)	Aug 01	4 101	1.0	-5.2	64 289	1.1	-5.5	6.4	(4)
Private new capital expenditure									
Current prices original (\$m)	Jun qtr 01	565	-4.2	-18.4	10 343	17.9	-9.0	5.5	(5)
Current prices trend (\$m)	Jun qtr 01	590	-9.4	-12.1	9 776	0.6	-5.4	6.0	(5)
Private new capital expenditure (\$m)	2000-01	2 654	8.3	8.3	39 491	-7.0	-7.0	6.7	(5)
Takings from accommodation—hotels, motels, guesthouses and serviced apartments	Jun qtr 01	52.1	-6.1	5.7	1 111.3	-8.8	6.9	4.7	(6)
<b>Production</b>									
Dwelling unit approvals									
Original (no.)	Aug 01	825	-15.4	58.0	15 995	20.4	61.6	5.2	(7)
Trend (no.)	Aug 01	824	6.7	55.8	14 424	6.8	46.5	5.7	(7)
Dwelling units commenced (no.)	Jun qtr 01	1 646	3.1	-30.7	30 705	15.4	-28.3	5.4	(8)
Value of non-residential building approvals—trend (\$m)	Aug 01	77.0	9.2	50.4	930.5	-4.9	3.1	8.3	(7)
Value of total building activity									
Commenced (\$m)	Jun qtr 01	395.9	16.0	-15.6	8 606.2	10.8	-13.8	4.6	(8)
Work done (\$m)	Jun qtr 01	405.2	6.0	-23.6	8 511.8	10.4	-25.9	4.8	(8)
Work yet to be done (\$m)	Jun qtr 01	455.6	0.6	-8.2	12 203.6	3.8	0.5	3.7	(8)
Value of engineering construction work done (\$m)	Jun qtr 01	366.6	50.4	5.6	5 126.2	24.7	-0.2	7.2	(9)
Manufacturing production									
Red meat (tonnes)	Jun qtr 01	53 535	-7.8	-1.4	795 532	3.7	2.0	6.7	(11)
Mineral exploration expenditure (other than for petroleum)(a) (\$m)	Jun qtr 01	12.4	153.1	121.4	195.8	16.1	7.2	6.3	(12)

(a) From July 2000 value data no longer contains Wholesale Sales Tax.

Indicator	Period	South Australia			Australia			SA as a % of Aust.	Source index
		Number	% change from		Number	% change from			
			Previous period	Same period previous year		Previous period	Same period previous year		
<b>Prices(a)</b>									
CPI—All groups (index no.)	Sep qtr 01	135.3	0.1	2.3	134.2	0.3	2.5	..	(13)
Price index of materials used in house building (index no.)	Sep qtr 01	128.4	-0.8	-1.1	124.7	0.2	0.2	..	(14)
Price index of materials used in building other than houses (index no.)	Sep qtr 01	117.2	-0.2	1.0	117.5	0.3	1.7	..	(14)
Price index of established houses (index no.)	Jun qtr 01	136.5	2.6	7.6	159.4	3.6	8.2	..	(16)
Price index of project homes (index no.)	Jun qtr 01	143.4	1.1	10.0	135.4	0.2	10.2	..	(16)
<b>Labour force and demography</b>									
Population (resident at end qtr) ('000)	Mar qtr 01	1 501.4	0.1	0.3	19 334.2	0.3	1.2	7.8	(17)
Short-term overseas visitor arrivals (no.)	Jul 00	10 230	12.0	19.7	429 030	23.3	10.4	2.4	(21)
Short-term resident departures (no.)	Jul 00	18 630	28.6	6.1	296 940	-2.2	3.6	6.3	(21)
Labour force									
Original ('000)	Sep 01	733.8	1.1	-0.8	9 927.6	1.6	1.1	7.4	(18)
Trend ('000)	Sep 01	731.1	0.0	-0.5	9 847.8	0.0	1.3	7.4	(18)
Employed persons									
Original ('000)	Sep 01	681.2	1.1	-0.9	9 255.0	1.4	0.3	7.4	(18)
Trend ('000)	Sep 01	676.7	0.1	-0.7	9 177.7	0.1	0.5	7.4	(18)
Participation rate									
Original(b) (%)	Sep 01	60.5	0.6	-0.8	64.2	0.9	-0.1	..	(18)
Trend(b) (%)	Sep 01	60.3	0.0	-0.6	63.7	-0.1	0.0	..	(18)
Unemployment rate									
Original(b) (%)	Sep 01	7.2	0.0	0.1	6.8	0.2	0.7	..	(18)
Trend(b) (%)	Sep 01	7.4	-0.1	0.1	6.8	0.0	0.7	..	(18)
Job vacancies ('000)	Aug 01	6.2	12.7	17.0	92.7	11.2	-21.6	6.7	(19)
Industrial disputes ('000 working days lost)	Jul 01	2.6	1 200.0	2 500.0	46.8	-30.3	112.7	5.6	(20)
<b>Income</b>									
Average weekly earnings (full-time adults; ordinary time)									
Original (\$)	May 01	780.90	1.4	7.4	824.10	1.7	5.3	..	(22)
Trend (\$)	May 01	782.50	1.3	7.0	822.30	1.2	4.7	..	(22)
Wage cost index (total hourly rate excluding bonuses)(c) (index no.)	Jun qtr 01	111.6	0.5	3.2	112.4	0.6	3.7	..	(23)
<b>Financial markets</b>									
Secured housing finance(d) (\$m)	Aug 01	455.0	-1.5	18.8	8 381.0	3.4	38.9	5.4	(24)
Finance commitments									
Personal (\$m)	Aug 01	308.9	-3.6	1.4	4 809.0	-5.0	-0.5	6.4	(25)
Commercial (\$m)	Aug 01	594.3	-6.3	44.1	16 475.0	8.4	-2.9	3.6	(25)
Lease (\$m)	Aug 01	15.6	-45.6	54.5	569.0	-4.5	21.1	2.7	(25)
Interest rates(b)									
Banks new housing loans (%)	Sep 01	..	..	..	6.55	-0.25	-1.50	..	(26)
Bank loans—small, medium business(e) (%)	Sep 01	..	..	..	7.80	-0.20	-1.40	..	(26)
Bank loans—large business (%)	Sep 01	..	..	..	8.30	-0.20	-1.35	..	(26)
(a) Base year of each index 1989-90 = 100.									
(b) Change is shown in terms of percentage points.									
(c) Base year of index Sep 1997 = 100.									
(d) Excludes alterations and additions. Includes refinancing.									
(e) Rate for business loans over \$50,000.									

## 2

## STATE SUMMARY

Indicator	Period	NSW	Vic.	Qld	SA	WA	Tas.	NT	ACT	Source index
SELECTED INDICATORS										
CPI—All groups(a) (index no.)	Sep qtr 01	135.4	133.6	134.2	<b>135.3</b>	131.5	132.8	132.5	133.2	(13)
Participation rate trend (%)	Sep 01	62.8	63.7	65.0	<b>60.3</b>	66.6	58.6	74.8	71.6	(18)
Unemployment rate trend (%)	Sep 01	6.1	6.2	8.1	<b>7.4</b>	7.1	9.5	7.3	5.2	(18)
Average weekly earnings (full-time adults; ordinary time) trend (\$)	May 01	864.60	798.90	768.90	<b>782.50</b>	833.40	754.50	826.20	939.50	(22)

## SELECTED INDICATORS PER HEAD OF POPULATION(B)

State final demand										
Chain volume measures trend (\$'000)	Jun qtr 01	8.6	8.4	7.9	<b>7.5</b>	8.3	6.9	10.2	15.9	(1)
Retail turnover										
Current prices original (\$)	Aug 01	706.7	669.2	700.4	<b>671.1</b>	694.2	593.7	790.2	888.0	(3)
Current prices, trend	Aug 01	722.0	688.5	705.8	<b>686.2</b>	706.9	613.7	717.1	909.4	(3)
New motor vehicle registrations trend (no. per '000 population)	Aug 01	3.3	3.7	3.5	<b>2.7</b>	3.0	2.4	2.8	3.4	(4)
Private new capital expenditure										
Current prices trend (\$)	Jun qtr 01	496.9	529.1	379.3	<b>393.0</b>	755.7	261.5	1 442.4	449.9	(5)
Dwelling unit approvals										
Original (no. per '000 population)	Aug 01	0.620	1.182	0.895	<b>0.549</b>	0.975	0.317	0.381	0.581	(7)
Trend (no. per '000 population)	Aug 01	0.554	0.900	0.831	<b>0.549</b>	0.950	0.330	0.579	0.616	(7)
Secured housing finance(c) (\$)	Aug 01	543.8	398.7	383.1	<b>303.1</b>	438.5	193.5	193.0	366.9	(24)

## PERCENTAGE CHANGE FROM PREVIOUS PERIOD

State final demand										
Chain volume measures trend (%)	Jun qtr 01	-0.2	1.2	1.6	<b>0.6</b>	1.5	0.8	1.1	0.7	(1)
Retail turnover										
Current prices original (%)	Aug 01	1.0	0.8	2.0	<b>1.7</b>	3.2	3.8	4.1	-1.0	(3)
Current prices, trend	Aug 01	0.5	0.5	0.2	<b>1.0</b>	0.8	-0.4	0.7	0.8	(3)
New motor vehicle registrations trend (%)	Aug 01	1.0	1.0	1.7	<b>1.0</b>	1.1	-1.6	-2.0	-1.0	(4)
Private new capital expenditure										
Current prices trend (%)	Jun qtr 01	-3.7	1.6	-2.7	<b>-9.4</b>	7.2	-2.4	32.7	4.4	(5)
Dwelling unit approvals										
Original (%)	Aug 01	4.9	52.7	25.0	<b>-15.4</b>	6.4	26.3	-20.2	-33.0	(7)
Trend (%)	Aug 01	5.1	8.2	6.2	<b>6.7</b>	6.9	6.2	0.0	3.2	(7)
CPI—All groups (%)	Sep qtr 01	0.3	0.5	0.1	<b>0.1</b>	0.1	-0.4	0.2	-0.1	(13)
Participation rate trend(d) (%)	Sep 01	0.0	0.0	-0.1	<b>0.0</b>	-0.1	0.1	0.1	-0.2	(18)
Unemployment rate trend(d) (%)	Sep 01	0.0	-0.1	-0.1	<b>-0.1</b>	-0.1	0.2	0.0	-0.1	(18)
Average weekly earnings (full-time adults; ordinary time) trend (%)	May 01	1.5	1.0	0.9	<b>1.3</b>	0.7	1.2	1.2	0.4	(22)
Secured housing finance (%)	Aug 01	2.8	4.0	5.8	<b>-1.5</b>	2.5	30.0	-11.6	0.0	(24)

(a) Base year of index 1989-90 = 100.

(b) The latest quarterly estimate of Australian resident population has been used to calculate ratios for subsequent periods.

(c) Excludes alterations and additions. Includes refinancing.

(d) Change is shown in terms of percentage points.



### 3

#### STATE ACCOUNTS AT CURRENT PRICES

Period	<i>Final consumption expenditure</i>		<i>Gross fixed capital formation</i>			State final demand	Gross State product	Compensation of employees
	Households	General government	Private	Public				
ANNUAL (\$m)								
<b>1997-98</b>	24 424	7 808	6 684	1 306	40 222	39 290	18 760	
<b>1998-99</b>	25 341	7 969	6 036	1 335	40 682	39 966	19 153	
<b>1999-00</b>	26 503	8 360	(a)10 237	(a)-1 547	43 553	42 282	19 951	
QUARTERLY, TREND (\$m)								
<b>1999-00</b>								
March	6 681	2 255	1 794	386	11 115	n.a.	5 009	
June	6 788	2 264	1 829	383	11 264	n.a.	5 070	
<b>2000-01</b>								
September	6 951	2 259	1 790	376	11 376	n.a.	5 127	
December	7 126	2 268	1 724	350	11 471	n.a.	5 190	
March	7 271	2 301	1 757	318	11 648	n.a.	5 260	
June	7 386	2 331	1 785	313	11 815	n.a.	5 329	

(a) The negative figure for Public gross fixed capital formation and the larger than usual positive figure for Private gross fixed capital formation are the result of the sale of the South Australian electrical transmission network in December quarter 1999. For more information see *National Income, Expenditure and Product, Australian National Accounts, June 2000* (Cat. no. 5206.0).

Source: *Australian National Accounts: Quarterly State Details* (Cat. no. 5206.0.40.001), and *Australian National Accounts: State Accounts* (Cat. no. 5220.0).

### 4

#### STATE ACCOUNTS AT CHAIN VOLUME MEASURES(a)

Period	<i>Final consumption expenditure</i>		<i>Gross fixed capital formation</i>			State final demand	Gross State product
	Households	General government	Private	Public			
ANNUAL (\$m)							
<b>1997-98</b>	24 572	7 991	6 773	1 303	40 637	39 087	
<b>1998-99</b>	25 341	7 969	6 036	1 336	40 682	39 966	
<b>1999-00</b>	26 218	8 224	(b)10 013	(b)-1 456	42 999	41 381	
QUARTERLY, TREND (\$m)							
<b>1999-00</b>							
March	6 664	2 241	1 804	361	11 069	n.a.	
June	6 686	2 245	1 817	367	11 125	n.a.	
<b>2000-01</b>							
September	6 747	2 242	1 749	366	11 117	n.a.	
December	6 839	2 240	1 674	343	11 095	n.a.	
March	6 922	2 245	1 698	318	11 180	n.a.	
June	6 986	2 249	1 715	303	11 250	n.a.	

(a) Reference year for chain volume measures is 1998-99.

(b) The negative figure for Public gross fixed capital formation and the larger than usual positive figure for Private gross fixed capital formation are the result of the sale of the South Australian electrical transmission network in December quarter 1999. For more information see *National Income, Expenditure and Product, Australian National Accounts, June 2000* (Cat. no. 5206.0).

Source: *Australian National Accounts: Quarterly State Details* (Cat. no. 5206.0.40.001), and *Australian National Accounts: State Accounts* (Cat. no. 5220.0).

## 5

## MERCHANDISE EXPORTS, BY SELECTED COMMODITY GROUP(a)

<i>Period</i>	<i>Meat and meat preparations</i>	<i>Wheat</i>	<i>Wine</i>	<i>Wool and sheepskins (excl. wool tops)</i>	<i>Machinery</i>	<i>Metals and metal manufactures</i>	<i>Fish and crustaceans</i>	<i>Road vehicles, parts and accessories</i>	<i>Petroleum and petroleum products</i>	<i>Total(b)</i>
	\$'000	\$'000	\$'000	\$'000	\$'000	\$'000	\$'000	\$'000	\$'000	\$'000
<b>1998-99</b>	198 541	567 812	693 733	212 226	384 702	543 675	252 592	651 949	154 425	5 332 300
<b>1999-00</b>	160 483	473 086	899 348	179 716	353 205	805 744	394 375	883 792	218 466	6 188 231
<b>2000-01</b>	262 600	767 524	1 081 310	236 034	381 747	1 019 894	451 710	1 399 479	355 781	8 285 784
<b>1999-00</b>										
March	16 203	37 670	81 909	15 355	31 158	75 803	21 515	80 430	26 155	560 304
April	15 688	48 190	81 644	13 701	26 242	69 225	28 678	21 432	27 316	484 156
May	16 988	31 684	93 800	20 262	33 529	69 203	27 111	64 861	3 473	488 743
June	16 704	23 814	90 533	21 491	32 751	81 301	28 968	63 329	30 107	564 152
<b>2000-01</b>										
July	17 198	19 207	91 473	18 494	31 670	66 877	37 243	113 052	28 523	569 048
August	12 891	34 504	91 522	13 905	32 251	54 225	117 255	119 957	12 106	643 760
September	21 175	66 366	110 883	17 429	29 031	96 525	66 255	137 895	49 737	761 874
October	22 718	31 594	104 142	26 188	29 363	93 449	17 387	66 730	12 239	557 546
November	21 086	34 320	66 654	24 868	39 987	92 385	25 144	99 097	37 355	608 459
December	23 003	55 592	74 430	17 779	35 714	95 601	23 853	197 310	34 021	786 954
January	15 352	42 141	56 686	12 389	19 399	71 312	27 610	36 155	11 715	465 417
February	23 730	80 599	78 767	19 868	27 828	89 603	16 885	109 181	36 380	703 077
March	27 691	112 562	92 701	22 506	32 623	99 791	21 120	148 177	17 124	816 060
April	26 339	93 911	121 497	19 887	32 125	89 887	23 097	155 998	52 960	848 242
May	27 404	152 550	98 761	22 367	33 559	79 393	28 944	115 827	33 738	821 085
June	24 012	44 178	93 793	20 353	38 196	90 845	46 917	100 101	29 883	704 262
<b>2001-02</b>										
July	18 742	84 671	89 467	14 983	31 711	80 062	105 885	85 602	4 227	694 079
August	15 560	104 764	109 542	12 260	29 073	65 434	108 749	87 371	30 011	758 587

(a) Restrictions are placed on the release of statistics for certain commodities for reasons of confidentiality. These restrictions do not affect total export and import figures, but they can affect some items within commodity, industry and country tables. See *International Trade* (Cat. no. 5422.0), Explanatory Notes, paragraph 30, for more details.

(b) Includes other commodity groups not listed.

Source: ABS data available on request.

## 6

## MERCHANDISE EXPORTS, BY SELECTED COUNTRIES AND COUNTRY GROUPS

Period	European Union					South-East and North-East Asia				
	United States of America	Middle East	United Kingdom	Total European Union	New Zealand	Japan	China	Hong Kong	ASEAN	Total
	\$'000	\$'000	\$'000	\$'000	\$'000	\$'000	\$'000	\$'000	\$'000	\$'000
<b>1998-99</b>	705 166	640 412	476 340	928 468	385 513	625 530	302 776	219 536	432 730	1 898 837
<b>1999-00</b>	954 681	724 871	625 154	1 073 928	446 026	787 295	315 199	255 679	492 304	2 297 913
<b>2000-01</b>	1 354 793	1 335 793	713 514	1 232 541	480 802	963 114	437 939	298 897	682 586	2 882 288
<b>1999-00</b>										
March	131 298	24 442	53 267	87 039	37 877	65 469	43 237	26 342	41 680	215 769
April	68 381	66 629	58 962	99 714	19 524	63 008	21 328	20 398	39 863	187 566
May	101 180	30 245	64 293	101 411	23 024	53 701	19 306	14 037	49 465	173 766
June	62 092	61 433	56 258	94 338	41 788	109 779	25 500	18 924	61 779	247 770
<b>2000-01</b>										
July	100 224	65 100	55 658	85 089	34 853	85 633	24 427	23 112	51 101	216 245
August	128 909	59 559	66 643	101 217	32 894	157 189	22 980	12 572	45 170	262 062
September	96 183	108 823	86 988	136 672	39 384	142 299	23 256	24 806	66 988	292 464
October	57 168	61 372	84 703	128 689	42 321	39 822	42 670	18 484	59 867	197 515
November	141 743	53 997	30 339	59 478	54 206	55 931	54 946	36 927	54 355	249 513
December	161 458	158 267	37 513	74 503	29 610	81 125	17 245	31 419	61 396	245 174
January	55 623	90 284	32 418	59 100	21 446	37 119	24 316	31 873	51 910	172 995
February	100 916	145 190	51 056	109 310	37 641	54 585	61 981	29 821	59 017	239 767
March	115 814	178 076	59 618	120 294	47 460	37 109	55 989	28 698	51 248	224 332
April	115 986	183 447	98 255	158 996	47 252	80 941	43 900	15 196	65 386	268 384
May	141 135	160 104	55 656	102 356	45 043	105 396	21 910	22 784	53 819	253 300
June	139 635	71 574	54 666	96 837	48 693	85 966	44 319	23 205	62 329	260 538
<b>2001-02</b>										
July	116 027	121 210	53 283	86 638	48 715	141 638	18 061	12 330	54 557	250 346
August	129 366	134 817	66 884	96 644	52 901	150 781	18 899	16 960	44 828	262 941

Source: ABS data available on request.

## 7

## MERCHANDISE EXPORTS, BY INDUSTRY OF ORIGIN(a)

Period	Manufacturing								Total
	Agriculture, forestry and fishing(b)	Mining	Food, beverages and tobacco	Petroleum, coal, chemical associated product	Metal product	Machinery and equipment	Other manu- facturing	Other industries/ confidential	
	\$'000	\$'000	\$'000	\$'000	\$'000	\$'000	\$'000	\$'000	\$'000
<b>1998-99</b>	1 352 378	73 125	1 282 013	285 053	581 372	1 172 362	264 973	321 024	5 332 300
<b>1999-00</b>	934 944	135 461	1 517 721	369 480	837 235	1 412 721	256 771	723 899	6 188 231
<b>2000-01</b>	1 287 151	165 733	1 898 356	536 055	1 068 444	1 975 975	270 291	1 083 779	8 285 784
<b>1999-00</b>									
March	91 256	1 157	136 228	40 091	78 579	127 314	23 185	62 493	560 304
April	77 966	20 118	140 525	40 372	71 716	62 360	19 912	51 186	484 156
May	73 998	1 208	148 640	16 480	72 947	113 986	20 553	40 930	488 743
June	68 317	22 340	152 594	44 089	84 209	110 627	23 176	58 799	564 152
<b>2000-01</b>									
July	65 147	6 159	162 950	42 580	71 223	160 082	22 674	38 234	569 048
August	71 380	3 238	171 659	25 645	59 116	168 763	21 156	122 802	643 760
September	93 636	28 341	192 961	64 838	98 056	183 475	20 737	79 831	761 874
October	73 874	9 037	155 483	23 959	96 272	114 445	23 546	60 931	557 546
November	75 775	1 018	122 919	49 586	96 412	155 733	20 730	86 286	608 459
December	96 930	30 834	141 394	48 477	99 070	251 856	21 467	96 926	786 954
January	79 054	8 276	115 276	22 392	75 124	64 528	21 215	79 553	465 417
February	112 571	28 060	153 585	50 182	95 214	153 423	19 282	90 761	703 077
March	188 107	1 609	160 997	34 236	102 602	195 962	26 980	105 567	816 060
April	136 400	24 564	185 976	71 973	97 014	205 257	24 118	102 940	848 242
May	205 436	23 132	171 674	52 101	83 148	165 364	25 932	94 300	821 085
June	88 845	1 466	163 483	50 086	95 194	157 086	22 454	125 648	704 262
<b>2001-02</b>									
July	163 643	2 298	148 833	21 254	85 223	134 348	18 404	120 077	694 079
August	167 152	3 368	168 040	50 328	67 850	134 742	15 416	151 691	758 587

(a) Restrictions are placed on the release of statistics for certain commodities for reasons of confidentiality. These restrictions do not affect total export and import figures, but they can affect some items within commodity, industry and country tables. See *International Trade* (Cat. no. 5422.0), Explanatory Notes, paragraph 30, for more details.

(b) Bulk barley details are only included in this item for periods prior to September 1999. Due to confidentiality restrictions bulk barley is included in 'Other industries/confidential' from September 1999 onwards.

Source: ABS data available on request.

## 8

## MERCHANDISE IMPORTS, BY SELECTED COMMODITY GROUP(a)

<i>Period</i>	<i>Food, beverages and tobacco</i>	<i>Petroleum and petroleum products</i>	<i>Chemicals</i>	<i>Textiles</i>	<i>Metals and metal manufactures</i>	<i>Machinery</i>	<i>Road vehicle parts and accessories</i>	<i>Other manufactured goods</i>	<i>Total(b)</i>
	\$'000	\$'000	\$'000	\$'000	\$'000	\$'000	\$'000	\$'000	\$'000
<b>1998-99</b>	162 784	271 492	281 097	96 052	264 732	917 879	812 096	765 643	3 716 152
<b>1999-00</b>	163 509	515 641	263 959	97 100	262 737	1 164 672	834 842	845 913	4 319 348
<b>2000-01</b>	183 196	968 428	284 227	97 281	315 803	1 205 016	854 759	926 960	5 045 172
<b>1999-00</b>									
March	10 534	23 846	36 835	8 774	24 635	100 622	77 585	73 811	376 965
April	8 677	49 022	23 130	9 829	23 748	78 906	63 183	59 870	330 807
May	12 970	150	26 399	8 829	25 235	103 045	93 658	89 393	376 376
June	13 173	81 962	25 199	8 426	24 025	116 514	82 365	70 038	437 101
<b>2000-01</b>									
July	12 672	12 429	15 366	7 477	27 313	81 141	88 021	64 441	323 578
August	15 478	105 525	18 815	10 427	31 299	84 295	85 147	100 451	466 221
September	14 607	112 111	16 617	7 996	26 072	92 650	69 757	74 871	426 734
October	19 561	20	16 312	9 911	29 337	100 090	77 594	76 202	343 395
November	19 530	186 246	16 133	7 366	30 389	107 265	79 920	84 173	552 576
December	13 166	42 077	15 344	6 399	20 145	102 436	58 572	62 099	333 906
January	12 558	16 440	24 436	6 950	27 734	97 647	47 013	71 387	321 682
February	11 456	123 599	22 811	8 947	22 891	89 394	59 947	78 042	438 399
March	14 957	82 612	36 950	6 792	24 075	110 739	77 516	87 171	462 244
April	15 533	99 678	57 548	7 239	25 625	104 946	71 621	75 203	479 019
May	16 160	77 698	29 168	9 156	23 798	117 562	67 744	73 174	435 064
June	17 518	109 994	14 728	8 622	27 124	116 851	71 909	79 747	462 353
<b>2001-02</b>									
July	14 742	27 393	19 648	7 575	28 991	99 314	74 734	89 678	378 633
August	19 401	139 771	19 532	10 687	29 848	139 698	98 134	111 799	585 094

(a) Restrictions are placed on the release of statistics for certain commodities for reasons of confidentiality. These restrictions do not affect total export and import figures, but they can affect some items within commodity, industry and country tables. See *International Trade* (Cat. no. 5422.0), Explanatory Notes, paragraph 30, for more details.

(b) Includes other commodity groups not listed.

Source: ABS data available on request.

## 9

## TURNOVER OF RETAIL ESTABLISHMENTS, BY INDUSTRY—TREND(a)

Period	Food retailing	Department stores	Clothing and soft good retailing	Household good retailing	Recreational good retailing	Other retailing	Hospitality and services	Total
	\$m	\$m	\$m	\$m	\$m	\$m	\$m	\$m
<b>1999-00</b>								
June	386.8	95.1	47.9	96.5	27.1	96.5	153.0	903.6
<b>2000-01</b>								
July	390.3	95.2	47.2	97.8	26.0	98.3	164.2	918.8
August	387.1	94.7	47.9	97.9	25.7	102.7	166.6	923.5
September	385.4	93.9	48.7	97.7	25.6	106.8	169.3	928.8
October	385.9	93.4	49.5	97.3	25.3	109.9	172.0	935.0
November	388.5	93.5	50.2	97.0	25.1	112.0	174.5	942.5
December	392.1	94.0	50.6	97.1	25.0	113.7	176.9	951.1
January	395.8	94.7	50.8	98.1	25.0	115.5	178.4	959.6
February	399.2	95.3	50.7	100.2	25.1	117.6	178.5	967.9
March	402.9	95.6	50.4	102.9	25.2	119.9	177.9	976.3
April	407.0	95.5	50.2	105.8	27.9	122.4	177.7	985.7
May	411.6	95.2	50.0	108.4	28.3	124.5	178.7	996.6
June	416.5	94.8	50.0	110.4	28.6	126.3	180.9	1 008.0
<b>2001-02</b>								
July	421.4	94.5	50.1	111.8	28.9	127.7	183.7	1 019.6
August	425.3	94.0	50.1	112.4	29.1	128.6	187.3	1 030.2

(a) A break in the trend series occurred between June and July 2000 because of the impact of the The New Tax System on Retail turnover.

Source: Retail Trade, Australia (Cat. no. 8501.0).

## 10

## NEW MOTOR VEHICLE REGISTRATIONS, BY TYPE OF VEHICLE

Period	Original			Seasonally adjusted			Trend estimate(a)		
	Passenger vehicles	Other vehicles	Total	Passenger vehicles	Other vehicles	Total	Passenger vehicles	Other vehicles	Total
<b>1999-00</b>									
June	2 720	943	3 663	2 200	658	2 858	3 001	616	3 617
<b>2000-01</b>									
July	4 078	538	4 616	4 128	569	4 697	3 729	604	4 333
August	3 956	582	4 538	3 790	580	4 370	3 731	593	4 324
September	3 547	591	4 138	3 665	638	4 303	3 746	589	4 335
October	3 747	494	4 241	3 787	571	4 358	3 748	596	4 344
November	3 997	537	4 534	3 657	519	4 176	3 723	612	4 335
December	3 991	658	4 649	4 025	663	4 688	3 671	628	4 299
January	2 857	579	3 436	3 586	747	4 333	3 585	635	4 220
February	3 069	568	3 637	3 177	607	3 784	3 487	635	4 122
March	3 509	660	4 169	3 321	615	3 936	3 415	632	4 047
April	3 121	547	3 668	3 555	603	4 158	3 379	631	4 010
May	3 488	680	4 168	3 454	607	4 061	3 375	635	4 010
June	3 729	856	4 585	3 196	635	3 831	3 385	648	4 033
<b>2001-02</b>									
July	3 549	724	4 273	3 488	769	4 257	3 399	663	4 062
August	3 645	660	4 305	3 411	634	4 045	3 419	682	4 101

(a) A break in the trend series occurred between June and July 2000 because of the impact of The New Tax System.

Source: New Motor Vehicle Registrations, Australia, Preliminary (Cat. no. 9301.0) and ABS data available on request.

# 11

## ACTUAL PRIVATE NEW CAPITAL EXPENDITURE, BY SELECTED INDUSTRY AND TYPE OF ASSET

Period	Industry			Total	Type of asset	
	Mining	Manufacturing	Other selected industries		New buildings and structures	Equipment, plant and machinery
ANNUAL (\$m)						
<b>1998-99</b>	508	776	993	2 277	529	1 748
<b>1999-00</b>	242	853	1 355	2 451	619	1 832
<b>2000-01</b>	419	822	1 413	2 654	659	1 995
QUARTERLY, ORIGINAL (\$m)						
<b>1999-00</b>						
March	55	208	341	603	157	446
June	67	251	375	692	220	472
<b>2000-01</b>						
September	126	208	316	649	180	469
December	183	221	445	849	264	585
March	48	187	355	590	105	485
June	62	206	297	565	109	456
QUARTERLY, TREND (\$m)						
<b>1999-00</b>						
March	n.a.	n.a.	n.a.	617	165	452
June	n.a.	n.a.	n.a.	671	199	472
<b>2000-01</b>						
September	n.a.	n.a.	n.a.	722	214	508
December	n.a.	n.a.	n.a.	701	190	511
March	n.a.	n.a.	n.a.	651	149	502
June	n.a.	n.a.	n.a.	590	111	479

Source: State Estimates of Private New Capital Expenditure (Cat. no. 5646.0).

# 12

## TOURIST ACCOMMODATION

Period	Licensed hotels with facilities				Motels and guesthouses				Serviced apartments			
	Estab-lish-ments	Guest rooms	Room occu-pancy	Takings	Estab-lish-ments	Guest rooms	Room occu-pancy	Takings	Estab-lish-ments	Guest rooms	Room occu-pancy	Takings
	no.	no.	%	\$'000	no.	no.	%	\$'000	no.	no.	%	\$'000
<b>1998-99</b>												
June	62	4 095	58.6	22 362	146	5 189	51.5	18 140	22	889	54.1	3 947
<b>1999-00</b>												
September	62	3 988	58.0	20 959	146	5 175	50.7	17 812	23	1 084	60.2	5 265
December	62	4 090	61.6	24 619	146	5 166	55.1	19 928	26	1 207	61.5	6 462
March	62	4 065	60.1	23 738	146	5 168	55.3	19 956	26	1 213	62.6	6 739
June	60	4 037	58.7	23 033	147	5 212	53.1	19 309	26	1 208	62.7	6 912
<b>2000-01</b>												
September	60	4 070	56.3	22 888	147	5 218	50.6	19 548	26	1 211	56.9	6 156
December	62	4 128	58.2	24 907	146	5 204	54.4	21 189	26	1 207	62.4	7 109
March	62	3 905	59.9	24 555	146	5 217	55.2	21 536	27	1 280	67.1	7 825
June	61	4 066	55.9	23 849	146	5 230	50.5	20 289	27	1 300	63.2	7 959

Source: Tourist Accommodation, Australia (Cat. no. 8635.0).

Period	Houses		Total dwelling units		New residential building \$m	Alterations and additions to residential building \$m	Total residential building \$m	Non-residential building \$m	Total building \$m
	Private sector	Total	Private sector	Total					
	no.	no.	no.	no.					
ANNUAL									
<b>1998-99</b>	6,568	6,777	7,697	7,928	775.6	144.0	919.6	670.9	1590.5
<b>1999-00</b>	8,290	8,392	9,915	10,024	1022.9	188.9	1211.8	585.7	1797.5
<b>2000-01</b>	5,550	5,639	6,654	6,770	735.6	157.3	892.9	728.5	1621.4
MONTHLY, ORIGINAL									
<b>1999-00</b>									
May	616	625	795	804	79.5	17.3	96.8	66.1	162.9
June	517	524	591	598	63.9	11.5	75.4	24.3	99.7
<b>2000-01</b>									
July	443	461	689	710	83.5	9.3	92.8	60.6	153.4
August	450	465	507	522	57.8	11.9	69.7	89.6	159.3
September	353	353	409	409	42.1	12.6	54.7	29.4	84.1
October	434	434	510	514	55.6	13.1	68.7	45.3	114.0
November	458	462	650	661	63.4	15.0	78.3	49.6	127.9
December	381	398	439	458	49.4	12.1	61.4	52.6	114.1
January	364	364	423	432	46.5	13.5	60.0	35.2	95.3
February	380	385	464	469	50.4	13.8	64.2	36.6	100.8
March	516	522	629	635	67.2	14.0	81.2	141.9	223.2
April	475	492	496	515	56.3	10.8	67.1	40.5	107.6
May	655	659	705	709	79.3	16.9	96.1	95.7	191.8
June	641	644	733	736	84.2	14.3	98.5	51.5	150.0
<b>2001-02</b>									
July	765	771	966	975	98.3	15.9	114.2	45.9	160.1
August	734	741	808	825	86.3	17.0	103.3	118.4	221.7
MONTHLY, TREND									
<b>1999-00</b>									
May	569	577	696	705	74.9	13.7	88.6	52.3	140.8
June	502	512	609	620	66.5	12.6	79.1	53.1	132.1
<b>2000-01</b>									
July	452	462	548	559	59.8	11.7	71.5	52.2	123.7
August	422	431	519	529	55.9	11.4	67.3	51.2	118.5
September	409	417	510	520	54.5	11.6	66.1	50.9	116.9
October	406	412	516	525	54.4	12.2	66.6	50.5	117.1
November	409	414	523	532	54.9	13.1	68	48.3	116.2
December	414	419	528	537	55.6	13.7	69.3	45.1	114.3
January	423	429	528	538	56.9	14	70.9	43.3	114.2
February	442	449	533	543	59	14.1	73.2	43.6	116.8
March	476	484	550	559	62.2	14.3	76.5	45.9	122.3
April	525	532	590	598	66.6	14.5	81.1	50.4	131.5
May	583	590	647	655	72	14.8	86.8	56.9	143.7
June	640	647	706	715	77.3	15.1	92.4	63.9	156.2
<b>2001-02</b>									
July	690	696	763	772	81.9	15.4	97.2	70.5	167.7
August	735	741	813	824	86.0	15.7	101.7	77.0	178.7

Source: Building Approvals, Australia (Cat. no. 8731.0) and ABS data available on request.



## 14

## BUILDING COMMENCEMENTS

Period	New houses		Total dwelling units(a)		New residential building \$m	Alterations and additions to residential building \$m	Non-residential building		
	Private sector	Total	Private sector	Total			Private sector	Total	Total building
	no.	no.	no.	no.			\$m	\$m	\$m
<b>1998-99</b>	6,092	6,297	7,186	7,416	771.3	139.7	400.7	624.3	1535.3
<b>1999-00</b>	7,729	7,856	9,266	9,410	1044.8	198.8	351.2	576.8	1820.5
<b>2000-01</b>	5,317	5,404	6,460	6,574	780.1	161.4	387.7	580.0	1521.0
<b>1998-99</b>									
June	1,591	1,661	1,756	1,826	183.9	37.8	71.0	122.9	344.6
<b>1999-00</b>									
September	1,752	1,792	2,116	2,166	251.2	42.6	84.1	109.3	403.1
December	1,947	2,007	2,264	2,327	250.9	45.2	92.7	132.2	428.3
March	2,054	2,064	2,534	2,544	284.9	52.1	70.8	182.9	519.9
June	1,977	1,994	2,353	2,374	257.8	58.9	103.6	152.5	469.2
<b>2000-01</b>									
September	1,380	1,419	1,777	1,819	228.9	25.6	104.8	166.3	420.8
December	1,345	1,350	1,498	1,512	167.8	44.3	122.8	151.4	363.5
March	1,157	1,179	1,562	1,597	186.5	43.6	70.9	111.2	341.2
June	1,435	1,456	1,623	1,646	196.8	48.0	89.2	151.1	395.9

(a) Includes conversions.

Source: *Building Activity, Australia* (Cat. no. 8752.0).

## VALUE OF BUILDING WORK DONE AND COMPLETED DURING PERIOD

Period	New houses		New residential building			Non-residential building		Total building		
	Private sector	Total	Private sector	Total	Alterations and additions to residential building	Total residential building	Private sector	Total	Private sector	Total
	\$m	\$m	\$m	\$m	\$m	\$m	\$m	\$m	\$m	\$m
VALUE OF BUILDING WORK DONE										
<b>1998-99</b>	599.4	614.6	720.8	737.7	147.7	885.4	417.1	571.6	1,283.8	1,457.0
<b>1999-00</b>	798.1	812.2	984.5	999.9	195.5	1,195.4	409.9	629.4	1,585.1	1,824.8
<b>2000-01</b>	679.7	686.9	834.6	844.1	162.1	1,006.2	392.5	617.3	1,382.1	1,623.5
<b>1998-99</b>										
June	154.7	158.9	189.9	194.4	34.4	228.9	72.6	117.2	296.2	346.1
<b>1999-00</b>										
September	166.8	171.9	212.6	218.4	41.3	259.8	116.7	171.6	369.4	431.3
December	187.5	192.0	227.3	232.1	46.8	278.9	101.0	149.2	374.3	428.1
March	193.0	196.1	239.4	242.6	47.2	289.9	86.3	145.3	372.4	435.2
June	250.8	252.2	305.1	306.8	60.1	366.9	105.9	163.3	469.1	530.2
<b>2000-01</b>										
September	175.9	178.2	228.3	230.7	30.9	261.5	84.0	138.2	341.8	399.7
December	179.6	180.9	216.0	218.3	42.1	260.4	116.6	176.1	372.9	436.5
March	162.6	164.0	193.8	195.7	40.7	236.4	97.2	145.7	330.1	382.1
June	161.6	163.9	196.4	199.5	48.4	247.9	94.7	157.1	337.4	405.2
VALUE OF BUILDING WORK COMPLETED										
<b>1998-99</b>	600.6	614.8	700.0	715.2	153.2	868.4	505.3	639.4	1,356.8	1,507.8
<b>1999-00</b>	713.5	730.1	867.6	886.2	191.9	1,078.1	362.9	538.4	1,419.4	1,616.4
<b>2000-01</b>	758.7	763.6	942.8	949.0	154.4	1,103.4	435.4	589.3	1,525.7	1,692.7
<b>1998-99</b>										
June	139.0	140.7	168.6	170.3	31.0	201.4	101.0	122.0	300.0	323.3
<b>1999-00</b>										
September	148.9	154.7	170.2	177.7	38.5	216.2	67.9	104.1	275.4	320.2
December	190.6	195.1	221.7	226.5	45.5	272.0	124.7	161.8	391.3	433.8
March	156.0	160.2	177.8	182.0	42.2	224.2	100.8	150.4	320.0	374.6
June	217.9	220.1	297.9	300.1	65.7	365.8	69.6	122.0	432.8	487.8
<b>2000-01</b>										
September	175.5	176.2	199.0	199.9	31.4	231.4	133.2	180.5	362.5	411.9
December	222.2	224.8	313.7	317.3	35.8	353.1	82.8	107.7	430.7	460.8
March	173.0	174.3	216.4	217.9	34.9	252.8	82.4	138.5	330.9	391.2
June	188.0	188.3	213.7	213.9	52.2	266.1	137.0	162.6	401.5	428.7

Source: Building Activity, Australia (Cat. no. 8752.0).

<i>Period</i>	<i>Pigmeat</i> <i>tonnes</i>	<i>Beef</i> <i>tonnes</i>	<i>Mutton</i> <i>tonnes</i>	<i>Lamb</i> <i>tonnes</i>	<i>Sawn timber(a)</i> <i>m<sup>3</sup></i>
<b>1998-99</b>	30 864	62 266	48 029	44 173	374 590
<b>1999-00</b>	31 927	78 001	28 970	56 668	425 549
<b>2000-01</b>	36 679	82 532	36 104	61 893	n.y.a
<b>1998-99</b>					
June	8 782	14 717	7 915	12 337	96 391
<b>1999-00</b>					
September	7 294	17 107	5 654	11 492	111 075
December	7 504	18 401	8 714	11 944	93 802
March	8 245	21 743	8 810	14 475	112 949
June	8 884	20 750	5 792	18 757	107 723
<b>2000-01</b>					
September	8 227	18 011	8 072	15 785	126 440
December	8 143	21 982	9 826	15 689	89 486
March	9 785	23 367	9 885	14 968	75 558
June	10 524	19 172	8 321	15 451	n.y.a

(a) From Australian softwood logs only.

Source: *Livestock Products, Australia* (Cat. no. 7215.0) and ABS data available on request.

<i>Period</i>	<i>Food</i>	<i>Alcohol and tobacco</i>	<i>Clothing and footwear</i>	<i>Housing</i>	<i>House furnishings, supplies and services</i>	<i>Health</i>	<i>Transportation</i>	<i>Communication</i>	<i>Recreation</i>	<i>Education</i>	<i>Miscellaneous</i>	<i>All groups</i>
ANNUAL AVERAGE (1989–90 = 100.0)												
<b>1998–99</b>	127.7	171.8	105.0	92.0	113.3	176.0	121.6	101.9	117.9	204.8	142.7	123.2
<b>1999–00</b>	130.8	179.1	103.3	97.0	112.9	165.7	129.4	97.7	119.1	215.8	148.8	126.3
<b>2000–01</b>	136.7	198.3	111.9	104.3	117.1	169.5	138.0	104.7	122.9	225.9	159.3	133.5
QUARTERLY (1989–90 = 100.0)												
<b>1999–00</b>												
June	131.9	182.5	104.0	98.3	113.4	167.9	131.9	98.7	118.6	220.7	153.9	127.6
<b>2000–01</b>												
September	133.8	193.4	113.6	103.9	116.0	168.5	136.8	105.5	122.7	220.9	157.8	132.3
December	134.2	196.0	111.2	103.9	115.8	167.6	137.6	105.0	123.4	220.9	158.3	132.5
March	139.4	200.5	110.5	104.4	117.4	170.7	137.0	104.3	123.0	230.9	159.9	134.1
June	139.4	203.3	112.3	104.9	119.3	171.3	140.4	103.9	122.5	230.9	161.2	135.1
<b>2001–02</b>												
September	140.5	205.9	108.4	106.8	120.6	170.9	136.4	103.6	123.1	231.0	163.5	135.3
PERCENTAGE CHANGE FROM SAME QUARTER OF PREVIOUS YEAR												
<b>1999–00</b>												
June	2.4	5.3	-1.6	5.9	0.2	2.1	7.8	-1.3	-0.3	4.7	7.9	3.2
<b>2000–01</b>												
September	3.2	10.9	8.4	9.4	3.1	2.4	7.4	8.0	2.5	4.8	10.2	5.8
December	2.9	10.2	8.5	7.2	2.8	2.4	8.0	8.0	3.1	4.8	7.4	5.4
March	6.3	10.4	8.4	6.6	4.0	2.4	5.1	7.5	3.8	4.6	6.2	5.8
June	5.7	11.4	8.0	6.7	5.2	2.0	6.4	5.3	3.3	4.6	4.7	5.9
<b>2001–02</b>												
September	5.0	6.5	-4.6	2.8	4.0	1.4	-0.3	1.8	0.3	4.6	3.6	2.3
PERCENTAGE CHANGE FROM PREVIOUS QUARTER												
<b>1999–00</b>												
June	0.5	0.5	2.1	0.4	0.4	0.7	1.2	1.8	0.1	0.0	2.2	0.6
<b>2000–01</b>												
September	1.4	6.0	9.2	5.7	2.3	0.4	3.7	6.9	3.5	0.1	2.5	3.7
December	0.3	1.3	-2.1	0.0	-0.2	-0.5	0.6	-0.5	0.6	0.0	0.3	0.2
March	3.9	2.3	-0.6	0.5	1.4	1.8	-0.4	-0.7	-0.3	4.5	1.0	1.2
June	0.0	0.9	1.6	0.5	1.6	0.4	2.5	-0.4	-0.4	0.0	0.8	0.7
<b>2001–02</b>												
September	0.8	1.3	-3.4	1.8	1.1	-0.2	-2.8	-0.3	0.5	0.0	1.4	0.1

Source: Consumer Price Index (Cat. no. 6401.0).

# 18

## ESTIMATED RESIDENT POPULATION AND COMPONENTS OF POPULATION CHANGE

Period	Net migration			Total increase	Population at end of period
	Natural increase	Interstate	Overseas(a)		
<b>1997-98</b>	6 602	-3 254	3 390	6 738	1 486 418
<b>1998-99</b>	6 751	-2 869	2 108	5 990	1 492 408
<b>1999-00</b>	6 306	-4 773	3 453	4 986	1 497 394
<b>1998-99</b>					
June	1 652	-864	229	1 017	1 492 408
<b>1999-00</b>					
September	1 419	-600	992	1 811	1 494 219
December	1 611	-1 291	1 643	1 963	1 496 182
March	1 828	-1 735	662	755	1 496 937
June	1 448	-1 147	156	457	1 497 394
<b>2000-01</b>					
September	1 121	-1 030	924	1 015	1 498 409
December	1 490	-1 308	1 660	1 842	1 500 251
March	1 740	-1 264	655	1 131	1 501 382

(a) Includes category jumping.

Source: Australian Demographic Statistics (Cat. no. 3101.0).

# 19

## BIRTHS, DEATHS, MARRIAGES AND DIVORCES

Period	Registrations			
	Births	Deaths	Marriages	Divorces
<b>1997-98</b>	18 330	11 728	7 988	4 113
<b>1998-99</b>	18 399	11 648	8 034	4 191
<b>1999-00</b>	17 896	11 590	8 428	4 197
<b>1998-99</b>				
June	4 559	2 907	1 769	1 134
<b>1999-00</b>				
September	4 600	3 181	1 259	1 058
December	4 371	2 760	2 737	1 190
March	4 476	2 648	2 436	965
June	4 449	3 001	1 996	984
<b>2000-01</b>				
September	4 360	3 239	1 092	1 056
December	4 319	2 829	2 703	1 031
March	4 549	2 809	2 175	824

Source: Australian Demographic Statistics (Cat. no. 3101.0).

Period	Employed full-time		Employed part-time		Total employed		Unemployed		Labour force	
	Males	Females	Males	Females	Males	Females	Males	Females	Males	Females
ANNUAL AVERAGE ('000)										
<b>1998-99</b>	319.7	148.2	49.6	137.2	369.3	285.4	39.3	25.3	408.6	310.6
<b>1999-00</b>	322.1	152.5	56.1	142.3	378.2	294.9	34.6	23.9	412.8	318.7
<b>2000-01</b>	322.6	156.7	54.8	143.5	377.4	300.2	32.6	20.2	410.0	320.4
MONTHLY, ORIGINAL ('000)										
<b>2000-01</b>										
July	332.8	156.0	52.9	142.3	385.7	298.3	30.0	20.4	415.7	318.7
August	327.9	158.2	55.0	139.5	382.9	297.7	31.2	21.8	414.1	319.5
September	329.6	162.2	53.7	141.6	383.3	303.8	32.7	20.2	416.0	324.0
October	327.9	157.4	54.7	142.3	382.6	299.6	31.2	19.3	413.8	318.9
November	327.3	157.1	52.2	142.5	379.5	299.6	31.8	20.4	411.3	320.0
December	328.8	159.5	51.1	143.3	380.0	302.8	32.3	20.0	412.2	322.8
January	320.5	157.3	55.0	134.0	375.4	291.3	34.7	20.8	410.1	312.1
February	321.0	157.4	54.3	143.4	375.3	300.8	34.8	20.4	410.1	321.2
March	311.6	156.0	57.5	145.9	369.1	301.8	32.6	18.3	401.7	320.2
April	314.3	151.8	57.1	150.6	371.4	302.5	34.2	19.4	405.6	321.9
May	316.3	154.8	55.1	146.2	371.3	301.0	35.5	20.5	406.9	321.4
June	313.5	152.7	58.6	150.1	372.1	302.8	30.5	20.9	402.6	323.7
<b>2001-02</b>										
July	316.2	156.5	54.8	144.8	371.0	301.3	33.2	19.4	404.2	320.7
August	317.2	150.9	56.2	149.4	373.4	300.3	31.9	20.5	405.3	320.7
September	318.2	158.3	57.3	147.4	375.5	305.7	32.2	20.5	407.6	326.2
MONTHLY, TREND ('000)										
<b>2000-01</b>										
July	329.2	157.0	54.3	141.0	383.5	298.0	33.6	22.2	417.1	320.2
August	329.1	158.2	54.3	140.5	383.4	298.7	32.7	21.7	416.1	320.4
September	328.7	158.7	54.2	139.9	382.9	298.6	32.0	21.3	414.9	319.9
October	327.8	158.4	54.1	139.8	381.9	298.2	31.6	20.9	413.5	319.1
November	326.1	157.5	54.1	140.2	380.2	297.7	31.5	20.4	411.7	318.1
December	324.0	156.6	54.0	141.1	378.0	297.7	31.8	19.7	409.8	317.4
January	321.6	155.9	54.2	142.5	375.8	298.4	32.2	19.1	408.0	317.5
February	319.3	155.6	54.6	144.2	373.9	299.8	32.7	18.8	406.6	318.6
March	317.4	155.5	55.0	146.0	372.4	301.5	33.4	18.8	405.8	320.3
April	316.2	155.4	55.4	147.4	371.6	302.8	33.9	19.2	405.5	322.0
May	315.7	155.3	55.8	148.1	371.5	303.4	34.2	19.9	405.7	323.3
June	315.6	155.3	56.2	148.3	371.8	303.6	34.2	20.5	406.0	324.1
<b>2001-02</b>										
July	315.8	155.4	56.5	148.0	372.3	303.4	33.8	21.0	406.1	324.4
August	316.1	155.6	56.9	147.5	373.0	303.1	33.4	21.3	406.4	324.4
September	316.7	155.8	57.2	147.0	373.9	302.8	32.9	21.5	406.8	324.3

(a) Population aged 15 years and over.

Source: Labour Force, Australia, Preliminary (Cat. no. 6202.0).

## 21

## CIVILIAN LABOUR FORCE, UNEMPLOYMENT AND PARTICIPATION RATES(a)

Period	Civilian population			Unemployment rate			Participation rate		
	Males aged 15 and over	Females aged 15 and over	Persons aged 15-19	Males all ages	Females all ages	Persons all ages	Males	Females	Persons
	'000	'000	%	%	%	%	%	%	%
ANNUAL AVERAGE									
<b>1998-99</b>	583.2	609.8	21.7	9.6	8.1	9.0	70.1	50.9	60.3
<b>1999-00</b>	587.6	613.8	20.9	8.4	7.5	8.0	70.3	51.9	60.9
<b>2000-01</b>	591.6	616.9	18.5	8.0	6.3	7.2	69.3	51.9	60.4
MONTHLY, ORIGINAL									
<b>2000-01</b>									
July	590.0	615.5	15.1	7.2	6.4	6.9	70.5	51.8	60.9
August	590.4	615.8	20.5	7.5	6.8	7.2	70.1	51.9	60.8
September	590.7	616.0	17.6	7.9	6.2	7.1	70.4	52.6	61.3
October	591.0	616.3	16.9	7.5	6.0	6.9	70.0	51.7	60.7
November	591.3	616.6	18.2	7.7	6.4	7.1	69.6	51.9	60.5
December	591.5	616.9	20.7	7.8	6.2	7.1	69.7	52.3	60.8
January	591.8	617.0	20.6	8.5	6.7	7.7	69.3	50.6	59.7
February	592.0	617.2	18.8	8.5	6.4	7.5	69.3	52.0	60.5
March	592.3	617.4	17.7	8.1	5.7	7.1	67.8	51.9	59.7
April	592.6	617.6	17.8	8.4	6.0	7.4	68.5	52.1	60.1
May	592.9	617.9	21.1	8.7	6.4	7.7	68.6	52.0	60.2
June	593.1	618.2	17.1	7.6	6.4	7.1	67.9	52.4	60.0
<b>2001-02</b>									
July	593.5	618.6	17.6	8.2	6.1	7.3	68.1	51.9	59.8
August	593.9	619.0	17.9	7.9	6.4	7.2	68.2	51.8	59.9
September	594.3	619.4	17.0	7.9	6.3	7.2	68.6	52.7	60.5
MONTHLY, TREND									
<b>2000-01</b>									
July	n.a.	n.a.	n.a.	8.0	6.9	7.6	70.7	52.0	61.2
August	n.a.	n.a.	n.a.	7.9	6.8	7.4	70.5	52.0	61.1
September	n.a.	n.a.	n.a.	7.7	6.7	7.3	70.2	51.9	60.9
October	n.a.	n.a.	n.a.	7.6	6.6	7.2	70.0	51.8	60.7
November	n.a.	n.a.	n.a.	7.7	6.4	7.1	69.6	51.6	60.4
December	n.a.	n.a.	n.a.	7.8	6.2	7.1	69.3	51.5	60.2
January	n.a.	n.a.	n.a.	7.9	6.0	7.1	68.9	51.5	60.0
February	n.a.	n.a.	n.a.	8.1	5.9	7.1	68.7	51.6	60.0
March	n.a.	n.a.	n.a.	8.2	5.9	7.2	68.5	51.9	60.0
April	n.a.	n.a.	n.a.	8.4	6.0	7.3	68.4	52.1	60.1
May	n.a.	n.a.	n.a.	8.4	6.1	7.4	68.4	52.3	60.2
June	n.a.	n.a.	n.a.	8.4	6.3	7.5	68.4	52.4	60.3
<b>2001-02</b>									
July	n.a.	n.a.	n.a.	8.3	6.5	7.5	68.4	52.4	60.3
August	n.a.	n.a.	n.a.	8.2	6.6	7.5	68.4	52.4	60.3
September	n.a.	n.a.	n.a.	8.1	6.6	7.4	68.5	52.4	60.3

(a) Population aged 15 years and over.

Source: Labour Force, Australia, Preliminary (Cat. no. 6202.0).

## AVERAGE WEEKLY EARNINGS OF EMPLOYEES

Period	Males			Females			Persons		
	Full-time adult ordinary time earnings	Full-time adult total earnings	All males total earnings	Full-time adult ordinary time earnings	Full-time adult total earnings	All females total earnings	Full-time adult ordinary time earnings	Full-time adult total earnings	All employees total earnings
ANNUAL AVERAGE (\$ per week)									
<b>1998-99</b>	741.20	797.60	678.30	627.90	647.30	464.40	699.10	741.70	575.20
<b>1999-00</b>	756.80	812.50	695.00	641.70	663.30	457.20	714.40	757.50	575.90
<b>2000-01</b>	811.30	864.40	746.80	685.20	703.90	491.20	765.70	806.40	619.70
QUARTERLY, ORIGINAL (\$ per week)									
<b>1999-00</b>									
February	768.60	821.20	708.30	645.30	656.80	461.30	723.00	760.30	584.50
May	770.40	831.30	705.00	651.40	677.20	462.60	726.80	774.80	585.90
<b>2000-01</b>									
August	791.60	846.00	724.80	667.70	692.60	484.00	745.50	788.90	603.60
November	814.90	866.00	748.30	681.40	698.00	488.30	766.40	805.00	618.50
February	813.80	870.60	754.70	693.60	710.60	499.30	770.10	812.40	627.70
May	824.80	875.00	759.10	698.00	714.20	493.00	780.90	819.30	628.90
QUARTERLY, TREND (\$ per week)									
<b>1999-00</b>									
February	760.60	817.90	700.60	643.90	664.30	458.40	717.60	761.20	578.90
May	776.70	834.20	713.10	654.70	676.20	468.20	731.60	775.50	590.70
<b>2000-01</b>									
August	793.00	848.50	727.40	667.90	689.70	480.20	746.70	789.90	604.20
November	806.50	860.00	742.20	680.00	699.60	489.30	760.20	801.60	616.30
February	817.50	870.00	752.80	690.50	707.40	494.40	772.10	811.80	624.70
May	826.00	878.40	759.80	700.10	715.50	496.40	782.50	821.20	629.80

Source: Average Weekly Earnings, States and Australia (Cat. no. 6302.0).



## 23

## SECURED HOUSING FINANCE COMMITMENTS(a)

Period	Original		Seasonally adjusted		Trend	
	Dwelling units	Value	Dwelling units	Value	Dwelling units	Value
	no.	\$m	no.	\$m	no.	\$m
<b>1999-00</b>						
June	3 510	354	3 239	340	3 621	357
<b>2000-01</b>						
July	3 537	332	3 747	355	3 719	360
August	4 079	383	4 176	396	3 834	366
September	3 704	347	3 968	373	3 926	372
October	3 717	351	3 812	353	3 965	376
November	4 163	406	3 847	371	3 939	377
December	3 921	395	4 071	401	3 876	377
January	3 511	356	3 960	397	3 810	378
February	3 565	351	3 558	351	3 789	383
March	4 119	423	3 746	388	3 826	395
April	3 645	382	3 731	395	3 912	410
May	4 522	479	4 287	449	4 037	429
June	4 321	458	4 115	453	4 175	448
<b>2001-02</b>						
July	4 290	462	4 411	475	4 300	464
August	4 324	455	4 370	467	4 416	478

(a) Excludes alterations and additions. Includes refinancing.

Source: Housing Finance for Owner Occupation, Australia (Cat. no. 5609.0).

## 24

## FINANCE COMMITMENTS

Period	Commercial finance commitments			Personal finance commitments			
	Fixed loan facilities	Revolving credit facilities	Total commercial finance commitments	Fixed loan facilities	Revolving credit facilities	Total personal finance commitments	Total lease finance commitments
	\$m	\$m	\$m	\$m	\$m	\$m	\$m
<b>1999-00</b>							
June	758.9	392.6	1 151.4	154.0	147.9	301.9	18.4
<b>2000-01</b>							
July	339.5	256.5	596.0	112.8	147.0	259.8	9.8
August	249.2	163.0	412.3	141.9	162.6	304.5	10.1
September	235.4	269.6	505.0	131.6	121.0	252.6	15.8
October	247.0	150.7	397.7	126.0	122.6	248.6	9.4
November	287.3	254.6	541.9	149.5	163.5	312.9	13.6
December	329.6	394.5	724.1	138.0	148.1	286.0	14.4
January	234.2	164.6	398.9	136.1	129.1	265.2	7.7
February	284.4	292.7	577.1	137.5	111.5	249.0	15.2
March	321.3	278.2	599.5	164.8	147.1	311.9	13.7
April	262.6	295.6	558.2	133.7	108.6	242.4	11.2
May	376.4	186.8	563.2	162.5	144.9	307.4	7.7
June	524.6	375.8	900.5	165.3	168.5	333.8	19.1
<b>2001-02</b>							
July	373.9	260.2	634.1	150.7	169.7	320.4	28.7
August	374.2	220.1	594.3	165.4	143.6	308.9	15.6

Source: ABS data available on request.

## PUBLICATIONS SOURCE INDEX

- (1) *Australian National Accounts, Quarterly State Details*  
(Cat. no. 5206.0.40.001)
- (2) International Merchandise Trade, ABS data available on request
- (3) *Retail Trade, Australia* (Cat. no. 8501.0) Monthly
- (4) *New Motor Vehicles Registrations, Australia, Preliminary*  
(Cat. no. 9301.0) Monthly
- (5) *State Estimates of Private New Capital Expenditure*  
(Cat. no. 5646.0) Quarterly
- (6) *Tourist Accommodation, Australia* (Cat. no. 8635.0) Quarterly
- (7) *Building Approvals, Australia* (Cat. no. 8731.0) Monthly
- (8) *Building Activity, Australia* (Cat. no. 8752.0) Quarterly
- (9) *Engineering Construction Activity, Australia*  
(Cat. no. 8762.0) Quarterly
- (10) *Manufacturing Production, Australia, Preliminary*  
(Cat. no. 8301.0) Quarterly
- (11) *Livestock Products, Australia* (Cat. no. 7215.0) Quarterly
- (12) *Actual and Expected Private Mineral Exploration, Australia*  
(Cat. no. 8412.0) Quarterly
- (13) *Consumer Price Index* (Cat. no. 6401.0) Quarterly
- (14) *Producer Price Indexes* (Cat. no. 6427.0) Quarterly
- (16) *House Price Indexes: Eight Capital Cities*  
(Cat. no. 6416.0) Quarterly
- (17) *Australian Demographic Statistics* (Cat. no. 3101.0) Quarterly
- (18) *Labour Force, Australia, Preliminary* (Cat. no. 6202.0) Monthly
- (19) *Job Vacancies, Australia* (Cat. no. 6354.0) Quarterly
- (20) *Industrial Disputes, Australia* (Cat. no. 6321.0) Monthly
- (21) Overseas arrival and departure statistics
- (22) *Average Weekly Earnings, States and Australia*  
(Cat. no. 6302.0) Quarterly
- (23) *Wage Cost Index, Australia* (Cat. no. 6345.0) Quarterly
- (24) *Housing Finance for Owner Occupation, Australia*  
(Cat. no. 5609.0) Monthly
- (25) *Lending Finance, Australia* (Cat. no. 5671.0) Monthly—and ABS  
data available on request
- (26) *Reserve Bank of Australia Bulletin*

## FOR MORE INFORMATION...

- INTERNET* **www.abs.gov.au** the ABS web site is the best place to start for access to summary data from our latest publications, information about the ABS, advice about upcoming releases, our catalogue, and Australia Now—a statistical profile.
- LIBRARY* A range of ABS publications is available from public and tertiary libraries Australia-wide. Contact your nearest library to determine whether it has the ABS statistics you require, or visit our web site for a list of libraries.
- CPI INFOLINE* For current and historical Consumer Price Index data, call 1902 981 074 (call cost 77c per minute).
- DIAL-A-STATISTIC* For the latest figures for National Accounts, Balance of Payments, Labour Force, Average Weekly Earnings, Estimated Resident Population and the Consumer Price Index call 1900 986 400 (call cost 77c per minute).

## INFORMATION SERVICE

Data which have been published and can be provided within five minutes are free of charge. Our information consultants can also help you to access the full range of ABS information—ABS user-pays services can be tailored to your needs, time frame and budget. Publications may be purchased. Specialists are on hand to help you with analytical or methodological advice.

- PHONE* **1300 135 070**
- EMAIL* **client.services@abs.gov.au**
- FAX* 1300 135 211
- POST* Client Services, ABS, GPO Box 796, Sydney 1041

## WHY NOT SUBSCRIBE?

ABS subscription services provide regular, convenient and prompt deliveries of ABS publications and products as they are released. Email delivery of monthly and quarterly publications is available.

- PHONE* 1300 366 323
- EMAIL* subscriptions@abs.gov.au
- FAX* 03 9615 7848
- POST* Subscription Services, ABS, GPO Box 2796Y, Melbourne 3001



2130740011016  
ISSN 1039-8880

RRP \$19.00