

TASMANIAN STATISTICAL INDICATORS

EMBARGO: 11:30AM (CANBERRA TIME) THURS 11 DEC 2003

C O N T E N T S

	<i>page</i>
Notes	2
Main features	3
List of tables	8

SUBJECT AREAS

1 Population and demography	9
2 Labour force	10
3 Wages and prices	18
4 Production	24
5 Primary industry	25
6 Building	28
7 Finance	29
8 Tourism	31
9 Transport	34
10 Retail trade	35
11 Overseas trade	36
12 Australia and state comparisons	39
13 Tasmanian statistical divisions comparisons	41

ADDITIONAL INFORMATION

Map: Tasmanian statistical divisions	42
--	----

I N Q U I R I E S

- For further information about these and related statistics, contact the National Information and Referral Service on 1300 135 070 or Mary Eagle on Hobart (03) 6222 5812.

NOTES

FORTHCOMING ISSUES

ISSUE	RELEASE DATE
January 2004	9 January 2004
February 2004	12 February 2004
March 2004	11 March 2004
April 2004	8 April 2004
May 2004	11 May 2004
June 2004	10 June 2004

INTRODUCTION

1 This publication contains latest figures for a comprehensive range of economic indicators. Statistics shown in this publication are the latest available at the date of preparation and may be subject to revision in subsequent issues. Reference should therefore always be made to the latest issue or to the statistical publication on the specific subject.

SEASONAL ADJUSTMENT AND TREND ESTIMATION

2 Seasonal adjustment is a means of removing the estimated effects of normal seasonal variation from the series so that the effects of other influences on the series can be more clearly recognised. Seasonal adjustment does not aim to remove the irregular or non-seasonal influences which may be present in any particular month. This means that month-to-month movements of the seasonally adjusted estimates may not be reliable indicators of trend behaviour.

3 The smoothing of seasonally adjusted series reduces the impact of the irregular components of the seasonally adjusted series and creates trend estimates. These trend estimates are derived by applying a 13-term Henderson-weighted moving average to all months except the last six. The last six monthly trend estimates are obtained by applying surrogates of the Henderson average to the seasonally adjusted series.

4 While this smoothing technique enables estimates to be produced for the latest month, it does result in revisions to the most recent months as additional observations become available. Generally, subsequent revisions become smaller and after 3 months have a negligible impact on the series.

5 A number of ABS data series will reflect significant and subsequent impacts of The New Tax System (TNTS), introduced in Australia from 1 July 2000. Further information can be found in *Information Paper: ABS Statistics and The New Tax System* (cat. no. 1358.0).

SYMBOLS AND OTHER USAGES

na	not available
np	not available for separate publication (but included in totals where applicable)
nya	not yet available
. .	not applicable
—	nil or rounded to zero
p	preliminary figure or series subject to revision
r	figure or series revised since previous issue
*	estimate has a relative standard error of between 25% and 50% and should be used with caution
**	estimate has a relative standard error greater than 50% and is considered too unreliable for general use.

Stevan R. Matheson
Regional Director, Tasmania

MAIN FEATURES

THE LABOUR FORCE

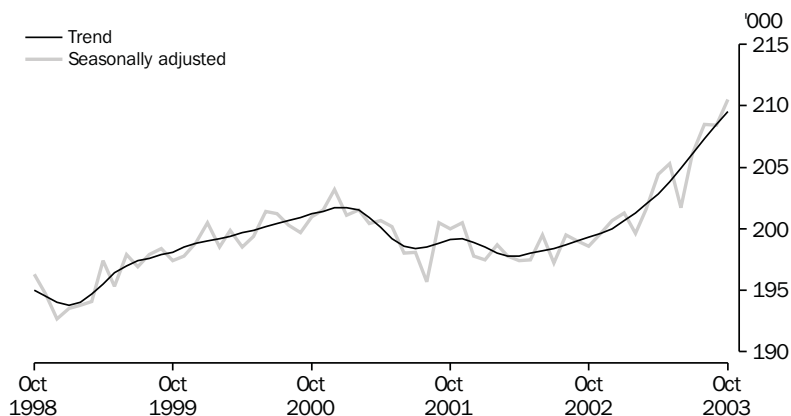
Trend estimates There were an estimated 224,500 persons (based on *trend* estimates) in the labour force in October 2003 and an estimated 380,500 civilian Tasmanians aged 15 years or more, yielding a labour force participation rate of 59.1%, compared to 58.1% in October 2002. The Australian labour force participation rate for October 2003 was 63.5%, compared to the October 2002 estimate of 63.7% — see table 36 and *Labour Force, Australia* (cat. no. 6202.0).

For Tasmanian males, the *trend* estimate of the participation rate was 66.6% in October 2003, compared to the October 2002 estimate of 66.5%. For Tasmanian females, the *trend* estimate of the participation rate was 52.0% in October 2003, compared to 50.2% in October 2002 — see table 3.

EMPLOYMENT

Trend estimates The *trend* estimate of the total number of employed persons in Tasmania in October 2003 was 209,500, compared to 199,300 in October 2002, an increase of 5.1%. Employment over the same period increased in New South Wales by 1.5%, Victoria by 1.2%, Queensland by 3.6%, South Australia by 2.6% and Western Australia by 0.6%. The increase in the national employment figure over the same period was 1.8% — see table 36 and *Labour Force, Australia* (cat. no. 6202.0).

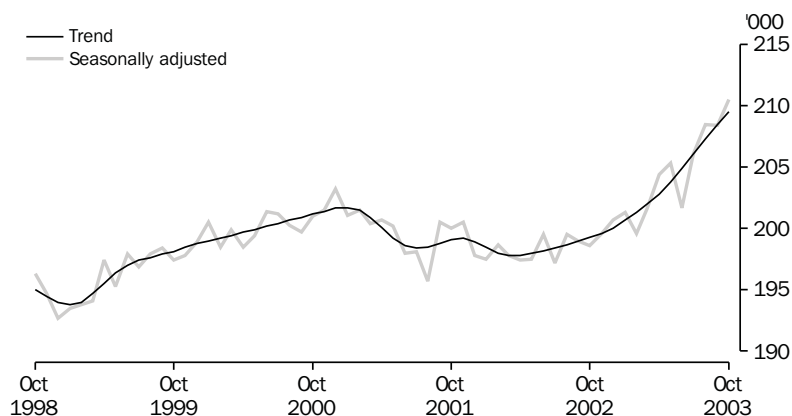
EMPLOYMENT, TASMANIA



UNEMPLOYMENT

Trend estimates The *trend* estimate of the number of unemployed persons in Tasmania for October 2003 was 15,000 compared to 18,600 in October 2002. The *trend* estimate of the unemployment rate for October 2003 was 6.7%, a decrease from the October 2002 figure of 8.5%. The Australian *trend* estimate of the unemployment rate was 5.7% in October 2003 compared to 6.1% in October 2002 — see tables 3 and 36, and *Labour Force, Australia* (cat. no. 6202.0).

UNEMPLOYMENT, TASMANIA

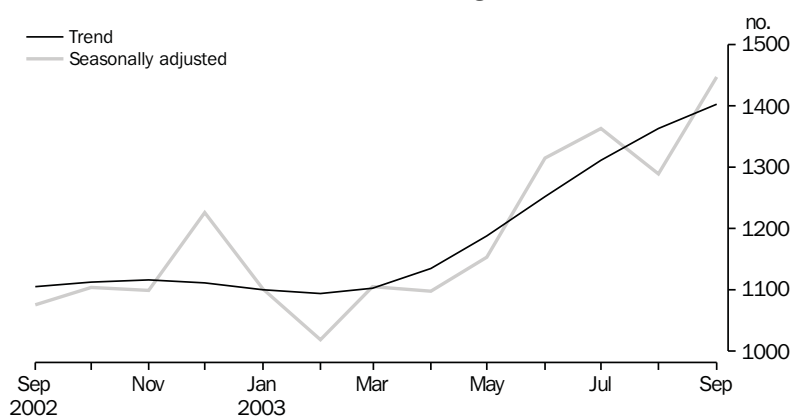


HOUSING FINANCE

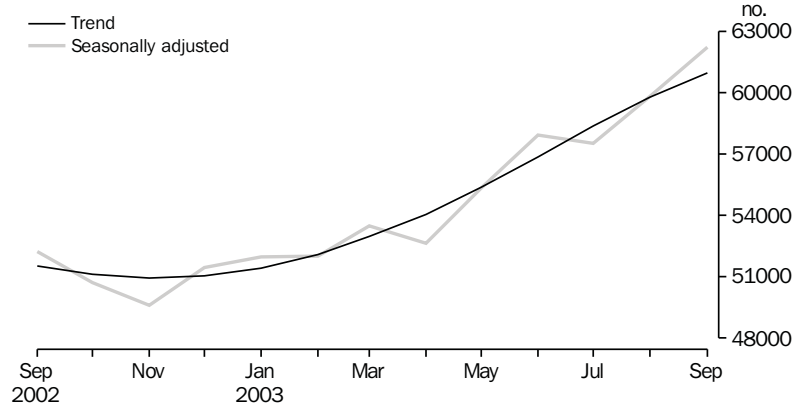
Trend estimates In *trend* terms, the number of housing finance commitments in Tasmania for September 2003 was 1,403, an increase of 2.9% from the previous month. In the same period, the *trend* estimate for Australia increased by 2.0%.

The Tasmanian *trend* estimate increased by 27.0% between September 2002 and September 2003, while the national *trend* estimate increased by 18.4%. The changes in the number of housing finance commitments over the same period for the other states and territories were New South Wales (15.2%), Victoria (10.4%), Queensland (31.7%), South Australia (16.6%), Western Australia (22.2%), Northern Territory (43.0%) and Australian Capital Territory (5.7%) — see table 26 and *Housing Finance for Owner Occupation, Australia* (cat. no. 5609.).

HOUSING FINANCE TASMANIA, Number of dwellings



HOUSING FINANCE AUSTRALIA, Number of dwellings



BUILDING APPROVALS

Original terms There were 234 dwelling units approved in Tasmania during September 2003, including 221 new houses. This compares to 247 dwelling units approved during August 2003, including 231 new houses. The number of dwelling units approved in September 2003 increased by 31.5% from the 178 approvals recorded in September 2002.

At current prices, the value of total building approved in Tasmania was \$45.0m in September 2003, which was 15.0% below the August 2003 figure of \$52.9m and 32.1% above the September 2002 figure of \$34.1m. Residential building contributed \$38.6m and non-residential building \$6.5m in September 2003 — see table 25 and *Building Approvals, Australia* (cat. no. 8731.0).

SALES OF NEW MOTOR VEHICLES

Trend estimates In *trend* terms, there were 1,783 new motor vehicles sold in Tasmania in October 2003, compared to 1,698 sold in September 2003. The number of new motor vehicles sold in October 2003 increased by 44.1% from the October 2002 figure of 1,237. Passenger vehicles represented 64.0% of all new vehicles sold in Tasmania in October 2003. Nationally, the *trend* estimate of new motor vehicles sold in October 2003 was 79,774, an increase of 14.9% from the October 2002 figure of 69,428 — see table 31 and *Sales of New Motor Vehicles, Australia* (Electronic Publication) (cat. no. 9314.0).

RETAIL

Trend estimates In *trend* terms, the estimate of retail turnover in Australia for September 2003 was \$15,348.2m, a 6.8% increase from the September 2002 estimate of \$14,373.9m. In *trend* terms, the estimate of retail turnover in Tasmania for September 2003 was \$328.8m, a 11.8% increase from the September 2002 estimate of \$294.2m — see table 32 and *Retail Trade, Australia* (cat. no. 8501.0).

LIVESTOCK SLAUGHTERING

Trend estimates In September 2003, the *trend* estimate for the number of cattle and calves slaughtered increased by 2.7% from August 2003. Over the same period the *trend* estimate for the number of sheep and lambs slaughtered remained steady, while the *trend* estimate for the number of pigs slaughtered increased by 0.7%.

The *trend* estimate for the number of cattle and calves slaughtered in September 2003 was 21,500, up by 15.1% on the estimate for September 2002 and up by 22.2% on the estimate for September 2001.

The *trend* estimate for the number of sheep and lambs slaughtered in September 2003 was 71,000, up by 17.9% on the estimate for September 2002 and up by 5.9% on the estimate for September 2001.

The *trend* estimate for the number of pigs slaughtered in September 2003 was 3,900, down by 6.4% on the estimate for September 2002 and down by 20.7% on the estimate for September 2001 — see table 21.

OVERSEAS TRADE

The value of Tasmania's exports for the month of September 2003 was \$168m, a decrease of 35.2% on the month of August 2003. Australia's exports for September 2003 totalled \$9,106m.

Tasmania's major export destinations for the month of September 2003 were Japan (\$38.9m), Hong Kong (\$21.9m) and Korea (\$15.9m). Major commodity groups exported for the month were non-ferrous metals (\$49.1m), fish, crustaceans and molluscs (\$16.9m) and metallic ores and metal scrap (\$8.7m).

CONSUMER PRICE INDEX

The Consumer Price Index (All groups) for Hobart increased by 0.2% in the September quarter of 2003. Brisbane recorded the largest increase (1.1%) while Darwin recorded a decrease (-0.1%). The weighted average of the eight capital cities increased by 0.6%.

LIST OF TABLES

1	Population	9
2	Births, deaths and marriages	9
3	Labour force status	10
4	Labour force status by region, males	11
5	Labour force status by region, females	12
6	Labour force status by region, persons	13
7	Teenage labour market	14
8	All employed persons by occupation	15
9	Employed persons by industry	16
10	Average hours worked	16
11	Job vacancies	17
12	Industrial disputes	17
13	Average weekly earnings of employees	18
14	Indexes of total hourly rates of pay	19
15	Summary of annual movements in wages and prices	20
16	House price index numbers, Hobart	20
17	Consumer price index, Hobart and eight capital cities combined	21
18	Price index of materials used in building other than house building, Hobart	22
19	Production of selected commodities	24
20	Livestock slaughtering: original	25
21	Livestock slaughtering: seasonally adjusted and trend	25
22	Meat production	26
23	Principal mineral concentrates produced	26
24	Sawmills and plywood mills, logs delivered and timber produced	27
25	Building approvals: original	28
26	Secured housing commitments	29
27	Private new capital expenditure by type of asset: original	30
28	Accommodation establishments	31
29	National Parks, person entries	32
30	Tracks in National Parks, walker registrations	33
31	Sales of new motor vehicles	34
32	Turnover of retail establishments at current prices	35
33	Value of overseas trade — Tasmania and Australia	36
34	Merchandise exports by selected countries and country groups	37
35	Merchandise exports by selected commodity groups: original	38
36	Major Statistical Indicators — Australia and state comparisons	39
37	Major Statistical Indicators — Tasmanian Statistical Divisions	41

1

POPULATION — ORIGINAL

	<i>Estimated resident population</i>	<i>Natural increase(a)</i>	<i>Net estimated migration gain</i>	<i>Total population growth</i>	<i>Annual growth rate(b)</i>
	'000	'000	'000	'000	%
1999–2000	471.4	2.1	-2.2	—	—
2000–01	471.8	2.0	-2.0	0.4	0.08
2001–02	472.7	2.1	-1.2	0.9	0.20
2001					
March qtr	471.8	0.6	-0.2	0.4	0.05
June qtr	471.8	0.4	-0.5	—	0.08
September qtr	471.6	0.2	-0.4	-0.2	0.07
December qtr	472.1	0.8	-0.3	0.5	0.15
2002					
March qtr	472.6	0.6	-0.1	0.5	0.17
June qtr p	472.7	0.5	-0.4	0.1	0.20
September qtr p	473.4	0.6	0.1	0.6	0.37
December qtr p	474.4	0.3	0.7	1.0	0.48
2003					
March qtr	476.2	0.6	1.3	1.8	0.76

(a) Excess of live births registered over deaths registered (based on usual state of residence).

(b) Percentage growth from same quarter in previous year.

Source: Australian Demographic Statistics (cat. no. 3101.0).

2

BIRTHS, DEATHS AND MARRIAGES(a)

	<i>Births</i>		<i>Deaths</i>		<i>Infant mortality(b)</i>		<i>Marriages</i>	
	<i>no.</i>	<i>rate(c)</i>	<i>no.</i>	<i>rate(d)</i>	<i>no.</i>	<i>rate(e)</i>	<i>no.</i>	<i>rate(f)</i>
1999–2000	5 804	1.82	3 715	7.6	38	6.5	2 648	5.6
2000–01	5 874	1.88	3 827	7.6	43	7.3	2 446	5.2
2001–02	5 975	1.94	3 836	7.4	34	5.7	2 432	5.2
2001								
March qtr	1 476	..	887	..	10	6.8	789	..
June qtr	1 402	..	983	..	10	7.1	711	..
September qtr	1 173	..	987	..	11	9.4	346	..
December qtr	1 765	..	956	..	3	1.7	336	..
2002								
March qtr	1 528	..	897	..	11	7.2	1 091	..
June qtr	1 509	..	996	..	9	6.0	659	..
September qtr	1 539	..	981	..	9	5.8	320	..
December qtr	1 440	..	1 108	..	7	4.9	535	..
2003								
March qtr	1 490	..	934	..	8	5.4	n.a.	..

(a) Usual residents of Tasmania.

(b) Deaths of children under one year of age.

(c) Total fertility rate. The sum of age specific fertility rates (live births at each age of a mother per female population of that age). It represents the number of children a woman would bear during her lifetime if she experienced age-specific fertility rates at each age of her reproductive life.

(d) Standardised death rate. The overall death rate, per 1,000 persons, that would have prevailed in a standard population if it had experienced at each age the death rates of the population being studied. The standard population used in these calculations is all persons in the 1991 Australian population.

(e) Rate per 1,000 live births.

(f) Crude marriage rate is the number of marriages registered during the financial year, per 1,000 estimated resident population at 31 December of that year.

Source: Australian Demographic Statistics (cat. no. 3101.0).

3

LABOUR FORCE STATUS(a) — SEASONALLY ADJUSTED AND TREND

	Seasonally adjusted series(b)				Trend series(b)			
	Employed	Unemployed	Unemploy- ment rate	Participation rate	Employed	Unemployed	Unemploy- ment rate	Participation rate
	'000	'000	%	%	'000	'000	%	%
MALES								
2002								
October	109.3	10.5	8.8	65.9	110.1	10.9	9.0	66.5
November	111.6	10.0	8.3	66.9	110.3	11.3	9.3	66.8
December	110.2	12.7	10.3	67.5	110.3	11.7	9.6	67.0
2003								
January	110.5	11.7	9.6	67.1	110.3	12.1	9.9	67.1
February	109.1	13.2	10.8	67.0	110.3	12.2	10.0	67.2
March	110.2	12.6	10.3	67.2	110.5	12.0	9.8	67.1
April	111.8	10.6	8.6	66.9	110.9	11.4	9.3	66.9
May	111.8	10.2	8.4	66.6	111.4	10.7	8.8	66.7
June	110.4	11.5	9.4	66.5	111.9	10.1	8.3	66.5
July	113.3	8.0	6.6	66.1	112.4	9.7	7.9	66.5
August	113.0	9.7	7.9	66.7	112.8	9.5	7.7	66.5
September	112.7	9.3	7.6	66.3	113.2	9.3	7.6	66.5
October	113.8	10.0	8.0	67.0	113.4	9.4	7.6	66.6
FEMALES								
2002								
October	89.3	7.5	7.8	50.2	89.2	7.7	7.9	50.2
November	88.0	7.2	7.5	49.3	89.3	7.6	7.9	50.2
December	90.5	8.3	8.4	51.1	89.7	7.6	7.8	50.4
2003								
January	90.8	7.1	7.3	50.7	90.4	7.6	7.8	50.7
February	90.6	8.1	8.3	51.0	91.0	7.6	7.7	50.9
March	91.5	7.4	7.5	51.0	91.5	7.5	7.6	51.1
April	92.6	6.6	6.6	51.1	92.0	7.3	7.4	51.2
May	93.5	7.6	7.5	52.0	92.4	7.1	7.2	51.2
June	91.3	7.1	7.2	50.5	93.0	6.8	6.8	51.3
July	92.8	6.8	6.9	51.1	93.7	6.5	6.5	51.4
August	95.5	5.7	5.7	51.9	94.6	6.2	6.1	51.6
September	95.7	5.6	5.5	51.8	95.4	5.9	5.8	51.8
October	96.7	5.6	5.5	52.2	96.1	5.6	5.5	52.0
PERSONS								
2002								
October	198.6	18.0	8.3	57.8	199.3	18.6	8.5	58.1
November	199.6	17.2	7.9	57.8	199.6	18.9	8.7	58.3
December	200.7	20.9	9.4	59.1	200.0	19.3	8.8	58.5
2003								
January	201.3	18.9	8.6	58.6	200.7	19.7	8.9	58.7
February	199.6	21.4	9.7	58.8	201.3	19.8	8.9	58.8
March	201.6	20.0	9.0	58.9	202.0	19.5	8.8	58.8
April	204.4	17.1	7.7	58.8	202.8	18.8	8.5	58.8
May	205.3	17.8	8.0	59.1	203.8	17.8	8.0	58.7
June	201.7	18.6	8.4	58.3	204.9	16.9	7.6	58.7
July	206.1	14.9	6.7	58.4	206.1	16.2	7.3	58.7
August	208.5	15.4	6.9	59.1	207.3	15.6	7.0	58.8
September	208.4	14.9	6.7	58.8	208.5	15.2	6.8	58.9
October	210.5	15.6	6.9	59.4	209.5	15.0	6.7	59.1

(a) For explanation of terms and concepts, refer to *Labour Force, Australia* (cat. no. 6202.0).

(b) Seasonal factors are reviewed annually to take account of each additional year's data. The results of the review are used to compile revised seasonally adjusted and trend estimates each February. Trend estimates for the most recent months are also revised each month; see Notes on page 2.

Source: *Labour Force, Australia* (cat. no. 6202.0).

4

LABOUR FORCE STATUS BY REGION — MALES(a)(b)

	Total employed	Total unemployed	Unemployment rate	Participation rate
	'000	'000	%	%
HOBART AND SOUTHERN STATISTICAL DIVISIONS				
2001				
October	51.0	6.0	10.6	65.9
2002				
October	50.5	5.1	9.2	64.1
2003				
August	51.7	4.5	8.0	64.4
September	51.9	4.3	7.6	64.5
October	52.0	4.6	8.1	64.3
NORTHERN STATISTICAL DIVISION				
2001				
October	33.5	3.2	8.7	68.5
2002				
October	33.1	2.4	6.9	65.8
2003				
August	33.4	3.2	8.7	69.0
September	34.5	3.6	9.5	69.7
October	34.4	3.4	9.0	70.2
MERSEY-LYELL STATISTICAL DIVISION				
2001				
October	24.7	2.9	10.4	67.1
2002				
October	24.6	2.6	9.5	66.2
2003				
August	26.5	2.7	9.3	66.6
September	26.2	2.0	7.1	66.4
October	26.3	1.6	5.8	65.2
TASMANIA				
2001				
October	109.2	12.1	9.9	66.9
2002				
October	108.3	10.1	8.6	65.1
2003				
August	111.6	10.4	8.5	66.3
September	112.6	9.9	8.1	66.5
October	112.7	9.6	7.9	66.2

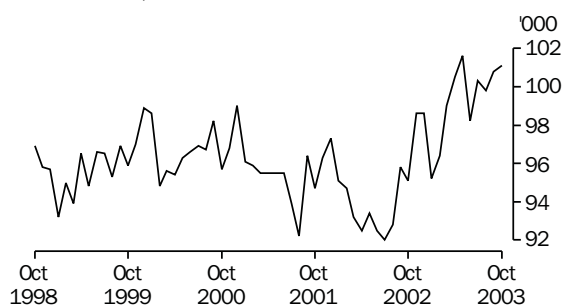
(a) For explanation of terms and concepts, refer to *Labour Force, Australia* (cat. no. 6202.0).

(b) Data in this table are original series, i.e. they are not part of a seasonally adjusted or a trend series. Accordingly, care should be exercised when using these data.

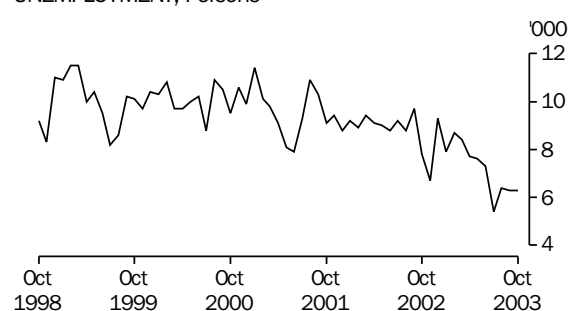
Source: *Labour Force, Selected Summary Tables, Australia* (cat. no. 6291.0.55.001).

Hobart and Southern Statistical Divisions (see table 6)

EMPLOYMENT, Persons



UNEMPLOYMENT, Persons



5

LABOUR FORCE STATUS BY REGION — FEMALES(a)(b)

	<i>Total employed</i>	<i>Total unemployed</i>	<i>Unemployment rate</i>	<i>Participation rate</i>
	'000	'000	%	%
HOBART AND SOUTHERN STATISTICAL DIVISIONS				
2001				
October	43.8	3.1	6.6	50.2
2002				
October	44.6	2.7	5.7	50.5
2003				
August	48.1	1.9	3.8	53.2
September	48.9	2.0	4.0	54.0
October	49.1	1.8	3.5	53.8
NORTHERN STATISTICAL DIVISIONS				
2001				
October	27.2	1.6	5.6	51.6
2002				
October	25.6	2.2	8.0	50.4
2003				
August	26.5	2.4	8.2	51.9
September	27.6	2.6	8.5	53.1
October	28.4	2.2	7.1	54.2
MERSEY-LYELL STATISTICAL DIVISIONS				
2001				
October	18.9	1.9	9.3	49.0
2002				
October	19.1	2.5	11.7	49.2
2003				
August	19.2	1.9	8.9	46.3
September	18.8	1.5	7.6	45.7
October	19.3	1.6	7.7	46.4
TASMANIA				
2001				
October	89.9	6.7	6.9	50.4
2002				
October	89.3	7.4	7.7	50.2
2003				
August	93.8	6.2	6.2	51.2
September	95.3	6.1	6.0	51.9
October	96.8	5.5	5.4	52.2

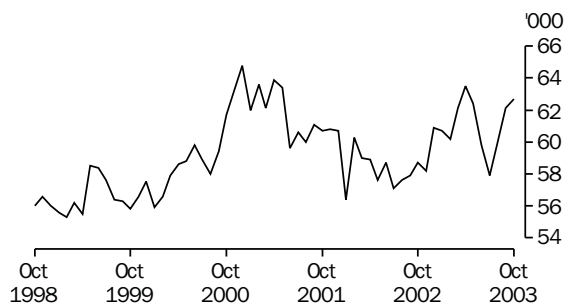
(a) For explanation of terms and concepts, refer to *Labour Force, Australia* (cat. no. 6202.0).

(b) Data in this table are original series, i.e. they are not part of a seasonally adjusted or a trend series. Accordingly, care should be exercised when using these data.

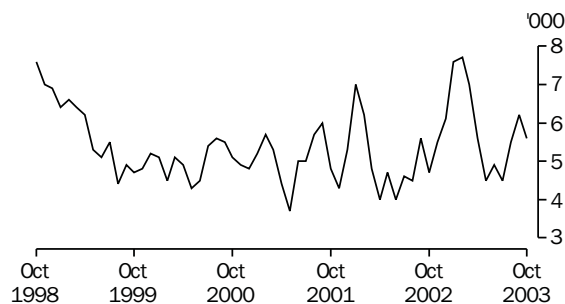
Source: *Labour Force, Selected Summary Tables, Australia* (cat. no. 6291.0.55.001).

Northern Statistical Division (see table 6)

EMPLOYMENT, Persons



UNEMPLOYMENT, Persons



6

LABOUR FORCE STATUS BY REGION — PERSONS(a)(b)

	Total employed	Total unemployed	Unemployment rate	Participation rate
	'000	'000	%	%
HOBART AND SOUTHERN STATISTICAL DIVISIONS				
2001				
October	94.7	9.1	8.8	57.7
2002				
October	95.1	7.8	7.6	57.1
2003				
August	99.8	6.4	6.0	58.6
September	100.8	6.3	5.9	59.1
October	101.1	6.3	5.9	58.9
NORTHERN STATISTICAL DIVISION				
2001				
October	60.7	4.8	7.3	59.9
2002				
October	58.7	4.7	7.4	58.0
2003				
August	59.9	5.5	8.5	60.3
September	62.1	6.2	9.1	61.3
October	62.7	5.6	8.2	62.0
MERSEY-LYELL STATISTICAL DIVISION				
2001				
October	43.6	4.8	9.9	57.9
2002				
October	43.8	5.1	10.5	57.4
2003				
August	45.7	4.6	9.1	56.3
September	45.0	3.6	7.3	55.8
October	45.6	3.2	6.6	55.6
TASMANIA				
2001				
October	199.1	18.7	8.6	58.4
2002				
October	197.6	17.6	8.2	57.4
2003				
August	205.4	16.5	7.5	58.5
September	207.9	16.0	7.2	59.0
October	209.4	15.1	6.7	59.0

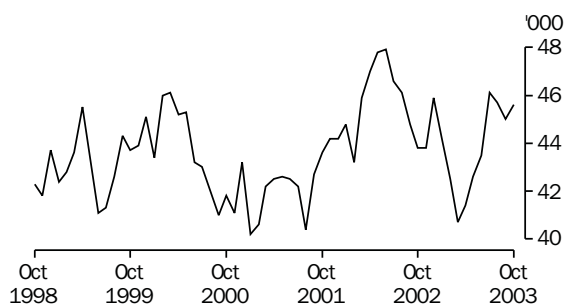
(a) For explanation of terms and concepts, refer to *Labour Force, Australia* (cat. no. 6202.0).

(b) Data in this table are original series, i.e. they are not part of a seasonally adjusted or a trend series. Accordingly, care should be exercised when using these data.

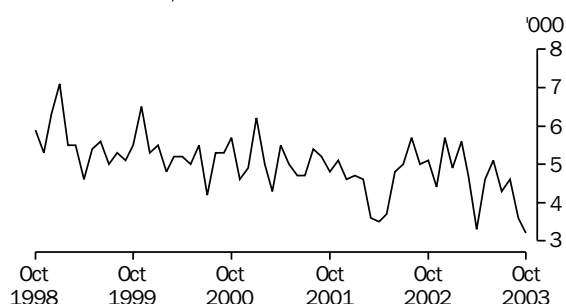
Source: *Labour Force, Selected Summary Tables, Australia* (cat. no. 6291.0.55.001).

Mersey-Lyell Statistical Division (see table 6)

EMPLOYMENT, Persons



UNEMPLOYMENT, Persons



7

TEENAGE LABOUR MARKET(a)

	<u>Employed</u>		<u>Unemployed</u>		<u>Labour force</u>	<u>Not in labour force</u>	<u>Civilian population aged 15-19</u>	<u>Unemployment rate</u>	<u>Unemployment population ratio</u>	<u>Participation rate</u>
	<u>Full time</u>	<u>Total</u>	<u>Looking for full time work</u>	<u>Total</u>						
	'000	'000	'000	'000						
ATTENDING NEITHER A SCHOOL NOR A TERTIARY INSTITUTION FULL-TIME										
2001										
October	5.8	7.2	1.8	2.0	9.2	1.4	10.6	21.8	19.0	87.2
2002										
October	5.1	7.1	1.9	1.9	9.1	1.6	10.7	21.4	18.2	84.8
2003										
August	5.7	7.9	1.2	1.4	9.3	1.5	10.8	14.7	12.6	86.1
September	5.8	7.2	*1.0	*1.1	8.3	1.5	9.9	13.5	11.4	84.7
October	5.7	8.4	*0.8	1.3	9.7	*0.8	10.4	13.0	12.1	92.5
ATTENDING SCHOOL OR A TERTIARY INSTITUTION FULL-TIME										
2001										
October	**0.1	5.8	*0.7	2.3	8.1	15.6	23.7	28.7	9.8	34.3
2002										
October	**0.1	7.2	**0.3	2.5	9.7	13.6	23.3	25.6	10.7	41.6
2003										
August	**0.2	7.4	*0.6	2.3	9.7	13.6	23.3	23.4	9.7	41.6
September	*0.6	8.2	*0.9	2.3	10.5	13.7	24.2	21.6	9.3	43.4
October	**0.1	8.5	*0.6	1.6	10.0	13.6	23.6	15.5	6.6	42.4
TOTAL										
2001										
October	5.8	13.0	2.5	4.3	17.3	16.9	34.3	25.0	12.6	50.6
2002										
October	5.2	14.3	2.2	4.4	18.8	15.2	34.0	23.6	13.0	55.2
2003										
August	5.9	15.3	1.8	3.6	19.0	15.1	34.0	19.1	10.7	55.7
September	6.3	15.4	1.9	3.4	18.8	15.2	34.0	18.0	10.0	55.3
October	5.8	16.9	1.4	2.8	19.7	14.4	34.0	14.3	8.3	57.8

(a) Persons aged 15-19 years. For explanation of terms and concepts, refer to *Labour Force, Australia* (cat. no. 6202.0). Care should be exercised when using these series as some estimates are subject to high sampling variability.

Source: ABS data available on request, *Labour Force, Estimates; Labour Force, Teenage Employment and Unemployment, Australia, Preliminary, Data Report* (cat. no. 6202.0.40.001).

8

ALL EMPLOYED PERSONS BY OCCUPATION(a)(b)

	August 2002			August 2003		Proportion of total employed	
	Persons	Males	Females	Persons	August 2002	August 2003	
	'000	'000	'000	'000	%	%	
Managers and administrators							
Generalist managers	2.3	2.9	*0.5	3.3	1.2	1.6	
Specialist managers	5.4	3.6	1.3	4.9	2.8	2.4	
Farmers and farm managers	6.6	4.2	1.4	5.6	3.3	2.7	
<i>Total</i>	14.3	10.7	3.1	13.8	7.3	6.7	
Professionals							
Science, building and engineering professionals	3.8	3.3	*1.0	4.3	1.9	2.1	
Business and information professionals	6.1	4.1	2.1	6.2	3.1	3.0	
Health professionals	7.5	2.0	5.7	7.8	3.8	3.8	
Education professionals	9.3	3.3	6.9	10.2	4.7	5.0	
Social, arts and miscellaneous professionals	6.0	3.4	2.9	6.3	3.0	3.0	
<i>Total</i>	32.5	16.2	18.6	34.7	16.6	16.9	
Associate professionals							
Science, engineering and related associate professionals	3.6	1.6	*0.9	2.4	1.8	1.2	
Business and administration associate professionals	6.4	3.0	3.3	6.3	3.3	3.1	
Managing supervisors (sales and service)	8.0	5.7	4.4	10.1	4.1	4.9	
Health and welfare associate professionals	1.5	**0.3	1.2	1.6	0.8	0.8	
Other associate professionals	2.9	1.9	*0.8	2.7	1.5	1.3	
<i>Total</i>	22.4	12.4	10.6	23.1	11.4	11.2	
Tradespersons and related workers							
Mechanical and fabrication engineering tradespersons	4.6	5.3	—	5.3	2.3	2.6	
Automotive tradespersons	2.5	3.1	—	3.1	1.3	1.5	
Electrical and electronics tradespersons	3.4	4.5	**0.1	4.6	1.8	2.3	
Construction tradespersons	5.5	5.6	—	5.6	2.8	2.7	
Food tradespersons	1.9	1.2	*0.7	2.0	0.9	1.0	
Skilled agricultural and horticultural workers	1.2	1.6	**0.1	1.7	0.6	0.8	
Other tradespersons and related workers	4.1	2.4	2.0	4.4	2.1	2.2	
<i>Total</i>	23.2	23.8	3.0	26.8	11.8	13.0	
Advanced clerical and service workers							
Secretaries and personal assistants	2.4	**0.1	2.3	2.4	1.2	1.2	
Other advanced clerical and service workers	3.1	*0.8	3.5	4.3	1.6	2.1	
<i>Total</i>	5.5	*0.9	5.8	6.8	2.8	3.3	
Intermediate clerical, sales and service workers							
Intermediate clerical workers	20.3	5.2	17.2	22.4	10.4	10.9	
Intermediate sales and related workers	3.2	2.3	*0.7	3.0	1.6	1.5	
Intermediate service workers	12.9	2.5	11.1	13.5	6.6	6.6	
<i>Total</i>	36.4	9.9	29.0	38.9	18.5	18.9	
Intermediate production and transport workers							
Intermediate plant operators	4.9	5.2	—	5.2	2.5	2.5	
Intermediate machine operators	1.6	1.4	*0.6	2.0	0.8	1.0	
Road and rail transport drivers	5.9	5.4	*0.8	6.1	3.0	3.0	
Other intermediate production and transport workers	3.9	5.4	*0.9	6.3	2.0	3.1	
<i>Total</i>	16.3	17.4	2.2	19.6	8.3	9.6	
Elementary clerical, sales and service workers							
Elementary clerks	1.3	*0.8	*0.9	1.6	0.7	0.8	
Elementary sales workers	18.2	5.3	12.0	17.3	9.3	8.4	
Elementary service workers	1.8	1.3	*0.9	2.2	0.9	1.1	
<i>Total</i>	21.4	7.4	13.8	21.1	10.9	10.3	
Labourers and related workers							
Cleaners	6.0	1.9	4.2	6.1	3.0	3.0	
Factory labourers	6.7	2.4	1.2	3.5	3.4	1.7	
Other labourers and related workers	11.8	8.6	2.4	10.9	6.0	5.3	
<i>Total</i>	24.4	12.9	7.7	20.6	12.4	10.0	
Total employed	196.5	111.6	93.8	205.4	100.0	100.0	

(a) For explanation of terms and concepts, refer to *Australian Labour Market Statistics* (cat. no. 6105.0).

(b) Classified according to the Australian Standard Classification of Occupations (ASCO), Second edition.

Source: ABS data available on request, *Labour Force, Estimates*.

9

EMPLOYED PERSONS BY INDUSTRY(a)(b)

	<i>Number of Employees</i>				
	<i>August 2002</i>	<i>November 2002</i>	<i>February 2003</i>	<i>May 2003</i>	<i>August 2003</i>
	<i>'000</i>	<i>'000</i>	<i>'000</i>	<i>'000</i>	<i>'000</i>
Agriculture, forestry and fishing	16.0	16.2	14.2	16.9	16.3
Mining	1.8	2.2	2.0	1.6	1.9
Manufacturing	21.3	22.0	22.7	22.8	20.9
Electricity, gas and water supply	1.9	2.0	1.8	1.7	2.3
Construction	12.0	11.6	12.1	12.3	13.0
Wholesale trade	7.7	9.3	9.9	9.0	8.4
Retail trade	30.5	31.3	32.6	35.2	34.5
Accommodation, cafes and restaurants	7.5	8.8	11.0	11.3	10.6
Transport and storage	8.9	7.7	7.9	7.9	8.5
Communication services	2.7	2.8	1.9	2.8	3.0
Finance and insurance	5.9	5.2	6.6	5.8	5.1
Property and business services	14.4	14.8	16.1	15.2	15.4
Government administration and defence	11.0	12.1	11.8	11.8	12.2
Education	16.0	16.4	15.1	16.9	16.7
Health and community services	24.1	24.4	20.7	21.9	23.5
Cultural and recreational services	5.9	5.6	5.2	4.5	4.4
Personal and other services	8.8	8.2	7.5	8.8	8.7
Total all industries	196.5	200.6	199.1	206.6	205.4

(a) For explanation of terms and concepts, refer to *Australian Labour Market Statistics* (cat. no. 6105.0).

(b) Small movements are subject to high sample variability and should be used with caution.

Source: ABS data available on request; *Labour Force Survey*.

10

AVERAGE HOURS WORKED

	<i>Average weekly total hours worked, all employed persons(a)</i>		
	<i>Males</i>	<i>Females</i>	<i>Persons</i>
2002			
May	38.8	26.8	33.3
August	38.4	27.1	33.3
November	39.0	27.0	33.7
2003			
February	38.0	25.8	32.5
May	40.4	27.2	34.4
August	38.3	27.5	33.4

(a) For explanation of terms and concepts, refer to *Labour Force, Australia* (cat. no. 6203.0).

Source: ABS data available on request; *Labour Force Survey*.

11

JOB VACANCIES(a)(b)

	no.	rate(c)
	'000	%
2002		
May	*1.7	*1.0
August	*2.2	*1.4
November	*2.1	*1.3
2003		
February	*2.1	*1.2
May	*2.0	*1.2
August	*1.9	*1.1

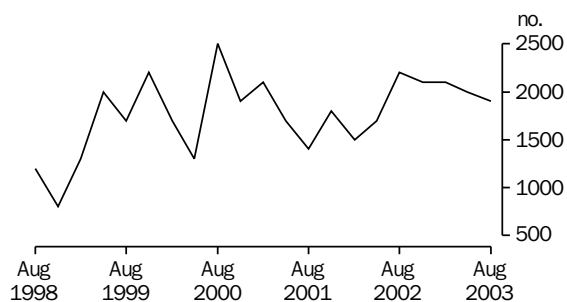
(a) For explanation of terms and concepts, refer to *Job Vacancies, Australia* (cat. no. 6354.0).

(b) Care should be exercised in using these series as some estimates are subject to high sampling variability.

(c) Job vacancies expressed as a percentage of the number of employees plus job vacancies.

Source: *Job Vacancies, Australia* (cat. no. 6354.0).

JOB VACANCIES, TASMANIA



12

INDUSTRIAL DISPUTES(a)

	Working days lost '000	Twelve months ended	Working days lost per thousand employees no.
2002			
August	0.1	August	18
September	—	September	18
October	—	October	18
November	0.1	November	19
December	1.2	December	20
2003			
January	—	January	20
February	—	February	20
March	—	March	10
April	—	April	10
May	—	May	10
June	—	June	9
July	—	July	9
August	—	August	8

(a) For explanation of terms and concepts, refer to *Industrial Disputes, Australia* (cat. no. 6321.0).

Source: *Industrial Disputes, Australia* (cat. no. 6321.0).

AVERAGE WEEKLY EARNINGS OF EMPLOYEES(a) — ORIGINAL AND TREND

	Males			Females			Persons		
	Full-time adult ordinary time earnings	Full-time adult total earnings	All males total earnings	Full-time adult ordinary time earnings	Full-time adult total earnings	All females total earnings	Full-time adult ordinary time earnings	Full-time adult total earnings	All employees total earnings
ORIGINAL									
2002									
May	828.00	869.40	713.90	720.10	735.70	451.80	790.00	822.40	579.10
August	841.60	877.90	740.20	748.90	762.20	473.80	812.80	841.80	611.50
November	849.80	887.70	767.60	758.40	772.70	490.40	820.80	851.30	628.20
2003									
February	863.00	903.20	780.40	748.30	762.70	481.90	826.00	858.10	629.90
May	864.00	904.20	759.10	761.90	775.20	485.80	831.10	862.60	619.30
August	864.80	903.30	757.80	758.10	766.20	496.30	831.40	860.40	631.50
TREND(b)									
2002									
May	834.10	872.50	722.80	730.10	746.00	460.20	798.10	828.80	590.30
August	842.20	881.20	743.40	743.10	757.40	473.30	809.50	840.30	608.90
November	850.30	889.00	762.30	751.70	765.10	481.90	819.20	849.80	622.40
2003									
February	858.00	896.60	768.20	755.20	768.80	485.00	825.50	856.40	625.70
May	864.70	904.10	767.40	758.90	772.20	488.40	830.80	862.10	627.00
August	870.90	912.00	766.60	764.20	776.30	493.50	836.40	868.20	630.60

(a) For explanation of terms and concepts, refer to Average Weekly Earnings, Australia (cat. no. 6302.0).

(b) ABS trend estimates for the most recent months are revised, see Notes on page 2.

Source: Average Weekly Earnings, Australia (cat. no. 6302.0).

	Index numbers				Percentage change	
	Dec qtr 2002	Mar qtr 2003	Jun qtr 2003	Sep qtr 2003	Mar qtr 2003 to Jun qtr 2003	Jun qtr 2003 to Sep qtr 2003
SELECTED INDUSTRIES(c)						
Manufacturing	115.9	116.3	117.6	118.1	1.1	0.4
Retail trade	114.2	115.0	115.6	117.1	0.5	1.3
Government administration and defence	114.7	115.2	115.2	117.3	—	1.8
Education	119.9	120.0	123.0	124.1	2.5	0.9
Health and community services	115.0	115.2	115.5	118.3	0.3	2.4
All industries(d)	116.2	116.6	117.4	119.0	0.7	1.4
SELECTED OCCUPATIONS						
Professionals	118.1	118.3	120.3	122.0	1.7	1.4
Associate professionals	116.6	117.0	117.1	118.9	0.1	1.5
Tradespersons & related workers	114.6	115.0	116.0	116.9	0.9	0.8
Intermediate clerical, sales & service workers	116.1	116.4	116.6	118.3	0.2	1.5
Intermediate production & transport workers	117.0	117.4	118.8	119.8	1.2	0.8
Elementary clerical, sales & service workers	115.5	116.0	116.8	118.9	0.7	1.8
Labourers & related workers	114.7	114.9	116.0	117.8	1.0	1.6
All occupations	116.2	116.6	117.4	119.0	0.7	1.4

(a) Base of each index: September quarter 1997 = 100.0.

(b) These indexes are a measure of quarterly changes in wage and salary costs for employee jobs. They are one of four sets of indexes that together comprise the Wage Cost Index. For explanation of terms and concepts, refer to Wage Cost Index, Australia (cat. no. 6345.0).

(c) Industry is shown at the ANZSIC division level for selected divisions.

(d) Excludes Agriculture, forestry and fishing.

Source: ABS data available on request; Wage Cost Index.

15

SUMMARY OF ANNUAL MOVEMENTS IN WAGES AND PRICES(a), PERCENTAGE CHANGE FROM PREVIOUS YEAR — ORIGINAL

	CPI	Price index of materials used in house building	Price index of materials used in building other than house building	Average weekly total earnings, full-time adult employees(b)
	all groups—Hobart	all groups—Hobart	all groups—Hobart	
	%	%	%	%
2000-01	5.8	1.8	0.3	3.2
2001-02	2.0	1.9	1.7	4.6
2002-03	3.3	4.1	2.4	—
2001				
September	1.1	1.7	2.0	2.6
December	2.1	1.6	1.2	-4.4
2002				
March	2.3	1.8	1.2	6.1
June	2.7	2.3	2.2	5.2
September	3.5	3.4	2.7	7.2
December	3.1	3.9	2.7	5.2
2003				
March	3.6	4.7	2.1	4.9
June	2.8	4.5	2.1	4.9
September	2.6	4.0	2.0	2.2

(a) See note 5 on page 2 of this issue on the impacts of The New Tax System (TNTS).

(b) March, June, September and December data relates to February, May, August and November survey dates as published in Average Weekly Earnings, Australia (cat. no. 6302.0).

Source: ABS data available on request; Producer Price Index (cat. no. 6427.0); Consumer Price Index, Australia (cat. no. 6401.0); Average Weekly Earnings, Australia (cat. no. 6302.0).

16

HOUSE PRICE INDEX NUMBERS(a)(b)

	Established house price index		Project home price index	
	Index	% change(c)	Index	% change(c)
2000-01	134.2	4.0	140.7	11.5
2001-02	140.1	4.4	145.1	3.1
2002-03	157.1	12.1	158.5	9.2
2001				
June	135.1	1.0	141.8	0.9
September	134.9	-0.1	142.7	0.6
December	138.3	2.5	143.4	0.5
2002				
March	142.1	2.7	144.6	0.8
June	144.9	2.0	149.7	3.5
September	148.9	2.8	152.5	1.9
December	150.8	1.3	154.4	1.2
2003				
March	160.9	6.7	161.2	4.4
June	167.9	4.4	165.7	2.8

(a) Base of each Index: 1989-90 = 100.0.

(b) Used in calculating the mortgage interest charges component of the Consumer Price Index.

(c) Percentage change over previous period.

Source: House Price Indexes: Eight Capital Cities (cat. no. 6416.0).

Hobart

	Food	Clothing and Footwear	Housing	Household furnishings, supplies and services	Transportation	Alcohol and tobacco
2000						
September	130.9	112.8	105.5	124.5	133.3	179.8
December	132.0	112.9	105.8	124.6	130.4	181.6
2001						
March	134.3	110.7	106.9	125.6	131.4	185.4
June	136.0	112.2	107.2	126.6	134.6	188.6
September	135.7	109.3	107.4	127.3	131.5	189.4
December	138.2	113.9	107.8	126.9	130.4	189.5
2002						
March	140.4	110.9	109.0	127.6	131.3	191.5
June	141.1	113.3	110.3	127.4	135.9	193.0
September	142.0	107.4	112.4	127.7	134.9	195.5
December	143.0	108.3	113.0	127.8	136.3	196.3
2003						
March	146.0	104.3	115.2	127.5	139.0	198.9
June	146.5	110.1	116.9	128.8	134.3	203.3
September	146.4	103.3	118.3	128.4	136.7	206.5

Hobart

Weighted average of eight capital cities

	Health	Education	Index, all groups	% change over previous period, all groups	Index	% change over previous period
2000						
September	178.0	206.5	131.3	3.8	130.9	3.7
December	177.4	206.5	131.2	-0.1	131.3	0.3
2001						
March	181.5	215.1	132.1	0.7	132.7	1.1
June	181.4	215.1	133.4	1.0	133.8	0.8
September	180.3	215.0	132.8	-0.4	134.2	0.3
December	180.5	215.0	133.9	0.8	135.4	0.9
2002						
March	185.8	221.9	135.2	1.0	136.6	0.9
June	193.6	221.9	137.0	1.3	137.6	0.7
September	193.4	222.7	137.5	0.4	138.5	0.7
December	192.9	222.7	138.0	0.4	139.5	0.7
2003						
March	200.7	233.2	140.0	1.4	141.3	1.3
June	209.1	233.4	140.8	0.6	141.3	—
September	207.8	233.6	141.1	0.2	142.1	0.6

(a) Base year: 1989-90 = 100.0.

(b) Further information on construction of CPI indexes is contained in the bulletin *Australian Consumer Price Index Concepts, Sources and Methods* (cat. no. 6461.0).(c) As a result of the introduction of the 14th Series Australian CPI there have been changes to some groups and restructuring of some others. See Appendix A2 of the September quarter issue 2000 of *Consumer Price Index, Australia* (cat. no. 6401.0) for more information.

(d) See Note 5 on page 2 of this issue on the impacts of The New Tax System (TNTS) introduced on 1 July 2000.

Source: *Consumer Price Index, Australia* (cat. no. 6401.0).

Index numbers for selected major building materials

	<i>Structural timber</i>	<i>Clay bricks</i>	<i>Ready mixed concrete</i>	<i>Precast concrete products</i>	<i>Steel decking, cladding etc.</i>	<i>Structural steel</i>
2000-01	120.6	132.6	117.9	131.6	107.6	129.3
2001-02	123.0	137.0	122.7	131.6	104.4	130.2
2002-03	126.3	145.5	134.4	131.6	110.2	132.4
2001						
September	122.3	135.3	117.0	131.6	107.7	129.4
December	123.1	135.3	116.7	131.6	105.6	129.4
2002						
March	123.2	137.6	124.0	131.6	102.5	131.0
June	123.4	139.9	133.2	131.6	101.8	131.0
September	124.0	143.9	133.8	131.6	107.8	132.1
December	124.8	144.0	134.0	131.6	107.0	132.1
2003						
March	126.1	147.0	134.0	131.6	113.1	132.1
June	130.1	147.0	135.9	131.6	112.9	133.1
September	131.0	147.1	137.3	137.9	111.2	133.1

Index numbers for selected major building materials

	<i>Reinforcing steel bar, fabric and mesh</i>	<i>Aluminium windows</i>	<i>Fabricated steel products</i>	<i>Builders hardware</i>	<i>Sand and aggregate</i>	<i>Paint and other coatings</i>	<i>Non-ferrous pipes and fittings</i>
2000-01	107.8	116.8	114.0	119.3	147.9	135.0	185.6
2001-02	107.9	120.3	114.9	123.4	148.7	137.6	180.9
2002-03	110.8	121.5	128.8	123.2	157.6	142.2	176.4
2001							
September	107.8	120.3	113.9	123.4	147.1	137.6	183.2
December	107.9	120.3	114.4	123.6	147.4	137.4	178.1
2002							
March	107.9	120.3	111.4	123.3	147.4	137.6	182.0
June	107.9	120.3	119.7	123.3	152.9	137.9	180.2
September	110.3	120.3	129.7	123.2	157.2	140.2	176.4
December	110.3	120.3	129.7	123.2	157.2	142.4	176.4
2003							
March	110.7	120.3	126.7	123.2	157.2	141.9	176.4
June	111.7	124.9	128.9	123.3	158.8	144.1	176.4
September	112.9	124.9	132.3	123.3	156.5	145.2	180.4

For footnotes see end of table.

...continued

	<i>All electrical materials</i>		<i>All mechanical services</i>		<i>All plumbing materials</i>	
	<i>Index</i>	<i>% change over previous period</i>	<i>Index</i>	<i>% change over previous period</i>	<i>Index</i>	<i>% change over previous period</i>
2000-01	117.3	-0.3	118.2	-1.7	132.7	4.5
2001-02	118.5	1.0	120.9	2.3	132.4	-0.2
2002-03	117.9	-0.5	122.5	1.3	135.1	2.0
2001						
September	118.2	0.3	119.8	0.7	131.8	-1.6
December	118.7	0.4	120.1	0.3	130.4	-1.1
2002						
March	119.5	0.7	121.8	1.4	133.4	2.3
June	117.7	-1.5	122.0	0.2	133.8	0.3
September	117.5	-0.2	122.1	0.1	135.0	0.9
December	117.6	0.1	122.5	0.3	135.3	0.2
2003						
March	117.8	0.2	122.6	0.1	134.8	-0.4
June	118.6	0.7	122.6	—	135.2	0.3
September	119.6	0.8	123.3	0.6	136.8	1.2

	<i>All groups excluding electrical materials and mechanical services</i>		<i>All groups</i>	
	<i>Index</i>	<i>% change over previous period</i>	<i>Index</i>	<i>% change over previous period</i>
2000-01	120.5	1.2	119.3	0.3
2001-02	122.1	1.3	121.3	1.7
2002-03	125.7	2.9	124.2	2.4
2001				
September	121.2	-0.1	120.3	0.2
December	121.2	—	120.5	0.2
2002				
March	122.2	0.8	121.6	0.9
June	123.8	1.3	122.8	1.0
September	124.9	0.9	123.5	0.6
December	125.1	0.2	123.7	0.2
2003				
March	125.6	0.4	124.2	0.4
June	127.2	1.3	125.4	1.0
September	127.9	0.6	126.0	0.5

(a) Base year: 1989-90 = 100.0.

Source: ABS data available on request; Producer Price Index (cat. no. 6427.0).

	<i>Dairy products(a)</i>			<i>Staff hours worked</i>	
	<i>Whole milk(b)</i>	<i>Factory butter(c)</i>	<i>Factory cheese(d)</i>	<i>Textile manufacturing(e)</i>	<i>Vegetable preserving</i>
	<i>million litres</i>	<i>tonnes</i>	<i>tonnes</i>	<i>'000</i>	<i>'000</i>
2000-01	589.7	5 949	32 355	938	1 037
2001-02	671.4	7 368	35 155	975	1 062
2002-03	585.4	na	31 632	1 022	1 344
2002					
September	58.7	na	3 809	82	72
October	82.8	na	2 711	99	82
November	84.4	na	3 683	97	99
December	77.7	na	4 312	67	118
2003					
January	63.4	na	3 615	70	97
February	48.1	na	3 208	85	134
March	42.4	na	3 337	87	131
April	34.9	na	2 251	78	136
May	31.8	na	2 113	96	164
June	20.0	na	1 651	73	125
July	14.6	na	na	90	126
August	26.3	na	na	84	129
September	54.4	na	na	77	84
		<i>Refined zinc</i>	<i>Metallurgical refining</i>		<i>Electricity</i>
		<i>'000 tonnes</i>	<i>Index(f)</i>		<i>million kW.h</i>
2000-01		233.1	138.4		10 150
2001-02		251.7	140.8		10 210
2002-03		253.4	144.1		10 460
2002					
September		21.6	144.8		(Sep qtr) 2 800
October		19.6	143.7		..
November		20.2	142.2		..
December		21.0	145.7		(Dec qtr) 2 530
2003					
January		21.1	146.7		..
February		19.9	132.8		..
March		22.2	148.0		(Mar qtr) 2 430
April		22.0	145.8		..
May		23.2	150.6		..
June		22.4	149.4		(Jun qtr) 2 700
July		20.3	146.0		..
August		19.6	141.7		..
September		22.0	144.5		(Sep qtr) 2 920

(a) Source: Australian Dairy Corporation.

(b) Includes the whole milk equivalent of farm cream intake.

(c) Includes butter equivalent of butter oil. From July 2002 the Australian Dairy Corporation advised that Factory butter production data are confidential.

(d) From July 2003 the Australian Dairy Corporation advised that factory cheese production data are confidential.

(e) Includes spinning, weaving and carpet making. Reported by establishments which manufacture textiles only, or manufacture clothing and textiles in the one plant.

(f) Metallurgical refining index (Base year: 1979-80 = 00.0). Output from selected establishments covering the smelting and refining of ferro-alloys, zinc and aluminium. The weighting pattern is based on the establishments' value added as derived from the 1979-80 manufacturing census. For multi-product establishments, value added was apportioned to products on the basis of gross receipts from each product.

Source: ABS data available on request; Employees Hours Worked Survey; Monthly Production Survey; Manufacturing Survey.

20

LIVESTOCK SLAUGHTERING — ORIGINAL

	Cattle					
	<i>Bulls, bullocks and steers</i>	<i>Cows and heifers</i>	<i>Calves</i>	<i>Sheep</i>	<i>Lambs</i>	<i>Pigs</i>
	'000	'000	'000	'000	'000	'000
2000-01	90.2	94.2	49.7	364.7	416.1	57.6
2001-02	80.6	79.4	44.6	275.8	426.4	53.1
2002-03	79.9	112.9	41.2	388.3	374.0	47.7
2001						
September	5.0	4.0	16.2	15.8	36.3	5.1
2002						
September	4.2	2.7	12.6	15.8	29.1	3.8
October	5.2	9.5	5.2	18.0	32.6	3.6
November	7.6	10.8	1.3	24.7	32.6	4.4
December	6.1	8.0	0.4	27.7	25.8	5.0
2003						
January	8.4	11.6	0.3	45.2	35.9	4.0
February	7.8	10.8	0.2	47.9	31.7	3.5
March	7.0	11.5	0.5	55.5	28.1	3.6
April	6.1	12.7	1.0	41.4	23.8	3.5
May	7.6	13.5	1.1	47.5	34.0	4.3
June	5.0	10.7	0.8	27.5	30.7	3.8
July	4.0	10.9	1.4	30.4	39.5	4.0
August	4.8	7.7	16.8	19.1	38.6	3.9
September	4.3	7.0	15.5	21.8	27.3	3.7

Source: ABS data available on request; Livestock Slaughtered.

21

LIVESTOCK SLAUGHTERING — SEASONALLY ADJUSTED(a) AND TREND(b)

	Seasonally adjusted			Trend		
	<i>Cattle and calves</i>	<i>Sheep and lambs</i>	<i>Pigs</i>	<i>Cattle and calves</i>	<i>Sheep and lambs</i>	<i>Pigs</i>
	'000	'000	'000	'000	'000	'000
2001						
September	17.5	70.8	5.4	17.6	67.0	4.9
2002						
September	13.0	61.2	3.9	18.7	60.2	4.2
October	20.9	55.5	4.0	20.0	59.1	4.3
November	22.9	59.6	4.8	21.3	59.2	4.4
December	21.3	57.8	4.3	22.5	60.4	4.4
2003						
January	24.8	64.5	4.7	23.0	62.3	4.3
February	23.3	63.7	3.9	22.7	64.4	4.1
March	21.7	69.4	3.3	21.9	66.5	4.0
April	20.5	66.8	3.5	20.9	68.1	3.8
May	20.1	71.7	3.9	20.3	69.3	3.8
June	18.3	61.4	3.5	20.2	70.1	3.8
July	19.9	80.6	4.1	20.5	70.7	3.8
August	23.5	69.8	4.1	21.0	71.1	3.9
September	21.7	68.2	3.7	21.5	71.0	3.9

(a) Seasonally adjusted factors are reviewed annually to take account of each additional year's original data. The results of the review are used to compile revised seasonally adjusted and trend estimates; see Notes page 2.

(b) ABS trend estimates for the most recent months are revised; see Notes page 2.

Source: ABS data available on request; Livestock Slaughtered.

22

MEAT PRODUCTION(a)

	<i>Beef</i>	<i>Veal</i>	<i>Mutton</i>	<i>Lamb</i>	<i>Pig meat(b)</i>	<i>Total</i>
	<i>tonnes</i>	<i>tonnes</i>	<i>tonnes</i>	<i>tonnes</i>	<i>tonnes</i>	<i>tonnes</i>
2000-01	48 771	996	7 232	8 014	3 583	68 596
2001-02	43 923	899	5 416	8 466	3 159	61 863
2002-03	51 376	826	7 495	7 439	2 715	69 851
2001						
September	2 500	317	311	721	314	4 163
2002						
September	1 967	244	304	591	222	3 328
October	3 825	101	348	690	207	5 171
November	5 041	27	482	634	250	6 433
December	3 984	10	541	493	272	5 300
2003						
January	5 637	9	885	706	223	7 460
February	5 135	7	925	613	196	6 876
March	4 872	14	1 076	552	206	6 720
April	4 765	23	793	461	192	6 233
May	5 538	26	903	682	248	7 396
June	4 026	19	532	613	219	5 408
July	3 727	30	582	803	227	5 368
August	3 332	322	370	778	225	5 026
September	3 061	301	430	556	204	4 553

(a) Carcass weight.

(b) Includes pork used for production of bacon and ham.

Source: ABS data available on request; Livestock Slaughtered.

23

PRINCIPAL MINERAL CONCENTRATES PRODUCED

	<i>Copper</i>	<i>Iron (pellets)</i>	<i>Lead</i>	<i>Tin</i>	<i>Zinc</i>
	<i>'000 tonnes</i>	<i>'000 tonnes</i>	<i>'000 tonnes</i>	<i>'000 tonnes</i>	<i>'000 tonnes</i>
2000-01	105.4	2 027.3	40.6	14.8	143.2
2001-02	115.0	2 151.6	35.6	12.4	138.7
2002-03	108.1	2 142.3	42.2	nya	141.9
2001					
September	32.5	487.8	8.9	3.1	35.2
December	30.9	554.1	8.4	3.6	37.9
2002					
March	28.0	533.5	9.9	2.7	33.3
June	23.6	576.3	8.5	3.0	32.4
September	34.5	513.1	9.7	3.7	39.0
December	25.4	516.3	9.2	1.7	31.4
2003					
March	25.6	578.7	12.4	2.4	35.0
June	22.7	534.2	10.8	nya	36.5
September	22.9	560.8	9.2	nya	34.0

Source: Mineral Resources Tasmania, Department of Infrastructure, Energy and Resources.

	Tasmanian-grown logs delivered					Sawn, peeled and sliced timber produced(b)				
	Eucalypts	Hardwoods, excluding eucalypts(c)	Plant- ation(d)	Native soft- woods(e)	Total	Eucalypts	Hardwoods, excluding eucalypts(c)	Plant- ation(d)	Native soft- woods(e)	Total
		'000 m ³	'000 m ³	'000 m ³			'000 m ³	'000 m ³	'000 m ³	
2000-01	468.5	24.8	369.9	2.6	865.8	157.9	6.3	174.1	0.2	338.6
2001-02	513.9	31.7	447.2	0.9	993.8	170.2	8.1	208.9	0.3	387.4
2002-03	525.0	25.9	509.8	2.5	1 063.2	163.3	6.7	228.0	0.5	398.5
2001										
September	129.8	5.6	115.9	0.1	251.4	42.1	1.8	50.9	0.1	95.0
December	115.0	8.9	94.3	0.1	218.4	37.8	2.2	48.4	0.1	88.3
2002										
March	116.2	10.3	121.6	0.3	248.5	41.6	2.7	53.6	0.1	97.9
June	152.8	6.9	115.4	0.3	275.4	48.7	1.4	56.0	0.1	106.2
September	143.4	5.4	122.3	0.2	271.3	44.7	1.4	58.8	0.1	105.0
December	142.6	5.3	143.6	1.0	292.5	41.3	1.8	55.9	0.1	99.1
2003										
March	113.8	8.1	124.8	0.5	247.1	36.5	1.6	56.5	0.1	94.6
June	125.2	7.1	119.2	0.8	252.3	40.9	1.9	56.9	0.2	99.8
September	157.2	4.9	133.2	0.2	295.4	46.4	1.7	64.4	—	112.5

(a) Separate data for logs delivered and sourced from Crown and Private land is available on request.

(b) Includes plywood, veneer and sliced timber production converted to an equivalent cubic measurement.

(c) Includes blackwood, myrtle, sassafras etc.

(d) Radiata pine.

(e) Includes Huon pine, Celery Top pine and King William pine.

Source: ABS data available on request, Forest Products Survey.

								<i>Value(e)</i>	
	<i>Dwelling units</i>				New dwelling units	Alterations and additions to residential buildings(c)	<i>Non-residential buildings(d)</i>		Total of all building
	New houses	New other residential buildings(a)	Other dwelling units created (conversions etc.)(b)	Total dwelling units			Private	Total	
no.	no.	no.	no.	\$m	\$m	\$m	\$m	\$m	
2000-01	1 108	80	10	1 198	127.5	43.1	95.2	152.5	323.0
2001-02	1 878	141	13	2 032	221.0	51.7	113.6	168.0	440.7
2002-03	1 957	164	17	2 138	260.7	62.4	147.8	r 200.8	r 524.0
2002									
September	172	6	—	178	20.8	4.3	7.6	r 8.9	r 34.1
October	151	19	2	172	19.4	6.2	8.5	10.3	36.0
November	142	3	—	145	16.9	3.4	6.2	12.5	32.8
December	189	9	—	198	24.3	5.6	7.4	9.8	39.6
2003									
January	137	2	2	141	18.3	5.2	18.6	24.1	47.6
February	146	4	2	152	18.3	5.1	9.5	17.0	40.4
March	175	7	1	183	22.8	5.6	15.5	17.4	45.7
April	146	23	4	173	22.5	3.9	9.7	20.5	46.8
May	186	62	3	251	26.8	6.4	15.4	16.0	49.2
June	167	21	1	189	26.9	6.3	15.3	27.6	60.8
July	223	36	1	260	40.3	6.7	8.5	16.3	63.3
August	231	8	8	247	32.6	7.3	10.1	13.0	52.9
September	221	12	1	234	32.2	6.4	6.5	6.5	45.0

(a) New individual dwelling units (e.g. flats, home units and villa units).

(b) From alterations and additions to residential building, conversions of non-residential building to residential building etc.

(c) Valued at \$10,000 and over. Includes conversions and dwelling units approved as part of alterations and additions or as part of the construction of non-residential building.

(d) Comprises non-residential building (new plus alterations and additions) valued at \$50,000 and over.

(e) Value data from July 2000 reference month onward are recorded inclusive of GST. See *Building Approvals, Australia* (cat. no. 8731.0) or page 2 of this publication for more details.

Source: *Building Approvals, Australia* (cat. no. 8731.0).

	<i>Total number of dwellings(a)</i>			<i>Total value of commitments(b)</i>		
	<i>Original</i>	<i>Seasonally adjusted</i>	<i>Trend</i>	<i>Original</i>	<i>Seasonally adjusted</i>	<i>Trend</i>
	<i>no.</i>	<i>no.</i>	<i>no.</i>	<i>\$m</i>	<i>\$m</i>	<i>\$m</i>
2002						
September	990	1 076	1 105	91	96	98
October	1 158	1 104	1 113	105	103	100
November	1 153	1 099	1 117	105	98	103
December	1 174	1 226	1 112	111	111	104
2003						
January	977	1 102	1 101	91	112	105
February	1 015	1 019	1 094	99	99	107
March	1 152	1 106	1 103	114	106	110
April	1 074	1 098	1 135	106	116	114
May	1 283	1 153	1 188	128	114	121
June	1 249	1 315	1 252	128	135	128
July	1 365	1 364	1 312	142	138	134
August	1 303	1 289	1 364	135	134	140
September	1 347	1 447	1 403	144	148	144

(a) Includes new dwellings, established dwellings and refinancing. Excludes alterations and additions.

(b) Commitment is a firm offer of housing finance. It either has been, or is normally expected to be, accepted. Includes commitments to provide housing finance to employees and commitments accepted and cancelled in the same month. Excludes alterations and additions. Includes refinancing.

Source: *Housing Finance for Owner Occupation, Australia (cat. no. 5609.0)*.

	Asset			Industry			
	<i>Buildings and structures</i>	<i>Equipment, plant and machinery</i>	<i>Total asset</i>	<i>Mining</i>	<i>Manufacturing</i>	<i>Other selected industries</i>	<i>Total all industries</i>
	\$m	\$m	\$m	\$m	\$m	\$m	\$m
2000-01	133	466	600	87	162	352	600
2001-02	444	518	962	57	154	752	962
2002-03	254	633	888	44	240	603	888
2001							
June	28	136	164	25	50	89	164
September	67	122	189	15	41	134	189
December	103	107	210	11	42	157	210
2002							
March	136	120	256	17	36	203	256
June	138	169	307	14	35	258	307
September	88	101	189	9	33	147	189
December	55	213	268	13	69	186	268
2003							
March	73	151	224	14	89	121	224
June	38	168	207	8	49	149	207

(a) Estimates based on a sample survey and therefore subject to sampling variability. Covers selected industries only — mining, manufacturing, and other selected industries.

(b) Current prices.

(c) See *Private New Capital Expenditure and Expected Expenditure* (cat. no. 5625.0) or page 2 of this issue on the impacts of The New Tax System (TNTS) introduced on 1 July 2000.

(d) There have been significant revisions to all data contained in this issue. For more information see "Revisions in this Issue" on pages 3 and 4 of *Private New Capital Expenditure and Expected Expenditure, September Quarter 2002* (cat. no. 5625.0).

Source: *Private New Capital Expenditure and Expected Expenditure* (cat. no. 5625.0).

	<i>Establish- ments</i>	<i>Guest rooms</i>	<i>Bed spaces</i>	<i>Persons employed</i>	<i>Room nights occupied</i>	<i>Room occupancy rate</i>	<i>Guest nights</i>	<i>Bed occupancy rate</i>	<i>Guest arrivals</i>	<i>Takings from accommodation(b)</i>
	<i>no.</i>	<i>no.</i>	<i>no.</i>	<i>no.</i>	<i>'000</i>	<i>%</i>	<i>'000</i>	<i>%</i>	<i>'000</i>	<i>\$'000</i>
LICENSED HOTELS WITH FACILITIES										
2002										
March qtr	53	2 899	7 945	2 700	166.9	64.0	286.0	40.0	158.4	15 745
2003										
January	na	na	na	na	52.0	59.1	95.8	39.1	52.3	5 188
February	na	na	na	na	53.9	67.7	89.7	40.6	50.5	5 266
March	na	na	na	na	64.4	73.1	106.4	43.5	59.0	6 433
March qtr	52	2 840	7 898	2 468	170.3	66.6	291.9	41.1	161.8	16 888
MOTELS AND GUEST HOUSES WITH FACILITIES										
2002										
March qtr	49	1 650	5 124	695	99.2	66.8	199.9	43.3	107.7	9 216
2003										
January	na	na	na	na	38.2	68.6	82.1	49.1	42.5	4 003
February	na	na	na	na	36.1	71.8	69.5	46.0	38.7	3 557
March	na	na	na	na	43.0	77.3	83.6	50.0	47.2	4 171
March qtr	55	1 795	5 394	1 050	117.3	72.6	235.2	48.4	128.5	11 731
SERVICED APARTMENTS										
2002										
March qtr	26	1 009	3 407	531	62.7	69.0	144.5	47.1	61.1	7 463
2003										
January	na	na	na	na	25.8	73.7	67.8	55.3	28.7	3 252
February	na	na	na	na	23.4	74.1	50.8	45.9	23.5	2 738
March	na	na	na	na	27.8	79.6	60.7	49.4	27.8	3 306
March qtr	31	1 128	3 958	559	77.0	75.9	179.3	50.3	80.0	9 297
TOTAL ESTABLISHMENTS										
2002										
March qtr	128	5 558	16 476	3 926	328.8	65.7	630.4	42.5	327.3	32 424
2003										
January	na	na	na	na	116.0	64.9	245.7	45.9	123.5	12 444
February	na	na	na	na	113.4	70.3	210.0	43.5	112.8	11 562
March	na	na	na	na	135.2	75.7	250.7	46.9	134.0	13 911
March qtr	138	5 763	17 250	4 077	364.6	70.3	706.4	45.5	370.3	37 916

(a) Comprising establishments with 15 or more rooms or units. For explanation of terms and concepts refer to *Tourist Accommodation, Australia* (cat. no. 8635.0).

(b) 'Takings from accommodation' after 1 July 2000 are recorded inclusive of GST. See *Tourist Accommodation, Australia* (cat. no. 8635.0) or page 2 of this publication for more details.

Source: *Tourist Accommodation, Australia* (cat. no. 8635.0). For more detailed information, see *Tourist Accommodation, Small Area Data, Tasmania* (cat. no. 8635.6.40.001).

Tasmanian National Park attendance

	<i>Cradle Mountain(b)</i> <i>(Lake Dove)</i>	<i>Lake St Clair(b)</i> <i>(Cynthia Bay)</i>	<i>Mt Field(b)</i>	<i>Freycinet(c)</i>	<i>Narawntapu(d)</i> <i>(Bakers Beach)</i>	<i>Mole Creek Karst(e)</i> <i>(Marakoopa Cave)</i>	<i>Maria Island(f)</i> <i>(Darlington)</i>
	<i>no.</i>	<i>no.</i>	<i>no.</i>	<i>no.</i>	<i>no.</i>	<i>no.</i>	<i>no.</i>
2000-01	168 700	111 800	138 700	273 000	34 300	26 788	12 820
2001-02	178 600	107 800	133 900	273 300	35 800	26 103	12 598
2002-03	209 000	134 500	147 200	318 000	38 900	28 648	13 337
2002							
October	14 300	10 300	9 800	p 19 500	2 400	2 328	983
November	17 200	12 300	12 000	p 27 100	4 200	2 711	1 509
December	23 400	14 400	16 700	p 36 600	4 700	4 506	1 479
2003							
January	34 900	22 600	24 900	p 57 800	7 100	4 505	2 025
February	22 700	18 000	16 700	p 39 700	4 000	2 676	1 366
March	24 900	18 500	15 700	p 36 700	4 200	2 632	1 576
April	26 600	16 400	16 300	p 32 400	3 900	2 837	1 344
May	11 400	6 700	9 600	p 16 000	1 800	1 652	886
June	8 900	3 700	5 700	p 11 100	1 700	1 428	489
July	10 200	3 800	5 900	p 10 800	1 300	929	280
August	8 700	2 800	6 200	p 10 700	1 600	809	187
September	13 900	6 700	9 000	p 16 800	2 100	2 077	527
October	17 200	10 500	11 500	p 22 900	2 500	2 062	774

(a) A 'person entry' occurs whenever a visitor enters a National Park. Freycinet data, in particular, reflects repeat entries. Measurement occurs at the designated sites in brackets.

(b) Estimated through a combination of traffic and booth counts.

(c) As of July 2002, estimates of person entries is derived using traffic counts only. As a result, pre and post-July 2002 data are not strictly comparable.

(d) Estimated through traffic counts.

(e) Number of people taken on a guided tour.

(f) The sum of ferry arrivals only. From July 2000, excludes estimated plane passengers. Services disrupted during December 2002.

Source: *Tasmanian Parks and Wildlife Service, Department of Primary Industries, Water and Environment.*

	<i>Overland(b)</i>	<i>South Coast(c)</i>	<i>Freycinet(d)</i>	<i>Port Davey(c)</i>	<i>Frenchmans Cap</i>
	<i>no.</i>	<i>no.</i>	<i>no.</i>	<i>no.</i>	<i>no.</i>
2000-01	7 273	915	3 002	208	753
2001-02	7 537	1 099	3 512	229	644
2002-03	8 154	p 957	3 143	p 173	826
2002					
October	222	11	128	—	6
November	670	76	466	16	75
December	1 398	182	372	31	106
2003					
January	1 702	259	810	67	195
February	1 388	185	331	22	156
March	1 182	p 110	276	13	91
April	1 173	p 91	279	16	115
May	135	p 12	34	p 4	33
June	59	p 4	73	p 1	14
July	69	p 2	60	p —	11
August	26	p —	25	p —	4
September	141	p —	68	p —	5
October	203	p 6	66	p —	24

(a) Numbers include only walkers who registered and represented their intention.

(b) Sum of registrations at Cradle Mt and Lake St Clair.

(c) Sum of registrations to walk the length of the track in any direction, irrespective of starting point.

(d) All overnight walkers registered in the park.

Source: *Tasmanian Parks and Wildlife Service, Department of Primary Industries, Water and Environment.*

	Passenger vehicles	Other vehicles	Total	Change from corresponding month of previous year
	no.	no.	no.	%
ORIGINAL				
2000-01	9 944	4 693	14 637	..
2001-02	9 467	5 295	14 762	..
2002-03	9 017	6 384	15 401	..
2002				
October	707	496	1 203	-4.3
November	869	529	1 398	-2.0
December	1 063	521	1 584	-15.4
2003				
January	591	434	1 025	3.6
February	619	450	1 069	-1.9
March	723	495	1 218	11.4
April	631	546	1 177	6.7
May	743	711	1 454	8.3
June	821	728	1 549	19.7
July	802	605	1 407	19.8
August	1 059	530	1 589	21.2
September	1 129	510	1 639	32.3
October	1 295	713	2 008	66.9
TREND				
2000-01	9 887	4 691	14 579	..
2001-02	9 504	5 266	14 771	..
2002-03	9 176	6 379	15 555	..
2002				
October	712	525	1 237	1.6
November	710	523	1 233	-1.7
December	717	519	1 236	-3.1
2003				
January	733	518	1 251	-2.3
February	756	523	1 279	0.3
March	784	536	1 320	4.5
April	811	550	1 361	8.3
May	841	563	1 404	11.5
June	881	577	1 458	15.3
July	936	592	1 528	20.6
August	1 003	608	1 611	27.8
September	1 072	626	1 698	36.1
October	1 141	642	1 783	44.1

(a) These statistics are based on the VFACTS series produced by the Federal Chamber of Automotive Industries. VFACTS reports the numbers of new motor vehicle sales by dealers and direct sales by manufacturers throughout Australia.

Source: Sales of New Motor Vehicles (cat. no. 9314.0.55.001).

								<i>Trend</i>	
								<i>Total(d)</i>	
	Original	Food retailing	Clothing and soft good retailing	Household good retailing	Recreational good retailing	Hospitality and services	Change from corresponding period of previous year		
	\$m	\$m	\$m	\$m	\$m	\$m	\$m	%	
2000-01	3 222.4	1 401.0	158.9	479.8	180.9	377.9	3 230.1	6.0	
2001-02	3 384.3	1 450.3	190.1	520.1	192.9	364.8	3 387.1	4.9	
2002-03	3 582.2	1 470.0	199.7	580.2	187.2	400.4	3 596.0	6.2	
2002									
September	269.6	121.3	16.6	47.0	15.7	32.9	294.2	7.1	
October	297.9	121.6	16.5	46.9	15.6	33.1	295.1	6.7	
November	313.1	121.8	16.5	46.8	15.4	32.9	296.2	6.3	
December	387.9	121.9	16.5	46.9	15.3	32.7	297.3	5.9	
2003									
January	299.5	122.0	16.6	47.2	15.2	32.5	298.1	5.3	
February	270.6	122.1	16.7	47.8	15.0	32.6	299.1	4.8	
March	296.8	122.6	16.7	48.7	15.0	33.2	301.1	4.6	
April	298.6	123.6	16.7	50.0	15.3	34.1	304.5	5.1	
May	307.4	125.0	16.7	51.5	15.9	35.4	309.4	6.2	
June	287.7	126.6	16.8	53.0	16.8	36.7	314.8	7.8	
July	309.9	128.2	16.8	54.5	17.8	37.8	320.1	9.3	
August	307.0	129.7	16.9	55.8	18.8	38.8	324.9	10.7	
September	309.8	130.9	16.9	56.8	19.7	39.6	328.8	11.8	

(a) Excludes motor vehicles, parts, petrol, etc.

(b) ABS retail seasonally adjusted and trend estimates for earlier periods are revised each month. See *Retail Trade, Australia* (cat. no. 8501.0) for more details.

(c) Data from July 2000 reference month onwards are recorded inclusive of GST. See *Retail Trade, Australia* (cat. no. 8501.0) and page 2 of this publication for more details. A break in the trend series occurred between June and July 2000 because of the impact of The New Tax System on retail turnover.

(d) Includes Department stores and Other retailing.

Source: *Retail Trade, Australia* (cat. no. 8501.0).

	Tasmania				Australia			
	Imports	Imports change over preceding period	Exports	Exports change over preceding period	Imports	Imports change over preceding period	Exports(b)	Exports change over preceding period
	\$m	%	\$m	%	\$m	%	\$m	%
2000-01	524	19	2 435	10	118 317	7	119 539	23
2001-02	518	-1	2 388	-2	119 649	1	121 108	1
2002-03	763	47	2 454	3	r 133 130	11	r 115 452	-5
2002								
September	44	-9	185	-18	10 824	-5	9 916	-4
October	42	-5	183	-1	11 893	10	10 416	5
November	30	-28	257	40	11 646	-2	9 998	-4
December	42	37	210	-18	12 129	4	10 406	4
2003								
January	39	-7	198	-6	10 900	-10	8 927	-14
February	47	20	184	-7	10 226	-6	9 056	1
March	30	-35	221	21	10 786	5	r 9 868	9
April	52	71	205	r -7	r 10 947	1	r 8 694	-12
May	32	-39	232	13	r 10 372	-5	r 8 975	3
June	35	9	163	-30	r 10 718	3	r 8 796	-2
July	r 52	r 49	180	11	r 10 606	-1	r 8 517	-3
August	47	-9	r 260	44	r 10 876	r 3	r 9 091	7
September	43	-7	168	-35	11 493	6	9 106	—

(a) It is difficult to get a complete picture of Tasmania's trade performance as imports recorded by the ABS include only goods imported directly into the State from overseas, and reported by the Australian Customs Service. Many of Tasmania's goods imported for direct consumption, or input into further processing industries, arrive via interstate ports, and are not included in this table.

(b) Includes re-exports.

Source: ABS data available on request, *International Trade*.

	European Community			East Asia					Total all countries
	United States of America	United Kingdom	Total European Community	Japan	Korea	Taiwan	Hong Kong	ASEAN(a)	
	\$'000	\$'000	\$'000	\$'000	\$'000	\$'000	\$'000	\$'000	
2000-01	229 841	37 169	154 043	573 314	183 972	214 042	252 793	390 642	2 435 416
2001-02	295 301	35 702	129 225	547 903	223 208	153 819	263 275	347 321	2 387 806
2002-03	r 230 809	r 39 150	r 215 868	588 373	r 247 373	r 149 217	326 211	r 303 614	r 2 453 974
2002									
September	10 027	4 012	16 254	41 879	24 133	9 507	28 449	25 207	184 956
October	14 462	1 175	9 195	53 803	25 511	10 861	11 353	29 069	183 035
November	74 124	2 704	7 876	44 174	23 738	15 083	33 495	19 355	256 503
December	5 749	2 767	20 498	57 329	18 621	18 795	33 278	25 558	210 267
2003									
January	15 865	2 233	4 036	53 432	21 321	9 564	36 113	26 049	197 626
February	17 035	1 749	15 230	43 546	26 884	9 995	21 792	17 837	183 614
March	17 017	11 159	r 26 642	46 931	r 17 118	r 10 050	36 933	r 27 312	r 221 326
April	r 21 282	2 102	16 556	50 082	r 19 745	14 815	22 998	r 34 999	r 204 792
May	12 961	r 2 801	r 68 181	49 557	r 16 709	10 509	13 829	r 23 879	r 231 736
June	r 9 449	1 196	6 522	48 338	10 015	8 553	30 289	r 15 368	r 162 797
July	r 30 546	r 1 887	4 197	47 026	r 20 834	r 9 471	19 021	r 17 179	r 180 474
August	r 91 478	r 1 650	r 5 063	r 44 596	15 664	r 12 292	r 32 218	r 26 733	r 259 545
September	9 156	5 438	14 024	38 908	15 890	13 633	21 854	17 099	168 229

(a) ASEAN member countries are: Brunei, Cambodia, Indonesia, Laos, Malaysia, Myanmar, Philippines, Singapore, Thailand and Viet Nam.

Source: ABS data available on request, International Trade.

	<i>Meat and meat preparations</i>	<i>Dairy product & eggs</i>	<i>Fish, crustaceans and molluscs</i>	<i>Vegetables and fruit</i>	<i>Wood and woodchips(a)</i>	<i>Textile fibres and wastes</i>	<i>Metallic ores and metal scrap</i>
	\$'000	\$'000	\$'000	\$'000	\$'000	\$'000	\$'000
2000-01	88 773	101 006	176 737	49 788	31 816	21 248	242 366
2001-02	75 541	114 682	174 885	60 759	43 788	23 797	188 273
2002-03	76 222	89 360	r 163 468	r 61 144	r 38 121	33 189	167 827
2002							
September	4 246	7 112	14 790	2 423	4 404	1 006	10 391
October	4 485	4 384	10 511	1 075	3 214	2 583	5 832
November	5 893	6 152	16 548	637	4 281	1 380	21 402
December	10 074	10 375	22 076	1 392	4 660	3 731	13 941
2003							
January	5 623	9 215	18 286	2 960	375	706	18 554
February	7 372	6 573	11 892	3 636	2 083	4 729	15 641
March	7 862	11 672	11 685	r 9 962	r 3 643	12 534	10 289
April	7 117	10 044	9 726	r 13 041	r 3 434	798	5 772
May	6 689	r 6 795	10 096	r 14 427	1 511	296	14 917
June	5 364	4 711	6 421	4 321	r 1 958	491	17 252
July	r 5 316	4 992	r 14 380	2 561	r 3 375	2 898	7 994
August	r 4 515	r 5 195	r 15 872	r 1 963	r 961	r 657	3 282
September	3 894	4 602	16 924	1 333	2 543	3 076	8 711

	<i>Paper and paperboard</i>	<i>Iron and steel</i>	<i>Non-ferrous metals</i>	<i>Road vehicles and transport equipment</i>	<i>Other and combined confidential items(b)</i>	<i>Total all commodity groups</i>
	\$'000	\$'000	\$'000	\$'000	\$'000	\$'000
2000-01	3 444	4 209	793 286	107 374	815 368	2 435 416
2001-02	14 208	2 894	762 015	106 156	820 806	2 387 806
2002-03	26 953	2 911	r 750 995	132 056	r 911 726	r 2 453 974
2002						
September	1 355	258	64 723	21	74 225	184 956
October	1 141	170	62 728	2 743	84 169	183 035
November	1 684	152	67 425	62 466	68 483	256 503
December	1 746	827	63 852	196	77 397	210 267
2003						
January	2 288	149	66 796	106	72 569	197 626
February	2 823	237	51 561	260	76 808	183 614
March	3 347	211	r 64 981	8 190	r 76 950	r 221 326
April	3 760	244	r 64 201	609	86 046	r 204 792
May	3 618	47	r 47 853	56 501	r 68 985	r 231 736
June	2 840	236	49 140	822	r 69 241	r 162 797
July	2 178	198	r 66 080	99	r 70 404	r 180 474
August	r 2 022	150	r 77 070	77 747	r 70 112	r 259 545
September	1 937	291	49 068	310	75 539	168 229

(a) Hardwood woodchips exports are confidential for Tasmania from June 2000.

(b) Includes medical & pharmaceutical products from January 2002.

Source: ABS data available on request, International Trade.

	NSW	Vic.	Qld	SA	WA	Tas.	Aust.(a)
Population							
Estimated resident population, March 2003 ('000) p	6 691.8	4 929.8	3 774.3	1 528.2	1 951.3	476.2	19 875.0
Proportion of Australian population, March 2003 (%) p	33.7	24.8	19.0	7.7	9.8	2.4	100.0
Population growth rate, 12 months to March 2003 (%) p	0.9	1.4	2.4	0.6	1.5	0.8	1.3
Labour force							
Employment growth, October 2002 to October 2003 (trend series) (%)							
Males	1.3	3.2	2.4	2.2	2.0	3.0	2.1
Females	1.7	-1.2	5.0	3.0	-1.3	7.8	1.3
Persons	1.5	1.2	3.6	2.6	0.6	5.1	1.8
Unemployment rate (trend series), October 2003 (%)	5.6	5.3	6.3	6.0	6.2	6.7	5.7
Unemployment growth, October 2002 to October 2003 (trend series) (%)	-2.9	-6.7	-7.8	-1.0	0.7	-19.3	-5.0
Participation rate (trend series), October 2003 (%)	62.7	63.1	64.9	61.6	65.7	59.1	63.5
Job vacancy rate, August 2003 (%)	1.3	1.4	1.5	1.1	1.1	*1.1	1.3
Working days lost through industrial disputes, 12 months to August 2003 (days per '000 employees)	23	53	30	15	51	8	34
Wages and prices							
Average weekly full-time adult employees' total earnings (trend series) August 2003(\$)							
Males	1 096.70	1 043.10	972.10	954.40	1 068.00	912.00	1 044.30
Females	887.00	854.80	790.20	822.80	784.30	776.30	847.60
Persons	1 019.40	977.40	906.90	909.70	971.20	868.20	974.30
Average weekly full-time adult employees' total earnings, growth (trend), 12 months to Aug '03 (%)	6.1	5.8	6.3	7.0	5.9	3.3	6.2
Consumer price index, all groups, annual growth to September qtr 2003 (%) ^(b)	2.0	2.9	2.9	3.6	2.1	2.6	2.6
Building							
% change in the number of total dwelling units approved (original),							
— in the 12 months ended September 2003, over the same period previous year	-2.8	-6.7	10.1	-2.8	5.8	11.2	—
— September 2002 to September 2003	14.0	13.9	40.2	11.9	17.1	31.5	18.6

For footnotes see end of table.

...continued

	NSW	Vic.	Qld	SA	WA	Tas.	Aust.(a)
Private investment and retail trade							
Where this indicator is measured in a survey, it will be prefaced with a question on satisfaction with levels of civic participation over the same period previous year (original)	6.7	13.5	23.1	29.0	19.4	-7.7	15.1
% change in trend estimates\nturnover of retail establishments, September 2003 (change from corresponding month\nof the previous year)	5.2	6.4	10.9	2.1	7.8	11.8	6.8
Transport							
% change in number of sales of new motor vehicles in the 12 months ended October 2003 over the same period previous year, (trend)(c)	5.6	8.4	14.0	16.4	11.3	13.3	9.2
Agriculture							
% change in the number of livestock slaughtered 12 months ended September 2003 over the same period previous year (original)							
Cattle and calves	-10.6	-11.7	4.8	-22.6	2.0	37.4	-4.1
Sheep and lambs	-38.7	-16.9	-51.6	-23.4	-8.3	9.5	-25.1
Tourism — room occupancy rates							
Hotels, motels & guest houses, & serviced apartments with facilities,— March quarter 2003 (%)	60.6	60.7	58.6	55.3	56.6	70.3	59.1
Australian National and State Accounts							
% change in Domestic (State) Final Demand(d), Chain Volume measures (trend series)							
Mar qtr 2003 to Jun qtr 2003	1.0	0.5	1.2	1.8	1.6	0.5	1.0
Jun qtr 2002 to Jun qtr 2003	4.7	3.3	5.6	6.5	8.2	3.4	5.0
(a) Australian totals include the ACT and NT, with the exception of Agriculture, which excludes both.							
(b) CPI applies to state capitals.							
(c) This data is new and replaces the Registration of New Motor Vehicles data. The Australian Bureau of Statistics is no longer collecting and disseminating statistics relating to the registration of new motor vehicles. For more information please refer to the paper <i>Developments in New Motor Vehicle Statistics, 2001</i> (cat. no. 9313.0)							
(d) Total of four types of expenditure: Private investment, Private consumption, Government investment, Government consumption.							

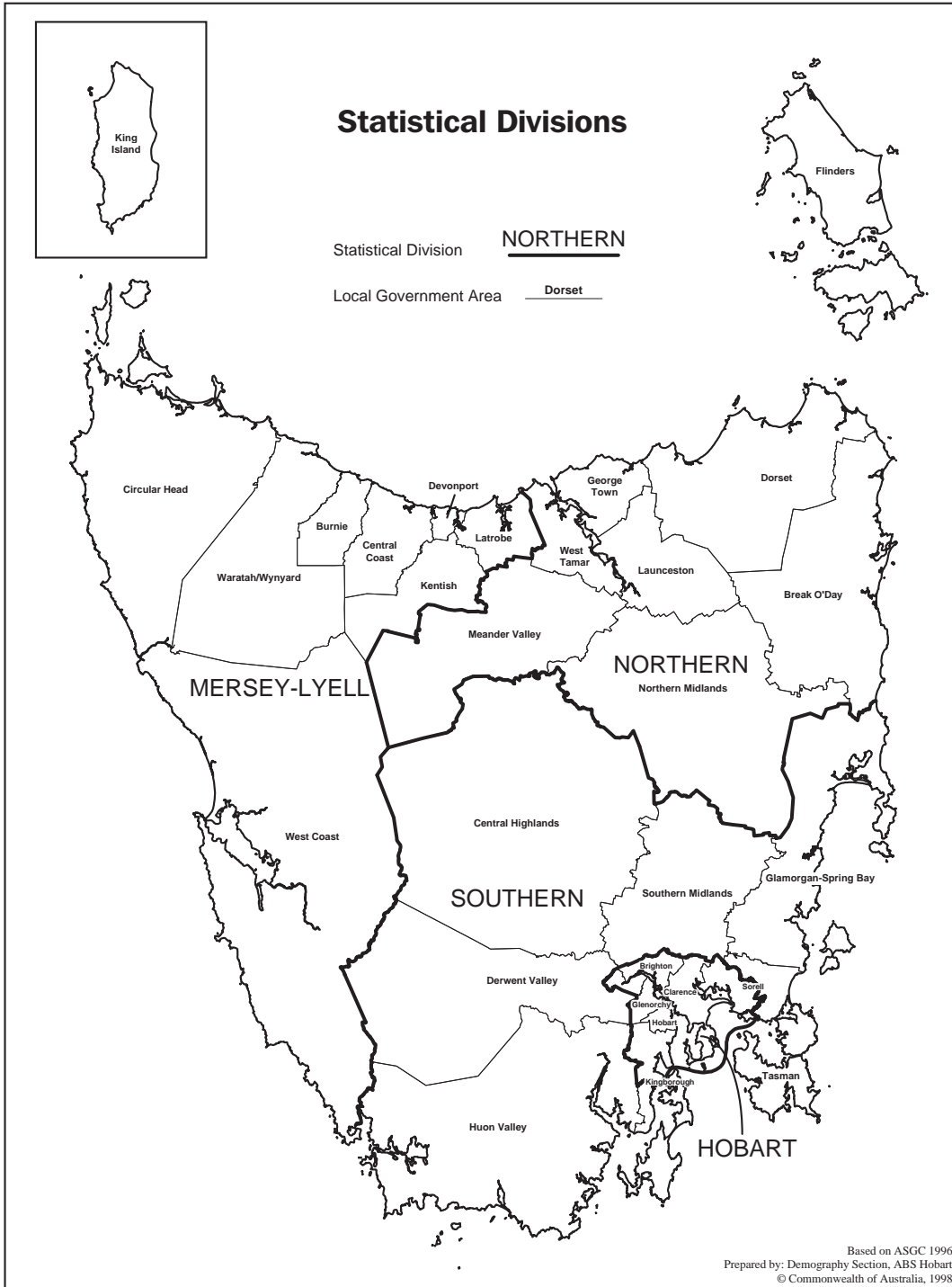
	<i>Unit</i>	<i>Greater Hobart and Southern Statistical Divisions</i>	<i>Northern Statistical Division</i>	<i>Mersey-Lyell Statistical Division</i>	<i>Tasmania</i>
Area(a)	km ²	25 616	19 980	22 523	68 121
Population					
Estimated resident population, 30 June 2001	no.	231 854	133 115	106 826	471 795
Estimated resident population, 30 June 2002	no.	232 713	133 595	106 417	472 725
Births 2001(b)	no.	3 199	1 815	1 397	6 430
Deaths 2001(b)	no.	1 827	1 148	884	3 876
Labour force (original), October 2003					
Total employed	no.	101 100	62 700	45 600	209 400
Total unemployed	no.	6 300	5 600	3 200	15 100
Unemployment rate	%	5.9	8.2	6.6	6.7
Participation rate	%	58.9	62.0	55.6	59.0
Schools, 2002(c)					
Government	no.	98	58	58	214
Non-government	no.	33	17	16	66
Full-time students, 2002(c)					
Government	no.	28 454	18 091	14 963	61 508
Non-government	no.	11 981	4 946	3 915	20 842
All schools	no.	40 435	23 037	18 878	82 350
Educational qualification, 2001 Census(d)					
Postgraduate degree level	no.	3 016	940	386	4 342
Graduate diploma and Graduate certificate level	no.	2 374	850	525	3 749
Batchelor degree level	no.	16 171	7 052	3 821	27 044
Advanced diploma and diploma level	no.	9 613	4 785	3 429	17 827
Certificate level	no.	25 715	15 463	12 953	54 131
Agriculture					
Establishments with agricultural activity, 2001-02 season	no.	1 060	1 471	1 495	4 027
Total area of establishments	ha.	704 091	774 431	296 618	1 775 140
Crops, production, 2001-02 season					
Potatoes	tonnes	7 715	128 560	213 076	350 134
Onions	tonnes	—	18 022	44 942	62 975
Apples	tonnes	36 741	6 234	8 642	51 617
Barley	tonnes	8 765	16 065	1 608	26 438
Livestock, 2001-02 season					
Meat cattle	no.	60 255	169 631	201 886	431 771
Milk cattle	no.	4 389	79 489	103 182	187 060
Sheep and lambs	no.	1 452 094	1 753 403	174 135	3 379 632
Pigs	no.	1 331	13 277	3 177	17 785
Gross value of agricultural production, 2001-02	\$m	nya	nya	nya	903
Building, 2002-03					
Total dwelling units approved	no.	1 214	588	336	2 138
Value of total residential building approved	\$'000	187 625	84 036	51 493	323 154
Value of total building approved	\$'000	281 778	137 297	97 597	516 671
Dwellings, Census 2001					
Total dwellings	no.	102 374	59 307	46 364	208 046
Occupied private dwellings	no.	89 156	51 249	40 766	181 172
Fully owned	no.	35 777	21 570	17 984	75 331

(a) Source: Department of Primary Industries, Water and Environment.

(b) Births and deaths are based on usual residence year of registration. Total Tasmania includes usual residence other than Tasmanian Statistical Divisions.

(c) Source: Tasmanian Department of Education and the Department of Education, Science and Training.

(d) From 2001 the *Australian Standard Classification of Education (ASCED)* (cat. no. 1272.0) replaced the *ABS Classification of Qualifications (ABSCQ)* (cat. no. 1262.0). For further information see ASCED.



FOR MORE INFORMATION...

- INTERNET* **www.abs.gov.au** the ABS web site is the best place to start for access to summary data from our latest publications, information about the ABS, advice about upcoming releases, our catalogue, and Australia Now—a statistical profile.
- LIBRARY* A range of ABS publications is available from public and tertiary libraries Australia-wide. Contact your nearest library to determine whether it has the ABS statistics you require, or visit our web site for a list of libraries.
- CPI INFOLINE* For current and historical Consumer Price Index data, call 1902 981 074 (call cost 77c per minute).
- DIAL-A-STATISTIC* For the latest figures for National Accounts, Balance of Payments, Labour Force, Average Weekly Earnings, Estimated Resident Population and the Consumer Price Index call 1900 986 400 (call cost 77c per minute).

INFORMATION SERVICE

Data which have been published and can be provided within five minutes are free of charge. Our information consultants can also help you to access the full range of ABS information—ABS user-pays services can be tailored to your needs, time frame and budget. Publications may be purchased. Specialists are on hand to help you with analytical or methodological advice.

- PHONE* **1300 135 070**
- EMAIL* **client.services@abs.gov.au**
- FAX* 1300 135 211
- POST* Client Services, ABS, GPO Box 796, Sydney 2001

WHY NOT SUBSCRIBE?

ABS subscription services provide regular, convenient and prompt deliveries of ABS publications and products as they are released. Email delivery of monthly and quarterly publications is available.

- PHONE* 1300 366 323
- EMAIL* subscriptions@abs.gov.au
- FAX* 03 9615 7848
- POST* Subscription Services, ABS, GPO Box 2796Y, Melbourne 3001



2130360012035
ISSN 1034-1803

RRP \$22.00