

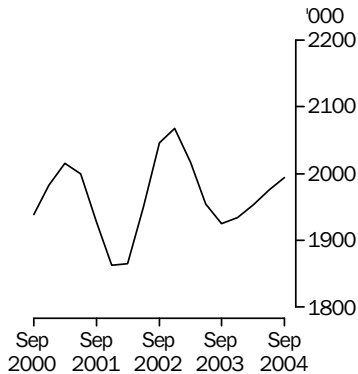
LIVESTOCK PRODUCTS

AUSTRALIA

EMBARGO: 11.30AM (CANBERRA TIME) THURS 11 NOV 2004

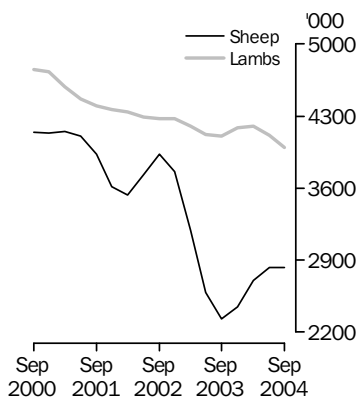
Cattle slaughtering

Excluding calves
Trend



Sheep and lamb slaughtering

Trend



KEY FIGURES

TREND ESTIMATES

	Sep Qtr 2003	Jun Qtr 2004	Sep Qtr 2004
	'000	'000	'000
Number slaughtered			
Cattle	1 925.0	1 976.2	1 994.0
Calves	278.1	239.5	212.3
Sheep	2 325.8	2 826.7	2 824.6
Lambs	4 109.2	4 110.1	3 994.9
Pigs	1 424.3	1 367.0	1 348.5
Chickens	105 262.6	103 703.4	103 598.1

	Sep Qtr 2003	Jun Qtr 2004	Sep Qtr 2004
	tonnes	tonnes	tonnes
Meat produced			
Beef	484 066	520 412	531 381
Veal	9 377	8 251	7 242
Mutton	48 277	59 029	58 081
Lamb	83 327	84 663	81 326
Pig meat	103 890	98 984	97 896
Chicken meat	169 853	170 283	170 007
Wool receivals	106 588	122 537	120 747

	Jun Qtr 2003	Mar Qtr 2004	Jun Qtr 2004
	ML	ML	ML
Whole milk intake by factories	2 461	2 543	2 567

KEY POINTS

TREND ESTIMATES

- The trend estimate for beef production in September quarter 2004 increased by 2% to a record 531,000 tonnes.
- The trend estimate for the number of sheep slaughtered in September quarter 2004 remained steady at 2.8 million.
- The trend estimate for the number of lambs slaughtered fell by 3% to 4.0 million, the lowest quarterly trend estimate since March 1999.
- In September quarter 2004, the trend estimate for the number of pigs slaughtered fell slightly to 1.3 million. This was the sixth consecutive quarterly decrease and the lowest quarterly trend estimate since December 2001.

INQUIRIES

- For further information about these and related statistics, contact the National Information and Referral Service on 1300 135 070 or Frank Costin on Hobart (03) 6222 5838.

NOTES

FORTHCOMING ISSUES

ISSUE (Quarter)

RELEASE DATE

December 2004

14 February 2005

March 2005

13 May 2005

.....

CHANGES IN THIS ISSUE

There are no changes in this issue.

FORTHCOMING CHANGES

There are no forthcoming changes.

.....

ABBREVIATIONS

ABS Australian Bureau of Statistics

ML megalitre

t tonne

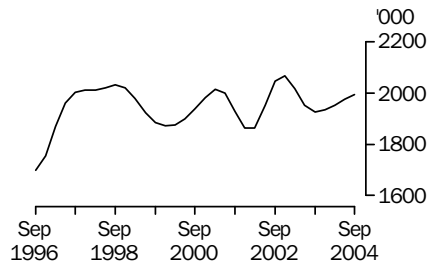
UHT ultra heat treated

Susan Linacre

Acting Australian Statistician

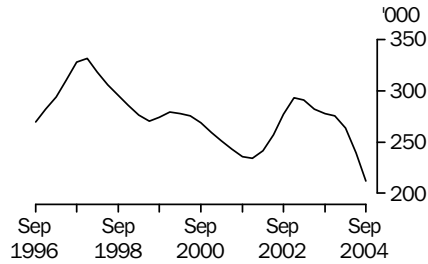
LIVESTOCK SLAUGHTERED TREND

CATTLE (EXCLUDING CALVES)



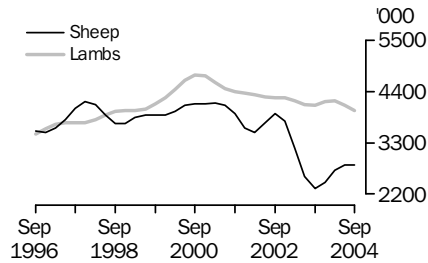
The trend estimate for the number of cattle slaughtered in September quarter 2004 rose slightly to 2.0 million.

CALVES



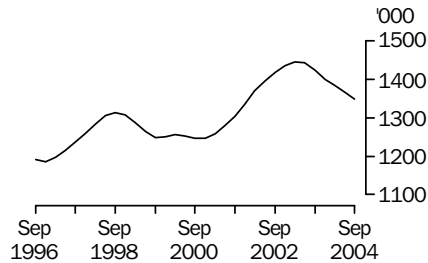
The trend estimate for the number of calves slaughtered in September quarter 2004 fell by 11% to 212,000.

SHEEP AND LAMBS



In September quarter 2004, the trend estimate for the number of sheep slaughtered remained steady at 2.8 million. The number of lambs slaughtered fell by 3% to 4.0 million, the lowest quarterly trend estimate since March 1999.

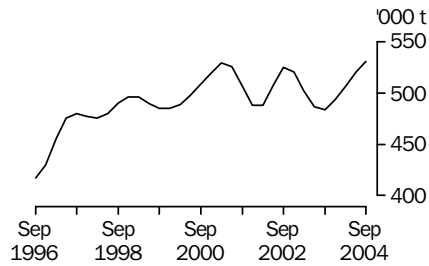
PIGS



In September quarter 2004, the trend estimate for the number of pigs slaughtered fell to 1.3 million. This was the sixth consecutive quarterly decrease and the lowest quarterly trend estimate since December 2001.

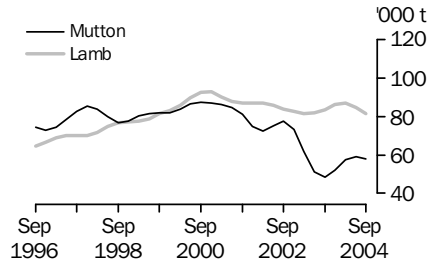
MEAT PRODUCTION TREND

BEEF



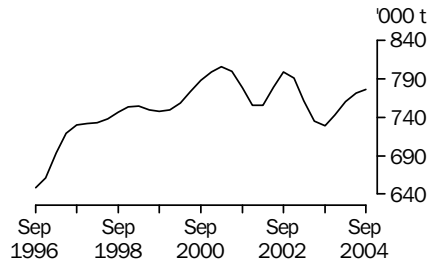
In September quarter 2004, the trend estimate for beef production rose by 2% to a record 531,000 tonnes.

MUTTON AND LAMB



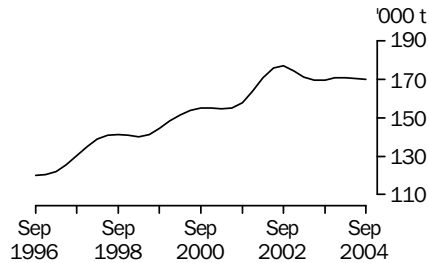
In September quarter 2004, the trend estimate for mutton production fell by 2% to 58,100 tonnes, and the estimate for lamb production fell by 4% to 81,300 tonnes.

TOTAL RED MEAT



The trend estimate for red meat production rose slightly to 776,000 tonnes in September quarter 2004. This rise was due to increased beef production for the quarter, since veal, mutton, lamb and pig meat production all fell.

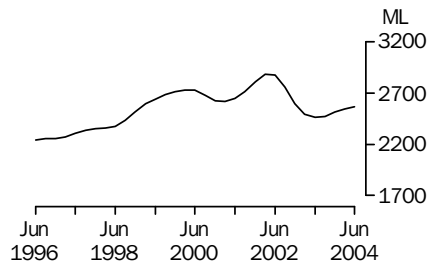
CHICKEN MEAT



The trend estimate for chicken meat production in September quarter 2004 remained steady at 170,000 tonnes.

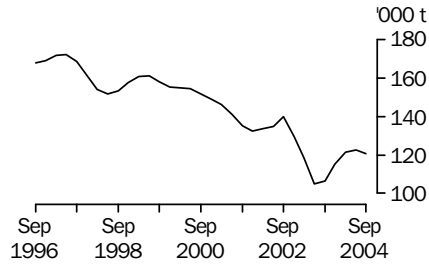
LIVESTOCK PRODUCTS TREND

WHOLE MILK INTAKE BY FACTORIES



An improvement in seasonal conditions in June quarter 2004 saw the trend estimate for whole milk intake by factories increase marginally to 2.6 billion litres.

BROKERS AND DEALERS RECEIVALS OF TAXABLE WOOL



The trend estimate for wool receivals by brokers and dealers for September quarter 2004 fell marginally to 121,000 tonnes.

LIVESTOCK EXPORTS ORIGINAL

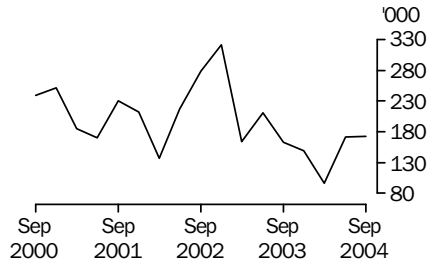
EXPORTS OF LIVE SHEEP



Live sheep exports increased by 26% to 851,000 in September quarter 2004.

The gross value of live sheep exports rose by 31% to \$58.8 million, with the unit value increasing to \$69.16.

EXPORTS OF LIVE CATTLE



In September 2004 live cattle exports rose marginally to 172,000. A 14% increase in unit value (to \$651.00) saw the gross value of live cattle exports increase to \$112 million.

LIVESTOCK SLAUGHTERED, Australia(a): All Series

<i>Quarter</i>	<i>Bulls, bullocks and steers</i>	<i>Cows and heifers</i>	<i>Total cattle (excluding calves)</i>	<i>Calves</i>	<i>Sheep</i>	<i>Lambs</i>	<i>Pigs</i>	<i>Chickens</i>
	'000	'000	'000	'000	'000	'000	'000	'000
ORIGINAL								
2003								
June	943.7	1 087.2	2 030.9	261.0	2 271.4	4 083.3	1 500.1	101 682.1
September	951.2	997.9	1 949.1	480.1	1 899.9	3 667.9	1 437.9	105 746.9
December	1 017.9	916.3	1 934.2	201.5	2 736.3	4 371.5	1 376.9	107 480.2
2004								
March	945.6	903.2	1 848.8	126.1	3 076.2	4 285.5	1 352.3	106 367.5
June	1 016.3	1 004.5	2 020.8	218.1	2 708.4	4 236.9	1 424.1	100 459.3
September	1 135.9	953.4	2 089.3	413.9	2 345.3	3 597.7	1 360.1	102 643.9
SEASONALLY ADJUSTED								
2003								
June	950.9	998.9	1 949.7	281.5	2 509.7	4 023.5	1 440.9	103 087.6
September	918.6	976.4	1 895.0	248.8	2 172.2	3 907.2	1 419.6	107 334.7
December	985.8	979.5	1 965.3	309.7	2 503.5	4 209.5	1 395.1	104 228.2
2004								
March	1 007.0	947.4	1 954.5	255.6	2 729.4	4 240.6	1 391.4	105 571.5
June	1 022.8	922.3	1 945.2	235.3	2 990.0	4 179.0	1 367.3	101 808.2
September	1 098.3	932.8	2 031.0	214.8	2 654.5	3 853.0	1 343.6	104 322.8
TREND								
2003								
June	955.8	998.2	1 954.0	282.1	2 582.1	4 120.1	1 442.9	104 377.1
September	945.1	979.9	1 925.0	278.1	2 325.8	4 109.2	1 424.3	105 262.6
December	964.9	968.7	1 933.6	275.8	2 449.1	4 187.9	1 400.6	105 375.7
2004								
March	1 004.2	949.5	1 953.6	263.4	2 704.6	4 205.3	1 384.9	104 490.3
June	1 042.5	933.7	1 976.2	239.5	2 826.7	4 110.1	1 367.0	103 703.4
September	1 071.5	922.4	1 994.0	212.3	2 824.6	3 994.9	1 348.5	103 598.1

(a) For more information refer to paragraphs 5 to 9 of the Explanatory Notes.

LIVESTOCK PRODUCTS, Australia(a): All Series

Quarter	RED MEAT						Chicken meat tonnes	Whole milk intake by factories ML	Brokers and dealers receipts of taxable wool tonnes
	Beef tonnes	Veal tonnes	Mutton tonnes	Lamb tonnes	Pig meat tonnes	Total red meat tonnes			
ORIGINAL									
2003									
June	499 323	8 953	43 734	81 381	111 490	744 881	164 280	1 782	71 921
September	489 378	12 683	39 847	73 146	106 120	721 174	169 979	2 370	121 566
December	497 502	7 945	60 488	90 068	98 551	754 555	175 765	3 431	135 827
2004									
March	483 454	6 644	64 694	89 804	96 531	741 128	172 068	2 442	117 290
June	527 514	7 821	54 684	88 430	104 697	783 145	165 723	1 832	92 900
September	551 747	11 246	48 240	70 757	99 416	781 405	169 152	nya	127 458
SEASONALLY ADJUSTED									
2003									
June	484 832	9 295	49 662	80 245	105 740	729 774	166 520	2 472	99 186
September	478 520	8 217	45 219	79 231	103 611	714 798	171 434	2 471	109 034
December	496 195	10 752	53 650	86 328	100 832	747 757	170 393	2 509	114 158
2004									
March	512 139	8 774	58 130	88 011	100 511	767 565	172 276	2 548	122 266
June	511 728	8 151	62 055	87 078	99 252	768 264	167 992	2 569	128 183
September	539 642	7 283	54 475	77 100	97 386	775 886	170 684	nya	114 232
TREND									
2003									
June	486 758	9 389	51 363	81 886	105 926	735 322	169 502	2 461	104 864
September	484 066	9 377	48 277	83 327	103 890	728 937	169 853	2 471	106 588
December	493 137	9 413	52 135	86 215	101 487	742 387	170 764	2 512	115 247
2004									
March	507 015	9 090	57 306	87 027	100 190	760 628	170 917	2 543	121 455
June	520 412	8 251	59 029	84 663	98 984	771 339	170 283	2 567	122 537
September	531 381	7 242	58 081	81 326	97 896	775 926	170 007	nya	120 747

nya not yet available

(a) For more information refer to paragraphs 5 to 9 and 13 to 15 of the Explanatory Notes.

NUMBER OF LIVESTOCK SLAUGHTERED (a), Bulls, Bullocks and Steers: All Series

Quarter	New South Wales	Victoria	Queensland	South Australia	Western Australia	Tasmania	Australia
	'000	'000	'000	'000	'000	'000	'000
ORIGINAL							
2003							
June	218.9	154.3	476.8	38.9	36.0	18.6	943.7
September	180.7	137.5	547.3	31.8	40.6	13.1	951.2
December	201.5	144.9	535.9	46.6	63.3	25.4	1 017.9
2004							
March	208.6	170.6	444.3	41.0	50.6	30.3	945.6
June	203.0	160.8	542.2	34.6	46.0	29.5	1 016.3
September	235.4	137.2	661.4	27.3	50.3	24.0	1 135.9
SEASONALLY ADJUSTED							
2003							
June	225.0	160.5	473.8	39.8	40.5	18.6	950.9
September	180.6	155.7	479.1	37.9	43.7	15.3	918.6
December	201.2	136.4	528.6	43.7	52.2	26.5	985.8
2004							
March	203.5	155.8	530.5	36.8	50.8	25.4	1 007.0
June	208.3	166.8	539.1	35.2	51.9	29.6	1 022.8
September	236.3	156.5	578.4	32.7	55.4	28.1	1 098.3
TREND							
2003							
June	223.1	158.4	478.5	40.0	42.9	18.4	955.8
September	204.7	154.9	490.2	40.3	45.2	20.0	945.1
December	197.8	154.2	511.6	40.0	48.8	23.5	964.9
2004							
March	203.4	156.9	532.4	38.2	51.6	26.7	1 004.2
June	214.9	160.1	550.0	35.4	53.0	28.4	1 042.5
September	227.2	161.5	564.5	32.9	54.0	28.7	1 071.5

(a) For more information refer to paragraph 4 of the Explanatory Notes.

NUMBER OF LIVESTOCK SLAUGHTERED(a), Cows and Heifers: All Series

Quarter	New South Wales	Victoria	Queensland	South Australia	Western Australia	Tasmania	Australia
	'000	'000	'000	'000	'000	'000	'000
ORIGINAL							
2003							
June	235.1	256.4	448.0	50.9	58.9	36.8	1 087.2
September	219.2	220.4	437.5	32.5	61.7	25.6	997.9
December	217.9	233.8	342.6	35.1	62.2	23.7	916.3
2004							
March	190.3	243.6	330.2	38.1	71.2	28.8	903.2
June	194.1	246.1	428.7	38.8	67.5	28.4	1 004.5
September	206.2	238.2	381.5	32.7	71.6	22.1	953.4
SEASONALLY ADJUSTED							
2003							
June	222.0	256.9	382.7	48.0	63.2	31.4	998.9
September	221.4	227.6	398.1	35.8	63.5	32.3	976.4
December	221.9	230.8	388.6	35.8	60.1	25.3	979.5
2004							
March	193.0	238.6	390.1	36.3	67.0	25.4	947.4
June	183.3	246.8	365.4	36.5	72.4	24.4	922.3
September	212.2	245.6	347.2	36.1	73.8	28.6	932.8
TREND							
2003							
June	230.7	243.9	382.8	44.4	64.6	32.3	998.2
September	222.3	235.4	390.1	39.1	62.2	30.1	979.9
December	210.0	233.1	394.1	36.0	62.8	27.1	968.7
2004							
March	199.8	237.2	383.0	35.7	66.6	25.3	949.5
June	195.0	244.0	367.4	36.3	70.9	25.5	933.7
September	197.1	247.4	351.9	36.3	74.1	27.1	922.4

(a) For more information refer to paragraph 4 of the Explanatory Notes.

NUMBER OF LIVESTOCK SLAUGHTERED(a), Total Cattle (excluding Calves): All Series

Quarter	New South Wales	Victoria	Queensland	South Australia	Western Australia	Tasmania	Australia
	'000	'000	'000	'000	'000	'000	'000
ORIGINAL							
2003							
June	453.9	410.7	924.8	89.8	94.8	55.5	2 030.9
September	399.8	357.8	984.8	64.3	102.2	38.7	1 949.1
December	419.4	378.6	878.5	81.7	125.5	49.1	1 934.2
2004							
March	398.9	414.2	774.5	79.1	121.7	59.0	1 848.8
June	397.1	406.9	970.9	73.3	113.4	57.9	2 020.8
September	441.6	375.4	1 042.9	60.0	122.0	46.1	2 089.3
SEASONALLY ADJUSTED							
2003							
June	447.0	417.4	856.5	87.8	103.7	50.0	1 949.7
September	402.1	383.4	877.2	73.7	107.2	47.6	1 895.0
December	423.0	367.2	917.3	79.5	112.3	51.8	1 965.3
2004							
March	396.4	394.4	920.6	73.1	117.8	50.8	1 954.5
June	391.5	413.5	904.6	71.7	124.3	53.9	1 945.2
September	448.5	402.0	925.5	68.8	129.3	56.7	2 031.0
TREND							
2003							
June	453.8	402.3	861.4	84.4	107.5	50.6	1 954.0
September	427.0	390.3	880.3	79.4	107.4	50.2	1 925.0
December	407.8	387.3	905.6	76.0	111.6	50.6	1 933.6
2004							
March	403.3	394.2	915.4	73.9	118.1	52.0	1 953.6
June	409.9	404.1	917.4	71.7	123.9	53.9	1 976.2
September	424.3	408.9	916.5	69.2	128.1	55.8	1 994.0

(a) For more information refer to paragraph 4 of the Explanatory Notes.

NUMBER OF LIVESTOCK SLAUGHTERED (a), Calves: All Series

Quarter	New South Wales	Victoria	Queensland	South Australia	Western Australia	Tasmania	Australia
	'000	'000	'000	'000	'000	'000	'000
ORIGINAL							
2003							
June	66.4	164.2	23.0	2.9	1.3	2.9	261.0
September	56.4	362.9	23.4	2.2	1.3	33.7	480.1
December	53.7	115.3	21.4	1.1	1.1	8.7	201.5
2004							
March	56.6	45.5	19.7	1.5	1.3	1.3	126.1
June	55.2	135.5	20.7	1.9	1.1	3.6	218.1
September	50.8	307.9	20.2	1.4	1.2	32.2	413.9
SEASONALLY ADJUSTED							
2003							
June	61.2	182.0	21.6	2.5	1.4	11.3	281.5
September	57.6	159.1	23.0	1.9	1.2	11.1	248.8
December	60.0	193.5	23.1	1.5	1.0	14.1	309.7
2004							
March	54.4	203.5	19.9	1.7	1.3	16.2	255.6
June	50.9	149.8	19.4	1.6	1.2	14.0	235.3
September	51.9	136.0	19.9	1.2	1.1	10.6	214.8
TREND							
2003							
June	60.6	183.1	23.2	2.4	1.3	11.9	282.1
September	59.2	178.2	22.8	1.9	1.2	12.3	278.1
December	57.5	185.9	21.9	1.7	1.2	13.9	275.8
2004							
March	54.9	182.7	20.8	1.6	1.2	14.8	263.4
June	52.5	164.0	19.7	1.5	1.2	13.8	239.5
September	50.5	140.0	19.1	1.3	1.2	12.1	212.3

(a) For more information refer to paragraph 4 of the Explanatory Notes.

NUMBER OF LIVESTOCK SLAUGHTERED (a), Sheep: All Series

Quarter	New South Wales	Victoria	Queensland	South Australia	Western Australia	Tasmania	Australia
	'000	'000	'000	'000	'000	'000	'000
ORIGINAL							
2003							
June	814.9	642.7	227.0	180.0	290.5	116.3	2 271.4
September	611.0	541.6	216.2	185.2	274.7	71.3	1 899.9
December	790.2	808.7	240.0	282.4	514.3	100.8	2 736.3
2004							
March	948.2	920.6	229.1	266.1	604.1	108.1	3 076.2
June	952.4	816.2	214.4	206.8	452.4	66.1	2 708.4
September	713.4	674.4	226.3	206.9	479.1	45.2	2 345.3
SEASONALLY ADJUSTED							
2003							
June	875.4	712.9	222.4	220.2	387.1	114.7	2 509.7
September	648.0	656.7	217.1	212.2	312.4	111.5	2 172.2
December	742.1	719.9	246.3	244.5	444.8	103.4	2 503.5
2004							
March	892.2	799.9	226.7	230.9	496.3	78.9	2 729.4
June	1 024.1	905.2	210.6	252.9	604.7	65.3	2 990.0
September	758.7	820.3	227.0	236.0	546.6	69.9	2 654.5
TREND							
2003							
June	876.5	736.3	232.8	239.2	390.7	112.5	2 582.1
September	712.3	678.7	225.7	217.4	370.3	113.0	2 325.8
December	757.2	720.2	228.4	226.7	418.6	98.7	2 449.1
2004							
March	865.9	799.5	227.6	240.0	503.9	82.7	2 704.6
June	910.3	850.3	222.0	243.1	560.3	70.8	2 826.7
September	883.6	869.7	217.2	241.4	582.6	64.4	2 824.6

(a) For more information refer to paragraph 4 of the Explanatory Notes.

NUMBER OF LIVESTOCK SLAUGHTERED (a), Lambs: All Series

Quarter	New South Wales	Victoria	Queensland	South Australia	Western Australia	Tasmania	Australia
	'000	'000	'000	'000	'000	'000	'000
ORIGINAL							
2003							
June	1 037.5	1 639.6	75.3	727.6	514.9	88.4	4 083.3
September	912.8	1 478.3	96.1	574.2	501.0	105.5	3 667.9
December	1 056.0	1 747.7	143.3	700.0	629.0	95.5	4 371.5
2004							
March	1 087.0	1 625.9	142.1	727.7	598.7	104.1	4 285.5
June	988.5	1 622.6	154.8	693.9	663.0	114.1	4 236.9
September	891.8	1 394.3	153.5	480.9	577.7	99.5	3 597.7
SEASONALLY ADJUSTED							
2003							
June	1 036.1	1 682.4	75.6	667.1	510.8	89.1	4 023.5
September	926.9	1 526.8	84.6	711.5	557.0	100.0	3 907.2
December	1 046.0	1 629.3	154.5	687.0	572.5	98.8	4 209.5
2004							
March	1 061.8	1 652.7	151.4	670.7	601.9	105.9	4 240.6
June	988.5	1 659.3	155.3	636.9	658.7	114.5	4 179.0
September	900.1	1 447.4	134.9	597.6	641.5	94.5	3 853.0
TREND							
2003							
June	1 045.5	1 669.8	80.5	709.6	527.6	94.3	4 120.1
September	1 037.8	1 632.5	102.8	695.1	546.3	96.1	4 109.2
December	1 048.5	1 640.2	133.6	686.4	576.8	101.9	4 187.9
2004							
March	1 032.5	1 638.6	151.8	667.5	610.8	106.2	4 205.3
June	986.3	1 597.7	151.8	635.2	636.7	106.0	4 110.1
September	938.0	1 532.6	142.2	608.4	652.5	103.2	3 994.9

(a) For more information refer to paragraph 4 of the Explanatory Notes.

NUMBER OF LIVESTOCK SLAUGHTERED (a), Pigs: All Series

Quarter	New South Wales	Victoria	Queensland	South Australia	Western Australia	Tasmania	Australia
	'000	'000	'000	'000	'000	'000	'000
ORIGINAL							
2003							
June	475.7	269.4	329.5	235.2	176.4	11.6	1 500.1
September	453.9	248.0	335.7	215.8	170.6	11.6	1 437.9
December	439.4	243.7	326.1	191.3	162.3	11.7	1 376.9
2004							
March	414.6	233.8	320.9	202.3	167.7	10.7	1 352.3
June	443.1	247.7	335.4	211.5	173.8	10.2	1 424.1
September	415.9	235.2	323.1	201.3	170.6	11.6	1 360.1
SEASONALLY ADJUSTED							
2003							
June	460.0	261.0	317.2	219.5	168.8	11.0	1 440.9
September	444.2	246.4	334.7	215.5	169.7	11.7	1 419.6
December	439.5	242.8	330.6	208.7	168.2	11.6	1 395.1
2004							
March	429.5	240.8	329.6	199.0	169.0	11.4	1 391.4
June	427.1	239.9	323.2	197.3	166.6	9.7	1 367.3
September	414.5	232.8	319.3	201.9	168.7	11.4	1 343.6
TREND							
2003							
June	458.1	255.5	324.7	218.9	170.5	11.5	1 442.9
September	447.5	249.8	331.4	214.4	169.6	11.5	1 424.3
December	438.3	243.9	331.0	207.6	168.5	11.4	1 400.6
2004							
March	431.2	240.5	328.8	201.7	168.2	11.0	1 384.9
June	424.2	238.0	323.9	199.0	167.9	10.7	1 367.0
September	417.2	234.7	320.1	198.7	167.9	10.6	1 348.5

(a) For more information refer to paragraph 4 of the Explanatory Notes.

NUMBER OF CHICKENS SLAUGHTERED(a): All Series

Quarter	New South Wales	Victoria	Queensland	South Australia	Western Australia	Australia
	'000	'000	'000	'000	'000	'000
ORIGINAL						
2003						
June	35 613.2	29 138.0	18 282.3	np	np	101 682.1
September	38 377.1	29 312.9	19 209.3	np	np	105 746.9
December	36 797.4	31 092.4	20 288.0	np	np	107 480.2
2004						
March	37 155.1	30 319.2	19 761.1	np	np	106 367.5
June	37 029.2	29 621.5	18 213.7	np	np	100 459.3
September	37 001.4	29 496.7	20 190.6	np	np	102 643.9
SEASONALLY ADJUSTED						
2003						
June	35 947.8	29 417.2	18 699.1	np	np	103 087.6
September	38 716.4	29 944.9	19 534.5	np	np	107 334.7
December	35 742.8	30 192.5	19 474.9	np	np	104 228.2
2004						
March	37 016.5	29 972.5	19 626.9	np	np	105 571.5
June	37 373.9	29 915.2	18 640.1	np	np	101 808.2
September	37 252.9	30 174.8	20 692.3	np	np	104 322.8
TREND						
2003						
June	36 732.5	29 688.2	18 972.2	np	np	104 377.1
September	36 885.5	29 893.1	19 335.0	np	np	105 262.6
December	36 977.1	30 019.2	19 407.3	np	np	105 375.7
2004						
March	36 902.8	30 046.1	19 373.8	np	np	104 490.3
June	37 066.0	30 021.9	19 521.4	np	np	103 703.4
September	37 543.9	30 046.9	19 927.0	np	np	103 598.1

np not available for publication but included in totals where applicable, unless otherwise indicated

(a) For more information refer to paragraphs 8 and 9 of the Explanatory Notes.

NUMBER OF LIVESTOCK SLAUGHTERED (a): Original

Financial year	New South Wales '000	Victoria '000	Queensland '000	South Australia '000	Western Australia '000	Tasmania '000	Australia '000
BULLS, BULLOCKS AND STEERS							
2001-02	820.5	630.6	2 150.0	182.0	137.7	80.6	4 002.4
2002-03	961.6	630.0	1 993.7	166.6	173.4	79.9	4 006.3
2003-04	793.7	613.7	2 069.7	153.9	200.4	98.3	3 930.9
COWS AND HEIFERS							
2001-02	992.1	800.6	1 364.2	150.6	230.6	79.4	3 621.7
2002-03	968.9	1 020.5	1 521.6	192.5	255.9	112.9	4 076.4
2003-04	821.4	943.8	1 539.0	144.5	262.5	106.5	3 821.9
TOTAL CATTLE (excluding calves)							
2001-02	1 812.6	1 431.1	3 514.1	332.6	368.3	160.0	7 624.1
2002-03	1 930.5	1 650.4	3 515.2	359.1	429.3	192.8	8 082.7
2003-04	1 615.2	1 557.5	3 608.7	298.5	462.9	204.7	7 752.9
CALVES							
2001-02	205.7	597.0	99.7	9.6	6.0	44.6	963.3
2002-03	246.1	749.3	92.1	11.0	5.3	41.2	1 145.8
2003-04	221.9	659.2	85.1	6.8	4.7	47.3	1 025.8
SHEEP							
2001-02	5 712.7	3 819.5	1 334.0	1 337.7	1 961.3	275.8	14 441.0
2002-03	5 282.2	3 641.2	1 142.0	1 431.8	1 771.8	388.3	13 657.3
2003-04	3 301.7	3 087.1	899.7	940.5	1 845.4	346.3	10 420.7
LAMBS							
2001-02	4 558.8	6 997.4	627.6	2 933.4	1 856.6	426.4	17 400.2
2002-03	4 388.8	6 904.8	340.3	2 841.1	2 021.0	374.0	16 869.8
2003-04	4 044.3	6 474.5	536.3	2 695.8	2 391.8	419.2	16 561.8
PIGS							
2001-02	1 885.0	1 042.1	1 133.7	690.0	591.4	53.1	5 402.4
2002-03	1 860.6	1 033.2	1 234.8	884.1	672.3	47.7	5 741.7
2003-04	1 751.0	973.2	1 318.1	820.9	674.4	44.2	5 591.2
CHICKENS							
2001-02	156 682.0	109 311.2	70 940.6	np	np	np	415 555.6
2002-03	149 917.0	117 892.0	75 149.3	np	np	np	419 181.0
2003-04	149 358.7	120 345.9	77 472.0	np	np	np	420 053.9

np not available for publication but included in totals where applicable, unless otherwise indicated

(a) For more information refer to paragraphs 4, 5 and 7 to 9 of the Explanatory Notes.

RED MEAT PRODUCED(a), Beef: All Series

Quarter	New South Wales	Victoria	Queensland	South Australia	Western Australia	Tasmania	Australia
	tonnes	tonnes	tonnes	tonnes	tonnes	tonnes	tonnes
ORIGINAL							
2003							
June	108 541	89 867	242 235	21 413	22 650	14 328	499 323
September	95 483	80 324	262 870	15 611	24 687	10 120	489 378
December	102 846	87 972	239 249	21 514	32 363	13 282	497 502
2004							
March	101 958	98 121	214 642	20 875	31 198	16 385	483 454
June	101 498	95 046	267 721	18 988	28 307	15 667	527 514
September	112 565	87 882	293 318	14 922	30 219	12 550	551 747
SEASONALLY ADJUSTED							
2003							
June	106 050	92 129	228 026	21 378	25 204	13 235	484 832
September	97 607	86 588	232 800	18 374	25 833	13 123	478 520
December	103 490	84 824	247 687	20 407	28 567	13 490	496 195
2004							
March	101 524	92 694	255 101	19 092	29 779	14 082	512 139
June	99 158	97 275	251 851	18 892	31 531	14 519	511 728
September	115 080	94 756	259 489	17 662	33 008	16 229	539 642
TREND							
2003							
June	108 084	89 221	229 730	20 679	26 286	13 347	486 758
September	103 464	87 128	235 118	19 846	26 451	13 260	484 066
December	101 198	87 965	244 910	19 467	27 857	13 442	493 137
2004							
March	101 653	91 337	251 828	19 238	29 909	14 050	507 015
June	104 473	94 957	255 620	18 722	31 526	14 879	520 412
September	108 834	96 688	257 703	17 993	32 700	15 694	531 381

(a) For more information refer to paragraphs 4 to 6 of the Explanatory Notes.

	<i>New South Wales</i>	<i>Victoria</i>	<i>Queensland</i>	<i>South Australia</i>	<i>Western Australia</i>	<i>Tasmania</i>	<i>Australia</i>
<i>Quarter</i>	tonnes	tonnes	tonnes	tonnes	tonnes	tonnes	tonnes
ORIGINAL							
2003							
June	4 283	3 339	1 087	88	77	67	8 953
September	3 621	7 079	1 168	69	80	653	12 683
December	3 464	3 120	1 072	41	60	176	7 945
2004							
March	3 643	1 815	1 027	48	63	36	6 644
June	3 547	3 062	1 003	58	55	82	7 821
September	3 252	6 293	953	45	63	627	11 246
SEASONALLY ADJUSTED							
2003							
June	3 961	3 900	1 039	78	81	230	9 295
September	3 730	3 131	1 156	62	71	221	8 217
December	3 990	5 083	1 190	51	61	272	10 752
2004							
March	3 368	6 632	984	50	66	309	8 774
June	3 288	3 592	959	52	59	282	8 151
September	3 349	2 798	942	41	56	214	7 283
TREND							
2003							
June	4 053	3 625	1 103	77	76	237	9 389
September	3 904	4 011	1 141	63	72	243	9 377
December	3 699	4 695	1 116	54	66	270	9 413
2004							
March	3 526	4 730	1 045	50	62	286	9 090
June	3 353	4 051	967	48	60	273	8 251
September	3 229	3 119	915	45	57	242	7 242

(a) For more information refer to paragraphs 4 to 6 of the Explanatory Notes.

RED MEAT PRODUCED(a), Mutton: All Series

Quarter	<i>New South Wales</i>	<i>Victoria</i>	<i>Queensland</i>	<i>South Australia</i>	<i>Western Australia</i>	<i>Tasmania</i>	Australia
	tonnes	tonnes	tonnes	tonnes	tonnes	tonnes	tonnes
ORIGINAL							
2003							
June	16 090	11 400	4 271	3 948	5 797	2 227	43 734
September	13 318	10 475	4 526	4 527	5 619	1 382	39 847
December	18 674	16 829	5 246	7 251	10 456	2 031	60 488
2004							
March	21 116	17 927	4 877	6 566	12 086	2 122	64 694
June	20 087	14 964	4 511	4 886	8 932	1 304	54 684
September	15 239	12 883	4 774	4 853	9 617	873	48 240
SEASONALLY ADJUSTED							
2003							
June	17 602	13 338	4 177	5 050	7 808	2 205	49 662
September	14 043	12 532	4 648	5 129	6 360	2 187	45 219
December	17 037	14 354	5 219	6 029	9 001	2 058	53 650
2004							
March	20 264	15 746	4 876	5 810	9 946	1 548	58 130
June	21 956	17 521	4 426	6 235	12 074	1 296	62 055
September	16 155	15 474	4 897	5 487	10 913	1 366	54 475
TREND							
2003							
June	17 737	13 857	4 425	5 408	7 868	2 184	51 363
September	15 457	13 098	4 643	5 242	7 503	2 211	48 277
December	17 121	14 167	4 897	5 652	8 458	1 948	52 135
2004							
March	19 396	15 700	4 870	5 967	10 123	1 635	57 306
June	19 883	16 458	4 731	5 939	11 203	1 394	59 029
September	18 788	16 528	4 658	5 746	11 562	1 278	58 081

(a) For more information refer to paragraphs 4 to 6 of the Explanatory Notes.

Quarter	<i>New South Wales</i>	<i>Victoria</i>	<i>Queensland</i>	<i>South Australia</i>	<i>Western Australia</i>	<i>Tasmania</i>	<i>Australia</i>
	tonnes	tonnes	tonnes	tonnes	tonnes	tonnes	tonnes
ORIGINAL							
2003							
June	20 389	31 693	1 439	15 809	10 296	1 755	81 381
September	17 990	28 863	1 843	12 379	9 935	2 136	73 146
December	21 589	35 527	2 757	15 861	12 439	1 894	90 068
2004							
March	22 339	33 357	2 738	17 719	11 592	2 059	89 804
June	20 186	33 068	3 009	16 573	13 246	2 348	88 430
September	17 389	27 345	2 923	9 906	11 183	2 011	70 757
SEASONALLY ADJUSTED							
2003							
June	20 193	31 862	1 425	14 014	10 057	1 726	80 245
September	18 428	30 386	1 631	15 965	11 151	2 026	79 231
December	21 451	33 380	2 985	15 844	11 311	1 976	86 328
2004							
March	21 708	33 652	2 939	16 145	11 755	2 129	88 011
June	19 998	33 175	2 974	14 698	12 955	2 296	87 078
September	17 691	28 935	2 569	12 845	12 532	1 912	77 100
TREND							
2003							
June	20 486	32 017	1 510	15 287	10 505	1 865	81 886
September	20 730	32 341	1 975	15 528	10 859	1 915	83 327
December	21 327	33 272	2 588	15 937	11 392	2 046	86 215
2004							
March	21 065	33 300	2 932	15 671	12 004	2 136	87 027
June	19 912	32 177	2 915	14 605	12 468	2 131	84 663
September	18 586	30 691	2 714	13 572	12 768	2 082	81 326

(a) For more information refer to paragraphs 4 to 6 of the Explanatory Notes.

Quarter	New South Wales	Victoria	Queensland	South Australia	Western Australia	Tasmania	Australia
	tonnes	tonnes	tonnes	tonnes	tonnes	tonnes	tonnes
ORIGINAL							
2003							
June	36 716	19 023	25 522	17 405	12 058	659	111 490
September	34 471	17 848	26 157	15 415	11 465	656	106 120
December	32 041	17 311	24 551	13 211	10 691	642	98 551
2004							
March	30 328	16 885	23 198	14 172	11 252	593	96 531
June	32 955	18 251	25 868	15 162	11 781	566	104 697
September	30 503	17 559	24 936	14 135	11 533	643	99 416
SEASONALLY ADJUSTED							
2003							
June	34 840	18 365	24 278	16 056	11 450	621	105 740
September	33 491	17 587	25 632	15 404	11 254	662	103 611
December	32 533	17 192	24 943	14 703	11 214	639	100 832
2004							
March	31 797	17 576	24 578	13 876	11 418	635	100 511
June	31 167	17 625	24 622	13 981	11 201	536	99 252
September	30 127	17 342	24 168	14 162	11 296	626	97 386
TREND							
2003							
June	34 671	17 923	25 020	16 000	11 499	650	105 926
September	33 638	17 707	25 308	15 369	11 347	646	103 890
December	32 631	17 467	24 974	14 647	11 259	636	101 487
2004							
March	31 792	17 443	24 767	14 157	11 286	612	100 190
June	31 033	17 505	24 451	13 978	11 290	591	98 984
September	30 332	17 505	24 290	13 993	11 277	589	97 896

(a) For more information refer to paragraphs 4 to 6 of the Explanatory Notes.

TOTAL RED MEAT PRODUCED(a): All Series

Quarter	New South Wales	Victoria	Queensland	South Australia	Western Australia	Tasmania	Australia
	tonnes	tonnes	tonnes	tonnes	tonnes	tonnes	tonnes
ORIGINAL							
2003							
June	186 019	155 321	274 554	58 663	50 878	19 037	744 881
September	164 883	144 589	296 565	48 001	51 786	14 947	721 174
December	178 616	160 759	272 876	57 879	66 010	18 024	754 555
2004							
March	179 385	168 106	246 481	59 379	66 191	21 195	741 128
June	178 273	164 391	302 113	55 666	62 322	19 968	783 145
September	178 947	151 962	326 904	43 862	62 615	16 704	781 405
SEASONALLY ADJUSTED							
2003							
June	182 646	159 594	258 945	56 576	54 600	18 017	729 774
September	167 299	150 224	265 867	54 934	54 669	18 219	714 798
December	178 501	154 833	282 024	57 034	60 154	18 435	747 757
2004							
March	178 661	166 300	288 478	54 973	62 964	18 703	767 565
June	175 567	169 188	284 832	53 858	67 820	18 929	768 264
September	182 402	159 305	292 065	50 197	67 805	20 347	775 886
TREND							
2003							
June	185 031	156 643	261 788	57 451	56 234	18 283	735 322
September	177 193	154 285	268 185	56 048	56 232	18 275	728 937
December	175 976	157 566	278 485	55 757	59 032	18 342	742 387
2004							
March	177 432	162 510	285 442	55 083	63 384	18 719	760 628
June	178 654	165 148	288 684	53 292	66 547	19 268	771 339
September	179 769	164 531	290 280	51 349	68 364	19 885	775 926

(a) For more information refer to paragraphs 4 to 6 of the Explanatory Notes.

CHICKEN MEAT PRODUCED(a): All Series

<i>Quarter</i>	<i>New South Wales</i>	<i>Victoria</i>	<i>Queensland</i>	<i>South Australia</i>	<i>Western Australia</i>	<i>Australia</i>
tonnes	tonnes	tonnes	tonnes	tonnes	tonnes	tonnes
ORIGINAL						
2003						
June	58 882	49 071	27 904	np	np	164 280
September	62 524	49 055	29 003	np	np	169 979
December	63 467	51 857	30 409	np	np	175 765
2004						
March	58 710	54 627	28 890	np	np	172 068
June	63 053	49 810	29 587	np	np	165 723
September	64 322	50 354	30 849	np	np	169 152
SEASONALLY ADJUSTED						
2003						
June	59 563	49 462	28 463	np	np	166 520
September	61 905	50 642	29 140	np	np	171 434
December	62 405	49 436	29 217	np	np	170 393
2004						
March	58 391	55 100	29 365	np	np	172 276
June	63 829	50 302	30 213	np	np	167 992
September	64 275	51 924	30 943	np	np	170 684
TREND						
2003						
June	61 333	50 203	28 808	np	np	169 502
September	60 974	50 207	28 951	np	np	169 853
December	60 831	51 223	29 162	np	np	170 764
2004						
March	61 314	52 049	29 605	np	np	170 917
June	62 360	52 099	30 159	np	np	170 283
September	63 915	51 859	30 773	np	np	170 007

np not available for publication but included in totals where applicable, unless otherwise indicated

(a) For more information refer to paragraphs 8 and 9 of the Explanatory Notes.

MEAT PRODUCED(a): Original

<i>Financial year</i>	<i>New South Wales</i> tonnes	<i>Victoria</i> tonnes	<i>Queensland</i> tonnes	<i>South Australia</i> tonnes	<i>Western Australia</i> tonnes	<i>Tasmania</i> tonnes	<i>Australia</i> tonnes
BEEF							
2001-02	460 964	342 898	972 749	85 882	88 593	43 923	1 996 167
2002-03	471 498	370 223	946 950	88 362	105 074	51 376	2 034 613
2003-04	401 785	361 463	984 482	76 988	116 555	55 454	1 997 848
VEAL							
2001-02	12 992	11 998	4 852	278	377	899	31 446
2002-03	16 493	16 007	4 202	341	300	826	38 220
2003-04	14 277	15 076	4 270	216	258	947	35 093
MUTTON							
2001-02	121 844	74 425	24 801	30 342	39 481	5 416	296 308
2002-03	106 106	67 552	20 741	30 893	35 431	7 495	268 218
2003-04	73 195	60 195	19 161	23 229	37 094	6 839	219 713
LAMB							
2001-02	91 401	136 325	11 851	64 285	35 618	8 466	347 947
2002-03	85 304	130 699	6 284	60 114	39 568	7 439	329 407
2003-04	82 104	130 816	10 348	62 532	47 212	8 436	341 448
PIG MEAT							
2001-02	144 146	73 652	85 940	48 329	39 996	3 159	395 534
2002-03	140 247	72 105	94 434	64 147	45 490	2 715	419 555
2003-04	129 795	70 295	99 774	57 960	45 190	2 457	405 898
TOTAL RED MEAT							
2001-02	831 347	639 298	1 100 193	229 116	204 065	61 863	3 067 401
2002-03	819 648	656 586	1 072 611	243 857	225 863	69 851	3 090 013
2003-04	701 156	637 845	1 118 035	220 926	246 309	74 134	3 000 002
CHICKEN MEAT							
2001-02	273 445	180 993	99 316	np	np	np	667 471
2002-03	256 445	204 440	114 327	np	np	np	689 826
2003-04	247 755	205 348	117 889	np	np	np	683 534

np not available for publication but included in totals where applicable, unless otherwise indicated

(a) For more information refer to paragraphs 4 to 9 in the Explanatory Notes.

Period	FRESH, CHILLED OR FROZEN MEAT									PROCESSED MEAT	
	<i>Beef bone-in</i>	<i>Beef bone-out</i>	<i>Veal bone-in</i>	<i>Veal bone-out</i>	<i>Mutton bone-in</i>	<i>Mutton bone-out</i>	<i>Lamb bone-in</i>	<i>Lamb bone-out</i>	<i>Pork</i>	<i>Bacon and ham</i>	<i>Canned meat</i>
	tonnes	tonnes	tonnes	tonnes	tonnes	tonnes	tonnes	tonnes	tonnes	tonnes	tonnes
2001-02	34 126	892 317	2 424	7 119	113 894	52 072	104 565	13 794	58 964	122	15 724
2002-03	37 467	894 430	3 675	6 458	109 345	52 275	87 907	14 082	62 927	351	17 048
2003-04	32 069	852 855	2 893	6 262	86 539	42 708	100 531	18 326	50 667	558	24 705
2003											
June	8 072	213 868	873	1 157	16 275	8 819	22 703	4 301	15 335	121	5 536
September	8 072	206 200	1 053	1 935	13 959	6 776	18 839	3 549	15 183	117	6 702
December	8 533	222 440	742	1 974	25 216	10 818	30 351	4 391	11 991	191	6 067
2004											
March	6 996	183 077	487	982	24 575	12 034	25 026	4 674	11 579	136	5 920
June	8 468	241 138	611	1 371	22 790	13 080	26 314	5 712	11 914	114	6 015
September	7 221	246 753	767	2 298	17 884	9 180	18 192	3 883	11 908	114	5 758

(a) For more information refer to paragraphs 10 and 11 of the Explanatory Notes.

<i>Period</i>	<i>Number</i>	<i>Gross weight</i>	<i>Gross value</i>	<i>Unit value</i>
	'000	'000 tonnes	\$'000	\$
.....				
SHEEP				
2001-02	6 443.2	318.0	391 705	60.79
2002-03	5 843.2	273.0	408 235	69.86
2003-04	3 842.7	188.2	266 457	69.34
2003				
June	968.4	44.6	69 714	71.99
September	1 091.2	52.2	79 320	72.69
December	1 046.7	53.2	73 698	70.41
2004				
March	1 028.9	50.4	68 609	66.68
June	675.9	32.4	44 830	66.33
September	850.6	48.6	58 829	69.16
.....				
CATTLE				
2001-02	797.0	293.5	525 535	659.39
2002-03	976.6	362.5	569 288	582.93
2003-04	581.5	192.0	317 850	546.60
2003				
June	211.3	89.7	117 120	554.28
September	163.4	51.8	81 667	499.80
December	150.0	49.8	83 738	558.25
2004				
March	96.7	32.4	54 772	566.41
June	171.2	58.1	97 673	570.52
September	172.4	57.4	112 232	651.00

(a) For more information refer to paragraph 12 of the Explanatory Notes.

WHOLE MILK INTAKE, By Factories(a)(b): All Series

	<i>New South Wales</i>	<i>Victoria</i>	<i>Queensland</i>	<i>South Australia</i>	<i>Western Australia</i>	<i>Tasmania</i>	<i>Australia</i>
<i>Quarter</i>	ML	ML	ML	ML	ML	ML	ML
ORIGINAL							
2003							
March	299	1 458	171	178	89	154	2 349
June	297	971	167	163	98	87	1 782
September	328	1 492	185	163	107	95	2 370
December	367	2 326	182	213	113	231	3 431
2004							
March	302	1 546	161	172	93	168	2 442
June	274	1 070	147	156	91	95	1 832
SEASONALLY ADJUSTED							
2003							
March	314	1 540	176	187	96	141	2 454
June	334	1 535	180	184	103	136	2 472
September	321	1 562	176	169	101	142	2 471
December	321	1 587	172	178	106	145	2 509
2004							
March	315	1 636	164	180	100	153	2 548
June	307	1 683	158	176	96	149	2 569
TREND							
2003							
March	318	1 571	178	185	101	142	2 495
June	319	1 539	178	184	102	139	2 461
September	321	1 550	176	180	103	141	2 471
December	320	1 594	171	178	103	146	2 512
2004							
March	315	1 635	165	178	100	150	2 543
June	310	1 671	159	178	98	151	2 567

(a) For more information refer to paragraph 13 of the Explanatory Notes.

(b) Data for Australian Capital Territory are included in New South Wales; data for Northern Territory are included in South Australia.

Source: Original series data from Dairy Australia.

MARKET MILK SALES, By Factories(a)(b): All Series

	<i>New South Wales</i>	<i>Victoria</i>	<i>Queensland</i>	<i>South Australia</i>	<i>Western Australia</i>	<i>Tasmania</i>	<i>Australia</i>
<i>Quarter</i>	ML	ML	ML	ML	ML	ML	ML
ORIGINAL							
2003							
March	152	114	99	44	49	13	470
June	155	121	101	46	52	13	487
September	159	124	104	46	51	13	497
December	156	120	102	45	51	13	488
2004							
March	155	119	102	46	52	13	487
June	158	120	103	45	50	13	489
SEASONALLY ADJUSTED							
2003							
March	154	116	101	44	50	13	478
June	154	121	101	46	51	13	487
September	157	121	101	45	51	13	488
December	157	120	102	46	51	13	490
2004							
March	157	122	103	47	52	13	493
June	157	121	103	45	50	13	489
TREND							
2003							
March	154	119	101	45	50	13	481
June	155	120	101	45	51	13	484
September	156	121	102	46	51	13	488
December	157	121	102	46	51	13	490
2004							
March	157	121	103	46	51	13	491
June	157	121	103	46	51	13	491

(a) For more information refer to paragraph 13 of the Explanatory Notes.

(b) Data for Australian Capital Territory are included in New South Wales; data for Northern Territory are included in South Australia.

Source: Original series data from Dairy Australia.

BROKERS AND DEALERS RECEIVALS OF TAXABLE WOOL(a): All Series

Quarter	New South Wales	Victoria	Queensland	South Australia	Western Australia	Tasmania	Australia	% of total received by brokers
	tonnes	tonnes	tonnes	tonnes	tonnes	tonnes	tonnes	%
ORIGINAL								
2003								
June	22 836	19 327	4 357	7 500	15 519	2 381	71 921	81.8
September	40 255	27 518	6 017	18 119	26 996	2 661	121 566	84.2
December	37 540	38 987	3 360	20 980	30 149	4 811	135 827	82.4
2004								
March	32 387	29 160	4 099	16 355	33 052	2 237	117 290	83.0
June	30 633	24 001	3 652	11 528	19 657	3 429	92 900	78.1
September	42 313	29 087	6 706	19 936	27 521	1 896	127 458	84.1
SEASONALLY ADJUSTED								
2003								
June	29 166	28 250	3 648	10 814	24 443	2 866	99 186	..
September	32 743	26 878	4 746	15 622	26 335	2 709	109 034	..
December	33 678	28 035	5 038	17 122	26 984	3 301	114 158	..
2004								
March	37 061	32 425	4 723	17 654	27 390	3 013	122 266	..
June	39 169	35 054	3 069	16 775	30 003	4 113	128 183	..
September	34 350	28 535	5 264	17 038	27 063	1 982	114 232	..
TREND								
2003								
June	30 272	27 972	4 108	13 471	26 011	3 029	104 864	..
September	31 409	27 314	4 498	14 670	25 815	2 882	106 588	..
December	34 597	29 259	4 714	16 664	26 895	3 119	115 247	..
2004								
March	36 654	31 595	4 430	17 396	28 029	3 352	121 455	..
June	37 150	32 387	4 221	17 189	28 390	3 201	122 537	..
September	36 639	31 643	4 337	16 984	28 302	2 844	120 747	..

.. not applicable

(a) For more information refer to paragraphs 14 and 15 of the Explanatory Notes.

<i>Financial year</i>	<i>New South Wales</i>	<i>Victoria</i>	<i>Queensland</i>	<i>South Australia</i>	<i>Western Australia</i>	<i>Tasmania</i>	<i>Australia</i>
-----------------------	------------------------	-----------------	-------------------	------------------------	--------------------------	-----------------	-------------------------

.....

WHOLE MILK INTAKE BY FACTORIES (b) (ML)

2001-02	1 343	7 405	744	715	393	672	11 271
2002-03	1 301	6 585	720	733	404	585	10 328
2003-04	1 271	6 434	674	703	403	589	10 075

.....

MARKET MILK SALES BY FACTORIES (b) (ML)

2001-02	622	459	402	184	192	50	1 909
2002-03	616	473	404	181	200	51	1 925
2003-04	627	484	411	183	204	52	1 961

.....

BROKERS AND DEALERS RECEIVALS OF TAXABLE WOOL (Tonnes)

2001-02	163 926	142 338	30 188	83 144	103 028	14 268	536 891
2002-03	168 138	128 444	18 287	65 054	108 739	14 357	503 020
2003-04	140 815	119 667	17 127	66 982	109 854	13 138	467 583

.....

(a) For more information refer to paragraphs 13 to 15 of the Explanatory Notes.

(b) Data for Australian Capital Territory are included in New South Wales; data for Northern Territory are included in South Australia.

Source: Original series data from Dairy Australia.

WHAT IF...? REVISIONS TO TREND ESTIMATES

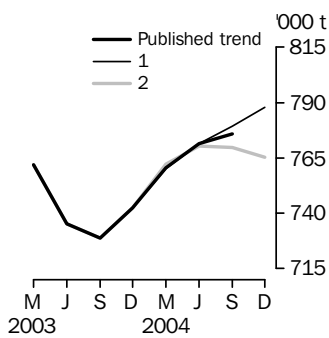
EFFECT OF NEW SEASONALLY ADJUSTED ESTIMATES ON TREND ESTIMATES

TREND REVISIONS

Recent seasonally adjusted and trend estimates are likely to be revised when original estimates for subsequent quarters become available. The approximate effects of possible scenarios on trend estimates are presented below. These illustrate the impact on trend estimates if next quarter's seasonally adjusted estimate either rises or falls by a certain percentage (based on the historical average of movements in seasonally adjusted estimates).

For further information, see paragraphs 20 and 21 of the Explanatory Notes.

RED MEAT PRODUCTION

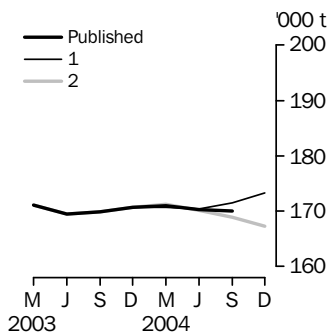


WHAT IF NEXT QUARTER'S SEASONALLY ADJUSTED ESTIMATE:

	<u>Trend as published</u>		<u>(1) rises by 3% on Sep Qtr 2004</u>		<u>(2) falls by 3% on Sep Qtr 2004</u>	
	number	% change	number	% change	number	% change
Sep Qtr 2003	728 937	-0.9	728 936	-0.9	728 936	-0.9
Dec Qtr 2003	742 387	1.8	742 387	1.8	742 387	1.8
Mar Qtr 2004	760 628	2.5	760 289	2.4	762 295	2.7
Jun Qtr 2004	771 339	1.4	771 320	1.5	770 591	1.1
Sep Qtr 2004	775 926	0.6	779 303	1.0	769 637	-0.1
Dec Qtr 2004	787 669	1.1	765 434	-0.5

.. not applicable

CHICKEN MEAT PRODUCTION



WHAT IF NEXT QUARTER'S SEASONALLY ADJUSTED ESTIMATE:

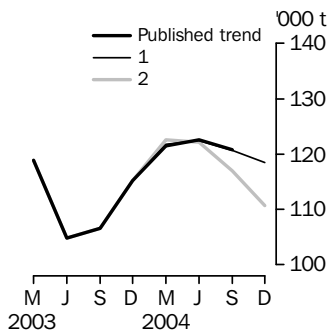
	<u>Trend as published</u>		<u>(1) rises by 4% on Sep Qtr 2004</u>		<u>(2) falls by 4% on Sep Qtr 2004</u>	
	number	% change	number	% change	number	% change
Sep Qtr 2003	169 853	0.2	169 853	0.2	169 853	0.2
Dec Qtr 2003	170 764	0.5	170 765	0.5	170 765	0.5
Mar Qtr 2004	170 917	0.1	170 696	—	171 217	0.3
Jun Qtr 2004	170 283	-0.4	170 392	-0.2	170 211	-0.6
Sep Qtr 2004	170 007	-0.2	171 467	0.6	168 959	-0.7
Dec Qtr 2004	173 247	1.0	167 299	-1.0

.. not applicable

— nil or rounded to zero (including null cells)

WHAT IF...? REVISIONS TO TREND ESTIMATES *continued*

WOOL RECEIVALS



WHAT IF NEXT QUARTER'S

SEASONALLY ADJUSTED ESTIMATE:

(1) rises by 9%

(2) falls by 9%

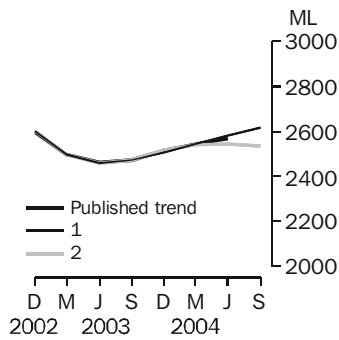
on Sep Qtr 2004

on Sep Qtr 2004

	<u>Trend as published</u>		<u>(1) rises by 9% on Sep Qtr 2004</u>		<u>(2) falls by 9% on Sep Qtr 2004</u>	
	number	% change	number	% change	number	% change
Sep Qtr 2003	106 588	1.6	106 622	1.7	106 622	1.7
Dec Qtr 2003	115 247	8.1	115 246	8.1	115 246	8.1
Mar Qtr 2004	121 455	5.4	121 782	5.7	122 534	6.3
Jun Qtr 2004	122 537	0.9	122 479	0.6	122 171	-0.3
Sep Qtr 2004	120 747	-1.5	120 663	-1.5	117 019	-4.2
Dec Qtr 2004	118 520	-1.8	110 710	-5.4

.. not applicable

WHOLE MILK INTAKE BY FACTORIES



WHAT IF NEXT QUARTER'S

SEASONALLY ADJUSTED ESTIMATE:

(1) rises by 2%

(2) falls by 2%

on Jun Qtr 2004

on Jun Qtr 2004

	<u>Trend as published</u>		<u>(1) rises by 2% on Jun Qtr 2004</u>		<u>(2) falls by 2% on Jun Qtr 2004</u>	
	number	% change	number	% change	number	% change
Jun Qtr 2003	2 461	-1.4	2 459	-1.4	2 459	-1.4
Sep Qtr 2003	2 471	0.4	2 471	0.5	2 471	0.5
Dec Qtr 2003	2 512	1.7	2 508	1.5	2 516	1.8
Mar Qtr 2004	2 543	1.2	2 544	1.4	2 541	1.0
Jun Qtr 2004	2 567	0.9	2 582	1.5	2 544	0.1
Sep Qtr 2004	2 617	1.4	2 533	-0.4

.. not applicable

EXPLANATORY NOTES

INTRODUCTION

1 This publication contains information on livestock slaughterings, meat production, exports of live sheep and live cattle, exports of fresh, frozen and processed meat, and whole milk intake by factories, market milk sales by factories and receivals of taxable wool by wool brokers and dealers.

2 The figures shown in this publication have been revised where necessary and as a consequence may not agree with similar data shown in previous publications.

3 Where figures have been rounded, discrepancies may occur between sums of the component items and totals.

4 Unless indicated otherwise, Australian totals include data for all states and both territories.

LIVESTOCK SLAUGHTERINGS AND MEAT PRODUCTION

5 The statistics on slaughterings for red meat production are based on a monthly collection from abattoirs and other major slaughtering establishments and include estimates of animals slaughtered on farms and by country butchers and other small slaughtering establishments.

6 Red meat is shown in carcass weight and excludes offal.

7 Care should be taken when using this information as the figures only relate to slaughterings for human consumption and do not include animals condemned, slaughtered for pet food or those killed for boiling down.

8 Poultry slaughterings and meat produced statistics have been compiled from quarterly returns supplied by commercial poultry slaughtering establishments and comprise boilers, fryers and roasters. Many small producers are excluded from the collection; however, the statistics represent a high level of coverage. Tasmanian, Northern Territory and Australian Capital Territory data are excluded from the Australian total.

9 Chicken meat is shown in dressed weight of whole birds, pieces and giblets. Some slaughterings and meat production statistics for 'Ducks and Drakes' and 'Other Fowls and Turkeys' are available by contacting the ABS on Hobart (03) 6222 5974 or by writing to GPO Box 66, Hobart Tasmania 7001 (Attention: Agriculture Section).

EXPORTS OF FRESH, FROZEN AND PROCESSED MEAT

10 Table 20 shows exports of fresh, frozen and processed meat. International trade statistics are compiled by the ABS from information submitted by exporters and importers or their agents to the Australian Customs Service. Factors can be applied to beef, veal, mutton and lamb bone-out figures to derive bone-in carcass weight which, when added to bone-in figures, shows total exports in carcass weight. The factor for beef and veal is 1.5 and for mutton and lamb, 2.0. This information is sourced from Department of Agriculture, Fisheries and Forestry – Australia.

11 Beef also includes buffalo meat. Bacon and ham shown is the cured carcass weight of smoked or cooked bacon and ham. It also includes the stated net weight of packs of canned bacon and ham. Canned meat is shown as the canned weight and excludes canned bacon and ham.

LIVE SHEEP AND CATTLE EXPORTS

12 Table 21 contains statistics of the number of live sheep and cattle exported, the gross weight, gross value and unit value. The unit value is obtained by dividing the gross value by the number of animals exported. Sheep and cattle exported for breeding are excluded.

MILK

13 Tables 2, 22, 23 and 25 contain statistics collected by Dairy Australia. Whole milk intake by factories includes the whole milk equivalent of farm cream intake. Market milk sales includes white, flavoured, high and low fat milk and UHT milk. Interstate transfers of UHT milk have been included in their state of destination.

EXPLANATORY NOTES *continued*

WOOL RECEIVALS

14 The statistics in tables 2, 24 and 25 show the amount of taxable wool received by brokers and purchased by dealers from wool producers. It excludes wool received by brokers on which tax has already been paid by other dealers (private buyers) or brokers.

15 The information shown is on the basis of the state in which wool has actually been received and does not necessarily reflect the production of wool in that state.

SEASONAL ADJUSTMENT

16 Seasonal adjustment is a means of removing the estimated effects of normal seasonal variation from the series so that the effects of other influences can be more clearly recognised.

17 In the seasonal adjustment of the livestock estimates, account has been taken of both normal seasonal factors and 'trading day' effects, where significant, (arising from the varying length of each quarter and the varying numbers of Sundays, Mondays, Tuesdays etc. in the quarter). Adjustments are also made for the effects of change in the date of Easter holidays, again, where significant. Seasonal adjustment does not remove from the series the effect of irregular influences (e.g. abnormal weather, industrial disputes).

18 The state component series have been seasonally adjusted independently. Therefore, the adjusted components may not add to the Australian group totals.

19 In this publication the seasonally adjusted estimates are produced by the concurrent seasonal adjustment method which takes account of the latest available original estimates. This method improves the estimation of seasonal factors and therefore, the seasonally adjusted and trend estimates for the current and previous quarters. As a result of this improvement, revisions to the seasonally adjusted and trend estimates will be observed for recent periods. In most instances the only noticeable revisions will be to the previous quarter and the same quarter one year ago. A more detailed review is conducted annually prior to the June quarter release, using data up to and including the March quarter. The concurrent seasonal adjustment methodology replaces the forward factor methodology used previously.

TREND ESTIMATES

20 A trend estimate is obtained by reducing the irregular component from the seasonally adjusted series. In this publication trend estimates are generally derived by applying a 7-term Henderson moving average to the seasonally adjusted series. The 7-term Henderson, (like all Henderson averages) is symmetric, but as the end of a time series is approached, asymmetric forms of the average are applied. Unlike the weights of the standard 7-term Henderson moving average, the weights employed here have been tailored to suit the particular characteristics of individual series. While the asymmetric weights enable the trend to be calculated for recent quarters, it does result in revisions to the estimates for the most recent three quarters as additional observations become available. Revisions of trend estimates will also occur with revisions to the original data and re-estimation of seasonal factors.

21 Sensitivity analysis indicates the potential magnitude and direction of revisions created to the last three estimates. It aims to show how a specified movement in the seasonally adjusted data in the next period will affect the trend path of the time series. By showing how sensitive the trend estimates are to the addition of new data, the analysis provides information which can be used in the assessment of the trend's stability.

22 For further information, see *Information Paper: A Guide to Interpreting Time Series – Monitoring 'Trends', an Overview* (cat. no. 1348.0) or contact the Assistant Director, Time Series Analysis on Canberra (02) 6252 6345.

EXPLANATORY NOTES *continued*

RELATED PUBLICATIONS

23 Current publications and other products released by the ABS are listed in the *Catalogue of Publications and Products* (cat. no. 1101.0). The Catalogue is available from any ABS office or the ABS web site <<http://www.abs.gov.au>>. The ABS also issues a daily Release Advice on the web site which details products to be released in the week ahead.

GENERAL ACKNOWLEDGMENT

24 ABS publications draw extensively on information provided freely by individuals, businesses, governments and other organisations. Their continued cooperation is very much appreciated. Without it, the wide range of statistics published by the ABS would not be available. Information received by the ABS is treated in strict confidence as required by the *Census and Statistics Act 1905*.

FOR MORE INFORMATION . . .

- INTERNET* **www.abs.gov.au** the ABS web site is the best place to start for access to summary data from our latest publications, information about the ABS, advice about upcoming releases, our catalogue, and Australia Now—a statistical profile.
- LIBRARY* A range of ABS publications is available from public and tertiary libraries Australia-wide. Contact your nearest library to determine whether it has the ABS statistics you require, or visit our web site for a list of libraries.
- CPI INFOLINE* For current and historical Consumer Price Index data, call 1902 981 074 (call cost 77c per minute).
- DIAL-A-STATISTIC* For the latest figures for National Accounts, Balance of Payments, Labour Force, Average Weekly Earnings, Estimated Resident Population and the Consumer Price Index call 1900 986 400 (call cost 77c per minute).

INFORMATION SERVICE

Data already published that can be provided within five minutes will be free of charge. Our information consultants can also help you to access the full range of ABS information—ABS user pays services can be tailored to your needs, time frame and budget. Publications may be purchased. Specialists are on hand to help you with analytical or methodological advice.

- PHONE* 1300 135 070
- EMAIL* client.services@abs.gov.au
- FAX* 1300 135 211
- POST* Client Services, ABS, GPO Box 796, Sydney NSW 2001

WHY NOT SUBSCRIBE?

ABS subscription services provide regular, convenient and prompt deliveries of selected ABS publications and products as they are released. Email delivery of monthly and quarterly publications is available.

- PHONE* 1300 366 323
- EMAIL* subscriptions@abs.gov.au
- FAX* (03) 9615 7848
- POST* Subscription Services, ABS, GPO Box 2796Y, Melbourne Vic 3001



2721500009048

ISSN 0728 4047

RRP \$23.00