



SOUTH AUSTRALIAN ECONOMIC INDICATORS

EMBARGO: 11:30AM (CANBERRA TIME) THURS 1 AUG 2002

C O N T E N T S

	<i>page</i>
Notes.....	2
REVIEW	
Overview	3
Selected features	4
TABLES	
List of tables	5
Statistical summary	6
State summary	8
State accounts	9
International trade	10
Consumption and investment	13
Production	15
Consumer price index	19
Labour force and demography	20
Average weekly earnings	23
Financial markets	24
ADDITIONAL INFORMATION	
Publications source index	25

- For further information about these and related statistics, contact Kirsten Hastwell on Adelaide 08 8237 7369, or the National Information and Referral Service on 1300 135 070.

NOTES

FORTHCOMING ISSUES

<i>ISSUE</i>	<i>RELEASE DATE</i>
September 2002	2 September 2002
October 2002	1 October 2002
November 2002	1 November 2002
December 2002	2 December 2002
January 2003	20 December 2002
February 2003	3 February 2003

ABOUT THIS PUBLICATION

South Australian Economic Indicators is a monthly publication which contains the latest available data at the time of preparation for a range of statistical series that have been identified as indicators of economic activity in this State. In a number of cases the figures presented are preliminary and subject to revision in subsequent issues.

SYMBOLS AND OTHER USAGES

n.a.	not available
n.y.a.	not yet available
*	subject to sampling variability too high for most practical purposes
..	not applicable
0, 0.0	nil, or rounded to zero

ROUNDING

Where figures have been rounded, discrepancies may occur between sums of the component items and totals.

INFORMATION

All data are original, unless otherwise stated. More detailed information on each series, including explanatory and technical notes, can be obtained from other Australian Bureau of Statistics publications or alternative data sources. To assist those seeking further information, the series presented in the statistical and State summaries provides a reference to the Publication Source Index which is at the end of this publication.

Steve Crabb
Regional Director
South Australia

OVERVIEW

The data in this Overview are presented in trend terms, unless otherwise stated.

INTERNATIONAL TRADE

The value of South Australian merchandise exports in original terms for the month of May 2002 was \$790.7m. This was an increase of 3.8% from the value for April 2002 and a decrease of 3.8% on May 2001.

The value of South Australian merchandise imports in original terms for the month of May 2002 was \$443.5m. This was a decrease of 1.4% from the value for April 2002 and an increase of 1.9% over May 2001.

CONSUMPTION AND INVESTMENT

South Australia's retail turnover increased by 12.5% over the 12 months to May 2002. Retail turnover for May 2002 was \$1,121.5m.

There were 4,351 new motor vehicle sales in June 2002, an increase of 10.0% on June last year.

Private new capital expenditure in the March Quarter 2002 was \$739m, an increase of 15.6% on the March Quarter 2001.

HOUSING

The number of dwelling units approved in May 2002 was 981, a rise of 48.9% on May last year.

CONSUMER PRICE INDEX

The Consumer Price Index (All Groups) for Adelaide increased by 1.0% to 139.1 in the June Quarter 2002, and by 3.0% over the level recorded twelve months previously. The annual change is no longer affected by the direct or first round effects of The New Tax System, particularly the introduction of the goods and services tax.

LABOUR FORCE AND DEMOGRAPHY

The trend estimate of employed persons in South Australia rose for the sixteenth consecutive month to 695,800 in June 2002 and was 20,500 persons higher than the level of twelve months ago (675,300). The total number of persons employed full-time in South Australia was 472,600, slightly higher than the number for June 2001 (471,000).

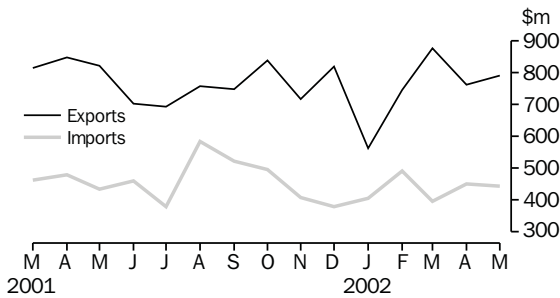
The trend estimate of the unemployment rate for South Australia was 6.7% in June 2002, the same as for the previous two months. The trend estimate of the participation rate in South Australia rose from 60.2% in June 2001 to 61.1% in June 2002.

FINANCIAL MARKETS

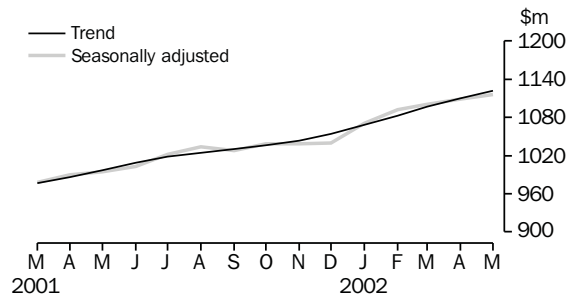
The value of secured housing finance commitments (excluding alterations and additions) was \$467m in May 2002. This was a 0.8% decrease on April 2002 and 8.1% higher than May 2001.

SELECTED FEATURES

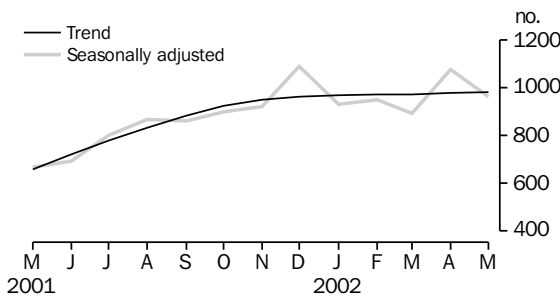
MERCHANDISE EXPORTS AND IMPORTS



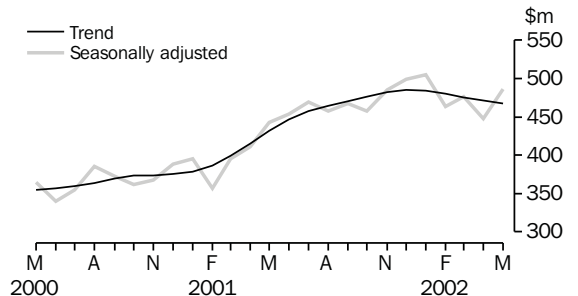
RETAIL TURNOVER



DWELLING UNITS APPROVED

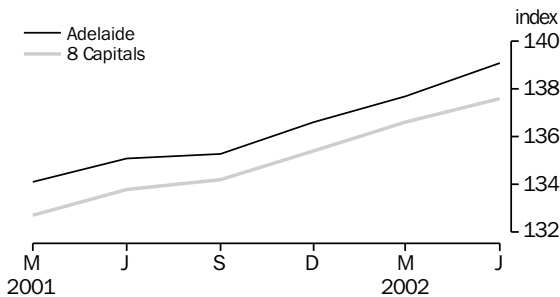


SECURED HOUSING FINANCE COMMITMENTS(a)

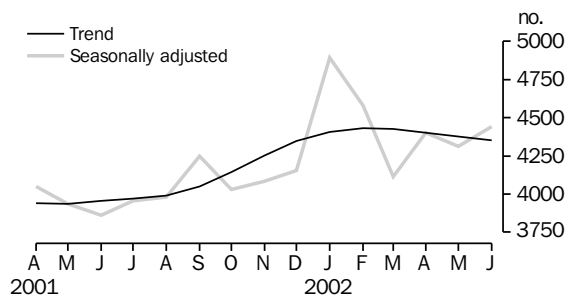


(a) Excludes alterations and additions. Includes refinancing.

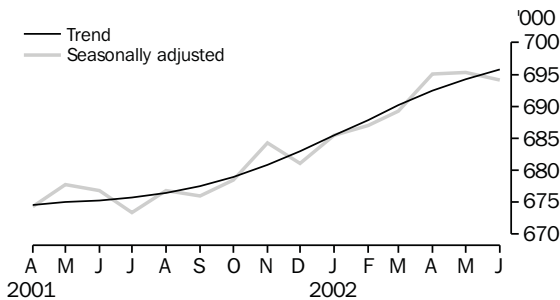
CONSUMER PRICE INDEX



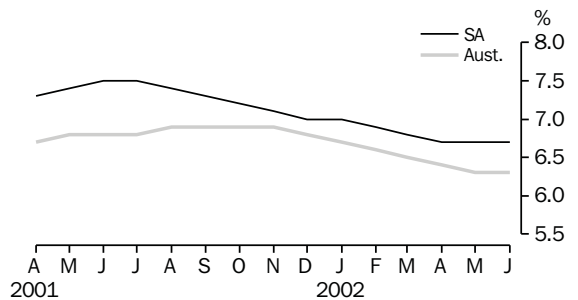
NEW MOTOR VEHICLE SALES



EMPLOYED PERSONS



UNEMPLOYMENT RATE—TREND



LIST OF TABLES

			Page
STATISTICAL SUMMARY	1	Statistical summary	6
	2	State summary	8
STATE ACCOUNTS	3	State accounts at current prices	9
	4	State accounts at chain volume measures	9
INTERNATIONAL TRADE	5	Merchandise exports, by selected commodity group	10
	6	Merchandise exports, by selected countries and country groups	11
	7	Merchandise imports, by selected commodity group	12
CONSUMPTION AND INVESTMENT	8	Turnover of retail establishments, by industry—trend	13
	9	New motor vehicle sales, by type of vehicle	13
	10	Actual private new capital expenditure, by selected industry and type of asset	14
	11	Tourist accommodation	14
PRODUCTION	12	Building approvals	15
	13	Building commencements	16
	14	Value of building work done and completed during period	17
	15	Production, livestock products and selected commodities	18
	16	Consumer price index, by group—Adelaide	19
LABOUR FORCE AND DEMOGRAPHY	17	Estimated resident population and components of population change	20
	18	Births, deaths, marriages and divorces	20
	19	Civilian labour force status	21
	20	Civilian labour force, unemployment and participation rates	22
AVERAGE WEEKLY EARNINGS	21	Average weekly earnings of employees	23
FINANCIAL MARKETS	22	Secured housing finance commitments	24
	23	Finance commitments	24

Indicator	Period	South Australia			Australia			SA as a % of Aust.	Source index
		Number	% change from		Number	% change from			
			Previous period	Same period previous year		Previous period	Same period previous year		
State accounts									
Domestic final demand									
Current prices trend (\$m)	Mar qtr 02	12 617	2.4	8.7	178 922	1.9	6.9	7.1	(1)
Chain volume measures trend (\$m)	Mar qtr 02	11 791	1.4	5.9	168 322	1.3	5.3	7.0	(1)
Private final consumption expenditure									
Current prices trend (\$m)	Mar qtr 02	7 808	2.2	7.4	107 407	1.8	6.1	7.3	(1)
Chain volume measures trend (\$m)	Mar qtr 02	7 302	1.7	5.5	100 221	1.2	4.1	7.3	(1)
Private gross fixed capital formation									
Current prices trend (\$m)	Mar qtr 02	2 043	4.2	18.5	32 172	4.1	15.2	6.4	(1)
Chain volume measures trend (\$m)	Mar qtr 02	1 938	3.6	16.5	30 608	3.5	14.1	6.3	(1)
Compensation of employees									
Current prices trend (\$m)	Mar qtr 02	5 562	2.2	6.7	84 600	1.0	4.4	6.6	(1)
International accounts									
Exports (\$m)	May 02	790.7	3.8	-3.8	10 045.0	2.6	-6.1	7.9	(2)
Imports (\$m)	May 02	443.5	-1.4	1.9	10 162.8	0.2	1.8	4.4	(2)
Consumption and investment									
Retail turnover									
Current prices original (\$m)	May 02	1 101.5	5.0	12.4	14 426.3	5.6	9.8	7.6	(3)
Current prices trend (\$m)	May 02	1 121.5	1.1	12.5	14 475.6	0.8	7.8	7.7	(3)
Chain volume measures original (\$m)	Mar qtr 02	2 885.8	-11.1	10.9	37 297.6	-13.3	5.1	7.7	(3)
New motor vehicle sales									
Original (no.)	June 02	5 143	10.6	10.0	78 781	7.7	7.1	6.2	(4)
Trend (no.)	June 02	4 351	-0.6	10.0	67 887	-0.7	7.5	6.5	(4)
Private new capital expenditure									
Current prices original (\$m)	Mar qtr 02	647	-24.0	9.7	9 159	-15.5	4.4	7.1	(6)
Current prices trend (\$m)	Mar qtr 02	739	8.2	15.6	10 122	1.1	5.1	7.3	(6)
Private new capital expenditure (\$m)	2000-01	2 649	8.1	16.3	39 358	-7.3	-11.9	6.7	(6)
Takings from accommodation—hotels, motels, guesthouses and serviced apartments									
	Mar qtr 02	58.2	4.3	4.9	1 214.0	0.4	-0.3	4.8	(6)
Production									
Dwelling unit approvals									
Original (no.)	May 02	981	-0.6	38.4	16 035	5.5	18.9	6.1	(7)
Trend (no.)	May 02	981	0.3	48.9	14 496	1.9	23.1	6.8	(7)
Dwelling units commenced (no.)	Mar qtr 02	2 334	-10.7	46.1	38 693	-9.4	45.4	6.0	(8)
Value of non-residential building approvals—trend (\$m)									
	May 02	55.7	-5.4	1.6	1 154.5	-0.4	11.6	7.4	(7)
Value of total building activity									
Commenced (\$m)	Mar qtr 02	503.3	-10.1	47.5	10 567.3	-2.3	36.1	4.8	(8)
Work done (\$m)	Mar qtr 02	499.6	-5.3	30.7	9 432.2	-5.9	22.4	5.3	(8)
Work yet to be done (\$m)	Mar qtr 02	750.5	4.0	65.7	16 215.6	11.5	37.9	4.6	(8)
Value of engineering construction work done (\$m)									
	Mar qtr 02	369.8	3.9	51.7	4 406.7	-7.8	7.2	8.4	(9)
Manufacturing production									
Red meat (tonnes)	Mar qtr 02	57 747	4.0	6.7	723 602	-3.4	-9.1	8.0	(11)
Mineral exploration expenditure (other than for petroleum)(a) (\$m)									
	Mar qtr 02	7.3	-8.8	49.0	129.5	-24.1	-9.8	5.6	(12)

(a) From July 2000 value data no longer contains Wholesale Sales Tax.

Indicator	Period	South Australia			Australia			SA as a % of Aust.	Source index
		Number	% change from		Number	% change from			
			Previous period	Same period previous year		Previous period	Same period previous year		
Prices(a)									
CPI—All groups (index no.)	June qtr 02	139.1	1.0	3.0	137.6	0.7	2.8	..	(13)
Price index of materials used in house building (index no.)	June qtr 02	133.1	1.7	2.8	127.8	1.3	2.7	..	(14)
Price index of materials used in building other than houses (index no.)	June qtr 02	120.7	1.4	2.8	120.3	1.6	2.6	..	(14)
Price index of established houses (index no.)	Mar qtr 02	153.4	4.7	15.3	180.6	3.8	17.3	..	(16)
Price index of project homes (index no.)	Mar qtr 02	149.3	1.2	5.3	138.3	0.5	2.4	..	(16)
Labour force and demography									
Population (resident at end qtr) ('000)	Dec qtr 01	1 518.9	0.2	0.5	19 603.5	0.3	1.2	7.7	(17)
Labour force									
Original ('000)	June 02	741.3	0.2	2.1	9 964.0	0.5	1.5	7.4	(18)
Trend ('000)	June 02	745.5	0.2	2.2	9 935.1	0.0	1.1	7.5	(18)
Employed persons									
Original ('000)	June 02	691.9	0.3	2.5	9 339.5	0.6	1.9	7.4	(18)
Trend ('000)	June 02	695.8	0.2	3.0	9 311.5	0.1	1.7	7.5	(18)
Participation rate									
Original(b) (%)	June 02	60.8	0.1	1.4	63.8	0.4	0.0	..	(18)
Trend(b) (%)	June 02	61.1	0.1	1.5	63.6	-0.1	-0.2	..	(18)
Unemployment rate									
Original(b) (%)	June 02	6.7	-2.4	-5.8	6.3	-0.8	-6.0	..	(18)
Trend(b) (%)	June 02	6.7	-0.6	-10.7	6.3	-0.6	-8.0	..	(18)
Job vacancies ('000)	May 02	7.0	2.9	27.2	88.8	1.0	6.5	7.9	(19)
Industrial disputes ('000 working days lost)	Apr 02	1.6	166.7	700.0	15.1	-66.3	-49.3	10.6	(20)
Income									
Average weekly earnings (full-time adults; ordinary time)									
Original (\$)	Feb 02	801.50	0.7	4.1	860.50	1.4	6.2	..	(21)
Trend (\$)	Feb 02	800.70	0.6	3.6	860.10	1.3	5.9	..	(21)
Wage cost index (total hourly rate excluding bonuses)(c) (index no.)	Mar qtr 02	114.8	0.8	3.3	115.2	0.7	3.1	..	(22)
Financial markets									
Secured housing finance(d) (\$m)	May 02	525.0	14.6	9.6	9 352.3	14.2	12.7	5.6	(23)
Finance commitments									
Personal (\$m)	May 02	352.5	9.6	14.7	5 550.2	16.4	8.8	6.4	(24)
Commercial (\$m)	May 02	699.0	0.5	24.1	19 515.0	14.2	2.5	3.6	(24)
Lease (\$m)	May 02	16.1	21.1	109.7	550.3	19.3	14.5	2.9	(24)
Interest rates(b)									
Banks new housing loans (%)	June 02	6.55	4.00	-3.70	..	(25)
Bank loans—small, medium business(e) (%)	June 02	8.00	3.20	0.00	..	(25)
Bank loans—large business (%)	June 02	8.35	3.10	-1.80	..	(25)
(a) Base year of each index 1989–90 = 100.									
(b) Change is shown in terms of percentage points.									
(c) Base year of index Sep 1997 = 100.									
(d) Excludes alterations and additions. Includes refinancing.									
(e) Rate for business loans over \$50,000.									

2

STATE SUMMARY

Indicator	Period	NSW	Vic.	Qld	SA	WA	Tas.	NT	ACT	Source index
SELECTED INDICATORS										
CPI—All groups(a) (index no.)	June qtr 02	138.8	136.9	138.1	139.1	134.6	137.0	135.0	137.2	(13)
Participation rate trend (%)	June 02	62.6	63.8	65.2	60.7	66.5	58.4	74.4	71.2	(18)
Unemployment rate trend (%)	June 02	6.1	5.8	7.4	6.7	6.0	8.3	4.8	4.6	(18)
Average weekly earnings (full-time adults; ordinary time) trend (\$)	Feb 02	905.20	854.70	801.10	800.70	860.90	785.10	832.10	949.10	(22)
SELECTED INDICATORS PER HEAD OF POPULATION(B)										
State final demand										
Chain volume measures trend (\$'000)	Mar qtr 02	8.7	8.6	8.0	7.8	8.5	7.2	11.1	16.1	(1)
Retail turnover										
Current prices original (\$)	May 02	742.3	719.4	728.8	725.2	761.2	654.8	772.5	936.0	(3)
Current prices, trend	May 02	737.7	725.6	735.1	738.4	763.0	653.8	759.0	929.5	(3)
New motor vehicle Sales trend (no. per '000 population)	June 02	3.6	3.7	3.4	2.9	3.1	2.7	3.2	3.7	(4)
Private new capital expenditure										
Current prices trend (\$)	Mar qtr 02	455.2	512.1	466.2	486.5	677.0	494.5	2 671.8	458.7	(5)
Dwelling unit approvals										
Original (no. per '000 population)	May 02	0.768	0.920	0.846	0.646	0.996	0.349	0.245	0.772	(7)
Trend (no. per '000 population)	May 02	0.686	0.854	0.820	0.646	0.847	0.340	0.380	0.546	(7)
Secured housing finance(c) (\$)	May 02	588.0	440.2	416.0	345.7	492.0	228.2	215.1	505.2	(24)
PERCENTAGE CHANGE FROM PREVIOUS PERIOD										
State final demand										
Chain volume measures trend (%)	Mar qtr 02	1.0	1.3	1.0	1.4	0.5	1.7	3.3	0.8	(1)
Retail turnover										
Current prices original (%)	May 02	5.8	4.6	6.6	5.0	6.2	5.3	8.4	5.1	(3)
Current prices, trend	May 02	0.6	0.6	1.0	1.1	0.5	0.7	0.9	0.3	(3)
New motor vehicle sales trend (%)	June 02	-0.6	-1.2	-0.6	-0.6	-1.0	0.3	0.8	1.1	(4)
Private new capital expenditure										
Current prices trend (%)	Mar qtr 02	-1.8	-0.4	3.7	8.2	-4.1	17.6	22.8	11.3	(5)
Dwelling unit approvals										
Original (%)	May 02	2.9	2.4	12.0	-0.6	12.5	0.0	-41.7	50.0	(7)
Trend (%)	May 02	4.9	3.5	-1.5	0.3	-0.8	-4.7	-2.6	7.3	(7)
CPI — All groups (%)	June qtr 02	0.7	0.7	0.7	1.0	0.7	1.3	0.9	1.2	(13)
Participation rate trend(d) (%)	June 02	0.0	0.0	-0.1	0.1	0.1	0.1	-0.1	0.2	(18)
Unemployment rate trend(d) (%)	June 02	0.0	-0.1	-0.1	0.0	-0.1	0.0	-0.4	0.0	(18)
Average weekly earnings (full-time adults; ordinary time) trend (%)	Feb 02	0.7	2.5	1.3	0.6	1.0	1.3	0.6	0.1	(22)
Secured housing finance (%)	May 02	12.6	18.5	12.7	14.6	11.7	24.1	19.4	20.7	(24)

(a) Base year of index 1989-90 = 100.

(b) The latest quarterly estimate of Australian resident population has been used to calculate ratios for subsequent periods.

(c) Excludes alterations and additions. Includes refinancing.

(d) Change is shown in terms of percentage points.

3

STATE ACCOUNTS AT CURRENT PRICES

Period	Final consumption expenditure		Gross fixed capital formation		State final demand	Gross State product	Compensation of employees
	Households	General government	Private	Public			
ANNUAL (\$m)							
1998-99	25 426	7 947	5 965	1 353	40 690	39 529	19 103
1999-00	26 549	8 884	(a)10 013	(a)-1 437	44 010	41 340	19 956
2000-01	28 771	9 059	8 202	147	46 181	43 194	20 770
QUARTERLY, TREND (\$m)							
2000-01							
December	7 129	2 250	1 736	350	11 465	n.a.	5 175
March	7 270	2 278	1 723	334	11 606	n.a.	5 212
June	7 368	2 323	1 760	333	11 784	n.a.	5 249
2001-02							
September	7 491	2 357	1 847	338	12 029	n.a.	5 325
December	7 639	2 388	1 960	336	12 322	n.a.	5 440
March	7 808	2 404	2 043	326	12 617	n.a.	5 562

(a) The negative figure for Public gross fixed capital formation and the larger than usual positive figure for Private gross fixed capital formation are the result of the sale of the South Australian electrical transmission network in December quarter 1999. For more information see *National Income, Expenditure and Product, Australian National Accounts, June 2000* (cat. no. 5206.0).

Source: *Australian National Accounts: Quarterly State Details* (Cat. no. 5206.0), and *Australian National Accounts: State Accounts* (cat. no. 5220.0).

4

STATE ACCOUNTS AT CHAIN VOLUME MEASURES(a)

Period	Final consumption expenditure		Gross fixed capital formation		State final demand	Gross State product
	Households	General government	Private	Public		
ANNUAL (\$m)						
1998-99	25 817	8 331	6 128	1 332	41 726	40 931
1999-00	26 550	8 885	(b)10011	(b)-1437	44 010	41 340
2000-01	27 500	8 861	7 964	133	44 458	41 617
QUARTERLY, TREND (\$m)						
2000-01						
December	6 837	2 215	1 687	343	11 082	n.a.
March	6 919	2 218	1 663	327	11 126	n.a.
June	6 981	2 233	1 693	326	11 232	n.a.
2001-02						
September	7 067	2 243	1 770	330	11 413	n.a.
December	7 179	2 252	1 870	328	11 630	n.a.
March	7 302	2 253	1 938	318	11 791	n.a.

(a) Reference year for chain volume measures is 1999-2000.

(b) The negative figure for Public gross fixed capital formation and the larger than usual positive figure for Private gross fixed capital formation are the result of the sale of the South Australian electrical transmission network in December quarter 1999. For more information see *National Income, Expenditure and Product, Australian National Accounts, June 2000* (cat. no. 5206.0).

Source: *Australian National Accounts: Quarterly State Details* (Cat. no. 5206.0), and *Australian National Accounts: State Accounts* (cat. no. 5220.0).

5

MERCHANDISE EXPORTS, BY SELECTED COMMODITY GROUP(a)

<i>Period</i>	<i>Meat and meat preparations</i>	<i>Wheat</i>	<i>Wine</i>	<i>Wool and sheepskins (excl. wool tops)</i>	<i>Machinery</i>	<i>Metals and metal manufactures</i>	<i>Fish and crustaceans</i>	<i>Road vehicles, parts and accessories</i>	<i>Petroleum and petroleum products</i>	<i>Total(b)</i>
	\$'000	\$'000	\$'000	\$'000	\$'000	\$'000	\$'000	\$'000	\$'000	\$'000
1998-99	198 541	567 812	693 733	212 226	384 702	543 675	252 592	651 949	154 425	5 332 300
1999-00	160 483	473 086	899 348	179 716	353 205	805 744	394 375	883 792	218 466	6 188 231
2000-01	262 565	767 524	1 081 599	236 034	381 785	1 019 926	451 841	1 399 489	355 781	8 286 782
2000-01										
December	23 003	55 592	74 430	17 779	35 714	95 601	23 853	197 310	34 021	786 954
January	15 352	42 141	56 686	12 389	19 399	71 312	27 610	36 155	11 715	465 417
February	23 730	80 599	78 767	19 868	27 828	89 603	16 885	109 181	36 380	703 077
March	27 691	112 562	92 701	22 506	32 623	99 791	21 216	148 177	17 124	816 155
April	26 339	93 911	121 497	19 887	32 164	89 887	23 097	155 998	52 960	848 280
May	27 404	152 550	99 062	22 367	33 559	79 393	28 980	115 827	33 738	821 839
June	23 977	44 178	93 781	20 353	38 196	90 878	46 917	100 111	29 883	704 372
2001-02										
July	18 743	84 671	90 064	15 060	31 470	80 081	105 885	85 602	4 227	694 672
August	16 578	104 764	111 866	12 339	23 309	65 167	109 720	87 611	28 997	757 774
September	26 569	50 769	145 952	14 797	23 338	83 420	18 330	157 731	26 830	747 539
October	29 804	74 206	134 368	23 871	24 161	80 651	16 992	217 406	17 879	839 374
November	30 056	95 995	81 272	24 908	21 862	89 069	23 757	135 759	30 543	716 786
December	32 122	93 070	105 237	17 789	23 070	62 905	31 363	207 778	20 094	820 433
January	22 606	136 558	61 255	15 357	19 868	63 089	35 902	25 652	16 755	561 781
February	31 151	86 109	83 896	23 634	25 522	82 009	26 139	122 727	2 328	744 915
March	34 039	119 775	127 217	32 952	35 628	88 156	22 366	170 972	44 166	876 076
April	24 002	102 777	123 640	22 632	32 376	74 899	25 307	139 114	8 900	762 087
May	25 701	114 535	147 360	33 354	32 991	85 047	22 739	84 918	32 443	790 685

(a) Restrictions are placed on the release of statistics for certain commodities for reasons of confidentiality. These restrictions do not affect total export and import figures, but they can affect some items within commodity, industry and country tables. See *International Trade* (cat. no. 5422.0), Explanatory Notes, paragraph 30, for more details.

(b) Includes other commodity groups not listed.

Source: ABS data available on request.

6

MERCHANDISE EXPORTS, BY SELECTED COUNTRIES AND COUNTRY GROUPS

Period	European Union					South-East and North-East Asia				
	United States of America	Middle East	United Kingdom	Total European Union	New Zealand	Japan	China	Hong Kong	ASEAN	Total
	\$'000	\$'000	\$'000	\$'000	\$'000	\$'000	\$'000	\$'000	\$'000	\$'000
1998-99	705 166	640 412	476 340	928 469	385 513	625 530	302 776	219 536	432 730	1 898 836
1999-00	954 681	724 871	625 154	1 073 928	446 026	787 295	315 199	255 679	492 304	2 297 913
2000-01	1 354 759	1 335 811	713 525	1 232 563	480 887	963 481	437 939	298 939	682 671	2 882 839
2000-01										
December	161 458	158 267	37 513	74 504	29 610	81 125	17 245	31 419	61 396	245 174
January	55 623	90 284	32 418	59 100	21 446	37 119	24 316	31 873	51 910	172 994
February	100 916	145 190	51 056	109 310	37 641	54 585	61 981	29 821	59 017	239 767
March	115 814	178 076	59 618	120 294	47 460	37 205	55 989	28 698	51 248	224 427
April	115 986	183 447	98 255	158 995	47 291	80 941	43 900	15 196	65 386	268 384
May	141 133	160 104	55 667	102 367	45 043	105 667	21 910	22 827	53 850	253 674
June	139 602	71 593	54 666	96 847	48 740	85 966	44 319	23 205	62 383	260 621
2001-02										
July	115 848	121 291	53 283	86 715	48 927	141 618	18 061	12 359	54 577	250 375
August	131 917	134 855	67 349	98 428	52 532	146 655	19 060	16 613	44 614	258 525
September	149 121	114 225	93 941	150 232	53 822	74 345	49 322	9 474	51 316	211 033
October	137 817	183 472	92 365	159 319	52 409	45 629	39 129	21 422	47 777	213 989
November	142 528	120 739	46 215	92 135	50 254	85 470	44 104	25 897	48 034	242 844
December	187 722	172 462	54 885	108 541	52 684	71 888	35 887	24 433	41 232	200 866
January	44 318	156 335	34 647	75 972	21 074	39 434	17 643	31 643	54 117	169 467
February	96 361	159 711	48 505	93 817	39 680	61 201	20 726	25 099	54 444	191 109
March	151 288	187 690	70 971	134 767	54 220	59 063	63 661	27 514	53 413	245 718
April	132 238	191 309	64 701	96 862	61 802	74 501	33 993	12 150	41 455	195 707
May	132 699	133 607	78 566	115 595	34 977	52 937	37 112	19 029	51 153	204 570

Source: ABS data available on request.

7

MERCHANDISE IMPORTS, BY SELECTED COMMODITY GROUP(a)

<i>Period</i>	<i>Food, beverages and tobacco</i>	<i>Petroleum and petroleum products</i>	<i>Chemicals</i>	<i>Textiles</i>	<i>Metals and metal manufactures</i>	<i>Machinery</i>	<i>Road vehicle parts and accessories</i>	<i>Other manufactured goods</i>	<i>Total(b)</i>
	\$'000	\$'000	\$'000	\$'000	\$'000	\$'000	\$'000	\$'000	\$'000
1998-99	162 784	271 492	281 097	96 052	264 732	917 879	812 096	765 643	3 716 152
1999-00	163 509	515 641	263 959	97 100	262 737	1 164 672	834 842	845 913	4 319 348
2000-01	183 196	968 428	284 227	97 281	315 327	1 205 016	854 759	926 817	5 044 553
2000-01									
December	13 166	42 077	15 344	6 399	20 145	102 436	58 572	62 099	333 906
January	12 558	16 440	24 436	6 950	27 734	97 647	47 013	71 387	321 682
February	11 456	123 599	22 811	8 947	22 891	89 394	59 947	78 042	438 399
March	14 957	82 612	36 950	6 792	24 140	110 739	77 516	87 106	462 244
April	15 533	99 678	57 548	7 239	25 625	104 946	71 621	75 171	478 988
May	16 160	77 698	29 168	9 156	23 837	117 562	67 744	73 174	435 103
June	17 518	109 994	14 728	8 622	26 545	116 851	71 909	79 700	461 726
2001-02									
July	14 737	27 393	19 654	7 571	28 988	99 212	74 725	89 592	378 430
August	19 403	139 722	19 498	10 687	29 850	139 726	98 097	111 202	584 391
September	17 922	172 850	19 594	7 687	25 943	104 533	68 422	92 551	523 420
October	23 648	63 528	19 978	9 154	33 610	159 511	82 343	91 382	496 998
November	25 109	13 766	21 446	10 959	25 354	130 063	66 386	95 258	406 947
December	17 232	78 949	18 247	6 218	23 108	99 669	52 322	70 152	379 968
January	16 625	1 347	26 023	9 135	33 252	136 435	63 910	94 198	406 502
February	16 447	127 019	19 898	8 556	24 880	109 125	73 572	91 120	490 891
March	12 504	45 325	35 457	8 338	26 536	95 261	72 474	78 991	396 159
April	11 993	77 536	24 886	9 947	28 077	113 070	81 283	79 415	449 965
May	14 597	61 253	25 855	9 843	27 134	117 169	80 639	86 694	443 547

(a) Restrictions are placed on the release of statistics for certain commodities for reasons of confidentiality. These restrictions do not affect total export and import figures, but they can affect some items within commodity, industry and country tables. See *International Trade* (cat. no. 5422.0), Explanatory Notes, paragraph 30, for more details.

(b) Includes other commodity groups not listed.

Source: ABS data available on request.

8

TURNOVER OF RETAIL ESTABLISHMENTS, BY INDUSTRY—TREND

Period	Food retailing	Department stores	Clothing and soft good retailing	Household good retailing	Recreational good retailing	Other retailing	Hospitality and services	Total
	\$m	\$m	\$m	\$m	\$m	\$m	\$m	\$m
2000-01								
March	403.2	95.6	50.4	103.1	25.2	120.2	177.1	976.4
April	407.3	95.7	50.3	105.9	28.1	122.5	177.1	986.3
May	411.7	95.2	50.2	108.2	28.3	124.9	178.6	997.2
June	416.6	94.5	50.3	109.9	28.2	127.2	181.3	1 008.4
2001-02								
July	421.5	94.0	50.2	110.6	27.9	129.1	183.9	1 017.7
August	426.2	94.0	50.2	110.5	27.4	130.2	185.7	1 024.5
September	430.3	94.6	50.3	110.6	27.1	130.3	186.7	1 030.0
October	433.5	95.8	50.9	111.4	27.1	129.5	187.7	1 035.8
November	435.9	97.2	51.8	113.1	27.7	128.3	189.7	1 043.6
December	438.1	98.4	52.9	115.8	28.5	127.5	193.3	1 054.4
January	440.6	99.2	54.1	118.9	29.2	127.8	198.6	1 068.2
February	443.5	99.5	55.0	122.0	29.6	129.2	204.4	1 083.0
March	446.4	99.7	55.7	124.9	29.6	131.5	209.3	1 096.9
April	449.1	99.7	56.0	127.4	29.4	133.8	213.0	1 109.5
May	451.5	99.8	56.2	129.4	29.1	136.2	215.8	1 121.5

Source: Retail Trade, Australia (cat. no. 8501.0).

9

NEW MOTOR VEHICLE SALES, BY TYPE OF VEHICLE

Period	Original			Seasonally adjusted			Trend estimate		
	Passenger vehicles	Other vehicles	Total	Passenger vehicles	Other vehicles	Total	Passenger vehicles	Other vehicles	Total
2000-01									
April	2558	999	3557	2888	1160	4048	2830	1112	3942
May	2956	1197	4153	2839	1099	3938	2829	1108	3937
June	3239	1438	4677	2803	1056	3859	2840	1116	3956
2001-02									
July	2865	1113	3978	2825	1130	3955	2838	1134	3972
August	2995	1176	4171	2869	1113	3982	2830	1160	3990
September	2580	1090	3670	2899	1350	4249	2850	1199	4049
October	2995	1153	4148	2874	1158	4032	2899	1246	4145
November	3176	1339	4515	2803	1283	4086	2966	1288	4254
December	2989	1390	4379	2882	1270	4152	3026	1322	4348
January	2681	1046	3727	3461	1433	4894	3059	1350	4409
February	2892	1276	4168	3121	1461	4582	3057	1375	4432
March	2889	1335	4224	2859	1254	4113	3026	1399	4425
April	2727	1258	3985	2996	1405	4401	2982	1418	4400
May	2945	1703	4648	2783	1530	4313	2943	1433	4376
June	3342	1801	5143	3030	1414	4444	2904	1447	4351

Source: Sales of New Motor Vehicles, Australia (cat. no. 9314.0.55.001).

10

ACTUAL PRIVATE NEW CAPITAL EXPENDITURE, BY SELECTED INDUSTRY AND TYPE OF ASSET

Period	Industry			Total	Type of asset	
	Mining	Manufacturing	Other selected industries		New buildings and structures	Equipment, plant and machinery
ANNUAL (\$m)						
1998-99	509	776	993	2 277	529	1 747
1999-00	243	854	1 356	2 450	619	1 831
2000-01	419	817	1 415	2 649	656	1 994
QUARTERLY, ORIGINAL (\$m)						
2000-01						
December	183	221	445	849	264	585
March	48	187	355	590	105	485
June	62	201	299	561	107	455
2000-02						
September	75	182	287	544	125	420
December	98	242	511	851	178	674
March	72	175	400	647	123	525
QUARTERLY, TREND (\$m)						
2000-01						
December	n.a.	n.a.	n.a.	703	189	514
March	n.a.	n.a.	n.a.	639	146	493
June	n.a.	n.a.	n.a.	593	119	474
2001-02						
September	n.a.	n.a.	n.a.	619	125	494
December	n.a.	n.a.	n.a.	683	145	538
March	n.a.	n.a.	n.a.	739	153	586

Source: Private New Capital Expenditure, Australia (cat. no. 5625.0) and ABS data available on request.

11

TOURIST ACCOMMODATION

Period	Licensed hotels with facilities				Motels and guesthouses				Serviced apartments			
	Estab-lish-ments	Guest rooms	Room occu-pancy	Takings	Estab-lish-ments	Guest rooms	Room occu-pancy	Takings	Estab-lish-ments	Guest rooms	Room occu-pancy	Takings
	no.	no.	%	\$'000	no.	no.	%	\$'000	no.	no.	%	\$'000
1999-00												
March	62	4 065	60.1	23 739	146	5 168	55.3	19 956	26	1 213	62.6	6 739
June	60	4 037	58.7	23 033	147	5 212	53.1	19 309	26	1 208	62.7	6 912
2000-01												
September	60	4 070	56.3	23 960	147	5 218	50.6	19 898	26	1 211	56.9	6 252
December	62	4 128	58.2	26 070	146	5 204	54.4	21 557	26	1 220	62.4	7 232
March	62	3 905	59.9	25 686	146	5 217	55.2	21 889	27	1 280	67.1	7 955
June	61	4 066	55.9	23 849	146	5 230	50.5	20 289	27	1 300	63.2	7 959
2001-02												
September	61	4 078	56.3	23 498	146	5 231	49.7	19 926	27	1 293	60.1	7 019
December	61	4 083	61.0	26 556	144	5 170	51.9	21 044	27	1 283	67.0	8 218
March	62	4 091	61.6	27 321	145	5 196	55.6	22 467	27	1 293	70.5	8 454

Source: Tourist Accommodation, Australia (cat. no. 8635.0).

Period	Houses		Total dwelling units		New residential building \$m	Alterations and additions to residential building \$m	Total residential building \$m	Non-residential building \$m	Total building \$m
	Private sector	Total	Private sector	Total					
	no.	no.	no.	no.					
ANNUAL									
1998-99	6568	6777	7697	7928	775.6	144.0	919.6	671.6	1591.2
1999-00	8290	8392	9915	10024	1022.9	188.9	1211.8	585.7	1797.5
2000-01	5555	5644	6659	6775	735.6	157.3	892.9	718.2	1611.1
MONTHLY, ORIGINAL									
2000-01									
February	380	385	464	469	50.4	13.8	64.2	36.6	100.9
March	517	523	630	636	67.2	14.0	81.2	141.9	223.2
April	477	494	498	517	56.3	10.8	67.1	40.5	107.6
May	655	659	705	709	79.3	16.9	96.1	95.7	191.8
June	641	644	733	736	84.2	14.3	98.5	40.8	139.3
2001-02									
July	765	771	966	975	98.3	15.9	114.2	45.9	160.1
August	736	743	810	827	86.3	17.0	103.3	118.4	221.7
September	712	731	840	863	95.9	14.5	110.3	48.3	158.6
October	778	797	877	904	98.0	19.6	117.7	81.9	199.6
November	764	810	881	931	100.4	16.1	116.5	57.3	173.8
December	699	744	924	970	107.9	13.0	120.9	42.9	163.7
January	667	688	741	764	86.7	13.2	99.8	73.0	172.9
February	770	839	899	971	104.8	17.7	122.6	59.6	182.2
March	756	774	886	904	97.0	14.3	111.3	74.9	186.2
April	701	714	970	987	111.3	16.2	127.5	53.1	180.6
May	799	823	957	981	119.3	16.5	135.9	53.1	189.0
MONTHLY, TREND									
2000-01									
February	438	445	533	543	58.2	14.1	72.4	48.1	120.4
March	467	474	554	562	60.7	14.2	74.9	49.7	124.6
April	510	517	592	600	64.4	14.4	78.8	51.7	130.5
May	566	572	652	659	69.8	14.6	84.3	54.8	139.1
June	624	630	713	721	75.6	14.8	90.4	58.6	149.0
2001-02									
July	673	681	767	779	81.3	15.2	96.5	61.5	158.0
August	709	720	818	834	87.0	15.4	102.4	63.5	166.0
September	733	751	861	885	92.8	15.6	108.4	65.2	173.6
October	748	775	892	924	98.3	15.6	113.9	66.7	180.6
November	756	791	911	950	102.6	15.6	118.3	68.0	186.3
December	758	797	921	963	105.8	15.7	121.5	68.6	190.1
January	761	800	928	969	108.1	15.8	123.9	67.8	191.7
February	761	797	934	972	110.0	16.0	126.0	66.1	192.1
March	759	790	941	974	112.0	16.2	128.1	63.1	191.2
April	757	783	951	978	114.1	16.3	130.4	58.9	189.3
May	754	775	959	981	116.0	16.5	132.5	55.7	188.2

Source: Building Approvals, Australia (cat. no. 8731.0) and ABS data available on request.

13

BUILDING COMMENCEMENTS

Period	New houses		Total dwelling units(a)		New residential building	Alterations and additions to residential building	Non-residential building		
	Private sector	Total	Private sector	Total			Private sector	Total	Total building
	no.	no.	no.	no.	\$m	\$m	\$m	\$m	\$m
1998-99	6 092	6 297	7 186	7 416	771.3	139.7	400.7	624.3	1535.3
1999-00	7 729	7 856	9 266	9 410	1044.8	198.8	351.2	576.8	1820.5
2000-01	5 303	5 390	6 442	6 556	779.2	161.3	390.5	729.6	1670.1
1999-00									
March	2 054	2 064	2 534	2 544	284.9	52.1	70.8	182.9	519.9
June	1 977	1 994	2 353	2 374	257.8	58.9	103.6	152.5	469.2
2000-01									
September	1 380	1 419	1 777	1 819	228.9	25.6	104.8	166.3	420.8
December	1 345	1 350	1 498	1 512	167.8	44.3	122.8	151.4	363.5
March	1 157	1 179	1 562	1 597	186.5	43.6	70.9	111.2	341.2
June	1 422	1 443	1 605	1 628	196.0	47.9	91.9	300.7	544.6
2001-02									
September	1 835	1 857	2 365	2 400	324.0	45.1	145.3	188.7	557.9
December	2 217	2 273	2 543	2 613	307.8	52.7	167.2	199.4	559.9
March	1 848	1 947	2 228	2 334	282.3	51.8	118.7	169.2	503.3

(a) Includes conversions.

Source: Building Activity, Australia (cat. no. 8752.0).

VALUE OF BUILDING WORK DONE AND COMPLETED DURING PERIOD

Period	New houses		New residential building		Alterations and additions to residential building	Total residential building	Non-residential building		Total building	
	Private sector	Total	Private sector	Total			Private sector	Total	Private sector	Total
	\$m	\$m	\$m	\$m	\$m	\$m	\$m	\$m	\$m	\$m
VALUE OF BUILDING WORK DONE										
1998-99	599.4	614.6	720.8	737.7	147.7	885.4	417.1	571.6	1283.8	1457.0
1999-00	798.1	812.2	984.5	999.9	195.5	1195.4	409.9	629.4	1585.1	1824.8
2000-01	679.7	686.9	835.5	845.0	161.9	1006.8	395.0	624.0	1385.4	1630.9
1999-00										
March	193.0	196.1	239.4	242.6	47.2	289.9	86.3	145.3	372.4	435.2
June	250.8	252.2	305.1	306.8	60.1	366.9	105.9	163.3	469.1	530.2
2000-01										
September	175.9	178.2	228.3	230.7	30.9	261.5	84.0	138.2	341.8	399.7
December	179.6	180.9	216.0	218.3	42.1	260.4	116.6	176.1	372.9	436.5
March	162.6	164.0	193.8	195.7	40.7	236.4	97.2	145.7	330.1	382.1
June	161.6	163.8	197.3	200.3	48.2	248.6	97.2	163.9	340.6	412.5
2001-02										
September	184.2	187.2	227.7	231.2	48.7	279.9	112.7	170.6	386.9	450.5
December	219.4	222.6	261.9	265.5	48.4	314.0	146.8	213.8	456.3	527.7
March	217.8	222.7	264.6	270.7	47.5	318.2	129.3	181.3	440.5	499.6
VALUE OF BUILDING WORK COMPLETED										
1998-99	600.6	614.8	700.0	715.2	153.2	868.4	505.3	639.4	1356.8	1507.8
1999-00	713.5	730.1	867.6	886.2	191.9	1078.1	362.9	538.4	1419.4	1616.4
2000-01	758.7	763.6	942.8	949.0	154.4	1103.4	436.3	591.5	1526.5	1694.9
1999-00										
March	156.0	160.2	177.8	182.0	42.2	224.2	100.8	150.4	320.0	374.6
June	217.9	220.1	297.9	300.1	65.7	365.8	69.6	122.0	432.8	487.8
2000-01										
September	175.5	176.2	199.0	199.9	31.4	231.4	133.2	180.5	362.5	411.9
December	222.2	224.8	313.7	317.3	35.8	353.1	82.8	107.7	430.7	460.8
March	173.0	174.3	216.4	217.9	34.9	252.8	82.4	138.5	330.9	391.2
June	188.0	188.3	213.7	213.9	52.2	266.1	137.9	164.9	402.4	431.0
2001-02										
September	149.9	153.2	173.1	177.6	55.0	232.6	75.5	121.0	300.5	353.7
December	194.3	197.6	220.5	224.4	38.1	262.5	129.3	259.9	386.3	522.4
March	174.8	177.2	231.9	234.8	39.1	273.9	82.0	125.5	351.6	399.4

Source: Building Activity, Australia (cat. no. 8752.0).

<i>Period</i>	<i>Pigmeat</i> <i>tonnes</i>	<i>Beef</i> <i>tonnes</i>	<i>Mutton</i> <i>tonnes</i>	<i>Lamb</i> <i>tonnes</i>	<i>Sawn timber(a)</i> <i>m³</i>
1998-99	30 864	62 266	48 029	44 173	374 590
1999-00	31 927	78 001	28 970	56 668	425 549
2000-01	36 679	82 532	36 104	61 893	389 417
1999-00					
March	8 245	21 743	8 810	14 475	112 949
June	8 884	20 750	5 792	18 757	107 723
2000-01					
September	8 227	18 011	8 072	15 785	126 440
December	8 143	21 982	9 826	15 689	89 486
March	9 785	23 367	9 885	14 968	75 558
June	10 524	19 172	8 321	15 451	97 933
2001-02					
September	10 274	18 271	6 290	11 694	103 774
December	9 754	21 325	8 221	17 627	111 797
March	12 583	23 748	8 895	17 232	111 697

(a) From Australian softwood logs only.

Source: *Livestock Products, Australia (cat. no. 7215.0)* and ABS data available on request.

<i>Period</i>	<i>Food</i>	<i>Alcohol and tobacco</i>	<i>Clothing and footwear</i>	<i>Housing</i>	<i>House furnishings, supplies and services</i>	<i>Health</i>	<i>Transportation</i>	<i>Communication</i>	<i>Recreation</i>	<i>Education</i>	<i>Miscellaneous</i>	<i>All groups</i>
ANNUAL AVERAGE (1989-90 = 100.0)												
1999-00	130.8	179.1	103.3	97.0	112.9	165.7	129.4	97.7	119.1	215.8	148.8	126.3
2000-01	136.7	198.3	111.9	104.3	117.1	169.5	138.0	104.7	122.9	225.9	159.3	133.5
2001-02	143.1	207.3	111.1	108.2	120.6	173.0	135.8	105.8	126.9	235.8	165.1	137.2
QUARTERLY (1989-90 = 100.0)												
2000-01												
March	139.4	200.5	110.5	104.4	117.4	170.7	137.0	104.3	123.0	230.9	159.9	134.1
June	139.4	203.3	112.3	104.9	119.3	171.3	140.4	103.9	122.5	230.9	161.2	135.1
2001-02												
September	140.5	205.9	108.4	106.8	120.6	170.9	136.4	103.6	123.1	231.0	163.5	135.3
December	143.8	205.5	112.2	107.9	120.9	169.3	134.4	106.0	125.6	231.1	163.8	136.6
March	144.6	207.8	110.6	108.6	120.0	173.7	133.9	106.2	129.0	240.6	166.0	137.7
June	143.6	210.0	113.0	109.5	120.9	178.0	138.4	107.3	129.9	240.6	167.0	139.1
PERCENTAGE CHANGE FROM SAME QUARTER OF PREVIOUS YEAR												
2000-01												
March	6.3	10.4	8.4	6.6	4.0	2.4	5.1	7.5	3.8	4.6	6.2	5.8
June	5.7	11.4	8.0	6.7	5.2	2.0	6.4	5.3	3.3	4.6	4.7	5.9
2001-02												
September	5.0	6.5	-4.6	2.8	4.0	1.4	-0.3	1.8	0.3	4.6	3.6	2.3
December	7.2	4.8	0.9	3.8	4.4	1.0	-2.3	1.0	1.8	4.6	3.5	3.1
March	3.7	3.6	0.1	4.0	2.2	1.8	-2.3	1.8	4.9	4.2	3.8	2.7
June	3.0	3.3	0.6	4.4	1.3	3.9	-1.4	3.3	6.0	4.2	3.6	3.0
PERCENTAGE CHANGE FROM PREVIOUS QUARTER												
2000-01												
March	3.9	2.3	-0.6	0.5	1.4	1.8	-0.4	-0.7	-0.3	4.5	1.0	1.2
June	0.0	0.9	1.6	0.5	1.6	0.4	2.5	-0.4	-0.4	0.0	0.8	0.7
2001-02												
September	0.8	1.3	-3.4	1.8	1.1	-0.2	-2.8	-0.3	0.5	0.0	1.4	0.1
December	2.3	-0.2	3.5	1.0	0.2	-0.9	-1.5	2.3	2.0	0.0	0.2	1.0
March	0.6	1.1	-1.4	0.6	-0.7	2.6	-0.4	0.2	2.7	4.1	1.3	0.8
June	-0.7	1.1	2.2	0.8	0.8	2.5	3.4	1.0	0.7	0.0	0.6	1.0

Source: Consumer Price Index (cat. no. 6401.0).

17

ESTIMATED RESIDENT POPULATION AND COMPONENTS OF POPULATION CHANGE(a)

Period	Net migration			Total increase	Population at end of period
	Natural increase	Interstate	Overseas(b)		
1998-99	6 751	-2 869	2 108	8 375	1 499 204
1999-00	6 306	-4 773	3 453	7 598	1 506 802
2000-01	5 635	-4 234	3 602	8 052	1 514 854
1999-00					
March	1 828	-1 735	662	1 406	1 497 587
June	1 448	-1 147	156	1 110	1 506 802
2000-01					
September	1 121	-1 030	924	1 778	1 508 580
December	1 490	-1 308	1 660	2 603	1 511 183
March	1 740	-1 264	655	1 894	1 513 077
June	1 284	-632	363	1 777	1 514 854
2001-02					
September	1 244	-632	1 130	1 742	1 516 596
December	1 264	-171	1 185	2 278	1 518 874

(a) These figures take into account the results of the 2001 Census of Population and Housing and differences between total population growth and the sum of natural increase and net migration during 1996-2001 are due to preliminary intercensal discrepancy.

(b) Includes category jumping.

Source: Australian Demographic Statistics (cat. no. 3101.0).

18

BIRTHS, DEATHS, MARRIAGES AND DIVORCES

Period	Registrations			
	Births	Deaths	Marriages	Divorces
1998-99	18 399	11 648	8 034	4 191
1999-00	17 896	11 590	8 428	4 197
2000-01	17 449	11 814	7 689	4 072
1999-00				
March	4 476	2 648	2 436	965
June	4 449	3 001	1 996	984
2000-01				
September	4 360	3 239	1 092	1 056
December	4 319	2 829	2 703	1 031
March	4 549	2 809	2 175	824
June	4 221	2 937	1 719	1 161
2001-02				
September	4 398	3 154	1 096	1 387
December	4 109	2 845	2 444	1 173

Source: Australian Demographic Statistics (cat. no. 3101.0).

19

CIVILIAN LABOUR FORCE STATUS(a)

Period	Employed full-time		Employed part-time		Total employed		Unemployed		Labour force	
	Males	Females	Males	Females	Males	Females	Males	Females	Males	Females
ANNUAL AVERAGE ('000)										
1999-00	322.1	152.5	56.1	142.3	378.2	294.9	34.6	23.9	412.8	318.7
2000-01	322.6	156.7	54.8	143.5	377.4	300.2	32.6	20.2	410.0	320.4
2001-02	319.2	153.2	59.1	153.1	378.4	306.3	31.8	20.0	410.2	326.2
MONTHLY, ORIGINAL ('000)										
2000-01										
April	314.3	151.8	57.1	150.6	371.4	302.5	34.2	19.4	405.6	321.9
May	316.3	154.8	55.1	146.2	371.3	301.0	35.5	20.5	406.9	321.4
June	313.5	152.7	58.6	150.1	372.1	302.8	30.5	20.9	402.6	323.7
2001-02										
July	316.2	156.5	54.8	144.8	371.0	301.3	33.2	19.4	404.2	320.7
August	317.2	150.9	56.2	149.4	373.4	300.3	31.9	20.5	405.3	320.7
September	318.2	158.3	57.3	147.4	375.5	305.7	32.2	20.5	407.6	326.2
October	317.7	154.6	56.9	150.9	374.6	305.5	32.4	18.6	407.1	324.1
November	319.4	159.8	56.2	151.6	375.6	311.4	32.1	16.9	407.6	328.3
December	322.1	158.8	59.6	151.1	381.7	309.9	32.0	20.2	413.8	330.1
January	322.1	151.4	56.9	147.3	379.0	298.8	33.4	22.8	412.4	321.6
February	318.9	152.6	62.4	152.3	381.3	304.9	34.7	22.2	416.0	327.1
March	320.4	147.7	64.0	157.6	384.4	305.3	28.7	21.3	413.1	326.6
April	319.4	147.9	63.5	163.8	382.9	311.6	30.1	18.5	413.0	330.1
May	321.0	152.4	59.8	156.5	380.8	308.9	31.2	19.3	412.0	328.2
June	318.3	147.0	61.9	164.7	380.2	311.7	29.9	19.5	410.1	331.2
MONTHLY, TREND ('000)										
2000-01										
April	316.1	155.8	55.7	147.0	371.8	302.8	33.8	19.2	405.6	322.0
May	315.7	155.5	55.9	147.9	371.6	303.4	34.1	19.8	405.7	323.2
June	315.8	155.2	56.0	148.2	371.8	303.4	34.1	20.4	405.9	323.8
2001-02										
July	316.1	155.1	56.3	148.2	372.4	303.3	33.8	20.6	406.2	323.9
August	316.6	155.3	56.5	147.9	373.1	303.2	33.3	20.6	406.5	323.8
September	317.2	155.5	56.8	147.9	374.0	303.4	32.8	20.3	406.9	323.8
October	317.8	155.6	57.3	148.2	375.1	303.8	32.4	20.1	407.5	323.9
November	318.5	155.1	58.1	149.1	376.6	304.2	32.0	20.1	408.7	324.3
December	319.2	154.2	59.2	150.5	378.4	304.7	31.6	20.1	410.0	324.8
January	319.8	152.9	60.3	152.5	380.1	305.4	31.3	20.1	411.3	325.5
February	320.4	151.7	61.0	154.7	381.4	306.4	30.9	20.0	412.4	326.4
March	321.0	150.8	61.4	157.0	382.4	307.8	30.7	19.8	413.0	327.7
April	321.4	150.5	61.4	159.1	382.8	309.6	30.5	19.5	413.3	329.1
May	321.7	150.4	61.2	160.9	382.9	311.3	30.6	19.3	413.4	330.6
June	321.9	150.7	60.8	162.5	382.7	313.2	30.7	19.0	413.3	332.1

(a) Population aged 15 years and over.

Source: Labour Force, Australia, Preliminary (cat. no. 6202.0).

Period	Civilian population			Unemployment rate			Participation rate		
	Males aged 15 and over	Females aged 15 and over	Persons aged 15-19	Males all ages	Females all ages	Persons all ages	Males	Females	Persons
	'000	'000	%	%	%	%	%	%	%
ANNUAL AVERAGE									
1999-00	587.6	613.8	20.0	8.4	7.5	8.0	70.3	51.9	60.9
2000-01	591.6	616.9	17.9	8.0	6.3	7.2	69.3	51.9	60.4
2001-02	595.4	620.5	18.5	7.8	6.1	7.1	68.9	52.6	60.6
MONTHLY, ORIGINAL									
2000-01									
April	592.6	617.6	17.8	8.4	6.0	7.4	68.5	52.1	60.1
May	592.9	617.9	21.1	8.7	6.4	7.7	68.6	52.0	60.2
June	593.1	618.2	17.1	7.6	6.4	7.1	67.9	52.4	60.0
2001-02									
July	593.5	618.6	17.6	8.2	6.1	7.3	68.1	51.9	59.8
August	593.9	619.0	17.9	7.9	6.4	7.2	68.2	51.8	59.9
September	594.3	619.4	17.0	7.9	6.3	7.2	68.6	52.7	60.5
October	594.5	619.6	18.9	8.0	5.7	7.0	68.5	52.3	60.2
November	594.8	619.9	16.5	7.9	5.2	6.7	68.5	53.0	60.6
December	595.1	620.1	20.9	7.7	6.1	7.0	69.5	53.2	61.2
January	595.5	620.5	24.4	8.1	7.1	7.7	69.3	51.8	60.4
February	595.9	620.9	19.1	8.3	6.8	7.7	69.8	52.7	61.1
March	596.2	621.3	18.3	6.9	6.5	6.8	69.3	52.6	60.8
April	596.6	621.7	16.3	7.3	5.6	6.5	69.2	53.1	61.0
May	597.0	622.1	17.9	7.6	5.9	6.8	69.0	52.8	60.7
June	597.4	622.5	17.5	7.3	5.9	6.7	68.6	53.2	60.8
MONTHLY, TREND									
2000-01									
April	n.a.	n.a.	n.a.	8.4	6.1	7.4	68.4	52.3	60.2
May	n.a.	n.a.	n.a.	8.4	6.1	7.4	68.4	52.3	60.2
June	n.a.	n.a.	n.a.	8.4	6.3	7.5	68.4	52.4	60.2
2001-02									
July	n.a.	n.a.	n.a.	8.3	6.4	7.5	68.4	52.4	60.2
August	n.a.	n.a.	n.a.	8.2	6.4	7.4	68.4	52.3	60.2
September	n.a.	n.a.	n.a.	8.1	6.3	7.3	68.5	52.3	60.2
October	n.a.	n.a.	n.a.	8.0	6.2	7.2	68.5	52.3	60.2
November	n.a.	n.a.	n.a.	7.8	6.2	7.1	68.7	52.3	60.3
December	n.a.	n.a.	n.a.	7.7	6.2	7.0	68.9	52.4	60.5
January	n.a.	n.a.	n.a.	7.6	6.2	7.0	69.1	52.5	60.6
February	n.a.	n.a.	n.a.	7.5	6.1	6.9	69.2	52.6	60.7
March	n.a.	n.a.	n.a.	7.4	6.1	6.8	69.3	52.7	60.8
April	n.a.	n.a.	n.a.	7.4	5.9	6.7	69.3	52.9	60.9
May	n.a.	n.a.	n.a.	7.4	5.8	6.7	69.3	53.2	61.0
June	n.a.	n.a.	n.a.	7.4	5.7	6.7	69.2	53.4	61.1

(a) Population aged 15 years and over.

Source: Labour Force, Australia, Preliminary (cat. no. 6202.0).

21

AVERAGE WEEKLY EARNINGS OF EMPLOYEES

Period	Males			Females			Persons		
	Full-time adult ordinary time earnings	Full-time adult total earnings	All males total earnings	Full-time adult ordinary time earnings	Full-time adult total earnings	All females total earnings	Full-time adult ordinary time earnings	Full-time adult total earnings	All employees total earnings
ANNUAL AVERAGE (\$ per week)									
1998-99	741.20	797.60	678.30	627.90	647.30	464.40	699.10	741.70	575.20
1999-00	756.80	812.50	695.00	641.70	663.30	457.20	714.40	757.50	575.90
2000-01	811.30	864.40	746.80	685.20	703.90	491.20	765.70	806.40	619.70
QUARTERLY, ORIGINAL (\$ per week)									
2000-01									
November	814.90	866.00	748.30	681.40	698.00	488.30	766.40	805.00	618.50
February	813.80	870.60	754.70	693.60	710.60	499.30	770.10	812.40	627.70
May	824.80	875.00	759.10	698.00	714.20	493.00	780.90	819.30	628.90
2001-02									
August	832.60	875.90	771.20	714.50	727.10	513.00	791.70	824.30	644.50
November	827.80	884.90	772.10	733.00	745.80	506.00	796.10	838.40	641.40
February	831.00	900.50	773.20	741.80	754.60	497.90	801.50	852.20	639.20
QUARTERLY, TREND (\$ per week)									
2000-01									
November	807.00	860.80	741.50	679.50	699.70	488.80	760.40	802.10	615.70
February	819.00	870.60	754.50	690.50	707.30	495.50	773.00	812.10	625.90
May	825.60	875.30	763.70	702.90	717.70	502.10	782.40	819.70	634.70
2001-02									
August	828.50	879.20	768.80	716.10	729.70	505.60	789.60	827.50	639.80
November	829.90	885.50	771.00	728.40	741.40	504.50	795.80	837.30	641.00
February	829.50	894.00	770.80	739.80	753.20	500.60	800.70	848.80	639.20

Source: Average Weekly Earnings, States and Australia (cat. no. 6302.0).

22

SECURED HOUSING FINANCE COMMITMENTS(a)

Period	Original		Seasonally adjusted		Trend	
	Dwelling units	Value	Dwelling units	Value	Dwelling units	Value
	no.	\$m	no.	\$m	no.	\$m
2000-01						
March	4119	423	3814	395	3870	399
April	3645	382	3895	411	3957	415
May	4522	479	4205	443	4068	432
June	4321	458	4165	454	4175	447
2001-02						
July	4290	462	4308	469	4255	457
August	4324	455	4326	457	4304	464
September	3849	414	4324	467	4331	470
October	4334	473	4216	457	4351	476
November	4695	525	4338	485	4350	482
December	4423	508	4482	499	4330	485
January	3892	444	4438	505	4297	484
February	4008	455	4074	463	4264	480
March	4246	478	4240	476	4240	475
April	4112	458	4013	448	4233	471
May	4880	525	4507	486	4232	467

(a) Excludes alterations and additions. Includes refinancing.

Source: Housing Finance for Owner Occupation, Australia (cat. no. 5609.0).

23

FINANCE COMMITMENTS

Period	Commercial finance commitments			Personal finance commitments			
	Fixed loan facilities	Revolving credit facilities	Total commercial finance commitments	Fixed loan facilities	Revolving credit facilities	Total personal finance commitments	Total lease finance commitments
	\$m	\$m	\$m	\$m	\$m	\$m	\$m
2000-01							
March	321.3	278.2	599.5	164.8	147.1	311.9	13.7
April	262.6	295.6	558.2	133.7	108.6	242.4	11.2
May	376.4	186.8	563.2	162.5	144.9	307.4	7.7
June	524.6	375.8	900.5	165.3	168.5	333.8	19.1
2001-02							
July	373.9	260.2	634.1	150.7	169.7	320.4	28.7
August	374.2	220.1	594.3	165.4	143.6	308.9	15.6
September	293.2	222.3	515.5	136.5	127.2	263.7	13.5
October	412.6	295.7	708.3	162.4	145.4	307.8	14.9
November	551.8	295.1	846.9	180.6	178.5	359.1	25.6
December	611.8	290.5	902.3	165.9	147.2	313.0	16.2
January	338.8	228.3	567.1	164.2	120.0	284.1	10.9
February	422.8	288.2	711.0	176.3	134.7	310.9	13.9
March	545.5	235.5	781.0	176.3	145.9	322.3	14.6
April	470.0	225.8	695.4	169.8	151.7	321.5	13.3
May	463.8	235.1	699.0	193.8	158.7	352.5	16.1

Source: ABS data available on request.

PUBLICATIONS SOURCE INDEX

- (1) *Australian National Accounts, Quarterly State Details*, cat. no. 5206.0.40.001
- (2) International Merchandise Trade, ABS data available on request
- (3) *Retail Trade, Australia*, cat. no. 8501.0, Monthly
- (4) *Sales of New Motor Vehicles, Australia*, cat. no. 9314.0.55.00,1 Monthly
- (5) *State Estimates of Private New Capital Expenditure*, cat. no. 5646.0, Quarterly
- (6) *Tourist Accommodation, Australia*, cat. no. 8635.0, Quarterly
- (7) *Building Approvals, Australia*, cat. no. 8731.0, Monthly
- (8) *Building Activity, Australia*, cat. no. 8752.0, Quarterly
- (9) *Engineering Construction Activity, Australia*, cat. no. 8762.0, Quarterly
- (10) *Manufacturing Production, Australia, Preliminary*, cat. no. 8301.0, Quarterly
- (11) *Livestock Products, Australia*, cat. no. 7215.0, Quarterly
- (12) *Actual and Expected Private Mineral Exploration, Australia*, cat. no. 8412.0, Quarterly
- (13) *Consumer Price Index*, cat. no. 6401.0, Quarterly
- (14) *Producer Price Indexes*, cat. no. 6427.0, Quarterly
- (16) *House Price Indexes: Eight Capital Cities*, cat. no. 6416.0, Quarterly
- (17) *Australian Demographic Statistics*, cat. no. 3101.0, Quarterly
- (18) *Labour Force, Australia, Preliminary*, cat. no. 6202.0, Monthly
- (19) *Job Vacancies, Australia*, cat. no. 6354.0, Quarterly
- (20) *Industrial Disputes, Australia*, cat. no. 6321.0, Monthly
- (21) *Average Weekly Earnings, States and Australia*, cat. no. 6302.0, Quarterly
- (22) *Wage Cost Index, Australia*, cat. no. 6345.0, Quarterly
- (23) *Housing Finance for Owner Occupation, Australia*, cat. no. 5609.0, Monthly
- (24) *Lending Finance, Australia*, cat. no. 5671.0, Monthly—and ABS data available on request
- (25) *Reserve Bank of Australia Bulletin*

FOR MORE INFORMATION...

- INTERNET* **www.abs.gov.au** the ABS web site is the best place to start for access to summary data from our latest publications, information about the ABS, advice about upcoming releases, our catalogue, and Australia Now—a statistical profile.
- LIBRARY* A range of ABS publications is available from public and tertiary libraries Australia-wide. Contact your nearest library to determine whether it has the ABS statistics you require, or visit our web site for a list of libraries.
- CPI INFOLINE* For current and historical Consumer Price Index data, call 1902 981 074 (call cost 77c per minute).
- DIAL-A-STATISTIC* For the latest figures for National Accounts, Balance of Payments, Labour Force, Average Weekly Earnings, Estimated Resident Population and the Consumer Price Index call 1900 986 400 (call cost 77c per minute).

INFORMATION SERVICE

Data which have been published and can be provided within five minutes are free of charge. Our information consultants can also help you to access the full range of ABS information—ABS user-pays services can be tailored to your needs, time frame and budget. Publications may be purchased. Specialists are on hand to help you with analytical or methodological advice.

- PHONE* **1300 135 070**
- EMAIL* **client.services@abs.gov.au**
- FAX* 1300 135 211
- POST* Client Services, ABS, GPO Box 796, Sydney 1041

WHY NOT SUBSCRIBE?

ABS subscription services provide regular, convenient and prompt deliveries of ABS publications and products as they are released. Email delivery of monthly and quarterly publications is available.

- PHONE* 1300 366 323
- EMAIL* subscriptions@abs.gov.au
- FAX* 03 9615 7848
- POST* Subscription Services, ABS, GPO Box 2796Y, Melbourne 3001



2130740008023
ISSN 1039-8880

RRP \$20.00