



JUNE 2000

6203.0

LABOUR FORCE

AUSTRALIA

EMBARGO: 11:30AM (CANBERRA TIME) FRI 28 JULY 2000

CONTENTS

	<i>page</i>
Notes	2
SUMMARY OF FINDINGS	
Labour market in brief	3
Principal labour force series	4
TABLES	
List of tables	8
Civilian population aged 15 and over	9
Employed persons	25
Unemployed persons	27
Persons not in the labour force	31
Gross flows	31
Relationship in household	32
All families	34
ADDITIONAL INFORMATION	
Explanatory notes	36
Technical notes	49
Glossary	55

- For further information about these and related statistics, contact Mark Webb on Canberra 02 6252 6525, or the National Information Service on 1300 135 070.

NOTES

FORTHCOMING ISSUES	<table><thead><tr><th>Issue</th><th>Release Date</th></tr></thead><tbody><tr><td>July 2000</td><td>25 August 2000</td></tr><tr><td>August 2000</td><td>29 September 2000</td></tr><tr><td>September 2000</td><td>27 October 2000</td></tr><tr><td>October 2000</td><td>24 November 2000</td></tr><tr><td>November 2000</td><td>22 December 2000</td></tr><tr><td>December 2000</td><td>25 January 2001</td></tr></tbody></table>	Issue	Release Date	July 2000	25 August 2000	August 2000	29 September 2000	September 2000	27 October 2000	October 2000	24 November 2000	November 2000	22 December 2000	December 2000	25 January 2001
Issue	Release Date														
July 2000	25 August 2000														
August 2000	29 September 2000														
September 2000	27 October 2000														
October 2000	24 November 2000														
November 2000	22 December 2000														
December 2000	25 January 2001														
CHANGES THIS MONTH	<p>The ABS has made a minor change to the rounding of labour force time series. This has resulted in minor downward revisions, of 1 at the least significant digit, for less than 1 in 2,000 observations. This change has affected a very small number of previously published seasonally adjusted and trend labour force estimates.</p>														
FORTHCOMING CHANGES	<p>The Labour Force Survey (LFS) questionnaire is being redesigned to better reflect current labour market phenomena and contemporary user needs. The new questionnaire is scheduled to be implemented in March and April 2001. More information is available in <i>Information Paper: Labour Force Survey Questionnaire Redesign</i> (Cat no. 6294.0), which was released on 14 March 2000.</p>														
STATE INQUIRIES	<p>For further inquiries about labour force data, contact Labour Force Inquiries in ABS State offices: Sydney 02 9268 4633, Melbourne 03 9615 7073, Brisbane 07 3222 6068, Adelaide 08 8237 7365, Perth 08 9360 5940, Hobart 03 6220 5884, Darwin 08 8943 2120, Canberra 02 6207 0283.</p>														

Dennis Trewin
Australian Statistician

LABOUR MARKET IN BRIEF

TREND ESTIMATES

The trend estimate of employed persons has been increasing steadily since May 1997, reaching 9,036,600 in June 2000. Both full-time and part-time employment have continued rising, reaching 6,678,200 and 2,358,300 respectively. The trend estimate of unemployment has been falling since June 1998, to stand at 648,400 in June 2000. The trend unemployment rate in June 2000 remained at 6.7%. The male unemployment rate remained steady at 6.7% while the female unemployment rate decreased to 6.7%. The trend participation rate in June 2000 remained at 63.7%. The male participation rate remained at 72.7% while the female participation rate rose to 55.0%.

EMPLOYMENT

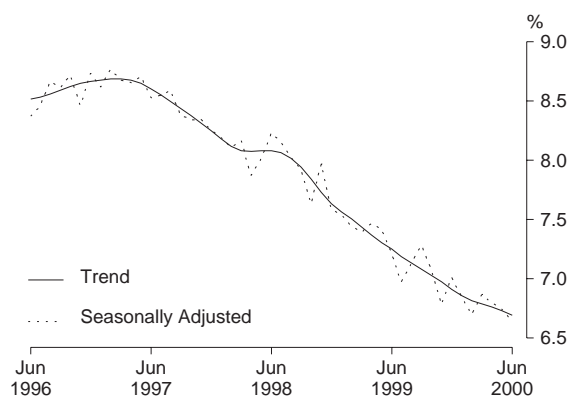
The seasonally adjusted estimate of employment increased by 21,700 to 9,042,000 in June 2000. Full-time employment rose by 47,100 to 6,700,300, with male full-time employment rising by 20,500 to 4,451,800 and female full-time employment rising by 26,600 to 2,248,500. Part-time employment decreased by 25,300 to 2,341,700, with decreases in part-time employment for males of 22,600 and females of 2,800.

UNEMPLOYMENT

The seasonally adjusted estimate of unemployment decreased by 9,000 to 643,000 in June 2000. The number of unemployed persons seeking full-time work fell by 28,200 to 463,100 with the number of females seeking full-time work falling by 28,300. The number of unemployed persons seeking part-time work rose by 19,200 to 179,900, with the number of males and females seeking part-time work rising by 3,100 and 16,100 respectively.

UNEMPLOYMENT RATE

The seasonally adjusted unemployment rate decreased by 0.1 percentage point to 6.6% in June 2000. The male unemployment rate remained at 6.7% while the female unemployment rate fell by 0.3 percentage points to 6.5%.



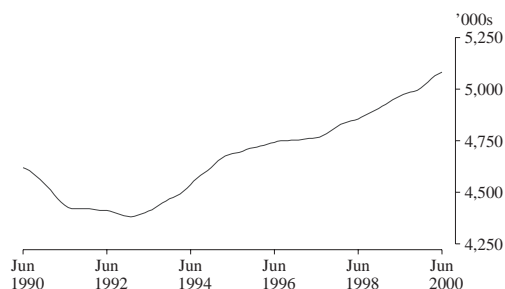
PARTICIPATION RATE

The seasonally adjusted labour force participation rate remained steady at 63.7% in June 2000. The male participation rate fell by 0.1 percentage point to 72.6% while the female participation rate rose by 0.1 percentage point to 55.0%.

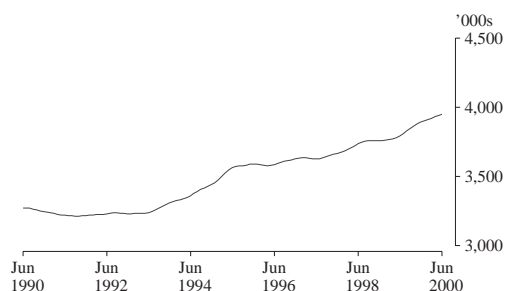
PRINCIPAL LABOUR FORCE SERIES

EMPLOYED PERSONS: TREND SERIES

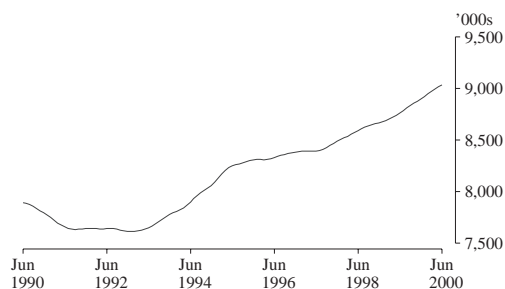
Males From a low of 4,383,100 in January 1993, the trend estimate of employed males rose strongly until May 1995. Growth then slowed, with the trend reaching 4,769,600 in July 1997. The trend estimate has since shown stronger growth, reaching 5,084,700 in June 2000.



Females The trend estimate of employed females was flat from May 1991 until May 1993 before rising strongly to 3,572,200 in July 1995. Since then the trend has generally been rising, and stood at 3,951,800 in June 2000.

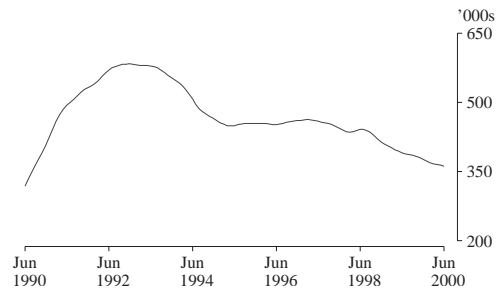


Persons The trend estimate of employed persons rose strongly from a low of 7,615,300 in January 1993 until mid 1995. The trend then continued to rise at a slower rate until May 1997. Since then, the trend estimate has shown stronger growth, to stand at 9,036,600 in June 2000.

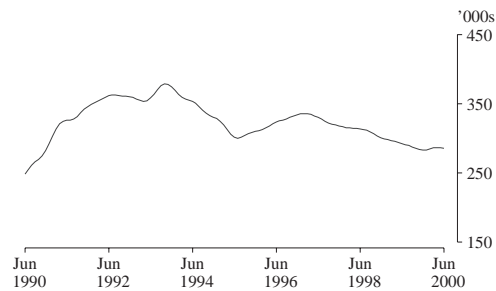


UNEMPLOYED PERSONS:
TREND SERIES

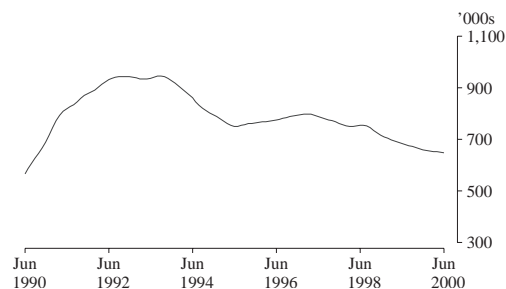
Males After reaching a peak of 584,000 in December 1992, the trend estimate of male unemployment fell rapidly to 449,200 in May 1995. The trend estimate then remained relatively flat until July 1998, before falling to 362,500 in June 2000.



Females From a high of 379,000 in October 1993, the trend estimate of unemployed females fell rapidly to 300,500 in July 1995. The trend estimate then rose steadily to reach 336,400 in February 1997, before falling to 283,300 in December 1999. It has remained at a similar level and stood at 285,900 in June 2000.

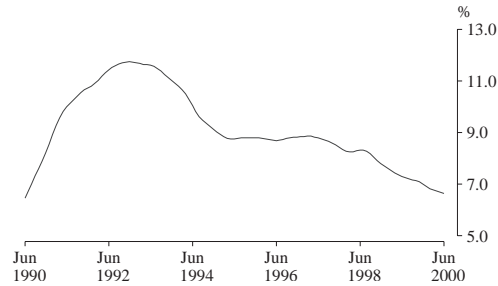


Persons The trend estimate of unemployed persons peaked at 946,800 in September 1993, before falling rapidly to 751,900 in June 1995. The trend then rose slowly for almost two years to 799,400 in March 1997. The trend estimate has generally been falling since March 1997, and was 648,400 in June 2000.

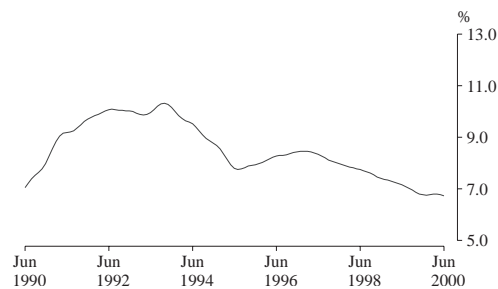


UNEMPLOYMENT RATE:
TREND SERIES

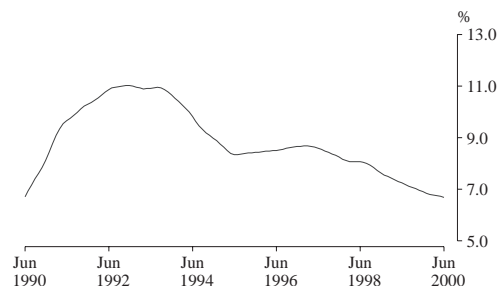
Males The male trend unemployment rate peaked at 11.8% in December 1992, before falling rapidly to 8.8% in May 1995. The trend estimate then remained relatively steady until July 1998. It has generally been falling since then, to stand at 6.7% in June 2000.



Females From a high of 10.3% in October 1993, the trend unemployment rate for females fell steeply to 7.8% in July 1995. The trend then rose slowly to 8.5% in February 1997, before falling to 6.7% in June 2000.

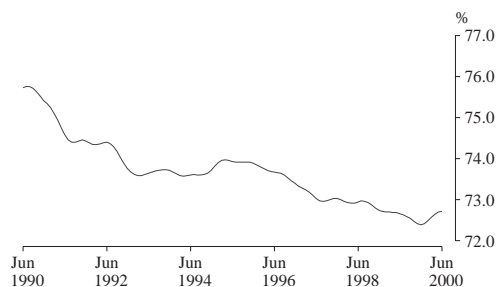


Persons After reaching a high of 11.0% in August 1992, the trend unemployment rate remained steady for twelve months, before falling rapidly to 8.3% in July 1995. The trend then rose slowly, reaching 8.7% in March 1997. Apart from a small increase in mid 1998, the trend estimate has since decreased, and stood at 6.7% in June 2000.

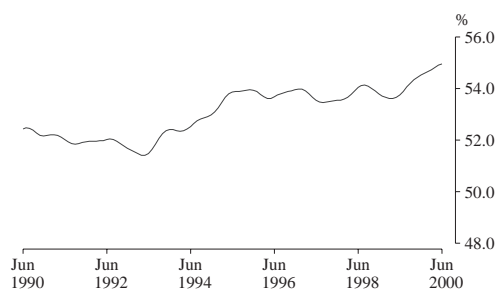


PARTICIPATION RATE: TREND SERIES

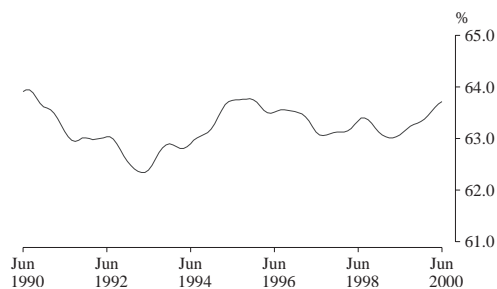
Males The trend estimate of the male participation rate generally fell from 75.8% in July 1990 to 73.6% in March 1993. After rising to 74.0% in April 1995, the trend rate generally fell to 72.4% in December 1999. Recently the trend rate has increased to stand at 72.7% in June 2000.



Females The trend estimate of the female participation rate rose from 51.4% in May 1993 to 54.0% in November 1995. The trend remained relatively stable until March 1999. Since then the trend has been rising and stood at 55.0% in June 2000.



Persons From a peak of 64.0% in July 1990, the trend estimate of the participation rate fell to a low of 62.3% in April 1993. The trend rate then rose to 63.8% in mid 1995, before generally declining to 63.0% in April 1999. The trend has since increased to stand at 63.7% in June 2000.



LIST OF TABLES

Civilian population aged 15 and over

	1	Original series, Australia	9
	2	Seasonally adjusted series, Australia	11
	3	Trend series, Australia	12
	4	Marital status	13
	5	State and Territories	13
	6	State capital cities	14
	7	Australian Capital Territory	14
	8	Seasonally adjusted series, States	15
	9	Trend series, States and Territories	18
	10	Age	22
	11	Aged 15 to 19 (single years)	22
	12	Aged 20 to 24 (single years)	23
	13	Participation rates	23
	14	Birthplace	24
	15	Born outside Australia	25
Employed persons	16	Full-time and part-time workers	25
	17	Hours worked	26
	18	Employment/population ratios	26
	19	Full-time workers who worked less than 35 hours	26
Unemployed persons	20	States, by age	27
	21	Aged 15 to 19: duration of unemployment and school attendance	27
	22	Age and whether looking for full-time or part-time work	28
	23	Birthplace	28
	24	Long-term unemployment	29
	25	Duration of unemployment	30
Persons not in the labour force	26	Age and marital status	31
	27	Whether looking for work, etc.	31
Gross flows	28	Estimates of labour force status and gross changes (flows) derived from matched records, May 2000 and June 2000	31
Relationship in household	29	Summary table	32
	30	Labour force status	33
All families	31	Number of family members, and labour force status	34
	32	Number of children under 15 present, number of dependants present and labour force status	35

TABLE 1. LABOUR FORCE STATUS OF CIVILIAN POPULATION AGED 15 AND OVER

Month	Unemployed											
	Employed			Looking for full-time work				Labour force	Not in labour force	Civilian population aged 15 and over	Unemployment rate - per cent -	Participation rate
	Full-time workers	Part-time workers	Total	Aged 15-19 looking for first job	Total	Looking for part-time work - '000 -	Total					
MALES												
1999 —												
April	4,299.2	640.7	4,939.9	22.2	337.3	64.9	402.2	5,342.1	2,015.0	7,357.2	7.5	72.6
May	4,290.9	641.8	4,932.7	21.5	332.3	65.4	397.7	5,330.4	2,036.6	7,367.0	7.5	72.4
June	4,316.8	660.8	4,977.6	20.5	321.9	49.8	371.7	5,349.4	2,027.4	7,376.8	6.9	72.5
July	4,373.7	618.8	4,992.4	17.3	302.2	57.2	359.4	5,351.8	2,034.2	7,386.0	6.7	72.5
August	4,323.8	620.8	4,944.5	18.4	316.4	66.4	382.9	5,327.4	2,067.9	7,395.3	7.2	72.0
September	4,387.7	622.0	5,009.7	16.7	331.3	72.5	403.8	5,413.6	1,991.1	7,404.6	7.5	73.1
October	4,376.4	623.0	4,999.4	17.6	307.2	61.4	368.6	5,368.1	2,048.0	7,416.0	6.9	72.4
November	4,378.8	608.7	4,987.5	20.2	301.3	48.9	350.3	5,337.8	2,089.6	7,427.4	6.6	71.9
December	4,462.2	617.4	5,079.6	31.8	322.0	65.7	387.7	5,467.3	1,971.5	7,438.7	7.1	73.5
2000 —												
January	4,367.2	611.0	4,978.2	34.5	344.6	62.5	407.1	5,385.3	2,062.7	7,448.0	7.6	72.3
February	4,420.6	613.8	5,034.3	29.0	326.5	66.1	392.6	5,427.0	2,030.2	7,457.2	7.2	72.8
March	4,391.2	642.6	5,033.8	24.4	310.9	71.3	382.2	5,415.9	2,050.4	7,466.4	7.1	72.5
April	4,400.4	666.2	5,066.6	19.3	296.3	68.5	364.9	5,431.4	2,044.1	7,475.5	6.7	72.7
May	4,407.9	660.9	5,068.9	16.5	297.8	58.7	356.5	5,425.4	2,059.2	7,484.6	6.6	72.5
June	4,433.3	651.2	5,084.5	18.1	293.2	55.1	348.3	5,432.8	2,061.0	7,493.8	6.4	72.5
Standard error of —												
June 2000 estimates	21.4	9.6	23.3	2.3	7.1	3.8	7.6	24.3	15.2	..	0.1	0.3
May 00 to June 00 movements	14.0	7.1	14.7	2.0	5.4	3.0	5.7	15.1	10.7	..	0.1	0.2
MARRIED FEMALES												
1999 —												
April	1,176.7	1,051.8	2,228.5	* 1.6	66.1	37.2	103.2	2,331.8	1,992.7	4,324.5	4.4	53.9
May	1,181.3	1,058.6	2,239.8	* 1.3	58.7	41.9	100.6	2,340.4	1,981.1	4,321.5	4.3	54.2
June	1,207.8	1,069.1	2,276.9	* 2.1	63.6	36.4	100.0	2,376.8	1,945.6	4,322.5	4.2	55.0
July	1,219.7	1,063.1	2,282.7	* 1.5	51.4	36.0	87.5	2,370.2	1,961.9	4,332.1	3.7	54.7
August	1,205.7	1,064.5	2,270.1	* 2.2	61.2	36.6	97.8	2,367.9	1,987.5	4,355.4	4.1	54.4
September	1,235.4	1,104.9	2,340.3	* 1.7	70.1	39.8	109.9	2,450.2	1,915.8	4,366.1	4.5	56.1
October	1,249.8	1,076.9	2,326.7	* 0.5	63.1	34.5	97.7	2,424.4	1,955.8	4,380.2	4.0	55.3
November	1,241.2	1,108.3	2,349.5	* 0.7	56.5	35.0	91.5	2,441.1	1,940.7	4,381.8	3.8	55.7
December	1,288.7	1,082.2	2,370.9	* 1.2	58.1	33.7	91.9	2,462.8	1,938.1	4,400.9	3.7	56.0
2000 —												
January	1,254.0	998.3	2,252.3	* 0.7	63.0	31.2	94.2	2,346.5	2,069.4	4,416.0	4.0	53.1
February	1,252.7	1,080.0	2,332.7	* 0.8	75.9	43.5	119.4	2,452.1	1,974.2	4,426.3	4.9	55.4
March	1,264.8	1,093.2	2,358.0	* 1.0	73.3	45.0	118.3	2,476.3	1,933.1	4,409.4	4.8	56.2
April	1,270.3	1,091.3	2,361.6	* 1.1	68.7	46.0	114.7	2,476.3	1,929.3	4,405.5	4.6	56.2
May	1,266.5	1,108.8	2,375.3	* 0.5	63.9	37.6	101.6	2,476.9	1,945.8	4,422.6	4.1	56.0
June	1,276.4	1,115.3	2,391.7	* 1.5	55.9	46.0	101.9	2,493.6	1,902.4	4,396.0	4.1	56.7
Standard error of —												
June 2000 estimates	12.5	11.9	16.1	0.6	3.8	3.5	4.8	16.4	14.7	..	0.2	0.4
May 00 to June 00 movements	9.0	8.6	11.3	0.8	3.1	2.8	3.7	11.4	10.5	..	0.1	0.3

TABLE 1. LABOUR FORCE STATUS OF CIVILIAN POPULATION AGED 15 AND OVER

Month	Employed			Unemployed				Labour force	Not in labour force	Civilian population aged 15 and over	Unemployment rate - per cent -	Participation rate
	Full-time workers	Part-time workers	Total	Looking for full-time work		Looking for part-time work - '000 -	Total					
				Aged 15-19 looking for first job	Total							
	ALL FEMALES											
1999 —												
April	2,110.0	1,663.7	3,773.7	19.0	190.2	112.7	302.9	4,076.7	3,510.5	7,587.2	7.4	53.7
May	2,108.5	1,675.4	3,783.8	18.1	181.0	110.2	291.1	4,074.9	3,521.3	7,596.3	7.1	53.6
June	2,132.5	1,683.5	3,816.0	14.9	175.8	100.9	276.7	4,092.7	3,512.7	7,605.4	6.8	53.8
July	2,172.6	1,659.4	3,832.0	14.3	160.4	104.2	264.6	4,096.6	3,517.9	7,614.5	6.5	53.8
August	2,109.6	1,677.5	3,787.1	16.3	166.8	103.1	269.9	4,057.0	3,566.6	7,623.6	6.7	53.2
September	2,165.0	1,733.2	3,898.2	18.1	187.7	121.8	309.5	4,207.7	3,425.1	7,632.7	7.4	55.1
October	2,190.8	1,698.9	3,889.7	16.6	173.9	100.4	274.4	4,164.1	3,479.1	7,643.2	6.6	54.5
November	2,178.0	1,727.3	3,905.3	17.7	167.5	92.1	259.6	4,164.9	3,488.7	7,653.7	6.2	54.4
December	2,263.8	1,703.4	3,967.2	24.5	184.7	94.8	279.5	4,246.7	3,417.4	7,664.1	6.6	55.4
2000 —												
January	2,208.0	1,587.8	3,795.8	23.0	188.5	100.7	289.2	4,085.0	3,587.3	7,672.3	7.1	53.2
February	2,189.2	1,681.6	3,870.7	21.5	200.8	125.2	326.1	4,196.8	3,483.7	7,680.5	7.8	54.6
March	2,201.2	1,715.0	3,916.2	17.5	197.4	120.6	318.0	4,234.2	3,454.5	7,688.7	7.5	55.1
April	2,212.6	1,725.6	3,938.2	20.7	181.8	112.6	294.4	4,232.6	3,464.4	7,697.0	7.0	55.0
May	2,200.7	1,746.9	3,947.6	17.4	186.0	100.4	286.4	4,234.1	3,471.3	7,705.3	6.8	54.9
June	2,222.3	1,749.1	3,971.4	16.8	152.5	107.7	260.3	4,231.7	3,482.0	7,713.7	6.2	54.9
Standard error of —												
June 2000 estimates	15.7	14.2	20.1	2.2	5.5	4.9	6.8	20.8	18.9	..	0.2	0.3
May 00 to June 00 movements	11.0	10.1	13.5	1.9	4.5	3.7	5.3	13.8	12.9	..	0.1	0.2
PERSONS												
1999 —												
April	6,409.2	2,304.4	8,713.6	41.3	527.5	177.7	705.2	9,418.8	5,525.5	14,944.3	7.5	63.0
May	6,399.3	2,317.2	8,716.5	39.5	513.2	175.5	688.8	9,405.3	5,557.9	14,963.2	7.3	62.9
June	6,449.3	2,344.3	8,793.6	35.4	497.8	150.7	648.5	9,442.1	5,540.1	14,982.1	6.9	63.0
July	6,546.3	2,278.1	8,824.4	31.6	462.6	161.4	624.0	9,448.4	5,552.1	15,000.5	6.6	63.0
August	6,433.4	2,298.2	8,731.6	34.8	483.2	169.6	652.8	9,384.4	5,634.5	15,018.9	7.0	62.5
September	6,552.7	2,355.2	8,908.0	34.8	519.0	194.3	713.3	9,621.2	5,416.1	15,037.4	7.4	64.0
October	6,567.2	2,321.9	8,889.2	34.3	481.1	161.9	643.0	9,532.2	5,527.0	15,059.2	6.7	63.3
November	6,556.8	2,336.0	8,892.8	37.9	468.8	141.1	609.9	9,502.7	5,578.3	15,081.0	6.4	63.0
December	6,726.0	2,320.8	9,046.8	56.3	506.7	160.5	667.2	9,714.0	5,388.9	15,102.9	6.9	64.3
2000 —												
January	6,575.2	2,198.8	8,773.9	57.6	533.2	163.2	696.3	9,470.3	5,650.0	15,120.3	7.4	62.6
February	6,609.8	2,295.3	8,905.1	50.5	527.3	191.4	718.7	9,623.8	5,513.9	15,137.7	7.5	63.6
March	6,592.4	2,357.6	8,950.0	42.0	508.3	191.8	700.2	9,650.1	5,504.9	15,155.1	7.3	63.7
April	6,613.0	2,391.8	9,004.8	39.9	478.2	181.1	659.3	9,664.1	5,508.5	15,172.5	6.8	63.7
May	6,608.6	2,407.9	9,016.5	33.8	483.9	159.1	643.0	9,659.4	5,530.5	15,190.0	6.7	63.6
June	6,655.6	2,400.2	9,055.9	34.9	445.7	162.9	608.6	9,664.5	5,543.0	15,207.5	6.3	63.6
Standard error of —												
June 2000 estimates	28.2	16.2	36.7	3.1	8.3	5.7	9.4	39.0	24.7	..	0.1	0.3
May 00 to June 00 movements	16.2	11.3	18.1	2.5	6.4	4.3	7.1	18.5	15.2	..	0.1	0.1

TABLE 2. CIVILIAN LABOUR FORCE: SEASONALLY ADJUSTED SERIES

Month	Employed		Unemployed					Labour force	Unemployment rate - per	Participation rate cent -
	Full-time workers	Part-time workers	Total	Looking for full-time work		Looking for part-time work				
				Aged 15-19 looking for first job	Total - '000 -					
					Total					
MALES										
1999 —										
April	4,314.9	631.4	4,946.4	22.2	344.1	62.6	406.8	5,353.1	7.6	72.8
May	4,313.1	630.6	4,943.7	22.0	337.7	66.7	404.4	5,348.0	7.6	72.6
June	4,334.0	636.5	4,970.5	21.4	332.5	56.7	389.2	5,359.6	7.3	72.7
July	4,348.9	628.4	4,977.3	20.6	310.8	64.4	375.2	5,352.6	7.0	72.5
August	4,373.8	619.0	4,992.7	21.8	320.6	69.8	390.5	5,383.2	7.3	72.8
September	4,373.1	613.3	4,986.4	20.7	325.9	66.3	392.2	5,378.6	7.3	72.6
October	4,369.4	620.2	4,989.7	20.9	326.7	64.2	390.9	5,380.6	7.3	72.6
November	4,381.0	610.4	4,991.4	23.4	310.2	55.9	366.0	5,357.4	6.8	72.1
December	4,390.2	616.5	5,006.7	24.1	326.4	62.6	388.9	5,395.6	7.2	72.5
2000 —										
January	4,367.1	636.0	5,003.0	24.1	317.2	60.2	377.4	5,380.5	7.0	72.2
February	4,412.2	644.4	5,056.6	25.7	299.8	60.3	360.1	5,416.7	6.6	72.6
March	4,410.2	635.6	5,045.8	24.8	304.1	62.2	366.3	5,412.1	6.8	72.5
April	4,416.9	656.8	5,073.7	19.3	302.3	65.9	368.3	5,441.9	6.8	72.8
May	4,431.3	649.1	5,080.4	16.9	302.8	59.8	362.7	5,443.1	6.7	72.7
June	4,451.8	626.5	5,078.3	18.8	302.9	62.9	365.8	5,444.1	6.7	72.6
MARRIED FEMALES										
1999 —										
April	1,185.7	1,039.1	2,224.8	n.a.	65.7	35.7	101.4	2,326.2	4.4	53.8
May	1,190.0	1,041.1	2,231.1	n.a.	60.1	40.9	101.0	2,332.1	4.3	54.0
June	1,215.9	1,039.0	2,254.9	n.a.	64.7	37.5	102.2	2,357.1	4.3	54.5
July	1,203.8	1,061.8	2,265.6	n.a.	54.6	37.8	92.4	2,358.0	3.9	54.4
August	1,210.2	1,065.2	2,275.4	n.a.	62.0	37.7	99.6	2,375.1	4.2	54.5
September	1,217.0	1,075.6	2,292.7	n.a.	68.5	36.8	105.3	2,397.9	4.4	54.9
October	1,243.0	1,077.7	2,320.7	n.a.	64.4	35.3	99.6	2,420.4	4.1	55.3
November	1,236.8	1,098.1	2,334.9	n.a.	60.6	35.5	96.1	2,431.0	4.0	55.5
December	1,265.5	1,100.1	2,365.6	n.a.	62.1	38.7	100.8	2,466.5	4.1	56.0
2000 —										
January	1,270.7	1,079.3	2,349.9	n.a.	61.4	36.2	97.6	2,447.5	4.0	55.4
February	1,262.4	1,095.3	2,357.7	n.a.	65.3	37.7	103.0	2,460.7	4.2	55.6
March	1,276.8	1,080.9	2,357.7	n.a.	70.3	40.9	111.2	2,468.9	4.5	56.0
April	1,279.9	1,078.0	2,357.9	n.a.	68.3	44.1	112.4	2,470.3	4.6	56.1
May	1,276.4	1,090.6	2,367.0	n.a.	65.5	36.5	102.0	2,469.0	4.1	55.8
June	1,285.4	1,083.9	2,369.3	n.a.	57.0	47.3	104.3	2,473.6	4.2	56.3
ALL FEMALES										
1999 —										
April	2,124.3	1,645.6	3,769.9	18.6	189.2	107.8	296.9	4,066.9	7.3	53.6
May	2,128.1	1,648.0	3,776.1	19.2	183.6	110.9	294.4	4,070.6	7.2	53.6
June	2,156.9	1,650.8	3,807.7	18.6	184.2	109.5	293.7	4,101.4	7.2	53.9
July	2,140.9	1,671.1	3,812.0	18.4	171.5	112.6	284.1	4,096.1	6.9	53.8
August	2,144.9	1,683.1	3,828.1	19.7	176.7	110.3	287.0	4,115.0	7.0	54.0
September	2,150.8	1,691.7	3,842.6	21.4	188.7	112.9	301.6	4,144.1	7.3	54.3
October	2,183.5	1,698.7	3,882.2	18.4	182.2	102.6	284.8	4,167.0	6.8	54.5
November	2,178.2	1,703.2	3,881.4	18.4	178.4	101.5	279.9	4,161.2	6.7	54.4
December	2,201.6	1,704.0	3,905.7	18.4	182.8	100.7	283.4	4,189.1	6.8	54.7
2000 —										
January	2,204.0	1,696.4	3,900.3	16.1	175.3	102.1	277.4	4,177.7	6.6	54.5
February	2,192.8	1,713.0	3,905.8	19.1	175.2	108.2	283.4	4,189.3	6.8	54.5
March	2,221.9	1,703.1	3,925.0	17.1	188.2	107.3	295.5	4,220.5	7.0	54.9
April	2,227.7	1,706.8	3,934.5	20.1	180.7	107.5	288.2	4,222.7	6.8	54.9
May	2,221.9	1,718.0	3,939.9	18.5	188.5	100.9	289.4	4,229.3	6.8	54.9
June	2,248.5	1,715.2	3,963.7	21.0	160.2	117.0	277.2	4,240.9	6.5	55.0
PERSONS										
1999 —										
April	6,439.3	2,277.0	8,716.3	40.8	533.3	170.4	703.7	9,420.0	7.5	63.0
May	6,441.2	2,278.6	8,719.8	41.2	521.3	177.6	698.8	9,418.6	7.4	62.9
June	6,490.9	2,287.3	8,778.2	40.0	516.7	166.2	682.9	9,461.1	7.2	63.1
July	6,489.8	2,299.6	8,789.4	39.0	482.4	177.0	659.3	9,448.7	7.0	63.0
August	6,518.7	2,302.1	8,820.8	41.5	497.4	180.1	677.4	9,498.2	7.1	63.2
September	6,524.0	2,305.0	8,829.0	42.1	514.5	179.2	693.7	9,522.7	7.3	63.3
October	6,552.9	2,318.9	8,871.8	39.2	508.9	166.8	675.8	9,547.6	7.1	63.4
November	6,559.1	2,313.6	8,872.8	41.8	488.5	157.4	645.9	9,518.7	6.8	63.1
December	6,591.8	2,320.5	8,912.3	42.5	509.1	163.2	672.3	9,584.7	7.0	63.5
2000 —										
January	6,571.0	2,332.3	8,903.4	40.2	492.5	162.3	654.8	9,558.1	6.9	63.2
February	6,605.0	2,357.4	8,962.4	44.8	475.0	168.5	643.5	9,606.0	6.7	63.5
March	6,632.0	2,338.7	8,970.7	41.9	492.3	169.5	661.8	9,632.6	6.9	63.6
April	6,644.5	2,363.6	9,008.2	39.4	483.1	173.4	656.5	9,664.6	6.8	63.7
May	6,653.2	2,367.1	9,020.3	35.4	491.4	160.7	652.1	9,672.4	6.7	63.7
June	6,700.3	2,341.7	9,042.0	39.8	463.1	179.9	643.0	9,685.1	6.6	63.7

TABLE 3. CIVILIAN LABOUR FORCE: TREND SERIES

Month	Unemployed									
	Employed			Looking for full-time work				Labour force	Unemployment rate - per	Participation rate cent -
				Aged 15-19 looking for first job	Total	Looking for part-time work	Total			
	Full-time workers	Part-time workers	Total					- '000 -		
MALES										
1999 —										
April	4,318.6	631.7	4,950.3	22.8	337.1	61.1	398.3	5,348.6	7.4	72.7
May	4,328.4	631.5	4,959.9	22.1	331.9	62.8	394.7	5,354.7	7.4	72.7
June	4,338.3	629.7	4,968.1	21.4	327.7	64.2	391.9	5,360.0	7.3	72.7
July	4,349.3	626.1	4,975.5	21.0	324.4	64.9	389.3	5,364.8	7.3	72.6
August	4,360.2	621.4	4,981.6	21.0	322.4	65.0	387.4	5,369.0	7.2	72.6
September	4,369.3	617.5	4,986.7	21.3	321.4	64.4	385.8	5,372.5	7.2	72.5
October	4,375.5	615.8	4,991.3	22.0	320.8	63.2	384.0	5,375.3	7.1	72.5
November	4,379.5	617.6	4,997.1	23.1	319.7	61.9	381.6	5,378.8	7.1	72.4
December r	4,383.5	623.2	5,006.8	24.0	317.0	60.9	377.9	5,384.7	7.0	72.4
2000 —										
January r	4,389.9	630.8	5,020.7	24.3	312.9	60.6	373.5	5,394.2	6.9	72.4
February r	4,399.1	637.6	5,036.7	23.7	308.6	61.2	369.8	5,406.5	6.8	72.5
March r	4,410.0	642.2	5,052.2	22.5	305.4	61.9	367.3	5,419.5	6.8	72.6
April r	4,421.2	644.4	5,065.7	21.1	303.0	62.4	365.4	5,431.1	6.7	72.7
May r	4,431.8	644.9	5,076.7	19.6	301.5	62.8	364.3	5,441.0	6.7	72.7
June	4,441.2	643.5	5,084.7	18.2	299.9	62.6	362.5	5,447.2	6.7	72.7
MARRIED FEMALES										
1999 —										
April	1,197.4	1,036.6	2,234.0	n.a.	64.0	37.8	101.8	2,335.8	4.4	54.1
May	1,197.1	1,041.3	2,238.4	n.a.	62.2	38.4	100.7	2,339.1	4.3	54.1
June	1,200.1	1,047.6	2,247.7	n.a.	61.6	38.4	99.9	2,347.6	4.3	54.2
July	1,205.8	1,056.2	2,261.9	n.a.	61.6	37.8	99.4	2,361.4	4.2	54.4
August	1,214.0	1,065.8	2,279.8	n.a.	62.1	37.2	99.2	2,379.1	4.2	54.7
September	1,224.0	1,075.5	2,299.5	n.a.	62.5	36.7	99.1	2,398.6	4.1	55.0
October	1,234.8	1,083.8	2,318.6	n.a.	62.8	36.2	99.0	2,417.6	4.1	55.2
November	1,245.8	1,089.2	2,335.0	n.a.	63.0	36.3	99.3	2,434.3	4.1	55.4
December r	1,256.2	1,091.2	2,347.4	n.a.	63.5	36.8	100.3	2,447.8	4.1	55.6
2000 —										
January r	1,265.1	1,090.4	2,355.5	n.a.	64.4	37.6	102.0	2,457.4	4.2	55.7
February r	1,271.5	1,088.2	2,359.6	n.a.	65.2	38.7	103.9	2,463.6	4.2	55.8
March r	1,275.6	1,085.9	2,361.5	n.a.	65.9	39.9	105.8	2,467.3	4.3	55.9
April r	1,277.8	1,084.4	2,362.2	n.a.	65.8	41.1	106.9	2,469.1	4.3	55.9
May r	1,278.5	1,083.5	2,362.0	n.a.	65.0	42.3	107.3	2,469.3	4.3	56.0
June	1,279.0	1,083.4	2,362.3	n.a.	63.7	43.2	107.0	2,469.3	4.3	56.1
ALL FEMALES										
1999 —										
April	2,130.8	1,642.6	3,773.4	18.2	185.8	110.1	295.9	4,069.3	7.3	53.6
May	2,133.4	1,649.5	3,783.0	18.5	183.2	111.4	294.6	4,077.6	7.2	53.7
June	2,137.7	1,658.5	3,796.2	18.9	181.3	111.9	293.2	4,089.4	7.2	53.8
July	2,143.9	1,669.4	3,813.3	19.3	180.3	111.2	291.5	4,104.8	7.1	53.9
August	2,152.2	1,680.2	3,832.4	19.5	180.2	109.7	289.9	4,122.3	7.0	54.1
September	2,161.6	1,689.7	3,851.3	19.5	180.4	107.7	288.0	4,139.3	7.0	54.2
October	2,171.6	1,696.9	3,868.5	19.1	180.6	105.5	286.1	4,154.6	6.9	54.4
November	2,182.2	1,701.2	3,883.4	18.6	180.4	103.8	284.1	4,167.5	6.8	54.5
December r	2,192.2	1,703.2	3,895.4	18.1	180.3	102.9	283.3	4,178.7	6.8	54.5
2000 —										
January r	2,200.9	1,704.3	3,905.1	17.8	180.5	103.2	283.7	4,188.8	6.8	54.6
February r	2,208.1	1,705.7	3,913.8	17.9	180.6	104.4	285.0	4,198.8	6.8	54.7
March r	2,215.4	1,707.7	3,923.1	18.4	180.6	106.0	286.6	4,209.7	6.8	54.7
April r	2,223.3	1,710.1	3,933.4	18.9	179.8	107.4	287.2	4,220.6	6.8	54.8
May r	2,231.1	1,712.5	3,943.6	19.4	178.2	108.7	286.9	4,230.5	6.8	54.9
June	2,237.0	1,714.8	3,951.8	19.9	175.8	110.1	285.9	4,237.7	6.7	55.0
PERSONS										
1999 —										
April	6,449.4	2,274.3	8,723.7	41.0	522.9	171.2	694.1	9,417.8	7.4	63.0
May	6,461.8	2,281.1	8,742.9	40.6	515.2	174.1	689.3	9,432.2	7.3	63.0
June	6,476.0	2,288.2	8,764.2	40.3	509.1	176.0	685.1	9,449.3	7.3	63.1
July	6,493.3	2,295.5	8,788.8	40.3	504.7	176.1	680.8	9,469.6	7.2	63.1
August	6,512.4	2,301.6	8,814.0	40.5	502.6	174.6	677.3	9,491.2	7.1	63.2
September	6,530.9	2,307.2	8,838.0	40.7	501.8	172.0	673.8	9,511.9	7.1	63.2
October	6,547.1	2,312.7	8,859.8	41.1	501.4	168.7	670.1	9,529.9	7.0	63.3
November	6,561.7	2,318.8	8,880.5	41.6	500.1	165.7	665.8	9,546.3	7.0	63.3
December r	6,575.7	2,326.5	8,902.2	42.0	497.3	163.8	661.2	9,563.4	6.9	63.3
2000 —										
January r	6,590.7	2,335.1	8,925.8	42.1	493.3	163.8	657.1	9,583.0	6.9	63.4
February r	6,607.2	2,343.3	8,950.5	41.7	489.2	165.6	654.8	9,605.3	6.8	63.5
March r	6,625.5	2,349.9	8,975.3	40.9	486.0	167.9	653.9	9,629.3	6.8	63.5
April r	6,644.5	2,354.5	8,999.1	39.9	482.9	169.8	652.6	9,651.7	6.8	63.6
May r	6,662.9	2,357.4	9,020.3	39.0	479.7	171.5	651.2	9,671.5	6.7	63.7
June	6,678.2	2,358.3	9,036.6	38.2	475.7	172.7	648.4	9,685.0	6.7	63.7

**TABLE 4. LABOUR FORCE STATUS OF THE CIVILIAN POPULATION AGED 15 AND OVER:
MARITAL STATUS, JUNE 2000**

	Employed			Unemployed			Labour force	Not in labour force	Civilian population aged 15 and over	Unemployment rate - per cent -	Participation rate
	Full-time workers	Part-time workers	Total	Looking for full-time work	Looking for part-time work - '000 -	Total					
<i>Males</i>	4,433.3	651.2	5,084.5	293.2	55.1	348.3	5,432.8	2,061.0	7,493.8	6.4	72.5
Married	2,984.1	253.5	3,237.5	115.3	12.7	128.0	3,365.5	1,123.4	4,488.9	3.8	75.0
Not married	1,449.3	397.7	1,846.9	177.9	42.4	220.3	2,067.3	937.6	3,004.9	10.7	68.8
<i>Females</i>	2,222.3	1,749.1	3,971.4	152.5	107.7	260.3	4,231.7	3,482.0	7,713.7	6.2	54.9
Married	1,276.4	1,115.3	2,391.7	55.9	46.0	101.9	2,493.6	1,902.4	4,396.0	4.1	56.7
Not married	945.9	633.8	1,579.7	96.6	61.8	158.4	1,738.1	1,579.6	3,317.7	9.1	52.4
Persons	6,655.6	2,400.2	9,055.9	445.7	162.9	608.6	9,664.5	5,543.0	15,207.5	6.3	63.6

**TABLE 5. LABOUR FORCE STATUS OF THE CIVILIAN POPULATION AGED 15 AND OVER:
STATES AND TERRITORIES, JUNE 2000**

State or Territory	Employed			Unemployed			Labour force	Not in labour force	Civilian population aged 15 and over	Unemployment rate - per cent -	Participation rate
	Full-time workers	Part-time workers	Total	Looking for full-time work	Looking for part-time work - '000 -	Total					
MALES											
New South Wales	1,517.3	201.4	1,718.7	86.3	14.2	100.5	1,819.2	715.5	2,534.7	5.5	71.8
Victoria	1,088.9	170.5	1,259.4	66.3	16.9	83.2	1,342.6	523.9	1,866.5	6.2	71.9
Queensland	830.8	122.0	952.9	66.5	10.9	77.4	1,030.3	357.7	1,388.0	7.5	74.2
South Australia	328.9	52.1	380.9	29.3	4.2	33.5	414.5	175.1	589.6	8.1	70.3
Western Australia	454.0	70.3	524.3	26.5	5.2	31.7	556.0	186.8	742.8	5.7	74.9
Tasmania	94.8	14.7	109.5	11.5	1.7	13.2	122.7	57.7	180.4	10.8	68.0
Northern Territory	44.1	6.7	50.8	2.8	* 0.4	3.1	54.0	19.3	73.2	5.8	73.7
Australian Capital Territory	74.5	13.5	88.0	3.9	1.6	5.5	93.5	25.1	118.6	5.9	78.9
<i>Australia</i>	<i>4,433.3</i>	<i>651.2</i>	<i>5,084.5</i>	<i>293.2</i>	<i>55.1</i>	<i>348.3</i>	<i>5,432.8</i>	<i>2,061.0</i>	<i>7,493.8</i>	<i>6.4</i>	<i>72.5</i>
FEMALES											
New South Wales	783.4	542.7	1,326.0	39.8	36.4	76.1	1,402.2	1,211.8	2,614.0	5.4	53.6
Victoria	562.8	446.9	1,009.7	42.2	25.0	67.2	1,076.8	868.5	1,945.3	6.2	55.4
Queensland	395.3	338.8	734.0	32.9	24.6	57.5	791.6	622.9	1,414.4	7.3	56.0
South Australia	154.6	137.6	292.2	15.0	7.4	22.3	314.6	300.6	615.2	7.1	51.1
Western Australia	203.9	196.8	400.7	14.7	10.2	24.9	425.6	317.8	743.4	5.9	57.2
Tasmania	45.1	44.9	90.1	4.9	2.1	7.0	97.1	93.3	190.3	7.2	51.0
Northern Territory	27.0	12.7	39.7	1.3	* 0.3	1.6	41.3	25.7	67.0	4.0	61.7
Australian Capital Territory	50.3	28.7	79.0	1.8	1.7	3.5	82.5	41.4	123.9	4.2	66.6
<i>Australia</i>	<i>2,222.3</i>	<i>1,749.1</i>	<i>3,971.4</i>	<i>152.5</i>	<i>107.7</i>	<i>260.3</i>	<i>4,231.7</i>	<i>3,482.0</i>	<i>7,713.7</i>	<i>6.2</i>	<i>54.9</i>
PERSONS											
New South Wales	2,300.6	744.1	3,044.7	126.0	50.6	176.6	3,221.3	1,927.3	5,148.6	5.5	62.6
Victoria	1,651.7	617.4	2,269.0	108.5	41.9	150.4	2,419.4	1,392.4	3,811.8	6.2	63.5
Queensland	1,226.1	460.8	1,686.9	99.5	35.5	135.0	1,821.9	980.6	2,802.4	7.4	65.0
South Australia	483.5	189.7	673.2	44.3	11.6	55.9	729.1	475.8	1,204.8	7.7	60.5
Western Australia	657.9	267.1	925.0	41.2	15.4	56.7	981.6	504.6	1,486.2	5.8	66.0
Tasmania	140.0	59.6	199.6	16.4	3.9	20.2	219.8	151.0	370.8	9.2	59.3
Northern Territory	71.1	19.4	90.5	4.1	* 0.7	4.8	95.3	45.0	140.3	5.0	67.9
Australian Capital Territory	124.8	42.2	167.0	5.7	3.3	9.0	176.0	66.5	242.5	5.1	72.6
Australia	6,655.6	2,400.2	9,055.9	445.7	162.9	608.6	9,664.5	5,543.0	15,207.5	6.3	63.6

**TABLE 6. LABOUR FORCE STATUS OF THE CIVILIAN POPULATION AGED 15 AND OVER:
STATE CAPITAL CITIES, JUNE 2000**

Capital city	Employed		Unemployed			Labour force	Not in labour force	Civilian population aged 15 and over	Unemployment rate - per cent -	Participation rate
	Full-time workers	Total	Looking for full-time work	Looking for part-time work - '000 -	Total					
MALES										
Sydney	1,009.6	1,132.4	40.1	8.8	48.9	1,181.3	427.9	1,609.1	4.1	73.4
Melbourne	805.9	928.7	44.4	12.5	56.9	985.6	375.3	1,360.9	5.8	72.4
Brisbane	383.9	437.8	23.8	6.6	30.4	468.3	165.1	633.3	6.5	73.9
Adelaide	235.1	275.1	21.0	3.2	24.2	299.3	132.7	432.1	8.1	69.3
Perth	322.1	377.7	18.7	4.2	22.9	400.7	143.9	544.5	5.7	73.6
Hobart	37.8	43.5	4.8	0.7	5.5	49.0	25.2	74.2	11.3	66.0
Total	2,794.4	3,195.2	152.8	36.0	188.9	3,384.1	1,270.0	4,654.1	5.6	72.7
FEMALES										
Sydney	559.9	887.7	21.6	21.3	42.9	930.6	736.3	1,667.0	4.6	55.8
Melbourne	441.6	761.0	30.0	17.4	47.4	808.4	617.1	1,425.5	5.9	56.7
Brisbane	194.4	357.0	13.1	11.1	24.2	381.1	279.3	660.4	6.3	57.7
Adelaide	118.6	220.4	10.7	5.8	16.5	236.8	123.3	460.2	7.0	51.5
Perth	159.2	303.5	10.6	6.7	17.3	320.8	240.8	561.7	5.4	57.1
Hobart	19.5	39.3	2.1	1.2	3.3	42.6	37.9	80.6	7.8	52.9
Total	1,493.2	2,569.0	88.0	63.5	151.5	2,720.5	2,134.7	4,855.2	5.6	56.0
PERSONS										
Sydney	1,569.5	2,020.1	61.6	30.2	91.8	2,111.9	1,164.2	3,276.1	4.3	64.5
Melbourne	1,247.6	1,689.7	74.4	29.8	104.3	1,794.0	992.4	2,786.4	5.8	64.4
Brisbane	578.2	794.8	36.9	17.7	54.6	849.4	444.4	1,293.8	6.4	65.7
Adelaide	353.6	495.5	31.7	9.0	40.7	536.2	356.1	892.2	7.6	60.1
Perth	481.3	681.3	29.3	10.9	40.2	721.5	384.7	1,106.2	5.6	65.2
Hobart	57.3	82.8	6.9	1.9	8.8	91.6	63.1	154.7	9.6	59.2
Total	4,287.6	5,764.2	240.9	99.5	340.4	6,104.6	3,404.8	9,509.3	5.6	64.2

**TABLE 7. LABOUR FORCE STATUS OF THE CIVILIAN POPULATION AGED 15 AND OVER:
AUSTRALIAN CAPITAL TERRITORY, JUNE 2000**

	Persons							Total
	Males	Females		Aged 15-19	Aged 20-24	Aged 25 and over		
		Married	Total					
— '000 —								
<i>Employed</i>								
Full-time workers	88.0	45.4	79.0	12.1	21.2	133.7	167.0	
Part-time workers	74.5	28.0	50.3	3.5	14.3	107.1	124.8	
	13.5	17.4	28.7	8.7	6.9	26.6	42.2	
<i>Unemployed</i>								
Looking for full-time work	5.5	* 1.0	3.5	2.8	1.7	4.6	9.0	
Looking for part-time work	3.9	* 0.4	1.8	* 0.7	1.4	3.6	5.7	
	1.6	* 0.6	1.7	2.1	* 0.2	* 1.0	3.3	
Labour force	93.5	46.4	82.5	14.9	22.8	138.3	176.0	
Not in labour force	25.1	20.1	41.4	9.2	3.7	53.6	66.5	
Aged 15-19 attending school	3.8	* 0.0	3.9	7.7	7.7	
Civilian population	118.6	66.5	123.9	24.1	26.5	191.9	242.5	
— per cent —								
Unemployment rate	5.9	* 2.2	4.2	18.5	7.2	3.3	5.1	
Looking for full-time work	5.0	* 1.6	3.4	* 16.2	9.0	3.3	4.4	
Participation rate	78.9	69.8	66.6	61.9	86.1	72.1	72.6	
Employment/population ratio	74.2	68.2	63.8	50.4	79.9	69.7	68.9	
— number —								
Average weekly hours worked by employed persons	37.7	30.3	30.1	17.7	31.7	36.0	34.1	
Average duration of unemployment (weeks)	45.7	* 19.5	21.1	15.0	* 47.4	44.9	36.2	

TABLE 8. CIVILIAN LABOUR FORCE, STATES: SEASONALLY ADJUSTED SERIES

Month	NEW SOUTH WALES																	
	Males						Females						Persons					
	Employed		Unemp- loyed - '000 -	Labour force	Unemp- loyment rate - per cent -	Partic ipation rate	Employed		Unemp- loyed - '000 -	Labour force	Unemp- loyment rate - per cent -	Partic ipation rate	Employed		Unemp- loyed - '000 -	Labour force	Unemp- loyment rate - per cent -	Partic ipation rate
	Full-time workers	Total					Full-time workers	Total					Full-time workers	Total				
1999 —																		
April	1,458.9	1,656.9	118.1	1,775.0	6.7	71.4	729.3	1,246.3	94.7	1,341.0	7.1	52.1	2,188.2	2,903.2	212.7	3,116.0	6.8	61.6
May	1,469.5	1,666.8	113.2	1,780.0	6.4	71.5	740.1	1,253.7	90.7	1,344.3	6.7	52.2	2,209.6	2,920.5	203.8	3,124.3	6.5	61.7
June	1,466.9	1,670.6	112.2	1,782.8	6.3	71.5	752.6	1,256.2	89.4	1,345.6	6.6	52.2	2,219.5	2,926.9	201.6	3,128.4	6.4	61.7
July	1,482.6	1,681.1	109.6	1,790.8	6.1	71.7	746.1	1,257.1	82.4	1,339.5	6.2	51.9	2,228.6	2,938.2	192.1	3,130.3	6.1	61.6
August	1,490.0	1,678.8	115.2	1,794.0	6.4	71.8	740.3	1,257.3	93.1	1,350.4	6.9	52.2	2,230.4	2,936.1	208.2	3,144.3	6.6	61.8
September	1,491.4	1,684.6	121.7	1,806.3	6.7	72.2	743.3	1,264.4	96.1	1,360.5	7.1	52.6	2,234.7	2,948.9	217.8	3,166.7	6.9	62.2
October	1,499.2	1,689.0	110.2	1,799.3	6.1	71.8	757.5	1,277.9	79.8	1,357.7	5.9	52.4	2,256.7	2,967.0	190.0	3,157.0	6.0	61.9
November	1,502.4	1,686.4	97.0	1,783.4	5.4	71.0	755.5	1,274.1	79.9	1,354.0	5.9	52.2	2,257.9	2,960.5	176.9	3,137.4	5.6	61.5
December	1,505.3	1,688.3	118.2	1,806.6	6.5	71.8	768.1	1,283.2	81.7	1,364.9	6.0	52.5	2,273.4	2,971.5	199.9	3,171.5	6.3	62.0
2000 —																		
January	1,495.8	1,685.9	111.5	1,797.5	6.2	71.4	774.1	1,288.0	78.0	1,366.0	5.7	52.5	2,269.9	2,974.0	189.5	3,163.4	6.0	61.8
February	1,503.5	1,701.9	103.3	1,805.2	5.7	71.6	761.0	1,302.6	83.1	1,385.7	6.0	53.2	2,264.5	3,004.5	186.4	3,190.8	5.8	62.3
March	1,497.8	1,701.6	109.7	1,811.2	6.1	71.8	777.8	1,312.3	83.7	1,396.0	6.0	53.6	2,275.7	3,013.9	193.3	3,207.2	6.0	62.5
April	1,507.5	1,715.6	102.7	1,818.3	5.6	71.9	795.0	1,322.7	79.0	1,401.7	5.6	53.7	2,302.5	3,038.2	181.8	3,220.0	5.6	62.7
May	1,514.2	1,724.1	100.9	1,825.0	5.5	72.1	796.6	1,329.3	84.2	1,413.5	6.0	54.1	2,310.8	3,053.4	185.1	3,238.5	5.7	63.0
June	1,525.0	1,721.3	104.4	1,825.7	5.7	72.0	789.5	1,317.1	83.5	1,400.6	6.0	53.6	2,314.5	3,038.4	187.9	3,226.3	5.8	62.7
VICTORIA																		
1999 —																		
April	1,065.5	1,229.8	113.9	1,343.7	8.5	73.3	524.8	935.3	72.8	1,008.1	7.2	52.7	1,590.2	2,165.0	186.8	2,351.8	7.9	62.8
May	1,059.6	1,216.6	110.7	1,327.3	8.3	72.3	525.9	941.6	74.0	1,015.6	7.3	53.0	1,585.5	2,158.2	184.7	2,342.9	7.9	62.5
June	1,077.6	1,247.7	101.9	1,349.6	7.6	73.4	527.6	946.8	73.4	1,020.2	7.2	53.2	1,605.2	2,194.5	175.4	2,369.8	7.4	63.1
July	1,081.7	1,242.6	100.4	1,343.1	7.5	73.0	530.3	957.5	78.0	1,035.5	7.5	53.9	1,611.9	2,200.1	178.5	2,378.6	7.5	63.3
August	1,084.3	1,239.9	100.1	1,339.9	7.5	72.7	533.4	959.0	71.4	1,030.4	6.9	53.6	1,617.7	2,198.8	171.5	2,370.3	7.2	63.0
September	1,080.9	1,243.5	96.5	1,340.1	7.2	72.6	533.1	965.0	75.6	1,040.6	7.3	54.1	1,614.0	2,208.5	172.2	2,380.7	7.2	63.1
October	1,078.3	1,242.1	91.9	1,334.0	6.9	72.2	536.5	973.4	72.4	1,045.8	6.9	54.2	1,614.8	2,215.5	164.3	2,379.8	6.9	63.0
November	1,072.6	1,230.9	93.4	1,324.3	7.1	71.6	541.1	972.2	69.9	1,042.1	6.7	54.0	1,613.7	2,203.1	163.3	2,366.4	6.9	62.6
December	1,081.6	1,244.1	95.0	1,339.2	7.1	72.3	552.9	981.1	70.4	1,051.4	6.7	54.4	1,634.5	2,225.2	165.4	2,390.6	6.9	63.1
2000 —																		
January	1,077.4	1,240.1	87.3	1,327.4	6.6	71.5	548.9	972.2	73.9	1,046.1	7.1	54.1	1,626.3	2,212.3	161.2	2,373.6	6.8	62.6
February	1,095.9	1,255.9	83.3	1,339.3	6.2	72.1	544.1	976.7	74.4	1,051.1	7.1	54.3	1,639.9	2,232.6	157.8	2,390.4	6.6	63.0
March	1,088.3	1,248.6	89.5	1,338.1	6.7	71.9	552.9	985.6	75.8	1,061.4	7.1	54.7	1,641.2	2,234.3	165.3	2,399.5	6.9	63.2
April	1,084.1	1,255.0	92.1	1,347.1	6.8	72.3	546.4	977.1	73.3	1,050.4	7.0	54.1	1,630.5	2,232.0	165.4	2,397.5	6.9	63.0
May	1,088.5	1,250.7	92.4	1,343.1	6.9	72.0	550.1	992.5	73.7	1,066.2	6.9	54.9	1,638.6	2,243.2	166.1	2,409.4	6.9	63.3
June	1,094.2	1,258.6	85.8	1,344.4	6.4	72.0	567.2	1,004.4	70.9	1,075.3	6.6	55.3	1,661.3	2,263.0	156.7	2,419.7	6.5	63.5

TABLE 8. CIVILIAN LABOUR FORCE, STATES: SEASONALLY ADJUSTED SERIES—continued

Month	Males							Females					Persons					
	Employed		Unemp- loyed - '000 -	Labour force	Unemp- loyment rate - per cent -	Partic- ipation rate	Employed		Unemp- loyed - '000 -	Labour force	Unemp- loyment rate - per cent -	Partic- ipation rate	Employed		Unemp- loyed - '000 -	Labour force	Unemp- loyment rate - per cent -	Partic- ipation rate
	Full-time workers	Total					Full-time workers	Total					Full-time workers	Total				
	QUEENSLAND																	
1999 —																		
April	810.3	929.6	80.4	1,010.0	8.0	74.4	401.1	717.1	60.8	777.9	7.8	56.2	1,211.4	1,646.7	141.2	1,788.0	7.9	65.2
May	805.9	926.2	83.9	1,010.1	8.3	74.3	392.6	717.3	63.1	780.4	8.1	56.3	1,198.5	1,643.6	147.0	1,790.6	8.2	65.2
June	817.4	927.3	81.7	1,009.1	8.1	74.1	397.0	714.4	64.5	778.9	8.3	56.1	1,214.5	1,641.7	146.3	1,787.9	8.2	65.0
July	816.9	924.4	80.2	1,004.6	8.0	73.6	394.2	716.9	61.5	778.4	7.9	56.0	1,211.1	1,641.2	141.7	1,783.0	7.9	64.7
August	819.1	933.5	79.1	1,012.6	7.8	74.1	385.6	720.0	58.5	778.5	7.5	55.9	1,204.7	1,653.5	137.6	1,791.1	7.7	64.9
September	817.4	922.1	82.2	1,004.3	8.2	73.4	393.1	720.9	65.5	786.4	8.3	56.4	1,210.4	1,643.0	147.7	1,790.7	8.2	64.8
October	805.4	914.4	83.4	997.8	8.4	72.7	398.9	726.2	70.8	797.0	8.9	57.1	1,204.3	1,640.6	154.2	1,794.8	8.6	64.8
November	820.4	936.1	76.2	1,012.2	7.5	73.7	392.9	726.0	65.3	791.3	8.2	56.6	1,213.2	1,662.1	141.4	1,803.5	7.8	65.0
December	818.2	927.7	83.5	1,011.2	8.3	73.5	395.2	731.6	66.2	797.9	8.3	56.9	1,213.3	1,659.3	149.8	1,809.1	8.3	65.1
2000 —																		
January	811.3	932.2	83.7	1,015.9	8.2	73.7	401.1	728.3	62.5	790.8	7.9	56.3	1,212.4	1,660.5	146.2	1,806.7	8.1	64.9
February	811.9	937.2	78.5	1,015.7	7.7	73.6	395.0	730.4	60.3	790.7	7.6	56.2	1,206.9	1,667.6	138.8	1,806.4	7.7	64.8
March	819.2	931.6	81.2	1,012.7	8.0	73.2	401.0	726.7	69.0	795.7	8.7	56.5	1,220.2	1,658.3	150.1	1,808.4	8.3	64.8
April	819.4	942.8	84.7	1,027.5	8.2	74.2	398.0	736.6	64.0	800.7	8.0	56.8	1,217.4	1,679.5	148.7	1,828.2	8.1	65.4
May	828.8	950.2	77.1	1,027.3	7.5	74.1	398.4	736.2	64.2	800.4	8.0	56.7	1,227.3	1,686.4	141.3	1,827.6	7.7	65.3
June	834.8	949.2	82.0	1,031.2	8.0	74.3	396.2	730.9	57.6	788.5	7.3	55.7	1,231.0	1,680.0	139.6	1,819.7	7.7	64.9
SOUTH AUSTRALIA																		
1999 —																		
April	319.2	367.1	36.2	403.3	9.0	69.0	150.1	287.1	24.4	311.5	7.8	51.0	469.3	654.2	60.6	714.7	8.5	59.8
May	321.7	374.3	36.5	410.8	8.9	70.2	152.7	287.1	27.1	314.2	8.6	51.4	474.4	661.4	63.6	725.0	8.8	60.6
June	319.4	374.5	33.6	408.0	8.2	69.7	149.9	287.3	25.6	313.0	8.2	51.1	469.3	661.8	59.2	721.0	8.2	60.2
July	318.4	373.9	33.2	407.1	8.1	69.5	151.4	290.5	25.0	315.6	7.9	51.5	469.8	664.5	58.2	722.6	8.1	60.3
August	317.0	372.8	36.8	409.5	9.0	69.9	153.4	291.3	25.9	317.2	8.2	51.8	470.4	664.1	62.7	726.7	8.6	60.6
September	316.4	373.3	33.2	406.5	8.2	69.3	151.4	292.6	26.2	318.8	8.2	52.0	467.8	665.9	59.4	725.3	8.2	60.5
October	314.0	373.4	37.4	410.8	9.1	70.0	153.0	290.8	25.6	316.4	8.1	51.6	466.9	664.3	63.0	727.3	8.7	60.6
November	316.2	372.5	34.5	407.0	8.5	69.3	153.1	298.0	23.4	321.4	7.3	52.4	469.3	670.5	58.0	728.4	8.0	60.7
December	319.8	380.8	34.7	415.5	8.3	70.7	156.2	300.4	24.3	324.7	7.5	52.9	476.0	681.2	59.0	740.2	8.0	61.6
2000 —																		
January	317.9	376.9	33.7	410.6	8.2	69.8	147.3	300.1	22.8	322.9	7.1	52.6	465.2	676.9	56.5	733.4	7.7	61.0
February	329.0	382.0	36.0	418.0	8.6	71.1	152.9	292.4	27.9	320.2	8.7	52.1	481.9	674.3	63.9	738.2	8.7	61.4
March	330.1	383.6	33.1	416.7	7.9	70.8	153.8	293.2	25.1	318.3	7.9	51.8	483.9	676.8	58.1	734.9	7.9	61.1
April	328.5	382.2	36.2	418.4	8.6	71.1	150.7	293.0	25.9	318.9	8.1	51.9	479.2	675.2	62.1	737.3	8.4	61.3
May	326.7	381.3	38.1	419.4	9.1	71.2	147.9	292.4	24.8	317.2	7.8	51.6	474.5	673.7	62.9	736.6	8.5	61.2
June	328.9	380.0	36.4	416.4	8.7	70.6	158.5	291.6	22.9	314.5	7.3	51.1	487.4	671.6	59.3	730.9	8.1	60.7

TABLE 8. CIVILIAN LABOUR FORCE, STATES: SEASONALLY ADJUSTED SERIES—continued

Month	Males							Females					Persons					
	Employed		Unemp- loyed - '000 -	Labour force	Unemp- loyment rate - per cent -	Partic- ipation rate	Employed		Unemp- loyed - '000 -	Labour force	Unemp- loyment rate - per cent -	Partic- ipation rate	Employed		Unemp- loyed - '000 -	Labour force	Unemp- loyment rate - per cent -	Partic- ipation rate
	Full-time workers	Total					Full-time workers	Total					Full-time workers	Total				
	WESTERN AUSTRALIA																	
1999 —																		
April	447.7	513.5	39.7	553.3	7.2	76.0	202.2	384.3	31.9	416.1	7.7	57.1	649.8	897.8	71.6	969.4	7.4	66.6
May	441.4	509.1	37.0	546.1	6.8	74.9	201.0	386.4	26.3	412.7	6.4	56.6	642.4	895.4	63.4	958.8	6.6	65.7
June	444.0	508.9	38.4	547.2	7.0	74.9	204.8	391.7	24.1	415.8	5.8	56.9	648.8	900.6	62.4	963.0	6.5	65.9
July	446.2	512.6	36.9	549.5	6.7	75.1	205.3	391.5	25.9	417.3	6.2	57.0	651.5	904.1	62.7	966.8	6.5	66.1
August	448.4	514.9	37.5	552.4	6.8	75.4	205.9	389.8	26.2	416.0	6.3	56.7	654.3	904.7	63.7	968.4	6.6	66.1
September	449.7	516.0	40.6	556.6	7.3	75.9	205.7	393.5	26.9	420.4	6.4	57.3	655.4	909.5	67.5	977.0	6.9	66.6
October	454.2	521.4	41.2	562.6	7.3	76.5	212.0	396.4	25.9	422.3	6.1	57.4	666.2	917.8	67.1	984.9	6.8	67.0
November	456.1	520.8	41.3	562.1	7.3	76.3	218.7	405.6	26.2	431.8	6.1	58.6	674.8	926.4	67.5	993.9	6.8	67.5
December	458.4	523.7	36.1	559.8	6.5	75.9	211.6	402.4	23.9	426.3	5.6	57.8	670.0	926.1	60.1	986.1	6.1	66.8
2000 —																		
January	453.8	522.1	42.4	564.5	7.5	76.4	210.6	401.9	24.9	426.8	5.8	57.8	664.4	924.0	67.3	991.4	6.8	67.1
February	461.9	528.4	39.1	567.5	6.9	76.7	213.1	401.5	23.5	425.0	5.5	57.4	674.9	929.9	62.6	992.5	6.3	67.1
March	460.5	525.7	38.2	563.9	6.8	76.1	213.1	401.3	26.7	428.0	6.2	57.8	673.6	927.0	64.9	991.9	6.5	66.9
April	460.1	526.2	36.8	563.0	6.5	75.9	213.0	400.5	32.4	432.9	7.5	58.4	673.1	926.7	69.2	995.9	7.0	67.1
May	455.5	523.8	34.3	558.1	6.1	75.2	206.9	397.6	27.4	425.0	6.4	57.2	662.4	921.4	61.6	983.1	6.3	66.2
June	455.0	525.0	32.7	557.7	5.9	75.1	204.5	400.8	25.7	426.5	6.0	57.4	659.5	925.8	58.5	984.3	5.9	66.2
TASMANIA																		
1999 —																		
April	93.3	109.1	13.9	122.9	11.3	68.2	43.5	85.9	7.8	93.8	8.4	49.4	136.8	195.0	21.7	216.7	10.0	58.6
May	93.7	109.2	14.6	123.8	11.8	68.7	44.6	85.2	7.9	93.0	8.4	49.0	138.3	194.4	22.4	216.8	10.3	58.6
June	94.5	111.0	13.4	124.4	10.8	69.0	43.6	86.4	7.4	93.9	7.9	49.5	138.1	197.4	20.9	218.3	9.6	59.0
July	95.1	110.5	12.7	123.2	10.3	68.3	44.0	85.5	6.6	92.1	7.1	48.5	139.1	196.0	19.2	215.2	8.9	58.2
August	97.4	110.5	11.5	121.9	9.4	67.7	45.0	86.4	7.2	93.5	7.7	49.3	142.5	196.8	18.6	215.5	8.6	58.2
September	97.1	110.2	13.1	123.3	10.6	68.4	45.7	86.8	7.5	94.4	8.0	49.7	142.8	197.0	20.6	217.6	9.5	58.8
October	96.4	109.8	12.5	122.3	10.2	67.9	44.5	86.6	7.6	94.2	8.1	49.6	140.9	196.4	20.2	216.5	9.3	58.5
November	97.2	109.9	13.5	123.4	10.9	68.5	43.9	88.0	8.0	96.0	8.4	50.6	141.0	197.9	21.5	219.4	9.8	59.3
December	96.5	110.5	12.4	122.9	10.1	68.2	42.9	88.9	7.6	96.5	7.9	50.8	139.4	199.4	20.0	219.4	9.1	59.3
2000 —																		
January	95.6	109.8	11.8	121.6	9.7	67.5	43.2	89.8	7.9	97.7	8.1	51.4	138.8	199.6	19.6	219.3	9.0	59.2
February	93.5	109.7	10.9	120.6	9.1	66.9	42.7	88.3	7.8	96.1	8.1	50.6	136.2	198.0	18.7	216.7	8.6	58.5
March	94.2	109.3	11.0	120.3	9.1	66.7	44.0	89.9	8.3	98.3	8.5	51.7	138.2	199.2	19.3	218.6	8.9	59.0
April	94.1	108.5	11.6	120.2	9.7	66.6	43.7	88.2	9.2	97.4	9.4	51.2	137.8	196.7	20.8	217.5	9.6	58.7
May	95.3	109.3	11.9	121.2	9.8	67.2	45.1	88.7	8.6	97.4	8.9	51.2	140.4	198.0	20.6	218.6	9.4	59.0
June	95.6	110.2	13.6	123.8	11.0	68.6	46.2	90.7	7.2	97.9	7.4	51.4	141.8	200.9	20.8	221.7	9.4	59.8

TABLE 9. CIVILIAN LABOUR FORCE, STATES AND TERRITORIES: TREND SERIES

Month	Males						Females						Persons					
	Employed		Unemp- loyed - '000 -	Labour force	Unemp- loyment rate - per cent -	Partic- ipation rate	Employed		Unemp- loyed - '000 -	Labour force	Unemp- loyment rate - per cent -	Partic- ipation rate	Employed		Unemp- loyed - '000 -	Labour force	Unemp- loyment rate - per cent -	Partic- ipation rate
	Full-time workers	Total					Full-time workers	Total					Full-time workers	Total				
NEW SOUTH WALES																		
1999 —																		
April	1,460.6	1,661.1	117.2	1,778.3	6.6	71.5	738.7	1,250.1	91.5	1,341.6	6.8	52.1	2,199.3	2,911.2	208.7	3,119.9	6.7	61.7
May	1,466.9	1,667.1	115.0	1,782.2	6.5	71.6	740.1	1,251.3	91.4	1,342.7	6.8	52.1	2,206.9	2,918.4	206.5	3,124.9	6.6	61.7
June	1,473.4	1,672.4	113.9	1,786.3	6.4	71.7	741.8	1,253.4	91.0	1,344.5	6.8	52.1	2,215.1	2,925.8	205.0	3,130.8	6.5	61.7
July	1,480.4	1,677.0	113.3	1,790.3	6.3	71.7	743.7	1,257.1	89.9	1,347.0	6.7	52.2	2,224.1	2,934.1	203.2	3,137.3	6.5	61.8
August	1,487.3	1,680.9	113.0	1,793.8	6.3	71.8	746.3	1,261.2	88.5	1,349.7	6.6	52.2	2,233.6	2,942.1	201.4	3,143.6	6.4	61.8
September	1,493.5	1,683.8	112.4	1,796.2	6.3	71.8	749.6	1,265.8	86.8	1,352.5	6.4	52.3	2,243.0	2,949.5	199.2	3,148.8	6.3	61.8
October	1,497.9	1,685.5	111.7	1,797.3	6.2	71.7	753.2	1,270.7	84.9	1,355.6	6.3	52.3	2,251.1	2,956.3	196.7	3,152.9	6.2	61.8
November	1,500.3	1,686.8	110.8	1,797.6	6.2	71.6	757.4	1,276.7	82.9	1,359.7	6.1	52.4	2,257.7	2,963.6	193.7	3,157.3	6.1	61.8
December r	1,500.8	1,689.0	109.6	1,798.7	6.1	71.5	762.8	1,284.4	81.2	1,365.6	5.9	52.6	2,263.6	2,973.4	190.9	3,164.3	6.0	61.9
2000 —																		
January r	1,500.9	1,693.0	108.4	1,801.4	6.0	71.6	768.7	1,293.0	80.5	1,373.5	5.9	52.8	2,269.6	2,986.0	188.9	3,174.9	6.0	62.0
February r	1,502.0	1,698.7	107.3	1,806.1	5.9	71.6	774.4	1,301.9	80.8	1,382.7	5.8	53.1	2,276.5	3,000.6	188.2	3,188.8	5.9	62.2
March r	1,504.5	1,705.5	106.2	1,811.7	5.9	71.8	780.2	1,310.3	81.7	1,392.0	5.9	53.4	2,284.7	3,015.8	187.9	3,203.7	5.9	62.4
April r	1,508.3	1,712.3	104.8	1,817.1	5.8	71.9	785.8	1,317.5	82.3	1,399.8	5.9	53.7	2,294.1	3,029.8	187.1	3,216.9	5.8	62.6
May r	1,512.6	1,718.4	103.6	1,821.9	5.7	72.0	790.9	1,323.2	82.8	1,406.0	5.9	53.9	2,303.5	3,041.5	186.3	3,227.9	5.8	62.8
June	1,516.9	1,723.4	101.7	1,825.0	5.6	72.0	794.5	1,326.8	83.2	1,410.0	5.9	54.0	2,311.4	3,050.2	184.8	3,235.0	5.7	62.9
VICTORIA																		
1999 —																		
April	1,072.8	1,232.1	105.5	1,337.5	7.9	73.0	528.0	940.4	74.1	1,014.5	7.3	53.0	1,600.9	2,172.4	179.6	2,352.0	7.6	62.8
May	1,074.1	1,234.4	105.8	1,340.2	7.9	73.0	527.5	943.2	74.3	1,017.6	7.3	53.1	1,601.6	2,177.6	180.1	2,357.8	7.6	62.9
June	1,075.5	1,236.9	104.6	1,341.5	7.8	73.0	527.7	947.7	74.5	1,022.3	7.3	53.3	1,603.2	2,184.6	179.2	2,363.8	7.6	62.9
July	1,077.3	1,239.1	102.3	1,341.4	7.6	72.9	529.1	953.7	74.4	1,028.1	7.2	53.5	1,606.4	2,192.8	176.7	2,369.5	7.5	63.0
August	1,078.8	1,240.5	99.5	1,340.0	7.4	72.7	531.8	960.2	73.9	1,034.1	7.1	53.8	1,610.5	2,200.7	173.4	2,374.1	7.3	63.1
September	1,079.6	1,240.8	96.7	1,337.5	7.2	72.5	535.2	965.9	73.2	1,039.1	7.0	54.0	1,614.7	2,206.7	169.9	2,376.6	7.1	63.0
October	1,079.6	1,240.4	94.2	1,334.7	7.1	72.2	539.0	970.4	72.4	1,042.9	6.9	54.1	1,618.6	2,210.9	166.7	2,377.5	7.0	63.0
November	1,079.5	1,240.3	92.3	1,332.6	6.9	72.0	542.6	973.5	72.0	1,045.5	6.9	54.2	1,622.1	2,213.9	164.3	2,378.1	6.9	62.9
December r	1,080.4	1,241.6	90.5	1,332.2	6.8	71.9	545.4	975.3	72.3	1,047.5	6.9	54.2	1,625.9	2,216.9	162.8	2,379.7	6.8	62.9
2000 —																		
January r	1,082.7	1,244.5	89.4	1,333.9	6.7	71.9	547.2	976.7	72.9	1,049.6	6.9	54.2	1,629.9	2,221.2	162.3	2,383.6	6.8	62.9
February r	1,085.3	1,247.7	89.0	1,336.7	6.7	71.9	548.5	978.8	73.6	1,052.3	7.0	54.3	1,633.8	2,226.5	162.6	2,389.0	6.8	62.9
March r	1,087.5	1,250.7	88.9	1,339.6	6.6	72.0	549.9	981.9	73.9	1,055.8	7.0	54.4	1,637.4	2,232.6	162.9	2,395.5	6.8	63.0
April r	1,089.1	1,253.1	89.0	1,342.2	6.6	72.1	551.8	986.1	73.9	1,060.0	7.0	54.6	1,640.9	2,239.2	162.9	2,402.1	6.8	63.2
May r	1,090.4	1,255.1	89.1	1,344.2	6.6	72.1	554.2	990.7	73.5	1,064.3	6.9	54.8	1,644.7	2,245.8	162.7	2,408.5	6.8	63.3
June	1,091.2	1,256.1	89.2	1,345.3	6.6	72.1	556.5	995.0	73.0	1,067.9	6.8	54.9	1,647.6	2,251.1	162.1	2,413.2	6.7	63.3

TABLE 9. CIVILIAN LABOUR FORCE, STATES AND TERRITORIES: TREND SERIES—continued

Month	Males							Females					Persons					
	Employed		Unemp- loyed - '000 -	Labour force	Unemp- loyment rate - per cent -	Partic- ipation rate	Employed		Unemp- loyed - '000 -	Labour force	Unemp- loyment rate - per cent -	Partic- ipation rate	Employed		Unemp- loyed - '000 -	Labour force	Unemp- loyment rate - per cent -	Partic- ipation rate
	Full-time workers	Total					Full-time workers	Total					Full-time workers	Total				
	QUEENSLAND																	
1999 —																		
April	809.6	927.5	79.9	1,007.4	7.9	74.2	395.1	712.1	62.3	774.3	8.0	56.0	1,204.8	1,639.5	142.2	1,781.7	8.0	65.0
May	812.0	927.7	80.5	1,008.3	8.0	74.1	394.9	714.5	62.0	776.5	8.0	56.0	1,206.9	1,642.2	142.6	1,784.8	8.0	65.0
June	814.0	927.3	81.1	1,008.4	8.0	74.0	394.3	716.5	62.1	778.5	8.0	56.1	1,208.3	1,643.8	143.1	1,786.9	8.0	65.0
July	815.4	926.4	81.2	1,007.6	8.1	73.8	393.4	718.2	62.7	780.9	8.0	56.2	1,208.7	1,644.6	143.9	1,788.5	8.0	64.9
August	816.2	925.4	81.1	1,006.5	8.1	73.6	392.7	720.1	63.8	783.9	8.1	56.3	1,208.9	1,645.5	144.9	1,790.4	8.1	64.9
September	816.1	925.1	81.0	1,006.0	8.1	73.5	392.8	722.3	64.7	787.0	8.2	56.4	1,208.9	1,647.4	145.7	1,793.1	8.1	64.9
October	815.5	925.6	80.9	1,006.5	8.0	73.4	393.8	724.7	65.4	790.1	8.3	56.6	1,209.2	1,650.3	146.3	1,796.6	8.1	64.9
November	814.5	926.9	81.1	1,008.0	8.0	73.4	395.2	726.7	65.6	792.4	8.3	56.6	1,209.7	1,653.6	146.7	1,800.3	8.1	64.9
December r	813.8	928.8	81.3	1,010.2	8.0	73.4	396.6	728.3	65.5	793.9	8.3	56.6	1,210.4	1,657.2	146.9	1,804.0	8.1	64.9
2000 —																		
January r	814.3	931.7	81.4	1,013.1	8.0	73.5	397.7	729.5	65.1	794.6	8.2	56.6	1,212.0	1,661.2	146.5	1,807.7	8.1	65.0
February r	816.0	935.1	81.3	1,016.4	8.0	73.6	398.1	730.5	64.4	795.0	8.1	56.5	1,214.1	1,665.6	145.8	1,811.4	8.0	65.0
March r	818.8	938.5	81.3	1,019.8	8.0	73.8	398.3	731.5	63.9	795.4	8.0	56.5	1,217.1	1,670.0	145.2	1,815.2	8.0	65.0
April r	822.2	941.9	81.1	1,023.1	7.9	73.9	398.3	732.5	63.4	795.9	8.0	56.4	1,220.5	1,674.4	144.5	1,818.9	7.9	65.1
May r	825.8	945.2	81.0	1,026.2	7.9	74.0	398.2	733.3	62.7	796.0	7.9	56.4	1,224.0	1,678.5	143.7	1,822.2	7.9	65.1
June	829.7	948.7	80.5	1,029.2	7.8	74.2	397.8	733.7	61.8	795.6	7.8	56.3	1,227.5	1,682.4	142.4	1,824.8	7.8	65.1
SOUTH AUSTRALIA																		
1999 —																		
April	321.3	371.6	36.7	408.2	9.0	69.8	150.0	287.1	25.8	312.8	8.2	51.2	471.3	658.7	62.4	721.1	8.7	60.3
May	320.9	372.4	35.5	407.9	8.7	69.7	150.8	287.6	25.8	313.4	8.2	51.2	471.7	660.0	61.3	721.3	8.5	60.3
June	319.7	372.9	34.9	407.8	8.5	69.7	151.3	288.3	25.8	314.1	8.2	51.3	471.0	661.3	60.7	721.9	8.4	60.3
July	318.2	373.2	34.6	407.8	8.5	69.6	151.8	289.3	25.8	315.2	8.2	51.5	470.0	662.5	60.5	723.0	8.4	60.4
August	316.8	373.3	34.7	408.0	8.5	69.6	152.3	290.9	25.7	316.5	8.1	51.7	469.1	664.2	60.4	724.5	8.3	60.4
September	315.8	373.5	34.9	408.4	8.5	69.7	152.6	292.8	25.3	318.1	8.0	51.9	468.5	666.4	60.2	726.6	8.3	60.6
October	315.8	374.1	35.1	409.2	8.6	69.7	152.8	294.9	24.9	319.8	7.8	52.1	468.6	669.0	60.0	728.9	8.2	60.7
November	316.9	375.4	35.0	410.3	8.5	69.9	152.9	296.4	24.6	321.0	7.7	52.3	469.8	671.8	59.6	731.4	8.1	60.9
December r	319.2	377.3	34.8	412.0	8.4	70.1	152.6	297.2	24.6	321.8	7.7	52.4	471.9	674.4	59.4	733.8	8.1	61.1
2000 —																		
January r	322.1	379.2	34.6	413.9	8.4	70.4	152.1	296.9	24.9	321.7	7.7	52.4	474.3	676.1	59.5	735.6	8.1	61.2
February r	324.9	380.7	34.8	415.5	8.4	70.7	151.8	295.8	25.1	320.9	7.8	52.2	476.7	676.5	59.9	736.5	8.1	61.3
March r	327.0	381.6	35.2	416.8	8.5	70.8	151.7	294.4	25.3	319.6	7.9	52.0	478.7	676.0	60.5	736.5	8.2	61.2
April r	328.4	382.0	35.8	417.7	8.6	70.9	151.9	293.0	25.2	318.2	7.9	51.8	480.3	675.0	61.0	736.0	8.3	61.2
May r	329.2	382.0	36.4	418.4	8.7	71.0	152.4	291.9	24.9	316.9	7.9	51.5	481.7	674.0	61.3	735.2	8.3	61.1
June	329.6	381.6	36.9	418.4	8.8	71.0	153.1	291.1	24.5	315.6	7.8	51.3	482.7	672.7	61.4	734.1	8.4	60.9

TABLE 9. CIVILIAN LABOUR FORCE, STATES AND TERRITORIES: TREND SERIES—continued

Month	Males						Females						Persons					
	Employed		Unemp- loyed - '000 -	Labour force	Unemp- loyment rate - per cent -	Partic- ipation rate	Employed		Unemp- loyed - '000 -	Labour force	Unemp- loyment rate - per cent -	Partic- ipation rate	Employed		Unemp- loyed - '000 -	Labour force	Unemp- loyment rate - per cent -	Partic- ipation rate
	Full-time workers	Total					Full-time workers	Total					Full-time workers	Total				
WESTERN AUSTRALIA																		
1999 —																		
April	444.8	510.4	38.5	549.0	7.0	75.4	201.0	385.6	27.9	413.5	6.7	56.8	645.8	896.0	66.4	962.4	6.9	66.1
May	444.5	510.7	37.9	548.6	6.9	75.3	201.6	387.0	27.3	414.3	6.6	56.8	646.1	897.6	65.2	962.8	6.8	66.0
June	444.9	511.3	37.8	549.1	6.9	75.2	202.9	388.6	26.7	415.2	6.4	56.8	647.8	899.8	64.4	964.3	6.7	66.0
July	446.2	512.6	38.1	550.7	6.9	75.3	204.9	390.5	26.2	416.6	6.3	56.9	651.0	903.1	64.3	967.3	6.6	66.1
August	448.2	514.5	38.7	553.2	7.0	75.5	207.1	392.7	25.9	418.6	6.2	57.1	655.2	907.2	64.6	971.8	6.6	66.3
September	450.6	516.8	39.4	556.1	7.1	75.8	209.2	395.3	25.8	421.2	6.1	57.4	659.8	912.1	65.2	977.3	6.7	66.6
October	453.0	519.3	39.9	559.2	7.1	76.1	211.0	398.0	25.6	423.6	6.0	57.6	664.1	917.2	65.5	982.7	6.7	66.8
November	455.3	521.5	40.3	561.8	7.2	76.3	212.5	400.4	25.2	425.6	5.9	57.8	667.8	921.9	65.5	987.4	6.6	67.0
December r	457.1	523.3	40.3	563.5	7.1	76.4	213.5	402.0	25.0	427.0	5.9	57.9	670.6	925.3	65.3	990.6	6.6	67.1
2000 —																		
January r	458.4	524.5	39.8	564.3	7.0	76.4	213.6	402.5	25.3	427.8	5.9	57.9	672.0	927.0	65.1	992.1	6.6	67.1
February r	459.0	525.3	38.9	564.1	6.9	76.3	212.8	401.9	26.0	427.9	6.1	57.8	671.7	927.2	64.8	992.0	6.5	67.0
March r	458.9	525.6	37.7	563.3	6.7	76.1	211.5	401.0	26.8	427.8	6.3	57.7	670.4	926.6	64.5	991.1	6.5	66.9
April r	458.5	525.7	36.5	562.1	6.5	75.8	210.2	400.3	27.5	427.8	6.4	57.7	668.6	925.9	64.0	989.9	6.5	66.7
May r	457.8	525.6	35.2	560.8	6.3	75.6	208.7	399.7	28.0	427.6	6.5	57.6	666.4	925.2	63.1	988.4	6.4	66.6
June	456.9	525.3	34.1	559.4	6.1	75.3	207.5	399.5	28.2	427.7	6.6	57.6	664.5	924.7	62.4	987.1	6.3	66.4
TASMANIA																		
1999 —																		
April	92.6	108.7	14.4	123.2	11.7	68.3	43.7	85.7	7.6	93.3	8.1	49.2	136.2	194.5	22.0	216.5	10.2	58.5
May	93.5	109.5	13.9	123.4	11.3	68.4	44.0	85.8	7.4	93.2	8.0	49.1	137.6	195.3	21.3	216.6	9.9	58.5
June	94.7	110.1	13.3	123.4	10.8	68.5	44.3	85.8	7.3	93.1	7.9	49.1	139.0	195.9	20.7	216.5	9.5	58.5
July	95.7	110.4	12.9	123.3	10.5	68.4	44.6	85.9	7.3	93.2	7.8	49.1	140.3	196.3	20.2	216.5	9.3	58.5
August	96.5	110.4	12.7	123.1	10.3	68.3	44.7	86.2	7.3	93.5	7.8	49.3	141.2	196.7	20.0	216.7	9.2	58.6
September	96.9	110.4	12.6	123.0	10.3	68.3	44.7	86.7	7.4	94.1	7.8	49.6	141.6	197.1	20.0	217.1	9.2	58.7
October	97.0	110.2	12.6	122.8	10.3	68.2	44.4	87.3	7.5	94.8	7.9	50.0	141.4	197.5	20.1	217.7	9.2	58.8
November	96.6	110.1	12.5	122.6	10.2	68.0	43.9	88.0	7.7	95.6	8.0	50.4	140.6	198.1	20.2	218.2	9.2	59.0
December r	96.0	109.9	12.2	122.2	10.0	67.8	43.5	88.5	7.8	96.4	8.1	50.7	139.4	198.5	20.1	218.5	9.2	59.0
2000 —																		
January r	95.3	109.8	11.8	121.6	9.7	67.5	43.2	88.9	8.0	96.9	8.3	51.0	138.5	198.6	19.9	218.5	9.1	59.0
February r	94.8	109.6	11.6	121.1	9.5	67.2	43.3	89.0	8.2	97.2	8.4	51.1	138.1	198.6	19.7	218.3	9.0	59.0
March r	94.5	109.4	11.5	120.9	9.5	67.1	43.7	89.1	8.3	97.4	8.5	51.2	138.2	198.5	19.8	218.3	9.1	58.9
April r	94.5	109.3	11.7	121.0	9.7	67.1	44.2	89.2	8.4	97.5	8.6	51.3	138.7	198.5	20.0	218.6	9.2	59.0
May r	94.6	109.3	12.0	121.3	9.9	67.3	44.8	89.3	8.3	97.7	8.5	51.3	139.4	198.6	20.3	219.0	9.3	59.1
June	94.9	109.4	12.4	121.8	10.2	67.5	45.4	89.5	8.3	97.7	8.5	51.4	140.2	198.8	20.7	219.5	9.4	59.2

TABLE 9. CIVILIAN LABOUR FORCE, STATES AND TERRITORIES: TREND SERIES—continued

Month	Males						Females						Persons					
	Employed		Unemp- loyed - '000 -	Labour force	Unemp- loyment rate - per cent -	Partic- ipation rate	Employed		Unemp- loyed - '000 -	Labour force	Unemp- loyment rate - per cent -	Partic- ipation rate	Employed		Unemp- loyed - '000 -	Labour force	Unemp- loyment rate - per cent -	Partic- ipation rate
	Full-time workers	Total					Full-time workers	Total					Full-time workers	Total				
NORTHERN TERRITORY																		
1999 —																		
April	46.7	54.1	2.2	56.3	3.8	77.8	26.8	41.1	1.9	43.0	4.4	65.3	73.5	95.2	4.1	99.3	4.1	71.9
May	46.6	54.0	2.1	56.1	3.7	77.3	26.6	40.9	2.0	42.9	4.7	65.1	73.1	94.9	4.1	99.0	4.1	71.5
June	46.4	53.8	1.9	55.8	3.5	76.8	26.6	40.8	2.0	42.9	4.8	64.9	73.0	94.7	4.0	98.6	4.0	71.1
July	46.5	53.7	1.8	55.5	3.3	76.3	26.8	40.8	2.0	42.9	4.8	64.9	73.3	94.5	3.9	98.4	3.9	70.9
August	46.6	53.6	1.8	55.4	3.2	76.0	27.1	40.8	2.0	42.8	4.7	64.7	73.6	94.4	3.8	98.2	3.9	70.6
September	46.5	53.4	1.9	55.3	3.4	75.8	27.3	40.7	2.0	42.7	4.7	64.4	73.8	94.1	3.9	97.9	4.0	70.4
October	46.2	53.0	2.0	55.0	3.7	75.4	27.5	40.4	2.0	42.4	4.8	64.0	73.6	93.4	4.1	97.5	4.2	70.0
November	45.7	52.5	2.2	54.7	4.1	75.0	27.6	40.2	2.0	42.2	4.8	63.5	73.3	92.7	4.3	96.9	4.4	69.5
December r	45.2	51.9	2.4	54.3	4.3	74.3	27.7	40.0	2.1	42.1	4.9	63.3	73.0	92.0	4.4	96.4	4.6	69.1
2000 —																		
January r	44.8	51.5	2.4	53.9	4.5	73.7	27.9	40.0	2.1	42.1	5.0	63.2	72.7	91.5	4.5	96.0	4.7	68.7
February r	44.6	51.3	2.4	53.7	4.6	73.4	28.0	40.1	2.1	42.2	5.0	63.3	72.6	91.4	4.6	95.9	4.8	68.6
March r	44.5	51.1	2.5	53.6	4.7	73.3	28.2	40.2	2.1	42.4	5.1	63.4	72.6	91.3	4.7	96.0	4.9	68.6
April (a) r	44.3	51.0	2.6	53.6	4.9	73.2	28.2	40.2	2.2	42.4	5.1	63.4	72.6	91.2	4.8	96.0	5.0	68.5
May (a) r	44.2	50.8	2.8	53.6	5.3	73.2	28.3	40.1	2.2	42.3	5.2	63.3	72.5	90.9	5.0	95.9	5.2	68.4
June (a)	44.1	50.6	3.0	53.6	5.6	73.2	28.3	40.1	2.2	42.2	5.1	63.0	72.4	90.7	5.2	95.9	5.4	68.3
AUSTRALIAN CAPITAL TERRITORY																		
1999 —																		
April	68.9	82.1	5.8	88.0	6.6	76.8	47.0	75.3	4.2	79.5	5.2	65.2	115.9	157.5	10.0	167.5	6.0	70.9
May	68.9	82.4	5.9	88.3	6.7	77.0	47.3	75.7	4.0	79.7	5.0	65.3	116.2	158.0	9.9	167.9	5.9	71.0
June	69.1	82.8	5.9	88.7	6.7	77.3	48.0	76.2	3.8	80.0	4.8	65.6	117.1	159.0	9.8	168.8	5.8	71.3
July	69.6	83.4	5.9	89.3	6.6	77.7	48.8	76.8	3.8	80.6	4.7	66.0	118.4	160.3	9.7	169.9	5.7	71.7
August	70.1	84.2	5.8	89.9	6.4	78.2	49.6	77.4	3.9	81.3	4.8	66.5	119.7	161.6	9.7	171.2	5.7	72.2
September	70.6	84.9	5.7	90.6	6.3	78.6	50.2	77.9	4.1	82.0	5.0	67.0	120.8	162.8	9.8	172.5	5.7	72.6
October	71.1	85.4	5.6	91.1	6.2	78.9	50.5	78.3	4.2	82.5	5.1	67.4	121.6	163.7	9.8	173.6	5.7	73.0
November	71.5	86.0	5.5	91.5	6.0	79.2	50.8	78.6	4.2	82.8	5.1	67.6	122.3	164.5	9.7	174.3	5.6	73.2
December r	72.0	86.4	5.4	91.8	5.9	79.2	51.0	78.6	4.2	82.8	5.1	67.5	123.0	165.0	9.6	174.6	5.5	73.2
2000 —																		
January r	72.5	86.7	5.3	92.0	5.8	79.2	51.4	78.7	4.1	82.7	4.9	67.3	123.8	165.3	9.4	174.7	5.4	73.1
February r	72.9	86.8	5.3	92.1	5.8	79.0	51.8	78.6	4.0	82.6	4.8	67.1	124.7	165.5	9.3	174.8	5.3	72.9
March r	73.4	87.0	5.3	92.4	5.8	78.9	52.0	78.6	4.0	82.6	4.9	67.0	125.4	165.6	9.4	175.0	5.3	72.8
April (a) r	73.8	87.2	5.4	92.6	5.8	78.8	52.0	78.5	4.1	82.6	5.0	66.9	125.9	165.7	9.5	175.2	5.4	72.7
May (a) r	74.2	87.4	5.4	92.9	5.9	78.7	51.9	78.4	4.2	82.6	5.1	66.8	126.1	165.8	9.6	175.4	5.5	72.6
June (a)	74.4	87.6	5.5	93.1	5.9	78.7	51.6	78.2	4.3	82.5	5.2	66.6	126.1	165.8	9.8	175.6	5.6	72.5

(a) These estimates may be subject to significant revisions as data for later months become available.

TABLE 10. CIVILIAN LABOUR FORCE, BY AGE, JUNE 2000

Age group	Number ('000)					Participation rate (per cent)				
	Females				Persons	Females				Persons
	Males	Married	Not married	Total		Males	Married	Not married	Total	
15-64	5,333.8	2,469.9	1,723.6	4,193.6	9,527.4	82.6	64.3	67.4	65.6	74.1
15-19	398.6	13.6	369.8	383.4	782.0	57.7	58.1	58.2	58.2	58.0
20-24	590.3	115.0	400.7	515.7	1,106.0	85.6	68.1	80.4	77.3	81.5
25-34	1,339.5	619.6	400.1	1,019.7	2,359.2	93.0	67.1	76.3	70.4	81.7
35-44	1,338.9	817.0	246.7	1,063.7	2,402.6	91.7	72.6	70.8	72.1	81.9
45-54	1,133.2	687.1	213.0	900.1	2,033.3	87.1	69.8	70.5	69.9	78.6
55-59	351.8	160.1	67.2	227.3	579.1	72.2	47.6	49.7	48.2	60.4
60-64	181.5	57.5	26.2	83.7	265.2	46.3	20.9	23.1	21.5	34.0
65 and over	98.9	23.7	14.4	38.1	137.1	9.6	4.2	1.9	2.9	5.8
Total	5,432.8	2,493.6	1,738.1	4,231.7	9,664.5	72.5	56.7	52.4	54.9	63.6

TABLE 11. LABOUR FORCE STATUS OF THE CIVILIAN POPULATION AGED 15 TO 19: FULL-TIME ATTENDANCE AT SCHOOL OR A TERTIARY EDUCATIONAL INSTITUTION, JUNE 2000

	Employed		Unemployed			Labour force	Not in labour force	Civilian population aged 15-19	Unemployment rate - per cent -	Participation rate
	Full-time workers	Total	Looking for full-time work	Looking for part-time work - '000 -	Total					
ATTENDING NEITHER SCHOOL NOR A TERTIARY EDUCATIONAL INSTITUTION FULL TIME (a)										
Males	147.2	187.2	25.0	* 2.4	27.4	214.6	24.0	238.6	12.8	89.9
Females	81.6	122.8	22.9	* 2.8	25.7	148.5	28.0	176.5	17.3	84.1
Persons	228.8	310.0	47.9	5.2	53.1	363.1	52.0	415.1	14.6	87.5
Left school —										
Before 1998	59.1	74.6	13.0	* 2.1	15.1	89.7	20.1	109.8	16.8	81.7
1998	89.3	117.3	11.7	* 1.6	13.3	130.6	10.0	140.6	10.2	92.9
1999 to survey date	80.4	118.1	23.2	* 1.5	24.7	142.8	20.6	163.4	17.3	87.4
Age —										
15	* 3.3	5.4	* 2.6	* 0.0	* 2.6	8.0	* 3.3	11.3	* 32.2	70.7
16	18.7	26.8	7.6	* 0.0	7.6	34.4	5.4	39.8	22.2	86.5
17	30.7	43.0	9.0	* 0.9	9.8	52.8	9.3	62.1	18.6	85.1
18	74.3	101.8	17.1	* 2.4	19.5	121.3	15.7	137.1	16.1	88.5
19	101.8	133.0	11.5	* 2.0	13.5	146.5	18.3	164.8	9.2	88.9
ATTENDING A TERTIARY EDUCATIONAL INSTITUTION FULL TIME										
Males	* 2.1	49.2	* 3.6	6.6	10.2	59.4	47.2	106.6	17.2	55.7
Females	* 2.0	74.0	* 1.4	8.6	10.0	84.0	44.3	128.3	11.9	65.5
Persons	* 4.0	123.2	5.0	15.2	20.2	143.3	91.5	234.9	14.1	61.0
Left school —										
Before 1998	* 0.4	7.6	* 1.6	* 0.5	* 2.1	9.7	8.2	17.9	* 21.7	54.1
1998	* 1.8	51.8	* 0.3	* 3.2	* 3.5	55.3	29.3	84.6	* 6.4	65.4
1999 to survey date	* 1.8	63.8	* 3.1	11.5	14.5	78.3	54.1	132.4	18.6	59.2
Age —										
15 and 16	* 0.1	* 1.9	* 0.7	* 0.7	* 1.4	* 3.3	* 4.0	7.3	* 42.2	* 45.1
17	* 0.9	10.9	* 1.2	* 3.3	4.5	15.4	13.2	28.6	29.2	53.9
18	* 1.4	54.0	* 2.5	6.5	9.0	63.1	35.8	98.8	14.3	63.8
19	* 1.6	56.3	* 0.6	4.7	5.3	61.6	38.6	100.2	8.5	61.5
ATTENDING SCHOOL										
Males	* 0.9	98.5	* 3.8	22.3	26.1	124.6	220.6	345.2	20.9	36.1
Females	* 0.1	126.1	* 1.7	23.1	24.8	150.9	203.2	354.1	16.5	42.6
Persons	* 1.0	224.6	5.5	45.4	50.9	275.5	423.8	699.4	18.5	39.4
Age —										
15	* 0.1	64.2	* 1.5	21.6	23.1	87.3	165.8	253.1	26.5	34.5
16	* 0.7	78.2	* 1.9	13.6	15.5	93.7	130.1	223.8	16.5	41.9
17	* 0.2	69.3	* 1.0	7.5	8.6	77.9	103.6	181.5	11.0	42.9
18 and 19	* 0.0	12.9	* 1.0	* 2.7	* 3.8	16.6	24.4	41.0	* 22.7	40.5
TOTAL										
Males	150.2	335.0	32.4	31.2	63.6	398.6	291.8	690.4	16.0	57.7
Females	83.7	322.8	26.0	34.5	60.5	383.4	275.5	658.9	15.8	58.2
Persons	233.9	657.8	58.4	65.8	124.2	782.0	567.4	1,349.3	15.9	58.0
Age —										
15	* 3.4	70.4	* 4.1	21.9	26.0	96.4	170.1	266.4	27.0	36.2
16	19.5	106.1	10.3	14.0	24.3	130.4	138.5	268.9	18.6	48.5
17	31.7	123.2	11.2	11.7	22.9	146.1	126.0	272.1	15.7	53.7
18	75.7	166.9	20.7	11.6	32.3	199.2	71.7	270.9	16.2	73.5
19	103.4	191.1	12.1	6.6	18.8	209.9	61.1	271.0	8.9	77.5

(a) The components of the 'Left school' category in the 'Not in labour force' column do not add to the total because institutionalised persons are not asked the 'school attendance' question.

TABLE 12. LABOUR FORCE STATUS OF THE CIVILIAN POPULATION AGED 20-24: FULL-TIME ATTENDANCE AT A TERTIARY EDUCATIONAL INSTITUTION, JUNE 2000

	<i>Employed</i>		<i>Unemployed</i>			<i>Labour force</i>	<i>Not in labour force</i>	<i>Civilian population aged 20-24</i>	<i>Unemployment rate - per cent -</i>	<i>Participation rate</i>
	<i>Full-time workers</i>	<i>Total</i>	<i>Looking for full-time work</i>	<i>Looking for part-time work - '000 -</i>	<i>Total</i>					
NOT ATTENDING A TERTIARY EDUCATIONAL INSTITUTION FULL TIME										
Males	422.1	476.0	48.2	* 2.2	50.4	526.5	36.4	562.9	9.6	93.5
Females	315.5	404.8	25.1	5.0	30.1	434.8	92.5	527.4	6.9	82.5
Persons	737.6	880.8	73.3	7.2	80.5	961.3	129.0	1,090.3	8.4	88.2
Age —										
20	112.1	143.9	15.6	* 0.4	16.0	159.9	21.8	181.6	10.0	88.0
21	135.2	163.8	18.2	* 1.9	20.1	183.8	22.0	205.8	10.9	89.3
22	151.1	181.1	14.0	* 1.1	15.1	196.2	23.8	220.0	7.7	89.2
23	165.8	192.5	14.1	* 1.8	15.9	208.4	32.0	240.4	7.6	86.7
24	173.5	199.7	11.5	* 1.9	13.4	213.0	29.3	242.4	6.3	87.9
ATTENDING A TERTIARY EDUCATIONAL INSTITUTION FULL TIME										
Males	5.2	56.8	* 3.2	* 3.9	7.0	63.8	63.1	127.0	11.0	50.3
Females	4.4	74.7	* 1.9	* 4.3	6.2	80.9	58.8	139.6	7.6	57.9
Persons	9.6	131.5	5.0	8.1	13.2	144.7	121.9	266.6	9.1	54.3
Age —										
20	* 4.3	46.0	* 0.2	* 4.0	* 4.2	50.2	37.0	87.3	* 8.4	57.5
21	* 1.2	35.0	* 1.0	* 2.0	* 3.0	38.0	26.2	64.3	* 8.0	59.2
22	* 0.9	23.0	* 1.5	* 0.8	* 2.4	25.4	24.9	50.3	* 9.4	50.5
23	* 1.8	16.7	* 1.3	* 1.2	* 2.5	19.1	13.6	32.8	* 12.9	58.4
24	* 1.5	10.9	* 0.9	* 0.1	* 1.0	11.9	20.1	32.0	* 8.8	37.3
TOTAL										
Males	427.3	532.9	51.4	6.0	57.5	590.3	99.6	689.9	9.7	85.6
Females	319.9	479.5	27.0	9.3	36.2	515.7	151.3	667.0	7.0	77.3
Persons	747.2	1,012.3	78.4	15.3	93.7	1,106.0	250.9	1,356.9	8.5	81.5
Age —										
20	116.4	189.8	15.8	4.4	20.2	210.1	58.8	268.9	9.6	78.1
21	136.3	198.8	19.2	* 3.9	23.1	221.9	48.2	270.1	10.4	82.1
22	152.0	204.1	15.5	* 2.0	17.5	221.6	48.7	270.3	7.9	82.0
23	167.6	209.1	15.5	* 3.0	18.4	227.5	45.7	273.2	8.1	83.3
24	174.9	210.5	12.4	* 2.1	14.4	225.0	49.4	274.4	6.4	82.0

TABLE 13. LABOUR FORCE PARTICIPATION RATES(a), BY AGE AND BIRTHPLACE, JUNE 2000 (per cent)

<i>Age group</i>	<i>Born in Australia</i>			<i>Born outside Australia</i>		
	<i>Males</i>	<i>Females</i>	<i>Persons</i>	<i>Males</i>	<i>Females</i>	<i>Persons</i>
15-64	84.6	68.1	76.4	78.8	59.5	69.3
15-19	62.3	60.7	61.5	37.4	50.4	43.4
20-24	89.9	79.9	85.0	66.9	66.2	66.5
25-34	94.5	71.9	83.2	88.9	65.4	76.9
35-44	92.3	73.6	82.8	91.1	68.9	80.1
45-54	87.7	72.3	80.1	87.1	65.7	76.4
55-59	74.6	51.9	63.1	69.3	41.3	56.3
60-64	49.3	25.0	36.8	43.3	15.5	30.1
65 and over	12.3	3.9	7.6	6.5	1.9	4.2
Total	76.2	58.7	67.3	66.6	49.3	58.0

(a) Calculated using population estimates which exclude those in institutions.

TABLE 14. CIVILIAN LABOUR FORCE BY BIRTHPLACE(a), JUNE 2000

	Employed		Unemployed		Labour force	Unemployment rate - per cent -	Participation rate(b)
	Full-time workers	Total	Looking for full-time work - '000 -	Total			
MALES							
Born in Australia	3,293.5	3,797.9	224.6	268.1	4,066.0	6.6	76.2
Born outside Australia	1,139.9	1,286.6	68.5	80.2	1,366.8	5.9	66.6
Main English Speaking Countries	507.1	559.3	24.1	27.9	587.2	4.7	72.3
Other Countries	632.8	727.2	44.4	52.3	779.6	6.7	62.8
Oceania	150.0	165.6	7.2	8.5	174.1	4.9	84.5
New Zealand	124.4	136.2	5.9	7.2	143.4	5.0	87.5
Europe and the Former USSR	593.5	658.4	29.6	33.5	691.9	4.8	60.6
Germany	27.1	29.8	* 1.1	* 1.1	30.9	* 3.5	67.0
Greece	24.7	27.7	* 1.5	* 1.5	29.2	* 5.1	47.6
Italy	56.7	63.5	* 1.3	* 1.8	65.3	* 2.8	47.2
Netherlands	21.6	24.5	* 0.8	* 1.0	25.5	* 3.8	57.8
UK and Ireland	332.3	367.2	15.5	17.5	384.6	4.5	66.9
Former Yugoslav Republics	51.0	55.8	* 4.2	4.7	60.5	7.8	58.6
The Middle East and North Africa	55.4	66.5	7.4	8.3	74.9	11.1	63.5
Lebanon	20.3	25.0	* 3.6	4.6	29.6	15.5	65.2
Southeast Asia	124.3	139.5	10.6	12.2	151.7	8.0	70.2
Malaysia	23.9	27.3	* 0.8	* 1.1	28.4	* 3.9	72.9
Philippines	23.1	24.5	* 1.3	* 1.3	25.9	* 5.2	78.5
Viet Nam	45.0	48.5	5.5	5.8	54.3	10.6	71.7
Northeast Asia	68.4	81.8	* 3.5	5.1	86.9	5.9	63.3
China	36.9	41.2	* 2.0	* 2.0	43.3	* 4.7	60.2
The Americas	49.5	53.5	* 4.2	4.9	58.4	8.3	79.3
Other	98.7	121.2	6.0	7.8	128.9	6.0	80.4
India	29.9	34.5	* 1.2	* 1.6	36.0	* 4.4	82.2
FEMALES							
Born in Australia	1,669.0	3,044.0	108.3	187.0	3,231.0	5.8	58.7
Born outside Australia	553.3	927.5	44.2	73.2	1,000.7	7.3	49.3
Main English Speaking Countries	222.9	387.4	14.4	23.7	411.1	5.8	55.4
Other Countries	330.5	540.0	29.8	49.6	589.6	8.4	45.8
Oceania	76.0	123.4	6.6	10.1	133.5	7.5	64.8
New Zealand	60.2	96.9	5.4	7.8	104.6	7.4	68.7
Europe and the Former USSR	248.0	444.7	15.4	27.8	472.5	5.9	44.2
Germany	12.3	21.3	* 0.8	* 1.4	22.7	* 6.0	42.3
Greece	8.4	16.1	* 0.0	* 0.3	16.4	* 1.6	28.1
Italy	15.9	32.3	* 0.2	* 0.7	33.0	* 2.2	26.6
Netherlands	8.7	16.1	* 0.4	* 0.6	16.8	* 3.7	41.6
UK and Ireland	141.1	252.7	8.2	14.2	266.9	5.3	50.5
Former Yugoslav Republics	20.4	35.0	* 3.1	5.6	40.6	13.8	45.9
The Middle East and North Africa	17.4	31.5	* 3.2	4.7	36.2	13.0	35.1
Lebanon	5.8	11.9	* 0.3	* 1.0	12.9	* 7.4	30.7
Southeast Asia	92.2	131.6	10.8	15.4	147.0	10.5	53.9
Malaysia	15.9	25.7	* 0.5	* 0.6	26.3	* 2.3	56.1
Philippines	25.3	36.9	* 2.0	* 4.1	41.0	* 10.0	61.0
Viet Nam	27.3	33.9	5.4	6.5	40.4	16.2	50.5
Northeast Asia	46.6	72.0	* 1.1	* 3.2	75.2	* 4.3	50.2
China	26.1	38.7	* 0.9	* 2.2	40.8	* 5.3	50.1
The Americas	22.4	40.2	* 2.3	* 3.6	43.9	* 8.3	57.8
Other	50.7	84.1	4.8	8.4	92.5	9.1	61.0
India	13.5	20.3	* 1.2	* 3.0	23.3	* 12.7	58.5
PERSONS							
Born in Australia	4,962.4	6,841.9	333.0	455.1	7,297.0	6.2	67.3
Born outside Australia	1,693.2	2,214.0	112.7	153.4	2,367.4	6.5	58.0
Main English Speaking Countries	729.9	946.8	38.5	51.5	998.3	5.2	64.2
Other Countries	963.3	1,267.2	74.3	101.9	1,369.1	7.4	54.2
Oceania	226.0	289.0	13.8	18.6	307.6	6.1	74.7
New Zealand	184.6	233.1	11.3	15.0	248.0	6.0	78.4
Europe and the Former USSR	841.5	1,103.1	45.0	61.2	1,164.3	5.3	52.7
Germany	39.4	51.1	* 1.9	* 2.4	53.6	* 4.5	53.7
Greece	33.1	43.9	* 1.5	* 1.8	45.6	* 3.8	38.1
Italy	72.6	95.8	* 1.5	* 2.5	98.3	* 2.6	37.5
Netherlands	30.2	40.7	* 1.1	* 1.6	42.3	* 3.7	50.1
UK and Ireland	473.4	619.9	23.8	31.7	651.6	4.9	59.0
Former Yugoslav Republics	71.4	90.8	7.3	10.3	101.1	10.2	52.7
The Middle East and North Africa	72.8	98.0	10.5	13.0	111.0	11.7	50.2
Lebanon	26.1	36.9	* 3.9	5.5	42.4	13.1	48.6
Southeast Asia	216.5	271.1	21.5	27.6	298.7	9.2	61.1
Malaysia	39.8	53.0	* 1.3	* 1.7	54.7	* 3.1	63.7
Philippines	48.4	61.4	* 3.3	5.4	66.9	8.1	66.7
Viet Nam	72.3	82.4	10.8	12.3	94.7	13.0	60.8
Northeast Asia	115.1	153.8	4.6	8.3	162.1	5.1	56.4
China	63.0	79.9	* 3.0	* 4.2	84.1	* 5.0	54.8
The Americas	72.0	93.8	6.4	8.5	102.3	8.3	68.4
Other	149.4	205.2	10.8	16.2	221.4	7.3	71.0
India	43.3	54.8	* 2.5	4.5	59.3	7.6	70.9

(a) See paragraph 51 of the Explanatory Notes. (b) Calculated using population estimates which exclude those in institutions.

TABLE 15. CIVILIAN LABOUR FORCE BORN OUTSIDE AUSTRALIA: BIRTHPLACE AND PERIOD OF ARRIVAL IN AUSTRALIA, JUNE 2000

Period of arrival	Born outside Australia												
	Oceania		Europe & the Former USSR		The Middle East and North Africa		South-east Asia	North-east Asia	The Americas	Other	Total		
	New Zealand	Other countries	U.K. and Ireland	Other countries	North Africa	South-east Asia	North-east Asia	The Americas	Other	Males	Married	Total	Persons
	EMPLOYED ('000)												
Before 1976	36.7	12.8	365.6	320.1	40.8	29.7	14.6	35.6	39.7	543.7	266.2	351.8	895.5
1976 — 1980	38.7	6.2	47.6	30.8	7.4	50.8	8.4	14.0	10.1	116.7	59.6	97.2	213.9
1981 — 1985	30.9	8.5	56.4	40.2	8.2	56.6	14.5	7.3	30.9	140.5	67.9	113.1	253.6
1986 — 1990	47.8	12.5	61.2	31.7	20.0	73.6	60.1	12.2	50.3	203.1	106.6	166.2	369.3
1991 — 1995	24.6	9.7	42.4	30.9	11.3	35.2	29.8	11.9	34.3	127.5	68.4	102.6	230.1
1996 to survey date	54.3	6.1	46.8	29.4	10.3	25.3	26.3	12.9	40.0	155.0	61.4	96.5	251.5
UNEMPLOYED ('000)													
Before 1976	* 0.2	* 0.6	19.1	14.8	* 3.1	* 2.1	* 0.3	* 1.2	* 2.4	26.3	10.4	17.4	43.7
1976 — 1980	* 3.5	* 0.3	* 2.4	* 2.9	* 0.6	* 3.9	* 0.0	* 0.6	* 1.0	6.8	* 3.7	8.4	15.3
1981 — 1985	* 1.7	* 0.7	* 3.9	* 2.2	* 1.6	6.0	* 1.1	* 2.0	* 2.6	13.0	5.9	8.9	21.8
1986 — 1990	* 3.1	* 0.2	* 3.2	* 2.1	* 3.0	5.5	* 2.2	* 2.7	* 1.9	11.7	4.6	12.1	23.8
1991 — 1995	* 2.2	* 1.2	* 0.8	* 2.0	* 2.5	5.9	* 2.0	* 0.8	* 2.5	9.9	4.9	10.0	20.0
1996 to survey date	* 4.2	* 0.7	* 2.3	5.6	* 2.2	* 4.1	* 2.8	* 1.2	5.7	12.4	10.9	16.4	28.8
LABOUR FORCE ('000)													
Before 1976	36.9	13.4	384.6	334.9	43.9	31.8	14.9	36.7	42.0	570.1	276.6	369.2	939.2
1976 — 1980	42.2	6.5	50.0	33.7	8.0	54.7	8.4	14.6	11.1	123.5	63.3	105.7	229.2
1981 — 1985	32.6	9.2	60.3	42.5	9.9	62.6	15.6	9.3	33.5	153.5	73.8	121.9	275.4
1986 — 1990	50.9	12.7	64.4	33.8	23.0	79.1	62.3	14.8	52.2	214.8	111.2	178.4	393.2
1991 — 1995	26.8	10.9	43.2	32.9	13.7	41.1	31.8	12.7	36.9	137.4	73.4	112.6	250.0
1996 to survey date	58.5	6.8	49.1	35.0	12.5	29.4	29.1	14.2	45.7	167.5	72.3	112.9	280.4
UNEMPLOYMENT RATE (per cent)													
Before 1976	* 0.6	* 4.1	5.0	4.4	* 7.1	* 6.7	* 2.2	* 3.2	* 5.6	4.6	3.8	4.7	4.7
1976 — 1980	* 8.3	* 4.0	* 4.8	* 8.7	* 7.7	* 7.1	* 0.0	* 4.2	* 9.2	5.5	* 5.9	8.0	6.7
1981 — 1985	* 5.2	* 7.7	* 6.4	* 5.2	* 16.6	9.6	* 6.8	* 21.7	* 7.7	8.4	8.0	7.3	7.9
1986 — 1990	* 6.1	* 1.3	* 5.0	* 6.1	* 13.2	6.9	* 3.5	* 17.9	* 3.7	5.5	4.1	6.8	6.1
1991 — 1995	* 8.3	* 11.4	* 1.8	* 6.1	* 17.9	14.4	* 6.1	* 6.5	* 6.9	7.2	6.7	8.9	8.0
1996 to survey date	* 7.2	* 10.4	* 4.6	15.9	* 17.4	* 14.0	* 9.6	* 8.6	12.5	7.4	15.0	14.5	10.3
PARTICIPATION RATE(a) (per cent)													
Before 1976	66.5	62.2	50.6	39.9	42.8	72.2	53.1	68.7	61.8	56.0	42.0	38.6	47.6
1976 — 1980	84.1	63.6	76.2	69.4	49.2	72.0	62.2	78.0	70.3	82.3	60.3	64.1	72.8
1981 — 1985	77.1	75.1	74.6	72.9	71.7	66.8	66.2	63.4	77.6	81.2	65.4	63.0	72.0
1986 — 1990	81.0	58.2	76.9	62.8	61.9	62.2	71.3	68.1	78.4	79.3	62.7	61.3	69.9
1991 — 1995	82.1	63.0	85.5	65.5	55.5	53.0	52.8	78.9	69.1	76.5	57.8	55.5	65.3
1996 to survey date	80.6	54.3	78.8	61.5	47.3	41.6	39.0	56.9	70.2	68.2	52.9	51.2	60.1

(a) Calculated using population estimates which exclude those in institutions.

TABLE 16. EMPLOYED PERSONS: FULL-TIME AND PART-TIME WORKERS, BY AGE, JUNE 2000 ('000)

	Age group								Total
	15-19	20-24	25-34	35-44	45-54	55-59	60-64	65 and over	
MALES									
Full-time workers	150.2	427.3	1,164.7	1,198.6	1,005.5	291.8	140.0	55.3	4,433.3
Part-time workers	184.8	105.6	96.5	73.3	75.1	40.5	32.9	42.5	651.2
Total	335.0	532.9	1,261.2	1,271.8	1,080.6	332.3	172.9	97.8	5,084.5
MARRIED FEMALES									
Full-time workers	4.9	74.3	348.4	375.2	371.6	72.2	23.0	6.8	1,276.4
Part-time workers	5.2	33.3	243.6	403.4	297.2	83.2	32.7	16.6	1,115.3
Total	10.1	107.6	592.0	778.7	668.8	155.4	55.7	23.4	2,391.7
ALL FEMALES									
Full-time workers	83.7	319.9	630.3	520.2	514.1	107.8	35.1	11.1	2,222.3
Part-time workers	239.1	159.5	331.7	482.8	354.4	109.3	45.9	26.4	1,749.1
Total	322.8	479.5	962.0	1,003.0	868.5	217.0	81.1	37.6	3,971.4
PERSONS									
Full-time workers	233.9	747.2	1,795.0	1,718.8	1,519.6	399.6	175.2	66.4	6,655.6
Part-time workers	423.9	265.1	428.2	556.0	429.5	149.8	78.8	68.9	2,400.2
Total	657.8	1,012.3	2,223.2	2,274.8	1,949.1	549.3	254.0	135.3	9,055.9

TABLE 17. EMPLOYED PERSONS: HOURS WORKED, JUNE 2000

	Females			Total	Persons
	Males	Married	Not married		
	NUMBER EMPLOYED ('000)				
Weekly Hours worked —					
0	215.8	120.1	70.9	190.9	406.7
1-15	323.0	448.5	343.3	791.8	1,114.8
16-29	442.1	567.4	256.5	823.9	1,265.9
30-34	558.5	308.8	222.2	531.0	1,089.5
35-39	707.0	319.2	247.6	566.8	1,273.8
40	819.8	243.9	178.5	422.4	1,242.2
41-44	238.7	75.8	59.5	135.3	374.1
45-48	483.3	101.6	77.0	178.6	661.8
49 and over	1,296.4	206.4	124.3	330.8	1,627.1
Total	5,084.5	2,391.7	1,579.7	3,971.4	9,055.9
	WEEKLY HOURS WORKED				
Aggregate weekly hours worked (million)	200.6	68.1	45.1	113.2	313.8
By full-time workers	190.4	49.4	36.0	85.4	275.7
By part-time workers	10.2	18.7	9.1	27.9	38.1
Average weekly hours worked	39.4	28.5	28.5	28.5	34.6
By full-time workers	42.9	38.7	38.0	38.4	41.4
By part-time workers	15.6	16.8	14.4	15.9	15.9
Average weekly hours worked by persons who worked one hour or more in the reference week	41.2	30.0	29.9	29.9	36.3
By full-time workers	44.7	40.6	39.5	40.1	43.2
By part-time workers	16.7	17.8	15.3	16.9	16.8

TABLE 18. EMPLOYED PERSONS: EMPLOYMENT/POPULATION RATIOS BY AGE AND MARITAL STATUS, JUNE 2000 (per cent)

Age group	Males			Females			Persons
	Married	Not married	Total	Married	Not married	Total	
15-19	* 61.6	48.4	48.5	43.4	49.2	49.0	48.7
20-24	86.3	75.8	77.2	63.7	74.6	71.9	74.6
25-34	91.4	82.8	87.6	64.1	70.5	66.4	77.0
35-44	91.3	73.8	87.1	69.2	64.4	68.0	77.5
45-54	87.8	65.2	83.1	67.9	66.1	67.5	75.3
55-59	72.5	52.7	68.2	46.1	45.6	46.0	57.3
60-64	45.9	37.3	44.1	20.2	22.3	20.8	32.5
65 and over	10.7	6.1	9.5	4.2	1.9	2.9	5.8
Total	72.1	61.5	67.8	54.4	47.6	51.5	59.5

TABLE 19. FULL-TIME WORKERS WHO WORKED LESS THAN 35 HOURS, BY REASON, JUNE 2000 ('000)

Reason for working less than 35 hours	Females			Total	Persons
	Males	Married	Not married		
Leave, holiday or flextime/personal reasons	638.3	250.1	194.3	444.4	1,082.8
Own illness or injury	114.6	37.7	35.0	72.7	187.3
Bad weather, plant breakdown, etc.	22.2	* 2.6	* 0.9	* 3.5	25.7
Began or left job in the reference week	9.9	* 1.9	* 2.2	* 4.1	14.0
Stood down, on short time, insufficient work	35.4	8.9	9.2	18.1	53.5
Shift work, standard work arrangements	46.9	20.1	12.2	32.4	79.2
Other reasons	20.9	8.2	5.2	13.3	34.2
Total	888.1	329.5	259.0	588.5	1,476.6

TABLE 20. UNEMPLOYED PERSONS: STATES, BY AGE, JUNE 2000
(*'000*)

<i>Age group</i>	<i>New South Wales</i>	<i>Victoria</i>	<i>Queensland</i>	<i>South Australia</i>	<i>Western Australia</i>	<i>Tasmania</i>	<i>Australia</i>
MALES							
15-19	18.3	17.9	13.4	5.2	4.5	2.1	63.6
20-24	17.0	14.4	10.5	5.1	6.6	2.7	57.5
25-34	18.8	18.1	19.4	9.4	7.5	2.8	78.3
35-44	21.3	14.1	14.6	6.5	6.9	2.4	67.1
45 and over	25.1	18.7	19.5	7.4	6.3	3.4	81.8
<i>Total</i>	<i>100.5</i>	<i>83.2</i>	<i>77.4</i>	<i>33.5</i>	<i>31.7</i>	<i>13.2</i>	<i>348.3</i>
FEMALES							
15-19	19.6	15.0	13.3	5.3	4.0	2.2	60.5
20-24	11.7	7.0	8.1	4.0	3.4	* 0.9	36.2
25-34	17.0	15.9	11.0	5.0	7.0	* 0.9	57.7
35-44	16.5	15.4	14.6	5.4	6.1	1.5	60.7
45 and over	11.2	13.9	10.5	2.7	4.4	1.4	45.1
<i>Total</i>	<i>76.1</i>	<i>67.2</i>	<i>57.5</i>	<i>22.3</i>	<i>24.9</i>	<i>7.0</i>	<i>260.3</i>
PERSONS							
Looking for full-time work —							
15-19	19.3	12.3	12.4	6.0	4.6	2.8	58.4
20-24	22.7	18.9	15.3	8.0	8.6	3.0	78.4
25-34	26.4	27.8	24.7	12.0	11.4	3.2	108.3
35-44	30.8	23.8	21.3	9.1	9.1	3.5	99.8
45-54	19.1	18.8	16.8	6.8	5.2	2.2	70.4
55 and over	7.6	7.0	9.0	* 2.3	* 2.5	1.6	30.4
<i>Total looking for full-time work</i>	<i>126.0</i>	<i>108.5</i>	<i>99.5</i>	<i>44.3</i>	<i>41.2</i>	<i>16.4</i>	<i>445.7</i>
Total —							
15-19	37.9	32.9	26.7	10.5	8.5	4.3	124.2
20-24	28.7	21.4	18.7	9.1	10.0	3.6	93.7
25-34	35.9	34.0	30.5	14.3	14.5	3.7	136.0
35-44	37.8	29.5	29.1	11.8	13.0	3.9	127.8
45-54	25.7	21.4	18.4	7.1	6.6	3.0	84.2
55 and over	10.6	11.2	11.6	3.0	4.1	1.8	42.7
Total	176.6	150.4	135.0	55.9	56.7	20.2	608.6

**TABLE 21. UNEMPLOYED PERSONS AGED 15-19:
DURATION OF UNEMPLOYMENT AND SCHOOL ATTENDANCE, JUNE 2000**

	<i>Not attending school</i>			<i>Total</i>
	<i>Attending school</i>	<i>Left school before 1999</i>	<i>Left school 1999 to survey date</i>	
	NUMBER (<i>'000</i>)			
Duration of unemployment (weeks) —				
Under 4	14.3	5.0	9.9	29.2
4 and under 13	14.4	7.7	9.4	31.5
13 and under 26	9.6	6.0	9.1	25.0
26 and over	12.6	15.4	10.6	38.5
<i>Total</i>	<i>50.9</i>	<i>34.0</i>	<i>38.9</i>	<i>124.2</i>
DURATION OF UNEMPLOYMENT (weeks)				
Average duration —				
Males	20.2	39.5	15.9	23.5
Females	14.5	40.7	17.5	23.3
Persons	17.4	40.2	16.6	23.4
Looking for full-time work	* 23.2	47.0	18.0	31.7
Looking for part-time work	16.7	* 15.5	13.8	16.0
Median duration —				
Males	10	26	8	12
Females	8	18	22	13
Persons	8	23	13	13
Looking for full-time work	* 9	26	17	21
Looking for part-time work	8	* 13	* 8	8

TABLE 22. UNEMPLOYED PERSONS: BY AGE AND WHETHER LOOKING FOR FULL-TIME OR PART-TIME WORK, JUNE 2000

	Number unemployed ('000)					Unemployment rate (per cent)				
	Males		Females		Persons	Males		Females		Persons
	Married	Total	Married	Total		Married	Total	Married	Total	
LOOKING FOR FULL-TIME WORK										
Total	115.3	293.2	55.9	152.5	445.7	3.7	6.2	4.2	6.4	6.3
Aged 15-19	* 0.6	32.4	* 2.2	26.0	58.4	* 15.2	17.7	* 30.8	23.7	20.0
Looking for first job	* 0.1	18.1	* 1.5	16.8	34.9
Attending school	* 0.0	* 3.8	* 0.2	* 1.7	5.5	n.a.	n.a.	n.a.	n.a.	n.a.
Attending a tertiary educational institution full time	* 0.0	* 3.6	* 0.0	* 1.4	5.0	n.a.	n.a.	n.a.	n.a.	n.a.
Aged 20 and over	114.7	260.8	53.8	126.5	387.3	3.7	5.7	4.1	5.6	5.7
20-24	6.2	51.4	5.8	27.0	78.4	7.7	10.7	7.2	7.8	9.5
Looking for first job	* 0.3	10.7	* 0.6	6.9	17.6
25-34	29.9	72.8	14.6	35.5	108.3	4.1	5.9	4.0	5.3	5.7
35-44	35.8	64.2	19.1	35.6	99.8	3.6	5.1	4.8	6.4	5.5
45-54	27.0	48.8	10.7	21.6	70.4	3.1	4.6	2.8	4.0	4.4
55 and over	15.8	23.5	* 3.7	6.9	30.4	3.8	4.6	* 3.5	4.3	4.5
Aged 15-64	114.6	292.5	55.9	152.5	445.1	3.8	6.3	4.2	6.5	6.3
LOOKING FOR PART-TIME WORK										
Total	12.7	55.1	46.0	107.7	162.9	4.8	7.8	4.0	5.8	6.4
Aged 15-19	* 0.1	31.2	* 1.3	34.5	65.8	* 14.5	14.5	* 19.4	12.6	13.4
Attending school	* 0.0	22.3	* 0.0	23.1	45.4	* 0.0	18.6	* 0.0	15.5	16.9
Attending a tertiary educational institution full time	* 0.1	6.6	* 0.0	8.6	15.2	* 100.0	12.2	* 0.0	10.6	11.3
Aged 20 and over	12.6	23.9	44.7	73.2	97.1	4.7	4.9	3.9	4.6	4.7
20-24	* 0.6	6.0	* 1.6	9.3	15.3	* 6.8	5.4	* 4.5	5.5	5.5
Attending a tertiary educational institution full time	* 0.0	* 3.9	* 0.5	* 4.3	8.1	* 0.0	* 6.9	* 12.7	* 5.7	6.3
25-34	* 3.0	5.5	13.1	22.2	27.7	* 7.5	5.4	5.1	6.3	6.1
35-44	* 1.4	* 2.8	19.2	25.1	27.9	* 2.7	* 3.7	4.5	4.9	4.8
45 and over	7.5	9.5	10.8	16.6	26.1	4.6	4.7	2.5	3.0	3.5
Aged 15-64	12.2	54.6	45.7	107.2	161.8	5.3	8.2	4.0	5.9	6.5
TOTAL										
Total	128.0	348.3	101.9	260.3	608.6	3.8	6.4	4.1	6.2	6.3
Aged 15-19	* 0.7	63.6	* 3.4	60.5	124.2	* 15.1	16.0	* 25.4	15.8	15.9
Attending school	* 0.0	26.1	* 0.2	24.8	50.9	* 0.0	20.9	* 45.6	16.5	18.5
Attending a tertiary educational institution full time	* 0.1	10.2	* 0.0	10.0	20.2	* 100.0	17.2	* 0.0	11.9	14.1
Aged 20 and over(a)	127.3	284.7	98.5	199.7	484.4	3.8	5.7	4.0	5.2	5.5
20-24	6.8	57.5	7.3	36.2	93.7	7.6	9.7	6.4	7.0	8.5
Attending a tertiary educational institution full time	* 0.5	7.0	* 0.7	6.2	13.2	* 19.1	11.0	* 15.8	7.6	9.1
25-34	32.9	78.3	27.7	57.7	136.0	4.3	5.8	4.5	5.7	5.8
35-44	37.1	67.1	38.3	60.7	127.8	3.5	5.0	4.7	5.7	5.3
45-54	29.4	52.5	18.3	31.7	84.2	3.2	4.6	2.7	3.5	4.1
55-59	13.5	19.5	4.8	10.3	29.8	4.6	5.5	3.0	4.5	5.1
60-64	6.3	8.6	* 1.8	* 2.6	11.2	4.2	4.8	* 3.1	* 3.1	4.2
Aged 15-64	126.8	347.1	101.6	259.7	606.8	3.9	6.5	4.1	6.2	6.4

(a) Includes unemployed persons aged 65 and over, details for whom are not shown separately.

TABLE 23. UNEMPLOYED PERSONS: BIRTHPLACE BY AGE, JUNE 2000

	Number unemployed ('000)			Unemployment rate (per cent)		
	Males	Females	Persons	Males	Females	Persons
	BORN IN AUSTRALIA					
Total	268.1	187.0	455.1	6.6	5.8	6.2
Looking for full-time work	224.6	108.3	333.0	6.4	6.1	6.3
Looking for part-time work	43.5	78.7	122.2	7.9	5.4	6.1
Aged 15-19	56.8	52.6	109.4	15.5	15.3	15.4
Aged 20 and over	211.3	134.4	345.7	5.7	4.7	5.2
20-24	49.6	28.9	78.5	9.7	6.7	8.3
25-34	64.6	40.2	104.7	6.1	5.0	5.6
35-44	46.0	38.5	84.5	4.9	5.0	4.9
45-54	32.4	18.6	51.1	4.3	3.0	3.7
55 and over	18.7	8.2	26.9	4.4	3.2	3.9
Aged 15-64	268.1	186.8	454.9	6.7	5.8	6.3
BORN OUTSIDE AUSTRALIA						
Total	80.2	73.2	153.4	5.9	7.3	6.5
Looking for full-time work	68.5	44.2	112.7	5.7	7.4	6.2
Looking for part-time work	11.7	29.0	40.7	7.4	7.2	7.2
Aged 15-19	6.8	7.9	14.8	20.6	20.5	20.6
Aged 20 and over	73.4	65.3	138.7	5.5	6.8	6.0
20-24	7.9	7.3	15.2	9.8	8.7	9.2
25-34	13.8	17.5	31.3	5.0	8.3	6.4
35-44	21.1	22.1	43.3	5.3	7.5	6.3
45-54	20.1	13.0	33.1	5.4	4.6	5.0
55 and over	10.6	5.3	15.9	5.1	5.9	5.3
Aged 15-64	79.0	72.9	152.0	5.9	7.3	6.5

TABLE 25. UNEMPLOYED PERSONS: DURATION OF UNEMPLOYMENT BY AGE, MARITAL STATUS AND FULL-TIME/PART-TIME STATUS, JUNE 2000
(*000)

Duration of unemployment (weeks)	Age group				Total(a)	Married	Not married	Looking for -	
	15-19	20-24	25-34	35-54				Full-time work	Part-time work
MALES									
— '000 —									
Under 52	54.5	42.0	53.0	70.5	235.3	83.3	151.9	189.4	45.8
under 2	7.7	* 2.6	6.0	8.0	27.7	12.3	15.4	18.8	8.8
2 and under 4	6.3	4.8	6.0	8.5	27.3	10.6	16.6	19.2	8.0
4 and under 8	9.2	8.4	13.7	14.2	47.4	17.0	30.4	38.7	8.7
8 and under 13	8.7	8.0	5.2	7.3	30.2	9.9	20.3	25.5	4.7
13 and under 26	10.6	9.1	11.1	17.5	52.3	15.7	36.7	44.0	8.4
26 and under 39	9.6	5.9	8.5	9.9	35.8	11.9	23.9	30.4	5.4
39 and under 52	* 2.4	* 3.2	* 2.5	5.0	14.6	5.9	8.7	12.8	* 1.8
52 and over	9.2	15.5	25.4	49.2	113.1	44.7	68.4	103.7	9.3
52 and under 65	* 4.0	* 2.7	7.3	7.2	22.8	8.4	14.4	18.8	* 4.0
65 and under 104	* 2.4	* 1.5	* 3.1	8.2	16.7	5.7	11.0	15.6	* 1.1
104 and over	* 2.8	11.3	15.0	33.7	73.6	30.6	43.0	69.4	* 4.2
Total	63.6	57.5	78.3	119.6	348.3	128.0	220.3	293.2	55.1
— weeks —									
Average duration —	23.5	48.5	54.3	76.0	59.1	63.1	56.8	65.3	25.9
Median duration —	12	19	22	30	23	25	22	26	8
FEMALES									
— '000 —									
Under 52	54.7	29.8	46.1	67.4	205.0	81.1	124.0	112.1	93.0
under 2	5.5	5.2	6.9	8.4	27.3	12.4	14.9	13.2	14.1
2 and under 4	9.6	5.7	7.1	9.8	34.3	15.1	19.2	12.6	21.7
4 and under 8	6.3	4.9	7.6	14.9	34.6	14.9	19.7	21.0	13.6
8 and under 13	7.3	* 3.7	7.8	11.9	31.6	13.2	18.4	18.0	13.6
13 and under 26	14.4	5.5	11.0	12.2	43.9	15.5	28.4	26.5	17.5
26 and under 39	10.1	* 4.0	4.6	7.7	27.0	7.5	19.5	17.2	9.8
39 and under 52	* 1.4	* 0.8	* 1.1	* 2.5	6.2	* 2.5	* 3.7	* 3.6	* 2.6
52 and over	5.9	6.4	11.6	24.9	55.2	20.8	34.4	40.5	14.8
52 and under 65	* 1.0	* 1.8	* 2.6	5.7	12.4	5.6	6.8	8.1	* 4.3
65 and under 104	* 1.9	* 1.3	* 2.3	* 3.5	9.4	* 3.4	6.0	7.0	* 2.3
104 and over	* 2.9	* 3.3	6.7	15.8	33.5	11.8	21.6	25.3	8.1
Total	60.5	36.2	57.7	92.3	260.3	101.9	158.4	152.5	107.7
— weeks —									
Average duration —	23.3	28.3	37.4	51.4	40.6	35.1	44.1	49.1	28.6
Median duration —	13	10	12	13	13	10	16	17	8
PERSONS									
— '000 —									
Under 52	109.2	71.8	99.0	137.9	440.3	164.4	275.9	301.5	138.8
under 2	13.3	7.7	12.9	16.4	55.0	24.7	30.3	32.0	22.9
2 and under 4	15.9	10.5	13.1	18.3	61.6	25.7	35.8	31.8	29.7
4 and under 8	15.4	13.4	21.3	29.1	82.0	31.9	50.1	59.7	22.3
8 and under 13	16.0	11.7	12.9	19.2	61.8	23.0	38.7	43.5	18.3
13 and under 26	25.0	14.6	22.0	29.6	96.3	31.2	65.1	70.4	25.8
26 and under 39	19.8	9.9	13.1	17.6	62.9	19.4	43.5	47.6	15.2
39 and under 52	* 3.8	* 4.0	* 3.6	7.6	20.9	8.5	12.4	16.4	4.4
52 and over	15.0	21.9	37.0	74.1	168.3	65.5	102.8	144.2	24.1
52 and under 65	5.0	4.4	9.9	12.9	35.2	14.0	21.2	26.9	8.3
65 and under 104	* 4.3	* 2.9	5.4	11.7	26.1	9.1	16.9	22.6	* 3.4
104 and over	5.7	14.6	21.7	49.5	107.0	42.4	64.6	94.7	12.3
Total	124.2	93.7	136.0	212.0	608.6	229.9	378.7	445.7	162.9
— weeks —									
Average duration —	23.4	40.7	47.1	65.2	51.2	50.7	51.5	59.8	27.7
Median duration —	13	13	17	23	18	16	20	23	8

(a) Includes persons aged 55 and over, details for whom are not shown separately.

TABLE 24. LONG-TERM UNEMPLOYMENT

Month	Long-term unemployment									Long-term unemployment as a proportion of total unemployment		
	Unemployed 52 weeks and under 104			Unemployed 104 weeks and over			Total			Males	Females	Persons
	Males	Females	Persons	Males	Females	Persons	Males	Females	Persons			
ORIGINAL												
1999 —												
April	52.2	32.3	84.5	83.0	42.1	125.2	135.2	74.5	209.7	33.6	24.6	29.7
May	54.4	36.9	91.3	84.9	36.1	121.0	139.3	73.0	212.3	35.0	25.1	30.8
June	49.0	25.6	74.6	75.8	41.2	117.0	124.8	66.8	191.6	33.6	24.1	29.5
July	43.6	28.6	72.2	76.9	38.2	115.1	120.5	66.8	187.3	33.5	25.2	30.0
August	46.0	32.3	78.4	76.0	37.3	113.3	122.0	69.6	191.6	31.9	25.8	29.4
September	48.3	33.4	81.7	86.9	43.2	130.1	135.2	76.6	211.8	33.5	24.7	29.7
October	46.8	26.6	73.4	82.0	40.7	122.7	128.8	67.3	196.1	34.9	24.5	30.5
November	45.3	26.1	71.4	80.3	36.8	117.2	125.6	62.9	188.5	35.9	24.2	30.9
December	46.3	26.0	72.4	79.2	38.2	117.5	125.6	64.3	189.8	32.4	23.0	28.4
2000 —												
January	41.1	26.1	67.2	78.3	41.0	119.2	119.4	67.1	186.5	29.3	23.2	26.8
February	41.2	24.5	65.7	86.2	44.4	130.6	127.4	68.8	196.2	32.4	21.1	27.3
March	38.3	33.0	71.3	78.4	39.4	117.8	116.8	72.4	189.1	30.6	22.8	27.0
April	41.1	29.3	70.4	74.0	43.2	117.2	115.2	72.5	187.7	31.6	24.6	28.5
May	43.3	30.0	73.3	73.8	35.4	109.1	117.1	65.4	182.5	32.8	22.8	28.4
June	39.5	21.8	61.3	73.6	33.5	107.0	113.1	55.2	168.3	32.5	21.2	27.7
SEASONALLY ADJUSTED												
1999 —												
April	54.1	33.4	87.5	84.4	41.6	126.0	138.5	75.0	213.5	34.0	25.3	30.3
May	54.6	39.1	93.7	89.4	37.4	126.9	144.1	76.5	220.6	35.6	26.0	31.6
June	52.0	28.3	80.3	80.2	42.2	122.4	132.2	70.5	202.7	34.0	24.0	29.7
July	43.9	30.4	74.3	82.3	39.6	121.9	126.2	70.0	196.2	33.6	24.6	29.8
August	48.7	34.1	82.8	79.4	37.4	116.8	128.0	71.5	199.6	32.8	24.9	29.5
September	46.4	31.3	77.7	80.4	40.5	121.0	126.9	71.8	198.7	32.4	23.8	28.6
October	46.2	28.2	74.4	81.9	38.6	120.5	128.1	66.9	195.0	32.8	23.5	28.9
November	44.8	26.2	71.0	80.8	38.9	119.7	125.6	65.1	190.7	34.3	23.3	29.5
December	45.3	24.8	70.2	80.4	39.8	120.2	125.7	64.7	190.4	32.3	22.8	28.3
2000 —												
January	40.6	24.6	65.1	78.0	43.3	121.3	118.6	67.9	186.4	31.4	24.5	28.5
February	39.6	21.2	60.8	77.4	40.5	117.9	116.9	61.7	178.6	32.5	21.8	27.8
March	37.7	32.2	69.9	74.8	38.5	113.3	112.6	70.7	183.3	30.7	23.9	27.7
April	42.7	30.2	72.9	75.2	42.6	117.9	117.9	72.9	190.8	32.0	25.3	29.1
May	43.5	31.8	75.3	77.8	36.7	114.6	121.3	68.6	189.9	33.5	23.7	29.1
June	41.9	24.0	65.9	77.9	34.3	112.3	119.8	58.4	178.2	32.8	21.1	27.7
TREND SERIES												
1999 —												
April	54.2	34.9	89.1	84.5	41.2	125.8	138.7	76.1	214.8	34.8	25.7	30.9
May	52.4	33.8	86.3	83.5	40.3	123.8	135.9	74.2	210.1	34.4	25.2	30.5
June	50.5	33.0	83.4	82.7	39.8	122.5	133.2	72.7	205.9	34.0	24.8	30.1
July	48.8	32.2	80.9	81.9	39.3	121.2	130.7	71.5	202.2	33.6	24.5	29.7
August	47.5	31.2	78.8	81.4	39.0	120.4	128.9	70.3	199.2	33.3	24.3	29.4
September	46.5	29.9	76.4	80.9	39.1	120.0	127.4	69.0	196.4	33.0	23.9	29.2
October	45.6	28.2	73.8	80.6	39.4	120.0	126.2	67.6	193.7	32.9	23.6	28.9
November	44.4	26.5	71.0	80.2	39.8	120.0	124.6	66.3	191.0	32.7	23.4	28.7
December	43.1	25.5	68.6	79.4	40.4	119.9	122.5	66.0	188.5	32.4	23.3	28.5
2000 —												
January r	41.8	25.5	67.2	78.3	40.9	119.2	120.1	66.3	186.4	32.2	23.4	28.4
February r	40.9	26.4	67.3	77.3	40.7	118.0	118.2	67.1	185.3	32.0	23.5	28.3
March r	40.7	27.6	68.3	76.6	40.1	116.7	117.4	67.7	185.0	32.0	23.6	28.3
April r	41.0	28.5	69.4	76.4	39.1	115.5	117.3	67.6	184.9	32.1	23.5	28.3
May r	41.4	29.0	70.4	76.4	38.0	114.4	117.8	66.9	184.7	32.3	23.3	28.4
June	41.9	29.1	71.0	76.6	36.7	113.4	118.5	65.9	184.4	32.7	23.0	28.4

TABLE 26. PERSONS NOT IN THE LABOUR FORCE: AGE AND MARITAL STATUS, JUNE 2000

Age group	Males			Females			Persons	Proportion of population - per cent -
	Married	Not married	Total	Married - '000 -	Not married	Total		
15-19	* 1.8	290.1	291.8	9.8	265.8	275.5	567.4	42.0
20-24	6.4	93.2	99.6	53.9	97.4	151.3	250.9	18.5
25-34	35.9	64.8	100.6	303.7	124.5	428.2	528.8	18.3
35-44	59.8	61.3	121.1	308.9	101.8	410.8	531.9	18.1
45-54	95.5	71.8	167.3	297.7	89.1	386.8	554.2	21.4
55-59	91.8	43.7	135.5	176.6	68.1	244.6	380.1	39.6
60-64	163.1	47.1	210.2	217.9	87.3	305.2	515.4	66.0
65-69	211.0	59.2	270.2	199.5	117.2	316.7	586.9	87.1
70 and over	458.2	206.4	664.6	334.4	628.4	962.8	1,627.4	97.0
Total	1,123.4	937.6	2,061.0	1,902.4	1,579.6	3,482.0	5,543.0	36.4

TABLE 27. PERSONS NOT IN THE LABOUR FORCE: WHETHER LOOKING FOR WORK, ETC., JUNE 2000 ('000)

	Males			Females			Persons
	Married	Not married	Total	Married	Not married	Total	
<i>Looking for work</i>	18.1	43.2	61.3	35.8	46.2	82.0	143.3
Took active steps to find work(a)	6.8	20.7	27.5	13.7	20.7	34.3	61.8
Did not take active steps to find work	11.3	22.5	33.8	22.1	25.6	47.7	81.5
Not looking for work	1,025.4	806.9	1,832.3	1,818.5	1,345.5	3,164.0	4,996.3
Permanently unable to work	42.5	33.4	75.8	23.1	43.2	66.3	142.1
In institutions	37.4	54.2	91.6	25.0	144.7	169.7	261.3
Total	1,123.4	937.6	2,061.0	1,902.4	1,579.6	3,482.0	5,543.0

(a) Not available to start work in the reference week for reasons other than own temporary illness or injury.

**TABLE 28. ESTIMATES OF LABOUR FORCE STATUS AND GROSS CHANGES (FLOWS) DERIVED FROM
MATCHED RECORDS MAY 2000 AND JUNE 2000
(‘000)**

<i>Labour force status in May 2000</i>	<i>Labour force status in June 2000</i>			
	<i>Employed full time</i>	<i>Employed part time</i>	<i>Unemployed</i>	<i>Not in the labour force</i>
MALES				
Employed full time	3,390.1	83.5	30.3	32.3
Employed part time	88.7	368.6	21.3	48.0
Unemployed	29.4	31.4	163.5	50.8
Not in the labour force	34.9	44.4	51.8	1,404.5
MARRIED FEMALES				
Employed full time	908.0	87.3	* 3.2	21.4
Employed part time	90.6	762.2	11.0	54.4
Unemployed	4.5	12.8	37.0	27.3
Not in the labour force	17.9	68.2	30.6	1,413.0
ALL FEMALES				
Employed full time	1,588.5	121.3	6.9	28.6
Employed part time	134.6	1,188.5	25.9	91.7
Unemployed	15.5	34.8	110.9	65.4
Not in the labour force	24.9	98.7	58.9	2,452.8
PERSONS				
Employed full time	4,978.6	204.7	37.2	60.9
Employed part time	223.3	1,557.1	47.2	139.7
Unemployed	44.9	66.2	274.3	116.3
Not in the labour force	59.8	143.1	110.7	3,857.3

POPULATION REPRESENTED BY THE MATCHED SAMPLE

<i>Males</i>	<i>Females</i>		<i>Persons</i>
	<i>Married</i>	<i>Total</i>	
5,873.6	3,549.3	6,047.8	11,921.5

TABLE 29. RELATIONSHIP IN HOUSEHOLD, THE CIVILIAN POPULATION AGED 15 AND OVER: SUMMARY TABLE, JUNE 2000

	Employed	Unemployed PERSONS ('000)	Labour force	Not in labour force	Civilian population aged 15 and over		
					Males	Females	Persons
Family member	7,338.8	455.6	7,794.4	3,985.9	5,828.3	5,952.1	11,780.3
Husband or wife	5,451.5	222.7	5,674.3	2,846.7	4,313.4	4,207.5	8,521.0
With children under 15	2,574.3	130.8	2,705.1	739.6	1,755.9	1,688.8	3,444.7
Without children under 15	2,877.2	92.0	2,969.2	2,107.2	2,557.5	2,518.8	5,076.3
With dependants	3,062.0	143.8	3,205.8	846.2	2,061.7	1,990.4	4,052.0
Without dependants	2,389.5	78.9	2,468.5	2,000.5	2,251.8	2,217.2	4,469.0
Lone parent	361.8	48.3	410.2	353.0	126.6	636.6	763.2
With children under 15	214.4	35.1	249.5	204.2	50.2	403.5	453.7
With dependent students but without children under 15	66.1	5.8	71.8	22.5	25.3	69.0	94.3
Without dependants	81.3	7.5	88.8	126.4	51.1	164.1	215.2
Dependent student	388.7	70.6	459.3	476.5	456.1	479.7	935.8
Non-dependent child(a)	981.8	99.9	1,081.7	145.9	781.7	445.8	1,227.6
Other family person	155.0	14.0	169.0	163.8	150.4	182.3	332.8
Non-family member	1,383.4	119.1	1,502.5	1,026.4	1,256.2	1,272.6	2,528.8
Lone person	732.6	65.2	797.8	874.5	764.9	907.3	1,672.2
Not living alone	650.8	53.9	704.7	151.9	491.3	365.3	856.6
<i>Usual resident of a household where relationship was determined</i>	8,722.2	574.7	9,296.9	5,012.3	7,084.5	7,224.7	14,309.2
Usual resident of a household where relationship was not determined	198.2	16.2	214.4	84.4	135.2	163.6	298.8
Total usual residents of private dwellings	8,920.4	590.9	9,511.3	5,096.7	7,219.7	7,388.2	14,607.9
Visitors to private dwellings	48.7	7.4	56.0	50.2	54.8	51.4	106.2
Persons enumerated in non-private dwellings	86.8	10.3	97.1	396.2	219.3	274.0	493.3
Total	9,055.9	608.6	9,664.5	5,543.0	7,493.8	7,713.7	15,207.5
	PROPORTION OF TOTAL (per cent)						
Family member	81.0	74.9	80.7	71.9	77.8	77.2	77.5
Husband or wife	60.2	36.6	58.7	51.4	57.6	54.5	56.0
With children under 15	28.4	21.5	28.0	13.3	23.4	21.9	22.7
Without children under 15	31.8	15.1	30.7	38.0	34.1	32.7	33.4
With dependants	33.8	23.6	33.2	15.3	27.5	25.8	26.6
Without dependants	26.4	13.0	25.5	36.1	30.0	28.7	29.4
Lone parent	4.0	7.9	4.2	6.4	1.7	8.3	5.0
With children under 15	2.4	5.8	2.6	3.7	0.7	5.2	3.0
With dependent students but without children under 15	0.7	0.9	0.7	0.4	0.3	0.9	0.6
Without dependants	0.9	1.2	0.9	2.3	0.7	2.1	1.4
Dependent student	4.3	11.6	4.8	8.6	6.1	6.2	6.2
Non-dependent child(a)	10.8	16.4	11.2	2.6	10.4	5.8	8.1
Other family person	1.7	2.3	1.7	3.0	2.0	2.4	2.2
Non-family member	15.3	19.6	15.5	18.5	16.8	16.5	16.6
Lone person	8.1	10.7	8.3	15.8	10.2	11.8	11.0
Not living alone	7.2	8.9	7.3	2.7	6.6	4.7	5.6
<i>Usual resident of a household where relationship was determined</i>	96.3	94.4	96.2	90.4	94.5	93.7	94.1
Usual resident of a household where relationship was not determined	2.2	2.7	2.2	1.5	1.8	2.1	2.0
Total usual residents of private dwellings	98.5	97.1	98.4	91.9	96.3	95.8	96.1
Visitors to private dwellings	0.5	1.2	0.6	0.9	0.7	0.7	0.7
Persons enumerated in non-private dwellings	1.0	1.7	1.0	7.1	2.9	3.6	3.2
Total	100.0	100.0	100.0	100.0	100.0	100.0	100.0

(a) Aged 15 and over.

TABLE 30. RELATIONSHIP IN HOUSEHOLD AND LABOUR FORCE STATUS OF PERSONS AGED 15 AND OVER(a), JUNE 2000

	<i>Employed</i>		<i>Unemployed</i>		<i>Labour force</i>	<i>Not in labour force</i>	<i>Civilian population aged 15 and over</i>	<i>Unemployment rate - per</i>	<i>Participation rate</i>	
	<i>Full-time workers</i>	<i>Part-time workers</i>	<i>Total</i>	<i>Looking for full-time work</i>						<i>Total - '000 -</i>
MALES										
Family member	3,570.5	522.5	4,093.0	201.8	249.9	4,342.9	1,485.4	5,828.3	5.8	74.5
Husband	2,903.0	243.9	3,146.9	111.7	124.2	3,271.1	1,042.3	4,313.4	3.8	75.8
With children under 15	1,494.5	81.7	1,576.2	67.0	71.1	1,647.4	108.5	1,755.9	4.3	93.8
Without children under 15	1,408.5	162.2	1,570.7	44.7	53.1	1,623.8	933.8	2,557.5	3.3	63.5
With dependants	1,743.6	100.5	1,844.1	73.7	78.8	1,922.9	138.8	2,061.7	4.1	93.3
Without dependants	1,159.4	143.5	1,302.8	38.0	45.4	1,348.2	903.5	2,251.8	3.4	59.9
Lone parent	65.6	10.5	76.1	5.6	7.4	83.4	43.1	126.6	8.8	65.9
With children under 15	23.8	5.4	29.2	* 2.9	4.4	33.6	16.5	50.2	13.1	67.0
With dependent students but without children under 15	16.0	* 3.2	19.2	* 1.4	* 1.4	20.6	4.7	25.3	* 6.7	81.3
Without dependants	25.8	* 1.9	27.7	* 1.3	* 1.6	29.2	21.8	51.1	* 5.4	57.3
Dependent student	5.3	162.7	168.0	7.5	36.7	204.7	251.4	456.1	17.9	44.9
Non-dependent child(b)	525.3	91.5	616.8	69.1	72.9	689.8	92.0	781.7	10.6	88.2
Other family person	71.2	13.9	85.1	7.9	8.8	93.9	56.6	150.4	9.4	62.4
Non-family member	709.5	96.6	806.1	72.5	77.4	883.5	372.7	1,256.2	8.8	70.3
Lone person	380.1	48.6	428.7	42.1	43.6	472.3	292.7	764.9	9.2	61.7
Not living alone	329.4	48.1	377.4	30.4	33.9	411.3	80.0	491.3	8.2	83.7
Total	4,280.0	619.1	4,899.1	274.3	327.4	5,226.4	1,858.1	7,084.5	6.3	73.8
FEMALES										
Family member	1,702.7	1,543.2	3,245.9	110.2	205.7	3,451.5	2,500.5	5,952.1	6.0	58.0
Wife	1,222.9	1,081.7	2,304.6	54.1	98.6	2,403.1	1,804.4	4,207.5	4.1	57.1
With children under 15	398.6	599.5	998.1	27.9	59.7	1,057.7	631.0	1,688.8	5.6	62.6
Without children under 15	824.3	482.1	1,306.5	26.1	38.9	1,345.4	1,173.4	2,518.8	2.9	53.4
With dependants	520.1	697.8	1,217.9	30.4	65.0	1,282.9	707.5	1,990.4	5.1	64.5
Without dependants	702.8	383.9	1,086.7	23.7	33.5	1,120.2	1,096.9	2,217.2	3.0	50.5
Lone parent	145.2	140.5	285.7	26.4	41.0	326.7	309.9	636.6	12.5	51.3
With children under 15	79.7	105.5	185.2	17.1	30.7	215.9	187.6	403.5	14.2	53.5
With dependent students but without children under 15	29.5	17.4	46.9	* 3.8	4.4	51.3	17.7	69.0	8.5	74.3
Without dependants	36.0	17.6	53.6	5.5	5.9	59.5	104.6	164.1	9.9	36.3
Dependent student	* 2.7	218.0	220.7	* 3.3	33.9	254.6	225.1	479.7	13.3	53.1
Non-dependent child(b)	286.4	78.6	365.0	23.1	27.0	392.0	53.9	445.8	6.9	87.9
Other family person	45.5	24.4	69.9	* 3.3	5.3	75.2	107.2	182.3	7.0	41.2
Non-family member	427.3	150.0	577.3	33.7	41.6	618.9	653.7	1,272.6	6.7	48.6
Lone person	226.4	77.5	303.9	17.6	21.6	325.5	581.8	907.3	6.6	35.9
Not living alone	200.9	72.5	273.3	16.1	20.0	293.4	71.9	365.3	6.8	80.3
Total	2,130.0	1,693.1	3,823.1	143.9	247.3	4,070.4	3,154.2	7,224.7	6.1	56.3
PERSONS										
Family member	5,273.2	2,065.7	7,338.8	312.0	455.6	7,794.4	3,985.9	11,780.3	5.8	66.2
Husband or wife	4,125.9	1,325.6	5,451.5	165.8	222.7	5,674.3	2,846.7	8,521.0	3.9	66.6
With children under 15	1,893.1	681.3	2,574.3	94.9	130.8	2,705.1	739.6	3,444.7	4.8	78.5
Without children under 15	2,232.9	644.3	2,877.2	70.9	92.0	2,969.2	2,107.2	5,076.3	3.1	58.5
With dependants	2,263.7	798.2	3,062.0	104.1	143.8	3,205.8	846.2	4,052.0	4.5	79.1
Without dependants	1,862.2	527.3	2,389.5	61.7	78.9	2,468.5	2,000.5	4,469.0	3.2	55.2
Lone parent	210.8	151.0	361.8	32.0	48.3	410.2	353.0	763.2	11.8	53.7
With children under 15	103.5	110.9	214.4	20.0	35.1	249.5	204.2	453.7	14.1	55.0
With dependent students but without children under 15	45.5	20.6	66.1	5.2	5.8	71.8	22.5	94.3	8.0	76.2
Without dependants	61.8	19.5	81.3	6.8	7.5	88.8	126.4	215.2	8.4	41.3
Dependent student	8.0	380.6	388.7	10.8	70.6	459.3	476.5	935.8	15.4	49.1
Non-dependent child(b)	811.7	170.1	981.8	92.2	99.9	1,081.7	145.9	1,227.6	9.2	88.1
Other family person	116.6	38.3	155.0	11.2	14.0	169.0	163.8	332.8	8.3	50.8
Non-family member	1,136.8	246.6	1,383.4	106.3	119.1	1,502.5	1,026.4	2,528.8	7.9	59.4
Lone person	606.6	126.1	732.6	59.8	65.2	797.8	874.5	1,672.2	8.2	47.7
Not living alone	530.2	120.5	650.8	46.5	53.9	704.7	151.9	856.6	7.6	82.3
Total	6,409.9	2,312.3	8,722.2	418.2	574.7	9,296.9	5,012.3	14,309.2	6.2	65.0

(a) Civilians who were residents of private dwellings where family status was determined. See Explanatory Notes paragraphs 45 and 46. (b) Aged 15 and over.

TABLE 31. ALL FAMILIES(a): FAMILY TYPE, NUMBER OF FAMILY MEMBERS AND LABOUR FORCE STATUS, JUNE 2000
(*000 families)

Number of family members of any age	None employed			One employed			Two or more employed			Total		
	None unemployed	One or more unemployed	Total	None unemployed	One or more unemployed	Total	None unemployed	One or more unemployed	Total	None unemployed	One or more unemployed	Total
COUPLE FAMILY												
Two	685.8	22.4	708.2	259.6	33.8	293.4	782.4	..	782.4	1,727.8	56.2	1,784.0
Three	47.0	26.4	73.4	228.3	30.6	259.0	486.4	22.7	509.1	761.7	79.7	841.5
Four	28.2	20.7	48.9	232.8	38.5	271.2	675.2	33.0	708.2	936.1	92.2	1,028.3
Five	12.6	10.0	22.6	106.6	16.8	123.4	269.4	21.2	290.6	388.7	48.0	436.6
Six or more	8.9	9.5	18.4	51.7	6.5	58.2	85.2	12.9	98.0	145.8	28.8	174.6
Total	782.5	88.9	871.4	879.1	126.2	1,005.2	2,298.6	89.7	2,388.3	3,960.2	304.8	4,265.0
ONE PARENT FAMILY WITH A MALE PARENT												
Two	15.8	6.1	21.9	34.5	* 4.2	38.6	23.8	..	23.8	74.1	10.3	84.3
Three or more	6.4	* 4.3	10.8	16.3	* 1.6	17.9	13.2	* 1.8	15.0	35.9	7.7	43.6
Total	22.2	10.4	32.6	50.8	5.8	56.5	37.1	* 1.8	38.8	110.0	18.0	128.0
ONE PARENT FAMILY WITH A FEMALE PARENT												
Two	105.6	26.0	131.7	152.2	10.0	162.2	42.1	..	42.1	299.9	36.1	336.0
Three	64.5	16.4	80.8	66.8	9.6	76.4	41.9	* 2.6	44.5	173.3	28.5	201.8
Four	31.5	* 3.8	35.3	24.1	* 2.6	26.7	13.2	* 2.0	15.2	68.8	8.4	77.2
Five or more	12.5	* 2.1	14.6	4.8	* 1.2	5.9	6.0	* 0.9	6.8	23.2	* 4.1	27.3
Total	214.1	48.3	262.3	247.9	23.4	271.3	103.3	5.4	108.7	565.3	77.1	642.3
ONE PARENT FAMILIES: TOTAL												
Two	121.4	32.2	153.5	186.7	14.2	200.8	66.0	..	66.0	374.0	46.4	420.4
Three	67.3	20.1	87.4	79.2	10.9	90.1	51.6	* 3.5	55.1	198.0	34.6	232.6
Four	33.8	* 4.0	37.8	27.3	* 2.9	30.1	15.9	* 2.7	18.6	76.9	9.6	86.5
Five or more	13.8	* 2.4	16.2	5.6	* 1.2	6.7	6.9	* 1.0	7.9	26.3	4.5	30.8
Total	236.3	58.7	295.0	298.7	29.2	327.9	140.3	7.2	147.5	675.3	95.1	770.3
OTHER FAMILY												
Two	13.4	* 2.9	16.4	16.2	* 4.1	20.3	35.3	..	35.3	64.9	7.0	71.9
Three or more	* 1.8	* 0.3	* 2.1	* 0.5	* 0.7	* 1.2	5.5	* 0.3	5.8	7.8	* 1.2	9.1
Total	15.3	* 3.2	18.5	16.7	4.7	21.5	40.8	* 0.3	41.1	72.8	8.2	81.0
TOTAL												
Two	820.6	57.5	878.1	462.5	52.1	514.6	883.7	..	883.7	2,166.8	109.5	2,276.3
Three	115.7	46.5	162.1	307.9	42.2	350.1	542.7	26.5	569.2	966.2	115.2	1,081.4
Four	62.4	24.8	87.2	260.0	41.3	301.4	691.2	35.7	726.8	1,013.6	101.8	1,115.4
Five	23.0	12.3	35.3	111.5	17.6	129.1	274.9	21.9	296.8	409.4	51.8	461.2
Six or more	12.3	9.8	22.2	52.6	6.8	59.4	87.3	13.1	100.4	152.2	29.8	182.0
Total	1,034.0	150.8	1,184.8	1,194.5	160.1	1,354.5	2,479.7	97.2	2,576.9	4,708.2	408.1	5,116.3

(a) See Explanatory Notes paragraphs 45 and 46 for details of exclusions to family tables.

TABLE 32. ALL FAMILIES(a): FAMILY TYPE, NUMBER OF CHILDREN UNDER 15 PRESENT, NUMBER OF DEPENDANTS AND LABOUR FORCE STATUS, JUNE 2000
(*000 families)

	Number of children under 15			Number of dependants			Total
	None	One	Two or more	None	One	Two or more	
NO FAMILY MEMBER EMPLOYED							
Couple family	756.6	42.8	72.0	745.6	42.4	83.5	871.4
One or both spouses unemployed(b)	27.0	20.2	32.8	24.9	18.3	36.8	80.0
Husband unemployed, wife unemployed	5.5	* 4.1	5.3	5.3	* 3.9	5.7	14.9
Husband unemployed, wife not in the labour force	17.7	14.1	25.1	15.9	12.8	28.3	56.9
Neither spouse unemployed	729.6	22.5	39.2	720.6	24.1	46.6	791.4
One parent families	73.0	111.2	110.8	54.1	113.4	127.5	295.0
Parent unemployed	7.5	18.0	14.0	* 3.0	19.2	17.5	39.6
Male parent unemployed	* 1.8	* 3.1	* 1.1	* 0.9	* 2.6	* 2.5	6.0
Female parent unemployed	5.7	15.0	12.9	* 2.1	16.5	14.9	33.6
Parent not unemployed	65.4	93.2	96.7	51.1	94.2	110.1	255.4
Male parent not in the labour force	11.7	10.0	4.9	8.0	12.2	6.4	26.6
Female parent not in the labour force	53.7	83.2	91.8	43.0	82.1	103.7	228.7
Other family	18.5	18.5	18.5
Family head unemployed	* 1.2	* 1.2	* 1.2
Family head not unemployed	17.3	17.3	17.3
Family head not in the labour force	17.3	17.3	17.3
Total	848.1	154.0	182.8	818.1	155.7	211.0	1,184.8
ONE OR MORE FAMILY MEMBERS EMPLOYED							
Couple family	1,789.9	593.4	1,010.2	1,499.6	632.1	1,261.8	3,393.5
One or both spouses unemployed(b)	58.1	24.4	42.1	48.7	24.6	51.3	124.6
Husband employed, wife unemployed	27.2	16.2	29.7	23.3	15.8	33.9	73.0
Husband unemployed, wife employed	22.6	5.5	10.2	19.6	6.0	12.7	38.3
Husband unemployed, wife unemployed	* 1.6	* 0.4	* 0.6	* 0.9	* 0.7	* 1.0	* 2.6
Husband unemployed, wife not in the labour force	5.4	* 2.3	* 1.7	* 3.8	* 2.2	* 3.4	9.3
Neither spouse unemployed	1,731.8	569.0	968.1	1,450.9	607.5	1,210.5	3,268.9
Husband employed, wife employed	1,205.2	378.8	589.3	997.1	399.4	776.8	2,173.3
Husband employed, wife not in the labour force	327.9	170.5	357.8	274.4	179.4	402.3	856.2
Husband not in the labour force, wife employed	101.2	15.1	16.3	90.4	18.9	23.3	132.6
Husband not in the labour force, wife not in the labour force	97.5	4.6	4.7	89.0	9.9	8.0	106.9
One parent families	243.6	142.9	88.9	167.2	175.1	133.1	475.4
Parent unemployed	5.9	* 2.1	* 0.9	4.6	* 2.6	* 1.7	8.9
Parent not unemployed	237.7	140.8	88.0	162.6	172.5	131.4	466.5
Male parent employed	47.7	19.4	9.9	28.4	33.0	15.6	77.0
Female parent employed	103.5	112.9	72.3	55.9	128.2	104.6	288.7
Male parent not in the labour force	15.5	* 1.5	* 0.0	14.3	* 1.7	* 1.0	17.0
Female parent not in the labour force	71.1	6.9	5.8	64.0	9.6	10.2	83.8
Other family	62.5	62.5	62.5
Family head unemployed	* 2.8	* 2.8	* 2.8
Family head not unemployed	59.7	59.7	59.7
Family head employed	49.2	49.2	49.2
Family head not in the labour force	10.5	10.5	10.5
Total	2,096.1	736.3	1,099.1	1,729.3	807.2	1,394.9	3,931.5
TOTAL							
Couple family	2,546.6	636.2	1,082.2	2,245.2	674.5	1,345.3	4,265.0
One or both spouses unemployed(b)	85.2	44.6	74.9	73.6	42.9	88.1	204.7
Husband employed, wife unemployed	27.2	16.2	29.7	23.3	15.8	33.9	73.0
Husband unemployed, wife employed	22.6	5.5	10.2	19.6	6.0	12.7	38.3
Husband unemployed, wife unemployed	7.0	4.6	5.9	6.2	4.5	6.7	17.5
Husband unemployed, wife not in the labour force	23.1	16.4	26.8	19.6	15.0	31.7	66.3
Neither spouse unemployed	2,461.4	591.5	1,007.4	2,171.6	631.6	1,257.2	4,060.3
Husband employed, wife employed	1,205.2	378.8	589.3	997.1	399.4	776.8	2,173.3
Husband employed, wife not in the labour force	327.9	170.5	357.8	274.4	179.4	402.3	856.2
Husband not in the labour force, wife employed	101.2	15.1	16.3	90.4	18.9	23.3	132.6
Husband not in the labour force, wife not in the labour force	827.1	27.1	43.9	809.6	34.0	54.6	898.2
One parent families	316.6	254.1	199.6	221.2	288.5	260.6	770.3
Parent unemployed	13.4	20.1	14.9	7.6	21.8	19.1	48.5
Male parent unemployed	* 3.0	* 3.3	* 1.1	* 1.6	* 3.3	* 2.5	7.4
Female parent unemployed	10.4	16.9	13.8	6.0	18.5	16.6	41.1
Parent not unemployed	303.2	234.0	184.7	213.6	266.7	241.5	721.8
Male parent employed	47.7	19.4	9.9	28.4	33.0	15.6	77.0
Female parent employed	103.5	112.9	72.3	55.9	128.2	104.6	288.7
Male parent not in the labour force	27.2	11.5	4.9	22.3	13.9	7.4	43.6
Female parent not in the labour force	124.8	90.2	97.6	107.0	91.7	113.9	312.6
Other family	81.0	81.0	81.0
Family head unemployed	* 4.0	* 4.0	* 4.0
Family head not unemployed	77.0	77.0	77.0
Family head employed	49.2	49.2	49.2
Family head not in the labour force	27.8	27.8	27.8
Total	2,944.2	890.3	1,281.9	2,547.4	963.0	1,605.9	5,116.3

(a) See Explanatory Notes paragraphs 45 and 46 for details of exclusions to family tables. (b) Includes a small number of families with husband not in the labour force and wife unemployed.

EXPLANATORY NOTES

INTRODUCTION

1 This publication contains estimates of the civilian labour force derived from the Labour Force Survey component of the Monthly Population Survey. Estimates of the labour force characteristics of family members and of family composition are also included.

2 Estimates of the civilian labour force are available for over 77 regions across Australia and are shown in various publications produced by State offices of the ABS. These data are also available as a special data service. For details, contact any ABS office.

3 Preliminary survey results are published in advance of this more detailed publication in *Labour Force, Australia, Preliminary* (6202.0).

4 Although emphasis in the population survey is placed on the regular collection of specific data on demographic and labour force characteristics of the population, supplementary and special surveys of particular aspects of the labour force or of other subjects are carried out from time to time. Statistics from these surveys are available on request. A list of survey publications on labour force and related topics appears at the end of this publication.

POPULATION SURVEY

5 The population survey is based on a multi-stage area sample of private dwellings (currently about 30,000 houses, flats, etc.) and a list sample of non-private dwellings (hotels, motels, etc.), and covers about 0.5% of the population of Australia. The information is obtained from the occupants of selected dwellings by specially trained interviewers. The interviews are generally conducted during the two weeks beginning on the Monday between the 6th and 12th of each month. The information obtained relates to the week before the interview (i.e. the reference week).

INTRODUCTION OF TELEPHONE INTERVIEWING

6 The ABS introduced the use of telephone interviewing into the Labour Force Survey over the period August 1996 to February 1997. Households selected for the Labour Force Survey are interviewed each month for eight months, with one-eighth of the sample being replaced each month. The first interview is conducted face-to-face. Subsequent interviews are then conducted by telephone (if acceptable to the respondent). The method was phased in by switching each incoming sample group over to telephone interviewing in its second month in the survey.

7 During the period of implementation, the new method produced different estimates than would have been obtained under the old methodology. The effect peaked in November 1996, when it is estimated that the published estimate of total employment was about 36,000 to 48,000 lower than would have been measured under the old methodology. The effect dissipated over the final months of implementation and was no longer discernible from February 1997. Therefore, the estimates for February 1997 and onwards are directly comparable to estimates for periods prior to August 1996.

SCOPE	<p>8 The Labour Force Survey includes all persons aged 15 and over except:</p> <ul style="list-style-type: none"> ■ members of the permanent defence forces; ■ certain diplomatic personnel of overseas governments, customarily excluded from census and estimated populations; ■ overseas residents in Australia; and ■ members of non-Australian defence forces (and their dependants) stationed in Australia. <p>From July 1993 Jervis Bay Territory has been excluded from the scope of the survey. Before July 1993 it was included in estimates for the Australian Capital Territory.</p>
COVERAGE	<p>9 In the Labour Force Survey, coverage rules are applied which aim to ensure that each person is associated with only one dwelling, and hence has only one chance of selection. The chance of a person being enumerated at two separate dwellings in the one survey is considered to be negligible. See paragraph 45 for information about the effect of the coverage rules on family statistics.</p> <p>10 Persons who are away from their usual residence for six weeks or less at the time of interview are enumerated at their usual residence (relevant information may be obtained from other usual residents present at the time of the survey).</p>
POPULATION BENCHMARKS	<p>11 Labour Force Survey estimates of persons employed, unemployed and not in the labour force are calculated in such a way as to add up to the independently estimated distribution of the usually resident population aged 15 and over by age and sex. This procedure compensates for under-enumeration in the survey, and leads to more reliable estimates. Persons who, at the time of interview, are overseas for more than six weeks but for less than 12 months are included in the independent population statistics (benchmarks) and are thus provided for in the calculation of the estimates. The benchmarks are the latest available estimates at the time the Labour Force Survey is conducted, but they usually differ from the official population estimates subsequently published in <i>Australian Demographic Statistics</i> (3101.0) because they are derived from incomplete information about population changes.</p>
REVISION OF POPULATION BENCHMARKS	<p>12 Survey estimates are not revised for the usually small amendments of population benchmarks arising from new data on deaths and overseas and internal migration. Revisions are made, however, after each Census of Population and Housing, and when population estimation bases are reviewed. These revisions affect original, seasonally adjusted and trend estimates. The last such revision was made in February 1999 to take account of the results of the 1996 Census of Population and Housing. This revision affected all the monthly estimates from January 1995 to January 1999.</p>

REVISION OF POPULATION BENCHMARKS <i>continued</i>	13 Population benchmarks used in the estimation of Labour Force Survey data are compiled according to place of usual residence. An explanation of the place of usual residence conceptual basis for population estimates is given in <i>Demographic Estimates and Projections: Concepts, Sources and Methods</i> (3228.0) which is available on the ABS web site www.abs.gov.au under Statistical Concepts Library.
HISTORY OF THE SURVEY	14 National surveys were conducted in February, May, August and November each year from 1964 to February 1978. The survey has been conducted on a monthly basis since February 1978.
QUESTIONNAIRE CHANGES	15 The questionnaire used in the survey for the collection of labour force data has been revised from time to time. Details of these changes have been published in <i>Information Paper: Questionnaires Used in the Labour Force Survey</i> (6232.0) in March 1978, December 1981, August 1984, June 1986, June 1991 and March 1993. The most recent change was in February 1998, to include references to Centrelink.
INCLUSION OF CONTRIBUTING FAMILY WORKERS	<p>16 In April 1986, the questionnaire was revised following the extension of the definition of employed persons to include persons who worked without pay between 1–14 hours per week in a family business or on a farm (i.e. contributing family workers). This definition aligned the Australian labour force concepts with the set of definitions adopted by the 13th International Conference of Labour Statisticians in October 1982.</p> <p>17 Previously, contributing family workers who worked 1–14 hours, or who had such a job but were not at work, were defined as either unemployed or not in the labour force, depending on whether they were actively looking for work. In order to assist users to assess the impact of the change, estimates for March 1986 based on the new definition were shown in footnotes to tables 1 and 2 of the February, March and April 1987 issues of this publication.</p>
COMPARABILITY OF SERIES	<p>18 As a result of changes in coding methods, estimates classified by industry, occupation and status in employment data from February 2000 onwards are not strictly comparable with earlier periods. For details on the changes to industry and occupation refer to the article in the November 1999 issue of this publication. For details of the change to status in employment see the article in the May 2000 issue of this publication.</p> <p>19 As noted in paragraph 12, estimates from January 1995 to January 2000 were revised to conform to revised population estimates following the 1996 Census of Population and Housing, and are thus not strictly comparable with estimates for periods prior to January 1995. An examination of the revised population estimates showed that the effects on Labour Force Survey estimates for the period before January 1995 were inconsequential, and that no meaningful purpose would be served by publishing revised estimates for that period.</p>

COMPARABILITY OF SERIES
continued

20 Comparability with estimates produced from the quarterly Survey of Employment and Earnings is affected by the use of a different survey methodology and definitions. The Labour Force Survey provides estimates of people in jobs whereas the Survey of Employment and Earnings provides an estimate of the number of jobs held by employees. A more detailed description of the differences between these two series is available on request.

21 From December 1989 onwards, the category 'other families' was split into 'one-parent families' and 'other families'. Therefore estimates of other families were not strictly comparable with estimates in previous issues. However, in November 1989, 97% of other families with dependants were one-parent families. In March 1994, a new families classification was introduced which also affected comparability (see paragraphs 47 to 49).

SURVEY SAMPLE REDESIGN

22 Following each Population Census, the ABS reselecs the Labour Force Survey sample to take into account the new information which is obtained from the Census. The sample that was used in the Labour Force Survey from September 1992 to August 1997 has been replaced by a new sample selected using information collected in the 1996 Census. The new sample was phased in over the period September 1997 to April 1998. For additional information, see *Information Paper: Labour Force Survey Sample Design* (6269.0).

23 The sampling fractions for each State/Territory differ in order to yield reliable estimates of the main labour force aggregates for each State and Territory. The sampling fractions for the current sample together with the sampling fractions determined from the 1991 Census are:

	<i>1991 Census redesign</i>	<i>1996 Census redesign</i>
New South Wales	1 in 277	1 in 300
Victoria	1 in 242	1 in 257
Queensland	1 in 195	1 in 222
South Australia	1 in 139	1 in 147
Western Australia	1 in 146	1 in 160
Tasmania	1 in 75	1 in 83
Northern Territory	1 in 75	1 in 85
Australian Capital Territory	1 in 75	1 in 85

RELIABILITY OF THE
ESTIMATES

24 Estimates in this publication are subject to two sources of error:

- sampling error: since the estimates are based on information obtained from occupants of a sample of dwellings they, and the movements derived from them, may differ from the figures that would have been produced if all dwellings had been included in the survey. More information on this topic is given in the Technical Notes; and

RELIABILITY OF ESTIMATES
continued

- non-sampling error: inaccuracies may occur because of imperfections in reporting by respondents and interviewers and errors made in coding and processing data. These inaccuracies may occur in any enumeration, whether it be a full count or a sample. Every effort is made to reduce the non-sampling error to a minimum by careful design of questionnaires, intensive training and supervision of interviewers and efficient operating procedures.

DIFFERENCES BETWEEN
CENSUS AND LABOUR
FORCE SURVEY ESTIMATES

25 The results of the 1996 Census of Population and Housing show that labour force estimates derived from the Census differ from those derived from the Labour Force Survey.

26 The broad concepts underlying the measures of the labour force and its components, employment and unemployment, are similar in the Census and the survey.

27 There are considerable differences in both the collection methodology adopted (including the detailed questions asked) and estimation procedures. Factors contributing to differences in estimates include under-enumeration in the Population Census for which census labour force estimates have not been adjusted, the use in the Labour Force Survey of population benchmarks derived from incomplete information about population change (see paragraph 11), the inclusion of permanent defence forces in census estimates, the personal interview approach adopted in the survey as opposed to self-enumeration of census schedules, differing questions used to determine labour force characteristics and differing methods of adjustment for non-response to the survey or Census.

28 The Labour Force Survey provides detailed and up-to-date estimates of employment and unemployment for Australia, States and regions, whereas the Census of Population and Housing provides counts for small areas but in less detail than is available from the survey.

29 These considerations should be borne in mind when comparisons are made between Population Census and Labour Force Survey estimates.

SEASONAL ADJUSTMENT

30 Seasonally adjusted series are published in tables 2, 8 and 24. Seasonal adjustment is a means of removing the estimated effects of normal seasonal variation from the series so that the effects of other influences on the series can be recognised more clearly. Seasonal adjustment does not remove the irregular or non-seasonal influences which may be present in any particular month. This means that month-to-month movements of the seasonally adjusted estimates may not be reliable indicators of trend behaviour. For example, irregular factors unrelated to the trend account for more than half the seasonally adjusted movement in series at the Australia level, with the following frequency:

SEASONAL ADJUSTMENT
continued

<i>Series</i>	<i>Monthly movements</i>
Employment	6 in 10
Unemployment	8 in 10
Unemployment rate	7 in 10
Participation rate	9 in 10

31 The seasonal factors for all seasonally adjusted series are reviewed annually to take account of each additional year's original data. The latest review, in February 2000, revised the Australian and State seasonally adjusted and trend monthly series back to February 1978. For information about the method of adjustment, please refer to the feature article in the February 2000 issue of this publication. Revised seasonally adjusted and trend estimates for all months for Australia and the States are available on request. Inquiries concerning this data should be directed to Mark Webb on Canberra 02 6252 6525.

TREND ESTIMATION

32 Smoothing seasonally adjusted series produces a measure of trend by reducing the impact of the irregular component of the series. The monthly trend estimates are derived by applying a 13-term Henderson-weighted moving average to all months except the last six. The last six monthly trend estimates are obtained by applying surrogates of the Henderson average to the seasonally adjusted series. Quarterly trend estimates (e.g. employment by industry) are derived by applying a 7-term Henderson moving average to the seasonally adjusted series. The 7-term Henderson average also uses surrogate forms of the average as the end of a time series is approached. Unlike the surrogate weights of the 13-term Henderson used on monthly data, the weights employed here are tailored to suit the particular characteristics of individual series. These trend series are used to analyse the underlying behaviour of the series over time. Trend series graphs are shown on pages 4 to 7 with the trend series published in tables 3, 9 and 24. Long term data are available on the ABS on-line data dissemination service, PC Ausstats.

33 While this smoothing technique enables estimates to be produced which include the latest month, it does result in revisions to the most recent months as additional observations become available. Generally, subsequent revisions become smaller, and after three months or two quarters have a negligible impact on the series. There will also be revisions as a result of the annual review of seasonal factors mentioned above in paragraph 31.

TREND ESTIMATION
continued

34 Trend estimates for the Australian Capital Territory and the Northern Territory are published in table 9. Original estimates for the two Territories have shown, historically, a high degree of variability, which can lead to considerable revisions to the seasonally adjusted estimates after each annual seasonal factor re-analysis. Seasonally adjusted estimates are not currently published for the two Territories. The most recent six months trend estimates are subject to revision. For the three most recent months, the revision may be relatively large. Inferences about trends drawn from smoothed seasonally adjusted (trend) estimates for months earlier than the latest three months are unlikely to be affected by month-to-month revisions. They may, however, be revised as a result of the annual re-analysis of seasonal factors.

35 Users may wish to refer to the ABS publication *A Guide to Interpreting Time Series — Monitoring 'Trends' an Overview (1348.0)* for further information about trend estimates. Details of the trend weighting patterns are available on request from the Assistant Director, Time Series Analysis on Canberra 02 6252 6345.

MONTH-TO-MONTH
MOVEMENTS

36 Care should be taken in the interpretation of month-to-month movements in these estimates. Survey estimates are subject to sampling and non-sampling variability as explained in paragraph 24.

GROSS FLOWS

37 In order to minimise respondent load and at the same time maintain continuity within the population survey sample, one-eighth of the dwellings are replaced after each survey. Adoption of this rotation procedure, whereby about seven-eighths of the sample remains unchanged from one month to the next, enables more reliable measurements of changes in the labour force characteristics of the population to be made than would be possible if a new sample were introduced each month.

38 Because a high proportion of private dwellings selected in one survey remains in the sample for the following survey, it is possible to match the characteristics of most of the persons in those dwellings from one month to the next, to record any changes that occur, and hence to produce estimates of flows between the different categories of the population and labour force.

39 The procedures used to select persons in non-private dwellings preclude the possibility of matching any of them who may be included in successive surveys. For this and other reasons, including the mobility of the population and non-response in either or both surveys, about 10% of persons in those dwellings which are included in the sample in successive months cannot be matched. The introduction of the new sample means less persons will be common between August, September and October 1997. Normally those who can be matched represent about 80% of all persons in the survey.

40 Changes in the characteristics of this latter group are shown in the gross flows table (table 28). About two-thirds of the remaining (unmatched) 20% of persons in the survey are likely to have characteristics similar to those in the matched group, but the characteristics of the other third are likely to be somewhat different.

41 Gross flow estimates relate only to those persons in private dwellings for whom information was obtained in successive surveys. The expansion factors used in calculating the estimates were those applying to the second of each pair of months. Note that the estimates have not been adjusted to account for the unmatched sample component.

42 Although it is not possible to provide gross flow estimates for all persons in the survey it is considered that the estimates derived from matched records will be a useful guide to the proportions of the movements between categories which underlie the changes in monthly levels. When comparing flows for different periods it is important to take into account the population represented by the matched sample, as shown in the last line of the table.

43 While every effort is made to reduce non-sampling errors to a minimum, any such errors affecting labour force status will tend to accumulate in the gross flow statistics rather than to cancel out. The estimates are also subject to sampling variability, as explained in the Technical Notes. For these reasons the estimates of flows should be used with caution. The standard errors may be obtained from table A of the Technical Notes.

LABOUR FORCE STATUS
AND OTHER
CHARACTERISTICS OF
FAMILIES

44 As a part of survey procedures, family relationships are determined each month, enabling both the estimation of persons cross-classified by their relationship in the household and the estimation of families. This publication contains tables showing the labour force status and family status of individuals and families classified by family type, number of family members, the labour force status of persons within families, the number of children under 15 present and the number of dependants present.

45 Because of the coverage rules, persons who usually live with other members of their family may, at the time of the survey, be enumerated as not living with all the usual members of their family. This situation is more likely for persons who are enumerated as visitors to other private dwellings or as persons staying in non-private dwellings (hotels, hospitals, etc.). The determination of family structure and family characteristics in such cases is difficult.

LABOUR FORCE STATUS
AND OTHER
CHARACTERISTICS OF
FAMILIES *continued*

Thus for survey questions used to determine family relationships, scope was further restricted to usual residents of private dwellings and the following persons were excluded:

- all persons enumerated in non-private dwellings (including hotels, motels, hospitals and other institutions); and
- persons enumerated as visitors to (rather than usual residents of) private dwellings.

46 In addition, in those households where it was not possible to obtain information relating to all the usual residents, no family information was recorded. Thus persons living in households which include a member of the permanent defence forces, who is outside the scope of the population survey, are excluded from survey questions used to determine family relationships because family information could not be obtained from each usual resident. Similarly households which, at the time of the survey, have one or more of their usual residents away for more than six weeks, are excluded from the family survey. This also applies to households from which an incomplete or inadequate questionnaire was obtained for any usual resident in on scope and coverage. A summary of those persons for whom family information is obtained as well as those usual residents of private dwellings for whom complete family information cannot be obtained, and those persons specifically excluded from the family determination procedures is contained in the family tables. Generally, relationship in household is determined for more than 90% of all civilians aged 15 and over.

CHANGES IN FAMILIES
CLASSIFICATIONS

47 *Relationship in household* and *Family type* classifications were introduced in the March 1994 issue of this publication to align with ABS standards. Most categories in the two classifications remain comparable with categories in the previous classifications. The cases in which there are breaks in comparability are discussed in the following paragraphs.

48 *Relationship in household*. This classification was previously referred to as *Family status*.

- *Lone parents* (previously referred to as *Sole parents*) now includes parents with non-dependent children (provided those children are without a spouse or children of their own). These *Lone parents without dependants* are shown separately in table 30 and there were 205,800 such persons in March 1994.
- *Dependent students* (previously *Full-time students aged 15–24*) now comprise sons or daughters (of a couple or a lone parent) aged 15–19 attending school or aged 15–24 attending a tertiary educational institution full time. Other related full-time students, who were also previously classified as *Full-time students aged 15–24* are now included in *Other family persons*. There were 24,200 such persons in March 1994.

CHANGES IN FAMILIES
CLASSIFICATIONS *continued*

- *Other family persons* now comprises the previous groups *Other family head*, excluding those now counted as *Lone parents* (79,200 persons in March 1994), the other related full-time students previously classified as *Full-time students aged 15–24* (see above; 24,200 in March 1994) and *Other relative of married couple or family head* (218,100 in March 1994).

49 *Family type*. This classification was previously referred to as *Type of family*. There are three types of families in the new classification, as follows:

- *Couple families* is the term used to describe families previously referred to as *Married-couple families*. Apart from the name change, the new category is otherwise exactly comparable with the old category.
- *One-parent families* now includes those families in which there is a lone parent with only non-dependent children present. Such families were previously included in *Other families*. There were 208,400 of these families in March 1994.
- *Other families* now excludes those families in which there is a lone parent with only non-dependent children present (see above).

50 Estimates of the number of families in this publication differ from those in publications prior to the April 1986 issue. This is due to the adoption of a weighting procedure where the weight for a family is determined using an average of the weights for all family members responding to the Labour Force Survey. Previously, the weight used to derive estimates of the number of families was determined by nomination of a proxy 'head of household' as representative of the family. Additional tables were included in the April 1986 issue of this publication to show the impact of this new procedure.

BIRTHPLACE

51 From April 1991, labour force birthplace data are aggregated according to major groups of the *Australian Standard Classification of Countries for Social Statistics (ASCCSS)* (1269.0). The ASCCSS was developed by the ABS for use whenever demographic, labour and social statistics are classified by countries.

52 The ASCCSS major groups are based on the concept of geographic proximity. They differ from the country groups presented in this publication prior to April 1991. For example, African countries are now covered by 'The Middle East and North Africa' and 'Africa (excluding North Africa)', while Asia has been split into 'Southeast Asia', 'Northeast Asia' and 'Southern Asia'. Data for selected individual countries will continue to be available in this publication.

INDUSTRY

53 From August 1994, Labour Force Survey industry data are classified according to the Australian and New Zealand Standard Industrial Classification (ANZSIC), a detailed description of which appears in *ANZSIC 1993* (1292.0). Like the previous Australian Standard Industrial Classification (ASIC), ANZSIC classifies businesses according to their economic activities, in a structure consisting of 4 levels (Division, Subdivision, Group and Class). Labour Force Survey data are coded at the Group level, as was the practice under ASIC.

54 To enable the conversion of historical data from ASIC to ANZSIC for the period November 1984 to May 1994, a concordance was published in the August 1994 issue of this publication and in the *Information Paper — Labour Force Survey: Introduction of ANZSIC for Industry Data (Replacement Publication)* (6259.0). It has been found that the concordance, which was based on preliminary investigations, did not provide the most appropriate conversion for certain Group level industries. An improved concordance has now been applied to historical Labour Force Survey estimates. This concordance was published in an appendix to the May 1996 issue of this publication, and in a further issue of the above Information Paper. For further information about the new concordance or the availability of data, contact Mark Webb on Canberra 02 6252 6525.

OCCUPATION

55 From August 1996, Labour Force Survey occupation data are classified according to the Australian Standard Classification of Occupations (ASCO) Second Edition, a detailed description of which appears in *ASCO — Australian Standard Classification of Occupations, Second Edition* (1220.0). The new version of the classification replaces ASCO First Edition, which was adopted in the survey in August 1986. Like ASCO First Edition, ASCO Second Edition is a skill-based classification of occupation. However, the structure of ASCO Second Edition comprises five hierarchical levels (Major Group, Sub-Major Group, Minor Group, Unit Group and Occupation) compared with four levels in ASCO First Edition (Major Group, Minor Group, Unit Group and Occupation). Under ASCO Second Edition, Labour Force Survey data are coded to the Unit Group level, as was the practice under ASCO First Edition.

ADDITIONAL DATA

56 Estimates for employed persons classified by industry, occupation and status in employment are available each February, May, August and November. For these months, additional tables containing the following data are included in this publication:

- Employed persons by industry:
 - Original, seasonally adjusted and trend;
 - Full-time and part-time workers;
 - Status in employment;
 - Age and birthplace;
 - Hours worked;
 - Divisions and subdivisions;
 - Industry by occupation;
- Employed persons by occupation:
 - Full-time and part-time workers;
 - Status in employment;
 - Age and birthplace;
 - Hours worked;
 - Major, sub-major, and selected minor groups;
- Unemployment rate by industry of last full-time job;
- Unemployment rate by occupation of last full-time job.

Seasonally adjusted estimates of employed persons by industry have been published in this bulletin since February 1993. Trend estimates have been published since August 1994.

RELATED PUBLICATIONS

57 Users may also wish to refer to the following publications which relate to the labour force and are available on request:

Labour Force, Australia, Preliminary (6202.0) — issued monthly

Labour Force, Teenage Employment and Unemployment, Australia, Preliminary - Data Report (6202.0.40.001) — issued monthly

Labour Force, Selected Summary Tables, Australia
(6291.0.40.001) — issued monthly

Labour Force, Australia, 1978 – 1995 (6204.0)

Labour Force Projections, Australia: 1999 to 2016 (6260.0)

Labour Force, New South Wales and Australian Capital Territory
(6201.1) — issued quarterly

Labour Force, Victoria (6202.2) — issued quarterly

RELATED PUBLICATIONS
continued

Labour Force Status and Other Characteristics of Families, Australia (6224.0) — issued annually

Wage and Salary Earners, Australia (6248.0) — issued quarterly

Labour Statistics, Australia (6101.0)

Australia's Long-term Unemployed — A Statistical Profile (6255.0)

Information Paper: Questionnaires Used in the Labour Force Survey (6232.0)

Information Paper: Labour Force Survey Sample Design (6269.0)

Information Paper: Regional Labour Force Statistics (6262.0)

Information Paper: Labour Force Survey Questionnaire Redesign (6294.0)

Information Paper: Measuring Employment and Unemployment (6279.0)

A Guide to Interpreting Time Series – Monitoring “Trends” An Overview (1348.0)

Labour Force Survey: Introduction of ANZSIC for Industry data (Replacement publication) (6259.0)

Directory of Labour Market and Social Survey Data (Choosing data from the ABS Household Survey Program) (1135.0).

58 Current publications produced by the ABS are listed in the *Catalogue of Publications and Products, Australia* (1101.0). The ABS also issues, on Tuesdays and Fridays, a *Release Advice* (1105.0) which lists publications to be released in the next few days. The Catalogue and Release Advice are available from any ABS office or from the ABS Information Service on the ABS web site www.abs.gov.au.

UNPUBLISHED STATISTICS

59 The ABS can also make available information which is not published. This information is available on a number of media such as floppy disk and customised reports. In general, a charge is made for providing unpublished information. Inquiries should be made to Mark Webb on Canberra 02 6252 6525 or any ABS office.

ROUNDING

60 Estimates have been rounded and discrepancies may occur between sums of the component items and totals.

SYMBOLS AND OTHER
USAGES

* subject to sampling variability too high for most practical uses. See paragraph 7 of the Technical Notes
n.a. not available
. . not applicable
n.e.c. not elsewhere classified
r revised

TECHNICAL NOTES

1 A new sample for the Labour Force Survey has been phased in over the period September 1997 to April 1998. For information about the sample design see *Information Paper: Labour Force Survey Sample Design* (6269.0).

ESTIMATION PROCEDURE

2 The labour force estimates are derived from the population survey by use of a complex ratio estimation procedure, which ensures that the survey estimates conform to an independently estimated distribution of the population by age and sex, rather than to the age and sex distribution within the sample itself.

RELIABILITY OF THE ESTIMATES

3 Two types of error are possible in an estimate based on a sample survey: sampling error and non-sampling error. The *sampling error* is a measure of the variability that occurs by chance because a sample, rather than the entire population, is surveyed. Since the estimates in this publication are based on information obtained from occupants of a sample of dwellings they, and the movements derived from them, are subject to sampling variability; that is, they may differ from the estimates that would have been produced if all dwellings had been included in the surveys. One measure of the likely difference is given by the *standard error*, which indicates the extent to which an estimate might have varied by chance because only a sample of dwellings was included. There are about two chances in three that a sample estimate will differ by less than one standard error from the estimate that would have been obtained if all dwellings had been included, and about nineteen chances in twenty that the difference will be less than two standard errors. Another measure of sampling variability is the *relative standard error* which is obtained by expressing the standard error as a percentage of the estimate to which it refers. The relative standard error is a useful measure in that it provides an immediate indication of the percentage errors likely to have occurred due to sampling, and thus avoids the need to refer also to the size of the estimate.

4 The imprecision due to sampling variability, which is measured by the standard error, should not be confused with inaccuracies that may occur because of imperfections in reporting by respondents, errors made in collection such as in recording and coding data, and errors made in processing the data. Inaccuracies of this kind are referred to as the *non-sampling error* and they may occur in any enumeration, whether it be a full count or a sample. It is not possible to quantify non-sampling error, but every effort is made to reduce it to a minimum by careful design of questionnaires, intensive training and supervision of interviewers and efficient operating procedures. For the examples on page 51 it is assumed to be zero. In practice, the potential for non-sampling error adds to the uncertainty of the estimates caused by sampling variability.

5 Space does not allow for the separate indication of the standard errors of all estimates in this publication. Standard errors of estimates for the latest month and of estimates of movements since the previous month are shown in table 1. Standard errors of other estimates and other monthly movements should be determined by using tables A and B.

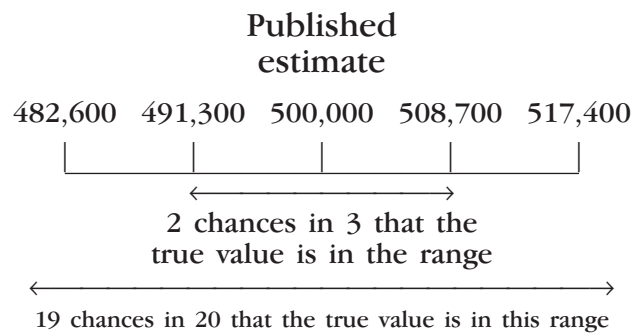
6 The size of the standard error increases with the level of the estimate, so that the larger the estimate the larger is the standard error. However, it should be noted that the larger the sample estimate the smaller will be the standard error in percentage terms. Thus, larger sample estimates will be relatively more reliable than smaller estimates.

7 As the standard errors in table A show, *the smaller the estimate the higher is the relative standard error*. Very small estimates are subject to such high standard errors (relative to the size of the estimate) as to detract seriously from their value for most reasonable uses. In the tables in this publication, only estimates with relative standard errors of 25% or less, and percentages based on such estimates, are considered sufficiently reliable for most purposes. However, estimates and percentages with larger relative standard errors have been included and are preceded by an asterisk (e.g. *3.4) to indicate they are subject to high standard errors and should be used with caution.

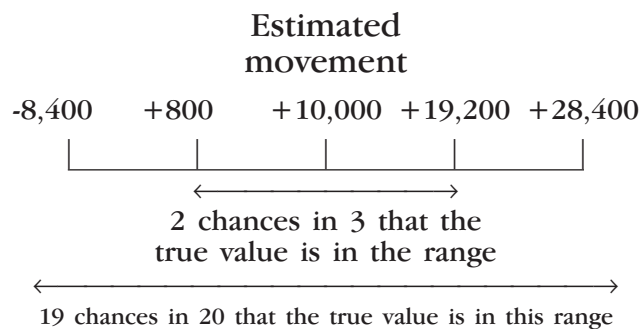
8 The movement in the level of an estimate is also subject to sampling variability. The standard error of the movement depends on the levels of the estimates from which the movement is obtained rather than the size of the movement. An indication of the magnitude of standard errors of monthly movements is given in table B. The estimates of standard error of monthly movements apply only to estimates of movements between two consecutive months. Movements between corresponding months of consecutive quarters (quarterly movements), corresponding months of consecutive years (annual movements) and other non-consecutive months, will generally be subject to somewhat greater sampling variability than is indicated in table B. Standard errors of *quarterly* movements can be obtained by multiplying the figures in table A by 1.04. Standard errors of all *six monthly* movements can be obtained by multiplying the figures in table A by 1.28. When using table A or table B to calculate standard errors of movements, refer to the larger of the two estimates from which the movement is derived.

RELIABILITY OF THE ESTIMATES 9 Examples of the calculation and use of standard errors are given below:
continued

- Consider an estimate for Australia of 500,000 employed persons aged 15–19. By referring to table A, in the row for an estimate of 500,000 and the column for Australia, a standard error of 8,700 is obtained. There are about two chances in three that the true value (the number that would have been obtained if the whole population had been included in the survey) is within the range 491,300 to 508,700. There are about nineteen chances in twenty that the true value is in the range 482,600 to 517,400.



- Consider estimates for females employed part time in Australia of 1,390,000 in one month and 1,400,000 in the next month. This represents an upward movement of 10,000. By referring to table B for the larger estimate of 1,400,000, a movement standard error of 9,200 is obtained (after applying linear interpolation and rounding). Therefore, there are about two chances in three that the true movement is in the range +800 to +19,200 and about nineteen chances in twenty that the true movement is in the range –8,400 to +28,400.



10 The relative standard errors of estimates of *aggregate hours worked*, *average hours worked*, *average duration of unemployment*, and *median duration of unemployment* are obtained by first finding the relative standard error of the estimate of the total number of persons contributing to the estimate (see table A) and then multiplying the figure so obtained by the following relevant factors:

- aggregate hours worked: 1.4;
- average hours worked: 0.9;
- average duration of unemployment: 1.5; and
- median duration of unemployment: 1.7.

The levels at which these and other labour force estimates have a relative standard error of 25% are shown in table C.

11 The following is an example of the calculation of standard errors where the use of a factor is required:

- Consider a median duration of unemployment for Australia of 30 weeks, with an estimate of 1,000,000 persons unemployed. Table A gives the standard error as 11,350 which is 1.1% as a *relative standard error*. The factor of 1.7 (see paragraph 10) is applied to the relative standard error of 1.1% to obtain 1.9%. Therefore the *standard error* for the median duration of unemployment is 1.9% of 30 weeks, i.e. about half of one week. So there are two chances in three that the median duration of unemployment is between 29.5 and 30.5 weeks, and about nineteen chances in twenty that it is between 29 and 31 weeks.

12 Proportions and percentages (for example, unemployment rates) formed from the ratio of two estimates are also subject to sampling error. The size of the error depends on the accuracy of both the numerator and denominator. The formula for the relative standard error (RSE) of a proportion or percentage is given below:

$$\text{RSE } (x / y) = \sqrt{[\text{RSE } (x)]^2 + [\text{RSE } (y)]^2}$$

13 Standard errors contained in tables A and B are designed to provide an average standard error applicable for all monthly Labour Force Survey estimates. Analysis of the standard errors applicable to particular survey estimates has shown that the standard errors of estimates of employment are generally 5% lower than those shown in tables A and B, while standard errors for estimates of unemployment and persons not in the labour force are both approximately 4% higher than those shown in the tables.

A

STANDARD ERRORS OF ESTIMATES FROM SEPTEMBER 1997(a)

Size of estimate	NSW	Vic.	Qld	SA	WA	Tas.	NT	ACT	Aust.	%
	no.	no.	no.	no.	no.	no.	no.	no.	no.	
100						100	100	130		
200				210	210	140	130	160	140	70.0
300	220	230	310	250	260	160	150	180	180	60.0
500	320	320	390	310	330	200	190	210	270	54.0
700	400	390	460	360	380	230	220	240	340	48.6
1 000	520	490	540	410	450	270	250	270	440	44.0
1 500	670	620	650	490	540	320	290	310	570	38.0
2 000	800	740	740	550	610	360	330	340	700	35.0
2 500	900	850	800	600	650	400	350	350	800	32.0
3 000	1 000	900	900	650	700	400	400	400	900	30.0
3 500	1 100	1 000	950	700	750	450	400	400	950	27.1
4 000	1 200	1 050	1 000	750	800	450	450	450	1 050	26.3
5 000	1 350	1 200	1 100	800	900	500	450	500	1 200	24.0
7 000	1 600	1 400	1 300	900	1 050	600	550	550	1 450	20.7
10 000	1 900	1 650	1 500	1 050	1 200	700	600	600	1 700	17.0
15 000	2 300	1 950	1 800	1 250	1 400	800	700	750	2 100	14.0
20 000	2 600	2 200	2 050	1 400	1 550	900	800	800	2 450	12.3
30 000	3 100	2 600	2 400	1 650	1 850	1 050	900	950	2 950	9.8
40 000	3 450	2 900	2 750	1 850	2 050	1 150	1 000	1 100	3 300	8.3
50 000	3 700	3 100	3 000	2 050	2 200	1 250	1 100	1 200	3 650	7.3
100 000	4 600	3 900	4 000	2 700	2 850	1 600	1 400	1 650	4 750	4.8
150 000	5 250	4 550	4 700	3 200	3 300	1 900	1 600	1 950	5 500	3.7
200 000	5 750	5 100	5 300	3 550	3 650	2 100	1 800	2 250	6 150	3.1
300 000	6 700	6 050	6 250	4 200	4 150	2 450		2 700	7 150	2.4
500 000	8 350	7 550	7 650	5 100	4 950	2 900			8 700	1.7
1 000 000	11 650	10 600	10 000	6 700	6 150				11 350	1.1
2 000 000	17 150	15 400	13 050	8 750	7 600				15 000	0.8
5 000 000	30 750	26 500	18 400						23 000	0.5
10 000 000									40 350	0.4

(a) For standard errors for earlier period, see previous issues of this publication.

B

STANDARD ERRORS OF ESTIMATES OF MONTHLY MOVEMENTS FOR OCTOBER 1997 TO NOVEMBER 1997 ONWARDS(a)

Size of larger estimate	NSW	Vic.	Qld	SA	WA	Tas.	NT	ACT	Aust.
100						100	90	100	310
200			330	210	270	130	110	130	400
300	490	400	380	240	300	150	130	140	460
500	580	480	450	280	360	180	160	170	550
700	650	530	500	320	400	200	180	190	630
1 000	730	600	570	360	450	220	210	210	710
1 500	840	690	660	420	520	260	240	240	820
2 000	920	760	730	460	570	280	270	270	910
2 500	1 000	820	780	500	610	310	300	290	980
3 000	1 060	880	840	530	650	330	320	310	1 050
4 000	1 170	970	920	590	720	360	360	340	1 160
5 000	1 260	1 040	1 000	630	770	390	390	360	1 260
7 000	1 410	1 170	1 120	710	860	440	440	400	1 420
10 000	1 590	1 320	1 270	810	970	500	500	450	1 610
15 000	1 820	1 520	1 460	930	1 110	570	590	520	1 860
20 000	2 010	1 670	1 610	1 030	1 220	630	660	570	2 060
30 000	2 300	1 920	1 860	1 190	1 390	730	770	650	2 380
50 000	2 740	2 290	2 220	1 420	1 650	870	930	760	2 850
70 000	3 060	2 560	2 490	1 600	1 840	980	1 060	850	3 210
100 000	3 460	2 890	2 820	1 810	2 070	1 100	1 210	960	3 650
150 000	3 960	3 320	3 240	2 080	2 360	1 270	1 410	1 090	4 210
200 000	4 370	3 670	3 580	2 300	2 600	1 400	1 580	1 200	4 670
300 000	5 000	4 210	4 120	2 660	2 970	1 610		1 370	5 390
500 000	5 950	5 010	4 920	3 180	3 520	1 930			6 470
1 000 000	7 510	6 340	6 260	4 050	4 420				8 270
2 000 000	9 490	8 030	7 960	5 160	5 550				10 580
5 000 000	12 920	10 970	10 930						14 660
10 000 000									18 750

(a) For standard errors for earlier periods, see previous issues of this publication.

C

LEVELS AT WHICH LABOUR FORCE ESTIMATES HAVE A RELATIVE STANDARD ERROR OF 25%(a) FROM SEPTEMBER 1997(b)

	<i>NSW</i>	<i>Vic.</i>	<i>Qld</i>	<i>SA</i>	<i>WA</i>	<i>Tas.</i>	<i>NT</i>	<i>ACT</i>	<i>Aust.</i>
Estimates classified by									
Aggregate hours worked	10 600	8 200	7 200	4 000	4 800	1 800	1 500	1 800	8 700
Average hours worked	4 600	3 800	3 700	2 000	2 400	800	700	1 000	3 500
Average duration of unemployment	10 400	9 600	7 300	4 100	5 000	1 800	1 100	1 900	10 400
Median duration of unemployment	16 800	12 700	10 800	6 000	7 200	2 800	2 500	2 600	14 300
All other estimates	5 900	4 500	4 100	2 400	2 800	1 100	1 000	1 100	4 400

(a) See Technical Notes, page 52. (b) For standard errors for earlier periods, see previous issues of this publication.

GLOSSARY

Actively looking for work	Includes writing, telephoning or applying in person to an employer for work; answering an advertisement for a job; checking factory noticeboards or the touchscreens at Centrelink offices; being registered with Centrelink as a jobseeker; checking or registering with any other employment agency; advertising or tendering for work; and contacting friends or relatives.
Aggregate hours worked	The total number of hours a group of employed persons has actually worked during the reference week, not necessarily hours paid for.
Attending school	Persons aged 15–19 who, during the reference week, were enrolled full time at secondary or high schools.
Attending tertiary educational institution full time	Persons aged 15–24 who, during the reference week, were enrolled full time at a TAFE college, university, or other tertiary educational institution.
Average duration of unemployment	For a group of unemployed persons, the aggregate duration of unemployment divided by the number of persons in the group.
Average family size	For any group of families, the total number of family members divided by the number of families in the group.
Average hours worked	Aggregate hours worked by a group divided by the number of persons in that group.
Birthplace	From April 1991, classified according to the <i>Australian Standard Classification of Countries for Social Statistics (ASCCSS)</i> (1269.0).
Contributing family worker	A person who works without pay, in an economic enterprise operated by a relative. (This category was formerly entitled unpaid family helper).
Couple families	Families in which there are two married persons and these persons are husband and wife.
Dependants	All family members under 15 years of age; all family members aged 15–19 attending school or aged 15–24 attending a tertiary educational institution full time (except those classified as husbands, wives or lone parents).
Dependent student	In couple or one-parent families, sons or daughters aged 15–19 attending school or aged 15–24 attending a tertiary educational institution full time (except those classified as husbands, wives or lone parents).
Duration of unemployment	The period from the time a person began looking for work or was stood down, to the end of the reference week. Thus the survey measures current (and continuing) periods of unemployment rather than completed spells. For persons who may have begun looking for work while still employed, the duration of unemployment is defined as the period from the time the person last worked full time for two weeks or more to the end of the reference week.

- Employed** Persons aged 15 and over who, during the reference week:
- worked for one hour or more for pay, profit, commission or payment in kind in a job or business, or on a farm (comprising employees, employers and own account workers); or
 - worked for one hour or more without pay in a family business or on a farm (i.e. contributing family workers); or
 - were employees who had a job but were not at work and were: on paid leave; on leave without pay for less than four weeks up to the end of the reference week; stood down without pay because of bad weather or plant breakdown at their place of employment for less than four weeks up to the end of the reference week; on strike or locked out; on workers' compensation and expected to be returning to their job; or receiving wages or salary while undertaking full-time study; or
 - were employers, own account workers or contributing family workers who had a job, business or farm, but were not at work.

Employee An employee is a person who works for a public or private employer and receives remuneration in wages, salary, a retainer fee by their employer while working on a commission basis, tips, piece-rates or payment in kind, or a person who operates his or her own incorporated enterprise with or without hiring employees.

Employer An employer is a person who operates his or her own unincorporated economic enterprise or engages independently in a profession or trade, and hires one or more employees.

Employment/population ratio For any group, the number of employed persons expressed as a percentage of the civilian population aged 15 and over in the same group.

- Family** Two or more related persons (*relationship* includes relationships by blood, marriage or adoption) usually resident in the same household at the time of the survey. A family comprises a married couple or a family head as defined, together with any persons having any of the following relationships to them:
- sons or daughters of any age, if not married and with no children of their own present;
 - other relatives if not accompanied by a spouse, sons or daughters, or parents of their own; or
 - any children under 15 years of age who do not have a parent present.

- Family head** Any person without a spouse present:
- with a son or daughter aged under 15 present; or
 - without a son or daughter aged under 15 present, but with a son or daughter aged 15 or over present (provided that the son or daughter has no spouse, son or daughter of his/her own present); or

Where a family has no person falling into either of these categories, the family head is generally defined to be the eldest person in the family.

No family head is determined for a couple family.

- Former workers** Unemployed persons who have previously worked full time for two weeks or more but not in the past two years.

- Full-time workers** Employed persons who usually worked 35 hours or more a week (in all jobs) and others who, although usually working less than 35 hours a week, worked 35 hours or more during the reference week.

- Household** A group of one or more persons in a private dwelling who consider themselves to be separate from other persons (if any) in the dwelling, and who make regular provision to take meals separately from other persons, i.e. at different times or in different rooms. Lodgers who receive accommodation but not meals are treated as separate households. Boarders who receive both accommodation and meals are not treated as separate households. A household may consist of any number of families and non-family members.

- Industry** From August 1994, classified according to the *Australian and New Zealand Standard Industrial Classification (ANZSIC) 1993 (1292.0)*.

- Job leavers** Unemployed persons who have worked full time for two weeks or more in the past two years and *left that job voluntarily*, that is, because of unsatisfactory work arrangements/pay/hours; the job was seasonal, temporary or a holiday job and they left that job to return to studies; their last job was running their own business and they closed down or sold that business for reasons other than financial difficulties; or any other reasons.

- Job losers** Unemployed persons who have worked full time for two weeks or more in the past two years and *left that job involuntarily*, that is, were laid off or retrenched from that job; left that job because of their own ill-health or injury; the job was seasonal, temporary or a holiday job and they did not leave that job to return to studies; or their last job was running their own business and the business closed down because of financial difficulties.

- Labour force** For any group, persons who were employed or unemployed, as defined.

Labour force status	A classification of the civilian population aged 15 and over into employed, unemployed or not in the labour force, as defined. The definitions conform closely to the international standard definitions adopted by the International Conferences of Labour Statisticians.
Lone parent	The head of a one-parent family.
Lone person	A person who is the sole member of a household.
Long-term unemployed	Persons unemployed for a period of 52 weeks or more.
Main English speaking countries	The United Kingdom, Ireland, South Africa, Canada, the United States of America and New Zealand.
Marital status	Persons are classified as married (husband and wife) if they are reported as being married (including de facto) and their spouse was a usual resident of the household at the time of the survey. The not-married category comprises persons who have never married, or are separated, widowed or divorced, as well as those who, although reported as being married, did not have a spouse who usually lived in the household.
Median duration of unemployment	The duration which divides unemployed persons into two equal groups, one comprising persons whose duration of unemployment is above the median and the other, persons whose duration is below it.
Non-dependent child	In couple or one parent families, sons or daughters aged 15 and over, other than those classified as dependent students, husbands, wives or sole parents.
Non-family member	A person who is not related to any other member of the household in which they are living.
Not in the labour force	Persons who were not in the categories employed or unemployed, as defined. They include persons who were keeping house (unpaid), retired, voluntarily inactive, permanently unable to work, persons in institutions (hospitals, gaols, sanatoriums, etc.), trainee teachers, members of contemplative religious orders, and persons whose only activity during the reference week was jury service or unpaid voluntary work for a charitable organisation.
Occupation	From August 1996, classified according to the <i>Australian Standard Classification of Occupations, Second Edition 1996</i> (Cat. no. 1220.0). See <i>Information Paper: ASCO – Australian Standard Classification of Occupations</i> (1221.0).
One-parent families	Families in which there is a family head together with at least one son or daughter of his/her own.
Other families	Families which are not couple families or one-parent families, as defined. They include families in which there is no parent, for example a family head living with a brother or sister.

Own-account worker	A person who operates his or her own unincorporated economic enterprise or engages independently in a profession or trade, and hires no employees (this category was formerly entitled self employed).
Participation rate	For any group, the labour force expressed as a percentage of the civilian population aged 15 and over in the same group. Participation rates for persons classified by birthplace are calculated using population estimates which exclude those in institutions. Participation rates for persons classified by school or tertiary educational institution attendance are calculated using population estimates which include those in institutions.
Part-time workers	Employed persons who usually worked less than 35 hours a week and who did so during the reference week.
Seasonally adjusted series	A time series of estimates with the estimated effects of normal seasonal variation removed. See paragraphs 30 and 31 of the Explanatory Notes for more detail.
State capital cities	The areas determining the six State capital cities are the Statistical Divisions for those capital cities defined in the <i>Statistical Geography: Volume 1 - Australian Standard Geographical Classification (ASGC)</i> (1216.0).
Status in employment	Employed persons classified by whether they were employers, own account workers, employees, or contributing family workers.
Trend series	A smoothed seasonally adjusted series of estimates. See paragraphs 32 to 35 of the Explanatory Notes for more detail.
Unemployed	Persons aged 15 and over who were not employed during the reference week, and: <ul style="list-style-type: none"> ■ had actively looked for full-time or part-time work at any time in the four weeks up to the end of the reference week and: ■ were available for work in the reference week, or would have been available except for temporary illness (i.e. lasting for less than four weeks to the end of the reference week); or ■ were waiting to start a new job within four weeks from the end of the reference week and would have started in the reference week if the job had been available then; or ■ were waiting to be called back to a full-time or part-time job from which they had been stood down without pay for less than four weeks up to the end of the reference week (including the whole of the reference week) for reasons other than bad weather or plant breakdown.
Unemployed looking for first full-time job	Unemployed persons looking for full-time work who had never worked full time for two weeks or more.
Unemployed looking for first job	Unemployed persons who had never worked full time for two weeks or more.

Unemployed looking for full-time work	Unemployed persons who actively looked for full-time work or were to resume a full-time job from which they had been stood down.
Unemployed looking for part-time work	Unemployed persons who had actively looked for part-time work only, or were to resume a part-time job from which they had been stood down.
Unemployed persons classified by industry and occupation	Unemployed persons who had worked full time for two weeks or more in the last two years are classified according to the industry and occupation of their most recent full-time job.
Unemployment rate	For any group, the number of unemployed persons expressed as a percentage of the labour force in the same group.

SUPPLEMENTARY SURVEYS

The supplementary and special surveys collect data on particular aspects of the labour force. The following is an historical list of supplementary and special labour force surveys. The data is available in publication form, by subscription or on request. It may be possible to order unpublished data on the following supplementary and special surveys by contacting the ABS.

TITLE	CATALOGUE NUMBER
■ Career Experience. Irregular. Latest issue November 1998	6254.0
■ Career Paths of Persons with Trade Qualifications. Final issue 1993 (Discontinued)	6243.0
■ Child Care. Irregular. Latest issue June 1999	4402.0
■ Education and Training Experience. Irregular. Latest issue 1997	6278.0
■ Employee Earnings, Benefits and Trade Union Membership. Annual. Latest issue August 1999	6310.0
■ Employment Benefits. Final issue August 1994 (Discontinued)	6334.0.40.001
■ Forms of Employment. Irregular. Latest issue August 1998.	6359.0
■ Job Search Experience of Unemployed Persons. Annual. Latest issue July 1999	6222.0
■ Labour Force Experience. Two yearly. Latest issue February 1999	6206.0
■ Labour Force Status and Educational Attainment. Final issue February 1994 (Discontinued)	6235.0
■ Labour Force Status and Other Characteristics of Families. Annual. Latest issue June 1999	6224.0
■ Labour Force Status and Other Characteristics of Migrants. Irregular. Latest issue November 1996	6250.0
■ Labour Mobility. Two-yearly. Latest issue February 1998	6209.0
■ Multiple Jobholding. Irregular. Latest issue August 1997	6216.0
■ Participation in Education. Final issue September 1999 (Discontinued)	6272.0
■ Persons Employed at Home. Irregular. Latest issue September 1995	6275.0
■ Persons Not in the Labour Force. Annual. Latest issue September 1999	6220.0
■ Persons Who had Re-entered the Labour Force. Final issue July 1995 (Discontinued)	6264.0.40.001
■ Persons Who Have Left the Labour Force. Final issue September 1994 (Discontinued)	6267.0.40.001
■ Retirement and Retirement Intentions. Irregular. Latest issue November 1997	6238.0
■ Retrenchment and Redundancy. Irregular. Latest issue July 1997	6266.0
■ Successful and Unsuccessful Job Search Experience. Two-yearly. Latest issue July 1998	6245.0
■ Superannuation. Final issue November 1995 (Discontinued)	6319.0
■ Trade Union Members. Final issue August 1996 (Discontinued)	6325.0
■ Transition from Education to Work. Annual. Latest issue May 1999	6227.0
■ Underemployed Workers. Annual. Latest issue September 1998	6265.0
■ Working Arrangements. Irregular. Latest issue August 1997	6342.0

FORTHCOMING SUPPLEMENTARY SURVEYS

Topic	Reference month	Release
Underemployed Workers	September 1999	August 2000

INQUIRIES

For further information on the Labour Force supplementary survey publications listed above, contact the National Information Service on 1300 135 070.

FOR MORE INFORMATION...

- INTERNET* **www.abs.gov.au** the ABS web site is the best place to start for access to summary data from our latest publications, information about the ABS, advice about upcoming releases, our catalogue, and Australia Now—a statistical profile.
- LIBRARY* A range of ABS publications is available from public and tertiary libraries Australia-wide. Contact your nearest library to determine whether it has the ABS statistics you require, or visit our web site for a list of libraries.
- CPI INFOLINE* For current and historical Consumer Price Index data, call 1902 981 074 (call cost 77c per minute).
- DIAL-A-STATISTIC* For the latest figures for National Accounts, Balance of Payments, Labour Force, Average Weekly Earnings, Estimated Resident Population and the Consumer Price Index call 1900 986 400 (call cost 77c per minute).

INFORMATION SERVICE

Data which have been published and can be provided within five minutes are free of charge. Our information consultants can also help you to access the full range of ABS information—ABS user-pays services can be tailored to your needs, time frame and budget. Publications may be purchased. Specialists are on hand to help you with analytical or methodological advice.

- PHONE* **1300 135 070**
- EMAIL* **client.services@abs.gov.au**
- FAX* 1300 135 211
- POST* Client Services, ABS, GPO Box 796, Sydney 1041

WHY NOT SUBSCRIBE?

ABS subscription services provide regular, convenient and prompt deliveries of ABS publications and products as they are released. Email delivery of monthly and quarterly publications is available.

- PHONE* 1300 366 323
- EMAIL* subscriptions@abs.gov.au
- FAX* 03 9615 7848
- POST* Subscription Services, ABS, GPO Box 2796Y, Melbourne 3001



2620300006007
ISSN 1030-0996

RRP \$24.00