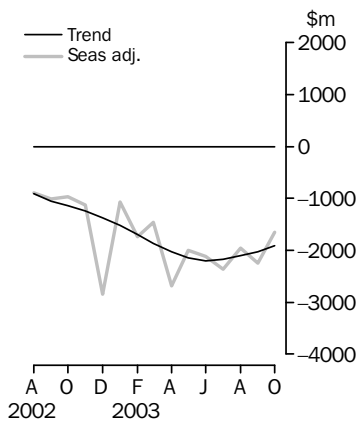


# **INTERNATIONAL TRADE IN GOODS AND SERVICES**

**AUSTRALIA**

EMBARGO: 11.30AM (CANBERRA TIME) THURS 4 DEC 2003

## **Balance on goods and services**



## **KEY FIGURES**

|                                       | <b>August<br/>2003</b> | <b>September<br/>2003</b> | <b>October<br/>2003</b> | <b>Sep 03 to<br/>Oct 03</b> |
|---------------------------------------|------------------------|---------------------------|-------------------------|-----------------------------|
|                                       | <b>\$m</b>             | <b>\$m</b>                | <b>\$m</b>              | <b>% change</b>             |
| <b>TREND</b>                          |                        |                           |                         |                             |
| Balance on goods & services           | -2 107                 | -2 032                    | -1 910                  | 6                           |
| Credits (exports of goods & services) | 11 438                 | 11 512                    | 11 624                  | 1                           |
| Debits (imports of goods & services)  | 13 545                 | 13 544                    | 13 534                  | —                           |
| <b>SEASONALLY ADJUSTED</b>            |                        |                           |                         |                             |
| Balance on goods & services           | -1 957                 | -2 250                    | -1 648                  | 27                          |
| Credits (exports of goods & services) | 11 592                 | 11 554                    | 11 755                  | 2                           |
| Debits (imports of goods & services)  | 13 549                 | 13 804                    | 13 403                  | -3                          |

— nil or rounded to zero (including null cells)

## **KEY POINTS**

### **TREND ESTIMATES**

- The provisional trend estimate of the balance on goods and services was a deficit of \$1,910m in October 2003, a decrease of \$122m (6%) on the deficit in September.
- Goods and services credits rose \$112m to \$11,624m. Goods and services debits fell \$10m to \$13,534m.

### **SEASONALLY ADJUSTED ESTIMATES**

- In seasonally adjusted terms, the balance on goods and services was a deficit of \$1,648m in October, a decrease of \$602m (27%) on the deficit in September.
- Goods and services credits rose \$201m (2%) to \$11,755m. Services credits rose \$211m (8%), rural goods rose \$32m (2%) and non-rural and other goods fell \$42m (1%). The increase in services credits was partly due to international visitors attending the Rugby World Cup.
- Goods and services debits fell \$401m (3%) to \$13,403m, with goods debits down \$457m (4%) and services debits up \$56m (2%). Consumption goods fell \$156m (4%), intermediate and other goods fell \$163m (3%) and capital goods fell \$138m (5%).

### **ORIGINAL ESTIMATES**

- In original terms, the October balance on goods and services was a deficit of \$3,147m, a decrease of \$33m (1%) on the deficit in September. The decreased deficit was the result of a \$459m (4%) increase in exports of goods and services, mostly offset by a \$426m (3%) increase in imports of goods and services.

## **INQUIRIES**

- For further information about these and related statistics, contact the National Information and Referral Service on 1300 135 070 or Artur Andrysiak on Canberra 02 6252 6792.

# NOTES

## FORTHCOMING ISSUES

| ISSUE         | RELEASE DATE    |
|---------------|-----------------|
| November 2003 | 9 January 2004  |
| December 2003 | 2 February 2004 |
| January 2004  | 1 March 2004    |
| February 2004 | 30 March 2004   |
| March 2004    | 4 May 2004      |
| April 2004    | 31 May 2004     |



## CHANGES IN THIS ISSUE

### *Seasonal Factors*

Seasonally adjusted and trend estimates of the balance on goods and services have been revised as a result of the seasonal re-analysis which takes account of additional data that have become available since the previous re-analysis.

Revised historical and new forward seasonal factors are available in the electronic version of this publication (see 5368.0, Table 19, for monthly seasonal factors). Existing subscription clients to this data service should contact Kevin Yeadon on 02 6252 6255 or e-mail <k.yeadon@abs.gov.au>.

## FEATURE ARTICLES

A feature article on Australia's Exporters, 2002-03 has been released on the ABS web site <<http://www.abs.gov.au>> concurrently with the release of this publication. The article is the third in a series analysing the characteristics and international trading activities of Australia's exporters and importers, based on the Australian Business Number (ABN). The earlier articles related to analyses for the July to December 2001 and 2001-02 reference periods respectively.

The number of Australian exporters of goods and services in 2002-03 was estimated to be 31,174, a fall of 0.9% from the estimate of 31,450 for 2001-02. This estimate is consistent with the 3.2% fall in the total value of exports of goods and services from \$153.3b in 2001-02 to \$148.4b in 2002-03. Information on importers for 2002-03 will be included in a separate article to be released on the web site on 9 January 2004. To access these articles on the web site select: Themes then International Trade then Topics of Interest.

A feature article on the Statistical Treatment of Economic Activity in the Timor Sea was included in the September quarter 2003 issue of *Australian National Accounts: National Income, Expenditure and Product* (cat. no. 5206.0), released on 3 December 2003.

## CAUTIONARY NOTE

The tables in this publication are presented on two bases. Tables 1-6 contain estimates of Australia's international trade in goods and services which have been adjusted for coverage, valuation and timing to a balance of payments basis. Tables 7-10 contain estimates of merchandise exports and imports based on Australian Customs Service records. Paragraph 5 of the Explanatory Notes provides an explanation of the difference between these bases.

Dennis Trewin  
Australian Statistician

# CONTENTS

page

|                    |   |
|--------------------|---|
| Tables on AusStats | 4 |
|--------------------|---|

## ANALYSIS

|                      |   |
|----------------------|---|
| Analysis and comment | 5 |
|----------------------|---|

## TABLES

### INTERNATIONAL TRADE IN GOODS AND SERVICES - BALANCE OF PAYMENTS BASIS

|   |    |
|---|----|
| <b>1</b> Goods and services, summary, seasonally adjusted and trend | 9  |
| <b>2</b> Goods and services, summary, original                      | 10 |
| <b>3</b> Goods credits, original                                    | 11 |
| <b>4</b> Goods debits, original                                     | 12 |
| <b>5</b> Services, summary, original                                | 13 |
| <b>6</b> Services, original, quarterly                              | 14 |

### INTERNATIONAL MERCHANDISE TRADE - RECORDED TRADE BASIS

|   |    |
|---|----|
| <b>7</b> International merchandise exports, by commodity                | 15 |
| <b>8</b> International merchandise imports, by commodity                | 18 |
| <b>9</b> International merchandise trade, by country and country groups | 21 |
| <b>10</b> International merchandise trade, by state                     | 22 |

### OTHER TABLES

|   |    |
|---|----|
| <b>11</b> Period average exchange rates per Australian Dollar | 23 |
|---|----|

## OTHER INFORMATION

|                             |    |
|-----------------------------|----|
| Explanatory notes           | 24 |
| Appendix – Related articles | 27 |

## TABLES ON AUSSTATS

---

### TABLES AVAILABLE ON AUSSTATS

Data available on the ABS web site <[www.abs.gov.au](http://www.abs.gov.au)> includes:

- longer time series of all tables contained in this publication
- additional tables listed below:

12 Merchandise exports by Broad Economic Category (BEC)

13 Merchandise exports by industry of origin (ANZSIC)

14 Merchandise imports by Broad Economic Category (BEC)

15 Merchandise imports by Balance of Payments Broad Economic Category (BoPBEC)

16 Merchandise imports by industry of origin (ANZSIC)

17 Merchandise exports, state by country and country groups

18 Merchandise imports, state by country and country groups

19 Monthly forward seasonal adjustment factors

## ANALYSIS AND COMMENTS

### BALANCE ON GOODS AND SERVICES

The trend estimate of the balance on goods and services in October 2003 was a deficit of \$1,910m, a decrease of \$122m (6%) on the deficit in September.

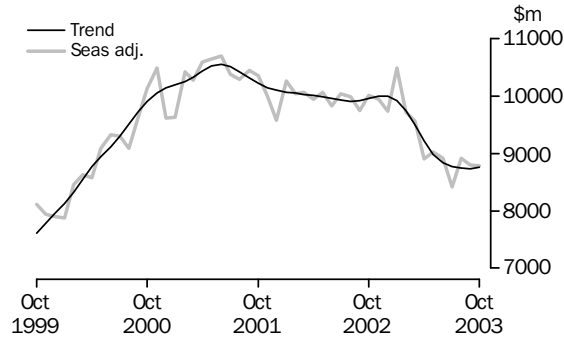
In seasonally adjusted terms, the balance on goods and services in October 2003 was a deficit of \$1,648m, a decrease of \$602m (27%) on the deficit in September.

### EXPORTS OF GOODS AND SERVICES

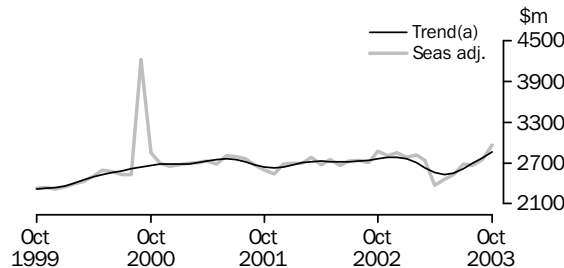
The trend estimate of goods and services credits rose \$112m (1%) in October to \$11,624m.

In seasonally adjusted terms, goods and services credits rose \$201m (2%) in October to \$11,755m. Rural goods rose \$32m (2%), while non-rural and other goods fell \$42m (1%). Services credits rose \$211m (8%), partly due to international visitors attending the Rugby World Cup.

### GOODS CREDITS



### SERVICES CREDITS



(a) Trend estimates exclude the impact of the Olympics in September and October 2000

### *Rural goods*

The trend estimate of rural goods rose \$31m (2%) to \$1,837m.

In seasonally adjusted terms, rural goods increased \$32m (2%) to \$1,903m.

Rural goods, in original terms, rose \$122m (7%) to \$1,971m.

The main contributor to the increase in the seasonally adjusted series was cereal grains and cereal preparations, up 35%, in contrast to the average September to October fall of 2% over the previous three years. This was partly offset by a fall in other rural goods, down 3%, compared with the average September to October rise of 7%.

## ANALYSIS AND COMMENTS *continued*

### Non-rural and other goods

The trend estimate of non-rural and other goods exports fell \$7m to \$6,923m.

Seasonally adjusted, non-rural and other goods fell \$42m (1%) to \$6,887m.

In original terms, non-rural and other goods fell \$48m (1%) to \$7,182m.

Contributing to the decrease in the seasonally adjusted series were:

- other goods, up \$1m (0%), compared with the average September to October rise of 29% over the previous three years
- other non-rural, down \$99m (12%), in contrast to the average September to October rise of 8% over the previous three years
- transport equipment, up \$11m (2%), compared with the average September to October rise of 24% over the previous three years
- other mineral fuels, down \$153m (18%), compared with the average September to October fall of 7% over the previous three years.

Partly offsetting these decreases was a rise in metal ores and minerals, up \$126m (11%), compared with the average September to October rise of 6% over the previous three years.

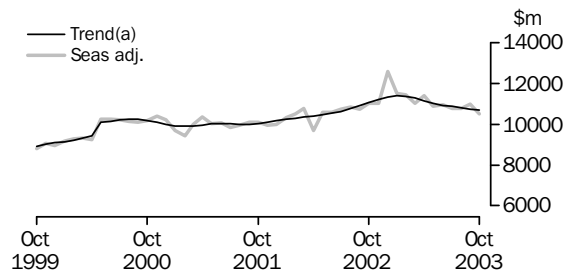
### IMPORTS OF GOODS AND SERVICES

The trend estimate of goods and services debits fell \$10m in October to \$13,534m.

In seasonally adjusted terms, goods and services debits fell \$401m (3%) to \$13,403m.

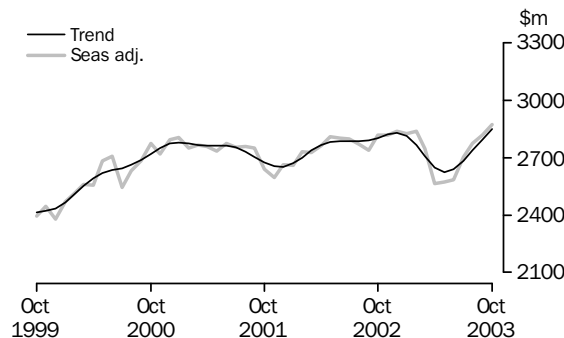
Goods debits fell \$457m (4%) while services debits rose \$56m (2%).

### GOODS DEBITS



(a) A trend break of \$500m has been applied to May 2000. Trend estimates exclude abnormal imports of aircraft in December 2002.

### SERVICES DEBITS



## ANALYSIS AND COMMENTS *continued*

### *Consumption goods*

The trend estimate of imports of consumption goods fell \$5m to \$3,439.

In seasonally adjusted terms, imports of consumption goods fell \$156m (4%) to \$3,445m.

Consumption goods, in original terms, rose \$122m (3%) to \$4,105m.

Contributing to the fall in the seasonally adjusted series were:

- non-industrial transport equipment, down \$60m (5%), in contrast to an average September to October rise of 4% over the previous three years
- consumption goods n.e.s., up \$87m (7%), compared with an average September to October rise of 16% over the previous three years
- food and beverages, up \$25m (5%), compared with an average September to October rise of 21% over the previous three years
- textiles, clothing and footwear, down \$29m (6%), in contrast to an average September to October rise of 8% over the previous three years.

### *Capital goods*

The trend estimate of imports of capital goods fell \$38m to \$2,511m.

Seasonally adjusted, capital goods imports decreased \$138m (5%) to \$2,403m.

Imports of capital goods, in original terms, rose \$62m (2%) to \$2,709m.

Contributing to the fall in the seasonally adjusted series were:

- civil aircraft, down \$68m (24%), in contrast to strong September to October rises over the previous three years
- machinery and industrial equipment, up \$34m (4%), compared with an average September to October rise of 17% over the previous three years
- ADP equipment, up \$6m (1%), compared with an average September to October rise of 6% over the previous three years
- industrial transport equipment, up \$24m (8%), compared with an average September to October rise of 14% over the previous three years.

### *Intermediate and other goods*

The trend estimate of imports of intermediate and other goods decreased \$23m to \$4,733m.

Seasonally adjusted, intermediate and other goods imports fell \$163m (3%) to \$4,682m.

Imports of intermediate and other goods, in original terms, increased \$218m (4%) to \$5,240m.

Contributing to the fall in the seasonally adjusted series were:

- other merchandise goods, down \$79m (49%), in contrast to strong September to October rises over the previous three years
- fuels and lubricants, down \$71m (9%), in contrast to an average September to October rise of 33% over the previous three years
- goods for processing, down \$98m (26%), in contrast to an average September to October rise of 44% over the previous three years.

## ANALYSIS AND COMMENTS *continued*

---

*Intermediate and other  
goods continued*

Partly offsetting these effects were:

- organic and inorganic chemicals, up \$153m (75%), in contrast to an average September to October fall of 12% over the previous three years
- processed industrial supplies, up \$119m (12%), compared with an average September to October rise of 9% over the previous three years.



GOODS AND SERVICES(a), Summary: **Seasonally adjusted and trend**

| Months                     | BALANCE               | CREDITS                  |             |                |                              |                | DEBITS                   |             |                    |               |                               |                |
|----------------------------|-----------------------|--------------------------|-------------|----------------|------------------------------|----------------|--------------------------|-------------|--------------------|---------------|-------------------------------|----------------|
|                            | On goods and services | Total goods and services | Total goods | Rural goods(b) | Non-rural and other goods(b) | Total services | Total goods and services | Total goods | Con-sumption goods | Capital goods | Inter-mediate and other goods | Total services |
|                            | \$m                   | \$m                      | \$m         | \$m            | \$m                          | \$m            | \$m                      | \$m         | \$m                | \$m           | \$m                           | \$m            |
| <b>SEASONALLY ADJUSTED</b> |                       |                          |             |                |                              |                |                          |             |                    |               |                               |                |
| <b>2002</b>                |                       |                          |             |                |                              |                |                          |             |                    |               |                               |                |
| August                     | <b>-895</b>           | 12 723                   | 9 982       | 2 456          | 7 526                        | 2 741          | -13 618                  | -10 849     | -3 361             | -2 427        | -5 061                        | -2 769         |
| September                  | <b>-1 015</b>         | 12 451                   | 9 744       | 2 358          | 7 386                        | 2 707          | -13 466                  | -10 728     | -3 442             | -2 417        | -4 869                        | -2 738         |
| October                    | <b>-959</b>           | 12 888                   | 10 014      | 2 407          | 7 607                        | 2 874          | -13 847                  | -11 030     | -3 385             | -2 584        | -5 061                        | -2 817         |
| November                   | <b>-1 122</b>         | 12 751                   | 9 945       | 2 291          | 7 654                        | 2 806          | -13 873                  | -11 056     | -3 452             | -2 471        | -5 133                        | -2 817         |
| December                   | <b>-2 845</b>         | 12 594                   | 9 741       | 2 066          | 7 675                        | 2 853          | -15 439                  | -12 602     | -3 503             | -3 790        | -5 309                        | -2 837         |
| <b>2003</b>                |                       |                          |             |                |                              |                |                          |             |                    |               |                               |                |
| January                    | <b>-1 066</b>         | 13 275                   | 10 485      | 2 093          | 8 392                        | 2 790          | -14 341                  | -11 513     | -3 563             | -2 166        | -5 784                        | -2 828         |
| February                   | <b>-1 737</b>         | 12 545                   | 9 723       | 2 027          | 7 696                        | 2 822          | -14 282                  | -11 443     | -3 436             | -2 758        | -5 249                        | -2 839         |
| March                      | <b>-1 462</b>         | 12 307                   | 9 570       | 2 004          | 7 566                        | 2 737          | -13 769                  | -11 022     | -3 203             | -2 528        | -5 291                        | -2 747         |
| April                      | <b>-2 682</b>         | 11 282                   | 8 909       | 1 863          | 7 046                        | 2 373          | -13 964                  | -11 398     | -3 583             | -2 662        | -5 153                        | -2 566         |
| May                        | <b>-1 994</b>         | 11 475                   | 9 018       | 1 786          | 7 232                        | 2 457          | -13 469                  | -10 898     | -3 522             | -2 434        | -4 942                        | -2 571         |
| June                       | <b>-2 110</b>         | 11 445                   | 8 918       | 1 763          | 7 155                        | 2 527          | -13 555                  | -10 970     | -3 441             | -2 721        | -4 808                        | -2 585         |
| July                       | <b>-2 365</b>         | 11 106                   | 8 420       | 1 754          | 6 666                        | 2 686          | -13 471                  | -10 769     | -3 316             | -2 629        | -4 824                        | -2 702         |
| August                     | <b>-1 957</b>         | 11 592                   | 8 925       | 1 714          | 7 211                        | 2 667          | -13 549                  | -10 775     | -3 330             | -2 626        | -4 819                        | -2 774         |
| September                  | <b>-2 250</b>         | 11 554                   | 8 800       | 1 871          | 6 929                        | 2 754          | -13 804                  | -10 987     | -3 601             | -2 541        | -4 845                        | -2 817         |
| October                    | <b>-1 648</b>         | 11 755                   | 8 790       | 1 903          | 6 887                        | 2 965          | -13 403                  | -10 530     | -3 445             | -2 403        | -4 682                        | -2 873         |
| <b>TREND ESTIMATES</b>     |                       |                          |             |                |                              |                |                          |             |                    |               |                               |                |
| <b>2002</b>                |                       |                          |             |                |                              |                |                          |             |                    |               |                               |                |
| August                     | <b>-908</b>           | 12 640                   | 9 915       | 2 426          | 7 489                        | 2 725          | -13 548                  | -10 763     | -3 362             | -2 491        | -4 910                        | -2 785         |
| September                  | <b>-1 045</b>         | 12 659                   | 9 923       | 2 380          | 7 543                        | 2 736          | -13 704                  | -10 915     | -3 411             | -2 500        | -5 004                        | -2 789         |
| October                    | <b>-1 145</b>         | 12 723                   | 9 963       | 2 322          | 7 641                        | 2 760          | -13 868                  | -11 065     | -3 445             | -2 503        | -5 117                        | -2 803         |
| November                   | <b>-1 243</b>         | 12 784                   | 10 002      | 2 254          | 7 748                        | 2 782          | -14 027                  | -11 204     | -3 459             | -2 513        | -5 232                        | -2 823         |
| December                   | <b>-1 372</b>         | 12 785                   | 9 997       | 2 177          | 7 820                        | 2 788          | -14 157                  | -11 328     | -3 463             | -2 526        | -5 339                        | -2 829         |
| <b>2003</b>                |                       |                          |             |                |                              |                |                          |             |                    |               |                               |                |
| January                    | <b>-1 523</b>         | 12 682                   | 9 920       | 2 095          | 7 825                        | 2 762          | -14 205                  | -11 392     | -3 461             | -2 536        | -5 395                        | -2 813         |
| February                   | <b>-1 690</b>         | 12 456                   | 9 751       | 2 015          | 7 736                        | 2 705          | -14 146                  | -11 380     | -3 458             | -2 548        | -5 374                        | -2 766         |
| March                      | <b>-1 864</b>         | 12 134                   | 9 501       | 1 941          | 7 560                        | 2 633          | -13 998                  | -11 292     | -3 449             | -2 563        | -5 280                        | -2 706         |
| April                      | <b>-2 027</b>         | 11 788                   | 9 222       | 1 871          | 7 351                        | 2 566          | -13 815                  | -11 165     | -3 437             | -2 588        | -5 140                        | -2 650         |
| May                        | <b>-2 147</b>         | 11 520                   | 8 987       | 1 817          | 7 170                        | 2 533          | -13 667                  | -11 042     | -3 428             | -2 610        | -5 004                        | -2 625         |
| June                       | <b>-2 197</b>         | 11 387                   | 8 834       | 1 783          | 7 051                        | 2 553          | -13 584                  | -10 945     | -3 427             | -2 616        | -4 902                        | -2 639         |
| July                       | <b>-2 170</b>         | 11 384                   | 8 771       | 1 774          | 6 997                        | 2 613          | -13 554                  | -10 871     | -3 430             | -2 601        | -4 840                        | -2 683         |
| August                     | <b>-2 107</b>         | 11 438                   | 8 745       | 1 785          | 6 960                        | 2 693          | -13 545                  | -10 805     | -3 434             | -2 577        | -4 794                        | -2 740         |
| September                  | <b>-2 032</b>         | 11 512                   | 8 736       | 1 806          | 6 930                        | 2 776          | -13 544                  | -10 749     | -3 444             | -2 549        | -4 756                        | -2 795         |
| October                    | <b>-1 910</b>         | 11 624                   | 8 760       | 1 837          | 6 923                        | 2 864          | -13 534                  | -10 683     | -3 439             | -2 511        | -4 733                        | -2 851         |

(a) For sign conventions, see paragraph 9 of the Explanatory Notes.

(b) For all time periods, estimates for sugar, sugar preparations and honey are included in Non-rural and other goods.

## GOODS AND SERVICES(a), Summary: Original

|                               | BALANCE                                  | CREDITS                                     |                        |                           |   |                           | DEBITS                                      |                        |                                    |                          |   |                           |
|-------------------------------|--|---|------------------------|---------------------------|---|---------------------------|---|------------------------|------------------------------------|--------------------------|---|---------------------------|
|                               |  |   |                        |                           |   |                           |   |                        |                                    |                          |   |                           |
|                               | <i>On<br/>goods<br/>and<br/>services</i> | <i>Total<br/>goods<br/>and<br/>services</i> | <i>Total<br/>goods</i> | <i>Rural<br/>goods(b)</i> | <i>Non-rural<br/>and other<br/>goods(b)</i> | <i>Total<br/>services</i> | <i>Total<br/>goods<br/>and<br/>services</i> | <i>Total<br/>goods</i> | <i>Con-<br/>sumption<br/>goods</i> | <i>Capital<br/>goods</i> | <i>Inter-<br/>mediate<br/>and<br/>other<br/>goods</i> | <i>Total<br/>services</i> |
| \$m                           | \$m                                      | \$m   | \$m                    | \$m                       | \$m   | \$m                       | \$m   | \$m                    | \$m                                | \$m                      | \$m   |                           |
| FINANCIAL YEAR                |  |   |                        |                           |   |                           |   |                        |                                    |                          |   |                           |
| <b>2000-01</b>                | <b>649</b>                               | 153 854                                     | 120 307                | 29 164                    | 91 143                                      | 33 547                    | -153 205                                    | -120 524               | -35 775                            | -25 739                  | -59 010   | -32 681                   |
| <b>2001-02</b>                | <b>-1 233</b>                            | 153 340                                     | 121 090                | 30 085                    | 91 005                                      | 32 250                    | -154 573                                    | -121 942               | -37 422                            | -27 208                  | -57 312   | -32 631                   |
| <b>2002-03</b>                | <b>-18 758</b>                           | 148 404                                     | 115 933                | 25 468                    | 90 465                                      | 32 471                    | -167 162                                    | -134 253               | -41 227                            | -31 529                  | -61 497   | -32 909                   |
| MONTHS                        |  |   |                        |                           |   |                           |   |                        |                                    |                          |   |                           |
| <b>2002</b>                   |  |   |                        |                           |   |                           |   |                        |                                    |                          |   |                           |
| August                        | <b>-1 140</b>                            | 12 848                                      | 10 269                 | 2 466                     | 7 803                                       | 2 579                     | -13 988                                     | -11 166                | -3 602                             | -2 430                   | -5 134  | -2 822                    |
| September                     | <b>-1 633</b>                            | 12 319                                      | 9 906                  | 2 269                     | 7 637                                       | 2 413                     | -13 952                                     | -10 992                | -3 701                             | -2 487                   | -4 804  | -2 960                    |
| October                       | <b>-2 308</b>                            | 13 281                                      | 10 497                 | 2 531                     | 7 966                                       | 2 784                     | -15 589                                     | -12 563                | -3 994                             | -2 909                   | -5 660  | -3 026                    |
| November                      | <b>-1 362</b>                            | 12 770                                      | 10 033                 | 2 377                     | 7 656                                       | 2 737                     | -14 132                                     | -11 385                | -3 720                             | -2 438                   | -5 227  | -2 747                    |
| December                      | <b>-1 662</b>                            | 13 313                                      | 10 501                 | 2 306                     | 8 195                                       | 2 812                     | -14 975                                     | -12 156                | -3 321                             | -3 621                   | -5 214  | -2 819                    |
| <b>2003</b>                   |  |   |                        |                           |   |                           |   |                        |                                    |                          |   |                           |
| January                       | <b>-1 728</b>                            | 12 156                                      | 9 031                  | 1 811                     | 7 220                                       | 3 125                     | -13 884                                     | -10 963                | -3 185                             | -2 093                   | -5 685  | -2 921                    |
| February                      | <b>-441</b>                              | 12 409                                      | 9 021                  | 1 948                     | 7 073                                       | 3 388                     | -12 850                                     | -10 352                | -3 165                             | -2 331                   | -4 856  | -2 498                    |
| March                         | <b>-905</b>                              | 12 611                                      | 9 902                  | 2 111                     | 7 791                                       | 2 709                     | -13 516                                     | -10 906                | -3 127                             | -2 435                   | -5 344  | -2 610                    |
| April                         | <b>-2 623</b>                            | 10 955                                      | 8 675                  | 1 845                     | 6 830                                       | 2 280                     | -13 578                                     | -11 077                | -3 364                             | -2 565                   | -5 148  | -2 501                    |
| May                           | <b>-1 848</b>                            | 11 198                                      | 9 063                  | 1 835                     | 7 228                                       | 2 135                     | -13 046                                     | -10 579                | -3 187                             | -2 442                   | -4 950  | -2 467                    |
| June                          | <b>-2 278</b>                            | 11 121                                      | 8 830                  | 1 656                     | 7 174                                       | 2 291                     | -13 399                                     | -10 828                | -3 187                             | -2 998                   | -4 643  | -2 571                    |
| July                          | <b>-2 250</b>                            | 11 706                                      | 8 551                  | 1 703                     | 6 848                                       | 3 155                     | -13 956                                     | -11 118                | -3 573                             | -2 814                   | -4 731  | -2 838                    |
| August                        | <b>-1 747</b>                            | 11 782                                      | 9 233                  | 1 722                     | 7 511                                       | 2 549                     | -13 529                                     | -10 700                | -3 445                             | -2 500                   | -4 755  | -2 829                    |
| September                     | <b>-3 180</b>                            | 11 537                                      | 9 079                  | 1 849                     | 7 230                                       | 2 458                     | -14 717                                     | -11 652                | -3 983                             | -2 647                   | -5 022  | -3 065                    |
| October                       | <b>-3 147</b>                            | 11 996                                      | 9 153                  | 1 971                     | 7 182                                       | 2 843                     | -15 143                                     | -12 054                | -4 105                             | -2 709                   | -5 240  | -3 089                    |
| FINANCIAL YEAR TO DATE        |  |   |                        |                           |   |                           |   |                        |                                    |                          |   |                           |
| <b>4 months ended October</b> |  |   |                        |                           |   |                           |   |                        |                                    |                          |   |                           |
| 2002                          | <b>-5 911</b>                            | 51 871                                      | 40 877                 | 9 579                     | 31 298                                      | 10 994                    | -57 782                                     | -46 007                | -14 971                            | -10 606                  | -20 430   | -11 775                   |
| 2003                          | <b>-10 324</b>                           | 47 021                                      | 36 016                 | 7 245                     | 28 771                                      | 11 005                    | -57 345                                     | -45 524                | -15 106                            | -10 670                  | -19 748   | -11 821                   |

(a) For sign conventions, see paragraph 9 of the Explanatory Notes.

(b) For all time periods, estimates for sugar, sugar preparations and honey are included in Non-rural and other goods.

## GOODS CREDITS, Original

|                                       |                |                |                |              |              |              | 4 MONTHS      |               | Change       |
|---------------------------------------|----------------|----------------|----------------|--------------|--------------|--------------|---------------|---------------|--------------|
|                                       |                |                |                |              |              |              | ENDED OCTOBER |               |              |
|                                       | 2000-01        | 2001-02        | 2002-03        | Aug<br>2003  | Sep<br>2003  | Oct<br>2003  | 2002          | 2003          |              |
|                                       | \$m            | \$m            | \$m            | \$m          | \$m          | \$m          | \$m           | %             |              |
| <b>Total goods credits</b>            | <b>120 307</b> | <b>121 090</b> | <b>115 933</b> | <b>9 233</b> | <b>9 079</b> | <b>9 153</b> | <b>40 877</b> | <b>36 016</b> | <b>-11.9</b> |
| Rural goods                           |                |                |                |              |              |              |               |               |              |
| Meat and meat preparations            | 5 796          | 6 246          | 5 655          | 395          | 446          | 499          | 2 017         | 1 745         | -13.5        |
| Cereal grains and cereal preparations | 5 937          | 6 481          | 4 487          | 233          | 251          | 339          | 1 886         | 1 070         | -43.3        |
| Wool and sheepskins                   | 3 897          | 3 687          | 3 545          | 171          | 247          | 258          | 1 299         | 869           | -33.1        |
| Other rural                           | 13 534         | 13 671         | 11 781         | 923          | 905          | 875          | 4 377         | 3 561         | -18.6        |
| <i>Total rural goods(a)</i>           | <i>29 164</i>  | <i>30 085</i>  | <i>25 468</i>  | <i>1 722</i> | <i>1 849</i> | <i>1 971</i> | <i>9 579</i>  | <i>7 245</i>  | <i>-24.4</i> |
| Non-rural goods                       |                |                |                |              |              |              |               |               |              |
| Metal ores and minerals               | 15 205         | 14 774         | 14 482         | 1 188        | 1 163        | 1 289        | 4 907         | 4 732         | -3.6         |
| Coal, coke and briquettes             | 10 844         | 13 430         | 11 988         | 877          | 900          | 925          | 4 094         | 3 553         | -13.2        |
| Other mineral fuels                   | 13 464         | 10 940         | 11 049         | 861          | 847          | 694          | 4 045         | 3 270         | -19.2        |
| Metals (excl. gold)                   | 10 146         | 9 650          | 8 714          | 630          | 590          | 622          | 3 126         | 2 393         | -23.4        |
| Machinery                             | 8 797          | 7 999          | 7 362          | 602          | 591          | 607          | 2 586         | 2 423         | -6.3         |
| Transport equipment                   | 5 041          | 5 686          | 6 276          | 602          | 455          | 466          | 2 150         | 1 928         | -10.3        |
| Other manufactures                    | 13 530         | 13 758         | 13 492         | 1 133        | 1 200        | 1 193        | 4 706         | 4 645         | -1.3         |
| Other non-rural(a)                    | 6 706          | 7 149          | 8 409          | 795          | 827          | 728          | 2 947         | 3 068         | 4.1          |
| <i>Total non-rural goods(a)</i>       | <i>83 733</i>  | <i>83 386</i>  | <i>81 772</i>  | <i>6 688</i> | <i>6 573</i> | <i>6 524</i> | <i>28 561</i> | <i>26 012</i> | <i>-8.9</i>  |
| Other goods                           |                |                |                |              |              |              |               |               |              |
| <i>Total other goods(b)</i>           | <i>7 410</i>   | <i>7 619</i>   | <i>8 693</i>   | <i>823</i>   | <i>657</i>   | <i>658</i>   | <i>2 737</i>  | <i>2 759</i>  | <i>0.8</i>   |

(a) For all time periods, estimates for sugar, sugar preparations and honey are included in Other non-rural.

(b) Includes non-monetary gold.

## GOODS DEBITS, Original(a)

|   |                 |                 |                 |                |                |                | 4 MONTHS<br>ENDED OCTOBER |                | Change<br>% |
|---|-----------------|-----------------|-----------------|----------------|----------------|----------------|---------------------------|----------------|-------------|
|   | 2000-01         | 2001-02         | 2002-03         | Aug<br>2003    | Sep<br>2003    | Oct<br>2003    | 2002                      | 2003           |             |
|   | \$m             | \$m             | \$m             | \$m            | \$m            | \$m            | \$m                       | \$m            |             |
| <b>Total goods debits</b>                             | <b>-120 524</b> | <b>-121 942</b> | <b>-134 253</b> | <b>-10 700</b> | <b>-11 652</b> | <b>-12 054</b> | <b>-46 007</b>            | <b>-45 524</b> | <b>-1.0</b> |
| Consumption goods                                     |                 |                 |                 |                |                |                |                           |                |             |
| Food and beverages, mainly for consumption            | -4 483          | -4 687          | -5 066          | -392           | -466           | -491           | -1 696                    | -1 757         | 3.6         |
| Household electrical items                            | -3 000          | -3 166          | -3 657          | -309           | -348           | -384           | -1 407                    | -1 339         | -4.8        |
| Non-industrial transport equipment                    | -9 627          | -9 930          | -11 302         | -887           | -1 150         | -1 090         | -3 907                    | -4 174         | 6.8         |
| Textiles, clothing and footwear                       | -4 811          | -4 849          | -5 237          | -467           | -467           | -438           | -1 935                    | -1 840         | -4.9        |
| Toys, books and leisure goods                         | -3 359          | -3 494          | -3 740          | -330           | -382           | -445           | -1 506                    | -1 450         | -3.7        |
| Consumption goods n.e.s.                              | -10 495         | -11 296         | -12 225         | -1 060         | -1 170         | -1 257         | -4 520                    | -4 546         | 0.6         |
| <i>Total consumption goods</i>                        | <i>-35 775</i>  | <i>-37 422</i>  | <i>-41 227</i>  | <i>-3 445</i>  | <i>-3 983</i>  | <i>-4 105</i>  | <i>-14 971</i>            | <i>-15 106</i> | <i>0.9</i>  |
| Capital goods   |                 |                 |                 |                |                |                |                           |                |             |
| Machinery and industrial equipment                    | -8 876          | -9 502          | -11 006         | -956           | -941           | -975           | -3 901                    | -3 739         | -4.2        |
| ADP equipment   | -5 260          | -5 055          | -4 908          | -381           | -430           | -436           | -1 693                    | -1 678         | -0.9        |
| Telecommunications equipment                          | -4 379          | -3 643          | -3 620          | -297           | -309           | -355           | -1 118                    | -1 289         | 15.3        |
| Civil aircraft  | -609            | -1 513          | -3 887          | -194           | -285           | -217           | -1 101                    | -1 164         | 5.7         |
| Industrial transport equipment n.e.s.                 | -2 940          | -3 613          | -3 881          | -297           | -304           | -328           | -1 260                    | -1 268         | 0.6         |
| Capital goods n.e.s.                                  | -3 675          | -3 882          | -4 227          | -375           | -378           | -398           | -1 533                    | -1 532         | -0.1        |
| <i>Total capital goods</i>                            | <i>-25 739</i>  | <i>-27 208</i>  | <i>-31 529</i>  | <i>-2 500</i>  | <i>-2 647</i>  | <i>-2 709</i>  | <i>-10 606</i>            | <i>-10 670</i> | <i>0.6</i>  |
| Intermediate and other merchandise goods              |                 |                 |                 |                |                |                |                           |                |             |
| Food and beverages, mainly for industry               | -592            | -577            | -736            | -50            | -53            | -50            | -241                      | -221           | -8.3        |
| Primary industrial supplies n.e.s.                    | -1 133          | -1 117          | -1 220          | -103           | -119           | -92            | -467                      | -402           | -13.9       |
| Fuels and lubricants                                  | -10 358         | -8 823          | -10 393         | -743           | -834           | -763           | -3 165                    | -2 958         | -6.5        |
| Parts for transport equipment                         | -7 089          | -6 827          | -7 258          | -554           | -561           | -612           | -2 528                    | -2 375         | -6.1        |
| Parts for ADP equipment                               | -2 255          | -2 159          | -2 011          | -165           | -158           | -169           | -708                      | -655           | -7.5        |
| Other parts for capital goods                         | -9 072          | -8 216          | -8 606          | -705           | -711           | -799           | -2 917                    | -2 970         | 1.8         |
| Organic and inorganic chemicals                       | -3 777          | -3 447          | -3 089          | -265           | -203           | -356           | -1 013                    | -1 030         | 1.7         |
| Paper and paperboard                                  | -2 311          | -2 225          | -2 326          | -191           | -203           | -216           | -825                      | -813           | -1.5        |
| Textile yarn and fabrics                              | -1 863          | -1 830          | -1 839          | -145           | -142           | -145           | -682                      | -588           | -13.8       |
| Iron and steel  | -1 437          | -1 765          | -1 960          | -172           | -170           | -181           | -627                      | -701           | 11.8        |
| Plastics  | -2 193          | -2 182          | -2 478          | -179           | -182           | -205           | -831                      | -749           | -9.9        |
| Processed industrial supplies n.e.s.                  | -11 251         | -11 441         | -12 238         | -943           | -991           | -1 110         | -3 996                    | -3 994         | -0.1        |
| Other merchandise goods                               | -1 320          | -1 563          | -1 710          | -113           | -162           | -83            | -647                      | -466           | -28.0       |
| <i>Total intermediate and other merchandise goods</i> | <i>-54 651</i>  | <i>-52 172</i>  | <i>-55 864</i>  | <i>-4 328</i>  | <i>-4 489</i>  | <i>-4 781</i>  | <i>-18 647</i>            | <i>-17 922</i> | <i>-3.9</i> |
| Other goods   |                 |                 |                 |                |                |                |                           |                |             |
| <i>Total other goods(b)</i>                           | <i>-4 359</i>   | <i>-5 140</i>   | <i>-5 633</i>   | <i>-427</i>    | <i>-533</i>    | <i>-459</i>    | <i>-1 783</i>             | <i>-1 826</i>  | <i>2.4</i>  |

(a) For sign conventions, see paragraph 9 of the Explanatory Notes.

(b) Includes non-monetary gold.

## SERVICES (a), Summary: Original

|                        |         |         |         |             |             |             | 4 MONTHS ENDED OCT |         | Change |
|------------------------|---------|---------|---------|-------------|-------------|-------------|--------------------|---------|--------|
|                        | 2000-01 | 2001-02 | 2002-03 | Aug<br>2003 | Sep<br>2003 | Oct<br>2003 | 2002               | 2003    |        |
|                        | \$m     | \$m     | \$m     | \$m         | \$m         | \$m         | \$m                | \$m     |        |
| <b>Credits</b>         |         |         |         |             |             |             |                    |         |        |
| Freight                | 1 038   | 1 001   | 934     | 74          | 73          | 75          | 322                | 296     | -8     |
| Other transportation   | 7 024   | 6 664   | 6 547   | 523         | 527         | 555         | 2 249              | 2 128   | -5     |
| Travel                 | 15 507  | 15 645  | 15 443  | 1 158       | 1 050       | 1 387       | 5 273              | 5 362   | 2      |
| Other services         | 9 978   | 8 940   | 9 547   | 794         | 808         | 826         | 3 150              | 3 219   | 2      |
| Total services credits | 33 547  | 32 250  | 32 471  | 2 549       | 2 458       | 2 843       | 10 994             | 11 005  | —      |
| <b>Debits (b)</b>      |         |         |         |             |             |             |                    |         |        |
| Freight                | -5 991  | -5 626  | -5 808  | -476        | -524        | -542        | -1 950             | -2 007  | 3      |
| Other transportation   | -5 361  | -5 150  | -5 170  | -415        | -476        | -433        | -1 999             | -1 761  | -12    |
| Travel                 | -11 072 | -10 918 | -11 012 | -1 014      | -1 132      | -1 088      | -4 137             | -4 256  | 3      |
| Other services         | -10 257 | -10 937 | -10 919 | -924        | -933        | -1 026      | -3 689             | -3 797  | 3      |
| Total services debits  | -32 681 | -32 631 | -32 909 | -2 829      | -3 065      | -3 089      | -11 775            | -11 821 | —      |

— nil or rounded to zero (including null cells)

(b) For sign conventions, see paragraph 9 of the Explanatory Notes.

(a) For more detailed trade in services by commodity, see Table 6.

|   | CREDITS      |              |              |              | DEBITS        |               |               |               |
|---|--------------|--------------|--------------|--------------|---------------|---------------|---------------|---------------|
|   | Dec Qtr      | Mar Qtr      | Jun Qtr      | Sep Qtr      | Dec Qtr       | Mar Qtr       | Jun Qtr       | Sep Qtr       |
|   | 2002         | 2003         | 2003         | 2003         | 2002          | 2003          | 2003          | 2003          |
|   | \$m          | \$m          | \$m          | \$m          | \$m           | \$m           | \$m           | \$m           |
| <b>Services</b>   | <b>8 333</b> | <b>9 222</b> | <b>6 706</b> | <b>8 162</b> | <b>-8 592</b> | <b>-8 029</b> | <b>-7 539</b> | <b>-8 732</b> |
| Transportation services   |              |              |              |              |               |               |               |               |
| Passenger   | 1 729        | 1 760        | 1 379        | 1 573        | -1 083        | -987          | -912          | -1 122        |
| Freight   | 237          | 222          | 232          | 221          | -1 482        | -1 420        | -1 469        | -1 465        |
| Other   | ..           | ..           | ..           | ..           | -237          | -223          | -190          | -206          |
| <i>Total transportation services</i>                            | <i>1 966</i> | <i>1 982</i> | <i>1 611</i> | <i>1 794</i> | <i>-2 802</i> | <i>-2 630</i> | <i>-2 571</i> | <i>-2 793</i> |
| Travel services   |              |              |              |              |               |               |               |               |
| Business  | 286          | 306          | 252          | 287          | -663          | -747          | -566          | -747          |
| Personal  |              |              |              |              |               |               |               |               |
| Education-related   | 628          | 2 197        | 607          | 1 477        | -155          | -167          | -140          | -246          |
| Other   | 2 776        | 2 480        | 1 883        | 2 211        | -2 027        | -1 832        | -1 653        | -2 175        |
| <i>Total personal</i>   | <i>3 404</i> | <i>4 677</i> | <i>2 490</i> | <i>3 688</i> | <i>-2 182</i> | <i>-1 999</i> | <i>-1 793</i> | <i>-2 421</i> |
| <i>Total travel services</i>                                    | <i>3 690</i> | <i>4 983</i> | <i>2 742</i> | <i>3 975</i> | <i>-2 845</i> | <i>-2 746</i> | <i>-2 359</i> | <i>-3 168</i> |
| Communications services   | 331          | 245          | 234          | 293          | -452          | -318          | -287          | -353          |
| Construction services   | 25           | 18           | 20           | 24           | —             | —             | —             | —             |
| Insurance services  | 169          | 169          | 166          | 171          | -214          | -214          | -214          | -218          |
| Financial services  | 246          | 246          | 246          | 251          | -146          | -146          | -147          | -144          |
| Computer and information services                               | 299          | 253          | 289          | 268          | -276          | -183          | -264          | -246          |
| Royalties and licence fees                                      | 190          | 148          | 165          | 140          | -464          | -446          | -443          | -475          |
| Other business services   |              |              |              |              |               |               |               |               |
| Merchanting and other trade-related                             | 152          | 95           | 136          | 134          | -99           | -93           | -64           | -115          |
| Operational leasing   | 4            | 4            | 8            | 10           | -249          | -256          | -232          | -252          |
| Miscellaneous business, professional and technical              |              |              |              |              |               |               |               |               |
| Legal, accounting, management consulting and public relations   | 171          | 126          | 167          | 189          | -91           | -106          | -84           | -70           |
| Advertising, market research and public opinion polling         | 34           | 48           | 39           | 26           | -40           | -35           | -51           | -27           |
| Research and development  | 78           | 66           | 63           | 85           | -39           | -27           | -29           | -39           |
| Architecture, engineering and other technical services          | 190          | 137          | 122          | 143          | -83           | -61           | -97           | -94           |
| Agriculture, mining and on-site processing                      | 11           | 4            | 5            | 9            | -38           | -34           | -58           | -38           |
| Services between affiliated enterprises n.i.e.                  | 307          | 249          | 260          | 224          | -259          | -187          | -160          | -217          |
| Other   | 118          | 84           | 80           | 83           | -130          | -135          | -92           | -109          |
| <i>Total miscellaneous business, professional and technical</i> | <i>909</i>   | <i>714</i>   | <i>736</i>   | <i>759</i>   | <i>-680</i>   | <i>-585</i>   | <i>-571</i>   | <i>-594</i>   |
| <i>Total other business services</i>                            | <i>1 065</i> | <i>813</i>   | <i>880</i>   | <i>903</i>   | <i>-1 028</i> | <i>-934</i>   | <i>-867</i>   | <i>-961</i>   |
| Personal, cultural, and recreational services                   |              |              |              |              |               |               |               |               |
| Audiovisual and related services                                | 37           | 64           | 25           | 28           | -155          | -191          | -156          | -181          |
| Other personal, cultural and recreational services              | 127          | 113          | 95           | 132          | -42           | -64           | -29           | -31           |
| <i>Total personal, cultural, and recreational services</i>      | <i>164</i>   | <i>177</i>   | <i>120</i>   | <i>160</i>   | <i>-197</i>   | <i>-255</i>   | <i>-185</i>   | <i>-212</i>   |
| Government services n.i.e.                                      | 188          | 188          | 233          | 183          | -168          | -157          | -202          | -162          |

.. not applicable

(b) For more information see paragraphs 13 and 14 of the Explanatory Notes.

— nil or rounded to zero (including null cells)

(a) For sign conventions, see paragraph 9 of the Explanatory Notes.

## INTERNATIONAL MERCHANDISE EXPORTS, By commodity

|                                    | Aug<br>2003 | Sep<br>2003 | Oct<br>2003 | Percent<br>of total<br>merchandise<br>exports(a) | 4 MONTHS<br>ENDED OCTOBER |       |
|------------------------------------|-------------|-------------|-------------|--|---------------------------|-------|
|                                    |             |             |             |  | 2002                      | 2003  |
|                                    |             |             |             |  | \$m                       | \$m   |
| MAJOR COMMODITIES                  |             |             |             |  |                           |       |
| 011 Meat of bovine animals         | 273         | 309         | 329         | 3.6  | 1 421                     | 1 196 |
| 041 Wheat                          | 153         | 143         | 260         | 2.9  | 1 301                     | 717   |
| 268 Wool and other animal hair     | 143         | 220         | 228         | 2.5  | 1 215                     | 761   |
| 281 Iron ore and concentrates      | 381         | 437         | 442         | 4.9  | 1 902                     | 1 721 |
| 285 Aluminium ore and concentrates | 310         | 271         | 321         | 3.5  | 1 231                     | 1 195 |
| 321 Coal, not agglomerated         | 869         | 893         | 924         | 10.1   | 4 083                     | 3 537 |
| 333 Crude petroleum oils           | 458         | 456         | 358         | 3.9  | 2 256                     | 1 732 |
| 334 Refined petroleum oils         | 182         | 189         | 155         | 1.7  | 883                       | 698   |
| 343 Natural gas                    | 214         | 182         | 181         | 2.0  | 903                       | 810   |
| 684 Aluminium                      | 354         | 314         | 307         | 3.4  | 1 477                     | 1 259 |
| 781 Passenger motor vehicles       | 250         | 285         | 247         | 2.7  | 854                       | 966   |
| 971 Gold, non-monetary             | 595         | 369         | 486         | 5.3  | 1 818                     | 1 899 |

## SECTION AND DIVISION OF THE SITC

|    |   |              |              |              |             |                    |
|----|---|--------------|--------------|--------------|-------------|--------------------|
| 0  | Food and live animals(b)  |              |              |              |             |                    |
| 00 | Live animals other than fish, crustaceans, molluscs and aquatic invertebrates                                 | 78           | 69           | 73           | 0.8         | 409 300            |
| 01 | Meat and meat preparations  | 395          | 448          | 490          | 5.4         | 2 017 1 738        |
| 02 | Dairy products and birds' eggs  | 139          | 172          | 201          | 2.2         | 801 642            |
| 03 | Fish (not marine mammals), crustaceans, molluscs and aquatic invertebrates, and preparations thereof(b)       | 195          | 140          | 99           | 1.1         | 598 561            |
| 04 | Cereals and cereal preparations(b)  | 234          | 252          | 339          | 3.7         | 1 886 1 072        |
| 05 | Vegetables and fruit  | 124          | 109          | 95           | 1.0         | 562 446            |
| 06 | Sugars, sugar preparations and honey(b)   | 21           | 14           | 16           | 0.2         | 83 63              |
| 07 | Coffee, tea, cocoa, spices, and manufactures thereof  | 23           | 27           | 29           | 0.3         | 116 104            |
| 08 | Feeding stuff for animals (excl. unmilled cereals)(b)   | 62           | 71           | 65           | 0.7         | 310 262            |
| 09 | Miscellaneous edible products and preparations  | 43           | 42           | 39           | 0.4         | 152 167            |
|    | <i>Total food and live animals</i>  | <i>1 315</i> | <i>1 343</i> | <i>1 446</i> | <i>15.9</i> | <i>6 933 5 355</i> |
| 1  | Beverages and tobacco   |              |              |              |             |                    |
| 11 | Beverages   | 238          | 227          | 230          | 2.5         | 928 910            |
| 12 | Tobacco and tobacco manufactures  | 6            | 7            | 7            | 0.1         | 39 25              |
|    | <i>Total beverages and tobacco</i>  | <i>245</i>   | <i>234</i>   | <i>237</i>   | <i>2.6</i>  | <i>967 935</i>     |
| 2  | Crude materials, inedible, except fuels(b)  |              |              |              |             |                    |
| 21 | Hides, skins and furskins, raw(b)   | 58           | 49           | 53           | 0.6         | 260 209            |
| 22 | Oil seeds and oleaginous fruits   | 32           | 18           | 10           | 0.1         | 152 83             |
| 23 | Crude rubber (incl. synthetic and reclaimed)  | 1            | 2            | 1            | —           | 5 6                |
| 24 | Cork and wood   | 71           | 80           | 94           | 1.0         | 354 322            |
| 25 | Pulp and waste paper  | 5            | 5            | 5            | 0.1         | 15 19              |
| 26 | Textile fibres and their wastes (not manufactured into yarn or fabric)(b)                                     | 213          | 302          | 295          | 3.2         | 1 731 1 066        |
| 27 | Crude fertilisers (excl. those of Division 56) and crude minerals (excl. coal, petroleum and precious stones) | 44           | 31           | 40           | 0.4         | 166 154            |
| 28 | Metalliferous ores and metal scrap(b)   | 1 131        | 1 114        | 1 249        | 13.7        | 4 741 4 551        |
| 29 | Crude animal and vegetable materials, n.e.s.  | 20           | 20           | 22           | 0.2         | 110 84             |
|    | <i>Total crude materials, inedible, except fuels</i>  | <i>1 574</i> | <i>1 622</i> | <i>1 769</i> | <i>19.4</i> | <i>7 534 6 495</i> |
| 3  | Mineral fuels, lubricants and related materials   |              |              |              |             |                    |
| 32 | Coal, coke and briquettes   | 874          | 895          | 925          | 10.2        | 4 095 3 546        |
| 33 | Petroleum, petroleum products and related materials   | 642          | 645          | 515          | 5.7         | 3 145 2 433        |
| 34 | Gas, natural and manufactured   | 271          | 259          | 234          | 2.6         | 1 166 1 056        |
|    | <i>Total mineral fuels, lubricants and related materials</i>  | <i>1 786</i> | <i>1 799</i> | <i>1 674</i> | <i>18.4</i> | <i>8 407 7 035</i> |

— nil or rounded to zero (including null cells)

(a) Percent of total merchandise exports is calculated for the most recent month.

(b) Excludes exports commodities subject to a confidentiality restriction. These are included in Division 98.

|                                  |  |             |             | Percent<br>of total<br>merchandise<br>exports(a) | 4 MONTHS<br>ENDED OCTOBER |             |
|----------------------------------|--|-------------|-------------|--|---------------------------|-------------|
|                                  | Aug<br>2003  | Sep<br>2003 | Oct<br>2003 |  | 2002                      | 2003        |
|                                  | \$m  | \$m         | \$m         |  | \$m                       | \$m         |
| SECTION AND DIVISION OF THE SITC |  |             |             |  |                           |             |
| 4                                | Animal and vegetable oils, fats and waxes(b)   |             |             |  |                           |             |
| 41                               | Animal oils and fats   | 21          | 18          | 26   | 0.3                       | 74 85       |
| 42                               | Fixed vegetable fats and oils, crude, refined or fractionated(b)   | 7           | 2           | 1  | —                         | 21 14       |
| 43                               | Fats and oils (processed), waxes and inedible mixtures or preparations, of animal or vegetable origin, n.e.s.  | 4           | 4           | 5  | 0.1                       | 19 17       |
|                                  | <i>Total animal and vegetable oils, fats and waxes</i>   | 32          | 24          | 31   | 0.3                       | 113 116     |
| 5                                | Chemicals and related products, n.e.s.(b)  |             |             |  |                           |             |
| 51                               | Organic chemicals(b)   | 7           | 7           | 13   | 0.1                       | 40 42       |
| 52                               | Inorganic chemicals(b)   | 46          | 35          | 57   | 0.6                       | 194 178     |
| 53                               | Dyeing, tanning and colouring materials  | 54          | 47          | 49   | 0.5                       | 217 192     |
| 54                               | Medicinal and pharmaceutical products  | 214         | 189         | 215  | 2.4                       | 646 832     |
| 55                               | Essential oils and resinoids and perfume materials; toilet, polishing and cleansing preparations               | 36          | 37          | 35   | 0.4                       | 176 147     |
| 56                               | Fertilisers (excl. crude)  | 19          | 27          | 28   | 0.3                       | 64 82       |
| 57                               | Plastics in primary forms(b)   | 16          | 19          | 16   | 0.2                       | 77 70       |
| 58                               | Plastics in non-primary forms  | 22          | 22          | 21   | 0.2                       | 84 80       |
| 59                               | Chemical materials and products, n.e.s.  | 50          | 56          | 51   | 0.6                       | 224 211     |
|                                  | <i>Total chemicals and related products, n.e.s.</i>  | 465         | 440         | 483  | 5.3                       | 1 723 1 835 |
| 6                                | Manufactured goods classified chiefly by material(b)   |             |             |  |                           |             |
| 61                               | Leather, leather manufactures, and dressed furskins, n.e.s.  | 48          | 46          | 43   | 0.5                       | 242 174     |
| 62                               | Rubber manufactures, n.e.s.  | 11          | 14          | 11   | 0.1                       | 47 49       |
| 63                               | Cork and wood manufactures (excl. furniture)(b)  | 16          | 16          | 17   | 0.2                       | 75 66       |
| 64                               | Paper, paperboard, and articles of paper pulp, of paper or of paperboard                                       | 54          | 63          | 56   | 0.6                       | 251 232     |
| 65                               | Textile yarn, fabrics, made-up articles, n.e.s., and related products  | 43          | 43          | 38   | 0.4                       | 176 165     |
| 66                               | Non-metallic mineral manufactures, n.e.s.(b)   | 54          | 118         | 84   | 0.9                       | 338 326     |
| 67                               | Iron and steel(b)  | 70          | 68          | 77   | 0.8                       | 240 298     |
| 68                               | Non-ferrous metals   | 558         | 514         | 541  | 5.9                       | 2 886 2 082 |
| 69                               | Manufactures of metals, n.e.s.   | 65          | 64          | 65   | 0.7                       | 298 265     |
|                                  | <i>Total manufactured goods classified chiefly by material</i>   | 920         | 946         | 933  | 10.2                      | 4 552 3 656 |
| 7                                | Machinery and transport equipment  |             |             |  |                           |             |
| 71                               | Power generating machinery and equipment   | 84          | 80          | 66   | 0.7                       | 242 308     |
| 72                               | Machinery specialised for particular industries  | 100         | 88          | 98   | 1.1                       | 443 390     |
| 73                               | Metal working machinery  | 11          | 14          | 12   | 0.1                       | 49 55       |
| 74                               | General industrial machinery and equipment, n.e.s. and machine parts, n.e.s.(b)                                | 99          | 103         | 97   | 1.1                       | 426 411     |
| 75                               | Office machines and automatic data processing machines   | 111         | 109         | 113  | 1.2                       | 542 457     |
| 76                               | Telecommunications and sound recording and reproducing apparatus and equipment                                 | 63          | 63          | 65   | 0.7                       | 273 248     |
| 77                               | Electrical machinery, apparatus, appliances, parts (incl. non-elec. counterparts of electrical domestic equip) | 131         | 132         | 140  | 1.5                       | 602 531     |
| 78                               | Road vehicles (incl. air-cushion vehicles)   | 371         | 410         | 364  | 4.0                       | 1 332 1 450 |
| 79                               | Transport equipment (excl. road vehicles)  | 180         | 84          | 83   | 0.9                       | 814 446     |
|                                  | <i>Total machinery and transport equipment</i>   | 1 151       | 1 083       | 1 039  | 11.4                      | 4 724 4 296 |

— nil or rounded to zero (including null cells)

(a) Percent of total merchandise exports is calculated for the most recent month.

(b) Excludes exports commodities subject to a confidentiality restriction. These are included in Division 98.



|                                  |   |              |              | Percent<br>of total<br>merchandise<br>exports(a) | 4 MONTHS<br>ENDED OCTOBER |                      |
|----------------------------------|---|--------------|--------------|--|---------------------------|----------------------|
|                                  | Aug<br>2003   | Sep<br>2003  | Oct<br>2003  |  | .....                     |                      |
|                                  | \$m   | \$m          | \$m          |  | 2002                      | 2003                 |
|                                  |   |              | %            | \$m  | \$m                       |                      |
| SECTION AND DIVISION OF THE SITC |   |              |              |  |                           |                      |
| 8                                | Miscellaneous manufactured articles(b)  |              |              |  |                           |                      |
| 81                               | Prefabricated buildings; sanitary, plumbing, heating and lighting fixtures and fittings, n.e.s.                     | 9            | 9            | 8  | 0.1                       | 50 33                |
| 82                               | Furniture, parts thereof; bedding, mattresses, mattress supports, cushions and similar stuffed furnishings          | 11           | 13           | 11   | 0.1                       | 62 52                |
| 83                               | Travel goods, handbags and similar containers   | 2            | 2            | 3  | —                         | 5 8                  |
| 84                               | Articles of apparel and clothing accessories  | 36           | 29           | 23   | 0.3                       | 127 127              |
| 85                               | Footwear(b)   | 5            | 5            | 4  | —                         | 22 18                |
| 87                               | Professional, scientific and controlling instruments and apparatus, n.e.s.  | 100          | 102          | 95   | 1.0                       | 440 387              |
| 88                               | Photographic apparatus, equipment and supplies and optical goods, n.e.s.; watches and clocks                        | 45           | 48           | 46   | 0.5                       | 247 186              |
| 89                               | Miscellaneous manufactured articles, n.e.s.   | 157          | 164          | 168  | 1.8                       | 576 642              |
|                                  | <i>Total miscellaneous manufactured articles</i>  | 364          | 372          | 358  | 3.9                       | 1 531 1 452          |
| 9                                | Commodities and transactions not classified elsewhere in the SITC(b)  |              |              |  |                           |                      |
| 93                               | Special transactions and commodities not classified according to kind   | 182          | 288          | 173  | 1.9                       | 862 815              |
| 95                               | Gold coin whether or not legal tender, and other coin being legal tender  | 4            | 16           | 10   | 0.1                       | 26 34                |
| 96                               | Coin (excl. gold coin), not being legal tender  | —            | —            | —  | —                         | — —                  |
| 97                               | Gold, non-monetary (excl. gold ores and concentrates)   | 595          | 369          | 486  | 5.3                       | 1 818 1 899          |
| 98                               | Combined confidential items excl some of SITC 280 (exports only) and some of SITCs 510 and 520 (imports only)(c)(d) | 444          | 510          | 471  | 5.2                       | 1 540 1 826          |
|                                  | <i>Total commodities and transactions not classified elsewhere in the SITC</i>                                      | 1 225        | 1 184        | 1 140  | 12.5                      | 4 247 4 573          |
|                                  | <b>Total Merchandise Exports</b>  | <b>9 077</b> | <b>9 048</b> | <b>9 109</b>                                     | <b>100.0</b>              | <b>40 732 35 748</b> |
|                                  | Balance of Payments Adjustments   | 156          | 31           | 44   | . .                       | 145 268              |
|                                  | Goods Credits (exports) on a Balance of Payments Basis  | 9 233        | 9 079        | 9 153  | . .                       | 40 877 36 016        |

. . not applicable

— nil or rounded to zero (including null cells)

(a) Percent of total merchandise exports is calculated for the most recent month.

(b) Excludes exports commodities subject to a confidentiality restriction. These are included in Division 98.

(c) Includes exports commodities subject to a confidentiality restriction.

(d) Includes small value export entries which can not yet be allocated by commodity.

|   | Aug<br>2003 | Sep<br>2003 | Oct<br>2003 | Percent<br>of total<br>merchandise<br>trade(a) | 4 MONTHS<br>ENDED OCTOBER |       |
|---|-------------|-------------|-------------|--|---------------------------|-------|
|   |             |             |             |  | 2002                      | 2003  |
|   |             |             |             |  | \$m                       | \$m   |
| MAJOR COMMODITIES                             |             |             |             |  |                           |       |
| 333 Crude petroleum oils                      | 460         | 547         | 424         | 3.6  | 2 399                     | 1 842 |
| 334 Refined petroleum oils                    | 223         | 262         | 313         | 2.6  | 656                       | 990   |
| 542 Medicaments                               | 364         | 398         | 443         | 3.7  | 1 495                     | 1 613 |
| 641 Paper and paperboard                      | 170         | 178         | 192         | 1.6  | 722                       | 721   |
| 752 Automatic data processing machines        | 378         | 427         | 434         | 3.7  | 1 678                     | 1 668 |
| 759 Parts and accessories of office machines  | 194         | 191         | 205         | 1.7  | 845                       | 780   |
| 764 Telecommunications equipment              | 332         | 323         | 347         | 2.9  | 1 319                     | 1 340 |
| 781 Passenger motor vehicles                  | 811         | 1 051       | 981         | 8.3  | 3 512                     | 3 793 |
| 782 Motor vehicles for the transport of goods | 214         | 243         | 250         | 2.1  | 991                       | 955   |
| 784 Parts and accessories of motor vehicles   | 184         | 180         | 200         | 1.7  | 776                       | 760   |
| 792 Aircraft and associated equipment         | 619         | 379         | 317         | 2.7  | 1 463                     | 1 534 |
| 971 Gold, non-monetary                        | 200         | 296         | 161         | 1.4  | 791                       | 834   |

## SECTION AND DIVISION OF THE SITC

|    |   |     |     |     |     |             |
|----|---|-----|-----|-----|-----|-------------|
| 0  | Food and live animals   |     |     |     |     |             |
| 00 | Live animals other than fish, crustaceans, molluscs and aquatic invertebrates                                 | 8   | 4   | 1   | —   | 25 19       |
| 01 | Meat and meat preparations  | 14  | 16  | 25  | 0.2 | 53 72       |
| 02 | Dairy products and birds' eggs  | 16  | 21  | 30  | 0.2 | 98 87       |
| 03 | Fish (not marine mammals), crustaceans, molluscs and aquatic invertebrates, and preparations thereof          | 68  | 81  | 93  | 0.8 | 301 313     |
| 04 | Cereals and cereal preparations   | 33  | 35  | 39  | 0.3 | 124 138     |
| 05 | Vegetables and fruit  | 73  | 72  | 78  | 0.7 | 282 306     |
| 06 | Sugars, sugar preparations and honey  | 15  | 17  | 19  | 0.2 | 63 66       |
| 07 | Coffee, tea, cocoa, spices, and manufactures thereof  | 53  | 55  | 65  | 0.5 | 243 233     |
| 08 | Feeding stuff for animals (excl. unmilled cereals)  | 14  | 23  | 25  | 0.2 | 106 86      |
| 09 | Miscellaneous edible products and preparations  | 89  | 112 | 78  | 0.7 | 335 360     |
|    | <i>Total food and live animals</i>  | 383 | 436 | 453 | 3.8 | 1 631 1 678 |
| 1  | Beverages and tobacco   |     |     |     |     |             |
| 11 | Beverages   | 53  | 79  | 90  | 0.8 | 279 278     |
| 12 | Tobacco and tobacco manufactures  | 24  | 16  | 15  | 0.1 | 125 77      |
|    | <i>Total beverages and tobacco</i>  | 77  | 95  | 105 | 0.9 | 404 355     |
| 2  | Crude materials, inedible, except fuels   |     |     |     |     |             |
| 21 | Hides, skins and furskins, raw  | —   | 1   | —   | —   | — 1         |
| 22 | Oil seeds and oleaginous fruits   | 3   | 7   | 4   | —   | 22 28       |
| 23 | Crude rubber (incl. synthetic and reclaimed)  | 10  | 10  | 12  | 0.1 | 44 42       |
| 24 | Cork and wood   | 48  | 57  | 55  | 0.5 | 208 215     |
| 25 | Pulp and waste paper  | 23  | 13  | 18  | 0.1 | 103 71      |
| 26 | Textile fibres and their wastes (not manufactured into yarn or fabric)  | 14  | 13  | 18  | 0.1 | 58 56       |
| 27 | Crude fertilisers (excl. those of Division 56) and crude minerals (excl. coal, petroleum and precious stones) | 19  | 12  | 14  | 0.1 | 70 69       |
| 28 | Metalliferous ores and metal scrap  | 33  | 24  | 22  | 0.2 | 108 97      |
| 29 | Crude animal and vegetable materials, n.e.s.  | 17  | 19  | 28  | 0.2 | 91 83       |
|    | <i>Total crude materials, inedible, except fuels</i>  | 168 | 156 | 170 | 1.4 | 704 662     |
| 3  | Mineral fuels, lubricants and related materials(b)  |     |     |     |     |             |
| 32 | Coal, coke and briquettes   | —   | —   | 1   | —   | 7 4         |
| 33 | Petroleum, petroleum products and related materials   | 695 | 830 | 760 | 6.4 | 3 147 2 904 |
| 34 | Gas, natural and manufactured   | 51  | 19  | 16  | 0.1 | 70 89       |
|    | <i>Total mineral fuels, lubricants and related materials</i>  | 747 | 850 | 776 | 6.6 | 3 224 2 997 |

— nil or rounded to zero (including null cells)

(b) Excludes imports commodities subject to a confidentiality restriction. These are included in Division 98.

(a) Percent of total merchandise imports is calculated for the most recent month.

|                                  |   |       |       | Percent<br>of total<br>merchandise<br>trade(a) | 4 MONTHS<br>ENDED OCTOBER |               |
|----------------------------------|---|-------|-------|--|---------------------------|---------------|
|                                  | Aug   | Sep   | Oct   |  | 2002                      | 2003          |
|                                  | 2003  | 2003  | 2003  |  |                           |               |
|                                  | \$m   | \$m   | \$m   | %  | \$m                       | \$m           |
| SECTION AND DIVISION OF THE SITC |   |       |       |  |                           |               |
| 4                                | Animal and vegetable oils, fats and waxes   |       |       |  |                           |               |
| 41                               | Animal oils and fats  | 1     | 6     | —  | —                         | 10 13         |
| 42                               | Fixed vegetable fats and oils, crude, refined or fractionated   | 37    | 21    | 18   | 0.2                       | 110 104       |
| 43                               | Fats and oils (processed), waxes and inedible mixtures or preparations, of animal or vegetable origin, n.e.s.     | 3     | 4     | 4  | —                         | 14 15         |
|                                  | <i>Total animal and vegetable oils, fats and waxes</i>  | 40    | 31    | 22   | 0.2                       | 134 132       |
| 5                                | Chemicals and related products, n.e.s.(b)   |       |       |  |                           |               |
| 51                               | Organic chemicals   | 193   | 147   | 289  | 2.4                       | 798 780       |
| 52                               | Inorganic chemicals(b)  | 71    | 57    | 66   | 0.6                       | 210 250       |
| 53                               | Dyeing, tanning and colouring materials   | 39    | 47    | 51   | 0.4                       | 189 179       |
| 54                               | Medicinal and pharmaceutical products   | 473   | 465   | 581  | 4.9                       | 1 820 2 039   |
| 55                               | Essential oils and resinoids and perfume materials; toilet, polishing and cleansing preparations                  | 109   | 125   | 131  | 1.1                       | 459 466       |
| 56                               | Fertilisers (excl. crude)   | 34    | 38    | 46   | 0.4                       | 153 145       |
| 57                               | Plastics in primary forms   | 95    | 96    | 108  | 0.9                       | 466 397       |
| 58                               | Plastics in non-primary forms   | 83    | 86    | 97   | 0.8                       | 364 351       |
| 59                               | Chemical materials and products, n.e.s.   | 115   | 115   | 121  | 1.0                       | 520 476       |
|                                  | <i>Total chemicals and related products, n.e.s.</i>   | 1 214 | 1 175 | 1 489  | 12.6                      | 4 979 5 083   |
| 6                                | Manufactured goods classified chiefly by material(b)  |       |       |  |                           |               |
| 61                               | Leather, leather manufactures, and dressed furskins, n.e.s.   | 16    | 12    | 17   | 0.1                       | 71 61         |
| 62                               | Rubber manufactures, n.e.s.(b)  | 151   | 143   | 154  | 1.3                       | 614 598       |
| 63                               | Cork and wood manufactures (excl. furniture)  | 51    | 52    | 52   | 0.4                       | 225 205       |
| 64                               | Paper, paperboard, and articles of paper pulp, of paper or of paperboard(b)                                       | 210   | 221   | 238  | 2.0                       | 881 889       |
| 65                               | Textile yarn, fabrics, made-up articles, n.e.s., and related products   | 219   | 228   | 229  | 1.9                       | 996 897       |
| 66                               | Non-metallic mineral manufactures, n.e.s.   | 165   | 217   | 185  | 1.6                       | 756 738       |
| 67                               | Iron and steel(b)   | 172   | 170   | 181  | 1.5                       | 625 701       |
| 68                               | Non-ferrous metals(b)   | 65    | 101   | 96   | 0.8                       | 325 327       |
| 69                               | Manufactures of metals, n.e.s.(b)   | 261   | 277   | 294  | 2.5                       | 1 083 1 092   |
|                                  | <i>Total manufactured goods classified chiefly by material</i>  | 1 309 | 1 423 | 1 446  | 12.2                      | 5 575 5 508   |
| 7                                | Machinery and transport equipment(b)  |       |       |  |                           |               |
| 71                               | Power generating machinery and equipment  | 239   | 255   | 302  | 2.5                       | 1 080 1 094   |
| 72                               | Machinery specialised for particular industries   | 454   | 407   | 432  | 3.7                       | 1 672 1 705   |
| 73                               | Metal working machinery   | 64    | 49    | 48   | 0.4                       | 207 231       |
| 74                               | General industrial machinery and equipment, n.e.s. and machine parts, n.e.s.                                      | 591   | 602   | 680  | 5.7                       | 2 495 2 430   |
| 75                               | Office machines and automatic data processing machines  | 626   | 655   | 681  | 5.7                       | 2 724 2 614   |
| 76                               | Telecommunications and sound recording and reproducing apparatus and equipment                                    | 585   | 638   | 677  | 5.7                       | 2 435 2 486   |
| 77                               | Electrical machinery, apparatus, appliances, parts (incl. non-elec. counterparts of electrical domestic equip)(b) | 553   | 591   | 625  | 5.3                       | 2 406 2 356   |
| 78                               | Road vehicles (incl. air-cushion vehicles)  | 1 307 | 1 589 | 1 571  | 13.3                      | 5 748 5 978   |
| 79                               | Transport equipment (excl. road vehicles)   | 664   | 422   | 357  | 3.0                       | 2 029 1 723   |
|                                  | <i>Total machinery and transport equipment</i>  | 5 083 | 5 209 | 5 373  | 45.4                      | 20 796 20 616 |

— nil or rounded to zero (including null cells)

(b) Excludes imports commodities subject to a confidentiality restriction. These are included in Division 98.

(a) Percent of total merchandise imports is calculated for the most recent month.

|                                  | Aug<br>2003  | Sep<br>2003   | Oct<br>2003   | Percent<br>of total<br>merchandise<br>trade(a) | 4 MONTHS<br>ENDED OCTOBER |               |
|----------------------------------|--|---------------|---------------|--|---------------------------|---------------|
|                                  |  |               |               |  | 2002                      | 2003          |
|                                  |  |               |               |  | \$m                       | \$m           |
| SECTION AND DIVISION OF THE SITC |  |               |               |  |                           |               |
| 8                                | Miscellaneous manufactured articles(b)   |               |               |  |                           |               |
| 81                               | Prefabricated buildings; sanitary, plumbing, heating and lighting fixtures and fittings, n.e.s.                  |               |               |  |                           |               |
|                                  | 37   | 45            | 46            | 0.4  | 160                       | 164           |
| 82                               | Furniture, parts thereof; bedding, mattresses, mattress supports, cushions and similar stuffed furnishings       |               |               |  |                           |               |
|                                  | 140  | 151           | 162           | 1.4  | 556                       | 583           |
| 83                               | Travel goods, handbags and similar containers  |               |               |  |                           |               |
|                                  | 43   | 48            | 52            | 0.4  | 191                       | 184           |
| 84                               | Articles of apparel and clothing accessories   |               |               |  |                           |               |
|                                  | 306  | 307           | 287           | 2.4  | 1 237                     | 1 214         |
| 85                               | Footwear   |               |               |  |                           |               |
|                                  | 93   | 81            | 73            | 0.6  | 401                       | 342           |
| 87                               | Professional, scientific and controlling instruments and apparatus, n.e.s.                                       |               |               |  |                           |               |
|                                  | 251  | 264           | 273           | 2.3  | 1 052                     | 1 073         |
| 88                               | Photographic apparatus, equipment and supplies and optical goods, n.e.s.; watches and clocks(b)                  |               |               |  |                           |               |
|                                  | 116  | 124           | 137           | 1.2  | 570                       | 485           |
| 89                               | Miscellaneous manufactured articles, n.e.s.  |               |               |  |                           |               |
|                                  | 632  | 780           | 787           | 6.6  | 2 721                     | 2 777         |
|                                  | <i>Total miscellaneous manufactured articles</i>   |               |               |  |                           |               |
|                                  | 1 618  | 1 799         | 1 817         | 15.3   | 6 888                     | 6 822         |
| 9                                | Commodities and transactions not classified elsewhere in the SITC(b)   |               |               |  |                           |               |
| 93                               | Special transactions and commodities not classified according to kind  |               |               |  |                           |               |
|                                  | 3  | 3             | 2             | —  | 15                        | 10            |
| 95                               | Gold coin whether or not legal tender, and other coin being legal tender   |               |               |  |                           |               |
|                                  | 1  | 1             | —             | —  | 3                         | 3             |
| 96                               | Coin (excl. gold coin), not being legal tender   |               |               |  |                           |               |
|                                  | —  | —             | —             | —  | —                         | —             |
| 97                               | Gold, non-monetary (excl. gold ores and concentrates)  |               |               |  |                           |               |
|                                  | 200  | 296           | 161           | 1.4  | 791                       | 834           |
| 98                               | Combined confidential items excl some of SITC 280 (exports only) and some of SITCs 510 and 520 (imports only)(c) |               |               |  |                           |               |
|                                  | 31   | 15            | 24            | 0.2  | 263                       | 106           |
|                                  | <i>Total commodities and transactions not classified elsewhere in the SITC</i>                                   |               |               |  |                           |               |
|                                  | 235  | 315           | 187           | 1.6  | 1 071                     | 954           |
|                                  | <b>Total Merchandise Imports</b>   |               |               |  |                           |               |
|                                  | <b>10 875</b>  | <b>11 489</b> | <b>11 839</b> | <b>100.0</b>                                   | <b>45 405</b>             | <b>44 808</b> |
|                                  | Balance of Payments Adjustments  |               |               |  |                           |               |
|                                  | -175   | 163           | 215           | —  | 602                       | 716           |
|                                  | Goods Debits (imports) on a Balance of Payments Basis  |               |               |  |                           |               |
|                                  | 10 700   | 11 652        | 12 054        | —  | 46 007                    | 45 524        |

— nil or rounded to zero (including null cells)

(a) Percent of total merchandise imports is calculated for the most recent month.

(b) Excludes imports commodities subject to a confidentiality restriction. These are included in Division 98.

(c) Includes imports commodities subject to a confidentiality restriction.

## INTERNATIONAL MERCHANDISE TRADE, By country and country groups(a)

| Country                   | EXPORTS        |              |                |               | IMPORTS        |               |                |               | BALANCE OF MERCHANDISE TRADE |               |
|---------------------------|----------------|--------------|----------------|---------------|----------------|---------------|----------------|---------------|------------------------------|---------------|
|                           | 2002-03        | October      | 4 months ended |               | 2002-03        | October       | 4 months ended |               | 2002-03                      | October       |
|                           |                | 2003         | October        | October       |                | 2003          | October        | October       |                              | October       |
|                           | \$m            | \$m          | \$m            | \$m           | \$m            | \$m           | \$m            | \$m           | \$m                          |               |
| Belgium(b)                | —              | 58           | —              | 203           | —              | 114           | —              | 398           | —                            | -195          |
| Brazil                    | 413            | 33           | 122            | 175           | 490            | 40            | 188            | 166           | -77                          | 9             |
| Canada                    | 1 818          | 170          | 644            | 545           | 1 755          | 154           | 557            | 640           | 63                           | -95           |
| China                     | 8 802          | 740          | 2 915          | 3 007         | 13 789         | 1 501         | 5 010          | 5 362         | -4 987                       | -2 355        |
| Denmark                   | 125            | 17           | 41             | 49            | 770            | 79            | 244            | 269           | -645                         | -220          |
| Egypt(c)                  | 370            | 28           | 215            | 54            | 20             | 2             | 12             | 7             | 350                          | 47            |
| Fiji                      | 542            | 47           | 219            | 164           | 222            | 19            | 76             | 73            | 321                          | 91            |
| Finland                   | 453            | 49           | 137            | 156           | 680            | 59            | 213            | 223           | -227                         | -67           |
| France                    | 1 172          | 87           | 429            | 334           | 3 781          | 232           | 898            | 999           | -2 609                       | -664          |
| Germany                   | 1 585          | 109          | 648            | 405           | 7 952          | 676           | 2 756          | 2 719         | -6 367                       | -2 314        |
| Hong Kong (Sar of China)  | 3 214          | 228          | 1 191          | 945           | 1 234          | 101           | 487            | 378           | 1 980                        | 567           |
| India                     | 2 577          | 347          | 771            | 1 245         | 979            | 97            | 356            | 347           | 1 598                        | 898           |
| Indonesia                 | 2 910          | 270          | 1 121          | 1 012         | 4 600          | 283           | 1 520          | 1 241         | -1 690                       | -229          |
| Iran                      | 407            | 12           | 154            | 47            | 40             | 2             | 7              | 20            | 368                          | 26            |
| Iraq                      | 360            | 40           | 122            | 40            | 37             | —             | —              | —             | 324                          | 40            |
| Ireland                   | 183            | 14           | 72             | 59            | 1 607          | 171           | 526            | 608           | -1 425                       | -549          |
| Israel                    | 195            | 19           | 86             | 79            | 481            | 39            | 159            | 149           | -286                         | -71           |
| Italy                     | 1 861          | 122          | 609            | 460           | 4 148          | 392           | 1 410          | 1 459         | -2 288                       | -999          |
| Japan                     | 21 724         | 1 554        | 7 840          | 6 530         | 16 337         | 1 572         | 5 719          | 5 661         | 5 388                        | 868           |
| Korea, Republic of        | 9 116          | 640          | 3 448          | 2 630         | 4 753          | 474           | 1 646          | 1 645         | 4 363                        | 986           |
| Kuwait                    | 518            | 52           | 169            | 213           | 184            | 19            | 49             | 40            | 334                          | 173           |
| Malaysia                  | 2 147          | 208          | 797            | 718           | 4 261          | 366           | 1 406          | 1 516         | -2 115                       | -797          |
| Mexico                    | 429            | 43           | 109            | 151           | 572            | 52            | 185            | 208           | -143                         | -57           |
| Netherlands               | 1 364          | 128          | 450            | 463           | 1 283          | 107           | 433            | 402           | 81                           | 61            |
| New Zealand               | 8 131          | 710          | 2 800          | 2 847         | 5 019          | 458           | 1 765          | 1 773         | 3 111                        | 1 074         |
| Pakistan                  | 285            | 31           | 97             | 142           | 192            | 16            | 63             | 55            | 93                           | 87            |
| Papua New Guinea          | 950            | 60           | 347            | 277           | 1 502          | 75            | 360            | 434           | -552                         | -157          |
| Philippines               | 1 091          | 91           | 388            | 302           | 839            | 85            | 290            | 291           | 252                          | 11            |
| Saudi Arabia              | 1 991          | 144          | 700            | 627           | 1 284          | 61            | 378            | 187           | 708                          | 441           |
| Singapore                 | 4 657          | 271          | 1 749          | 997           | 4 370          | 518           | 1 508          | 1 590         | 288                          | -593          |
| South Africa              | 1 314          | 118          | 413            | 440           | 1 060          | 105           | 360            | 409           | 254                          | 31            |
| Spain                     | 667            | 70           | 208            | 237           | 1 047          | 84            | 357            | 374           | -380                         | -136          |
| Sweden                    | 211            | 11           | 78             | 96            | 1 810          | 160           | 551            | 570           | -1 598                       | -473          |
| Switzerland               | 378            | 17           | 96             | 66            | 1 230          | 104           | 463            | 378           | -852                         | -311          |
| Taiwan                    | 4 311          | 326          | 1 612          | 1 199         | 3 376          | 295           | 1 194          | 1 158         | 934                          | 40            |
| Thailand                  | 2 479          | 227          | 967            | 792           | 3 471          | 367           | 1 159          | 1 276         | -992                         | -483          |
| Turkey                    | 298            | 25           | 67             | 79            | 223            | 21            | 77             | 72            | 75                           | 8             |
| United Arab Emirates      | 1 234          | 77           | 489            | 344           | 755            | 45            | 149            | 233           | 479                          | 111           |
| United Kingdom            | 7 234          | 450          | 1 897          | 2 214         | 5 769          | 501           | 2 038          | 1 882         | 1 464                        | 332           |
| United States of America  | 10 365         | 853          | 3 863          | 3 303         | 22 494         | 1 806         | 7 655          | 7 211         | -12 129                      | -3 908        |
| Viet Nam                  | 472            | 39           | 163            | 125           | 2 505          | 190           | 870            | 796           | -2 033                       | -671          |
| Other Countries(d)        | 7 102          | 574          | 2 491          | 1 974         | 6 211          | 399           | 2 307          | 1 592         | 891                          | 382           |
| <b>Total</b>              | <b>115 454</b> | <b>9 109</b> | <b>40 732</b>  | <b>35 748</b> | <b>133 130</b> | <b>11 839</b> | <b>45 405</b>  | <b>44 808</b> | <b>-17 675</b>               | <b>-9 060</b> |
| APEC                      | 83 003         | 6 455        | 30 088         | 25 503        | 92 245         | 8 390         | 31 830         | 31 595        | -9 242                       | -6 092        |
| ASEAN                     | 13 853         | 1 112        | 5 221          | 3 973         | 20 749         | 1 845         | 6 999          | 6 855         | -6 896                       | -2 881        |
| Developing Countries      | 52 958         | 4 271        | 19 156         | 16 337        | 51 216         | 4 792         | 17 667         | 17 617        | 1 742                        | -1 280        |
| Least Developed Countries | 1 231          | 117          | 468            | 384           | 227            | 23            | 77             | 75            | 1 004                        | 308           |
| European Union            | 15 858         | 1 130        | 4 946          | 4 722         | 31 397         | 2 668         | 10 461         | 10 278        | -15 539                      | -5 555        |
| OECD                      | 68 337         | 5 153        | 23 855         | 20 915        | 84 750         | 7 385         | 28 853         | 28 217        | -16 413                      | -7 302        |

— nil or rounded to zero (including null cells)

(a) See AusStats for details of all countries.

(b) Prior to July 2003, Belgium and Luxembourg were combined. Belgium-Luxembourg is included in 'Other Countries' up to and including June 2003.

(c) Exports of Alumina to Egypt are excluded from its country total and included in the 'Other Countries' category.

(d) Includes small value export entries which cannot yet be allocated by country.

|   | 4 MONTHS<br>ENDED OCTOBER |               |               |               |
|---|---------------------------|---------------|---------------|---------------|
|   | 2002-03                   | Oct<br>2003   | 2002          | 2003          |
|   | \$m                       | \$m           | \$m           | \$m           |
| .....                                     |                           |               |               |               |
| EXPORTS (a)                               |                           |               |               |               |
| New South Wales                           | 20 232                    | 1 517         | 7 259         | 6 022         |
| Victoria                                  | 18 907                    | 1 550         | 7 018         | 5 857         |
| Queensland                                | 21 379                    | 1 711         | 7 721         | 6 660         |
| South Australia                           | 8 365                     | 652           | 2 985         | 2 555         |
| Western Australia                         | 32 415                    | 2 563         | 10 728        | 10 397        |
| Tasmania                                  | 2 454                     | 184           | 785           | 792           |
| Northern Territory                        | 2 607                     | 215           | 1 056         | 691           |
| Australian Capital Territory              | 4                         | 3             | 1             | 9             |
| State not available for publication(b)(c) | 429                       | 114           | 143           | 215           |
| Re-exports                                | 8 661                     | 601           | 3 036         | 2 550         |
| <b>Total exports</b>                      | <b>115 454</b>            | <b>9 109</b>  | <b>40 732</b> | <b>35 748</b> |
| .....                                     |                           |               |               |               |
| IMPORTS                                   |                           |               |               |               |
| New South Wales                           | 55 250                    | 5 075         | 19 020        | 18 834        |
| Victoria                                  | 42 129                    | 3 572         | 14 130        | 13 773        |
| Queensland                                | 16 358                    | 1 635         | 5 600         | 6 198         |
| South Australia                           | 5 724                     | 444           | 1 955         | 1 752         |
| Western Australia                         | 11 755                    | 1 012         | 3 656         | 3 813         |
| Tasmania                                  | 763                       | 30            | 457           | 172           |
| Northern Territory                        | 934                       | 71            | 372           | 264           |
| Australian Capital Territory              | 217                       | —             | 214           | 3             |
| <b>Total imports</b>                      | <b>133 130</b>            | <b>11 839</b> | <b>45 405</b> | <b>44 808</b> |

— nil or rounded to zero (including null cells)

(a) State in which the final stage of production or manufacture occurs.

(b) Includes exports which cannot yet be allocated by state. These shipments will be appropriately classified as more details become available.

(c) Exports of Alumina to Bahrain, Egypt and Iceland are excluded from the state totals and included in 'State not available for publication' category.

## PERIOD AVERAGE EXCHANGE RATES, Per Australian Dollar(a)

| <i>Period</i>  | <i>United States dollar</i> | <i>United Kingdom pound</i> | <i>Euro</i> | <i>Japanese yen</i> | <i>Trade-weighted index of value of the \$A(b)</i> |
|----------------|-----------------------------|-----------------------------|-------------|---------------------|--|
| <i>Period</i>  | \$                          | \$                          | \$          | \$                  | \$   |
| FINANCIAL YEAR |                             |                             |             |                     |  |
| <b>2000-01</b> | 0.5379                      | 0.3704                      | 0.6023      | 61.49               | 50.3   |
| <b>2001-02</b> | 0.5239                      | 0.3632                      | 0.5850      | 66.10               | 50.7   |
| <b>2002-03</b> | 0.5848                      | 0.3685                      | 0.5577      | 70.01               | 53.5   |
| MONTHS         |                             |                             |             |                     |  |
| <b>2002</b>    |                             |                             |             |                     |  |
| August         | 0.5422                      | 0.3527                      | 0.5543      | 64.48               | 50.5   |
| September      | 0.5470                      | 0.3517                      | 0.5578      | 66.01               | 51.1   |
| October        | 0.5498                      | 0.3530                      | 0.5601      | 68.09               | 51.7   |
| November       | 0.5611                      | 0.3570                      | 0.5604      | 68.19               | 52.2   |
| December       | 0.5627                      | 0.3555                      | 0.5535      | 68.81               | 52.1   |
| <b>2003</b>    |                             |                             |             |                     |  |
| January        | 0.5825                      | 0.3605                      | 0.5490      | 69.21               | 52.9   |
| February       | 0.5947                      | 0.3691                      | 0.5520      | 71.00               | 53.9   |
| March          | 0.6023                      | 0.3804                      | 0.5577      | 71.43               | 54.6   |
| April          | 0.6090                      | 0.3869                      | 0.5610      | 72.92               | 55.3   |
| May            | 0.6470                      | 0.3989                      | 0.5601      | 75.91               | 57.4   |
| June           | 0.6643                      | 0.4000                      | 0.5689      | 78.58               | 58.8   |
| July           | 0.6621                      | 0.4074                      | 0.5820      | 78.57               | 58.9   |
| August         | 0.6512                      | 0.4086                      | 0.5843      | 77.32               | 58.2   |
| September      | 0.6614                      | 0.4107                      | 0.5891      | 76.11               | 58.5   |
| October        | 0.6941                      | 0.4138                      | 0.5928      | 75.98               | 60.1   |

- (a) These exchange rates and the trade-weighted index are derived using rates provided by the Reserve Bank of Australia in respect of each trading day.
- (b) May 1970=100. The trade-weighted index is reweighted annually (on 1 October) and on special occasions if required.

## EXPLANATORY NOTES

### INTRODUCTION

**1** This publication presents preliminary estimates of Australia's international trade in goods and services on a balance of payments basis and merchandise import and export statistics on a recorded trade basis.

**2** Merchandise trade statistics on a recorded trade basis are compiled from information submitted by exporters and importers or their agents to the Australian Customs Service (ACS). Adjustments for coverage, timing and valuation are made to recorded trade data to convert them to a balance of payments basis. The main source for services data is the quarterly Survey of International Trade in Services.

**3** More comprehensive quarterly estimates of Australia's trade in goods and services, together with comprehensive details of Australia's balance of payments are included in the quarterly publication, *Balance of Payments and International Investment Position, Australia* (cat.no.5302.0). Detailed monthly statistics on merchandise trade are available on AusStats or by subscription to tailored services.

### CONCEPTS, SOURCES AND METHODS

**4** The conceptual framework used in compiling Australia's merchandise trade statistics can be found in *International Merchandise Trade, Australia: Concepts, Sources and Methods, 2001* (cat.no.5489.0).

**5** The conceptual framework used in compiling Australia's balance of payments statistics is based on the Fifth Edition of the International Monetary Fund's *Balance of Payments Manual* (BPM5,1993). Descriptions of the underlying concepts and structure of the balance of payments and the sources, methods and terms used in compiling the estimates are presented in *Balance of Payments and International Investment Position, Australia: Concepts, Sources and Methods, 1998* (cat.no.5331.0). To bring merchandise trade statistics on a recorded trade basis to a balance of payment basis, timing adjustments are made to ensure that the transaction is recorded in the period in which ownership changed, rather than in the period in which the transaction was recorded by ACS. Adjustments are also made to imports to take account of distortions which arise when significant changes occur in the volume of import entries lodged but not yet processed by ACS in a given month. Chapter 6 of cat. no. 5331.0 provides more detail on the relationship between statistics on international merchandise trade on a recorded trade basis and on a balance of payments basis.

**6** Both of the Concepts, Sources and Methods publications are available for free from the ABS web site, see <<http://www.abs.gov.au>> -select *About Statistics* then *Concepts & Classifications*.

### SEASONAL ADJUSTMENT

**7** Monthly original estimates are volatile, being subject to calendar-related and large irregular influences. Seasonally adjusted estimates are derived by estimating and removing systematic calendar related effects, such as seasonal and trading day influences, from the original series. Seasonal adjustment does not aim to remove the irregular or non-seasonal influences which may be present in any particular month. These irregular influences may reflect both random economic events and difficulties of statistical recording. The international trade in goods and services on a balance of payments basis estimates are seasonally adjusted. The merchandise exports and imports statistics on a recorded trade basis are not.

### TREND ESTIMATES

**8** The month-to-month movements of the seasonally adjusted estimates may not be reliable indicators of trend behaviour because they include irregular or non-seasonal movements. Trend estimates are derived by applying a 13-term Henderson moving average to the seasonally adjusted series. The use of a 13-term Henderson average can result in revisions to the estimates for the most recent six months as additional observations become available. Revisions can also occur because of changes in the original data and as a result of the annual re-estimation of the seasonal factors.



## EXPLANATORY NOTES *continued*

### SIGN CONVENTION

**9** In keeping with balance of payments conventions, where statistics are on a balance of payments basis, credit entries (exports) are shown without sign and debit items (imports) are shown as negative entries. For statistics on a recorded trade basis, both imports and exports are shown without sign. The calculation of percentage changes on balance of payments debit items are made without regard to sign. References to balance of payments debit items in Key Figures, Key Points, and Analysis and Comments are also made without regard to sign.

### COMMODITY BREAKDOWNS OF GOODS

**10** For details of the classification used for goods exports on a balance of payments basis (credits), see table 6.6 in *Balance of Payments and International Investment Position, Australia: Concepts, Sources and Methods, 1998* (cat.no.5331.0).

**11** Details of the classification of goods imports on a balance of payments basis (debits) are provided in table 6.7 in cat. no. 5331.0. Most of the commodity groups shown in table 4 for goods debits are available for more detailed sub-groups from AusStats.

**12** The recorded trade statistics shown in tables 7 and 8 are classified by the Standard International Trade Classification 2 (SITC). The first section of tables 7 and 8 show the most significant commodities (by value) at the SITC 3 digit level.

### COMMODITY BREAKDOWNS OF SERVICES

**13** The quarterly detailed services data published in Table 6 are consistent with the monthly aggregates shown in Table 5. Services trade data by major partner countries and by Australian state of production/consumption are published on a financial year basis and a calendar year basis.

**14** Monthly indicators for many of the services components that are only surveyed quarterly are not available. In particular, the Freight and Other transportation components of Total services credits are not available for publication on a monthly basis. The estimates for these items shown in table 5 are therefore derived by dividing the quarterly estimate by three.

### RELATED PRODUCTS OR SERVICES

**15** More detailed balance of payments and recorded merchandise trade data, including forward seasonal factors, are available from AusStats. Very detailed merchandise trade data by commodity, country and state are available by contacting the National Information and Referral Service, as shown on the back of this publication.

**16** Users may also wish to refer to the following publications which are available from ABS Bookshops and on the ABS web site:

- *Balance of Payments and International Investment Position, Australia* (cat.no.5302.0) - issued quarterly
- *International Merchandise Imports, Australia* (cat.no.5439.0) - issued monthly
- *International Trade Price Indexes, Australia* (cat.no.6457.0) - issued quarterly
- *Balance of Payments and International Investment Position, Australia: Concepts, Sources and Methods* (cat.no.5331.0)
- *Information Paper: Quality of Australian Balance of Payments Statistics* (cat.no.5342.0)
- *International Merchandise Trade, Australia: Concepts, Sources and Methods* (cat.no.5489.0)
- *A Guide to Australian Balance of Payments and International Investment Position Statistics* (cat.no.5362.0.55.001).

**17** The last four publications are available for free on the ABS web site <<http://www.abs.gov.au>> - select *About Statistics* then *Concepts & Classifications*.

## EXPLANATORY NOTES *continued*

---

### ABBREVIATIONS

|        |  |
|--------|--|
| ABS    | Australian Bureau of Statistics                        |
| ACS    | Australian Customs Service                             |
| APEC   | Asia Pacific Economic Co-operation                     |
| ASEAN  | Association of South-East Asian Nations                |
| n.e.s. | not elsewhere specified                                |
| n.i.e. | not included elsewhere                                 |
| OECD   | Organisation for Economic Co-operation and Development |
| SAR    | Special Administrative Region                          |
| SITC   | Standard International Trade Classification            |

## APPENDIX RELATED ARTICLES

| <i>Article</i>  | <i>Source</i> | <i>Issue</i> |
|---|---------------|--------------|
| <b>Investment</b>   |               |              |
| Gross external debt   | 5302.0        | Sep qtr 2003 |
| Foreign ownership of equity   | 5302.0        | Sep qtr 2003 |
| Measuring Australia's foreign currency exposure   | 5302.0        | Dec qtr 2001 |
| <b>Balance of payments</b>  |               |              |
| International comparison of balance of payments statistics  | 5363.0        | 1999–2000    |
| The Sydney Olympic Games  | 5302.0        | Sep qtr 1999 |
| The Sydney Olympic Games Update   | 5368.0        | Jul 2000     |
| <b>Merchandise trade</b>  |               |              |
| Export and import currencies  | 5422.0        | Mar qtr 2003 |
| Australia's exporters and importers, 2001–02  | 5422.0        | Dec qtr 2002 |
| Trade through Australia's ports   | 5422.0        | Sep qtr 2002 |
| Australia's trade in wine   | 5422.0        | Dec qtr 2001 |
| Australia's export markets, 1991–92 to 2000–01  | 5422.0        | Jun qtr 2001 |
| Major commodities traded by Australia, 1991 to 2000   | 5422.0        | Dec qtr 2000 |
| Australia's trade in crude petroleum  | 5422.0        | Mar qtr 2000 |
| Australia's merchandise trade with the Republic of Korea  | 5422.0        | Sep qtr 1999 |
| Australia's merchandise trade with Japan  | 5422.0        | Mar qtr 1999 |
| Bilateral merchandise trade statistics reconciliation: Australia and the European Union, 1992 to 1997 | 5422.0        | Sep qtr 1998 |
| <b>Trade in services</b>  |               |              |
| International trade in services by partner country, 2002  | (a) web site  | May 2003     |
| International trade in services by State, 2002  | (a) web site  | May 2003     |
| International trade in goods and services by partner country, 2001–02                                 | (a) web site  | Oct 2002     |
| International trade in goods and services by State, 2001–02   | (a) web site  | Oct 2002     |
| Goods and selected services by region, 2000–2001  | 5368.0        | Feb 2002     |
| International trade in education services   | 5302.0        | Sep qtr 2001 |
| <b>Finance</b>  |               |              |
| Recent trends in construction and first home buyers finance   | 5609.0        | Mar 2002     |
| Household sector data in the financial accounts   | 5232.0        | Mar qtr 2002 |
| Investment Managers   | 5655.0        | Jun qtr 2000 |
| Venture capital, 1999–2000  | 5611.0        | 2000-2001    |
| Impact of 2003–2004 farm season on Australian production  | 5611.0        | 1999-2000    |
| <b>Technical information</b>  |               |              |
| Changes to country and port classifications   | 5368.0        | May 2003     |
| The effect of customs changes on export statistics  | 5422.0        | Jun qtr 2002 |
| Harmonized system changes   | 5422.0        | Sep qtr 2001 |
| International trade review: data quality and client queries   | 5422.0        | Jun qtr 2000 |
| Data confidentiality  | 5422.0        | Dec qtr 1999 |
| Change to value threshold for imports   | 5422.0        | Jun qtr 1998 |

(a) International Trade Theme Page: Select Themes; International Trade; Topics of Interest

## FOR MORE INFORMATION . . .

- INTERNET* **www.abs.gov.au** the ABS web site is the best place to start for access to summary data from our latest publications, information about the ABS, advice about upcoming releases, our catalogue, and Australia Now—a statistical profile.
- LIBRARY* A range of ABS publications is available from public and tertiary libraries Australia-wide. Contact your nearest library to determine whether it has the ABS statistics you require, or visit our web site for a list of libraries.
- CPI INFOLINE* For current and historical Consumer Price Index data, call 1902 981 074 (call cost 77c per minute).
- DIAL-A-STATISTIC* For the latest figures for National Accounts, Balance of Payments, Labour Force, Average Weekly Earnings, Estimated Resident Population and the Consumer Price Index call 1900 986 400 (call cost 77c per minute).

## INFORMATION SERVICE

Data already published that can be provided within five minutes will be free of charge. Our information consultants can also help you to access the full range of ABS information—ABS user pays services can be tailored to your needs, time frame and budget. Publications may be purchased. Specialists are on hand to help you with analytical or methodological advice.

- PHONE* 1300 135 070
- EMAIL* [client.services@abs.gov.au](mailto:client.services@abs.gov.au)
- FAX* 1300 135 211
- POST* Client Services, ABS, GPO Box 796, Sydney NSW 2001

## WHY NOT SUBSCRIBE?

ABS subscription services provide regular, convenient and prompt deliveries of ABS publications and products as they are released. Email delivery of monthly and quarterly publications is available.

- PHONE* 1300 366 323
- EMAIL* [subscriptions@abs.gov.au](mailto:subscriptions@abs.gov.au)
- FAX* 03 9615 7848
- POST* Subscription Services, ABS, GPO Box 2796Y, Melbourne Vic 3001



2536800010034

ISSN 1328 2778

RRP \$19.50