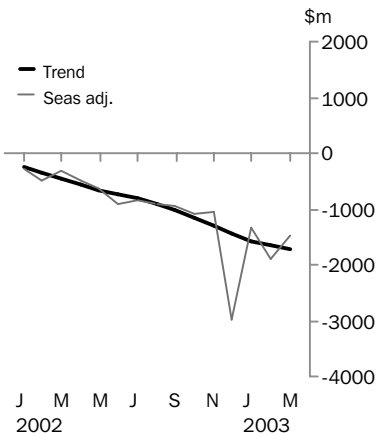


# INTERNATIONAL TRADE IN GOODS AND SERVICES

AUSTRALIA

EMBARGO: 11:30AM (CANBERRA TIME) FRI 2 MAY 2003

## Balance on goods and services



## MARCH KEY FIGURES

### TREND ESTIMATES

	Jan 2003 \$m	Feb 2003 \$m	Mar 2003 \$m	Feb 2003 to Mar 2003 % change
Balance on goods & services	-1 564	-1 651	-1 708	..
Credits (exports of goods & services)	12 643	12 581	12 513	-1
Debits (imports of goods & services)	14 207	14 232	14 221	0

### SEASONALLY ADJUSTED

	Jan 2003 \$m	Feb 2003 \$m	Mar 2003 \$m	Feb 2003 to Mar 2003 % change
Balance on goods & services	-1 331	-1 897	-1 475	..
Credits (exports of goods & services)	13 170	12 341	12 279	-1
Debits (imports of goods & services)	14 501	14 238	13 754	-3

## MARCH KEY POINTS

### TREND ESTIMATES

- The provisional trend estimate of the balance on goods and services was a deficit of \$1,708m in March, an increase of \$57m on the deficit in February.
- Goods and services credits fell \$68m to \$12,513m. Goods and services debits fell \$11m to \$14,221m.

### SEASONALLY ADJUSTED ESTIMATES

- In seasonally adjusted terms, the balance on goods and services was a deficit of \$1,475m in March, a decrease of \$422m on the deficit in February. The decrease was due to a small fall in credits and a larger fall in debits.
- Goods and services credits fell \$62m to \$12,279m. Rural goods rose by \$71m (4%), while non-rural and other goods fell \$11m. Services credits fell by \$122m (5%).
- Goods and services debits fell \$484m (3%) to \$13,754m, with goods debits down \$342m (3%) and services debits down \$142m (5%).
- The fall in services (both for debits and credits) was largely caused by reduced international travel.

### ORIGINAL ESTIMATES

- In original terms, the March balance on goods and services was a deficit of \$1,071m, an increase of \$389m (57%) on the deficit in February.
- Rural goods in the 9 months of the financial year to March were down \$2.9b on the corresponding period in 2001-02. Cereal grains were down \$1.6b.

- For further information about these and related statistics, please contact Karen Brown on Canberra 02 6252 7932, or the National Information and Referral Service on 1300 135 070.

# NOTES

## FORTHCOMING ISSUES

<i>ISSUE</i>	<i>EXPECTED RELEASE DATE</i>
April 2003	29 May 2003
May 2003	30 June 2003
June 2003	29 July 2003
July 2003	29 August 2003
August 2003	29 September 2003
September 2003	30 October 2003



## CHANGES IN THIS ISSUE

In original terms, revisions since the previous issue have:

- decreased the deficit on goods and services for December quarter 2002 by \$80m; and
- decreased the deficit on goods and services for the eight months to February 2003 by \$131m.

The revisions are the result of incorporating the latest available data relating to merchandise trade and the quarterly Survey of International Trade in Services.



## CHANGES TO FORTHCOMING ISSUES

The ABS has reviewed its publication strategy for international merchandise trade data and it has been decided to discontinue *International Merchandise Trade, Australia* (cat. no. 5422.0) after the March quarter 2003 issue (due for release on 23 May 2003). It was previously announced that the March 2003 issue of this publication would be released in a new format incorporating some data from 5422.0. However, this has been delayed until the April 2003 issue of this publication (expected to be released on 29 May 2003). We apologise for the delay.

This monthly publication, *International Trade in Goods and Services, Australia* (cat. no. 5368.0) will be expanded to include the following tables:

International Merchandise Exports by Commodity (similar to table 11 in 5422.0)

International Merchandise Imports by Commodity (similar to table 11 in 5422.0)

International Merchandise Trade by Selected Country and Country Groups (similar to table 7 in 5422.0)

International Merchandise Exports and Imports by State (similar to tables 25 and 26 in 5422.0).

This issue of the publication will be available on the ABS web site in the new format in mid May 2003.



## SYMBOLS AND OTHER USAGES

- n.e.s. not elsewhere specified
- n.i.e. not included elsewhere
- n.p. not published
- .. not applicable



Dennis Trewin  
Australian Statistician

## ANALYSIS AND COMMENTS

### BALANCE ON GOODS AND SERVICES

The trend estimate of the balance on goods and services was a deficit of \$1,708m in March 2003, an increase of \$57m on the deficit in February.

In seasonally adjusted terms, the balance on goods and services was a deficit of \$1,475m in March, a decrease of \$422m on the deficit in February.

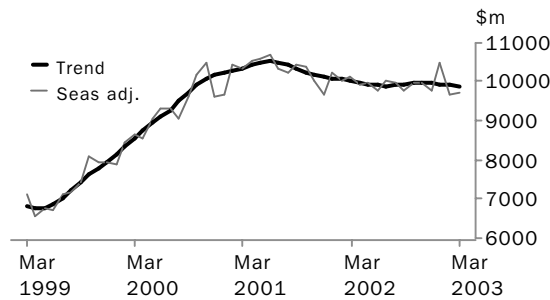
The sum of the seasonally adjusted balances for the three months to March 2003 was a deficit of \$4,703m, a decrease of \$433m on the deficit of \$5,136m for the three months to December 2002. However, if the more detailed seasonal factors used in compiling quarterly Balance of Payments are applied, the March quarter 2003 deficit was \$4,579m, a decrease of \$830m on the revised December quarter 2002 deficit of \$5,409m.

### EXPORTS OF GOODS AND SERVICES

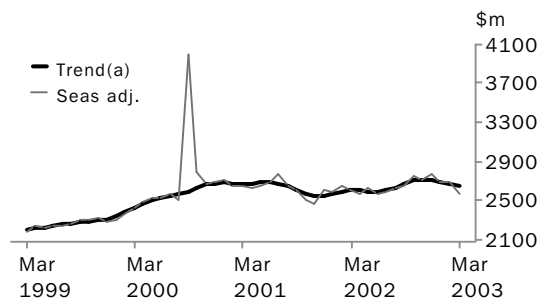
The trend estimate of goods and services credits fell \$68m in March to \$12,513m.

In seasonally adjusted terms, goods and services credits fell \$62m in March to \$12,279m. Rural goods rose \$71m (4%), while non-rural and other goods fell marginally by \$11m. Services credits fell \$122m (5%). Short-term visitor arrivals dropped, causing a fall in travel credits.

#### GOODS CREDITS



#### SERVICES CREDITS



(a) Trend estimates exclude the impact of the Olympics in September and October 2000

**RURAL GOODS** The trend estimate of rural goods fell \$42m (2%) to \$1,922m. In seasonally adjusted terms, rural goods rose \$71m (4%) to \$2,003m. Rural goods, in original terms, increased \$192m (10%) to \$2,075m. Rural goods in the 9 months of the financial year to March were down \$2.9b on the corresponding period in 2001-02.

The March increase in exports of rural goods, in original terms, was mainly driven by:

- Other rural, up \$77m (9%) with increases in exports of vegetables and fruits (34%); fish, crustaceans and molluscs (17%) and cork and wood (12%);
- Meat and meat preparations, up \$58m (13%). Exports of beef and veal rose \$37m (12%) with volumes up 10% and prices up 3%; and
- Wool and sheepskins, up \$51m (17%). Exports of greasy wool rose \$61m (33%) with volumes up 30% and prices up 2%.

## ANALYSIS AND COMMENTS

**NON-RURAL AND OTHER GOODS** The trend estimate of non-rural and other goods rose \$2m to \$7,945m. Seasonally adjusted, non-rural and other goods decreased \$11m to \$7,715m. Non-rural goods were up \$193m, but this was offset by a \$204m decrease in Other goods.

In original terms, non-rural goods rose \$987m (16%) to \$7,130m, with increases in all categories.

Increases were greater than usual for February to March for:

- Other mineral fuels, up \$126m (15%), in contrast to no movement on average over the previous three years. Exports of crude oil rose \$60m (15%) with volumes up 9% and prices 6%;
- Machinery, up \$130m (24%), compared to an average rise over the previous three years of 1%; and
- Metals (excluding gold), up \$195m (35%), compared to an average rise over the previous three years of 17%.

Increases were smaller than usual for:

- Transport equipment, up \$18m (4%), compared to an average increase over the previous three years of 35%; and
- Other non-rural, up \$66m (9%), compared to an average increase over the previous three years of 22%.

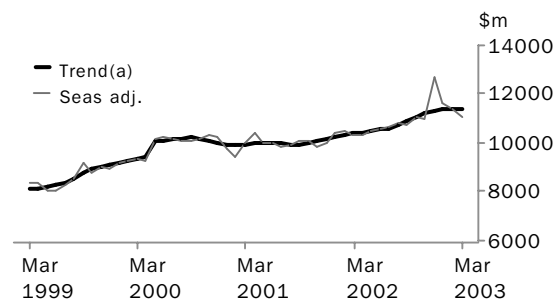
### IMPORTS OF GOODS AND SERVICES

The trend estimate of goods and services debits fell \$11m to \$14,221m.

In seasonally adjusted terms, goods and services debits fell \$484m (3%) to \$13,754m. Goods debits fell \$342m (3%) and services debits fell \$142m (5%). Falling departures of residents caused a fall in travel debits.

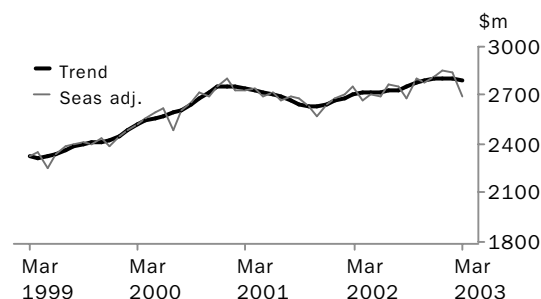
Preliminary analysis shows that goods import volumes, in seasonally adjusted terms, increased about 0.5% during the March quarter 2003. The Chain Laspeyres price index fell about 1.8% and the implicit price deflator fell by about 2.2%. The final volume and price outcomes will be published in the March quarter 2003 issue of *Balance of Payments and International Investment Position, Australia* (5302.0).

#### GOODS DEBITS



(a) A trend break of \$500m has been applied to May 2000. Trend estimates exclude abnormal imports of aircraft in December 2002.

#### SERVICES DEBITS



## ANALYSIS AND COMMENTS

**CONSUMPTION GOODS** The trend estimate of imports of consumption goods decreased \$47m to \$3,372m. In seasonally adjusted terms, imports of consumption goods fell \$204m (6%) to \$3,187m. Consumption goods, in original terms, fell \$34m (1%) to \$3,131m. This fall was in contrast to the usual February to March rise, resulting in the fall in the seasonally adjusted estimate.

Contributing to the fall in the seasonally adjusted series were:

- non-industrial transport equipment, down \$86m (9%), in contrast to an average rise over the previous three years of 28%; and
- consumption goods n.e.s., up \$14m (1%), compared to an average rise over the previous three years of 6%.

Offsetting these effects was a rise in the imports of toys, books and leisure goods, up 20%, which was significantly higher than the average rise over the previous three years of 4%.

**CAPITAL GOODS** The trend estimate of imports of capital goods rose \$4m to \$2,535m. Seasonally adjusted, capital goods imports fell \$258m (9%) to \$2,505m.

Imports of capital goods, in original terms, rose \$122m (5%) to \$2,438m. This increase was smaller than the usual February to March rise, producing a fall in the seasonally adjusted estimate.

Contributing to the fall in the seasonally adjusted series were:

- civil aircraft, down \$99m (28%), in contrast to an average rise over the previous three years of 36%;
- industrial transport equipment, up \$20m (7%), compared to an average rise over the previous three years of 26%;
- telecommunications equipment, up \$34m (13%), compared to an average rise over the previous three years of 34%; and
- machinery and industrial equipment, up \$21m (3%), compared to an average rise over the previous three years of 9%.

**INTERMEDIATE AND OTHER GOODS** The trend estimate of imports of intermediate and other goods increased \$40m (1%) to \$5,517m.

Seasonally adjusted, imports of intermediate and other goods rose \$120m (2%) to \$5,364m.

Imports of intermediate and other goods, in original terms, increased \$457m (9%) to \$5,322m.

Increases were larger than usual for February to March for:

- fuels and lubricants, up \$271m (36%), compared to an average rise over the previous three years of 12%. The increase is due to increased volumes of crude petroleum; and
- other merchandise goods, up \$47m (58%), compared to an average rise over the previous three years of 2%.

Offsetting these increases were falls in goods for processing, down 31%, compared to an average fall over the previous three years of 6%; and falls in organic and inorganic chemicals, down 9%, in contrast to an average rise over the previous three years of 20%.

GOODS AND SERVICES(a), Summary: **Seasonally Adjusted and Trend**

CREDITS..... DEBITS.....

Months	Balance on	Total	Rural	Non-rural	Total	Total goods	Total goods	Total goods	Con-	Capital	Inter-	Total
	goods and	goods										
	services	and	goods(b)	goods(b)	services	and services	and services	and services	goods	goods	other goods	services
	\$m	\$m	\$m	\$m	\$m	\$m	\$m	\$m	\$m	\$m	\$m	\$m
<b>SEASONALLY ADJUSTED</b>												
<b>2002</b>												
January	- 292	12 828	10 234	2 379	7 855	2 594	-13 120	-10 442	-3 191	-2 330	-4 921	-2 678
February	- 495	12 682	10 037	2 458	7 579	2 645	-13 177	-10 465	-3 278	-2 353	-4 834	-2 712
March	- 331	12 758	10 156	2 407	7 749	2 602	-13 089	-10 330	-3 183	-2 223	-4 924	-2 759
April	- 492	12 489	9 913	2 506	7 407	2 576	-12 981	-10 315	-3 257	-2 300	-4 758	-2 666
May	- 622	12 613	9 983	2 542	7 441	2 630	-13 235	-10 530	-3 297	-2 527	-4 706	-2 705
June	- 896	12 336	9 760	2 354	7 406	2 576	-13 232	-10 535	-3 295	-2 411	-4 829	-2 697
July	- 834	12 587	10 007	2 331	7 676	2 580	-13 421	-10 649	-3 293	-2 581	-4 775	-2 772
August	- 908	12 630	9 993	2 392	7 601	2 637	-13 538	-10 786	-3 340	-2 393	-5 053	-2 752
September	- 950	12 439	9 796	2 253	7 543	2 643	-13 389	-10 704	-3 464	-2 409	-4 831	-2 685
October	-1 095	12 740	9 994	2 399	7 595	2 746	-13 835	-11 032	-3 359	-2 643	-5 030	-2 803
November	-1 067	12 691	9 975	2 248	7 727	2 716	-13 758	-10 978	-3 490	-2 417	-5 071	-2 780
December	-2 974	12 533	9 765	2 032	7 733	2 768	-15 507	-12 690	-3 482	-3 794	-5 414	-2 817
<b>2003</b>												
January	-1 331	13 170	10 473	1 934	8 539	2 697	-14 501	-11 645	-3 634	-2 137	-5 874	-2 856
February	-1 897	12 341	9 658	1 932	7 726	2 683	-14 238	-11 398	-3 391	-2 763	-5 244	-2 840
March	-1 475	12 279	9 718	2 003	7 715	2 561	-13 754	-11 056	-3 187	-2 505	-5 364	-2 698
<b>TREND ESTIMATES</b>												
<b>2002</b>												
January	- 232	12 676	10 098	2 453	7 645	2 578	-12 908	-10 240	-3 144	-2 284	-4 812	-2 668
February	- 345	12 656	10 058	2 443	7 615	2 598	-13 001	-10 314	-3 186	-2 304	-4 824	-2 687
March	- 455	12 633	10 026	2 448	7 578	2 607	-13 088	-10 384	-3 224	-2 335	-4 825	-2 704
April	- 557	12 597	9 993	2 450	7 543	2 604	-13 154	-10 441	-3 256	-2 371	-4 814	-2 713
May	- 657	12 549	9 953	2 440	7 513	2 596	-13 206	-10 490	-3 280	-2 408	-4 802	-2 716
June	- 742	12 517	9 922	2 420	7 502	2 595	-13 259	-10 540	-3 301	-2 439	-4 800	-2 719
July	- 824	12 511	9 902	2 396	7 506	2 609	-13 335	-10 610	-3 322	-2 472	-4 816	-2 725
August	- 911	12 542	9 906	2 365	7 541	2 636	-13 453	-10 717	-3 356	-2 492	-4 869	-2 736
September	-1 021	12 601	9 929	2 321	7 608	2 672	-13 622	-10 867	-3 402	-2 500	-4 965	-2 755
October	-1 152	12 661	9 958	2 260	7 698	2 703	-13 813	-11 036	-3 445	-2 501	-5 090	-2 777
November	-1 302	12 690	9 971	2 186	7 785	2 719	-13 992	-11 198	-3 472	-2 508	-5 218	-2 794
December	-1 447	12 682	9 966	2 103	7 863	2 716	-14 129	-11 323	-3 475	-2 515	-5 333	-2 806
<b>2003</b>												
January	-1 564	12 643	9 944	2 027	7 917	2 699	-14 207	-11 398	-3 455	-2 522	-5 421	-2 809
February	-1 651	12 581	9 907	1 964	7 943	2 674	-14 232	-11 427	-3 419	-2 531	-5 477	-2 805
March	-1 708	12 513	9 867	1 922	7 945	2 646	-14 221	-11 424	-3 372	-2 535	-5 517	-2 797

(a) For sign conventions, see paragraph 8 of the Explanatory notes.

(b) For all time periods, estimates for Sugar, sugar preparations and honey are included in Other non-rural

## GOODS AND SERVICES(a), Summary: Original

Period	CREDITS.....						DEBITS.....					
	Balance on goods and services	Total goods and services	Total goods	Rural goods(b)	Non-rural and other goods(b)	Total services	Total goods and services	Total goods	Consumption goods	Capital goods	Inter-mediate and other goods	Total services
	\$m	\$m	\$m	\$m	\$m	\$m	\$m	\$m	\$m	\$m	\$m	\$m
<b>1999-2000</b>	-14 289	126 034	97 665	23 617	74 048	28 369	-140 323	-110 610	-30 781	-26 695	-53 134	-29 713
<b>2000-01</b>	875	153 511	120 307	29 061	91 246	33 204	-152 636	-120 337	-35 775	-25 552	-59 010	-32 299
<b>2001-02</b>	-1 648	152 290	121 090	29 815	91 275	31 200	-153 938	-121 882	-37 422	-27 148	-57 312	-32 056
<b>2002</b>												
January	- 727	11 789	8 897	2 155	6 742	2 892	-12 516	-9 802	-2 801	-2 232	-4 769	-2 714
February	563	12 446	9 293	2 394	6 899	3 153	-11 883	-9 510	-3 057	-1 970	-4 483	-2 373
March	754	13 027	10 491	2 553	7 938	2 536	-12 273	-9 709	-2 900	-2 080	-4 729	-2 564
April	- 703	12 182	9 738	2 447	7 291	2 444	-12 885	-10 248	-3 172	-2 180	-4 896	-2 637
May	- 983	12 435	10 081	2 639	7 442	2 354	-13 418	-10 776	-3 087	-2 779	-4 910	-2 642
June	- 444	12 114	9 725	2 245	7 480	2 389	-12 558	-9 838	-2 902	-2 436	-4 500	-2 720
July	-1 086	13 141	10 205	2 266	7 939	2 936	-14 227	-11 283	-3 674	-2 777	-4 832	-2 944
August	-1 217	12 748	10 269	2 376	7 893	2 479	-13 965	-11 164	-3 602	-2 428	-5 134	-2 801
September	-1 677	12 255	9 906	2 167	7 739	2 349	-13 932	-10 989	-3 701	-2 484	-4 804	-2 943
October	-2 382	13 160	10 475	2 471	8 004	2 685	-15 542	-12 563	-3 994	-2 907	-5 662	-2 979
November	-1 397	12 679	10 024	2 308	7 716	2 655	-14 076	-11 376	-3 721	-2 432	-5 223	-2 700
December	-1 707	13 233	10 486	2 259	8 227	2 747	-14 940	-12 157	-3 323	-3 607	-5 227	-2 783
<b>2003</b>												
January	-1 857	12 023	9 004	1 734	7 270	3 019	-13 880	-10 965	-3 185	-2 085	-5 695	-2 915
February	- 682	12 150	8 953	1 883	7 070	3 197	-12 832	-10 346	-3 165	-2 316	-4 865	-2 486
March	-1 071	12 406	9 928	2 075	7 853	2 478	-13 477	-10 891	-3 131	-2 438	-5 322	-2 586
FINANCIAL YEAR TO DATE												
9 months to Mar 2002	482	115 559	91 546	22 484	69 062	24 013	-115 077	-91 020	-28 261	-19 753	-43 006	-24 057
9 months to Mar 2003	-13 076	113 795	89 250	19 539	69 711	24 545	-126 871	-101 734	-31 496	-23 474	-46 764	-25 137

(a) For sign conventions, see paragraph 8 of the Explanatory notes.

(b) For all time periods, estimates for Sugar, sugar preparations and honey are included in Other non-rural

## GOODS CREDITS: Original

## RURAL GOODS.....

<i>Period</i>	<i>Total goods</i>	<i>Total rural goods(a)</i>	<i>Meat and meat preparations</i>	<i>Cereal grains and cereal preparations</i>	<i>Sugar, sugar preparations and honey(a)</i>	<i>Wool and sheepskins</i>	<i>Other rural</i>
<i>\$m</i>	<i>\$m</i>	<i>\$m</i>	<i>\$m</i>	<i>\$m</i>	<i>\$m</i>	<i>\$m</i>	<i>\$m</i>
<b>1999-2000</b>	97 665	23 617	4 467	4 941	n.p.	2 963	11 246
<b>2000-01</b>	120 307	29 061	5 796	5 834	n.p.	3 897	13 534
<b>2001-02</b>	121 090	29 815	6 246	6 211	n.p.	3 687	13 671
<b>2002</b>							
January	8 897	2 155	298	666	n.p.	176	1 015
February	9 293	2 394	450	523	n.p.	313	1 108
March	10 491	2 553	562	431	n.p.	421	1 139
April	9 738	2 447	495	645	n.p.	291	1 016
May	10 081	2 639	550	516	n.p.	322	1 251
June	9 725	2 245	512	408	n.p.	274	1 051
July	10 205	2 266	496	362	n.p.	307	1 101
August	10 269	2 376	483	453	n.p.	267	1 173
September	9 906	2 167	468	382	n.p.	303	1 014
October	10 475	2 471	570	390	n.p.	422	1 089
November	10 024	2 308	529	325	n.p.	408	1 046
December	10 486	2 259	535	272	n.p.	372	1 080
<b>2003</b>							
January	9 004	1 734	314	277	n.p.	227	916
February	8 953	1 883	446	277	n.p.	308	852
March	9 928	2 075	504	283	n.p.	359	929
FINANCIAL YEAR TO DATE							
9 months to Mar 2002	91 546	22 484	4 689	4 642	n.p.	2 800	10 353
9 months to Mar 2003	89 250	19 539	4 345	3 021	n.p.	2 973	9 200

(a) For all time periods, estimates for Sugar, sugar preparations and honey are included in Other non-rural



GOODS CREDITS: **Original** *continued*

## NON-RURAL GOODS.....

<i>Period</i>	<i>Total non-rural goods(a)</i>	<i>Metal ores and minerals</i>	<i>Coal, coke and briquettes</i>	<i>Other mineral fuels</i>	<i>Metals (excl. gold)</i>	<i>Machinery</i>	<i>Transport equipment</i>	<i>Other manufactures</i>	<i>Other non-rural(a)</i>	<i>Other goods(b)</i>
<i>\$m</i>	<i>\$m</i>	<i>\$m</i>	<i>\$m</i>	<i>\$m</i>	<i>\$m</i>	<i>\$m</i>	<i>\$m</i>	<i>\$m</i>	<i>\$m</i>	<i>\$m</i>
<b>1999-2000</b>	66 493	11 760	8 336	9 082	8 810	7 133	4 597	11 539	5 236	7 555
<b>2000-01</b>	83 836	15 205	10 844	13 464	10 146	8 797	5 041	13 530	6 809	7 410
<b>2001-02</b>	83 656	14 774	13 430	10 940	9 650	7 999	5 686	13 758	7 419	7 619
<b>2002</b>										
January	6 019	1 034	1 246	879	810	470	205	881	494	723
February	6 336	1 143	1 080	765	757	575	430	1 118	468	563
March	7 293	1 137	1 159	805	893	682	723	1 247	647	645
April	6 696	1 284	1 086	855	756	590	492	1 080	553	595
May	6 676	1 152	1 027	856	805	684	387	1 146	619	766
June	6 866	1 260	1 051	872	698	622	557	1 137	669	614
July	7 188	1 189	1 007	1 016	810	666	511	1 179	810	751
August	7 252	1 210	1 089	1 078	801	641	510	1 129	794	641
September	7 216	1 263	1 019	1 058	721	647	461	1 212	835	523
October	7 182	1 224	978	893	794	632	668	1 186	807	822
November	7 062	1 147	1 018	950	764	633	712	1 180	658	654
December	7 503	1 318	1 120	1 009	824	697	672	1 134	729	724
<b>2003</b>										
January	6 306	1 108	1 116	923	726	448	429	901	655	964
February	6 143	1 139	871	823	555	540	471	1 033	711	927
March	7 130	1 280	1 045	949	750	670	489	1 170	777	723
FINANCIAL YEAR TO DATE										
9 months to Mar 2002	63 418	11 078	10 266	8 357	7 391	6 103	4 250	10 395	5 578	5 644
9 months to Mar 2003	62 982	10 878	9 263	8 699	6 745	5 574	4 923	10 124	6 776	6 729

(a) For all time periods, estimates for Sugar, sugar preparations and honey are included in Other non-rural

(b) Includes non-monetary gold.

## GOODS DEBITS(a): Original

## CONSUMPTION GOODS.....

<i>Period</i>	<i>Total goods</i>	<i>Total consumption goods</i>	<i>Food and beverages, mainly for consumption</i>	<i>Household electrical items</i>	<i>Non-industrial transport equipment</i>	<i>Textiles, clothing and footwear</i>	<i>Toys, books and leisure goods</i>	<i>Consumption goods n.e.s.</i>
	<i>\$m</i>	<i>\$m</i>	<i>\$m</i>	<i>\$m</i>	<i>\$m</i>	<i>\$m</i>	<i>\$m</i>	<i>\$m</i>
<b>1999-2000</b>	- 110 610	-30 781	-3 943	-2 456	-7 735	-4 232	-3 238	-9 177
<b>2000-01</b>	- 120 337	-35 775	-4 483	-3 000	-9 627	-4 811	-3 359	-10 495
<b>2001-02</b>	- 121 882	-37 422	-4 687	-3 166	-9 930	-4 849	-3 494	-11 296
<b>2002</b>								
January	-9 802	-2 801	- 406	- 186	- 696	- 440	- 234	- 839
February	-9 510	-3 057	- 376	- 238	- 685	- 528	- 272	- 958
March	-9 709	-2 900	- 365	- 238	- 861	- 371	- 231	- 834
April	-10 248	-3 172	- 360	- 286	- 820	- 393	- 280	-1 033
May	-10 776	-3 087	- 358	- 286	- 908	- 338	- 275	- 922
June	-9 838	-2 902	- 317	- 259	- 905	- 318	- 285	- 818
July	-11 283	-3 674	- 382	- 314	-1 095	- 477	- 327	-1 079
August	-11 164	-3 602	- 409	- 330	- 893	- 526	- 356	-1 088
September	-10 989	-3 701	- 419	- 350	-1 001	- 437	- 360	-1 134
October	-12 563	-3 994	- 486	- 413	- 918	- 495	- 463	-1 219
November	-11 376	-3 721	- 469	- 371	- 895	- 427	- 421	-1 138
December	-12 157	-3 323	- 464	- 287	- 973	- 373	- 281	- 945
<b>2003</b>								
January	-10 965	-3 185	- 449	- 254	- 772	- 491	- 265	- 954
February	-10 346	-3 165	- 369	- 238	- 924	- 478	- 218	- 938
March	-10 891	-3 131	- 406	- 266	- 838	- 408	- 261	- 952
FINANCIAL YEAR TO DATE								
9 months to Mar 2002	-91 020	-28 261	-3 652	-2 335	-7 297	-3 800	-2 654	-8 523
9 months to Mar 2003	- 101 734	-31 496	-3 853	-2 823	-8 309	-4 112	-2 952	-9 447

(a) For sign conventions, see paragraph 8 of the Explanatory Notes.

GOODS DEBITS(a): Original *continued*

## CAPITAL GOODS.....

<i>Period</i>	<i>Total capital goods</i>	<i>Machinery and industrial equipment</i>	<i>ADP equipment</i>	<i>Telecommunications equipment</i>	<i>Civil aircraft</i>	<i>Industrial transport equipment n.e.s.</i>	<i>Capital goods n.e.s.</i>
<i>\$m</i>	<i>\$m</i>	<i>\$m</i>	<i>\$m</i>	<i>\$m</i>	<i>\$m</i>	<i>\$m</i>	<i>\$m</i>
<b>1999-2000</b>	-26 695	-8 912	-4 912	-4 150	-1 414	-3 981	-3 326
<b>2000-01</b>	-25 552	-8 876	-5 260	-4 379	- 609	-2 753	-3 675
<b>2001-02</b>	-27 148	-9 502	-5 055	-3 643	-1 513	-3 553	-3 882
<b>2002</b>							
January	-2 232	- 827	- 378	- 163	- 354	- 233	- 277
February	-1 970	- 654	- 373	- 171	- 234	- 249	- 289
March	-2 080	- 713	- 457	- 231	- 133	- 239	- 307
April	-2 180	- 734	- 473	- 228	- 110	- 287	- 348
May	-2 779	- 779	- 436	- 358	- 231	- 627	- 348
June	-2 436	- 719	- 444	- 333	- 326	- 294	- 320
July	-2 777	- 914	- 451	- 271	- 473	- 298	- 370
August	-2 428	-1 089	- 393	- 265	0	- 301	- 380
September	-2 484	- 894	- 421	- 258	- 189	- 338	- 384
October	-2 907	-1 004	- 428	- 324	- 439	- 313	- 399
November	-2 432	-1 032	- 360	- 323	-30	- 314	- 373
December	-3 607	- 975	- 405	- 350	-1 234	- 288	- 355
<b>2003</b>							
January	-2 085	- 953	- 332	- 222	-7	- 263	- 308
February	-2 316	- 787	- 320	- 263	- 358	- 291	- 297
March	-2 438	- 808	- 435	- 297	- 259	- 311	- 328
FINANCIAL YEAR TO DATE							
9 months to Mar 2002	-19 753	-7 270	-3 702	-2 724	- 846	-2 345	-2 866
9 months to Mar 2003	-23 474	-8 456	-3 545	-2 573	-2 989	-2 717	-3 194

(a) For sign conventions, see paragraph 8 of the Explanatory Notes.

GOODS DEBITS(a): **Original** *continued*

## INTERMEDIATE AND OTHER MERCHANDISE GOODS.....

<i>Period</i>	<i>Total intermediate and other merchandise goods</i>	<i>Food and beverages, mainly for industry</i>	<i>Primary industrial supplies n.e.s.</i>	<i>Fuels and lubricants</i>	<i>Parts for transport equipment</i>	<i>Parts for ADP equipment</i>	<i>Other parts for capital goods</i>	<i>Organic and inorganic chemicals</i>
<i>\$m</i>	<i>\$m</i>	<i>\$m</i>	<i>\$m</i>	<i>\$m</i>	<i>\$m</i>	<i>\$m</i>	<i>\$m</i>	<i>\$m</i>
<b>1999-2000</b>	-49 073	- 731	-1 117	-7 450	-6 874	-1 936	-8 008	-3 572
<b>2000-01</b>	-54 652	- 592	-1 133	-10 358	-7 089	-2 255	-9 072	-3 777
<b>2001-02</b>	-52 172	- 577	-1 117	-8 823	-6 827	-2 159	-8 216	-3 447
<b>2002</b>								
January	-4 419	-56	- 100	- 618	- 550	- 177	- 663	- 369
February	-4 028	-51	-73	- 688	- 547	- 161	- 619	- 252
March	-4 314	-50	-107	- 703	- 538	- 193	- 650	- 289
April	-4 398	-48	-106	- 648	- 564	- 183	- 691	- 277
May	-4 551	-50	-96	- 800	- 581	- 172	- 715	- 283
June	-4 015	-47	-85	- 671	- 553	- 185	- 666	- 212
July	-4 406	-62	-104	- 697	- 621	- 199	- 716	- 287
August	-4 754	-63	-128	- 847	- 630	- 178	- 721	- 237
September	-4 408	-61	-129	- 614	- 598	- 159	- 718	- 238
October	-5 079	-55	-106	-1 007	- 679	- 172	- 762	- 251
November	-4 771	-52	-109	- 817	- 667	- 177	- 734	- 206
December	-4 705	-63	-100	- 952	- 629	- 165	- 721	- 261
<b>2003</b>								
January	-5 012	-76	-88	-1 128	- 616	- 158	- 740	- 257
February	-4 289	-73	-83	- 750	- 503	- 145	- 686	- 274
March	-4 877	-75	-113	-1 021	- 564	- 183	- 720	- 250
FINANCIAL YEAR TO DATE								
9 months to Mar 2002	-39 208	- 432	- 830	-6 704	-5 129	-1 619	-6 144	-2 675
9 months to Mar 2003	-42 301	- 580	- 960	-7 833	-5 507	-1 536	-6 518	-2 261

(a) For sign conventions, see paragraph 8 of the Explanatory Notes.

GOODS DEBITS(a): **Original** *continued*INTERMEDIATE AND OTHER MERCHANDISE GOODS *continued*.....

Period	<i>Paper and paperboard</i>	<i>Textile yarn and fabrics</i>	<i>Iron and steel</i>	<i>Plastics</i>	<i>Processed industrial supplies n.e.s.</i>	<i>Other merchandise goods</i>	<i>Other goods(b)</i>
	\$m	\$m	\$m	\$m	\$m	\$m	\$m
<b>1999-2000</b>	-2 207	-1 987	-1 509	-2 037	-10 772	- 873	-4 061
<b>2000-01</b>	-2 311	-1 863	-1 437	-2 193	-11 252	-1 320	-4 358
<b>2001-02</b>	-2 225	-1 830	-1 765	-2 182	-11 441	-1 563	-5 140
<b>2002</b>							
January	- 181	- 151	- 176	- 194	-1 017	- 167	- 350
February	- 178	- 142	- 125	- 157	- 913	- 122	- 455
March	- 187	- 133	- 154	- 176	- 959	- 175	- 415
April	- 189	- 155	- 146	- 183	-1 066	- 142	- 498
May	- 182	- 172	- 148	- 194	-1 023	- 135	- 359
June	- 158	- 152	- 141	- 168	- 795	- 182	- 485
July	- 184	- 182	- 135	- 196	- 936	- 87	- 426
August	- 205	- 169	- 164	- 205	- 992	- 215	- 380
September	- 199	- 160	- 158	- 203	-1 031	- 140	- 396
October	- 237	- 171	- 170	- 227	-1 037	- 205	- 583
November	- 203	- 159	- 147	- 217	-1 044	- 239	- 452
December	- 176	- 137	- 175	- 207	- 953	- 166	- 522
<b>2003</b>							
January	- 214	- 154	- 191	- 226	-1 067	- 97	- 683
February	- 186	- 130	- 163	- 197	-1 018	- 81	- 576
March	- 193	- 139	- 159	- 209	-1 123	- 128	- 445
FINANCIAL YEAR TO DATE							
9 months to Mar 2002	-1 696	-1 351	-1 330	-1 637	-8 557	-1 104	-3 798
9 months to Mar 2003	-1 797	-1 401	-1 462	-1 887	-9 201	-1 358	-4 463

(a) For sign conventions, see paragraph 8 of the Explanatory Notes. (b) Includes non-monetary gold.

## SERVICES(a)(b): Original

Period	CREDITS.....					DEBITS.....				
	Total services	Freight	Other transportation	Travel	Other services	Total services	Freight	Other transportation	Travel	Other services
	\$m	\$m	\$m	\$m	\$m	\$m	\$m	\$m	\$m	\$m
<b>1999-2000</b>	28 369	1 017	5 848	13 139	8 365	-29 713	-5 257	-4 761	-9 836	-9 859
<b>2000-01</b>	33 204	1 038	7 024	15 366	9 776	-32 299	-5 991	-5 361	-11 189	-9 758
<b>2001-02</b>	31 200	1 001	6 664	14 775	8 760	-32 056	-5 626	-5 150	-10 934	-10 346
<b>2002</b>										
January	2 892	77	577	1 529	709	-2 714	-449	-407	-1 041	-817
February	3 153	77	571	1 803	702	-2 373	-430	-361	-743	-839
March	2 536	76	591	1 183	686	-2 564	-466	-413	-864	-821
April	2 444	80	526	1 097	741	-2 637	-468	-422	-885	-862
May	2 354	80	526	997	751	-2 642	-472	-445	-860	-865
June	2 389	81	522	1 034	752	-2 720	-402	-491	-931	-896
July	2 936	81	560	1 579	716	-2 944	-464	-551	-1 061	-868
August	2 479	81	560	1 111	727	-2 801	-499	-476	-946	-880
September	2 349	81	559	978	731	-2 943	-474	-511	-1 067	-891
October	2 685	79	570	1 187	849	-2 979	-513	-461	-1 076	-929
November	2 655	79	569	1 151	856	-2 700	-490	-404	-873	-933
December	2 747	79	590	1 222	856	-2 783	-479	-455	-900	-949
<b>2003</b>										
January	3 019	75	573	1 629	742	-2 915	-474	-467	-1 122	-852
February	3 197	75	573	1 808	741	-2 486	-444	-392	-795	-855
March	2 478	75	572	1 076	755	-2 586	-480	-445	-799	-862
FINANCIAL YEAR TO DATE										
9 months to Mar 2002	24 013	760	5 090	11 647	6 516	-24 057	-4 284	-3 792	-8 258	-7 723
9 months to Mar 2003	24 545	705	5 126	11 741	6 973	-25 137	-4 317	-4 162	-8 639	-8 019

(a) For sign conventions, see paragraph 8 of the Explanatory Notes.

(b) For more detailed trade in services by commodity, see Table 6.

## SERVICES(a)(b): Original—Quarterly

	CREDITS.....				DEBITS.....			
	<i>Jun Qtr</i>	<i>Sep Qtr</i>	<i>Dec Qtr</i>	<i>Mar Qtr</i>	<i>Jun Qtr</i>	<i>Sep Qtr</i>	<i>Dec Qtr</i>	<i>Mar Qtr</i>
	2002	2002	2002	2003	2002	2002	2002	2003
	\$m	\$m	\$m	\$m	\$m	\$m	\$m	\$m
<b>SERVICES</b>	<b>7 187</b>	<b>7 764</b>	<b>8 087</b>	<b>8 694</b>	<b>-7 999</b>	<b>-8 688</b>	<b>-8 462</b>	<b>-7 987</b>
<b>Transportation services</b>	<b>1 815</b>	<b>1 922</b>	<b>1 966</b>	<b>1 943</b>	<b>-2 700</b>	<b>-2 975</b>	<b>-2 802</b>	<b>-2 702</b>
Passenger	1 574	1 679	1 729	1 718	-1 138	-1 284	-1 083	-1 080
Freight	241	243	237	225	-1 342	-1 437	-1 482	-1 398
Other	n.p.	n.p.	n.p.	n.p.	- 220	- 254	- 237	- 224
<b>Travel services</b>	<b>3 128</b>	<b>3 668</b>	<b>3 560</b>	<b>4 513</b>	<b>-2 676</b>	<b>-3 074</b>	<b>-2 849</b>	<b>-2 716</b>
Business	289	270	271	269	- 698	- 701	- 663	- 751
Personal	2 839	3 398	3 289	4 244	-1 978	-2 373	-2 186	-1 965
Education-related	714	1 156	554	1 846	- 125	- 204	- 159	- 176
Other	2 125	2 242	2 735	2 398	-1 853	-2 169	-2 027	-1 789
<b>Communications services</b>	<b>219</b>	<b>264</b>	<b>323</b>	<b>255</b>	<b>- 301</b>	<b>- 295</b>	<b>- 500</b>	<b>- 324</b>
<b>Construction services</b>	<b>35</b>	<b>22</b>	<b>25</b>	<b>26</b>	<b>0</b>	<b>0</b>	<b>0</b>	<b>0</b>
<b>Insurance services</b>	<b>166</b>	<b>169</b>	<b>169</b>	<b>169</b>	<b>- 214</b>	<b>- 214</b>	<b>- 214</b>	<b>- 214</b>
<b>Financial services</b>	<b>196</b>	<b>196</b>	<b>196</b>	<b>196</b>	<b>- 139</b>	<b>- 139</b>	<b>- 139</b>	<b>- 139</b>
<b>Computer and information services</b>	<b>255</b>	<b>259</b>	<b>314</b>	<b>267</b>	<b>- 132</b>	<b>- 133</b>	<b>- 156</b>	<b>-94</b>
<b>Royalties and licence fees</b>	<b>138</b>	<b>115</b>	<b>161</b>	<b>132</b>	<b>- 439</b>	<b>- 476</b>	<b>- 467</b>	<b>- 441</b>
<b>Other business services</b>	<b>851</b>	<b>813</b>	<b>1 026</b>	<b>847</b>	<b>- 958</b>	<b>-1 019</b>	<b>- 980</b>	<b>- 953</b>
Merchanting and other trade-related	134	96	152	148	-90	- 113	- 100	-86
Operational leasing	9	9	4	5	- 207	- 218	- 249	- 249
Miscellaneous business, professional & technical	708	708	870	694	- 661	- 688	- 631	- 618
Legal, accounting, management consulting and public relations	158	176	171	192	- 124	-70	-84	-95
Advertising, market research, and public opinion polling	34	24	34	41	-57	-27	-40	-42
Research and development	66	79	78	55	-21	-38	-39	-22
Architectural, engineering and other technical services	134	133	191	129	- 139	- 213	-90	- 134
Agricultural, mining, and on-site processing	9	9	12	30	-38	-38	-38	-54
Services between affiliated enterprises n.i.e.	259	209	281	191	- 209	- 214	- 254	- 217
Other	48	78	103	56	-73	-88	-86	-54
<b>Personal, cultural, and recreational services</b>	<b>165</b>	<b>149</b>	<b>164</b>	<b>165</b>	<b>- 250</b>	<b>- 206</b>	<b>- 187</b>	<b>- 247</b>
Audiovisual and related services	17	26	37	26	- 215	- 178	- 154	- 211
Other personal, cultural and recreational services	148	123	127	139	-35	-28	-33	-36
<b>Government services n.i.e.</b>	<b>219</b>	<b>187</b>	<b>183</b>	<b>181</b>	<b>- 190</b>	<b>- 157</b>	<b>- 168</b>	<b>- 157</b>

(a) For sign conventions, see paragraph 8 of the Explanatory Notes.

(b) For more information, see paragraphs 11 and 12 of the Explanatory Notes.

## PERIOD AVERAGE EXCHANGE RATES(a)

## UNITS OF FOREIGN CURRENCY PER AUSTRALIAN DOLLAR.....

<i>Period</i>	<i>United States dollar</i>	<i>United Kingdom pound</i>	<i>Euro</i>	<i>Japanese yen</i>	<i>Special Drawing Right</i>	<i>Trade-weighted index of value of the \$A(b)</i>
<b>1999-2000</b>	0.6289	0.3948	.	67.90	0.4642	55.2
<b>2000-01</b>	0.5379	0.3704	0.6023	61.49	0.4177	50.3
<b>2001-02</b>	0.5239	0.3632	0.5850	66.10	0.4135	50.8
<b>2002</b>						
January	0.5169	0.3600	0.5836	68.51	0.4121	50.9
February	0.5130	0.3605	0.5897	68.54	0.4122	50.7
March	0.5243	0.3685	0.5982	68.74	0.4195	51.4
April	0.5354	0.3713	0.6047	70.06	0.4263	52.3
May	0.5497	0.3765	0.6000	69.55	0.4308	52.6
June	0.5694	0.3839	0.5962	70.29	0.4383	53.4
July	0.5544	0.3564	0.5580	65.43	0.4166	51.2
August	0.5422	0.3527	0.5543	64.48	0.4106	50.5
September	0.5470	0.3517	0.5578	66.01	0.4138	51.1
October	0.5498	0.3530	0.5601	68.09	0.4173	51.7
November	0.5611	0.3570	0.5604	68.19	0.4214	52.2
December	0.5627	0.3555	0.5535	68.81	0.4211	52.1
<b>2003</b>						
January	0.5825	0.3605	0.5490	69.21	0.4267	52.9
February	0.5947	0.3691	0.5520	71.00	0.4339	53.9
March	0.6023	0.3804	0.5577	71.43	0.4397	54.6

(a) These exchange rates and the trade-weighted index are derived using rates provided by the Reserve Bank of Australia in respect of each trading day.

(b) May 1970=100. The trade-weighted index is reweighted annually (on 1 October) and on special occasions as required.



# EXPLANATORY NOTES

## INTRODUCTION

**1** This publication contains preliminary estimates of Australia's international trade in goods and services on a balance of payments basis. General merchandise imports and exports are derived mainly from international trade statistics, which are based on Australian Customs Service records. Adjustments for coverage and timing are made to international trade statistics to bring them to a balance of payments basis. The main source of services data is the quarterly Survey of International Trade in Services.

**2** More comprehensive quarterly estimates of Australia's trade in goods and services, together with comprehensive details of Australia's balance of payments and international investment position statistics are included in the quarterly publication, *Balance of Payments and International Investment Position, Australia* (cat. no. 5302.0).

## CONCEPTS, SOURCES AND METHODS

**3** The conceptual framework used in Australia's balance of payments and international investment position statistics is based on the Fifth Edition of the International Monetary Fund's *Balance of Payments Manual* (BPM5, 1993). Descriptions of the underlying concepts and structure of the balance of payments and international investment position, and the sources, methods and terms used in compiling the estimates are presented in *Balance of Payments and International Investment Position, Australia: Concepts, Sources and Methods, 1998* (cat. no. 5331.0).

## SEASONAL ADJUSTMENT

**4** Monthly original estimates are volatile, being subject to calendar related and large irregular influences. Seasonally adjusted estimates are derived by estimating and removing systematic calendar related effects, such as seasonal and trading day influences, from the original series. The trading day influences arise from the varying length of months and the varying number of Sundays, Mondays, Tuesdays etc in each month. Seasonal adjustment does not aim to remove the irregular or non-seasonal influences which may be present in any particular month. The irregular influences may reflect both random economic events and difficulties of statistical recording.

**5** The factors used to seasonally adjust the monthly goods and services statistics can be obtained from Kevin Yeadon on Canberra (02) 6252 6255. There is a charge for this service.

## TREND ESTIMATES

**6** The month-to-month movements of the seasonally adjusted estimates may not be reliable indicators of trend behaviour. For example, irregular factors unrelated to the trend account for more than half the seasonally adjusted monthly movements with the following frequency:

balance on goods and services: 9 in 10 months  
goods and services credits: 8 in 10 months  
goods and services debits: 8 in 10 months.

**7** Trend estimates are derived by applying a 13-term Henderson moving average to the seasonally adjusted series. The 13-term Henderson average (like all Henderson averages) is symmetric, but as the end of a time series is approached, asymmetric forms of the average are applied. While the asymmetric weights enable trend estimates for recent months to be produced, they result in revisions to the estimates for the most recent six months as additional observations become available. There may also be revisions because of changes in the original data and as a result of the re-estimation of the seasonal factors. Details of trend-cycle weighting patterns are available on request from Time Series Analysis Section on Canberra 02 6252 6076.

## EXPLANATORY NOTES

### SIGN CONVENTION

**8** In keeping with balance of payments conventions, credit entries are shown without sign and debit items are shown as negative entries. However, references to debit items in Key Figures, Key Points, and Analysis and Comments are made without regard to sign.

### COMMODITY BREAKDOWNS OF GOODS

**9** For details of the classification used for rural and non-rural goods see table 6.6 in *Balance of Payments and International Investment Position, Australia: Concepts, Sources and Methods, 1998* (cat. no. 5331.0).

**10** Table 6.7 in 5331.0 provides details of the classification used for goods debits. Most of the 25 commodity groups shown in table 4 for merchandise goods debits are further sub-divided into a total of 106 commodity sub-groups. The information at this level is available as a special data service, and can be obtained from Kevin Yeadon on Canberra 02 6252 6255.

### COMMODITY BREAKDOWNS OF SERVICES

**11** The quarterly detailed services data published in Table 6 are consistent with the monthly aggregates shown in Table 5. Subject to confidentiality constraints, a further breakdown of services data on a quarterly basis is available on request. Services trade data by major partner countries and by Australian state of production/consumption are published on a financial year basis and a calendar year basis in feature articles in this publication. Additional detail and additional presentations of the data are available on request. For further information contact Kevin Yeadon on Canberra 02 6252 6255.

**12** Monthly indicators for many of the services components that are surveyed only quarterly are not available. In particular, the Freight and Other transportation components of Total services credits are not available for publication on a monthly basis. Therefore the estimates for these items shown in table 5 are derived by dividing the quarterly estimate by three.

### RELATED PRODUCTS AND SERVICES

**13** Detailed data of exports and imports of goods dissected by commodity and country are available on an international trade basis by contacting the National Information and Referral Service. Contact details are shown on the back of this publication.

**14** Users may also wish to refer to the following publications which are available from ABS Bookshops:

- *Balance of Payments and International Investment Position, Australia* (cat. no. 5302.0)—issued quarterly
- *International Merchandise Trade, Australia* (cat no. 5422.0)—issued quarterly
- *Balance of Payments and International Investment Position, Australia: Concepts, Sources and Methods* (cat. no. 5331.0)
- *Information Paper: Quality of Australian Balance of Payments Statistics* (cat. no. 5342.0)
- *International Merchandise Trade, Australia: Concepts, Sources and Methods* (cat. no. 5489.0)
- *A Guide to Australian Balance of Payments and International Investment Position Statistics* (cat. no. 5362.0.55.001).

**15** The last four publications are located on the ABS web site <<http://www.abs.gov.au>>

-select [About Statistics](#) then [Concepts & Classifications](#).

# WHAT IF...? REVISIONS TO TREND ESTIMATES

## EFFECT OF NEW SEASONALLY ADJUSTED ESTIMATES ON TREND ESTIMATES

Readers should exercise care in the interpretation of the trend data as the last three observations, in particular, are likely to be revised with the addition of subsequent months' data. For further information, see Explanatory Note 7.

### TREND REVISIONS

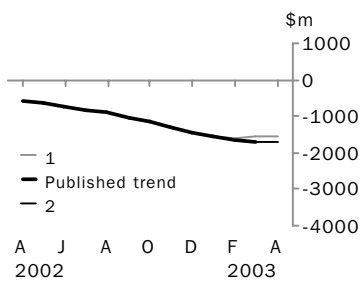
The graph below presents the effect of two possible scenarios on the previous trend estimates:

**1** The April seasonally adjusted estimate of the balance on goods and services 'improves' by \$200 million when compared with the March seasonally adjusted estimate. (An 'improvement' refers to an increase in a surplus or a decrease in a deficit.)

**2** The April seasonally adjusted estimate of the balance on goods and services 'deteriorates' by \$200 million when compared with the March seasonally adjusted estimate. (A 'deterioration' refers to a decrease in a surplus or an increase in a deficit.)

The change of \$200 million has been chosen because in the last decade the average monthly movement, without regard to sign, of the seasonally adjusted balance on goods and services series has been approximately \$200 million.

### BALANCE ON GOODS AND SERVICES



	TREND AS PUBLISHED	WHAT IF NEXT MONTH'S SEASONALLY ADJUSTED ESTIMATE:	
	\$m	<b>1</b> <i>improves by \$200m on Mar 2003</i> \$m	<b>2</b> <i>deteriorates by \$200m on Mar 2003</i> \$m
September 2002	-1 021	-1 021	-1 021
October 2002	-1 152	-1 162	-1 155
November 2002	-1 302	-1 318	-1 305
December 2002	-1 447	-1 455	-1 448
January 2003	-1 564	-1 543	-1 560
February 2003	-1 651	-1 577	-1 637
March 2003	-1 708	-1 574	-1 686
April 2003		-1 541	-1 709

## FOR MORE INFORMATION...

- INTERNET* **www.abs.gov.au** the ABS web site is the best place to start for access to summary data from our latest publications, information about the ABS, advice about upcoming releases, our catalogue, and Australia Now—a statistical profile.
- LIBRARY* A range of ABS publications is available from public and tertiary libraries Australia-wide. Contact your nearest library to determine whether it has the ABS statistics you require, or visit our web site for a list of libraries.
- CPI INFOLINE* For current and historical Consumer Price Index data, call 1902 981 074 (call cost 77c per minute).
- DIAL-A-STATISTIC* For the latest figures for National Accounts, Balance of Payments, Labour Force, Average Weekly Earnings, Estimated Resident Population and the Consumer Price Index call 1900 986 400 (call cost 77c per minute).

### INFORMATION SERVICE

Data which have been published and can be provided within five minutes are free of charge. Our information consultants can also help you to access the full range of ABS information—ABS user-pays services can be tailored to your needs, time frame and budget. Publications may be purchased. Specialists are on hand to help you with analytical or methodological advice.

- PHONE* **1300 135 070**
- EMAIL* **client.services@abs.gov.au**
- FAX* 1300 135 211
- POST* Client Services, ABS, GPO Box 796, Sydney 2001

## WHY NOT SUBSCRIBE?

ABS subscription services provide regular, convenient and prompt deliveries of ABS publications and products as they are released. Email delivery of monthly and quarterly publications is available.

- PHONE* 1300 366 323
- EMAIL* subscriptions@abs.gov.au
- FAX* 03 9615 7848
- POST* Subscription Services, ABS, GPO Box 2796Y, Melbourne 3001



2536800003036  
ISSN 1328-2778

RRP \$19.50

© Commonwealth of Australia 2003

Produced by the Australian Bureau of Statistics