

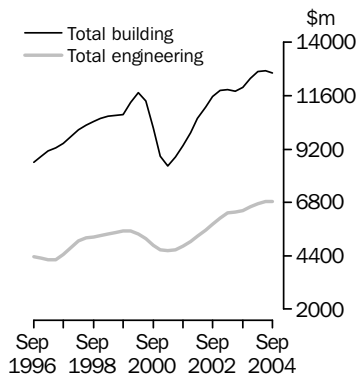
CONSTRUCTION WORK DONE AUSTRALIA
PRELIMINARY

EMBARGO: 11.30AM (CANBERRA TIME) WED 24 NOV 2004

KEY FIGURES

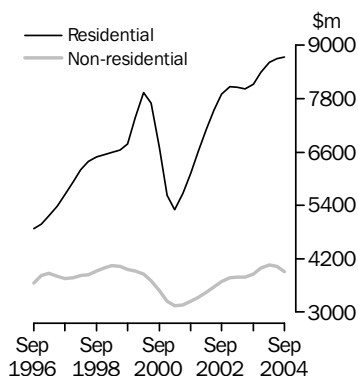
Value of construction work done

Volume terms
Trend estimates



Value of building work done

Volume terms
Trend estimates



INQUIRIES

- For further information about these and related statistics, contact the National Information and Referral Service on 1300 135 070 or Andrew Stidston on Adelaide (08) 8237 7668.

	Sep qtr 04	Jun qtr 04 to Sep qtr 04	Sep qtr 03 to Sep qtr 04
	\$m	% change	% change

TREND ESTIMATES (a)

Value of work done

Building	12 620.1	-0.8	5.3
Residential	8 726.2	0.3	7.4
Non-residential	3 904.1	-2.9	1.3
Engineering	6 838.1	0.1	6.1
Total construction	19 464.6	-0.4	5.6

SEASONALLY ADJUSTED ESTIMATES (a)

Value of work done

Building	12 459.6	-2.7	5.2
Residential	8 695.2	0.2	7.7
Non-residential	3 764.4	-8.7	-0.1
Engineering	6 819.0	0.1	8.4
Total construction	19 278.6	-1.7	6.3

(a) Reference year for Chain Volume Measures is 2002-2003.

KEY POINTS

VALUE OF CONSTRUCTION WORK DONE, VOLUME TERMS

TREND ESTIMATES

- The trend estimate of building work done fell 0.8% in the September quarter 2004. Slowing growth in residential building (+0.3%) was offset by a fall in non-residential building (-2.9%).
- Engineering work done was relatively flat, growing 0.1% in the September quarter 2004.
- Total construction work done fell 0.4% in the latest quarter.

SEASONALLY ADJUSTED ESTIMATES

- The seasonally adjusted estimate of building work done fell 2.7% in the September quarter 2004, to \$12,459.6m. Residential building rose 0.2%, to \$8,695.2m, a level only exceeded by the June quarter 2000. Non-residential building fell 8.7% in the September quarter 2004, to \$3,764.4m, the lowest estimate since the December quarter 2002.
- Engineering work done was relatively flat, growing 0.1%, to \$6,819.0m in the September quarter 2004. A rise in work done for the public sector of 5.3%, to \$3,126.1m, was offset by a fall in work done for the private sector of 3.9%, to \$3,692.9m.
- Total construction work done fell 1.7%, to \$19,278.6m, in the latest quarter.

NOTES

FORTHCOMING ISSUES

<i>ISSUE (Quarter)</i>	<i>RELEASE DATE</i>
December 2004	23 February 2005
March 2005	25 May 2005

.....

ABOUT THIS ISSUE

This publication provides an early indication of trends in building and engineering construction activity. The data are estimates based on a response rate of approximately 80% of the value of both building and engineering work done during the quarter. More comprehensive and updated results will be released in *Building Activity, Australia* (cat. no. 8752.0) on 21 January 2005 and in *Engineering Construction Activity, Australia* (cat. no. 8762.0) on 20 January 2005.

CHANGES IN THIS ISSUE

The underlying price indexes used in the compilation of the chain volume measures have been re-referenced resulting in minor revisions to the chain volume measures from September quarter 2000 onwards.

New tables have been included in this issue, details of the tables are:

- tables 13 and 14 shows state and territory Construction Work Done in Chain Volume Measures for original, seasonally adjusted and trend data
- table 15 shows the value of Work in the Pipeline in Current Prices, original for Australia
- table 16 shows number of Dwelling Units Approved but Not Yet Commenced, original for states and territories.

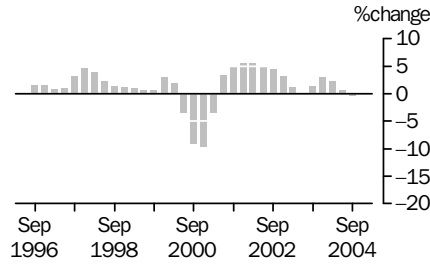
Corresponding tables have been released electronically and are available via AusStats. An additional table, table 15b, is included in AusStats which shows value of Work in the Pipeline in Current Prices, original for states and territories.

Dennis Trewin
Australian Statistician

CONSTRUCTION WORK DONE CHAIN VOLUME MEASURES

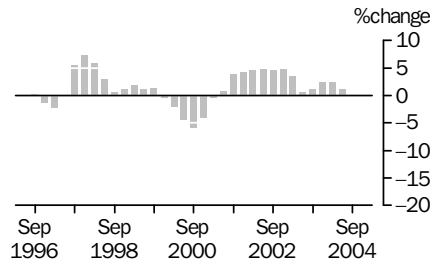
TREND PERCENTAGE CHANGE

TOTAL CONSTRUCTION



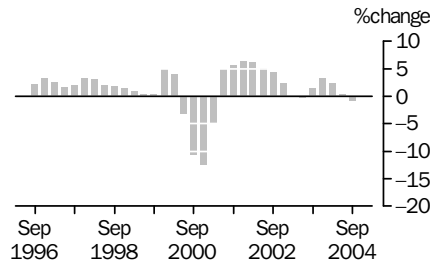
The total value of construction work done decreased for the first quarter since the March quarter 2001.

ENGINEERING



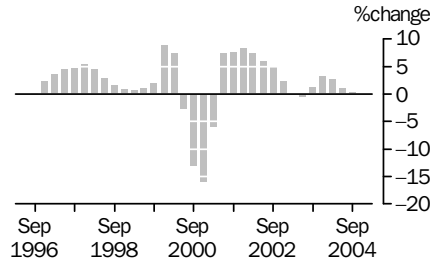
Engineering construction work done has increased for fourteen successive quarters.

BUILDING



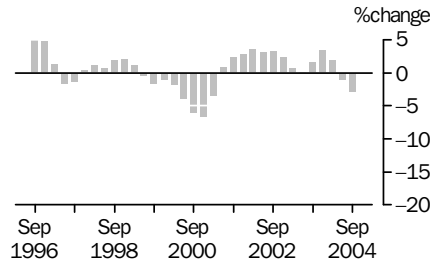
Total building work decreased in the latest quarter after four quarters of growth.

RESIDENTIAL



Residential building work has increased for the last five quarters, with the rate of growth slowing over recent quarters.

NON-RESIDENTIAL

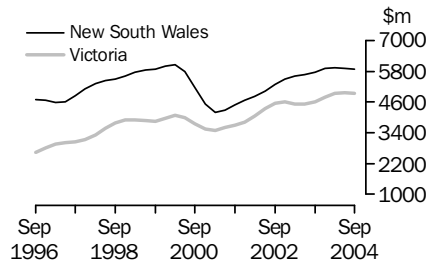


Non-residential work has fallen for the last two quarters following four quarters of growth.

CONSTRUCTION WORK DONE STATES AND TERRITORIES

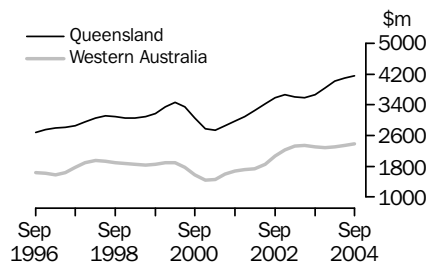
CHAIN VOLUME MEASURES—TREND ESTIMATES

NEW SOUTH WALES
VICTORIA



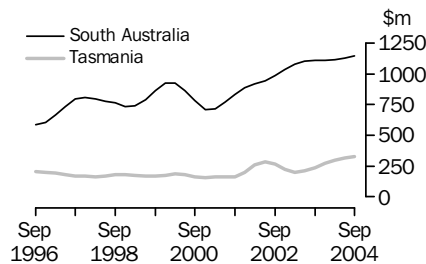
Following strong growth since early 2001 construction work done has fallen for the latest two quarters for New South Wales and the latest quarter for Victoria.

QUEENSLAND
WESTERN AUSTRALIA



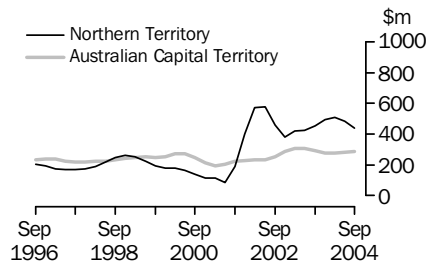
Construction work done continues to grow in Queensland with growth in the engineering sector predominant over recent quarters. Construction work done in Western Australia has grown for the last three quarters.

SOUTH AUSTRALIA
TASMANIA



Construction work done in South Australia has been growing since December 2000. In Tasmania, growth has been strong for six quarters.

NORTHERN TERRITORY
AUSTRALIAN CAPITAL
TERRITORY



Construction work done in the Northern Territory has fallen for the past two quarters due to declines in both building and engineering sectors. The Australian Capital Territory has shown growth for the past two quarters.

LIST OF TABLES

page

TABLES

1	Construction work done, chain volume measures	6
2	Construction work done, chain volume measures, change from previous period	7
3	Construction work done, current prices	8
4	Construction work done, current prices, change from previous period	9
5	Value of building work done, chain volume measures	10
6	Value of building work done, chain volume measures, change from previous period	11
7	Value of building work done, current prices	12
8	Value of building work done, current prices, change from previous period	13
9	Construction work done, states and territories, chain volume measures, original	14
10	Construction work done, states and territories, chain volume measures, change from previous period, original	15
11	Construction work done, states and territories, current prices, original	16
12	Construction work done, states and territories, current prices, change from previous period, original	17
13	Construction work done, states and territories, chain volume measures	18
14	Construction work done, states and territories, chain volume measures, change from previous period	19
15	Work in the pipeline, current prices, original	20
16	Number of dwellings approved but not yet commenced at end of quarter, states and territories, original	21

CONSTRUCTION WORK DONE, Chain volume measures(a)

Period	BUILDING WORK DONE			ENGINEERING WORK DONE			CONSTRUCTION WORK DONE		
	Private	Public	Total	Private	Public	Total	Private	Public	Total
	\$m	\$m	\$m	\$m	\$m	\$m	\$m	\$m	\$m
ORIGINAL									
2001-02	36 631.9	4 429.8	41 063.9	9 165.3	11 401.9	20 577.8	45 782.9	15 830.1	61 634.6
2002-03	42 835.9	4 248.2	47 084.1	13 283.0	11 446.7	24 729.7	56 118.9	15 695.0	71 813.9
2003-04	45 801.0	4 102.0	49 903.0	15 362.7	11 215.4	26 578.1	61 163.7	15 317.4	76 481.1
2003									
Jun Qtr	10 559.3	1 014.0	11 573.4	3 599.9	3 229.5	6 829.8	14 161.1	4 244.6	18 408.1
Sep Qtr	11 256.8	1 026.4	12 283.2	3 704.5	2 438.3	6 142.8	14 961.3	3 464.7	18 426.0
Dec Qtr	11 892.8	1 058.1	12 950.9	4 075.2	2 743.1	6 818.2	15 968.0	3 801.2	19 769.2
2004									
Mar Qtr	10 961.6	955.3	11 916.8	3 712.3	2 666.2	6 378.5	14 673.8	3 621.5	18 295.3
Jun Qtr	11 689.8	1 062.2	12 752.0	3 870.8	3 367.8	7 238.5	15 560.6	4 429.9	19 990.6
Sep Qtr	11 901.0	1 014.2	12 915.3	3 855.0	2 853.5	6 708.5	15 756.0	3 867.7	19 623.7
SEASONALLY ADJUSTED									
2003									
Jun Qtr	10 635.9	981.0	11 617.6	3 587.4	2 831.0	6 417.1	14 225.1	3 814.6	18 037.1
Sep Qtr	10 863.8	979.0	11 843.1	3 612.5	2 677.2	6 289.6	14 476.2	3 656.2	18 132.7
Dec Qtr	11 462.8	1 036.0	12 498.9	3 937.7	2 716.6	6 654.4	15 400.6	3 752.6	19 153.3
2004									
Mar Qtr	11 700.8	1 060.3	12 761.1	3 968.6	2 852.5	6 821.1	15 669.5	3 912.8	19 582.2
Jun Qtr	11 773.5	1 026.7	12 799.9	3 843.9	2 969.1	6 813.0	15 617.5	3 995.8	19 612.9
Sep Qtr	11 490.0	969.2	12 459.6	3 692.9	3 126.1	6 819.0	15 183.0	4 095.3	19 278.6
TREND									
2003									
Jun Qtr	10 817.2	1 000.7	11 818.5	3 594.8	2 771.6	6 365.4	14 413.0	3 773.0	18 185.0
Sep Qtr	10 987.5	995.1	11 983.0	3 726.2	2 717.8	6 443.5	14 714.4	3 713.5	18 427.2
Dec Qtr	11 350.5	1 025.5	12 376.1	3 863.2	2 737.9	6 601.1	15 213.7	3 763.6	18 977.3
2004									
Mar Qtr	11 634.3	1 040.3	12 674.4	3 912.7	2 842.5	6 753.3	15 546.7	3 881.9	19 426.0
Jun Qtr	11 695.4	1 023.1	12 718.5	3 855.0	2 979.1	6 832.6	15 550.3	4 001.8	19 550.3
Sep Qtr	11 631.0	995.0	12 620.1	3 741.1	3 067.0	6 838.1	15 366.7	4 069.0	19 464.6

(a) Chain volume measures, reference year 2002-03. See paragraphs 25-28 of the Explanatory Notes.

CONSTRUCTION WORK DONE, Chain volume measures(a)—Change from previous period

Period	BUILDING WORK DONE			ENGINEERING WORK DONE			CONSTRUCTION WORK DONE		
	Private	Public	Total	Private	Public	Total	Private	Public	Total
	%	%	%	%	%	%	%	%	%
ORIGINAL									
2001-02	17.8	4.1	16.2	31.0	-4.4	8.6	20.3	-2.2	13.5
2002-03	16.9	-4.1	14.7	44.9	0.4	20.2	22.6	-0.9	16.5
2003-04	6.9	-3.4	6.0	15.7	-2.0	7.5	9.0	-2.4	6.5
2003									
Jun Qtr	3.5	7.7	3.8	9.2	22.9	15.3	4.9	18.9	7.8
Sep Qtr	6.6	1.2	6.1	2.9	-24.5	-10.1	5.7	-18.4	0.1
Dec Qtr	5.7	3.1	5.4	10.0	12.5	11.0	6.7	9.7	7.3
2004									
Mar Qtr	-7.8	-9.7	-8.0	-8.9	-2.8	-6.4	-8.1	-4.7	-7.5
Jun Qtr	6.6	11.2	7.0	4.3	26.3	13.5	6.0	22.3	9.3
Sep Qtr	1.8	-4.5	1.3	-0.4	-15.3	-7.3	1.3	-12.7	-1.8
SEASONALLY ADJUSTED									
2003									
Jun Qtr	-3.5	-6.9	-3.8	1.5	1.4	1.4	-2.3	-0.8	-2.0
Sep Qtr	2.1	-0.2	1.9	0.7	-5.4	-2.0	1.8	-4.2	0.5
Dec Qtr	5.5	5.8	5.5	9.0	1.5	5.8	6.4	2.6	5.6
2004									
Mar Qtr	2.1	2.4	2.1	0.8	5.0	2.5	1.7	4.3	2.2
Jun Qtr	0.6	-3.2	0.3	-3.1	4.1	-0.1	-0.3	2.1	0.2
Sep Qtr	-2.4	-5.6	-2.7	-3.9	5.3	0.1	-2.8	2.5	-1.7
TREND									
2003									
Jun Qtr	0.1	-4.2	-0.3	3.8	-3.0	0.7	1.0	-3.3	0.1
Sep Qtr	1.6	-0.6	1.4	3.7	-1.9	1.2	2.1	-1.6	1.3
Dec Qtr	3.3	3.1	3.3	3.7	0.7	2.4	3.4	1.3	3.0
2004									
Mar Qtr	2.5	1.4	2.4	1.3	3.8	2.3	2.2	3.1	2.4
Jun Qtr	0.5	-1.7	0.3	-1.5	4.8	1.2	—	3.1	0.6
Sep Qtr	-0.5	-2.7	-0.8	-3.0	3.0	0.1	-1.2	1.7	-0.4

— nil or rounded to zero (including null cells)

(a) Chain volume measures, reference year 2002-03. See paragraphs 25-28 of the Explanatory Notes.

CONSTRUCTION WORK DONE, Current prices

Period	BUILDING WORK DONE(a)			ENGINEERING WORK DONE			CONSTRUCTION WORK DONE(a)		
	Private	Public	Total	Private	Public	Total	Private	Public	Total
	\$m	\$m	\$m	\$m	\$m	\$m	\$m	\$m	\$m
ORIGINAL									
2001-02	35 265.7	4 277.2	39 542.9	8 899.0	11 132.3	20 031.3	44 164.7	15 409.5	59 574.2
2002-03	42 835.9	4 248.2	47 084.2	13 283.0	11 445.8	24 728.8	56 119.0	15 694.0	71 812.9
2003-04	49 188.0	4 400.7	53 588.7	15 853.0	11 572.2	27 425.1	65 041.0	15 972.9	81 013.9
2003									
Jun Qtr	10 791.2	1 034.3	11 825.5	3 650.9	3 261.3	6 912.2	14 442.1	4 295.7	18 737.8
Sep Qtr	11 755.3	1 067.9	12 823.2	3 766.8	2 476.1	6 242.8	15 522.1	3 544.0	19 066.0
Dec Qtr	12 643.8	1 121.3	13 765.1	4 166.9	2 811.5	6 978.4	16 810.7	3 932.8	20 743.5
2004									
Mar Qtr	11 871.5	1 035.1	12 906.6	3 836.4	2 766.9	6 603.3	15 708.0	3 802.0	19 509.9
Jun Qtr	12 917.4	1 176.5	14 093.9	4 082.9	3 517.7	7 600.5	17 000.3	4 694.2	21 694.4
Sep Qtr	13 396.5	1 152.6	14 549.0	4 111.7	3 007.3	7 119.0	17 508.2	4 159.9	21 668.1
SEASONALLY ADJUSTED									
2003									
Jun Qtr	10 859.9	997.2	11 857.1	3 645.3	2 859.1	6 504.4	14 505.1	3 856.4	18 361.5
Sep Qtr	11 338.2	1 018.2	12 356.4	3 683.5	2 715.9	6 399.5	15 021.8	3 734.1	18 755.9
Dec Qtr	12 182.2	1 099.5	13 281.6	4 040.5	2 780.7	6 821.2	16 222.7	3 880.1	20 102.8
2004									
Mar Qtr	12 667.4	1 152.2	13 819.5	4 117.8	2 955.4	7 073.1	16 785.1	4 107.5	20 892.7
Jun Qtr	13 006.4	1 141.3	14 147.6	4 071.7	3 096.7	7 168.4	17 078.1	4 237.9	21 316.0
Sep Qtr	12 937.6	1 100.9	14 038.5	3 948.8	3 294.7	7 243.6	16 886.4	4 395.6	21 282.1
TREND									
2003									
Jun Qtr	11 047.3	1 017.7	12 065.1	3 638.0	2 796.6	6 434.6	14 685.3	3 814.4	18 499.7
Sep Qtr	11 451.1	1 033.8	12 484.9	3 798.7	2 760.8	6 559.5	15 249.8	3 794.6	19 044.4
Dec Qtr	12 069.3	1 090.1	13 159.3	3 971.9	2 804.5	6 776.4	16 041.1	3 894.6	19 935.7
2004									
Mar Qtr	12 605.3	1 130.4	13 735.5	4 070.4	2 938.5	7 008.9	16 675.7	4 068.9	20 744.4
Jun Qtr	12 912.8	1 136.3	14 049.0	4 067.2	3 109.7	7 176.8	16 980.0	4 245.9	21 225.9
Sep Qtr	13 087.7	1 122.1	14 209.8	3 999.9	3 256.3	7 256.2	17 087.7	4 378.3	21 466.0

(a) From the September quarter 2000, data is inclusive of non-deductible Goods and Services Tax payable on residential buildings. See paragraphs 11 and 12 of the Explanatory Notes.

CONSTRUCTION WORK DONE, Current prices—Change from previous period

Period	BUILDING WORK DONE(a)			ENGINEERING WORK DONE			CONSTRUCTION WORK DONE(a)		
	Private	Public	Total	Private	Public	Total	Private	Public	Total
	%	%	%	%	%	%	%	%	%
ORIGINAL									
2001-02	19.5	4.6	17.7	33.2	-2.9	10.4	22.0	-0.9	15.1
2002-03	21.5	-0.7	19.1	49.3	2.8	23.5	27.1	1.8	20.5
2003-04	14.8	3.6	13.8	19.3	1.1	10.9	15.9	1.8	12.8
2003									
Jun Qtr	5.4	9.4	5.7	10.9	23.6	16.5	6.7	19.8	9.5
Sep Qtr	8.9	3.2	8.4	3.2	-24.1	-9.7	7.5	-17.5	1.8
Dec Qtr	7.6	5.0	7.3	10.6	13.5	11.8	8.3	11.0	8.8
2004									
Mar Qtr	-6.1	-7.7	-6.2	-7.9	-1.6	-5.4	-6.6	-3.3	-5.9
Jun Qtr	8.8	13.7	9.2	6.4	27.1	15.1	8.2	23.5	11.2
Sep Qtr	3.7	-2.0	3.2	0.7	-14.5	-6.3	3.0	-11.4	-0.1
SEASONALLY ADJUSTED									
2003									
Jun Qtr	-1.8	-5.4	-2.1	3.0	1.9	2.5	-0.6	-0.1	-0.5
Sep Qtr	4.4	2.1	4.2	1.0	-5.0	-1.6	3.6	-3.2	2.1
Dec Qtr	7.4	8.0	7.5	9.7	2.4	6.6	8.0	3.9	7.2
2004									
Mar Qtr	4.0	4.8	4.0	1.9	6.3	3.7	3.5	5.9	3.9
Jun Qtr	2.7	-0.9	2.4	-1.1	4.8	1.3	1.7	3.2	2.0
Sep Qtr	-0.5	-3.5	-0.8	-3.0	6.4	1.0	-1.1	3.7	-0.2
TREND									
2003									
Jun Qtr	1.8	-2.7	1.4	4.6	-2.4	1.4	2.5	-2.5	1.4
Sep Qtr	3.7	1.6	3.5	4.4	-1.3	1.9	3.8	-0.5	2.9
Dec Qtr	5.4	5.4	5.4	4.6	1.6	3.3	5.2	2.6	4.7
2004									
Mar Qtr	4.4	3.7	4.4	2.5	4.8	3.4	4.0	4.5	4.1
Jun Qtr	2.4	0.5	2.3	-0.1	5.8	2.4	1.8	4.4	2.3
Sep Qtr	1.4	-1.2	1.1	-1.7	4.7	1.1	0.6	3.1	1.1

(a) From the September quarter 2000, data is inclusive of non-deductible GST payable on residential buildings. See paragraphs 11 and 12 of the Explanatory Notes.

VALUE OF BUILDING WORK DONE, Chain volume measures(a)

Period	NEW RESIDENTIAL BUILDING		ALTERATIONS AND ADDITIONS		RESIDENTIAL BUILDING		NON-RESIDENTIAL BUILDING		TOTAL BUILDING(a)	
	Private	Total	Private	Total	Private	Total	Private	Total	Private	Total
	\$m	\$m	\$m	\$m	\$m	\$m	\$m	\$m	\$m	\$m
ORIGINAL										
2001-02	22 716.2	23 200.8	4 101.3	4 277.4	26 818.1	27 478.8	9 813.9	13 582.4	36 631.9	41 063.9
2002-03	26 776.0	27 224.6	4 578.2	4 761.8	31 354.2	31 986.4	11 481.8	15 097.8	42 835.9	47 084.1
2003-04	28 106.6	28 591.5	5 157.1	5 309.4	33 263.7	33 900.9	12 537.3	16 002.1	45 801.0	49 903.0
2003										
Jun Qtr	6 519.9	6 632.3	1 144.0	1 205.8	7 663.9	7 838.1	2 894.9	3 734.9	10 559.3	11 573.4
Sep Qtr	6 873.7	7 008.9	1 270.8	1 313.3	8 144.5	8 322.2	3 112.3	3 961.0	11 256.8	12 283.2
Dec Qtr	7 221.3	7 351.4	1 367.6	1 399.1	8 588.9	8 750.5	3 303.9	4 200.5	11 892.8	12 950.9
2004										
Mar Qtr	6 819.3	6 926.4	1 192.0	1 227.5	8 011.3	8 153.9	2 950.2	3 763.0	10 961.6	11 916.8
Jun Qtr	7 192.3	7 304.8	1 326.8	1 369.5	8 519.0	8 674.3	3 170.8	4 077.7	11 689.8	12 752.0
Sep Qtr	7 439.9	7 571.2	1 347.3	1 384.0	8 787.1	8 955.2	3 113.9	3 960.1	11 901.0	12 915.3
SEASONALLY ADJUSTED										
2003										
Jun Qtr	6 522.7	6 641.4	1 141.0	1 189.7	7 663.6	7 831.0	2 971.7	3 786.0	10 635.9	11 617.6
Sep Qtr	6 656.7	6 783.4	1 248.8	1 292.9	7 905.5	8 076.3	2 958.3	3 766.8	10 863.8	11 843.1
Dec Qtr	7 009.2	7 127.3	1 295.1	1 333.4	8 304.3	8 460.7	3 158.5	4 038.2	11 462.8	12 498.9
2004										
Mar Qtr	7 238.3	7 358.2	1 293.1	1 329.7	8 531.4	8 687.9	3 169.4	4 073.2	11 700.8	12 761.1
Jun Qtr	7 202.4	7 322.7	1 320.2	1 353.3	8 522.6	8 676.0	3 251.0	4 123.9	11 773.5	12 799.9
Sep Qtr	7 223.0	7 347.1	1 309.4	1 348.1	8 532.4	8 695.2	2 957.6	3 764.4	11 490.0	12 459.6
TREND										
2003										
Jun Qtr	6 672.3	6 791.3	1 182.0	1 230.4	7 854.2	8 021.6	2 962.6	3 796.5	10 817.2	11 818.5
Sep Qtr	6 730.7	6 852.1	1 231.0	1 275.0	7 961.7	8 127.1	3 025.6	3 855.7	10 987.5	11 983.0
Dec Qtr	6 949.3	7 070.7	1 279.8	1 319.0	8 229.1	8 389.7	3 121.4	3 986.3	11 350.5	12 376.1
2004										
Mar Qtr	7 152.2	7 272.3	1 304.8	1 341.1	8 456.6	8 612.9	3 177.8	4 062.0	11 634.3	12 674.4
Jun Qtr	7 232.3	7 353.1	1 311.1	1 346.6	8 543.2	8 699.6	3 152.1	4 019.0	11 695.4	12 718.5
Sep Qtr	7 251.5	7 374.7	1 314.4	1 350.6	8 566.8	8 726.2	3 067.5	3 904.1	11 631.0	12 620.1

(a) Chain volume measures, reference year 2002-03. See paragraphs 25-28 of the Explanatory Notes.

VALUE OF BUILDING WORK DONE, Chain volume measures(a)—Change from previous period

Period	NEW RESIDENTIAL BUILDING		ALTERATIONS AND ADDITIONS		RESIDENTIAL BUILDING		NON-RESIDENTIAL BUILDING		TOTAL BUILDING	
	Private	Total	Private	Total	Private	Total	Private	Total	Private	Total
	%	%	%	%	%	%	%	%	%	%
ORIGINAL										
2001-02	23.5	23.2	18.9	18.9	22.8	22.5	6.3	5.3	17.8	16.2
2002-03	17.9	17.3	11.6	11.3	16.9	16.4	17.0	11.2	16.9	14.7
2003-04	5.0	5.0	12.6	11.5	6.1	6.0	9.2	6.0	6.9	6.0
2003										
Jun Qtr	1.2	1.4	6.7	7.8	2.0	2.3	7.6	7.1	3.5	3.8
Sep Qtr	5.4	5.7	11.1	8.9	6.3	6.2	7.5	6.1	6.6	6.1
Dec Qtr	5.1	4.9	7.6	6.5	5.5	5.1	6.2	6.0	5.7	5.4
2004										
Mar Qtr	-5.6	-5.8	-12.8	-12.3	-6.7	-6.8	-10.7	-10.4	-7.8	-8.0
Jun Qtr	5.5	5.5	11.3	11.6	6.3	6.4	7.5	8.4	6.6	7.0
Sep Qtr	3.4	3.6	1.5	1.1	3.1	3.2	-1.8	-2.9	1.8	1.3
SEASONALLY ADJUSTED										
2003										
Jun Qtr	-5.5	-5.3	-2.5	-2.5	-5.1	-4.9	0.7	-1.6	-3.5	-3.8
Sep Qtr	2.1	2.1	9.4	8.7	3.2	3.1	-0.4	-0.5	2.1	1.9
Dec Qtr	5.3	5.1	3.7	3.1	5.0	4.8	6.8	7.2	5.5	5.5
2004										
Mar Qtr	3.3	3.2	-0.2	-0.3	2.7	2.7	0.3	0.9	2.1	2.1
Jun Qtr	-0.5	-0.5	2.1	1.8	-0.1	-0.1	2.6	1.2	0.6	0.3
Sep Qtr	0.3	0.3	-0.8	-0.4	0.1	0.2	-9.0	-8.7	-2.4	-2.7
TREND										
2003										
Jun Qtr	-1.1	-1.0	2.7	2.5	-0.5	-0.5	1.8	0.1	0.1	-0.3
Sep Qtr	0.9	0.9	4.1	3.6	1.4	1.3	2.1	1.6	1.6	1.4
Dec Qtr	3.2	3.2	4.0	3.5	3.4	3.2	3.2	3.4	3.3	3.3
2004										
Mar Qtr	2.9	2.9	2.0	1.7	2.8	2.7	1.8	1.9	2.5	2.4
Jun Qtr	1.1	1.1	0.5	0.4	1.0	1.0	-0.8	-1.1	0.5	0.3
Sep Qtr	0.3	0.3	0.3	0.3	0.3	0.3	-2.7	-2.9	-0.5	-0.8

(a) Chain volume measures, reference year 2002-03. See paragraphs 25-28 of the Explanatory Notes.

VALUE OF BUILDING WORK DONE, Current prices

Period	NEW RESIDENTIAL BUILDING (a)		ALTERATIONS AND ADDITIONS (a)		RESIDENTIAL BUILDING (a)		NON-RESIDENTIAL BUILDING		TOTAL BUILDING (a)	
	Private	Total	Private	Total	Private	Total	Private	Total	Private	Total
	\$m	\$m	\$m	\$m	\$m	\$m	\$m	\$m	\$m	\$m
ORIGINAL										
2001-02	21 820.8	22 285.6	3 953.1	4 122.1	25 773.9	26 407.7	9 491.7	13 135.1	35 265.7	39 542.9
2002-03	26 776.0	27 224.6	4 578.2	4 761.8	31 354.2	31 986.4	11 481.8	15 097.7	42 835.9	47 084.2
2003-04	30 249.1	30 769.8	5 462.3	5 624.3	35 711.4	36 394.2	13 476.6	17 194.5	49 188.0	53 588.7
2003										
Jun Qtr	6 675.5	6 790.2	1 167.6	1 230.8	7 843.1	8 021.0	2 948.1	3 804.5	10 791.2	11 825.5
Sep Qtr	7 197.0	7 338.7	1 319.5	1 363.7	8 516.5	8 702.4	3 238.8	4 120.8	11 755.3	12 823.2
Dec Qtr	7 698.5	7 836.8	1 441.1	1 474.4	9 139.6	9 311.2	3 504.2	4 453.9	12 643.8	13 765.1
2004										
Mar Qtr	7 399.2	7 515.5	1 269.2	1 307.2	8 668.4	8 822.7	3 203.1	4 083.9	11 871.5	12 906.6
Jun Qtr	7 954.4	8 078.8	1 432.6	1 479.1	9 387.0	9 557.8	3 530.4	4 536.0	12 917.4	14 093.9
Sep Qtr	8 363.2	8 510.8	1 474.9	1 514.6	9 838.1	10 025.4	3 558.4	4 523.6	13 396.5	14 549.0
SEASONALLY ADJUSTED										
2003										
Jun Qtr	6 675.8	6 797.2	1 162.6	1 212.3	7 838.4	8 009.5	3 021.4	3 847.6	10 859.9	11 857.1
Sep Qtr	6 968.2	7 101.0	1 295.6	1 341.7	8 263.8	8 442.7	3 074.5	3 913.8	11 338.2	12 356.4
Dec Qtr	7 470.5	7 596.0	1 364.5	1 405.3	8 835.0	9 001.3	3 347.2	4 280.3	12 182.2	13 281.6
2004										
Mar Qtr	7 850.8	7 981.0	1 377.1	1 416.9	9 227.9	9 397.8	3 439.4	4 421.7	12 667.4	13 819.5
Jun Qtr	7 961.6	8 094.5	1 426.3	1 462.8	9 387.8	9 557.3	3 618.5	4 590.3	13 006.4	14 147.6
Sep Qtr	8 125.4	8 264.7	1 431.1	1 472.8	9 556.5	9 737.5	3 381.1	4 301.0	12 937.6	14 038.5
TREND										
2003										
Jun Qtr	6 827.8	6 949.8	1 204.8	1 254.1	8 032.6	8 203.9	3 014.7	3 861.2	11 047.3	12 065.1
Sep Qtr	7 035.5	7 162.4	1 276.5	1 322.3	8 312.0	8 484.7	3 139.1	4 000.2	11 451.1	12 484.9
Dec Qtr	7 410.2	7 539.5	1 347.1	1 388.9	8 757.3	8 928.4	3 311.9	4 230.9	12 069.3	13 159.3
2004										
Mar Qtr	7 763.2	7 893.4	1 391.0	1 430.3	9 153.8	9 323.3	3 451.9	4 412.7	12 605.3	13 735.5
Jun Qtr	7 990.4	8 123.8	1 415.5	1 454.2	9 405.8	9 578.0	3 507.3	4 471.3	12 912.8	14 049.0
Sep Qtr	8 156.1	8 294.6	1 435.7	1 475.2	9 593.7	9 771.7	3 492.7	4 437.2	13 087.7	14 209.8

(a) From the September quarter 2000, data is inclusive of non-deductible GST payable on residential buildings. See paragraphs 11 and 12 of the Explanatory Notes.

VALUE OF BUILDING WORK DONE, Current Prices—Change from previous period

Period	NEW RESIDENTIAL BUILDING(a)		ALTERATIONS AND ADDITIONS(a)		RESIDENTIAL BUILDING(a)		NON-RESIDENTIAL BUILDING		TOTAL BUILDING(a)	
	Private	Total	Private	Total	Private	Total	Private	Total	Private	Total
	%	%	%	%	%	%	%	%	%	%
ORIGINAL										
2001-02	25.6	25.2	21.6	21.6	25.0	24.6	6.9	5.9	19.5	17.7
2002-03	22.7	22.2	15.8	15.5	21.7	21.1	21.0	14.9	21.5	19.1
2003-04	13.0	13.0	19.3	18.1	13.9	13.8	17.4	13.9	14.8	13.8
2003										
Jun Qtr	3.3	3.5	8.5	9.6	4.0	4.4	9.3	8.8	5.4	5.7
Sep Qtr	7.8	8.1	13.0	10.8	8.6	8.5	9.9	8.3	8.9	8.4
Dec Qtr	7.0	6.8	9.2	8.1	7.3	7.0	8.2	8.1	7.6	7.3
2004										
Mar Qtr	-3.9	-4.1	-11.9	-11.3	-5.2	-5.2	-8.6	-8.3	-6.1	-6.2
Jun Qtr	7.5	7.5	12.9	13.2	8.3	8.3	10.2	11.1	8.8	9.2
Sep Qtr	5.1	5.3	3.0	2.4	4.8	4.9	0.8	-0.3	3.7	3.2
SEASONALLY ADJUSTED										
2003										
Jun Qtr	-3.6	-3.4	-0.8	-0.7	-3.2	-3.0	2.2	-0.1	-1.8	-2.1
Sep Qtr	4.4	4.5	11.4	10.7	5.4	5.4	1.8	1.7	4.4	4.2
Dec Qtr	7.2	7.0	5.3	4.7	6.9	6.6	8.9	9.4	7.4	7.5
2004										
Mar Qtr	5.1	5.1	0.9	0.8	4.4	4.4	2.8	3.3	4.0	4.0
Jun Qtr	1.4	1.4	3.6	3.2	1.7	1.7	5.2	3.8	2.7	2.4
Sep Qtr	2.1	2.1	0.3	0.7	1.8	1.9	-6.6	-6.3	-0.5	-0.8
TREND										
2003										
Jun Qtr	0.7	0.8	4.4	4.2	1.3	1.3	3.2	1.6	1.8	1.4
Sep Qtr	3.0	3.1	5.9	5.4	3.5	3.4	4.1	3.6	3.7	3.5
Dec Qtr	5.3	5.3	5.5	5.0	5.4	5.2	5.5	5.8	5.4	5.4
2004										
Mar Qtr	4.8	4.7	3.3	3.0	4.5	4.4	4.2	4.3	4.4	4.4
Jun Qtr	2.9	2.9	1.8	1.7	2.8	2.7	1.6	1.3	2.4	2.3
Sep Qtr	2.1	2.1	1.4	1.4	2.0	2.0	-0.4	-0.8	1.4	1.1

(a) From the September quarter 2000, data is inclusive of non-deductible GST payable on residential buildings. See paragraphs 11 and 12 of the Explanatory Notes.

CONSTRUCTION WORK DONE, States and territories—Chain volume measures(a): Original

<i>Period</i>	<i>NSW</i>	<i>Vic.</i>	<i>Qld</i>	<i>SA</i>	<i>WA</i>	<i>Tas.</i>	<i>NT</i>	<i>ACT</i>	<i>Aust.</i>
	\$m	\$m	\$m	\$m	\$m	\$m	\$m	\$m	\$m
BUILDING WORK DONE									
2001-02	13 224.4	12 413.3	7 966.9	2 122.9	3 798.4	455.0	370.3	716.2	41 063.9
2002-03	15 594.8	14 050.0	8 881.5	2 436.5	4 335.0	504.2	366.3	915.8	47 084.1
2003-04	15 926.9	14 553.1	10 300.0	2 759.1	4 435.2	664.1	388.8	875.7	49 903.0
2003									
Jun Qtr	3 921.4	3 383.2	2 131.5	637.0	1 047.9	124.3	91.6	236.2	11 573.4
Sep Qtr	3 983.1	3 560.8	2 451.5	657.5	1 157.4	150.3	98.1	224.4	12 283.2
Dec Qtr	4 154.9	3 689.4	2 801.8	715.1	1 075.9	174.8	107.4	231.6	12 950.9
2004									
Mar Qtr	3 845.8	3 454.9	2 383.5	676.6	1 114.3	160.4	86.6	194.7	11 916.8
Jun Qtr	3 943.2	3 848.0	2 663.2	709.9	1 087.5	178.5	96.7	225.0	12 752.0
Sep Qtr	3 903.5	3 824.6	2 780.2	778.6	1 139.6	168.9	100.4	219.4	12 915.3
ENGINEERING WORK DONE									
2001-02	5 762.9	3 478.3	4 755.7	1 452.0	3 200.1	467.8	1 256.1	205.2	20 577.8
2002-03	6 483.7	4 244.3	5 558.8	1 766.4	4 735.3	364.0	1 331.6	244.7	24 729.7
2003-04	7 642.8	4 831.9	5 362.1	1 712.2	4 744.2	466.0	1 580.9	238.0	26 578.1
2003									
Jun Qtr	1 852.6	1 200.6	1 376.9	496.6	1 401.8	90.8	329.4	81.0	6 829.8
Sep Qtr	1 746.9	1 080.6	1 209.7	433.3	1 139.0	74.3	406.8	52.3	6 142.8
Dec Qtr	1 911.1	1 217.3	1 446.2	429.7	1 220.0	113.9	419.7	60.4	6 818.2
2004									
Mar Qtr	1 921.0	1 225.5	1 190.1	385.3	1 115.4	121.1	361.3	58.8	6 378.5
Jun Qtr	2 063.8	1 308.5	1 516.2	463.9	1 269.8	156.7	393.1	66.6	7 238.5
Sep Qtr	1 906.0	1 115.9	1 556.7	342.9	1 262.8	131.8	321.5	70.8	6 708.5
CONSTRUCTION WORK DONE									
2001-02	18 984.0	15 885.1	12 716.3	3 570.6	6 994.9	922.0	1 625.7	922.4	61 634.6
2002-03	22 078.5	18 294.3	14 440.4	4 203.0	9 070.3	868.2	1 697.9	1 160.4	71 813.9
2003-04	23 569.7	19 385.0	15 662.1	4 471.3	9 179.4	1 130.1	1 969.7	1 113.8	76 481.1
2003									
Jun Qtr	5 775.4	4 584.8	3 509.4	1 134.3	2 450.9	215.3	421.0	317.6	18 408.1
Sep Qtr	5 729.9	4 641.4	3 661.2	1 090.9	2 296.5	224.6	504.9	276.7	18 426.0
Dec Qtr	6 065.9	4 906.7	4 248.0	1 144.8	2 295.9	288.8	527.1	292.0	19 769.2
2004									
Mar Qtr	5 766.8	4 680.4	3 573.6	1 061.8	2 229.7	281.5	448.0	253.5	18 295.3
Jun Qtr	6 007.0	5 156.5	4 179.4	1 173.8	2 357.3	335.2	489.7	291.6	19 990.6
Sep Qtr	5 809.6	4 940.5	4 336.9	1 121.5	2 402.4	300.7	421.9	290.2	19 623.7

(a) Chain volume measures, reference year 2002-03. See paragraphs 25-28 of the Explanatory Notes.

	NSW	Vic.	Qld	SA	WA	Tas.	NT	ACT	Aust.
Period	%	%	%	%	%	%	%	%	%
.....									
BUILDING WORK DONE									
2001-02	13.8	15.0	26.2	20.7	7.0	23.6	15.6	14.9	16.2
2002-03	17.9	13.2	11.5	14.8	14.1	10.8	-1.1	27.9	14.7
2003-04	2.1	3.6	16.0	13.2	2.3	31.7	6.2	-4.4	6.0
2003									
Jun Qtr	6.2	2.5	2.5	10.7	-1.5	8.3	26.5	-4.3	3.8
Sep Qtr	1.6	5.2	15.0	3.2	10.5	20.9	7.1	-5.0	6.1
Dec Qtr	4.3	3.6	14.3	8.8	-7.0	16.3	9.5	3.2	5.4
2004									
Mar Qtr	-7.4	-6.4	-14.9	-5.4	3.6	-8.2	-19.4	-15.9	-8.0
Jun Qtr	2.5	11.4	11.7	4.9	-2.4	11.3	11.6	15.5	7.0
Sep Qtr	-1.0	-0.6	4.4	9.7	4.8	-5.4	3.8	-2.5	1.3
.....									
ENGINEERING WORK DONE									
2001-02	-10.6	3.6	-4.1	23.3	36.1	69.2	616.5	-5.4	8.6
2002-03	12.5	22.0	16.9	21.7	48.0	-22.2	6.0	19.3	20.2
2003-04	17.9	13.8	-3.5	-3.1	0.2	28.0	18.7	-2.7	7.5
2003									
Jun Qtr	17.9	15.1	0.5	9.9	26.2	11.0	41.5	29.7	15.3
Sep Qtr	-5.7	-10.0	-12.1	-12.7	-18.7	-18.2	23.5	-35.5	-10.1
Dec Qtr	9.4	12.7	19.5	-0.8	7.1	53.4	3.2	15.5	11.0
2004									
Mar Qtr	0.5	0.7	-17.7	-10.3	-8.6	6.3	-13.9	-2.6	-6.4
Jun Qtr	7.4	6.8	27.4	20.4	13.8	29.4	8.8	13.2	13.5
Sep Qtr	-7.6	-14.7	2.7	-26.1	-0.5	-15.9	-18.2	6.4	-7.3
.....									
CONSTRUCTION WORK DONE									
2001-02	5.4	12.3	12.6	22.3	19.1	43.8	227.6	8.8	13.5
2002-03	16.3	15.2	13.6	17.7	29.7	-5.8	4.4	25.8	16.5
2003-04	6.8	6.0	8.5	6.4	1.2	30.2	16.0	-4.0	6.5
2003									
Jun Qtr	9.7	5.5	1.7	10.4	12.7	9.5	38.0	2.7	7.8
Sep Qtr	-0.8	1.2	4.3	-3.8	-6.3	4.3	19.9	-12.9	0.1
Dec Qtr	5.9	5.7	16.0	4.9	—	28.6	4.4	5.5	7.3
2004									
Mar Qtr	-4.9	-4.6	-15.9	-7.2	-2.9	-2.5	-15.0	-13.2	-7.5
Jun Qtr	4.2	10.2	17.0	10.5	5.7	19.1	9.3	15.0	9.3
Sep Qtr	-3.3	-4.2	3.8	-4.5	1.9	-10.3	-13.9	-0.5	-1.8

— nil or rounded to zero (including null cells)

(a) Chain volume measures, reference year 2002-03. See paragraphs 25-28 of the Explanatory Notes.

	NSW	Vic.	Qld	SA	WA	Tas.	NT	ACT	Aust.
<i>Period</i>	\$m	\$m	\$m	\$m	\$m	\$m	\$m	\$m	\$m
BUILDING WORK DONE (a)									
2001-02	12 783.7	12 062.9	7 508.7	2 032.7	3 686.1	429.2	358.1	681.5	39 542.9
2002-03	15 594.8	14 050.0	8 881.5	2 436.5	4 335.0	504.2	366.3	915.8	47 084.2
2003-04	17 142.9	15 311.9	11 398.5	2 885.3	4 792.5	711.5	401.2	945.0	53 588.7
2003									
Jun Qtr	4 000.0	3 456.4	2 192.4	643.3	1 070.6	128.2	92.9	241.8	11 825.5
Sep Qtr	4 150.5	3 694.1	2 601.0	671.5	1 212.7	157.1	99.7	236.5	12 823.2
Dec Qtr	4 410.9	3 851.1	3 064.6	741.5	1 152.5	185.1	110.1	249.1	13 765.1
2004									
Mar Qtr	4 188.1	3 642.4	2 671.2	714.1	1 216.0	173.1	89.5	212.2	12 906.6
Jun Qtr	4 393.4	4 124.3	3 061.6	758.2	1 211.2	196.2	101.9	247.1	14 093.9
Sep Qtr	4 419.7	4 179.3	3 273.8	834.7	1 300.7	189.8	108.9	242.0	14 549.0
ENGINEERING WORK DONE									
2001-02	5 597.6	3 389.0	4 627.5	1 417.4	3 119.3	453.8	1 226.7	199.9	20 031.3
2002-03	6 483.7	4 244.3	5 558.8	1 766.4	4 735.3	364.0	1 331.6	244.7	24 728.8
2003-04	7 900.9	4 983.3	5 542.8	1 764.7	4 883.2	485.5	1 619.8	244.9	27 425.1
2003									
Jun Qtr	1 876.6	1 214.0	1 395.5	503.0	1 416.7	91.7	332.8	81.9	6 912.2
Sep Qtr	1 776.6	1 097.2	1 231.7	439.8	1 156.4	75.5	412.7	53.0	6 242.8
Dec Qtr	1 961.4	1 246.2	1 483.5	439.2	1 243.4	117.5	425.3	61.9	6 978.4
2004									
Mar Qtr	1 996.8	1 269.3	1 234.4	398.7	1 148.9	126.5	368.2	60.6	6 603.3
Jun Qtr	2 166.0	1 370.7	1 593.3	487.1	1 334.6	166.0	413.5	69.4	7 600.5
Sep Qtr	2 021.2	1 183.2	1 654.9	362.7	1 339.7	141.3	341.8	74.2	7 119.0
CONSTRUCTION WORK DONE (a)									
2001-02	18 381.3	15 451.9	12 136.2	3 450.1	6 805.4	883.0	1 584.9	881.4	59 574.2
2002-03	22 078.5	18 294.3	14 440.4	4 203.0	9 070.3	868.2	1 697.9	1 160.4	71 812.9
2003-04	25 043.8	20 295.2	16 941.3	4 650.0	9 675.7	1 197.0	2 021.0	1 189.8	81 013.9
2003									
Jun Qtr	5 876.6	4 670.4	3 587.9	1 146.3	2 487.3	219.9	425.7	323.7	18 737.8
Sep Qtr	5 927.1	4 791.3	3 832.7	1 111.3	2 369.1	232.6	512.4	289.5	19 066.0
Dec Qtr	6 372.4	5 097.2	4 548.1	1 180.7	2 395.9	302.6	535.5	311.0	20 743.5
2004									
Mar Qtr	6 184.9	4 911.7	3 905.6	1 112.8	2 364.9	299.6	457.7	272.8	19 509.9
Jun Qtr	6 559.4	5 495.1	4 654.8	1 245.2	2 545.8	362.2	515.4	316.5	21 694.4
Sep Qtr	6 440.9	5 362.5	4 928.8	1 197.4	2 640.4	331.2	450.8	316.2	21 668.1

(a) From the September quarter 2000, data is inclusive of non-deductible GST payable on residential buildings. See paragraphs 11 and 12 of the Explanatory Notes.

CONSTRUCTION WORK DONE, States and territories—Current prices—Change from previous period: **Original**

<i>Period</i>	<i>NSW</i>	<i>Vic.</i>	<i>Qld</i>	<i>SA</i>	<i>WA</i>	<i>Tas.</i>	<i>NT</i>	<i>ACT</i>	<i>Aust.</i>
.....									
BUILDING WORK DONE (a)									
2001-02	14.2	18.4	25.9	24.7	8.7	26.2	15.1	17.9	17.7
2002-03	22.0	16.5	18.3	19.9	17.6	17.5	2.3	34.4	19.1
2003-04	9.9	9.0	28.3	18.4	10.6	41.1	9.5	3.2	13.8
2003									
Jun Qtr	8.1	4.5	4.8	11.3	0.3	10.5	27.6	-2.4	5.7
Sep Qtr	3.8	6.9	18.6	4.4	13.3	22.6	7.4	-2.2	8.4
Dec Qtr	6.3	4.2	17.8	10.4	-5.0	17.8	10.5	5.3	7.3
2004									
Mar Qtr	-5.1	-5.4	-12.8	-3.7	5.5	-6.5	-18.8	-14.8	-6.2
Jun Qtr	4.9	13.2	14.6	6.2	-0.4	13.3	13.9	16.5	9.2
Sep Qtr	0.6	1.3	6.9	10.1	7.4	-3.2	6.9	-2.1	3.2
.....									
ENGINEERING WORK DONE									
2001-02	-9.1	5.4	-2.5	25.5	38.2	71.7	629.1	-3.9	10.4
2002-03	15.8	25.2	20.1	24.6	51.8	-19.8	8.5	22.4	23.5
2003-04	21.9	17.4	-0.3	-0.1	3.1	33.4	21.6	0.1	10.9
2003									
Jun Qtr	19.0	16.4	1.9	11.3	27.5	11.6	42.4	31.3	16.5
Sep Qtr	-5.3	-9.6	-11.7	-12.6	-18.4	-17.7	24.0	-35.3	-9.7
Dec Qtr	10.4	13.6	20.4	-0.1	7.5	55.6	3.1	16.8	11.8
2004									
Mar Qtr	1.8	1.9	-16.8	-9.2	-7.6	7.6	-13.4	-2.0	-5.4
Jun Qtr	8.5	8.0	29.1	22.2	16.2	31.3	12.3	14.5	15.1
Sep Qtr	-6.7	-13.7	3.9	-25.5	0.4	-14.9	-17.3	6.9	-6.3
.....									
CONSTRUCTION WORK DONE (a)									
2001-02	6.0	15.3	13.3	25.0	20.5	46.1	230.6	12.1	15.1
2002-03	20.1	18.4	19.0	21.8	33.3	-1.7	7.1	31.7	20.5
2003-04	13.4	10.9	17.3	10.6	6.7	37.9	19.0	2.5	12.8
2003									
Jun Qtr	11.3	7.4	3.6	11.3	14.2	10.9	38.9	4.4	9.5
Sep Qtr	0.9	2.6	6.8	-3.0	-4.8	5.8	20.4	-10.6	1.8
Dec Qtr	7.5	6.4	18.7	6.2	1.1	30.1	4.5	7.4	8.8
2004									
Mar Qtr	-2.9	-3.6	-14.1	-5.8	-1.3	-1.0	-14.5	-12.3	-5.9
Jun Qtr	6.1	11.9	19.2	11.9	7.6	20.9	12.6	16.0	11.2
Sep Qtr	-1.8	-2.4	5.9	-3.8	3.7	-8.6	-12.5	-0.1	-0.1

(a) From the September quarter 2000, data is inclusive of non-deductible GST payable on residential buildings. See paragraphs 11 and 12 of the Explanatory Notes.

CONSTRUCTION WORK DONE, States and territories—Chain volume measures(a)

<i>Period</i>	<i>NSW</i>	<i>Vic.</i>	<i>Qld</i>	<i>SA</i>	<i>WA</i>	<i>Tas.</i>	<i>NT</i>	<i>ACT</i>
	\$m	\$m	\$m	\$m	\$m	\$m	\$m	\$m
ORIGINAL								
2001-02	18 984.0	15 885.1	12 716.3	3 570.6	6 994.9	922.0	1 625.7	922.4
2002-03	22 078.5	18 294.3	14 440.4	4 203.0	9 070.3	868.2	1 697.9	1 160.4
2003-04	23 569.7	19 385.0	15 662.1	4 471.3	9 179.4	1 130.1	1 969.7	1 113.8
2003								
Jun Qtr	5 775.4	4 584.8	3 509.4	1 134.3	2 450.9	215.3	421.0	317.6
Sep Qtr	5 729.9	4 641.4	3 661.2	1 090.9	2 296.5	224.6	504.9	276.7
Dec Qtr	6 065.9	4 906.7	4 248.0	1 144.8	2 295.9	288.8	527.1	292.0
2004								
Mar Qtr	5 766.8	4 680.4	3 573.6	1 061.8	2 229.7	281.5	448.0	253.5
Jun Qtr	6 007.0	5 156.5	4 179.4	1 173.8	2 357.3	335.2	489.7	291.6
Sep Qtr	5 809.6	4 940.5	4 336.9	1 121.5	2 402.4	300.7	421.9	290.2
SEASONALLY ADJUSTED								
2003								
Jun Qtr	5 594.8	4 445.3	3 436.5	1 089.9	2 408.5	198.5	444.4	299.9
Sep Qtr	5 791.0	4 592.4	3 545.1	1 137.4	2 278.7	243.3	451.4	283.7
Dec Qtr	5 835.7	4 852.6	4 094.9	1 093.5	2 218.8	278.6	460.2	284.2
2004								
Mar Qtr	6 141.4	4 941.7	3 902.4	1 111.5	2 356.4	291.7	556.4	268.6
Jun Qtr	5 801.6	4 998.4	4 119.8	1 128.9	2 325.6	316.5	501.7	277.2
Sep Qtr	5 881.1	4 888.7	4 204.8	1 155.4	2 383.8	333.9	382.2	298.6
TREND								
2003								
Jun Qtr	5 673.8	4 517.1	3 584.6	1 105.1	2 337.5	209.6	425.0	305.8
Sep Qtr	5 769.3	4 625.3	3 670.1	1 110.3	2 304.2	238.8	452.9	291.2
Dec Qtr	5 904.2	4 800.0	3 851.6	1 110.8	2 279.8	270.7	496.0	276.5
2004								
Mar Qtr	5 955.9	4 928.2	4 018.4	1 114.6	2 301.7	297.1	507.9	275.7
Jun Qtr	5 926.6	4 961.2	4 106.1	1 128.7	2 346.7	315.6	483.6	280.9
Sep Qtr	5 874.5	4 943.4	4 162.2	1 147.4	2 378.8	326.9	440.0	287.9

(a) Reference year for Chain Volume Measures is 2002-2003. See paragraphs 25-28 of the Explanatory Notes.

<i>Period</i>	<i>NSW</i>	<i>Vic.</i>	<i>Qld</i>	<i>SA</i>	<i>WA</i>	<i>Tas.</i>	<i>NT</i>	<i>ACT</i>
ORIGINAL								
2001-02	5.4	12.3	12.6	22.3	19.1	43.8	227.6	8.8
2002-03	16.3	15.2	13.6	17.7	29.7	-5.8	4.4	25.8
2003-04	6.8	6.0	8.5	6.4	1.2	30.2	16.0	-4.0
2003								
Jun Qtr	9.7	5.5	1.7	10.4	12.7	9.5	38.0	2.7
Sep Qtr	-0.8	1.2	4.3	-3.8	-6.3	4.3	19.9	-12.9
Dec Qtr	5.9	5.7	16.0	4.9	—	28.6	4.4	5.5
2004								
Mar Qtr	-4.9	-4.6	-15.9	-7.2	-2.9	-2.5	-15.0	-13.2
Jun Qtr	4.2	10.2	17.0	10.5	5.7	19.1	9.3	15.0
Sep Qtr	-3.3	-4.2	3.8	-4.5	1.9	-10.3	-13.9	-0.5
SEASONALLY ADJUSTED								
2003								
Jun Qtr	-1.0	-3.2	-9.1	1.1	4.8	-2.6	13.6	-8.8
Sep Qtr	3.5	3.3	3.2	4.4	-5.4	22.6	1.6	-5.4
Dec Qtr	0.8	5.7	15.5	-3.9	-2.6	14.5	2.0	0.2
2004								
Mar Qtr	5.2	1.8	-4.7	1.6	6.2	4.7	20.9	-5.5
Jun Qtr	-5.5	1.1	5.6	1.6	-1.3	8.5	-9.8	3.2
Sep Qtr	1.4	-2.2	2.1	2.3	2.5	5.5	-23.8	7.7
TREND								
2003								
Jun Qtr	0.8	-0.5	-0.9	2.0	0.1	5.8	1.0	-0.1
Sep Qtr	1.7	2.4	2.4	0.5	-1.4	13.9	6.6	-4.8
Dec Qtr	2.3	3.8	4.9	—	-1.1	13.4	9.5	-5.0
2004								
Mar Qtr	0.9	2.7	4.3	0.3	1.0	9.8	2.4	-0.3
Jun Qtr	-0.5	0.7	2.2	1.3	2.0	6.2	-4.8	1.9
Sep Qtr	-0.9	-0.4	1.4	1.7	1.4	3.6	-9.0	2.5

— nil or rounded to zero (including null cells)

(a) Reference year for Chain Volume Measures is 2002-2003. See paragraphs 25-28 of the Explanatory Notes.

	<i>New houses</i>	<i>New other residential building</i>	<i>New residential building</i>	<i>Alterations and additions to residential building</i>	<i>Total residential building</i>	<i>Non-residential building</i>	<i>Total building</i>
	\$m	\$m	\$m	\$m	\$m	\$m	\$m
WORK YET TO BE DONE AT END OF QUARTER (a)							
2003							
Jun Qtr	4 807.2	6 670.8	11 478.0	1 221.5	12 699.5	8 209.2	20 908.7
Sep Qtr	5 537.6	6 507.4	12 045.0	1 347.9	13 392.9	8 154.6	21 547.5
Dec Qtr	5 958.3	6 949.6	12 907.9	1 355.0	14 262.9	8 462.1	22 725.0
2004							
Mar Qtr	6 178.2	6 839.6	13 017.7	1 374.9	14 392.7	9 052.1	23 444.8
Jun Qtr	6 373.9	6 999.2	13 373.1	1 456.5	14 829.2	8 883.3	23 712.8
Sep Qtr	6 558.5	6 937.7	13 496.2	1 492.0	14 988.2	9 038.8	24 027.0
WORK APPROVED BUT NOT YET COMMENCED AT END OF QUARTER (a)							
2003							
Jun Qtr	2 229.1	1 084.1	3 313.2	807.9	4 121.1	1 774.9	5 896.0
Sep Qtr	2 333.1	1 174.0	3 507.1	824.4	4 331.5	1 822.4	6 153.9
Dec Qtr	2 498.2	1 370.5	3 868.7	903.4	4 772.1	1 678.8	6 450.9
2004							
Mar Qtr	2 425.1	1 523.7	3 948.7	879.6	4 828.3	1 575.6	6 403.9
Jun Qtr	2 492.4	1 751.3	4 243.7	845.7	5 089.4	1 461.0	6 550.4
Sep Qtr	2 466.5	1 895.5	4 362.1	914.8	5 276.9	1 678.0	6 954.9
WORK IN THE PIPELINE AT END OF QUARTER (a)							
2003							
Jun Qtr	7 036.3	7 754.9	14 791.2	2 029.4	16 820.6	9 984.1	26 804.7
Sep Qtr	7 870.7	7 681.4	15 552.1	2 172.3	17 724.4	9 977.0	27 701.4
Dec Qtr	8 456.5	8 320.1	16 776.6	2 258.4	19 035.0	10 140.9	29 175.9
2004							
Mar Qtr	8 603.3	8 363.3	16 966.4	2 254.5	19 221.0	10 627.7	29 848.7
Jun Qtr	8 866.3	8 750.5	17 616.8	2 302.2	19 918.6	10 344.3	30 263.2
Sep Qtr	9 025.0	8 833.2	17 858.3	2 406.8	20 265.1	10 716.8	30 981.9

(a) See Glossary for definitions.

	NSW	Vic.	Qld	SA	WA	Tas., NT & ACT	Aust.
NEW HOUSES							
2003							
Jun Qtr	4 549	3 668	1 844	1 149	1 654	321	13 185
Sep Qtr	4 735	3 394	1 615	1 330	2 191	376	13 641
Dec Qtr	4 766	3 328	1 698	1 370	2 582	403	14 146
2004							
Mar Qtr	4 733	2 813	1 678	1 605	2 252	328	13 409
Jun Qtr	4 905	2 450	1 622	1 586	2 682	428	13 373
Sep Qtr	4 661	3 020	1 501	1 815	2 265	493	13 754
NEW OTHER RESIDENTIAL BUILDING							
2003							
Jun Qtr	4 565	1 102	869	362	382	14	7 294
Sep Qtr	4 364	1 226	1 174	396	369	50	7 579
Dec Qtr	5 580	1 530	1 125	475	174	95	8 978
2004							
Mar Qtr	5 455	2 025	877	709	298	35	9 399
Jun Qtr	5 641	2 550	1 019	660	361	296	10 527
Sep Qtr	6 046	1 847	1 396	817	469	298	10 872
TOTAL DWELLINGS (a)							
2003							
Jun Qtr	9 314	4 934	2 723	1 660	2 041	349	21 020
Sep Qtr	9 348	4 821	2 796	1 737	2 561	429	21 691
Dec Qtr	10 692	4 988	2 862	1 866	2 766	504	23 679
2004							
Mar Qtr	10 452	4 968	2 575	2 450	2 567	367	23 380
Jun Qtr	10 815	5 200	2 645	2 392	2 750	727	24 530
Sep Qtr	10 991	5 026	2 903	2 754	2 737	792	25 203

(a) Includes Conversions etc.

EXPLANATORY NOTES

INTRODUCTION

1 This publication contains preliminary estimates of building and engineering construction work done during the current quarter and revised estimates for the previous two quarters. The estimates of building work done and engineering work done are from the quarterly Building Activity Survey and the quarterly Engineering Construction Survey respectively. Estimates of work done are based upon a response from each survey of approximately 80% of the value of work done during the current quarter. More comprehensive and updated results will be available shortly in *Building Activity, Australia* (cat. no. 8752.0) and *Engineering Construction Activity, Australia* (cat. no. 8762.0).

SCOPE AND COVERAGE

2 The scope of the Building Activity Survey is building activity which includes construction of new buildings and alterations and additions to existing buildings.

3 The building statistics were compiled on the basis of returns collected from builders and other individuals and organisations engaged in building activity. From the March quarter 2002, the quarterly survey consists of:

- a sample survey of private sector building jobs involving residential building jobs valued at \$10,000 or more and non-residential building jobs valued at \$50,000 or more
- a complete enumeration of all such public sector building jobs.

4 The scope of the Engineering Construction Survey is the value of all engineering construction work undertaken in Australia. Where projects include elements of both building and engineering construction every effort is taken to exclude the building component from the engineering construction statistics.

STATISTICAL UNIT

5 In the Engineering Construction Survey, the statistical unit used to represent businesses, and for which statistics are reported, is the Australian Business Number (ABN) unit, in most cases. The ABN unit is the business unit which has registered for an ABN, and thus appears on the Australian Taxation Office (ATO) administered Australian Business Register. This unit is suitable for ABS statistical needs when the business is simple in structure. For more significant and diverse businesses where the ABN unit is not suitable for Australian Bureau of Statistics statistical needs, the statistical unit used is the Type of Activity Unit (TAU). A TAU is comprised of one or more business entities, sub-entities or branches of a business entity within an enterprise group that can report production and employment data for similar economic activities. When a minimum set of data items is available, a TAU is created which covers all the operations within an industry subdivision—and the TAU is classified to the relevant subdivision of the *Australian and New Zealand Standard Industrial Classification (ANZSIC)*. Where a business cannot supply adequate data for each industry, a TAU is formed which contains activity in more than one industry subdivision and the TAU is classified to the predominant ANZSIC subdivision.

6 Further details about the ABS economic statistical units used in the Engineering Construction Survey, and in other ABS economic surveys (both sample surveys and censuses), can be found in Chapter 2 of the *Standard Economic Sector Classifications of Australia (SESCA) 2002* (cat. no. 1218.0).

RELATIONSHIP WITH NATIONAL ACCOUNTS

7 Data on the value of work done on the construction of new residential buildings, alterations and additions to residential buildings, private sector non-residential buildings and the value of engineering construction activity are the major sources of data which are used to compile the national accounts estimates for private gross fixed capital formation on dwellings, and other buildings and structures. However, there are some adjustments to the survey data which are made in the process of compiling these national accounts series. Allowances are made for the value of activity which is out of scope of the Building Activity Survey and the Engineering Construction Survey. Such

EXPLANATORY NOTES *continued*

RELATIONSHIP WITH NATIONAL ACCOUNTS *continued*

activity includes work done on projects which fall below the size cut-offs used for the Building Activity survey and also the value of building work done which is undertaken without obtaining a building permit, either because such a permit is not required or because the requisite permit is not obtained. The national accounts estimates also make allowances for purchases (less sales) of buildings and other structures from (to) the public sector.

TREATMENT OF THE GST

8 Statistics on the value of work (current prices) show residential building work done on a GST inclusive basis and non-residential work and engineering construction work done on a GST exclusive basis. This approach is consistent with that adopted in the Australian National Accounts which is based on the conceptual framework described in the 1993 edition of the international statistical standard System of National Accounts (SNA93).

9 SNA93 requires value added taxes (VAT), such as the GST, to be recorded on a net basis where:

- (a) both outputs of goods and services and imports are valued excluding invoiced VAT
- (b) purchases of goods and services are recorded including non-deductible VAT.

10 Under the net system, VAT is recorded as being payable by purchasers, not sellers, and then only by those purchasers who are not able to deduct it. Almost all VAT is therefore recorded in the SNA93 as being paid on final uses—mainly on household consumption. Small amounts of VAT, may however, be paid by businesses in respect of certain kinds of purchases on which VAT may not be deductible.

11 The ABS records value of work done inclusive of GST in respect of residential construction and exclusive of GST in respect of non-residential construction and engineering construction. Purchasers of residential structures are unable to deduct GST from the purchase price. For non-residential structures and engineering construction, the reverse is true in most circumstances.

12 Total construction work is derived by adding total building work and total engineering construction work. To derive total building activity it is appropriate to add the residential and non-residential components. Valuation of the components of the total is consistent, since, for both components, the value of work done is recorded inclusive of non-deductible GST paid by the purchaser. As such, total building activity and total construction includes the non-deductible GST payable on residential building.

13 As estimates for engineering work are provided on a GST exclusive basis, and the majority of construction materials used were exempt from Wholesale Sales Tax, the introduction of the GST had little direct effect on the estimates of engineering construction.

CLASSIFICATION

14 *Ownership.* The ownership of a building is classified as either *private sector* or *public sector*, according to the sector of the intended owner of the completed building as evident at the time of approval. Engineering projects are classified as either *private sector* or *public sector* according to the expected ownership of the project at the time of completion.

15 Building jobs are classified both by the TYPE OF BUILDING (e.g. 'residential', 'non-residential') and by the TYPE OF WORK INVOLVED (e.g. 'new' and 'alterations and additions'). These classifications are used in conjunction with each other and are defined in the Glossary.

EXPLANATORY NOTES *continued*

RELIABILITY OF THE ESTIMATES

16 The estimates of engineering activity are based on a sample survey as are the estimates of private sector building activity. A complete enumeration of public sector building activity is done. Because data are not collected for all engineering jobs nor for all building jobs, the published estimates are subject to sampling variability. Relative standard errors give a measure of this variability and therefore indicate the degree of confidence that can be attached to the data.

17 Relative standard errors for the value of work done in the September quarter 2004 are given below. There is 67% confidence that the actual value would be within one standard error of the sample estimate, and 95% confidence that it lies within two standard errors.

Australia

New private residential building	0.9
Total private residential building	0.8
Private non-residential building	0.9
Total private building	0.6
Total residential building	0.8
Total non-residential building	0.7
Total building	0.6
Engineering for the private sector	2.4
Total engineering	1.7

<i>States and territories</i>	<i>Total building</i>	<i>Total engineering</i>
	%	%
NSW	1.0	2.6
Vic.	1.3	4.9
Qld	1.3	4.2
SA	1.3	4.9
WA	1.3	3.6
Tas.	1.2	2.1
NT	—	1.0
ACT	1.1	6.2

— nil or rounded to zero (including null cells)

SEASONAL ADJUSTMENT

18 In the seasonally adjusted series, account has been taken of normal seasonal factors, 'trading day' effects arising from the varying numbers of working days in a quarter and the effect of movement in the date of Easter which may, in successive years, affect figures for different quarters.

19 Since seasonally adjusted statistics reflect both irregular and trend movements, an upward or downward movement in a seasonally adjusted series does not necessarily indicate a change of trend. Particular care should therefore be taken in interpreting individual quarter-to-quarter movements.

20 From the June quarter 2003, the seasonally adjusted estimates are produced by the concurrent seasonal adjustment method which takes account of the latest available original estimates. The concurrent seasonal adjustment methodology replaces the forward factor methodology previously used, when seasonal factors were only revised following an annual re-analysis. The concurrent method improves the estimation of seasonal factors and, therefore, the seasonally adjusted and trend estimates for the current and previous quarters. As a result, revisions to the seasonally adjusted and trend

EXPLANATORY NOTES *continued*

SEASONAL ADJUSTMENT

continued

estimates will be observed for recent periods. In most instances, the only noticeable revisions will be to the previous quarter and the same quarter of a year earlier.

21 A more detailed review of concurrent seasonal factors will be conducted annually, generally prior to the release of data for the December quarter.

TREND ESTIMATES

22 Seasonally adjusted series can be smoothed to reduce the impact of the irregular component in the adjusted series. This smoothed seasonally adjusted series is called a trend estimate.

23 The trend estimates are derived by applying a 7-term Henderson moving average to the seasonally adjusted series. The 7-term Henderson average (like all Henderson averages) is symmetric but, as the end of a time series is approached, asymmetric forms of the average are applied. Unlike weights of the standard 7-term Henderson moving average, the weights employed here have been tailored to suit the particular characteristics of individual series.

24 While the smoothing technique described in paragraphs 22 and 23 enables trend estimates to be produced for recent quarters, it does result in revisions to the estimates for the most recent three quarters as additional observations become available. There may also be revisions because of changes in the original data. For further information, see *Information Paper: A Guide to Interpreting Time Series—Monitoring Trends, 2003* (cat. no. 1349.0) or contact the Assistant Director, Time Series Analysis on Canberra (02) 6252 6540 or email <timeseries@abs.gov.au>.

CHAIN VOLUME MEASURES

25 Chain volume estimates of the value of work done are presented in original, seasonally adjusted and trend terms.

26 While current price estimates of value of work done reflect both price and volume changes, chain volume estimates measure changes in value after the direct effects of price changes have been eliminated and therefore only reflect volume changes. The direct impact of the GST is a price change, and hence is removed from chain volume estimates. The deflators used to revalue the current price estimates in this publication are derived from the same price data underlying the deflators compiled for the dwellings and new other building components, and the new engineering construction component, of the national accounts aggregate 'Gross fixed capital formation'.

27 The chain volume measures of work done appearing in this publication are annually reweighted chain Laspeyres indexes referenced to current price values in a chosen reference year (currently 2002–03). The reference year is updated annually in the June quarter publication. Each year's data in the value of work done series are based on the prices of the previous year, except for the quarters of the latest incomplete year which are based upon the current reference year (i.e. 2002–03). Comparability with previous years is achieved by linking (or chaining) the series together to form a continuous time series. Further information on the nature and concepts of chain volume measures is contained in the *ABS Information Paper: Introduction of Chain Volume Measures in the Australian National Accounts* (cat. no. 5248.0).

28 The factors used to seasonally adjust the chain volume series are identical to those used to adjust the corresponding current price series.

ACKNOWLEDGMENT

29 ABS publications draw extensively on information provided freely by individuals, businesses, governments and other organisations. Their continued cooperation is very much appreciated: without it, the wide range of statistics published by the ABS would not be available. Information received by the ABS is treated in strict confidence as required by the *Census and Statistics Act 1905*.

RELATED PRODUCTS

30 All tables in this publication, plus some additional state and territory series are available in electronic form on the ABS web site <<http://www.abs.gov.au>>.

EXPLANATORY NOTES *continued*

RELATED PRODUCTS *continued*

- 31** Users may also wish to refer to the following publications:
- Building Activity, Australia*, cat. no. 8752.0
 - Building Approvals, Australia*, cat. no. 8731.0
 - Dwelling Unit Commencements, Australia, Preliminary*, cat. no. 8750.0
 - Engineering Construction Activity, Australia*, cat. no. 8762.0
 - House Price Indexes: Eight Capital Cities*, cat. no. 6416.0
 - Housing Finance for Owner Occupation, Australia*, cat. no. 5609.0
 - Private Sector Construction Industry, Australia, 1996–97*, cat. no. 8772.0
 - Producer Price Indexes, Australia*, cat. no. 6427.0.

32 Current publications and other products released by the ABS are listed in the *Catalogue of Publications and Products* (cat. no. 1101.0). The Catalogue is available from the National Information and Referral Service on 1300 135 070 or the ABS web site <<http://www.abs.gov.au>>. The ABS also issues a daily Release Advice on the web site which details products to be released in the week ahead.

ABS DATA AVAILABLE ON REQUEST

33 As well as the statistics included in this and related publications, the ABS may have other relevant data available on request. Inquiries should be made to the National Information and Referral Service on 1300 135 070.

ABBREVIATIONS

ABN	Australian Business Number
ABS	Australian Bureau of Statistics
ACT	Australian Capital Territory
ANZSIC	Australian and New Zealand Standard Industrial Classification
ATO	Australian Taxation Office
Aust.	Australia
GST	Goods and Services Tax
NSW	New South Wales
NT	Northern Territory
qtr	quarter
Qld	Queensland
SA	South Australia
Tas.	Tasmania
TAU	type of activity unit
VAT	value added tax
Vic.	Victoria
WA	Western Australia

GLOSSARY

Alterations and additions	Building activity carried out on existing buildings. Includes adding to or diminishing floor area, altering the structural design of a building and affixing rigid components which are integral to the functioning of the building.
Alterations and additions to residential buildings	Alterations and additions carried out on existing residential buildings, which may result in the creation of new dwelling units.
Building	A building is a rigid, fixed and permanent structure which has a roof. Its intended purpose is primarily to house people, plant, machinery, vehicles, goods or livestock. An integral feature of a building's design, to satisfy its intended use, is the provision for regular access by persons.
Construction work done	The sum of building work done and engineering construction work done.
Dwelling unit	A dwelling unit is a self-contained suite of rooms, including cooking and bathing facilities and intended for long-term residential use. Units (whether self-contained or not) within buildings offering institutional care, such as hospitals, or temporary accommodation such as motels, hostels and holiday apartments, are not defined as dwelling units. The value of units of this type is included in non-residential building.
House	A house is a detached building predominantly used for long-term residential purposes and consisting of only one dwelling unit. Thus, detached 'granny flats' and detached dwelling units (such as caretakers' residences) associated with non-residential buildings are defined as houses for the purpose of these statistics.
New	Building activity which will result in the creation of a building which previously did not exist.
Non-residential building	A non-residential building is primarily intended for purposes other than long term residential purposes.
Other residential building	An other residential building is a building other than a house primarily used for long-term residential purposes and which contains (or has attached to it) more than one dwelling unit (e.g. includes blocks of flats, attached townhouses, duplexes, apartment buildings, etc.).
Residential building	A residential building is a building predominantly consisting of one or more dwelling units. Residential buildings can be either <i>houses</i> or <i>other residential buildings</i> .
Value of building and engineering work done during the period	Represents the estimated value of work carried out during the quarter on jobs which have commenced.
Value of building work done	Includes the costs of materials fixed in place, labour, and architects fees. It excludes the value of land and landscaping and non-building components such as fencing, paving, roadworks, tennis courts, outdoor pools and car parks.
Value of engineering work done	The value of engineering work done for the private sector consists of the value of work done on prime contracts, plus speculative contracts, plus work done on own account. The value of engineering work done for the public sector is the work done by the organisation's own workforce and subcontractors. In each case, the value excludes the cost of land and repair and maintenance activity, as well as the value of any transfers of existing assets, the value of installed machinery and equipment not integral to the structure and the expenses for relocation of utility services. However, a contract for the installation of machinery and equipment which is an integral part of a construction project is included.
Work approved but not yet commenced	The anticipated completion value of the project, or if that is not known, the approval value. For residential building, 'work approved but not yet commenced' also provides a measure of the number of dwellings that have been approved, but have not commenced by the end of the reference period.

GLOSSARY *continued*

- Work in the pipeline** Value of building work that has been approved, but as yet, has not been undertaken. Work in the pipeline has two components. Firstly, there is an estimate of the amount of building work still to be done on projects that have already commenced, 'work yet to be done'. The second component is the building work that has been approved, but had not commenced by the end of the reference period, 'work approved but not yet commenced'. Information on 'work in the pipeline' is available from the June quarter 2003.
- Work yet to be done** The difference between the anticipated completion value of the project and the estimated value of work already done up to the end of the reference period for jobs which have commenced.

FOR MORE INFORMATION . . .

- INTERNET* **www.abs.gov.au** the ABS web site is the best place to start for access to summary data from our latest publications, information about the ABS, advice about upcoming releases, our catalogue, and Australia Now—a statistical profile.
- LIBRARY* A range of ABS publications is available from public and tertiary libraries Australia-wide. Contact your nearest library to determine whether it has the ABS statistics you require, or visit our web site for a list of libraries.
- CPI INFOLINE* For current and historical Consumer Price Index data, call 1902 981 074 (call cost 77c per minute).
- DIAL-A-STATISTIC* For the latest figures for National Accounts, Balance of Payments, Labour Force, Average Weekly Earnings, Estimated Resident Population and the Consumer Price Index call 1900 986 400 (call cost 77c per minute).

INFORMATION SERVICE

Data already published that can be provided within five minutes will be free of charge. Our information consultants can also help you to access the full range of ABS information—ABS user pays services can be tailored to your needs, time frame and budget. Publications may be purchased. Specialists are on hand to help you with analytical or methodological advice.

- PHONE* 1300 135 070
- EMAIL* client.services@abs.gov.au
- FAX* 1300 135 211
- POST* Client Services, ABS, GPO Box 796, Sydney NSW 2001

WHY NOT SUBSCRIBE?

ABS subscription services provide regular, convenient and prompt deliveries of selected ABS publications and products as they are released. Email delivery of monthly and quarterly publications is available.

- PHONE* 1300 366 323
- EMAIL* subscriptions@abs.gov.au
- FAX* (03) 9615 7848
- POST* Subscription Services, ABS, GPO Box 2796Y, Melbourne Vic 3001



2875500009048

ISSN 1445 6966

RRP \$21.00