



# TOURIST ACCOMMODATION AUSTRALIA

EMBARGO: 11:30AM (CANBERRA TIME) FRI 21 SEP 2001

## JUNE QTR KEY FIGURES

LICENSED HOTELS	June Qtr 2000	June Qtr 2001	change
Rooms available (no.)	74 302	78 050	5.0 %
Room occupancy rate (%)	62.0	59.3	-2.7 pts
Takings from accommodation (\$'000)	525 795	569 936	8.4 %
Average takings per room night occupied (\$)	125.9	135.3	9.4 \$

MOTELS AND GUEST HOUSES	June Qtr 2000	June Qtr 2001	change
Rooms available (no.)	86 091	84 093	-2.3 %
Room occupancy rate (%)	53.4	50.9	-2.5 pts
Takings from accommodation (\$'000)	335 620	336 607	0.3 %
Average takings per room night occupied (\$)	80.4	86.4	6.0 \$

SERVICED APARTMENTS	June Qtr 2000	June Qtr 2001	change
Rooms available (no.)	32 437	34 401	6.1 %
Room occupancy rate (%)	55.9	56.4	0.5 pts
Takings from accommodation (\$'000)	178 063	204 794	15.0 %
Average takings per room night occupied (\$)	108.1	115.9	7.8 \$

## JUNE QTR KEY POINTS

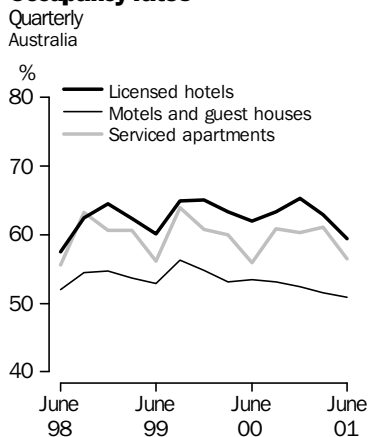
### OCCUPANCY RATES DECREASE

■ In June quarter 2001 room occupancy rates fell 1.9 percentage points nationally compared to June quarter 2000. Occupancy rates in hotels and motels fell 2.7 percentage points and 2.5 percentage points respectively, while serviced apartments recorded a marginal increase of 0.5 percentage points. Only Queensland (up 0.9 percentage points) and the Australian Capital Territory (up 3.9 percentage points) saw growth in the period. The fall in occupancy rates reflects a 1.3% decrease in actual room nights occupied despite a slight increase in capacity with guest rooms up 1.9%

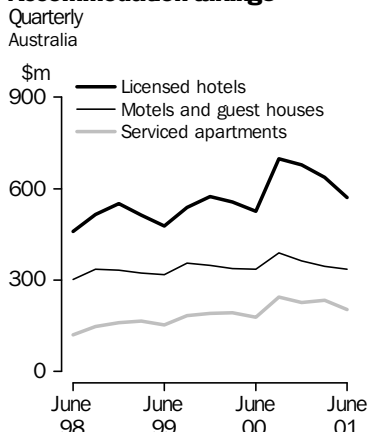
### TAKINGS SHOW MODEST INCREASES

■ Accommodation takings from hotels, motels and serviced apartments increased 6.9% in the June quarter 2001 compared to the June quarter 2000. All States and Territories recorded increases with Queensland up 10.9% and the Australian Capital Territory up 23.2%.

### Occupancy rates



### Accommodation takings



**PLEASE NOTE!**

Revisions to accommodation takings data. See 'Data Notes' on page 2.

- For further information about these and related statistics, contact Neil McKellar-Stewart on 07 3222 6364, or the National Information Service on 1300 135 070.

# NOTES

## FORTHCOMING ISSUES

### ISSUE

### RELEASE DATE

September Quarter 2001

21 December 2001

## INTRODUCTION

This publication contains the results of the quarterly Survey of Tourist Accommodation (STA). The STA includes hotels, motels, guest houses and serviced apartments with 15 or more rooms.

## REVISIONS

This issue contains revisions to the data on 'takings from accommodation' for the September quarter 2000 through to the March quarter 2001. These revisions, shown in Tables 18 to 33, reflect adjustments to account for instances where businesses did not or were not able to provide takings from accommodation inclusive of the Goods and Services Tax (GST). The contribution of the adjustment has resulted in an increase in takings of 2.2% at the national level for all establishments (hotels, motels and serviced apartments) in March quarter 2001 and December quarter 2000, and 2.1% in September quarter 2000. Further details are provided in an Appendix on page 54.

## SYMBOLS AND OTHER

### USAGES

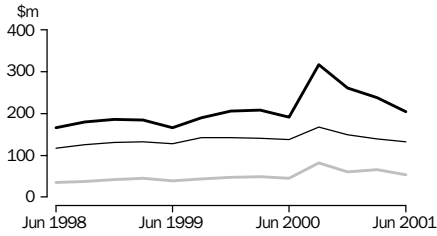
- n.a. not available
- n.p. not available for publication but included in totals where applicable
- r revised
- . . not applicable
- nil or rounded to zero

R. W. Edwards  
Acting Australian Statistician

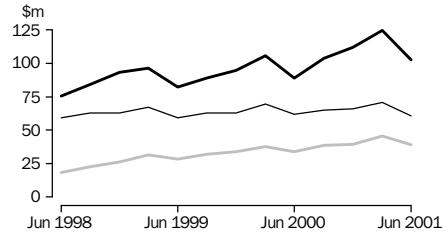
# ACCOMMODATION TAKINGS

Licensed hotels
  Motels and guest houses
  Serviced apartments

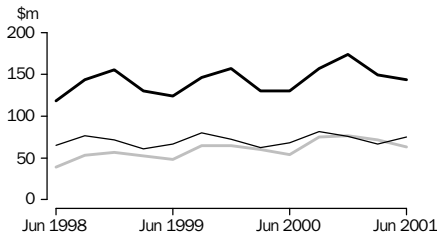
NEW SOUTH WALES



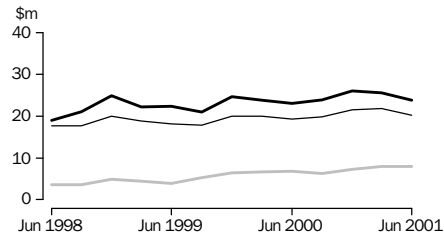
VICTORIA



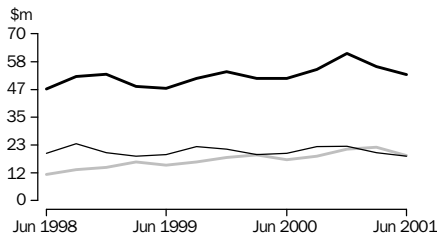
QUEENSLAND



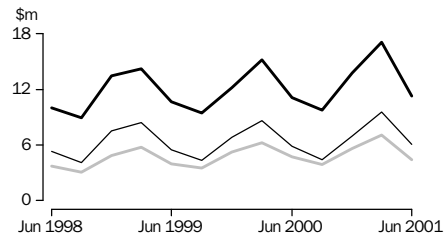
SOUTH AUSTRALIA



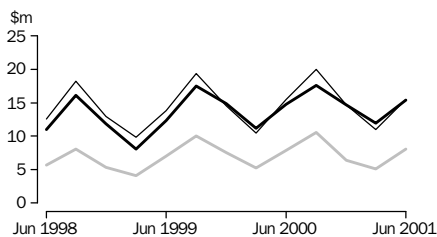
WESTERN AUSTRALIA



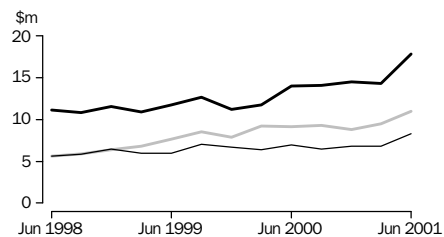
TASMANIA



NORTHERN TERRITORY



AUSTRALIAN CAPITAL TERRITORY



# LIST OF TABLES

Page

## JUNE QUARTER 2001 RESULTS

1	Summary of hotels, motels, guest houses and serviced apartments	5
	Hotels, motels, guest houses and serviced apartments, by star grading	
2	Australia	6
3	New South Wales	8
4	Victoria	10
5	Queensland	12
6	South Australia	14
7	Western Australia	16
8	Tasmania	18
9	Northern Territory	20
10	Australian Capital Territory	22
	Hotels, motels, guest houses and serviced apartments, by Tourism Region	
11	New South Wales	24
12	Victoria	26
13	Queensland	28
14	South Australia	30
15	Western Australia	31
16	Tasmania	32
17	Northern Territory and Australian Capital Territory	33

## REVISED TABLES FOR ACCOMMODATION TAKINGS, SEPTEMBER QUARTER 2000 - MARCH QUARTER 2001

### Hotels, motels, guest houses and serviced apartments, by star grading

18	Australia	34
19	New South Wales	35
20	Victoria	36
21	Queensland	37
22	South Australia	38
23	Western Australia	39
24	Tasmania	40
25	Northern Territory	41
26	Australian Capital Territory	42

### Hotels, motels, guest houses and serviced apartments, by Tourism Region

27	New South Wales	43
28	Victoria	44
29	Queensland	45
30	South Australia	46
31	Western Australia	47
32	Tasmania	48
33	Northern Territory and Australian Capital Territory	49

# 1 SUMMARY OF HOTELS, MOTELS, GUEST HOUSES AND SERVICED APARTMENTS (a)—Australia

Period	Establishments no.	Guest rooms no.	Bed spaces no.	Persons employed no.	Room nights occupied '000	Room occupancy rate %	Guest nights '000	Bed occupancy rate %	Guest arrivals '000	Average length of stay days	Takings from accom- modation \$'000
<b>LICENSED HOTELS WITH FACILITIES</b>											
<b>2000</b>											
March quarter	767	73 760	197 179	72 728	4 239	63.3	6 950	38.9	2 989	2.3	556 825
June quarter	767	74 302	197 513	72 517	4 177	62.0	6 668	37.2	2 946	2.3	525 795
September quarter	774	76 607	203 977	73 695	4 447	63.3	7 261	38.8	2 955	2.5	698 985
December quarter	780	76 783	204 109	73 457	4 607	65.3	7 569	40.3	3 109	2.4	677 488
<b>2001</b>											
March quarter	781	77 626	205 020	72 670	4 387	62.9	7 294	39.6	3 034	2.4	636 858
June quarter	778	78 050	205 656	72 226	4 212	59.3	6 854	36.6	2 984	2.3	569 936
Year ended June 2000	..	..	..	..	17 085	63.8	27 979	39.1	12 157	2.3	2 195 211
Year ended June 2001	..	..	..	..	17 652	62.7	28 979	38.8	12 082	2.4	2 583 268
<b>MOTELS AND GUEST HOUSES WITH FACILITIES</b>											
<b>2000</b>											
March quarter	2 411	85 821	254 335	31 464	4 138	53.1	7 295	31.6	3 947	1.8	337 890
June quarter	2 412	86 091	254 578	31 341	4 176	53.4	7 214	31.2	3 977	1.8	335 620
September quarter	2 412	85 078	251 929	31 342	4 142	53.1	7 286	31.5	3 980	1.8	387 739
December quarter	2 402	84 722	250 170	30 328	4 083	52.4	7 167	31.2	3 955	1.8	363 272
<b>2001</b>											
March quarter	2 400	84 432	248 795	29 917	3 907	51.5	6 982	31.2	3 856	1.8	345 954
June quarter	2 398	84 093	247 928	29 368	3 894	50.9	6 746	29.9	3 788	1.8	336 607
Year ended June 2000	..	..	..	..	17 052	54.4	29 878	32.1	16 364	1.8	1 377 203
Year ended June 2001	..	..	..	..	16 027	52.0	28 180	31.0	15 579	1.8	1 433 572
<b>SERVICED APARTMENTS</b>											
<b>2000</b>											
March quarter	611	31 542	107 951	10 807	1 712	60.0	3 792	38.8	995	3.8	193 602
June quarter	626	32 437	110 381	11 400	1 647	55.9	3 488	34.8	923	3.8	178 063
September quarter	641	33 394	113 130	11 466	1 860	60.9	4 041	39.0	1 044	3.9	243 388
December quarter	646	33 421	113 267	11 612	1 853	60.3	4 040	38.8	1 143	3.5	226 330
<b>2001</b>											
March quarter	649	34 501	115 146	11 872	1 894	61.1	4 183	40.4	1 142	3.7	235 295
June quarter	649	34 401	114 636	11 532	1 767	56.4	3 752	36.0	1 071	3.5	204 794
Year ended June 2000	..	..	..	..	6 759	60.1	14 662	37.6	3 875	3.8	745 611
Year ended June 2001	..	..	..	..	7 374	59.7	16 015	38.5	4 400	3.6	909 807
<b>TOTAL ESTABLISHMENTS</b>											
<b>2000</b>											
March quarter	3 789	191 123	559 465	114 999	10 088	58.2	18 037	35.5	7 931	2.3	1 088 317
June quarter	3 805	192 830	562 472	115 258	10 000	57.1	17 370	34.0	7 847	2.2	1 039 478
September quarter	3 827	195 079	569 036	116 503	10 449	58.4	18 589	35.6	7 979	2.3	1 330 113
December quarter	3 828	194 926	567 546	115 397	10 543	58.8	18 775	36.0	8 207	2.3	1 267 090
<b>2001</b>											
March quarter	3 830	196 559	568 961	114 459	10 189	57.7	18 459	36.1	8 031	2.3	1 218 107
June quarter	3 825	196 544	568 220	113 126	9 873	55.2	17 352	33.6	7 843	2.2	1 111 337
Year ended June 2000	..	..	..	..	40 897	59.0	72 519	35.6	32 396	2.2	4 318 024
Year ended June 2001	..	..	..	..	41 053	57.5	73 175	35.3	32 060	2.3	4 926 647

(a) Comprising establishments with 15 or more rooms or units. See Explanatory Notes, paragraph 7.

## STAR GRADING .....

Period	Licensed hotels with facilities	Motels and guest houses	Serviced apartments	1	2	3	4	5	Ungraded	Total
	ESTABLISHMENTS, CAPACITY AND EMPLOYMENT (number)									
<b>June quarter 2000</b>										
Establishments	767	2 412	626	61	474	1 837	844	88	501	3 805
Guest rooms	74 302	86 091	32 437	1 991	13 761	70 380	66 616	21 572	18 510	192 830
Bed spaces	197 513	254 578	110 381	6 376	40 455	208 942	196 622	56 462	53 615	562 472
Persons employed	72 517	31 341	11 400	749	5 480	27 410	39 171	35 036	7 412	115 258
<b>June quarter 2001</b>										
Establishments	778	2 398	649	62	457	1 866	899	98	443	3 825
Guest rooms	78 050	84 093	34 401	2 009	13 252	71 054	70 819	23 542	15 868	196 544
Bed spaces	205 656	247 928	114 636	6 391	39 041	210 769	205 793	60 366	45 860	568 220
Persons employed	72 226	29 368	11 532	800	5 176	26 883	38 787	34 993	6 487	113 126
ROOM NIGHTS OCCUPIED ('000)										
<b>2000</b>										
June quarter	4 176.8	4 175.8	1 647.2	63.2	564.7	3 459.6	3 814.1	1 339.3	759.1	9 999.9
<b>2001</b>										
April	1 406.9	1 334.9	610.2	22.2	180.0	1 157.8	1 321.8	460.2	210.0	3 352.1
May	1 452.6	1 328.6	581.9	20.5	174.1	1 125.9	1 359.7	477.6	205.4	3 363.2
June	1 352.4	1 230.4	574.8	19.9	161.3	1 060.1	1 272.3	439.5	204.5	3 157.6
June quarter	4 211.9	3 894.0	1 767.0	62.6	515.4	3 343.8	3 953.8	1 377.3	620.0	9 872.9
ROOM OCCUPANCY RATES (%)										
<b>2000</b>										
June quarter	62.0	53.4	55.9	35.0	45.2	54.1	63.0	68.6	45.4	57.1
<b>2001</b>										
April	60.1	52.9	59.1	36.9	45.3	54.3	62.2	65.2	44.1	56.9
May	60.0	51.0	54.6	32.9	42.4	51.1	61.9	65.4	41.8	55.2
June	57.8	48.8	55.7	33.0	40.6	49.8	59.9	62.2	43.0	53.6
June quarter	59.3	50.9	56.4	34.2	42.8	51.7	61.4	64.3	42.9	55.2
GUEST NIGHTS ('000)										
<b>2000</b>										
June quarter	6 668.1	7 214.5	3 487.5	101.8	1 004.0	6 240.1	6 491.3	2 155.9	1 377.0	17 370.1
<b>2001</b>										
April	2 395.7	2 444.1	1 389.2	36.5	336.3	2 222.5	2 446.9	789.7	397.1	6 228.9
May	2 252.3	2 182.9	1 150.0	31.4	295.2	1 937.5	2 222.5	750.1	348.5	5 585.2
June	2 205.9	2 119.0	1 212.7	31.6	284.4	1 919.1	2 202.2	725.5	374.9	5 537.6
June quarter	6 853.9	6 745.9	3 752.0	99.5	915.9	6 079.2	6 871.5	2 265.2	1 120.5	17 351.8
BED OCCUPANCY RATES (%)										
<b>2000</b>										
June quarter	37.2	31.2	34.8	17.6	27.3	32.8	36.3	42.2	28.4	34.0
<b>2001</b>										
April	38.8	32.9	40.4	19.0	28.7	35.1	39.6	43.6	28.9	36.5
May	35.3	28.4	32.4	15.9	24.4	29.7	34.8	40.1	24.5	31.7
June	35.8	28.5	35.3	16.5	24.3	30.4	35.7	40.1	27.2	32.5
June quarter	36.6	29.9	36.0	17.1	25.8	31.7	36.7	41.2	26.8	33.6

(a) Comprising establishments with 15 or more rooms or units. See Explanatory Notes, paragraph 7.

## STAR GRADING .....

Period	Licensed hotels with facilities	Motels and guest houses	Serviced apartments	1	2	3	4	5	Ungraded	Total
GUEST ARRIVALS ('000)										
<b>2000</b>										
June quarter	2 946.1	3 977.2	923.2	55.8	582.9	3 124.9	2 715.4	845.8	521.8	7 846.5
<b>2001</b>										
April	1 012.9	1 368.8	381.4	20.6	192.1	1 114.7	990.6	295.7	149.4	2 763.1
May	999.2	1 224.3	335.4	18.4	167.5	983.4	953.1	300.3	136.2	2 558.9
June	971.8	1 195.4	354.1	17.9	164.3	968.8	940.0	287.6	142.7	2 521.2
June quarter	2 983.8	3 788.5	1 070.9	56.8	524.0	3 066.8	2 883.7	883.7	428.2	7 843.2
AVERAGE LENGTH OF STAY (days)										
<b>2000</b>										
June quarter	2.3	1.8	3.8	1.8	1.7	2.0	2.4	2.5	2.6	2.2
<b>2001</b>										
June quarter	2.3	1.8	3.5	1.8	1.7	2.0	2.4	2.6	2.6	2.2
TAKINGS FROM ACCOMMODATION (\$'000)										
<b>2000</b>										
June quarter	525 795	335 620	178 063	3 626	33 532	276 405	433 802	226 512	65 601	1 039 478
<b>2001</b>										
April	192 901	117 414	73 305	1 425	11 769	102 755	163 497	85 223	18 952	383 620
May	197 251	113 032	66 524	1 261	10 783	95 182	165 197	86 647	17 737	376 807
June	179 784	106 161	64 965	1 503	10 473	91 035	152 732	77 137	18 030	350 910
June quarter	569 936	336 607	204 794	4 188	33 024	288 972	481 425	249 007	54 720	1 111 337
AVERAGE TAKINGS PER ROOM NIGHT OCCUPIED (\$)										
<b>2000</b>										
June quarter	125.9	80.4	108.1	57.4	59.4	79.9	113.7	169.1	86.4	103.9
<b>2001</b>										
April	137.1	88.0	120.1	64.1	65.4	88.7	123.7	185.2	90.2	114.4
May	135.8	85.1	114.3	61.5	62.0	84.5	121.5	181.4	86.3	112.0
June	132.9	86.3	113.0	75.6	64.9	85.9	120.0	175.5	88.2	111.1
June quarter	135.3	86.4	115.9	66.9	64.1	86.4	121.8	180.8	88.3	112.6
AVERAGE TAKINGS PER AVAILABLE ROOM NIGHT (\$)										
<b>2000</b>										
June quarter	78.1	42.9	60.4	20.1	26.9	43.2	71.7	116.1	39.3	59.4
<b>2001</b>										
April	82.4	46.5	71.0	23.6	29.6	48.2	77.0	120.7	39.8	65.1
May	81.5	43.4	62.4	20.2	26.2	43.2	75.3	118.7	36.1	61.8
June	76.8	42.1	62.9	24.9	26.4	42.8	71.9	109.2	37.9	59.5
June quarter	80.2	44.0	65.4	22.9	27.4	44.7	74.7	116.2	37.9	62.1

(a) Comprising establishments with 15 or more rooms or units. See Explanatory Notes, paragraph 7.

## STAR GRADING .....

<i>Period</i>	<i>Licensed hotels with facilities</i>	<i>Motels and guest houses</i>	<i>Serviced apartments</i>	<i>1</i>	<i>2</i>	<i>3</i>	<i>4</i>	<i>5</i>	<i>Ungraded</i>	<i>Total</i>
<b>ESTABLISHMENTS, CAPACITY AND EMPLOYMENT (number)</b>										
<b>June quarter 2000</b>										
Establishments	184	1 003	127	29	176	697	210	21	181	1 314
Guest rooms	22 695	33 864	6 594	1 099	4 930	25 646	19 268	5 779	6 431	63 153
Bed spaces	56 197	101 295	22 621	3 918	14 777	75 365	53 606	13 340	19 107	180 113
Persons employed	21 288	12 531	2 584	297	1 741	9 708	12 513	9 728	2 416	36 403
<b>June quarter 2001</b>										
Establishments	198	994	134	31	177	704	220	26	168	1 326
Guest rooms	25 033	32 835	7 620	1 187	5 079	25 682	21 000	6 893	5 647	65 488
Bed spaces	62 049	97 424	25 002	4 187	14 969	74 988	57 737	15 733	16 861	184 475
Persons employed	20 924	11 320	2 781	357	1 720	9 034	12 136	9 762	2 016	35 025
<b>ROOM NIGHTS OCCUPIED ('000)</b>										
<b>2000</b>										
<i>June quarter</i>	1 329.2	1 665.4	329.3	30.2	218.8	1 308.0	1 180.0	350.4	236.5	3 323.9
<b>2001</b>										
April	454.2	526.5	130.6	13.0	77.3	426.2	402.7	129.2	62.9	1 111.3
May	469.9	504.0	118.8	11.2	71.4	409.4	406.0	135.8	58.9	1 092.7
June	433.2	466.9	119.6	11.1	65.7	377.9	384.8	119.3	60.8	1 019.7
<i>June quarter</i>	1 357.3	1 497.4	369.0	35.3	214.4	1 213.4	1 193.6	384.4	182.7	3 223.7
<b>ROOM OCCUPANCY RATES (%)</b>										
<b>2000</b>										
<i>June quarter</i>	65.1	54.1	54.9	30.3	48.8	56.2	67.4	67.1	41.2	58.1
<b>2001</b>										
April	60.5	53.5	57.1	36.5	50.7	55.3	63.9	62.5	37.2	56.6
May	60.5	49.5	50.3	30.3	45.3	51.4	62.4	63.6	33.7	53.8
June	57.7	47.5	52.3	31.3	43.1	49.1	61.1	57.7	35.9	51.9
<i>June quarter</i>	59.6	50.1	53.2	32.7	46.4	51.9	62.5	61.3	35.5	54.1
<b>GUEST NIGHTS ('000)</b>										
<b>2000</b>										
<i>June quarter</i>	2 000.7	2 907.5	648.6	51.1	393.6	2 317.3	1 861.2	515.1	418.4	5 556.8
<b>2001</b>										
April	753.1	974.7	277.0	20.0	146.2	814.2	696.1	213.8	114.4	2 004.8
May	713.0	828.7	215.4	15.9	125.5	691.7	622.2	205.8	96.0	1 757.1
June	684.6	800.7	225.4	17.7	117.8	669.7	610.2	186.9	108.5	1 710.7
<i>June quarter</i>	2 150.7	2 604.1	717.9	53.6	389.5	2 175.7	1 928.4	606.5	319.0	5 472.6
<b>BED OCCUPANCY RATES (%)</b>										
<b>2000</b>										
<i>June quarter</i>	39.5	31.6	31.5	14.4	29.3	33.9	38.2	42.6	24.5	34.0
<b>2001</b>										
April	40.5	33.3	36.9	16.0	32.5	36.2	40.2	45.3	22.6	36.2
May	37.1	27.4	27.8	12.2	27.0	29.8	34.8	42.2	18.4	30.7
June	36.8	27.4	30.1	14.1	26.2	29.8	35.2	39.6	21.5	30.9
<i>June quarter</i>	38.1	29.4	31.6	14.1	28.6	31.9	36.7	42.4	20.8	32.6

(a) Comprising establishments with 15 or more rooms or units. See Explanatory Notes, paragraph 7.



# 3

## HOTELS, MOTELS, GUEST HOUSES AND SERVICED APARTMENTS (a)—NSW *continued*

### STAR GRADING .....

Period	Licensed hotels with facilities	Motels and guest houses	Serviced apartments	1	2	3	4	5	Ungraded	Total
GUEST ARRIVALS ('000)										
<b>2000</b>										
June quarter	892.8	1 699.2	197.3	29.4	238.6	1 240.8	881.3	207.0	192.2	2 789.3
<b>2001</b>										
April	310.1	587.6	84.7	11.3	87.8	445.6	300.9	86.7	50.1	982.5
May	310.2	504.4	73.0	9.8	74.1	383.2	290.5	85.9	44.2	887.6
June	296.9	491.3	75.7	10.7	72.6	372.4	283.9	77.8	46.5	863.9
June quarter	917.2	1 583.3	233.5	31.8	234.5	1 201.1	875.3	250.4	140.8	2 733.9
AVERAGE LENGTH OF STAY (days)										
<b>2000</b>										
June quarter	2.2	1.7	3.3	1.7	1.6	1.9	2.1	2.5	2.2	2.0
<b>2001</b>										
June quarter	2.3	1.6	3.1	1.7	1.7	1.8	2.2	2.4	2.3	2.0
TAKINGS FROM ACCOMMODATION (\$'000)										
<b>2000</b>										
June quarter	191 952	137 903	44 150	1 920	13 043	111 992	151 219	76 949	18 883	374 005
<b>2001</b>										
April	68 661	47 279	19 007	902	5 118	39 133	55 197	29 238	5 359	134 947
May	71 062	43 536	16 879	745	4 466	36 120	55 365	29 951	4 831	131 477
June	64 019	41 394	16 430	1 014	4 140	34 190	52 123	25 229	5 147	121 844
June quarter	203 743	132 209	52 316	2 662	13 724	109 444	162 684	84 418	15 337	388 268
AVERAGE TAKINGS PER ROOM NIGHT OCCUPIED (\$)										
<b>2000</b>										
June quarter	144.4	82.8	134.1	63.6	59.6	85.6	128.2	219.6	79.8	112.5
<b>2001</b>										
April	151.2	89.8	145.6	69.4	66.2	91.8	137.1	226.3	85.2	121.4
May	151.2	86.4	142.0	66.8	62.6	88.2	136.4	220.5	82.0	120.3
June	147.8	88.7	137.4	91.1	63.0	90.5	135.4	211.4	84.7	119.5
June quarter	150.1	88.3	141.8	75.4	64.0	90.2	136.3	219.6	84.0	120.4
AVERAGE TAKINGS PER AVAILABLE ROOM NIGHT (\$)										
<b>2000</b>										
June quarter	94.0	44.8	73.6	19.3	29.1	48.2	86.4	147.4	32.9	65.4
<b>2001</b>										
April	91.4	48.0	83.1	25.3	33.6	50.8	87.6	141.4	31.6	68.7
May	91.6	42.8	71.5	20.3	28.4	45.4	85.0	140.2	27.6	64.8
June	85.2	42.1	71.9	28.5	27.2	44.4	82.7	122.0	30.4	62.1
June quarter	89.4	44.3	75.4	24.6	29.7	46.9	85.1	134.6	29.8	65.2

(a) Comprising establishments with 15 or more rooms or units. See Explanatory Notes, paragraph 7.

## 4

## HOTELS, MOTELS, GUEST HOUSES AND SERVICED APARTMENTS (a)—Vic.

## STAR GRADING .....

<i>Period</i>	<i>Licensed hotels with facilities</i>	<i>Motels and guest houses</i>	<i>Serviced apartments</i>	1	2	3	4	5	<i>Ungraded</i>	<i>Total</i>
<b>ESTABLISHMENTS, CAPACITY AND EMPLOYMENT (number)</b>										
<b>June quarter 2000</b>										
Establishments	125	504	76	8	77	354	175	14	77	705
Guest rooms	10 906	16 306	4 172	270	2 129	11 210	11 539	3 400	2 836	31 384
Bed spaces	26 244	47 317	12 811	776	6 402	31 950	30 409	7 633	9 202	86 372
Persons employed	13 957	5 879	1 750	81	790	4 210	6 716	8 639	1 150	21 586
<b>June quarter 2001</b>										
Establishments	128	494	83	8	68	369	201	20	39	705
Guest rooms	12 165	15 501	4 629	259	1 720	11 545	12 988	4 184	1 599	32 295
Bed spaces	28 760	45 097	14 009	741	5 307	33 079	34 753	9 205	4 781	87 866
Persons employed	14 659	5 606	1 743	81	692	4 192	7 026	9 160	857	22 008
<b>ROOM NIGHTS OCCUPIED ('000)</b>										
<b>2000</b>										
<i>June quarter</i>	639.2	734.4	255.4	9.8	74.4	503.0	680.0	215.0	146.6	1 628.9
<b>2001</b>										
April	224.9	239.8	93.9	3.5	19.5	185.8	246.5	77.5	25.8	558.6
May	242.2	224.9	97.5	2.9	15.9	171.6	261.8	86.6	25.8	564.6
June	216.3	192.8	87.3	2.9	14.1	149.9	225.3	80.8	23.4	496.4
<i>June quarter</i>	683.4	657.4	278.7	9.3	49.5	507.3	733.5	244.9	75.0	1 619.6
<b>ROOM OCCUPANCY RATES (%)</b>										
<b>2000</b>										
<i>June quarter</i>	64.5	49.6	67.3	40.0	38.6	49.4	64.8	69.5	56.8	57.1
<b>2001</b>										
April	61.6	51.6	67.6	45.3	37.8	53.6	63.3	61.8	53.8	57.7
May	64.2	46.8	67.9	36.4	29.9	48.0	65.0	66.7	52.1	56.4
June	59.3	41.5	62.9	37.2	27.3	43.3	57.8	64.3	48.8	51.2
<i>June quarter</i>	61.7	46.6	66.2	39.6	31.6	48.3	62.1	64.3	51.6	55.1
<b>GUEST NIGHTS ('000)</b>										
<b>2000</b>										
<i>June quarter</i>	938.0	1 260.3	457.7	13.6	139.7	884.0	1 029.4	307.5	281.8	2 655.9
<b>2001</b>										
April	356.2	440.7	181.8	6.7	37.8	348.2	420.6	117.0	48.4	978.7
May	353.6	368.5	170.4	5.2	27.0	293.6	400.5	123.0	43.1	892.5
June	337.4	328.9	161.9	4.2	25.1	266.7	365.5	124.4	42.3	828.2
<i>June quarter</i>	1 047.2	1 138.1	514.0	16.2	89.8	908.6	1 186.5	364.4	133.8	2 699.3
<b>BED OCCUPANCY RATES (%)</b>										
<b>2000</b>										
<i>June quarter</i>	39.3	29.3	39.3	19.2	24.1	30.4	37.2	44.3	33.7	33.8
<b>2001</b>										
April	41.3	32.6	43.3	30.1	23.7	35.1	40.3	42.4	33.7	37.1
May	39.7	26.4	39.2	22.8	16.4	28.6	37.2	43.1	29.1	32.8
June	39.1	24.3	38.5	19.1	15.8	26.9	35.1	45.0	29.5	31.4
<i>June quarter</i>	40.0	27.7	40.3	24.0	18.6	30.2	37.5	43.5	30.8	33.8

(a) Comprising establishments with 15 or more rooms or units. See Explanatory Notes, paragraph 7.

## 4

HOTELS, MOTELS, GUEST HOUSES AND SERVICED APARTMENTS (a)—Vic. *continued*

## STAR GRADING .....

Period	Licensed hotels with facilities	Motels and guest houses	Serviced apartments	1	2	3	4	5	Ungraded	Total
GUEST ARRIVALS ('000)										
<b>2000</b>										
June quarter	435.8	725.4	134.3	8.7	86.2	483.5	500.0	135.1	82.1	1 295.5
<b>2001</b>										
April	170.9	255.9	51.0	4.6	22.7	184.5	195.2	53.5	17.2	477.9
May	171.3	215.9	51.9	3.9	16.4	155.0	190.0	57.4	16.3	439.1
June	169.4	194.2	49.5	2.8	14.7	144.1	179.3	56.5	15.7	413.2
June quarter	511.7	666.0	152.4	11.4	53.9	483.5	564.6	167.5	49.3	1 330.1
AVERAGE LENGTH OF STAY (days)										
<b>2000</b>										
June quarter	2.2	1.7	3.4	1.6	1.6	1.8	2.1	2.3	3.4	2.1
<b>2001</b>										
June quarter	2.0	1.7	3.4	1.4	1.7	1.9	2.1	2.2	2.7	2.0
TAKINGS FROM ACCOMMODATION (\$'000)										
<b>2000</b>										
June quarter	89 135	62 263	33 935	554	4 449	38 880	81 439	41 429	18 582	185 332
<b>2001</b>										
April	33 521	22 247	13 353	222	1 231	16 493	31 654	15 968	3 554	69 121
May	36 799	20 543	13 768	185	964	14 808	33 918	17 796	3 439	71 110
June	32 351	17 889	12 085	182	903	13 182	28 811	16 111	3 138	62 325
June quarter	102 671	60 679	39 207	588	3 098	44 482	94 383	49 875	10 131	202 556
AVERAGE TAKINGS PER ROOM NIGHT OCCUPIED (\$)										
<b>2000</b>										
June quarter	139.5	84.8	132.9	56.3	59.8	77.3	119.8	192.7	126.7	113.8
<b>2001</b>										
April	149.0	92.8	142.2	63.0	63.1	88.8	128.4	205.9	137.7	123.7
May	151.9	91.4	141.2	63.1	60.6	86.3	129.6	205.6	133.2	126.0
June	149.6	92.8	138.4	62.9	64.0	87.9	127.9	199.5	134.0	125.6
June quarter	150.2	92.3	140.7	63.0	62.6	87.7	128.7	203.7	135.0	125.1
AVERAGE TAKINGS PER AVAILABLE ROOM NIGHT (\$)										
<b>2000</b>										
June quarter	89.9	42.0	89.4	22.5	23.1	38.2	77.6	133.9	72.0	65.0
<b>2001</b>										
April	91.9	47.8	96.2	28.5	23.9	47.6	81.2	127.2	74.1	71.3
May	97.6	42.7	95.9	23.0	18.1	41.4	84.2	137.2	69.4	71.0
June	88.6	38.5	87.0	23.4	17.5	38.1	73.9	128.4	65.4	64.3
June quarter	92.7	43.0	93.1	25.0	19.8	42.3	79.9	131.0	69.6	68.9

(a) Comprising establishments with 15 or more rooms or units. See Explanatory Notes, paragraph 7.

## STAR GRADING .....

Period	Licensed	Motels	Serviced	STAR GRADING					Ungraded	Total
	hotels with facilities	and guest houses	apartments	1	2	3	4	5		
<b>ESTABLISHMENTS, CAPACITY AND EMPLOYMENT (number)</b>										
<b>June quarter 2000</b>										
Establishments	171	511	265	10	100	410	284	31	112	947
Guest rooms	20 514	18 383	13 248	251	2 474	15 080	21 521	7 961	4 858	52 145
Bed spaces	62 895	54 686	45 739	715	7 455	48 007	68 738	24 682	13 723	163 320
Persons employed	20 531	6 512	4 098	119	1 158	5 743	10 699	11 640	1 782	31 141
<b>June quarter 2001</b>										
Establishments	167	513	274	9	96	417	293	32	107	954
Guest rooms	20 516	18 343	13 420	209	2 405	15 360	21 879	8 067	4 359	52 279
Bed spaces	62 247	54 328	46 028	571	7 302	48 765	68 256	24 819	12 890	162 603
Persons employed	20 124	6 438	3 979	97	1 063	5 858	10 491	11 415	1 617	30 541
<b>ROOM NIGHTS OCCUPIED ('000)</b>										
<b>2000</b>										
June quarter	1 135.9	935.7	605.6	10.2	99.1	763.7	1 116.9	482.7	204.6	2 677.2
<b>2001</b>										
April	374.6	290.4	225.7	2.3	31.6	245.5	382.7	162.0	66.5	890.7
May	374.0	326.3	210.2	2.8	32.4	258.5	392.2	159.1	65.4	910.5
June	371.1	326.9	221.4	2.5	31.9	267.3	396.0	154.6	67.2	919.4
June quarter	1 119.6	943.6	657.4	7.6	96.0	771.3	1 170.8	475.7	199.2	2 720.6
<b>ROOM OCCUPANCY RATES (%)</b>										
<b>2000</b>										
June quarter	61.0	55.9	50.3	44.7	44.4	55.6	57.0	67.0	46.4	56.5
<b>2001</b>										
April	60.9	52.8	56.1	36.6	43.9	53.3	58.3	66.9	50.8	56.8
May	58.8	57.4	50.5	42.8	43.5	54.3	57.8	63.6	48.4	56.2
June	60.3	59.6	55.0	40.4	44.4	58.2	60.3	63.9	51.4	58.7
June quarter	60.0	56.6	53.8	40.0	43.9	55.2	58.8	64.8	50.2	57.2
<b>GUEST NIGHTS ('000)</b>										
<b>2000</b>										
June quarter	2 099.1	1 628.8	1 456.8	18.2	178.8	1 462.4	2 229.0	907.0	389.2	5 184.7
<b>2001</b>										
April	725.0	533.5	586.3	4.5	59.1	504.0	822.8	315.6	138.8	1 844.7
May	650.1	540.1	470.3	5.1	53.5	466.2	729.8	285.5	120.6	1 660.6
June	685.9	578.2	529.5	4.5	54.8	518.4	793.3	289.0	133.5	1 793.6
June quarter	2 061.0	1 651.7	1 586.1	14.1	167.3	1 488.6	2 345.8	890.1	393.0	5 298.9
<b>BED OCCUPANCY RATES (%)</b>										
<b>2000</b>										
June quarter	36.8	32.7	35.0	28.0	26.5	33.5	35.6	40.5	31.2	34.9
<b>2001</b>										
April	38.8	32.7	42.5	26.2	27.0	34.4	40.2	42.4	35.9	37.8
May	33.7	32.1	33.0	28.5	23.6	30.8	34.5	37.1	30.2	32.9
June	36.7	35.6	38.3	26.5	25.2	35.6	38.7	38.8	34.5	36.8
June quarter	36.4	33.5	37.9	27.1	25.2	33.6	37.8	39.4	33.5	35.8

(a) Comprising establishments with 15 or more rooms or units. See Explanatory Notes, paragraph 7.

## 5

HOTELS, MOTELS, GUEST HOUSES AND SERVICED APARTMENTS (a)—Qld *continued*

## STAR GRADING .....

Period	Licensed hotels with facilities	Motels and guest houses	Serviced apartments	1	2	3	4	5	Ungraded	Total
GUEST ARRIVALS ('000)										
<b>2000</b>										
June quarter	795.4	804.6	310.8	7.7	104.3	621.2	739.8	316.8	121.0	1 910.9
<b>2001</b>										
April	251.8	265.8	136.1	1.5	32.6	207.1	271.4	99.3	41.9	653.7
May	251.3	271.7	116.3	1.8	31.0	204.4	263.6	98.5	40.0	639.2
June	254.1	292.1	132.6	1.6	30.8	225.0	280.2	97.9	43.4	678.9
June quarter	757.2	829.6	385.0	4.8	94.3	636.5	815.2	295.8	125.3	1 971.8
AVERAGE LENGTH OF STAY (days)										
<b>2000</b>										
June quarter	2.6	2.0	4.7	2.4	1.7	2.4	3.0	2.9	3.2	2.7
<b>2001</b>										
June quarter	2.7	2.0	4.1	2.9	1.8	2.3	2.9	3.0	3.1	2.7
TAKINGS FROM ACCOMMODATION (\$'000)										
<b>2000</b>										
June quarter	130 533	68 048	54 176	465	5 498	54 840	107 543	68 141	16 268	252 757
<b>2001</b>										
April	49 125	23 412	23 172	111	1 933	20 557	40 706	26 292	6 110	95 709
May	46 787	25 705	19 085	134	1 851	19 801	39 817	24 432	5 541	91 577
June	46 332	25 820	20 779	119	1 989	20 716	40 391	23 810	5 906	92 931
June quarter	142 244	74 937	63 035	365	5 774	61 074	120 914	74 533	17 556	280 217
AVERAGE TAKINGS PER ROOM NIGHT OCCUPIED (\$)										
<b>2000</b>										
June quarter	114.9	72.7	89.5	45.5	55.5	71.8	96.3	141.2	79.5	94.4
<b>2001</b>										
April	131.2	80.6	102.7	48.6	61.1	83.7	106.4	162.3	91.9	107.5
May	125.1	78.8	90.8	48.5	57.1	76.6	101.5	153.5	84.7	100.6
June	124.9	79.0	93.8	47.1	62.4	77.5	102.0	154.0	87.8	101.1
June quarter	127.0	79.4	95.9	48.0	60.2	79.2	103.3	156.7	88.2	103.0
AVERAGE TAKINGS PER AVAILABLE ROOM NIGHT (\$)										
<b>2000</b>										
June quarter	70.1	40.7	45.0	20.4	24.6	40.0	54.9	94.5	36.9	53.3
<b>2001</b>										
April	79.8	42.5	57.6	17.8	26.8	44.6	62.0	108.6	46.7	61.0
May	73.6	45.2	45.9	20.8	24.8	41.6	58.7	97.7	41.0	56.5
June	75.3	47.1	51.6	19.0	27.7	45.1	61.5	98.4	45.2	59.3
June quarter	76.2	45.0	51.6	19.2	26.4	43.7	60.7	101.5	44.3	58.9

(a) Comprising establishments with 15 or more rooms or units. See Explanatory Notes, paragraph 7.

## STAR GRADING .....

Period	Licensed hotels with facilities	Motels and guest houses	Serviced apartments	1	2	3	4	5	Ungraded	Total
ESTABLISHMENTS, CAPACITY AND EMPLOYMENT (number)										
<b>June quarter 2000</b>										
Establishments	60	147	26	6	52	117	44	4	10	233
Guest rooms	4 037	5 212	1 208	146	1 501	4 470	2 799	1 263	278	10 457
Bed spaces	10 070	15 760	4 342	380	4 222	13 089	9 026	2 588	867	30 172
Persons employed	3 910	1 954	479	141	677	2 220	1 871	1 306	128	6 343
<b>June quarter 2001</b>										
Establishments	61	146	27	6	51	116	47	4	10	234
Guest rooms	4 066	5 230	1 300	143	1 505	4 439	2 975	1 263	271	10 596
Bed spaces	10 148	15 716	4 552	342	4 173	13 048	9 514	2 572	767	30 416
Persons employed	4 010	1 965	483	133	754	2 267	1 898	1 263	143	6 458
ROOM NIGHTS OCCUPIED ('000)										
<b>2000</b>										
June quarter	215.7	251.9	68.9	3.6	54.8	223.9	155.5	86.3	12.4	536.4
<b>2001</b>										
April	70.4	88.8	27.3	1.0	19.3	76.6	58.3	27.9	3.5	186.5
May	73.1	81.8	25.3	1.0	18.2	70.9	57.8	29.3	3.0	180.2
June	63.5	69.6	22.2	0.7	15.9	62.6	48.0	24.6	3.5	155.2
June quarter	207.0	240.1	74.8	2.6	53.4	210.1	164.1	81.7	10.1	521.9
ROOM OCCUPANCY RATES (%)										
<b>2000</b>										
June quarter	58.7	53.1	62.7	27.1	40.1	55.0	61.0	75.1	48.8	56.4
<b>2001</b>										
April	57.8	56.6	70.0	22.5	42.8	57.5	65.3	73.5	43.3	58.7
May	58.0	50.5	62.7	21.5	39.1	51.5	62.7	74.7	35.7	54.9
June	52.0	44.3	56.9	15.7	35.2	47.0	53.8	64.9	43.5	48.8
June quarter	55.9	50.5	63.2	19.9	39.0	52.0	60.6	71.1	40.8	54.1
GUEST NIGHTS ('000)										
<b>2000</b>										
June quarter	320.9	428.7	135.6	5.9	95.2	387.2	258.9	112.3	25.7	885.2
<b>2001</b>										
April	109.8	159.7	59.1	1.7	34.7	141.5	105.4	37.9	7.3	328.5
May	102.8	131.3	47.1	1.4	30.1	118.5	89.6	36.6	4.9	281.1
June	92.0	113.7	43.7	1.2	27.0	104.5	78.2	32.7	5.7	249.3
June quarter	304.6	404.6	149.8	4.4	91.8	364.5	273.1	107.2	17.9	859.0
BED OCCUPANCY RATES (%)										
<b>2000</b>										
June quarter	35.0	29.9	34.3	17.0	24.8	32.5	31.5	47.7	32.6	32.2
<b>2001</b>										
April	36.1	33.9	43.2	16.9	27.7	36.1	36.9	49.1	31.8	36.0
May	32.7	26.9	33.4	13.7	23.2	29.3	30.4	45.9	20.7	29.8
June	30.2	24.1	32.0	11.5	21.6	26.7	27.4	42.4	24.8	27.3
June quarter	33.0	28.3	36.2	14.0	24.2	30.7	31.5	45.8	25.7	31.0

(a) Comprising establishments with 15 or more rooms or units. See Explanatory Notes, paragraph 7.

## STAR GRADING .....

<i>Period</i>	<i>Licensed hotels with facilities</i>	<i>Motels and guest houses</i>	<i>Serviced apartments</i>	<i>1</i>	<i>2</i>	<i>3</i>	<i>4</i>	<i>5</i>	<i>Ungraded</i>	<i>Total</i>
GUEST ARRIVALS ('000)										
<b>2000</b>										
<i>June quarter</i>	162.6	242.5	40.9	3.3	53.9	212.2	115.7	53.0	7.9	446.0
<b>2001</b>										
April	55.5	86.7	17.8	0.9	20.6	73.7	43.9	18.1	2.8	160.0
May	53.8	74.0	14.9	0.8	17.5	63.5	40.4	18.4	2.0	142.6
June	51.1	65.1	13.5	0.7	16.6	56.7	36.2	17.2	2.2	129.7
<i>June quarter</i>	160.3	225.8	46.2	2.4	54.8	193.9	120.5	53.6	7.0	432.3
AVERAGE LENGTH OF STAY (days)										
<b>2000</b>										
<i>June quarter</i>	2.0	1.8	3.3	1.8	1.8	1.8	2.2	2.1	3.2	2.0
<b>2001</b>										
<i>June quarter</i>	1.9	1.8	3.2	1.8	1.7	1.9	2.3	2.0	2.6	2.0
TAKINGS FROM ACCOMMODATION (\$'000)										
<b>2000</b>										
<i>June quarter</i>	23 033	19 309	6 912	152	2 921	16 504	17 001	11 854	823	49 254
<b>2001</b>										
April	8 340	7 665	2 995	47	1 168	6 284	7 005	4 231	264	19 000
May	8 584	6 789	2 699	40	1 038	5 667	6 669	4 449	207	18 071
June	6 925	5 835	2 266	31	961	4 957	5 421	3 399	257	15 026
<i>June quarter</i>	23 849	20 289	7 959	119	3 167	16 908	19 096	12 079	728	52 096
AVERAGE TAKINGS PER ROOM NIGHT OCCUPIED (\$)										
<b>2000</b>										
<i>June quarter</i>	106.8	76.7	100.3	42.2	53.3	73.7	109.4	137.3	66.6	91.8
<b>2001</b>										
April	118.4	86.4	109.7	49.0	60.5	82.0	120.3	151.9	74.8	101.9
May	117.5	83.0	106.7	42.2	56.9	79.9	115.3	152.1	69.2	100.3
June	109.1	83.9	102.1	46.2	60.5	79.2	113.0	138.2	72.6	96.8
<i>June quarter</i>	115.2	84.5	106.4	45.8	59.3	80.5	116.4	147.9	72.4	99.8
AVERAGE TAKINGS PER AVAILABLE ROOM NIGHT (\$)										
<b>2000</b>										
<i>June quarter</i>	62.7	40.7	62.9	11.4	21.4	40.6	66.7	103.1	32.5	51.8
<b>2001</b>										
April	68.4	48.9	76.8	11.0	25.9	47.2	78.5	111.7	32.4	59.8
May	68.1	41.9	67.0	9.1	22.3	41.2	72.3	113.6	24.7	55.0
June	56.8	37.2	58.1	7.3	21.3	37.2	60.7	89.7	31.6	47.3
<i>June quarter</i>	64.5	42.6	67.3	9.1	23.1	41.9	70.5	105.1	29.5	54.0

(a) Comprising establishments with 15 or more rooms or units. See Explanatory Notes, paragraph 7.

## 7

## HOTELS, MOTELS, GUEST HOUSES AND SERVICED APARTMENTS (a)—WA

## STAR GRADING .....

<i>Period</i>	<i>Licensed hotels with facilities</i>	<i>Motels and guest houses</i>	<i>Serviced apartments</i>	<i>1 and Ungraded</i>	<i>2</i>	<i>3</i>	<i>4</i>	<i>5</i>	<i>Total</i>
<b>ESTABLISHMENTS, CAPACITY AND EMPLOYMENT (number)</b>									
<b>June quarter 2000</b>									
Establishments	134	122	69	90	26	131	64	14	325
Guest rooms	9 476	5 770	3 712	2 907	946	7 361	5 350	2 394	18 958
Bed spaces	23 729	15 575	12 789	7 325	2 359	20 239	15 654	6 516	52 093
Persons employed	6 939	2 058	1 212	1 579	472	2 720	2 813	2 625	10 209
<b>June quarter 2001</b>									
Establishments	132	126	69	87	23	135	70	12	327
Guest rooms	9 519	5 659	3 881	2 852	776	7 445	5 626	2 360	19 059
Bed spaces	24 102	15 383	12 910	7 139	1 988	20 516	16 438	6 314	52 395
Persons employed	6 616	1 727	1 302	1 428	360	2 783	2 860	2 214	9 645
<b>ROOM NIGHTS OCCUPIED ('000)</b>									
<b>2000</b>									
<i>June quarter</i>	500.3	256.5	177.2	107.8	37.8	333.8	302.9	151.7	934.0
<b>2001</b>									
April	159.5	81.7	67.3	36.7	10.0	112.5	101.0	48.4	308.6
May	164.9	79.2	58.1	35.5	10.4	108.3	100.6	47.4	302.2
June	159.1	74.3	59.0	33.3	10.1	107.7	99.0	42.2	292.3
<i>June quarter</i>	483.5	235.2	184.4	105.6	30.5	328.5	300.5	138.0	903.1
<b>ROOM OCCUPANCY RATES (%)</b>									
<b>2000</b>									
<i>June quarter</i>	58.0	49.2	53.2	40.7	43.9	49.8	62.8	70.9	54.4
<b>2001</b>									
April	55.9	48.1	57.8	42.9	43.0	50.4	59.8	68.3	54.0
May	55.9	45.1	48.3	40.2	43.4	46.9	57.7	64.8	51.2
June	55.7	43.7	50.7	39.0	43.2	48.2	58.7	59.6	51.1
<i>June quarter</i>	55.8	45.7	52.2	40.7	43.2	48.5	58.7	64.3	52.1
<b>GUEST NIGHTS ('000)</b>									
<b>2000</b>									
<i>June quarter</i>	746.4	417.4	379.5	167.0	59.0	571.9	503.2	242.0	1 543.3
<b>2001</b>									
April	247.9	140.5	149.7	59.6	16.6	201.3	177.5	83.2	538.1
May	235.0	122.3	111.8	51.2	15.3	173.4	157.4	71.8	469.1
June	232.9	119.7	120.5	51.8	15.7	178.1	161.1	66.4	473.1
<i>June quarter</i>	715.8	382.5	382.0	162.6	47.6	552.8	496.0	221.4	1 480.3
<b>BED OCCUPANCY RATES (%)</b>									
<b>2000</b>									
<i>June quarter</i>	34.6	29.7	33.0	25.1	27.5	31.1	35.6	41.5	32.7
<b>2001</b>									
April	34.3	30.4	38.7	27.8	27.8	32.7	36.0	43.9	34.2
May	31.5	25.7	27.9	23.1	24.8	27.3	30.9	36.7	28.9
June	32.2	25.9	31.1	24.2	26.4	28.9	32.7	35.1	30.1
<i>June quarter</i>	32.6	27.3	32.5	25.0	26.3	29.6	33.2	38.5	31.0

(a) Comprising establishments with 15 or more rooms or units. See Explanatory Notes, paragraph 7.



# 7 HOTELS, MOTELS, GUEST HOUSES AND SERVICED APARTMENTS (a)—WA *continued*

## STAR GRADING .....

Period	Licensed hotels with facilities	Motels and guest houses	Serviced apartments	1 and Ungraded	2	3	4	5	Total
GUEST ARRIVALS ('000)									
<b>2000</b>									
June quarter	338.4	194.6	110.1	81.3	29.2	246.0	194.3	92.3	643.2
<b>2001</b>									
April	114.5	67.1	45.5	24.8	7.6	89.2	77.2	28.3	227.1
May	107.3	58.7	35.2	20.9	6.9	76.8	70.5	26.0	201.2
June	108.2	57.1	38.8	21.3	7.4	78.4	71.4	25.6	204.1
June quarter	329.9	182.9	119.5	67.0	21.9	244.4	219.1	79.9	632.4
AVERAGE LENGTH OF STAY (days)									
<b>2000</b>									
June quarter	2.2	2.1	3.4	2.1	2.0	2.3	2.6	2.6	2.4
<b>2001</b>									
June quarter	2.2	2.1	3.2	2.4	2.2	2.3	2.3	2.8	2.3
TAKINGS FROM ACCOMMODATION (\$'000)									
<b>2000</b>									
June quarter	51 221	19 804	17 093	6 643	2 557	25 273	32 793	20 852	88 118
<b>2001</b>									
April	17 919	6 663	7 256	2 509	748	9 406	12 009	7 166	31 838
May	18 107	6 137	5 698	2 310	711	8 497	11 536	6 888	29 942
June	16 865	5 847	5 848	2 211	776	8 507	11 381	5 686	28 561
June quarter	52 890	18 647	18 803	7 031	2 235	26 410	34 926	19 740	90 341
AVERAGE TAKINGS PER ROOM NIGHT OCCUPIED (\$)									
<b>2000</b>									
June quarter	102.4	77.2	96.5	61.6	67.6	75.7	108.3	137.5	94.3
<b>2001</b>									
April	112.3	81.5	107.8	68.4	74.7	83.6	118.9	148.1	103.2
May	109.8	77.5	98.1	65.0	68.1	78.5	114.7	145.3	99.1
June	106.0	78.7	99.1	66.3	77.1	79.0	115.0	134.7	97.7
June quarter	109.4	79.3	102.0	66.6	73.2	80.4	116.2	143.1	100.0
AVERAGE TAKINGS PER AVAILABLE ROOM NIGHT (\$)									
<b>2000</b>									
June quarter	59.4	38.0	51.3	25.1	29.7	37.7	68.0	97.5	51.3
<b>2001</b>									
April	62.7	39.2	62.3	29.3	32.1	42.1	71.2	101.2	55.7
May	61.4	35.0	47.4	26.1	29.6	36.8	66.1	94.2	50.7
June	59.1	34.4	50.2	25.8	33.3	38.1	67.4	80.3	50.0
June quarter	61.1	36.2	53.2	27.1	31.6	39.0	68.2	91.9	52.1

(a) Comprising establishments with 15 or more rooms or units. See Explanatory Notes, paragraph 7.

## STAR GRADING .....

<i>Period</i>	<i>Licensed hotels with facilities</i>	<i>Motels and guest houses</i>	<i>Serviced apartments</i>	<i>1 and ungraded</i>	<i>2</i>	<i>3</i>	<i>4 and 5</i>	<i>Total</i>
ESTABLISHMENTS, CAPACITY AND EMPLOYMENT (number)								
<b>June quarter 2000</b>								
Establishments	55	51	25	8	16	74	33	131
Guest rooms	2 871	1 749	876	247	441	2 714	2 094	5 496
Bed spaces	7 870	5 420	3 317	540	1 130	8 452	6 485	16 607
Persons employed	2 813	671	437	75	222	1 293	2 331	3 921
<b>June quarter 2001</b>								
Establishments	54	50	25	10	16	71	32	129
Guest rooms	2 913	1 684	881	264	514	2 634	2 066	5 478
Bed spaces	8 046	5 241	3 219	814	1 346	8 152	6 194	16 506
Persons employed	2 751	627	418	171	239	1 219	2 167	3 796
ROOM NIGHTS OCCUPIED ('000)								
<b>2000</b>								
<i>June quarter</i>	128.5	74.5	45.5	4.7	12.4	114.0	117.4	248.5
<b>2001</b>								
April	47.3	28.7	16.1	2.7	4.3	44.0	41.2	92.1
May	40.6	23.5	12.8	2.3	4.7	33.1	36.9	77.0
June	31.1	16.6	10.6	2.2	3.1	24.3	28.7	58.3
<i>June quarter</i>	118.9	68.8	39.6	7.1	12.0	101.4	106.8	227.3
ROOM OCCUPANCY RATES (%)								
<b>2000</b>								
<i>June quarter</i>	49.2	46.8	57.1	21.0	30.9	46.1	61.6	49.7
<b>2001</b>								
April	54.1	56.8	61.0	33.5	27.6	55.7	66.5	56.1
May	44.9	45.1	47.0	28.5	29.3	40.5	57.6	45.3
June	35.6	32.8	40.2	27.2	19.9	30.8	46.3	35.5
<i>June quarter</i>	44.9	44.9	49.4	29.7	25.7	42.3	56.8	45.6
GUEST NIGHTS ('000)								
<b>2000</b>								
<i>June quarter</i>	205.7	137.8	98.1	8.3	17.3	221.1	194.9	441.6
<b>2001</b>								
April	79.5	56.5	36.8	6.0	7.4	87.1	72.3	172.8
May	62.8	42.1	25.1	4.5	7.0	61.5	56.8	129.9
June	50.1	32.0	23.7	4.9	5.1	49.4	46.2	105.7
<i>June quarter</i>	192.4	130.5	85.5	15.4	19.6	198.0	175.4	408.4
BED OCCUPANCY RATES (%)								
<b>2000</b>								
<i>June quarter</i>	28.7	27.9	32.5	16.9	16.8	28.7	33.0	29.2
<b>2001</b>								
April	32.9	35.9	38.1	24.6	18.3	35.6	38.9	34.9
May	25.2	25.9	25.1	18.0	16.8	24.3	29.6	25.4
June	20.7	20.3	24.5	20.0	12.8	20.2	24.9	21.3
<i>June quarter</i>	26.3	27.4	29.2	20.9	16.0	26.7	31.1	27.2

(a) Comprising establishments with 15 or more rooms or units. See Explanatory Notes, paragraph 7.

## STAR GRADING .....

Period	Licensed hotels with facilities	Motels and guest houses	Serviced apartments	1 and ungraded	2	3	4 and 5	Total
GUEST ARRIVALS ('000)								
<b>2000</b>								
June quarter	114.7	77.1	40.2	3.6	9.6	124.3	94.5	232.0
<b>2001</b>								
April	43.9	31.8	15.8	3.2	4.7	50.5	33.1	91.5
May	34.3	23.4	11.1	2.4	4.0	34.2	28.2	68.8
June	26.7	17.5	10.6	2.6	2.9	26.6	22.7	54.9
June quarter	104.9	72.7	37.5	8.1	11.6	111.4	84.0	215.2
AVERAGE LENGTH OF STAY (days)								
<b>2000</b>								
June quarter	1.8	1.8	2.4	2.3	1.8	1.8	2.1	1.9
<b>2001</b>								
June quarter	1.8	1.8	2.3	1.9	1.7	1.8	2.1	1.9
TAKINGS FROM ACCOMMODATION (\$'000)								
<b>2000</b>								
June quarter	11 098	5 880	4 724	323	528	8 198	12 652	21 702
<b>2001</b>								
April	4 597	2 639	1 815	212	233	3 570	5 035	9 050
May	3 861	2 000	1 419	221	263	2 525	4 271	7 280
June	2 843	1 418	1 164	178	164	1 906	3 177	5 425
June quarter	11 301	6 057	4 398	611	661	8 001	12 483	21 755
AVERAGE TAKINGS PER ROOM NIGHT OCCUPIED (\$)								
<b>2000</b>								
June quarter	86.4	79.0	103.8	68.5	42.5	71.9	107.8	87.3
<b>2001</b>								
April	97.2	91.9	112.6	79.7	54.7	81.1	122.2	98.2
May	95.1	85.0	110.5	94.7	56.4	76.3	115.8	94.6
June	91.5	85.6	109.6	82.7	53.5	78.3	110.6	93.1
June quarter	95.0	88.0	111.1	85.5	55.1	78.9	116.9	95.7
AVERAGE TAKINGS PER AVAILABLE ROOM NIGHT (\$)								
<b>2000</b>								
June quarter	42.5	36.9	59.3	14.4	13.1	33.2	66.4	43.4
<b>2001</b>								
April	52.6	52.2	68.7	26.7	15.1	45.2	81.2	55.1
May	42.8	38.3	52.0	27.0	16.5	30.9	66.7	42.9
June	32.5	28.1	44.0	22.5	10.7	24.1	51.3	33.0
June quarter	42.6	39.5	54.9	25.4	14.1	33.4	66.4	43.6

(a) Comprising establishments with 15 or more rooms or units. See Explanatory Notes, paragraph 7.

## STAR GRADING .....

<i>Period</i>	<i>Licensed hotels with facilities</i>	<i>Motels and guest houses</i>	<i>Serviced apartments</i>	<i>1 and Ungraded</i>	<i>2</i>	<i>3</i>	<i>4 and 5</i>	<i>Total</i>
<b>ESTABLISHMENTS, CAPACITY AND EMPLOYMENT (number)</b>								
<b>June quarter 2000</b>								
Establishments	23	49	18	21	19	34	16	90
Guest rooms	1 902	3 127	1 176	654	780	2 499	2 272	6 205
Bed spaces	5 416	9 346	3 850	1 874	2 344	7 478	6 916	18 612
Persons employed	1 788	1 182	423	257	260	1 054	1 822	3 393
<b>June quarter 2001</b>								
Establishments	23	50	17	22	19	33	16	90
Guest rooms	1 935	3 155	1 150	719	774	2 465	2 282	6 240
Bed spaces	5 469	9 540	3 723	2 006	2 372	7 634	6 720	18 732
Persons employed	1 864	1 134	396	291	260	1 004	1 839	3 394
<b>ROOM NIGHTS OCCUPIED ('000)</b>								
<b>2000</b>								
<i>June quarter</i>	110.7	169.6	74.3	30.0	37.8	136.8	150.1	354.6
<b>2001</b>								
April	34.7	47.0	17.9	8.0	8.6	38.1	44.7	99.5
May	41.1	55.3	25.3	10.5	11.9	43.4	55.9	121.7
June	37.4	54.7	24.5	10.4	13.1	43.5	49.6	116.6
<i>June quarter</i>	113.2	157.0	67.6	28.9	33.6	125.0	150.3	337.9
<b>ROOM OCCUPANCY RATES (%)</b>								
<b>2000</b>								
<i>June quarter</i>	63.9	60.0	69.4	51.3	54.0	60.1	72.6	63.0
<b>2001</b>								
April	59.7	49.6	51.8	37.0	37.2	51.6	65.4	53.2
May	68.5	56.6	70.9	47.1	49.6	56.8	79.1	62.9
June	64.5	57.8	70.9	48.3	56.2	58.8	72.5	62.3
<i>June quarter</i>	64.3	54.7	64.6	44.2	47.7	55.7	72.4	59.5
<b>GUEST NIGHTS ('000)</b>								
<b>2000</b>								
<i>June quarter</i>	186.8	282.1	146.9	53.6	65.0	253.1	244.1	615.8
<b>2001</b>								
April	56.1	80.8	34.8	14.1	15.1	70.9	71.7	171.7
May	62.6	92.4	49.1	18.9	19.7	77.0	88.3	204.0
June	60.1	94.7	48.0	19.7	22.9	80.1	80.1	202.8
<i>June quarter</i>	178.8	267.8	131.8	52.7	57.6	228.0	240.1	578.5
<b>BED OCCUPANCY RATES (%)</b>								
<b>2000</b>								
<i>June quarter</i>	37.9	33.3	41.9	31.8	30.8	37.2	38.8	36.5
<b>2001</b>								
April	34.2	28.2	31.2	23.4	21.2	30.9	35.6	30.6
May	36.9	31.2	42.5	30.4	26.8	32.5	42.4	35.1
June	36.7	33.1	43.0	32.8	32.1	35.0	39.8	36.1
<i>June quarter</i>	35.9	30.8	38.9	28.9	26.7	32.8	39.3	33.9

(a) Comprising establishments with 15 or more rooms or units. See Explanatory Notes, paragraph 7.

## STAR GRADING .....

Period	Licensed hotels with facilities	Motels and guest houses	Serviced apartments	1 and Ungraded	2	3	4 and 5	Total
GUEST ARRIVALS ('000)								
<b>2000</b>								
June quarter	109.2	151.0	46.7	23.2	37.7	137.3	108.7	307.0
<b>2001</b>								
April	30.6	45.6	12.6	7.3	9.2	40.0	32.4	88.9
May	32.8	47.1	15.7	7.9	11.3	39.6	36.8	95.6
June	32.0	51.5	16.8	8.9	13.9	43.0	34.6	100.4
June quarter	95.5	144.2	45.1	24.1	34.5	122.5	103.7	284.8
AVERAGE LENGTH OF STAY (days)								
<b>2000</b>								
June quarter	1.7	1.9	3.1	2.3	1.7	1.8	2.2	2.0
<b>2001</b>								
June quarter	1.9	1.9	2.9	2.2	1.7	1.9	2.3	2.0
TAKINGS FROM ACCOMMODATION (\$'000)								
<b>2000</b>								
June quarter	14 834	15 463	7 919	2 296	2 607	14 858	18 455	38 216
<b>2001</b>								
April	5 207	4 685	2 061	558	658	4 692	6 045	11 952
May	5 399	5 428	3 061	807	905	5 067	7 110	13 888
June	4 823	5 388	2 989	824	1 011	5 228	6 137	13 200
June quarter	15 429	15 502	8 111	2 188	2 574	14 987	19 291	39 041
AVERAGE TAKINGS PER ROOM NIGHT OCCUPIED (\$)								
<b>2000</b>								
June quarter	134.0	91.2	106.6	76.6	69.0	108.6	123.0	107.8
<b>2001</b>								
April	150.2	99.7	115.4	69.8	76.1	123.0	135.1	120.1
May	131.3	98.1	121.1	76.9	76.0	116.8	127.1	114.1
June	128.8	98.5	122.2	79.0	77.5	120.2	123.6	113.2
June quarter	136.3	98.7	120.0	75.7	76.6	119.9	128.3	115.6
AVERAGE TAKINGS PER AVAILABLE ROOM NIGHT (\$)								
<b>2000</b>								
June quarter	85.7	54.7	74.0	39.3	37.3	65.3	89.3	67.9
<b>2001</b>								
April	89.7	49.5	59.7	25.9	28.3	63.4	88.3	63.8
May	90.0	55.5	85.9	36.2	37.7	66.3	100.5	71.8
June	83.1	56.9	86.7	38.2	43.6	70.7	89.6	70.5
June quarter	87.6	54.0	77.5	33.4	36.6	66.8	92.9	68.8

(a) Comprising establishments with 15 or more rooms or units. See Explanatory Notes, paragraph 7.

## STAR GRADING .....

<i>Period</i>	<i>Licensed hotels with facilities</i>	<i>Motels and guest houses</i>	<i>Serviced apartments</i>	<i>1 and ungraded</i>	<i>2</i>	<i>3</i>	<i>4 and 5</i>	<i>Total</i>
ESTABLISHMENTS, CAPACITY AND EMPLOYMENT (number)								
<b>June quarter 2000</b>								
Establishments	15	25	20	10	8	20	22	60
Guest rooms	1 901	1 680	1 451	524	560	1 400	2 548	5 032
Bed spaces	5 092	5 179	4 912	1 564	1 766	4 362	7 491	15 183
Persons employed	1 291	554	417	136	160	462	1 504	2 262
<b>June quarter 2001</b>								
Establishments	15	25	20	8	7	21	24	60
Guest rooms	1 903	1 686	1 520	368	479	1 484	2 778	5 109
Bed spaces	4 835	5 199	5 193	1 152	1 584	4 587	7 904	15 227
Persons employed	1 278	551	430	96	88	526	1 549	2 259
ROOM NIGHTS OCCUPIED ('000)								
<b>2000</b>								
<i>June quarter</i>	117.4	87.9	91.1	25.8	29.6	76.4	164.6	296.4
<b>2001</b>								
April	41.3	32.0	31.4	6.4	9.3	29.0	60.0	104.7
May	46.8	33.7	33.8	6.5	9.1	30.7	68.0	114.4
June	40.8	28.6	30.3	6.3	7.6	26.9	58.8	99.6
<i>June quarter</i>	128.9	94.3	95.5	19.2	26.0	86.7	186.9	318.7
ROOM OCCUPANCY RATES (%)								
<b>2000</b>								
<i>June quarter</i>	67.9	57.5	69.0	54.1	58.1	60.0	71.0	64.7
<b>2001</b>								
April	72.4	63.3	68.9	58.0	65.0	65.2	72.0	68.3
May	79.4	64.5	71.8	57.4	61.0	66.8	79.0	72.2
June	71.4	56.5	66.3	56.8	52.8	60.5	70.6	65.0
<i>June quarter</i>	74.4	61.5	69.1	57.4	59.6	64.2	73.9	68.6
GUEST NIGHTS ('000)								
<b>2000</b>								
<i>June quarter</i>	170.6	152.0	164.3	46.0	55.4	143.0	242.5	486.8
<b>2001</b>								
April	68.1	57.8	63.7	11.9	19.6	55.4	102.7	189.6
May	72.5	57.6	60.9	13.0	17.2	55.5	105.3	191.0
June	62.9	51.1	60.1	12.3	15.9	52.1	93.8	174.1
<i>June quarter</i>	203.5	166.5	184.8	37.3	52.7	163.0	301.8	554.8
BED OCCUPANCY RATES (%)								
<b>2000</b>								
<i>June quarter</i>	36.8	32.2	36.8	32.3	34.5	36.0	35.6	35.2
<b>2001</b>								
April	46.9	37.1	40.9	34.5	41.3	40.3	43.3	41.5
May	48.4	35.7	37.9	36.4	35.0	39.0	43.0	40.5
June	43.3	32.8	38.6	35.7	33.5	37.8	39.5	38.1
<i>June quarter</i>	46.2	35.2	39.1	35.6	36.6	39.0	42.0	40.0

(a) Comprising establishments with 15 or more rooms or units. See Explanatory Notes, paragraph 7.

## STAR GRADING .....

<i>Period</i>	<i>Licensed hotels with facilities</i>	<i>Motels and guest houses</i>	<i>Serviced apartments</i>	<i>1 and ungraded</i>	<i>2</i>	<i>3</i>	<i>4 and 5</i>	<i>Total</i>
GUEST ARRIVALS ('000)								
<b>2000</b>								
<i>June quarter</i>	97.3	82.7	42.8	17.2	23.4	59.5	122.7	222.8
<b>2001</b>								
April	35.6	28.2	17.8	4.4	6.9	24.1	46.2	81.6
May	38.3	29.2	17.3	4.6	6.2	26.7	47.3	84.8
June	33.3	26.5	16.5	4.1	5.4	22.7	44.1	76.3
<i>June quarter</i>	107.1	83.9	51.6	13.0	18.5	73.5	137.6	242.6
AVERAGE LENGTH OF STAY (days)								
<b>2000</b>								
<i>June quarter</i>	1.8	1.8	3.8	2.7	2.4	2.4	2.0	2.2
<b>2001</b>								
<i>June quarter</i>	1.9	2.0	3.6	2.9	2.8	2.2	2.2	2.3
TAKINGS FROM ACCOMMODATION (\$'000)								
<b>2000</b>								
<i>June quarter</i>	13 989	6 951	9 155	2 318	1 930	5 860	19 987	30 095
<b>2001</b>								
April	5 531	2 824	3 647	529	679	2 620	8 174	12 002
May	6 652	2 894	3 915	538	584	2 696	9 643	13 461
June	5 626	2 569	3 403	526	529	2 350	8 193	11 598
<i>June quarter</i>	17 809	8 287	10 965	1 593	1 792	7 666	26 010	37 062
AVERAGE TAKINGS PER ROOM NIGHT OCCUPIED (\$)								
<b>2000</b>								
<i>June quarter</i>	119.2	79.0	100.5	89.9	65.1	76.7	121.5	101.5
<b>2001</b>								
April	133.9	88.2	116.1	82.7	72.7	90.3	136.3	114.6
May	142.0	85.9	115.7	82.2	64.5	87.7	141.8	117.7
June	138.0	89.8	112.5	84.0	69.8	87.2	139.2	116.4
<i>June quarter</i>	138.1	87.9	114.8	82.9	69.0	88.4	139.2	116.3
AVERAGE TAKINGS PER AVAILABLE ROOM NIGHT (\$)								
<b>2000</b>								
<i>June quarter</i>	80.9	45.5	69.3	48.6	37.9	46.0	86.2	65.7
<b>2001</b>								
April	96.9	55.8	80.0	47.9	47.3	58.8	98.1	78.3
May	112.8	55.4	83.1	47.2	39.3	58.6	112.0	85.0
June	98.5	50.8	74.6	47.7	36.8	52.8	98.3	75.7
<i>June quarter</i>	102.8	54.0	79.3	47.6	41.1	56.8	102.9	79.7

(a) Comprising establishments with 15 or more rooms or units. See Explanatory Notes, paragraph 7.

<i>Period</i>	<i>South Coast</i>	<i>Illawarra</i>	<i>Sydney</i>	<i>Snowy Mountains</i>	<i>Capital Country</i>	<i>The Murray</i>	<i>Riverina</i>	<i>Explorer Country</i>
ESTABLISHMENTS, CAPACITY AND EMPLOYMENT (number)								
<b>June quarter 2000</b>								
Establishments	80	32	283	60	68	98	68	122
Guest rooms	1 953	1 106	31 393	2 383	2 142	2 835	1 935	3 534
Bed spaces	6 114	3 412	79 527	9 202	6 251	9 172	5 688	11 001
Persons employed	603	620	22 899	845	916	927	634	1 266
<b>June quarter 2001</b>								
Establishments	81	33	297	59	68	99	67	121
Guest rooms	1 989	1 124	33 629	2 357	2 141	2 873	1 896	3 519
Bed spaces	6 173	3 515	83 960	9 335	6 267	9 038	5 647	10 689
Persons employed	623	629	22 053	867	861	909	666	1 215
ROOM NIGHTS OCCUPIED ('000)								
<b>2000</b>								
<i>June quarter</i>	79.3	58.6	1 902.6	40.2	105.0	133.0	99.8	177.3
<b>2001</b>								
April	29.1	18.7	632.9	11.9	35.9	49.3	33.4	57.2
May	24.6	19.8	638.4	10.4	35.9	45.3	33.1	55.3
June	20.4	16.6	595.2	15.0	32.0	36.3	27.4	53.0
<i>June quarter</i>	74.1	55.1	1 866.5	37.3	103.8	130.9	94.0	165.5
ROOM OCCUPANCY RATES (%)								
<b>2000</b>								
<i>June quarter</i>	44.7	58.2	67.1	18.6	53.8	51.6	56.7	55.1
<b>2001</b>								
April	48.7	55.6	62.7	16.9	55.9	57.2	58.8	54.2
May	39.9	56.7	61.2	14.2	54.1	50.8	56.4	50.7
June	34.3	49.3	59.1	21.2	49.8	42.1	48.2	50.2
<i>June quarter</i>	40.9	53.9	61.0	17.4	53.3	50.1	54.5	51.7
GUEST NIGHTS ('000)								
<b>2000</b>								
<i>June quarter</i>	144.3	94.9	2 996.4	88.7	184.7	246.2	162.9	323.5
<b>2001</b>								
April	57.8	33.0	1 079.2	26.8	66.6	97.0	58.3	110.1
May	42.7	30.8	991.1	20.1	60.1	78.7	50.4	91.4
June	37.0	26.2	956.2	39.8	56.9	64.9	43.3	93.3
<i>June quarter</i>	137.5	89.9	3 026.4	86.7	183.5	240.6	151.9	294.8
GUEST ARRIVALS ('000)								
<b>2000</b>								
<i>June quarter</i>	83.3	48.2	1 212.8	42.7	113.3	144.7	116.1	230.9
<b>2001</b>								
April	33.1	16.9	425.1	13.5	41.7	54.1	40.8	78.0
May	24.4	15.5	415.1	9.9	38.5	45.1	34.1	64.0
June	22.1	13.9	406.4	14.8	35.0	39.4	29.8	66.0
<i>June quarter</i>	79.6	46.3	1 246.5	38.2	115.2	138.7	104.7	208.0
TAKINGS FROM ACCOMMODATION (\$'000)								
<b>2000</b>								
<i>June quarter</i>	5 371	5 621	258 225	3 647	9 147	9 347	6 950	12 312
<b>2001</b>								
April	2 413	1 988	91 188	942	3 285	3 798	2 622	4 473
May	1 819	2 064	92 723	854	3 218	3 339	2 536	4 151
June	1 561	1 738	84 028	2 052	2 950	2 749	2 092	4 019
<i>June quarter</i>	5 794	5 790	267 939	3 848	9 453	9 886	7 249	12 643



<i>Period</i>	<i>Hunter</i>	<i>North Coast NSW</i>	<i>Northern Rivers Tropical NSW</i>	<i>Big Sky Country</i>	<i>The Living Outback</i>	<i>Central Coast</i>	<i>Blue Mountains</i>
ESTABLISHMENTS, CAPACITY AND EMPLOYMENT (number)							
<b>June quarter 2000</b>							
Establishments	99	128	77	88	38	39	34
Guest rooms	3 782	3 906	2 158	2 422	940	1 370	1 294
Bed spaces	12 120	12 708	6 789	7 269	2 708	4 599	3 553
Persons employed	2 147	1 760	677	828	289	906	1 086
<b>June quarter 2001</b>							
Establishments	100	124	76	90	38	40	33
Guest rooms	3 867	3 772	2 114	2 484	950	1 528	1 245
Bed spaces	12 221	12 144	6 621	7 425	2 779	5 144	3 517
Persons employed	2 078	1 493	646	856	294	844	991
ROOM NIGHTS OCCUPIED ('000)							
<b>2000</b>							
<i>June quarter</i>	172.3	170.3	92.3	125.1	43.8	60.1	64.1
<b>2001</b>							
April	56.6	60.5	31.1	37.8	14.0	20.1	22.6
May	53.8	51.7	30.6	39.8	15.8	18.4	19.8
June	53.8	50.9	30.4	36.9	13.7	18.5	19.6
<i>June quarter</i>	164.2	163.2	92.0	114.5	43.5	57.0	62.0
ROOM OCCUPANCY RATES (%)							
<b>2000</b>							
<i>June quarter</i>	50.1	48.1	47.0	56.8	51.2	48.2	54.5
<b>2001</b>							
April	48.8	53.5	49.0	50.7	49.2	43.9	60.6
May	44.9	44.2	46.7	51.7	53.5	38.9	51.3
June	46.4	45.0	47.9	49.5	48.0	40.3	52.3
<i>June quarter</i>	46.7	47.5	47.8	50.6	50.3	41.0	54.7
GUEST NIGHTS ('000)							
<b>2000</b>							
<i>June quarter</i>	297.0	330.4	168.7	214.4	75.6	111.5	117.6
<b>2001</b>							
April	109.6	124.6	61.6	68.2	24.6	43.3	44.1
May	90.9	91.8	53.3	63.5	24.9	33.9	33.6
June	95.2	90.7	54.8	61.6	21.7	35.2	34.1
<i>June quarter</i>	295.8	307.0	169.7	193.3	71.2	112.4	111.8
GUEST ARRIVALS ('000)							
<b>2000</b>							
<i>June quarter</i>	176.8	197.9	100.2	151.2	46.4	55.0	70.0
<b>2001</b>							
April	64.8	71.3	34.8	46.8	15.1	22.7	23.7
May	56.5	55.3	31.9	43.5	14.6	19.1	19.9
June	56.3	55.3	31.9	41.0	13.1	19.2	19.8
<i>June quarter</i>	177.6	181.9	98.6	131.3	42.8	61.0	63.4
TAKINGS FROM ACCOMMODATION (\$'000)							
<b>2000</b>							
<i>June quarter</i>	18 128	13 371	6 685	8 155	2 647	6 361	8 039
<b>2001</b>							
April	6 646	5 789	2 730	2 743	920	2 469	2 941
May	5 743	4 145	2 372	2 820	1 032	2 087	2 573
June	5 877	4 007	2 306	2 712	923	2 126	2 704
<i>June quarter</i>	18 267	13 941	7 408	8 276	2 875	6 682	8 218

Period	Melbourne	Wimmera	Mallee	Western	Western Grampians	Bendigo Loddon	Peninsula	Central Murray	Goulburn	High Country
<b>ESTABLISHMENTS, CAPACITY AND EMPLOYMENT (number)</b>										
<b>June quarter 2000</b>										
Establishments	228	6	43	54	20	31	21	21	27	72
Guest rooms	17 995	117	1 297	1 467	484	779	710	561	694	1 921
Bed spaces	45 420	338	3 916	4 523	1 394	2 369	1 839	1 707	2 059	7 050
Persons employed	15 527	29	471	745	203	365	384	160	348	817
<b>June quarter 2001</b>										
Establishments	237	6	41	52	20	31	21	21	27	70
Guest rooms	19 050	117	1 230	1 379	481	782	737	560	689	1 879
Bed spaces	47 638	335	3 709	4 199	1 384	2 354	2 016	1 623	1 999	6 834
Persons employed	16 051	29	480	707	218	352	392	147	363	767
<b>ROOM NIGHTS OCCUPIED ('000)</b>										
<b>2000</b>										
June quarter	1 098.2	4.3	57.9	62.6	22.5	37.1	25.6	23.2	31.1	60.1
<b>2001</b>										
April	373.1	1.4	18.8	22.9	7.5	13.1	9.9	8.4	10.3	19.8
May	395.6	1.4	18.6	19.8	7.1	13.3	8.8	7.0	9.8	16.8
June	353.8	1.2	16.1	15.7	6.3	11.4	7.4	6.5	8.7	13.1
June quarter	1 122.4	4.1	53.5	58.5	20.9	37.8	26.1	22.0	28.7	49.7
<b>ROOM OCCUPANCY RATES (%)</b>										
<b>2000</b>										
June quarter	67.1	40.6	49.0	47.2	51.2	52.3	39.6	45.4	49.2	34.4
<b>2001</b>										
April	65.3	40.1	51.0	55.4	51.9	56.0	44.6	50.2	49.7	35.1
May	67.0	39.5	48.6	46.4	47.8	54.7	38.6	40.3	45.7	28.9
June	61.9	35.5	43.8	38.0	43.6	48.5	33.6	38.9	42.1	23.3
June quarter	64.7	38.4	47.8	46.6	47.8	53.1	38.9	43.1	45.8	29.1
<b>GUEST NIGHTS ('000)</b>										
<b>2000</b>										
June quarter	1 717.5	7.1	101.9	117.2	37.1	65.7	40.3	40.4	47.6	119.9
<b>2001</b>										
April	627.7	2.4	33.9	45.9	13.2	24.9	16.5	16.2	17.3	41.8
May	613.2	2.1	28.8	35.2	10.3	21.5	13.5	11.3	14.3	32.1
June	579.6	1.9	26.8	29.3	9.7	19.1	12.1	11.2	13.2	27.9
June quarter	1 820.5	6.5	89.5	110.4	33.2	65.5	42.1	38.8	44.8	101.8
<b>GUEST ARRIVALS ('000)</b>										
<b>2000</b>										
June quarter	719.4	5.7	61.4	72.3	26.9	43.9	21.9	25.2	33.6	64.9
<b>2001</b>										
April	262.1	1.9	20.4	28.8	9.9	16.4	9.4	9.6	11.8	22.5
May	264.3	1.6	17.8	21.8	8.0	14.2	8.0	7.7	10.0	17.8
June	256.9	1.4	16.4	19.0	7.6	12.5	6.9	7.3	9.3	15.6
June quarter	783.3	4.8	54.6	69.6	25.5	43.2	24.2	24.6	31.0	55.9
<b>TAKINGS FROM ACCOMMODATION (\$'000)</b>										
<b>2000</b>										
June quarter	142 402	225	3 944	5 219	1 581	2 928	2 997	1 704	2 148	4 976
<b>2001</b>										
April	52 395	84	1 439	2 179	618	1 157	1 284	680	812	1 724
May	56 496	84	1 322	1 836	584	1 097	1 129	520	710	1 366
June	49 555	72	1 183	1 420	514	968	1 019	503	672	1 265
June quarter	158 445	240	3 944	5 435	1 716	3 222	3 432	1 703	2 194	4 355

Period	Lakes	Gippsland	Melbourne East	Geelong	Macedon	Spa Country	Ballarat	Central Highlands	Upper Yarra	Murray East	Phillip Island
<b>ESTABLISHMENTS, CAPACITY AND EMPLOYMENT (number)</b>											
<b>June quarter 2000</b>											
Establishments	25	34	15	22	4	5	25	15	13	14	10
Guest rooms	672	1 014	467	694	115	118	859	360	424	320	316
Bed spaces	2 014	3 018	1 090	2 122	243	300	2 674	1 131	1 077	970	1 118
Persons employed	244	302	459	362	87	105	443	91	248	75	121
<b>June quarter 2001</b>											
Establishments	24	35	12	23	3	5	26	14	13	13	11
Guest rooms	667	1 035	357	813	72	118	887	343	422	305	372
Bed spaces	1 960	3 045	860	2 203	163	291	2 763	1 078	1 075	932	1 405
Persons employed	225	287	369	428	74	77	497	79	263	72	131
<b>ROOM NIGHTS OCCUPIED ('000)</b>											
<b>2000</b>											
June quarter	24.5	33.1	15.8	32.2	4.3	5.6	38.9	13.6	14.2	13.6	10.4
<b>2001</b>											
April	9.5	10.7	3.9	12.3	0.9	1.8	13.5	5.4	4.7	4.7	5.9
May	7.2	11.2	4.2	10.6	0.8	1.7	13.8	4.3	4.5	4.6	3.5
June	5.7	10.3	3.5	9.7	1.0	1.8	11.3	3.5	3.2	3.0	3.0
June quarter	22.4	32.2	11.6	32.7	2.7	5.3	38.6	13.2	12.4	12.3	12.5
<b>ROOM OCCUPANCY RATES (%)</b>											
<b>2000</b>											
June quarter	40.1	35.8	37.1	51.0	41.5	52.5	49.8	42.8	36.7	46.8	36.2
<b>2001</b>											
April	47.4	34.5	36.7	50.5	41.4	52.1	50.9	52.1	37.0	51.5	53.2
May	35.0	34.8	37.7	42.2	35.8	45.6	50.2	40.7	34.4	48.6	30.6
June	28.6	33.1	32.7	39.8	44.4	50.9	42.5	33.8	25.6	32.4	27.3
June quarter	36.9	34.2	35.7	44.2	40.5	49.5	47.8	42.2	32.3	44.2	36.9
<b>GUEST NIGHTS ('000)</b>											
<b>2000</b>											
June quarter	44.1	51.1	22.9	52.7	5.2	8.7	80.4	26.0	23.0	24.5	22.5
<b>2001</b>											
April	18.1	18.2	6.3	20.9	1.2	3.3	29.6	11.2	7.7	8.7	13.7
May	12.1	15.8	6.0	16.0	0.9	2.8	25.5	8.1	7.5	8.0	7.4
June	10.1	15.2	5.5	15.4	1.1	3.0	23.6	6.3	5.2	4.9	7.0
June quarter	40.3	49.2	17.7	52.2	3.3	9.1	78.8	25.6	20.4	21.6	28.1
<b>GUEST ARRIVALS ('000)</b>											
<b>2000</b>											
June quarter	26.9	32.4	13.3	31.3	3.0	5.6	48.1	18.2	13.9	15.3	12.4
<b>2001</b>											
April	11.8	12.2	4.4	12.1	0.8	2.2	17.6	7.3	4.5	5.6	6.7
May	7.7	10.4	3.9	9.7	0.6	2.1	14.8	5.0	3.9	4.8	5.0
June	6.8	9.7	3.5	9.2	0.7	2.0	13.3	4.5	3.1	3.3	4.3
June quarter	26.2	32.3	11.7	31.0	2.0	6.3	45.6	16.8	11.6	13.8	16.0
<b>TAKINGS FROM ACCOMMODATION (\$'000)</b>											
<b>2000</b>											
June quarter	1 549	2 221	1 668	2 823	499	806	3 272	940	1 658	860	915
<b>2001</b>											
April	675	781	434	1 241	90	275	1 251	412	596	332	662
May	495	804	487	1 061	96	254	1 196	320	591	324	337
June	418	740	421	1 028	109	248	1 001	267	402	220	302
June quarter	1 588	2 325	1 342	3 331	295	777	3 447	998	1 588	875	1 302

<i>Period</i>	<i>Gold Coast</i>	<i>Brisbane</i>	<i>Sunshine Coast</i>	<i>Hervey Bay/ Maryborough</i>	<i>Darling Downs</i>	<i>Bundaberg</i>
ESTABLISHMENTS, CAPACITY AND EMPLOYMENT (number)						
<b>June quarter 2000</b>						
Establishments	150	162	96	43	63	24
Guest rooms	13 228	9 962	4 232	1 607	1 613	594
Bed spaces	43 860	27 754	14 577	5 478	5 111	1 772
Persons employed	8 485	7 101	2 194	684	616	192
<b>June quarter 2001</b>						
Establishments	149	162	97	42	64	25
Guest rooms	13 184	9 734	4 501	1 571	1 634	620
Bed spaces	43 572	26 945	15 388	5 376	5 182	1 878
Persons employed	8 492	6 946	2 245	724	599	175
ROOM NIGHTS OCCUPIED ('000)						
<b>2000</b>						
<i>June quarter</i>	680.7	555.1	169.1	67.7	79.7	30.6
<b>2001</b>						
April	247.2	182.0	67.4	18.9	24.3	9.0
May	219.8	209.9	51.2	20.7	26.5	10.5
June	232.4	202.0	55.1	19.6	25.9	11.8
<i>June quarter</i>	699.5	593.9	173.8	59.2	76.7	31.3
ROOM OCCUPANCY RATES (%)						
<b>2000</b>						
<i>June quarter</i>	56.6	61.2	43.9	46.3	54.3	56.5
<b>2001</b>						
April	62.5	62.3	49.9	40.1	49.6	48.6
May	53.8	69.6	36.7	42.5	52.3	54.8
June	58.8	69.6	40.8	41.6	52.9	63.2
<i>June quarter</i>	58.3	67.2	42.4	41.4	51.6	55.5
GUEST NIGHTS ('000)						
<b>2000</b>						
<i>June quarter</i>	1 550.6	888.3	403.1	128.1	140.6	52.3
<b>2001</b>						
April	596.3	302.8	189.5	41.1	44.6	16.4
May	481.3	315.7	124.0	33.7	45.7	16.7
June	532.8	323.6	140.1	35.3	45.5	20.8
<i>June quarter</i>	1 610.3	942.0	453.7	110.0	135.8	53.9
GUEST ARRIVALS ('000)						
<b>2000</b>						
<i>June quarter</i>	453.8	373.0	126.9	68.1	94.6	35.5
<b>2001</b>						
April	161.9	133.5	55.7	21.8	31.0	10.7
May	141.6	149.3	42.7	19.1	30.2	10.9
June	154.5	145.6	48.7	20.6	31.2	13.5
<i>June quarter</i>	458.0	428.4	147.1	61.6	92.4	35.1
TAKINGS FROM ACCOMMODATION (\$'000)						
<b>2000</b>						
<i>June quarter</i>	63 426	51 243	18 290	4 527	5 391	2 161
<b>2001</b>						
April	25 915	18 333	8 666	1 418	1 807	777
May	21 123	22 249	5 558	1 454	1 967	794
June	22 987	21 213	5 937	1 393	1 967	921
<i>June quarter</i>	70 025	61 796	20 162	4 264	5 741	2 492

<i>Period</i>	<i>Fitzroy</i>	<i>Mackay</i>	<i>Whitsundays</i>	<i>Northern</i>	<i>Tropical North Queensland</i>	<i>Outback</i>	<i>Great Barrier Reef</i>
ESTABLISHMENTS, CAPACITY AND EMPLOYMENT (number)							
<b>June quarter 2000</b>							
Establishments	83	53	18	55	148	52	17
Guest rooms	3 121	1 755	2 406	2 395	9 838	1 394	2 697
Bed spaces	10 054	5 207	8 555	6 971	30 052	3 929	9 181
Persons employed	1 600	948	1 863	1 510	5 398	550	2 344
<b>June quarter 2001</b>							
Establishments	86	52	18	54	153	52	16
Guest rooms	3 187	1 764	2 136	2 391	10 132	1 424	2 468
Bed spaces	9 908	5 209	7 622	6 943	30 749	4 029	8 423
Persons employed	1 586	937	1 736	1 433	5 124	529	2 243
ROOM NIGHTS OCCUPIED ('000)							
<b>2000</b>							
<i>June quarter</i>	158.3	86.6	103.3	137.2	537.5	71.3	119.6
<b>2001</b>							
April	52.4	27.9	34.2	38.1	171.6	19.7	41.7
May	58.9	30.2	31.3	51.1	175.7	25.5	32.9
June	55.3	28.7	29.7	44.6	194.7	25.6	32.7
<i>June quarter</i>	166.5	86.8	95.2	133.8	542.0	70.8	107.3
ROOM OCCUPANCY RATES (%)							
<b>2000</b>							
<i>June quarter</i>	55.8	54.2	48.0	63.0	60.1	57.0	49.7
<b>2001</b>							
April	54.8	52.7	53.4	53.1	56.5	46.1	56.3
May	59.6	55.2	47.3	69.0	56.0	57.8	43.2
June	57.8	54.2	46.4	62.1	64.2	60.0	44.1
<i>June quarter</i>	57.4	54.1	49.0	61.5	58.8	54.7	47.8
GUEST NIGHTS ('000)							
<b>2000</b>							
<i>June quarter</i>	268.2	139.0	231.0	218.0	1 057.0	108.6	260.2
<b>2001</b>							
April	89.9	46.1	80.8	63.0	350.7	30.9	93.3
May	90.4	44.7	63.2	78.1	334.8	36.7	65.8
June	93.9	45.5	66.9	71.9	393.6	40.3	72.2
<i>June quarter</i>	274.2	136.4	210.9	213.0	1 079.1	107.8	231.3
GUEST ARRIVALS ('000)							
<b>2000</b>							
<i>June quarter</i>	143.5	63.1	73.0	111.0	302.3	66.0	71.3
<b>2001</b>							
April	44.8	19.3	25.2	32.1	101.2	18.9	23.9
May	46.2	20.1	20.7	37.6	100.5	22.4	18.4
June	49.8	20.7	21.3	37.1	112.9	25.1	19.9
<i>June quarter</i>	140.9	60.2	67.2	106.8	314.6	66.5	62.2
TAKINGS FROM ACCOMMODATION (\$'000)							
<b>2000</b>							
<i>June quarter</i>	12 251	5 904	16 184	10 929	57 776	4 675	21 038
<b>2001</b>							
April	4 660	2 093	6 386	3 228	21 300	1 398	9 041
May	4 608	2 199	4 847	4 471	20 540	1 838	6 003
June	4 412	2 035	4 483	3 670	22 916	1 834	6 048
<i>June quarter</i>	13 679	6 326	15 716	11 369	64 756	5 069	21 092

Period	Limestone Coast	Murray-lands	Fleurieu Peninsula	Adelaide	Adelaide Hills	Barossa Valley	Riverland	Clare Valley	Flinders Ranges	Outback SA	Eyre Peninsula	Yorke Peninsula	Kangaroo Island
<b>ESTABLISHMENTS, CAPACITY AND EMPLOYMENT (number)</b>													
<b>June quarter 2000</b>													
Establishments	32	4	16	84	4	9	14	5	19	8	24	8	6
Guest rooms	929	96	520	5 660	132	367	499	144	636	388	765	154	167
Bed spaces	2 785	299	1 662	15 897	325	1 078	1 533	438	1 955	1 080	2 209	438	473
Persons employed	416	39	289	3 527	154	266	496	87	240	175	505	55	94
<b>June quarter 2001</b>													
Establishments	32	4	16	86	4	9	14	4	19	8	24	8	6
Guest rooms	935	96	515	5 791	132	366	507	128	652	388	769	147	170
Bed spaces	2 800	303	1 658	16 283	326	1 018	1 535	402	1 948	1 071	2 170	444	458
Persons employed	440	37	293	3 563	131	254	504	75	264	196	526	68	107
<b>ROOM NIGHTS OCCUPIED ('000)</b>													
<b>2000</b>													
June quarter	43.3	4.1	17.0	330.6	6.9	16.5	21.5	7.6	30.6	15.3	31.8	4.8	6.3
<b>2001</b>													
April	15.3	1.5	6.2	116.5	2.5	6.5	6.8	2.4	9.1	4.5	10.4	1.7	3.0
May	14.4	1.4	4.7	110.6	2.1	5.4	8.6	2.4	10.1	5.0	11.3	2.0	2.1
June	11.4	1.2	3.2	96.9	1.7	4.1	7.4	2.0	9.6	5.3	9.9	1.4	1.2
June quarter	41.1	4.1	14.1	324.0	6.3	16.1	22.8	6.8	28.8	14.8	31.7	5.1	6.4
<b>ROOM OCCUPANCY RATES (%)</b>													
<b>2000</b>													
June quarter	51.3	47.3	36.0	64.2	57.3	49.5	47.4	57.7	52.9	43.4	45.7	34.2	41.4
<b>2001</b>													
April	54.6	52.6	40.4	67.0	63.2	59.5	44.9	62.3	46.6	38.3	45.2	38.8	58.7
May	49.8	45.8	29.6	61.6	50.4	47.9	54.7	61.4	49.9	41.4	47.6	43.3	40.6
June	40.5	40.7	20.6	55.8	43.0	37.6	48.6	51.3	48.9	45.8	42.9	32.3	24.0
June quarter	48.3	46.4	30.2	61.5	52.2	48.3	49.5	58.3	48.5	41.8	45.3	38.2	41.1
<b>GUEST NIGHTS ('000)</b>													
<b>2000</b>													
June quarter	73.1	7.3	38.2	528.7	14.0	28.6	36.7	13.3	53.5	25.3	47.0	7.8	11.9
<b>2001</b>													
April	27.1	2.9	14.0	199.5	5.7	12.7	12.2	4.8	16.6	7.4	16.5	3.0	6.2
May	22.6	2.3	9.0	168.1	3.8	9.3	13.5	4.6	16.0	7.6	16.6	3.2	4.7
June	17.6	2.0	6.6	154.7	3.4	7.4	12.4	3.5	15.4	8.6	13.4	2.2	2.2
June quarter	67.3	7.3	29.6	522.2	12.8	29.4	38.1	12.8	48.0	23.6	46.5	8.4	13.0
<b>GUEST ARRIVALS ('000)</b>													
<b>2000</b>													
June quarter	42.2	5.0	20.6	222.6	6.3	18.7	22.9	9.0	40.7	17.4	29.7	4.6	6.4
<b>2001</b>													
April	17.1	2.0	7.6	81.0	2.2	7.9	8.2	3.0	11.1	4.7	10.2	2.0	3.1
May	13.2	1.6	5.4	72.1	2.0	6.1	8.9	2.9	10.6	4.4	10.2	1.9	3.1
June	10.7	1.4	4.3	69.1	2.0	4.6	8.1	2.4	10.4	5.7	8.6	1.4	1.1
June quarter	41.0	5.0	17.3	222.2	6.1	18.5	25.2	8.3	32.2	14.8	29.0	5.3	7.3
<b>TAKINGS FROM ACCOMMODATION (\$'000)</b>													
<b>2000</b>													
June quarter	2 821	212	1 365	34 458	680	1 724	1 410	538	2 112	1 181	1 976	282	496
<b>2001</b>													
April	1 122	95	589	13 453	258	711	486	207	647	342	712	113	265
May	1 027	83	431	12 732	219	586	589	227	680	434	776	123	164
June	830	72	298	10 592	176	424	507	197	649	399	675	97	111
June quarter	2 979	249	1 317	36 777	654	1 721	1 581	630	1 977	1 174	2 162	333	540

Period	South East	Goldfields	Midwest	Gascoyne	Pilbara	Kimberley	Perth	Peel	South West	Great Southern	Wheatbelt
<b>ESTABLISHMENTS, CAPACITY AND EMPLOYMENT (number)</b>											
<b>June quarter 2000</b>											
Establishments	10	25	25	11	20	27	100	6	58	19	24
Guest rooms	294	1 066	835	504	1 419	1 482	9 254	286	2 415	717	686
Bed spaces	861	2 732	2 244	1 350	3 061	4 323	25 235	1 062	7 494	2 112	1 619
Persons employed	128	453	365	211	469	886	5 729	148	1 283	287	250
<b>June quarter 2001</b>											
Establishments	10	25	25	11	19	27	102	8	57	21	22
Guest rooms	277	1 071	876	504	1 455	1 301	9 359	452	2 372	776	616
Bed spaces	830	2 792	2 344	1 347	3 051	3 805	25 539	1 520	7 356	2 322	1 489
Persons employed	127	447	352	188	460	566	5 582	162	1 257	286	218
<b>ROOM NIGHTS OCCUPIED ('000)</b>											
<b>2000</b>											
June quarter	12.3	44.7	35.0	22.2	57.2	77.6	526.6	11.8	96.4	26.3	23.9
<b>2001</b>											
April	4.3	14.7	11.3	7.5	21.7	16.5	172.9	5.7	36.2	11.4	6.5
May	4.0	15.7	12.6	6.9	24.4	21.6	169.2	4.2	28.6	8.4	6.8
June	3.2	15.8	12.8	7.1	22.5	25.6	160.8	4.5	26.1	7.8	6.3
June quarter	11.4	46.2	36.7	21.4	68.5	63.6	502.9	14.3	90.9	27.6	19.6
<b>ROOM OCCUPANCY RATES (%)</b>											
<b>2000</b>											
June quarter	46.1	46.0	46.0	48.5	44.3	59.5	62.5	45.2	44.7	40.3	38.3
<b>2001</b>											
April	51.4	45.7	43.1	49.3	49.6	42.2	61.6	41.7	50.9	48.9	35.1
May	46.1	47.3	46.2	44.0	54.1	53.5	58.3	29.8	38.9	35.0	35.5
June	38.3	49.1	48.8	46.8	51.5	65.5	57.3	33.1	36.7	33.4	34.2
June quarter	45.3	47.4	46.0	46.7	51.8	53.7	59.1	34.8	42.1	39.1	34.9
<b>GUEST NIGHTS ('000)</b>											
<b>2000</b>											
June quarter	20.6	62.2	56.5	37.9	70.6	139.4	857.3	26.0	196.5	43.7	32.7
<b>2001</b>											
April	7.7	20.9	20.2	14.2	26.4	29.2	294.9	14.0	80.3	20.7	9.7
May	5.7	20.4	19.1	10.9	30.2	37.7	262.1	8.7	52.9	12.8	8.6
June	4.6	20.9	20.0	11.2	27.9	47.5	258.2	10.2	51.8	12.8	8.2
June quarter	17.9	62.2	59.3	36.3	84.4	114.4	815.3	32.9	184.9	46.3	26.4
<b>GUEST ARRIVALS ('000)</b>											
<b>2000</b>											
June quarter	8.7	28.2	30.7	16.3	31.5	48.1	324.4	13.1	96.2	26.0	20.0
<b>2001</b>											
April	3.4	10.3	11.3	5.2	9.2	12.4	115.1	5.9	36.5	11.0	6.7
May	2.6	9.7	10.3	4.3	11.2	14.4	103.9	4.2	28.0	7.4	5.4
June	2.2	9.5	9.9	4.6	10.5	19.7	103.2	4.8	27.0	7.2	5.4
June quarter	8.2	29.5	31.5	14.2	30.8	46.6	322.1	15.0	91.5	25.6	17.4
<b>TAKINGS FROM ACCOMMODATION (\$'000)</b>											
<b>2000</b>											
June quarter	804	3 406	2 258	1 603	4 151	8 316	54 419	1 072	8 657	2 114	1 319
<b>2001</b>											
April	305	1 170	849	607	1 638	1 683	19 679	545	3 908	1 024	430
May	277	1 270	922	549	1 930	2 256	18 670	339	2 620	725	383
June	213	1 313	931	525	1 913	2 742	16 983	384	2 484	671	401
June quarter	795	3 753	2 702	1 681	5 481	6 682	55 332	1 268	9 013	2 420	1 214

Period	Greater Hobart	Southern	East Coast	Northern	Greater Launceston	North West	West Coast
ESTABLISHMENTS, CAPACITY AND EMPLOYMENT (number)							
<b>June quarter 2000</b>							
Establishments	39	14	4	2	30	32	10
Guest rooms	2 068	458	n.p.	n.p.	1 350	986	412
Bed spaces	5 921	1 583	n.p.	n.p.	4 424	2 782	1 231
Persons employed	1 717	218	n.p.	n.p.	1 155	532	180
<b>June quarter 2001</b>							
Establishments	38	14	4	2	30	31	10
Guest rooms	2 056	462	n.p.	n.p.	1 347	976	416
Bed spaces	5 858	1 624	n.p.	n.p.	4 365	2 778	1 242
Persons employed	1 704	229	n.p.	n.p.	1 080	512	158
ROOM NIGHTS OCCUPIED ('000)							
<b>2000</b>							
June quarter	112.6	15.9	n.p.	n.p.	64.9	34.7	13.8
<b>2001</b>							
April	42.4	6.6	n.p.	n.p.	22.3	12.0	6.3
May	34.0	4.0	n.p.	n.p.	21.9	10.3	4.7
June	26.2	3.2	n.p.	n.p.	16.3	8.3	2.8
June quarter	102.6	13.8	n.p.	n.p.	60.5	30.6	13.8
ROOM OCCUPANCY RATES (%)							
<b>2000</b>							
June quarter	59.9	38.2	n.p.	n.p.	52.8	38.7	36.9
<b>2001</b>							
April	68.7	47.5	n.p.	n.p.	55.3	41.0	50.2
May	53.3	28.1	n.p.	n.p.	52.4	33.9	36.8
June	42.4	22.9	n.p.	n.p.	40.4	28.3	22.7
June quarter	54.8	32.8	n.p.	n.p.	49.4	34.4	36.5
GUEST NIGHTS ('000)							
<b>2000</b>							
June quarter	199.5	32.6	n.p.	n.p.	115.9	56.8	25.1
<b>2001</b>							
April	77.1	14.5	n.p.	n.p.	42.2	21.3	12.4
May	57.6	7.7	n.p.	n.p.	36.6	15.9	8.1
June	46.6	6.8	n.p.	n.p.	30.6	13.3	5.2
June quarter	181.4	29.1	n.p.	n.p.	109.3	50.5	25.7
GUEST ARRIVALS ('000)							
<b>2000</b>							
June quarter	81.5	23.9	n.p.	n.p.	65.3	34.9	17.8
<b>2001</b>							
April	32.0	10.6	n.p.	n.p.	22.2	13.5	9.3
May	25.1	5.7	n.p.	n.p.	19.0	10.6	5.4
June	20.4	4.7	n.p.	n.p.	16.0	8.1	3.6
June quarter	77.5	21.1	n.p.	n.p.	57.2	32.2	18.3
TAKINGS FROM ACCOMMODATION (\$'000)							
<b>2000</b>							
June quarter	10 529	1 377	n.p.	n.p.	5 409	2 962	991
<b>2001</b>							
April	4 524	681	n.p.	n.p.	2 046	1 132	474
May	3 570	397	n.p.	n.p.	1 967	885	321
June	2 609	303	n.p.	n.p.	1 452	740	209
June quarter	10 703	1 381	n.p.	n.p.	5 465	2 756	1 004



Period	Darwin	Kakadu	Arnhem	Katherine	Tablelands	Petermann	Alice Springs	MacDonnell	Daly	Canberra
ESTABLISHMENTS, CAPACITY AND EMPLOYMENT (number)										
<b>June quarter 2000</b>										
Establishments	34	4	3	10	7	7	22	2	1	60
Guest rooms	2 563	n.p.	n.p.	528	249	n.p.	1 614	n.p.	n.p.	5 032
Bed spaces	7 615	n.p.	n.p.	1 447	685	n.p.	4 935	n.p.	n.p.	15 183
Persons employed	1 575	n.p.	n.p.	228	72	n.p.	754	n.p.	n.p.	2 262
<b>June quarter 2001</b>										
Establishments	34	4	3	10	7	7	22	2	1	60
Guest rooms	2 596	n.p.	n.p.	529	250	n.p.	1 610	n.p.	n.p.	5 109
Bed spaces	7 677	n.p.	n.p.	1 495	712	n.p.	4 880	n.p.	n.p.	15 227
Persons employed	1 555	n.p.	n.p.	188	64	n.p.	749	n.p.	n.p.	2 259
ROOM NIGHTS OCCUPIED ('000)										
<b>2000</b>										
June quarter	172.2	n.p.	n.p.	22.8	8.2	n.p.	81.2	n.p.	n.p.	296.4
<b>2001</b>										
April	42.3	n.p.	n.p.	5.0	2.1	n.p.	28.0	n.p.	n.p.	104.7
May	59.0	n.p.	n.p.	6.6	3.6	n.p.	32.5	n.p.	n.p.	114.4
June	56.3	n.p.	n.p.	8.3	3.4	n.p.	27.1	n.p.	n.p.	99.6
June quarter	157.6	n.p.	n.p.	19.9	9.0	n.p.	87.5	n.p.	n.p.	318.7
ROOM OCCUPANCY RATES (%)										
<b>2000</b>										
June quarter	73.8	n.p.	n.p.	49.6	36.3	n.p.	55.3	n.p.	n.p.	64.7
<b>2001</b>										
April	54.3	n.p.	n.p.	31.4	27.9	n.p.	58.0	n.p.	n.p.	68.3
May	73.3	n.p.	n.p.	40.4	46.4	n.p.	65.0	n.p.	n.p.	72.2
June	72.3	n.p.	n.p.	52.3	44.7	n.p.	56.0	n.p.	n.p.	65.0
June quarter	66.7	n.p.	n.p.	41.4	39.7	n.p.	59.7	n.p.	n.p.	68.6
GUEST NIGHTS ('000)										
<b>2000</b>										
June quarter	285.2	n.p.	n.p.	42.5	14.3	n.p.	143.5	n.p.	n.p.	486.8
<b>2001</b>										
April	68.5	n.p.	n.p.	9.5	3.7	n.p.	46.0	n.p.	n.p.	189.6
May	98.1	n.p.	n.p.	12.5	5.5	n.p.	50.2	n.p.	n.p.	191.0
June	94.4	n.p.	n.p.	15.3	5.8	n.p.	45.2	n.p.	n.p.	174.1
June quarter	261.1	n.p.	n.p.	37.3	15.0	n.p.	141.4	n.p.	n.p.	554.8
GUEST ARRIVALS ('000)										
<b>2000</b>										
June quarter	118.5	n.p.	n.p.	27.4	13.3	n.p.	67.6	n.p.	n.p.	222.8
<b>2001</b>										
April	28.3	n.p.	n.p.	6.8	3.1	n.p.	22.3	n.p.	n.p.	81.6
May	37.4	n.p.	n.p.	8.4	4.2	n.p.	21.5	n.p.	n.p.	84.8
June	37.6	n.p.	n.p.	10.1	5.0	n.p.	21.4	n.p.	n.p.	76.3
June quarter	103.3	n.p.	n.p.	25.2	12.3	n.p.	65.2	n.p.	n.p.	242.6
TAKINGS FROM ACCOMMODATION (\$'000)										
<b>2000</b>										
June quarter	17 117	n.p.	n.p.	1 558	521	n.p.	6 458	n.p.	n.p.	30 095
<b>2001</b>										
April	4 263	n.p.	n.p.	366	159	n.p.	2 346	n.p.	n.p.	12 002
May	6 570	n.p.	n.p.	487	283	n.p.	2 763	n.p.	n.p.	13 461
June	6 146	n.p.	n.p.	615	261	n.p.	2 230	n.p.	n.p.	11 598
June quarter	16 979	n.p.	n.p.	1 468	702	n.p.	7 338	n.p.	n.p.	37 062

## STAR GRADING .....

Period	STAR GRADING .....									
	Licensed hotels with facilities	Motels and guest houses	Serviced apartments	1	2	3	4	5	Ungraded	Total
<b>TAKINGS FROM ACCOMMODATION (\$'000)</b>										
<b>2000</b>										
July	198 184	123 006	73 056	2 356	12 302	105 788	165 925	82 276	25 598	394 245
August	211 227	123 514	72 578	2 486	12 158	106 422	168 629	89 375	28 249	407 319
September	289 575	141 219	97 755	2 326	13 662	136 329	213 809	127 087	35 335	528 548
<i>September quarter</i>	698 985	387 739	243 388	7 169	38 122	348 540	548 363	298 738	89 181	1 330 113
October	240 809	130 588	77 354	1 373	12 166	113 683	193 556	106 674	21 300	448 751
November	236 877	124 231	74 174	1 295	11 551	107 109	188 113	106 282	20 933	435 282
December	199 803	108 452	74 801	1 258	10 956	97 269	163 184	91 068	19 322	383 056
<i>December quarter</i>	677 488	363 272	226 330	3 926	34 673	318 060	544 852	304 024	61 554	1 267 090
<b>2001</b>										
January	203 430	120 248	90 895	1 437	12 016	109 207	173 491	95 921	22 500	414 573
February	201 202	102 873	66 589	1 145	9 002	88 189	161 186	93 418	17 724	370 664
March	232 226	122 832	77 812	1 353	11 300	105 435	186 833	106 817	21 132	432 871
<i>March quarter</i>	636 858	345 954	235 295	3 935	32 319	302 832	521 509	296 157	61 356	1 218 107
<b>AVERAGE TAKINGS PER ROOM NIGHT OCCUPIED (\$)</b>										
<b>2000</b>										
July	137.9	90.0	120.3	85.4	66.6	90.4	124.9	184.9	100.2	115.6
August	141.0	90.3	119.0	87.8	66.6	90.5	124.9	186.4	109.1	117.2
September	191.5	100.3	152.2	85.4	70.9	109.8	158.2	268.3	127.8	148.4
<i>September quarter</i>	157.2	93.6	130.9	86.2	68.1	97.2	136.1	213.7	112.8	127.3
October	152.6	89.8	121.7	60.7	63.9	90.7	131.9	208.3	96.3	122.4
November	144.9	87.6	118.6	58.9	64.5	87.1	126.7	197.4	93.9	118.4
December	143.3	89.5	126.4	64.7	66.6	90.7	127.7	196.8	96.5	119.8
<i>December quarter</i>	147.1	89.0	122.1	61.3	64.9	89.4	128.8	200.9	95.5	120.2
<b>2001</b>										
January	142.9	91.1	131.6	65.6	68.5	92.3	128.5	199.0	101.3	120.7
February	145.7	87.3	119.4	60.6	62.4	85.9	127.3	199.9	91.1	118.9
March	146.8	87.2	120.5	61.1	63.7	86.1	128.0	204.5	92.3	119.1
<i>March quarter</i>	145.2	88.5	124.2	62.5	65.0	88.2	127.9	201.2	95.0	119.6
<b>AVERAGE TAKINGS PER AVAILABLE ROOM NIGHT (\$)</b>										
<b>2000</b>										
July	83.8	46.8	71.2	38.6	29.2	47.8	78.9	118.6	48.4	65.5
August	89.1	47.0	70.7	41.3	28.9	48.1	80.0	128.7	53.4	67.6
September	126.5	55.4	97.6	39.9	33.6	63.6	105.2	189.1	67.0	90.5
<i>September quarter</i>	99.5	49.7	79.7	39.9	30.5	53.1	87.9	145.0	56.3	74.4
October	101.2	49.8	74.7	21.8	29.3	51.8	89.7	152.1	42.1	74.3
November	102.9	48.9	74.0	21.3	28.7	50.4	90.1	156.6	42.8	74.5
December	84.0	41.4	72.2	20.0	26.4	44.3	75.6	129.9	38.3	63.5
<i>December quarter</i>	96.0	46.7	73.6	21.0	28.1	48.8	85.1	146.1	41.0	70.7
<b>2001</b>										
January	84.6	46.0	85.2	22.7	28.9	49.9	79.7	131.9	43.6	68.1
February	92.9	43.6	69.0	20.0	24.0	44.8	82.0	142.2	37.9	67.5
March	96.6	47.0	72.8	21.4	27.2	48.2	85.8	146.9	40.8	71.1
<i>March quarter</i>	91.3	45.6	75.9	21.4	26.8	47.7	82.5	140.2	40.9	68.9

(a) Comprising establishments with 15 or more rooms or units. See Explanatory Notes, paragraph 7.

## STAR GRADING .....

Period	STAR GRADING .....									Total
	Licensed hotels with facilities	Motels and guest houses	Serviced apartments	1	2	3	4	5	Ungraded	
TAKINGS FROM ACCOMMODATION (\$'000)										
<b>2000</b>										
July	75 505	48 921	18 943	1 703	4 643	41 777	55 725	27 943	11 579	143 369
August	78 072	48 684	18 994	1 803	4 673	41 333	55 057	28 967	13 917	145 750
September	164 028	70 384	42 784	1 632	6 043	72 691	105 449	70 130	21 251	277 196
September quarter	317 606	167 990	80 720	5 137	15 360	155 801	216 231	127 040	46 747	566 315
October	96 721	54 143	21 101	772	5 232	46 667	72 748	39 949	6 596	171 964
November	88 962	49 179	18 853	796	4 969	41 136	66 187	37 774	6 133	156 994
December	75 365	45 576	20 118	797	5 054	38 598	58 184	32 626	5 799	141 058
December quarter	261 047	148 898	60 071	2 365	15 255	126 401	197 120	110 348	18 528	470 017
<b>2001</b>										
January	71 709	50 041	24 422	912	5 469	42 976	59 229	30 916	6 669	146 172
February	80 876	41 195	19 743	746	3 918	35 125	59 428	36 836	5 760	141 815
March	84 927	47 555	21 403	843	4 886	39 885	63 906	37 937	6 427	153 885
March quarter	237 512	138 790	65 569	2 501	14 274	117 986	182 562	105 690	18 857	441 871
AVERAGE TAKINGS PER ROOM NIGHT OCCUPIED (\$)										
<b>2000</b>										
July	158.2	92.9	153.9	101.2	67.6	97.0	141.8	238.4	115.0	127.2
August	163.9	93.4	159.6	105.9	68.9	97.7	143.3	239.0	134.9	130.5
September	289.9	120.7	283.3	104.3	79.2	147.0	240.8	462.2	171.4	213.2
September quarter	209.0	103.0	205.3	103.8	72.2	115.6	178.0	325.6	142.6	159.8
October	187.2	95.8	161.3	65.9	65.2	100.9	161.4	281.8	100.4	141.8
November	165.6	90.4	141.0	66.4	66.2	91.1	144.1	251.3	91.5	129.2
December	164.7	94.3	156.2	71.6	69.2	96.1	146.3	259.2	96.0	131.8
December quarter	172.7	93.5	152.7	67.8	66.8	96.1	150.7	264.0	95.9	134.4
<b>2001</b>										
January	155.7	94.9	159.6	72.3	71.4	97.6	142.6	245.2	95.3	128.1
February	165.3	90.1	149.7	68.0	64.5	91.6	144.0	252.6	88.9	131.5
March	162.4	89.0	148.3	66.5	65.8	90.1	142.8	250.3	87.8	128.0
March quarter	161.3	91.4	152.7	69.0	67.5	93.2	143.1	249.6	90.6	129.2
AVERAGE TAKINGS PER AVAILABLE ROOM NIGHT (\$)										
<b>2000</b>										
July	101.5	47.6	86.8	51.0	30.4	52.1	92.7	144.8	55.7	72.0
August	104.4	47.4	87.0	54.0	30.6	51.6	90.9	150.1	67.0	73.1
September	225.9	70.3	194.6	50.5	41.2	93.4	179.9	375.5	98.2	142.4
September quarter	143.2	55.0	123.0	51.8	33.9	65.4	120.6	221.8	74.0	95.5
October	128.1	52.8	92.4	20.8	33.0	59.2	113.2	202.2	35.8	85.6
November	121.8	49.6	85.3	22.1	32.4	53.9	106.5	197.6	34.4	80.8
December	99.8	44.5	88.1	21.4	31.9	49.0	90.6	165.1	31.4	70.3
December quarter	116.5	48.9	88.6	21.4	32.4	54.0	103.4	188.2	33.9	78.9
<b>2001</b>										
January	92.4	49.3	101.1	24.5	34.5	54.5	91.7	144.3	35.4	71.9
February	115.4	44.9	90.5	22.2	27.4	49.3	101.9	190.3	33.7	77.2
March	109.4	46.8	88.6	22.7	30.9	50.5	98.9	177.1	33.8	75.6
March quarter	105.4	47.0	93.5	23.2	31.1	51.5	97.4	169.9	34.3	74.8

(a) Comprising establishments with 15 or more rooms or units. See Explanatory Notes, paragraph 7.

NOTE!  
Revised data for  
July 2000 – March 2001

## STAR GRADING .....

Period	Licensed hotels with facilities	Motels and guest houses	Serviced apartments	1	2	3	4	5	Ungraded	Total
<b>TAKINGS FROM ACCOMMODATION (\$'000)</b>										
<b>2000</b>										
July	34 888	22 286	13 431	190	1 445	16 389	32 881	15 989	3 711	70 605
August	35 756	22 016	12 978	167	1 459	16 146	32 670	16 716	3 592	70 750
September	33 202	20 649	12 224	225	1 527	15 130	29 333	16 496	3 364	66 075
<i>September quarter</i>	<i>103 846</i>	<i>64 951</i>	<i>38 634</i>	<i>582</i>	<i>4 431</i>	<i>47 664</i>	<i>94 884</i>	<i>49 201</i>	<i>10 668</i>	<i>207 430</i>
October	36 969	22 746	13 045	219	1 178	15 532	33 914	17 963	3 956	72 761
November	43 198	23 670	15 332	220	1 248	16 549	38 340	21 370	4 473	82 200
December	31 595	19 388	11 319	184	1 141	13 995	28 586	15 010	3 386	62 302
<i>December quarter</i>	<i>111 763</i>	<i>65 804</i>	<i>39 696</i>	<i>623</i>	<i>3 566</i>	<i>46 076</i>	<i>100 840</i>	<i>54 343</i>	<i>11 815</i>	<i>217 263</i>
<b>2001</b>										
January	36 232	23 482	15 225	206	1 424	17 702	32 711	18 748	4 148	74 940
February	38 873	21 399	13 689	178	1 108	14 458	34 773	19 551	3 893	73 962
March	49 705	26 063	16 731	227	1 382	18 271	43 077	24 838	4 705	92 500
<i>March quarter</i>	<i>124 811</i>	<i>70 945</i>	<i>45 646</i>	<i>611</i>	<i>3 914</i>	<i>50 431</i>	<i>110 561</i>	<i>63 137</i>	<i>12 746</i>	<i>241 401</i>
<b>AVERAGE TAKINGS PER ROOM NIGHT OCCUPIED (\$)</b>										
<b>2000</b>										
July	150.7	98.4	146.8	62.9	70.6	94.2	132.5	207.5	138.2	128.5
August	153.2	98.9	145.6	62.1	72.6	94.7	133.4	205.9	139.0	129.8
September	158.8	93.3	146.1	66.8	69.3	88.3	132.7	227.9	140.5	128.5
<i>September quarter</i>	<i>154.1</i>	<i>96.9</i>	<i>146.2</i>	<i>64.1</i>	<i>70.8</i>	<i>92.4</i>	<i>132.9</i>	<i>213.3</i>	<i>139.2</i>	<i>128.9</i>
October	153.8	91.5	145.7	55.9	62.2	83.3	130.7	221.6	137.7	125.8
November	161.1	93.1	154.3	49.7	64.5	86.0	135.9	228.8	148.2	132.2
December	148.0	93.7	144.9	61.6	64.6	86.2	129.6	209.9	144.8	125.0
<i>December quarter</i>	<i>154.8</i>	<i>92.7</i>	<i>148.7</i>	<i>55.0</i>	<i>63.8</i>	<i>85.2</i>	<i>132.3</i>	<i>220.9</i>	<i>143.6</i>	<i>127.9</i>
<b>2001</b>										
January	157.3	96.2	153.7	61.4	67.0	92.7	133.5	219.3	151.3	130.7
February	163.6	94.5	147.8	60.4	63.7	86.2	136.1	227.7	142.4	132.8
March	179.7	95.4	155.9	61.9	64.4	89.1	145.1	253.2	147.7	140.8
<i>March quarter</i>	<i>167.6</i>	<i>95.4</i>	<i>152.7</i>	<i>61.3</i>	<i>65.1</i>	<i>89.5</i>	<i>138.7</i>	<i>234.3</i>	<i>147.2</i>	<i>135.1</i>
<b>AVERAGE TAKINGS PER AVAILABLE ROOM NIGHT (\$)</b>										
<b>2000</b>										
July	99.0	46.0	104.9	22.6	23.3	45.5	87.5	144.2	78.7	73.2
August	101.7	45.5	101.3	22.1	23.5	44.8	86.9	150.7	75.9	73.4
September	97.6	44.0	98.6	30.8	25.5	43.3	80.6	153.7	72.9	70.7
<i>September quarter</i>	<i>99.4</i>	<i>45.2</i>	<i>101.6</i>	<i>25.0</i>	<i>24.1</i>	<i>44.5</i>	<i>85.1</i>	<i>149.5</i>	<i>75.8</i>	<i>72.5</i>
October	104.6	47.1	101.8	27.3	21.3	43.6	88.7	162.0	76.5	75.5
November	126.2	50.7	123.7	28.4	23.3	48.0	103.6	199.2	89.3	88.1
December	89.4	40.2	88.3	22.9	20.7	39.3	74.8	135.4	66.1	64.6
<i>December quarter</i>	<i>106.5</i>	<i>46.0</i>	<i>104.4</i>	<i>26.1</i>	<i>21.8</i>	<i>43.6</i>	<i>88.9</i>	<i>165.2</i>	<i>77.2</i>	<i>75.9</i>
<b>2001</b>										
January	99.3	48.6	108.1	25.6	25.7	49.4	82.4	157.6	80.6	75.7
February	118.0	49.0	106.2	24.6	22.2	44.6	96.5	181.9	83.8	82.6
March	136.2	54.0	116.6	28.2	25.0	51.1	107.8	208.8	91.4	93.3
<i>March quarter</i>	<i>117.8</i>	<i>50.6</i>	<i>110.5</i>	<i>26.2</i>	<i>24.4</i>	<i>48.5</i>	<i>95.6</i>	<i>182.8</i>	<i>85.3</i>	<i>83.9</i>

(a) Comprising establishments with 15 or more rooms or units. See Explanatory Notes, paragraph 7.

## STAR GRADING .....

Period	STAR GRADING .....									Total
	Licensed hotels with facilities	Motels and guest houses	Serviced apartments	1	2	3	4	5	Ungraded	
TAKINGS FROM ACCOMMODATION (\$'000)										
<b>2000</b>										
July	49 736	27 833	24 170	175	2 248	23 684	45 550	24 227	5 855	101 739
August	55 155	27 789	24 595	189	2 150	23 535	46 966	28 301	6 397	107 538
September	52 285	25 849	26 518	195	2 169	23 390	46 061	26 396	6 441	104 652
September quarter	157 175	81 471	75 282	559	6 566	70 608	138 577	78 924	18 693	313 928
October	61 125	27 037	26 055	146	2 244	23 621	49 253	32 312	6 640	114 216
November	57 869	26 006	23 726	97	2 059	22 608	46 212	30 330	6 294	107 600
December	54 903	22 661	27 137	119	2 113	22 083	44 842	29 170	6 374	104 701
December quarter	173 896	75 703	76 918	363	6 416	68 312	140 307	91 812	19 308	326 517
<b>2001</b>										
January	56 829	23 418	32 179	146	2 111	22 511	47 955	32 309	7 395	112 426
February	41 835	19 669	18 435	91	1 491	16 107	34 297	23 257	4 696	79 939
March	50 653	23 824	21 473	107	1 790	19 578	41 018	27 771	5 686	95 950
March quarter	149 318	66 911	72 086	345	5 391	58 196	123 270	83 337	17 777	288 315
AVERAGE TAKINGS PER ROOM NIGHT OCCUPIED (\$)										
<b>2000</b>										
July	124.2	80.3	100.2	52.3	61.7	80.3	106.4	153.4	86.4	102.9
August	129.1	80.7	97.4	52.0	61.7	79.8	106.0	160.5	89.5	105.0
September	133.5	80.1	103.8	53.8	61.9	83.1	109.0	168.4	91.2	107.9
September quarter	128.9	80.4	100.5	52.7	61.8	81.1	107.1	160.7	89.1	105.3
October	143.0	81.2	103.5	53.1	63.2	84.9	110.4	180.6	94.2	112.9
November	132.7	80.7	100.8	42.7	63.6	83.5	106.6	164.2	90.1	108.3
December	138.9	80.8	113.9	49.3	68.7	89.3	112.4	171.9	97.9	114.5
December quarter	138.1	80.9	106.0	48.7	65.1	85.8	109.7	172.2	94.0	111.8
<b>2001</b>										
January	143.1	82.9	117.5	58.0	66.1	87.8	115.3	182.0	106.7	117.9
February	130.0	77.7	95.3	44.2	59.0	77.3	102.5	161.7	87.0	104.0
March	131.2	78.4	96.0	48.5	59.4	78.8	102.5	164.8	89.1	105.1
March quarter	135.1	79.7	104.3	50.7	61.7	81.6	107.1	170.1	95.0	109.4
AVERAGE TAKINGS PER AVAILABLE ROOM NIGHT (\$)										
<b>2000</b>										
July	77.7	48.9	57.7	22.5	29.6	49.9	66.7	96.0	43.4	62.5
August	86.1	48.8	58.7	24.3	28.3	49.6	68.8	111.8	47.4	66.0
September	85.2	46.9	65.4	25.9	29.5	50.9	70.4	107.7	49.4	66.6
September quarter	83.0	48.2	60.5	24.2	29.1	50.1	68.6	105.2	46.7	65.0
October	95.8	47.2	63.2	22.6	29.4	49.3	72.4	129.9	50.1	70.4
November	93.7	46.9	59.4	15.5	27.8	48.8	70.2	126.0	49.0	68.5
December	86.0	39.6	65.8	18.4	27.6	46.1	66.0	117.3	48.1	64.5
December quarter	91.8	44.6	62.8	18.9	28.3	48.1	69.5	124.4	49.1	67.8
<b>2001</b>										
January	89.0	41.1	77.0	22.5	27.7	47.6	70.6	129.2	52.4	69.1
February	73.3	38.3	48.9	15.6	21.6	38.2	56.1	103.0	36.8	54.7
March	79.4	41.9	51.4	16.6	23.3	41.4	60.6	111.0	40.3	59.1
March quarter	80.9	40.5	59.4	18.3	24.3	42.5	62.6	114.8	43.4	61.2

(a) Comprising establishments with 15 or more rooms or units. See Explanatory Notes, paragraph 7.

## STAR GRADING .....

Period	TAKINGS FROM ACCOMMODATION (\$'000)									
	Licensed hotels with facilities	Motels and guest houses	Serviced apartments	1	2	3	4	5	Ungraded	Total
<b>2000</b>										
July	7 482	6 079	2 082	40	1 005	5 017	5 413	3 854	315	15 643
August	8 329	6 788	2 113	57	1 078	5 455	6 030	4 323	287	17 230
September	8 149	7 031	2 057	62	1 222	5 743	5 773	4 123	314	17 237
September quarter	23 960	19 897	6 252	160	3 305	16 215	17 215	12 300	915	50 110
October	9 154	7 605	2 409	72	1 176	6 124	6 991	4 579	225	19 168
November	8 886	7 280	2 372	57	1 036	5 795	6 867	4 529	254	18 538
December	8 031	6 672	2 451	45	994	5 102	6 569	4 091	352	17 154
December quarter	26 070	21 557	7 232	174	3 206	17 021	20 428	13 199	832	54 860
<b>2001</b>										
January	7 519	7 277	2 623	50	1 056	5 760	6 631	3 572	350	17 419
February	8 174	6 669	2 302	36	896	5 095	6 765	4 105	247	17 144
March	9 993	7 943	3 030	47	1 135	6 273	7 786	5 372	354	20 967
March quarter	25 686	21 889	7 955	133	3 088	17 128	21 182	13 049	950	55 530
<b>AVERAGE TAKINGS PER ROOM NIGHT OCCUPIED (\$)</b>										
<b>2000</b>										
July	112.5	81.4	99.5	51.3	54.5	75.8	115.8	148.6	77.9	96.5
August	113.6	82.9	100.7	55.6	56.1	76.5	117.2	147.2	74.3	97.8
September	116.8	81.4	95.7	47.8	57.1	77.1	115.8	155.3	78.0	97.0
September quarter	114.3	81.9	98.6	51.3	56.0	76.5	116.3	150.3	76.8	97.1
October	116.3	83.1	103.6	53.0	58.3	78.2	116.9	148.7	74.0	99.1
November	117.5	81.6	100.2	50.0	56.7	76.2	116.7	146.5	76.5	98.3
December	120.6	83.8	105.9	49.7	56.7	77.3	122.6	149.7	88.6	101.3
December quarter	118.0	82.8	103.2	51.1	57.3	77.3	118.6	148.2	80.4	99.5
<b>2001</b>										
January	117.8	84.7	103.4	43.3	59.1	80.4	120.9	142.2	78.5	99.5
February	123.9	84.3	101.6	35.8	57.2	77.9	124.5	146.6	74.8	102.2
March	123.9	84.1	103.6	39.6	57.8	78.1	119.9	160.3	74.0	102.6
March quarter	122.1	84.4	102.9	39.7	58.1	78.8	121.7	150.6	75.8	101.5
<b>AVERAGE TAKINGS PER AVAILABLE ROOM NIGHT (\$)</b>										
<b>2000</b>										
July	59.9	37.6	55.5	8.9	21.6	36.2	62.3	98.4	37.0	48.2
August	66.5	42.0	56.3	12.7	23.1	39.3	69.4	110.4	33.7	53.1
September	66.7	44.9	56.6	14.2	27.1	42.4	68.7	108.8	38.2	54.7
September quarter	64.4	41.4	56.1	11.9	23.9	39.3	66.8	105.9	36.3	52.0
October	71.5	47.1	63.7	14.7	25.4	44.1	78.4	117.0	25.5	58.6
November	71.8	46.6	64.8	11.9	23.2	43.1	79.6	119.5	29.7	58.6
December	62.8	41.4	64.8	9.2	21.5	36.8	73.7	104.5	39.9	52.4
December quarter	68.6	45.0	64.4	11.9	23.4	41.3	77.2	113.6	31.7	56.5
<b>2001</b>										
January	62.1	45.0	66.1	10.0	22.8	43.7	72.6	91.2	40.3	54.0
February	74.8	45.7	64.2	8.1	21.4	42.8	82.0	116.1	31.5	58.9
March	82.6	49.1	76.4	9.4	24.5	47.5	85.3	137.2	40.7	65.0
March quarter	73.1	46.6	69.1	9.2	22.9	44.7	79.9	114.8	37.7	59.3

(a) Comprising establishments with 15 or more rooms or units. See Explanatory Notes, paragraph 7.

NOTE!  
Revised data for  
July 2000 – March 2001

## STAR GRADING .....

Period	Licensed hotels with facilities	Motels and guest houses	Serviced apartments	1 and Ungraded	2	3	4	5	Total
TAKINGS FROM ACCOMMODATION (\$'000)									
<b>2000</b>									
July	17 312	7 092	6 121	2 185	992	8 516	11 180	7 651	30 525
August	19 137	7 389	5 811	2 203	989	9 031	12 057	8 056	32 336
September	18 498	8 054	6 810	2 410	1 110	10 004	12 148	7 690	33 361
September quarter	54 947	22 534	18 741	6 798	3 092	27 551	35 385	23 397	96 222
October	21 199	8 545	7 257	2 172	785	10 514	14 016	9 513	37 001
November	22 355	7 677	6 822	2 121	718	9 867	14 118	10 029	36 853
December	18 155	6 648	7 482	2 210	563	8 816	12 119	8 577	32 285
December quarter	61 708	22 870	21 561	6 504	2 066	29 197	40 254	28 118	106 139
<b>2001</b>									
January	18 336	7 225	9 061	2 562	651	9 886	12 613	8 911	34 622
February	17 673	5 759	5 894	1 852	480	7 975	11 226	7 794	29 326
March	20 160	7 065	7 391	2 406	605	9 669	13 298	8 638	34 616
March quarter	56 168	20 050	22 346	6 820	1 735	27 529	37 137	25 343	98 564
AVERAGE TAKINGS PER ROOM NIGHT OCCUPIED (\$)									
<b>2000</b>									
July	110.8	88.0	102.0	62.4	75.7	81.1	117.5	157.7	102.8
August	111.0	86.4	98.6	64.2	72.3	79.8	116.0	155.5	102.0
September	108.9	84.3	102.7	64.9	73.7	80.3	116.2	152.7	100.6
September quarter	110.2	86.1	101.1	63.9	73.8	80.4	116.5	155.3	101.8
October	113.2	84.2	99.6	62.0	69.8	79.6	116.7	150.6	102.3
November	118.9	82.4	101.8	63.2	70.8	79.9	119.7	159.1	105.8
December	113.1	85.3	110.7	65.6	75.2	83.7	117.5	151.8	105.5
December quarter	115.1	83.9	103.9	63.6	71.6	80.9	118.0	153.9	104.5
<b>2001</b>									
January	114.0	84.9	120.5	73.3	81.5	85.3	119.9	155.7	107.8
February	116.2	79.3	99.9	61.8	71.5	79.6	117.5	152.2	103.4
March	113.4	80.3	102.7	63.6	71.4	79.7	116.9	153.0	102.5
March quarter	114.5	81.6	108.4	66.4	74.9	81.6	118.1	153.7	104.6
AVERAGE TAKINGS PER AVAILABLE ROOM NIGHT (\$)									
<b>2000</b>									
July	58.7	39.3	53.1	23.9	34.8	37.0	67.2	103.1	51.7
August	64.9	40.9	50.4	24.1	34.7	39.2	72.5	108.6	54.8
September	64.8	46.1	61.1	27.2	40.3	44.9	75.5	107.1	58.4
September quarter	62.8	42.1	54.8	25.0	36.6	40.3	71.7	106.2	54.9
October	71.7	47.0	59.7	24.2	33.6	45.6	80.2	117.7	61.8
November	78.4	43.7	57.9	24.7	31.8	44.3	83.5	128.2	63.7
December	61.6	36.7	61.5	24.9	24.1	38.3	69.6	106.1	54.0
December quarter	70.5	42.5	59.7	24.6	29.8	42.7	77.7	117.2	59.8
<b>2001</b>									
January	62.1	40.0	75.0	29.1	27.0	42.9	72.7	110.3	58.0
February	66.2	35.3	54.0	23.3	22.0	38.3	71.7	106.8	54.4
March	68.2	39.1	61.2	27.4	25.1	41.9	76.7	106.9	58.0
March quarter	65.5	38.2	63.7	26.7	24.8	41.1	73.7	108.0	56.9

(a) Comprising establishments with 15 or more rooms or units. See Explanatory Notes, paragraph 7.

## STAR GRADING .....

Period	STAR GRADING .....							
	Licensed hotels with facilities	Motels and guest houses	Serviced apartments	1 and Ungraded	2	3	4 and 5	Total
<b>TAKINGS FROM ACCOMMODATION (\$'000)</b>								
<b>2000</b>								
July	2 848	1 330	1 177	149	138	1 663	3 405	5 355
August	3 478	1 365	1 205	128	128	1 797	3 996	6 049
September	3 413	1 729	1 506	200	131	2 354	3 963	6 648
<i>September quarter</i>	9 739	4 425	3 888	477	397	5 814	11 364	18 052
October	4 527	2 190	1 768	227	248	3 015	4 995	8 484
November	4 904	2 498	1 858	245	314	3 442	5 259	9 260
December	4 363	2 262	1 994	248	244	3 200	4 928	8 619
<i>December quarter</i>	13 794	6 950	5 619	720	806	9 657	15 182	26 364
<b>2001</b>								
January	5 563	3 257	2 566	321	326	4 789	5 950	11 387
February	5 209	2 838	2 043	294	321	4 096	5 378	10 089
March	6 309	3 458	2 479	304	445	5 023	6 475	12 246
<i>March quarter</i>	17 081	9 553	7 088	919	1 092	13 908	17 803	33 722
<b>AVERAGE TAKINGS PER ROOM NIGHT OCCUPIED (\$)</b>								
<b>2000</b>								
July	93.8	84.6	109.2	82.9	43.8	74.0	115.7	94.2
August	98.5	82.6	108.4	77.2	40.8	74.1	117.8	96.1
September	92.6	85.1	107.5	83.8	43.2	74.5	116.0	93.4
<i>September quarter</i>	95.0	84.1	108.3	81.7	42.6	74.2	116.5	94.5
October	99.6	84.6	116.2	89.6	55.6	76.9	123.8	98.1
November	94.7	85.0	112.0	87.8	58.6	77.1	117.0	94.8
December	98.1	90.5	126.5	101.4	52.7	84.5	122.3	101.1
<i>December quarter</i>	97.4	86.6	118.2	92.6	55.8	79.3	120.9	97.8
<b>2001</b>								
January	99.4	96.4	124.4	88.7	57.0	88.4	126.8	103.1
February	97.2	91.4	120.3	81.9	59.3	83.0	124.2	99.3
March	97.6	92.2	119.0	86.8	62.9	82.8	125.0	99.5
<i>March quarter</i>	98.0	93.3	121.3	85.8	60.0	84.7	125.4	100.6
<b>AVERAGE TAKINGS PER AVAILABLE ROOM NIGHT (\$)</b>								
<b>2000</b>								
July	31.6	24.5	43.3	16.5	10.1	19.6	53.2	31.2
August	38.6	26.0	44.4	14.2	9.4	21.6	62.4	35.6
September	39.1	34.1	57.3	22.9	10.0	29.3	63.9	40.5
<i>September quarter</i>	36.4	28.1	48.2	17.8	9.8	23.4	59.8	35.7
October	50.2	42.1	64.9	29.8	15.0	36.9	78.6	50.1
November	56.3	49.7	70.4	33.4	19.7	43.5	85.5	56.5
December	48.4	43.5	73.2	32.6	14.8	39.2	77.5	50.9
<i>December quarter</i>	51.6	45.0	69.5	31.9	16.5	39.8	80.5	52.5
<b>2001</b>								
January	61.6	63.0	94.1	41.8	20.6	58.6	92.8	67.2
February	63.8	60.8	82.9	42.4	22.4	55.5	92.9	66.0
March	69.8	66.9	90.9	39.5	28.1	61.5	101.0	72.3
<i>March quarter</i>	65.1	63.7	89.5	41.2	23.8	58.6	95.7	68.6

(a) Comprising establishments with 15 or more rooms or units. See Explanatory Notes, paragraph 7.



NOTE!  
Revised data for  
July 2000 – March 2001

Period	STAR GRADING .....							
	Licensed hotels with facilities	Motels and guest houses	Serviced apartments	1 and Ungraded	2	3	4 and 5	Total
TAKINGS FROM ACCOMMODATION (\$'000)								
<b>2000</b>								
July	5 961	7 268	3 859	1 231	1 272	6 855	7 731	17 088
August	6 725	7 399	3 896	1 225	1 164	7 293	8 338	18 020
September	4 918	5 316	2 835	853	875	5 163	6 179	13 069
September quarter	17 605	19 983	10 590	3 309	3 310	19 311	22 248	48 178
October	5 672	5 784	2 540	781	769	5 910	6 537	13 997
November	5 365	5 365	2 136	639	680	5 513	6 035	12 866
December	3 682	3 514	1 757	491	466	3 766	4 230	8 953
December quarter	14 720	14 663	6 433	1 911	1 915	15 189	16 801	35 816
<b>2001</b>								
January	3 475	3 354	1 597	478	418	3 521	4 011	8 427
February	3 918	3 325	1 548	410	351	3 361	4 669	8 791
March	4 590	4 346	1 939	499	497	4 431	5 448	10 875
March quarter	11 983	11 026	5 084	1 386	1 266	11 313	14 127	28 092
AVERAGE TAKINGS PER ROOM NIGHT OCCUPIED (\$)								
<b>2000</b>								
July	145.8	105.9	125.2	86.9	80.5	124.9	139.3	121.8
August	149.5	106.7	126.5	88.0	77.2	127.5	141.6	124.2
September	137.0	97.5	120.6	84.4	77.2	120.3	124.7	114.8
September quarter	144.6	103.8	124.4	86.6	78.4	124.6	135.7	120.6
October	135.8	98.4	112.7	76.5	68.9	118.5	126.0	113.7
November	140.1	97.7	105.5	68.4	69.5	122.4	122.4	113.4
December	134.5	95.1	104.8	67.4	64.9	117.4	122.3	110.4
December quarter	137.0	97.3	108.0	71.2	68.1	119.6	123.8	112.7
<b>2001</b>								
January	136.7	94.1	101.3	63.3	65.5	114.4	124.7	109.7
February	137.8	94.2	103.2	63.7	60.6	112.8	127.2	111.7
March	140.1	94.9	104.9	67.3	65.7	111.9	128.3	112.1
March quarter	138.3	94.5	103.2	64.8	64.2	113.0	126.9	111.2
AVERAGE TAKINGS PER AVAILABLE ROOM NIGHT (\$)								
<b>2000</b>								
July	99.3	74.4	106.6	58.8	52.6	87.4	109.8	88.1
August	112.0	75.7	107.6	58.5	48.1	93.0	118.4	92.9
September	84.6	56.2	80.9	42.1	37.4	68.0	90.6	69.6
September quarter	98.8	68.9	98.6	53.3	46.1	82.9	106.4	83.7
October	94.7	59.4	70.9	35.9	31.8	77.4	92.2	72.5
November	92.6	56.9	61.6	30.4	29.1	74.6	87.9	68.8
December	61.5	36.1	49.0	22.6	19.3	49.3	59.6	46.3
December quarter	82.8	50.7	60.5	29.6	26.7	67.0	79.8	62.5
<b>2001</b>								
January	57.8	34.2	45.1	21.3	17.2	46.1	56.9	43.5
February	72.1	37.5	48.4	20.2	16.0	48.7	73.3	50.3
March	76.3	44.3	54.8	22.2	20.4	58.0	77.2	56.2
March quarter	68.6	38.7	49.5	21.3	17.9	51.0	69.0	50.0

(a) Comprising establishments with 15 or more rooms or units. See Explanatory Notes, paragraph 7.

## STAR GRADING .....

Period	STAR GRADING .....							
	Licensed hotels with facilities	Motels and guest houses	Serviced apartments	1 and Ungraded	2	3	4 and 5	Total
<b>TAKINGS FROM ACCOMMODATION (\$'000)</b>								
<b>2000</b>								
July	4 452	2 197	3 273	821	559	1 888	6 652	9 921
August	4 575	2 085	2 987	771	516	1 833	6 527	9 647
September	5 082	2 207	3 021	714	585	1 855	7 156	10 310
<i>September quarter</i>	14 109	6 489	9 281	2 306	1 661	5 576	20 335	29 878
October	5 443	2 538	3 179	866	534	2 300	7 459	11 160
November	5 338	2 557	3 075	899	528	2 199	7 344	10 970
December	3 709	1 731	2 544	574	381	1 708	5 321	7 985
<i>December quarter</i>	14 491	6 826	8 798	2 339	1 443	6 208	20 125	30 115
<b>2001</b>								
January	3 766	2 193	3 222	701	561	2 062	5 856	9 181
February	4 645	2 019	2 934	665	436	1 972	6 525	9 598
March	5 888	2 578	3 366	880	561	2 306	8 086	11 832
<i>March quarter</i>	14 299	6 790	9 522	2 245	1 558	6 340	20 468	30 611
<b>AVERAGE TAKINGS PER ROOM NIGHT OCCUPIED (\$)</b>								
<b>2000</b>								
July	131.0	81.0	113.0	93.0	63.3	87.0	131.1	110.1
August	132.2	80.1	109.0	87.8	60.0	84.6	133.3	109.6
September	154.0	89.7	113.1	96.0	69.1	89.2	150.3	122.3
<i>September quarter</i>	138.9	83.4	111.7	92.1	64.1	86.9	138.0	113.8
October	135.8	85.4	106.7	102.6	61.8	85.5	134.1	112.0
November	136.2	85.3	104.4	99.7	60.1	83.2	135.0	111.2
December	126.6	83.2	108.1	98.0	60.3	84.7	128.9	108.4
<i>December quarter</i>	133.4	84.8	106.3	100.3	60.8	84.5	133.0	110.8
<b>2001</b>								
January	128.4	84.8	115.6	97.5	72.6	90.2	129.3	110.5
February	143.1	83.4	112.2	95.7	60.3	88.2	141.0	115.9
March	144.7	83.5	112.3	97.5	63.1	85.1	143.0	116.5
<i>March quarter</i>	139.5	83.9	113.3	97.0	65.3	87.7	138.2	114.4
<b>AVERAGE TAKINGS PER AVAILABLE ROOM NIGHT (\$)</b>								
<b>2000</b>								
July	75.5	42.3	73.1	51.1	32.2	43.6	84.3	63.7
August	77.6	40.1	66.7	47.9	29.7	42.4	82.7	62.0
September	89.1	43.9	69.7	45.8	34.8	44.3	93.7	68.4
<i>September quarter</i>	80.7	42.1	69.8	48.3	32.2	43.4	86.8	64.7
October	92.2	48.8	71.3	54.5	35.9	50.1	94.5	71.7
November	93.4	50.9	71.2	58.4	36.7	49.5	96.2	72.8
December	62.8	33.9	57.0	38.2	25.6	37.2	67.4	51.6
<i>December quarter</i>	82.7	44.5	66.5	50.5	32.7	45.6	85.9	65.3
<b>2001</b>								
January	63.7	42.0	73.7	45.9	37.7	44.9	74.1	59.2
February	86.9	42.8	74.3	48.1	32.5	47.5	91.4	68.5
March	99.6	49.3	77.0	57.6	37.7	50.2	102.3	76.3
<i>March quarter</i>	83.3	44.8	75.0	50.6	36.1	47.5	89.2	68.0

(a) Comprising establishments with 15 or more rooms or units. See Explanatory Notes, paragraph 7.

**NOTE!**  
Revised data for  
July 2000 – March 2001

Period	South Coast	Illawarra (a)	Sydney	Snowy Mountains	Capital Country (a)	The Murray	Riverina	Explorer Country
<b>TAKINGS FROM ACCOMMODATION (\$'000)</b>								
<b>2000</b>								
July	1 502	1 899	96 191	8 845	3 093	2 576	2 219	4 195
August	1 459	1 733	98 534	10 828	2 944	2 553	2 221	3 987
September	1 835	2 822	227 496	5 438	3 551	3 162	2 540	4 639
<i>September quarter</i>	4 796	6 455	422 222	25 110	9 589	8 292	6 980	12 821
October	2 203	2 042	128 125	591	3 339	3 359	2 773	4 595
November	2 180	1 959	114 847	687	3 142	3 487	2 568	4 103
December	2 507	2 179	99 607	839	2 569	2 702	2 248	3 439
<i>December quarter</i>	6 890	6 180	342 578	2 117	9 050	9 548	7 589	12 137
<b>2001</b>								
January	3 821	2 465	95 724	1 163	2 589	3 548	2 207	3 559
February	2 177	2 003	105 552	652	2 383	2 888	2 107	3 119
March	2 477	2 273	110 849	815	3 094	3 798	2 595	4 061
<i>March quarter</i>	8 475	6 741	312 125	2 629	8 066	10 233	6 909	10 739

Period	Hunter (a)	North Coast NSW (a)	Northern Rivers Tropical NSW	Big Sky Country	The Living Outback	Central Coast	Blue Mountains
<b>TAKINGS FROM ACCOMMODATION (\$'000)</b>							
<b>2000</b>							
July	6 763	4 408	2 352	2 741	965	2 286	3 334
August	6 421	4 158	2 250	2 827	966	2 104	2 767
September	6 525	5 160	2 609	2 872	1 024	3 678	3 843
<i>September quarter</i>	19 709	13 726	7 211	8 439	2 954	8 069	9 944
October	7 037	5 537	2 698	3 189	1 024	2 635	2 818
November	7 170	5 522	2 704	2 355	863	2 551	2 855
December	6 989	6 552	3 108	2 297	677	2 801	2 548
<i>December quarter</i>	21 197	17 611	8 509	7 841	2 564	7 986	8 220
<b>2001</b>							
January	7 828	8 941	3 926	3 120	691	4 096	2 494
February	6 628	4 474	2 241	2 129	629	2 648	2 185
March	7 359	4 932	2 447	2 904	911	2 608	2 761
<i>March quarter</i>	21 816	18 346	8 614	8 153	2 231	9 351	7 441

(a) Boundary changes to this Tourism Region (TR) which were implemented in March quarter 2001 mean these figures are no longer comparable with previously published data for this Tourism Region.

NOTE!  
Revised data for  
July 2000 – March 2001

Period Melbourne Wimmera Mallee Western Western Grampians Bendigo Loddon Peninsula Central Murray Goulburn High Country

## TAKINGS FROM ACCOMMODATION (\$'000)

Period	Melbourne	Wimmera	Mallee	Western	Western Grampians	Bendigo Loddon	Peninsula	Central Murray	Goulburn	High Country
<b>2000</b>										
July	53 788	64	1 183	1 388	473	1 036	845	517	816	5 120
August	53 740	88	1 205	1 318	512	900	882	446	758	5 625
September	51 236	79	1 469	1 711	542	922	749	557	730	2 859
September quarter	158 765	231	3 856	4 417	1 528	2 857	2 476	1 520	2 304	13 604
October	57 168	90	1 517	1 883	601	1 222	1 119	720	824	1 048
November	66 090	80	1 382	2 281	600	1 083	1 265	664	832	1 153
December	48 285	82	1 173	2 328	476	807	1 274	544	687	1 148
December quarter	171 542	252	4 073	6 491	1 677	3 112	3 658	1 928	2 343	3 348
<b>2001</b>										
January	56 935	72	1 310	3 600	482	934	1 665	776	726	1 575
February	58 910	64	1 046	2 428	516	1 016	1 615	562	732	1 014
March	74 481	84	1 330	2 669	650	1 272	1 719	659	984	1 354
March quarter	190 326	219	3 686	8 697	1 648	3 222	4 999	1 997	2 442	3 942

Period Lakes Gippsland Melbourne East Geelong Macedon Spa Country Ballarat Central Highlands Upper Yarra Murray East Phillip Island

## TAKINGS FROM ACCOMMODATION (\$'000)

Period	Lakes	Gippsland	Melbourne East	Geelong	Macedon	Spa Country	Ballarat	Central Highlands	Upper Yarra	Murray East	Phillip Island
<b>2000</b>											
July	398	794	553	967	179	239	1 028	248	487	227	255
August	403	762	615	967	172	276	966	246	418	240	212
September	491	648	526	809	105	210	1 104	342	400	264	321
September quarter	1 292	2 204	1 695	2 743	456	725	3 098	836	1 306	731	788
October	494	851	599	969	123	254	1 528	414	579	273	485
November	599	859	634	1 156	110	298	1 362	409	531	320	493
December	652	662	512	1 029	55	230	835	333	414	239	538
December quarter	1 745	2 371	1 745	3 154	288	782	3 725	1 156	1 524	831	1 516
<b>2001</b>											
January	1 046	784	489	1 335	47	221	1 067	328	338	287	924
February	567	750	603	1 353	120	250	1 048	260	376	242	491
March	706	1 060	657	1 366	119	292	1 291	399	550	322	537
March quarter	2 319	2 593	1 748	4 054	285	763	3 407	987	1 264	851	1 951

Period	Gold Coast	Brisbane	Sunshine Coast	Hervey Bay/ Maryborough	Darling Downs	Bundaberg	
TAKINGS FROM ACCOMMODATION (\$'000)							
<b>2000</b>							
July	23 333	21 285	6 573	1 829	2 026	782	
August	25 378	20 886	6 977	2 073	1 965	696	
September	27 055	18 760	8 683	2 338	2 268	755	
<i>September quarter</i>	75 766	60 931	22 233	6 240	6 259	2 233	
October	29 111	22 344	9 465	2 259	1 896	824	
November	27 774	20 356	8 558	1 842	1 668	819	
December	32 704	16 888	10 411	2 271	1 588	900	
<i>December quarter</i>	89 589	59 588	28 434	6 372	5 152	2 544	
<b>2001</b>							
January	40 112	15 676	13 790	1 677	1 552	778	
February	23 223	16 331	6 716	1 203	1 493	697	
March	26 585	19 437	7 796	1 588	1 857	823	
<i>March quarter</i>	89 919	51 444	28 302	4 467	4 903	2 298	
TAKINGS FROM ACCOMMODATION (\$'000)							
Period	Fitzroy	Mackay	Whitsundays	Northern	Tropical North Queensland	Outback	Great Barrier Reef
<b>2000</b>							
July	4 561	2 198	5 429	4 519	27 166	2 039	7 170
August	4 305	2 218	6 842	4 190	29 988	2 019	9 591
September	4 624	2 428	7 846	3 716	24 541	1 637	10 670
<i>September quarter</i>	13 489	6 843	20 117	12 426	81 696	5 694	27 431
October	4 852	2 243	8 167	4 099	27 464	1 492	11 841
November	5 028	2 128	8 074	3 822	26 208	1 323	11 171
December	4 881	2 082	8 997	3 036	19 872	1 070	12 473
<i>December quarter</i>	14 761	6 453	25 237	10 957	73 544	3 886	35 485
<b>2001</b>							
January	4 711	2 136	9 542	2 774	18 756	924	12 690
February	3 522	1 773	5 330	2 827	15 740	1 084	7 106
March	4 554	2 117	6 725	3 254	19 788	1 426	9 051
<i>March quarter</i>	12 787	6 027	21 597	8 854	54 284	3 434	28 847

**NOTE!**  
Revised data for  
July 2000 – March 2001

Period	Limestone Coast (a)	Murray-lands (a)	Fleurieu Peninsula (a)	Adelaide (a)	Adelaide Hills (a)	Barossa Valley	Riverland
TAKINGS FROM ACCOMMODATION (\$'000)							
<b>2000</b>							
July	797	67	439	10 938	219	498	404
August	807	69	309	12 334	199	541	456
September	950	75	403	12 031	234	416	508
<i>September quarter</i>	2 554	211	1 151	35 303	652	1 455	1 368
October	1 061	83	522	13 434	251	648	492
November	1 128	97	529	13 238	237	606	473
December	955	61	545	12 484	257	505	397
<i>December quarter</i>	3 143	240	1 596	39 157	745	1 759	1 362
<b>2001</b>							
January	1 255	80	817	12 031	213	582	410
February	979	68	476	12 814	186	519	319
March	1 237	76	559	15 457	271	618	465
<i>March quarter</i>	3 471	224	1 852	40 303	669	1 719	1 195

Period	Clare Valley (a)	Flinders Ranges (a)	Outback SA	Eyre Peninsula	Yorke Peninsula (a)	Kangaroo Island
TAKINGS FROM ACCOMMODATION (\$'000)						
<b>2000</b>						
July	175	787	478	665	76	103
August	179	870	429	824	82	131
September	235	921	410	805	101	146
<i>September quarter</i>	589	2 578	1 317	2 293	260	380
October	255	930	404	711	108	271
November	178	709	316	683	88	257
December	151	571	256	623	94	255
<i>December quarter</i>	583	2 210	976	2 017	289	782
<b>2001</b>						
January	178	470	248	668	147	320
February	155	435	226	657	88	222
March	201	595	310	774	113	290
<i>March quarter</i>	534	1 500	785	2 099	347	832

(a) Boundary changes to this Tourism Region (TR) which were implemented in March quarter 2001 mean these figures are no longer comparable with previously published data for this Tourism Region.

# 31

## HOTELS, MOTELS, GUEST HOUSES & SERVICED APARTMENTS, Tourism Regions—WA

**NOTE!**  
Revised data for  
July 2000 – March 2001

Period	South East	Goldfields	Midwest	Gascoyne	Pilbara	Kimberley	Perth	Peel	South West	Great Southern	Wheatbelt
<b>TAKINGS FROM ACCOMMODATION (\$'000)</b>											
<b>2000</b>											
July	227	1 276	814	682	1 607	4 457	17 573	361	2 554	538	436
August	254	1 164	1 045	697	1 813	4 786	18 788	290	2 346	584	569
September	346	1 438	1 121	630	1 757	3 677	19 663	380	3 024	731	595
<i>September quarter</i>	827	3 878	2 980	2 009	5 176	12 920	56 024	1 031	7 924	1 852	1 600
October	401	1 650	936	557	1 745	3 019	23 096	470	3 569	974	585
November	372	1 282	773	438	1 556	2 023	25 121	434	3 471	879	504
December	350	1 008	668	418	1 080	1 332	21 310	627	4 145	944	403
<i>December quarter</i>	1 123	3 940	2 377	1 413	4 381	6 374	69 528	1 530	11 185	2 797	1 491
<b>2001</b>											
January	484	1 009	756	412	1 237	1 128	21 788	923	5 389	1 127	369
February	286	1 014	667	336	1 286	900	20 076	474	3 143	770	375
March	345	1 212	740	442	1 419	1 469	22 853	594	4 185	937	420
<i>March quarter</i>	1 116	3 235	2 163	1 190	3 941	3 497	64 717	1 992	12 716	2 834	1 164

**NOTE!**  
Revised data for  
July 2000 – March 2001

Period	Greater Hobart	Southern	East Coast	Northern	Greater Launceston	North West	West Coast
TAKINGS FROM ACCOMMODATION (\$'000)							
<b>2000</b>							
July	2 891	229	n.p.	n.p.	1 276	732	164
August	3 347	263	n.p.	n.p.	1 432	739	189
September	3 323	404	n.p.	n.p.	1 652	873	279
<i>September quarter</i>	9 561	896	<i>n.p.</i>	<i>n.p.</i>	4 359	2 345	631
October	4 607	512	n.p.	n.p.	1 879	1 034	326
November	4 592	642	n.p.	n.p.	2 202	1 217	451
December	4 302	709	n.p.	n.p.	1 966	1 082	392
<i>December quarter</i>	13 502	1 863	<i>n.p.</i>	<i>n.p.</i>	6 046	3 333	1 169
<b>2001</b>							
January	5 515	1 036	n.p.	n.p.	2 364	1 443	722
February	4 629	833	n.p.	n.p.	2 352	1 384	670
March	5 768	898	n.p.	n.p.	2 885	1 647	793
<i>March quarter</i>	15 913	2 767	<i>n.p.</i>	<i>n.p.</i>	7 600	4 474	2 185



NOTE!  
Revised data for  
July 2000 – March 2001

Period	Darwin	Kakadu	Amhem	Katherine	Tablelands	Petermann	Alice Springs	MacDonnell	Daly	Canberra
TAKINGS FROM ACCOMMODATION (\$'000)										
<b>2000</b>										
July	8 374	n.p.	169	766	186	n.p.	2 618	n.p.	n.p.	9 921
August	8 514	n.p.	190	774	202	n.p.	2 670	n.p.	n.p.	9 647
September	5 996	n.p.	188	559	172	n.p.	2 209	n.p.	n.p.	10 310
September quarter	22 884	n.p.	548	2 098	560	n.p.	7 498	n.p.	n.p.	29 878
October	5 158	n.p.	n.p.	546	149	n.p.	2 914	n.p.	n.p.	11 160
November	4 370	n.p.	n.p.	463	147	n.p.	2 547	n.p.	n.p.	10 970
December	3 329	n.p.	n.p.	340	134	n.p.	1 612	n.p.	n.p.	7 985
December quarter	12 857	n.p.	n.p.	1 349	430	n.p.	7 072	n.p.	n.p.	30 115
<b>2001</b>										
January	3 038	n.p.	n.p.	325	144	n.p.	1 601	n.p.	n.p.	9 181
February	3 158	n.p.	n.p.	300	132	n.p.	1 764	n.p.	n.p.	9 598
March	3 609	n.p.	n.p.	403	174	n.p.	2 458	n.p.	n.p.	11 832
March quarter	9 805	n.p.	n.p.	1 029	450	n.p.	5 823	n.p.	n.p.	30 611

## EXPLANATORY NOTES

---

### INTRODUCTION

- 1** This publication contains data from the ABS quarterly Survey of Tourist Accommodation (STA). The STA is a mailout collection that completely enumerates all in-scope accommodation establishments.
- 2** From the March quarter 1998, the scope and collection strategy for the STA was changed to include only significant accommodation establishments (these are defined below).

### SCOPE

- 3** On a quarterly basis, the STA includes hotels, resorts, motels, guest houses and serviced apartments with 15 or more rooms or units.
- 4** Every third year beginning with 2000, the STA expands to also include:
  - holiday flats, units and houses of letting entities with 15 or more rooms or units;
  - caravan parks with 40 or more powered sites;
  - visitor hostels with 25 or more bed spaces.
- 5** The short-term non-residential accommodation which is in scope of the STA is accommodation which is not leased, and which is provided to guests who would generally stay for periods of less than two months.
- 6** Some establishments also provide long-term residential accommodation. For hotels, motels, guest houses and serviced apartments, the amount of such activity is considered to be insignificant and is included in the data presented in this publication.

### DEFINITIONS OF ACCOMMODATION ESTABLISHMENTS

- 7** The STA includes the following categories of establishments which provide predominantly short-term non-residential accommodation to the general public:
  - hotels and resorts with facilities - establishments with 15 or more rooms which are licensed to operate a public bar and which provide accommodation on a room/suite basis, with a bath/shower and toilet in most guest rooms, but which do not have full cooking facilities (i.e. hot plates and oven/microwave) in most guest rooms;
  - motels, private hotels and guest houses with facilities - establishments with 15 or more rooms which are not licensed to operate a public bar, and which provide accommodation on a room/suite basis, with a bath/shower and toilet in most guest rooms, but which do not have full cooking facilities (i.e. hot plates and oven/microwave) in most guest rooms;
  - serviced apartments - establishments with 15 or more units which mostly comprise self-contained units at the same location, and which are available on a unit/apartment basis to the general public for a minimum of one night; the units should have full cooking facilities (i.e. hot plates and oven/microwave), refrigerator and bath/shower and toilet facilities; all bed linen and towels should be provided, and daily servicing (i.e. cleaning and bed making) must be available through the on-site management, although this service may not necessarily be used.

## EXPLANATORY NOTES *continued*

CLASSIFICATION CHANGES	<p><b>8</b> As a result of the separate classification of serviced apartments from the March quarter 1998, there have been several changes to definitions of accommodation units. Some units, which were formerly in categories such as hotels, motels or holiday flats, units and houses are now classified as serviced apartments. A small number of establishments which were previously classified as motels have been reclassified as holiday flats, units and houses and are therefore no longer in scope of the quarterly STA, except as described in paragraph 4.</p>
COVERAGE	<p><b>9</b> Coverage is comprehensive and from the September quarter 1999, is obtained from the Australian Automobile Association accommodation guide, supplied as an electronic file, which is updated twice yearly. This is supplemented by notification of new tourism developments and their likely opening dates in selected guides, major tourism journals and periodicals and newspapers. Periodic comparison with lists of accommodation establishments provided by the various Tourism Commissions and Industry Associations is also undertaken.</p>
DATA QUALITY	<p><b>10</b> The survey does not have a sample component and the data are not subject to sampling variability. However, other inaccuracies collectively referred to as non-sampling error may affect the data. These non-sampling errors may arise from a number of sources, including:</p> <ul style="list-style-type: none"><li>■ errors in the reporting of data by respondents;</li><li>■ errors in the process of capturing data;</li><li>■ estimation for missing data; and</li><li>■ definition and classification errors.</li></ul> <p>Every effort has been made to reduce non-sampling error to a minimum by careful design and testing of questionnaires, and efficient operating procedures and systems used to compile statistics.</p> <p><b>11</b> The June quarter 2001 response rates were:</p> <ul style="list-style-type: none"><li>■ 92% licensed hotels</li><li>■ 91% motels and guest houses</li><li>■ 92% serviced apartments</li></ul>
TAKINGS FROM ACCOMMODATION	<p><b>12</b> From 1 July 2000, takings from accommodation include gross revenue from the provision of accommodation, including GST. Takings from meals are excluded. Where businesses are unable to provide the data inclusive of GST, it is automatically adjusted by the ABS prior to aggregation and release in output. In the June quarter 2001 at the Australia level, these adjustments accounted for 1.6% of total takings, 1.9% of takings for hotels, 0.6% of takings for motels and guest houses and 2.2% of takings for serviced apartments.</p> <p>This issue also contains revisions to account for the under-reporting of GST in takings from accommodation for September quarter 2000, December quarter 2000 and March quarter 2001. An Appendix providing further information about these revisions is included on pages 54-56 of this issue.</p>

## EXPLANATORY NOTES *continued*

---

### REGIONAL DATA

**13** Survey results are aggregated to Tourism Regions as defined by relevant State and Territory Tourist Commissions or equivalent organisations. Tourism Regions are reviewed annually and may be subject to boundary and name changes. Where changes have occurred care should be taken when making comparisons with previously published data at this level.

Details of the composition of Tourism Regions and major changes to Tourism Regions may be found in *Tourist Accommodation, Small Area Data* Standard Data Service products for each State/Territory (Cat. no. 8635.n.40.001) (issued quarterly). Outline maps of Tourism Regions are also provided in these Small Area Data products.

### ANNUAL CAPACITY DATA

**14** ABS releases counts of accommodation establishments and their capacity as at the end of December each year in respect of the pre-1998 scope of the survey (but recognising serviced apartments separately) as follows:

- hotels, motels and guest houses and serviced apartments with facilities and having five or more rooms;
- holiday flats, units and houses (other than those included with serviced apartments) which are operated by owners, managers or real estate agents who have sole letting rights to at least five flats, units or houses for short term letting;
- all caravan parks regardless of size; and
- all visitor hostels regardless of size.

**15** As a result of classification changes applied from March quarter 1998 onward, data will not be comparable with that previously published for particular accommodation types.

**16** These counts are published annually in a quarterly issue of *Tourism Indicators, Australia* (Cat. no. 8634.0).

### STATISTICS AVAILABLE ON REQUEST

**17** The ABS makes tourist accommodation data available on request, including statistics for past quarters, for specific areas and specific data items. For example, detailed employment statistics showing the number of full-time, part-time or casual employees may be available. Normally such data is made available on a fee for service basis.

### RELATED PUBLICATIONS

**18** Other ABS publications and products which may be of interest include:  
*Directory of Tourism Statistics, 2000* (Cat. no. 1130.0) (irregular)  
*Overseas Arrivals and Departures, Australia* (Cat. no. 3401.0) (issued monthly)  
*Tourism Indicators, Australia* (Cat. no. 8634.0) (issued quarterly)  
*Tourist Accommodation, Small Area Data* Standard Data Service (SDS) products for each State/Territory (except the ACT) (Cat. no. 8635.n.40.001) (issued quarterly).

**19** Current publications produced by the ABS are listed in the *Catalogue of Publications and Products* (Cat. no. 1101.0). The ABS also issues the *Release Advice* (Cat. no. 1105.0) on Tuesdays and Fridays which lists publications to be released in the next few days. Both are available from any ABS office or the ABS web site.

## EXPLANATORY NOTES *continued*

---

### EFFECTS OF ROUNDING

**20** Where figures have been rounded, discrepancies may occur between totals and the sum of the component items.

### TOURISM REGION CHANGES

**21** Changes to Statistical Local Area (SLA) and Tourism Region (TR) boundaries were introduced in the March quarter 2001 issue of this publication. These changes were applied to previously published results. Therefore, users should note that the revised Tourism Regions tables for NSW and SA (Tables 27 and 30), include revisions as a result of these boundary changes and the under-reporting of GST. For details of the specific geographic areas (SLAs and TRs) involved see:

*Tourist Accommodation, Small Area Data, New South Wales*  
(Cat. no. 8635.1.40.001). March qtr 2001 issue

*Tourist Accommodation, Small Area Data, South Australia*  
(Cat. no. 8635.5.40.001) March qtr 2001 issue

From June quarter 2001 changes have been made to the following Tourism Region (TR) in South Australia

South East (TR) renamed Limestone Coast (TR)  
(this involved no change in the boundary of this Tourism Region)

## APPENDIX

---

### EXPLANATION OF REVISION TO TAKINGS FROM ACCOMMODATION

**BACKGROUND TO THE INCLUSION OF GST** Prior to the introduction of the Goods and Services Tax in July 2000, detailed testing of the STA was conducted which indicated that businesses expected to be able to report accommodation takings on a GST inclusive basis. This expectation was consistent with the practice that was previously adopted by the ABS whereby taxes related to accommodation were included in the takings from accommodation data collected from respondents. Key users of tourism statistics (including the National and State tourism bodies) supported the inclusion of GST as this more closely reflected the final cost of accommodation to consumers. Consequently a decision was made to collect and publish accommodation takings inclusive of GST. This is consistent with ABS intentions described in the Information Paper, *ABS Statistics and The New Tax System 2000* (Cat.no. 1358.0).

**IDENTIFICATION OF GST UNDER-REPORTING** From September quarter 2000 businesses included in the STA were asked to report their takings inclusive of GST. Higher takings (which also included the effect of the Olympics) were recorded by most States and Territories in the September and December quarters 2000. However, contact with a small number of businesses revealed that some businesses were having difficulty reporting takings inclusive of GST.

A letter reminding businesses to report takings inclusive of GST was despatched with the March quarter 2001 questionnaire and a sample of accommodation establishments was contacted to determine whether they had reported accommodation takings inclusive of GST. These post-enumeration investigations indicated that while the level of under-reporting was low, some larger businesses had not included the GST in their accommodation takings data. Based on the results of these investigations users were advised in the March quarter 2001 issue of this publication that the extent of under-reporting was estimated to be between 4% and 6%.

### PROCESSING AND SUMMARY OF RESULTS

An additional question was included on the June quarter 2001 survey questionnaire which asked businesses whether they were able to report takings inclusive of GST. The responses to this question were used to adjust the June quarter 2001 data. Data for earlier quarters was revised on a similar basis with additional adjustments applied in cases where businesses advised the ABS of reporting difficulties. The revised statistics for Australia and the States and Territories by star grade are included in Tables 18-26. Tables 27-33 present the revisions by Tourism Regions.

The two tables overleaf show the impact of the revisions for each quarter by State and Territory and capital city Tourism Region.

The size of the revisions varies by State, capital city Tourism Region and accommodation type. In South Australia, the Northern Territory and the Australian Capital Territory a greater number of large establishments did not include GST. These establishments contributed to slightly higher revisions for these areas. In general, under-reporting of GST by larger hotel groups was also higher and this contributed to larger revisions particularly in the capital city Tourism Regions.

While most businesses are able to report accommodation takings inclusive of GST an adjustment to the data for the current and future quarters is required for the small number of businesses who are unable to report on this basis. The adjustment to data for the June quarter 2001 amounted to a 1.6% increase in takings nationally.

At the national level the revisions were lower than expected. Rigorous procedures were applied in the processing of the revisions and adjustments to ensure the accuracy of the statistics. The revisions made have resulted in an increase in takings of 2.2% at the national level for all establishments (hotels, motels and serviced apartments) in March quarter 2001 and December quarter 2000, and 2.1% in September quarter 2001.

**APPENDIX** *continued*

EFFECT OF REVISIONS TO TAKINGS FROM ACCOMMODATION—Capital City Tourism Regions  
Percentage Increase to Original Data

Period	Sydney	Melbourne	Brisbane	Adelaide	Perth	Greater Hobart	Darwin	Canberra
<b>TOTAL ESTABLISHMENTS</b>								
<b>2000</b>								
September quarter	2.4%	2.8%	2.4%	1.4%	2.1%	3.1%	2.2%	3.9%
December quarter	2.4%	2.8%	2.3%	1.2%	2.0%	2.9%	2.2%	4.0%
<b>2001</b>								
March quarter	2.5%	2.9%	2.4%	3.8%	2.0%	2.7%	2.2%	3.9%

EFFECT OF REVISIONS TO TAKINGS FROM ACCOMMODATION—States and Territories  
Percentage Increase to Original Data

Period	New South Wales	Victoria	Queensland	South Australia	Western Australia	Tasmania	Northern Territory	Australian Capital Territory	Australia
<b>HOTELS</b>									
<b>2000</b>									
September quarter	2.2%	3.2%	2.4%	4.7%	2.0%	2.9%	4.3%	6.5%	2.6%
December quarter	2.3%	3.3%	2.4%	4.7%	2.1%	2.8%	5.1%	6.5%	2.8%
<b>2001</b>									
March quarter	2.4%	3.5%	2.5%	4.6%	2.1%	2.6%	5.4%	6.6%	2.9%
<b>MOTELS AND GUEST HOUSES WITH FACILITIES</b>									
<b>2000</b>									
September quarter	1.2%	0.7%	0.8%	1.8%	0.6%	1.5%	3.5%	0.9%	1.2%
December quarter	1.1%	0.6%	0.8%	1.7%	0.4%	1.4%	4.1%	0.9%	1.1%
<b>2001</b>									
March quarter	0.9%	0.6%	0.8%	1.6%	0.3%	1.6%	3.9%	0.7%	0.9%
<b>SERVICED APARTMENTS</b>									
<b>2000</b>									
September quarter	2.8%	2.2%	2.5%	1.6%	0.5%	3.3%	3.5%	2.3%	2.4%
December quarter	2.8%	2.0%	2.6%	1.7%	0.5%	3.5%	4.0%	2.4%	2.4%
<b>2001</b>									
March quarter	2.9%	2.0%	2.5%	1.7%	0.5%	3.4%	3.9%	2.4%	2.3%
<b>TOTAL ESTABLISHMENTS</b>									
<b>2000</b>									
September quarter	2.0%	2.2%	2.0%	3.1%	1.4%	2.7%	3.8%	3.9%	2.1%
December quarter	2.0%	2.3%	2.1%	3.1%	1.4%	2.6%	4.5%	4.0%	2.2%
<b>2001</b>									
March quarter	2.0%	2.3%	2.1%	3.0%	1.4%	2.5%	4.5%	3.9%	2.2%



## GLOSSARY

---

**Average length of stay** Average length of stay is expressed in numbers of days and calculated by dividing *Guest nights* by *Guest arrivals*.

**Bed spaces** Three-quarter beds are counted as one bed space; double beds as two bed spaces. Cots are excluded.

**Capacity** Capacity in terms of *Guest rooms/units* or *Bed spaces* is the maximum number available to accommodate paying guests during the survey period. Capacity closed temporarily for seasonal reasons is included.

**Establishments** The number of hotels, motels and guest houses and serviced apartments within the scope of the survey which operated for any part of the survey period, or which closed temporarily for the quarter for seasonal reasons.

**Guest arrivals** The total number of paying guests counted only on the first night they stayed at the accommodation establishment during the survey period.

**Guest rooms** The maximum number of rooms available at each establishment during the survey period for accommodating short-term paying guests. Units and apartments within serviced apartments are treated as rooms in these survey results.

**Occupancy** Occupancy in terms of *Room nights* refers to the total number of nights each guest room or unit was occupied during the survey period.

Occupancy in terms of *Guest nights* refers to the total number of paying guests counted on each night they stayed at the accommodation establishment during the survey period.

**Occupancy rates** *Occupancy rates* represent occupancy expressed as a percentage of total capacity available during the survey period, e.g. for the period

$$\text{Room occupancy rate (\%)} = \frac{\text{Room nights occupied}}{(\text{Guest rooms}) \times (\text{No. of days in the period})} \times 100$$

providing that, for establishments closing (other than for seasonal reasons) or opening during the survey period, the denominator of the above expression includes only operating periods.

**Persons employed** The total number of persons working at each accommodation establishment at the end of the survey period (including working proprietors and those working on other than accommodation activities).

**Room nights available** The number of guest rooms/units available multiplied by the number of days for which they were available during the survey period. For establishments closing (other than for seasonal reasons) or opening during this period, operating periods only are included.

**Star grading** The grading of hotels, motels and guest houses with facilities and serviced apartments based on the classification system used by members of the Australian Automobile Association (AAA). The gradings are allocated according to a points system based on the amenities and facilities available to guests. Details of the grading scheme are contained in the RACV-RAASA members' publication *Accommodation Australia*, or the individual tour guides produced by members of the AAA. For the purpose of classifying establishments to a star grading in this publication, 'half' star gradings are ignored (e.g. a two and a half star grading has been shown as two star).

From the June quarter 1999, some (very few) large establishments not star graded by the AAA have been allocated a star grade by the ABS for Survey of Tourist Accommodation statistical tabulation purposes.

**Takings from accommodation** Since 1 July 2000, takings from accommodation include gross revenue from the provision of accommodation, including GST. Takings from meals are excluded. In cases where takings from accommodation data cannot be provided inclusive of GST the amount of GST payable is estimated and the data revised accordingly.

Prior to 1 July 2000, takings from accommodation for some jurisdictions included bed taxes. From 1 July bed taxes were abolished being replaced by GST. Takings from accommodation for each month generally represent the takings received during that month. Where payments are received in advance of, or after, the provision of accommodation to guests, the monthly figure for takings from accommodation may not necessarily bear a direct relationship to the number of guests accommodated during the month.



## FOR MORE INFORMATION...

- INTERNET* **www.abs.gov.au** the ABS web site is the best place to start for access to summary data from our latest publications, information about the ABS, advice about upcoming releases, our catalogue, and Australia Now—a statistical profile.
- LIBRARY* A range of ABS publications is available from public and tertiary libraries Australia-wide. Contact your nearest library to determine whether it has the ABS statistics you require, or visit our web site for a list of libraries.
- CPI INFOLINE* For current and historical Consumer Price Index data, call 1902 981 074 (call cost 77c per minute).
- DIAL-A-STATISTIC* For the latest figures for National Accounts, Balance of Payments, Labour Force, Average Weekly Earnings, Estimated Resident Population and the Consumer Price Index call 1900 986 400 (call cost 77c per minute).

### INFORMATION SERVICE

Data which have been published and can be provided within five minutes are free of charge. Our information consultants can also help you to access the full range of ABS information—ABS user-pays services can be tailored to your needs, time frame and budget. Publications may be purchased. Specialists are on hand to help you with analytical or methodological advice.

- PHONE* **1300 135 070**
- EMAIL* **client.services@abs.gov.au**
- FAX* 1300 135 211
- POST* Client Services, ABS, GPO Box 796, Sydney 1041

## WHY NOT SUBSCRIBE?

ABS subscription services provide regular, convenient and prompt deliveries of ABS publications and products as they are released. Email delivery of monthly and quarterly publications is available.

- PHONE* 1300 366 323
- EMAIL* subscriptions@abs.gov.au
- FAX* 03 9615 7848
- POST* Subscription Services, ABS, GPO Box 2796Y, Melbourne 3001



2863500006013  
ISSN 1031-0770

RRP \$22.00

© Commonwealth of Australia 2001

Produced by the Australian Bureau of Statistics