

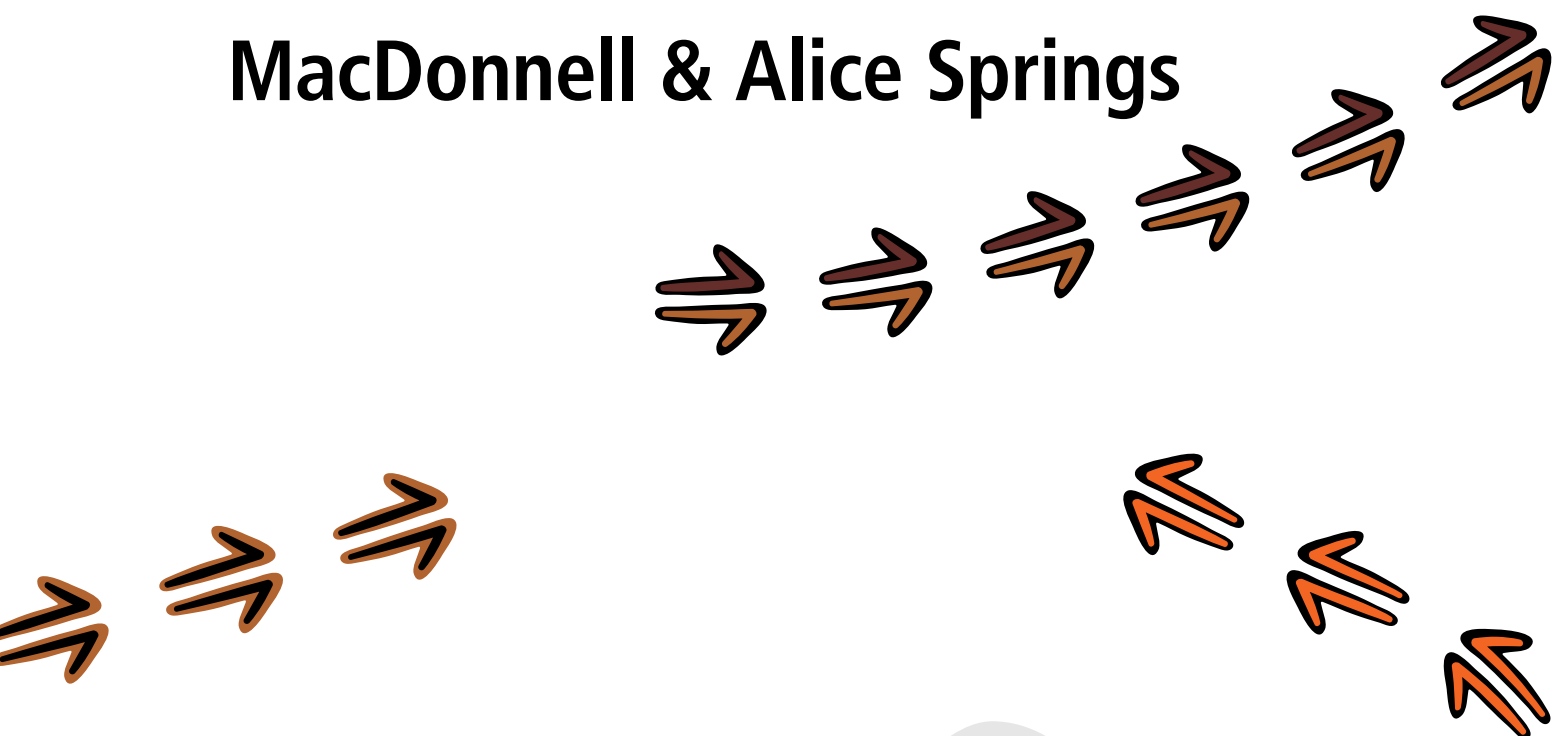
NORTHERN TERRITORY

MacDonnell & Alice Springs

2016 CENSUS STORY

NORTHERN TERRITORY

MacDonnell & Alice Springs



2016 (ENSUS STORY

Glossary

Caring for Children	People who spent time caring for a child/children (under 15 years) without pay in the two weeks prior to Census night.
Children	Are people aged under 15 years of age.
Completed Year 12	Includes people aged 15 years and over who are no longer attending primary or secondary school.
Families	Includes couple families with and without children, single parents, and other families.
Houses	Includes private dwellings, occupied and unoccupied. A dwelling is a structure which is intended to have people live in it, and which was habitable on Census night, for example houses, flats, caravans and humpies.
Language	Top Australian Indigenous language spoken at home.
People	Total population figures are based on place of 'usual residence' or where that person usually lives.
Students	Includes everyone who said they were attending a school, university or technical institution.
Weekly Income	Includes people aged 15 years and over and is the middle value (median) of total weekly personal income.
Working	Includes everyone who said they were working full-time or part-time, or were away from work. This does not include people involved in the Community Development Program (CDP).

Contents

Glossary	2
Artwork	4
The ABS says thanks	5
Northern Territory	7
MacDonnell Region	8
Amoonguna	10
Areyonga	12
Finke	14
Haasts Bluff	16
Hermannsburg	18
Imanpa	20
Kaltukatjara	22
Kintore	24
Mount Liebig	26
Mutitjulu	28
Papunya	30
Santa Teresa	32
Titjikala	34
Wallace Rockhole	36
Alice Springs	38
Anthelk Ewlpaye	40
Anthepe - New Lparpa - Tyeweretye	42
Ewyenper - Ilpeye - Irklancha	44
Ilperle-Tyathe - Mt Nancy - Aper-Alwerr	46
Inarlenge	48
Nyewente - Akngwertnarre - Namatjira	50
Yarrenyty-Arltere	52
Know more	56



Artwork

The artwork in this story book was commissioned by the Centre of Excellence for Aboriginal and Torres Strait Islander Statistics to embody what the centre represents. The work incorporates Larrakia Artist Shaun Lee's (AKA Gwarkabah's) diverse heritage, through contemporary and traditional hand-created designs. Using spray-paint medium on hardwood, the work features and combines various traditional stories and symbols from local areas and across Australia. Together, the artwork tells the story of the Centre of Excellence and its people. The designs were digitalised by Dreamtime Creative.



Traditional stories and symbol break down



Star shape: National courage – representing navigation, called the 'Guiding Star'.

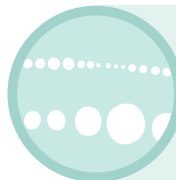
Core centre design: Black represents the earth and the soil; the pattern symbolises an 'ageless recognition' used through Northern Australia, and perhaps wider Australia. An 'ageless recognition' is the closest translation into English. It's derived from a number of terms that describe an instant identification of a particular established symbol of connection or linkage.



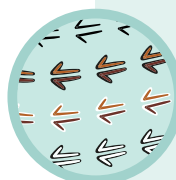
Message sticks: Representing unique messages; signifies that a story is being told and needs to be received.

Is a connection to and from Larrakia Country, and between other Indigenous cultures.

- **Top message stick:** Country and regions across Australia
- **Middle message stick:** Coming together and meeting
- **Bottom message stick:** Two half-moons facing inwards represents the people; and the two lines on either side identifies that the message is inclusive of both male and female.



Dots: Symbolises the link between people, organisations, States and Territories, representing the importance of strong linkage and communication. A dot in a dot in a dot: Traditional Larrakia design colours represent the artist's own diversity – his Northern Larrakia, Wardaman, Karrijarri heritage, and his acknowledgement of all of these people.



Kangaroo tracks: Acknowledge the journey and pathways that have been taken; and symbolises moving forward, as the kangaroo is known for not moving backwards.

Track colours: Represent diversity and the differences between people. The kangaroo is an iconic Australian animal, representing our uniqueness, and recognition Nationally.



Paperbark vessel: Carrying safely all the gathered information and knowledge

THE ABS SAYS THANKS



The Australian Bureau of Statistics would like to thank the Aboriginal and Torres Strait Islander communities who helped to make the 2016 Census a success.

MacDonnell & Alice Springs, your numbers are in.

The results of our latest national Census reveal who we are, where we live, what we do, and where we're headed.

The information we've gathered will inform planning and decision-making for our future, like where we build schools, roads and hospitals. Census data helps us decide where we need funding and services across every community in Australia – this means your community, too!

So here is the story for MacDonnell & Alice Springs – a living biography updated every five years.

Future surveys

The ABS also has other surveys. We thank you in advance for your help in completing these. They may include questions about your health, employment or other details. You can see how this information helps your community at www.abs.gov.au/participant-info.



Photos by the Australian Bureau of Statistics, taken from the Jabiru township.

Australia



23.4
million

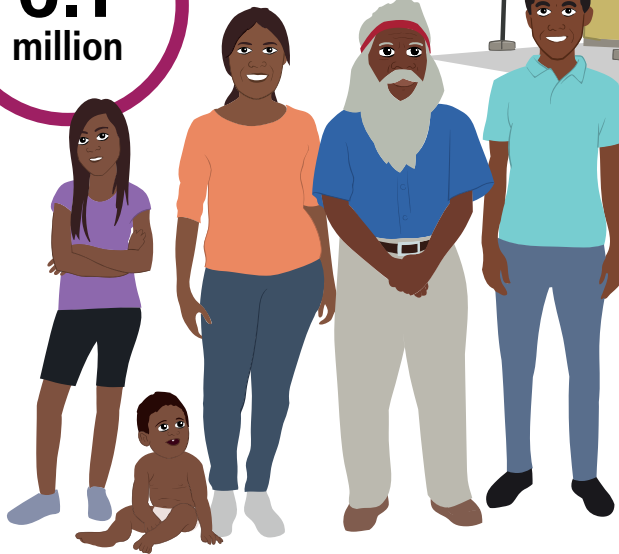
People

649 168

Aboriginal and/or
Torres Strait
Islander people

FAMILIES

6.1
million



9.9
million

HOUSES

11.9 million
Females



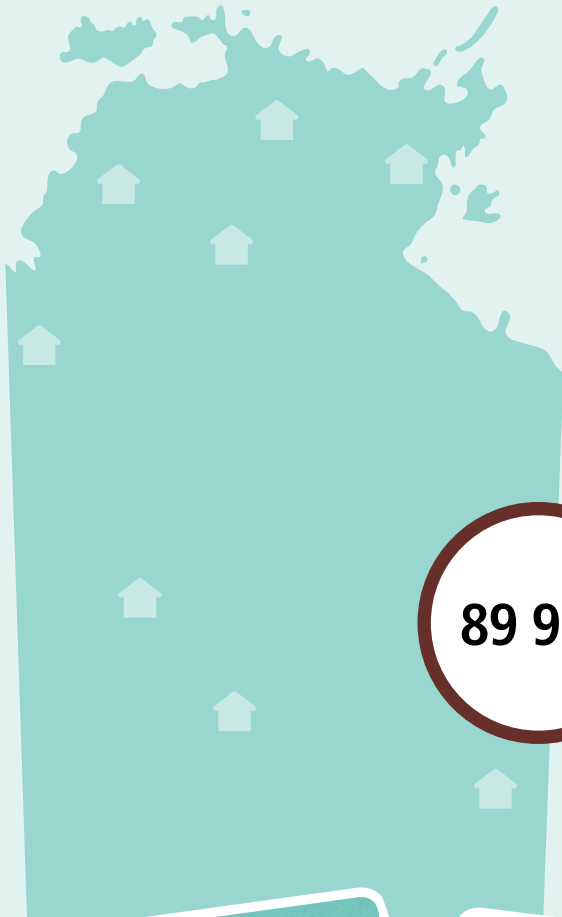
11.5 million
Males



4.4 million
Children



Northern Territory



228 833

People

58 247

Aboriginal and/or
Torres Strait
Islander people

89 959

HOUSES

110 266

FEMALES

118 570

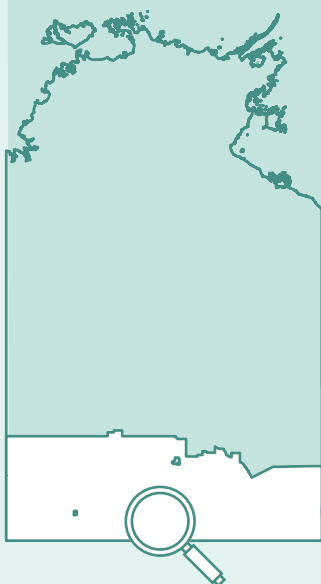
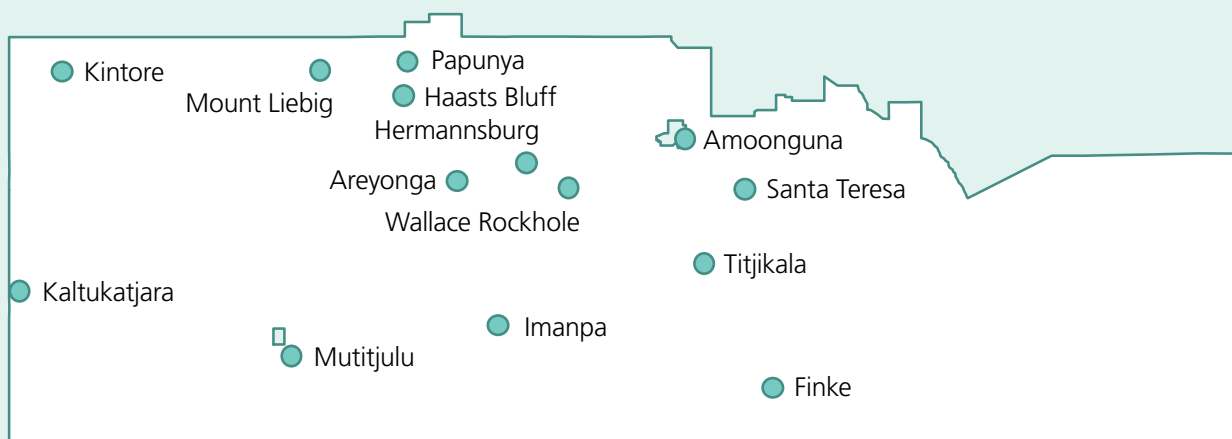
MALES

49 474

(CHILDREN



MacDonnell Region



MacDonnell Region

FAMILIES

1 061



6 029

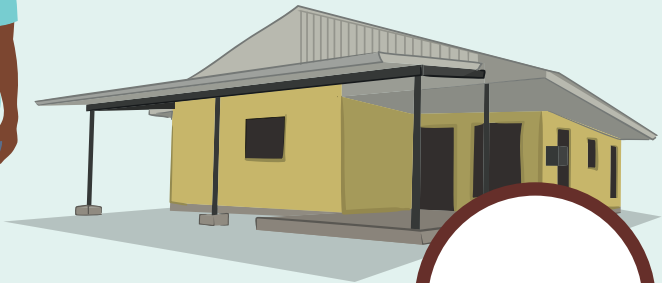
People

4 955

Aboriginal and/or
Torres Strait
Islander people

1 956

HOUSES



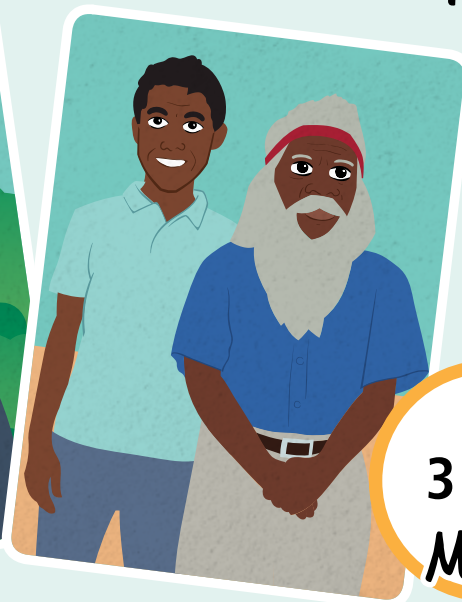
2 891

FEMALES



3 144

MALES



Amoonguna

LANGUAGE SPOKEN
Arrernte, nfd

239

People

237

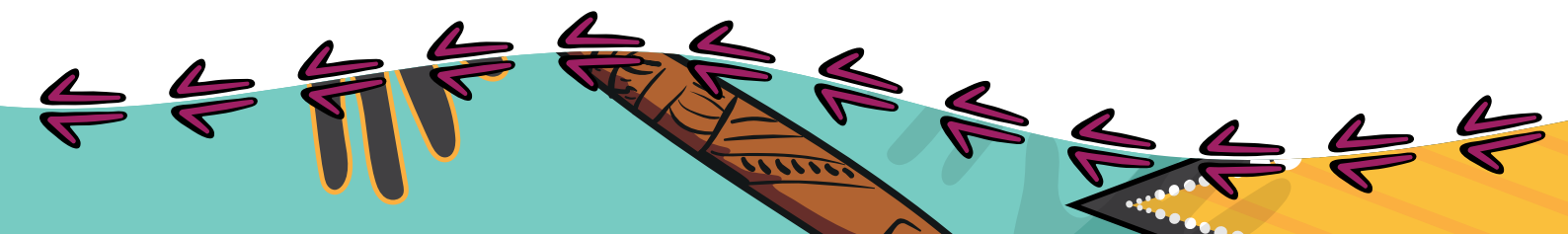
Aboriginal and/or
Torres Strait
Islander people

HOUSES

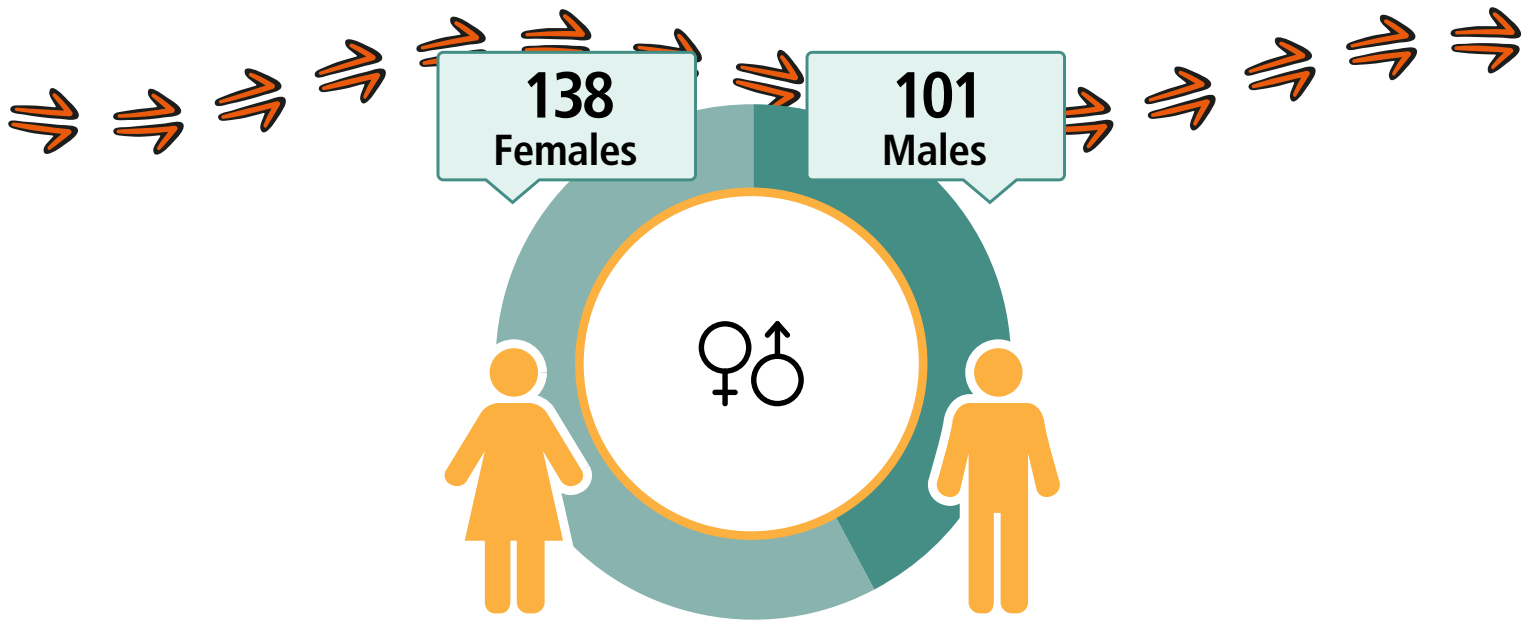
63

58

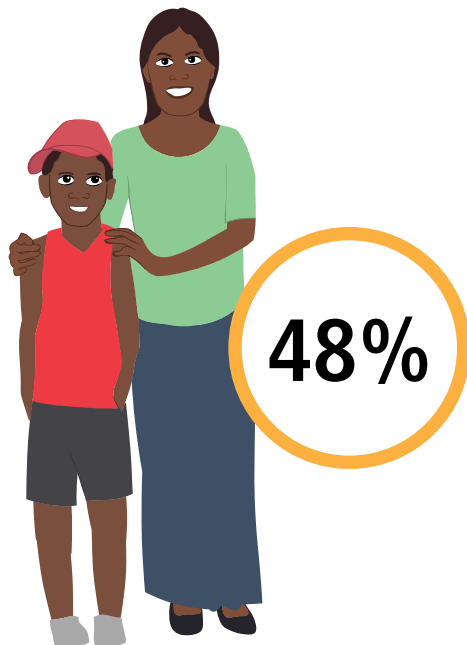
FAMILIES



Amoonguna



CARED FOR CHILDREN



21
Working



\$173
Weekly Income



70
Students



13
Completed
Year 12



Geography: Amoonguna ILOC

Areyonga

LANGUAGE SPOKEN
Pitjantjatjara

195

People

179

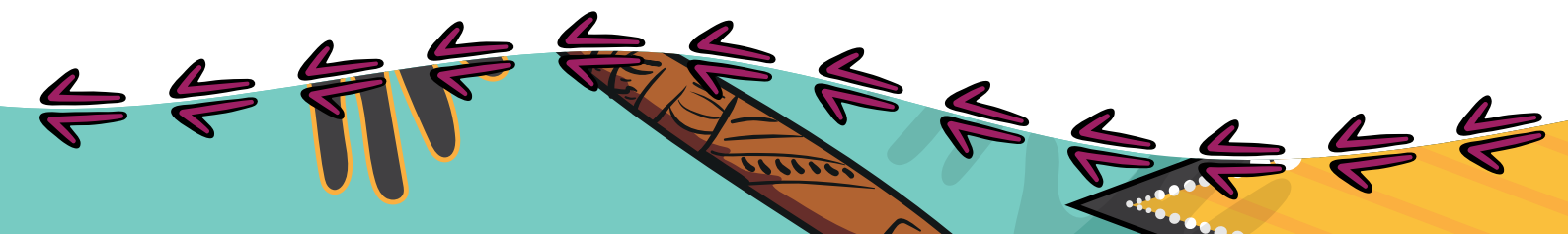
Aboriginal and/or
Torres Strait
Islander people

HOUSES

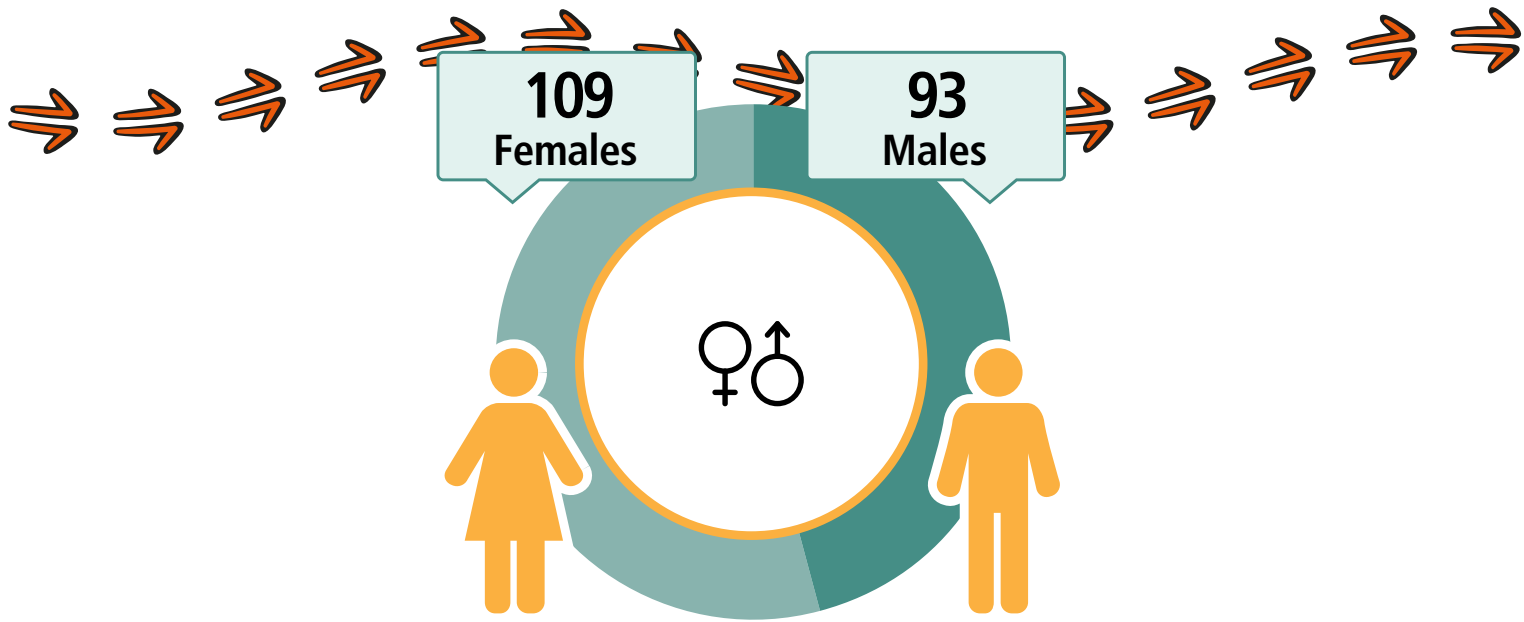
41

48

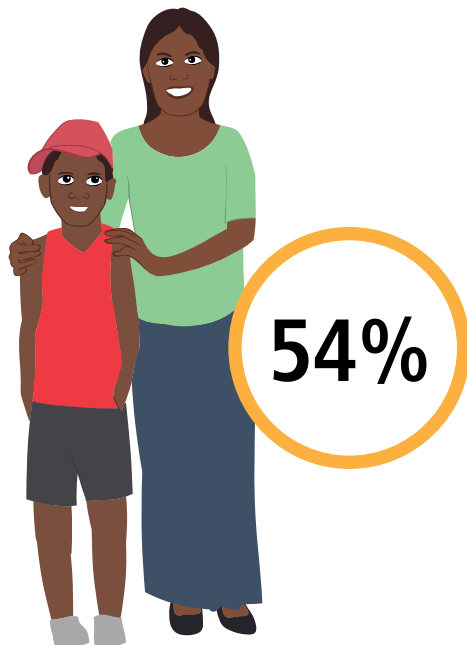
FAMILIES



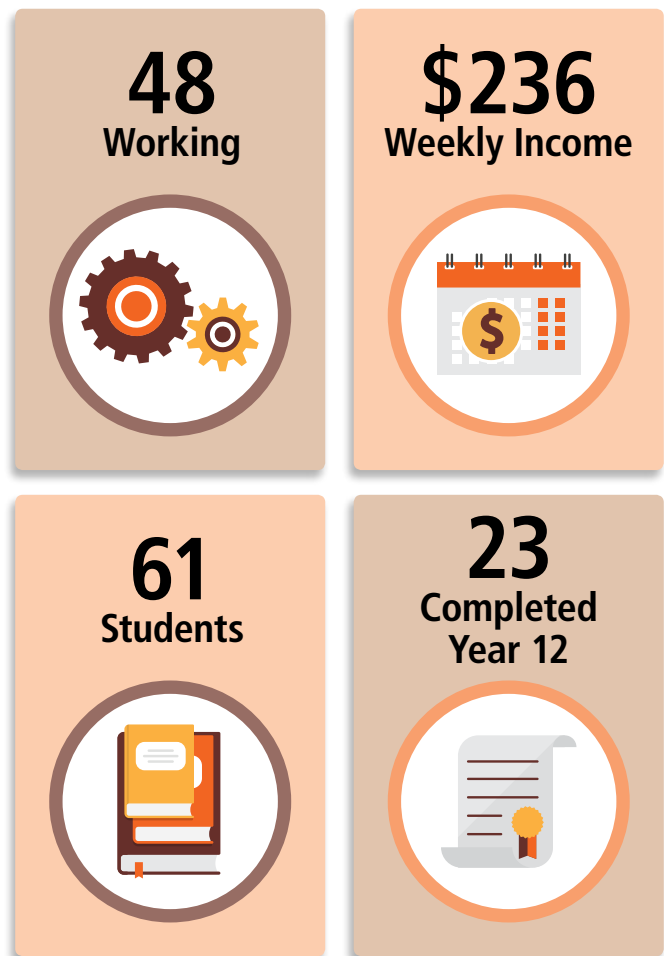
Areyonga



CARED FOR CHILDREN



Geography: Areyonga ILOC



A decorative border at the bottom of the page featuring stylized Indigenous art. It includes a yellow and black patterned area on the left, a teal wavy line, and various purple and black arrow-like shapes pointing in different directions.

Finke

LANGUAGE SPOKEN
Yankunytjatjara

192

People

160

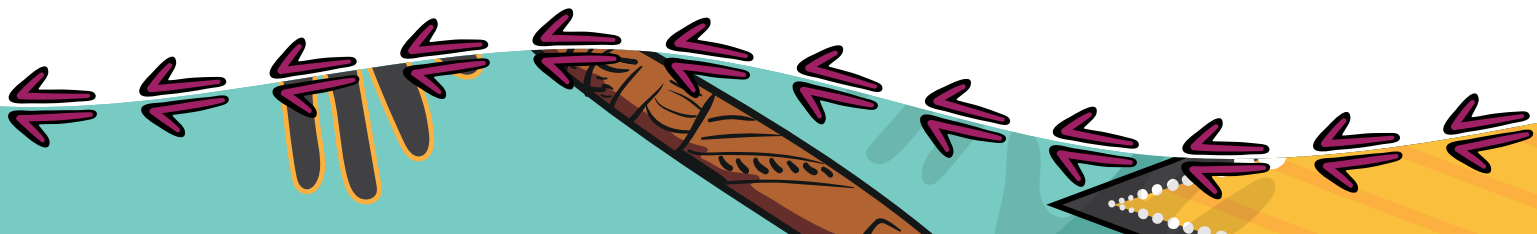
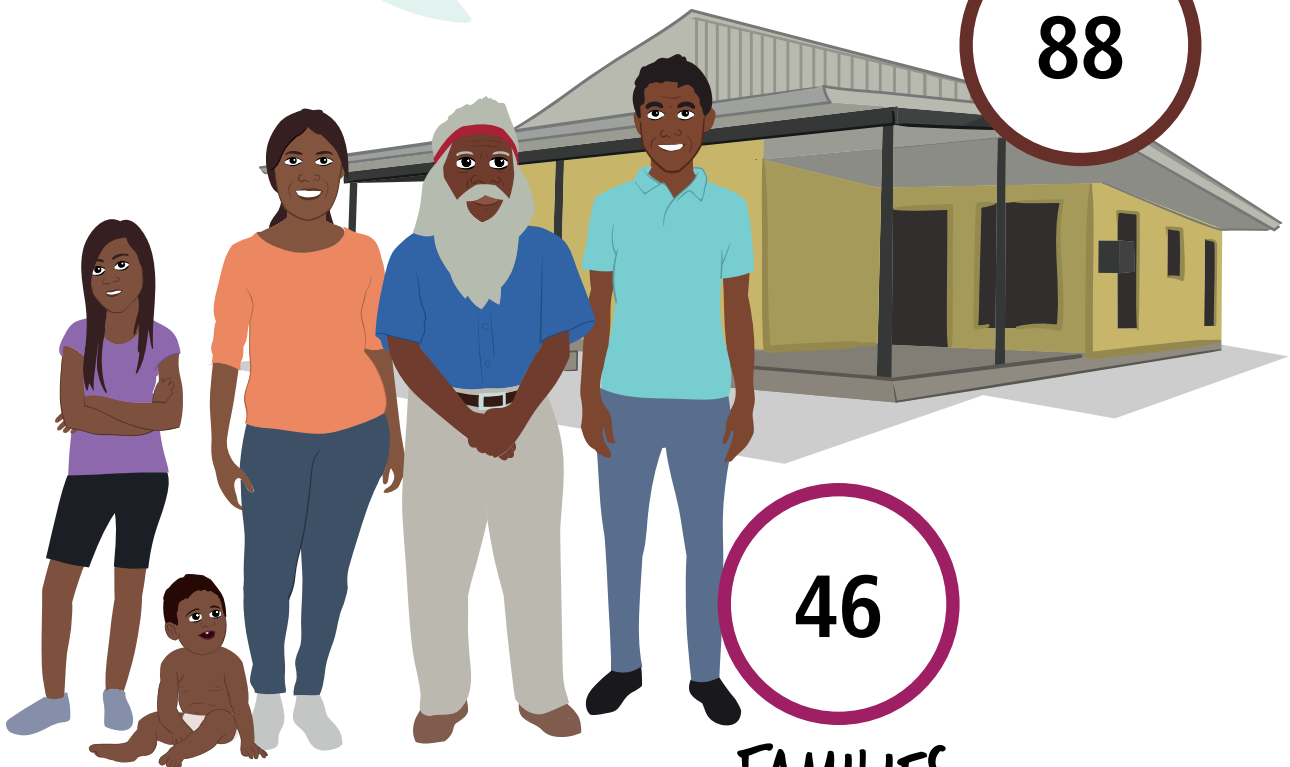
Aboriginal and/or
Torres Strait
Islander people

HOUSES

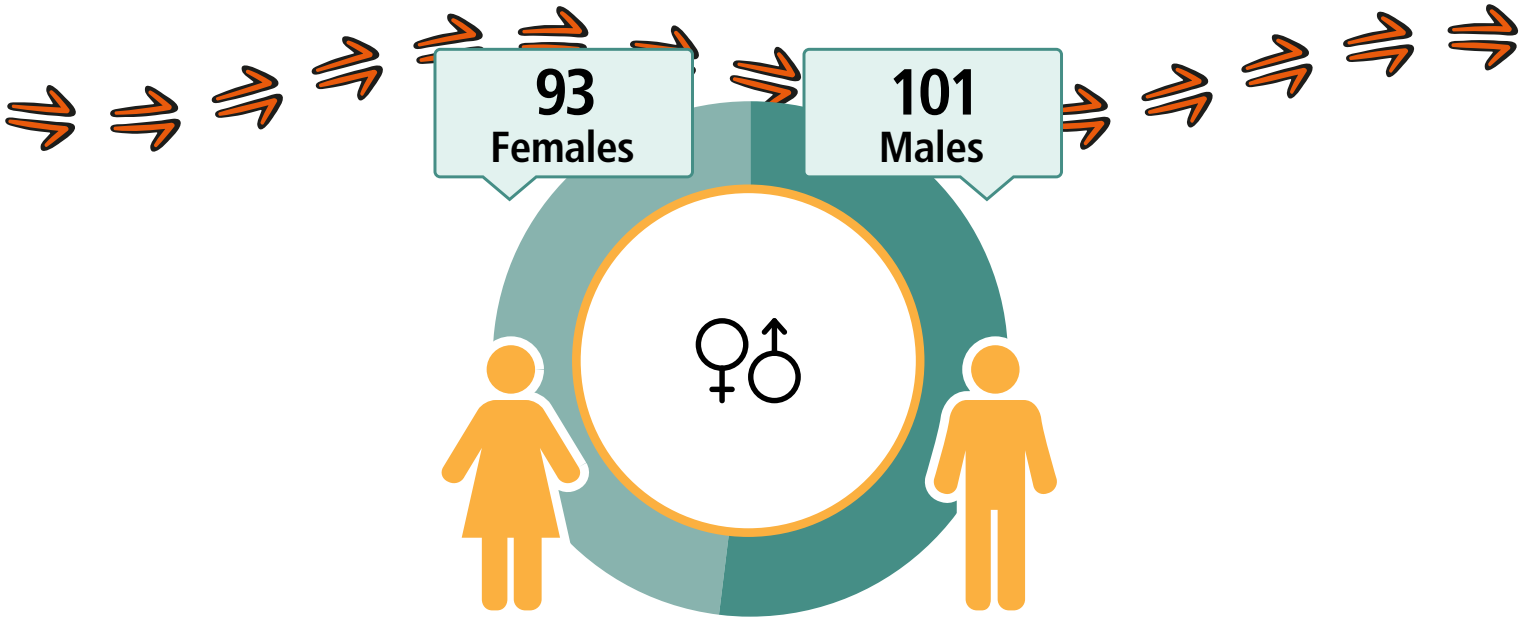
88

46

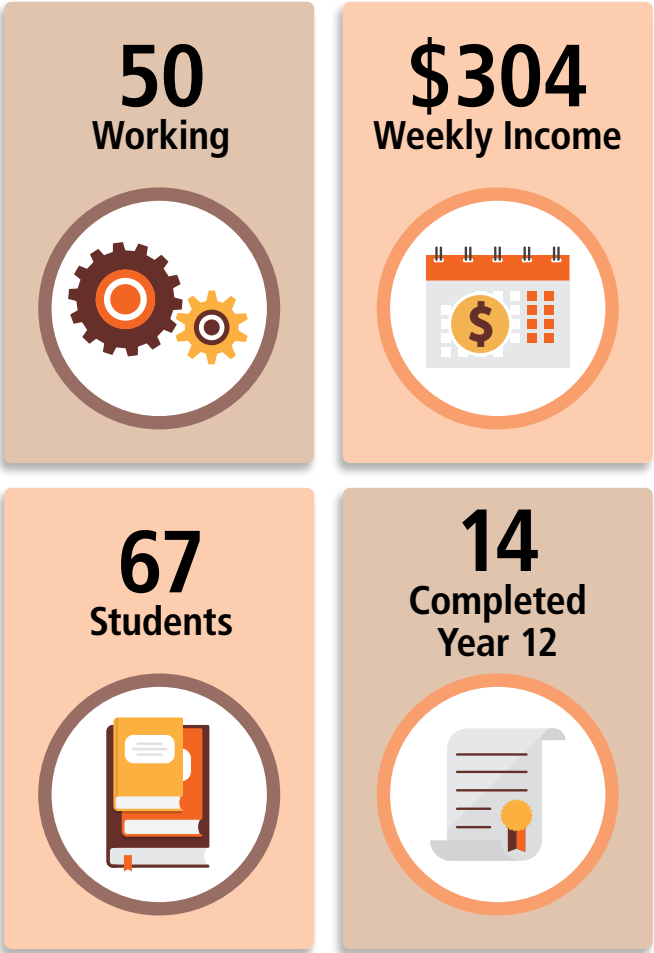
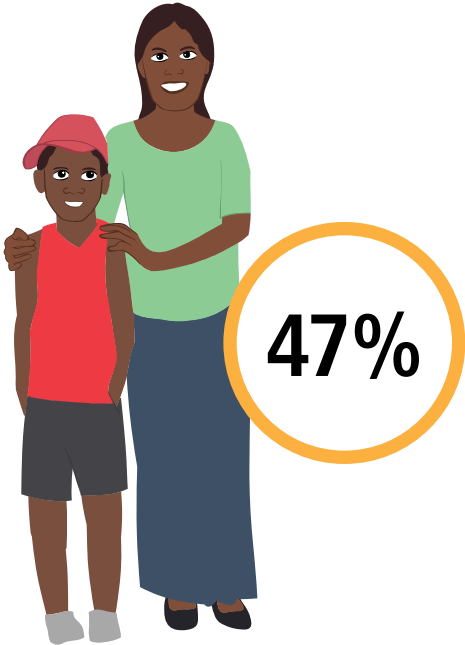
FAMILIES



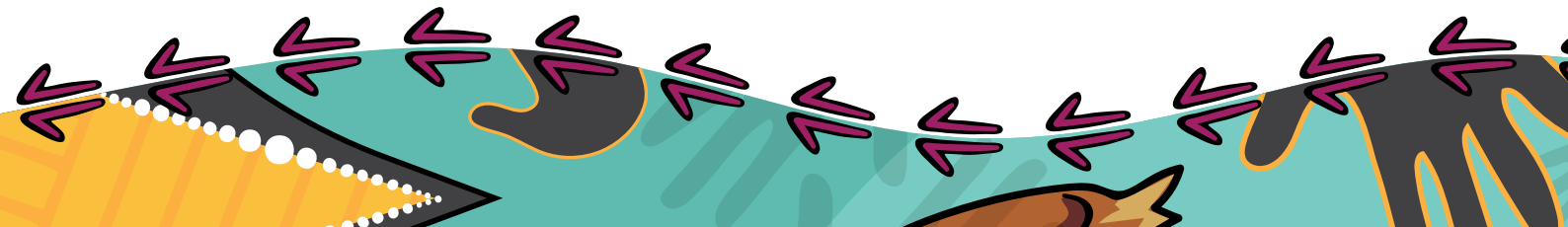
Finke



CARED FOR CHILDREN



Geography:Apatula (Finke) ILOC



Haasts Bluff

LANGUAGE SPOKEN
Luritja

138

People

125

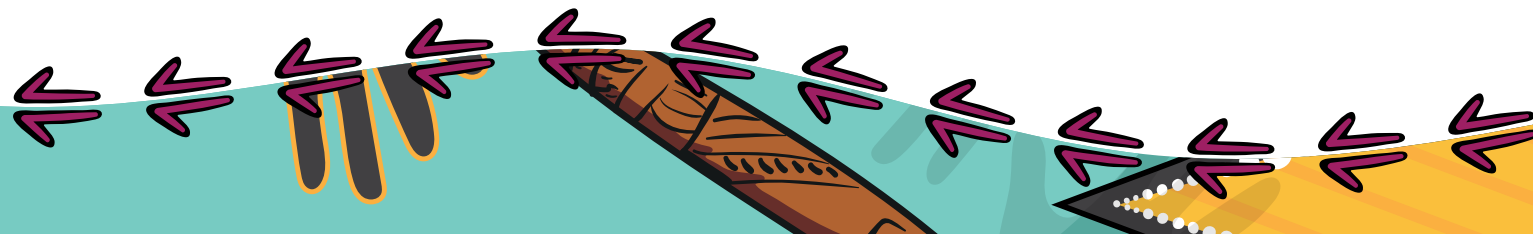
Aboriginal and/or
Torres Strait
Islander people

HOUSES

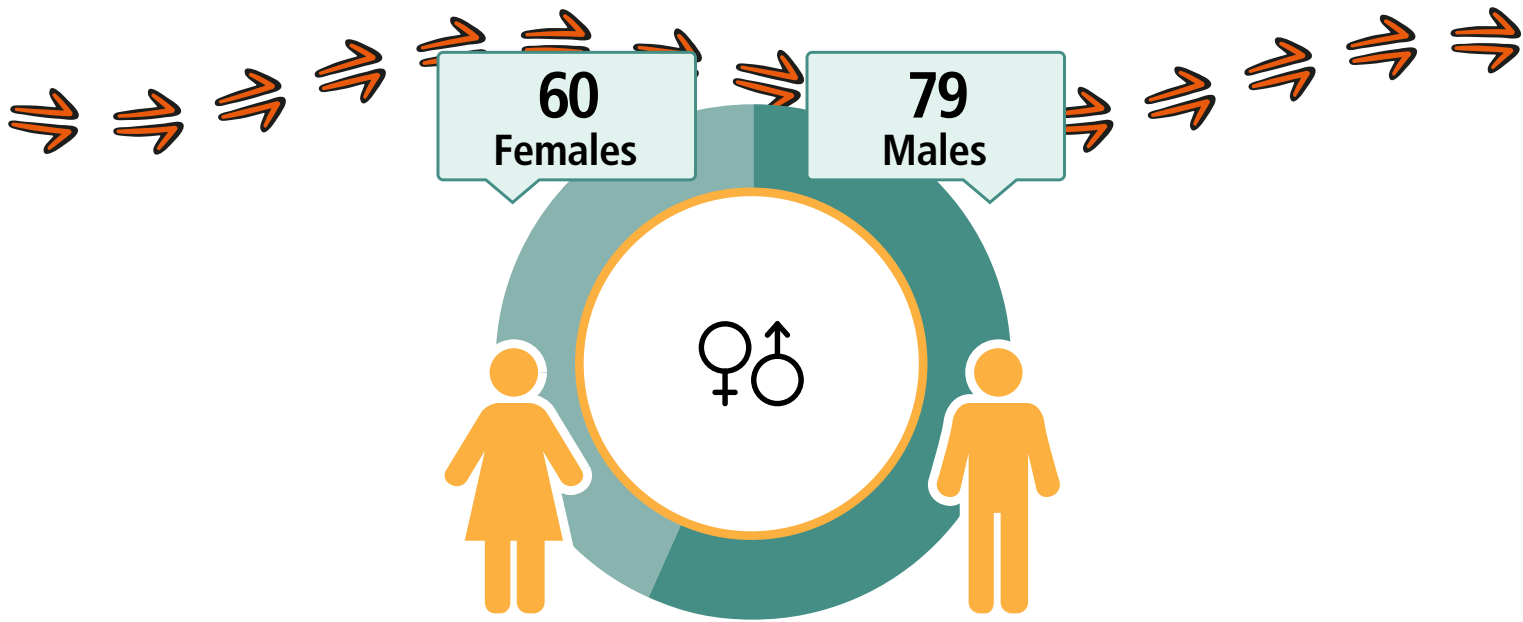
28

30

FAMILIES



Haasts Bluff



CARED FOR CHILDREN



48%

39
Working



\$211
Weekly Income



55
Students



9
Completed
Year 12



Geography: Haasts Bluff SSC

A decorative border at the bottom of the page featuring stylized Aboriginal art. It includes a yellow and black pattern on the left, a teal and black pattern in the center, and a yellow and black pattern on the right, all with purple arrows pointing in various directions.

Hermannsburg

LANGUAGE SPOKEN
Western Arrarnta

605

People

542

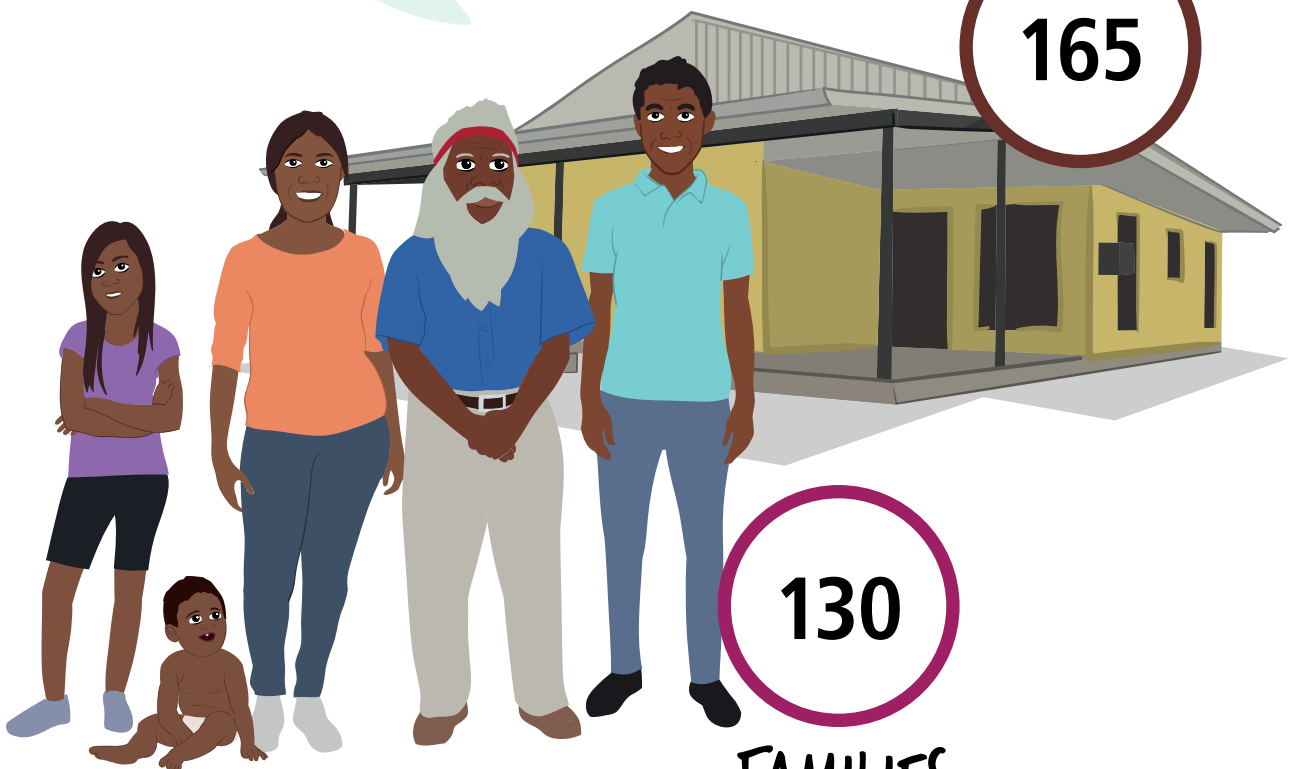
Aboriginal and/or
Torres Strait
Islander people

HOUSES

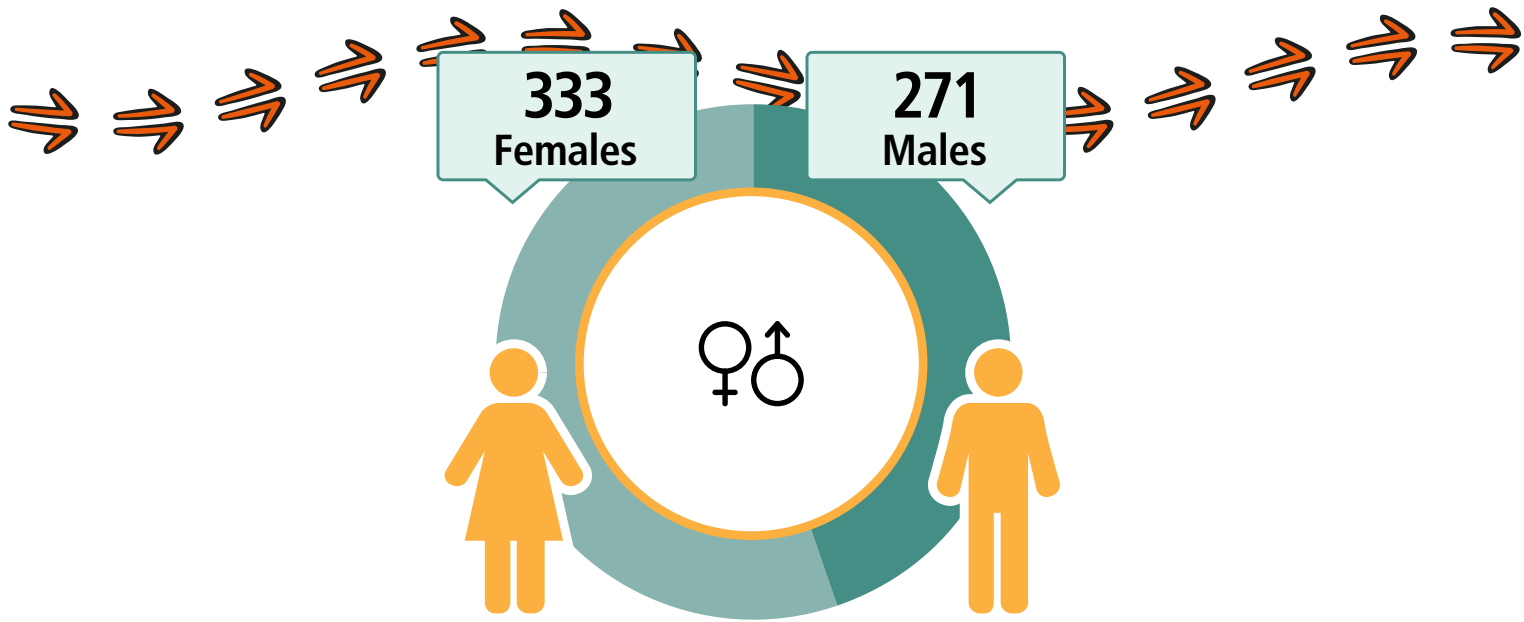
165

130

FAMILIES



Hermannsburg



CARED FOR CHILDREN



41%

117
Working



\$273
Weekly Income



202
Students



65
Completed
Year 12



Geography: Hermannsburg ILOC

A decorative Aboriginal artwork at the bottom of the page, featuring a stylized landscape with a yellow and orange sun or moon, a blue and green body of water, and various purple and black arrows pointing in different directions.

Imanpa

LANGUAGE SPOKEN
Pitjantjatjara

151

People

132

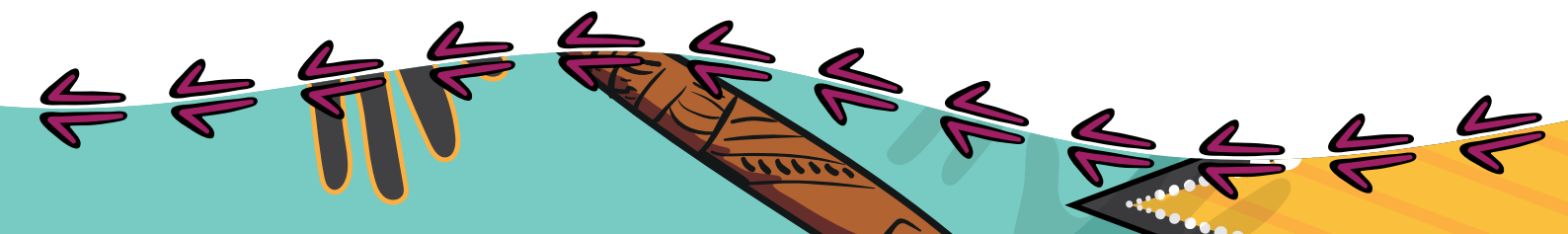
Aboriginal and/or
Torres Strait
Islander people

HOUSES

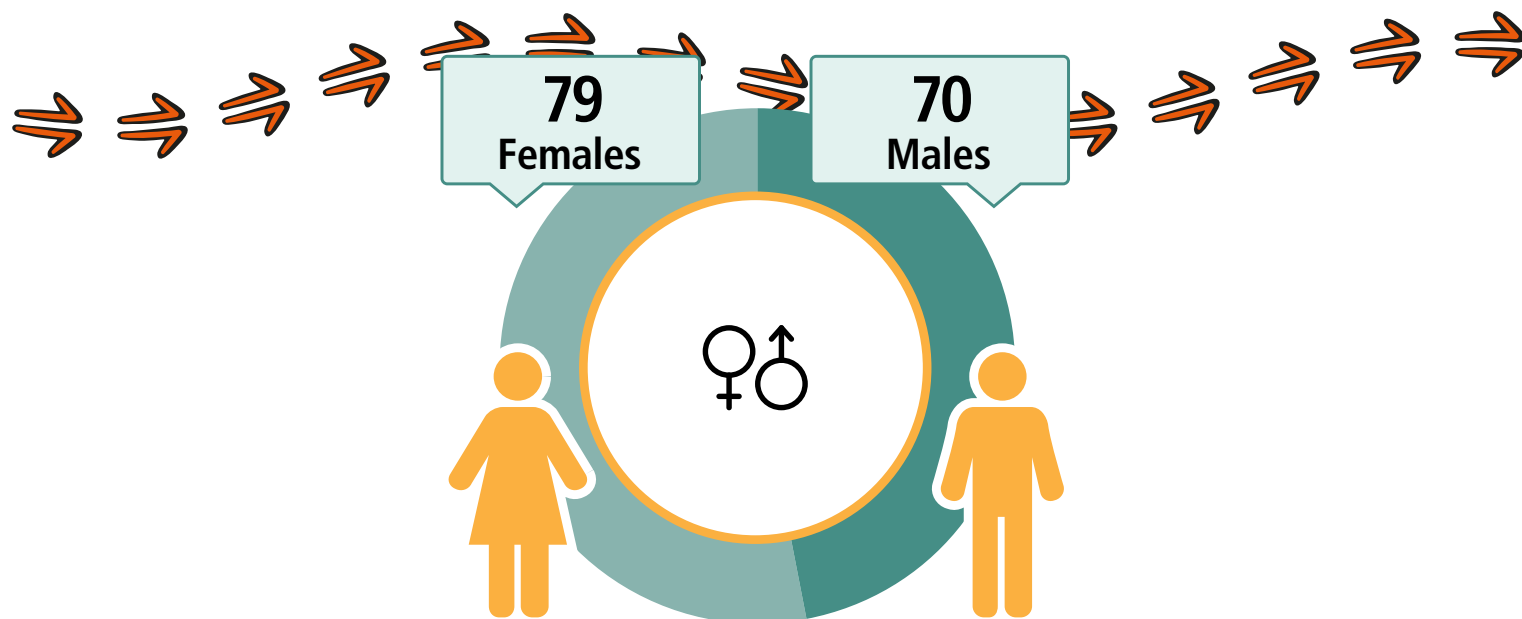
37

28

FAMILIES



Imanpa



CARED FOR CHILDREN



42%

32
Working



\$341
Weekly Income



71
Students



13
Completed
Year 12



Geography: Imanpa (Mount Ebenezer) ILOC

Kaltukatjara

LANGUAGE SPOKEN
Pitjantjatjara

394

People

293

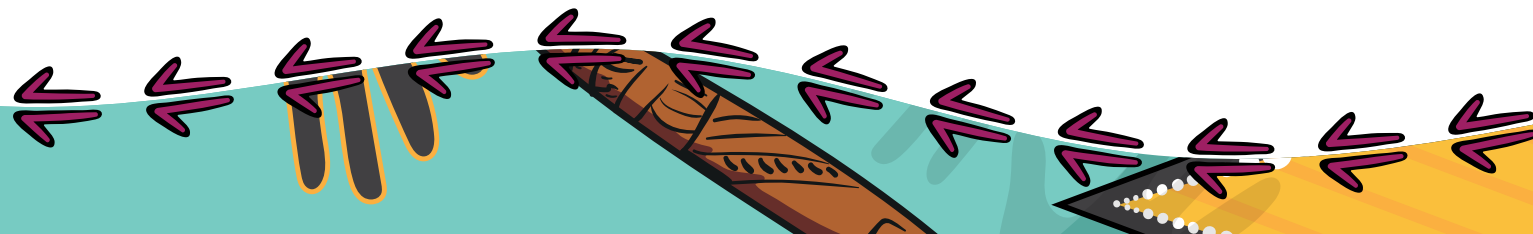
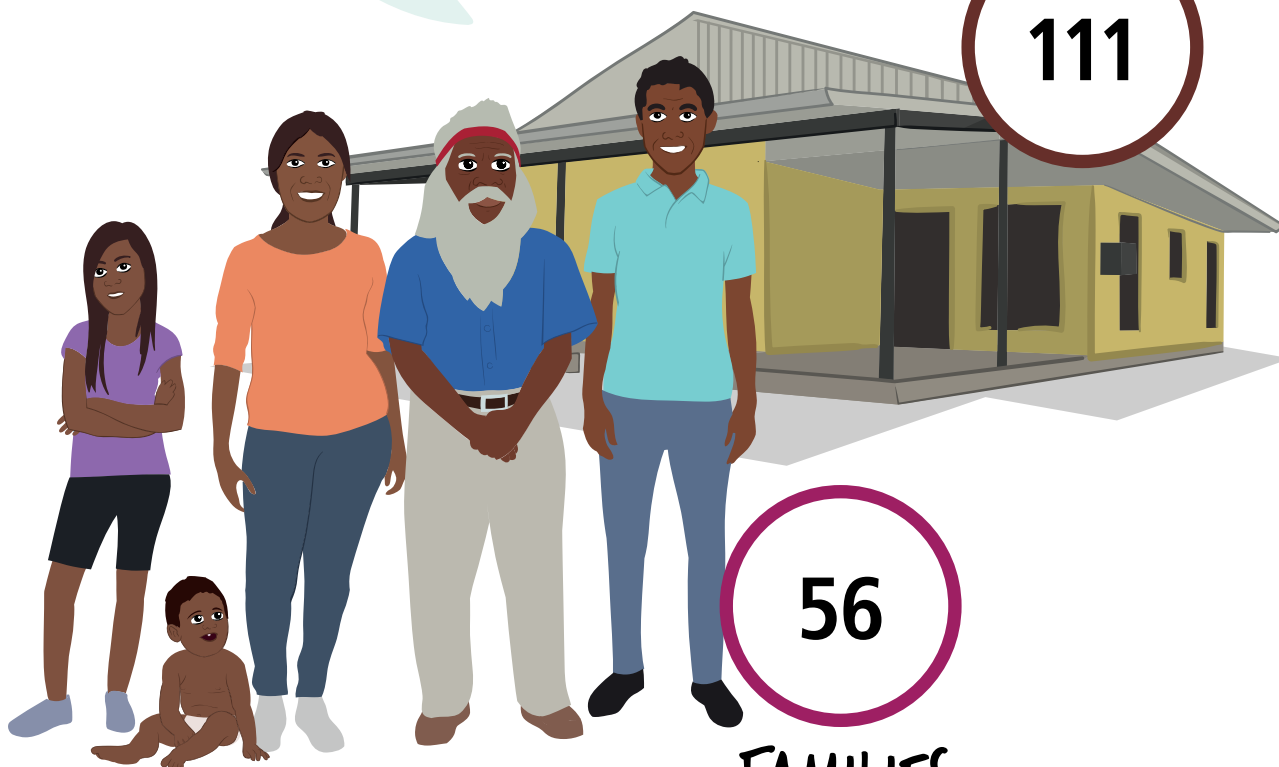
Aboriginal and/or
Torres Strait
Islander people

HOUSES

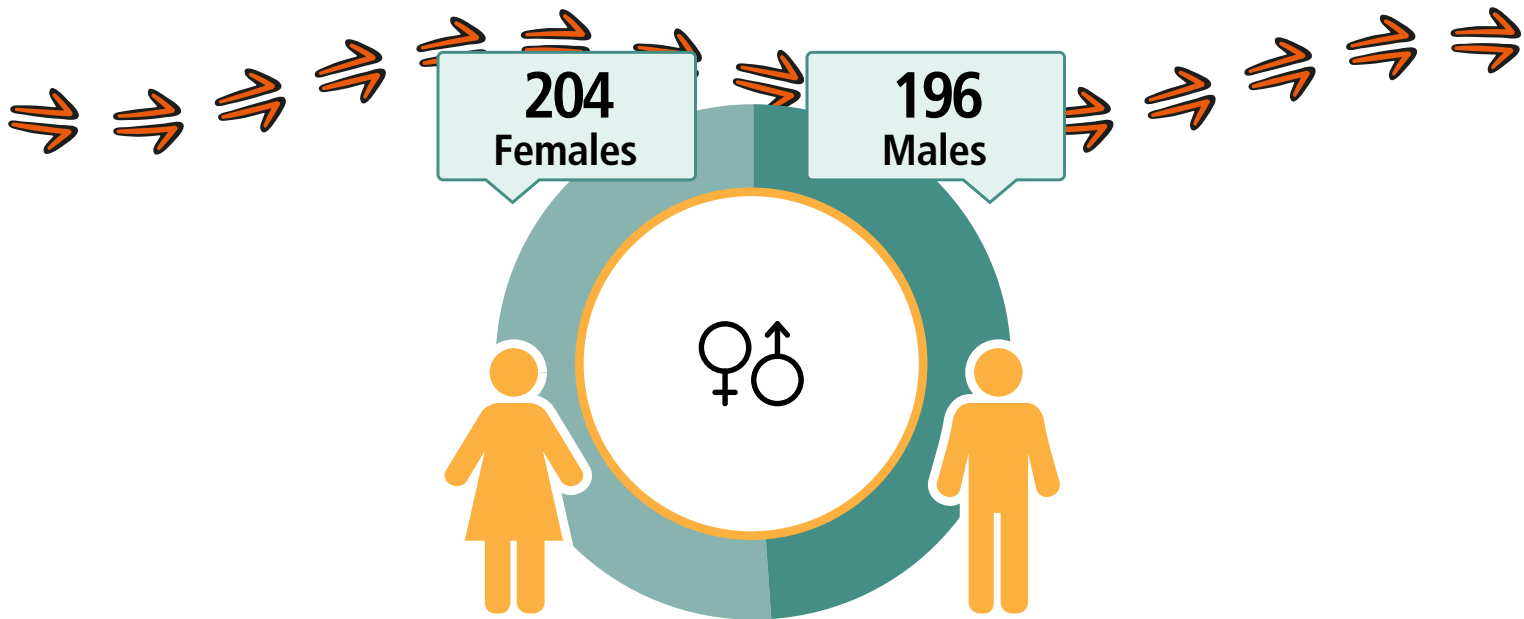
111

56

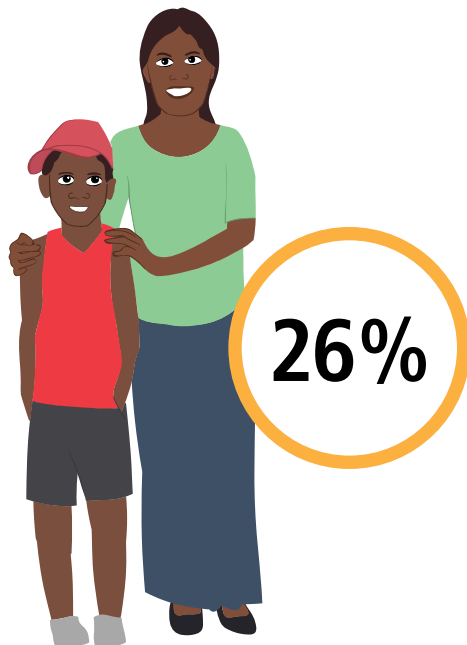
FAMILIES



Kaltukatjara



CARED FOR CHILDREN



64
Working



\$282
Weekly Income



142
Students



57
Completed
Year 12



Geography: Kaltukatjara (Docker River) ILOC

Kintore

LANGUAGE SPOKEN
Luritja

410

People

376

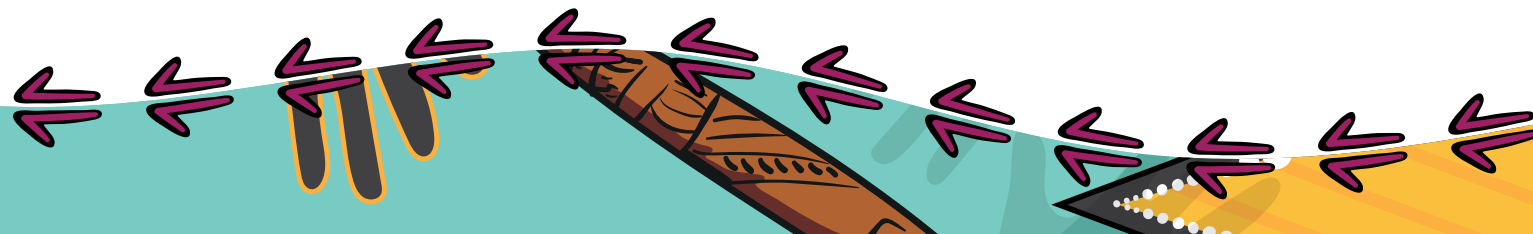
Aboriginal and/or
Torres Strait
Islander people

HOUSES

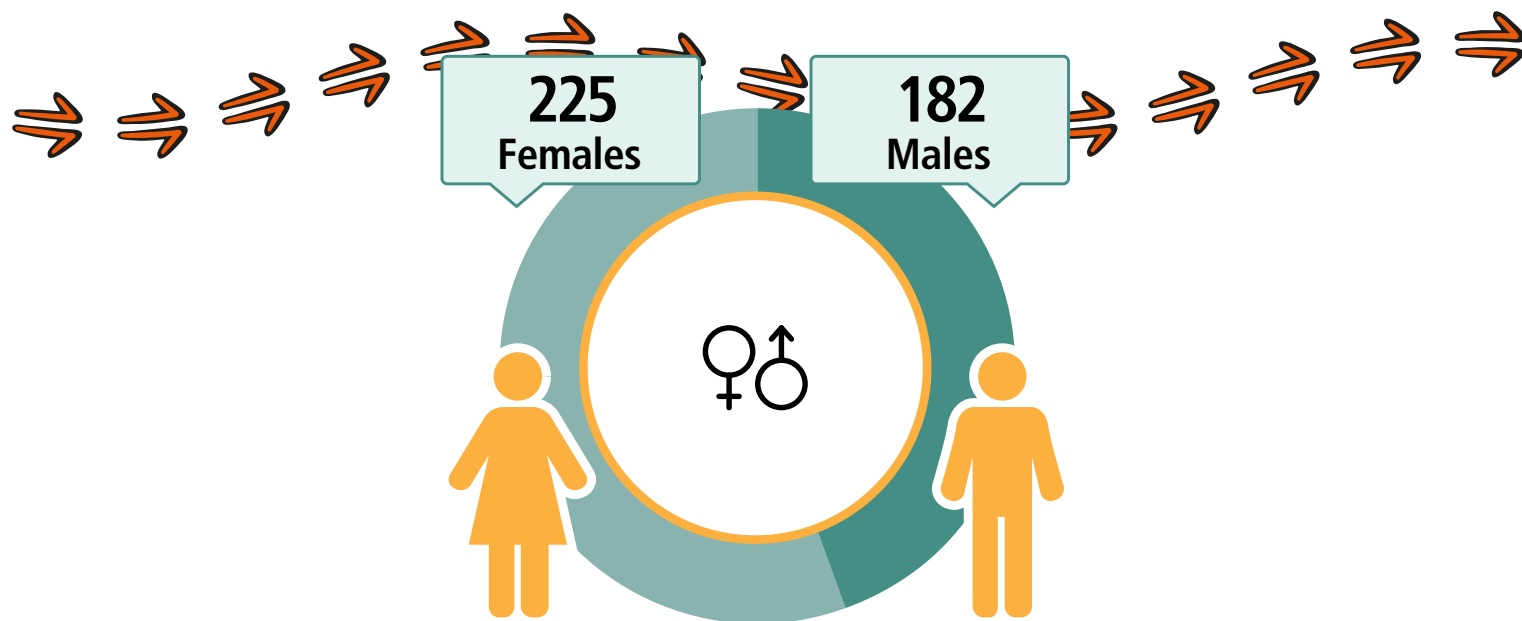
98

99

FAMILIES



Kintore



CARED FOR CHILDREN



53%

53
Working



\$171
Weekly Income



139
Students



53
Completed
Year 12



Geography: Walungurru (Kintore) ILOC

Mount Liebig

LANGUAGE SPOKEN
Luritja

169

People

154

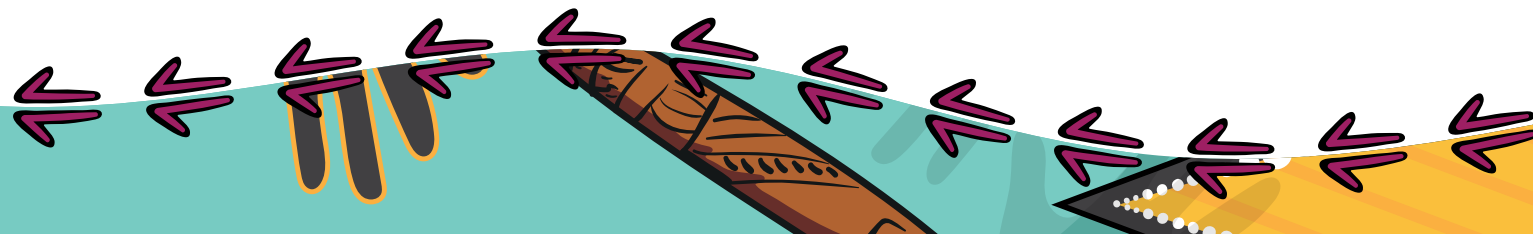
Aboriginal and/or
Torres Strait
Islander people

HOUSES

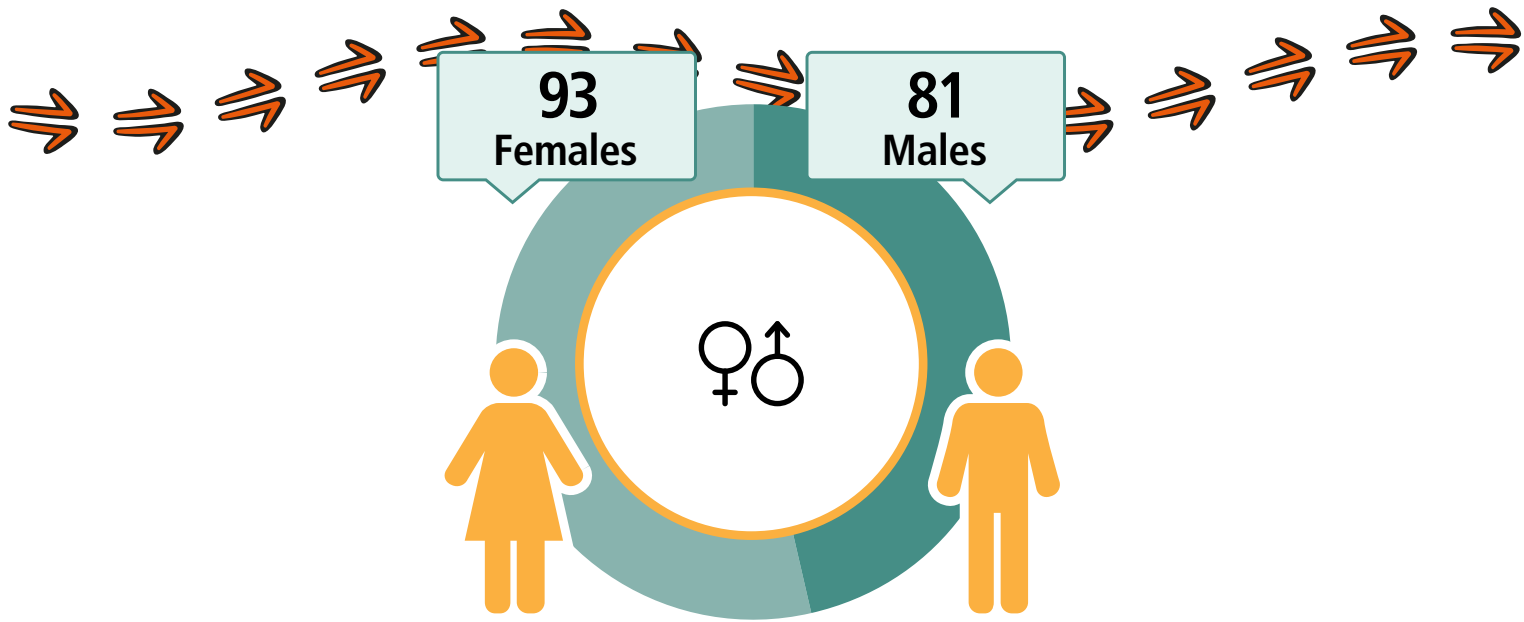
46

37

FAMILIES



Mount Liebig



CARED FOR (CHILDREN



45%

41
Working



\$251
Weekly Income



60
Students



27
Completed
Year 12



Geography: Mount Liebig SSC

A decorative border at the bottom of the page featuring stylized Aboriginal art patterns, including a yellow and black dot pattern, a teal wavy line, and purple and black arrow-like shapes.

Mutitjulu

LANGUAGE SPOKEN
Pitjantjatjara

323

People

250

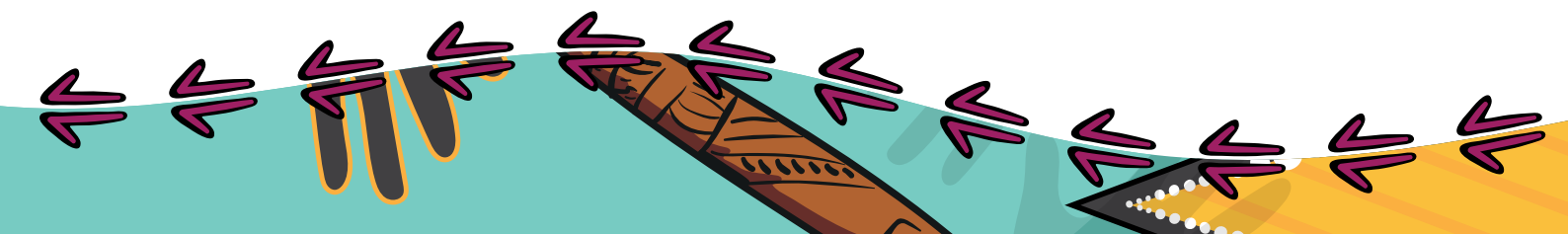
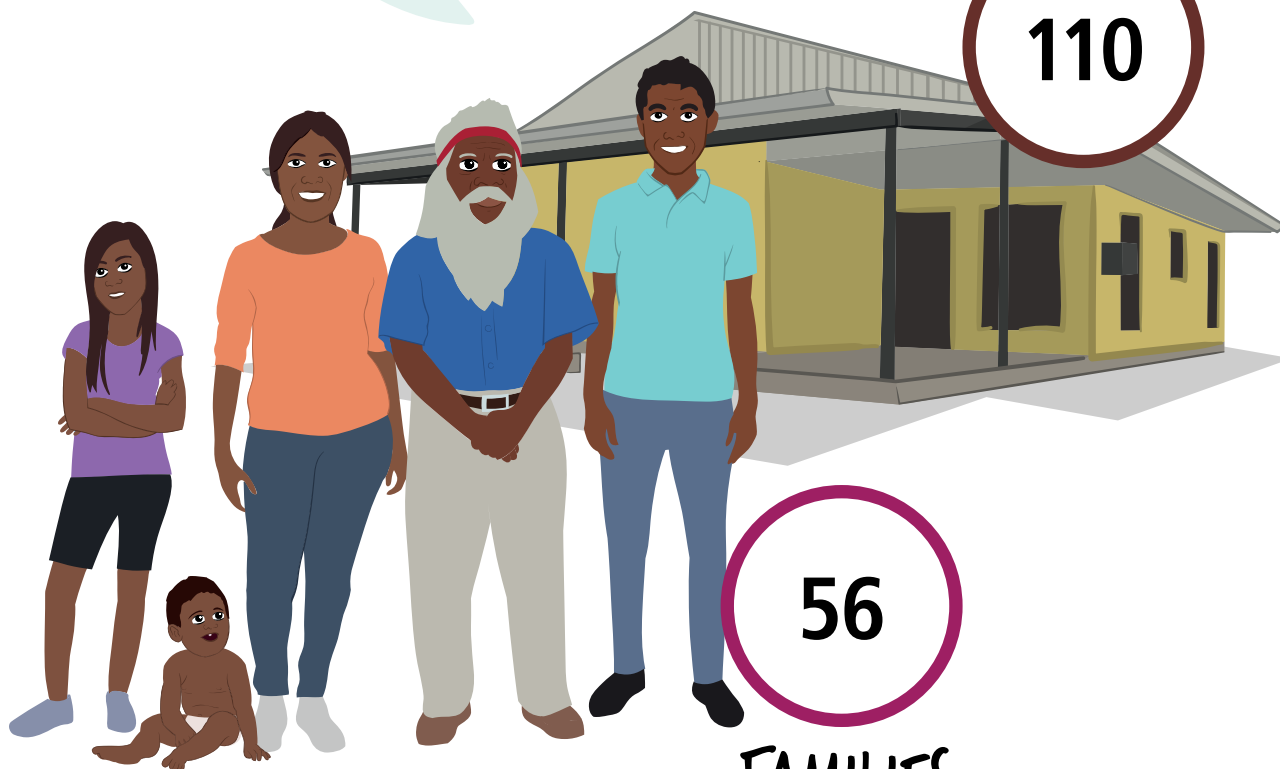
Aboriginal and/or
Torres Strait
Islander people

HOUSES

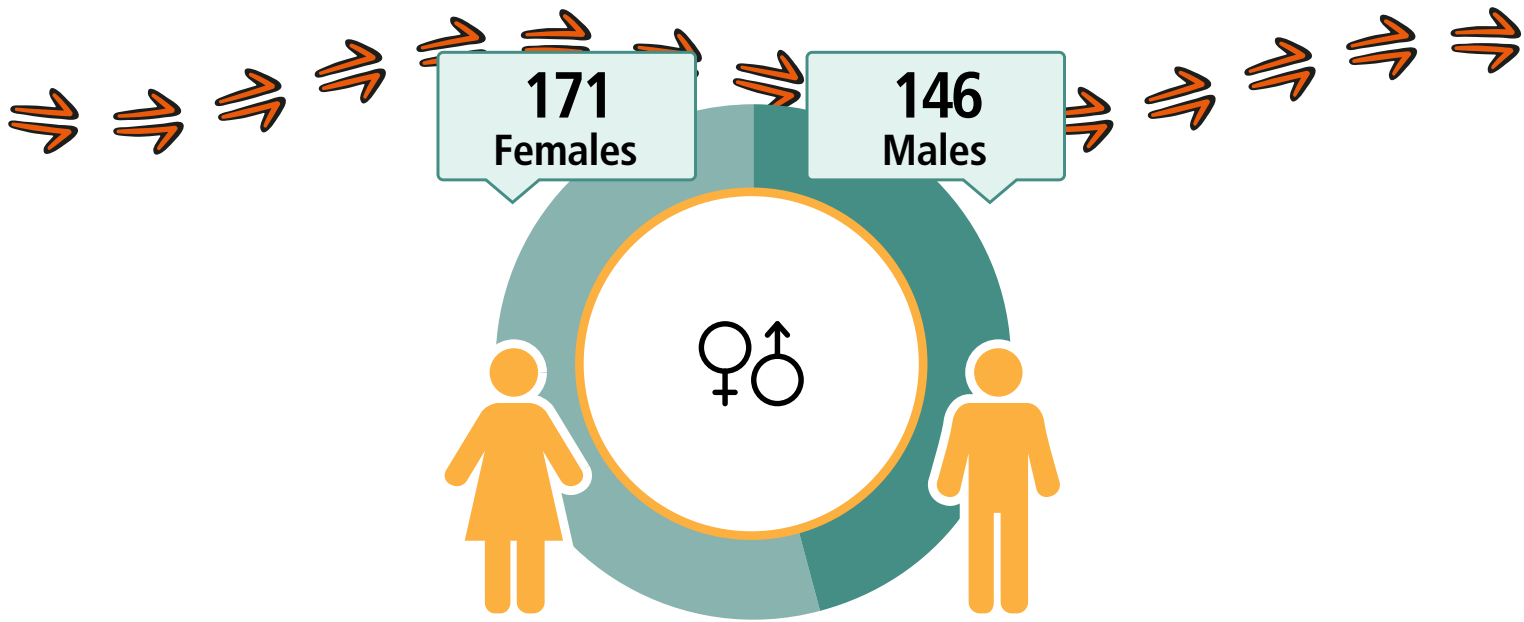
110

56

FAMILIES



Mutitjulu



CARED FOR CHILDREN



35%

77
Working



\$279
Weekly Income



136
Students



43
Completed
Year 12



Geography: Mutitjulu SSC

Papunya

LANGUAGE SPOKEN
Luritja

404

People

346

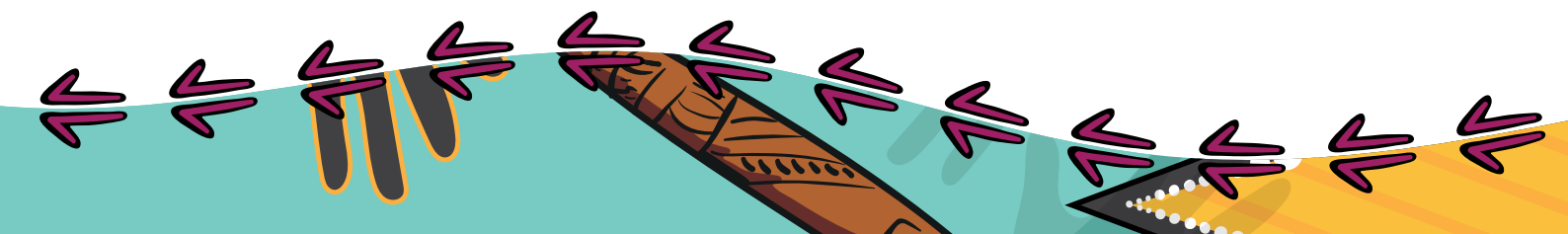
Aboriginal and/or
Torres Strait
Islander people

HOUSES

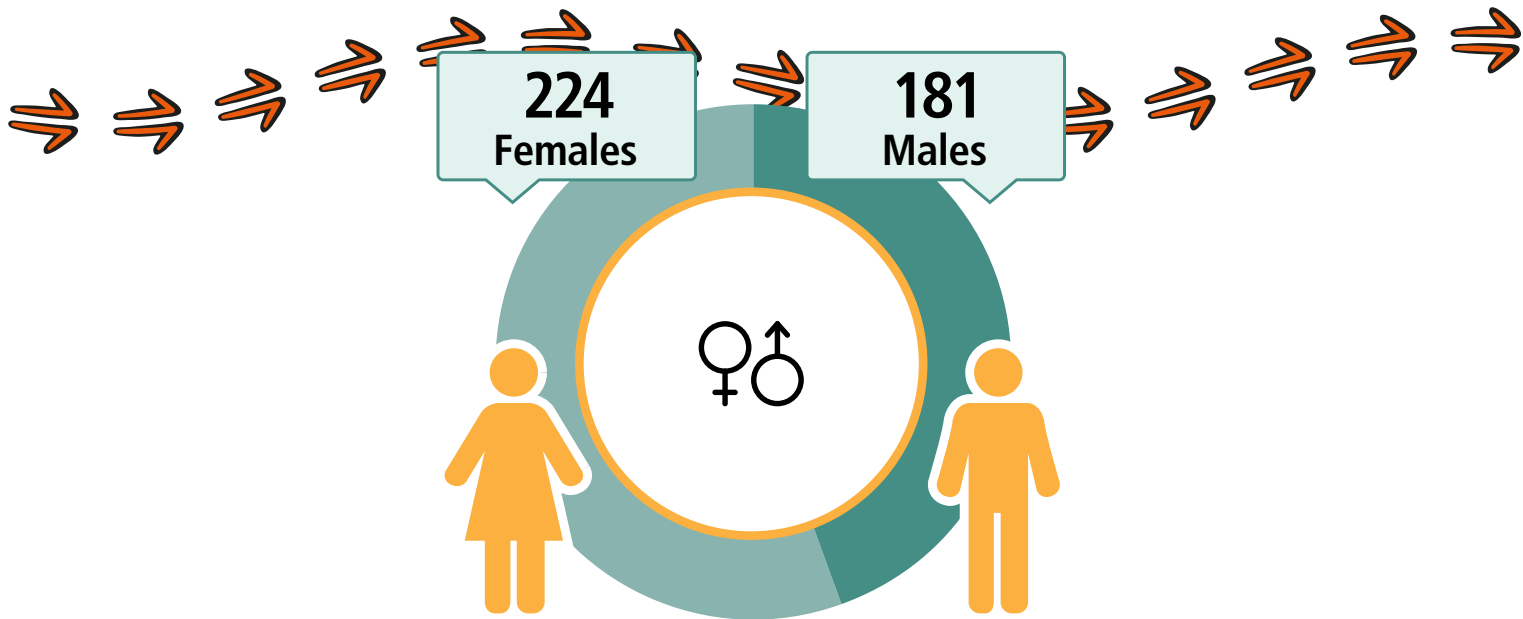
96

87

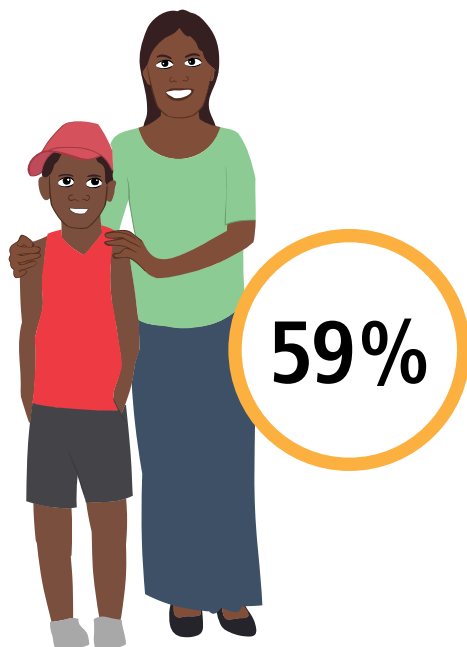
FAMILIES



Papunya



CARED FOR CHILDREN



84
Working



\$235
Weekly Income



150
Students



45
Completed
Year 12



Geography: Papunya ILOC

Santa Teresa

LANGUAGE SPOKEN
Arrernte, nfd

579

People

500

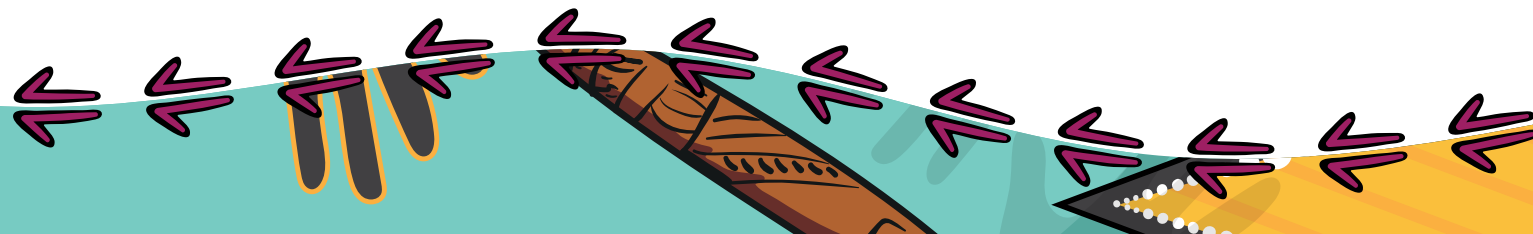
Aboriginal and/or
Torres Strait
Islander people

HOUSES

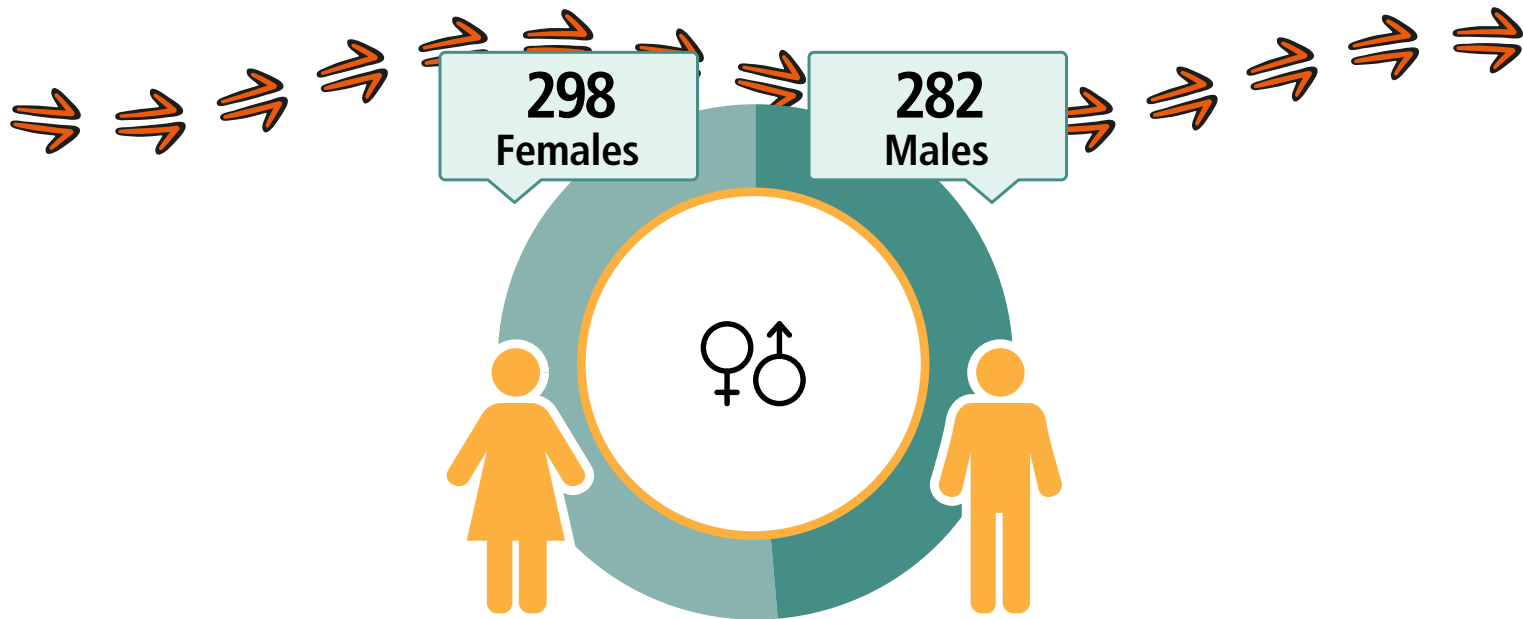
162

133

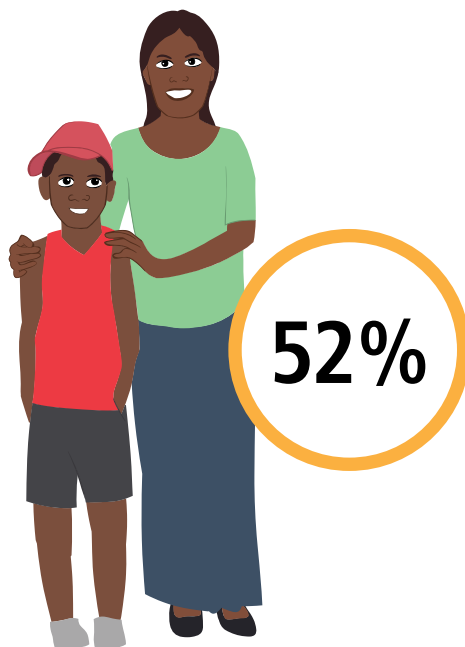
FAMILIES



Santa Teresa



CARED FOR (CHILDREN



131
Working



\$272
Weekly Income



195
Students



69
Completed
Year 12



Geography: Santa Teresa (Ltyentye Purte) ILOC

Titjikala

LANGUAGE SPOKEN
Yankunytjatjara

227

People

203

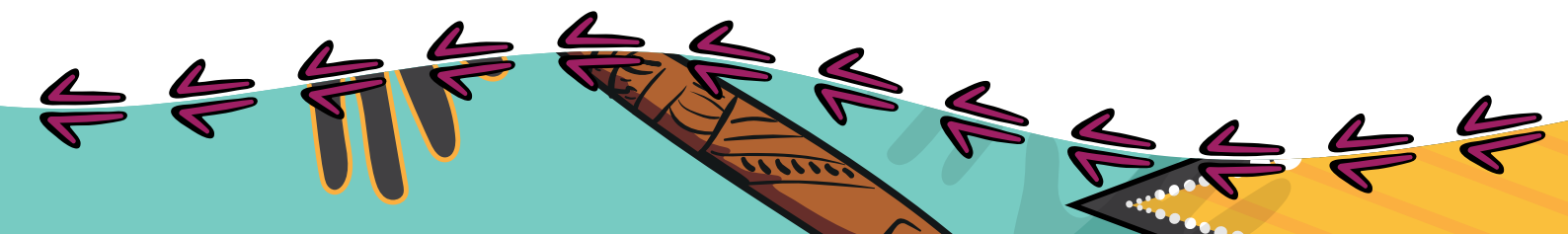
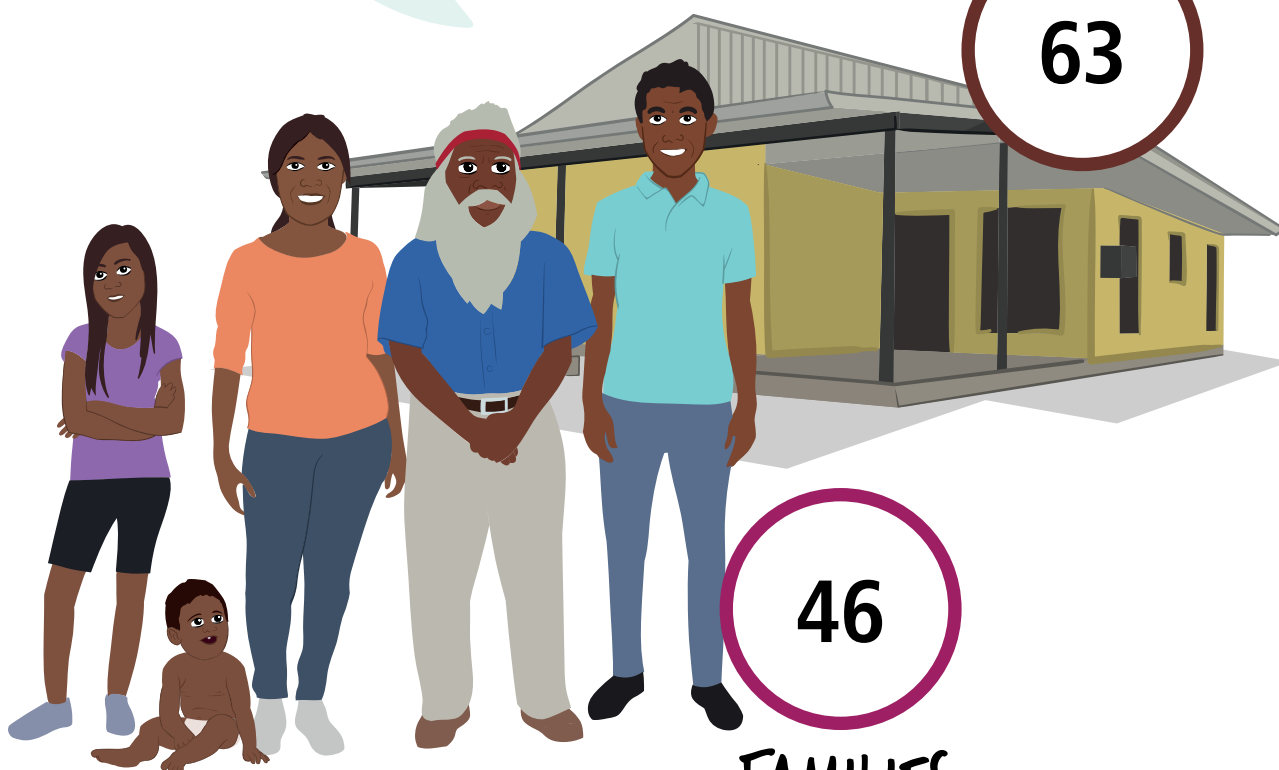
Aboriginal and/or
Torres Strait
Islander people

HOUSES

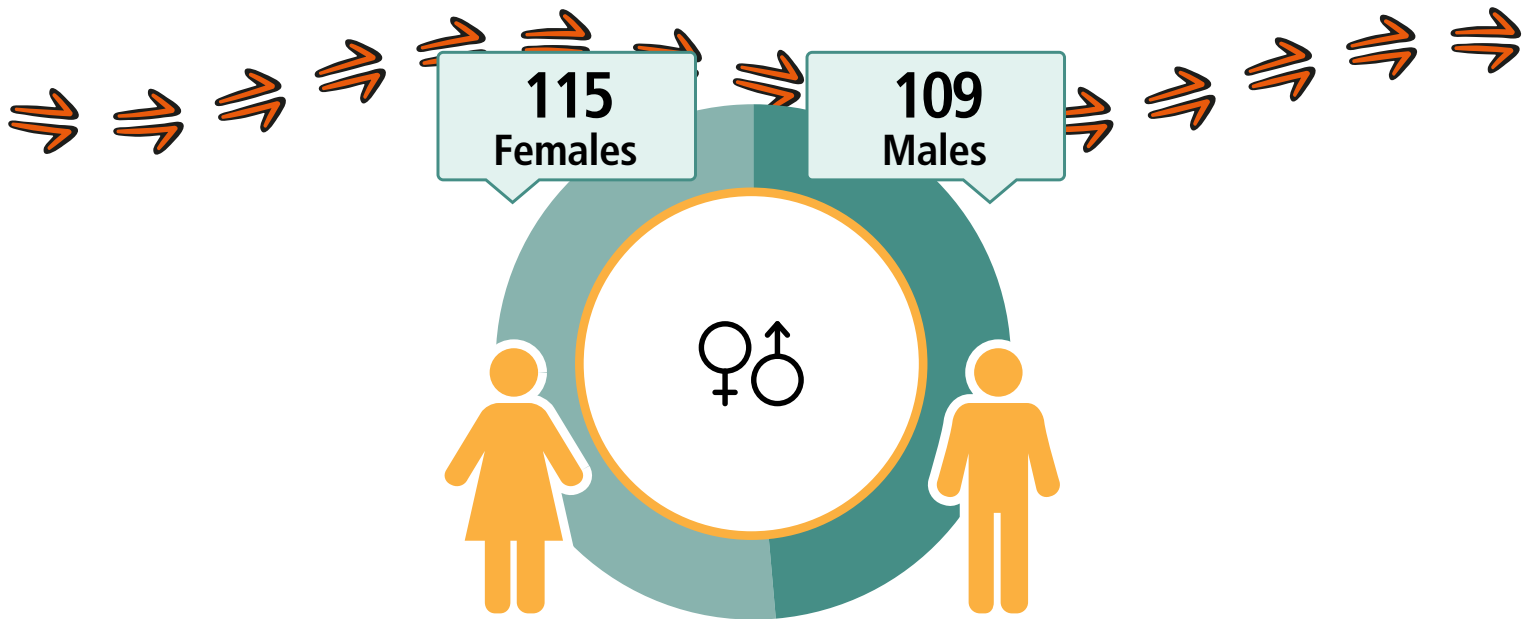
63

46

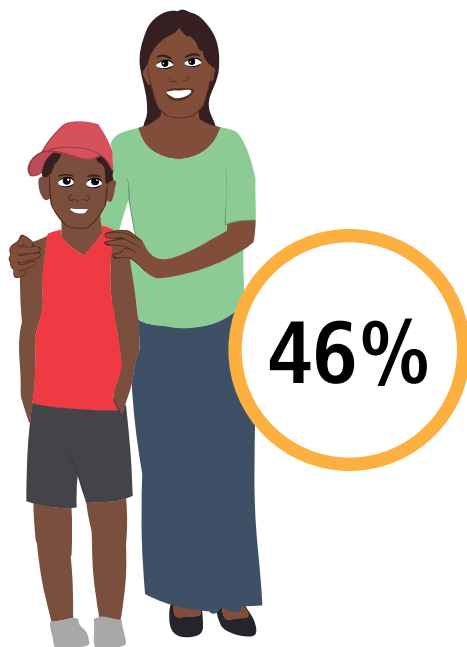
FAMILIES



Titjikala



CARED FOR CHILDREN



65
Working



\$335
Weekly Income



85
Students



23
Completed
Year 12



Geography: Titjikala ILOC

A decorative border at the bottom of the page featuring stylized Aboriginal art. It includes a yellow and orange patterned area on the left, a teal wavy line, and various purple and black arrow-like shapes pointing in different directions.

Wallace Rockhole

LANGUAGE SPOKEN
Arrernte, nec

102

People

99

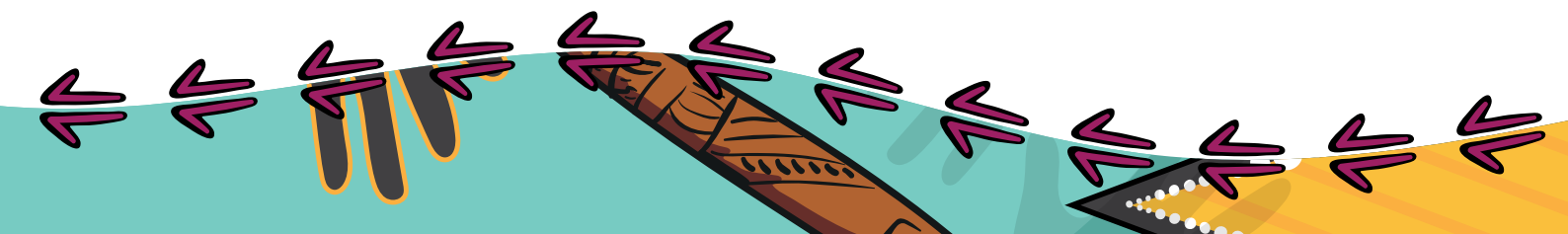
Aboriginal and/or
Torres Strait
Islander people

HOUSES

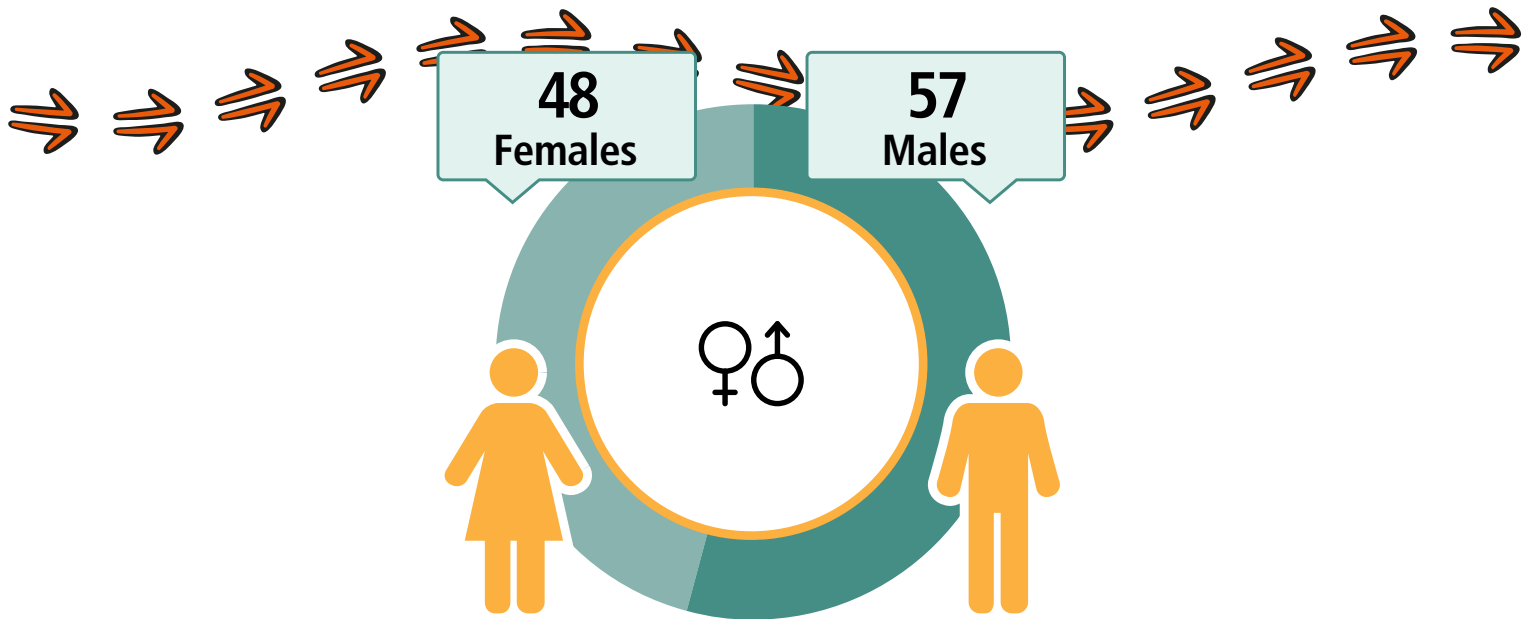
28

25

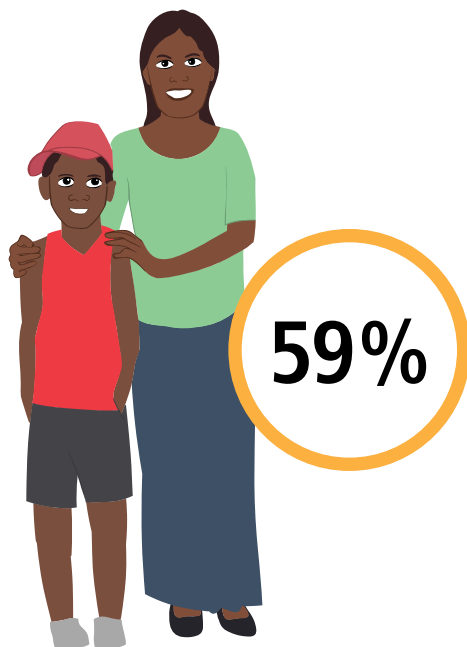
FAMILIES



Wallace Rockhole



CARED FOR CHILDREN



25
Working



\$256
Weekly Income



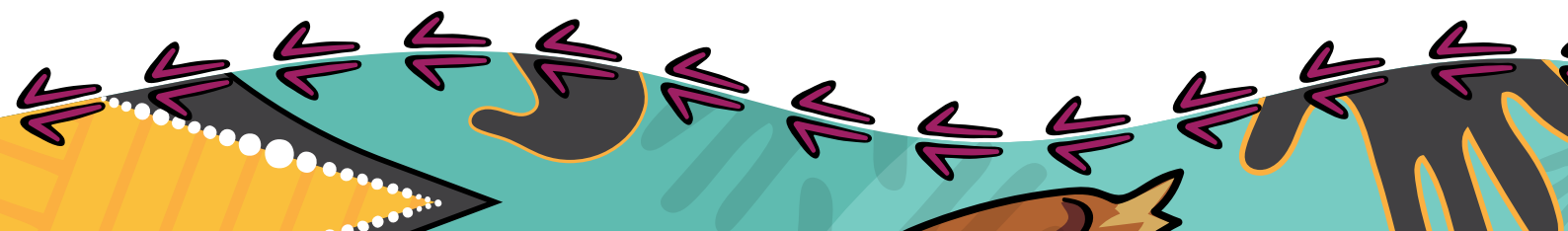
37
Students



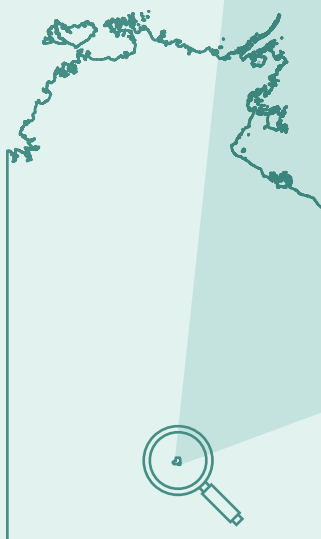
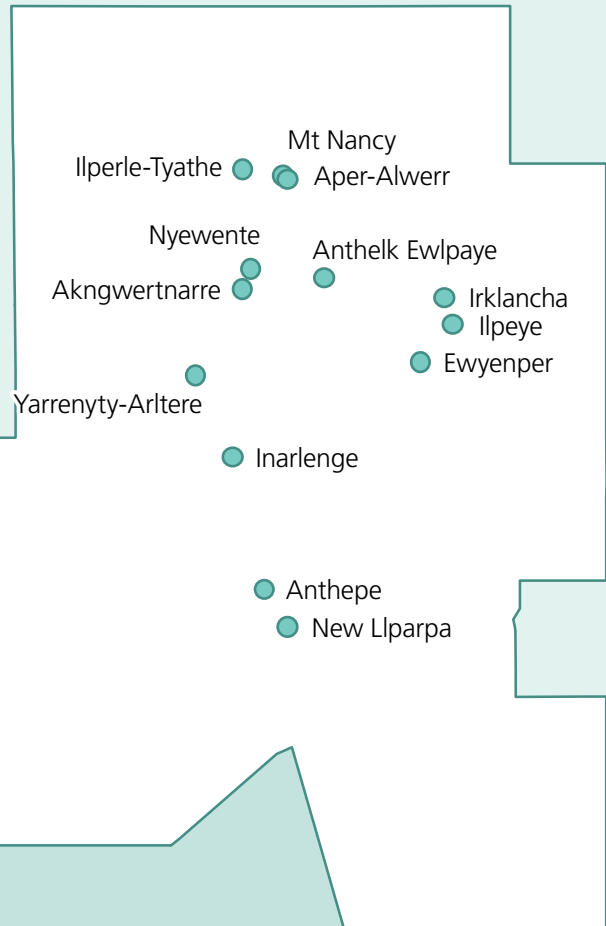
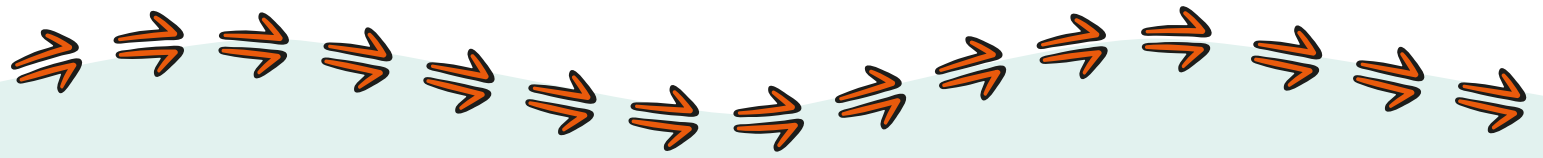
6
Completed
Year 12



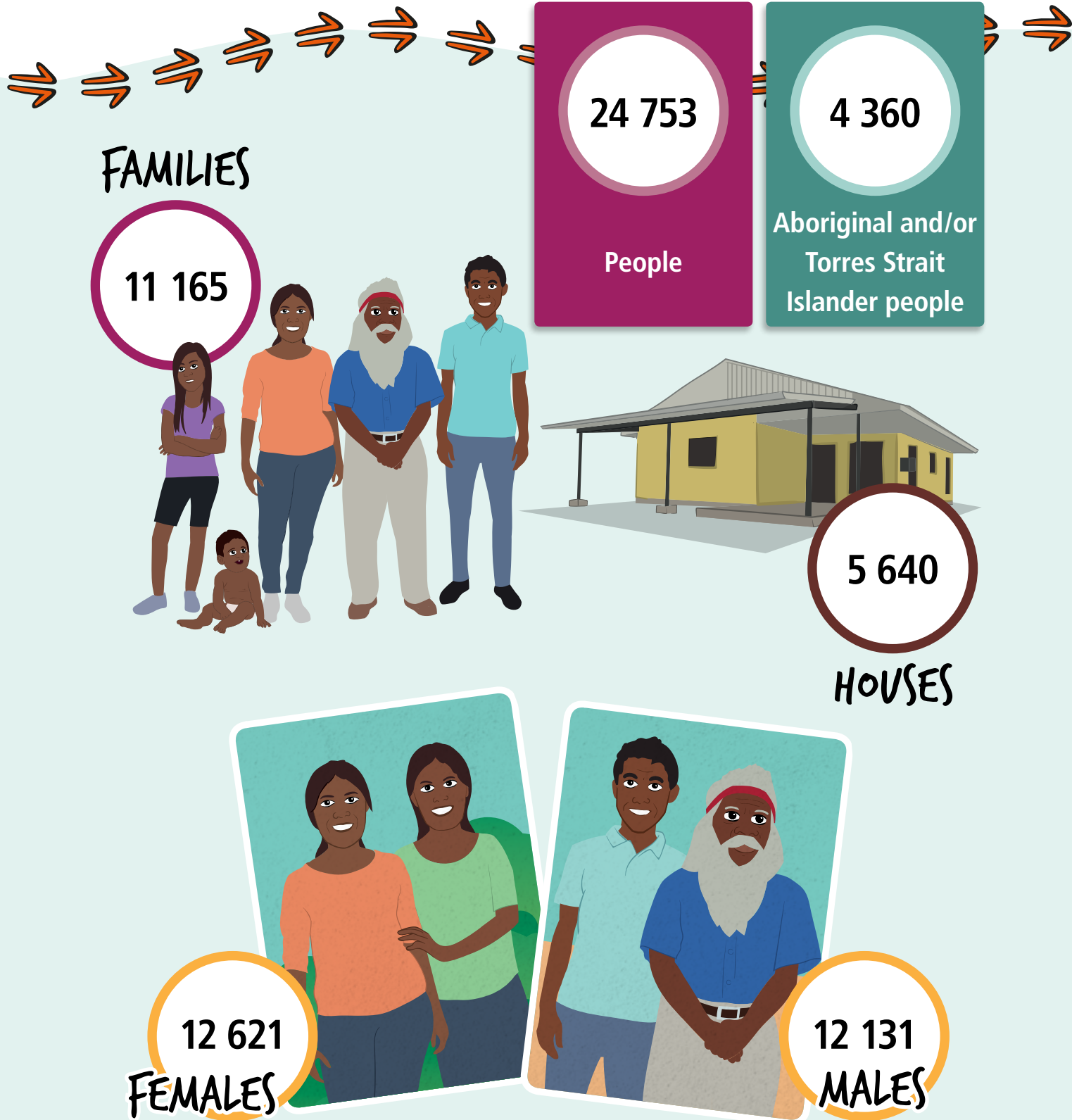
Geography: Wallace Rockhole ILOC



Alice Springs



Alice Springs



Geography: Alice Springs (T) LGA

Anthelk Ewlpaye

LANGUAGE SPOKEN
Arrernte, nec

94

People

91

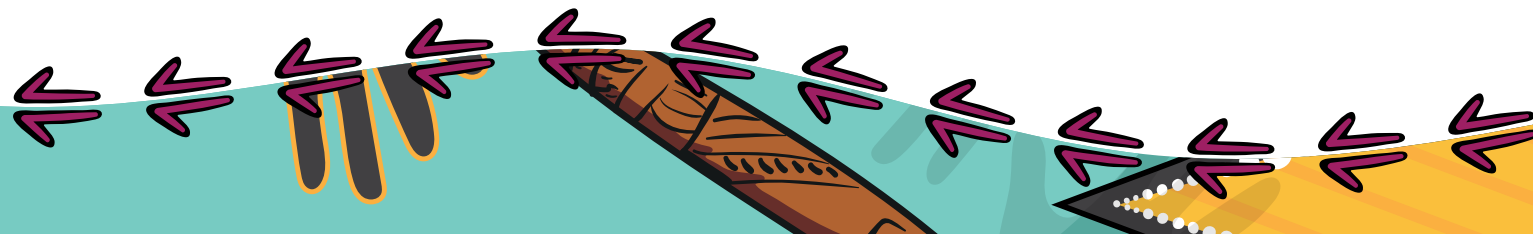
Aboriginal and/or
Torres Strait
Islander people

HOUSES

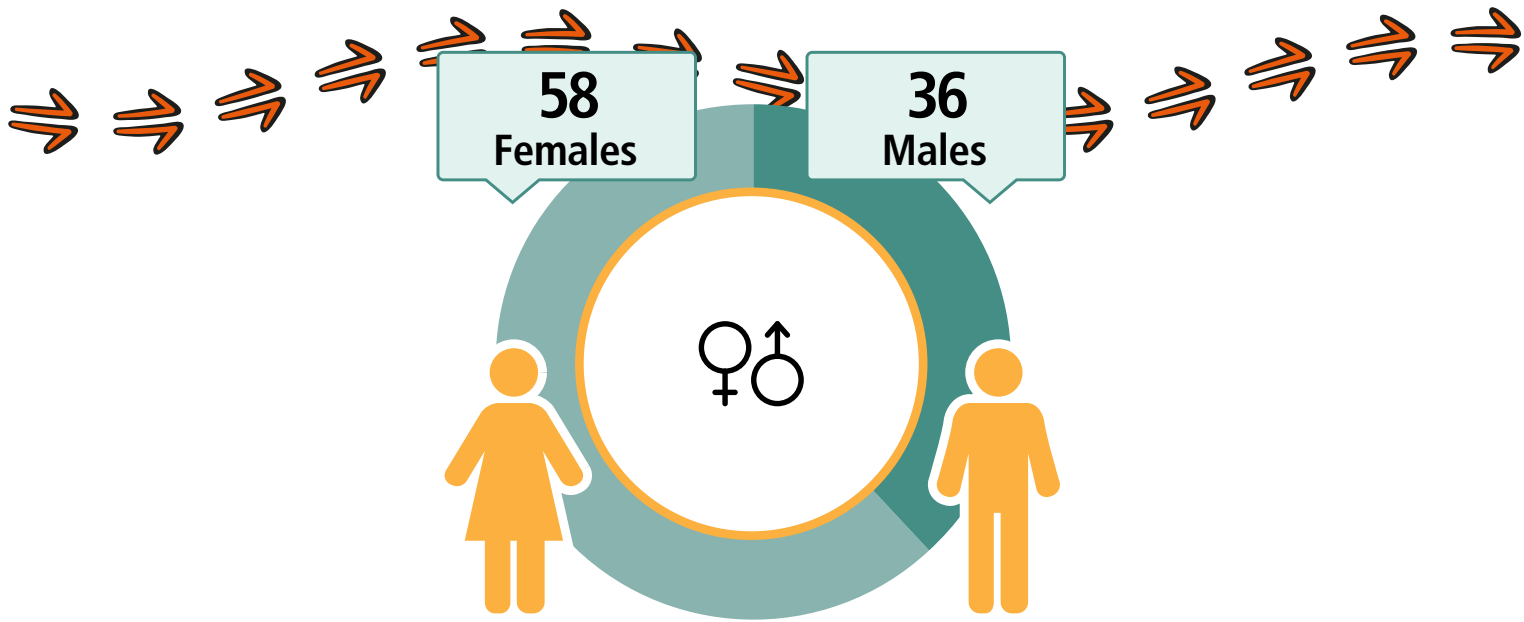
37

18

FAMILIES



Anthelk Ewlpaye



CARED FOR CHILDREN



6%

5
Working



\$258
Weekly Income



35
Students



3
Completed
Year 12



Geography: Anthelk Ewlpaye ILOC

Anthepe - New Lparpa - Tyeweretye

LANGUAGE SPOKEN
Pitjantjatjara

298

People

273

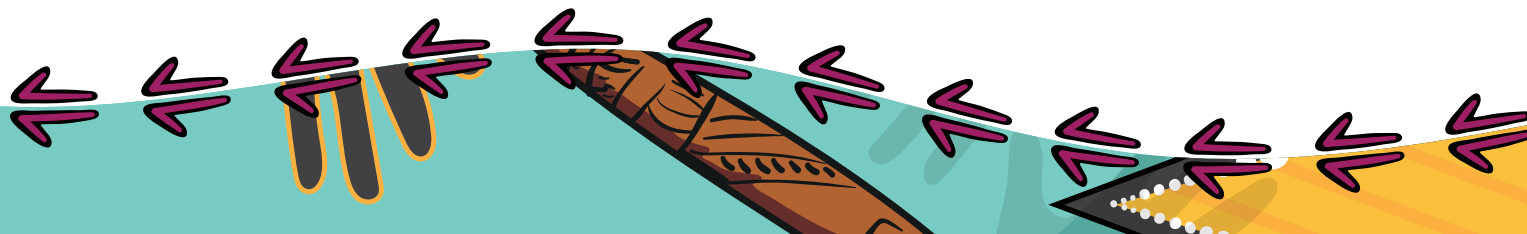
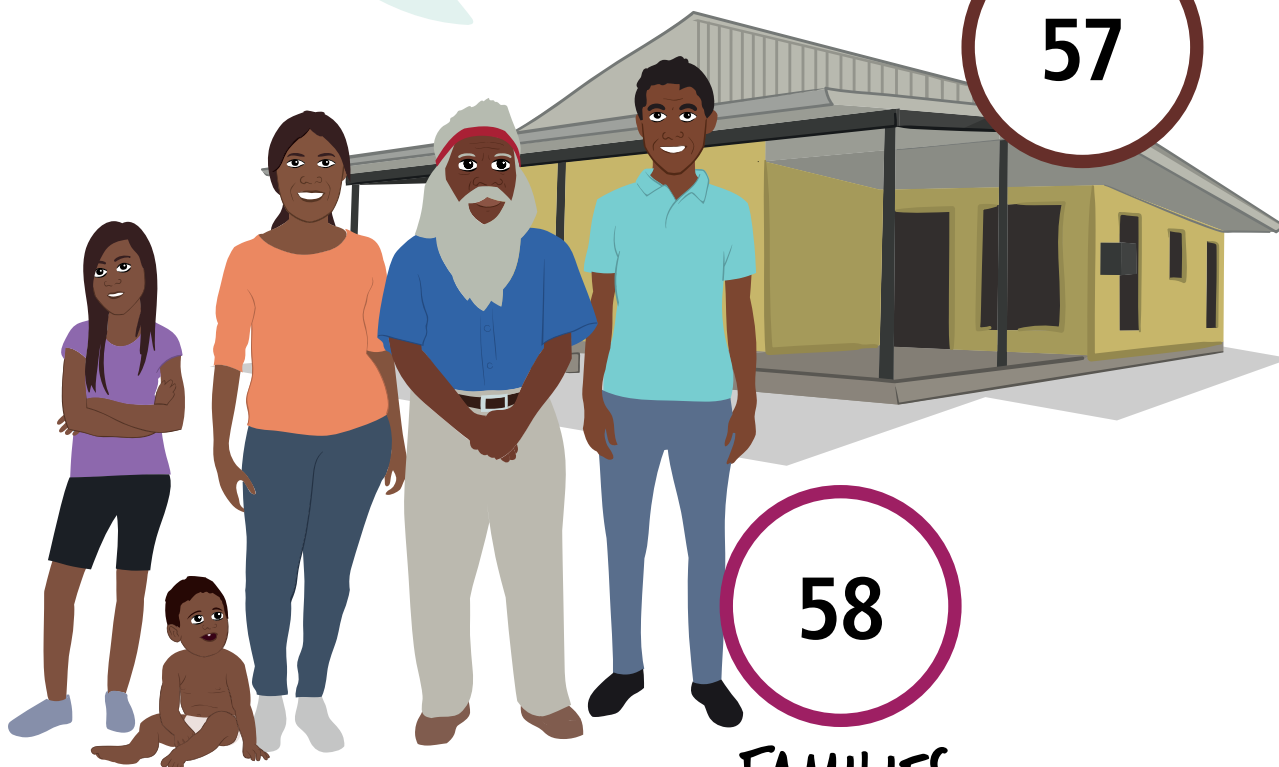
Aboriginal and/or
Torres Strait
Islander people

HOUSES

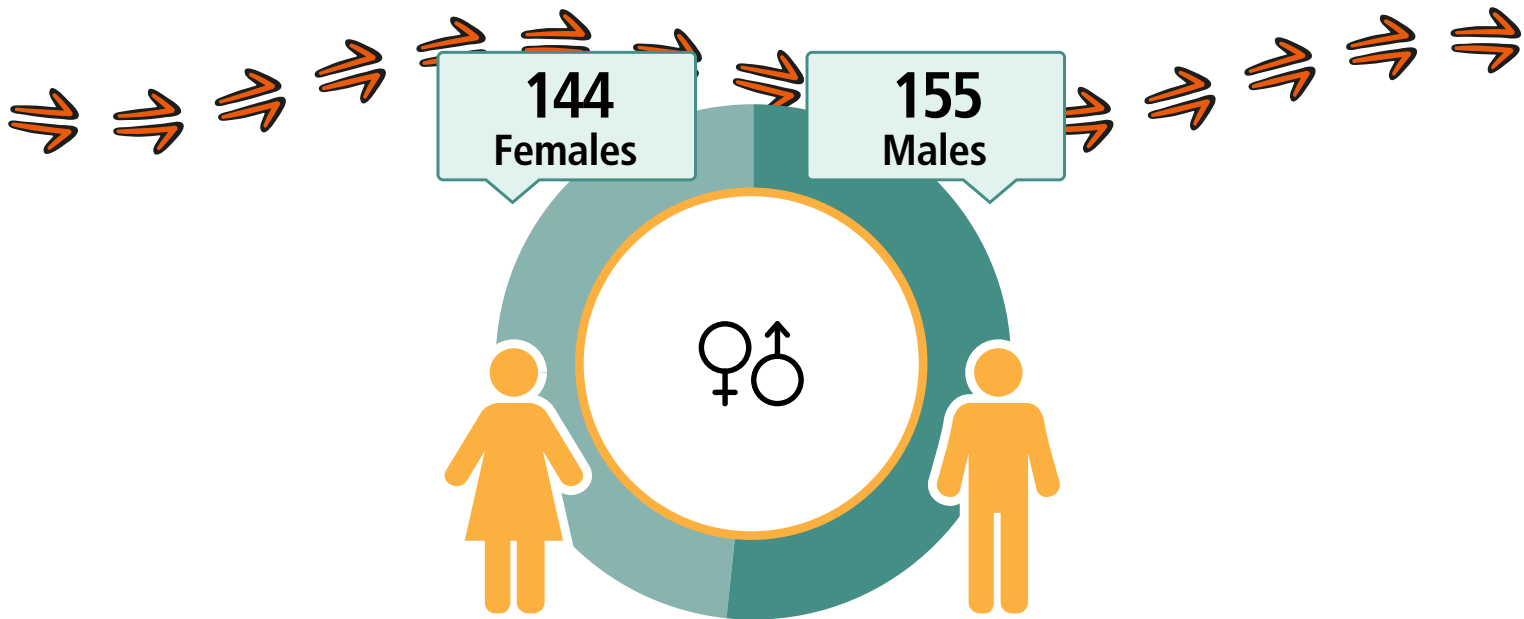
57

58

FAMILIES



Anthepe - New Lparpa - Tyeweretye



CARED FOR
(CHILDREN



20%

13
Working



\$230
Weekly Income



110
Students



21
Completed
Year 12



Geography: Anthepe - New Lparpa - Tyeweretye ILOC

A decorative border at the bottom of the page featuring stylized Aboriginal art. It includes a yellow and black pattern on the left, a teal and black pattern in the middle, and a yellow and black pattern on the right, all with white dots and arrows.

Ewyenper - Ilpeye - Irklancha

LANGUAGE SPOKEN
Arrernte, nec

236

People

227

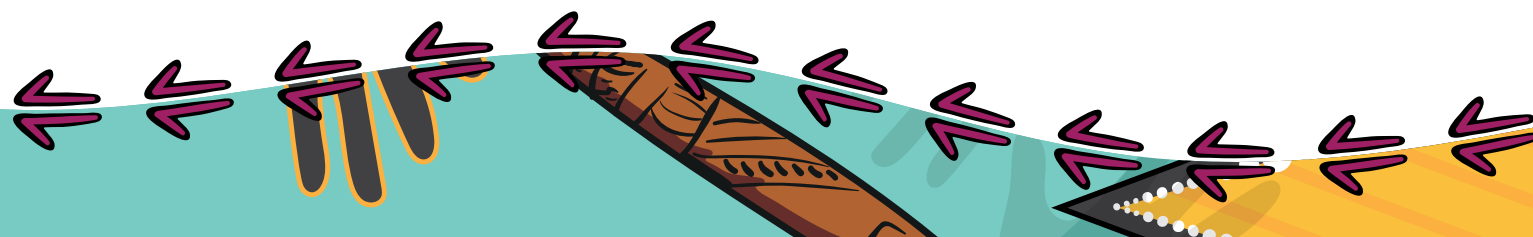
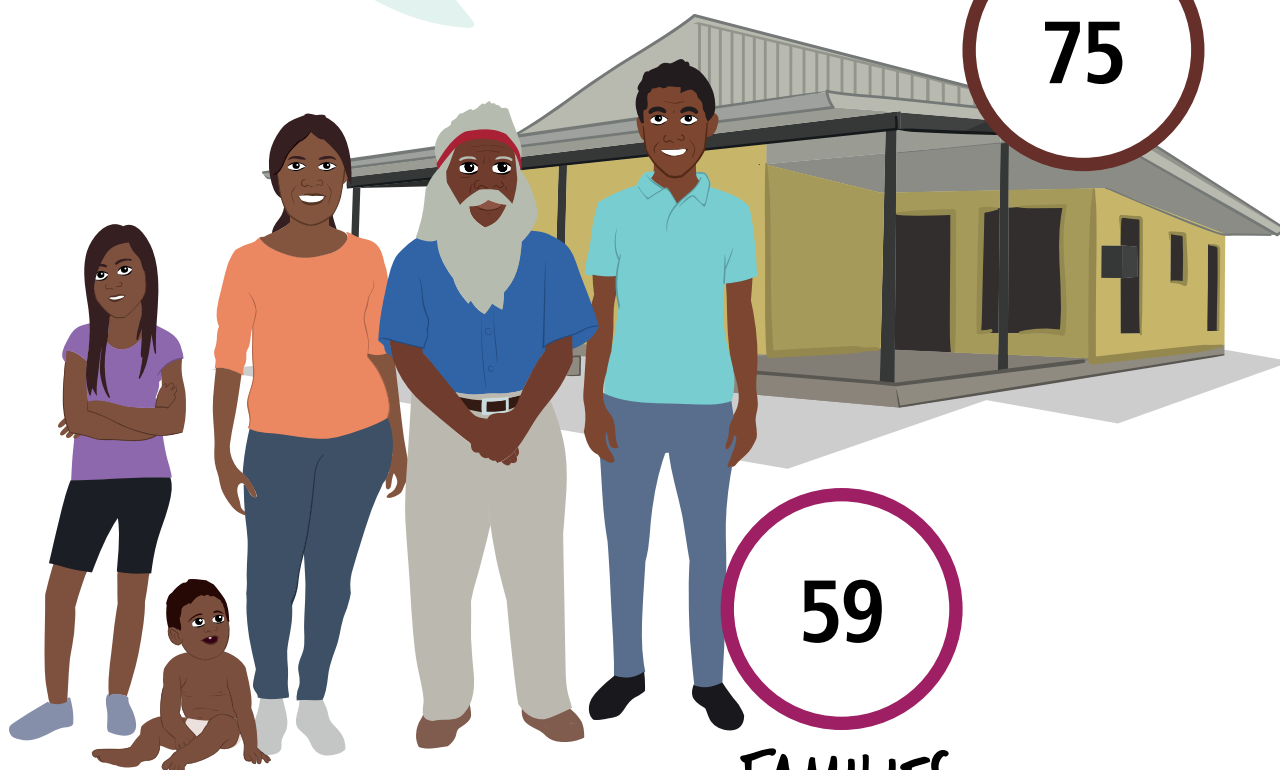
Aboriginal and/or
Torres Strait
Islander people

HOUSES

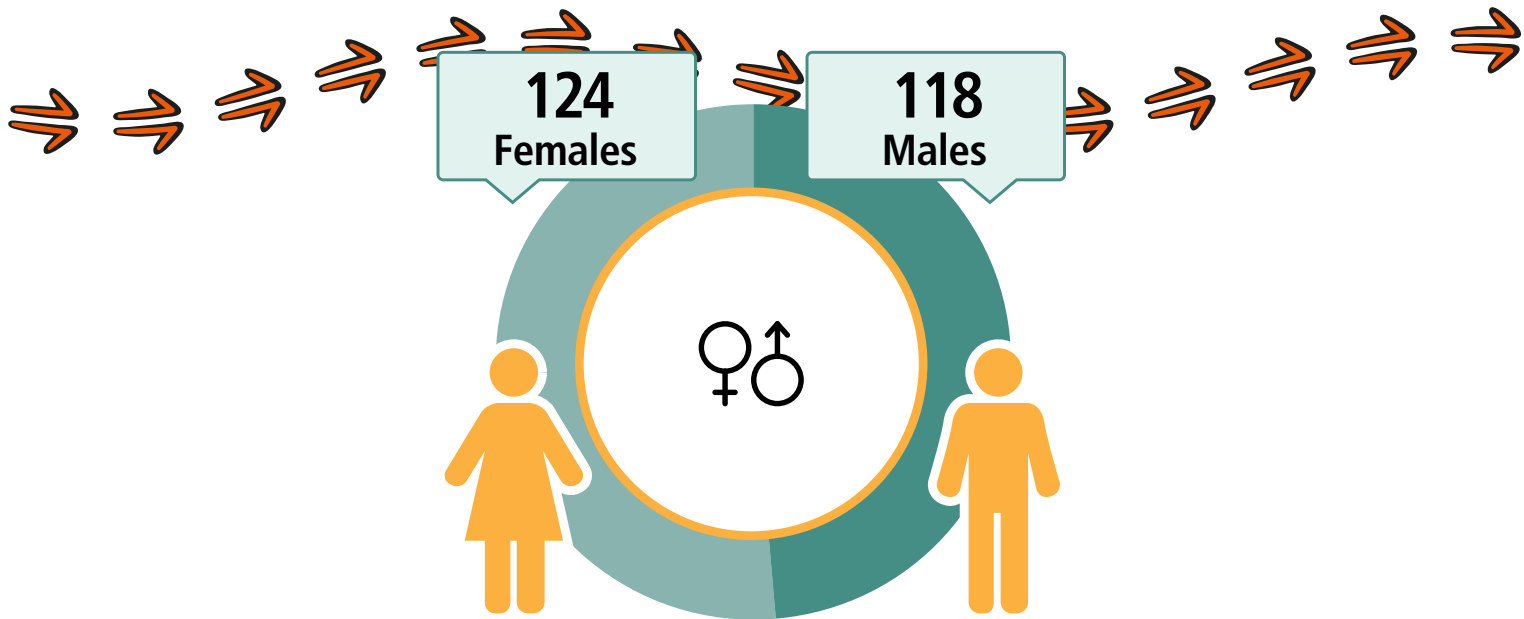
75

59

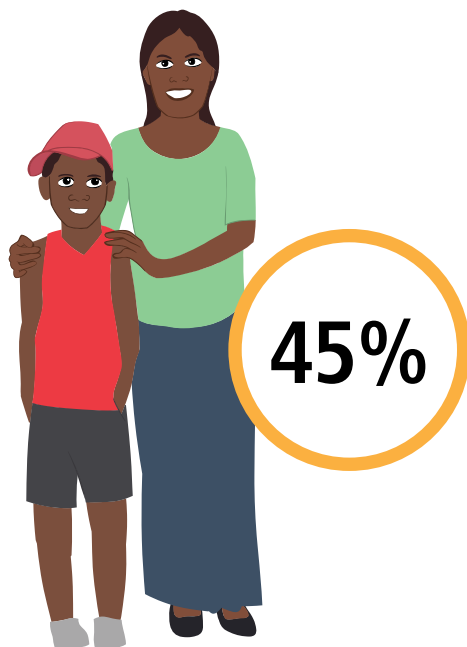
FAMILIES



Ewyenper - Ilpeye - Irklancha



CARED FOR CHILDREN



17
Working



\$238
Weekly Income



92
Students



13
Completed
Year 12



Geography: Ewyenper - Ilpeye - Irklancha ILOC

Ilperle-Tyathe - Mt Nancy - Aper-Alwerr

LANGUAGE SPOKEN
Warlpiri

100

People

98

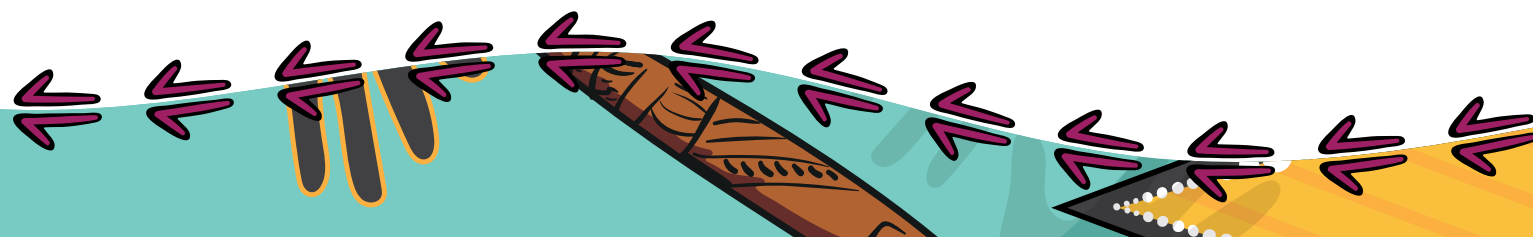
Aboriginal and/or
Torres Strait
Islander people

HOUSES

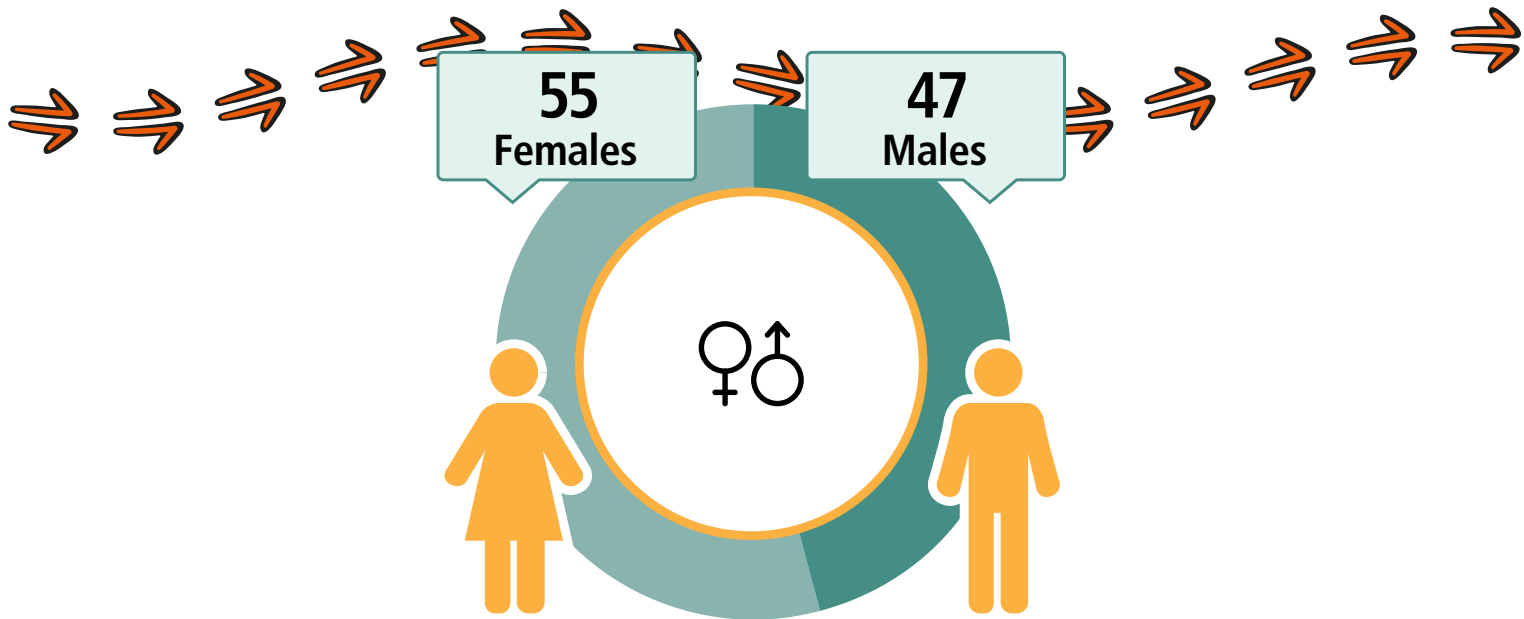
29

31

FAMILIES



Ilperle-Tyathe - Mt Nancy - Aper-Alwerr



CARED FOR (CHILDREN



28%

11
Working



\$291
Weekly Income



27
Students



5
Completed
Year 12



Geography: Ilperle-Tyathe - Mt Nancy - Aper-Alwerr ILOC

A decorative border at the bottom of the page featuring stylized Aboriginal art. It includes a yellow and orange patterned area on the left, a teal wavy line, and various purple and black arrow-like shapes pointing in different directions.

Inarlenge

LANGUAGE SPOKEN
Luritja

65

People

58

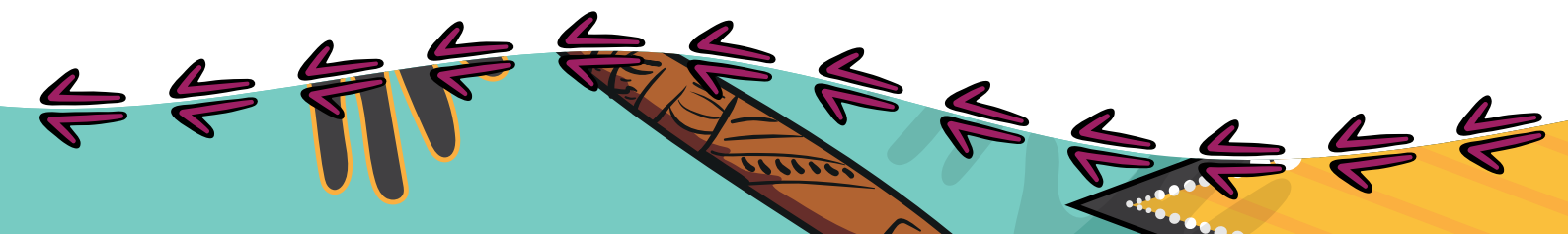
Aboriginal and/or
Torres Strait
Islander people

HOUSES

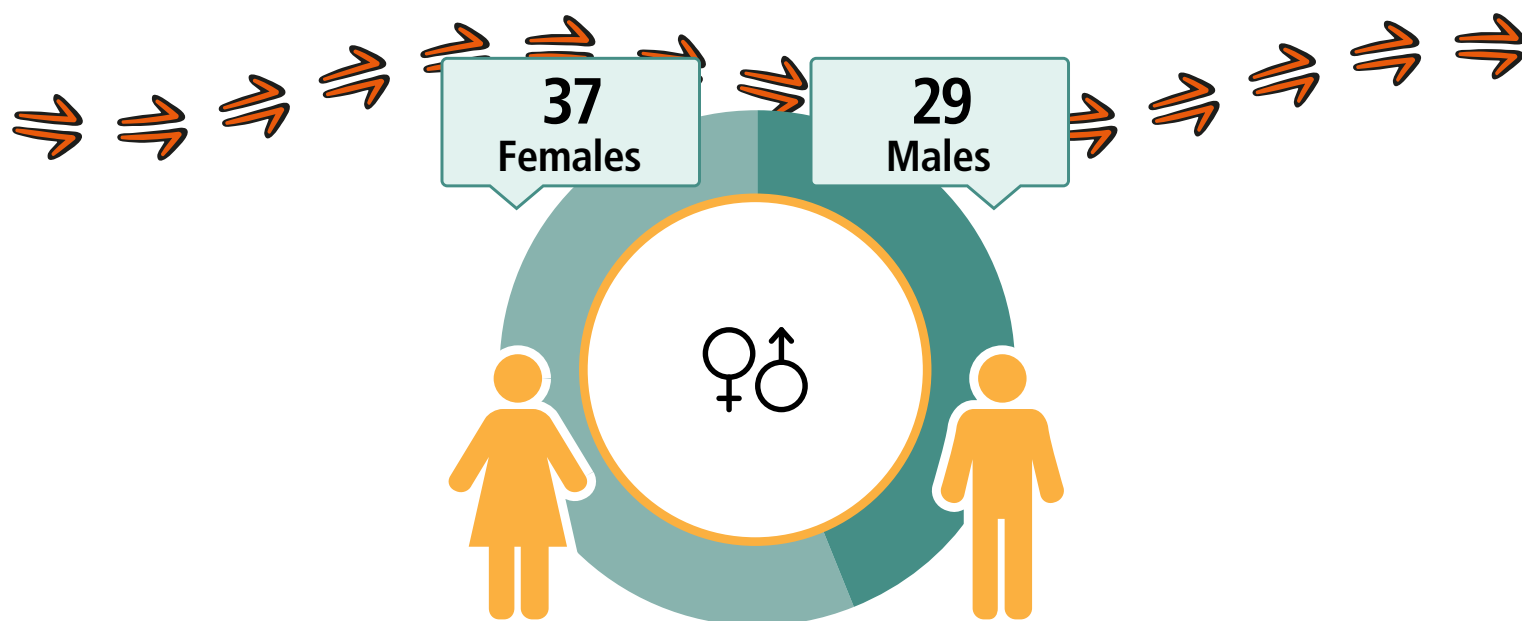
26

18

FAMILIES



Inarlenge



CARED FOR CHILDREN



33%

3
Working



\$230
Weekly Income



10
Students



3
Completed
Year 12



Geography: Inarlenge ILOC

A decorative border at the bottom of the page featuring stylized Aboriginal art. It includes a yellow and orange pattern on the left, a teal and black pattern in the center, and a black and white pattern on the right, all with purple arrows pointing in various directions.

Nyewente - Akngwertnarre - Namatjira

LANGUAGE SPOKEN
Arrernte, nfd

118

People

115

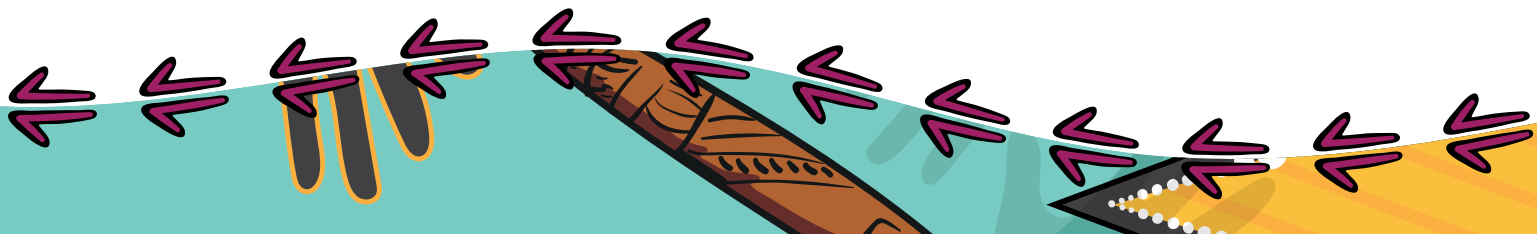
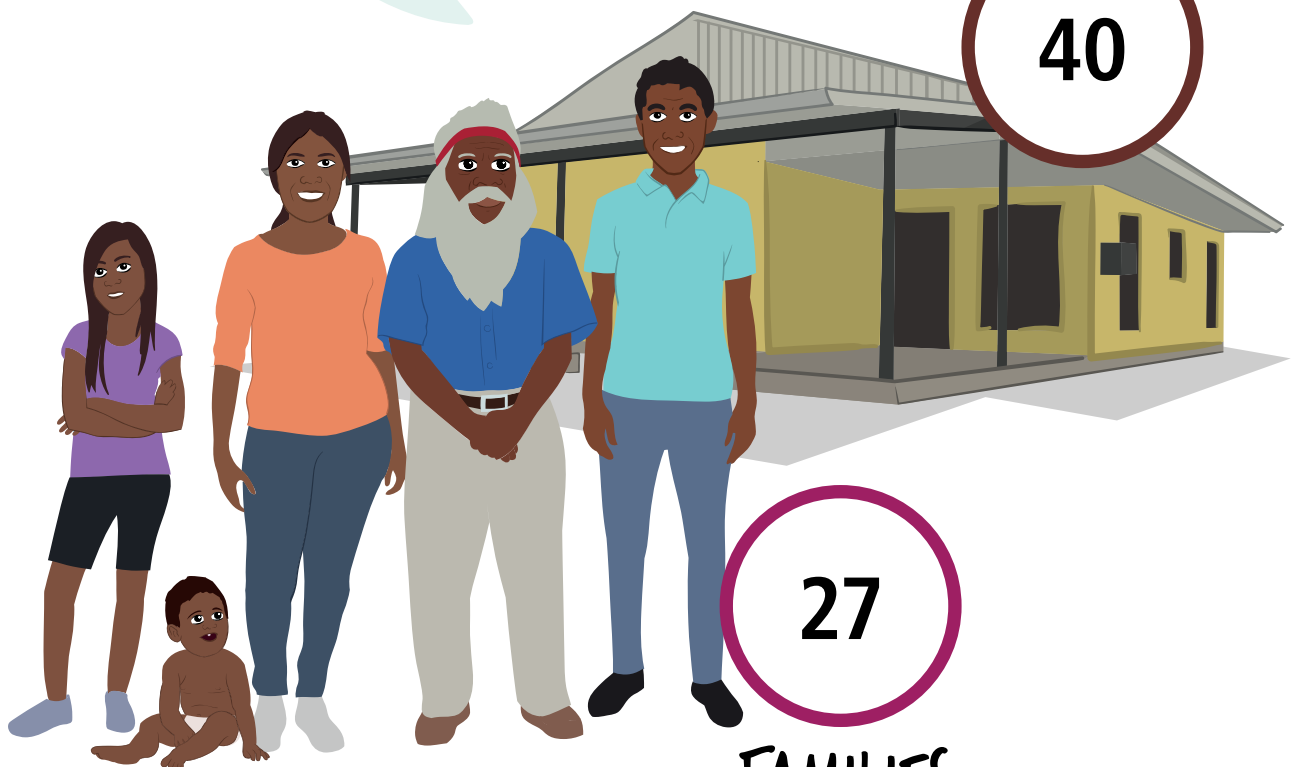
Aboriginal and/or
Torres Strait
Islander people

HOUSES

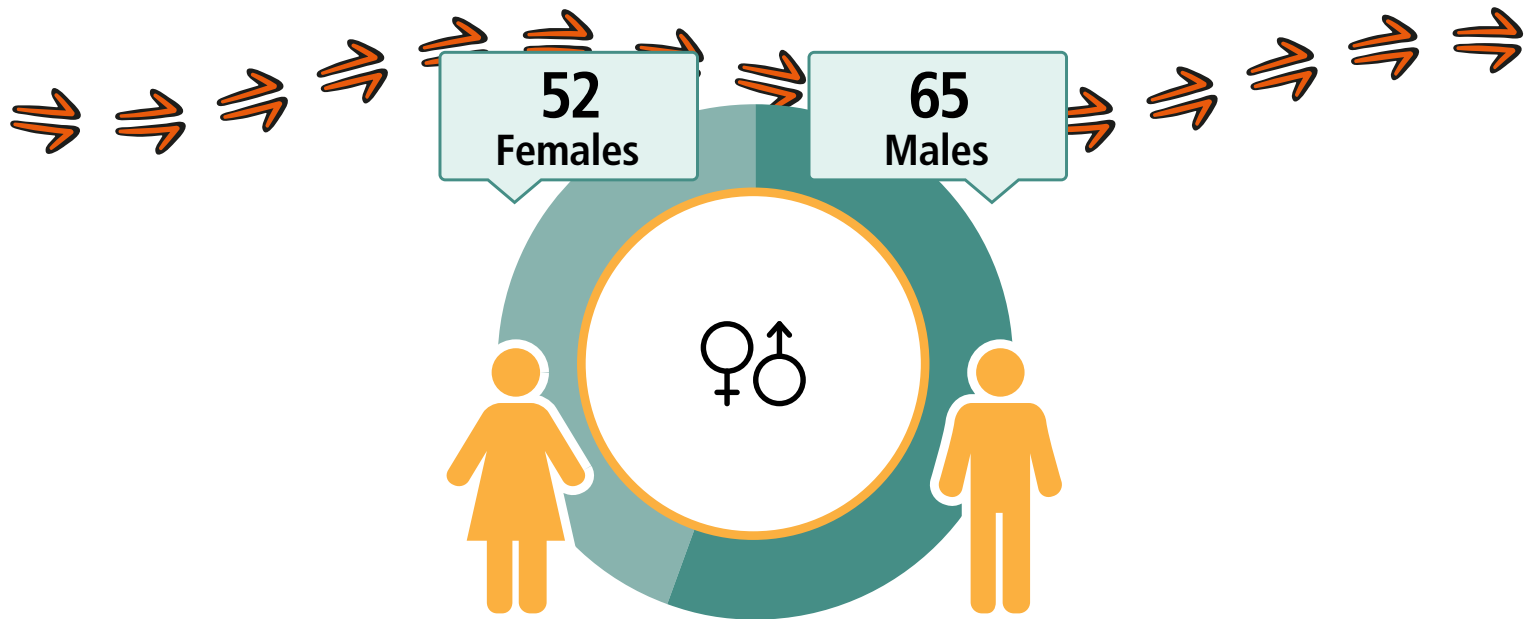
40

27

FAMILIES



Nyewente - Akngwertnarre - Namatjira



CARED FOR
(CHILDREN)



23%

16
Working



\$292
Weekly Income



41
Students



9
Completed
Year 12



Geography: Nyewente - Akngwertnarre - Namatjira ILOC

Yarrenyty-Arltere

LANGUAGE SPOKEN
Arrernte, nec

103

People

103

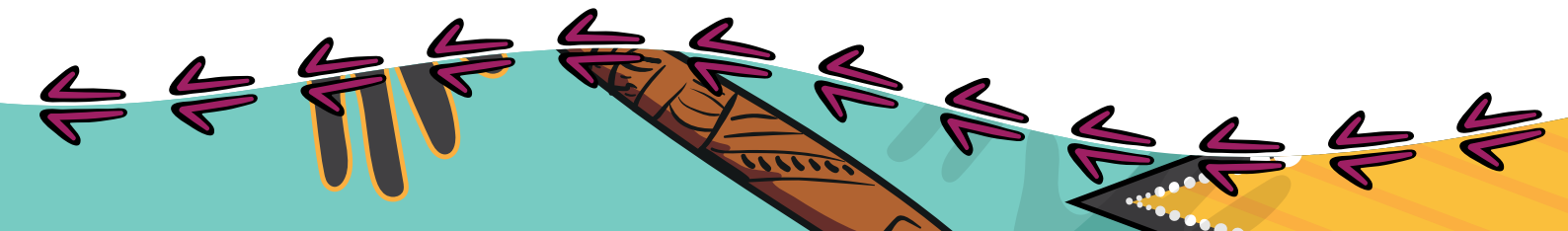
Aboriginal and/or
Torres Strait
Islander people

HOUSES

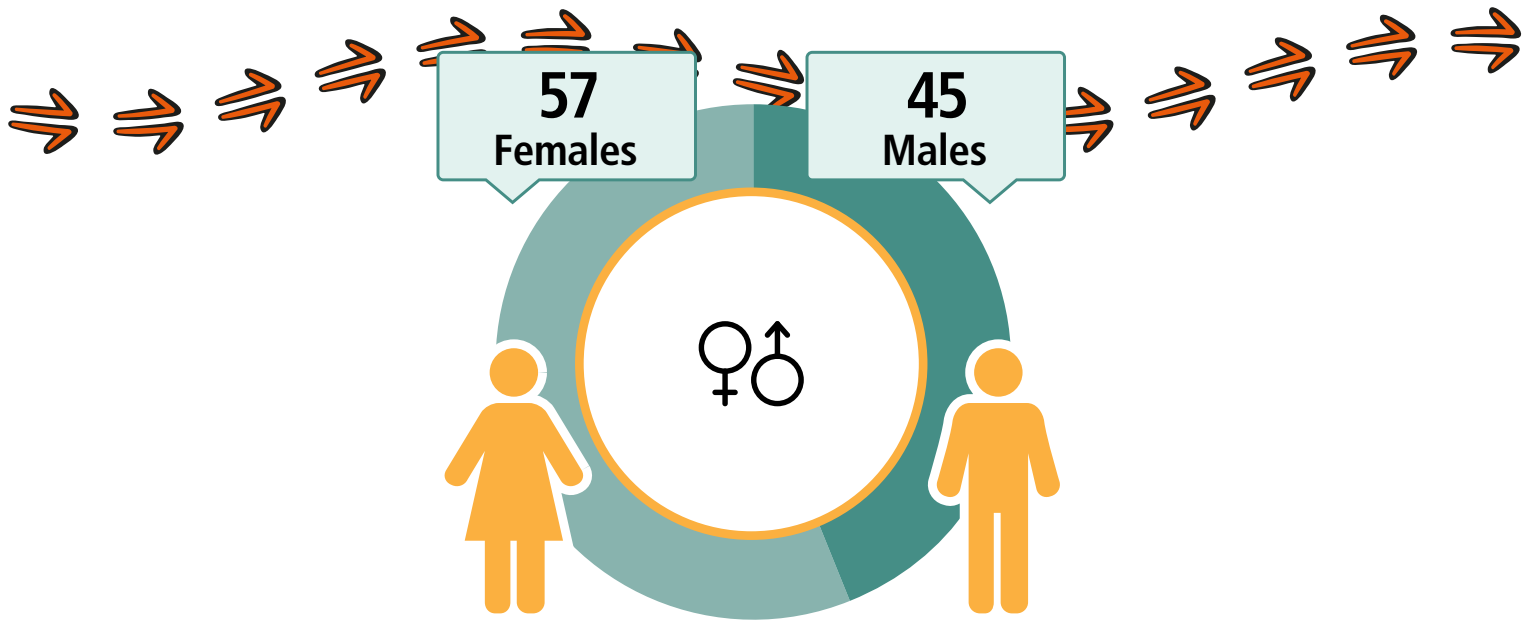
34

20

FAMILIES



Yarrenyty-Arltere



CARED FOR CHILDREN



28%

11
Working



\$257
Weekly Income



42
Students



11
Completed
Year 12



Geography: Yarrenyty-Arltere ILOC

A decorative border at the bottom of the page featuring stylized Aboriginal art. It includes a yellow and orange patterned area on the left, a teal wavy line, and various purple and black arrow-like shapes pointing in different directions.







Know more

You can find more information on your region for free at www.abs.gov.au/census using these data products.



Contact the Centre of Excellence for Aboriginal and Torres Strait Islander Statistics

Phone: 1300 135 070

Email: CoEATSIS@abs.gov.au

Disclaimer

The data displayed for the purposes of this publication may slightly differ to other Census products available on the ABS website.

All data in this publication is based on Total People, Total Dwellings and Total Families for each area.

Community names are generally based upon a commonly identified name or combination of names for the area/community. It is acknowledged that some communities may have an alternative name or different spelling.

Confidentiality

By law, your personal information is kept private and will not be shared with anyone. The ABS makes sure that no one can be identified by the information in this book.

