

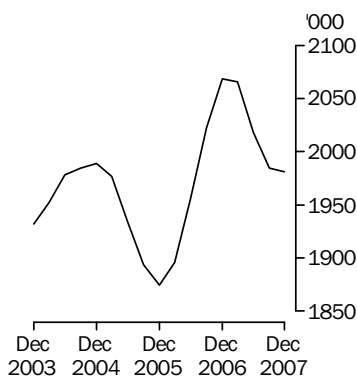
LIVESTOCK PRODUCTS

AUSTRALIA

EMBARGO: 11.30AM (CANBERRA TIME) THURS 14 FEB 2008

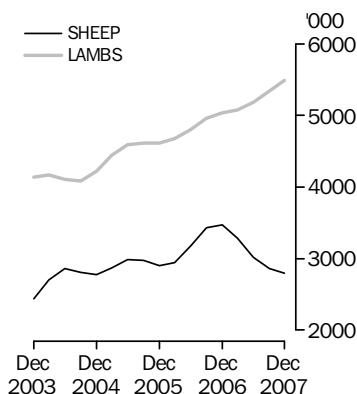
Cattle slaughtering

Excluding calves
Trend



Sheep and lamb slaughtering

Trend



KEY FIGURES

TREND ESTIMATES	Dec Qtr 2006 '000	Sep Qtr 2007 '000	Dec Qtr 2007 '000
Number slaughtered			
Cattle	2 068.5	1 984.5	1 981.0
Calves	240.8	223.9	213.4
Sheep	3 478.3	2 858.1	2 793.7
Lambs	5 042.0	5 344.8	5 487.1
Pigs	1 335.2	1 335.6	1 340.5
Chickens	113 021.4	115 342.9	116 224.7

	Dec Qtr 2006 tonnes	Sep Qtr 2007 tonnes	Dec Qtr 2007 tonnes
Meat produced			
Beef	557 020	530 388	528 400
Veal	7 857	7 357	7 142
Mutton	71 042	60 540	61 876
Lamb	103 272	111 266	115 905
Pig meat	95 543	96 552	97 142
Chicken meat	201 334	203 708	204 299
Wool receivals	116 392	107 284	103 386

	Sep Qtr 2006 ML	Jun Qtr 2007 ML	Sep Qtr 2007 ML
Whole milk intake by factories	2 524	2 318	2 340

KEY POINTS

CATTLE SLAUGHTERED

- The trend estimate for cattle slaughtered remained steady in the December quarter 2007 at 2.0 million while the seasonally adjusted estimate rose by 2% to 2.0 million.

SHEEP SLAUGHTERED

- The trend estimate for sheep slaughtered fell by 2% in the December quarter 2007 to 2.8 million while the seasonally adjusted estimate rose by 2% to 2.9 million.

LAMBS SLAUGHTERED

- The trend estimate for lambs slaughtered rose by 3% in the December quarter 2007 to 5.5 million while the seasonally adjusted estimate remained steady at 5.5 million.

PIGS SLAUGHTERED

- The trend estimate for pigs slaughtered remained steady in the December quarter 2007 at 1.3 million while the seasonally adjusted estimate also remained steady at 1.3 million.

INQUIRIES

For further information about these and related statistics, contact the National Information and Referral Service on 1300 135 070 or Nigel Gibson on Hobart (03) 6222 5940.

NOTES

FORTHCOMING ISSUES

ISSUE (Quarter)

RELEASE DATE

March 2008

14 May 2008

June 2008

14 August 2008

.....

CHANGES IN THIS ISSUE

There are no changes in this issue.

.....

ABBREVIATIONS

ABS Australian Bureau of Statistics

ML megalitre

t tonne

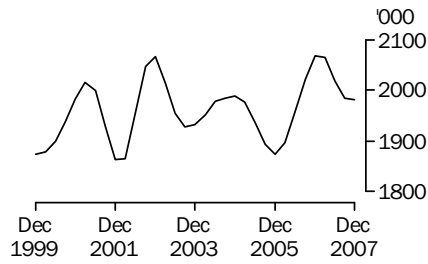
UHT ultra heat treated

Brian Pink

Australian Statistician

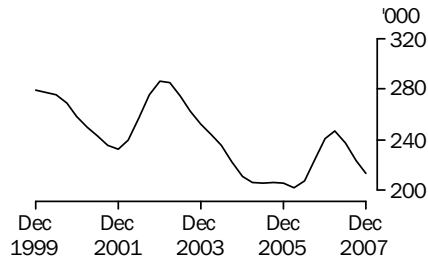
LIVESTOCK SLAUGHTERED TREND

CATTLE (EXCLUDING CALVES)



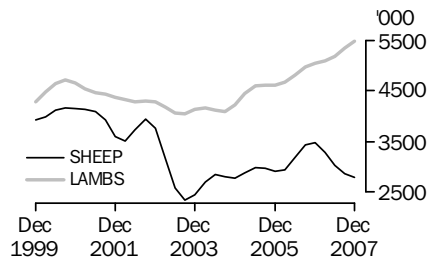
The trend estimate for the number of cattle slaughtered in December quarter 2007 remained steady at 2.0 million.

CALVES



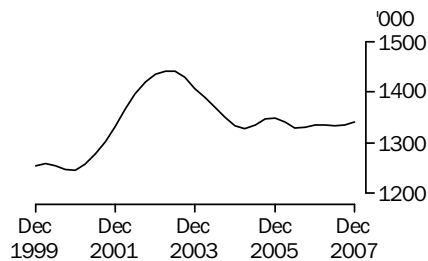
The trend estimate for the number of calves slaughtered in December quarter 2007 fell by 5% to 213,000.

SHEEP AND LAMBS



In December quarter 2007, the trend estimate for the number of sheep slaughtered fell by 2% to 2.8 million. The number of lambs slaughtered rose by 3% to 5.5 million. Numbers were strengthened by producers reportedly having lambs ready for market earlier than usual.

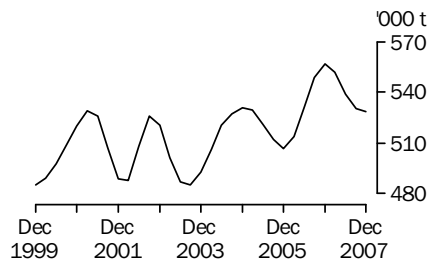
PIGS



In December quarter 2007, the trend estimate for the number of pigs slaughtered remained steady at 1.3 million.

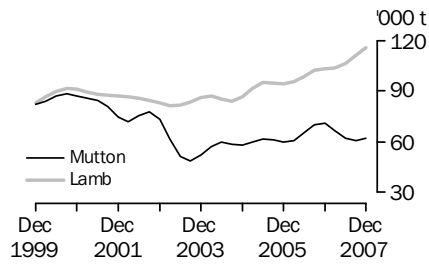
MEAT PRODUCTION TREND

BEEF



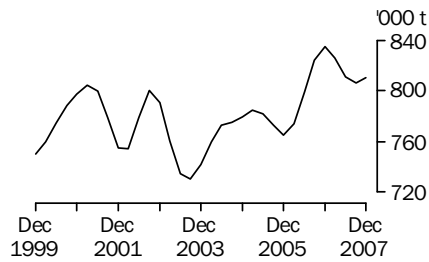
In December quarter 2007, the trend estimate for beef production remained steady at 528,000 tonnes.

MUTTON AND LAMB



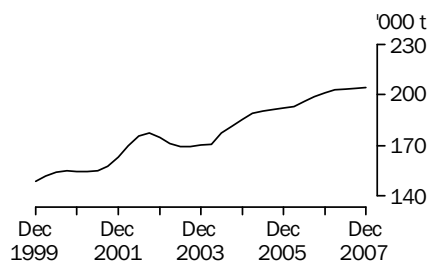
In December quarter 2007, the trend estimate for mutton production rose by 2% to 61,900 tonnes. The trend estimate for lamb production rose by 4% to 116,000 tonnes.

TOTAL RED MEAT



The trend estimate for red meat production rose marginally to 810,000 tonnes in December quarter 2007.

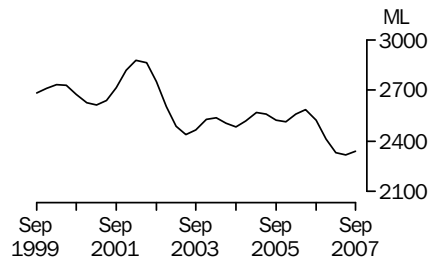
CHICKEN MEAT



The trend estimate for chicken meat production remained steady at 204,000 tonnes in December quarter 2007.

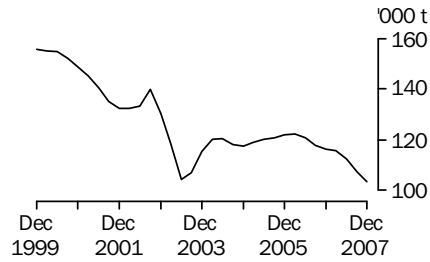
LIVESTOCK PRODUCTS TREND

WHOLE MILK INTAKE BY FACTORIES



The trend estimate for whole milk intake by factories in September quarter 2007 rose marginally to 2.3 billion litres.

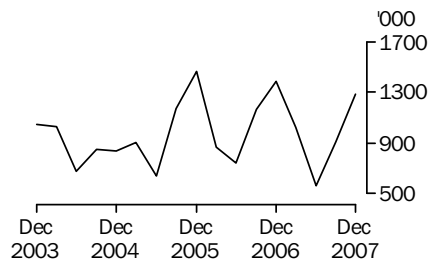
BROKERS AND DEALERS RECEIVALS OF TAXABLE WOOL



The trend estimate for wool receivals by brokers and dealers in December quarter 2007 fell by 4% to 103,000 tonnes.

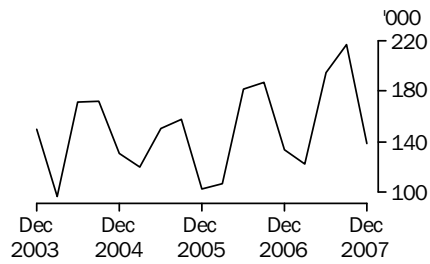
LIVESTOCK EXPORTS ORIGINAL

EXPORTS OF LIVE SHEEP



Live sheep exports rose by 41% to 1.3 million in December quarter 2007. Gross value rose by 45% for the quarter, up to \$91.1 million. Unit value rose by 3% to \$71.06.

EXPORTS OF LIVE CATTLE



Live cattle exports fell by 36% to 139,000 in December quarter 2007. Gross value fell by 37% for the quarter, down to \$86.6 million. Unit value fell by 2% to \$624.64.

LIST OF TABLES AND GRAPHS

page

OVERVIEW

1	Livestock slaughtered, Australia	9
2	Livestock products, Australia	10

LIVESTOCK SLAUGHTERINGS

3	Number of livestock slaughtered, bulls, bullocks and steers, by state	11
4	Number of livestock slaughtered, cows and heifers, by state	12
5	Number of livestock slaughtered, total cattle (excluding calves), by state	13
6	Number of livestock slaughtered, calves, by state	14
7	Number of livestock slaughtered, sheep, by state	15
8	Number of livestock slaughtered, lambs, by state	16
9	Number of livestock slaughtered, pigs, by state	17
10	Number of chickens slaughtered, by state	18
11	Number of livestock slaughtered, financial year, by state	19

MEAT PRODUCED

12	Red meat produced, beef, by state	20
13	Red meat produced, veal, by state	21
14	Red meat produced, mutton, by state	22
15	Red meat produced, lamb, by state	23
16	Red meat produced, pig meat, by state	24
17	Total red meat produced, by state	25
18	Chicken meat produced, by state	26
19	Meat produced, financial year, by state	27

EXPORTS OF MEAT AND LIVE ANIMALS

20	Exports of fresh, frozen and processed meat, Australia	28
21	Exports of live sheep and cattle, Australia	29

LIVESTOCK PRODUCTS

22	Whole milk intake by factories, by state	30
23	Market milk sales by factories, by state	31
24	Brokers and dealers receivals of taxable wool, by state	32
25	Livestock products, financial year, by state	33

LIVESTOCK SLAUGHTERED, Australia(a): All Series

<i>Quarter</i>	<i>Bulls, bullocks and steers</i>	<i>Cows and heifers</i>	<i>Cattle (excluding calves)</i>	<i>Calves</i>	<i>Sheep</i>	<i>Lambs</i>	<i>Pigs</i>	<i>Chickens</i>
	'000	'000	'000	'000	'000	'000	'000	'000
ORIGINAL								
2006								
September	1 145.4	850.6	1 996.0	386.7	2 736.8	4 686.8	1 329.2	112 282.7
December	1 162.6	928.4	2 091.1	182.0	4 100.7	5 180.6	1 314.2	115 061.6
2007								
March	1 072.6	960.5	2 033.1	129.7	3 883.8	5 270.3	1 319.8	114 226.4
June	1 010.2	1 031.2	2 041.5	220.4	2 549.8	5 020.7	1 358.7	112 339.6
September	1 038.8	945.7	1 984.5	405.2	2 282.1	5 182.5	1 348.3	113 435.5
December	1 084.5	906.5	1 991.0	154.6	3 325.6	5 680.9	1 322.8	120 323.6
SEASONALLY ADJUSTED								
2006								
September	1 112.8	862.0	1 974.8	212.4	3 389.6	4 987.3	1 323.6	113 369.4
December	1 132.7	981.9	2 114.6	252.6	3 598.8	5 018.3	1 336.2	111 981.6
2007								
March	1 115.3	985.6	2 100.9	250.0	3 356.4	5 207.9	1 349.4	114 192.4
June	1 027.9	941.9	1 969.7	234.2	2 848.1	4 950.6	1 314.0	114 476.8
September	1 010.4	962.0	1 972.4	223.4	2 846.4	5 492.3	1 343.3	114 577.5
December	1 056.6	956.9	2 013.6	212.9	2 896.6	5 513.2	1 343.8	117 029.9
TREND								
2006								
September	1 113.8	908.6	2 022.3	223.5	3 425.8	4 967.4	1 330.1	111 906.8
December	1 121.5	947.0	2 068.5	240.8	3 478.3	5 042.0	1 335.2	113 021.4
2007								
March	1 094.8	971.0	2 065.8	247.1	3 288.4	5 085.5	1 334.4	113 704.4
June	1 052.3	966.1	2 018.4	237.5	3 023.8	5 186.9	1 333.8	114 358.4
September	1 029.3	955.2	1 984.5	223.9	2 858.1	5 344.8	1 335.6	115 342.9
December	1 027.4	953.6	1 981.0	213.4	2 793.7	5 487.1	1 340.5	116 224.7

(a) For more information refer to paragraphs 5, and 7 to 9 of the Explanatory Notes.

LIVESTOCK PRODUCTS, Australia(a): All Series

Quarter	RED MEAT						Chicken meat tonnes	Whole milk intake by factories ML	Brokers and dealers receivals of taxable wool tonnes
	Beef tonnes	Veal tonnes	Mutton tonnes	Lamb tonnes	Pig meat tonnes	Total red meat tonnes			
ORIGINAL									
2006									
September	549 188	10 553	57 470	96 061	96 384	809 655	198 358	2 504	123 159
December	560 541	6 738	85 508	104 276	92 769	849 833	206 225	3 197	131 950
2007									
March	548 468	5 846	77 931	109 039	92 959	834 242	204 254	2 144	114 583
June	537 517	7 441	50 079	103 208	99 754	797 998	202 754	1 734	95 043
September	530 877	10 757	49 637	106 211	98 271	795 753	199 865	2 304	108 620
December	533 589	5 853	75 098	120 576	95 079	830 195	209 293	nya	119 173
SEASONALLY ADJUSTED									
2006									
September	545 095	7 312	69 921	103 145	94 907	820 380	199 920	2 572	115 564
December	562 725	8 167	73 808	101 963	95 255	841 918	203 340	2 381	115 555
2007									
March	560 292	7 888	68 298	106 974	96 834	840 286	205 038	2 283	116 310
June	528 216	7 502	57 034	100 685	94 958	788 395	203 391	2 332	116 761
September	527 591	7 476	60 389	113 675	96 815	805 946	201 277	2 365	101 790
December	535 525	7 055	64 899	118 052	97 541	823 072	206 589	nya	104 817
TREND									
2006									
September	548 574	7 472	70 273	102 312	95 456	824 087	198 816	2 524	117 601
December	557 020	7 857	71 042	103 272	95 543	834 734	201 334	2 410	116 392
2007									
March	552 161	7 900	66 662	103 608	95 682	826 013	203 115	2 331	115 712
June	539 012	7 648	61 930	106 388	96 074	811 052	203 292	2 318	112 302
September	530 388	7 357	60 540	111 266	96 552	806 103	203 708	2 340	107 284
December	528 400	7 142	61 876	115 905	97 142	810 465	204 299	nya	103 386

nya not yet available

(a) For more information refer to paragraphs 5 to 9 and 13 to 15 of the Explanatory Notes.

NUMBER OF LIVESTOCK SLAUGHTERED (a), Bulls, bullocks and steers: All Series

Quarter	New South Wales	Victoria	Queensland	South Australia	Western Australia	Tasmania	Australia
	'000	'000	'000	'000	'000	'000	'000
ORIGINAL							
2006							
September	230.8	139.1	673.0	37.2	47.2	18.0	1 145.4
December	230.4	183.9	618.3	50.0	53.8	26.0	1 162.6
2007							
March	254.3	176.9	522.6	51.1	44.9	22.6	1 072.6
June	225.8	134.7	543.3	41.1	43.2	21.9	1 010.2
September	222.3	124.9	587.1	38.4	48.4	17.4	1 038.8
December	236.5	163.8	558.9	42.6	62.3	20.2	1 084.5
SEASONALLY ADJUSTED							
2006							
September	236.0	161.2	597.4	45.9	50.3	21.2	1 112.8
December	234.9	167.6	605.1	45.1	45.7	25.4	1 132.7
2007							
March	243.5	160.8	612.2	44.7	45.9	20.2	1 115.3
June	226.4	143.7	543.8	43.9	47.6	21.7	1 027.9
September	227.6	145.1	522.2	47.0	51.4	20.5	1 010.4
December	241.3	148.3	547.2	38.8	53.1	19.7	1 056.6
TREND							
2006							
September	236.6	159.4	601.8	44.8	48.9	21.5	1 113.8
December	237.9	163.7	604.2	44.6	47.0	22.7	1 121.5
2007							
March	235.2	158.5	589.8	45.3	46.3	22.4	1 094.8
June	232.1	150.0	559.5	44.8	48.0	21.2	1 052.3
September	231.8	145.5	537.3	43.7	50.7	20.4	1 029.3
December	234.1	144.7	528.1	42.0	52.9	20.2	1 027.4

(a) For more information refer to paragraphs 4, 5 and 7 of the Explanatory Notes.

NUMBER OF LIVESTOCK SLAUGHTERED (a), Cows and heifers: All Series

Quarter	New South Wales	Victoria	Queensland	South Australia	Western Australia	Tasmania	Australia
	'000	'000	'000	'000	'000	'000	'000
ORIGINAL							
2006							
September	167.1	192.9	372.6	30.8	59.0	27.2	850.6
December	213.9	247.0	330.1	46.1	61.3	29.0	928.4
2007							
March	203.4	255.9	347.3	47.1	71.5	34.2	960.5
June	224.4	236.8	424.1	38.4	67.8	38.7	1 031.2
September	204.7	221.7	389.3	29.8	67.0	32.2	945.7
December	211.2	223.6	328.7	46.2	64.2	31.6	906.5
SEASONALLY ADJUSTED							
2006							
September	174.1	204.8	354.5	37.7	59.9	30.6	862.0
December	215.1	244.5	385.2	43.5	63.9	32.3	981.9
2007							
March	209.4	250.1	380.8	42.2	67.9	31.1	985.6
June	208.2	230.8	358.3	38.2	67.5	34.7	941.9
September	214.0	236.6	373.5	36.7	68.2	36.2	962.0
December	213.0	220.6	382.4	43.4	67.0	35.1	956.9
TREND							
2006							
September	191.6	217.4	366.7	39.4	60.9	31.4	908.6
December	201.8	234.0	373.4	41.3	64.0	31.5	947.0
2007							
March	209.9	243.9	375.1	41.1	66.6	32.5	971.0
June	212.0	239.7	371.3	39.4	67.9	34.1	966.1
September	211.7	230.8	371.4	39.0	67.9	35.3	955.2
December	213.6	224.3	377.0	40.3	67.5	36.1	953.6

(a) For more information refer to paragraphs 4, 5 and 7 of the Explanatory Notes.

NUMBER OF LIVESTOCK SLAUGHTERED (a), Total cattle (excluding calves): All Series

Quarter	New South Wales	Victoria	Queensland	South Australia	Western Australia	Tasmania	Australia
	'000	'000	'000	'000	'000	'000	'000
ORIGINAL							
2006							
September	397.8	332.0	1 045.5	68.0	106.2	45.1	1 996.0
December	444.2	430.9	948.4	96.1	115.1	55.0	2 091.1
2007							
March	457.7	432.8	869.9	98.2	116.4	56.8	2 033.1
June	450.2	371.5	967.4	79.5	111.0	60.6	2 041.5
September	427.0	346.6	976.5	68.2	115.4	49.6	1 984.5
December	447.8	387.4	887.6	88.8	126.5	51.8	1 991.0
SEASONALLY ADJUSTED							
2006							
September	410.1	366.1	952.0	83.5	110.2	51.8	1 974.8
December	450.0	412.1	990.2	88.7	109.6	57.8	2 114.6
2007							
March	452.8	410.9	993.0	86.8	113.7	51.3	2 100.9
June	434.6	374.5	902.0	82.1	115.1	56.4	1 969.7
September	441.6	381.7	895.7	83.7	119.6	56.8	1 972.4
December	454.4	368.9	929.5	82.2	120.1	54.9	2 013.6
TREND							
2006							
September	428.2	376.8	968.5	84.2	109.8	52.8	2 022.3
December	439.7	397.7	977.6	86.0	111.0	54.2	2 068.5
2007							
March	445.1	402.4	964.9	86.4	112.9	54.9	2 065.8
June	444.2	389.7	930.8	84.3	115.9	55.3	2 018.4
September	443.4	376.3	908.7	82.8	118.6	55.7	1 984.5
December	447.7	369.0	905.1	82.3	120.3	56.2	1 981.0

(a) For more information refer to paragraphs 4, 5 and 7 of the Explanatory Notes.

NUMBER OF LIVESTOCK SLAUGHTERED (a), Calves: All Series

Quarter	New South Wales	Victoria	Queensland	South Australia	Western Australia	Tasmania	Australia
	'000	'000	'000	'000	'000	'000	'000
ORIGINAL							
2006							
September	54.6	284.6	16.8	1.3	1.1	28.1	386.7
December	58.9	102.3	11.7	0.9	0.7	7.2	182.0
2007							
March	62.1	48.0	16.0	1.4	0.8	1.4	129.7
June	56.5	139.8	17.4	1.3	1.1	4.1	220.4
September	51.6	297.9	15.6	1.4	1.1	37.5	405.2
December	46.1	88.5	10.9	0.8	1.0	7.2	154.6
SEASONALLY ADJUSTED							
2006							
September	55.7	131.7	16.0	1.1	1.0	9.6	212.4
December	62.7	161.4	13.7	1.2	0.7	10.6	252.6
2007							
March	61.1	181.5	16.4	1.4	0.9	14.9	250.0
June	53.3	147.9	15.6	1.2	1.1	13.7	234.2
September	52.5	138.6	14.8	1.2	1.0	12.7	223.4
December	49.0	138.5	12.8	1.1	0.9	10.7	212.9
TREND							
2006							
September	57.0	141.8	15.1	1.1	0.9	9.9	223.5
December	60.3	157.9	15.2	1.2	0.9	11.6	240.8
2007							
March	59.7	166.2	15.5	1.3	0.9	13.4	247.1
June	55.8	156.5	15.4	1.2	1.0	13.7	237.5
September	51.8	142.9	14.6	1.2	1.0	12.7	223.9
December	49.0	133.8	13.3	1.1	1.0	11.4	213.4

(a) For more information refer to paragraphs 4, 5 and 7 of the Explanatory Notes.

NUMBER OF LIVESTOCK SLAUGHTERED (a), Sheep: All Series

Quarter	New South Wales	Victoria	Queensland	South Australia	Western Australia	Tasmania	Australia
	'000	'000	'000	'000	'000	'000	'000
ORIGINAL							
2006							
September	803.4	826.5	206.9	287.3	560.9	51.9	2 736.8
December	1 215.5	1 262.7	244.1	440.0	805.3	133.1	4 100.7
2007							
March	1 168.6	1 230.4	273.0	390.8	697.1	123.8	3 883.8
June	701.0	658.4	276.2	296.0	550.5	67.7	2 549.8
September	546.4	694.1	187.3	287.0	524.9	42.4	2 282.1
December	895.6	1 038.7	203.6	328.0	765.9	93.9	3 325.6
SEASONALLY ADJUSTED							
2006							
September	1 039.4	1 022.4	228.0	331.4	664.3	88.1	3 389.6
December	1 111.6	1 121.9	248.0	368.0	692.3	118.0	3 598.8
2007							
March	1 047.2	1 067.1	261.5	350.8	600.7	91.6	3 356.4
June	686.6	721.2	257.8	359.3	660.9	72.6	2 848.1
September	713.5	858.9	208.3	331.1	622.5	72.6	2 846.4
December	815.3	922.2	207.8	274.4	657.1	82.8	2 896.6
TREND							
2006							
September	1 069.5	1 046.9	235.4	316.1	649.9	95.6	3 425.8
December	1 070.1	1 068.5	248.2	352.4	663.7	101.7	3 478.3
2007							
March	958.0	983.3	256.3	366.6	647.4	93.9	3 288.4
June	814.3	876.3	245.1	349.2	635.0	80.6	3 023.8
September	736.6	837.0	224.2	322.8	638.8	74.5	2 858.1
December	727.5	858.2	203.8	293.4	651.3	76.6	2 793.7

(a) For more information refer to paragraphs 4, 5 and 7 of the Explanatory Notes.

NUMBER OF LIVESTOCK SLAUGHTERED (a), Lambs: All Series

Quarter	New South Wales '000	Victoria '000	Queensland '000	South Australia '000	Western Australia '000	Tasmania '000	Australia '000
ORIGINAL							
2006							
September	1 119.2	2 089.0	63.5	724.2	559.5	131.4	4 686.8
December	1 145.2	2 454.7	75.9	840.5	548.3	115.9	5 180.6
2007							
March	1 086.5	2 399.9	91.3	886.7	695.8	110.1	5 270.3
June	1 106.6	2 156.3	96.3	800.0	719.6	141.9	5 020.7
September	1 236.4	2 237.7	102.8	883.6	592.9	129.1	5 182.5
December	1 235.2	2 484.5	121.2	1 064.6	639.3	136.2	5 680.9
SEASONALLY ADJUSTED							
2006							
September	1 194.0	2 202.7	62.3	860.5	598.8	127.3	4 987.3
December	1 112.2	2 317.1	78.5	804.8	541.9	122.5	5 018.3
2007							
March	1 061.6	2 393.1	96.9	824.2	708.4	118.4	5 207.9
June	1 097.7	2 180.6	89.6	774.0	668.3	129.9	4 950.6
September	1 314.4	2 355.6	101.8	1 041.2	636.0	125.2	5 492.3
December	1 202.2	2 349.2	124.6	1 020.9	636.5	143.5	5 513.2
TREND							
2006							
September	1 151.6	2 200.0	71.9	826.0	607.7	123.7	4 967.4
December	1 113.8	2 302.2	78.9	809.7	608.6	122.5	5 042.0
2007							
March	1 097.3	2 319.3	87.2	809.2	643.2	122.3	5 085.5
June	1 144.8	2 300.7	96.2	864.1	665.4	125.3	5 186.9
September	1 212.9	2 306.6	105.5	954.7	654.9	131.5	5 344.8
December	1 254.0	2 332.0	115.8	1 034.2	631.3	137.5	5 487.1

(a) For more information refer to paragraphs 4, 5 and 7 of the Explanatory Notes.

NUMBER OF LIVESTOCK SLAUGHTERED (a), Pigs: All Series

Quarter	New South Wales	Victoria	Queensland	South Australia	Western Australia	Tasmania	Australia
	'000	'000	'000	'000	'000	'000	'000
ORIGINAL							
2006							
September	396.7	203.0	320.8	261.5	135.1	10.7	1 329.2
December	405.4	196.0	303.0	256.7	140.5	10.9	1 314.2
2007							
March	391.5	180.6	318.7	273.4	144.8	9.4	1 319.8
June	407.8	208.4	327.2	255.6	147.6	11.7	1 358.7
September	410.1	182.1	336.6	270.2	139.0	10.3	1 348.3
December	406.6	172.9	311.6	286.0	135.2	10.4	1 322.8
SEASONALLY ADJUSTED							
2006							
September	393.0	203.8	316.3	264.6	134.6	10.6	1 323.6
December	405.3	198.6	310.6	261.7	147.1	10.2	1 336.2
2007							
March	409.8	185.7	322.6	274.7	145.4	10.2	1 349.4
June	394.2	199.4	320.0	247.3	141.1	11.7	1 314.0
September	406.5	182.9	331.9	273.2	138.7	10.2	1 343.3
December	405.9	175.3	319.7	290.5	141.4	9.7	1 343.8
TREND							
2006							
September	397.4	200.6	314.7	263.6	142.0	10.3	1 330.1
December	402.7	197.2	314.7	265.6	143.0	10.4	1 335.2
2007							
March	403.6	194.2	319.0	262.0	143.8	10.7	1 334.4
June	403.0	190.3	323.5	263.3	142.4	10.8	1 333.8
September	403.0	185.0	325.4	271.1	140.2	10.5	1 335.6
December	404.6	178.8	324.4	282.2	139.6	10.0	1 340.5

(a) For more information refer to paragraphs 4, 5 and 7 of the Explanatory Notes.

NUMBER OF CHICKENS SLAUGHTERED(a): All Series

Quarter	New South Wales	Victoria	Queensland	South Australia	Western Australia	Australia
	'000	'000	'000	'000	'000	'000
ORIGINAL						
2006						
September	37 198.0	31 713.9	21 416.9	np	np	112 282.7
December	37 672.9	32 323.5	23 123.2	np	np	115 061.6
2007						
March	38 363.6	31 106.6	22 607.2	np	np	114 226.4
June	37 010.4	31 159.4	22 428.6	np	np	112 339.6
September	36 320.3	30 704.8	23 697.8	np	np	113 435.5
December	39 032.6	32 886.6	25 128.2	np	np	120 323.6
SEASONALLY ADJUSTED						
2006						
September	37 319.7	32 465.4	21 493.7	np	np	113 369.4
December	37 245.1	31 527.1	21 842.6	np	np	111 981.6
2007						
March	38 269.6	31 096.8	22 583.2	np	np	114 192.4
June	37 375.5	31 215.2	23 776.7	np	np	114 476.8
September	36 509.8	31 459.6	23 770.4	np	np	114 577.5
December	38 556.5	32 067.0	23 724.9	np	np	117 029.9
TREND						
2006						
September	37 414.1	31 718.1	21 001.5	np	np	111 906.8
December	37 629.2	31 656.3	21 902.3	np	np	113 021.4
2007						
March	37 579.5	31 321.4	22 821.2	np	np	113 704.4
June	37 421.8	31 233.7	23 395.2	np	np	114 358.4
September	37 420.8	31 533.3	23 776.2	np	np	115 342.9
December	37 644.5	31 891.0	23 920.0	np	np	116 224.7

np not available for publication but included in totals where applicable, unless otherwise indicated

(a) For more information refer to paragraphs 8 and 9 of the Explanatory Notes.

NUMBER OF LIVESTOCK SLAUGHTERED (a): Original

Financial year	New South Wales '000	Victoria '000	Queensland '000	South Australia '000	Western Australia '000	Tasmania '000	Australia '000
BULLS, BULLOCKS AND STEERS							
2004-05	925.8	600.2	2 330.6	191.1	228.7	109.2	4 386.9
2005-06	915.3	577.7	2 299.0	176.8	187.4	81.1	4 238.5
2006-07	941.3	634.5	2 357.2	179.4	189.0	88.5	4 390.9
COWS AND HEIFERS							
2004-05	774.6	915.5	1 359.8	168.0	281.8	94.9	3 598.7
2005-06	675.0	803.6	1 347.9	148.0	246.6	116.2	3 341.6
2006-07	808.7	932.7	1 474.1	162.5	259.7	129.1	3 770.8
CATTLE (excluding calves)							
2004-05	1 700.4	1 515.7	3 690.5	359.1	510.5	204.1	7 985.6
2005-06	1 590.3	1 381.3	3 646.9	324.8	434.0	197.3	7 580.1
2006-07	1 750.0	1 567.2	3 831.3	341.9	448.7	217.5	8 161.7
CALVES							
2004-05	201.2	539.0	73.3	5.3	4.3	44.1	867.9
2005-06	204.6	505.2	62.3	4.4	3.7	40.2	821.2
2006-07	232.1	574.7	61.9	4.9	3.7	40.8	918.9
SHEEP							
2004-05	3 548.4	3 465.4	918.9	979.1	2 205.2	325.6	11 442.6
2005-06	3 707.5	3 722.0	940.0	1 061.9	2 120.6	277.7	11 829.7
2006-07	3 888.6	3 978.0	1 000.2	1 414.0	2 613.8	376.5	13 271.2
LAMBS							
2004-05	4 110.4	6 787.1	287.2	3 236.2	2 466.7	442.9	17 330.6
2005-06	4 227.3	7 613.5	283.6	3 231.2	2 798.4	511.6	18 665.6
2006-07	4 457.5	9 099.9	327.0	3 251.5	2 523.2	499.3	20 158.3
PIGS							
2004-05	1 614.6	847.3	1 285.4	894.8	647.0	45.6	5 342.5
2005-06	1 633.1	777.8	1 292.9	1 018.9	599.2	41.8	5 370.1
2006-07	1 601.4	788.0	1 269.7	1 047.3	568.1	42.7	5 321.9
CHICKENS							
2004-05	147 973.2	124 726.5	84 086.2	np	np	np	437 640.9
2005-06	149 432.5	122 320.1	82 723.2	np	np	np	437 864.5
2006-07	150 244.9	126 303.4	89 576.0	np	np	np	453 910.2

np not available for publication but included in totals where applicable, unless otherwise indicated

(a) For more information refer to paragraphs 4, 5 and 7 to 9 of the Explanatory Notes.

RED MEAT PRODUCED(a), Beef: All Series

Quarter	New South Wales	Victoria	Queensland	South Australia	Western Australia	Tasmania	Australia
	tonnes	tonnes	tonnes	tonnes	tonnes	tonnes	tonnes
ORIGINAL							
2006							
September	105 667	79 103	306 129	17 829	27 843	12 348	549 188
December	114 184	102 841	273 353	24 906	29 466	15 528	560 541
2007							
March	120 231	102 959	253 459	26 256	29 559	15 740	548 468
June	112 983	85 567	274 034	21 145	27 565	15 964	537 517
September	107 427	83 312	280 138	17 671	28 998	13 077	530 877
December	113 527	95 382	255 334	22 767	32 413	13 912	533 589
SEASONALLY ADJUSTED							
2006							
September	110 291	86 959	276 115	22 375	29 222	14 467	545 095
December	114 481	97 971	284 413	22 742	27 344	16 001	562 725
2007							
March	116 247	96 703	291 244	22 875	28 631	14 166	560 292
June	111 659	87 681	258 250	22 058	29 358	15 019	528 216
September	112 408	91 755	253 116	22 103	30 345	15 248	527 591
December	113 847	90 547	265 558	20 866	30 266	14 346	535 525
TREND							
2006							
September	111 703	89 564	280 029	21 968	28 723	14 689	548 574
December	114 000	94 102	283 476	22 519	28 314	15 020	557 020
2007							
March	114 363	94 731	279 272	22 800	28 451	15 045	552 161
June	113 475	92 141	267 565	22 304	29 308	14 905	539 012
September	112 741	90 218	259 080	21 752	30 071	14 819	530 388
December	112 709	90 105	255 873	21 295	30 435	14 801	528 400

(a) For more information refer to paragraphs 4 to 7 of the Explanatory Notes.

Quarter	New South Wales	Victoria	Queensland	South Australia	Western Australia	Tasmania	Australia
	tonnes	tonnes	tonnes	tonnes	tonnes	tonnes	tonnes
ORIGINAL							
2006							
September	3 561	5 615	703	41	77	544	10 553
December	3 814	2 171	511	33	50	147	6 738
2007							
March	4 039	1 012	657	42	49	35	5 846
June	3 697	2 858	672	41	72	89	7 441
September	3 393	5 938	579	41	76	718	10 757
December	3 047	2 092	453	30	67	152	5 853
SEASONALLY ADJUSTED							
2006							
September	3 644	2 712	687	39	66	192	7 312
December	4 030	3 202	577	40	51	208	8 167
2007							
March	3 962	3 344	670	43	59	263	7 888
June	3 505	3 002	603	37	71	268	7 502
September	3 462	2 885	566	38	64	253	7 476
December	3 219	3 049	515	36	69	218	7 055
TREND							
2006							
September	3 710	2 830	661	38	58	197	7 472
December	3 911	3 083	641	40	58	221	7 857
2007							
March	3 876	3 207	624	40	60	250	7 900
June	3 648	3 096	605	39	65	261	7 648
September	3 411	2 979	568	37	68	250	7 357
December	3 232	2 945	520	36	68	232	7 142

(a) For more information refer to paragraphs 4 to 7 of the Explanatory Notes.

RED MEAT PRODUCED(a), Mutton: All Series

Quarter	New South Wales	Victoria	Queensland	South Australia	Western Australia	Tasmania	Australia
	tonnes	tonnes	tonnes	tonnes	tonnes	tonnes	tonnes
ORIGINAL							
2006							
September	17 826	15 664	4 244	6 910	11 818	1 009	57 470
December	26 352	24 339	5 193	10 322	16 721	2 580	85 508
2007							
March	24 510	22 802	5 231	9 045	14 015	2 328	77 931
June	13 863	12 070	5 187	6 685	10 999	1 275	50 079
September	12 301	14 576	3 848	7 207	10 880	825	49 637
December	20 726	23 081	4 570	8 324	16 512	1 886	75 098
SEASONALLY ADJUSTED							
2006							
September	22 883	19 376	4 629	7 797	13 900	1 734	69 921
December	22 892	20 552	4 948	8 511	14 121	2 197	73 808
2007							
March	22 351	19 797	5 086	8 191	12 232	1 750	68 298
June	14 209	14 141	5 134	8 394	13 404	1 399	57 034
September	15 908	18 032	4 232	8 115	12 816	1 429	60 389
December	17 925	19 453	4 356	6 875	13 902	1 591	64 899
TREND							
2006							
September	22 854	19 654	4 735	7 440	13 632	1 814	70 273
December	22 625	19 787	4 931	8 207	13 633	1 929	71 042
2007							
March	20 129	18 358	5 051	8 527	13 124	1 788	66 662
June	17 313	17 138	4 871	8 259	12 945	1 550	61 930
September	16 056	17 283	4 552	7 830	13 196	1 449	60 540
December	16 120	18 392	4 254	7 347	13 656	1 487	61 876

(a) For more information refer to paragraphs 4 to 7 of the Explanatory Notes.

Quarter	<i>New South Wales</i>	<i>Victoria</i>	<i>Queensland</i>	<i>South Australia</i>	<i>Western Australia</i>	<i>Tasmania</i>	Australia
	tonnes	tonnes	tonnes	tonnes	tonnes	tonnes	tonnes
ORIGINAL							
2006							
September	22 375	42 470	1 222	15 910	11 318	2 768	96 061
December	22 800	49 030	1 437	17 891	10 733	2 385	104 276
2007							
March	21 816	49 433	1 680	19 843	14 062	2 205	109 039
June	21 864	43 981	1 710	18 228	14 497	2 928	103 208
September	24 900	46 042	2 021	19 059	11 564	2 625	106 211
December	25 057	53 059	2 601	24 257	12 753	2 848	120 576
SEASONALLY ADJUSTED							
2006							
September	23 717	44 658	1 207	19 186	12 230	2 634	103 145
December	22 250	45 991	1 472	17 740	10 706	2 531	101 963
2007							
March	21 606	49 445	1 809	18 025	14 304	2 415	106 974
June	21 495	44 743	1 573	17 257	13 243	2 680	100 685
September	26 135	48 398	2 025	22 751	12 536	2 497	113 675
December	24 503	49 787	2 634	24 118	12 816	3 012	118 052
TREND							
2006							
September	23 006	44 700	1 377	18 239	12 388	2 562	102 312
December	22 293	46 556	1 475	17 924	12 245	2 530	103 272
2007							
March	21 930	47 132	1 590	17 750	12 811	2 503	103 608
June	22 794	47 281	1 793	19 057	13 231	2 555	106 388
September	24 211	47 903	2 078	21 470	13 026	2 691	111 266
December	25 304	48 831	2 420	23 765	12 577	2 837	115 905

(a) For more information refer to paragraphs 4 to 7 of the Explanatory Notes.

<i>Quarter</i>	<i>New South Wales</i>	<i>Victoria</i>	<i>Queensland</i>	<i>South Australia</i>	<i>Western Australia</i>	<i>Tasmania</i>	<i>Australia</i>
tonnes	tonnes	tonnes	tonnes	tonnes	tonnes	tonnes	tonnes
ORIGINAL							
2006							
September	27 765	15 304	24 035	19 469	9 115	621	96 384
December	26 827	14 246	22 144	19 277	9 558	635	92 769
2007							
March	26 147	13 285	23 279	19 652	9 988	541	92 959
June	28 897	15 481	24 818	19 610	10 239	690	99 754
September	28 902	13 387	24 903	20 900	9 570	609	98 271
December	28 614	12 909	22 329	21 448	9 181	597	95 079
SEASONALLY ADJUSTED							
2006							
September	27 164	15 176	23 334	19 474	9 074	606	94 907
December	27 325	14 616	22 980	20 027	10 151	593	95 255
2007							
March	27 712	13 871	24 204	19 868	10 003	593	96 834
June	27 471	14 598	23 750	18 741	9 689	695	94 958
September	28 282	13 291	24 184	20 891	9 557	594	96 815
December	29 093	13 253	23 203	22 183	9 734	559	97 541
TREND							
2006							
September	27 299	14 896	23 317	19 654	9 668	592	95 456
December	27 375	14 635	23 374	19 771	9 797	600	95 543
2007							
March	27 436	14 331	23 756	19 500	9 888	626	95 682
June	27 795	13 987	23 953	19 770	9 801	632	96 074
September	28 283	13 637	23 838	20 602	9 646	614	96 552
December	28 833	13 280	23 526	21 721	9 609	582	97 142

(a) For more information refer to paragraphs 4 to 7 of the Explanatory Notes.

TOTAL RED MEAT PRODUCED(a): All Series

Quarter	New South Wales	Victoria	Queensland	South Australia	Western Australia	Tasmania	Australia
	tonnes	tonnes	tonnes	tonnes	tonnes	tonnes	tonnes
ORIGINAL							
2006							
September	177 193	158 156	336 332	60 159	60 171	17 290	809 655
December	193 977	192 627	302 638	72 430	66 529	21 275	849 833
2007							
March	196 744	189 491	284 305	74 838	67 673	20 850	834 242
June	181 305	159 956	306 421	65 709	63 372	20 946	797 998
September	176 923	163 255	311 488	64 877	61 088	17 854	795 753
December	190 970	186 523	285 288	76 825	70 926	19 394	830 195
SEASONALLY ADJUSTED							
2006							
September	187 699	168 881	305 972	68 871	64 492	19 633	820 380
December	190 978	182 332	314 390	69 060	62 373	21 530	841 918
2007							
March	191 878	183 160	323 013	69 002	65 229	19 187	840 286
June	178 339	164 165	289 310	66 487	65 765	20 061	788 395
September	186 195	174 361	284 123	73 898	65 318	20 021	805 946
December	188 587	176 089	296 266	74 078	66 787	19 726	823 072
TREND							
2006							
September	188 572	171 644	310 119	67 339	64 469	19 854	824 087
December	190 204	178 163	313 897	68 461	64 047	20 300	834 734
2007							
March	187 734	177 759	310 293	68 617	64 334	20 212	826 013
June	185 025	173 643	298 787	69 429	65 350	19 903	811 052
September	184 702	172 020	290 116	71 691	66 007	19 823	806 103
December	186 198	173 553	286 593	74 164	66 345	19 939	810 465

(a) For more information refer to paragraphs 4 to 7 of the Explanatory Notes.

CHICKEN MEAT PRODUCED(a): All Series

Quarter	<i>New South Wales</i>	<i>Victoria</i>	<i>Queensland</i>	<i>South Australia</i>	<i>Western Australia</i>	Australia
	tonnes	tonnes	tonnes	tonnes	tonnes	tonnes
ORIGINAL						
2006						
September	68 809	60 927	33 565	np	np	198 358
December	73 668	58 997	35 030	np	np	206 225
2007						
March	75 905	56 976	36 036	np	np	204 254
June	73 524	59 120	34 970	np	np	202 754
September	68 748	57 002	37 640	np	np	199 865
December	71 094	61 849	39 238	np	np	209 293
SEASONALLY ADJUSTED						
2006						
September	70 053	61 859	32 831	np	np	199 920
December	73 899	57 627	33 621	np	np	203 340
2007						
March	75 447	57 443	36 654	np	np	205 038
June	72 262	59 207	36 731	np	np	203 391
September	70 234	57 641	36 779	np	np	201 277
December	71 475	60 653	37 721	np	np	206 589
TREND						
2006						
September	72 514	59 001	32 544	np	np	198 816
December	73 351	59 006	33 936	np	np	201 334
2007						
March	73 802	58 164	35 874	np	np	203 115
June	72 822	58 096	36 699	np	np	203 292
September	71 338	58 942	37 176	np	np	203 708
December	70 414	59 753	37 408	np	np	204 299

np not available for publication but included in totals where applicable, unless otherwise indicated

(a) For more information refer to paragraphs 8 and 9 of the Explanatory Notes.

MEAT PRODUCED(a): Original

<i>Financial year</i>	<i>New South Wales</i> tonnes	<i>Victoria</i> tonnes	<i>Queensland</i> tonnes	<i>South Australia</i> tonnes	<i>Western Australia</i> tonnes	<i>Tasmania</i> tonnes	<i>Australia</i> tonnes
BEEF							
2004-05	440 720	363 226	1 046 410	93 049	131 407	56 859	2 132 810
2005-06	411 202	331 311	1 054 198	83 547	113 318	54 807	2 049 521
2006-07	453 065	370 471	1 106 975	90 136	114 434	59 580	2 195 713
VEAL							
2004-05	12 941	11 393	3 451	176	250	886	29 147
2005-06	13 288	10 011	2 994	149	250	809	27 551
2006-07	15 110	11 655	2 543	157	249	815	30 579
MUTTON							
2004-05	77 517	68 026	18 899	22 721	43 842	6 351	237 356
2005-06	78 795	70 562	19 102	24 098	45 939	5 294	243 791
2006-07	82 552	74 875	19 854	32 962	53 553	7 192	270 988
LAMB							
2004-05	82 550	135 948	5 564	72 157	49 122	8 950	354 290
2005-06	84 763	153 449	5 457	69 636	58 080	10 452	381 837
2006-07	88 855	184 913	6 048	71 871	50 610	10 286	412 583
PIG MEAT							
2004-05	119 085	62 740	96 365	63 525	43 999	2 538	388 598
2005-06	115 908	57 015	95 628	76 663	40 977	2 374	388 863
2006-07	109 637	58 316	94 276	78 008	38 901	2 487	381 865
TOTAL RED MEAT							
2004-05	732 812	641 332	1 170 689	251 627	268 620	75 584	3 142 201
2005-06	703 956	622 349	1 177 380	254 093	258 563	73 735	3 091 562
2006-07	749 219	700 230	1 229 696	273 136	257 746	80 360	3 291 728
CHICKEN MEAT							
2004-05	265 716	219 508	128 669	np	np	np	750 029
2005-06	285 294	215 448	135 650	np	np	np	772 613
2006-07	291 907	236 020	139 601	np	np	np	811 591

np not available for publication but included in totals where applicable, unless otherwise indicated

(a) For more information refer to paragraphs 4 to 9 in the Explanatory Notes.

Period	FRESH, CHILLED OR FROZEN MEAT									PROCESSED MEAT	
	<i>Beef bone-in</i>	<i>Beef bone-out</i>	<i>Veal bone-in</i>	<i>Veal bone-out</i>	<i>Mutton bone-in</i>	<i>Mutton bone-out</i>	<i>Lamb bone-in</i>	<i>Lamb bone-out</i>	<i>Pork</i>	<i>Bacon and ham</i>	<i>Canned meat</i>
	tonnes	tonnes	tonnes	tonnes	tonnes	tonnes	tonnes	tonnes	tonnes	tonnes	tonnes
2004-05	44 636	959 391	3 320	5 775	101 740	41 790	106 518	21 699	43 495	449	22 835
2005-06	52 196	890 604	3 266	5 793	106 948	41 458	119 523	26 491	44 007	292	20 857
2006-07	52 389	971 531	3 753	5 792	124 851	42 826	127 616	29 042	41 313	550	16 051
2006											
September	14 128	247 157	937	1 943	24 009	9 464	30 856	6 373	10 976	125	5 311
December	15 027	267 379	943	1 971	43 691	13 141	35 094	7 098	10 410	145	4 989
2007											
March	11 598	218 939	883	517	35 039	11 717	30 773	7 527	9 656	134	3 130
June	11 636	238 056	989	1 363	22 112	8 503	30 892	8 045	10 272	145	2 621
September	12 745	230 121	1 037	1 956	19 988	7 859	31 534	8 043	10 912	98	2 765
December	15 433	249 415	951	1 544	37 770	12 580	40 972	8 757	9 832	225	2 912

(a) For more information refer to paragraphs 10 and 11 of the Explanatory Notes.

EXPORTS OF LIVE SHEEP AND CATTLE, Australia(a): Original

Period	Number	Gross weight	Gross value	Unit value
	'000	'000 tonnes	\$'000	\$
.....				
SHEEP				
2004-05	3 233.2	166.1	206 678	63.92
2005-06	4 247.7	209.5	291 452	68.61
2006-07	4 137.9	198.8	288 697	69.77
2006				
September	1 166.3	56.9	83 620	71.70
December	1 388.7	63.0	97 768	70.40
2007				
March	1 021.5	50.2	69 493	68.03
June	561.4	28.7	37 815	67.36
September	910.1	43.5	63 022	69.25
December	1 282.1	62.4	91 114	71.06
.....				
CATTLE				
2004-05	573.7	191.7	374 060	652.01
2005-06	548.8	182.7	357 793	651.99
2006-07	638.0	216.1	437 427	685.58
2006				
September	187.2	60.8	127 170	679.31
December	133.6	45.3	92 966	695.98
2007				
March	122.4	40.9	88 267	721.36
June	194.9	69.1	129 024	662.01
September	216.5	74.3	137 649	635.88
December	138.7	46.6	86 629	624.64

(a) For more information refer to paragraph 12 of the Explanatory Notes.

WHOLE MILK INTAKE, By Factories(a)(b): All Series

	<i>New South Wales</i>	<i>Victoria</i>	<i>Queensland</i>	<i>South Australia</i>	<i>Western Australia</i>	<i>Tasmania</i>	<i>Australia</i>
<i>Quarter</i>	ML	ML	ML	ML	ML	ML	ML
ORIGINAL							
2006							
June	268	1 171	132	160	86	111	1 927
September	295	1 685	151	162	93	117	2 504
December	311	2 192	147	194	98	255	3 197
2007							
March	255	1 363	124	159	77	167	2 144
June	247	1 045	113	145	81	103	1 734
September	275	1 555	125	145	86	119	2 304
SEASONALLY ADJUSTED							
2006							
June	297	1 728	144	176	90	169	2 604
September	290	1 708	142	172	90	170	2 572
December	274	1 556	137	164	88	162	2 381
2007							
March	270	1 477	131	165	86	154	2 283
June	274	1 532	124	159	85	158	2 332
September	270	1 568	118	154	83	172	2 365
TREND							
2006							
June	298	1 711	146	174	91	167	2 587
September	287	1 668	141	171	89	168	2 524
December	277	1 579	137	167	88	162	2 410
2007							
March	272	1 521	131	163	86	158	2 331
June	271	1 519	124	159	85	160	2 318
September	271	1 547	118	155	83	166	2 340

(a) For more information refer to paragraph 13 of the Explanatory Notes.

(b) Data for Australian Capital Territory are included in New South Wales; data for Northern Territory are included in South Australia.

Source: Original series data from Dairy Australia.

MARKET MILK SALES, By Factories(a)(b): All Series

	<i>New South Wales</i>	<i>Victoria</i>	<i>Queensland</i>	<i>South Australia</i>	<i>Western Australia</i>	<i>Tasmania</i>	<i>Australia</i>
<i>Quarter</i>	ML	ML	ML	ML	ML	ML	ML
ORIGINAL							
2006							
June	167	127	112	50	56	14	525
September	173	129	119	53	59	14	545
December	170	126	118	51	55	13	532
2007							
March	167	126	118	51	57	14	532
June	175	129	121	53	59	14	550
September	171	129	125	53	59	14	551
SEASONALLY ADJUSTED							
2006							
June	166	127	113	50	56	14	525
September	169	127	116	51	57	14	534
December	171	126	118	51	55	13	536
2007							
March	170	128	119	51	58	14	540
June	174	128	122	53	59	14	550
September	167	127	123	51	58	14	540
TREND							
2006							
June	166	126	114	50	56	14	525
September	169	127	116	51	56	14	532
December	171	127	118	51	57	14	538
2007							
March	171	127	120	52	58	14	542
June	171	128	121	52	58	14	544
September	170	128	123	52	59	14	545

(a) For more information refer to paragraph 13 of the Explanatory Notes.

(b) Data for Australian Capital Territory are included in New South Wales; data for Northern Territory are included in South Australia.

Source: Original series data from Dairy Australia.

BROKERS AND DEALERS RECEIVALS OF TAXABLE WOOL(a): All Series

Quarter	New South Wales	Victoria	Queensland	South Australia	Western Australia	Tasmania	Australia	% of total received by brokers
	tonnes	tonnes	tonnes	tonnes	tonnes	tonnes	tonnes	%
ORIGINAL								
2006								
September	38 527	29 009	6 492	17 892	27 695	3 545	123 159	80.2
December	37 574	38 146	3 452	20 110	29 061	3 608	131 950	78.0
2007								
March	30 236	30 828	3 206	18 777	29 578	1 958	114 583	78.5
June	30 477	23 457	5 054	15 490	18 158	2 407	95 043	74.8
September	37 528	25 965	3 744	17 841	20 646	2 896	108 620	83.6
December	35 433	33 708	2 977	19 328	25 562	2 165	119 173	79.2
SEASONALLY ADJUSTED								
2006								
September	33 574	29 714	4 863	16 268	27 926	3 220	115 564	..
December	34 235	30 507	4 264	17 322	26 424	2 801	115 555	..
2007								
March	33 880	31 171	4 325	19 715	24 652	2 570	116 310	..
June	35 290	29 547	4 562	19 240	25 413	2 711	116 761	..
September	32 197	26 726	2 732	16 507	21 002	2 624	101 790	..
December	32 379	27 088	3 691	16 686	23 178	1 795	104 817	..
TREND								
2006								
September	35 626	30 195	4 567	16 299	27 885	3 029	117 601	..
December	34 116	30 541	4 555	17 892	26 428	2 860	116 392	..
2007								
March	34 028	30 479	4 331	18 916	25 217	2 741	115 712	..
June	33 988	29 254	3 949	18 587	23 917	2 606	112 302	..
September	33 162	27 752	3 568	17 521	22 882	2 400	107 284	..
December	32 404	26 671	3 296	16 586	22 289	2 142	103 386	..

.. not applicable

(a) For more information refer to paragraphs 4, 14 and 15 of the Explanatory Notes.

<i>Financial year</i>	<i>New South Wales</i>	<i>Victoria</i>	<i>Queensland</i>	<i>South Australia</i>	<i>Western Australia</i>	<i>Tasmania</i>	<i>Australia</i>
.....							
WHOLE MILK INTAKE BY FACTORIES (b) (ML)							
2004-05	1 218	6 613	619	679	396	600	10 125
2005-06	1 217	6 583	609	680	377	622	10 089
2006-07	1 108	6 285	535	660	349	642	9 579
.....							
MARKET MILK SALES BY FACTORIES (b) (ML)							
2004-05	641	480	429	199	215	53	2 017
2005-06	656	495	445	198	219	53	2 066
2006-07	684	509	475	207	230	55	2 160
.....							
BROKERS AND DEALERS RECEIVALS OF TAXABLE WOOL (Tonnes)							
2004-05	149 193	120 360	20 217	67 516	107 054	10 881	475 221
2005-06	153 227	119 383	21 016	61 939	118 801	12 360	486 726
2006-07	136 813	121 439	18 204	72 269	104 492	11 518	464 736

(a) For more information refer to paragraphs 13 to 15 of the Explanatory Notes.

(b) Data for Australian Capital Territory are included in New South Wales; data for Northern Territory are included in South Australia.

Source: Original series milk data from Dairy Australia.

EXPLANATORY NOTES

INTRODUCTION

1 This publication contains information on livestock slaughterings, meat production, exports of live sheep and live cattle, exports of fresh, chilled, frozen and processed meat, and whole milk intake by factories, market milk sales by factories and receivals of taxable wool by wool brokers and dealers.

2 The figures shown in this publication have been revised where necessary and as a consequence may not agree with similar data shown in previous publications.

3 Where figures have been rounded, discrepancies may occur between sums of the component items and totals.

4 Unless indicated otherwise, Australian totals include data for all states and both territories. Where states and territories do not appear in tables, this is for reasons of confidentiality.

LIVESTOCK SLAUGHTERINGS AND MEAT PRODUCTION

5 The statistics on slaughterings for red meat production are based on a monthly collection from abattoirs and other major slaughtering establishments and include estimates of animals slaughtered on farms and by country butchers and other small slaughtering establishments.

6 Red meat is shown in carcass weight and excludes offal.

7 Care should be taken when using this information as the figures only relate to slaughterings for human consumption and do not include animals condemned, slaughtered for pet food or those killed for boiling down.

8 Poultry slaughterings and meat produced statistics have been compiled from quarterly returns supplied by commercial poultry slaughtering establishments and comprise boilers, fryers and roasters. Many small producers are excluded from the collection; however, the statistics represent a high level of coverage. Tasmanian, Northern Territory and Australian Capital Territory data are excluded from the Australian total.

9 Chicken meat is shown in dressed weight of whole birds, pieces and giblets. Some slaughterings and meat production statistics for 'Ducks and Drakes' and 'Other Fowls and Turkeys' are available by contacting the ABS on Hobart (03) 6222 5838 or by writing to GPO Box 66, Hobart Tasmania 7001 (Attention: Agriculture Section).

EXPORTS OF FRESH, CHILLED, FROZEN AND PROCESSED MEAT

10 Table 20 shows exports of fresh, chilled, frozen and processed meat. International trade statistics are compiled by the ABS from information submitted by exporters and importers or their agents to the Australian Customs Service. Factors can be applied to beef, veal, mutton and lamb bone-out figures to derive bone-in carcass weight which, when added to bone-in figures, shows total exports in carcass weight. The factor for beef and veal is 1.5 and for mutton and lamb, 2.0. This information is sourced from Department of Agriculture, Fisheries and Forestry – Australia.

11 Beef also includes buffalo meat. Bacon and ham shown is the cured carcass weight of smoked or cooked bacon and ham. It also includes the stated net weight of packs of canned bacon and ham. Canned meat is shown as the canned weight and excludes canned bacon and ham.

LIVE SHEEP AND CATTLE EXPORTS

12 Table 21 contains statistics of the number of live sheep and cattle exported, the gross weight, gross value and unit value. The unit value is obtained by dividing the gross value by the number of animals exported. Sheep and cattle exported for breeding are excluded.

MILK

13 Tables 2, 22, 23 and 25 contain statistics collected by Dairy Australia. Whole milk intake by factories includes the whole milk equivalent of farm cream intake. Market milk sales includes white, flavoured, high and low fat milk and UHT milk. Interstate transfers of UHT milk have been included in their state of destination.

EXPLANATORY NOTES *continued*

WOOL RECEIVALS

14 The statistics in tables 2, 24 and 25 show the amount of taxable wool received by brokers and purchased by dealers from wool producers. It excludes wool received by brokers on which tax has already been paid by other dealers (private buyers) or brokers.

15 The information shown is on the basis of the state in which wool has actually been received and does not necessarily reflect the production of wool in that state.

SEASONAL ADJUSTMENT

16 Seasonal adjustment is a means of removing the estimated effects of normal seasonal variation from the series so that the effects of other influences can be more clearly recognised.

17 In the seasonal adjustment of the livestock estimates, account has been taken of both normal seasonal factors and 'trading day' effects, where significant, (arising from the varying length of each quarter and the varying numbers of Sundays, Mondays, Tuesdays etc. in the quarter). Adjustments are also made for the effects of change in the date of Easter holidays, again, where significant. Seasonal adjustment does not remove from the series the effect of irregular influences (e.g. abnormal weather, industrial disputes).

18 The state component series have been seasonally adjusted independently. Therefore, the adjusted components may not add to the Australian group totals.

19 In this publication, the seasonally adjusted estimates are produced by the concurrent seasonal adjustment method which takes account of the latest available original estimates. This method improves the estimation of seasonal factors and therefore, the seasonally adjusted and trend estimates for the current and previous quarters. As a result of this improvement, revisions to the seasonally adjusted and trend estimates will be observed for recent periods. In most instances the only noticeable revisions will be to the previous quarter and the same quarter one year ago. A more detailed review is conducted annually prior to the September quarter release, using data up to and including the June quarter. The concurrent seasonal adjustment methodology replaces the forward factor methodology used previously.

20 More recently, the ABS has implemented improved methods of producing seasonally adjusted estimates, focused on the application of Autoregressive Integrated Moving Average (ARIMA) modelling techniques. ARIMA modelling is a technique that can be used to extend original estimates beyond the end of a time series. For more information on the details of ARIMA modelling, see the feature article '*Use of ARIMA modelling to reduce revisions*' in the October 2004 issue of *Australian Economic Indicators* (cat. no. 1350.0).

TREND ESTIMATES

21 A trend estimate is obtained by reducing the irregular component from the seasonally adjusted series. In this publication trend estimates are generally derived by applying a 7-term Henderson moving average to the seasonally adjusted series. The 7-term Henderson (like all Henderson averages) is symmetric, but as the end of a time series is approached, asymmetric forms of the average are applied. Unlike the weights of the standard 7-term Henderson moving average, the weights employed here have been tailored to suit the particular characteristics of individual series. While the asymmetric weights enable the trend to be calculated for recent quarters, it does result in revisions to the estimates for the most recent three quarters as additional observations become available. Revisions of trend estimates will also occur with revisions to the original data and re-estimation of seasonal factors.

22 Sensitivity analysis indicates the potential magnitude and direction of revisions created to the last three estimates. It aims to show how a specified movement in the seasonally adjusted data in the next period will affect the trend path of the time series. By showing how sensitive the trend estimates are to the addition of new data, the

EXPLANATORY NOTES *continued*

TREND ESTIMATES *continued*

analysis provides information which can be used in the assessment of the trend's stability.

23 The state component series have been adjusted independently. Therefore, the adjusted components may not add to the Australian group totals.

24 For further information, see *Information Paper: A Guide to Interpreting Time Series – Monitoring 'Trends', an Overview* (cat. no. 1348.0) or contact the Assistant Director, Time Series Analysis on Canberra (02) 6252 6345.

RELATED PUBLICATIONS

25 Current publications and other products released by the ABS are listed in the *Catalogue of Publications and Products* (cat. no. 1101.0). The Catalogue is available from any ABS office or the ABS web site <<http://www.abs.gov.au>>. The ABS also issues a daily Release Advice on the web site which details products to be released in the week ahead.

GENERAL ACKNOWLEDGMENT

26 ABS publications draw extensively on information provided freely by individuals, businesses, governments and other organisations. Their continued cooperation is very much appreciated. Without it, the wide range of statistics published by the ABS would not be available. Information received by the ABS is treated in strict confidence as required by the *Census and Statistics Act 1905*.

APPENDIX WHAT IF ... ? REVISIONS TO TREND ESTIMATES

TREND REVISIONS

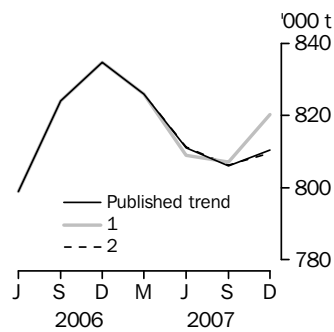
Recent seasonally adjusted and trend estimates are likely to be revised when original estimates for subsequent quarters become available. The approximate effects of possible scenarios on trend estimates are presented in the 'What-if' graphs below. These illustrate the impact on trend estimates if next quarter's seasonally adjusted estimate either rises (1) or falls (2) by a certain percentage, based on the historical average of movements in seasonally adjusted estimates.

For further information, see paragraphs 21 to 23 of the Explanatory Notes.

Red meat production

1. The next quarter's seasonally adjusted estimate of red meat production is 2.2% higher than the December quarter 2007 estimate.
2. The next quarter's seasonally adjusted estimate of red meat production is 2.2% lower than the December quarter 2007 estimate.

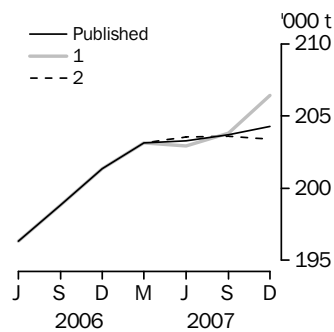
WHAT-IF RED MEAT PRODUCTION



Chicken meat production

1. The next quarter's seasonally adjusted estimate of chicken meat production is 2.6% higher than the December quarter 2007 estimate.
2. The next quarter's seasonally adjusted estimate of chicken meat production is 2.6% lower than the December quarter 2007 estimate.

WHAT-IF CHICKEN MEAT PRODUCTION

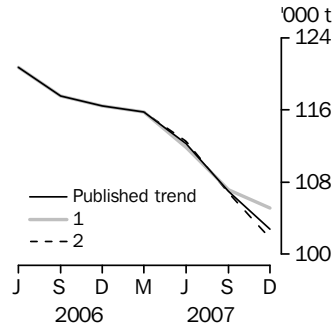


APPENDIX WHAT IF ... ? REVISIONS TO TREND ESTIMATES *continued*

Wool receivals

1. The next quarter's seasonally adjusted estimate of wool receivals is 5.6% higher than the December quarter 2007 estimate.
2. The next quarter's seasonally adjusted estimate of wool receivals is 5.6% lower than the December quarter 2007 estimate.

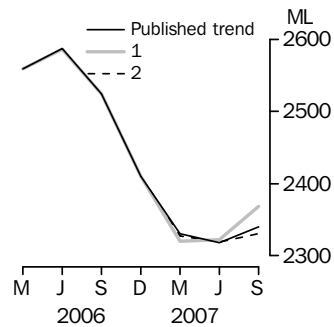
WHAT-IF WOOL RECEIVALS



Whole milk intake by factories

1. The next quarter's seasonally adjusted estimate of whole milk intake by factories is 2.5% higher than the September quarter 2007 estimate.
2. The next quarter's seasonally adjusted estimate of whole milk intake by factories is 2.5% lower than the September quarter 2007 estimate.

WHAT-IF WHOLE MILK INTAKE BY FACTORIES



FOR MORE INFORMATION . . .

- INTERNET* **www.abs.gov.au** the ABS website is the best place for data from our publications and information about the ABS.
- LIBRARY* A range of ABS publications are available from public and tertiary libraries Australia wide. Contact your nearest library to determine whether it has the ABS statistics you require, or visit our website for a list of libraries.

INFORMATION AND REFERRAL SERVICE

Our consultants can help you access the full range of information published by the ABS that is available free of charge from our website, or purchase a hard copy publication. Information tailored to your needs can also be requested as a 'user pays' service. Specialists are on hand to help you with analytical or methodological advice.

- PHONE* 1300 135 070
- EMAIL* client.services@abs.gov.au
- FAX* 1300 135 211
- POST* Client Services, ABS, GPO Box 796, Sydney NSW 2001

FREE ACCESS TO STATISTICS

All statistics on the ABS website can be downloaded free of charge.

- WEB ADDRESS* www.abs.gov.au



2721500008072

ISSN 0728 4047

RRP \$26.00