



CORRECTIVE SERVICES

AUSTRALIA

EMBARGO: 11:30AM (CANBERRA TIME) THURS 19 DEC 2002

C O N T E N T S

	<i>page</i>
Notes	2
Summary of findings	3

TABLES

1 Persons in prison custody	7
2 Persons in prison custody, by sex and type of prison custody	9
3 Persons in prison custody, by legal status and sentence type	15
4 Sentenced receptions into prison custody, by type of sentence ..	19
5 Indigenous persons in prison custody, by sex	20
6 Indigenous persons in prison custody, by legal status and sentence type	23
7 Persons in periodic detention, by sex	27
8 Federal sentenced persons in prison custody, by sex	29
9 Persons in community-based corrections, by sex	30
10 Persons in community-based corrections, by type of order	31

ADDITIONAL INFORMATION

Explanatory notes	32
Appendix	36
Glossary	37

- For further information about these and related statistics, contact Robert Letheby on Melbourne 03 9615 7381 or the National Information and Referral Service on 1300 135 070.

NOTES

FORTHCOMING ISSUES	ISSUE	RELEASE DATE
	December 2002	27 March 2003
	March 2003	26 June 2003



ABOUT THIS PUBLICATION This publication presents information on persons in custody and community-based corrections. The statistics are derived from information collected by the Australian Bureau of Statistics from administrative records held by corrective services agencies in each state and territory, and from the Federal Attorney-General's Department for details on federal prisoners. Details are provided for each state and territory on numbers and imprisonment rates by type of custody (i.e. open or secure custody or periodic detention). Information is also presented on prisoner numbers by legal status (sentenced or unsentenced) and by sentence type, for all prisoners and for Indigenous prisoners, together with the number of sentenced receptions into custody and the number of federal prisoners.

The ABS acknowledges the valuable contribution of the Board of Management, the Advisory Group of the National Corrective Services Statistics Unit and the staff of the various agencies that provide the statistics that are presented in this publication.

SYMBOLS AND OTHER USAGES	ABS	Australian Bureau of Statistics
	ERP	Estimated Resident Population
	n.a.	not available
	n.p.	not available for publication but included in totals where applicable, unless otherwise stated
	r	figures or series revised since previous issue
	..	not applicable
	—	nil or rounded to zero

Where figures have been rounded discrepancies may occur between the sum of component items and the total.

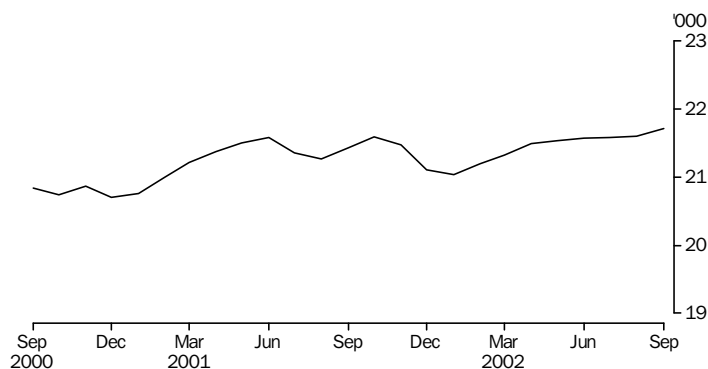
Dennis Trewin
Australian Statistician

SUMMARY OF FINDINGS

NUMBER OF PRISONERS

In the September quarter 2002 the average daily number of prisoners in Australia was 21,631. This was an increase of 98 (less than 1%) on the June quarter 2002 and an increase of 280 (1%) on the September quarter 2001. New South Wales recorded the largest increase in the number of prisoners since the June quarter 2002 of 83, while Tasmania recorded the largest proportional increase of 7%. The largest increase in the number of prisoners between the September quarter 2001 and the September quarter 2002 occurred in Queensland (220). Tasmania recorded the largest proportional increase (21%). Decreases were recorded in Western Australia (11%), the Australian Capital Territory — including Australian Capital Territory prisoners held in New South Wales prisons — (6%) and the Northern Territory (less than 1%).

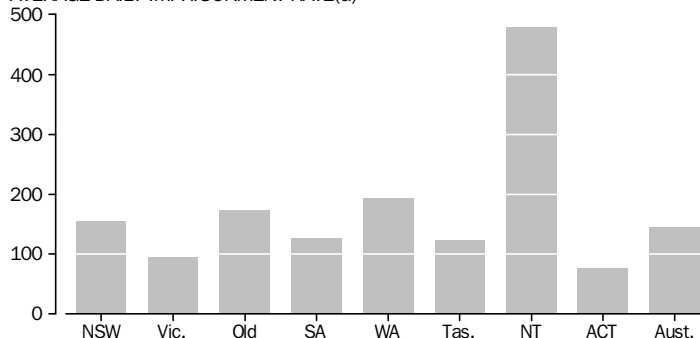
PERSONS IN PRISON CUSTODY, Average daily number—Australia



RATES PER 100,000 ADULTS

Nationally, the average daily imprisonment rate was 145 prisoners per 100,000 adult population during the September quarter 2002. This was unchanged since the June quarter 2002 and the September quarter 2001. While the Northern Territory had the highest imprisonment rate per 100,000 adult population, of 479, this was 2% lower than the September quarter 2001 figure of 491. The next highest rates were recorded by Western Australia and Queensland (194 and 173 prisoners per 100,000 adult population respectively).

AVERAGE DAILY IMPRISONMENT RATE(a)



(a) Rate per 100,000 adult population

SUMMARY OF FINDINGS *continued*

SEX

Of the average daily number of prisoners in Australia during the September quarter 2002, 20,220 (93%) were male and 1,411 (7%) were female. Nationally, the number of female prisoners increased by 1% since the June quarter 2002 and male prisoners rose by less than 1%. Between the September quarters 2001 and 2002 the number of female prisoners increased by 3% and the number of male prisoners by 1%.

TYPE OF CUSTODY

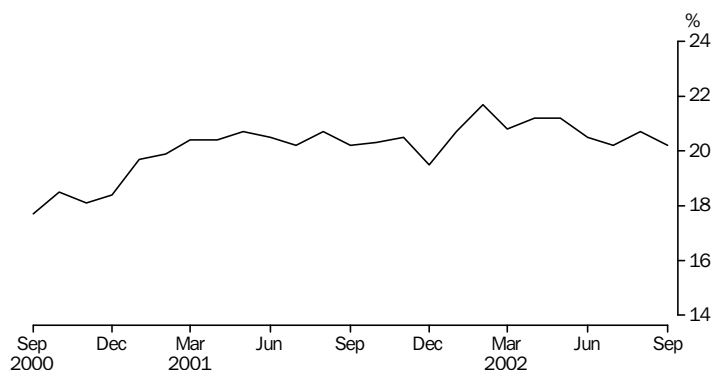
In the September quarter 2002 the average daily number of prisoners in secure prison custody was 15,894 (73%). The remaining 5,737 prisoners (27%) were held in open prison custody. Victoria, Queensland and South Australia recorded the highest proportion of prisoners held in secure custody (all 88%). All female prisoners in South Australia, Tasmania and the Northern Territory, and all prisoners in the Australian Capital Territory, were held in secure prison custody.

LEGAL STATUS AND SENTENCE TYPE

The average number of unsentenced prisoners on the first day of the month was 4,386 for the September quarter 2002, a decrease of 3% since the June quarter 2002. Unsentenced prisoners accounted for 20% of all prisoners during the September quarter 2002. South Australia had the highest proportion of its prisoner population who were unsentenced, at 33%, with the Northern Territory the lowest at 15%. Between the June and September quarters 2002 proportional decreases were recorded in all states and territories except Queensland, where a 2% increase in unsentenced prisoners was recorded.

Between the September quarters 2001 and 2002 there was a 1% increase in the number of unsentenced prisoners. Delays in Tasmania's courts and a reduction in the granting of bail applications contributed to Tasmania recording the largest proportional increase in unsentenced prisoners of 25% during the 12 month period (see paragraph 23 of the Explanatory Notes). While Tasmania had the largest proportional increase in unsentenced prisoners between the September quarters 2001 and 2002, it recorded the largest proportional decrease in unsentenced prisoners since the June quarter 2002 (16%), indicating a decrease in court delays. The Australian Capital Territory — including Australian Capital Territory prisoners held in New South Wales prisons — recorded the largest proportional decrease of 24% in unsentenced prisoners since the September quarter 2001.

PERSONS IN PRISON CUSTODY, Proportion unsentenced



SUMMARY OF FINDINGS *continued*

LEGAL STATUS AND SENTENCE TYPE *continued*

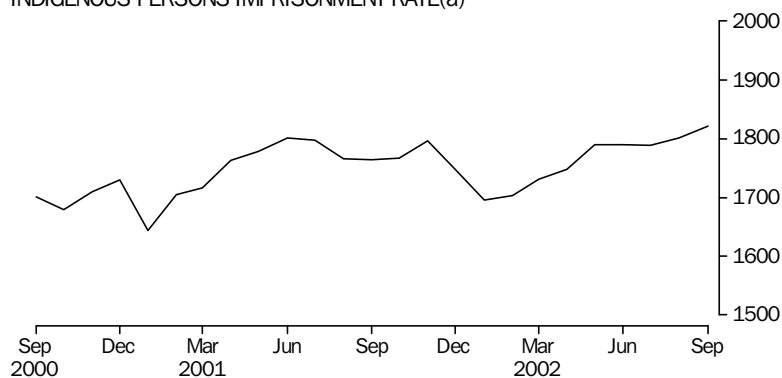
The number of sentenced prisoners in the September quarter 2002 was 17,159, an increase of 1% nationally since the June quarter 2002. While the largest proportional decrease in sentenced prisoners was recorded in Western Australia (12%) since the September quarter 2001, this downward movement ceased in the latter part of the period with a 1% increase since the June quarter 2002. Tasmania recorded the largest increase (18%) in the number of sentenced prisoners since the September quarter 2001.

INDIGENOUS PRISONERS

For the September quarter 2002, the average number of Indigenous prisoners on the first day of the month was 4,379. This was a 2% increase since the June quarter 2002 and a 4% increase on the September quarter 2001. Indigenous prisoners represented 20% of the total prisoner population in the September quarter 2002.

The imprisonment rate of Indigenous persons for the September quarter 2002 was 1,804 per 100,000 adult Indigenous population. This was an increase of 2% since the June quarter 2002 and an increase of 2% on the rate for the September quarter 2001. The imprisonment rate of Indigenous persons increased by 13% in New South Wales, 12% in Victoria and 11% in the Northern Territory between the September quarters 2001 and 2002. During the same period, Western Australia recorded a decrease of 19% in the Indigenous imprisonment rate as a result of the impact of changes that have occurred in Western Australia's justice sector (see paragraph 22 of the Explanatory Notes). While the Indigenous imprisonment rate in the September quarter 2002 for Western Australia was 18 times the imprisonment rate of non-Indigenous persons, the highest ratio across all states and territories, this ratio is well below the figure of 21 that was recorded in the September quarter 2001. Nationally, the September quarter 2002 rate was 16 times the imprisonment rate of non-Indigenous persons.

INDIGENOUS PERSONS IMPRISONMENT RATE(a)



(a) Rate per 100,000 adult Indigenous population.

Further information on the interpretation of statistics on Indigenous persons in prison custody is provided in the Appendix on page 36 of this publication.

SUMMARY OF FINDINGS *continued*

PERIODIC DETENTION

Periodic detention is a form of custody only used in New South Wales and the Australian Capital Territory. Prisoners on periodic detention are required to be held in custody for only two consecutive days each week. There was an average daily number of 896 persons in New South Wales and 77 persons in the Australian Capital Territory held in periodic detention during the September quarter 2002. Between the September quarters 2001 and 2002, the number of periodic detainees decreased by 16% for New South Wales and increased by 15% for the Australian Capital Territory.

PERSONS IN COMMUNITY-BASED CORRECTIONS

In the June quarter 2002 the number of persons in community-based corrections in Australia was 53,525, of whom 82% (43,656) were males.

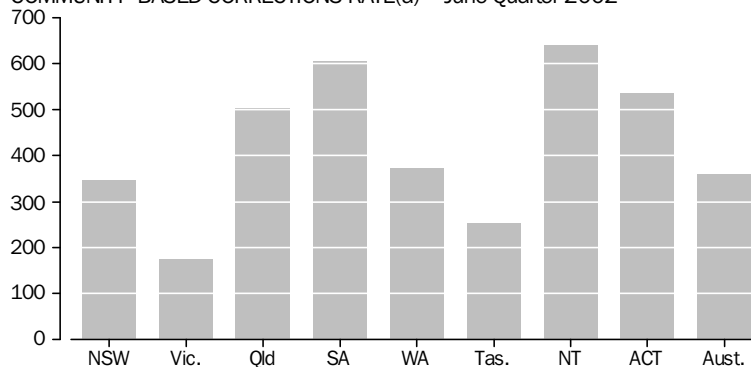
Rates per 100,000 adults

Nationally, the rate of persons in community-based corrections has been steadily decreasing over the last year from a high of 375 persons per 100,000 adult population in the September quarter 2001 to 359 persons per 100,000 adult population in the June quarter 2002. The Northern Territory recorded the highest rate of 640 persons per 100,000 adult population, followed by South Australia with 607 persons per 100,000 adult population. Victoria had the lowest rate of persons in community-based corrections (175 persons per 100,000 adult population).

Type of order

The most common orders served for community-based corrections were sentenced probation (30,054) followed by community service (12,116). Sentenced probation was the most common order served in each of the jurisdictions. There were 568 orders for restricted movement and 650 for bail.

COMMUNITY-BASED CORRECTIONS RATE(a)—June Quarter 2002



(a) Rate per 100,000 adult population

1

PERSONS IN PRISON CUSTODY

Period	NSW(a)	Vic.	Qld	SA	WA	Tas.	NT	ACT in		Aust.(a)
								NSW(a)(b)	ACT(c)	
AVERAGE DAILY NUMBER										
1999	7 117	2 945	5 095	1 363	2 903	343	615	129	36	20 416
2000	7 329	3 153	4 848	1 298	3 055	398	633	150	52	20 766
2001	7 656	3 381	4 685	1 391	3 078	367	687	145	62	21 306
2001										
September quarter	7 690	3 384	4 627	1 427	3 124	365	672	136	61	21 351
December quarter	7 692	3 442	4 733	1 418	2 945	391	698	146	73	21 391
2002										
March quarter	7 602	3 439	4 819	1 448	2 807	378	653	143	41	21 187
June quarter	7 682	3 519	4 907	1 481	2 810	414	661	134	58	21 533
September quarter	7 765	3 585	4 847	1 476	2 786	441	669	123	63	21 631
2001										
July	7 684	3 391	4 644	1 406	3 142	345	687	134	55	21 353
August	7 645	3 376	4 595	1 436	3 121	366	668	134	63	21 269
September	7 744	3 385	4 643	1 440	3 109	384	661	140	66	21 432
October	7 819	3 438	4 730	1 419	3 039	384	697	149	69	21 595
November	7 727	3 449	4 736	1 431	2 963	393	699	151	79	21 476
December	7 530	3 440	4 734	1 404	2 833	396	698	138	70	21 105
2002										
January	7 550	3 449	4 755	1 423	2 795	376	656	151	32	21 036
February	7 624	3 419	4 842	1 452	2 805	369	644	141	46	21 201
March	7 634	3 448	4 863	1 470	2 820	388	657	137	44	21 324
April	7 677	3 483	4 907	1 470	2 842	396	658	137	58	21 492
May	7 661	3 533	4 911	1 484	2 810	416	662	133	58	21 535
June	7 709	3 541	4 902	1 489	2 779	431	664	132	58	21 573
July	7 739	3 553	4 863	1 502	2 774	424	664	124	61	21 580
August	7 761	3 579	4 841	1 476	2 772	438	668	122	65	21 601
September	7 797	3 625	4 837	1 449	2 811	461	674	123	62	21 715

(a) Prior to the September quarter 2000, all full-time prisoners sentenced in the ACT were held in NSW prisons. Since the September quarter 2000, some ACT-sentenced fine default only prisoners have been held in the ACT. The ACT in NSW figures are a subset of the NSW figures—see Explanatory notes, paragraph 12.

(b) The figures are a single count taken on a specific day of the month and are not an average of the daily prisoner population for that month.

(c) Refers to unsentenced persons in ACT prison custody and, from the September quarter 2000, may include some sentenced fine default only prisoners.

1

PERSONS IN PRISON CUSTODY *continued*

Period	NSW(a)	Vic.	Qld	SA	WA	Tas.	NT	ACT in		Aust.(a)
								NSW(a)(b)	ACT(c)	
RATE PER 100,000 ADULT POPULATION										
1999	148.1	81.4	193.0	120.0	211.6	96.4	453.9	54.7	15.3	142.8
2000	150.6	85.9	180.3	113.7	219.0	111.7	464.6	64.5	22.3	143.3
2001	155.5	90.7	170.8	121.1	216.8	103.3	502.7	62.0	26.3	145.0
2001										
September quarter	155.9	90.5	168.3	124.1	219.5	103.7	491.0	57.7	26.0	145.1
December quarter	155.4	91.8	171.3	123.1	206.1	111.2	507.6	61.7	30.8	144.8
2002										
March quarter	153.1	91.3	173.5	125.5	195.5	107.3	473.4	60.4	17.2	142.9
June quarter	153.0	93.7	176.0	127.1	196.3	117.1	473.1	55.1	23.9	144.5
September quarter	154.2	94.9	172.9	126.4	193.8	124.4	478.8	50.4	25.8	144.6
2001										
July	155.8	90.7	168.9	122.2	220.8	98.0	501.6	56.9	23.3	145.1
August	155.0	90.3	167.1	124.8	219.3	104.0	488.1	56.7	26.6	144.5
September	157.0	90.5	168.8	125.2	218.4	109.3	483.1	59.6	28.0	145.6
October	158.0	91.6	171.1	123.2	212.7	109.2	506.9	63.0	29.3	146.2
November	156.1	91.9	171.3	124.2	207.3	111.7	508.3	63.7	33.4	145.4
December	152.1	91.7	171.3	121.9	198.3	112.6	507.6	58.5	29.7	142.9
2002										
January	152.0	91.6	171.2	123.3	194.7	106.7	475.7	63.8	13.7	141.9
February	153.5	90.8	174.4	125.8	195.3	104.8	467.5	59.6	19.6	143.0
March	153.7	91.6	175.1	127.4	196.4	110.2	476.5	57.9	18.5	143.8
April	152.9	92.7	176.0	126.2	198.6	111.8	470.7	56.4	24.0	144.2
May	152.6	94.0	176.2	127.4	196.3	117.5	473.7	54.7	23.8	144.5
June	153.5	94.2	175.8	127.8	194.1	121.9	474.9	54.3	23.8	144.8
July	153.7	94.1	173.5	128.7	192.9	119.7	475.4	50.8	25.2	144.3
August	154.1	94.8	172.7	126.4	192.8	123.6	478.6	50.0	26.9	144.4
September	154.8	96.0	172.6	124.1	195.5	130.1	482.4	50.3	25.3	145.2

(a) Prior to the September quarter 2000, all full-time prisoners sentenced in the ACT were held in NSW prisons. Since the September quarter 2000, some ACT-sentenced fine default only prisoners have been held in the ACT. The ACT in NSW figures are a subset of the NSW figures—see Explanatory notes, paragraph 12.

(b) The figures are a single count taken on a specific day of the month and are not an average of the daily prisoner population for that month.

(c) Refers to unsentenced persons in ACT prison custody and, from the September quarter 2000, may include some sentenced fine default only prisoners.

2

PERSONS IN PRISON CUSTODY, By sex and type of prison custody

Prison custody and sex	NSW(a)	Vic.	Qld	SA	WA	Tas.	NT	ACT in		Aust.(a)
								NSW(a)(b)	ACT(c)	
AVERAGE DAILY NUMBER										
Males										
Secure prison custody										
1999	3 744	2 465	3 844	1 100	1 758	235	476	39	33	13 654
2000	3 754	2 631	3 721	1 055	1 862	296	494	41	45	13 858
2001	3 910	2 809	3 690	1 156	1 873	274	528	43	58	14 298
2001										
September quarter	3 914	2 819	3 679	1 184	1 925	275	512	40	59	14 366
December quarter	3 891	2 861	3 835	1 168	1 840	293	529	45	69	14 486
2002										
March quarter	3 917	2 870	3 964	1 177	1 806	281	503	39	39	14 556
June quarter	3 944	2 931	4 065	1 210	1 863	295	510	41	56	14 874
September quarter	3 914	2 964	4 037	1 210	1 887	319	525	37	59	14 916
July	3 872	2 919	4 058	1 229	1 880	307	508	39	58	14 831
August	3 911	2 959	4 019	1 213	1 882	318	533	36	61	14 896
September	3 961	3 017	4 034	1 188	1 901	332	533	36	58	15 024
Open prison custody										
1999	2 953	301	943	188	930	91	113	82	..	5 520
2000	3 199	326	834	172	953	81	123	97	..	5 609
2001	3 251	333	706	152	986	73	141	89	..	5 643
2001										
September quarter	3 278	324	650	159	984	70	145	85	..	5 611
December quarter	3 300	332	599	165	904	76	148	90	..	5 525
2002										
March quarter	3 217	325	553	181	807	77	131	95	..	5 291
June quarter	3 236	337	539	184	751	87	132	85	..	5 266
September quarter	3 337	369	516	176	697	86	123	79	..	5 304
July	3 354	383	516	180	693	88	135	78	..	5 348
August	3 334	370	523	173	689	83	113	79	..	5 286
September	3 321	354	509	175	709	88	122	80	..	5 278
Total prison custody										
1999	6 697	2 766	4 786	1 288	2 688	326	590	121	33	19 174
2000	6 873	2 957	4 555	1 228	2 815	377	617	138	45	19 466
2001	7 161	3 142	4 396	1 308	2 860	347	669	132	58	19 941
2001										
September quarter	7 193	3 143	4 330	1 343	2 909	344	657	124	59	19 977
December quarter	7 191	3 193	4 434	1 333	2 744	369	677	134	69	20 011
2002										
March quarter	7 134	3 195	4 517	1 358	2 613	358	634	133	39	19 846
June quarter	7 180	3 267	4 604	1 395	2 614	382	643	126	56	20 140
September quarter	7 251	3 334	4 553	1 386	2 584	405	648	116	59	20 220
July	7 226	3 302	4 574	1 409	2 573	394	643	117	58	20 179
August	7 245	3 329	4 542	1 386	2 570	401	647	115	61	20 182
September	7 283	3 371	4 543	1 363	2 610	420	654	116	58	20 302

(a) Prior to the September quarter 2000, all full-time prisoners sentenced in the ACT were held in NSW prisons. Since the September quarter 2000, some ACT-sentenced fine default only prisoners have been held in the ACT. The ACT in NSW figures are a subset of the NSW figures—see Explanatory notes, paragraph 12.

(b) The figures are a single count taken on a specific day of the month and are not an average of the daily prisoner population for that month.

(c) Refers to unsentenced persons in ACT prison custody and, from the September quarter 2000, may include some sentenced fine default only prisoners.

<i>Prison custody and sex</i>	<i>NSW(a)</i>	<i>Vic.</i>	<i>Qld</i>	<i>SA</i>	<i>WA</i>	<i>Tas.</i>	<i>NT</i>	<i>ACT in NSW(a)(b)</i>	<i>ACT(c)</i>	<i>Aust.(a)</i>
AVERAGE DAILY NUMBER										
Females										
Secure prison custody										
1999	277	146	216	74	142	17	25	—	3	901
2000	288	157	231	70	158	22	16	—	7	949
2001	299	189	241	83	139	20	18	—	4	993
2001										
September quarter	303	197	256	84	135	20	15	—	3	1 013
December quarter	291	200	255	85	123	22	21	—	4	1 000
2002										
March quarter	259	193	260	91	117	20	19	—	2	961
June quarter	271	201	260	86	119	32	18	—	2	990
September quarter	273	200	246	90	109	36	21	—	4	978
July	269	198	247	93	115	30	21	—	4	976
August	277	199	249	90	109	37	22	—	4	987
September	274	204	241	86	103	41	20	—	4	972
Open prison custody										
1999	144	33	92	..	73	8	..	342
2000	168	39	62	..	82	12	..	351
2001	196	49	48	..	79	12	..	371
2001										
September quarter	194	44	42	..	80	11	..	361
December quarter	210	49	44	..	78	12	..	380
2002										
March quarter	209	52	42	..	77	10	..	379
June quarter	232	51	43	..	77	8	..	403
September quarter	241	51	48	..	92	7	..	432
July	244	53	42	..	86	7	..	424
August	238	51	50	..	93	7	..	432
September	240	50	53	..	98	7	..	441
Total prison custody										
1999	421	179	309	74	215	17	25	8	3	1 242
2000	456	196	293	70	240	22	16	12	7	1 300
2001	495	238	289	83	219	20	18	13	4	1 365
2001										
September quarter	498	241	298	84	215	20	15	12	3	1 374
December quarter	501	249	299	85	201	22	21	12	4	1 380
2002										
March quarter	468	245	302	91	194	20	19	10	2	1 340
June quarter	503	252	303	86	197	32	18	8	2	1 393
September quarter	514	252	294	90	201	36	21	7	4	1 411
July	513	251	289	93	200	30	21	7	4	1 401
August	516	250	299	90	202	37	22	7	4	1 419
September	514	254	294	86	201	41	20	7	4	1 413

(a) Prior to the September quarter 2000, all full-time prisoners sentenced in the ACT were held in NSW prisons. Since the September quarter 2000, some ACT-sentenced fine default only prisoners have been held in the ACT. The ACT in NSW figures are a subset of the NSW figures—see Explanatory notes, paragraph 12.

(b) The figures are a single count taken on a specific day of the month and are not an average of the daily prisoner population for that month.

(c) Refers to unsentenced persons in ACT prison custody and, from the September quarter 2000, may include some sentenced fine default only prisoners.

2

PERSONS IN PRISON CUSTODY, By sex and type of prison custody *continued*

Prison custody and sex	NSW(a)	Vic.	Qld	SA	WA	Tas.	NT	ACT in		Aust. (a)
								NSW(a)(b)	ACT(c)	
AVERAGE DAILY NUMBER										
Persons										
Secure prison custody										
1999	4 021	2 611	4 060	1 174	1 901	252	501	39	36	14 555
2000	4 041	2 788	3 952	1 126	2 020	317	511	41	52	14 807
2001	4 209	2 998	3 931	1 239	2 013	293	546	44	62	15 291
2001										
September quarter	4 218	3 015	3 935	1 268	2 060	295	527	40	61	15 378
December quarter	4 182	3 061	4 091	1 253	1 963	315	549	45	73	15 486
2002										
March quarter	4 176	3 063	4 224	1 267	1 923	301	522	39	41	15 517
June quarter	4 215	3 132	4 325	1 297	1 982	327	529	41	58	15 864
September quarter	4 188	3 165	4 283	1 300	1 997	354	545	37	63	15 894
July	4 141	3 117	4 305	1 322	1 995	336	529	39	61	15 807
August	4 188	3 158	4 268	1 303	1 991	355	555	36	65	15 883
September	4 235	3 221	4 275	1 274	2 004	373	552	36	62	15 996
Open prison custody										
1999	3 097	333	1 035	188	1 003	91	113	90	..	5 861
2000	3 287	365	896	172	1 035	81	123	109	..	5 959
2001	3 447	382	753	152	1 065	73	141	102	..	6 014
2001										
September quarter	3 473	369	692	159	1 064	70	145	96	..	5 972
December quarter	3 510	381	643	165	982	76	148	101	..	5 905
2002										
March quarter	3 426	376	595	181	884	77	131	104	..	5 670
June quarter	3 468	387	582	184	828	87	132	93	..	5 669
September quarter	3 577	421	564	176	789	86	123	86	..	5 737
July	3 598	436	558	180	779	88	135	85	..	5 773
August	3 573	421	573	173	782	83	113	86	..	5 718
September	3 562	404	562	175	807	88	122	87	..	5 720
Total prison custody										
1999	7 117	2 945	5 095	1 363	2 903	343	615	129	36	20 416
2000	7 329	3 153	4 848	1 298	3 055	398	633	150	52	20 766
2001	7 656	3 381	4 685	1 391	3 078	367	687	145	62	21 306
2001										
September quarter	7 690	3 384	4 627	1 427	3 124	365	672	136	61	21 351
December quarter	7 692	3 442	4 733	1 418	2 945	391	698	146	73	21 391
2002										
March quarter	7 602	3 439	4 819	1 448	2 807	378	653	143	41	21 187
June quarter	7 682	3 519	4 907	1 481	2 810	414	661	134	58	21 533
September quarter	7 765	3 585	4 847	1 476	2 786	441	669	123	63	21 631
July	7 739	3 553	4 863	1 502	2 774	424	664	124	61	21 580
August	7 761	3 579	4 841	1 476	2 772	438	668	122	65	21 601
September	7 797	3 625	4 837	1 449	2 811	461	674	123	62	21 715

(a) Prior to the September quarter 2000, all full-time prisoners sentenced in the ACT were held in NSW prisons. Since the September quarter 2000, some ACT-sentenced fine default only prisoners have been held in the ACT. The ACT in NSW figures are a subset of the NSW figures—see Explanatory notes, paragraph 12.

(b) The figures are a single count taken on a specific day of the month and are not an average of the daily prisoner population for that month.

(c) Refers to unsentenced persons in ACT prison custody and, from the September quarter 2000, may include some sentenced fine default only prisoners.

Prison custody and sex	NSW(a)	Vic.	Qld	SA	WA	Tas.	NT	ACT in		Aust.(a)
								NSW(a)(b)	ACT(c)	
RATE PER 100,000 ADULT POPULATION										
Males										
Secure prison custody										
1999	158.4	139.3	293.3	198.2	256.5	135.6	659.6	33.5	28.1	193.8
2000	156.7	146.4	278.8	189.0	267.0	170.4	678.6	35.6	39.1	194.0
2001	161.1	153.7	271.2	205.6	264.0	159.0	724.9	37.0	49.7	197.2
2001										
September quarter	161.0	153.8	269.8	210.4	270.5	161.1	701.5	34.0	50.3	197.8
December quarter	159.4	155.5	279.9	207.2	257.6	172.0	722.6	38.1	59.1	198.7
2002										
March quarter	159.9	155.3	288.0	208.4	251.6	164.4	685.6	33.0	33.2	198.9
June quarter	160.1	160.5	296.6	212.5	262.3	171.5	696.6	34.3	47.2	203.6
September quarter	158.4	161.5	293.0	212.0	264.6	185.2	716.9	31.0	49.5	203.4
July	156.7	159.0	294.5	215.3	263.5	178.2	694.6	32.8	48.4	202.3
August	158.3	161.2	291.7	212.5	263.8	184.6	728.9	30.1	51.5	203.1
September	160.3	164.3	292.8	208.1	266.5	193.0	727.6	30.0	48.4	204.9
Open prison custody										
1999	124.9	17.0	72.0	33.9	135.7	52.8	157.3	70.3	..	78.3
2000	130.2	18.1	62.5	30.8	136.7	46.8	168.5	84.4	..	78.5
2001	133.9	18.3	51.9	27.1	138.9	42.6	193.9	76.9	..	77.9
2001										
September quarter	134.8	17.7	47.7	28.3	138.2	40.9	199.4	72.6	..	77.3
December quarter	135.2	18.1	43.7	29.3	126.5	44.6	203.0	76.6	..	75.8
2002										
March quarter	131.3	17.6	40.2	32.0	112.5	45.2	177.9	80.9	..	72.3
June quarter	131.3	18.4	39.3	32.4	105.7	50.6	180.8	72.0	..	72.1
September quarter	135.0	20.1	37.5	30.8	97.7	50.1	168.3	66.4	..	72.3
July	135.7	20.9	37.5	31.5	97.2	50.8	183.8	65.6	..	72.9
August	134.9	20.2	38.0	30.3	96.6	48.5	154.8	66.4	..	72.1
September	134.4	19.3	36.9	30.7	99.4	51.1	166.3	67.3	..	72.0
Total prison custody										
1999	283.2	156.3	365.2	232.1	392.2	188.4	816.9	103.8	28.1	272.1
2000	286.9	164.5	341.2	219.9	403.7	217.1	847.1	120.1	39.1	272.5
2001	295.0	171.9	323.1	232.7	402.9	201.5	918.9	113.9	49.7	275.1
2001										
September quarter	295.8	171.5	317.5	238.8	408.7	201.9	901.0	106.7	50.3	275.1
December quarter	294.7	173.5	323.6	236.5	384.0	216.6	925.6	114.7	59.1	274.5
2002										
March quarter	291.2	172.9	328.2	240.5	364.0	209.6	863.5	113.9	33.2	271.2
June quarter	291.4	178.9	335.9	244.9	368.0	222.0	877.5	106.4	47.2	275.7
September quarter	293.5	181.6	330.5	242.8	362.3	235.3	885.3	97.4	49.5	275.7
July	292.5	179.9	332.0	246.8	360.7	229.0	878.4	98.4	48.4	275.2
August	293.3	181.3	329.7	242.8	360.3	233.0	883.8	96.6	51.5	275.2
September	294.8	183.6	329.7	238.7	365.9	244.1	893.9	97.2	48.4	276.9

(a) Prior to the September quarter 2000, all full-time prisoners sentenced in the ACT were held in NSW prisons. Since the September quarter 2000, some ACT-sentenced fine default only prisoners have been held in the ACT. The ACT in NSW figures are a subset of the NSW figures—see Explanatory notes, paragraph 12.

(b) The figures are a single count taken on a specific day of the month and are not an average of the daily prisoner population for that month.

(c) Refers to unsentenced persons in ACT prison custody and, from the September quarter 2000, may include some sentenced fine default only prisoners.

2

PERSONS IN PRISON CUSTODY, By sex and type of prison custody *continued*

Prison custody and sex	NSW(a)	Vic.	Qld	SA	WA	Tas.	NT	ACT in		Aust.(a)
								NSW(a)(b)	ACT(c)	
RATE PER 100,000 ADULT POPULATION										
Females										
Secure prison custody										
1999	11.3	7.9	16.3	12.8	20.7	9.2	39.7	—	2.7	12.4
2000	11.6	8.4	17.1	12.1	22.7	11.9	25.9	0.2	5.9	12.9
2001	11.9	10.0	17.4	14.1	19.6	10.7	28.4	0.6	3.3	13.4
2001										
September quarter	12.1	10.3	18.4	14.3	19.0	11.2	23.7	0.3	2.1	13.6
December quarter	11.6	10.5	18.3	14.4	17.2	12.0	32.0	0.1	3.0	13.4
2002										
March quarter	10.3	10.1	18.6	15.4	16.3	11.1	29.3	—	1.5	12.8
June quarter	10.6	10.4	18.3	14.5	16.5	17.8	27.7	—	1.7	13.0
September quarter	10.7	10.3	17.2	15.0	15.1	19.5	31.1	—	3.2	12.8
July	10.5	10.2	17.3	15.6	15.9	16.3	31.6	—	3.0	12.8
August	10.8	10.3	17.5	15.1	15.1	20.1	32.4	—	3.4	12.9
September	10.7	10.5	16.9	14.4	14.2	22.3	29.3	—	3.3	12.7
Open prison custody										
1999	5.9	1.8	6.9	..	10.6	6.8	..	4.7
2000	6.8	2.1	4.6	..	11.7	10.1	..	4.8
2001	7.9	2.5	3.4	..	11.1	10.5	..	5.0
2001										
September quarter	7.8	2.3	3.0	..	11.3	9.5	..	4.8
December quarter	8.4	2.5	3.1	..	10.9	9.8	..	5.1
2002										
March quarter	8.3	2.7	3.0	..	10.7	8.1	..	5.1
June quarter	9.1	2.6	3.0	..	10.7	6.4	..	5.3
September quarter	9.4	2.6	3.4	..	12.7	5.6	..	5.7
July	9.5	2.7	2.9	..	11.8	5.6	..	5.6
August	9.3	2.6	3.5	..	12.8	5.6	..	5.7
September	9.4	2.6	3.7	..	13.5	5.6	..	5.8
Total prison custody										
1999	17.2	9.7	23.2	12.8	31.3	9.2	39.7	6.8	2.7	17.1
2000	18.5	10.5	21.6	12.1	34.5	11.9	25.9	10.3	5.9	17.7
2001	19.8	12.5	20.9	14.1	30.8	10.7	28.4	11.1	3.3	18.3
2001										
September quarter	19.9	12.6	21.5	14.3	30.3	11.2	23.7	9.8	2.1	18.4
December quarter	19.9	13.0	21.5	14.4	28.1	12.0	32.0	9.9	3.0	18.4
2002										
March quarter	18.6	12.8	21.6	15.4	27.0	11.1	29.3	8.1	1.5	17.9
June quarter	19.7	13.0	21.4	14.5	27.2	17.8	27.7	6.4	1.7	18.3
September quarter	20.0	13.0	20.6	15.0	27.8	19.5	31.1	5.6	3.2	18.5
July	20.0	12.9	20.3	15.6	27.7	16.3	31.6	5.6	3.0	18.4
August	20.1	12.9	21.0	15.1	27.9	20.1	32.4	5.6	3.4	18.6
September	20.0	13.1	20.6	14.4	27.8	22.3	29.3	5.6	3.3	18.5

(a) Prior to the September quarter 2000, all full-time prisoners sentenced in the ACT were held in NSW prisons. Since the September quarter 2000, some ACT-sentenced fine default only prisoners have been held in the ACT. The ACT in NSW figures are a subset of the NSW figures—see Explanatory notes, paragraph 12.

(b) The figures are a single count taken on a specific day of the month and are not an average of the daily prisoner population for that month.

(c) Refers to unsentenced persons in ACT prison custody and, from the September quarter 2000, may include some sentenced fine default only prisoners.

2

PERSONS IN PRISON CUSTODY, By sex and type of prison custody *continued*

Prison custody and sex	NSW(a)	Vic.	Qld	SA	WA	Tas.	NT	ACT in		Aust.(a)
								NSW(a)(b)	ACT(c)	
RATE PER 100,000 ADULT POPULATION										
Persons										
Secure prison custody										
1999	83.6	72.2	153.8	103.4	138.5	70.7	370.1	16.6	15.3	101.8
2000	83.1	75.9	147.0	98.6	144.8	88.9	374.5	17.7	22.3	102.2
2001	85.5	80.4	143.3	107.7	141.8	82.7	399.5	18.6	26.3	104.1
2001										
September quarter	85.5	80.7	143.1	110.2	144.8	83.9	384.8	17.0	26.0	104.5
December quarter	84.5	81.6	148.0	108.7	137.4	89.6	399.6	18.9	30.8	104.8
2002										
March quarter	84.1	81.3	152.1	109.8	133.9	85.4	378.7	16.3	17.2	104.7
June quarter	83.9	83.3	155.1	111.3	138.5	92.5	378.3	16.7	23.9	106.5
September quarter	83.2	83.8	152.8	111.4	138.9	100.1	390.5	15.1	25.8	106.3
July	82.2	82.5	153.6	113.2	138.8	95.0	379.1	16.0	25.2	105.7
August	83.2	83.6	152.3	111.6	138.5	100.1	397.4	14.7	26.9	106.2
September	84.1	85.3	152.5	109.1	139.4	105.3	395.3	14.6	25.3	106.9
Open prison custody										
1999	64.4	9.2	39.2	16.6	73.1	25.7	83.8	38.2	..	41.0
2000	67.6	9.9	33.3	15.1	74.2	22.8	90.0	46.8	..	41.1
2001	70.0	10.2	27.5	13.3	75.0	20.7	103.3	43.3	..	40.9
2001										
September quarter	70.4	9.9	25.2	13.8	74.7	19.8	106.2	40.7	..	40.6
December quarter	70.9	10.2	23.2	14.4	68.7	21.6	108.0	42.8	..	40.0
2002										
March quarter	69.0	10.0	21.4	15.7	61.6	21.9	94.7	44.1	..	38.2
June quarter	69.1	10.3	20.9	15.8	57.8	24.6	94.8	38.4	..	38.0
September quarter	71.0	11.1	20.1	15.1	54.9	24.4	88.2	35.3	..	38.4
July	71.4	11.5	19.9	15.4	54.2	24.7	96.3	34.9	..	38.6
August	71.0	11.1	20.4	14.8	54.4	23.6	81.1	35.3	..	38.2
September	70.7	10.7	20.0	15.0	56.1	24.9	87.2	35.7	..	38.2
Total prison custody										
1999	148.1	81.4	193.0	120.0	211.6	96.4	453.9	54.7	15.3	142.8
2000	150.6	85.9	180.3	113.7	219.0	111.7	464.6	64.5	22.3	143.3
2001	155.5	90.7	170.8	121.1	216.8	103.3	502.7	62.0	26.3	145.0
2001										
September quarter	155.9	90.5	168.3	124.1	219.5	103.7	491.0	57.7	26.0	145.1
December quarter	155.4	91.8	171.3	123.1	206.1	111.2	507.6	61.7	30.8	144.8
2002										
March quarter	153.1	91.3	173.5	125.5	195.5	107.3	473.4	60.4	17.2	142.9
June quarter	153.0	93.7	176.0	127.1	196.3	117.1	473.1	55.1	23.9	144.5
September quarter	154.2	94.9	172.9	126.4	193.8	124.4	478.8	50.4	25.8	144.6
July	153.7	94.1	173.5	128.7	192.9	119.7	475.4	50.8	25.2	144.3
August	154.1	94.8	172.7	126.4	192.8	123.6	478.6	50.0	26.9	144.4
September	154.8	96.0	172.6	124.1	195.5	130.1	482.4	50.3	25.3	145.2

(a) Prior to the September quarter 2000, all full-time prisoners sentenced in the ACT were held in NSW prisons. Since the September quarter 2000, some ACT-sentenced fine default only prisoners have been held in the ACT. The ACT in NSW figures are a subset of the NSW figures—see Explanatory notes, paragraph 12.

(b) The figures are a single count taken on a specific day of the month and are not an average of the daily prisoner population for that month.

(c) Refers to unsentenced persons in ACT prison custody and, from the September quarter 2000, may include some sentenced fine default only prisoners.

3

PERSONS IN PRISON CUSTODY, By legal status and sentence type

Legal status and sentence type	NSW(a)	Vic.	Qld	SA	WA	Tas.	NT	ACT in NSW(a)	ACT(b)	Aust.(a)
NUMBER ON FIRST DAY OF MONTH										
Unsentenced										
1999(c)	1 321	451	616	277	377	56	91	3	41	3 231
2000(c)	1 495	459	702	364	451	73	160	3	54	3 755
2001(c)	1 650	512	913	476	494	61	139	3	65	4 309
2001										
September quarter(c)	1 643	514	932	496	511	61	130	2	61	4 348
December quarter(c)	1 623	542	939	462	469	62	136	1	76	4 309
2002										
March quarter(c)	1 686	630	950	460	491	66	111	—	46	4 441
June quarter(c)	1 641	615	964	523	517	90	111	—	49	4 509
September quarter(c)	1 621	607	981	488	465	76	101	2	46	4 386
July	1 555	585	978	512	497	69	99	—	51	4 346
August	1 684	630	982	498	440	79	96	1	38	4 447
September	1 623	607	983	455	459	81	107	4	50	4 365
Sentenced										
Fine default only										
1999(c)	1	5	234	43	71	21	20	2	..	395
2000(c)	3	3	193	3	55	13	14	—	1	285
2001(c)	2	—	4	2	49	24	20	—	1	104
2001										
September quarter(c)	3	—	—	1	56	33	18	1	1	112
December quarter(c)	1	—	1	1	48	17	26	—	2	97
2002										
March quarter(c)	1	1	1	1	41	11	11	—	1	67
June quarter(c)	6	1	2	—	31	10	1	—	1	52
September quarter(c)	—	1	4	1	41	24	—	—	3	75
July	—	—	3	2	32	21	—	—	1	59
August	—	2	2	—	47	26	1	—	7	85
September	1	1	7	—	45	26	—	1	2	82
Other sentenced										
1999(c)	5 796	2 482	4 213	1 043	2 438	257	497	125	..	16 725
2000(c)	5 842	2 680	3 910	941	2 529	258	459	147	..	16 619
2001(c)	6 030	2 864	3 741	921	2 546	241	529	142	..	16 872
2001										
September quarter(c)	6 073	2 869	3 700	935	2 568	232	530	134	..	16 907
December quarter(c)	6 143	2 891	3 739	972	2 470	263	539	142	..	17 017
2002										
March quarter(c)	5 915	2 808	3 821	989	2 265	252	537	143	..	16 588
June quarter(c)	6 078	2 883	3 911	961	2 272	312	555	133	..	16 972
September quarter(c)	6 152	2 955	3 850	990	2 280	287	569	121	..	17 083
July	6 205	2 954	3 868	970	2 271	288	565	124	..	17 121
August	6 102	2 949	3 835	1 008	2 263	281	564	121	..	17 002
September	6 149	2 961	3 847	993	2 307	293	577	118	..	17 127

(a) Prior to the September quarter 2000, all full-time prisoners sentenced in the ACT were held in NSW prisons. Since the September quarter 2000, some ACT-sentenced fine default only prisoners have been held in the ACT. The ACT in NSW figures are a subset of the NSW figures—see Explanatory notes, paragraph 12.

(b) Refers to unsentenced persons in ACT prison custody and, from the September quarter 2000, may include some sentenced fine default only prisoners.

(c) Figures for the quarter and year for first day of month counts are calculated as a simple average—see Explanatory notes, paragraph 5.

3

PERSONS IN PRISON CUSTODY, By legal status and sentence type *continued*

Legal status and sentence type	NSW(a)	Vic.	Qld	SA	WA	Tas.	NT	ACT in NSW(a)	ACT(b)	Aust.(a)
NUMBER ON FIRST DAY OF MONTH										
Total sentenced										
1999(c)	5 797	2 487	4 447	1 086	2 509	278	517	127	..	17 120
2000(c)	5 845	2 683	4 103	944	2 584	271	473	147	1	16 904
2001(c)	6 033	2 864	3 746	922	2 595	265	549	142	1	16 975
2001										
September quarter(c)	6 076	2 869	3 700	936	2 624	264	548	135	1	17 018
December quarter(c)	6 145	2 891	3 740	974	2 518	280	564	142	2	17 115
2002										
March quarter(c)	5 916	2 809	3 823	990	2 306	263	547	143	1	16 655
June quarter(c)	6 084	2 883	3 913	962	2 303	322	556	133	1	17 024
September quarter(c)	6 152	2 956	3 854	991	2 322	312	569	121	3	17 159
July	6 205	2 954	3 871	972	2 303	309	565	124	1	17 180
August	6 102	2 951	3 837	1 008	2 310	307	565	121	7	17 087
September	6 150	2 962	3 854	993	2 352	319	577	119	2	17 209
Total										
1999(c)	7 118	2 939	5 063	1 363	2 886	334	608	129	41	20 351
2000(c)	7 340	3 141	4 804	1 307	3 035	344	633	150	55	20 659
2001(c)	7 683	3 377	4 658	1 398	3 089	326	688	145	66	21 284
2001										
September quarter(c)	7 719	3 383	4 632	1 433	3 135	325	678	137	62	21 366
December quarter(c)	7 768	3 433	4 680	1 436	2 987	342	700	143	78	21 424
2002										
March quarter(c)	7 602	3 439	4 773	1 450	2 797	329	658	143	48	21 096
June quarter(c)	7 725	3 498	4 877	1 485	2 820	412	667	133	50	21 533
September quarter(c)	7 773	3 563	4 835	1 479	2 787	388	670	123	50	21 545
July	7 760	3 539	4 849	1 484	2 800	378	664	124	52	21 526
August	7 786	3 581	4 819	1 506	2 750	386	661	122	45	21 534
September	7 773	3 569	4 837	1 448	2 811	400	684	123	52	21 574

- (a) Prior to the September quarter 2000, all full-time prisoners sentenced in the ACT were held in NSW prisons. Since the September quarter 2000, some ACT-sentenced fine default only prisoners have been held in the ACT. The ACT in NSW figures are a subset of the NSW figures—see Explanatory notes, paragraph 12.
- (b) Refers to unsentenced persons in ACT prison custody and, from the September quarter 2000, may include some sentenced fine default only prisoners.
- (c) Figures for the quarter and year for first day of month counts are calculated as a simple average—see Explanatory notes, paragraph 5.

3

PERSONS IN PRISON CUSTODY, By legal status and sentence type *continued*

Legal status and sentence type	NSW(a)	Vic.	Qld	SA	WA	Tas.	NT	ACT in NSW(a)	ACT(b)	Aust.(a)
RATE PER 100,000 ADULT POPULATION										
Unsentenced										
1999(c)	27.5	12.5	23.4	24.4	27.5	15.8	67.4	0.4	17.5	22.6
2000(c)	30.7	12.5	26.1	31.8	32.3	20.4	117.0	1.5	23.0	25.9
2001(c)	33.5	13.8	33.3	41.4	34.8	17.2	101.4	1.5	27.4	29.3
2001										
September quarter(c)	33.3	13.8	33.9	43.2	35.9	17.3	94.7	0.7	25.9	29.5
December quarter(c)	32.8	14.4	34.0	40.1	32.8	17.7	98.7	0.6	32.1	29.2
2002										
March quarter(c)	34.0	16.7	34.2	39.9	34.2	18.7	80.5	—	19.6	30.0
June quarter(c)	32.7	16.4	34.6	44.9	36.1	25.3	79.4	—	20.2	30.3
September quarter(c)	32.2	16.1	35.0	41.8	32.4	21.5	72.1	0.7	19.0	29.3
July	30.9	15.5	34.9	43.9	34.6	19.5	70.9	—	20.9	29.1
August	33.4	16.7	35.0	42.7	30.6	22.3	68.7	0.4	15.6	29.7
September	32.2	16.1	35.1	39.0	31.9	22.9	76.6	1.6	20.5	29.2
Sentenced										
Fine default only										
1999(c)	—	0.1	8.8	3.8	5.2	6.0	14.8	0.7	..	2.8
2000(c)	0.1	—	7.2	0.2	3.9	3.7	10.5	—	0.5	2.0
2001(c)	0.1	—	0.2	0.1	3.5	6.8	14.9	0.1	0.5	0.7
2001										
September quarter(c)	0.1	—	—	0.1	4.0	9.3	13.1	0.3	0.3	0.8
December quarter(c)	—	—	—	0.1	3.4	4.7	18.7	—	1.0	0.7
2002										
March quarter(c)	—	—	—	0.1	2.9	3.1	7.7	—	0.6	0.5
June quarter(c)	0.1	—	0.1	—	2.1	2.8	1.0	—	0.3	0.3
September quarter(c)	—	—	0.1	0.1	2.9	6.9	0.2	0.1	1.4	0.5
July	—	—	0.1	0.2	2.2	5.9	—	—	0.4	0.4
August	—	0.1	0.1	—	3.3	7.3	0.7	—	2.9	0.6
September	—	—	0.2	—	3.1	7.3	—	0.4	0.8	0.5
Other sentenced										
1999(c)	120.6	68.6	159.6	91.8	177.7	72.2	366.9	53.2	..	117.0
2000(c)	120.1	73.0	145.4	82.4	181.3	72.2	336.5	63.1	..	114.7
2001(c)	122.4	76.8	136.4	80.1	179.4	67.9	386.6	60.3	..	114.9
2001										
September quarter(c)	123.1	76.7	134.5	81.3	180.4	65.9	387.4	57.0	..	114.9
December quarter(c)	124.1	77.1	135.3	84.4	172.9	74.8	391.9	60.1	..	115.2
2002										
March quarter(c)	119.1	74.6	137.6	85.7	157.8	71.6	389.3	60.4	..	111.9
June quarter(c)	121.0	76.7	140.3	82.5	158.7	88.2	396.9	54.9	..	113.9
September quarter(c)	122.2	78.2	137.3	84.8	158.6	81.1	407.2	49.6	..	114.2
July	123.2	78.2	138.0	83.1	158.0	81.3	404.6	50.8	..	114.5
August	121.2	78.1	136.8	86.3	157.4	79.3	403.9	49.6	..	113.7
September	122.1	78.4	137.2	85.1	160.5	82.7	413.2	48.4	..	114.5

(a) Prior to the September quarter 2000, all full-time prisoners sentenced in the ACT were held in NSW prisons. Since the September quarter 2000, some ACT-sentenced fine default only prisoners have been held in the ACT. The ACT in NSW figures are a subset of the NSW figures—see Explanatory notes, paragraph 12.

(b) Refers to unsentenced persons in ACT prison custody and, from the September quarter 2000, may include some sentenced fine default only prisoners.

(c) Figures for the quarter and year for first day of month counts are calculated as a simple average—see Explanatory notes, paragraph 5.

3

PERSONS IN PRISON CUSTODY, By legal status and sentence type *continued*

Legal status and sentence type	NSW(a)	Vic.	Qld	SA	WA	Tas.	NT	ACT in NSW(a)	ACT(b)	Aust.(a)
RATE PER 100,000 ADULT POPULATION										
Total sentenced										
1999(c)	120.6	68.7	168.4	95.6	182.9	78.2	381.6	54.0	..	119.7
2000(c)	120.2	73.1	152.6	82.6	185.2	76.0	347.1	63.1	0.5	116.7
2001(c)	122.5	76.8	136.5	80.3	182.9	74.7	401.5	60.4	0.5	115.6
2001										
September quarter(c)	123.2	76.7	134.5	81.4	184.4	75.2	400.6	57.3	0.3	115.6
December quarter(c)	124.1	77.1	135.3	84.5	176.2	79.5	410.6	60.1	1.0	115.9
2002										
March quarter(c)	119.1	74.6	137.7	85.8	160.6	74.8	397.1	60.4	0.6	112.3
June quarter(c)	121.2	76.7	140.4	82.6	160.9	91.0	397.8	54.9	0.3	114.3
September quarter(c)	122.2	78.3	137.5	84.9	161.5	88.0	407.4	49.8	1.4	114.7
July	123.2	78.2	138.1	83.3	160.2	87.2	404.6	50.8	0.4	114.9
August	121.2	78.1	136.9	86.3	160.7	86.7	404.6	49.6	2.9	114.2
September	122.1	78.4	137.5	85.1	163.6	90.1	413.2	48.8	0.8	115.0
Total										
1999(c)	148.1	81.2	191.8	120.1	210.4	94.0	449.1	55.1	17.5	142.4
2000(c)	150.9	85.6	178.7	114.5	217.6	96.4	464.1	64.6	23.5	142.6
2001(c)	156.0	90.5	169.8	121.7	217.6	92.0	502.9	61.8	27.9	144.9
2001										
September quarter(c)	156.5	90.5	168.4	124.6	220.3	92.5	495.3	58.0	26.2	145.2
December quarter(c)	156.9	91.5	169.3	124.7	209.0	97.3	509.3	60.6	33.1	145.0
2002										
March quarter(c)	153.1	91.3	171.9	125.7	194.8	93.5	477.6	60.4	20.1	142.3
June quarter(c)	153.8	93.1	175.0	127.5	197.0	116.4	477.3	54.9	20.4	144.5
September quarter(c)	154.4	94.3	172.5	126.7	193.8	109.5	479.5	50.4	20.4	144.0
July	154.1	93.7	173.0	127.1	194.8	106.7	475.5	50.8	21.3	143.9
August	154.6	94.8	171.9	129.0	191.3	109.0	473.3	50.0	18.5	144.0
September	154.4	94.5	172.6	124.0	195.5	112.9	489.8	50.4	21.3	144.2

(a) Prior to the September quarter 2000, all full-time prisoners sentenced in the ACT were held in NSW prisons. Since the September quarter 2000, some ACT-sentenced fine default only prisoners have been held in the ACT. The ACT in NSW figures are a subset of the NSW figures—see Explanatory notes, paragraph 12.

(b) Refers to unsentenced persons in ACT prison custody and, from the September quarter 2000, may include some sentenced fine default only prisoners.

(c) Figures for the quarter and year for first day of month counts are calculated as a simple average—see Explanatory notes, paragraph 5.

4

SENTENCED RECEPTIONS INTO PRISON CUSTODY, By type of sentence

Sentence type	NSW(a)	Vic.(b)	Qld	SA	WA	Tas.	NT	ACT in NSW(a)	ACT	Aust.(a)
NUMBER										
Fine default only										
1999	44	47	4 696	1 712	644	267	939	3	..	8 349
2000	75	29	3 290	130	537	162	378	—	41	4 642
2001	79	8	69	50	757	333	358	—	72	1 726
2001										
September quarter	20	—	13	11	258	100	83	1	21	506
December quarter	23	4	9	14	176	50	98	1	22	396
2002										
March quarter	16	1	12	5	131	33	—	1	21	219
June quarter	7	—	8	9	99	63	2	1	15	203
September quarter	7	1	7	2	199	76	2	1	46	340
July	1	1	3	—	60	23	1	—	18	107
August	2	—	3	2	61	26	—	—	14	108
September	4	—	1	—	78	27	1	1	14	125
Other sentenced										
1999	8 293	3 959	10 854	1 537	3 373	610	896	115	..	29 522
2000	7 917	4 012	8 872	1 156	3 552	588	768	—	..	26 865
2001	7 895	3 856	6 590	1 261	3 253	475	709	144	..	24 039
2001										
September quarter	2 011	995	1 671	348	833	118	146	37	..	6 122
December quarter	1 827	941	1 798	314	677	139	170	32	..	5 866
2002										
March quarter	1 957	925	1 891	287	720	111	162	20	..	6 053
June quarter	2 080	1 061	1 888	238	717	148	169	28	..	6 301
September quarter	1 627	1 075	2 049	257	759	181	199	22	..	6 147
July	549	334	603	53	245	46	60	7	..	1 890
August	541	304	726	122	282	79	63	10	..	2 117
September	537	437	720	82	232	56	76	5	..	2 140
Total sentenced										
1999	8 337	4 006	15 550	3 249	4 017	877	1 835	118	..	37 871
2000	7 992	4 041	12 162	1 286	4 089	750	1 146	—	41	31 507
2001	7 974	3 864	6 659	1 311	4 010	808	1 067	146	72	25 765
2001										
September quarter	2 031	995	1 684	359	1 091	218	229	38	21	6 628
December quarter	1 850	945	1 807	328	853	189	268	33	22	6 262
2002										
March quarter	1 973	926	1 903	292	851	144	162	21	21	6 272
June quarter	2 087	1 061	1 896	247	816	211	171	29	15	6 504
September quarter	1 634	1 076	2 056	259	958	257	201	23	46	6 487
July	550	335	606	53	305	69	61	7	18	1 997
August	543	304	729	124	343	105	63	10	14	2 225
September	541	437	721	82	310	83	77	6	14	2 265

(a) Prior to the September quarter 2000, all full-time prisoners sentenced in the ACT were held in NSW prisons. Since the September quarter 2000, some ACT-sentenced fine default only prisoners have been held in the ACT. The ACT in NSW figures are a subset of the NSW figures—see Explanatory notes, paragraph 12.

(b) Victorian figures do not include prisoners whose status changed from unsentenced to sentenced during the period.

5

INDIGENOUS PERSONS IN PRISON CUSTODY, By sex(a)(b)(c)

Sex	NSW(d)(e)	Vic.	Qld	SA	WA	Tas.	NT	ACT in NSW(d)(e)	ACT(f)	Aust.(d)(e)
NUMBER ON FIRST DAY OF MONTH										
Males										
1999(g)	n.a.	115	1 044	191	883	36	430	n.a.	6	n.a.
2000(g)	1 032	124	999	185	881	42	386	7	6	3 656
2001(g)	1 077	132	1 005	212	923	41	416	8	9	3 814
2001										
September quarter(g)	1 085	129	1 043	210	950	42	413	6	10	3 882
December quarter(g)	1 122	128	1 064	214	864	45	408	9	10	3 855
2002										
March quarter(g)	1 119	136	1 078	226	803	54	392	11	3	3 811
June quarter(g)	1 203	149	1 096	212	808	55	429	11	6	3 958
September quarter(g)	1 254	148	1 082	225	800	49	452	10	6	4 017
July	1 241	146	1 082	221	802	42	443	10	6	3 983
August	1 260	151	1 085	232	778	54	448	9	5	4 013
September	1 261	147	1 080	223	821	52	465	11	7	4 056
Females										
1999(g)	n.a.	8	71	14	94	2	17	n.a.	1	n.a.
2000(g)	111	11	76	13	95	1	11	3	1	319
2001(g)	134	14	79	17	96	2	11	3	1	354
2001										
September quarter(g)	126	15	80	17	97	3	9	2	—	347
December quarter(g)	142	15	82	18	88	3	11	2	—	360
2002										
March quarter(g)	127	19	86	22	73	2	12	2	1	341
June quarter(g)	136	16	86	20	77	5	12	3	—	352
September quarter(g)	147	15	88	23	69	7	11	2	1	362
July	149	15	84	21	70	8	10	2	1	358
August	145	14	87	24	71	4	13	2	2	360
September	148	16	93	24	66	9	11	2	—	367
Persons										
1999(g)	n.a.	122	1 116	205	977	37	447	n.a.	7	n.a.
2000(g)	1 143	134	1 075	199	977	43	398	10	6	3 974
2001(g)	1 211	146	1 083	230	1 019	43	427	11	10	4 168
2001										
September quarter(g)	1 211	143	1 123	227	1 047	44	422	9	10	4 228
December quarter(g)	1 264	143	1 147	232	952	48	419	12	10	4 215
2002										
March quarter(g)	1 245	155	1 165	248	876	56	404	13	4	4 152
June quarter(g)	1 339	165	1 181	232	885	60	442	14	6	4 310
September quarter(g)	1 401	163	1 170	248	869	56	463	12	7	4 379
July	1 390	161	1 166	242	872	50	453	12	7	4 341
August	1 405	165	1 172	256	849	58	461	11	7	4 373
September	1 409	163	1 173	247	887	61	476	13	7	4 423

(a) Some rates and ratios in this table have not been published—see Explanatory notes, paragraph 21.

(b) Persons in custody are asked their Indigenous status during reception into custody—see Explanatory notes, paragraphs 10–11.

(c) See Appendix—Interpretation of Indigenous Statistics.

(d) Numbers of Indigenous persons for NSW prior to September 1999 are unavailable—see Explanatory notes, paragraph 9.

(e) Prior to the September quarter 2000, all full-time prisoners sentenced in the ACT were held in NSW prisons. Since the September quarter 2000, some ACT-sentenced fine default only prisoners have been held in the ACT. The ACT in NSW figures are a subset of the NSW figures—see Explanatory notes, paragraph 12.

(f) Refers to unsentenced persons in ACT prison custody and, from the September quarter 2000, may include some sentenced fine default only prisoners.

(g) Figures for the quarter and year for first day of the month counts are calculated as a simple average—see Explanatory notes, paragraph 5.

Sex	NSW(d)(e)	Vic.	Qld	SA	WA	Tas.	NT	ACT in NSW(d)(e)	ACT(f)	Aust.(d)(e)
RATE PER 100,000 ADULT INDIGENOUS POPULATION										
Males										
1999(g)	n.a.	1 727.9	3 504.6	3 178.8	5 662.1	n.p.	2 772.1	n.a.	n.p.	n.a.
2000(g)	3 390.3	1 814.2	3 228.3	3 024.9	5 489.3	n.p.	2 461.2	n.p.	n.p.	3 278.1
2001(g)	3 447.4	1 889.9	3 154.6	3 395.5	5 611.2	n.p.	2 581.9	n.p.	n.p.	3 335.6
2001										
September quarter(g)	3 471.7	1 846.8	3 274.5	3 364.8	5 778.9	n.p.	2 511.8	n.p.	n.p.	3 388.4
December quarter(g)	3 589.0	1 832.4	3 342.5	3 423.5	5 255.9	n.p.	2 483.4	n.p.	n.p.	3 365.1
2002										
March quarter(g)	3 489.5	1 905.0	3 297.7	3 546.2	4 767.6	n.p.	2 416.2	n.p.	n.p.	3 261.4
June quarter(g)	3 752.6	2 082.5	3 350.7	3 331.8	4 799.2	n.p.	2 648.6	n.p.	n.p.	3 387.8
September quarter(g)	3 911.7	2 073.1	3 309.9	3 535.7	4 751.7	n.p.	2 788.4	n.p.	n.p.	3 438.3
July	3 871.1	2 045.1	3 308.9	3 467.8	4 761.6	n.p.	2 732.9	n.p.	n.p.	3 408.9
August	3 930.4	2 115.1	3 318.0	3 640.4	4 619.1	n.p.	2 763.7	n.p.	n.p.	3 434.6
September	3 933.5	2 059.1	3 302.8	3 499.1	4 874.4	n.p.	2 868.6	n.p.	n.p.	3 471.4
Females										
1999(g)	n.a.	n.p.	218.8	211.3	566.2	n.p.	100.4	n.a.	n.p.	n.a.
2000(g)	332.5	148.6	225.5	193.4	557.8	n.p.	68.8	n.p.	n.p.	264.7
2001(g)	393.9	195.0	226.8	244.6	548.5	n.p.	65.8	n.p.	n.p.	287.4
2001										
September quarter(g)	370.6	204.3	232.1	238.7	552.8	n.p.	52.4	n.p.	n.p.	280.7
December quarter(g)	418.7	208.9	237.8	257.5	501.5	n.p.	65.9	n.p.	n.p.	291.8
2002										
March quarter(g)	364.0	256.4	242.9	295.5	408.2	n.p.	70.8	n.p.	n.p.	270.9
June quarter(g)	390.8	219.8	241.0	268.3	428.6	n.p.	72.8	n.p.	n.p.	279.6
September quarter(g)	423.4	206.0	247.6	313.7	384.1	n.p.	66.9	n.p.	n.p.	287.3
July	428.2	206.0	236.3	286.5	389.6	n.p.	59.0	n.p.	n.p.	284.4
August	416.7	192.3	244.8	327.4	395.2	n.p.	76.7	n.p.	n.p.	286.0
September	425.3	219.8	261.6	327.4	367.4	n.p.	64.9	n.p.	n.p.	291.5
Persons										
1999(g)	n.a.	900.7	1 791.2	1 613.2	3 030.2	412.8	1 402.7	n.a.	n.p.	n.a.
2000(g)	1 794.3	966.9	1 663.6	1 521.4	2 945.2	464.0	1 234.7	n.p.	n.p.	1 713.7
2001(g)	1 856.4	1 029.7	1 629.6	1 717.6	2 997.8	460.8	1 294.2	n.p.	n.p.	1 754.0
2001										
September quarter(g)	1 855.9	1 013.2	1 689.8	1 700.1	3 081.1	482.1	1 254.4	n.p.	n.p.	1 776.1
December quarter(g)	1 937.1	1 008.5	1 725.4	1 737.5	2 801.6	522.0	1 247.5	n.p.	n.p.	1 770.7
2002										
March quarter(g)	1 862.7	1 072.7	1 706.6	1 807.3	2 517.5	590.4	1 217.5	n.p.	n.p.	1 710.4
June quarter(g)	2 002.8	1 142.0	1 731.0	1 692.9	2 543.4	636.4	1 332.1	n.p.	n.p.	1 775.7
September quarter(g)	2 096.0	1 130.5	1 714.9	1 812.1	2 497.4	597.5	1 397.4	n.p.	n.p.	1 804.0
July	2 079.0	1 116.6	1 708.6	1 765.9	2 505.1	530.3	1 366.3	n.p.	n.p.	1 788.4
August	2 101.5	1 144.3	1 717.4	1 868.1	2 439.0	615.2	1 390.4	n.p.	n.p.	1 801.6
September	2 107.5	1 130.5	1 718.8	1 802.4	2 548.2	647.0	1 435.6	n.p.	n.p.	1 822.2

(a) Some rates and ratios in this table have not been published—see Explanatory notes, paragraph 21.

(b) Persons in custody are asked their Indigenous status during reception into custody—see Explanatory Notes, paragraphs 10–11.

(c) See Appendix—Interpretation of Indigenous Statistics.

(d) Numbers of Indigenous persons for NSW prior to September 1999 are unavailable—see Explanatory notes, paragraph 9.

(e) Prior to the September quarter 2000, all full-time prisoners sentenced in the ACT were held in NSW prisons. Since the September quarter 2000, some ACT-sentenced fine default only prisoners have been held in the ACT. The ACT in NSW figures are a subset of the NSW figures—see Explanatory notes, paragraph 12.

(f) Refers to unsentenced persons in ACT prison custody and, from the September quarter 2000, may include some sentenced fine default only prisoners.

(g) Figures for the quarter and year for first day of the month counts are calculated as a simple average—see Explanatory notes, paragraph 5.

5

INDIGENOUS PERSONS IN PRISON CUSTODY, By sex(a)(b)(c) *continued*

Sex	NSW(d)(e)	Vic.	Qld	SA	WA	Tas.	NT	ACT in NSW(d)(e)	ACT(f)	Aust.(d)(e)
RATIO OF INDIGENOUS TO NON-INDIGENOUS RATES OF IMPRISONMENT										
Males										
1999(g)	n.a.	11.5	12.1	15.9	21.2	n.p.	10.4	n.a.	n.p.	n.a.
2000(g)	13.7	11.5	12.0	15.9	19.5	n.p.	6.1	n.p.	n.p.	14.7
2001(g)	13.5	11.5	12.5	17.1	20.0	n.p.	5.8	n.p.	n.p.	14.8
2001										
September quarter(g)	13.6	11.2	13.3	16.4	20.4	n.p.	5.7	n.p.	n.p.	15.0
December quarter(g)	14.1	11.0	13.5	16.8	19.1	n.p.	5.2	n.p.	n.p.	14.9
2002										
March quarter(g)	14.0	11.4	13.1	17.4	18.5	n.p.	5.6	n.p.	n.p.	14.7
June quarter(g)	15.2	12.2	12.9	15.8	18.3	n.p.	6.9	n.p.	n.p.	15.1
September quarter(g)	15.9	12.0	12.9	17.1	18.5	n.p.	8.1	n.p.	n.p.	15.4
July	15.7	11.9	12.8	16.6	18.4	n.p.	7.7	n.p.	n.p.	15.2
August	15.9	12.2	13.0	17.4	18.2	n.p.	8.2	n.p.	n.p.	15.4
September	16.0	11.9	12.9	17.4	19.0	n.p.	8.2	n.p.	n.p.	15.6
Females										
1999(g)	n.a.	n.p.	12.2	20.7	32.0	n.p.	6.8	n.a.	n.p.	n.a.
2000(g)	23.4	15.0	14.1	19.4	26.9	n.p.	6.5	n.p.	n.p.	19.6
2001(g)	26.4	16.6	14.7	22.1	30.9	n.p.	4.8	n.p.	n.p.	20.8
2001										
September quarter(g)	24.1	17.1	14.4	21.1	33.3	n.p.	3.5	n.p.	n.p.	20.0
December quarter(g)	28.0	16.9	15.1	22.1	30.1	n.p.	4.2	n.p.	n.p.	20.9
2002										
March quarter(g)	26.2	22.4	15.4	25.4	24.6	n.p.	4.2	n.p.	n.p.	20.2
June quarter(g)	26.3	18.1	15.0	23.1	25.0	n.p.	6.0	n.p.	n.p.	19.9
September quarter(g)	28.9	17.0	16.2	28.1	20.8	n.p.	3.7	n.p.	n.p.	20.6
July	29.0	16.5	15.6	25.6	22.2	n.p.	2.9	n.p.	n.p.	20.4
August	28.5	16.0	16.5	28.8	21.5	n.p.	4.7	n.p.	n.p.	20.6
September	29.2	18.4	16.6	30.1	18.8	n.p.	3.6	n.p.	n.p.	20.8
Persons										
1999(g)	n.a.	11.5	11.7	15.6	21.3	4.8	9.1	n.a.	n.p.	n.a.
2000(g)	13.9	11.8	11.7	15.5	19.5	5.4	5.5	n.p.	n.p.	14.7
2001(g)	14.0	11.8	12.2	16.7	20.1	5.6	5.2	n.p.	n.p.	14.8
2001										
September quarter(g)	13.9	11.6	12.9	16.0	20.5	5.9	5.1	n.p.	n.p.	15.0
December quarter(g)	14.5	11.5	13.2	16.4	19.2	6.1	4.6	n.p.	n.p.	15.0
2002										
March quarter(g)	14.4	12.3	12.8	17.1	18.4	7.4	5.0	n.p.	n.p.	14.7
June quarter(g)	15.5	12.8	12.7	15.6	18.4	6.2	6.3	n.p.	n.p.	15.1
September quarter(g)	16.3	12.5	12.8	17.0	18.3	6.2	7.2	n.p.	n.p.	15.5
July	16.2	12.4	12.7	16.4	18.2	5.6	6.9	n.p.	n.p.	15.3
August	16.4	12.6	12.9	17.2	18.0	6.5	7.4	n.p.	n.p.	15.4
September	16.5	12.5	12.8	17.3	18.6	6.6	7.4	n.p.	n.p.	15.6

(a) Some rates and ratios in this table have not been published—see Explanatory notes, paragraph 21.

(b) Persons in custody are asked their Indigenous status during reception into custody—see Explanatory notes paragraphs 10–11.

(c) See Appendix—Interpretation of Indigenous Statistics.

(d) Numbers of Indigenous persons for NSW prior to September 1999 are unavailable—see Explanatory notes, paragraph 9.

(e) Prior to the September quarter 2000, all full-time prisoners sentenced in the ACT were held in NSW prisons. Since the September quarter 2000, some ACT-sentenced fine default only prisoners have been held in the ACT. The ACT in NSW figures are a subset of the NSW figures—see Explanatory notes, paragraph 12.

(f) Refers to unsentenced persons in ACT prison custody and, from the September quarter 2000, may include some sentenced fine default only prisoners.

(g) Figures for the quarter and year for first day of the month counts are calculated as a simple average—see Explanatory notes, paragraph 5.

6

INDIGENOUS PERSONS IN PRISON CUSTODY, By legal status and sentence type(a)(b)(c)

Legal status and sentence type	NSW(d)(e)	Vic.	Qld	SA	WA	Tas.	NT	ACT in NSW(d)(e)	ACT(f)	Aust.(d)(e)
NUMBER ON FIRST DAY OF MONTH										
Unsentenced										
1999(g)	n.a.	24	124	52	124	8	53	n.a.	7	n.a.
2000(g)	214	27	154	66	133	8	69	—	6	676
2001(g)	250	32	173	85	159	12	86	1	10	807
2001										
September quarter(g)	242	30	181	83	157	14	80	—	10	798
December quarter(g)	258	32	186	81	143	16	91	—	10	818
2002										
March quarter(g)	282	41	201	97	150	14	78	—	3	867
June quarter(g)	287	39	195	86	161	16	84	—	6	874
September quarter(g)	279	28	200	93	144	14	79	—	7	844
July	262	26	203	99	148	14	80	—	7	839
August	297	30	207	97	131	15	72	—	7	856
September	278	28	189	84	153	13	85	1	7	837
Sentenced										
Fine default only										
1999(g)	n.a.	—	54	9	34	1	17	n.a.	..	n.a.
2000(g)	1	—	43	1	24	—	11	—	—	81
2001(g)	—	—	—	—	30	1	15	—	—	47
2001										
September quarter(g)	1	—	—	—	40	1	14	—	—	57
December quarter(g)	—	—	—	—	31	—	14	—	—	45
2002										
March quarter(g)	—	—	—	—	25	—	5	—	—	31
June quarter(g)	—	—	—	—	17	1	—	—	—	18
September quarter(g)	—	—	—	—	25	1	—	—	—	27
July	—	—	—	—	17	2	—	—	—	19
August	—	—	—	—	31	—	1	—	—	32
September	—	—	1	—	27	1	—	—	—	29
Other sentenced										
1999(g)	n.a.	98	937	144	819	29	378	n.a.	..	n.a.
2000(g)	928	107	878	132	819	35	318	10	..	3 217
2001(g)	961	114	910	144	830	31	326	11	..	3 315
2001										
September quarter(g)	968	113	942	144	850	29	327	9	..	3 374
December quarter(g)	1 006	111	960	151	778	32	314	12	..	3 352
2002										
March quarter(g)	964	113	963	150	701	42	320	13	..	3 254
June quarter(g)	1 052	126	986	146	707	43	357	14	..	3 418
September quarter(g)	1 122	135	970	155	700	41	384	12	..	3 508
July	1 128	135	963	143	707	34	373	12	..	3 483
August	1 108	135	965	159	687	43	388	11	..	3 485
September	1 131	135	983	163	707	47	391	12	..	3 557

(a) Some rates in this table have not been published—see Explanatory notes, paragraph 21.

(b) Persons in custody are asked their Indigenous status during reception into custody—see Explanatory notes, paragraphs 10–11.

(c) See Appendix—Interpretation of Indigenous Statistics.

(d) Numbers of Indigenous persons for NSW prior to September 1999 are unavailable—see Explanatory notes, paragraph 9.

(e) Prior to the September quarter 2000, all full-time prisoners sentenced in the ACT were held in NSW prisons. Since the September quarter 2000, some ACT-sentenced fine default only prisoners have been held in the ACT. The ACT in NSW figures are a subset of the NSW figures—see Explanatory notes, paragraph 12.

(f) Refers to unsentenced persons in ACT prison custody and, from the September quarter 2000, may include some sentenced fine default only prisoners.

(g) Figures for the quarter and year for first day of the month counts are calculated as a simple average—see Explanatory notes, paragraph 5.

Legal status and sentence type	NSW(d)(e)	Vic.	Qld	SA	WA	Tas.	NT	ACT in NSW(d)(e)	ACT(f)	Aust.(d)(e)
NUMBER ON FIRST DAY OF MONTH										
Total sentenced										
1999(g)	n.a.	98	991	153	853	30	394	n.a.	..	n.a.
2000(g)	929	107	921	132	844	36	329	10	—	3 298
2001(g)	961	114	910	144	860	32	341	11	—	3 361
2001										
September quarter(g)	969	113	942	145	891	30	342	9	—	3 431
December quarter(g)	1 006	111	960	151	809	32	328	12	—	3 397
2002										
March quarter(g)	964	113	964	150	726	42	326	13	—	3 285
June quarter(g)	1 052	126	986	146	725	44	357	14	—	3 436
September quarter(g)	1 122	135	971	155	725	42	384	12	—	3 535
July	1 128	135	963	143	724	36	373	12	—	3 502
August	1 108	135	965	159	718	43	389	11	—	3 517
September	1 131	135	984	163	734	48	391	12	—	3 586
Total										
1999(g)	n.a.	122	1 116	205	977	37	447	n.a.	7	n.a.
2000(g)	1 143	134	1 075	199	977	43	398	10	6	3 974
2001(g)	1 211	146	1 083	230	1 019	43	427	11	10	4 168
2001										
September quarter(g)	1 211	143	1 123	227	1 047	44	422	9	10	4 228
December quarter(g)	1 264	143	1 147	232	952	48	419	12	10	4 215
2002										
March quarter(g)	1 245	155	1 165	248	876	56	404	13	4	4 152
June quarter(g)	1 339	165	1 181	232	885	60	442	14	6	4 310
September quarter(g)	1 401	163	1 170	248	869	56	463	12	7	4 379
July	1 390	161	1 166	242	872	50	453	12	7	4 341
August	1 405	165	1 172	256	849	58	461	11	7	4 373
September	1 409	163	1 173	247	887	61	476	13	7	4 423

(a) Some rates in this table have not been published—see Explanatory notes, paragraph 21.

(b) Persons in custody are asked their Indigenous status during reception into custody—see Explanatory notes, paragraphs 10–11.

(c) See Appendix—Interpretation of Indigenous Statistics.

(d) Numbers of Indigenous persons for NSW prior to September 1999 are unavailable—see Explanatory notes paragraph 9.

(e) Prior to the September quarter 2000, all full-time prisoners sentenced in the ACT were held in NSW prisons. Since the September quarter 2000, some ACT-sentenced fine default only prisoners have been held in the ACT. The ACT in NSW figures are a subset of the NSW figures—see Explanatory notes, paragraph 12.

(f) Refers to unsentenced persons in ACT prison custody and, from the September quarter 2000, may include some sentenced fine default only prisoners.

(g) Figures for the quarter and year for first day of the month counts are calculated as a simple average—see Explanatory notes, paragraph 5.

Legal status and sentence type	NSW(d)(e)	Vic.	Qld	SA	WA	Tas.	NT	ACT in NSW(d)(e)	ACT(f)	Aust.(d)(e)
RATES PER 100,000 ADULT INDIGENOUS POPULATION										
Unsentenced										
1999(g)	n.a.	175.2	199.4	408.1	384.5	n.p.	165.3	n.a.	n.p.	n.a.
2000(g)	336.0	195.5	238.0	508.4	400.9	n.p.	213.7	n.p.	n.p.	291.7
2001(g)	383.7	225.0	260.3	638.8	466.8	125.0	261.5	n.p.	n.p.	339.5
2001										
September quarter(g)	371.4	214.4	272.8	618.2	460.9	152.2	238.0	n.p.	n.p.	335.1
December quarter(g)	395.9	226.2	280.4	605.7	421.7	170.4	271.7	n.p.	n.p.	343.6
2002										
March quarter(g)	421.3	286.7	294.5	710.3	431.9	148.5	235.3	n.p.	n.p.	357.2
June quarter(g)	428.8	270.5	285.7	627.6	461.6	169.7	254.4	n.p.	n.p.	360.1
September quarter(g)	417.3	194.2	292.6	681.1	413.7	148.5	238.3	n.p.	n.p.	347.7
July	391.9	180.3	297.5	722.4	425.2	148.5	241.3	n.p.	n.p.	345.6
August	444.2	208.1	303.3	707.8	376.3	159.1	217.2	n.p.	n.p.	352.6
September	415.8	194.2	276.9	613.0	439.5	137.9	256.4	n.p.	n.p.	344.8
Sentenced										
Fine default only										
1999(g)	n.a.	n.p.	87.1	n.p.	105.9	n.p.	52.6	n.a.	..	n.a.
2000(g)	n.p.	n.p.	66.4	n.p.	73.1	n.p.	35.6	n.p.	n.p.	34.7
2001(g)	n.p.	n.p.	n.p.	n.p.	89.3	n.p.	44.5	n.p.	n.p.	19.6
2001										
September quarter(g)	n.p.	n.p.	n.p.	n.p.	118.7	n.p.	42.6	n.p.	n.p.	23.9
December quarter(g)	n.p.	n.p.	n.p.	n.p.	90.2	n.p.	41.6	n.p.	n.p.	19.0
2002										
March quarter(g)	n.p.	n.p.	n.p.	n.p.	71.8	n.p.	n.p.	n.p.	n.p.	12.8
June quarter(g)	n.p.	n.p.	n.p.	n.p.	49.8	n.p.	n.p.	n.p.	n.p.	7.4
September quarter(g)	n.p.	n.p.	n.p.	n.p.	71.8	n.p.	n.p.	n.p.	n.p.	11.0
July	n.p.	n.p.	n.p.	n.p.	48.8	n.p.	n.p.	n.p.	n.p.	7.8
August	n.p.	n.p.	n.p.	n.p.	89.1	n.p.	n.p.	n.p.	n.p.	13.2
September	n.p.	n.p.	n.p.	n.p.	77.6	n.p.	n.p.	n.p.	n.p.	11.9
Other sentenced										
1999(g)	n.a.	725.5	1 504.7	1 134.8	2 539.8	321.2	1 185.2	n.a.	..	n.a.
2000(g)	1 457.4	770.2	1 359.2	1 007.9	2 471.2	378.3	985.5	n.p.	..	1 387.3
2001(g)	1 472.4	804.1	1 368.9	1 077.5	2 441.8	327.7	988.2	n.p.	..	1 394.9
2001										
September quarter(g)	1 483.5	798.8	1 416.9	1 079.4	2 501.6	315.4	973.8	n.p.	..	1 417.1
December quarter(g)	1 541.2	782.3	1 444.5	1 131.7	2 289.8	348.0	934.1	n.p.	..	1 408.0
2002										
March quarter(g)	1 441.4	786.0	1 411.6	1 097.0	2 013.8	441.9	966.1	n.p.	..	1 340.4
June quarter(g)	1 574.0	871.5	1 445.3	1 065.4	2 032.0	459.6	1 077.7	n.p.	..	1 408.3
September quarter(g)	1 678.7	936.3	1 421.9	1 131.1	2 011.9	438.4	1 158.2	n.p.	..	1 445.3
July	1 687.2	936.3	1 411.1	1 043.5	2 031.1	360.6	1 125.0	n.p.	..	1 434.9
August	1 657.2	936.3	1 414.0	1 160.2	1 973.6	456.1	1 170.2	n.p.	..	1 435.7
September	1 691.6	936.3	1 440.4	1 189.4	2 031.1	498.5	1 179.3	n.p.	..	1 465.4

(a) Some rates in this table have not been published—see Explanatory notes, paragraph 21.

(b) Persons in custody are asked their Indigenous status during reception into custody—see Explanatory notes paragraphs 10–11.

(c) See Appendix—Interpretation of Indigenous Statistics.

(d) Numbers of Indigenous persons for NSW prior to September 1999 are unavailable—see Explanatory notes, paragraph 9.

(e) Prior to the September quarter 2000, all full-time prisoners sentenced in the ACT were held in NSW prisons. Since the September quarter 2000, some ACT-sentenced fine default only prisoners have been held in the ACT. The ACT in NSW figures are a subset of the NSW figures—see Explanatory notes, paragraph 12.

(f) Refers to unsentenced persons in ACT prison custody and, from the September quarter 2000, may include some sentenced fine default only prisoners.

(g) Figures for the quarter and year for first day of the month counts are calculated on a simple average—see Explanatory notes, paragraph 5.

6

INDIGENOUS PERSONS IN PRISON CUSTODY, By legal status and sentence type(a)(b)(c) *continued*

Legal status and sentence type	NSW(d)(e)	Vic.	Qld	SA	WA	Tas.	NT	ACT in NSW(d)(e)	ACT(f)	Aust.(d)(e)
RATES PER 100,000 ADULT INDIGENOUS POPULATION										
Total sentenced										
1999(g)	n.a.	725.5	1 591.8	1 205.1	2 645.7	328.6	1 237.9	n.a.	..	n.a.
2000(g)	1 458.3	771.4	1 425.6	1 013.0	2 544.3	381.9	1 021.0	n.p.	n.p.	1 422.0
2001(g)	1 472.8	804.7	1 369.3	1 078.8	2 531.0	335.7	1 032.7	n.p.	n.p.	1 414.5
2001										
September quarter(g)	1 484.5	798.8	1 416.9	1 081.9	2 620.2	329.9	1 016.4	n.p.	n.p.	1 441.1
December quarter(g)	1 541.2	782.3	1 445.0	1 131.7	2 380.0	351.6	975.8	n.p.	n.p.	1 427.1
2002										
March quarter(g)	1 441.4	786.0	1 412.1	1 097.0	2 085.7	441.9	982.2	n.p.	n.p.	1 353.2
June quarter(g)	1 574.0	871.5	1 445.3	1 065.4	2 081.8	466.7	1 077.7	n.p.	n.p.	1 415.7
September quarter(g)	1 678.7	936.3	1 422.3	1 131.1	2 083.8	449.0	1 159.2	n.p.	n.p.	1 456.3
July	1 687.2	936.3	1 411.1	1 043.5	2 079.9	381.8	1 125.0	n.p.	n.p.	1 442.7
August	1 657.2	936.3	1 414.0	1 160.2	2 062.7	456.1	1 173.2	n.p.	n.p.	1 448.9
September	1 691.6	936.3	1 441.9	1 189.4	2 108.7	509.1	1 179.3	n.p.	n.p.	1 477.3
Total										
1999(g)	n.a.	900.7	1 791.2	1 613.2	3 030.2	412.8	1 402.7	n.a.	n.p.	n.a.
2000(g)	1 794.3	966.9	1 663.6	1 521.4	2 945.2	464.0	1 234.7	n.p.	n.p.	1 713.7
2001(g)	1 856.4	1 029.7	1 629.6	1 717.6	2 997.8	460.8	1 294.2	n.p.	n.p.	1 754.0
2001										
September quarter(g)	1 855.9	1 013.2	1 689.8	1 700.1	3 081.1	482.1	1 254.4	n.p.	n.p.	1 776.1
December quarter(g)	1 937.1	1 008.5	1 725.4	1 737.5	2 801.6	522.0	1 247.5	n.p.	n.p.	1 770.7
2002										
March quarter(g)	1 862.7	1 072.7	1 706.6	1 807.3	2 517.5	590.4	1 217.5	n.p.	n.p.	1 710.4
June quarter(g)	2 002.8	1 142.0	1 731.0	1 692.9	2 543.4	636.4	1 332.1	n.p.	n.p.	1 775.7
September quarter(g)	2 096.0	1 130.5	1 714.9	1 812.1	2 497.4	597.5	1 397.4	n.p.	n.p.	1 804.0
July	2 079.0	1 116.6	1 708.6	1 765.9	2 505.1	530.3	1 366.3	n.p.	n.p.	1 788.4
August	2 101.5	1 144.3	1 717.4	1 868.1	2 439.0	615.2	1 390.4	n.p.	n.p.	1 801.6
September	2 107.5	1 130.5	1 718.8	1 802.4	2 548.2	647.0	1 435.6	n.p.	n.p.	1 822.2

(a) Some rates in this table have not been published—see Explanatory notes, paragraph 21.

(b) Persons in custody are asked their Indigenous status during reception into custody—see Explanatory notes, paragraphs 10–11.

(c) See Appendix—Interpretation of Indigenous Statistics.

(d) Numbers of Indigenous persons for NSW prior to September 1999 are unavailable—see Explanatory notes paragraph 9.

(e) Prior to the September quarter 2000, all full-time prisoners sentenced in the ACT were held in NSW prisons. Since the September quarter 2000, some ACT-sentenced fine default only prisoners have been held in the ACT. The ACT in NSW figures are a subset of the NSW figures—see Explanatory notes, paragraph 12.

(f) Refers to unsentenced persons in ACT prison custody and, from the September quarter 2000, may include some sentenced fine default only prisoners.

(g) Figures for the quarter and year for first day of the month counts are calculated on a simple average—see Explanatory notes, paragraph 5.

7

PERSONS IN PERIODIC DETENTION, By sex

Sex	NSW	ACT	Aust.(a)
AVERAGE DAILY NUMBER(b)			
Males			
1999	1 190	62	1 252
2000	1 107	69	1 176
2001	974	66	1 040
2001			
September quarter	981	65	1 046
December quarter	989	62	1 051
2002			
March quarter	857	56	914
June quarter	814	64	878
September quarter	825	72	897
July	817	69	886
August	818	74	892
September	841	72	913
Females			
1999	114	3	117
2000	109	7	115
2001	87	4	91
2001			
September quarter	82	3	85
December quarter	82	2	85
2002			
March quarter	65	3	68
June quarter	68	4	73
September quarter	71	5	77
July	74	6	79
August	71	5	76
September	69	5	74
Persons			
1999	1 304	65	1 369
2000	1 216	75	1 291
2001	1 061	69	1 130
2001			
September quarter	1 063	67	1 131
December quarter	1 071	64	1 135
2002			
March quarter	922	60	982
June quarter	883	68	951
September quarter	896	77	973
July	890	75	965
August	889	79	968
September	911	77	987

(a) Periodic detention is a form of custody only used in NSW and the ACT.

(b) See Explanatory notes, paragraph 2.

7

PERSONS IN PERIODIC DETENTION, By sex *continued*

Sex	NSW	ACT	Aust.(a)
RATE PER 100,000 ADULT POPULATION			
Males			
1999	50.3	53.0	17.8
2000	46.2	60.0	16.5
2001	40.1	56.5	14.4
2001			
September quarter	40.3	55.7	14.4
December quarter	40.5	52.8	14.4
2002			
March quarter	35.0	48.2	12.5
June quarter	33.0	54.0	12.0
September quarter	33.4	60.3	12.2
July	33.0	58.2	12.1
August	33.1	62.2	12.2
September	34.1	60.3	12.5
Females			
1999	4.6	2.8	1.6
2000	4.4	5.3	1.6
2001	3.5	3.3	1.2
2001			
September quarter	3.3	2.2	1.1
December quarter	3.3	1.9	1.1
2002			
March quarter	2.6	2.7	0.9
June quarter	2.7	3.6	1.0
September quarter	2.8	4.2	1.0
July	2.9	4.6	1.0
August	2.8	4.0	1.0
September	2.7	4.0	1.0
Persons			
1999	27.1	27.6	9.6
2000	25.0	32.3	8.9
2001	21.5	29.6	7.7
2001			
September quarter	21.6	28.6	7.7
December quarter	21.6	27.1	7.7
2002			
March quarter	18.6	25.2	6.6
June quarter	17.6	28.2	6.4
September quarter	17.8	31.5	6.5
July	17.7	30.8	6.5
August	17.7	32.4	6.5
September	18.1	31.5	6.6

(a) Periodic detention is a form of custody only used in NSW and the ACT.

NUMBER ON FIRST DAY OF MONTH.....

	NSW	Vic.	Qld	SA	WA	Tas.	NT	ACT	Aust.
MALES									
1999(b)	262	72	98	27	101	1	16	4	581
2000(b)	296	76	84	24	120	2	37	5	645
2001(b)	293	84	68	19	138	3	105	6	717
2001									
September quarter(b)	301	85	62	21	138	2	111	7	727
December quarter(b)	300	85	66	17	152	3	123	6	753
2002									
March quarter(b)	304	80	68	16	140	3	111	5	727
June quarter(b)	299	77	62	20	137	4	98	5	701
September quarter(b)	296	77	58	21	136	5	80	3	676
July	295	78	59	20	138	3	82	4	679
August	297	76	57	22	131	4	81	3	671
September	296	76	59	22	138	8	76	3	678
FEMALES									
1999(b)	31	5	13	4	9	2	2	1	66
2000(b)	27	5	13	6	13	2	—	1	67
2001(b)	31	6	16	4	16	1	1	—	75
2001									
September quarter(b)	31	6	18	5	16	1	1	—	77
December quarter(b)	30	6	17	4	17	—	1	1	77
2002									
March quarter(b)	31	6	18	3	16	1	1	1	77
June quarter(b)	33	6	14	3	14	1	1	—	72
September quarter(b)	33	10	9	3	13	1	4	1	74
July	34	9	10	3	12	2	3	1	74
August	33	9	6	3	13	—	5	1	70
September	31	11	11	3	14	1	5	1	77
PERSONS									
1999(b)	293	78	111	31	110	2	18	5	647
2000(b)	323	82	97	30	133	5	38	6	712
2001(b)	324	90	84	24	154	4	105	7	792
2001									
September quarter(b)	332	91	80	26	154	3	112	7	804
December quarter(b)	331	91	84	22	169	3	124	7	830
2002									
March quarter(b)	334	86	86	19	156	5	112	5	804
June quarter(b)	332	83	76	23	151	4	99	5	773
September quarter(b)	329	86	67	24	149	6	84	4	750
July	329	87	69	23	150	5	85	5	753
August	330	85	63	25	144	4	86	4	741
September	327	87	70	25	152	9	81	4	755

(a) This table shows prisoners by the state or territory in which they were sentenced, not where they were held in custody.

(b) Figures for the quarter and year for first day of the month counts are calculated as a simple average—see Explanatory notes, paragraph 5.

Sex	NSW	Vic.	Qld	SA	WA	Tas.	NT	ACT	Aust.
NUMBER ON FIRST DAY OF MONTH(c)									
Males									
2001									
September quarter	14 770	5 339	12 714	5 351	4 037	786	850	1 037	44 884
December quarter	14 920	5 315	11 963	5 506	4 212	766	853	1 062	44 598
2002									
March quarter	14 754	5 151	11 537	5 622	4 256	761	827	1 067	43 975
June quarter	14 753	5 277	11 146	5 676	4 169	730	809	1 096	43 656
Females									
2001									
September quarter	2 628	1 123	3 290	1 324	1 212	170	121	230	10 098
December quarter	2 671	1 165	3 084	1 312	1 202	168	101	224	9 926
2002									
March quarter	2 615	1 175	3 034	1 333	1 193	166	91	221	9 828
June quarter	2 575	1 205	2 888	1 324	1 156	168	86	211	9 612
Persons(d)									
2001									
September quarter	17 464	6 593	16 004	6 754	5 249	956	971	1 267	55 259
December quarter	17 643	6 590	15 048	6 900	5 413	934	954	1 286	54 768
2002									
March quarter	17 432	6 413	14 571	7 037	5 449	926	918	1 288	54 036
June quarter	17 406	6 583	14 034	7 077	5 325	898	895	1 307	53 525
RATE PER 100,000 ADULT POPULATION									
Males									
2001									
September quarter	607.4	291.3	932.3	951.1	567.4	461.2	1 165.7	890.2	618.0
December quarter	611.4	288.8	873.1	977.1	589.5	449.3	1 166.1	908.5	611.8
2002									
March quarter	602.3	278.8	838.3	995.9	593.0	445.4	1 127.3	911.3	601.0
June quarter	598.8	289.0	813.2	996.6	586.8	424.5	1 104.8	925.3	597.7
Females									
2001									
September quarter	105.1	58.9	237.3	225.3	170.3	94.0	188.6	193.2	135.4
December quarter	106.4	60.9	221.3	223.0	168.2	92.6	157.1	187.5	132.7
2002									
March quarter	103.9	61.3	216.6	226.2	166.2	91.3	141.2	184.8	130.9
June quarter	100.7	62.4	203.8	222.5	160.3	92.4	128.8	169.2	126.5
Persons(d)									
2001									
September quarter	354.0	176.3	581.9	587.2	368.8	272.1	709.1	538.0	375.4
December quarter	356.4	175.7	544.4	599.0	378.8	265.6	694.1	544.1	370.8
2002									
March quarter	351.0	170.3	524.7	609.8	379.5	263.0	666.2	544.2	364.5
June quarter	346.6	175.2	503.4	607.5	371.9	253.9	640.4	537.8	359.2

(a) This table is updated annually in the September quarter publication.

(b) With the exception of Tasmania, the number of persons in community-based corrections includes those persons with breached or suspended orders—see Explanatory notes, paragraph 6.

(c) Figures for each quarter for first day of the month counts are calculated as a simple average—see Explanatory notes, paragraph 5.

(d) Includes persons whose sex is unknown.

NUMBER ON FIRST DAY OF MONTH(c).....

Type of order	NSW	Vic.	Qld	SA	WA	Tas.	NT	ACT	Aust.
SEPTEMBER QUARTER 2001									
Restricted movement	176	—	90	185	75	—	43	—	568
Reparation									
Fine option	117	1 141	4 343	1 802	499	75	190	—	8 168
Community service	4 823	944	2 137	1 328	2 233	345	155	141	12 106
Supervision (compliance)									
Parole	3 134	1 028	1 462	918	1 225	110	170	133	8 180
Bail	184	—	—	214	—	—	1	149	548
Sentenced probation	11 312	3 669	7 973	2 331	3 218	527	435	844	30 309
DECEMBER QUARTER 2001									
Restricted movement	180	—	68	182	84	—	28	1	543
Reparation									
Fine option	112	1 038	3 432	1 978	457	76	142	—	7 234
Community service	4 696	935	2 202	1 357	2 373	364	197	173	12 298
Supervision (compliance)									
Parole	3 306	1 077	1 390	873	1 263	102	165	134	8 311
Bail	184	—	—	194	—	—	2	146	526
Sentenced probation	11 415	3 712	7 955	2 393	3 408	496	442	833	30 654
MARCH QUARTER 2002									
Restricted movement	154	—	83	185	89	—	29	1	540
Reparation									
Fine option	110	993	3 073	1 964	416	80	58	—	6 694
Community service	4 472	850	2 192	1 340	2 417	391	236	176	12 074
Supervision (compliance)									
Parole	3 416	1 153	1 318	879	1 317	99	163	142	8 488
Bail	162	—	—	226	—	—	3	176	567
Sentenced probation	11 252	3 605	7 905	2 443	3 434	457	456	794	30 347
JUNE QUARTER 2002									
Restricted movement	189	—	77	191	80	—	30	1	568
Reparation									
Fine option	106	1 077	2 710	1 908	367	98	24	—	6 290
Community service	4 536	919	2 159	1 371	2 342	385	245	159	12 116
Supervision (compliance)									
Parole	3 371	1 173	1 256	877	1 335	91	165	153	8 421
Bail	170	—	—	283	—	—	3	194	650
Sentenced probation	11 145	3 614	7 832	2 447	3 335	430	450	800	30 054

(a) If a person has more than one type of order, they are counted more than once in this table. If a person has more than one order of the same order type, they are counted once in the order type. With the exception of Tasmania, the number of persons in community-based corrections includes those persons with breached or suspended orders—see Explanatory notes, paragraph 6.

(b) This table is updated annually in the September quarter publication.

(c) Figures for each quarter for first day of the month counts are calculated as a simple average—see Explanatory notes, paragraph 5.

EXPLANATORY NOTES

INTRODUCTION

1 This publication presents statistical series on persons held in either adult corrective services custody or who are serving community-based orders in Australia. It contains data on the number of persons by their sex, type of custody, legal status and sentence type; the number of sentenced persons received into corrective services custody each month; the number of Indigenous persons in corrective services custody by their sex, legal status and sentence type, and the number of federal prisoners.

2 Statistics presented in this publication are compiled in three ways:

- Average daily prisoner population: Counts taken on each day of the month are summed and divided by the number of days in that month to determine the average daily prisoner population for that month. The average daily periodic detainee population is a count of persons on periodic detention on each day a centre is open, divided by the number of days a centre is open.
- Sentenced prisoner reception figures: Counts are provided each month on the number of receptions where a prisoner is received as a sentenced prisoner plus the number of changes of legal status from unsentenced to sentenced.
- First day of the month prisoner population: Counts of prisoner populations, taken on or near the first day of the month (see Explanatory notes, paragraphs 4 and 5).

3 Although national standards and classifications are used in the compilation of these statistics, some discrepancies remain between the states and territories. These are due to legislative and procedural differences between jurisdictions and the way that these differences are reflected in agencies' administrative data systems. As part of its development strategy, the ABS is working with corrective services agencies to minimise the effect of these differences.

REFERENCE PERIOD/DATE

4 For the average daily prisoner population and the sentenced prisoner receptions counts, the reference period is the complete reference month. For all other information in the publication, the reference date is the first day of the month. However, not all states and territories report strictly according to this 'first day of the month' rule:

- The Western Australian and Victorian prison population and Australian Capital Territory prisoners in New South Wales prisons are counted as at midnight on the last day of the month. In these cases the figures provided are taken to represent the prison population at the beginning of the following month to align with practices in other states and territories.
- The New South Wales prison population is counted on the first Sunday of the month.
- In January 1999 ACT Corrections commenced sending surplus unsentenced prisoners to New South Wales prisons. These unsentenced ACT in NSW prisoners are shown on a daily average basis in Table 3.

5 Calculation of figures for the entire quarter and entire year varies depending on the counting unit and method of counting prisoners. These figures may be subject to rounding:

- Average daily figures: Figures are calculated by weighting the average according to the number of days in each month or year.
- First day of the month: Figures are simple averages. Quarterly figures for each month are added and the total is divided by three; for yearly figures, the figures for each month are added and the total divided by twelve.
- Sentenced receptions: Figures are totals of each month.

SCOPE

6 The scope of the statistics in this publication includes all persons remanded or sentenced to adult custodial corrective services agencies or who are serving community-based orders in each state and territory in Australia, including Work Outreach Camps and Community Custody Centres in Queensland. Commencing with the 2000–01 reference period, community-based corrections includes those persons with breached or suspended orders, with the exception of Tasmania.

7 In all states and territories except Victoria and Queensland, persons remanded or sentenced to adult custody are aged 18 years and over. Persons under 18 years are treated as juveniles in most Australian courts and are not remanded or sentenced to custody in adult prisons, other than in exceptional circumstances. However, in Victoria and Queensland, 'adult' refers to persons aged 17 years and over.

DATA SOURCE

8 Statistics in this publication are derived from information collected by the ABS from administrative records held by corrective services agencies within each state and territory. Statistics on federal prisoners are derived from records kept by the Criminal Law Division of the Commonwealth Attorney-General's Department.

9 Statistics marked 'n.a.' in tables 5 and 6 are not available for inclusion in this publication. New South Wales Department of Corrective Services modified its computer system to enable provision of counts of Indigenous persons in custody from July 1999. Australian Capital Territory Corrective Services Department has advised that the numbers of Indigenous prisoners sentenced in Australian Capital Territory courts and held in New South Wales prisons had been under reported. This under reporting was resolved from April 2000. No adjustments to data prior to April 2000 were able to be made.

INDIGENOUS IDENTIFICATION

10 In all states and territories persons are asked during entry into custody whether they identify as Aboriginal or Torres Strait Islander. It is uncommon for corrective services agencies to collect Indigenous status information from sources other than the person's own identification.

11 Some persons in custody are recorded as of unknown Indigenous status on corrective services agencies' information systems, but unknown Indigenous status has not been provided for this collection. Such persons are designated as non-Indigenous. It is intended that unknown Indigenous status will be collected from these systems in future.

AUSTRALIAN CAPITAL TERRITORY PRISONERS

12 The Australian Capital Territory has a detention centre for unsentenced prisoners and a periodic detention centre. With the exception of some sentenced fine default only prisoners, persons sentenced to full-time custody by Australian Capital Territory criminal courts are held in New South Wales prisons.

13 During 2000 the Australian Capital Territory commenced detaining prisoners sentenced for fine default only at their centre for unsentenced persons. To provide greater understanding of the number of prisoners attributed to the Australian Capital Territory, while presenting an accurate picture of the New South Wales prisoner population, statistics relating to Australian Capital Territory prisoners in New South Wales prisons are presented as a subset of the New South Wales figures.

RATES AND RATIOS

14 Imprisonment rates enable comparison of prisoner numbers across states and territories. Prisoner rates are expressed per 100,000 adult population.

15 For the purpose of this publication the population figures used in the calculation of rates are for persons aged 18 years and over for all states and territories except Victoria and Queensland where the population used is persons aged 17 and over (see Explanatory Notes, paragraph 7).

16 Rates for the Indigenous adult population in this publication are based on revised projections for 30 June 2002 (refer *Experimental Projections of the Aboriginal and Torres Strait Islander Population 30 June 1996 to 30 June 2006* (cat. no. 3231.0)). These projections are in turn based on the results of the 1996 Census of Population and Housing.

17 Two series of these projections have been published. The so-called 'higher series' takes into account a possible change in propensity for people to identify themselves as Indigenous since the 1996 Population Census and estimates this from the 1991–1996 inter-censal period. The lower series assumes no such change has taken place since 1996. The lower of the two series was used in calculating rates for the Indigenous adult population in this publication. This is because, after discussions with representatives of corrective services agencies, it was felt that the propensity to identify as Indigenous has not increased to the same extent in the prison environment as might have occurred in the wider community.

18 Rates for the total adult prisoner population and persons in community-based corrections are calculated using the Estimated Resident Population (ERP) for each of the states and territories (refer *Population by Age and Sex, Australian States and Territories* (cat. no. 3201.0)). As the population changes over time the denominator used for the calculation of rates varies, depending on the reference period. Rates are calculated using ERP for two quarters prior to their respective quarters. Thus for the September quarter 2002, ERP for the March quarter 2002 was used in the calculation of rates. This approach uses the latest ERP available at the time of publication.

19 The ratio of imprisonment rates of Indigenous persons to non-Indigenous persons is calculated by dividing the Indigenous imprisonment rate for each period and state or territory by the corresponding non-Indigenous imprisonment rate.

20 The ratio indicates the extent to which the imprisonment rates of Indigenous persons exceed the imprisonment rates of non-Indigenous persons. A ratio of 20.0 indicates that, for the given state or territory, the imprisonment rate of Indigenous persons per 100,000 adult population is 20 times that of the imprisonment rate of non-Indigenous persons.

21 In some instances Indigenous rates and ratios have not been published. Where this occurs, the cell concerned contains the symbol 'n.p.' This happens where, either the number of persons in custody is less than 10, or where the denominator population on which the rate is calculated is less than 5,000. This has been done because such rates and ratios vary widely from month to month with small variations in numbers of persons, and therefore may give an inaccurate reflection of the relative involvement of Indigenous persons in custody.

SIGNIFICANT EVENTS

22 During 2002 the following factors in Western Australia have impacted on the prisoner population: an increase in the acquittal and dismissal rates in courts; greater use by the courts of suspended imprisonment and community orders as penalties; shorter sentences; and a decrease in the breach rate for early release orders. The impact of these factors has been proportionally greater on the number of Indigenous prisoners who tend to be convicted of offences which attract shorter sentences.

23 During the 2001–02 financial year, Tasmania recorded a large increase in the number of unsentenced prisoners. This overall increase was due to an increase in lodgments in the Supreme Court coupled with the move by police to more actively oppose bail. The variation over the period is explained primarily by the availability of judicial resources. A Supreme Court Judge was allocated to a long running trial in the March and June quarters of 2002—this represented 25% of the judicial resources allocated to crime by the court. There was also a reduction in the number of magistrates available in the Court of Petty Sessions due to a number of long running coronial inquests.

RELATED PUBLICATIONS

ABS publications

24 Other ABS publications which may be of interest include:

Australian Standard Offence Classification, 1997 (ASOC) cat. no. 1234.0—irregular

Crime and Safety, Australia, April 1998 cat. no. 4509.0—irregular

Higher Criminal Courts, Australia, 2000-2001 cat. no. 4513.0—annual

Prisoners in Australia, 2001 cat. no. 4517.0—annual

Recorded Crime, Australia, 2001 cat. no. 4510.0—annual

25 Current publications and other products released by the ABS are listed in the *Catalogue of Publications and Products* (cat. no. 1101.0). The Catalogue is available from any ABS office or the ABS web site <<http://www.abs.gov.au>>. The ABS also issues a daily Release Advice on the web site which details products to be released in the week ahead.

APPENDIX Interpretation of Indigenous Statistics

INTRODUCTION

Tables 5 and 6 in this publication provide nationally comparable statistics on imprisonment of Aboriginal and Torres Strait Islander (Indigenous) people. There are a number of issues that bear on the statistical measures of Indigenous imprisonment. This technical appendix provides advice on how these statistics should be interpreted.

NUMBERS

The first and most basic measure of Indigenous imprisonment is the *number of persons imprisoned*. Imprisoned persons are classified as Indigenous if they identify themselves as Aboriginal or Torres Strait Islander at the time they are received into prison custody. These statistics in *Corrective Services Australia* are derived from administrative records held by corrective services agencies in each jurisdiction. The accuracy of the Indigenous component of the statistics is dependent upon the quality of the information collected by these agencies.

PROPORTIONS

The second measure is the Indigenous *proportion of the prisoner population*. This relates the number of Indigenous persons in custody to the total number of persons in custody, and provides a basis for comparing the composition of the prison population across jurisdictions.

RATES

The third measure of Indigenous imprisonment is the *rate of imprisonment*, that is the number of Indigenous prisoners per 100,000 adults in the Indigenous population. The number of persons imprisoned in any jurisdiction is partly a function of the size of the population in that jurisdiction. All other things being equal, a jurisdiction such as the Northern Territory with a large Indigenous population will have a larger number of Indigenous prisoners than a jurisdiction such as Tasmania with a small Indigenous population. The rate of imprisonment provides a basis for comparing the relative likelihood that any Indigenous adult in a state or territory will be imprisoned.

RATIOS

The fourth measure of Indigenous imprisonment is the *ratio of Indigenous to non-Indigenous imprisonment*. Australian states and territories have widely varying rates of imprisonment. Hence, the likelihood that any Indigenous adult will be imprisoned in any jurisdiction is partly a function of the overall likelihood of imprisonment in that jurisdiction. This ratio provides a measure of how much more likely it is that an Indigenous adult in a particular jurisdiction will be imprisoned compared with his or her non-Indigenous counterparts.

GLOSSARY

Corrective services custody	Confinement in a place intended primarily for the purpose of confining prisoners, such as a prison, prison farm, Periodic Detention Centre or Community Custody Centre.
Community-based corrections	This refers to the community-based management of court-ordered sanctions, post-prison administrative arrangements and fine conversions for offenders, which principally involve the provision of one or more of the following activities: supervision, programmes or community work.
Federal sentenced prisoner	Persons charged and sentenced under a Commonwealth statute. For the purposes of this publication federal sentenced prisoners are those persons who are recognised by the Criminal Law Division of the Commonwealth Attorney-General's Department as having been charged and sentenced under a Commonwealth statute. Federal sentenced prisoners are counted by the state or territory in which they were sentenced, not necessarily where they were held in custody.
Fine default only	A sentence type indicating that, at the time, the prisoner is serving a sentence for default of a fine and nothing else.
Full-time custody	A type of custody where a prisoner is required to be held in custody on a full-time basis.
Indigenous prisoner	A prisoner who identifies as either Aboriginal or Torres Strait Islander.
Legal status	An offender may be either sentenced or unsentenced depending on the warrant(s) or court order(s) which provide the legal basis for the detention of the offender in custody.
Open custody	A custodial regime for managing prisoners which does not require them to be confined by a secure perimeter physical barrier, irrespective of whether a physical barrier exists.
Other sentenced	A sentence type indicating that, at the time, a person is serving a sentence other than, or in addition to, a fine default sentence.
Periodic detention	A type of custody or order where a sentenced prisoner is required to be held in custody for two consecutive days in a one-week period.
Prisoner	A person held in custody. For the purposes of this collection, prisoners are those whose confinement is the responsibility of a corrective services agency.
Reparation	Reparation refers to all offenders with a community service order or fine option that requires them to undertake unpaid work.
Restricted movement	This refers to offenders who are subject to a system of restricted movement including supervision and/or electronic monitoring.
Secure custody	A custodial regime for managing prisoners that requires them to be confined by a secure physical barrier.
Sentenced	A legal status indicating that a person has received a custodial order from a court in response to a conviction for a criminal offence.

Sentenced prisoner reception Includes persons who enter corrective services custody from the community, having received a sentence of imprisonment as an outcome of a court proceeding. It also includes persons who are sentenced to custody while in custody on remand (i.e. change status from a remand to a sentenced prisoner). Sentenced prisoners in custody who receive a further sentence of imprisonment are not counted as sentenced receptions.

Two types of sentenced prisoner reception are distinguished:

- A *fine default only* reception is a sentenced reception where a person enters custody as a result of defaulting on the payment of a fine.
- An *other sentenced reception* is a sentenced reception (including changes of status from unsentenced to sentenced) for anything other than a fine default only reception.

Note that Victorian reception figures do not include prisoners who change status from unsentenced to sentenced in the period.

Supervision (compliance) This includes community-based orders other than those categorised as restricted movement or reparation (e.g. parole, bail and sentenced probation).

Unsentenced A legal status indicating that a person is confined to custody while awaiting the outcome of their trial. Some sentenced prisoners may also be "remanded in custody", (i.e. are unsentenced) in relation to other offences pending a court hearing. In such cases, these prisoners are counted as sentenced.

FOR MORE INFORMATION...

- INTERNET* **www.abs.gov.au** the ABS web site is the best place to start for access to summary data from our latest publications, information about the ABS, advice about upcoming releases, our catalogue, and Australia Now—a statistical profile.
- LIBRARY* A range of ABS publications is available from public and tertiary libraries Australia-wide. Contact your nearest library to determine whether it has the ABS statistics you require, or visit our web site for a list of libraries.
- CPI INFOLINE* For current and historical Consumer Price Index data, call 1902 981 074 (call cost 77c per minute).
- DIAL-A-STATISTIC* For the latest figures for National Accounts, Balance of Payments, Labour Force, Average Weekly Earnings, Estimated Resident Population and the Consumer Price Index call 1900 986 400 (call cost 77c per minute).

INFORMATION SERVICE

Data which have been published and can be provided within five minutes are free of charge. Our information consultants can also help you to access the full range of ABS information—ABS user-pays services can be tailored to your needs, time frame and budget. Publications may be purchased. Specialists are on hand to help you with analytical or methodological advice.

- PHONE* **1300 135 070**
- EMAIL* **client.services@abs.gov.au**
- FAX* 1300 135 211
- POST* Client Services, ABS, GPO Box 796, Sydney 2001

WHY NOT SUBSCRIBE?

ABS subscription services provide regular, convenient and prompt deliveries of ABS publications and products as they are released. Email delivery of monthly and quarterly publications is available.

- PHONE* 1300 366 323
- EMAIL* subscriptions@abs.gov.au
- FAX* 03 9615 7848
- POST* Subscription Services, ABS, GPO Box 2796Y, Melbourne 3001



2451200009023
ISSN 1440-5997

RRP \$22.00