



ECONOMIC INDICATORS

NEW SOUTH WALES

EMBARGO: 11:30AM (CANBERRA TIME) FRI 15 DEC 2000

CONTENTS

	<i>Page</i>
Notes	2
NSW overview.....	3
Main features.....	4
List of tables and graphs	5
Population	6
Labour.....	7
Production	10
Building.....	11
Retail trade	12
New motor vehicle registrations	13
Tourism	14
Consumer and producer price indexes.....	15
Finance	16
State Government finance	17
Investment.....	18
International trade.....	19

PLEASE NOTE:
Some of the figures
in this publication
will be affected by the GST.
See Data Notes on page 2.

- For further information about these and related statistics, contact Jill Tomlinson on Sydney 02 9268 4123, or the National Information Service on 1300 135 070.

NOTES

FORTHCOMING ISSUES	<p><i>ISSUE</i></p> <p>January 2001 February 2001 March 2001 April 2001 May 2001 June 2001</p>	<p><i>ISSUE DATE</i></p> <p>15 January 2001 15 February 2001 15 March 2001 17 April 2001 15 May 2001 15 June 2001</p>
DATA NOTES	<p>ABS statistical series are being impacted to varying degrees as a result of The New Tax System (TNTS), introduced in Australia from 1 July 2000. TNTS included the removal of Wholesale Sales Tax and the introduction of a Goods and Services Tax (GST), and as a result, a wide range of ABS data series will reflect significant immediate and subsequent impacts. For further information see <i>Australian Economic Indicators, July 2000</i> (Cat. no. 1350.0).</p>	
CHANGES TO THIS ISSUE	<p>This publication does not contain figures for gas production. Gas production has been removed due to the ongoing confidentiality of the figures.</p> <p>This publication contains a new format for Government Finance Statistics (GFS). This financial year GFS reporting has moved to an accrual presentation. This year's Budget and monthly reporting are in accordance with Australian Accounting Standards and the new accrual based principles developed by the Australian Bureau of Statistics.</p>	
GENERAL	<p>This publication provides information on a wide range of economic indicators which are the latest available at the time of publication. In a number of cases, figures appearing in this summary are preliminary and are subject to revision in subsequent issues.</p>	
SEASONAL ADJUSTMENT AND TREND ESTIMATION	<p>Seasonal adjustment is a means of removing the estimated effects of normal seasonal variation from a series so that the effects of other variations on that series can be more clearly recognised. This means that movements of seasonally adjusted estimates may not be reliable indicators of trend behaviour. Smoothing seasonally adjusted series produces a measure of the underlying trend by reducing the impact of the irregular component of the series. For an explanation of seasonal adjustment derivation, refer to the publication <i>Seasonally Adjusted Indicators</i> (Cat. no. 1308.0).</p>	
SYMBOLS AND OTHER USAGES	<p>kWh kilowatt hour n.a. not available n.p. not available for publication but included in totals where applicable n.y.a not yet available r figure or series revised since previous issue . . not applicable — nil or rounded to zero — break in continuity of series (where a line is drawn across a column between two consecutive figures)</p>	

Geoff Smith
Regional Director
New South Wales

NSW OVERVIEW

EMPLOYMENT	Employment in NSW dropped by 0.6% in October 2000 to a seasonally adjusted figure of 3,040,500. National employment in October 2000 was 9,106,200.
UNEMPLOYMENT	Unemployment in NSW was a seasonally adjusted figure of 176,200 in October 2000, while the unemployment rate remained steady at 5.5%. The national unemployment rate was 6.3% in October 2000.
INDUSTRIAL DISPUTES	In NSW in August 2000 there were 8,700 working days lost due to industrial disputes, an increase of 16% on the working days lost in the previous month. Nationally there were 32,900 working days lost due to industrial disputes in August 2000.
AVERAGE WEEKLY EARNINGS	Average weekly earnings in NSW in August 2000 were \$834.90 compared with \$798.30 for Australia (full-time adult ordinary time earnings, seasonally adjusted).
BUILDING APPROVALS	The seasonally adjusted number of new dwelling units approved for NSW in September 2000 increased by almost 13.8% from the previous month to 2,775 dwelling units. This was a decrease of 38.2% on the corresponding month of the previous year. Nationally, there were 8,936 new dwelling units, a decrease of 1.1% from the previous month.
RETAIL	In seasonally adjusted terms, total retail sales for NSW in September 2000 were \$4,591.8 million. This was an increase of 3.2% on the previous month.
NEW MOTOR VEHICLE REGISTRATIONS	New motor vehicle registrations for NSW in seasonally adjusted terms in September 2000 decreased by 14.7% compared to the previous month to 22,986 registrations.
FINANCE	The seasonally adjusted value of housing finance commitments for owner occupation in NSW in September 2000 was \$2,121 million, a decrease of 6.1% on the previous month and an overall decrease of 16.0% on September 1999.
IMPORTS AND EXPORTS	The customs value of imports into NSW during September 2000 was \$4,492 million, a decrease of 9.7% on August 2000. The value of exports (FOB) from NSW in August 2000 was \$1,966 million, an increase of 7.9% over the same period.
GOVERNMENT FINANCE STATISTICS (GFS)	The underlying General Government operating surplus for the three months ended 30 September 2000 was \$293 million. The General Government Net Lending result for the three months ended 30 September 2000 was \$522 million.

MAIN FEATURES

LABOUR FORCE

Over the period October 1999 to October 2000, the seasonally adjusted estimate for total employment in NSW increased by 73,500 or 2.5% to 3,040,500. The number of unemployed persons in NSW fell by 13,800 over the same period to 176,200. Nationally, the annual estimates recorded an increase of 2.6% in employed persons and decrease of 8.9% in unemployed persons. In NSW, the unemployment rate remained steady at 5.5% from the previous month but decreased by 0.5 percentage points from October 1999. During the same period, the participation rate for NSW increased by 0.3 percentage points to 62.2%. Nationally, the unemployment and participation rates were 6.3% and 63.6% respectively in October 2000.

In original terms, the number of job vacancies in NSW increased by 5% from May 2000 but was down by 9.1% since August 1999. The national figure of 127,700 in August 2000 represented an increase of 19.5% from the previous quarter.

There were 8,700 working days lost due to industrial disputation in August 2000, a 16% increase from July 2000. During the 12 months ended August 2000, the rate of working days lost fell substantially by 73%. Nationally, the number of working days lost fell by 74.7% over the same period.

IMPORTS AND EXPORTS

In September 2000, the customs value of imports into NSW was \$4,492 million and the value of exports (FOB) from NSW was \$1,966 million. In terms of annual movements, imports into NSW increased by 9.6% compared to September 1999, and exports increased by 25% over the same period. Imports fell by 9.7% from the previous month while exports rose by 7.9%. At the national level, imports at \$9,885 million fell 8% on the previous month and were 10.3% up on the figure a year ago. Exports were \$9,371 million, an increase of 4.9% on the previous period and an increase of 33.1% on the previous year.

Commodities exported from NSW in September 2000 included Meat and meat preparations (\$91 million), Cereal and cereal preparations (\$149 million), Wool and other animal hair (\$77 million), Coal, coke and briquettes (\$292 million), Iron and steel (\$9 million), Aluminium (\$134 million), and Office machines and automatic data processing machines (\$29 million). Significant changes from the previous month occurred for Iron and steel (down 85.9%), Wool and animal hair (up 16%), Office machines and automatic data processing machines (up 10.9%) and Meat and meat preparations (down 8.2%). Changes from September 1999 were significant for Iron and steel (down 84.2%), Cereal and cereal preparations (up 57.8%) and Aluminium (up 25.5%). Nationally, significant annual movements occurred for Iron and steel (down 56.3%), Wool and other animal hair (up 36.1%) and Office machines and automatic data processing machines (down 28.8%).

LIST OF TABLES AND GRAPHS

page

POPULATION	1 Estimated Resident Population, NSW	6
LABOUR	2 Labour data, latest time period, NSW and Australia	7
	3 Labour data, time series, NSW	7
	4 Labour force status of the civilian population, NSW	8
	5 Graph: Unemployment rates, NSW and Australia	9
	6 Coal, electricity and gas production, latest time period, NSW and Australia	10
PRODUCTION	7 Coal, electricity and gas production, time series, NSW	10
BUILDING	8 Building approvals, latest time period, NSW and Australia	11
	9 Building approvals, time series, NSW	11
RETAIL TRADE	10 Turnover of retail establishments, latest time period, NSW and Australia	12
	11 Turnover of retail establishments, seasonally adjusted, time series, NSW	12
NEW MOTOR VEHICLE REGISTRATIONS	12 New motor vehicle registrations, latest time period, NSW and Australia	13
	13 New motor vehicle registrations, seasonally adjusted, time series, NSW	13
TOURISM	14 Accommodation Establishments, latest time period, NSW and Australia	14
	15 Accommodation Establishments, time series, Sydney and NSW	14
	16 Graph: Hotels, motels etc., monthly room occupancy rates, Sydney Tourism Region and NSW	14
CONSUMER AND PRODUCER PRICE INDEXES	17 Consumer and producer price indexes, latest time period, NSW and Australia	15
	18 Consumer and producer price indexes, time series, NSW	15
	19 Graph: Consumer Price Index, Sydney and average of 8 capital cities	15
FINANCE	20 Finance commitments, latest time period, NSW and Australia	16
	21 Finance commitments, time series, NSW	16
STATE GOVERNMENT FINANCE	22 Government finance, general government sector, monthly operating statement, NSW.	17
INVESTMENT	23 Actual private new fixed capital expenditure, latest time period, NSW and Australia	18
	24 Actual private new fixed capital expenditure, time series, NSW	18
	25 Graph: Actual private new fixed capital expenditure by type of asset, trend estimate, NSW	18
INTERNATIONAL TRADE	26 Imports and exports, latest time period, NSW and Australia	19
	27 Imports and exports, time series, NSW	19

1 ESTIMATED RESIDENT POPULATION—NSW

	<i>Estimated resident population at end of period</i>			<i>Increase during period</i>			<i>Mean estimated resident population for year ended</i>	
	<i>Males</i>	<i>Females</i>	<i>Persons</i>	<i>Natural increase(a)</i>	<i>Net estimated migration</i>	<i>Total increase</i>	<i>30 June</i>	<i>31 December</i>
	<i>'000</i>	<i>'000</i>	<i>'000</i>	<i>'000</i>	<i>'000</i>	<i>'000</i>	<i>'000</i>	<i>'000</i>
1997	3 129.0	3 171.5	6 300.5	40.9	17.6	58.5	6 240.9	6 276.1
1998	3 164.5	3 204.0	6 368.5	39.9	28.1	68.1	6 303.5	6 335.7
1999	3 199.8	3 236.9	6 436.7	42.3	25.8	68.2	6 367.3	6 398.3
1998								
December qtr	3 164.5	3 204.0	6 368.5	10.8	4.2	15.0
1999								
March qtr	3 171.0	3 210.5	6 381.5	10.7	2.3	13.0
June qtr	3 179.2	3 217.5	6 396.7	10.1	5.1	15.2
September qtr	3 188.3	3 225.5	6 413.7	8.1	8.9	17.0
December qtr	3 199.8	3 236.9	6 436.7	13.4	9.5	22.9
2000								
March qtr	3 206.4	3 242.4	6 448.8	7.6	4.5	12.1

(a) Excess of live births over deaths.

Source: Australian Demographic Statistics (Cat. no. 3101.0).

2 LABOUR—NSW AND AUSTRALIA

	Unit	Latest period	Latest figure	New South Wales		Australia		
				Change from prior period	Change from same period prior year	Latest figure	Change from prior period	Change from same period prior year
				%	%	no.	%	%
Employed persons (seasonally adjusted)	'000	October 2000	3 040.5	-0.6	2.5	9 106.2	-0.1	2.6
Unemployed persons (seasonally adjusted)	'000	October 2000	176.2	-0.3	-7.3	615.4	0.3	-8.9
Labour force (seasonally adjusted)	'000	October 2000	3 216.7	-0.6	1.9	9 721.6	—	1.8
Participation rate (seasonally adjusted)	%	October 2000	62.2	-0.8	0.5	63.6	-0.2	0.3
Unemployment rate (seasonally adjusted)	%	October 2000	5.5	—	-8.3	6.3	—	-11.3
Industrial disputes—working days lost	'000	August 2000	8.7	16.0	-73.0	32.9	50.2	-74.7
Job vacancies	'000	August 2000	43.9	5.0	-9.1	127.7	19.5	16.1
Average weekly employee earnings—full-time adult ordinary time earnings (seasonally adjusted)	\$	August 2000	834.9	1.2	5.9	798.3	1.9	6.1

Source: Average Weekly Earnings, States and Australia (Cat. no. 6302.0); Industrial Disputes, Australia (Cat. no. 6321.0); Job Vacancies, Australia (Cat. no. 6354.0); Labour Force, Australia, Preliminary (Cat. no. 6202.0).

3 LABOUR—NSW

	Seasonally adjusted						
	Employed persons	Unemployed persons	Labour force	Participation rate	Unemployment rate	Industrial disputes (working days lost)	Job vacancies
	'000	'000	'000	%	%	'000	'000
1999							
August	2 936.1	208.2	3 144.3	61.8	6.6	32.2	48.3
September	2 948.9	217.8	3 166.7	62.2	6.9	33.8	..
October	2 967.0	190.0	3 157.0	61.9	6.0	16.7	..
November	2 960.5	176.9	3 137.4	61.5	5.6	121.4	36.9
December	2 971.5	199.9	3 171.4	62.0	6.3	29.1	..
2000							
January	2 974.0	189.5	3 163.5	61.8	6.0	7.5	..
February	3 004.5	186.4	3 190.9	62.3	5.8	20.1	46.4
March	3 013.9	193.3	3 207.2	62.5	6.0	11.8	..
April	3 038.2	181.8	3 220.0	62.7	5.6	20.0	..
May	3 053.4	185.1	3 238.5	63.0	5.7	47.1	41.8
June	3 038.4	187.9	3 226.3	62.7	5.8	16.3	..
July	3 060.2	173.4	3 233.6	62.7	5.4	7.5	..
August	3 070.3	178.6	3 248.9	63.0	5.5	8.7	43.9
September	3 059.7	176.8	3 236.5	62.7	5.5	n.y.a.	..
October	3 040.5	176.2	3 216.7	62.2	5.5	n.y.a.	..

Source: Industrial Disputes, Australia (Cat. no. 6321.0); Job Vacancies, Australia (Cat. no. 6354.0); Labour Force, Australia, Preliminary (Cat. no. 6202.0).

4 LABOUR FORCE STATUS, NSW—ORIGINAL

	<i>Employed</i>		<i>Unemployed</i>		<i>Labour force</i>	<i>Not in labour force</i>	<i>Civilian population aged 15 years and over</i>	<i>Unemployment rate(a)</i>	<i>Participation rate(b)</i>
	<i>Full-time workers</i>	<i>Total</i>	<i>Looking for full-time work</i>	<i>Total</i>					
	'000	'000	'000	'000					
MALES									
October									
1996	1 421.5	1 602.4	115.5	133.9	1 736.3	665.4	2 401.8	7.7	72.3
1997	1 427.9	1 594.9	119.2	136.9	1 731.7	701.9	2 433.7	7.9	71.2
1998	1 460.5	1 648.9	96.8	110.5	1 759.4	709.0	2 468.4	6.3	71.3
1999									
August	1 464.1	1 662.6	95.9	115.3	1 777.8	721.6	2 499.4	6.5	71.1
September	1 502.7	1 696.2	97.6	124.8	1 820.9	681.5	2 502.4	6.9	72.8
October	1 504.7	1 688.4	87.4	105.5	1 793.9	712.6	2 506.4	5.9	71.6
November	1 498.9	1 681.8	81.4	95.1	1 777.0	733.5	2 510.5	5.4	70.8
December	1 530.2	1 711.0	95.2	116.1	1 827.0	687.5	2 514.5	6.4	72.7
2000									
January	1 497.6	1 680.2	104.8	119.9	1 800.1	717.6	2 517.7	6.7	71.5
February	1 503.6	1 694.0	95.8	113.8	1 807.8	713.1	2 520.9	6.3	71.7
March	1 494.2	1 701.8	93.5	114.1	1 815.9	708.2	2 524.0	6.3	71.9
April	1 504.7	1 716.6	81.8	100.5	1 817.1	710.5	2 527.6	5.5	71.9
May	1 504.2	1 719.5	79.7	98.2	1 817.7	713.5	2 531.1	5.4	71.8
June	1 517.3	1 718.7	86.3	100.5	1 819.2	715.5	2 534.7	5.5	71.8
July	1 528.2	1 732.5	81.4	99.6	1 832.1	705.5	2 537.6	5.4	72.2
August	1 492.5	1 701.7	87.1	101.2	1 802.8	737.7	2 540.5	5.6	71.0
September	1 519.3	1 738.0	85.8	106.6	1 844.6	698.9	2 543.5	5.8	72.5
October	1 506.1	1 719.3	85.0	101.5	1 820.9	724.6	2 545.5	5.6	71.5
FEMALES									
October									
1996	737.9	1 216.6	62.5	97.1	1 313.7	1 179.7	2 493.4	7.4	52.7
1997	723.1	1 195.5	67.2	96.5	1 292.1	1 232.7	2 524.8	7.5	51.2
1998	751.4	1 258.7	54.8	90.3	1 349.0	1 207.6	2 556.6	6.7	52.8
1999									
August	723.4	1 237.1	54.9	86.7	1 323.8	1 261.2	2 584.9	6.5	51.2
September	749.9	1 285.6	61.3	97.6	1 383.2	1 204.7	2 587.9	7.1	53.4
October	767.2	1 289.1	51.3	77.1	1 366.2	1 225.1	2 591.3	5.6	52.7
November	756.5	1 283.3	50.5	71.8	1 355.1	1 239.7	2 594.8	5.3	52.2
December	788.4	1 307.0	54.7	80.9	1 387.9	1 210.4	2 598.3	5.8	53.4
2000									
January	776.9	1 257.2	55.3	80.7	1 337.9	1 262.8	2 600.7	6.0	51.4
February	755.7	1 282.3	57.0	98.2	1 380.5	1 222.7	2 603.2	7.1	53.0
March	771.1	1 307.8	57.0	92.4	1 400.2	1 205.4	2 605.6	6.6	53.7
April	791.3	1 318.7	52.1	82.4	1 401.1	1 207.3	2 608.4	5.9	53.7
May	784.9	1 324.9	53.2	83.7	1 408.7	1 202.5	2 611.2	5.9	53.9
June	783.4	1 326.0	39.8	76.1	1 402.2	1 211.8	2 614.0	5.4	53.6
July	812.3	1 344.0	36.0	60.9	1 404.8	1 211.8	2 616.7	4.3	53.7
August	787.2	1 329.4	40.1	72.3	1 401.7	1 217.6	2 619.3	5.2	53.5
September	805.6	1 356.4	43.0	73.9	1 430.3	1 191.7	2 622.0	5.2	54.6
October	784.8	1 332.5	40.1	67.7	1 400.2	1 223.3	2 623.5	4.8	53.4

(a) For footnotes see end of table.

4 LABOUR FORCE STATUS, NSW—ORIGINAL—continued

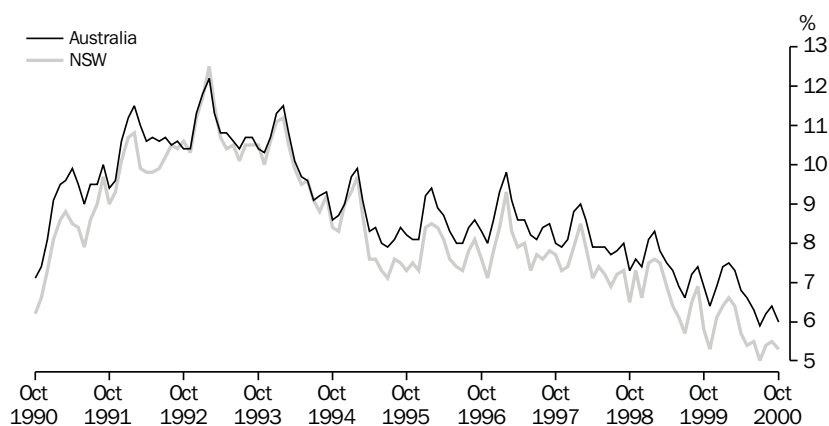
	<u>Employed</u>		<u>Unemployed</u>		<u>Labour force</u>	<u>Not in labour force</u>	<u>Civilian population aged 15 years and over</u>	<u>Unemployment rate(a)</u>	<u>Participation rate(b)</u>
	<u>Full-time workers</u>	<u>Total</u>	<u>Looking for full-time work</u>	<u>Total</u>					
	'000	'000	'000	'000					
PERSONS									
October									
1996	2 159.3	2 819.0	177.9	231.0	3 050.0	1 845.2	4 895.2	7.6	62.3
1997	2 150.9	2 790.4	186.3	233.4	3 023.8	1 934.6	4 958.4	7.7	61.0
1998	2 211.9	2 907.6	151.6	200.8	3 108.4	1 916.6	5 025.0	6.5	61.9
1999									
August	2 187.6	2 899.6	150.8	202.0	3 101.6	1 982.8	5 084.4	6.5	61.0
September	2 252.6	2 981.8	158.9	222.4	3 204.2	1 886.2	5 090.3	6.9	62.9
October	2 271.8	2 977.5	138.6	182.6	3 160.1	1 937.7	5 097.8	5.8	62.0
November	2 255.4	2 965.1	131.9	167.0	3 132.1	1 973.2	5 105.3	5.3	61.3
December	2 318.6	3 017.9	149.9	197.0	3 214.9	1 897.9	5 112.8	6.1	62.9
2000									
January	2 274.5	2 937.4	160.1	200.6	3 138.0	1 980.4	5 118.4	6.4	61.3
February	2 259.3	2 976.3	152.8	212.0	3 188.3	1 935.7	5 124.0	6.6	62.2
March	2 265.4	3 009.6	150.4	206.5	3 216.1	1 913.6	5 129.7	6.4	62.7
April	2 296.0	3 035.3	133.9	182.9	3 218.2	1 917.8	5 136.0	5.7	62.7
May	2 289.1	3 044.4	132.8	181.9	3 226.3	1 916.0	5 142.3	5.6	62.7
June	2 300.6	3 044.7	126.0	176.6	3 221.3	1 927.3	5 148.6	5.5	62.6
July	2 340.5	3 076.5	117.4	160.5	3 237.0	1 917.3	5 154.3	5.0	62.8
August	2 279.7	3 031.1	127.2	173.4	3 204.6	1 955.3	5 159.9	5.4	62.1
September	2 324.9	3 094.4	128.9	180.5	3 274.9	1 890.6	5 165.5	5.5	63.4
October	2 290.9	3 051.8	125.1	169.2	3 221.1	1 947.9	5 169.0	5.3	62.3

(a) The number of unemployed in each group expressed as a percentage of the labour force in the same group.

(b) The labour force in each group expressed as a percentage of the civilian population aged 15 years and over in the same group.

Source: Labour Force, Australia, Preliminary (Cat. no. 6202.0).

5 UNEMPLOYMENT RATE—ORIGINAL



Source: Labour Force, Australia, Preliminary (Cat. no. 6202.0).

6 COAL AND ELECTRICITY PRODUCTION, NSW AND AUSTRALIA—ORIGINAL

	Unit	Latest period	New South Wales				Australia		
			Latest figure	Change from prior period	Change from same period prior year	Latest figure	Change from prior period	Change from same period prior year	
				%	%		%	%	
Raw coal won									
Underground	'000 tonnes	Sept 2000	3 837	-31.6	-30.9	6 797	-23.2	-23.3	
Open cut	'000 tonnes	Sept 2000	8 301	-0.1	1.0	20 288	0.3	4.1	
Total	'000 tonnes	Sept 2000	12 138	-12.8	-11.8	27 085	-6.9	-4.5	
Electricity	mill. kWh	Sept qtr 2000	19 289	11.3	13.6	49 387	4.2	5.6	

Source: Joint Coal Board for NSW and Australia from ABS unpublished statistics, Manufacturing Production, Australia (Cat. no. 8301.0).

7 COAL AND ELECTRICITY PRODUCTION, NSW—ORIGINAL

	Raw coal won			Electricity mill. kWh
	Underground	Open cut	Total	
	'000 tonnes	'000 tonnes	'000 tonnes	
1997-98	58 299	75 710	134 009	61 804
1998-99	51 158	80 209	131 367	63 743
1999-2000	52 709	80 186	132 895	65 934
1999				
July	4 560	6 706	11 266	} 16 977
August	3 861	6 442	10 303	
September	5 552	8 215	13 767	
October	4 015	6 369	10 384	} 15 284
November	4 573	6 323	10 596	
December	5 918	6 967	11 985	
2000				
January	3 633	5 907	9 541	} 16 339
February	3 834	6 376	10 210	
March	4 799	6 549	11 348	
April	3 854	5 084	8 938	} 17 334
May	5 601	8 611	14 212	
June	3 793	6 443	10 237	
July	3 958	6 161	10 119	} 19 289
August	5 609	8 310	13 919	
September	3 837	8 301	12 138	

Source: Joint Coal Board, Manufacturing Production, Australia (Cat. no. 8301.0).

8 BUILDING APPROVALS—NSW AND AUSTRALIA

	Unit	Latest period	Latest figure	New South Wales		Australia		
				Change from prior period %	Change from same period prior year %	Latest figure	Change from prior period %	Change from same period prior year %
Number of dwelling units(a) (seasonally adjusted(b))								
New houses	no.	Sept 2000	1 402	-5.3	-40.5	5 696	-4.4	-44.8
Total	no.	Sept 2000	2 775	13.8	-38.2	8 936	-1.1	-37.9
Value of new residential building (seasonally adjusted)	\$m	Sept 2000	396.3	6.6	-26.7	1 152.6	-2.0	-31.4
Value of alterations and additions to residential building(c) (seasonally adjusted)	\$m	Sept 2000	79.8	4.6	-28.6	210.5	-13.3	-21.7
Value of non-residential building(d) (original)	\$m	Sept 2000	308.1	12.3	18.2	995.4	0.9	15.2
Value of all building (original)	\$m	Sept 2000	761.0	0.3	-18.8	2 373.2	-6.1	-20.3

(a) Includes dwelling units approved as part of the construction of non-residential building and alterations and additions to existing buildings (including conversions to dwelling units).

(b) Seasonally adjusted and trend estimates to April 2000 have been revised. See Building Approvals, Australia (Cat. no. 8731.0).

(c) Valued at \$10,000 or more. Includes conversions of existing buildings into residential buildings.

(d) Valued at \$50,000 or more.

Source: Building Approvals, Australia (Cat. no. 8731.0).

9 BUILDING APPROVALS—NSW

	Number of dwelling units(a), seasonally adjusted				Value of building approvals(b)			
	New houses		Total		Seasonally adjusted		Original	
	Private sector	Total	Private sector	Total	New residential building	Alterations and additions to residential building(c)	Non-residential building(d)	All building
	no.	no.	no.	no.	\$m	\$m	\$m	\$m
1996-97	5 169.2	11 356.6
1997-98	5 910.9	13 348.6
1998-99	4 543.4	11 932.3
1999								
July	r 2 693	r 1 706	r 4 217	r 4 374	r 602.9	109.0	r 524.3	1 270.1
August	r 2 612	2 615	r 4 667	4 721	631.8	114.9	509.0	1 287.7
September	2 321	2 355	r 4 444	r 4 489	r 540.7	111.8	r 260.6	r 937.5
October	r 2 714	r 2 739	r 4 578	r 4 719	r 578.7	116.0	r 266.3	r 906.2
November r	2 819	2 838	4 261	4 334	523.7	105.8	276.1	1 003.8
December	r 3 038	r 3 055	4 582	r 4 628	r 589.1	r 114.5	r 280.5	r 978.1
2000								
January r	2 741	2 755	4 294	4 387	626.8	92.7	361.6	955.2
February r	2 866	2 882	4 246	4 360	566.7	123.4	283.5	951.7
March r	2 632	2 642	4 033	4 062	514.5	125.0	444.9	1 082.6
April r	2 183	2 204	3 596	3 737	483.3	121.0	391.4	r 919.9
May r	2 057	2 075	3 904	3 989	537.0	123.0	311.2	1 101.1
June	1 857	1 864	2 927	3 050	r 402.3	r 79.9	r 349.0	r 813.0
July r	1 301	1 308	1 828	1 915	283.3	74.5	285.3	665.7
August r	1 417	1 480	2 370	2 439	371.9	76.3	274.3	759.1
September	1 396	1 402	2 690	2 775	396.3	79.8	308.1	761.0

(a) Includes dwelling units approved as part of the construction of non-residential building and alterations and additions to existing buildings (including conversions to dwelling units).

(b) From July 2000, value data for both residential and non-residential building approvals will be on a GST inclusive basis.

(c) Valued at \$10,000 or more. Includes conversions of existing buildings into residential buildings.

(d) Valued at \$50,000 or more.

Source: Building Approvals, Australia (Cat. no. 8731.0).

10 TURNOVER OF RETAIL ESTABLISHMENTS(a), NSW AND AUSTRALIA(b)—SEASONALLY ADJUSTED

	Latest period	New South Wales			Australia		
		Latest figure	Change from prior period	Change from same period prior year	Latest figure	Change from prior period	Change from same period prior year
		\$m	%	%	\$m	%	%
Food retailing	Sept 2000	1 646.8	0.1	3.5	5 034.4	-0.5	2.9
Department stores	Sept 2000	394.0	-2.1	8.2	1 094.7	-3.4	3.0
Clothing and soft good retailing	Sept 2000	371.2	24.9	17.0	888.1	12.8	5.7
Household good retailing	Sept 2000	459.5	-2.4	2.3	1 470.8	-1.6	4.8
Recreational good retailing	Sept 2000	206.3	-4.7	7.0	602.1	-0.4	-0.2
Other retailing	Sept 2000	453.9	6.4	6.2	1 356.3	2.7	4.9
Hospitality and services	Sept 2000	1 060.1	7.1	22.0	2 316.6	2.4	10.2
Total value of retail sales	Sept 2000	4 591.8	3.2	9.0	12 763.0	0.8	4.7

(a) The figures shown are derived from a monthly survey of retail establishments. Excludes motor vehicle, boat and caravan dealers, service stations, smash repairers, tyre and battery retailers, bread and milk vendors, footwear repairers and electrical appliance repairers n.e.c. Retail establishments which do not have employees are excluded from the survey. Turnover includes retail sales, wholesale sales, takings from repairs, meals and hiring of goods; and commissions from agency activity (e.g. commissions received from collecting dry cleaning, selling lottery tickets etc.).

Source: Retail Trade, Australia (Cat. no. 8501.0).

11 TURNOVER OF RETAIL ESTABLISHMENTS(a), NSW(b)—SEASONALLY ADJUSTED(c)

	Food retailing	Department stores	Clothing and soft good retailing	Household good retailing	Recreational good retailing	Other retailing	Hospitality and services	Total
	\$m	\$m	\$m	\$m	\$m	\$m	\$m	\$m
1999								
July	1 556.0	361.6	304.3	405.2	198.0	415.5	854.3	4 094.8
August	1 594.6	372.3	323.4	428.9	194.7	428.4	843.8	4 186.1
September	1 591.4	364.1	317.2	449.1	192.8	427.5	868.8	4 210.9
October	1 586.7	377.2	321.7	460.2	189.3	425.2	848.1	4 208.4
November	1 591.0	373.0	328.7	438.3	184.0	434.5	844.4	4 193.9
December	1 603.4	371.1	322.4	420.0	184.7	444.3	854.9	4 200.9
2000								
January	1 541.3	372.3	311.5	439.3	198.9	421.4	854.4	4 139.1
February	1 546.3	377.6	293.9	455.9	197.2	430.3	862.3	4 163.6
March	1 548.6	371.7	320.0	452.2	200.9	427.0	872.4	4 192.8
April	1 558.1	378.8	302.1	445.3	201.8	428.7	872.0	4 186.9
May	1 552.4	382.8	312.4	459.2	209.4	439.0	875.1	4 230.2
June	1 586.5	461.0	371.2	583.3	204.1	479.2	887.6	4 572.8
July	1 596.5	300.5	274.4	427.4	220.5	393.4	931.8	4 144.5
August	1 645.3	402.6	297.2	471.0	216.5	426.4	989.6	4 448.7
September	1 646.8	394.0	371.2	459.5	206.3	453.9	1 060.1	4 591.8

(a) The figures shown are derived from a monthly survey of retail establishments. Excludes motor vehicle, boat and caravan dealers, service stations, smash repairers, tyre and battery retailers, bread and milk vendors, footwear repairers and electrical appliance repairers n.e.c. Retail establishments which do not have employees are excluded from the survey. Turnover includes retail sales, wholesale sales, takings from repairs, meals and hiring of goods; and commissions from agency activity (e.g. commissions received from collecting dry cleaning, selling lottery tickets etc.).

(b) Data from July 2000 reference month onwards are recorded inclusive of GST.

(c) Data for previous months have been revised due to concurrent seasonal adjustment methodology. See Explanatory Notes in Retail Trade, Australia (Cat. no. 8501.0).

Source: Retail Trade, Australia (Cat. no. 8501.0).

12 NEW MOTOR VEHICLE REGISTRATIONS(a), NSW AND AUSTRALIA—SEASONALLY ADJUSTED

	Latest period	New South Wales			Australia		
		Latest figure	Change from prior period	Change from same period prior year	Latest figure	Change from prior period	Change from same period prior year
		no.	%	%	no.	%	%
Passenger vehicles	Sept 2000	19 653	-15.5	9.1	58 127	-9.4	17.0
Other vehicles (excluding motor cycles)	Sept 2000	3 333	-9.5	-6.2	10 061	-7.7	-5.9
Total registrations (excluding motor cycles)	Sept 2000	22 986	-14.7	6.5	68 188	-9.2	12.9

(a) Includes vehicles (other than those of the defence forces) owned by Government departments and authorities. Excludes mobile plant and equipment, tractors, trailers and non-motorised caravans.

Source: *New Motor Vehicle Registrations, Australia, Preliminary (Cat. no. 9301.0)*.

13 NEW MOTOR VEHICLE REGISTRATIONS(a), NSW—SEASONALLY ADJUSTED

	Passenger vehicles	Other vehicles (excluding motor cycles)	Total (excluding motor cycles)
	no.	no.	no.
1999			
July	19 633	3 748	23 381
August	17 713	3 449	21 162
September	18 022	3 553	21 574
October	17 819	3 802	21 621
November	18 426	3 942	22 368
December	19 679	4 395	24 074
2000			
January	17 675	3 672	21 347
February	18 376	3 977	22 352
March	18 314	3 530	21 844
April	17 517	3 451	20 968
May	16 439	3 661	20 100
June	13 911	3 708	17 619
July r	23 285	2 958	26 243
August	23 263	3 684	26 947
September	19 653	3 333	22 986

(a) Includes vehicles (other than those of the defence forces) owned by Government departments and authorities. Excludes mobile plant and equipment, tractors, trailers and non-motorised caravans.

Source: *New Motor Vehicle Registrations, Australia, Preliminary (Cat. no. 9301.0)*.

14 ACCOMMODATION ESTABLISHMENTS(a) NSW AND AUSTRALIA—ORIGINAL

	New South Wales					Australia		
	Unit	Latest period	Latest figure	Change from prior period	Change from same period prior year	Latest figure	Change from prior period	Change from same period prior year
				%	%		%	%
Room nights	'000	June qtr 2000	3 323.9	-1.9	7.2	9 999.9	-0.9	6.1
Room occupancy rate	%	June qtr 2000	58.1	-3.6	0.3	57.1	-1.9	1.6
Takings	\$'000	June qtr 2000	374 005	-6.0	12.4	1 039 478	-4.5	9.8

(a) Licensed hotels with facilities, motels and guest houses and serviced apartments with 15 or more rooms or units.

Source: *Tourist Accommodation, Australia (Cat. no. 8635.0)*.

15 ACCOMMODATION ESTABLISHMENTS(a) SYDNEY AND NSW—ORIGINAL

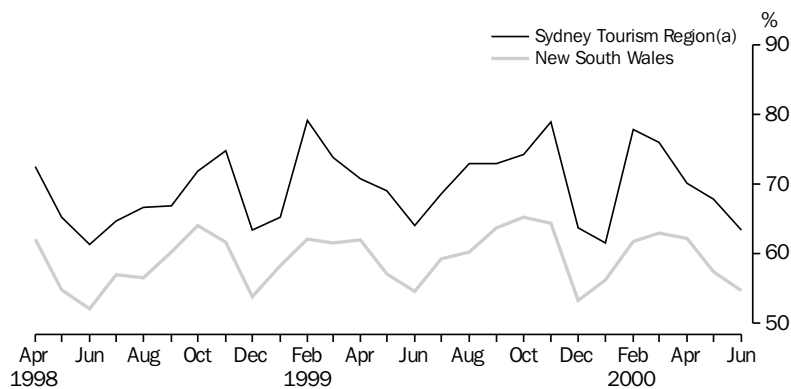
	Sydney Tourism Region(b)			New South Wales		
	Room nights	Room occupancy rate	Takings	Room nights	Room occupancy rate	Takings
	'000	%	\$'000	'000	%	\$'000
1999						
March qtr	1 828.8	72.5	248 997	3 213.2	60.6	360 674
June qtr	1 731.3	68.0	226 273	3 099.9	57.9	332 827
September qtr	1 865.9	71.6	247 543	3 345.0	61.1	375 014
December qtr	1 962.5	72.3	276 165	3 423.1	60.9	395 165
2000						
March qtr 2000	1 980.0	71.7	279 374	3 388.1	60.3	397 869
June qtr 2000	1 902.6	67.1	258 225	3 324.0	58.1	374 005

(a) Licensed hotels with facilities, motels and guest houses and serviced apartments with 15 or more rooms or units.

(b) Excludes Gosford, Wyong and Blue Mountains Statistical Local Areas.

Source: *Tourist Accommodation, Small Area Data, New South Wales (Cat. no. 8635.1.40.001)*.

16 ACCOMMODATION ESTABLISHMENTS, MONTHLY ROOM OCCUPANCY RATE—ORIGINAL



(a) Excludes Gosford, Wyong and Blue Mountains Statistical Local Areas.

Source: *Tourist Accommodation, Small Area Data, NSW (Prod. no. 8635.1.40.001)*.

17 CONSUMER AND PRODUCER PRICE INDEXES—NSW AND AUSTRALIA

	Unit	New South Wales(a)				Australia(b)		
		Latest period	Latest figure	Change from prior period %	Change from same period prior year %	Latest figure	Change from prior period %	Change from same period prior year %
Consumer Price Index (all groups)	1989-90 =100.0	Sep qtr 2000	131.6	3.6	6.0	130.9	3.7	6.1
Price index of materials used in house building (all groups)	1989-90 =100.0	Sep qtr 2000	130.0	-0.9	5.1	124.5	-0.8	3.3
Price index of materials used in building other than house building (all groups)	1989-90 =100.0	Sep qtr 2000	115.4	-1.6	0.3	115.5	-1.6	0.3

(a) Refers to State capital city—Sydney.

(b) For the Consumer Price Index this is the weighted average of eight capital cities and for the other two indexes, the weighted average of the six State capital cities.

Source: Consumer Price Index, Australia (Cat. no. 6401.0); Price Index of Materials Used in Building Other Than House Building, Six State Capital Cities (Cat. no. 6407.0); Price Index of Materials Used in House Building, Six State Capital Cities (Cat. no. 6408.0).

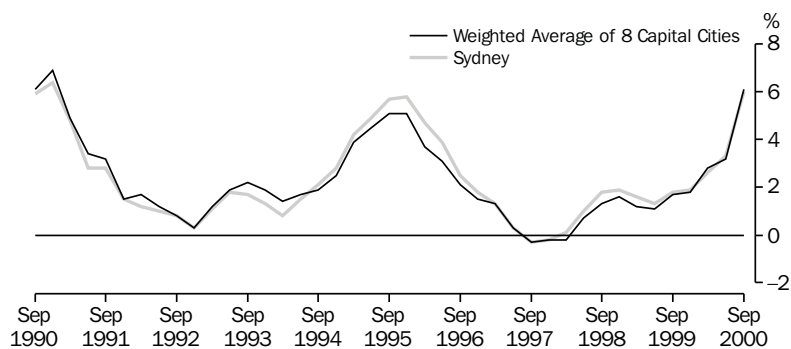
18 CONSUMER AND PRODUCER PRICE INDEXES—NSW(a)

	Consumer Price Index, all groups	Price Index of materials used in house building, all groups	Price Index of materials used in building other than house building, all groups
	1989-90 = 100.0	1989-90 = 100.0	1989-90 = 100.0
1999			
June qtr	123.0	121.8	115.4
September qtr	124.1	123.7	115.1
December qtr	124.7	124.4	115.3
2000			
March qtr	125.8	128.0	116.4
June qtr	127.0	131.2	117.3
September qtr	131.6	130.0	115.4

(a) Refers to State capital city—Sydney.

Source: Consumer Price Index, Australia (Cat. no. 6401.0); Price Index of Materials Used in Building Other Than House Building, Six State Capital Cities (Cat. no. 6407.0); Price Index of Materials Used in House Building, Six State Capital Cities (Cat. no. 6408.0).

19 CONSUMER PRICE INDEX, ANNUAL RATE OF CHANGE



Source: Consumer Price Index (Cat. no. 6401.0).

20 SECURED HOUSING FINANCE COMMITMENTS TO INDIVIDUALS FOR OWNER OCCUPATION—NSW AND AUSTRALIA

	Latest period	New South Wales			Australia		
		Latest figure	Change from prior period	Change from same period prior year	Latest figure	Change from prior period	Change from same period prior year
			\$m	%		%	\$m
Lending commitments for the construction or purchase of dwellings							
Construction of dwellings	Sept 2000	151	-8.5	-52.1	538	-10.6	-45.9
Purchase of newly erected dwellings	Sept 2000	79	-7.1	-21.8	191	-10.7	-21.7
Purchase of established dwellings(a)	Sept 2000	1 446	-15.6	-21.5	3 429	-15.9	-17.4
Refinancing of existing dwellings	Sept 2000	410	-12.4	4.1	990	-11.8	4.1
Lending commitments for alterations and additions	Sept 2000	84	-7.7	-20.8	222	-8.6	-21.6
Total lending commitments to individuals for housing(b)	Sept 2000	2 087	-14.2	-21.3	5 149	-14.4	-18.8
Total lending commitments to individuals for housing (seasonally adjusted)(b)	Sept 2000	2 121	-6.1	-16.0	5 286	-6.7	-13.0

(a) Excludes refinancing.

(b) Excludes alterations and additions.

Source: *Housing Finance for Owner Occupation, Australia (Cat. no. 5609.0)*.

21 SECURED HOUSING FINANCE COMMITMENTS TO INDIVIDUALS FOR OWNER OCCUPATION—NSW

	Lending commitments for the construction or purchase of dwellings					Total lending commitments to individuals for housing(b)	
	Construction of dwellings	Purchase of newly erected dwellings	Purchase of established dwellings(a)	Refinancing of existing dwellings	Lending commitments for alterations and additions	Original	Seasonally adjusted
	\$m	\$m	\$m	\$m	\$m	\$m	\$m
1997-98	2 625	1 280	14 445	3 573	1 174	21 923	..
1998-99	2 990	1 147	16 761	4 026	1 126	24 925	..
1999-2000	3 268	1 129	21 637	4 993	1 271	31 027	..
1999							
July	271	96	1 786	335	93	2 489	2 410
August	286	90	1 800	396	96	2 572	2 525
September	315	101	1 841	394	106	2 652	2 524
October	290	104	1 956	418	110	2 768	2 993
November	329	115	2 122	460	120	3 026	2 889
December	275	90	1 893	415	105	2 672	2 792
2000							
January	226	70	1 404	309	83	2 010	2 712
February	324	103	1 759	423	114	2 609	2 709
March	296	101	1 956	488	123	2 842	2 428
April	213	77	1 581	358	94	2 229	2 406
May	246	94	1 909	524	119	2 772	2 428
June	197	86	1 630	474	105	2 387	2 219
July	170	69	1 439	436	89	2 114	2 107
August	165	85	1 713	468	91	2 431	2 258
September	151	79	1 446	410	84	2 087	2 121

(a) Excludes refinancing.

(b) Excludes alterations and additions.

Source: *Housing Finance for Owner Occupation, Australia (Cat. no. 5609.0)*.

22 NSW GOVERNMENT FINANCE, GENERAL GOVERNMENT SECTOR(a)

	Budget 12 months to 30/06/2001	Actual 3 months to 30/09/2000
	\$m	\$m
State revenues		
Taxation	12 412	3 195
Commonwealth grants	12 780	2 981
Financial distributions	1 210	306
Fines, regulatory fees and other	792	218
<i>Total state revenues</i>	27 194	6 700
Operating revenues		
Sale of goods and services	2 171	581
Investment income	391	107
Grants and contributions	421	147
Other revenue	280	58
<i>Total operating revenues</i>	3 263	893
Expenses		
Employee related—superannuation	1 540	385
Employee related—other	12 157	2 945
Other operating	6 765	1 601
Maintenance	1 120	178
Depreciation and amortisation	995	358
Recurrent grants and subsidies	3 944	1 027
Capital grants and subsidies	1 397	285
Finance costs	1 287	526
<i>Total expenses</i>	29 205	7 305
Gain/(loss) on sale of non-current assets	-14	5
Net cost of services	25 956	6 407
Surplus (underlying)	1 238	293
Abnormal items	2 400	2 582
Surplus/(deficit) for the year	3 638	2 875
less valuation gains	-1 888	-2 214
GFS net operating balance	1 750	661
less capital acquisitions	-2 493	-526
plus depreciation	995	358
plus asset sales & other	407	29
<i>GFS net lending</i>	659	522

(a) Prior to the 2000–2001 Budget, NSW Government Finance Statistics were published on a cash basis. Monthly Government Finance Statistics reporting has now moved to an accruals framework.

Source: Financial Statement released by NSW Treasury. Figures may differ from data published in annual ABS publications.

23 ACTUAL PRIVATE NEW FIXED CAPITAL EXPENDITURE, CURRENT PRICES, NSW AND AUSTRALIA—TREND

Type of asset	Latest period	New South Wales			Australia		
		Latest figure	Change from prior period	Change from same period prior year	Latest figure	Change from prior period	Change from same period prior year
		\$m	%	%	\$m	%	%
New buildings and structures	Jun qtr 2000	968	0.8	0.9	2 966	5.6	-5.1
Equipment, plant and machinery	Jun qtr 2000	2 895	3.4	13.8	7 529	-1.2	-1.0
Total	Jun qtr 2000	3 863	2.7	10.3	10 495	0.7	-2.2

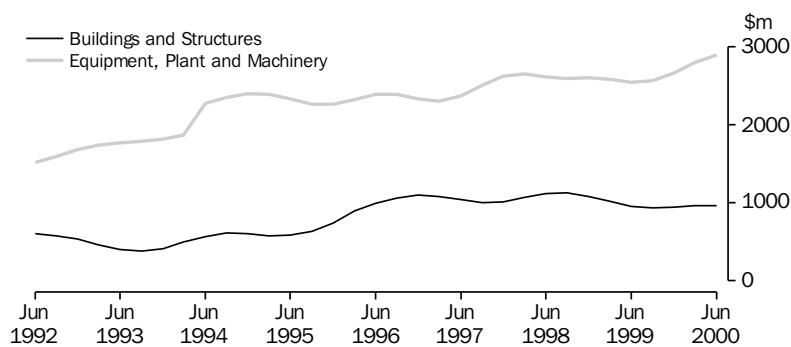
Source: State Estimates of Private New Capital Expenditure (Cat. no. 5646.0).

24 ACTUAL PRIVATE NEW FIXED CAPITAL EXPENDITURE, CURRENT PRICES, NSW—TREND

	Type of asset		Total
	New buildings and structures	Equipment, plant and machinery	
	\$m	\$m	
1999			
March qtr	1 018	2 585	3 603
June qtr	959	2 543	3 502
September qtr	935	2 562	3 497
December qtr	949	2 666	3 615
2000			
March qtr	960	2 800	3 760
June qtr	968	2 895	3 863

Source: State Estimates of New Capital Expenditure (Cat. no. 5646.0).

25 ACTUAL PRIVATE NEW FIXED CAPITAL EXPENDITURE, CURRENT PRICES, NSW—TREND



Source: State Estimates of New Capital Expenditure (Cat. no. 5646.0).

26 INTERNATIONAL TRADE, IMPORTS(a) AND EXPORTS(b)—NSW AND AUSTRALIA

	Latest period	New South Wales			Australia		
		Latest figure	Change from prior period	Change from same period prior year	Latest figure	Change from prior period	Change from same period prior year
		\$m	%	%	\$m	%	%
Overseas imports into NSW	Sept 2000	4 492	-9.7	9.6	9 885	-8.0	10.3
Total overseas exports(c)	Sept 2000	1 966	7.9	25.0	9 371	4.9	33.1
Export commodities and SITC(d) code							
Meat and meat preparations (01)	Sept 2000	91	-8.2	11.7	444	4.9	23.0
Cereals and cereal preparations (04)	Sept 2000	149	4.1	57.8	465	4.0	19.5
Wool and other animal hair (268)	Sept 2000	77	16.0	11.4	276	25.8	36.1
Coal, coke and briquettes (32)	Sept 2000	292	-3.1	17.3	844	4.7	23.4
Iron and steel (67)	Sept 2000	9	-85.9	-84.2	43	-54.9	-56.3
Aluminium (684)	Sept 2000	134	-0.5	25.5	334	-20.8	20.7
Office machines and automatic data processing machines (75)	Sept 2000	29	10.9	-0.9	48	12.4	-28.8

(a) Figures shown are Customs value.

(b) Figures shown are Free On Board (FOB) values.

(c) Excludes re-exported goods.

(d) Standard International Trade Classification Revision 3.

Source: ABS unpublished data, International Trade database.

27 INTERNATIONAL TRADE, IMPORTS(a) AND EXPORTS(b)—NSW

	Overseas exports of SITC(c) commodities								
	Overseas imports into NSW	Total overseas exports(d)	Meat and meat preparations (01)	Cereals and cereal preparations (04)	Wool and other animal hair (268)	Coal, coke and briquettes (32)	Iron and steel (67)	Aluminium (684)	Office machines and automatic data processing machines (75)
	\$m	\$m	\$m	\$m	\$m	\$m	\$m	\$m	\$m
1998-1999	42 142	17 948	948	1 234	685	3 766	958	1 151	333
1999-2000	48 019	18 947	1 047	1 261	826	3 092	830	1 341	380
1999									
July	3 497	1 514	83	110	54	298	45	104	33
August	3 806	1 535	85	106	50	277	48	96	35
September	4 098	1 573	81	94	69	249	59	107	29
October	3 765	1 553	91	103	78	239	53	105	29
November	4 272	1 577	90	107	93	244	67	104	34
December	3 975	1 577	94	112	83	211	68	112	28
2000									
January	3 462	1 331	68	68	55	261	50	101	22
February	3 731	1 516	86	114	72	226	61	122	32
March	4 341	1 637	95	123	78	238	79	132	43
April	3 534	1 610	87	94	59	285	99	109	35
May	4 588	r 1 764	93	118	69	295	108	122	30
June	4 876	r 1 762	93	112	66	268	94	129	29
July	r 4 508	r 1 779	101	138	66	318	64	129	31
August	r 4 977	r 1 822	98	143	66	301	66	135	26
September	4 492	1 966	91	149	77	292	9	134	29

(a) Figures shown are Customs value.

(b) Figures shown are Free On Board (FOB) values.

(c) Standard International Trade Classification Revision 3.

(d) Excludes re-exported goods.

Source: ABS unpublished data, International Trade database.

FOR MORE INFORMATION...

- INTERNET* **www.abs.gov.au** the ABS web site is the best place to start for access to summary data from our latest publications, information about the ABS, advice about upcoming releases, our catalogue, and Australia Now—a statistical profile.
- LIBRARY* A range of ABS publications is available from public and tertiary libraries Australia-wide. Contact your nearest library to determine whether it has the ABS statistics you require, or visit our web site for a list of libraries.
- CPI INFOLINE* For current and historical Consumer Price Index data, call 1902 981 074 (call cost 77c per minute).
- DIAL-A-STATISTIC* For the latest figures for National Accounts, Balance of Payments, Labour Force, Average Weekly Earnings, Estimated Resident Population and the Consumer Price Index call 1900 986 400 (call cost 77c per minute).

INFORMATION SERVICE

Data which have been published and can be provided within five minutes are free of charge. Our information consultants can also help you to access the full range of ABS information—ABS user-pays services can be tailored to your needs, time frame and budget. Publications may be purchased. Specialists are on hand to help you with analytical or methodological advice.

- PHONE* **1300 135 070**
- EMAIL* **client.services@abs.gov.au**
- FAX* 1300 135 211
- POST* Client Services, ABS, GPO Box 796, Sydney 1041

WHY NOT SUBSCRIBE?

ABS subscription services provide regular, convenient and prompt deliveries of ABS publications and products as they are released. Email delivery of monthly and quarterly publications is available.

- PHONE* 1300 366 323
- EMAIL* subscriptions@abs.gov.au
- FAX* 03 9615 7848
- POST* Subscription Services, ABS, GPO Box 2796Y, Melbourne 3001



2130710012005
ISSN 1031-8534

RRP \$17.50