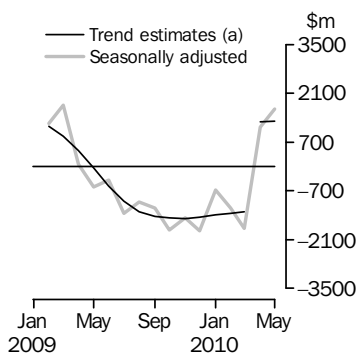


INTERNATIONAL TRADE IN GOODS AND SERVICES

AUSTRALIA

EMBARGO: 11.30AM (CANBERRA TIME) TUES 6 JUL 2010

Balance on Goods and Services



(a) A trend break of \$2,033m has been applied to April 2010.

KEY FIGURES

| | Mar 2010 | Apr 2010 | May 2010 | Apr 10 to May 10 % |
|--|-------------|-------------|-------------|-----------------------------|
| | \$m | \$m | \$m | change |
| BALANCE ON GOODS AND SERVICES | | | | |
| Trend estimates | -1 296 | 1 287 | 1 306 | .. |
| Seasonally adjusted | -1 769 | 1 123 | 1 645 | .. |
| CREDITS (Exports of goods & services) | | | | |
| Trend estimates | 20 829 | 23 576 | 23 926 | 1 |
| Seasonally adjusted | 20 528 | 23 328 | 24 725 | 6 |
| DEBITS (Imports of goods & services) | | | | |
| Trend estimates | 22 125 | 22 289 | 22 619 | 1 |
| Seasonally adjusted | 22 297 | 22 205 | 23 080 | 4 |

.. not applicable

KEY POINTS

BALANCE ON GOODS AND SERVICES

- The trend estimate of the *balance on goods and services* was a surplus of \$1,306m in May 2010, an increase of \$19m on the revised surplus in April 2010.
- In seasonally adjusted terms, the *balance on goods and services* was a surplus of \$1,645m in May 2010, an increase of \$522m on the revised surplus in April 2010.

CREDITS (EXPORTS OF GOODS & SERVICES)

- In seasonally adjusted terms, *goods and services credits* rose \$1,397m (6%) to \$24,725m. *Non-monetary gold* rose \$772m (66%), *non-rural goods* rose \$385m (2%), *rural goods* rose \$235m (11%) and *services credits* rose \$5m.

DEBITS (IMPORTS OF GOODS & SERVICES)

- In seasonally adjusted terms, *goods and services debits* rose \$875m (4%) to \$23,080m. *Capital goods* rose \$408m (10%), *consumption goods* rose \$214m (4%), *intermediate and other merchandise goods* rose \$182m (2%) and *services debits* rose \$108m (2%). *Non-monetary gold* fell \$36m (4%).

INQUIRIES

For further information contact Selvi Sekhar on Canberra (02) 6252 5540 for Goods, and Andrew Tomadini on Canberra (02) 6252 7094 for Services.

NOTES

FORTHCOMING ISSUES

| ISSUE | RELEASE DATE |
|----------------|------------------|
| June 2010 | 4 August 2010 |
| July 2010 | 2 September 2010 |
| August 2010 | 5 October 2010 |
| September 2010 | 4 November 2010 |
| October 2010 | 2 December 2010 |
| November 2010 | 11 January 2011 |



REVISIONS

Table 17 summarises revisions to goods and services on a balance of payments basis, in original current price terms, since the last issue of this publication, for the last three financial years and last six months.

Revisions have been made to incorporate the latest data relating to merchandise trade and international trade in services. In original terms, these revisions have:

- increased the surplus on goods and services for April 2010 by \$865m
- increased the surplus on goods and services for 2008–09 by \$94m
- decreased the deficit on goods and services for the 10 months to April 2010 by \$2,403m.

Seasonally adjusted and trend series have been revised due to the incorporation of revised estimates, the incorporation of estimates for the latest month and the rederivation of seasonal factors under the concurrent seasonal adjustment methodology.

IRON ORE AND COAL PRICES

Adjustments have been made to the value of the 'metal ores and minerals' and the 'coal, coke and briquettes' components in the balance of payments series. See page 4 – Commodity prices adjustment for details.

CHANGES IN THIS ISSUE

As advised in the previous issue, this issue introduces a change of treatment for the civil aircraft component. A new component 'Civil aircraft and confidentialised items' includes civil aircraft for all periods and from July 2008 includes all commodities subject to a 'no commodity details' or 'no value details' restriction. This change affects the statistics presented in Capital goods n.e.s. from December 2008 and Other merchandise goods for July and August 2008, but the change does not revise the total value of goods debits. This change will be reflected in the June quarter 2010 issue of *Balance of Payments and International Investment Position, Australia* (cat. no. 5302.0).

All civil aircraft have been confidentialised since December 2008, and therefore the components making up the 'Civil aircraft and confidentialised items' series will not be available at a lower level on a balance of payments basis.

Brian Pink
Australian Statistician

CONTENTS

page

| | |
|---------------------------------------|---|
| Commodity prices adjustment | 4 |
| Time series data | 5 |

ANALYSIS

| | |
|---------------------------------|---|
| Analysis and comments | 7 |
|---------------------------------|---|

TABLES

INTERNATIONAL TRADE IN GOODS AND SERVICES – BALANCE OF PAYMENTS BASIS

| | |
|---|----|
| 1 Goods and services, summary, seasonally adjusted and trend estimates | 12 |
| 2 Goods and services, summary, original | 13 |
| 3 Goods credits, original | 14 |
| 4 Goods debits, original | 15 |
| 5 Goods credits, seasonally adjusted | 16 |
| 6 Goods debits, seasonally adjusted | 17 |
| 7 Goods credits, trend estimates | 18 |
| 8 Goods debits, trend estimates | 19 |
| 9 Services, summary, original | 20 |
| 10 Services, summary, seasonally adjusted and trend estimates | 21 |
| 11 Services, original, quarterly | 22 |

INTERNATIONAL MERCHANDISE TRADE – RECORDED TRADE BASIS

| | |
|--|----|
| 12 International merchandise exports, by commodity | 23 |
| 13 International merchandise imports, by commodity | 26 |
| 14 International merchandise trade, by country and country groups | 29 |
| 15 International merchandise trade, by state | 30 |

OTHER TABLES

| | |
|---|----|
| 16 Period average exchange rates per Australian dollar | 31 |
| 17 Summary of revisions, goods and services, original | 32 |

OTHER INFORMATION

| | |
|---------------------------------------|----|
| Explanatory Notes | 33 |
| Appendix – Related articles | 39 |

COMMODITY PRICES ADJUSTMENT

PRICES ADJUSTMENT

Recorded trade exports data presented in tables 12–15 of this publication are based on information provided by exporters to the Australian Customs and Border Protection Service (Customs and Border Protection). At the time of initial reporting to Customs and Border Protection the final prices may not be known for some commodities. New contract prices that have been recently negotiated, or are still being negotiated, for commodities like iron ore and coal may not be fully reflected in the Customs and Border Protection source data. It is expected that the final prices will be updated progressively in recorded trade data as exporters revise the information provided to Customs and Border Protection. It is not yet known how the recent move from annual to quarterly contracts for some exporters will impact on the reporting of information.

Balance of payments data in this publication have been adjusted for May 2010 to take into account additional information on the unit price of iron ore and coal exports. As progressive revisions to the recorded trade prices are provided to the ABS they will be incorporated into the balance of payments series.

In the unadjusted recorded trade series, the unit price of metal ores and minerals decreased by 11% (with iron ore and concentrates down 3%) between April and May 2010. The equivalent balance of payments series, metal ores and minerals, decreased 1%.

In the unadjusted recorded trade series, the unit price of coal, coke and briquettes increased by 6% (with coal, not agglomerated up 6%) between April and May 2010. The equivalent balance of payments series, coal, coke and briquettes, increased 14%.

Since the price increase is likely to result in a permanent change in the level of the series, an estimated trend break correction of \$1,200m has been applied to metal ores and minerals and related aggregates. This replaces the \$800m trend break correction introduced in the previous issue. An estimated trend break of \$1,000m has been applied to coal, coke and briquettes and related aggregates in April 2010. As a minimum of three months are required for a trend break correction to be accurately estimated, the size of the trend break may be revised. Therefore, users should interpret the trend estimates for recent months with caution.

TIME SERIES DATA

TIME SERIES DATA

Tables 1 to 16 of this publication are available free on the ABS website <www.abs.gov.au> from the Downloads tab of this issue with longer time series. A number of these tables present more detailed breakdowns than included in the publication and a number of additional tables are also available free on the ABS website.

Tables with more detailed breakdowns:

11a Services credits: Original - Quarter

11b Services debits: Original - Quarter

12b Merchandise exports by Standard International Trade Classification (3 digit), FOB Value

13b Merchandise imports by Standard International Trade Classification (3 digit), Customs Value

14a Merchandise exports, Country and Country Groups, FOB Value

14b Merchandise imports, Country and Country Groups, Customs Value

Additional tables:

31 Merchandise exports by Broad Economic Category (BEC)

32a Merchandise exports, Industry (ANZSIC 2006), FOB Value

32b Merchandise exports, Industry (ANZSIC 1993), FOB Value

33 Merchandise imports by Broad Economic Category (BEC)

34 Merchandise imports by Balance of Payments Broad Economic Category (BoPBEC)

35a Merchandise imports, Industry (ANZSIC 2006), Customs Value

35b Merchandise imports, Industry (ANZSIC 1993), Customs Value

36 Merchandise exports, state by country and country groups

37 Merchandise imports, state by country and country groups

91 Monthly seasonal adjustment factors and forward factors for 12 months.

TIME SERIES DATA *continued*

TRADE IN SERVICES DATA CUBES

Trade in Services data cubes are usually updated on an annual basis. Calendar year (cat. no. 5368.0.55.004) statistics are updated in May and financial year (cat. no. 5368.0.55.003) statistics are updated in December.

The following tables were included in the calendar year data cubes:

- 1 International trade in services, credits, state by year
- 2 International trade in services, credits, year by state
- 3 International trade in services, debits, state by year
- 4 International trade in services, debits, year by state
- 5 International trade in services, credits, year by country and service
- 6 International trade in services, credits, service by year and by country
- 7 International trade in services, debits, year by country and service
- 8 International trade in services, debits, service by year and by country
- 9 International trade in services, credits, year by country and travel service
- 10 International trade in services, debits, year by country and travel service
- 11 International trade in services, credits, education related travel, by educational sector, by type of expenditure by year.

ANALYSIS AND COMMENTS

BALANCE ON GOODS AND SERVICES

The trend estimate of the balance on goods and services was a surplus of \$1,306m in May 2010, an increase of \$19m on the revised surplus in April 2010.

In seasonally adjusted terms, the balance on goods and services was a surplus of \$1,645m in May 2010, an increase of \$522m on the revised surplus in April 2010.

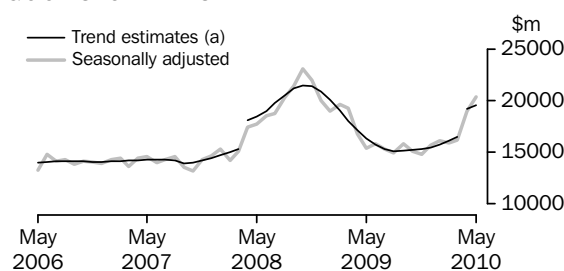
EXPORTS OF GOODS AND SERVICES

Between April 2010 and May 2010 the trend estimate of goods and services credits rose \$350m (1%) to \$23,926m.

In seasonally adjusted terms, goods and services credits rose \$1,397m (6%) to \$24,725m. Non-monetary gold rose \$772m (66%), non-rural goods rose \$385m (2%), rural goods rose \$235m (11%) and services credits rose \$5m.

Exports of goods

GOODS CREDITS



(a) Trend breaks of \$2,725m to April 2008 and \$2,200m to April 2010 have been applied.

RURAL GOODS

In trend terms, exports of rural goods rose \$21m (1%) to \$2,202m.

In seasonally adjusted terms, exports of rural goods rose \$235m (11%) to \$2,298m.

The main components contributing to the rise in seasonally adjusted estimates were:

- cereal grains and cereal preparations, up \$104m (27%)
- other rural, up \$101m (11%).

NON-RURAL GOODS

In trend terms, exports of non-rural goods rose \$216m (1%) to \$15,880m.

In seasonally adjusted terms, exports of non-rural goods rose \$385m (2%) to \$16,137m.

The main components contributing to the rise in seasonally adjusted estimates were:

- coal, coke and briquettes, up \$329m (10%)
- metal ores and minerals, up \$157m (3%)
- other manufactures, up \$52m (4%).

Partly offsetting these increases was the other mineral fuels component, down \$219m (10%).

In original terms on a recorded trade basis, between April and May 2010, volumes of coal, not agglomerated decreased 1% and volumes of iron ores and concentrates increased 2%.

ANALYSIS AND COMMENTS *continued*

Exports of goods continued

NET EXPORTS OF GOODS UNDER MERCHANTING

In trend terms, net exports of goods under merchanting rose \$4m (13%) to \$36m.

In seasonally adjusted terms, net exports of goods under merchanting remained steady at \$38m.

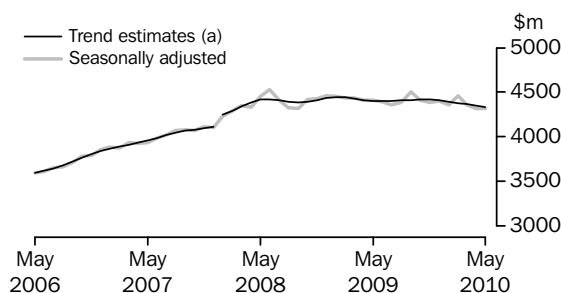
NON-MONETARY GOLD

In trend terms, exports of non-monetary gold rose \$125m (9%) to \$1,475m.

In seasonally adjusted terms, non-monetary gold rose \$772m (66%) to \$1,933m.

Exports of services

SERVICES CREDITS



(a) A trend break of \$106m has been applied to January 2008.

In trend terms, services credits fell \$17m to \$4,333m.

In seasonally adjusted terms, services credits rose \$5m to \$4,319m.

The main component contributing to the rise in the seasonally adjusted estimates was travel services, up \$18m (1%).

Partly offsetting this increase was the manufacturing services on physical inputs owned by others component, down \$11m (46%).

In seasonally adjusted terms, tourism related services credits rose \$12m to \$2,947m.

IMPORTS OF GOODS AND SERVICES

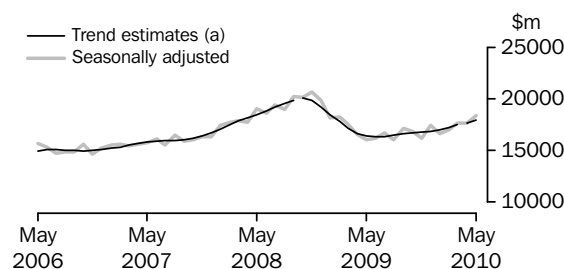
Between April 2010 and May 2010 the trend estimate of goods and services debits rose \$330m (1%) to \$22,619m.

In seasonally adjusted terms, goods and services debits rose \$875m (4%) to \$23,080m.

Capital goods rose \$408m (10%), consumption goods rose \$214m (4%) and intermediate and other merchandise goods rose \$182m (2%). Non-monetary gold fell \$36m (4%). Services debits rose \$108m (2%).

Imports of goods

GOODS DEBITS



(a) Trend breaks of \$167m to October 2008 and April 2010 have been applied.

CONSUMPTION GOODS

In trend terms, imports of consumption goods rose \$70m (1%) to \$5,432m.

In seasonally adjusted terms, imports of consumption goods rose \$214m (4%) to \$5,546m.

The main components contributing to the rise in the seasonally adjusted estimates were:

- household electrical items, up \$112m (28%)
- consumption goods n.e.s., up \$80m (5%).

CAPITAL GOODS

In trend terms, imports of capital goods rose \$96m (2%) to \$4,115m.

In seasonally adjusted terms, imports of capital goods rose \$408m (10%) to \$4,343m.

The main components contributing to the rise in the seasonally adjusted estimates were:

- civil aircraft and confidentialised items, up \$166m (61%)
- machinery and industrial equipment, up \$116m (9%)
- ADP equipment, up \$99m (15%).

INTERMEDIATE AND OTHER MERCHANDISE GOODS

In trend terms, imports of intermediate and other merchandise goods rose \$51m (1%) to \$7,635m.

In seasonally adjusted terms, imports of intermediate and other merchandise goods rose \$182m (2%) to \$7,668m.

The main components contributing to the rise in the seasonally adjusted estimates were:

- other parts for capital goods, up \$160m (17%)
- parts for transport equipment, up \$82m (12%)
- organic and inorganic chemicals, up \$65m (20%)
- processed industrial supplies n.e.s., up \$56m (3%).

Partly offsetting these rises was the fuels and lubricants component, down \$214m (9%).

In original terms on a merchandise trade basis, crude petroleum decreased \$274m (19%) with volumes down 19% and prices up 0.4%.

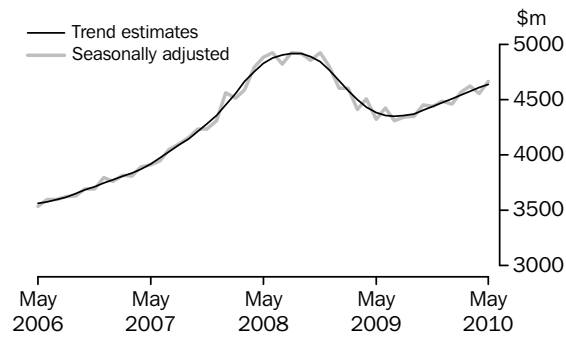
NON-MONETARY GOLD

In trend terms, imports of non-monetary gold rose \$86m (12%) to \$803m.

In seasonally adjusted terms, imports of non-monetary gold fell \$36m (4%) to \$858m.

Imports of services

SERVICES DEBITS



In trend terms, services debits rose \$28m (1%) to \$4,635m.

In seasonally adjusted terms, services debits rose \$108m (2%) to \$4,666m.

The main components contributing to the rise in the seasonally adjusted estimates were:

- transport services, up \$67m (6%)
- travel services, up \$34m (2%).

Partly offsetting these increases was the other services component, down \$13m (1%).

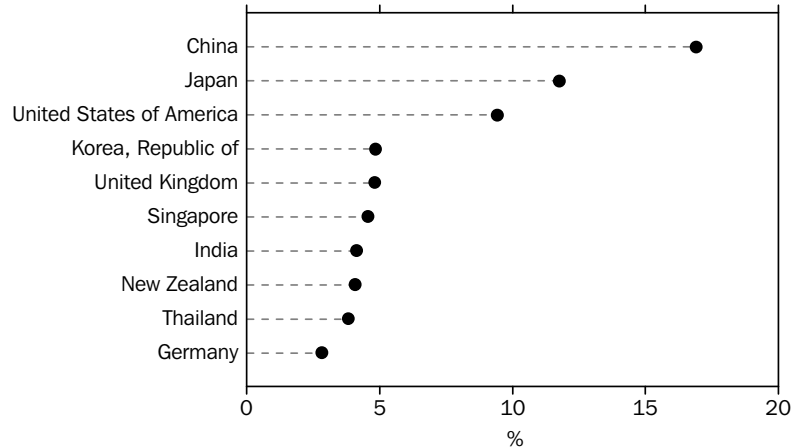
In seasonally adjusted terms, tourism related services debits rose \$40m (2%) to \$2,442m.

ANALYSIS AND COMMENTS *continued*

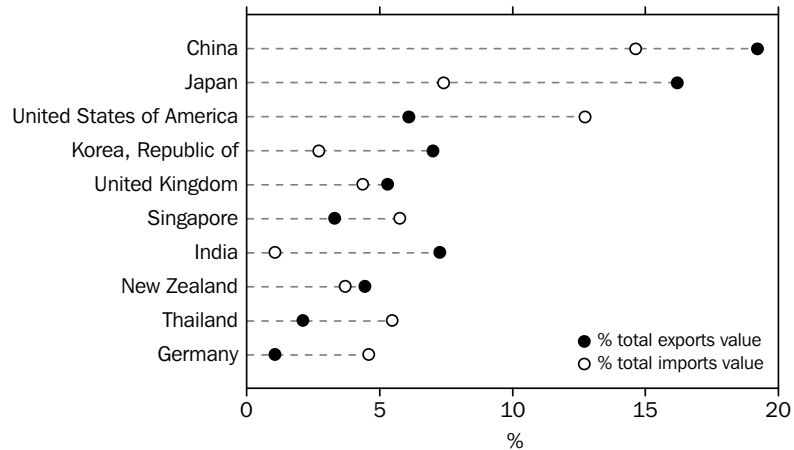
Country breakdown for the year 2009

The following charts show Australia's major trading partners for calendar year 2009. The charts include both trade in goods (on a recorded trade basis) and trade in services (on a balance of payments basis). The first chart shows the countries with the largest two-way trade, i.e., combined trade in both exports and imports of goods and services. The second chart shows the separate breakdown of total exports and total imports for these major countries.

TOTAL VALUE OF TWO-WAY TRADE, By major countries—2009, Percentage share



EXPORTS AND IMPORTS OF GOODS AND SERVICES, By major countries—2009



Combining trade in goods (on a recorded trade basis) and trade in services (on a balance of payments basis) provides a good approximation of total trade. Some transactions will be excluded (e.g. Merchanting credits and Goods procured in ports by carriers debits) while the Manufacturing services on physical inputs owned by others component will be double counted. These transactions are unlikely to impact on the broad analysis.

Imports data with the confidentiality restrictions 'no commodity details' or 'no value details' are excluded from the individual country and included in 'no country details' in the detailed breakdown of the time series spreadsheet table 14b. In 2009, these restrictions represented 3% of total imports value. In table 14 of this publication, the 'no country details' data is included in 'other countries'.

GOODS AND SERVICES(a), Summary—Seasonally Adjusted and Trend Estimates

| | Jun 2009 | Jul 2009 | Aug 2009 | Sep 2009 | Oct 2009 | Nov 2009 | Dec 2009 | Jan 2010 | Feb 2010 | Mar 2010 | Apr 2010 | May 2010 |
|---|----------------|----------------|----------------|----------------|----------------|----------------|----------------|----------------|----------------|----------------|----------------|----------------|
| | \$m | \$m | \$m | \$m | \$m | \$m | \$m | \$m | \$m | \$m | \$m | \$m |
| SEASONALLY ADJUSTED | | | | | | | | | | | | |
| BALANCE | | | | | | | | | | | | |
| On goods and services | -387 | -1 343 | -1 023 | -1 201 | -1 829 | -1 476 | -1 846 | -664 | -1 199 | -1 769 | 1 123 | 1 645 |
| CREDITS | | | | | | | | | | | | |
| Total goods and services | 20 215 | 19 703 | 19 346 | 20 305 | 19 480 | 19 168 | 20 102 | 20 439 | 20 336 | 20 528 | 23 328 | 24 725 |
| Total goods | 15 817 | 15 344 | 14 960 | 15 802 | 15 070 | 14 782 | 15 696 | 16 079 | 15 874 | 16 169 | 19 014 | 20 406 |
| Rural goods(b) | 2 295 | 2 215 | 2 107 | 2 021 | 1 867 | 1 967 | 2 089 | 2 097 | 2 140 | 2 157 | 2 063 | 2 298 |
| Non-rural goods(b) | 12 356 | 12 255 | 11 979 | 12 362 | 12 032 | 11 675 | 12 517 | 12 719 | 12 817 | 12 779 | 15 752 | 16 137 |
| Net exports of goods under merchandise(c) | 25 | 39 | 39 | 41 | 15 | 15 | 15 | 23 | 23 | 23 | 38 | 38 |
| Non-monetary gold(c) | 1 141 | 835 | 836 | 1 378 | 1 156 | 1 125 | 1 075 | 1 240 | 894 | 1 209 | 1 161 | 1 933 |
| Total services | 4 397 | 4 359 | 4 386 | 4 503 | 4 410 | 4 386 | 4 406 | 4 361 | 4 462 | 4 359 | 4 314 | 4 319 |
| DEBITS | | | | | | | | | | | | |
| Total goods and services | -20 601 | -21 046 | -20 369 | -21 506 | -21 309 | -20 644 | -21 948 | -21 103 | -21 535 | -22 297 | -22 205 | -23 080 |
| Total goods | -16 177 | -16 735 | -16 029 | -17 157 | -16 858 | -16 206 | -17 465 | -16 647 | -16 967 | -17 673 | -17 647 | -18 414 |
| Consumption goods | -5 185 | -5 231 | -4 914 | -5 098 | -5 013 | -5 042 | -4 970 | -5 108 | -5 348 | -5 179 | -5 332 | -5 546 |
| Capital goods | -3 690 | -3 813 | -3 881 | -4 011 | -4 100 | -3 772 | -4 063 | -3 953 | -3 975 | -4 089 | -3 935 | -4 343 |
| Intermediate and other merchandise goods | -6 955 | -7 436 | -6 678 | -7 310 | -7 073 | -6 950 | -7 767 | -7 235 | -7 176 | -7 811 | -7 486 | -7 668 |
| Non-monetary gold(c) | -346 | -255 | -555 | -737 | -672 | -441 | -665 | -351 | -467 | -594 | -894 | -858 |
| Total services | -4 424 | -4 312 | -4 340 | -4 349 | -4 451 | -4 438 | -4 483 | -4 456 | -4 568 | -4 624 | -4 558 | -4 666 |
| TREND ESTIMATES (d) | | | | | | | | | | | | |
| BALANCE | | | | | | | | | | | | |
| On goods and services | -558 | -1 005 | -1 299 | -1 430 | -1 476 | -1 482 | -1 442 | -1 385 | -1 333 | -1 296 | 1 287 | 1 306 |
| CREDITS | | | | | | | | | | | | |
| Total goods and services | 20 118 | 19 697 | 19 529 | 19 552 | 19 640 | 19 726 | 19 885 | 20 140 | 20 463 | 20 829 | 23 576 | 23 926 |
| Total goods | 15 719 | 15 294 | 15 120 | 15 138 | 15 223 | 15 310 | 15 476 | 15 744 | 16 082 | 16 463 | 19 226 | 19 592 |
| Rural goods(b) | 2 282 | 2 172 | 2 079 | 2 018 | 1 993 | 1 995 | 2 026 | 2 071 | 2 114 | 2 149 | 2 181 | 2 202 |
| Non-rural goods(b)(e) | 12 314 | 12 098 | 12 011 | 12 025 | 12 082 | 12 167 | 12 322 | 12 547 | 12 801 | 13 055 | 15 664 | 15 880 |
| Net exports of goods under merchandise | 33 | 33 | 32 | 29 | 25 | 21 | 18 | 20 | 23 | 28 | 32 | 36 |
| Non-monetary gold | 1 091 | 991 | 998 | 1 066 | 1 122 | 1 127 | 1 110 | 1 106 | 1 144 | 1 232 | 1 350 | 1 475 |
| Total services | 4 399 | 4 403 | 4 409 | 4 414 | 4 417 | 4 416 | 4 409 | 4 396 | 4 381 | 4 366 | 4 350 | 4 333 |
| DEBITS | | | | | | | | | | | | |
| Total goods and services | -20 677 | -20 702 | -20 828 | -20 982 | -21 116 | -21 209 | -21 327 | -21 525 | -21 796 | -22 125 | -22 289 | -22 619 |
| Total goods | -16 317 | -16 352 | -16 472 | -16 609 | -16 715 | -16 772 | -16 853 | -17 015 | -17 252 | -17 548 | -17 681 | -17 985 |
| Consumption goods | -5 095 | -5 107 | -5 077 | -5 039 | -5 026 | -5 029 | -5 065 | -5 129 | -5 203 | -5 283 | -5 362 | -5 432 |
| Capital goods(f) | -3 732 | -3 773 | -3 850 | -3 923 | -3 968 | -3 970 | -3 965 | -3 984 | -4 036 | -4 113 | -4 019 | -4 115 |
| Intermediate and other merchandise goods | -6 948 | -6 990 | -7 044 | -7 100 | -7 158 | -7 221 | -7 291 | -7 376 | -7 450 | -7 518 | -7 584 | -7 635 |
| Non-monetary gold | -542 | -482 | -501 | -547 | -563 | -551 | -532 | -525 | -563 | -634 | -717 | -803 |
| Total services | -4 359 | -4 350 | -4 355 | -4 373 | -4 401 | -4 437 | -4 474 | -4 510 | -4 544 | -4 577 | -4 607 | -4 635 |
| (a) For sign conventions, see paragraph 15 of the Explanatory Notes. | | | | | | | | | | | | |
| (b) For all time periods, estimates for sugar, sugar preparations and honey are included in Non-rural goods. | | | | | | | | | | | | |
| (c) This component is not seasonally adjusted. | | | | | | | | | | | | |
| (d) Caution should be used when interpreting recent trend estimates as they may be affected by unusual economic factors. For more details on trend estimates, please see paragraph 19 of the explanatory notes. | | | | | | | | | | | | |
| (e) A trend break of \$2,200m has been applied to Non-rural goods credits and related aggregates in April 2010. This trend break will be reassessed in a future issue. | | | | | | | | | | | | |
| (f) A trend break of \$167m has been applied to Capital goods debits and related aggregates in April 2010. This trend break will be reassessed in a future issue. | | | | | | | | | | | | |

GOODS AND SERVICES (a), Summary—Original

| | Jun 2009 | Jul 2009 | Aug 2009 | Sep 2009 | Oct 2009 | Nov 2009 | Dec 2009 | Jan 2010 | Feb 2010 | Mar 2010 | Apr 2010 | May 2010 |
|---|----------------|----------------|----------------|----------------|----------------|----------------|----------------|----------------|----------------|----------------|----------------|----------------|
| | \$m | \$m | \$m | \$m | \$m | \$m | \$m | \$m | \$m | \$m | \$m | \$m |
| BALANCE | | | | | | | | | | | | |
| On goods and services | -579 | -1 766 | -218 | -2 345 | -2 405 | -2 520 | -1 724 | -1 459 | -36 | -1 615 | 1 454 | 3 158 |
| CREDITS | | | | | | | | | | | | |
| Total goods and services | 19 684 | 19 772 | 19 811 | 20 360 | 20 443 | 19 060 | 20 922 | 18 864 | 19 443 | 21 085 | 22 831 | 25 132 |
| Total goods | 15 624 | 15 380 | 15 317 | 16 034 | 15 833 | 14 638 | 16 561 | 14 612 | 14 882 | 16 575 | 18 438 | 20 916 |
| Rural goods(b) | 2 223 | 2 129 | 2 085 | 1 985 | 1 898 | 1 911 | 2 203 | 1 855 | 2 088 | 2 362 | 2 049 | 2 532 |
| Non-rural goods(b) | 12 235 | 12 377 | 12 357 | 12 630 | 12 764 | 11 587 | 13 268 | 11 494 | 11 877 | 12 981 | 15 190 | 16 413 |
| Net exports of goods under merchanting | 25 | 39 | 39 | 41 | 15 | 15 | 15 | 23 | 23 | 23 | 38 | 38 |
| Non-monetary gold | 1 141 | 835 | 836 | 1 378 | 1 156 | 1 125 | 1 075 | 1 240 | 894 | 1 209 | 1 161 | 1 933 |
| Total services | 4 060 | 4 392 | 4 494 | 4 326 | 4 610 | 4 422 | 4 361 | 4 252 | 4 561 | 4 510 | 4 393 | 4 216 |
| DEBITS | | | | | | | | | | | | |
| Total goods and services | -20 263 | -21 538 | -20 029 | -22 705 | -22 848 | -21 580 | -22 646 | -20 323 | -19 479 | -22 700 | -21 377 | -21 974 |
| Total goods | -15 805 | -17 001 | -15 759 | -18 027 | -18 137 | -17 288 | -17 914 | -15 616 | -15 530 | -18 278 | -16 921 | -17 544 |
| Consumption goods | -4 927 | -5 410 | -4 919 | -5 568 | -5 783 | -5 598 | -5 073 | -4 598 | -4 867 | -5 192 | -4 877 | -5 079 |
| Capital goods | -3 759 | -3 851 | -3 739 | -4 183 | -4 263 | -4 177 | -4 266 | -3 602 | -3 469 | -4 303 | -3 768 | -4 190 |
| Intermediate and other merchandise goods | -6 773 | -7 485 | -6 546 | -7 539 | -7 419 | -7 072 | -7 910 | -7 065 | -6 727 | -8 189 | -7 382 | -7 417 |
| Non-monetary gold | -346 | -255 | -555 | -737 | -672 | -441 | -665 | -351 | -467 | -594 | -894 | -858 |
| Total services | -4 458 | -4 537 | -4 270 | -4 678 | -4 711 | -4 292 | -4 732 | -4 707 | -3 949 | -4 422 | -4 456 | -4 430 |

(a) For sign conventions, see paragraph 15 of the Explanatory Notes.

(b) For all time periods, estimates for sugar, sugar preparations and honey are included in Non-rural goods.

| | | | | | | | 11 MONTHS ENDED MAY | | Change |
|---|----------------|----------------|----------------|---------------|---------------|---------------|------------------------|----------------|--------------|
| | 2006-07 | 2007-08 | 2008-09 | Mar 2010 | Apr 2010 | May 2010 | 2009 | 2010 | |
| | \$m | \$m | \$m | \$m | \$m | \$m | \$m | \$m | |
| Total goods credits | 169 524 | 182 952 | 231 564 | 16 575 | 18 438 | 20 916 | 215 940 | 179 186 | -17.0 |
| General merchandise | 158 570 | 170 471 | 213 755 | 15 343 | 17 239 | 18 945 | 199 297 | 166 035 | -16.7 |
| <i>Rural goods(a)</i> | 25 090 | 25 494 | 29 383 | 2 362 | 2 049 | 2 532 | 27 160 | 23 097 | -15.0 |
| Meat and meat preparations | 7 080 | 6 542 | 7 454 | 550 | 533 | 664 | 6 916 | 5 725 | -17.2 |
| Cereal grains and cereal preparations | 4 171 | 4 975 | 6 881 | 570 | 404 | 576 | 6 268 | 4 878 | -22.2 |
| Wool and sheepskins | 3 065 | 2 796 | 2 322 | 273 | 212 | 213 | 2 172 | 2 090 | -3.8 |
| Other rural(a) | 10 774 | 11 181 | 12 726 | 969 | 900 | 1 079 | 11 804 | 10 404 | -11.9 |
| <i>Non-rural goods(a)</i> | 133 480 | 144 977 | 184 372 | 12 981 | 15 190 | 16 413 | 172 137 | 142 938 | -17.0 |
| Metal ores and minerals | 35 315 | 41 339 | 52 015 | 4 247 | 5 444 | 5 875 | 48 326 | 45 910 | -5.0 |
| Coal, coke and briquettes | 21 928 | 24 599 | 54 957 | 2 344 | 3 360 | 3 807 | 51 866 | 31 898 | -38.5 |
| Other mineral fuels | 15 641 | 18 889 | 20 707 | 1 767 | 1 968 | 1 675 | 19 410 | 17 109 | -11.9 |
| Metals (excl. non-monetary gold) | 14 821 | 14 039 | 12 394 | 900 | 1 019 | 1 170 | 11 471 | 9 809 | -14.5 |
| Machinery | 8 391 | 8 750 | 8 900 | 696 | 623 | 736 | 8 225 | 7 268 | -11.6 |
| Transport equipment | 4 651 | 5 723 | 5 090 | 391 | 318 | 346 | 4 847 | 3 736 | -22.9 |
| Other manufactures | 16 241 | 16 965 | 17 601 | 1 486 | 1 215 | 1 476 | 16 244 | 14 942 | -8.0 |
| Other non-rural (incl. sugar and beverages) | 15 113 | 13 126 | 11 077 | 1 032 | 1 131 | 1 198 | 10 212 | 11 003 | 7.7 |
| Goods procured in ports by carriers | 1 379 | 1 547 | 1 631 | 118 | 112 | 130 | 1 536 | 1 263 | -17.8 |
| Net exports of goods under merchanting | 214 | 209 | 301 | 23 | 38 | 38 | 276 | 309 | 12.0 |
| Goods acquired under merchanting | | | | | | | | | |
| (negative exports) | -1 303 | -1 528 | -2 386 | -150 | -182 | -182 | -2 239 | -1 730 | 22.7 |
| Goods sold under merchanting | 1 517 | 1 737 | 2 687 | 173 | 220 | 220 | 2 515 | 2 039 | -18.9 |
| Non-monetary gold | 10 740 | 12 272 | 17 508 | 1 209 | 1 161 | 1 933 | 16 367 | 12 842 | -21.5 |

(a) For all time periods, estimates for sugar, sugar preparations and honey are included in Other non-rural.

GOODS DEBITS(a), Original

| | 11 MONTHS ENDED MAY | | | | | | | | |
|---|---------------------|-----------------|-----------------|----------------|----------------|----------------|-----------------|-----------------|------------|
| | 2006-07 | 2007-08 | 2008-09 | Mar | Apr | May | 2009 | 2010 | Change |
| | \$m | \$m | \$m | \$m | \$m | \$m | \$m | \$m | % |
| Total goods debits | -183 572 | -204 846 | -222 378 | -18 278 | -16 921 | -17 544 | -206 573 | -188 015 | 9.0 |
| General merchandise | -178 261 | -197 253 | -210 856 | -17 684 | -16 027 | -16 686 | -195 397 | -181 526 | 7.1 |
| <i>Consumption goods</i> | -54 913 | -59 371 | -61 419 | -5 192 | -4 877 | -5 079 | -56 492 | -56 964 | -0.8 |
| Food and beverages, mainly for consumption | -7 182 | -7 840 | -8 857 | -706 | -632 | -645 | -8 183 | -7 997 | 2.3 |
| Household electrical items | -4 525 | -5 051 | -5 488 | -320 | -381 | -461 | -5 007 | -5 057 | -1.0 |
| Non-industrial transport equipment | -14 894 | -16 872 | -13 247 | -1 640 | -1 470 | -1 442 | -12 073 | -14 749 | -22.2 |
| Textiles, clothing and footwear | -6 805 | -7 051 | -8 287 | -620 | -597 | -525 | -7 733 | -6 909 | 10.7 |
| Toys, books and leisure goods | -4 328 | -4 561 | -5 277 | -321 | -314 | -387 | -4 847 | -4 276 | 11.8 |
| Consumption goods n.e.s. | -17 179 | -17 996 | -20 263 | -1 585 | -1 483 | -1 619 | -18 649 | -17 976 | 3.6 |
| <i>Capital goods</i> | -41 774 | -45 299 | -51 572 | -4 303 | -3 768 | -4 190 | -47 813 | -43 811 | 8.4 |
| Machinery and industrial equipment | -15 330 | -16 480 | -18 488 | -1 325 | -1 233 | -1 338 | -17 170 | -14 208 | 17.3 |
| ADP equipment | -7 008 | -7 074 | -7 257 | -677 | -676 | -799 | -6 613 | -6 854 | -3.6 |
| Telecommunications equipment | -5 315 | -5 790 | -6 431 | -539 | -499 | -549 | -5 907 | -5 540 | 6.2 |
| Civil aircraft and confidentialised items(b) | -1 667 | -2 691 | -5 524 | -380 | -272 | -438 | -5 162 | -4 620 | 10.5 |
| Industrial transport equipment n.e.s. | -6 463 | -7 502 | -6 527 | -728 | -659 | -620 | -6 159 | -6 121 | 0.6 |
| Capital goods n.e.s. | -5 991 | -5 762 | -7 345 | -654 | -429 | -446 | -6 802 | -6 468 | 4.9 |
| <i>Intermediate and other merchandise goods</i> | -81 574 | -92 583 | -97 865 | -8 189 | -7 382 | -7 417 | -91 092 | -80 751 | 11.4 |
| Food and beverages, mainly for industry | -819 | -923 | -1 186 | -103 | -86 | -75 | -1 106 | -944 | 14.6 |
| Primary industrial supplies n.e.s. | -1 552 | -1 477 | -1 901 | -134 | -115 | -99 | -1 778 | -1 227 | 31.0 |
| Fuels and lubricants | -21 470 | -29 772 | -28 213 | -2 265 | -2 469 | -2 255 | -26 192 | -24 179 | 7.7 |
| Parts for transport equipment | -8 355 | -8 837 | -8 599 | -739 | -674 | -712 | -8 012 | -7 529 | 6.0 |
| Parts for ADP equipment | -1 620 | -1 115 | -1 067 | -86 | -76 | -90 | -980 | -876 | 10.6 |
| Other parts for capital goods | -11 780 | -11 990 | -14 312 | -1 279 | -977 | -1 094 | -13 134 | -12 541 | 4.5 |
| Organic and inorganic chemicals | -4 406 | -4 673 | -5 384 | -407 | -306 | -411 | -5 015 | -3 978 | 20.7 |
| Paper and paperboard | -2 368 | -2 359 | -2 403 | -199 | -185 | -179 | -2 254 | -2 100 | 6.8 |
| Textile yarn and fabrics | -1 366 | -1 334 | -1 344 | -93 | -85 | -90 | -1 252 | -1 074 | 14.2 |
| Iron and steel | -3 817 | -3 721 | -5 528 | -305 | -294 | -295 | -5 277 | -2 950 | 44.1 |
| Plastics | -2 957 | -3 064 | -3 028 | -240 | -232 | -233 | -2 833 | -2 489 | 12.1 |
| Processed industrial supplies n.e.s. | -17 997 | -20 132 | -21 919 | -1 875 | -1 688 | -1 693 | -20 432 | -18 296 | 10.5 |
| Other merchandise goods(b) | -1 619 | -1 415 | -1 401 | -348 | -84 | -80 | -1 328 | -1 314 | 1.1 |
| Goods procured in ports by carriers | -1 448 | -1 771 | -1 580 | -116 | -111 | -111 | -1 499 | -1 254 | 16.3 |
| Non-monetary gold | -5 311 | -7 593 | -11 522 | -594 | -894 | -858 | -11 176 | -6 489 | 41.9 |

(a) For sign conventions, see paragraph 15 of the Explanatory Notes.

(b) From July 2008, commodities subject to a 'no commodity details' or 'no value details' restriction are included in Civil aircraft and confidentialised items, and for earlier periods are included in Other merchandise goods.

GOODS CREDITS, Seasonally Adjusted

| | Aug 2009 | Sep 2009 | Oct 2009 | Nov 2009 | Dec 2009 | Jan 2010 | Feb 2010 | Mar 2010 | Apr 2010 | May 2010 |
|---|---------------|---------------|---------------|---------------|---------------|---------------|---------------|---------------|---------------|---------------|
| | \$m | \$m | \$m | \$m | \$m | \$m | \$m | \$m | \$m | \$m |
| Total goods credits | 14 960 | 15 802 | 15 070 | 14 782 | 15 696 | 16 079 | 15 874 | 16 169 | 19 014 | 20 406 |
| General merchandise | 14 085 | 14 383 | 13 899 | 13 642 | 14 606 | 14 816 | 14 957 | 14 937 | 17 815 | 18 435 |
| <i>Rural goods</i> | 2 107 | 2 021 | 1 867 | 1 967 | 2 089 | 2 097 | 2 140 | 2 157 | 2 063 | 2 298 |
| Meat and meat preparations | 547 | 501 | 495 | 474 | 497 | 499 | 492 | 520 | 559 | 593 |
| Cereal grains and cereal preparations | 487 | 433 | 386 | 410 | 405 | 458 | 416 | 467 | 383 | 487 |
| Wool and sheepskins | 161 | 161 | 180 | 211 | 187 | 193 | 202 | 208 | 201 | 197 |
| Other rural (a) | 912 | 926 | 804 | 872 | 1 000 | 947 | 1 029 | 963 | 920 | 1 021 |
| <i>Non-rural goods</i> | 11 979 | 12 362 | 12 032 | 11 675 | 12 517 | 12 719 | 12 817 | 12 779 | 15 752 | 16 137 |
| Metal ores and minerals | 3 697 | 3 784 | 3 518 | 3 735 | 3 734 | 4 036 | 4 193 | 4 166 | 5 636 | 5 793 |
| Coal, coke and briquettes(b) | 2 767 | 3 027 | 2 675 | 2 565 | 2 949 | 2 828 | 2 576 | 2 301 | 3 409 | 3 738 |
| Other mineral fuels(c) | 1 332 | 1 261 | 1 465 | 1 366 | 1 513 | 1 469 | 1 620 | 1 865 | 2 105 | 1 886 |
| Metals (excl. non-monetary gold)(c) | 852 | 853 | 914 | 717 | 928 | 905 | 879 | 908 | 1 034 | 1 021 |
| Machinery | 642 | 668 | 651 | 641 | 641 | 647 | 662 | 665 | 664 | 710 |
| Transport equipment | 347 | 322 | 324 | 340 | 308 | 337 | 379 | 379 | 344 | 353 |
| Other manufactures | 1 354 | 1 345 | 1 354 | 1 331 | 1 342 | 1 339 | 1 342 | 1 366 | 1 334 | 1 386 |
| Other non-rural (incl. sugar and beverages) | 887 | 993 | 1 025 | 870 | 986 | 1 039 | 1 048 | 1 010 | 1 104 | 1 112 |
| Goods procured in ports by carriers(c) | 100 | 109 | 105 | 109 | 117 | 120 | 119 | 120 | 123 | 138 |
| Net exports of goods under merchanting(d) | 39 | 41 | 15 | 15 | 15 | 23 | 23 | 23 | 38 | 38 |
| Non-monetary gold(d) | 836 | 1 378 | 1 156 | 1 125 | 1 075 | 1 240 | 894 | 1 209 | 1 161 | 1 933 |

(a) For all time periods, estimates for sugar, sugar preparations and honey are included in Other non-rural.

(b) Only a length-of-month adjustment has been applied to this component.

(c) In using these seasonally adjusted series, care should be exercised because of the difficulties associated with reliably estimating the seasonal pattern.

(d) This component is not seasonally adjusted.

GOODS DEBITS(a), Seasonally Adjusted

| | Aug 2009 | Sep 2009 | Oct 2009 | Nov 2009 | Dec 2009 | Jan 2010 | Feb 2010 | Mar 2010 | Apr 2010 | May 2010 |
|---|----------------|----------------|----------------|----------------|----------------|----------------|----------------|----------------|----------------|----------------|
| | \$m | \$m | \$m | \$m | \$m | \$m | \$m | \$m | \$m | \$m |
| Total goods debits | -16 029 | -17 157 | -16 858 | -16 206 | -17 465 | -16 647 | -16 967 | -17 673 | -17 647 | -18 414 |
| General merchandise | -15 474 | -16 420 | -16 186 | -15 765 | -16 800 | -16 296 | -16 500 | -17 079 | -16 753 | -17 556 |
| <i>Consumption goods</i> | -4 914 | -5 098 | -5 013 | -5 042 | -4 970 | -5 108 | -5 348 | -5 179 | -5 332 | -5 546 |
| Food and beverages, mainly for consumption | -758 | -735 | -730 | -679 | -715 | -707 | -689 | -708 | -687 | -731 |
| Household electrical items | -508 | -475 | -414 | -463 | -465 | -434 | -436 | -396 | -404 | -516 |
| Non-industrial transport equipment | -1 039 | -1 237 | -1 273 | -1 334 | -1 330 | -1 351 | -1 541 | -1 488 | -1 619 | -1 570 |
| Textiles, clothing and footwear | -628 | -619 | -592 | -581 | -501 | -646 | -642 | -637 | -630 | -658 |
| Toys, books and leisure goods | -420 | -394 | -398 | -385 | -360 | -356 | -379 | -368 | -379 | -379 |
| Consumption goods n.e.s. | -1 562 | -1 639 | -1 608 | -1 599 | -1 600 | -1 614 | -1 663 | -1 581 | -1 612 | -1 692 |
| <i>Capital goods</i> | -3 881 | -4 011 | -4 100 | -3 772 | -4 063 | -3 953 | -3 975 | -4 089 | -3 935 | -4 343 |
| Machinery and industrial equipment | -1 264 | -1 302 | -1 208 | -1 352 | -1 224 | -1 128 | -1 368 | -1 266 | -1 309 | -1 425 |
| ADP equipment | -599 | -551 | -591 | -561 | -595 | -640 | -665 | -649 | -661 | -760 |
| Telecommunications equipment | -503 | -522 | -491 | -490 | -506 | -499 | -435 | -498 | -522 | -548 |
| Civil aircraft and confidentialised items(b)(c) | -441 | -469 | -791 | -236 | -596 | -540 | -235 | -380 | -272 | -438 |
| Industrial transport equipment n.e.s. | -411 | -528 | -493 | -538 | -546 | -539 | -627 | -669 | -703 | -710 |
| Capital goods n.e.s. | -662 | -639 | -527 | -595 | -597 | -607 | -644 | -626 | -467 | -462 |
| <i>Intermediate and other merchandise goods</i> | -6 678 | -7 310 | -7 073 | -6 950 | -7 767 | -7 235 | -7 176 | -7 811 | -7 486 | -7 668 |
| Food and beverages, mainly for industry | -100 | -78 | -80 | -81 | -87 | -65 | -84 | -102 | -87 | -82 |
| Primary industrial supplies n.e.s.(d) | -120 | -105 | -79 | -116 | -123 | -102 | -121 | -124 | -132 | -128 |
| Fuels and lubricants(c) | -1 794 | -2 241 | -2 026 | -2 106 | -2 626 | -1 916 | -2 055 | -2 265 | -2 469 | -2 255 |
| Parts for transport equipment | -618 | -772 | -689 | -613 | -675 | -741 | -704 | -696 | -668 | -750 |
| Parts for ADP equipment | -74 | -60 | -78 | -76 | -81 | -91 | -91 | -76 | -80 | -84 |
| Other parts for capital goods | -1 132 | -1 144 | -1 176 | -1 085 | -1 236 | -1 184 | -1 099 | -1 205 | -963 | -1 123 |
| Organic and inorganic chemicals | -350 | -332 | -371 | -378 | -371 | -353 | -337 | -371 | -331 | -396 |
| Paper and paperboard | -175 | -187 | -183 | -186 | -194 | -197 | -197 | -191 | -205 | -202 |
| Textile yarn and fabrics | -106 | -102 | -101 | -94 | -93 | -96 | -100 | -93 | -93 | -93 |
| Iron and steel | -263 | -248 | -204 | -225 | -255 | -251 | -294 | -294 | -300 | -341 |
| Plastics | -215 | -210 | -219 | -213 | -218 | -219 | -232 | -238 | -241 | -244 |
| Processed industrial supplies n.e.s. | -1 549 | -1 595 | -1 618 | -1 597 | -1 621 | -1 711 | -1 683 | -1 693 | -1 723 | -1 779 |
| Other merchandise goods(b)(e) | -62 | -115 | -139 | -69 | -81 | -195 | -66 | -348 | -84 | -80 |
| Goods procured in ports by carriers(c) | -118 | -121 | -111 | -111 | -109 | -114 | -114 | -116 | -111 | -111 |
| Non-monetary gold(c) | -555 | -737 | -672 | -441 | -665 | -351 | -467 | -594 | -894 | -858 |

(a) For sign conventions, see paragraph 15 of the Explanatory Notes.

(b) From July 2008, commodities subject to a 'no commodity details' or 'no value details' restriction are included in Civil aircraft and confidentialised items, and for earlier periods are included in Other merchandise goods.

(c) This component is not seasonally adjusted.

(d) In using these seasonally adjusted series, care should be exercised because of the difficulties associated with reliably estimating the seasonal pattern.

(e) From July 1981, this component is not seasonally adjusted.

| | Aug 2009 | Sep 2009 | Oct 2009 | Nov 2009 | Dec 2009 | Jan 2010 | Feb 2010 | Mar 2010 | Apr 2010 | May 2010 |
|---|---------------|---------------|---------------|---------------|---------------|---------------|---------------|---------------|---------------|---------------|
| | \$m | \$m | \$m | \$m | \$m | \$m | \$m | \$m | \$m | \$m |
| Total goods credits | 15 120 | 15 138 | 15 223 | 15 310 | 15 476 | 15 744 | 16 082 | 16 463 | 19 226 | 19 592 |
| General merchandise | 14 090 | 14 043 | 14 075 | 14 162 | 14 348 | 14 619 | 14 915 | 15 204 | 17 844 | 18 081 |
| <i>Rural goods</i> | 2 079 | 2 018 | 1 993 | 1 995 | 2 026 | 2 071 | 2 114 | 2 149 | 2 181 | 2 202 |
| Meat and meat preparations | 524 | 511 | 499 | 489 | 488 | 496 | 511 | 529 | 548 | 566 |
| Cereal grains and cereal preparations | 476 | 441 | 421 | 411 | 413 | 422 | 431 | 438 | 444 | 448 |
| Wool and sheepskins | 165 | 172 | 180 | 188 | 195 | 199 | 201 | 201 | 202 | 201 |
| Other rural(b) | 914 | 894 | 894 | 907 | 930 | 954 | 972 | 981 | 987 | 986 |
| <i>Non-rural goods</i> | 12 011 | 12 025 | 12 082 | 12 167 | 12 322 | 12 547 | 12 801 | 13 055 | 15 664 | 15 880 |
| Metal ores and minerals(c) | 3 640 | 3 645 | 3 678 | 3 737 | 3 835 | 3 964 | 4 103 | 4 235 | 5 618 | 5 730 |
| Coal, coke and briquettes(d) | 2 857 | 2 818 | 2 802 | 2 772 | 2 724 | 2 662 | 2 587 | 2 516 | 3 563 | 3 498 |
| Other mineral fuels | 1 318 | 1 342 | 1 364 | 1 405 | 1 477 | 1 577 | 1 690 | 1 802 | 1 902 | 1 991 |
| Metals (excl. non-monetary gold) | 842 | 845 | 847 | 851 | 863 | 885 | 914 | 947 | 978 | 1 013 |
| Machinery | 656 | 653 | 650 | 646 | 646 | 650 | 657 | 667 | 677 | 687 |
| Transport equipment | 308 | 321 | 330 | 334 | 338 | 345 | 353 | 359 | 362 | 363 |
| Other manufactures | 1 364 | 1 353 | 1 345 | 1 340 | 1 339 | 1 342 | 1 346 | 1 352 | 1 358 | 1 365 |
| Other non-rural (incl. sugar and beverages) | 923 | 942 | 959 | 972 | 987 | 1 007 | 1 030 | 1 056 | 1 079 | 1 105 |
| Goods procured in ports by carriers | 103 | 105 | 108 | 111 | 114 | 117 | 120 | 123 | 127 | 130 |
| Net exports of goods under merchanting | 32 | 29 | 25 | 21 | 18 | 20 | 23 | 28 | 32 | 36 |
| Non-monetary gold | 998 | 1 066 | 1 122 | 1 127 | 1 110 | 1 106 | 1 144 | 1 232 | 1 350 | 1 475 |

(a) Caution should be used when interpreting recent trend estimates as they may be affected by unusual economic factors. For more details on trend estimates, please see paragraph 19 of the explanatory notes.

(b) For all time periods, estimates for sugar, sugar preparations and honey are included in Other non-rural.

(c) An estimated trend correction of \$1,200m has been applied to Metal ores and minerals and related aggregates in April 2010. This trend break will be reassessed in a future issue.

(d) An estimated trend correction of \$1,000m has been applied to Coal, coke and briquettes and related aggregates in April 2010. This trend break will be reassessed in a future issue.

| | Aug 2009 | Sep 2009 | Oct 2009 | Nov 2009 | Dec 2009 | Jan 2010 | Feb 2010 | Mar 2010 | Apr 2010 | May 2010 |
|---|----------------|----------------|----------------|----------------|----------------|----------------|----------------|----------------|----------------|----------------|
| | \$m | \$m | \$m | \$m | \$m | \$m | \$m | \$m | \$m | \$m |
| Total goods debits | -16 472 | -16 609 | -16 715 | -16 772 | -16 853 | -17 015 | -17 252 | -17 548 | -17 681 | -17 985 |
| General merchandise | -15 971 | -16 061 | -16 151 | -16 220 | -16 321 | -16 490 | -16 689 | -16 914 | -16 965 | -17 182 |
| <i>Consumption goods</i> | -5 077 | -5 039 | -5 026 | -5 029 | -5 065 | -5 129 | -5 203 | -5 283 | -5 362 | -5 432 |
| Food and beverages, mainly for consumption | -749 | -738 | -725 | -712 | -702 | -699 | -700 | -702 | -705 | -710 |
| Household electrical items | -498 | -479 | -463 | -449 | -439 | -433 | -431 | -433 | -439 | -445 |
| Non-industrial transport equipment | -1 142 | -1 198 | -1 252 | -1 305 | -1 360 | -1 416 | -1 467 | -1 518 | -1 562 | -1 597 |
| Textiles, clothing and footwear | -629 | -606 | -590 | -582 | -585 | -599 | -617 | -633 | -646 | -657 |
| Toys, books and leisure goods | -418 | -402 | -390 | -379 | -372 | -369 | -369 | -371 | -373 | -377 |
| Consumption goods n.e.s. | -1 641 | -1 616 | -1 607 | -1 604 | -1 606 | -1 613 | -1 619 | -1 626 | -1 636 | -1 646 |
| <i>Capital goods</i> | -3 850 | -3 923 | -3 968 | -3 970 | -3 965 | -3 984 | -4 036 | -4 113 | -4 019 | -4 115 |
| Machinery and industrial equipment | -1 278 | -1 270 | -1 264 | -1 251 | -1 245 | -1 254 | -1 272 | -1 298 | -1 329 | -1 353 |
| ADP equipment | -586 | -585 | -586 | -589 | -600 | -621 | -646 | -669 | -691 | -713 |
| Telecommunications equipment | -505 | -504 | -501 | -494 | -488 | -486 | -489 | -498 | -509 | -520 |
| Civil aircraft and confidentialised items(c) | -437 | -474 | -507 | -514 | -483 | -433 | -390 | -361 | -341 | -352 |
| Industrial transport equipment n.e.s. | -436 | -475 | -505 | -528 | -553 | -583 | -617 | -652 | -685 | -711 |
| Capital goods n.e.s.(d) | -607 | -615 | -605 | -595 | -597 | -608 | -623 | -635 | -464 | -466 |
| <i>Intermediate and other merchandise goods</i> | -7 044 | -7 100 | -7 158 | -7 221 | -7 291 | -7 376 | -7 450 | -7 518 | -7 584 | -7 635 |
| Food and beverages, mainly for industry | -89 | -86 | -82 | -80 | -80 | -82 | -84 | -86 | -88 | -88 |
| Primary industrial supplies n.e.s. | -102 | -102 | -103 | -106 | -110 | -115 | -119 | -124 | -127 | -128 |
| Fuels and lubricants | -2 104 | -2 145 | -2 159 | -2 164 | -2 175 | -2 197 | -2 215 | -2 240 | -2 274 | -2 297 |
| Parts for transport equipment | -645 | -663 | -679 | -688 | -690 | -692 | -696 | -704 | -711 | -719 |
| Parts for ADP equipment | -76 | -75 | -76 | -78 | -81 | -84 | -85 | -84 | -83 | -82 |
| Other parts for capital goods | -1 151 | -1 147 | -1 154 | -1 162 | -1 164 | -1 156 | -1 139 | -1 118 | -1 097 | -1 081 |
| Organic and inorganic chemicals | -361 | -360 | -360 | -361 | -360 | -359 | -357 | -357 | -359 | -363 |
| Paper and paperboard | -176 | -180 | -185 | -189 | -192 | -194 | -196 | -198 | -200 | -202 |
| Textile yarn and fabrics | -100 | -100 | -99 | -98 | -96 | -95 | -95 | -94 | -94 | -94 |
| Iron and steel | -248 | -238 | -233 | -234 | -244 | -260 | -278 | -296 | -312 | -324 |
| Plastics | -215 | -215 | -215 | -216 | -219 | -224 | -230 | -235 | -240 | -244 |
| Processed industrial supplies n.e.s. | -1 580 | -1 588 | -1 602 | -1 620 | -1 641 | -1 665 | -1 688 | -1 711 | -1 732 | -1 752 |
| Other merchandise goods(c) | -87 | -86 | -94 | -110 | -128 | -144 | -154 | -158 | -154 | -147 |
| Goods procured in ports by carriers | -110 | -115 | -116 | -115 | -113 | -112 | -113 | -113 | -113 | -113 |
| Non-monetary gold | -501 | -547 | -563 | -551 | -532 | -525 | -563 | -634 | -717 | -803 |

(a) For sign conventions, see paragraph 15 of the Explanatory Notes.

(b) Caution should be used when interpreting recent trend estimates as they may be affected by unusual economic factors. For more details on trend estimates, please see paragraph 19 of the explanatory notes.

(c) From July 2008, commodities subject to a 'no commodity details' or 'no value details' restriction are included in Civil aircraft and confidentialised items, and for earlier periods are included in Other merchandise goods.

(d) An estimated trend correction of \$167m has been applied to Capital goods n.e.s. and related aggregates in April 2010. This trend break will be reassessed in a future issue.

| | | | | | | | 11 MONTHS ENDED MAY | | Change |
|---|----------------|----------------|----------------|---------------|---------------|---------------|------------------------|----------------|-------------|
| | 2006-07 | 2007-08 | 2008-09 | Mar 2010 | Apr 2010 | May 2010 | 2009 | 2010 | |
| | \$m | \$m | \$m | \$m | \$m | \$m | \$m | \$m | |
| Services credits | 45 956 | 50 645 | 52 873 | 4 510 | 4 393 | 4 216 | 48 813 | 48 537 | -0.6 |
| Manufacturing services on physical inputs owned by others | 121 | 77 | 258 | 24 | 24 | 13 | 231 | 271 | 17.3 |
| Maintenance and repair services n.i.e. | 90 | 103 | 86 | 4 | 3 | 3 | 83 | 54 | -34.9 |
| Transport | 8 546 | 9 129 | 7 342 | 542 | 501 | 469 | 6 868 | 5 895 | -14.2 |
| Passenger(c) | 4 237 | 4 118 | 3 410 | 238 | 191 | 159 | 3 215 | 2 410 | -25.0 |
| Freight | 765 | 1 463 | 851 | 51 | 52 | 52 | 800 | 575 | -28.1 |
| Other | 2 348 | 2 595 | 2 127 | 181 | 186 | 186 | 1 965 | 2 022 | 2.9 |
| Postal and courier services(d) | 1 196 | 953 | 954 | 72 | 72 | 72 | 888 | 888 | — |
| Travel | 25 161 | 28 252 | 31 096 | 2 950 | 2 802 | 2 668 | 28 671 | 30 834 | 7.5 |
| Other services | 12 038 | 13 084 | 14 091 | 990 | 1 063 | 1 063 | 12 960 | 11 483 | -11.4 |
| Services debits | -45 139 | -53 330 | -56 172 | -4 422 | -4 456 | -4 430 | -51 714 | -49 184 | 4.9 |
| Manufacturing services on physical inputs owned by others | -3 | -7 | -4 | — | — | — | -4 | -6 | -50.0 |
| Maintenance and repair services n.i.e. | -131 | -97 | -193 | -20 | -14 | -33 | -173 | -261 | -50.9 |
| Transport | -15 732 | -16 797 | -15 832 | -1 272 | -1 151 | -1 209 | -14 775 | -12 508 | 15.3 |
| Passenger(c) | -6 876 | -7 278 | -5 835 | -485 | -434 | -464 | -5 386 | -4 672 | 13.3 |
| Freight | -8 303 | -8 923 | -9 386 | -749 | -677 | -705 | -8 827 | -7 377 | 16.4 |
| Other | -385 | -417 | -437 | -27 | -26 | -26 | -403 | -293 | 27.3 |
| Postal and courier services(d) | -168 | -179 | -174 | -11 | -14 | -14 | -159 | -166 | -4.4 |
| Travel | -15 934 | -20 153 | -22 082 | -1 777 | -1 898 | -1 795 | -20 226 | -21 363 | -5.6 |
| Other services | -13 339 | -16 276 | -18 061 | -1 353 | -1 393 | -1 393 | -16 536 | -15 046 | 9.0 |
| Memorandum items: | | | | | | | | | |
| Tourism related service credits(e) | 29 398 | 32 370 | 34 506 | 3 188 | 2 993 | 2 827 | 31 886 | 33 244 | 4.3 |
| Tourism related service debits(e) | -22 810 | -27 431 | -27 917 | -2 262 | -2 332 | -2 259 | -25 612 | -26 035 | -1.7 |

— nil or rounded to zero (including null cells)

(a) For sign conventions, see paragraph 15 of the Explanatory Notes.

(b) For more detailed trade in services components, see table 11.

(c) Passenger services includes agency fees and commissions for air transport.

(d) Postal and courier services includes indirect commissions for sea transport.

(e) For a more detailed explanation of tourism related services, see paragraph 27 of the Explanatory Notes.

| | Aug 2009 | Sep 2009 | Oct 2009 | Nov 2009 | Dec 2009 | Jan 2010 | Feb 2010 | Mar 2010 | Apr 2010 | May 2010 |
|--|---------------|---------------|---------------|---------------|---------------|---------------|---------------|---------------|---------------|---------------|
| | \$m | \$m | \$m | \$m | \$m | \$m | \$m | \$m | \$m | \$m |
| SEASONALLY ADJUSTED | | | | | | | | | | |
| Services credits | 4 386 | 4 503 | 4 410 | 4 386 | 4 406 | 4 361 | 4 462 | 4 359 | 4 314 | 4 319 |
| Manufacturing services on physical inputs owned by others(b) | 24 | 20 | 32 | 28 | 27 | 27 | 24 | 24 | 24 | 13 |
| Maintenance and repair services n.i.e.(b) | 9 | 7 | 5 | 4 | 5 | 5 | 4 | 4 | 3 | 3 |
| Transport | 520 | 529 | 554 | 551 | 551 | 542 | 536 | 528 | 519 | 510 |
| Passenger(c) | 216 | 224 | 224 | 223 | 220 | 220 | 217 | 212 | 204 | 198 |
| Freight(d) | 53 | 51 | 51 | 52 | 52 | 53 | 52 | 51 | 53 | 54 |
| Other(d) | 173 | 171 | 191 | 190 | 192 | 188 | 188 | 187 | 186 | 185 |
| Postal and courier services(e) | 78 | 82 | 88 | 87 | 87 | 81 | 78 | 77 | 76 | 74 |
| Travel | 2 764 | 2 868 | 2 781 | 2 764 | 2 785 | 2 757 | 2 864 | 2 769 | 2 731 | 2 749 |
| Other services | 1 069 | 1 079 | 1 038 | 1 039 | 1 038 | 1 030 | 1 035 | 1 034 | 1 036 | 1 044 |
| Services debits | -4 340 | -4 349 | -4 451 | -4 438 | -4 483 | -4 456 | -4 568 | -4 624 | -4 558 | -4 666 |
| Manufacturing services on physical inputs owned by others(b) | -1 | — | -1 | — | -2 | -1 | -1 | — | — | — |
| Maintenance and repair services n.i.e.(b) | -18 | -20 | -17 | -22 | -32 | -15 | -53 | -20 | -14 | -33 |
| Transport | -1 023 | -1 055 | -1 113 | -1 097 | -1 145 | -1 133 | -1 181 | -1 230 | -1 217 | -1 284 |
| Passenger(c) | -383 | -391 | -413 | -428 | -448 | -438 | -451 | -472 | -458 | -463 |
| Freight | -598 | -622 | -657 | -627 | -656 | -653 | -687 | -715 | -718 | -780 |
| Other(b) | -28 | -28 | -26 | -26 | -26 | -26 | -26 | -27 | -26 | -26 |
| Postal and courier services(e) | -14 | -14 | -17 | -16 | -15 | -16 | -16 | -15 | -15 | -15 |
| Travel | -1 936 | -1 907 | -1 946 | -1 939 | -1 933 | -1 943 | -1 962 | -1 994 | -1 944 | -1 978 |
| Other services | -1 363 | -1 367 | -1 374 | -1 380 | -1 371 | -1 365 | -1 371 | -1 381 | -1 383 | -1 370 |
| Memorandum items: | | | | | | | | | | |
| Tourism related service credits(f) | 2 980 | 3 092 | 3 005 | 2 987 | 3 005 | 2 977 | 3 081 | 2 981 | 2 935 | 2 947 |
| Tourism related service debits(f) | -2 319 | -2 297 | -2 359 | -2 367 | -2 382 | -2 381 | -2 413 | -2 466 | -2 402 | -2 442 |

TREND ESTIMATES

| | | | | | | | | | | |
|---|---------------|---------------|---------------|---------------|---------------|---------------|---------------|---------------|---------------|---------------|
| Services credits | 4 409 | 4 414 | 4 417 | 4 416 | 4 409 | 4 396 | 4 381 | 4 366 | 4 350 | 4 333 |
| Manufacturing services on physical inputs owned by others | 26 | 26 | 27 | 27 | 27 | 27 | 25 | 23 | 21 | 19 |
| Maintenance and repair services n.i.e. | 6 | 6 | 6 | 5 | 5 | 4 | 4 | 4 | 3 | 3 |
| Transport | 524 | 534 | 542 | 547 | 548 | 543 | 536 | 528 | 521 | 515 |
| Passenger(c) | 220 | 220 | 221 | 222 | 221 | 219 | 215 | 211 | 206 | 202 |
| Freight | 52 | 52 | 52 | 52 | 52 | 52 | 52 | 53 | 53 | 53 |
| Other | 173 | 179 | 184 | 188 | 190 | 190 | 188 | 187 | 186 | 185 |
| Postal and courier services(e) | 79 | 83 | 85 | 86 | 85 | 83 | 80 | 78 | 76 | 74 |
| Travel | 2 784 | 2 789 | 2 792 | 2 795 | 2 793 | 2 788 | 2 783 | 2 776 | 2 768 | 2 758 |
| Other services | 1 069 | 1 059 | 1 050 | 1 042 | 1 036 | 1 034 | 1 034 | 1 035 | 1 037 | 1 039 |
| Services debits | -4 355 | -4 373 | -4 401 | -4 437 | -4 474 | -4 510 | -4 544 | -4 577 | -4 607 | -4 635 |
| Manufacturing services on physical inputs owned by others | — | -1 | -1 | -1 | -1 | -1 | -1 | — | — | — |
| Maintenance and repair services n.i.e. | -18 | -19 | -21 | -24 | -26 | -28 | -28 | -28 | -27 | -26 |
| Transport | -1 045 | -1 060 | -1 082 | -1 106 | -1 131 | -1 157 | -1 183 | -1 210 | -1 235 | -1 258 |
| Passenger(c) | -388 | -397 | -410 | -424 | -436 | -447 | -454 | -459 | -463 | -466 |
| Freight | -613 | -620 | -630 | -640 | -652 | -668 | -688 | -709 | -730 | -751 |
| Other | -29 | -27 | -26 | -26 | -26 | -26 | -26 | -26 | -26 | -26 |
| Postal and courier services(e) | -15 | -15 | -16 | -16 | -16 | -16 | -15 | -15 | -15 | -15 |
| Travel | -1 911 | -1 924 | -1 932 | -1 940 | -1 945 | -1 951 | -1 958 | -1 965 | -1 969 | -1 974 |
| Other services | -1 381 | -1 369 | -1 365 | -1 367 | -1 371 | -1 373 | -1 374 | -1 375 | -1 376 | -1 376 |
| Memorandum items: | | | | | | | | | | |
| Tourism related service credits(f) | 3 004 | 3 009 | 3 014 | 3 017 | 3 014 | 3 007 | 2 997 | 2 986 | 2 974 | 2 960 |
| Tourism related service debits(f) | -2 299 | -2 321 | -2 342 | -2 364 | -2 381 | -2 398 | -2 412 | -2 424 | -2 433 | -2 440 |

— nil or rounded to zero (including null cells)

(a) For sign conventions, see paragraph 15 of the Explanatory Notes.

(b) This component is not seasonally adjusted.

(c) Passenger services includes agency fees and commissions for air transport.

(d) In using these seasonally adjusted series, care should be exercised because of the difficulties associated with reliably estimating the seasonal pattern.

(e) Postal and courier services includes indirect commissions for sea transport.

(f) For a more detailed explanation of tourism related services, see paragraph 27 of the Explanatory Notes.

| | CREDITS | | | | DEBITS | | | |
|--|---------------|---------------|---------------|---------------|----------------|----------------|----------------|----------------|
| | Jun Qtr | Sep Qtr | Dec Qtr | Mar Qtr | Jun Qtr | Sep Qtr | Dec Qtr | Mar Qtr |
| | 2009 | 2009 | 2009 | 2010 | 2009 | 2009 | 2009 | 2010 |
| | \$m | \$m | \$m | \$m | \$m | \$m | \$m | \$m |
| Services | 12 850 | 13 212 | 13 393 | 13 323 | -12 979 | -13 485 | -13 735 | -13 078 |
| Manufacturing services on physical inputs owned by others | 86 | 72 | 87 | 75 | — | -1 | -3 | -2 |
| Maintenance and repair services n.i.e. | 12 | 21 | 14 | 13 | -47 | -55 | -71 | -88 |
| Transport | 1 455 | 1 578 | 1 689 | 1 658 | -3 111 | -3 204 | -3 568 | -3 376 |
| Passenger(b) | 616 | 611 | 699 | 750 | -1 232 | -1 212 | -1 291 | -1 271 |
| Freight | 151 | 164 | 156 | 151 | -1 732 | -1 841 | -2 161 | -1 993 |
| Other | 488 | 521 | 588 | 541 | -104 | -84 | -78 | -79 |
| Postal and courier services(c) | 200 | 282 | 246 | 216 | -43 | -67 | -38 | -33 |
| Travel | 7 911 | 8 434 | 8 337 | 8 593 | -5 341 | -6 220 | -5 883 | -5 567 |
| Business | 644 | 693 | 663 | 733 | -717 | -768 | -695 | -777 |
| Personal | 7 267 | 7 741 | 7 674 | 7 860 | -4 624 | -5 452 | -5 188 | -4 790 |
| Education-related | 4 518 | 4 972 | 4 278 | 4 528 | -168 | -263 | -215 | -219 |
| Other(d) | 2 749 | 2 769 | 3 396 | 3 332 | -4 456 | -5 189 | -4 973 | -4 571 |
| Construction | 12 | 48 | 27 | 21 | — | — | — | — |
| Insurance and pension services | 58 | 77 | 74 | 64 | -137 | -128 | -128 | -130 |
| Financial services | 302 | 265 | 281 | 242 | -181 | -163 | -172 | -178 |
| Charges for the use of intellectual property n.i.e. | 273 | 213 | 250 | 271 | -906 | -887 | -924 | -869 |
| Telecommunications, computer and information services | 513 | 461 | 428 | 420 | -560 | -511 | -507 | -505 |
| Telecommunication services | 63 | 62 | 70 | 56 | -139 | -122 | -126 | -135 |
| Computer and information services | 450 | 399 | 358 | 364 | -421 | -389 | -381 | -370 |
| Computer services | 362 | 315 | 297 | 293 | -358 | -327 | -315 | -305 |
| Information services | 12 | 8 | 7 | 12 | -10 | -5 | -7 | -7 |
| Other services | 76 | 76 | 54 | 59 | -53 | -57 | -59 | -58 |
| Other business services | 1 815 | 1 639 | 1 816 | 1 547 | -2 142 | -1 798 | -1 942 | -1 789 |
| Research and development services | 146 | 130 | 147 | 113 | -60 | -55 | -64 | -54 |
| Professional and management consulting services | 880 | 773 | 831 | 709 | -977 | -709 | -825 | -561 |
| Legal, accounting, management consulting, public relations and other professional services | 789 | 685 | 736 | 628 | -930 | -681 | -786 | -513 |
| Advertising, market research and public opinion polling | 91 | 88 | 95 | 81 | -47 | -28 | -39 | -48 |
| Technical, trade-related and other business services | 789 | 736 | 838 | 725 | -1 105 | -1 034 | -1 053 | -1 174 |
| Architectural, engineering and other technical services | 340 | 383 | 410 | 385 | -431 | -379 | -447 | -340 |
| Waste treatment and de-pollution, agricultural and mining services | 59 | 52 | 54 | 63 | -186 | -142 | -150 | -120 |
| Operational leasing services | 63 | 75 | 89 | 64 | -187 | -196 | -197 | -171 |
| Trade-related commission services | 220 | 123 | 174 | 108 | -57 | -56 | -54 | -48 |
| Other business services n.i.e. | 107 | 103 | 111 | 105 | -244 | -261 | -205 | -495 |
| Personal, cultural and recreational services | 196 | 194 | 180 | 203 | -314 | -296 | -315 | -352 |
| Audiovisual and related services | 24 | 28 | 32 | 47 | -287 | -266 | -279 | -286 |
| Other personal, cultural and recreational services | 172 | 166 | 148 | 156 | -27 | -30 | -36 | -66 |
| Government goods and services n.i.e. | 217 | 210 | 210 | 216 | -240 | -222 | -222 | -222 |
| Memorandum items: | | | | | | | | |
| Gross insurance premiums receivable / payable | 165 | 174 | 179 | 153 | -245 | -249 | -263 | -255 |
| Gross insurance claims payable / receivable | -123 | -117 | -121 | -105 | 275 | 278 | 288 | 286 |
| Tourism related services(e) | 8 527 | 9 045 | 9 036 | 9 343 | -6 573 | -7 432 | -7 174 | -6 838 |

— nil or rounded to zero (including null cells)

(a) For sign conventions, see paragraph 15 of the Explanatory Notes.

(b) Passenger services includes agency fees and commissions for air transport.

(c) Postal and courier services includes indirect commissions for sea transport.

(d) Other personal travel includes health-related travel.

(e) For a more detailed explanation of tourism related services, see paragraph 27 of the Explanatory Notes.

| | Mar | Apr | May | Per cent | 11 MONTHS | |
|--|-------|-------|-------|-------------|-----------|--------|
| | 2010 | 2010 | 2010 | of total | ENDED MAY | |
| | \$m | \$m | \$m | merchandise | 2009 | 2010 |
| | | | | exports(b) | | |
| | | | | % | \$m | \$m |
| MAJOR COMMODITIES (c) | | | | | | |
| 011 Meat of bovine animals | 359 | 352 | 433 | 2.2 | 4 689 | 3 680 |
| 041 Wheat and meslin | 362 | 255 | 375 | 1.9 | 4 446 | 3 347 |
| 268 Wool and other animal hair | 243 | 188 | 184 | 0.9 | 1 878 | 1 827 |
| 281 Iron ore and concentrates | 2 598 | 3 750 | 3 709 | 18.6 | 31 975 | 28 997 |
| 283 Copper ores and concentrates | 413 | 489 | 223 | 1.1 | 3 195 | 3 951 |
| 285 Aluminium ores and concentrates | 442 | 481 | 455 | 2.3 | 5 771 | 4 532 |
| 321 Coal, not agglomerated | 2 330 | 3 347 | 3 530 | 17.7 | 51 647 | 31 542 |
| 333 Crude petroleum oils | 788 | 1 153 | 961 | 4.8 | 7 646 | 8 091 |
| 334 Refine petroleum oils | 185 | 164 | 278 | 1.4 | 2 602 | 2 237 |
| 343 Natural gas | 774 | 671 | 513 | 2.6 | 9 529 | 6 958 |
| 682 Copper | 177 | 215 | 259 | 1.3 | 2 534 | 2 259 |
| 684 Aluminium | 338 | 408 | 501 | 2.5 | 4 926 | 3 848 |
| 781 Motor vehicles for transport of people | 188 | 149 | 179 | 0.9 | 2 579 | 1 666 |
| 971 Gold, non-monetary | 1 175 | 1 139 | 1 830 | 9.2 | 15 779 | 12 395 |
| SECTION AND DIVISION OF THE SITC | | | | | | |
| 0 Food and live animals | | | | | | |
| 00 Live animals (excl. fish, crustaceans, molluscs and aquatic invertebrates) | 99 | 88 | 72 | 0.4 | 1 077 | 1 065 |
| 01 Meat and meat preparations | 550 | 532 | 664 | 3.3 | 6 915 | 5 725 |
| 02 Dairy products and birds' eggs | 180 | 148 | 175 | 0.9 | 2 417 | 1 766 |
| 03 Fish (not marine mammals), crustaceans, molluscs and aquatic invertebrates, and preparations thereof | 83 | 81 | 85 | 0.4 | 1 074 | 928 |
| 04 Cereals and cereal preparations | 570 | 404 | 576 | 2.9 | 6 268 | 4 878 |
| 05 Vegetables and fruit | 131 | 117 | 175 | 0.9 | 1 505 | 1 413 |
| 06 Sugars, sugar preparations and honey | 28 | 21 | 27 | 0.1 | 241 | 272 |
| 07 Coffee, tea, cocoa, spices, and manufactures thereof | 21 | 22 | 24 | 0.1 | 270 | 264 |
| 08 Feeding stuff for animals (excl. unmilled cereals) | 76 | 73 | 76 | 0.4 | 1 281 | 907 |
| 09 Miscellaneous edible products and preparations | 77 | 70 | 70 | 0.4 | 602 | 672 |
| <i>Total Food and live animals</i> | 1 816 | 1 557 | 1 943 | 9.7 | 21 650 | 17 891 |
| 1 Beverages and tobacco | | | | | | |
| 11 Beverages | 207 | 173 | 223 | 1.1 | 2 424 | 2 166 |
| 12 Tobacco and tobacco manufactures | 13 | 15 | 9 | — | 124 | 119 |
| <i>Total Beverages and tobacco</i> | 220 | 188 | 232 | 1.2 | 2 547 | 2 284 |
| 2 Crude materials, inedible, except fuels | | | | | | |
| 21 Hides, skins and furskins, raw | 58 | 53 | 69 | 0.3 | 600 | 527 |
| 22 Oil-seeds and oleaginous fruits | 55 | 42 | 70 | 0.4 | 637 | 601 |
| 23 Crude rubber (incl. synthetic and reclaimed) | 2 | 1 | 1 | — | 11 | 13 |
| 24 Cork and wood | 90 | 104 | 93 | 0.5 | 1 124 | 1 028 |
| 25 Pulp and waste paper | 23 | 24 | 28 | 0.1 | 236 | 222 |
| 26 Textile fibres and their wastes (not manufactured into yarn or fabric) | 279 | 216 | 283 | 1.4 | 2 369 | 2 421 |
| 27 Crude fertilizers (excl. those of Division 56) and crude minerals (excl. coal, petroleum and precious stones) | 31 | 34 | 35 | 0.2 | 321 | 283 |
| 28 Metalliferous ores and metal scrap | 4 216 | 5 410 | 5 250 | 26.3 | 48 170 | 44 884 |
| 29 Crude animal and vegetable materials, n.e.s. | 15 | 17 | 19 | 0.1 | 220 | 184 |
| <i>Total Crude materials, inedible, except fuels</i> | 4 769 | 5 902 | 5 848 | 29.3 | 53 689 | 50 162 |
| 3 Mineral fuels, lubricants and related materials | | | | | | |
| 32 Coal, coke and briquettes | 2 344 | 3 360 | 3 540 | 17.8 | 51 867 | 31 631 |
| 33 Petroleum, petroleum products and related materials | 975 | 1 320 | 1 241 | 6.2 | 10 264 | 10 343 |
| 34 Gas, natural and manufactured | 903 | 754 | 556 | 2.8 | 10 508 | 7 959 |
| <i>Total Mineral fuels, lubricants and related materials</i> | 4 222 | 5 434 | 5 337 | 26.8 | 72 639 | 49 934 |

— nil or rounded to zero (including null cells)

(a) Some SITC sections and divisions exclude commodities subject to a confidentiality restriction. These are included in Division 98. For more information see paragraph 26 of the Explanatory Notes.

(b) Per cent of total merchandise is calculated for the most recent month.

(c) The 'Major commodities' section lists commodities at the SITC Rev 4 3-digit level which are the most significant (by value) or are of particular interest. Abbreviated descriptors have been used. The list of 'Major commodities' is reviewed annually.

| | | | | Per cent of total merchandise exports(b) | 11 MONTHS ENDED MAY | | |
|----------------------------------|---|-------|-------|---|------------------------|--------|--------|
| | Mar | Apr | May | | | | |
| | 2010 | 2010 | 2010 | | 2009 | 2010 | |
| | \$m | \$m | \$m | % | \$m | \$m | |
| SECTION AND DIVISION OF THE SITC | | | | | | | |
| 4 | Animal and vegetable oils, fats and waxes | | | | | | |
| 41 | Animal oils and fats | 29 | 27 | 36 | 0.2 | 293 | 249 |
| 42 | Fixed vegetable fats and oils, crude, refined or fractionated | 13 | 15 | 9 | — | 165 | 137 |
| 43 | Fats and oils (processed), waxes and inedible mixtures or preparations, of animal or vegetable origin, n.e.s. | 1 | 1 | 1 | — | 13 | 11 |
| | <i>Total Animal and vegetable oils, fats and waxes</i> | 43 | 43 | 46 | 0.2 | 471 | 397 |
| 5 | Chemicals and related products, n.e.s. | | | | | | |
| 51 | Organic chemicals | 18 | 16 | 13 | 0.1 | 156 | 152 |
| 52 | Inorganic chemicals | 45 | 41 | 49 | 0.2 | 517 | 478 |
| 53 | Dyeing, tanning and colouring materials | 53 | 43 | 63 | 0.3 | 551 | 603 |
| 54 | Medicinal and pharmaceutical products | 405 | 301 | 414 | 2.1 | 3 660 | 3 781 |
| 55 | Essential oils and resinoids and perfume materials, toilet, polishing and cleansing preparations | 59 | 54 | 60 | 0.3 | 562 | 573 |
| 56 | Fertilisers (excl. crude) | 10 | 11 | 7 | — | 688 | 288 |
| 57 | Plastics in primary forms | 30 | 26 | 32 | 0.2 | 274 | 262 |
| 58 | Plastics in non-primary forms | 31 | 26 | 28 | 0.1 | 385 | 321 |
| 59 | Chemical materials and products, n.e.s. | 89 | 81 | 91 | 0.5 | 1 004 | 906 |
| | <i>Total Chemicals and related products, nes</i> | 741 | 599 | 757 | 3.8 | 7 797 | 7 364 |
| 6 | Manufactured goods classified chiefly by material | | | | | | |
| 61 | Leather, leather manufactures and dressed furskins, n.e.s. | 24 | 21 | 26 | 0.1 | 256 | 232 |
| 62 | Rubber manufactures, n.e.s. | 17 | 14 | 20 | 0.1 | 236 | 172 |
| 63 | Cork and wood manufactures (excl. furniture) | 11 | 13 | 16 | 0.1 | 150 | 133 |
| 64 | Paper, paperboard and articles of paper pulp, of paper or of paperboard | 74 | 62 | 73 | 0.4 | 626 | 643 |
| 65 | Textile yarn, fabrics, made-up articles n.e.s. and related products | 27 | 20 | 22 | 0.1 | 331 | 256 |
| 66 | Non-metallic mineral manufactures, n.e.s. | 79 | 43 | 51 | 0.3 | 805 | 682 |
| 67 | Iron and steel | 108 | 127 | 142 | 0.7 | 1 283 | 993 |
| 68 | Non-ferrous metals | 792 | 892 | 1 029 | 5.2 | 10 187 | 8 815 |
| 69 | Manufactures of metals, n.e.s. | 87 | 92 | 96 | 0.5 | 1 015 | 978 |
| | <i>Total Manufactured goods classified chiefly by material</i> | 1 219 | 1 285 | 1 475 | 7.4 | 14 889 | 12 903 |
| 7 | Machinery and transport equipment | | | | | | |
| 71 | Power generating machinery and equipment | 75 | 73 | 63 | 0.3 | 815 | 724 |
| 72 | Machinery specialized for particular industries | 156 | 136 | 164 | 0.8 | 1 783 | 1 658 |
| 73 | Metal working machinery | 7 | 16 | 13 | 0.1 | 170 | 127 |
| 74 | General industrial machinery and equipment, n.e.s. and machine parts, n.e.s. | 154 | 127 | 164 | 0.8 | 1 742 | 1 557 |
| 75 | Office machines and automatic data processing machines | 98 | 85 | 107 | 0.5 | 1 109 | 947 |
| 76 | Telecommunications and sound recording and reproducing apparatus and equipment | 72 | 64 | 85 | 0.4 | 1 016 | 855 |
| 77 | Electrical machinery, apparatus and appliances, parts (incl. non electrical counterparts of electrical domestic equip) | 133 | 121 | 140 | 0.7 | 1 590 | 1 390 |
| 78 | Road vehicles (incl. air-cushion vehicles) | 291 | 234 | 269 | 1.3 | 3 509 | 2 568 |
| 79 | Transport equipment (excl. road vehicles) | 99 | 84 | 77 | 0.4 | 1 334 | 1 165 |
| | <i>Total Machinery and transport equipment</i> | 1 084 | 940 | 1 080 | 5.4 | 13 067 | 10 990 |

— nil or rounded to zero (including null cells)

(b) Per cent of total merchandise is calculated for the most recent month.

(a) Some SITC sections and divisions exclude commodities subject to a confidentiality restriction. These are included in Division 98. For more information see paragraph 26 of the Explanatory Notes.

| | Mar 2010 | Apr 2010 | May 2010 | Per cent of total merchandise exports(b) | 11 MONTHS ENDED MAY | |
|--|--|---------------|---------------|---|------------------------|----------------|
| | | | | | | |
| | | | | | 2009 | 2010 |
| | \$m | \$m | \$m | % | \$m | \$m |
| SECTION AND DIVISION OF THE SITC | | | | | | |
| 8 | Miscellaneous manufactured articles | | | | | |
| 81 | Prefabricated buildings and sanitary, plumbing, heating and lighting fixtures and fittings, n.e.s. | | | | | |
| | 13 | 12 | 11 | 0.1 | 130 | 146 |
| 82 | Furniture and parts thereof; bedding, mattresses, mattress supports, cushions and similar stuffed furnishings | | | | | |
| | 12 | 9 | 8 | — | 116 | 99 |
| 83 | Travel goods, handbags and similar containers | | | | | |
| | 3 | 3 | 3 | — | 29 | 32 |
| 84 | Articles of apparel and clothing accessories | | | | | |
| | 26 | 21 | 18 | 0.1 | 223 | 225 |
| 85 | Footwear | | | | | |
| | 3 | 3 | 3 | — | 46 | 38 |
| 87 | Professional, scientific and controlling instruments and apparatus, n.e.s. | | | | | |
| | 169 | 143 | 178 | 0.9 | 2 061 | 1 796 |
| 88 | Photographic apparatus, equipment and supplies and optical goods, n.e.s., watches and clocks | | | | | |
| | 24 | 20 | 23 | 0.1 | 342 | 260 |
| 89 | Miscellaneous manufactured articles, n.e.s. | | | | | |
| | 175 | 137 | 170 | 0.9 | 2 066 | 1 867 |
| | <i>Total Miscellaneous manufactured articles</i> | | | | | |
| | 425 | 349 | 414 | 2.1 | 5 013 | 4 463 |
| 9 | Commodities and transactions not classified elsewhere in the SITC | | | | | |
| 93 | Special transactions and commodities not classified according to kind | | | | | |
| | 151 | 141 | 111 | 0.6 | 1 602 | 1 657 |
| 95 | Gold coin whether or not legal tender, and other coin being legal tender | | | | | |
| | 34 | 22 | 103 | 0.5 | 590 | 446 |
| 96 | Coin (excl. gold coin) not being legal tender | | | | | |
| | — | — | — | — | 1 | — |
| 97 | Gold, non-monetary (excl. gold ores and concentrates) | | | | | |
| | 1 175 | 1 139 | 1 830 | 9.2 | 15 779 | 12 395 |
| 98 | Combined confidential items excl. some of SITC 280 (exports only) and some of SITCs 510 and 520 (imports only) | | | | | |
| | 605 | 760 | 756 | 3.8 | 5 524 | 6 626 |
| | <i>Total Commodities and transactions not classified elsewhere in the SITC</i> | | | | | |
| | 1 965 | 2 061 | 2 800 | 14.0 | 23 496 | 21 123 |
| Total merchandise exports | | | | | | |
| | 16 503 | 18 357 | 19 933 | 100.0 | 215 259 | 177 511 |
| Balance of Payments Adjustments | | | | | | |
| | 72 | 81 | 983 | .. | 681 | 1 675 |
| Goods Credits (exports) on a Balance of Payments Basis | | | | | | |
| | 16 575 | 18 438 | 20 916 | .. | 215 940 | 179 186 |

.. not applicable
 — nil or rounded to zero (including null cells)

(a) Some SITC sections and divisions exclude commodities subject to a confidentiality restriction. These are included in Division 98. For more information see paragraph 26 of the Explanatory Notes.

(b) Per cent of total merchandise is calculated for the most recent month.

| | Mar 2010 | Apr 2010 | May 2010 | Per cent of total merchandise imports(b) | 11 MONTHS ENDED MAY | |
|--|-------------|-------------|-------------|---|------------------------|------|
| | | | | | 2009 | 2010 |
| | | | | | \$m | \$m |
| | \$m | \$m | \$m | % | \$m | \$m |

MAJOR COMMODITIES

| | | | | | | |
|--|-------|-------|-------|-----|--------|--------|
| 333 Crude petroleum oils | 1 196 | 1 440 | 1 166 | 6.7 | 13 377 | 13 270 |
| 334 Refined petroleum oils | 950 | 871 | 1 017 | 5.8 | 11 373 | 9 852 |
| 542 Medicaments | 658 | 588 | 693 | 4.0 | 6 724 | 6 845 |
| 641 Paper and paperboard | 173 | 156 | 151 | 0.9 | 1 881 | 1 737 |
| 723 Civil engineering and contractors' plant and equipment | 304 | 216 | 259 | 1.5 | 3 211 | 2 457 |
| 751 Office machines | 154 | 167 | 175 | 1.0 | 1 798 | 1 787 |
| 752 Automatic data processing machines | 567 | 543 | 652 | 3.7 | 5 338 | 5 485 |
| 761 Televisions | 154 | 207 | 296 | 1.7 | 2 698 | 2 871 |
| 764 Telecommunications equipment | 600 | 555 | 616 | 3.5 | 6 735 | 6 305 |
| 781 Motor vehicles for the transport of people | 1 525 | 1 374 | 1 318 | 7.6 | 10 520 | 13 461 |
| 782 Motor vehicles for the transport of goods | 674 | 549 | 542 | 3.1 | 4 714 | 5 380 |
| 784 Parts and accessories of motor vehicles | 230 | 215 | 206 | 1.2 | 2 279 | 2 200 |
| 971 Gold, non-monetary | 649 | 949 | 888 | 5.1 | 10 841 | 7 085 |

SECTION AND DIVISION OF THE SITC

| | | | | | | |
|----|---|-------|-------|-------|------|---------------|
| 0 | Food and live animals | | | | | |
| 00 | Live animals other than fish, crustaceans, molluscs and aquatic invertebrates | 10 | 7 | 7 | — | 100 96 |
| 01 | Meat and meat preparations | 52 | 59 | 50 | 0.3 | 520 512 |
| 02 | Dairy products and birds' eggs | 53 | 52 | 48 | 0.3 | 550 539 |
| 03 | Fish (not marine mammals), crustaceans, molluscs and aquatic invertebrates, and preparations thereof | 100 | 95 | 89 | 0.5 | 1 191 1 143 |
| 04 | Cereals and cereal preparations | 59 | 58 | 57 | 0.3 | 758 726 |
| 05 | Vegetables and fruit | 124 | 108 | 112 | 0.6 | 1 552 1 410 |
| 06 | Sugars, sugar preparations and honey | 41 | 20 | 20 | 0.1 | 243 270 |
| 07 | Coffee, tea, cocoa, spices, and manufactures thereof | 96 | 79 | 84 | 0.5 | 1 093 1 064 |
| 08 | Feeding stuff for animals (excl. unmilled cereals) | 57 | 38 | 34 | 0.2 | 558 530 |
| 09 | Miscellaneous edible products and preparations | 142 | 105 | 133 | 0.8 | 1 416 1 458 |
| | <i>Total Food and live animals</i> | 735 | 620 | 633 | 3.6 | 7 980 7 748 |
| 1 | Beverages and tobacco | | | | | |
| 11 | Beverages | 105 | 97 | 95 | 0.5 | 1 390 1 356 |
| 12 | Tobacco and tobacco manufactures | 34 | 23 | 19 | 0.1 | 219 239 |
| | <i>Total Beverages and tobacco</i> | 139 | 121 | 114 | 0.7 | 1 609 1 595 |
| 2 | Crude materials, inedible, except fuels | | | | | |
| 21 | Hides, skins and furskins, raw | — | — | — | — | 2 1 |
| 22 | Oil-seeds and oleaginous fruits | 5 | 4 | 2 | — | 55 46 |
| 23 | Crude rubber (incl. synthetic and reclaimed) | 11 | 11 | 12 | 0.1 | 170 122 |
| 24 | Cork and wood | 55 | 53 | 54 | 0.3 | 550 554 |
| 25 | Pulp and waste paper | 15 | 15 | 11 | 0.1 | 254 165 |
| 26 | Textile fibres and their wastes (not manufactured into yarn or fabric) | 11 | 8 | 9 | 0.1 | 123 121 |
| 27 | Crude fertilizers (excl. those of Division 56) and crude minerals (excl. coal, petroleum and precious stones) | 17 | 8 | 20 | 0.1 | 443 126 |
| 28 | Metalliferous ores and metal scrap | 33 | 62 | 32 | 0.2 | 524 462 |
| 29 | Crude animal and vegetable materials, n.e.s. | 30 | 22 | 24 | 0.1 | 326 293 |
| | <i>Total Crude materials, inedible, except fuels</i> | 176 | 183 | 164 | 0.9 | 2 448 1 889 |
| 3 | Mineral fuels, lubricants and related materials | | | | | |
| 32 | Coal, coke and briquettes | 2 | 3 | 7 | — | 27 27 |
| 33 | Petroleum, petroleum products and related materials | 2 186 | 2 351 | 2 220 | 12.8 | 25 439 23 529 |
| 34 | Gas, natural and manufactured | 208 | 192 | 101 | 0.6 | 2 397 1 557 |
| | <i>Total Mineral fuels, lubricants and related materials</i> | 2 395 | 2 546 | 2 328 | 13.4 | 27 863 25 114 |

— nil or rounded to zero (including null cells)

(a) Some SITC sections and divisions exclude commodities subject to a confidentiality restriction. These are included in Division 98. For more information see paragraph 26 of the Explanatory Notes.

(b) Per cent of total merchandise is calculated for the most recent month.

(c) The 'Major commodities' section lists commodities at the SITC Rev 4 3-digit level which are the most significant (by value) or are of particular interest. Abbreviated descriptors have been used. The list of 'Major commodities' is reviewed annually.

| | | | | Per cent of total merchandise imports(b) | 11 MONTHS ENDED MAY | | |
|----------------------------------|---|-------|-------|---|------------------------|--------|--------|
| | Mar | Apr | May | | | | |
| | 2010 | 2010 | 2010 | | 2009 | 2010 | |
| | \$m | \$m | \$m | % | \$m | \$m | |
| SECTION AND DIVISION OF THE SITC | | | | | | | |
| 4 | Animal and vegetable oils, fats and waxes | | | | | | |
| 41 | Animal oils and fats | 2 | 3 | 2 | — | 37 | 27 |
| 42 | Fixed vegetable fats and oils, crude, refined or fractionated | 27 | 36 | 27 | 0.2 | 484 | 385 |
| 43 | Fats and oils (processed), waxes and inedible mixtures or preparations, of animal or vegetable n.e.s. | 5 | 5 | 5 | — | 61 | 62 |
| | <i>Total Animal and vegetable oils, fats and waxes</i> | 35 | 44 | 34 | 0.2 | 582 | 474 |
| 5 | Chemicals and related products, n.e.s. | | | | | | |
| 51 | Organic chemicals | 305 | 234 | 311 | 1.8 | 3 163 | 2 978 |
| 52 | Inorganic chemicals | 103 | 72 | 101 | 0.6 | 1 857 | 1 006 |
| 53 | Dyeing, tanning and colouring materials | 51 | 51 | 53 | 0.3 | 644 | 562 |
| 54 | Medicinal and pharmaceutical products | 846 | 713 | 847 | 4.9 | 8 277 | 8 407 |
| 55 | Essential oils and resinoids and perfume materials; toilet, polishing and cleansing preparations | 156 | 140 | 139 | 0.8 | 1 673 | 1 656 |
| 56 | Fertilisers (excl. crude) | 194 | 205 | 128 | 0.7 | 1 669 | 939 |
| 57 | Plastics in primary forms | 125 | 120 | 127 | 0.7 | 1 518 | 1 237 |
| 58 | Plastics in non-primary forms | 115 | 112 | 106 | 0.6 | 1 315 | 1 250 |
| 59 | Chemical materials and products, n.e.s. | 171 | 157 | 167 | 1.0 | 2 007 | 1 754 |
| | <i>Total Chemicals and related products, n.e.s.</i> | 2 065 | 1 805 | 1 978 | 11.4 | 22 122 | 19 789 |
| 6 | Manufactured goods classified chiefly by material | | | | | | |
| 61 | Leather, leather manufactures, and dressed furskins, n.e.s. | 14 | 11 | 14 | 0.1 | 157 | 130 |
| 62 | Rubber manufactures, n.e.s. | 278 | 253 | 228 | 1.3 | 2 512 | 2 565 |
| 63 | Cork and wood manufactures (excl. furniture) | 63 | 51 | 56 | 0.3 | 647 | 591 |
| 64 | Paper, paperboard and articles of paper pulp, of paper or of paperboard | 233 | 213 | 214 | 1.2 | 2 650 | 2 469 |
| 65 | Textile yarn, fabrics, made-up articles n.e.s., and related products | 198 | 179 | 187 | 1.1 | 2 417 | 2 187 |
| 66 | Non-metallic mineral manufactures, n.e.s. | 232 | 205 | 189 | 1.1 | 2 595 | 2 377 |
| 67 | Iron and steel | 305 | 294 | 295 | 1.7 | 5 279 | 2 950 |
| 68 | Non-ferrous metals | 262 | 176 | 203 | 1.2 | 1 818 | 2 212 |
| 69 | Manufactures of metals, n.e.s. | 383 | 369 | 408 | 2.3 | 5 285 | 4 550 |
| | <i>Total Manufactured goods classified chiefly by material</i> | 1 966 | 1 751 | 1 793 | 10.3 | 23 361 | 20 031 |
| 7 | Machinery and transport equipment | | | | | | |
| 71 | Power generating machinery and equipment | 371 | 284 | 349 | 2.0 | 5 014 | 4 055 |
| 72 | Machinery specialised for particular industries | 654 | 526 | 634 | 3.6 | 7 435 | 6 282 |
| 73 | Metal working machinery | 52 | 68 | 61 | 0.4 | 702 | 566 |
| 74 | General industrial machinery and equipment, n.e.s. and machine parts, n.e.s. | 992 | 786 | 787 | 4.5 | 11 069 | 10 455 |
| 75 | Office machines and automatic data processing machines | 807 | 786 | 917 | 5.3 | 8 236 | 8 164 |
| 76 | Telecommunications and sound recording and reproducing apparatus and equipment | 819 | 838 | 993 | 5.7 | 10 630 | 10 255 |
| 77 | Electrical machinery, apparatus, appliances, parts (incl. non-elec. counterparts of electrical domestic equip) | 834 | 822 | 902 | 5.2 | 9 366 | 8 783 |
| 78 | Road vehicles (incl. air-cushion vehicles) | 2 563 | 2 255 | 2 195 | 12.6 | 19 538 | 22 601 |
| 79 | Transport equipment (excl. road vehicles) | 109 | 176 | 167 | 1.0 | 3 296 | 1 960 |
| | <i>Total Machinery and transport equipment</i> | 7 201 | 6 542 | 7 004 | 40.3 | 75 287 | 73 120 |

— nil or rounded to zero (including null cells)

(b) Per cent of total merchandise is calculated for the most recent month.

(a) Some SITC sections and divisions exclude commodities subject to a confidentiality restriction. These are included in Division 98. For more information see paragraph 26 of the Explanatory Notes.

| | Mar 2010 | Apr 2010 | May 2010 | Per cent of total merchandise imports(b) | 11 MONTHS ENDED MAY | | |
|----------------------------------|--|---------------|---------------|---|------------------------|----------------|----------------|
| | | | | | | | |
| | | | | | 2009 | 2010 | |
| | \$m | \$m | \$m | % | \$m | \$m | |
| SECTION AND DIVISION OF THE SITC | | | | | | | |
| 8 | Miscellaneous manufactured articles | | | | | | |
| 81 | Prefabricated buildings; sanitary, plumbing, heating and lighting fixtures and fittings, n.e.s. | 53 | 57 | 61 | 0.3 | 773 | 701 |
| 82 | Furniture, parts thereof; bedding, mattresses, mattress supports, cushions and similar stuffed furnishings | 163 | 189 | 193 | 1.1 | 2 638 | 2 345 |
| 83 | Travel goods, handbags and similar containers | 42 | 45 | 50 | 0.3 | 772 | 679 |
| 84 | Articles of apparel and clothing accessories | 403 | 413 | 342 | 2.0 | 5 156 | 4 519 |
| 85 | Footwear | 102 | 81 | 76 | 0.4 | 1 312 | 1 168 |
| 87 | Professional, scientific and controlling instruments and apparatus, n.e.s. | 425 | 371 | 385 | 2.2 | 4 576 | 4 209 |
| 88 | Photographic apparatus, equipment and supplies and optical goods, n.e.s., watches and clocks | 107 | 97 | 108 | 0.6 | 1 387 | 1 267 |
| 89 | Miscellaneous manufactured articles, n.e.s. | 756 | 709 | 795 | 4.6 | 10 512 | 9 181 |
| | <i>Total Miscellaneous manufactured articles</i> | <i>2 052</i> | <i>1 962</i> | <i>2 009</i> | <i>11.6</i> | <i>27 125</i> | <i>24 067</i> |
| 9 | Commodities and transactions not classified elsewhere in the SITC | | | | | | |
| 93 | Special transactions and commodities not classified according to kind | 3 | 3 | 3 | — | 53 | 35 |
| 95 | Gold coin whether or not legal tender, and other coin being legal tender | 1 | 1 | 1 | — | 5 | 8 |
| 96 | Coin (excl. gold coin), not being legal tender | — | — | 1 | — | 1 | 2 |
| 97 | Gold, non-monetary (excl. gold ores and concentrates) | 649 | 949 | 888 | 5.1 | 10 841 | 7 085 |
| 98 | Combined confidential items excl. some of SITC 280 (exports only) and some of SITCs 510 and 520 (imports only) | 608 | 272 | 438 | 2.5 | 4 513 | 4 847 |
| | <i>Total Commodities and transactions not classified elsewhere in the SITC</i> | <i>1 261</i> | <i>1 224</i> | <i>1 330</i> | <i>7.6</i> | <i>15 414</i> | <i>11 977</i> |
| | Total merchandise imports | 18 025 | 16 798 | 17 387 | 100.0 | 203 791 | 185 803 |
| | Balance of Payments Adjustments | 253 | 123 | 157 | .. | 2 782 | 2 212 |
| | Goods Debits (imports) on a Balance of Payments Basis | 18 278 | 16 921 | 17 544 | .. | 206 573 | 188 015 |

.. not applicable
 — nil or rounded to zero (including null cells)

(a) Some SITC sections and divisions exclude commodities subject to a confidentiality restriction. These are included in Division 98. For more information see paragraph 26 of the Explanatory Notes.

(b) Per cent of total merchandise is calculated for the most recent month.

| | EXPORTS | | | | IMPORTS(b) | | | | BALANCE OF MERCHANDISE TRADE | |
|---------------------------|----------------|---------------|--------------------------------|--------------------------------|----------------|---------------|--------------------------------|--------------------------------|------------------------------------|--------------------------------------|
| | 2008-09 | May 2010 | 11 | 11 | 2008-09 | May 2010 | 11 | 11 | 2008-09 | 11 Months Ended May 2010 |
| | | | months ended May 2009 | months ended May 2010 | | | Months Ended May 2009 | Months Ended May 2010 | | |
| \$m | \$m | \$m | \$m | \$m | \$m | \$m | \$m | | | |
| Belgium | 1 301 | 118 | 1 261 | 991 | 1 719 | 126 | 1 611 | 1 438 | -418 | -447 |
| Brazil | 1 483 | 99 | 1 421 | 1 128 | 1 041 | 48 | 991 | 542 | 442 | 587 |
| Canada | 1 557 | 111 | 1 429 | 1 185 | 2 437 | 154 | 2 296 | 1 589 | -880 | -404 |
| China | 39 325 | 4 296 | 35 763 | 39 764 | 37 044 | 2 999 | 34 441 | 33 169 | 2 281 | 6 594 |
| Denmark | 176 | 14 | 165 | 129 | 1 070 | 81 | 987 | 1 032 | -894 | -903 |
| Egypt(c) | 453 | 18 | 403 | 348 | 33 | 2 | 30 | 24 | 420 | 324 |
| Fiji | 374 | 25 | 349 | 280 | 160 | 14 | 147 | 146 | 215 | 134 |
| Finland | 595 | 69 | 586 | 304 | 978 | 53 | 917 | 595 | -383 | -290 |
| France | 1 721 | 112 | 1 589 | 1 002 | 4 653 | 289 | 4 333 | 3 586 | -2 932 | -2 584 |
| Germany | 2 197 | 209 | 2 057 | 1 429 | 11 106 | 882 | 10 303 | 9 771 | -8 909 | -8 341 |
| Hong Kong (SAR of China) | 3 192 | 258 | 2 970 | 2 482 | 1 424 | 88 | 1 313 | 1 036 | 1 768 | 1 446 |
| India | 15 425 | 1 250 | 14 152 | 14 399 | 2 114 | 140 | 1 980 | 1 711 | 13 311 | 12 688 |
| Indonesia | 4 295 | 401 | 3 877 | 3 935 | 5 039 | 385 | 4 636 | 4 202 | -744 | -268 |
| Iran | 661 | 16 | 626 | 133 | 95 | 2 | 93 | 81 | 567 | 52 |
| Iraq | 194 | 1 | 178 | 195 | 31 | — | 31 | — | 163 | 195 |
| Ireland | 134 | 14 | 122 | 110 | 2 399 | 263 | 2 164 | 2 115 | -2 265 | -2 006 |
| Israel | 262 | 8 | 252 | 148 | 715 | 40 | 670 | 519 | -453 | -371 |
| Italy | 1 556 | 62 | 1 518 | 816 | 5 338 | 421 | 4 912 | 4 408 | -3 783 | -3 592 |
| Japan | 52 768 | 3 770 | 49 823 | 33 105 | 17 842 | 1 384 | 16 353 | 16 140 | 34 926 | 16 965 |
| Korea, Republic of | 19 274 | 1 778 | 18 017 | 14 648 | 6 523 | 768 | 5 854 | 6 480 | 12 751 | 8 168 |
| Kuwait | 428 | 65 | 403 | 494 | 426 | 65 | 382 | 370 | 2 | 124 |
| Malaysia | 3 730 | 274 | 3 431 | 2 860 | 8 335 | 890 | 7 669 | 7 574 | -4 605 | -4 714 |
| Mexico | 902 | 66 | 807 | 704 | 1 324 | 115 | 1 233 | 1 124 | -422 | -421 |
| Netherlands | 3 202 | 212 | 3 062 | 1 751 | 1 771 | 107 | 1 651 | 1 250 | 1 431 | 500 |
| New Zealand | 8 549 | 749 | 7 941 | 7 440 | 7 050 | 633 | 6 523 | 6 384 | 1 500 | 1 056 |
| Pakistan | 478 | 48 | 447 | 522 | 181 | 12 | 170 | 141 | 296 | 380 |
| Papua New Guinea | 1 611 | 196 | 1 503 | 1 825 | 3 013 | 192 | 2 806 | 2 643 | -1 402 | -818 |
| Philippines | 1 409 | 116 | 1 351 | 997 | 605 | 38 | 562 | 426 | 804 | 572 |
| Saudi Arabia | 2 250 | 152 | 2 145 | 1 403 | 935 | 47 | 920 | 434 | 1 315 | 969 |
| Singapore | 5 522 | 311 | 5 153 | 4 715 | 13 445 | 1 114 | 12 673 | 10 076 | -7 923 | -5 360 |
| South Africa | 2 056 | 179 | 1 989 | 1 544 | 1 258 | 69 | 1 181 | 919 | 798 | 625 |
| Spain | 612 | 55 | 577 | 419 | 1 731 | 151 | 1 606 | 1 544 | -1 119 | -1 125 |
| Sweden | 566 | 59 | 544 | 324 | 2 441 | 202 | 2 262 | 1 885 | -1 875 | -1 561 |
| Switzerland | 660 | 28 | 574 | 233 | 2 481 | 177 | 2 279 | 2 049 | -1 821 | -1 816 |
| Taiwan | 8 126 | 762 | 7 684 | 5 937 | 4 089 | 273 | 3 865 | 3 094 | 4 037 | 2 843 |
| Thailand | 4 951 | 282 | 4 472 | 4 298 | 10 749 | 1 118 | 9 973 | 11 402 | -5 799 | -7 104 |
| Turkey | 811 | 14 | 778 | 249 | 507 | 37 | 479 | 416 | 304 | -167 |
| United Arab Emirates | 3 604 | 183 | 3 455 | 1 769 | 1 924 | 237 | 1 733 | 2 218 | 1 680 | -449 |
| United Kingdom | 11 509 | 1 651 | 10 936 | 5 868 | 9 024 | 449 | 8 550 | 5 253 | 2 484 | 615 |
| United States of America | 11 600 | 907 | 10 947 | 8 661 | 25 334 | 1 824 | 23 718 | 19 981 | -13 734 | -11 320 |
| Viet Nam | 1 234 | 135 | 1 105 | 1 274 | 4 402 | 257 | 4 060 | 2 811 | -3 168 | -1 537 |
| Other Countries(b) | 10 070 | 863 | 9 395 | 7 688 | 16 697 | 1 243 | 15 431 | 15 220 | -6 626 | -7 532 |
| Total | 230 829 | 19 933 | 215 259 | 177 511 | 219 485 | 17 387 | 203 791 | 185 803 | 11 344 | -8 292 |
| APEC | 169 417 | 14 538 | 157 569 | 134 726 | 151 755 | 12 464 | 140 838 | 131 127 | 17 663 | 3 600 |
| ASEAN | 21 286 | 1 537 | 19 520 | 18 217 | 43 640 | 3 855 | 40 611 | 37 348 | -22 354 | -19 131 |
| Developing Countries | 124 497 | 11 076 | 114 908 | 107 407 | 106 794 | 9 139 | 99 119 | 93 802 | 17 703 | 13 605 |
| Least Developed Countries | 2 144 | 202 | 1 917 | 1 676 | 281 | 32 | 252 | 269 | 1 862 | 1 406 |
| European Union(d) | 24 043 | 2 618 | 22 858 | 13 480 | 45 402 | 3 245 | 42 212 | 35 202 | -21 358 | -21 722 |
| OECD | 120 069 | 10 054 | 113 089 | 79 709 | 110 059 | 8 412 | 101 991 | 90 362 | 10 010 | -10 652 |

— nil or rounded to zero (including null cells)

(a) See Time series spreadsheets for details of all countries.

(b) From September 2008 imports data with confidentiality restrictions 'no commodity details' or 'no value details' are included in Other countries.

(c) Exports of Alumina to Egypt are excluded from country total and included in the 'Other Countries' category.

(d) The European Union includes 27 member countries.

| | 11 MONTHS ENDED MAY | | | |
|--|------------------------|---------------|----------------|----------------|
| | 2008-09 | May 2010 | 2009 | 2010 |
| | \$m | \$m | \$m | \$m |
| EXPORTS (a) | | | | |
| New South Wales | 38 777 | 2 864 | 36 137 | 28 042 |
| Victoria | 20 375 | 1 784 | 18 953 | 16 839 |
| Queensland | 56 553 | 4 267 | 52 889 | 37 741 |
| South Australia | 9 527 | 804 | 8 889 | 7 278 |
| Western Australia | 86 880 | 8 869 | 81 036 | 72 783 |
| Tasmania | 3 511 | 270 | 3 231 | 2 661 |
| Northern Territory | 6 292 | 372 | 5 883 | 4 399 |
| Australian Capital Territory | 11 | — | 10 | 4 |
| State not available for publication(b) | 797 | 51 | 752 | 503 |
| Re-exports | 8 105 | 651 | 7 479 | 7 260 |
| Total | 230 829 | 19 933 | 215 259 | 177 511 |
| IMPORTS | | | | |
| New South Wales | 78 994 | 6 588 | 73 057 | 69 105 |
| Victoria | 56 457 | 4 360 | 52 620 | 48 469 |
| Queensland | 33 972 | 2 711 | 31 343 | 28 159 |
| South Australia | 6 867 | 490 | 6 409 | 5 918 |
| Western Australia | 33 123 | 2 463 | 30 991 | 25 735 |
| Tasmania | 956 | 51 | 907 | 661 |
| Northern Territory | 4 347 | 286 | 4 058 | 2 903 |
| Australian Capital Territory | 7 | 1 | 7 | 5 |
| State not available for publication(c) | 4 761 | 438 | 4 399 | 4 847 |
| Total | 219 485 | 17 387 | 203 791 | 185 803 |

— nil or rounded to zero (including null cells)

(a) State in which the final stage of production or manufacture occurs.

(b) Exports of Alumina to Bahrain, Egypt and Iceland are excluded from the state totals and included in 'State not available for publication'.

(c) From September 2008 imports data with confidentiality restrictions 'no commodity details' or 'no value details' are included in State not available for publication.

PERIOD AVERAGE EXCHANGE RATES(a), Per Australian dollar

| <i>Period</i> | <i>United States dollar</i> | <i>UK pound sterling</i> | <i>Euro</i> | <i>Japanese yen</i> | <i>Special Drawing Right</i> | <i>Trade-weighted index of value of the A\$(b)</i> |
|----------------|-----------------------------|--------------------------|-------------|---------------------|------------------------------|--|
| FINANCIAL YEAR | | | | | | |
| 2006-07 | 0.7863 | 0.4066 | 0.6018 | 93.21 | 0.5251 | 64.8 |
| 2007-08 | 0.8968 | 0.4479 | 0.6099 | 98.63 | 0.5664 | 69.7 |
| 2008-09 | 0.7456 | 0.4621 | 0.5414 | 73.99 | 0.4869 | 60.2 |
| MONTHS | | | | | | |
| 2009 | | | | | | |
| March | 0.6646 | 0.4680 | 0.5093 | 64.92 | 0.4483 | 56.0 |
| April | 0.7122 | 0.4846 | 0.5398 | 70.24 | 0.4773 | 59.1 |
| May | 0.7626 | 0.4954 | 0.5596 | 73.72 | 0.5022 | 61.7 |
| June | 0.8023 | 0.4898 | 0.5721 | 77.39 | 0.5194 | 64.1 |
| July | 0.8040 | 0.4913 | 0.5709 | 75.96 | 0.5180 | 64.0 |
| August | 0.8344 | 0.5047 | 0.5852 | 79.15 | 0.5349 | 66.0 |
| September | 0.8611 | 0.5275 | 0.5915 | 78.74 | 0.5461 | 67.2 |
| October | 0.9090 | 0.5613 | 0.6130 | 82.03 | 0.5716 | 70.0 |
| November | 0.9202 | 0.5540 | 0.6166 | 82.04 | 0.5754 | 70.6 |
| December | 0.9028 | 0.5552 | 0.6174 | 80.89 | 0.5693 | 69.6 |
| 2010 | | | | | | |
| January | 0.9148 | 0.5659 | 0.6400 | 83.49 | 0.5842 | 70.7 |
| February | 0.8863 | 0.5663 | 0.6474 | 79.99 | 0.5759 | 69.2 |
| March | 0.9120 | 0.6058 | 0.6716 | 82.58 | 0.5968 | 71.0 |
| April | 0.9265 | 0.6043 | 0.6902 | 86.45 | 0.6105 | 72.1 |
| May | 0.8717 | 0.5942 | 0.6928 | 80.38 | 0.5883 | 68.9 |

(a) These exchange rates and the trade-weighted index are derived using rates provided by the Reserve Bank of Australia in respect of each trading day.

(b) May 1970 = 100. The Trade-weighted index is reweighted annually on 1 October and on special occasions as required.

| | 2006-07 | 2007-08 | 2008-09 | Nov 2009 | Dec 2009 | Jan 2010 | Feb 2010 | Mar 2010 | Apr 2010 |
|--|---------|---------|-----------|------------|------------|------------|------------|------------|------------|
| | \$m | \$m | \$m | \$m | \$m | \$m | \$m | \$m | \$m |
| BALANCE | | | | | | | | | |
| On goods and services | — | — | 94 | 169 | 218 | 267 | 423 | 192 | 865 |
| CREDITS | | | | | | | | | |
| Total goods and services | — | — | 94 | 19 | 40 | -31 | 171 | -20 | 481 |
| <i>Total goods</i> | — | — | 94 | 24 | 47 | 87 | 292 | 286 | 822 |
| Rural goods | — | — | — | 11 | — | 1 | 12 | -20 | -41 |
| Non-rural goods | — | — | 94 | 13 | 48 | 86 | 280 | 299 | 856 |
| Net exports of goods under merchanting | — | — | — | — | — | — | — | — | — |
| Non-monetary gold | — | — | — | — | -1 | — | — | 7 | 7 |
| <i>Total services</i> | — | — | — | -5 | -7 | -118 | -121 | -306 | -341 |
| DEBITS | | | | | | | | | |
| Total goods and services | — | — | — | 150 | 178 | 298 | 252 | 212 | 384 |
| <i>Total goods</i> | — | — | — | -14 | 4 | 37 | 23 | 79 | 134 |
| Consumption goods | — | — | — | 1 | -1 | — | — | 3 | -1 |
| Capital goods | — | — | -115 | — | 2 | 2 | 2 | 1 | 167 |
| Intermediate and other merchandise goods | — | — | 115 | -15 | 3 | 35 | 21 | 74 | -32 |
| Non-monetary gold debits | — | — | — | — | — | — | — | 1 | — |
| <i>Total services</i> | — | — | — | 164 | 174 | 261 | 229 | 133 | 250 |

— nil or rounded to zero (including null cells)

(a) This table is presented consistent with BPM6 sign conventions. This means for the balance on goods and services a negative revision indicates a decrease in a surplus or an increase in a deficit. For debits a negative revision indicates an increase in debits while a positive revision indicates a decrease in debits.

EXPLANATORY NOTES

INTRODUCTION

1 This publication presents preliminary estimates of Australia's international trade in goods and services on a balance of payments basis (Tables 1–11 and 17) and merchandise import and export statistics on a recorded trade basis (Tables 12–15). In addition, Table 16 Exchange rates and trade-weighted indexes are derived by using exchange rates and indexes provided by the Reserve Bank.

2 Merchandise trade statistics on a recorded trade basis are compiled from information submitted by exporters and importers or their agents to the Australian Customs and Border Protection Service (Customs and Border Protection). Adjustments for coverage, timing and valuation are made to recorded trade data to convert them to a balance of payments basis. The services data are sourced from the quarterly Survey of International Trade in Services and a range of administrative data and indicator series.

3 More comprehensive quarterly estimates of Australia's trade in goods and services, together with comprehensive details of Australia's balance of payments are included in the quarterly publication, *Balance of Payments and International Investment Position, Australia* (cat. no. 5302.0). Detailed monthly statistics on merchandise trade are available in Time Series Spreadsheets on the ABS website or by subscription to tailored services. More information on the *International Trade in Services by country, by state and by detailed services category* are available on a financial year basis (cat. no. 5368.0.55.003) with the September issue of this publication and calendar year basis (cat. no. 5368.0.55.004) with the March issue of this publication.

CONCEPTS, SOURCES AND METHODS

4 The conceptual framework used in compiling Australia's merchandise trade statistics can be found in *International Merchandise Trade, Australia: Concepts, Sources and Methods, 2001* (cat. no. 5489.0).

5 The conceptual framework used in compiling Australia's balance of payments statistics is based on the *International Monetary Fund's Balance of Payments and International Investment Position Manual Sixth Edition* (BPM6). Descriptions of the underlying concepts and structure of the balance of payments and the sources, methods and terms used in compiling the estimates are presented in *Balance of Payments and International Investment Position, Australia: Concepts, Sources and Methods, 1998* (cat. no. 5331.0). The current version of this document reflects the international standards prior to BPM6. A revised Concepts, Sources and Methods publication is scheduled for release in late 2010. The *Information paper: Implementation of new international statistical standards in the ABS National and International Accounts, September 2009* (cat. no. 5310.0.55.002) describes the key changes introduced with BPM6.

6 To bring merchandise trade statistics on a recorded trade basis to a balance of payments basis, timing adjustments are made to ensure that the transaction is recorded in the period in which ownership changed, rather than in the period in which the transaction was recorded by Customs and Border Protection or the period in which the goods arrived in/departed from an Australian port. Adjustments are also made to account for the change of ownership of goods not included in merchandise trade statistics. Chapter 6 of cat. no. 5331.0 provides more detail on the relationship between statistics on international merchandise trade on a recorded trade basis and on a balance of payments basis.

7 Recorded trade exports data presented for recent months in tables 12–15 of this publication are based on information initially reported by exporters to Customs and Border Protection. At the time of initial reporting to Customs and Border Protection the final prices may not be known for some commodities. Therefore, the information recorded for recent months for commodities like iron ore and coal can include a variety of prices including previous or current contract prices and the prevailing spot prices. Newly negotiated contract prices may not be fully reflected in the data first reported to

EXPLANATORY NOTES *continued*

CONCEPTS, SOURCES AND METHODS *continued*

Customs and Border Protection, and to compensate for this, the Balance of Payments series may reflect adjusted price levels.

8 The Concepts, Sources and Methods publications and information papers are available to download for free from the ABS website. Select *Statistics*, then select *By Catalogue Number*, and then the catalogue numbers as above.

CLASSIFICATIONS

9 The merchandise trade data on a recorded trade basis are presented using the following commodity classifications:

- the Harmonised System 2007 (available on request)
- the Standard International Trade Classification (SITC Revision 4)
- the Classification by Broad Economic Categories (BEC)
- the industry classification: Australian and New Zealand Standard Industrial Classification, 2006 (ANZSIC 06) from July 2005.

10 The Balance of Payments Goods and Services series are presented according to three classifications with the goods classifications derived from SITC Revision 4 and BEC. The classifications are:

- for goods:
 - the Balance of Payments Commodities for Exports (BoPCE)
 - the Balance of Payments Broad Economic Categories for Imports (BoPBEC),
- for services:
 - the Extended Balance of Payments Services Classification (EBOPS).

ACCURACY, RELIABILITY AND REVISIONS

11 While every effort is made to ensure the accuracy and reliability of estimates, most series are subject to revision as more complete and accurate information becomes available. Care should be exercised in the use and interpretation of estimates in this publication. The transactions occurring in international trade in goods and services are of many different kinds, and therefore the compilation of trade estimates entails the use of a very wide range of statistical data of varying degrees of accuracy and timeliness. For further information on the monthly services series, see paragraph 25.

12 The revisions are applied differently for merchandise trade and Balance of Payments series. Each month, merchandise trade data are revised for the previous six months to incorporate latest available data.

13 For the Balance of Payments Goods and Services series, in original terms, no revisions are applied in the July, October, January or April issues. This is to ensure the monthly series align with the comparable series in the quarterly publication. In the September issue revisions can be applied to the four previous financial years. In other issues revisions can be applied to the previous and current financial years to incorporate the latest available survey and administrative data.

14 In seasonally adjusted and trend terms, revisions may occur at any time point but tend to focus on the most recent estimates. Please also refer to paragraphs 17 (seasonal adjustment) and 19 (trend estimates) below.

SIGN CONVENTION

15 In keeping with BPM6 conventions, balance of payments basis credit entries are shown with an implied positive sign and debit items are shown as negative entries. For statistics on a recorded trade basis, both imports and exports are shown without sign. The calculation of percentage changes on balance of payments debit items are made without regard to sign. References to balance of payments debit items in Key Figures, Key Points, and Analysis and Comments are also made without regard to sign.

SEASONALLY ADJUSTED AND TREND ESTIMATES

16 The estimates of international trade in goods and services on a balance of payments basis are seasonally adjusted, however the merchandise exports and imports statistics on a recorded trade basis are not. Monthly original estimates are volatile, being subject to calendar-related and large irregular influences. Seasonally adjusted estimates are derived

EXPLANATORY NOTES *continued*

SEASONALLY ADJUSTED AND TREND ESTIMATES *continued*

by estimating and removing from the original series systematic calendar related effects, such as seasonal (e.g. Christmas), trading day and moving holiday (e.g. Easter) influences. Seasonal adjustment does not aim to remove the irregular or non-seasonal influences which may be present in any particular month. These irregular influences may reflect both random economic events and difficulties of statistical recording.

17 The seasonally adjusted statistics in this publication use the concurrent seasonal adjustment technique and Autoregressive Integrated Moving Average (ARIMA) modelling to estimate factors for the current and previous months. Under concurrent seasonal adjustment, the estimates of seasonal factors are fine tuned as new or revised original estimates become available each period. The seasonally adjusted estimates are subject to revisions at each reference month as the estimates of seasonal factors are improved.

18 ARIMA modelling relies on the characteristics of the series being analysed to project future period data. ARIMA modelling is used on a case-by-case basis where it results in reduced revisions to seasonally adjusted series when subsequent data become available. The projected values are temporary, intermediate values, that are only used internally to improve the estimation of the seasonal factors. The projected data do not affect the original estimates and are discarded at the end of the seasonal adjustment process. The ARIMA model is assessed as part of the annual review and, following the 2009 annual review, 40 of the 45 directly seasonally adjusted trade in goods and services time series use an ARIMA model.

19 The month-to-month movements of the seasonally adjusted estimates may not be reliable indicators of underlying behaviour because they include irregular or non-seasonal movements. Trend estimates reduce the effect of these movements as they are derived by applying a 13-term Henderson moving average to the seasonally adjusted series. The 13-term Henderson moving average (like all Henderson averages) is symmetric, but as the end of a time series is approached, asymmetric forms of the average are applied. While the asymmetric weights enable trend estimates for recent months to be produced, it does result in revisions to the estimates for the most recent six months as additional observations become available. Revisions to trend estimates can also occur because of revisions to the original data and as a result of the re-estimation of the seasonal factors. Trend estimates should be used with caution, especially around the time of unusual influences, until these have been appropriately taken into account.

20 Information papers and articles on time series methods are available on the ABS website:

- for seasonal adjustment methods, see *Information Paper: An Introductory Course on Time Series Analysis, Jan 2005* (cat. no. 1346.0.55.001) and *Time Series Analysis Frequently Asked Questions, 2003* (cat. no. 1346.0.55.002)
- for ARIMA modelling, see *Feature article: Use of ARIMA modelling to reduce revisions* in the October 2004 issue of *Australian Economic Indicators* (cat. no. 1350.0)
- for trend estimates methods, see *Information Paper: A Guide to Interpreting Time Series – Monitoring Trends* (cat. no. 1349.0)
- alternatively contact the Assistant Director, Time Series Analysis on (02) 6252 6345 or e-mail <time.series.analysis@abs.gov.au>.

ECONOMIC TERRITORY

21 In accordance with BPM6 definitions, Australia's economic territory, on a balance of payments basis, is the area under the effective control of the Australian government. It includes the land area, airspace, territorial waters, including jurisdiction over fishing rights and rights to fuels and minerals. Australian economic territory also includes territorial enclaves in the rest of the world. These are clearly demarcated areas of land, located in other countries and which are owned or rented by the Australian government

EXPLANATORY NOTES *continued*

ECONOMIC TERRITORY

continued

for diplomatic, military, scientific or other purposes. Specifically, the economic territory of Australia consists of:

- Geographic Australia which includes Cocos (Keeling) Islands and Christmas Island;
- Norfolk Island;
- Australian Antarctic Territory;
- Heard Island and McDonald Islands;
- Territory of Ashmore Reef and Cartier Island;
- Coral Sea Islands;
- Australia's territorial enclaves overseas; and
- the Joint Petroleum Development Area (joint territory between Australia and East Timor (Timor-Leste)).

22 Because of administrative complexities and measurement difficulties, Norfolk Island transactions with the rest of the world will not always be captured in all relevant Balance of Payments statistics. Most of the transactions involving Norfolk Island are not material to Australia's trade performance and not capturing these transactions will not distort these statistics. However, any significant transactions will be identified and included in the relevant statistics.

COMMODITY BREAKDOWN OF GOODS

23 For details of the classifications used to present goods exports (credits) and imports (debits) on a balance of payments basis, see tables 6.6 and 6.7, respectively, in *Balance of Payments and International Investment Position, Australia: Concepts, Sources and Methods*, 1998 (cat. no. 5331.0).

24 The recorded trade statistics shown in tables 12 and 13 are classified by the Standard International Trade Classification (SITC). Imports and exports of goods at a more detailed level are available from the Time Series spreadsheets on the ABS website. All data from July 2005 are presented according to SITC Rev 4 and data prior to July 2005 are presented according to SITC Rev 3. For details refer to the 'Classifications and Standards Update' in the July 2008 issue of this publication.

MONTHLY SERVICES SERIES

25 Monthly indicators for many of the services components that are only surveyed quarterly are not available. Monthly estimates for the freight and other transportation components of services credits in table 9 are derived by dividing the quarterly estimate by three. Freight debits are derived directly from imports data for the reference month as a difference between total merchandise cost, insurance and freight (CIF) and free on board (FOB), adjusted to reflect timing and processing adjustments. For freight credits and other transportation credits and debits, estimates are derived by extrapolating the last quarter's data by an average of movements for the same quarter over the three previous years, and then dividing the estimate by three. Similarly other services estimates are derived by extrapolating the last quarter's data by an average of movements for the same quarter over the previous three years, and then dividing the estimate by three.

CONFIDENTIALITY OF MERCHANDISE TRADE STATISTICS

26 The release of statistics for certain merchandise trade commodities is restricted in order to prevent the identification of the activities of an individual business, where this is requested by the business concerned. These restrictions do not affect the total value of exports and imports, but they can affect statistics at the country, state and commodity levels. Imports data that have the confidentiality restrictions 'No commodity details' or 'No value details' are aggregated into a single confidential commodity code. For data prior to September 2008, these data are added back into the appropriate state total and country total (i.e. these totals show the correct level of trade). From September 2008 these confidential data are not added back. Instead the confidential data are published as 'No country details' in the country totals and 'State not available for publication' in the state totals. Therefore, country and state totals from September 2008 may not represent the actual amount of trade in each country/state but only the trade in commodities without a 'No commodity details' or 'No value details' restriction. For information on the

EXPLANATORY NOTES *continued*

CONFIDENTIALITY OF MERCHANDISE TRADE STATISTICS *continued*

confidentiality restrictions applied to the merchandise trade statistics in this publication, refer to the current issue of *International merchandise trade: Confidential Commodities List (CCL)* (cat. no. 5372.0.55.001).

TOURISM RELATED SERVICES

27 The tourism related services memorandum items provide timely indicators of the movements in tourism related activities, not an absolute measure of the level of these activities. The tourism related indicator has been derived by combining total travel services (business, education-related and other personal travel) and passenger transportation services (which includes agency fees and commissions for air transport).

SERVICES BY STATE AND BY PARTNER COUNTRY

28 Annual services data by state, by country and detailed services are released twice yearly. Calendar year data are usually released with the March issue of this publication and financial year data are usually released with the September issue. Refer to Time series data for details.

29 Services credits are classified by the state of provision, while services debits are classified by the state of consumption. The state allocations for transportation, travel, postal and courier, and telecommunication services are based on a number of indicators including merchandise trade statistics by state, overseas passenger arrivals and departures by state of clearance and data provided by the Department of Immigration and Citizenship. The allocation for other services (about 25% of all trade in services) is primarily based on the location of the business reporting the information, which serves as a proxy for the state of provision/consumption of that service. The data should be used with care but are considered suitable for analysis over time.

30 A comprehensive explanation of the data sources used and the methodology applied in the compilation of partner country statistics is provided in Chapter 17 of *Balance of Payments and International Investment Position, Australia – Concepts, Sources and Methods* (cat. no. 5331.0). Approximately 7% of total services credits and 5% of total services debits for both 2007–08 and 2008–09 were either confidential, or unable to be allocated to individual countries.

ABS DATA AVAILABLE

31 More detailed balance of payments and recorded merchandise trade data, including forward seasonal factors are available as time series spreadsheets or data cubes from the ABS website. Merchandise trade data by commodity, country and state that are not on the ABS website may be available on request. Inquiries should be made to the National Information and Referral Service as shown on the back of this publication.

RELATED PRODUCTS AND PUBLICATIONS

32 Users may also wish to refer to the following publications which can be downloaded free of charge from the ABS website by using the 'Statistics' tab and selecting the relevant catalogue number:

- *Balance of Payments and International Investment Position, Australia* (cat. no. 5302.0) – issued quarterly
- *International Merchandise Imports, Australia* (cat. no. 5439.0) – issued monthly
- *International Trade Price Indexes, Australia* (cat. no. 6457.0) – issued quarterly
- *Balance of Payments and International Investment Position, Australia: Concepts, Sources and Methods* (cat. no. 5331.0)
- *Information Paper: Quality of Australian Balance of Payments Statistics* (cat. no. 5342.0)
- *International Merchandise Trade, Australia: Concepts, Sources and Methods* (cat. no. 5489.0)
- *A Guide to Australian Balance of Payments and International Investment Position Statistics* (cat. no. 5362.0.55.001).

EXPLANATORY NOTES *continued*

RELATED PRODUCTS AND PUBLICATIONS *continued*

33 Current publications and other products released by the ABS are available from the Statistics tab on the ABS website. The ABS also issues a daily *Release Advice* on the website which details products to be released in the week ahead. A *foreign trade theme page* and a *balance of payments theme page* are available on the ABS website. Select *Topics @ a Glance – Economy – Foreign Trade* or *Balance of Payments*. This page provides direct links to all foreign trade and balance of payments related data and publications, recent changes and forthcoming events, links to relevant websites and a range of other information about the Australian International Accounts.

ROUNDING

34 Where figures have been rounded, discrepancies may occur between sums of the component items and totals. Percentage movements are calculated from data at the level of precision presented in this publication (i.e. \$m) except for international merchandise trade tables.

ABBREVIATIONS

| | |
|--------|--|
| \$b | billion (thousand million) dollars |
| \$m | million dollars |
| ABS | Australian Bureau of Statistics |
| APEC | Asia Pacific Economic Co-operation |
| ASEAN | Association of South-East Asian Nations |
| n.e.s. | not elsewhere specified |
| n.i.e. | not included elsewhere |
| OECD | Organisation for Economic Co-operation and Development |
| SAR | Special Administrative Region |
| SITC | Standard International Trade Classification |

APPENDIX RELATED ARTICLES

| <i>Article</i> | <i>Source(a)</i> | <i>Issue</i> |
|--|------------------|--------------|
| Investment | | |
| Foreign ownership of equity | 5302.0 | Sep qtr 2007 |
| Kangaroo bonds | 1301.0 | 2006 |
| Foreign currency exposure | 5308.0 | Mar qtr 2005 |
| Gross external debt | 5302.0 | Sep qtr 2003 |
| Balance of payments | | |
| International comparison of balance of payments statistics | (b) 5363.0 | 1998–99 |
| Merchandise trade | | |
| Export And Import Invoice Currencies, Dec 2009 | 5368.0 | Dec 2009 |
| Characteristics of Australian Exporters | 5368.0.55.006 | 2008–09 |
| Export and import invoice currencies, 2007 | 5368.0 | Dec 2007 |
| 100 years of international trade statistics | 5368.0 | Oct 2007 |
| New methodology for deriving counts of Australian exports | 5368.0 | Feb 2006 |
| Australia's Importers, 2003–04 | 5368.0 | Nov 2004 |
| Australia's Exporters, 2003–04 | 5368.0 | Oct 2004 |
| Australia's trade with the USA | 5368.0 | Mar 2004 |
| Foreign ownership of Australian exporters and importers | 5496.0.55.001 | 2002–03 |
| Major commodities traded by Australia, 1991 to 2000 | (b) 5422.0 | Dec qtr 2000 |
| Trade in services | | |
| International trade in services by partner country, 2006, preliminary | 5368.0 | Dec 2006 |
| Changes to International trade in services statistics, August 2006 | 5368.0 | Aug 2006 |
| Changes to International trade in services travel statistics | 5368.0 | Aug 2005 |
| Finance | | |
| Impact of the farm season on Australian production in 2002–03 and 2003–04 | 1301.0 | 2005 |
| Recent trends in construction and first home buyers finance | 5609.0 | Mar 2002 |
| Household sector data in the financial accounts | 5232.0 | Mar qtr 2002 |
| Technical information | | |
| Implementation of new international statistical standards in ABS National and International Accounts, September 2009 | 5310.0.55.002 | Oct 2009 |
| Estimation of Workers' Remittances based on Balance of Payments and International Investment Position Manual, Sixth Edition | 5302.0.55.003 | Sep 2009 |
| Impact of revised international standards on monthly International Trade in Goods and Services | 5368.0.55.014 | Aug 2009 |
| Changes to International Trade in Goods Statistics - Countries and Ports | 5368.0.55.013 | Jul 2009 |
| Revisions to international standards in quarterly Balance of Payments and International Investment Position statistics from September 2009 | 5302.0.55.002 | 2009 |
| Revisions to international standards in monthly international trade in goods and services statistics from August 2009 | 5368.0.55.012 | 2009 |
| Changes to International Trade in Goods Industry Statistics, July 2009 | 5368.0.55.011 | Dec 2008 |
| Technical note 1 - Income on debt | 5302.0 | Jun qtr 2008 |
| Technical note 2 - Use of CDI data | 5302.0 | Jun qtr 2008 |
| Impact of introducing Revision 4 of the Standard International Trade Classification | 5368.0.55.010 | 2008 |
| Changes to international trade statistics July 2008 | 5368.0.55.009 | 2007–08 |
| Introduction of revised international standards in ABS economic statistics in 2009 | 5310.0.55.001 | 2007 |
| Changes on 1 January 2007 to Statistical Codes in the AHECC and the Customs Tariff | 1233.0.55.001 | Nov 2006 |
| ABS implementation in January 2007 of revisions to international trade classifications, 2007 | 5368.0.55.005 | Jun 2006 |
| Revised treatment of Goods for Processing in Merchandise Trade and Balance of Payments Statistics | 5368.0 | May 2006 |
| Impact of Customs and ABS changes on import statistics from October 2005 | 5439.0 | Oct 2005 |
| ABS management of the impact of the implementation of the imports component of the New Customs System | 5439.0 | Aug 2005 |
| Changes to country and port classifications | 5368.0 | May 2003 |
| Implementation of New Customs Systems | 5368.0 | Aug 2004 |
| The effect of customs changes on export statistics | 5422.0 | Jun qtr 2002 |
| Data confidentiality | 5422.0 | Dec qtr 1999 |

- (a) In the ABS website home page, select Statistics; By Catalogue Number; and click on the specified catalogue number and issue. Note: in some instances, a particular issue of the publication can be found in the Past & Future Releases page of the catalogue.
- (b) This article can be found in pdf format by referring to the Downloads page of the specified issue of this publication on the ABS website.

FOR MORE INFORMATION . . .

INTERNET **www.abs.gov.au** the ABS website is the best place for data from our publications and information about the ABS.

INFORMATION AND REFERRAL SERVICE

Our consultants can help you access the full range of information published by the ABS that is available free of charge from our website. Information tailored to your needs can also be requested as a 'user pays' service. Specialists are on hand to help you with analytical or methodological advice.

PHONE 1300 135 070

EMAIL client.services@abs.gov.au

FAX 1300 135 211

POST Client Services, ABS, GPO Box 796, Sydney NSW 2001

FREE ACCESS TO STATISTICS

All statistics on the ABS website can be downloaded free of charge.

WEB ADDRESS www.abs.gov.au