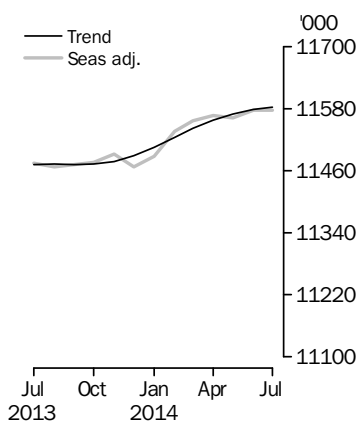


LABOUR FORCE

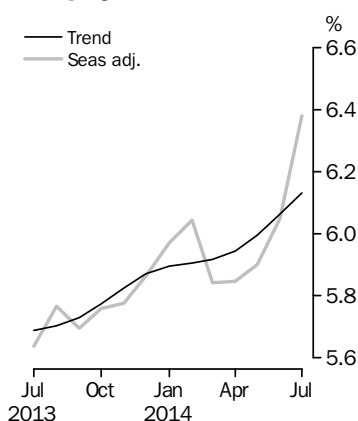
AUSTRALIA

EMBARGO: 11.30AM (CANBERRA TIME) THURS 7 AUG 2014

Employed Persons



Unemployment Rate



INQUIRIES

For further information about these and related statistics, contact the National Information and Referral Service on 1300 135 070, email client.services@abs.gov.au or Labour Force on Canberra (02) 6252 6525, email labourforce@abs.gov.au.

KEY FIGURES

	Jun 2014	Jul 2014	Jun 14 to Jul 14	Jul 13 to Jul 14
Trend				
Employed persons ('000)	11 577.7	11 582.2	4.6	1.0 %
Unemployed persons ('000)	747.3	756.7	9.5	9.4 %
Unemployment rate (%)	6.1	6.1	0.1 pts	0.4 pts
Participation rate (%)	64.7	64.7	0.0 pts	-0.2 pts
Seasonally Adjusted				
Employed persons ('000)	11 576.9	11 576.6	-0.3	0.9 %
Unemployed persons ('000)	745.2	789.0	43.7	15.1 %
Unemployment rate (%)	6.0	6.4	0.3 pts	0.7 pts
Participation rate (%)	64.7	64.8	0.1 pts	-0.1 pts

KEY POINTS

TREND ESTIMATES (MONTHLY CHANGE)

- Employment increased to 11,582,200 from a revised June 2014 estimate.
- Unemployment increased to 756,700.
- Unemployment rate increased 0.1 pts to 6.1%, based on unrounded estimates.
- Participation rate remained steady at 64.7%.
- Aggregate monthly hours worked increased 2.8 million hours (0.2%) to 1,610.9 million hours.

SEASONALLY ADJUSTED ESTIMATES (MONTHLY CHANGE)

- Employment decreased 300 to 11,576,600. Full-time employment increased 14,500 to 8,077,400 and part-time employment decreased 14,800 to 3,499,200.
- Unemployment increased 43,700 to 789,000. The number of unemployed persons looking for full-time work increased 21,900 to 566,400 and the number of unemployed persons only looking for part-time work increased 21,800 to 222,600.
- The unemployment rate increased 0.3 pts to 6.4%.
- Participation rate increased 0.1 pts to 64.8%.
- Aggregate monthly hours worked decreased 14.8 million hours (0.9%) to 1,610.7 million hours.

NOTES

FORTHCOMING ISSUES

<i>ISSUE</i>	<i>RELEASE DATE</i>
August 2014	11 September 2014
September 2014	9 October 2014
October 2014	6 November 2014
November 2014	11 December 2014
December 2014	15 January 2015



WHAT'S NEW IN THE LABOUR FORCE

For information on changes to Labour Force outputs and active job search steps, refer to 'What's New in the Labour Force' on pages 6-8.

ROUNDING

Estimates of change shown on the front cover and used in the commentary have been calculated using unrounded estimates, and may be different from, but are more accurate than, movements obtained from the rounded estimates. The graphs on the front cover also depict unrounded estimates.

SAMPLING ERROR

The estimates in this publication are based on a sample survey. Published estimates and the movements derived from them are subject to sampling variability. Standard errors give a measure of sampling variability (see Standard Errors section). The interval bounded by two standard errors is the 95% confidence interval, which provides a way of looking at the variability inherent in estimates. There is a 95% chance that the true value of the estimate lies within that interval.

MOVEMENTS IN SEASONALLY ADJUSTED SERIES BETWEEN JUNE 2014 AND JULY 2014



	<i>Monthly change...</i>	<i>95% Confidence interval...</i>	
Total Employment	-300	-57 700	to 57 100
Total Unemployment	43 700	5 900	to 81 500
Unemployment rate	0.3 pts	-0.1 pts	to 0.7 pts
Participation rate	0.1 pts	-0.3 pts	to 0.5 pts



Jonathan Palmer
Acting Australian Statistician

LABOUR FORCE COMMENTARY JULY 2014

NATIONAL ESTIMATES

Australia's unemployment rate increased by 0.3 percentage points (based on unrounded estimates) to 6.4% in July 2014 (seasonally adjusted). The increased unemployment rate resulted from increased participation with the number of persons in the labour force increasing by 43,400 persons, and the number of employed persons decreasing by 300. The net result was the number of unemployed persons increased by 43,700 to 789,000 in July 2014 (seasonally adjusted).

In trend terms the unemployment rate increased 0.1 percentage points (based on unrounded estimates) to 6.1% in July 2014, following a revision to the June 2014 estimate. The number of unemployed persons in July 2014 increased by 9,500 to 756,700. Trend estimates reduce the impact of the irregular component of the seasonally adjusted series and can provide a better a better basis for analysing the underlying behaviour of the series.

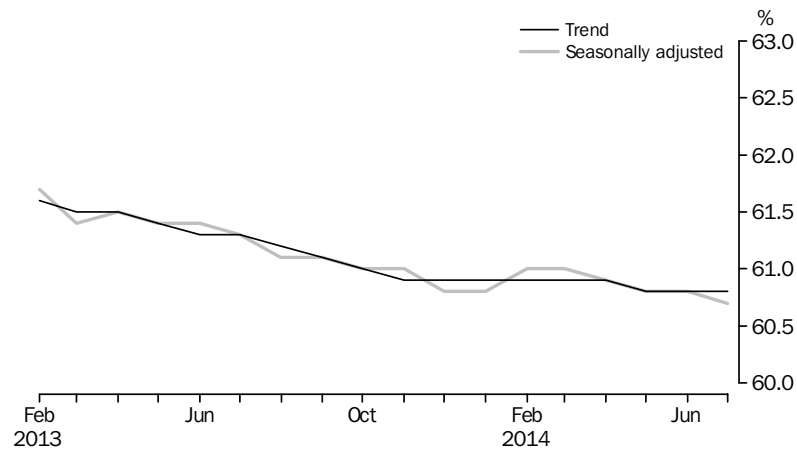
In original terms (where the seasonal and irregular influences have not been removed) the number of employed persons decreased by 11,900 persons between June and July 2014 and the number of unemployed persons increased by 19,300. The seasonally adjusted increase in unemployment was stronger than the increase in original terms, reflecting that historically there is usually a decrease in unemployed persons in July in original terms. The incoming rotation group for July 2014 had a lower proportion of employed persons and a higher proportion of unemployed persons compared to the sample it replaced. Therefore the incoming rotation group contributed more persons to the labour force and to the increased unemployment rate. The incoming rotation group contributed about one-third of the absolute change in the number of persons unemployed and 40% of the absolute change in male unemployment.

July 2014 saw the seasonally adjusted participation rate increase by 0.1 percentage points to 64.8%. The trend participation rate was unchanged at 64.7% in July 2014.

The seasonally adjusted number of employed persons decreased by 300 in July 2014 to 11,576,600 persons. In trend terms, employment increased by 4,600 persons to 11,582,200 persons in July 2014. The employment to population ratio, which expresses the number of employed persons as a percentage of the civilian population aged 15 years and over, decreased 0.1 percentage points to 60.7% (seasonally adjusted). The trend employment to population ratio remained steady at 60.8%, following a revision to the June 2014 estimate.

NATIONAL ESTIMATES
continued

EMPLOYMENT TO POPULATION RATIO, PERSONS, February 2013 to July 2014



Seasonally adjusted part-time employment decreased by 14,800 persons to 3,499,200 persons while full-time employment increased by 14,500 persons in July 2014 to 8,077,400 persons. The decrease in total employment resulted from:

- a decrease in male part-time employment, down 21,500 persons
- a decrease in female full-time employment, down 5,100 persons
- an increase in female part-time employment, up 6,700 persons
- an increase in male full-time employment, up 19,600 persons.

Seasonally adjusted aggregate monthly hours worked decreased by 14.8 million hours (0.9%) in July 2014 to 1,610.7 million hours.

STATE ESTIMATES

The largest absolute increases in seasonally adjusted unemployment were in Victoria (up 14,500 persons), Queensland (up 12,100 persons) and New South Wales (up 8,100 persons). The largest absolute decrease in seasonally adjusted unemployment was in South Australia (down 1,300 persons).

The largest absolute decreases in seasonally adjusted employment were in Queensland (down 12,600 persons), South Australia (down 4,200 persons) and New South Wales (down 4,200 persons). The largest absolute increase in seasonally adjusted employment was in Victoria (up 14,600 persons).

Victoria had the largest increase in the seasonally adjusted participation rate (up 0.5 percentage points) and South Australia the largest decrease (down 0.4 percentage points).

Seasonally adjusted estimates are not published for the territories.

LABOUR FORCE COMMENTARY JULY 2014 *continued*

STATE ESTIMATES *continued*

UNEMPLOYMENT RATE, STATE AND TERRITORIES, June 2014 and July 2014

	TREND		SEASONALLY ADJUSTED	
	June	July	June	July
	%	%	%	%
New South Wales	5.7	5.8	5.7	5.9
Victoria	6.6	6.6	6.6	7.0
Queensland	6.4	6.5	6.3	6.8
South Australia	7.0	7.1	7.3	7.2
Western Australia	5.0	5.0	5.0	5.2
Tasmania	7.5	7.5	7.3	7.6
Northern Territory	4.5	4.8	np	np
Australian Capital Territory	3.8	3.9	np	np
Australia	6.1	6.1	6.0	6.4

np not available for publication but included in totals where applicable, unless otherwise indicated

WHAT'S NEW IN THE LABOUR FORCE

CHANGES TO LABOUR FORCE OUTPUTS

Changes to standard Labour Force products will be implemented from the July 2014 to May 2015 issues of this and related publications. These changes have arisen from the ABS review in 2010-11 of content included in the labour household survey program, as described in the *Information Paper: Outcomes of the Labour Household Surveys Content Review, 2012* (cat. no. 6107.0).

There are no changes to the pdf, spreadsheets or data cube in this issue. However, there will be changes to the related detailed monthly and quarterly releases.

The following outputs were produced for the final time with the June 2014 issue of the detailed monthly Labour Force release (cat. no. 6291.0.55.001) and will not be available with the July 2014 or future issues:

- Spreadsheet tables 15a and 15b;
- Data cube EM2 - this will be replaced by two separate data cubes from the January 2015 issue;
- Data cube UM1;
- Data cube RM2.

The following outputs were produced for the final time with the May 2014 issue of the detailed quarterly Labour Force release (cat. no. 6291.0.55.003) and will not be available with the August 2014 or future issues:

- Data cube EO1;
- Data cube UQ2 - this will be replaced by two separate data cubes from the November 2014 issue;
- Data cube UQ3 - this will be replaced by two separate data cubes from the November 2014 issue.

The above products have been ceased due to:

- duration of unemployment since last full-time job no longer being collected as this item was replaced by duration of unemployment in 2001 and is therefore obsolete (Spreadsheet tables 15a and 15b; Data cubes UM1 and RM2), and
- expanded scope and changed response categories for employed persons who worked fewer than their usual number of hours during the reference week (Data cube EM2 which will be replaced, and Data cube EO1 for which the information will largely be available in other products).

The definition of duration of unemployment will change from the July 2014 issue of the detailed monthly Labour Force release (cat. no. 6291.0.55.001). The last job to break a period of job search no longer needs to be of a duration of two weeks or longer. Instead any job (of greater than one hour) can break a period of looking for work. This makes it consistent with the definition of employment where any work of one hour or more in the reference week counts as employment.

Further information on changes to outputs is available in the *Information Paper: Forthcoming Changes to Labour Force Statistics* (cat. no. 6292.0), released on 26 June 2014.

REVISION TO ACTIVE JOB
SEARCH STEPS

The ABS has refined some of the questions asked about job search steps in the Labour Force Survey (LFS) questionnaire to better reflect the nature of job search practices in Australia and to better align with international standards. This note outlines the previous practice, what the changes are, the reasons for the changes and the impact on estimates of unemployment.

In accordance with international standards the ABS includes an 'active' job search criteria to define the unemployed population in the LFS. 'Active' job search steps are those which put a person in contact with prospective employers for work, either directly or through intermediaries (such as employment services, agencies or recruiting firms), or represent steps towards 'self-employment'. People who only looked in newspapers or read job advertisements on the internet are not considered actively looking for work, as it is impossible to obtain work without some additional active job search step (for example, contacting the employer).

To maintain consistency in the underlying concept of active job search over time, it is necessary to periodically review the steps which are considered active to reflect current and emerging practices in the labour market. For example, in July 2011 looking on the internet was added to looking in newspapers as a passive job search step and reference to Centrelink touch screens was removed.

WHAT CHANGES HAVE
OCCURRED?

Changes to the job search steps were made to the LFS questionnaire from July 2014. These changes aim to more accurately reflect the role of Centrelink in relation to job seekers, to provide greater consistency of treatment of certain job search steps, and to include logical job search steps that were not previously included.

Two new active job search steps have been included in the survey:

- 'had an interview with an employer for work' and
- 'taken steps to purchase or start your own business'.

Having an interview with an employer is a logical step in the process of getting a job, and given that it may take some time for people to be offered a job after applying (during which time they may attend an interview), including this as an active job search step means that people who are in the process of being considered for a job will not necessarily change from being classified as unemployed to not in the labour force if there are time lags between applying for, being interviewed for and being offered a job.

The previous suite of job search steps did not consider steps taken to start or purchase a business as an active job search step. Activities such as applying for an Australian Business Number or licences, or seeking finance to establish or purchase a business, or obtaining premises or equipment, are considered job search activities for people who are looking to be 'self-employed', i.e. working in their own business. The recognition of these as active job search steps was agreed to at the 19th International Conference of Labour Statisticians, in October 2013, where the standards for work, employment and labour underutilisation were revised.

In addition, two steps which were previously 'active' steps are no longer considered sufficient for a person to be classified as actively looking for work. These are 'checked notice boards' and 'been registered with Centrelink as a jobseeker'.

WHAT CHANGES HAVE OCCURRED? continued

Previously, the step 'looking in newspapers or on the internet' was not an active job search step, as without taking further steps (such as responding to an advertisement or applying to an employer for a job) a prospective employer would not be made aware that the person was looking for work. Checking notice boards is not conceptually different from checking in newspapers or on the internet, so should be treated in the same way (as not an active job search step), and has been rolled into the current response 'looking in newspapers or on the internet'.

The role of Centrelink in relation to job seekers has changed over time. The core function of Centrelink in relation to job seekers is in the administration of income support, rather than directly supporting job search activities. While registering with Centrelink as a job seeker is a necessary step in order to receive government income support, it is not a step relating to actual job search. Job seekers would need to take active job search steps, in order to be considered actively looking for work.

See the Glossary for the list of job search steps classified as active from July 2014.

IMPACT ON ESTIMATES OF UNEMPLOYMENT

The changes in job search steps could, potentially, change the labour force status of persons between unemployed and not in the labour force. Prior to their introduction the net impact of the changes was assessed as unlikely to be statistically significant and, as accurately measuring any impact is expensive and complex, the ABS did not introduce special measurement arrangements. The ABS did, however, analyse how many respondents in July 2014, compared to historical patterns, were asked which active and passive job search steps they had undertaken in the reference week. There is no evidence that the introduction of the new active job search steps and the changing of two active steps to passive has had a significant impact on the estimates for unemployment and not in the labour force. In addition, changes in participation and the number of unemployed persons did not occur in a consistent manner across states and territories, males and females, and age groups. This further supports the conclusion that the new questionnaire had no systematic impact on the estimates of unemployed persons and persons not in the labour force.

The changes would not have had any impact on the estimates of employed persons.

LABOUR FORCE STATUS (AGED 15 YEARS & OVER): Trend

	EMPLOYED			UNEMPLOYED		Labour force	UNEMPLOYMENT RATE		Participation rate
	Full time	Part time	Total	Looking for f/t work	Total		Looking for f/t work	Total	
	'000	'000	'000	'000	'000		'000	%	
MALES									
July 2011	5 115.1	985.0	6 100.0	254.7	318.0	6 418.1	4.7	5.0	72.1
July 2012	5 165.4	999.1	6 164.4	267.0	333.4	6 497.8	4.9	5.1	71.7
2013									
July	5 172.4	1 048.4	6 220.8	306.5	377.5	6 598.3	5.6	5.7	71.4
August	5 165.4	1 053.6	6 219.0	308.1	380.0	6 599.0	5.6	5.8	71.3
September	5 157.8	1 057.9	6 215.7	311.0	383.3	6 599.0	5.7	5.8	71.2
October	5 152.1	1 061.5	6 213.6	314.2	386.6	6 600.3	5.7	5.9	71.1
November	5 150.1	1 066.1	6 216.2	315.8	388.8	6 605.0	5.8	5.9	71.1
December	5 152.9	1 071.2	6 224.0	315.2	389.0	6 613.1	5.8	5.9	71.1
2014									
January	5 159.7	1 075.7	6 235.4	312.6	387.0	6 622.4	5.7	5.8	71.0
February	5 169.1	1 078.1	6 247.2	309.8	384.5	6 631.7	5.7	5.8	71.0
March	5 178.9	1 077.8	6 256.7	308.9	384.1	6 640.9	5.6	5.8	71.0
April	5 187.4	1 075.2	6 262.6	310.8	387.3	6 649.9	5.7	5.8	71.0
May	5 194.4	1 070.7	6 265.1	314.9	393.6	6 658.7	5.7	5.9	71.0
June	5 200.4	1 065.4	6 265.7	320.0	401.5	6 667.2	5.8	6.0	71.0
July	5 204.5	1 059.8	6 264.3	325.6	410.3	6 674.5	5.9	6.1	71.0
FEMALES									
July 2011	2 780.4	2 334.6	5 115.1	174.4	284.4	5 399.5	5.9	5.3	58.9
July 2012	2 822.6	2 367.5	5 190.1	181.8	290.2	5 480.3	6.1	5.3	58.8
2013									
July	2 844.3	2 406.5	5 250.8	202.8	314.3	5 565.1	6.7	5.6	58.6
August	2 844.7	2 408.8	5 253.5	201.3	313.9	5 567.4	6.6	5.6	58.6
September	2 842.7	2 413.8	5 256.5	200.4	314.1	5 570.6	6.6	5.6	58.5
October	2 839.8	2 419.3	5 259.2	201.4	316.5	5 575.6	6.6	5.7	58.5
November	2 837.8	2 424.1	5 262.0	204.4	321.3	5 583.3	6.7	5.8	58.5
December	2 837.8	2 427.4	5 265.2	208.6	327.6	5 592.8	6.8	5.9	58.5
2014									
January	2 840.9	2 429.2	5 270.1	212.9	333.9	5 604.0	7.0	6.0	58.5
February	2 847.0	2 430.0	5 277.0	216.2	338.9	5 615.8	7.1	6.0	58.6
March	2 854.2	2 431.4	5 285.6	218.4	341.9	5 627.6	7.1	6.1	58.6
April	2 860.6	2 434.4	5 295.0	219.8	343.3	5 638.4	7.1	6.1	58.6
May	2 865.5	2 438.5	5 304.0	221.2	344.4	5 648.4	7.2	6.1	58.6
June	2 869.4	2 442.5	5 311.9	223.0	345.8	5 657.7	7.2	6.1	58.6
July	2 871.7	2 446.3	5 318.0	224.1	346.5	5 664.5	7.2	6.1	58.6
PERSONS									
July 2011	7 895.5	3 319.6	11 215.1	429.1	602.5	11 817.6	5.2	5.1	65.4
July 2012	7 988.0	3 366.5	11 354.5	448.8	623.6	11 978.1	5.3	5.2	65.1
2013									
July	8 016.7	3 454.9	11 471.6	509.3	691.8	12 163.4	6.0	5.7	65.0
August	8 010.2	3 462.3	11 472.5	509.5	693.9	12 166.4	6.0	5.7	64.9
September	8 000.5	3 471.7	11 472.2	511.4	697.4	12 169.5	6.0	5.7	64.8
October	7 992.0	3 480.8	11 472.8	515.6	703.1	12 175.9	6.1	5.8	64.7
November	7 987.9	3 490.3	11 478.2	520.1	710.1	12 188.3	6.1	5.8	64.7
December	7 990.6	3 498.6	11 489.2	523.8	716.7	12 205.9	6.2	5.9	64.7
2014									
January	8 000.6	3 504.8	11 505.5	525.5	720.9	12 226.3	6.2	5.9	64.7
February	8 016.1	3 508.1	11 524.2	526.0	723.4	12 247.6	6.2	5.9	64.7
March	8 033.1	3 509.2	11 542.4	527.3	726.1	12 268.4	6.2	5.9	64.7
April	8 048.0	3 509.6	11 557.6	530.6	730.6	12 288.3	6.2	5.9	64.7
May	8 060.0	3 509.2	11 569.1	536.1	737.9	12 307.1	6.2	6.0	64.7
June	8 069.8	3 507.9	11 577.7	542.9	747.3	12 324.9	6.3	6.1	64.7
July	8 076.1	3 506.1	11 582.2	549.7	756.7	12 339.0	6.4	6.1	64.7

LABOUR FORCE STATUS (AGED 15 YEARS & OVER): **Seasonally Adjusted**

	EMPLOYED			UNEMPLOYED		Labour force	UNEMPLOYMENT RATE		Participation rate
	Full time	Part time	Total	Looking for f/t work	Total		Looking for f/t work	Total	
	'000	'000	'000	'000	'000		'000	%	
MALES									
July 2011	5 112.4	991.0	6 103.3	250.5	316.0	6 419.3	4.7	4.9	72.1
July 2012	5 161.3	1 001.0	6 162.2	268.5	333.4	6 495.7	4.9	5.1	71.6
2013									
July	5 174.1	1 049.6	6 223.6	303.8	376.5	6 600.1	5.5	5.7	71.5
August	5 160.9	1 053.2	6 214.1	306.0	382.1	6 596.1	5.6	5.8	71.3
September	5 167.0	1 048.5	6 215.5	307.4	375.8	6 591.3	5.6	5.7	71.2
October	5 138.4	1 074.4	6 212.8	314.6	385.1	6 598.0	5.8	5.8	71.1
November	5 158.7	1 067.3	6 226.0	315.7	390.2	6 616.2	5.8	5.9	71.2
December	5 145.2	1 062.5	6 207.7	324.6	399.5	6 607.2	5.9	6.0	71.0
2014									
January	5 148.7	1 066.9	6 215.6	317.2	388.2	6 603.8	5.8	5.9	70.8
February	5 183.2	1 083.6	6 266.9	306.9	386.3	6 653.1	5.6	5.8	71.3
March	5 174.2	1 093.9	6 268.2	296.4	372.7	6 640.9	5.4	5.6	71.0
April	5 193.8	1 077.0	6 270.8	309.2	385.0	6 655.8	5.6	5.8	71.1
May	5 199.4	1 057.7	6 257.1	315.0	384.9	6 642.1	5.7	5.8	70.8
June	5 189.3	1 071.5	6 260.9	323.5	403.8	6 664.7	5.9	6.1	71.0
July	5 208.9	1 050.1	6 259.0	334.6	430.5	6 689.5	6.0	6.4	71.1
FEMALES									
July 2011	2 787.7	2 327.5	5 115.2	172.4	287.5	5 402.7	5.8	5.3	59.0
July 2012	2 820.1	2 371.3	5 191.4	179.0	288.1	5 479.5	6.0	5.3	58.8
2013									
July	2 842.4	2 409.0	5 251.3	201.7	309.2	5 560.5	6.6	5.6	58.6
August	2 854.9	2 397.4	5 252.3	202.3	319.8	5 572.1	6.6	5.7	58.6
September	2 843.7	2 412.2	5 255.9	200.6	317.0	5 572.9	6.6	5.7	58.6
October	2 844.1	2 418.5	5 262.6	200.8	316.0	5 578.7	6.6	5.7	58.5
November	2 840.2	2 425.5	5 265.7	196.1	314.4	5 580.1	6.5	5.6	58.4
December	2 822.3	2 437.3	5 259.6	202.4	314.7	5 574.3	6.7	5.6	58.3
2014									
January	2 824.9	2 447.3	5 272.2	228.8	341.5	5 613.7	7.5	6.1	58.6
February	2 871.4	2 397.9	5 269.3	218.0	355.7	5 625.0	7.1	6.3	58.7
March	2 856.9	2 431.3	5 288.2	216.6	344.3	5 632.5	7.0	6.1	58.6
April	2 851.0	2 445.0	5 296.0	214.8	333.4	5 629.4	7.0	5.9	58.5
May	2 867.4	2 437.4	5 304.9	220.8	339.9	5 644.7	7.1	6.0	58.6
June	2 873.6	2 442.4	5 316.0	220.9	341.5	5 657.5	7.1	6.0	58.6
July	2 868.5	2 449.1	5 317.7	231.8	358.5	5 676.1	7.5	6.3	58.7
PERSONS									
July 2011	7 900.1	3 318.4	11 218.5	422.9	603.5	11 822.0	5.1	5.1	65.4
July 2012	7 981.4	3 372.3	11 353.7	447.5	621.5	11 975.2	5.3	5.2	65.1
2013									
July	8 016.4	3 458.5	11 475.0	505.5	685.6	12 160.6	5.9	5.6	64.9
August	8 015.8	3 450.6	11 466.4	508.4	701.8	12 168.2	6.0	5.8	64.9
September	8 010.7	3 460.7	11 471.4	508.0	692.8	12 164.2	6.0	5.7	64.8
October	7 982.5	3 492.9	11 475.5	515.3	701.2	12 176.6	6.1	5.8	64.7
November	7 998.9	3 492.7	11 491.7	511.8	704.6	12 196.2	6.0	5.8	64.7
December	7 967.5	3 499.8	11 467.3	527.0	714.2	12 181.5	6.2	5.9	64.6
2014									
January	7 973.7	3 514.2	11 487.8	546.0	729.7	12 217.5	6.4	6.0	64.6
February	8 054.6	3 481.5	11 536.2	524.9	742.0	12 278.2	6.1	6.0	64.9
March	8 031.1	3 525.3	11 556.4	513.0	717.0	12 273.3	6.0	5.8	64.8
April	8 044.8	3 522.0	11 566.8	523.9	718.4	12 285.3	6.1	5.8	64.7
May	8 066.8	3 495.2	11 562.0	535.8	724.8	12 286.8	6.2	5.9	64.6
June	8 063.0	3 514.0	11 576.9	544.5	745.2	12 322.2	6.3	6.0	64.7
July	8 077.4	3 499.2	11 576.6	566.4	789.0	12 365.6	6.6	6.4	64.8

LABOUR FORCE STATUS (AGED 15 YEARS & OVER): Original

	EMPLOYED		UNEMPLOYED				Civilian population aged 15 years and over	UNEMPLOYMENT RATE			Participation rate
	Full time	Part time	Total	Looking for f/t work	Total	Labour force		Not in labour force	Looking for f/t work	Total	
	'000	'000	'000	'000	'000	'000		'000	%	%	
MALES											
July 2011	5 114.2	997.9	6 112.1	239.0	295.5	6 407.6	2 497.9	8 905.5	4.5	4.6	72.0
July 2012	5 162.9	1 007.4	6 170.3	257.8	314.0	6 484.3	2 582.2	9 066.5	4.8	4.8	71.5
2013											
July	5 177.0	1 054.6	6 231.5	294.2	357.0	6 588.6	2 647.2	9 235.8	5.4	5.4	71.3
August	5 111.0	1 046.6	6 157.7	299.4	373.5	6 531.1	2 717.9	9 249.0	5.5	5.7	70.6
September	5 208.2	1 031.4	6 239.6	302.7	377.5	6 617.1	2 645.1	9 262.2	5.5	5.7	71.4
October	5 125.7	1 093.2	6 218.9	315.9	381.9	6 600.9	2 676.3	9 277.2	5.8	5.8	71.2
November	5 160.0	1 045.9	6 205.9	299.1	366.7	6 572.5	2 719.8	9 292.3	5.5	5.6	70.7
December	5 204.9	1 063.3	6 268.3	309.0	387.4	6 655.7	2 651.6	9 307.3	5.6	5.8	71.5
2014											
January	5 141.9	1 031.5	6 173.4	344.9	417.8	6 591.2	2 730.1	9 321.3	6.3	6.3	70.7
February	5 210.2	1 044.3	6 254.4	336.4	429.3	6 683.7	2 651.5	9 335.2	6.1	6.4	71.6
March	5 157.3	1 109.9	6 267.2	304.1	390.3	6 657.5	2 691.7	9 349.2	5.6	5.9	71.2
April	5 186.8	1 096.9	6 283.7	304.4	379.9	6 663.5	2 700.2	9 363.7	5.5	5.7	71.2
May	5 192.4	1 080.2	6 272.6	309.1	374.9	6 647.6	2 730.7	9 378.2	5.6	5.6	70.9
June	5 160.1	1 110.6	6 270.7	318.0	390.9	6 661.6	2 731.1	9 392.7	5.8	5.9	70.9
July	5 213.4	1 054.3	6 267.7	323.8	406.7	6 674.4	2 730.8	9 405.2	5.8	6.1	71.0
FEMALES											
July 2011	2 792.8	2 322.7	5 115.5	160.4	267.1	5 382.5	3 781.9	9 164.5	5.4	5.0	58.7
July 2012	2 824.8	2 368.6	5 193.4	167.4	268.6	5 462.0	3 862.3	9 324.3	5.6	4.9	58.6
2013											
July	2 846.8	2 407.7	5 254.5	189.8	289.9	5 544.4	3 946.9	9 491.3	6.3	5.2	58.4
August	2 814.8	2 396.6	5 211.4	188.6	305.9	5 517.3	3 987.3	9 504.6	6.3	5.5	58.0
September	2 918.8	2 388.6	5 307.3	195.9	315.0	5 622.4	3 895.5	9 517.9	6.3	5.6	59.1
October	2 826.2	2 454.2	5 280.4	190.8	297.9	5 578.3	3 954.6	9 532.9	6.3	5.3	58.5
November	2 848.7	2 417.0	5 265.7	187.7	290.3	5 555.9	3 991.9	9 547.8	6.2	5.2	58.2
December	2 858.3	2 444.2	5 302.5	202.7	307.9	5 610.3	3 952.5	9 562.8	6.6	5.5	58.7
2014											
January	2 816.5	2 363.7	5 180.1	247.8	355.1	5 535.2	4 041.4	9 576.6	8.1	6.4	57.8
February	2 880.3	2 358.3	5 238.6	245.7	408.5	5 647.1	3 943.4	9 590.5	7.9	7.2	58.9
March	2 834.9	2 460.2	5 295.1	226.0	376.5	5 671.6	3 932.7	9 604.3	7.4	6.6	59.1
April	2 824.6	2 480.4	5 305.1	212.2	334.7	5 639.8	3 979.9	9 619.7	7.0	5.9	58.6
May	2 868.8	2 453.5	5 322.3	223.7	344.0	5 666.3	3 968.8	9 635.1	7.2	6.1	58.8
June	2 857.5	2 473.7	5 331.3	217.3	332.8	5 664.1	3 986.4	9 650.5	7.1	5.9	58.7
July	2 873.6	2 448.8	5 322.4	218.5	336.3	5 658.7	4 005.4	9 664.1	7.1	5.9	58.6
PERSONS											
July 2011	7 907.0	3 320.6	11 227.5	399.4	562.6	11 790.1	6 279.8	18 070.0	4.8	4.8	65.2
July 2012	7 987.7	3 376.0	11 363.7	425.2	582.6	11 946.3	6 444.6	18 390.9	5.1	4.9	65.0
2013											
July	8 023.7	3 462.3	11 486.0	484.0	646.9	12 133.0	6 594.1	18 727.1	5.7	5.3	64.8
August	7 925.8	3 443.2	11 369.0	487.9	679.4	12 048.4	6 705.2	18 753.6	5.8	5.6	64.2
September	8 127.0	3 420.0	11 547.0	498.5	692.5	12 239.5	6 540.6	18 780.1	5.8	5.7	65.2
October	7 951.9	3 547.4	11 499.3	506.7	679.9	12 179.2	6 630.9	18 810.1	6.0	5.6	64.7
November	8 008.7	3 462.8	11 471.5	486.8	657.0	12 128.5	6 711.7	18 840.1	5.7	5.4	64.4
December	8 063.2	3 507.5	11 570.7	511.7	695.3	12 266.0	6 604.1	18 870.2	6.0	5.7	65.0
2014											
January	7 958.4	3 395.2	11 353.6	592.7	772.8	12 126.4	6 771.5	18 897.9	6.9	6.4	64.2
February	8 090.5	3 402.6	11 493.0	582.1	837.8	12 330.8	6 594.9	18 925.7	6.7	6.8	65.2
March	7 992.2	3 570.2	11 562.3	530.1	766.8	12 329.1	6 624.4	18 953.5	6.2	6.2	65.0
April	8 011.5	3 577.3	11 588.7	516.6	714.6	12 303.3	6 680.1	18 983.4	6.1	5.8	64.8
May	8 061.3	3 533.7	11 595.0	532.8	718.9	12 313.9	6 699.4	19 013.3	6.2	5.8	64.8
June	8 017.7	3 584.3	11 602.0	535.3	723.7	12 325.7	6 717.5	19 043.2	6.3	5.9	64.7
July	8 087.0	3 503.1	11 590.1	542.2	743.0	12 333.1	6 736.2	19 069.2	6.3	6.0	64.7

LABOUR FORCE STATUS (AGED 15 YEARS & OVER)—New South Wales

	TREND					SEASONALLY ADJUSTED					Civilian population aged 15 years and over
	Employed full time	Total employed	Total unemployed	Unemployment rate	Participation rate	Employed full time	Total employed	Total unemployed	Unemployment rate	Participation rate	
	'000	'000	'000	%	%	'000	'000	'000	%	%	
MALES											
July 2011	1 596.8	1 912.2	100.8	5.0	70.1	1 594.6	1 918.6	98.9	4.9	70.3	2 869.6
July 2012	1 602.5	1 927.0	106.1	5.2	70.0	1 595.1	1 921.5	113.2	5.6	70.0	2 905.4
2013											
July	1 610.3	1 955.8	113.1	5.5	70.2	1 611.3	1 958.2	110.0	5.3	70.1	2 948.4
August	1 601.7	1 950.6	114.7	5.6	70.0	1 601.2	1 944.3	119.8	5.8	69.9	2 951.7
September	1 593.9	1 945.2	117.3	5.7	69.8	1 591.4	1 942.0	113.5	5.5	69.6	2 955.0
October	1 588.5	1 941.0	119.4	5.8	69.6	1 584.3	1 944.0	119.3	5.8	69.7	2 958.7
November	1 586.0	1 939.4	119.7	5.8	69.5	1 589.2	1 947.2	121.8	5.9	69.8	2 962.4
December	1 586.6	1 940.8	117.8	5.7	69.4	1 582.8	1 931.9	122.4	6.0	69.3	2 966.1
2014											
January	1 589.4	1 944.4	114.7	5.6	69.3	1 591.3	1 933.7	117.2	5.7	69.1	2 969.6
February	1 594.6	1 948.9	111.9	5.4	69.3	1 596.2	1 955.2	112.2	5.4	69.5	2 973.1
March	1 601.8	1 953.4	110.7	5.4	69.3	1 600.9	1 958.5	98.2	4.8	69.1	2 976.6
April	1 610.5	1 957.0	111.3	5.4	69.4	1 607.9	1 965.6	108.6	5.2	69.6	2 980.2
May	1 620.1	1 959.4	113.2	5.5	69.5	1 617.6	1 952.7	119.3	5.8	69.4	2 983.9
June	1 629.8	1 961.1	115.6	5.6	69.5	1 625.6	1 956.3	119.4	5.8	69.5	2 987.6
July	1 638.5	1 961.7	118.3	5.7	69.6	1 654.9	1 963.4	118.9	5.7	69.6	2 990.8
FEMALES											
July 2011	874.3	1 593.6	93.5	5.5	56.8	881.9	1 592.7	92.0	5.5	56.7	2 969.8
July 2012	903.4	1 619.2	82.5	4.8	56.6	908.2	1 621.4	80.1	4.7	56.6	3 008.4
2013											
July	915.4	1 649.2	102.8	5.9	57.4	905.9	1 642.3	104.5	6.0	57.2	3 051.2
August	913.2	1 647.7	102.9	5.9	57.3	924.1	1 663.4	105.8	6.0	57.9	3 054.5
September	910.3	1 645.6	102.4	5.9	57.2	909.1	1 642.2	98.7	5.7	56.9	3 057.8
October	907.3	1 643.7	101.9	5.8	57.0	906.8	1 640.1	103.3	5.9	56.9	3 061.6
November	905.2	1 643.1	101.7	5.8	56.9	909.6	1 638.6	102.4	5.9	56.8	3 065.3
December	904.8	1 644.0	101.8	5.8	56.9	902.3	1 642.6	97.6	5.6	56.7	3 069.1
2014											
January	906.6	1 646.6	101.8	5.8	56.9	889.0	1 651.9	102.1	5.8	57.1	3 072.6
February	909.9	1 650.0	101.7	5.8	56.9	919.4	1 644.5	106.7	6.1	56.9	3 076.1
March	913.3	1 652.5	101.6	5.8	57.0	919.3	1 656.8	102.0	5.8	57.1	3 079.6
April	915.4	1 653.4	101.6	5.8	56.9	917.4	1 658.3	99.5	5.7	57.0	3 083.4
May	916.0	1 653.2	101.9	5.8	56.9	917.7	1 649.6	98.9	5.7	56.6	3 087.2
June	915.6	1 652.4	102.5	5.8	56.8	912.2	1 655.9	100.5	5.7	56.8	3 091.0
July	914.8	1 651.0	103.1	5.9	56.7	909.4	1 644.6	109.1	6.2	56.7	3 094.3
PERSONS											
July 2011	2 471.1	3 505.8	194.3	5.3	63.4	2 476.5	3 511.3	190.9	5.2	63.4	5 839.3
July 2012	2 505.9	3 546.2	188.6	5.0	63.2	2 503.3	3 542.9	193.3	5.2	63.2	5 913.7
2013											
July	2 525.7	3 604.9	215.8	5.6	63.7	2 517.2	3 600.5	214.5	5.6	63.6	5 999.6
August	2 514.9	3 598.3	217.6	5.7	63.5	2 525.3	3 607.7	225.6	5.9	63.8	6 006.2
September	2 504.2	3 590.8	219.7	5.8	63.4	2 500.6	3 584.1	212.2	5.6	63.1	6 012.8
October	2 495.8	3 584.6	221.3	5.8	63.2	2 491.2	3 584.1	222.6	5.8	63.2	6 020.3
November	2 491.3	3 582.5	221.4	5.8	63.1	2 498.8	3 585.9	224.1	5.9	63.2	6 027.7
December	2 491.4	3 584.9	219.6	5.8	63.0	2 485.1	3 574.5	220.0	5.8	62.9	6 035.2
2014											
January	2 496.0	3 591.0	216.5	5.7	63.0	2 480.3	3 585.7	219.3	5.8	63.0	6 042.2
February	2 504.5	3 598.9	213.7	5.6	63.0	2 515.6	3 599.6	218.9	5.7	63.1	6 049.2
March	2 515.1	3 605.9	212.3	5.6	63.0	2 520.2	3 615.3	200.2	5.2	63.0	6 056.2
April	2 525.9	3 610.4	212.8	5.6	63.0	2 525.4	3 623.9	208.1	5.4	63.2	6 063.6
May	2 536.1	3 612.6	215.1	5.6	63.0	2 535.3	3 602.3	218.3	5.7	62.9	6 071.1
June	2 545.4	3 613.4	218.1	5.7	63.0	2 537.8	3 612.3	219.9	5.7	63.0	6 078.6
July	2 553.2	3 612.7	221.4	5.8	63.0	2 564.3	3 608.0	228.0	5.9	63.0	6 085.0

LABOUR FORCE STATUS (AGED 15 YEARS & OVER)—Victoria

	TREND					SEASONALLY ADJUSTED					Civilian population aged 15 years and over
	Employed full time	Total employed	Total unemployed	Unemployment rate	Participation rate	Employed full time	Total employed	Total unemployed	Unemployment rate	Participation rate	
	'000	'000	'000	%	%	'000	'000	'000	%	%	
MALES											
July 2011	1 276.1	1 536.0	76.4	4.7	72.7	1 274.5	1 536.7	77.2	4.8	72.8	2 217.7
July 2012	1 264.4	1 527.4	84.7	5.3	71.5	1 267.1	1 526.4	83.6	5.2	71.4	2 255.7
2013											
July	1 274.0	1 545.3	95.6	5.8	71.4	1 272.8	1 544.3	93.8	5.7	71.3	2 299.1
August	1 275.0	1 544.5	96.6	5.9	71.3	1 277.3	1 544.0	95.5	5.8	71.2	2 302.3
September	1 275.3	1 543.4	97.8	6.0	71.2	1 276.9	1 539.9	92.6	5.7	70.8	2 305.6
October	1 274.5	1 542.3	99.4	6.1	71.1	1 273.0	1 544.4	100.7	6.1	71.2	2 309.5
November	1 272.2	1 541.6	101.2	6.2	71.0	1 278.0	1 543.6	104.9	6.4	71.3	2 313.4
December	1 269.5	1 541.4	102.4	6.2	70.9	1 267.1	1 537.6	101.3	6.2	70.7	2 317.3
2014											
January	1 267.3	1 541.4	102.5	6.2	70.8	1 262.5	1 542.9	105.8	6.4	71.0	2 320.9
February	1 266.3	1 541.7	101.7	6.2	70.7	1 267.6	1 543.9	99.2	6.0	70.7	2 324.5
March	1 265.9	1 542.6	101.2	6.2	70.6	1 261.5	1 539.8	102.1	6.2	70.5	2 328.1
April	1 265.7	1 544.0	101.7	6.2	70.6	1 270.0	1 542.8	103.6	6.3	70.6	2 331.7
May	1 265.1	1 545.7	103.3	6.3	70.6	1 269.1	1 548.3	92.5	5.6	70.3	2 335.2
June	1 264.2	1 547.6	105.5	6.4	70.7	1 264.4	1 544.0	108.6	6.6	70.7	2 338.8
July	1 262.9	1 549.1	107.8	6.5	70.8	1 256.7	1 553.9	115.8	6.9	71.3	2 342.1
FEMALES											
July 2011	683.2	1 278.4	74.1	5.5	58.7	674.0	1 273.1	76.3	5.7	58.5	2 305.3
July 2012	687.2	1 312.5	80.6	5.8	59.4	685.2	1 312.2	78.2	5.6	59.3	2 345.6
2013											
July	681.4	1 319.9	79.4	5.7	58.6	682.9	1 321.1	77.4	5.5	58.5	2 388.5
August	682.0	1 320.5	80.3	5.7	58.6	677.5	1 318.7	80.0	5.7	58.5	2 391.8
September	682.8	1 320.9	81.9	5.8	58.6	680.8	1 315.4	84.5	6.0	58.4	2 395.2
October	683.7	1 320.9	84.3	6.0	58.6	691.6	1 323.4	83.7	5.9	58.6	2 399.1
November	684.9	1 320.6	86.9	6.2	58.6	690.1	1 324.3	85.8	6.1	58.7	2 403.0
December	685.9	1 319.9	89.5	6.3	58.6	675.7	1 317.3	88.6	6.3	58.4	2 407.0
2014											
January	687.5	1 319.1	91.7	6.5	58.5	687.8	1 322.4	91.6	6.5	58.7	2 410.5
February	689.7	1 318.1	93.3	6.6	58.5	687.9	1 315.2	97.0	6.9	58.5	2 414.2
March	692.3	1 317.6	94.4	6.7	58.4	695.8	1 318.6	94.6	6.7	58.5	2 417.7
April	694.8	1 317.7	95.0	6.7	58.3	697.2	1 310.7	93.1	6.6	58.0	2 421.5
May	696.7	1 318.4	95.6	6.8	58.3	694.2	1 326.1	96.9	6.8	58.7	2 425.2
June	697.9	1 319.1	96.1	6.8	58.3	701.1	1 316.5	92.4	6.6	58.0	2 429.0
July	698.0	1 319.7	96.5	6.8	58.3	694.2	1 321.2	99.8	7.0	58.4	2 432.8
PERSONS											
July 2011	1 959.2	2 814.4	150.5	5.1	65.6	1 948.5	2 809.8	153.5	5.2	65.5	4 523.0
July 2012	1 951.6	2 839.9	165.3	5.5	65.3	1 952.4	2 838.6	161.8	5.4	65.2	4 601.3
2013											
July	1 955.3	2 865.2	175.0	5.8	64.9	1 955.7	2 865.4	171.2	5.6	64.8	4 687.6
August	1 956.9	2 865.0	176.9	5.8	64.8	1 954.7	2 862.7	175.6	5.8	64.7	4 694.2
September	1 958.1	2 864.2	179.7	5.9	64.7	1 957.8	2 855.3	177.2	5.8	64.5	4 700.7
October	1 958.2	2 863.3	183.7	6.0	64.7	1 964.6	2 867.8	184.3	6.0	64.8	4 708.6
November	1 957.1	2 862.2	188.1	6.2	64.7	1 968.0	2 867.9	190.7	6.2	64.9	4 716.4
December	1 955.4	2 861.3	191.9	6.3	64.6	1 942.8	2 854.9	189.9	6.2	64.5	4 724.3
2014											
January	1 954.8	2 860.5	194.2	6.4	64.6	1 950.3	2 865.3	197.4	6.4	64.7	4 731.5
February	1 956.0	2 859.9	195.0	6.4	64.5	1 955.5	2 859.1	196.2	6.4	64.5	4 738.7
March	1 958.2	2 860.2	195.6	6.4	64.4	1 957.4	2 858.4	196.6	6.4	64.4	4 745.9
April	1 960.5	2 861.8	196.8	6.4	64.3	1 967.2	2 853.4	196.6	6.4	64.2	4 753.2
May	1 961.8	2 864.1	198.9	6.5	64.3	1 963.3	2 874.4	189.4	6.2	64.4	4 760.5
June	1 962.0	2 866.7	201.6	6.6	64.4	1 965.5	2 860.5	201.0	6.6	64.2	4 767.8
July	1 960.9	2 868.8	204.3	6.6	64.4	1 950.8	2 875.1	215.5	7.0	64.7	4 775.0

LABOUR FORCE STATUS (AGED 15 YEARS & OVER)—Queensland

	TREND					SEASONALLY ADJUSTED					
	<i>Employed full time</i>	<i>Total employed</i>	<i>Total unemp-loyed</i>	<i>Unemp-loyment rate</i>	<i>Partici-pation rate</i>	<i>Employed full time</i>	<i>Total employed</i>	<i>Total unemp-loyed</i>	<i>Unemp-loyment rate</i>	<i>Partici-pation rate</i>	<i>Civilian population aged 15 years and over</i>
	'000	'000	'000	%	%	'000	'000	'000	%	%	'000
MALES											
July 2011	1 036.9	1 224.0	70.6	5.5	73.3	1 034.7	1 218.7	72.5	5.6	73.1	1 765.7
July 2012	1 056.1	1 242.9	73.6	5.6	73.0	1 056.5	1 244.3	71.7	5.5	73.0	1 802.4
2013											
July	1 049.4	1 241.1	82.0	6.2	72.0	1 051.8	1 243.5	83.4	6.3	72.2	1 838.4
August	1 051.9	1 244.3	80.7	6.1	72.0	1 046.3	1 245.1	79.7	6.0	72.0	1 841.2
September	1 053.2	1 245.9	79.3	6.0	71.9	1 062.7	1 250.3	76.4	5.8	71.9	1 844.1
October	1 053.0	1 245.8	78.3	5.9	71.7	1 051.8	1 246.6	77.3	5.8	71.7	1 847.3
November	1 051.6	1 245.5	78.3	5.9	71.5	1 052.3	1 247.6	77.4	5.8	71.6	1 850.4
December	1 050.1	1 246.0	79.4	6.0	71.5	1 049.2	1 241.4	81.2	6.1	71.4	1 853.5
2014											
January	1 049.8	1 248.3	80.5	6.1	71.6	1 046.3	1 239.0	80.2	6.1	71.1	1 856.5
February	1 050.4	1 251.8	81.4	6.1	71.7	1 047.5	1 253.5	83.8	6.3	71.9	1 859.4
March	1 051.4	1 254.8	82.3	6.2	71.8	1 052.2	1 260.8	81.5	6.1	72.1	1 862.4
April	1 051.7	1 256.2	83.6	6.2	71.8	1 052.8	1 260.7	83.8	6.2	72.1	1 865.2
May	1 050.7	1 255.6	85.4	6.4	71.8	1 061.2	1 258.0	81.8	6.1	71.7	1 868.0
June	1 048.9	1 253.8	87.5	6.5	71.7	1 047.8	1 254.2	84.6	6.3	71.6	1 870.8
July	1 046.5	1 251.1	89.8	6.7	71.6	1 035.1	1 239.1	97.8	7.3	71.4	1 873.4
FEMALES											
July 2011	588.2	1 052.2	61.8	5.5	61.6	590.0	1 052.5	60.4	5.4	61.5	1 809.6
July 2012	585.9	1 043.2	65.7	5.9	60.0	580.4	1 041.2	69.1	6.2	60.1	1 848.0
2013											
July	594.9	1 065.0	62.9	5.6	59.8	600.0	1 067.0	59.0	5.2	59.7	1 886.1
August	596.7	1 068.7	63.3	5.6	59.9	600.3	1 065.2	63.2	5.6	59.7	1 889.3
September	596.3	1 071.7	63.9	5.6	60.0	596.0	1 074.6	65.4	5.7	60.2	1 892.5
October	594.6	1 073.8	64.7	5.7	60.1	594.0	1 075.2	67.8	5.9	60.3	1 895.8
November	592.4	1 075.3	65.7	5.8	60.1	587.9	1 079.3	62.7	5.5	60.1	1 899.1
December	590.5	1 076.7	67.1	5.9	60.1	590.3	1 079.1	64.6	5.6	60.1	1 902.5
2014											
January	589.7	1 078.8	68.8	6.0	60.2	591.9	1 066.0	70.6	6.2	59.6	1 905.6
February	590.1	1 082.2	70.5	6.1	60.4	593.7	1 084.5	71.5	6.2	60.6	1 908.7
March	591.5	1 087.0	72.2	6.2	60.6	587.2	1 089.5	71.0	6.1	60.7	1 911.8
April	593.6	1 092.4	73.5	6.3	60.9	587.8	1 092.9	75.1	6.4	61.0	1 915.5
May	596.0	1 097.5	74.3	6.3	61.1	599.9	1 097.6	74.3	6.3	61.1	1 919.2
June	598.5	1 102.0	74.8	6.4	61.2	601.4	1 103.1	75.0	6.4	61.3	1 923.0
July	600.9	1 105.9	75.0	6.3	61.4	602.1	1 105.6	74.0	6.3	61.2	1 926.0
PERSONS											
July 2011	1 625.1	2 276.1	132.4	5.5	67.4	1 624.7	2 271.2	132.9	5.5	67.2	3 575.4
July 2012	1 642.0	2 286.1	139.3	5.7	66.4	1 636.9	2 285.5	140.9	5.8	66.5	3 650.4
2013											
July	1 644.3	2 306.1	144.9	5.9	65.8	1 651.8	2 310.5	142.4	5.8	65.9	3 724.5
August	1 648.7	2 313.0	144.0	5.9	65.9	1 646.7	2 310.3	142.8	5.8	65.8	3 730.5
September	1 649.6	2 317.5	143.2	5.8	65.9	1 658.7	2 324.9	141.8	5.8	66.0	3 736.6
October	1 647.6	2 319.7	143.0	5.8	65.8	1 645.7	2 321.8	145.1	5.9	65.9	3 743.1
November	1 644.0	2 320.8	144.1	5.8	65.7	1 640.2	2 326.8	140.1	5.7	65.8	3 749.5
December	1 640.7	2 322.7	146.5	5.9	65.7	1 639.5	2 320.5	145.8	5.9	65.7	3 756.0
2014											
January	1 639.4	2 327.1	149.3	6.0	65.8	1 638.2	2 305.0	150.8	6.1	65.3	3 762.1
February	1 640.5	2 334.0	151.9	6.1	66.0	1 641.2	2 338.0	155.3	6.2	66.2	3 768.1
March	1 642.9	2 341.8	154.5	6.2	66.1	1 639.3	2 350.2	152.5	6.1	66.3	3 774.2
April	1 645.3	2 348.6	157.1	6.3	66.3	1 640.5	2 353.6	158.9	6.3	66.5	3 780.7
May	1 646.8	2 353.1	159.7	6.4	66.4	1 661.1	2 355.6	156.1	6.2	66.3	3 787.2
June	1 647.4	2 355.7	162.4	6.4	66.4	1 649.2	2 357.3	159.7	6.3	66.3	3 793.8
July	1 647.4	2 357.0	164.8	6.5	66.4	1 637.2	2 344.7	171.7	6.8	66.2	3 799.4

	TREND					SEASONALLY ADJUSTED					
	Employed full time	Total employed	Total unemployed	Unemployment rate	Participation rate	Employed full time	Total employed	Total unemployed	Unemployment rate	Participation rate	Civilian population aged 15 years and over
	'000	'000	'000	%	%	'000	'000	'000	%	%	'000
MALES											
July 2011	358.8	437.5	24.8	5.4	69.9	356.6	438.5	24.4	5.3	70.1	660.8
July 2012	352.5	432.9	26.7	5.8	68.9	352.3	435.2	23.8	5.2	68.8	667.4
2013											
July	350.5	434.2	30.3	6.5	69.0	350.2	431.7	32.7	7.0	68.9	673.7
August	348.4	432.5	31.1	6.7	68.8	343.6	431.7	31.5	6.8	68.7	674.1
September	346.9	430.9	31.7	6.9	68.6	347.4	432.4	29.5	6.4	68.5	674.6
October	346.9	430.1	32.1	6.9	68.4	346.8	428.2	33.6	7.3	68.4	675.2
November	348.3	430.1	32.3	7.0	68.4	347.4	429.4	31.8	6.9	68.2	675.8
December	350.5	430.5	32.3	7.0	68.4	349.3	430.9	33.1	7.1	68.6	676.4
2014											
January	352.5	431.0	32.3	7.0	68.4	353.9	431.6	32.2	7.0	68.5	676.9
February	353.9	431.5	32.4	7.0	68.5	358.1	433.1	31.1	6.7	68.5	677.5
March	354.5	432.0	32.7	7.0	68.5	352.6	430.3	33.9	7.3	68.5	678.0
April	354.6	432.2	33.4	7.2	68.6	353.7	432.0	32.6	7.0	68.4	678.8
May	354.4	432.4	34.3	7.3	68.7	354.9	433.3	32.1	6.9	68.5	679.5
June	354.2	432.5	35.2	7.5	68.8	354.1	433.2	37.6	8.0	69.2	680.3
July	353.8	432.6	36.2	7.7	68.9	353.6	431.8	36.9	7.9	68.8	680.8
FEMALES											
July 2011	184.5	373.5	19.9	5.0	57.4	187.0	373.7	19.8	5.0	57.4	685.8
July 2012	177.0	372.5	21.3	5.4	56.8	175.4	374.4	20.5	5.2	57.0	692.7
2013											
July	185.4	370.7	24.7	6.3	56.6	183.0	368.6	26.4	6.7	56.5	698.9
August	184.0	369.3	24.7	6.3	56.3	182.5	367.3	27.1	6.9	56.4	699.4
September	182.5	368.6	24.6	6.2	56.2	186.4	370.8	21.2	5.4	56.0	699.8
October	181.2	368.0	24.5	6.2	56.0	179.2	368.9	23.5	6.0	56.0	700.4
November	179.7	367.5	24.6	6.3	56.0	180.0	369.0	26.9	6.8	56.5	701.0
December	178.2	367.0	24.8	6.3	55.9	179.6	366.5	24.5	6.3	55.7	701.6
2014											
January	176.9	366.6	25.1	6.4	55.8	175.2	365.6	24.0	6.2	55.5	702.1
February	176.4	366.7	25.3	6.5	55.8	177.3	365.2	26.1	6.7	55.7	702.7
March	176.8	367.5	25.3	6.4	55.9	174.3	366.4	27.3	6.9	56.0	703.2
April	177.7	368.6	25.3	6.4	56.0	178.5	372.3	21.9	5.6	56.0	703.8
May	178.9	369.6	25.4	6.4	56.1	176.2	367.1	26.9	6.8	55.9	704.3
June	180.0	370.5	25.5	6.4	56.2	185.7	372.8	25.9	6.5	56.6	704.9
July	181.2	371.1	25.6	6.4	56.3	179.4	369.9	25.2	6.4	56.0	705.4
PERSONS											
July 2011	543.2	810.9	44.7	5.2	63.5	543.6	812.2	44.2	5.2	63.6	1 346.6
July 2012	529.5	805.4	47.9	5.6	62.7	527.7	809.5	44.2	5.2	62.8	1 360.1
2013											
July	535.9	805.0	55.0	6.4	62.7	533.2	800.3	59.1	6.9	62.6	1 372.7
August	532.4	801.8	55.9	6.5	62.4	526.1	799.0	58.6	6.8	62.4	1 373.5
September	529.4	799.5	56.3	6.6	62.3	533.8	803.2	50.7	5.9	62.1	1 374.4
October	528.0	798.1	56.6	6.6	62.1	526.1	797.1	57.1	6.7	62.1	1 375.6
November	528.1	797.6	56.9	6.7	62.1	527.4	798.4	58.7	6.9	62.3	1 376.8
December	528.7	797.5	57.1	6.7	62.0	528.9	797.4	57.7	6.7	62.1	1 378.0
2014											
January	529.5	797.6	57.3	6.7	62.0	529.1	797.3	56.2	6.6	61.9	1 379.1
February	530.3	798.3	57.7	6.7	62.0	535.4	798.3	57.1	6.7	62.0	1 380.2
March	531.3	799.5	58.0	6.8	62.1	526.9	796.6	61.2	7.1	62.1	1 381.3
April	532.3	800.8	58.7	6.8	62.2	532.2	804.3	54.5	6.3	62.1	1 382.6
May	533.3	802.0	59.7	6.9	62.3	531.1	800.4	59.0	6.9	62.1	1 383.9
June	534.2	803.0	60.8	7.0	62.4	539.8	805.9	63.5	7.3	62.8	1 385.2
July	535.0	803.7	61.8	7.1	62.5	533.0	801.7	62.2	7.2	62.3	1 386.2

LABOUR FORCE STATUS (AGED 15 YEARS & OVER)—Western Australia

	TREND					SEASONALLY ADJUSTED					Civilian population aged 15 years and over
	Employed full time	Total employed	Total unemployed	Unemployment rate	Participation rate	Employed full time	Total employed	Total unemployed	Unemployment rate	Participation rate	
	'000	'000	'000	%	%	'000	'000	'000	%	%	'000
MALES											
July 2011	595.3	693.7	30.9	4.3	76.0	596.2	696.4	26.9	3.7	75.9	953.3
July 2012	639.4	735.8	25.0	3.3	76.7	636.3	736.1	24.3	3.2	76.7	991.3
2013											
July	639.7	744.4	37.0	4.7	76.2	633.6	740.4	38.9	5.0	76.0	1 025.7
August	639.6	747.2	36.3	4.6	76.2	640.6	749.0	35.3	4.5	76.3	1 028.5
September	639.2	749.6	35.8	4.6	76.1	642.2	752.9	34.9	4.4	76.4	1 031.4
October	639.3	751.7	35.9	4.6	76.1	637.1	748.8	37.8	4.8	76.0	1 034.5
November	640.3	753.5	36.6	4.6	76.2	639.1	754.7	34.2	4.3	76.0	1 037.6
December	642.0	755.1	37.7	4.8	76.2	641.0	758.6	37.1	4.7	76.5	1 040.8
2014											
January	643.6	756.7	39.0	4.9	76.2	642.4	750.8	37.1	4.7	75.5	1 043.6
February	644.9	758.3	40.1	5.0	76.3	648.5	757.4	46.9	5.8	76.9	1 046.4
March	645.7	760.0	40.6	5.1	76.3	648.7	765.1	38.6	4.8	76.6	1 049.3
April	645.9	761.3	40.9	5.1	76.2	643.9	759.5	39.8	5.0	76.0	1 052.2
May	646.0	762.2	40.9	5.1	76.1	644.6	762.9	40.5	5.0	76.1	1 055.1
June	646.2	762.7	40.9	5.1	76.0	643.4	764.1	41.0	5.1	76.1	1 058.0
July	646.4	763.2	40.9	5.1	75.9	650.0	760.1	41.5	5.2	75.6	1 060.5
FEMALES											
July 2011	294.1	554.6	23.8	4.1	61.0	298.4	554.6	24.5	4.2	61.1	948.1
July 2012	312.2	574.7	26.7	4.4	61.4	308.7	566.9	24.8	4.2	60.4	979.0
2013											
July	315.0	579.7	28.6	4.7	60.2	314.6	581.6	24.0	4.0	59.9	1 010.8
August	315.8	580.9	27.2	4.5	60.0	316.9	573.9	33.4	5.5	59.9	1 013.5
September	316.1	582.9	26.4	4.3	59.9	315.9	580.7	28.7	4.7	60.0	1 016.1
October	316.5	584.9	26.6	4.3	60.0	320.2	594.6	21.1	3.4	60.4	1 019.0
November	316.9	586.3	27.7	4.5	60.1	315.9	584.0	25.0	4.1	59.6	1 021.8
December	317.3	587.1	29.3	4.7	60.2	310.2	585.2	28.0	4.6	59.8	1 024.7
2014											
January	317.4	587.5	30.9	5.0	60.2	317.2	591.0	35.0	5.6	60.9	1 027.3
February	317.4	587.9	32.0	5.2	60.2	327.6	586.1	36.8	5.9	60.5	1 030.0
March	317.2	589.3	32.4	5.2	60.2	318.3	586.6	30.5	4.9	59.8	1 032.6
April	317.2	591.9	31.9	5.1	60.2	307.9	591.2	29.4	4.7	59.9	1 035.6
May	317.3	594.9	31.5	5.0	60.3	318.6	594.9	31.1	5.0	60.3	1 038.5
June	317.7	597.9	31.2	5.0	60.4	316.2	599.0	31.2	4.9	60.5	1 041.5
July	318.1	600.6	30.9	4.9	60.5	323.3	604.3	32.7	5.1	61.0	1 044.0
PERSONS											
July 2011	889.4	1 248.3	54.7	4.2	68.5	894.6	1 250.9	51.3	3.9	68.5	1 901.4
July 2012	951.6	1 310.5	51.7	3.8	69.1	944.9	1 303.1	49.1	3.6	68.6	1 970.3
2013											
July	954.7	1 324.1	65.6	4.7	68.2	948.2	1 322.0	62.8	4.5	68.0	2 036.5
August	955.4	1 328.1	63.5	4.6	68.1	957.4	1 322.9	68.7	4.9	68.1	2 042.0
September	955.3	1 332.5	62.2	4.5	68.1	958.2	1 333.6	63.5	4.5	68.2	2 047.5
October	955.8	1 336.6	62.4	4.5	68.1	957.3	1 343.4	58.9	4.2	68.3	2 053.5
November	957.2	1 339.9	64.3	4.6	68.2	954.9	1 338.6	59.2	4.2	67.9	2 059.5
December	959.3	1 342.2	67.0	4.8	68.2	951.2	1 343.8	65.1	4.6	68.2	2 065.5
2014											
January	961.1	1 344.1	69.9	4.9	68.3	959.6	1 341.8	72.0	5.1	68.3	2 070.9
February	962.2	1 346.3	72.0	5.1	68.3	976.1	1 343.4	83.6	5.9	68.7	2 076.4
March	962.9	1 349.3	73.0	5.1	68.3	967.0	1 351.7	69.1	4.9	68.2	2 081.9
April	963.1	1 353.2	72.8	5.1	68.3	951.7	1 350.7	69.2	4.9	68.0	2 087.8
May	963.3	1 357.1	72.4	5.1	68.3	963.2	1 357.7	71.6	5.0	68.3	2 093.7
June	964.0	1 360.6	72.1	5.0	68.3	959.6	1 363.1	72.2	5.0	68.4	2 099.5
July	964.5	1 363.8	71.8	5.0	68.3	973.3	1 364.4	74.2	5.2	68.4	2 104.5

	TREND					SEASONALLY ADJUSTED					Civilian population aged 15 years and over
	Employed full time	Total employed	Total unemployed	Unemployment rate	Participation rate	Employed full time	Total employed	Total unemployed	Unemployment rate	Participation rate	
	'000	'000	'000	%	%	'000	'000	'000	%	%	
MALES											
July 2011	104.3	127.5	7.2	5.4	65.7	104.3	127.4	7.5	5.5	65.8	205.0
July 2012	100.2	126.3	9.3	6.8	65.8	99.8	125.3	8.9	6.7	65.2	205.9
2013											
July	97.2	123.1	11.2	8.4	65.1	98.5	123.8	11.1	8.3	65.3	206.5
August	96.8	122.4	11.6	8.6	64.8	95.9	121.5	12.0	9.0	64.6	206.6
September	96.6	121.8	11.6	8.7	64.6	95.5	121.8	12.0	9.0	64.8	206.7
October	96.6	121.5	11.4	8.5	64.3	96.7	122.1	11.1	8.3	64.4	206.7
November	96.8	121.7	11.0	8.3	64.2	97.9	121.2	11.1	8.4	64.0	206.8
December	97.5	122.4	10.8	8.1	64.4	97.1	121.5	10.5	8.0	63.8	206.9
2014											
January	98.4	123.3	10.8	8.0	64.8	98.3	123.8	10.3	7.7	64.8	207.0
February	99.4	124.3	10.8	8.0	65.3	98.1	123.8	10.8	8.0	65.0	207.0
March	100.3	125.2	10.9	8.0	65.7	99.8	125.9	11.2	8.2	66.2	207.1
April	100.8	125.9	10.8	7.9	66.0	104.4	127.9	11.2	8.1	67.2	207.1
May	101.2	126.4	10.8	7.9	66.2	100.4	124.6	11.1	8.1	65.5	207.1
June	101.3	126.7	10.7	7.8	66.3	101.0	126.6	9.7	7.1	65.8	207.2
July	101.1	126.9	10.5	7.7	66.3	99.7	127.1	10.7	7.8	66.5	207.2
FEMALES											
July 2011	52.3	110.4	5.7	4.9	55.2	51.6	111.2	5.6	4.8	55.5	210.5
July 2012	49.5	108.2	7.9	6.8	55.1	50.1	109.1	7.1	6.1	55.1	210.9
2013											
July	48.9	108.2	9.3	7.9	55.6	49.3	107.9	9.3	8.0	55.4	211.4
August	49.5	108.5	9.0	7.7	55.6	50.2	109.3	8.5	7.2	55.7	211.4
September	50.0	108.8	8.7	7.4	55.5	49.6	108.6	8.3	7.1	55.3	211.5
October	50.4	108.9	8.4	7.2	55.4	49.0	108.7	8.6	7.3	55.4	211.5
November	50.8	108.9	8.3	7.1	55.4	51.3	109.5	8.2	7.0	55.6	211.6
December	51.2	109.0	8.2	7.0	55.4	51.9	107.2	8.3	7.2	54.6	211.7
2014											
January	51.6	109.1	8.2	7.0	55.4	52.0	110.5	8.8	7.3	56.3	211.7
February	51.9	109.3	8.1	6.9	55.4	51.3	109.7	7.7	6.6	55.4	211.8
March	51.9	109.4	8.1	6.9	55.5	51.6	108.2	7.9	6.8	54.8	211.9
April	51.8	109.6	8.2	6.9	55.5	52.4	110.1	8.3	7.0	55.9	212.0
May	51.7	109.6	8.3	7.0	55.6	52.1	109.5	7.9	6.7	55.3	212.1
June	51.5	109.7	8.5	7.1	55.7	50.8	110.3	8.9	7.4	56.1	212.2
July	51.4	109.6	8.6	7.3	55.7	51.4	109.3	8.8	7.5	55.6	212.3
PERSONS											
July 2011	156.6	237.9	13.0	5.2	60.4	155.9	238.6	13.1	5.2	60.6	415.5
July 2012	149.8	234.5	17.2	6.8	60.4	149.9	234.4	16.0	6.4	60.1	416.8
2013											
July	146.1	231.3	20.6	8.2	60.3	147.8	231.7	20.5	8.1	60.3	418.0
August	146.3	230.9	20.6	8.2	60.2	146.2	230.8	20.4	8.1	60.1	418.0
September	146.6	230.6	20.3	8.1	60.0	145.1	230.5	20.3	8.1	60.0	418.1
October	147.0	230.4	19.8	7.9	59.8	145.7	230.8	19.7	7.9	59.9	418.3
November	147.6	230.6	19.3	7.7	59.7	149.2	230.7	19.3	7.7	59.8	418.4
December	148.7	231.4	19.0	7.6	59.8	149.1	228.7	18.8	7.6	59.1	418.6
2014											
January	150.1	232.4	18.9	7.5	60.0	150.3	234.3	19.0	7.5	60.5	418.7
February	151.3	233.6	18.9	7.5	60.3	149.4	233.5	18.5	7.3	60.2	418.8
March	152.1	234.7	19.0	7.5	60.5	151.3	234.2	19.2	7.6	60.5	418.9
April	152.6	235.5	19.0	7.5	60.7	156.8	238.0	19.5	7.6	61.4	419.1
May	152.8	236.0	19.1	7.5	60.9	152.5	234.1	18.9	7.5	60.4	419.2
June	152.8	236.4	19.1	7.5	60.9	151.9	236.9	18.6	7.3	60.9	419.4
July	152.6	236.5	19.1	7.5	61.0	151.1	236.3	19.5	7.6	61.0	419.5

	TREND					<i>Civilian population aged 15 years and over</i>
	<i>Employed full time</i>	<i>Total employed</i>	<i>Total unemployed</i>	<i>Unemployment rate</i>	<i>Participation rate</i>	
	'000	'000	'000	%	%	
MALES						
July 2011	56.8	64.8	2.8	4.1	75.9	88.9
July 2012	59.9	67.1	2.9	4.1	76.9	91.0
2013						
July	61.6	70.0	4.1	5.5	79.4	93.4
August	62.2	70.4	4.0	5.3	79.4	93.6
September	62.5	70.6	3.8	5.0	79.3	93.8
October	62.9	71.0	3.5	4.7	79.3	93.9
November	63.2	71.4	3.3	4.4	79.4	94.1
December	63.9	72.0	3.1	4.2	79.7	94.2
2014						
January	64.7	72.7	3.0	3.9	80.1	94.5
February	65.5	73.2	2.9	3.8	80.4	94.7
March	66.1	73.4	3.0	3.9	80.3	94.9
April	66.3	73.3	3.1	4.1	80.1	95.5
May	66.2	73.0	3.4	4.5	79.7	96.0
June	66.0	72.6	3.7	4.9	79.2	96.5
July	65.6	72.0	4.1	5.4	78.7	96.7
FEMALES						
July 2011	40.1	54.7	2.1	3.7	67.8	83.9
July 2012	42.3	57.7	2.5	4.1	70.4	85.5
2013						
July	41.4	57.7	3.6	5.8	70.4	87.0
August	41.8	57.8	3.5	5.7	70.4	87.1
September	42.1	57.9	3.3	5.4	70.2	87.2
October	42.3	58.1	3.1	5.0	70.1	87.3
November	42.5	58.3	2.8	4.6	70.0	87.4
December	42.7	58.7	2.6	4.2	70.0	87.6
2014						
January	43.1	59.2	2.4	3.9	70.2	87.7
February	43.7	59.6	2.3	3.7	70.4	87.9
March	44.1	59.9	2.2	3.6	70.6	88.0
April	44.3	60.0	2.3	3.6	70.6	88.2
May	44.3	59.9	2.3	3.8	70.4	88.4
June	44.1	59.7	2.4	3.9	70.1	88.7
July	43.7	59.4	2.5	4.1	69.7	88.8
PERSONS						
July 2011	96.8	119.5	4.9	3.9	72.0	172.8
July 2012	102.1	124.8	5.4	4.1	73.7	176.5
2013						
July	103.0	127.7	7.6	5.6	75.0	180.4
August	103.9	128.2	7.4	5.5	75.1	180.7
September	104.6	128.6	7.1	5.2	74.9	181.0
October	105.1	129.1	6.6	4.9	74.9	181.2
November	105.7	129.7	6.1	4.5	74.9	181.5
December	106.6	130.7	5.7	4.2	75.0	181.8
2014						
January	107.9	131.8	5.4	3.9	75.3	182.2
February	109.2	132.8	5.2	3.8	75.6	182.5
March	110.2	133.3	5.2	3.8	75.7	182.9
April	110.6	133.3	5.4	3.9	75.5	183.7
May	110.5	132.9	5.7	4.1	75.2	184.4
June	110.1	132.2	6.1	4.5	74.8	185.2
July	109.3	131.4	6.6	4.8	74.4	185.5

	TREND					Civilian population aged 15 years and over '000
	Employed full time	Total employed	Total unemployed	Unemployment rate	Participation rate	
	'000	'000	'000	%	%	
MALES						
July 2011	90.2	106.9	5.0	4.5	77.5	144.4
July 2012	90.6	107.8	4.8	4.3	76.3	147.5
2013						
July	91.3	110.9	4.7	4.0	76.8	150.5
August	91.2	110.9	4.8	4.1	76.7	150.8
September	91.0	110.8	4.9	4.2	76.5	151.1
October	90.9	110.8	4.8	4.1	76.3	151.4
November	90.9	111.1	4.6	3.9	76.2	151.8
December	91.2	111.6	4.3	3.7	76.2	152.1
2014						
January	91.5	112.2	4.0	3.4	76.3	152.3
February	91.9	112.7	3.8	3.3	76.3	152.6
March	92.2	113.0	3.7	3.2	76.3	152.8
April	92.4	113.1	3.6	3.1	76.3	153.1
May	92.5	113.2	3.5	3.0	76.2	153.3
June	92.6	113.3	3.5	3.0	76.0	153.5
July	92.7	113.3	3.5	3.0	76.0	153.7
FEMALES						
July 2011	65.1	99.4	3.8	3.7	68.1	151.6
July 2012	66.9	103.5	3.5	3.2	69.4	154.2
2013						
July	64.1	101.9	4.1	3.9	67.4	157.3
August	63.5	101.4	4.3	4.0	67.1	157.6
September	63.2	101.2	4.4	4.1	66.8	157.9
October	63.4	101.2	4.4	4.1	66.7	158.2
November	64.0	101.5	4.3	4.1	66.8	158.5
December	64.9	101.8	4.2	4.0	66.8	158.8
2014						
January	65.7	101.9	4.2	3.9	66.7	159.0
February	66.2	101.8	4.2	3.9	66.5	159.2
March	66.4	101.6	4.3	4.1	66.4	159.5
April	66.4	101.4	4.6	4.3	66.3	159.7
May	66.3	101.4	4.8	4.5	66.4	160.0
June	66.3	101.5	5.0	4.7	66.5	160.2
July	66.2	101.7	5.2	4.8	66.6	160.5
PERSONS						
July 2011	155.4	206.4	8.8	4.1	72.7	295.9
July 2012	157.5	211.3	8.3	3.8	72.8	301.7
2013						
July	155.4	212.8	8.8	4.0	72.0	307.8
August	154.7	212.4	9.0	4.1	71.8	308.4
September	154.2	212.0	9.2	4.2	71.6	309.0
October	154.3	212.0	9.2	4.1	71.4	309.6
November	154.9	212.6	8.9	4.0	71.4	310.2
December	156.0	213.3	8.5	3.8	71.4	310.9
2014						
January	157.2	214.0	8.1	3.7	71.4	311.3
February	158.1	214.4	8.0	3.6	71.3	311.8
March	158.6	214.5	8.0	3.6	71.3	312.3
April	158.7	214.6	8.2	3.7	71.2	312.8
May	158.8	214.6	8.3	3.7	71.2	313.3
June	158.9	214.8	8.5	3.8	71.2	313.8
July	158.9	215.0	8.6	3.9	71.2	314.2

	EMPLOYED			UNEMPLOYED		Labour force	Not in labour force	Civilian population aged 15 years and over	UNEMPLOYMENT RATE		Participation rate
	Full time	Part time	Total	Looking for f/t work	Total				Looking for f/t work	Total	
	'000	'000	'000	'000	'000				'000	'000	
MALES											
New South Wales	1 653.7	313.8	1 967.4	89.8	112.4	2 079.9	910.9	2 990.8	5.1	5.4	69.5
Victoria	1 253.1	300.2	1 553.3	84.7	113.1	1 666.4	675.8	2 342.1	6.3	6.8	71.1
Queensland	1 045.2	200.2	1 245.3	73.0	89.2	1 334.5	538.8	1 873.4	6.5	6.7	71.2
South Australia	352.1	80.4	432.5	27.3	33.7	466.2	214.6	680.8	7.2	7.2	68.5
Western Australia	653.0	106.5	759.5	34.5	39.8	799.3	261.2	1 060.5	5.0	5.0	75.4
Tasmania	98.3	27.8	126.1	8.7	10.4	136.5	70.7	207.2	8.1	7.6	65.9
Northern Territory	63.7	6.5	70.2	3.4	4.6	74.7	22.0	96.7	5.0	6.1	77.3
Australian Capital Territory	94.3	19.0	113.4	2.5	3.5	116.9	36.8	153.7	2.6	3.0	76.1
Australia	5 213.4	1 054.3	6 267.7	323.8	406.7	6 674.4	2 730.8	9 405.2	5.8	6.1	71.0
FEMALES											
New South Wales	910.3	731.1	1 641.5	66.8	102.4	1 743.8	1 350.5	3 094.3	6.8	5.9	56.4
Victoria	690.1	638.6	1 328.6	58.6	92.0	1 420.6	1 012.2	2 432.8	7.8	6.5	58.4
Queensland	610.6	495.3	1 106.0	47.2	71.4	1 177.4	748.6	1 926.0	7.2	6.1	61.1
South Australia	178.5	189.3	367.8	16.2	24.1	391.9	313.5	705.4	8.3	6.2	55.6
Western Australia	322.9	284.7	607.7	19.6	30.5	638.2	405.8	1 044.0	5.7	4.8	61.1
Tasmania	51.5	58.4	109.8	5.2	7.6	117.4	94.8	212.3	9.1	6.5	55.3
Northern Territory	42.1	15.5	57.6	2.1	3.1	60.7	28.1	88.8	4.8	5.0	68.3
Australian Capital Territory	67.6	35.9	103.5	2.8	5.1	108.6	51.9	160.5	4.0	4.7	67.7
Australia	2 873.6	2 448.8	5 322.4	218.5	336.3	5 658.7	4 005.4	9 664.1	7.1	5.9	58.6
PERSONS											
New South Wales	2 564.0	1 044.9	3 608.9	156.5	214.8	3 823.7	2 261.3	6 085.0	5.8	5.6	62.8
Victoria	1 943.2	938.7	2 881.9	143.3	205.1	3 087.0	1 688.0	4 775.0	6.9	6.6	64.6
Queensland	1 655.8	695.5	2 351.3	120.2	160.6	2 511.9	1 287.5	3 799.4	6.8	6.4	66.1
South Australia	530.6	269.6	800.2	43.5	57.8	858.1	528.1	1 386.2	7.6	6.7	61.9
Western Australia	976.0	391.3	1 367.2	54.0	70.3	1 437.5	667.0	2 104.5	5.2	4.9	68.3
Tasmania	149.7	86.2	235.9	13.8	18.0	253.9	165.6	419.5	8.5	7.1	60.5
Northern Territory	105.8	22.0	127.8	5.5	7.6	135.4	50.1	185.5	4.9	5.6	73.0
Australian Capital Territory	161.9	54.9	216.9	5.3	8.7	225.5	88.7	314.2	3.2	3.8	71.8
Australia	8 087.0	3 503.1	11 590.1	542.2	743.0	12 333.1	6 736.2	19 069.2	6.3	6.0	64.7

	EMPLOYED		UNEMPLOYED		UNEMPLOYMENT RATE		Participation rate	Employment to population ratio	Unemployment to population ratio – looking for full-time work
	Full time	Total	Looking for f/t work	Total	Looking for f/t work	Total			
	'000	'000	'000	'000	%	%			
MALES									
July 2011	126.6	330.9	34.6	65.2	21.5	16.5	53.2	44.4	4.6
July 2012	126.4	325.7	38.5	72.9	23.3	18.3	53.2	43.5	5.1
2013									
July	112.8	321.9	34.3	68.5	23.3	17.6	51.9	42.8	4.6
August	111.4	319.3	33.6	68.0	23.2	17.6	51.5	42.4	4.5
September	110.5	316.5	33.1	67.1	23.0	17.5	51.0	42.1	4.4
October	110.1	314.5	32.7	65.9	22.9	17.3	50.5	41.8	4.3
November	110.1	313.7	32.4	64.8	22.7	17.1	50.3	41.7	4.3
December	110.3	313.9	32.5	64.4	22.8	17.0	50.2	41.7	4.3
2014									
January	110.7	314.5	33.2	65.0	23.1	17.1	50.4	41.7	4.4
February	111.3	314.8	34.5	66.9	23.6	17.5	50.7	41.8	4.6
March	111.8	314.4	36.3	69.9	24.5	18.2	51.0	41.7	4.8
April	112.3	313.7	38.2	73.4	25.3	18.9	51.3	41.6	5.1
May	112.7	313.0	39.9	77.1	26.1	19.8	51.7	41.5	5.3
June	113.2	312.2	41.6	80.9	26.9	20.6	52.1	41.4	5.5
July	113.4	311.5	43.0	84.3	27.5	21.3	52.4	41.3	5.7
FEMALES									
July 2011	69.6	344.3	23.7	59.5	25.4	14.7	57.1	48.7	3.3
July 2012	68.9	341.6	22.9	61.4	25.0	15.2	56.8	48.2	3.2
2013									
July	56.6	339.4	26.0	60.8	31.5	15.2	56.2	47.6	3.7
August	55.9	336.2	26.5	62.9	32.1	15.8	56.0	47.2	3.7
September	55.4	333.5	26.5	63.9	32.3	16.1	55.7	46.8	3.7
October	55.1	331.9	26.1	64.0	32.1	16.2	55.5	46.5	3.7
November	55.1	331.2	25.6	63.5	31.7	16.1	55.3	46.4	3.6
December	55.3	330.3	25.4	63.3	31.5	16.1	55.1	46.2	3.6
2014									
January	55.5	329.2	25.6	63.8	31.6	16.2	55.0	46.1	3.6
February	55.5	328.2	26.2	65.2	32.0	16.6	55.0	45.9	3.7
March	55.4	327.8	26.8	66.9	32.5	17.0	55.2	45.8	3.7
April	55.3	328.0	27.1	68.3	32.9	17.2	55.4	45.8	3.8
May	55.1	328.7	27.3	69.2	33.1	17.4	55.6	45.9	3.8
June	55.2	330.0	27.4	69.8	33.2	17.4	55.8	46.1	3.8
July	55.3	331.3	27.2	69.8	33.0	17.4	55.9	46.2	3.8
PERSONS									
July 2011	196.3	675.1	58.3	124.8	22.9	15.6	55.1	46.5	4.0
July 2012	195.3	667.3	61.4	134.3	23.9	16.8	55.0	45.8	4.2
2013									
July	169.3	661.3	60.3	129.3	26.3	16.4	54.0	45.1	4.1
August	167.3	655.4	60.1	130.8	26.4	16.6	53.7	44.7	4.1
September	165.9	650.0	59.6	131.0	26.4	16.8	53.3	44.4	4.1
October	165.3	646.4	58.8	129.9	26.2	16.7	53.0	44.1	4.0
November	165.2	644.9	57.9	128.3	26.0	16.6	52.7	44.0	4.0
December	165.6	644.2	57.9	127.7	25.9	16.5	52.6	43.9	3.9
2014									
January	166.2	643.7	58.9	128.9	26.1	16.7	52.6	43.8	4.0
February	166.8	643.0	60.6	132.1	26.6	17.0	52.8	43.8	4.1
March	167.2	642.1	63.0	136.8	27.4	17.6	53.0	43.7	4.3
April	167.5	641.7	65.3	141.7	28.0	18.1	53.3	43.7	4.4
May	167.9	641.7	67.3	146.3	28.6	18.6	53.6	43.6	4.6
June	168.3	642.3	69.0	150.7	29.0	19.0	53.9	43.7	4.7
July	168.7	642.8	70.2	154.1	29.4	19.3	54.1	43.7	4.8

	EMPLOYED		UNEMPLOYED		UNEMPLOYMENT RATE		Participation rate	Employment to population ratio	Unemployment to population ratio – looking for full-time work
	Full time	Total	Looking for f/t work	Total	Looking for f/t work	Total			
	'000	'000	'000	'000	%	%			
MALES									
July 2011	129.1	331.5	35.7	66.6	21.7	16.7	53.4	44.5	4.8
July 2012	120.2	323.4	38.5	71.4	24.3	18.1	52.7	43.2	5.1
2013									
July	113.8	328.4	30.9	68.1	21.4	17.2	52.7	43.7	4.1
August	113.2	317.4	34.6	70.6	23.4	18.2	51.6	42.2	4.6
September	109.8	310.7	34.4	68.9	23.9	18.1	50.5	41.3	4.6
October	107.7	313.2	35.7	66.1	24.9	17.4	50.4	41.6	4.7
November	110.2	315.6	27.7	63.5	20.1	16.7	50.4	41.9	3.7
December	110.5	314.8	31.9	61.5	22.4	16.3	50.0	41.8	4.2
2014									
January	115.1	313.7	34.7	65.2	23.1	17.2	50.3	41.6	4.6
February	108.2	314.6	35.7	68.4	24.8	17.9	50.9	41.8	4.7
March	109.5	317.4	34.1	69.9	23.8	18.0	51.4	42.1	4.5
April	114.2	312.4	38.1	74.0	25.0	19.1	51.3	41.4	5.1
May	113.8	309.7	41.6	73.3	26.8	19.1	50.8	41.1	5.5
June	113.4	317.7	39.9	79.7	26.0	20.1	52.6	42.1	5.3
July	112.7	307.9	45.2	91.6	28.6	22.9	52.9	40.8	6.0
FEMALES									
July 2011	69.8	339.3	23.6	60.6	25.3	15.2	56.6	48.0	3.3
July 2012	69.1	342.9	24.3	62.2	26.0	15.4	57.1	48.3	3.4
2013									
July	56.5	338.8	23.9	57.4	29.7	14.5	55.6	47.5	3.4
August	56.6	334.2	28.7	65.5	33.6	16.4	56.1	46.9	4.0
September	55.3	334.0	27.7	68.2	33.3	17.0	56.4	46.8	3.9
October	55.3	335.3	25.3	66.1	31.3	16.5	56.3	47.0	3.5
November	53.1	326.7	26.4	63.1	33.2	16.2	54.6	45.8	3.7
December	55.4	327.1	22.6	56.1	29.0	14.7	53.6	45.8	3.2
2014									
January	57.1	336.6	26.0	63.4	31.3	15.9	56.0	47.1	3.6
February	56.4	328.4	26.3	68.3	31.8	17.2	55.5	45.9	3.7
March	55.1	327.7	27.5	66.8	33.3	16.9	55.2	45.8	3.8
April	53.4	323.1	27.3	68.9	33.9	17.6	54.8	45.1	3.8
May	58.2	324.6	29.3	74.1	33.5	18.6	55.7	45.3	4.1
June	50.7	334.7	23.9	61.1	32.1	15.4	55.2	46.7	3.3
July	58.6	335.4	28.4	73.3	32.7	17.9	57.0	46.8	4.0
PERSONS									
July 2011	198.9	670.8	59.3	127.2	23.0	15.9	54.9	46.2	4.1
July 2012	189.4	666.3	62.8	133.7	24.9	16.7	54.9	45.7	4.3
2013									
July	170.2	667.2	54.8	125.5	24.4	15.8	54.1	45.6	3.7
August	169.8	651.7	63.4	136.1	27.2	17.3	53.8	44.5	4.3
September	165.2	644.7	62.1	137.1	27.3	17.5	53.4	44.0	4.2
October	163.0	648.6	61.0	132.2	27.2	16.9	53.3	44.2	4.2
November	163.3	642.4	54.1	126.6	24.9	16.5	52.4	43.8	3.7
December	165.8	641.9	54.6	117.6	24.8	15.5	51.7	43.7	3.7
2014									
January	172.2	650.3	60.7	128.7	26.1	16.5	53.1	44.3	4.1
February	164.6	643.1	62.1	136.7	27.4	17.5	53.1	43.8	4.2
March	164.5	645.1	61.6	136.6	27.2	17.5	53.2	43.9	4.2
April	167.5	635.5	65.4	142.9	28.1	18.4	53.0	43.2	4.5
May	172.0	634.3	70.9	147.4	29.2	18.9	53.2	43.1	4.8
June	164.1	652.4	63.8	140.8	28.0	17.8	53.9	44.3	4.3
July	171.3	643.3	73.7	164.9	30.1	20.4	54.9	43.7	5.0

	EMPLOYED			UNEMPLOYED			Civilian population aged 15–19 years	UNEMPLOYMENT RATE		Participation rate	Unemployment to population ratio – looking for full-time work	
	Full time	Part time	Total	Looking for f/t work	Total	Labour force		Not in labour force	Looking for f/t work			Total
	'000	'000	'000	'000	'000	'000		'000	%			%
NOT ATTENDING FULL-TIME EDUCATION												
Males												
July 2011	115.0	39.5	154.5	27.3	30.1	184.6	35.4	220.0	19.2	16.3	83.9	12.4
July 2012	110.6	40.8	151.4	28.2	30.8	182.2	35.2	217.4	20.3	16.9	83.8	13.0
July 2013	104.1	49.2	153.3	21.7	24.5	177.8	29.0	206.8	17.2	13.8	86.0	10.5
July 2014	104.7	37.6	142.3	33.1	35.8	178.1	29.0	207.1	24.0	20.1	86.0	16.0
Females												
July 2011	60.0	48.8	108.8	17.8	21.1	129.9	35.8	165.7	22.8	16.2	78.4	10.7
July 2012	55.5	54.1	109.6	18.8	20.3	130.0	28.7	158.6	25.3	15.6	81.9	11.8
July 2013	53.7	53.6	107.3	15.1	17.3	124.6	30.2	154.8	21.9	13.9	80.5	9.7
July 2014	49.5	48.4	97.9	17.8	20.1	118.0	31.0	149.0	26.4	17.1	79.2	11.9
Persons												
July 2011	175.0	88.3	263.3	45.1	51.2	314.5	71.2	385.7	20.5	16.3	81.5	11.7
July 2012	166.0	95.0	261.0	47.0	51.1	312.1	63.9	376.0	22.1	16.4	83.0	12.5
July 2013	157.8	102.9	260.7	36.7	41.8	302.4	59.1	361.6	18.9	13.8	83.6	10.2
July 2014	154.1	86.1	240.2	50.8	55.9	296.1	60.0	356.1	24.8	18.9	83.2	14.3
ATTENDING FULL-TIME EDUCATION												
Males												
July 2011	15.8	159.3	175.1	*5.3	28.2	203.3	322.1	525.4	*24.9	13.9	38.7	*1.0
July 2012	11.4	158.4	169.8	6.9	31.6	201.4	330.2	531.6	37.8	15.7	37.9	1.3
July 2013	11.4	161.3	172.8	*6.4	34.6	207.4	338.0	545.3	*36.1	16.7	38.0	*1.2
July 2014	9.8	153.9	163.6	7.7	43.4	207.0	340.9	547.9	44.2	20.9	37.8	1.4
Females												
July 2011	10.7	214.8	225.5	*4.1	32.6	258.2	283.0	541.2	*27.7	12.6	47.7	*0.8
July 2012	15.1	213.8	229.0	*3.5	34.5	263.5	287.2	550.7	*19.0	13.1	47.9	*0.6
July 2013	*4.3	224.3	228.6	*6.9	33.2	261.8	296.0	557.8	*61.4	12.7	46.9	*1.2
July 2014	11.0	224.7	235.7	8.1	44.0	279.7	288.4	568.0	42.5	15.7	49.2	1.4
Persons												
July 2011	26.5	374.1	400.6	9.4	60.8	461.5	605.1	1 066.6	26.1	13.2	43.3	0.9
July 2012	26.6	372.2	398.8	10.5	66.1	464.9	617.4	1 082.2	28.3	14.2	43.0	1.0
July 2013	15.7	385.6	401.4	13.3	67.9	469.2	633.9	1 103.1	45.8	14.5	42.5	1.2
July 2014	20.7	378.5	399.3	15.8	87.4	486.6	629.3	1 115.9	43.3	18.0	43.6	1.4
TOTAL												
Males												
July 2011	130.8	198.8	329.6	32.6	58.2	387.9	357.5	745.4	19.9	15.0	52.0	4.4
July 2012	122.0	199.2	321.2	35.1	62.4	383.6	365.4	749.0	22.4	16.3	51.2	4.7
July 2013	115.5	210.6	326.1	28.1	59.1	385.2	366.9	752.1	19.6	15.3	51.2	3.7
July 2014	114.4	191.5	305.9	40.8	79.1	385.0	369.9	755.0	26.3	20.6	51.0	5.4
Females												
July 2011	70.7	263.7	334.4	21.9	53.7	388.1	318.8	706.9	23.6	13.8	54.9	3.1
July 2012	70.6	268.0	338.6	22.3	54.9	393.4	315.8	709.3	24.0	13.9	55.5	3.1
July 2013	58.0	277.9	335.9	21.9	50.5	386.4	326.1	712.6	27.4	13.1	54.2	3.1
July 2014	60.4	273.1	333.6	25.9	64.1	397.7	319.4	717.0	30.0	16.1	55.5	3.6
Persons												
July 2011	201.6	462.4	664.0	54.4	112.0	776.0	676.3	1 452.3	21.3	14.4	53.4	3.7
July 2012	192.6	467.2	659.8	57.5	117.2	777.0	681.2	1 458.2	23.0	15.1	53.3	3.9
July 2013	173.5	488.5	662.0	50.0	109.6	771.6	693.1	1 464.7	22.4	14.2	52.7	3.4
July 2014	174.8	464.6	639.5	66.6	143.3	782.7	689.3	1 472.0	27.6	18.3	53.2	4.5

* estimate is subject to sampling variability too high for most practical purposes

	EMPLOYED			UNEMPLOYED		Labour force	Not in labour force	Civilian population aged 15–19 years	UNEMPLOYMENT RATE		Participation rate	Unemployment to population ratio – looking for full-time work
	Full time	Part time	Total	Looking for f/t work	Total				Looking for f/t work	Total		
	'000	'000	'000	'000	'000				'000	'000		
NOT ATTENDING FULL-TIME EDUCATION												
New South Wales	49.9	21.5	71.4	16.2	17.7	89.2	21.9	111.1	24.5	19.9	80.3	14.6
Victoria	22.1	17.9	40.0	8.3	8.9	48.9	10.3	59.2	27.3	18.2	82.5	14.0
Queensland	40.2	23.2	63.4	17.1	18.7	82.1	12.3	94.4	29.9	22.7	87.0	18.1
South Australia	7.4	6.3	13.7	*3.0	4.3	18.0	4.8	22.8	*29.1	23.7	79.0	*13.4
Western Australia	27.5	12.0	39.5	*4.1	*4.1	43.6	7.6	51.3	*13.1	*9.5	85.2	*8.1
Tasmania	3.1	2.1	5.2	*1.1	*1.1	6.3	*0.6	6.9	*25.8	*17.0	90.9	*15.5
Northern Territory	2.8	1.1	3.9	*0.5	*0.7	4.5	1.5	6.1	*16.0	*15.0	74.7	*8.6
Australian Capital Territory	*1.2	1.8	3.0	*0.4	*0.4	3.5	*0.9	4.4	*27.5	*12.9	79.4	*10.3
Australia	154.1	86.1	240.2	50.8	55.9	296.1	60.0	356.1	24.8	18.9	83.2	14.3
ATTENDING FULL-TIME EDUCATION												
New South Wales	*6.4	104.3	110.7	*5.6	21.6	132.4	221.6	354.0	*46.8	16.3	37.4	*1.6
Victoria	*3.7	108.7	112.4	*3.8	26.7	139.1	157.8	296.9	*50.5	19.2	46.9	*1.3
Queensland	*5.2	81.4	86.6	*4.1	19.7	106.3	110.2	216.4	*43.9	18.5	49.1	*1.9
South Australia	*1.1	27.6	28.7	*0.3	7.1	35.8	45.7	81.5	*18.8	19.8	43.9	*0.3
Western Australia	*3.3	38.2	41.5	*0.8	6.2	47.7	63.7	111.4	*19.7	13.0	42.8	*0.7
Tasmania	*0.2	9.3	9.5	*0.8	3.3	12.8	13.8	26.6	*76.9	25.6	48.0	*2.9
Northern Territory	0.5	2.8	3.3	*0.2	*0.3	3.6	6.6	10.2	*23.9	*9.1	35.6	*1.5
Australian Capital Territory	*0.3	6.2	6.5	*0.4	2.4	8.9	9.9	18.8	*54.8	27.3	47.4	*1.9
Australia	20.7	378.5	399.3	15.8	87.4	486.6	629.3	1 115.9	43.3	18.0	43.6	1.4
TOTAL												
New South Wales	56.3	125.9	182.1	21.8	39.4	221.5	243.5	465.0	27.9	17.8	47.6	4.7
Victoria	25.8	126.6	152.4	12.1	35.6	188.0	168.1	356.1	31.9	18.9	52.8	3.4
Queensland	45.4	104.6	150.0	21.2	38.4	188.4	122.5	310.9	31.8	20.4	60.6	6.8
South Australia	8.5	34.0	42.5	*3.3	11.4	53.8	50.5	104.3	*27.9	21.1	51.6	*3.2
Western Australia	30.8	50.3	81.0	*5.0	10.4	91.4	71.3	162.7	*13.9	11.3	56.2	*3.0
Tasmania	3.3	11.4	14.7	1.8	4.3	19.1	14.5	33.5	35.6	22.7	56.9	5.5
Northern Territory	3.3	3.9	7.2	*0.7	*1.0	8.2	8.1	16.3	*17.3	*12.4	50.2	*4.2
Australian Capital Territory	*1.5	8.0	9.5	*0.8	2.9	12.4	10.8	23.2	*35.4	23.3	53.4	*3.5
Australia	174.8	464.6	639.5	66.6	143.3	782.7	689.3	1 472.0	27.6	18.3	53.2	4.5

* estimate is subject to sampling variability too high for most practical purposes

LABOUR FORCE STATUS IN JULY 2014

<i>Labour force status in June 2014</i>	<i>Employed Full time</i>	<i>Employed Part time</i>	<i>Employed Total</i>	<i>Unemployed</i>	<i>Labour Force</i>	<i>Not in Labour Force</i>	<i>Matched Civilian Population</i>
	'000	'000	'000	'000	'000	'000	'000
MALES							
Employed Full time	3 968.6	112.3	4 080.8	26.2	4 107.0	57.6	4 164.7
Employed Part time	145.5	655.9	801.4	19.7	821.1	72.5	893.6
Employed Total	4 114.1	768.1	4 882.2	45.9	4 928.1	130.2	5 058.3
Unemployed Total	30.1	22.4	52.6	196.7	249.3	67.7	316.9
Labour Force	4 144.2	790.6	4 934.8	242.6	5 177.4	197.8	5 375.2
Not in Labour Force	40.9	51.8	92.7	69.5	162.2	1 880.3	2 042.5
Matched Civilian Population	4 185.1	842.4	5 027.5	312.1	5 339.6	2 078.1	7 417.7
FEMALES							
Employed Full time	2 069.5	162.6	2 232.0	9.8	2 241.9	46.1	2 288.0
Employed Part time	179.5	1 712.7	1 892.2	23.5	1 915.7	106.1	2 021.8
Employed Total	2 249.0	1 875.3	4 124.2	33.3	4 157.5	152.2	4 309.7
Unemployed Total	13.8	30.0	43.7	158.3	202.0	69.2	271.2
Labour Force	2 262.7	1 905.2	4 167.9	191.6	4 359.6	221.4	4 580.9
Not in Labour Force	32.9	91.7	124.6	77.7	202.3	2 793.0	2 995.3
Matched Civilian Population	2 295.6	1 997.0	4 292.6	269.3	4 561.9	3 014.3	7 576.2
PERSONS							
Employed Full time	6 038.0	274.8	6 312.9	36.0	6 348.9	103.7	6 452.6
Employed Part time	325.0	2 368.6	2 693.6	43.1	2 736.8	178.6	2 915.4
Employed Total	6 363.1	2 643.4	9 006.5	79.2	9 085.6	282.3	9 368.0
Unemployed Total	43.9	52.4	96.3	355.0	451.3	136.8	588.1
Labour Force	6 407.0	2 695.8	9 102.8	434.2	9 536.9	419.2	9 956.1
Not in Labour Force	73.8	143.5	217.3	147.2	364.5	4 673.3	5 037.8
Matched Civilian Population	6 480.7	2 839.3	9 320.1	581.4	9 901.4	5 092.5	14 993.9

(a) Gross flows figures do not match published labour force estimates. Refer to gross flows in Glossary.

	TREND			SEASONALLY ADJUSTED		
	<i>Full time workers</i>	<i>Part time workers</i>	<i>Total</i>	<i>Full time workers</i>	<i>Part time workers</i>	<i>Total</i>
	millions	millions	millions	millions	millions	millions
MALES						
July 2011	907.4	68.7	976.1	908.6	70.0	978.6
July 2012	904.2	69.0	973.2	902.6	69.1	971.7
2013						
July	902.0	71.9	973.9	907.9	71.8	979.7
August	901.3	72.6	973.9	902.8	72.2	975.0
September	900.6	73.3	973.9	898.8	72.9	971.7
October	900.8	73.9	974.8	900.4	74.7	975.1
November	901.6	74.6	976.3	897.9	75.0	972.9
December	902.2	75.2	977.4	899.1	74.6	973.7
2014						
January	902.7	75.7	978.4	911.1	75.3	986.4
February	903.4	75.8	979.2	905.5	75.7	981.1
March	904.0	75.7	979.7	907.2	77.6	984.8
April	905.1	75.4	980.5	888.8	75.3	964.1
May	906.7	75.0	981.7	908.0	74.0	981.9
June	908.6	74.6	983.2	919.6	75.1	994.7
July	910.3	74.1	984.4	909.5	73.4	982.9
FEMALES						
July 2011	447.3	166.4	613.8	447.9	165.4	613.3
July 2012	443.7	165.8	609.5	444.6	165.7	610.3
2013						
July	449.6	169.8	619.4	447.7	172.0	619.8
August	449.8	170.2	620.0	456.7	167.0	623.7
September	449.3	171.1	620.4	448.9	171.3	620.2
October	448.8	172.1	620.9	448.9	173.4	622.3
November	448.2	173.0	621.2	444.3	171.9	616.3
December	447.3	173.5	620.8	446.7	172.4	619.1
2014						
January	446.5	173.9	620.4	447.6	179.5	627.1
February	446.4	173.9	620.3	449.5	170.1	619.6
March	446.8	173.9	620.7	450.9	173.1	624.0
April	447.7	174.0	621.7	435.5	174.1	609.6
May	449.0	174.2	623.1	450.3	174.7	625.0
June	450.6	174.3	624.9	455.3	175.6	630.9
July	452.2	174.3	626.5	454.2	173.6	627.8
PERSONS						
July 2011	1 354.7	235.1	1 590.0	1 356.5	235.4	1 591.9
July 2012	1 347.9	234.8	1 582.7	1 347.3	234.8	1 582.0
2013						
July	1 351.6	241.7	1 593.3	1 355.7	243.8	1 599.5
August	1 351.0	242.8	1 593.9	1 359.5	239.1	1 598.7
September	1 349.9	244.4	1 594.3	1 347.7	244.2	1 591.9
October	1 349.6	246.0	1 595.6	1 349.2	248.2	1 597.4
November	1 349.8	247.6	1 597.4	1 342.2	246.9	1 589.1
December	1 349.4	248.8	1 598.2	1 345.7	247.0	1 592.8
2014						
January	1 349.2	249.5	1 598.8	1 358.7	254.8	1 613.5
February	1 349.7	249.8	1 599.5	1 355.0	245.8	1 600.8
March	1 350.8	249.6	1 600.5	1 358.1	250.6	1 608.7
April	1 352.7	249.5	1 602.2	1 324.3	249.4	1 573.7
May	1 355.6	249.2	1 604.8	1 358.2	248.7	1 607.0
June	1 359.2	248.9	1 608.1	1 374.9	250.7	1 625.5
July	1 362.5	248.4	1 610.9	1 363.7	247.0	1 610.7

HOURS WORKED

	New South Wales	Victoria	Queensland	South Australia	Western Australia	Tasmania	Northern Territory	Australian Capital Territory	Australia
	millions	millions	millions	millions	millions	millions	millions	millions	millions

SEASONALLY ADJUSTED

July 2011	496.6	391.0	332.5	111.3	181.2	31.9	np	np	1 591.9
July 2012	494.4	385.7	322.6	110.7	189.4	30.8	np	np	1 582.0
2013									
July	501.1	391.9	335.7	106.1	187.9	29.8	np	np	1 599.5
August	499.4	389.5	334.4	107.7	190.6	29.5	np	np	1 598.7
September	496.1	388.0	332.2	108.6	189.6	29.8	np	np	1 591.9
October	498.0	392.4	331.1	107.1	190.2	29.9	np	np	1 597.4
November	495.3	388.7	329.8	108.7	189.1	30.1	np	np	1 589.1
December	496.0	390.4	330.6	108.4	189.2	30.0	np	np	1 592.8
January	498.4	392.2	339.6	111.6	191.8	31.2	np	np	1 613.5
2014									
February	497.6	389.5	332.5	108.6	193.3	30.4	np	np	1 600.8
March	498.8	393.7	332.7	109.9	193.7	30.9	np	np	1 608.7
April	491.7	382.1	324.9	108.1	187.3	31.2	np	np	1 573.7
May	498.4	392.1	335.1	109.1	191.1	31.1	np	np	1 607.0
June	506.5	395.8	335.0	111.8	195.9	31.0	np	np	1 625.5
July	501.2	392.0	331.7	109.5	196.3	30.9	np	np	1 610.7

TREND

July 2011	495.1	392.6	329.3	112.0	181.4	31.9	18.6	29.1	1 590.0
July 2012	493.8	387.1	322.8	109.4	190.8	30.7	19.2	28.8	1 582.7
2013									
July	500.2	389.8	329.8	108.2	188.3	29.6	19.0	28.5	1 593.3
August	499.1	389.8	331.2	107.8	188.8	29.6	19.1	28.4	1 593.9
September	497.9	389.8	332.2	107.7	189.3	29.7	19.3	28.4	1 594.3
October	497.1	390.2	332.7	108.0	189.9	29.9	19.4	28.4	1 595.6
November	496.8	390.6	332.9	108.6	190.4	30.1	19.6	28.5	1 597.4
December	496.6	390.5	332.8	109.1	190.7	30.3	19.7	28.6	1 598.2
January	496.5	390.3	332.7	109.3	190.9	30.5	19.8	28.7	1 598.8
2014									
February	496.7	390.1	332.7	109.4	191.2	30.8	19.9	28.8	1 599.5
March	497.2	390.0	332.4	109.5	191.6	30.9	20.0	29.0	1 600.5
April	498.1	390.3	332.1	109.5	192.0	31.0	20.0	29.1	1 602.2
May	499.2	390.9	332.0	109.6	192.7	31.0	20.0	29.3	1 604.8
June	500.5	391.6	332.2	109.8	193.6	31.1	20.0	29.4	1 608.1
July	501.7	392.3	332.1	109.9	194.4	31.0	19.9	29.5	1 610.9

np not available for publication but included in totals where applicable, unless otherwise indicated

	TREND			SEASONALLY ADJUSTED			ORIGINAL		
	<i>Under-employed workers</i>	<i>Under-employment rate</i>	<i>Labour force under-utilisation rate</i>	<i>Under-employed workers</i>	<i>Under-employment rate</i>	<i>Labour force under-utilisation rate</i>	<i>Under-employed workers</i>	<i>Under-employment rate</i>	<i>Labour force under-utilisation rate</i>
	'000	%	%	'000	%	%	'000	%	%
MALES									
May 2010	353.1	5.6	10.7	331.1	5.3	10.5	333.0	5.3	10.5
May 2011	334.1	5.2	10.1	347.3	5.4	10.2	350.5	5.5	10.2
May 2012	352.4	5.4	10.5	347.7	5.4	10.3	351.4	5.4	10.3
2012									
November	344.8	5.3	10.6	348.4	5.4	10.7	343.7	5.3	10.3
2013									
February	357.4	5.5	10.9	353.0	5.4	10.8	361.8	5.5	11.5
May	373.0	5.7	11.3	371.2	5.6	11.2	375.7	5.7	11.2
August	382.2	5.8	11.6	393.0	6.0	11.9	383.6	5.9	11.6
November	382.4	5.8	11.7	378.6	5.7	11.7	375.4	5.7	11.3
2014									
February	379.4	5.7	11.6	374.6	5.7	11.5	383.1	5.7	12.2
May	378.0	5.7	11.5	382.9	5.8	11.5	388.1	5.8	11.5
FEMALES									
May 2010	485.2	9.2	14.6	476.1	9.1	14.4	471.7	9.0	14.2
May 2011	483.3	9.0	14.4	479.2	8.9	14.3	475.4	8.8	14.2
May 2012	513.5	9.4	14.8	524.5	9.6	15.0	520.7	9.4	14.9
2012									
November	509.2	9.3	14.6	513.0	9.3	14.7	517.4	9.4	14.3
2013									
February	513.7	9.3	14.7	510.4	9.2	14.6	523.4	9.4	15.6
May	527.9	9.5	15.1	521.4	9.4	15.0	518.4	9.3	14.9
August	538.4	9.7	15.5	550.6	9.9	15.8	533.8	9.7	15.2
November	542.8	9.7	15.7	542.8	9.7	15.5	548.8	9.9	15.1
2014									
February	543.5	9.7	15.8	533.2	9.5	15.8	545.2	9.7	16.9
May	544.2	9.7	15.8	553.6	9.8	15.9	551.9	9.7	15.8
PERSONS									
May 2010	838.3	7.3	12.5	807.2	7.0	12.2	804.6	7.0	12.2
May 2011	817.4	6.9	12.0	826.4	7.0	12.1	825.9	7.0	12.0
May 2012	865.9	7.3	12.4	872.2	7.3	12.5	872.0	7.3	12.4
2012									
November	854.0	7.1	12.4	861.4	7.2	12.5	861.1	7.2	12.1
2013									
February	871.1	7.2	12.7	863.4	7.1	12.6	885.1	7.3	13.4
May	900.9	7.4	13.1	892.7	7.4	12.9	894.1	7.3	12.9
August	920.6	7.6	13.4	943.7	7.8	13.6	917.4	7.6	13.3
November	925.2	7.6	13.5	921.3	7.6	13.4	924.2	7.6	13.0
2014									
February	923.0	7.6	13.5	907.8	7.4	13.5	928.3	7.5	14.3
May	922.1	7.5	13.5	936.5	7.6	13.5	940.0	7.6	13.5

	TREND			SEASONALLY ADJUSTED			ORIGINAL		
	<i>Under-employed workers</i>	<i>Under-employment rate</i>	<i>Labour force under-utilisation rate</i>	<i>Under-employed workers</i>	<i>Under-employment rate</i>	<i>Labour force under-utilisation rate</i>	<i>Under-employed workers</i>	<i>Under-employment rate</i>	<i>Labour force under-utilisation rate</i>
	'000	%	%	'000	%	%	'000	%	%
MALES									
New South Wales	121.9	5.9	11.5	123.7	6.0	11.8	122.2	5.9	11.7
Victoria	97.6	6.0	11.7	98.5	6.0	11.6	101.2	6.2	11.7
Queensland	75.0	5.6	11.7	77.0	5.8	11.8	77.6	5.8	11.7
South Australia	28.4	6.1	12.9	28.1	6.1	12.9	28.1	6.0	12.6
Western Australia	38.2	4.8	10.1	40.6	5.1	10.1	40.5	5.0	9.8
Tasmania	10.4	7.7	15.8	10.0	7.3	15.7	10.6	7.8	15.4
Northern Territory	1.3	1.6	4.9	1.1	1.4	4.7	1.1	1.4	5.0
Australian Capital Territory	7.4	6.4	9.6	6.9	6.0	9.1	6.8	5.9	9.3
Australia	378.0	5.7	11.5	382.9	5.8	11.5	388.1	5.8	11.5
FEMALES									
New South Wales	160.8	9.3	15.0	166.9	9.6	15.2	167.2	9.6	15.1
Victoria	140.8	9.9	16.8	140.9	9.9	16.7	139.5	9.8	16.5
Queensland	120.5	10.3	16.7	124.6	10.7	17.0	122.9	10.4	16.9
South Australia	42.5	10.9	17.6	41.3	10.5	17.4	41.5	10.5	17.2
Western Australia	53.2	8.5	13.9	54.3	8.7	13.8	57.0	9.0	14.4
Tasmania	14.4	12.3	19.0	14.1	12.0	18.8	13.5	11.4	17.7
Northern Territory	2.8	4.4	7.0	3.0	4.7	6.6	3.1	4.9	7.0
Australian Capital Territory	6.5	6.2	10.4	6.9	6.6	11.8	7.3	6.9	12.2
Australia	544.2	9.7	15.8	553.6	9.8	15.9	551.9	9.7	15.8
PERSONS									
New South Wales	282.8	7.4	13.1	290.5	7.6	13.3	289.4	7.6	13.3
Victoria	238.4	7.8	14.1	239.4	7.8	14.0	240.7	7.8	13.9
Queensland	195.5	7.8	14.0	201.6	8.1	14.2	200.5	8.0	14.1
South Australia	71.0	8.3	15.1	69.3	8.1	15.0	69.5	8.1	14.7
Western Australia	91.4	6.4	11.8	94.8	6.6	11.7	97.5	6.8	11.8
Tasmania	24.8	9.8	17.3	24.1	9.5	17.2	24.1	9.5	16.5
Northern Territory	4.1	2.9	5.8	4.0	2.8	5.6	4.1	3.0	5.9
Australian Capital Territory	13.9	6.3	10.0	13.8	6.3	10.4	14.1	6.4	10.7
Australia	922.1	7.5	13.5	936.5	7.6	13.5	940.0	7.6	13.5

WHAT IF...? REVISIONS TO TREND ESTIMATES

EFFECT OF NEW SEASONALLY ADJUSTED ESTIMATES ON TREND ESTIMATES

TREND REVISIONS

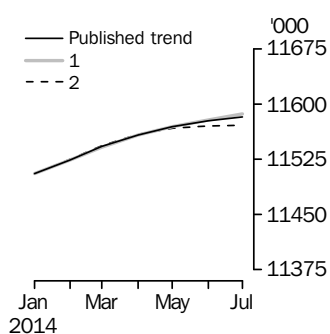
Each time new seasonally adjusted estimates become available, trend estimates are revised. This revision is a combined result of the concurrent seasonal adjustment process and the application of surrogates of the Henderson average to the seasonally adjusted series (see paragraphs 28 to 36 of the Explanatory Notes).

The examples in the tables below show two illustrative scenarios and the consequent revisions to previous trend estimates of employment and the unemployment rate. The revisions in the scenarios are due to the use of surrogates of the Henderson average, as the impact of revision of seasonally adjusted estimates can not be estimated in advance.

- (1) The August seasonally adjusted estimate is *higher* than the July estimate by:
0.24% for employment
2.20% for the unemployment rate
- (2) The August seasonally adjusted estimate is *lower* than the July estimate by:
0.24% for employment
2.20% for the unemployment rate

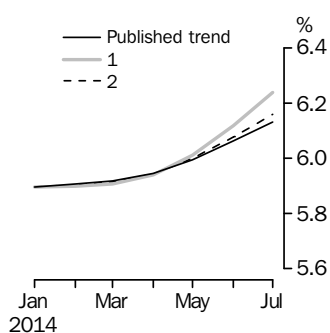
The percentage changes of 0.24% and 2.20% represent the average absolute monthly percentage changes in employment and the unemployment rate respectively. Estimates in the graphs have been calculated using unrounded estimates, and may be different from, but more accurate than, rounded estimates depicted in the corresponding table.

EMPLOYMENT



		WHAT IF NEXT MONTH'S SEASONALLY ADJUSTED ESTIMATE IS:	
		(1) 11 604.4 i.e. rises by 0.24%	(2) 11 548.8 i.e. falls by 0.24%
2014			
	<i>Trend as published</i>		
April	11 557.6	11 557.5	11 558.4
May	11 569.1	11 569.5	11 567.0
June	11 577.7	11 578.7	11 570.4
July	11 582.2	11 586.4	11 570.9

UNEMPLOYMENT RATE



		WHAT IF NEXT MONTH'S SEASONALLY ADJUSTED ESTIMATE IS:	
		(1) 6.5 i.e. rises by 2.20%	(2) 6.2 i.e. falls by 2.20%
2014			
	<i>Trend as published</i>		
April	5.9	5.9	5.9
May	6.0	6.0	6.0
June	6.1	6.1	6.1
July	6.1	6.2	6.2

EXPLANATORY NOTES

INTRODUCTION

1 This publication contains estimates of the civilian labour force derived from the Labour Force Survey component of the Monthly Population Survey. The full time series for estimates from this publication are also available electronically. More detailed estimates are released one week after this publication in various electronic formats – see *Labour Force, Australia, Detailed – Electronic Delivery* (cat. no. 6291.0.55.001) and *Labour Force, Australia, Detailed, Quarterly* (cat. no. 6291.0.55.003).

CONCEPTS, SOURCES AND METHODS

2 The conceptual framework used in Australia's Labour Force Survey aligns closely with the standards and guidelines set out in Resolutions of International Conferences of Labour Statisticians. Descriptions of the underlying concepts and structure of Australia's labour force statistics, and the sources and methods used in compiling the estimates, are presented in *Labour Statistics: Concepts, Sources and Methods* (cat. no. 6102.0.55.001) which is available on the ABS website <<http://www.abs.gov.au>>.

LABOUR FORCE SURVEY

3 The Labour Force Survey is based on a multi-stage area sample of private dwellings (currently approximately 26,000 houses, flats, etc.) and a list sample of non-private dwellings (hotels, motels, etc.), and covers approximately 0.32% of the civilian population of Australia aged 15 years and over.

4 Information is obtained from the occupants of selected dwellings by specially trained interviewers using computer-assisted interviewing, or self-completion online.

5 Households selected for the Labour Force Survey are interviewed each month for eight months, with one-eighth of the sample being replaced each month. The first interview is generally conducted face-to-face. Subsequent interviews are conducted by telephone (if acceptable to the respondent).

6 From December 2012 to April 2013, the ABS conducted a trial of online electronic data collection. Respondents in one rotation group (i.e. one-eighth of the survey sample) were offered the option of self completing their labour force survey questionnaire online instead of via a face-to-face or telephone interview. From May 2013, the ABS expanded the offer of online electronic collection to 50% of each new incoming rotation group. For more information see the article in the April 2013 issue of this publication. From September 2013, online electronic collection has been offered to 100% of private dwellings in each incoming rotation group. From April 2014, 100% of private dwellings are being offered online electronic collection.

7 The interviews are generally conducted during the two weeks beginning on the Sunday between the 5th and 11th of each month. The information obtained relates to the week before the interview (i.e. the reference week). Each year, to deal with operational difficulties involved with collecting and processing the Labour Force Survey around the Christmas and New Year holiday period, interviews for December start four weeks after November interviews start (i.e. between the 3rd and 9th December), and January interviews start five weeks after December interviews start. As a result, January interviewing may commence as early as the 7th or as late as the 13th, depending on the year. Occasionally, circumstances that present significant operational difficulties for survey collection can result in a change to the normal pattern for the start of interviewing.

8 Estimates from the Labour Force Survey are usually published first in this publication 32 days after the commencement of interviews for that month, with the exception of estimates for each December which are usually published 39 days after the commencement of interviews.

EXPLANATORY NOTES *continued*

SCOPE OF SURVEY

9 The Labour Force Survey includes all persons aged 15 years and over except members of the permanent defence forces, certain diplomatic personnel of overseas governments customarily excluded from census and estimated population counts, overseas residents in Australia, and members of non-Australian defence forces (and their dependants) stationed in Australia.

COVERAGE

10 In the Labour Force Survey, coverage rules are applied which aim to ensure that each person is associated with only one dwelling, and hence has only one chance of selection. The coverage rules are necessarily a balance between theoretical and operational considerations. Nevertheless, the chance of a person being enumerated at two separate dwellings in the survey is considered to be negligible.

POPULATION BENCHMARKS

11 The Labour Force Survey estimates are calculated in such a way as to add to independent estimates of the civilian population aged 15 years and over (population benchmarks). These population benchmarks are based on the most recently released estimates of Final and Preliminary quarterly Estimated Resident Population (ERP). For information on the methodology used to produce the ERP see *Australian Demographic Statistics* (cat. no. 3101.0). Since the most recently released ERP estimates lag the current time period for Labour Force estimates by nine months, the Labour Force population benchmarks are created by projecting forward three quarters past the most recently released quarterly ERP estimates. The projection is based on the historical pattern of each population component – births, deaths, interstate migration and net overseas migration (NOM). Projected estimates of NOM are supplemented with other data sources to better forecast population changes in the short-term. The main data source is the forecasts published by the Department of Immigration & Border Protection in the publication *The Outlook for Net Overseas Migration*.

12 Commencing in March 2010, the ERP series has been revised twice-yearly, in the March and September quarter issues of *Australian Demographic Statistics* (cat. no. 3101.0). This biannual revision cycle incorporates more up to date information available for NOM. From November 2012, each biannual revision to ERP estimates have been used to update the population benchmarks used in creating the Labour Force Survey estimates, usually resulting in revisions to approximately the last two years of the historical time series.

13 Every five years, the ERP series are revised to incorporate additional information available from the latest Census of Population and Housing (Census). Labour Force Survey population benchmarks, and the estimates, are revised following this five-yearly revision in the ERP. The process of incorporating the revised population benchmarks is referred to as 'rebased'. From the January 2014 issue of this publication, labour force estimates have been compiled using population benchmarks based on the results of the 2011 Census. Revisions were made to historical Labour Force estimates from June 2006 to December 2013. In addition, estimates from July 1991 to May 2006 were revised to reflect population benchmarks based on ERP revised following the 2011 Census. The next rebasing based on the Census will be following the release of the 2016 Census-based ERP estimates, which will incorporate revisions back five years. For more information on revised ERP estimates, refer to the June 2012 issue of *Australian Demographic Statistics* (cat. no. 3101.0) released in December 2012.

14 In between Censuses, the ABS revises the Labour Force population benchmarks using the latest ERP according to the paragraphs above. These were introduced in the July 2010, November 2012 and April 2013 issues. The revisions planned for the October 2013 issue and April 2014 issues were not implemented, see *What's New in the Labour Force* in the September 2013 issue of this publication. From the October 2014 issue, following the Census rebasing in the January 2014 issue, rebenchmarking will be undertaken quarterly in the April, July, October and January issues. For more

EXPLANATORY NOTES *continued*

POPULATION BENCHMARKS

continued

information, refer to the article *Rebenchmarking of Labour Force Series* in the November 2012 issue of this publication.

ESTIMATION METHOD

15 The estimation method used in the Labour Force Survey is Composite Estimation, which was introduced in May 2007. In January 2014 composite estimation was applied to all estimates from July 1991 as part of the 2011 Census rebenchmarking. Composite Estimation combines data collected in the previous six months with current month's data to produce the current month's estimates, thereby exploiting the high correlation between overlapping samples across months in the Labour Force Survey. The Composite Estimator combines the previous and current months' data by applying different factors according to length of time in the survey. After these factors are applied, the seven months of data are weighted to align with current month population benchmarks. For details see *Information Paper: Forthcoming Changes to Labour Force Statistics, 2007* (cat. no. 6292.0).

COMPARABILITY OF SERIES

16 From April 1986, the definition of employed persons was changed to include persons who worked without pay between 1 and 14 hours per week in a family business or on a farm (i.e. contributing family workers). For further information, see paragraphs 22 and 23 of the Explanatory Notes in the February 2003 issue of *Labour Force, Australia* (cat. no. 6203.0).

17 The ABS introduced telephone interviewing into the Labour Force Survey in August 1996. Implementation was phased in for each new sample group from August 1996 to February 1997. During the period of implementation, the new method produced different estimates than would have been obtained under the old methodology. The effect dissipated over the final months of implementation and was no longer discernible from February 1997. The estimates for February 1997 and onwards are directly comparable to estimates for periods prior to August 1996. For further details, see the feature article in the June 1997 issue of *Labour Force, Australia* (cat. no. 6203.0).

18 From April 2001 the Labour Force Survey was conducted using a redesigned questionnaire containing additional data items and some minor definitional changes. The definition of unemployed persons was changed to include all persons who were waiting to start work and were available to start in the reference week. This change was introduced in February 2004, when historical unit record data were revised from April 2001 to January 2004. This revision created a small trend break at April 2001 in unemployed persons and unemployment rate series. For further details, see *Information Paper: Forthcoming Changes to Labour Force Statistics, 2003* (cat. no. 6292.0), released in December 2003. From July 2014 the Labour Force Survey questionnaire was further redesigned and definitional changes made to active job search steps and duration of job search. For further details, see the Glossary and *Information Paper: Forthcoming Changes to Labour Force Statistics, June 2014* (cat. no. 6292.0), released in June 2014.

19 Core labour force series were revised in April 2001 for the period April 1986 to March 2001 for the remaining definitional changes introduced with the redesigned questionnaire, to reduce the impact of the changes on labour force series. For further details, see *Information Paper: Implementing the Redesigned Labour Force Survey Questionnaire* (cat. no. 6295.0) and *Information Paper: Questionnaires Used in the Labour Force Survey* (cat. no. 6232.0).

20 In May 2007, an improved method of estimation, known as composite estimation, was introduced into the Labour Force Survey. In introducing this change, the ABS revised unit record data from April 2001 to April 2007 based on the new estimation method. No change was identified in the trend breaks in the unemployed persons and unemployment rate series which arose with the introduction of a redesigned survey form

EXPLANATORY NOTES *continued*

COMPARABILITY OF SERIES *continued*

in April 2001 (as noted above in paragraph 19). For further details, see *Information Paper: Forthcoming Changes to Labour Force Statistics, 2007* (cat. no. 6292.0).

21 As one of a range of ABS savings initiatives for the 2008–09 financial year, there was a 24% reduction in the LFS sample size for the period July 2008 to August 2009, relative to the June 2008 sample size. The sample reduction was reversed from September 2009 to December 2009, with December 2009 estimates being the first produced under the fully reinstated sample.

LABOUR FORCE SURVEY SAMPLE

22 The current Labour Force Survey sample has been selected using information collected in the 2011 Census of Population and Housing.

23 The sample was introduced over four months – May 2013 to August 2013. Two rotation groups (i.e. one-quarter of the survey sample) were introduced each month. During the sample phase-in, the increased sample rotation had an impact on the quality of estimates. Movement standard errors increased by approximately 10%, representing, for example, an increase on the standard error on the Australian monthly change in employment for May 2013 from 27,000 to approximately 29,700.

24 Due to the use of composite estimation, there was a marginal impact on the quality of level estimates. Gross Flows analysis were impacted by the sample phase-in with between 60% to 70% of the sample available for matching between the current and previous months instead of the usual 80%. After full transition to the new sample, the quality of level and movement estimates is at the level designed for under the 2011 sample design and are of similar quality as the 2006 sample design. For further details, see *Information Paper: Labour Force Survey Sample Design* (cat. no. 6269.0) released on 30 May 2013.

RELIABILITY OF ESTIMATES

25 Two types of error are possible in an estimate based on a sample survey: sampling error and non-sampling error.

26 Sampling error occurs because a sample, rather than the entire population, is surveyed. One measure of the likely difference resulting from not including all dwellings in the survey is given by the standard error. There are about two chances in three that a sample estimate will differ by less than one standard error from the figure that would have been obtained if all dwellings had been included in the survey, and about nineteen chances in twenty that the difference will be less than two standard errors. Standard errors of key estimates for the latest month and of movements since the previous month of these estimates are shown in the standard errors section of this publication. Standard errors for other estimates and other movements may be calculated by using the spreadsheet contained in *Labour Force Survey Standard Errors, Data Cube* (cat. no. 6298.0.55.001) which is available free of charge on the ABS website <<http://www.abs.gov.au>>.

27 Non-sampling error arises from inaccuracies in collecting, recording and processing the data. Every effort is made to minimise reporting error by the careful design of questionnaires, intensive training and supervision of interviewers, and efficient data processing procedures. Non-sampling error also arises because information cannot be obtained from all persons selected in the survey. The Labour Force Survey receives a high level of co-operation from individuals in selected dwellings, with the average response rate over the last year being 94%. See Glossary for definition of response rate.

SEASONAL ADJUSTMENT AND TREND ESTIMATION

28 Seasonal adjustment is a means of removing the estimated effects of normal seasonal variation from the series so that the effects of other influences on the series can be more clearly recognised. Seasonal adjustment does not aim to remove the irregular or non-seasonal influences which may be present in any particular month. This means that month-to-month movements of the seasonally adjusted estimates may not be reliable indicators of trend behaviour.

EXPLANATORY NOTES *continued*

SEASONAL ADJUSTMENT AND TREND ESTIMATION *continued*

29 The Labour Force Survey uses the concurrent seasonal adjustment method to derive seasonal factors. Concurrent seasonal adjustment uses data up to the current month to estimate seasonal factors for the current and all previous months. This process can result in revisions each month to estimates for earlier periods. However, in most instances, the only noticeable revisions will be to the seasonally adjusted estimates for the previous month and one year prior to the current month.

30 The revision properties of the seasonally adjusted and trend estimates can be improved by the use of Autoregressive Integrated Moving Average (ARIMA) modelling. ARIMA modelling relies on the characteristics of the series being analysed to project future period data. The projected values are temporary, intermediate values, that are only used internally to improve the estimation of the seasonal factors. The projected data do not affect the original estimates and are discarded at the end of the seasonal adjustment process. The Labour Force Survey uses an ARIMA model for the majority of the individual time series. The ARIMA model is assessed as part of the annual reanalysis. For further details, see the feature article in the October 2004 issue of *Australian Economic Indicators* (cat. no. 1350.0).

31 Seasonal adjustment is able to remove the effect of events which occur at the same time in the survey every year. However, there are some events, like holidays, which are not always at the same time in the survey cycle or which are not at the same time across Australia. The effects of these types of events on Labour Force Survey estimates cannot in all cases be removed, because the pattern of their effects cannot be determined. However, two events for which adjustment is made in the seasonally adjusted series are the January interview start date and the timing of Easter. For further details, see *Information Paper: Forthcoming Changes to Labour Force Statistics* (cat. no. 6292.0) released in December 2003.

32 While seasonal factors for the complete time series are estimated each month, they will continue to be reviewed annually at a more detailed level to take into account each additional year's original data. This annual review will not normally result in significant changes to published estimates. The review is usually conducted in February each year with the results released in the February issue of this publication.

33 The smoothing of seasonally adjusted series to produce 'trend' series reduces the impact of the irregular component of the seasonally adjusted series. These trend estimates are derived by applying a 13-term Henderson-weighted moving average to all months except the last six. The last six monthly trend estimates are obtained by applying surrogates of the Henderson average to the seasonally adjusted series. Trend estimates are used to analyse the underlying behaviour of a series over time.

34 While this smoothing technique enables estimates to be produced for the latest month, it does result in revisions in addition to those caused by the revision of seasonally adjusted estimates. Generally, revisions due to the use of surrogates of the Henderson average become smaller, and after three months have a negligible impact on the series.

35 Trend estimates are published for the Northern Territory in table 10 and for the Australian Capital Territory in table 11. Unadjusted series for the two Territories have shown, historically, a high degree of variability, which can lead to considerable revisions to the seasonally adjusted estimates each month when seasonal factors are estimated. For this reason, seasonally adjusted estimates are not currently published for the two Territories. In addition, caution should be exercised in the interpretation of trend estimates for the two Territories, particularly for the three most recent months, where revisions may be relatively large.

EXPLANATORY NOTES *continued*

SEASONAL ADJUSTMENT AND TREND ESTIMATION *continued*

36 For further information, see *A Guide to Interpreting Time Series – Monitoring Trends* (cat. no. 1349.0) or contact the Assistant Director, Time Series Analysis on (02) 6252 6345 or email time.series.analysis@abs.gov.au.

RELATED PUBLICATIONS

37 Users may also wish to refer to the following publications:

- *Labour Force Survey Standard Products and Data Item Guide* (cat.no. 6103.0). This publication is a reference guide for users of Labour Force Survey data standard products.
- *Australian Labour Market Statistics* (cat. no. 6105.0). This publication presents key indicators of the labour market, articles on a range of labour market issues, and information about the latest developments in the labour statistics program. For further information about this publication, please contact Labour Market Statistics on (02) 6252 7206.

38 ABS information about the labour market can be found on the Topics @ a Glance page on the ABS website <<http://www.abs.gov.au>>.

39 Information about current publications and other products released by the ABS is available from the statistics page on the ABS website. The ABS also issues a daily release advice on the website, Upcoming Product Releases, which details products to be released in the week ahead.

DATA AVAILABLE ON REQUEST

40 As well as the statistics included in this and related publications, the ABS may have other relevant data available. Inquiries should be made to the Labour Force contact officer on (02) 6252 6525, email labourforce@abs.gov.au or to any ABS office.

EFFECTS OF ROUNDING

41 Estimates have been rounded and discrepancies may occur between sums of the component items and totals. Estimates of movement shown in this publication are obtained by taking the difference of unrounded estimates. The movement estimate is then rounded. Where a discrepancy occurs between the reported movement and the difference of the rounded estimates, the reported movement will be more accurate.

SYMBOLS AND ABBREVIATIONS

42 SYMBOLS AND ABBREVIATIONS

<i>Symbol</i>	<i>Definition</i>
'000	thousands
%	percentage
ABS	Australian Bureau of Statistics
CAI	computer assisted interviewing
cat. no.	catalogue number
ERP	estimated resident population
f/t	full time
LFS	Labour Force Survey
p/t	part time
pts	percentage points
Seas adj.	seasonally adjusted
TAFE	Technical and Further Education

STANDARD ERRORS

STANDARD ERRORS

The estimates in this publication are based on information gained from the occupants of a sample survey of dwellings. Because the entire population is not surveyed, the published original, seasonally adjusted and trend estimates are subject to sampling error. The most common way of quantifying such sampling error is to calculate the standard error for the published estimate or statistic. For more information, see paragraphs 25 to 27 of the Explanatory Notes.

LEVEL ESTIMATES

To illustrate, let us say the published level estimate for employed persons aged 15–19 years is 700,000 and the associated standard error is 9,000. The standard error is then used to interpret the level estimate of 700,000. For instance, the standard error of 9,000 indicates that:

- There are approximately two chances in three that the real value falls within the range 691,000 to 709,000 (700,000 + or – 9,000)
- There are approximately nineteen chances in twenty that the real value falls within the range 682,000 to 718,000 (700,000 + or – 18,000).

The real value in this case is the result we would obtain if we could enumerate the total population.

The following table shows the standard errors for this month's level estimates.

		AUSTRALIA										
		NSW	Vic.	Qld	SA	WA	Tas.	NT	ACT	Males	Females	Persons
Aged 15 years and over												
Employed												
Full time	'000	25.5	18.1	17.3	7.4	11.4	2.9	2.3	2.9	31.8	23.0	38.5
Part time	'000	17.8	12.0	11.6	5.5	8.1	2.2	0.7	2.0	13.2	20.9	25.8
Total	'000	27.9	22.3	19.8	8.6	12.4	3.4	2.7	3.0	34.6	32.1	43.6
Unemployed												
Looking for f/t work	'000	9.2	8.4	8.4	3.3	4.5	1.3	0.8	0.9	12.4	10.1	16.1
Looking for p/t work	'000	5.5	5.4	5.0	1.9	2.5	0.7	0.4	0.7	6.2	7.4	9.7
Total	'000	10.8	10.0	9.3	3.7	5.2	1.4	1.1	1.2	13.9	12.6	19.0
Labour force	'000	28.3	23.1	20.3	8.8	12.6	3.5	2.8	3.0	35.6	33.0	44.4
Not in labour force	'000	24.4	20.9	22.3	8.2	11.9	3.5	3.2	3.1	30.8	35.7	42.1
Unemployment rate												
Looking for f/t work	pts	0.3	0.4	0.5	0.6	0.4	0.8	0.7	0.5	0.2	0.3	0.2
Looking for p/t work	pts	0.5	0.5	0.7	0.7	0.6	0.7	1.7	1.2	0.5	0.3	0.3
Total	pts	0.3	0.3	0.4	0.4	0.4	0.6	0.8	0.5	0.2	0.2	0.2
Participation rate	pts	0.5	0.5	0.5	0.6	0.6	0.8	1.5	1.0	0.4	0.3	0.2
Aged 15–19 years												
Employed												
Full time	'000	4.0	2.0	2.8	1.0	2.0	0.5	0.2	0.4	4.9	3.9	5.8
Part time	'000	5.4	3.6	4.0	1.7	2.4	0.7	0.2	0.7	6.0	7.0	8.8
Total	'000	6.3	4.0	4.9	1.9	3.1	0.8	0.3	0.8	7.3	7.6	10.3
Unemployed												
Looking for f/t work	'000	3.2	2.3	3.5	0.9	1.4	0.4	0.2	0.3	4.3	3.4	5.5
Looking for p/t work	'000	2.9	3.2	3.1	1.4	1.4	0.5	0.1	0.5	4.2	4.2	5.9
Total	'000	4.5	4.0	4.9	1.7	2.0	0.7	0.3	0.6	6.0	5.4	8.1
Labour force	'000	7.0	4.4	5.5	2.2	3.4	1.0	0.3	0.9	8.1	8.2	11.4
Not in labour force	'000	9.8	5.7	7.6	3.0	4.2	1.1	0.8	1.3	10.6	9.8	14.9
Unemployment rate												
Looking for f/t work	pts	3.8	5.7	5.0	7.0	3.7	7.9	5.9	13.4	2.6	3.6	2.2
Looking for p/t work	pts	2.0	2.1	2.5	3.3	2.5	3.6	3.5	5.2	1.7	1.3	1.1
Total	pts	1.9	2.1	2.5	3.1	2.1	3.5	3.5	4.9	1.5	1.3	1.0
Participation rate	pts	1.5	1.2	1.8	2.1	2.1	2.8	1.9	3.7	1.1	1.1	0.8
Unemployment to population ratio – looking for f/t work	pts	0.7	0.6	1.1	0.8	0.8	1.3	1.5	1.5	0.6	0.5	0.4

STANDARD ERRORS *continued*

MOVEMENT ESTIMATES

The following example illustrates how to use the standard error to interpret a movement estimate. Let us say that one month the published level estimate for females employed part-time in Australia is 1,890,000; the next month the published level estimate is 1,900,000 and the associated standard error for the movement estimate is 11,900. The standard error is then used to interpret the published movement estimate of 10,000. For instance, the standard error of 11,900 indicates that:

- There are approximately two chances in three that the real movement between the two months falls within the range – 1,900 to 21,900 (10,000 + or – 11,900)
- There are approximately nineteen chances in twenty that the real movement falls within the range – 13,800 to 33,800 (10,000 + or – 23,800).

The following table shows the standard errors for this month's movement estimates.

		AUSTRALIA										
		NSW	Vic.	Qld	SA	WA	Tas.	NT	ACT	Males	Females	Persons
Aged 15 years and over												
Employed												
Full time	'000	14.8	11.9	9.3	3.9	6.8	1.7	1.8	1.8	18.4	13.5	23.4
Part time	'000	9.6	8.2	5.9	2.8	4.3	1.3	0.8	1.1	8.6	12.6	15.2
Total	'000	17.8	14.7	12.7	5.5	8.7	2.2	2.0	2.1	20.4	18.7	28.7
Unemployed												
Looking for f/t work	'000	9.4	8.3	7.8	3.4	4.7	1.2	0.8	1.1	12.3	10.0	16.0
Looking for p/t work	'000	5.7	5.4	4.4	1.9	2.7	0.7	0.5	0.8	6.2	7.3	9.6
Total	'000	11.1	9.9	9.1	3.9	5.4	1.4	0.9	1.3	13.8	12.5	18.9
Labour force	'000	18.3	15.2	13.5	5.9	9.0	2.3	2.0	2.2	21.1	19.3	29.8
Not in labour force	'000	18.1	15.1	13.2	5.8	8.8	2.2	2.1	2.2	17.8	21.9	29.3
Unemployment rate												
Looking for f/t work	pts	0.4	0.4	0.5	0.6	0.5	0.8	0.8	0.5	0.2	0.3	0.2
Looking for p/t work	pts	0.5	0.6	0.7	0.7	0.6	0.8	1.6	1.2	0.5	0.3	0.3
Total	pts	0.3	0.3	0.4	0.5	0.4	0.6	0.8	0.5	0.2	0.2	0.2
Participation rate	pts	0.3	0.3	0.4	0.4	0.4	0.5	1.1	0.7	0.2	0.2	0.2
Aged 15–19 years												
Employed												
Full time	'000	2.6	1.8	1.8	0.7	1.5	0.3	0.3	0.3	3.5	2.8	4.0
Part time	'000	3.8	3.3	2.7	1.2	1.8	0.5	0.4	0.5	4.3	4.8	6.0
Total	'000	4.3	3.6	3.0	1.3	2.2	0.6	0.5	0.5	5.0	5.1	6.7
Unemployed												
Looking for f/t work	'000	3.4	2.5	3.1	1.1	1.7	0.5	0.4	0.4	4.3	3.4	5.5
Looking for p/t work	'000	3.2	3.3	2.8	1.4	1.5	0.5	0.1	0.6	4.2	4.2	5.9
Total	'000	4.6	4.0	4.3	1.7	2.3	0.7	0.4	0.8	6.0	5.4	8.1
Labour force	'000	4.6	3.9	3.3	1.5	2.3	0.7	0.5	0.6	5.4	5.5	7.3
Not in labour force	'000	6.0	4.8	3.7	1.8	2.8	0.7	0.9	0.7	6.9	6.6	9.1
Unemployment rate												
Looking for f/t work	pts	4.3	6.2	5.4	7.8	4.7	9.0	7.0	14.4	2.9	4.4	2.4
Looking for p/t work	pts	2.0	2.2	2.5	3.2	2.6	3.8	3.5	5.4	1.8	1.4	1.1
Total	pts	2.0	2.2	2.5	3.2	2.3	3.8	3.9	5.1	1.6	1.4	1.0
Participation rate	pts	1.0	1.1	1.1	1.4	1.4	2.0	3.2	2.6	0.7	0.8	0.5
Unemployment to population ratio – looking for f/t work	pts	0.7	0.7	1.0	1.1	1.1	1.4	2.2	1.6	0.6	0.5	0.4

GLOSSARY

Actively looking for work	Includes written, telephoned or applied to an employer for work; had an interview with an employer for work; answered an advertisement for a job; checked or registered with a Job Services Australia provider or any other employment agency; taken steps to purchase or start your own business; advertised or tendered for work; and contacted friends or relatives in order to obtain work.
Actual hours of work	<p>Actual hours of work refers to a specified reference period and includes:</p> <ul style="list-style-type: none">■ hours actually worked during normal periods of work;■ time spent in addition to hours worked during normal periods of work (including overtime);■ time spent at the place of work on activities such as the preparation of the workplace, repairs and maintenance, preparation and cleaning of tools, and the preparation of receipts, time sheets and reports;■ time spent at the place of work waiting or standing by; and■ time corresponding to short rest periods. <p>Excluded are:</p> <ul style="list-style-type: none">■ hours paid for but not worked, such as paid annual leave, public holidays or paid sick leave;■ meal breaks; and■ time spent on travel to and from work (excluding some self-employed). <p>For multiple job holders actual hours worked should equal the hours worked at all jobs.</p>
Aggregate monthly hours worked	<p>Aggregate monthly hours worked measures the total number of actual hours worked by employed persons in a calendar month. It differs from the actual hours worked estimates (and the usual hours worked estimates) since these refer only to the hours worked in the reference week.</p> <p>The methodology used to produce aggregate monthly hours worked means that these are synthetic estimates. Seasonally adjusted and trend estimates of aggregate monthly hours worked are available for the period July 1978 onwards.</p> <p>Further information on the methodology used to produce the aggregate monthly hours worked estimates is available on the ABS website in <i>Information Paper: Expansion of Hours Worked Estimates from the Labour Force Survey</i> (cat. no. 6290.0.55.001).</p> <p>Actual and usual hours worked cannot be aggregated across time to produce either quarterly or annual estimates as they relate to only a single week in the month. In contrast, aggregate monthly hours worked estimates are a true monthly measure, and may be aggregated across time to produce both quarterly and annual estimates.</p>
Attending full time education	Persons aged 15–24 years enrolled at secondary or high school or enrolled as a full time student at a Technical and Further Education (TAFE) college, university, or other educational institution in the reference week.
Attending school	Persons aged 15–19 years enrolled at secondary or high school in the reference week.
Attending tertiary educational institution full time	Persons aged 15–24 years enrolled full time at a TAFE college, university, or other educational institution in the reference week, except those persons aged 15–19 years who were still attending school.
Civilian population aged 15 years and over	All usual residents of Australia aged 15 years and over except members of the permanent defence forces, certain diplomatic personnel of overseas governments customarily excluded from census and estimated population counts, overseas residents in Australia, and members of non-Australian defence forces (and their dependants) stationed in Australia.
Composite Estimation	The estimation methodology used in the Labour Force Survey. Composite Estimation uses sample responses from nearby months as well as from the reference month to derive estimates for the reference month. This approach achieves gains in efficiency by exploiting the high similarity between the responses provided by the same respondent in

GLOSSARY *continued*

Composite Estimation <i>continued</i>	previous months. For details see <i>Information Paper: Forthcoming Changes to Labour Force Statistics, 2007</i> (cat. no. 6292.0).
Employed	All persons aged 15 years and over who, during the reference week: <ul style="list-style-type: none">■ worked for one hour or more for pay, profit, commission or payment in kind in a job or business, or on a farm (comprising employees, employers and own account workers); or■ worked for one hour or more without pay in a family business or on a farm (i.e. contributing family workers); or■ were employees who had a job but were not at work and were:<ul style="list-style-type: none">■ away from work for fewer than four weeks up to the end of the reference week; or■ away from work for more than four weeks up to the end of the reference week and received pay for some or all of the four week period to the end of the reference week; or■ away from work as a standard work or shift arrangement; or■ on strike or locked out; or■ on workers' compensation and expected to return to their job; or■ were employers or own account workers, who had a job, business or farm, but were not at work.
Employment to population ratio	For any group, the number of employed persons expressed as a percentage of the civilian population in the same group.
Estimated resident population (ERP)	Estimated resident population (ERP), is Australia's official measure of the population of Australia and is based on the concept of usual residence. It refers to all people, regardless of nationality, citizenship or legal status, who usually live in Australia, with the exception of foreign diplomatic personnel and their families. It includes usual residents who are overseas for fewer than 12 months. It excludes overseas visitors who are in Australia for fewer than 12 months. Refer to <i>Australian Demographic Statistics</i> (cat. no. 3101.0).
Flow estimates	Flow estimates are a measure of activity over a given period. For example, aggregate monthly hours worked is a measure of the total number of hours worked in a calendar month.
Full time workers	Employed persons who usually worked 35 hours or more a week (in all jobs) and those who, although usually working fewer than 35 hours a week, worked 35 hours or more during the reference week.
Gross flows	<p>The matching of respondents who report in consecutive months enables analysis of the transition of individuals between the different labour force status classifications, referred to as the matched sample. The transition counts between the different labour force status classifications from one point in time to the next are commonly referred to as gross flows.</p> <p>The figures presented in gross flows are presented in original terms only and do not align with published labour force estimates. The gross flows figures are derived from the matched sample between consecutive months, which after taking account of the sample rotation and varying non-response in each month is approximately 80 percent of the sample.</p> <p>Caution should be exercised when analysing these gross flows data due to:</p> <ul style="list-style-type: none">■ the figures presented sum to approximately 80 percent of the population values as the gross flows data are based on the matched sample only;■ there is no adjustment applied to account for changes due to seasonal patterns (referred to commonly as seasonal adjustment); and■ the estimates of relative sizes of each transition class are subject to bias due to the matched sample being a non-representative sample.
Labour force	For any group, persons who were employed or unemployed, as defined.

GLOSSARY *continued*

Labour force status	A classification of the civilian population aged 15 years and over into employed, unemployed or not in the labour force, as defined. The definitions conform closely to the international standard definitions adopted by the International Conferences of Labour Statisticians.
Labour force underutilisation rate	The sum of the number of persons unemployed and the number of persons in underemployment, expressed as a proportion of the labour force.
Long-term unemployed	The number of persons unemployed for 52 weeks or over.
Long-term unemployment ratio	The number of long-term unemployed persons, expressed as a percentage of the total unemployed population.
Market sector	The market sector is an industry grouping comprising the following industries: Agriculture, forestry and fishing; Mining; Manufacturing; Electricity, gas, water and waste services; Construction; Wholesale trade; Retail trade; Accommodation and food services; Transport, postal and warehousing; Information media and telecommunications; Finance and insurance services; Rental, hiring and real estate services; Professional, scientific and technical services; Administrative and support services; Arts and recreation services; and Other services. Refer to <i>Australian National Accounts: Concepts, Sources and Methods</i> (cat. no. 5216.0).
Non-market Sector	The non-market sector is an industry grouping comprising the following industries: Education and training; Public administration & safety; and Health care and social assistance. Refer to <i>Australian National Accounts: Concepts, Sources and Methods</i> (cat. no. 5216.0).
Not in labour force	Persons who were not in the categories employed or unemployed, as defined.
Participation rate	For any group, the labour force expressed as a percentage of the civilian population aged 15 years and over in the same group.
Part time workers	Employed persons who usually worked fewer than 35 hours a week (in all jobs) and either did so during the reference week or were not at work during the reference week.
Response rate	The number of fully responding dwellings expressed as a percentage of the total number of dwellings excluding sample loss. Examples of sample loss include: dwellings where all persons are out of scope and/or coverage; vacant dwellings; dwellings under construction; dwellings converted to non-dwellings; derelict dwellings; and demolished dwellings.
Seasonally adjusted series	A time series of estimates with the estimated effects of normal seasonal variation removed. See Explanatory Notes paragraphs 28 to 32 for more detail.
Stock estimates	Stock estimates are a measure of certain attributes at a point in time and can be thought of as <i>stocktakes</i> . For example, the total number of employed persons is an account of the number of people who were considered employed in the Labour Force Survey reference week.
Trend series	A smoothed seasonally adjusted series of estimates. See Explanatory Notes paragraphs 33 to 36 for more detail.
Underemployment rate	The number of underemployed workers expressed as a percentage of the labour force.
Underemployed workers	Employed persons aged 15 years and over who want, and are available for, more hours of work than they currently have. They comprise: <ul style="list-style-type: none">■ persons employed part time who want to work more hours and are available to start work with more hours, either in the reference week or in the four weeks subsequent to the survey; or■ persons employed full time who worked part time hours in the reference week for economic reasons (such as being stood down or insufficient work being available). It is assumed that these people wanted to work full time in the reference week and would have been available to do so.

GLOSSARY *continued*

Unemployed	Persons aged 15 years and over who were not employed during the reference week, and: <ul style="list-style-type: none">■ had actively looked for full time or part time work at any time in the four weeks up to the end of the reference week and were available for work in the reference week; or■ were waiting to start a new job within four weeks from the end of the reference week and could have started in the reference week if the job had been available then.
Unemployed looking for full time work	Unemployed persons who: <ul style="list-style-type: none">■ actively looked for full time work; or■ were waiting to start a new full time job.
Unemployed looking for part time work	Unemployed persons who: <ul style="list-style-type: none">■ actively looked for part time work only; or■ were waiting to start a new part time job.
Unemployment rate	For any group, the number of unemployed persons expressed as a percentage of the labour force in the same group.
Unemployment to population ratio	For any group, the number of unemployed persons expressed as a percentage of the civilian population in the same group.
Usual hours of work	Usual hours of work refers to a typical period rather than to a specified reference period. The concept of usual hours applies both to persons at work and to persons temporarily absent from work, and is defined as the hours worked during a typical week or day. Actual hours worked (for a specific reference period) may differ from usual hours worked due to illness, vacation, strike, overtime work, a change of job, or similar reasons.

FOR MORE INFORMATION . . .

INTERNET **www.abs.gov.au** the ABS website is the best place for data from our publications and information about the ABS.

INFORMATION AND REFERRAL SERVICE

Our consultants can help you access the full range of information published by the ABS that is available free of charge from our website. Information tailored to your needs can also be requested as a 'user pays' service. Specialists are on hand to help you with analytical or methodological advice.

PHONE 1300 135 070

EMAIL client.services@abs.gov.au

FAX 1300 135 211

POST Client Services, ABS, GPO Box 796, Sydney NSW 2001

FREE ACCESS TO STATISTICS

All statistics on the ABS website can be downloaded free of charge.

WEB ADDRESS www.abs.gov.au