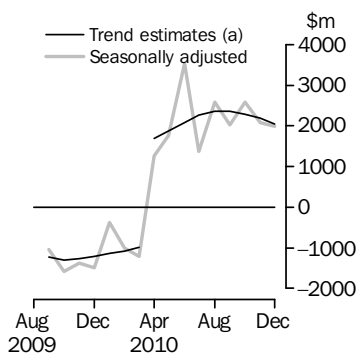


INTERNATIONAL TRADE IN GOODS AND SERVICES

AUSTRALIA

EMBARGO: 11.30AM (CANBERRA TIME) THURS 3 FEB 2011

Balance on Goods and Services



(a) A trend break of \$2,500m has been applied to April 2010.

KEY FIGURES

	Oct 2010	Nov 2010	Dec 2010	Nov 10 to Dec 10 %
	\$m	\$m	\$m	change
BALANCE ON GOODS AND SERVICES				
Trend estimates	2 281	2 202	2 042	..
Seasonally adjusted	2 589	2 078	1 981	..
CREDITS (Exports of goods & services)				
Trend estimates	24 559	24 428	24 268	-1
Seasonally adjusted	24 416	24 494	24 579	-
DEBITS (Imports of goods & services)				
Trend estimates	22 277	22 226	22 226	-
Seasonally adjusted	21 827	22 416	22 598	1

.. not applicable

- nil or rounded to zero (including null cells)

KEY POINTS

BALANCE ON GOODS AND SERVICES

- The trend estimate of the *balance on goods and services* was a surplus of \$2,042m in December 2010, a decrease of \$160m on the surplus in November 2010.
- In seasonally adjusted terms, the *balance on goods and services* was a surplus of \$1,981m in December 2010, a decrease of \$97m on the surplus in November 2010.

CREDITS (EXPORTS OF GOODS & SERVICES)

- In seasonally adjusted terms, *goods and services credits* rose \$85m to \$24,579m. *Non-rural goods* rose \$227m (1%), *rural goods* rose \$21m (1%) and *net exports of goods under merchanting* rose \$1m (25%). *Non-monetary gold* fell \$118m (10%). *Services credits* fell \$46m (1%).

DEBITS (IMPORTS OF GOODS & SERVICES)

- In seasonally adjusted terms, *goods and services debits* rose \$182m (1%) to \$22,598m. *Intermediate and other merchandise goods* rose \$643m (8%). *Non-monetary gold* fell \$201m (34%), *capital goods* fell \$155m (4%) and *consumption goods* fell \$49m (1%). *Services debits* fell \$57m (1%).

INQUIRIES

For further information contact Selvi Sekhar on Canberra (02) 6252 5540 for Goods, and Lee Taylor on Canberra (02) 6252 6377 for Services.

NOTES

FORTHCOMING ISSUES

ISSUE	RELEASE DATE
January 2011	3 March 2011
February 2011	5 April 2011
March 2011	10 May 2011
April 2011	2 June 2011
May 2011	5 July 2011
June 2011	3 August 2011

REVISIONS

Revisions have been made to incorporate the latest data relating to international merchandise trade and international trade in services. The international trade in goods and services on a balance of payments basis series have been revised from July 2009 onwards.

Table 17 summarises revisions to goods and services on a balance of payments basis, in original current price terms, since the last issue of this publication. In original terms, the revisions have:

- increased the deficit on goods and services for 2009–2010 by \$9m
- increased the surplus on goods and services for the five months to November 2010 by \$32m.

Seasonally adjusted and trend series have been revised due to the incorporation of the revisions and estimates for the latest month.

IMPACT OF THE FLOODS

Flooding in Queensland began in late December 2010. Data collection and processing for the data in this publication were not disrupted. It is expected that the first significant economic impact of floods in Queensland and other states will be reflected in the forthcoming issues of this publication.

CHANGES IN THIS AND FORTHCOMING ISSUES

Changes have been made to the OECD country group to include Israel and Estonia. Gold and silver merchandise trade data have been revised outside the normal revision period. In addition, changes will be made to the Australian Harmonized Export Commodity Classification and the Customs Tariff classification. See page 5 – *Changes in this and forthcoming issues* for details.

Brian Pink
Australian Statistician

CONTENTS

page

Commodity prices adjustment	4
Changes in this and forthcoming issues	5
Time series data	7

ANALYSIS

Analysis and comments	9
---------------------------------	---

TABLES

INTERNATIONAL TRADE IN GOODS AND SERVICES – BALANCE OF PAYMENTS BASIS

1 Goods and services, summary, seasonally adjusted and trend estimates	14
2 Goods and services, summary, original	15
3 Goods credits, original	16
4 Goods debits, original	17
5 Goods credits, seasonally adjusted	18
6 Goods debits, seasonally adjusted	19
7 Goods credits, trend estimates	20
8 Goods debits, trend estimates	21
9 Services, summary, original	22
10 Services, summary, seasonally adjusted and trend estimates	23
11 Services, original, quarterly	24

INTERNATIONAL MERCHANDISE TRADE – RECORDED TRADE BASIS

12 International merchandise exports, by commodity	25
13 International merchandise imports, by commodity	28
14 International merchandise trade, by country and country groups	31
15 International merchandise trade, by state	32

OTHER TABLES

16 Period average exchange rates per Australian dollar	33
17 Summary of revisions, goods and services, original	34

OTHER INFORMATION

Explanatory notes	35
Appendix – Related articles	41

COMMODITY PRICES ADJUSTMENT

PRICES ADJUSTMENT

International merchandise trade exports data (on a recorded trade basis) presented in tables 12, 14 and 15 of this publication are based on information provided by exporters to the *Australian Customs and Border Protection Service* (Customs and Border Protection). At the time of initial reporting to Customs and Border Protection the final prices may not be known for some commodities. New contract prices that have been recently negotiated, or are still being negotiated, for commodities like iron ore and coal may not be fully reflected in the Customs and Border Protection source data. Final prices are updated progressively in recorded trade data as exporters revise the information provided to Customs and Border Protection.

For this issue, no adjustments have been made to the 'metal ores and minerals' or 'coal, coke and briquettes' components. All previous price adjustments applied to these components have been removed.

CHANGES IN THIS AND FORTHCOMING ISSUES

CHANGES IN THIS ISSUE

Statistics presents on the OECD country group

New members of the OECD, Israel and Estonia, have been included in the OECD country group. This impacts the OECD data in table 14 of this publication and time series spreadsheet tables 14a, 14b, 36a to 36j and 37a to 37h. These countries have been included in the OECD country group for the complete merchandise trade time series (ie. data from January 1988).

Revision to gold and silver merchandise trade data outside the normal revision period

The Customs Tariff codes allocated to some gold and silver imports have been revised on a merchandise trade basis in the months January 2010 and March 2010. These months are outside the normal revision period for merchandise trade data. The changes will not impact on the balance of payments series of the broader level merchandise trade statistics presented in this publication. The changes will impact on detailed merchandise trade import statistics at the 5-digit Standard International Trade Classification (SITC) and Harmonised Tariff Item Statistical Classification (HTISC) levels available via ABS Client Services.

CHANGES IN FORTHCOMING ISSUES

Changes to Australian Harmonized Export Commodity Classification and Customs Tariff classification

Statistical codes in the Australian Harmonized Export Commodity Classification and the Customs Tariff classification were revised with new codes coming into effect on 1 January 2011. The changes result from the introduction of new statistical codes separately identifying essential oils in Chapter 33, and for identifying substances controlled by the Montreal and Stockholm Conventions in Chapters 29 and 38. The changes will not impact directly on the presentation of statistics in this publication but will impact on detailed merchandise trade import and export statistics available via ABS Client Services.

Changes to Australian Harmonized Export Commodity Classification

The following table shows Australian Harmonized Export Commodity Classification codes that ceased on 31 December 2010 and their replacement codes which came into effect on 1 January 2011.

CEASED 31/12/2010	REPLACED BY:	
29081909	29081903	29081907
29089990	29089920	29089995
29309078	29309072	29309077
33012990	33012960	33012991
38089190	38089130	38089191
38089290	38089220	38089291
38089932	38089934	38089939

For information see the *Australian Harmonized Exports Commodity Classification (AHECC)* (cat. no. 1233.0).

CHANGES IN THIS AND FORTHCOMING ISSUES *continued*

*Changes to the Customs
Tariff Classification*

The following table shows Customs Tariff codes that ceased on 31 December 2010 and their replacement codes which came into effect on 1 January 2011.

CEASED 31/12/2010	REPLACED BY:	
2903590009	2903590031	2903590039
2908190002	2908190006	2908190007
2908990005	2908990006	2908990007
2910900006	2910900008	2910900009
2930900095	2930900092	2930900099
2934990095	2934990091	2934990099
3808919034	3808919038	3808919039
3808920029	3808920046	3808920049
3808930043	3808930047	3808930048
3808990025	3808990029	3808990027

A complete copy of the new Customs Tariff is available on the Customs website:
<http://www.customs.gov.au>. Select '-import export', then 'customs tariff',
then 'working tariff page'.

TIME SERIES DATA

TIME SERIES DATA

Tables 1 to 16 of this publication are available free on the ABS website: <http://www.abs.gov.au> from the Downloads tab of this issue with longer time series. A number of these tables present more detailed breakdowns than included in the publication. A number of additional tables are available free on the ABS website.

Tables with more detailed breakdowns:

- 11a Services credits: Original - Quarter¹
- 11b Services debits: Original - Quarter¹
- 12b Merchandise exports by Standard International Trade Classification (3 digit), FOB Value
- 13b Merchandise imports by Standard International Trade Classification (3 digit), Customs Value
- 14a Merchandise exports, Country and Country Groups, FOB Value
- 14b Merchandise imports, Country and Country Groups, Customs Value

Additional tables:

- 31 Merchandise exports by Broad Economic Category (BEC)
- 32a Merchandise exports, Industry (ANZSIC 2006), FOB Value
- 32b Merchandise exports, Industry (ANZSIC 1993), FOB Value
- 33 Merchandise imports by Broad Economic Category (BEC)
- 34 Merchandise imports by Balance of Payments Broad Economic Category (BoPBEC)
- 35a Merchandise imports, Industry (ANZSIC 2006), Customs Value
- 35b Merchandise imports, Industry (ANZSIC 1993), Customs Value
- 36 Merchandise exports, state by country and country groups
- 37 Merchandise imports, state by country and country groups
- 91 Monthly seasonal adjustment factors and forward factors for 12 months.

¹ With a one quarter lag for the more detailed breakdowns.

TIME SERIES DATA *continued*

TRADE IN SERVICES DATA CUBES

Trade in services data cubes are usually updated on an annual basis. Calendar year (cat. no. 5368.0.55.004) statistics are updated in May and financial year (cat. no. 5368.0.55.003) statistics are updated in December.

The following tables were included in the calendar year data cubes:

- 1 International trade in services, credits, state by year
- 2 International trade in services, credits, year by state
- 3 International trade in services, debits, state by year
- 4 International trade in services, debits, year by state
- 5 International trade in services, credits, year by country and service
- 6 International trade in services, credits, service by year and by country
- 7 International trade in services, debits, year by country and service
- 8 International trade in services, debits, service by year and by country
- 9 International trade in services, credits, year by country and travel service
- 10 International trade in services, debits, year by country and travel service
- 11 International trade in services, credits, education related travel, by educational sector, by type of expenditure by year.

ANALYSIS AND COMMENTS

BALANCE ON GOODS AND SERVICES

The trend estimate of the balance on goods and services was a surplus of \$2,042m in December 2010, a decrease of \$160m on the surplus in November 2010.

In seasonally adjusted terms, the balance on goods and services was a surplus of \$1,981m in December 2010, a decrease of \$97m on the surplus in November 2010.

The sum of seasonally adjusted balances for the three months to December 2010 was a surplus of \$6,648m, an increase of \$648m on the surplus of \$6,000m for the three months to September 2010. However, if seasonal factors used in compiling the quarterly balance of payments are applied, the December quarter 2010 surplus was \$6,756m, an increase of \$726m on the revised September quarter surplus of \$6,030m.

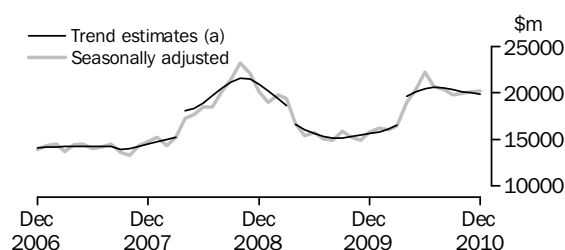
EXPORTS OF GOODS AND SERVICES

Between November 2010 and December 2010 the trend estimate of goods and services credits fell \$160m (1%) to \$24,268m.

In seasonally adjusted terms, goods and services credits rose \$85m to \$24,579m. Non-rural goods rose \$227m (1%), rural goods rose \$21m (1%) and net exports of goods under merchanting rose \$1m (25%). Non-monetary gold fell \$118m (10%). Services credits fell \$46m (1%).

Exports of goods

GOODS CREDITS



(a) Trend breaks of \$1,900m to April 2008, -\$1,400m to April 2009 and \$2,500m to April 2010 have been applied.

RURAL GOODS

In trend terms, exports of rural goods fell \$7m to \$2,338m.

In seasonally adjusted terms, exports of rural goods rose \$21m (1%) to \$2,386m.

The main components contributing to the rise in the seasonally adjusted estimates were:

- wool and sheepskins, up \$47m (20%)
- meat and meat preparations, up \$34m (6%).

Partly offsetting these increases was the cereal grains and cereal preparations component, down \$37m (6%).

NON-RURAL GOODS

In trend terms, exports of non-rural goods fell \$137m (1%) to \$16,280m.

In seasonally adjusted terms, exports of non-rural goods rose \$227m (1%) to \$16,695m.

The main components contributing to the rise in the seasonally adjusted estimates were:

- other manufactures, up \$149m (11%)
- metals (excl. non-monetary gold), up \$108m (11%)
- machinery, up \$99m (15%).

ANALYSIS AND COMMENTS *continued*

Exports of goods *continued*

NON-RURAL GOODS *continued*

Partly offsetting these increases was the metal ores and minerals component, down \$164m (3%).

For price and volume details, see the *Selected commodities* table on page 13.

NET EXPORTS OF GOODS UNDER MERCHANTING

In trend terms, net exports of goods under merchanting fell \$6m to -\$4m.

In seasonally adjusted terms, net exports of goods under merchanting rose \$1m (25%) to -\$3m.

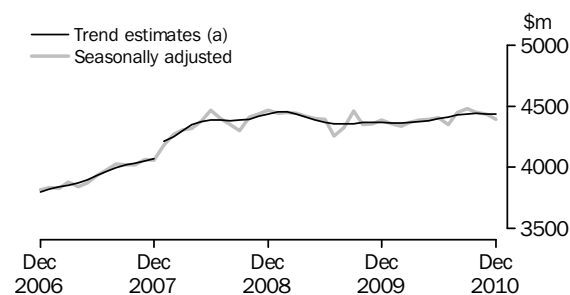
NON-MONETARY GOLD

In trend terms, exports of non-monetary gold fell \$4m to \$1,222m.

In seasonally adjusted terms, exports of non-monetary gold fell \$118m (10%) to \$1,111m.

Exports of services

SERVICES CREDITS



(a) A trend break of \$100m has been applied to January 2008.

In trend terms, services credits fell \$5m to \$4,433m.

In seasonally adjusted terms, services credits fell \$46m (1%) to \$4,390m.

The main component contributing to the decrease in the seasonally adjusted estimates was travel, down \$45m (2%).

In seasonally adjusted terms, tourism related services credits fell \$40m (1%) to \$2,911m.

IMPORTS OF GOODS AND SERVICES

Between November 2010 and December 2010 the trend estimate of goods and services debits remained steady at \$22,226m.

In seasonally adjusted terms, goods and services debits rose \$182m (1%) to \$22,598m. Intermediate and other merchandise goods rose \$643m (8%). Non-monetary gold fell \$201m (34%), capital goods fell \$155m (4%) and consumption goods fell \$49m (1%). Services debits fell \$57m (1%).

Preliminary analysis shows that, in seasonally adjusted terms, goods imports volumes increased 2.9% during the December quarter 2010 and the implicit price deflator fell 4.2%. In original terms, the Chain Laspeyres price index fell 3.8% while the implicit price deflator fell 4.3%. The final volume and price outcomes will be published in the

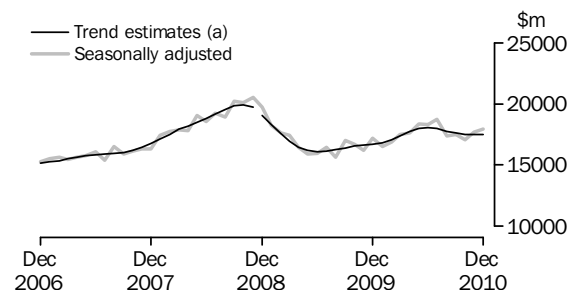
ANALYSIS AND COMMENTS *continued*

IMPORTS OF GOODS AND SERVICES *continued*

December quarter 2010 issue of *Balance of Payments and International Investment Position, Australia* (cat. no. 5302.0).

Imports of goods

GOODS DEBITS



(a) A trend break of -\$200m has been applied to December 2008.

CONSUMPTION GOODS

In trend terms, imports of consumption goods fell \$23m to \$5,352m.

In seasonally adjusted terms, imports of consumption goods fell \$49m (1%) to \$5,348m.

The main component contributing to the fall in the seasonally adjusted estimates was household electrical items, down \$56m (13%).

CAPITAL GOODS

In trend terms, imports of capital goods rose \$11m to \$3,920m.

In seasonally adjusted terms, imports of capital goods fell \$155m (4%) to \$3,946m.

The main components contributing to the fall in the seasonally adjusted estimates were:

- civil aircraft and confidentialised items, down \$73m (12%)
- machinery and industrial equipment, down \$37m (3%)
- telecommunications equipment, down \$28m (5%).

INTERMEDIATE AND OTHER MERCHANDISE GOODS

In trend terms, imports of intermediate and other merchandise goods rose \$23m to \$7,732m.

In seasonally adjusted terms, imports of intermediate and other merchandise goods rose \$643m (8%) to \$8,233m.

The main components contributing to the rise in the seasonally adjusted estimates were:

- fuels and lubricants, up \$426m (17%)
- other merchandise goods, up \$170m
- processed industrial supplies n.e.s., up \$48m (3%).

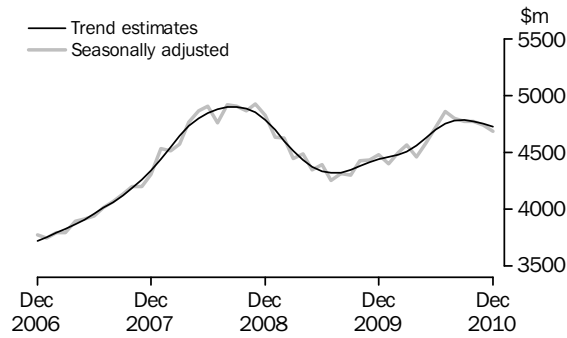
NON-MONETARY GOLD

In trend terms, imports of non-monetary gold rose \$16m (3%) to \$498m.

In seasonally adjusted terms, non-monetary gold debits fell \$201m (34%) to \$387m.

Imports of services

SERVICES DEBITS



In trend terms, services debits fell \$27m (1%) to \$4,724m.

In seasonally adjusted terms, services debits fell \$57m (1%) to \$4,684m.

The main components contributing to the fall in the seasonally adjusted estimates were:

- transport, down \$22m (2%)
- travel, down \$18m (1%)
- other services, down \$15m (1%).

In seasonally adjusted terms, tourism related services debits fell \$16m (1%) to \$2,572m.

ANALYSIS AND COMMENTS *continued*

Selected Commodities

SELECTED COMMODITIES, Price and volume analysis: **Recorded Trade Basis**

	<i>Jul</i> 2010	<i>Aug</i> 2010	<i>Sep</i> 2010	<i>Oct</i> 2010	<i>Nov</i> 2010	<i>Dec</i> 2010
	%	%	%	%	%	%
IRON ORE						
Lump						
Volumes	2	-5	8	10	-11	13
Price	9	-2	-2	-12	—	1
Fines						
Volumes	-9	2	4	7	-6	13
Price	5	-3	-2	-11	1	1
COAL						
Hard coking						
Volumes	-27	36	-11	-4	10	-4
Price	2	3	-4	-6	-7	-1
Semi-soft						
Volumes	-3	-10	-8	8	-5	7
Price	1	2	-10	—	-6	-1
Bituminous (Thermal)						
Volumes	4	4	7	-1	-19	15
Price	-2	-2	-1	-6	—	2

— nil or rounded to zero (including null cells)

On a recorded trade basis, between November and December 2010, large value increases were recorded for the following selected commodities:

- iron ore (lump) rose \$172m (14%) with exports to Japan up \$116m (50%) and China up \$58m (8%), driven by increases in volumes of 52% and 5% respectively
- iron ore (fines) rose \$439m (14%) with exports to China up \$276m (11%) and Japan up \$105m (27%), driven by increases in volumes of 10% and 23% respectively
- hard coking coal fell \$99m (5%) with exports to Japan down \$70m (14%) driven by a decrease in volume (12%)
- semi-soft coal rose \$39m (6%) with exports to China up \$62m, driven by an increase in volume (83%). This was partly offset by a fall in exports to Japan down \$43m (15%)
- bituminous (thermal) coal rose \$170m (17%) with exports to Japan up \$74m (14%) and China up \$65m (52%), driven by increases in volumes of 11% and 48% respectively.

GOODS AND SERVICES(a), Summary—Seasonally Adjusted and Trend Estimates

	Jan 2010	Feb 2010	Mar 2010	Apr 2010	May 2010	Jun 2010	Jul 2010	Aug 2010	Sep 2010	Oct 2010	Nov 2010	Dec 2010
	\$m	\$m	\$m	\$m	\$m	\$m	\$m	\$m	\$m	\$m	\$m	\$m
SEASONALLY ADJUSTED												
BALANCE												
On goods and services	-372	-1 006	-1 219	1 256	1 770	3 536	1 378	2 592	2 030	2 589	2 078	1 981
CREDITS												
Total goods and services	20 549	20 374	20 820	23 363	24 736	26 583	24 999	24 797	24 285	24 416	24 494	24 579
Total goods	16 196	16 036	16 453	18 978	20 344	22 176	20 650	20 351	19 805	19 966	20 058	20 189
Rural goods(b)	2 099	2 159	2 167	2 066	2 310	2 424	2 550	2 402	2 215	2 354	2 365	2 386
Non-rural goods(b)	12 843	12 970	13 066	15 728	16 079	18 269	16 831	17 084	16 419	16 062	16 468	16 695
Net exports of goods under merchandise(c)	13	13	11	23	23	24	26	26	25	-4	-4	-3
Non-monetary gold(c)	1 240	894	1 209	1 161	1 932	1 459	1 242	839	1 146	1 554	1 229	1 111
Total services	4 353	4 338	4 367	4 384	4 392	4 407	4 349	4 445	4 480	4 450	4 436	4 390
DEBITS												
Total goods and services	-20 921	-21 381	-22 039	-22 107	-22 966	-23 047	-23 621	-22 205	-22 255	-21 827	-22 416	-22 598
Total goods	-16 518	-16 884	-17 473	-17 646	-18 384	-18 329	-18 764	-17 405	-17 482	-17 056	-17 675	-17 914
Consumption goods	-5 117	-5 370	-5 204	-5 345	-5 536	-5 556	-5 485	-5 474	-5 465	-5 339	-5 397	-5 348
Capital goods	-3 748	-3 806	-3 934	-3 959	-4 319	-4 129	-4 119	-4 004	-3 801	-3 795	-4 101	-3 946
Intermediate and other merchandise goods	-7 239	-7 186	-7 878	-7 530	-7 642	-7 987	-8 773	-7 622	-7 716	-7 320	-7 590	-8 233
Non-monetary gold(c)	-414	-522	-457	-813	-887	-657	-387	-305	-500	-602	-588	-387
Total services	-4 403	-4 496	-4 567	-4 461	-4 582	-4 718	-4 857	-4 800	-4 773	-4 771	-4 741	-4 684
TREND ESTIMATES (d)												
BALANCE												
On goods and services	-1 134	-1 073	-993	1 694	1 870	2 081	2 271	2 370	2 352	2 281	2 202	2 042
CREDITS												
Total goods and services	20 176	20 485	20 916	24 005	24 493	24 848	24 997	24 927	24 739	24 559	24 428	24 268
Total goods	15 813	16 124	16 551	19 633	20 111	20 450	20 583	20 500	20 303	20 119	19 990	19 835
Rural goods(b)	2 068	2 111	2 169	2 236	2 303	2 358	2 388	2 391	2 375	2 358	2 345	2 338
Non-rural goods(b)(e)	12 623	12 887	13 219	16 194	16 585	16 860	16 964	16 885	16 706	16 536	16 417	16 280
Net exports of goods under merchandise	10	12	16	20	23	25	25	21	15	8	2	-4
Non-monetary gold	1 111	1 114	1 148	1 184	1 200	1 206	1 207	1 204	1 207	1 218	1 226	1 222
Total services	4 362	4 361	4 364	4 372	4 382	4 397	4 414	4 427	4 436	4 439	4 438	4 433
DEBITS												
Total goods and services	-21 310	-21 558	-21 909	-22 311	-22 623	-22 766	-22 726	-22 557	-22 386	-22 277	-22 226	-22 226
Total goods	-16 849	-17 080	-17 399	-17 750	-17 993	-18 066	-17 972	-17 775	-17 600	-17 505	-17 475	-17 502
Consumption goods	-5 168	-5 240	-5 317	-5 395	-5 457	-5 493	-5 498	-5 477	-5 441	-5 406	-5 375	-5 352
Capital goods	-3 821	-3 869	-3 953	-4 047	-4 105	-4 109	-4 070	-4 007	-3 953	-3 923	-3 909	-3 920
Intermediate and other merchandise goods	-7 350	-7 419	-7 514	-7 649	-7 777	-7 851	-7 851	-7 790	-7 730	-7 701	-7 709	-7 732
Non-monetary gold	-510	-552	-615	-659	-654	-613	-553	-501	-476	-476	-482	-498
Total services	-4 461	-4 478	-4 510	-4 562	-4 630	-4 700	-4 754	-4 783	-4 786	-4 772	-4 751	-4 724
(a) For sign conventions, see paragraph 15 of the Explanatory Notes.												
(b) For all time periods, estimates for sugar, sugar preparations and honey are included in Non-rural goods.												
(c) This component is not seasonally adjusted.												
(d) Caution should be used when interpreting recent trend estimates as they may be affected by unusual economic factors. For more details on trend estimates, please see paragraph 19 of the explanatory notes.												
(e) A trend break of \$2,500m has been applied to Non-rural goods credits and related aggregates in April 2010. This trend break will be reassessed in a future issue.												

GOODS AND SERVICES (a), Summary—Original

	Jan 2010	Feb 2010	Mar 2010	Apr 2010	May 2010	Jun 2010	Jul 2010	Aug 2010	Sep 2010	Oct 2010	Nov 2010	Dec 2010
	\$m	\$m	\$m	\$m	\$m	\$m	\$m	\$m	\$m	\$m	\$m	\$m
BALANCE												
On goods and services	-1 198	85	-1 012	1 786	3 211	3 167	1 501	3 135	980	2 294	279	2 334
CREDITS												
Total goods and services	18 922	19 363	21 298	23 038	25 019	26 004	25 526	25 492	24 556	25 205	24 050	25 625
Total goods	14 695	14 954	16 772	18 584	20 716	21 924	21 102	21 012	20 181	20 578	19 581	21 268
Rural goods(b)	1 863	2 100	2 369	2 061	2 514	2 424	2 535	2 366	2 117	2 351	2 207	2 496
Non-rural goods(b)	11 579	11 947	13 183	15 339	16 247	18 017	17 299	17 781	16 893	16 677	16 149	17 664
Net exports of goods under merchanting	13	13	11	23	23	24	26	26	25	-4	-4	-3
Non-monetary gold	1 240	894	1 209	1 161	1 932	1 459	1 242	839	1 146	1 554	1 229	1 111
Total services	4 227	4 409	4 526	4 454	4 303	4 080	4 424	4 480	4 375	4 627	4 469	4 357
DEBITS												
Total goods and services	-20 120	-19 278	-22 310	-21 252	-21 808	-22 837	-24 025	-22 357	-23 576	-22 911	-23 771	-23 291
Total goods	-15 519	-15 420	-17 989	-16 865	-17 496	-18 066	-18 897	-17 591	-18 370	-17 880	-19 188	-18 315
Consumption goods	-4 598	-4 867	-5 189	-4 878	-5 077	-5 376	-5 611	-5 595	-6 006	-5 878	-6 149	-5 404
Capital goods	-3 436	-3 300	-4 133	-3 763	-4 194	-4 214	-4 099	-4 015	-3 935	-3 889	-4 589	-4 164
Intermediate and other merchandise goods	-7 071	-6 731	-8 210	-7 411	-7 338	-7 819	-8 800	-7 676	-7 929	-7 511	-7 862	-8 360
Non-monetary gold	-414	-522	-457	-813	-887	-657	-387	-305	-500	-602	-588	-387
Total services	-4 601	-3 858	-4 321	-4 387	-4 312	-4 771	-5 128	-4 766	-5 206	-5 031	-4 583	-4 976

(a) For sign conventions, see paragraph 15 of the Explanatory Notes.

(b) For all time periods, estimates for sugar, sugar preparations and honey are included in Non-rural goods.

							6 MONTHS ENDED		Change
							DECEMBER		
	2007-08	2008-09	2009-10	Oct 2010	Nov 2010	Dec 2010	2009	2010	
	\$m	\$m	\$m	\$m	\$m	\$m	\$m	%	
Total goods credits	182 956	231 564	201 432	20 578	19 581	21 268	93 787	123 722	31.9
General merchandise	170 475	213 755	186 882	19 028	18 356	20 160	87 239	116 535	33.6
<i>Rural goods(a)</i>	25 494	29 383	25 543	2 351	2 207	2 496	12 212	14 072	15.2
Meat and meat preparations	6 542	7 454	6 350	576	632	653	3 212	3 576	11.3
Cereal grains and cereal preparations	4 975	6 881	5 266	602	397	488	2 364	2 970	25.6
Wool and sheepskins	2 796	2 322	2 307	232	263	312	1 032	1 303	26.3
Other rural(a)	11 181	12 726	11 620	941	915	1 043	5 604	6 223	11.0
<i>Non-rural goods(a)</i>	144 981	184 372	161 339	16 677	16 149	17 664	75 027	102 463	36.6
Metal ores and minerals	41 343	52 015	53 556	6 370	6 207	6 815	22 702	38 448	69.4
Coal, coke and briquettes	24 599	54 957	36 559	3 876	3 586	3 736	17 139	23 704	38.3
Other mineral fuels	18 889	20 707	18 964	1 800	1 952	2 052	8 829	11 878	34.5
Metals (excl. non-monetary gold)	14 039	12 394	10 735	961	1 016	1 173	5 144	6 135	19.3
Machinery	8 750	8 900	7 977	745	669	840	4 112	4 489	9.2
Transport equipment	5 723	5 090	4 073	323	299	361	2 138	1 968	-8.0
Other manufactures	16 965	17 601	16 375	1 475	1 348	1 510	8 488	8 562	0.9
Other non-rural (incl. sugar and beverages)	13 126	11 077	11 711	994	941	1 045	5 809	6 496	11.8
Goods procured in ports by carriers	1 547	1 631	1 389	133	131	132	666	783	17.6
Net exports of goods under merchanting	209	301	250	-4	-4	-3	143	66	-53.8
Goods acquired under merchanting									
(negative exports)	-1 528	-2 386	-1 799	-237	-237	-237	-913	-1 288	-41.1
Goods sold under merchanting	1 737	2 687	2 049	233	233	234	1 056	1 354	28.2
Non-monetary gold	12 272	17 508	14 300	1 554	1 229	1 111	6 405	7 121	11.2

(a) For all time periods, estimates for sugar, sugar preparations and honey are included in Other non-rural.

GOODS DEBITS(a), Original

	6 MONTHS ENDED								
	DECEMBER								
	2007-08	2008-09	2009-10	Oct 2010	Nov 2010	Dec 2010	2009	2010	Change
	\$m	\$m	\$m	\$m	\$m	\$m	\$m	\$m	%
Total goods debits	-204 858	-220 649	-204 265	-17 880	-19 188	-18 315	-102 910	-110 241	-7.1
General merchandise	-197 265	-209 127	-197 402	-17 278	-18 600	-17 928	-99 797	-107 472	-7.7
Consumption goods	-59 371	-61 419	-62 333	-5 878	-6 149	-5 404	-32 348	-34 643	-7.1
Food and beverages, mainly for consumption	-7 840	-8 857	-8 712	-805	-830	-819	-4 733	-4 851	-2.5
Household electrical items	-5 051	-5 488	-5 505	-532	-596	-372	-3 210	-2 880	10.3
Non-industrial transport equipment	-16 872	-13 247	-16 288	-1 441	-1 585	-1 530	-7 705	-8 861	-15.0
Textiles, clothing and footwear	-7 051	-8 287	-7 514	-684	-717	-651	-3 677	-4 316	-17.4
Toys, books and leisure goods	-4 561	-5 277	-4 675	-546	-502	-340	-2 693	-2 653	1.5
Consumption goods n.e.s.	-17 996	-20 263	-19 639	-1 870	-1 919	-1 692	-10 330	-11 082	-7.3
Capital goods	-45 299	-49 843	-46 517	-3 889	-4 589	-4 164	-23 477	-24 691	-5.2
Machinery and industrial equipment	-16 480	-18 488	-15 561	-1 268	-1 398	-1 332	-8 040	-8 024	0.2
ADP equipment	-7 074	-7 257	-7 633	-597	-626	-648	-3 601	-3 975	-10.4
Telecommunications equipment	-5 790	-6 431	-6 051	-686	-822	-607	-3 229	-3 877	-20.1
Civil aircraft and confidentialised items(b)	-2 691	-5 524	-5 051	-274	-615	-542	-2 755	-2 426	11.9
Industrial transport equipment n.e.s.	-7 502	-6 527	-6 804	-591	-615	-561	-3 085	-3 572	-15.8
Capital goods n.e.s.	-5 762	-5 616	-5 417	-473	-513	-474	-2 767	-2 817	-1.8
Intermediate and other merchandise goods	-92 595	-97 865	-88 552	-7 511	-7 862	-8 360	-43 972	-48 138	-9.5
Food and beverages, mainly for industry	-923	-1 186	-1 035	-101	-104	-96	-538	-585	-8.7
Primary industrial supplies n.e.s.	-1 477	-1 901	-1 346	-150	-161	-148	-695	-886	-27.5
Fuels and lubricants	-29 772	-28 213	-26 578	-2 112	-2 439	-2 865	-13 219	-14 224	-7.6
Parts for transport equipment	-8 837	-8 599	-8 221	-709	-730	-653	-4 066	-4 342	-6.8
Parts for ADP equipment	-1 115	-1 067	-973	-83	-79	-76	-459	-485	-5.7
Other parts for capital goods	-11 990	-14 312	-13 755	-1 164	-1 206	-1 254	-7 132	-7 314	-2.6
Organic and inorganic chemicals	-4 673	-5 384	-4 355	-375	-348	-351	-2 128	-2 264	-6.4
Paper and paperboard	-2 359	-2 403	-2 299	-219	-209	-186	-1 167	-1 294	-10.9
Textile yarn and fabrics	-1 334	-1 344	-1 170	-93	-96	-87	-623	-592	5.0
Iron and steel	-3 721	-5 528	-3 258	-319	-299	-316	-1 531	-1 999	-30.6
Plastics	-3 064	-3 028	-2 733	-248	-243	-216	-1 368	-1 505	-10.0
Processed industrial supplies n.e.s.	-20 132	-21 919	-20 026	-1 737	-1 754	-1 748	-9 817	-10 704	-9.0
Other merchandise goods(b)	-1 415	-1 401	-1 397	-78	-71	-241	-541	-1 185	-119.0
Goods procured in ports by carriers	-1 783	-1 580	-1 406	-123	-123	-123	-688	-759	-10.3
Non-monetary gold	-7 593	-11 522	-6 863	-602	-588	-387	-3 113	-2 769	11.1

(a) For sign conventions, see paragraph 15 of the Explanatory Notes.

(b) From July 2008, commodities subject to a 'no commodity details' or 'no value details' restriction are included in Civil aircraft and confidentialised items, and for earlier periods are included in Other merchandise goods.

GOODS CREDITS, Seasonally Adjusted

	Mar 2010	Apr 2010	May 2010	Jun 2010	Jul 2010	Aug 2010	Sep 2010	Oct 2010	Nov 2010	Dec 2010
	\$m	\$m	\$m	\$m	\$m	\$m	\$m	\$m	\$m	\$m
Total goods credits	16 453	18 978	20 344	22 176	20 650	20 351	19 805	19 966	20 058	20 189
General merchandise	15 233	17 794	18 389	20 693	19 382	19 486	18 634	18 416	18 833	19 081
<i>Rural goods</i>	2 167	2 066	2 310	2 424	2 550	2 402	2 215	2 354	2 365	2 386
Meat and meat preparations	516	547	588	624	603	578	538	537	574	608
Cereal grains and cereal preparations	476	392	463	443	545	469	551	668	582	545
Wool and sheepskins	208	199	196	225	221	218	200	201	234	281
Other rural (a)	967	927	1 064	1 132	1 182	1 137	925	947	976	952
<i>Non-rural goods</i>	13 066	15 728	16 079	18 269	16 831	17 084	16 419	16 062	16 468	16 695
Metal ores and minerals	4 398	5 713	5 849	7 187	6 438	5 886	6 103	6 207	6 530	6 366
Coal, coke and briquettes(b)	2 319	3 455	3 844	4 540	3 801	4 442	4 171	3 806	3 638	3 668
Other mineral fuels(c)	1 894	2 018	1 790	2 002	1 972	1 979	1 690	1 619	1 901	1 901
Metals (excl. non-monetary gold)(c)	911	1 026	1 007	944	1 023	990	945	966	999	1 107
Machinery	667	654	715	706	725	763	665	685	672	771
Transport equipment	373	347	348	359	307	317	311	278	285	293
Other manufactures	1 391	1 346	1 386	1 416	1 364	1 372	1 332	1 378	1 320	1 469
Other non-rural (incl. sugar and beverages)	993	1 048	1 009	984	1 070	1 209	1 078	996	996	992
Goods procured in ports by carriers(c)	120	121	132	129	133	126	123	128	126	129
Net exports of goods under merchanting(d)	11	23	23	24	26	26	25	-4	-4	-3
Non-monetary gold(d)	1 209	1 161	1 932	1 459	1 242	839	1 146	1 554	1 229	1 111

(a) For all time periods, estimates for sugar, sugar preparations and honey are included in Other non-rural.

(b) Only a length-of-month adjustment has been applied to this component.

(c) In using these seasonally adjusted series, care should be exercised because of the difficulties associated with reliably estimating the seasonal pattern.

(d) This component is not seasonally adjusted.

GOODS DEBITS(a), Seasonally Adjusted

	Mar 2010	Apr 2010	May 2010	Jun 2010	Jul 2010	Aug 2010	Sep 2010	Oct 2010	Nov 2010	Dec 2010
	\$m	\$m	\$m	\$m	\$m	\$m	\$m	\$m	\$m	\$m
Total goods debits	-17 473	-17 646	-18 384	-18 329	-18 764	-17 405	-17 482	-17 056	-17 675	-17 914
General merchandise	-17 016	-16 833	-17 497	-17 672	-18 377	-17 100	-16 982	-16 454	-17 087	-17 527
Consumption goods	-5 204	-5 345	-5 536	-5 556	-5 485	-5 474	-5 465	-5 339	-5 397	-5 348
Food and beverages, mainly for consumption	-720	-682	-740	-777	-781	-772	-771	-741	-725	-721
Household electrical items	-386	-432	-504	-453	-441	-428	-436	-419	-430	-374
Non-industrial transport equipment	-1 498	-1 584	-1 522	-1 487	-1 429	-1 383	-1 391	-1 394	-1 424	-1 430
Textiles, clothing and footwear	-640	-645	-681	-702	-705	-726	-710	-679	-698	-687
Toys, books and leisure goods	-370	-383	-384	-404	-375	-383	-389	-408	-399	-397
Consumption goods n.e.s.	-1 590	-1 619	-1 705	-1 732	-1 754	-1 781	-1 768	-1 698	-1 721	-1 739
Capital goods	-3 934	-3 959	-4 319	-4 129	-4 119	-4 004	-3 801	-3 795	-4 101	-3 946
Machinery and industrial equipment	-1 262	-1 312	-1 419	-1 380	-1 344	-1 286	-1 331	-1 279	-1 252	-1 215
ADP equipment	-651	-654	-767	-694	-731	-714	-661	-603	-624	-605
Telecommunications equipment	-500	-519	-551	-522	-562	-672	-568	-606	-611	-583
Civil aircraft and confidentialised items(b)(c)	-378	-269	-436	-438	-424	-244	-327	-274	-615	-542
Industrial transport equipment n.e.s.	-676	-708	-692	-643	-636	-621	-475	-580	-539	-553
Capital goods n.e.s.	-467	-497	-456	-453	-422	-466	-438	-452	-459	-447
Intermediate and other merchandise goods	-7 878	-7 530	-7 642	-7 987	-8 773	-7 622	-7 716	-7 320	-7 590	-8 233
Food and beverages, mainly for industry	-102	-88	-83	-93	-91	-96	-89	-98	-97	-92
Primary industrial supplies n.e.s.(d)	-122	-143	-126	-120	-171	-101	-141	-133	-137	-118
Fuels and lubricants(c)	-2 267	-2 488	-2 177	-2 456	-2 428	-2 080	-2 300	-2 112	-2 439	-2 865
Parts for transport equipment	-700	-672	-749	-725	-762	-716	-722	-677	-679	-669
Parts for ADP equipment	-75	-81	-84	-86	-84	-87	-82	-85	-84	-72
Other parts for capital goods	-1 225	-966	-1 153	-1 189	-1 235	-1 220	-1 172	-1 143	-1 146	-1 173
Organic and inorganic chemicals	-393	-316	-407	-377	-456	-410	-356	-361	-366	-359
Paper and paperboard	-192	-208	-205	-221	-207	-212	-201	-196	-197	-199
Textile yarn and fabrics	-94	-93	-95	-99	-105	-99	-94	-89	-88	-91
Iron and steel	-301	-295	-343	-338	-398	-321	-298	-300	-282	-306
Plastics	-241	-242	-247	-257	-262	-261	-243	-230	-221	-216
Processed industrial supplies n.e.s.	-1 698	-1 731	-1 774	-1 825	-1 889	-1 785	-1 753	-1 694	-1 661	-1 709
Other merchandise goods(b)(e)	-348	-85	-80	-82	-555	-104	-136	-78	-71	-241
Goods procured in ports by carriers(c)	-120	-121	-121	-120	-130	-130	-130	-123	-123	-123
Non-monetary gold(c)	-457	-813	-887	-657	-387	-305	-500	-602	-588	-387

(a) For sign conventions, see paragraph 15 of the Explanatory Notes.

(b) From July 2008, commodities subject to a 'no commodity details' or 'no value details' restriction are included in Civil aircraft and confidentialised items, and for earlier periods are included in Other merchandise goods.

(c) This component is not seasonally adjusted.

(d) In using these seasonally adjusted series, care should be exercised because of the difficulties associated with reliably estimating the seasonal pattern.

(e) From July 1981, this component is not seasonally adjusted.

GOODS CREDITS(a), Trend Estimates

	Mar 2010	Apr 2010	May 2010	Jun 2010	Jul 2010	Aug 2010	Sep 2010	Oct 2010	Nov 2010	Dec 2010
	\$m	\$m	\$m	\$m	\$m	\$m	\$m	\$m	\$m	\$m
Total goods credits	16 551	19 633	20 111	20 450	20 583	20 500	20 303	20 119	19 990	19 835
General merchandise	15 387	18 430	18 887	19 218	19 352	19 276	19 081	18 894	18 762	18 617
<i>Rural goods</i>	2 169	2 236	2 303	2 358	2 388	2 391	2 375	2 358	2 345	2 338
Meat and meat preparations	528	555	578	589	588	579	569	565	566	569
Cereal grains and cereal preparations	434	439	449	470	498	529	557	577	590	597
Wool and sheepskins	201	205	209	211	211	212	217	224	234	243
Other rural(b)	1 006	1 036	1 067	1 089	1 092	1 070	1 032	991	957	928
<i>Non-rural goods</i>	13 219	16 194	16 585	16 860	16 964	16 885	16 706	16 536	16 417	16 280
Metal ores and minerals(c)	4 412	6 033	6 196	6 291	6 319	6 305	6 276	6 265	6 280	6 268
Coal, coke and briquettes(d)	2 555	3 743	3 860	4 016	4 132	4 141	4 053	3 930	3 803	3 673
Other mineral fuels	1 796	1 891	1 947	1 950	1 913	1 863	1 826	1 805	1 800	1 794
Metals (excl. non-monetary gold)	941	969	985	988	985	980	983	995	1 012	1 033
Machinery	665	682	699	710	714	711	707	705	706	711
Transport equipment	359	358	352	340	326	313	303	294	287	282
Other manufactures	1 364	1 375	1 382	1 380	1 373	1 366	1 364	1 368	1 376	1 387
Other non-rural (incl. sugar and beverages)	1 005	1 017	1 036	1 056	1 072	1 077	1 068	1 049	1 026	1 004
Goods procured in ports by carriers	122	125	127	129	129	128	127	127	126	127
Net exports of goods under merchanting	16	20	23	25	25	21	15	8	2	-4
Non-monetary gold	1 148	1 184	1 200	1 206	1 207	1 204	1 207	1 218	1 226	1 222

(a) Caution should be used when interpreting recent trend estimates as they may be affected by unusual economic factors. For more details on trend estimates, please see paragraph 19 of the explanatory notes.

(b) For all time periods, estimates for sugar, sugar preparations and honey are included in Other non-rural.

(c) An estimated trend correction of \$1,400m has been applied to Metal ores and minerals and related aggregates in April 2010. This trend break will be reassessed in a future issue.

(d) An estimated trend correction of \$1,100m has been applied to Coal, coke and briquettes and related aggregates in April 2010. This trend break will be reassessed in a future issue.

GOODS DEBITS(a)(b), Trend Estimates

	Mar 2010	Apr 2010	May 2010	Jun 2010	Jul 2010	Aug 2010	Sep 2010	Oct 2010	Nov 2010	Dec 2010
	\$m	\$m	\$m	\$m	\$m	\$m	\$m	\$m	\$m	\$m
Total goods debits	-17 399	-17 750	-17 993	-18 066	-17 972	-17 775	-17 600	-17 505	-17 475	-17 502
General merchandise	-16 784	-17 091	-17 339	-17 453	-17 419	-17 273	-17 124	-17 030	-16 993	-17 004
Consumption goods	-5 317	-5 395	-5 457	-5 493	-5 498	-5 477	-5 441	-5 406	-5 375	-5 352
Food and beverages, mainly for consumption	-707	-720	-739	-756	-768	-768	-761	-749	-737	-725
Household electrical items	-439	-443	-448	-451	-450	-442	-430	-419	-408	-401
Non-industrial transport equipment	-1 513	-1 528	-1 517	-1 485	-1 446	-1 418	-1 404	-1 400	-1 403	-1 409
Textiles, clothing and footwear	-650	-665	-680	-693	-703	-707	-705	-700	-695	-690
Toys, books and leisure goods	-374	-380	-384	-387	-388	-390	-392	-395	-398	-400
Consumption goods n.e.s.	-1 633	-1 659	-1 690	-1 721	-1 742	-1 752	-1 749	-1 742	-1 734	-1 727
Capital goods	-3 953	-4 047	-4 105	-4 109	-4 070	-4 007	-3 953	-3 923	-3 909	-3 920
Machinery and industrial equipment	-1 300	-1 331	-1 354	-1 362	-1 351	-1 328	-1 302	-1 277	-1 253	-1 236
ADP equipment	-669	-692	-710	-717	-710	-691	-666	-641	-619	-604
Telecommunications equipment	-493	-510	-532	-557	-579	-593	-601	-605	-605	-605
Civil aircraft and confidentialised items(c)	-366	-365	-365	-357	-355	-355	-369	-401	-442	-489
Industrial transport equipment n.e.s.	-656	-677	-678	-659	-626	-592	-567	-550	-539	-533
Capital goods n.e.s.	-469	-471	-465	-457	-449	-446	-447	-449	-451	-453
Intermediate and other merchandise goods	-7 514	-7 649	-7 777	-7 851	-7 851	-7 790	-7 730	-7 701	-7 709	-7 732
Food and beverages, mainly for industry	-87	-89	-90	-91	-92	-92	-94	-95	-95	-95
Primary industrial supplies n.e.s.	-126	-130	-132	-134	-134	-134	-133	-131	-130	-128
Fuels and lubricants	-2 252	-2 296	-2 325	-2 321	-2 293	-2 266	-2 285	-2 345	-2 432	-2 517
Parts for transport equipment	-705	-716	-724	-730	-731	-724	-711	-696	-681	-671
Parts for ADP equipment	-84	-83	-83	-84	-85	-85	-84	-82	-80	-78
Other parts for capital goods	-1 128	-1 129	-1 144	-1 166	-1 184	-1 191	-1 187	-1 175	-1 161	-1 151
Organic and inorganic chemicals	-361	-371	-385	-397	-401	-396	-386	-374	-363	-355
Paper and paperboard	-200	-205	-208	-210	-210	-207	-204	-201	-198	-196
Textile yarn and fabrics	-95	-96	-98	-99	-98	-97	-95	-92	-90	-88
Iron and steel	-299	-320	-336	-344	-342	-332	-319	-305	-295	-287
Plastics	-238	-245	-252	-256	-256	-251	-244	-235	-227	-219
Processed industrial supplies n.e.s.	-1 720	-1 755	-1 788	-1 809	-1 810	-1 791	-1 759	-1 726	-1 698	-1 673
Other merchandise goods(c)	-100	-93	-89	-86	-88	-94	-104	-117	-133	-151
Goods procured in ports by carriers	-119	-121	-123	-125	-126	-127	-127	-126	-125	-124
Non-monetary gold	-615	-659	-654	-613	-553	-501	-476	-476	-482	-498

(a) For sign conventions, see paragraph 15 of the Explanatory Notes.

(b) Caution should be used when interpreting recent trend estimates as they may be affected by unusual economic factors. For more details on trend estimates, please see paragraph 19 of the explanatory notes.

(c) From July 2008, commodities subject to a 'no commodity details' or 'no value details' restriction are included in Civil aircraft and confidentialised items, and for earlier periods are included in Other merchandise goods.

							6 MONTHS ENDED		Change
							DECEMBER		
	2007-08	2008-09	2009-10	Oct 2010	Nov 2010	Dec 2010	2009	2010	
	\$m	\$m	\$m	\$m	\$m	\$m	\$m	\$m	%
Services credits	50 105	52 877	52 301	4 627	4 469	4 357	26 302	26 732	1.6
Manufacturing services on physical inputs owned by others	77	258	284	20	20	16	159	105	-34.0
Maintenance and repair services n.i.e.	103	86	57	4	8	6	35	32	-8.6
Transport	8 510	7 342	6 189	556	565	600	3 159	3 424	8.4
Passenger(c)	3 843	3 410	2 610	231	240	277	1 310	1 432	9.3
Freight	1 464	851	436	35	35	34	211	210	-0.5
Other	2 262	2 127	2 187	213	213	213	1 110	1 244	12.1
Postal and courier services(d)	941	954	956	77	77	76	528	538	1.9
Travel	28 250	31 096	33 022	2 848	2 678	2 527	16 502	16 322	-1.1
Other services	13 165	14 095	12 749	1 199	1 198	1 208	6 447	6 849	6.2
Services debits	-53 055	-56 170	-53 372	-5 031	-4 583	-4 976	-27 122	-29 690	-9.5
Manufacturing services on physical inputs owned by others	-7	-4	-6	—	-1	—	-4	-4	—
Maintenance and repair services n.i.e.	-117	-193	-294	-31	-16	-16	-126	-114	9.5
Transport	-16 427	-15 832	-13 727	-1 217	-1 209	-1 254	-6 776	-7 631	-12.6
Passenger(c)	-6 998	-5 835	-5 118	-470	-437	-533	-2 503	-2 998	-19.8
Freight	-8 923	-9 386	-8 142	-715	-740	-690	-4 004	-4 402	-9.9
Other	-327	-437	-309	-24	-24	-24	-162	-145	10.5
Postal and courier services(d)	-179	-174	-158	-8	-8	-7	-107	-86	19.6
Travel	-20 153	-22 082	-23 285	-2 316	-1 890	-2 246	-12 103	-13 374	-10.5
Other services	-16 351	-18 059	-16 060	-1 467	-1 467	-1 460	-8 113	-8 567	-5.6
Memorandum items:									
Tourism related service credits(e)	32 093	34 506	35 632	3 079	2 918	2 804	17 812	17 754	-0.3
Tourism related service debits(e)	-27 151	-27 917	-28 403	-2 786	-2 327	-2 779	-14 606	-16 372	-12.1

— nil or rounded to zero (including null cells)

(a) For sign conventions, see paragraph 15 of the Explanatory Notes.

(b) For more detailed trade in services components, see table 11.

(c) Passenger services includes agency fees and commissions for air transport.

(d) Postal and courier services includes indirect commissions for sea transport.

(e) For a more detailed explanation of tourism related services, see paragraph 27 of the Explanatory Notes.

	Mar 2010	Apr 2010	May 2010	Jun 2010	Jul 2010	Aug 2010	Sep 2010	Oct 2010	Nov 2010	Dec 2010
	\$m	\$m	\$m	\$m	\$m	\$m	\$m	\$m	\$m	\$m
SEASONALLY ADJUSTED										
Services credits	4 367	4 384	4 392	4 407	4 349	4 445	4 480	4 450	4 436	4 390
Manufacturing services on physical inputs owned by others(b)	24	24	13	13	17	15	17	20	20	16
Maintenance and repair services n.i.e.(b)	4	3	3	3	6	4	4	4	8	6
Transport	508	511	525	529	556	558	563	556	554	555
Passenger(c)	217	206	222	224	236	239	241	236	235	239
Freight(d)	33	42	40	39	38	35	35	36	36	34
Other	182	187	188	190	198	200	201	202	202	202
Postal and courier services(e)	77	77	75	75	84	85	85	82	82	80
Travel	2 780	2 771	2 764	2 772	2 662	2 756	2 771	2 733	2 716	2 671
Other services	1 051	1 075	1 087	1 091	1 109	1 112	1 125	1 137	1 137	1 142
Services debits	-4 567	-4 461	-4 582	-4 718	-4 857	-4 800	-4 773	-4 771	-4 741	-4 684
Manufacturing services on physical inputs owned by others(b)	—	—	—	—	-2	-1	—	—	-1	—
Maintenance and repair services n.i.e.(b)	-21	-16	-33	-29	-17	-23	-11	-31	-16	-16
Transport	-1 249	-1 179	-1 246	-1 295	-1 308	-1 268	-1 227	-1 176	-1 164	-1 142
Passenger(c)	-479	-451	-434	-459	-481	-495	-479	-480	-474	-476
Freight	-729	-700	-784	-808	-788	-735	-710	-661	-656	-634
Other(b)	-27	-23	-23	-22	-24	-24	-25	-24	-24	-24
Postal and courier services(e)(d)	-14	-5	-5	-7	-15	-13	-13	-10	-10	-9
Travel	-1 975	-1 934	-1 971	-2 063	-2 121	-2 087	-2 116	-2 124	-2 114	-2 096
Other services	-1 321	-1 332	-1 332	-1 331	-1 409	-1 421	-1 419	-1 441	-1 445	-1 430
Memorandum items:										
Tourism related service credits(f)	2 997	2 977	2 986	2 996	2 897	2 995	3 013	2 969	2 951	2 911
Tourism related service debits(f)	-2 455	-2 385	-2 405	-2 522	-2 602	-2 582	-2 595	-2 604	-2 588	-2 572

TREND ESTIMATES

Services credits	4 364	4 372	4 382	4 397	4 414	4 427	4 436	4 439	4 438	4 433
Manufacturing services on physical inputs owned by others	23	20	17	16	15	16	17	18	19	19
Maintenance and repair services n.i.e.	4	4	4	4	4	4	5	5	6	6
Transport	514	517	525	535	546	553	557	559	559	558
Passenger(c)	216	217	221	226	231	235	238	239	239	239
Freight	36	38	39	38	38	37	36	35	35	34
Other	184	186	188	192	196	198	200	202	203	203
Postal and courier services(e)	78	77	77	79	81	82	83	83	83	82
Travel	2 770	2 764	2 755	2 748	2 743	2 738	2 733	2 726	2 716	2 707
Other services	1 055	1 067	1 081	1 095	1 106	1 116	1 124	1 132	1 138	1 143
Services debits	-4 510	-4 562	-4 630	-4 700	-4 754	-4 783	-4 786	-4 772	-4 751	-4 724
Manufacturing services on physical inputs owned by others	—	—	—	—	-1	-1	-1	-1	—	—
Maintenance and repair services n.i.e.	-29	-28	-26	-24	-22	-21	-20	-19	-18	-18
Transport	-1 209	-1 235	-1 258	-1 272	-1 272	-1 256	-1 230	-1 201	-1 172	-1 146
Passenger(c)	-455	-456	-460	-465	-472	-477	-481	-482	-481	-478
Freight	-718	-745	-767	-775	-766	-743	-713	-683	-656	-634
Other	-25	-24	-24	-23	-23	-24	-24	-24	-24	-24
Postal and courier services(e)	-12	-10	-9	-9	-10	-12	-12	-12	-11	-10
Travel	-1 950	-1 973	-2 005	-2 042	-2 075	-2 099	-2 112	-2 117	-2 118	-2 113
Other services	-1 320	-1 325	-1 340	-1 361	-1 385	-1 406	-1 423	-1 434	-1 442	-1 447
Memorandum items:										
Tourism related service credits(f)	2 986	2 981	2 976	2 974	2 974	2 973	2 971	2 965	2 955	2 945
Tourism related service debits(f)	-2 405	-2 429	-2 465	-2 507	-2 547	-2 576	-2 593	-2 599	-2 599	-2 591

— nil or rounded to zero (including null cells)

(a) For sign conventions, see paragraph 15 of the Explanatory Notes.

(b) This component is not seasonally adjusted.

(c) Passenger services includes agency fees and commissions for air transport.

(d) In using these seasonally adjusted series, care should be exercised because of the difficulties associated with reliably estimating the seasonal pattern.

(e) Postal and courier services includes indirect commissions for sea transport.

(f) For a more detailed explanation of tourism related services, see paragraph 27 of the Explanatory Notes.

	CREDITS				DEBITS			
	Mar Qtr	Jun Qtr	Sep Qtr	Dec Qtr	Mar Qtr	Jun Qtr	Sep Qtr	Dec Qtr
	2010	2010	2010	2010	2010	2010	2010	2010
	\$m	\$m	\$m	\$m	\$m	\$m	\$m	\$m
Services	13 162	12 837	13 279	13 453	-12 780	-13 470	-15 100	-14 590
Manufacturing services on physical inputs owned by others	75	50	49	56	-2	—	-3	-1
Maintenance and repair services n.i.e.	13	9	14	18	-90	-78	-51	-63
Transport	1 589	1 441	1 703	1 721	-3 380	-3 571	-3 951	-3 680
Passenger(b)	750	550	684	748	-1 271	-1 344	-1 558	-1 440
Freight	96	129	106	104	-1 995	-2 143	-2 257	-2 145
Other	527	550	605	639	-79	-68	-73	-72
Postal and courier services(c)	216	212	308	230	-35	-16	-63	-23
Travel	8 493	8 027	8 269	8 053	-5 450	-5 732	-6 922	-6 452
Business	733	719	761	754	-751	-735	-871	-793
Personal	7 760	7 308	7 508	7 299	-4 699	-4 997	-6 051	-5 659
Education-related	4 428	4 690	4 638	3 938	-219	-181	-317	-189
Other(d)	3 332	2 618	2 870	3 361	-4 480	-4 816	-5 734	-5 470
Construction	21	32	23	13	—	—	—	—
Insurance and pension services	70	92	91	85	-137	-136	-135	-126
Financial services	238	254	259	282	-181	-144	-151	-171
Charges for the use of intellectual property n.i.e.	265	255	194	182	-855	-973	-947	-1 004
Telecommunications, computer and information services	418	436	447	486	-496	-479	-491	-553
Telecommunication services	57	44	44	51	-135	-97	-100	-110
Computer and information services	361	392	403	435	-361	-382	-391	-443
Computer services	293	323	302	336	-296	-315	-316	-346
Information services	9	15	20	18	-7	-9	-19	-32
Other services	59	54	81	81	-58	-58	-56	-65
Other business services	1 560	1 830	1 820	2 119	-1 609	-1 818	-1 931	-2 083
Research and development services	113	136	133	145	-54	-65	-42	-47
Professional and management consulting services	694	800	728	830	-561	-608	-653	-774
Legal, accounting, management consulting, public relations and other professional services	613	720	660	749	-513	-559	-612	-719
Advertising, market research and public opinion polling	81	80	68	81	-48	-49	-41	-55
Technical, trade-related and other business services	753	894	959	1 144	-994	-1 145	-1 236	-1 262
Architectural, engineering and other technical services	384	500	475	550	-476	-605	-663	-721
Waste treatment and de-pollution, agricultural and mining services	62	70	96	110	-117	-122	-188	-179
Operational leasing services	94	82	72	73	-147	-146	-140	-145
Trade-related commission services	108	124	198	287	-44	-55	-55	-60
Other business services n.i.e.	105	118	118	124	-210	-217	-190	-157
Personal, cultural and recreational services	204	195	200	228	-358	-317	-296	-235
Audiovisual and related services	48	31	34	40	-292	-271	-253	-170
Other personal, cultural and recreational services	156	164	166	188	-66	-46	-43	-65
Government goods and services n.i.e.	216	216	210	210	-222	-222	-222	-222
Memorandum items:								
Gross insurance premiums receivable / payable	171	218	198	215	-276	-282	-270	-287
Gross insurance claims payable / receivable	-120	-156	-135	-148	312	317	310	327
Tourism related services(e)	9 243	8 577	8 953	8 801	-6 721	-7 076	-8 480	-7 892

— nil or rounded to zero (including null cells)

(a) For sign conventions, see paragraph 15 of the Explanatory Notes.

(b) Passenger services includes agency fees and commissions for air transport.

(c) Postal and courier services includes indirect commissions for sea transport.

(d) Other personal travel includes health-related travel.

(e) For a more detailed explanation of tourism related services, see paragraph 27 of the Explanatory Notes.

	Oct 2010	Nov 2010	Dec 2010	Per cent of total merchandise exports(b)	6 MONTHS ENDED DECEMBER	
					2009	2010
					\$m	\$m
	\$m	\$m	\$m	%	\$m	\$m

MAJOR COMMODITIES (c)

011 Meat of bovine animals	362	405	422	2.0	2 073	2 337
041 Wheat and meslin	486	278	384	1.8	1 692	2 237
281 Iron ore and concentrates	4 655	4 362	4 969	23.4	14 112	28 373
283 Copper ores and concentrates	417	570	436	2.1	2 118	2 568
285 Aluminium ores and concentrates	405	436	422	2.0	2 334	2 575
287 Ores and concentrates of base metals, n.e.s.	490	325	431	2.0	1 688	2 165
321 Coal, not agglomerated	3 861	3 581	3 710	17.5	17 094	23 612
333 Crude petroleum oils	804	1 009	952	4.5	4 086	5 585
343 Natural gas	811	806	899	4.2	3 553	5 225
542 Medicaments	301	294	366	1.7	1 903	1 794
682 Copper	216	370	371	1.7	1 334	1 899
684 Aluminium	414	295	417	2.0	1 959	2 254
781 Motor vehicles for transport of people	155	127	167	0.8	919	880
971 Gold, non-monetary	1 523	1 168	1 061	5.0	6 164	6 815

SECTION AND DIVISION OF THE SITC

0 Food and live animals						
00 Live animals (excl. fish, crustaceans, molluscs and aquatic invertebrates)	127	80	112	0.5	625	608
01 Meat and meat preparations	574	633	654	3.1	3 212	3 575
02 Dairy products and birds' eggs	217	198	203	1.0	961	1 167
03 Fish (not marine mammals), crustaceans, molluscs and aquatic invertebrates, and preparations thereof	50	71	113	0.5	475	502
04 Cereals and cereal preparations	602	397	488	2.3	2 364	2 970
05 Vegetables and fruit	105	98	121	0.6	743	725
06 Sugars, sugar preparations and honey	37	27	30	0.1	149	192
07 Coffee, tea, cocoa, spices, and manufactures thereof	25	27	25	0.1	159	157
08 Feeding stuff for animals (excl. unmilled cereals)	77	64	85	0.4	563	485
09 Miscellaneous edible products and preparations	66	63	75	0.4	339	401
<i>Total Food and live animals</i>	<i>1 879</i>	<i>1 659</i>	<i>1 905</i>	<i>9.0</i>	<i>9 589</i>	<i>10 784</i>
1 Beverages and tobacco						
11 Beverages	201	164	214	1.0	1 248	1 190
12 Tobacco and tobacco manufactures	13	12	16	0.1	68	69
<i>Total Beverages and tobacco</i>	<i>214</i>	<i>176</i>	<i>231</i>	<i>1.1</i>	<i>1 316</i>	<i>1 259</i>
2 Crude materials, inedible, except fuels						
21 Hides, skins and furskins, raw	68	63	80	0.4	272	400
22 Oil-seeds and oleaginous fruits	8	36	44	0.2	224	150
23 Crude rubber (incl. synthetic and reclaimed)	1	1	1	—	6	8
24 Cork and wood	105	118	107	0.5	571	665
25 Pulp and waste paper	21	21	25	0.1	108	132
26 Textile fibres and their wastes (not manufactured into yarn or fabric)	244	259	291	1.4	1 228	1 732
27 Crude fertilizers (excl. those of Division 56) and crude minerals (excl. coal, petroleum and precious stones)	35	33	36	0.2	140	188
28 Metalliferous ores and metal scrap	6 335	6 175	6 780	31.9	22 369	38 264
29 Crude animal and vegetable materials, n.e.s.	18	18	22	0.1	106	111
<i>Total Crude materials, inedible, except fuels</i>	<i>6 837</i>	<i>6 724</i>	<i>7 387</i>	<i>34.8</i>	<i>25 024</i>	<i>41 649</i>
3 Mineral fuels, lubricants and related materials						
32 Coal, coke and briquettes	3 876	3 586	3 736	17.6	17 139	23 703
33 Petroleum, petroleum products and related materials	1 005	1 232	1 172	5.5	5 313	6 836
34 Gas, natural and manufactured	918	846	1 003	4.7	4 143	5 777
<i>Total Mineral fuels, lubricants and related materials</i>	<i>5 799</i>	<i>5 664</i>	<i>5 910</i>	<i>27.8</i>	<i>26 595</i>	<i>36 317</i>

— nil or rounded to zero (including null cells)

(a) Some SITC sections and divisions exclude commodities subject to a confidentiality restriction. These are included in Division 98. For more information see paragraph 26 of the Explanatory Notes.

(b) Per cent of total merchandise is calculated for the most recent month.

(c) The 'Major commodities' section lists commodities at the SITC Rev 4 3-digit level which are the most significant (by value) or are of particular interest. Abbreviated descriptors have been used. The list of 'Major commodities' is reviewed annually.

	Oct 2010	Nov 2010	Dec 2010	Per cent of total merchandise exports(b)	6 MONTHS ENDED DECEMBER	
					2009	2010
					\$m	\$m
SECTION AND DIVISION OF THE SITC						
4	Animal and vegetable oils, fats and waxes					
41	26	36	27	0.1	127	159
42	5	12	12	0.1	75	74
43	Fats and oils (processed), waxes and inedible mixtures or preparations, of animal or vegetable origin, n.e.s.					
	1	1	1	—	7	5
	<i>Total Animal and vegetable oils, fats and waxes</i>					
	32	50	41	0.2	209	238
5	Chemicals and related products, n.e.s.					
51	16	17	19	0.1	81	100
52	54	44	53	0.2	258	293
53	64	51	53	0.3	347	347
54	336	319	400	1.9	2 118	2 001
55	Essential oils and resinoids and perfume materials, toilet, polishing and cleansing preparations					
	59	55	62	0.3	311	338
56	25	8	7	—	234	227
57	27	34	31	0.1	132	188
58	31	25	22	0.1	191	191
59	87	78	84	0.4	491	490
	<i>Total Chemicals and related products, n.e.s.</i>					
	698	631	732	3.4	4 165	4 174
6	Manufactured goods classified chiefly by material					
61	25	21	26	0.1	127	145
62	15	16	16	0.1	96	97
63	12	10	14	0.1	75	83
64	65	58	68	0.3	324	401
65	21	22	24	0.1	151	138
66	70	68	56	0.3	383	363
67	141	110	148	0.7	439	714
68	820	906	1 024	4.8	4 702	5 419
69	103	93	100	0.5	568	564
	<i>Total Manufactured goods classified chiefly by material</i>					
	1 272	1 303	1 476	7.0	6 864	7 925
7	Machinery and transport equipment					
71	71	65	86	0.4	402	451
72	189	153	216	1.0	976	1 058
73	11	8	17	0.1	72	68
74	General industrial machinery and equipment, n.e.s. and machine parts, n.e.s.					
	158	142	202	1.0	883	974
75	96	99	94	0.4	490	614
76	Telecommunications and sound recording and reproducing apparatus and equipment					
	86	81	90	0.4	503	509
77	Electrical machinery, apparatus and appliances, parts (incl. non electrical counterparts of electrical domestic equip)					
	132	120	133	0.6	781	804
78	255	201	269	1.3	1 405	1 462
79	68	97	92	0.4	732	505
	<i>Total Machinery and transport equipment</i>					
	1 066	967	1 199	5.6	6 243	6 445

— nil or rounded to zero (including null cells)

(b) Per cent of total merchandise is calculated for the most recent month.

(a) Some SITC sections and divisions exclude commodities subject to a confidentiality restriction. These are included in Division 98. For more information see paragraph 26 of the Explanatory Notes.

	Oct 2010	Nov 2010	Dec 2010	Per cent of total merchandise exports (b)	6 MONTHS ENDED DECEMBER	
					
					2009	2010
	\$m	\$m	\$m	%	\$m	\$m
SECTION AND DIVISION OF THE SITC						
8	Miscellaneous manufactured articles					
81	Prefabricated buildings and sanitary, plumbing, heating and lighting fixtures and fittings, n.e.s.					
	11	11	11	0.1	79	64
82	Furniture and parts thereof; bedding, mattresses, mattress supports, cushions and similar stuffed furnishings					
	9	9	8	—	54	49
83	Travel goods, handbags and similar containers					
	2	3	3	—	19	15
84	Articles of apparel and clothing accessories					
	21	19	19	0.1	122	123
85	Footwear					
	4	4	4	—	23	23
87	Professional, scientific and controlling instruments and apparatus, n.e.s.					
	176	145	192	0.9	1 023	1 002
88	Photographic apparatus, equipment and supplies and optical goods, n.e.s., watches and clocks					
	21	25	27	0.1	156	137
89	Miscellaneous manufactured articles, n.e.s.					
	219	210	206	1.0	1 113	1 171
	<i>Total Miscellaneous manufactured articles</i>					
	464	426	471	2.2	2 589	2 584
9	Commodities and transactions not classified elsewhere in the SITC					
93	Special transactions and commodities not classified according to kind					
	141	138	131	0.6	965	779
95	Gold coin whether or not legal tender, and other coin being legal tender					
	31	61	50	0.2	240	307
96	Coin (excl. gold coin) not being legal tender					
	—	—	—	—	—	—
97	Gold, non-monetary (excl. gold ores and concentrates)					
	1 523	1 168	1 061	5.0	6 164	6 815
98	Combined confidential items excl. some of SITC 280 (exports only) and some of SITCs 510 and 520 (imports only)					
	593	595	637	3.0	3 388	4 176
	<i>Commodities and transactions not classified elsewhere in the SITC</i>					
	2 289	1 961	1 880	8.9	10 757	12 077
Total merchandise exports						
	20 551	19 560	21 230	100.0	93 352	123 452
Balance of Payments Adjustments						
	27	21	38	..	435	270
Goods Credits (exports) on a Balance of Payments Basis						
	20 578	19 581	21 268	..	93 787	123 722

.. not applicable
 — nil or rounded to zero (including null cells)

(a) Some SITC sections and divisions exclude commodities subject to a confidentiality restriction. These are included in Division 98. For more information see paragraph 26 of the Explanatory Notes.
 (b) Per cent of total merchandise is calculated for the most recent month.

	Oct	Nov	Dec	Per cent	6 MONTHS ENDED	
	2010	2010	2010	of total	DECEMBER	
	\$m	\$m	\$m	merchandise	2009	2010
				imports(b)		
				%	\$m	\$m
MAJOR COMMODITIES (c)						
333 Crude petroleum oils	1 075	1 461	1 828	10.1	7 045	8 549
334 Refined petroleum oils	826	908	865	4.8	5 552	4 828
542 Medicaments	687	703	608	3.4	3 727	4 151
723 Civil engineering and contractors' plant and equipment	284	265	264	1.5	1 313	1 607
743 Air pumps, compressors or fans; hoods; centrifuges; filtering apparatus; parts	154	163	145	0.8	1 978	1 010
752 Automatic data processing machines	486	507	540	3.0	2 839	3 252
761 Televisions, monitors and projectors	300	295	154	0.8	1 852	1 535
764 Telecommunications equipment	751	902	697	3.8	3 710	4 336
781 Motor cars for the transport of persons	1 291	1 429	1 370	7.5	6 969	7 978
782 Motor vehicles for the transport of goods	498	532	407	2.2	2 698	2 780
784 Parts and accessories of the motor vehicles	222	222	190	1.0	1 154	1 312
894 Baby carriages, toys, games and sporting goods	352	296	184	1.0	1 576	1 550
971 Gold, non-monetary	558	732	387	2.1	3 663	2 969
SECTION AND DIVISION OF THE SITC						
0 Food and live animals						
00 Live animals other than fish, crustaceans, molluscs and aquatic invertebrates	14	13	2	—	38	54
01 Meat and meat preparations	43	46	41	0.2	266	274
02 Dairy products and birds' eggs	60	61	55	0.3	281	359
03 Fish (not marine mammals), crustaceans, molluscs and aquatic invertebrates, and preparations thereof	117	128	122	0.7	661	683
04 Cereals and cereal preparations	73	65	63	0.3	451	431
05 Vegetables and fruit	130	150	167	0.9	825	848
06 Sugars, sugar preparations and honey	27	27	28	0.2	152	162
07 Coffee, tea, cocoa, spices, and manufactures thereof	115	116	113	0.6	658	678
08 Feeding stuff for animals (excl. unmilled cereals)	44	52	44	0.2	330	294
09 Miscellaneous edible products and preparations	154	154	128	0.7	829	874
<i>Total Food and live animals</i>	<i>777</i>	<i>812</i>	<i>762</i>	<i>4.2</i>	<i>4 490</i>	<i>4 658</i>
1 Beverages and tobacco						
11 Beverages	149	142	154	0.9	868	863
12 Tobacco and tobacco manufactures	18	19	20	0.1	130	122
<i>Total Beverages and tobacco</i>	<i>167</i>	<i>161</i>	<i>175</i>	<i>1.0</i>	<i>998</i>	<i>985</i>
2 Crude materials, inedible, except fuels						
21 Hides, skins and furskins, raw	—	—	—	—	—	1
22 Oil-seeds and oleaginous fruits	4	5	5	—	24	26
23 Crude rubber (incl. synthetic and reclaimed)	9	8	9	0.1	69	62
24 Cork and wood	57	66	51	0.3	296	356
25 Pulp and waste paper	16	11	15	0.1	94	100
26 Textile fibres and their wastes (not manufactured into yarn or fabric)	9	8	7	—	76	52
27 Crude fertilizers (excl. those of Division 56) and crude minerals (excl. coal, petroleum and precious stones)	11	18	27	0.1	65	127
28 Metalliferous ores and metal scrap	91	97	67	0.4	274	444
29 Crude animal and vegetable materials, n.e.s.	25	26	31	0.2	164	157
<i>Total Crude materials, inedible, except fuels</i>	<i>222</i>	<i>239</i>	<i>212</i>	<i>1.2</i>	<i>1 063</i>	<i>1 325</i>
3 Mineral fuels, lubricants and related materials						
32 Coal, coke and briquettes	10	12	3	—	14	29
33 Petroleum, petroleum products and related materials	1 955	2 404	2 752	15.2	12 811	13 695
34 Gas, natural and manufactured	266	139	249	1.4	868	1 316
<i>Total Mineral fuels, lubricants and related materials</i>	<i>2 231</i>	<i>2 556</i>	<i>3 004</i>	<i>16.6</i>	<i>13 693</i>	<i>15 040</i>

— nil or rounded to zero (including null cells)

(a) Some SITC sections and divisions exclude commodities subject to a confidentiality restriction. These are included in Division 98. For more information see paragraph 26 of the Explanatory Notes.

(b) Per cent of total merchandise is calculated for the most recent month.

(c) The 'Major commodities' section lists commodities at the SITC Rev 4 3-digit level which are the most significant (by value) or are of particular interest. Abbreviated descriptors have been used. The list of 'Major commodities' is reviewed annually.

	Oct	Nov	Dec	Per cent	6 MONTHS ENDED	
	2010	2010	2010	of total	DECEMBER	
	\$m	\$m	\$m	merchandise	2009	2010
				imports(b)		
				%	\$m	\$m
SECTION AND DIVISION OF THE SITC						
4	Animal and vegetable oils, fats and waxes					
41	Animal oils and fats	2	1	3	—	13 18
42	Fixed vegetable fats and oils, crude, refined or fractionated	42	38	43	0.2	241 249
43	Fats and oils (processed), waxes and inedible mixtures or preparations, of animal or vegetable n.e.s.	4	6	4	—	38 30
	<i>Total Animal and vegetable oils, fats and waxes</i>	48	45	50	0.3	293 298
5	Chemicals and related products, n.e.s.					
51	Organic chemicals	282	257	264	1.5	1 567 1 689
52	Inorganic chemicals	93	92	87	0.5	563 580
53	Dyeing, tanning and colouring materials	53	54	52	0.3	317 331
54	Medicinal and pharmaceutical products	838	844	726	4.0	4 574 4 969
55	Essential oils and resinoids and perfume materials; toilet, polishing and cleansing preparations	166	150	161	0.9	960 997
56	Fertilisers (excl. crude)	104	83	142	0.8	263 542
57	Plastics in primary forms	126	114	105	0.6	655 753
58	Plastics in non-primary forms	122	130	111	0.6	712 751
59	Chemical materials and products, n.e.s.	166	188	197	1.1	969 1 104
	<i>Total Chemicals and related products, n.e.s.</i>	1 952	1 912	1 845	10.2	10 580 11 715
6	Manufactured goods classified chiefly by material					
61	Leather, leather manufactures, and dressed furskins, n.e.s.	12	10	11	0.1	70 72
62	Rubber manufactures, n.e.s.	245	264	241	1.3	1 359 1 507
63	Cork and wood manufactures (excl. furniture)	59	63	56	0.3	300 368
64	Paper, paperboard and articles of paper pulp, of paper or of paperboard	252	248	223	1.2	1 383 1 523
65	Textile yarn, fabrics, made-up articles n.e.s., and related products	214	219	196	1.1	1 245 1 295
66	Non-metallic mineral manufactures, n.e.s.	211	210	192	1.1	1 347 1 294
67	Iron and steel	319	299	316	1.7	1 531 1 999
68	Non-ferrous metals	182	150	190	1.0	1 015 1 105
69	Manufactures of metals, n.e.s.	424	472	411	2.3	2 638 2 714
	<i>Total Manufactured goods classified chiefly by material</i>	1 917	1 934	1 836	10.1	10 887 11 877
7	Machinery and transport equipment					
71	Power generating machinery and equipment	366	323	349	1.9	2 303 2 148
72	Machinery specialized for particular industries	558	562	555	3.1	3 501 3 500
73	Metal working machinery	46	49	49	0.3	300 303
74	General industrial machinery and equipment, n.e.s. and machine parts, n.e.s.	861	913	896	4.9	6 202 5 416
75	Office machines and automatic data processing machines	726	739	773	4.3	4 302 4 767
76	Telecommunications and sound recording and reproducing apparatus and equipment	1 159	1 358	933	5.1	6 279 6 483
77	Electrical machinery, apparatus, appliances, parts (incl. non-elec. counterparts of electrical domestic equip)	917	1 090	1 005	5.5	4 785 5 820
78	Road vehicles (incl. air-cushion vehicles)	2 175	2 358	2 131	11.7	11 745 13 067
79	Transport equipment (excl. road vehicles)	170	167	224	1.2	1 276 1 216
	<i>Total Machinery and transport equipment</i>	6 977	7 559	6 914	38.1	40 693 42 720

— nil or rounded to zero (including null cells)

(b) Per cent of total merchandise is calculated for the most recent month.

(a) Some SITC sections and divisions exclude commodities subject to a confidentiality restriction. These are included in Division 98. For more information see paragraph 26 of the Explanatory Notes.

	Oct	Nov	Dec	Per cent	6 MONTHS ENDED		
	2010	2010	2010	of total	DECEMBER		
	\$m	\$m	\$m	merchandise	2009	2010	
				imports(b)			
				%	\$m	\$m	
SECTION AND DIVISION OF THE SITC							
8	Miscellaneous manufactured articles						
81	Prefabricated buildings; sanitary, plumbing, heating and lighting fixtures and fittings, n.e.s.	80	90	81	0.4	412	510
82	Furniture, parts thereof; bedding, mattresses, mattress supports, cushions and similar stuffed furnishings	234	262	239	1.3	1 410	1 479
83	Travel goods, handbags and similar containers	80	87	72	0.4	427	452
84	Articles of apparel and clothing accessories	443	462	417	2.3	2 345	2 804
85	Footwear	107	118	114	0.6	650	732
87	Professional, scientific and controlling instruments and apparatus, n.e.s.	392	406	425	2.3	2 337	2 449
88	Photographic apparatus, equipment and supplies and optical goods, n.e.s., watches and clocks	125	144	123	0.7	761	751
89	Miscellaneous manufactured articles, n.e.s.	1 058	1 013	768	4.2	5 473	5 599
	<i>Total Miscellaneous manufactured articles</i>	2 520	2 584	2 240	12.3	13 817	14 777
9	Commodities and transactions not classified elsewhere in the SITC						
93	Special transactions and commodities not classified according to kind	4	3	3	—	19	19
95	Gold coin whether or not legal tender, and other coin being legal tender	1	1	2	—	5	6
96	Coin (excl. gold coin) not being legal tender	—	1	—	—	1	2
97	Gold, non-monetary (excl. gold ores and concentrates)	558	732	387	2.1	3 663	2 969
98	Combined confidential items excl. some of SITC 280 (exports only) and some of SITCs 510 and 520 (imports only)	274	615	716	3.9	2 755	3 072
	<i>Total Commodities and transactions not classified elsewhere in the SITC</i>	837	1 351	1 108	6.1	6 442	6 068
	Total merchandise imports	17 648	19 152	18 146	100.0	102 956	109 463
	Balance of Payments Adjustments	232	36	169	..	-46	778
	Goods Debits (imports) on a Balance of Payments Basis	17 880	19 188	18 315	..	102 910	110 241

.. not applicable
 — nil or rounded to zero (including null cells)

(a) Some SITC sections and divisions exclude commodities subject to a confidentiality restriction. These are included in Division 98. For more information see paragraph 26 of the Explanatory Notes.

(b) Per cent of total merchandise is calculated for the most recent month.

	EXPORTS				IMPORTS (b)				BALANCE OF MERCHANDISE TRADE	
	2009-10	Dec	6 months ended	6 months ended	2009-10	Dec	6 Months Ended	6 Months Ended	2009-10	6 Months Ended
		2010	December	December		2010	2010	December		December
	\$m	\$m	\$m	\$m	\$m	\$m	\$m	\$m		
Belgium	1 079	119	448	624	1 560	117	832	820	-481	-196
Brazil	1 294	56	555	824	620	75	307	445	674	379
Canada	1 295	86	669	626	1 726	136	898	911	-431	-284
China	46 518	5 966	20 732	32 490	36 374	3 483	19 152	22 027	10 144	10 464
Denmark	141	14	71	75	1 105	78	582	498	-965	-424
Egypt(c)	411	45	187	273	26	2	16	14	385	258
Fiji	306	28	157	162	163	15	77	105	143	57
Finland	285	30	126	99	664	66	323	390	-379	-291
France	1 121	113	472	521	3 885	351	2 039	1 975	-2 764	-1 454
Germany	1 654	106	736	915	10 718	845	5 470	5 244	-9 064	-4 329
Hong Kong (SAR of China)	2 719	271	1 275	1 732	1 129	86	614	624	1 590	1 108
India	16 179	1 339	7 431	7 620	1 845	160	956	1 078	14 334	6 542
Indonesia	4 329	340	2 157	2 308	4 685	518	2 409	3 037	-356	-729
Iran	149	19	59	79	114	37	36	107	35	-27
Iraq	196	18	163	46	—	—	—	—	196	46
Ireland	121	8	59	71	2 305	167	1 163	1 167	-2 185	-1 096
Israel	176	27	87	101	573	51	281	307	-397	-206
Italy	948	154	477	663	4 814	443	2 430	2 508	-3 866	-1 845
Japan	37 069	3 905	17 426	23 964	17 779	1 449	8 780	9 175	19 290	14 789
Korea, Republic of	16 494	2 062	7 507	11 431	7 049	563	3 463	3 555	9 444	7 877
Kuwait	525	53	294	279	417	40	213	162	108	117
Malaysia	3 133	277	1 535	2 037	8 504	756	3 976	4 596	-5 371	-2 559
Mexico	741	57	345	332	1 235	122	595	765	-494	-433
Netherlands	2 058	203	873	1 429	1 360	115	735	679	698	751
New Zealand	8 027	630	4 175	4 154	7 004	589	3 531	3 727	1 022	426
Pakistan	610	23	263	194	153	14	69	79	457	115
Papua New Guinea	1 972	232	1 045	1 103	2 930	246	1 500	1 588	-958	-485
Philippines	1 092	106	573	720	461	33	232	238	631	482
Saudi Arabia	1 533	134	721	752	462	30	227	172	1 072	580
Singapore	5 046	393	2 768	2 559	10 899	920	5 579	5 362	-5 853	-2 804
South Africa	1 762	154	823	861	1 004	107	483	582	757	279
Spain	493	59	203	421	1 679	125	877	851	-1 186	-430
Sweden	441	29	169	263	2 084	195	1 029	1 133	-1 643	-871
Switzerland	269	27	129	165	2 231	184	1 193	1 164	-1 962	-998
Taiwan	6 851	761	3 099	4 618	3 416	265	1 656	1 859	3 435	2 759
Thailand	4 704	560	2 136	3 280	12 444	690	6 323	4 884	-7 740	-1 605
Turkey	304	82	126	281	459	63	217	243	-155	38
United Arab Emirates	1 974	201	949	1 120	2 293	232	1 244	1 181	-318	-61
United Kingdom	7 211	741	2 812	3 910	5 759	458	2 882	2 926	1 452	984
United States of America	9 546	753	4 804	4 508	21 856	1 849	10 782	11 609	-12 310	-7 102
Viet Nam	1 408	174	717	839	3 110	325	1 454	1 470	-1 702	-632
Other Countries(b)	8 534	880	3 996	5 003	16 688	2 147	8 328	10 204	-8 154	-5 201
Total	200 720	21 230	93 352	123 452	203 590	18 146	102 956	109 463	-2 870	13 989
APEC	151 968	16 693	71 440	97 411	144 014	12 372	72 490	77 056	7 955	20 354
ASEAN	19 859	1 861	9 960	11 831	41 092	3 397	20 513	20 239	-21 232	-8 408
Developing Countries	121 921	13 531	56 299	77 234	102 860	9 400	52 149	56 350	19 061	20 883
Least Developed Countries	1 841	216	863	1 209	291	32	134	179	1 550	1 030
European Union(d)	15 920	1 606	6 641	9 265	38 489	3 198	19 635	19 552	-22 569	-10 287
OECD	90 087	9 289	41 994	54 946	100 591	8 314	50 332	51 967	-10 503	2 980

— nil or rounded to zero (including null cells)

(a) See Time series spreadsheets for details of all countries.

(b) From September 2008 imports data with confidentiality restrictions 'no commodity details' or 'no value details' are included in Other countries.

(c) Exports of Alumina to Egypt are excluded from country total and included in the 'Other Countries' category.

(d) The European Union includes 27 member countries for all periods.

	6 MONTHS ENDED			
	DECEMBER			
	2009-10	Dec 2010	2009	2010
	\$m	\$m	\$m	\$m
EXPORTS (a)				
New South Wales	31 205	3 321	15 378	17 980
Victoria	18 427	1 754	9 070	9 750
Queensland	43 266	4 077	20 399	27 027
South Australia	8 134	999	4 036	5 162
Western Australia	83 306	9 513	36 159	54 896
Tasmania	3 004	340	1 392	1 629
Northern Territory	4 977	507	2 435	2 833
Australian Capital Territory	4	—	4	1
State not available for publication(b)	557	17	270	153
Re-exports	7 841	702	4 208	4 022
Total	200 720	21 230	93 352	123 452
IMPORTS				
New South Wales	76 003	6 856	38 387	42 310
Victoria	53 118	4 755	26 754	29 402
Queensland	31 035	2 734	15 425	16 495
South Australia	6 446	497	3 310	3 156
Western Australia	27 937	2 179	14 318	12 678
Tasmania	715	70	427	342
Northern Territory	3 051	339	1 579	2 004
Australian Capital Territory	5	—	3	4
State not available for publication(c)	5 280	716	2 755	3 072
Total	203 590	18 146	102 956	109 463

— nil or rounded to zero (including null cells)

(a) State in which the final stage of production or manufacture occurs.

(b) Exports of Alumina to Bahrain, Egypt and Iceland are excluded from the state totals and included in 'State not available for publication'.

(c) From September 2008 imports data with confidentiality restrictions 'no commodity details' or 'no value details' are included in State not available for publication.

PERIOD AVERAGE EXCHANGE RATES(a), Per Australian dollar

<i>Period</i>	<i>United States dollar</i>	<i>UK pound sterling</i>	<i>Euro</i>	<i>Japanese yen</i>	<i>Special Drawing Right</i>	<i>Trade-weighted index of value of the A\$(b)</i>
FINANCIAL YEAR						
2007-08	0.8968	0.4479	0.6099	98.63	0.5664	69.7
2008-09	0.7456	0.4621	0.5414	73.99	0.4869	60.2
2009-10	0.8830	0.5590	0.6362	80.77	0.5710	68.9
MONTHS						
2009						
October	0.9090	0.5613	0.6130	82.03	0.5716	70.0
November	0.9202	0.5540	0.6166	82.04	0.5754	70.6
December	0.9028	0.5552	0.6174	80.89	0.5693	69.6
2010						
January	0.9148	0.5659	0.6400	83.49	0.5842	70.7
February	0.8863	0.5663	0.6474	79.99	0.5759	69.2
March	0.9120	0.6058	0.6716	82.58	0.5968	71.0
April	0.9265	0.6043	0.6902	86.45	0.6105	72.1
May	0.8717	0.5942	0.6928	80.38	0.5883	68.9
June	0.8529	0.5777	0.6976	77.48	0.5808	67.7
July	0.8743	0.5725	0.6852	76.63	0.5821	68.2
August	0.9000	0.5747	0.6976	76.87	0.5928	69.5
September	0.9358	0.6010	0.7169	78.99	0.6138	71.5
October	0.9812	0.6190	0.7060	80.26	0.6251	73.2
November	0.9902	0.6198	0.7239	81.61	0.6338	74.0
December	0.9909	0.6347	0.7497	82.58	0.6454	74.7

(a) These exchange rates and the trade-weighted index are derived using rates provided by the Reserve Bank of Australia in respect of each trading day.

(b) May 1970 = 100. The Trade-weighted index is reweighted annually on 1 October and on special occasions as required.

	2007-08	2008-09	2009-10	Jun 2010	Jul 2010	Aug 2010	Sep 2010	Oct 2010	Nov 2010
	\$m	\$m	\$m	\$m	\$m	\$m	\$m	\$m	\$m
BALANCE									
On goods and services	—	—	-9	16	-74	11	9	31	55
CREDITS									
Total goods and services	—	—	47	17	-73	7	-4	9	-24
<i>Total goods</i>	—	—	13	13	-81	—	-6	-7	-128
Rural goods	—	—	4	4	—	—	-1	2	-60
Non-rural goods	—	—	9	9	-81	—	-5	-9	-68
Net exports of goods under merchanting	—	—	—	—	—	—	—	—	—
Non-monetary gold	—	—	—	—	—	—	—	—	—
<i>Total services</i>	—	—	34	4	8	7	2	16	104
DEBITS									
Total goods and services	—	—	-56	-1	-1	4	13	22	79
<i>Total goods</i>	—	—	7	7	4	9	16	16	14
Consumption goods	—	—	—	—	1	—	1	-1	1
Capital goods	—	—	6	6	—	7	—	10	3
Intermediate and other merchandise goods	—	—	1	1	3	2	15	7	10
Non-monetary gold	—	—	—	—	—	—	—	—	—
<i>Total services</i>	—	—	-63	-8	-5	-5	-3	6	65

— nil or rounded to zero (including null cells)

(a) This table is presented consistent with BPM6 sign conventions. This means for the balance on goods and services a negative revision indicates a decrease in a surplus or an increase in a deficit. For debits a negative revision indicates an increase in debits while a positive revision indicates a decrease in debits.

EXPLANATORY NOTES

INTRODUCTION

1 This publication presents preliminary estimates of Australia's international trade in goods and services on a balance of payments basis (tables 1–11 and 17) and merchandise import and export statistics on a recorded trade basis (tables 12–15). In addition, Table 16 Exchange rates and trade-weighted indexes are derived by using exchange rates and indexes provided by the Reserve Bank.

2 Merchandise trade statistics on a recorded trade basis are compiled from information submitted by exporters and importers or their agents to the Australian Customs and Border Protection Service (Customs and Border Protection). Adjustments for coverage, timing and valuation are made to recorded trade data to convert them to a balance of payments basis. The services data are sourced from the quarterly Survey of International Trade in Services and a range of administrative data and indicator series.

3 More comprehensive quarterly estimates of Australia's trade in goods and services, together with comprehensive details of Australia's balance of payments are included in the quarterly publication, *Balance of Payments and International Investment Position, Australia* (cat. no. 5302.0). Detailed monthly statistics on merchandise trade are available in Time Series Spreadsheets on the ABS website or by subscription to tailored services. More information on the *International Trade in Services by country, by state and by detailed services category* are available on a financial year basis (cat. no. 5368.0.55.003) with the September issue of this publication and calendar year basis (cat. no. 5368.0.55.004) with the March issue of this publication.

CONCEPTS, SOURCES AND METHODS

4 The conceptual framework used in compiling Australia's merchandise trade statistics can be found in *International Merchandise Trade, Australia: Concepts, Sources and Methods, 2001* (cat. no. 5489.0).

5 The conceptual framework used in compiling Australia's balance of payments statistics is based on the *International Monetary Fund's Balance of Payments and International Investment Position Manual Sixth Edition* (BPM6). Descriptions of the underlying concepts and structure of the balance of payments and the sources, methods and terms used in compiling the estimates are presented in *Balance of Payments and International Investment Position, Australia: Concepts, Sources and Methods, 1998* (cat. no. 5331.0). The current version of this document reflects the international standards prior to BPM6. A revised Concepts, Sources and Methods publication is scheduled for release in late 2010. The *Information paper: Implementation of new international statistical standards in the ABS National and International Accounts, September 2009* (cat. no. 5310.0.55.002) describes the key changes introduced with BPM6.

6 To bring merchandise trade statistics on a recorded trade basis to a balance of payments basis, timing adjustments are made to ensure that the transaction is recorded in the period in which ownership changed, rather than in the period in which the transaction was recorded by Customs and Border Protection or the period in which the goods arrived in/departed from an Australian port. Adjustments are also made to account for the change of ownership of goods not included in merchandise trade statistics. Chapter 6 of cat. no. 5331.0 provides more detail on the relationship between statistics on international merchandise trade on a recorded trade basis and on a balance of payments basis.

7 Recorded trade exports data presented for recent months in tables 12–15 of this publication are based on information initially reported by exporters to Customs and Border Protection. At the time of initial reporting to Customs and Border Protection the final prices may not be known for some commodities. Therefore, the information recorded for recent months for commodities like iron ore and coal can include a variety of prices including previous or current contract prices and the prevailing spot prices. Newly negotiated contract prices may not be fully reflected in the data first reported to

EXPLANATORY NOTES *continued*

CONCEPTS, SOURCES AND METHODS *continued*

Customs and Border Protection, and to compensate for this, the Balance of Payments series may reflect adjusted price levels.

8 The Concepts, Sources and Methods publications and information papers are available to download for free from the ABS website. Select *Statistics*, then select *By Catalogue Number*, and then the catalogue numbers as above.

CLASSIFICATIONS

9 The merchandise trade data on a recorded trade basis are presented using the following commodity classifications:

- the Harmonised System 2007 (available on request)
- the Standard International Trade Classification (SITC Revision 4)
- the Classification by Broad Economic Categories (BEC)
- the industry classification: Australian and New Zealand Standard Industrial Classification, 2006 (ANZSIC 06) from July 2005.

10 The Balance of Payments 'goods and services' series are presented according to three classifications with the goods classifications derived from SITC Revision 4 and BEC. The classifications are:

- for goods:
 - the Balance of Payments Commodities for Exports (BoPCE)
 - the Balance of Payments Broad Economic Categories (BoPBEC) for Imports
- for services:
 - the Extended Balance of Payments Services Classification (EBOPS).

ACCURACY, RELIABILITY AND REVISIONS

11 While every effort is made to ensure the accuracy and reliability of estimates, most series are subject to revision as more complete and accurate information becomes available. Care should be exercised in the use and interpretation of estimates in this publication. The transactions occurring in international trade in goods and services are of many different kinds, and therefore the compilation of trade estimates entails the use of a very wide range of statistical data of varying degrees of accuracy and timeliness. For further information on the monthly services series, see paragraph 25.

12 The revisions are applied differently for merchandise trade and Balance of Payments series. Each month, merchandise trade data are revised for the previous six months to incorporate latest available data.

13 For the Balance of Payments 'goods and services' series, in original terms, no revisions are applied in the July, October, January or April issues. This is to ensure the monthly series align with the comparable series in the quarterly publication. In the September issue revisions can be applied to the four previous financial years. In other issues revisions can be applied to the previous and current financial years to incorporate the latest available survey and administrative data.

14 In seasonally adjusted and trend terms, revisions may occur at any time point but tend to focus on the most recent estimates. Please also refer to paragraphs 17 (seasonal adjustment) and 19 (trend estimates) below.

SIGN CONVENTION

15 In keeping with BPM6 conventions, balance of payments basis credit entries are shown with an implied positive sign and debit items are shown as negative entries. For statistics on a recorded trade basis, both imports and exports are shown without sign. The calculation of percentage changes on balance of payments debit items are made without regard to sign. References to balance of payments debit items in Key Figures, Key Points, and Analysis and Comments are also made without regard to sign.

SEASONALLY ADJUSTED AND TREND ESTIMATES

16 The estimates of international trade in goods and services on a balance of payments basis are seasonally adjusted, however the merchandise exports and imports statistics on a recorded trade basis are not. Monthly original estimates are volatile, being subject to calendar-related and large irregular influences. Seasonally adjusted estimates are derived

EXPLANATORY NOTES *continued*

SEASONALLY ADJUSTED AND TREND ESTIMATES *continued*

by estimating and removing from the original series systematic calendar related effects, such as seasonal (e.g. Christmas), trading day and moving holiday (e.g. Easter) influences. Seasonal adjustment does not aim to remove the irregular or non-seasonal influences which may be present in any particular month. These irregular influences may reflect both random economic events and difficulties of statistical recording.

17 The seasonally adjusted statistics in this publication use the concurrent seasonal adjustment technique and Autoregressive Integrated Moving Average (ARIMA) modelling to estimate factors for the current and previous months. Under concurrent seasonal adjustment, the estimates of seasonal factors are fine tuned as new or revised original estimates become available each period. The seasonally adjusted estimates are subject to revisions at each reference month as the estimates of seasonal factors are improved.

18 ARIMA modelling relies on the characteristics of the series being analysed to project future period data. ARIMA modelling is used on a case-by-case basis where it results in reduced revisions to seasonally adjusted series when subsequent data become available. The projected values are temporary, intermediate values, that are only used internally to improve the estimation of the seasonal factors. The projected data do not affect the original estimates and are discarded at the end of the seasonal adjustment process. The ARIMA model is assessed as part of the annual review and, following the 2010 annual review, 40 of the 46 directly seasonally adjusted trade in goods and services time series use an ARIMA model.

19 The month-to-month movements of the seasonally adjusted estimates may not be reliable indicators of underlying behaviour because they include irregular or non-seasonal movements. Trend estimates reduce the effect of these movements as they are derived by applying a 13-term Henderson moving average to the seasonally adjusted series. The 13-term Henderson moving average (like all Henderson averages) is symmetric, but as the end of a time series is approached, asymmetric forms of the average are applied. While the asymmetric weights enable trend estimates for recent months to be produced, it does result in revisions to the estimates for the most recent six months as additional observations become available. Revisions to trend estimates can also occur because of revisions to the original data and as a result of the re-estimation of the seasonal factors. Trend estimates should be used with caution, especially around the time of unusual influences, until these have been appropriately taken into account.

20 Information papers and articles on time series methods are available on the ABS website:

- for seasonal adjustment methods, see *Information Paper: An Introductory Course on Time Series Analysis, Jan 2005* (cat. no. 1346.0.55.001) and *Time Series Analysis Frequently Asked Questions, 2003* (cat. no. 1346.0.55.002)
- for ARIMA modelling, see *Feature article: Use of ARIMA modelling to reduce revisions* in the October 2004 issue of *Australian Economic Indicators* (cat. no. 1350.0)
- for trend estimates methods, see *Information Paper: A Guide to Interpreting Time Series – Monitoring Trends* (cat. no. 1349.0)
- alternatively contact the Assistant Director, Time Series Analysis on (02) 6252 6345 or e-mail: time.series.analysis@abs.gov.au.

ECONOMIC TERRITORY

21 In accordance with BPM6 definitions, Australia's economic territory, on a balance of payments basis, is the area under the effective control of the Australian government. It includes the land area, airspace, territorial waters, including jurisdiction over fishing rights and rights to fuels and minerals. Australian economic territory also includes territorial enclaves in the rest of the world. These are clearly demarcated areas of land, located in other countries and which are owned or rented by the Australian government

EXPLANATORY NOTES *continued*

ECONOMIC TERRITORY

continued

for diplomatic, military, scientific or other purposes. Specifically, the economic territory of Australia consists of:

- Geographic Australia which includes Cocos (Keeling) Islands and Christmas Island;
- Norfolk Island;
- Australian Antarctic Territory;
- Heard Island and McDonald Islands;
- Territory of Ashmore Reef and Cartier Island;
- Coral Sea Islands;
- Australia's territorial enclaves overseas; and
- the Joint Petroleum Development Area (joint territory between Australia and East Timor (Timor-Leste)).

22 Because of administrative complexities and measurement difficulties, Norfolk Island transactions with the rest of the world will not always be captured in all relevant balance of payments statistics. Most of the transactions involving Norfolk Island are not material to Australia's trade performance and not capturing these transactions will not distort these statistics. However, any significant transactions will be identified and included in the relevant statistics.

COMMODITY BREAKDOWN OF GOODS

23 For details of the classifications used to present goods exports (credits) and imports (debits) on a balance of payments basis, see tables 6.6 and 6.7, respectively, in *Balance of Payments and International Investment Position, Australia: Concepts, Sources and Methods* (cat. no. 5331.0).

24 The recorded trade statistics shown in tables 12 and 13 are classified by the Standard International Trade Classification (SITC). Imports and exports of goods at a more detailed level are available from the time series spreadsheets on the ABS website. All data from July 2005 are presented according to SITC Rev 4 and data prior to July 2005 are presented according to SITC Rev 3. For details refer to the 'Classifications and Standards Update' in the July 2008 issue of this publication.

MONTHLY SERVICES SERIES

25 Monthly indicators for many of the services components that are only surveyed quarterly are not available. Monthly estimates for the freight and other transportation components of services credits in table 9 are derived by dividing the quarterly estimate by three. Freight debits are derived directly from imports data for the reference month as a difference between total merchandise cost, insurance and freight (CIF) and free on board (FOB), adjusted to reflect timing and processing adjustments. For freight credits and other transportation credits and debits, estimates are derived by extrapolating the last quarter's data by an average of movements for the same quarter over the three previous years, and then dividing the estimate by three. Similarly other services estimates are derived by extrapolating the last quarter's data by an average of movements for the same quarter over the previous three years, and then dividing the estimate by three.

CONFIDENTIALITY OF MERCHANDISE TRADE STATISTICS

26 The release of statistics for certain merchandise trade commodities is restricted in order to prevent the identification of the activities of an individual business, where this is requested by the business concerned. These restrictions do not affect the total value of exports and imports, but they can affect statistics at the country, state and commodity levels. Imports data that have the confidentiality restrictions 'No commodity details' or 'No value details' are aggregated into a single confidential commodity code. For data prior to September 2008, these data are added back into the appropriate state total and country total (i.e. these totals show the correct level of trade). From September 2008 these confidential data are not added back. Instead the confidential data are published as 'No country details' in the country totals and 'State not available for publication' in the state totals. Therefore, country and state totals from September 2008 may not represent the actual amount of trade in each country/state but only the trade in commodities without a 'No commodity details' or 'No value details' restriction. For information on the

EXPLANATORY NOTES *continued*

CONFIDENTIALITY OF MERCHANDISE TRADE STATISTICS *continued*

confidentiality restrictions applied to the merchandise trade statistics in this publication, refer to the current issue of *International merchandise trade: Confidential Commodities List (CCL)* (cat. no. 5372.0.55.001).

TOURISM RELATED SERVICES

27 The tourism related services memorandum items provide timely indicators of the movements in tourism related activities, not an absolute measure of the level of these activities. The tourism related indicator has been derived by combining total travel services (business, education-related and other personal travel) and passenger transportation services (which includes agency fees and commissions for air transport).

SERVICES BY STATE AND BY PARTNER COUNTRY

28 Annual services data by state, by country and detailed services are released twice yearly. Calendar year data are usually released following the March issue of this publication and financial year data are usually released following the September issue. Refer to time series data for details.

29 Services credits are classified by the state of provision, while services debits are classified by the state of consumption. The state allocations for transportation, travel, postal and courier, and telecommunication services are based on a number of indicators including merchandise trade statistics by state, overseas passenger arrivals and departures by state of clearance and data provided by the Department of Immigration and Citizenship. The allocation for other services (about 25% of all trade in services) is primarily based on the location of the business reporting the information, which serves as a proxy for the state of provision/consumption of that service. The data should be used with care but are considered suitable for analysis over time.

30 A comprehensive explanation of the data sources used and the methodology applied in the compilation of partner country statistics is provided in Chapter 17 of *Balance of Payments and International Investment Position, Australia – Concepts, Sources and Methods* (cat. no. 5331.0). Approximately 4% of total services credits and 5% of total services debits for both 2008–09 and 2009–10 were either confidential, or unable to be allocated to individual countries.

ABS DATA AVAILABLE

31 More detailed balance of payments and recorded merchandise trade data, including forward seasonal factors are available as time series spreadsheets or data cubes from the ABS website. Merchandise trade data by commodity, country and state that are not on the ABS website may be available on request. Inquiries should be made to the National Information and Referral Service as shown on the back of this publication.

RELATED PRODUCTS AND PUBLICATIONS

32 Users may also wish to refer to the following publications which can be downloaded free of charge from the ABS website by using the 'Statistics' tab and selecting the relevant catalogue number:

- *Balance of Payments and International Investment Position, Australia* (cat. no. 5302.0) – issued quarterly
- *International Merchandise Imports, Australia* (cat. no. 5439.0) – issued monthly
- *International Trade Price Indexes, Australia* (cat. no. 6457.0) – issued quarterly
- *Balance of Payments and International Investment Position, Australia: Concepts, Sources and Methods* (cat. no. 5331.0)
- *Information Paper: Quality of Australian Balance of Payments Statistics* (cat. no. 5342.0)
- *International Merchandise Trade, Australia: Concepts, Sources and Methods* (cat. no. 5489.0)
- *A Guide to Australian Balance of Payments and International Investment Position Statistics* (cat. no. 5362.0.55.001).

EXPLANATORY NOTES *continued*

RELATED PRODUCTS AND PUBLICATIONS *continued*

33 Current publications and other products released by the ABS are available from the Statistics tab on the ABS website. The ABS also issues a daily *Release Advice* on the website which details products to be released in the week ahead. A *foreign trade theme page* and a *balance of payments theme page* are available on the ABS website. Select *Topics @ a Glance – Economy – Foreign Trade* or *Balance of Payments*. This page provides direct links to all foreign trade and balance of payments related data and publications, recent changes and forthcoming events, links to relevant websites and a range of other information about the Australian International Accounts.

ROUNDING

34 Where figures have been rounded, discrepancies may occur between sums of the component items and totals. Percentage movements are calculated from data at the level of precision presented in this publication (i.e. \$m) except for international merchandise trade tables.

ABBREVIATIONS

\$b	billion (thousand million) dollars
\$m	million dollars
ABS	Australian Bureau of Statistics
ANZSIC	Australian and New Zealand Standard Industrial Classification
APEC	Asia Pacific Economic Co-operation
ASEAN	Association of South-East Asian Nations
BEC	Classification by Broad Economic Categories
BoPBEC	Balance of Payments Broad Economic Categories
EMS	Environmental Management Survey
f.o.b.	free on board
n.e.s.	not elsewhere specified
n.i.e.	not included elsewhere
OECD	Organisation for Economic Co-operation and Development
SAR	Special Administrative Region
SITC	Standard International Trade Classification

APPENDIX RELATED ARTICLES

<i>Article</i>	<i>Source(a)</i>	<i>Issue</i>
Investment		
Foreign ownership of equity	5302.0	Sep qtr 2007
Kangaroo bonds	1301.0	2006
Foreign currency exposure	5308.0	Mar qtr 2005
Gross external debt	5302.0	Sep qtr 2003
Balance of payments		
International comparison of balance of payments statistics	(b) 5363.0	1998–99
Merchandise trade		
Export And Import Invoice Currencies, Dec 2009	5368.0	Dec 2009
Characteristics of Australian Exporters	5368.0.55.006	2008–09
Export and import invoice currencies, 2007	5368.0	Dec 2007
100 years of international trade statistics	5368.0	Oct 2007
New methodology for deriving counts of Australian exports	5368.0	Feb 2006
Australia's Importers, 2003–04	5368.0	Nov 2004
Australia's Exporters, 2003–04	5368.0	Oct 2004
Australia's trade with the USA	5368.0	Mar 2004
Foreign ownership of Australian exporters and importers	5496.0.55.001	2002–03
Major commodities traded by Australia, 1991 to 2000	(b) 5422.0	Dec qtr 2000
Trade in services		
International trade in services by partner country, 2006, preliminary	5368.0	Dec 2006
Changes to International trade in services statistics, August 2006	5368.0	Aug 2006
Changes to International trade in services travel statistics	5368.0	Aug 2005
Finance		
Impact of the farm season on Australian production in 2002–03 and 2003–04	1301.0	2005
Recent trends in construction and first home buyers finance	5609.0	Mar 2002
Household sector data in the financial accounts	5232.0	Mar qtr 2002
Technical information		
Implementation of new international statistical standards in ABS National and International Accounts, September 2009	5310.0.55.002	Oct 2009
Estimation of Workers' Remittances based on Balance of Payments and International Investment Position Manual, Sixth Edition	5302.0.55.003	Sep 2009
Impact of revised international standards on monthly International Trade in Goods and Services	5368.0.55.014	Aug 2009
Changes to International Trade in Goods Statistics - Countries and Ports	5368.0.55.013	Jul 2009
Revisions to international standards in quarterly Balance of Payments and International Investment Position statistics from September 2009	5302.0.55.002	2009
Revisions to international standards in monthly international trade in goods and services statistics from August 2009	5368.0.55.012	2009
Changes to International Trade in Goods Industry Statistics, July 2009	5368.0.55.011	Dec 2008
Technical note 1 - Income on debt	5302.0	Jun qtr 2008
Technical note 2 - Use of CDI data	5302.0	Jun qtr 2008
Impact of introducing Revision 4 of the Standard International Trade Classification	5368.0.55.010	2008
Changes to international trade statistics July 2008	5368.0.55.009	2007–08
Introduction of revised international standards in ABS economic statistics in 2009	5310.0.55.001	2007
Changes on 1 January 2007 to Statistical Codes in the AHECC and the Customs Tariff	1233.0.55.001	Nov 2006
ABS implementation in January 2007 of revisions to international trade classifications, 2007	5368.0.55.005	Jun 2006
Revised treatment of Goods for Processing in Merchandise Trade and Balance of Payments Statistics	5368.0	May 2006
Impact of Customs and ABS changes on import statistics from October 2005	5439.0	Oct 2005
ABS management of the impact of the implementation of the imports component of the New Customs System	5439.0	Aug 2005
Changes to country and port classifications	5368.0	May 2003
Implementation of New Customs Systems	5368.0	Aug 2004
The effect of customs changes on export statistics	5422.0	Jun qtr 2002
Data confidentiality	5422.0	Dec qtr 1999

- (a) In the ABS website home page, select Statistics; By Catalogue Number; and click on the specified catalogue number and issue. Note: in some instances, a particular issue of the publication can be found in the Past & Future Releases page of the catalogue.
- (b) This article can be found in pdf format by referring to the Downloads page of the specified issue of this publication on the ABS website.

FOR MORE INFORMATION . . .

INTERNET **www.abs.gov.au** the ABS website is the best place for data from our publications and information about the ABS.

INFORMATION AND REFERRAL SERVICE

Our consultants can help you access the full range of information published by the ABS that is available free of charge from our website. Information tailored to your needs can also be requested as a 'user pays' service. Specialists are on hand to help you with analytical or methodological advice.

PHONE 1300 135 070

EMAIL client.services@abs.gov.au

FAX 1300 135 211

POST Client Services, ABS, GPO Box 796, Sydney NSW 2001

FREE ACCESS TO STATISTICS

All statistics on the ABS website can be downloaded free of charge.

WEB ADDRESS www.abs.gov.au