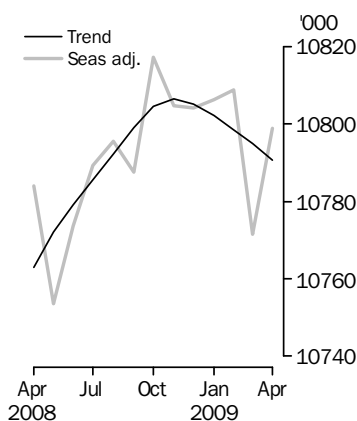


# LABOUR FORCE

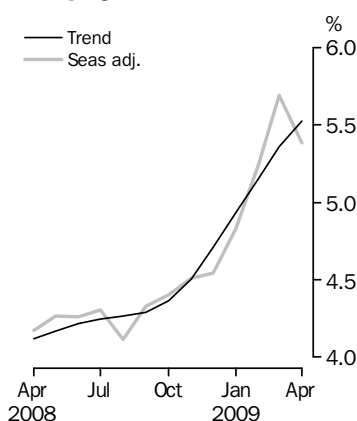
AUSTRALIA

EMBARGO: 11.30AM (CANBERRA TIME) THURS 7 MAY 2009

## Employed Persons



## Unemployment rate



## KEY FIGURES

	Mar 2009	Apr 2009	Mar 09 to Apr 09	Apr 08 to Apr 09
<b>Trend</b>				
Employed persons ('000)	10 794.9	10 790.6	-4.3	0.3 %
Unemployed persons ('000)	611.1	630.8	19.8	36.4 %
Unemployment rate (%)	5.4	5.5	0.2 pts	1.4 pts
Participation rate (%)	65.4	65.5	0.0 pts	0.0 pts
<b>Seasonally Adjusted</b>				
Employed persons ('000)	10 771.6	10 798.9	27.3	0.1 %
Unemployed persons ('000)	649.9	614.6	-35.3	30.9 %
Unemployment rate (%)	5.7	5.4	-0.3 pts	1.2 pts
Participation rate (%)	65.5	65.4	-0.1 pts	-0.2 pts

## KEY POINTS

### TREND ESTIMATES (MONTHLY CHANGE)

- EMPLOYMENT decreased to 10,790,600
- UNEMPLOYMENT increased to 630,800
- UNEMPLOYMENT RATE increased to 5.5%
- PARTICIPATION RATE increased to 65.5%

### SEASONALLY ADJUSTED ESTIMATES (MONTHLY CHANGE)

#### EMPLOYMENT

- increased by 27,300 to 10,798,900. Full-time employment increased by 49,100 to 7,672,700 and part-time employment decreased by 21,800 to 3,126,200.

#### UNEMPLOYMENT

- decreased by 35,300 to 614,600. The number of persons looking for full-time work decreased by 17,800 to 443,500 and the number of persons looking for part-time work decreased by 17,400 to 171,100.

#### UNEMPLOYMENT RATE

- decreased by 0.3 percentage points to 5.4%. The male unemployment rate decreased by 0.2 percentage points to 5.5%, and the female unemployment rate decreased by 0.4 percentage points to 5.3%.

#### PARTICIPATION RATE

- decreased by 0.1 percentage point to 65.4%.

## INQUIRIES

For further information about these and related statistics, contact the National Information and Referral Service on 1300 135 070 or Mary Piechowski on Canberra (02) 6252 6525.

# NOTES

## FORTHCOMING ISSUES

ISSUE	RELEASE DATE
May 2009	11 June 2009
June 2009	9 July 2009
July 2009	6 August 2009
August 2009	10 September 2009
September 2009	8 October 2009
October 2009	12 November 2009

## CHANGES THIS MONTH

This issue of *Labour Force, Australia* (cat. no. 6202.0) includes gross flows figures in Table 17 and, on the website, detailed data are available in the data cube *GM1 - Labour Force Status and Gross Changes (flows) by Sex, State, Age*.

For further information, see the article *Understanding movements in employment*, in the March 2009 issue of *Labour Force, Australia* (cat. no. 6202.0).

## HISTORICAL TIMESERIES

The second issue of *Labour Force Historical Timeseries, Australia* (cat. no. 6204.0.55.001), released on 4 May 2009, contains spreadsheets and data cubes with superseded Industry, Occupation and Regional classifications from the monthly and quarterly Labour Force Survey (LFS) publications.

Further information is provided in the March 2009 issue of *Labour Force, Australia* (cat. no. 6202.0).

## SAMPLING ERRORS

The estimates in this publication are based on a sample survey. Because the entire population is not enumerated, the published estimates and the movements derived from them are subject to sampling variability. Standard errors give a measure of this variability and appear on pages 29 and 30.

The 95% confidence intervals below provide another way of looking at the variability inherent in estimates from sample surveys. The interval bounded by the two limits is the 95% confidence interval, which represents a 95% chance that the true value of the estimate lies within that interval.

## MOVEMENTS IN SEASONALLY ADJUSTED SERIES BETWEEN MARCH AND APRIL 2009

	<u>Monthly change</u>	<u>95% Confidence interval</u>	
Total Employment	27 300	-33 300	to 87 900
Total Unemployment	-35 300	-73 500	to 2 900
Unemployment rate	-0.3 pts	-0.7 pts	to 0.1 pt
Participation rate	-0.1 pt	-0.5 pts	to 0.3 pts

Brian Pink  
Australian Statistician

## INTERPRETING GROSS FLOWS

### INTRODUCTION

In the Labour Force Survey, one-eighth of the dwellings sampled in the previous month are replaced, in the current month, by a new set of dwellings from the same geographic area. The seven-eighth overlap between the dwellings selected in consecutive months maintains continuity within the population survey sample and enables more reliable measurement of change in the labour force characteristics of the population than would be possible if a new sample was introduced each month.

The matching of respondents who report in consecutive months enables analysis of the transition of individuals between the different labour force status classifications, referred to as the matched sample. The transition counts between the different labour force status classifications from one point in time to the next are commonly referred to as gross flows.

### QUALITY OF DATA

The gross flows figures in Table 17 are presented in original terms only and do not align with published labour force estimates. The gross flows figures are derived from the matched sample between consecutive months, which after taking account of the sample rotation and varying non-response in each month is approximately 80 percent of the sample. Refer to the article in the March 2009 issue of *Labour Force, Australia* (cat no. 6202.0) for detailed quality statements.

### USING GROSS FLOWS FIGURES TO ANALYSE MOVEMENTS IN EMPLOYMENT

Gross flows figures can assist in understanding the movements in labour force status. For example, in the April 2009 labour force estimates, the number of employed persons, in trend terms, decreased 4,300 persons; comprised of a decrease in full-time employment of 8,500 persons, that was partly offset by an increase in part-time employment of 4,200 persons. However, in original terms, the number of employed persons increased 14,800 persons; comprised of an increase in full-time employment of 37,000 persons and a decrease in part-time employment of 22,200 persons.

When attempting to interpret the increase in full-time employment, in original terms, the following questions arise regarding the population:

- Are people moving from part-time employment into full-time employment?
- Are they moving from unemployment to employment?
- Are they moving from not in the labour force to employment?

#### *Movement between full-time employment and part-time employment*

Referring to Table 17 one can observe, in original terms, the following counts for transitions between full-time employment and part-time employment:

- 276,000 persons employed part-time in March 2009 were employed full-time in April 2009;
- 259,000 persons employed full-time in March 2009 were employed part-time in April 2009; and
- a net increase from the matched sample of 17,000 persons (276,000 minus 259,000 persons) from part-time employment to full-time employment.

Therefore, in the matched sample, there were more persons who moved from part-time employment to full-time employment than in the other direction.

## INTERPRETING GROSS FLOWS *continued*

### *Movement between employment and unemployment*

Referring to Table 17 one can observe, in original terms, the following counts for transitions between employment and unemployment:

- 116,000 persons unemployed in March 2009 were employed in April 2009
- 86,000 persons employed in March 2009 were unemployed in April 2009; and
- a net increase from the matched sample of 30,000 persons (116,000 minus 86,000 persons) from unemployed to being employed.

Therefore, one can observe from the matched sample, that there were more persons who moved from unemployment to employment than in the other direction.

### *Movement between employment and persons not in the labour force*

Referring to Table 17 one can observe, in original terms, the following counts for transitions between employment and persons not in the labour force:

- 180,000 persons not in the labour force in March 2009 were employed in April 2009;
- 204,000 persons employed in March 2009 were not in the labour force in April 2009; and
- a net decrease from the matched sample of 24,000 persons (180,000 minus 204,000 persons) from employed in March 2009 to being not in the labour force.

Therefore, one can observe from the matched sample, that a proportion of persons who were in employment have moved directly out the labour force.

### *Movement between unemployment and persons not in the labour force*

Referring to Table 17 one can observe, in original terms, the following counts for transitions between unemployment and persons not in the labour force:

- 114,000 persons not in the labour force in March 2009 were unemployed in April 2009;
- 147,000 persons unemployed in March 2009 were not in the labour force in April 2009; and
- a net decrease from the matched sample of 33,000 persons (114,000 minus 147,000 persons) from unemployed in March 2009 to being not in the labour force.

Therefore, one can observe from the matched sample, that a proportion of persons who are now not in the labour force were looking for work in March 2009.

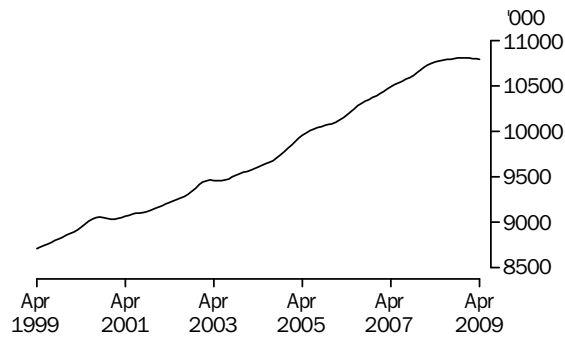
## CONCLUSION

Gross flows figures can assist in understanding the movements in labour force estimates. The figures presented in gross flows do not align with published labour force estimates and should only be used to interpret movements in published labour force estimates.

# PRINCIPAL LABOUR FORCE SERIES TREND ESTIMATES

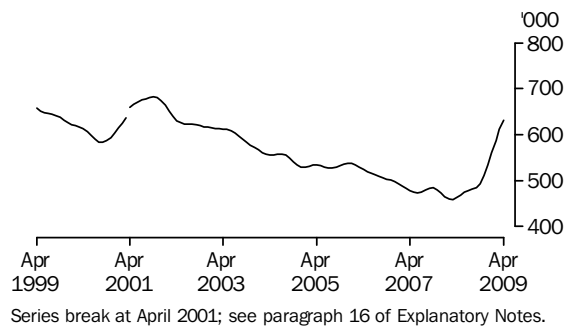
## EMPLOYED PERSONS

The trend estimate of employed persons rose from 8,714,600 in April 1999 to 9,057,300 in September 2000. The trend then fell slightly to 9,038,000 in January 2001, before generally rising to 10,806,600 in November 2008 before falling to 10,790,600 in April 2009.



## UNEMPLOYED PERSONS

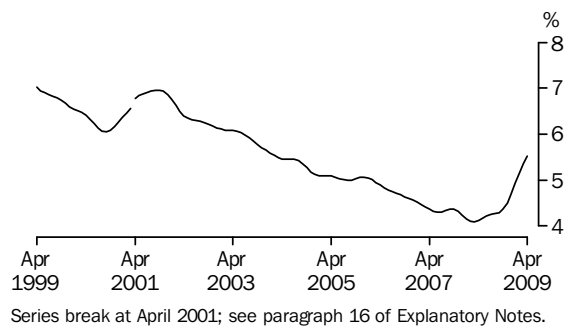
The trend estimate of unemployed persons fell from 658,100 in April 1999 to 583,000 in September 2000, before rising to 682,200 in October 2001. The trend generally fell to 458,800 in March 2008, before rising to stand at 630,800 in April 2009.



Series break at April 2001; see paragraph 16 of Explanatory Notes.

## UNEMPLOYMENT RATE

The trend unemployment rate generally fell from 7.0% in April 1999 to 6.0% in September 2000, before rising to 7.0% in October 2001. The trend generally fell to 4.1% in March 2008, before rising to stand at 5.5% in April 2009.



Series break at April 2001; see paragraph 16 of Explanatory Notes.

# LABOUR FORCE STATUS (AGED 15 YEARS & OVER): Trend

	EMPLOYED			UNEMPLOYED		UNEMPLOYMENT RATE			Participation rate
	Full time	Part time	Total	Looking for f/t work	Total	Labour force	Looking for f/t work	Total	
	'000	'000	'000	'000	'000	'000	%	%	
MALES									
April 2006	4 760.6	833.9	5 594.5	219.6	280.0	5 874.5	4.4	4.8	72.1
April 2007	4 907.4	860.8	5 768.3	187.7	238.9	6 007.1	3.7	4.0	72.5
2008									
April	4 997.1	898.3	5 895.4	182.3	235.4	6 130.8	3.5	3.8	72.6
May	5 007.6	890.1	5 897.7	185.1	238.7	6 136.4	3.6	3.9	72.6
June	5 018.3	882.3	5 900.6	186.9	241.3	6 142.0	3.6	3.9	72.5
July	5 028.2	876.5	5 904.6	187.3	242.2	6 146.8	3.6	3.9	72.5
August	5 035.5	873.6	5 909.1	187.5	242.8	6 151.9	3.6	3.9	72.5
September	5 038.7	873.3	5 912.0	190.1	245.6	6 157.6	3.6	4.0	72.4
October	5 034.4	876.9	5 911.3	197.2	253.4	6 164.7	3.8	4.1	72.4
November	5 022.0	884.1	5 906.1	209.0	266.7	6 172.8	4.0	4.3	72.3
December	5 004.4	892.9	5 897.3	224.0	284.0	6 181.3	4.3	4.6	72.3
2009									
January	4 985.3	901.4	5 886.7	240.1	302.4	6 189.1	4.6	4.9	72.3
February	4 966.5	909.6	5 876.2	255.5	320.1	6 196.3	4.9	5.2	72.3
March	4 949.9	917.0	5 866.9	269.0	335.6	6 202.5	5.2	5.4	72.2
April	4 935.8	923.6	5 859.4	279.9	348.5	6 207.9	5.4	5.6	72.2
FEMALES									
April 2006	2 511.6	2 077.8	4 589.5	146.1	243.6	4 833.1	5.5	5.0	57.4
April 2007	2 620.9	2 100.7	4 721.7	144.6	239.8	4 961.5	5.2	4.8	58.0
2008									
April	2 706.1	2 161.3	4 867.5	130.7	227.1	5 094.5	4.6	4.5	58.5
May	2 709.9	2 164.5	4 874.4	132.8	229.9	5 104.3	4.7	4.5	58.6
June	2 712.4	2 166.2	4 878.6	135.9	233.2	5 111.8	4.8	4.6	58.6
July	2 712.0	2 169.0	4 881.0	139.2	236.3	5 117.3	4.9	4.6	58.6
August	2 708.6	2 174.6	4 883.1	141.9	238.2	5 121.3	5.0	4.7	58.5
September	2 703.6	2 183.6	4 887.2	143.5	238.5	5 125.7	5.0	4.7	58.5
October	2 697.9	2 195.3	4 893.3	145.0	239.6	5 132.8	5.1	4.7	58.5
November	2 694.2	2 206.3	4 900.5	147.3	243.4	5 143.9	5.2	4.7	58.5
December	2 694.2	2 213.7	4 907.9	151.0	250.0	5 157.8	5.3	4.8	58.6
2009									
January	2 698.0	2 217.5	4 915.6	156.4	258.4	5 173.9	5.5	5.0	58.7
February	2 703.5	2 218.9	4 922.4	162.4	267.2	5 189.6	5.7	5.1	58.8
March	2 709.1	2 219.0	4 928.1	168.3	275.5	5 203.5	5.8	5.3	58.8
April	2 714.7	2 216.6	4 931.2	173.2	282.3	5 213.6	6.0	5.4	58.9
PERSONS									
April 2006	7 272.2	2 911.7	10 184.0	365.7	523.6	10 707.6	4.8	4.9	64.6
April 2007	7 528.4	2 961.6	10 489.9	332.3	478.7	10 968.6	4.2	4.4	65.1
2008									
April	7 703.2	3 059.6	10 762.8	313.1	462.5	11 225.3	3.9	4.1	65.5
May	7 717.4	3 054.7	10 772.1	318.0	468.6	11 240.7	4.0	4.2	65.5
June	7 730.7	3 048.5	10 779.2	322.8	474.6	11 253.8	4.0	4.2	65.4
July	7 740.1	3 045.5	10 785.6	326.5	478.5	11 264.2	4.0	4.2	65.4
August	7 744.1	3 048.1	10 792.2	329.4	481.0	11 273.2	4.1	4.3	65.4
September	7 742.3	3 056.9	10 799.2	333.6	484.1	11 283.3	4.1	4.3	65.3
October	7 732.3	3 072.2	10 804.5	342.2	493.0	11 297.5	4.2	4.4	65.3
November	7 716.2	3 090.3	10 806.6	356.3	510.1	11 316.7	4.4	4.5	65.3
December	7 698.6	3 106.6	10 805.2	375.0	533.9	11 339.1	4.6	4.7	65.3
2009									
January	7 683.3	3 119.0	10 802.3	396.5	560.8	11 363.1	4.9	4.9	65.4
February	7 670.0	3 128.5	10 798.6	417.9	587.3	11 385.9	5.2	5.2	65.4
March	7 658.9	3 136.0	10 794.9	437.3	611.1	11 406.0	5.4	5.4	65.4
April	7 650.5	3 140.2	10 790.6	453.1	630.8	11 421.5	5.6	5.5	65.5

LABOUR FORCE STATUS (AGED 15 YEARS & OVER): **Seasonally Adjusted**

	EMPLOYED			UNEMPLOYED		UNEMPLOYMENT RATE			Participation rate
	Full time	Part time	Total	Looking for f/t work	Total	Labour force	Looking for f/t work	Total	
	'000	'000	'000	'000	'000	'000	%	%	
MALES									
April 2006	4 759.6	839.1	5 598.7	209.0	274.1	5 872.8	4.2	4.7	72.1
April 2007	4 907.0	863.7	5 770.7	186.1	233.4	6 004.1	3.7	3.9	72.4
2008									
April	5 003.7	890.1	5 893.8	192.3	240.7	6 134.5	3.7	3.9	72.7
May	4 982.2	905.4	5 887.7	188.7	244.4	6 132.1	3.6	4.0	72.5
June	5 020.3	888.6	5 908.9	186.6	246.6	6 155.4	3.6	4.0	72.7
July	5 036.2	864.1	5 900.2	184.7	240.8	6 141.0	3.5	3.9	72.4
August	5 048.6	857.7	5 906.3	187.4	235.7	6 142.0	3.6	3.8	72.3
September	5 030.5	883.5	5 914.0	191.7	250.0	6 164.0	3.7	4.1	72.5
October	5 031.1	882.6	5 913.6	194.2	251.4	6 165.0	3.7	4.1	72.4
November	5 026.1	883.0	5 909.1	203.2	259.6	6 168.7	3.9	4.2	72.3
December	5 014.7	889.6	5 904.3	222.5	281.0	6 185.3	4.2	4.5	72.4
2009									
January	4 991.0	894.8	5 885.7	238.3	302.8	6 188.5	4.6	4.9	72.3
February	4 963.6	909.3	5 872.9	259.8	321.9	6 194.8	5.0	5.2	72.2
March	4 916.4	936.4	5 852.8	284.1	353.6	6 206.4	5.5	5.7	72.2
April	4 951.3	915.8	5 867.0	272.2	341.1	6 208.1	5.2	5.5	72.2
FEMALES									
April 2006	2 511.3	2 067.8	4 579.2	144.6	251.1	4 830.2	5.4	5.2	57.3
April 2007	2 610.1	2 108.1	4 718.2	138.6	238.8	4 957.0	5.0	4.8	57.9
2008									
April	2 702.0	2 188.3	4 890.3	137.2	228.8	5 119.1	4.8	4.5	58.8
May	2 712.3	2 153.6	4 865.9	128.7	234.8	5 100.6	4.5	4.6	58.5
June	2 692.0	2 172.8	4 864.8	133.6	232.9	5 097.7	4.7	4.6	58.4
July	2 731.2	2 157.9	4 889.1	144.3	244.9	5 134.0	5.0	4.8	58.7
August	2 715.4	2 173.9	4 889.3	139.3	227.8	5 117.0	4.9	4.5	58.5
September	2 705.6	2 167.9	4 873.5	141.8	238.3	5 111.8	5.0	4.7	58.3
October	2 687.9	2 215.7	4 903.6	152.2	246.7	5 150.2	5.4	4.8	58.7
November	2 702.0	2 193.6	4 895.6	153.0	250.8	5 146.4	5.4	4.9	58.5
December	2 662.4	2 237.4	4 899.8	136.9	233.2	5 133.0	4.9	4.5	58.3
2009									
January	2 722.3	2 198.3	4 920.6	146.6	245.9	5 166.4	5.1	4.8	58.6
February	2 699.4	2 236.5	4 935.9	172.7	276.8	5 212.7	6.0	5.3	59.0
March	2 707.2	2 211.6	4 918.9	177.2	296.2	5 215.1	6.1	5.7	59.0
April	2 721.5	2 210.4	4 931.9	171.2	273.5	5 205.4	5.9	5.3	58.8
PERSONS									
April 2006	7 270.9	2 906.9	10 177.8	353.6	525.2	10 703.0	4.6	4.9	64.6
April 2007	7 517.1	2 971.9	10 488.9	324.7	472.2	10 961.1	4.1	4.3	65.0
2008									
April	7 705.6	3 078.4	10 784.0	329.4	469.5	11 253.5	4.1	4.2	65.6
May	7 694.5	3 059.0	10 753.5	317.5	479.1	11 232.7	4.0	4.3	65.4
June	7 712.3	3 061.4	10 773.7	320.3	479.5	11 253.1	4.0	4.3	65.4
July	7 767.4	3 022.0	10 789.4	329.0	485.6	11 275.0	4.1	4.3	65.5
August	7 764.0	3 031.6	10 795.6	326.7	463.5	11 259.0	4.0	4.1	65.3
September	7 736.1	3 051.4	10 787.5	333.5	488.3	11 275.8	4.1	4.3	65.3
October	7 718.9	3 098.3	10 817.2	346.4	498.0	11 315.2	4.3	4.4	65.4
November	7 728.1	3 076.6	10 804.7	356.2	510.4	11 315.1	4.4	4.5	65.3
December	7 677.1	3 127.0	10 804.1	359.4	514.2	11 318.3	4.5	4.5	65.2
2009									
January	7 713.3	3 093.0	10 806.3	385.0	548.7	11 355.0	4.8	4.8	65.3
February	7 663.0	3 145.8	10 808.8	432.6	598.8	11 407.5	5.3	5.2	65.5
March	7 623.6	3 148.0	10 771.6	461.3	649.9	11 421.5	5.7	5.7	65.5
April	7 672.7	3 126.2	10 798.9	443.5	614.6	11 413.5	5.5	5.4	65.4

LABOUR FORCE STATUS (AGED 15 YEARS & OVER): Original

	EMPLOYED			UNEMPLOYED			Civilian population aged 15 years and over	UNEMPLOYMENT RATE		Participation rate	
	Full time	Part time	Total	Looking for f/t work	Total	Labour force		Not in labour force	Looking for f/t work		Total
	'000	'000	'000	'000	'000	'000		'000	%		%
MALES											
April 2006	4 736.0	861.9	5 597.9	214.1	283.5	5 881.3	2 264.8	8 146.1	4.3	4.8	72.2
April 2007	4 881.9	887.0	5 768.8	191.8	242.1	6 011.0	2 279.2	8 290.2	3.8	4.0	72.5
2008											
April	4 977.0	914.1	5 891.1	199.1	250.5	6 141.6	2 301.8	8 443.4	3.8	4.1	72.7
May	4 965.4	912.2	5 877.6	191.7	248.4	6 126.0	2 328.9	8 455.0	3.7	4.1	72.5
June	4 995.2	916.1	5 911.3	185.0	238.3	6 149.6	2 316.9	8 466.5	3.6	3.9	72.6
July	5 060.3	861.1	5 921.4	167.7	214.8	6 136.3	2 342.2	8 478.5	3.2	3.5	72.4
August	5 019.2	851.9	5 871.1	174.5	218.0	6 089.1	2 401.2	8 490.3	3.4	3.6	71.7
September	5 072.0	873.2	5 945.2	188.0	251.9	6 197.0	2 305.2	8 502.3	3.6	4.1	72.9
October	5 025.9	902.9	5 928.8	180.0	234.5	6 163.3	2 354.1	8 517.4	3.5	3.8	72.4
November	5 021.2	864.2	5 885.4	189.5	237.9	6 123.3	2 409.3	8 532.6	3.6	3.9	71.8
December	5 075.7	891.9	5 967.6	216.4	276.9	6 244.5	2 303.2	8 547.7	4.1	4.4	73.1
2009											
January	4 983.9	854.3	5 838.3	271.5	340.1	6 178.3	2 383.7	8 562.0	5.2	5.5	72.2
February	4 977.6	882.9	5 860.5	292.0	362.0	6 222.5	2 353.7	8 576.2	5.5	5.8	72.6
March	4 890.2	962.1	5 852.3	294.9	375.6	6 227.9	2 362.7	8 590.5	5.7	6.0	72.5
April	4 924.1	940.0	5 864.1	283.1	356.1	6 220.2	2 382.5	8 602.7	5.4	5.7	72.3
FEMALES											
April 2006	2 480.2	2 089.9	4 570.1	148.0	258.2	4 828.3	3 594.4	8 422.6	5.6	5.3	57.3
April 2007	2 577.8	2 129.7	4 707.4	142.6	246.6	4 954.0	3 608.1	8 562.1	5.2	5.0	57.9
2008											
April	2 668.6	2 210.7	4 879.3	141.9	237.4	5 116.7	3 589.9	8 706.6	5.0	4.6	58.8
May	2 684.1	2 182.0	4 866.1	127.3	232.5	5 098.6	3 618.5	8 717.1	4.5	4.6	58.5
June	2 668.0	2 212.2	4 880.2	130.2	227.3	5 107.6	3 620.0	8 727.6	4.7	4.5	58.5
July	2 737.3	2 148.0	4 885.3	133.5	224.8	5 110.0	3 628.8	8 738.9	4.7	4.4	58.5
August	2 681.0	2 183.7	4 864.8	127.4	214.5	5 079.3	3 670.9	8 750.2	4.5	4.2	58.0
September	2 767.8	2 163.2	4 931.0	134.8	235.2	5 166.2	3 595.3	8 761.5	4.6	4.6	59.0
October	2 663.9	2 239.1	4 903.0	138.5	226.3	5 129.3	3 646.6	8 775.9	4.9	4.4	58.4
November	2 706.2	2 186.6	4 892.9	140.4	228.3	5 121.2	3 669.1	8 790.4	4.9	4.5	58.3
December	2 720.4	2 246.0	4 966.4	137.2	231.2	5 197.6	3 607.2	8 804.8	4.8	4.4	59.0
2009											
January	2 739.0	2 109.2	4 848.2	168.6	263.1	5 111.3	3 706.9	8 818.1	5.8	5.1	58.0
February	2 720.1	2 191.5	4 911.6	202.5	324.2	5 235.8	3 595.7	8 831.5	6.9	6.2	59.3
March	2 684.3	2 234.0	4 918.3	187.1	321.8	5 240.1	3 604.7	8 844.8	6.5	6.1	59.2
April	2 687.4	2 233.8	4 921.2	177.1	283.5	5 204.7	3 651.0	8 855.7	6.2	5.4	58.8
PERSONS											
April 2006	7 216.2	2 951.8	10 168.0	362.1	541.6	10 709.6	5 859.2	16 568.8	4.8	5.1	64.6
April 2007	7 459.6	3 016.6	10 476.3	334.4	488.8	10 965.0	5 887.3	16 852.3	4.3	4.5	65.1
2008											
April	7 645.6	3 124.8	10 770.4	341.0	487.9	11 258.3	5 891.7	17 150.0	4.3	4.3	65.6
May	7 649.5	3 094.2	10 743.7	319.0	480.9	11 224.6	5 947.4	17 172.0	4.0	4.3	65.4
June	7 663.2	3 128.3	10 791.5	315.2	465.7	11 257.2	5 936.9	17 194.1	4.0	4.1	65.5
July	7 797.6	3 009.2	10 806.7	301.3	439.6	11 246.3	5 971.0	17 217.3	3.7	3.9	65.3
August	7 700.2	3 035.6	10 735.8	301.9	432.6	11 168.4	6 072.1	17 240.5	3.8	3.9	64.8
September	7 839.8	3 036.3	10 876.1	322.8	487.1	11 363.2	5 900.5	17 263.8	4.0	4.3	65.8
October	7 689.8	3 142.0	10 831.8	318.5	460.8	11 292.6	6 000.7	17 293.4	4.0	4.1	65.3
November	7 727.4	3 050.8	10 778.2	329.8	466.3	11 244.5	6 078.4	17 322.9	4.1	4.1	64.9
December	7 796.1	3 137.9	10 933.9	353.5	508.1	11 442.1	5 910.4	17 352.5	4.3	4.4	65.9
2009											
January	7 722.9	2 963.5	10 686.4	440.1	603.2	11 289.6	6 090.6	17 380.2	5.4	5.3	65.0
February	7 697.7	3 074.4	10 772.1	494.5	686.2	11 458.3	5 949.4	17 407.7	6.0	6.0	65.8
March	7 574.5	3 196.1	10 770.6	482.1	697.4	11 468.0	5 967.4	17 435.4	6.0	6.1	65.8
April	7 611.5	3 173.8	10 785.4	460.2	639.6	11 424.9	6 033.4	17 458.4	5.7	5.6	65.4



## LABOUR FORCE STATUS (AGED 15 YEARS &amp; OVER)—New South Wales

	TREND					SEASONALLY ADJUSTED					Civilian population aged 15 years and over
	Employed full time	Total employed	Total unemployed	Unemployment rate	Participation rate	Employed full time	Total employed	Total unemployed	Unemployment rate	Participation rate	
	'000	'000	'000	%	%	'000	'000	'000	%	%	
MALES											
April 2006	1 528.2	1 790.8	100.2	5.3	70.7	1 522.0	1 790.1	100.2	5.3	70.6	2 675.9
April 2007	1 557.2	1 834.2	84.9	4.4	70.8	1 558.6	1 834.7	83.5	4.4	70.8	2 709.4
2008											
April	1 592.6	1 878.3	85.4	4.3	71.5	1 596.1	1 878.1	89.2	4.5	71.6	2 748.3
May	1 594.0	1 876.9	86.9	4.4	71.4	1 585.1	1 876.6	90.4	4.6	71.5	2 750.7
June	1 593.1	1 873.2	88.2	4.5	71.2	1 597.4	1 880.1	87.0	4.4	71.5	2 753.2
July	1 590.6	1 868.7	88.9	4.5	71.0	1 590.1	1 865.8	88.3	4.5	70.9	2 756.1
August	1 587.0	1 865.0	89.5	4.6	70.8	1 584.9	1 853.2	91.6	4.7	70.5	2 759.1
September	1 582.8	1 862.5	90.4	4.6	70.7	1 584.3	1 866.0	84.7	4.3	70.6	2 762.1
October	1 577.8	1 860.4	93.0	4.8	70.6	1 579.6	1 864.2	100.2	5.1	71.0	2 765.9
November	1 571.2	1 858.0	97.5	5.0	70.6	1 568.9	1 856.1	89.8	4.6	70.3	2 769.7
December	1 563.6	1 854.7	103.2	5.3	70.6	1 564.8	1 860.2	103.8	5.3	70.8	2 773.5
2009											
January	1 555.7	1 850.4	109.4	5.6	70.6	1 555.9	1 850.1	109.8	5.6	70.6	2 776.9
February	1 547.8	1 845.8	115.3	5.9	70.5	1 551.5	1 843.6	113.6	5.8	70.4	2 780.4
March	1 540.5	1 841.6	120.6	6.1	70.5	1 534.3	1 836.2	131.1	6.7	70.7	2 783.8
April	1 534.4	1 838.5	124.3	6.3	70.5	1 532.3	1 841.4	119.4	6.1	70.4	2 786.9
FEMALES											
April 2006	826.8	1 470.3	79.4	5.1	55.6	826.9	1 447.2	87.0	5.7	55.1	2 785.6
April 2007	842.6	1 489.1	88.3	5.6	55.9	835.5	1 474.4	93.0	5.9	55.6	2 819.9
2008											
April	889.3	1 550.5	75.6	4.6	56.9	888.4	1 554.1	72.9	4.5	56.9	2 858.0
May	888.8	1 548.4	77.4	4.8	56.8	888.3	1 539.9	79.3	4.9	56.6	2 860.3
June	887.0	1 544.5	79.9	4.9	56.7	881.6	1 544.7	81.0	5.0	56.8	2 862.6
July	883.6	1 540.5	82.7	5.1	56.6	886.0	1 542.8	82.1	5.1	56.7	2 865.5
August	880.1	1 537.7	85.2	5.2	56.6	883.3	1 537.6	83.8	5.2	56.5	2 868.5
September	878.0	1 537.1	86.7	5.3	56.5	881.4	1 533.7	87.8	5.4	56.5	2 871.4
October	877.7	1 538.4	88.0	5.4	56.6	868.4	1 536.0	89.4	5.5	56.5	2 875.4
November	878.6	1 540.7	89.7	5.5	56.6	876.4	1 541.6	96.1	5.9	56.9	2 879.3
December	880.5	1 543.5	92.4	5.6	56.7	874.1	1 543.3	82.9	5.1	56.4	2 883.3
2009											
January	882.3	1 546.2	95.7	5.8	56.9	899.9	1 550.1	90.4	5.5	56.8	2 886.8
February	883.5	1 548.4	99.3	6.0	57.0	880.9	1 550.9	100.7	6.1	57.1	2 890.2
March	883.8	1 550.1	102.7	6.2	57.1	881.7	1 543.7	116.6	7.0	57.4	2 893.7
April	883.9	1 551.2	105.5	6.4	57.2	878.9	1 553.5	99.1	6.0	57.0	2 897.0
PERSONS											
April 2006	2 355.0	3 261.1	179.7	5.2	63.0	2 348.8	3 237.2	187.2	5.5	62.7	5 461.4
April 2007	2 399.8	3 323.3	173.1	5.0	63.2	2 394.0	3 309.1	176.5	5.1	63.0	5 529.3
2008											
April	2 482.0	3 428.8	161.0	4.5	64.0	2 484.4	3 432.2	162.1	4.5	64.1	5 606.3
May	2 482.8	3 425.3	164.2	4.6	64.0	2 473.4	3 416.5	169.7	4.7	63.9	5 611.0
June	2 480.1	3 417.7	168.1	4.7	63.8	2 479.0	3 424.8	168.1	4.7	64.0	5 615.7
July	2 474.1	3 409.2	171.6	4.8	63.7	2 476.1	3 408.6	170.5	4.8	63.7	5 621.6
August	2 467.1	3 402.7	174.7	4.9	63.6	2 468.2	3 390.8	175.4	4.9	63.4	5 627.6
September	2 460.8	3 399.6	177.1	5.0	63.5	2 465.7	3 399.7	172.6	4.8	63.4	5 633.5
October	2 455.4	3 398.8	181.0	5.1	63.5	2 448.0	3 400.2	189.6	5.3	63.6	5 641.3
November	2 449.8	3 398.6	187.2	5.2	63.5	2 445.3	3 397.7	185.9	5.2	63.4	5 649.0
December	2 444.1	3 398.2	195.6	5.4	63.5	2 439.0	3 403.5	186.7	5.2	63.5	5 656.7
2009											
January	2 438.0	3 396.6	205.1	5.7	63.6	2 455.8	3 400.2	200.2	5.6	63.6	5 663.7
February	2 431.3	3 394.2	214.6	5.9	63.6	2 432.4	3 394.5	214.3	5.9	63.6	5 670.6
March	2 424.3	3 391.7	223.3	6.2	63.7	2 416.0	3 379.9	247.7	6.8	63.9	5 677.5
April	2 418.4	3 389.6	229.8	6.3	63.7	2 411.2	3 395.0	218.6	6.0	63.6	5 683.9

LABOUR FORCE STATUS (AGED 15 YEARS & OVER)—Victoria

	TREND					SEASONALLY ADJUSTED					Civilian population aged 15 years and over
	Employed full time	Total employed	Total unemployed	Unemployment rate	Participation rate	Employed full time	Total employed	Total unemployed	Unemployment rate	Participation rate	
	'000	'000	'000	%	%	'000	'000	'000	%	%	
MALES											
April 2006	1 171.6	1 389.0	71.5	4.9	72.1	1 175.7	1 396.1	70.0	4.8	72.4	2 025.5
April 2007	1 211.6	1 434.5	63.5	4.2	72.7	1 211.7	1 434.9	62.2	4.2	72.6	2 060.8
2008											
April	1 223.4	1 462.7	61.0	4.0	72.6	1 218.7	1 459.5	62.1	4.1	72.5	2 099.3
May	1 222.4	1 461.3	61.9	4.1	72.5	1 223.5	1 467.5	59.3	3.9	72.6	2 102.1
June	1 221.5	1 460.2	62.6	4.1	72.3	1 221.3	1 460.1	67.7	4.4	72.6	2 104.9
July	1 220.9	1 459.5	62.4	4.1	72.2	1 222.4	1 457.7	64.4	4.2	72.2	2 108.0
August	1 220.4	1 458.7	61.4	4.0	72.0	1 222.3	1 458.3	59.5	3.9	71.9	2 111.0
September	1 219.8	1 457.2	61.0	4.0	71.8	1 217.8	1 456.7	61.3	4.0	71.8	2 114.1
October	1 218.2	1 455.0	62.1	4.1	71.6	1 215.9	1 457.2	60.0	4.0	71.6	2 117.9
November	1 215.7	1 452.6	65.0	4.3	71.5	1 214.9	1 453.6	61.1	4.0	71.4	2 121.6
December	1 212.3	1 450.2	69.5	4.6	71.5	1 218.7	1 449.5	69.8	4.6	71.5	2 125.3
2009											
January	1 208.6	1 447.7	74.5	4.9	71.5	1 212.2	1 447.8	76.3	5.0	71.6	2 128.9
February	1 205.0	1 445.8	79.2	5.2	71.5	1 201.0	1 443.0	81.7	5.4	71.5	2 132.5
March	1 201.9	1 444.4	83.3	5.5	71.5	1 190.7	1 443.0	83.8	5.5	71.5	2 136.0
April	1 199.5	1 443.5	86.6	5.7	71.6	1 207.5	1 447.3	85.9	5.6	71.7	2 139.3
FEMALES											
April 2006	610.5	1 135.5	65.1	5.4	56.9	614.7	1 136.0	68.0	5.6	57.0	2 112.0
April 2007	641.9	1 173.2	65.4	5.3	57.7	636.0	1 179.4	65.2	5.2	58.0	2 145.9
2008											
April	643.4	1 200.3	61.1	4.8	57.8	644.1	1 202.4	65.4	5.2	58.1	2 183.7
May	641.9	1 201.8	61.5	4.9	57.8	642.6	1 200.5	61.2	4.8	57.7	2 186.3
June	641.7	1 203.7	62.1	4.9	57.8	632.5	1 204.7	62.2	4.9	57.9	2 188.9
July	642.6	1 205.4	62.7	4.9	57.9	645.2	1 204.9	64.7	5.1	57.9	2 191.9
August	643.5	1 206.6	62.7	4.9	57.8	647.2	1 210.2	61.0	4.8	57.9	2 194.8
September	643.8	1 207.7	62.3	4.9	57.8	648.2	1 203.7	61.4	4.9	57.6	2 197.7
October	642.7	1 209.0	62.3	4.9	57.7	637.8	1 210.1	63.7	5.0	57.9	2 201.4
November	640.7	1 210.0	63.0	5.0	57.7	646.1	1 208.1	65.7	5.2	57.8	2 205.1
December	638.6	1 210.2	64.6	5.1	57.7	632.4	1 209.5	61.1	4.8	57.5	2 208.7
2009											
January	637.3	1 209.5	66.7	5.2	57.7	638.7	1 214.1	60.0	4.7	57.6	2 212.2
February	636.9	1 207.8	69.0	5.4	57.6	634.8	1 210.4	75.3	5.9	58.0	2 215.6
March	636.9	1 205.5	71.1	5.6	57.5	637.3	1 206.3	74.6	5.8	57.7	2 219.1
April	637.5	1 202.6	72.8	5.7	57.4	640.3	1 194.1	71.0	5.6	56.9	2 221.7
PERSONS											
April 2006	1 782.1	2 524.6	136.5	5.1	64.3	1 790.4	2 532.1	138.0	5.2	64.5	4 137.6
April 2007	1 853.5	2 607.7	129.0	4.7	65.1	1 847.7	2 614.4	127.5	4.6	65.2	4 206.7
2008											
April	1 866.8	2 663.0	122.1	4.4	65.0	1 862.8	2 661.9	127.5	4.6	65.1	4 283.0
May	1 864.3	2 663.1	123.4	4.4	65.0	1 866.1	2 668.0	120.4	4.3	65.0	4 288.4
June	1 863.2	2 663.9	124.8	4.5	64.9	1 853.9	2 664.8	129.9	4.6	65.1	4 293.8
July	1 863.4	2 664.9	125.0	4.5	64.9	1 867.6	2 662.6	129.1	4.6	64.9	4 299.8
August	1 863.9	2 665.3	124.1	4.5	64.8	1 869.5	2 668.4	120.4	4.3	64.8	4 305.8
September	1 863.6	2 664.9	123.3	4.4	64.7	1 866.1	2 660.4	122.7	4.4	64.5	4 311.9
October	1 860.9	2 664.0	124.3	4.5	64.6	1 853.7	2 667.3	123.7	4.4	64.6	4 319.3
November	1 856.4	2 662.7	128.0	4.6	64.5	1 861.0	2 661.7	126.8	4.5	64.4	4 326.7
December	1 850.9	2 660.4	134.1	4.8	64.5	1 851.0	2 659.0	131.0	4.7	64.4	4 334.0
2009											
January	1 845.9	2 657.2	141.2	5.0	64.5	1 850.8	2 661.8	136.3	4.9	64.5	4 341.1
February	1 841.9	2 653.6	148.2	5.3	64.4	1 835.7	2 653.4	157.0	5.6	64.6	4 348.1
March	1 838.8	2 649.9	154.3	5.5	64.4	1 828.0	2 649.3	158.3	5.6	64.5	4 355.1
April	1 837.0	2 646.2	159.4	5.7	64.4	1 847.8	2 641.4	156.9	5.6	64.2	4 360.9

LABOUR FORCE STATUS (AGED 15 YEARS & OVER)—Queensland

	TREND					SEASONALLY ADJUSTED					Civilian population aged 15 years and over
	Employed full time	Total employed	Total unemp-loyed	Unemp-loyment rate	Partici-pation rate	Employed full time	Total employed	Total unemp-loyed	Unemp-loyment rate	Partici-pation rate	
	'000	'000	'000	%	%	'000	'000	'000	%	%	
MALES											
April 2006	963.6	1 123.3	49.9	4.3	73.3	961.2	1 122.3	45.7	3.9	73.0	1 600.3
April 2007	1 018.1	1 179.6	39.0	3.2	74.3	1 017.1	1 180.4	37.9	3.1	74.3	1 640.5
2008											
April	1 019.5	1 191.4	39.5	3.2	73.4	1 024.1	1 191.2	40.8	3.3	73.4	1 677.5
May	1 024.0	1 193.1	40.3	3.3	73.4	1 015.5	1 188.9	42.5	3.4	73.3	1 681.0
June	1 029.8	1 195.9	40.8	3.3	73.4	1 029.4	1 197.2	41.7	3.4	73.5	1 684.5
July	1 035.7	1 199.3	41.2	3.3	73.5	1 042.8	1 200.7	38.8	3.1	73.5	1 687.4
August	1 040.4	1 202.4	42.1	3.4	73.6	1 042.6	1 202.2	39.5	3.2	73.5	1 690.2
September	1 043.0	1 204.5	44.1	3.5	73.7	1 041.9	1 203.3	45.7	3.7	73.8	1 693.1
October	1 043.4	1 205.5	47.1	3.8	73.8	1 038.4	1 207.6	47.2	3.8	73.9	1 696.8
November	1 042.1	1 205.7	50.8	4.0	73.9	1 052.1	1 211.7	50.8	4.0	74.2	1 700.5
December	1 040.2	1 205.6	54.8	4.3	73.9	1 035.6	1 198.9	53.1	4.2	73.5	1 704.2
2009											
January	1 038.8	1 205.7	58.4	4.6	74.0	1 035.7	1 201.9	59.8	4.7	73.9	1 708.0
February	1 037.7	1 206.0	61.7	4.9	74.1	1 039.3	1 209.4	63.2	5.0	74.3	1 711.7
March	1 037.0	1 206.5	64.5	5.1	74.1	1 034.5	1 208.7	64.6	5.1	74.2	1 715.4
April	1 036.7	1 206.9	66.8	5.2	74.2	1 039.8	1 206.4	66.6	5.2	74.1	1 718.0
FEMALES											
April 2006	512.2	925.2	50.7	5.2	59.5	512.5	924.0	50.0	5.1	59.4	1 639.8
April 2007	558.1	976.5	42.2	4.1	60.7	563.5	979.7	37.8	3.7	60.6	1 679.5
2008											
April	561.3	1 001.0	44.0	4.2	61.0	557.5	1 002.8	43.4	4.1	61.0	1 714.4
May	566.1	1 006.6	44.2	4.2	61.2	562.6	1 011.3	44.9	4.3	61.5	1 717.6
June	570.3	1 011.4	44.2	4.2	61.3	565.0	1 001.8	44.9	4.3	60.8	1 720.7
July	573.0	1 014.8	43.7	4.1	61.4	587.7	1 016.6	47.9	4.5	61.8	1 723.7
August	574.0	1 017.2	42.9	4.0	61.4	575.7	1 028.2	38.0	3.6	61.7	1 726.6
September	573.5	1 019.3	41.9	3.9	61.3	567.8	1 013.3	41.9	4.0	61.0	1 729.6
October	572.0	1 021.4	41.1	3.9	61.3	567.7	1 020.2	43.9	4.1	61.4	1 733.1
November	570.7	1 023.5	41.2	3.9	61.3	579.6	1 019.3	39.5	3.7	61.0	1 736.6
December	570.9	1 025.5	42.0	3.9	61.3	560.6	1 027.3	40.1	3.8	61.3	1 740.0
2009											
January	572.8	1 027.4	43.3	4.0	61.4	574.9	1 029.8	43.5	4.1	61.6	1 743.4
February	575.0	1 028.9	44.7	4.2	61.5	575.4	1 033.3	44.3	4.1	61.7	1 746.8
March	577.3	1 029.9	46.1	4.3	61.5	577.5	1 026.4	48.5	4.5	61.4	1 750.1
April	579.3	1 029.9	47.4	4.4	61.5	582.4	1 027.4	47.7	4.4	61.3	1 752.4
PERSONS											
April 2006	1 475.8	2 048.5	100.6	4.7	66.3	1 473.7	2 046.3	95.8	4.5	66.1	3 240.2
April 2007	1 576.2	2 156.1	81.2	3.6	67.4	1 580.6	2 160.2	75.8	3.4	67.3	3 320.0
2008											
April	1 580.8	2 192.4	83.4	3.7	67.1	1 581.6	2 194.1	84.2	3.7	67.2	3 392.0
May	1 590.1	2 199.7	84.5	3.7	67.2	1 578.1	2 200.2	87.4	3.8	67.3	3 398.6
June	1 600.1	2 207.3	84.9	3.7	67.3	1 594.3	2 199.0	86.6	3.8	67.1	3 405.2
July	1 608.8	2 214.1	84.9	3.7	67.4	1 630.5	2 217.3	86.7	3.8	67.5	3 411.0
August	1 614.4	2 219.6	85.0	3.7	67.4	1 618.3	2 230.4	77.5	3.4	67.5	3 416.9
September	1 616.5	2 223.8	85.9	3.7	67.5	1 609.7	2 216.6	87.6	3.8	67.3	3 422.7
October	1 615.4	2 226.9	88.2	3.8	67.5	1 606.2	2 227.8	91.1	3.9	67.6	3 429.9
November	1 612.8	2 229.2	92.0	4.0	67.5	1 631.7	2 231.1	90.3	3.9	67.5	3 437.1
December	1 611.2	2 231.0	96.8	4.2	67.6	1 596.2	2 226.2	93.3	4.0	67.3	3 444.3
2009											
January	1 611.6	2 233.0	101.7	4.4	67.6	1 610.6	2 231.7	103.3	4.4	67.7	3 451.4
February	1 612.8	2 234.9	106.4	4.5	67.7	1 614.7	2 242.7	107.5	4.6	68.0	3 458.5
March	1 614.4	2 236.4	110.6	4.7	67.8	1 612.0	2 235.1	113.1	4.8	67.8	3 465.6
April	1 616.0	2 236.8	114.2	4.9	67.8	1 622.2	2 233.8	114.2	4.9	67.7	3 470.5

	TREND					SEASONALLY ADJUSTED					Civilian population aged 15 years and over '000
	Employed full time	Total employed	Total unemp-loyed	Unemp-loyment rate	Partici-pation rate	Employed full time	Total employed	Total unemp-loyed	Unemp-loyment rate	Partici-pation rate	
	'000	'000	'000	%	%	'000	'000	'000	%	%	
MALES											
April 2006	342.1	408.4	22.6	5.2	69.1	342.7	406.6	23.5	5.5	68.9	624.1
April 2007	345.6	413.1	22.7	5.2	69.0	341.8	413.3	22.6	5.2	69.0	632.1
2008											
April	357.7	430.0	20.7	4.6	70.5	357.6	431.9	20.6	4.6	70.7	639.8
May	359.3	430.7	20.9	4.6	70.5	358.0	425.8	21.9	4.9	69.9	640.3
June	361.1	431.5	21.2	4.7	70.6	360.4	431.2	21.5	4.7	70.6	640.8
July	362.7	432.3	21.6	4.8	70.8	364.4	435.2	20.5	4.5	71.1	641.4
August	364.3	432.9	22.1	4.8	70.9	365.0	433.8	18.0	4.0	70.4	641.9
September	365.5	433.1	22.6	5.0	70.9	363.3	430.8	28.3	6.2	71.5	642.4
October	365.6	432.7	23.2	5.1	70.9	365.9	432.1	22.8	5.0	70.7	643.2
November	364.6	431.3	23.8	5.2	70.7	367.0	434.5	23.2	5.1	71.1	644.0
December	362.9	429.4	24.5	5.4	70.4	364.2	429.1	23.0	5.1	70.1	644.8
2009											
January	360.9	427.4	25.3	5.6	70.1	361.3	426.9	24.8	5.5	70.0	645.5
February	359.0	425.3	26.1	5.8	69.9	355.7	425.3	26.8	5.9	70.0	646.2
March	357.4	423.4	26.9	6.0	69.6	354.8	421.4	28.6	6.3	69.6	646.8
April	356.1	421.7	28.0	6.2	69.5	359.4	422.2	27.4	6.1	69.4	647.3
FEMALES											
April 2006	175.4	346.4	17.0	4.7	55.7	174.8	349.4	16.9	4.6	56.2	652.2
April 2007	176.8	350.3	17.3	4.7	55.7	176.2	349.4	18.9	5.1	55.8	660.0
2008											
April	186.7	357.6	17.9	4.8	56.2	186.1	356.3	19.7	5.2	56.3	667.7
May	186.5	357.6	18.3	4.9	56.3	189.2	358.2	19.7	5.2	56.6	668.2
June	186.2	357.9	18.6	4.9	56.3	187.9	357.9	18.2	4.8	56.2	668.7
July	185.3	358.4	19.0	5.0	56.4	182.9	357.7	18.4	4.9	56.2	669.2
August	183.7	358.9	19.6	5.2	56.5	182.0	356.5	18.6	5.0	56.0	669.7
September	181.7	359.4	20.3	5.3	56.7	187.4	363.7	20.1	5.2	57.3	670.2
October	179.8	359.7	21.1	5.5	56.8	178.9	360.0	22.0	5.8	56.9	671.0
November	178.8	360.3	21.8	5.7	56.9	175.8	360.9	22.2	5.8	57.0	671.8
December	178.9	361.4	22.1	5.8	57.0	177.2	357.8	21.8	5.8	56.4	672.6
2009											
January	179.8	363.2	21.9	5.7	57.2	179.4	362.2	22.8	5.9	57.2	673.2
February	181.4	365.6	21.5	5.6	57.4	181.9	366.0	21.5	5.5	57.5	673.9
March	183.2	368.3	21.0	5.4	57.7	184.2	367.8	20.8	5.4	57.6	674.5
April	185.3	371.0	20.4	5.2	58.0	187.4	375.8	19.3	4.9	58.5	675.1
PERSONS											
April 2006	517.5	754.7	39.5	5.0	62.2	517.5	756.0	40.4	5.1	62.4	1 276.3
April 2007	522.4	763.4	40.1	5.0	62.2	518.0	762.7	41.5	5.2	62.2	1 292.1
2008											
April	544.4	787.6	38.7	4.7	63.2	543.7	788.2	40.3	4.9	63.4	1 307.5
May	545.9	788.3	39.2	4.7	63.2	547.2	784.1	41.7	5.0	63.1	1 308.6
June	547.2	789.4	39.8	4.8	63.3	548.3	789.0	39.7	4.8	63.3	1 309.6
July	548.0	790.7	40.6	4.9	63.4	547.2	792.9	38.9	4.7	63.5	1 310.6
August	548.0	791.9	41.7	5.0	63.5	547.0	790.2	36.6	4.4	63.0	1 311.6
September	547.2	792.6	42.9	5.1	63.6	550.7	794.5	48.5	5.8	64.2	1 312.6
October	545.4	792.4	44.3	5.3	63.7	544.7	792.1	44.8	5.3	63.7	1 314.2
November	543.4	791.6	45.7	5.5	63.6	542.8	795.5	45.4	5.4	63.9	1 315.8
December	541.7	790.8	46.6	5.6	63.6	541.4	786.9	44.8	5.4	63.1	1 317.4
2009											
January	540.7	790.6	47.1	5.6	63.5	540.7	789.1	47.6	5.7	63.5	1 318.7
February	540.4	790.9	47.6	5.7	63.5	537.6	791.3	48.3	5.7	63.6	1 320.0
March	540.6	791.7	47.9	5.7	63.5	539.0	789.2	49.4	5.9	63.5	1 321.3
April	541.4	792.7	48.4	5.8	63.6	546.8	798.0	46.7	5.5	63.9	1 322.5

	TREND					SEASONALLY ADJUSTED					Civilian population aged 15 years and over
	Employed full time	Total employed	Total unemployed	Unemployment rate	Participation rate	Employed full time	Total employed	Total unemployed	Unemployment rate	Participation rate	
	'000	'000	'000	%	%	'000	'000	'000	%	%	'000
MALES											
April 2006	523.1	607.3	20.5	3.3	76.5	522.6	607.3	20.8	3.3	76.5	821.3
April 2007	534.0	620.5	17.2	2.7	75.7	534.5	620.6	14.1	2.2	75.4	842.2
2008											
April	557.2	640.0	20.0	3.0	76.2	556.0	637.1	19.5	3.0	75.7	866.9
May	560.9	642.4	20.0	3.0	76.2	553.1	637.6	23.7	3.6	76.1	868.6
June	565.2	646.4	19.5	2.9	76.5	565.2	643.3	18.4	2.8	76.0	870.4
July	570.1	651.9	18.6	2.8	76.8	573.4	652.2	18.1	2.7	76.8	872.4
August	574.9	657.8	17.4	2.6	77.2	577.3	664.6	16.0	2.3	77.8	874.3
September	578.5	662.5	16.6	2.4	77.5	574.7	658.4	20.9	3.1	77.5	876.2
October	579.5	664.6	16.6	2.4	77.5	582.5	670.1	12.0	1.8	77.6	878.8
November	577.6	663.9	17.8	2.6	77.4	578.2	659.8	19.0	2.8	77.0	881.3
December	573.6	661.3	20.1	3.0	77.1	577.3	667.8	18.5	2.7	77.7	883.9
2009											
January	569.0	658.2	23.0	3.4	76.9	571.3	656.7	21.8	3.2	76.6	886.2
February	564.4	655.4	26.0	3.8	76.7	557.6	651.8	25.7	3.8	76.3	888.5
March	560.4	653.2	28.8	4.2	76.6	556.1	649.1	34.7	5.1	76.8	890.9
April	556.9	651.0	31.5	4.6	76.5	560.9	655.3	29.2	4.3	76.6	893.3
FEMALES											
April 2006	241.8	467.8	19.9	4.1	59.5	240.2	468.8	19.8	4.1	59.6	819.5
April 2007	253.3	485.8	16.8	3.3	60.0	251.7	478.9	15.9	3.2	59.1	837.4
2008											
April	272.4	502.1	17.8	3.4	60.6	269.8	503.9	17.9	3.4	60.8	857.9
May	273.5	503.5	17.9	3.4	60.7	273.0	501.6	18.4	3.5	60.5	859.4
June	274.7	505.3	17.8	3.4	60.8	277.1	504.0	18.5	3.5	60.7	860.8
July	275.9	507.5	17.5	3.3	60.9	276.1	509.0	18.5	3.5	61.2	862.4
August	276.3	509.4	17.1	3.2	60.9	275.5	510.1	16.9	3.2	61.0	864.0
September	275.8	510.8	16.6	3.2	60.9	276.4	510.2	15.5	2.9	60.7	865.6
October	274.6	511.6	16.8	3.2	60.9	276.9	513.3	16.0	3.0	61.0	867.6
November	273.5	512.1	17.7	3.3	60.9	272.4	509.8	18.6	3.5	60.8	869.6
December	272.8	512.2	19.2	3.6	61.0	269.8	516.2	18.2	3.4	61.3	871.6
2009											
January	272.8	512.4	21.1	4.0	61.1	273.0	506.6	19.9	3.8	60.3	873.5
February	273.1	512.6	23.0	4.3	61.2	272.7	514.3	24.8	4.6	61.6	875.4
March	273.8	512.7	24.6	4.6	61.3	274.7	516.4	25.3	4.7	61.8	877.2
April	274.5	512.6	26.0	4.8	61.3	276.2	509.8	26.0	4.9	61.0	878.8
PERSONS											
April 2006	764.9	1 075.1	40.4	3.6	68.0	762.8	1 076.1	40.6	3.6	68.1	1 640.7
April 2007	787.4	1 106.3	34.0	3.0	67.9	786.2	1 099.5	30.0	2.7	67.2	1 679.6
2008											
April	829.6	1 142.1	37.8	3.2	68.4	825.7	1 141.0	37.4	3.2	68.3	1 724.8
May	834.3	1 145.9	37.9	3.2	68.5	826.1	1 139.3	42.1	3.6	68.4	1 728.0
June	840.0	1 151.7	37.3	3.1	68.7	842.3	1 147.3	36.9	3.1	68.4	1 731.2
July	845.9	1 159.3	36.1	3.0	68.9	849.5	1 161.2	36.6	3.1	69.0	1 734.8
August	851.2	1 167.2	34.5	2.9	69.1	852.8	1 174.7	32.9	2.7	69.5	1 738.3
September	854.3	1 173.2	33.2	2.8	69.2	851.1	1 168.7	36.4	3.0	69.2	1 741.8
October	854.2	1 176.3	33.3	2.8	69.3	859.4	1 183.4	28.0	2.3	69.4	1 746.4
November	851.0	1 175.9	35.5	2.9	69.2	850.7	1 169.7	37.5	3.1	68.9	1 751.0
December	846.5	1 173.5	39.4	3.2	69.1	847.2	1 184.1	36.8	3.0	69.5	1 755.5
2009											
January	841.8	1 170.6	44.1	3.6	69.0	844.4	1 163.4	41.8	3.5	68.5	1 759.7
February	837.6	1 168.0	49.0	4.0	69.0	830.4	1 166.1	50.5	4.2	69.0	1 763.9
March	834.2	1 165.9	53.4	4.4	69.0	830.8	1 165.6	60.0	4.9	69.3	1 768.1
April	831.4	1 163.6	57.5	4.7	69.0	837.2	1 165.1	55.2	4.5	68.9	1 772.1

	TREND					SEASONALLY ADJUSTED					Civilian population aged 15 years and over '000
	Employed full time	Total employed	Total unemployed	Unemployment rate	Participation rate	Employed full time	Total employed	Total unemployed	Unemployment rate	Participation rate	
	'000	'000	'000	%	%	'000	'000	'000	%	%	
MALES											
April 2006	102.1	121.8	9.5	7.2	68.6	102.2	122.1	9.0	6.9	68.4	191.5
April 2007	103.9	124.3	6.6	5.1	67.8	103.7	124.0	7.6	5.8	68.1	193.1
2008											
April	108.2	128.3	4.7	3.6	68.2	108.5	129.0	4.0	3.0	68.1	195.3
May	109.0	129.6	4.6	3.4	68.7	109.7	129.4	5.2	3.8	68.9	195.4
June	110.0	131.2	4.5	3.3	69.4	106.5	129.2	4.6	3.4	68.4	195.5
July	110.9	132.5	4.4	3.2	70.0	111.7	132.4	4.7	3.4	70.1	195.7
August	111.5	133.3	4.4	3.2	70.3	113.8	136.1	4.3	3.1	71.7	195.9
September	111.5	133.4	4.5	3.2	70.3	111.7	134.1	3.8	2.8	70.3	196.0
October	111.1	132.9	4.6	3.3	70.1	111.7	132.9	4.6	3.3	70.1	196.3
November	110.1	132.0	4.9	3.6	69.6	108.3	130.9	5.3	3.9	69.3	196.5
December	108.9	130.9	5.3	3.9	69.2	108.8	129.1	5.4	4.0	68.4	196.7
2009											
January	107.7	129.9	5.7	4.2	68.9	108.6	130.4	5.4	4.0	69.0	196.9
February	106.7	129.1	6.1	4.5	68.6	107.0	131.5	5.9	4.3	69.7	197.1
March	105.8	128.2	6.5	4.9	68.3	105.5	127.7	6.4	4.8	68.0	197.3
April	104.9	127.5	6.9	5.1	68.1	104.1	125.7	7.7	5.8	67.5	197.4
FEMALES											
April 2006	51.4	103.6	6.6	6.0	54.8	50.5	102.6	6.8	6.2	54.3	201.3
April 2007	51.7	102.3	5.6	5.2	53.1	51.3	102.8	5.5	5.1	53.3	203.0
2008											
April	54.3	106.0	6.1	5.5	54.7	55.0	107.5	6.1	5.4	55.4	205.0
May	54.6	106.4	6.0	5.3	54.8	54.8	107.9	5.4	4.7	55.2	205.1
June	54.8	106.7	5.9	5.2	54.9	54.2	108.1	5.6	4.9	55.4	205.2
July	54.9	107.0	5.7	5.1	54.9	54.7	104.2	6.6	5.9	54.0	205.3
August	54.9	107.2	5.6	5.0	54.9	55.4	107.2	5.8	5.1	55.0	205.5
September	54.9	107.3	5.7	5.0	54.9	55.1	107.0	5.7	5.0	54.8	205.6
October	54.9	107.6	5.7	5.0	55.0	54.5	109.9	4.4	3.9	55.5	205.9
November	55.0	108.1	5.7	5.0	55.2	55.0	107.4	6.0	5.3	55.0	206.1
December	55.0	108.5	5.7	5.0	55.4	54.2	107.2	6.5	5.8	55.2	206.3
2009											
January	54.9	108.8	5.8	5.1	55.5	54.9	107.6	5.9	5.2	55.0	206.5
February	54.8	109.0	5.9	5.2	55.6	56.7	112.0	5.7	4.9	57.0	206.7
March	54.7	109.2	6.1	5.3	55.7	53.9	109.5	4.5	4.0	55.1	206.9
April	54.4	109.1	6.3	5.4	55.7	53.6	107.5	7.7	6.7	55.6	207.1
PERSONS											
April 2006	153.5	225.5	16.1	6.7	61.5	152.7	224.7	15.8	6.6	61.2	392.8
April 2007	155.6	226.6	12.2	5.1	60.3	155.0	226.7	13.1	5.5	60.5	396.1
2008											
April	162.5	234.3	10.9	4.4	61.3	163.5	236.5	10.1	4.1	61.6	400.3
May	163.6	236.0	10.6	4.3	61.6	164.5	237.3	10.5	4.2	61.9	400.4
June	164.8	237.9	10.3	4.2	61.9	160.7	237.3	10.1	4.1	61.8	400.6
July	165.8	239.6	10.1	4.0	62.3	166.4	236.6	11.2	4.5	61.8	401.0
August	166.3	240.5	10.0	4.0	62.4	169.2	243.3	10.1	4.0	63.1	401.3
September	166.4	240.7	10.1	4.0	62.4	166.8	241.1	9.5	3.8	62.4	401.7
October	166.0	240.5	10.3	4.1	62.4	166.2	242.8	9.0	3.6	62.6	402.1
November	165.1	240.1	10.5	4.2	62.3	163.3	238.2	11.4	4.5	62.0	402.6
December	163.9	239.4	11.0	4.4	62.1	163.1	236.4	11.9	4.8	61.6	403.1
2009											
January	162.7	238.7	11.5	4.6	62.0	163.5	238.0	11.3	4.5	61.8	403.4
February	161.6	238.1	12.0	4.8	61.9	163.7	243.5	11.6	4.5	63.2	403.8
March	160.4	237.4	12.6	5.0	61.9	159.4	237.3	10.9	4.4	61.4	404.1
April	159.4	236.6	13.2	5.3	61.8	157.6	233.2	15.3	6.2	61.4	404.6

	TREND					<i>Civilian population aged 15 years and over</i>
	<i>Employed full time</i>	<i>Total employed</i>	<i>Total unemployed</i>	<i>Unemployment rate</i>	<i>Participation rate</i>	
	'000	'000	'000	%	%	
MALES						
April 2006	46.3	54.6	3.2	5.6	74.2	77.9
April 2007	49.9	58.0	2.9	4.7	76.1	80.0
2008						
April	51.6	60.4	2.4	3.8	76.3	82.2
May	51.7	60.5	2.1	3.4	76.0	82.4
June	51.8	60.7	1.9	3.0	75.7	82.6
July	51.9	60.7	1.8	2.9	75.4	82.9
August	52.2	60.8	1.8	2.9	75.3	83.1
September	52.6	60.9	2.0	3.2	75.4	83.4
October	53.3	61.1	2.2	3.4	75.7	83.5
November	54.1	61.5	2.4	3.7	76.3	83.6
December	55.0	62.0	2.6	4.0	77.0	83.8
2009						
January	55.8	62.6	2.7	4.1	77.8	83.9
February	56.6	63.3	2.9	4.3	78.6	84.1
March	57.3	63.8	3.0	4.5	79.4	84.3
April	57.7	64.3	3.1	4.7	80.0	84.3
FEMALES						
April 2006	33.9	48.0	2.6	5.2	67.1	75.5
April 2007	35.2	49.0	1.9	3.7	65.8	77.3
2008						
April	36.7	52.3	2.0	3.8	68.7	79.1
May	36.3	52.5	1.9	3.5	68.6	79.3
June	36.0	52.8	1.8	3.2	68.7	79.4
July	35.7	53.0	1.7	3.1	68.7	79.6
August	35.7	53.1	1.7	3.2	68.7	79.8
September	36.0	53.1	1.8	3.3	68.7	80.0
October	36.4	53.1	1.9	3.5	68.8	80.1
November	36.9	53.2	2.0	3.7	68.8	80.2
December	37.4	53.3	2.1	3.8	68.9	80.4
2009						
January	37.9	53.5	2.1	3.7	69.1	80.5
February	38.4	53.8	2.0	3.7	69.2	80.7
March	39.0	54.1	2.0	3.6	69.4	80.9
April	39.5	54.4	2.0	3.5	69.6	81.1
PERSONS						
April 2006	80.2	102.6	5.9	5.4	70.7	153.4
April 2007	85.1	106.9	4.8	4.3	71.0	157.3
2008						
April	88.3	112.6	4.5	3.8	72.6	161.3
May	88.0	113.0	4.0	3.4	72.4	161.7
June	87.7	113.4	3.7	3.1	72.2	162.1
July	87.6	113.8	3.5	3.0	72.2	162.5
August	87.9	113.9	3.6	3.0	72.1	162.9
September	88.6	114.0	3.8	3.2	72.1	163.4
October	89.7	114.2	4.1	3.5	72.3	163.6
November	91.0	114.6	4.4	3.7	72.6	163.9
December	92.3	115.3	4.7	3.9	73.1	164.1
2009						
January	93.7	116.2	4.8	4.0	73.5	164.5
February	95.0	117.1	4.9	4.0	74.0	164.8
March	96.2	118.0	5.0	4.1	74.5	165.1
April	97.2	118.7	5.1	4.1	74.9	165.4

	TREND					<i>Civilian population aged 15 years and over</i>
	<i>Employed full time</i>	<i>Total employed</i>	<i>Total unemployed</i>	<i>Unemployment rate</i>	<i>Participation rate</i>	
	'000	'000	'000	%	%	
MALES						
April 2006	82.6	97.1	3.7	3.6	77.8	129.6
April 2007	85.9	101.3	3.3	3.1	79.2	132.0
2008						
April	85.4	101.6	2.9	2.8	77.9	134.1
May	85.5	101.7	3.1	2.9	78.0	134.3
June	85.6	101.7	3.2	3.1	78.0	134.6
July	85.9	101.7	3.3	3.1	77.9	134.7
August	86.2	101.7	3.3	3.1	77.9	134.8
September	86.6	101.9	3.2	3.1	77.9	134.8
October	87.1	102.2	3.1	3.0	77.9	135.1
November	87.5	102.4	3.0	2.8	77.9	135.3
December	87.7	102.5	2.9	2.8	77.8	135.5
2009						
January	87.6	102.2	2.9	2.8	77.5	135.7
February	87.2	101.9	2.9	2.8	77.2	135.9
March	86.8	101.4	3.0	2.9	76.8	136.0
April	86.4	101.0	3.0	2.9	76.5	136.1
FEMALES						
April 2006	58.2	90.3	2.5	2.7	67.9	136.8
April 2007	60.1	92.3	2.7	2.9	68.3	139.0
2008						
April	60.9	94.4	2.4	2.5	68.8	140.8
May	60.9	94.5	2.4	2.5	68.7	141.0
June	60.9	94.5	2.3	2.4	68.6	141.2
July	61.0	94.5	2.3	2.3	68.5	141.3
August	60.9	94.5	2.2	2.3	68.5	141.3
September	60.6	94.5	2.2	2.3	68.4	141.4
October	60.2	94.5	2.3	2.3	68.4	141.5
November	59.9	94.5	2.3	2.3	68.3	141.7
December	59.9	94.4	2.3	2.3	68.1	141.8
2009						
January	60.0	94.4	2.3	2.4	68.1	142.0
February	60.3	94.4	2.4	2.5	68.1	142.2
March	60.5	94.5	2.5	2.6	68.2	142.4
April	60.9	94.6	2.6	2.7	68.2	142.4
PERSONS						
April 2006	140.8	187.5	6.2	3.2	72.7	266.4
April 2007	146.0	193.6	6.0	3.0	73.6	271.0
2008						
April	146.3	196.0	5.4	2.7	73.3	274.9
May	146.3	196.2	5.5	2.7	73.3	275.4
June	146.5	196.2	5.6	2.8	73.2	275.8
July	146.8	196.2	5.5	2.7	73.1	276.0
August	147.1	196.2	5.5	2.7	73.1	276.1
September	147.2	196.4	5.5	2.7	73.1	276.2
October	147.3	196.7	5.4	2.7	73.0	276.6
November	147.5	196.9	5.2	2.6	73.0	277.0
December	147.6	196.9	5.2	2.6	72.9	277.3
2009						
January	147.6	196.6	5.2	2.6	72.7	277.7
February	147.5	196.3	5.4	2.7	72.5	278.1
March	147.4	196.0	5.5	2.7	72.4	278.4
April	147.3	195.6	5.6	2.8	72.3	278.5



Original—April 2009

	EMPLOYED			UNEMPLOYED		Labour force	Not in labour force	Civilian population aged 15 years and over	UNEMPLOYMENT RATE		Participation rate
	Full time	Part time	Total	Looking for f/t work	Total				Looking for f/t work	Total	
	'000	'000	'000	'000	'000				'000	'000	
MALES											
New South Wales	1 530.6	313.2	1 843.8	100.9	122.2	1 966.0	820.9	2 786.9	6.2	6.2	70.5
Victoria	1 202.7	246.5	1 449.2	67.0	91.0	1 540.2	599.1	2 139.3	5.3	5.9	72.0
Queensland	1 033.3	171.4	1 204.6	61.3	70.6	1 275.2	442.8	1 718.0	5.6	5.5	74.2
South Australia	356.2	64.6	420.8	20.9	28.2	449.0	198.3	647.3	5.6	6.3	69.4
Western Australia	557.0	98.2	655.2	21.6	30.4	685.5	207.8	893.3	3.7	4.4	76.7
Tasmania	102.5	23.3	125.7	5.8	6.9	132.7	64.8	197.4	5.4	5.2	67.2
Northern Territory	57.0	7.2	64.3	3.4	3.7	67.9	16.3	84.3	5.6	5.4	80.6
Australian Capital Territory	84.9	15.8	100.6	*2.1	3.0	103.6	32.4	136.1	*2.4	2.9	76.2
<b>Australia</b>	<b>4 924.1</b>	<b>940.0</b>	<b>5 864.1</b>	<b>283.1</b>	<b>356.1</b>	<b>6 220.2</b>	<b>2 382.5</b>	<b>8 602.7</b>	<b>5.4</b>	<b>5.7</b>	<b>72.3</b>
FEMALES											
New South Wales	869.8	690.4	1 560.2	65.6	99.7	1 659.9	1 237.1	2 897.0	7.0	6.0	57.3
Victoria	635.5	561.3	1 196.8	41.3	75.8	1 272.7	949.0	2 221.7	6.1	6.0	57.3
Queensland	572.8	448.4	1 021.2	33.7	49.1	1 070.3	682.1	1 752.4	5.6	4.6	61.1
South Australia	184.9	189.7	374.6	11.1	19.8	394.4	280.7	675.1	5.6	5.0	58.4
Western Australia	271.1	238.7	509.7	18.4	27.7	537.5	341.3	878.8	6.4	5.2	61.2
Tasmania	52.3	56.2	108.5	2.9	6.3	114.8	92.3	207.1	5.3	5.5	55.4
Northern Territory	41.0	14.3	55.3	1.8	2.1	57.4	23.7	81.1	4.2	3.6	70.8
Australian Capital Territory	60.1	34.8	94.8	*2.3	2.8	97.7	44.8	142.4	*3.7	2.9	68.6
<b>Australia</b>	<b>2 687.4</b>	<b>2 233.8</b>	<b>4 921.2</b>	<b>177.1</b>	<b>283.5</b>	<b>5 204.7</b>	<b>3 651.0</b>	<b>8 855.7</b>	<b>6.2</b>	<b>5.4</b>	<b>58.8</b>
PERSONS											
New South Wales	2 400.4	1 003.6	3 404.0	166.5	222.0	3 626.0	2 058.0	5 683.9	6.5	6.1	63.8
Victoria	1 838.2	807.8	2 646.0	108.2	166.8	2 812.8	1 548.1	4 360.9	5.6	5.9	64.5
Queensland	1 606.0	619.8	2 225.8	95.0	119.7	2 345.5	1 125.0	3 470.5	5.6	5.1	67.6
South Australia	541.1	254.3	795.4	32.0	48.0	843.5	479.0	1 322.5	5.6	5.7	63.8
Western Australia	828.0	336.9	1 164.9	40.0	58.1	1 223.0	549.1	1 772.1	4.6	4.7	69.0
Tasmania	154.7	79.5	234.2	8.8	13.3	247.5	157.1	404.6	5.4	5.4	61.2
Northern Territory	98.0	21.6	119.6	5.2	5.8	125.3	40.0	165.4	5.0	4.6	75.8
Australian Capital Territory	145.0	50.5	195.5	4.5	5.8	201.3	77.2	278.5	3.0	2.9	72.3
<b>Australia</b>	<b>7 611.5</b>	<b>3 173.8</b>	<b>10 785.4</b>	<b>460.2</b>	<b>639.6</b>	<b>11 424.9</b>	<b>6 033.4</b>	<b>17 458.4</b>	<b>5.7</b>	<b>5.6</b>	<b>65.4</b>

\* estimate is subject to sampling variability too high for most practical purposes

	EMPLOYED		UNEMPLOYED		UNEMPLOYMENT RATE		Participation rate	Employment to population ratio	Unemployment to population ratio – looking for full-time work
	Full time	Total	Looking for f/t work	Total	Looking for f/t work	Total			
	'000	'000	'000	'000	%	%			
MALES									
April 2006	157.5	354.9	36.1	68.1	18.6	16.1	58.6	49.1	5.0
April 2007	160.5	367.3	31.0	57.6	16.2	13.6	57.8	50.0	4.2
2008									
April	175.7	388.3	28.4	54.2	13.9	12.2	59.2	51.9	3.8
May	176.2	386.5	28.8	54.7	14.1	12.4	58.9	51.6	3.9
June	176.4	384.7	29.2	55.2	14.2	12.5	58.7	51.3	3.9
July	176.1	383.3	29.0	55.2	14.1	12.6	58.5	51.1	3.9
August	175.0	381.9	28.3	55.0	13.9	12.6	58.2	50.9	3.8
September	172.7	379.7	27.6	55.2	13.8	12.7	57.9	50.5	3.7
October	169.2	376.2	27.8	56.7	14.1	13.1	57.6	50.0	3.7
November	164.6	371.6	29.4	59.7	15.1	13.8	57.3	49.4	3.9
December	159.8	366.1	32.2	63.8	16.7	14.8	57.1	48.6	4.3
2009									
January	155.1	360.6	35.5	68.0	18.6	15.9	56.9	47.8	4.7
February	150.7	355.5	38.8	71.9	20.5	16.8	56.7	47.1	5.1
March	146.8	351.1	41.7	75.3	22.1	17.6	56.5	46.5	5.5
April	143.5	347.5	44.0	78.1	23.4	18.3	56.3	46.0	5.8
FEMALES									
April 2006	80.2	357.3	25.1	60.2	23.9	14.4	60.7	51.9	3.7
April 2007	85.3	370.4	23.4	56.4	21.5	13.2	61.1	53.0	3.3
2008									
April	88.8	372.3	24.2	56.9	21.5	13.3	60.4	52.4	3.4
May	86.8	371.5	24.7	57.1	22.2	13.3	60.2	52.2	3.5
June	84.9	370.9	25.3	56.8	23.0	13.3	60.1	52.1	3.5
July	83.6	370.9	25.2	55.8	23.2	13.1	59.9	52.0	3.5
August	82.5	370.9	24.7	54.5	23.0	12.8	59.6	52.0	3.5
September	81.2	370.1	24.0	53.5	22.8	12.6	59.3	51.8	3.4
October	79.7	368.9	23.5	53.5	22.7	12.7	59.0	51.6	3.3
November	78.3	367.2	23.5	54.6	23.1	13.0	58.9	51.3	3.3
December	77.6	365.3	24.1	56.4	23.6	13.4	58.8	50.9	3.4
2009									
January	77.4	363.6	25.0	58.4	24.4	13.8	58.8	50.7	3.5
February	78.0	362.1	26.2	60.1	25.1	14.2	58.8	50.4	3.6
March	79.1	360.8	27.2	61.6	25.6	14.6	58.8	50.2	3.8
April	80.7	359.6	28.3	63.0	26.0	14.9	58.8	50.0	3.9
PERSONS									
April 2006	237.7	712.3	61.2	128.3	20.5	15.3	59.6	50.5	4.3
April 2007	245.8	737.8	54.4	114.0	18.1	13.4	59.4	51.4	3.8
2008									
April	264.6	760.6	52.6	111.1	16.6	12.7	59.8	52.2	3.6
May	263.0	758.0	53.6	111.8	16.9	12.8	59.6	51.9	3.7
June	261.4	755.6	54.4	112.0	17.2	12.9	59.4	51.7	3.7
July	259.7	754.2	54.3	111.0	17.3	12.8	59.1	51.6	3.7
August	257.5	752.8	53.0	109.4	17.1	12.7	58.9	51.4	3.6
September	253.9	749.8	51.6	108.7	16.9	12.7	58.6	51.1	3.5
October	248.8	745.1	51.3	110.2	17.1	12.9	58.3	50.8	3.5
November	242.9	738.8	52.9	114.3	17.9	13.4	58.1	50.3	3.6
December	237.4	731.5	56.2	120.2	19.2	14.1	57.9	49.7	3.8
2009									
January	232.5	724.2	60.6	126.4	20.6	14.9	57.8	49.2	4.1
February	228.7	717.6	65.0	132.1	22.1	15.5	57.7	48.7	4.4
March	225.8	711.9	68.9	136.9	23.4	16.1	57.6	48.3	4.7
April	224.3	707.1	72.3	141.1	24.4	16.6	57.5	47.9	4.9

	EMPLOYED		UNEMPLOYED		UNEMPLOYMENT RATE		Participation rate	Employment to population ratio	Unemployment to population ratio – looking for full-time work
	Full time	Total	Looking for f/t work	Total	Looking for f/t work	Total			
	'000	'000	'000	'000	%	%			
MALES									
April 2006	156.3	350.9	35.0	69.7	18.3	16.6	58.2	48.6	4.8
April 2007	166.1	371.3	30.0	54.9	15.3	12.9	58.0	50.5	4.1
2008									
April	171.9	388.9	30.3	54.0	15.0	12.2	59.2	52.0	4.0
May	175.0	385.6	28.1	53.6	13.8	12.2	58.7	51.5	3.8
June	176.7	381.8	32.0	62.0	15.3	14.0	59.2	51.0	4.3
July	175.0	384.6	28.2	55.4	13.9	12.6	58.7	51.3	3.8
August	182.5	381.0	28.3	49.2	13.4	11.4	57.3	50.7	3.8
September	171.2	380.1	28.2	57.1	14.1	13.1	58.2	50.6	3.8
October	166.0	379.3	28.6	57.9	14.7	13.2	58.1	50.4	3.8
November	162.4	371.0	25.6	57.1	13.6	13.3	56.9	49.3	3.4
December	163.2	368.2	32.2	61.9	16.5	14.4	57.1	48.9	4.3
2009									
January	157.9	357.6	30.9	68.1	16.4	16.0	56.5	47.4	4.1
February	149.6	354.1	45.0	76.0	23.1	17.7	57.0	46.9	6.0
March	140.2	351.8	46.0	76.3	24.7	17.8	56.7	46.6	6.1
April	145.7	346.8	39.9	76.8	21.5	18.1	56.1	45.9	5.3
FEMALES									
April 2006	80.6	354.5	25.5	67.5	24.1	16.0	61.3	51.5	3.7
April 2007	86.1	374.8	20.0	54.1	18.9	12.6	61.3	53.6	2.9
2008									
April	83.5	373.8	26.1	60.4	23.8	13.9	61.1	52.6	3.7
May	89.0	369.6	25.8	59.0	22.5	13.8	60.2	52.0	3.6
June	87.6	371.0	24.4	58.7	21.8	13.7	60.4	52.1	3.4
July	81.8	372.2	25.0	58.9	23.4	13.7	60.5	52.2	3.5
August	79.2	369.8	24.9	45.9	23.9	11.0	58.2	51.8	3.5
September	84.3	366.5	25.7	55.0	23.4	13.0	59.0	51.3	3.6
October	77.7	373.9	22.7	55.8	22.6	13.0	60.1	52.3	3.2
November	83.8	370.5	24.6	55.7	22.7	13.1	59.5	51.7	3.4
December	77.2	364.8	17.5	52.0	18.5	12.5	58.1	50.9	2.4
2009									
January	70.5	354.6	29.3	59.3	29.4	14.3	57.7	49.4	4.1
February	76.8	363.6	26.9	60.9	26.0	14.4	59.1	50.6	3.7
March	81.6	368.5	27.1	64.1	24.9	14.8	60.2	51.3	3.8
April	85.1	355.6	28.3	62.2	25.0	14.9	58.1	49.4	3.9
PERSONS									
April 2006	236.9	705.4	60.5	137.2	20.3	16.3	59.7	50.0	4.3
April 2007	252.2	746.1	50.0	109.0	16.6	12.7	59.6	52.0	3.5
2008									
April	255.4	762.7	56.4	114.4	18.1	13.0	60.1	52.3	3.9
May	264.0	755.3	53.9	112.6	17.0	13.0	59.4	51.7	3.7
June	264.3	752.8	56.4	120.6	17.6	13.8	59.8	51.5	3.9
July	256.8	756.8	53.2	114.3	17.2	13.1	59.6	51.7	3.6
August	261.7	750.8	53.1	95.1	16.9	11.2	57.8	51.3	3.6
September	255.5	746.6	53.9	112.0	17.4	13.1	58.6	50.9	3.7
October	243.6	753.2	51.3	113.7	17.4	13.1	59.1	51.3	3.5
November	246.2	741.5	50.1	112.8	16.9	13.2	58.2	50.5	3.4
December	240.4	732.9	49.7	114.0	17.1	13.5	57.6	49.8	3.4
2009									
January	228.4	712.2	60.3	127.4	20.9	15.2	57.0	48.4	4.1
February	226.4	717.8	71.9	136.9	24.1	16.0	58.0	48.7	4.9
March	221.8	720.3	73.1	140.4	24.8	16.3	58.4	48.9	5.0
April	230.7	702.4	68.2	139.0	22.8	16.5	57.1	47.6	4.6

	EMPLOYED			UNEMPLOYED			Civilian population aged 15–19 years	UNEMPLOYMENT RATE		Participation rate	Unemployment to population ratio – looking for full-time work	
	Full time	Part time	Total	Looking for f/t work	Total	Labour force		Looking for f/t work	Total			
	'000	'000	'000	'000	'000	'000		'000	'000			%
NOT ATTENDING FULL-TIME EDUCATION												
<b>Males</b>												
April 2006	153.0	36.6	189.6	27.8	29.8	219.3	29.2	248.5	15.4	13.6	88.3	11.2
April 2007	160.9	43.6	204.5	24.2	26.7	231.1	26.1	257.3	13.1	11.5	89.8	9.4
April 2008	164.4	47.1	211.6	23.7	25.4	237.0	19.0	256.0	12.6	10.7	92.6	9.3
April 2009	139.5	48.8	188.3	32.0	34.9	223.2	26.7	249.9	18.7	15.6	89.3	12.8
<b>Females</b>												
April 2006	74.6	57.3	132.0	23.4	25.5	157.5	25.4	182.9	23.9	16.2	86.1	12.8
April 2007	78.3	55.2	133.4	19.7	24.7	158.1	24.0	182.1	20.1	15.6	86.8	10.8
April 2008	76.7	60.0	136.7	23.6	25.3	162.0	25.8	187.8	23.5	15.6	86.3	12.5
April 2009	81.0	46.7	127.7	27.2	32.2	159.9	39.8	199.7	25.2	20.1	80.1	13.6
<b>Persons</b>												
April 2006	227.6	93.9	321.5	51.2	55.3	376.8	54.6	431.4	18.4	14.7	87.3	11.9
April 2007	239.1	98.8	337.9	43.9	51.3	389.2	50.1	439.3	15.5	13.2	88.6	10.0
April 2008	241.1	107.1	348.2	47.2	50.7	398.9	44.8	443.8	16.4	12.7	89.9	10.6
April 2009	220.5	95.5	316.0	59.2	67.1	383.1	66.5	449.6	21.2	17.5	85.2	13.2
ATTENDING FULL-TIME EDUCATION												
<b>Males</b>												
April 2006	5.8	159.8	165.6	5.0	38.8	204.4	269.7	474.1	46.0	19.0	43.1	1.0
April 2007	7.4	164.7	172.1	*3.9	27.3	199.4	278.3	477.7	*34.4	13.7	41.7	*0.8
April 2008	9.4	173.9	183.3	*4.6	27.6	210.9	280.9	491.8	*32.7	13.1	42.9	*0.9
April 2009	*7.5	156.4	163.9	*5.3	40.5	204.4	301.0	505.4	*41.2	19.8	40.5	*1.0
<b>Females</b>												
April 2006	5.0	216.4	221.4	*3.6	43.4	264.8	240.8	505.6	*41.7	16.4	52.4	*0.7
April 2007	7.3	232.6	239.9	*2.1	31.6	271.5	245.7	517.2	*22.7	11.6	52.5	*0.4
April 2008	6.7	228.9	235.7	*5.3	38.3	273.9	249.2	523.1	*44.0	14.0	52.4	*1.0
April 2009	*4.1	222.4	226.5	*4.1	33.7	260.2	259.4	519.7	*50.2	12.9	50.1	*0.8
<b>Persons</b>												
April 2006	10.8	376.2	387.0	8.6	82.2	469.2	510.6	979.7	44.1	17.5	47.9	0.9
April 2007	14.7	397.3	412.0	6.0	58.9	470.9	524.0	994.9	29.1	12.5	47.3	0.6
April 2008	16.1	402.9	419.0	9.9	65.9	484.8	530.1	1 014.9	37.9	13.6	47.8	1.0
April 2009	11.6	378.8	390.5	9.4	74.2	464.6	560.4	1 025.1	44.7	16.0	45.3	0.9
TOTAL												
<b>Males</b>												
April 2006	158.8	196.3	355.1	32.7	68.5	423.7	298.9	722.6	17.1	16.2	58.6	4.5
April 2007	168.3	208.3	376.6	28.1	54.0	430.6	304.4	735.0	14.3	12.5	58.6	3.8
April 2008	173.8	221.1	394.9	28.3	53.0	447.9	299.9	747.8	14.0	11.8	59.9	3.8
April 2009	147.0	205.2	352.2	37.3	75.4	427.6	327.7	755.3	20.2	17.6	56.6	4.9
<b>Females</b>												
April 2006	79.7	273.7	353.4	27.0	68.9	422.3	266.2	688.5	25.3	16.3	61.3	3.9
April 2007	85.6	287.7	373.3	21.8	56.3	429.6	269.7	699.3	20.3	13.1	61.4	3.1
April 2008	83.4	288.9	372.3	28.8	63.6	435.9	275.0	710.9	25.7	14.6	61.3	4.1
April 2009	85.1	269.1	354.2	31.4	65.9	420.1	299.2	719.3	26.9	15.7	58.4	4.4
<b>Persons</b>												
April 2006	238.5	470.1	708.5	59.8	137.4	845.9	565.1	1 411.1	20.0	16.2	60.0	4.2
April 2007	253.8	496.1	749.9	49.9	110.2	860.2	574.1	1 434.3	16.4	12.8	60.0	3.5
April 2008	257.2	510.0	767.2	57.1	116.6	883.8	574.9	1 458.7	18.2	13.2	60.6	3.9
April 2009	232.1	474.3	706.4	68.6	141.3	847.7	626.9	1 474.7	22.8	16.7	57.5	4.7

\* estimate is subject to sampling variability too high for most practical purposes

	EMPLOYED			UNEMPLOYED		Labour force	Not in labour force	Civilian population aged 15–19 years	UNEMPLOYMENT RATE		Participation rate	Unemployment to population ratio – looking for full-time work
	Full time	Part time	Total	Looking for f/t work	Total				Looking for f/t work	Total		
	'000	'000	'000	'000	'000				'000	'000		
NOT ATTENDING FULL-TIME EDUCATION												
New South Wales	63.1	28.6	91.7	19.7	23.6	115.3	20.0	135.3	23.8	20.4	85.2	14.6
Victoria	38.2	17.5	55.7	11.1	13.7	69.4	13.3	82.7	22.5	19.8	83.9	13.4
Queensland	60.1	26.8	86.8	17.3	17.7	104.5	16.9	121.5	22.3	16.9	86.1	14.2
South Australia	17.3	8.2	25.5	*3.5	*4.1	29.6	4.0	33.6	*16.8	*13.9	88.2	*10.4
Western Australia	29.7	8.5	38.1	*5.1	*5.5	43.6	8.8	52.3	*14.6	*12.5	83.3	*9.7
Tasmania	4.5	3.3	7.7	*0.8	*0.8	8.5	1.9	10.4	*15.8	*9.8	81.9	*8.0
Northern Territory	4.4	1.1	5.6	*1.1	*1.1	6.7	1.3	8.0	*19.2	*15.9	83.7	*13.3
Australian Capital Territory	3.2	1.6	4.8	*0.7	*0.7	5.5	*0.4	5.8	*17.5	*12.5	93.9	*11.7
<b>Australia</b>	<b>220.5</b>	<b>95.5</b>	<b>316.0</b>	<b>59.2</b>	<b>67.1</b>	<b>383.1</b>	<b>66.5</b>	<b>449.6</b>	<b>21.2</b>	<b>17.5</b>	<b>85.2</b>	<b>13.2</b>
ATTENDING FULL-TIME EDUCATION												
New South Wales	*4.5	107.3	111.9	*3.1	28.2	140.0	198.7	338.7	*41.0	20.1	41.3	*0.9
Victoria	*1.7	99.8	101.5	*1.6	17.4	118.9	158.1	277.0	*49.5	14.7	42.9	*0.6
Queensland	*1.9	81.9	83.8	*2.3	10.1	93.9	90.4	184.3	*55.2	10.8	50.9	*1.3
South Australia	*0.4	27.4	27.7	*0.2	5.5	33.3	40.3	73.6	*32.2	16.6	45.2	*0.3
Western Australia	*2.9	43.8	46.6	*1.1	8.9	55.5	45.9	101.4	*28.2	16.0	54.7	*1.1
Tasmania	*0.2	8.1	8.3	*0.7	2.8	11.1	13.1	24.1	*81.7	25.3	45.8	*2.9
Northern Territory	*—	2.6	2.6	*0.1	*0.3	2.9	5.3	8.2	*100.0	*10.7	35.2	*1.5
Australian Capital Territory	*0.2	8.0	8.1	*0.2	*1.0	9.1	8.6	17.7	*53.9	*10.7	51.4	*1.0
<b>Australia</b>	<b>11.6</b>	<b>378.8</b>	<b>390.5</b>	<b>9.4</b>	<b>74.2</b>	<b>464.6</b>	<b>560.4</b>	<b>1 025.1</b>	<b>44.7</b>	<b>16.0</b>	<b>45.3</b>	<b>0.9</b>
TOTAL												
New South Wales	67.6	135.9	203.6	22.9	51.7	255.3	218.7	474.0	25.3	20.3	53.9	4.8
Victoria	39.9	117.3	157.2	12.7	31.2	188.3	171.4	359.7	24.2	16.5	52.4	3.5
Queensland	62.0	108.7	170.6	19.6	27.8	198.4	107.4	305.8	24.0	14.0	64.9	6.4
South Australia	17.7	35.6	53.2	*3.7	9.6	62.9	44.3	107.1	*17.2	15.3	58.7	*3.4
Western Australia	32.5	52.2	84.7	6.2	14.4	99.1	54.6	153.7	16.0	14.5	64.5	4.0
Tasmania	4.6	11.4	16.0	*1.5	3.6	19.6	15.0	34.6	*24.9	18.5	56.7	*4.4
Northern Territory	4.4	3.7	8.2	*1.2	*1.4	9.5	6.6	16.2	*21.1	*14.3	59.0	*7.3
Australian Capital Territory	3.4	9.6	12.9	*0.9	*1.7	14.6	9.0	23.6	*20.4	*11.4	61.9	*3.7
<b>Australia</b>	<b>232.1</b>	<b>474.3</b>	<b>706.4</b>	<b>68.6</b>	<b>141.3</b>	<b>847.7</b>	<b>626.9</b>	<b>1 474.7</b>	<b>22.8</b>	<b>16.7</b>	<b>57.5</b>	<b>4.7</b>

\* estimate is subject to sampling variability too high for most practical purposes

— nil or rounded to zero (including null cells)

LABOUR FORCE STATUS IN APRIL 2009

<i>Labour force status in March 2009</i>	<i>Employed Full time</i> '000	<i>Employed Part time</i> '000	<i>Employed Total</i> '000	<i>Unemployed</i> '000	<i>Labour Force</i> '000	<i>Not in Labour Force</i> '000	<i>Matched Civilian Population</i> '000
MALES							
Employed Full time	3 854	102	3 956	30	3 986	32	4 018
Employed Part time	127	586	713	26	738	59	797
Employed Total	3 981	688	4 669	55	4 724	90	4 815
Unemployed Total	29	34	63	168	231	68	299
Labour Force	4 010	722	4 732	223	4 955	159	5 114
Not in Labour Force	30	46	75	59	135	1 673	1 808
Matched Civilian Population	4 039	768	4 807	282	5 089	1 832	6 922
FEMALES							
Employed Full time	2 020	157	2 177	12	2 190	25	2 214
Employed Part time	149	1 593	1 741	19	1 760	89	1 850
Employed Total	2 169	1 750	3 919	31	3 950	114	4 064
Unemployed Total	13	40	53	134	187	79	266
Labour Force	2 181	1 790	3 971	166	4 137	192	4 329
Not in Labour Force	21	84	105	55	160	2 603	2 763
Matched Civilian Population	2 202	1 874	4 076	221	4 297	2 795	7 092
PERSONS							
Employed Full time	5 874	259	6 134	42	6 175	56	6 232
Employed Part time	276	2 178	2 454	45	2 498	148	2 647
Employed Total	6 150	2 437	8 587	86	8 674	204	8 878
Unemployed Total	41	75	116	302	418	147	565
Labour Force	6 191	2 512	8 703	389	9 092	351	9 443
Not in Labour Force	51	129	180	114	294	4 276	4 570
Matched Civilian Population	6 242	2 641	8 883	503	9 386	4 628	14 014

(a) Gross flows figures do not match published labour force estimates. Refer to gross flows in Glossary.

# WHAT IF...? REVISIONS TO TREND ESTIMATES

## EFFECT OF NEW SEASONALLY ADJUSTED ESTIMATES ON TREND ESTIMATES

### TREND REVISIONS

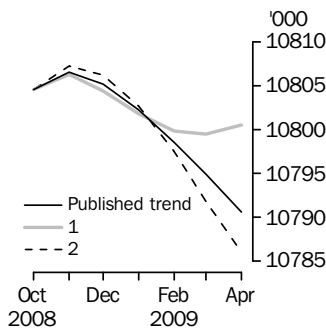
Each time new seasonally adjusted estimates become available, trend estimates are revised. This revision is a combined result of the concurrent seasonal adjustment process and the application of surrogates of the Henderson average to the seasonally adjusted series (see paragraphs 25 to 33 of the Explanatory Notes).

The examples in the tables below show two illustrative scenarios and the consequent revisions to previous trend estimates of employment and the unemployment rate. The revisions in the scenarios below are only due to the use of surrogates of the Henderson average, as the impact of revision of the seasonally adjusted estimates can not be estimated in advance.

- (1) The May seasonally adjusted estimate is *higher* than the April estimate by:  
0.24% for employment  
2.10% for the unemployment rate
- (2) The May seasonally adjusted estimate is *lower* than the April estimate by:  
0.24% for employment  
2.10% for the unemployment rate

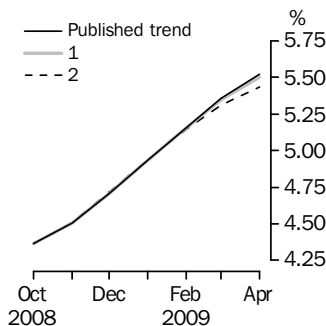
The percentage changes of 0.24% and 2.10% were chosen because they represent the average absolute monthly percentage changes in employment and the unemployment rate respectively.

### EMPLOYMENT



		WHAT IF NEXT MONTH'S SEASONALLY ADJUSTED ESTIMATE IS:	
		(1) 10 824.9 i.e. rises by 0.24%	(2) 10 773.0 i.e. falls by 0.24%
<b>2009</b>	<i>Trend as published</i>		
	January	10 802.3	10 801.8
	February	10 798.6	10 799.9
	March	10 794.9	10 799.5
	April	10 790.6	10 800.5

### UNEMPLOYMENT RATE



		WHAT IF NEXT MONTH'S SEASONALLY ADJUSTED ESTIMATE IS:	
		(1) 5.5 i.e. rises by 2.10%	(2) 5.3 i.e. falls by 2.10%
<b>2009</b>	<i>Trend as published</i>		
	January	4.9	4.9
	February	5.2	5.2
	March	5.4	5.3
	April	5.5	5.4

## EXPLANATORY NOTES

### INTRODUCTION

**1** This publication contains estimates of the civilian labour force derived from the Labour Force Survey component of the Monthly Population Survey. The full time series for estimates from this publication are also available electronically. More detailed estimates are released one week after this publication in various electronic formats – see *Labour Force, Australia, Detailed – Electronic Delivery* (cat. no. 6291.0.55.001) and *Labour Force, Australia, Detailed, Quarterly* (cat. no. 6291.0.55.003).

### CONCEPTS, SOURCES AND METHODS

**2** The conceptual framework used in Australia's Labour Force Survey aligns closely with the standards and guidelines set out in Resolutions of International Conferences of Labour Statisticians. Descriptions of the underlying concepts and structure of Australia's labour force statistics, and the sources and methods used in compiling the estimates, are presented in *Labour Statistics: Concepts, Sources and Methods* (cat. no. 6102.0.55.001) which is available on the ABS website <<http://www.abs.gov.au>> .

### LABOUR FORCE SURVEY

**3** The Labour Force Survey is based on a multi-stage area sample of private dwellings (currently about 22,800 houses, flats, etc.) and a list sample of non-private dwellings (hotels, motels, etc.), and covers about 0.24% of the population of Australia. Information is obtained from the occupants of selected dwellings by specially trained interviewers.

**4** The information is collected using computer-assisted interviewing (CAI), whereby responses are recorded directly onto an electronic questionnaire on a notebook computer. The CAI method was progressively implemented from October 2003 to August 2004, replacing the 'pen and paper' method previously used.

**5** Households selected for the Labour Force Survey are interviewed each month for eight months, with one-eighth of the sample being replaced each month. The first interview is conducted face-to-face. Subsequent interviews are conducted by telephone (if acceptable to the respondent).

**6** The interviews are generally conducted during the two weeks beginning on the Sunday between the 5th and 11th of each month. The information obtained relates to the week before the interview (i.e. the reference week). Each year, to deal with operational difficulties involved with collecting and processing the Labour Force Survey around the Christmas and New Year holiday period, interviews for December start four weeks after November interviews start, and January interviews start five weeks after December interviews start. As a result, January interviewing may commence as early as the 7th or as late as the 13th, depending on the year. Occasionally, circumstances that present significant operational difficulties for survey collection can result in a change to the normal pattern for the start of interviewing.

**7** Estimates from the Labour Force Survey are published first in this publication 32 days after the commencement of interviews for that month, with the exception of estimates for each December which are published 39 days after the commencement of interviews.

### SCOPE OF SURVEY

**8** The Labour Force Survey includes all persons aged 15 years and over except members of the permanent defence forces, certain diplomatic personnel of overseas governments customarily excluded from census and estimated population counts, overseas residents in Australia, and members of non-Australian defence forces (and their dependants) stationed in Australia.

### COVERAGE

**9** In the Labour Force Survey, coverage rules are applied which aim to ensure that each person is associated with only one dwelling, and hence has only one chance of selection. The coverage rules are necessarily a balance between theoretical and operational considerations. Nevertheless, the chance of a person being enumerated at two separate dwellings in the survey is considered to be negligible.

### POPULATION BENCHMARKS

**10** Labour Force Survey estimates are calculated in such a way as to add up to independent estimates of the civilian population aged 15 years and over (population



## EXPLANATORY NOTES *continued*

benchmarks). These population benchmarks are projections of the most recently released quarterly Estimated Resident Population (ERP) data. For information on the methodology used to produce the ERP see *Australian Demographic Statistics* (cat. no. 3101.0). To create the population benchmarks for the Labour Force Survey, the most recently released quarterly ERP estimates are projected forward one quarter past the period for which they are required. The projection is based on the historical pattern of each population component - births, deaths, interstate migration and net overseas migration (NOM). By projecting one quarter past that needed for the current population benchmarks, demographic changes are smoothed in, thereby making them less noticeable in the population benchmarks.

**11** The ERP series are revised annually in the September quarter issue of *Australian Demographic Statistics* (cat. no. 3101.0), released in March each year, to incorporate more up to date information available for the population components. The revised ERP estimates are used to update the quarterly population projections used in creating the Labour Force Survey population benchmarks. Benchmarks already used in producing Labour Force Survey estimates are not updated. A process of smoothing is used in the creation of population benchmarks to reduce the effect of these annual revisions to ERP estimates on the Labour Force Survey population benchmarks.

**12** Every five years the ERP series are revised to incorporate additional information available from the latest Census of Population and Housing. Following the incorporation of Census information, the ERP series prior to the latest Census are final and subject to no further revision. Labour Force Survey population benchmarks, and the estimates, are revised following this 5-yearly revision in the ERP. From the February 2009 issue of this publication, labour force estimates have been compiled using population benchmarks based on the results of the 2006 Census of Population and Housing. Revisions were made in the February 2009 issue to historical labour force estimates from June 2001 to January 2009.

### ESTIMATION METHOD

**13** The estimation method used in the Labour Force Survey is Composite Estimation, which was introduced in May 2007. Composite Estimation combines data collected in the previous six months with current month's data to produce the current month's estimates, thereby exploiting the high correlation between overlapping samples across months in the Labour Force Survey. The Composite Estimator combines the previous and current months' data by applying different factors according to length of time in the survey. After these factors are applied, the seven months of data are weighted to align with current month population benchmarks. For details see *Information Paper: Forthcoming Changes to Labour Force Statistics, 2007* (cat. no. 6292.0).

### COMPARABILITY OF SERIES

**14** From April 1986, the definition of employed persons was changed to include persons who worked without pay between 1 and 14 hours per week in a family business or on a farm (i.e. contributing family workers). For further information, see paragraphs 22 and 23 of the Explanatory Notes in the February 2003 issue of *Labour Force, Australia* (cat. no. 6203.0).

**15** The ABS introduced telephone interviewing into the Labour Force Survey in August 1996. Implementation was phased in for each new sample group from August 1996 to February 1997. During the period of implementation, the new method produced different estimates than would have been obtained under the old methodology. The effect dissipated over the final months of implementation and was no longer discernible from February 1997. The estimates for February 1997 and onwards are directly comparable to estimates for periods prior to August 1996. For further details, see the feature article in the June 1997 issue of *Labour Force, Australia* (cat. no. 6203.0).

**16** From April 2001 the Labour Force Survey has been conducted using a redesigned questionnaire containing additional data items and some minor definitional changes.

## EXPLANATORY NOTES *continued*

### COMPARABILITY OF SERIES

*continued*

The definition of unemployed persons was changed to include all persons who were waiting to start work and were available to start in the reference week. This change was introduced in February 2004, when historical unit record data were revised from April 2001 to January 2004. This revision created a small trend break at April 2001 in unemployed persons and unemployment rate series. For further details, see *Information Paper: Forthcoming Changes to Labour Force Statistics* (cat. no. 6292.0), released in December 2003.

**17** Core labour force series were revised in April 2001 for the period April 1986 to March 2001 for the remaining definitional changes introduced with the redesigned questionnaire, to reduce the impact of the changes on labour force series. For further details, see *Information Paper: Implementing the Redesigned Labour Force Survey Questionnaire* (cat. no. 6295.0) and *Information Paper: Questionnaires Used in the Labour Force Survey* (cat. no. 6232.0).

**18** In May 2007, an improved method of estimation, known as composite estimation, was introduced into the Labour Force Survey. In introducing this change the ABS revised unit record data from April 2001 to April 2007 based on the new estimation method. While estimates for periods prior to April 2001 are unrevised and were compiled using a different estimation method, no trend break was identified in the employed persons series. Also, no change was identified in the trend breaks in the unemployed persons and unemployment rate series which arose with the introduction of a redesigned survey form in April 2001 (as noted above in paragraph 16). For further details, see *Information Paper: Forthcoming Changes to Labour Force Statistics, 2007* (cat. no. 6292.0), released on 21 May 2007.

### SURVEY SAMPLE REDESIGN

**19** The Labour Force Survey sample has been reselected using information collected in the 2006 Census of Population and Housing.

**20** The bulk of the new sample was phased in over the period November 2007 to June 2008, with one-eighth of this portion of the sample being introduced every month. The remainder of the sample (about 20% of the total), which covers less settled areas of Australia and non-private dwellings was rotated in full for New South Wales, Western Australia, Northern Territory and Australian Capital Territory in March 2008, and for Victoria, Queensland, South Australia and Tasmania in April 2008. Such a pattern of implementation means that any changes to labour force estimates due to differences between the two samples, or any other influences, were spread over the eight months.

**21** For further details, see *Information Paper: Labour Force Survey Sample Design* (cat. no. 6269.0), released on 28 November 2007.

### RELIABILITY OF ESTIMATES

**22** Two types of error are possible in an estimate based on a sample survey: sampling error and non-sampling error.

**23** Sampling error occurs because a sample, rather than the entire population, is surveyed. One measure of the likely difference resulting from not including all dwellings in the survey is given by the standard error. There are about two chances in three that a sample estimate will differ by less than one standard error from the figure that would have been obtained if all dwellings had been included in the survey, and about nineteen chances in twenty that the difference will be less than two standard errors. Standard errors of key estimates for the latest month and of movements since the previous month of these estimates are shown in the standard errors section of this publication. Standard errors for other estimates and other movements may be calculated by using the spreadsheet contained in *Labour Force Survey Standard Errors, Data Cube* (cat. no. 6298.0.55.001) which is available free of charge on the ABS website <<http://www.abs.gov.au>>.

## EXPLANATORY NOTES *continued*

### RELIABILITY OF ESTIMATES

*continued*

**24** Non-sampling error arises from inaccuracies in collecting, recording and processing the data. Every effort is made to minimise reporting error by the careful design of questionnaires, intensive training and supervision of interviewers, and efficient data processing procedures. Non-sampling error also arises because information cannot be obtained from all persons selected in the survey. The Labour Force Survey receives a high level of co-operation from individuals in selected dwellings, with the average response rate over the last year being 97%. See Glossary for definition of response rate.

### SEASONAL ADJUSTMENT AND TREND ESTIMATION

**25** Seasonal adjustment is a means of removing the estimated effects of normal seasonal variation from the series so that the effects of other influences on the series can be more clearly recognised. Seasonal adjustment does not aim to remove the irregular or non-seasonal influences which may be present in any particular month. This means that month-to-month movements of the seasonally adjusted estimates may not be reliable indicators of trend behaviour.

**26** The Labour Force Survey uses the concurrent seasonal adjustment method to derive seasonal factors. Concurrent seasonal adjustment uses data up to the current month to estimate seasonal factors for the current and all previous months. This process can result in revisions each month to estimates for earlier periods. However, in most instances, the only noticeable revisions will be to the seasonally adjusted estimates for the previous month and one year prior to the current month.

**27** The revision properties of the seasonally adjusted and trend estimates can be improved by the use of Autoregressive Integrated Moving Average (ARIMA) modelling. ARIMA modelling relies on the characteristics of the series being analysed to project future period data. The projected values are temporary, intermediate values, that are only used internally to improve the estimation of the seasonal factors. The projected data do not affect the original estimates and are discarded at the end of the seasonal adjustment process. The Labour Force Survey uses an ARIMA model for 95% of the individual time series. The ARIMA model is assessed as part of the annual reanalysis. For further details, see the feature article in *Australian Economic Indicators, Oct 2004* (cat. no. 1350.0).

**28** Seasonal adjustment is able to remove the effect of events which occur at the same time in the survey every year. However, there are some events, like holidays, which are not always at the same time in the survey cycle or which are not at the same time across Australia. The effects of these types of events on Labour Force Survey estimates cannot in all cases be removed, because the pattern of their effects cannot be determined. However, two events which are adjusted for in the seasonally adjusted series are the January interview start date and the timing of Easter. For further details, see *Information Paper: Forthcoming Changes to Labour Force Statistics* (cat. no. 6292.0) released in December 2003.

**29** While seasonal factors for the complete time series are estimated each month, they will continue to be reviewed annually at a more detailed level to take into account each additional year's original data. This annual review will not normally result in significant changes to published estimates. The review is usually conducted in February each year with the results released in the February issue of this publication.

**30** The smoothing of seasonally adjusted series to produce 'trend' series reduces the impact of the irregular component of the seasonally adjusted series. These trend estimates are derived by applying a 13-term Henderson-weighted moving average to all months except the last six. The last six monthly trend estimates are obtained by applying surrogates of the Henderson average to the seasonally adjusted series. Trend estimates are used to analyse the underlying behaviour of a series over time.

**31** While this smoothing technique enables estimates to be produced for the latest month, it does result in revisions in addition to those caused by the revision of

## EXPLANATORY NOTES *continued*

### SEASONAL ADJUSTMENT AND TREND ESTIMATION *continued*

seasonally adjusted estimates. Generally, revisions due to the use of surrogates of the Henderson average become smaller, and after three months have a negligible impact on the series.

**32** Trend estimates are published for the Northern Territory in table 10 and for the Australian Capital Territory in table 11. Unadjusted series for the two territories have shown, historically, a high degree of variability, which can lead to considerable revisions to the seasonally adjusted estimates each month when seasonal factors are estimated. For this reason, seasonally adjusted estimates are not currently published for the two Territories. In addition, caution should be exercised in the interpretation of trend estimates for the two territories, particularly for the three most recent months, where revisions may be relatively large.

**33** For further information, see *A Guide to Interpreting Time Series – Monitoring Trends* (cat. no. 1349.0) or contact the Assistant Director, Time Series Analysis on (02) 6252 6345 or email [time.series.analysis@abs.gov.au](mailto:time.series.analysis@abs.gov.au).

### RELATED PUBLICATIONS

**34** Users may also wish to refer to *Australian Labour Market Statistics* (cat. no. 6105.0). This publication contains additional tables and a detailed list of related publications. For further information about this publication, please contact the Assistant Director, Labour Market Statistics on (02) 6252 7636.

**35** ABS Information about the labour market can be found on the Labour theme page on the ABS website <<http://www.abs.gov.au>>(Themes), or from ABS Bookshops.

**36** Information about current publications and other products released by the ABS is available from the statistics page on the ABS website. The ABS also issues a daily release advice on the website, Upcoming Product Releases which details products to be released in the week ahead.

### DATA AVAILABLE ON REQUEST

**37** As well as the statistics included in this and related publications, the ABS may have other relevant data available. Inquiries should be made to the Labour Force contact officer on (02) 6252 6525, email [labourforce@abs.gov.au](mailto:labourforce@abs.gov.au) or to any ABS office.

### EFFECTS OF ROUNDING

**38** Estimates have been rounded and discrepancies may occur between sums of the component items and totals.

**39** Estimates of movement shown in this publication are obtained by taking the difference of unrounded estimates. The movement estimate is then rounded to one decimal place. Therefore where a discrepancy occurs between the reported movement and the difference of the rounded estimates, the reported movement will be more accurate.

### SYMBOLS AND ABBREVIATIONS

#### **40** SYMBOLS AND ABBREVIATIONS

'000	thousands
ABS	Australian Bureau of Statistics
CAI	computer assisted interviewing
cat. no.	catalogue number
ERP	estimated resident population
f/t	full-time
LFS	Labour Force Survey
p/t	part-time
pts	percentage points
Seas adj.	seasonally adjusted
TAFE	Technical and Further Education

## STANDARD ERRORS

### STANDARD ERRORS

The estimates in this publication are based on information gained from the occupants of a sample survey of dwellings. Because the entire population is not surveyed, the published estimates are subject to sampling error. The most common way of quantifying such sampling error is to calculate the standard error for the published estimate or statistic. For more information, see paragraph 23 of the Explanatory Notes.

### LEVEL ESTIMATES

To illustrate, let us say the published level estimate for employed persons aged 15–19 years is 700,000 and the associated standard error is 8,300. The standard error is then used to interpret the level estimate of 700,000. For instance, the standard error of 8,300 indicates that:

- There are approximately two chances in three that the real value falls within the range 691,700 to 708,300 (700,000 + or – 8,300)
- There are approximately nineteen chances in twenty that the real value falls within the range 683,400 to 716,600 (700,000 + or – 16,600).

The real value in this case is the result we would obtain if we could enumerate the total population.

The following table shows the standard errors for this month's level estimates.

		AUSTRALIA										
		NSW	Vic.	Qld	SA	WA	Tas.	NT	ACT	Males	Females	Persons
<b>Aged 15 years and over</b>												
Employed												
Full time	'000	23.2	23.1	17.4	7.7	11.1	3.1	4.4	2.7	30.3	21.6	36.8
Part time	'000	16.2	14.4	11.1	5.5	7.7	2.3	1.3	1.8	12.2	19.4	23.8
Total	'000	25.6	28.0	19.8	8.9	12.2	3.6	5.2	2.8	32.9	30.3	41.7
Unemployed												
Looking for f/t work	'000	10.4	7.9	7.0	3.1	3.9	1.2	0.9	0.9	11.7	9.2	15.0
Looking for p/t work	'000	5.9	5.7	3.5	2.2	2.6	0.8	0.2	0.5	5.9	7.1	9.3
Total	'000	12.1	9.8	7.7	3.7	4.7	1.5	0.9	1.0	13.2	11.7	17.8
Labour force	'000	26.0	29.0	20.2	9.0	12.4	3.7	5.4	2.9	33.8	31.1	42.5
Not in labour force	'000	24.0	26.6	17.3	8.0	11.7	3.5	3.6	2.6	27.6	32.9	38.8
Unemployment rate												
Looking for f/t work	pts	0.4	0.4	0.4	0.5	0.4	0.7	0.8	0.6	0.2	0.3	0.2
Looking for p/t work	pts	0.5	0.7	0.5	0.8	0.7	1.0	1.0	0.9	0.6	0.3	0.3
Total	pts	0.3	0.3	0.3	0.4	0.4	0.6	0.7	0.5	0.2	0.2	0.2
Participation rate	pts	0.5	0.7	0.6	0.7	0.7	0.9	3.3	1.0	0.4	0.4	0.2
<b>Aged 15–19 years</b>												
Employed												
Full time	'000	4.0	3.0	3.2	1.4	2.1	0.5	0.4	0.5	5.3	4.3	6.4
Part time	'000	5.2	4.6	4.2	1.8	2.5	0.8	0.4	0.7	6.1	6.8	8.7
Total	'000	6.2	5.3	5.3	2.2	3.3	0.9	0.6	0.8	7.6	7.6	10.6
Unemployed												
Looking for f/t work	'000	3.6	2.5	3.1	1.0	1.5	0.5	0.3	0.4	4.2	3.8	5.7
Looking for p/t work	'000	4.1	3.1	1.9	1.3	1.7	0.6	0.1	0.4	4.2	4.0	5.8
Total	'000	5.6	4.1	3.7	1.7	2.3	0.8	0.4	0.5	5.9	5.6	8.2
Labour force	'000	7.1	5.8	5.8	2.4	3.6	1.0	0.7	0.9	8.3	8.3	11.6
Not in labour force	'000	9.3	7.6	5.7	2.8	3.9	1.1	0.8	1.0	9.5	9.1	13.4
Unemployment rate												
Looking for f/t work	pts	3.8	4.6	3.6	4.6	3.8	7.6	5.8	8.8	2.2	3.1	1.8
Looking for p/t work	pts	2.4	2.2	1.6	3.0	2.8	4.1	2.6	3.6	1.7	1.3	1.0
Total	pts	2.1	2.1	1.8	2.6	2.3	3.7	3.7	3.6	1.3	1.3	0.9
Participation rate	pts	1.5	1.6	1.9	2.3	2.4	3.0	4.2	3.8	1.1	1.1	0.8
Unemployment to population ratio – looking for f/t work												
	pts	0.8	0.7	1.0	0.9	1.0	1.4	2.1	1.6	0.6	0.5	0.4

## STANDARD ERRORS *continued*

### MOVEMENT ESTIMATES

The following example illustrates how to use the standard error to interpret a movement estimate. Let us say that one month the published level estimate for females employed part-time in Australia is 1,890,000; the next month the published level estimate is 1,900,000 and the associated standard error for the movement estimate is 9,500. The standard error is then used to interpret the published movement estimate of 10,000. For instance, the standard error of 9,500 indicates that:

- There are approximately two chances in three that the real movement between the two months falls within the range 500 to 19,500 (10,000 + or - 9,500)
- There are approximately nineteen chances in twenty that the real movement falls within the range -9,000 to 29,000 (10,000 + or - 19,000).

The following table shows the standard errors for this month's movement estimates.

		AUSTRALIA										
		NSW	Vic.	Qld	SA	WA	Tas.	NT	ACT	Males	Females	Persons
<b>Aged 15 years and over</b>												
Employed												
Full time	'000	15.5	12.4	11.2	4.4	7.0	2.0	1.4	1.9	19.6	14.4	24.9
Part time	'000	10.0	8.3	6.9	3.1	4.6	1.4	0.7	1.1	8.8	13.1	15.7
Total	'000	18.6	15.0	14.9	6.1	8.8	2.4	1.6	2.2	21.6	19.6	30.3
Unemployed												
Looking for f/t work	'000	10.8	8.0	7.6	3.0	4.2	1.2	0.7	1.0	12.2	9.7	15.8
Looking for p/t work	'000	7.1	5.6	4.5	2.2	3.0	0.8	0.3	0.9	6.3	8.2	10.4
Total	'000	13.1	9.7	9.0	3.8	5.2	1.4	0.7	1.3	13.8	12.8	19.1
Labour force	'000	19.3	15.5	15.7	6.5	9.1	2.5	1.6	2.2	22.3	20.3	31.4
Not in labour force	'000	17.5	14.5	13.1	5.7	7.7	2.4	1.3	2.1	17.0	21.3	28.2
Unemployment rate												
Looking for f/t work	pts	0.4	0.4	0.4	0.6	0.5	0.7	0.8	0.6	0.2	0.3	0.2
Looking for p/t work	pts	0.6	0.7	0.6	0.9	0.8	1.0	1.3	1.4	0.6	0.3	0.3
Total	pts	0.4	0.4	0.3	0.5	0.4	0.6	0.8	0.6	0.2	0.2	0.2
Participation rate	pts	0.3	0.4	0.5	0.5	0.5	0.6	1.0	0.8	0.3	0.2	0.2
<b>Aged 15-19 years</b>												
Employed												
Full time	'000	3.1	2.2	2.6	1.1	1.7	0.5	0.3	0.4	4.1	3.4	4.9
Part time	'000	4.1	3.5	3.3	1.4	2.1	0.6	0.3	0.6	4.7	5.3	6.6
Total	'000	4.8	3.9	3.9	1.6	2.6	0.7	0.4	0.6	5.8	5.8	7.7
Unemployed												
Looking for f/t work	'000	4.0	2.8	3.3	1.0	1.7	0.5	0.3	0.4	4.7	3.9	6.0
Looking for p/t work	'000	4.5	3.2	2.8	1.3	1.9	0.6	0.1	0.5	4.4	4.7	6.4
Total	'000	6.1	4.3	4.3	1.6	2.5	0.7	0.3	0.6	6.4	6.0	8.8
Labour force	'000	5.3	4.3	4.2	1.7	2.7	0.7	0.5	0.7	6.3	6.3	8.4
Not in labour force	'000	5.8	4.8	3.9	1.8	2.5	0.8	0.5	0.7	6.7	6.5	8.9
Unemployment rate												
Looking for f/t work	pts	4.4	5.3	3.9	4.7	4.2	7.7	6.1	8.2	2.4	3.4	2.0
Looking for p/t work	pts	2.6	2.3	1.9	3.1	2.7	3.9	4.0	4.3	1.7	1.4	1.1
Total	pts	2.3	2.3	2.0	2.7	2.3	3.7	3.9	3.7	1.4	1.4	1.0
Participation rate	pts	1.1	1.2	1.4	1.6	1.8	2.2	2.8	2.9	0.8	0.9	0.6
Unemployment to population ratio - looking for f/t work												
	pts	0.8	0.8	1.1	0.9	1.1	1.5	1.9	1.7	0.6	0.5	0.4

## GLOSSARY

<b>Actively looking for work</b>	Includes writing, telephoning or applying in person to an employer for work; answering an advertisement for a job; checking factory noticeboards or the touchscreens at the Centrelink offices; being registered with Centrelink as a jobseeker; checking or registering with any other employment agency; advertising or tendering for work; and contacting friends or relatives.
<b>Attending full-time education</b>	Persons aged 15–24 years enrolled at secondary or high school or enrolled as a full-time student at a Technical and Further Education (TAFE) college, university, or other educational institution in the reference week.
<b>Attending school</b>	Persons aged 15–19 years enrolled at secondary or high school in the reference week.
<b>Attending tertiary educational institution full time</b>	Persons aged 15–24 years enrolled full time at a TAFE college, university, or other educational institution in the reference week, except those persons aged 15–19 years who were still attending school.
<b>Civilian population aged 15 years and over</b>	All usual residents of Australia aged 15 years and over except members of the permanent defence forces, certain diplomatic personnel of overseas governments customarily excluded from census and estimated population counts, overseas residents in Australia, and members of non-Australian defence forces (and their dependants) stationed in Australia.
<b>Composite Estimation</b>	The estimation methodology used in the Labour Force Survey. Composite Estimation uses sample responses from nearby months as well as from the reference month to derive estimates for the reference month. This approach achieves gains in efficiency by exploiting the high similarity between the responses provided by the same respondent in previous months. For details see <i>Information Paper: Forthcoming Changes to Labour Force Statistics, 2007</i> (cat. no. 6292.0).
<b>Employed</b>	All persons aged 15 years and over who, during the reference week: <ul style="list-style-type: none"><li>■ worked for one hour or more for pay, profit, commission or payment in kind in a job or business, or on a farm (comprising employees, employers and own account workers); or</li><li>■ worked for one hour or more without pay in a family business or on a farm (i.e. contributing family workers); or</li><li>■ were employees who had a job but were not at work and were:<ul style="list-style-type: none"><li>■ away from work for less than four weeks up to the end of the reference week; or</li><li>■ away from work for more than four weeks up to the end of the reference week and received pay for some or all of the four week period to the end of the reference week; or</li><li>■ away from work as a standard work or shift arrangement; or</li><li>■ on strike or locked out; or</li><li>■ on workers' compensation and expected to return to their job; or</li></ul></li><li>■ were employers or own account workers, who had a job, business or farm, but were not at work.</li></ul>
<b>Employment to population ratio</b>	For any group, the number of employed persons expressed as a percentage of the civilian population in the same group.
<b>Full-time workers</b>	Employed persons who usually worked 35 hours or more a week (in all jobs) and those who, although usually working less than 35 hours a week, worked 35 hours or more during the reference week.
<b>Gross flows</b>	The matching of respondents who report in consecutive months enables analysis of the transition of individuals between the different labour force status classifications, referred to as the <i>matched sample</i> . The transition counts between the different labour force status classifications from one point in time to the next are commonly referred to as <i>gross flows</i> .

## GLOSSARY *continued*

<b>Gross flows <i>continued</i></b>	<p>The figures presented in gross flows are presented in original terms only and do not align with published labour force estimates. The gross flows figures are derived from the matched sample between consecutive months, which after taking account of the sample rotation and varying non-response in each month is approximately 80 percent of the sample.</p> <p>Caution should be exercised when analysing these gross flows data due to:</p> <ul style="list-style-type: none"><li>■ the figures presented sum to approximately 80 percent of the population values as the gross flows data are based on the matched sample only;</li><li>■ there is no adjustment applied to account for changes due to seasonal patterns (referred to commonly as seasonal adjustment); and</li><li>■ the relative sizes of each transition class are subject to bias due to the matched sample being a non-representative sample.</li></ul>
<b>Labour force</b>	For any group, persons who were employed or unemployed, as defined.
<b>Labour force status</b>	A classification of the civilian population aged 15 years and over into employed, unemployed or not in the labour force, as defined. The definitions conform closely to the international standard definitions adopted by the International Conferences of Labour Statisticians.
<b>Not in labour force</b>	Persons who were not in the categories employed or unemployed as defined.
<b>Participation rate</b>	For any group, the labour force expressed as a percentage of the civilian population aged 15 years and over in the same group.
<b>Part-time workers</b>	Employed persons who usually worked less than 35 hours a week (in all jobs) and either did so during the reference week, or were not at work in the reference week.
<b>Response rate</b>	The number of fully responding dwellings expressed as a percentage of the total number of dwellings excluding sample loss. Examples of sample loss include: dwellings where all persons are out of scope and/or coverage; vacant dwellings; dwellings under construction; dwellings converted to non-dwellings; derelict dwellings; and demolished dwellings.
<b>Seasonally adjusted series</b>	A time series of estimates with the estimated effects of normal seasonal variation removed. See Explanatory Notes 25 to 29 for more detail.
<b>Trend series</b>	A smoothed seasonally adjusted series of estimates. See Explanatory Notes 30 to 33 for more detail.
<b>Unemployed</b>	Persons aged 15 years and over who were not employed during the reference week, and: <ul style="list-style-type: none"><li>■ had actively looked for full-time or part-time work at any time in the four weeks up to the end of the reference week and were available for work in the reference week; or</li><li>■ were waiting to start a new job within four weeks from the end of the reference week and could have started in the reference week if the job had been available then.</li></ul>
<b>Unemployed looking for full-time work</b>	Unemployed persons who: <ul style="list-style-type: none"><li>■ actively looked for full-time work; or</li><li>■ were waiting to start a new full-time job.</li></ul>
<b>Unemployed looking for part-time work</b>	Unemployed persons who: <ul style="list-style-type: none"><li>■ actively looked for part-time work only; or</li><li>■ were waiting to start a new part-time job.</li></ul>
<b>Unemployment rate</b>	For any group, the number of unemployed persons expressed as a percentage of the labour force in the same group.
<b>Unemployment to population ratio</b>	For any group, the number of unemployed persons expressed as a percentage of the civilian population in the same group.









## FOR MORE INFORMATION . . .

*INTERNET*      **www.abs.gov.au** the ABS website is the best place for data from our publications and information about the ABS.

### INFORMATION AND REFERRAL SERVICE

Our consultants can help you access the full range of information published by the ABS that is available free of charge from our website. Information tailored to your needs can also be requested as a 'user pays' service. Specialists are on hand to help you with analytical or methodological advice.

*PHONE*                      1300 135 070

*EMAIL*                      [client.services@abs.gov.au](mailto:client.services@abs.gov.au)

*FAX*                              1300 135 211

*POST*                          Client Services, ABS, GPO Box 796, Sydney NSW 2001

## FREE ACCESS TO STATISTICS

All statistics on the ABS website can be downloaded free of charge.

*WEB ADDRESS*      [www.abs.gov.au](http://www.abs.gov.au)