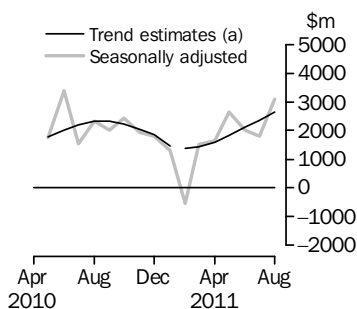


INTERNATIONAL TRADE IN GOODS AND SERVICES

AUSTRALIA

EMBARGO: 11.30AM (CANBERRA TIME) TUES 4 OCT 2011

Balance on Goods and Services



(a) A trend break of \$2,500m has been applied to April 2010 and a trend break of -\$300m has been applied to January 2011.

KEY FIGURES

	Jun 2011	Jul 2011	Aug 2011	Jul 11 to Aug 11 %
	\$m	\$m	\$m	change
BALANCE ON GOODS AND SERVICES				
Trend estimates	2 107	2 356	2 656	..
Seasonally adjusted	2 022	1 817	3 100	..
CREDITS (Exports of goods & services)				
Trend estimates	26 552	27 061	27 536	2
Seasonally adjusted	26 445	26 265	28 366	8
DEBITS (Imports of goods & services)				
Trend estimates	24 445	24 705	24 880	1
Seasonally adjusted	24 423	24 448	25 266	3

.. not applicable

KEY POINTS

BALANCE ON GOODS AND SERVICES

- The trend estimate of the *balance on goods and services* was a surplus of \$2,656m in August 2011, a rise of \$300m on the surplus in July 2011.
- In seasonally adjusted terms, the *balance on goods and services* was a surplus of \$3,100m in August 2011, a rise of \$1,283m on the surplus in July 2011.

CREDITS (EXPORTS OF GOODS & SERVICES)

- In seasonally adjusted terms, *goods and services credits* rose \$2,101m (8%) to \$28,366m. *Non-rural goods* rose \$1,547m (9%), *non-monetary gold* rose \$392m (30%) and *rural goods* rose \$165m (6%). *Net exports of goods under merchanting* remained steady at \$4m. *Services credits* fell \$2m.

DEBITS (IMPORTS OF GOODS & SERVICES)

- In seasonally adjusted terms, *goods and services debits* rose \$818m (3%) to \$25,266m. *Intermediate and other merchandise goods* rose \$610m (7%), *consumption goods* rose \$167m (3%) and *non-monetary gold* rose \$6m (1%). *Capital goods* fell \$122m (3%). *Services debits* rose \$156m (3%).

INQUIRIES

For further information contact Selvi Sekhar on Canberra (02) 6252 5540 for Goods, and Lee Taylor on Canberra (02) 6252 6377 for Services.

NOTES

FORTHCOMING ISSUES

ISSUE	RELEASE DATE
September 2011	8 November 2011
October 2011	12 December 2011
November 2011	5 January 2012
December 2011	2 February 2012
January 2012	9 March 2012
February 2012	4 April 2012



REVISIONS

Revisions have been made to incorporate the latest data relating to international merchandise trade and international trade in services:

- on a recorded trade basis:
 - international merchandise exports have been revised back to January 2011
 - international merchandise imports have been revised back to February 2011.
- on a balance of payments basis, goods and services have been revised back to July 1981.

Table 17 summarises historical revisions to goods and services on a balance of payments basis, in original current price terms. In original terms, the revisions have:

- decreased the deficit on goods and services for 2006–07 by \$1,604m
- decreased the deficit on goods and services for 2007–08 by \$499m
- decreased the surplus on goods and services for 2008–09 by \$269m
- increased the deficit on goods and services for 2009–10 by \$644m
- increased the surplus on goods and services for 2010–11 by \$35m
- decreased the surplus on goods and services for July 2011 by \$45m.

Seasonally adjusted and trend series have been revised due to the incorporation of the revisions and estimates for the latest month including the annual seasonal re-analysis and the derivation of seasonal factors under the concurrent seasonal adjustment methodology.

VALUE ADJUSTMENTS

Adjustments have been made to the value of the 'metal ores and minerals', 'coal, coke and briquettes' and 'capital goods n.e.s.' components in the balance of payments series. See page 4 – *Commodity value adjustment* for details.

CHANGES IN THIS ISSUE

The seasonally adjusted and trend estimates of goods and services on a balance of payments basis have been revised as a result of the annual seasonal re-analysis. This re-analysis reviews the seasonal and trading day factors in more detail than is possible in the monthly processing cycle and assesses the appropriateness of any prior corrections.

TRADE IN SERVICES DATA CUBES

The data cube *International Trade in Services by Country, by State and by Detailed Services Category, Financial Year, 2010–11* (cat. no. 5368.0.55.003) will be released on 11 November 2011.

Peter Harper
Acting Australian Statistician

CONTENTS

page

Commodity value adjustment	4
Time series data	6

ANALYSIS

Analysis and comments	8
---------------------------------	---

TABLES

INTERNATIONAL TRADE IN GOODS AND SERVICES – BALANCE OF PAYMENTS BASIS

1 Goods and services, summary, seasonally adjusted and trend estimates	12
2 Goods and services, summary, original	13
3 Goods credits, original	14
4 Goods debits, original	15
5 Goods credits, seasonally adjusted	16
6 Goods debits, seasonally adjusted	17
7 Goods credits, trend estimates	18
8 Goods debits, trend estimates	19
9 Services, summary, original	20
10 Services, summary, seasonally adjusted and trend estimates	21
11 Services, original, quarterly	22

INTERNATIONAL MERCHANDISE TRADE – RECORDED TRADE BASIS

12 International merchandise exports, by commodity	23
13 International merchandise imports, by commodity	26
14 International merchandise trade, by country and country groups	29
15 International merchandise trade, by state	30

OTHER TABLES

16 Period average exchange rates per Australian dollar	31
17 Summary of revisions, goods and services, original	32

OTHER INFORMATION

Explanatory notes	33
Appendix – Related articles	39

COMMODITY VALUE ADJUSTMENT

CAPITAL EXPENDITURE

The balance of payments goods debits component 'capital goods n.e.s.' includes an estimate of capital expenditure on goods that have changed ownership but have not yet crossed the Customs frontier.

IRON ORE AND COAL

International merchandise trade exports data (on a recorded trade basis) presented in tables 12-15 of this publication are based on information provided by exporters to the Australian Customs and Border Protection Service (Customs and Border Protection). At the time of initial reporting to Customs and Border Protection estimated quantity and unit price information may be reported for commodities like iron ore and coal. Final quantity and unit price information is updated progressively in recorded trade data as exporters revise the information provided to Customs and Border Protection. When additional information on quantity and unit price for these commodities is available, the ABS may adjust the balance of payments series to minimise the impact of future revisions.

The balance of payments series in this issue include:

- a positive \$280m adjustment to the value of the 'metal ores and minerals' component for August 2011. All other previous adjustments have been removed.
- a positive \$340m adjustment to the value of the 'coal, coke and briquettes' component for August 2011. A positive adjustment of \$200m in July 2011 made in the previous issue has been revised down to \$80m. All other previous adjustments have been removed.

With the adjustments included, the balance of payments series, in seasonally adjusted terms, for 'metal ores and minerals' rose \$484m (6%) between July and August 2011. The 'coal, coke and briquettes' series rose \$542m (14%).

COMMODITY VALUE ADJUSTMENT *continued*

IRON ORE AND COAL
continued

SELECTED COMMODITIES, Unit price and volume analysis: **Recorded Trade Basis (a)**

	CHANGE IN					
	Mar 2011	Apr 2011	May 2011	Jun 2011	Jul 2011	Aug 2011
	%	%	%	%	%	%
IRON ORE						
Lump						
Volumes	49	-11	8	-3	-8	20
Price	1	2	4	—	-5	-3
Fines						
Volumes	35	-6	8	-2	9	10
Price	2	—	3	—	-3	-6
COAL						
Hard coking						
Volumes	35	-1	10	3	-7	18
Price	4	9	13	-1	-4	-12
Semi-soft						
Volumes	36	-14	-12	36	-29	24
Price	6	11	13	-3	-2	-5
Bituminous (Thermal)						
Volumes	3	22	-2	19	-2	2
Price	1	-5	3	4	1	3

— nil or rounded to zero (including null cells)

(a) Data in this table are on a revised merchandise trade basis and have excluded adjustment applied to balance of payments series.

On a recorded trade basis (prior to the balance of payments adjustments), between July and August 2011, large value movements were recorded for the following selected commodities:

- iron ore, lump rose \$227m (17%) with exports to China up \$169m (22%), with volumes up 22% and prices down 1% and Japan up \$75m (21%), with volumes up 26% and prices down 4%
- iron ore, fines rose \$146m (3%) with exports to Japan up \$64m (10%), with volumes up 17% and prices down 6% and Republic of Korea up \$47m (10%), with volumes up 21% and prices down 9%
- semi-soft coking coal rose \$115m (18%) with exports to Japan up \$87m (35%), with volumes up 41% and prices down 4% and United Kingdom up \$22m
- hard coking coal rose \$84m (4%) with exports to Japan up \$113m (26%), with volumes up 29% and prices down 2% and China up \$77m.

TIME SERIES DATA

TIME SERIES DATA

Tables 1 to 16 of this publication are available free on the ABS website: <http://www.abs.gov.au> from the 'Downloads' tab of this issue with longer time series. A number of these tables present more detailed breakdowns than included in the publication. A number of additional tables are available free on the ABS website.

Tables with more detailed breakdowns:

- 11a Services credits: Original - Quarter¹
- 11b Services debits: Original - Quarter¹
- 12b Merchandise exports by Standard International Trade Classification (3 digit), FOB Value
- 13b Merchandise imports by Standard International Trade Classification (3 digit), Customs Value
- 14a Merchandise exports, Country and Country Groups, FOB Value
- 14b Merchandise imports, Country and Country Groups, Customs Value

Additional tables:

- 31 Merchandise exports by Broad Economic Category (BEC)
- 32a Merchandise exports, Industry (ANZSIC 2006), FOB Value
- 32b Merchandise exports, Industry (ANZSIC 1993), FOB Value
- 33 Merchandise imports by Broad Economic Category (BEC)
- 34 Merchandise imports by Balance of Payments Broad Economic Category (BoPBEC)
- 35a Merchandise imports, Industry (ANZSIC 2006), Customs Value
- 35b Merchandise imports, Industry (ANZSIC 1993), Customs Value
- 36 Merchandise exports, State by Country and Country Groups
- 37 Merchandise imports, State by Country and Country Groups
- 91 Monthly seasonal adjustment factors and forward factors for 12 months.

¹ With a one quarter lag for the more detailed breakdowns.

TIME SERIES DATA *continued*

TRADE IN SERVICES DATA CUBES

Trade in services data cubes are usually updated on an annual basis. Calendar year (cat. no. 5368.0.55.004) statistics are updated following the March issue of this publication and financial year (cat. no. 5368.0.55.003) statistics are updated following the September issue of this publication.

The following tables were included in the calendar and financial year data cubes:

- 1 International trade in services, credits, state by year
- 2 International trade in services, credits, year by state
- 3 International trade in services, debits, state by year
- 4 International trade in services, debits, year by state
- 5 International trade in services, credits, year by country and service
- 6 International trade in services, credits, service by year and by country
- 7 International trade in services, debits, year by country and service
- 8 International trade in services, debits, service by year and by country
- 9 International trade in services, credits, year by country and travel service
- 10 International trade in services, debits, year by country and travel service
- 11 International trade in services, credits, education related travel, by educational sector, by type of expenditure by year.

ANALYSIS AND COMMENTS

BALANCE ON GOODS AND SERVICES

The trend estimate of the balance on goods and services was a surplus of \$2,656m in August 2011, a rise of \$300m on the surplus in July 2011.

In seasonally adjusted terms, the balance on goods and services was a surplus of \$3,100m in August 2011, a rise of \$1,283m on the surplus in July 2011.

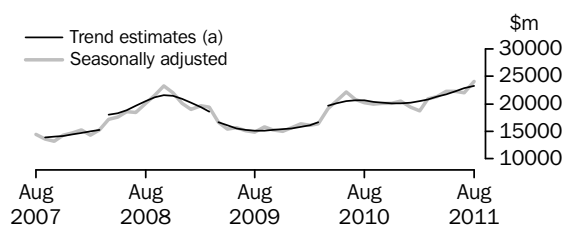
EXPORTS OF GOODS AND SERVICES

Between July 2011 and August 2011 the trend estimate of goods and services credits rose \$475m (2%) to \$27,536m.

In seasonally adjusted terms, goods and services credits rose \$2,101m (8%) to \$28,366m. Non-rural goods rose \$1,547m (9%), non-monetary gold rose \$392m (30%) and rural goods rose \$165m (6%). Net exports of goods under merchanting remained steady at \$4m. Services credits fell \$2m.

Exports of goods

GOODS CREDITS



(a) Trend breaks of \$400m to September 2007, \$1,900m to April 2008, -\$1,400m to April 2009 and \$2,500m to April 2010 have been applied.

RURAL GOODS

In trend terms, exports of rural goods rose \$39m (1%) to \$2,932m.

In seasonally adjusted terms, exports of rural goods rose \$165m (6%) to \$2,983m.

The main components contributing to the rise in seasonally adjusted estimates were:

- wool and sheepskins, up \$88m (35%)
- other rural, up \$68m (5%).

NON-RURAL GOODS

In trend terms, exports of non-rural goods rose \$324m (2%) to \$18,938m.

In seasonally adjusted terms, exports of non-rural goods rose \$1,547m (9%) to \$19,422m.

The main components contributing to the rise in seasonally adjusted estimates were:

- coal, coke and briquettes, up \$542m (14%)
- metal ores and minerals, up \$484m (6%)
- other mineral fuels, up \$429m (24%).

For price and volume details, see page 4 – *Commodity value adjustment*.

ANALYSIS AND COMMENTS *continued*

Exports of goods continued

NET EXPORTS OF GOODS UNDER MERCHANTING

In trend terms, net exports of goods under merchanting fell \$1m (50%) to \$1m.

In seasonally adjusted terms, net exports of goods under merchanting remained steady at \$4m.

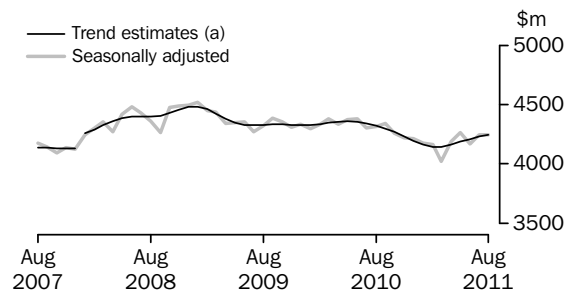
NON-MONETARY GOLD

In trend terms, exports of non-monetary gold rose \$95m (7%) to \$1,417m.

In seasonally adjusted terms, exports of non-monetary gold rose \$392m (30%) to \$1,714m.

Exports of services

SERVICES CREDITS



(a) A trend break of \$100m has been applied to January 2008.

In trend terms, services credits rose \$18m to \$4,248m.

In seasonally adjusted terms, services credits fell \$2m to \$4,244m.

The main component contributing to the fall in seasonally adjusted estimates was travel, down \$5m.

Partly offsetting this fall was the transport component, up \$3m (1%), with passenger transport up \$4m (2%).

In seasonally adjusted terms, tourism related services credits fell \$1m to \$2,790m.

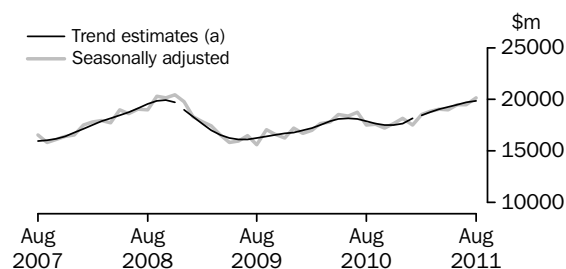
IMPORTS OF GOODS AND SERVICES

Between July 2011 and August 2011 the trend estimate of goods and services debits rose \$175m (1%) to \$24,880m.

In seasonally adjusted terms, goods and services debits rose \$818m (3%) to \$25,266m. Intermediate and other merchandise goods rose \$610m (7%), consumption goods rose \$167m (3%) and non-monetary gold rose \$6m (1%). Capital goods fell \$122m (3%). Services debits rose \$156m (3%).

Imports of goods

GOODS DEBITS



(a) A trend break of -\$200m has been applied to December 2008 and a trend break of \$300m has been applied to January 2011.

CONSUMPTION GOODS

In trend terms, imports of consumption goods rose \$35m (1%) to \$5,463m.

In seasonally adjusted terms, imports of consumption goods rose \$167m (3%) to \$5,551m.

The main components contributing to the rise in seasonally adjusted estimates were:

- household electrical items, up \$110m (33%)
- textiles, clothing and footwear, up \$91m (14%).

Partly offsetting these rises was the non-industrial transport equipment component, down \$119m (8%).

CAPITAL GOODS

In trend terms, imports of capital goods rose \$44m (1%) to \$4,673m.

In seasonally adjusted terms, imports of capital goods fell \$122m (3%) to \$4,679m.

The main components contributing to the fall in seasonally adjusted estimates were:

- civil aircraft and confidentialised items, down \$62m (15%)
- capital goods n.e.s., down \$49m (6%).

ANALYSIS AND COMMENTS *continued*

Imports of goods continued

INTERMEDIATE AND OTHER MERCHANDISE GOODS

In trend terms, imports of intermediate and other merchandise goods rose \$22m to \$9,203m.

In seasonally adjusted terms, imports of intermediate and other merchandise goods rose \$610m (7%) to \$9,386m.

The main components contributing to the rise in the seasonally adjusted estimates were:

- fuels and lubricants, up \$325m (11%) after falling \$458m (14%) between June and July 2011
- processed industrial supplies n.e.s., up \$242m (11%).

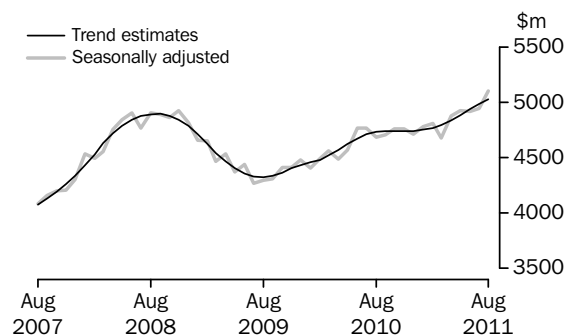
NON-MONETARY GOLD

In trend terms, imports of non-monetary gold rose \$29m (6%) to \$511m.

In seasonally adjusted terms, non-monetary gold rose \$6m (1%) to \$549m.

Imports of services

SERVICES DEBITS



In trend terms, services debits rose \$44m (1%) to \$5,029m.

In seasonally adjusted terms, services debits rose \$156m (3%) to \$5,100m.

The main components contributing to the rise in the seasonally adjusted estimates were:

- travel, up \$73m (3%)
- transport, up \$45m (4%), with freight transport up \$38m (5%).

In seasonally adjusted terms, tourism related services debits rose \$81m (3%) to \$2,896m.

GOODS AND SERVICES (a), Summary—Seasonally Adjusted and Trend Estimates

	Sep 2010	Oct 2010	Nov 2010	Dec 2010	Jan 2011	Feb 2011	Mar 2011	Apr 2011	May 2011	Jun 2011	Jul 2011	Aug 2011
	\$m	\$m	\$m	\$m	\$m	\$m	\$m	\$m	\$m	\$m	\$m	\$m
SEASONALLY ADJUSTED												
BALANCE												
On goods and services	2 015	2 444	1 939	1 803	1 297	-545	1 511	1 635	2 654	2 022	1 817	3 100
CREDITS												
Total goods and services	24 292	24 393	24 374	24 667	23 620	22 813	24 990	25 540	26 579	26 445	26 265	28 366
Total goods	19 953	20 133	20 157	20 452	19 447	18 650	20 968	21 352	22 319	22 275	22 019	24 122
Rural goods(b)	2 195	2 434	2 369	2 416	2 320	2 620	2 566	2 736	2 817	2 871	2 818	2 983
Non-rural goods(b)	16 588	16 124	16 534	16 906	15 570	15 160	17 039	17 531	17 879	18 676	17 875	19 422
Net exports of goods under merchandise(c)	25	25	25	25	23	23	21	2	2	3	4	4
Non-monetary gold(c)	1 146	1 550	1 229	1 105	1 534	846	1 343	1 083	1 621	726	1 322	1 714
Total services	4 339	4 260	4 217	4 215	4 173	4 164	4 022	4 188	4 261	4 170	4 246	4 244
DEBITS												
Total goods and services	-22 277	-21 950	-22 435	-22 863	-22 323	-23 358	-23 480	-23 904	-23 925	-24 423	-24 448	-25 266
Total goods	-17 573	-17 189	-17 676	-18 154	-17 542	-18 548	-18 801	-19 030	-18 997	-19 503	-19 504	-20 166
Consumption goods	-5 447	-5 297	-5 351	-5 315	-5 259	-5 249	-5 195	-5 046	-5 241	-5 198	-5 384	-5 551
Capital goods	-3 951	-3 947	-4 181	-4 160	-4 575	-4 620	-4 279	-4 720	-4 407	-4 681	-4 801	-4 679
Intermediate and other merchandise goods	-7 674	-7 343	-7 556	-8 292	-7 421	-8 340	-8 903	-8 873	-8 980	-9 235	-8 776	-9 386
Non-monetary gold(c)	-501	-602	-588	-387	-286	-339	-423	-391	-368	-390	-543	-549
Total services	-4 704	-4 761	-4 759	-4 710	-4 782	-4 810	-4 679	-4 874	-4 929	-4 920	-4 944	-5 100

TREND ESTIMATES (d)

BALANCE												
On goods and services	2 326	2 219	2 040	1 860	1 457	1 380	1 424	1 593	1 839	2 107	2 356	2 656
CREDITS												
Total goods and services	24 724	24 484	24 305	24 272	24 405	24 622	24 973	25 452	26 002	26 552	27 061	27 536
Total goods	20 426	20 215	20 072	20 077	20 242	20 478	20 828	21 291	21 817	22 343	22 831	23 288
Rural goods(b)	2 385	2 374	2 381	2 418	2 483	2 560	2 636	2 710	2 779	2 840	2 893	2 932
Non-rural goods(b)	16 801	16 579	16 421	16 383	16 491	16 688	16 995	17 382	17 815	18 236	18 614	18 938
Net exports of goods under merchandise	25	26	26	25	23	19	15	10	6	3	2	1
Non-monetary gold	1 214	1 236	1 244	1 251	1 245	1 211	1 182	1 188	1 217	1 263	1 322	1 417
Total services	4 298	4 270	4 232	4 195	4 163	4 145	4 146	4 162	4 185	4 209	4 230	4 248
DEBITS												
Total goods and services	-22 398	-22 265	-22 265	-22 412	-22 947	-23 242	-23 549	-23 860	-24 163	-24 445	-24 705	-24 880
Total goods	-17 657	-17 523	-17 525	-17 670	-18 193	-18 471	-18 751	-19 022	-19 276	-19 508	-19 720	-19 851
Consumption goods	-5 424	-5 370	-5 321	-5 288	-5 271	-5 269	-5 285	-5 314	-5 350	-5 390	-5 428	-5 463
Capital goods(e)	-4 094	-4 075	-4 101	-4 156	-4 485	-4 510	-4 518	-4 524	-4 548	-4 587	-4 629	-4 673
Intermediate and other merchandise goods	-7 661	-7 613	-7 645	-7 788	-8 036	-8 327	-8 593	-8 807	-8 966	-9 085	-9 181	-9 203
Non-monetary gold	-478	-464	-458	-438	-401	-365	-355	-377	-412	-447	-482	-511
Total services	-4 742	-4 743	-4 740	-4 742	-4 754	-4 771	-4 798	-4 838	-4 887	-4 937	-4 985	-5 029

(a) For sign conventions, see paragraph 15 of the Explanatory Notes.

(b) For all time periods, estimates for sugar, sugar preparations and honey are included in Non-rural goods.

(c) This component is not seasonally adjusted.

(d) Caution should be used when interpreting recent trend estimates as they may be affected by unusual economic factors. For more details on trend estimates, please see paragraph 19 of the Explanatory Notes.

(e) A trend break of -\$300m has been applied to Capital goods debits and related aggregates in January 2011. This trend break will be re-assessed in a future issue.

GOODS AND SERVICES (a), Summary—Original

	Sep 2010	Oct 2010	Nov 2010	Dec 2010	Jan 2011	Feb 2011	Mar 2011	Apr 2011	May 2011	Jun 2011	Jul 2011	Aug 2011
	\$m	\$m	\$m	\$m	\$m	\$m	\$m	\$m	\$m	\$m	\$m	\$m
BALANCE												
On goods and services	893	2 036	193	2 100	176	501	2 274	2 283	3 873	2 010	2 037	3 113
CREDITS												
Total goods and services	24 531	25 109	24 014	25 607	21 578	21 660	25 803	25 050	26 942	26 171	26 572	29 170
Total goods	20 270	20 668	19 736	21 396	17 595	17 451	21 666	20 765	22 741	22 293	22 316	24 875
Rural goods(b)	2 119	2 360	2 212	2 489	2 044	2 651	2 844	2 812	3 075	2 905	2 815	2 952
Non-rural goods(b)	16 980	16 733	16 270	17 777	13 994	13 931	17 458	16 868	18 043	18 659	18 175	20 205
Net exports of goods under merchandising	25	25	25	25	23	23	21	2	2	3	4	4
Non-monetary gold	1 146	1 550	1 229	1 105	1 534	846	1 343	1 083	1 621	726	1 322	1 714
Total services	4 261	4 441	4 278	4 211	3 983	4 209	4 137	4 285	4 201	3 878	4 256	4 295
DEBITS												
Total goods and services	-23 638	-23 073	-23 821	-23 507	-21 402	-21 159	-23 529	-22 767	-23 069	-24 161	-24 535	-26 057
Total goods	-18 531	-18 048	-19 181	-18 514	-16 392	-17 045	-19 122	-18 006	-18 407	-19 225	-19 322	-20 926
Consumption goods	-5 985	-5 870	-6 130	-5 405	-4 699	-4 764	-5 027	-4 596	-4 886	-4 994	-5 363	-5 879
Capital goods	-4 107	-4 072	-4 630	-4 344	-4 174	-4 134	-4 422	-4 454	-4 311	-4 755	-4 780	-4 839
Intermediate and other merchandise goods	-7 938	-7 504	-7 833	-8 378	-7 233	-7 808	-9 250	-8 565	-8 842	-9 086	-8 636	-9 659
Non-monetary gold	-501	-602	-588	-387	-286	-339	-423	-391	-368	-390	-543	-549
Total services	-5 107	-5 025	-4 640	-4 993	-5 010	-4 114	-4 407	-4 761	-4 662	-4 936	-5 213	-5 131

(a) For sign conventions, see paragraph 15 of the Explanatory Notes.

(b) For all time periods, estimates for sugar, sugar preparations and honey are included in Non-rural goods.

							2 MONTHS ENDED AUGUST		Change
	2008-09	2009-10	2010-11	Jun 2011	Jul 2011	Aug 2011	2010	2011	
	\$m	\$m	\$m	\$m	\$m	\$m	\$m	\$m	
Total goods credits	231 623	201 751	246 933	22 293	22 316	24 875	42 352	47 191	11.4
General merchandise	213 814	187 201	232 445	21 564	20 990	23 157	40 221	44 147	9.8
<i>Rural goods(a)</i>	29 429	25 589	30 450	2 905	2 815	2 952	4 939	5 767	16.8
Meat and meat preparations	7 454	6 350	6 930	605	593	608	1 188	1 201	1.1
Cereal grains and cereal preparations	6 881	5 266	7 361	684	692	646	998	1 338	34.1
Wool and sheepskins	2 322	2 306	3 053	255	217	206	321	423	31.8
Other rural(a)	12 772	11 667	13 106	1 361	1 313	1 492	2 432	2 805	15.3
<i>Non-rural goods(a)</i>	184 385	161 612	201 995	18 659	18 175	20 205	35 282	38 380	8.8
Metal ores and minerals	52 057	53 611	79 379	7 731	7 365	8 169	12 705	15 534	22.3
Coal, coke and briquettes	54 954	36 777	44 085	4 472	4 021	4 573	8 452	8 594	1.7
Other mineral fuels	20 706	18 964	23 598	2 103	2 086	2 469	4 444	4 555	2.5
Metals (excl. non-monetary gold)	12 394	10 735	12 690	942	1 104	1 075	2 092	2 179	4.2
Machinery	8 900	7 977	8 448	691	757	769	1 554	1 526	-1.8
Transport equipment	5 090	4 073	3 899	334	344	353	647	697	7.7
Other manufactures	17 601	16 375	16 288	1 389	1 437	1 526	2 798	2 963	5.9
Other non-rural (incl. sugar and beverages)	11 052	11 711	12 018	860	923	1 130	2 330	2 053	-11.9
Goods procured in ports by carriers	1 631	1 389	1 590	137	138	141	260	279	7.3
Net exports of goods under merchanting	301	250	224	3	4	4	50	8	-84.0
Goods acquired under merchanting (negative exports)	-2 386	-1 799	-1 726	-91	-94	-94	-386	-188	51.3
Goods sold under merchanting	2 687	2 049	1 950	94	98	98	436	196	-55.0
Non-monetary gold	17 508	14 300	14 264	726	1 322	1 714	2 081	3 036	45.9

(a) For all time periods, estimates for sugar, sugar preparations and honey are included in Other non-rural.

GOODS DEBITS(a), Original

							2 MONTHS ENDED AUGUST		Change
	2008-09	2009-10	2010-11	Jun 2011	Jul 2011	Aug 2011	2010	2011	
	\$m	\$m	\$m	\$m	\$m	\$m	\$m	\$m	
Total goods debits	-220 890	-204 995	-219 272	-19 225	-19 322	-20 926	-36 801	-40 248	-9.4
General merchandise	-209 587	-198 132	-214 305	-18 835	-18 779	-20 377	-36 109	-39 156	-8.4
Consumption goods	-61 419	-62 333	-63 559	-4 994	-5 363	-5 879	-11 203	-11 242	-0.3
Food and beverages, mainly for consumption	-8 857	-8 712	-8 952	-696	-713	-863	-1 538	-1 576	-2.5
Household electrical items	-5 488	-5 505	-4 861	-393	-330	-469	-870	-799	8.2
Non-industrial transport equipment	-13 247	-16 288	-15 953	-1 313	-1 499	-1 290	-2 826	-2 789	1.3
Textiles, clothing and footwear	-8 287	-7 514	-8 412	-630	-686	-851	-1 518	-1 537	-1.3
Toys, books and leisure goods	-5 277	-4 675	-4 442	-345	-316	-404	-777	-720	7.3
Consumption goods n.e.s.	-20 263	-19 639	-20 939	-1 617	-1 819	-2 002	-3 674	-3 821	-4.0
Capital goods	-50 422	-47 507	-51 882	-4 755	-4 780	-4 839	-8 479	-9 619	-13.4
Machinery and industrial equipment	-18 488	-15 561	-15 727	-1 394	-1 475	-1 714	-2 613	-3 189	-22.0
ADP equipment	-7 257	-7 633	-7 786	-759	-696	-688	-1 477	-1 384	6.3
Telecommunications equipment	-6 431	-6 051	-6 999	-588	-575	-591	-1 144	-1 166	-1.9
Civil aircraft and confidentialised items(b)	-5 524	-5 051	-5 322	-346	-401	-339	-680	-740	-8.8
Industrial transport equipment n.e.s.	-6 538	-6 811	-6 854	-525	-749	-665	-1 322	-1 414	-7.0
Capital goods n.e.s.	-6 184	-6 400	-9 194	-1 143	-884	-842	-1 243	-1 726	-38.9
Intermediate and other merchandise goods	-97 746	-88 292	-98 864	-9 086	-8 636	-9 659	-16 427	-18 295	-11.4
Food and beverages, mainly for industry	-1 186	-1 035	-1 223	-112	-92	-95	-194	-187	3.6
Primary industrial supplies n.e.s.	-1 901	-1 346	-1 713	-161	-203	-136	-280	-339	-21.1
Fuels and lubricants	-28 292	-26 494	-32 066	-3 379	-2 921	-3 246	-4 507	-6 167	-36.8
Parts for transport equipment	-8 599	-8 221	-8 880	-778	-837	-900	-1 497	-1 737	-16.0
Parts for ADP equipment	-1 067	-973	-906	-74	-57	-67	-169	-124	26.6
Other parts for capital goods	-14 312	-13 755	-14 298	-1 250	-1 133	-1 223	-2 483	-2 356	5.1
Organic and inorganic chemicals	-5 384	-4 355	-4 471	-338	-344	-372	-875	-716	18.2
Paper and paperboard	-2 403	-2 299	-2 339	-180	-186	-212	-442	-398	10.0
Textile yarn and fabrics	-1 344	-1 170	-1 135	-92	-89	-106	-211	-195	7.6
Iron and steel	-5 528	-3 258	-3 764	-344	-274	-329	-744	-603	19.0
Plastics	-3 028	-2 733	-2 886	-233	-229	-269	-529	-498	5.9
Processed industrial supplies n.e.s.	-21 919	-20 026	-21 918	-1 913	-2 039	-2 467	-3 627	-4 506	-24.2
Other merchandise goods(b)	-1 203	-1 231	-1 597	-74	-68	-73	-611	-141	76.9
Goods procured in ports by carriers	-1 580	-1 396	-1 668	-158	-164	-164	-258	-328	-27.1
Non-monetary gold	-11 303	-6 863	-4 967	-390	-543	-549	-692	-1 092	-57.8

(a) For sign conventions, see paragraph 15 of the Explanatory Notes.

(b) From July 2008, commodities subject to a 'no commodity details' or 'no value details' restriction are included in Civil aircraft and confidentialised items. For earlier periods, commodities subject to a 'no commodity details' or 'no value details' restriction are included in Other merchandise goods.

GOODS CREDITS, Seasonally Adjusted

	Nov 2010	Dec 2010	Jan 2011	Feb 2011	Mar 2011	Apr 2011	May 2011	Jun 2011	Jul 2011	Aug 2011
	\$m	\$m	\$m	\$m	\$m	\$m	\$m	\$m	\$m	\$m
Total goods credits	20 157	20 452	19 447	18 650	20 968	21 352	22 319	22 275	22 019	24 122
General merchandise	18 903	19 322	17 890	17 781	19 604	20 267	20 696	21 546	20 693	22 404
<i>Rural goods</i>	2 369	2 416	2 320	2 620	2 566	2 736	2 817	2 871	2 818	2 983
Meat and meat preparations	575	613	482	624	596	594	567	590	590	615
Cereal grains and cereal preparations	569	548	593	638	617	677	699	723	683	668
Wool and sheepskins	234	279	250	282	281	294	280	274	250	338
Other rural (a)	991	975	995	1 076	1 072	1 172	1 271	1 284	1 295	1 363
<i>Non-rural goods</i>	16 534	16 906	15 570	15 160	17 039	17 531	17 879	18 676	17 875	19 422
Metal ores and minerals	6 533	6 523	6 569	5 864	6 988	7 270	7 158	7 514	7 485	7 969
Coal, coke and briquettes(b)	3 664	3 645	2 628	2 772	3 197	3 534	3 815	4 537	3 948	4 490
Other mineral fuels(c)	1 899	1 949	1 897	1 920	2 146	2 139	2 268	2 191	1 812	2 241
Metals (excl. non-monetary gold)(c)	1 043	1 131	1 057	1 209	1 192	1 086	1 088	926	1 097	1 074
Machinery	672	757	695	691	707	716	692	703	712	732
Transport equipment	286	303	322	359	324	355	381	352	351	337
Other manufactures	1 318	1 462	1 261	1 371	1 385	1 347	1 367	1 363	1 384	1 431
Other non-rural (incl. sugar and beverages)	995	1 008	1 010	838	961	938	972	945	951	1 009
Goods procured in ports by carriers(c)	126	128	131	136	138	147	139	144	137	139
Net exports of goods under merchanting(d)	25	25	23	23	21	2	2	3	4	4
Non-monetary gold(d)	1 229	1 105	1 534	846	1 343	1 083	1 621	726	1 322	1 714

(a) For all time periods, estimates for sugar, sugar preparations and honey are included in Other non-rural.

(b) Only a length-of-month adjustment has been applied to this component.

(c) In using these seasonally adjusted series, care should be exercised because of the difficulties associated with reliably estimating the seasonal pattern.

(d) This component is not seasonally adjusted.

GOODS DEBITS(a), Seasonally Adjusted

	Nov 2010	Dec 2010	Jan 2011	Feb 2011	Mar 2011	Apr 2011	May 2011	Jun 2011	Jul 2011	Aug 2011
	\$m	\$m	\$m	\$m	\$m	\$m	\$m	\$m	\$m	\$m
Total goods debits	-17 676	-18 154	-17 542	-18 548	-18 801	-19 030	-18 997	-19 503	-19 504	-20 166
General merchandise	-17 088	-17 767	-17 256	-18 209	-18 378	-18 639	-18 629	-19 113	-18 961	-19 617
<i>Consumption goods</i>	-5 351	-5 315	-5 259	-5 249	-5 195	-5 046	-5 241	-5 198	-5 384	-5 551
Food and beverages, mainly for consumption	-720	-718	-717	-723	-735	-754	-784	-754	-756	-819
Household electrical items	-420	-379	-374	-380	-377	-403	-397	-395	-338	-448
Non-industrial transport equipment	-1 407	-1 411	-1 369	-1 356	-1 375	-950	-1 171	-1 251	-1 494	-1 375
Textiles, clothing and footwear	-702	-685	-665	-712	-658	-731	-757	-739	-660	-751
Toys, books and leisure goods	-393	-381	-366	-353	-330	-351	-336	-346	-346	-360
Consumption goods n.e.s.	-1 709	-1 741	-1 768	-1 725	-1 720	-1 857	-1 797	-1 713	-1 791	-1 799
<i>Capital goods</i>	-4 181	-4 160	-4 575	-4 620	-4 279	-4 720	-4 407	-4 681	-4 801	-4 679
Machinery and industrial equipment	-1 248	-1 228	-1 243	-1 364	-1 319	-1 361	-1 419	-1 389	-1 526	-1 577
ADP equipment	-623	-614	-606	-590	-653	-661	-647	-667	-669	-678
Telecommunications equipment	-609	-578	-669	-565	-546	-521	-527	-598	-651	-606
Civil aircraft and confidentialised items(b)(c)	-614	-541	-474	-629	-306	-716	-415	-346	-401	-339
Industrial transport equipment n.e.s.(d)	-538	-556	-663	-593	-574	-543	-571	-562	-662	-639
Capital goods n.e.s.	-549	-644	-920	-878	-881	-918	-829	-1 119	-890	-841
<i>Intermediate and other merchandise goods</i>	-7 556	-8 292	-7 421	-8 340	-8 903	-8 873	-8 980	-9 235	-8 776	-9 386
Food and beverages, mainly for industry	-98	-93	-90	-129	-102	-125	-102	-113	-90	-86
Primary industrial supplies n.e.s.(d)	-137	-119	-117	-122	-148	-146	-237	-160	-177	-148
Fuels and lubricants(c)	-2 416	-2 887	-2 139	-2 722	-3 320	-3 240	-3 043	-3 379	-2 921	-3 246
Parts for transport equipment	-680	-683	-728	-718	-798	-768	-828	-811	-850	-863
Parts for ADP equipment	-81	-73	-73	-68	-68	-74	-66	-67	-57	-67
Other parts for capital goods	-1 143	-1 176	-1 148	-1 215	-1 146	-1 207	-1 241	-1 231	-1 166	-1 202
Organic and inorganic chemicals	-361	-358	-352	-353	-408	-362	-335	-365	-365	-347
Paper and paperboard	-196	-196	-192	-185	-183	-184	-188	-193	-191	-194
Textile yarn and fabrics	-88	-93	-89	-93	-94	-100	-100	-94	-93	-94
Iron and steel	-283	-305	-251	-324	-271	-330	-323	-339	-289	-300
Plastics	-219	-221	-231	-230	-236	-251	-257	-245	-238	-253
Processed industrial supplies n.e.s.	-1 670	-1 729	-1 807	-1 967	-1 875	-1 863	-1 979	-2 007	-2 108	-2 350
Other merchandise goods(b)(d)(e)	-62	-234	-58	-68	-108	-65	-124	-74	-68	-73
Goods procured in ports by carriers(c)	-123	-124	-146	-146	-146	-158	-158	-158	-164	-164
Non-monetary gold(c)	-588	-387	-286	-339	-423	-391	-368	-390	-543	-549

(a) For sign conventions, see paragraph 15 of the Explanatory Notes.

(b) From July 2008, commodities subject to a 'no commodity details' or 'no value details' restriction are included in Civil aircraft and confidentialised items. For earlier periods, commodities subject to a 'no commodity details' or 'no value details' restriction are included in Other merchandise goods.

(c) This component is not seasonally adjusted.

(d) In using these seasonally adjusted series, care should be exercised because of the difficulties associated with reliably estimating the seasonal pattern.

(e) From July 1981, this component is not seasonally adjusted.

GOODS CREDITS(a), Trend Estimates

	Nov 2010	Dec 2010	Jan 2011	Feb 2011	Mar 2011	Apr 2011	May 2011	Jun 2011	Jul 2011	Aug 2011
	\$m	\$m	\$m	\$m	\$m	\$m	\$m	\$m	\$m	\$m
Total goods credits	20 072	20 077	20 242	20 478	20 828	21 291	21 817	22 343	22 831	23 288
General merchandise	18 802	18 801	18 974	19 248	19 631	20 092	20 594	21 076	21 507	21 870
<i>Rural goods</i>	2 381	2 418	2 483	2 560	2 636	2 710	2 779	2 840	2 893	2 932
Meat and meat preparations	578	593	604	608	603	595	590	589	591	594
Cereal grains and cereal preparations	595	599	605	620	641	666	683	692	696	696
Wool and sheepskins	235	250	266	276	280	280	281	284	288	292
Other rural(b)	972	976	1 007	1 056	1 112	1 169	1 226	1 276	1 318	1 349
<i>Non-rural goods</i>	16 421	16 383	16 491	16 688	16 995	17 382	17 815	18 236	18 614	18 938
Metal ores and minerals	6 312	6 363	6 465	6 591	6 767	6 994	7 237	7 461	7 654	7 832
Coal, coke and briquettes	3 760	3 600	3 493	3 458	3 527	3 668	3 850	4 043	4 222	4 373
Other mineral fuels	1 816	1 859	1 940	2 024	2 086	2 118	2 132	2 133	2 126	2 114
Metals (excl. non-monetary gold)	1 046	1 089	1 126	1 141	1 132	1 106	1 078	1 056	1 042	1 028
Machinery	697	700	704	706	705	703	705	708	714	718
Transport equipment	298	306	319	334	347	354	356	356	354	350
Other manufactures	1 355	1 356	1 358	1 357	1 357	1 360	1 368	1 379	1 392	1 397
Other non-rural (incl. sugar and beverages)	1 012	980	956	941	936	939	947	959	970	986
Goods procured in ports by carriers	127	129	132	136	139	141	141	141	141	140
Net exports of goods under merchanting	26	25	23	19	15	10	6	3	2	1
Non-monetary gold	1 244	1 251	1 245	1 211	1 182	1 188	1 217	1 263	1 322	1 417

(a) Caution should be used when interpreting recent trend estimates as they may be affected by unusual economic factors. For more details on trend estimates, please see paragraph 19 of the Explanatory Notes.

(b) For all time periods, estimates for sugar, sugar preparations and honey are included in Other non-rural.

	Nov 2010	Dec 2010	Jan 2011	Feb 2011	Mar 2011	Apr 2011	May 2011	Jun 2011	Jul 2011	Aug 2011
	\$m	\$m	\$m	\$m	\$m	\$m	\$m	\$m	\$m	\$m
Total goods debits	-17 525	-17 670	-18 193	-18 471	-18 751	-19 022	-19 276	-19 508	-19 720	-19 851
General merchandise	-17 067	-17 232	-17 792	-18 106	-18 396	-18 645	-18 865	-19 061	-19 238	-19 339
<i>Consumption goods</i>	-5 321	-5 288	-5 271	-5 269	-5 285	-5 314	-5 350	-5 390	-5 428	-5 463
Food and beverages, mainly for consumption	-728	-721	-721	-727	-737	-749	-760	-771	-781	-790
Household electrical items	-400	-391	-385	-383	-383	-385	-388	-391	-395	-400
Non-industrial transport equipment	-1 389	-1 385	-1 374	-1 359	-1 351	-1 352	-1 363	-1 378	-1 395	-1 410
Textiles, clothing and footwear	-690	-684	-685	-692	-702	-712	-719	-724	-726	-725
Toys, books and leisure goods	-386	-378	-367	-355	-346	-342	-342	-344	-347	-351
Consumption goods n.e.s.	-1 728	-1 729	-1 739	-1 753	-1 766	-1 774	-1 778	-1 781	-1 783	-1 787
<i>Capital goods</i>	-4 101	-4 156	-4 485	-4 510	-4 518	-4 524	-4 548	-4 587	-4 629	-4 673
Machinery and industrial equipment	-1 255	-1 261	-1 276	-1 298	-1 330	-1 368	-1 409	-1 450	-1 492	-1 527
ADP equipment	-616	-608	-609	-619	-632	-645	-656	-665	-672	-678
Telecommunications equipment	-610	-605	-590	-574	-561	-557	-564	-579	-595	-617
Civil aircraft and confidentialised items(c)	-449	-499	-532	-539	-519	-486	-453	-419	-385	-352
Industrial transport equipment n.e.s.	-559	-574	-585	-586	-581	-578	-581	-593	-607	-627
Capital goods n.e.s.(d)	-612	-610	-892	-893	-894	-891	-885	-881	-878	-874
<i>Intermediate and other merchandise goods</i>	-7 645	-7 788	-8 036	-8 327	-8 593	-8 807	-8 966	-9 085	-9 181	-9 203
Food and beverages, mainly for industry	-96	-99	-104	-109	-112	-112	-109	-103	-98	-91
Primary industrial supplies n.e.s.	-126	-124	-126	-136	-149	-163	-173	-177	-177	-174
Fuels and lubricants	-2 363	-2 486	-2 656	-2 835	-2 989	-3 100	-3 168	-3 200	-3 217	-3 183
Parts for transport equipment	-690	-698	-715	-738	-763	-788	-809	-827	-844	-858
Parts for ADP equipment	-79	-76	-73	-71	-70	-68	-67	-66	-64	-63
Other parts for capital goods	-1 160	-1 158	-1 165	-1 179	-1 192	-1 202	-1 207	-1 209	-1 208	-1 203
Organic and inorganic chemicals	-359	-357	-360	-365	-366	-365	-362	-359	-355	-352
Paper and paperboard	-195	-192	-189	-187	-186	-186	-188	-190	-191	-193
Textile yarn and fabrics	-90	-90	-91	-93	-95	-96	-96	-96	-95	-94
Iron and steel	-291	-285	-287	-295	-303	-311	-315	-316	-314	-308
Plastics	-228	-225	-227	-233	-239	-244	-247	-248	-249	-249
Processed industrial supplies n.e.s.	-1 730	-1 757	-1 799	-1 842	-1 884	-1 930	-1 985	-2 052	-2 125	-2 193
Other merchandise goods(c)	-110	-110	-106	-100	-94	-88	-84	-82	-81	-76
Goods procured in ports by carriers	-128	-132	-137	-144	-150	-154	-157	-160	-162	-164
Non-monetary gold	-458	-438	-401	-365	-355	-377	-412	-447	-482	-511

(a) For sign conventions, see paragraph 15 of the Explanatory Notes.

(b) Caution should be used when interpreting recent trend estimates as they may be affected by unusual economic factors. For more details on trend estimates, please see paragraph 19 of the Explanatory Notes.

(c) From July 2008, commodities subject to a 'no commodity details' or 'no value details' restriction are included in Civil aircraft and confidentialised items. For earlier periods, commodities subject to a 'no commodity details' or 'no value details' restriction are included in Other merchandise goods.

(d) A trend break of -\$300m has been applied to Capital goods n.e.s. and related aggregates in January 2011. This trend break will be re-assessed in a future issue.

							2 MONTHS ENDED AUGUST		Change %
	2008-09	2009-10	2010-11	Jun 2011	Jul 2011	Aug 2011	2010	2011	
	\$m	\$m	\$m	\$m	\$m	\$m	\$m	\$m	
Services credits	52 948	52 011	50 574	3 878	4 256	4 295	8 690	8 551	-1.6
Manufacturing services on physical inputs owned by others	45	48	33	2	4	2	6	6	—
Maintenance and repair services n.i.e.	86	57	49	3	4	6	10	10	—
Transport	7 342	6 189	6 339	467	538	533	1 149	1 071	-6.8
Passenger(c)	3 410	2 610	2 714	165	204	199	469	403	-14.1
Freight	851	436	403	37	36	36	70	72	2.9
Other	2 127	2 188	2 253	183	188	188	404	376	-6.9
Postal and courier services(d)	954	955	969	82	110	110	206	220	6.8
Travel	31 086	32 918	30 968	2 263	2 605	2 647	5 398	5 252	-2.7
Other services	14 389	12 799	13 185	1 143	1 105	1 107	2 127	2 212	4.0
Services debits	-56 328	-53 388	-57 359	-4 936	-5 213	-5 131	-9 704	-10 344	-6.6
Manufacturing services on physical inputs owned by others	—	—	-1	-1	—	—	—	—	—
Maintenance and repair services n.i.e.	-193	-294	-342	-59	-17	-36	-41	-53	-29.3
Transport	-15 832	-13 727	-14 749	-1 277	-1 253	-1 348	-2 581	-2 601	-0.8
Passenger(c)	-5 835	-5 118	-6 103	-567	-537	-520	-996	-1 057	-6.1
Freight	-9 388	-8 142	-8 244	-680	-676	-788	-1 495	-1 464	2.1
Other	-437	-309	-288	-25	-25	-25	-48	-50	-4.2
Postal and courier services(d)	-172	-158	-114	-5	-15	-15	-42	-30	28.6
Travel	-22 082	-23 285	-25 374	-2 219	-2 592	-2 394	-4 325	-4 986	-15.3
Other services	-18 221	-16 082	-16 893	-1 380	-1 351	-1 353	-2 757	-2 704	1.9
Memorandum items:									
Tourism related service credits(e)	34 496	35 528	33 682	2 428	2 809	2 846	5 867	5 655	-3.6
Tourism related service debits(e)	-27 917	-28 403	-31 477	-2 786	-3 129	-2 914	-5 321	-6 043	-13.6

— nil or rounded to zero (including null cells)

(a) For sign conventions, see paragraph 15 of the Explanatory Notes.

(b) For more detailed trade in services components, see table 11.

(c) Passenger services includes agency fees and commissions for air transport.

(d) Postal and courier services includes indirect commissions for sea transport.

(e) For a more detailed explanation of tourism related services, see paragraph 27 of the Explanatory Notes.

	Nov 2010	Dec 2010	Jan 2011	Feb 2011	Mar 2011	Apr 2011	May 2011	Jun 2011	Jul 2011	Aug 2011
	\$m	\$m	\$m	\$m	\$m	\$m	\$m	\$m	\$m	\$m
SEASONALLY ADJUSTED										
Services credits	4 217	4 215	4 173	4 164	4 022	4 188	4 261	4 170	4 246	4 244
Manufacturing services on physical inputs owned by others(b)	3	3	2	1	4	3	3	2	4	2
Maintenance and repair services n.i.e.(b)	8	6	2	3	3	3	3	3	4	6
Transport	507	515	533	515	508	525	523	517	514	517
Passenger(c)	220	228	236	217	213	218	217	209	206	210
Freight(d)	33	32	35	34	33	33	32	32	38	36
Other	179	179	186	188	189	187	187	188	183	183
Postal and courier services(e)	76	76	77	77	73	87	86	89	87	88
Travel	2 614	2 610	2 550	2 553	2 411	2 534	2 600	2 520	2 585	2 580
Other services	1 085	1 081	1 086	1 091	1 096	1 122	1 132	1 128	1 139	1 139
Services debits	-4 759	-4 710	-4 782	-4 810	-4 679	-4 874	-4 929	-4 920	-4 944	-5 100
Manufacturing services on physical inputs owned by others(b)	—	—	—	—	—	—	—	-1	—	—
Maintenance and repair services n.i.e.(b)	-16	-17	-20	-17	-36	-29	-65	-59	-17	-36
Transport	-1 217	-1 169	-1 181	-1 216	-1 213	-1 230	-1 245	-1 266	-1 281	-1 326
Passenger(c)	-530	-497	-510	-514	-512	-529	-515	-518	-525	-534
Freight	-657	-643	-638	-670	-668	-672	-700	-716	-721	-759
Other(b)	-24	-23	-24	-24	-25	-23	-23	-25	-25	-25
Postal and courier services(e)(d)	-7	-6	-9	-9	-9	-7	-7	-6	-9	-9
Travel	-2 063	-2 075	-2 158	-2 158	-2 011	-2 256	-2 264	-2 234	-2 289	-2 362
Other services	-1 463	-1 448	-1 423	-1 419	-1 419	-1 359	-1 355	-1 360	-1 357	-1 376
Memorandum items:										
Tourism related service credits(f)	2 834	2 838	2 785	2 770	2 624	2 752	2 817	2 729	2 791	2 790
Tourism related service debits(f)	-2 593	-2 572	-2 668	-2 671	-2 523	-2 785	-2 779	-2 752	-2 815	-2 896

TREND ESTIMATES

Services credits	4 232	4 195	4 163	4 145	4 146	4 162	4 185	4 209	4 230	4 248
Manufacturing services on physical inputs owned by others	3	3	2	3	3	3	3	3	3	3
Maintenance and repair services n.i.e.	5	5	4	3	3	3	3	4	4	5
Transport	526	520	517	517	518	519	519	518	517	518
Passenger(c)	232	228	224	221	219	216	213	211	209	209
Freight	33	33	33	33	33	33	34	34	35	36
Other	184	183	183	185	187	188	187	186	185	184
Postal and courier services(e)	78	76	76	77	80	82	85	87	89	90
Travel	2 613	2 583	2 551	2 527	2 518	2 523	2 536	2 553	2 568	2 581
Other services	1 085	1 085	1 088	1 095	1 104	1 114	1 124	1 132	1 138	1 142
Services debits	-4 740	-4 742	-4 754	-4 771	-4 798	-4 838	-4 887	-4 937	-4 985	-5 029
Manufacturing services on physical inputs owned by others	—	—	—	—	—	—	—	—	—	—
Maintenance and repair services n.i.e.	-18	-18	-21	-26	-33	-39	-43	-43	-42	-40
Transport	-1 201	-1 191	-1 191	-1 200	-1 213	-1 230	-1 249	-1 268	-1 286	-1 301
Passenger(c)	-511	-512	-513	-514	-515	-517	-520	-523	-525	-528
Freight	-657	-647	-647	-655	-667	-682	-697	-713	-728	-741
Other	-24	-24	-24	-24	-24	-24	-24	-24	-25	-25
Postal and courier services(e)	-9	-8	-8	-8	-8	-7	-7	-7	-8	-8
Travel	-2 074	-2 088	-2 107	-2 128	-2 154	-2 188	-2 226	-2 264	-2 299	-2 331
Other services	-1 447	-1 446	-1 435	-1 417	-1 397	-1 380	-1 369	-1 362	-1 358	-1 356
Memorandum items:										
Tourism related service credits(f)	2 845	2 811	2 776	2 748	2 736	2 739	2 749	2 764	2 777	2 790
Tourism related service debits(f)	-2 585	-2 600	-2 620	-2 641	-2 669	-2 705	-2 746	-2 787	-2 824	-2 859

— nil or rounded to zero (including null cells)

(a) For sign conventions, see paragraph 15 of the Explanatory Notes.

(b) This component is not seasonally adjusted.

(c) Passenger services includes agency fees and commissions for air transport.

(d) In using these seasonally adjusted series, care should be exercised because of the difficulties associated with reliably estimating the seasonal pattern.

(e) Postal and courier services includes indirect commissions for sea transport.

(f) For a more detailed explanation of tourism related services, see paragraph 27 of the Explanatory Notes.

	CREDITS				DEBITS			
	Sep Qtr	Dec Qtr	Mar Qtr	Jun Qtr	Sep Qtr	Dec Qtr	Mar Qtr	Jun Qtr
	2010	2010	2011	2011	2010	2010	2011	2011
	\$m	\$m	\$m	\$m	\$m	\$m	\$m	\$m
Services	12 951	12 930	12 329	12 364	-14 811	-14 658	-13 531	-14 359
Manufacturing services on physical inputs owned by others	9	9	7	8	—	—	—	-1
Maintenance and repair services n.i.e.	14	18	8	9	-52	-64	-73	-153
Transport	1 701	1 595	1 601	1 442	-3 951	-3 805	-3 396	-3 597
Passenger(b)	682	727	761	544	-1 558	-1 572	-1 424	-1 549
Freight	106	94	96	107	-2 257	-2 147	-1 880	-1 960
Other	605	560	541	547	-73	-71	-73	-71
Postal and courier services(c)	308	214	203	244	-63	-15	-19	-17
Travel	8 037	7 836	7 629	7 466	-6 675	-6 308	-5 897	-6 494
Business	761	753	900	862	-717	-699	-718	-647
Personal	7 276	7 083	6 729	6 604	-5 958	-5 609	-5 179	-5 847
Education-related	4 406	3 737	3 571	4 039	-317	-189	-226	-182
Other(d)	2 870	3 346	3 158	2 565	-5 641	-5 420	-4 953	-5 665
Construction	23	15	20	10	—	—	—	—
Insurance and pension services	82	78	81	111	-140	-138	-143	-151
Financial services	240	251	283	309	-166	-215	-163	-155
Charges for the use of intellectual property n.i.e.	202	303	176	248	-920	-983	-950	-960
Telecommunications, computer and information services	408	464	428	412	-490	-571	-485	-468
Telecommunication services	44	40	35	33	-100	-114	-109	-70
Computer and information services	364	424	393	379	-390	-457	-376	-398
Computer services	303	350	341	314	-316	-383	-311	-327
Information services	20	32	14	15	-19	-21	-17	-19
Other services	41	42	38	50	-55	-53	-48	-52
Other business services	1 825	1 984	1 616	1 944	-1 901	-1 971	-1 761	-1 799
Research and development services	132	168	108	131	-42	-70	-48	-72
Professional and management consulting services	736	851	734	776	-652	-704	-611	-631
Legal, accounting, management consulting, public relations and other professional services	668	740	642	695	-611	-650	-563	-580
Advertising, market research and public opinion polling	68	111	92	81	-41	-54	-48	-51
Technical, trade-related and other business services	957	965	774	1 037	-1 207	-1 197	-1 102	-1 096
Architectural, engineering and other technical services	474	472	425	567	-661	-634	-667	-590
Waste treatment and de-pollution, agricultural and mining services	94	121	36	57	-146	-204	-73	-120
Operational leasing services	72	53	54	57	-140	-127	-122	-146
Trade-related commission services	203	210	162	232	-57	-53	-80	-87
Other business services n.i.e.	114	109	97	124	-203	-179	-160	-153
Personal, cultural and recreational services	200	167	264	189	-294	-381	-441	-359
Audiovisual and related services	34	27	71	32	-252	-310	-337	-303
Other personal, cultural and recreational services	166	140	193	157	-42	-71	-104	-56
Government goods and services n.i.e.	210	210	216	216	-222	-222	-222	-222
Memorandum items:								
Gross insurance premiums receivable / payable	214	215	200	282	-260	-254	-284	-289
Gross insurance claims payable / receivable	-146	-144	-137	-196	169	164	187	193
Tourism related services(e)	8 719	8 563	8 390	8 010	-8 233	-7 880	-7 321	-8 043

— nil or rounded to zero (including null cells)

(a) For sign conventions, see paragraph 15 of the Explanatory Notes.

(b) Passenger services includes agency fees and commissions for air transport.

(c) Postal and courier services includes indirect commissions for sea transport.

(d) Other personal travel includes health-related travel.

(e) For a more detailed explanation of tourism related services, see paragraph 27 of the Explanatory Notes.

				Per cent of total merchandise exports(b)	2 MONTHS ENDED AUGUST	
	Jun 2011	Jul 2011	Aug 2011		2010	2011
	\$m	\$m	\$m	%	\$m	\$m
MAJOR COMMODITIES (c)						
011 Meat of bovine animals	410	393	398	1.6	804	790
041 Wheat and meslin	468	540	437	1.8	735	977
281 Iron ore and concentrates	5 552	5 546	5 939	24.6	9 545	11 485
283 Copper ores and concentrates	539	537	470	1.9	711	1 007
285 Aluminium ores and concentrates	481	405	512	2.1	866	916
287 Ores and concentrates of base metals, n.e.s.	483	313	395	1.6	657	709
321 Coal, not agglomerated	4 436	3 926	4 201	17.4	8 357	8 127
333 Crude petroleum oils	968	837	989	4.1	2 051	1 826
334 Refined petroleum oils	213	231	259	1.1	414	490
343 Natural gas	960	1 085	1 269	5.3	2 021	2 354
542 Medicaments	278	278	338	1.4	533	616
682 Copper	285	337	266	1.1	646	603
684 Aluminium	331	353	423	1.7	777	776
971 Gold, non-monetary	695	1 276	1 585	6.6	2 047	2 861

SECTION AND DIVISION OF THE SITC

0	Food and live animals					
00	Live animals (excl. fish, crustaceans, molluscs and aquatic invertebrates)	69	74	68	0.3	222 141
01	Meat and meat preparations	604	593	608	2.5	1 188 1 202
02	Dairy products and birds' eggs	176	146	142	0.6	366 288
03	Fish (not marine mammals), crustaceans, molluscs and aquatic invertebrates, and preparations thereof	64	97	166	0.7	207 264
04	Cereals and cereal preparations	684	692	646	2.7	998 1 338
05	Vegetables and fruit	125	171	172	0.7	288 343
06	Sugars, sugar preparations and honey	31	37	43	0.2	71 80
07	Coffee, tea, cocoa, spices, and manufactures thereof	27	25	29	0.1	59 54
08	Feeding stuff for animals (excl. unmilled cereals)	88	94	89	0.4	205 182
09	Miscellaneous edible products and preparations	75	71	81	0.3	133 151
	<i>Total Food and live animals</i>	1 942	1 999	2 043	8.5	3 737 4 043
1	Beverages and tobacco					
11	Beverages	171	179	196	0.8	404 375
12	Tobacco and tobacco manufactures	7	7	13	0.1	18 20
	<i>Total Beverages and tobacco</i>	178	186	209	0.9	422 395
2	Crude materials, inedible, except fuels					
21	Hides, skins and furskins, raw	66	70	78	0.3	134 148
22	Oil-seeds and oleaginous fruits	72	30	111	0.5	50 141
23	Crude rubber (incl. synthetic and reclaimed)	1	2	2	—	3 4
24	Cork and wood	103	78	83	0.3	220 161
25	Pulp and waste paper	21	20	22	0.1	43 42
26	Textile fibres and their wastes (not manufactured into yarn or fabric)	646	592	558	2.3	685 1 150
27	Crude fertilizers (excl. those of Division 56) and crude minerals (excl. coal, petroleum and precious stones)	51	31	37	0.2	64 68
28	Metalliferous ores and metal scrap	7 680	7 334	7 852	32.5	12 611 15 187
29	Crude animal and vegetable materials, n.e.s.	17	17	20	0.1	35 38
	<i>Total Crude materials, inedible, except fuels</i>	8 656	8 174	8 764	36.3	13 845 16 938

— nil or rounded to zero (including null cells)

(a) Some SITC sections and divisions exclude commodities subject to a confidentiality restriction. These are included in Division 98. For more information see paragraph 26 of the Explanatory Notes.

(b) Per cent of total merchandise is calculated for the most recent month.

(c) The 'Major commodities' section lists commodities at the SITC Rev 4 3-digit level which are the most significant (by value) or are of particular interest. Abbreviated descriptors have been used. The list of 'Major commodities' is reviewed annually.

	Jun 2011	Jul 2011	Aug 2011	Per cent of total merchandise exports(b)	2 MONTHS ENDED AUGUST	
					2010	2011
					\$m	\$m
SECTION AND DIVISION OF THE SITC						
3 Mineral fuels, lubricants and related materials						
32 Coal, coke and briquettes	4 472	3 941	4 233	17.5	8 395	8 175
33 Petroleum, petroleum products and related materials	1 182	1 068	1 249	5.2	2 467	2 317
34 Gas, natural and manufactured	1 052	1 149	1 358	5.6	2 220	2 507
<i>Total Mineral fuels, lubricants and related materials</i>	<i>6 706</i>	<i>6 159</i>	<i>6 840</i>	<i>28.3</i>	<i>13 082</i>	<i>12 998</i>
4 Animal and vegetable oils, fats and waxes						
41 Animal oils and fats	39	29	30	0.1	48	59
42 Fixed vegetable fats and oils, crude, refined or fractionated	11	5	27	0.1	32	33
43 Fats and oils (processed), waxes and inedible mixtures or preparations, of animal or vegetable origin, n.e.s.	1	1	1	—	2	2
<i>Total Animal and vegetable oils, fats and waxes</i>	<i>52</i>	<i>35</i>	<i>59</i>	<i>0.2</i>	<i>82</i>	<i>93</i>
5 Chemicals and related products, n.e.s.						
51 Organic chemicals	18	15	16	0.1	31	30
52 Inorganic chemicals	31	42	48	0.2	95	90
53 Dyeing, tanning and colouring materials	67	63	75	0.3	119	138
54 Medicinal and pharmaceutical products	338	345	370	1.5	604	714
55 Essential oils and resinoids and perfume materials, toilet, polishing and cleansing preparations	54	47	54	0.2	109	101
56 Fertilisers (excl. crude)	65	60	61	0.3	119	121
57 Plastics in primary forms	26	23	28	0.1	63	51
58 Plastics in non-primary forms	28	33	28	0.1	85	61
59 Chemical materials and products, n.e.s.	76	86	83	0.3	169	168
<i>Total Chemicals and related products, n.e.s.</i>	<i>702</i>	<i>713</i>	<i>762</i>	<i>3.2</i>	<i>1 395</i>	<i>1 475</i>
6 Manufactured goods classified chiefly by material						
61 Leather, leather manufactures and dressed furskins, n.e.s.	16	23	23	0.1	50	46
62 Rubber manufactures, n.e.s.	17	15	18	0.1	35	32
63 Cork and wood manufactures (excl. furniture)	11	12	12	0.1	31	24
64 Paper, paperboard and articles of paper pulp, of paper or of paperboard	74	70	78	0.3	150	148
65 Textile yarn, fabrics, made-up articles n.e.s. and related products	22	25	25	0.1	49	50
66 Non-metallic mineral manufactures, n.e.s.	51	43	37	0.2	89	80
67 Iron and steel	128	107	137	0.6	200	244
68 Non-ferrous metals	814	997	938	3.9	1 891	1 936
69 Manufactures of metals, n.e.s.	88	89	103	0.4	181	192
<i>Total Manufactured goods classified chiefly by material</i>	<i>1 222</i>	<i>1 380</i>	<i>1 372</i>	<i>5.7</i>	<i>2 676</i>	<i>2 752</i>
7 Machinery and transport equipment						
71 Power generating machinery and equipment	83	81	95	0.4	157	176
72 Machinery specialized for particular industries	156	171	180	0.7	355	350
73 Metal working machinery	17	12	13	0.1	24	24
74 General industrial machinery and equipment, n.e.s. and machine parts, n.e.s.	153	168	154	0.6	326	322
75 Office machines and automatic data processing machines	92	112	96	0.4	234	208
76 Telecommunications and sound recording and reproducing apparatus and equipment	70	80	83	0.3	166	163
77 Electrical machinery, apparatus and appliances, parts (incl. non electrical counterparts of electrical domestic equip)	118	132	146	0.6	289	278
78 Road vehicles (incl. air-cushion vehicles)	237	236	216	0.9	489	452
79 Transport equipment (excl. road vehicles)	96	109	137	0.6	157	246
<i>Total Machinery and transport equipment</i>	<i>1 021</i>	<i>1 101</i>	<i>1 119</i>	<i>4.6</i>	<i>2 197</i>	<i>2 220</i>

— nil or rounded to zero (including null cells)

(b) Per cent of total merchandise is calculated for the most recent month.

(a) Some SITC sections and divisions exclude commodities subject to a confidentiality restriction. These are included in Division 98. For more information see paragraph 26 of the Explanatory Notes.

	Jun	Jul	Aug	Per cent	2 MONTHS	
	2011	2011	2011	of total	ENDED AUGUST	
	\$m	\$m	\$m	merchandise	2010	2011
				exports(b)	\$m	\$m
				%		
SECTION AND DIVISION OF THE SITC						
8	Miscellaneous manufactured articles					
81	Prefabricated buildings and sanitary, plumbing, heating and lighting fixtures and fittings, n.e.s.	9	10	11	—	20 21
82	Furniture and parts thereof; bedding, mattresses, mattress supports, cushions and similar stuffed furnishings	7	9	10	—	14 19
83	Travel goods, handbags and similar containers	2	2	3	—	5 5
84	Articles of apparel and clothing accessories	16	19	23	0.1	41 41
85	Footwear	4	4	6	—	8 10
87	Professional, scientific and controlling instruments and apparatus, n.e.s.	156	171	171	0.7	339 343
88	Photographic apparatus, equipment and supplies and optical goods, n.e.s., watches and clocks	21	21	22	0.1	45 42
89	Miscellaneous manufactured articles, n.e.s.	191	209	217	0.9	343 426
	<i>Total Miscellaneous manufactured articles</i>	407	444	463	1.9	815 908
9	Commodities and transactions not classified elsewhere in the SITC					
93	Special transactions and commodities not classified according to kind	106	138	110	0.5	249 247
95	Gold coin whether or not legal tender, and other coin being legal tender	31	46	129	0.5	34 176
96	Coin (excl. gold coin) not being legal tender	—	—	—	—	—
97	Gold, non-monetary (excl. gold ores and concentrates)	695	1 276	1 585	6.6	2 047 2 861
98	Combined confidential items excl. some of SITC 280 (exports only) and some of SITCs 510 and 520 (imports only)	474	521	700	2.9	1 564 1 221
	<i>Commodities and transactions not classified elsewhere in the SITC</i>	1 307	1 982	2 523	10.4	3 894 4 505
	Total merchandise exports	22 194	22 172	24 154	100.0	42 145 46 327
	Balance of Payments Adjustments	99	144	721	. .	207 864
	Goods Credits (exports) on a Balance of Payments Basis	22 293	22 316	24 875	. .	42 352 47 191

. . not applicable
 — nil or rounded to zero (including null cells)

- (a) Some SITC sections and divisions exclude commodities subject to a confidentiality restriction. These are included in Division 98. For more information see paragraph 26 of the Explanatory Notes.
 (b) Per cent of total merchandise is calculated for the most recent month.

				Per cent of total merchandise imports(b)	2 MONTHS ENDED AUGUST		
	Jun 2011	Jul 2011	Aug 2011		2010	2011	
					\$m	\$m	
				%			
MAJOR COMMODITIES (c)							
333	Crude petroleum oils	2 149	1 591	1 952	9.5	2 799	3 543
334	Refined petroleum oils	1 143	1 185	1 155	5.6	1 436	2 340
542	Medicaments	642	795	783	3.8	1 441	1 578
723	Civil engineering and contractors' plant and equipment	311	388	460	2.2	551	848
752	Automatic data processing machines	624	590	559	2.7	1 211	1 149
761	Televisions, monitors and projectors	218	179	254	1.2	515	434
764	Telecommunications equipment	695	654	670	3.3	1 289	1 324
781	Motor cars for the transport of persons	1 235	1 388	1 147	5.6	2 549	2 535
782	Motor vehicles for the transport of goods	465	611	607	3.0	941	1 218
784	Parts and accessories of the motor vehicles	210	229	250	1.2	452	479
821	Furniture, bedding, mattresses and supports, and stuffed furnishings	215	221	260	1.3	485	480
874	Measuring, checking, analysing and controlling instruments and apparatus n.e.s.	231	211	224	1.1	450	435
971	Gold, non-monetary	390	543	716	3.5	651	1 259
SECTION AND DIVISION OF THE SITC							
0	Food and live animals						
00	Live animals other than fish, crustaceans, molluscs and aquatic invertebrates	9	5	11	0.1	17	16
01	Meat and meat preparations	48	51	47	0.2	96	99
02	Dairy products and birds' eggs	54	55	59	0.3	117	114
03	Fish (not marine mammals), crustaceans, molluscs and aquatic invertebrates, and preparations thereof	101	90	105	0.5	201	194
04	Cereals and cereal preparations	63	63	80	0.4	151	144
05	Vegetables and fruit	145	141	168	0.8	264	309
06	Sugars, sugar preparations and honey	34	22	30	0.1	51	51
07	Coffee, tea, cocoa, spices, and manufactures thereof	107	105	121	0.6	214	227
08	Feeding stuff for animals (excl. unmilled cereals)	53	27	85	0.4	107	111
09	Miscellaneous edible products and preparations	124	127	161	0.8	288	288
	<i>Total Food and live animals</i>	738	687	866	4.2	1 507	1 553
1	Beverages and tobacco						
11	Beverages	92	116	144	0.7	246	260
12	Tobacco and tobacco manufactures	20	16	25	0.1	43	41
	<i>Total Beverages and tobacco</i>	112	132	168	0.8	289	301
2	Crude materials, inedible, except fuels						
21	Hides, skins and furskins, raw	—	—	—	—	—	—
22	Oil-seeds and oleaginous fruits	3	2	4	—	7	6
23	Crude rubber (incl. synthetic and reclaimed)	12	9	14	0.1	24	24
24	Cork and wood	47	48	59	0.3	121	107
25	Pulp and waste paper	14	17	25	0.1	36	41
26	Textile fibres and their wastes (not manufactured into yarn or fabric)	9	10	8	—	20	17
27	Crude fertilizers (excl. those of Division 56) and crude minerals (excl. coal, petroleum and precious stones)	31	15	16	0.1	48	31
28	Metalliferous ores and metal scrap	84	163	85	0.4	132	248
29	Crude animal and vegetable materials, n.e.s.	24	25	28	0.1	49	52
	<i>Total Crude materials, inedible, except fuels</i>	224	288	238	1.2	437	526
3	Mineral fuels, lubricants and related materials						
32	Coal, coke and briquettes	4	9	3	—	2	13
33	Petroleum, petroleum products and related materials	3 349	2 836	3 170	15.4	4 338	6 006
34	Gas, natural and manufactured	151	224	221	1.1	446	444
	<i>Total Mineral fuels, lubricants and related materials</i>	3 504	3 069	3 394	16.5	4 786	6 463

— nil or rounded to zero (including null cells)

(a) Some SITC sections and divisions exclude commodities subject to a confidentiality restriction. These are included in Division 98. For more information see paragraph 26 of the Explanatory Notes.

(b) Per cent of total merchandise is calculated for the most recent month.

(c) The 'Major commodities' section lists commodities at the SITC Rev 4 3-digit level which are the most significant (by value) or are of particular interest. Abbreviated descriptors have been used. The list of 'Major commodities' is reviewed annually.

				Per cent of total merchandise imports(b)	2 MONTHS ENDED AUGUST		
	Jun	Jul	Aug			
	2011	2011	2011		2010	2011	
	\$m	\$m	\$m	%	\$m	\$m	
SECTION AND DIVISION OF THE SITC							
4	Animal and vegetable oils, fats and waxes						
41	Animal oils and fats	3	2	7	—	9	9
42	Fixed vegetable fats and oils, crude, refined or fractionated	33	30	34	0.2	94	65
43	Fats and oils (processed), waxes and inedible mixtures or preparations, of animal or vegetable n.e.s.	4	5	6	—	10	11
	<i>Total Animal and vegetable oils, fats and waxes</i>	40	38	47	0.2	113	85
5	Chemicals and related products, nes						
51	Organic chemicals	239	195	222	1.1	667	417
52	Inorganic chemicals	100	150	152	0.7	210	303
53	Dyeing, tanning and colouring materials	57	51	54	0.3	114	105
54	Medicinal and pharmaceutical products	830	982	948	4.6	1 736	1 929
55	Essential oils and resinoids and perfume materials; toilet, polishing and cleansing preparations	150	146	179	0.9	326	325
56	Fertilisers (excl. crude)	102	135	105	0.5	110	240
57	Plastics in primary forms	124	123	140	0.7	274	264
58	Plastics in non-primary forms	109	106	129	0.6	254	235
59	Chemical materials and products, n.e.s.	186	151	199	1.0	363	350
	<i>Total Chemicals and related products, n.e.s.</i>	1 898	2 040	2 128	10.4	4 055	4 168
6	Manufactured goods classified chiefly by material						
61	Leather, leather manufactures, and dressed furskins, n.e.s.	13	11	16	0.1	29	26
62	Rubber manufactures, n.e.s.	300	304	338	1.6	504	642
63	Cork and wood manufactures (excl. furniture)	59	61	70	0.3	124	131
64	Paper, paperboard and articles of paper pulp, of paper or of paperboard	211	214	245	1.2	518	459
65	Textile yarn, fabrics, made-up articles n.e.s., and related products	192	194	240	1.2	442	434
66	Non-metallic mineral manufactures, n.e.s.	190	178	218	1.1	431	396
67	Iron and steel	344	274	329	1.6	744	603
68	Non-ferrous metals	270	438	456	2.2	417	894
69	Manufactures of metals, n.e.s.	434	434	687	3.3	948	1 121
	<i>Total Manufactured goods classified chiefly by material</i>	2 014	2 107	2 599	12.7	4 158	4 706
7	Machinery and transport equipment						
71	Power generating machinery and equipment	347	373	390	1.9	734	764
72	Machinery specialized for particular industries	661	727	897	4.4	1 277	1 624
73	Metal working machinery	55	55	53	0.3	106	109
74	General industrial machinery and equipment, n.e.s. and machine parts, n.e.s.	779	862	982	4.8	1 724	1 844
75	Office machines and automatic data processing machines	888	822	820	4.0	1 754	1 642
76	Telecommunications and sound recording and reproducing apparatus and equipment	992	898	1 008	4.9	1 958	1 906
77	Electrical machinery, apparatus, appliances, parts (incl. non-elec. counterparts of electrical domestic equip)	1 039	876	986	4.8	1 856	1 861
78	Road vehicles (incl. air-cushion vehicles)	2 031	2 368	2 179	10.6	4 268	4 547
79	Transport equipment (excl. road vehicles)	108	1 202	119	0.6	529	1 321
	<i>Total Machinery and transport equipment</i>	6 899	8 183	7 434	36.2	14 206	15 617

— nil or rounded to zero (including null cells)

(b) Per cent of total merchandise is calculated for the most recent month.

(a) Some SITC sections and divisions exclude commodities subject to a confidentiality restriction. These are included in Division 98. For more information see paragraph 26 of the Explanatory Notes.

	Jun 2011	Jul 2011	Aug 2011	Per cent of total merchandise imports(b)	2 MONTHS ENDED AUGUST	
					2010	2011
					\$m	\$m
SECTION AND DIVISION OF THE SITC						
8	Miscellaneous manufactured articles					
81	Prefabricated buildings; sanitary, plumbing, heating and lighting fixtures and fittings, n.e.s.	92	81	111	0.5	162 193
82	Furniture, parts thereof; bedding, mattresses, mattress supports, cushions and similar stuffed furnishings	215	221	260	1.3	485 480
83	Travel goods, handbags and similar containers	62	61	74	0.4	138 135
84	Articles of apparel and clothing accessories	430	461	562	2.7	993 1 022
85	Footwear	87	109	141	0.7	268 249
87	Professional, scientific and controlling instruments and apparatus, n.e.s.	406	388	413	2.0	826 801
88	Photographic apparatus, equipment and supplies and optical goods, n.e.s., watches and clocks	109	112	126	0.6	237 238
89	Miscellaneous manufactured articles, n.e.s.	828	791	895	4.4	1 720 1 686
	<i>Total Miscellaneous manufactured articles</i>	2 228	2 223	2 582	12.6	4 829 4 805
9	Commodities and transactions not classified elsewhere in the SITC					
93	Special transactions and commodities not classified according to kind	2	3	6	—	6 9
95	Gold coin whether or not legal tender, and other coin being legal tender	1	2	1	—	1 3
96	Coin (excl. gold coin) not being legal tender	—	1	1	—	— 2
97	Gold, non-monetary (excl. gold ores and concentrates)	390	543	716	3.5	651 1 259
98	Combined confidential items excl. some of SITC 280 (exports only) and some of SITCs 510 and 520 (imports only)	346	401	339	1.7	1 140 741
	<i>Total Commodities and transactions not classified elsewhere in the SITC</i>	740	950	1 064	5.2	1 799 2 013
	Total merchandise imports	18 398	19 715	20 521	100.0	36 179 40 236
	Balance of Payments Adjustments	827	-393	405	..	622 12
	Goods Debits (imports) on a Balance of Payments Basis	19 225	19 322	20 926	..	36 801 40 248

.. not applicable
 — nil or rounded to zero (including null cells)

(a) Some SITC sections and divisions exclude commodities subject to a confidentiality restriction. These are included in Division 98. For more information see paragraph 26 of the Explanatory Notes.
 (b) Per cent of total merchandise is calculated for the most recent month.

	EXPORTS				IMPORTS (b)				BALANCE OF MERCHANDISE TRADE	
	2010-11	Aug 2011	2	2	2010-11	Aug 2011	2	2	2010-11	August 2011
			months ended August 2010	months ended August 2011			Months Ended August 2010	Months Ended August 2011		
	\$m	\$m	\$m	\$m	\$m	\$m	\$m	\$m	\$m	\$m
Belgium	1 329	79	237	151	1 644	137	284	246	-315	-95
Brazil	1 519	51	481	270	882	88	114	142	637	129
Canada	1 345	125	254	203	1 762	145	371	293	-417	-91
China	64 866	6 633	10 471	12 377	41 109	3 767	7 139	7 001	23 757	5 376
Denmark	153	14	24	27	941	83	154	153	-787	-127
Egypt(c)	593	21	95	96	39	2	6	16	554	80
Fiji	300	33	54	61	187	19	38	31	113	30
Finland	226	17	18	91	862	82	110	161	-637	-70
France	1 123	121	184	199	3 798	390	709	690	-2 675	-491
Germany	2 115	243	259	410	10 247	1 014	1 798	1 991	-8 132	-1 581
Hong Kong (SAR of China)	3 259	201	484	450	1 153	107	223	201	2 106	249
India	15 767	1 110	2 900	2 014	2 083	198	346	337	13 684	1 677
Indonesia	4 780	382	815	1 031	5 755	594	965	949	-975	82
Iran	157	8	14	13	121	34	28	36	36	-23
Iraq	327	24	13	81	—	—	—	—	327	81
Ireland	123	10	30	18	2 177	168	419	386	-2 054	-368
Israel	227	34	50	62	608	65	101	112	-380	-50
Italy	1 272	104	217	223	4 845	483	889	898	-3 573	-675
Japan	46 945	4 870	8 737	9 422	16 685	1 691	2 916	3 481	30 260	5 941
Korea, Republic of	22 538	2 081	3 764	3 907	6 984	481	1 151	1 038	15 554	2 870
Kuwait	617	50	85	86	317	73	—	109	301	-23
Malaysia	4 059	385	669	741	8 814	639	1 794	1 189	-4 756	-448
Mexico	888	134	103	202	1 592	130	258	298	-705	-97
Netherlands	3 024	296	519	552	1 385	157	235	288	1 640	265
New Zealand	7 686	769	1 403	1 425	7 364	692	1 208	1 315	322	110
Pakistan	381	26	67	51	175	12	25	25	207	26
Papua New Guinea	2 213	192	348	386	3 474	266	480	506	-1 261	-120
Philippines	1 482	122	245	240	442	40	82	76	1 040	164
Saudi Arabia	1 502	101	243	215	369	35	29	62	1 132	153
Singapore	5 443	534	1 079	1 341	11 413	1 082	1 554	3 243	-5 970	-1 903
South Africa	1 615	168	277	346	1 006	69	198	137	610	209
Spain	861	123	139	167	1 702	150	320	322	-841	-155
Sweden	496	25	99	49	2 315	230	393	421	-1 819	-371
Switzerland	410	57	63	130	2 515	329	374	552	-2 105	-421
Taiwan	9 111	857	1 613	1 620	3 616	356	638	683	5 496	937
Thailand	6 956	661	1 280	1 096	9 117	789	1 536	1 644	-2 162	-548
Turkey	427	59	47	138	485	36	66	68	-58	70
United Arab Emirates	2 199	223	369	420	3 130	436	391	711	-931	-291
United Kingdom	6 604	1 024	770	1 909	5 985	692	1 003	1 356	618	553
United States of America	9 070	866	1 638	1 819	23 229	2 333	3 817	4 484	-14 159	-2 665
Viet Nam	1 802	226	255	337	2 668	465	431	698	-866	-362
Other Countries(b)	9 800	1 094	1 736	1 950	21 145	1 960	3 585	3 886	-11 345	-1 936
Total	245 618	24 154	42 145	46 327	214 147	20 521	36 179	40 236	31 471	6 091
APEC	193 896	19 231	33 359	36 903	148 524	14 099	25 120	28 051	45 373	8 852
ASEAN	24 687	2 323	4 372	4 814	39 393	3 818	6 528	8 114	-14 706	-3 299
Developing Countries	155 313	14 598	26 373	28 048	110 221	10 474	18 191	20 704	45 093	7 344
Least Developed Countries	2 284	229	440	444	378	64	54	98	1 906	345
European Union(d)	17 785	2 113	2 639	3 875	38 514	3 859	6 785	7 407	-20 729	-3 532
OECD	107 641	11 201	18 657	21 320	101 722	9 915	17 480	19 360	5 919	1 959

— nil or rounded to zero (including null cells)

(a) See Time series spreadsheets for details of all countries.

(b) From September 2008 imports data with confidentiality restrictions 'no commodity details' or 'no value details' are included in Other countries.

(c) Exports of Alumina to Egypt are excluded from country total and included in the 'Other Countries' category.

(d) The European Union includes 27 member countries for all periods.

	2 MONTHS ENDED AUGUST			
	2010-11	Aug 2011	2010	2011
	\$m	\$m	\$m	\$m
EXPORTS (a)				
New South Wales	36 357	3 772	5 953	7 215
Victoria	19 650	1 849	3 291	3 559
Queensland	49 329	4 793	9 848	9 388
South Australia	11 195	982	1 799	2 053
Western Australia	112 098	11 189	18 439	21 205
Tasmania	3 177	295	581	526
Northern Territory	5 302	500	895	877
Australian Capital Territory	3	—	1	—
State not available for publication(b)	446	81	54	145
Re-exports	8 061	694	1 285	1 357
Total	245 618	24 154	42 145	46 327
IMPORTS				
New South Wales	81 481	7 570	14 256	14 386
Victoria	56 807	5 223	9 690	9 834
Queensland	33 086	3 321	5 358	6 551
South Australia	6 529	635	1 038	1 252
Western Australia	25 955	2 998	3 965	6 712
Tasmania	637	61	89	98
Northern Territory	3 690	372	643	662
Australian Capital Territory	7	—	1	—
State not available for publication(c)	5 956	339	1 140	741
Total	214 147	20 521	36 179	40 236

— nil or rounded to zero (including null cells)

(a) State in which the final stage of production or manufacture occurs.

(b) Exports of Alumina to Bahrain, Egypt and Iceland are excluded from the state totals and included in 'State not available for publication'.

(c) From September 2008 imports data with confidentiality restrictions 'no commodity details' or 'no value details' are included in State not available for publication.

PERIOD AVERAGE EXCHANGE RATES(a), Per Australian dollar

<i>Period</i>	<i>United States dollar</i>	<i>UK pound sterling</i>	<i>Euro</i>	<i>Japanese yen</i>	<i>Special Drawing Right</i>	<i>Trade-weighted index of value of the A\$(b)</i>
FINANCIAL YEAR						
2008-09	0.7456	0.4621	0.5414	73.99	0.4869	60.2
2009-10	0.8830	0.5590	0.6362	80.77	0.5710	68.9
2010-11	0.9891	0.6213	0.7248	82.10	0.6346	74.0
MONTHS						
2010						
June	0.8529	0.5777	0.6976	77.48	0.5808	67.7
July	0.8743	0.5725	0.6852	76.63	0.5821	68.2
August	0.9000	0.5747	0.6976	76.87	0.5928	69.5
September	0.9358	0.6010	0.7169	78.99	0.6138	71.5
October	0.9812	0.6190	0.7060	80.26	0.6251	73.2
November	0.9902	0.6198	0.7239	81.61	0.6338	74.0
December	0.9909	0.6347	0.7497	82.58	0.6454	74.7
2011						
January	0.9941	0.6305	0.7457	82.16	0.6434	74.3
February	1.0086	0.6252	0.7383	83.29	0.6457	75.1
March	1.0100	0.6250	0.7217	82.60	0.6394	74.8
April	1.0554	0.6458	0.7311	88.09	0.6616	77.4
May	1.0688	0.6537	0.7448	86.75	0.6687	77.9
June	1.0603	0.6535	0.7368	85.35	0.6631	77.0
July	1.0766	0.6674	0.7532	85.52	0.6749	77.7
August	1.0485	0.6409	0.7312	80.83	0.6529	75.3

(a) These exchange rates and the trade-weighted index are derived using rates provided by the Reserve Bank of Australia in respect of each trading day.

(b) May 1970 = 100. The Trade-weighted index is reweighted annually on 1 October and on special occasions as required.

	2008-09	2009-10	2010-11	Feb 2011	Mar 2011	Apr 2011	May 2011	Jun 2011	Jul 2011
	\$m	\$m	\$m	\$m	\$m	\$m	\$m	\$m	\$m
BALANCE									
On goods and services	-269	-644	35	-85	-98	136	346	210	-45
CREDITS									
Total goods and services	130	-370	-662	-97	-101	-3	173	-46	75
<i>Total goods</i>	59	-58	220	13	11	-23	147	76	-34
Rural goods	46	—	-21	4	—	—	-1	-31	-43
Non-rural goods	13	-58	344	11	15	12	180	137	43
Net exports of goods under merchanting	—	—	-96	1	-2	-33	-33	-30	-34
Non-monetary gold	—	—	-7	-3	-2	-2	1	—	—
<i>Total services</i>	71	-312	-882	-110	-112	20	26	-122	109
DEBITS									
Total goods and services	-399	-274	697	12	3	139	173	256	-120
<i>Total goods</i>	-241	-319	-304	-21	-28	-32	-27	-22	-21
Consumption goods	—	—	8	4	—	2	2	—	1
Capital goods	-579	-480	-516	-37	-38	-59	-37	-78	-48
Intermediate and other merchandise goods	119	161	204	12	10	25	8	56	26
Non-monetary gold	219	—	—	—	—	—	—	—	—
<i>Total services</i>	-158	45	1 001	33	31	171	200	278	-99

— nil or rounded to zero (including null cells)

(a) This table is presented consistent with BPM6 sign conventions. This means for the balance on goods and services a negative revision indicates a decrease in a surplus or an increase in a deficit. For debits a negative revision indicates an increase in debits while a positive revision indicates a decrease in debits.

EXPLANATORY NOTES

INTRODUCTION

1 This publication presents preliminary estimates of Australia's international trade in goods and services on a balance of payments basis (tables 1–11 and 17) and merchandise import and export statistics on a recorded trade basis (tables 12–15). In addition, table 16 Exchange rates and trade-weighted indexes are derived by using exchange rates and indexes provided by the Reserve Bank of Australia.

2 Merchandise trade statistics on a recorded trade basis are compiled from information submitted by exporters and importers or their agents to the Australian Customs and Border Protection Service (Customs and Border Protection). Adjustments for coverage, timing and valuation are made to recorded trade data to convert them to a balance of payments basis. The services data are sourced from the quarterly Survey of International Trade in Services and a range of administrative data and indicator series.

3 More comprehensive quarterly estimates of Australia's trade in goods and services, together with comprehensive details of Australia's balance of payments are included in the quarterly publication, *Balance of Payments and International Investment Position, Australia* (cat. no. 5302.0). Detailed monthly statistics on merchandise trade are available in Time Series Spreadsheets on the ABS website or by subscription to tailored services. More information on the *International Trade in Services by Country, by State and by Detailed Services Category* are available on a financial year basis (cat. no. 5368.0.55.003) following the September issue of this publication and calendar year basis (cat. no. 5368.0.55.004) following the March issue of this publication.

CONCEPTS, SOURCES AND METHODS

4 The conceptual framework used in compiling Australia's merchandise trade statistics can be found in *International Merchandise Trade, Australia: Concepts, Sources and Methods, 2001* (cat. no. 5489.0).

5 The conceptual framework used in compiling Australia's balance of payments statistics is based on the International Monetary Fund's *Balance of Payments and International Investment Position Manual, Sixth Edition* (BPM6). Descriptions of the underlying concepts and structure of the balance of payments and the sources, methods and terms used in compiling estimates are presented in the publication *Balance of Payments and International Investment Position, Australia: Concepts, Sources and Methods, 1998* (cat. no. 5331.0). This version reflects the international standards prior to BPM6 and is currently being revised. The first part of the revised document was released on 8 March 2011, featuring only the Goods Account. Other components will be released as they become available. Further information on the key changes introduced with BPM6 can be found in the *Information paper: Implementation of new international statistical standards in the ABS National and International Accounts, September 2009* (cat. no. 5310.0.55.002).

6 To bring merchandise trade statistics on a recorded trade basis to a balance of payments basis, timing adjustments are made to ensure that the transaction is recorded in the period in which ownership changed, rather than in the period in which the transaction was recorded by Customs and Border Protection or the period in which the goods arrived in/departed from an Australian port. Adjustments are also made to account for the change of ownership of goods not included in merchandise trade statistics. Chapter 6 of cat. no. 5331.0 provides more detail on the relationship between statistics on international merchandise trade on a recorded trade basis and on a balance of payments basis.

7 Recorded trade exports data presented for recent months in tables 12–15 of this publication are based on information initially reported by exporters to Customs and Border Protection. At the time of initial reporting to Customs and Border Protection the final prices may not be known for some commodities. Therefore, the information recorded for recent months for commodities like iron ore and coal can include a variety of prices including previous or current contract prices and the prevailing spot prices.

EXPLANATORY NOTES *continued*

CONCEPTS, SOURCES AND METHODS *continued*

Newly negotiated contract prices may not be fully reflected in the data first reported to Customs and Border Protection, and to compensate for this, the balance of payments series may reflect adjusted price levels.

8 The Concepts, Sources and Methods publications and information papers are available to download for free from the ABS website. Select *Statistics*, then select *By Catalogue Number*, and then the catalogue numbers as above.

CLASSIFICATIONS

9 The merchandise trade data on a recorded trade basis are presented using the following commodity classifications:

- the Harmonized System 2007 (available on request)
- the Standard International Trade Classification (SITC Revision 4)
- the Classification by Broad Economic Categories (BEC)
- the industry classification: Australian and New Zealand Standard Industrial Classification, 2006 (ANZSIC 06) from July 2005.

10 The Balance of Payments 'goods and services' series are presented according to three classifications with the goods classifications derived from SITC Revision 4 and BEC. The classifications are:

- for goods:
 - the Balance of Payments Commodities for Exports (BoPCE)
 - the Balance of Payments Broad Economic Categories (BoPBEC) for Imports
- for services:
 - the Extended Balance of Payments Services Classification (EBOPS).

ACCURACY, RELIABILITY AND REVISIONS

11 While every effort is made to ensure the accuracy and reliability of estimates, most series are subject to revision as more complete and accurate information becomes available. Care should be exercised in the use and interpretation of estimates in this publication. The transactions occurring in international trade in goods and services are of many different kinds, and therefore the compilation of trade estimates entails the use of a very wide range of statistical data of varying degrees of accuracy and timeliness. For further information on the monthly services series, see paragraph 25.

12 The revisions are applied differently for merchandise trade and balance of payments series. Each month, merchandise trade data are revised for the previous six months to incorporate latest available data.

13 For the balance of payments 'goods and services' series, in original terms, no revisions are applied in the July, October, January or April issues. This is to ensure the monthly series align with the comparable series in the *Balance of Payments and International Investment Position, Australia* (cat. no. 5302.0). In the September issue revisions can be applied to the four previous financial years. In other issues revisions can be applied to the previous and current financial years to incorporate the latest available survey and administrative data.

14 In seasonally adjusted and trend terms, revisions may occur at any time point but tend to focus on the most recent estimates. Please also refer to paragraphs 17 (seasonal adjustment) and 19 (trend estimates) below.

SIGN CONVENTION

15 In keeping with BPM6 conventions, balance of payments basis credit entries are shown with an implied positive sign and debit items are shown as negative entries. For statistics on a recorded trade basis, both imports and exports are shown without sign. The calculation of percentage changes on balance of payments debit items are made without regard to sign. References to balance of payments debit items in Key Figures, Key Points, and Analysis and Comments are also made without regard to sign.

EXPLANATORY NOTES *continued*

SEASONALLY ADJUSTED AND TREND ESTIMATES

16 The estimates of international trade in goods and services on a balance of payments basis are seasonally adjusted, however the merchandise exports and imports statistics on a recorded trade basis are not. Monthly original estimates are volatile, being subject to calendar-related and large irregular influences. Seasonally adjusted estimates are derived by estimating and removing from the original series systematic calendar related effects, such as seasonal (e.g. Christmas), trading day and moving holiday (e.g. Easter) influences. Seasonal adjustment does not aim to remove the irregular or non-seasonal influences which may be present in any particular month. These irregular influences may reflect both random economic events and difficulties of statistical recording.

17 The seasonally adjusted statistics in this publication use the concurrent seasonal adjustment technique and Autoregressive Integrated Moving Average (ARIMA) modelling to estimate factors for the current and previous months. Under concurrent seasonal adjustment, the estimates of seasonal factors are fine tuned as new or revised original estimates become available each period. The seasonally adjusted estimates are subject to revisions at each reference month as the estimates of seasonal factors are improved.

18 ARIMA modelling relies on the characteristics of the series being analysed to project future period data. ARIMA modelling is used on a case-by-case basis where it results in reduced revisions to seasonally adjusted series when subsequent data becomes available. The projected values are temporary, intermediate values, that are only used internally to improve the estimation of the seasonal factors. The projected data do not affect the original estimates and are discarded at the end of the seasonal adjustment process. The ARIMA model is assessed as part of the annual review and, following the 2011 annual review, the majority of directly seasonally adjusted trade in goods and services time series use an ARIMA model.

19 The month-to-month movements of the seasonally adjusted estimates may not be reliable indicators of underlying behaviour because they include irregular or non-seasonal movements. Trend estimates reduce the effect of these movements as they are derived by applying a 13-term Henderson moving average to the seasonally adjusted series. The 13-term Henderson moving average (like all Henderson averages) is symmetric, but as the end of a time series is approached, asymmetric forms of the average are applied. While the asymmetric weights enable trend estimates for recent months to be produced, it does result in revisions to the estimates for the most recent six months as additional observations become available. Revisions to trend estimates can also occur because of revisions to the original data and as a result of the re-estimation of the seasonal factors. Trend estimates should be used with caution, especially around the time of unusual influences, until these have been appropriately taken into account.

20 Information papers and articles on time series methods are available on the ABS website:

- for seasonal adjustment methods, see *Information Paper: An Introductory Course on Time Series Analysis, Jan 2005* (cat. no. 1346.0.55.001) and *Time Series Analysis Frequently Asked Questions, 2003* (cat. no. 1346.0.55.002)
- for ARIMA modelling, see *Feature article: Use of ARIMA modelling to reduce revisions* in the October 2004 issue of *Australian Economic Indicators* (cat. no. 1350.0)
- for trend estimates methods, see *Information Paper: A Guide to Interpreting Time Series – Monitoring Trends* (cat. no. 1349.0)
- alternatively contact the Assistant Director, Time Series Analysis on (02) 6252 6345 or e-mail: time.series.analysis@abs.gov.au.

EXPLANATORY NOTES *continued*

ECONOMIC TERRITORY

21 In accordance with BPM6 definitions, Australia's economic territory, on a balance of payments basis, is the area under the effective control of the Australian government. It includes the land area, airspace, territorial waters, including jurisdiction over fishing rights and rights to fuels and minerals. Australian economic territory also includes territorial enclaves in the rest of the world. These are clearly demarcated areas of land, located in other countries and which are owned or rented by the Australian government for diplomatic, military, scientific or other purposes. Specifically, the economic territory of Australia consists of:

- Geographic Australia which includes Cocos (Keeling) Islands and Christmas Island;
- Norfolk Island;
- Australian Antarctic Territory;
- Heard Island and McDonald Islands;
- Territory of Ashmore Reef and Cartier Island;
- Coral Sea Islands;
- Australia's territorial enclaves overseas; and
- the Joint Petroleum Development Area (joint territory between Australia and East Timor (Timor-Leste)).

22 Because of administrative complexities and measurement difficulties, Norfolk Island transactions with the rest of the world will not always be captured in all relevant balance of payments statistics. Most of the transactions involving Norfolk Island are not material to Australia's trade performance and not capturing these transactions will not distort these statistics. However, any significant transactions will be identified and included in the relevant statistics.

COMMODITY BREAKDOWN OF GOODS

23 For details of the classifications used to present goods exports (credits) and imports (debits) on a balance of payments basis, see tables 6.6 and 6.7, respectively, in *Balance of Payments and International Investment Position, Australia: Concepts, Sources and Methods* (cat. no. 5331.0).

24 The recorded trade statistics shown in tables 12 and 13 are classified by the Standard International Trade Classification (SITC). Imports and exports of goods at a more detailed level are available from the time series spreadsheets on the ABS website. All data from July 2005 are presented according to SITC Rev 4 and data prior to July 2005 are presented according to SITC Rev 3. For details refer to the 'Classifications and Standards Update' in the July 2008 issue of this publication.

MONTHLY SERVICES SERIES

25 Monthly indicators for many of the services components that are only surveyed quarterly are not available. Monthly estimates for the freight and other transportation components of services credits in table 9 are derived by dividing the quarterly estimate by three. Freight debits are derived directly from imports data for the reference month as a difference between total merchandise cost, insurance and freight (CIF) and free on board (FOB), adjusted to reflect timing and processing adjustments. For freight credits and other transportation credits and debits, estimates are derived by extrapolating the last quarter's data by an average of movements for the same quarter over the three previous years, and then dividing the estimate by three. Similarly other services estimates are derived by extrapolating the last quarter's data by an average of movements for the same quarter over the previous three years, and then dividing the estimate by three.

CONFIDENTIALITY OF MERCHANDISE TRADE STATISTICS

26 The release of statistics for certain merchandise trade commodities is restricted in order to prevent the identification of the activities of an individual business, where this is requested by the business concerned. These restrictions do not affect the total value of exports and imports, but they can affect statistics at the country, state and commodity levels. Imports data that have the confidentiality restrictions 'No commodity details' or 'No value details' are aggregated into a single confidential commodity code. For data prior to September 2008, these data are added back into the appropriate state total and

EXPLANATORY NOTES *continued*

CONFIDENTIALITY OF MERCHANDISE TRADE STATISTICS *continued*

country total (i.e. these totals show the correct level of trade). From September 2008 these confidential data are not added back. Instead the confidential data are published as 'No country details' in the country totals and 'State not available for publication' in the state totals. Therefore, country and state totals from September 2008 may not represent the actual amount of trade in each country/state but only the trade in commodities without a 'No commodity details' or 'No value details' restriction. For information on the confidentiality restrictions applied to the merchandise trade statistics in this publication, refer to the current issue of *International Merchandise Trade: Confidential Commodities List (CCL)* (cat. no. 5372.0.55.001).

TOURISM RELATED SERVICES

27 The tourism related services memorandum items provide timely indicators of the movements in tourism related activities, not an absolute measure of the level of these activities. The tourism related indicator has been derived by combining total travel services (business, education-related and other personal travel) and passenger transportation services (which includes agency fees and commissions for air transport).

SERVICES BY STATE AND BY PARTNER COUNTRY

28 Annual services data by state, by country and detailed services are released twice yearly. Calendar year data are usually released following the March issue of this publication and financial year data are usually released following the September issue. Refer to time series data under trade in services data cubes for details.

29 Services credits are classified by the state of provision, while services debits are classified by the state of consumption. The state allocations for transportation, travel, postal and courier, and telecommunication services are based on a number of indicators including merchandise trade statistics by state, overseas passenger arrivals and departures by state of clearance and data provided by the Department of Immigration and Citizenship. The allocation for other services (about 25% of all trade in services) is primarily based on the location of the business reporting the information, which serves as a proxy for the state of provision/consumption of that service. The data should be used with care but are considered suitable for analysis over time.

30 A comprehensive explanation of the data sources used and the methodology applied in the compilation of partner country statistics is provided in Chapter 17 of *Balance of Payments and International Investment Position, Australia: Concepts, Sources and Methods* (cat. no. 5331.0). Approximately 4% of total services credits and 5% of total services debits for both 2008–09 and 2009–10 were either confidential, or unable to be allocated to individual countries.

ABS DATA AVAILABLE

31 More detailed balance of payments and recorded merchandise trade data, including forward seasonal factors are available as time series spreadsheets or data cubes from the ABS website. Merchandise trade data by commodity, country and state that are not on the ABS website may be available on request. Inquiries should be made to the National Information and Referral Service as shown on the back of this publication.

RELATED PRODUCTS AND PUBLICATIONS

32 Users may also wish to refer to the following publications which can be downloaded free of charge from the ABS website by using the 'Statistics' tab and selecting the relevant catalogue number:

- *Balance of Payments and International Investment Position, Australia* (cat. no. 5302.0) – issued quarterly
- *International Merchandise Imports, Australia* (cat. no. 5439.0) – issued monthly
- *International Trade Price Indexes, Australia* (cat. no. 6457.0) – issued quarterly
- *Balance of Payments and International Investment Position, Australia: Concepts, Sources and Methods* (cat. no. 5331.0)
- *Information Paper: Quality of Australian Balance of Payments Statistics* (cat. no. 5342.0)

EXPLANATORY NOTES *continued*

RELATED PRODUCTS AND PUBLICATIONS *continued*

- *International Merchandise Trade, Australia: Concepts, Sources and Methods* (cat. no. 5489.0)
- *A Guide to Australian Balance of Payments and International Investment Position Statistics* (cat. no. 5362.0.55.001).

33 Current publications and other products released by the ABS are available from the 'Statistics' tab on the ABS website. The ABS also issues a daily *Release Advice* on the website which details products to be released in the week ahead. A *foreign trade theme page* and a *balance of payments theme page* are available on the ABS website. Select *Topics @ a Glance – Economy – Foreign Trade* or *Balance of Payments*. This page provides direct links to all foreign trade and balance of payments related data and publications, recent changes and forthcoming events, links to relevant websites and a range of other information about the Australian International Accounts.

ROUNDING

34 Where figures have been rounded, discrepancies may occur between sums of the component items and totals. Percentage movements are calculated from data at the level of precision presented in this publication (i.e. \$m) except for international merchandise trade tables.

ABBREVIATIONS

\$b	billion (thousand million) dollars
\$m	million dollars
ABS	Australian Bureau of Statistics
ANZSIC	Australian and New Zealand Standard Industrial Classification
APEC	Asia Pacific Economic Co-operation
ASEAN	Association of South-East Asian Nations
BEC	Classification by Broad Economic Categories
BoPBEC	Balance of Payments Broad Economic Categories
EMS	Environmental Management Survey
f.o.b.	free on board
n.e.s.	not elsewhere specified
n.i.e.	not included elsewhere
OECD	Organisation for Economic Co-operation and Development
SAR	Special Administrative Region
SITC	Standard International Trade Classification

APPENDIX RELATED ARTICLES

Article	Source(a)	Issue / Release
Investment		
Foreign currency exposure	5308.0	Mar qtr 2009
Foreign ownership of equity	5302.0	Sep qtr 2007
Kangaroo bonds	1301.0	2006
Gross external debt	5302.0	Sep qtr 2003
Balance of payments		
International comparison of balance of payments statistics	(b) 5363.0	1998–99
Merchandise trade		
Characteristics of Australian Exporters, 2009–10	5368.0.55.006	Mar 2011
Export and Import Invoice Currencies, Dec 2009	5368.0	Dec 2009
100 years of international trade statistics	5368.0	Oct 2007
New methodology for deriving counts of Australian exports	5368.0	Feb 2006
Australia's Importers, 2003–04	5368.0	Nov 2004
Australia's Exporters, 2003–04	5368.0	Oct 2004
Foreign ownership of Australian exporters and importers, 2002–03	5496.0.55.001	Jun 2004
Australia's trade with the USA	5368.0	Mar 2004
Major commodities traded by Australia, 1991 to 2000	(b) 5422.0	Dec qtr 2000
Trade in services		
Australian outward finance and insurance foreign affiliate trade, 2009–10	5485.0	Jun 2011
International trade in services by partner country, 2006, preliminary	5368.0	Dec 2006
Changes to International trade in services statistics, August 2006	5368.0	Aug 2006
Changes to International trade in services travel statistics	5368.0	Aug 2005
Finance		
Impact of the farm season on Australian production in 2002–03 and 2003–04	1301.0	2005
Recent trends in construction and first home buyers finance	5609.0	Mar 2002
Household sector data in the financial accounts	5232.0	Mar qtr 2002
Technical information		
Experimental Statistics on International Shipping Container Movements, 2009–10	5368.0.55.018	Sep 2011
Proposed changes to statistical codes in the HTISC, 2012	5368.0.55.016	May 2011
Proposed changes to statistical codes in the AHECC, 2012	5368.0.55.015	Mar 2011
Implementation of new international statistical standards in ABS National and International Accounts, September 2009	5310.0.55.002	Oct 2009
Impact of revised international standards on monthly International Trade in Goods and Services, August 2009	5368.0.55.014	Oct 2009
Estimation of Workers' Remittances based on Balance of Payments and International Investment Position Manual, Sixth Edition, September 2009	5302.0.55.003	Aug 2009
Revisions to international standards in quarterly Balance of Payments and International Investment Position statistics from September 2009, 2009	5302.0.55.002	Jul 2009
Changes to International Trade in Goods Statistics – Countries and Ports, July 2009	5368.0.55.013	Jul 2009
Revisions to international standards in monthly international trade in goods and services statistics from August 2009, 2009	5368.0.55.012	Jun 2009
Changes to International Trade in Goods Industry Statistics, July 2009	5368.0.55.011	Dec 2008
Technical note 1 – Income on debt	5302.0	Jun qtr 2008
Technical note 2 – Use of CDI data	5302.0	Jun qtr 2008
Impact of introducing Revision 4 of the Standard International Trade Classification, 2008	5368.0.55.010	May 2008
Changes to international trade statistics July 2008, 2007 to 2008	5368.0.55.009	Jan 2008
Introduction of revised international standards in ABS economic statistics in 2009, 2007	5310.0.55.001	Sep 2007
Changes on 1 January 2007 to Statistical Codes in the AHECC and the Customs Tariff, 2007	1233.0.55.001	Nov 2006
ABS implementation in January 2007 of revisions to international trade classifications, 2007	5368.0.55.005	Jun 2006
Revised treatment of Goods for Processing in Merchandise Trade and Balance of Payments Statistics	5368.0	May 2006
Impact of Customs and ABS changes on import statistics from October 2005	5439.0	Oct 2005
ABS management of the impact of the implementation of the imports component of the New Customs System	5439.0	Aug 2005
Changes to country and port classifications	5368.0	May 2003
Implementation of New Customs Systems	5368.0	Aug 2004
The effect of customs changes on export statistics	5422.0	Jun qtr 2002
Data confidentiality	5422.0	Dec qtr 1999

- (a) In the ABS website home page, select Statistics; By Catalogue Number; and click on the specified catalogue number and issue. Note: in some instances, a particular issue of the publication can be found in the Past & Future Releases page of the catalogue.
- (b) This article can be found in pdf format by referring to the Downloads page of the specified issue of this publication on the ABS website.

FOR MORE INFORMATION . . .

INTERNET **www.abs.gov.au** the ABS website is the best place for data from our publications and information about the ABS.

INFORMATION AND REFERRAL SERVICE

Our consultants can help you access the full range of information published by the ABS that is available free of charge from our website. Information tailored to your needs can also be requested as a 'user pays' service. Specialists are on hand to help you with analytical or methodological advice.

PHONE 1300 135 070

EMAIL client.services@abs.gov.au

FAX 1300 135 211

POST Client Services, ABS, GPO Box 796, Sydney NSW 2001

FREE ACCESS TO STATISTICS

All statistics on the ABS website can be downloaded free of charge.

WEB ADDRESS www.abs.gov.au