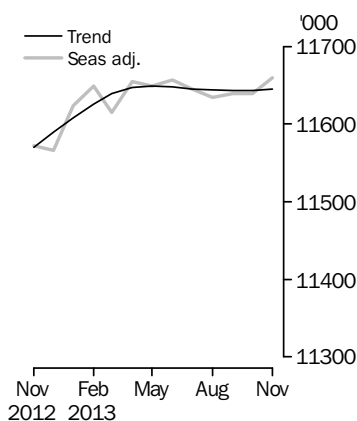


# LABOUR FORCE

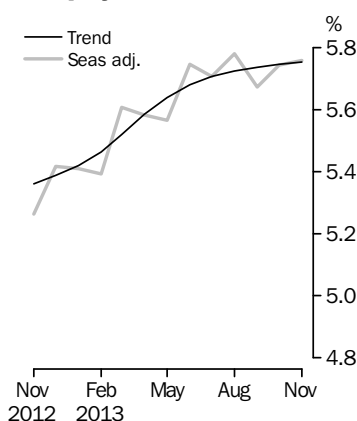
AUSTRALIA

EMBARGO: 11.30AM (CANBERRA TIME) THURS 12 DEC 2013

## Employed Persons



## Unemployment Rate



## KEY FIGURES

	Oct 2013	Nov 2013	Oct 13 to Nov 13	Nov 12 to Nov 13
<b>Trend</b>				
Employed persons ('000)	11 643.7	11 645.5	1.8	0.6 %
Unemployed persons ('000)	709.8	710.7	0.9	8.4 %
Unemployment rate (%)	5.7	5.8	0.0 pts	0.4 pts
Participation rate (%)	64.8	64.8	-0.1 pts	-0.4 pts
<b>Seasonally Adjusted</b>				
Employed persons ('000)	11 638.9	11 659.9	21.0	0.8 %
Unemployed persons ('000)	709.1	712.5	3.4	10.8 %
Unemployment rate (%)	5.7	5.8	0.0 pts	0.5 pts
Participation rate (%)	64.8	64.8	0.0 pts	-0.3 pts

## KEY POINTS

### TREND ESTIMATES (MONTHLY CHANGE)

- Employment increased to 11,645,500.
- Unemployment increased to 710,700.
- Unemployment rate increased by less than 0.1 pts to 5.8%, based on unrounded estimates.
- Participation rate at 64.8%.
- Aggregate monthly hours worked decreased to 1,641.6 million hours.

### SEASONALLY ADJUSTED ESTIMATES (MONTHLY CHANGE)

- Employment increased 21,000 to 11,659,900. Full-time employment increased 15,500 to 8,107,900 and part-time employment increased 5,500 to 3,552,000.
- Unemployment increased 3,400 (0.5%) to 712,500. The number of unemployed persons looking for full-time work decreased 3,500 to 517,700 and the number of unemployed persons looking for part-time work increased 6,800 to 194,800.
- The unemployment rate increased by less than 0.1 pts to 5.8%, based on unrounded estimates.
- The participation rate remained steady at 64.8%.
- Aggregate monthly hours worked decreased 11.7 million hours (0.7%) to 1,634.4 million hours.

### LABOUR UNDERUTILISATION (QUARTERLY CHANGE)

- Trend estimates: The labour force underutilisation rate increased 0.3 pts to 13.7%.
- Seasonally adjusted estimates: The labour force underutilisation rate decreased 0.3 pts to 13.4%. The male labour force underutilisation rate decreased 0.2 pts to 11.7%. The female labour force underutilisation rate decreased 0.3 pts to 15.6%.

## INQUIRIES

For further information about these and related statistics, contact the National Information and Referral Service on 1300 135 070, email [client.services@abs.gov.au](mailto:client.services@abs.gov.au) or Labour Force on Canberra (02) 6252 6525, email [labourforce@abs.gov.au](mailto:labourforce@abs.gov.au).

# NOTES

## FORTHCOMING ISSUES

<i>ISSUE</i>	<i>RELEASE DATE</i>
December 2013	16 January 2014
January 2014	13 February 2014
February 2014	13 March 2014
March 2014	10 April 2014
April 2014	8 May 2014
May 2014	12 June 2014

## ROUNDING

Estimates of monthly and quarterly changes shown on the front cover and used in the commentary have been calculated using unrounded estimates, and may be different from, but are more accurate than, movements obtained from the rounded estimates. The graphs on the front cover also depict unrounded estimates.

## SAMPLING ERROR

The estimates in this publication are based on a sample survey. Published estimates and the movements derived from them are subject to sampling variability. Standard errors give a measure of sampling variability (see Standard Errors section). The interval bounded by two standard errors is the 95% confidence interval, which provides a way of looking at the variability inherent in estimates. There is a 95% chance that the true value of the estimate lies within that interval.

## MOVEMENTS IN SEASONALLY ADJUSTED SERIES BETWEEN OCTOBER 2013 AND NOVEMBER 2013

	<u>Monthly change</u>	<u>95% Confidence interval</u>
Total Employment	21 000	-36 000 to 78 000
Total Unemployment	3 400	-32 600 to 39 400
Unemployment rate	0.0 pts	-0.4 pts to 0.4 pts
Participation rate	0.0 pts	-0.4 pts to 0.4 pts

Brian Pink  
Australian Statistician

# LABOUR FORCE COMMENTARY NOVEMBER 2013

## NATIONAL ESTIMATES

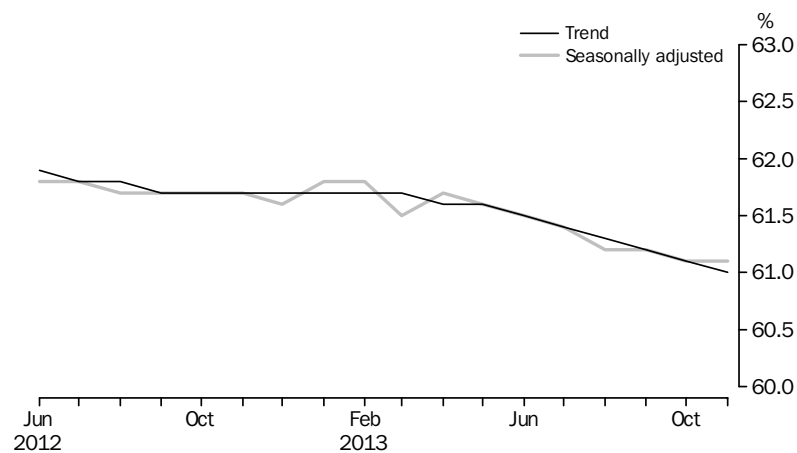
Australia's unemployment rate increased by less than 0.1 percentage points to 5.8% in November 2013 (seasonally adjusted) when calculated using unrounded estimates, while in trend terms the unemployment rate also increased by less than 0.1 percentage points to 5.8% following a revision to the October estimate. The number of unemployed persons increased by 3,400 to 712,500 in November 2013 (seasonally adjusted), while in trend terms the number of unemployed persons in November 2013 rose by 900 to 710,700.

The seasonally adjusted underemployment rate decreased 0.2 percentage points to 7.6 per cent in November 2013. Combined with the unemployment rate of 5.8 per cent, the latest seasonally adjusted estimate of total labour force underutilisation decreased 0.3 percentage points to 13.4 per cent in November. In trend terms, the underemployment rate increased 0.1 percentage points to 7.8 per cent in November 2013 and total labour force underutilisation increased 0.3 percentage points to 13.7 per cent.

November 2013 saw the seasonally adjusted participation rate remain steady at 64.8%. The trend participation rate decreased 0.1 percentage points to 64.8% in November 2013 when calculated using unrounded estimates.

The seasonally adjusted number of employed persons increased by 21,000 in November 2013 to 11,659,900 persons. In trend terms, employment increased by 1,800 persons to 11,645,500 persons in November 2013. The employment to population ratio, which expresses the number of employed persons as a percentage of the civilian population aged 15 years and over, remained steady at 61.1% (seasonally adjusted). The trend employment to population ratio decreased 0.1 percentage points to 61.0%.

EMPLOYMENT TO POPULATION RATIO, PERSONS, June 2012 to November 2013



Seasonally adjusted full-time employment rose in November 2013, up 15,500 persons to 8,107,900 persons, while part-time employment increased by 5,500 persons to 3,552,000 persons. The increase in total employment resulted from:

- an increase in male full-time employment, up 21,500 persons
- an increase in female part-time employment, up 13,700 persons
- a decrease in male part-time employment, down 8,200 persons
- a decrease in female full-time employment, down 6,000 persons.

# LABOUR FORCE COMMENTARY NOVEMBER 2013 *continued*

## NATIONAL ESTIMATES *continued*

Seasonally adjusted aggregate hours decreased by 11.7 million hours (0.7%) in November 2013 to 1,634.4 million hours.

## STATE ESTIMATES

The largest absolute increase in seasonally adjusted employment was in Queensland, up 4,700 persons. The largest absolute decreases in seasonally adjusted employment were in Western Australia (down 2,700 persons) and Victoria (down 2,600 persons). Seasonally adjusted estimates are not published for the territories.

## UNEMPLOYMENT RATE, STATE AND TERRITORIES, October 2013 and November 2013

	TREND		SEASONALLY ADJUSTED	
	October	November	October	November
	%	%	%	%
New South Wales	5.8	5.9	5.9	5.9
Victoria	6.0	6.1	6.0	6.2
Queensland	5.8	5.7	5.9	5.6
South Australia	6.6	6.6	6.6	6.8
Western Australia	4.4	4.4	4.3	4.3
Tasmania	8.0	7.9	7.8	7.8
Northern Territory	4.9	4.7	np	np
Australian Capital Territory	4.2	4.2	np	np
<b>Australia</b>	<b>5.7</b>	<b>5.8</b>	<b>5.7</b>	<b>5.8</b>

np not available for publication but included in totals where applicable, unless otherwise indicated

## WHAT'S NEW IN THE LABOUR FORCE

### UPCOMING CHANGE TO GEOGRAPHY STANDARD USED IN THE LABOUR FORCE SURVEY

The Australian Bureau of Statistics (ABS) introduced a new geographical classification, the Australian Statistical Geography Standard (ASGS), on 1 July 2011 prior to conducting the 2011 Census of Population and Housing. The new geography standard has been designed to provide users with statistical regions that are more stable over time, consistent in size, more detailed, better representative of underlying settlement patterns and socio-economic relationships, and encompassed in a single framework. In addition, the ASGS is adaptable because, as population regions grow, consistency can be maintained with previous regions (i.e. a growing region may be split in two).

In the Labour Force Survey (LFS) geography is used to define areas from which households are selected and to disseminate regional statistics. The ABS redesigns Labour Force regions after each Census and, following the 2011 Census of Population and Housing, introduced the new geographic standard, the ASGS into the sample design.

Despite the LFS sample being selected entirely from an ASGS-based design since August 2013, the ABS is continuing to release estimates on the existing Australian Standard Geographical Classification (ASGC) basis until the December 2013 issue. From the January 2014 issue, estimates will no longer be released or available on the ASGC. Labour force estimates will be published using ASGS regions from the January 2014 issue onwards and will be backcast to October 1998.

For further information, please refer to the *Information Paper: Regional Labour Force Statistics (ABS cat. no. 6262.0)*, released today.

### UPCOMING CHANGE IN COLLECTION PROCEDURES FOR THE LABOUR FORCE SURVEY

The LFS receives a high level of cooperation from individuals in selected dwellings, with the response rate typically ranging from 95 to 97% each month. However, in recent years it has become increasingly difficult to contact persons selected in the Survey due to changes in lifestyles. This has led to significant increases in costs which are not sustainable. In response, the ABS is refining procedures for the collection of Labour Force data. As a result, from 2014 the LFS response rate is expected to range from 93 to 95% each month. Analysis undertaken by the ABS has shown that this will not have a significant impact on the quality of Labour Force estimates at the Australia and State levels. The impact on regional Labour Force data is still being assessed, but it is unlikely to be significant. Response rates for the ABS's LFS will remain higher than those for similar surveys conducted by national statistical offices in comparable countries.

This initiative is part of a broader program of ABS work to enhance the cost-effectiveness of its response follow-up strategies while maintaining the high quality of its statistics. The ABS remains committed to producing high quality labour force estimates and will continue to monitor the estimates to determine if there is any impact from the changed procedures.

### NEW RETIREMENT AND LABOUR FORCE PARTICIPATION DATA AVAILABLE

The ABS's Labour Statistics Program recently released two articles analysing retirement and labour force participation.

'Incentives to join or increase labour force participation' was included in the 28 November release of *Barriers and Incentives to Labour Force Participation, Australia, 2012-13 (cat. no. 6239.0)*. It examines some of the incentives people reported to be 'very important' to encourage them to participate (or increase participation) in the labour force. Both persons not in the labour force and those employed part-time place

NEW RETIREMENT AND  
LABOUR FORCE  
PARTICIPATION DATA  
AVAILABLE *continued*

importance on being able to work part-time hours and being able to work set hours on set days. This highlights the preference for many in these groups to engage in, or maintain, part-time employment to enable them to balance their work with other commitments. The unemployed placed importance on utilising their existing skills/experience and improving their skills through training/study. This demonstrates the importance of skills, experience and job fit in assisting them transition into employment. For females with children aged under 13 years, child care incentives were particularly important.

'Changing retirement intentions and behaviours - an age cohort analysis' was included in the 9 December release of *Retirement and Retirement Intentions, Australia, 2012-13* (cat. no. 6238.0). It compares the retirement intentions and behaviours of four age cohorts in 2012-13 against the expectations of each of the same cohorts in earlier years. The article found that in general, less people were retired in 2012-13 than expected to be when asked in 2004-05, which indicates that people are retiring later than previously intended. While people are remaining in the labour force longer than expected, the proportion of people working part-time before retirement had increased, and there was a decrease in the proportion of people working part-time hours but preferring more hours. Together these findings point to a voluntary transition to retirement through working part-time. It was also found that people were most likely to have government pension as their main source of income at retirement in 2012-13 despite most of the same cohort expecting to retire mainly on superannuation.

500TH LABOUR FORCE  
SURVEY

On Sunday 1 December, the 500th LFS went into the field for enumeration - 70 quarterly surveys between November 1960 and February 1978 followed by 430 monthly surveys between March 1978 and December 2013.

The LFS is the Bureau's longest running household survey and has provided the basis on which the ABS has built an extensive program of labour and social surveys of the Australian population. The LFS provides official statistics about the number of employed and unemployed Australians and their working arrangements.

ABS household surveys, including the LFS, draw extensively on information provided freely by individuals. Their continued cooperation is very much appreciated: without it, the wide range of population and social statistics published by the ABS would not be available.

Results from the 500th LFS will be published on 16 January 2014.

# LABOUR FORCE STATUS (AGED 15 YEARS & OVER): Trend

	EMPLOYED			UNEMPLOYED			UNEMPLOYMENT RATE		
	<i>Full time</i>	<i>Part time</i>	<i>Total</i>	<i>Looking for f/t work</i>	<i>Total</i>	<i>Labour force</i>	<i>Looking for f/t work</i>	<i>Total</i>	<i>Participation rate</i>
	'000	'000	'000	'000	'000	'000	%	%	%
MALES									
November 2010	5 169.4	1 015.0	6 184.4	243.1	312.8	6 497.2	4.5	4.8	72.7
November 2011	5 204.6	1 011.4	6 216.0	264.6	333.3	6 549.2	4.8	5.1	72.1
2012									
November	5 268.4	1 011.2	6 279.6	287.8	358.3	6 637.9	5.2	5.4	71.8
December	5 269.8	1 019.4	6 289.2	286.6	359.4	6 648.6	5.2	5.4	71.8
2013									
January	5 268.9	1 029.2	6 298.1	287.3	361.0	6 659.1	5.2	5.4	71.8
February	5 267.5	1 038.4	6 306.0	291.1	364.1	6 670.0	5.2	5.5	71.8
March	5 266.3	1 046.1	6 312.3	296.8	368.7	6 681.1	5.3	5.5	71.8
April	5 265.3	1 051.4	6 316.7	302.6	373.9	6 690.6	5.4	5.6	71.8
May	5 263.5	1 055.1	6 318.5	307.0	378.1	6 696.6	5.5	5.6	71.7
June	5 258.9	1 058.4	6 317.3	309.8	381.5	6 698.8	5.6	5.7	71.6
July	5 252.0	1 062.5	6 314.6	311.2	383.8	6 698.4	5.6	5.7	71.5
August	5 244.0	1 067.8	6 311.8	312.2	385.4	6 697.3	5.6	5.8	71.4
September	5 236.7	1 072.9	6 309.6	313.6	386.9	6 696.5	5.6	5.8	71.3
October	5 230.6	1 077.4	6 308.0	315.2	388.5	6 696.5	5.7	5.8	71.2
November	5 226.2	1 080.9	6 307.2	316.7	389.6	6 696.8	5.7	5.8	71.2
FEMALES									
November 2010	2 786.0	2 342.5	5 128.5	179.3	294.1	5 422.7	6.0	5.4	59.0
November 2011	2 826.5	2 381.7	5 208.2	185.5	294.0	5 502.1	6.2	5.3	58.9
2012									
November	2 871.4	2 419.7	5 291.1	187.2	297.1	5 588.1	6.1	5.3	58.8
December	2 872.3	2 428.3	5 300.5	188.7	300.5	5 601.0	6.2	5.4	58.9
2013									
January	2 872.4	2 438.0	5 310.3	191.0	304.2	5 614.5	6.2	5.4	58.9
February	2 872.8	2 446.9	5 319.7	194.0	307.7	5 627.4	6.3	5.5	58.9
March	2 873.8	2 452.8	5 326.6	197.8	311.3	5 637.9	6.4	5.5	59.0
April	2 875.5	2 454.8	5 330.3	201.6	315.0	5 645.3	6.6	5.6	59.0
May	2 876.8	2 454.1	5 331.0	204.8	318.1	5 649.0	6.6	5.6	58.9
June	2 877.8	2 452.8	5 330.7	206.5	319.9	5 650.6	6.7	5.7	58.8
July	2 878.7	2 452.3	5 331.0	206.6	321.0	5 652.1	6.7	5.7	58.8
August	2 879.2	2 453.2	5 332.3	205.6	321.5	5 653.9	6.7	5.7	58.7
September	2 878.8	2 455.1	5 334.0	204.1	321.6	5 655.6	6.6	5.7	58.7
October	2 877.9	2 457.8	5 335.7	202.4	321.4	5 657.0	6.6	5.7	58.6
November	2 877.2	2 461.1	5 338.3	200.8	321.1	5 659.4	6.5	5.7	58.6
PERSONS									
November 2010	7 955.4	3 357.6	11 313.0	422.4	607.0	11 919.9	5.0	5.1	65.8
November 2011	8 031.1	3 393.1	11 424.1	450.1	627.2	12 051.4	5.3	5.2	65.4
2012									
November	8 139.8	3 430.9	11 570.7	475.0	655.4	12 226.1	5.5	5.4	65.2
December	8 142.1	3 447.7	11 589.7	475.3	659.9	12 249.6	5.5	5.4	65.2
2013									
January	8 141.3	3 467.1	11 608.4	478.3	665.2	12 273.6	5.5	5.4	65.3
February	8 140.3	3 485.3	11 625.6	485.1	671.8	12 297.4	5.6	5.5	65.3
March	8 140.1	3 498.9	11 638.9	494.6	680.0	12 319.0	5.7	5.5	65.3
April	8 140.8	3 506.2	11 647.0	504.2	688.9	12 336.0	5.8	5.6	65.3
May	8 140.3	3 509.2	11 649.5	511.7	696.2	12 345.7	5.9	5.6	65.2
June	8 136.8	3 511.2	11 648.0	516.2	701.4	12 349.4	6.0	5.7	65.2
July	8 130.7	3 514.9	11 645.6	517.8	704.9	12 350.5	6.0	5.7	65.1
August	8 123.2	3 521.0	11 644.2	517.8	706.9	12 351.1	6.0	5.7	65.0
September	8 115.5	3 528.0	11 643.5	517.6	708.5	12 352.1	6.0	5.7	64.9
October	8 108.5	3 535.2	11 643.7	517.7	709.8	12 353.5	6.0	5.7	64.8
November	8 103.5	3 542.0	11 645.5	517.4	710.7	12 356.2	6.0	5.8	64.8

LABOUR FORCE STATUS (AGED 15 YEARS & OVER): **Seasonally Adjusted**

	EMPLOYED			UNEMPLOYED			UNEMPLOYMENT RATE		
	<i>Full time</i>	<i>Part time</i>	<i>Total</i>	<i>Looking for f/t work</i>	<i>Total</i>	<i>Labour force</i>	<i>Looking for f/t work</i>	<i>Total</i>	<i>Participation rate</i>
	'000	'000	'000	'000	'000	'000	%	%	%
MALES									
November 2010	5 180.4	1 021.4	6 201.8	245.9	312.3	6 514.1	4.5	4.8	72.9
November 2011	5 192.7	1 032.5	6 225.1	264.3	336.1	6 561.3	4.8	5.1	72.3
2012									
November	5 275.3	1 005.9	6 281.2	281.4	352.9	6 634.1	5.1	5.3	71.8
December	5 269.0	1 017.4	6 286.4	289.7	362.0	6 648.4	5.2	5.4	71.8
2013									
January	5 272.0	1 021.2	6 293.2	284.5	361.8	6 654.9	5.1	5.4	71.8
February	5 255.0	1 067.7	6 322.7	279.4	357.1	6 679.8	5.0	5.3	71.9
March	5 261.5	1 037.0	6 298.6	307.2	377.1	6 675.7	5.5	5.6	71.7
April	5 271.5	1 042.4	6 313.8	303.4	369.4	6 683.3	5.4	5.5	71.7
May	5 269.2	1 057.9	6 327.0	305.5	372.5	6 699.5	5.5	5.6	71.8
June	5 260.5	1 062.4	6 322.9	314.2	390.5	6 713.4	5.6	5.8	71.8
July	5 253.9	1 061.4	6 315.3	312.3	386.5	6 701.8	5.6	5.8	71.6
August	5 237.4	1 067.6	6 305.1	309.5	386.2	6 691.3	5.6	5.8	71.4
September	5 244.0	1 062.0	6 306.0	308.1	377.4	6 683.4	5.5	5.6	71.2
October	5 214.4	1 089.6	6 304.0	319.1	389.9	6 693.9	5.8	5.8	71.2
November	5 235.9	1 081.4	6 317.3	319.0	393.9	6 711.2	5.7	5.9	71.3
FEMALES									
November 2010	2 804.7	2 336.2	5 140.9	182.0	301.8	5 442.7	6.1	5.5	59.2
November 2011	2 818.1	2 393.6	5 211.7	184.8	295.4	5 507.1	6.2	5.4	59.0
2012									
November	2 870.5	2 420.4	5 290.9	184.7	289.9	5 580.8	6.0	5.2	58.7
December	2 855.2	2 424.2	5 279.4	190.0	300.3	5 579.7	6.2	5.4	58.7
2013									
January	2 881.1	2 449.8	5 330.9	189.7	303.1	5 634.1	6.2	5.4	59.1
February	2 878.2	2 448.3	5 326.5	193.5	306.8	5 633.2	6.3	5.4	59.0
March	2 864.1	2 451.9	5 316.0	196.9	312.8	5 628.8	6.4	5.6	58.9
April	2 883.0	2 458.2	5 341.2	202.1	319.8	5 661.0	6.5	5.6	59.1
May	2 874.7	2 447.7	5 322.4	203.7	314.2	5 636.5	6.6	5.6	58.8
June	2 876.4	2 457.9	5 334.3	211.6	320.1	5 654.4	6.9	5.7	58.9
July	2 874.4	2 455.7	5 330.0	206.0	318.2	5 648.2	6.7	5.6	58.7
August	2 886.8	2 442.9	5 329.7	206.3	327.4	5 657.1	6.7	5.8	58.8
September	2 879.5	2 454.1	5 333.6	203.2	322.4	5 656.0	6.6	5.7	58.7
October	2 878.0	2 456.9	5 334.9	202.0	319.2	5 654.1	6.6	5.6	58.6
November	2 872.0	2 470.6	5 342.6	198.7	318.6	5 661.2	6.5	5.6	58.5
PERSONS									
November 2010	7 985.1	3 357.6	11 342.7	427.9	614.1	11 956.8	5.1	5.1	66.0
November 2011	8 010.8	3 426.1	11 436.8	449.1	631.5	12 068.3	5.3	5.2	65.5
2012									
November	8 145.9	3 426.2	11 572.1	466.1	642.8	12 214.9	5.4	5.3	65.2
December	8 124.1	3 441.7	11 565.8	479.7	662.3	12 228.1	5.6	5.4	65.1
2013									
January	8 153.1	3 471.0	11 624.1	474.2	664.9	12 289.0	5.5	5.4	65.3
February	8 133.2	3 516.0	11 649.2	472.9	663.8	12 313.0	5.5	5.4	65.4
March	8 125.6	3 489.0	11 614.6	504.0	689.9	12 304.5	5.8	5.6	65.2
April	8 154.5	3 500.6	11 655.0	505.4	689.3	12 344.3	5.8	5.6	65.3
May	8 143.8	3 505.6	11 649.4	509.2	686.7	12 336.1	5.9	5.6	65.2
June	8 136.9	3 520.3	11 657.2	525.8	710.6	12 367.8	6.1	5.7	65.3
July	8 128.2	3 517.1	11 645.3	518.3	704.7	12 350.1	6.0	5.7	65.1
August	8 124.3	3 510.5	11 634.8	515.8	713.6	12 348.4	6.0	5.8	65.0
September	8 123.5	3 516.1	11 639.6	511.3	699.8	12 339.4	5.9	5.7	64.8
October	8 092.4	3 546.5	11 638.9	521.1	709.1	12 348.0	6.1	5.7	64.8
November	8 107.9	3 552.0	11 659.9	517.7	712.5	12 372.4	6.0	5.8	64.8



LABOUR FORCE STATUS (AGED 15 YEARS & OVER): Original

	EMPLOYED			UNEMPLOYED		Labour force	Not in labour force	Civilian population aged 15 years and over	UNEMPLOYMENT RATE		Participation rate
	Full time	Part time	Total	Looking for f/t work	Total				Looking for f/t work	Total	
	'000	'000	'000	'000	'000				'000	'000	
MALES											
November 2010	5 179.3	1 000.1	6 179.3	230.6	290.0	6 469.3	2 468.1	8 937.5	4.3	4.5	72.4
November 2011	5 192.7	1 012.0	6 204.7	248.3	312.7	6 517.4	2 562.2	9 079.6	4.6	4.8	71.8
2012											
November	5 274.8	986.2	6 261.1	265.0	329.4	6 590.5	2 655.0	9 245.5	4.8	5.0	71.3
December	5 339.9	1 022.7	6 362.6	275.1	349.8	6 712.5	2 545.3	9 257.7	4.9	5.2	72.5
2013											
January	5 261.1	990.1	6 251.2	307.4	388.4	6 639.6	2 635.5	9 275.1	5.5	5.8	71.6
February	5 281.2	1 023.3	6 304.5	310.8	399.9	6 704.4	2 588.1	9 292.4	5.6	6.0	72.1
March	5 245.8	1 047.4	6 293.2	316.4	396.2	6 689.4	2 620.3	9 309.8	5.7	5.9	71.9
April	5 257.6	1 057.1	6 314.7	301.2	367.8	6 682.5	2 640.3	9 322.8	5.4	5.5	71.7
May	5 253.9	1 084.0	6 337.9	303.5	368.3	6 706.2	2 629.6	9 335.8	5.5	5.5	71.8
June	5 230.6	1 097.3	6 327.8	306.6	373.9	6 701.8	2 647.1	9 348.8	5.5	5.6	71.7
July	5 252.8	1 069.6	6 322.4	299.8	364.1	6 686.6	2 675.5	9 362.0	5.4	5.4	71.4
August	5 183.0	1 062.2	6 245.3	304.0	378.4	6 623.7	2 751.6	9 375.3	5.5	5.7	70.7
September	5 283.4	1 046.0	6 329.4	307.0	383.0	6 712.4	2 676.1	9 388.4	5.5	5.7	71.5
October	5 202.2	1 108.7	6 310.9	318.2	384.5	6 695.4	2 707.0	9 402.4	5.8	5.7	71.2
November	5 236.2	1 060.4	6 296.6	301.7	369.6	6 666.2	2 750.4	9 416.5	5.4	5.5	70.8
FEMALES											
November 2010	2 815.7	2 323.6	5 139.3	174.0	280.2	5 419.4	3 770.7	9 190.2	5.8	5.2	59.0
November 2011	2 827.7	2 381.5	5 209.2	177.4	274.9	5 484.1	3 855.3	9 339.4	5.9	5.0	58.7
2012											
November	2 877.1	2 410.7	5 287.8	177.3	269.8	5 557.6	3 942.8	9 500.4	5.8	4.9	58.5
December	2 903.9	2 425.2	5 329.1	191.9	296.8	5 625.9	3 887.2	9 513.1	6.2	5.3	59.1
2013											
January	2 857.8	2 367.1	5 224.9	207.0	315.9	5 540.8	3 989.1	9 529.9	6.8	5.7	58.1
February	2 884.8	2 412.6	5 297.4	215.9	349.5	5 646.9	3 900.0	9 546.9	7.0	6.2	59.1
March	2 840.6	2 479.2	5 319.7	206.1	339.3	5 659.0	3 904.8	9 563.8	6.8	6.0	59.2
April	2 856.2	2 488.4	5 344.6	202.3	325.2	5 669.8	3 906.3	9 576.1	6.6	5.7	59.2
May	2 874.1	2 464.2	5 338.4	205.8	317.0	5 655.3	3 933.1	9 588.4	6.7	5.6	59.0
June	2 855.0	2 488.6	5 343.5	206.1	310.0	5 653.6	3 947.1	9 600.7	6.7	5.5	58.9
July	2 878.9	2 453.4	5 332.3	191.0	294.7	5 627.0	3 987.2	9 614.1	6.2	5.2	58.5
August	2 844.3	2 443.5	5 287.7	191.6	312.0	5 599.7	4 027.9	9 627.7	6.3	5.6	58.2
September	2 952.1	2 429.3	5 381.3	199.1	321.5	5 702.8	3 938.3	9 641.1	6.3	5.6	59.2
October	2 856.6	2 496.2	5 352.8	193.3	302.1	5 654.9	4 001.6	9 656.5	6.3	5.3	58.6
November	2 876.3	2 462.3	5 338.6	190.4	295.6	5 634.2	4 037.8	9 672.0	6.2	5.2	58.3
PERSONS											
November 2010	7 995.0	3 323.6	11 318.6	404.6	570.2	11 888.8	6 238.9	18 127.7	4.8	4.8	65.6
November 2011	8 020.4	3 393.5	11 413.9	425.7	587.6	12 001.5	6 417.5	18 419.1	5.0	4.9	65.2
2012											
November	8 152.0	3 396.9	11 548.9	442.3	599.2	12 148.1	6 597.8	18 745.9	5.1	4.9	64.8
December	8 243.9	3 447.9	11 691.7	467.0	646.6	12 338.3	6 432.4	18 770.8	5.4	5.2	65.7
2013											
January	8 118.9	3 357.2	11 476.1	514.4	704.3	12 180.4	6 624.6	18 805.0	6.0	5.8	64.8
February	8 166.0	3 435.8	11 601.9	526.7	749.4	12 351.3	6 488.1	18 839.3	6.1	6.1	65.6
March	8 086.4	3 526.6	11 612.9	522.5	735.5	12 348.4	6 525.1	18 873.6	6.1	6.0	65.4
April	8 113.8	3 545.5	11 659.3	503.5	693.0	12 352.3	6 546.5	18 898.9	5.8	5.6	65.4
May	8 128.0	3 548.3	11 676.3	509.3	685.3	12 361.6	6 562.7	18 924.2	5.9	5.5	65.3
June	8 085.5	3 585.9	11 671.4	512.7	684.0	12 355.4	6 594.2	18 949.6	6.0	5.5	65.2
July	8 131.7	3 523.0	11 654.7	490.8	658.8	12 313.5	6 662.7	18 976.2	5.7	5.4	64.9
August	8 027.3	3 505.7	11 533.0	495.6	690.4	12 223.4	6 779.5	19 002.9	5.8	5.6	64.3
September	8 235.4	3 475.3	11 710.7	506.1	704.4	12 415.2	6 614.4	19 029.5	5.8	5.7	65.2
October	8 058.9	3 604.9	11 663.7	511.5	686.6	12 350.3	6 708.7	19 059.0	6.0	5.6	64.8
November	8 112.4	3 522.7	11 635.2	492.1	665.2	12 300.4	6 788.2	19 088.6	5.7	5.4	64.4

LABOUR FORCE STATUS (AGED 15 YEARS & OVER)—New South Wales

	TREND					SEASONALLY ADJUSTED					Civilian population aged 15 years and over
	Employed full time	Total employed	Total unemp-loyed	Unemp-loyment rate	Partici-pation rate	Employed full time	Total employed	Total unemp-loyed	Unemp-loyment rate	Partici-pation rate	
	'000	'000	'000	%	%	'000	'000	'000	%	%	
MALES											
November 2010	1 631.5	1 957.5	94.6	4.6	71.1	1 639.7	1 960.9	95.4	4.6	71.3	2 885.0
November 2011	1 632.2	1 953.1	103.8	5.0	70.5	1 630.6	1 960.1	99.1	4.8	70.5	2 919.0
2012											
November	1 653.4	1 973.0	109.5	5.3	70.4	1 651.0	1 969.0	111.5	5.4	70.3	2 957.5
December	1 655.2	1 978.9	109.1	5.2	70.5	1 651.5	1 976.0	104.4	5.0	70.3	2 960.7
2013											
January	1 655.0	1 984.4	109.9	5.2	70.6	1 655.5	1 985.3	106.6	5.1	70.5	2 965.2
February	1 654.4	1 989.8	111.0	5.3	70.7	1 648.6	1 990.4	113.6	5.4	70.8	2 969.7
March	1 654.1	1 994.4	112.1	5.3	70.8	1 652.9	1 992.6	117.0	5.5	70.9	2 974.2
April	1 653.7	1 996.7	113.2	5.4	70.9	1 660.2	1 999.0	109.8	5.2	70.8	2 976.9
May	1 651.5	1 995.8	113.7	5.4	70.8	1 650.3	1 997.9	118.4	5.6	71.0	2 979.5
June	1 646.4	1 991.8	114.4	5.4	70.6	1 647.7	1 994.9	109.1	5.2	70.6	2 982.2
July	1 639.5	1 986.4	115.5	5.5	70.4	1 643.5	1 992.5	112.6	5.3	70.5	2 985.4
August	1 631.8	1 981.2	117.3	5.6	70.2	1 631.4	1 971.6	122.5	5.9	70.1	2 988.7
September	1 624.6	1 977.1	119.3	5.7	70.1	1 619.9	1 969.4	117.1	5.6	69.7	2 991.9
October	1 618.4	1 974.2	121.3	5.8	70.0	1 613.8	1 977.6	122.1	5.8	70.1	2 994.7
November	1 613.9	1 972.5	122.8	5.9	69.9	1 617.3	1 978.3	124.1	5.9	70.1	2 997.5
FEMALES											
November 2010	900.7	1 618.8	93.1	5.4	57.1	903.4	1 620.6	97.2	5.7	57.3	2 995.7
November 2011	900.6	1 633.4	98.9	5.7	57.1	898.2	1 635.5	96.6	5.6	57.1	3 034.0
2012											
November	920.7	1 664.1	86.2	4.9	56.9	920.1	1 657.7	81.9	4.7	56.6	3 073.3
December	922.6	1 666.9	88.3	5.0	57.0	915.6	1 658.1	90.4	5.2	56.8	3 076.6
2013											
January	926.4	1 670.9	90.3	5.1	57.2	925.1	1 677.5	89.1	5.0	57.3	3 081.2
February	931.0	1 675.3	92.4	5.2	57.3	932.8	1 675.8	91.1	5.2	57.3	3 085.8
March	935.1	1 679.8	95.0	5.4	57.4	933.9	1 676.8	96.2	5.4	57.4	3 090.4
April	937.8	1 683.6	98.1	5.5	57.6	945.3	1 689.0	98.6	5.5	57.8	3 093.2
May	937.9	1 685.8	101.0	5.7	57.7	941.8	1 686.7	100.2	5.6	57.7	3 096.1
June	935.9	1 686.2	103.2	5.8	57.7	932.7	1 683.5	101.2	5.7	57.6	3 098.9
July	932.7	1 685.3	104.6	5.8	57.7	922.8	1 677.0	108.2	6.1	57.5	3 102.3
August	929.6	1 683.3	105.2	5.9	57.6	939.7	1 699.9	108.7	6.0	58.2	3 105.6
September	926.9	1 680.6	105.4	5.9	57.4	925.1	1 677.6	101.1	5.7	57.2	3 109.0
October	924.5	1 677.6	105.3	5.9	57.3	922.6	1 673.5	106.1	6.0	57.2	3 112.9
November	922.9	1 674.8	105.0	5.9	57.1	922.7	1 670.9	103.6	5.8	56.9	3 116.8
PERSONS											
November 2010	2 532.3	3 576.3	187.7	5.0	64.0	2 543.0	3 581.5	192.6	5.1	64.2	5 880.7
November 2011	2 532.8	3 586.5	202.7	5.3	63.7	2 528.8	3 595.6	195.7	5.2	63.7	5 953.0
2012											
November	2 574.0	3 637.1	195.7	5.1	63.5	2 571.1	3 626.8	193.4	5.1	63.3	6 030.8
December	2 577.9	3 645.8	197.4	5.1	63.6	2 567.1	3 634.1	194.7	5.1	63.4	6 037.3
2013											
January	2 581.5	3 655.3	200.2	5.2	63.8	2 580.6	3 662.8	195.6	5.1	63.8	6 046.4
February	2 585.4	3 665.1	203.3	5.3	63.9	2 581.5	3 666.2	204.6	5.3	63.9	6 055.6
March	2 589.2	3 674.1	207.1	5.3	64.0	2 586.8	3 669.4	213.2	5.5	64.0	6 064.7
April	2 591.5	3 680.3	211.3	5.4	64.1	2 605.5	3 687.9	208.4	5.3	64.2	6 070.1
May	2 589.4	3 681.6	214.8	5.5	64.1	2 592.0	3 684.7	218.5	5.6	64.2	6 075.6
June	2 582.3	3 678.0	217.6	5.6	64.1	2 580.4	3 678.4	210.3	5.4	63.9	6 081.1
July	2 572.2	3 671.7	220.1	5.7	63.9	2 566.2	3 669.5	220.8	5.7	63.9	6 087.7
August	2 561.4	3 664.5	222.5	5.7	63.8	2 571.1	3 671.4	231.2	5.9	64.0	6 094.3
September	2 551.5	3 657.7	224.7	5.8	63.6	2 544.9	3 647.0	218.2	5.6	63.4	6 100.8
October	2 543.0	3 651.8	226.6	5.8	63.5	2 536.3	3 651.2	228.2	5.9	63.5	6 107.6
November	2 536.8	3 647.3	227.7	5.9	63.4	2 540.0	3 649.3	227.7	5.9	63.4	6 114.3

LABOUR FORCE STATUS (AGED 15 YEARS & OVER)—Victoria

	TREND					SEASONALLY ADJUSTED					Civilian population aged 15 years and over '000
	Employed full time	Total employed	Total unemployed	Unemployment rate	Participation rate	Employed full time	Total employed	Total unemployed	Unemployment rate	Participation rate	
	'000	'000	'000	%	%	'000	'000	'000	%	%	
MALES											
November 2010	1 287.2	1 562.3	80.4	4.9	73.6	1 289.3	1 569.2	78.4	4.8	73.8	2 232.3
November 2011	1 289.6	1 556.5	85.2	5.2	72.5	1 285.8	1 554.8	88.6	5.4	72.5	2 265.7
2012											
November	1 288.2	1 559.3	89.4	5.4	71.5	1 293.7	1 554.6	87.1	5.3	71.2	2 305.0
December	1 288.8	1 561.2	90.0	5.4	71.5	1 292.3	1 567.2	88.2	5.3	71.7	2 308.0
2013											
January	1 289.6	1 562.5	90.6	5.5	71.5	1 287.1	1 559.1	103.5	6.2	71.9	2 312.3
February	1 290.0	1 563.7	91.6	5.5	71.5	1 276.4	1 564.3	83.7	5.1	71.1	2 316.6
March	1 290.5	1 565.5	92.6	5.6	71.5	1 301.9	1 563.5	92.5	5.6	71.4	2 320.9
April	1 291.5	1 568.3	93.5	5.6	71.5	1 293.2	1 562.5	94.8	5.7	71.3	2 323.7
May	1 292.7	1 571.0	94.1	5.7	71.6	1 293.0	1 575.4	88.3	5.3	71.5	2 326.6
June	1 294.0	1 572.8	95.1	5.7	71.6	1 290.7	1 578.6	102.5	6.1	72.2	2 329.4
July	1 295.2	1 573.6	96.3	5.8	71.6	1 291.9	1 572.4	96.8	5.8	71.6	2 332.7
August	1 296.5	1 573.4	97.5	5.8	71.5	1 299.7	1 573.0	97.1	5.8	71.5	2 335.9
September	1 298.3	1 572.8	98.9	5.9	71.5	1 300.3	1 568.8	92.4	5.6	71.0	2 339.2
October	1 300.2	1 572.2	100.7	6.0	71.4	1 297.9	1 574.6	101.5	6.1	71.5	2 343.2
November	1 301.7	1 571.2	102.6	6.1	71.4	1 303.2	1 571.0	108.0	6.4	71.5	2 347.3
FEMALES											
November 2010	678.1	1 278.4	74.9	5.5	58.5	677.0	1 277.1	80.9	6.0	58.7	2 311.7
November 2011	688.8	1 302.7	74.4	5.4	58.6	690.8	1 304.7	75.2	5.4	58.7	2 350.2
2012											
November	689.9	1 327.6	80.7	5.7	58.9	684.0	1 327.0	79.2	5.6	58.8	2 390.0
December	688.4	1 327.0	81.8	5.8	58.8	687.8	1 327.1	82.5	5.9	58.9	2 393.1
2013											
January	688.1	1 327.4	82.5	5.9	58.8	686.0	1 325.4	82.9	5.9	58.7	2 397.5
February	689.0	1 329.3	82.5	5.8	58.8	691.1	1 334.2	83.2	5.9	59.0	2 401.9
March	690.3	1 332.2	81.9	5.8	58.8	686.0	1 326.5	81.0	5.8	58.5	2 406.3
April	690.9	1 335.1	81.1	5.7	58.8	697.6	1 336.1	84.1	5.9	59.0	2 409.1
May	690.3	1 337.3	80.4	5.7	58.8	692.4	1 334.8	78.4	5.5	58.6	2 411.9
June	689.1	1 338.6	80.2	5.7	58.7	688.1	1 348.0	79.1	5.5	59.1	2 414.7
July	688.5	1 339.1	80.7	5.7	58.7	687.8	1 339.1	79.7	5.6	58.7	2 418.1
August	688.8	1 339.4	81.7	5.8	58.7	682.5	1 336.0	80.6	5.7	58.5	2 421.5
September	690.2	1 339.6	83.0	5.8	58.7	688.1	1 333.9	85.9	6.1	58.6	2 424.9
October	692.0	1 340.1	84.1	5.9	58.6	698.5	1 343.0	83.8	5.9	58.7	2 429.1
November	694.4	1 340.8	85.4	6.0	58.7	697.0	1 344.0	85.5	6.0	58.7	2 433.3
PERSONS											
November 2010	1 965.4	2 840.7	155.3	5.2	65.9	1 966.3	2 846.3	159.3	5.3	66.1	4 544.0
November 2011	1 978.5	2 859.3	159.6	5.3	65.4	1 976.6	2 859.4	163.8	5.4	65.5	4 615.9
2012											
November	1 978.1	2 886.9	170.2	5.6	65.1	1 977.7	2 881.6	166.3	5.5	64.9	4 695.1
December	1 977.3	2 888.2	171.8	5.6	65.1	1 980.1	2 894.3	170.7	5.6	65.2	4 701.1
2013											
January	1 977.7	2 889.9	173.1	5.7	65.0	1 973.1	2 884.4	186.3	6.1	65.2	4 709.8
February	1 979.1	2 892.9	174.1	5.7	65.0	1 967.5	2 898.6	166.9	5.4	65.0	4 718.5
March	1 980.9	2 897.7	174.6	5.7	65.0	1 987.9	2 890.0	173.5	5.7	64.8	4 727.2
April	1 982.4	2 903.4	174.6	5.7	65.0	1 990.8	2 898.7	178.9	5.8	65.0	4 732.9
May	1 983.0	2 908.3	174.5	5.7	65.1	1 985.5	2 910.1	166.7	5.4	64.9	4 738.5
June	1 983.1	2 911.4	175.2	5.7	65.1	1 978.8	2 926.7	181.6	5.8	65.5	4 744.2
July	1 983.7	2 912.7	177.0	5.7	65.0	1 979.7	2 911.5	176.4	5.7	65.0	4 750.8
August	1 985.4	2 912.7	179.3	5.8	65.0	1 982.2	2 909.1	177.7	5.8	64.9	4 757.5
September	1 988.5	2 912.4	181.9	5.9	64.9	1 988.4	2 902.8	178.3	5.8	64.7	4 764.1
October	1 992.3	2 912.2	184.8	6.0	64.9	1 996.4	2 917.6	185.3	6.0	65.0	4 772.3
November	1 996.2	2 911.9	188.0	6.1	64.9	2 000.2	2 915.0	193.5	6.2	65.0	4 780.5

LABOUR FORCE STATUS (AGED 15 YEARS & OVER)—Queensland

	TREND					SEASONALLY ADJUSTED					Civilian population aged 15 years and over '000
	Employed full time	Total employed	Total unemployed	Unemployment rate	Participation rate	Employed full time	Total employed	Total unemployed	Unemployment rate	Participation rate	
	'000	'000	'000	%	%	'000	'000	'000	%	%	
MALES											
November 2010	1 052.9	1 246.4	70.1	5.3	73.6	1 052.1	1 248.7	69.4	5.3	73.7	1 789.1
November 2011	1 072.1	1 265.9	71.4	5.3	73.4	1 069.9	1 264.6	72.1	5.4	73.4	1 821.2
2012											
November	1 082.8	1 270.0	83.8	6.2	72.8	1 086.2	1 276.2	82.7	6.1	73.1	1 859.2
December	1 082.3	1 269.6	83.0	6.1	72.6	1 082.0	1 269.2	84.5	6.2	72.7	1 861.9
2013											
January	1 081.0	1 269.3	81.7	6.0	72.4	1 084.2	1 271.7	77.8	5.8	72.3	1 865.4
February	1 079.3	1 269.0	81.1	6.0	72.2	1 081.9	1 272.6	81.8	6.0	72.5	1 869.0
March	1 076.9	1 268.2	81.6	6.0	72.1	1 073.0	1 262.9	83.8	6.2	71.9	1 872.6
April	1 074.4	1 267.3	83.0	6.1	72.0	1 072.6	1 267.7	79.3	5.9	71.8	1 875.9
May	1 073.1	1 267.6	84.5	6.2	72.0	1 073.9	1 269.0	80.6	6.0	71.8	1 879.1
June	1 073.2	1 269.2	85.2	6.3	72.0	1 072.1	1 264.7	92.2	6.8	72.1	1 882.4
July	1 074.3	1 271.6	84.9	6.3	72.0	1 078.4	1 274.8	87.3	6.4	72.2	1 885.3
August	1 075.9	1 274.1	83.7	6.2	71.9	1 065.4	1 272.0	83.7	6.2	71.8	1 888.3
September	1 077.4	1 276.3	82.1	6.0	71.8	1 086.9	1 279.6	79.6	5.9	71.9	1 891.2
October	1 078.7	1 278.1	80.4	5.9	71.7	1 077.4	1 278.1	78.8	5.8	71.6	1 894.4
November	1 079.8	1 279.6	78.7	5.8	71.6	1 079.4	1 278.7	78.7	5.8	71.5	1 897.6
FEMALES											
November 2010	587.4	1 062.9	65.5	5.8	61.7	601.0	1 066.6	64.3	5.7	61.9	1 828.2
November 2011	604.4	1 076.4	65.7	5.8	61.3	600.9	1 072.2	68.9	6.0	61.3	1 862.5
2012											
November	602.1	1 072.3	67.4	5.9	59.9	604.4	1 076.4	69.3	6.1	60.2	1 901.8
December	601.9	1 077.0	66.0	5.8	60.0	593.1	1 061.7	68.1	6.0	59.3	1 904.8
2013											
January	600.0	1 081.1	64.8	5.7	60.0	614.7	1 101.9	61.7	5.3	61.0	1 908.4
February	597.7	1 084.0	64.1	5.6	60.1	598.9	1 079.5	64.8	5.7	59.8	1 912.0
March	596.2	1 085.5	63.7	5.5	60.0	588.0	1 084.0	62.9	5.5	59.9	1 915.6
April	596.6	1 085.9	63.7	5.5	59.9	592.4	1 085.8	62.9	5.5	59.9	1 918.8
May	599.3	1 086.3	64.0	5.6	59.9	597.0	1 087.3	65.2	5.7	60.0	1 922.1
June	603.2	1 087.6	64.7	5.6	59.8	604.3	1 083.6	67.6	5.9	59.8	1 925.3
July	607.0	1 090.2	65.3	5.7	59.9	612.4	1 092.2	61.1	5.3	59.8	1 928.5
August	609.1	1 093.5	65.8	5.7	60.0	612.7	1 090.4	65.4	5.7	59.8	1 931.8
September	609.2	1 096.8	66.3	5.7	60.1	610.2	1 099.3	68.2	5.8	60.3	1 934.9
October	608.2	1 100.0	66.6	5.7	60.2	607.0	1 100.5	69.2	5.9	60.3	1 938.4
November	606.5	1 102.8	66.6	5.7	60.3	599.6	1 104.6	63.8	5.5	60.2	1 942.0
PERSONS											
November 2010	1 640.3	2 309.3	135.7	5.5	67.6	1 653.0	2 315.3	133.7	5.5	67.7	3 617.3
November 2011	1 676.5	2 342.3	137.1	5.5	67.3	1 670.8	2 336.9	141.0	5.7	67.3	3 683.6
2012											
November	1 684.9	2 342.3	151.2	6.1	66.3	1 690.6	2 352.6	152.0	6.1	66.6	3 761.0
December	1 684.2	2 346.5	149.1	6.0	66.2	1 675.1	2 330.9	152.6	6.1	65.9	3 766.7
2013											
January	1 681.1	2 350.4	146.5	5.9	66.2	1 698.9	2 373.6	139.5	5.6	66.6	3 773.8
February	1 677.0	2 353.0	145.2	5.8	66.1	1 680.8	2 352.0	146.5	5.9	66.1	3 781.1
March	1 673.1	2 353.7	145.4	5.8	66.0	1 661.0	2 346.9	146.7	5.9	65.8	3 788.2
April	1 671.1	2 353.3	146.7	5.9	65.9	1 665.0	2 353.5	142.2	5.7	65.8	3 794.7
May	1 672.4	2 353.9	148.5	5.9	65.8	1 670.9	2 356.3	145.8	5.8	65.8	3 801.2
June	1 676.4	2 356.8	149.9	6.0	65.8	1 676.4	2 348.3	159.8	6.4	65.9	3 807.7
July	1 681.3	2 361.8	150.3	6.0	65.9	1 690.9	2 367.0	148.4	5.9	66.0	3 813.8
August	1 685.0	2 367.6	149.6	5.9	65.9	1 678.0	2 362.4	149.1	5.9	65.7	3 820.0
September	1 686.5	2 373.2	148.4	5.9	65.9	1 697.1	2 378.9	147.8	5.8	66.0	3 826.1
October	1 686.8	2 378.1	147.0	5.8	65.9	1 684.4	2 378.6	148.0	5.9	65.9	3 832.8
November	1 686.2	2 382.4	145.3	5.7	65.9	1 678.9	2 383.3	142.5	5.6	65.8	3 839.6

LABOUR FORCE STATUS (AGED 15 YEARS & OVER)—South Australia

	TREND					SEASONALLY ADJUSTED					Civilian population aged 15 years and over '000
	Employed full time	Total employed	Total unemp-loyed	Unemp-loyment rate	Partici-pation rate	Employed full time	Total employed	Total unemp-loyed	Unemp-loyment rate	Partici-pation rate	
	'000	'000	'000	%	%	'000	'000	'000	%	%	
MALES											
November 2010	362.0	435.9	25.7	5.6	69.7	362.1	433.4	25.1	5.5	69.2	662.4
November 2011	359.7	440.9	25.7	5.5	69.8	359.3	441.8	26.2	5.6	70.0	668.2
2012											
November	356.5	436.5	27.0	5.8	68.7	359.3	438.4	24.0	5.2	68.5	675.1
December	356.6	436.9	27.3	5.9	68.7	357.9	439.3	29.0	6.2	69.3	675.6
2013											
January	356.5	437.5	27.5	5.9	68.7	357.6	438.7	28.1	6.0	69.0	676.4
February	357.0	438.4	27.6	5.9	68.8	354.3	434.2	28.6	6.2	68.3	677.2
March	357.8	439.4	27.8	6.0	68.9	351.7	435.1	27.9	6.0	68.3	678.0
April	358.5	440.3	28.2	6.0	69.0	358.8	441.5	26.1	5.6	68.9	678.7
May	358.4	440.8	28.9	6.2	69.1	367.0	447.4	28.4	6.0	70.0	679.3
June	357.2	440.1	29.8	6.3	69.1	359.1	442.2	28.9	6.1	69.3	679.9
July	354.9	438.4	30.8	6.6	69.0	353.8	434.7	34.1	7.3	68.9	680.4
August	352.3	436.2	31.6	6.8	68.7	346.7	434.2	32.0	6.9	68.5	680.8
September	350.0	434.1	32.0	6.9	68.4	349.9	435.7	29.8	6.4	68.3	681.2
October	348.3	432.4	32.3	6.9	68.2	349.1	431.2	33.7	7.3	68.2	681.5
November	347.1	431.1	32.3	7.0	68.0	349.7	432.5	31.3	6.7	68.0	681.7
FEMALES											
November 2010	188.9	375.1	21.9	5.5	57.5	192.0	377.0	22.4	5.6	57.9	690.3
November 2011	182.1	378.0	19.7	5.0	57.1	183.0	378.9	18.8	4.7	57.1	696.6
2012											
November	185.8	380.9	21.7	5.4	57.2	185.5	378.5	21.6	5.4	56.9	703.4
December	186.4	382.0	22.1	5.5	57.4	185.7	381.8	21.4	5.3	57.3	703.9
2013											
January	187.0	383.2	22.6	5.6	57.6	185.3	383.5	24.5	6.0	57.9	704.8
February	187.9	383.9	22.9	5.6	57.7	185.2	383.6	21.9	5.4	57.5	705.6
March	188.9	383.7	23.4	5.7	57.6	190.9	384.9	22.7	5.6	57.7	706.4
April	189.7	382.3	24.1	5.9	57.5	190.3	383.2	24.7	6.1	57.7	707.0
May	189.8	380.0	24.7	6.1	57.2	192.1	382.6	24.1	5.9	57.5	707.5
June	189.1	377.4	25.0	6.2	56.8	190.4	375.8	24.1	6.0	56.5	708.0
July	187.8	375.3	25.2	6.3	56.5	183.9	372.7	27.6	6.9	56.5	708.5
August	186.4	374.0	25.1	6.3	56.3	184.6	371.5	27.1	6.8	56.2	708.9
September	185.1	373.3	24.9	6.3	56.1	190.6	375.5	21.5	5.4	56.0	709.3
October	183.9	373.0	24.9	6.2	56.1	181.5	374.0	23.3	5.9	56.0	709.7
November	182.9	373.0	24.9	6.3	56.0	182.1	373.5	27.3	6.8	56.5	710.0
PERSONS											
November 2010	550.9	811.0	47.6	5.5	63.5	554.1	810.5	47.6	5.5	63.4	1 352.7
November 2011	541.8	818.9	45.4	5.2	63.3	542.3	820.7	45.0	5.2	63.4	1 364.8
2012											
November	542.3	817.4	48.7	5.6	62.8	544.8	816.9	45.6	5.3	62.6	1 378.6
December	543.0	818.9	49.4	5.7	62.9	543.6	821.1	50.5	5.8	63.2	1 379.6
2013											
January	543.5	820.7	50.1	5.8	63.0	542.9	822.2	52.7	6.0	63.3	1 381.2
February	544.9	822.3	50.5	5.8	63.1	539.6	817.8	50.5	5.8	62.8	1 382.8
March	546.7	823.0	51.2	5.9	63.2	542.6	820.0	50.6	5.8	62.9	1 384.5
April	548.2	822.6	52.3	6.0	63.1	549.1	824.8	50.9	5.8	63.2	1 385.6
May	548.2	820.8	53.6	6.1	63.0	559.1	830.0	52.5	6.0	63.6	1 386.8
June	546.3	817.6	54.9	6.3	62.9	549.5	818.0	53.0	6.1	62.8	1 388.0
July	542.8	813.8	56.0	6.4	62.6	537.7	807.3	61.6	7.1	62.6	1 388.8
August	538.6	810.2	56.7	6.5	62.4	531.3	805.7	59.1	6.8	62.2	1 389.7
September	535.1	807.4	57.0	6.6	62.2	540.5	811.2	51.2	5.9	62.0	1 390.6
October	532.3	805.4	57.2	6.6	62.0	530.6	805.2	57.0	6.6	62.0	1 391.1
November	530.0	804.1	57.2	6.6	61.9	531.8	806.0	58.6	6.8	62.1	1 391.7

LABOUR FORCE STATUS (AGED 15 YEARS & OVER)—Western Australia

	TREND					SEASONALLY ADJUSTED					Civilian population aged 15 years and over
	Employed full time	Total employed	Total unemployed	Unemployment rate	Participation rate	Employed full time	Total employed	Total unemployed	Unemployment rate	Participation rate	
	'000	'000	'000	%	%	'000	'000	'000	%	%	
MALES											
November 2010	588.9	688.3	28.4	4.0	76.2	591.0	689.3	28.6	4.0	76.4	940.1
November 2011	605.9	705.4	31.2	4.2	75.8	605.1	705.3	32.3	4.4	75.9	972.1
2012											
November	641.9	742.6	31.4	4.1	76.7	641.2	741.4	31.1	4.0	76.6	1 008.9
December	641.2	743.4	32.3	4.2	76.6	640.5	741.0	32.5	4.2	76.5	1 011.6
2013											
January	640.2	743.7	33.2	4.3	76.5	646.7	749.4	29.5	3.8	76.7	1 015.0
February	639.3	743.5	34.5	4.4	76.4	636.5	743.2	35.4	4.5	76.5	1 018.4
March	638.9	743.1	36.0	4.6	76.3	633.9	739.5	35.2	4.5	75.8	1 021.8
April	639.1	743.1	37.2	4.8	76.1	638.2	740.3	41.3	5.3	76.3	1 024.9
May	639.8	743.5	37.9	4.9	76.0	641.4	749.3	36.9	4.7	76.5	1 027.9
June	640.5	744.6	38.0	4.9	75.9	646.5	745.3	36.0	4.6	75.8	1 031.0
July	641.0	746.5	37.7	4.8	75.8	636.2	739.6	39.9	5.1	75.4	1 033.9
August	640.8	748.6	37.2	4.7	75.8	641.0	750.0	36.6	4.7	75.9	1 036.8
September	640.4	750.7	36.8	4.7	75.7	642.7	754.4	35.4	4.5	76.0	1 039.6
October	639.9	752.7	36.4	4.6	75.7	637.0	750.4	38.5	4.9	75.6	1 043.0
November	639.5	754.2	36.3	4.6	75.7	640.8	756.7	34.8	4.4	75.6	1 046.3
FEMALES											
November 2010	275.6	528.6	28.6	5.1	60.5	281.5	531.8	28.6	5.1	60.8	921.4
November 2011	291.8	551.4	24.5	4.2	60.7	291.1	552.4	24.6	4.3	60.8	948.6
2012											
November	313.2	578.9	27.8	4.6	61.9	316.2	581.0	26.5	4.4	62.0	979.6
December	312.9	579.9	28.1	4.6	61.9	316.5	580.9	28.2	4.6	62.0	982.0
2013											
January	311.4	579.3	28.7	4.7	61.7	309.0	581.0	26.8	4.4	61.7	984.7
February	309.3	578.1	29.3	4.8	61.5	306.7	576.4	28.6	4.7	61.3	987.5
March	307.6	576.7	29.6	4.9	61.2	309.2	575.5	30.2	5.0	61.2	990.2
April	306.7	575.1	29.9	4.9	60.9	306.2	576.9	32.2	5.3	61.3	992.8
May	307.1	573.9	29.9	4.9	60.7	305.2	569.8	31.3	5.2	60.4	995.3
June	308.4	573.6	29.2	4.9	60.4	308.8	577.0	27.5	4.5	60.6	997.8
July	310.1	574.2	28.3	4.7	60.2	310.1	577.7	23.2	3.9	60.1	1 000.5
August	311.7	575.4	27.3	4.5	60.1	311.9	566.5	33.1	5.5	59.8	1 003.1
September	313.1	576.9	26.3	4.4	60.0	313.9	575.5	28.1	4.7	60.0	1 005.8
October	314.2	578.6	25.3	4.2	59.9	316.3	587.5	21.2	3.5	60.3	1 008.9
November	315.0	580.4	24.5	4.1	59.9	312.6	578.5	24.7	4.1	59.6	1 012.1
PERSONS											
November 2010	864.5	1 216.9	57.0	4.5	68.4	872.5	1 221.1	57.2	4.5	68.7	1 861.6
November 2011	897.7	1 256.9	55.7	4.2	68.3	896.2	1 257.7	57.0	4.3	68.4	1 920.7
2012											
November	955.1	1 321.5	59.2	4.3	69.4	957.4	1 322.4	57.6	4.2	69.4	1 988.6
December	954.1	1 323.3	60.4	4.4	69.4	957.0	1 321.9	60.7	4.4	69.3	1 993.6
2013											
January	951.6	1 323.0	62.0	4.5	69.3	955.7	1 330.4	56.3	4.1	69.3	1 999.7
February	948.7	1 321.5	63.8	4.6	69.1	943.2	1 319.6	64.0	4.6	69.0	2 005.9
March	946.5	1 319.8	65.6	4.7	68.9	943.1	1 315.0	65.5	4.7	68.6	2 012.0
April	945.8	1 318.2	67.1	4.8	68.7	944.5	1 317.1	73.4	5.3	68.9	2 017.6
May	946.8	1 317.4	67.8	4.9	68.5	946.6	1 319.1	68.2	4.9	68.6	2 023.2
June	948.9	1 318.2	67.3	4.9	68.3	955.3	1 322.3	63.5	4.6	68.3	2 028.8
July	951.1	1 320.7	66.0	4.8	68.2	946.3	1 317.3	63.1	4.6	67.9	2 034.4
August	952.5	1 324.0	64.5	4.6	68.1	952.9	1 316.5	69.7	5.0	68.0	2 039.9
September	953.5	1 327.6	63.1	4.5	68.0	956.7	1 329.9	63.5	4.6	68.1	2 045.4
October	954.2	1 331.3	61.7	4.4	67.9	953.3	1 337.8	59.7	4.3	68.1	2 051.9
November	954.5	1 334.6	60.8	4.4	67.9	953.4	1 335.1	59.5	4.3	67.8	2 058.4

	TREND					SEASONALLY ADJUSTED					Civilian population aged 15 years and over
	Employed full time	Total employed	Total unemployed	Unemployment rate	Participation rate	Employed full time	Total employed	Total unemployed	Unemployment rate	Participation rate	
	'000	'000	'000	%	%	'000	'000	'000	%	%	
MALES											
November 2010	101.8	125.4	7.2	5.4	66.1	103.4	125.8	7.2	5.4	66.3	200.5
November 2011	100.8	124.9	8.5	6.4	66.1	100.3	125.7	9.1	6.8	66.8	201.7
2012											
November	98.8	124.8	9.4	7.0	66.3	98.2	124.3	8.7	6.5	65.7	202.5
December	98.5	124.6	9.4	7.0	66.1	95.8	123.7	10.1	7.5	66.0	202.6
2013											
January	98.2	124.3	9.4	7.0	65.9	100.3	123.5	10.2	7.6	66.0	202.8
February	97.9	124.1	9.4	7.0	65.8	98.0	124.7	8.9	6.7	65.8	203.0
March	97.8	123.9	9.4	7.1	65.7	97.5	123.9	9.5	7.1	65.6	203.2
April	97.5	123.6	9.7	7.3	65.6	96.6	124.0	8.8	6.7	65.3	203.3
May	97.1	123.0	10.1	7.6	65.5	98.2	123.7	9.8	7.3	65.6	203.3
June	96.4	122.2	10.7	8.1	65.3	96.3	121.5	11.4	8.6	65.4	203.4
July	95.8	121.3	11.2	8.5	65.1	96.7	121.9	11.0	8.3	65.3	203.4
August	95.3	120.5	11.5	8.7	64.9	94.4	119.4	12.3	9.3	64.7	203.5
September	95.0	119.9	11.6	8.9	64.7	93.8	119.7	12.2	9.2	64.8	203.5
October	94.7	119.3	11.6	8.9	64.4	95.1	120.3	10.9	8.3	64.5	203.4
November	94.6	118.9	11.5	8.8	64.2	95.7	118.5	11.0	8.5	63.8	203.2
FEMALES											
November 2010	52.6	111.5	6.7	5.7	56.2	51.6	111.0	6.8	5.8	56.0	210.3
November 2011	51.7	111.2	6.3	5.4	55.5	51.3	110.6	6.8	5.8	55.5	211.6
2012											
November	48.8	108.1	8.3	7.1	54.9	49.0	107.8	8.3	7.1	54.8	211.9
December	48.8	108.1	8.3	7.2	54.9	48.4	107.9	8.2	7.0	54.8	211.9
2013											
January	48.6	108.0	8.4	7.2	54.9	49.4	107.8	8.8	7.6	55.0	212.1
February	48.3	107.9	8.6	7.4	54.9	49.3	110.1	7.8	6.6	55.5	212.3
March	48.0	107.8	9.1	7.8	55.0	47.7	107.1	8.8	7.6	54.5	212.6
April	48.0	107.8	9.5	8.1	55.2	46.4	105.7	10.1	8.7	54.5	212.5
May	48.1	107.9	9.7	8.3	55.4	47.8	108.7	9.0	7.6	55.4	212.5
June	48.5	108.3	9.7	8.2	55.5	49.2	108.7	11.5	9.6	56.5	212.5
July	49.0	108.7	9.5	8.0	55.6	49.2	108.4	9.5	8.0	55.5	212.6
August	49.4	109.1	9.1	7.7	55.6	50.1	109.9	8.3	7.0	55.6	212.6
September	49.8	109.3	8.7	7.3	55.5	49.4	108.9	8.2	7.0	55.1	212.6
October	50.0	109.5	8.3	7.1	55.4	49.1	109.2	8.6	7.3	55.4	212.5
November	50.2	109.5	8.1	6.9	55.3	51.0	109.8	8.2	6.9	55.6	212.4
PERSONS											
November 2010	154.4	236.9	13.9	5.5	61.0	155.0	236.8	14.0	5.6	61.0	410.8
November 2011	152.5	236.1	14.8	5.9	60.7	151.6	236.3	15.9	6.3	61.0	413.3
2012											
November	147.5	232.9	17.7	7.1	60.5	147.1	232.1	16.9	6.8	60.1	414.4
December	147.2	232.6	17.7	7.1	60.4	144.2	231.5	18.2	7.3	60.3	414.5
2013											
January	146.8	232.3	17.8	7.1	60.3	149.7	231.3	19.1	7.6	60.4	414.9
February	146.3	232.0	18.0	7.2	60.2	147.3	234.8	16.7	6.6	60.5	415.4
March	145.8	231.7	18.5	7.4	60.2	145.2	231.0	18.3	7.3	60.0	415.8
April	145.5	231.4	19.2	7.6	60.3	143.0	229.7	18.9	7.6	59.8	415.8
May	145.2	231.0	19.9	7.9	60.3	146.0	232.4	18.8	7.5	60.4	415.9
June	144.9	230.5	20.4	8.1	60.3	145.5	230.2	22.9	9.0	60.9	415.9
July	144.8	230.0	20.7	8.3	60.3	145.9	230.3	20.4	8.2	60.3	416.0
August	144.8	229.6	20.6	8.2	60.1	144.4	229.3	20.6	8.2	60.1	416.1
September	144.7	229.2	20.3	8.1	60.0	143.2	228.6	20.4	8.2	59.8	416.2
October	144.8	228.8	20.0	8.0	59.8	144.1	229.5	19.5	7.8	59.9	415.9
November	144.8	228.5	19.6	7.9	59.7	146.8	228.3	19.2	7.8	59.6	415.6

	TREND					<i>Civilian population aged 15 years and over</i>
	<i>Employed full time</i>	<i>Total employed</i>	<i>Total unemployed</i>	<i>Unemployment rate</i>	<i>Participation rate</i>	
	'000	'000	'000	%	%	
MALES						
November 2010	57.2	65.0	1.6	2.3	77.0	86.4
November 2011	57.8	65.5	2.9	4.2	78.1	87.5
2012						
November	59.6	67.7	2.8	3.9	78.4	89.9
December	59.3	67.6	2.8	3.9	78.3	89.9
2013						
January	58.9	67.4	2.9	4.1	78.0	90.1
February	58.7	67.3	3.0	4.3	77.8	90.3
March	58.7	67.3	3.2	4.5	77.8	90.5
April	59.0	67.5	3.3	4.7	78.0	90.7
May	59.5	67.9	3.5	4.9	78.4	91.0
June	60.1	68.3	3.6	5.0	78.8	91.3
July	60.8	68.7	3.6	5.0	79.1	91.4
August	61.3	69.1	3.5	4.9	79.2	91.6
September	61.8	69.4	3.4	4.7	79.3	91.7
October	62.2	69.6	3.3	4.5	79.3	92.0
November	62.5	69.9	3.1	4.3	79.3	92.2
FEMALES						
November 2010	40.0	55.9	1.7	3.0	68.2	84.4
November 2011	42.2	57.8	2.8	4.5	70.9	85.5
2012						
November	43.2	58.7	2.5	4.1	70.3	87.1
December	42.9	58.3	2.5	4.1	69.8	87.2
2013						
January	42.5	58.0	2.6	4.2	69.3	87.3
February	42.1	57.7	2.7	4.4	69.0	87.5
March	41.7	57.6	2.8	4.7	69.0	87.6
April	41.5	57.7	3.1	5.0	69.2	87.8
May	41.5	58.0	3.3	5.4	69.6	88.0
June	41.7	58.3	3.4	5.5	70.0	88.2
July	42.0	58.6	3.5	5.6	70.4	88.3
August	42.4	58.9	3.5	5.6	70.5	88.4
September	42.6	59.0	3.4	5.5	70.5	88.5
October	42.8	59.1	3.3	5.3	70.5	88.6
November	42.9	59.2	3.2	5.2	70.4	88.7
PERSONS						
November 2010	97.1	120.8	3.3	2.6	72.7	170.8
November 2011	100.0	123.3	5.6	4.4	74.5	173.0
2012						
November	102.8	126.4	5.3	4.0	74.4	177.0
December	102.2	126.0	5.3	4.0	74.1	177.1
2013						
January	101.4	125.4	5.4	4.1	73.7	177.4
February	100.7	125.0	5.7	4.3	73.5	177.8
March	100.4	124.9	6.0	4.6	73.5	178.1
April	100.4	125.2	6.4	4.9	73.7	178.6
May	100.9	125.8	6.8	5.1	74.1	179.0
June	101.8	126.6	7.0	5.2	74.5	179.5
July	102.8	127.4	7.1	5.3	74.8	179.8
August	103.7	127.9	7.0	5.2	74.9	180.0
September	104.4	128.3	6.8	5.1	75.0	180.3
October	105.0	128.7	6.6	4.9	75.0	180.6
November	105.4	129.1	6.4	4.7	74.9	180.9



	TREND					Civilian population aged 15 years and over
	Employed full time	Total employed	Total unemployed	Unemployment rate	Participation rate	
	'000	'000	'000	%	%	
MALES						
November 2010	89.8	106.1	3.8	3.5	77.6	141.7
November 2011	88.7	106.2	4.4	4.0	76.7	144.2
2012						
November	89.3	107.2	5.3	4.7	76.4	147.3
December	89.0	107.2	5.5	4.9	76.4	147.5
2013						
January	89.0	107.4	5.5	4.9	76.4	147.8
February	89.2	107.8	5.4	4.8	76.4	148.2
March	89.6	108.4	5.1	4.5	76.4	148.5
April	90.1	109.0	4.8	4.2	76.5	148.7
May	90.6	109.6	4.5	4.0	76.6	149.0
June	90.9	110.0	4.4	3.9	76.7	149.2
July	91.0	110.2	4.5	4.0	76.7	149.5
August	90.9	110.1	4.7	4.1	76.6	149.8
September	90.6	110.0	4.8	4.2	76.5	150.0
October	90.4	109.8	4.8	4.2	76.2	150.4
November	90.2	109.6	4.8	4.2	76.0	150.7
FEMALES						
November 2010	62.4	99.3	3.1	3.0	69.2	148.1
November 2011	64.0	98.9	3.6	3.5	68.1	150.6
2012						
November	66.9	101.8	4.1	3.9	69.1	153.3
December	66.7	101.8	4.3	4.0	69.1	153.5
2013						
January	66.4	101.8	4.4	4.1	69.0	153.9
February	65.9	101.8	4.4	4.2	68.9	154.2
March	65.3	101.6	4.4	4.1	68.6	154.6
April	64.7	101.4	4.3	4.0	68.3	154.8
May	64.2	101.0	4.1	3.9	67.9	154.9
June	63.6	100.7	4.1	3.9	67.5	155.1
July	63.1	100.3	4.1	3.9	67.1	155.4
August	62.6	99.9	4.2	4.0	66.8	155.7
September	62.2	99.6	4.2	4.1	66.6	156.0
October	61.8	99.4	4.3	4.1	66.3	156.4
November	61.6	99.4	4.4	4.2	66.2	156.8
PERSONS						
November 2010	152.2	205.4	6.9	3.3	73.3	289.8
November 2011	152.7	205.1	8.0	3.8	72.3	294.8
2012						
November	156.2	209.0	9.4	4.3	72.7	300.5
December	155.8	209.0	9.8	4.5	72.7	301.0
2013						
January	155.4	209.2	9.9	4.5	72.6	301.7
February	155.2	209.6	9.8	4.5	72.6	302.4
March	154.9	210.0	9.5	4.3	72.5	303.1
April	154.9	210.4	9.0	4.1	72.3	303.5
May	154.8	210.7	8.7	3.9	72.2	303.9
June	154.6	210.7	8.5	3.9	72.0	304.3
July	154.1	210.4	8.6	3.9	71.8	304.9
August	153.5	210.0	8.8	4.0	71.6	305.5
September	152.8	209.6	9.0	4.1	71.4	306.0
October	152.2	209.2	9.1	4.2	71.2	306.8
November	151.7	208.9	9.2	4.2	71.0	307.5

	EMPLOYED			UNEMPLOYED			Civilian population aged 15 years and over	UNEMPLOYMENT RATE		Participation rate	
	Full time	Part time	Total	Looking for f/t work	Total	Labour force		Not in labour force	Looking for f/t work		Total
	'000	'000	'000	'000	'000	'000		'000	%		%
MALES											
New South Wales	1 614.5	355.7	1 970.2	95.8	120.4	2 090.6	906.9	2 997.5	5.6	5.8	69.7
Victoria	1 302.8	263.2	1 566.0	82.8	98.7	1 664.7	682.6	2 347.3	6.0	5.9	70.9
Queensland	1 077.4	200.0	1 277.5	59.3	72.5	1 350.0	547.6	1 897.6	5.2	5.4	71.1
South Australia	351.7	79.9	431.6	25.0	30.2	461.8	219.9	681.7	6.6	6.5	67.7
Western Australia	638.9	113.3	752.2	26.5	31.3	783.5	262.8	1 046.3	4.0	4.0	74.9
Tasmania	96.1	21.8	117.9	8.8	10.9	128.8	74.4	203.2	8.4	8.4	63.4
Northern Territory	63.6	8.0	71.5	2.0	2.6	74.1	18.1	92.2	3.1	3.5	80.4
Australian Capital Territory	91.1	18.5	109.6	*1.6	3.1	112.7	38.1	150.7	*1.7	2.7	74.8
<b>Australia</b>	<b>5 236.2</b>	<b>1 060.4</b>	<b>6 296.6</b>	<b>301.7</b>	<b>369.6</b>	<b>6 666.2</b>	<b>2 750.4</b>	<b>9 416.5</b>	<b>5.4</b>	<b>5.5</b>	<b>70.8</b>
FEMALES											
New South Wales	923.9	741.9	1 665.8	61.1	96.7	1 762.6	1 354.2	3 116.8	6.2	5.5	56.6
Victoria	697.4	644.7	1 342.1	50.9	78.5	1 420.5	1 012.7	2 433.3	6.8	5.5	58.4
Queensland	604.4	505.7	1 110.1	37.9	57.7	1 167.9	774.1	1 942.0	5.9	4.9	60.1
South Australia	181.4	193.1	374.5	16.4	26.5	400.9	309.1	710.0	8.3	6.6	56.5
Western Australia	312.1	266.5	578.6	13.8	21.4	599.9	412.2	1 012.1	4.2	3.6	59.3
Tasmania	51.5	57.2	108.7	5.4	8.4	117.1	95.3	212.4	9.5	7.2	55.1
Northern Territory	43.0	16.8	59.8	2.0	2.5	62.3	26.4	88.7	4.5	4.0	70.3
Australian Capital Territory	62.6	36.4	99.0	2.8	4.0	103.0	53.8	156.8	4.3	3.9	65.7
<b>Australia</b>	<b>2 876.3</b>	<b>2 462.3</b>	<b>5 338.6</b>	<b>190.4</b>	<b>295.6</b>	<b>5 634.2</b>	<b>4 037.8</b>	<b>9 672.0</b>	<b>6.2</b>	<b>5.2</b>	<b>58.3</b>
PERSONS											
New South Wales	2 538.5	1 097.6	3 636.1	156.9	217.1	3 853.2	2 261.2	6 114.3	5.8	5.6	63.0
Victoria	2 000.2	907.9	2 908.0	133.6	177.2	3 085.2	1 695.3	4 780.5	6.3	5.7	64.5
Queensland	1 681.8	705.8	2 387.6	97.2	130.3	2 517.8	1 321.7	3 839.6	5.5	5.2	65.6
South Australia	533.1	273.0	806.1	41.5	56.7	862.8	529.0	1 391.7	7.2	6.6	62.0
Western Australia	951.0	379.8	1 330.8	40.3	52.6	1 383.4	675.0	2 058.4	4.1	3.8	67.2
Tasmania	147.6	79.0	226.6	14.2	19.3	245.9	169.7	415.6	8.8	7.8	59.2
Northern Territory	106.6	24.7	131.3	4.1	5.1	136.4	44.4	180.9	3.7	3.8	75.4
Australian Capital Territory	153.7	54.9	208.6	4.4	7.0	215.7	91.9	307.5	2.8	3.3	70.1
<b>Australia</b>	<b>8 112.4</b>	<b>3 522.7</b>	<b>11 635.2</b>	<b>492.1</b>	<b>665.2</b>	<b>12 300.4</b>	<b>6 788.2</b>	<b>19 088.6</b>	<b>5.7</b>	<b>5.4</b>	<b>64.4</b>

\* estimate is subject to sampling variability too high for most practical purposes

	EMPLOYED		UNEMPLOYED		UNEMPLOYMENT RATE		Participation rate	Employment to population ratio	Unemployment to population ratio – looking for full-time work
	Full time	Total	Looking for f/t work	Total	Looking for f/t work	Total			
	'000	'000	'000	'000	%	%			
MALES									
November 2010	146.7	351.6	33.5	70.4	18.6	16.7	55.1	46.0	4.4
November 2011	129.2	338.3	34.9	68.2	21.2	16.8	53.4	44.4	4.6
2012									
November	132.3	326.9	41.4	75.6	23.8	18.8	52.8	42.9	5.4
December	130.7	326.4	40.7	75.1	23.7	18.7	52.7	42.8	5.3
2013									
January	128.3	326.6	39.7	74.3	23.6	18.5	52.6	42.9	5.2
February	125.4	327.7	38.7	73.2	23.6	18.3	52.6	43.0	5.1
March	122.7	329.3	37.7	72.2	23.5	18.0	52.7	43.2	4.9
April	120.3	330.4	36.8	71.3	23.4	17.7	52.7	43.3	4.8
May	118.2	330.3	36.2	70.9	23.4	17.7	52.6	43.3	4.7
June	116.3	328.9	35.7	70.7	23.5	17.7	52.5	43.2	4.7
July	114.7	326.7	35.1	70.4	23.4	17.7	52.1	42.9	4.6
August	113.3	324.1	34.5	70.0	23.4	17.8	51.7	42.6	4.5
September	112.0	321.4	33.9	69.4	23.2	17.8	51.3	42.2	4.4
October	110.9	319.1	33.2	68.5	23.0	17.7	50.9	41.9	4.4
November	110.1	317.3	32.3	67.4	22.7	17.5	50.5	41.6	4.2
FEMALES									
November 2010	73.8	349.8	31.8	70.8	30.1	16.8	57.9	48.1	4.4
November 2011	68.2	350.2	28.6	64.3	29.5	15.5	57.3	48.4	3.9
2012									
November	65.5	347.4	22.2	59.6	25.2	14.6	56.2	48.0	3.1
December	63.7	347.5	22.6	59.6	26.2	14.6	56.2	48.0	3.1
2013									
January	61.9	348.2	23.3	59.6	27.4	14.6	56.3	48.1	3.2
February	60.2	349.2	24.1	59.2	28.6	14.5	56.3	48.2	3.3
March	59.0	350.2	24.7	58.5	29.5	14.3	56.4	48.3	3.4
April	58.3	350.8	25.0	58.0	30.0	14.2	56.4	48.4	3.5
May	58.2	350.7	25.3	58.3	30.3	14.3	56.4	48.4	3.5
June	58.2	349.6	25.7	59.6	30.6	14.6	56.5	48.2	3.5
July	57.9	347.3	26.2	62.0	31.1	15.1	56.5	47.9	3.6
August	57.4	344.4	26.7	64.3	31.7	15.7	56.4	47.5	3.7
September	56.6	341.6	27.0	66.1	32.2	16.2	56.3	47.1	3.7
October	55.9	339.0	27.0	67.4	32.6	16.6	56.1	46.8	3.7
November	55.1	336.8	26.8	68.4	32.7	16.9	55.9	46.5	3.7
PERSONS									
November 2010	220.5	701.4	65.3	141.1	22.8	16.7	56.5	47.0	4.4
November 2011	197.5	688.4	63.5	132.5	24.3	16.2	55.3	46.4	4.3
2012									
November	197.7	674.3	63.5	135.2	24.3	16.7	54.5	45.4	4.3
December	194.4	673.9	63.3	134.7	24.6	16.7	54.4	45.3	4.3
2013									
January	190.2	674.8	63.1	133.8	24.9	16.6	54.4	45.4	4.2
February	185.6	676.9	62.8	132.4	25.3	16.4	54.4	45.5	4.2
March	181.7	679.5	62.4	130.6	25.6	16.1	54.5	45.7	4.2
April	178.6	681.1	61.8	129.3	25.7	16.0	54.5	45.8	4.2
May	176.4	681.0	61.4	129.1	25.8	15.9	54.5	45.8	4.1
June	174.5	678.5	61.3	130.3	26.0	16.1	54.4	45.6	4.1
July	172.6	674.0	61.3	132.4	26.2	16.4	54.3	45.4	4.1
August	170.6	668.5	61.2	134.3	26.4	16.7	54.0	45.0	4.1
September	168.6	663.0	60.8	135.5	26.5	17.0	53.7	44.6	4.1
October	166.8	658.1	60.2	135.9	26.5	17.1	53.4	44.3	4.0
November	165.2	654.1	59.2	135.8	26.3	17.2	53.1	44.0	4.0

	EMPLOYED		UNEMPLOYED		UNEMPLOYMENT RATE		Participation rate	Employment to population ratio	Unemployment to population ratio – looking for full-time work
	Full time	Total	Looking for f/t work	Total	Looking for f/t work	Total			
	'000	'000	'000	'000	%	%			
MALES									
November 2010	148.2	355.2	35.0	71.4	19.1	16.7	55.8	46.4	4.6
November 2011	130.6	336.7	30.2	64.1	18.8	16.0	52.7	44.3	4.0
2012									
November	130.7	325.7	43.9	78.5	25.2	19.4	53.1	42.8	5.8
December	130.8	319.4	41.9	75.1	24.2	19.0	51.8	41.9	5.5
2013									
January	128.4	332.4	35.5	69.9	21.7	17.4	52.8	43.6	4.7
February	124.8	329.1	39.2	73.9	23.9	18.3	52.8	43.2	5.1
March	122.4	328.1	39.9	77.9	24.6	19.2	53.2	43.0	5.2
April	119.7	328.8	35.9	68.8	23.1	17.3	52.1	43.1	4.7
May	121.1	329.1	35.2	67.5	22.5	17.0	52.1	43.2	4.6
June	112.0	331.7	37.5	71.0	25.1	17.6	52.9	43.6	4.9
July	115.6	331.8	32.3	70.0	21.9	17.4	52.8	43.6	4.2
August	115.1	323.4	35.4	72.8	23.5	18.4	52.0	42.5	4.6
September	111.6	314.9	34.9	70.9	23.8	18.4	50.7	41.3	4.6
October	108.7	318.1	35.4	67.2	24.6	17.4	50.6	41.8	4.6
November	111.4	320.4	28.8	64.5	20.5	16.7	50.5	42.0	3.8
FEMALES									
November 2010	77.1	349.8	30.9	70.1	28.6	16.7	57.8	48.1	4.3
November 2011	66.7	355.7	29.3	66.9	30.5	15.8	58.4	49.2	4.0
2012									
November	67.4	349.4	17.0	51.6	20.1	12.9	55.4	48.3	2.3
December	64.9	350.1	22.4	58.9	25.6	14.4	56.5	48.4	3.1
2013									
January	61.3	347.0	25.8	66.9	29.6	16.2	57.1	47.9	3.6
February	58.2	344.9	25.9	58.8	30.8	14.6	55.7	47.6	3.6
March	58.4	349.9	24.6	56.0	29.6	13.8	55.9	48.2	3.4
April	59.2	354.5	23.6	59.5	28.5	14.4	57.1	48.9	3.3
May	58.7	352.8	25.0	56.0	29.9	13.7	56.4	48.7	3.5
June	57.7	347.4	26.3	59.2	31.3	14.6	56.2	48.0	3.6
July	57.9	348.7	23.7	59.0	29.0	14.5	56.3	48.1	3.3
August	58.2	343.3	29.8	67.0	33.9	16.3	56.6	47.4	4.1
September	56.9	341.3	28.0	69.5	33.0	16.9	56.7	47.1	3.9
October	56.3	341.4	25.4	68.2	31.1	16.7	56.5	47.1	3.5
November	53.4	333.2	26.2	64.6	32.9	16.2	54.8	45.9	3.6
PERSONS									
November 2010	225.3	705.0	65.9	141.5	22.6	16.7	56.8	47.3	4.4
November 2011	197.3	692.4	59.5	131.0	23.2	15.9	55.5	46.6	4.0
2012									
November	198.1	675.1	60.9	130.1	23.5	16.2	54.2	45.4	4.1
December	195.6	669.5	64.2	134.0	24.7	16.7	54.1	45.1	4.3
2013									
January	189.7	679.4	61.3	136.8	24.4	16.8	54.9	45.7	4.1
February	182.9	673.9	65.1	132.7	26.2	16.4	54.2	45.3	4.4
March	180.8	678.0	64.5	133.9	26.3	16.5	54.5	45.5	4.3
April	178.9	683.3	59.5	128.3	25.0	15.8	54.6	45.9	4.0
May	179.8	681.9	60.2	123.5	25.1	15.3	54.2	45.9	4.0
June	169.7	679.1	63.8	130.2	27.3	16.1	54.5	45.7	4.3
July	173.5	680.5	56.0	129.1	24.4	15.9	54.5	45.8	3.8
August	173.3	666.6	65.2	139.8	27.3	17.3	54.3	44.9	4.4
September	168.5	656.2	62.9	140.3	27.2	17.6	53.6	44.2	4.2
October	165.0	659.5	60.7	135.5	26.9	17.0	53.5	44.4	4.1
November	164.8	653.6	55.0	129.1	25.0	16.5	52.6	43.9	3.7

	EMPLOYED			UNEMPLOYED		Labour force	Not in labour force	Civilian population aged 15–19 years	UNEMPLOYMENT RATE		Participation rate	Unemployment to population ratio – looking for full-time work
	Full time	Part time	Total	Looking for f/t work	Total				Looking for f/t work	Total		
	'000	'000	'000	'000	'000	'000	'000	'000			%	%
NOT ATTENDING FULL-TIME EDUCATION												
<b>Males</b>												
November 2010	132.3	48.3	180.5	25.8	30.8	211.4	46.3	257.7	16.3	14.6	82.0	10.0
November 2011	118.2	47.0	165.2	23.7	27.7	192.9	49.4	242.3	16.7	14.4	79.6	9.8
November 2012	115.8	39.7	155.5	30.9	34.7	190.2	43.2	233.3	21.1	18.2	81.5	13.3
November 2013	92.2	41.4	133.6	17.6	20.9	154.5	30.6	185.1	16.0	13.5	83.5	9.5
<b>Females</b>												
November 2010	67.4	60.7	128.1	20.4	23.8	151.9	45.9	197.9	23.2	15.7	76.8	10.3
November 2011	56.9	59.7	116.6	21.0	26.4	143.0	40.4	183.4	27.0	18.5	78.0	11.5
November 2012	57.1	61.0	118.1	11.9	14.2	132.4	49.1	181.5	17.2	10.7	72.9	6.6
November 2013	45.7	51.9	97.6	15.1	17.9	115.5	38.4	153.9	24.8	15.5	75.0	9.8
<b>Persons</b>												
November 2010	199.7	108.9	308.7	46.3	54.6	363.3	92.2	455.5	18.8	15.0	79.8	10.2
November 2011	175.1	106.7	281.8	44.7	54.2	336.0	89.8	425.7	20.4	16.1	78.9	10.5
November 2012	172.9	100.7	273.6	42.8	48.9	322.5	92.3	414.8	19.9	15.2	77.7	10.3
November 2013	137.9	93.3	231.2	32.6	38.8	270.0	69.1	339.0	19.1	14.4	79.6	9.6
ATTENDING FULL-TIME EDUCATION												
<b>Males</b>												
November 2010	7.8	155.7	163.5	7.6	35.5	198.9	308.4	507.4	49.5	17.8	39.2	1.5
November 2011	*6.0	155.2	161.2	*4.7	31.5	192.7	326.0	518.6	*43.8	16.3	37.1	*0.9
November 2012	8.9	151.0	159.9	9.5	37.4	197.3	330.9	528.2	51.5	19.0	37.4	1.8
November 2013	14.2	162.2	176.4	8.7	38.0	214.4	362.7	577.1	37.9	17.7	37.2	1.5
<b>Females</b>												
November 2010	9.5	205.8	215.2	8.5	39.9	255.1	273.6	528.7	47.4	15.6	48.2	1.6
November 2011	9.7	222.8	232.5	6.6	34.2	266.6	273.5	540.1	40.4	12.8	49.4	1.2
November 2012	9.8	214.6	224.4	*4.2	32.4	256.7	285.8	542.6	*30.0	12.6	47.3	*0.8
November 2013	*7.1	221.7	228.8	9.6	40.1	268.9	302.4	571.4	57.3	14.9	47.1	1.7
<b>Persons</b>												
November 2010	17.2	361.5	378.7	16.1	75.3	454.0	582.1	1 036.1	48.4	16.6	43.8	1.6
November 2011	15.7	377.9	393.6	11.2	65.7	459.3	599.5	1 058.7	41.7	14.3	43.4	1.1
November 2012	18.7	365.6	384.3	13.7	69.8	454.1	616.7	1 070.7	42.2	15.4	42.4	1.3
November 2013	21.3	383.9	405.2	18.3	78.2	483.3	665.1	1 148.5	46.1	16.2	42.1	1.6
TOTAL												
<b>Males</b>												
November 2010	140.1	204.0	344.0	33.4	66.3	410.3	354.7	765.0	19.3	16.2	53.6	4.4
November 2011	124.2	202.1	326.4	28.4	59.2	385.6	375.3	760.9	18.6	15.4	50.7	3.7
November 2012	124.7	190.7	315.4	40.4	72.1	387.5	374.0	761.5	24.5	18.6	50.9	5.3
November 2013	106.3	203.6	310.0	26.2	59.0	368.9	393.3	762.3	19.8	16.0	48.4	3.4
<b>Females</b>												
November 2010	76.9	266.5	343.3	28.9	63.7	407.0	319.5	726.5	27.4	15.6	56.0	4.0
November 2011	66.6	282.5	349.1	27.6	60.6	409.7	313.9	723.6	29.3	14.8	56.6	3.8
November 2012	66.9	275.6	342.5	16.1	46.6	389.1	335.0	724.1	19.4	12.0	53.7	2.2
November 2013	52.9	273.5	326.4	24.7	58.0	384.4	340.9	725.3	31.8	15.1	53.0	3.4
<b>Persons</b>												
November 2010	216.9	470.4	687.4	62.4	130.0	817.3	674.3	1 491.6	22.3	15.9	54.8	4.2
November 2011	190.8	484.6	675.4	56.0	119.8	795.2	689.2	1 484.5	22.7	15.1	53.6	3.8
November 2012	191.6	466.3	657.9	56.5	118.7	776.6	709.0	1 485.6	22.8	15.3	52.3	3.8
November 2013	159.2	477.1	636.3	50.9	117.0	753.3	734.2	1 487.5	24.2	15.5	50.6	3.4

\* estimate is subject to sampling variability too high for most practical purposes

	EMPLOYED			UNEMPLOYED		Labour force	Not in labour force	Civilian population aged 15–19 years	UNEMPLOYMENT RATE		Participation rate	Unemployment to population ratio – looking for full-time work
	Full time	Part time	Total	Looking for f/t work	Total				Looking for f/t work	Total		
	'000	'000	'000	'000	'000				'000	'000		
NOT ATTENDING FULL-TIME EDUCATION												
New South Wales	35.4	33.0	68.4	8.3	11.6	80.0	26.9	106.9	19.0	14.5	74.8	7.8
Victoria	25.8	13.2	39.0	*5.2	*5.6	44.7	10.3	55.0	*16.7	*12.6	81.2	*9.4
Queensland	37.1	26.1	63.1	12.1	12.7	75.8	15.4	91.2	24.6	16.8	83.1	13.3
South Australia	8.8	6.5	15.3	3.9	4.8	20.1	*3.0	23.1	30.8	23.8	87.1	17.1
Western Australia	22.8	11.1	33.9	*1.5	*2.2	36.1	9.1	45.2	*6.2	*6.2	79.9	*3.3
Tasmania	3.2	*1.2	4.4	*1.1	*1.3	5.7	2.0	7.7	*25.0	*23.3	74.2	*13.7
Northern Territory	2.9	0.9	3.8	*0.2	*0.2	4.0	2.0	6.0	*6.9	*5.3	66.4	*3.5
Australian Capital Territory	2.0	*1.3	3.3	*0.3	*0.3	3.6	*0.4	4.0	*14.7	*9.5	90.0	*8.5
<b>Australia</b>	<b>137.9</b>	<b>93.3</b>	<b>231.2</b>	<b>32.6</b>	<b>38.8</b>	<b>270.0</b>	<b>69.1</b>	<b>339.0</b>	<b>19.1</b>	<b>14.4</b>	<b>79.6</b>	<b>9.6</b>
ATTENDING FULL-TIME EDUCATION												
New South Wales	8.1	113.2	121.3	*5.2	24.9	146.3	216.6	362.9	*39.2	17.1	40.3	*1.4
Victoria	4.4	96.3	100.7	*4.5	21.3	122.0	183.4	305.3	*50.5	17.4	40.0	*1.5
Queensland	*5.5	85.6	91.0	*3.0	15.0	106.0	118.5	224.5	*35.4	14.2	47.2	*1.3
South Australia	*0.7	28.4	29.1	*1.7	6.8	36.0	46.3	82.3	*70.2	18.9	43.7	*2.1
Western Australia	*2.1	39.2	41.2	*2.3	5.9	47.1	70.6	117.7	*53.0	12.5	40.0	*2.0
Tasmania	*0.2	8.3	8.5	*0.9	2.8	11.3	14.5	25.8	*83.9	24.9	43.7	*3.6
Northern Territory	0.3	4.6	4.9	*0.1	*0.2	5.1	5.2	10.4	*20.6	*4.2	49.5	*0.9
Australian Capital Territory	*—	8.4	8.4	*0.4	*1.2	9.5	10.0	19.6	*100.0	*12.4	48.7	*2.1
<b>Australia</b>	<b>21.3</b>	<b>383.9</b>	<b>405.2</b>	<b>18.3</b>	<b>78.2</b>	<b>483.3</b>	<b>665.1</b>	<b>1 148.5</b>	<b>46.1</b>	<b>16.2</b>	<b>42.1</b>	<b>1.6</b>
TOTAL												
New South Wales	43.5	146.2	189.7	13.5	36.5	226.3	243.5	469.7	23.7	16.1	48.2	2.9
Victoria	30.3	109.5	139.8	9.7	26.9	166.7	193.7	360.3	24.3	16.2	46.3	2.7
Queensland	42.5	111.6	154.1	15.1	27.7	181.9	133.9	315.8	26.2	15.2	57.6	4.8
South Australia	9.6	34.9	44.5	5.7	11.6	56.1	49.3	105.4	37.3	20.7	53.2	5.4
Western Australia	24.8	50.3	75.1	*3.8	8.1	83.2	79.6	162.9	*13.3	9.8	51.1	*2.3
Tasmania	3.4	9.5	12.9	2.0	4.1	17.0	16.5	33.5	37.3	24.4	50.7	6.0
Northern Territory	3.2	5.5	8.7	*0.3	*0.4	9.1	7.3	16.4	*8.6	*4.7	55.7	*1.8
Australian Capital Territory	2.0	9.6	11.6	*0.8	*1.5	13.1	10.4	23.6	*27.8	*11.6	55.7	*3.2
<b>Australia</b>	<b>159.2</b>	<b>477.1</b>	<b>636.3</b>	<b>50.9</b>	<b>117.0</b>	<b>753.3</b>	<b>734.2</b>	<b>1 487.5</b>	<b>24.2</b>	<b>15.5</b>	<b>50.6</b>	<b>3.4</b>

\* estimate is subject to sampling variability too high for most practical purposes

— nil or rounded to zero (including null cells)

LABOUR FORCE STATUS IN NOVEMBER 2013

<i>Labour force status in October 2013</i>	<i>Employed Full time</i>	<i>Employed Part time</i>	<i>Employed Total</i>	<i>Unemployed</i>	<i>Labour Force</i>	<i>Not in Labour Force</i>	<i>Matched Civilian Population</i>
	'000	'000	'000	'000	'000	'000	'000
<b>MALES</b>							
Employed Full time	4 049.1	122.5	4 171.7	27.8	4 199.5	52.1	4 251.6
Employed Part time	139.2	663.9	803.0	20.9	823.9	63.0	886.9
Employed Total	4 188.3	786.4	4 974.7	48.7	5 023.4	115.1	5 138.5
Unemployed Total	33.3	24.5	57.8	175.7	233.5	66.5	300.0
Labour Force	4 221.6	810.9	5 032.5	224.4	5 256.9	181.6	5 438.5
Not in Labour Force	37.0	48.1	85.1	60.2	145.3	1 913.5	2 058.8
Matched Civilian Population	4 258.6	859.0	5 117.6	284.6	5 402.2	2 095.1	7 497.3
<b>FEMALES</b>							
Employed Full time	2 094.7	165.5	2 260.2	8.1	2 268.3	36.2	2 304.5
Employed Part time	193.9	1 735.9	1 929.8	21.5	1 951.3	114.7	2 066.0
Employed Total	2 288.6	1 901.4	4 190.0	29.5	4 219.5	150.9	4 370.5
Unemployed Total	10.2	39.8	50.0	136.5	186.5	60.8	247.3
Labour Force	2 298.8	1 941.2	4 240.0	166.0	4 406.0	211.8	4 617.8
Not in Labour Force	35.4	85.4	120.8	75.2	195.9	2 873.4	3 069.4
Matched Civilian Population	2 334.2	2 026.6	4 360.8	241.2	4 601.9	3 085.2	7 687.1
<b>PERSONS</b>							
Employed Full time	6 143.8	288.0	6 431.9	35.9	6 467.8	88.3	6 556.1
Employed Part time	333.1	2 399.7	2 732.8	42.3	2 775.1	177.7	2 952.8
Employed Total	6 477.0	2 687.7	9 164.7	78.3	9 243.0	266.0	9 509.0
Unemployed Total	43.5	64.3	107.8	312.1	419.9	127.3	547.3
Labour Force	6 520.4	2 752.1	9 272.5	390.4	9 662.9	393.3	10 056.2
Not in Labour Force	72.3	133.5	205.9	135.4	341.3	4 786.9	5 128.2
Matched Civilian Population	6 592.8	2 885.6	9 478.4	525.8	10 004.2	5 180.3	15 184.4

(a) Gross flows figures do not match published labour force estimates. Refer to gross flows in Glossary.

	TREND			SEASONALLY ADJUSTED		
	<i>Full time workers</i>	<i>Part time workers</i>	<i>Total</i>	<i>Full time workers</i>	<i>Part time workers</i>	<i>Total</i>
	millions	millions	millions	millions	millions	millions
MALES						
November 2010	913.7	70.2	983.9	912.5	70.8	983.2
November 2011	925.9	69.6	995.5	921.9	71.6	993.6
2012						
November	928.6	69.8	998.5	930.5	69.1	999.7
December	929.0	70.4	999.4	928.6	69.0	997.6
2013						
January	928.9	71.1	1 000.0	927.1	70.7	997.7
February	928.8	71.9	1 000.6	929.2	75.2	1 004.4
March	928.9	72.5	1 001.4	929.6	71.6	1 001.2
April	929.4	72.9	1 002.3	931.8	71.9	1 003.7
May	930.0	73.1	1 003.1	925.0	73.5	998.4
June	930.4	73.4	1 003.8	929.2	73.9	1 003.1
July	930.4	73.9	1 004.3	935.7	73.3	1 009.1
August	929.9	74.6	1 004.6	931.4	74.3	1 005.7
September	929.1	75.4	1 004.4	926.1	74.8	1 001.0
October	928.0	76.1	1 004.0	929.2	77.2	1 006.4
November	927.0	76.7	1 003.7	924.1	77.0	1 001.1
FEMALES						
November 2010	448.2	165.9	614.1	449.4	164.5	613.9
November 2011	455.4	170.5	625.9	452.0	174.5	626.5
2012						
November	454.8	171.6	626.4	456.8	172.1	628.9
December	455.7	172.2	628.0	457.0	173.2	630.2
2013						
January	456.4	172.9	629.3	456.2	172.2	628.4
February	457.0	173.6	630.6	457.4	173.1	630.6
March	457.5	174.3	631.8	455.2	175.1	630.3
April	458.5	174.7	633.2	461.6	175.2	636.9
May	459.8	174.9	634.7	456.7	173.9	630.6
June	461.3	175.1	636.4	461.2	175.4	636.6
July	462.3	175.5	637.7	460.7	177.2	637.9
August	462.5	175.9	638.4	468.9	172.8	641.6
September	462.1	176.5	638.6	461.8	176.7	638.5
October	461.2	177.1	638.3	460.6	179.1	639.7
November	460.3	177.7	638.0	456.0	177.3	633.3
PERSONS						
November 2010	1 361.9	236.1	1 597.2	1 361.9	235.3	1 597.2
November 2011	1 381.3	240.1	1 621.4	1 373.9	246.1	1 620.0
2012						
November	1 383.4	241.4	1 624.8	1 387.3	241.2	1 628.6
December	1 384.8	242.6	1 627.4	1 385.6	242.2	1 627.8
2013						
January	1 385.4	244.0	1 629.3	1 383.3	242.8	1 626.1
February	1 385.8	245.5	1 631.2	1 386.6	248.3	1 635.0
March	1 386.5	246.8	1 633.2	1 384.8	246.7	1 631.5
April	1 387.9	247.6	1 635.4	1 393.4	247.2	1 640.5
May	1 389.8	248.0	1 637.8	1 381.6	247.4	1 629.0
June	1 391.7	248.6	1 640.3	1 390.3	249.3	1 639.6
July	1 392.7	249.4	1 642.1	1 396.4	250.5	1 646.9
August	1 392.5	250.5	1 643.0	1 400.3	247.1	1 647.4
September	1 391.2	251.9	1 643.0	1 388.0	251.5	1 639.4
October	1 389.2	253.2	1 642.3	1 389.8	256.3	1 646.1
November	1 387.3	254.3	1 641.6	1 380.1	254.3	1 634.4



## HOURS WORKED

	<i>New South Wales</i>	<i>Victoria</i>	<i>Queensland</i>	<i>South Australia</i>	<i>Western Australia</i>	<i>Tasmania</i>	<i>Northern Territory</i>	<i>Australian Capital Territory</i>	<i>Australia</i>
	millions	millions	millions	millions	millions	millions	millions	millions	millions

## SEASONALLY ADJUSTED

November 2010	503.2	395.9	332.0	112.3	176.2	31.2	np	np	1 597.2
November 2011	506.4	400.2	338.5	113.2	182.1	31.9	np	np	1 620.0
2012									
November	512.8	396.2	337.8	110.4	192.4	30.5	np	np	1 628.6
December	512.3	398.3	335.9	111.8	190.5	30.3	np	np	1 627.8
2013									
January	512.8	396.5	336.1	112.2	190.6	30.4	np	np	1 626.1
February	515.3	399.7	340.7	112.2	189.2	30.3	np	np	1 635.0
March	513.5	399.0	336.5	112.2	192.6	30.3	np	np	1 631.5
April	516.0	403.9	336.9	111.8	193.0	31.1	np	np	1 640.5
May	516.7	398.6	337.6	115.0	183.9	29.0	np	np	1 629.0
June	519.7	402.9	335.7	112.3	191.0	30.0	np	np	1 639.6
July	519.0	404.8	347.2	109.1	190.4	29.0	np	np	1 646.9
August	516.9	402.6	347.0	110.3	192.9	29.7	np	np	1 647.4
September	512.7	401.2	344.5	111.4	192.0	29.9	np	np	1 639.4
October	515.1	405.7	345.3	108.8	192.4	29.6	np	np	1 646.1
November	510.4	402.8	341.3	111.0	191.1	29.9	np	np	1 634.4

## TREND

November 2010	503.7	396.6	329.9	112.3	176.3	31.7	18.5	28.3	1 597.2
November 2011	505.9	398.1	340.3	113.0	184.9	31.5	19.0	28.7	1 621.4
2012									
November	512.1	397.4	333.9	111.5	191.3	30.5	19.4	28.7	1 624.8
December	512.8	397.7	335.5	111.6	191.2	30.5	19.3	28.7	1 627.4
2013									
January	513.3	398.1	336.6	111.9	191.0	30.5	19.1	28.7	1 629.3
February	514.1	398.9	337.2	112.3	190.6	30.4	19.0	28.7	1 631.2
March	515.2	399.9	337.4	112.6	190.2	30.3	19.0	28.7	1 633.2
April	516.4	400.9	337.8	112.7	189.9	30.1	19.0	28.7	1 635.4
May	517.3	401.7	338.9	112.4	189.8	29.9	19.1	28.7	1 637.8
June	517.8	402.4	340.7	111.8	190.1	29.7	19.2	28.7	1 640.3
July	517.4	402.8	342.5	111.2	190.6	29.6	19.4	28.6	1 642.1
August	516.4	403.1	344.0	110.6	191.2	29.6	19.5	28.6	1 643.0
September	515.1	403.3	344.8	110.2	191.8	29.6	19.6	28.6	1 643.0
October	513.7	403.5	345.0	110.0	192.2	29.7	19.7	28.6	1 642.3
November	512.4	403.8	344.9	109.8	192.7	29.9	19.8	28.5	1 641.6

np not available for publication but included in totals where applicable, unless otherwise indicated

	TREND			SEASONALLY ADJUSTED			ORIGINAL		
	<i>Under-employed workers</i>	<i>Under-employment rate</i>	<i>Labour force under-utilisation rate</i>	<i>Under-employed workers</i>	<i>Under-employment rate</i>	<i>Labour force under-utilisation rate</i>	<i>Under-employed workers</i>	<i>Under-employment rate</i>	<i>Labour force under-utilisation rate</i>
	'000	%	%	'000	%	%	'000	%	%
MALES									
November 2009	381.9	6.0	11.8	385.8	6.1	11.8	376.2	6.0	11.3
November 2010	356.6	5.5	10.3	365.5	5.6	10.4	358.5	5.5	10.0
November 2011	357.7	5.5	10.6	355.9	5.4	10.6	348.9	5.4	10.2
2012									
May	359.6	5.5	10.6	357.2	5.4	10.4	359.8	5.5	10.4
August	351.5	5.3	10.5	345.3	5.2	10.5	338.4	5.2	10.3
November	351.3	5.3	10.6	355.4	5.4	10.7	349.2	5.3	10.3
2013									
February	364.1	5.5	10.9	358.4	5.4	10.8	368.4	5.5	11.5
May	379.0	5.7	11.3	380.5	5.7	11.2	383.2	5.7	11.2
August	388.8	5.8	11.6	398.5	6.0	11.9	391.4	5.9	11.6
November	392.5	5.9	11.8	384.3	5.7	11.7	379.5	5.7	11.2
FEMALES									
November 2009	514.8	9.7	15.2	517.0	9.8	15.2	519.7	9.8	14.9
November 2010	486.5	9.0	14.5	477.8	8.8	14.4	480.6	8.9	14.0
November 2011	510.8	9.3	14.7	518.9	9.4	14.9	521.3	9.5	14.5
2012									
May	522.6	9.4	14.8	534.8	9.6	15.1	528.9	9.5	14.9
August	521.0	9.4	14.6	512.1	9.3	14.4	494.1	9.0	13.8
November	518.4	9.3	14.6	525.4	9.4	14.7	528.3	9.5	14.4
2013									
February	523.8	9.3	14.8	516.1	9.2	14.7	534.3	9.5	15.7
May	539.1	9.6	15.2	535.6	9.5	15.1	528.9	9.4	15.0
August	553.3	9.8	15.5	566.1	10.0	15.9	547.3	9.8	15.3
November	563.7	10.0	15.8	556.8	9.9	15.6	561.1	10.0	15.2
PERSONS									
November 2009	896.7	7.7	13.3	902.7	7.8	13.4	895.8	7.7	12.9
November 2010	843.2	7.1	12.2	843.3	7.1	12.3	839.1	7.1	11.9
November 2011	868.5	7.2	12.5	874.8	7.3	12.5	870.2	7.3	12.1
2012									
May	882.2	7.3	12.5	892.1	7.4	12.6	888.6	7.3	12.5
August	872.5	7.2	12.4	857.3	7.1	12.3	832.6	6.9	11.9
November	869.7	7.1	12.4	880.8	7.2	12.5	877.5	7.2	12.2
2013									
February	887.9	7.2	12.7	874.5	7.1	12.6	902.7	7.3	13.4
May	918.1	7.5	13.1	916.1	7.4	13.0	912.1	7.4	12.9
August	942.1	7.6	13.4	964.6	7.8	13.7	938.7	7.7	13.3
November	956.2	7.8	13.7	941.0	7.6	13.4	940.6	7.6	13.1

	TREND			SEASONALLY ADJUSTED			ORIGINAL		
	<i>Under-employed workers</i>	<i>Under-employment rate</i>	<i>Labour force under-utilisation rate</i>	<i>Under-employed workers</i>	<i>Under-employment rate</i>	<i>Labour force under-utilisation rate</i>	<i>Under-employed workers</i>	<i>Under-employment rate</i>	<i>Labour force under-utilisation rate</i>
	'000	%	%	'000	%	%	'000	%	%
MALES									
New South Wales	126.6	6.0	12.0	125.2	6.0	11.9	122.7	5.9	11.6
Victoria	104.6	6.3	12.5	102.4	6.1	12.5	100.1	6.0	11.9
Queensland	78.7	5.8	11.8	74.0	5.5	11.3	74.4	5.5	10.9
South Australia	27.9	6.0	12.9	27.1	5.9	12.7	27.1	5.9	12.4
Western Australia	38.6	4.9	9.3	39.4	5.0	9.3	38.4	4.9	8.9
Tasmania	10.1	7.8	16.8	9.6	7.4	16.0	9.1	7.0	15.5
Northern Territory	1.6	2.2	7.2	1.6	2.2	6.7	1.7	2.3	5.8
Australian Capital Territory	5.4	4.8	8.3	6.2	5.5	8.7	6.1	5.4	8.2
<b>Australia</b>	<b>392.5</b>	<b>5.9</b>	<b>11.8</b>	<b>384.3</b>	<b>5.7</b>	<b>11.7</b>	<b>379.5</b>	<b>5.7</b>	<b>11.2</b>
FEMALES									
New South Wales	174.9	9.8	15.8	169.8	9.6	15.5	174.9	9.9	15.4
Victoria	147.8	10.4	16.3	140.1	9.8	15.8	141.1	9.9	15.5
Queensland	120.9	10.4	15.9	123.9	10.6	16.1	124.8	10.7	15.6
South Australia	41.0	10.3	17.2	42.3	10.6	17.4	42.4	10.6	17.2
Western Australia	54.9	9.2	13.8	54.9	9.1	13.2	54.3	9.0	12.6
Tasmania	15.0	12.7	20.3	14.6	12.4	19.8	14.9	12.7	19.9
Northern Territory	2.2	3.6	8.7	1.9	3.1	7.6	1.7	2.7	6.7
Australian Capital Territory	7.0	6.8	10.7	6.7	6.4	10.5	6.9	6.7	10.6
<b>Australia</b>	<b>563.7</b>	<b>10.0</b>	<b>15.8</b>	<b>556.8</b>	<b>9.9</b>	<b>15.6</b>	<b>561.1</b>	<b>10.0</b>	<b>15.2</b>
PERSONS									
New South Wales	301.6	7.8	13.8	295.0	7.6	13.5	297.6	7.7	13.4
Victoria	252.4	8.2	14.2	242.6	7.8	14.0	241.2	7.8	13.6
Queensland	199.6	7.9	13.7	197.9	7.9	13.5	199.3	7.9	13.1
South Australia	68.8	8.0	14.9	69.3	8.0	14.9	69.5	8.1	14.6
Western Australia	93.5	6.7	11.2	94.3	6.8	11.0	92.7	6.7	10.5
Tasmania	25.1	10.1	18.4	24.2	9.8	17.8	24.0	9.7	17.6
Northern Territory	3.9	2.9	7.9	3.5	2.6	7.2	3.4	2.5	6.2
Australian Capital Territory	12.4	5.7	9.4	12.9	5.9	9.6	13.0	6.0	9.3
<b>Australia</b>	<b>956.2</b>	<b>7.8</b>	<b>13.7</b>	<b>941.0</b>	<b>7.6</b>	<b>13.4</b>	<b>940.6</b>	<b>7.6</b>	<b>13.1</b>

## WHAT IF...? REVISIONS TO TREND ESTIMATES

### EFFECT OF NEW SEASONALLY ADJUSTED ESTIMATES ON TREND ESTIMATES

#### TREND REVISIONS

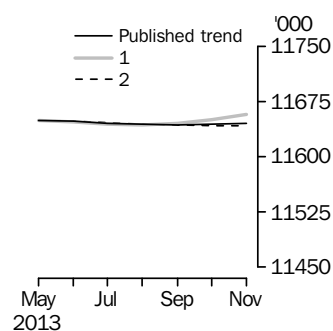
Each time new seasonally adjusted estimates become available, trend estimates are revised. This revision is a combined result of the concurrent seasonal adjustment process and the application of surrogates of the Henderson average to the seasonally adjusted series (see paragraphs 28 to 36 of the Explanatory Notes).

The examples in the tables below show two illustrative scenarios and the consequent revisions to previous trend estimates of employment and the unemployment rate. The revisions in the scenarios are due to the use of surrogates of the Henderson average, as the impact of revision of seasonally adjusted estimates can not be estimated in advance.

- (1) The December seasonally adjusted estimate is *higher* than the November estimate by:
  - 0.24% for employment
  - 2.20% for the unemployment rate
- (2) The December seasonally adjusted estimate is *lower* than the November estimate by:
  - 0.24% for employment
  - 2.20% for the unemployment rate

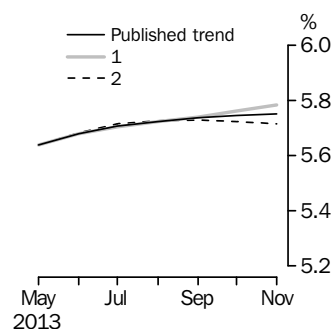
The percentage changes of 0.24% and 2.20% represent the average absolute monthly percentage changes in employment and the unemployment rate respectively. Estimates in the graphs have been calculated using unrounded estimates, and may be different from, but more accurate than, rounded estimates depicted in the corresponding table.

#### EMPLOYMENT



		WHAT IF NEXT MONTH'S SEASONALLY ADJUSTED ESTIMATE IS:		
		(1) 11 687.9 i.e. rises by 0.24%	(2) 11 632.0 i.e. falls by 0.24%	
		<i>Trend as published</i>		
<b>2013</b>				
August	11 644.2	11 643.5	11 644.5	
September	11 643.5	11 645.2	11 642.7	
October	11 643.7	11 650.2	11 641.9	
November	11 645.5	11 657.4	11 641.8	

#### UNEMPLOYMENT RATE



		WHAT IF NEXT MONTH'S SEASONALLY ADJUSTED ESTIMATE IS:		
		(1) 5.9 i.e. rises by 2.20%	(2) 5.6 i.e. falls by 2.20%	
		<i>Trend as published</i>		
<b>2013</b>				
August	5.7	5.7	5.7	
September	5.7	5.7	5.7	
October	5.7	5.8	5.7	
November	5.8	5.8	5.7	

## EXPLANATORY NOTES

### INTRODUCTION

**1** This publication contains estimates of the civilian labour force derived from the Labour Force Survey component of the Monthly Population Survey. The full time series for estimates from this publication are also available electronically. More detailed estimates are released one week after this publication in various electronic formats – see *Labour Force, Australia, Detailed – Electronic Delivery* (cat. no. 6291.0.55.001) and *Labour Force, Australia, Detailed, Quarterly* (cat. no. 6291.0.55.003).

### CONCEPTS, SOURCES AND METHODS

**2** The conceptual framework used in Australia's Labour Force Survey aligns closely with the standards and guidelines set out in Resolutions of International Conferences of Labour Statisticians. Descriptions of the underlying concepts and structure of Australia's labour force statistics, and the sources and methods used in compiling the estimates, are presented in *Labour Statistics: Concepts, Sources and Methods* (cat. no. 6102.0.55.001) which is available on the ABS website <<http://www.abs.gov.au>>.

### LABOUR FORCE SURVEY

**3** The Labour Force Survey is based on a multi-stage area sample of private dwellings (currently approximately 26,000 houses, flats, etc.) and a list sample of non-private dwellings (hotels, motels, etc.), and covers approximately 0.32% of the civilian population of Australia aged 15 years and over.

**4** Information is obtained from the occupants of selected dwellings by specially trained interviewers using computer-assisted interviewing, or self-completion online.

**5** Households selected for the Labour Force Survey are interviewed each month for eight months, with one-eighth of the sample being replaced each month. The first interview is generally conducted face-to-face. Subsequent interviews are conducted by telephone (if acceptable to the respondent).

**6** From December 2012 to April 2013, the ABS conducted a trial of online electronic data collection. Respondents in one rotation group (i.e. one-eighth of the survey sample) were offered the option of self completing their labour force survey questionnaire online instead of via a face-to-face or telephone interview. From May 2013, the ABS expanded the offer of online electronic collection to 50% of each new incoming rotation group. For more information see the article in the April 2013 issue of this publication. From September 2013 online electronic collection is offered to 100% of private dwellings in each incoming rotation group.

**7** The interviews are generally conducted during the two weeks beginning on the Sunday between the 5th and 11th of each month. The information obtained relates to the week before the interview (i.e. the reference week). Each year, to deal with operational difficulties involved with collecting and processing the Labour Force Survey around the Christmas and New Year holiday period, interviews for December start four weeks after November interviews start, and January interviews start five weeks after December interviews start. As a result, January interviewing may commence as early as the 7th or as late as the 13th, depending on the year. Occasionally, circumstances that present significant operational difficulties for survey collection can result in a change to the normal pattern for the start of interviewing.

**8** Estimates from the Labour Force Survey are usually published first in this publication 32 days after the commencement of interviews for that month, with the exception of estimates for each December which are usually published 39 days after the commencement of interviews.

### SCOPE OF SURVEY

**9** The Labour Force Survey includes all persons aged 15 years and over except members of the permanent defence forces, certain diplomatic personnel of overseas governments customarily excluded from census and estimated population counts, overseas residents in Australia, and members of non-Australian defence forces (and their dependants) stationed in Australia.

## EXPLANATORY NOTES *continued*

### COVERAGE

**10** In the Labour Force Survey, coverage rules are applied which aim to ensure that each person is associated with only one dwelling, and hence has only one chance of selection. The coverage rules are necessarily a balance between theoretical and operational considerations. Nevertheless, the chance of a person being enumerated at two separate dwellings in the survey is considered to be negligible.

### POPULATION BENCHMARKS

**11** The Labour Force Survey estimates are calculated in such a way as to add to independent estimates of the civilian population aged 15 years and over (population benchmarks). These population benchmarks are based on the most recently released estimates of Final and Preliminary quarterly Estimated Resident Population (ERP). For information on the methodology used to produce the ERP see *Australian Demographic Statistics* (cat. no. 3101.0). Since the most recently released ERP estimates lag the current time period for Labour Force estimates by nine months, the Labour Force population benchmarks are created by projecting forward three quarters past the most recently released quarterly ERP estimates. The projection is based on the historical pattern of each population component – births, deaths, interstate migration and net overseas migration (NOM). Projected estimates of NOM are supplemented with other data sources to better forecast population changes in the short-term. The main data source is the forecasts published by the Department of Immigration & Border Protection in the publication *The Outlook for Net Overseas Migration*.

**12** Commencing in March 2010, the ERP series has been revised twice-yearly, in the March and September quarter issues of *Australian Demographic Statistics* (cat. no. 3101.0). This biannual revision cycle incorporates more up to date information available for NOM. From November 2012, each biannual revision to ERP estimates have been used to update the population benchmarks used in creating the Labour Force Survey estimates, usually resulting in revisions to approximately the last two years of the historical time series.

**13** Every five years, the ERP series are revised to incorporate additional information available from the latest Census of Population and Housing (Census). Labour Force Survey population benchmarks, and the estimates, are revised following this five-yearly revision in the ERP. The process of incorporating the revised population benchmarks is referred to as 'rebased'. From the February 2009 issue of this publication, labour force estimates have been compiled using population benchmarks based on the results of the 2006 Census. Revisions were made in the February 2009 issue to historical Labour Force estimates from June 2001 to January 2009. The next rebasing based on the Census will be following the release of the 2011 Census-based ERP estimates, which will incorporate revisions back 20 years to 1991, the same revision period selected for revisions to historical ERP. This revision will be released in the January 2014 issue of this publication. For more information on revised ERP estimates, refer to the June 2012 issue of *Australian Demographic Statistics* (cat. no. 3101.0) released in December 2012.

**14** In between Censuses, the ABS revises the Labour Force population benchmarks using the latest ERP according to the paragraphs above. These were introduced in the July 2010, November 2012 and April 2013 issues. The biannual revision planned for the October 2013 and April 2014 issues will not be implemented, see *What's New in the Labour Force* in the September 2013 issue of this publication. From the July 2014 issue, after the Census rebasing has been published in the January 2014 issue, rebenchmarking will be undertaken quarterly in the April, July, October and January issues. For more information, refer to the article *Rebenchmarking of Labour Force Series* in the November 2012 issue of this publication.

## EXPLANATORY NOTES *continued*

### ESTIMATION METHOD

**15** The estimation method used in the Labour Force Survey is Composite Estimation, which was introduced in May 2007. Composite Estimation combines data collected in the previous six months with current month's data to produce the current month's estimates, thereby exploiting the high correlation between overlapping samples across months in the Labour Force Survey. The Composite Estimator combines the previous and current months' data by applying different factors according to length of time in the survey. After these factors are applied, the seven months of data are weighted to align with current month population benchmarks. For details see *Information Paper: Forthcoming Changes to Labour Force Statistics, 2007* (cat. no. 6292.0).

### COMPARABILITY OF SERIES

**16** From April 1986, the definition of employed persons was changed to include persons who worked without pay between 1 and 14 hours per week in a family business or on a farm (i.e. contributing family workers). For further information, see paragraphs 22 and 23 of the Explanatory Notes in the February 2003 issue of *Labour Force, Australia* (cat. no. 6203.0).

**17** The ABS introduced telephone interviewing into the Labour Force Survey in August 1996. Implementation was phased in for each new sample group from August 1996 to February 1997. During the period of implementation, the new method produced different estimates than would have been obtained under the old methodology. The effect dissipated over the final months of implementation and was no longer discernible from February 1997. The estimates for February 1997 and onwards are directly comparable to estimates for periods prior to August 1996. For further details, see the feature article in the June 1997 issue of *Labour Force, Australia* (cat. no. 6203.0).

**18** From April 2001 the Labour Force Survey has been conducted using a redesigned questionnaire containing additional data items and some minor definitional changes. The definition of unemployed persons was changed to include all persons who were waiting to start work and were available to start in the reference week. This change was introduced in February 2004, when historical unit record data were revised from April 2001 to January 2004. This revision created a small trend break at April 2001 in unemployed persons and unemployment rate series. For further details, see *Information Paper: Forthcoming Changes to Labour Force Statistics* (cat. no. 6292.0), released in December 2003.

**19** Core labour force series were revised in April 2001 for the period April 1986 to March 2001 for the remaining definitional changes introduced with the redesigned questionnaire, to reduce the impact of the changes on labour force series. For further details, see *Information Paper: Implementing the Redesigned Labour Force Survey Questionnaire* (cat. no. 6295.0) and *Information Paper: Questionnaires Used in the Labour Force Survey* (cat. no. 6232.0).

**20** In May 2007, an improved method of estimation, known as composite estimation, was introduced into the Labour Force Survey. In introducing this change, the ABS revised unit record data from April 2001 to April 2007 based on the new estimation method. While estimates for periods prior to April 2001 are unrevised and were compiled using a different estimation method, no trend break was identified in the employed persons series. Also, no change was identified in the trend breaks in the unemployed persons and unemployment rate series which arose with the introduction of a redesigned survey form in April 2001 (as noted above in paragraph 19). For further details, see *Information Paper: Forthcoming Changes to Labour Force Statistics, 2007* (cat. no. 6292.0).

## EXPLANATORY NOTES *continued*

### COMPARABILITY OF SERIES

*continued*

**21** As one of a range of ABS savings initiatives for the 2008–09 financial year, there was a 24% reduction in the LFS sample size for the period July 2008 to August 2009, relative to the June 2008 sample size. The sample reduction was reversed from September 2009 to December 2009, with December 2009 estimates being the first produced under the fully reinstated sample.

### LABOUR FORCE SURVEY SAMPLE

**22** The current Labour Force Survey sample has been selected using information collected in the 2011 Census of Population and Housing.

**23** The sample was introduced over four months – May 2013 to August 2013. Two rotation groups (i.e. one-quarter of the survey sample) were introduced each month.

**24** During the sample phase-in, the increased sample rotation had an impact on the quality of estimates. Movement standard errors increased by approximately 10%, representing, for example, an increase on the standard error on the Australian monthly change in employment for May 2013 from 27,000 to approximately 29,700. Due to the use of composite estimation, there was also a marginal impact on the quality of level estimates. Gross Flows analysis were impacted by the sample phase-in with between 60% to 70% of the sample available for matching between the current and previous months instead of the usual 80%. After full transition to the new sample, the quality of level and movement estimates had moved to the quality designed for under the 2011 sample design and are of similar quality as the 2006 sample design. For further details, see *Information Paper: Labour Force Survey Sample Design* (cat. no. 6269.0) released on 30 May 2013.

### RELIABILITY OF ESTIMATES

**25** Two types of error are possible in an estimate based on a sample survey: sampling error and non-sampling error.

**26** Sampling error occurs because a sample, rather than the entire population, is surveyed. One measure of the likely difference resulting from not including all dwellings in the survey is given by the standard error. There are about two chances in three that a sample estimate will differ by less than one standard error from the figure that would have been obtained if all dwellings had been included in the survey, and about nineteen chances in twenty that the difference will be less than two standard errors. Standard errors of key estimates for the latest month and of movements since the previous month of these estimates are shown in the standard errors section of this publication. Standard errors for other estimates and other movements may be calculated by using the spreadsheet contained in *Labour Force Survey Standard Errors, Data Cube* (cat. no. 6298.0.55.001) which is available free of charge on the ABS website <<http://www.abs.gov.au>>.

**27** Non-sampling error arises from inaccuracies in collecting, recording and processing the data. Every effort is made to minimise reporting error by the careful design of questionnaires, intensive training and supervision of interviewers, and efficient data processing procedures. Non-sampling error also arises because information cannot be obtained from all persons selected in the survey. The Labour Force Survey receives a high level of co-operation from individuals in selected dwellings, with the average response rate over the last year being 96%. See Glossary for definition of response rate.

### SEASONAL ADJUSTMENT AND TREND ESTIMATION

**28** Seasonal adjustment is a means of removing the estimated effects of normal seasonal variation from the series so that the effects of other influences on the series can be more clearly recognised. Seasonal adjustment does not aim to remove the irregular or non-seasonal influences which may be present in any particular month. This means that month-to-month movements of the seasonally adjusted estimates may not be reliable indicators of trend behaviour.



## EXPLANATORY NOTES *continued*

### SEASONAL ADJUSTMENT AND TREND ESTIMATION *continued*

**29** The Labour Force Survey uses the concurrent seasonal adjustment method to derive seasonal factors. Concurrent seasonal adjustment uses data up to the current month to estimate seasonal factors for the current and all previous months. This process can result in revisions each month to estimates for earlier periods. However, in most instances, the only noticeable revisions will be to the seasonally adjusted estimates for the previous month and one year prior to the current month.

**30** The revision properties of the seasonally adjusted and trend estimates can be improved by the use of Autoregressive Integrated Moving Average (ARIMA) modelling. ARIMA modelling relies on the characteristics of the series being analysed to project future period data. The projected values are temporary, intermediate values, that are only used internally to improve the estimation of the seasonal factors. The projected data do not affect the original estimates and are discarded at the end of the seasonal adjustment process. The Labour Force Survey uses an ARIMA model for 95% of the individual time series. The ARIMA model is assessed as part of the annual reanalysis. For further details, see the feature article in the October 2004 issue of *Australian Economic Indicators* (cat. no. 1350.0).

**31** Seasonal adjustment is able to remove the effect of events which occur at the same time in the survey every year. However, there are some events, like holidays, which are not always at the same time in the survey cycle or which are not at the same time across Australia. The effects of these types of events on Labour Force Survey estimates cannot in all cases be removed, because the pattern of their effects cannot be determined. However, two events for which adjustment is made in the seasonally adjusted series are the January interview start date and the timing of Easter. For further details, see *Information Paper: Forthcoming Changes to Labour Force Statistics* (cat. no. 6292.0) released in December 2003.

**32** While seasonal factors for the complete time series are estimated each month, they will continue to be reviewed annually at a more detailed level to take into account each additional year's original data. This annual review will not normally result in significant changes to published estimates. The next review is scheduled to be released with the January 2014 issue of this publication, to coincide with the 20 year rebasing of the labour force estimates.

**33** The smoothing of seasonally adjusted series to produce 'trend' series reduces the impact of the irregular component of the seasonally adjusted series. These trend estimates are derived by applying a 13-term Henderson-weighted moving average to all months except the last six. The last six monthly trend estimates are obtained by applying surrogates of the Henderson average to the seasonally adjusted series. Trend estimates are used to analyse the underlying behaviour of a series over time.

**34** While this smoothing technique enables estimates to be produced for the latest month, it does result in revisions in addition to those caused by the revision of seasonally adjusted estimates. Generally, revisions due to the use of surrogates of the Henderson average become smaller, and after three months have a negligible impact on the series.

**35** Trend estimates are published for the Northern Territory in table 10 and for the Australian Capital Territory in table 11. Unadjusted series for the two Territories have shown, historically, a high degree of variability, which can lead to considerable revisions to the seasonally adjusted estimates each month when seasonal factors are estimated. For this reason, seasonally adjusted estimates are not currently published for the two Territories. In addition, caution should be exercised in the interpretation of trend estimates for the two Territories, particularly for the three most recent months, where revisions may be relatively large.

## EXPLANATORY NOTES *continued*

### SEASONAL ADJUSTMENT AND TREND ESTIMATION *continued*

**36** For further information, see *A Guide to Interpreting Time Series – Monitoring Trends* (cat. no. 1349.0) or contact the Assistant Director, Time Series Analysis on (02) 6252 6345 or email [time.series.analysis@abs.gov.au](mailto:time.series.analysis@abs.gov.au).

### RELATED PUBLICATIONS

**37** Users may also wish to refer to the following publications:

- *Labour Force Survey Standard Products and Data Item Guide* (cat.no. 6103.0). This publication is a reference guide for users of Labour Force Survey data standard products.
- *Australian Labour Market Statistics* (cat. no. 6105.0). This publication presents key indicators of the labour market, articles on a range of labour market issues, and information about the latest developments in the labour statistics program. For further information about this publication, please contact Labour Market Statistics on (02) 6252 7206.

**38** ABS information about the labour market can be found on the Topics @ a Glance page on the ABS website <<http://www.abs.gov.au>>.

**39** Information about current publications and other products released by the ABS is available from the statistics page on the ABS website. The ABS also issues a daily release advice on the website, Upcoming Product Releases, which details products to be released in the week ahead.

### DATA AVAILABLE ON REQUEST

**40** As well as the statistics included in this and related publications, the ABS may have other relevant data available. Inquiries should be made to the Labour Force contact officer on (02) 6252 6525, email [labourforce@abs.gov.au](mailto:labourforce@abs.gov.au) or to any ABS office.

### EFFECTS OF ROUNDING

**41** Estimates have been rounded and discrepancies may occur between sums of the component items and totals. Estimates of movement shown in this publication are obtained by taking the difference of unrounded estimates. The movement estimate is then rounded. Where a discrepancy occurs between the reported movement and the difference of the rounded estimates, the reported movement will be more accurate.

### SYMBOLS AND ABBREVIATIONS

#### **42** SYMBOLS AND ABBREVIATIONS

<i>Symbol</i>	<i>Definition</i>
'000	thousands
%	percentage
ABS	Australian Bureau of Statistics
CAI	computer assisted interviewing
cat. no.	catalogue number
ERP	estimated resident population
f/t	full time
LFS	Labour Force Survey
p/t	part time
pts	percentage points
Seas adj.	seasonally adjusted
TAFE	Technical and Further Education

## STANDARD ERRORS

### STANDARD ERRORS

The estimates in this publication are based on information gained from the occupants of a sample survey of dwellings. Because the entire population is not surveyed, the published original, seasonally adjusted and trend estimates are subject to sampling error. The most common way of quantifying such sampling error is to calculate the standard error for the published estimate or statistic. For more information, see paragraphs 25 to 27 of the Explanatory Notes.

### LEVEL ESTIMATES

To illustrate, let us say the published level estimate for employed persons aged 15–19 years is 700,000 and the associated standard error is 9,000. The standard error is then used to interpret the level estimate of 700,000. For instance, the standard error of 9,000 indicates that:

- There are approximately two chances in three that the real value falls within the range 691,000 to 709,000 (700,000 + or – 9,000)
- There are approximately nineteen chances in twenty that the real value falls within the range 682,000 to 718,000 (700,000 + or – 18,000).

The real value in this case is the result we would obtain if we could enumerate the total population.

The following table shows the standard errors for this month's level estimates.

										AUSTRALIA										
										Males	Females	Persons								
										NSW	Vic.	Qld	SA	WA	Tas.	NT	ACT			
<b>Aged 15 years and over</b>																				
Employed																				
Full time	'000	25.1	18.2	17.3	7.3	11.2	2.8	2.3	2.8	31.5	22.7	38.1								
Part time	'000	18.0	11.6	11.6	5.5	7.9	2.1	0.7	1.9	13.1	20.8	25.6								
Total	'000	27.7	22.2	19.8	8.5	12.2	3.3	2.7	3.0	34.3	31.8	43.2								
Unemployed																				
Looking for f/t work	'000	9.1	8.0	7.6	3.2	3.9	1.3	0.7	0.8	11.8	9.3	15.2								
Looking for p/t work	'000	5.5	4.4	4.4	2.0	2.1	0.7	0.3	0.6	5.5	6.9	8.9								
Total	'000	10.8	9.2	8.5	3.7	4.4	1.5	0.8	1.0	13.1	11.7	17.8								
Labour force																				
Not in labour force	'000	28.1	22.9	20.1	8.7	12.3	3.4	2.8	3.0	35.2	32.6	44.0								
Unemployment rate		24.1	20.8	22.2	8.1	11.9	3.5	2.9	3.1	30.5	35.5	41.8								
Looking for f/t work	pts	0.3	0.4	0.4	0.5	0.4	0.8	0.6	0.5	0.2	0.3	0.2								
Looking for p/t work	pts	0.5	0.5	0.6	0.7	0.5	0.9	1.1	1.0	0.5	0.3	0.2								
Total	pts	0.3	0.3	0.3	0.4	0.3	0.6	0.6	0.5	0.2	0.2	0.1								
Participation rate	pts	0.5	0.5	0.5	0.6	0.6	0.8	1.6	1.0	0.4	0.3	0.2								
<b>Aged 15–19 years</b>																				
Employed																				
Full time	'000	3.6	2.0	2.7	1.1	1.8	0.5	0.2	0.4	4.7	3.7	5.5								
Part time	'000	5.7	3.3	4.1	1.7	2.4	0.7	0.2	0.8	6.1	6.9	8.9								
Total	'000	6.4	3.8	4.9	1.9	3.0	0.8	0.3	0.8	7.3	7.5	10.2								
Unemployed																				
Looking for f/t work	'000	2.5	2.0	2.9	1.2	1.2	0.5	0.1	0.3	3.4	3.3	4.8								
Looking for p/t work	'000	3.3	2.7	2.6	1.2	1.3	0.5	0.1	0.3	3.8	3.8	5.4								
Total	'000	4.2	3.4	4.0	1.7	1.7	0.7	0.2	0.5	5.1	5.1	7.3								
Labour force																				
Not in labour force	'000	7.0	4.1	5.3	2.2	3.1	0.9	0.3	0.9	7.9	8.0	11.0								
Unemployment rate		9.7	6.1	7.9	2.9	4.4	1.2	0.7	1.2	10.9	10.1	15.3								
Looking for f/t work	pts	4.0	4.8	4.8	7.0	4.0	7.8	3.9	11.2	2.5	3.9	2.1								
Looking for p/t work	pts	1.9	2.1	2.1	2.8	2.3	4.0	1.2	3.2	1.6	1.2	1.0								
Total	pts	1.8	2.0	2.2	3.0	2.0	3.7	1.9	3.4	1.3	1.3	0.9								
Participation rate	pts	1.5	1.1	1.7	2.1	1.9	2.6	2.0	3.7	1.0	1.1	0.7								
Unemployment to population ratio – looking for f/t work	pts	0.5	0.6	0.9	1.1	0.7	1.4	0.8	1.4	0.4	0.5	0.3								

## STANDARD ERRORS *continued*

### MOVEMENT ESTIMATES

The following example illustrates how to use the standard error to interpret a movement estimate. Let us say that one month the published level estimate for females employed part-time in Australia is 1,890,000; the next month the published level estimate is 1,900,000 and the associated standard error for the movement estimate is 11,900. The standard error is then used to interpret the published movement estimate of 10,000. For instance, the standard error of 11,900 indicates that:

- There are approximately two chances in three that the real movement between the two months falls within the range – 1,900 to 21,900 (10,000 + or – 11,900)
- There are approximately nineteen chances in twenty that the real movement falls within the range – 13,800 to 33,800 (10,000 + or – 23,800).

The following table shows the standard errors for this month's movement estimates.

		AUSTRALIA										
		NSW	Vic.	Qld	SA	WA	Tas.	NT	ACT	Males	Females	Persons
<b>Aged 15 years and over</b>												
Employed												
Full time	'000	14.6	12.0	9.4	3.8	6.6	1.7	1.8	1.8	18.3	13.4	23.2
Part time	'000	9.7	8.1	5.8	2.8	4.1	1.3	0.9	1.2	8.5	12.5	15.0
Total	'000	17.7	14.6	12.8	5.4	8.4	2.1	2.0	2.1	20.2	18.5	28.5
Unemployed												
Looking for f/t work	'000	9.6	7.9	7.4	3.3	4.0	1.2	0.7	1.1	12.0	9.3	15.4
Looking for p/t work	'000	5.7	4.6	3.9	2.0	2.5	0.8	0.4	0.8	5.5	7.0	8.9
Total	'000	11.2	9.2	8.4	3.8	4.7	1.4	0.8	1.3	13.3	11.7	18.0
Labour force	'000	18.3	15.1	13.5	5.8	8.7	2.2	2.0	2.1	20.9	19.1	29.5
Not in labour force	'000	17.9	14.9	13.4	5.8	8.8	2.2	1.9	2.2	17.7	21.8	29.1
Unemployment rate												
Looking for f/t work	pts	0.4	0.4	0.5	0.6	0.4	0.8	0.6	0.6	0.2	0.3	0.2
Looking for p/t work	pts	0.5	0.5	0.6	0.7	0.6	0.9	1.3	1.1	0.5	0.3	0.2
Total	pts	0.3	0.3	0.4	0.4	0.3	0.6	0.6	0.5	0.2	0.2	0.2
Participation rate	pts	0.3	0.3	0.4	0.4	0.4	0.5	1.1	0.7	0.2	0.2	0.2
<b>Aged 15–19 years</b>												
Employed												
Full time	'000	2.5	1.9	1.8	0.7	1.3	0.3	0.3	0.3	3.3	2.7	3.9
Part time	'000	3.8	3.1	2.7	1.3	1.8	0.5	0.4	0.6	4.3	4.8	6.0
Total	'000	4.3	3.4	3.0	1.4	2.1	0.6	0.5	0.6	5.0	5.1	6.7
Unemployed												
Looking for f/t work	'000	3.0	2.3	2.6	1.2	1.2	0.5	0.2	0.4	3.7	3.3	4.9
Looking for p/t work	'000	3.4	3.0	2.4	1.3	1.4	0.5	0.1	0.5	3.8	4.3	5.7
Total	'000	4.6	3.8	3.6	1.7	1.8	0.7	0.2	0.6	5.3	5.3	7.5
Labour force	'000	4.7	3.8	3.2	1.5	2.2	0.6	0.5	0.6	5.3	5.5	7.3
Not in labour force	'000	5.9	5.0	3.8	1.8	2.9	0.7	0.8	0.7	7.0	6.6	9.2
Unemployment rate												
Looking for f/t work	pts	4.5	5.2	5.3	8.2	4.1	8.5	5.1	13.3	2.7	4.3	2.3
Looking for p/t work	pts	2.0	2.3	2.1	2.8	2.4	4.0	2.2	3.6	1.6	1.3	1.0
Total	pts	1.9	2.2	2.3	3.0	2.1	3.8	2.6	3.8	1.4	1.4	1.0
Participation rate	pts	1.0	1.0	1.0	1.4	1.4	1.9	3.2	2.7	0.7	0.8	0.5
Unemployment to population ratio – looking for f/t work	pts	0.6	0.6	0.8	1.1	0.8	1.4	1.0	1.6	0.5	0.5	0.3

## GLOSSARY

<b>Actively looking for work</b>	Includes writing, telephoning or applying to an employer for work; answering an advertisement for a job; checking noticeboards; being registered with Centrelink as a jobseeker; checking or registering with any other employment agency; advertising or tendering for work; and contacting friends or relatives.
<b>Actual hours of work</b>	<p>Actual hours of work refers to a specified reference period and includes:</p> <ul style="list-style-type: none"><li>■ hours actually worked during normal periods of work;</li><li>■ time spent in addition to hours worked during normal periods of work (including overtime);</li><li>■ time spent at the place of work on activities such as the preparation of the workplace, repairs and maintenance, preparation and cleaning of tools, and the preparation of receipts, time sheets and reports;</li><li>■ time spent at the place of work waiting or standing by; and</li><li>■ time corresponding to short rest periods.</li></ul> <p>Excluded are:</p> <ul style="list-style-type: none"><li>■ hours paid for but not worked, such as paid annual leave, public holidays or paid sick leave;</li><li>■ meal breaks; and</li><li>■ time spent on travel to and from work (excluding some self-employed).</li></ul> <p>For multiple job holders actual hours worked should equal the hours worked at all jobs.</p>
<b>Aggregate monthly hours worked</b>	<p>Aggregate monthly hours worked measures the total number of actual hours worked by employed persons in a calendar month. It differs from the actual hours worked estimates (and the usual hours worked estimates) since these refer only to the hours worked in the reference week.</p> <p>The methodology used to produce aggregate monthly hours worked means that these are synthetic estimates. Seasonally adjusted and trend estimates of aggregate monthly hours worked are available for the period July 1978 onwards.</p> <p>Further information on the methodology used to produce the aggregate monthly hours worked estimates is available on the ABS website in <i>Information Paper: Expansion of Hours Worked Estimates from the Labour Force Survey</i> (cat. no. 6290.0.55.001).</p> <p>Actual and usual hours worked cannot be aggregated across time to produce either quarterly or annual estimates as they relate to only a single week in the month. In contrast, aggregate monthly hours worked estimates are a true monthly measure, and may be aggregated across time to produce both quarterly and annual estimates.</p>
<b>Attending full time education</b>	Persons aged 15–24 years enrolled at secondary or high school or enrolled as a full time student at a Technical and Further Education (TAFE) college, university, or other educational institution in the reference week.
<b>Attending school</b>	Persons aged 15–19 years enrolled at secondary or high school in the reference week.
<b>Attending tertiary educational institution full time</b>	Persons aged 15–24 years enrolled full time at a TAFE college, university, or other educational institution in the reference week, except those persons aged 15–19 years who were still attending school.
<b>Civilian population aged 15 years and over</b>	All usual residents of Australia aged 15 years and over except members of the permanent defence forces, certain diplomatic personnel of overseas governments customarily excluded from census and estimated population counts, overseas residents in Australia, and members of non-Australian defence forces (and their dependants) stationed in Australia.
<b>Composite Estimation</b>	The estimation methodology used in the Labour Force Survey. Composite Estimation uses sample responses from nearby months as well as from the reference month to derive estimates for the reference month. This approach achieves gains in efficiency by exploiting the high similarity between the responses provided by the same respondent in

## GLOSSARY *continued*

previous months. For details see *Information Paper: Forthcoming Changes to Labour Force Statistics, 2007* (cat. no. 6292.0).

**Employed** All persons aged 15 years and over who, during the reference week:

- worked for one hour or more for pay, profit, commission or payment in kind in a job or business, or on a farm (comprising employees, employers and own account workers); or
- worked for one hour or more without pay in a family business or on a farm (i.e. contributing family workers); or
- were employees who had a job but were not at work and were:
  - away from work for fewer than four weeks up to the end of the reference week; or
  - away from work for more than four weeks up to the end of the reference week and received pay for some or all of the four week period to the end of the reference week; or
  - away from work as a standard work or shift arrangement; or
  - on strike or locked out; or
  - on workers' compensation and expected to return to their job; or
- were employers or own account workers, who had a job, business or farm, but were not at work.

**Employment to population ratio** For any group, the number of employed persons expressed as a percentage of the civilian population in the same group.

**Estimated resident population (ERP)** Estimated resident population (ERP), is Australia's official measure of the population of Australia and is based on the concept of usual residence. It refers to all people, regardless of nationality, citizenship or legal status, who usually live in Australia, with the exception of foreign diplomatic personnel and their families. It includes usual residents who are overseas for fewer than 12 months. It excludes overseas visitors who are in Australia for fewer than 12 months. Refer to *Australian Demographic Statistics* (cat. no. 3101.0).

**Flow estimates** Flow estimates are a measure of activity over a given period. For example, aggregate monthly hours worked is a measure of the total number of hours worked in a calendar month.

**Full time workers** Employed persons who usually worked 35 hours or more a week (in all jobs) and those who, although usually working fewer than 35 hours a week, worked 35 hours or more during the reference week.

**Gross flows** The matching of respondents who report in consecutive months enables analysis of the transition of individuals between the different labour force status classifications, referred to as the matched sample. The transition counts between the different labour force status classifications from one point in time to the next are commonly referred to as gross flows.

The figures presented in gross flows are presented in original terms only and do not align with published labour force estimates. The gross flows figures are derived from the matched sample between consecutive months, which after taking account of the sample rotation and varying non-response in each month is approximately 80 percent of the sample.

Caution should be exercised when analysing these gross flows data due to:

- the figures presented sum to approximately 80 percent of the population values as the gross flows data are based on the matched sample only;
- there is no adjustment applied to account for changes due to seasonal patterns (referred to commonly as seasonal adjustment); and
- the estimates of relative sizes of each transition class are subject to bias due to the matched sample being a non-representative sample.

**Labour force** For any group, persons who were employed or unemployed, as defined.

## GLOSSARY *continued*

<b>Labour force status</b>	A classification of the civilian population aged 15 years and over into employed, unemployed or not in the labour force, as defined. The definitions conform closely to the international standard definitions adopted by the International Conferences of Labour Statisticians.
<b>Labour force underutilisation rate</b>	The sum of the number of persons unemployed and the number of persons in underemployment, expressed as a proportion of the labour force.
<b>Long-term unemployed</b>	The number of persons unemployed for 52 weeks or over.
<b>Long-term unemployment ratio</b>	The number of long-term unemployed persons, expressed as a percentage of the total unemployed population.
<b>Market sector</b>	The market sector is an industry grouping comprising the following industries: Agriculture, forestry and fishing; Mining; Manufacturing; Electricity, gas, water and waste services; Construction; Wholesale trade; Retail trade; Accommodation and food services; Transport, postal and warehousing; Information media and telecommunications; Finance and insurance services; Rental, hiring and real estate services; Professional, scientific and technical services; Administrative and support services; Arts and recreation services; and Other services. Refer to <i>Australian National Accounts: Concepts, Sources and Methods</i> (cat. no. 5216.0).
<b>Non-market Sector</b>	The non-market sector is an industry grouping comprising the following industries: Education and training; Public administration & safety; and Health care and social assistance. Refer to <i>Australian National Accounts: Concepts, Sources and Methods</i> (cat. no. 5216.0).
<b>Not in labour force</b>	Persons who were not in the categories employed or unemployed, as defined.
<b>Participation rate</b>	For any group, the labour force expressed as a percentage of the civilian population aged 15 years and over in the same group.
<b>Part time workers</b>	Employed persons who usually worked fewer than 35 hours a week (in all jobs) and either did so during the reference week or were not at work during the reference week.
<b>Response rate</b>	The number of fully responding dwellings expressed as a percentage of the total number of dwellings excluding sample loss. Examples of sample loss include: dwellings where all persons are out of scope and/or coverage; vacant dwellings; dwellings under construction; dwellings converted to non-dwellings; derelict dwellings; and demolished dwellings.
<b>Seasonally adjusted series</b>	A time series of estimates with the estimated effects of normal seasonal variation removed. See Explanatory Notes paragraphs 28 to 32 for more detail.
<b>Stock estimates</b>	Stock estimates are a measure of certain attributes at a point in time and can be thought of as <i>stocktakes</i> . For example, the total number of employed persons is an account of the number of people who were considered employed in the Labour Force Survey reference week.
<b>Trend series</b>	A smoothed seasonally adjusted series of estimates. See Explanatory Notes paragraphs 33 to 36 for more detail.
<b>Underemployment rate</b>	The number of underemployed workers expressed as a percentage of the labour force.
<b>Underemployed workers</b>	Employed persons aged 15 years and over who want, and are available for, more hours of work than they currently have. They comprise: <ul style="list-style-type: none"><li>■ persons employed part time who want to work more hours and are available to start work with more hours, either in the reference week or in the four weeks subsequent to the survey; or</li><li>■ persons employed full time who worked part time hours in the reference week for economic reasons (such as being stood down or insufficient work being available). It is assumed that these people wanted to work full time in the reference week and would have been available to do so.</li></ul>

## GLOSSARY *continued*

---

<b>Unemployed</b>	Persons aged 15 years and over who were not employed during the reference week, and: <ul style="list-style-type: none"><li>■ had actively looked for full time or part time work at any time in the four weeks up to the end of the reference week and were available for work in the reference week; or</li><li>■ were waiting to start a new job within four weeks from the end of the reference week and could have started in the reference week if the job had been available then.</li></ul>
<b>Unemployed looking for full time work</b>	Unemployed persons who: <ul style="list-style-type: none"><li>■ actively looked for full time work; or</li><li>■ were waiting to start a new full time job.</li></ul>
<b>Unemployed looking for part time work</b>	Unemployed persons who: <ul style="list-style-type: none"><li>■ actively looked for part time work only; or</li><li>■ were waiting to start a new part time job.</li></ul>
<b>Unemployment rate</b>	For any group, the number of unemployed persons expressed as a percentage of the labour force in the same group.
<b>Unemployment to population ratio</b>	For any group, the number of unemployed persons expressed as a percentage of the civilian population in the same group.
<b>Usual hours of work</b>	Usual hours of work refers to a typical period rather than to a specified reference period. The concept of usual hours applies both to persons at work and to persons temporarily absent from work, and is defined as the hours worked during a typical week or day. Actual hours worked (for a specific reference period) may differ from usual hours worked due to illness, vacation, strike, overtime work, a change of job, or similar reasons.









## FOR MORE INFORMATION . . .

*INTERNET*      **www.abs.gov.au** the ABS website is the best place for data from our publications and information about the ABS.

### INFORMATION AND REFERRAL SERVICE

Our consultants can help you access the full range of information published by the ABS that is available free of charge from our website. Information tailored to your needs can also be requested as a 'user pays' service. Specialists are on hand to help you with analytical or methodological advice.

*PHONE*                      1300 135 070

*EMAIL*                      [client.services@abs.gov.au](mailto:client.services@abs.gov.au)

*FAX*                              1300 135 211

*POST*                              Client Services, ABS, GPO Box 796, Sydney NSW 2001

## FREE ACCESS TO STATISTICS

All statistics on the ABS website can be downloaded free of charge.

*WEB ADDRESS*      [www.abs.gov.au](http://www.abs.gov.au)