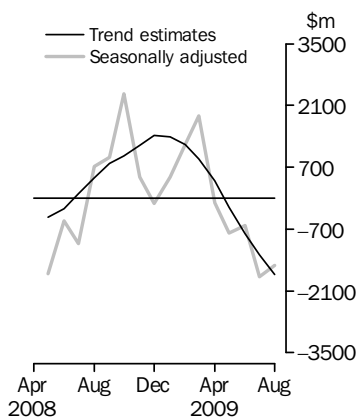


INTERNATIONAL TRADE IN GOODS AND SERVICES

AUSTRALIA

EMBARGO: 11.30AM (CANBERRA TIME) TUES 6 OCT 2009

Balance on Goods and Services



KEY FIGURES

	Jun 2009	Jul 2009	Aug 2009	Jul 09 to Aug 09 %
	\$m	\$m	\$m	
BALANCE ON GOODS AND SERVICES				
Trend estimates	-799	-1 286	-1 722	..
Seasonally adjusted	-607	-1 783	-1 524	..
CREDITS (Exports of goods & services)				
Trend estimates	20 121	19 527	19 029	-3
Seasonally adjusted	20 147	19 682	19 325	-2
DEBITS (Imports of goods & services)				
Trend estimates	20 920	20 813	20 752	—
Seasonally adjusted	20 754	21 464	20 849	-3

.. not applicable

— nil or rounded to zero (including null cells)

KEY POINTS

BALANCE ON GOODS AND SERVICES

- The trend estimate of the *balance on goods and services* was a deficit of \$1,722m in August 2009, an increase of \$436m (34%) on a revised deficit in July 2009.
- In seasonally adjusted terms, the *balance on goods and services* was a deficit of \$1,524m in August 2009, a decrease of \$259m (15%) on a revised deficit in July 2009.

CREDITS (EXPORTS OF GOODS & SERVICES)

- Seasonally adjusted, *goods and services credits* fell \$357m (2%) to \$19,325m. *Non-rural goods* fell \$318m (3%) with the *coal, coke and briquettes* component down \$248m (8%), *rural goods* fell \$62m (3%) and *non-monetary gold* fell \$6m (1%). *Services credits* rose \$29m (1%).

DEBITS (IMPORTS OF GOODS & SERVICES)

- Seasonally adjusted, *goods and services debits* fell \$615m (3%) to \$20,849m. *Intermediate and other merchandise goods* fell \$729m (10%) with the *fuels and lubricants* component down \$592m (24%) and *consumption goods* fell \$305m (6%).
- These falls were partly offset by rises in *non-monetary gold*, up \$300m (118%), *capital goods*, up \$83m (2%) and *services debits*, up \$35m (1%).

INQUIRIES

For further information contact Selvi Sekhar on Canberra (02) 6252 5540 for goods, and Karen McGuigan on Canberra (02) 6252 5415 for services.

NOTES

FORTHCOMING ISSUES

ISSUE	RELEASE DATE
September 2009	5 November 2009
October 2009	9 December 2009
November 2009	7 January 2010
December 2009	3 February 2010
January 2010	4 March 2010
February 2010	1 April 2010



REVISIONS AND CHANGES IN THIS ISSUE

This issue introduces estimates on a balance of payments basis compiled according to revised international standards, the Balance of Payments and International Investment Position Manual, sixth edition (BPM6). For further details refer to:

- *Information paper: Revisions to international standards in monthly international trade in goods and services statistics from August 2009, 2009* (cat. no. 5368.0.55.012), released on 17 June 2009, which provides correspondence between the time series IDs used in this issue and the previous issue.
- *Impact of revised international standards on monthly International Trade in Goods and Services, Aug 2009* (cat. no. 5368.0.55.014), released on 2 October 2009, which describes the impact on key aggregates in this publication.

In addition, revisions have been made to incorporate the latest available data relating to merchandise trade from February 2008 and international trade in goods and services from July 2008.

Please note that the *Information paper: Implementation of revised international statistical standards in ABS National and International Accounts* (cat no. 5310.0.55.002) is scheduled to be released on 14 October 2009.

Table 17, Summary of revisions, has been added to this publication. However the revisions data is not yet available and will be provided from the next issue.

CHANGES IN TIME SERIES SPREADSHEETS

In addition to the new time series IDs introduced with BPM6, the following additional recorded trade time series IDs have been added from this issue for the Euro area:

Table 14a

MERCHANDISE EXPORTS, Country and Country Groups, FOB Value

- A2716732C – Euro area

Table 14b

MERCHANDISE IMPORTS, Country and Country Groups, Customs Value

- A3309026T – Euro area

Brian Pink
Australian Statistician

CONTENTS

page

Time series data 4

ANALYSIS

Analysis and comments 5

TABLES

INTERNATIONAL TRADE IN GOODS AND SERVICES – BALANCE OF PAYMENTS BASIS

1	Goods and services, summary, seasonally adjusted and trend estimates	10
2	Goods and services, summary, original	11
3	Goods credits, original	12
4	Goods debits, original	13
5	Goods credits, seasonally adjusted	14
6	Goods debits, seasonally adjusted	15
7	Goods credits, trend estimates	16
8	Goods debits, trend estimates	17
9	Services, summary, original	18
10	Services, summary, seasonally adjusted and trend estimates	19
11	Services, original, quarterly	20

INTERNATIONAL MERCHANDISE TRADE – RECORDED TRADE BASIS

12	International merchandise exports, by commodity	21
13	International merchandise imports, by commodity	24
14	International merchandise trade, by country and country groups	27
15	International merchandise trade, by state	28

OTHER TABLES

16	Period average exchange rates per Australian dollar	29
17	Summary of revisions, goods and services, original	30

OTHER INFORMATION

Explanatory Notes	31
Appendix – Related articles	37

TIME SERIES DATA

TIME SERIES DATA

Data available free on the ABS web site include longer time series of tables in this publication and the additional spreadsheets and data cubes listed below.

- 31 Merchandise exports by Broad Economic Category (BEC)
- 32 Merchandise exports by industry of origin (ANZSIC)
- 33 Merchandise imports by Broad Economic Category (BEC)
- 34 Merchandise imports by Balance of Payments Broad Economic Category (BoPBEC)
- 35 Merchandise imports by industry of origin (ANZSIC)
- 36 Merchandise exports, state by country and country groups
- 37 Merchandise imports, state by country and country groups
- 91 Monthly seasonal adjustment factors and forward factors for 12 months.

TRADE IN SERVICES DATA CUBES

Trade in Services data cubes are usually updated on an annual basis - with the March issue of this publication for calendar year (cat. no. 5368.0.55.004) and with the September issue for financial year (cat. no. 5368.0.55.003).

These Trade in Services data cubes are currently presented according to the Balance of Payments Manual, 5th edition. The financial year data cubes, to be released with the September issue, will be on a BPM6 basis and the calendar year data cubes will be released on BPM6 basis with the October issue.

The following tables are included in both sets of data cubes:

- 1 International trade in services, credits, state by year
- 2 International trade in services, credits, year by state
- 3 International trade in services, debits, state by year
- 4 International trade in services, debits, year by state
- 5 International trade in services, credits, year by country and service
- 6 International trade in services, credits, service by year and by country
- 7 International trade in services, debits, year by country and service
- 8 International trade in services, debits, service by year and by country
- 9 International trade in services, credits and debits, year by detailed service
- 10 International trade in services, credits, year by country and travel service
- 11 International trade in services, debits, year by country and travel service

In addition, the following table is available on a calendar year basis and will be available on a financial year basis from the September 2009 issue.

- 12 International trade in services, credits, education related travel, by educational sector, by type of expenditure by year.

ANALYSIS AND COMMENTS

BALANCE ON GOODS AND SERVICES

The trend estimate of the balance on goods and services was a deficit of \$1,722m in August 2009, an increase of \$436m (34%) on a revised deficit in July 2009.

In seasonally adjusted terms, the balance on goods and services was a deficit of \$1,524m in August 2009, a decrease of \$259m (15%) on a revised deficit in July 2009.

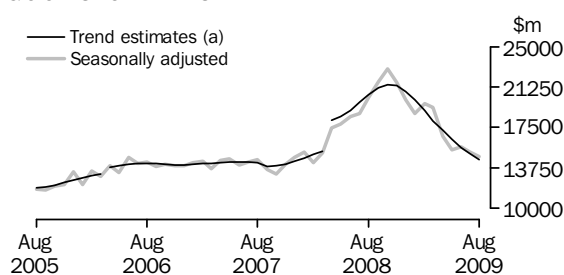
EXPORTS OF GOODS AND SERVICES

Between July 2009 and August 2009 the trend estimate of goods and services credits fell \$498m (3%) to \$19,029m.

In seasonally adjusted terms, goods and services credits fell \$357m (2%) to \$19,325m. Non-rural goods fell \$318m (3%), rural goods fell \$62m (3%) and non-monetary gold fell \$6m (1%). Services credits rose \$29m (1%).

Exports of goods

GOODS CREDITS



(a) Trend breaks of \$500m to April 2006 and \$2,725m to April 2008 have been applied.

RURAL GOODS

In trend terms, exports of rural goods fell \$70m (3%) to \$2,167m.

In seasonally adjusted terms, exports of rural goods fell \$62m (3%) to \$2,153m.

The main component contributing to the fall in the seasonally adjusted estimates was other rural, down \$65m (7%).

In original terms, exports of rural goods fell \$23m (1%) to \$2,086m.

NON-RURAL GOODS

In trend terms, exports of non-rural goods fell \$271m (2%) to \$11,619m.

In seasonally adjusted terms, exports of non-rural goods fell \$318m (3%) to \$11,793m.

The main components contributing to the fall in seasonally adjusted estimates were:

- coal, coke & briquettes, down \$248m (8%)
- other non-rural (incl. sugar and beverages), down \$50m (6%)
- other mineral fuels, down \$49m (4%)
- metal ores and minerals, down \$49m (1%).

Partly offsetting these decreases were:

- metals (excl. non-monetary gold), up \$76m (10%)
- transport equipment, up \$57m (19%).

In original terms, exports of non-rural goods fell \$34m to \$12,191m.

ANALYSIS AND COMMENTS *continued*

Exports of goods continued

NET EXPORTS OF GOODS UNDER MERCHANTING

In trend terms, net exports of goods under merchanting fell \$1m (4%) to \$23m.

In both original terms and seasonally adjusted terms, net exports of goods under merchanting remained steady at \$25m.

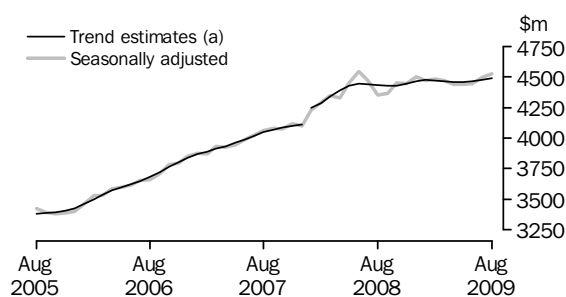
NON-MONETARY GOLD

In trend terms, exports of non-monetary gold fell \$169m (19%) to \$729m.

In both original terms and seasonally adjusted terms, non-monetary gold fell \$6m (1%) to \$829m.

Exports of services

SERVICES CREDITS



(a) A trend break of \$106m has been applied to January 2008.

In trend terms, services credits rose \$13m to \$4,490m.

In seasonally adjusted terms, services credits rose \$29m (1%) to \$4,525m.

The components contributing to the rise in the seasonally adjusted estimates were:

- travel services, up \$34m (1%)
- maintenance and repair services n.i.e., up \$4m (80%)
- other services, up \$3m.

Partly offsetting these rises were:

- transport services, down \$7m (1%)
- manufacturing services on physical inputs owned by others, down \$4m (14%).

In seasonally adjusted terms, tourism related services credits rose \$34m (1%) to \$2,985m.

IMPORTS OF GOODS AND SERVICES

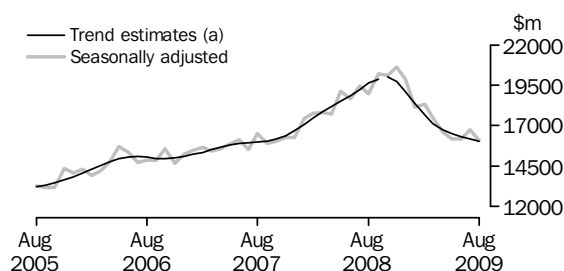
Between July 2009 and August 2009 the trend estimate of goods and services debits fell \$61m to \$20,752m.

In seasonally adjusted terms, goods and services debits fell \$615m (3%) to \$20,849m.

Intermediate and other merchandise goods fell \$729m (10%) and consumption goods fell \$305m (6%). Non-monetary gold rose \$300m (118%), capital goods rose \$83m (2%) and services debits rose \$35m (1%).

Imports of goods

GOODS DEBITS



(a) A trend break of \$167m has been applied to Capital goods n.e.s. debits and related aggregates in October 2008.

CONSUMPTION GOODS

In trend terms, imports of consumption goods rose \$34m (1%) to \$5,184m.

In seasonally adjusted terms, imports of consumption goods fell \$305m (6%) to \$4,981m.

The main components contributing to the fall in the seasonally adjusted estimates were:

- consumption goods n.e.s., down \$153m (9%)
- non-industrial transport equipment, down \$87m (8%)
- textiles, clothing and footwear, down \$42m (6%).

In original terms, imports of consumption goods fell \$490m (9%) to \$4,923m.

CAPITAL GOODS

In trend terms, imports of capital goods fell \$21m (1%) to \$3,644m.

In seasonally adjusted terms, imports of capital goods rose \$83m (2%) to \$3,905m.

The component contributing to the rise in the seasonally adjusted estimates was capital goods n.e.s., up \$231m (26%).

Partly offsetting this rise were:

- industrial transport equipment n.e.s., down \$59m (14%)
- machinery and industrial equipment, down \$52m (4%)
- ADP equipment, down \$31m (5%).

In original terms, imports of capital goods fell \$113m (3%) to \$3,732m.

INTERMEDIATE AND OTHER MERCHANDISE GOODS

In trend terms, imports of intermediate and other merchandise goods fell \$13m to \$6,925m.

In seasonally adjusted terms, imports of intermediate and other merchandise goods fell \$729m (10%) to \$6,651m.

The main components contributing to the fall in the seasonally adjusted estimates were:

- fuels and lubricants, down \$592m (24%)
- processed industrial supplies n.e.s., down \$91m (6%)
- other parts for capital goods, down \$34m (3%).

ANALYSIS AND COMMENTS *continued*

Imports of goods continued

INTERMEDIATE AND OTHER MERCHANDISE GOODS *continued*

Partly offsetting these falls was the primary industrial supplies n.e.s. component, up \$44m (56%).

In original terms the fall in the fuels and lubricants component was driven by crude petroleum, down \$364m (26%) with volumes down 24% and prices down 2% and refined petroleum products, down \$216m (24%) with volumes down 25% and prices up 2%.

In original terms, imports of intermediate and other merchandise goods fell \$904m (12%) to \$6,541m.

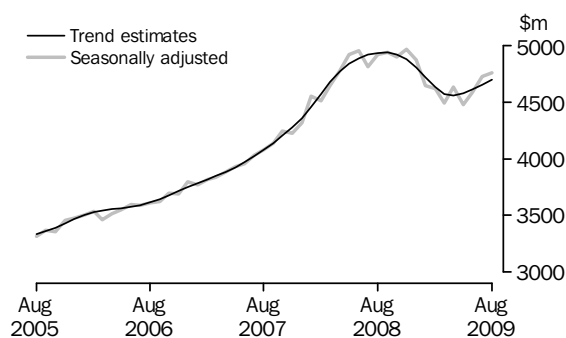
NON-MONETARY GOLD

In trend terms, imports of non-monetary gold fell \$104m (25%) to \$304m.

In both original terms and seasonally adjusted terms, non-monetary gold debits rose \$300m (118%) to \$555m.

Imports of services

SERVICES DEBITS



In trend terms, services debits rose \$42m (1%) to \$4,695m.

In seasonally adjusted terms, services debits rose \$35m (1%) to \$4,757m.

The components contributing to the rise in the seasonally adjusted estimates were:

- travel services, up \$32m (2%)
- other services, up \$9m (1%).

Partly offsetting these increases was the transport services component, down \$6m (1%).

In seasonally adjusted terms, tourism related services debits rose \$48m (2%) to \$2,488m.

GOODS AND SERVICES (a), Summary—Seasonally Adjusted and Trend Estimates

	Sep 2008	Oct 2008(b)	Nov 2008	Dec 2008	Jan 2009	Feb 2009	Mar 2009	Apr 2009	May 2009	Jun 2009	Jul 2009	Aug 2009
	\$m	\$m	\$m	\$m	\$m	\$m	\$m	\$m	\$m	\$m	\$m	\$m
SEASONALLY ADJUSTED												
BALANCE												
On goods and services	926	2 371	486	-116	482	1 223	1 871	-106	-780	-607	-1 783	-1 524
CREDITS												
Total goods and services	26 077	27 392	26 088	24 592	23 284	24 173	23 835	21 133	19 857	20 147	19 682	19 325
Total goods	21 713	22 944	21 644	20 090	18 814	19 692	19 365	16 694	15 420	15 704	15 186	14 800
Rural goods(c)	2 257	2 584	2 471	2 519	2 476	2 550	2 742	2 443	2 332	2 310	2 215	2 153
Non-rural goods(c)	18 092	18 843	17 786	16 223	14 868	14 893	14 476	12 901	12 085	12 229	12 111	11 793
Net exports of goods under merchandising(d)												
Non-monetary gold(d)	51	-11	-11	-10	38	38	38	25	25	25	25	25
Total services	4 364	4 448	4 445	4 502	4 470	4 481	4 470	4 438	4 437	4 443	4 496	4 525
DEBITS												
Total goods and services	-25 152	-25 021	-25 602	-24 708	-22 802	-22 950	-21 964	-21 238	-20 636	-20 754	-21 464	-20 849
Total goods	-20 214	-20 122	-20 640	-19 836	-18 160	-18 331	-17 473	-16 609	-16 162	-16 171	-16 742	-16 092
Consumption goods	-5 088	-5 208	-5 340	-5 423	-5 158	-4 467	-5 130	-5 080	-5 010	-5 194	-5 286	-4 981
Capital goods	-4 430	-4 399	-4 412	-5 222	-4 397	-4 947	-4 268	-3 773	-3 561	-3 663	-3 822	-3 905
Intermediate and other merchandise goods	-9 714	-9 730	-9 305	-8 420	-7 504	-7 226	-7 013	-7 172	-6 707	-6 968	-7 380	-6 651
Non-monetary gold(d)	-982	-784	-1 583	-771	-1 101	-1 691	-1 063	-584	-884	-346	-255	-555
Total services	-4 938	-4 899	-4 963	-4 872	-4 642	-4 620	-4 491	-4 629	-4 474	-4 583	-4 722	-4 757
TREND ESTIMATES (e)												
BALANCE												
On goods and services	794	965	1 200	1 426	1 397	1 220	886	395	-210	-799	-1 286	-1 722
CREDITS												
Total goods and services	25 588	25 886	25 809	25 316	24 498	23 524	22 558	21 680	20 861	20 121	19 527	19 029
Total goods	21 164	21 458	21 366	20 852	20 022	19 051	18 096	17 225	16 405	15 656	15 050	14 539
Rural goods(c)	2 374	2 422	2 482	2 533	2 562	2 564	2 533	2 474	2 397	2 313	2 237	2 167
Non-rural goods(c)	17 441	17 630	17 385	16 707	15 743	14 722	13 860	13 210	12 686	12 238	11 890	11 619
Net exports of goods under merchandising	25	15	10	10	16	25	31	32	29	26	24	23
Non-monetary gold	1 324	1 390	1 489	1 601	1 701	1 740	1 672	1 509	1 293	1 079	898	729
Total services	4 424	4 428	4 444	4 464	4 476	4 472	4 462	4 455	4 456	4 465	4 477	4 490
DEBITS												
Total goods and services	-24 794	-24 921	-24 610	-23 890	-23 101	-22 303	-21 672	-21 286	-21 071	-20 920	-20 813	-20 752
Total goods	-19 859	-20 005	-19 736	-19 084	-18 384	-17 675	-17 101	-16 731	-16 497	-16 310	-16 160	-16 057
Consumption goods	-5 178	-5 217	-5 216	-5 170	-5 088	-5 019	-4 991	-5 014	-5 067	-5 116	-5 150	-5 184
Capital goods	-4 287	-4 429	-4 377	-4 332	-4 211	-4 075	-3 951	-3 848	-3 767	-3 707	-3 665	-3 644
Intermediate and other merchandise goods	-9 449	-9 331	-9 026	-8 394	-7 868	-7 412	-7 116	-7 000	-6 969	-6 951	-6 938	-6 925
Non-monetary gold	-944	-1 027	-1 116	-1 189	-1 216	-1 170	-1 043	-869	-694	-536	-408	-304
Total services	-4 934	-4 916	-4 874	-4 805	-4 717	-4 628	-4 571	-4 555	-4 574	-4 610	-4 653	-4 695

(a) For sign conventions, see paragraph 15 of the Explanatory Notes.

(b) A trend break of \$167m has been applied to Capital goods and related aggregates in October 2008.

(c) For all time periods, estimates for sugar, sugar preparations and honey are included in Non-rural goods.

(d) These components are not seasonally adjusted.

(e) Caution should be used when interpreting recent trend estimates as they may be affected by unusual economic factors. For more details on trend estimates, please see paragraph 19 of the explanatory notes.

GOODS AND SERVICES (a), Summary—Original

	Sep 2008	Oct 2008	Nov 2008	Dec 2008	Jan 2009	Feb 2009	Mar 2009	Apr 2009	May 2009	Jun 2009	Jul 2009	Aug 2009
	\$m	\$m	\$m	\$m	\$m	\$m	\$m	\$m	\$m	\$m	\$m	\$m
BALANCE												
On goods and services	-445	1 342	143	52	-540	2 170	2 754	96	407	-874	-2 261	-663
CREDITS												
Total goods and services	25 993	28 714	26 259	25 515	21 824	23 094	24 554	20 732	19 974	19 539	19 717	19 774
Total goods	21 811	24 112	21 730	21 038	17 411	18 533	19 924	16 201	15 642	15 461	15 194	15 131
Rural goods(b)	2 218	2 680	2 509	2 619	2 197	2 533	2 973	2 488	2 471	2 221	2 109	2 086
Non-rural goods(b)	18 229	19 915	17 835	17 071	13 743	13 750	14 804	12 363	12 168	12 075	12 225	12 191
Net exports of goods under merchanting	51	-11	-11	-10	38	38	38	25	25	25	25	25
Non-monetary gold	1 313	1 528	1 397	1 358	1 433	2 212	2 109	1 325	978	1 140	835	829
Total services	4 182	4 602	4 529	4 477	4 413	4 561	4 630	4 531	4 332	4 078	4 523	4 643
DEBITS												
Total goods and services	-26 438	-27 372	-26 116	-25 463	-22 364	-20 924	-21 800	-20 636	-19 567	-20 413	-21 978	-20 437
Total goods	-21 113	-22 121	-21 346	-20 325	-17 482	-16 902	-17 554	-16 096	-15 314	-15 828	-16 958	-15 751
Consumption goods	-5 578	-6 135	-5 793	-5 528	-4 846	-4 039	-4 943	-4 730	-4 542	-4 928	-5 413	-4 923
Capital goods	-4 557	-4 801	-4 744	-5 515	-4 044	-4 353	-4 373	-3 619	-3 451	-3 760	-3 845	-3 732
Intermediate and other merchandise goods	-9 996	-10 401	-9 226	-8 511	-7 491	-6 819	-7 175	-7 163	-6 437	-6 794	-7 445	-6 541
Non-monetary gold	-982	-784	-1 583	-771	-1 101	-1 691	-1 063	-584	-884	-346	-255	-555
Total services	-5 325	-5 251	-4 770	-5 138	-4 882	-4 022	-4 246	-4 540	-4 253	-4 585	-5 020	-4 686

(a) For sign conventions, see paragraph 15 of the Explanatory Notes.

(b) For all time periods, estimates for sugar, sugar preparations and honey are included in Non-rural goods.

							2 MONTHS ENDED AUGUST		Change %
	2006-07	2007-08	2008-09	Jun 2009	Jul 2009	Aug 2009	2008	2009	
	\$m	\$m	\$m	\$m	\$m	\$m	\$m	\$m	
Total goods credits	169 524	182 952	231 407	15 461	15 194	15 131	39 544	30 325	-23.3
General merchandise	158 570	170 471	213 590	14 296	14 334	14 277	36 728	28 611	-22.1
<i>Rural goods</i>	25 090	25 494	29 348	2 221	2 109	2 086	4 439	4 195	-5.5
Meat and meat preparations	7 080	6 542	7 454	538	528	552	1 150	1 080	-6.1
Cereal grains and cereal preparations	4 171	4 975	6 881	613	471	505	1 000	976	-2.4
Wool and sheepskins	3 065	2 796	2 322	150	139	95	331	234	-29.3
Other rural (a)	10 774	11 181	12 691	920	971	934	1 958	1 905	-2.7
<i>Non-rural goods</i>	133 480	144 977	184 242	12 075	12 225	12 191	32 289	24 416	-24.4
Metal ores and minerals	35 315	41 339	51 967	3 601	3 519	3 725	9 169	7 244	-21.0
Coal, coke and briquettes	21 928	24 599	54 865	3 026	3 008	2 755	8 778	5 763	-34.3
Other mineral fuels	15 641	18 889	20 710	1 301	1 498	1 409	4 021	2 907	-27.7
Metals (excl. non-monetary gold)	14 821	14 039	12 374	917	768	950	2 527	1 718	-32.0
Machinery	8 391	8 750	8 900	675	700	651	1 549	1 351	-12.8
Transport equipment	4 651	5 723	5 093	243	317	360	1 100	677	-38.5
Other manufactures	16 241	16 965	17 602	1 357	1 457	1 429	3 011	2 886	-4.2
Other non-rural (incl. sugar and beverages)	15 113	13 126	11 100	860	853	809	1 816	1 662	-8.5
Goods procured in ports by carriers	1 379	1 547	1 631	95	105	103	318	208	-34.6
Net exports of goods under merchanting	214	209	310	25	25	25	102	50	-51.0
Goods acquired under merchanting									
(negative exports)	-1 303	-1 528	-2 395	-149	-159	-159	-346	-318	8.1
Goods sold under merchanting	1 517	1 737	2 705	174	184	184	448	368	-17.9
Non-monetary gold	10 740	12 272	17 507	1 140	835	829	2 714	1 664	-38.7

(a) For all time periods, estimates for sugar, sugar preparations and honey are included in Other non-rural.

GOODS DEBITS(a), Original

							2 MONTHS ENDED AUGUST		Change %
	2006-07	2007-08	2008-09	Jun 2009	Jul 2009	Aug 2009	2008	2009	
	\$m	\$m	\$m	\$m	\$m	\$m	\$m	\$m	
Total goods debits	-183 572	-204 846	-222 522	-15 828	-16 958	-15 751	-38 441	-32 709	14.9
General merchandise	-178 261	-197 253	-211 000	-15 482	-16 703	-15 196	-36 708	-31 899	13.1
Consumption goods	-54 913	-59 371	-61 419	-4 928	-5 413	-4 923	-10 357	-10 336	0.2
Food and beverages, mainly for consumption	-7 182	-7 840	-8 857	-675	-776	-728	-1 322	-1 504	-13.8
Household electrical items	-4 525	-5 051	-5 489	-481	-523	-496	-894	-1 019	-14.0
Non-industrial transport equipment	-14 894	-16 872	-13 247	-1 174	-1 154	-1 015	-2 805	-2 169	22.7
Textiles, clothing and footwear	-6 805	-7 051	-8 286	-553	-733	-646	-1 300	-1 379	-6.1
Toys, books and leisure goods	-4 328	-4 561	-5 278	-430	-414	-449	-828	-863	-4.2
Consumption goods n.e.s.	-17 179	-17 996	-20 262	-1 615	-1 813	-1 589	-3 208	-3 402	-6.0
Capital goods	-41 774	-45 299	-51 465	-3 760	-3 845	-3 732	-8 248	-7 577	8.1
Machinery and industrial equipment	-15 330	-16 480	-18 491	-1 318	-1 352	-1 277	-3 106	-2 629	15.4
ADP equipment	-7 008	-7 074	-7 261	-644	-686	-562	-1 129	-1 248	-10.5
Telecommunications equipment	-5 315	-5 790	-6 432	-525	-482	-452	-899	-934	-3.9
Civil aircraft(b)	-1 667	-2 691	na	na	na	na	na	na	na
Industrial transport equipment n.e.s.	-6 463	-7 502	-6 530	-368	-454	-374	-1 574	-828	47.4
Capital goods n.e.s.(b)	-5 991	-5 762	-11 227	-905	-871	-1 067	-978	-1 938	-98.2
Intermediate and other merchandise goods	-81 574	-92 583	-98 116	-6 794	-7 445	-6 541	-18 103	-13 986	22.7
Food and beverages, mainly for industry	-819	-923	-1 186	-80	-107	-92	-173	-199	-15.0
Primary industrial supplies n.e.s.	-1 552	-1 477	-1 902	-121	-74	-129	-370	-203	45.1
Fuels and lubricants	-21 470	-29 772	-28 208	-2 010	-2 418	-1 826	-6 335	-4 244	33.0
Parts for transport equipment	-8 355	-8 837	-8 600	-587	-596	-616	-1 639	-1 212	26.1
Parts for ADP equipment	-1 620	-1 115	-1 067	-87	-100	-68	-171	-168	1.8
Other parts for capital goods	-11 780	-11 990	-14 312	-1 176	-1 191	-1 062	-2 097	-2 253	-7.4
Organic and inorganic chemicals	-4 406	-4 673	-5 383	-371	-350	-343	-909	-693	23.8
Paper and paperboard	-2 368	-2 359	-2 403	-149	-182	-179	-439	-361	17.8
Textile yarn and fabrics	-1 366	-1 334	-1 343	-92	-102	-110	-223	-212	4.9
Iron and steel	-3 817	-3 721	-5 528	-251	-294	-264	-915	-558	39.0
Plastics	-2 957	-3 064	-3 026	-194	-231	-208	-529	-439	17.0
Processed industrial supplies n.e.s.	-17 997	-20 132	-21 918	-1 488	-1 635	-1 492	-3 639	-3 127	14.1
Other merchandise goods(b)	-1 619	-1 415	-1 515	-73	-75	-62	-266	-137	48.5
Goods procured in ports by carriers	-1 448	-1 771	-1 725	-115	-90	-90	-398	-180	54.8
Non-monetary gold	-5 311	-7 593	-11 522	-346	-255	-555	-1 733	-810	53.3

na not available

(a) For sign conventions, see paragraph 15 of the Explanatory Notes.

(b) From December 2008, the Civil aircraft series and commodities subject to a 'no commodity details' or 'no value details' restriction are included in Capital goods n.e.s.. From September to November 2008 commodities with these restrictions are included in Civil aircraft and for earlier periods are included in Other merchandise goods.

GOODS CREDITS, Seasonally Adjusted

	Nov 2008	Dec 2008	Jan 2009	Feb 2009	Mar 2009	Apr 2009	May 2009	Jun 2009	Jul 2009	Aug 2009
	\$m	\$m	\$m	\$m	\$m	\$m	\$m	\$m	\$m	\$m
Total goods credits	21 644	20 090	18 814	19 692	19 365	16 694	15 420	15 704	15 186	14 800
General merchandise	20 258	18 742	17 343	17 442	17 218	15 344	14 417	14 539	14 326	13 946
<i>Rural goods</i>	2 471	2 519	2 476	2 550	2 742	2 443	2 332	2 310	2 215	2 153
Meat and meat preparations	652	631	599	653	629	579	592	564	561	578
Cereal grains and cereal preparations	479	608	575	590	800	619	563	622	520	509
Wool and sheepskins	201	187	182	192	179	173	168	160	158	156
Other rural (a)	1 140	1 094	1 120	1 114	1 132	1 072	1 009	965	975	910
<i>Non-rural goods</i>	17 786	16 223	14 868	14 893	14 476	12 901	12 085	12 229	12 111	11 793
Metal ores and minerals	4 296	3 973	4 218	4 374	4 316	3 841	3 674	3 600	3 637	3 588
Coal, coke and briquettes(b)	6 280	5 485	4 445	4 348	4 104	3 595	3 039	3 070	2 953	2 705
Other mineral fuels(c)	2 086	1 906	1 724	1 648	1 486	1 330	1 277	1 369	1 371	1 322
Metals (excl. non-monetary gold)(c)	1 174	1 007	893	890	813	844	816	851	787	863
Machinery	870	751	689	767	757	677	660	688	671	640
Transport equipment	465	482	420	360	358	271	211	270	301	358
Other manufactures	1 551	1 504	1 446	1 481	1 490	1 381	1 393	1 405	1 396	1 383
Other non-rural (incl. sugar and beverages)	907	981	900	891	1 033	856	914	878	885	835
Goods procured in ports by carriers(c)	157	134	132	133	118	108	100	97	110	98
Net exports of goods under merchanting(d)	-11	-10	38	38	38	25	25	25	25	25
Non-monetary gold(d)	1 397	1 358	1 433	2 212	2 109	1 325	978	1 140	835	829

(a) For all time periods, estimates for sugar, sugar preparations and honey are included in Other non-rural.

(b) Only a length-of-month adjustment has been applied to this component.

(c) In using these seasonally adjusted series, care should be exercised because of the difficulties associated with reliably estimating the seasonal pattern.

(d) This component is not seasonally adjusted.

GOODS DEBITS(a), Seasonally Adjusted

	Nov 2008	Dec 2008	Jan 2009	Feb 2009	Mar 2009	Apr 2009	May 2009	Jun 2009	Jul 2009	Aug 2009
	\$m	\$m	\$m	\$m	\$m	\$m	\$m	\$m	\$m	\$m
Total goods debits	-20 640	-19 836	-18 160	-18 331	-17 473	-16 609	-16 162	-16 171	-16 742	-16 092
General merchandise	-19 057	-19 065	-17 059	-16 640	-16 410	-16 025	-15 278	-15 825	-16 487	-15 537
Consumption goods	-5 340	-5 423	-5 158	-4 467	-5 130	-5 080	-5 010	-5 194	-5 286	-4 981
Food and beverages, mainly for consumption	-747	-778	-759	-677	-789	-735	-735	-760	-793	-774
Household electrical items	-480	-435	-463	-389	-417	-494	-526	-539	-523	-524
Non-industrial transport equipment	-1 166	-1 223	-1 003	-790	-880	-905	-877	-1 075	-1 112	-1 025
Textiles, clothing and footwear	-737	-762	-747	-639	-782	-720	-667	-664	-680	-638
Toys, books and leisure goods	-445	-472	-443	-378	-465	-458	-462	-445	-441	-439
Consumption goods n.e.s.	-1 766	-1 753	-1 743	-1 594	-1 796	-1 767	-1 743	-1 711	-1 735	-1 582
Capital goods	-4 412	-5 222	-4 397	-4 947	-4 268	-3 773	-3 561	-3 663	-3 822	-3 905
Machinery and industrial equipment	-1 645	-1 650	-1 558	-1 504	-1 771	-1 443	-1 246	-1 365	-1 346	-1 294
ADP equipment	-678	-658	-592	-590	-588	-591	-511	-575	-646	-615
Telecommunications equipment	-545	-480	-556	-585	-591	-525	-520	-510	-510	-503
Civil aircraft(b)(c)	-265	na	na	na	na	na	na	na	na	na
Industrial transport equipment n.e.s.	-619	-600	-496	-449	-436	-323	-298	-346	-428	-369
Capital goods n.e.s.(b)	-659	-1 834	-1 194	-1 819	-883	-891	-986	-866	-892	-1 123
Intermediate and other merchandise goods	-9 305	-8 420	-7 504	-7 226	-7 013	-7 172	-6 707	-6 968	-7 380	-6 651
Food and beverages, mainly for industry	-120	-106	-107	-97	-99	-97	-89	-91	-97	-98
Primary industrial supplies n.e.s.(d)	-239	-186	-193	-101	-130	-99	-102	-128	-78	-122
Fuels and lubricants(c)	-2 407	-2 053	-1 823	-1 872	-1 707	-1 800	-1 761	-2 010	-2 418	-1 826
Parts for transport equipment	-844	-707	-660	-617	-648	-636	-592	-597	-584	-603
Parts for ADP equipment	-123	-92	-90	-87	-90	-86	-76	-80	-95	-73
Other parts for capital goods	-1 304	-1 279	-1 259	-1 156	-1 229	-1 236	-1 181	-1 179	-1 157	-1 123
Organic and inorganic chemicals	-593	-509	-450	-415	-351	-399	-364	-397	-359	-353
Paper and paperboard	-224	-206	-207	-191	-190	-178	-167	-166	-168	-170
Textile yarn and fabrics	-123	-123	-114	-105	-112	-108	-99	-92	-102	-106
Iron and steel	-581	-654	-452	-443	-332	-347	-283	-274	-289	-269
Plastics	-282	-263	-233	-233	-247	-225	-200	-210	-235	-215
Processed industrial supplies n.e.s.	-2 239	-1 998	-1 727	-1 715	-1 702	-1 628	-1 595	-1 555	-1 632	-1 541
Other merchandise goods(b)(e)	-70	-88	-83	-90	-72	-220	-87	-73	-75	-62
Goods procured in ports by carriers(c)	-156	-157	-105	-105	-105	-113	-113	-115	-90	-90
Non-monetary gold(c)	-1 583	-771	-1 101	-1 691	-1 063	-584	-884	-346	-255	-555

na not available

(a) For sign conventions, see paragraph 15 of the Explanatory Notes.

(b) From December 2008, the Civil aircraft series and commodities subject to a 'no commodity details' or 'no value details' restriction are included in Capital goods n.e.s.. From September to November 2008 commodities with these restrictions are included in Civil aircraft and for earlier periods are included in Other merchandise goods.

(c) These components are not seasonally adjusted.

(d) In using these seasonally adjusted series, care should be exercised because of the difficulties associated with reliably estimating the seasonal pattern.

(e) From July 1981, this component is not seasonally adjusted.

GOODS CREDITS(a), Trend Estimates

	Nov 2008	Dec 2008	Jan 2009	Feb 2009	Mar 2009	Apr 2009	May 2009	Jun 2009	Jul 2009	Aug 2009
	\$m	\$m	\$m	\$m	\$m	\$m	\$m	\$m	\$m	\$m
Total goods credits	21 366	20 852	20 022	19 051	18 096	17 225	16 405	15 656	15 050	14 539
General merchandise	19 867	19 240	18 305	17 286	16 393	15 684	15 083	14 552	14 127	13 787
<i>Rural goods</i>	2 482	2 533	2 562	2 564	2 533	2 474	2 397	2 313	2 237	2 167
Meat and meat preparations	653	650	639	624	610	598	587	576	568	560
Cereal grains and cereal preparations	514	560	606	640	652	640	614	584	554	524
Wool and sheepskins	209	200	190	183	177	173	168	163	159	155
Other rural(b)	1 106	1 124	1 127	1 117	1 094	1 063	1 027	990	957	928
<i>Non-rural goods</i>	17 385	16 707	15 743	14 722	13 860	13 210	12 686	12 238	11 890	11 619
Metal ores and minerals	4 597	4 420	4 259	4 137	4 047	3 948	3 815	3 688	3 585	3 507
Coal, coke and briquettes	5 772	5 499	5 010	4 444	3 948	3 581	3 305	3 063	2 864	2 700
Other mineral fuels	1 961	1 894	1 775	1 629	1 498	1 409	1 358	1 328	1 312	1 306
Metals (excl. non-monetary gold)	1 149	1 051	956	883	841	827	825	825	826	828
Machinery	787	778	759	738	718	701	687	674	661	647
Transport equipment	507	471	422	368	322	292	278	276	284	298
Other manufactures	1 522	1 512	1 491	1 466	1 443	1 424	1 409	1 397	1 388	1 379
Other non-rural (incl. sugar and beverages)	935	936	934	931	927	917	902	886	871	856
Goods procured in ports by carriers	154	146	136	126	117	111	106	102	100	98
Net exports of goods under merchanting	10	10	16	25	31	32	29	26	24	23
Non-monetary gold	1 489	1 601	1 701	1 740	1 672	1 509	1 293	1 079	898	729

(a) Caution should be used when interpreting recent trend estimates as they may be affected by unusual economic factors. For more details on trend estimates, please see paragraph 19 of the explanatory notes.

(b) For all time periods, estimates for sugar, sugar preparations and honey are included in Other non-rural.

	Nov 2008	Dec 2008	Jan 2009	Feb 2009	Mar 2009	Apr 2009	May 2009	Jun 2009	Jul 2009	Aug 2009
	\$m	\$m	\$m	\$m	\$m	\$m	\$m	\$m	\$m	\$m
Total goods debits	-19 736	-19 084	-18 384	-17 675	-17 101	-16 731	-16 497	-16 310	-16 160	-16 057
General merchandise	-18 620	-17 896	-17 168	-16 505	-16 058	-15 862	-15 803	-15 774	-15 753	-15 753
Consumption goods	-5 216	-5 170	-5 088	-5 019	-4 991	-5 014	-5 067	-5 116	-5 150	-5 184
Food and beverages, mainly for consumption	-749	-752	-748	-743	-742	-745	-753	-762	-771	-780
Household electrical items	-440	-439	-438	-441	-454	-475	-499	-519	-533	-546
Non-industrial transport equipment	-1 165	-1 082	-994	-928	-898	-907	-946	-993	-1 037	-1 079
Textiles, clothing and footwear	-717	-732	-735	-730	-718	-704	-690	-677	-664	-655
Toys, books and leisure goods	-441	-442	-441	-441	-443	-446	-449	-450	-449	-448
Consumption goods n.e.s.	-1 705	-1 724	-1 731	-1 735	-1 737	-1 737	-1 731	-1 717	-1 695	-1 675
Capital goods	-4 377	-4 332	-4 211	-4 075	-3 951	-3 848	-3 767	-3 707	-3 665	-3 644
Machinery and industrial equipment	-1 613	-1 624	-1 615	-1 584	-1 532	-1 470	-1 409	-1 355	-1 312	-1 279
ADP equipment	-664	-654	-628	-599	-577	-571	-575	-584	-596	-607
Telecommunications equipment	-545	-550	-554	-555	-553	-545	-532	-519	-507	-497
Civil aircraft(c)	-283	na	na	na	na	na	na	na	na	na
Industrial transport equipment n.e.s.	-629	-569	-508	-449	-402	-370	-355	-352	-356	-364
Capital goods n.e.s.(c)	-644	np	np	np	np	np	np	np	np	np
Intermediate and other merchandise goods	-9 026	-8 394	-7 868	-7 412	-7 116	-7 000	-6 969	-6 951	-6 938	-6 925
Food and beverages, mainly for industry	-110	-110	-106	-102	-98	-95	-94	-94	-94	-95
Primary industrial supplies n.e.s.	-191	-183	-166	-146	-125	-111	-106	-104	-103	-106
Fuels and lubricants	-2 528	-2 233	-1 971	-1 805	-1 756	-1 815	-1 896	-1 969	-2 030	-2 075
Parts for transport equipment	-849	-670	-663	-650	-635	-620	-609	-600	-594	-590
Parts for ADP equipment	-90	-91	-90	-89	-87	-85	-84	-83	-82	-81
Other parts for capital goods	-1 241	-1 256	-1 251	-1 237	-1 219	-1 202	-1 189	-1 175	-1 160	-1 148
Organic and inorganic chemicals	-521	-499	-465	-428	-398	-381	-374	-369	-365	-362
Paper and paperboard	-217	-212	-204	-195	-186	-179	-173	-169	-166	-165
Textile yarn and fabrics	-122	-120	-117	-112	-107	-104	-102	-100	-100	-100
Iron and steel	-590	-560	-505	-440	-379	-333	-303	-283	-270	-260
Plastics	-273	-264	-251	-239	-229	-223	-219	-217	-216	-216
Processed industrial supplies n.e.s.	-2 015	-1 958	-1 865	-1 764	-1 682	-1 631	-1 607	-1 588	-1 573	-1 559
Other merchandise goods(c)	-126	-101	-90	-94	-107	-113	-107	-96	-84	-71
Goods procured in ports by carriers	-156	-138	-123	-114	-110	-108	-106	-104	-101	-97
Non-monetary gold	-1 116	-1 189	-1 216	-1 170	-1 043	-869	-694	-536	-408	-304

na not available

np not available for publication but included in totals where applicable, unless otherwise indicated

(a) For sign conventions, see paragraph 15 of the Explanatory Notes.

(b) Caution should be used when interpreting recent trend estimates as they may be affected by unusual economic factors. For more details on trend estimates, please see paragraph 19 of the explanatory notes.

(c) From December 2008, the Civil aircraft series and commodities subject to a 'no commodity details' or 'no value details' restriction are included in Capital goods n.e.s.. From September to November 2008 commodities with these restrictions are included in Civil aircraft and for earlier periods are included in Other merchandise goods. Trend estimates for the Capital goods n.e.s. series from December 2008 have been suppressed due to the change in the composition of the series.

							2 MONTHS ENDED AUGUST		Change %
	2006-07	2007-08	2008-09	Jun 2009	Jul 2009	Aug 2009	2008	2009	
	\$m	\$m	\$m	\$m	\$m	\$m	\$m	\$m	
Services credits	45 956	50 645	53 298	4 078	4 523	4 643	8 963	9 166	2.3
Manufacturing services on physical inputs owned by others	121	77	258	27	28	24	20	52	160.0
Maintenance and repair services n.i.e.	90	103	86	3	5	9	19	14	-26.3
Transport	8 546	9 129	7 901	513	597	585	1 536	1 182	-23.0
Passenger(c)	4 237	4 118	3 653	208	251	239	666	490	-26.4
Freight	765	1 463	848	50	40	40	220	80	-63.6
Other	2 348	2 595	2 446	189	204	204	446	408	-8.5
Postal and courier services(d)	1 196	953	954	66	102	102	204	204	—
Travel	25 161	28 252	30 941	2 397	2 737	2 868	5 073	5 605	10.5
Other services	12 038	13 084	14 112	1 138	1 156	1 157	2 315	2 313	-0.1
Services debits	-45 139	-53 330	-56 880	-4 585	-5 020	-4 686	-9 868	-9 706	1.6
Manufacturing services on physical inputs owned by others	-3	-7	-4	—	—	-1	-1	-1	—
Maintenance and repair services n.i.e.	-131	-97	-197	-19	-17	-18	-22	-35	-59.1
Transport	-15 732	-16 797	-16 180	-1 079	-1 156	-1 097	-2 952	-2 253	23.7
Passenger(c)	-6 876	-7 278	-6 094	-465	-488	-466	-1 207	-954	21.0
Freight	-8 303	-8 923	-9 386	-558	-591	-554	-1 629	-1 145	29.7
Other	-385	-417	-527	-41	-41	-41	-74	-82	-10.8
Postal and courier services(d)	-168	-179	-173	-15	-36	-36	-42	-72	-71.4
Travel	-15 934	-20 153	-22 133	-1 910	-2 265	-1 989	-3 917	-4 254	-8.6
Other services	-13 339	-16 276	-18 366	-1 577	-1 582	-1 581	-2 976	-3 163	-6.3
Memorandum items:									
Tourism related service credits(e)	29 398	32 370	34 594	2 605	2 988	3 107	5 739	6 095	6.2
Tourism related service debits(e)	-22 810	-27 431	-28 227	-2 375	-2 753	-2 455	-5 124	-5 208	-2

— nil or rounded to zero (including null cells)

(a) For sign conventions, see paragraph 15 of the Explanatory Notes.

(b) For more detailed trade in services components, see table 11.

(c) Passenger services includes agency fees and commissions for air transport.

(d) Postal and courier services includes indirect commissions for sea transport.

(e) For a more detailed explanation of tourism related services, see paragraph 27 of the Explanatory Notes.

	Nov 2008	Dec 2008	Jan 2009	Feb 2009	Mar 2009	Apr 2009	May 2009	Jun 2009	Jul 2009	Aug 2009
	\$m	\$m	\$m	\$m	\$m	\$m	\$m	\$m	\$m	\$m
SEASONALLY ADJUSTED										
Services credits	4 445	4 502	4 470	4 481	4 470	4 438	4 437	4 443	4 496	4 525
Manufacturing services on physical inputs owned by others(b)	15	14	24	33	27	31	28	27	28	24
Maintenance and repair services n.i.e.(b)	8	12	7	7	8	4	5	3	5	9
Transport	683	688	662	634	615	581	553	559	574	567
Passenger(c)	315	321	333	306	292	271	244	253	248	248
Freight(d)	72	69	54	53	52	50	50	47	42	39
Other(d)	213	214	195	196	197	189	189	190	196	198
Postal and courier services(e)	83	85	81	78	74	71	70	68	87	82
Travel	2 522	2 573	2 614	2 634	2 641	2 713	2 731	2 717	2 703	2 737
Other services	1 217	1 216	1 163	1 174	1 179	1 110	1 120	1 137	1 186	1 189
Services debits	-4 963	-4 872	-4 642	-4 620	-4 491	-4 629	-4 474	-4 583	-4 722	-4 757
Manufacturing services on physical inputs owned by others(b)	—	—	—	—	—	—	—	—	—	-1
Maintenance and repair services n.i.e.(b)	-11	-18	-23	-11	-25	-27	-14	-19	-17	-18
Transport	-1 550	-1 461	-1 314	-1 232	-1 214	-1 203	-1 040	-1 100	-1 116	-1 110
Passenger(c)	-542	-506	-484	-485	-467	-491	-366	-437	-449	-466
Freight	-940	-886	-772	-690	-691	-654	-614	-604	-605	-580
Other(b)	-51	-52	-45	-45	-44	-43	-43	-41	-41	-41
Postal and courier services(e)	-17	-17	-13	-12	-12	-15	-17	-18	-21	-23
Travel	-1 867	-1 841	-1 787	-1 842	-1 704	-1 887	-1 885	-1 914	-1 990	-2 022
Other services	-1 534	-1 552	-1 517	-1 535	-1 548	-1 512	-1 535	-1 551	-1 598	-1 607
Memorandum items:										
Tourism related service credits(f)	2 838	2 894	2 946	2 940	2 933	2 984	2 975	2 970	2 951	2 985
Tourism related service debits(f)	-2 410	-2 347	-2 272	-2 327	-2 171	-2 378	-2 252	-2 351	-2 440	-2 488

TREND ESTIMATES

Services credits	4 444	4 464	4 476	4 472	4 462	4 455	4 456	4 465	4 477	4 490
Manufacturing services on physical inputs owned by others	19	22	24	27	28	29	29	28	27	26
Maintenance and repair services n.i.e.	8	8	8	7	6	5	5	5	5	6
Transport	686	672	654	632	610	589	574	565	559	557
Passenger(c)	319	318	314	304	290	275	262	252	245	241
Freight	72	64	58	54	52	50	48	46	44	41
Other	211	207	202	197	193	192	191	192	193	195
Postal and courier services(e)	84	83	80	77	74	73	74	75	77	80
Travel	2 521	2 562	2 604	2 640	2 667	2 689	2 706	2 719	2 728	2 734
Other services	1 209	1 201	1 186	1 167	1 151	1 142	1 143	1 149	1 158	1 168
Services debits	-4 874	-4 805	-4 717	-4 628	-4 571	-4 555	-4 574	-4 610	-4 653	-4 695
Manufacturing services on physical inputs owned by others	-1	—	—	—	—	—	—	—	—	—
Maintenance and repair services n.i.e.	-15	-17	-18	-20	-20	-20	-20	-19	-18	-18
Transport	-1 481	-1 428	-1 356	-1 276	-1 206	-1 156	-1 125	-1 104	-1 091	-1 085
Passenger(c)	-535	-517	-498	-478	-461	-448	-440	-437	-437	-440
Freight	-883	-848	-796	-739	-688	-650	-626	-608	-593	-583
Other	-48	-49	-48	-46	-44	-43	-42	-42	-41	-41
Postal and courier services(e)	-15	-15	-14	-13	-13	-14	-16	-18	-20	-22
Travel	-1 843	-1 825	-1 809	-1 802	-1 814	-1 843	-1 883	-1 926	-1 967	-2 001
Other services	-1 534	-1 535	-1 533	-1 530	-1 530	-1 536	-1 546	-1 561	-1 576	-1 590
Memorandum items:										
Tourism related service credits(f)	2 840	2 880	2 918	2 944	2 957	2 963	2 967	2 970	2 973	2 975
Tourism related service debits(f)	-2 378	-2 342	-2 307	-2 280	-2 275	-2 291	-2 323	-2 363	-2 404	-2 441

— nil or rounded to zero (including null cells)

(a) For sign conventions, see paragraph 15 of the Explanatory Notes.

(b) This component is not seasonally adjusted.

(c) Passenger services includes agency fees and commissions for air transport.

(d) In using these seasonally adjusted series, care should be exercised because of the difficulties associated with reliably estimating the seasonal pattern.

(e) Postal and courier services includes indirect commissions for sea transport.

(f) For a more detailed explanation of tourism related services, see paragraph 27 of the Explanatory Notes.

	CREDITS				DEBITS			
	Sep Qtr	Dec Qtr	Mar Qtr	Jun Qtr	Sep Qtr	Dec Qtr	Mar Qtr	Jun Qtr
	2008	2008	2009	2009	2008	2008	2009	2009
	\$m	\$m	\$m	\$m	\$m	\$m	\$m	\$m
Services	13 145	13 608	13 604	12 941	-15 193	-15 159	-13 150	-13 378
Manufacturing services on physical inputs owned by others	31	57	84	86	-1	-3	—	—
Maintenance and repair services n.i.e.	27	25	22	12	-33	-45	-59	-60
Transport	2 254	2 080	1 995	1 572	-4 628	-4 806	-3 570	-3 176
Passenger(b)	949	987	1 060	657	-1 887	-1 611	-1 322	-1 274
Freight	332	214	154	148	-2 566	-3 001	-2 087	-1 732
Other	668	648	563	567	-112	-154	-134	-127
Postal and courier services(c)	305	231	218	200	-63	-40	-27	-43
Travel	7 352	7 610	8 115	7 864	-6 044	-5 578	-5 019	-5 492
Business	704	640	711	643	-775	-751	-728	-624
Personal	6 648	6 970	7 404	7 221	-5 269	-4 827	-4 291	-4 868
Education-related	4 181	3 729	4 196	4 464	-309	-175	-177	-168
Other services(d)	2 467	3 241	3 208	2 757	-4 960	-4 652	-4 114	-4 700
Construction	44	26	21	12	—	—	—	—
Insurance and pension services	115	122	93	86	-199	-238	-255	-276
Financial services	273	310	343	287	-188	-224	-173	-180
Charges for the use of intellectual property n.i.e.	230	170	200	270	-877	-854	-897	-909
Telecommunications, computer and information services	517	552	507	550	-502	-591	-584	-559
Telecommunication services	66	85	76	63	-116	-172	-180	-139
Computer and information services	451	467	431	487	-386	-419	-404	-420
Computer services	394	396	356	399	-347	-359	-336	-358
Information services	6	8	9	12	-9	-15	-11	-10
Other services	51	63	66	76	-30	-45	-57	-52
Other business services	1 894	2 252	1 804	1 796	-2 018	-2 328	-2 028	-2 164
Research and development services	160	164	131	143	-60	-87	-60	-59
Professional and management consulting services	855	1 132	870	865	-673	-782	-896	-985
Legal, accounting, management consulting, public relations and other professional	764	1 020	775	773	-645	-740	-844	-938
Advertising, market research and public opinion polling	91	112	95	92	-28	-42	-52	-47
Technical, trade-related and other business services	879	956	803	788	-1 285	-1 459	-1 072	-1 120
Architectural, engineering and other technical	422	468	386	339	-468	-568	-414	-431
Waste treatment and de-pollution, agricultural and mining	80	77	65	59	-258	-307	-183	-210
Operational leasing	121	77	74	63	-185	-218	-198	-165
Trade-related	120	213	178	221	-62	-57	-44	-57
Other business n.i.e.	136	121	100	106	-312	-309	-233	-257
Personal, cultural and recreational services	194	203	204	189	-511	-279	-362	-322
Audiovisual and related services	41	45	53	24	-484	-255	-290	-300
Other personal, cultural and recreational services	153	158	151	165	-27	-24	-72	-22
Government services n.i.e.	214	201	216	217	-192	-213	-203	-240
Memorandum items:								
Gross insurance premiums receivable / payable	227	236	198	167	-240	-258	-262	-245
Gross insurance claims payable / receivable	-147	-157	-133	-124	244	256	287	275
Tourism related services(e)	8 301	8 597	9 175	8 521	-7 931	-7 189	-6 341	-6 766

— nil or rounded to zero (including null cells)

- (a) For sign conventions, see paragraph 15 of the Explanatory Notes.
 (b) Passenger services includes agency fees and commissions for air transport.

(c) Postal and courier services includes indirect commissions for sea transport.

(d) Other personal travel includes health-related travel.

(e) For a more detailed explanation of tourism related services, see paragraph 27 of the Explanatory Notes.

					Per cent of total merchandise exports(b)	2 MONTHS ENDED AUGUST	
		Jun 2009	Jul 2009	Aug 2009		2008	2009
		\$m	\$m	\$m	%	\$m	\$m
MAJOR COMMODITIES(c)							
011	Meat of bovine animals	361	361	381	2.5	856	742
041	Wheat and meslin	490	326	377	2.5	679	704
268	Wool and other animal hair	132	121	78	0.5	284	199
281	Iron ore and concentrates	2 256	2 369	2 428	16.1	6 088	4 797
283	Copper ores and concentrates	400	245	296	2.0	566	541
285	Aluminium ores and concentrates	325	364	381	2.5	1 067	745
321	Coal, not agglomerated	3 001	3 007	2 742	18.1	8 748	5 749
333	Crude petroleum oils	608	650	617	4.1	2 068	1 267
334	Refined petroleum oils	161	194	163	1.1	532	357
343	Natural gas	557	624	634	4.2	1 435	1 259
682	Copper	268	205	201	1.3	633	406
684	Aluminium	326	302	385	2.5	947	686
781	Motor vehicles for transport of people	85	132	124	0.8	676	255
971	Gold, non-monetary	1 114	821	810	5.4	2 684	1 632
SECTION AND DIVISION OF THE SITC							
0	Food and live animals						
00	Live animals (excl. fish, crustaceans, molluscs and aquatic invertebrates)	88	106	87	0.6	198	193
01	Meat and meat preparations	538	528	552	3.7	1 151	1 080
02	Dairy products and birds' eggs	153	172	152	1.0	310	324
03	Fish (not marine mammals), crustaceans, molluscs and aquatic invertebrates, and preparations thereof	74	70	100	0.7	230	170
04	Cereals and cereal preparations	613	471	505	3.3	999	976
05	Vegetables and fruit	162	154	154	1.0	242	308
06	Sugars, sugar preparations and honey	15	27	30	0.2	46	57
07	Coffee, tea, cocoa, spices, and manufactures thereof	23	26	28	0.2	42	54
08	Feeding stuff for animals (excl. unmilled cereals)	89	95	94	0.6	187	189
09	Miscellaneous edible products and preparations	44	55	52	0.3	100	107
	<i>Total Food and live animals</i>	1 800	1 705	1 753	11.6	3 505	3 458
1	Beverages and tobacco						
11	Beverages	220	202	212	1.4	472	414
12	Tobacco and tobacco manufactures	8	13	11	0.1	19	24
	<i>Total Beverages and tobacco</i>	228	215	223	1.5	491	438
2	Crude materials, inedible, except fuels						
21	Hides, skins and furskins, raw	36	39	39	0.3	114	78
22	Oil-seeds and oleaginous fruits	13	30	33	0.2	31	63
23	Crude rubber (incl. synthetic and reclaimed)	1	1	1	—	2	2
24	Cork and wood	103	98	85	0.6	244	184
25	Pulp and waste paper	17	16	19	0.1	51	35
26	Textile fibres and their wastes (not manufactured into yarn or fabric)	193	181	126	0.8	392	308
27	Crude fertilizers (excl. those of Division 56) and crude minerals (excl. coal, petroleum and precious stones)	27	17	19	0.1	49	36
28	Metalliferous ores and metal scrap	3 574	3 502	3 706	24.5	9 144	7 208
29	Crude animal and vegetable materials, n.e.s.	23	20	17	0.1	45	37
	<i>Total Crude materials, inedible, except fuels</i>	3 986	3 905	4 045	26.8	10 072	7 950
3	Mineral fuels, lubricants and related materials						
32	Coal, coke and briquettes	3 026	3 008	2 755	18.2	8 779	5 763
33	Petroleum, petroleum products and related materials	771	846	781	5.2	2 605	1 626
34	Gas, natural and manufactured	621	750	727	4.8	1 634	1 477
	<i>Total Mineral fuels, lubricants and related materials</i>	4 418	4 604	4 263	28.2	13 017	8 867

— nil or rounded to zero (including null cells)

(a) Some SITC sections and divisions exclude commodities subject to a confidentiality restriction. These are included in Division 98. For more information see paragraph 26 of the Explanatory Notes.

(b) Per cent of total merchandise is calculated for the most recent month.

(c) The 'Major commodities' section lists commodities at the SITC Rev 4 3-digit level which are the most significant (by value) or are of particular interest. Abbreviated descriptors have been used. The list of 'Major commodities' is reviewed annually.

	Jun 2009	Jul 2009	Aug 2009	Per cent of total merchandise exports(b)	2 MONTHS ENDED AUGUST	
					2008	2009
					\$m	\$m
SECTION AND DIVISION OF THE SITC						
4	Animal and vegetable oils, fats and waxes					
41	30	24	14	0.1	56	38
42	14	13	17	0.1	32	30
43	Fats and oils (processed), waxes and inedible mixtures or preparations, of animal or vegetable origin, n.e.s.					
	1	1	1	—	2	2
	44	38	32	0.2	90	70
5	Chemicals and related products, n.e.s.					
51	12	14	13	0.1	31	26
52	43	50	35	0.2	76	85
53	66	72	59	0.4	79	131
54	370	373	374	2.5	714	747
55	Essential oils and resinoids and perfume materials, toilet, polishing and cleansing preparations					
	48	52	52	0.3	96	104
56	32	35	55	0.4	262	90
57	19	22	22	0.1	56	44
58	37	41	32	0.2	60	73
59	69	83	86	0.6	165	169
	696	742	729	4.8	1 540	1 470
6	Manufactured goods classified chiefly by material					
61	18	19	23	0.2	52	42
62	18	18	12	0.1	43	30
63	15	15	11	0.1	28	26
64	Paper, paperboard and articles of paper pulp, of paper or of paperboard					
	54	63	53	0.4	107	116
65	22	26	25	0.2	64	51
66	84	55	53	0.3	104	107
67	63	61	65	0.4	346	126
68	855	707	885	5.9	2 180	1 592
69	82	96	103	0.7	192	199
	1 210	1 059	1 230	8.1	3 117	2 289
7	Machinery and transport equipment					
71	74	71	51	0.3	181	122
72	155	158	163	1.1	325	321
73	14	11	10	0.1	30	21
74	General industrial machinery and equipment, n.e.s. and machine parts, n.e.s.					
	145	147	152	1.0	319	299
75	77	80	76	0.5	198	156
76	Telecommunications and sound recording and reproducing apparatus and equipment					
	81	77	76	0.5	186	153
77	Electrical machinery, apparatus and appliances, parts (incl. non electrical counterparts of electrical domestic equip)					
	128	155	121	0.8	310	276
78	166	218	188	1.2	871	405
79	76	99	172	1.1	229	271
	916	1 016	1 008	6.7	2 649	2 024

— nil or rounded to zero (including null cells)

(b) Per cent of total merchandise is calculated for the most recent month.

(a) Some SITC sections and divisions exclude commodities subject to a confidentiality restriction. These are included in Division 98. For more information see paragraph 26 of the Explanatory Notes.

				Per cent of total merchandise exports(b)	2 MONTHS ENDED AUGUST	
	Jun 2009	Jul 2009	Aug 2009		2008	2009
	\$m	\$m	\$m		\$m	\$m
SECTION AND DIVISION OF THE SITC						
8	Miscellaneous manufactured articles					
81	Prefabricated buildings and sanitary, plumbing, heating and lighting fixtures and fittings, n.e.s.	12	10	13	0.1	31 23
82	Furniture and parts thereof; bedding, mattresses, mattress supports, cushions and similar stuffed furnishings	7	6	10	0.1	19 16
83	Travel goods, handbags and similar containers	2	2	3	—	5 5
84	Articles of apparel and clothing accessories	14	18	23	0.2	47 41
85	Footwear	3	3	5	—	8 8
87	Professional, scientific and controlling instruments and apparatus, n.e.s.	158	181	168	1.1	330 349
88	Photographic apparatus, equipment and supplies and optical goods, n.e.s., watches and clocks	24	29	27	0.2	53 56
89	Miscellaneous manufactured articles, n.e.s.	148	172	170	1.1	383 343
	<i>Total Miscellaneous manufactured articles</i>	368	423	420	2.8	877 843
9	Commodities and transactions not classified elsewhere in the SITC					
93	Special transactions and commodities not classified according to kind	166	162	153	1.0	222 315
95	Gold coin whether or not legal tender, and other coin being legal tender	27	14	19	0.1	31 32
96	Coin (excl. gold coin) not being legal tender	—	—	—	—	— —
97	Gold, non-monetary (excl. gold ores and concentrates)	1 114	821	810	5.4	2 684 1 632
98	Combined confidential items excl. some of SITC 280 (exports only) and some of SITCs 510 and 520 (imports only)	474	481	423	2.8	822 903
	<i>Total Commodities and transactions not classified elsewhere in the SITC</i>	1 780	1 478	1 404	9.3	3 759 2 882
	Total merchandise exports	15 445	15 184	15 108	100.0	39 117 30 292
	Balance of Payments Adjustments	16	10	23	. .	427 33
	Goods Credits (exports) on a Balance of Payments Basis	15 461	15 194	15 131	. .	39 544 30 325

. . not applicable
 — nil or rounded to zero (including null cells)

- (a) Some SITC sections and divisions exclude commodities subject to a confidentiality restriction. These are included in Division 98. For more information see paragraph 26 of the Explanatory Notes.
 (b) Per cent of total merchandise is calculated for the most recent month.

				Per cent of total merchandise imports(b)	2 MONTHS ENDED AUGUST	
	Jun	Jul	Aug		2008	2009
	2009	2009	2009			
	\$m	\$m	\$m	%	\$m	\$m
MAJOR COMMODITIES						
333 Crude petroleum oils	1 075	1 415	1 051	6.8	3 732	2 465
334 Refined petroleum oils	834	898	682	4.4	2 416	1 580
542 Medicaments	669	747	544	3.5	1 196	1 291
641 Paper and paperboard	121	148	143	0.9	374	292
723 Civil engineering and contractors' plant and equipment	144	184	135	0.9	706	319
751 Office machines	159	187	161	1.0	319	349
752 Automatic data processing machines	520	566	429	2.8	890	995
761 Televisions	327	318	317	2.0	552	635
764 Telecommunications equipment	614	558	515	3.3	1 031	1 073
781 Motor vehicles for the transport of people	1 098	1 069	901	5.8	2 533	1 971
782 Motor vehicles for the transport of goods	270	341	327	2.1	1 147	669
784 Parts and accessories of motor vehicles	163	188	179	1.2	479	367
971 Gold, non-monetary	410	321	610	3.9	1 655	931

SECTION AND DIVISION OF THE SITC

0	Food and live animals					
00	Live animals other than fish, crustaceans, molluscs and aquatic invertebrates	4	7	8	0.1	18
01	Meat and meat preparations	57	51	46	0.3	79
02	Dairy products and birds' eggs	40	50	39	0.3	95
03	Fish (not marine mammals), crustaceans, molluscs and aquatic invertebrates, and preparations thereof	94	104	96	0.6	187
04	Cereals and cereal preparations	66	77	71	0.5	141
05	Vegetables and fruit	122	146	119	0.8	250
06	Sugars, sugar preparations and honey	23	26	24	0.2	38
07	Coffee, tea, cocoa, spices, and manufactures thereof	88	118	114	0.7	183
08	Feeding stuff for animals (excl. unmilled cereals)	30	96	26	0.2	91
09	Miscellaneous edible products and preparations	140	142	137	0.9	219
	<i>Total Food and live animals</i>	664	818	681	4.4	1 301
1	Beverages and tobacco					
11	Beverages	87	117	120	0.8	203
12	Tobacco and tobacco manufactures	27	21	18	0.1	36
	<i>Total Beverages and tobacco</i>	113	138	138	0.9	239
2	Crude materials, inedible, except fuels					
21	Hides, skins and furskins, raw	—	—	—	—	—
22	Oil-seeds and oleaginous fruits	4	5	3	—	10
23	Crude rubber (incl. synthetic and reclaimed)	9	10	11	0.1	40
24	Cork and wood	46	47	45	0.3	100
25	Pulp and waste paper	13	17	9	0.1	60
26	Textile fibres and their wastes (not manufactured into yarn or fabric)	12	13	12	0.1	25
27	Crude fertilizers (excl. those of Division 56) and crude minerals (excl. coal, petroleum and precious stones)	17	9	8	0.1	125
28	Metalliferous ores and metal scrap	30	13	70	0.5	143
29	Crude animal and vegetable materials, n.e.s.	26	25	24	0.2	41
	<i>Total Crude materials, inedible, except fuels</i>	157	139	182	1.2	545
3	Mineral fuels, lubricants and related materials					
32	Coal, coke and briquettes	1	1	1	—	4
33	Petroleum, petroleum products and related materials	1 943	2 341	1 776	11.5	6 254
34	Gas, natural and manufactured	148	154	140	0.9	301
	<i>Total Mineral fuels, lubricants and related materials</i>	2 092	2 496	1 917	12.4	6 559

— nil or rounded to zero (including null cells)

(a) Some SITC sections and divisions exclude commodities subject to a confidentiality restriction. These are included in Division 98. For more information see paragraph 26 of the Explanatory Notes.

(b) Per cent of total merchandise is calculated for the most recent month.

(c) The 'Major commodities' section lists commodities at the SITC Rev 4 3-digit level which are the most significant (by value) or are of particular interest. Abbreviated descriptors have been used. The list of 'Major commodities' is reviewed annually.

				Per cent of total merchandise imports(b)	2 MONTHS ENDED AUGUST		
	Jun	Jul	Aug			
	2009	2009	2009		2008	2009	
	\$m	\$m	\$m	%	\$m	\$m	
SECTION AND DIVISION OF THE SITC							
4	Animal and vegetable oils, fats and waxes						
41	Animal oils and fats	2	1	5	—	5	6
42	Fixed vegetable fats and oils, crude, refined or fractionated	31	42	42	0.3	87	84
43	Fats and oils (processed), waxes and inedible mixtures or preparations, of animal or vegetable n.e.s.	4	6	6	—	11	12
	<i>Total Animal and vegetable oils, fats and waxes</i>	37	49	53	0.3	103	102
5	Chemicals and related products, n.e.s.						
51	Organic chemicals	267	236	247	1.6	562	483
52	Inorganic chemicals	104	115	96	0.6	348	211
53	Dyeing, tanning and colouring materials	46	52	49	0.3	114	101
54	Medicinal and pharmaceutical products	803	908	685	4.4	1 441	1 593
55	Essential oils and resinoids and perfume materials; toilet, polishing and cleansing preparations	136	157	160	1.0	267	317
56	Fertilisers (excl. crude)	81	74	43	0.3	346	117
57	Plastics in primary forms	91	101	100	0.6	300	201
58	Plastics in non-primary forms	103	130	108	0.7	229	238
59	Chemical materials and products, n.e.s.	156	161	153	1.0	336	314
	<i>Total Chemicals and related products, n.e.s.</i>	1 787	1 932	1 642	10.6	3 942	3 574
6	Manufactured goods classified chiefly by material						
61	Leather, leather manufactures, and dressed furskins, n.e.s.	10	11	11	0.1	35	23
62	Rubber manufactures, n.e.s.	193	230	220	1.4	433	449
63	Cork and wood manufactures (excl. furniture)	45	46	46	0.3	108	92
64	Paper, paperboard and articles of paper pulp, of paper or of paperboard	187	220	214	1.4	499	434
65	Textile yarn, fabrics, made-up articles n.e.s., and related products	177	207	209	1.3	412	416
66	Non-metallic mineral manufactures, n.e.s.	197	208	194	1.3	432	402
67	Iron and steel	251	294	264	1.7	918	558
68	Non-ferrous metals	119	84	154	1.0	320	238
69	Manufactures of metals, n.e.s.	426	474	410	2.6	920	884
	<i>Total Manufactured goods classified chiefly by material</i>	1 605	1 773	1 722	11.1	4 076	3 496
7	Machinery and transport equipment						
71	Power generating machinery and equipment	336	311	303	2.0	904	613
72	Machinery specialised for particular industries	524	521	575	3.7	1 430	1 096
73	Metal working machinery	52	54	49	0.3	127	103
74	General industrial machinery and equipment, n.e.s. and machine parts, n.e.s.	1 014	1 026	936	6.0	1 766	1 963
75	Office machines and automatic data processing machines	775	867	662	4.3	1 395	1 529
76	Telecommunications and sound recording and reproducing apparatus and equipment	1 017	973	913	5.9	1 752	1 887
77	Electrical machinery, apparatus, appliances, parts (incl. non-elec. counterparts of electrical domestic equip)	796	833	747	4.8	1 649	1 579
78	Road vehicles (incl. air-cushion vehicles)	1 656	1 719	1 565	10.1	4 566	3 285
79	Transport equipment (excl. road vehicles)	121	148	77	0.5	1 389	225
	<i>Total Machinery and transport equipment</i>	6 293	6 452	5 827	37.6	14 978	12 278

— nil or rounded to zero (including null cells)

(b) Per cent of total merchandise is calculated for the most recent month.

(a) Some SITC sections and divisions exclude commodities subject to a confidentiality restriction. These are included in Division 98. For more information see paragraph 26 of the Explanatory Notes.

	Jun 2009	Jul 2009	Aug 2009	Per cent of total merchandise imports(b)	2 MONTHS ENDED AUGUST	
					2008	2009
					\$m	\$m
SECTION AND DIVISION OF THE SITC						
8	Miscellaneous manufactured articles					
81	Prefabricated buildings; sanitary, plumbing, heating and lighting fixtures and fittings, n.e.s.					
	56	63	71	0.5	132	134
82	Furniture, parts thereof; bedding, mattresses, mattress supports, cushions and similar stuffed furnishings					
	203	234	225	1.5	443	460
83	Travel goods, handbags and similar containers					
	56	70	64	0.4	122	134
84	Articles of apparel and clothing accessories					
	368	486	418	2.7	848	904
85	Footwear					
	91	134	118	0.8	240	252
87	Professional, scientific and controlling instruments and apparatus, n.e.s.					
	437	407	391	2.5	801	798
88	Photographic apparatus, equipment and supplies and optical goods, n.e.s., watches and clocks					
	110	125	114	0.7	233	239
89	Miscellaneous manufactured articles, n.e.s.					
	841	853	883	5.7	1 714	1 737
	<i>Total Miscellaneous manufactured articles</i>					
	2 161	2 372	2 285	14.7	4 533	4 657
9	Commodities and transactions not classified elsewhere in the SITC					
93	Special transactions and commodities not classified according to kind					
	4	4	3	—	7	6
95	Gold coin whether or not legal tender, and other coin being legal tender					
	—	—	—	—	1	1
96	Coin (excl. gold coin), not being legal tender					
	—	—	—	—	—	—
97	Gold, non-monetary (excl. gold ores and concentrates)					
	410	321	610	3.9	1 655	931
98	Combined confidential items excl. some of SITC 280 (exports only) and some of SITCs 510 and 520 (imports only)					
	362	222	442	2.8	114	664
	<i>Total Commodities and transactions not classified elsewhere in the SITC</i>					
	775	547	1 055	6.8	1 778	1 602
Total merchandise imports						
	15 684	16 715	15 502	100.0	38 054	32 216
Balance of Payments Adjustments						
	144	243	249	. .	387	493
Goods Debits (imports) on a Balance of Payments Basis						
	15 828	16 958	15 751	. .	38 441	32 709

. . not applicable

— nil or rounded to zero (including null cells)

(a) Some SITC sections and divisions exclude commodities subject to a confidentiality restriction. These are included in Division 98. For more information see paragraph 26 of the Explanatory Notes.

(b) Per cent of total merchandise is calculated for the most recent month.

	EXPORTS				IMPORTS (b)				BALANCE OF MERCHANDISE TRADE	
	2008-09	Aug 2009	2	2	2008-09	Aug 2009	2	2	2008-09	2009
			Months Ended August 2008	Months Ended August 2009			Months Ended August 2008	Months Ended August 2009		
	\$m	\$m	\$m	\$m	\$m	\$m	\$m	\$m	\$m	\$m
Belgium	1 301	73	373	147	1 719	150	353	297	-418	-150
Brazil	1 483	44	411	100	1 041	41	316	96	442	4
Canada	1 549	92	257	208	2 437	134	478	303	-888	-95
China	39 310	3 259	6 028	6 843	37 046	2 883	5 712	5 936	2 264	907
Denmark	176	12	27	25	1 070	83	183	168	-894	-143
Egypt(c)	452	34	73	84	33	6	3	8	419	77
Fiji	375	30	67	60	160	10	26	21	215	40
Finland	595	4	105	20	978	42	193	93	-383	-73
France	1 721	38	267	132	4 656	312	1 153	664	-2 935	-532
Germany	2 201	111	314	205	11 106	919	2 015	1 753	-8 905	-1 548
Hong Kong (Sar of China)	3 191	199	476	394	1 424	96	246	207	1 767	187
India	15 426	1 144	2 752	2 286	2 115	140	309	276	13 311	2 010
Indonesia	4 295	290	839	649	5 038	298	1 036	737	-743	-87
Iran	661	5	41	16	95	2	22	5	567	11
Iraq	194	67	60	82	31	—	—	—	163	82
Ireland	134	12	27	22	2 399	184	344	393	-2 265	-371
Israel	262	22	21	43	715	45	133	86	-453	-44
Italy	1 556	89	295	118	5 339	361	1 002	821	-3 783	-703
Japan	52 610	3 040	9 083	5 869	17 841	1 298	3 263	2 713	34 769	3 156
Korea, Republic of	19 245	1 217	2 674	2 322	6 528	521	1 092	1 060	12 717	1 261
Kuwait	428	42	90	93	426	42	56	57	2	37
Malaysia	3 727	300	709	558	8 332	549	1 581	1 249	-4 606	-692
Mexico	902	61	95	134	1 324	83	190	180	-422	-46
Netherlands	3 202	106	513	274	1 771	117	302	235	1 431	39
New Zealand	8 548	725	1 577	1 397	7 050	562	1 301	1 090	1 499	307
Pakistan	478	47	80	91	181	11	24	24	296	67
Papua New Guinea	1 611	196	283	333	3 013	205	468	502	-1 402	-168
Philippines	1 409	97	249	182	605	39	134	72	805	110
Saudi Arabia	2 250	99	326	232	933	53	242	83	1 317	150
Singapore	5 518	425	954	988	13 452	648	2 496	1 578	-7 934	-589
South Africa	2 056	138	453	293	1 258	58	268	147	798	146
Spain	612	20	96	60	1 731	124	309	275	-1 119	-215
Sweden	566	43	190	67	2 441	167	424	368	-1 875	-302
Switzerland	660	18	37	45	2 481	181	403	433	-1 821	-388
Taiwan	8 146	549	1 446	1 093	4 089	229	702	529	4 056	564
Thailand	4 947	328	962	757	10 749	847	1 726	1 738	-5 802	-981
Turkey	811	12	238	22	507	24	72	56	304	-34
United Arab Emirates	3 604	165	689	291	1 925	312	501	501	1 679	-211
United Kingdom	11 509	377	1 790	584	9 024	461	1 517	979	2 485	-395
United States of America	11 599	781	2 219	1 635	25 338	1 821	4 273	3 473	-13 739	-1 838
Viet Nam	1 231	126	164	232	4 399	226	1 053	531	-3 168	-299
Other Countries(b)	10 066	665	1 767	1 308	16 685	1 215	2 134	2 482	-6 619	-1 174
Total	230 620	15 108	39 117	30 292	219 485	15 502	38 054	32 216	11 135	-1 925
APEC	169 204	11 768	28 300	23 775	151 764	10 673	26 535	22 408	17 441	1 367
ASEAN	21 273	1 579	3 899	3 388	43 640	2 689	8 477	6 128	-22 367	-2 739
Developing Countries	124 454	8 946	20 362	18 333	106 790	7 533	18 883	16 097	17 665	2 235
Least Developed Countries	2 144	163	282	295	281	19	38	43	1 862	252
European Union(d)	24 047	907	4 138	1 699	45 405	3 120	8 313	6 429	-21 358	-4 729
OECD	119 873	6 853	20 262	13 324	110 069	7 808	19 484	15 861	9 804	-2 537

— nil or rounded to zero (including null cells)

(a) See Time series spreadsheets for details of all countries.

(b) From September 2008 imports data with confidentiality restrictions 'no commodity details' or 'no value details' are included in Other countries.

(c) Exports of Alumina to Egypt are excluded from country total and included in the 'Other Countries' category.

(d) The European Union includes 27 member countries.

	2008-09	Aug 2009	2 MONTHS ENDED AUGUST	
			2008	2009
			\$m	\$m
EXPORTS (a)				
New South Wales	38 758	2 627	6 035	5 275
Victoria	20 382	1 464	3 430	2 938
Queensland	56 409	3 316	9 925	6 588
South Australia	9 508	682	1 926	1 315
Western Australia	86 856	5 584	14 783	11 401
Tasmania	3 498	231	596	464
Northern Territory	6 292	414	1 015	810
Australian Capital Territory	11	—	5	—
State not available for publication(b)	797	75	156	106
Re-exports	8 109	716	1 247	1 395
Total	230 620	15 108	39 117	30 292
IMPORTS				
New South Wales	79 005	5 896	13 365	12 336
Victoria	56 458	4 112	10 364	8 504
Queensland	33 961	2 232	6 389	4 798
South Australia	6 868	497	1 299	1 019
Western Australia	33 121	2 024	5 694	4 228
Tasmania	956	52	204	117
Northern Territory	4 348	247	738	547
Australian Capital Territory	7	—	1	2
State not available for publication(c)	4 760	442	—	664
Total	219 485	15 502	38 054	32 216

— nil or rounded to zero (including null cells)

(a) State in which the final stage of production or manufacture occurs.

(b) Exports of Alumina to Bahrain, Egypt and Iceland are excluded from the state totals and included in 'State not available for publication'.

(c) From September 2008 imports data with confidentiality restrictions 'no commodity details' or 'no value details' are included in State not available for publication.

PERIOD AVERAGE EXCHANGE RATES(a), Per Australian dollar

<i>Period</i>	<i>United States dollar</i>	<i>UK pound sterling</i>	<i>Euro</i>	<i>Japanese yen</i>	<i>Special Drawing Right</i>	<i>Trade-weighted index of value of the A\$(b)</i>
FINANCIAL YEAR						
2006-07	0.7863	0.4066	0.6018	93.21	0.5251	64.8
2007-08	0.8968	0.4479	0.6099	98.63	0.5664	69.7
2008-09	0.7456	0.4621	0.5414	73.99	0.4869	60.2
MONTHS						
2008						
June	0.9508	0.4840	0.6116	101.75	0.5882	72.8
July	0.9625	0.4840	0.6102	102.71	0.5898	73.3
August	0.8810	0.4668	0.5890	96.33	0.5555	68.6
September	0.8205	0.4558	0.5700	87.49	0.5271	64.9
October	0.6894	0.4070	0.5173	69.20	0.4542	56.1
November	0.6557	0.4279	0.5155	63.55	0.4421	54.4
December	0.6690	0.4480	0.4973	61.02	0.4407	54.6
2009						
January	0.6784	0.4678	0.5095	61.37	0.4478	55.4
February	0.6490	0.4503	0.5074	59.97	0.4386	54.2
March	0.6646	0.4680	0.5093	64.92	0.4483	56.0
April	0.7122	0.4846	0.5398	70.24	0.4773	59.1
May	0.7626	0.4954	0.5596	73.72	0.5022	61.7
June	0.8023	0.4898	0.5721	77.39	0.5194	64.2
July	0.8040	0.4913	0.5709	75.96	0.5180	64.0
August	0.8344	0.5047	0.5852	79.15	0.5349	66.0

(a) These exchange rates and the trade-weighted index are derived using rates provided by the Reserve Bank of Australia in respect of each trading day.

(b) May 1970 = 100. The Trade-weighted index is reweighted annually on 1 October and on special occasions as required.

	2006-07	2007-08	2008-09	Feb 2009	Mar 2009	Apr 2009	May 2009	Jun 2009	Jul 2009
	\$m	\$m	\$m	\$m	\$m	\$m	\$m	\$m	\$m
BALANCE									
On goods and services	nya	nya	nya	nya	nya	nya	nya	nya	nya
CREDITS									
Total goods and services	nya	nya	nya	nya	nya	nya	nya	nya	nya
Total goods	nya	nya	nya	nya	nya	nya	nya	nya	nya
Rural goods	nya	nya	nya	nya	nya	nya	nya	nya	nya
Non-rural goods	nya	nya	nya	nya	nya	nya	nya	nya	nya
Net exports of goods under merchanting	nya	nya	nya	nya	nya	nya	nya	nya	nya
Non-monetary gold	nya	nya	nya	nya	nya	nya	nya	nya	nya
Total services	nya	nya	nya	nya	nya	nya	nya	nya	nya
DEBITS									
Total goods and services	nya	nya	nya	nya	nya	nya	nya	nya	nya
Total goods	nya	nya	nya	nya	nya	nya	nya	nya	nya
Consumption goods	nya	nya	nya	nya	nya	nya	nya	nya	nya
Capital goods	nya	nya	nya	nya	nya	nya	nya	nya	nya
Intermediate and other merchandise goods	nya	nya	nya	nya	nya	nya	nya	nya	nya
Non-monetary gold	nya	nya	nya	nya	nya	nya	nya	nya	nya
Total services	nya	nya	nya	nya	nya	nya	nya	nya	nya

nya not yet available

EXPLANATORY NOTES

INTRODUCTION

1 This publication presents preliminary estimates of Australia's international trade in goods and services on a balance of payments basis (Tables 1–11 and 17) and merchandise import and export statistics on a recorded trade basis (Tables 12–15). In addition, Table 16 Exchange rates and trade-weighted indexes are derived by using exchange rates and indexes provided by the Reserve Bank.

2 Merchandise trade statistics on a recorded trade basis are compiled from information submitted by exporters and importers or their agents to the Australian Customs and Border Protection Service (Customs). Adjustments for coverage, timing and valuation are made to recorded trade data to convert them to a balance of payments basis. The services data are sourced from the quarterly Survey of International Trade in Services and a range of administrative data and indicator series.

3 More comprehensive quarterly estimates of Australia's trade in goods and services, together with comprehensive details of Australia's balance of payments are included in the quarterly publication, *Balance of Payments and International Investment Position, Australia* (cat. no. 5302.0). Detailed monthly statistics on merchandise trade are available in Time Series Spreadsheets on the ABS website or by subscription to tailored services. More information on the *International Trade in Services by country, by state and by detailed services category* are available on a financial year basis (cat. no. 5368.0.55.003) with the September issue of this publication and calendar year basis (cat. no. 5368.0.55.004) with the March issue of this publication.

CONCEPTS, SOURCES AND METHODS

4 The conceptual framework used in compiling Australia's merchandise trade statistics can be found in *International Merchandise Trade, Australia: Concepts, Sources and Methods, 2001* (cat. no. 5489.0).

5 The conceptual framework used in compiling Australia's balance of payments statistics is based on the *International Monetary Fund's Balance of Payments and International Investment Position Manual Sixth Edition* (BPM6, 2008). Descriptions of the underlying concepts and structure of the balance of payments and the sources, methods and terms used in compiling the estimates are presented in *Balance of Payments and International Investment Position, Australia: Concepts, Sources and Methods*, 1998 (cat. no. 5331.0). The current version of this document reflects the international standards prior to BPM6. A revised Concepts, Sources and Methods publication is scheduled for release in late 2010. The *Information paper: Implementation of revised international statistical standards in the ABS National and International Accounts* (cat. no. 5310.0.55.002) describes the key changes introduced with BPM6.

6 To bring merchandise trade statistics on a recorded trade basis to a balance of payments basis, timing adjustments are made to ensure that the transaction is recorded in the period in which ownership changed, rather than in the period in which the transaction was recorded by Customs or the period in which the goods arrived in/departed from an Australian port. Adjustments are also made to account for the change of ownership of goods not included in merchandise trade statistics. Chapter 6 of cat. no. 5331.0 provides more detail on the relationship between statistics on international merchandise trade on a recorded trade basis and on a balance of payments basis.

7 Recorded trade exports data presented for recent months in tables 12–15 of this publication are based on information initially reported by exporters to Customs. At the time of initial reporting to Customs the final prices may not be known for some commodities. Therefore, the information recorded for recent months for commodities like iron ore and coal can include a variety of prices including previous or current contract prices and the prevailing spot prices. Newly negotiated contract prices may not

EXPLANATORY NOTES *continued*

CONCEPTS, SOURCES AND METHODS *continued*

be fully reflected in the data first reported to Customs, and to compensate for this, the Balance of Payments series may reflect adjusted price levels.

8 The Concepts, Sources and Methods publications and information papers are available to download for free from the ABS website. Select *Statistics*, then select *By Catalogue Number*, and then the catalogue numbers as above.

CLASSIFICATIONS

9 The merchandise trade data on a recorded trade basis are presented using the following commodity classifications:

- the Harmonised System 2007 (available on request)
- the Standard International Trade Classification (SITC Revision 4)
- the Classification by Broad Economic Categories (BEC)
- the industry classification: Australian and New Zealand Standard Industrial Classification, 2006 (ANZSIC 06).

10 The Balance of Payments Goods and Services series are presented according to three classifications with the goods classifications derived from SITC Revision 4 and BEC. The classifications are:

- for goods:
 - the Balance of Payments Commodities for Exports (BoPCE)
 - the Balance of Payments Broad Economic Categories for Imports (BoPBEC),
- for services:
 - the Extended Balance of Payments Services Classification (EBOPS).

ACCURACY, RELIABILITY AND REVISIONS

11 Care should be exercised in the use and interpretation of estimates in this publication. The transactions occurring in international trade in goods and services are of many different kinds, and therefore the compilation of trade estimates entails the use of a very wide range of statistical data of varying degrees of accuracy and timeliness. While every effort is made to ensure the accuracy and reliability of estimates, most series are subject to revision as more complete and accurate information becomes available. For further information on the monthly services series, see paragraph 25.

12 The revisions are applied differently for merchandise trade and Balance of Payments series. Each month, merchandise trade data are revised for the previous six months to incorporate latest available data.

13 For the Balance of Payments Goods and Services series, in original terms, no revisions are applied in the July, October, January or April issues. This is to ensure the monthly series align with the comparable series in the quarterly publication. In the September issue revisions can be applied to the four previous financial years. In other issues revisions can be applied to the previous and current financial years to incorporate the latest available survey and administrative data.

14 In seasonally adjusted and trend terms, revisions may occur at any time point but tend to focus on the most recent estimates. Please also refer to paragraphs 17 (seasonal adjustment) and 19 (trend estimates) below.

SIGN CONVENTION

15 In keeping with balance of payments conventions, where statistics are on a balance of payments basis, credit entries (exports) are shown without sign and debit items (imports) are shown as negative entries. For statistics on a recorded trade basis, both imports and exports are shown without sign. The calculation of percentage changes on balance of payments debit items are made without regard to sign. References to balance of payments debit items in Key Figures, Key Points, and Analysis and Comments are also made without regard to sign.

EXPLANATORY NOTES *continued*

SEASONALLY ADJUSTED AND TREND ESTIMATES

16 The estimates of international trade in goods and services on a balance of payments basis are seasonally adjusted, however the merchandise exports and imports statistics on a recorded trade basis are not. Monthly original estimates are volatile, being subject to calendar-related and large irregular influences. Seasonally adjusted estimates are derived by estimating and removing from the original series systematic calendar related effects, such as seasonal (e.g. Christmas), trading day and moving holiday (e.g. Easter) influences. Seasonal adjustment does not aim to remove the irregular or non-seasonal influences which may be present in any particular month. These irregular influences may reflect both random economic events and difficulties of statistical recording.

17 The seasonally adjusted statistics in this publication use the concurrent seasonal adjustment technique and Autoregressive Integrated Moving Average (ARIMA) modelling to estimate factors for the current and previous months. Under concurrent seasonal adjustment, the estimates of seasonal factors are fine tuned as new original estimates become available each period. The seasonally adjusted estimates are subject to revisions at each reference month as the estimates of seasonal factors are improved.

18 ARIMA modelling relies on the characteristics of the series being analysed to project future period data. ARIMA modelling is used on a case-by-case basis where it results in reduced revisions to seasonally adjusted series when subsequent data become available. The projected values are temporary, intermediate values, that are only used internally to improve the estimation of the seasonal factors. The projected data do not affect the original estimates and are discarded at the end of the seasonal adjustment process. The ARIMA model is assessed as part of the annual review and, following the 2009 annual review, 40 of the 56 directly seasonally adjusted trade in goods and services time series use an ARIMA model.

19 Trend estimates are published as the month-to-month movements of the seasonally adjusted estimates may not be reliable indicators of underlying behaviour because they include irregular or non-seasonal movements. Trend estimates reduce the effect of these movements as they are derived by applying a 13-term Henderson moving average to the seasonally adjusted series. The 13-term Henderson moving average (like all Henderson averages) is symmetric, but as the end of a time series is approached, asymmetric forms of the average are applied. While the asymmetric weights enable trend estimates for recent months to be produced, it does result in revisions to the estimates for the most recent six months as additional observations become available. Revisions to trend estimates can also occur because of revisions to the original data and as a result of the re-estimation of the seasonal factors. Trend estimates should be used with caution, especially around the time of unusual influences, until these have been appropriately taken into account. Please take note of the footnotes in tables that include trend estimates.

20 Information papers and articles on time series methods are available on the ABS website:

- for seasonal adjustment methods, see *Information Paper: An Introductory Course on Time Series Analysis, Jan 2005* (cat. no. 1346.0.55.001) and *Time Series Analysis Frequently Asked Questions, 2003* (cat. no. 1346.0.55.002)
- for ARIMA modelling, see *Feature article: Use of ARIMA modelling to reduce revisions* in the October 2004 issue of *Australian Economic Indicators* (cat. no. 1350.0)
- for trend estimates methods, see *Information Paper: A Guide to Interpreting Time Series – Monitoring Trends* (cat. no. 1349.0)
- alternatively contact the Assistant Director, Time Series Analysis on (02) 6252 6345 or e-mail <time.series.analysis@abs.gov.au>.

EXPLANATORY NOTES *continued*

ECONOMIC TERRITORY

21 Australia's economic territory, on a Balance of Payments basis, is the area under the effective control of the Australian government. It includes the land area, airspace, territorial waters, including jurisdiction over fishing rights and rights to fuels and minerals. Australian economic territory also includes territorial enclaves in the rest of the world. These are clearly demarcated areas of land, located in other countries and which are owned or rented by the Australian government for diplomatic, military, scientific or other purposes. Specifically, the economic territory of Australia consists of:

- Geographic Australia which includes Cocos (Keeling) Islands and Christmas Island;
- Norfolk Island;
- Australian Antarctic Territory;
- Heard Island and McDonald Islands;
- Territory of Ashmore Reef and Cartier Island;
- Coral Sea Islands;
- Australia's territorial enclaves overseas; and
- the Joint Petroleum Development Area (joint territory between Australia and East Timor (Timor-Leste)).

22 Because of administrative complexities and measurement difficulties, Norfolk Island transactions with the rest of the world will not always be captured in all relevant Balance of Payments statistics. Most of the transactions involving Norfolk Island are not material to Australia's trade performance and not capturing these transactions will not distort Balance of Payments statistics. However, any significant transactions will be identified and included in the relevant statistics.

COMMODITY BREAKDOWN OF GOODS

23 For details of the classifications used to present goods exports (credits) and imports (debits) on a balance of payments basis, see tables 6.6 and 6.7, respectively, in *Balance of Payments and International Investment Position, Australia: Concepts, Sources and Methods*, 1998 (cat. no. 5331.0).

24 The recorded trade statistics shown in tables 12 and 13 are classified by the Standard International Trade Classification (SITC). Imports and exports of goods at a more detailed level are available from the Time Series spreadsheets on the ABS website. All data from July 2005 are presented according to SITC Rev 4 and data prior to July 2005 are presented according to SITC Rev 3. For details refer to the 'Classifications and Standards Update' in the July 2008 issue of this publication.

MONTHLY SERVICES SERIES

25 Monthly indicators for many of the services components that are only surveyed quarterly are not available. Monthly estimates for the freight and other transportation components of services credits in table 9 are derived by dividing the quarterly estimate by three. Freight debits are derived directly from imports data for the reference month as a difference between total merchandise cost, insurance and freight (CIF) and free on board (FOB), adjusted to reflect timing and processing adjustments. For freight credits and other transportation credits and debits, estimates are derived by extrapolating the last quarter's data by an average of movements for the same quarter over the three previous years, and then dividing the estimate by three. Similarly other services estimates are derived by extrapolating the last quarter's data by an average of movements for the same quarter over the previous three years, and then dividing the estimate by three.

CONFIDENTIALITY OF MERCHANDISE TRADE STATISTICS

26 The release of statistics for certain merchandise trade commodities is restricted in order to prevent the identification of the activities of an individual business, where this is requested by the business concerned. These restrictions do not affect the total value of exports and imports, but they can affect statistics at the country, state and commodity levels. Imports data that have the confidentiality restrictions 'No commodity details' or 'No value details' are aggregated into a single confidential commodity code. For data prior to September 2008, these data are added back into the appropriate state total and country total (i.e. these totals show the correct level of trade). From September 2008

EXPLANATORY NOTES *continued*

CONFIDENTIALITY OF MERCHANDISE TRADE STATISTICS *continued*

these confidential data are not added back. Instead the confidential data are published as 'No country details' in the country totals and 'State not available for publication' in the state totals. Therefore, country and state totals from September 2008 may not represent the actual amount of trade in each country/state but only the trade in commodities without a 'No commodity details' or 'No value details' restriction. For information on the confidentiality restrictions applied to the merchandise trade statistics in this publication, refer to the current issue of *International merchandise trade: Confidential Commodities List (CCL)* (cat. no. 5372.0.55.001).

TOURISM RELATED SERVICES

27 The tourism related services memorandum items provide timely indicators of the movements in tourism related activities, not an absolute measure of the level of these activities. The tourism related indicator has been derived by combining total travel services (business, education-related and other personal travel) and passenger transportation services (which includes agency fees and commissions for air transport).

SERVICES BY STATE AND BY PARTNER COUNTRY

28 Annual services data by state, by country and detailed services are released twice yearly. Calendar year data are usually released with the March issue of this publication and financial year data are usually released with the September issue. Refer to Time series data for details.

29 Services credits are classified by the state of provision, while services debits are classified by the state of consumption. The state allocations for transportation, travel, postal and courier, and telecommunication services are based on a number of indicators including merchandise trade statistics by state, overseas passenger arrivals and departures by state of clearance and data provided by the Department of Immigration and Citizenship. The allocation for other services (about 25% of all trade in services) is primarily based on the location of the business reporting the information, which serves as a proxy for the state of provision/consumption of that service. The data should be used with care but are considered suitable for analysis over time.

30 A comprehensive explanation of the data sources used and the methodology applied in the compilation of partner country statistics is provided in Chapter 17 of *Balance of Payments and International Investment Position, Australia – Concepts, Sources and Methods* (cat. no. 5331.0). Approximately 7% of total services credits and 5% of total services debits for both 2007–08 and 2008–09 were either confidential, or unable to be allocated to individual countries.

ABS DATA AVAILABLE

31 More detailed balance of payments and recorded merchandise trade data, including forward seasonal factors are available as time series spreadsheets or data cubes from the ABS web site. Merchandise trade data by commodity, country and state that are not on the ABS web site may be available on request. Inquiries should be made to the National Information and Referral Service as shown on the back of this publication.

RELATED PRODUCTS AND PUBLICATIONS

32 Users may also wish to refer to the following publications which can be downloaded free of charge from the ABS web site by using the 'Statistics' tab and selecting the relevant catalogue number:

- *Balance of Payments and International Investment Position, Australia* (cat. no. 5302.0) – issued quarterly
- *International Merchandise Imports, Australia* (cat. no. 5439.0) – issued monthly
- *International Trade Price Indexes, Australia* (cat. no. 6457.0) – issued quarterly
- *Balance of Payments and International Investment Position, Australia: Concepts, Sources and Methods* (cat. no. 5331.0)
- *Information Paper: Quality of Australian Balance of Payments Statistics* (cat. no. 5342.0)
- *International Merchandise Trade, Australia: Concepts, Sources and Methods* (cat. no. 5489.0)

EXPLANATORY NOTES *continued*

RELATED PRODUCTS AND PUBLICATIONS *continued*

- *A Guide to Australian Balance of Payments and International Investment Position Statistics* (cat. no. 5362.0.55.001).

33 Current publications and other products released by the ABS are available from the Statistics tab on the ABS web site. The ABS also issues a daily *Release Advice* on the web site which details products to be released in the week ahead. A *foreign trade theme page* and a *balance of payments theme page* are available on the ABS website. Select *Themes – Economy – Foreign Trade* or *Balance of Payments*. This page provides direct links to all foreign trade and balance of payments related data and publications, recent changes and forthcoming events, links to relevant web sites and a range of other information about the Australian International Accounts.

ROUNDING

34 Where figures have been rounded, discrepancies may occur between sums of the component items and totals. Percentage movements are calculated from data at the level of precision presented in this publication (i.e. \$m) except for international merchandise trade tables.

ABBREVIATIONS

\$b	billion (thousand million) dollars
\$m	million dollars
ABS	Australian Bureau of Statistics
APEC	Asia Pacific Economic Co-operation
ASEAN	Association of South-East Asian Nations
n.e.s.	not elsewhere specified
n.i.e.	not included elsewhere
OECD	Organisation for Economic Co-operation and Development
SAR	Special Administrative Region
SITC	Standard International Trade Classification

APPENDIX RELATED ARTICLES

<i>Article</i>	<i>Source(a)</i>	<i>Issue</i>
Investment		
Foreign ownership of equity	5302.0	Sep qtr 2007
Kangaroo bonds	1301.0	2006
Foreign currency exposure	5308.0	Mar qtr 2005
Gross external debt	5302.0	Sep qtr 2003
Balance of payments		
International comparison of balance of payments statistics	(b) 5363.0	1998–99
Merchandise trade		
Characteristics of Australian Exporters	5368.0.55.006	2007–08
Export and import invoice currencies, 2006	5368.0	Dec 2007
100 years of international trade statistics	5368.0	Oct 2007
New methodology for deriving counts of Australian exports	5368.0	Feb 2006
Australia's Importers, 2003–04	5368.0	Nov 2004
Australia's Exporters, 2003–04	5368.0	Oct 2004
Australia's trade with the USA	5368.0	Mar 2004
Foreign ownership of Australian exporters and importers	5496.0.55.001	2002–03
Major commodities traded by Australia, 1991 to 2000	(b) 5422.0	Dec qtr 2000
Trade in services		
International trade in services by partner country, 2006, preliminary	5368.0	Dec 2006
Changes to International trade in services statistics, August 2006	5368.0	Aug 2006
Changes to International trade in services travel statistics	5368.0	Aug 2005
Finance		
Impact of the farm season on Australian production in 2002–03 and 2003–04	1301.0	2005
Recent trends in construction and first home buyers finance	5609.0	Mar 2002
Household sector data in the financial accounts	5232.0	Mar qtr 2002
Technical information		
Estimation of Workers' Remittances based on Balance of Payments and International Investment Position Manual, Sixth Edition	5302.0.55.003	Sep 2009
Impact of revised international standards on monthly International Trade in Goods and Services	5368.0.55.014	Aug 2009
Changes to International Trade in Goods Statistics - Countries and Ports	5368.0.55.013	Jul 2009
Revisions to international standards in quarterly Balance of Payments and International Investment Position statistics from September 2009	5302.0.55.002	2009
Revisions to international standards in monthly international trade in goods and services statistics from August 2009	5368.0.55.012	2009
Changes to International Trade in Goods Industry Statistics, July 2009	5368.0.55.011	Dec 2008
Technical note 1 - Income on debt	5302.0	Jun qtr 2008
Technical note 2 - Use of CDI data	5302.0	Jun qtr 2008
Impact of introducing Revision 4 of the Standard International Trade Classification	5368.0.55.010	2008
Changes to international trade statistics July 2008	5368.0.55.009	2007–08
Introduction of revised international standards in ABS economic statistics in 2009	5310.0.55.001	2007
Changes on 1 January 2007 to Statistical Codes in the AHECC and the Customs Tariff	1233.0.55.001	Nov 2006
ABS implementation in January 2007 of revisions to international trade classifications, 2007	5368.0.55.005	Jun 2006
Revised treatment of Goods for Processing in Merchandise Trade and Balance of Payments Statistics	5368.0	May 2006
Impact of Customs and ABS changes on import statistics from October 2005	5439.0	Oct 2005
ABS management of the impact of the implementation of the imports component of the New Customs System	5439.0	Aug 2005
Changes to country and port classifications	5368.0	May 2003
Implementation of New Customs Systems	5368.0	Aug 2004
The effect of customs changes on export statistics	5422.0	Jun qtr 2002
Data confidentiality	5422.0	Dec qtr 1999

- (a) In the ABS web site home page, select Statistics; By Catalogue Number; and click on the specified catalogue number and issue. Note: in some instances, a particular issue of the publication can be found in the Past & Future Releases page of the catalogue.
- (b) This article can be found in pdf format by referring to the Downloads page of the specified issue of this publication on the ABS web site.

FOR MORE INFORMATION . . .

INTERNET **www.abs.gov.au** the ABS website is the best place for data from our publications and information about the ABS.

INFORMATION AND REFERRAL SERVICE

Our consultants can help you access the full range of information published by the ABS that is available free of charge from our website. Information tailored to your needs can also be requested as a 'user pays' service. Specialists are on hand to help you with analytical or methodological advice.

PHONE 1300 135 070

EMAIL client.services@abs.gov.au

FAX 1300 135 211

POST Client Services, ABS, GPO Box 796, Sydney NSW 2001

FREE ACCESS TO STATISTICS

All statistics on the ABS website can be downloaded free of charge.

WEB ADDRESS www.abs.gov.au