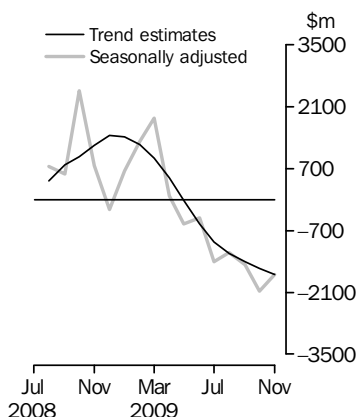


INTERNATIONAL TRADE IN GOODS AND SERVICES

AUSTRALIA

EMBARGO: 11.30AM (CANBERRA TIME) THURS 7 JAN 2010

Balance on Goods and Services



KEY FIGURES

	Sep 2009	Oct 2009	Nov 2009	Oct 09 to Nov 09 %
	\$m	\$m	\$m	change
BALANCE ON GOODS AND SERVICES				
Trend estimates	-1 406	-1 562	-1 691	..
Seasonally adjusted	-1 485	-2 080	-1 700	..
CREDITS (Exports of goods & services)				
Trend estimates	19 439	19 347	19 275	—
Seasonally adjusted	20 056	19 323	19 032	-2
DEBITS (Imports of goods & services)				
Trend estimates	20 845	20 909	20 966	—
Seasonally adjusted	21 540	21 403	20 733	-3

.. not applicable

— nil or rounded to zero (including null cells)

KEY POINTS

BALANCE ON GOODS AND SERVICES

- The trend estimate of the *balance on goods and services* was a deficit of \$1,691m in November 2009, an increase of \$129m on a revised deficit in October 2009.
- In seasonally adjusted terms, the *balance on goods and services* was a deficit of \$1,700m in November 2009, a decrease of \$380m on a revised deficit in October 2009.

CREDITS (EXPORTS OF GOODS & SERVICES)

- Seasonally adjusted, *goods and services credits* fell \$291m (2%) to \$19,032m. *Non-rural goods* fell \$314m (3%) with the *other non-rural (incl. sugar and beverages)* component down \$160m (15%), the *coal, coke and briquettes* component down \$132m (5%) and the *metals (excl. non-monetary gold)* component down \$120m (14%). *Non-monetary gold* fell \$29m (3%) and *rural goods* rose \$86m (5%). Services credits fell \$33m (1%).

DEBITS (IMPORTS OF GOODS & SERVICES)

- Seasonally adjusted, *goods and services debits* fell \$670m (3%) to \$20,733m. *Capital goods* fell \$307m (8%), *non-monetary gold* fell \$231m (34%) and *intermediate and other merchandise goods* fell \$127m (2%). *Consumption goods* rose \$12m. Services debits fell \$19m.

INQUIRIES

For further information about this publication, contact Selvi Sekhar on Canberra (02) 6252 5540

NOTES

FORTHCOMING ISSUES

<i>ISSUE</i>	<i>RELEASE DATE</i>
December 2009	3 February 2010
January 2010	4 March 2010
February 2010	1 April 2010
March 2010	6 May 2010
April 2010	3 June 2010
May 2010	6 July 2010

REVISIONS

Table 17 summarises revisions, in original current price terms, since the last issue of this publication, for the last three financial years and last six months.

Revisions have been made to incorporate the latest available data relating to merchandise trade and international trade in services. In original terms, these revisions have:

- decreased the deficit on goods and services for October 2009 by \$196m
- increased the surplus on goods and services for 2008-09 by \$399m.

Seasonally adjusted and trend series are revised due to the incorporation of revised estimates, incorporation of estimates for the latest month and the rederivation of seasonal factors under the concurrent seasonal adjustment methodology.

ABBREVIATIONS

\$b	billion (thousand million) dollars
\$m	million dollars
ABS	Australian Bureau of Statistics
APEC	Asia Pacific Economic Co-operation
ASEAN	Association of South-East Asian Nations
n.e.s.	not elsewhere specified
n.i.e.	not included elsewhere
OECD	Organisation for Economic Co-operation and Development
SAR	Special Administrative Region
SITC	Standard International Trade Classification

Ian Ewing
Acting Australian Statistician

CONTENTS

page

Time series data 4

ANALYSIS

Analysis and comments 5

TABLES

INTERNATIONAL TRADE IN GOODS AND SERVICES – BALANCE OF PAYMENTS BASIS

1	Goods and services, summary, seasonally adjusted and trend estimates	10
2	Goods and services, summary, original	11
3	Goods credits, original	12
4	Goods debits, original	13
5	Goods credits, seasonally adjusted	14
6	Goods debits, seasonally adjusted	15
7	Goods credits, trend estimates	16
8	Goods debits, trend estimates	17
9	Services, summary, original	18
10	Services, summary, seasonally adjusted and trend estimates	19
11	Services, original, quarterly	20

INTERNATIONAL MERCHANDISE TRADE – RECORDED TRADE BASIS

12	International merchandise exports, by commodity	21
13	International merchandise imports, by commodity	24
14	International merchandise trade, by country and country groups	27
15	International merchandise trade, by state	28

OTHER TABLES

16	Period average exchange rates per Australian dollar	29
17	Summary of revisions, goods and services, original	30

OTHER INFORMATION

Explanatory Notes	31
Appendix – Related articles	37

TIME SERIES DATA

TIME SERIES DATA

Data is available free on the ABS web site include longer time series of tables in this publication and the additional spreadsheets and data cubes listed below.

- 31 Merchandise exports by Broad Economic Category (BEC)
- 32 Merchandise exports by industry of origin (ANZSIC)
- 33 Merchandise imports by Broad Economic Category (BEC)
- 34 Merchandise imports by Balance of Payments Broad Economic Category (BoPBEC)
- 35 Merchandise imports by industry of origin (ANZSIC)
- 36 Merchandise exports, state by country and country groups
- 37 Merchandise imports, state by country and country groups
- 91 Monthly seasonal adjustment factors and forward factors for 12 months.

TRADE IN SERVICES DATA CUBES

Trade in Services data cubes are usually updated on an annual basis - with the March issue of this publication for calendar year (cat. no. 5368.0.55.004) and with the September issue for financial year (cat. no. 5368.0.55.003).

The following tables are included in both sets of data cubes:

- 1 International trade in services, credits, state by year
- 2 International trade in services, credits, year by state
- 3 International trade in services, debits, state by year
- 4 International trade in services, debits, year by state
- 5 International trade in services, credits, year by country and service
- 6 International trade in services, credits, service by year and by country
- 7 International trade in services, debits, year by country and service
- 8 International trade in services, debits, service by year and by country
- 10 International trade in services, credits, year by country and travel service
- 11 International trade in services, debits, year by country and travel service
- 12 International trade in services, credits, education related travel, by educational sector, by type of expenditure by year.

ANALYSIS AND COMMENTS

BALANCE ON GOODS AND SERVICES

The trend estimate of the balance on goods and services was a deficit of \$1,691m in November 2009, an increase of \$129m on a revised deficit in October 2009.

In seasonally adjusted terms, the balance on goods and services was a deficit of \$1,700m in November 2009, a decrease of \$380m on a revised deficit in October 2009.

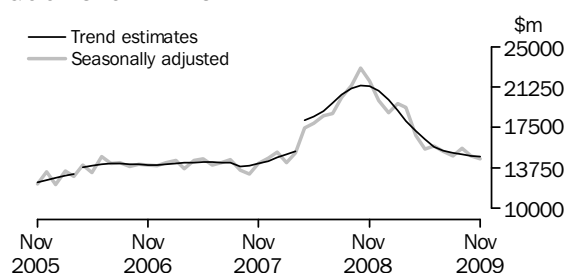
EXPORTS OF GOODS AND SERVICES

Between October 2009 and November 2009 the trend estimate of goods and services credits fell \$72m to \$19,275m.

In seasonally adjusted terms, goods and services credits fell \$291m (2%) to \$19,032m. Non-rural goods fell \$314m (3%) and non-monetary gold fell \$29m (3%). Rural goods rose \$86m (5%). Services credits fell \$33m (1%).

Exports of goods

GOODS CREDITS



(a) Trend breaks of \$500m to April 2006 and \$2,725m to April 2008 have been applied.

RURAL GOODS

In trend terms, exports of rural goods fell \$50m (3%) to \$1,895m.

In seasonally adjusted terms, exports of rural goods rose \$86m (5%) to \$1,947m.

The main components contributing to the rise in seasonally adjusted estimates were:

- other rural, up \$52m (7%)
- wool and sheepskins, up \$29m (16%).

NON-RURAL GOODS

In trend terms, exports of non-rural goods fell \$79m (1%) to \$11,710m.

In seasonally adjusted terms, exports of non-rural goods fell \$314m (3%) to \$11,499m.

The main components contributing to the fall in seasonally adjusted estimates were:

- other non-rural (incl. sugar and beverages), down \$160m (15%)
- coal, coke & briquettes, down \$132m (5%). In original terms, bituminous coal fell \$105m (11%), with volumes down 13% and prices up 3%.
- metals (excluding non-monetary gold), down \$120m (14%). In original terms, copper fell \$125m (51%), with volumes down 52% and prices up 2%.
- other mineral fuels, down \$96m (7%). In original terms, crude fell \$368 (42%) with volumes down 40% and prices down 4%. This was partly offset by LNG, up \$137m (25%) with volumes up 17% and prices up 7%.

Partly offsetting these decreases was the metal ores and minerals component, up \$186m (5%). In original terms, copper ore rose \$153m (50%) with volumes up 25% and prices up 20%.

ANALYSIS AND COMMENTS *continued*

Exports of goods *continued*

NET EXPORTS OF GOODS UNDER MERCHANTING

In trend terms, net exports of goods under merchanting fell \$2m (6%) to \$32m.

In both original terms and seasonally adjusted terms, net exports of goods under merchanting remained steady at \$27m.

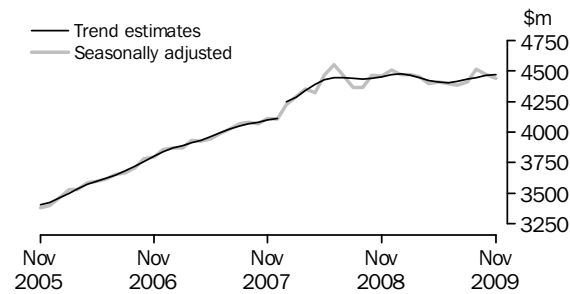
NON-MONETARY GOLD

In trend terms, exports of non-monetary gold rose \$50m (4%) to \$1,169m.

In both original terms and seasonally adjusted terms, non-monetary gold fell \$29m (3%) to \$1,122m.

Exports of services

SERVICES CREDITS



(a) A trend break of \$106m has been applied to January 2008.

In trend terms, services credits rose \$9m to \$4,469m.

In seasonally adjusted terms, services credits fell \$33m (1%) to \$4,438m.

The main component contributing to the fall in the seasonally adjusted estimates was travel services, down \$29m (1%).

In seasonally adjusted terms, tourism related services credits fell \$27m (1%) to \$2,972m.

IMPORTS OF GOODS AND SERVICES

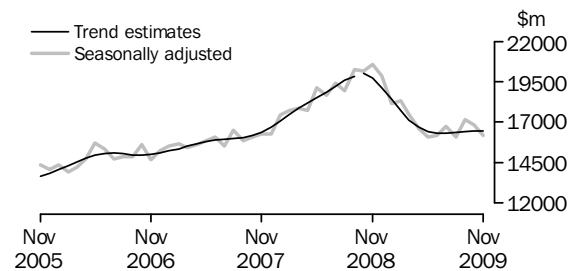
Between October 2009 and November 2009 the trend estimate of goods and services debits rose \$57m to \$20,966m.

In seasonally adjusted terms, goods and services debits fell \$670m (3%) to \$20,733m.

Capital goods fell \$307m (8%), non-monetary gold fell \$231m (34%) and intermediate and other merchandise goods fell \$127m (2%). Consumption goods rose \$12m. Services debits fell \$19m.

Imports of goods

GOODS DEBITS



(a) A trend break of \$167m has been applied to Capital goods n.e.s. debits and related aggregates in October 2008.

ANALYSIS AND COMMENTS *continued*

Imports of goods continued

CONSUMPTION GOODS

In trend terms, imports of consumption goods fell \$12m to \$5,045m.

In seasonally adjusted terms, imports of consumption goods rose \$12m to \$5,050m.

The main components contributing to the rise in the seasonally adjusted estimates were:

- non-industrial transport equipment, up \$52m (4%)
- household electrical items, up \$45m (11%).

Partly offsetting these rises was the food and beverages, mainly for consumption component, down \$63m (9%).

CAPITAL GOODS

In trend terms, imports of capital goods rose \$11m to \$3,743m.

In seasonally adjusted terms, imports of capital goods fell \$307m (8%) to \$3,737m.

The main component contributing to the fall in the seasonally adjusted estimates was capital goods n.e.s., down \$429m (35%).

Partly offsetting this fall was the machinery and industrial equipment component, up \$118m (10%).

INTERMEDIATE AND OTHER MERCHANDISE GOODS

In trend terms, imports of intermediate and other merchandise goods rose \$15m to \$7,096m.

In seasonally adjusted terms, imports of intermediate and other merchandise goods fell \$127m (2%) to \$6,974m.

The components contributing to the fall in the seasonally adjusted estimates were:

- other merchandise goods, down \$71m (51%)
- other parts for capital goods, down \$69m (6%)
- parts for transport equipment, down \$67m (10%).

Partly offsetting these falls was the fuels and lubricants component, up \$50m (2%).

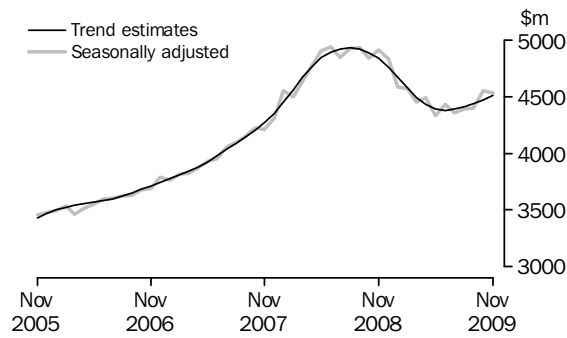
NON-MONETARY GOLD

In trend terms, imports of non-monetary gold rose \$6m (1%) to \$571m.

In both original terms and seasonally adjusted terms, non-monetary gold fell \$231m (34%) to \$441m.

Imports of services

SERVICES DEBITS



In trend terms, services debits rose \$37m (1%) to \$4,510m.

In seasonally adjusted terms, services debits fell \$19m to \$4,530m.

The main component contributing to the fall in the seasonally adjusted estimates was transport services, down \$29m (3%) with freight services down \$30m (5%).

Partly offsetting this fall was the maintenance and repair services n.i.e. component, up \$6m (40%).

In seasonally adjusted terms, tourism related services debits rose \$3m to \$2,461m.

GOODS AND SERVICES (a), Summary—Seasonally Adjusted and Trend Estimates

	Dec 2008	Jan 2009	Feb 2009	Mar 2009	Apr 2009	May 2009	Jun 2009	Jul 2009	Aug 2009	Sep 2009	Oct 2009	Nov 2009
	\$m	\$m	\$m	\$m	\$m	\$m	\$m	\$m	\$m	\$m	\$m	\$m
SEASONALLY ADJUSTED												
BALANCE												
On goods and services	-225	641	1 310	1 832	76	-557	-409	-1 404	-1 209	-1 485	-2 080	-1 700
CREDITS												
Total goods and services	24 481	23 372	24 196	23 800	21 162	19 880	20 194	19 670	19 264	20 056	19 323	19 032
Total goods	19 972	18 901	19 724	19 346	16 765	15 472	15 796	15 289	14 856	15 543	14 852	14 595
Rural goods(b)	2 529	2 493	2 554	2 720	2 456	2 315	2 309	2 189	2 092	2 000	1 861	1 947
Non-rural goods(b)	16 095	14 937	14 920	14 479	12 959	12 154	12 322	12 225	11 886	12 126	11 813	11 499
Net exports of goods under merchandise(c)	-10	38	38	38	25	25	25	41	41	40	27	27
Non-monetary gold(c)	1 358	1 433	2 212	2 109	1 325	978	1 140	835	836	1 377	1 151	1 122
Total services	4 509	4 471	4 472	4 453	4 396	4 408	4 398	4 381	4 408	4 513	4 471	4 438
DEBITS												
Total goods and services	-24 706	-22 731	-22 886	-21 967	-21 086	-20 437	-20 603	-21 074	-20 473	-21 540	-21 403	-20 733
Total goods	-19 877	-18 145	-18 314	-17 515	-16 599	-16 108	-16 177	-16 718	-16 083	-17 143	-16 854	-16 202
Consumption goods	-5 442	-5 144	-4 462	-5 141	-5 071	-4 999	-5 180	-5 238	-4 934	-5 106	-5 038	-5 050
Capital goods	-5 239	-4 385	-4 942	-4 280	-3 783	-3 531	-3 697	-3 809	-3 930	-3 987	-4 044	-3 737
Intermediate and other merchandise goods	-8 425	-7 515	-7 218	-7 031	-7 160	-6 694	-6 954	-7 417	-6 663	-7 313	-7 101	-6 974
Non-monetary gold(c)	-771	-1 101	-1 691	-1 063	-584	-884	-346	-255	-555	-737	-672	-441
Total services	-4 829	-4 586	-4 572	-4 453	-4 487	-4 328	-4 427	-4 356	-4 390	-4 397	-4 549	-4 530
TREND ESTIMATES (d)												
BALANCE												
On goods and services	1 445	1 416	1 242	936	499	-22	-558	-965	-1 216	-1 406	-1 562	-1 691
CREDITS												
Total goods and services	25 334	24 527	23 552	22 546	21 606	20 791	20 151	19 745	19 556	19 439	19 347	19 275
Total goods	20 864	20 051	19 086	18 103	17 187	16 387	15 748	15 331	15 126	14 993	14 887	14 806
Rural goods(b)	2 553	2 575	2 570	2 538	2 480	2 396	2 290	2 182	2 088	2 009	1 945	1 895
Non-rural goods(b)	16 700	15 759	14 752	13 870	13 182	12 680	12 332	12 110	11 986	11 884	11 789	11 710
Net exports of goods under merchandise	10	16	24	30	33	33	33	34	35	35	34	32
Non-monetary gold	1 601	1 701	1 740	1 665	1 493	1 278	1 094	1 005	1 017	1 065	1 119	1 169
Total services	4 470	4 476	4 466	4 443	4 419	4 404	4 403	4 414	4 430	4 446	4 460	4 469
DEBITS												
Total goods and services	-23 888	-23 111	-22 310	-21 609	-21 108	-20 813	-20 709	-20 710	-20 772	-20 845	-20 909	-20 966
Total goods	-19 129	-18 443	-17 736	-17 117	-16 678	-16 422	-16 330	-16 322	-16 362	-16 404	-16 436	-16 456
Consumption goods	-5 179	-5 093	-5 019	-4 986	-5 001	-5 049	-5 096	-5 110	-5 091	-5 071	-5 057	-5 045
Capital goods	-4 369	-4 264	-4 134	-4 000	-3 874	-3 773	-3 714	-3 696	-3 705	-3 719	-3 732	-3 743
Intermediate and other merchandise goods	-8 393	-7 870	-7 412	-7 093	-6 948	-6 927	-6 972	-7 022	-7 055	-7 074	-7 081	-7 096
Non-monetary gold	-1 189	-1 216	-1 170	-1 038	-854	-673	-548	-494	-511	-540	-565	-571
Total services	-4 759	-4 668	-4 574	-4 493	-4 430	-4 391	-4 380	-4 388	-4 410	-4 441	-4 473	-4 510
(a) For sign conventions, see paragraph 15 of the Explanatory Notes.												
(b) For all time periods, estimates for sugar, sugar preparations and honey are included in Non-rural goods.												
(c) These components are not seasonally adjusted.												
(d) Caution should be used when interpreting recent trend estimates as they may be affected by unusual economic factors. For more details on trend estimates, please see paragraph 19 of the explanatory notes.												

GOODS AND SERVICES (a), Summary—Original

	Dec 2008	Jan 2009	Feb 2009	Mar 2009	Apr 2009	May 2009	Jun 2009	Jul 2009	Aug 2009	Sep 2009	Oct 2009	Nov 2009
	\$m	\$m	\$m	\$m	\$m	\$m	\$m	\$m	\$m	\$m	\$m	\$m
BALANCE												
On goods and services	84	-511	2 200	2 769	268	560	-639	-1 846	-337	-2 598	-2 757	-2 640
CREDITS												
Total goods and services	25 508	21 815	23 086	24 533	20 739	19 976	19 613	19 724	19 730	20 145	20 309	19 086
Total goods	21 026	17 396	18 533	19 921	16 246	15 684	15 570	15 321	15 226	15 813	15 635	14 604
Rural goods(b)	2 619	2 197	2 533	2 986	2 492	2 487	2 221	2 110	2 071	1 960	1 886	1 954
Non-rural goods(b)	17 059	13 728	13 750	14 788	12 404	12 194	12 184	12 335	12 278	12 436	12 571	11 501
Net exports of goods under merchanting	-10	38	38	38	25	25	25	41	41	40	27	27
Non-monetary gold	1 358	1 433	2 212	2 109	1 325	978	1 140	835	836	1 377	1 151	1 122
Total services	4 482	4 419	4 553	4 612	4 493	4 292	4 043	4 403	4 504	4 332	4 674	4 482
DEBITS												
Total goods and services	-25 424	-22 326	-20 886	-21 764	-20 471	-19 416	-20 252	-21 570	-20 067	-22 743	-23 066	-21 726
Total goods	-20 323	-17 480	-16 900	-17 554	-16 075	-15 298	-15 816	-16 991	-15 761	-18 025	-18 207	-17 332
Consumption goods	-5 528	-4 846	-4 039	-4 944	-4 730	-4 542	-4 927	-5 409	-4 919	-5 568	-5 785	-5 607
Capital goods	-5 515	-4 044	-4 353	-4 370	-3 617	-3 449	-3 759	-3 855	-3 739	-4 183	-4 266	-4 185
Intermediate and other merchandise goods	-8 509	-7 489	-6 817	-7 177	-7 144	-6 423	-6 784	-7 472	-6 548	-7 537	-7 484	-7 099
Non-monetary gold	-771	-1 101	-1 691	-1 063	-584	-884	-346	-255	-555	-737	-672	-441
Total services	-5 101	-4 846	-3 986	-4 210	-4 396	-4 118	-4 436	-4 579	-4 306	-4 718	-4 859	-4 394

(a) For sign conventions, see paragraph 15 of the Explanatory Notes.

(b) For all time periods, estimates for sugar, sugar preparations and honey are included in Non-rural goods.

							5 MONTHS ENDED		Change
							NOVEMBER		
	2006-07	2007-08	2008-09	Sep 2009	Oct 2009	Nov 2009	2008	2009	
	\$m	\$m	\$m	\$m	\$m	\$m	\$m	%	
Total goods credits	169 524	182 952	231 475	15 813	15 635	14 604	107 099	76 599	-28.5
General merchandise	158 570	170 471	213 667	14 396	14 457	13 455	100 025	71 102	-28.9
<i>Rural goods</i>	25 090	25 494	29 381	1 960	1 886	1 954	11 846	9 981	-15.7
Meat and meat preparations	7 080	6 542	7 454	515	546	547	3 358	2 683	-20.1
Cereal grains and cereal preparations	4 171	4 975	6 881	393	309	300	2 158	1 976	-8.4
Wool and sheepskins	3 065	2 796	2 322	149	217	236	1 036	835	-19.4
Other rural (a)	10 774	11 181	12 724	903	814	871	5 294	4 487	-15.2
<i>Non-rural goods</i>	133 480	144 977	184 286	12 436	12 571	11 501	88 179	61 121	-30.7
Metal ores and minerals	35 315	41 339	51 927	3 721	3 649	3 551	24 042	18 200	-24.3
Coal, coke and briquettes	21 928	24 599	54 957	2 984	2 656	2 440	26 908	13 979	-48.0
Other mineral fuels	15 641	18 889	20 707	1 223	1 649	1 378	10 540	7 168	-32.0
Metals (excl. non-monetary gold)	14 821	14 039	12 393	786	947	765	6 287	4 203	-33.1
Machinery	8 391	8 750	8 899	719	698	640	4 062	3 402	-16.2
Transport equipment	4 651	5 723	5 090	342	392	363	2 881	1 770	-38.6
Other manufactures	16 241	16 965	17 601	1 442	1 416	1 411	7 880	7 152	-9.2
Other non-rural (incl. sugar and beverages)	15 113	13 126	11 081	1 098	1 062	837	4 746	4 700	-1.0
Goods procured in ports by carriers	1 379	1 547	1 631	121	102	116	833	547	-34.3
Net exports of goods under merchanting	214	209	301	40	27	27	122	176	44.3
Goods acquired under merchanting									
(negative exports)	-1 303	-1 528	-2 387	-125	-139	-139	-1 096	-651	40.6
Goods sold under merchanting	1 517	1 737	2 688	165	166	166	1 218	827	-32.1
Non-monetary gold	10 740	12 272	17 507	1 377	1 151	1 122	6 952	5 321	-23.5

(a) For all time periods, estimates for sugar, sugar preparations and honey are included in Other non-rural.

GOODS DEBITS(a), Original

							5 MONTHS ENDED		Change
							NOVEMBER		
	2006-07	2007-08	2008-09	Sep 2009	Oct 2009	Nov 2009	2008	2009	
	\$m	\$m	\$m	\$m	\$m	\$m	\$m	\$m	%
Total goods debits	-183 572	-204 846	-222 429	-18 025	-18 207	-17 332	-102 983	-86 316	16.2
General merchandise	-178 261	-197 253	-210 907	-17 288	-17 535	-16 891	-97 901	-83 656	14.6
Consumption goods	-54 913	-59 371	-61 419	-5 568	-5 785	-5 607	-27 863	-27 288	2.1
Food and beverages, mainly for consumption	-7 182	-7 840	-8 857	-804	-828	-779	-3 835	-3 912	-2.0
Household electrical items	-4 525	-5 051	-5 488	-552	-542	-622	-2 581	-2 734	-5.9
Non-industrial transport equipment	-14 894	-16 872	-13 247	-1 290	-1 397	-1 429	-6 619	-6 285	5.0
Textiles, clothing and footwear	-6 805	-7 051	-8 287	-659	-622	-578	-3 498	-3 237	7.5
Toys, books and leisure goods	-4 328	-4 561	-5 277	-492	-553	-459	-2 520	-2 367	6.1
Consumption goods n.e.s.	-17 179	-17 996	-20 263	-1 771	-1 843	-1 740	-8 810	-8 753	0.6
Capital goods	-41 774	-45 299	-51 457	-4 183	-4 266	-4 185	-22 350	-20 228	9.5
Machinery and industrial equipment	-15 330	-16 480	-18 488	-1 324	-1 252	-1 517	-8 192	-6 723	17.9
ADP equipment	-7 008	-7 074	-7 257	-534	-606	-561	-3 150	-2 949	6.4
Telecommunications equipment	-5 315	-5 790	-6 431	-579	-558	-638	-2 845	-2 709	4.8
Civil aircraft(b)	-1 667	-2 691	na	na	na	na	na	na	na
Industrial transport equipment n.e.s.	-6 463	-7 502	-6 527	-586	-504	-594	-3 678	-2 526	31.3
Capital goods n.e.s.(b)	-5 991	-5 762	-11 230	-1 160	-1 346	-875	-2 961	-5 321	-79.7
Intermediate and other merchandise goods	-81 574	-92 583	-98 031	-7 537	-7 484	-7 099	-47 688	-36 140	24.2
Food and beverages, mainly for industry	-819	-923	-1 186	-85	-82	-81	-526	-447	15.0
Primary industrial supplies n.e.s.	-1 552	-1 477	-1 901	-106	-97	-114	-970	-520	46.4
Fuels and lubricants	-21 470	-29 772	-28 203	-2 243	-2 008	-2 058	-15 182	-10 526	30.7
Parts for transport equipment	-8 355	-8 837	-8 599	-800	-750	-642	-4 258	-3 404	20.1
Parts for ADP equipment	-1 620	-1 115	-1 067	-61	-73	-70	-462	-372	19.5
Other parts for capital goods	-11 780	-11 990	-14 312	-1 220	-1 238	-1 108	-5 907	-5 819	1.5
Organic and inorganic chemicals	-4 406	-4 673	-5 386	-324	-378	-342	-2 443	-1 748	28.4
Paper and paperboard	-2 368	-2 359	-2 403	-213	-216	-194	-1 183	-984	16.8
Textile yarn and fabrics	-1 366	-1 334	-1 344	-112	-107	-105	-622	-536	13.8
Iron and steel	-3 817	-3 721	-5 528	-254	-229	-244	-2 834	-1 286	54.6
Plastics	-2 957	-3 064	-3 028	-228	-247	-230	-1 471	-1 144	22.2
Processed industrial supplies n.e.s.	-17 997	-20 132	-21 919	-1 660	-1 731	-1 654	-10 154	-8 174	19.5
Other merchandise goods(b)	-1 619	-1 415	-1 516	-114	-139	-68	-802	-457	43.0
Goods procured in ports by carriers	-1 448	-1 771	-1 639	-117	-189	-189	-874	-723	17.3
Non-monetary gold	-5 311	-7 593	-11 522	-737	-672	-441	-5 082	-2 660	47.7

na not available

(a) For sign conventions, see paragraph 15 of the Explanatory Notes.

(b) From December 2008, the Civil aircraft series and commodities subject to a 'no commodity details' or 'no value details' restriction are included in Capital goods n.e.s.. From September to November 2008 commodities with these restriction are included in Civil aircraft and for earlier periods are included in Other merchandise goods.

GOODS CREDITS, Seasonally Adjusted

	Feb 2009	Mar 2009	Apr 2009	May 2009	Jun 2009	Jul 2009	Aug 2009	Sep 2009	Oct 2009	Nov 2009
	\$m	\$m	\$m	\$m	\$m	\$m	\$m	\$m	\$m	\$m
Total goods credits	19 724	19 346	16 765	15 472	15 796	15 289	14 856	15 543	14 852	14 595
General merchandise	17 474	17 199	15 415	14 469	14 631	14 413	13 979	14 126	13 674	13 446
<i>Rural goods</i>	2 554	2 720	2 456	2 315	2 309	2 189	2 092	2 000	1 861	1 947
Meat and meat preparations	652	631	584	585	557	551	548	505	498	486
Cereal grains and cereal preparations	592	771	621	555	621	513	488	427	382	400
Wool and sheepskins	193	180	174	167	163	158	159	164	181	210
Other rural (a)	1 117	1 137	1 077	1 008	968	967	897	904	800	852
<i>Non-rural goods</i>	14 920	14 479	12 959	12 154	12 322	12 225	11 886	12 126	11 813	11 499
Metal ores and minerals	4 391	4 310	3 880	3 714	3 627	3 638	3 641	3 714	3 424	3 610
Coal, coke and briquettes(b)	4 348	4 104	3 630	3 031	3 136	3 025	2 767	3 028	2 608	2 476
Other mineral fuels(c)	1 652	1 513	1 331	1 284	1 374	1 366	1 316	1 146	1 428	1 332
Metals (excl. non-monetary gold)(c)	895	836	849	839	851	816	835	841	878	758
Machinery	769	758	675	657	690	667	640	668	650	645
Transport equipment	358	357	273	214	270	303	353	326	323	338
Other manufactures	1 482	1 489	1 377	1 392	1 401	1 390	1 374	1 346	1 356	1 349
Other non-rural (incl. sugar and beverages)	891	995	835	923	874	911	859	947	1 043	883
Goods procured in ports by carriers(c)	134	119	109	99	99	107	101	110	103	108
Net exports of goods under merchanting(d)	38	38	25	25	25	41	41	40	27	27
Non-monetary gold(d)	2 212	2 109	1 325	978	1 140	835	836	1 377	1 151	1 122

(a) For all time periods, estimates for sugar, sugar preparations and honey are included in Other non-rural.

(b) Only a length-of-month adjustment has been applied to this component.

(c) In using these seasonally adjusted series, care should be exercised because of the difficulties associated with reliably estimating the seasonal pattern.

(d) This component is not seasonally adjusted.

GOODS DEBITS(a), Seasonally Adjusted

	Feb 2009	Mar 2009	Apr 2009	May 2009	Jun 2009	Jul 2009	Aug 2009	Sep 2009	Oct 2009	Nov 2009
	\$m	\$m	\$m	\$m	\$m	\$m	\$m	\$m	\$m	\$m
Total goods debits	-18 314	-17 515	-16 599	-16 108	-16 177	-16 718	-16 083	-17 143	-16 854	-16 202
General merchandise	-16 623	-16 452	-16 015	-15 224	-15 831	-16 463	-15 528	-16 406	-16 182	-15 761
<i>Consumption goods</i>	-4 462	-5 141	-5 071	-4 999	-5 180	-5 238	-4 934	-5 106	-5 038	-5 050
Food and beverages, mainly for consumption	-678	-795	-730	-733	-755	-787	-760	-745	-739	-676
Household electrical items	-391	-422	-492	-522	-540	-513	-503	-476	-423	-468
Non-industrial transport equipment	-793	-888	-910	-891	-1 088	-1 119	-1 033	-1 233	-1 260	-1 312
Textiles, clothing and footwear	-634	-781	-715	-666	-660	-670	-625	-622	-591	-579
Toys, books and leisure goods	-377	-468	-457	-457	-439	-432	-422	-395	-405	-394
Consumption goods n.e.s.	-1 591	-1 786	-1 766	-1 729	-1 698	-1 716	-1 591	-1 636	-1 619	-1 620
<i>Capital goods</i>	-4 942	-4 280	-3 783	-3 531	-3 697	-3 809	-3 930	-3 987	-4 044	-3 737
Machinery and industrial equipment	-1 501	-1 768	-1 430	-1 232	-1 374	-1 328	-1 285	-1 304	-1 229	-1 347
ADP equipment	-591	-589	-589	-509	-574	-653	-605	-548	-586	-556
Telecommunications equipment	-586	-592	-530	-521	-512	-513	-504	-527	-493	-490
Civil aircraft(b)(c)	na	na	na	na	na	na	na	na	na	na
Industrial transport equipment n.e.s.	-457	-429	-337	-294	-359	-424	-414	-512	-494	-532
Capital goods n.e.s.(b)	-1 808	-902	-898	-975	-878	-890	-1 122	-1 096	-1 242	-813
<i>Intermediate and other merchandise goods</i>	-7 218	-7 031	-7 160	-6 694	-6 954	-7 417	-6 663	-7 313	-7 101	-6 974
Food and beverages, mainly for industry	-97	-99	-96	-87	-89	-94	-96	-78	-81	-81
Primary industrial supplies n.e.s.(d)	-99	-127	-97	-100	-126	-84	-117	-106	-82	-107
Fuels and lubricants(c)	-1 872	-1 709	-1 792	-1 761	-2 011	-2 418	-1 799	-2 243	-2 008	-2 058
Parts for transport equipment	-613	-655	-644	-595	-600	-593	-619	-765	-683	-616
Parts for ADP equipment	-87	-90	-86	-75	-79	-95	-74	-59	-77	-74
Other parts for capital goods	-1 156	-1 232	-1 238	-1 180	-1 177	-1 156	-1 123	-1 154	-1 164	-1 095
Organic and inorganic chemicals	-414	-350	-402	-360	-397	-362	-358	-332	-368	-387
Paper and paperboard	-191	-189	-177	-168	-168	-171	-174	-185	-182	-185
Textile yarn and fabrics	-105	-113	-107	-99	-93	-101	-107	-102	-101	-95
Iron and steel	-445	-333	-349	-282	-271	-284	-264	-248	-206	-216
Plastics	-233	-250	-225	-201	-211	-234	-214	-211	-219	-210
Processed industrial supplies n.e.s.	-1 714	-1 706	-1 627	-1 599	-1 558	-1 635	-1 544	-1 599	-1 602	-1 593
Other merchandise goods(b)(e)	-90	-73	-220	-87	-73	-75	-61	-114	-139	-68
Goods procured in ports by carriers(c)	-103	-104	-100	-100	-100	-114	-114	-117	-189	-189
Non-monetary gold(c)	-1 691	-1 063	-584	-884	-346	-255	-555	-737	-672	-441

na not available

(a) For sign conventions, see paragraph 15 of the Explanatory Notes.

(b) From December 2008, the Civil aircraft series and commodities subject to a 'no commodity details' or 'no value details' restriction are included in Capital goods n.e.s.. From September to November 2008 commodities with these restrictions are included in Civil aircraft and for earlier periods are included in Other merchandise goods.

(c) These components are not seasonally adjusted.

(d) In using these seasonally adjusted series, care should be exercised because of the difficulties associated with reliably estimating the seasonal pattern.

(e) From July 1981, this component is not seasonally adjusted.

GOODS CREDITS(a), Trend Estimates

	Feb 2009	Mar 2009	Apr 2009	May 2009	Jun 2009	Jul 2009	Aug 2009	Sep 2009	Oct 2009	Nov 2009
	\$m	\$m	\$m	\$m	\$m	\$m	\$m	\$m	\$m	\$m
Total goods credits	19 086	18 103	17 187	16 387	15 748	15 331	15 126	14 993	14 887	14 806
General merchandise	17 322	16 407	15 662	15 076	14 622	14 293	14 074	13 893	13 734	13 605
<i>Rural goods</i>	2 570	2 538	2 480	2 396	2 290	2 182	2 088	2 009	1 945	1 895
Meat and meat preparations	624	609	597	584	567	549	532	516	502	490
Cereal grains and cereal preparations	640	651	641	615	573	526	481	442	411	385
Wool and sheepskins	182	177	173	167	163	162	165	172	180	188
Other rural(b)	1 124	1 101	1 069	1 031	988	946	910	878	852	832
<i>Non-rural goods</i>	14 752	13 870	13 182	12 680	12 332	12 110	11 986	11 884	11 789	11 710
Metal ores and minerals	4 162	4 064	3 963	3 841	3 719	3 642	3 610	3 590	3 574	3 563
Coal, coke and briquettes	4 446	3 941	3 559	3 299	3 121	2 984	2 874	2 774	2 680	2 609
Other mineral fuels	1 635	1 506	1 409	1 347	1 317	1 307	1 307	1 309	1 315	1 321
Metals (excl. non-monetary gold)	887	849	834	833	837	838	837	832	825	817
Machinery	739	717	698	684	673	663	658	654	651	648
Transport equipment	367	320	287	274	277	293	311	326	338	347
Other manufactures	1 465	1 441	1 421	1 405	1 391	1 379	1 370	1 362	1 355	1 347
Other non-rural (incl. sugar and beverages)	925	915	901	892	893	902	916	931	945	950
Goods procured in ports by carriers	126	117	110	105	103	102	104	105	106	107
Net exports of goods under merchanting	24	30	33	33	33	34	35	35	34	32
Non-monetary gold	1 740	1 665	1 493	1 278	1 094	1 005	1 017	1 065	1 119	1 169

(a) Caution should be used when interpreting recent trend estimates as they may be affected by unusual economic factors. For more details on trend estimates, please see paragraph 19 of the explanatory notes.

(b) For all time periods, estimates for sugar, sugar preparations and honey are included in Other non-rural.

	Feb 2009	Mar 2009	Apr 2009	May 2009	Jun 2009	Jul 2009	Aug 2009	Sep 2009	Oct 2009	Nov 2009
	\$m	\$m	\$m	\$m	\$m	\$m	\$m	\$m	\$m	\$m
Total goods debits	-17 736	-17 117	-16 678	-16 422	-16 330	-16 322	-16 362	-16 404	-16 436	-16 456
General merchandise	-16 566	-16 079	-15 824	-15 749	-15 782	-15 828	-15 850	-15 864	-15 871	-15 885
Consumption goods	-5 019	-4 986	-5 001	-5 049	-5 096	-5 110	-5 091	-5 071	-5 057	-5 045
Food and beverages, mainly for consumption	-744	-741	-744	-752	-758	-760	-753	-743	-731	-717
Household electrical items	-444	-457	-479	-501	-513	-511	-497	-480	-463	-449
Non-industrial transport equipment	-929	-899	-903	-941	-1 005	-1 075	-1 136	-1 193	-1 246	-1 291
Textiles, clothing and footwear	-729	-716	-701	-687	-671	-652	-632	-615	-600	-588
Toys, books and leisure goods	-442	-443	-445	-446	-442	-432	-420	-409	-400	-394
Consumption goods n.e.s.	-1 731	-1 730	-1 729	-1 722	-1 706	-1 681	-1 652	-1 631	-1 616	-1 607
Capital goods	-4 134	-4 000	-3 874	-3 773	-3 714	-3 696	-3 705	-3 719	-3 732	-3 743
Machinery and industrial equipment	-1 577	-1 523	-1 461	-1 398	-1 344	-1 308	-1 292	-1 288	-1 290	-1 296
ADP equipment	-599	-578	-570	-574	-582	-587	-588	-585	-579	-575
Telecommunications equipment	-557	-554	-547	-535	-522	-513	-508	-505	-502	-498
Civil aircraft(c)	na	na	na	na	na	na	na	na	na	na
Industrial transport equipment n.e.s.	-450	-400	-364	-350	-363	-396	-435	-472	-504	-530
Capital goods n.e.s.(c)	np	np	np	np	np	np	np	np	np	np
Intermediate and other merchandise goods	-7 412	-7 093	-6 948	-6 927	-6 972	-7 022	-7 055	-7 074	-7 081	-7 096
Food and beverages, mainly for industry	-102	-97	-94	-92	-91	-90	-88	-85	-83	-81
Primary industrial supplies n.e.s.	-143	-123	-109	-104	-103	-104	-103	-101	-100	-98
Fuels and lubricants	-1 804	-1 744	-1 792	-1 887	-1 978	-2 046	-2 085	-2 098	-2 097	-2 089
Parts for transport equipment	-651	-635	-618	-611	-616	-630	-646	-661	-672	-679
Parts for ADP equipment	-89	-87	-85	-83	-81	-79	-76	-74	-72	-71
Other parts for capital goods	-1 240	-1 220	-1 201	-1 187	-1 176	-1 163	-1 150	-1 139	-1 131	-1 125
Organic and inorganic chemicals	-426	-397	-379	-370	-367	-365	-362	-361	-361	-365
Paper and paperboard	-194	-185	-178	-173	-171	-172	-175	-179	-182	-185
Textile yarn and fabrics	-112	-107	-104	-102	-101	-101	-101	-101	-100	-100
Iron and steel	-443	-379	-330	-298	-280	-268	-255	-241	-227	-218
Plastics	-239	-229	-223	-219	-218	-216	-216	-216	-215	-215
Processed industrial supplies n.e.s.	-1 765	-1 681	-1 625	-1 598	-1 591	-1 586	-1 585	-1 587	-1 590	-1 594
Other merchandise goods(c)	-94	-106	-112	-106	-98	-91	-89	-90	-93	-102
Goods procured in ports by carriers	-109	-102	-98	-97	-102	-111	-125	-142	-159	-175
Non-monetary gold	-1 170	-1 038	-854	-673	-548	-494	-511	-540	-565	-571

na not available

np not available for publication but included in totals where applicable, unless otherwise indicated

(a) For sign conventions, see paragraph 15 of the Explanatory Notes.

(b) Caution should be used when interpreting recent trend estimates as they may be affected by unusual economic factors. For more details on trend estimates, please see paragraph 19 of the explanatory notes.

(c) From December 2008, the Civil aircraft series and commodities subject to a 'no commodity details' or 'no value details' restriction are included in Capital goods n.e.s.. From September to November 2008 commodities with these restrictions are included in Civil aircraft and for earlier periods are included in Other merchandise goods. Trend estimates for the Capital goods n.e.s. series from December 2008 have been suppressed due to the change in the composition of the series.

							5 MONTHS ENDED		Change
							NOVEMBER		
	2006-07	2007-08	2008-09	Sep 2009	Oct 2009	Nov 2009	2008	2009	
	\$m	\$m	\$m	\$m	\$m	\$m	\$m	%	
Services credits	45 956	50 645	53 206	4 332	4 674	4 482	22 312	22 395	0.4
Manufacturing services on physical inputs owned by others	121	77	258	20	32	28	74	132	78.4
Maintenance and repair services n.i.e.	90	103	86	7	5	4	40	30	-25.0
Transport	8 546	9 129	7 886	557	556	563	3 597	2 818	-21.7
Passenger(c)	4 237	4 118	3 653	210	233	240	1 568	1 125	-28.3
Freight	765	1 463	851	54	39	39	475	242	-49.1
Other	2 348	2 595	2 428	199	218	218	1 095	1 037	-5.3
Postal and courier services(d)	1 196	953	954	94	66	66	459	414	-9.8
Travel	25 161	28 252	31 027	2 710	2 909	2 715	12 601	13 956	10.8
Other services	12 038	13 084	13 949	1 038	1 172	1 172	6 000	5 459	-9.0
Services debits	-45 139	-53 330	-56 179	-4 718	-4 859	-4 394	-25 086	-22 856	8.9
Manufacturing services on physical inputs owned by others	-3	-7	-4	—	-1	—	-4	-2	50.0
Maintenance and repair services n.i.e.	-131	-97	-197	-21	-15	-21	-60	-92	-53.3
Transport	-15 732	-16 797	-16 180	-1 183	-1 207	-1 106	-7 858	-5 588	28.9
Passenger(c)	-6 876	-7 278	-6 094	-455	-404	-377	-2 954	-2 035	31.1
Freight	-8 303	-8 923	-9 385	-670	-756	-682	-4 601	-3 283	28.6
Other	-385	-417	-527	-35	-38	-38	-214	-185	13.6
Postal and courier services(d)	-168	-179	-174	-23	-9	-9	-89	-85	4.5
Travel	-15 934	-20 153	-21 886	-2 190	-2 232	-1 863	-9 673	-10 406	-7.6
Other services	-13 339	-16 276	-17 912	-1 324	-1 404	-1 404	-7 491	-6 768	9.7
Memorandum items:									
Tourism related service credits(e)	29 398	32 370	34 680	2 920	3 142	2 955	14 169	15 081	6.4
Tourism related service debits(e)	-22 810	-27 431	-27 980	-2 645	-2 636	-2 240	-12 627	-12 441	1.5

— nil or rounded to zero (including null cells)

(a) For sign conventions, see paragraph 15 of the Explanatory Notes.

(b) For more detailed trade in services components, see table 11.

(c) Passenger services includes agency fees and commissions for air transport.

(d) Postal and courier services includes indirect commissions for sea transport.

(e) For a more detailed explanation of tourism related services, see paragraph 27 of the Explanatory Notes.

	Feb 2009	Mar 2009	Apr 2009	May 2009	Jun 2009	Jul 2009	Aug 2009	Sep 2009	Oct 2009	Nov 2009
	\$m	\$m	\$m	\$m	\$m	\$m	\$m	\$m	\$m	\$m
SEASONALLY ADJUSTED										
Services credits	4 472	4 453	4 396	4 408	4 398	4 381	4 408	4 513	4 471	4 438
Manufacturing services on physical inputs owned by others(b)	33	27	31	28	27	28	24	20	32	28
Maintenance and repair services n.i.e.(b)	7	8	4	5	3	5	9	7	5	4
Transport	630	610	580	560	559	556	554	558	564	561
Passenger(c)	305	290	269	250	249	229	227	237	236	239
Freight(d)	53	52	51	52	51	54	53	50	39	40
Other(d)	193	193	189	189	189	195	196	194	214	212
Postal and courier services(e)	79	75	72	70	70	78	78	77	75	71
Travel	2 640	2 641	2 708	2 728	2 719	2 716	2 741	2 843	2 763	2 734
Other services	1 162	1 167	1 074	1 087	1 090	1 076	1 080	1 085	1 107	1 111
Services debits	-4 572	-4 453	-4 487	-4 328	-4 427	-4 356	-4 390	-4 397	-4 549	-4 530
Manufacturing services on physical inputs owned by others(b)	—	—	—	—	—	—	-1	—	-1	—
Maintenance and repair services n.i.e.(b)	-11	-25	-27	-14	-19	-17	-18	-21	-15	-21
Transport	-1 232	-1 206	-1 198	-1 037	-1 092	-1 074	-1 046	-1 068	-1 105	-1 076
Passenger(c)	-485	-457	-483	-363	-419	-400	-395	-396	-402	-405
Freight	-690	-692	-656	-616	-615	-623	-600	-624	-651	-621
Other(b)	-45	-44	-43	-43	-41	-37	-37	-35	-38	-38
Postal and courier services(e)	-12	-12	-15	-16	-16	-14	-14	-14	-13	-12
Travel	-1 833	-1 718	-1 816	-1 819	-1 834	-1 921	-1 973	-1 954	-2 056	-2 056
Other services	-1 496	-1 504	-1 447	-1 458	-1 482	-1 344	-1 352	-1 353	-1 373	-1 378
Memorandum items:										
Tourism related service credits(f)	2 945	2 931	2 977	2 978	2 968	2 945	2 968	3 079	2 999	2 972
Tourism related service debits(f)	-2 318	-2 175	-2 299	-2 182	-2 253	-2 321	-2 368	-2 350	-2 458	-2 461

TREND ESTIMATES

Services credits	4 466	4 443	4 419	4 404	4 403	4 414	4 430	4 446	4 460	4 469
Manufacturing services on physical inputs owned by others	27	28	29	29	27	26	26	26	26	27
Maintenance and repair services n.i.e.	7	6	5	5	5	6	6	6	6	6
Transport	630	608	586	569	560	556	556	557	559	561
Passenger(c)	304	290	273	256	244	237	234	233	233	234
Freight	54	52	51	52	52	51	50	47	45	42
Other	195	191	189	189	190	193	197	201	206	210
Postal and courier services(e)	78	75	73	72	73	74	75	76	76	75
Travel	2 646	2 668	2 687	2 709	2 728	2 745	2 757	2 766	2 771	2 773
Other services	1 155	1 132	1 110	1 093	1 083	1 081	1 085	1 091	1 098	1 103
Services debits	-4 574	-4 493	-4 430	-4 391	-4 380	-4 388	-4 410	-4 441	-4 473	-4 510
Manufacturing services on physical inputs owned by others	—	—	—	—	—	—	—	—	—	—
Maintenance and repair services n.i.e.	-20	-20	-20	-20	-19	-18	-18	-18	-18	-19
Transport	-1 275	-1 202	-1 143	-1 103	-1 080	-1 070	-1 067	-1 069	-1 073	-1 083
Passenger(c)	-477	-457	-438	-421	-408	-400	-397	-397	-398	-404
Freight	-738	-687	-648	-626	-618	-616	-618	-621	-626	-631
Other	-47	-45	-43	-41	-40	-39	-38	-37	-37	-37
Postal and courier services(e)	-14	-14	-14	-15	-15	-15	-14	-14	-13	-12
Travel	-1 785	-1 784	-1 795	-1 821	-1 859	-1 903	-1 948	-1 989	-2 024	-2 054
Other services	-1 494	-1 487	-1 471	-1 448	-1 421	-1 396	-1 376	-1 364	-1 357	-1 353
Memorandum items:										
Tourism related service credits(f)	2 950	2 958	2 960	2 965	2 972	2 982	2 991	2 999	3 004	3 007
Tourism related service debits(f)	-2 262	-2 241	-2 234	-2 241	-2 267	-2 303	-2 346	-2 386	-2 422	-2 458

— nil or rounded to zero (including null cells)

(a) For sign conventions, see paragraph 15 of the Explanatory Notes.

(b) This component is not seasonally adjusted.

(c) Passenger services includes agency fees and commissions for air transport.

(d) In using these seasonally adjusted series, care should be exercised because of the difficulties associated with reliably estimating the seasonal pattern.

(e) Postal and courier services includes indirect commissions for sea transport.

(f) For a more detailed explanation of tourism related services, see paragraph 27 of the Explanatory Notes.

	CREDITS				DEBITS			
	Dec Qtr	Mar Qtr	Jun Qtr	Sep Qtr	Dec Qtr	Mar Qtr	Jun Qtr	Sep Qtr
	2008	2009	2009	2009	2008	2009	2009	2009
	\$m	\$m	\$m	\$m	\$m	\$m	\$m	\$m
Services	13 644	13 584	12 828	13 239	-15 052	-13 042	-12 950	-13 603
Manufacturing services on physical inputs owned by others	57	84	86	72	-3	—	—	-1
Maintenance and repair services n.i.e.	25	22	12	21	-45	-59	-60	-56
Transport	2 080	1 982	1 575	1 699	-4 806	-3 571	-3 175	-3 275
Passenger(b)	987	1 058	659	652	-1 611	-1 322	-1 274	-1 254
Freight	214	154	151	164	-3 001	-2 087	-1 731	-1 845
Other	648	552	565	601	-154	-134	-127	-109
Postal and courier services(c)	231	218	200	282	-40	-28	-43	-67
Travel	7 665	8 126	7 850	8 332	-5 578	-5 019	-5 245	-6 311
Business	640	708	644	693	-751	-728	-673	-712
Personal	7 025	7 418	7 206	7 639	-4 827	-4 291	-4 572	-5 599
Education-related	3 784	4 210	4 457	4 870	-175	-177	-168	-263
Other(d)	3 241	3 208	2 749	2 769	-4 652	-4 114	-4 404	-5 336
Construction	26	21	12	13	—	—	—	—
Insurance and pension services	108	78	58	76	-149	-145	-137	-135
Financial services	310	343	279	290	-206	-174	-190	-154
Charges for the use of intellectual property n.i.e.	167	200	219	201	-854	-897	-906	-871
Telecommunications, computer and information services	551	507	513	459	-591	-584	-560	-516
Telecommunication services	85	76	63	62	-172	-180	-139	-122
Computer and information services	466	431	450	397	-419	-404	-421	-394
Computer services	396	356	362	313	-359	-336	-358	-332
Information services	7	9	12	8	-15	-11	-10	-5
Other services	63	66	76	76	-45	-57	-53	-57
Other business services	2 251	1 801	1 811	1 632	-2 328	-2 028	-2 146	-1 789
Research and development services	164	131	146	131	-87	-60	-60	-51
Professional and management consulting services	1 132	868	879	763	-782	-896	-979	-691
Legal, accounting, management consulting, public relations and other professional services	1 020	773	788	676	-740	-844	-932	-671
Advertising, market research and public opinion polling	112	95	91	87	-42	-52	-47	-20
Technical, trade-related and other business services	955	802	786	738	-1 459	-1 072	-1 107	-1 047
Architectural, engineering and other technical services	468	386	337	384	-568	-414	-430	-386
Waste treatment and de-pollution, agricultural and mining services	77	65	59	53	-270	-152	-186	-130
Operational leasing services	77	74	63	72	-255	-229	-189	-197
Trade-related commission services	213	178	220	123	-57	-44	-57	-52
Other business services n.i.e.	120	99	107	106	-309	-233	-245	-282
Personal, cultural and recreational services	203	204	196	234	-279	-362	-291	-273
Audiovisual and related services	45	53	24	30	-255	-290	-269	-245
Other personal, cultural and recreational services	158	151	172	204	-24	-72	-22	-28
Government goods and services n.i.e.	201	216	217	210	-213	-203	-240	-222
Memorandum items:								
Gross insurance premiums receivable / payable	233	201	165	168	-258	-262	-245	-249
Gross insurance claims payable / receivable	-154	-133	-123	-114	256	287	275	278
Tourism related services(e)	8 652	9 184	8 509	8 984	-7 189	-6 341	-6 519	-7 565

— nil or rounded to zero (including null cells)

(a) For sign conventions, see paragraph 15 of the Explanatory Notes.

(b) Passenger services includes agency fees and commissions for air transport.

(c) Postal and courier services includes indirect commissions for sea transport.

(d) Other personal travel includes health-related travel.

(e) For a more detailed explanation of tourism related services, see paragraph 27 of the Explanatory Notes.

				Per cent of total merchandise exports(b)	5 MONTHS ENDED NOVEMBER	
	Sep 2009	Oct 2009	Nov 2009		2008	2009
	\$m	\$m	\$m	%	\$m	\$m
MAJOR COMMODITIES(c)						
011 Meat of bovine animals	328	344	333	2.3	2 369	1 744
041 Wheat and meslin	290	214	201	1.4	1 419	1 408
268 Wool and other animal hair	130	192	205	1.4	889	725
281 Iron ore and concentrates	2 381	2 236	2 162	14.8	15 705	11 572
283 Copper ores and concentrates	384	305	458	3.1	1 611	1 713
285 Aluminium ores and concentrates	365	395	366	2.5	3 001	1 873
321 Coal, not agglomerated	2 970	2 651	2 439	16.7	26 793	13 945
333 Crude petroleum oils	560	880	512	3.5	4 683	3 249
334 Refine petroleum oils	233	202	210	1.4	1 323	998
343 Natural gas	467	556	693	4.8	4 661	2 961
682 Copper	269	252	129	0.9	1 420	1 075
684 Aluminium	268	328	323	2.2	2 612	1 579
781 Motor vehicles for transport of people	131	191	164	1.1	1 635	741
971 Gold, non-monetary	1 299	1 118	1 089	7.5	6 713	5 143

SECTION AND DIVISION OF THE SITC

0	Food and live animals					
00	Live animals (excl. fish, crustaceans, molluscs and aquatic invertebrates)	109	94	121	0.8	512 516
01	Meat and meat preparations	514	546	547	3.8	3 358 2 683
02	Dairy products and birds' eggs	142	155	166	1.1	1 169 786
03	Fish (not marine mammals), crustaceans, molluscs and aquatic invertebrates, and preparations thereof	75	49	67	0.5	465 359
04	Cereals and cereal preparations	393	309	300	2.1	2 157 1 976
05	Vegetables and fruit	108	91	111	0.8	562 616
06	Sugars, sugar preparations and honey	20	32	25	0.2	116 134
07	Coffee, tea, cocoa, spices, and manufactures thereof	27	25	27	0.2	122 132
08	Feeding stuff for animals (excl. unmilled cereals)	86	84	72	0.5	552 431
09	Miscellaneous edible products and preparations	51	55	62	0.4	271 276
	<i>Total Food and live animals</i>	<i>1 527</i>	<i>1 440</i>	<i>1 499</i>	<i>10.3</i>	<i>9 286 7 909</i>
1	Beverages and tobacco					
11	Beverages	240	212	168	1.2	1 194 1 034
12	Tobacco and tobacco manufactures	10	10	10	0.1	53 55
	<i>Total Beverages and tobacco</i>	<i>250</i>	<i>223</i>	<i>178</i>	<i>1.2</i>	<i>1 247 1 089</i>
2	Crude materials, inedible, except fuels					
21	Hides, skins and furskins, raw	44	45	51	0.4	332 218
22	Oil-seeds and oleaginous fruits	45	7	17	0.1	49 132
23	Crude rubber (incl. synthetic and reclaimed)	1	1	1	—	6 5
24	Cork and wood	89	103	83	0.6	600 458
25	Pulp and waste paper	15	19	23	0.2	134 92
26	Textile fibres and their wastes (not manufactured into yarn or fabric)	193	244	254	1.7	1 162 998
27	Crude fertilizers (excl. those of Division 56) and crude minerals (excl. coal, petroleum and precious stones)	27	22	24	0.2	156 109
28	Metalliferous ores and metal scrap	3 694	3 627	3 527	24.2	24 060 18 092
29	Crude animal and vegetable materials, n.e.s.	16	16	19	0.1	113 88
	<i>Total Crude materials, inedible, except fuels</i>	<i>4 126</i>	<i>4 084</i>	<i>3 999</i>	<i>27.4</i>	<i>26 612 20 193</i>
3	Mineral fuels, lubricants and related materials					
32	Coal, coke and briquettes	2 983	2 656	2 440	16.7	26 909 13 977
33	Petroleum, petroleum products and related materials	794	1 083	723	5.0	6 015 4 252
34	Gas, natural and manufactured	542	662	764	5.2	5 229 3 431
	<i>Total Mineral fuels, lubricants and related materials</i>	<i>4 320</i>	<i>4 401</i>	<i>3 927</i>	<i>26.9</i>	<i>38 152 21 661</i>

— nil or rounded to zero (including null cells)

(a) Some SITC sections and divisions exclude commodities subject to a confidentiality restriction. These are included in Division 98. For more information see paragraph 26 of the Explanatory Notes.

(b) Per cent of total merchandise is calculated for the most recent month.

(c) The 'Major commodities' section lists commodities at the SITC Rev 4 3-digit level which are the most significant (by value) or are of particular interest. Abbreviated descriptors have been used. The list of 'Major commodities' is reviewed annually.

	Sep	Oct	Nov	Per cent	5 MONTHS ENDED	
	2009	2009	2009	of total	NOVEMBER	
	\$m	\$m	\$m	merchandise	2008	2009
			exports (b)	%	\$m	\$m
SECTION AND DIVISION OF THE SITC						
4	Animal and vegetable oils, fats and waxes					
41	35	20	16	0.1	159	108
42	9	14	9	0.1	84	62
43	Fats and oils (processed), waxes and inedible mixtures or preparations, of animal or vegetable origin, n.e.s.					
	1	1	1	—	5	5
	<i>Total Animal and vegetable oils, fats and waxes</i>					
	45	35	25	0.2	248	176
5	Chemicals and related products, n.e.s.					
51	14	16	12	0.1	80	69
52	47	43	33	0.2	244	208
53	52	52	59	0.4	235	293
54	336	338	355	2.4	1 737	1 775
55	Essential oils and resinoids and perfume materials, toilet, polishing and cleansing preparations					
	48	52	57	0.4	259	261
56	72	42	16	0.1	506	220
57	23	22	21	0.1	144	110
58	33	30	29	0.2	164	166
59	82	82	81	0.6	464	413
	<i>Total Chemicals and related products, nes</i>					
	708	678	662	4.5	3 832	3 515
6	Manufactured goods classified chiefly by material					
61	20	20	19	0.1	128	101
62	16	17	17	0.1	117	79
63	15	15	9	0.1	69	65
64	53	52	52	0.4	293	273
65	26	26	24	0.2	161	127
66	92	73	73	0.5	374	345
67	74	85	74	0.5	841	360
68	711	862	691	4.7	5 445	3 844
69	87	103	91	0.6	497	481
	<i>Total Manufactured goods classified chiefly by material</i>					
	1 095	1 254	1 051	7.2	7 925	5 675
7	Machinery and transport equipment					
71	65	70	76	0.5	439	333
72	170	160	139	1.0	868	788
73	16	12	9	0.1	86	58
74	General industrial machinery and equipment, n.e.s. and machine parts, n.e.s.					
	165	140	126	0.9	832	731
75	85	82	87	0.6	538	410
76	Telecommunications and sound recording and reproducing apparatus and equipment					
	91	96	82	0.6	487	422
77	Electrical machinery, apparatus and appliances, parts (incl. non electrical counterparts of electrical domestic equip)					
	125	137	120	0.8	814	656
78	207	265	252	1.7	2 124	1 127
79	134	127	111	0.8	756	642
	<i>Total Machinery and transport equipment</i>					
	1 058	1 089	1 003	6.9	6 943	5 166

— nil or rounded to zero (including null cells)

(b) Per cent of total merchandise is calculated for the most recent month.

(a) Some SITC sections and divisions exclude commodities subject to a confidentiality restriction. These are included in Division 98. For more information see paragraph 26 of the Explanatory Notes.

					5 MONTHS ENDED		
					NOVEMBER		
	Sep 2009	Oct 2009	Nov 2009	Per cent of total merchandise exports(b)	2008	2009	
	\$m	\$m	\$m	%	\$m	\$m	
SECTION AND DIVISION OF THE SITC							
8	Miscellaneous manufactured articles						
81	Prefabricated buildings and sanitary, plumbing, heating and lighting fixtures and fittings, n.e.s.						
	9	12	18	0.1	67	63	
82	Furniture and parts thereof; bedding, mattresses, mattress supports, cushions and similar stuffed furnishings						
	7	13	9	0.1	56	45	
83	Travel goods, handbags and similar containers						
	3	3	4	—	13	15	
84	Articles of apparel and clothing accessories						
	21	22	20	0.1	110	104	
85	Footwear						
	4	3	3	—	23	19	
87	Professional, scientific and controlling instruments and apparatus, n.e.s.						
	159	163	167	1.1	939	838	
88	Photographic apparatus, equipment and supplies and optical goods, n.e.s., watches and clocks						
	27	25	25	0.2	159	132	
89	Miscellaneous manufactured articles, n.e.s.						
	192	189	215	1.5	1 036	938	
	<i>Total Miscellaneous manufactured articles</i>	<i>422</i>	<i>431</i>	<i>3.2</i>	<i>2 402</i>	<i>2 155</i>	
9	Commodities and transactions not classified elsewhere in the SITC						
93	Special transactions and commodities not classified according to kind						
	135	187	167	1.1	665	804	
95	Gold coin whether or not legal tender, and other coin being legal tender						
	78	33	33	0.2	241	177	
96	Coin (excl. gold coin) not being legal tender						
	—	—	—	—	—	—	
97	Gold, non-monetary (excl. gold ores and concentrates)						
	1 299	1 118	1 089	7.5	6 713	5 143	
98	Combined confidential items excl. some of SITC 280 (exports only) and some of SITCs 510 and 520 (imports only)						
	680	658	486	3.3	2 499	2 734	
	<i>Total Commodities and transactions not classified elsewhere in the SITC</i>	<i>2 192</i>	<i>1 996</i>	<i>12.2</i>	<i>10 118</i>	<i>8 857</i>	
	Total merchandise exports	15 743	15 630	100.0	106 766	76 397	
	Balance of Payments Adjustments	70	5	23	. .	333	202
	Goods Credits (exports) on a Balance of Payments Basis	15 813	15 635	14 604	. .	107 099	76 599

. . not applicable
 — nil or rounded to zero (including null cells)

(a) Some SITC sections and divisions exclude commodities subject to a confidentiality restriction. These are included in Division 98. For more information see paragraph 26 of the Explanatory Notes.
 (b) Per cent of total merchandise is calculated for the most recent month.

				Per cent of total merchandise imports(b)	5 MONTHS ENDED NOVEMBER	
	Sep	Oct	Nov		
	2009	2009	2009		2008	2009
	\$m	\$m	\$m	%	\$m	\$m
MAJOR COMMODITIES						
333 Crude petroleum oils	1 030	872	1 109	6.3	8 134	5 470
334 Refined petroleum oils	1 122	1 037	858	4.9	6 519	4 574
542 Medicaments	618	678	601	3.4	2 925	3 188
641 Paper and paperboard	173	178	155	0.9	987	797
723 Civil engineering and contractors' plant and equipment	210	184	406	2.3	1 704	1 120
751 Office machines	172	176	143	0.8	872	840
752 Automatic data processing machines	402	471	435	2.5	2 509	2 302
761 Televisions	301	304	360	2.1	1 424	1 600
764 Telecommunications equipment	705	634	703	4.0	3 232	3 116
781 Motor vehicles for the transport of people	1 180	1 271	1 263	7.2	5 803	5 684
782 Motor vehicles for the transport of goods	481	506	521	3.0	2 802	2 177
784 Parts and accessories of motor vehicles	196	209	200	1.1	1 180	972
971 Gold, non-monetary	747	748	507	2.9	4 914	2 934

SECTION AND DIVISION OF THE SITC

0	Food and live animals					
00	Live animals other than fish, crustaceans, molluscs and aquatic invertebrates	4	7	6	—	38 32
01	Meat and meat preparations	50	37	37	0.2	217 221
02	Dairy products and birds' eggs	43	45	47	0.3	261 225
03	Fish (not marine mammals), crustaceans, molluscs and aquatic invertebrates, and preparations thereof	110	118	111	0.6	535 538
04	Cereals and cereal preparations	84	76	75	0.4	369 384
05	Vegetables and fruit	131	140	138	0.8	707 673
06	Sugars, sugar preparations and honey	30	24	23	0.1	107 127
07	Coffee, tea, cocoa, spices, and manufactures thereof	114	115	98	0.6	521 559
08	Feeding stuff for animals (excl. unmilled cereals)	67	33	40	0.2	265 263
09	Miscellaneous edible products and preparations	129	145	138	0.8	631 692
	<i>Total Food and live animals</i>	762	741	713	4.1	3 652 3 714
1	Beverages and tobacco					
11	Beverages	154	173	149	0.9	716 712
12	Tobacco and tobacco manufactures	26	21	23	0.1	84 110
	<i>Total Beverages and tobacco</i>	180	194	173	1.0	800 822
2	Crude materials, inedible, except fuels					
21	Hides, skins and furskins, raw	—	—	—	—	1 —
22	Oil-seeds and oleaginous fruits	4	2	3	—	27 17
23	Crude rubber (incl. synthetic and reclaimed)	11	14	12	0.1	101 59
24	Cork and wood	49	49	54	0.3	269 244
25	Pulp and waste paper	18	17	10	0.1	155 71
26	Textile fibres and their wastes (not manufactured into yarn or fabric)	12	15	14	0.1	63 66
27	Crude fertilizers (excl. those of Division 56) and crude minerals (excl. coal, petroleum and precious stones)	8	8	11	0.1	320 45
28	Metalliferous ores and metal scrap	28	26	43	0.2	313 179
29	Crude animal and vegetable materials, n.e.s.	27	29	27	0.2	138 131
	<i>Total Crude materials, inedible, except fuels</i>	159	160	173	1.0	1 388 813
3	Mineral fuels, lubricants and related materials					
32	Coal, coke and briquettes	1	9	1	—	7 13
33	Petroleum, petroleum products and related materials	2 182	1 944	1 995	11.4	14 981 10 210
34	Gas, natural and manufactured	135	142	141	0.8	935 712
	<i>Total Mineral fuels, lubricants and related materials</i>	2 317	2 096	2 138	12.2	15 924 10 935

— nil or rounded to zero (including null cells)

(a) Some SITC sections and divisions exclude commodities subject to a confidentiality restriction. These are included in Division 98. For more information see paragraph 26 of the Explanatory Notes.

(b) Per cent of total merchandise is calculated for the most recent month.

(c) The 'Major commodities' section lists commodities at the SITC Rev 4 3-digit level which are the most significant (by value) or are of particular interest. Abbreviated descriptors have been used. The list of 'Major commodities' is reviewed annually.

				Per cent of total merchandise imports(b)	5 MONTHS ENDED NOVEMBER		
	Sep	Oct	Nov			
	2009	2009	2009		2008	2009	
	\$m	\$m	\$m	%	\$m	\$m	
SECTION AND DIVISION OF THE SITC							
4	Animal and vegetable oils, fats and waxes						
41	Animal oils and fats	3	1	1	—	21	11
42	Fixed vegetable fats and oils, crude, refined or fractionated	42	34	35	0.2	253	195
43	Fats and oils (processed), waxes and inedible mixtures or preparations, of animal or vegetable n.e.s.	7	7	7	—	30	34
	<i>Total Animal and vegetable oils, fats and waxes</i>	52	42	44	0.3	304	240
5	Chemicals and related products, n.e.s.						
51	Organic chemicals	223	291	267	1.5	1 476	1 274
52	Inorganic chemicals	101	88	77	0.4	970	478
53	Dyeing, tanning and colouring materials	54	55	53	0.3	319	264
54	Medicinal and pharmaceutical products	751	824	739	4.2	3 595	3 906
55	Essential oils and resinoids and perfume materials; toilet, polishing and cleansing preparations	186	159	147	0.8	764	809
56	Fertilisers (excl. crude)	42	47	20	0.1	897	226
57	Plastics in primary forms	113	125	108	0.6	825	547
58	Plastics in non-primary forms	115	122	122	0.7	646	597
59	Chemical materials and products, n.e.s.	156	155	168	1.0	959	792
	<i>Total Chemicals and related products, n.e.s.</i>	1 743	1 865	1 701	9.7	10 450	8 894
6	Manufactured goods classified chiefly by material						
61	Leather, leather manufactures, and dressed furskins, n.e.s.	12	11	11	0.1	82	57
62	Rubber manufactures, n.e.s.	238	237	218	1.2	1 181	1 142
63	Cork and wood manufactures (excl. furniture)	48	52	54	0.3	307	246
64	Paper, paperboard and articles of paper pulp, of paper or of paperboard	249	255	227	1.3	1 361	1 165
65	Textile yarn, fabrics, made-up articles n.e.s., and related products	224	219	212	1.2	1 178	1 071
66	Non-metallic mineral manufactures, n.e.s.	240	248	235	1.3	1 244	1 125
67	Iron and steel	254	229	244	1.4	2 837	1 286
68	Non-ferrous metals	197	178	244	1.4	909	860
69	Manufactures of metals, n.e.s.	422	524	425	2.4	2 654	2 253
	<i>Total Manufactured goods classified chiefly by material</i>	1 882	1 955	1 871	10.7	11 753	9 204
7	Machinery and transport equipment						
71	Power generating machinery and equipment	429	460	370	2.1	2 437	1 872
72	Machinery specialised for particular industries	580	481	759	4.3	3 679	2 916
73	Metal working machinery	55	46	48	0.3	325	252
74	General industrial machinery and equipment, n.e.s. and machine parts, n.e.s.	1 070	1 080	973	5.5	4 975	5 087
75	Office machines and automatic data processing machines	635	719	648	3.7	3 898	3 531
76	Telecommunications and sound recording and reproducing apparatus and equipment	1 142	1 076	1 225	7.0	5 345	5 329
77	Electrical machinery, apparatus, appliances, parts (incl. non-elec. counterparts of electrical domestic equip)	806	780	785	4.5	4 479	3 950
78	Road vehicles (incl. air-cushion vehicles)	2 006	2 147	2 166	12.4	10 935	9 603
79	Transport equipment (excl. road vehicles)	162	101	675	3.9	2 286	1 162
	<i>Total Machinery and transport equipment</i>	6 885	6 890	7 649	43.6	38 358	33 702

— nil or rounded to zero (including null cells)

(b) Per cent of total merchandise is calculated for the most recent month.

(a) Some SITC sections and divisions exclude commodities subject to a confidentiality restriction. These are included in Division 98. For more information see paragraph 26 of the Explanatory Notes.

				Per cent of total merchandise imports(b)	5 MONTHS ENDED NOVEMBER	
	Sep	Oct	Nov		
	2009	2009	2009		2008	2009
	\$m	\$m	\$m	%	\$m	\$m
SECTION AND DIVISION OF THE SITC						
8	Miscellaneous manufactured articles					
81	Prefabricated buildings; sanitary, plumbing, heating and lighting fixtures and fittings, n.e.s.					
	78	75	64	0.4	381	351
82	Furniture, parts thereof; bedding, mattresses, mattress supports, cushions and similar stuffed furnishings					
	239	241	235	1.3	1 334	1 175
83	Travel goods, handbags and similar containers					
	70	82	78	0.4	393	363
84	Articles of apparel and clothing accessories					
	422	397	362	2.1	2 282	2 085
85	Footwear					
	115	102	97	0.6	604	566
87	Professional, scientific and controlling instruments and apparatus, n.e.s.					
	383	376	395	2.3	2 139	1 952
88	Photographic apparatus, equipment and supplies and optical goods, n.e.s., watches and clocks					
	126	134	133	0.8	653	633
89	Miscellaneous manufactured articles, n.e.s.					
	985	1 052	958	5.5	5 355	4 731
	<i>Total Miscellaneous manufactured articles</i>					
	2 418	2 459	2 323	13.2	13 143	11 855
9	Commodities and transactions not classified elsewhere in the SITC					
93	Special transactions and commodities not classified according to kind					
	3	2	4	—	21	16
95	Gold coin whether or not legal tender, and other coin being legal tender					
	—	—	2	—	3	4
96	Coin (excl. gold coin), not being legal tender					
	—	—	—	—	—	—
97	Gold, non-monetary (excl. gold ores and concentrates)					
	747	748	507	2.9	4 914	2 934
98	Combined confidential items excl. some of SITC 280 (exports only) and some of SITCs 510 and 520 (imports only)					
	470	791	238	1.4	990	2 161
	<i>Total Commodities and transactions not classified elsewhere in the SITC</i>					
	1 221	1 542	750	4.3	5 928	5 114
Total merchandise imports						
	17 619	17 944	17 535	100.0	101 700	85 293
Balance of Payments Adjustments						
	406	263	-203	. .	1 283	1 023
Goods Debits (imports) on a Balance of Payments Basis						
	18 025	18 207	17 332	. .	102 983	86 316

. . not applicable
 — nil or rounded to zero (including null cells)

(a) Some SITC sections and divisions exclude commodities subject to a confidentiality restriction. These are included in Division 98. For more information see paragraph 26 of the Explanatory Notes.

(b) Per cent of total merchandise is calculated for the most recent month.

	EXPORTS				IMPORTS (b)				BALANCE OF MERCHANDISE TRADE	
	2008-09	Nov	5 months ended	5 months ended	2008-09	Nov	5 Months Ended	5 Months Ended	2008-09	5 Months Ended
		2009	November	November		November	2009	November		November
	\$m	\$m	\$m	\$m	\$m	\$m	\$m	\$m		
Belgium	1 301	66	762	359	1 719	140	838	701	-418	-342
Brazil	1 483	86	1 065	408	1 041	53	638	253	442	155
Canada	1 546	88	644	540	2 437	143	1 254	738	-891	-198
China	39 326	3 093	14 910	16 480	37 044	3 750	17 086	16 271	2 282	210
Denmark	176	9	66	57	1 070	131	447	465	-894	-408
Egypt(c)	453	26	169	142	33	2	8	13	420	129
Fiji	374	21	174	134	160	19	69	59	215	74
Finland	595	24	371	107	978	51	469	267	-383	-160
France	1 721	91	906	364	4 653	339	2 201	1 715	-2 932	-1 351
Germany	2 197	91	1 077	607	11 106	972	4 951	4 581	-8 909	-3 974
Hong Kong (Sar of China)	3 192	202	1 223	1 016	1 424	103	693	527	1 768	488
India	15 419	1 228	7 417	6 098	2 114	164	883	785	13 305	5 313
Indonesia	4 295	322	2 008	1 681	5 038	366	2 451	1 891	-743	-209
Iran	661	3	83	49	95	1	79	33	567	16
Iraq	194	1	60	155	31	—	31	—	163	155
Ireland	134	8	64	51	2 399	190	1 006	976	-2 265	-924
Israel	262	17	144	78	715	47	323	229	-453	-151
Italy	1 556	71	866	378	5 338	433	2 344	2 024	-3 783	-1 646
Japan	52 768	2 717	25 919	14 405	17 842	1 414	8 314	7 301	34 926	7 104
Korea, Republic of	19 274	1 267	9 289	6 176	6 525	505	2 828	2 784	12 749	3 391
Kuwait	428	59	181	239	426	40	235	171	2	68
Malaysia	3 730	200	1 849	1 321	8 335	894	4 036	3 232	-4 605	-1 911
Mexico	902	43	344	280	1 324	105	593	491	-422	-211
Netherlands	3 202	101	1 684	672	1 771	124	825	612	1 431	60
New Zealand	8 549	715	4 108	3 561	7 050	614	3 410	2 889	1 500	672
Pakistan	478	22	153	239	181	13	68	59	296	180
Papua New Guinea	1 611	120	662	792	3 013	302	1 287	1 185	-1 402	-393
Philippines	1 409	96	682	504	605	35	330	192	804	312
Saudi Arabia	2 250	119	1 017	598	935	20	518	183	1 315	415
Singapore	5 522	394	2 484	2 359	13 445	1 086	6 638	4 579	-7 923	-2 219
South Africa	2 056	108	1 128	666	1 258	97	687	408	798	259
Spain	612	39	394	160	1 731	149	833	739	-1 119	-579
Sweden	566	21	328	156	2 441	188	1 134	856	-1 875	-700
Switzerland	660	21	172	97	2 481	186	1 034	1 030	-1 821	-933
Taiwan	8 126	494	3 999	2 528	4 089	276	2 031	1 370	4 037	1 157
Thailand	4 951	250	2 551	1 614	10 749	900	4 516	5 335	-5 799	-3 721
Turkey	811	33	559	106	507	34	205	182	304	-76
United Arab Emirates	3 604	143	2 163	762	1 924	180	917	992	1 680	-230
United Kingdom	11 509	702	4 103	2 607	9 024	444	5 024	2 392	2 484	215
United States of America	11 601	798	5 744	4 085	25 334	1 629	11 536	8 836	-13 734	-4 751
Viet Nam	1 234	106	448	594	4 399	230	2 440	1 247	-3 165	-653
Other Countries(b)	10 070	569	4 794	3 171	16 691	1 168	6 492	6 699	-6 621	-3 528
Total	230 812	14 581	106 766	76 397	219 478	17 535	101 700	85 293	11 334	-8 897
APEC	169 406	10 965	77 632	58 331	151 753	12 617	71 052	60 122	17 653	-1 792
ASEAN	21 286	1 379	10 082	8 133	43 636	3 561	21 171	16 860	-22 350	-8 727
Developing Countries	124 492	8 570	55 614	45 468	106 787	9 302	50 616	43 337	17 705	2 131
Least Developed Countries	2 144	113	753	681	281	23	100	114	1 862	567
European Union(d)	24 043	1 250	10 888	5 663	45 401	3 380	21 517	16 375	-21 358	-10 712
OECD	120 057	6 927	57 583	34 894	110 062	8 131	51 200	41 032	9 996	-6 138

— nil or rounded to zero (including null cells)

(a) See Time series spreadsheets for details of all countries.

(b) From September 2008 imports data with confidentiality restrictions 'no commodity details' or 'no value details' are included in Other countries.

(c) Exports of Alumina to Egypt are excluded from country total and included in the 'Other Countries' category.

(d) The European Union includes 27 member countries.

	2008-09		5 MONTHS ENDED NOVEMBER	
		Nov	2008	2009
	\$m	2009 \$m	\$m	\$m
EXPORTS (a)				
New South Wales	38 778	2 360	17 242	12 733
Victoria	20 375	1 545	9 460	7 456
Queensland	56 541	2 867	28 462	16 593
South Australia	9 527	665	4 356	3 349
Western Australia	86 880	5 796	38 916	29 416
Tasmania	3 506	206	1 531	1 114
Northern Territory	6 292	397	2 807	1 970
Australian Capital Territory	11	—	5	4
State not available for publication(b)	797	33	459	218
Re-exports	8 105	712	3 527	3 543
Total	230 812	14 581	106 766	76 397
IMPORTS				
New South Wales	78 997	6 587	36 223	32 029
Victoria	56 457	4 507	26 907	22 276
Queensland	33 964	2 558	17 014	12 749
South Australia	6 867	638	3 339	2 728
Western Australia	33 121	2 673	14 993	11 706
Tasmania	956	84	515	343
Northern Territory	4 347	250	1 830	1 299
Australian Capital Territory	7	—	3	3
State not available for publication(c)	4 761	238	875	2 161
Total	219 478	17 535	101 700	85 293

— nil or rounded to zero (including null cells)

(a) State in which the final stage of production or manufacture occurs.

(b) Exports of Alumina to Bahrain, Egypt and Iceland are excluded from the state totals and included in 'State not available for publication'.

(c) From September 2008 imports data with confidentiality restrictions 'no commodity details' or 'no value details' are included in State not available for publication.

PERIOD AVERAGE EXCHANGE RATES(a), Per Australian dollar

<i>Period</i>	<i>United States dollar</i>	<i>UK pound sterling</i>	<i>Euro</i>	<i>Japanese yen</i>	<i>Special Drawing Right</i>	<i>Trade-weighted index of value of the A\$(b)</i>
FINANCIAL YEAR						
2006-07	0.7863	0.4066	0.6018	93.21	0.5251	64.8
2007-08	0.8968	0.4479	0.6099	98.63	0.5664	69.7
2008-09	0.7456	0.4621	0.5414	73.99	0.4869	60.2
MONTHS						
2008						
September	0.8205	0.4558	0.5700	87.49	0.5271	64.9
October	0.6894	0.4070	0.5173	69.20	0.4542	56.1
November	0.6557	0.4279	0.5155	63.55	0.4421	54.4
December	0.6690	0.4480	0.4973	61.02	0.4407	54.6
2009						
January	0.6784	0.4678	0.5095	61.37	0.4478	55.4
February	0.6490	0.4503	0.5074	59.97	0.4386	54.2
March	0.6646	0.4680	0.5093	64.92	0.4483	56.0
April	0.7122	0.4846	0.5398	70.24	0.4773	59.1
May	0.7626	0.4954	0.5596	73.72	0.5022	61.7
June	0.8023	0.4898	0.5721	77.39	0.5194	64.2
July	0.8040	0.4913	0.5709	75.96	0.5180	64.0
August	0.8344	0.5047	0.5852	79.15	0.5349	66.0
September	0.8611	0.5275	0.5915	78.74	0.5461	67.2
October	0.9090	0.5613	0.6130	82.03	0.5716	70.0
November	0.9202	0.5540	0.6166	82.04	0.5754	70.6

(a) These exchange rates and the trade-weighted index are derived using rates provided by the Reserve Bank of Australia in respect of each trading day.

(b) May 1970 = 100. The Trade-weighted index is reweighted annually on 1 October and on special occasions as required.

	2006-07	2007-08	2008-09	May 2009	Jun 2009	Jul 2009	Aug 2009	Sep 2009	Oct 2009
	\$m	\$m	\$m	\$m	\$m	\$m	\$m	\$m	\$m
BALANCE									
On goods and services	—	—	399	91	144	381	434	466	196
CREDITS									
Total goods and services	—	—	-12	-11	24	-56	-23	-104	-200
Total goods	—	—	69	20	55	90	127	81	90
Rural goods	—	—	20	16	—	—	—	-27	-20
Non-rural goods	—	—	58	4	55	74	111	91	79
Net exports of goods under merchanting	—	—	-9	—	—	16	16	14	19
Non-monetary gold	—	—	—	—	—	—	—	3	12
Total services	—	—	-81	-31	-31	-146	-150	-185	-290
DEBITS									
Total goods and services	—	—	411	102	120	437	457	570	396
Total goods	—	—	91	13	16	9	24	23	20
Consumption goods	—	—	—	—	—	2	3	2	1
Capital goods	—	—	3	—	2	-2	—	-2	-5
Intermediate and other merchandise goods	—	—	88	13	14	9	21	23	25
Non-monetary gold	—	—	—	—	—	—	—	—	-1
Total services	—	—	320	89	104	428	433	547	376

— nil or rounded to zero (including null cells)

(a) This table is presented consistent with BPM6 sign conventions. This means for the balance on goods and services a negative revision indicates a decrease in a surplus or an increase in a deficit. For debits a negative revision indicates an increase in debits while a positive revision indicates a decrease in debits.

EXPLANATORY NOTES

INTRODUCTION

1 This publication presents preliminary estimates of Australia's international trade in goods and services on a balance of payments basis (Tables 1–11 and 17) and merchandise import and export statistics on a recorded trade basis (Tables 12–15). In addition, Table 16 Exchange rates and trade-weighted indexes are derived by using exchange rates and indexes provided by the Reserve Bank.

2 Merchandise trade statistics on a recorded trade basis are compiled from information submitted by exporters and importers or their agents to the Australian Customs and Border Protection Service (Customs). Adjustments for coverage, timing and valuation are made to recorded trade data to convert them to a balance of payments basis. The services data are sourced from the quarterly Survey of International Trade in Services and a range of administrative data and indicator series.

3 More comprehensive quarterly estimates of Australia's trade in goods and services, together with comprehensive details of Australia's balance of payments are included in the quarterly publication, *Balance of Payments and International Investment Position, Australia* (cat. no. 5302.0). Detailed monthly statistics on merchandise trade are available in Time Series Spreadsheets on the ABS website or by subscription to tailored services. More information on the *International Trade in Services by country, by state and by detailed services category* are available on a financial year basis (cat. no. 5368.0.55.003) with the September issue of this publication and calendar year basis (cat. no. 5368.0.55.004) with the March issue of this publication.

CONCEPTS, SOURCES AND METHODS

4 The conceptual framework used in compiling Australia's merchandise trade statistics can be found in *International Merchandise Trade, Australia: Concepts, Sources and Methods, 2001* (cat. no. 5489.0).

5 The conceptual framework used in compiling Australia's balance of payments statistics is based on the *International Monetary Fund's Balance of Payments and International Investment Position Manual Sixth Edition* (BPM6). Descriptions of the underlying concepts and structure of the balance of payments and the sources, methods and terms used in compiling the estimates are presented in *Balance of Payments and International Investment Position, Australia: Concepts, Sources and Methods, 1998* (cat. no. 5331.0). The current version of this document reflects the international standards prior to BPM6. A revised Concepts, Sources and Methods publication is scheduled for release in late 2010. The *Information paper: Implementation of revised international statistical standards in the ABS National and International Accounts* (cat. no. 5310.0.55.002) describes the key changes introduced with BPM6.

6 To bring merchandise trade statistics on a recorded trade basis to a balance of payments basis, timing adjustments are made to ensure that the transaction is recorded in the period in which ownership changed, rather than in the period in which the transaction was recorded by Customs or the period in which the goods arrived in/departed from an Australian port. Adjustments are also made to account for the change of ownership of goods not included in merchandise trade statistics. Chapter 6 of cat. no. 5331.0 provides more detail on the relationship between statistics on international merchandise trade on a recorded trade basis and on a balance of payments basis.

7 Recorded trade exports data presented for recent months in tables 12–15 of this publication are based on information initially reported by exporters to Customs. At the time of initial reporting to Customs the final prices may not be known for some commodities. Therefore, the information recorded for recent months for commodities like iron ore and coal can include a variety of prices including previous or current contract prices and the prevailing spot prices. Newly negotiated contract prices may not be fully reflected in the data first reported to Customs, and to compensate for this, the Balance of Payments series may reflect adjusted price levels.

EXPLANATORY NOTES *continued*

CONCEPTS, SOURCES AND METHODS *continued*

8 The Concepts, Sources and Methods publications and information papers are available to download for free from the ABS website. Select *Statistics*, then select *By Catalogue Number*, and then the catalogue numbers as above.

CLASSIFICATIONS

9 The merchandise trade data on a recorded trade basis are presented using the following commodity classifications:

- the Harmonised System 2007 (available on request)
- the Standard International Trade Classification (SITC Revision 4)
- the Classification by Broad Economic Categories (BEC)
- the industry classification: Australian and New Zealand Standard Industrial Classification, 2006 (ANZSIC 06).

10 The Balance of Payments Goods and Services series are presented according to three classifications with the goods classifications derived from SITC Revision 4 and BEC. The classifications are:

- for goods:
 - the Balance of Payments Commodities for Exports (BoPCE)
 - the Balance of Payments Broad Economic Categories for Imports (BoPBEC),
- for services:
 - the Extended Balance of Payments Services Classification (EBOPS).

ACCURACY, RELIABILITY AND REVISIONS

11 While every effort is made to ensure the accuracy and reliability of estimates, most series are subject to revision as more complete and accurate information becomes available. Care should be exercised in the use and interpretation of estimates in this publication. The transactions occurring in international trade in goods and services are of many different kinds, and therefore the compilation of trade estimates entails the use of a very wide range of statistical data of varying degrees of accuracy and timeliness. For further information on the monthly services series, see paragraph 25.

12 The revisions are applied differently for merchandise trade and Balance of Payments series. Each month, merchandise trade data are revised for the previous six months to incorporate latest available data.

13 For the Balance of Payments Goods and Services series, in original terms, no revisions are applied in the July, October, January or April issues. This is to ensure the monthly series align with the comparable series in the quarterly publication. In the September issue revisions can be applied to the four previous financial years. In other issues revisions can be applied to the previous and current financial years to incorporate the latest available survey and administrative data.

14 In seasonally adjusted and trend terms, revisions may occur at any time point but tend to focus on the most recent estimates. Please also refer to paragraphs 17 (seasonal adjustment) and 19 (trend estimates) below.

SIGN CONVENTION

15 In keeping with BPM6 conventions, balance of payments basis credit entries are shown with an implied positive sign and debit items are shown as negative entries. For statistics on a recorded trade basis, both imports and exports are shown without sign. The calculation of percentage changes on balance of payments debit items are made without regard to sign. References to balance of payments debit items in Key Figures, Key Points, and Analysis and Comments are also made without regard to sign.

SEASONALLY ADJUSTED AND TREND ESTIMATES

16 The estimates of international trade in goods and services on a balance of payments basis are seasonally adjusted, however the merchandise exports and imports statistics on a recorded trade basis are not. Monthly original estimates are volatile, being subject to calendar-related and large irregular influences. Seasonally adjusted estimates are derived by estimating and removing from the original series systematic calendar related effects, such as seasonal (e.g. Christmas), trading day and moving holiday (e.g. Easter)

EXPLANATORY NOTES *continued*

SEASONALLY ADJUSTED AND TREND ESTIMATES *continued*

influences. Seasonal adjustment does not aim to remove the irregular or non-seasonal influences which may be present in any particular month. These irregular influences may reflect both random economic events and difficulties of statistical recording.

17 The seasonally adjusted statistics in this publication use the concurrent seasonal adjustment technique and Autoregressive Integrated Moving Average (ARIMA) modelling to estimate factors for the current and previous months. Under concurrent seasonal adjustment, the estimates of seasonal factors are fine tuned as new or revised original estimates become available each period. The seasonally adjusted estimates are subject to revisions at each reference month as the estimates of seasonal factors are improved.

18 ARIMA modelling relies on the characteristics of the series being analysed to project future period data. ARIMA modelling is used on a case-by-case basis where it results in reduced revisions to seasonally adjusted series when subsequent data become available. The projected values are temporary, intermediate values, that are only used internally to improve the estimation of the seasonal factors. The projected data do not affect the original estimates and are discarded at the end of the seasonal adjustment process. The ARIMA model is assessed as part of the annual review and, following the 2009 annual review, 40 of the 45 directly seasonally adjusted trade in goods and services time series use an ARIMA model.

19 The month-to-month movements of the seasonally adjusted estimates may not be reliable indicators of underlying behaviour because they include irregular or non-seasonal movements. Trend estimates reduce the effect of these movements as they are derived by applying a 13-term Henderson moving average to the seasonally adjusted series. The 13-term Henderson moving average (like all Henderson averages) is symmetric, but as the end of a time series is approached, asymmetric forms of the average are applied. While the asymmetric weights enable trend estimates for recent months to be produced, it does result in revisions to the estimates for the most recent six months as additional observations become available. Revisions to trend estimates can also occur because of revisions to the original data and as a result of the re-estimation of the seasonal factors. Trend estimates should be used with caution, especially around the time of unusual influences, until these have been appropriately taken into account.

20 Information papers and articles on time series methods are available on the ABS website:

- for seasonal adjustment methods, see *Information Paper: An Introductory Course on Time Series Analysis, Jan 2005* (cat. no. 1346.0.55.001) and *Time Series Analysis Frequently Asked Questions, 2003* (cat. no. 1346.0.55.002)
- for ARIMA modelling, see *Feature article: Use of ARIMA modelling to reduce revisions* in the October 2004 issue of *Australian Economic Indicators* (cat. no. 1350.0)
- for trend estimates methods, see *Information Paper: A Guide to Interpreting Time Series – Monitoring Trends* (cat. no. 1349.0)
- alternatively contact the Assistant Director, Time Series Analysis on (02) 6252 6345 or e-mail <time.series.analysis@abs.gov.au>.

ECONOMIC TERRITORY

21 In accordance with BPM6 definitions, Australia's economic territory, on a balance of payments basis, is the area under the effective control of the Australian government. It includes the land area, airspace, territorial waters, including jurisdiction over fishing rights and rights to fuels and minerals. Australian economic territory also includes territorial enclaves in the rest of the world. These are clearly demarcated areas of land, located in other countries and which are owned or rented by the Australian government for diplomatic, military, scientific or other purposes. Specifically, the economic territory of Australia consists of:

- Geographic Australia which includes Cocos (Keeling) Islands and Christmas Island;

EXPLANATORY NOTES *continued*

ECONOMIC TERRITORY

continued

- Norfolk Island;
- Australian Antarctic Territory;
- Heard Island and McDonald Islands;
- Territory of Ashmore Reef and Cartier Island;
- Coral Sea Islands;
- Australia's territorial enclaves overseas; and
- the Joint Petroleum Development Area (joint territory between Australia and East Timor (Timor-Leste)).

22 Because of administrative complexities and measurement difficulties, Norfolk Island transactions with the rest of the world will not always be captured in all relevant Balance of Payments statistics. Most of the transactions involving Norfolk Island are not material to Australia's trade performance and not capturing these transactions will not distort these statistics. However, any significant transactions will be identified and included in the relevant statistics.

COMMODITY BREAKDOWN OF GOODS

23 For details of the classifications used to present goods exports (credits) and imports (debits) on a balance of payments basis, see tables 6.6 and 6.7, respectively, in *Balance of Payments and International Investment Position, Australia: Concepts, Sources and Methods*, 1998 (cat. no. 5331.0).

24 The recorded trade statistics shown in tables 12 and 13 are classified by the Standard International Trade Classification (SITC). Imports and exports of goods at a more detailed level are available from the Time Series spreadsheets on the ABS website. All data from July 2005 are presented according to SITC Rev 4 and data prior to July 2005 are presented according to SITC Rev 3. For details refer to the 'Classifications and Standards Update' in the July 2008 issue of this publication.

MONTHLY SERVICES SERIES

25 Monthly indicators for many of the services components that are only surveyed quarterly are not available. Monthly estimates for the freight and other transportation components of services credits in table 9 are derived by dividing the quarterly estimate by three. Freight debits are derived directly from imports data for the reference month as a difference between total merchandise cost, insurance and freight (CIF) and free on board (FOB), adjusted to reflect timing and processing adjustments. For freight credits and other transportation credits and debits, estimates are derived by extrapolating the last quarter's data by an average of movements for the same quarter over the three previous years, and then dividing the estimate by three. Similarly other services estimates are derived by extrapolating the last quarter's data by an average of movements for the same quarter over the previous three years, and then dividing the estimate by three.

CONFIDENTIALITY OF MERCHANDISE TRADE STATISTICS

26 The release of statistics for certain merchandise trade commodities is restricted in order to prevent the identification of the activities of an individual business, where this is requested by the business concerned. These restrictions do not affect the total value of exports and imports, but they can affect statistics at the country, state and commodity levels. Imports data that have the confidentiality restrictions 'No commodity details' or 'No value details' are aggregated into a single confidential commodity code. For data prior to September 2008, these data are added back into the appropriate state total and country total (i.e. these totals show the correct level of trade). From September 2008 these confidential data are not added back. Instead the confidential data are published as 'No country details' in the country totals and 'State not available for publication' in the state totals. Therefore, country and state totals from September 2008 may not represent the actual amount of trade in each country/state but only the trade in commodities without a 'No commodity details' or 'No value details' restriction. For information on the confidentiality restrictions applied to the merchandise trade statistics in this publication, refer to the current issue of *International merchandise trade: Confidential Commodities List (CCL)* (cat. no. 5372.0.55.001).

EXPLANATORY NOTES *continued*

TOURISM RELATED SERVICES

27 The tourism related services memorandum items provide timely indicators of the movements in tourism related activities, not an absolute measure of the level of these activities. The tourism related indicator has been derived by combining total travel services (business, education-related and other personal travel) and passenger transportation services (which includes agency fees and commissions for air transport).

SERVICES BY STATE AND BY PARTNER COUNTRY

28 Annual services data by state, by country and detailed services are released twice yearly. Calendar year data are usually released with the March issue of this publication and financial year data are usually released with the September issue. Refer to Time series data for details.

29 Services credits are classified by the state of provision, while services debits are classified by the state of consumption. The state allocations for transportation, travel, postal and courier, and telecommunication services are based on a number of indicators including merchandise trade statistics by state, overseas passenger arrivals and departures by state of clearance and data provided by the Department of Immigration and Citizenship. The allocation for other services (about 25% of all trade in services) is primarily based on the location of the business reporting the information, which serves as a proxy for the state of provision/consumption of that service. The data should be used with care but are considered suitable for analysis over time.

30 A comprehensive explanation of the data sources used and the methodology applied in the compilation of partner country statistics is provided in Chapter 17 of *Balance of Payments and International Investment Position, Australia – Concepts, Sources and Methods* (cat. no. 5331.0). Approximately 7% of total services credits and 5% of total services debits for both 2007–08 and 2008–09 were either confidential, or unable to be allocated to individual countries.

ABS DATA AVAILABLE

31 More detailed balance of payments and recorded merchandise trade data, including forward seasonal factors are available as time series spreadsheets or data cubes from the ABS web site. Merchandise trade data by commodity, country and state that are not on the ABS web site may be available on request. Inquiries should be made to the National Information and Referral Service as shown on the back of this publication.

RELATED PRODUCTS AND PUBLICATIONS

32 Users may also wish to refer to the following publications which can be downloaded free of charge from the ABS web site by using the 'Statistics' tab and selecting the relevant catalogue number:

- *Balance of Payments and International Investment Position, Australia* (cat. no. 5302.0) – issued quarterly
- *International Merchandise Imports, Australia* (cat. no. 5439.0) – issued monthly
- *International Trade Price Indexes, Australia* (cat. no. 6457.0) – issued quarterly
- *Balance of Payments and International Investment Position, Australia: Concepts, Sources and Methods* (cat. no. 5331.0)
- *Information Paper: Quality of Australian Balance of Payments Statistics* (cat. no. 5342.0)
- *International Merchandise Trade, Australia: Concepts, Sources and Methods* (cat. no. 5489.0)
- *A Guide to Australian Balance of Payments and International Investment Position Statistics* (cat. no. 5362.0.55.001).

33 Current publications and other products released by the ABS are available from the Statistics tab on the ABS web site. The ABS also issues a daily *Release Advice* on the web site which details products to be released in the week ahead. A *foreign trade theme page* and a *balance of payments theme page* are available on the ABS website. Select *Themes – Economy – Foreign Trade* or *Balance of Payments*. This page provides direct links to all foreign trade and balance of payments related data and publications, recent changes and

EXPLANATORY NOTES *continued*

RELATED PRODUCTS AND
PUBLICATIONS *continued*

forthcoming events, links to relevant web sites and a range of other information about the Australian International Accounts.

ROUNDING

34 Where figures have been rounded, discrepancies may occur between sums of the component items and totals. Percentage movements are calculated from data at the level of precision presented in this publication (i.e. \$m) except for international merchandise trade tables.

APPENDIX RELATED ARTICLES

<i>Article</i>	<i>Source(a)</i>	<i>Issue</i>
Investment		
Foreign ownership of equity	5302.0	Sep qtr 2007
Kangaroo bonds	1301.0	2006
Foreign currency exposure	5308.0	Mar qtr 2005
Gross external debt	5302.0	Sep qtr 2003
Balance of payments		
International comparison of balance of payments statistics	(b) 5363.0	1998–99
Merchandise trade		
Characteristics of Australian Exporters	5368.0.55.006	2007–08
Export and import invoice currencies, 2007	5368.0	Dec 2007
100 years of international trade statistics	5368.0	Oct 2007
New methodology for deriving counts of Australian exports	5368.0	Feb 2006
Australia's Importers, 2003–04	5368.0	Nov 2004
Australia's Exporters, 2003–04	5368.0	Oct 2004
Australia's trade with the USA	5368.0	Mar 2004
Foreign ownership of Australian exporters and importers	5496.0.55.001	2002–03
Major commodities traded by Australia, 1991 to 2000	(b) 5422.0	Dec qtr 2000
Trade in services		
International trade in services by partner country, 2006, preliminary	5368.0	Dec 2006
Changes to International trade in services statistics, August 2006	5368.0	Aug 2006
Changes to International trade in services travel statistics	5368.0	Aug 2005
Finance		
Impact of the farm season on Australian production in 2002–03 and 2003–04	1301.0	2005
Recent trends in construction and first home buyers finance	5609.0	Mar 2002
Household sector data in the financial accounts	5232.0	Mar qtr 2002
Technical information		
Implementation of new international statistical standards in ABS National and International Accounts, September 2009	5310.0.55.002	Oct 2009
Estimation of Workers' Remittances based on Balance of Payments and International Investment Position Manual, Sixth Edition	5302.0.55.003	Sep 2009
Impact of revised international standards on monthly International Trade in Goods and Services	5368.0.55.014	Aug 2009
Changes to International Trade in Goods Statistics - Countries and Ports	5368.0.55.013	Jul 2009
Revisions to international standards in quarterly Balance of Payments and International Investment Position statistics from September 2009	5302.0.55.002	2009
Revisions to international standards in monthly international trade in goods and services statistics from August 2009	5368.0.55.012	2009
Changes to International Trade in Goods Industry Statistics, July 2009	5368.0.55.011	Dec 2008
Technical note 1 - Income on debt	5302.0	Jun qtr 2008
Technical note 2 - Use of CDI data	5302.0	Jun qtr 2008
Impact of introducing Revision 4 of the Standard International Trade Classification	5368.0.55.010	2008
Changes to international trade statistics July 2008	5368.0.55.009	2007–08
Introduction of revised international standards in ABS economic statistics in 2009	5310.0.55.001	2007
Changes on 1 January 2007 to Statistical Codes in the AHECC and the Customs Tariff	1233.0.55.001	Nov 2006
ABS implementation in January 2007 of revisions to international trade classifications, 2007	5368.0.55.005	Jun 2006
Revised treatment of Goods for Processing in Merchandise Trade and Balance of Payments Statistics	5368.0	May 2006
Impact of Customs and ABS changes on import statistics from October 2005	5439.0	Oct 2005
ABS management of the impact of the implementation of the imports component of the New Customs System	5439.0	Aug 2005
Changes to country and port classifications	5368.0	May 2003
Implementation of New Customs Systems	5368.0	Aug 2004
The effect of customs changes on export statistics	5422.0	Jun qtr 2002
Data confidentiality	5422.0	Dec qtr 1999

- (a) In the ABS web site home page, select Statistics; By Catalogue Number; and click on the specified catalogue number and issue. Note: in some instances, a particular issue of the publication can be found in the Past & Future Releases page of the catalogue.
- (b) This article can be found in pdf format by referring to the Downloads page of the specified issue of this publication on the ABS web site.

FOR MORE INFORMATION . . .

INTERNET **www.abs.gov.au** the ABS website is the best place for data from our publications and information about the ABS.

INFORMATION AND REFERRAL SERVICE

Our consultants can help you access the full range of information published by the ABS that is available free of charge from our website. Information tailored to your needs can also be requested as a 'user pays' service. Specialists are on hand to help you with analytical or methodological advice.

PHONE 1300 135 070

EMAIL client.services@abs.gov.au

FAX 1300 135 211

POST Client Services, ABS, GPO Box 796, Sydney NSW 2001

FREE ACCESS TO STATISTICS

All statistics on the ABS website can be downloaded free of charge.

WEB ADDRESS www.abs.gov.au