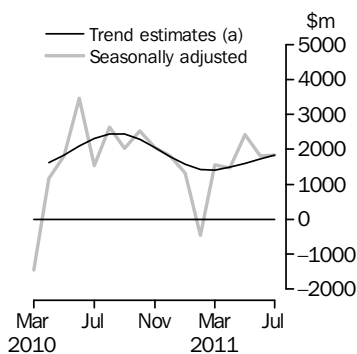


INTERNATIONAL TRADE IN GOODS AND SERVICES

AUSTRALIA

EMBARGO: 11.30AM (CANBERRA TIME) MON 12 SEP 2011

Balance on Goods and Services



(a) A trend break of \$2,500m has been applied to April 2010.

KEY FIGURES

	May 2011	Jun 2011	Jul 2011	Jun 11 to Jul 11 %
	\$m	\$m	\$m	change
BALANCE ON GOODS AND SERVICES				
Trend estimates	1 605	1 734	1 846	..
Seasonally adjusted	2 418	1 817	1 826	..
CREDITS (Exports of goods & services)				
Trend estimates	25 832	26 175	26 457	1
Seasonally adjusted	26 411	26 326	26 102	-1
DEBITS (Imports of goods & services)				
Trend estimates	24 228	24 441	24 611	1
Seasonally adjusted	23 993	24 508	24 276	-1

.. not applicable

KEY POINTS

BALANCE ON GOODS AND SERVICES

- The trend estimate of the *balance on goods and services* was a surplus of \$1,846m in July 2011, a rise of \$112m on the surplus in June 2011.
- In seasonally adjusted terms, the *balance on goods and services* was a surplus of \$1,826m in July 2011, a rise of \$9m on the surplus in June 2011.

CREDITS (EXPORTS OF GOODS & SERVICES)

- In seasonally adjusted terms, *goods and services credits* fell \$224m (1%) to \$26,102m. *Non-rural goods* fell \$724m (4%) and *rural goods* fell \$41m (1%). *Non-monetary gold* rose \$596m (82%) and *net exports of goods under merchanting* rose \$5m (15%). *Services credits* fell \$60m (1%).

DEBITS (IMPORTS OF GOODS & SERVICES)

- In seasonally adjusted terms, *goods and services debits* fell \$232m (1%) to \$24,276m. *Intermediate and other merchandise goods* fell \$513m (6%). *Consumption goods* rose \$166m (3%), *non-monetary gold* rose \$153m (39%) and *capital goods* rose \$135m (3%). *Services debits* fell \$174m (3%).

INQUIRIES

For further information contact Selvi Sekhar on Canberra (02) 6252 5540 for Goods, and Lee Taylor on Canberra (02) 6252 6377 for Services.

NOTES

FORTHCOMING ISSUES

ISSUE	RELEASE DATE
August 2011	4 October 2011
September 2011	8 November 2011
October 2011	12 December 2011
November 2011	10 January 2012
December 2011	2 February 2012
January 2012	13 March 2012



REVISIONS

Revisions have been made to incorporate the latest data relating to international merchandise trade. The capital goods n.e.s. component of the goods debit series has been revised from January 2010 onwards. There were no other revisions to the balance of payments series in original terms.

The revised goods debits data aligns with the data published in the June quarter 2011 issues of *Balance of Payments and International Investment Position* (cat. no. 5302.0) and *Australian National Accounts: National Income, Expenditure and Product* (cat. no. 5206.0).

Table 17 summarises revisions to goods and services on a balance of payments basis, in original current price terms, since the last issue of this publication. In original terms, the revisions have decreased the surplus on goods and services for 2010–11 by \$1,572m.

Seasonally adjusted and trend series have been revised due to the incorporation of the revisions and estimates for the latest month.

VALUE ADJUSTMENTS

Adjustments have been made to the value of the 'metal ores and minerals', 'coal, coke and briquettes' and 'capital goods n.e.s.' components in the balance of payments series. See page 4 – *Commodity value adjustment* for details.

CHANGES IN THIS AND FORTHCOMING ISSUES

Tables 12 and 13 of this publication present the major commodities for international merchandise trade exports (table 12) and imports (table 13). As part of an annual review, the major commodities have been updated in this issue.

The seasonally adjusted and trend estimates of goods and services will be revised in the August 2011 issue as a result of the annual seasonal re-analysis.

See page 6 – *Changes in this and forthcoming issues* for details.

RELATED RELEASES

For related recent and upcoming releases. See page 7 – *Related releases*.

Brian Pink
Australian Statistician

CONTENTS

	<i>page</i>
Commodity value adjustment	4
Changes in this and forthcoming issues	6
Related releases	7
Time series data	8
ANALYSIS	
Analysis and comments	10
TABLES	
INTERNATIONAL TRADE IN GOODS AND SERVICES – BALANCE OF PAYMENTS BASIS	
1 Goods and services, summary, seasonally adjusted and trend estimates	14
2 Goods and services, summary, original	15
3 Goods credits, original	16
4 Goods debits, original	17
5 Goods credits, seasonally adjusted	18
6 Goods debits, seasonally adjusted	19
7 Goods credits, trend estimates	20
8 Goods debits, trend estimates	21
9 Services, summary, original	22
10 Services, summary, seasonally adjusted and trend estimates	23
11 Services, original, quarterly	24
INTERNATIONAL MERCHANDISE TRADE – RECORDED TRADE BASIS	
12 International merchandise exports, by commodity	25
13 International merchandise imports, by commodity	28
14 International merchandise trade, by country and country groups	31
15 International merchandise trade, by state	32
OTHER TABLES	
16 Period average exchange rates per Australian dollar	33
17 Summary of revisions, goods and services, original	34
OTHER INFORMATION	
Explanatory notes	35
Appendix – Related articles	41

COMMODITY VALUE ADJUSTMENT

IRON ORE AND COAL

International merchandise trade exports data (on a recorded trade basis) presented in tables 12–15 of this publication are based on information provided by exporters to the Australian Customs and Border Protection Service (Customs and Border Protection). At the time of initial reporting to Customs and Border Protection estimated quantity and unit price information may be reported for commodities like iron ore and coal. Final quantity and unit price information are updated progressively in recorded trade data as exporters revise the information provided to Customs and Border Protection. When additional information on quantity and unit price for these commodities are available, the ABS may adjust the balance of payments series to minimise the impact of future revisions.

The balance of payments series in this issue include:

- a positive \$270m adjustment to the value of the 'metal ores and minerals' component for July 2011. A positive adjustment of \$300m in June 2011 made in the previous issue remains
- a positive \$200m adjustment to the value of the 'coal, coke and briquettes' component for July 2011. Positive adjustments of \$230m in May 2011 and \$280m in June 2011 made in previous issues remain.

With the adjustments included, the balance of payments series, in seasonally adjusted terms, for 'metal ores and minerals' remained steady between June and July 2011. The 'coal, coke and briquettes' series decreased 12%.

COMMODITY VALUE ADJUSTMENT *continued*

IRON ORE AND COAL
continued

SELECTED COMMODITIES, Unit price and volume analysis: **Recorded Trade Basis (a)**

		CHANGE IN					
		Feb 2011	Mar 2011	Apr 2011	May 2011	Jun 2011	Jul 2011
		%	%	%	%	%	%
IRON ORE							
Lump							
Volumes		-22	49	-11	8	-3	-6
Price		3	1	2	4	—	-12
Fines							
Volumes		-16	35	-6	8	-2	12
Price		4	2	1	3	—	-11
COAL							
Hard coking							
Volumes		-5	35	-1	10	2	-5
Price		5	4	9	13	-4	-9
Semi-soft							
Volumes		3	36	-14	-12	37	-31
Price		9	6	11	13	-8	-1
Bituminous (Thermal)							
Volumes		-20	3	22	-3	20	-2
Price		3	1	-5	3	4	2

— nil or rounded to zero (including null cells)

(a) Data in this table are on a revised merchandise trade basis and have excluded adjustment applied to balance of payments series.

On a revised recorded trade basis (prior to the balance of payments adjustments), between June and July 2011, large value movements were recorded for the following selected commodities:

- hard coking coal fell \$278m (14%) with exports to India down \$241m (37%), with volumes down 27%
- semi-soft coking coal fell \$277m (32%) with exports to Japan down \$69m (23%), with volumes down 26% and Republic of Korea down \$60m (33%) with volumes down 31%.

CAPITAL EXPENDITURE

The balance of payments goods debits component 'capital goods n.e.s.' includes an estimate of capital expenditure on goods that have changed ownership but not yet crossed the Customs frontier.

CHANGES IN THIS AND FORTHCOMING ISSUES

CHANGES IN THIS ISSUE

Table 12, International merchandise exports major commodities:

- 334 Refined petroleum oils

replaces:

- 781 Motor vehicles for transport of people.

Table 13, International merchandise imports major commodities:

- 821 Furniture, bedding, mattresses and supports, and stuffed furnishings
- 874 Measuring, checking, analysing and controlling instruments and apparatus n.e.s.

replace:

- 743 Air pumps, compressors or fans; hoods; centrifuges; filtering apparatus; parts
- 894 Baby carriages, toys, games and sporting goods.

CHANGES IN FORTHCOMING ISSUES

*Seasonally adjusted and
trend estimates*

The seasonally adjusted and trend estimates of goods and services on a balance of payments basis will be revised in the August 2011 issue as a result of the annual seasonal re-analysis. This re-analysis reviews the seasonal and trading day factors in detail and assesses the appropriateness of any prior corrections.

RELATED RELEASES

AUSTRALIAN HARMONIZED EXPORT COMMODITY CLASSIFICATION (AHECC)

The *Australian Harmonized Export Commodity Classification (AHECC) – Electronic Publication, Jan 2012* (cat. no. 1233.0) was released on the ABS website on 22 August 2011. This publication presents the AHECC statistical structure for use from 1 January 2012. Changes to the AHECC result from the introduction of the five yearly review conducted by the World Customs Organisation and an ABS review of statistical codes. Following consultation with stakeholders, the AHECC has been amended, in some areas, from the version presented in the *Information Paper: Proposed Changes to Statistical Codes in the AHECC, 2012* (cat. no. 5368.0.55.015). This publication includes the correspondence from AHECC 2007 to AHECC 2012. However, the correspondence to related classifications and free standing descriptors used for dissemination of data, will not be available until 8 December 2011. These will be provided in the *Information Paper: Changes to AHECC and Customs Tariff* (cat. no. 5368.0.55.017).

INFORMATION PAPER: REVIEW OF THE PRODUCER AND INTERNATIONAL TRADE PRICE INDEXES, 2011

The *Information Paper: Review of the Producer and International Trade Price Indexes, 2011* (cat. no. 6427.0.55.003) was released on 2 September 2011. This paper provides a basis for user consultation regarding the review of the Australian Producer Price Indexes (PPIs) and International Trade Price Indexes (ITPIs). The ABS is undertaking a fundamental and systematic review to shape the future of this suite of indexes. This paper discusses major issues to be considered in the review and presents ABS preliminary views. The ABS welcomes written submissions from users on the issues covered in this paper.

Outcomes of the review are expected to be published in February 2012.

INFORMATION PAPER: EXPERIMENTAL STATISTICS ON INTERNATIONAL SHIPPING CONTAINER MOVEMENTS

The *Information Paper: Experimental Statistics on International Shipping Container Movements, 2009-10* (cat. no. 5368.0.55.018) will be released on 16 September 2011. This paper presents experimental statistics on international shipping container movements. It describes government and industry data requirements for container statistics; the relationship between container statistics and trade statistics; the methodology used to compile statistics on containers used to import goods; and options for the future of these statistics.

The paper aims to promote discussion and seek feedback from data users on the statistics presented, their methodology and other issues raised in the paper.

TIME SERIES DATA

TIME SERIES DATA

Tables 1 to 16 of this publication are available free on the ABS website: <http://www.abs.gov.au> from the 'Downloads' tab of this issue with longer time series. A number of these tables present more detailed breakdowns than included in the publication. A number of additional tables are available free on the ABS website.

Tables with more detailed breakdowns:

- 11a Services credits: Original - Quarter¹
- 11b Services debits: Original - Quarter¹
- 12b Merchandise exports by Standard International Trade Classification (3 digit), FOB Value
- 13b Merchandise imports by Standard International Trade Classification (3 digit), Customs Value
- 14a Merchandise exports, Country and Country Groups, FOB Value
- 14b Merchandise imports, Country and Country Groups, Customs Value

Additional tables:

- 31 Merchandise exports by Broad Economic Category (BEC)
- 32a Merchandise exports, Industry (ANZSIC 2006), FOB Value
- 32b Merchandise exports, Industry (ANZSIC 1993), FOB Value
- 33 Merchandise imports by Broad Economic Category (BEC)
- 34 Merchandise imports by Balance of Payments Broad Economic Category (BoPBEC)
- 35a Merchandise imports, Industry (ANZSIC 2006), Customs Value
- 35b Merchandise imports, Industry (ANZSIC 1993), Customs Value
- 36 Merchandise exports, State by Country and Country Groups
- 37 Merchandise imports, State by Country and Country Groups
- 91 Monthly seasonal adjustment factors and forward factors for 12 months.

¹ With a one quarter lag for the more detailed breakdowns.

TIME SERIES DATA *continued*

TRADE IN SERVICES DATA CUBES

Trade in services data cubes are usually updated on an annual basis. Calendar year (cat. no. 5368.0.55.004) statistics are updated following the March issue of this publication and financial year (cat. no. 5368.0.55.003) statistics are updated following the September issue of this publication.

The following tables were included in the calendar and financial year data cubes:

- 1 International trade in services, credits, state by year
- 2 International trade in services, credits, year by state
- 3 International trade in services, debits, state by year
- 4 International trade in services, debits, year by state
- 5 International trade in services, credits, year by country and service
- 6 International trade in services, credits, service by year and by country
- 7 International trade in services, debits, year by country and service
- 8 International trade in services, debits, service by year and by country
- 9 International trade in services, credits, year by country and travel service
- 10 International trade in services, debits, year by country and travel service
- 11 International trade in services, credits, education related travel, by educational sector, by type of expenditure by year.

ANALYSIS AND COMMENTS

BALANCE ON GOODS AND SERVICES

The trend estimate of the balance on goods and services was a surplus of \$1,846m in July 2011, a rise of \$112m on the surplus in June 2011.

In seasonally adjusted terms, the balance on goods and services was a surplus of \$1,826m in July 2011, a rise of \$9m on the surplus in June 2011.

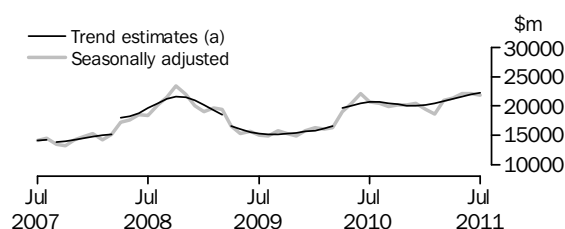
EXPORTS OF GOODS AND SERVICES

Between June 2011 and July 2011 the trend estimate of goods and services credits rose \$282m (1%) to \$26,457m.

In seasonally adjusted terms, goods and services credits fell \$224m (1%) to \$26,102m. Non-rural goods fell \$724m (4%) and rural goods fell \$41m (1%). Non-monetary gold rose \$596m (82%) and net exports of goods under merchanting rose \$5m (15%). Services credits fell \$60m (1%).

Exports of goods

GOODS CREDITS



(a) Trend breaks of \$400m to September 2007, \$1,900m to April 2008, -\$1,400m to April 2009 and \$2,500m to April 2010 have been applied.

RURAL GOODS

In trend terms, exports of rural goods rose \$47m (2%) to \$2,881m.

In seasonally adjusted terms, exports of rural goods fell \$41m (1%) to \$2,832m.

The main components contributing to the fall in seasonally adjusted estimates were:

- cereal grains and cereal preparations, down \$26m (4%)
- wool and sheepskins, down \$9m (3%).

NON-RURAL GOODS

In trend terms, exports of non-rural goods rose \$243m (1%) to \$18,145m.

In seasonally adjusted terms, exports of non-rural goods fell \$724m (4%) to \$17,718m.

The main components contributing to the fall in seasonally adjusted estimates were:

- coal, coke and briquettes, down \$535m (12%)
- other mineral fuels, down \$401m (19%).

Partly offsetting these falls was the metals (excl. non-monetary gold) component, up \$170m (18%).

For price and volume details, see page 4 – *Commodity value adjustment*.

ANALYSIS AND COMMENTS *continued*

Exports of goods *continued*

NET EXPORTS OF GOODS UNDER MERCHANTING

In trend terms, net exports of goods under merchanting rose \$2m (6%) to \$37m.

In seasonally adjusted terms, net exports of goods under merchanting rose \$5m (15%) to \$38m.

NON-MONETARY GOLD

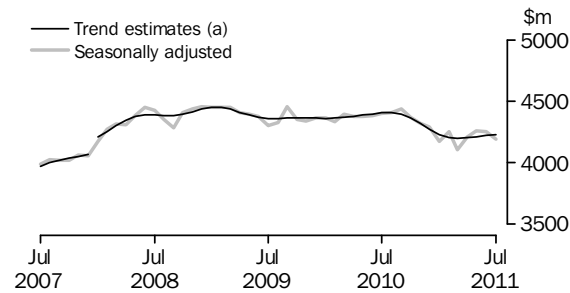
In trend terms, exports of non-monetary gold fell \$20m (2%) to \$1,164m.

In seasonally adjusted terms, exports of non-monetary gold for July 2011 rose \$596m (82%) to \$1,322m, after falling \$894m (55%) between May and June 2011.

On a recorded trade basis, between June and July 2011, non-monetary gold rose \$581m (84%). This was primarily due to an increase in exports to the United Kingdom, up \$524m, on volumes.

Exports of services

SERVICES CREDITS



(a) A trend break of \$100m has been applied to January 2008.

In trend terms, services credits rose \$10m to \$4,229m.

In seasonally adjusted terms, services credits fell \$60m (1%) to \$4,192m.

The main component contributing to the fall in seasonally adjusted estimates was travel, down \$75m (3%).

In seasonally adjusted terms, tourism related services credits fell \$77m (3%) to \$2,771m.

ANALYSIS AND COMMENTS *continued*

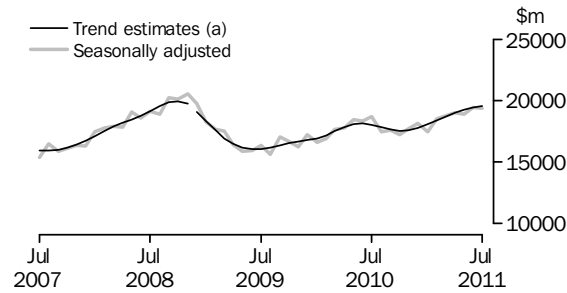
IMPORTS OF GOODS AND SERVICES

Between June 2011 and July 2011 the trend estimate of goods and services debits rose \$170m (1%) to \$24,611m.

In seasonally adjusted terms, goods and services debits fell \$232m (1%) to \$24,276m. Intermediate and other merchandise goods fell \$513m (6%). Consumption goods rose \$166m (3%), non-monetary gold rose \$153m (39%) and capital goods rose \$135m (3%). Services debits fell \$174m (3%).

Imports of goods

GOODS DEBITS



(a) A trend break of -\$200m has been applied to December 2008.

CONSUMPTION GOODS

In trend terms, imports of consumption goods rose \$16m to \$5,372m.

In seasonally adjusted terms, imports of consumption goods rose \$166m (3%) to \$5,363m.

The main component contributing to the rise in seasonally adjusted estimates was non-industrial transport equipment, up \$227m (18%).

Partly offsetting this rise was the textiles, clothing and footwear component, down \$67m (9%).

CAPITAL GOODS

In trend terms, imports of capital goods rose \$20m to \$4,572m.

In seasonally adjusted terms, imports of capital goods rose \$135m (3%) to \$4,684m.

The main components contributing to the rise in seasonally adjusted estimates were:

- machinery and industrial equipment, up \$103m (7%)
- industrial transport equipment n.e.s., up \$86m (15%).

Partly offsetting these rises was the capital goods n.e.s. component, down \$167m (17%).

INTERMEDIATE AND OTHER MERCHANDISE GOODS

In trend terms, imports of intermediate and other merchandise goods rose \$90m (1%) to \$9,168m.

In seasonally adjusted terms, imports of intermediate and other merchandise goods fell \$513m (6%) to \$8,775m.

The main component contributing to the fall in the seasonally adjusted estimates was fuels and lubricants, down \$455m (13%) after increasing \$333m (11%) between May and June 2011.

ANALYSIS AND COMMENTS *continued*

Imports of goods continued

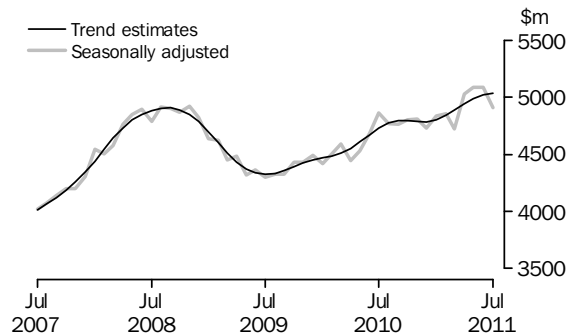
NON-MONETARY GOLD

In trend terms, imports of non-monetary gold rose \$28m (6%) to \$462m.

In seasonally adjusted terms, non-monetary gold rose \$153m (39%) to \$543m.

Imports of services

SERVICES DEBITS



In trend terms, services debits rose \$16m to \$5,037m.

In seasonally adjusted terms, services debits fell \$174m (3%) to \$4,911m.

The main components contributing to the fall in the seasonally adjusted estimates were:

- travel, down \$73m (3%)
- transport, down \$60m (5%), with passenger transport down \$58m (10%).

In seasonally adjusted terms, tourism related services debits fell \$131m (5%) to \$2,699m.

GOODS AND SERVICES (a), Summary—Seasonally Adjusted and Trend Estimates

	Aug 2010	Sep 2010	Oct 2010	Nov 2010	Dec 2010	Jan 2011	Feb 2011	Mar 2011	Apr 2011	May 2011	Jun 2011	Jul 2011
	\$m	\$m	\$m	\$m	\$m	\$m	\$m	\$m	\$m	\$m	\$m	\$m
SEASONALLY ADJUSTED												
BALANCE												
On goods and services	2 642	2 030	2 528	2 047	1 809	1 309	-468	1 546	1 463	2 418	1 817	1 826
CREDITS												
Total goods and services	24 910	24 392	24 533	24 549	24 702	23 626	22 883	25 015	25 523	26 411	26 326	26 102
Total goods	20 501	19 956	20 166	20 230	20 410	19 452	18 632	20 910	21 312	22 153	22 073	21 910
Rural goods(b)	2 421	2 209	2 446	2 374	2 415	2 333	2 627	2 560	2 733	2 800	2 873	2 832
Non-rural goods(b)	17 217	16 576	16 145	16 602	16 865	15 562	15 135	16 983	17 459	17 698	18 442	17 718
Net exports of goods under merchandise(c)	25	25	25	25	25	22	22	23	35	35	33	38
Non-monetary gold(c)	839	1 146	1 550	1 229	1 105	1 535	849	1 345	1 085	1 620	726	1 322
Total services	4 408	4 436	4 367	4 319	4 292	4 174	4 251	4 105	4 212	4 258	4 252	4 192
DEBITS												
Total goods and services	-22 267	-22 361	-22 006	-22 502	-22 893	-22 318	-23 351	-23 469	-24 060	-23 993	-24 508	-24 276
Total goods	-17 498	-17 599	-17 200	-17 694	-18 161	-17 483	-18 497	-18 746	-19 034	-18 909	-19 424	-19 365
Consumption goods	-5 456	-5 453	-5 304	-5 353	-5 323	-5 266	-5 252	-5 173	-5 063	-5 228	-5 197	-5 363
Capital goods	-4 140	-3 933	-3 947	-4 180	-4 147	-4 500	-4 554	-4 224	-4 698	-4 336	-4 549	-4 684
Intermediate and other merchandise goods	-7 597	-7 712	-7 348	-7 573	-8 304	-7 431	-8 352	-8 927	-8 882	-8 977	-9 288	-8 775
Non-monetary gold(c)	-305	-501	-602	-588	-387	-286	-339	-423	-391	-368	-390	-543
Total services	-4 769	-4 762	-4 806	-4 808	-4 732	-4 835	-4 854	-4 723	-5 026	-5 085	-5 085	-4 911
TREND ESTIMATES (d)												
BALANCE												
On goods and services	2 451	2 440	2 295	2 052	1 790	1 570	1 420	1 397	1 477	1 605	1 734	1 846
CREDITS												
Total goods and services	25 057	24 876	24 627	24 414	24 338	24 431	24 659	25 011	25 426	25 832	26 175	26 457
Total goods	20 651	20 483	20 261	20 092	20 066	20 202	20 455	20 813	21 223	21 621	21 955	22 228
Rural goods(b)	2 399	2 391	2 375	2 371	2 398	2 455	2 534	2 616	2 700	2 773	2 834	2 881
Non-rural goods(b)	17 022	16 853	16 625	16 452	16 393	16 478	16 675	16 967	17 294	17 621	17 902	18 145
Net exports of goods under merchandise	25	25	25	24	23	24	25	27	30	33	35	37
Non-monetary gold	1 204	1 214	1 236	1 245	1 252	1 246	1 222	1 203	1 199	1 193	1 184	1 164
Total services	4 406	4 394	4 366	4 322	4 272	4 229	4 204	4 198	4 203	4 212	4 219	4 229
DEBITS												
Total goods and services	-22 606	-22 437	-22 331	-22 362	-22 548	-22 861	-23 239	-23 613	-23 949	-24 228	-24 441	-24 611
Total goods	-17 832	-17 639	-17 533	-17 576	-17 767	-18 061	-18 398	-18 721	-19 004	-19 238	-19 420	-19 574
Consumption goods	-5 462	-5 423	-5 372	-5 326	-5 293	-5 275	-5 276	-5 293	-5 314	-5 337	-5 356	-5 372
Capital goods	-4 106	-4 059	-4 065	-4 132	-4 235	-4 336	-4 413	-4 459	-4 487	-4 517	-4 552	-4 572
Intermediate and other merchandise goods	-7 756	-7 679	-7 631	-7 661	-7 801	-8 048	-8 341	-8 609	-8 823	-8 979	-9 078	-9 168
Non-monetary gold	-508	-478	-464	-458	-438	-401	-368	-361	-380	-406	-434	-462
Total services	-4 774	-4 797	-4 799	-4 786	-4 781	-4 800	-4 841	-4 892	-4 945	-4 989	-5 021	-5 037
(a) For sign conventions, see paragraph 15 of the Explanatory Notes.												
(b) For all time periods, estimates for sugar, sugar preparations and honey are included in Non-rural goods.												
(c) This component is not seasonally adjusted.												
(d) Caution should be used when interpreting recent trend estimates as they may be affected by unusual economic factors. For more details on trend estimates, please see paragraph 19 of the Explanatory Notes.												

GOODS AND SERVICES (a), Summary—Original

	Aug 2010	Sep 2010	Oct 2010	Nov 2010	Dec 2010	Jan 2011	Feb 2011	Mar 2011	Apr 2011	May 2011	Jun 2011	Jul 2011
	\$m	\$m	\$m	\$m	\$m	\$m	\$m	\$m	\$m	\$m	\$m	\$m
BALANCE												
On goods and services	3 089	949	2 118	270	2 175	242	586	2 372	2 147	3 527	1 800	2 082
CREDITS												
Total goods and services	25 540	24 619	25 204	24 097	25 671	21 658	21 757	25 904	25 053	26 769	26 217	26 497
Total goods	21 078	20 270	20 668	19 736	21 396	17 599	17 438	21 655	20 788	22 594	22 217	22 350
Rural goods(b)	2 384	2 119	2 360	2 212	2 489	2 037	2 647	2 844	2 812	3 076	2 936	2 858
Non-rural goods(b)	17 830	16 980	16 733	16 270	17 777	14 005	13 920	17 443	16 856	17 863	18 522	18 132
Net exports of goods under merchandising	25	25	25	25	25	22	22	23	35	35	33	38
Non-monetary gold	839	1 146	1 550	1 229	1 105	1 535	849	1 345	1 085	1 620	726	1 322
Total services	4 462	4 349	4 536	4 361	4 275	4 059	4 319	4 249	4 265	4 175	4 000	4 147
DEBITS												
Total goods and services	-22 451	-23 670	-23 086	-23 827	-23 496	-21 416	-21 171	-23 532	-22 906	-23 242	-24 417	-24 415
Total goods	-17 722	-18 506	-18 023	-19 156	-18 489	-16 368	-17 024	-19 094	-17 974	-18 380	-19 203	-19 301
Consumption goods	-5 591	-5 985	-5 870	-6 130	-5 405	-4 699	-4 768	-5 027	-4 598	-4 888	-4 994	-5 364
Capital goods	-4 148	-4 068	-4 042	-4 595	-4 314	-4 139	-4 097	-4 384	-4 395	-4 274	-4 677	-4 732
Intermediate and other merchandise goods	-7 678	-7 952	-7 509	-7 843	-8 383	-7 244	-7 820	-9 260	-8 590	-8 850	-9 142	-8 662
Non-monetary gold	-305	-501	-602	-588	-387	-286	-339	-423	-391	-368	-390	-543
Total services	-4 729	-5 164	-5 063	-4 671	-5 007	-5 048	-4 147	-4 438	-4 932	-4 862	-5 214	-5 114

(a) For sign conventions, see paragraph 15 of the Explanatory Notes.

(b) For all time periods, estimates for sugar, sugar preparations and honey are included in Non-rural goods.

							1 MONTH ENDED JULY		Change
	2008-09	2009-10	2010-11	May	Jun	Jul	2010	2011	
	\$m	\$m	\$m	2011	2011	2011	\$m	\$m	
Total goods credits	231 564	201 809	246 713	22 594	22 217	22 350	21 274	22 350	5.1
General merchandise	213 755	187 259	232 122	20 939	21 458	20 990	20 007	20 990	4.9
<i>Rural goods(a)</i>	29 383	25 589	30 471	3 076	2 936	2 858	2 555	2 858	11.9
Meat and meat preparations	7 454	6 350	6 941	597	617	603	613	603	-1.6
Cereal grains and cereal preparations	6 881	5 266	7 358	827	680	701	537	701	30.5
Wool and sheepskins	2 322	2 306	3 053	281	255	221	197	221	12.2
Other rural(a)	12 726	11 667	13 119	1 371	1 384	1 333	1 208	1 333	10.3
<i>Non-rural goods(a)</i>	184 372	161 670	201 651	17 863	18 522	18 132	17 452	18 132	3.9
Metal ores and minerals	52 015	53 669	79 231	7 205	7 665	7 384	6 457	7 384	14.4
Coal, coke and briquettes	54 957	36 777	43 902	3 822	4 364	3 965	3 925	3 965	1.0
Other mineral fuels	20 707	18 964	23 615	2 046	2 113	2 039	2 310	2 039	-11.7
Metals (excl. non-monetary gold)	12 394	10 735	12 707	1 208	952	1 122	1 057	1 122	6.1
Machinery	8 900	7 977	8 461	705	698	762	753	762	1.2
Transport equipment	5 090	4 073	3 909	412	333	343	306	343	12.1
Other manufactures	17 601	16 375	16 298	1 393	1 399	1 447	1 394	1 447	3.8
Other non-rural (incl. sugar and beverages)	11 077	11 711	11 938	935	861	932	1 121	932	-16.9
Goods procured in ports by carriers	1 631	1 389	1 590	137	137	138	129	138	7.0
Net exports of goods under merchanting	301	250	320	35	33	38	25	38	52.0
Goods acquired under merchanting (negative exports)	-2 386	-1 799	-1 735	-94	-95	-97	-193	-97	49.7
Goods sold under merchanting	2 687	2 049	2 055	129	128	135	218	135	-38.1
Non-monetary gold	17 508	14 300	14 271	1 620	726	1 322	1 242	1 322	6.4

(a) For all time periods, estimates for sugar, sugar preparations and honey are included in Other non-rural.

GOODS DEBITS(a), Original

							1 MONTH ENDED JULY		Change
	2008-09	2009-10	2010-11	May	Jun	Jul	2010	2011	
	\$m	\$m	\$m	\$m	\$m	\$m	\$m	\$m	
Total goods debits	-220 649	-204 676	-218 968	-18 380	-19 203	-19 301	-19 029	-19 301	-1.4
General merchandise	-209 127	-197 813	-214 001	-18 012	-18 813	-18 758	-18 642	-18 758	-0.6
<i>Consumption goods</i>	-61 419	-62 333	-63 567	-4 888	-4 994	-5 364	-5 612	-5 364	4.4
Food and beverages, mainly for consumption	-8 857	-8 712	-8 952	-715	-696	-714	-771	-714	7.4
Household electrical items	-5 488	-5 505	-4 859	-378	-392	-330	-442	-330	25.3
Non-industrial transport equipment	-13 247	-16 288	-15 955	-1 101	-1 313	-1 499	-1 501	-1 499	0.1
Textiles, clothing and footwear	-8 287	-7 514	-8 414	-617	-630	-685	-743	-685	7.8
Toys, books and leisure goods	-5 277	-4 675	-4 441	-336	-345	-316	-364	-316	13.2
Consumption goods n.e.s.	-20 263	-19 639	-20 946	-1 741	-1 618	-1 820	-1 791	-1 820	-1.6
<i>Capital goods</i>	-49 843	-47 027	-51 366	-4 274	-4 677	-4 732	-4 233	-4 732	-11.8
Machinery and industrial equipment	-18 488	-15 561	-15 730	-1 361	-1 396	-1 476	-1 316	-1 476	-12.2
ADP equipment	-7 257	-7 633	-7 786	-685	-759	-696	-759	-696	8.3
Telecommunications equipment	-6 431	-6 051	-7 008	-524	-590	-575	-507	-575	-13.4
Civil aircraft and confidentialised items(b)	-5 524	-5 051	-5 309	-415	-345	-401	-424	-401	5.4
Industrial transport equipment n.e.s.	-6 527	-6 804	-6 859	-536	-530	-749	-692	-749	-8.2
Capital goods n.e.s.	-5 616	-5 927	-8 674	-753	-1 057	-835	-535	-835	-56.1
<i>Intermediate and other merchandise goods</i>	-97 865	-88 453	-99 068	-8 850	-9 142	-8 662	-8 797	-8 662	1.5
Food and beverages, mainly for industry	-1 186	-1 035	-1 223	-97	-112	-92	-96	-92	4.2
Primary industrial supplies n.e.s.	-1 901	-1 346	-1 712	-196	-161	-204	-177	-204	-15.3
Fuels and lubricants	-28 213	-26 494	-32 075	-3 050	-3 383	-2 928	-2 427	-2 928	-20.6
Parts for transport equipment	-8 599	-8 221	-8 882	-824	-779	-835	-771	-835	-8.3
Parts for ADP equipment	-1 067	-973	-906	-69	-74	-57	-85	-57	32.9
Other parts for capital goods	-14 312	-13 755	-14 297	-1 263	-1 251	-1 134	-1 273	-1 134	10.9
Organic and inorganic chemicals	-5 384	-4 355	-4 470	-345	-338	-344	-426	-344	19.2
Paper and paperboard	-2 403	-2 299	-2 339	-170	-180	-186	-213	-186	12.7
Textile yarn and fabrics	-1 344	-1 170	-1 134	-97	-91	-89	-104	-89	14.4
Iron and steel	-5 528	-3 258	-3 763	-286	-344	-274	-415	-274	34.0
Plastics	-3 028	-2 733	-2 884	-252	-233	-229	-266	-229	13.9
Processed industrial supplies n.e.s.	-21 919	-20 026	-21 919	-1 915	-1 914	-2 039	-1 860	-2 039	-9.6
Other merchandise goods(b)	-1 401	-1 392	-1 828	-138	-136	-98	-555	-98	82.3
Goods procured in ports by carriers	-1 580	-1 396	-1 636	-148	-146	-153	-129	-153	-18.6
Non-monetary gold	-11 522	-6 863	-4 967	-368	-390	-543	-387	-543	-40.3

(a) For sign conventions, see paragraph 15 of the Explanatory Notes.

(b) From July 2008, commodities subject to a 'no commodity details' or 'no value details' restriction are included in Civil aircraft and confidentialised items. For earlier periods, commodities subject to a 'no commodity details' or 'no value details' restriction are included in Other merchandise goods.

GOODS CREDITS, Seasonally Adjusted

	Oct 2010	Nov 2010	Dec 2010	Jan 2011	Feb 2011	Mar 2011	Apr 2011	May 2011	Jun 2011	Jul 2011
	\$m	\$m	\$m	\$m	\$m	\$m	\$m	\$m	\$m	\$m
Total goods credits	20 166	20 230	20 410	19 452	18 632	20 910	21 312	22 153	22 073	21 910
General merchandise	18 591	18 976	19 280	17 895	17 761	19 542	20 192	20 498	21 314	20 550
<i>Rural goods</i>	2 446	2 374	2 415	2 333	2 627	2 560	2 733	2 800	2 873	2 832
Meat and meat preparations	540	576	610	503	638	591	589	563	595	590
Cereal grains and cereal preparations	720	565	547	593	638	615	683	698	724	698
Wool and sheepskins	206	235	282	250	282	279	292	274	266	257
Other rural (a)	980	998	976	987	1 069	1 074	1 168	1 265	1 289	1 287
<i>Non-rural goods</i>	16 145	16 602	16 865	15 562	15 135	16 983	17 459	17 698	18 442	17 718
Metal ores and minerals	6 284	6 576	6 497	6 563	5 838	6 945	7 238	7 104	7 416	7 434
Coal, coke and briquettes(b)	3 806	3 664	3 645	2 628	2 772	3 197	3 522	3 753	4 428	3 893
Other mineral fuels(c)	1 619	1 908	1 949	1 903	1 918	2 137	2 126	2 262	2 162	1 761
Metals (excl. non-monetary gold)(c)	980	1 044	1 127	1 058	1 212	1 194	1 083	1 093	942	1 112
Machinery	687	673	759	695	690	707	719	690	711	712
Transport equipment	281	286	303	325	362	324	359	383	353	352
Other manufactures	1 375	1 322	1 460	1 262	1 371	1 385	1 347	1 365	1 366	1 385
Other non-rural (incl. sugar and beverages)	987	1 004	997	999	835	956	918	910	920	931
Goods procured in ports by carriers(c)	127	125	128	130	136	138	146	139	145	137
Net exports of goods under merchanting(d)	25	25	25	22	22	23	35	35	33	38
Non-monetary gold(d)	1 550	1 229	1 105	1 535	849	1 345	1 085	1 620	726	1 322

(a) For all time periods, estimates for sugar, sugar preparations and honey are included in Other non-rural.

(b) Only a length-of-month adjustment has been applied to this component.

(c) In using these seasonally adjusted series, care should be exercised because of the difficulties associated with reliably estimating the seasonal pattern.

(d) This component is not seasonally adjusted.

GOODS DEBITS(a), Seasonally Adjusted

	Oct 2010	Nov 2010	Dec 2010	Jan 2011	Feb 2011	Mar 2011	Apr 2011	May 2011	Jun 2011	Jul 2011
	\$m	\$m	\$m	\$m	\$m	\$m	\$m	\$m	\$m	\$m
Total goods debits	-17 200	-17 694	-18 161	-17 483	-18 497	-18 746	-19 034	-18 909	-19 424	-19 365
General merchandise	-16 598	-17 106	-17 774	-17 197	-18 158	-18 323	-18 643	-18 541	-19 034	-18 822
Consumption goods	-5 304	-5 353	-5 323	-5 266	-5 252	-5 173	-5 063	-5 228	-5 197	-5 363
Food and beverages, mainly for consumption	-739	-720	-717	-715	-722	-734	-752	-781	-751	-751
Household electrical items	-411	-423	-380	-375	-379	-373	-399	-392	-386	-335
Non-industrial transport equipment	-1 380	-1 411	-1 413	-1 360	-1 362	-1 386	-956	-1 189	-1 256	-1 483
Textiles, clothing and footwear	-686	-702	-686	-669	-710	-648	-733	-752	-731	-664
Toys, books and leisure goods	-402	-392	-386	-370	-353	-319	-353	-334	-343	-346
Consumption goods n.e.s.	-1 686	-1 705	-1 741	-1 778	-1 726	-1 711	-1 870	-1 779	-1 728	-1 785
Capital goods	-3 947	-4 180	-4 147	-4 500	-4 554	-4 224	-4 698	-4 336	-4 549	-4 684
Machinery and industrial equipment	-1 273	-1 262	-1 233	-1 256	-1 350	-1 296	-1 358	-1 394	-1 388	-1 491
ADP equipment	-610	-622	-612	-602	-590	-654	-662	-647	-664	-671
Telecommunications equipment	-601	-613	-574	-676	-568	-549	-517	-528	-600	-649
Civil aircraft and confidentialised items(b)(c)	-274	-614	-541	-474	-629	-306	-716	-415	-345	-401
Industrial transport equipment n.e.s.	-570	-537	-557	-670	-594	-570	-542	-561	-567	-653
Capital goods n.e.s.	-620	-532	-630	-821	-823	-850	-902	-791	-985	-818
Intermediate and other merchandise goods	-7 348	-7 573	-8 304	-7 431	-8 352	-8 927	-8 882	-8 977	-9 288	-8 775
Food and beverages, mainly for industry	-99	-98	-93	-90	-129	-103	-126	-102	-114	-91
Primary industrial supplies n.e.s.(d)	-132	-138	-119	-117	-122	-150	-147	-240	-165	-181
Fuels and lubricants(c)	-2 112	-2 416	-2 887	-2 140	-2 722	-3 317	-3 240	-3 050	-3 383	-2 928
Parts for transport equipment	-683	-680	-684	-726	-716	-797	-773	-827	-811	-845
Parts for ADP equipment	-85	-81	-73	-73	-69	-68	-75	-65	-66	-59
Other parts for capital goods	-1 150	-1 145	-1 176	-1 142	-1 211	-1 153	-1 192	-1 241	-1 240	-1 168
Organic and inorganic chemicals	-358	-360	-357	-352	-353	-411	-362	-336	-366	-366
Paper and paperboard	-194	-196	-196	-193	-185	-183	-184	-188	-191	-190
Textile yarn and fabrics	-90	-88	-92	-88	-93	-94	-100	-100	-93	-92
Iron and steel	-309	-282	-304	-250	-324	-272	-330	-324	-340	-291
Plastics	-231	-218	-221	-232	-231	-236	-251	-254	-244	-236
Processed industrial supplies n.e.s.	-1 706	-1 675	-1 738	-1 813	-1 970	-1 874	-1 856	-1 964	-1 994	-2 075
Other merchandise goods(b)(e)	-77	-72	-239	-69	-81	-122	-100	-138	-136	-98
Goods procured in ports by carriers(c)	-123	-123	-124	-146	-146	-146	-148	-148	-146	-153
Non-monetary gold(c)	-602	-588	-387	-286	-339	-423	-391	-368	-390	-543

(a) For sign conventions, see paragraph 15 of the Explanatory Notes.

(b) From July 2008, commodities subject to a 'no commodity details' or 'no value details' restriction are included in Civil aircraft and confidentialised items. For earlier periods, commodities subject to a 'no commodity details' or 'no value details' restriction are included in Other merchandise goods.

(c) This component is not seasonally adjusted.

(d) In using these seasonally adjusted series, care should be exercised because of the difficulties associated with reliably estimating the seasonal pattern.

(e) From July 1981, this component is not seasonally adjusted.

GOODS CREDITS(a), Trend Estimates

	Oct 2010	Nov 2010	Dec 2010	Jan 2011	Feb 2011	Mar 2011	Apr 2011	May 2011	Jun 2011	Jul 2011
	\$m	\$m	\$m	\$m	\$m	\$m	\$m	\$m	\$m	\$m
Total goods credits	20 261	20 092	20 066	20 202	20 455	20 813	21 223	21 621	21 955	22 228
General merchandise	19 000	18 823	18 791	18 933	19 209	19 583	19 993	20 395	20 736	21 027
<i>Rural goods</i>	2 375	2 371	2 398	2 455	2 534	2 616	2 700	2 773	2 834	2 881
Meat and meat preparations	561	562	569	578	585	587	587	587	587	590
Cereal grains and cereal preparations	585	594	599	605	618	640	667	689	707	718
Wool and sheepskins	226	237	252	266	276	280	278	275	271	268
Other rural(b)	1 003	978	978	1 006	1 055	1 110	1 167	1 221	1 269	1 306
<i>Non-rural goods</i>	16 625	16 452	16 393	16 478	16 675	16 967	17 294	17 621	17 902	18 145
Metal ores and minerals	6 337	6 329	6 368	6 456	6 576	6 746	6 953	7 161	7 342	7 490
Coal, coke and briquettes	3 934	3 761	3 604	3 497	3 469	3 533	3 645	3 780	3 918	4 045
Other mineral fuels	1 813	1 822	1 862	1 939	2 023	2 082	2 107	2 107	2 086	2 051
Metals (excl. non-monetary gold)	1 009	1 045	1 089	1 125	1 141	1 133	1 110	1 084	1 060	1 044
Machinery	700	698	700	704	707	706	705	705	706	710
Transport equipment	297	299	307	321	336	348	356	360	362	363
Other manufactures	1 358	1 356	1 357	1 357	1 357	1 358	1 361	1 366	1 369	1 381
Other non-rural (incl. sugar and beverages)	1 052	1 015	977	947	931	922	917	915	917	920
Goods procured in ports by carriers	126	126	128	132	135	138	140	142	142	142
Net exports of goods under merchanting	25	24	23	24	25	27	30	33	35	37
Non-monetary gold	1 236	1 245	1 252	1 246	1 222	1 203	1 199	1 193	1 184	1 164

(a) Caution should be used when interpreting recent trend estimates as they may be affected by unusual economic factors. For more details on trend estimates, please see paragraph 19 of the Explanatory Notes.

(b) For all time periods, estimates for sugar, sugar preparations and honey are included in Other non-rural.

	Oct 2010	Nov 2010	Dec 2010	Jan 2011	Feb 2011	Mar 2011	Apr 2011	May 2011	Jun 2011	Jul 2011
	\$m	\$m	\$m	\$m	\$m	\$m	\$m	\$m	\$m	\$m
Total goods debits	-17 533	-17 576	-17 767	-18 061	-18 398	-18 721	-19 004	-19 238	-19 420	-19 574
General merchandise	-17 068	-17 118	-17 329	-17 660	-18 030	-18 360	-18 624	-18 833	-18 986	-19 112
Consumption goods	-5 372	-5 326	-5 293	-5 275	-5 276	-5 293	-5 314	-5 337	-5 356	-5 372
Food and beverages, mainly for consumption	-745	-729	-721	-720	-727	-738	-748	-755	-760	-763
Household electrical items	-415	-402	-392	-385	-383	-383	-383	-380	-375	-369
Non-industrial transport equipment	-1 385	-1 387	-1 386	-1 377	-1 365	-1 358	-1 360	-1 371	-1 388	-1 409
Textiles, clothing and footwear	-702	-692	-685	-685	-691	-701	-709	-714	-716	-714
Toys, books and leisure goods	-392	-388	-379	-367	-355	-345	-341	-339	-339	-340
Consumption goods n.e.s.	-1 734	-1 727	-1 730	-1 741	-1 755	-1 767	-1 774	-1 777	-1 778	-1 777
Capital goods	-4 065	-4 132	-4 235	-4 336	-4 413	-4 459	-4 487	-4 517	-4 552	-4 572
Machinery and industrial equipment	-1 275	-1 264	-1 265	-1 275	-1 296	-1 324	-1 356	-1 387	-1 417	-1 442
ADP equipment	-637	-617	-608	-609	-619	-632	-645	-656	-665	-672
Telecommunications equipment	-609	-612	-607	-593	-577	-564	-558	-563	-575	-587
Civil aircraft and confidentialised items(c)	-402	-449	-499	-533	-536	-515	-484	-455	-427	-401
Industrial transport equipment n.e.s.	-553	-562	-577	-586	-587	-581	-576	-576	-582	-588
Capital goods n.e.s.	-590	-628	-680	-741	-799	-843	-868	-880	-885	-880
Intermediate and other merchandise goods	-7 631	-7 661	-7 801	-8 048	-8 341	-8 609	-8 823	-8 979	-9 078	-9 168
Food and beverages, mainly for industry	-94	-96	-99	-104	-109	-112	-112	-110	-108	-104
Primary industrial supplies n.e.s.	-127	-125	-124	-127	-136	-150	-165	-178	-188	-195
Fuels and lubricants	-2 285	-2 363	-2 486	-2 655	-2 832	-2 985	-3 099	-3 174	-3 209	-3 245
Parts for transport equipment	-695	-691	-698	-714	-738	-764	-788	-808	-825	-838
Parts for ADP equipment	-82	-79	-76	-73	-71	-70	-68	-67	-65	-63
Other parts for capital goods	-1 175	-1 160	-1 156	-1 163	-1 176	-1 189	-1 200	-1 207	-1 211	-1 214
Organic and inorganic chemicals	-368	-358	-357	-360	-365	-367	-366	-364	-362	-361
Paper and paperboard	-199	-195	-192	-189	-187	-186	-186	-187	-188	-189
Textile yarn and fabrics	-93	-90	-90	-91	-93	-95	-96	-96	-96	-95
Iron and steel	-304	-291	-284	-286	-294	-303	-311	-317	-320	-323
Plastics	-235	-228	-225	-227	-233	-239	-243	-245	-246	-246
Processed industrial supplies n.e.s.	-1 733	-1 739	-1 766	-1 806	-1 850	-1 892	-1 927	-1 960	-1 993	-2 021
Other merchandise goods(c)	-114	-118	-117	-115	-113	-113	-113	-116	-117	-125
Goods procured in ports by carriers	-126	-128	-132	-137	-142	-146	-148	-149	-150	-150
Non-monetary gold	-464	-458	-438	-401	-368	-361	-380	-406	-434	-462

(a) For sign conventions, see paragraph 15 of the Explanatory Notes.

(b) Caution should be used when interpreting recent trend estimates as they may be affected by unusual economic factors. For more details on trend estimates, please see paragraph 19 of the Explanatory Notes.

(c) From July 2008, commodities subject to a 'no commodity details' or 'no value details' restriction are included in Civil aircraft and confidentialised items. For earlier periods, commodities subject to a 'no commodity details' or 'no value details' restriction are included in Other merchandise goods.

							1 MONTH ENDED JULY		Change %
	2008-09	2009-10	2010-11	May 2011	Jun 2011	Jul 2011	2010	2011	
	\$m	\$m	\$m	\$m	\$m	\$m	\$m	\$m	
Services credits	52 877	52 323	51 456	4 175	4 000	4 147	4 406	4 147	-5.9
Manufacturing services on physical inputs owned by others	258	284	197	16	13	22	17	22	29.4
Maintenance and repair services n.i.e.	86	57	50	3	4	4	6	4	-33.3
Transport	7 342	6 189	6 437	482	485	560	580	560	-3.4
Passenger(c)	3 410	2 610	2 825	191	194	240	240	240	—
Freight	851	436	424	39	38	38	35	38	8.6
Other	2 127	2 187	2 255	183	183	193	202	193	-4.5
Postal and courier services(d)	954	956	933	69	70	89	103	89	-13.6
Travel	31 096	33 020	31 717	2 560	2 392	2 494	2 741	2 494	-9.0
Other services	14 095	12 773	13 055	1 114	1 106	1 067	1 062	1 067	0.5
Services debits	-56 170	-53 433	-58 360	-4 862	-5 214	-5 114	-5 085	-5 114	-0.6
Manufacturing services on physical inputs owned by others	-4	-6	-5	—	—	—	-2	—	100.0
Maintenance and repair services n.i.e.	-193	-294	-339	-65	-58	-17	-17	-17	—
Transport	-15 832	-13 727	-14 923	-1 238	-1 337	-1 238	-1 329	-1 238	6.8
Passenger(c)	-5 835	-5 118	-6 261	-545	-625	-517	-514	-517	-0.6
Freight	-9 386	-8 142	-8 251	-660	-682	-677	-770	-677	12.1
Other	-437	-309	-287	-24	-22	-23	-24	-23	4.2
Postal and courier services(d)	-174	-158	-124	-9	-8	-21	-21	-21	—
Travel	-22 082	-23 285	-25 868	-2 083	-2 338	-2 427	-2 356	-2 427	-3.0
Other services	-18 059	-16 121	-17 225	-1 476	-1 481	-1 432	-1 381	-1 432	-3.7
Memorandum items:									
Tourism related service credits(e)	34 506	35 630	34 542	2 751	2 586	2 734	2 981	2 734	-8.3
Tourism related service debits(e)	-27 917	-28 403	-32 129	-2 628	-2 963	-2 944	-2 870	-2 944	-2.6

— nil or rounded to zero (including null cells)

(a) For sign conventions, see paragraph 15 of the Explanatory Notes.

(b) For more detailed trade in services components, see table 11.

(c) Passenger services includes agency fees and commissions for air transport.

(d) Postal and courier services includes indirect commissions for sea transport.

(e) For a more detailed explanation of tourism related services, see paragraph 27 of the Explanatory Notes.

	Oct 2010	Nov 2010	Dec 2010	Jan 2011	Feb 2011	Mar 2011	Apr 2011	May 2011	Jun 2011	Jul 2011
	\$m	\$m	\$m	\$m	\$m	\$m	\$m	\$m	\$m	\$m
SEASONALLY ADJUSTED										
Services credits	4 367	4 319	4 292	4 174	4 251	4 105	4 212	4 258	4 252	4 192
Manufacturing services on physical inputs owned by others(b)	20	20	16	12	8	23	20	16	13	22
Maintenance and repair services n.i.e.(b)	4	8	6	2	3	3	3	3	4	4
Transport	531	509	517	546	536	528	534	536	537	537
Passenger(c)	240	222	231	245	235	229	235	239	240	239
Freight(d)	33	33	33	39	38	37	37	36	33	40
Other	182	179	178	186	187	189	187	188	188	187
Postal and courier services(e)	77	76	76	76	75	73	75	74	75	71
Travel	2 712	2 685	2 661	2 544	2 630	2 474	2 571	2 610	2 607	2 532
Other services	1 099	1 097	1 092	1 070	1 074	1 077	1 083	1 092	1 091	1 097
Services debits	-4 806	-4 808	-4 732	-4 835	-4 854	-4 723	-5 026	-5 085	-5 085	-4 911
Manufacturing services on physical inputs owned by others(b)	—	-1	—	—	—	-1	—	—	—	—
Maintenance and repair services n.i.e.(b)	-31	-16	-17	-20	-17	-35	-28	-65	-58	-17
Transport	-1 202	-1 221	-1 171	-1 192	-1 223	-1 225	-1 266	-1 296	-1 312	-1 252
Passenger(c)	-508	-531	-499	-517	-518	-524	-560	-562	-562	-504
Freight	-663	-659	-642	-641	-671	-668	-673	-700	-718	-713
Other(b)	-24	-24	-23	-24	-24	-25	-24	-24	-22	-23
Postal and courier services(e)(d)	-7	-7	-6	-10	-10	-8	-9	-9	-9	-12
Travel	-2 108	-2 103	-2 095	-2 192	-2 189	-2 036	-2 287	-2 277	-2 268	-2 195
Other services	-1 464	-1 467	-1 450	-1 431	-1 425	-1 426	-1 444	-1 447	-1 447	-1 447
Memorandum items:										
Tourism related service credits(f)	2 952	2 906	2 892	2 789	2 865	2 704	2 806	2 849	2 848	2 771
Tourism related service debits(f)	-2 616	-2 634	-2 594	-2 709	-2 708	-2 560	-2 848	-2 840	-2 830	-2 699

TREND ESTIMATES

Services credits	4 366	4 322	4 272	4 229	4 204	4 198	4 203	4 212	4 219	4 229
Manufacturing services on physical inputs owned by others	17	17	16	15	15	16	17	18	18	19
Maintenance and repair services n.i.e.	5	5	5	4	3	3	3	3	3	4
Transport	537	531	528	528	531	534	535	536	536	536
Passenger(c)	236	235	234	234	234	235	236	237	238	238
Freight	34	34	35	36	37	37	37	37	36	36
Other	187	184	183	183	185	187	188	188	188	188
Postal and courier services(e)	80	78	76	75	75	75	74	74	74	73
Travel	2 712	2 678	2 637	2 600	2 576	2 566	2 565	2 568	2 570	2 575
Other services	1 095	1 091	1 086	1 081	1 079	1 079	1 083	1 087	1 091	1 096
Services debits	-4 799	-4 786	-4 781	-4 800	-4 841	-4 892	-4 945	-4 989	-5 021	-5 037
Manufacturing services on physical inputs owned by others	—	—	—	—	—	—	—	—	—	—
Maintenance and repair services n.i.e.	-19	-18	-18	-21	-26	-32	-38	-43	-44	-44
Transport	-1 224	-1 204	-1 194	-1 200	-1 217	-1 239	-1 259	-1 275	-1 287	-1 293
Passenger(c)	-510	-512	-514	-519	-527	-536	-543	-547	-547	-544
Freight	-680	-659	-649	-649	-657	-670	-683	-695	-706	-715
Other	-24	-24	-24	-24	-24	-24	-24	-24	-23	-23
Postal and courier services(e)	-10	-9	-8	-8	-8	-9	-9	-10	-10	-10
Travel	-2 111	-2 114	-2 121	-2 138	-2 161	-2 186	-2 210	-2 230	-2 245	-2 251
Other services	-1 445	-1 450	-1 448	-1 442	-1 437	-1 435	-1 437	-1 441	-1 445	-1 449
Memorandum items:										
Tourism related service credits(f)	2 948	2 913	2 871	2 834	2 810	2 801	2 802	2 805	2 808	2 813
Tourism related service debits(f)	-2 621	-2 626	-2 634	-2 656	-2 688	-2 722	-2 753	-2 777	-2 792	-2 795

— nil or rounded to zero (including null cells)

(a) For sign conventions, see paragraph 15 of the Explanatory Notes.

(b) This component is not seasonally adjusted.

(c) Passenger services includes agency fees and commissions for air transport.

(d) In using these seasonally adjusted series, care should be exercised because of the difficulties associated with reliably estimating the seasonal pattern.

(e) Postal and courier services includes indirect commissions for sea transport.

(f) For a more detailed explanation of tourism related services, see paragraph 27 of the Explanatory Notes.

	CREDITS				DEBITS			
	Sep Qtr	Dec Qtr	Mar Qtr	Jun Qtr	Sep Qtr	Dec Qtr	Mar Qtr	Jun Qtr
	2010	2010	2011	2011	2010	2010	2011	2011
	\$m	\$m	\$m	\$m	\$m	\$m	\$m	\$m
Services	13 217	13 172	12 627	12 440	-14 978	-14 741	-13 633	-15 008
Manufacturing services on physical inputs owned by others	49	56	43	49	-3	-1	-1	—
Maintenance and repair services n.i.e.	14	18	8	10	-52	-64	-72	-151
Transport	1 701	1 595	1 667	1 474	-3 951	-3 805	-3 397	-3 770
Passenger(b)	682	727	815	601	-1 558	-1 572	-1 424	-1 707
Freight	106	94	108	116	-2 257	-2 147	-1 880	-1 967
Other	605	560	541	549	-73	-71	-73	-70
Postal and courier services(c)	308	214	203	208	-63	-15	-20	-26
Travel	8 269	8 030	7 844	7 574	-6 829	-6 374	-5 997	-6 668
Business	761	753	900	847	-871	-793	-832	-767
Personal	7 508	7 277	6 944	6 727	-5 958	-5 581	-5 165	-5 901
Education-related	4 638	3 931	3 778	4 084	-317	-189	-226	-206
Other(d)	2 870	3 346	3 166	2 643	-5 641	-5 392	-4 939	-5 695
Construction	23	15	20	40	—	—	—	—
Insurance and pension services	82	79	83	134	-152	-149	-154	-157
Financial services	235	245	259	249	-164	-215	-164	-172
Charges for the use of intellectual property n.i.e.	202	304	177	202	-920	-983	-950	-1 042
Telecommunications, computer and information services	407	470	428	452	-490	-571	-485	-514
Telecommunication services	44	40	35	31	-100	-114	-109	-91
Computer and information services	363	430	393	421	-390	-457	-376	-423
Computer services	302	356	341	365	-316	-383	-311	-352
Information services	20	32	14	17	-19	-21	-17	-20
Other services	41	42	38	39	-55	-53	-48	-51
Other business services	1 825	1 983	1 619	1 772	-1 901	-1 976	-1 749	-1 933
Research and development services	132	168	107	122	-42	-70	-48	-52
Professional and management consulting services	736	851	738	823	-652	-705	-615	-665
Legal, accounting, management consulting, public relations and other professional services	668	740	646	733	-611	-651	-567	-609
Advertising, market research and public opinion polling	68	111	92	90	-41	-54	-48	-56
Technical, trade-related and other business services	957	964	774	827	-1 207	-1 201	-1 086	-1 216
Architectural, engineering and other technical services	474	472	426	462	-661	-634	-668	-735
Waste treatment and de-pollution, agricultural and mining services	94	121	36	34	-146	-204	-73	-83
Operational leasing services	72	53	57	49	-140	-129	-129	-153
Trade-related commission services	203	210	160	179	-57	-53	-55	-61
Other business services n.i.e.	114	108	95	103	-203	-181	-161	-184
Personal, cultural and recreational services	200	167	263	268	-294	-381	-442	-379
Audiovisual and related services	34	27	72	49	-252	-310	-338	-345
Other personal, cultural and recreational services	166	140	191	219	-42	-71	-104	-34
Government goods and services n.i.e.	210	210	216	216	-222	-222	-222	-222
Memorandum items:								
Gross insurance premiums receivable / payable	211	215	203	322	-302	-296	-335	-347
Gross insurance claims payable / receivable	-146	-144	-137	-234	193	188	226	238
Tourism related services(e)	8 951	8 757	8 659	8 175	-8 387	-7 946	-7 421	-8 375

— nil or rounded to zero (including null cells)

(a) For sign conventions, see paragraph 15 of the Explanatory Notes.

(b) Passenger services includes agency fees and commissions for air transport.

(c) Postal and courier services includes indirect commissions for sea transport.

(d) Other personal travel includes health-related travel.

(e) For a more detailed explanation of tourism related services, see paragraph 27 of the Explanatory Notes.

	May	Jun	Jul	Per cent	1 MONTH	
	2011	2011	2011	of total	ENDED JULY	
	\$m	\$m	\$m	merchandise	2010	2011
				exports(b)		
				%	\$m	\$m
MAJOR COMMODITIES (c)						
011 Meat of bovine animals	383	410	397	1.8	418	397
041 Wheat and meslin	574	468	547	2.5	397	547
281 Iron ore and concentrates	5 652	5 553	5 272	24.2	4 849	5 272
283 Copper ores and concentrates	337	539	537	2.5	408	537
285 Aluminium ores and concentrates	500	481	400	1.8	441	400
287 Ores and concentrates of base metals, n.e.s.	286	478	310	1.4	331	310
321 Coal, not agglomerated	3 887	4 309	3 749	17.2	3 860	3 749
333 Crude petroleum oils	896	968	792	3.6	1 198	792
334 Refined petroleum oils	312	213	231	1.1	185	231
343 Natural gas	876	971	1 104	5.1	945	1 104
542 Medicaments	305	278	278	1.3	275	278
682 Copper	352	285	341	1.6	342	341
684 Aluminium	569	330	368	1.7	419	368
971 Gold, non-monetary	1 569	695	1 276	5.9	1 218	1 276

SECTION AND DIVISION OF THE SITC

0	Food and live animals						
00	Live animals (excl. fish, crustaceans, molluscs and aquatic invertebrates)	128	70	75	0.3	99	75
01	Meat and meat preparations	597	603	603	2.8	613	603
02	Dairy products and birds' eggs	179	176	148	0.7	184	148
03	Fish (not marine mammals), crustaceans, molluscs and aquatic invertebrates, and preparations thereof	82	64	98	0.4	87	98
04	Cereals and cereal preparations	826	685	701	3.2	537	701
05	Vegetables and fruit	138	125	174	0.8	153	174
06	Sugars, sugar preparations and honey	30	31	37	0.2	36	37
07	Coffee, tea, cocoa, spices, and manufactures thereof	24	27	25	0.1	27	25
08	Feeding stuff for animals (excl. unmilled cereals)	88	88	96	0.4	104	96
09	Miscellaneous edible products and preparations	80	74	71	0.3	66	71
	<i>Total Food and live animals</i>	<i>2 172</i>	<i>1 942</i>	<i>2 028</i>	<i>9.3</i>	<i>1 904</i>	<i>2 028</i>
1	Beverages and tobacco						
11	Beverages	176	171	181	0.8	188	181
12	Tobacco and tobacco manufactures	10	7	7	—	8	7
	<i>Total Beverages and tobacco</i>	<i>186</i>	<i>178</i>	<i>188</i>	<i>0.9</i>	<i>197</i>	<i>188</i>
2	Crude materials, inedible, except fuels						
21	Hides, skins and furskins, raw	71	66	70	0.3	63	70
22	Oil-seeds and oleaginous fruits	168	72	33	0.2	26	33
23	Crude rubber (incl. synthetic and reclaimed)	1	1	2	—	2	2
24	Cork and wood	102	103	79	0.4	112	79
25	Pulp and waste paper	19	21	21	0.1	22	21
26	Textile fibres and their wastes (not manufactured into yarn or fabric)	505	646	601	2.8	394	601
27	Crude fertilizers (excl. those of Division 56) and crude minerals (excl. coal, petroleum and precious stones)	25	51	30	0.1	26	30
28	Metalliferous ores and metal scrap	7 200	7 659	7 084	32.5	6 412	7 084
29	Crude animal and vegetable materials, n.e.s.	16	17	18	0.1	18	18
	<i>Total Crude materials, inedible, except fuels</i>	<i>8 107</i>	<i>8 636</i>	<i>7 937</i>	<i>36.5</i>	<i>7 076</i>	<i>7 937</i>
3	Mineral fuels, lubricants and related materials						
32	Coal, coke and briquettes	3 890	4 345	3 765	17.3	3 871	3 765
33	Petroleum, petroleum products and related materials	1 208	1 182	1 024	4.7	1 384	1 024
34	Gas, natural and manufactured	958	1 056	1 147	5.3	1 046	1 147
	<i>Total Mineral fuels, lubricants and related materials</i>	<i>6 056</i>	<i>6 584</i>	<i>5 936</i>	<i>27.3</i>	<i>6 301</i>	<i>5 936</i>

— nil or rounded to zero (including null cells)

(a) Some SITC sections and divisions exclude commodities subject to a confidentiality restriction. These are included in Division 98. For more information see paragraph 26 of the Explanatory Notes.

(b) Per cent of total merchandise is calculated for the most recent month.

(c) The 'Major commodities' section lists commodities at the SITC Rev 4 3-digit level which are the most significant (by value) or are of particular interest. Abbreviated descriptors have been used. The list of 'Major commodities' is reviewed annually.

				Per cent of total merchandise exports(b)	1 MONTH ENDED JULY		
	May 2011	Jun 2011	Jul 2011		2010	2011	
	\$m	\$m	\$m	%	\$m	\$m	
SECTION AND DIVISION OF THE SITC							
4	Animal and vegetable oils, fats and waxes						
41	Animal oils and fats	29	39	29	0.1	20	29
42	Fixed vegetable fats and oils, crude, refined or fractionated	15	11	5	—	19	5
43	Fats and oils (processed), waxes and inedible mixtures or preparations, of animal or vegetable origin, n.e.s.	1	1	1	—	1	1
	<i>Total Animal and vegetable oils, fats and waxes</i>	45	52	35	0.2	40	35
5	Chemicals and related products, n.e.s.						
51	Organic chemicals	17	18	15	0.1	14	15
52	Inorganic chemicals	63	31	42	0.2	45	42
53	Dyeing, tanning and colouring materials	69	67	66	0.3	65	66
54	Medicinal and pharmaceutical products	367	338	345	1.6	307	345
55	Essential oils and resinoids and perfume materials, toilet, polishing and cleansing preparations	46	54	48	0.2	52	48
56	Fertilisers (excl. crude)	19	65	60	0.3	58	60
57	Plastics in primary forms	23	26	24	0.1	30	24
58	Plastics in non-primary forms	33	28	33	0.1	47	33
59	Chemical materials and products, n.e.s.	78	76	86	0.4	86	86
	<i>Total Chemicals and related products, n.e.s.</i>	715	702	718	3.3	706	718
6	Manufactured goods classified chiefly by material						
61	Leather, leather manufactures and dressed furskins, n.e.s.	20	16	23	0.1	23	23
62	Rubber manufactures, n.e.s.	18	17	15	0.1	18	15
63	Cork and wood manufactures (excl. furniture)	8	11	12	0.1	17	12
64	Paper, paperboard and articles of paper pulp, of paper or of paperboard	77	74	71	0.3	76	71
65	Textile yarn, fabrics, made-up articles n.e.s. and related products	22	22	25	0.1	24	25
66	Non-metallic mineral manufactures, n.e.s.	46	51	43	0.2	43	43
67	Iron and steel	95	128	105	0.5	77	105
68	Non-ferrous metals	1 110	813	1 018	4.7	979	1 018
69	Manufactures of metals, n.e.s.	85	88	90	0.4	84	90
	<i>Total Manufactured goods classified chiefly by material</i>	1 480	1 221	1 402	6.4	1 342	1 402
7	Machinery and transport equipment						
71	Power generating machinery and equipment	79	82	81	0.4	78	81
72	Machinery specialized for particular industries	159	155	172	0.8	147	172
73	Metal working machinery	9	17	12	0.1	11	12
74	General industrial machinery and equipment, n.e.s. and machine parts, n.e.s.	153	153	169	0.8	157	169
75	Office machines and automatic data processing machines	97	92	113	0.5	126	113
76	Telecommunications and sound recording and reproducing apparatus and equipment	75	70	80	0.4	83	80
77	Electrical machinery, apparatus and appliances, parts (incl. non electrical counterparts of electrical domestic equip)	127	118	133	0.6	148	133
78	Road vehicles (incl. air-cushion vehicles)	189	236	233	1.1	233	233
79	Transport equipment (excl. road vehicles)	222	97	111	0.5	74	111
	<i>Total Machinery and transport equipment</i>	1 110	1 020	1 104	5.1	1 058	1 104

— nil or rounded to zero (including null cells)

(b) Per cent of total merchandise is calculated for the most recent month.

(a) Some SITC sections and divisions exclude commodities subject to a confidentiality restriction. These are included in Division 98. For more information see paragraph 26 of the Explanatory Notes.

				Per cent of total merchandise exports(b)	1 MONTH ENDED JULY	
	May	Jun	Jul		
	2011	2011	2011		2010	2011
	\$m	\$m	\$m	%	\$m	\$m
SECTION AND DIVISION OF THE SITC						
8	Miscellaneous manufactured articles					
81	Prefabricated buildings and sanitary, plumbing, heating and lighting fixtures and fittings, n.e.s.	11	9	10	—	9 10
82	Furniture and parts thereof; bedding, mattresses, mattress supports, cushions and similar stuffed furnishings	7	7	8	—	7 8
83	Travel goods, handbags and similar containers	2	2	2	—	3 2
84	Articles of apparel and clothing accessories	18	16	19	0.1	20 19
85	Footwear	3	4	4	—	3 4
87	Professional, scientific and controlling instruments and apparatus, n.e.s.	169	156	172	0.8	168 172
88	Photographic apparatus, equipment and supplies and optical goods, n.e.s., watches and clocks	19	21	21	0.1	23 21
89	Miscellaneous manufactured articles, n.e.s.	170	191	210	1.0	169 210
	<i>Total Miscellaneous manufactured articles</i>	398	407	445	2.0	401 445
9	Commodities and transactions not classified elsewhere in the SITC					
93	Special transactions and commodities not classified according to kind	121	106	138	0.6	126 138
95	Gold coin whether or not legal tender, and other coin being legal tender	53	31	46	0.2	23 46
96	Coin (excl. gold coin) not being legal tender	—	—	—	—	—
97	Gold, non-monetary (excl. gold ores and concentrates)	1 569	695	1 276	5.9	1 218 1 276
98	Combined confidential items excl. some of SITC 280 (exports only) and some of SITCs 510 and 520 (imports only)	545	473	520	2.4	716 520
	<i>Commodities and transactions not classified elsewhere in the SITC</i>	2 287	1 306	1 981	9.1	2 084 1 981
	Total merchandise exports	22 557	22 047	21 775	100.0	21 110 21 775
	Balance of Payments Adjustments	37	170	575	. .	164 575
	Goods Credits (exports) on a Balance of Payments Basis	22 594	22 217	22 350	. .	21 274 22 350

. . not applicable
 — nil or rounded to zero (including null cells)

(a) Some SITC sections and divisions exclude commodities subject to a confidentiality restriction. These are included in Division 98. For more information see paragraph 26 of the Explanatory Notes.
 (b) Per cent of total merchandise is calculated for the most recent month.

	May	Jun	Jul	Per cent	1 MONTH	
	2011	2011	2011	of total	ENDED JULY	
	\$m	\$m	\$m	merchandise	2010	2011
				imports(b)		
				%	\$m	\$m
MAJOR COMMODITIES (c)						
333 Crude petroleum oils	1 720	2 149	1 581	8.0	1 439	1 581
334 Refined petroleum oils	1 228	1 142	1 184	6.0	825	1 184
542 Medicaments	728	642	795	4.0	705	795
723 Civil engineering and contractors' plant and equipment	301	311	388	2.0	303	388
752 Automatic data processing machines	569	624	590	3.0	629	590
761 Televisions, monitors and projectors	220	218	179	0.9	265	179
764 Telecommunications equipment	609	695	654	3.3	579	654
781 Motor cars for the transport of persons	1 008	1 235	1 388	7.0	1 358	1 388
782 Motor vehicles for the transport of goods	410	465	611	3.1	457	611
784 Parts and accessories of the motor vehicles	213	210	228	1.2	227	228
821 Furniture, bedding, mattresses and supports, and stuffed furnishings	213	215	221	1.1	237	221
874 Measuring, checking, analysing and controlling instruments and apparatus n.e.s.	221	231	212	1.1	226	212
971 Gold, non-monetary	510	390	543	2.8	346	543
SECTION AND DIVISION OF THE SITC						
0 Food and live animals						
00 Live animals other than fish, crustaceans, molluscs and aquatic invertebrates	6	9	5	—	7	5
01 Meat and meat preparations	47	48	51	0.3	52	51
02 Dairy products and birds' eggs	53	54	55	0.3	58	55
03 Fish (not marine mammals), crustaceans, molluscs and aquatic invertebrates, and preparations thereof	97	101	90	0.5	101	90
04 Cereals and cereal preparations	62	63	63	0.3	75	63
05 Vegetables and fruit	133	145	141	0.7	138	141
06 Sugars, sugar preparations and honey	21	34	22	0.1	23	22
07 Coffee, tea, cocoa, spices, and manufactures thereof	99	107	105	0.5	106	105
08 Feeding stuff for animals (excl. unmilled cereals)	55	53	27	0.1	43	27
09 Miscellaneous edible products and preparations	141	124	127	0.6	149	127
<i>Total Food and live animals</i>	715	738	687	3.5	753	687
1 Beverages and tobacco						
11 Beverages	111	92	117	0.6	111	117
12 Tobacco and tobacco manufactures	29	20	16	0.1	24	16
<i>Total Beverages and tobacco</i>	139	112	133	0.7	135	133
2 Crude materials, inedible, except fuels						
21 Hides, skins and furskins, raw	—	—	—	—	—	—
22 Oil-seeds and oleaginous fruits	4	3	2	—	4	2
23 Crude rubber (incl. synthetic and reclaimed)	12	12	9	—	12	9
24 Cork and wood	53	47	48	0.2	62	48
25 Pulp and waste paper	15	14	17	0.1	22	17
26 Textile fibres and their wastes (not manufactured into yarn or fabric)	11	9	10	—	10	10
27 Crude fertilizers (excl. those of Division 56) and crude minerals (excl. coal, petroleum and precious stones)	25	31	15	0.1	28	15
28 Metalliferous ores and metal scrap	137	84	163	0.8	95	163
29 Crude animal and vegetable materials, n.e.s.	25	24	25	0.1	25	25
<i>Total Crude materials, inedible, except fuels</i>	280	224	288	1.5	258	288
3 Mineral fuels, lubricants and related materials						
32 Coal, coke and briquettes	5	4	9	—	1	9
33 Petroleum, petroleum products and related materials	3 001	3 348	2 825	14.3	2 327	2 825
34 Gas, natural and manufactured	169	151	224	1.1	236	224
<i>Total Mineral fuels, lubricants and related materials</i>	3 175	3 503	3 058	15.5	2 565	3 058

— nil or rounded to zero (including null cells)

(a) Some SITC sections and divisions exclude commodities subject to a confidentiality restriction. These are included in Division 98. For more information see paragraph 26 of the Explanatory Notes.

(b) Per cent of total merchandise is calculated for the most recent month.

(c) The 'Major commodities' section lists commodities at the SITC Rev 4 3-digit level which are the most significant (by value) or are of particular interest. Abbreviated descriptors have been used. The list of 'Major commodities' is reviewed annually.

				Per cent of total merchandise imports(b)	1 MONTH ENDED JULY	
	May 2011	Jun 2011	Jul 2011		2010	2011
	\$m	\$m	\$m	%	\$m	\$m
SECTION AND DIVISION OF THE SITC						
4	Animal and vegetable oils, fats and waxes					
41	Animal oils and fats	2	3	2	—	2 2
42	Fixed vegetable fats and oils, crude, refined or fractionated	53	33	30	0.2	55 30
43	Fats and oils (processed), waxes and inedible mixtures or preparations, of animal or vegetable n.e.s.	5	4	5	—	5 5
	<i>Total Animal and vegetable oils, fats and waxes</i>	60	40	37	0.2	62 37
5	Chemicals and related products, nes					
51	Organic chemicals	231	239	195	1.0	319 195
52	Inorganic chemicals	115	100	150	0.8	108 150
53	Dyeing, tanning and colouring materials	51	57	51	0.3	56 51
54	Medicinal and pharmaceutical products	914	830	982	5.0	855 982
55	Essential oils and resinoids and perfume materials; toilet, polishing and cleansing preparations	155	150	146	0.7	156 146
56	Fertilisers (excl. crude)	97	102	135	0.7	64 135
57	Plastics in primary forms	131	124	123	0.6	142 123
58	Plastics in non-primary forms	121	109	106	0.5	125 106
59	Chemical materials and products, n.e.s.	172	186	151	0.8	187 151
	<i>Total Chemicals and related products, n.e.s.</i>	1 988	1 898	2 040	10.3	2 011 2 040
6	Manufactured goods classified chiefly by material					
61	Leather, leather manufactures, and dressed furskins, n.e.s.	13	13	11	0.1	14 11
62	Rubber manufactures, n.e.s.	287	300	304	1.5	257 304
63	Cork and wood manufactures (excl. furniture)	63	59	61	0.3	62 61
64	Paper, paperboard and articles of paper pulp, of paper or of paperboard	201	211	214	1.1	255 214
65	Textile yarn, fabrics, made-up articles n.e.s., and related products	207	192	194	1.0	214 194
66	Non-metallic mineral manufactures, n.e.s.	195	190	179	0.9	211 179
67	Iron and steel	286	344	274	1.4	415 274
68	Non-ferrous metals	262	270	438	2.2	229 438
69	Manufactures of metals, n.e.s.	481	434	434	2.2	477 434
	<i>Total Manufactured goods classified chiefly by material</i>	1 995	2 014	2 107	10.7	2 134 2 107
7	Machinery and transport equipment					
71	Power generating machinery and equipment	402	347	373	1.9	352 373
72	Machinery specialized for particular industries	627	662	726	3.7	665 726
73	Metal working machinery	62	55	55	0.3	59 55
74	General industrial machinery and equipment, n.e.s. and machine parts, n.e.s.	804	779	864	4.4	863 864
75	Office machines and automatic data processing machines	794	888	822	4.2	908 822
76	Telecommunications and sound recording and reproducing apparatus and equipment	893	992	898	4.6	928 898
77	Electrical machinery, apparatus, appliances, parts (incl. non-elec. counterparts of electrical domestic equip)	1 038	1 039	876	4.4	945 876
78	Road vehicles (incl. air-cushion vehicles)	1 745	2 031	2 367	12.0	2 196 2 367
79	Transport equipment (excl. road vehicles)	218	108	1 202	6.1	314 1 202
	<i>Total Machinery and transport equipment</i>	6 582	6 900	8 184	41.5	7 230 8 184

— nil or rounded to zero (including null cells)

(b) Per cent of total merchandise is calculated for the most recent month.

(a) Some SITC sections and divisions exclude commodities subject to a confidentiality restriction. These are included in Division 98. For more information see paragraph 26 of the Explanatory Notes.

				Per cent of total merchandise imports(b)	1 MONTH ENDED JULY	
	May	Jun	Jul		
	2011	2011	2011		2010	2011
	\$m	\$m	\$m	%	\$m	\$m
SECTION AND DIVISION OF THE SITC						
8	Miscellaneous manufactured articles					
81	Prefabricated buildings; sanitary, plumbing, heating and lighting fixtures and fittings, n.e.s.	80	92	81	0.4	80 81
82	Furniture, parts thereof; bedding, mattresses, mattress supports, cushions and similar stuffed furnishings	213	215	221	1.1	237 221
83	Travel goods, handbags and similar containers	60	62	61	0.3	67 61
84	Articles of apparel and clothing accessories	411	430	460	2.3	489 460
85	Footwear	81	87	108	0.6	131 108
87	Professional, scientific and controlling instruments and apparatus, n.e.s.	412	406	389	2.0	407 389
88	Photographic apparatus, equipment and supplies and optical goods, n.e.s., watches and clocks	105	109	112	0.6	120 112
89	Miscellaneous manufactured articles, n.e.s.	819	828	792	4.0	826 792
	<i>Total Miscellaneous manufactured articles</i>	<i>2 179</i>	<i>2 229</i>	<i>2 224</i>	<i>11.3</i>	<i>2 357 2 224</i>
9	Commodities and transactions not classified elsewhere in the SITC					
93	Special transactions and commodities not classified according to kind	4	2	3	—	3 3
95	Gold coin whether or not legal tender, and other coin being legal tender	1	1	2	—	1 2
96	Coin (excl. gold coin) not being legal tender	—	—	1	—	— 1
97	Gold, non-monetary (excl. gold ores and concentrates)	510	390	543	2.8	346 543
98	Combined confidential items excl. some of SITC 280 (exports only) and some of SITCs 510 and 520 (imports only)	415	346	401	2.0	896 401
	<i>Total Commodities and transactions not classified elsewhere in the SITC</i>	<i>930</i>	<i>740</i>	<i>950</i>	<i>4.8</i>	<i>1 246 950</i>
	Total merchandise imports	18 043	18 398	19 708	100.0	18 749 19 708
	Balance of Payments Adjustments	337	805	-407	. .	280 -407
	Goods Debits (imports) on a Balance of Payments Basis	18 380	19 203	19 301	. .	19 029 19 301

. . not applicable
 — nil or rounded to zero (including null cells)

- (a) Some SITC sections and divisions exclude commodities subject to a confidentiality restriction. These are included in Division 98. For more information see paragraph 26 of the Explanatory Notes.
 (b) Per cent of total merchandise is calculated for the most recent month.

	EXPORTS				IMPORTS (b)				BALANCE OF MERCHANDISE TRADE	
	2010-11	Jul 2011	1 month ended	1 month ended	2010-11	Jul 2011	1 Month Ended	1 Month Ended	2010-11	1 Month Ended July 2011
			July 2010	July 2011			July 2010	July 2011		
	\$m	\$m	\$m	\$m	\$m	\$m	\$m	\$m		
Belgium	1 330	65	116	65	1 644	108	146	108	-315	-43
Brazil	1 518	210	233	210	882	53	56	53	636	157
Canada	1 296	103	109	103	1 762	149	189	149	-466	-46
China	64 835	5 561	5 225	5 561	41 109	3 234	3 519	3 234	23 726	2 326
Denmark	153	12	12	12	941	71	81	71	-787	-58
Egypt(c)	593	75	53	75	39	14	2	14	554	61
Fiji	300	29	31	29	187	12	19	12	113	16
Finland	226	66	15	66	862	79	65	79	-637	-13
France	1 125	78	79	78	3 799	300	304	300	-2 674	-222
Germany	2 115	158	134	158	10 246	977	905	977	-8 131	-819
Hong Kong (SAR of China)	3 259	252	203	252	1 153	94	108	94	2 106	158
India	15 742	846	1 266	846	2 083	139	163	139	13 659	707
Indonesia	4 780	654	453	654	5 755	355	519	355	-975	298
Iran	157	6	7	6	121	2	4	2	36	3
Iraq	327	58	1	58	—	—	—	—	327	58
Ireland	123	7	15	7	2 177	218	226	218	-2 054	-210
Israel	227	28	17	28	608	47	53	47	-380	-19
Italy	1 272	106	90	106	4 846	412	445	412	-3 574	-306
Japan	46 880	4 472	4 233	4 472	16 685	1 791	1 567	1 791	30 194	2 681
Korea, Republic of	22 543	1 805	2 113	1 805	6 984	556	654	556	15 560	1 249
Kuwait	617	36	41	36	317	36	—	36	301	—
Malaysia	4 064	359	299	359	8 815	550	914	550	-4 750	-191
Mexico	888	68	50	68	1 592	168	147	168	-705	-100
Netherlands	3 015	218	252	218	1 386	134	100	134	1 629	85
New Zealand	7 686	659	698	659	7 378	625	616	625	308	35
Pakistan	382	25	24	25	175	13	13	13	207	12
Papua New Guinea	2 215	196	177	196	3 474	239	251	239	-1 260	-43
Philippines	1 483	121	120	121	442	36	46	36	1 041	84
Saudi Arabia	1 502	114	133	114	369	27	14	27	1 132	87
Singapore	5 443	803	581	803	11 410	2 167	862	2 167	-5 967	-1 363
South Africa	1 615	175	121	175	1 006	68	93	68	610	107
Spain	861	54	77	54	1 702	171	160	171	-841	-117
Sweden	496	24	34	24	2 315	191	184	191	-1 819	-167
Switzerland	410	75	33	75	2 515	223	200	223	-2 105	-148
Taiwan	9 114	756	827	756	3 616	327	301	327	5 498	429
Thailand	6 955	422	811	422	9 117	855	783	855	-2 163	-433
Turkey	427	78	19	78	485	33	33	33	-58	45
United Arab Emirates	2 198	196	200	196	3 129	275	182	275	-932	-79
United Kingdom	6 581	878	409	878	5 985	661	489	661	596	216
United States of America	9 071	951	850	951	23 229	2 147	1 875	2 147	-14 157	-1 196
Viet Nam	1 802	112	130	112	2 667	233	227	233	-866	-121
Other Countries(b)	9 795	862	819	862	21 146	1 915	2 236	1 915	-11 352	-1 053
Total	245 427	21 775	21 110	21 775	214 160	19 708	18 749	19 708	31 267	2 067
APEC	193 762	17 408	16 983	17 408	148 535	13 955	12 839	13 955	45 227	3 453
ASEAN	24 693	2 487	2 408	2 487	39 389	4 301	3 435	4 301	-14 697	-1 814
Developing Countries	155 265	13 172	13 388	13 172	110 216	10 227	9 305	10 227	45 048	2 945
Least Developed Countries	2 284	214	254	214	378	34	23	34	1 906	180
European Union(d)	17 755	1 692	1 259	1 692	38 515	3 546	3 337	3 546	-20 761	-1 854
OECD	107 498	9 976	9 413	9 976	101 739	9 441	8 961	9 441	5 759	535

— nil or rounded to zero (including null cells)

(a) See Time series spreadsheets for details of all countries.

(b) From September 2008 imports data with confidentiality restrictions 'no commodity details' or 'no value details' are included in Other countries.

(c) Exports of Alumina to Egypt are excluded from country total and included in the 'Other Countries' category.

(d) The European Union includes 27 member countries for all periods.

	2010-11	Jul 2011	1 MONTH ENDED JULY	
			2010	2011
	\$m	\$m	\$m	\$m
EXPORTS (a)				
New South Wales	36 351	3 457	3 077	3 457
Victoria	19 640	1 693	1 688	1 693
Queensland	49 195	4 445	4 517	4 445
South Australia	11 195	1 079	878	1 079
Western Australia	112 065	9 763	9 601	9 763
Tasmania	3 173	240	261	240
Northern Territory	5 298	369	437	369
Australian Capital Territory	3	—	—	—
State not available for publication(b)	446	64	25	64
Re-exports	8 061	665	626	665
Total	245 427	21 775	21 110	21 775
IMPORTS				
New South Wales	81 488	6 815	7 178	6 815
Victoria	56 813	4 623	4 973	4 623
Queensland	33 083	3 212	2 738	3 212
South Australia	6 529	617	551	617
Western Australia	25 956	3 714	2 023	3 714
Tasmania	637	36	39	36
Northern Territory	3 691	289	350	289
Australian Capital Territory	7	—	—	—
State not available for publication(c)	5 956	401	896	401
Total	214 160	19 708	18 749	19 708

— nil or rounded to zero (including null cells)

(a) State in which the final stage of production or manufacture occurs.

(b) Exports of Alumina to Bahrain, Egypt and Iceland are excluded from the state totals and included in 'State not available for publication'.

(c) From September 2008 imports data with confidentiality restrictions 'no commodity details' or 'no value details' are included in State not available for publication.

PERIOD AVERAGE EXCHANGE RATES(a), Per Australian dollar

<i>Period</i>	<i>United States dollar</i>	<i>UK pound sterling</i>	<i>Euro</i>	<i>Japanese yen</i>	<i>Special Drawing Right</i>	<i>Trade-weighted index of value of the A\$(b)</i>
FINANCIAL YEAR						
2008-09	0.7456	0.4621	0.5414	73.99	0.4869	60.2
2009-10	0.8830	0.5590	0.6362	80.77	0.5710	68.9
2010-11	0.9891	0.6213	0.7248	82.10	0.6346	74.0
MONTHS						
2010						
May	0.8717	0.5942	0.6928	80.38	0.5883	68.9
June	0.8529	0.5777	0.6976	77.48	0.5808	67.7
July	0.8743	0.5725	0.6852	76.63	0.5821	68.2
August	0.9000	0.5747	0.6976	76.87	0.5928	69.5
September	0.9358	0.6010	0.7169	78.99	0.6138	71.5
October	0.9812	0.6190	0.7060	80.26	0.6251	73.2
November	0.9902	0.6198	0.7239	81.61	0.6338	74.0
December	0.9909	0.6347	0.7497	82.58	0.6454	74.7
2011						
January	0.9941	0.6305	0.7457	82.16	0.6434	74.3
February	1.0086	0.6252	0.7383	83.29	0.6457	75.1
March	1.0100	0.6250	0.7217	82.60	0.6394	74.8
April	1.0554	0.6458	0.7311	88.09	0.6616	77.4
May	1.0688	0.6537	0.7448	86.75	0.6687	77.9
June	1.0603	0.6535	0.7368	85.35	0.6631	77.0
July	1.0766	0.6674	0.7532	85.52	0.6749	77.7

(a) These exchange rates and the trade-weighted index are derived using rates provided by the Reserve Bank of Australia in respect of each trading day.

(b) May 1970 = 100. The Trade-weighted index is reweighted annually on 1 October and on special occasions as required.

	2008-09	2009-10	2010-11	Jan 2011	Feb 2011	Mar 2011	Apr 2011	May 2011	Jun 2011
	\$m	\$m	\$m	\$m	\$m	\$m	\$m	\$m	\$m
BALANCE									
On goods and services	—	-510	-1 572	-199	-198	-198	-212	-213	-212
CREDITS									
Total goods and services	—	—	—	—	—	—	—	—	—
<i>Total goods</i>	—	—	—	—	—	—	—	—	—
Rural goods	—	—	—	—	—	—	—	—	—
Non-rural goods	—	—	—	—	—	—	—	—	—
Net exports of goods under merchandising	—	—	—	—	—	—	—	—	—
Non-monetary gold	—	—	—	—	—	—	—	—	—
<i>Total services</i>	—	—	—	—	—	—	—	—	—
DEBITS									
Total goods and services	—	-510	-1 572	-199	-198	-198	-212	-213	-212
<i>Total goods</i>	—	-510	-1 572	-199	-198	-198	-212	-213	-212
Consumption goods	—	—	—	—	—	—	—	—	—
Capital goods	—	-510	-1 572	-199	-198	-198	-212	-213	-212
Intermediate and other merchandise goods	—	—	—	—	—	—	—	—	—
Non-monetary gold	—	—	—	—	—	—	—	—	—
<i>Total services</i>	—	—	—	—	—	—	—	—	—

— nil or rounded to zero (including null cells)

(a) This table is presented consistent with BPM6 sign conventions. This means for the balance on goods and services a negative revision indicates a decrease in a surplus or an increase in a deficit. For debits a negative revision indicates an increase in debits while a positive revision indicates a decrease in debits.

EXPLANATORY NOTES

INTRODUCTION

1 This publication presents preliminary estimates of Australia's international trade in goods and services on a balance of payments basis (tables 1–11 and 17) and merchandise import and export statistics on a recorded trade basis (tables 12–15). In addition, table 16 Exchange rates and trade-weighted indexes are derived by using exchange rates and indexes provided by the Reserve Bank of Australia.

2 Merchandise trade statistics on a recorded trade basis are compiled from information submitted by exporters and importers or their agents to the Australian Customs and Border Protection Service (Customs and Border Protection). Adjustments for coverage, timing and valuation are made to recorded trade data to convert them to a balance of payments basis. The services data are sourced from the quarterly Survey of International Trade in Services and a range of administrative data and indicator series.

3 More comprehensive quarterly estimates of Australia's trade in goods and services, together with comprehensive details of Australia's balance of payments are included in the quarterly publication, *Balance of Payments and International Investment Position, Australia* (cat. no. 5302.0). Detailed monthly statistics on merchandise trade are available in Time Series Spreadsheets on the ABS website or by subscription to tailored services. More information on the *International Trade in Services by Country, by State and by Detailed Services Category* are available on a financial year basis (cat. no. 5368.0.55.003) following the September issue of this publication and calendar year basis (cat. no. 5368.0.55.004) following the March issue of this publication.

CONCEPTS, SOURCES AND METHODS

4 The conceptual framework used in compiling Australia's merchandise trade statistics can be found in *International Merchandise Trade, Australia: Concepts, Sources and Methods, 2001* (cat. no. 5489.0).

5 The conceptual framework used in compiling Australia's balance of payments statistics is based on the International Monetary Fund's *Balance of Payments and International Investment Position Manual, Sixth Edition* (BPM6). Descriptions of the underlying concepts and structure of the balance of payments and the sources, methods and terms used in compiling estimates are presented in the publication *Balance of Payments and International Investment Position, Australia: Concepts, Sources and Methods, 1998* (cat. no. 5331.0). This version reflects the international standards prior to BPM6 and is currently being revised. The first part of the revised document was released on 8 March 2011, featuring only the Goods Account. Other components will be released as they become available. Further information on the key changes introduced with BPM6 can be found in the *Information paper: Implementation of new international statistical standards in the ABS National and International Accounts, September 2009* (cat. no. 5310.0.55.002).

6 To bring merchandise trade statistics on a recorded trade basis to a balance of payments basis, timing adjustments are made to ensure that the transaction is recorded in the period in which ownership changed, rather than in the period in which the transaction was recorded by Customs and Border Protection or the period in which the goods arrived in/departed from an Australian port. Adjustments are also made to account for the change of ownership of goods not included in merchandise trade statistics. Chapter 6 of cat. no. 5331.0 provides more detail on the relationship between statistics on international merchandise trade on a recorded trade basis and on a balance of payments basis.

7 Recorded trade exports data presented for recent months in tables 12–15 of this publication are based on information initially reported by exporters to Customs and Border Protection. At the time of initial reporting to Customs and Border Protection the final prices may not be known for some commodities. Therefore, the information recorded for recent months for commodities like iron ore and coal can include a variety of prices including previous or current contract prices and the prevailing spot prices.

EXPLANATORY NOTES *continued*

CONCEPTS, SOURCES AND METHODS *continued*

Newly negotiated contract prices may not be fully reflected in the data first reported to Customs and Border Protection, and to compensate for this, the balance of payments series may reflect adjusted price levels.

8 The Concepts, Sources and Methods publications and information papers are available to download for free from the ABS website. Select *Statistics*, then select *By Catalogue Number*, and then the catalogue numbers as above.

CLASSIFICATIONS

9 The merchandise trade data on a recorded trade basis are presented using the following commodity classifications:

- the Harmonized System 2007 (available on request)
- the Standard International Trade Classification (SITC Revision 4)
- the Classification by Broad Economic Categories (BEC)
- the industry classification: Australian and New Zealand Standard Industrial Classification, 2006 (ANZSIC 06) from July 2005.

10 The Balance of Payments 'goods and services' series are presented according to three classifications with the goods classifications derived from SITC Revision 4 and BEC. The classifications are:

- for goods:
 - the Balance of Payments Commodities for Exports (BoPCE)
 - the Balance of Payments Broad Economic Categories (BoPBEC) for Imports
- for services:
 - the Extended Balance of Payments Services Classification (EBOPS).

ACCURACY, RELIABILITY AND REVISIONS

11 While every effort is made to ensure the accuracy and reliability of estimates, most series are subject to revision as more complete and accurate information becomes available. Care should be exercised in the use and interpretation of estimates in this publication. The transactions occurring in international trade in goods and services are of many different kinds, and therefore the compilation of trade estimates entails the use of a very wide range of statistical data of varying degrees of accuracy and timeliness. For further information on the monthly services series, see paragraph 25.

12 The revisions are applied differently for merchandise trade and balance of payments series. Each month, merchandise trade data are revised for the previous six months to incorporate latest available data.

13 For the balance of payments 'goods and services' series, in original terms, no revisions are applied in the July, October, January or April issues. This is to ensure the monthly series align with the comparable series in the *Balance of Payments and International Investment Position, Australia* (cat. no. 5302.0). In the September issue revisions can be applied to the four previous financial years. In other issues revisions can be applied to the previous and current financial years to incorporate the latest available survey and administrative data.

14 In seasonally adjusted and trend terms, revisions may occur at any time point but tend to focus on the most recent estimates. Please also refer to paragraphs 17 (seasonal adjustment) and 19 (trend estimates) below.

SIGN CONVENTION

15 In keeping with BPM6 conventions, balance of payments basis credit entries are shown with an implied positive sign and debit items are shown as negative entries. For statistics on a recorded trade basis, both imports and exports are shown without sign. The calculation of percentage changes on balance of payments debit items are made without regard to sign. References to balance of payments debit items in Key Figures, Key Points, and Analysis and Comments are also made without regard to sign.

EXPLANATORY NOTES *continued*

SEASONALLY ADJUSTED AND TREND ESTIMATES

16 The estimates of international trade in goods and services on a balance of payments basis are seasonally adjusted, however the merchandise exports and imports statistics on a recorded trade basis are not. Monthly original estimates are volatile, being subject to calendar-related and large irregular influences. Seasonally adjusted estimates are derived by estimating and removing from the original series systematic calendar related effects, such as seasonal (e.g. Christmas), trading day and moving holiday (e.g. Easter) influences. Seasonal adjustment does not aim to remove the irregular or non-seasonal influences which may be present in any particular month. These irregular influences may reflect both random economic events and difficulties of statistical recording.

17 The seasonally adjusted statistics in this publication use the concurrent seasonal adjustment technique and Autoregressive Integrated Moving Average (ARIMA) modelling to estimate factors for the current and previous months. Under concurrent seasonal adjustment, the estimates of seasonal factors are fine tuned as new or revised original estimates become available each period. The seasonally adjusted estimates are subject to revisions at each reference month as the estimates of seasonal factors are improved.

18 ARIMA modelling relies on the characteristics of the series being analysed to project future period data. ARIMA modelling is used on a case-by-case basis where it results in reduced revisions to seasonally adjusted series when subsequent data becomes available. The projected values are temporary, intermediate values, that are only used internally to improve the estimation of the seasonal factors. The projected data do not affect the original estimates and are discarded at the end of the seasonal adjustment process. The ARIMA model is assessed as part of the annual review and, following the 2010 annual review, 40 of the 46 directly seasonally adjusted trade in goods and services time series use an ARIMA model.

19 The month-to-month movements of the seasonally adjusted estimates may not be reliable indicators of underlying behaviour because they include irregular or non-seasonal movements. Trend estimates reduce the effect of these movements as they are derived by applying a 13-term Henderson moving average to the seasonally adjusted series. The 13-term Henderson moving average (like all Henderson averages) is symmetric, but as the end of a time series is approached, asymmetric forms of the average are applied. While the asymmetric weights enable trend estimates for recent months to be produced, it does result in revisions to the estimates for the most recent six months as additional observations become available. Revisions to trend estimates can also occur because of revisions to the original data and as a result of the re-estimation of the seasonal factors. Trend estimates should be used with caution, especially around the time of unusual influences, until these have been appropriately taken into account.

20 Information papers and articles on time series methods are available on the ABS website:

- for seasonal adjustment methods, see *Information Paper: An Introductory Course on Time Series Analysis, Jan 2005* (cat. no. 1346.0.55.001) and *Time Series Analysis Frequently Asked Questions, 2003* (cat. no. 1346.0.55.002)
- for ARIMA modelling, see *Feature article: Use of ARIMA modelling to reduce revisions* in the October 2004 issue of *Australian Economic Indicators* (cat. no. 1350.0)
- for trend estimates methods, see *Information Paper: A Guide to Interpreting Time Series – Monitoring Trends* (cat. no. 1349.0)
- alternatively contact the Assistant Director, Time Series Analysis on (02) 6252 6345 or e-mail: time.series.analysis@abs.gov.au.

EXPLANATORY NOTES *continued*

ECONOMIC TERRITORY

21 In accordance with BPM6 definitions, Australia's economic territory, on a balance of payments basis, is the area under the effective control of the Australian government. It includes the land area, airspace, territorial waters, including jurisdiction over fishing rights and rights to fuels and minerals. Australian economic territory also includes territorial enclaves in the rest of the world. These are clearly demarcated areas of land, located in other countries and which are owned or rented by the Australian government for diplomatic, military, scientific or other purposes. Specifically, the economic territory of Australia consists of:

- Geographic Australia which includes Cocos (Keeling) Islands and Christmas Island;
- Norfolk Island;
- Australian Antarctic Territory;
- Heard Island and McDonald Islands;
- Territory of Ashmore Reef and Cartier Island;
- Coral Sea Islands;
- Australia's territorial enclaves overseas; and
- the Joint Petroleum Development Area (joint territory between Australia and East Timor (Timor-Leste)).

22 Because of administrative complexities and measurement difficulties, Norfolk Island transactions with the rest of the world will not always be captured in all relevant balance of payments statistics. Most of the transactions involving Norfolk Island are not material to Australia's trade performance and not capturing these transactions will not distort these statistics. However, any significant transactions will be identified and included in the relevant statistics.

COMMODITY BREAKDOWN OF GOODS

23 For details of the classifications used to present goods exports (credits) and imports (debits) on a balance of payments basis, see tables 6.6 and 6.7, respectively, in *Balance of Payments and International Investment Position, Australia: Concepts, Sources and Methods* (cat. no. 5331.0).

24 The recorded trade statistics shown in tables 12 and 13 are classified by the Standard International Trade Classification (SITC). Imports and exports of goods at a more detailed level are available from the time series spreadsheets on the ABS website. All data from July 2005 are presented according to SITC Rev 4 and data prior to July 2005 are presented according to SITC Rev 3. For details refer to the 'Classifications and Standards Update' in the July 2008 issue of this publication.

MONTHLY SERVICES SERIES

25 Monthly indicators for many of the services components that are only surveyed quarterly are not available. Monthly estimates for the freight and other transportation components of services credits in table 9 are derived by dividing the quarterly estimate by three. Freight debits are derived directly from imports data for the reference month as a difference between total merchandise cost, insurance and freight (CIF) and free on board (FOB), adjusted to reflect timing and processing adjustments. For freight credits and other transportation credits and debits, estimates are derived by extrapolating the last quarter's data by an average of movements for the same quarter over the three previous years, and then dividing the estimate by three. Similarly other services estimates are derived by extrapolating the last quarter's data by an average of movements for the same quarter over the previous three years, and then dividing the estimate by three.

CONFIDENTIALITY OF MERCHANDISE TRADE STATISTICS

26 The release of statistics for certain merchandise trade commodities is restricted in order to prevent the identification of the activities of an individual business, where this is requested by the business concerned. These restrictions do not affect the total value of exports and imports, but they can affect statistics at the country, state and commodity levels. Imports data that have the confidentiality restrictions 'No commodity details' or 'No value details' are aggregated into a single confidential commodity code. For data prior to September 2008, these data are added back into the appropriate state total and

EXPLANATORY NOTES *continued*

CONFIDENTIALITY OF MERCHANDISE TRADE STATISTICS *continued*

country total (i.e. these totals show the correct level of trade). From September 2008 these confidential data are not added back. Instead the confidential data are published as 'No country details' in the country totals and 'State not available for publication' in the state totals. Therefore, country and state totals from September 2008 may not represent the actual amount of trade in each country/state but only the trade in commodities without a 'No commodity details' or 'No value details' restriction. For information on the confidentiality restrictions applied to the merchandise trade statistics in this publication, refer to the current issue of *International Merchandise Trade: Confidential Commodities List (CCL)* (cat. no. 5372.0.55.001).

TOURISM RELATED SERVICES

27 The tourism related services memorandum items provide timely indicators of the movements in tourism related activities, not an absolute measure of the level of these activities. The tourism related indicator has been derived by combining total travel services (business, education-related and other personal travel) and passenger transportation services (which includes agency fees and commissions for air transport).

SERVICES BY STATE AND BY PARTNER COUNTRY

28 Annual services data by state, by country and detailed services are released twice yearly. Calendar year data are usually released following the March issue of this publication and financial year data are usually released following the September issue. Refer to time series data under trade in services data cubes for details.

29 Services credits are classified by the state of provision, while services debits are classified by the state of consumption. The state allocations for transportation, travel, postal and courier, and telecommunication services are based on a number of indicators including merchandise trade statistics by state, overseas passenger arrivals and departures by state of clearance and data provided by the Department of Immigration and Citizenship. The allocation for other services (about 25% of all trade in services) is primarily based on the location of the business reporting the information, which serves as a proxy for the state of provision/consumption of that service. The data should be used with care but are considered suitable for analysis over time.

30 A comprehensive explanation of the data sources used and the methodology applied in the compilation of partner country statistics is provided in Chapter 17 of *Balance of Payments and International Investment Position, Australia: Concepts, Sources and Methods* (cat. no. 5331.0). Approximately 4% of total services credits and 5% of total services debits for both 2008–09 and 2009–10 were either confidential, or unable to be allocated to individual countries.

ABS DATA AVAILABLE

31 More detailed balance of payments and recorded merchandise trade data, including forward seasonal factors are available as time series spreadsheets or data cubes from the ABS website. Merchandise trade data by commodity, country and state that are not on the ABS website may be available on request. Inquiries should be made to the National Information and Referral Service as shown on the back of this publication.

RELATED PRODUCTS AND PUBLICATIONS

32 Users may also wish to refer to the following publications which can be downloaded free of charge from the ABS website by using the 'Statistics' tab and selecting the relevant catalogue number:

- *Balance of Payments and International Investment Position, Australia* (cat. no. 5302.0) – issued quarterly
- *International Merchandise Imports, Australia* (cat. no. 5439.0) – issued monthly
- *International Trade Price Indexes, Australia* (cat. no. 6457.0) – issued quarterly
- *Balance of Payments and International Investment Position, Australia: Concepts, Sources and Methods* (cat. no. 5331.0)
- *Information Paper: Quality of Australian Balance of Payments Statistics* (cat. no. 5342.0)

EXPLANATORY NOTES *continued*

RELATED PRODUCTS AND PUBLICATIONS *continued*

- *International Merchandise Trade, Australia: Concepts, Sources and Methods* (cat. no. 5489.0)
- *A Guide to Australian Balance of Payments and International Investment Position Statistics* (cat. no. 5362.0.55.001).

33 Current publications and other products released by the ABS are available from the 'Statistics' tab on the ABS website. The ABS also issues a daily *Release Advice* on the website which details products to be released in the week ahead. A *foreign trade theme page* and a *balance of payments theme page* are available on the ABS website. Select *Topics @ a Glance – Economy – Foreign Trade* or *Balance of Payments*. This page provides direct links to all foreign trade and balance of payments related data and publications, recent changes and forthcoming events, links to relevant websites and a range of other information about the Australian International Accounts.

ROUNDING

34 Where figures have been rounded, discrepancies may occur between sums of the component items and totals. Percentage movements are calculated from data at the level of precision presented in this publication (i.e. \$m) except for international merchandise trade tables.

ABBREVIATIONS

\$b	billion (thousand million) dollars
\$m	million dollars
ABS	Australian Bureau of Statistics
ANZSIC	Australian and New Zealand Standard Industrial Classification
APEC	Asia Pacific Economic Co-operation
ASEAN	Association of South-East Asian Nations
BEC	Classification by Broad Economic Categories
BoPBEC	Balance of Payments Broad Economic Categories
EMS	Environmental Management Survey
f.o.b.	free on board
n.e.s.	not elsewhere specified
n.i.e.	not included elsewhere
OECD	Organisation for Economic Co-operation and Development
SAR	Special Administrative Region
SITC	Standard International Trade Classification

APPENDIX RELATED ARTICLES

<i>Article</i>	<i>Source (a)</i>	<i>Issue / Release</i>
Investment		
Foreign currency exposure	5308.0	Mar qtr 2009
Foreign ownership of equity	5302.0	Sep qtr 2007
Kangaroo bonds	1301.0	2006
Gross external debt	5302.0	Sep qtr 2003
Balance of payments		
International comparison of balance of payments statistics	(b) 5363.0	1998–99
Merchandise trade		
Characteristics of Australian Exporters, 2009–10	5368.0.55.006	Mar 2011
Export and Import Invoice Currencies, Dec 2009	5368.0	Dec 2009
100 years of international trade statistics	5368.0	Oct 2007
New methodology for deriving counts of Australian exports	5368.0	Feb 2006
Australia's Importers, 2003–04	5368.0	Nov 2004
Australia's Exporters, 2003–04	5368.0	Oct 2004
Foreign ownership of Australian exporters and importers, 2002–03	5496.0.55.001	Jun 2004
Australia's trade with the USA	5368.0	Mar 2004
Major commodities traded by Australia, 1991 to 2000	(b) 5422.0	Dec qtr 2000
Trade in services		
Australian outward finance and insurance foreign affiliate trade, 2009–10	5485.0	Jun 2011
International trade in services by partner country, 2006, preliminary	5368.0	Dec 2006
Changes to International trade in services statistics, August 2006	5368.0	Aug 2006
Changes to International trade in services travel statistics	5368.0	Aug 2005
Finance		
Impact of the farm season on Australian production in 2002–03 and 2003–04	1301.0	2005
Recent trends in construction and first home buyers finance	5609.0	Mar 2002
Household sector data in the financial accounts	5232.0	Mar qtr 2002
Technical information		
Proposed changes to statistical codes in the HTISC, 2012	5368.0.55.016	May 2011
Proposed changes to statistical codes in the AHECC, 2012	5368.0.55.015	Mar 2011
Implementation of new international statistical standards in ABS National and International Accounts, September 2009	5310.0.55.002	Oct 2009
Impact of revised international standards on monthly International Trade in Goods and Services, August 2009	5368.0.55.014	Oct 2009
Estimation of Workers' Remittances based on Balance of Payments and International Investment Position Manual, Sixth Edition, September 2009	5302.0.55.003	Aug 2009
Revisions to international standards in quarterly Balance of Payments and International Investment Position statistics from September 2009, 2009	5302.0.55.002	Jul 2009
Changes to International Trade in Goods Statistics – Countries and Ports, July 2009	5368.0.55.013	Jul 2009
Revisions to international standards in monthly international trade in goods and services statistics from August 2009, 2009	5368.0.55.012	Jun 2009
Changes to International Trade in Goods Industry Statistics, July 2009	5368.0.55.011	Dec 2008
Technical note 1 – Income on debt	5302.0	Jun qtr 2008
Technical note 2 – Use of CDI data	5302.0	Jun qtr 2008
Impact of introducing Revision 4 of the Standard International Trade Classification, 2008	5368.0.55.010	May 2008
Changes to international trade statistics July 2008, 2007 to 2008	5368.0.55.009	Jan 2008
Introduction of revised international standards in ABS economic statistics in 2009, 2007	5310.0.55.001	Sep 2007
Changes on 1 January 2007 to Statistical Codes in the AHECC and the Customs Tariff, 2007	1233.0.55.001	Nov 2006
ABS implementation in January 2007 of revisions to international trade classifications, 2007	5368.0.55.005	Jun 2006
Revised treatment of Goods for Processing in Merchandise Trade and Balance of Payments Statistics	5368.0	May 2006
Impact of Customs and ABS changes on import statistics from October 2005	5439.0	Oct 2005
ABS management of the impact of the implementation of the imports component of the New Customs System	5439.0	Aug 2005
Changes to country and port classifications	5368.0	May 2003
Implementation of New Customs Systems	5368.0	Aug 2004
The effect of customs changes on export statistics	5422.0	Jun qtr 2002
Data confidentiality	5422.0	Dec qtr 1999

- (a) In the ABS website home page, select Statistics; By Catalogue Number; and click on the specified catalogue number and issue. Note: in some instances, a particular issue of the publication can be found in the Past & Future Releases page of the catalogue.
- (b) This article can be found in pdf format by referring to the Downloads page of the specified issue of this publication on the ABS website.

FOR MORE INFORMATION . . .

INTERNET **www.abs.gov.au** the ABS website is the best place for data from our publications and information about the ABS.

INFORMATION AND REFERRAL SERVICE

Our consultants can help you access the full range of information published by the ABS that is available free of charge from our website. Information tailored to your needs can also be requested as a 'user pays' service. Specialists are on hand to help you with analytical or methodological advice.

PHONE 1300 135 070

EMAIL client.services@abs.gov.au

FAX 1300 135 211

POST Client Services, ABS, GPO Box 796, Sydney NSW 2001

FREE ACCESS TO STATISTICS

All statistics on the ABS website can be downloaded free of charge.

WEB ADDRESS www.abs.gov.au