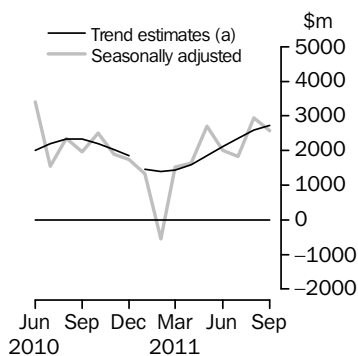


INTERNATIONAL TRADE IN GOODS AND SERVICES

AUSTRALIA

EMBARGO: 11.30AM (CANBERRA TIME) TUES 8 NOV 2011

Balance on Goods and Services



(a) A trend break of \$300m has been applied to January 2011.

KEY FIGURES

	Jul 2011	Aug 2011	Sep 2011	Aug 11 to Sep 11 %
	\$m	\$m	\$m	% change
BALANCE ON GOODS AND SERVICES				
Trend estimates	2 363	2 596	2 718	..
Seasonally adjusted	1 830	2 953	2 564	..
CREDITS (Exports of goods & services)				
Trend estimates	26 882	27 252	27 486	1
Seasonally adjusted	26 130	28 037	27 325	-3
DEBITS (Imports of goods & services)				
Trend estimates	24 519	24 657	24 768	—
Seasonally adjusted	24 300	25 084	24 761	-1

.. not applicable

— nil or rounded to zero (including null cells)

KEY POINTS

BALANCE ON GOODS AND SERVICES

- The trend estimate of the *balance on goods and services* was a surplus of \$2,718m in September 2011, a rise of \$122m on the surplus in August 2011.
- In seasonally adjusted terms, the *balance on goods and services* was a surplus of \$2,564m in September 2011, a fall of \$389m on the surplus in August 2011.

CREDITS (EXPORTS OF GOODS & SERVICES)

- In seasonally adjusted terms, *goods and services credits* fell \$712m (3%) to \$27,325m. *Non-monetary gold* fell \$411m (24%) and *non-rural goods* fell \$295m (2%). *Rural goods* rose \$45m (2%) and *net exports of goods under merchanting* rose \$1m (25%). *Services credits* fell \$52m (1%).

DEBITS (IMPORTS OF GOODS & SERVICES)

- In seasonally adjusted terms, *goods and services debits* fell \$323m (1%) to \$24,761m. *Intermediate and other merchandise goods* fell \$460m (5%) and *consumption goods* fell \$155m (3%). *Capital goods* rose \$302m (6%) and *non-monetary gold* rose \$39m (7%). *Services debits* fell \$47m (1%).

INQUIRIES

For further information contact Selvi Sekhar on Canberra (02) 6252 5540 for Goods, and Lee Taylor on Canberra (02) 6252 6377 for Services.

NOTES

FORTHCOMING ISSUES

<i>ISSUE</i>	<i>RELEASE DATE</i>
October 2011	12 December 2011
November 2011	5 January 2012
December 2011	2 February 2012
January 2012	9 March 2012
February 2012	4 April 2012
March 2012	8 May 2012



REVISIONS

Revisions have been made to incorporate the latest data relating to international merchandise trade and international trade in services:

- on a recorded trade basis, international merchandise exports and imports have been revised back to March 2011
- on a balance of payments basis:
 - goods and services have been revised back to July 2010
 - services have been revised for the periods from July 1984 to June 1994.

Table 17 summarises revisions to goods and services on a balance of payments basis, in original current price terms, since the last issue of this publication. In original terms, the revisions have:

- increased the surplus on goods and services for 2010–11 by \$42m
- decreased the surplus on goods and services for the two months to August 2011 by \$265m.

Seasonally adjusted and trend series have been revised due to the incorporation of the revisions and estimates for the latest month.

VALUE ADJUSTMENTS

Iron ore and coal

- for this issue, no value adjustments have been applied to the 'metal ores and minerals' or 'coal, coke and briquettes' components. All previous adjustments applied to these components have been removed.

Capital expenditure

- the balance of payments goods debits component 'capital goods n.e.s.' includes an estimate of capital expenditure on goods that have changed ownership but have not yet crossed the Customs frontier.

RELATED RELEASES

For related recent and upcoming releases. See page 4 – Related releases.

Brian Pink
Australian Statistician

CONTENTS

page

Related releases	4
Time series data	5

ANALYSIS

Analysis and comments	7
-----------------------	---

TABLES

INTERNATIONAL TRADE IN GOODS AND SERVICES – BALANCE OF PAYMENTS BASIS

1 Goods and services, summary, seasonally adjusted and trend estimates	12
2 Goods and services, summary, original	13
3 Goods credits, original	14
4 Goods debits, original	15
5 Goods credits, seasonally adjusted	16
6 Goods debits, seasonally adjusted	17
7 Goods credits, trend estimates	18
8 Goods debits, trend estimates	19
9 Services, summary, original	20
10 Services, summary, seasonally adjusted and trend estimates	21
11 Services, original, quarterly	22

INTERNATIONAL MERCHANDISE TRADE – RECORDED TRADE BASIS

12 International merchandise exports, by commodity	23
13 International merchandise imports, by commodity	26
14 International merchandise trade, by country and country groups	29
15 International merchandise trade, by state	30

OTHER TABLES

16 Period average exchange rates per Australian dollar	31
17 Summary of revisions, goods and services, original	32

OTHER INFORMATION

Explanatory notes	33
Appendix – Related articles	39

RELATED RELEASES

TRADE IN SERVICES DATA CUBES The data cube *International Trade in Services by Country, by State and by Detailed Services Category, Financial Year, 2010–11* (cat. no. 5368.0.55.003) will be released on 11 November 2011.

AUSTRALIAN HARMONIZED EXPORT COMMODITY CLASSIFICATION The *Australian Harmonized Export Commodity Classification (AHECC) – Electronic Publication, Jan 2012* (cat. no. 1233.0) was released on the ABS website on 22 August 2011. A revised version of this publication will be released on 15 November 2011 to include changes to the following tables:

- Table 2. Key of changes
- Table 3. AHECC Section 01 - Chapter 1 – 5
- Table 16. AHECC Section 14 - Chapter 71
- Table 18. AHECC Section 16 - Chapter 84 – 85
- Table 20. AHECC Section 18 - Chapter 90 – 92
- Table 23. AHECC Section 21 - Chapter 97 – 99
- Table 24. AHECC Complete File (this update will include free standing descriptors).

INFORMATION PAPER: CHANGES TO AHECC AND CUSTOMS TARIFF The *Information Paper: Changes to AHECC and Customs Tariff* (cat. no. 5368.0.55.017) will be released on 8 December 2011. This information paper will provide correspondences between the statistical codes of the AHECC and Customs Tariff, and related classifications used for the dissemination of merchandise trade data as follows:

- Correspondences between Customs Tariff 2011 and 2012
- AHECC Correspondences to Standard International Trade Classification Rev. 4, Broad Economic Category, Australian and New Zealand Standard Industrial Classification 2006; and free standing descriptors
- Customs Tariff Correspondences to Standard International Trade Classification Rev. 4, Broad Economic Category, Australian and New Zealand Standard Industrial Classification 2006, Balance of Payments Broad Economic Category; and free standing descriptors.

The Customs Tariff 2012 is available from the Australian Customs and Border Protection Services website www.customs.gov.au, select *Tariff* then *Working tariff 2012*.

TIME SERIES DATA

TIME SERIES DATA

Tables 1 to 16 of this publication are available free on the ABS website www.abs.gov.au from the 'Downloads' tab of this issue with longer time series. A number of these tables present more detailed breakdowns than included in the publication. A number of additional tables are available free on the ABS website.

Tables with more detailed breakdowns:

11a Services credits: Original - Quarter¹

11b Services debits: Original - Quarter¹

12b Merchandise exports by Standard International Trade Classification (3 digit), FOB Value

13b Merchandise imports by Standard International Trade Classification (3 digit), Customs Value

14a Merchandise exports, Country and Country Groups, FOB Value

14b Merchandise imports, Country and Country Groups, Customs Value

Additional tables:

31 Merchandise exports by Broad Economic Category (BEC)

32a Merchandise exports, Industry (ANZSIC 2006), FOB Value

32b Merchandise exports, Industry (ANZSIC 1993), FOB Value

33 Merchandise imports by Broad Economic Category (BEC)

34 Merchandise imports by Balance of Payments Broad Economic Category (BoPBEC)

35a Merchandise imports, Industry (ANZSIC 2006), Customs Value

35b Merchandise imports, Industry (ANZSIC 1993), Customs Value

36 Merchandise exports, State by Country and Country Groups

37 Merchandise imports, State by Country and Country Groups

91 Monthly seasonal adjustment factors and forward factors for 12 months.

¹ With a one quarter lag for the more detailed breakdowns.

TIME SERIES DATA *continued*

TRADE IN SERVICES DATA CUBES

Trade in services data cubes are usually updated on an annual basis. Calendar year (cat. no. 5368.0.55.004) statistics are updated following the March issue of this publication and financial year (cat. no. 5368.0.55.003) statistics are updated following the September issue of this publication.

The following tables were included in the calendar and financial year data cubes:

- 1 International trade in services, credits, state by year
- 2 International trade in services, credits, year by state
- 3 International trade in services, debits, state by year
- 4 International trade in services, debits, year by state
- 5 International trade in services, credits, year by country and service
- 6 International trade in services, credits, service by year and by country
- 7 International trade in services, debits, year by country and service
- 8 International trade in services, debits, service by year and by country
- 9 International trade in services, credits, year by country and travel service
- 10 International trade in services, debits, year by country and travel service
- 11 International trade in services, credits, education related travel, by educational sector, by type of expenditure by year.

ANALYSIS AND COMMENTS

BALANCE ON GOODS AND SERVICES

The trend estimate of the balance on goods and services was a surplus of \$2,718m in September 2011, a rise of \$122m on the surplus in August 2011.

In seasonally adjusted terms, the balance on goods and services was a surplus of \$2,564m in September 2011, a fall of \$389m on the surplus in August 2011.

The sum of seasonally adjusted balances for the three months to September 2011 was a surplus of \$7,347m, an increase of \$995m on the surplus of \$6,352m for the three months to June 2011. However, if seasonal factors used in compiling the quarterly balance of payments are applied, the September quarter 2011 surplus was \$7,761m, an increase of \$1,530m on the revised June quarter 2011 surplus of \$6,231m. The main goods components contributing to this quarter-on-quarter result were:

- Goods credits
 - metal ores and minerals, rose \$1,833m (8%). In original terms on a recorded trade basis, iron ore and concentrates, rose \$1,757m (11%) primarily on volumes
 - coal, coke and briquettes, rose \$966m (8%). In original terms on a recorded trade basis, coal, not agglomerated, rose \$1,059m (9%) primarily on volumes
 - non-monetary gold, rose \$919m (27%). In original terms on a recorded trade basis, non-monetary gold rose \$717m (22%) on both volumes and prices.
- Goods debits
 - non-industrial transport equipment, rose \$703m (21%). In original terms on a recorded trade basis, passenger motor vehicles, rose \$665m (22%)
 - processed industrial supplies n.e.s., rose \$551m (10%). In original terms on a recorded trade basis, other processed industrial supplies n.e.s, rose \$567m (18%)
 - industrial transport equipment n.e.s., rose \$422m (26%). In original terms on a recorded trade basis, motor vehicles for transporting goods, rose \$538m (42%).

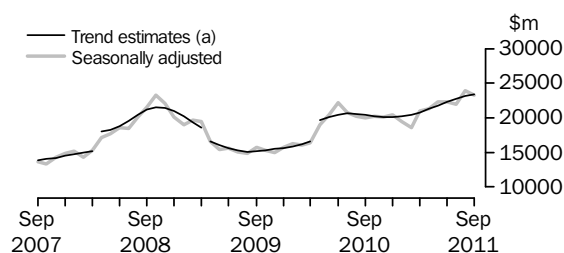
EXPORTS OF GOODS AND SERVICES

Between August 2011 and September 2011 the trend estimate of goods and services credits rose \$234m (1%) to \$27,486m.

In seasonally adjusted terms, goods and services credits fell \$712m (3%) to \$27,325m. Non-monetary gold fell \$411m (24%) and non-rural goods fell \$295m (2%). Rural goods rose \$45m (2%) and net exports of goods under merchanting rose \$1m (25%). Services credits fell \$52m (1%).

Exports of goods

GOODS CREDITS



(a) Trend breaks of \$1,900m to April 2008, \$1,400m to April 2009 and \$2,500m to April 2010 have been applied.

ANALYSIS AND COMMENTS *continued*

Exports of goods *continued*

RURAL GOODS

In trend terms, exports of rural goods rose \$46m (2%) to \$2,986m.

In seasonally adjusted terms, exports of rural goods rose \$45m (2%) to \$3,012m.

The main component contributing to the rise in seasonally adjusted estimates was cereal grains and cereal preparations, up \$100m (15%).

Partly offsetting this rise was the wool and sheepskins component, down \$51m (15%).

NON-RURAL GOODS

In trend terms, exports of non-rural goods rose \$184m (1%) to \$19,034m.

In seasonally adjusted terms, exports of non-rural goods fell \$295m (2%) to \$18,986m.

The main components contributing to the fall in seasonally adjusted estimates were:

- other mineral fuels, down \$162m (7%)
- metal ores and minerals, down \$104m (1%)
- other non-rural, down \$80m (8%).

For price and volume details, see the *Selected commodities* section on page 11.

NET EXPORTS OF GOODS UNDER MERCHANTING

In trend terms, net exports of goods under merchanting rose \$1m (50%) to \$3m.

In seasonally adjusted terms, net exports of goods under merchanting rose \$1m (25%) to \$5m.

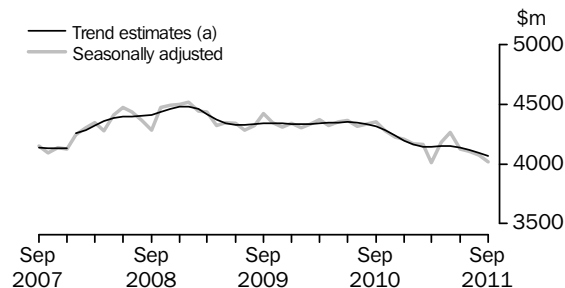
NON-MONETARY GOLD

In trend terms, exports of non-monetary gold rose \$26m (2%) to \$1,397m.

In seasonally adjusted terms, exports of non-monetary gold fell \$411m (24%) to \$1,303m.

Exports of services

SERVICES CREDITS



(a) A trend break of \$100m has been applied to January 2008.

In trend terms, services credits fell \$23m (1%) to \$4,066m.

In seasonally adjusted terms, services credits fell \$52m (1%) to \$4,019m.

The main components contributing to the fall in seasonally adjusted estimates were:

- travel, down \$30m (1%)
- other services, down \$12m (1%).

ANALYSIS AND COMMENTS *continued*

Exports of services continued

In seasonally adjusted terms, tourism related services credits fell \$39m (1%) to \$2,577m.

IMPORTS OF GOODS AND SERVICES

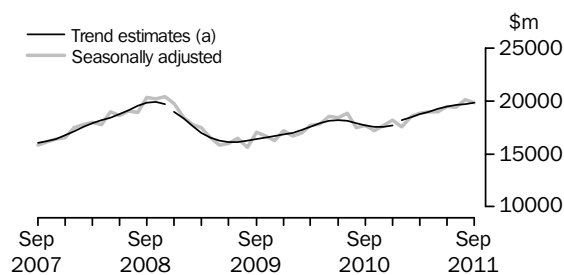
Between August 2011 and September 2011 the trend estimate of goods and services debits rose \$111m to \$24,768m.

In seasonally adjusted terms, goods and services debits fell \$323m (1%) to \$24,761m. Intermediate and other merchandise goods fell \$460m (5%) and consumption goods fell \$155m (3%). Capital goods rose \$302m (6%) and non-monetary gold rose \$39m (7%). Services debits fell \$47m (1%).

Preliminary analysis shows that, in seasonally adjusted terms, goods imports volumes rose 3.9% and the implicit price deflator fell 0.7% during the September quarter 2011. In original terms, the Chain Laspeyres price index rose 0.3% and the implicit price deflator fell 0.2%. The final volume and price outcomes will be published in the September quarter 2011 issue of *Balance of Payments and International Investment Position, Australia* (cat. no. 5302.0).

Imports of goods

GOODS DEBITS



(a) A trend break of \$200m has been applied to December 2008 and a trend break of \$300m has been applied to January 2011.

CONSUMPTION GOODS

In trend terms, imports of consumption goods rose \$13m to \$5,434m.

In seasonally adjusted terms, imports of consumption goods fell \$155m (3%) to \$5,370m.

The main components contributing to the fall in seasonally adjusted estimates were:

- non-industrial transport equipment, down \$88m (7%)
- household electrical items, down \$65m (15%).

CAPITAL GOODS

In trend terms, imports of capital goods rose \$97m (2%) to \$4,852m.

In seasonally adjusted terms, imports of capital goods rose \$302m (6%) to \$5,008m.

The main component contributing to the rise in seasonally adjusted estimates was civil aircraft and confidentialised items, up \$325m (96%).

ANALYSIS AND COMMENTS *continued*

Imports of goods continued

INTERMEDIATE AND OTHER MERCHANDISE GOODS

In trend terms, imports of intermediate and other merchandise goods fell \$49m (1%) to \$8,958m.

In seasonally adjusted terms, imports of intermediate and other merchandise goods fell \$460m (5%) to \$8,868m.

The main components contributing to the fall in the seasonally adjusted estimates were:

- fuels and lubricants, down \$374m (12%) after rising \$298m (10%) between July and August 2011
- processed industrial supplies n.e.s., down \$356m (15%).

Partly offsetting these falls was the other merchandise goods component, up \$194m.

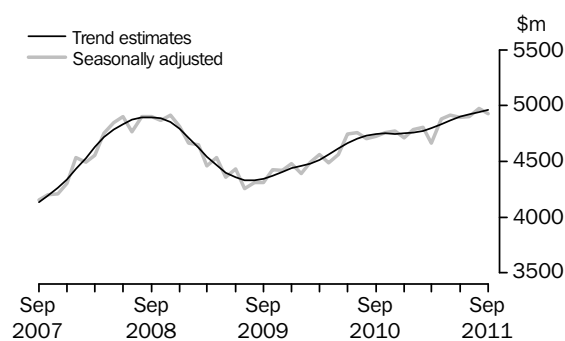
NON-MONETARY GOLD

In trend terms, imports of non-monetary gold rose \$33m (6%) to \$563m.

In seasonally adjusted terms, non-monetary gold rose \$39m (7%) to \$588m.

Imports of services

SERVICES DEBITS



In trend terms, services debits rose \$17m to \$4,960m.

In seasonally adjusted terms, services debits fell \$47m (1%) to \$4,928m.

The main components contributing to the fall in the seasonally adjusted estimates were:

- transport, down \$45m (3%), with freight transport down \$35m (5%)
- maintenance and repair services n.i.e., down \$10m (28%).

In seasonally adjusted terms, tourism related services debits fell \$4m to \$2,762m.

ANALYSIS AND COMMENTS *continued*

Selected commodities

SELECTED COMMODITIES, Unit price and volume analysis: **Recorded Trade Basis** (a)

		CHANGE IN					
		Apr 2011	May 2011	Jun 2011	Jul 2011	Aug 2011	Sep 2011
		%	%	%	%	%	%
IRON ORE							
Lump							
Volumes		-11	8	-3	-8	19	-3
Price		2	4	—	-5	3	2
Fines							
Volumes		-6	8	-2	9	6	-2
Price		—	3	—	-3	2	4
COAL							
Hard coking							
Volumes		-1	10	4	-7	22	-8
Price		9	13	-1	-1	-6	4
Semi-soft							
Volumes		-14	-12	36	-29	23	9
Price		11	13	-3	-2	-4	1
Bituminous (Thermal)							
Volumes		22	-2	19	-2	3	-7
Price		-5	3	4	1	4	—

— nil or rounded to zero (including null cells)

(a) Data in this table are on a revised merchandise trade basis and have excluded adjustment applied to balance of payments series.

On a recorded trade basis, between August and September 2011, large value movements were recorded for the following selected commodities:

- iron ore, fines rose \$84m (2%) with exports to China up \$316m (10%), with volumes up 5% and prices up 4% and Taiwan up \$16m (18%), driven exclusively by volumes
- bituminous (thermal) coal fell \$104m (7%) with exports to Taiwan down \$80m (33%), with volumes down 33% and prices down 1% and China down \$76m (29%), with volumes down 26% and prices down 4%
- hard coking coal fell \$96m (4%) with exports to India down \$121m (20%), with volumes down 25% and prices up 7% and Japan down \$84m (14%), with volumes down 18% and prices up 4%
- semi-soft coal rose \$80m (10%) with exports to China up \$110m and Taiwan up \$23m (27%), with volumes up 37% and prices down 8%.

GOODS AND SERVICES(a), Summary—Seasonally Adjusted and Trend Estimates

	Oct 2010	Nov 2010	Dec 2010	Jan 2011	Feb 2011	Mar 2011	Apr 2011	May 2011	Jun 2011	Jul 2011	Aug 2011	Sep 2011
	\$m	\$m	\$m	\$m	\$m	\$m	\$m	\$m	\$m	\$m	\$m	\$m
SEASONALLY ADJUSTED												
BALANCE												
On goods and services	2 500	1 900	1 741	1 328	-553	1 528	1 636	2 705	2 011	1 830	2 953	2 564
CREDITS												
Total goods and services	24 463	24 372	24 632	23 620	22 805	24 997	25 508	26 555	26 412	26 130	28 037	27 325
Total goods	20 190	20 150	20 423	19 455	18 646	20 986	21 330	22 294	22 288	22 023	23 966	23 306
Rural goods(b)	2 445	2 359	2 411	2 320	2 630	2 572	2 722	2 804	2 877	2 812	2 967	3 012
Non-rural goods(b)	16 170	16 536	16 881	15 577	15 147	17 050	17 529	17 871	18 680	17 884	19 281	18 986
Net exports of goods under merchandise(c)	25	25	25	23	23	21	2	2	3	4	4	5
Non-monetary gold(c)	1 550	1 229	1 105	1 534	846	1 343	1 076	1 617	728	1 323	1 714	1 303
Total services	4 273	4 223	4 209	4 166	4 159	4 010	4 178	4 261	4 124	4 107	4 071	4 019
DEBITS												
Total goods and services	-21 963	-22 472	-22 891	-22 292	-23 358	-23 469	-23 871	-23 850	-24 400	-24 300	-25 084	-24 761
Total goods	-17 205	-17 699	-18 178	-17 507	-18 550	-18 805	-18 988	-18 937	-19 503	-19 401	-20 109	-19 833
Consumption goods	-5 297	-5 347	-5 321	-5 257	-5 251	-5 199	-5 041	-5 243	-5 196	-5 377	-5 525	-5 370
Capital goods	-3 958	-4 199	-4 173	-4 556	-4 620	-4 270	-4 693	-4 366	-4 687	-4 736	-4 706	-5 008
Intermediate and other merchandise goods	-7 347	-7 565	-8 297	-7 408	-8 340	-8 913	-8 862	-8 960	-9 230	-8 745	-9 328	-8 868
Non-monetary gold(c)	-602	-588	-387	-286	-339	-423	-391	-368	-390	-543	-549	-588
Total services	-4 758	-4 773	-4 714	-4 785	-4 808	-4 664	-4 884	-4 913	-4 897	-4 900	-4 975	-4 928
TREND ESTIMATES (d)												
BALANCE												
On goods and services	2 208	2 023	1 845	1 449	1 384	1 428	1 592	1 841	2 112	2 363	2 596	2 718
CREDITS												
Total goods and services	24 507	24 320	24 277	24 402	24 619	24 963	25 429	25 952	26 452	26 882	27 252	27 486
Total goods	20 227	20 081	20 081	20 240	20 475	20 821	21 282	21 805	22 316	22 767	23 163	23 420
Rural goods(b)	2 377	2 384	2 420	2 484	2 560	2 634	2 706	2 775	2 835	2 891	2 940	2 986
Non-rural goods(b)	16 588	16 427	16 385	16 490	16 687	16 992	17 379	17 808	18 218	18 562	18 850	19 034
Net exports of goods under merchandise	26	26	25	23	19	15	10	6	4	3	2	3
Non-monetary gold	1 236	1 245	1 252	1 244	1 209	1 180	1 186	1 216	1 258	1 311	1 371	1 397
Total services	4 281	4 239	4 195	4 162	4 144	4 143	4 147	4 147	4 136	4 115	4 089	4 066
DEBITS												
Total goods and services	-22 300	-22 296	-22 432	-22 953	-23 235	-23 536	-23 837	-24 110	-24 340	-24 519	-24 657	-24 768
Total goods	-17 548	-17 548	-17 683	-18 196	-18 462	-18 738	-19 006	-19 243	-19 442	-19 595	-19 713	-19 808
Consumption goods	-5 373	-5 324	-5 290	-5 273	-5 271	-5 286	-5 315	-5 349	-5 380	-5 404	-5 421	-5 434
Capital goods(e)	-4 087	-4 111	-4 162	-4 485	-4 501	-4 494	-4 491	-4 519	-4 581	-4 665	-4 755	-4 852
Intermediate and other merchandise goods	-7 624	-7 655	-7 793	-8 037	-8 325	-8 605	-8 829	-8 966	-9 031	-9 036	-9 007	-8 958
Non-monetary gold	-464	-458	-438	-401	-365	-352	-371	-410	-450	-490	-530	-563
Total services	-4 752	-4 748	-4 749	-4 757	-4 773	-4 797	-4 831	-4 867	-4 898	-4 924	-4 943	-4 960
(a) For sign conventions, see paragraph 15 of the Explanatory Notes.												
(b) For all time periods, estimates for sugar, sugar preparations and honey are included in Non-rural goods.												
(c) This component is not seasonally adjusted.												
(d) Caution should be used when interpreting recent trend estimates as they may be affected by unusual economic factors. For more details on trend estimates, please see paragraph 19 of the Explanatory Notes.												
(e) A trend break of \$300m has been applied to Capital goods debits and related aggregates in January 2011. This trend break will be re-assessed in a future issue.												

GOODS AND SERVICES (a), Summary—Original

	Oct 2010	Nov 2010	Dec 2010	Jan 2011	Feb 2011	Mar 2011	Apr 2011	May 2011	Jun 2011	Jul 2011	Aug 2011	Sep 2011
	\$m	\$m	\$m	\$m	\$m	\$m	\$m	\$m	\$m	\$m	\$m	\$m
BALANCE												
On goods and services	2 016	178	2 089	184	501	2 285	2 326	3 931	2 031	1 931	2 954	1 575
CREDITS												
Total goods and services	25 109	24 013	25 607	21 577	21 660	25 818	25 045	26 956	26 189	26 391	28 860	27 599
Total goods	20 668	19 736	21 396	17 595	17 451	21 681	20 761	22 755	22 311	22 307	24 756	23 679
Rural goods(b)	2 360	2 212	2 489	2 044	2 651	2 853	2 808	3 075	2 903	2 816	2 926	2 793
Non-rural goods(b)	16 733	16 270	17 777	13 994	13 931	17 464	16 875	18 061	18 677	18 164	20 112	19 578
Net exports of goods under merchandising	25	25	25	23	23	21	2	2	3	4	4	5
Non-monetary gold	1 550	1 229	1 105	1 534	846	1 343	1 076	1 617	728	1 323	1 714	1 303
Total services	4 441	4 277	4 211	3 982	4 209	4 137	4 284	4 201	3 878	4 084	4 104	3 920
DEBITS												
Total goods and services	-23 093	-23 835	-23 518	-21 393	-21 159	-23 533	-22 719	-23 025	-24 158	-24 460	-25 906	-26 024
Total goods	-18 068	-19 195	-18 525	-16 383	-17 045	-19 126	-17 958	-18 363	-19 221	-19 257	-20 941	-20 656
Consumption goods	-5 870	-6 130	-5 405	-4 699	-4 764	-5 027	-4 596	-4 886	-4 993	-5 362	-5 880	-5 867
Capital goods	-4 092	-4 644	-4 355	-4 165	-4 134	-4 418	-4 406	-4 276	-4 745	-4 715	-4 878	-5 166
Intermediate and other merchandise goods	-7 504	-7 833	-8 378	-7 233	-7 808	-9 258	-8 565	-8 833	-9 093	-8 637	-9 634	-9 035
Non-monetary gold	-602	-588	-387	-286	-339	-423	-391	-368	-390	-543	-549	-588
Total services	-5 025	-4 640	-4 993	-5 010	-4 114	-4 407	-4 761	-4 662	-4 937	-5 203	-4 965	-5 368

(a) For sign conventions, see paragraph 15 of the Explanatory Notes.

(b) For all time periods, estimates for sugar, sugar preparations and honey are included in Non-rural goods.

							3 MONTHS ENDED		Change
							SEPTEMBER		
	2008-09	2009-10	2010-11	Jul 2011	Aug 2011	Sep 2011	2010	2011	
	\$m	\$m	\$m	\$m	\$m	\$m	\$m	\$m	%
Total goods credits	231 623	201 751	246 975	22 307	24 756	23 679	62 621	70 742	13.0
General merchandise	213 814	187 201	232 497	20 980	23 038	22 371	59 320	66 389	11.9
<i>Rural goods(a)</i>	29 429	25 589	30 453	2 816	2 926	2 793	7 058	8 535	20.9
Meat and meat preparations	7 454	6 350	6 930	593	602	587	1 715	1 782	3.9
Cereal grains and cereal preparations	6 881	5 266	7 361	693	639	673	1 482	2 005	35.3
Wool and sheepskins	2 322	2 306	3 048	217	207	248	496	672	35.5
Other rural(a)	12 772	11 667	13 114	1 313	1 478	1 285	3 365	4 076	21.1
<i>Non-rural goods(a)</i>	184 385	161 612	202 044	18 164	20 112	19 578	52 262	57 854	10.7
Metal ores and minerals	52 057	53 611	79 400	7 359	8 162	8 241	19 209	23 762	23.7
Coal, coke and briquettes	54 954	36 777	44 102	4 018	4 531	4 412	12 563	12 961	3.2
Other mineral fuels	20 706	18 964	23 619	2 083	2 464	2 049	6 074	6 596	8.6
Metals (excl. non-monetary gold)	12 394	10 735	12 689	1 109	1 064	1 071	3 015	3 244	7.6
Machinery	8 900	7 977	8 448	757	758	779	2 233	2 294	2.7
Transport equipment	5 090	4 073	3 900	344	350	310	984	1 004	2.0
Other manufactures	17 601	16 375	16 288	1 436	1 515	1 540	4 230	4 491	6.2
Other non-rural (incl. sugar and beverages)	11 052	11 711	12 008	920	1 127	1 039	3 567	3 086	-13.5
Goods procured in ports by carriers	1 631	1 389	1 590	138	141	137	387	416	7.5
Net exports of goods under merchanting	301	250	224	4	4	5	75	13	-82.7
Goods acquired under merchanting									
(negative exports)	-2 386	-1 799	-1 726	-94	-94	-94	-578	-282	51.2
Goods sold under merchanting	2 687	2 049	1 950	98	98	99	653	295	-54.8
Non-monetary gold	17 508	14 300	14 254	1 323	1 714	1 303	3 226	4 340	34.5

(a) For all time periods, estimates for sugar, sugar preparations and honey are included in Other non-rural.

GOODS DEBITS(a), Original

	3 MONTHS ENDED								
	SEPTEMBER								
	2008-09	2009-10	2010-11	Jul 2011	Aug 2011	Sep 2011	2010	2011	Change
	\$m	\$m	\$m	\$m	\$m	\$m	\$m	\$m	%
Total goods debits	-220 890	-204 995	-219 267	-19 257	-20 941	-20 656	-55 383	-60 854	-9.9
General merchandise	-209 587	-198 132	-214 300	-18 714	-20 392	-20 068	-54 190	-59 174	-9.2
Consumption goods	-61 419	-62 333	-63 558	-5 362	-5 880	-5 867	-17 188	-17 109	0.5
Food and beverages, mainly for consumption	-8 857	-8 712	-8 951	-713	-863	-891	-2 398	-2 467	-2.9
Household electrical items	-5 488	-5 505	-4 861	-330	-469	-436	-1 381	-1 235	10.6
Non-industrial transport equipment	-13 247	-16 288	-15 953	-1 499	-1 290	-1 342	-4 305	-4 131	4.0
Textiles, clothing and footwear	-8 287	-7 514	-8 412	-687	-852	-783	-2 264	-2 322	-2.6
Toys, books and leisure goods	-5 277	-4 675	-4 443	-314	-404	-473	-1 264	-1 191	5.8
Consumption goods n.e.s.	-20 263	-19 639	-20 938	-1 819	-2 002	-1 942	-5 576	-5 763	-3.4
Capital goods	-50 422	-47 507	-51 872	-4 715	-4 878	-5 166	-12 637	-14 759	-16.8
Machinery and industrial equipment	-18 488	-15 561	-15 726	-1 475	-1 714	-1 652	-4 024	-4 841	-20.3
ADP equipment	-7 257	-7 633	-7 786	-696	-688	-622	-2 104	-2 006	4.7
Telecommunications equipment	-6 431	-6 051	-6 999	-575	-591	-568	-1 763	-1 734	1.6
Civil aircraft and confidentialised items(b)	-5 524	-5 051	-5 322	-404	-338	-663	-1 007	-1 405	-39.5
Industrial transport equipment n.e.s.	-6 538	-6 811	-6 854	-749	-665	-730	-1 805	-2 144	-18.8
Capital goods n.e.s.	-6 184	-6 400	-9 185	-816	-882	-931	-1 934	-2 629	-35.9
Intermediate and other merchandise goods	-97 746	-88 292	-98 870	-8 637	-9 634	-9 035	-24 365	-27 306	-12.1
Food and beverages, mainly for industry	-1 186	-1 035	-1 223	-92	-95	-116	-284	-303	-6.7
Primary industrial supplies n.e.s.	-1 901	-1 346	-1 713	-204	-136	-131	-427	-471	-10.3
Fuels and lubricants	-28 292	-26 494	-32 072	-2 926	-3 224	-2 850	-6 808	-9 000	-32.2
Parts for transport equipment	-8 599	-8 221	-8 880	-837	-900	-816	-2 250	-2 553	-13.5
Parts for ADP equipment	-1 067	-973	-906	-57	-67	-69	-247	-193	21.9
Other parts for capital goods	-14 312	-13 755	-14 299	-1 130	-1 223	-1 198	-3 693	-3 551	3.8
Organic and inorganic chemicals	-5 384	-4 355	-4 471	-344	-372	-456	-1 189	-1 172	1.4
Paper and paperboard	-2 403	-2 299	-2 339	-186	-212	-215	-680	-613	9.9
Textile yarn and fabrics	-1 344	-1 170	-1 135	-89	-106	-104	-316	-299	5.4
Iron and steel	-5 528	-3 258	-3 764	-274	-329	-295	-1 065	-898	15.7
Plastics	-3 028	-2 733	-2 886	-229	-269	-274	-796	-772	3.0
Processed industrial supplies n.e.s.	-21 919	-20 026	-21 917	-2 038	-2 463	-2 077	-5 492	-6 578	-19.8
Other merchandise goods(b)	-1 203	-1 231	-1 597	-67	-74	-268	-732	-409	44.1
Goods procured in ports by carriers	-1 580	-1 396	-1 668	-164	-164	-166	-386	-494	-28.0
Non-monetary gold	-11 303	-6 863	-4 967	-543	-549	-588	-1 193	-1 680	-40.8

(a) For sign conventions, see paragraph 15 of the Explanatory Notes.

(b) From July 2008, commodities subject to a 'no commodity details' or 'no value details' restriction are included in Civil aircraft and confidentialised items. For earlier periods, commodities subject to a 'no commodity details' or 'no value details' restriction are included in Other merchandise goods.

GOODS CREDITS, Seasonally Adjusted

	Dec 2010	Jan 2011	Feb 2011	Mar 2011	Apr 2011	May 2011	Jun 2011	Jul 2011	Aug 2011	Sep 2011
	\$m	\$m	\$m	\$m	\$m	\$m	\$m	\$m	\$m	\$m
Total goods credits	20 423	19 455	18 646	20 986	21 330	22 294	22 288	22 023	23 966	23 306
General merchandise	19 293	17 898	17 777	19 622	20 252	20 675	21 557	20 696	22 248	21 998
<i>Rural goods</i>	2 411	2 320	2 630	2 572	2 722	2 804	2 877	2 812	2 967	3 012
Meat and meat preparations	612	482	623	595	592	567	592	591	609	613
Cereal grains and cereal preparations	545	592	637	614	683	697	724	693	673	773
Wool and sheepskins	275	252	282	279	291	278	268	250	344	293
Other rural (a)	980	995	1 087	1 084	1 157	1 263	1 293	1 278	1 340	1 333
<i>Non-rural goods</i>	16 881	15 577	15 147	17 050	17 529	17 871	18 680	17 884	19 281	18 986
Metal ores and minerals	6 517	6 571	5 859	7 013	7 273	7 174	7 529	7 486	7 955	7 851
Coal, coke and briquettes(b)	3 645	2 628	2 772	3 197	3 534	3 815	4 554	3 945	4 449	4 476
Other mineral fuels(c)	1 931	1 902	1 912	2 137	2 141	2 252	2 165	1 834	2 194	2 032
Metals (excl. non-monetary gold)(c)	1 129	1 058	1 209	1 193	1 083	1 089	926	1 098	1 066	1 084
Machinery	756	696	692	709	717	690	704	711	725	734
Transport equipment	304	322	359	325	354	382	350	347	325	293
Other manufactures	1 459	1 264	1 371	1 384	1 350	1 365	1 366	1 387	1 433	1 466
Other non-rural (incl. sugar and beverages)	1 011	1 006	837	956	931	967	942	940	997	917
Goods procured in ports by carriers(c)	129	130	136	137	146	138	144	136	138	133
Net exports of goods under merchanting(d)	25	23	23	21	2	2	3	4	4	5
Non-monetary gold(d)	1 105	1 534	846	1 343	1 076	1 617	728	1 323	1 714	1 303

(a) For all time periods, estimates for sugar, sugar preparations and honey are included in Other non-rural.

(b) Only a length-of-month adjustment has been applied to this component.

(c) In using these seasonally adjusted series, care should be exercised because of the difficulties associated with reliably estimating the seasonal pattern.

(d) This component is not seasonally adjusted.

GOODS DEBITS(a), Seasonally Adjusted

	Dec 2010	Jan 2011	Feb 2011	Mar 2011	Apr 2011	May 2011	Jun 2011	Jul 2011	Aug 2011	Sep 2011
	\$m	\$m	\$m	\$m	\$m	\$m	\$m	\$m	\$m	\$m
Total goods debits	-18 178	-17 507	-18 550	-18 805	-18 988	-18 937	-19 503	-19 401	-20 109	-19 833
General merchandise	-17 791	-17 221	-18 211	-18 382	-18 597	-18 569	-19 113	-18 858	-19 560	-19 245
<i>Consumption goods</i>	-5 321	-5 257	-5 251	-5 199	-5 041	-5 243	-5 196	-5 377	-5 525	-5 370
Food and beverages, mainly for consumption	-719	-716	-723	-736	-754	-786	-756	-756	-814	-787
Household electrical items	-379	-374	-380	-377	-402	-394	-392	-336	-445	-380
Non-industrial transport equipment	-1 418	-1 365	-1 355	-1 377	-945	-1 172	-1 246	-1 484	-1 348	-1 260
Textiles, clothing and footwear	-684	-665	-713	-660	-731	-758	-740	-662	-751	-739
Toys, books and leisure goods	-380	-368	-353	-329	-352	-336	-347	-347	-363	-370
Consumption goods n.e.s.	-1 740	-1 769	-1 727	-1 720	-1 857	-1 797	-1 716	-1 792	-1 805	-1 833
<i>Capital goods</i>	-4 173	-4 556	-4 620	-4 270	-4 693	-4 366	-4 687	-4 736	-4 706	-5 008
Machinery and industrial equipment	-1 228	-1 244	-1 366	-1 320	-1 361	-1 418	-1 394	-1 525	-1 585	-1 567
ADP equipment	-614	-606	-590	-653	-660	-647	-665	-667	-676	-665
Telecommunications equipment	-586	-655	-566	-547	-526	-519	-594	-638	-599	-538
Civil aircraft and confidentialised items(b)(c)	-541	-474	-629	-306	-716	-415	-346	-404	-338	-663
Industrial transport equipment n.e.s.(d)	-556	-665	-593	-573	-546	-571	-565	-661	-649	-680
Capital goods n.e.s.	-649	-913	-876	-872	-884	-795	-1 122	-841	-859	-894
<i>Intermediate and other merchandise goods</i>	-8 297	-7 408	-8 340	-8 913	-8 862	-8 960	-9 230	-8 745	-9 328	-8 868
Food and beverages, mainly for industry	-93	-91	-130	-103	-125	-103	-114	-91	-84	-113
Primary industrial supplies n.e.s.(d)	-121	-116	-121	-148	-141	-231	-162	-173	-144	-129
Fuels and lubricants(c)	-2 887	-2 139	-2 722	-3 328	-3 240	-3 034	-3 386	-2 926	-3 224	-2 850
Parts for transport equipment	-681	-726	-718	-801	-769	-829	-810	-841	-845	-790
Parts for ADP equipment	-73	-74	-69	-68	-75	-65	-67	-57	-68	-70
Other parts for capital goods	-1 176	-1 137	-1 214	-1 147	-1 206	-1 242	-1 229	-1 165	-1 188	-1 168
Organic and inorganic chemicals	-356	-350	-352	-409	-364	-337	-366	-371	-357	-512
Paper and paperboard	-197	-192	-185	-182	-184	-188	-191	-190	-192	-183
Textile yarn and fabrics	-93	-89	-93	-94	-100	-100	-94	-93	-94	-94
Iron and steel	-305	-250	-323	-270	-328	-323	-339	-288	-297	-283
Plastics	-222	-231	-230	-236	-250	-256	-247	-237	-254	-253
Processed industrial supplies n.e.s.	-1 736	-1 811	-1 969	-1 873	-1 858	-1 971	-1 993	-2 082	-2 343	-1 987
Other merchandise goods(b)(d)(e)	-234	-58	-68	-108	-65	-124	-74	-67	-74	-268
Goods procured in ports by carriers(c)	-124	-146	-146	-146	-158	-158	-158	-164	-164	-166
Non-monetary gold(c)	-387	-286	-339	-423	-391	-368	-390	-543	-549	-588

(a) For sign conventions, see paragraph 15 of the Explanatory Notes.

(b) From July 2008, commodities subject to a 'no commodity details' or 'no value details' restriction are included in Civil aircraft and confidentialised items. For earlier periods, commodities subject to a 'no commodity details' or 'no value details' restriction are included in Other merchandise goods.

(c) This component is not seasonally adjusted.

(d) In using these seasonally adjusted series, care should be exercised because of the difficulties associated with reliably estimating the seasonal pattern.

(e) From July 1981, this component is not seasonally adjusted.

GOODS CREDITS(a), Trend Estimates

	Dec 2010	Jan 2011	Feb 2011	Mar 2011	Apr 2011	May 2011	Jun 2011	Jul 2011	Aug 2011	Sep 2011
	\$m	\$m	\$m	\$m	\$m	\$m	\$m	\$m	\$m	\$m
Total goods credits	20 081	20 240	20 475	20 821	21 282	21 805	22 316	22 767	23 163	23 420
General merchandise	18 805	18 973	19 246	19 626	20 086	20 583	21 054	21 453	21 790	22 020
<i>Rural goods</i>	2 420	2 484	2 560	2 634	2 706	2 775	2 835	2 891	2 940	2 986
Meat and meat preparations	592	604	607	602	594	589	589	593	599	606
Cereal grains and cereal preparations	597	604	619	639	664	685	698	710	721	731
Wool and sheepskins	250	265	275	279	279	279	282	287	292	299
Other rural(b)	980	1 011	1 059	1 114	1 170	1 222	1 266	1 301	1 328	1 350
<i>Non-rural goods</i>	16 385	16 490	16 687	16 992	17 379	17 808	18 218	18 562	18 850	19 034
Metal ores and minerals	6 357	6 464	6 596	6 776	7 005	7 247	7 466	7 643	7 795	7 862
Coal, coke and briquettes	3 600	3 493	3 459	3 522	3 660	3 848	4 048	4 229	4 378	4 511
Other mineral fuels	1 865	1 939	2 018	2 081	2 116	2 125	2 115	2 093	2 071	2 043
Metals (excl. non-monetary gold)	1 090	1 125	1 141	1 132	1 106	1 077	1 057	1 048	1 046	1 053
Machinery	700	704	707	706	703	704	709	714	720	724
Transport equipment	307	320	335	348	356	356	350	341	329	319
Other manufactures	1 355	1 357	1 357	1 356	1 359	1 368	1 383	1 401	1 418	1 436
Other non-rural (incl. sugar and beverages)	982	955	939	933	935	942	950	954	956	950
Goods procured in ports by carriers	129	132	135	138	140	141	140	139	137	135
Net exports of goods under merchanting	25	23	19	15	10	6	4	3	2	3
Non-monetary gold	1 252	1 244	1 209	1 180	1 186	1 216	1 258	1 311	1 371	1 397

(a) Caution should be used when interpreting recent trend estimates as they may be affected by unusual economic factors. For more details on trend estimates, please see paragraph 19 of the Explanatory Notes.

(b) For all time periods, estimates for sugar, sugar preparations and honey are included in Other non-rural.

GOODS DEBITS(a)(b), Trend Estimates

	Dec 2010	Jan 2011	Feb 2011	Mar 2011	Apr 2011	May 2011	Jun 2011	Jul 2011	Aug 2011	Sep 2011
	\$m	\$m	\$m	\$m	\$m	\$m	\$m	\$m	\$m	\$m
Total goods debits	-17 683	-18 196	-18 462	-18 738	-19 006	-19 243	-19 442	-19 595	-19 713	-19 808
General merchandise	-17 245	-17 795	-18 097	-18 386	-18 635	-18 834	-18 992	-19 105	-19 184	-19 244
<i>Consumption goods</i>	-5 290	-5 273	-5 271	-5 286	-5 315	-5 349	-5 380	-5 404	-5 421	-5 434
Food and beverages, mainly for consumption	-721	-721	-728	-738	-750	-761	-770	-779	-786	-792
Household electrical items	-392	-386	-383	-382	-384	-387	-389	-390	-391	-393
Non-industrial transport equipment	-1 389	-1 375	-1 359	-1 352	-1 353	-1 360	-1 365	-1 365	-1 357	-1 345
Textiles, clothing and footwear	-683	-685	-692	-703	-713	-720	-725	-727	-729	-732
Toys, books and leisure goods	-377	-367	-355	-346	-342	-343	-347	-352	-358	-364
Consumption goods n.e.s.	-1 729	-1 740	-1 754	-1 766	-1 773	-1 778	-1 784	-1 791	-1 800	-1 808
<i>Capital goods</i>	-4 162	-4 485	-4 501	-4 494	-4 491	-4 519	-4 581	-4 665	-4 755	-4 852
Machinery and industrial equipment	-1 260	-1 276	-1 299	-1 330	-1 368	-1 409	-1 453	-1 497	-1 537	-1 576
ADP equipment	-609	-610	-619	-632	-644	-655	-663	-667	-671	-670
Telecommunications equipment	-606	-591	-573	-561	-556	-561	-571	-581	-588	-590
Civil aircraft and confidentialised items(c)	-499	-532	-539	-515	-477	-448	-433	-431	-443	-474
Industrial transport equipment n.e.s.	-574	-585	-587	-581	-576	-582	-598	-621	-645	-667
Capital goods n.e.s.(d)	-615	-891	-884	-877	-869	-864	-864	-867	-871	-875
<i>Intermediate and other merchandise goods</i>	-7 793	-8 037	-8 325	-8 605	-8 829	-8 966	-9 031	-9 036	-9 007	-8 958
Food and beverages, mainly for industry	-99	-104	-109	-112	-112	-109	-105	-101	-98	-98
Primary industrial supplies n.e.s.	-125	-126	-135	-148	-162	-171	-172	-167	-158	-148
Fuels and lubricants	-2 487	-2 657	-2 837	-3 002	-3 121	-3 177	-3 177	-3 135	-3 074	-3 000
Parts for transport equipment	-698	-714	-738	-766	-791	-809	-820	-826	-828	-825
Parts for ADP equipment	-76	-73	-72	-70	-68	-67	-66	-66	-66	-66
Other parts for capital goods	-1 155	-1 162	-1 177	-1 192	-1 202	-1 206	-1 204	-1 198	-1 189	-1 182
Organic and inorganic chemicals	-354	-358	-364	-364	-361	-362	-369	-383	-402	-421
Paper and paperboard	-192	-190	-187	-186	-186	-187	-188	-189	-189	-189
Textile yarn and fabrics	-90	-91	-93	-95	-96	-96	-96	-95	-94	-94
Iron and steel	-285	-287	-294	-303	-311	-315	-313	-308	-300	-295
Plastics	-225	-227	-233	-239	-244	-247	-248	-249	-250	-251
Processed industrial supplies n.e.s.	-1 765	-1 805	-1 844	-1 886	-1 931	-1 979	-2 030	-2 080	-2 120	-2 154
Other merchandise goods(c)	-110	-106	-100	-94	-88	-84	-83	-79	-74	-69
Goods procured in ports by carriers	-132	-137	-144	-150	-154	-158	-160	-162	-164	-166
Non-monetary gold	-438	-401	-365	-352	-371	-410	-450	-490	-530	-563

(a) For sign conventions, see paragraph 15 of the Explanatory Notes.

(b) Caution should be used when interpreting recent trend estimates as they may be affected by unusual economic factors. For more details on trend estimates, please see paragraph 19 of the Explanatory Notes.

(c) From July 2008, commodities subject to a 'no commodity details' or 'no value details' restriction are included in Civil aircraft and confidentialised items. For earlier periods, commodities subject to a 'no commodity details' or 'no value details' restriction are included in Other merchandise goods.

(d) A trend break of \$300m has been applied to Capital goods n.e.s. and related aggregates in January 2011. This trend break will be re-assessed in a future issue.

							3 MONTHS ENDED SEPTEMBER		Change %
	2008-09	2009-10	2010-11	Jul 2011	Aug 2011	Sep 2011	2010	2011	
	\$m	\$m	\$m	\$m	\$m	\$m	\$m	\$m	
Services credits	52 948	52 011	50 570	4 084	4 104	3 920	12 950	12 108	-6.5
Manufacturing services on physical inputs owned by others	45	48	33	4	2	1	9	7	-22.2
Maintenance and repair services n.i.e.	86	57	49	4	6	4	14	14	—
Transport	7 342	6 189	6 339	538	533	510	1 701	1 581	-7.1
Passenger(c)	3 410	2 610	2 714	204	199	177	682	580	-15.0
Freight	851	436	403	36	36	36	106	108	1.9
Other	2 127	2 188	2 253	188	188	188	605	564	-6.8
Postal and courier services(d)	954	955	969	110	110	109	308	329	6.8
Travel	31 086	32 918	30 968	2 433	2 455	2 294	8 037	7 182	-10.6
Other services	14 389	12 799	13 181	1 105	1 108	1 111	3 189	3 324	4.2
Services debits	-56 328	-53 388	-57 360	-5 203	-4 965	-5 368	-14 811	-15 536	-4.9
Manufacturing services on physical inputs owned by others	—	—	-1	—	—	—	—	—	na
Maintenance and repair services n.i.e.	-193	-294	-342	-17	-36	-26	-52	-79	-51.9
Transport	-15 832	-13 727	-14 749	-1 253	-1 321	-1 392	-3 951	-3 966	-0.4
Passenger(c)	-5 835	-5 118	-6 103	-537	-493	-584	-1 558	-1 614	-3.6
Freight	-9 388	-8 142	-8 244	-676	-788	-768	-2 257	-2 232	1.1
Other	-437	-309	-288	-25	-25	-24	-73	-74	-1.4
Postal and courier services(d)	-172	-158	-114	-15	-15	-16	-63	-46	27.0
Travel	-22 082	-23 285	-25 374	-2 582	-2 255	-2 596	-6 675	-7 433	-11.4
Other services	-18 221	-16 082	-16 894	-1 351	-1 353	-1 354	-4 133	-4 058	1.8
Memorandum items:									
Tourism related service credits(e)	34 496	35 528	33 682	2 637	2 654	2 471	8 719	7 762	-11.0
Tourism related service debits(e)	-27 917	-28 403	-31 477	-3 119	-2 748	-3 180	-8 233	-9 047	-9.9

— nil or rounded to zero (including null cells)

na not available

(a) For sign conventions, see paragraph 15 of the Explanatory Notes.

(b) For more detailed trade in services components, see table 11.

(c) Passenger services includes agency fees and commissions for air transport.

(d) Postal and courier services includes indirect commissions for sea transport.

(e) For a more detailed explanation of tourism related services, see paragraph 27 of the Explanatory Notes.

	Dec 2010	Jan 2011	Feb 2011	Mar 2011	Apr 2011	May 2011	Jun 2011	Jul 2011	Aug 2011	Sep 2011
	\$m	\$m	\$m	\$m	\$m	\$m	\$m	\$m	\$m	\$m
SEASONALLY ADJUSTED										
Services credits	4 209	4 166	4 159	4 010	4 178	4 261	4 124	4 107	4 071	4 019
Manufacturing services on physical inputs owned by others(b)	3	2	1	4	3	3	2	4	2	1
Maintenance and repair services n.i.e.(b)	6	2	3	3	3	3	3	4	6	4
Transport	516	534	516	508	526	523	517	513	513	506
Passenger(c)	228	236	217	214	218	217	208	204	206	197
Freight(d)	32	35	34	33	34	32	32	38	36	35
Other	179	186	188	189	187	187	188	183	183	185
Postal and courier services(e)	76	77	77	73	88	87	89	87	88	90
Travel	2 604	2 543	2 548	2 399	2 525	2 600	2 474	2 448	2 410	2 380
Other services	1 080	1 085	1 091	1 096	1 122	1 132	1 128	1 139	1 140	1 128
Services debits	-4 714	-4 785	-4 808	-4 664	-4 884	-4 913	-4 897	-4 900	-4 975	-4 928
Manufacturing services on physical inputs owned by others(b)	—	—	—	—	—	—	-1	—	—	—
Maintenance and repair services n.i.e.(b)	-17	-20	-17	-36	-29	-65	-59	-17	-36	-26
Transport	-1 169	-1 183	-1 215	-1 215	-1 225	-1 241	-1 261	-1 267	-1 304	-1 259
Passenger(c)	-496	-512	-513	-514	-525	-512	-516	-517	-511	-502
Freight	-643	-638	-670	-667	-670	-700	-714	-716	-759	-724
Other(b)	-23	-24	-24	-25	-23	-23	-25	-25	-25	-24
Postal and courier services(e)(d)	-7	-9	-8	-9	-7	-7	-6	-9	-9	-10
Travel	-2 080	-2 160	-2 159	-1 996	-2 274	-2 253	-2 215	-2 256	-2 255	-2 260
Other services	-1 448	-1 422	-1 417	-1 417	-1 356	-1 354	-1 361	-1 360	-1 380	-1 382
Memorandum items:										
Tourism related service credits(f)	2 833	2 779	2 765	2 613	2 742	2 817	2 682	2 652	2 616	2 577
Tourism related service debits(f)	-2 575	-2 672	-2 672	-2 510	-2 799	-2 765	-2 731	-2 773	-2 766	-2 762

TREND ESTIMATES

Services credits	4 195	4 162	4 144	4 143	4 147	4 147	4 136	4 115	4 089	4 066
Manufacturing services on physical inputs owned by others	3	2	3	3	3	3	3	3	2	2
Maintenance and repair services n.i.e.	5	4	3	3	3	3	4	4	4	5
Transport	521	518	518	519	519	518	517	515	513	510
Passenger(c)	229	225	222	219	216	213	210	207	204	201
Freight	33	33	33	33	33	34	34	35	35	36
Other	183	183	185	187	188	187	186	185	184	183
Postal and courier services(e)	76	76	77	80	82	85	87	88	89	90
Travel	2 583	2 550	2 526	2 515	2 508	2 499	2 483	2 459	2 432	2 411
Other services	1 084	1 087	1 094	1 104	1 114	1 124	1 131	1 135	1 137	1 138
Services debits	-4 749	-4 757	-4 773	-4 797	-4 831	-4 867	-4 898	-4 924	-4 943	-4 960
Manufacturing services on physical inputs owned by others	—	—	—	—	—	—	—	—	—	—
Maintenance and repair services n.i.e.	-18	-21	-26	-33	-40	-43	-42	-39	-36	-31
Transport	-1 193	-1 193	-1 200	-1 213	-1 229	-1 244	-1 258	-1 268	-1 277	-1 283
Passenger(c)	-513	-514	-514	-515	-516	-517	-515	-513	-511	-508
Freight	-648	-648	-655	-666	-681	-696	-710	-723	-733	-741
Other	-24	-24	-24	-24	-24	-24	-24	-24	-25	-25
Postal and courier services(e)	-8	-7	-7	-7	-7	-7	-8	-8	-9	-9
Travel	-2 092	-2 110	-2 131	-2 157	-2 185	-2 212	-2 234	-2 251	-2 264	-2 275
Other services	-1 446	-1 434	-1 415	-1 394	-1 377	-1 368	-1 364	-1 364	-1 367	-1 372
Memorandum items:										
Tourism related service credits(f)	2 812	2 775	2 748	2 734	2 724	2 711	2 692	2 666	2 636	2 612
Tourism related service debits(f)	-2 605	-2 623	-2 645	-2 672	-2 702	-2 729	-2 750	-2 765	-2 774	-2 783

— nil or rounded to zero (including null cells)

(a) For sign conventions, see paragraph 15 of the Explanatory Notes.

(b) This component is not seasonally adjusted.

(c) Passenger services includes agency fees and commissions for air transport.

(d) In using these seasonally adjusted series, care should be exercised because of the difficulties associated with reliably estimating the seasonal pattern.

(e) Postal and courier services includes indirect commissions for sea transport.

(f) For a more detailed explanation of tourism related services, see paragraph 27 of the Explanatory Notes.

	CREDITS				DEBITS			
	Dec Qtr	Mar Qtr	Jun Qtr	Sep Qtr	Dec Qtr	Mar Qtr	Jun Qtr	Sep Qtr
	2010	2011	2011	2011	2010	2011	2011	2011
	\$m	\$m	\$m	\$m	\$m	\$m	\$m	\$m
Services	12 929	12 328	12 363	12 108	-14 658	-13 531	-14 360	-15 536
Manufacturing services on physical inputs owned by others	9	7	8	7	—	—	-1	—
Maintenance and repair services n.i.e.	18	8	9	14	-64	-73	-153	-79
Transport	1 595	1 601	1 442	1 581	-3 805	-3 396	-3 597	-3 966
Passenger(b)	727	761	544	580	-1 572	-1 424	-1 549	-1 614
Freight	94	96	107	108	-2 147	-1 880	-1 960	-2 232
Other	560	541	547	564	-71	-73	-71	-74
Postal and courier services(c)	214	203	244	329	-15	-19	-17	-46
Travel	7 836	7 629	7 466	7 182	-6 308	-5 897	-6 494	-7 433
Business	753	900	862	864	-699	-718	-647	-659
Personal	7 083	6 729	6 604	6 318	-5 609	-5 179	-5 847	-6 774
Education-related	3 737	3 571	4 039	3 727	-189	-226	-182	-334
Other(d)	3 346	3 158	2 565	2 591	-5 420	-4 953	-5 665	-6 440
Construction	15	20	10	7	—	—	—	—
Insurance and pension services	77	80	110	110	-138	-143	-151	-150
Financial services	251	283	309	303	-215	-163	-155	-151
Charges for the use of intellectual property n.i.e.	303	176	248	233	-983	-950	-961	-944
Telecommunications, computer and information services	464	428	412	401	-571	-485	-468	-462
Telecommunication services	40	35	33	33	-114	-109	-70	-70
Computer and information services	424	393	379	368	-457	-376	-398	-392
Computer services	350	341	314	301	-383	-311	-327	-322
Information services	32	14	15	14	-21	-17	-19	-24
Other services	42	38	50	53	-53	-48	-52	-46
Other business services	1 984	1 616	1 944	1 924	-1 971	-1 761	-1 799	-1 753
Research and development services	168	108	131	136	-70	-48	-72	-80
Professional and management consulting services	851	734	776	739	-704	-611	-631	-598
Legal, accounting, management consulting, public relations and other professional services	740	642	695	655	-650	-563	-580	-565
Advertising, market research and public opinion polling	111	92	81	84	-54	-48	-51	-33
Technical, trade-related and other business services	965	774	1 037	1 049	-1 197	-1 102	-1 096	-1 075
Architectural, engineering and other technical services	472	425	567	546	-634	-667	-590	-549
Waste treatment and de-pollution, agricultural and mining services	121	36	57	65	-204	-73	-120	-113
Operational leasing services	53	54	57	93	-127	-122	-146	-154
Trade-related commission services	210	162	232	214	-53	-80	-87	-92
Other business services n.i.e.	109	97	124	131	-179	-160	-153	-167
Personal, cultural and recreational services	167	264	189	136	-381	-441	-359	-376
Audiovisual and related services	27	71	32	19	-310	-337	-303	-318
Other personal, cultural and recreational services	140	193	157	117	-71	-104	-56	-58
Government goods and services n.i.e.	210	216	216	210	-222	-222	-222	-222
Memorandum items:								
Gross insurance premiums receivable / payable	215	200	282	270	-254	-284	-289	-270
Gross insurance claims payable / receivable	-145	-138	-197	-187	164	187	193	200
Tourism related services(e)	8 563	8 390	8 010	7 762	-7 880	-7 321	-8 043	-9 047

— nil or rounded to zero (including null cells)

(a) For sign conventions, see paragraph 15 of the Explanatory Notes.

(b) Passenger services includes agency fees and commissions for air transport.

(c) Postal and courier services includes indirect commissions for sea transport.

(d) Other personal travel includes health-related travel.

(e) For a more detailed explanation of tourism related services, see paragraph 27 of the Explanatory Notes.

				Per cent of total merchandise exports(b)	3 MONTHS ENDED SEPTEMBER		
	Jul	Aug	Sep			
	2011	2011	2011		2010	2011	
	\$m	\$m	\$m	%	\$m	\$m	
MAJOR COMMODITIES (c)							
011	Meat of bovine animals	392	394	380	1.6	1 147	1 167
041	Wheat and meslin	541	432	462	2.0	1 090	1 434
281	Iron ore and concentrates	5 542	6 222	6 256	26.6	14 396	18 020
283	Copper ores and concentrates	537	470	472	2.0	1 195	1 479
285	Aluminium ores and concentrates	405	512	478	2.0	1 312	1 394
287	Ores and concentrates of base metals, n.e.s.	314	395	322	1.4	944	1 030
321	Coal, not agglomerated	4 002	4 499	4 372	18.6	12 461	12 873
333	Crude petroleum oils	837	996	1 124	4.8	2 819	2 957
334	Refined petroleum oils	230	275	242	1.0	604	747
343	Natural gas	1 083	1 242	695	2.9	2 709	3 020
542	Medicaments	278	337	274	1.2	833	889
682	Copper	337	265	393	1.7	969	995
684	Aluminium	358	414	395	1.7	1 127	1 167
971	Gold, non-monetary	1 277	1 585	1 131	4.8	3 062	3 993
SECTION AND DIVISION OF THE SITC							
0	Food and live animals						
00	Live animals (excl. fish, crustaceans, molluscs and aquatic invertebrates)	74	66	120	0.5	289	259
01	Meat and meat preparations	593	602	587	2.5	1 715	1 782
02	Dairy products and birds' eggs	146	141	185	0.8	549	472
03	Fish (not marine mammals), crustaceans, molluscs and aquatic invertebrates, and preparations thereof	97	165	61	0.3	269	324
04	Cereals and cereal preparations	693	639	673	2.9	1 482	2 005
05	Vegetables and fruit	171	169	163	0.7	401	503
06	Sugars, sugar preparations and honey	37	42	35	0.1	98	114
07	Coffee, tea, cocoa, spices, and manufactures thereof	25	29	27	0.1	81	81
08	Feeding stuff for animals (excl. unmilled cereals)	94	87	90	0.4	289	271
09	Miscellaneous edible products and preparations	71	80	84	0.4	197	236
	<i>Total Food and live animals</i>	1 999	2 021	2 025	8.6	5 369	6 046
1	Beverages and tobacco						
11	Beverages	179	195	187	0.8	611	561
12	Tobacco and tobacco manufactures	7	13	9	—	28	30
	<i>Total Beverages and tobacco</i>	186	208	197	0.8	639	591
2	Crude materials, inedible, except fuels						
21	Hides, skins and furskins, raw	70	78	64	0.3	190	211
22	Oil-seeds and oleaginous fruits	29	110	38	0.2	61	177
23	Crude rubber (incl. synthetic and reclaimed)	2	2	2	—	5	6
24	Cork and wood	78	82	99	0.4	334	259
25	Pulp and waste paper	20	21	25	0.1	65	66
26	Textile fibres and their wastes (not manufactured into yarn or fabric)	594	557	495	2.1	938	1 646
27	Crude fertilizers (excl. those of Division 56) and crude minerals (excl. coal, petroleum and precious stones)	31	37	40	0.2	84	107
28	Metalliferous ores and metal scrap	7 328	8 125	8 201	34.8	19 078	23 653
29	Crude animal and vegetable materials, n.e.s.	17	20	18	0.1	52	55
	<i>Total Crude materials, inedible, except fuels</i>	8 168	9 032	8 982	38.1	20 807	26 182
3	Mineral fuels, lubricants and related materials						
32	Coal, coke and briquettes	4 018	4 531	4 412	18.7	12 506	12 961
33	Petroleum, petroleum products and related materials	1 067	1 271	1 366	5.8	3 427	3 705
34	Gas, natural and manufactured	1 147	1 330	811	3.4	3 010	3 288
	<i>Total Mineral fuels, lubricants and related materials</i>	6 232	7 133	6 589	28.0	18 943	19 955

— nil or rounded to zero (including null cells)

(a) Some SITC sections and divisions exclude commodities subject to a confidentiality restriction. These are included in Division 98. For more information see paragraph 26 of the Explanatory Notes.

(b) Per cent of total merchandise is calculated for the most recent month.

(c) The 'Major commodities' section lists commodities at the SITC Rev 4 3-digit level which are the most significant (by value) or are of particular interest. Abbreviated descriptors have been used. The list of 'Major commodities' is reviewed annually.

				Per cent of total merchandise exports(b)	3 MONTHS ENDED SEPTEMBER.....		
	Jul	Aug	Sep		2010	2011	
	2011	2011	2011		\$m	\$m	
	\$m	\$m	\$m	%	\$m	\$m	
SECTION AND DIVISION OF THE SITC							
4	Animal and vegetable oils, fats and waxes						
41	Animal oils and fats	29	30	45	0.2	69	104
42	Fixed vegetable fats and oils, crude, refined or fractionated	5	27	13	0.1	44	45
43	Fats and oils (processed), waxes and inedible mixtures or preparations, of animal or vegetable origin, n.e.s.	1	1	1	—	2	2
	<i>Total Animal and vegetable oils, fats and waxes</i>	35	59	58	0.2	115	151
5	Chemicals and related products, n.e.s.						
51	Organic chemicals	15	16	18	0.1	48	48
52	Inorganic chemicals	42	48	59	0.3	142	149
53	Dyeing, tanning and colouring materials	63	75	74	0.3	179	213
54	Medicinal and pharmaceutical products	345	369	312	1.3	945	1 026
55	Essential oils and resinoids and perfume materials, toilet, polishing and cleansing preparations	47	54	55	0.2	163	155
56	Fertilisers (excl. crude)	60	61	61	0.3	186	182
57	Plastics in primary forms	23	27	25	0.1	97	76
58	Plastics in non-primary forms	33	28	31	0.1	112	92
59	Chemical materials and products, n.e.s.	86	82	84	0.4	241	252
	<i>Total Chemicals and related products, n.e.s.</i>	713	760	721	3.1	2 113	2 194
6	Manufactured goods classified chiefly by material						
61	Leather, leather manufactures and dressed furskins, n.e.s.	23	23	19	0.1	73	65
62	Rubber manufactures, n.e.s.	15	18	14	0.1	50	46
63	Cork and wood manufactures (excl. furniture)	12	12	9	—	47	33
64	Paper, paperboard and articles of paper pulp, of paper or of paperboard	70	77	76	0.3	210	223
65	Textile yarn, fabrics, made-up articles n.e.s. and related products	25	25	26	0.1	72	76
66	Non-metallic mineral manufactures, n.e.s.	43	37	83	0.4	169	163
67	Iron and steel	107	136	101	0.4	315	345
68	Non-ferrous metals	1 002	928	970	4.1	2 699	2 900
69	Manufactures of metals, n.e.s.	89	100	89	0.4	269	279
	<i>Total Manufactured goods classified chiefly by material</i>	1 385	1 356	1 387	5.9	3 904	4 128
7	Machinery and transport equipment						
71	Power generating machinery and equipment	81	94	77	0.3	229	252
72	Machinery specialized for particular industries	171	177	204	0.9	500	552
73	Metal working machinery	12	12	14	0.1	33	38
74	General industrial machinery and equipment, n.e.s. and machine parts, n.e.s.	168	152	159	0.7	472	479
75	Office machines and automatic data processing machines	112	95	92	0.4	325	298
76	Telecommunications and sound recording and reproducing apparatus and equipment	80	82	96	0.4	249	258
77	Electrical machinery, apparatus and appliances, parts (incl. non electrical counterparts of electrical domestic equip)	132	144	136	0.6	421	412
78	Road vehicles (incl. air-cushion vehicles)	236	213	194	0.8	736	643
79	Transport equipment (excl. road vehicles)	109	137	115	0.5	248	361
	<i>Total Machinery and transport equipment</i>	1 101	1 107	1 087	4.6	3 211	3 295

— nil or rounded to zero (including null cells)

(b) Per cent of total merchandise is calculated for the most recent month.

(a) Some SITC sections and divisions exclude commodities subject to a confidentiality restriction. These are included in Division 98. For more information see paragraph 26 of the Explanatory Notes.

				Per cent of total merchandise exports(b)	3 MONTHS ENDED SEPTEMBER	
	Jul	Aug	Sep		
	2011	2011	2011		2010	2011
	\$m	\$m	\$m	%	\$m	\$m
SECTION AND DIVISION OF THE SITC						
8	Miscellaneous manufactured articles					
81	Prefabricated buildings and sanitary, plumbing, heating and lighting fixtures and fittings, n.e.s.	10	11	10	—	31 31
82	Furniture and parts thereof; bedding, mattresses, mattress supports, cushions and similar stuffed furnishings	9	10	8	—	22 27
83	Travel goods, handbags and similar containers	2	3	3	—	7 8
84	Articles of apparel and clothing accessories	19	23	22	0.1	63 63
85	Footwear	4	6	5	—	11 15
87	Professional, scientific and controlling instruments and apparatus, n.e.s.	171	169	173	0.7	489 513
88	Photographic apparatus, equipment and supplies and optical goods, n.e.s., watches and clocks	21	22	24	0.1	65 66
89	Miscellaneous manufactured articles, n.e.s.	209	216	258	1.1	536 682
	<i>Total Miscellaneous manufactured articles</i>	444	459	502	2.1	1 223 1 404
9	Commodities and transactions not classified elsewhere in the SITC					
93	Special transactions and commodities not classified according to kind	138	108	79	0.3	369 324
95	Gold coin whether or not legal tender, and other coin being legal tender	46	129	172	0.7	165 347
96	Coin (excl. gold coin) not being legal tender	—	—	—	—	— —
97	Gold, non-monetary (excl. gold ores and concentrates)	1 277	1 585	1 131	4.8	3 062 3 993
98	Combined confidential items excl. some of SITC 280 (exports only) and some of SITCs 510 and 520 (imports only)	518	699	624	2.6	2 322 1 841
	<i>Commodities and transactions not classified elsewhere in the SITC</i>	1 979	2 521	2 006	8.5	5 918 6 506
	Total merchandise exports	22 243	24 656	23 553	100.0	62 244 70 451
	Balance of Payments Adjustments	64	100	126	. .	377 291
	Goods Credits (exports) on a Balance of Payments Basis	22 307	24 756	23 679	. .	62 621 70 742

. . not applicable
 — nil or rounded to zero (including null cells)

(a) Some SITC sections and divisions exclude commodities subject to a confidentiality restriction. These are included in Division 98. For more information see paragraph 26 of the Explanatory Notes.

(b) Per cent of total merchandise is calculated for the most recent month.

	Jul 2011	Aug 2011	Sep 2011	Per cent of total merchandise imports(b)	3 MONTHS ENDED SEPTEMBER	
					2010	2011
					\$m	\$m
MAJOR COMMODITIES (c)						
333 Crude petroleum oils	1 591	1 968	1 364	6.8	4 185	4 924
334 Refined petroleum oils	1 190	1 153	1 284	6.4	2 230	3 627
542 Medicaments	795	783	692	3.5	2 127	2 270
723 Civil engineering and contractors' plant and equipment	389	460	351	1.8	794	1 200
752 Automatic data processing machines	590	559	502	2.5	1 719	1 651
761 Televisions, monitors and projectors	179	254	222	1.1	786	656
764 Telecommunications equipment	654	669	637	3.2	1 986	1 960
781 Motor cars for the transport of persons	1 388	1 147	1 209	6.0	3 888	3 744
782 Motor vehicles for the transport of goods	611	608	616	3.1	1 343	1 834
784 Parts and accessories of the motor vehicles	229	250	228	1.1	679	707
821 Furniture, bedding, mattresses and supports, and stuffed furnishings	221	259	261	1.3	744	741
874 Measuring, checking, analysing and controlling instruments and apparatus n.e.s.	211	223	226	1.1	663	660
971 Gold, non-monetary	543	716	588	2.9	1 292	1 846

SECTION AND DIVISION OF THE SITC

0	Food and live animals					
00	Live animals other than fish, crustaceans, molluscs and aquatic invertebrates	5	11	9	—	24 25
01	Meat and meat preparations	51	47	44	0.2	145 143
02	Dairy products and birds' eggs	55	59	63	0.3	183 177
03	Fish (not marine mammals), crustaceans, molluscs and aquatic invertebrates, and preparations thereof	90	105	108	0.5	316 302
04	Cereals and cereal preparations	63	80	86	0.4	230 229
05	Vegetables and fruit	141	168	177	0.9	402 486
06	Sugars, sugar preparations and honey	22	30	33	0.2	81 84
07	Coffee, tea, cocoa, spices, and manufactures thereof	105	121	133	0.7	335 360
08	Feeding stuff for animals (excl. unmilled cereals)	27	85	45	0.2	154 157
09	Miscellaneous edible products and preparations	127	161	162	0.8	438 449
	<i>Total Food and live animals</i>	687	866	861	4.3	2 307 2 414
1	Beverages and tobacco					
11	Beverages	116	143	162	0.8	418 422
12	Tobacco and tobacco manufactures	16	25	25	0.1	64 66
	<i>Total Beverages and tobacco</i>	132	168	187	0.9	482 487
2	Crude materials, inedible, except fuels					
21	Hides, skins and furskins, raw	—	—	—	—	— —
22	Oil-seeds and oleaginous fruits	2	4	4	—	13 11
23	Crude rubber (incl. synthetic and reclaimed)	9	14	14	0.1	35 38
24	Cork and wood	48	59	58	0.3	183 165
25	Pulp and waste paper	17	25	12	0.1	59 54
26	Textile fibres and their wastes (not manufactured into yarn or fabric)	10	8	8	—	29 26
27	Crude fertilizers (excl. those of Division 56) and crude minerals (excl. coal, petroleum and precious stones)	15	16	32	0.2	71 62
28	Metalliferous ores and metal scrap	163	85	50	0.2	188 298
29	Crude animal and vegetable materials, n.e.s.	25	28	27	0.1	74 79
	<i>Total Crude materials, inedible, except fuels</i>	288	238	206	1.0	652 732

— nil or rounded to zero (including null cells)

(a) Some SITC sections and divisions exclude commodities subject to a confidentiality restriction. These are included in Division 98. For more information see paragraph 26 of the Explanatory Notes.

(b) Per cent of total merchandise is calculated for the most recent month.

(c) The 'Major commodities' section lists commodities at the SITC Rev 4 3-digit level which are the most significant (by value) or are of particular interest. Abbreviated descriptors have been used. The list of 'Major commodities' is reviewed annually.

					Per cent of total merchandise imports(b)	3 MONTHS ENDED SEPTEMBER.....	
		Jul 2011	Aug 2011	Sep 2011		2010	2011
		\$m	\$m	\$m	%	\$m	\$m
SECTION AND DIVISION OF THE SITC							
3	Mineral fuels, lubricants and related materials						
32	Coal, coke and briquettes	9	3	1	—	3	14
33	Petroleum, petroleum products and related materials	2 841	3 184	2 719	13.6	6 585	8 745
34	Gas, natural and manufactured	224	221	321	1.6	662	765
	<i>Total Mineral fuels, lubricants and related materials</i>	<i>3 074</i>	<i>3 408</i>	<i>3 041</i>	<i>15.2</i>	<i>7 250</i>	<i>9 524</i>
4	Animal and vegetable oils, fats and waxes						
41	Animal oils and fats	2	7	3	—	13	11
42	Fixed vegetable fats and oils, crude, refined or fractionated	30	34	35	0.2	126	100
43	Fats and oils (processed), waxes and inedible mixtures or preparations, of animal or vegetable n.e.s.	5	6	5	—	16	16
	<i>Total Animal and vegetable oils, fats and waxes</i>	<i>38</i>	<i>47</i>	<i>43</i>	<i>0.2</i>	<i>155</i>	<i>127</i>
5	Chemicals and related products, nes						
51	Organic chemicals	195	222	286	1.4	884	703
52	Inorganic chemicals	150	153	173	0.9	307	476
53	Dyeing, tanning and colouring materials	51	54	56	0.3	172	161
54	Medicinal and pharmaceutical products	982	947	873	4.4	2 566	2 802
55	Essential oils and resinoids and perfume materials; toilet, polishing and cleansing preparations	146	179	205	1.0	519	530
56	Fertilisers (excl. crude)	135	103	153	0.8	212	391
57	Plastics in primary forms	123	140	147	0.7	408	410
58	Plastics in non-primary forms	106	129	127	0.6	387	362
59	Chemical materials and products, n.e.s.	151	198	184	0.9	553	533
	<i>Total Chemicals and related products, n.e.s.</i>	<i>2 039</i>	<i>2 125</i>	<i>2 203</i>	<i>11.0</i>	<i>6 010</i>	<i>6 367</i>
6	Manufactured goods classified chiefly by material						
61	Leather, leather manufactures, and dressed furskins, n.e.s.	11	16	12	0.1	39	38
62	Rubber manufactures, n.e.s.	304	338	313	1.6	758	955
63	Cork and wood manufactures (excl. furniture)	61	70	64	0.3	190	195
64	Paper, paperboard and articles of paper pulp, of paper or of paperboard	214	245	249	1.2	796	708
65	Textile yarn, fabrics, made-up articles n.e.s., and related products	194	240	229	1.1	666	662
66	Non-metallic mineral manufactures, n.e.s.	178	217	220	1.1	682	616
67	Iron and steel	274	329	295	1.5	1 065	898
68	Non-ferrous metals	438	456	165	0.8	583	1 059
69	Manufactures of metals, n.e.s.	433	687	575	2.9	1 407	1 696
	<i>Total Manufactured goods classified chiefly by material</i>	<i>2 106</i>	<i>2 598</i>	<i>2 122</i>	<i>10.6</i>	<i>6 187</i>	<i>6 827</i>
7	Machinery and transport equipment						
71	Power generating machinery and equipment	373	390	376	1.9	1 116	1 140
72	Machinery specialized for particular industries	727	897	810	4.0	1 823	2 435
73	Metal working machinery	55	53	61	0.3	160	169
74	General industrial machinery and equipment, n.e.s. and machine parts, n.e.s.	861	982	1 018	5.1	2 746	2 861
75	Office machines and automatic data processing machines	822	820	742	3.7	2 529	2 383
76	Telecommunications and sound recording and reproducing apparatus and equipment	898	1 008	950	4.7	3 033	2 856
77	Electrical machinery, apparatus, appliances, parts (incl. non-elec. counterparts of electrical domestic equip)	873	986	941	4.7	2 806	2 800
78	Road vehicles (incl. air-cushion vehicles)	2 368	2 180	2 220	11.1	6 403	6 767
79	Transport equipment (excl. road vehicles)	1 202	119	176	0.9	656	1 497
	<i>Total Machinery and transport equipment</i>	<i>8 180</i>	<i>7 434</i>	<i>7 295</i>	<i>36.4</i>	<i>21 272</i>	<i>22 909</i>

— nil or rounded to zero (including null cells)

(b) Per cent of total merchandise is calculated for the most recent month.

(a) Some SITC sections and divisions exclude commodities subject to a confidentiality restriction. These are included in Division 98. For more information see paragraph 26 of the Explanatory Notes.

				Per cent of total merchandise imports(b)	3 MONTHS ENDED SEPTEMBER.....		
	Jul	Aug	Sep		2010	2011	
	2011	2011	2011				
	\$m	\$m	\$m	%	\$m	\$m	
SECTION AND DIVISION OF THE SITC							
8	Miscellaneous manufactured articles						
81	Prefabricated buildings; sanitary, plumbing, heating and lighting fixtures and fittings, n.e.s.	81	111	134	0.7	258	327
82	Furniture, parts thereof; bedding, mattresses, mattress supports, cushions and similar stuffed furnishings	221	259	261	1.3	744	741
83	Travel goods, handbags and similar containers	61	74	80	0.4	213	215
84	Articles of apparel and clothing accessories	461	562	519	2.6	1 482	1 542
85	Footwear	109	141	123	0.6	392	373
87	Professional, scientific and controlling instruments and apparatus, n.e.s.	388	412	410	2.0	1 226	1 210
88	Photographic apparatus, equipment and supplies and optical goods, n.e.s., watches and clocks	112	126	126	0.6	359	364
89	Miscellaneous manufactured articles, n.e.s.	790	895	956	4.8	2 760	2 641
	<i>Total Miscellaneous manufactured articles</i>	2 222	2 581	2 610	13.0	7 434	7 413
9	Commodities and transactions not classified elsewhere in the SITC						
93	Special transactions and commodities not classified according to kind	3	6	5	—	9	14
95	Gold coin whether or not legal tender, and other coin being legal tender	2	1	1	—	3	4
96	Coin (excl. gold coin) not being legal tender	1	1	—	—	1	2
97	Gold, non-monetary (excl. gold ores and concentrates)	543	716	588	2.9	1 292	1 846
98	Combined confidential items excl. some of SITC 280 (exports only) and some of SITCs 510 and 520 (imports only)	404	338	860	4.3	1 467	1 602
	<i>Total Commodities and transactions not classified elsewhere in the SITC</i>	952	1 062	1 454	7.3	2 772	3 468
	Total merchandise imports	19 718	20 528	20 022	100.0	54 519	60 268
	Balance of Payments Adjustments	-461	413	634	. .	864	586
	Goods Debits (imports) on a Balance of Payments Basis	19 257	20 941	20 656	. .	55 383	60 854

. . not applicable
 — nil or rounded to zero (including null cells)

(a) Some SITC sections and divisions exclude commodities subject to a confidentiality restriction. These are included in Division 98. For more information see paragraph 26 of the Explanatory Notes.

(b) Per cent of total merchandise is calculated for the most recent month.

	EXPORTS				IMPORTS(b)				BALANCE OF MERCHANDISE TRADE	
	2010-11	Sep	3 months ended	3 months ended	2010-11	Sep	3 Months Ended	3 Months Ended	2010-11	3 Months Ended
		2011	September 2010	September 2011		2011	September 2010	September 2011		September 2011
	\$m	\$m	\$m	\$m	\$m	\$m	\$m	\$m	\$m	\$m
Belgium	1 328	120	326	268	1 645	132	404	378	-317	-109
Brazil	1 519	209	603	480	882	71	199	213	637	266
Canada	1 345	98	350	300	1 762	159	498	452	-417	-152
China	64 854	7 057	15 660	19 601	41 109	3 828	10 868	10 892	23 746	8 708
Denmark	237	14	33	40	941	71	232	224	-703	-184
Egypt(c)	593	48	154	143	39	1	9	18	554	126
Fiji	300	27	77	85	187	19	57	49	113	36
Finland	226	16	45	107	862	92	180	253	-637	-146
France	1 123	81	255	280	3 798	323	1 036	1 014	-2 675	-734
Germany	2 115	259	448	668	10 247	1 021	2 654	3 007	-8 132	-2 339
Hong Kong (SAR of China)	3 259	269	850	716	1 153	103	329	304	2 106	412
India	15 765	1 450	4 171	3 619	2 083	204	551	541	13 682	3 078
Indonesia	4 780	568	1 288	1 594	5 751	565	1 395	1 516	-971	78
Iran	157	18	27	31	121	2	31	38	36	-7
Iraq	327	1	27	82	—	—	—	—	327	82
Ireland	123	8	44	25	2 177	220	659	606	-2 054	-581
Israel	227	12	57	73	608	52	157	165	-380	-91
Italy	1 274	120	303	361	4 845	481	1 278	1 379	-3 571	-1 018
Japan	46 951	4 159	12 430	13 725	16 692	1 782	4 571	5 265	30 259	8 460
Korea, Republic of	22 573	1 973	5 492	5 918	6 984	487	1 772	1 525	15 589	4 394
Kuwait	617	44	117	131	317	52	39	161	301	-30
Malaysia	4 059	415	1 098	1 156	8 815	725	2 492	1 913	-4 757	-756
Mexico	888	67	161	270	1 592	113	400	411	-705	-141
Netherlands	3 024	313	747	880	1 385	143	346	430	1 640	449
New Zealand	7 691	721	2 081	2 147	7 364	682	1 860	2 000	327	148
Pakistan	381	75	116	126	175	13	40	38	207	88
Papua New Guinea	2 213	232	496	615	3 474	298	838	806	-1 260	-191
Philippines	1 483	96	322	335	442	36	123	113	1 042	222
Saudi Arabia	1 502	99	358	313	369	68	47	130	1 132	184
Singapore	5 466	429	1 575	1 781	11 419	1 150	2 446	4 326	-5 953	-2 545
South Africa	1 616	136	392	481	1 006	67	287	204	610	278
Spain	858	91	232	258	1 702	167	485	488	-844	-231
Sweden	496	99	193	162	2 315	175	553	596	-1 819	-434
Switzerland	410	79	87	209	2 515	251	562	806	-2 105	-596
Taiwan	9 109	818	2 521	2 474	3 616	318	957	1 001	5 493	1 473
Thailand	6 950	831	1 747	1 921	9 117	751	2 361	2 394	-2 167	-473
Turkey	427	31	110	188	485	35	101	103	-58	85
United Arab Emirates	2 199	189	573	608	3 125	252	638	963	-925	-355
United Kingdom	6 604	318	1 516	2 226	5 985	505	1 504	1 860	619	366
United States of America	9 066	770	2 300	2 581	23 228	2 141	5 805	6 625	-14 162	-4 045
Viet Nam	1 801	258	375	594	2 668	246	721	947	-866	-353
Other Countries(b)	9 800	933	2 487	2 877	21 148	2 220	5 036	6 114	-11 347	-3 237
Total	245 744	23 553	62 244	70 451	214 152	20 022	54 519	60 268	31 592	10 183
APEC	193 941	18 915	49 059	56 190	148 533	13 707	38 265	41 763	45 408	14 428
ASEAN	24 705	2 608	6 450	7 420	39 396	3 651	9 841	11 700	-14 691	-4 281
Developing Countries	155 351	15 574	39 132	44 021	110 218	9 872	27 649	30 580	45 133	13 441
Least Developed Countries	2 284	202	618	644	378	50	83	149	1 906	495
European Union(d)	17 867	1 495	4 324	5 411	38 515	3 589	10 030	10 991	-20 647	-5 580
OECD	107 764	9 467	27 394	31 025	101 728	9 353	26 327	28 715	6 036	2 310

— nil or rounded to zero (including null cells)

(a) See Time series spreadsheets for details of all countries.

(b) From September 2008 imports data with confidentiality restrictions 'no commodity details' or 'no value details' are included in Other countries.

(c) Exports of Alumina to Egypt are excluded from country total and included in the 'Other Countries' category.

(d) The European Union includes 27 member countries for all periods.

			3 MONTHS ENDED SEPTEMBER	
	2010-11	Sep 2011	2010	2011
	\$m	\$m	\$m	\$m
EXPORTS (a)				
New South Wales	36 362	3 410	9 010	10 647
Victoria	19 649	1 875	4 775	5 423
Queensland	49 368	5 095	14 497	14 811
South Australia	11 195	921	2 507	2 963
Western Australia	112 181	10 694	27 305	32 157
Tasmania	3 181	322	789	843
Northern Territory	5 299	550	1 358	1 426
Australian Capital Territory	3	3	1	3
State not available for publication(b)	446	31	81	176
Re-exports	8 061	651	1 919	2 002
Total	245 744	23 553	62 244	70 451
IMPORTS				
New South Wales	81 484	7 275	21 280	21 643
Victoria	56 806	5 173	14 830	15 009
Queensland	33 088	3 214	8 159	9 787
South Australia	6 529	581	1 569	1 834
Western Australia	25 956	2 414	6 030	9 125
Tasmania	637	59	151	157
Northern Territory	3 689	444	1 034	1 105
Australian Capital Territory	8	2	1	7
State not available for publication(c)	5 956	860	1 467	1 602
Total	214 152	20 022	54 519	60 268

- (a) State in which the final stage of production or manufacture occurs.
- (b) Exports of Alumina to Bahrain, Egypt and Iceland are excluded from the state totals and included in 'State not available for publication'.
- (c) From September 2008 imports data with confidentiality restrictions 'no commodity details' or 'no value details' are included in State not available for publication.

PERIOD AVERAGE EXCHANGE RATES(a), Per Australian dollar

<i>Period</i>	<i>United States dollar</i>	<i>UK pound sterling</i>	<i>Euro</i>	<i>Japanese yen</i>	<i>Special Drawing Right</i>	<i>Trade-weighted index of value of the A\$(b)</i>
FINANCIAL YEAR						
2008-09	0.7456	0.4621	0.5414	73.99	0.4869	60.2
2009-10	0.8830	0.5590	0.6362	80.77	0.5710	68.9
2010-11	0.9891	0.6213	0.7248	82.10	0.6346	74.0
MONTHS						
2010						
July	0.8743	0.5725	0.6852	76.63	0.5821	68.2
August	0.9000	0.5747	0.6976	76.87	0.5928	69.5
September	0.9358	0.6010	0.7169	78.99	0.6138	71.5
October	0.9812	0.6190	0.7060	80.26	0.6251	73.2
November	0.9902	0.6198	0.7239	81.61	0.6338	74.0
December	0.9909	0.6347	0.7497	82.58	0.6454	74.7
2011						
January	0.9941	0.6305	0.7457	82.16	0.6434	74.3
February	1.0086	0.6252	0.7383	83.29	0.6457	75.1
March	1.0100	0.6250	0.7217	82.60	0.6394	74.8
April	1.0554	0.6458	0.7311	88.09	0.6616	77.4
May	1.0688	0.6537	0.7448	86.75	0.6687	77.9
June	1.0603	0.6535	0.7368	85.35	0.6631	77.0
July	1.0766	0.6674	0.7532	85.52	0.6749	77.7
August	1.0485	0.6409	0.7312	80.83	0.6529	75.3
September	1.0239	0.6483	0.7434	78.61	0.6487	74.7

(a) These exchange rates and the trade-weighted index are derived using rates provided by the Reserve Bank of Australia in respect of each trading day.

(b) May 1970 = 100. The Trade-weighted index is reweighted annually on 1 October and on special occasions as required.

	2008-09	2009-10	2010-11	Mar 2011	Apr 2011	May 2011	Jun 2011	Jul 2011	Aug 2011
	\$m	\$m	\$m	\$m	\$m	\$m	\$m	\$m	\$m
BALANCE									
On goods and services	—	—	42	11	43	58	21	-106	-159
CREDITS									
Total goods and services	—	—	38	15	-5	14	18	-181	-310
<i>Total goods</i>	—	—	42	15	-4	14	18	-9	-119
Rural goods	—	—	3	9	-4	—	-2	1	-26
Non-rural goods	—	—	49	6	7	18	18	-11	-93
Net exports of goods under merchanting	—	—	—	—	—	—	—	—	—
Non-monetary gold	—	—	-10	—	-7	-4	2	1	—
<i>Total services</i>	—	—	-4	—	-1	—	—	-172	-191
DEBITS									
Total goods and services	—	—	4	-4	48	44	3	75	151
<i>Total goods</i>	—	—	5	-4	48	44	4	65	-15
Consumption goods	—	—	1	—	—	—	1	1	-1
Capital goods	—	—	10	4	48	35	10	65	-39
Intermediate and other merchandise goods	—	—	-6	-8	—	9	-7	-1	25
Non-monetary gold	—	—	—	—	—	—	—	—	—
<i>Total services</i>	—	—	-1	—	—	—	-1	10	166

— nil or rounded to zero (including null cells)

(a) This table is presented consistent with BPM6 sign conventions. This means for the balance on goods and services a negative revision indicates a decrease in a surplus or an increase in a deficit. For debits a negative revision indicates an increase in debits while a positive revision indicates a decrease in debits.

EXPLANATORY NOTES

INTRODUCTION

1 This publication presents preliminary estimates of Australia's international trade in goods and services on a balance of payments basis (tables 1–11 and 17) and merchandise import and export statistics on a recorded trade basis (tables 12–15). In addition, table 16 Exchange rates and trade-weighted indexes are derived by using exchange rates and indexes provided by the Reserve Bank of Australia.

2 Merchandise trade statistics on a recorded trade basis are compiled from information submitted by exporters and importers or their agents to the Australian Customs and Border Protection Service (Customs and Border Protection). Adjustments for coverage, timing and valuation are made to recorded trade data to convert them to a balance of payments basis. The services data are sourced from the quarterly Survey of International Trade in Services and a range of administrative data and indicator series.

3 More comprehensive quarterly estimates of Australia's trade in goods and services, together with comprehensive details of Australia's balance of payments are included in the quarterly publication, *Balance of Payments and International Investment Position, Australia* (cat. no. 5302.0). Detailed monthly statistics on merchandise trade are available in Time Series Spreadsheets on the ABS website or by subscription to tailored services. More information on the *International Trade in Services by Country, by State and by Detailed Services Category* are available on a financial year basis (cat. no. 5368.0.55.003) following the September issue of this publication and calendar year basis (cat. no. 5368.0.55.004) following the March issue of this publication.

CONCEPTS, SOURCES AND METHODS

4 The conceptual framework used in compiling Australia's merchandise trade statistics can be found in *International Merchandise Trade, Australia: Concepts, Sources and Methods, 2001* (cat. no. 5489.0).

5 The conceptual framework used in compiling Australia's balance of payments statistics is based on the International Monetary Fund's *Balance of Payments and International Investment Position Manual, Sixth Edition* (BPM6). Descriptions of the underlying concepts and structure of the balance of payments and the sources, methods and terms used in compiling estimates are presented in the publication *Balance of Payments and International Investment Position, Australia: Concepts, Sources and Methods, 1998* (cat. no. 5331.0). This version reflects the international standards prior to BPM6 and is currently being revised. The first part of the revised document was released on 8 March 2011, featuring only the Goods Account. Other components will be released as they become available. Further information on the key changes introduced with BPM6 can be found in the *Information paper: Implementation of new international statistical standards in the ABS National and International Accounts, September 2009* (cat. no. 5310.0.55.002).

6 To bring merchandise trade statistics on a recorded trade basis to a balance of payments basis, timing adjustments are made to ensure that the transaction is recorded in the period in which ownership changed, rather than in the period in which the transaction was recorded by Customs and Border Protection or the period in which the goods arrived in/departed from an Australian port. Adjustments are also made to account for the change of ownership of goods not included in merchandise trade statistics. Chapter 6 of cat. no. 5331.0 provides more detail on the relationship between statistics on international merchandise trade on a recorded trade basis and on a balance of payments basis.

7 Recorded trade exports data presented for recent months in tables 12–15 of this publication are based on information initially reported by exporters to Customs and Border Protection. At the time of initial reporting to Customs and Border Protection the final prices may not be known for some commodities. Therefore, the information recorded for recent months for commodities like iron ore and coal can include a variety of prices including previous or current contract prices and the prevailing spot prices.

EXPLANATORY NOTES *continued*

CONCEPTS, SOURCES AND METHODS *continued*

Newly negotiated contract prices may not be fully reflected in the data first reported to Customs and Border Protection, and to compensate for this, the balance of payments series may reflect adjusted price levels.

8 The Concepts, Sources and Methods publications and information papers are available to download for free from the ABS website. Select *Statistics*, then select *By Catalogue Number*, and then the catalogue numbers as above.

CLASSIFICATIONS

9 The merchandise trade data on a recorded trade basis are presented using the following commodity classifications:

- the Harmonized System 2007 (available on request)
- the Standard International Trade Classification (SITC Revision 4)
- the Classification by Broad Economic Categories (BEC)
- the industry classification: Australian and New Zealand Standard Industrial Classification, 2006 (ANZSIC 06) from July 2005.

10 The Balance of Payments 'goods and services' series are presented according to three classifications with the goods classifications derived from SITC Revision 4 and BEC. The classifications are:

- for goods:
 - the Balance of Payments Commodities for Exports (BoPCE)
 - the Balance of Payments Broad Economic Categories (BoPBEC) for Imports
- for services:
 - the Extended Balance of Payments Services Classification (EBOPS).

ACCURACY, RELIABILITY AND REVISIONS

11 While every effort is made to ensure the accuracy and reliability of estimates, most series are subject to revision as more complete and accurate information becomes available. Care should be exercised in the use and interpretation of estimates in this publication. The transactions occurring in international trade in goods and services are of many different kinds, and therefore the compilation of trade estimates entails the use of a very wide range of statistical data of varying degrees of accuracy and timeliness. For further information on the monthly services series, see paragraph 25.

12 The revisions are applied differently for merchandise trade and balance of payments series. Each month, merchandise trade data are revised for the previous six months to incorporate latest available data.

13 For the balance of payments 'goods and services' series, in original terms, no revisions are applied in the July, October, January or April issues. This is to ensure the monthly series align with the comparable series in the *Balance of Payments and International Investment Position, Australia* (cat. no. 5302.0). In the September issue revisions can be applied to the four previous financial years. In other issues revisions can be applied to the previous and current financial years to incorporate the latest available survey and administrative data.

14 In seasonally adjusted and trend terms, revisions may occur at any time point but tend to focus on the most recent estimates. Please also refer to paragraphs 17 (seasonal adjustment) and 19 (trend estimates) below.

SIGN CONVENTION

15 In keeping with BPM6 conventions, balance of payments basis credit entries are shown with an implied positive sign and debit items are shown as negative entries. For statistics on a recorded trade basis, both imports and exports are shown without sign. The calculation of percentage changes on balance of payments debit items are made without regard to sign. References to balance of payments debit items in Key Figures, Key Points, and Analysis and Comments are also made without regard to sign.

EXPLANATORY NOTES *continued*

SEASONALLY ADJUSTED AND TREND ESTIMATES

16 The estimates of international trade in goods and services on a balance of payments basis are seasonally adjusted, however the merchandise exports and imports statistics on a recorded trade basis are not. Monthly original estimates are volatile, being subject to calendar-related and large irregular influences. Seasonally adjusted estimates are derived by estimating and removing from the original series systematic calendar related effects, such as seasonal (e.g. Christmas), trading day and moving holiday (e.g. Easter) influences. Seasonal adjustment does not aim to remove the irregular or non-seasonal influences which may be present in any particular month. These irregular influences may reflect both random economic events and difficulties of statistical recording.

17 The seasonally adjusted statistics in this publication use the concurrent seasonal adjustment technique and Autoregressive Integrated Moving Average (ARIMA) modelling to estimate factors for the current and previous months. Under concurrent seasonal adjustment, the estimates of seasonal factors are fine tuned as new or revised original estimates become available each period. The seasonally adjusted estimates are subject to revisions at each reference month as the estimates of seasonal factors are improved.

18 ARIMA modelling relies on the characteristics of the series being analysed to project future period data. ARIMA modelling is used on a case-by-case basis where it results in reduced revisions to seasonally adjusted series when subsequent data becomes available. The projected values are temporary, intermediate values, that are only used internally to improve the estimation of the seasonal factors. The projected data do not affect the original estimates and are discarded at the end of the seasonal adjustment process. The ARIMA model is assessed as part of the annual review and, following the 2011 annual review, the majority of directly seasonally adjusted trade in goods and services time series use an ARIMA model.

19 The month-to-month movements of the seasonally adjusted estimates may not be reliable indicators of underlying behaviour because they include irregular or non-seasonal movements. Trend estimates reduce the effect of these movements as they are derived by applying a 13-term Henderson moving average to the seasonally adjusted series. The 13-term Henderson moving average (like all Henderson averages) is symmetric, but as the end of a time series is approached, asymmetric forms of the average are applied. While the asymmetric weights enable trend estimates for recent months to be produced, it does result in revisions to the estimates for the most recent six months as additional observations become available. Revisions to trend estimates can also occur because of revisions to the original data and as a result of the re-estimation of the seasonal factors. Trend estimates should be used with caution, especially around the time of unusual influences, until these have been appropriately taken into account.

20 Information papers and articles on time series methods are available on the ABS website:

- for seasonal adjustment methods, see *Information Paper: An Introductory Course on Time Series Analysis, Jan 2005* (cat. no. 1346.0.55.001) and *Time Series Analysis Frequently Asked Questions, 2003* (cat. no. 1346.0.55.002)
- for ARIMA modelling, see *Feature article: Use of ARIMA modelling to reduce revisions* in the October 2004 issue of *Australian Economic Indicators* (cat. no. 1350.0)
- for trend estimates methods, see *Information Paper: A Guide to Interpreting Time Series – Monitoring Trends* (cat. no. 1349.0)
- alternatively contact the Assistant Director, Time Series Analysis on (02) 6252 6345 or e-mail: time.series.analysis@abs.gov.au.

EXPLANATORY NOTES *continued*

ECONOMIC TERRITORY

21 In accordance with BPM6 definitions, Australia's economic territory, on a balance of payments basis, is the area under the effective control of the Australian government. It includes the land area, airspace, territorial waters, including jurisdiction over fishing rights and rights to fuels and minerals. Australian economic territory also includes territorial enclaves in the rest of the world. These are clearly demarcated areas of land, located in other countries and which are owned or rented by the Australian government for diplomatic, military, scientific or other purposes. Specifically, the economic territory of Australia consists of:

- Geographic Australia which includes Cocos (Keeling) Islands and Christmas Island;
- Norfolk Island;
- Australian Antarctic Territory;
- Heard Island and McDonald Islands;
- Territory of Ashmore Reef and Cartier Island;
- Coral Sea Islands;
- Australia's territorial enclaves overseas; and
- the Joint Petroleum Development Area (joint territory between Australia and East Timor (Timor-Leste)).

22 Because of administrative complexities and measurement difficulties, Norfolk Island transactions with the rest of the world will not always be captured in all relevant balance of payments statistics. Most of the transactions involving Norfolk Island are not material to Australia's trade performance and not capturing these transactions will not distort these statistics. However, any significant transactions will be identified and included in the relevant statistics.

COMMODITY BREAKDOWN OF GOODS

23 For details of the classifications used to present goods exports (credits) and imports (debits) on a balance of payments basis, see tables 6.6 and 6.7, respectively, in *Balance of Payments and International Investment Position, Australia: Concepts, Sources and Methods* (cat. no. 5331.0).

24 The recorded trade statistics shown in tables 12 and 13 are classified by the Standard International Trade Classification (SITC). Imports and exports of goods at a more detailed level are available from the time series spreadsheets on the ABS website. All data from July 2005 are presented according to SITC Rev 4 and data prior to July 2005 are presented according to SITC Rev 3. For details refer to the 'Classifications and Standards Update' in the July 2008 issue of this publication.

MONTHLY SERVICES SERIES

25 Monthly indicators for many of the services components that are only surveyed quarterly are not available. Monthly estimates for the freight and other transportation components of services credits in table 9 are derived by dividing the quarterly estimate by three. Freight debits are derived directly from imports data for the reference month as a difference between total merchandise cost, insurance and freight (CIF) and free on board (FOB), adjusted to reflect timing and processing adjustments. For freight credits and other transportation credits and debits, estimates are derived by extrapolating the last quarter's data by an average of movements for the same quarter over the three previous years, and then dividing the estimate by three. Similarly other services estimates are derived by extrapolating the last quarter's data by an average of movements for the same quarter over the previous three years, and then dividing the estimate by three.

CONFIDENTIALITY OF MERCHANDISE TRADE STATISTICS

26 The release of statistics for certain merchandise trade commodities is restricted in order to prevent the identification of the activities of an individual business, where this is requested by the business concerned. These restrictions do not affect the total value of exports and imports, but they can affect statistics at the country, state and commodity levels. Imports data that have the confidentiality restrictions 'No commodity details' or 'No value details' are aggregated into a single confidential commodity code. For data prior to September 2008, these data are added back into the appropriate state total and

EXPLANATORY NOTES *continued*

CONFIDENTIALITY OF MERCHANDISE TRADE STATISTICS *continued*

country total (i.e. these totals show the correct level of trade). From September 2008 these confidential data are not added back. Instead the confidential data are published as 'No country details' in the country totals and 'State not available for publication' in the state totals. Therefore, country and state totals from September 2008 may not represent the actual amount of trade in each country/state but only the trade in commodities without a 'No commodity details' or 'No value details' restriction. For information on the confidentiality restrictions applied to the merchandise trade statistics in this publication, refer to the current issue of *International Merchandise Trade: Confidential Commodities List (CCL)* (cat. no. 5372.0.55.001).

TOURISM RELATED SERVICES

27 The tourism related services memorandum items provide timely indicators of the movements in tourism related activities, not an absolute measure of the level of these activities. The tourism related indicator has been derived by combining total travel services (business, education-related and other personal travel) and passenger transportation services (which includes agency fees and commissions for air transport).

SERVICES BY STATE AND BY PARTNER COUNTRY

28 Annual services data by state, by country and detailed services are released twice yearly. Calendar year data are usually released following the March issue of this publication and financial year data are usually released following the September issue. Refer to time series data under trade in services data cubes for details.

29 Services credits are classified by the state of provision, while services debits are classified by the state of consumption. The state allocations for transportation, travel, postal and courier, and telecommunication services are based on a number of indicators including merchandise trade statistics by state, overseas passenger arrivals and departures by state of clearance and data provided by the Department of Immigration and Citizenship. The allocation for other services (about 25% of all trade in services) is primarily based on the location of the business reporting the information, which serves as a proxy for the state of provision/consumption of that service. The data should be used with care but are considered suitable for analysis over time.

30 A comprehensive explanation of the data sources used and the methodology applied in the compilation of partner country statistics is provided in Chapter 17 of *Balance of Payments and International Investment Position, Australia: Concepts, Sources and Methods* (cat. no. 5331.0). Approximately 4% of total services credits and 5% of total services debits for both 2008–09 and 2009–10 were either confidential, or unable to be allocated to individual countries.

ABS DATA AVAILABLE

31 More detailed balance of payments and recorded merchandise trade data, including forward seasonal factors are available as time series spreadsheets or data cubes from the ABS website. Merchandise trade data by commodity, country and state that are not on the ABS website may be available on request. Inquiries should be made to the National Information and Referral Service as shown on the back of this publication.

RELATED PRODUCTS AND PUBLICATIONS

32 Users may also wish to refer to the following publications which can be downloaded free of charge from the ABS website by using the 'Statistics' tab and selecting the relevant catalogue number:

- *Balance of Payments and International Investment Position, Australia* (cat. no. 5302.0) – issued quarterly
- *International Merchandise Imports, Australia* (cat. no. 5439.0) – issued monthly
- *International Trade Price Indexes, Australia* (cat. no. 6457.0) – issued quarterly
- *Balance of Payments and International Investment Position, Australia: Concepts, Sources and Methods* (cat. no. 5331.0)
- *Information Paper: Quality of Australian Balance of Payments Statistics* (cat. no. 5342.0)

EXPLANATORY NOTES *continued*

RELATED PRODUCTS AND PUBLICATIONS *continued*

- *International Merchandise Trade, Australia: Concepts, Sources and Methods* (cat. no. 5489.0)
- *A Guide to Australian Balance of Payments and International Investment Position Statistics* (cat. no. 5362.0.55.001).

33 Current publications and other products released by the ABS are available from the 'Statistics' tab on the ABS website. The ABS also issues a daily *Release Advice* on the website which details products to be released in the week ahead. A *foreign trade theme page* and a *balance of payments theme page* are available on the ABS website. Select *Topics @ a Glance – Economy – Foreign Trade* or *Balance of Payments*. This page provides direct links to all foreign trade and balance of payments related data and publications, recent changes and forthcoming events, links to relevant websites and a range of other information about the Australian International Accounts.

ROUNDING

34 Where figures have been rounded, discrepancies may occur between sums of the component items and totals. Percentage movements are calculated from data at the level of precision presented in this publication (i.e. \$m) except for international merchandise trade tables.

ABBREVIATIONS

\$b	billion (thousand million) dollars
\$m	million dollars
ABS	Australian Bureau of Statistics
ANZSIC	Australian and New Zealand Standard Industrial Classification
APEC	Asia Pacific Economic Co-operation
ASEAN	Association of South-East Asian Nations
BEC	Classification by Broad Economic Categories
BoPBEC	Balance of Payments Broad Economic Categories
EMS	Environmental Management Survey
f.o.b.	free on board
n.e.s.	not elsewhere specified
n.i.e.	not included elsewhere
OECD	Organisation for Economic Co-operation and Development
SAR	Special Administrative Region
SITC	Standard International Trade Classification

APPENDIX RELATED ARTICLES

<i>Article</i>	<i>Source(a)</i>	<i>Issue / Release</i>
Investment		
Foreign currency exposure	5308.0	Mar qtr 2009
Foreign ownership of equity	5302.0	Sep qtr 2007
Kangaroo bonds	1301.0	2006
Gross external debt	5302.0	Sep qtr 2003
Balance of payments		
International comparison of balance of payments statistics	(b) 5363.0	1998–99
Merchandise trade		
Characteristics of Australian Exporters, 2009–10	5368.0.55.006	Mar 2011
Export and Import Invoice Currencies, Dec 2009	5368.0	Dec 2009
100 years of international trade statistics	5368.0	Oct 2007
New methodology for deriving counts of Australian exports	5368.0	Feb 2006
Australia's Importers, 2003–04	5368.0	Nov 2004
Australia's Exporters, 2003–04	5368.0	Oct 2004
Foreign ownership of Australian exporters and importers, 2002–03	5496.0.55.001	Jun 2004
Australia's trade with the USA	5368.0	Mar 2004
Major commodities traded by Australia, 1991 to 2000	(b) 5422.0	Dec qtr 2000
Trade in services		
Australian outward finance and insurance foreign affiliate trade, 2009–10	5485.0	Jun 2011
International trade in services by partner country, 2006, preliminary	5368.0	Dec 2006
Changes to International trade in services statistics, August 2006	5368.0	Aug 2006
Changes to International trade in services travel statistics	5368.0	Aug 2005
Finance		
Impact of the farm season on Australian production in 2002–03 and 2003–04	1301.0	2005
Recent trends in construction and first home buyers finance	5609.0	Mar 2002
Household sector data in the financial accounts	5232.0	Mar qtr 2002
Technical information		
Information Paper: Experimental Statistics on International Shipping Container Movements, 2009–10	5368.0.55.018	Sep 2011
Proposed changes to statistical codes in the HTISC, 2012	5368.0.55.016	May 2011
Proposed changes to statistical codes in the AHECC, 2012	5368.0.55.015	Mar 2011
Implementation of new international statistical standards in ABS National and International Accounts, September 2009	5310.0.55.002	Oct 2009
Impact of revised international standards on monthly International Trade in Goods and Services, August 2009	5368.0.55.014	Oct 2009
Estimation of Workers' Remittances based on Balance of Payments and International Investment Position Manual, Sixth Edition, September 2009	5302.0.55.003	Aug 2009
Revisions to international standards in quarterly Balance of Payments and International Investment Position statistics from September 2009, 2009	5302.0.55.002	Jul 2009
Changes to International Trade in Goods Statistics – Countries and Ports, July 2009	5368.0.55.013	Jul 2009
Revisions to international standards in monthly international trade in goods and services statistics from August 2009, 2009	5368.0.55.012	Jun 2009
Changes to International Trade in Goods Industry Statistics, July 2009	5368.0.55.011	Dec 2008
Technical note 1 – Income on debt	5302.0	Jun qtr 2008
Technical note 2 – Use of CDI data	5302.0	Jun qtr 2008
Impact of introducing Revision 4 of the Standard International Trade Classification, 2008	5368.0.55.010	May 2008
Changes to international trade statistics July 2008, 2007 to 2008	5368.0.55.009	Jan 2008
Introduction of revised international standards in ABS economic statistics in 2009, 2007	5310.0.55.001	Sep 2007
Changes on 1 January 2007 to Statistical Codes in the AHECC and the Customs Tariff, 2007	1233.0.55.001	Nov 2006
ABS implementation in January 2007 of revisions to international trade classifications, 2007	5368.0.55.005	Jun 2006
Revised treatment of Goods for Processing in Merchandise Trade and Balance of Payments Statistics	5368.0	May 2006
Impact of Customs and ABS changes on import statistics from October 2005	5439.0	Oct 2005
ABS management of the impact of the implementation of the imports component of the New Customs System	5439.0	Aug 2005
Changes to country and port classifications	5368.0	May 2003
Implementation of New Customs Systems	5368.0	Aug 2004
The effect of customs changes on export statistics	5422.0	Jun qtr 2002
Data confidentiality	5422.0	Dec qtr 1999

- (a) In the ABS website home page, select Statistics; By Catalogue Number; and click on the specified catalogue number and issue. Note: in some instances, a particular issue of the publication can be found in the Past & Future Releases page of the catalogue.
- (b) This article can be found in pdf format by referring to the Downloads page of the specified issue of this publication on the ABS website.

FOR MORE INFORMATION . . .

INTERNET **www.abs.gov.au** the ABS website is the best place for data from our publications and information about the ABS.

INFORMATION AND REFERRAL SERVICE

Our consultants can help you access the full range of information published by the ABS that is available free of charge from our website. Information tailored to your needs can also be requested as a 'user pays' service. Specialists are on hand to help you with analytical or methodological advice.

PHONE 1300 135 070

EMAIL client.services@abs.gov.au

FAX 1300 135 211

POST Client Services, ABS, GPO Box 796, Sydney NSW 2001

FREE ACCESS TO STATISTICS

All statistics on the ABS website can be downloaded free of charge.

WEB ADDRESS www.abs.gov.au