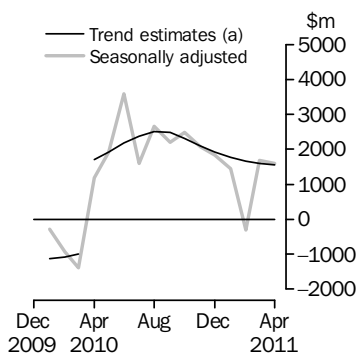


# INTERNATIONAL TRADE IN GOODS AND SERVICES

AUSTRALIA

EMBARGO: 11.30AM (CANBERRA TIME) THURS 2 JUN 2011

## Balance on Goods and Services



(a) A trend break of \$2,500m has been applied to April 2010.

## KEY FIGURES

	Feb 2011	Mar 2011	Apr 2011	Mar 11 to Apr 11 %
	\$m	\$m	\$m	change
<b>BALANCE ON GOODS AND SERVICES</b>				
Trend estimates	1 670	1 604	1 557	..
Seasonally adjusted	-295	1 691	1 597	..
<b>CREDITS (Exports of goods &amp; services)</b>				
Trend estimates	24 731	24 969	25 217	1
Seasonally adjusted	22 842	25 144	25 282	1
<b>DEBITS (Imports of goods &amp; services)</b>				
Trend estimates	23 061	23 366	23 660	1
Seasonally adjusted	23 138	23 452	23 685	1

.. not applicable

## KEY POINTS

### BALANCE ON GOODS AND SERVICES

- The trend estimate of the *balance on goods and services* was a surplus of \$1,557m in April 2011, a fall of \$47m on the surplus in March 2011.
- In seasonally adjusted terms, the *balance on goods and services* was a surplus of \$1,597m in April 2011, a fall of \$94m on the surplus in March 2011.

### CREDITS (EXPORTS OF GOODS & SERVICES)

- In seasonally adjusted terms, *goods and services credits* rose \$138m (1%) to \$25,282m. *Non-rural goods* rose \$186m (1%), *rural goods* rose \$141m (6%) and *net exports of goods under merchanting* rose \$20m (77%). *Non-monetary gold* fell \$264m (20%). *Services credits* rose \$55m (1%).

### DEBITS (IMPORTS OF GOODS & SERVICES)

- In seasonally adjusted terms, *goods and services debits* rose \$233m (1%) to \$23,685m. *Capital goods* rose \$489m (12%). *Consumption goods* fell \$159m (3%), *intermediate and other merchandise goods* fell \$125m (1%) and *non-monetary gold* fell \$32m (8%). *Services debits* rose \$60m (1%).

## INQUIRIES

For further information contact Selvi Sekhar on Canberra (02) 6252 5540 for Goods, and Lee Taylor on Canberra (02) 6252 6377 for Services.

# NOTES

## FORTHCOMING ISSUES

ISSUE	RELEASE DATE
May 2011	5 July 2011
June 2011	3 August 2011
July 2011	8 September 2011
August 2011	4 October 2011
September 2011	8 November 2011
October 2011	12 December 2011



## REVISIONS

Revisions have been made to incorporate the latest data relating to international merchandise trade. The international trade in goods and services on a balance of payments basis, goods debits series have been revised for the 6 months to March 2011. There were no other revisions to the balance of payments basis series in original terms.

Table 17 summarises revisions to goods and services on a balance of payments basis, in original current price terms, since the last issue of this publication. In original terms, the revisions have:

- decreased the surplus on goods and services for the 9 months to March 2011 by \$1,020m.

The revised goods debits data aligns with the data published in the March quarter 2011 issues of *Balance of Payments and International Investment Position* (cat. no. 5302.0) and *Australian National Accounts: National Income, Expenditure and Product* (cat. no. 5206.0).

Seasonally adjusted and trend series have been revised due to the incorporation of the revisions and estimates for the latest month.

## CHANGES IN THIS ISSUE

Following advice from the Department of Foreign Affairs and Trade, the description of 'Myanmar' has been changed to 'Burma (Republic of the Union of Myanmar)'. This change has been included in time series spreadsheet tables 14a, 14b, 36a to 36j and 37a to 37h and in the country data for the complete merchandise trade time series (i.e. data from January 1988). The ordering of countries has been affected for all country tables.

## IRON ORE AND COAL PRICES

Adjustments have been made to the value of the 'metal ores and minerals' component in the balance of payments series. See page 4 – *Commodity prices adjustment* for details.

## RELATED RELEASES

Related recent and upcoming releases are detailed in the *Related releases* on page 5.

## IMPACT OF NATURAL DISASTERS

The collection and processing of data included in this publication were not disrupted by the Japanese earthquake and tsunami. See page 6 – *Impact of natural disasters* for details.

Brian Pink  
Australian Statistician

# CONTENTS

page

Commodity prices adjustment . . . . .	4
Related releases . . . . .	5
Impact of natural disasters . . . . .	6
Time series data . . . . .	7

## ANALYSIS

Analysis and comments . . . . .	9
---------------------------------	---

## TABLES

### INTERNATIONAL TRADE IN GOODS AND SERVICES – BALANCE OF PAYMENTS BASIS

<b>1</b> Goods and services, summary, seasonally adjusted and trend estimates . . . . .	14
<b>2</b> Goods and services, summary, original . . . . .	15
<b>3</b> Goods credits, original . . . . .	16
<b>4</b> Goods debits, original . . . . .	17
<b>5</b> Goods credits, seasonally adjusted . . . . .	18
<b>6</b> Goods debits, seasonally adjusted . . . . .	19
<b>7</b> Goods credits, trend estimates . . . . .	20
<b>8</b> Goods debits, trend estimates . . . . .	21
<b>9</b> Services, summary, original . . . . .	22
<b>10</b> Services, summary, seasonally adjusted and trend estimates . . . . .	23
<b>11</b> Services, original, quarterly . . . . .	24

### INTERNATIONAL MERCHANDISE TRADE – RECORDED TRADE BASIS

<b>12</b> International merchandise exports, by commodity . . . . .	25
<b>13</b> International merchandise imports, by commodity . . . . .	28
<b>14</b> International merchandise trade, by country and country groups . . . . .	31
<b>15</b> International merchandise trade, by state . . . . .	32

### OTHER TABLES

<b>16</b> Period average exchange rates per Australian dollar . . . . .	33
<b>17</b> Summary of revisions, goods and services, original . . . . .	34

## OTHER INFORMATION

Explanatory notes . . . . .	35
Appendix – Related articles . . . . .	41

## COMMODITY PRICES ADJUSTMENT

---

### PRICES ADJUSTMENT

International merchandise trade exports data (on a recorded trade basis) presented in tables 12–15 of this publication are based on information provided by exporters to the *Australian Customs and Border Protection Service* (Customs and Border Protection). At the time of initial reporting to Customs and Border Protection the final prices may not be known for some commodities. New contract prices that have been recently negotiated, or are still being negotiated, for commodities like iron ore and coal may not be fully reflected in the Customs and Border Protection source data. Final prices are updated progressively in recorded trade data as exporters revise the information provided to Customs and Border Protection.

A positive \$250m adjustment has been made to the value of the 'metal ores and minerals' component in the balance of payments series for April 2011 to take into account additional information on both the unit price and volume of iron ore exports. The positive adjustment of \$400m made to the 'metal ores and minerals' component for March 2011 announced in the previous issue of this publication remains. No adjustment has been applied to the 'coal, coke and briquettes' component.

## RELATED RELEASES

---

### TRADE IN SERVICES DATA CUBE

The data cube *International Trade in Services by Country, by State and by Detailed Services Category, Calendar Year, 2010* (cat. no. 5368.0.55.004) was released on 19 May 2011.

### AUSTRALIAN OUTWARD FINANCE AND INSURANCE FOREIGN AFFILIATE TRADE

The publication *Australian Outward Finance and Insurance Foreign Affiliate Trade, 2009–10* (cat. no. 5485.0) will be released on 27 June 2011. This publication will present details of the activities of the foreign affiliates of Australian resident finance and insurance businesses. The details include number of affiliates and their employment by country and by industry, and sales and purchases of services.

### PROPOSED CHANGES TO STATISTICAL CODES IN THE CUSTOMS TARIFF (HARMONIZED TARIFF ITEM STATISTICAL CODE (HTISC) 2012)

The *Information paper: Proposed changes to statistical codes in the HTISC, 2012* (cat. no. 5368.0.55.016) was released on the ABS website on 13 May 2011. This information paper presents the proposed Customs Tariff statistical structure for use from 1 January 2012. Changes to the Customs Tariff result from the introduction of the five yearly review conducted by the World Customs Organisation and the ABS review of statistical codes. This paper enables users of detailed merchandise trade import statistics to review and comment by 17 June 2011 on proposed changes to statistical codes.

## IMPACT OF NATURAL DISASTERS

---

### JAPANESE EARTHQUAKE AND TSUNAMI

The Japanese earthquake and tsunami occurred on 11 March 2011. On a month to month basis, original and seasonally adjusted series can be impacted by a number of factors including commodity prices, exchange rates, supply constraints, consumer confidence and unusual influences. It is not usually possible to quantify the impact of a specific event, like the Japanese earthquake and tsunami, on the export and import series. The impact of these events will be closely monitored by the ABS.

Between March and April 2011 merchandise imports from Japan fell \$711m (48%) due primarily to a fall of \$494m (81%) in the non-industrial transport equipment component.

Between March and April 2011 merchandise exports to Japan fell \$74m (2%) with the impact varying across components.

## TIME SERIES DATA

### TIME SERIES DATA

Tables 1 to 16 of this publication are available free on the ABS website: <http://www.abs.gov.au> from the Downloads tab of this issue with longer time series. A number of these tables present more detailed breakdowns than included in the publication. A number of additional tables are available free on the ABS website.

#### *Tables with more detailed breakdowns:*

- 11a Services credits: Original - Quarter<sup>1</sup>
- 11b Services debits: Original - Quarter<sup>1</sup>
- 12b Merchandise exports by Standard International Trade Classification (3 digit), FOB Value
- 13b Merchandise imports by Standard International Trade Classification (3 digit), Customs Value
- 14a Merchandise exports, Country and Country Groups, FOB Value
- 14b Merchandise imports, Country and Country Groups, Customs Value

#### *Additional tables:*

- 31 Merchandise exports by Broad Economic Category (BEC)
- 32a Merchandise exports, Industry (ANZSIC 2006), FOB Value
- 32b Merchandise exports, Industry (ANZSIC 1993), FOB Value
- 33 Merchandise imports by Broad Economic Category (BEC)
- 34 Merchandise imports by Balance of Payments Broad Economic Category (BoPBEC)
- 35a Merchandise imports, Industry (ANZSIC 2006), Customs Value
- 35b Merchandise imports, Industry (ANZSIC 1993), Customs Value
- 36 Merchandise exports, state by country and country groups
- 37 Merchandise imports, state by country and country groups
- 91 Monthly seasonal adjustment factors and forward factors for 12 months.

---

<sup>1</sup> With a one quarter lag for the more detailed breakdowns.

## TIME SERIES DATA *continued*

---

### TRADE IN SERVICES DATA CUBES

Trade in services data cubes are usually updated on an annual basis. Calendar year (cat. no. 5368.0.55.004) statistics are updated following the March issue of this publication and financial year (cat. no. 5368.0.55.003) statistics are updated following the September issue of this publication.

The following tables were included in the calendar and financial year data cubes:

- 1 International trade in services, credits, state by year
- 2 International trade in services, credits, year by state
- 3 International trade in services, debits, state by year
- 4 International trade in services, debits, year by state
- 5 International trade in services, credits, year by country and service
- 6 International trade in services, credits, service by year and by country
- 7 International trade in services, debits, year by country and service
- 8 International trade in services, debits, service by year and by country
- 9 International trade in services, credits, year by country and travel service
- 10 International trade in services, debits, year by country and travel service
- 11 International trade in services, credits, education related travel, by educational sector, by type of expenditure by year.



## ANALYSIS AND COMMENTS

### BALANCE ON GOODS AND SERVICES

The trend estimate of the balance on goods and services was a surplus of \$1,557m in April 2011, a fall of \$47m on the surplus in March 2011.

In seasonally adjusted terms, the balance on goods and services was a surplus of \$1,597m in April 2011, a fall of \$94m on the surplus in March 2011.

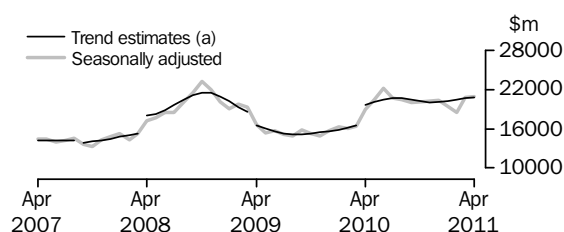
### EXPORTS OF GOODS AND SERVICES

Between March 2011 and April 2011 the trend estimate of goods and services credits rose \$248m (1%) to \$25,217m.

In seasonally adjusted terms, goods and services credits rose \$138m (1%) to \$25,282m. Non-rural goods rose \$186m (1%), rural goods rose \$141m (6%) and net exports of goods under merchanting rose \$20m (77%). Non-monetary gold fell \$264m (20%). Services credits rose \$55m (1%).

#### Exports of goods

### GOODS CREDITS



(a) Trend breaks of \$400m to September 2007, \$1,900m to April 2008, -\$1,400m to April 2009 and \$2,500m to April 2010 have been applied.

### RURAL GOODS

In trend terms, exports of rural goods rose \$48m (2%) to \$2,631m.

In seasonally adjusted terms, exports of rural goods rose \$141m (6%) to \$2,699m.

The main components contributing to the rise in the seasonally adjusted estimates were:

- cereal grains and cereal preparations, up \$67m (11%)
- other rural, up \$56m (5%).

### NON-RURAL GOODS

In trend terms, exports of non-rural goods rose \$206m (1%) to \$17,070m.

In seasonally adjusted terms, exports of non-rural goods rose \$186m (1%) to \$17,034m.

The main component contributing to the rise in the seasonally adjusted estimates was metal ores and minerals, up \$263m (4%).

Partly offsetting this rise was the metals (excl. non-monetary gold) component, down \$73m (6%).

For price and volume details, see the *Selected commodities* at the end of this section.

### NET EXPORTS OF GOODS UNDER MERCHANTING

In trend terms, net exports of goods under merchanting rose \$3m (9%) to \$35m.

In seasonally adjusted terms, net exports of goods under merchanting rose \$20m (77%) to \$46m.

## ANALYSIS AND COMMENTS *continued*

### Exports of goods *continued*

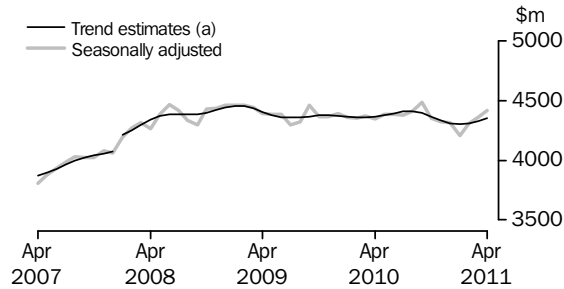
#### NON-MONETARY GOLD

In trend terms, exports of non-monetary gold fell \$38m (3%) to \$1,126m.

In seasonally adjusted terms, exports of non-monetary gold fell \$264m (20%) to \$1,088m.

### Exports of services

#### SERVICES CREDITS



(a) A trend break of \$100m has been applied to January 2008.

In trend terms, services credits rose \$28m (1%) to \$4,355m.

In seasonally adjusted terms, services credits rose \$55m (1%) to \$4,414m.

The main component contributing to the rise in the seasonally adjusted estimates was travel, up \$52m (2%).

In seasonally adjusted terms, tourism related services credits rose \$52m (2%) to \$2,966m.

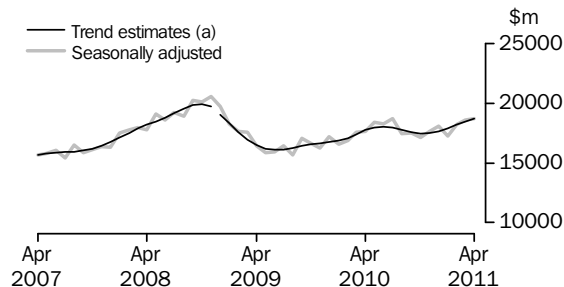
### IMPORTS OF GOODS AND SERVICES

Between March 2011 and April 2011 the trend estimate of goods and services debits rose \$294m (1%) to \$23,660m.

In seasonally adjusted terms, goods and services debits rose \$233m (1%) to \$23,685m. Capital goods rose \$489m (12%). Consumption goods fell \$159m (3%), intermediate and other merchandise goods fell \$125m (1%) and non-monetary gold fell \$32m (8%). Services debits rose \$60m (1%).

### Imports of goods

#### GOODS DEBITS



(a) A trend break of -\$200m has been applied to December 2008.

#### CONSUMPTION GOODS

In trend terms, imports of consumption goods rose \$17m to \$5,292m.

In seasonally adjusted terms, imports of consumption goods fell \$159m (3%) to \$5,049m.

## ANALYSIS AND COMMENTS *continued*

### Imports of goods *continued*

#### CONSUMPTION GOODS *continued*

The main component contributing to the fall in the seasonally adjusted estimates was non-industrial transport equipment, down \$426m (31%).

All other components rose, partly offsetting the above fall. The consumption goods n.e.s. component, rose \$149m (9%).

#### CAPITAL GOODS

In trend terms, imports of capital goods rose \$30m (1%) to \$4,335m.

In seasonally adjusted terms, imports of capital goods rose \$489m (12%) to \$4,495m.

The main component contributing to the rise in the seasonally adjusted estimates was civil aircraft and confidentialised items, up \$432m (141%).

#### INTERMEDIATE AND OTHER MERCHANDISE GOODS

In trend terms, imports of intermediate and other merchandise goods rose \$230m (3%) to \$8,747m.

In seasonally adjusted terms, imports of intermediate and other merchandise goods fell \$125m (1%) to \$8,795m.

The main components contributing to the fall in the seasonally adjusted estimates were:

- fuels and lubricants, down \$88m (3%)
- organic and inorganic chemicals, down \$71m (16%).

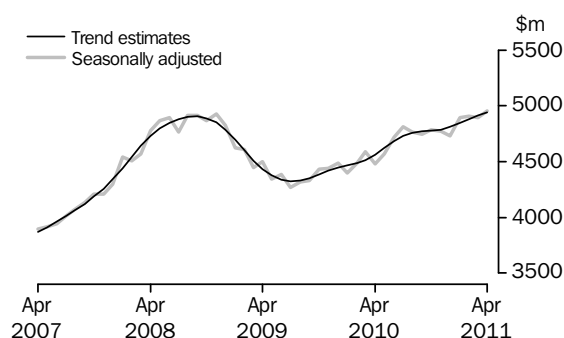
#### NON-MONETARY GOLD

In trend terms, imports of non-monetary gold fell \$10m (3%) to \$346m.

In seasonally adjusted terms, non-monetary gold fell \$32m (8%) to \$391m.

### Imports of services

#### SERVICES DEBITS



In trend terms, services debits rose \$26m (1%) to \$4,939m.

In seasonally adjusted terms, services debits rose \$60m (1%) to \$4,955m.

The main components contributing to the rise in the seasonally adjusted estimates were:

- other services, up \$30m (2%)
- travel, up \$29m (1%).

In seasonally adjusted terms, tourism related services debits rose \$39m (1%) to \$2,727m.

## ANALYSIS AND COMMENTS *continued*

### Selected Commodities

### SELECTED COMMODITIES, Price and volume analysis: **Recorded Trade Basis**

	Nov 2010	Dec 2010	Jan 2011	Feb 2011	Mar 2011	Apr 2011
	%	%	%	%	%	%
.....						
<b>IRON ORE</b>						
<b>Lump</b>						
Volumes	-11	14	-15	-23	50	np
Price	1	3	7	3	1	np
<b>Fines</b>						
Volumes	-6	10	-16	-17	36	np
Price	1	5	7	4	1	np
.....						
<b>COAL</b>						
<b>Hard coking</b>						
Volumes	10	-6	-39	-5	37	-6
Price	-6	—	1	6	3	-8
<b>Semi-soft</b>						
Volumes	-5	3	-33	2	39	-17
Price	-6	-2	-2	9	6	3
<b>Bituminous (Thermal)</b>						
Volumes	-19	15	-10	-20	3	26
Price	—	2	5	2	1	-6

— nil or rounded to zero (including null cells)

np not available for publication but included in totals where applicable, unless otherwise indicated

On a recorded trade basis, between March and April 2011, large value movements were recorded for the following selected commodities:

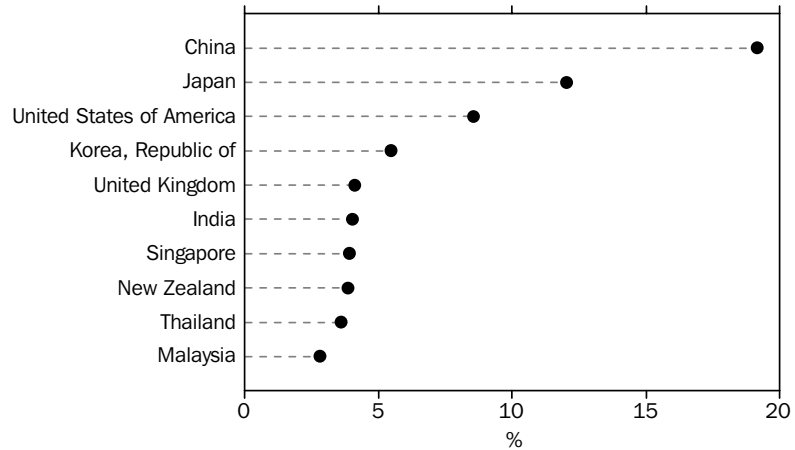
- hard coking coal fell \$213m (14%) with exports to China down \$121m and Republic of Korea down \$99m (51%), both driven by decreases in volumes
- semi-soft coal fell \$110m (15%) with exports to Republic of Korea down \$99m (49%) and India down \$22m (25%), both driven by decreases in volumes
- bituminous (thermal) coal rose \$181m (19%) with exports to Japan up \$120m (26%) with volumes up 32%, and Taiwan up \$42m (35%) with volumes up 37%.

## ANALYSIS AND COMMENTS *continued*

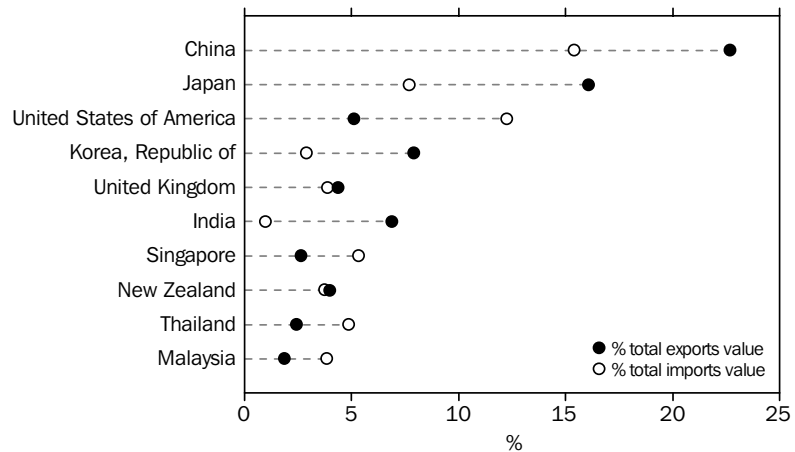
### COUNTRY BREAKDOWN

The following charts show Australia's major trading partners for the calendar year 2010. The charts include both trade in goods (on a recorded trade basis) and trade in services (on a balance of payments basis). The first chart shows the countries with the largest two-way trade i.e. combined trade in both exports and imports of goods and services. The second chart shows separately total exports and total imports of goods and services, for the ten countries in the first chart.

TOTAL VALUE OF TWO-WAY TRADE, By major countries—2010, Percentage share



EXPORTS AND IMPORTS OF GOODS AND SERVICES, By major countries—2010



Combining trade in goods (on a recorded trade basis) and trade in services (on a balance of payments basis) provides a good approximation of total trade. Some components will be excluded (e.g. Merchanting, credits and Goods procured in ports by carriers, debits) while the Manufacturing services on physical inputs owned by others component will be double counted. These components are unlikely to impact the broad analysis.

Imports data with the confidentiality restrictions 'no commodity details' or 'no value details' are excluded from the individual country and included in 'no country details' in the detailed breakdown presented in the time series spreadsheet table 14b. In table 14 of this publication, the 'no country details' data are included in 'other countries'. In 2010, these restrictions represented 3% of the total imports value but the impact on specific countries may be larger.

## GOODS AND SERVICES(a), Summary—Seasonally Adjusted and Trend Estimates

	May 2010	Jun 2010	Jul 2010	Aug 2010	Sep 2010	Oct 2010	Nov 2010	Dec 2010	Jan 2011	Feb 2011	Mar 2011	Apr 2011
	\$m	\$m	\$m	\$m	\$m	\$m	\$m	\$m	\$m	\$m	\$m	\$m
SEASONALLY ADJUSTED												
<b>BALANCE</b>												
<b>On goods and services</b>	<b>1 933</b>	<b>3 588</b>	<b>1 596</b>	<b>2 648</b>	<b>2 196</b>	<b>2 482</b>	<b>2 066</b>	<b>1 839</b>	<b>1 442</b>	<b>-295</b>	<b>1 691</b>	<b>1 597</b>
<b>CREDITS</b>												
Total goods and services	24 880	26 561	25 117	24 848	24 447	24 404	24 499	24 665	23 569	22 842	25 144	25 282
<b>Total goods</b>	<b>20 494</b>	<b>22 174</b>	<b>20 743</b>	<b>20 436</b>	<b>19 961</b>	<b>20 055</b>	<b>20 177</b>	<b>20 352</b>	<b>19 363</b>	<b>18 532</b>	<b>20 785</b>	<b>20 868</b>
Rural goods(b)	2 303	2 412	2 568	2 422	2 229	2 377	2 373	2 414	2 339	2 617	2 558	2 699
Non-rural goods(b)	16 236	18 280	16 908	17 150	16 561	16 103	16 552	16 807	15 463	15 041	16 848	17 034
Net exports of goods under merchandise(c)	23	24	25	25	25	25	25	25	26	26	26	46
Non-monetary gold(c)	1 932	1 459	1 242	839	1 146	1 550	1 227	1 106	1 535	849	1 352	1 088
<b>Total services</b>	<b>4 386</b>	<b>4 386</b>	<b>4 375</b>	<b>4 412</b>	<b>4 485</b>	<b>4 349</b>	<b>4 322</b>	<b>4 313</b>	<b>4 207</b>	<b>4 310</b>	<b>4 359</b>	<b>4 414</b>
<b>DEBITS</b>												
Total goods and services	-22 947	-22 973	-23 521	-22 199	-22 251	-21 922	-22 433	-22 826	-22 127	-23 138	-23 452	-23 685
<b>Total goods</b>	<b>-18 381</b>	<b>-18 257</b>	<b>-18 711</b>	<b>-17 433</b>	<b>-17 504</b>	<b>-17 136</b>	<b>-17 658</b>	<b>-18 095</b>	<b>-17 232</b>	<b>-18 227</b>	<b>-18 557</b>	<b>-18 730</b>
Consumption goods	-5 526	-5 557	-5 462	-5 495	-5 445	-5 303	-5 347	-5 304	-5 239	-5 249	-5 208	-5 049
Capital goods	-4 331	-4 156	-4 127	-4 018	-3 828	-3 903	-4 159	-4 115	-4 317	-4 351	-4 006	-4 495
Intermediate and other merchandise goods	-7 636	-7 887	-8 734	-7 615	-7 731	-7 329	-7 565	-8 289	-7 391	-8 288	-8 920	-8 795
Non-monetary gold(c)	-887	-657	-387	-305	-501	-602	-588	-387	-286	-339	-423	-391
<b>Total services</b>	<b>-4 566</b>	<b>-4 716</b>	<b>-4 810</b>	<b>-4 766</b>	<b>-4 747</b>	<b>-4 786</b>	<b>-4 775</b>	<b>-4 731</b>	<b>-4 895</b>	<b>-4 910</b>	<b>-4 895</b>	<b>-4 955</b>
TREND ESTIMATES (d)												
<b>BALANCE</b>												
<b>On goods and services</b>	<b>1 923</b>	<b>2 174</b>	<b>2 385</b>	<b>2 514</b>	<b>2 477</b>	<b>2 311</b>	<b>2 097</b>	<b>1 924</b>	<b>1 782</b>	<b>1 670</b>	<b>1 604</b>	<b>1 557</b>
<b>CREDITS</b>												
Total goods and services	24 518	24 896	25 079	25 053	24 839	24 558	24 379	24 400	24 538	24 731	24 969	25 217
<b>Total goods</b>	<b>20 142</b>	<b>20 505</b>	<b>20 674</b>	<b>20 644</b>	<b>20 444</b>	<b>20 192</b>	<b>20 046</b>	<b>20 092</b>	<b>20 237</b>	<b>20 422</b>	<b>20 643</b>	<b>20 862</b>
Rural goods(b)	2 295	2 356	2 397	2 404	2 386	2 364	2 363	2 399	2 458	2 522	2 583	2 631
Non-rural goods(b)	16 626	16 918	17 051	17 011	16 819	16 569	16 406	16 411	16 517	16 672	16 864	17 070
Net exports of goods under merchandise	22	24	25	25	25	25	25	25	27	29	32	35
Non-monetary gold	1 200	1 207	1 201	1 204	1 213	1 235	1 253	1 257	1 236	1 200	1 164	1 126
<b>Total services</b>	<b>4 376</b>	<b>4 391</b>	<b>4 405</b>	<b>4 409</b>	<b>4 396</b>	<b>4 366</b>	<b>4 332</b>	<b>4 308</b>	<b>4 300</b>	<b>4 309</b>	<b>4 327</b>	<b>4 355</b>
<b>DEBITS</b>												
Total goods and services	-22 595	-22 722	-22 695	-22 539	-22 362	-22 248	-22 282	-22 475	-22 756	-23 061	-23 366	-23 660
<b>Total goods</b>	<b>-17 973</b>	<b>-18 040</b>	<b>-17 965</b>	<b>-17 780</b>	<b>-17 589</b>	<b>-17 469</b>	<b>-17 495</b>	<b>-17 665</b>	<b>-17 911</b>	<b>-18 181</b>	<b>-18 453</b>	<b>-18 721</b>
Consumption goods	-5 465	-5 494	-5 496	-5 471	-5 428	-5 371	-5 321	-5 289	-5 272	-5 268	-5 275	-5 292
Capital goods	-4 104	-4 116	-4 084	-4 026	-3 995	-4 005	-4 058	-4 135	-4 205	-4 260	-4 305	-4 335
Intermediate and other merchandise goods	-7 750	-7 816	-7 828	-7 775	-7 689	-7 629	-7 657	-7 802	-8 030	-8 279	-8 517	-8 747
Non-monetary gold	-654	-613	-557	-508	-478	-464	-459	-439	-404	-375	-356	-346
<b>Total services</b>	<b>-4 622</b>	<b>-4 682</b>	<b>-4 730</b>	<b>-4 758</b>	<b>-4 773</b>	<b>-4 779</b>	<b>-4 787</b>	<b>-4 810</b>	<b>-4 845</b>	<b>-4 880</b>	<b>-4 913</b>	<b>-4 939</b>

(a) For sign conventions, see paragraph 15 of the Explanatory Notes.

(b) For all time periods, estimates for sugar, sugar preparations and honey are included in Non-rural goods.

(c) This component is not seasonally adjusted.

(d) Caution should be used when interpreting recent trend estimates as they may be affected by unusual economic factors. For more details on trend estimates, please see paragraph 19 of the Explanatory Notes.

## GOODS AND SERVICES (a), Summary—Original

	May 2010	Jun 2010	Jul 2010	Aug 2010	Sep 2010	Oct 2010	Nov 2010	Dec 2010	Jan 2011	Feb 2011	Mar 2011	Apr 2011
	\$m	\$m	\$m	\$m	\$m	\$m	\$m	\$m	\$m	\$m	\$m	\$m
<b>BALANCE</b>												
<b>On goods and services</b>	<b>3 318</b>	<b>3 387</b>	<b>1 619</b>	<b>3 217</b>	<b>1 078</b>	<b>2 101</b>	<b>257</b>	<b>2 088</b>	<b>342</b>	<b>708</b>	<b>2 596</b>	<b>2 365</b>
<b>CREDITS</b>												
Total goods and services	25 121	26 135	25 600	25 533	24 613	25 189	24 038	25 622	21 597	21 714	26 114	24 924
<b>Total goods</b>	<b>20 817</b>	<b>22 056</b>	<b>21 186</b>	<b>21 063</b>	<b>20 254</b>	<b>20 665</b>	<b>19 689</b>	<b>21 350</b>	<b>17 516</b>	<b>17 358</b>	<b>21 585</b>	<b>20 366</b>
Rural goods(b)	2 514	2 434	2 561	2 384	2 119	2 351	2 203	2 486	2 038	2 648	2 870	2 808
Non-rural goods(b)	16 348	18 139	17 358	17 815	16 964	16 739	16 234	17 733	13 917	13 835	17 337	16 424
Net exports of goods under merchanting	23	24	25	25	25	25	25	25	26	26	26	46
Non-monetary gold	1 932	1 459	1 242	839	1 146	1 550	1 227	1 106	1 535	849	1 352	1 088
<b>Total services</b>	<b>4 304</b>	<b>4 079</b>	<b>4 414</b>	<b>4 470</b>	<b>4 359</b>	<b>4 524</b>	<b>4 349</b>	<b>4 272</b>	<b>4 081</b>	<b>4 356</b>	<b>4 529</b>	<b>4 558</b>
<b>DEBITS</b>												
Total goods and services	-21 803	-22 748	-23 981	-22 316	-23 535	-23 088	-23 781	-23 534	-21 255	-21 006	-23 518	-22 559
<b>Total goods</b>	<b>-17 492</b>	<b>-17 979</b>	<b>-18 896</b>	<b>-17 589</b>	<b>-18 372</b>	<b>-18 044</b>	<b>-19 176</b>	<b>-18 514</b>	<b>-16 118</b>	<b>-16 786</b>	<b>-18 903</b>	<b>-17 758</b>
Consumption goods	-5 077	-5 376	-5 612	-5 591	-5 985	-5 868	-6 130	-5 403	-4 700	-4 767	-5 033	-4 600
Capital goods	-4 194	-4 214	-4 100	-4 015	-3 934	-4 062	-4 615	-4 338	-3 919	-3 903	-4 187	-4 211
Intermediate and other merchandise goods	-7 334	-7 732	-8 797	-7 678	-7 952	-7 512	-7 843	-8 386	-7 213	-7 777	-9 260	-8 556
Non-monetary gold	-887	-657	-387	-305	-501	-602	-588	-387	-286	-339	-423	-391
<b>Total services</b>	<b>-4 311</b>	<b>-4 769</b>	<b>-5 085</b>	<b>-4 727</b>	<b>-5 163</b>	<b>-5 044</b>	<b>-4 605</b>	<b>-5 020</b>	<b>-5 137</b>	<b>-4 220</b>	<b>-4 615</b>	<b>-4 801</b>

(a) For sign conventions, see paragraph 15 of the Explanatory Notes.

(b) For all time periods, estimates for sugar, sugar preparations and honey are included in Non-rural goods.

	2007-08	2008-09	2009-10	Feb 2011	Mar 2011	Apr 2011	10 MONTHS ENDED APRIL		Change
							2010	2011	
							\$m	\$m	
<b>Total goods credits</b>	<b>182 956</b>	<b>231 564</b>	<b>201 809</b>	<b>17 358</b>	<b>21 585</b>	<b>20 366</b>	<b>158 936</b>	<b>201 032</b>	<b>26.5</b>
General merchandise	170 475	213 755	187 259	16 483	20 207	19 232	147 824	188 824	27.7
<i>Rural goods(a)</i>	25 494	29 383	25 589	2 648	2 870	2 808	20 641	24 468	18.5
Meat and meat preparations	6 542	7 454	6 350	595	655	593	5 061	5 730	13.2
Cereal grains and cereal preparations	4 975	6 881	5 266	745	719	765	4 302	5 857	36.1
Wool and sheepskins	2 796	2 322	2 307	323	392	338	1 877	2 522	34.4
Other rural(a)	11 181	12 726	11 666	985	1 104	1 112	9 401	10 359	10.2
<i>Non-rural goods(a)</i>	144 981	184 372	161 670	13 835	17 337	16 424	127 183	164 356	29.2
Metal ores and minerals	41 343	52 015	53 669	5 445	7 146	6 790	40 691	64 056	57.4
Coal, coke and briquettes	24 599	54 957	36 777	2 521	3 185	3 125	28 169	35 263	25.2
Other mineral fuels	18 889	20 707	18 964	1 710	2 084	2 099	15 455	19 462	25.9
Metals (excl. non-monetary gold)	14 039	12 394	10 735	1 036	1 164	1 076	8 664	10 414	20.2
Machinery	8 750	8 900	7 977	648	753	706	6 531	7 079	8.4
Transport equipment	5 723	5 090	4 073	358	356	317	3 390	3 175	-6.3
Other manufactures	16 965	17 601	16 375	1 268	1 485	1 236	13 467	13 512	0.3
Other non-rural (incl. sugar and beverages)	13 126	11 077	11 711	717	1 029	935	9 683	10 078	4.1
Goods procured in ports by carriers	1 547	1 631	1 389	132	135	140	1 133	1 317	16.2
Net exports of goods under merchanting	209	301	250	26	26	46	203	274	35.0
Goods acquired under merchanting									
(negative exports)	-1 528	-2 386	-1 799	-177	-177	-203	-1 499	-1 941	-29.5
Goods sold under merchanting	1 737	2 687	2 049	203	203	249	1 702	2 215	30.1
Non-monetary gold	12 272	17 508	14 300	849	1 352	1 088	10 909	11 934	9.4

(a) For all time periods, estimates for sugar, sugar preparations and honey are included in Other non-rural.



## GOODS DEBITS (a), Original

							10 MONTHS ENDED APRIL		Change
	2007-08	2008-09	2009-10	Feb 2011	Mar 2011	Apr 2011	2010	2011	
	\$m	\$m	\$m	\$m	\$m	\$m	\$m	\$m	
<b>Total goods debits</b>	<b>-204 858</b>	<b>-220 649</b>	<b>-204 166</b>	<b>-16 786</b>	<b>-18 903</b>	<b>-17 758</b>	<b>-168 695</b>	<b>-180 156</b>	<b>-6.8</b>
General merchandise	-197 265	-209 127	-197 303	-16 447	-18 480	-17 367	-163 376	-175 947	-7.7
<i>Consumption goods</i>	-59 371	-61 419	-62 333	-4 767	-5 033	-4 600	-51 880	-53 689	-3.5
Food and beverages, mainly for consumption	-7 840	-8 857	-8 712	-627	-726	-674	-7 353	-7 542	-2.6
Household electrical items	-5 051	-5 488	-5 505	-295	-312	-352	-4 597	-4 087	11.1
Non-industrial transport equipment	-16 872	-13 247	-16 288	-1 178	-1 420	-927	-13 305	-13 541	-1.8
Textiles, clothing and footwear	-7 051	-8 287	-7 514	-829	-631	-667	-6 384	-7 169	-12.3
Toys, books and leisure goods	-4 561	-5 277	-4 675	-274	-275	-291	-3 886	-3 762	3.2
Consumption goods n.e.s.	-17 996	-20 263	-19 639	-1 564	-1 669	-1 689	-16 355	-17 588	-7.5
<i>Capital goods</i>	-45 299	-49 843	-46 517	-3 903	-4 187	-4 211	-38 109	-41 284	-8.3
Machinery and industrial equipment	-16 480	-18 488	-15 561	-1 215	-1 319	-1 224	-12 872	-12 978	-0.8
ADP equipment	-7 074	-7 257	-7 633	-469	-706	-669	-6 054	-6 347	-4.8
Telecommunications equipment	-5 790	-6 431	-6 051	-462	-560	-466	-4 989	-5 894	-18.1
Civil aircraft and confidentialised items(b)	-2 691	-5 524	-5 051	-629	-306	-738	-4 177	-4 572	-9.5
Industrial transport equipment n.e.s.	-7 502	-6 527	-6 804	-533	-599	-482	-5 502	-5 793	-5.3
Capital goods n.e.s.	-5 762	-5 616	-5 417	-595	-697	-632	-4 515	-5 700	-26.2
<i>Intermediate and other merchandise goods</i>	-92 595	-97 865	-88 453	-7 777	-9 260	-8 556	-73 387	-80 974	-10.3
Food and beverages, mainly for industry	-923	-1 186	-1 035	-117	-105	-125	-869	-1 014	-16.7
Primary industrial supplies n.e.s.	-1 477	-1 901	-1 346	-85	-170	-119	-1 134	-1 355	-19.5
Fuels and lubricants	-29 772	-28 213	-26 494	-2 699	-3 314	-3 226	-21 945	-25 594	-16.6
Parts for transport equipment	-8 837	-8 599	-8 221	-644	-877	-743	-6 810	-7 279	-6.9
Parts for ADP equipment	-1 115	-1 067	-973	-59	-80	-72	-786	-763	2.9
Other parts for capital goods	-11 990	-14 312	-13 755	-1 049	-1 197	-1 179	-11 451	-11 783	-2.9
Organic and inorganic chemicals	-4 673	-5 384	-4 355	-354	-489	-345	-3 585	-3 812	-6.3
Paper and paperboard	-2 359	-2 403	-2 299	-169	-188	-154	-1 921	-1 991	-3.6
Textile yarn and fabrics	-1 334	-1 344	-1 170	-86	-93	-90	-984	-948	3.7
Iron and steel	-3 721	-5 528	-3 258	-318	-270	-306	-2 655	-3 133	-18.0
Plastics	-3 064	-3 028	-2 733	-202	-240	-237	-2 256	-2 401	-6.4
Processed industrial supplies n.e.s.	-20 132	-21 919	-20 026	-1 788	-1 989	-1 731	-16 599	-18 084	-8.9
Other merchandise goods(b)	-1 415	-1 401	-1 392	-81	-122	-102	-1 235	-1 556	-26.0
Goods procured in ports by carriers	-1 783	-1 580	-1 396	-126	-126	-127	-1 157	-1 261	-9.0
Non-monetary gold	-7 593	-11 522	-6 863	-339	-423	-391	-5 319	-4 209	20.9

(a) For sign conventions, see paragraph 15 of the Explanatory Notes.

(b) From July 2008, commodities subject to a 'no commodity details' or 'no value details' restriction are included in Civil aircraft and confidentialised items. For earlier periods, commodities subject to a 'no commodity details' or 'no value details' restriction are included in Other merchandise goods.

## GOODS CREDITS, Seasonally Adjusted

	Jul 2010	Aug 2010	Sep 2010	Oct 2010	Nov 2010	Dec 2010	Jan 2011	Feb 2011	Mar 2011	Apr 2011
	\$m	\$m	\$m	\$m	\$m	\$m	\$m	\$m	\$m	\$m
<b>Total goods credits</b>	<b>20 743</b>	<b>20 436</b>	<b>19 961</b>	<b>20 055</b>	<b>20 177</b>	<b>20 352</b>	<b>19 363</b>	<b>18 532</b>	<b>20 785</b>	<b>20 868</b>
General merchandise	19 476	19 572	18 790	18 480	18 925	19 221	17 802	17 657	19 407	19 734
<i>Rural goods</i>	2 568	2 422	2 229	2 377	2 373	2 414	2 339	2 617	2 558	2 699
Meat and meat preparations	602	578	540	538	573	609	504	630	598	599
Cereal grains and cereal preparations	537	475	549	681	576	550	596	640	612	679
Wool and sheepskins	220	218	202	203	237	282	250	287	289	306
Other rural (a)	1 208	1 151	938	956	987	972	988	1 060	1 060	1 116
<i>Non-rural goods</i>	16 908	17 150	16 561	16 103	16 552	16 807	15 463	15 041	16 848	17 034
Metal ores and minerals	6 466	5 949	6 244	6 244	6 559	6 456	6 540	5 803	6 873	7 136
Coal, coke and briquettes(b)	3 854	4 442	4 171	3 806	3 664	3 645	2 624	2 740	3 127	3 171
Other mineral fuels(c)	1 969	1 969	1 707	1 617	1 882	1 943	1 885	1 928	2 150	2 103
Metals (excl. non-monetary gold)(c)	1 026	995	953	975	1 034	1 118	1 013	1 169	1 172	1 099
Machinery	728	766	649	688	676	761	697	692	714	736
Transport equipment	309	311	315	280	288	300	323	368	323	361
Other manufactures	1 362	1 373	1 329	1 375	1 321	1 459	1 265	1 369	1 387	1 348
Other non-rural (incl. sugar and beverages)	1 061	1 218	1 070	990	1 004	995	986	834	963	933
Goods procured in ports by carriers(c)	133	126	123	128	125	129	130	136	139	148
Net exports of goods under merchanting(d)	25	25	25	25	25	25	26	26	26	46
Non-monetary gold(d)	1 242	839	1 146	1 550	1 227	1 106	1 535	849	1 352	1 088

(a) For all time periods, estimates for sugar, sugar preparations and honey are included in Other non-rural.

(b) Only a length-of-month adjustment has been applied to this component.

(c) In using these seasonally adjusted series, care should be exercised because of the difficulties associated with reliably estimating the seasonal pattern.

(d) This component is not seasonally adjusted.

## GOODS DEBITS(a), Seasonally Adjusted

	Jul 2010	Aug 2010	Sep 2010	Oct 2010	Nov 2010	Dec 2010	Jan 2011	Feb 2011	Mar 2011	Apr 2011
	\$m	\$m	\$m	\$m	\$m	\$m	\$m	\$m	\$m	\$m
<b>Total goods debits</b>	<b>-18 711</b>	<b>-17 433</b>	<b>-17 504</b>	<b>-17 136</b>	<b>-17 658</b>	<b>-18 095</b>	<b>-17 232</b>	<b>-18 227</b>	<b>-18 557</b>	<b>-18 730</b>
General merchandise	-18 324	-17 128	-17 003	-16 534	-17 070	-17 708	-16 946	-17 888	-18 134	-18 339
Consumption goods	-5 462	-5 495	-5 445	-5 303	-5 347	-5 304	-5 239	-5 249	-5 208	-5 049
Food and beverages, mainly for consumption	-777	-770	-770	-738	-720	-715	-711	-720	-736	-746
Household electrical items	-437	-422	-435	-408	-420	-377	-374	-377	-374	-401
Non-industrial transport equipment	-1 428	-1 397	-1 386	-1 386	-1 411	-1 415	-1 363	-1 362	-1 385	-959
Textiles, clothing and footwear	-704	-728	-712	-677	-694	-682	-652	-714	-668	-723
Toys, books and leisure goods	-381	-382	-391	-400	-391	-381	-368	-353	-328	-352
Consumption goods n.e.s.	-1 735	-1 795	-1 750	-1 694	-1 710	-1 734	-1 771	-1 723	-1 718	-1 867
Capital goods	-4 127	-4 018	-3 828	-3 903	-4 159	-4 115	-4 317	-4 351	-4 006	-4 495
Machinery and industrial equipment	-1 344	-1 284	-1 341	-1 274	-1 259	-1 224	-1 251	-1 337	-1 281	-1 339
ADP equipment	-727	-708	-660	-604	-621	-611	-606	-590	-655	-666
Telecommunications equipment	-562	-676	-565	-606	-610	-578	-677	-568	-546	-510
Civil aircraft and confidentialised items(b)(c)	-424	-244	-327	-274	-614	-542	-474	-629	-306	-738
Industrial transport equipment n.e.s.	-635	-619	-477	-584	-538	-558	-667	-592	-564	-546
Capital goods n.e.s.	-435	-487	-457	-561	-517	-603	-642	-634	-654	-697
Intermediate and other merchandise goods	-8 734	-7 615	-7 731	-7 329	-7 565	-8 289	-7 391	-8 288	-8 920	-8 795
Food and beverages, mainly for industry	-90	-94	-90	-99	-98	-94	-89	-130	-105	-122
Primary industrial supplies n.e.s.(d)	-168	-101	-137	-133	-137	-117	-114	-117	-143	-140
Fuels and lubricants(c)	-2 427	-2 080	-2 301	-2 114	-2 416	-2 889	-2 128	-2 699	-3 314	-3 226
Parts for transport equipment	-759	-712	-720	-682	-682	-684	-722	-712	-797	-753
Parts for ADP equipment	-84	-87	-81	-84	-82	-73	-74	-71	-70	-75
Other parts for capital goods	-1 232	-1 217	-1 173	-1 139	-1 143	-1 172	-1 139	-1 215	-1 157	-1 182
Organic and inorganic chemicals	-455	-407	-353	-356	-359	-360	-357	-354	-440	-369
Paper and paperboard	-207	-213	-200	-194	-196	-196	-193	-186	-182	-183
Textile yarn and fabrics	-103	-99	-94	-90	-88	-92	-89	-93	-94	-100
Iron and steel	-398	-318	-301	-297	-279	-300	-255	-324	-282	-321
Plastics	-260	-259	-245	-230	-219	-220	-231	-230	-237	-251
Processed industrial supplies n.e.s.	-1 866	-1 795	-1 772	-1 711	-1 672	-1 729	-1 804	-1 950	-1 851	-1 844
Other merchandise goods(b)(e)	-555	-104	-135	-77	-72	-239	-69	-81	-122	-102
Goods procured in ports by carriers(c)	-129	-129	-128	-123	-123	-124	-126	-126	-126	-127
Non-monetary gold(c)	-387	-305	-501	-602	-588	-387	-286	-339	-423	-391

(a) For sign conventions, see paragraph 15 of the Explanatory Notes.

(b) From July 2008, commodities subject to a 'no commodity details' or 'no value details' restriction are included in Civil aircraft and confidentialised items. For earlier periods, commodities subject to a 'no commodity details' or 'no value details' restriction are included in Other merchandise goods.

(c) This component is not seasonally adjusted.

(d) In using these seasonally adjusted series, care should be exercised because of the difficulties associated with reliably estimating the seasonal pattern.

(e) From July 1981, this component is not seasonally adjusted.

## GOODS CREDITS(a), Trend Estimates

	Jul 2010	Aug 2010	Sep 2010	Oct 2010	Nov 2010	Dec 2010	Jan 2011	Feb 2011	Mar 2011	Apr 2011
	\$m	\$m	\$m	\$m	\$m	\$m	\$m	\$m	\$m	\$m
<b>Total goods credits</b>	<b>20 674</b>	<b>20 644</b>	<b>20 444</b>	<b>20 192</b>	<b>20 046</b>	<b>20 092</b>	<b>20 237</b>	<b>20 422</b>	<b>20 643</b>	<b>20 862</b>
General merchandise	19 448	19 415	19 205	18 932	18 769	18 810	18 975	19 194	19 448	19 701
<i>Rural goods</i>	2 397	2 404	2 386	2 364	2 363	2 399	2 458	2 522	2 583	2 631
Meat and meat preparations	591	581	568	560	559	567	578	587	596	602
Cereal grains and cereal preparations	495	528	558	580	591	599	607	618	630	640
Wool and sheepskins	210	212	216	224	236	251	267	281	293	302
Other rural(b)	1 101	1 083	1 044	1 001	976	982	1 007	1 036	1 065	1 088
<i>Non-rural goods</i>	17 051	17 011	16 819	16 569	16 406	16 411	16 517	16 672	16 864	17 070
Metal ores and minerals	6 343	6 367	6 355	6 319	6 310	6 362	6 439	6 527	6 634	6 754
Coal, coke and briquettes	4 194	4 198	4 091	3 921	3 760	3 654	3 588	3 558	3 552	3 569
Other mineral fuels	1 908	1 859	1 816	1 797	1 812	1 860	1 929	1 996	2 057	2 107
Metals (excl. non-monetary gold)	989	986	988	1 003	1 030	1 061	1 091	1 116	1 136	1 147
Machinery	713	711	706	700	699	702	708	714	719	721
Transport equipment	325	311	300	296	299	309	321	334	345	356
Other manufactures	1 376	1 369	1 363	1 358	1 357	1 358	1 358	1 358	1 359	1 357
Other non-rural (incl. sugar and beverages)	1 075	1 081	1 073	1 049	1 013	976	950	933	923	917
Goods procured in ports by carriers	129	128	127	126	127	129	132	136	140	143
Net exports of goods under merchanting	25	25	25	25	25	25	27	29	32	35
Non-monetary gold	1 201	1 204	1 213	1 235	1 253	1 257	1 236	1 200	1 164	1 126

(a) Caution should be used when interpreting recent trend estimates as they may be affected by unusual economic factors. For more details on trend estimates, please see paragraph 19 of the Explanatory Notes.

(b) For all time periods, estimates for sugar, sugar preparations and honey are included in Other non-rural.

	Jul 2010	Aug 2010	Sep 2010	Oct 2010	Nov 2010	Dec 2010	Jan 2011	Feb 2011	Mar 2011	Apr 2011
	\$m	\$m	\$m	\$m	\$m	\$m	\$m	\$m	\$m	\$m
<b>Total goods debits</b>	<b>-17 965</b>	<b>-17 780</b>	<b>-17 589</b>	<b>-17 469</b>	<b>-17 495</b>	<b>-17 665</b>	<b>-17 911</b>	<b>-18 181</b>	<b>-18 453</b>	<b>-18 721</b>
General merchandise	-17 408	-17 272	-17 111	-17 005	-17 036	-17 226	-17 507	-17 806	-18 097	-18 374
Consumption goods	-5 496	-5 471	-5 428	-5 371	-5 321	-5 289	-5 272	-5 268	-5 275	-5 292
Food and beverages, mainly for consumption	-767	-768	-759	-744	-729	-722	-720	-723	-727	-734
Household electrical items	-447	-438	-426	-412	-400	-391	-384	-380	-379	-380
Non-industrial transport equipment	-1 452	-1 419	-1 400	-1 392	-1 391	-1 389	-1 382	-1 371	-1 360	-1 349
Textiles, clothing and footwear	-705	-709	-705	-696	-687	-682	-682	-685	-691	-698
Toys, books and leisure goods	-391	-392	-393	-391	-386	-378	-367	-356	-347	-340
Consumption goods n.e.s.	-1 735	-1 745	-1 745	-1 735	-1 727	-1 727	-1 737	-1 753	-1 771	-1 792
Capital goods	-4 084	-4 026	-3 995	-4 005	-4 058	-4 135	-4 205	-4 260	-4 305	-4 335
Machinery and industrial equipment	-1 353	-1 329	-1 301	-1 276	-1 264	-1 264	-1 272	-1 285	-1 299	-1 316
ADP equipment	-706	-689	-664	-636	-617	-610	-612	-620	-631	-644
Telecommunications equipment	-581	-595	-605	-612	-614	-607	-596	-581	-564	-543
Civil aircraft and confidentialised items(c)	-355	-353	-368	-402	-445	-489	-521	-541	-558	-575
Industrial transport equipment n.e.s.	-628	-589	-564	-557	-564	-577	-587	-589	-586	-575
Capital goods n.e.s.	-462	-472	-492	-521	-554	-587	-617	-644	-667	-682
Intermediate and other merchandise goods	-7 828	-7 775	-7 689	-7 629	-7 657	-7 802	-8 030	-8 279	-8 517	-8 747
Food and beverages, mainly for industry	-91	-92	-93	-94	-96	-99	-104	-109	-114	-117
Primary industrial supplies n.e.s.	-133	-133	-131	-128	-125	-124	-125	-127	-129	-133
Fuels and lubricants	-2 282	-2 260	-2 257	-2 285	-2 361	-2 485	-2 644	-2 814	-2 981	-3 142
Parts for transport equipment	-727	-721	-709	-696	-693	-700	-715	-732	-749	-765
Parts for ADP equipment	-84	-85	-84	-82	-79	-76	-74	-72	-71	-71
Other parts for capital goods	-1 184	-1 190	-1 184	-1 171	-1 159	-1 158	-1 164	-1 171	-1 177	-1 182
Organic and inorganic chemicals	-399	-394	-381	-367	-358	-359	-367	-376	-384	-391
Paper and paperboard	-210	-208	-204	-200	-196	-193	-190	-187	-185	-183
Textile yarn and fabrics	-98	-97	-95	-92	-91	-90	-91	-93	-95	-97
Iron and steel	-343	-333	-317	-300	-289	-286	-289	-294	-299	-304
Plastics	-254	-250	-243	-235	-228	-226	-228	-232	-236	-242
Processed industrial supplies n.e.s.	-1 810	-1 790	-1 760	-1 738	-1 739	-1 763	-1 800	-1 836	-1 865	-1 888
Other merchandise goods(c)	-88	-97	-106	-114	-118	-118	-116	-112	-107	-106
Goods procured in ports by carriers	-125	-126	-126	-126	-125	-125	-125	-126	-126	-127
Non-monetary gold	-557	-508	-478	-464	-459	-439	-404	-375	-356	-346

(a) For sign conventions, see paragraph 15 of the Explanatory Notes.

(b) Caution should be used when interpreting recent trend estimates as they may be affected by unusual economic factors. For more details on trend estimates, please see paragraph 19 of the Explanatory Notes.

(c) From July 2008, commodities subject to a 'no commodity details' or 'no value details' restriction are included in Civil aircraft and confidentialised items. For earlier periods, commodities subject to a 'no commodity details' or 'no value details' restriction are included in Other merchandise goods.

							10 MONTHS ENDED APRIL		Change
	2007-08	2008-09	2009-10	Feb 2011	Mar 2011	Apr 2011	2010	2011	
	\$m	\$m	\$m	\$m	\$m	\$m	\$m	\$m	
<b>Services credits</b>	<b>50 105</b>	<b>52 877</b>	<b>52 323</b>	<b>4 356</b>	<b>4 529</b>	<b>4 558</b>	<b>43 940</b>	<b>43 912</b>	<b>-0.1</b>
Manufacturing services on physical inputs owned by others	77	258	284	8	23	20	258	168	-34.9
Maintenance and repair services n.i.e.	103	86	57	3	3	3	51	43	-15.7
Transport	8 510	7 342	6 189	519	505	472	5 233	5 355	2.3
Passenger(c)	3 843	3 410	2 610	247	230	192	2 249	2 360	4.9
Freight	1 464	851	436	30	32	34	349	326	-6.6
Other	2 262	2 127	2 187	176	176	178	1 820	1 880	3.3
Postal and courier services(d)	941	954	956	66	67	68	815	789	-3.2
Travel	28 250	31 096	33 020	2 756	2 919	2 895	27 831	27 315	-1.9
Other services	13 165	14 095	12 773	1 070	1 079	1 168	10 567	11 031	4.4
<b>Services debits</b>	<b>-53 055</b>	<b>-56 170</b>	<b>-53 433</b>	<b>-4 220</b>	<b>-4 615</b>	<b>-4 801</b>	<b>-44 353</b>	<b>-48 417</b>	<b>-9.2</b>
Manufacturing services on physical inputs owned by others	-7	-4	-6	—	-1	—	-6	-5	16.7
Maintenance and repair services n.i.e.	-117	-193	-294	-16	-34	-28	-232	-213	8.2
Transport	-16 427	-15 832	-13 727	-1 110	-1 252	-1 146	-11 286	-12 333	-9.3
Passenger(c)	-6 998	-5 835	-5 118	-468	-531	-490	-4 196	-5 081	-21.1
Freight	-8 923	-9 386	-8 142	-615	-694	-628	-6 679	-6 921	-3.6
Other	-327	-437	-309	-23	-22	-22	-264	-234	11.4
Postal and courier services(d)	-179	-174	-158	-4	-5	-6	-147	-97	34.0
Travel	-20 153	-22 082	-23 285	-1 656	-1 884	-2 095	-19 432	-21 424	-10.3
Other services	-16 351	-18 059	-16 121	-1 438	-1 444	-1 532	-13 397	-14 442	-7.8
<b>Memorandum items:</b>									
Tourism related service credits(e)	32 093	34 506	35 630	3 003	3 149	3 087	30 080	29 675	-1.3
Tourism related service debits(e)	-27 151	-27 917	-28 403	-2 124	-2 415	-2 585	-23 628	-26 505	-12.2

— nil or rounded to zero (including null cells)

(a) For sign conventions, see paragraph 15 of the Explanatory Notes.

(b) For more detailed trade in services components, see table 11.

(c) Passenger services includes agency fees and commissions for air transport.

(d) Postal and courier services includes indirect commissions for sea transport.

(e) For a more detailed explanation of tourism related services, see paragraph 27 of the Explanatory Notes.

	Jul 2010	Aug 2010	Sep 2010	Oct 2010	Nov 2010	Dec 2010	Jan 2011	Feb 2011	Mar 2011	Apr 2011
	\$m	\$m	\$m	\$m	\$m	\$m	\$m	\$m	\$m	\$m
SEASONALLY ADJUSTED										
<b>Services credits</b>	<b>4 375</b>	<b>4 412</b>	<b>4 485</b>	<b>4 349</b>	<b>4 322</b>	<b>4 313</b>	<b>4 207</b>	<b>4 310</b>	<b>4 359</b>	<b>4 414</b>
Manufacturing services on physical inputs owned by others(b)	17	15	17	20	20	16	12	8	23	20
Maintenance and repair services n.i.e.(b)	6	4	4	4	8	6	2	3	3	3
Transport	554	555	557	532	514	513	518	511	500	502
Passenger(c)	236	239	240	238	225	227	228	222	212	212
Freight(d)	38	35	34	32	32	32	33	32	32	33
Other	196	197	198	184	181	179	183	183	184	183
Postal and courier services(e)	83	83	84	77	76	76	75	73	73	74
Travel	2 700	2 741	2 804	2 701	2 688	2 685	2 563	2 669	2 702	2 754
Other services	1 098	1 097	1 104	1 092	1 092	1 093	1 111	1 120	1 130	1 135
<b>Services debits</b>	<b>-4 810</b>	<b>-4 766</b>	<b>-4 747</b>	<b>-4 786</b>	<b>-4 775</b>	<b>-4 731</b>	<b>-4 895</b>	<b>-4 910</b>	<b>-4 895</b>	<b>-4 955</b>
Manufacturing services on physical inputs owned by others(b)	-2	-1	—	—	-1	—	—	—	-1	—
Maintenance and repair services n.i.e.(b)	-17	-23	-11	-31	-16	-17	-20	-16	-34	-28
Transport	-1 304	-1 274	-1 235	-1 194	-1 195	-1 184	-1 213	-1 233	-1 220	-1 228
Passenger(c)	-484	-500	-487	-503	-506	-513	-541	-535	-525	-535
Freight	-781	-736	-711	-660	-658	-642	-643	-669	-667	-665
Other(b)	-24	-24	-25	-24	-24	-23	-23	-23	-22	-22
Postal and courier services(e)(d)	-15	-13	-13	-7	-7	-6	-6	-6	-6	-6
Travel	-2 093	-2 060	-2 093	-2 105	-2 101	-2 084	-2 186	-2 188	-2 163	-2 192
Other services	-1 395	-1 408	-1 408	-1 456	-1 462	-1 447	-1 476	-1 474	-1 477	-1 507
<b>Memorandum items:</b>										
Tourism related service credits(f)	2 936	2 980	3 044	2 939	2 913	2 911	2 791	2 890	2 914	2 966
Tourism related service debits(f)	-2 577	-2 560	-2 580	-2 608	-2 607	-2 597	-2 726	-2 723	-2 688	-2 727

## TREND ESTIMATES

<b>Services credits</b>	<b>4 405</b>	<b>4 409</b>	<b>4 396</b>	<b>4 366</b>	<b>4 332</b>	<b>4 308</b>	<b>4 300</b>	<b>4 309</b>	<b>4 327</b>	<b>4 355</b>
Manufacturing services on physical inputs owned by others	16	16	17	17	17	16	15	16	16	17
Maintenance and repair services n.i.e.	4	5	5	5	5	5	4	4	3	3
Transport	544	547	544	536	527	518	512	508	504	502
Passenger(c)	232	236	237	236	232	228	224	220	216	213
Freight	37	36	34	33	32	32	32	32	32	32
Other	194	194	192	188	185	183	182	182	182	183
Postal and courier services(e)	80	81	81	79	77	76	74	74	73	73
Travel	2 747	2 745	2 733	2 711	2 686	2 667	2 660	2 665	2 678	2 700
Other services	1 095	1 097	1 096	1 096	1 097	1 102	1 109	1 117	1 125	1 133
<b>Services debits</b>	<b>-4 730</b>	<b>-4 758</b>	<b>-4 773</b>	<b>-4 779</b>	<b>-4 787</b>	<b>-4 810</b>	<b>-4 845</b>	<b>-4 880</b>	<b>-4 913</b>	<b>-4 939</b>
Manufacturing services on physical inputs owned by others	-1	-1	-1	—	—	—	—	—	—	—
Maintenance and repair services n.i.e.	-22	-21	-20	-19	-19	-19	-21	-23	-25	-27
Transport	-1 273	-1 261	-1 241	-1 219	-1 204	-1 201	-1 207	-1 214	-1 222	-1 229
Passenger(c)	-474	-484	-495	-504	-512	-519	-525	-531	-535	-536
Freight	-765	-742	-712	-681	-660	-653	-653	-655	-659	-665
Other	-23	-24	-24	-24	-24	-23	-23	-23	-22	-22
Postal and courier services(e)	-10	-11	-11	-9	-8	-7	-6	-6	-6	-6
Travel	-2 058	-2 076	-2 089	-2 100	-2 112	-2 128	-2 148	-2 165	-2 180	-2 192
Other services	-1 377	-1 400	-1 422	-1 440	-1 453	-1 461	-1 469	-1 478	-1 486	-1 491
<b>Memorandum items:</b>										
Tourism related service credits(f)	2 979	2 981	2 970	2 947	2 918	2 895	2 883	2 885	2 895	2 913
Tourism related service debits(f)	-2 532	-2 560	-2 584	-2 604	-2 623	-2 647	-2 673	-2 696	-2 715	-2 729

— nil or rounded to zero (including null cells)

(a) For sign conventions, see paragraph 15 of the Explanatory Notes.

(b) This component is not seasonally adjusted.

(c) Passenger services includes agency fees and commissions for air transport.

(d) In using these seasonally adjusted series, care should be exercised because of the difficulties associated with reliably estimating the seasonal pattern.

(e) Postal and courier services includes indirect commissions for sea transport.

(f) For a more detailed explanation of tourism related services, see paragraph 27 of the Explanatory Notes.

	CREDITS				DEBITS			
	Jun Qtr	Sep Qtr	Dec Qtr	Mar Qtr	Jun Qtr	Sep Qtr	Dec Qtr	Mar Qtr
	2010	2010	2010	2011	2010	2010	2010	2011
	\$m	\$m	\$m	\$m	\$m	\$m	\$m	\$m
<b>Services</b>	<b>12 838</b>	<b>13 243</b>	<b>13 145</b>	<b>12 966</b>	<b>-13 466</b>	<b>-14 975</b>	<b>-14 669</b>	<b>-13 972</b>
Manufacturing services on physical inputs owned by others	50	49	56	43	—	-3	-1	-1
Maintenance and repair services n.i.e.	9	14	18	8	-78	-51	-64	-70
Transport	1 441	1 701	1 608	1 574	-3 571	-3 951	-3 768	-3 468
Passenger(b)	550	682	731	755	-1 344	-1 558	-1 535	-1 498
Freight	129	106	94	92	-2 143	-2 257	-2 147	-1 889
Other	550	605	569	528	-68	-73	-71	-68
Postal and courier services(c)	212	308	214	199	-16	-63	-15	-13
Travel	8 026	8 269	8 030	8 121	-5 732	-6 836	-6 380	-6 113
Business	719	761	753	866	-735	-871	-793	-816
Personal	7 307	7 508	7 277	7 255	-4 997	-5 965	-5 587	-5 297
Education-related	4 689	4 638	3 931	4 022	-181	-317	-189	-226
Other(d)	2 618	2 870	3 346	3 233	-4 816	-5 648	-5 398	-5 071
Construction	32	23	16	14	—	—	—	—
Insurance and pension services	93	84	75	67	-154	-155	-148	-153
Financial services	243	228	245	238	-138	-164	-183	-185
Charges for the use of intellectual property n.i.e.	255	202	306	307	-960	-920	-984	-969
Telecommunications, computer and information services	436	446	516	471	-479	-491	-572	-535
Telecommunication services	44	44	40	40	-97	-100	-114	-120
Computer and information services	392	402	476	431	-382	-391	-458	-415
Computer services	323	302	354	313	-315	-316	-384	-341
Information services	15	20	32	25	-9	-19	-21	-18
Other services	54	80	90	93	-58	-56	-53	-56
Other business services	1 843	1 817	1 896	1 723	-1 816	-1 888	-1 963	-1 850
Research and development services	136	132	169	133	-65	-42	-70	-58
Professional and management consulting services	813	730	845	752	-608	-652	-706	-659
Legal, accounting, management consulting, public relations and other professional services	733	662	734	651	-559	-611	-652	-601
Advertising, market research and public opinion polling	80	68	111	101	-49	-41	-54	-58
Technical, trade-related and other business services	894	955	882	838	-1 143	-1 194	-1 187	-1 133
Architectural, engineering and other technical services	500	474	473	460	-603	-661	-637	-649
Waste treatment and de-pollution, agricultural and mining services	70	94	38	37	-122	-146	-203	-152
Operational leasing services	82	72	53	50	-146	-140	-129	-123
Trade-related commission services	124	203	210	181	-55	-57	-54	-46
Other business services n.i.e.	118	112	108	110	-217	-190	-164	-163
Personal, cultural and recreational services	194	200	169	184	-316	-294	-384	-406
Audiovisual and related services	31	34	27	52	-270	-252	-312	-329
Other personal, cultural and recreational services	163	166	142	132	-46	-42	-72	-77
Government goods and services n.i.e.	216	210	210	216	-222	-222	-222	-222
<b>Memorandum items:</b>								
Gross insurance premiums receivable / payable	218	217	215	196	-282	-290	-281	-316
Gross insurance claims payable / receivable	-154	-150	-150	-139	317	321	316	393
Tourism related services(e)	8 576	8 951	8 761	8 876	-7 076	-8 394	-7 915	-7 611

— nil or rounded to zero (including null cells)

(a) For sign conventions, see paragraph 15 of the Explanatory Notes.

(b) Passenger services includes agency fees and commissions for air transport.

(c) Postal and courier services includes indirect commissions for sea transport.

(d) Other personal travel includes health-related travel.

(e) For a more detailed explanation of tourism related services, see paragraph 27 of the Explanatory Notes.



				Per cent of total merchandise exports(b)	10 MONTHS ENDED APRIL	
	Feb	Mar	Apr		2010	2011
	2011	2011	2011			
	\$m	\$m	\$m	%	\$m	\$m
MAJOR COMMODITIES (c)						
011 Meat of bovine animals	396	433	390	2.0	3 246	3 729
041 Wheat and meslin	586	534	537	2.7	2 972	4 433
281 Iron ore and concentrates	3 793	5 364	4 772	23.9	25 852	46 844
283 Copper ores and concentrates	484	306	438	2.2	3 680	4 232
285 Aluminium ores and concentrates	378	446	436	2.2	4 077	4 300
287 Ores and concentrates of base metals, n.e.s.	314	440	393	2.0	3 023	3 695
321 Coal, not agglomerated	2 523	3 251	3 121	15.6	28 089	35 178
333 Crude petroleum oils	799	1 025	1 051	5.3	7 158	9 166
343 Natural gas	724	875	827	4.1	6 440	8 488
542 Medicaments	253	352	201	1.0	3 045	2 776
682 Copper	300	337	335	1.7	2 025	3 242
684 Aluminium	370	479	394	2.0	3 348	3 792
781 Motor vehicles for transport of people	136	131	111	0.6	1 487	1 319
971 Gold, non-monetary	795	1 274	1 025	5.1	10 565	11 363
SECTION AND DIVISION OF THE SITC						
0 Food and live animals						
00 Live animals (excl. fish, crustaceans, molluscs and aquatic invertebrates)	77	91	85	0.4	993	923
01 Meat and meat preparations	595	648	593	3.0	5 061	5 723
02 Dairy products and birds' eggs	182	198	174	0.9	1 591	1 889
03 Fish (not marine mammals), crustaceans, molluscs and aquatic invertebrates, and preparations thereof	78	82	73	0.4	843	847
04 Cereals and cereal preparations	745	718	765	3.8	4 302	5 856
05 Vegetables and fruit	121	156	145	0.7	1 238	1 239
06 Sugars, sugar preparations and honey	15	30	14	0.1	246	274
07 Coffee, tea, cocoa, spices, and manufactures thereof	25	22	20	0.1	240	243
08 Feeding stuff for animals (excl. unmilled cereals)	77	79	75	0.4	871	813
09 Miscellaneous edible products and preparations	69	74	71	0.4	603	667
<i>Total Food and live animals</i>	1 983	2 099	2 015	10.1	15 988	18 475
1 Beverages and tobacco						
11 Beverages	166	171	178	0.9	1 943	1 829
12 Tobacco and tobacco manufactures	7	13	9	—	110	109
<i>Total Beverages and tobacco</i>	174	184	187	0.9	2 053	1 938
2 Crude materials, inedible, except fuels						
21 Hides, skins and furskins, raw	69	89	70	0.3	458	667
22 Oil-seeds and oleaginous fruits	104	121	195	1.0	531	719
23 Crude rubber (incl. synthetic and reclaimed)	1	1	1	—	11	12
24 Cork and wood	102	99	83	0.4	935	1 007
25 Pulp and waste paper	21	21	19	0.1	194	212
26 Textile fibres and their wastes (not manufactured into yarn or fabric)	298	353	352	1.8	2 138	2 897
27 Crude fertilizers (excl. those of Division 56) and crude minerals (excl. coal, petroleum and precious stones)	31	35	24	0.1	248	309
28 Metalliferous ores and metal scrap	5 420	7 135	6 517	32.6	40 139	63 544
29 Crude animal and vegetable materials, n.e.s.	15	16	19	0.1	165	174
<i>Total Crude materials, inedible, except fuels</i>	6 061	7 871	7 281	36.4	44 819	69 542
3 Mineral fuels, lubricants and related materials						
32 Coal, coke and briquettes	2 549	3 273	3 125	15.6	28 168	35 327
33 Petroleum, petroleum products and related materials	988	1 271	1 329	6.6	9 137	11 298
34 Gas, natural and manufactured	829	924	904	4.5	7 390	9 376
<i>Total Mineral fuels, lubricants and related materials</i>	4 367	5 468	5 358	26.8	44 695	56 001

— nil or rounded to zero (including null cells)

(a) Some SITC sections and divisions exclude commodities subject to a confidentiality restriction. These are included in Division 98. For more information see paragraph 26 of the Explanatory Notes.

(b) Per cent of total merchandise is calculated for the most recent month.

(c) The 'Major commodities' section lists commodities at the SITC Rev 4 3-digit level which are the most significant (by value) or are of particular interest. Abbreviated descriptors have been used. The list of 'Major commodities' is reviewed annually.

	Feb 2011	Mar 2011	Apr 2011	Per cent of total merchandise exports(b)	10 MONTHS ENDED APRIL	
					2010	2011
					\$m	\$m
SECTION AND DIVISION OF THE SITC						
4	Animal and vegetable oils, fats and waxes					
41	38	47	38	0.2	213	300
42	18	21	17	0.1	128	141
43	Fats and oils (processed), waxes and inedible mixtures or preparations, of animal or vegetable origin, n.e.s.					
	1	1	1	—	10	9
	<i>Total Animal and vegetable oils, fats and waxes</i>					
	57	69	56	0.3	351	449
5	Chemicals and related products, n.e.s.					
51	14	17	16	0.1	139	157
52	44	45	43	0.2	429	478
53	70	64	66	0.3	540	598
54	280	398	228	1.1	3 367	3 106
55	Essential oils and resinoids and perfume materials, toilet, polishing and cleansing preparations					
	53	55	50	0.3	513	540
56	11	13	19	0.1	281	280
57	25	31	27	0.1	230	295
58	27	27	25	0.1	293	288
59	79	83	83	0.4	815	801
	<i>Total Chemicals and related products, n.e.s.</i>					
	604	733	557	2.8	6 607	6 542
6	Manufactured goods classified chiefly by material					
61	20	25	23	0.1	206	226
62	18	19	19	0.1	151	163
63	12	6	12	0.1	116	119
64	74	72	70	0.3	570	675
65	21	21	24	0.1	235	218
66	64	49	43	0.2	633	561
67	96	89	71	0.4	851	1 076
68	940	1 079	1 005	5.0	7 810	9 368
69	83	91	92	0.5	882	892
	<i>Total Manufactured goods classified chiefly by material</i>					
	1 328	1 451	1 359	6.8	11 455	13 298
7	Machinery and transport equipment					
71	79	92	87	0.4	660	753
72	150	164	147	0.7	1 494	1 612
73	16	12	12	0.1	114	114
74	General industrial machinery and equipment, n.e.s. and machine parts, n.e.s.					
	128	164	160	0.8	1 394	1 541
75	85	110	103	0.5	840	992
76	Telecommunications and sound recording and reproducing apparatus and equipment					
	75	75	74	0.4	770	798
77	Electrical machinery, apparatus and appliances, parts (incl. non electrical counterparts of electrical domestic equip)					
	114	130	122	0.6	1 249	1 247
78	236	249	202	1.0	2 299	2 269
79	118	121	96	0.5	1 088	894
	<i>Total Machinery and transport equipment</i>					
	1 002	1 116	1 002	5.0	9 909	10 221

— nil or rounded to zero (including null cells)

(b) Per cent of total merchandise is calculated for the most recent month.

(a) Some SITC sections and divisions exclude commodities subject to a confidentiality restriction. These are included in Division 98. For more information see paragraph 26 of the Explanatory Notes.

				Per cent of total merchandise exports(b)	10 MONTHS ENDED APRIL	
	Feb 2011	Mar 2011	Apr 2011		2010	2011
	\$m	\$m	\$m	%	\$m	\$m
SECTION AND DIVISION OF THE SITC						
8	Miscellaneous manufactured articles					
81	Prefabricated buildings and sanitary, plumbing, heating and lighting fixtures and fittings, n.e.s.					
	7	15	10	0.1	135	102
82	Furniture and parts thereof; bedding, mattresses, mattress supports, cushions and similar stuffed furnishings					
	7	9	8	—	91	77
83	Travel goods, handbags and similar containers					
	3	2	2	—	29	23
84	Articles of apparel and clothing accessories					
	21	27	22	0.1	206	209
85	Footwear					
	4	5	4	—	35	37
87	Professional, scientific and controlling instruments and apparatus, n.e.s.					
	147	177	158	0.8	1 618	1 599
88	Photographic apparatus, equipment and supplies and optical goods, n.e.s., watches and clocks					
	19	26	23	0.1	237	222
89	Miscellaneous manufactured articles, n.e.s.					
	162	197	166	0.8	1 698	1 815
	<i>Total Miscellaneous manufactured articles</i>					
	368	458	393	2.0	4 049	4 084
9	Commodities and transactions not classified elsewhere in the SITC					
93	Special transactions and commodities not classified according to kind					
	93	148	132	0.7	1 546	1 238
95	Gold coin whether or not legal tender, and other coin being legal tender					
	53	73	63	0.3	343	567
96	Coin (excl. gold coin) not being legal tender					
	—	—	—	—	—	—
97	Gold, non-monetary (excl. gold ores and concentrates)					
	795	1 274	1 025	5.1	10 565	11 363
98	Combined confidential items excl. some of SITC 280 (exports only) and some of SITCs 510 and 520 (imports only)					
	351	637	565	2.8	5 832	6 232
	<i>Commodities and transactions not classified elsewhere in the SITC</i>					
	1 293	2 132	1 785	8.9	18 286	19 401
	<b>17 236</b>	<b>21 582</b>	<b>19 993</b>	<b>100.0</b>	<b>158 212</b>	<b>199 953</b>
	Balance of Payments Adjustments					
	122	3	373	..	724	1 079
	Goods Credits (exports) on a Balance of Payments Basis					
	17 358	21 585	20 366	..	158 936	201 032

.. not applicable  
— nil or rounded to zero (including null cells)

(a) Some SITC sections and divisions exclude commodities subject to a confidentiality restriction. These are included in Division 98. For more information see paragraph 26 of the Explanatory Notes.

(b) Per cent of total merchandise is calculated for the most recent month.

	Feb	Mar	Apr	Per cent	10 MONTHS	
	2011	2011	2011	of total	ENDED APRIL	
	\$m	\$m	\$m	merchandise	2010	2011
				imports(b)	\$m	\$m
				%		
MAJOR COMMODITIES (c)						
333 Crude petroleum oils	1 597	2 121	1 792	10.3	12 135	15 427
334 Refined petroleum oils	1 020	1 090	1 316	7.6	8 809	8 904
542 Medicaments	631	691	733	4.2	6 152	6 845
723 Civil engineering and contractors' plant and equipment	262	334	279	1.6	2 199	2 727
743 Air pumps, compressors or fans; hoods; centrifuges; filtering apparatus; parts	110	142	131	0.7	2 878	1 526
752 Automatic data processing machines	385	579	569	3.3	4 833	5 214
761 Televisions, monitors and projectors	137	145	174	1.0	2 575	2 103
764 Telecommunications equipment	520	638	546	3.1	5 689	6 627
781 Motor cars for the transport of persons	1 085	1 302	836	4.8	12 143	12 220
782 Motor vehicles for the transport of goods	489	556	411	2.4	4 839	4 645
784 Parts and accessories of the motor vehicles	190	237	202	1.2	1 995	2 121
894 Baby carriages, toys, games and sporting goods	137	120	143	0.8	2 162	2 088
971 Gold, non-monetary	474	423	391	2.2	6 197	4 542
SECTION AND DIVISION OF THE SITC						
0 Food and live animals						
00 Live animals other than fish, crustaceans, molluscs and aquatic invertebrates	27	12	9	—	87	110
01 Meat and meat preparations	40	49	55	0.3	463	455
02 Dairy products and birds' eggs	50	51	46	0.3	491	551
03 Fish (not marine mammals), crustaceans, molluscs and aquatic invertebrates, and preparations thereof	92	101	97	0.6	1 054	1 077
04 Cereals and cereal preparations	56	60	55	0.3	669	657
05 Vegetables and fruit	131	131	127	0.7	1 298	1 377
06 Sugars, sugar preparations and honey	42	26	51	0.3	250	303
07 Coffee, tea, cocoa, spices, and manufactures thereof	95	121	93	0.5	980	1 089
08 Feeding stuff for animals (excl. unmilled cereals)	40	51	30	0.2	496	448
09 Miscellaneous edible products and preparations	114	138	121	0.7	1 325	1 364
<i>Total Food and live animals</i>	687	740	684	3.9	7 113	7 430
1 Beverages and tobacco						
11 Beverages	85	116	107	0.6	1 261	1 267
12 Tobacco and tobacco manufactures	17	26	37	0.2	221	225
<i>Total Beverages and tobacco</i>	101	142	144	0.8	1 482	1 492
2 Crude materials, inedible, except fuels						
21 Hides, skins and furskins, raw	—	—	—	—	1	1
22 Oil-seeds and oleaginous fruits	4	3	4	—	43	41
23 Crude rubber (incl. synthetic and reclaimed)	11	14	15	0.1	110	112
24 Cork and wood	51	58	52	0.3	500	570
25 Pulp and waste paper	10	13	15	0.1	154	153
26 Textile fibres and their wastes (not manufactured into yarn or fabric)	9	12	10	0.1	112	94
27 Crude fertilizers (excl. those of Division 56) and crude minerals (excl. coal, petroleum and precious stones)	17	7	29	0.2	106	187
28 Metalliferous ores and metal scrap	24	110	39	0.2	434	643
29 Crude animal and vegetable materials, n.e.s.	25	33	23	0.1	269	271
<i>Total Crude materials, inedible, except fuels</i>	152	250	187	1.1	1 730	2 074
3 Mineral fuels, lubricants and related materials						
32 Coal, coke and briquettes	1	1	16	0.1	20	53
33 Petroleum, petroleum products and related materials	2 647	3 268	3 159	18.1	21 313	24 828
34 Gas, natural and manufactured	163	166	180	1.0	1 456	1 986
<i>Total Mineral fuels, lubricants and related materials</i>	2 811	3 435	3 355	19.3	22 789	26 868

— nil or rounded to zero (including null cells)

(a) Some SITC sections and divisions exclude commodities subject to a confidentiality restriction. These are included in Division 98. For more information see paragraph 26 of the Explanatory Notes.

(b) Per cent of total merchandise is calculated for the most recent month.

(c) The 'Major commodities' section lists commodities at the SITC Rev 4 3-digit level which are the most significant (by value) or are of particular interest. Abbreviated descriptors have been used. The list of 'Major commodities' is reviewed annually.

				Per cent of total merchandise imports(b)	10 MONTHS ENDED APRIL		
	Feb	Mar	Apr		2010	2011	
	2011	2011	2011				
	\$m	\$m	\$m	%	\$m	\$m	
SECTION AND DIVISION OF THE SITC							
4	Animal and vegetable oils, fats and waxes						
41	Animal oils and fats	3	1	3	—	25	30
42	Fixed vegetable fats and oils, crude, refined or fractionated	40	31	38	0.2	357	378
43	Fats and oils (processed), waxes and inedible mixtures or preparations, of animal or vegetable n.e.s.	4	6	5	—	57	51
	<i>Total Animal and vegetable oils, fats and waxes</i>	47	39	47	0.3	439	459
5	Chemicals and related products, n.e.s.						
51	Organic chemicals	236	360	257	1.5	2 685	2 821
52	Inorganic chemicals	119	103	89	0.5	904	972
53	Dyeing, tanning and colouring materials	49	58	47	0.3	510	538
54	Medicinal and pharmaceutical products	780	863	888	5.1	7 560	8 348
55	Essential oils and resinoids and perfume materials; toilet, polishing and cleansing preparations	133	166	144	0.8	1 517	1 580
56	Fertilisers (excl. crude)	121	273	186	1.1	811	1 243
57	Plastics in primary forms	101	124	120	0.7	1 110	1 207
58	Plastics in non-primary forms	101	116	116	0.7	1 144	1 194
59	Chemical materials and products, n.e.s.	167	216	170	1.0	1 586	1 832
	<i>Total Chemicals and related products, n.e.s.</i>	1 806	2 279	2 017	11.6	17 828	19 735
6	Manufactured goods classified chiefly by material						
61	Leather, leather manufactures, and dressed furskins, n.e.s.	11	13	10	0.1	116	119
62	Rubber manufactures, n.e.s.	233	286	286	1.6	2 337	2 542
63	Cork and wood manufactures (excl. furniture)	60	66	59	0.3	535	617
64	Paper, paperboard and articles of paper pulp, of paper or of paperboard	197	221	183	1.0	2 255	2 330
65	Textile yarn, fabrics, made-up articles n.e.s., and related products	199	190	197	1.1	2 001	2 069
66	Non-metallic mineral manufactures, n.e.s.	189	213	191	1.1	2 188	2 082
67	Iron and steel	318	270	306	1.8	2 655	3 133
68	Non-ferrous metals	326	187	130	0.7	2 008	1 966
69	Manufactures of metals, n.e.s.	402	385	416	2.4	4 141	4 409
	<i>Total Manufactured goods classified chiefly by material</i>	1 935	1 830	1 778	10.2	18 234	19 268
7	Machinery and transport equipment						
71	Power generating machinery and equipment	328	417	322	1.8	3 701	3 603
72	Machinery specialized for particular industries	519	613	597	3.4	5 650	5 743
73	Metal working machinery	59	60	50	0.3	505	519
74	General industrial machinery and equipment, n.e.s. and machine parts, n.e.s.	741	800	765	4.4	9 666	8 459
75	Office machines and automatic data processing machines	564	844	776	4.5	7 246	7 582
76	Telecommunications and sound recording and reproducing apparatus and equipment	702	833	780	4.5	9 262	9 552
77	Electrical machinery, apparatus, appliances, parts (incl. non-elec. counterparts of electrical domestic equip)	879	992	984	5.6	7 882	9 530
78	Road vehicles (incl. air-cushion vehicles)	1 879	2 240	1 559	9.0	20 406	20 481
79	Transport equipment (excl. road vehicles)	111	135	150	0.9	1 792	1 904
	<i>Total Machinery and transport equipment</i>	5 783	6 934	5 983	34.3	66 111	67 372

— nil or rounded to zero (including null cells)

(b) Per cent of total merchandise is calculated for the most recent month.

(a) Some SITC sections and divisions exclude commodities subject to a confidentiality restriction. These are included in Division 98. For more information see paragraph 26 of the Explanatory Notes.

				Per cent of total merchandise imports(b)	10 MONTHS ENDED APRIL		
	Feb	Mar	Apr		.....		
	2011	2011	2011		2010	2011	
	\$m	\$m	\$m	%	\$m	\$m	
SECTION AND DIVISION OF THE SITC							
8	Miscellaneous manufactured articles						
81	Prefabricated buildings; sanitary, plumbing, heating and lighting fixtures and fittings, n.e.s.	65	63	76	0.4	640	785
82	Furniture, parts thereof; bedding, mattresses, mattress supports, cushions and similar stuffed furnishings	191	169	199	1.1	2 152	2 247
83	Travel goods, handbags and similar containers	65	48	54	0.3	628	685
84	Articles of apparel and clothing accessories	572	425	458	2.6	4 177	4 754
85	Footwear	133	96	91	0.5	1 091	1 169
87	Professional, scientific and controlling instruments and apparatus, n.e.s.	354	449	388	2.2	3 823	3 996
88	Photographic apparatus, equipment and supplies and optical goods, n.e.s., watches and clocks	95	115	105	0.6	1 158	1 167
89	Miscellaneous manufactured articles, n.e.s.	694	770	724	4.2	8 385	8 456
	<i>Total Miscellaneous manufactured articles</i>	2 169	2 135	2 095	12.0	22 054	23 258
9	Commodities and transactions not classified elsewhere in the SITC						
93	Special transactions and commodities not classified according to kind	3	4	2	—	32	29
95	Gold coin whether or not legal tender, and other coin being legal tender	1	2	1	—	7	11
96	Coin (excl. gold coin) not being legal tender	—	1	—	—	1	3
97	Gold, non-monetary (excl. gold ores and concentrates)	474	423	391	2.2	6 197	4 542
98	Combined confidential items excl. some of SITC 280 (exports only) and some of SITCs 510 and 520 (imports only)	629	306	738	4.2	4 406	5 218
	<i>Total Commodities and transactions not classified elsewhere in the SITC</i>	1 107	735	1 133	6.5	10 644	9 804
	<b>Total merchandise imports</b>	<b>16 599</b>	<b>18 518</b>	<b>17 423</b>	<b>100.0</b>	<b>168 423</b>	<b>177 760</b>
	Balance of Payments Adjustments	187	385	335	..	272	2 396
	Goods Debits (imports) on a Balance of Payments Basis	16 786	18 903	17 758	..	168 695	180 156

.. not applicable  
 — nil or rounded to zero (including null cells)

(a) Some SITC sections and divisions exclude commodities subject to a confidentiality restriction. These are included in Division 98. For more information see paragraph 26 of the Explanatory Notes.

(b) Per cent of total merchandise is calculated for the most recent month.

	EXPORTS				IMPORTS(b)				BALANCE OF MERCHANDISE TRADE	
	2009-10	Apr 2011	10	10	2009-10	Apr 2011	10	10	2009-10	10
			months ended April 2010	months ended April 2011			Months Ended April 2010	Months Ended April 2011		
	\$m	\$m	\$m	\$m	\$m	\$m	\$m	\$m	\$m	\$m
Belgium	1 079	95	877	994	1 560	125	1 312	1 363	-481	-369
Brazil	1 294	183	1 040	1 232	620	66	494	718	674	514
Canada	1 295	108	1 074	1 059	1 726	154	1 435	1 458	-431	-399
China	46 518	5 027	36 050	52 404	36 374	3 114	30 169	34 414	10 144	17 989
Denmark	141	16	114	125	1 105	67	952	798	-965	-673
Egypt(c)	411	88	330	520	26	1	22	20	385	500
Fiji	306	21	256	255	163	14	133	160	143	95
Finland	285	43	222	172	664	92	541	671	-379	-499
France	1 121	96	890	869	3 885	291	3 297	3 178	-2 764	-2 309
Germany	1 654	151	1 223	1 703	10 718	872	8 888	8 509	-9 064	-6 806
Hong Kong (SAR of China)	2 719	343	2 227	2 774	1 129	94	947	979	1 590	1 795
India	16 179	1 319	13 177	12 528	1 845	157	1 571	1 755	14 334	10 773
Indonesia	4 329	440	3 541	3 784	4 685	398	3 818	4 671	-356	-886
Iran	149	21	117	140	114	3	79	118	35	22
Iraq	196	77	194	268	—	—	—	—	196	268
Ireland	121	10	96	105	2 305	165	1 852	1 814	-2 185	-1 709
Israel	176	13	140	184	573	57	479	508	-397	-324
Italy	948	90	755	1 019	4 814	356	4 004	4 031	-3 866	-3 012
Japan	37 069	3 798	29 300	38 400	17 779	785	14 756	14 060	19 290	24 341
Korea, Republic of	16 494	1 550	12 852	18 637	7 049	637	5 711	5 697	9 444	12 940
Kuwait	525	74	429	484	417	—	305	254	108	230
Malaysia	3 133	276	2 588	3 231	8 504	866	6 730	7 336	-5 371	-4 105
Mexico	741	198	638	673	1 235	142	1 009	1 308	-494	-635
Netherlands	2 058	287	1 562	2 376	1 360	120	1 143	1 156	698	1 221
New Zealand	8 027	563	6 690	6 430	7 004	548	5 749	6 055	1 022	375
Pakistan	610	18	474	285	153	17	129	146	457	139
Papua New Guinea	1 972	208	1 629	1 805	2 930	243	2 451	2 787	-958	-982
Philippines	1 092	125	880	1 278	461	35	387	377	631	902
Saudi Arabia	1 533	135	1 252	1 232	462	84	387	304	1 072	928
Singapore	5 046	776	4 420	4 696	10 899	1 286	8 915	9 450	-5 853	-4 753
South Africa	1 762	130	1 365	1 370	1 004	87	850	864	757	506
Spain	493	118	364	727	1 679	147	1 393	1 389	-1 186	-662
Sweden	441	40	265	336	2 084	201	1 682	1 900	-1 643	-1 564
Switzerland	269	38	205	298	2 231	207	1 870	2 031	-1 962	-1 733
Taiwan	6 851	805	5 201	7 442	3 416	360	2 821	3 036	3 435	4 407
Thailand	4 704	509	4 020	5 727	12 444	702	10 285	7 850	-7 740	-2 123
Turkey	304	21	236	375	459	40	379	408	-155	-33
United Arab Emirates	1 974	187	1 586	1 843	2 293	308	1 980	2 171	-318	-328
United Kingdom	7 211	285	4 217	5 116	5 759	535	4 801	4 902	1 452	214
United States of America	9 546	806	7 755	7 497	21 856	1 872	18 157	19 127	-12 310	-11 630
Viet Nam	1 408	131	1 138	1 461	3 110	183	2 556	2 174	-1 702	-713
Other Countries(b)	8 534	772	6 824	8 088	16 688	1 993	13 978	17 809	-8 154	-9 721
<b>Total</b>	<b>200 720</b>	<b>19 993</b>	<b>158 212</b>	<b>199 953</b>	<b>203 590</b>	<b>17 423</b>	<b>168 423</b>	<b>177 760</b>	<b>-2 870</b>	<b>22 193</b>
APEC	151 968	15 800	120 769	158 454	144 014	11 578	118 657	123 411	7 955	35 043
ASEAN	19 859	2 272	16 707	20 323	41 092	3 539	33 495	32 818	-21 232	-12 495
Developing Countries	121 921	12 812	96 987	126 524	102 860	9 384	84 666	91 395	19 061	35 130
Least Developed Countries	1 841	186	1 474	1 937	291	30	237	308	1 550	1 629
European Union(d)	15 920	1 259	10 878	13 941	38 489	3 193	31 971	31 878	-22 569	-17 937
OECD	90 087	8 403	69 948	87 719	100 591	7 732	83 320	84 263	-10 503	3 456

— nil or rounded to zero (including null cells)

(a) See Time series spreadsheets for details of all countries.

(b) From September 2008 imports data with confidentiality restrictions 'no commodity details' or 'no value details' are included in Other countries.

(c) Exports of Alumina to Egypt are excluded from country total and included in the 'Other Countries' category.

(d) The European Union includes 27 member countries for all periods.

			10 MONTHS ENDED APRIL	
	2009-10	Apr 2011	2010	2011
	\$m	\$m	\$m	\$m
EXPORTS (a)				
New South Wales	31 205	3 110	25 144	29 712
Victoria	18 427	1 628	15 042	16 088
Queensland	43 266	3 445	33 571	39 580
South Australia	8 134	960	6 473	9 042
Western Australia	83 306	9 437	64 490	91 515
Tasmania	3 004	247	2 399	2 613
Northern Territory	4 977	390	4 028	4 492
Australian Capital Territory	4	—	4	3
State not available for publication(b)	557	48	452	328
Re-exports	7 841	727	6 610	6 581
<b>Total</b>	<b>200 720</b>	<b>19 993</b>	<b>158 212</b>	<b>199 953</b>
IMPORTS				
New South Wales	76 003	6 551	62 537	67 794
Victoria	53 118	4 408	44 105	47 238
Queensland	31 035	2 530	25 454	27 027
South Australia	6 446	534	5 422	5 327
Western Australia	27 937	2 340	23 269	21 468
Tasmania	715	53	610	533
Northern Territory	3 051	268	2 617	3 149
Australian Capital Territory	5	—	4	5
State not available for publication(c)	5 280	738	4 406	5 218
<b>Total</b>	<b>203 590</b>	<b>17 423</b>	<b>168 423</b>	<b>177 760</b>

— nil or rounded to zero (including null cells)

(a) State in which the final stage of production or manufacture occurs.

(b) Exports of Alumina to Bahrain, Egypt and Iceland are excluded from the state totals and included in 'State not available for publication'.

(c) From September 2008 imports data with confidentiality restrictions 'no commodity details' or 'no value details' are included in State not available for publication.



## PERIOD AVERAGE EXCHANGE RATES(a), Per Australian dollar

<i>Period</i>	<i>United States dollar</i>	<i>UK pound sterling</i>	<i>Euro</i>	<i>Japanese yen</i>	<i>Special Drawing Right</i>	<i>Trade-weighted index of value of the A\$(b)</i>
FINANCIAL YEAR						
2007-08	0.8968	0.4479	0.6099	98.63	0.5664	69.7
2008-09	0.7456	0.4621	0.5414	73.99	0.4869	60.2
2009-10	0.8830	0.5590	0.6362	80.77	0.5710	68.9
MONTHS						
2010						
February	0.8863	0.5663	0.6474	79.99	0.5759	69.2
March	0.9120	0.6058	0.6716	82.58	0.5968	71.0
April	0.9265	0.6043	0.6902	86.45	0.6105	72.1
May	0.8717	0.5942	0.6928	80.38	0.5883	68.9
June	0.8529	0.5777	0.6976	77.48	0.5808	67.7
July	0.8743	0.5725	0.6852	76.63	0.5821	68.2
August	0.9000	0.5747	0.6976	76.87	0.5928	69.5
September	0.9358	0.6010	0.7169	78.99	0.6138	71.5
October	0.9812	0.6190	0.7060	80.26	0.6251	73.2
November	0.9902	0.6198	0.7239	81.61	0.6338	74.0
December	0.9909	0.6347	0.7497	82.58	0.6454	74.7
2011						
January	0.9941	0.6305	0.7457	82.16	0.6434	74.3
February	1.0086	0.6252	0.7383	83.29	0.6457	75.1
March	1.0100	0.6250	0.7217	82.60	0.6394	74.8
April	1.0554	0.6458	0.7311	88.09	0.6616	77.4

(a) These exchange rates and the trade-weighted index are derived using rates provided by the Reserve Bank of Australia in respect of each trading day.

(b) May 1970 = 100. The Trade-weighted index is reweighted annually on 1 October and on special occasions as required.

	2007-08	2008-09	2009-10	Oct 2010	Nov 2010	Dec 2010	Jan 2011	Feb 2011	Mar 2011
	\$m	\$m	\$m	\$m	\$m	\$m	\$m	\$m	\$m
<b>BALANCE</b>									
<b>On goods and services</b>	—	—	—	-173	-173	-174	-166	-167	-167
<b>CREDITS</b>									
Total goods and services	—	—	—	—	—	—	—	—	—
<i>Total goods</i>	—	—	—	—	—	—	—	—	—
Rural goods	—	—	—	—	—	—	—	—	—
Non-rural goods	—	—	—	—	—	—	—	—	—
Net exports of goods under merchanting	—	—	—	—	—	—	—	—	—
Non-monetary gold	—	—	—	—	—	—	—	—	—
<i>Total services</i>	—	—	—	—	—	—	—	—	—
<b>DEBITS</b>									
Total goods and services	—	—	—	-173	-173	-174	-166	-167	-167
<i>Total goods</i>	—	—	—	-173	-173	-174	-166	-167	-167
Consumption goods	—	—	—	—	—	—	—	—	—
Capital goods	—	—	—	-173	-172	-174	-166	-167	-167
Intermediate and other merchandise goods	—	—	—	—	-1	—	—	—	—
Non-monetary gold	—	—	—	—	—	—	—	—	—
<i>Total services</i>	—	—	—	—	—	—	—	—	—

— nil or rounded to zero (including null cells)

(a) This table is presented consistent with BPM6 sign conventions. This means for the balance on goods and services a negative revision indicates a decrease in a surplus or an increase in a deficit. For debits a negative revision indicates an increase in debits while a positive revision indicates a decrease in debits.

## EXPLANATORY NOTES

### INTRODUCTION

**1** This publication presents preliminary estimates of Australia's international trade in goods and services on a balance of payments basis (tables 1–11 and 17) and merchandise import and export statistics on a recorded trade basis (tables 12–15). In addition, table 16 Exchange rates and trade-weighted indexes are derived by using exchange rates and indexes provided by the Reserve Bank of Australia.

**2** Merchandise trade statistics on a recorded trade basis are compiled from information submitted by exporters and importers or their agents to the Australian Customs and Border Protection Service (Customs and Border Protection). Adjustments for coverage, timing and valuation are made to recorded trade data to convert them to a balance of payments basis. The services data are sourced from the quarterly Survey of International Trade in Services and a range of administrative data and indicator series.

**3** More comprehensive quarterly estimates of Australia's trade in goods and services, together with comprehensive details of Australia's balance of payments are included in the quarterly publication, *Balance of Payments and International Investment Position, Australia* (cat. no. 5302.0). Detailed monthly statistics on merchandise trade are available in Time Series Spreadsheets on the ABS website or by subscription to tailored services. More information on the *International Trade in Services by Country, by State and by Detailed Services Category* are available on a financial year basis (cat. no. 5368.0.55.003) following the September issue of this publication and calendar year basis (cat. no. 5368.0.55.004) following the March issue of this publication.

### CONCEPTS, SOURCES AND METHODS

**4** The conceptual framework used in compiling Australia's merchandise trade statistics can be found in *International Merchandise Trade, Australia: Concepts, Sources and Methods, 2001* (cat. no. 5489.0).

**5** The conceptual framework used in compiling Australia's balance of payments statistics is based on the International Monetary Fund's *Balance of Payments and International Investment Position Manual, Sixth Edition (BPM6)*. Descriptions of the underlying concepts and structure of the balance of payments and the sources, methods and terms used in compiling estimates are presented in the publication *Balance of Payments and International Investment Position, Australia: Concepts, Sources and Methods, 1998* (cat. no. 5331.0). This version reflects the international standards prior to BPM6 and is currently being revised. The first part of the revised document was released on 8 March 2011, featuring only the Goods Account. Other components will be released as they become available. Further information on the key changes introduced with BPM6 can be found in the *Information paper: Implementation of new international statistical standards in the ABS National and International Accounts, September 2009* (cat. no. 5310.0.55.002).

**6** To bring merchandise trade statistics on a recorded trade basis to a balance of payments basis, timing adjustments are made to ensure that the transaction is recorded in the period in which ownership changed, rather than in the period in which the transaction was recorded by Customs and Border Protection or the period in which the goods arrived in/departed from an Australian port. Adjustments are also made to account for the change of ownership of goods not included in merchandise trade statistics. Chapter 6 of cat. no. 5331.0 provides more detail on the relationship between statistics on international merchandise trade on a recorded trade basis and on a balance of payments basis.

**7** Recorded trade exports data presented for recent months in tables 12–15 of this publication are based on information initially reported by exporters to Customs and Border Protection. At the time of initial reporting to Customs and Border Protection the final prices may not be known for some commodities. Therefore, the information recorded for recent months for commodities like iron ore and coal can include a variety of prices including previous or current contract prices and the prevailing spot prices.

## EXPLANATORY NOTES *continued*

### CONCEPTS, SOURCES AND METHODS *continued*

Newly negotiated contract prices may not be fully reflected in the data first reported to Customs and Border Protection, and to compensate for this, the balance of payments series may reflect adjusted price levels.

**8** The Concepts, Sources and Methods publications and information papers are available to download for free from the ABS website. Select *Statistics*, then select *By Catalogue Number*, and then the catalogue numbers as above.

### CLASSIFICATIONS

**9** The merchandise trade data on a recorded trade basis are presented using the following commodity classifications:

- the Harmonized System 2007 (available on request)
- the Standard International Trade Classification (SITC Revision 4)
- the Classification by Broad Economic Categories (BEC)
- the industry classification: Australian and New Zealand Standard Industrial Classification, 2006 (ANZSIC 06) from July 2005.

**10** The Balance of Payments 'goods and services' series are presented according to three classifications with the goods classifications derived from SITC Revision 4 and BEC. The classifications are:

- for goods:
  - the Balance of Payments Commodities for Exports (BoPCE)
  - the Balance of Payments Broad Economic Categories (BoPBEC) for Imports
- for services:
  - the Extended Balance of Payments Services Classification (EBOPS).

### ACCURACY, RELIABILITY AND REVISIONS

**11** While every effort is made to ensure the accuracy and reliability of estimates, most series are subject to revision as more complete and accurate information becomes available. Care should be exercised in the use and interpretation of estimates in this publication. The transactions occurring in international trade in goods and services are of many different kinds, and therefore the compilation of trade estimates entails the use of a very wide range of statistical data of varying degrees of accuracy and timeliness. For further information on the monthly services series, see paragraph 25.

**12** The revisions are applied differently for merchandise trade and balance of payments series. Each month, merchandise trade data are revised for the previous six months to incorporate latest available data.

**13** For the balance of payments 'goods and services' series, in original terms, no revisions are applied in the July, October, January or April issues. This is to ensure the monthly series align with the comparable series in the quarterly publication. In the September issue revisions can be applied to the four previous financial years. In other issues revisions can be applied to the previous and current financial years to incorporate the latest available survey and administrative data.

**14** In seasonally adjusted and trend terms, revisions may occur at any time point but tend to focus on the most recent estimates. Please also refer to paragraphs 17 (seasonal adjustment) and 19 (trend estimates) below.

### SIGN CONVENTION

**15** In keeping with BPM6 conventions, balance of payments basis credit entries are shown with an implied positive sign and debit items are shown as negative entries. For statistics on a recorded trade basis, both imports and exports are shown without sign. The calculation of percentage changes on balance of payments debit items are made without regard to sign. References to balance of payments debit items in Key Figures, Key Points, and Analysis and Comments are also made without regard to sign.

## EXPLANATORY NOTES *continued*

### SEASONALLY ADJUSTED AND TREND ESTIMATES

**16** The estimates of international trade in goods and services on a balance of payments basis are seasonally adjusted, however the merchandise exports and imports statistics on a recorded trade basis are not. Monthly original estimates are volatile, being subject to calendar-related and large irregular influences. Seasonally adjusted estimates are derived by estimating and removing from the original series systematic calendar related effects, such as seasonal (e.g. Christmas), trading day and moving holiday (e.g. Easter) influences. Seasonal adjustment does not aim to remove the irregular or non-seasonal influences which may be present in any particular month. These irregular influences may reflect both random economic events and difficulties of statistical recording.

**17** The seasonally adjusted statistics in this publication use the concurrent seasonal adjustment technique and Autoregressive Integrated Moving Average (ARIMA) modelling to estimate factors for the current and previous months. Under concurrent seasonal adjustment, the estimates of seasonal factors are fine tuned as new or revised original estimates become available each period. The seasonally adjusted estimates are subject to revisions at each reference month as the estimates of seasonal factors are improved.

**18** ARIMA modelling relies on the characteristics of the series being analysed to project future period data. ARIMA modelling is used on a case-by-case basis where it results in reduced revisions to seasonally adjusted series when subsequent data become available. The projected values are temporary, intermediate values, that are only used internally to improve the estimation of the seasonal factors. The projected data do not affect the original estimates and are discarded at the end of the seasonal adjustment process. The ARIMA model is assessed as part of the annual review and, following the 2010 annual review, 40 of the 46 directly seasonally adjusted trade in goods and services time series use an ARIMA model.

**19** The month-to-month movements of the seasonally adjusted estimates may not be reliable indicators of underlying behaviour because they include irregular or non-seasonal movements. Trend estimates reduce the effect of these movements as they are derived by applying a 13-term Henderson moving average to the seasonally adjusted series. The 13-term Henderson moving average (like all Henderson averages) is symmetric, but as the end of a time series is approached, asymmetric forms of the average are applied. While the asymmetric weights enable trend estimates for recent months to be produced, it does result in revisions to the estimates for the most recent six months as additional observations become available. Revisions to trend estimates can also occur because of revisions to the original data and as a result of the re-estimation of the seasonal factors. Trend estimates should be used with caution, especially around the time of unusual influences, until these have been appropriately taken into account.

**20** Information papers and articles on time series methods are available on the ABS website:

- for seasonal adjustment methods, see *Information Paper: An Introductory Course on Time Series Analysis, Jan 2005* (cat. no. 1346.0.55.001) and *Time Series Analysis Frequently Asked Questions, 2003* (cat. no. 1346.0.55.002)
- for ARIMA modelling, see *Feature article: Use of ARIMA modelling to reduce revisions* in the October 2004 issue of *Australian Economic Indicators* (cat. no. 1350.0)
- for trend estimates methods, see *Information Paper: A Guide to Interpreting Time Series – Monitoring Trends* (cat. no. 1349.0)
- alternatively contact the Assistant Director, Time Series Analysis on (02) 6252 6345 or e-mail: [time.series.analysis@abs.gov.au](mailto:time.series.analysis@abs.gov.au).

## EXPLANATORY NOTES *continued*

### ECONOMIC TERRITORY

**21** In accordance with BPM6 definitions, Australia's economic territory, on a balance of payments basis, is the area under the effective control of the Australian government. It includes the land area, airspace, territorial waters, including jurisdiction over fishing rights and rights to fuels and minerals. Australian economic territory also includes territorial enclaves in the rest of the world. These are clearly demarcated areas of land, located in other countries and which are owned or rented by the Australian government for diplomatic, military, scientific or other purposes. Specifically, the economic territory of Australia consists of:

- Geographic Australia which includes Cocos (Keeling) Islands and Christmas Island;
- Norfolk Island;
- Australian Antarctic Territory;
- Heard Island and McDonald Islands;
- Territory of Ashmore Reef and Cartier Island;
- Coral Sea Islands;
- Australia's territorial enclaves overseas; and
- the Joint Petroleum Development Area (joint territory between Australia and East Timor (Timor-Leste)).

**22** Because of administrative complexities and measurement difficulties, Norfolk Island transactions with the rest of the world will not always be captured in all relevant balance of payments statistics. Most of the transactions involving Norfolk Island are not material to Australia's trade performance and not capturing these transactions will not distort these statistics. However, any significant transactions will be identified and included in the relevant statistics.

### COMMODITY BREAKDOWN OF GOODS

**23** For details of the classifications used to present goods exports (credits) and imports (debits) on a balance of payments basis, see tables 6.6 and 6.7, respectively, in *Balance of Payments and International Investment Position, Australia: Concepts, Sources and Methods* (cat. no. 5331.0).

**24** The recorded trade statistics shown in tables 12 and 13 are classified by the Standard International Trade Classification (SITC). Imports and exports of goods at a more detailed level are available from the time series spreadsheets on the ABS website. All data from July 2005 are presented according to SITC Rev 4 and data prior to July 2005 are presented according to SITC Rev 3. For details refer to the 'Classifications and Standards Update' in the July 2008 issue of this publication.

### MONTHLY SERVICES SERIES

**25** Monthly indicators for many of the services components that are only surveyed quarterly are not available. Monthly estimates for the freight and other transportation components of services credits in table 9 are derived by dividing the quarterly estimate by three. Freight debits are derived directly from imports data for the reference month as a difference between total merchandise cost, insurance and freight (CIF) and free on board (FOB), adjusted to reflect timing and processing adjustments. For freight credits and other transportation credits and debits, estimates are derived by extrapolating the last quarter's data by an average of movements for the same quarter over the three previous years, and then dividing the estimate by three. Similarly other services estimates are derived by extrapolating the last quarter's data by an average of movements for the same quarter over the previous three years, and then dividing the estimate by three.

### CONFIDENTIALITY OF MERCHANDISE TRADE STATISTICS

**26** The release of statistics for certain merchandise trade commodities is restricted in order to prevent the identification of the activities of an individual business, where this is requested by the business concerned. These restrictions do not affect the total value of exports and imports, but they can affect statistics at the country, state and commodity levels. Imports data that have the confidentiality restrictions 'No commodity details' or 'No value details' are aggregated into a single confidential commodity code. For data prior to September 2008, these data are added back into the appropriate state total and

## EXPLANATORY NOTES *continued*

### CONFIDENTIALITY OF MERCHANDISE TRADE STATISTICS *continued*

country total (i.e. these totals show the correct level of trade). From September 2008 these confidential data are not added back. Instead the confidential data are published as 'No country details' in the country totals and 'State not available for publication' in the state totals. Therefore, country and state totals from September 2008 may not represent the actual amount of trade in each country/state but only the trade in commodities without a 'No commodity details' or 'No value details' restriction. For information on the confidentiality restrictions applied to the merchandise trade statistics in this publication, refer to the current issue of *International Merchandise Trade: Confidential Commodities List (CCL)* (cat. no. 5372.0.55.001).

### TOURISM RELATED SERVICES

**27** The tourism related services memorandum items provide timely indicators of the movements in tourism related activities, not an absolute measure of the level of these activities. The tourism related indicator has been derived by combining total travel services (business, education-related and other personal travel) and passenger transportation services (which includes agency fees and commissions for air transport).

### SERVICES BY STATE AND BY PARTNER COUNTRY

**28** Annual services data by state, by country and detailed services are released twice yearly. Calendar year data are usually released following the March issue of this publication and financial year data are usually released following the September issue. Refer to time series data for details.

**29** Services credits are classified by the state of provision, while services debits are classified by the state of consumption. The state allocations for transportation, travel, postal and courier, and telecommunication services are based on a number of indicators including merchandise trade statistics by state, overseas passenger arrivals and departures by state of clearance and data provided by the Department of Immigration and Citizenship. The allocation for other services (about 25% of all trade in services) is primarily based on the location of the business reporting the information, which serves as a proxy for the state of provision/consumption of that service. The data should be used with care but are considered suitable for analysis over time.

**30** A comprehensive explanation of the data sources used and the methodology applied in the compilation of partner country statistics is provided in Chapter 17 of *Balance of Payments and International Investment Position, Australia: Concepts, Sources and Methods* (cat. no. 5331.0). Approximately 4% of total services credits and 5% of total services debits for both 2008–09 and 2009–10 were either confidential, or unable to be allocated to individual countries.

### ABS DATA AVAILABLE

**31** More detailed balance of payments and recorded merchandise trade data, including forward seasonal factors are available as time series spreadsheets or data cubes from the ABS website. Merchandise trade data by commodity, country and state that are not on the ABS website may be available on request. Inquiries should be made to the National Information and Referral Service as shown on the back of this publication.

### RELATED PRODUCTS AND PUBLICATIONS

**32** Users may also wish to refer to the following publications which can be downloaded free of charge from the ABS website by using the 'Statistics' tab and selecting the relevant catalogue number:

- *Balance of Payments and International Investment Position, Australia* (cat. no. 5302.0) – issued quarterly
- *International Merchandise Imports, Australia* (cat. no. 5439.0) – issued monthly
- *International Trade Price Indexes, Australia* (cat. no. 6457.0) – issued quarterly
- *Balance of Payments and International Investment Position, Australia: Concepts, Sources and Methods* (cat. no. 5331.0)
- *Information Paper: Quality of Australian Balance of Payments Statistics* (cat. no. 5342.0)

## EXPLANATORY NOTES *continued*

### RELATED PRODUCTS AND PUBLICATIONS *continued*

- *International Merchandise Trade, Australia: Concepts, Sources and Methods* (cat. no. 5489.0)
- *A Guide to Australian Balance of Payments and International Investment Position Statistics* (cat. no. 5362.0.55.001).

**33** Current publications and other products released by the ABS are available from the 'Statistics' tab on the ABS website. The ABS also issues a daily *Release Advice* on the website which details products to be released in the week ahead. A *foreign trade theme page* and a *balance of payments theme page* are available on the ABS website. Select *Topics @ a Glance – Economy – Foreign Trade or Balance of Payments*. This page provides direct links to all foreign trade and balance of payments related data and publications, recent changes and forthcoming events, links to relevant websites and a range of other information about the Australian International Accounts.

### ROUNDING

**34** Where figures have been rounded, discrepancies may occur between sums of the component items and totals. Percentage movements are calculated from data at the level of precision presented in this publication (i.e. \$m) except for international merchandise trade tables.

### ABBREVIATIONS

\$b	billion (thousand million) dollars
\$m	million dollars
ABS	Australian Bureau of Statistics
ANZSIC	Australian and New Zealand Standard Industrial Classification
APEC	Asia Pacific Economic Co-operation
ASEAN	Association of South-East Asian Nations
BEC	Classification by Broad Economic Categories
BoPBEC	Balance of Payments Broad Economic Categories
EMS	Environmental Management Survey
f.o.b.	free on board
n.e.s.	not elsewhere specified
n.i.e.	not included elsewhere
OECD	Organisation for Economic Co-operation and Development
SAR	Special Administrative Region
SITC	Standard International Trade Classification



## APPENDIX RELATED ARTICLES

<i>Article</i>	<i>Source(a)</i>	<i>Issue / Release</i>
<b>Investment</b>		
Foreign currency exposure	5308.0	Mar qtr 2009
Foreign ownership of equity	5302.0	Sep qtr 2007
Kangaroo bonds	1301.0	2006
Gross external debt	5302.0	Sep qtr 2003
<b>Balance of payments</b>		
International comparison of balance of payments statistics	(b)5363.0	1998–99
<b>Merchandise trade</b>		
Characteristics of Australian Exporters, 2009–10	5368.0.55.006	Mar 2011
Export and Import Invoice Currencies, Dec 2009	5368.0	Dec 2009
100 years of international trade statistics	5368.0	Oct 2007
New methodology for deriving counts of Australian exports	5368.0	Feb 2006
Australia's Importers, 2003–04	5368.0	Nov 2004
Australia's Exporters, 2003–04	5368.0	Oct 2004
Foreign ownership of Australian exporters and importers, 2002–03	5496.0.55.001	Jun 2004
Australia's trade with the USA	5368.0	Mar 2004
Major commodities traded by Australia, 1991 to 2000	(b)5422.0	Dec qtr 2000
<b>Trade in services</b>		
International trade in services by partner country, 2006, preliminary	5368.0	Dec 2006
Changes to International trade in services statistics, August 2006	5368.0	Aug 2006
Changes to International trade in services travel statistics	5368.0	Aug 2005
<b>Finance</b>		
Impact of the farm season on Australian production in 2002–03 and 2003–04	1301.0	2005
Recent trends in construction and first home buyers finance	5609.0	Mar 2002
Household sector data in the financial accounts	5232.0	Mar qtr 2002
<b>Technical information</b>		
Proposed changes to statistical codes in the HTISC, 2012	5368.0.55.016	May 2011
Proposed changes to statistical codes in the AHECC, 2012	5368.0.55.015	Mar 2011
Implementation of new international statistical standards in ABS National and International Accounts, September 2009	5310.0.55.002	Oct 2009
Impact of revised international standards on monthly International Trade in Goods and Services, August 2009	5368.0.55.014	Oct 2009
Estimation of Workers' Remittances based on Balance of Payments and International Investment Position Manual, Sixth Edition, September 2009	5302.0.55.003	Aug 2009
Revisions to international standards in quarterly Balance of Payments and International Investment Position statistics from September 2009, 2009	5302.0.55.002	Jul 2009
Changes to International Trade in Goods Statistics – Countries and Ports, July 2009	5368.0.55.013	Jul 2009
Revisions to international standards in monthly international trade in goods and services statistics from August 2009, 2009	5368.0.55.012	Jun 2009
Changes to International Trade in Goods Industry Statistics, July 2009	5368.0.55.011	Dec 2008
Technical note 1 – Income on debt	5302.0	Jun qtr 2008
Technical note 2 – Use of CDI data	5302.0	Jun qtr 2008
Impact of introducing Revision 4 of the Standard International Trade Classification, 2008	5368.0.55.010	May 2008
Changes to international trade statistics July 2008, 2007 to 2008	5368.0.55.009	Jan 2008
Introduction of revised international standards in ABS economic statistics in 2009, 2007	5310.0.55.001	Sep 2007
Changes on 1 January 2007 to Statistical Codes in the AHECC and the Customs Tariff, 2007	1233.0.55.001	Nov 2006
ABS implementation in January 2007 of revisions to international trade classifications, 2007	5368.0.55.005	Jun 2006
Revised treatment of Goods for Processing in Merchandise Trade and Balance of Payments Statistics	5368.0	May 2006
Impact of Customs and ABS changes on import statistics from October 2005	5439.0	Oct 2005
ABS management of the impact of the implementation of the imports component of the New Customs System	5439.0	Aug 2005
Changes to country and port classifications	5368.0	May 2003
Implementation of New Customs Systems	5368.0	Aug 2004
The effect of customs changes on export statistics	5422.0	Jun qtr 2002
Data confidentiality	5422.0	Dec qtr 1999

- (a) In the ABS website home page, select Statistics; By Catalogue Number; and click on the specified catalogue number and issue. Note: in some instances, a particular issue of the publication can be found in the Past & Future Releases page of the catalogue.
- (b) This article can be found in pdf format by referring to the Downloads page of the specified issue of this publication on the ABS website.





## FOR MORE INFORMATION . . .

*INTERNET*      **www.abs.gov.au** the ABS website is the best place for data from our publications and information about the ABS.

### INFORMATION AND REFERRAL SERVICE

Our consultants can help you access the full range of information published by the ABS that is available free of charge from our website. Information tailored to your needs can also be requested as a 'user pays' service. Specialists are on hand to help you with analytical or methodological advice.

*PHONE*                      1300 135 070

*EMAIL*                      [client.services@abs.gov.au](mailto:client.services@abs.gov.au)

*FAX*                            1300 135 211

*POST*                         Client Services, ABS, GPO Box 796, Sydney NSW 2001

## FREE ACCESS TO STATISTICS

All statistics on the ABS website can be downloaded free of charge.

*WEB ADDRESS*      [www.abs.gov.au](http://www.abs.gov.au)