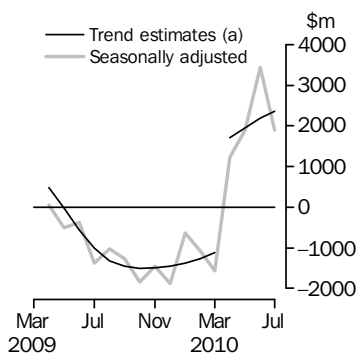


INTERNATIONAL TRADE IN GOODS AND SERVICES

AUSTRALIA

EMBARGO: 11.30AM (CANBERRA TIME) THURS 2 SEP 2010

Balance on Goods and Services



(a) A trend break of \$2,033m has been applied to April 2010.

KEY FIGURES

	May 2010	Jun 2010	Jul 2010	Jun 10 to Jul 10
	\$m	\$m	\$m	% change
BALANCE ON GOODS AND SERVICES				
Trend estimates	1 957	2 198	2 361	..
Seasonally adjusted	1 901	3 438	1 888	..
CREDITS (Exports of goods & services)				
Trend estimates	24 753	25 339	25 836	2
Seasonally adjusted	24 992	26 586	25 395	-4
DEBITS (Imports of goods & services)				
Trend estimates	22 796	23 140	23 475	1
Seasonally adjusted	23 090	23 148	23 507	2

.. not applicable

KEY POINTS

BALANCE ON GOODS AND SERVICES

- The trend estimate of the *balance on goods and services* was a surplus of \$2,361m in July 2010, an increase of \$163m on the revised surplus in June 2010.
- In seasonally adjusted terms, the *balance on goods and services* was a surplus of \$1,888m in July 2010, a decrease of \$1,550m on the revised surplus in June 2010.

CREDITS (EXPORTS OF GOODS & SERVICES)

- In seasonally adjusted terms, *goods and services credits* fell \$1,191m (4%) to \$25,395m. *Non-rural goods* fell \$1,076m (6%) and *non-monetary gold* fell \$219m (15%). *Rural goods* rose \$113m (5%). *Services credits* fell \$15m.

DEBITS (IMPORTS OF GOODS & SERVICES)

- In seasonally adjusted terms, *goods and services debits* rose \$359m (2%) to \$23,507m. *Intermediate and other merchandise goods* rose \$698m (9%) and *capital goods* rose \$4m. *Non-monetary gold* fell \$269m (44%) and *consumption goods* fell \$64m (1%). *Services debits* fell \$9m.

INQUIRIES

For further information contact Selvi Sekhar on Canberra (02) 6252 5540 for Goods, and Lee Taylor on Canberra (02) 6252 6377 for Services.

NOTES

FORTHCOMING ISSUES

<i>ISSUE</i>	<i>RELEASE DATE</i>
August 2010	5 October 2010
September 2010	4 November 2010
October 2010	2 December 2010
November 2010	11 January 2011
December 2010	3 February 2011
January 2011	3 March 2011



REVISIONS

Revisions have been made to incorporate the latest data relating to international merchandise trade. There were no revisions to the balance of payments series in original terms.

IRON ORE AND COAL PRICES

Adjustments have been made to the value of the 'metal ores and minerals' and 'coal, coke and briquettes' components in the balance of payments series. See page 4 – Commodity prices adjustment, for details.

CHANGES IN CURRENT ISSUE

Tables 12 and 13 of this publication present the major commodities for international merchandise trade exports and imports respectively. As part of an annual review, the major commodities have been updated in this issue.

Table 12, International merchandise exports major commodities:

- 287 ores and concentrates of base metals, n.e.s., and
- 542 medicaments

replace:

- 268 wool and other animal hair, and
- 334 refined petroleum oils.

Table 13, International merchandise imports major commodities:

- 743 air pumps, compressors or fans; hoods; centrifuges; filtering apparatus; parts, and
- 894 baby carriages, toys, games and sporting goods

replace:

- 641 paper and paperboard, and
- 751 office machines.

In addition, the description for SITC 761, televisions has been updated to 761, televisions, monitors and projectors.

Peter Harper
Acting Australian Statistician

CONTENTS

page

Commodity prices adjustment	4
Time series data	5

ANALYSIS

Analysis and comments	7
---------------------------------	---

TABLES

INTERNATIONAL TRADE IN GOODS AND SERVICES – BALANCE OF PAYMENTS BASIS

1 Goods and services, summary, seasonally adjusted and trend estimates	12
2 Goods and services, summary, original	13
3 Goods credits, original	14
4 Goods debits, original	15
5 Goods credits, seasonally adjusted	16
6 Goods debits, seasonally adjusted	17
7 Goods credits, trend estimates	18
8 Goods debits, trend estimates	19
9 Services, summary, original	20
10 Services, summary, seasonally adjusted and trend estimates	21
11 Services, original, quarterly	22

INTERNATIONAL MERCHANDISE TRADE – RECORDED TRADE BASIS

12 International merchandise exports, by commodity	23
13 International merchandise imports, by commodity	26
14 International merchandise trade, by country and country groups	29
15 International merchandise trade, by state	30

OTHER TABLES

16 Period average exchange rates per Australian dollar	31
17 Summary of revisions, goods and services, original	32

OTHER INFORMATION

Explanatory Notes	33
Appendix – Related articles	39

COMMODITY PRICES ADJUSTMENT

PRICES ADJUSTMENT

International merchandise trade exports data (on a recorded trade basis) presented in tables 12–15 of this publication are based on information provided by exporters to the Australian Customs and Border Protection Service (Customs and Border Protection). At the time of initial reporting to Customs and Border Protection the final prices may not be known for some commodities. New contract prices that have been recently negotiated, or are still being negotiated, for commodities like iron ore and coal may not be fully reflected in the Customs and Border Protection source data. Final prices are updated progressively in recorded trade data as exporters revise the information provided to Customs and Border Protection. It is not yet known how the recent move from annual to quarterly contracts for some exporters will impact on the reporting of information.

Balance of payments data in this publication have been adjusted for June and July 2010 to take into account additional information on the unit price of iron ore and coal exports. The adjustments for metal ores and minerals are \$218m in June and \$200m in July. The adjustments for coal, coke and briquettes are \$345m in June and \$145m in July.

In the unadjusted recorded trade series, the unit price of metal ores and minerals decreased 6% between June and July 2010. In the equivalent adjusted balance of payments series, the unit price of metal ores and minerals decreased 3%.

In the unadjusted recorded trade series, the unit price of coal, coke and briquettes decreased 11% between June and July 2010. In the equivalent adjusted balance of payments series, the unit price of coal, coke and briquettes decreased 5%.

TIME SERIES DATA

TIME SERIES DATA

Tables 1 to 16 of this publication are available free on the ABS website <www.abs.gov.au> from the Downloads tab of this issue with longer time series. A number of these tables present more detailed breakdowns than included in the publication and a number of additional tables are also available free on the ABS website.

Tables with more detailed breakdowns:

11a Services credits: Original - Quarter¹

11b Services debits: Original - Quarter¹

12b Merchandise exports by Standard International Trade Classification (3 digit), FOB Value

13b Merchandise imports by Standard International Trade Classification (3 digit), Customs Value

14a Merchandise exports, Country and Country Groups, FOB Value

14b Merchandise imports, Country and Country Groups, Customs Value

Additional tables:

31 Merchandise exports by Broad Economic Category (BEC)

32a Merchandise exports, Industry (ANZSIC 2006), FOB Value

32b Merchandise exports, Industry (ANZSIC 1993), FOB Value

33 Merchandise imports by Broad Economic Category (BEC)

34 Merchandise imports by Balance of Payments Broad Economic Category (BoPBEC)

35a Merchandise imports, Industry (ANZSIC 2006), Customs Value

35b Merchandise imports, Industry (ANZSIC 1993), Customs Value

36 Merchandise exports, state by country and country groups

37 Merchandise imports, state by country and country groups

91 Monthly seasonal adjustment factors and forward factors for 12 months.

¹ With a one quarter lag for the more detailed breakdowns.

TIME SERIES DATA *continued*

TRADE IN SERVICES DATA CUBES

Trade in Services data cubes are usually updated on an annual basis. Calendar year (cat. no. 5368.0.55.004) statistics are updated in May and financial year (cat. no. 5368.0.55.003) statistics are updated in December.

The following tables were included in the calendar year data cubes:

- 1 International trade in services, credits, state by year
- 2 International trade in services, credits, year by state
- 3 International trade in services, debits, state by year
- 4 International trade in services, debits, year by state
- 5 International trade in services, credits, year by country and service
- 6 International trade in services, credits, service by year and by country
- 7 International trade in services, debits, year by country and service
- 8 International trade in services, debits, service by year and by country
- 9 International trade in services, credits, year by country and travel service
- 10 International trade in services, debits, year by country and travel service
- 11 International trade in services, credits, education related travel, by educational sector, by type of expenditure by year.

ANALYSIS AND COMMENTS

BALANCE ON GOODS AND SERVICES

The trend estimate of the balance on goods and services was a surplus of \$2,361m in July 2010, an increase of \$163m on the revised surplus in June 2010.

In seasonally adjusted terms, the balance on goods and services was a surplus of \$1,888m in July 2010, a decrease of \$1,550m on the revised surplus in June 2010.

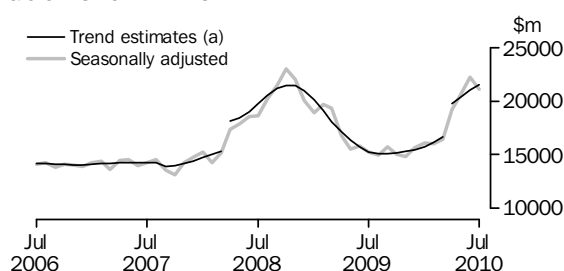
EXPORTS OF GOODS AND SERVICES

Between June 2010 and July 2010 the trend estimate of goods and services credits rose \$497m (2%) to \$25,836m.

In seasonally adjusted terms, goods and services credits fell \$1,191m (4%) to \$25,395m. Non-rural goods fell \$1,076m (6%) and non-monetary gold fell \$219m (15%). Rural goods rose \$113m (5%). Services credits fell \$15m.

Exports of goods

GOODS CREDITS



(a) Trend breaks of \$2,725m to April 2008 and \$2,200m to April 2010 have been applied.

RURAL GOODS

In trend terms, exports of rural goods rose \$81m (3%) to \$2,482m.

In seasonally adjusted terms, exports of rural goods rose \$113m (5%) to \$2,580m.

The components contributing to the rise in the seasonally adjusted estimates were:

- cereal grains and cereal preparations, up \$97m (22%)
- other rural, up \$29m (3%).

NON-RURAL GOODS

In trend terms, exports of non-rural goods rose \$394m (2%) to \$17,510m.

In seasonally adjusted terms, exports of non-rural goods fell \$1,076m (6%) to \$17,220m.

The main components contributing to the fall in the seasonally adjusted estimates were:

- coal, coke and briquettes, down \$704m (16%) on both volumes and prices
- metal ores and minerals, down \$499m (7%) on both volumes and prices.

Partly offsetting these decreases were the following components:

- other non-rural (incl. sugar and beverages), up \$139m (14%)
- metals (excl. non-monetary gold), up \$79m (8%).

For price and volume details, see the Selected commodities table on page 11.

ANALYSIS AND COMMENTS *continued*

Exports of goods continued

NET EXPORTS OF GOODS UNDER MERCHANTING

In trend terms, net exports of goods under merchanting rose \$2m (8%) to \$28m.

In seasonally adjusted terms, net exports of goods under merchanting rose \$6m (26%) to \$29m.

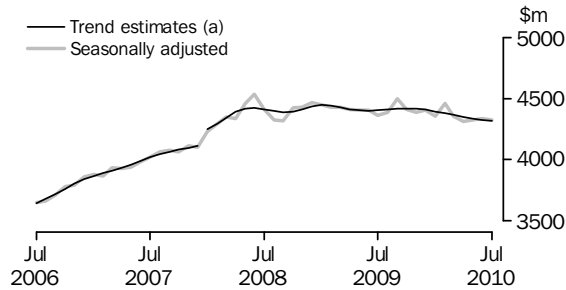
NON-MONETARY GOLD

In trend terms, exports of non-monetary gold rose \$26m (2%) to \$1,497m.

In seasonally adjusted terms, non-monetary gold fell \$219m (15%) to \$1,241m.

Exports of services

SERVICES CREDITS



(a) A trend break of \$106m has been applied to January 2008.

In trend terms, services credits fell \$7m to \$4,318m.

In seasonally adjusted terms, services credits fell \$15m to \$4,324m.

The only component contributing to the decrease in the seasonally adjusted estimates was travel services, down \$33m (1%).

In seasonally adjusted terms, tourism related services credits fell \$30m (1%) to \$2,929m.

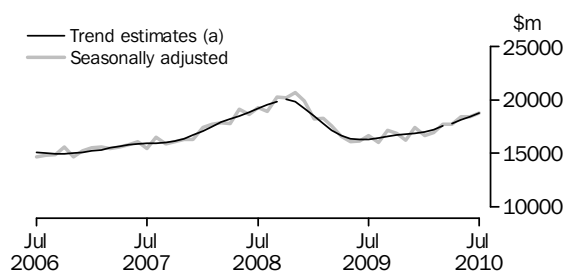
IMPORTS OF GOODS AND SERVICES

Between June 2010 and July 2010 the trend estimate of goods and services debits rose \$335m (1%) to \$23,475m.

In seasonally adjusted terms, goods and services debits rose \$359m (2%) to \$23,507m. Intermediate and other merchandise goods rose \$698m (9%) and capital goods rose \$4m. Non-monetary gold fell \$269m (44%) and consumption goods fell \$64m (1%). Services debits fell \$9m.

Imports of goods

GOODS DEBITS



(a) Trend breaks of \$167m to October 2008 and April 2010 have been applied.

CONSUMPTION GOODS

In trend terms, imports of consumption goods rose \$44m (1%) to \$5,568m.

In seasonally adjusted terms, imports of consumption goods fell \$64m (1%) to \$5,513m.

The main components contributing to the fall in the seasonally adjusted estimates were:

- non-industrial transport equipment, down \$43m (3%)
- toys, books and leisure goods, down \$23m (6%).

CAPITAL GOODS

In trend terms, imports of capital goods rose \$66m (2%) to \$4,257m.

In seasonally adjusted terms, imports of capital goods rose \$4m to \$4,197m.

The components contributing to the rise in the seasonally adjusted estimates were:

- ADP equipment, up \$59m (8%)
- telecommunications equipment, up \$36m (7%).

Partly offsetting these increases were the following components:

- capital goods n.e.s., down \$41m (9%)
- machinery and industrial equipment, down \$32m (2%).

ANALYSIS AND COMMENTS *continued*

Imports of goods continued

INTERMEDIATE AND OTHER MERCHANDISE GOODS

In trend terms, imports of intermediate and other merchandise goods rose \$225m (3%) to \$8,297m.

In seasonally adjusted terms, imports of intermediate and other merchandise goods rose \$698m (9%) to \$8,732m.

The main components contributing to the rise in the seasonally adjusted estimates were:

- other merchandise goods, up \$477m. The Department of Defence imported six Super Hornets
- organic and inorganic chemicals, up \$68m (18%)
- other parts for capital goods, up \$58m (5%).

Partly offsetting these increases was the fuels and lubricants component, down \$80m (3%).

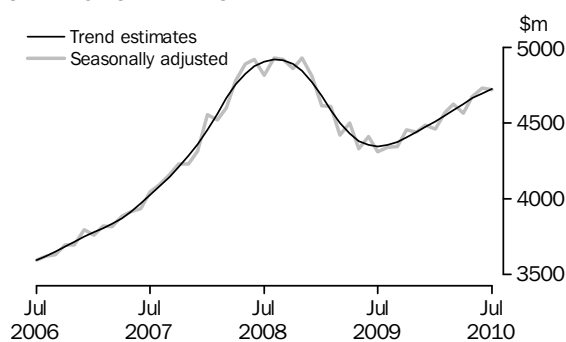
NON-MONETARY GOLD

In trend terms, imports of non-monetary gold fell \$29m (4%) to \$628m.

In seasonally adjusted terms, non-monetary gold fell \$269m (44%) to \$348m.

Imports of services

SERVICES DEBITS



In trend terms, services debits rose \$28m (1%) to \$4,724m.

In seasonally adjusted terms, services debits fell \$9m to \$4,718m.

The components contributing to the fall in the seasonally adjusted estimates were:

- transport services, down \$16m (1%)
- travel services, down \$6m.

Partly offsetting these decreases was an increase in the other services component, up \$8m (1%).

In seasonally adjusted terms, tourism related services debits fell \$14m (1%) to \$2,451m.

ANALYSIS AND COMMENTS *continued*

Selected commodities

SELECTED COMMODITIES, Price and volume analysis: **Recorded Trade Basis** (a)

	<i>Feb</i> 2010	<i>Mar</i> 2010	<i>Apr</i> 2010	<i>May</i> 2010	<i>Jun</i> 2010	<i>Jul</i> 2010
	%	%	%	%	%	%
.....						
IRON ORE						
Lump						
Volumes	-8	12	-9	5	-3	2
Price	17	-2	42	9	6	np
Fines						
Volumes	-9	7	5	-3	10	-7
Price	16	—	38	13	5	np
.....						
COAL						
Hard coking						
Volumes	-26	1	41	2	9	-27
Price	4	5	12	13	5	np
Semi-soft						
Volumes	-14	-7	15	11	-2	-1
Price	2	-3	28	20	9	np
Bituminous (Thermal)						
Volumes	-16	-4	22	-9	15	3
Price	4	-1	3	12	4	np

— nil or rounded to zero (including null cells)

np not available for publication but included in totals where applicable, unless otherwise indicated

(a) The equivalent Balance of Payments series includes adjustments which impact on percentage change of prices for June 2010. For more information see Commodity prices adjustment on page 4.

Between June and July 2010 exports of hard coking coal decreased \$743m (33%) on a recorded trade basis (without the balance of payments price adjustment). Exports to India decreased \$329m (47%) and to China decreased \$135m (77%).

GOODS AND SERVICES(a), Summary—Seasonally Adjusted and Trend Estimates

	Aug 2009	Sep 2009	Oct 2009	Nov 2009	Dec 2009	Jan 2010	Feb 2010	Mar 2010	Apr 2010	May 2010	Jun 2010	Jul 2010
	\$m	\$m	\$m	\$m	\$m	\$m	\$m	\$m	\$m	\$m	\$m	\$m
SEASONALLY ADJUSTED												
BALANCE												
On goods and services	-1 017	-1 269	-1 846	-1 457	-1 871	-625	-1 088	-1 558	1 231	1 901	3 438	1 888
CREDITS												
Total goods and services	19 335	20 222	19 458	19 209	20 080	20 471	20 452	20 768	23 492	24 992	26 586	25 395
Total goods	14 947	15 723	15 045	14 823	15 674	16 114	15 992	16 412	19 180	20 666	22 246	21 070
Rural goods(b)	2 107	2 009	1 854	1 971	2 084	2 111	2 152	2 171	2 064	2 337	2 467	2 580
Non-rural goods(b)	11 967	12 298	12 024	11 717	12 505	12 751	12 934	13 019	15 930	16 371	18 296	17 220
Net exports of goods under merchandise(c)	37	38	10	10	10	12	12	13	25	25	23	29
Non-monetary gold(c)	836	1 378	1 156	1 125	1 075	1 240	894	1 209	1 161	1 933	1 460	1 241
Total services	4 388	4 499	4 413	4 386	4 405	4 357	4 460	4 356	4 312	4 325	4 339	4 324
DEBITS												
Total goods and services	-20 351	-21 491	-21 304	-20 666	-21 951	-21 096	-21 539	-22 326	-22 262	-23 090	-23 148	-23 507
Total goods	-16 010	-17 146	-16 850	-16 224	-17 467	-16 635	-16 968	-17 701	-17 695	-18 415	-18 420	-18 790
Consumption goods	-4 928	-5 089	-5 022	-5 059	-4 969	-5 098	-5 349	-5 179	-5 343	-5 552	-5 577	-5 513
Capital goods	-3 857	-4 026	-4 100	-3 762	-4 068	-3 954	-3 959	-4 078	-3 943	-4 336	-4 193	-4 197
Intermediate and other merchandise goods	-6 669	-7 293	-7 056	-6 962	-7 766	-7 232	-7 193	-7 849	-7 515	-7 670	-8 034	-8 732
Non-monetary gold(c)	-555	-737	-672	-441	-665	-351	-467	-594	-894	-857	-617	-348
Total services	-4 341	-4 345	-4 455	-4 442	-4 484	-4 461	-4 571	-4 626	-4 567	-4 676	-4 727	-4 718
TREND ESTIMATES (d)												
BALANCE												
On goods and services	-1 316	-1 458	-1 502	-1 490	-1 450	-1 371	-1 258	-1 114	1 717	1 957	2 198	2 361
CREDITS												
Total goods and services	19 483	19 502	19 602	19 717	19 872	20 134	20 530	21 050	24 118	24 753	25 339	25 836
Total goods	15 072	15 086	15 185	15 302	15 464	15 739	16 151	16 685	19 767	20 417	21 014	21 518
Rural goods(b)	2 065	2 004	1 983	1 992	2 022	2 062	2 112	2 169	2 236	2 316	2 401	2 482
Non-rural goods(b)(e)	11 979	11 990	12 058	12 168	12 323	12 556	12 875	13 261	16 175	16 662	17 116	17 510
Net exports of goods under merchandise	30	26	21	15	11	10	13	17	20	23	26	28
Non-monetary gold	998	1 066	1 122	1 127	1 109	1 111	1 152	1 238	1 336	1 416	1 471	1 497
Total services	4 411	4 416	4 418	4 416	4 408	4 394	4 379	4 365	4 350	4 336	4 325	4 318
DEBITS												
Total goods and services	-20 799	-20 959	-21 104	-21 208	-21 322	-21 505	-21 788	-22 164	-22 401	-22 796	-23 140	-23 475
Total goods	-16 446	-16 586	-16 701	-16 768	-16 847	-16 994	-17 241	-17 579	-17 776	-18 133	-18 444	-18 751
Consumption goods	-5 076	-5 042	-5 031	-5 034	-5 062	-5 122	-5 202	-5 292	-5 380	-5 458	-5 524	-5 568
Capital goods(f)	-3 852	-3 924	-3 966	-3 968	-3 960	-3 976	-4 029	-4 114	-4 031	-4 119	-4 191	-4 257
Intermediate and other merchandise goods	-7 016	-7 074	-7 140	-7 215	-7 290	-7 359	-7 434	-7 538	-7 688	-7 874	-8 072	-8 297
Non-monetary gold	-501	-547	-563	-551	-535	-538	-577	-635	-676	-682	-657	-628
Total services	-4 353	-4 373	-4 403	-4 439	-4 475	-4 511	-4 547	-4 585	-4 625	-4 663	-4 696	-4 724
(a) For sign conventions, see paragraph 15 of the Explanatory Notes.												
(b) For all time periods, estimates for sugar, sugar preparations and honey are included in Non-rural goods.												
(c) This component is not seasonally adjusted.												
(d) Caution should be used when interpreting recent trend estimates as they may be affected by unusual economic factors. For more details on trend estimates, please see paragraph 19 of the explanatory notes.												
(e) A trend break of \$2,200m has been applied to Non-rural goods credits and related aggregates in April 2010. This trend break will be reassessed in a future issue.												
(f) A trend break of \$167m has been applied to Capital goods debits and related aggregates in April 2010. This trend break will be reassessed in a future issue.												

GOODS AND SERVICES (a), Summary—Original

	Aug 2009	Sep 2009	Oct 2009	Nov 2009	Dec 2009	Jan 2010	Feb 2010	Mar 2010	Apr 2010	May 2010	Jun 2010	Jul 2010
	\$m	\$m	\$m	\$m	\$m	\$m	\$m	\$m	\$m	\$m	\$m	\$m
BALANCE												
On goods and services	-228	-2 357	-2 402	-2 533	-1 722	-1 395	50	-1 421	1 581	3 161	3 077	1 892
CREDITS												
Total goods and services	19 801	20 348	20 446	19 047	20 922	18 924	19 526	21 277	22 959	25 067	25 925	25 599
Total goods	15 307	16 022	15 836	14 625	16 561	14 673	14 966	16 767	18 566	20 842	21 923	21 216
Rural goods(b)	2 085	1 985	1 898	1 911	2 204	1 855	2 088	2 362	2 047	2 504	2 447	2 556
Non-rural goods(b)	12 349	12 621	12 772	11 579	13 272	11 566	11 972	13 183	15 333	16 380	17 993	17 390
Net exports of goods under merchanting	37	38	10	10	10	12	12	13	25	25	23	29
Non-monetary gold	836	1 378	1 156	1 125	1 075	1 240	894	1 209	1 161	1 933	1 460	1 241
Total services	4 494	4 326	4 610	4 422	4 361	4 251	4 560	4 510	4 393	4 225	4 002	4 383
DEBITS												
Total goods and services	-20 029	-22 705	-22 848	-21 580	-22 644	-20 319	-19 476	-22 698	-21 378	-21 906	-22 848	-23 707
Total goods	-15 759	-18 027	-18 137	-17 288	-17 912	-15 614	-15 530	-18 278	-16 912	-17 473	-18 088	-18 816
Consumption goods	-4 919	-5 568	-5 783	-5 598	-5 070	-4 598	-4 868	-5 191	-4 877	-5 078	-5 377	-5 615
Capital goods	-3 739	-4 183	-4 263	-4 177	-4 266	-3 603	-3 469	-4 302	-3 768	-4 191	-4 266	-4 112
Intermediate and other merchandise goods	-6 546	-7 539	-7 419	-7 072	-7 911	-7 062	-6 726	-8 191	-7 373	-7 347	-7 828	-8 741
Non-monetary gold	-555	-737	-672	-441	-665	-351	-467	-594	-894	-857	-617	-348
Total services	-4 270	-4 678	-4 711	-4 292	-4 732	-4 705	-3 946	-4 420	-4 466	-4 433	-4 760	-4 891

(a) For sign conventions, see paragraph 15 of the Explanatory Notes.

(b) For all time periods, estimates for sugar, sugar preparations and honey are included in Non-rural goods.

							1 MONTH ENDED JULY		Change
	2007-08	2008-09	2009-10	May	Jun	Jul	2009	2010	
	\$m	\$m	\$m	\$m	\$m	\$m	\$m	\$m	
Total goods credits	182 952	231 564	201 458	20 842	21 923	21 216	15 370	21 216	38.0
General merchandise	170 471	213 755	186 904	18 884	20 440	19 946	14 498	19 946	37.6
<i>Rural goods(a)</i>	25 494	29 383	25 515	2 504	2 447	2 556	2 129	2 556	20.1
Meat and meat preparations	6 542	7 454	6 360	645	654	620	528	620	17.4
Cereal grains and cereal preparations	4 975	6 881	5 276	573	401	544	471	544	15.5
Wool and sheepskins	2 796	2 322	2 308	207	224	198	139	198	42.4
Other rural(a)	11 181	12 726	11 571	1 079	1 168	1 194	991	1 194	20.5
<i>Non-rural goods(a)</i>	144 977	184 372	161 389	16 380	17 993	17 390	12 369	17 390	40.6
Metal ores and minerals	41 339	52 015	53 376	5 877	7 077	6 411	3 556	6 411	80.3
Coal, coke and briquettes	24 599	54 957	36 460	3 917	4 374	3 803	3 081	3 803	23.4
Other mineral fuels	18 889	20 707	19 026	1 595	1 973	2 368	1 493	2 368	58.6
Metals (excl. non-monetary gold)	14 039	12 394	10 702	1 158	902	1 042	791	1 042	31.7
Machinery	8 750	8 900	7 985	731	723	761	700	761	8.7
Transport equipment	5 723	5 090	4 070	345	335	308	317	308	-2.8
Other manufactures	16 965	17 601	16 396	1 464	1 467	1 402	1 457	1 402	-3.8
Other non-rural (incl. sugar and beverages)	13 126	11 077	11 984	1 163	1 015	1 166	869	1 166	34.2
Goods procured in ports by carriers	1 547	1 631	1 390	130	127	129	105	129	22.9
Net exports of goods under merchanting	209	301	252	25	23	29	37	29	-21.6
Goods acquired under merchanting (negative exports)	-1 528	-2 386	-1 878	-175	-176	-173	-125	-173	-38.4
Goods sold under merchanting	1 737	2 687	2 130	200	199	202	162	202	24.7
Non-monetary gold	12 272	17 508	14 302	1 933	1 460	1 241	835	1 241	48.6

(a) For all time periods, estimates for sugar, sugar preparations and honey are included in Other non-rural.

GOODS DEBITS(a), Original

							1 MONTH ENDED JULY		Change
	2007-08	2008-09	2009-10	May 2010	Jun 2010	Jul 2010	2009	2010	
	\$m	\$m	\$m	\$m	\$m	\$m	\$m	\$m	
Total goods debits	-204 846	-222 378	-206 019	-17 473	-18 088	-18 816	-17 001	-18 816	-10.7
General merchandise	-197 253	-210 856	-198 914	-16 616	-17 471	-18 468	-16 746	-18 468	-10.3
<i>Consumption goods</i>	-59 371	-61 419	-62 337	-5 078	-5 377	-5 615	-5 410	-5 615	-3.8
Food and beverages, mainly for consumption	-7 840	-8 857	-8 711	-645	-714	-771	-774	-771	0.4
Household electrical items	-5 051	-5 488	-5 504	-461	-446	-442	-523	-442	15.5
Non-industrial transport equipment	-16 872	-13 247	-16 289	-1 442	-1 542	-1 502	-1 154	-1 502	-30.2
Textiles, clothing and footwear	-7 051	-8 287	-7 514	-525	-605	-741	-733	-741	-1.1
Toys, books and leisure goods	-4 561	-5 277	-4 677	-387	-401	-368	-414	-368	11.1
Consumption goods n.e.s.	-17 996	-20 263	-19 642	-1 618	-1 669	-1 791	-1 812	-1 791	1.2
<i>Capital goods</i>	-45 299	-51 572	-48 078	-4 191	-4 266	-4 112	-3 851	-4 112	-6.8
Machinery and industrial equipment	-16 480	-18 488	-15 569	-1 339	-1 360	-1 326	-1 352	-1 326	1.9
ADP equipment	-7 074	-7 257	-7 632	-799	-778	-759	-686	-759	-10.6
Telecommunications equipment	-5 790	-6 431	-6 050	-549	-512	-508	-482	-508	-5.4
Civil aircraft and confidentialised items(b)	-2 691	-5 524	-5 058	-438	-438	-426	-222	-426	-91.9
Industrial transport equipment n.e.s.	-7 502	-6 527	-6 800	-620	-678	-691	-461	-691	-49.9
Capital goods n.e.s.	-5 762	-7 345	-6 969	-446	-500	-402	-648	-402	38.0
<i>Intermediate and other merchandise goods</i>	-92 583	-97 865	-88 499	-7 347	-7 828	-8 741	-7 485	-8 741	-16.8
Food and beverages, mainly for industry	-923	-1 186	-1 036	-75	-92	-96	-107	-96	10.3
Primary industrial supplies n.e.s.	-1 477	-1 901	-1 342	-99	-115	-173	-75	-173	-130.7
Fuels and lubricants	-29 772	-28 213	-26 578	-2 188	-2 470	-2 390	-2 426	-2 390	1.5
Parts for transport equipment	-8 837	-8 599	-8 229	-712	-705	-771	-597	-771	-29.1
Parts for ADP equipment	-1 115	-1 067	-974	-90	-98	-86	-100	-86	14.0
Other parts for capital goods	-11 990	-14 312	-13 747	-1 094	-1 205	-1 263	-1 191	-1 263	-6.0
Organic and inorganic chemicals	-4 673	-5 384	-4 335	-409	-359	-426	-350	-426	-21.7
Paper and paperboard	-2 359	-2 403	-2 299	-179	-199	-213	-182	-213	-17.0
Textile yarn and fabrics	-1 334	-1 344	-1 170	-90	-96	-104	-102	-104	-2.0
Iron and steel	-3 721	-5 528	-3 258	-295	-308	-415	-294	-415	-41.2
Plastics	-3 064	-3 028	-2 733	-233	-244	-267	-231	-267	-15.6
Processed industrial supplies n.e.s.	-20 132	-21 919	-20 034	-1 692	-1 741	-1 860	-1 637	-1 860	-13.6
Other merchandise goods(b)	-1 415	-1 401	-1 396	-80	-82	-559	-75	-559	-645.3
Goods procured in ports by carriers	-1 771	-1 580	-1 368	-111	-114	-118	-118	-118	—
Non-monetary gold	-7 593	-11 522	-7 105	-857	-617	-348	-255	-348	-36.5

— nil or rounded to zero (including null cells)

(a) For sign conventions, see paragraph 15 of the Explanatory Notes.

(b) From July 2008, commodities subject to a 'no commodity details' or 'no value details' restriction are included in Civil aircraft and confidentialised items, and for earlier periods are included in Other merchandise goods.

GOODS CREDITS, Seasonally Adjusted

	Oct 2009	Nov 2009	Dec 2009	Jan 2010	Feb 2010	Mar 2010	Apr 2010	May 2010	Jun 2010	Jul 2010
	\$m	\$m	\$m	\$m	\$m	\$m	\$m	\$m	\$m	\$m
Total goods credits	15 045	14 823	15 674	16 114	15 992	16 412	19 180	20 666	22 246	21 070
General merchandise	13 879	13 688	14 589	14 862	15 086	15 190	17 994	18 708	20 763	19 800
<i>Rural goods</i>	1 854	1 971	2 084	2 111	2 152	2 171	2 064	2 337	2 467	2 580
Meat and meat preparations	497	475	498	502	491	521	559	592	637	623
Cereal grains and cereal preparations	377	407	406	462	416	470	381	486	447	544
Wool and sheepskins	179	211	187	193	204	210	203	199	225	225
Other rural (a)	801	878	994	955	1 041	970	920	1 060	1 158	1 187
<i>Non-rural goods</i>	12 024	11 717	12 505	12 751	12 934	13 019	15 930	16 371	18 296	17 220
Metal ores and minerals	3 507	3 757	3 722	4 052	4 292	4 352	5 850	5 989	7 198	6 699
Coal, coke and briquettes(b)	2 675	2 565	2 950	2 833	2 585	2 319	3 455	3 846	4 438	3 734
Other mineral fuels(c)	1 477	1 369	1 516	1 484	1 632	1 893	2 022	1 848	2 043	2 057
Metals (excl. non-monetary gold)(c)	912	712	932	905	877	909	1 025	1 002	935	1 014
Machinery	650	642	641	645	663	668	667	714	718	735
Transport equipment	329	338	308	334	377	376	348	350	363	316
Other manufactures	1 360	1 335	1 338	1 334	1 344	1 367	1 341	1 392	1 450	1 373
Other non-rural (incl. sugar and beverages)	1 010	891	981	1 045	1 046	1 015	1 100	1 096	1 019	1 158
Goods procured in ports by carriers(c)	105	108	118	119	119	120	123	134	132	135
Net exports of goods under merchanting(d)	10	10	10	12	12	13	25	25	23	29
Non-monetary gold(d)	1 156	1 125	1 075	1 240	894	1 209	1 161	1 933	1 460	1 241

(a) For all time periods, estimates for sugar, sugar preparations and honey are included in Other non-rural.

(b) Only a length-of-month adjustment has been applied to this component.

(c) In using these seasonally adjusted series, care should be exercised because of the difficulties associated with reliably estimating the seasonal pattern.

(d) This component is not seasonally adjusted.

GOODS DEBITS(a), Seasonally Adjusted

	Oct 2009	Nov 2009	Dec 2009	Jan 2010	Feb 2010	Mar 2010	Apr 2010	May 2010	Jun 2010	Jul 2010
	\$m	\$m	\$m	\$m	\$m	\$m	\$m	\$m	\$m	\$m
Total goods debits	-16 850	-16 224	-17 467	-16 635	-16 968	-17 701	-17 695	-18 415	-18 420	-18 790
General merchandise	-16 178	-15 783	-16 802	-16 284	-16 501	-17 107	-16 801	-17 558	-17 803	-18 442
<i>Consumption goods</i>	-5 022	-5 059	-4 969	-5 098	-5 349	-5 179	-5 343	-5 552	-5 577	-5 513
Food and beverages, mainly for consumption	-729	-690	-716	-705	-687	-714	-689	-742	-776	-786
Household electrical items	-415	-465	-463	-433	-435	-392	-413	-514	-469	-448
Non-industrial transport equipment	-1 272	-1 336	-1 335	-1 356	-1 540	-1 488	-1 601	-1 531	-1 504	-1 461
Textiles, clothing and footwear	-597	-580	-500	-638	-642	-638	-640	-681	-694	-702
Toys, books and leisure goods	-400	-386	-360	-355	-379	-368	-383	-382	-403	-380
Consumption goods n.e.s.	-1 608	-1 602	-1 596	-1 612	-1 666	-1 579	-1 618	-1 702	-1 730	-1 736
<i>Capital goods</i>	-4 100	-3 762	-4 068	-3 954	-3 959	-4 078	-3 943	-4 336	-4 193	-4 197
Machinery and industrial equipment	-1 209	-1 350	-1 223	-1 132	-1 361	-1 265	-1 314	-1 426	-1 402	-1 370
ADP equipment	-589	-560	-595	-639	-663	-647	-657	-772	-695	-754
Telecommunications equipment	-490	-489	-506	-498	-435	-497	-519	-546	-522	-558
Civil aircraft and confidentialised items(b)(c)	-791	-236	-596	-540	-235	-380	-272	-438	-438	-426
Industrial transport equipment n.e.s.	-492	-531	-551	-543	-625	-670	-701	-697	-659	-655
Capital goods n.e.s.	-528	-595	-597	-603	-639	-620	-480	-457	-475	-434
<i>Intermediate and other merchandise goods</i>	-7 056	-6 962	-7 766	-7 232	-7 193	-7 849	-7 515	-7 670	-8 034	-8 732
Food and beverages, mainly for industry	-81	-81	-87	-65	-84	-101	-88	-82	-93	-90
Primary industrial supplies n.e.s.(d)	-79	-115	-125	-102	-122	-126	-136	-130	-122	-165
Fuels and lubricants(c)	-2 026	-2 106	-2 626	-1 916	-2 055	-2 269	-2 461	-2 188	-2 470	-2 390
Parts for transport equipment	-680	-622	-670	-730	-703	-702	-666	-757	-731	-775
Parts for ADP equipment	-78	-76	-79	-93	-90	-75	-81	-85	-86	-85
Other parts for capital goods	-1 179	-1 090	-1 235	-1 181	-1 103	-1 208	-979	-1 151	-1 189	-1 247
Organic and inorganic chemicals	-365	-378	-371	-357	-339	-377	-329	-398	-378	-446
Paper and paperboard	-184	-186	-193	-196	-197	-190	-208	-205	-221	-209
Textile yarn and fabrics	-100	-94	-92	-96	-100	-93	-93	-95	-99	-104
Iron and steel	-202	-222	-254	-251	-295	-298	-304	-349	-349	-391
Plastics	-217	-214	-218	-221	-233	-240	-243	-248	-258	-264
Processed industrial supplies n.e.s.	-1 615	-1 597	-1 624	-1 715	-1 692	-1 705	-1 731	-1 791	-1 842	-1 891
Other merchandise goods(b)(e)	-139	-69	-81	-195	-66	-348	-84	-80	-82	-559
Goods procured in ports by carriers(c)	-111	-111	-109	-114	-114	-116	-111	-111	-114	-118
Non-monetary gold(c)	-672	-441	-665	-351	-467	-594	-894	-857	-617	-348

(a) For sign conventions, see paragraph 15 of the Explanatory Notes.

(b) From July 2008, commodities subject to a 'no commodity details' or 'no value details' restriction are included in Civil aircraft and confidentialised items, and for earlier periods are included in Other merchandise goods.

(c) This component is not seasonally adjusted.

(d) In using these seasonally adjusted series, care should be exercised because of the difficulties associated with reliably estimating the seasonal pattern.

(e) From July 1981, this component is not seasonally adjusted.

GOODS CREDITS(a), Trend Estimates

	Oct 2009	Nov 2009	Dec 2009	Jan 2010	Feb 2010	Mar 2010	Apr 2010	May 2010	Jun 2010	Jul 2010
	\$m	\$m	\$m	\$m	\$m	\$m	\$m	\$m	\$m	\$m
Total goods credits	15 185	15 302	15 464	15 739	16 151	16 685	19 767	20 417	21 014	21 518
General merchandise	14 041	14 160	14 344	14 618	14 987	15 430	18 412	18 978	19 517	19 993
<i>Rural goods</i>	1 983	1 992	2 022	2 062	2 112	2 169	2 236	2 316	2 401	2 482
Meat and meat preparations	498	490	487	493	509	533	559	586	610	631
Cereal grains and cereal preparations	416	408	411	420	428	437	446	459	475	490
Wool and sheepskins	179	188	195	199	201	204	207	211	216	220
Other rural(b)	890	907	929	951	973	996	1 024	1 060	1 100	1 141
<i>Non-rural goods</i>	12 058	12 168	12 323	12 556	12 875	13 261	16 175	16 662	17 116	17 510
Metal ores and minerals(c)	3 653	3 730	3 836	3 982	4 176	4 401	5 985	6 284	6 566	6 789
Coal, coke and briquettes(d)	2 801	2 771	2 712	2 647	2 593	2 569	3 733	3 785	3 852	3 937
Other mineral fuels	1 370	1 415	1 487	1 581	1 688	1 793	1 888	1 965	2 025	2 072
Metals (excl. non-monetary gold)	846	851	864	886	912	939	962	978	989	1 001
Machinery	648	645	645	648	657	670	685	700	715	727
Transport equipment	329	332	337	345	353	358	358	354	349	340
Other manufactures	1 345	1 339	1 336	1 338	1 346	1 358	1 372	1 386	1 397	1 406
Other non-rural (incl. sugar and beverages)	957	973	993	1 012	1 030	1 050	1 066	1 080	1 092	1 102
Goods procured in ports by carriers	108	111	114	117	120	123	126	129	132	134
Net exports of goods under merchanting	21	15	11	10	13	17	20	23	26	28
Non-monetary gold	1 122	1 127	1 109	1 111	1 152	1 238	1 336	1 416	1 471	1 497

(a) Caution should be used when interpreting recent trend estimates as they may be affected by unusual economic factors. For more details on trend estimates, please see paragraph 19 of the explanatory notes.

(b) For all time periods, estimates for sugar, sugar preparations and honey are included in Other non-rural.

(c) An estimated trend correction of \$1,200m has been applied to Metal ores and minerals and related aggregates in April 2010. This trend break will be reassessed in a future issue.

(d) An estimated trend correction of \$1,000m has been applied to Coal, coke and briquettes and related aggregates in April 2010. This trend break will be reassessed in a future issue.

	Oct 2009	Nov 2009	Dec 2009	Jan 2010	Feb 2010	Mar 2010	Apr 2010	May 2010	Jun 2010	Jul 2010
	\$m	\$m	\$m	\$m	\$m	\$m	\$m	\$m	\$m	\$m
Total goods debits	-16 701	-16 768	-16 847	-16 994	-17 241	-17 579	-17 776	-18 133	-18 444	-18 751
General merchandise	-16 138	-16 217	-16 312	-16 457	-16 665	-16 944	-17 099	-17 451	-17 787	-18 123
<i>Consumption goods</i>	-5 031	-5 034	-5 062	-5 122	-5 202	-5 292	-5 380	-5 458	-5 524	-5 568
Food and beverages, mainly for consumption	-727	-714	-703	-697	-698	-707	-721	-738	-755	-773
Household electrical items	-463	-449	-437	-431	-431	-435	-442	-451	-460	-469
Non-industrial transport equipment	-1 256	-1 309	-1 366	-1 425	-1 473	-1 506	-1 526	-1 531	-1 527	-1 515
Textiles, clothing and footwear	-588	-580	-582	-595	-616	-639	-659	-675	-689	-695
Toys, books and leisure goods	-390	-379	-371	-367	-369	-373	-379	-384	-389	-391
Consumption goods n.e.s.	-1 607	-1 603	-1 603	-1 607	-1 616	-1 632	-1 653	-1 678	-1 703	-1 725
<i>Capital goods</i>	-3 966	-3 968	-3 960	-3 976	-4 029	-4 114	-4 031	-4 119	-4 191	-4 257
Machinery and industrial equipment	-1 264	-1 250	-1 242	-1 249	-1 271	-1 301	-1 335	-1 366	-1 391	-1 410
ADP equipment	-584	-587	-599	-619	-644	-667	-689	-709	-727	-740
Telecommunications equipment	-500	-493	-487	-484	-487	-496	-509	-524	-537	-550
Civil aircraft and confidentialised items(c)	-507	-514	-482	-431	-385	-365	-367	-378	-390	-415
Industrial transport equipment n.e.s.	-505	-529	-556	-587	-620	-649	-669	-681	-685	-684
Capital goods n.e.s.(d)	-607	-594	-595	-606	-623	-636	-461	-462	-461	-458
<i>Intermediate and other merchandise goods</i>	-7 140	-7 215	-7 290	-7 359	-7 434	-7 538	-7 688	-7 874	-8 072	-8 297
Food and beverages, mainly for industry	-82	-80	-80	-81	-84	-87	-89	-90	-91	-92
Primary industrial supplies n.e.s.	-103	-106	-111	-116	-120	-125	-129	-134	-139	-145
Fuels and lubricants	-2 159	-2 166	-2 174	-2 190	-2 210	-2 238	-2 281	-2 330	-2 372	-2 439
Parts for transport equipment	-678	-685	-688	-689	-693	-704	-716	-727	-739	-749
Parts for ADP equipment	-76	-78	-81	-83	-85	-84	-83	-83	-83	-83
Other parts for capital goods	-1 150	-1 161	-1 163	-1 154	-1 139	-1 129	-1 129	-1 141	-1 159	-1 185
Organic and inorganic chemicals	-357	-360	-361	-359	-357	-358	-367	-380	-394	-410
Paper and paperboard	-185	-188	-191	-193	-196	-199	-203	-207	-211	-214
Textile yarn and fabrics	-99	-97	-96	-95	-95	-95	-96	-97	-98	-100
Iron and steel	-230	-233	-242	-258	-278	-299	-319	-338	-357	-373
Plastics	-215	-216	-219	-224	-231	-237	-244	-250	-256	-261
Processed industrial supplies n.e.s.	-1 598	-1 620	-1 643	-1 666	-1 692	-1 722	-1 756	-1 791	-1 826	-1 855
Other merchandise goods(c)	-94	-110	-129	-138	-141	-147	-164	-192	-232	-276
Goods procured in ports by carriers	-116	-115	-113	-112	-112	-113	-113	-114	-114	-115
Non-monetary gold	-563	-551	-535	-538	-577	-635	-676	-682	-657	-628

(a) For sign conventions, see paragraph 15 of the Explanatory Notes.

(b) Caution should be used when interpreting recent trend estimates as they may be affected by unusual economic factors. For more details on trend estimates, please see paragraph 19 of the explanatory notes.

(c) From July 2008, commodities subject to a 'no commodity details' or 'no value details' restriction are included in Civil aircraft and confidentialised items, and for earlier periods are included in Other merchandise goods.

(d) An estimated trend correction of \$167m has been applied to Capital goods n.e.s. and related aggregates in April 2010. This trend break will be reassessed in a future issue.

							1 MONTH ENDED JULY		Change %
	2007-08	2008-09	2009-10	May 2010	Jun 2010	Jul 2010	2009	2010	
	\$m	\$m	\$m	\$m	\$m	\$m	\$m	\$m	
Services credits	50 645	52 873	52 546	4 225	4 002	4 383	4 392	4 383	-0.2
Manufacturing services on physical inputs owned by others	77	258	284	13	13	17	28	17	-39.3
Maintenance and repair services n.i.e.	103	86	57	3	3	6	5	6	20.0
Transport	9 129	7 342	6 376	471	479	553	535	553	3.4
Passenger(c)	4 118	3 410	2 581	161	169	209	212	209	-1.4
Freight	1 463	851	627	52	52	59	55	59	7.3
Other	2 595	2 127	2 208	186	186	191	174	191	9.8
Postal and courier services(d)	953	954	960	72	72	94	94	94	—
Travel	28 252	31 096	33 285	2 675	2 444	2 782	2 790	2 782	-0.3
Other services	13 084	14 091	12 544	1 063	1 063	1 025	1 034	1 025	-0.9
Services debits	-53 330	-56 172	-53 950	-4 433	-4 760	-4 891	-4 537	-4 891	-7.8
Manufacturing services on physical inputs owned by others	-7	-4	-6	—	—	-2	—	-2	na
Maintenance and repair services n.i.e.	-97	-193	-292	-33	-28	-31	-17	-31	-82.4
Transport	-16 797	-15 832	-13 835	-1 208	-1 328	-1 309	-1 062	-1 309	-23.3
Passenger(c)	-7 278	-5 835	-5 202	-463	-531	-489	-404	-489	-21.0
Freight	-8 923	-9 386	-8 133	-705	-756	-774	-608	-774	-27.3
Other	-417	-437	-321	-26	-28	-25	-28	-25	10.7
Postal and courier services(d)	-179	-174	-179	-14	-13	-21	-22	-21	4.5
Travel	-20 153	-22 082	-23 354	-1 791	-1 995	-2 185	-2 126	-2 185	-2.8
Other services	-16 276	-18 061	-16 463	-1 401	-1 409	-1 364	-1 332	-1 364	-2.4
Memorandum items:									
Tourism related service credits(e)	32 370	34 506	35 866	2 836	2 613	2 991	3 002	2 991	-0.4
Tourism related service debits(e)	-27 431	-27 917	-28 556	-2 254	-2 526	-2 674	-2 530	-2 674	-5.7

— nil or rounded to zero (including null cells)

na not available

(a) For sign conventions, see paragraph 15 of the Explanatory Notes.

(b) For more detailed trade in services components, see table 11.

(c) Passenger services includes agency fees and commissions for air transport.

(d) Postal and courier services includes indirect commissions for sea transport.

(e) For a more detailed explanation of tourism related services, see paragraph 27 of the Explanatory Notes.

	Oct 2009	Nov 2009	Dec 2009	Jan 2010	Feb 2010	Mar 2010	Apr 2010	May 2010	Jun 2010	Jul 2010
	\$m	\$m	\$m	\$m	\$m	\$m	\$m	\$m	\$m	\$m
SEASONALLY ADJUSTED										
Services credits	4 413	4 386	4 405	4 357	4 460	4 356	4 312	4 325	4 339	4 324
Manufacturing services on physical inputs owned by others(b)	32	28	27	27	24	24	24	13	13	17
Maintenance and repair services n.i.e.(b)	5	4	5	5	4	4	3	3	3	6
Transport	552	550	551	542	536	529	522	518	522	526
Passenger(c)	223	223	220	220	217	213	207	204	204	207
Freight(d)	51	52	52	53	52	51	53	54	53	56
Other(d)	191	189	192	188	187	187	186	185	188	186
Postal and courier services(e)	87	87	87	81	78	78	76	75	77	77
Travel	2 786	2 766	2 785	2 755	2 862	2 765	2 726	2 746	2 755	2 722
Other services	1 038	1 038	1 037	1 029	1 034	1 034	1 037	1 045	1 047	1 054
Services debits	-4 455	-4 442	-4 484	-4 461	-4 571	-4 626	-4 567	-4 676	-4 727	-4 718
Manufacturing services on physical inputs owned by others(b)	-1	—	-2	-1	-1	—	—	—	—	-2
Maintenance and repair services n.i.e.(b)	-17	-22	-32	-16	-53	-20	-16	-33	-28	-31
Transport	-1 115	-1 098	-1 141	-1 138	-1 184	-1 234	-1 221	-1 296	-1 336	-1 320
Passenger(c)	-412	-429	-447	-441	-452	-474	-459	-467	-477	-469
Freight	-659	-627	-653	-655	-690	-718	-721	-789	-818	-812
Other(b)	-26	-26	-26	-26	-26	-27	-26	-26	-28	-25
Postal and courier services(e)	-17	-16	-15	-16	-16	-15	-15	-14	-13	-14
Travel	-1 947	-1 940	-1 935	-1 942	-1 963	-1 992	-1 945	-1 971	-1 988	-1 982
Other services	-1 375	-1 381	-1 374	-1 364	-1 371	-1 380	-1 385	-1 376	-1 375	-1 383
Memorandum items:										
Tourism related service credits(f)	3 010	2 988	3 005	2 975	3 080	2 978	2 933	2 950	2 959	2 929
Tourism related service debits(f)	-2 359	-2 369	-2 382	-2 383	-2 414	-2 465	-2 404	-2 438	-2 465	-2 451

TREND ESTIMATES

Services credits	4 418	4 416	4 408	4 394	4 379	4 365	4 350	4 336	4 325	4 318
Manufacturing services on physical inputs owned by others	27	27	27	27	25	23	20	18	16	14
Maintenance and repair services n.i.e.	6	5	5	4	4	4	4	4	4	4
Transport	541	546	547	543	537	530	525	523	521	520
Passenger(c)	220	221	221	219	216	212	209	207	205	204
Freight	52	52	52	52	52	53	53	53	54	54
Other	184	188	189	190	189	187	187	186	186	187
Postal and courier services(e)	85	86	85	83	80	78	77	76	75	76
Travel	2 796	2 797	2 793	2 788	2 781	2 773	2 762	2 749	2 738	2 729
Other services	1 049	1 040	1 035	1 032	1 032	1 035	1 039	1 043	1 047	1 050
Services debits	-4 403	-4 439	-4 475	-4 511	-4 547	-4 585	-4 625	-4 663	-4 696	-4 724
Manufacturing services on physical inputs owned by others	-1	-1	-1	-1	-1	—	—	—	—	-1
Maintenance and repair services n.i.e.	-21	-24	-26	-28	-29	-28	-28	-28	-28	-29
Transport	-1 081	-1 106	-1 130	-1 157	-1 185	-1 217	-1 250	-1 282	-1 309	-1 332
Passenger(c)	-410	-425	-437	-448	-456	-461	-465	-469	-471	-474
Freight	-629	-640	-651	-667	-688	-714	-744	-772	-797	-818
Other	-26	-26	-26	-26	-26	-26	-26	-26	-26	-26
Postal and courier services(e)	-16	-16	-16	-16	-16	-15	-15	-14	-14	-14
Travel	-1 934	-1 941	-1 946	-1 951	-1 958	-1 964	-1 969	-1 974	-1 979	-1 982
Other services	-1 366	-1 367	-1 371	-1 374	-1 375	-1 376	-1 377	-1 379	-1 380	-1 381
Memorandum items:										
Tourism related service credits(f)	3 016	3 018	3 014	3 007	2 997	2 986	2 971	2 956	2 943	2 933
Tourism related service debits(f)	-2 344	-2 365	-2 383	-2 399	-2 413	-2 425	-2 434	-2 443	-2 450	-2 455

— nil or rounded to zero (including null cells)

(a) For sign conventions, see paragraph 15 of the Explanatory Notes.

(b) This component is not seasonally adjusted.

(c) Passenger services includes agency fees and commissions for air transport.

(d) In using these seasonally adjusted series, care should be exercised because of the difficulties associated with reliably estimating the seasonal pattern.

(e) Postal and courier services includes indirect commissions for sea transport.

(f) For a more detailed explanation of tourism related services, see paragraph 27 of the Explanatory Notes.

	CREDITS				DEBITS			
	Sep Qtr	Dec Qtr	Mar Qtr	Jun Qtr	Sep Qtr	Dec Qtr	Mar Qtr	Jun Qtr
	2009	2009	2010	2010	2009	2009	2010	2010
	\$m	\$m	\$m	\$m	\$m	\$m	\$m	\$m
Services	13 212	13 393	13 321	12 620	-13 485	-13 735	-13 071	-13 659
Manufacturing services on physical inputs owned by others	72	87	75	50	-1	-3	-2	—
Maintenance and repair services n.i.e.	21	14	13	9	-55	-71	-89	-77
Transport	1 578	1 689	1 658	1 451	-3 204	-3 568	-3 376	-3 687
Passenger(b)	611	699	750	521	-1 212	-1 291	-1 271	-1 428
Freight	164	156	151	156	-1 841	-2 161	-1 993	-2 138
Other	521	588	541	558	-84	-78	-79	-80
Postal and courier services(c)	282	246	216	216	-67	-38	-33	-41
Travel	8 434	8 337	8 593	7 921	-6 220	-5 883	-5 567	-5 684
Business	693	663	733	729	-768	-695	-777	-821
Personal	7 741	7 674	7 860	7 192	-5 452	-5 188	-4 790	-4 863
Education-related	4 972	4 278	4 528	4 585	-263	-215	-219	-172
Other(d)	2 769	3 396	3 332	2 607	-5 189	-4 973	-4 571	-4 691
Construction	48	27	21	9	—	—	—	—
Insurance and pension services	77	74	62	67	-128	-128	-122	-125
Financial services	265	281	242	236	-163	-172	-178	-182
Charges for the use of intellectual property n.i.e.	213	250	271	330	-887	-924	-869	-905
Telecommunications, computer and information services	461	428	420	434	-511	-507	-505	-536
Telecommunication services	62	70	56	49	-122	-126	-135	-123
Computer and information services	399	358	364	385	-389	-381	-370	-413
Computer services	315	297	293	306	-327	-315	-305	-343
Information services	8	7	12	13	-5	-7	-7	-8
Other services	76	54	59	66	-57	-59	-58	-62
Other business services	1 639	1 816	1 547	1 686	-1 798	-1 942	-1 789	-1 963
Research and development services	130	147	113	130	-55	-64	-54	-53
Professional and management consulting services	773	831	709	797	-709	-825	-561	-642
Legal, accounting, management consulting, public relations and other professional services	685	736	628	713	-681	-786	-513	-584
Advertising, market research and public opinion polling	88	95	81	84	-28	-39	-48	-58
Technical, trade-related and other business services	736	838	725	759	-1 034	-1 053	-1 174	-1 268
Architectural, engineering and other technical services	383	410	385	403	-379	-447	-340	-361
Waste treatment and de-pollution, agricultural and mining services	52	54	63	59	-142	-150	-120	-153
Operational leasing services	75	89	64	60	-196	-197	-171	-164
Trade-related commission services	123	174	108	132	-56	-54	-48	-51
Other business services n.i.e.	103	111	105	105	-261	-205	-495	-539
Personal, cultural and recreational services	194	180	203	211	-296	-315	-352	-278
Audiovisual and related services	28	32	47	37	-266	-279	-286	-244
Other personal, cultural and recreational services	166	148	156	174	-30	-36	-66	-34
Government goods and services n.i.e.	210	210	216	216	-222	-222	-222	-222
Memorandum items:								
Gross insurance premiums receivable / payable	174	179	153	178	-249	-263	-255	-264
Gross insurance claims payable / receivable	-117	-121	-105	-128	278	288	286	291
Tourism related services(e)	9 045	9 036	9 343	8 442	-7 432	-7 174	-6 838	-7 112

— nil or rounded to zero (including null cells)

(a) For sign conventions, see paragraph 15 of the Explanatory Notes.

(b) Passenger services includes agency fees and commissions for air transport.

(c) Postal and courier services includes indirect commissions for sea transport.

(d) Other personal travel includes health-related travel.

(e) For a more detailed explanation of tourism related services, see paragraph 27 of the Explanatory Notes.

				Per cent of total merchandise exports(b)	1 MONTH ENDED JULY	
	May 2010	Jun 2010	Jul 2010		2009	2010
	\$m	\$m	\$m	%	\$m	\$m
MAJOR COMMODITIES (c)						
011 Meat of bovine animals	425	437	421	2.0	361	421
041 Wheat and meslin	374	286	391	1.9	327	391
281 Iron ore and concentrates	4 317	4 872	4 639	22.3	2 347	4 639
283 Copper ores and concentrates	223	603	394	1.9	256	394
285 Aluminium ores and concentrates	468	497	441	2.1	365	441
287 Ores and concentrates of base metals, n.e.s.	383	496	336	1.6	261	336
321 Coal, not agglomerated	3 907	4 451	3 648	17.6	3 080	3 648
333 Crude petroleum oils	906	882	1 188	5.7	653	1 188
343 Natural gas	478	886	997	4.8	623	997
542 Medicaments	374	290	276	1.3	330	276
682 Copper	266	220	334	1.6	225	334
684 Aluminium	478	314	414	2.0	305	414
781 Motor vehicles for transport of people	181	170	138	0.7	132	138
971 Gold, non-monetary	1 829	1 403	1 218	5.9	821	1 218

SECTION AND DIVISION OF THE SITC

0	Food and live animals					
00	Live animals (excl. fish, crustaceans, molluscs and aquatic invertebrates)	72	91	98	0.5	106
01	Meat and meat preparations	645	644	620	3.0	528
02	Dairy products and birds' eggs	174	191	187	0.9	172
03	Fish (not marine mammals), crustaceans, molluscs and aquatic invertebrates, and preparations thereof	85	62	88	0.4	70
04	Cereals and cereal preparations	573	393	544	2.6	471
05	Vegetables and fruit	170	166	157	0.8	154
06	Sugars, sugar preparations and honey	26	21	36	0.2	27
07	Coffee, tea, cocoa, spices, and manufactures thereof	23	23	27	0.1	26
08	Feeding stuff for animals (excl. unmilled cereals)	74	77	81	0.4	114
09	Miscellaneous edible products and preparations	68	65	67	0.3	56
	<i>Total Food and live animals</i>	<i>1 910</i>	<i>1 733</i>	<i>1 906</i>	<i>9.2</i>	<i>1 725</i>
1	Beverages and tobacco					
11	Beverages	220	187	189	0.9	202
12	Tobacco and tobacco manufactures	9	7	8	—	13
	<i>Total Beverages and tobacco</i>	<i>229</i>	<i>194</i>	<i>198</i>	<i>1.0</i>	<i>215</i>
2	Crude materials, inedible, except fuels					
21	Hides, skins and furskins, raw	68	66	64	0.3	39
22	Oil-seeds and oleaginous fruits	88	44	27	0.1	30
23	Crude rubber (incl. synthetic and reclaimed)	1	1	2	—	1
24	Cork and wood	92	100	113	0.5	98
25	Pulp and waste paper	27	20	23	0.1	16
26	Textile fibres and their wastes (not manufactured into yarn or fabric)	276	403	397	1.9	181
27	Crude fertilizers (excl. those of Division 56) and crude minerals (excl. coal, petroleum and precious stones)	34	30	27	0.1	17
28	Metalliferous ores and metal scrap	5 874	7 006	6 184	29.8	3 516
29	Crude animal and vegetable materials, n.e.s.	18	19	18	0.1	20
	<i>Total Crude materials, inedible, except fuels</i>	<i>6 479</i>	<i>7 690</i>	<i>6 854</i>	<i>33.0</i>	<i>3 918</i>
3	Mineral fuels, lubricants and related materials					
32	Coal, coke and briquettes	3 917	4 474	3 658	17.6	3 081
33	Petroleum, petroleum products and related materials	1 160	1 077	1 377	6.6	846
34	Gas, natural and manufactured	521	997	1 111	5.4	745
	<i>Total Mineral fuels, lubricants and related materials</i>	<i>5 598</i>	<i>6 547</i>	<i>6 146</i>	<i>29.6</i>	<i>4 672</i>

— nil or rounded to zero (including null cells)

(a) Some SITC sections and divisions exclude commodities subject to a confidentiality restriction. These are included in Division 98. For more information see paragraph 26 of the Explanatory Notes.

(b) Per cent of total merchandise is calculated for the most recent month.

(c) The 'Major commodities' section lists commodities at the SITC Rev 4 3-digit level which are the most significant (by value) or are of particular interest. Abbreviated descriptors have been used. The list of 'Major commodities' is reviewed annually.

				Per cent of total merchandise exports(b)	1 MONTH ENDED JULY		
	May	Jun	Jul			
	2010	2010	2010		2009	2010	
	\$m	\$m	\$m	%	\$m	\$m	
SECTION AND DIVISION OF THE SITC							
4	Animal and vegetable oils, fats and waxes						
41	Animal oils and fats	36	28	21	0.1	24	21
42	Fixed vegetable fats and oils, crude, refined or fractionated	9	18	18	0.1	13	18
43	Fats and oils (processed), waxes and inedible mixtures or preparations, of animal or vegetable origin, n.e.s.	1	1	1	—	1	1
	<i>Total Animal and vegetable oils, fats and waxes</i>	46	47	40	0.2	38	40
5	Chemicals and related products, n.e.s.						
51	Organic chemicals	13	12	14	0.1	14	14
52	Inorganic chemicals	50	54	45	0.2	50	45
53	Dyeing, tanning and colouring materials	62	62	66	0.3	72	66
54	Medicinal and pharmaceutical products	414	336	307	1.5	373	307
55	Essential oils and resinoids and perfume materials, toilet, polishing and cleansing preparations	60	54	54	0.3	52	54
56	Fertilisers (excl. crude)	7	47	55	0.3	35	55
57	Plastics in primary forms	31	29	31	0.2	22	31
58	Plastics in non-primary forms	27	27	48	0.2	41	48
59	Chemical materials and products, n.e.s.	90	95	86	0.4	83	86
	<i>Total Chemicals and related products, n.e.s.</i>	754	716	707	3.4	742	707
6	Manufactured goods classified chiefly by material						
61	Leather, leather manufactures and dressed furskins, n.e.s.	26	26	24	0.1	19	24
62	Rubber manufactures, n.e.s.	20	15	18	0.1	18	18
63	Cork and wood manufactures (excl. furniture)	16	11	17	0.1	15	17
64	Paper, paperboard and articles of paper pulp, of paper or of paperboard	73	77	76	0.4	63	76
65	Textile yarn, fabrics, made-up articles n.e.s. and related products	21	23	24	0.1	26	24
66	Non-metallic mineral manufactures, n.e.s.	50	68	44	0.2	55	44
67	Iron and steel	143	126	77	0.4	61	77
68	Non-ferrous metals	1 010	791	965	4.6	730	965
69	Manufactures of metals, n.e.s.	94	90	86	0.4	96	86
	<i>Total Manufactured goods classified chiefly by material</i>	1 454	1 227	1 331	6.4	1 081	1 331
7	Machinery and transport equipment						
71	Power generating machinery and equipment	63	64	78	0.4	71	78
72	Machinery specialized for particular industries	162	167	149	0.7	158	149
73	Metal working machinery	13	11	11	0.1	10	11
74	General industrial machinery and equipment, n.e.s. and machine parts, n.e.s.	161	150	160	0.8	147	160
75	Office machines and automatic data processing machines	107	112	127	0.6	80	127
76	Telecommunications and sound recording and reproducing apparatus and equipment	84	77	84	0.4	77	84
77	Electrical machinery, apparatus and appliances, parts (incl. non electrical counterparts of electrical domestic equip)	139	133	150	0.7	157	150
78	Road vehicles (incl. air-cushion vehicles)	269	262	233	1.1	218	233
79	Transport equipment (excl. road vehicles)	76	71	75	0.4	99	75
	<i>Total Machinery and transport equipment</i>	1 075	1 047	1 067	5.1	1 016	1 067

— nil or rounded to zero (including null cells)

(b) Per cent of total merchandise is calculated for the most recent month.

(a) Some SITC sections and divisions exclude commodities subject to a confidentiality restriction. These are included in Division 98. For more information see paragraph 26 of the Explanatory Notes.

				Per cent of total merchandise exports(b)	1 MONTH ENDED JULY	
	May 2010	Jun 2010	Jul 2010		2009	2010
	\$m	\$m	\$m	%	\$m	\$m
SECTION AND DIVISION OF THE SITC						
8	Miscellaneous manufactured articles					
81	Prefabricated buildings and sanitary, plumbing, heating and lighting fixtures and fittings, n.e.s.	11	14	10	—	10 10
82	Furniture and parts thereof; bedding, mattresses, mattress supports, cushions and similar stuffed furnishings	8	7	7	—	6 7
83	Travel goods, handbags and similar containers	3	2	3	—	2 3
84	Articles of apparel and clothing accessories	18	15	20	0.1	18 20
85	Footwear	4	3	3	—	3 3
87	Professional, scientific and controlling instruments and apparatus, n.e.s.	175	176	168	0.8	181 168
88	Photographic apparatus, equipment and supplies and optical goods, n.e.s., watches and clocks	23	25	23	0.1	29 23
89	Miscellaneous manufactured articles, n.e.s.	167	176	170	0.8	172 170
	<i>Total Miscellaneous manufactured articles</i>	409	419	404	1.9	423 404
9	Commodities and transactions not classified elsewhere in the SITC					
93	Special transactions and commodities not classified according to kind	110	110	128	0.6	162 128
95	Gold coin whether or not legal tender, and other coin being legal tender	103	56	23	0.1	14 23
96	Coin (excl. gold coin) not being legal tender	—	—	—	—	— —
97	Gold, non-monetary (excl. gold ores and concentrates)	1 829	1 403	1 218	5.9	821 1 218
98	Combined confidential items excl. some of SITC 280 (exports only) and some of SITCs 510 and 520 (imports only)	725	585	739	3.6	465 739
	<i>Commodities and transactions not classified elsewhere in the SITC</i>	2 767	2 155	2 109	10.2	1 462 2 109
	Total merchandise exports	20 720	21 774	20 762	100.0	15 293 20 762
	Balance of Payments Adjustments	122	149	454	. .	77 454
	Goods Credits (exports) on a Balance of Payments Basis	20 842	21 923	21 216	. .	15 370 21 216

. . not applicable
 — nil or rounded to zero (including null cells)

(a) Some SITC sections and divisions exclude commodities subject to a confidentiality restriction. These are included in Division 98. For more information see paragraph 26 of the Explanatory Notes.
 (b) Per cent of total merchandise is calculated for the most recent month.

				Per cent of total merchandise imports(b)	1 MONTH ENDED JULY	
	May	Jun	Jul		
	2010	2010	2010		2009	2010
	\$m	\$m	\$m	%	\$m	\$m
MAJOR COMMODITIES (c)						
333 Crude petroleum oils	1 157	1 428	1 432	7.6	1 415	1 432
334 Refined petroleum oils	956	947	815	4.4	905	815
542 Medicaments	693	658	704	3.8	747	704
723 Civil engineering and contractors' plant and equipment	259	303	303	1.6	184	303
743 Air pumps, compressors or fans; hoods; centrifuges; filtering apparatus; parts	147	163	173	0.9	357	173
752 Automatic data processing machines	652	627	630	3.4	566	630
761 Televisions, monitors and projectors	296	286	265	1.4	318	265
764 Telecommunications equipment	616	602	579	3.1	558	579
781 Motor cars for the transport of persons	1 318	1 448	1 358	7.2	1 069	1 358
782 Motor vehicles for the transport of goods	541	557	456	2.4	341	456
784 Parts and accessories of the motor vehicles	206	218	226	1.2	189	226
894 Baby carriages, toys, games and sporting goods	200	229	203	1.1	235	203
971 Gold, non-monetary	887	648	346	1.8	321	346

SECTION AND DIVISION OF THE SITC

0	Food and live animals					
00	Live animals other than fish, crustaceans, molluscs and aquatic invertebrates	7	8	8	—	5 8
01	Meat and meat preparations	50	52	52	0.3	51 52
02	Dairy products and birds' eggs	48	54	58	0.3	50 58
03	Fish (not marine mammals), crustaceans, molluscs and aquatic invertebrates, and preparations thereof	89	105	101	0.5	104 101
04	Cereals and cereal preparations	57	64	75	0.4	77 75
05	Vegetables and fruit	112	124	138	0.7	146 138
06	Sugars, sugar preparations and honey	20	24	23	0.1	25 23
07	Coffee, tea, cocoa, spices, and manufactures thereof	84	101	106	0.6	118 106
08	Feeding stuff for animals (excl. unmilled cereals)	34	67	43	0.2	96 43
09	Miscellaneous edible products and preparations	133	134	149	0.8	143 149
	<i>Total Food and live animals</i>	633	733	754	4.0	815 754
1	Beverages and tobacco					
11	Beverages	95	103	111	0.6	116 111
12	Tobacco and tobacco manufactures	19	22	24	0.1	21 24
	<i>Total Beverages and tobacco</i>	114	125	135	0.7	137 135
2	Crude materials, inedible, except fuels					
21	Hides, skins and furskins, raw	—	—	—	—	— —
22	Oil-seeds and oleaginous fruits	2	3	4	—	5 4
23	Crude rubber (incl. synthetic and reclaimed)	12	13	12	0.1	10 12
24	Cork and wood	54	57	62	0.3	47 62
25	Pulp and waste paper	11	16	22	0.1	17 22
26	Textile fibres and their wastes (not manufactured into yarn or fabric)	9	9	10	0.1	13 10
27	Crude fertilizers (excl. those of Division 56) and crude minerals (excl. coal, petroleum and precious stones)	20	9	28	0.1	9 28
28	Metalliferous ores and metal scrap	32	45	95	0.5	13 95
29	Crude animal and vegetable materials, n.e.s.	24	23	25	0.1	25 25
	<i>Total Crude materials, inedible, except fuels</i>	164	175	257	1.4	139 257
3	Mineral fuels, lubricants and related materials					
32	Coal, coke and briquettes	7	1	1	—	1 1
33	Petroleum, petroleum products and related materials	2 150	2 404	2 307	12.3	2 349 2 307
34	Gas, natural and manufactured	67	102	236	1.3	154 236
	<i>Total Mineral fuels, lubricants and related materials</i>	2 224	2 507	2 545	13.6	2 505 2 545

— nil or rounded to zero (including null cells)

(a) Some SITC sections and divisions exclude commodities subject to a confidentiality restriction. These are included in Division 98. For more information see paragraph 26 of the Explanatory Notes.

(b) Per cent of total merchandise is calculated for the most recent month.

(c) The 'Major commodities' section lists commodities at the SITC Rev 4 3-digit level which are the most significant (by value) or are of particular interest. Abbreviated descriptors have been used. The list of 'Major commodities' is reviewed annually.

				Per cent of total merchandise imports(b)	1 MONTH ENDED JULY	
	May	Jun	Jul		
	2010	2010	2010		2009	2010
	\$m	\$m	\$m	%	\$m	\$m
SECTION AND DIVISION OF THE SITC						
4	Animal and vegetable oils, fats and waxes					
41	Animal oils and fats	2	5	2	—	1 2
42	Fixed vegetable fats and oils, crude, refined or fractionated	27	40	55	0.3	42 55
43	Fats and oils (processed), waxes and inedible mixtures or preparations, of animal or vegetable n.e.s.	5	3	5	—	6 5
	<i>Total Animal and vegetable oils, fats and waxes</i>	34	48	62	0.3	49 62
5	Chemicals and related products, n.e.s.					
51	Organic chemicals	310	279	319	1.7	236 319
52	Inorganic chemicals	101	80	108	0.6	115 108
53	Dyeing, tanning and colouring materials	52	52	56	0.3	52 56
54	Medicinal and pharmaceutical products	847	798	853	4.6	908 853
55	Essential oils and resinoids and perfume materials; toilet, polishing and cleansing preparations	139	145	156	0.8	158 156
56	Fertilisers (excl. crude)	127	107	64	0.3	74 64
57	Plastics in primary forms	127	126	142	0.8	101 142
58	Plastics in non-primary forms	106	118	125	0.7	130 125
59	Chemical materials and products, n.e.s.	167	180	188	1.0	161 188
	<i>Total Chemicals and related products, n.e.s.</i>	1 976	1 886	2 011	10.7	1 933 2 011
6	Manufactured goods classified chiefly by material					
61	Leather, leather manufactures, and dressed furskins, n.e.s.	14	9	14	0.1	11 14
62	Rubber manufactures, n.e.s.	228	242	257	1.4	230 257
63	Cork and wood manufactures (excl. furniture)	56	58	62	0.3	46 62
64	Paper, paperboard and articles of paper pulp, of paper or of paperboard	213	235	256	1.4	220 256
65	Textile yarn, fabrics, made-up articles n.e.s., and related products	187	192	214	1.1	206 214
66	Non-metallic mineral manufactures, n.e.s.	189	220	209	1.1	209 209
67	Iron and steel	295	308	415	2.2	294 415
68	Non-ferrous metals	203	181	228	1.2	85 228
69	Manufactures of metals, n.e.s.	408	428	479	2.6	473 479
	<i>Total Manufactured goods classified chiefly by material</i>	1 793	1 873	2 134	11.4	1 774 2 134
7	Machinery and transport equipment					
71	Power generating machinery and equipment	349	359	352	1.9	311 352
72	Machinery specialized for particular industries	634	657	666	3.6	521 666
73	Metal working machinery	61	62	59	0.3	54 59
74	General industrial machinery and equipment, n.e.s. and machine parts, n.e.s.	787	823	867	4.6	1 027 867
75	Office machines and automatic data processing machines	916	920	908	4.8	867 908
76	Telecommunications and sound recording and reproducing apparatus and equipment	993	976	928	5.0	973 928
77	Electrical machinery, apparatus, appliances, parts (incl. non-elec. counterparts of electrical domestic equip)	902	899	944	5.0	833 944
78	Road vehicles (incl. air-cushion vehicles)	2 195	2 369	2 194	11.7	1 719 2 194
79	Transport equipment (excl. road vehicles)	167	142	315	1.7	148 315
	<i>Total Machinery and transport equipment</i>	7 005	7 206	7 233	38.6	6 452 7 233

— nil or rounded to zero (including null cells)

(b) Per cent of total merchandise is calculated for the most recent month.

(a) Some SITC sections and divisions exclude commodities subject to a confidentiality restriction. These are included in Division 98. For more information see paragraph 26 of the Explanatory Notes.

				Per cent of total merchandise imports(b)	1 MONTH ENDED JULY	
	May 2010	Jun 2010	Jul 2010		2009	2010
	\$m	\$m	\$m	%	\$m	\$m
SECTION AND DIVISION OF THE SITC						
8	Miscellaneous manufactured articles					
81	Prefabricated buildings; sanitary, plumbing, heating and lighting fixtures and fittings, n.e.s.	60	72	80	0.4	63 80
82	Furniture, parts thereof; bedding, mattresses, mattress supports, cushions and similar stuffed furnishings	192	216	237	1.3	234 237
83	Travel goods, handbags and similar containers	50	58	68	0.4	70 68
84	Articles of apparel and clothing accessories	341	401	489	2.6	486 489
85	Footwear	76	95	130	0.7	134 130
87	Professional, scientific and controlling instruments and apparatus, n.e.s.	385	450	405	2.2	407 405
88	Photographic apparatus, equipment and supplies and optical goods, n.e.s., watches and clocks	108	109	120	0.6	125 120
89	Miscellaneous manufactured articles, n.e.s.	794	861	830	4.4	853 830
	<i>Total Miscellaneous manufactured articles</i>	<i>2 007</i>	<i>2 263</i>	<i>2 359</i>	<i>12.6</i>	<i>2 372 2 359</i>
9	Commodities and transactions not classified elsewhere in the SITC					
93	Special transactions and commodities not classified according to kind	3	3	3	—	4 3
95	Gold coin whether or not legal tender, and other coin being legal tender	1	1	1	—	— 1
96	Coin (excl. gold coin) not being legal tender	1	—	—	—	—
97	Gold, non-monetary (excl. gold ores and concentrates)	887	648	346	1.8	321 346
98	Combined confidential items excl. some of SITC 280 (exports only) and some of SITCs 510 and 520 (imports only)	438	438	898	4.8	222 898
	<i>Total Commodities and transactions not classified elsewhere in the SITC</i>	<i>1 329</i>	<i>1 091</i>	<i>1 247</i>	<i>6.7</i>	<i>547 1 247</i>
	Total merchandise imports	17 278	17 907	18 736	100.0	16 723 18 736
	Balance of Payments Adjustments	195	181	80	. .	278 80
	Goods Debits (imports) on a Balance of Payments Basis	17 473	18 088	18 816	. .	17 001 18 816

. . not applicable
 — nil or rounded to zero (including null cells)

- (a) Some SITC sections and divisions exclude commodities subject to a confidentiality restriction. These are included in Division 98. For more information see paragraph 26 of the Explanatory Notes.
 (b) Per cent of total merchandise is calculated for the most recent month.

	EXPORTS				IMPORTS(b)				BALANCE OF MERCHANDISE TRADE	
	2009-10	Jul 2010	1 month ended	1 month ended	2009-10	Jul 2010	1 Month Ended	1 Month Ended	2009-10	1 Month Ended July 2010
			July 2009	July 2010			July 2009	July 2010		
	\$m	\$m	\$m	\$m	\$m	\$m	\$m	\$m		
Belgium	1 075	114	73	114	1 560	146	146	146	-485	-33
Brazil	1 294	218	50	218	620	55	55	55	674	162
Canada	1 295	109	116	109	1 726	189	169	189	-432	-80
China	46 448	5 090	3 573	5 090	36 368	3 522	3 053	3 522	10 080	1 568
Denmark	141	12	13	12	1 105	81	86	81	-965	-69
Egypt(c)	411	52	51	52	26	2	2	2	385	50
Fiji	306	31	30	31	163	19	10	19	143	12
Finland	311	14	17	14	664	65	51	65	-353	-50
France	1 121	92	94	92	3 886	304	353	304	-2 765	-211
Germany	1 688	127	94	127	10 724	908	834	908	-9 036	-781
Hong Kong (SAR of China)	2 717	205	196	205	1 129	108	110	108	1 588	97
India	16 179	1 201	1 146	1 201	1 846	163	136	163	14 334	1 038
Indonesia	4 326	469	359	469	4 687	519	439	519	-361	-51
Iran	149	7	11	7	114	4	3	4	35	3
Iraq	196	1	16	1	—	—	—	—	196	1
Ireland	121	15	11	15	2 305	226	209	226	-2 185	-211
Israel	176	17	21	17	573	53	41	53	-397	-36
Italy	948	78	29	78	4 797	445	460	445	-3 849	-367
Japan	37 104	4 160	2 903	4 160	17 781	1 563	1 414	1 563	19 323	2 598
Korea, Republic of	16 495	2 071	1 129	2 071	7 050	652	540	652	9 445	1 419
Kuwait	525	40	51	40	417	—	15	—	108	40
Malaysia	3 127	298	263	298	8 483	907	706	907	-5 356	-609
Mexico	740	49	72	49	1 234	147	96	147	-494	-98
Netherlands	2 036	211	172	211	1 360	100	116	100	675	111
New Zealand	8 027	703	669	703	6 998	615	529	615	1 029	88
Pakistan	610	26	43	26	153	13	13	13	457	13
Papua New Guinea	1 972	179	137	179	2 930	250	296	250	-958	-71
Philippines	1 092	119	85	119	461	46	33	46	630	73
Saudi Arabia	1 533	133	133	133	462	14	30	14	1 072	119
Singapore	5 035	597	563	597	10 924	867	933	867	-5 889	-270
South Africa	1 762	122	155	122	1 004	93	89	93	757	29
Spain	494	78	40	78	1 679	161	150	161	-1 186	-83
Sweden	441	29	23	29	2 089	185	202	185	-1 648	-156
Switzerland	271	32	27	32	2 232	200	252	200	-1 961	-167
Taiwan	6 849	822	550	822	3 416	301	299	301	3 433	520
Thailand	4 707	804	431	804	12 441	769	891	769	-7 734	35
Turkey	304	19	8	19	459	33	32	33	-155	-14
United Arab Emirates	1 974	200	126	200	2 294	182	189	182	-319	19
United Kingdom	7 212	406	206	406	5 773	491	519	491	1 439	-85
United States of America	9 535	853	855	853	21 856	1 879	1 650	1 879	-12 321	-1 026
Viet Nam	1 408	128	111	128	3 110	228	305	228	-1 702	-100
Other Countries(b)	8 535	831	641	831	16 697	2 234	1 267	2 234	-8 162	-1 403
Total	200 690	20 762	15 293	20 762	203 603	18 736	16 723	18 736	-2 913	2 026
APEC	151 901	16 758	12 116	16 758	144 010	12 820	11 741	12 820	7 890	3 938
ASEAN	19 844	2 428	1 821	2 428	41 096	3 420	3 447	3 420	-21 251	-993
Developing Countries	121 830	13 142	9 418	13 142	102 860	9 289	8 574	9 289	18 970	3 853
Least Developed Countries	1 842	248	132	248	291	23	23	23	1 551	225
European Union(d)	15 953	1 203	796	1 203	38 497	3 344	3 310	3 344	-22 545	-2 141
OECD	89 723	9 217	6 573	9 217	98 972	8 797	8 052	8 797	-9 249	420

— nil or rounded to zero (including null cells)

(a) See Time series spreadsheets for details of all countries.

(b) From September 2008 imports data with confidentiality restrictions 'no commodity details' or 'no value details' are included in Other countries.

(c) Exports of Alumina to Egypt are excluded from country total and included in the 'Other Countries' category.

(d) The European Union includes 27 member countries.

	2009-10	Jul 2010	1 MONTH ENDED JULY	
			2009	2010
	\$m	\$m	\$m	\$m
EXPORTS (a)				
New South Wales	31 193	3 064	2 653	3 064
Victoria	18 424	1 695	1 473	1 695
Queensland	43 257	4 327	3 377	4 327
South Australia	8 136	872	653	872
Western Australia	83 294	9 444	5 794	9 444
Tasmania	3 005	259	236	259
Northern Territory	4 977	442	397	442
Australian Capital Territory	4	—	—	—
State not available for publication(b)	557	25	32	25
Re-exports	7 843	632	678	632
Total	200 690	20 762	15 293	20 762
IMPORTS				
New South Wales	76 001	7 184	6 437	7 184
Victoria	53 118	4 968	4 391	4 968
Queensland	31 049	2 725	2 574	2 725
South Australia	6 447	552	522	552
Western Australia	27 931	2 026	2 210	2 026
Tasmania	715	37	64	37
Northern Territory	3 051	346	301	346
Australian Capital Territory	5	—	2	—
State not available for publication(c)	5 286	898	222	898
Total	203 603	18 736	16 723	18 736

— nil or rounded to zero (including null cells)

(a) State in which the final stage of production or manufacture occurs.

(b) Exports of Alumina to Bahrain, Egypt and Iceland are excluded from the state totals and included in 'State not available for publication'.

(c) From September 2008 imports data with confidentiality restrictions 'no commodity details' or 'no value details' are included in State not available for publication.

PERIOD AVERAGE EXCHANGE RATES(a), Per Australian dollar

<i>Period</i>	<i>United States dollar</i>	<i>UK pound sterling</i>	<i>Euro</i>	<i>Japanese yen</i>	<i>Special Drawing Right</i>	<i>Trade-weighted index of value of the A\$(b)</i>
FINANCIAL YEAR						
2007-08	0.8968	0.4479	0.6099	98.63	0.5664	69.7
2008-09	0.7456	0.4621	0.5414	73.99	0.4869	60.2
2009-10	0.8830	0.5590	0.6362	80.77	0.5710	68.9
MONTHS						
2009						
May	0.7626	0.4954	0.5596	73.72	0.5022	61.7
June	0.8023	0.4898	0.5721	77.39	0.5194	64.1
July	0.8040	0.4913	0.5709	75.96	0.5180	64.0
August	0.8344	0.5047	0.5852	79.15	0.5349	66.0
September	0.8611	0.5275	0.5915	78.74	0.5461	67.2
October	0.9090	0.5613	0.6130	82.03	0.5716	70.0
November	0.9202	0.5540	0.6166	82.04	0.5754	70.6
December	0.9028	0.5552	0.6174	80.89	0.5693	69.6
2010						
January	0.9148	0.5659	0.6400	83.49	0.5842	70.7
February	0.8863	0.5663	0.6474	79.99	0.5759	69.2
March	0.9120	0.6058	0.6716	82.58	0.5968	71.0
April	0.9265	0.6043	0.6902	86.45	0.6105	72.1
May	0.8717	0.5942	0.6928	80.38	0.5883	68.9
June	0.8529	0.5777	0.6976	77.48	0.5808	67.7
July	0.8743	0.5725	0.6852	76.63	0.5821	68.2

(a) These exchange rates and the trade-weighted index are derived using rates provided by the Reserve Bank of Australia in respect of each trading day.

(b) May 1970 = 100. The Trade-weighted index is reweighted annually on 1 October and on special occasions as required.

	2007-08	2008-09	2009-10	Jan 2010	Feb 2010	Mar 2010	Apr 2010	May 2010	Jun 2010
	\$m	\$m	\$m	\$m	\$m	\$m	\$m	\$m	\$m
BALANCE									
On goods and services	—	—	—	—	—	—	—	—	—
CREDITS									
Total goods and services	—	—	—	—	—	—	—	—	—
<i>Total goods</i>	—	—	—	—	—	—	—	—	—
Rural goods	—	—	—	—	—	—	—	—	—
Non-rural goods	—	—	—	—	—	—	—	—	—
Net exports of goods under merchanting	—	—	—	—	—	—	—	—	—
Non-monetary gold	—	—	—	—	—	—	—	—	—
<i>Total services</i>	—	—	—	—	—	—	—	—	—
DEBITS									
Total goods and services	—	—	—	—	—	—	—	—	—
<i>Total goods</i>	—	—	—	—	—	—	—	—	—
Consumption goods	—	—	—	—	—	—	—	—	—
Capital goods	—	—	—	—	—	—	—	—	—
Intermediate and other merchandise goods	—	—	—	—	—	—	—	—	—
Non-monetary gold debits	—	—	—	—	—	—	—	—	—
<i>Total services</i>	—	—	—	—	—	—	—	—	—

— nil or rounded to zero (including null cells)

(a) This table is presented consistent with BPM6 sign conventions. This means for the balance on goods and services a negative revision indicates a decrease in a surplus or an increase in a deficit. For debits a negative revision indicates an increase in debits while a positive revision indicates a decrease in debits.

EXPLANATORY NOTES

INTRODUCTION

1 This publication presents preliminary estimates of Australia's international trade in goods and services on a balance of payments basis (Tables 1–11 and 17) and merchandise import and export statistics on a recorded trade basis (Tables 12–15). In addition, Table 16 Exchange rates and trade-weighted indexes are derived by using exchange rates and indexes provided by the Reserve Bank.

2 Merchandise trade statistics on a recorded trade basis are compiled from information submitted by exporters and importers or their agents to the Australian Customs and Border Protection Service (Customs and Border Protection). Adjustments for coverage, timing and valuation are made to recorded trade data to convert them to a balance of payments basis. The services data are sourced from the quarterly Survey of International Trade in Services and a range of administrative data and indicator series.

3 More comprehensive quarterly estimates of Australia's trade in goods and services, together with comprehensive details of Australia's balance of payments are included in the quarterly publication, *Balance of Payments and International Investment Position, Australia* (cat. no. 5302.0). Detailed monthly statistics on merchandise trade are available in Time Series Spreadsheets on the ABS website or by subscription to tailored services. More information on the *International Trade in Services by country, by state and by detailed services category* are available on a financial year basis (cat. no. 5368.0.55.003) with the September issue of this publication and calendar year basis (cat. no. 5368.0.55.004) with the March issue of this publication.

CONCEPTS, SOURCES AND METHODS

4 The conceptual framework used in compiling Australia's merchandise trade statistics can be found in *International Merchandise Trade, Australia: Concepts, Sources and Methods, 2001* (cat. no. 5489.0).

5 The conceptual framework used in compiling Australia's balance of payments statistics is based on the *International Monetary Fund's Balance of Payments and International Investment Position Manual Sixth Edition* (BPM6). Descriptions of the underlying concepts and structure of the balance of payments and the sources, methods and terms used in compiling the estimates are presented in *Balance of Payments and International Investment Position, Australia: Concepts, Sources and Methods, 1998* (cat. no. 5331.0). The current version of this document reflects the international standards prior to BPM6. A revised Concepts, Sources and Methods publication is scheduled for release in late 2010. The *Information paper: Implementation of new international statistical standards in the ABS National and International Accounts, September 2009* (cat. no. 5310.0.55.002) describes the key changes introduced with BPM6.

6 To bring merchandise trade statistics on a recorded trade basis to a balance of payments basis, timing adjustments are made to ensure that the transaction is recorded in the period in which ownership changed, rather than in the period in which the transaction was recorded by Customs and Border Protection or the period in which the goods arrived in/departed from an Australian port. Adjustments are also made to account for the change of ownership of goods not included in merchandise trade statistics. Chapter 6 of cat. no. 5331.0 provides more detail on the relationship between statistics on international merchandise trade on a recorded trade basis and on a balance of payments basis.

7 Recorded trade exports data presented for recent months in tables 12–15 of this publication are based on information initially reported by exporters to Customs and Border Protection. At the time of initial reporting to Customs and Border Protection the final prices may not be known for some commodities. Therefore, the information recorded for recent months for commodities like iron ore and coal can include a variety of prices including previous or current contract prices and the prevailing spot prices. Newly negotiated contract prices may not be fully reflected in the data first reported to

EXPLANATORY NOTES *continued*

CONCEPTS, SOURCES AND METHODS *continued*

Customs and Border Protection, and to compensate for this, the Balance of Payments series may reflect adjusted price levels.

8 The Concepts, Sources and Methods publications and information papers are available to download for free from the ABS website. Select *Statistics*, then select *By Catalogue Number*, and then the catalogue numbers as above.

CLASSIFICATIONS

9 The merchandise trade data on a recorded trade basis are presented using the following commodity classifications:

- the Harmonised System 2007 (available on request)
- the Standard International Trade Classification (SITC Revision 4)
- the Classification by Broad Economic Categories (BEC)
- the industry classification: Australian and New Zealand Standard Industrial Classification, 2006 (ANZSIC 06) from July 2005.

10 The Balance of Payments Goods and Services series are presented according to three classifications with the goods classifications derived from SITC Revision 4 and BEC. The classifications are:

- for goods:
 - the Balance of Payments Commodities for Exports (BoPCE)
 - the Balance of Payments Broad Economic Categories for Imports (BoPBEC)
- for services:
 - the Extended Balance of Payments Services Classification (EBOPS).

ACCURACY, RELIABILITY AND REVISIONS

11 While every effort is made to ensure the accuracy and reliability of estimates, most series are subject to revision as more complete and accurate information becomes available. Care should be exercised in the use and interpretation of estimates in this publication. The transactions occurring in international trade in goods and services are of many different kinds, and therefore the compilation of trade estimates entails the use of a very wide range of statistical data of varying degrees of accuracy and timeliness. For further information on the monthly services series, see paragraph 25.

12 The revisions are applied differently for merchandise trade and Balance of Payments series. Each month, merchandise trade data are revised for the previous six months to incorporate latest available data.

13 For the Balance of Payments Goods and Services series, in original terms, no revisions are applied in the July, October, January or April issues. This is to ensure the monthly series align with the comparable series in the quarterly publication. In the September issue revisions can be applied to the four previous financial years. In other issues revisions can be applied to the previous and current financial years to incorporate the latest available survey and administrative data.

14 In seasonally adjusted and trend terms, revisions may occur at any time point but tend to focus on the most recent estimates. Please also refer to paragraphs 17 (seasonal adjustment) and 19 (trend estimates) below.

SIGN CONVENTION

15 In keeping with BPM6 conventions, balance of payments basis credit entries are shown with an implied positive sign and debit items are shown as negative entries. For statistics on a recorded trade basis, both imports and exports are shown without sign. The calculation of percentage changes on balance of payments debit items are made without regard to sign. References to balance of payments debit items in Key Figures, Key Points, and Analysis and Comments are also made without regard to sign.

SEASONALLY ADJUSTED AND TREND ESTIMATES

16 The estimates of international trade in goods and services on a balance of payments basis are seasonally adjusted, however the merchandise exports and imports statistics on a recorded trade basis are not. Monthly original estimates are volatile, being subject to calendar-related and large irregular influences. Seasonally adjusted estimates are derived

EXPLANATORY NOTES *continued*

SEASONALLY ADJUSTED AND TREND ESTIMATES *continued*

by estimating and removing from the original series systematic calendar related effects, such as seasonal (e.g. Christmas), trading day and moving holiday (e.g. Easter) influences. Seasonal adjustment does not aim to remove the irregular or non-seasonal influences which may be present in any particular month. These irregular influences may reflect both random economic events and difficulties of statistical recording.

17 The seasonally adjusted statistics in this publication use the concurrent seasonal adjustment technique and Autoregressive Integrated Moving Average (ARIMA) modelling to estimate factors for the current and previous months. Under concurrent seasonal adjustment, the estimates of seasonal factors are fine tuned as new or revised original estimates become available each period. The seasonally adjusted estimates are subject to revisions at each reference month as the estimates of seasonal factors are improved.

18 ARIMA modelling relies on the characteristics of the series being analysed to project future period data. ARIMA modelling is used on a case-by-case basis where it results in reduced revisions to seasonally adjusted series when subsequent data become available. The projected values are temporary, intermediate values, that are only used internally to improve the estimation of the seasonal factors. The projected data do not affect the original estimates and are discarded at the end of the seasonal adjustment process. The ARIMA model is assessed as part of the annual review and, following the 2009 annual review, 40 of the 45 directly seasonally adjusted trade in goods and services time series use an ARIMA model.

19 The month-to-month movements of the seasonally adjusted estimates may not be reliable indicators of underlying behaviour because they include irregular or non-seasonal movements. Trend estimates reduce the effect of these movements as they are derived by applying a 13-term Henderson moving average to the seasonally adjusted series. The 13-term Henderson moving average (like all Henderson averages) is symmetric, but as the end of a time series is approached, asymmetric forms of the average are applied. While the asymmetric weights enable trend estimates for recent months to be produced, it does result in revisions to the estimates for the most recent six months as additional observations become available. Revisions to trend estimates can also occur because of revisions to the original data and as a result of the re-estimation of the seasonal factors. Trend estimates should be used with caution, especially around the time of unusual influences, until these have been appropriately taken into account.

20 Information papers and articles on time series methods are available on the ABS website:

- for seasonal adjustment methods, see *Information Paper: An Introductory Course on Time Series Analysis, Jan 2005* (cat. no. 1346.0.55.001) and *Time Series Analysis Frequently Asked Questions, 2003* (cat. no. 1346.0.55.002)
- for ARIMA modelling, see *Feature article: Use of ARIMA modelling to reduce revisions* in the October 2004 issue of *Australian Economic Indicators* (cat. no. 1350.0)
- for trend estimates methods, see *Information Paper: A Guide to Interpreting Time Series – Monitoring Trends* (cat. no. 1349.0)
- alternatively contact the Assistant Director, Time Series Analysis on (02) 6252 6345 or e-mail <time.series.analysis@abs.gov.au>.

ECONOMIC TERRITORY

21 In accordance with BPM6 definitions, Australia's economic territory, on a balance of payments basis, is the area under the effective control of the Australian government. It includes the land area, airspace, territorial waters, including jurisdiction over fishing rights and rights to fuels and minerals. Australian economic territory also includes territorial enclaves in the rest of the world. These are clearly demarcated areas of land, located in other countries and which are owned or rented by the Australian government

EXPLANATORY NOTES *continued*

ECONOMIC TERRITORY

continued

for diplomatic, military, scientific or other purposes. Specifically, the economic territory of Australia consists of:

- Geographic Australia which includes Cocos (Keeling) Islands and Christmas Island;
- Norfolk Island;
- Australian Antarctic Territory;
- Heard Island and McDonald Islands;
- Territory of Ashmore Reef and Cartier Island;
- Coral Sea Islands;
- Australia's territorial enclaves overseas; and
- the Joint Petroleum Development Area (joint territory between Australia and East Timor (Timor-Leste)).

22 Because of administrative complexities and measurement difficulties, Norfolk Island transactions with the rest of the world will not always be captured in all relevant Balance of Payments statistics. Most of the transactions involving Norfolk Island are not material to Australia's trade performance and not capturing these transactions will not distort these statistics. However, any significant transactions will be identified and included in the relevant statistics.

COMMODITY BREAKDOWN OF GOODS

23 For details of the classifications used to present goods exports (credits) and imports (debits) on a balance of payments basis, see tables 6.6 and 6.7, respectively, in *Balance of Payments and International Investment Position, Australia: Concepts, Sources and Methods*, 1998 (cat. no. 5331.0).

24 The recorded trade statistics shown in tables 12 and 13 are classified by the Standard International Trade Classification (SITC). Imports and exports of goods at a more detailed level are available from the Time Series spreadsheets on the ABS website. All data from July 2005 are presented according to SITC Rev 4 and data prior to July 2005 are presented according to SITC Rev 3. For details refer to the 'Classifications and Standards Update' in the July 2008 issue of this publication.

MONTHLY SERVICES SERIES

25 Monthly indicators for many of the services components that are only surveyed quarterly are not available. Monthly estimates for the freight and other transportation components of services credits in table 9 are derived by dividing the quarterly estimate by three. Freight debits are derived directly from imports data for the reference month as a difference between total merchandise cost, insurance and freight (CIF) and free on board (FOB), adjusted to reflect timing and processing adjustments. For freight credits and other transportation credits and debits, estimates are derived by extrapolating the last quarter's data by an average of movements for the same quarter over the three previous years, and then dividing the estimate by three. Similarly other services estimates are derived by extrapolating the last quarter's data by an average of movements for the same quarter over the previous three years, and then dividing the estimate by three.

CONFIDENTIALITY OF MERCHANDISE TRADE STATISTICS

26 The release of statistics for certain merchandise trade commodities is restricted in order to prevent the identification of the activities of an individual business, where this is requested by the business concerned. These restrictions do not affect the total value of exports and imports, but they can affect statistics at the country, state and commodity levels. Imports data that have the confidentiality restrictions 'No commodity details' or 'No value details' are aggregated into a single confidential commodity code. For data prior to September 2008, these data are added back into the appropriate state total and country total (i.e. these totals show the correct level of trade). From September 2008 these confidential data are not added back. Instead the confidential data are published as 'No country details' in the country totals and 'State not available for publication' in the state totals. Therefore, country and state totals from September 2008 may not represent the actual amount of trade in each country/state but only the trade in commodities without a 'No commodity details' or 'No value details' restriction. For information on the

EXPLANATORY NOTES *continued*

CONFIDENTIALITY OF MERCHANDISE TRADE STATISTICS *continued*

confidentiality restrictions applied to the merchandise trade statistics in this publication, refer to the current issue of *International merchandise trade: Confidential Commodities List (CCL)* (cat. no. 5372.0.55.001).

TOURISM RELATED SERVICES

27 The tourism related services memorandum items provide timely indicators of the movements in tourism related activities, not an absolute measure of the level of these activities. The tourism related indicator has been derived by combining total travel services (business, education-related and other personal travel) and passenger transportation services (which includes agency fees and commissions for air transport).

SERVICES BY STATE AND BY PARTNER COUNTRY

28 Annual services data by state, by country and detailed services are released twice yearly. Calendar year data are usually released with the March issue of this publication and financial year data are usually released with the September issue. Refer to Time series data for details.

29 Services credits are classified by the state of provision, while services debits are classified by the state of consumption. The state allocations for transportation, travel, postal and courier, and telecommunication services are based on a number of indicators including merchandise trade statistics by state, overseas passenger arrivals and departures by state of clearance and data provided by the Department of Immigration and Citizenship. The allocation for other services (about 25% of all trade in services) is primarily based on the location of the business reporting the information, which serves as a proxy for the state of provision/consumption of that service. The data should be used with care but are considered suitable for analysis over time.

30 A comprehensive explanation of the data sources used and the methodology applied in the compilation of partner country statistics is provided in Chapter 17 of *Balance of Payments and International Investment Position, Australia – Concepts, Sources and Methods* (cat. no. 5331.0). Approximately 7% of total services credits and 5% of total services debits for both 2007–08 and 2008–09 were either confidential, or unable to be allocated to individual countries.

ABS DATA AVAILABLE

31 More detailed balance of payments and recorded merchandise trade data, including forward seasonal factors are available as time series spreadsheets or data cubes from the ABS website. Merchandise trade data by commodity, country and state that are not on the ABS website may be available on request. Inquiries should be made to the National Information and Referral Service as shown on the back of this publication.

RELATED PRODUCTS AND PUBLICATIONS

32 Users may also wish to refer to the following publications which can be downloaded free of charge from the ABS website by using the 'Statistics' tab and selecting the relevant catalogue number:

- *Balance of Payments and International Investment Position, Australia* (cat. no. 5302.0) – issued quarterly
- *International Merchandise Imports, Australia* (cat. no. 5439.0) – issued monthly
- *International Trade Price Indexes, Australia* (cat. no. 6457.0) – issued quarterly
- *Balance of Payments and International Investment Position, Australia: Concepts, Sources and Methods* (cat. no. 5331.0)
- *Information Paper: Quality of Australian Balance of Payments Statistics* (cat. no. 5342.0)
- *International Merchandise Trade, Australia: Concepts, Sources and Methods* (cat. no. 5489.0)
- *A Guide to Australian Balance of Payments and International Investment Position Statistics* (cat. no. 5362.0.55.001).

EXPLANATORY NOTES *continued*

RELATED PRODUCTS AND PUBLICATIONS *continued*

33 Current publications and other products released by the ABS are available from the Statistics tab on the ABS website. The ABS also issues a daily *Release Advice* on the website which details products to be released in the week ahead. A *foreign trade theme page* and a *balance of payments theme page* are available on the ABS website. Select *Topics @ a Glance – Economy – Foreign Trade* or *Balance of Payments*. This page provides direct links to all foreign trade and balance of payments related data and publications, recent changes and forthcoming events, links to relevant websites and a range of other information about the Australian International Accounts.

ROUNDING

34 Where figures have been rounded, discrepancies may occur between sums of the component items and totals. Percentage movements are calculated from data at the level of precision presented in this publication (i.e. \$m) except for international merchandise trade tables.

ABBREVIATIONS

\$b	billion (thousand million) dollars
\$m	million dollars
ABS	Australian Bureau of Statistics
APEC	Asia Pacific Economic Co-operation
ASEAN	Association of South-East Asian Nations
n.e.s.	not elsewhere specified
n.i.e.	not included elsewhere
OECD	Organisation for Economic Co-operation and Development
SAR	Special Administrative Region
SITC	Standard International Trade Classification

APPENDIX RELATED ARTICLES

<i>Article</i>	<i>Source(a)</i>	<i>Issue</i>
Investment		
Foreign ownership of equity	5302.0	Sep qtr 2007
Kangaroo bonds	1301.0	2006
Foreign currency exposure	5308.0	Mar qtr 2005
Gross external debt	5302.0	Sep qtr 2003
Balance of payments		
International comparison of balance of payments statistics	(b) 5363.0	1998–99
Merchandise trade		
Export And Import Invoice Currencies, Dec 2009	5368.0	Dec 2009
Characteristics of Australian Exporters	5368.0.55.006	2008–09
Export and import invoice currencies, 2007	5368.0	Dec 2007
100 years of international trade statistics	5368.0	Oct 2007
New methodology for deriving counts of Australian exports	5368.0	Feb 2006
Australia's Importers, 2003–04	5368.0	Nov 2004
Australia's Exporters, 2003–04	5368.0	Oct 2004
Australia's trade with the USA	5368.0	Mar 2004
Foreign ownership of Australian exporters and importers	5496.0.55.001	2002–03
Major commodities traded by Australia, 1991 to 2000	(b) 5422.0	Dec qtr 2000
Trade in services		
International trade in services by partner country, 2006, preliminary	5368.0	Dec 2006
Changes to International trade in services statistics, August 2006	5368.0	Aug 2006
Changes to International trade in services travel statistics	5368.0	Aug 2005
Finance		
Impact of the farm season on Australian production in 2002–03 and 2003–04	1301.0	2005
Recent trends in construction and first home buyers finance	5609.0	Mar 2002
Household sector data in the financial accounts	5232.0	Mar qtr 2002
Technical information		
Implementation of new international statistical standards in ABS National and International Accounts, September 2009	5310.0.55.002	Oct 2009
Estimation of Workers' Remittances based on Balance of Payments and International Investment Position Manual, Sixth Edition	5302.0.55.003	Sep 2009
Impact of revised international standards on monthly International Trade in Goods and Services	5368.0.55.014	Aug 2009
Changes to International Trade in Goods Statistics - Countries and Ports	5368.0.55.013	Jul 2009
Revisions to international standards in quarterly Balance of Payments and International Investment Position statistics from September 2009	5302.0.55.002	2009
Revisions to international standards in monthly international trade in goods and services statistics from August 2009	5368.0.55.012	2009
Changes to International Trade in Goods Industry Statistics, July 2009	5368.0.55.011	Dec 2008
Technical note 1 - Income on debt	5302.0	Jun qtr 2008
Technical note 2 - Use of CDI data	5302.0	Jun qtr 2008
Impact of introducing Revision 4 of the Standard International Trade Classification	5368.0.55.010	2008
Changes to international trade statistics July 2008	5368.0.55.009	2007–08
Introduction of revised international standards in ABS economic statistics in 2009	5310.0.55.001	2007
Changes on 1 January 2007 to Statistical Codes in the AHECC and the Customs Tariff	1233.0.55.001	Nov 2006
ABS implementation in January 2007 of revisions to international trade classifications, 2007	5368.0.55.005	Jun 2006
Revised treatment of Goods for Processing in Merchandise Trade and Balance of Payments Statistics	5368.0	May 2006
Impact of Customs and ABS changes on import statistics from October 2005	5439.0	Oct 2005
ABS management of the impact of the implementation of the imports component of the New Customs System	5439.0	Aug 2005
Changes to country and port classifications	5368.0	May 2003
Implementation of New Customs Systems	5368.0	Aug 2004
The effect of customs changes on export statistics	5422.0	Jun qtr 2002
Data confidentiality	5422.0	Dec qtr 1999

- (a) In the ABS website home page, select Statistics; By Catalogue Number; and click on the specified catalogue number and issue. Note: in some instances, a particular issue of the publication can be found in the Past & Future Releases page of the catalogue.
- (b) This article can be found in pdf format by referring to the Downloads page of the specified issue of this publication on the ABS website.

FOR MORE INFORMATION . . .

INTERNET **www.abs.gov.au** the ABS website is the best place for data from our publications and information about the ABS.

INFORMATION AND REFERRAL SERVICE

Our consultants can help you access the full range of information published by the ABS that is available free of charge from our website. Information tailored to your needs can also be requested as a 'user pays' service. Specialists are on hand to help you with analytical or methodological advice.

PHONE 1300 135 070

EMAIL client.services@abs.gov.au

FAX 1300 135 211

POST Client Services, ABS, GPO Box 796, Sydney NSW 2001

FREE ACCESS TO STATISTICS

All statistics on the ABS website can be downloaded free of charge.

WEB ADDRESS www.abs.gov.au