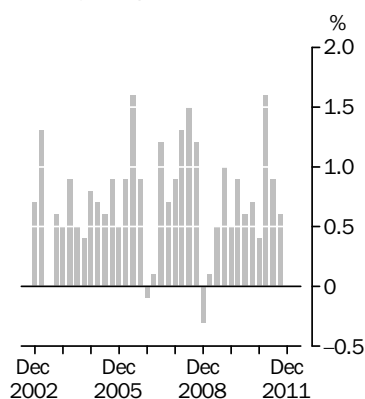


**CONSUMER PRICE INDEX**

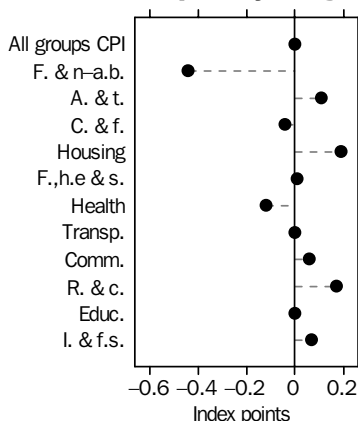
AUSTRALIA

EMBARGO: 11.30AM (CANBERRA TIME) WED 25 JAN 2012

**All Groups CPI**  
Quarterly change



**Contribution to quarterly change**



**KEY FIGURES**

**WEIGHTED AVERAGE OF EIGHT CAPITAL CITIES**

	<i>Sep Qtr 2011 to Dec Qtr 2011</i> % change	<i>Dec Qtr 2010 to Dec Qtr 2011</i> % change
<b>All groups CPI</b>	<b>0.0</b>	<b>3.1</b>
Food and non-alcoholic beverages	-1.5	2.5
Alcohol and tobacco	0.9	3.1
Clothing and footwear	-0.5	2.6
Housing	0.4	4.0
Furnishings, household equipment and services	0.1	0.2
Health	-1.2	3.6
Transport	0.0	4.0
Communication	1.1	1.6
Recreation and culture	0.8	0.5
Education	0.0	5.8
Insurance and financial services	0.6	5.6
<b>CPI analytical series</b>		
All groups CPI, seasonally adjusted	0.2	3.0
Trimmed mean	0.6	2.6
Weighted median	0.5	2.6

**KEY POINTS**

**THE ALL GROUPS CPI**

- was unchanged in the December quarter 2011, compared with a rise of 0.6% in the September quarter 2011.
- rose 3.1% through the year to the December quarter 2011, compared with a rise of 3.5% through the year to the September quarter 2011.

**OVERVIEW OF CPI MOVEMENTS**

- The most significant price rises this quarter were for domestic holiday travel and accommodation (+7.3%), rents (+1.0%), telecommunication equipment and services (+1.1%), beer (+1.2%) and automotive fuel (+0.7%).
- The most significant price falls this quarter were for fruit (-13.4%), pharmaceutical products (-5.6%), vegetables (-5.0%), audio, visual and computing equipment (-3.4%), international holiday travel and accommodation (-1.9%) and motor vehicles (-1.2%).

**INQUIRIES**

For further information about these and related statistics, contact the National Information and Referral Service on 1300 135 070.

# NOTES

## FORTHCOMING ISSUES

<i>ISSUE (Quarter)</i>	<i>RELEASE DATE</i>
March 2012	24 April 2012
June 2012	25 July 2012
Sept 2012	24 October 2012
December 2012	23 January 2013

.....

## CHANGES IN THIS ISSUE

An additional time series spreadsheet, 'CPI expenditure class, combined seasonal adjustment factors, weighted average of eight capital cities' (Table 16), is now available on the ABS web site <<http://www.abs.gov.au>>. It contains the factors used to calculate the seasonally adjusted expenditure class series. Factors are only included for those expenditure classes that are seasonally adjusted. See paragraphs 14–16 of the Explanatory Notes for more details on seasonal adjustment.

As part of the ongoing sample review program, from the December quarter 2011 onwards, the approach to measuring the price change of rents has changed. When introducing a new property into the sample to replace one that is no longer available for rent by households, an adjustment is now made to ensure the best measure of the price change of rents over time.

## CHANGES IN FUTURE RELEASES

From the September quarter 2012, all index numbers will be calculated on a new reference base of 2011–12. This will result in the index numbers for each index series being reset to 100.0 for the financial year 2011–12. Period-to-period percentage changes may differ slightly to those previously published due to rounding and the re-referencing. These differences do not constitute a revision. Further information on re-referencing can be found in chapter 12 of *Information Paper: Consumer Price Index Concepts, Sources and Methods, 2011* (cat. no. 6461.0).

## ROUNDING

Any discrepancies between totals and sums of components in this publication are due to rounding.

.....

## ABBREVIATIONS

ABS Australian Bureau of Statistics  
CPI Consumer Price Index  
n.e.c. not elsewhere classified

Brian Pink  
Australian Statistician

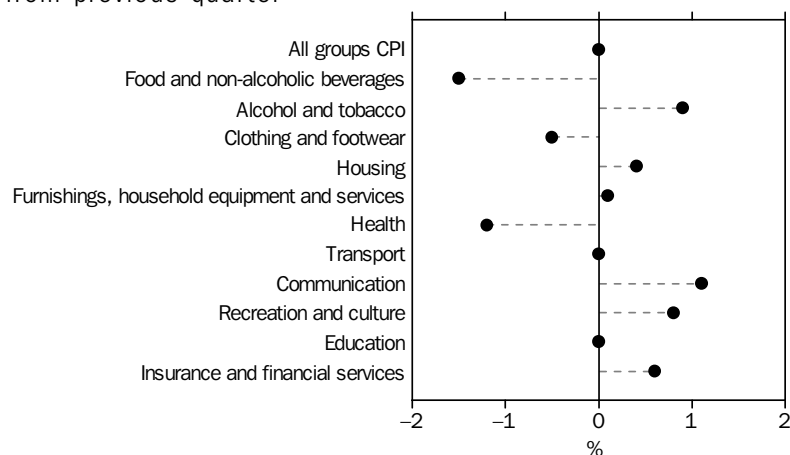
## MAIN CONTRIBUTORS TO CHANGE

### MAIN CONTRIBUTORS TO CHANGE

#### CPI GROUPS

The discussion of the CPI groups below is ordered in terms of their absolute significance to the change in All groups index points for the quarter (see tables 6 and 7).

WEIGHTED AVERAGE OF EIGHT CAPITAL CITIES, Percentage change from previous quarter



#### FOOD AND NON-ALCOHOLIC BEVERAGES GROUP (-1.5%)

The food and non-alcoholic beverages group fell in the December quarter 2011. The most significant contributors were fruit (-13.4%) and vegetables (-5.0%). The fall in fruit prices was mainly attributable to a decrease of approximately 46% in the price of bananas in the December quarter 2011 due to good supplies following the shortages created by Cyclone Yasi in February 2011. Restaurant meals (+0.8%) and coffee, tea and cocoa (+5.7%) provided the most significant offsets.

Over the twelve months to the December quarter 2011, the food and non-alcoholic beverages group rose 2.5%. Fruit rose 24.4% over the twelve months to the December quarter 2011 mainly due to increases in the price of bananas due to the shortages during 2011.

#### HOUSING GROUP (+0.4%)

The housing group rose in the December quarter 2011 mainly due to increases in rents (+1.0%), new dwelling purchase by owner-occupiers (+0.3%) and electricity (+0.6%).

Over the twelve months to the December quarter 2011, the housing group rose 4.0%.

#### RECREATION AND CULTURE GROUP (+0.8%)

The recreation and culture group rose in the December quarter 2011 due to increases in domestic holiday travel and accommodation (+7.3%) and audio, visual and computing media and services (+2.3%). This was partially offset by falls in audio, visual and computing equipment (-3.4%), international holiday travel and accommodation (-1.9%) and games, toys and hobbies (-2.7%).

In the CPI, airfares are collected in advance (at the time of payment), but are only used in the CPI in the quarter in which the trip is undertaken. International airfares are collected two months in advance (October for travel in December) and domestic airfares are collected one month in advance (October for travel in November).

Over the twelve months to the December quarter 2011, the recreation and culture group rose 0.5%.

## MAIN CONTRIBUTORS TO CHANGE *continued*

### HEALTH GROUP (-1.2%)

The health group fell in the December quarter 2011. The most significant contributors were pharmaceutical products (-5.6%) and medical and hospital services (-0.2%). This fall was partially offset by a rise in dental services (+0.7%).

The main reason for the fall in pharmaceutical products was a greater proportion of consumers exceeding the Pharmaceutical Benefits Scheme safety net compared to the September quarter 2011.

Over the twelve months to the December quarter 2011, the health group rose 3.6%.

### ALCOHOL AND TOBACCO GROUP (+0.9%)

The alcohol and tobacco group rose in the December quarter 2011. The most significant contributors were beer (+1.2%), tobacco (+0.9%) and spirits (+1.2%). The rise in beer was partially due to the flow on effect of the federal excise tax increase from 1 August 2011.

Over the twelve months to the December quarter 2011, the alcohol and tobacco group rose 3.1% largely due to increases in the federal excise tax which is applied on 1 February and 1 August each year.

### INSURANCE AND FINANCIAL SERVICES GROUP (+0.6%)

The insurance and financial services group rose in the December quarter 2011. The main contributors to the rise were insurance (+1.3%), other financial services (+0.5%) and deposit and loan facilities (direct charges) (+0.1%). The rise in insurance was primarily due to increases in premiums for house and household contents insurance.

Over the twelve months to the December quarter 2011, the insurance and financial services group rose 5.6%.

### COMMUNICATION GROUP (+1.1%)

The communication group rose in the December quarter 2011. The most significant contributor was telecommunication equipment and services (+1.1%).

Over the twelve months to the December quarter 2011, the communication group rose 1.6%.

### CLOTHING AND FOOTWEAR GROUP (-0.5%)

The clothing and footwear group fell in the December quarter 2011. The main contributor was accessories (-3.7%) driven by pre-Christmas sales. This fall was partially offset by a rise in garments for women (+0.6%).

Over the twelve months to the December quarter 2011, the clothing and footwear group rose 2.6%.

### FURNISHINGS, HOUSEHOLD EQUIPMENT AND SERVICES GROUP (+0.1%)

The furnishings, household equipment and services group rose in the December quarter 2011. The main contributors to the rise were child care (+2.6%) and furniture (+1.1%). The rise was partially offset by falls in major household appliances (-3.4%) and other non-durable household products (-1.1%).

Over the twelve months to the December quarter 2011, the furnishings, household equipment and services group rose 0.2%. This was partly due to an increase in child care (+8.5%) in the same period.

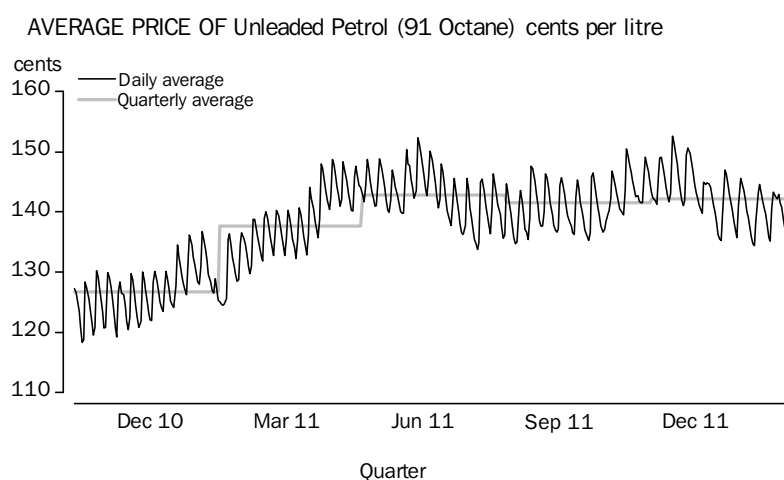
## MAIN CONTRIBUTORS TO CHANGE *continued*

### TRANSPORT GROUP (0.0%)

The transport group recorded no change in the December quarter 2011. Automotive fuel (+0.7%) recorded an increase which was largely offset by a fall in motor vehicles (-1.2%).

During 2011, the average monthly price of automotive fuel rose in July (+0.5%), fell in August (-0.2%), rose in September (+1.8%) and October (+1.1%) and fell in November (-2.1%) and December (-0.5%).

The following graph illustrates the movement of the average daily prices for unleaded petrol for the weighted average of eight capital cities over the last fifteen months.



Over the twelve months to the December quarter 2011, the transport group rose 4.0%.

### EDUCATION GROUP (0.0%)

The education group recorded no change in the December quarter 2011.

Over the twelve months to the December quarter 2011, the education group rose 5.8%.

### INTERNATIONAL TRADE EXPOSURE – TRADABLES AND NON-TRADABLES

The tradables component (see Table 8) of the All groups CPI fell 1.2% in the December quarter 2011. Prices for the goods and services in this component are largely determined on the world market. The tradables component represents approximately 40% of the weight of the CPI. The most significant contributors to the 1.1% fall in the tradable goods component were fruit, pharmaceutical products, vegetables, audio, visual and computing equipment, motor vehicles and accessories. The most significant offsetting rises were for automotive fuel, audio, visual and computing media and services and tobacco. The fall in the tradable services component of 1.9% was driven by international holiday travel and accommodation.

The non-tradables component of the All groups CPI rose 0.7% in the December quarter 2011. Prices for the goods and services in this component are largely determined by domestic price pressures. The non-tradables component represents approximately 60% of the weight of the CPI. The non-tradable goods component rose 0.3% mainly due to beer, new dwelling purchase by owner-occupiers, electricity, and take away and fast foods. The most significant offsetting fall was poultry. The non-tradable services component rose 0.9%, due to increases for domestic holiday travel and accommodation,

## MAIN CONTRIBUTORS TO CHANGE *continued*

### INTERNATIONAL TRADE EXPOSURE – TRADABLES AND NON-TRADABLES *continued*

rents, telecommunication equipment and services, child care, insurance and restaurant meals.

Over the twelve months to the December quarter 2011, the tradables component rose 1.8% and the non-tradables component rose 3.9%. This compares to them rising 3.3% and 3.6% respectively through the year to the September quarter 2011.

A detailed description of which expenditure classes are classified as tradable and non-tradable in the 16th series is shown in Appendix 1 of the September quarter 2011 issue of *Consumer Price Index, Australia* (cat. no 6401.0).

### SEASONALLY ADJUSTED ANALYTICAL SERIES

The expenditure class 'Fruit' was affected by unusually high prices during 2011 following shortages created by the floods and Cyclone Yasi in early 2011. Adjustments were made this quarter to the seasonally adjusted series in 2011 to take this into account. These adjustments were in addition to those previously made. Revisions to the seasonally adjusted estimates are also due to the application of concurrent seasonal adjustment, described in paragraph 15 of the Explanatory Notes.

In the December quarter 2011, the All groups CPI, seasonally adjusted rose 0.2%, compared with the original All groups CPI recording no change.

The trimmed mean rose 0.6% in the December quarter 2011, compared to a revised rise of 0.4% in the September quarter 2011. Over the twelve months to the December quarter 2011, the trimmed mean rose 2.6% compared to a revised rise of 2.4% over the twelve months to the September quarter 2011.

The weighted median rose 0.5% in the December quarter 2011, compared to a revised rise of 0.4% in the September quarter 2011. Over the twelve months to the December quarter 2011, the weighted median rose 2.6% compared to a revised rise of 2.7% over the twelve months to the September quarter 2011.

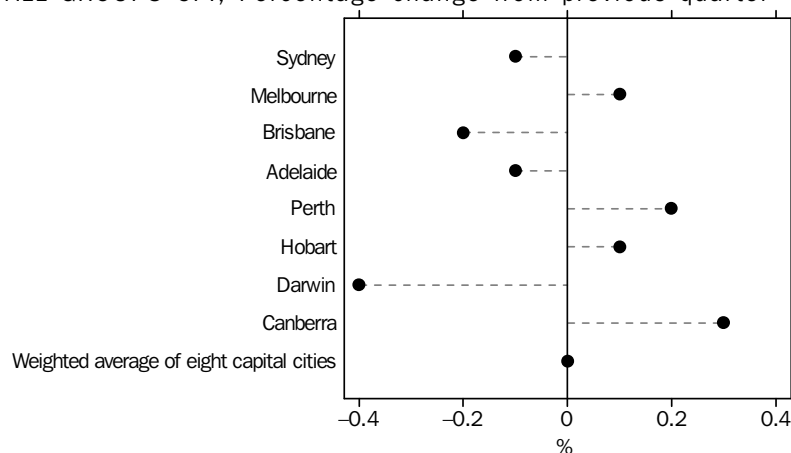
A detailed explanation of the seasonal adjustment of the All Groups CPI is available in *Information Paper: Seasonal Adjustment of Consumer Price Indexes, 2011* (cat. no. 6401.0.55.003). This paper includes a description of the seasonal adjustment method applied, the trimmed mean and the weighted median.

## CAPITAL CITIES COMPARISON

### CAPITAL CITIES COMPARISON

ALL GROUPS CPI

ALL GROUPS CPI, Percentage change from previous quarter



At the All groups level, the CPI rose and fell in the capital cities in equal numbers during the December quarter 2011. Rises were recorded in Canberra (+0.3%), Perth (+0.2%), Melbourne (+0.1%) and Hobart (+0.1%). Falls were recorded in Darwin (-0.4%), Brisbane (-0.2%), Sydney (-0.1%) and Adelaide (-0.1%).

The housing group was the most significant positive contributor to the All groups quarterly movement recording rises in all cities with the exception of Melbourne (-0.1%). The largest movements were recorded in Adelaide (+1.2%) driven by increases in electricity. Sydney and Perth (+0.8%) also rose largely due to increases in rents.

The recreation and culture group was the second largest positive contributor to the quarterly movement, recording rises in five of the eight capital cities. The largest city movements were recorded in Perth (+1.5%), Hobart (+1.3%) and Canberra (+1.2%). The most significant contributor was the increase to domestic holiday travel and accommodation in seven of the eight capital cities, most notably Perth (+11.8%), Melbourne (+8.1%) and Canberra (+6.7%), with Darwin (-8.1%) recording the only fall.

The food and non-alcoholic beverages group was the most significant negative contributor in all cities. The largest falls for the food and non-alcoholic beverages group were recorded in Canberra (-2.5%), Darwin (-2.5%) and Adelaide (-2.0%) due to falls in all cities for fruit ranging from Canberra (-23.6%) to Perth (-10.5%).

The health group was the second largest negative contributor to the quarterly movement recording falls in all cities. The fall was mainly due to a greater proportion of consumers exceeding the Pharmaceutical Benefits Scheme safety net resulting in decreases in pharmaceutical products in all cities with falls ranging from 7.5% in Hobart to 4.6% in Perth.

Over the twelve months to the December quarter 2011, the All groups CPI rose in all capital cities with the largest positive movements recorded in Adelaide (+3.6%) and Canberra (+3.6%). Brisbane (+2.4%) and Darwin (+2.4%) recorded the smallest rises over the twelve months to the December quarter 2011.

## CAPITAL CITIES COMPARISON *continued*

ALL GROUPS CPI *continued*

ALL GROUPS CPI, All groups index numbers and percentage changes

	INDEX NUMBER(a)	PERCENTAGE CHANGE	
	<i>Dec Qtr 2011</i>	<i>Sep Qtr 2011 to Dec Qtr 2011</i>	<i>Dec Qtr 2010 to Dec Qtr 2011</i>
Sydney	178.7	-0.1	3.2
Melbourne	176.8	0.1	3.1
Brisbane	184.4	-0.2	2.4
Adelaide	183.5	-0.1	3.6
Perth	179.1	0.2	2.9
Hobart	178.1	0.1	3.2
Darwin	176.0	-0.4	2.4
Canberra	180.4	0.3	3.6
Weighted average of eight capital cities	179.4	0.0	3.1

(a) Base of each index: 1989-90 = 100.0.



## LIST OF TABLES

*page*

### CONSUMER PRICE INDEX

<b>1</b>	All groups CPI, index numbers . . . . .	10
<b>2</b>	All groups CPI, percentage changes . . . . .	11
<b>3</b>	CPI groups, weighted average of eight capital cities, index numbers . . . . .	12
<b>4</b>	CPI groups, weighted average of eight capital cities, percentage changes . . . . .	14
<b>5</b>	CPI groups, index numbers . . . . .	16
<b>6</b>	Contribution to change in All groups CPI . . . . .	19
<b>7</b>	CPI group, sub-group and expenditure class, weighted average of eight capital cities . . . . .	22
<b>8</b>	Analytical series, weighted average of eight capital cities . . . . .	25
<b>9</b>	International comparisons, All groups CPI excluding Housing and Insurance and financial services, index numbers . . . . .	26
<b>10</b>	International comparisons, All groups CPI excluding Housing and Insurance and financial services, percentage changes . . . . .	27

### ADDITIONAL CPI TABLES AVAILABLE ON ABS WEBSITE

<b>11</b>	CPI group, sub-group and expenditure class, index numbers by capital city	
<b>12</b>	CPI group, sub-group and expenditure class, percentage change from corresponding quarter of previous year by capital city	
<b>13</b>	CPI group, sub-group and expenditure class, percentage change from previous quarter by capital city	
<b>14</b>	CPI group, sub-group and expenditure class, points contribution by capital city	
<b>15</b>	CPI expenditure class, seasonally adjusted index numbers, weighted average of eight capital cities	
<b>16</b>	CPI expenditure class, combined seasonal adjustment factors, weighted average of eight capital cities	

## ALL GROUPS CPI, Index numbers(a)

<i>Period</i>	<i>Sydney</i>	<i>Melbourne</i>	<i>Brisbane</i>	<i>Adelaide</i>	<i>Perth</i>	<i>Hobart</i>	<i>Darwin</i>	<i>Canberra</i>	<i>Weighted average of eight capital cities</i>
<b>2007-08</b>	160.9	159.6	164.8	164.4	161.7	160.3	158.3	162.0	161.4
<b>2008-09</b>	165.8	164.1	171.0	169.7	166.6	164.9	163.6	167.5	166.4
<b>2009-10</b>	169.7	167.5	175.5	173.4	170.8	169.3	168.7	171.1	170.3
<b>2010-11</b>	174.8	173.0	181.4	178.9	175.7	174.1	173.2	175.8	175.6
<b>2007</b>									
December	159.5	158.5	163.4	163.1	160.2	159.2	157.1	160.8	160.1
<b>2008</b>									
March	161.7	160.6	165.6	165.5	162.5	161.3	158.5	163.0	162.2
June	164.1	162.5	168.4	167.6	165.1	162.9	160.8	165.0	164.6
September	165.9	164.4	170.8	169.8	166.7	164.7	163.6	167.5	166.5
December	165.5	163.5	170.4	169.3	166.2	164.4	162.9	166.8	166.0
<b>2009</b>									
March	165.6	163.9	170.8	169.3	166.0	164.8	163.0	167.4	166.2
June	166.3	164.4	171.8	170.3	167.4	165.7	164.8	168.4	167.0
September	168.1	165.4	174.1	172.1	168.7	167.7	168.0	169.9	168.6
December	169.1	166.4	174.7	172.7	169.7	168.7	167.8	170.6	169.5
<b>2010</b>									
March	170.5	168.5	176.0	173.7	171.6	170.0	168.7	171.7	171.0
June	171.1	169.5	177.3	175.0	173.2	170.7	170.1	172.3	172.1
September	172.5	170.5	179.1	176.6	174.0	172.4	171.9	173.4	173.3
December	173.1	171.5	180.0	177.1	174.1	172.6	171.8	174.2	174.0
<b>2011</b>									
March	175.9	174.4	182.3	180.0	176.1	174.9	173.7	176.8	176.7
June	177.6	175.6	184.1	181.8	178.4	176.5	175.4	178.7	178.3
September	178.8	176.7	184.7	183.6	178.8	177.9	176.7	179.9	179.4
December	178.7	176.8	184.4	183.5	179.1	178.1	176.0	180.4	179.4

(a) Unless otherwise specified, base of each index: 1989-90 = 100.0.

## ALL GROUPS CPI, Percentage changes

<i>Period</i>	<i>Sydney</i>	<i>Melbourne</i>	<i>Brisbane</i>	<i>Adelaide</i>	<i>Perth</i>	<i>Hobart</i>	<i>Darwin</i>	<i>Canberra</i>	<i>Weighted average of eight capital cities</i>
PERCENTAGE CHANGE (from previous financial year)									
<b>2007-08</b>	3.0	3.5	4.1	3.3	3.6	3.0	3.5	3.6	3.4
<b>2008-09</b>	3.0	2.8	3.8	3.2	3.0	2.9	3.3	3.4	3.1
<b>2009-10</b>	2.4	2.1	2.6	2.2	2.5	2.7	3.1	2.1	2.3
<b>2010-11</b>	3.0	3.3	3.4	3.2	2.9	2.8	2.7	2.7	3.1
PERCENTAGE CHANGE (from corresponding quarter of previous year)									
<b>2007</b>									
December	2.4	3.3	3.9	2.7	3.0	2.9	2.9	3.3	3.0
<b>2008</b>									
March	3.9	4.4	4.8	4.5	4.3	3.8	3.9	4.6	4.2
June	4.3	4.4	5.1	4.6	4.5	3.5	3.9	4.4	4.5
September	4.9	4.8	5.6	5.1	4.9	4.3	4.5	5.2	5.0
December	3.8	3.2	4.3	3.8	3.7	3.3	3.7	3.7	3.7
<b>2009</b>									
March	2.4	2.1	3.1	2.3	2.2	2.2	2.8	2.7	2.5
June	1.3	1.2	2.0	1.6	1.4	1.7	2.5	2.1	1.5
September	1.3	0.6	1.9	1.4	1.2	1.8	2.7	1.4	1.3
December	2.2	1.8	2.5	2.0	2.1	2.6	3.0	2.3	2.1
<b>2010</b>									
March	3.0	2.8	3.0	2.6	3.4	3.2	3.5	2.6	2.9
June	2.9	3.1	3.2	2.8	3.5	3.0	3.2	2.3	3.1
September	2.6	3.1	2.9	2.6	3.1	2.8	2.3	2.1	2.8
December	2.4	3.1	3.0	2.5	2.6	2.3	2.4	2.1	2.7
<b>2011</b>									
March	3.2	3.5	3.6	3.6	2.6	2.9	3.0	3.0	3.3
June	3.8	3.6	3.8	3.9	3.0	3.4	3.1	3.7	3.6
September	3.7	3.6	3.1	4.0	2.8	3.2	2.8	3.7	3.5
December	3.2	3.1	2.4	3.6	2.9	3.2	2.4	3.6	3.1
PERCENTAGE CHANGE (from previous quarter)									
<b>2007</b>									
December	0.9	1.0	1.1	1.0	0.8	0.8	0.3	1.0	0.9
<b>2008</b>									
March	1.4	1.3	1.3	1.5	1.4	1.3	0.9	1.4	1.3
June	1.5	1.2	1.7	1.3	1.6	1.0	1.5	1.2	1.5
September	1.1	1.2	1.4	1.3	1.0	1.1	1.7	1.5	1.2
December	-0.2	-0.5	-0.2	-0.3	-0.3	-0.2	-0.4	-0.4	-0.3
<b>2009</b>									
March	0.1	0.2	0.2	0.0	-0.1	0.2	0.1	0.4	0.1
June	0.4	0.3	0.6	0.6	0.8	0.5	1.1	0.6	0.5
September	1.1	0.6	1.3	1.1	0.8	1.2	1.9	0.9	1.0
December	0.6	0.6	0.3	0.3	0.6	0.6	-0.1	0.4	0.5
<b>2010</b>									
March	0.8	1.3	0.7	0.6	1.1	0.8	0.5	0.6	0.9
June	0.4	0.6	0.7	0.7	0.9	0.4	0.8	0.3	0.6
September	0.8	0.6	1.0	0.9	0.5	1.0	1.1	0.6	0.7
December	0.3	0.6	0.5	0.3	0.1	0.1	-0.1	0.5	0.4
<b>2011</b>									
March	1.6	1.7	1.3	1.6	1.1	1.3	1.1	1.5	1.6
June	1.0	0.7	1.0	1.0	1.3	0.9	1.0	1.1	0.9
September	0.7	0.6	0.3	1.0	0.2	0.8	0.7	0.7	0.6
December	-0.1	0.1	-0.2	-0.1	0.2	0.1	-0.4	0.3	0.0

CPI GROUPS, Weighted average of eight capital cities—Index numbers(a)

<i>Period</i>	<i>Food and non-alcoholic beverages</i>	<i>Alcohol and tobacco</i>	<i>Clothing and footwear</i>	<i>Housing</i>	<i>Furnishings, household equipment and services</i>	<i>Health</i>
<b>2007-08</b>	177.8	249.8	109.3	140.6	123.4	233.5
<b>2008-09</b>	186.5	263.6	110.2	149.0	125.1	245.4
<b>2009-10</b>	189.5	276.3	109.9	157.6	128.0	257.2
<b>2010-11</b>	196.5	303.3	107.7	165.3	127.9	269.0
<b>2007</b>						
December	175.9	248.2	109.8	139.3	123.5	226.9
<b>2008</b>						
March	179.6	250.7	107.2	141.9	122.7	236.0
June	179.5	255.4	110.4	143.4	124.7	241.6
September	182.1	259.1	109.6	147.2	123.6	241.0
December	185.8	262.6	110.0	148.3	124.0	238.1
<b>2009</b>						
March	189.9	265.1	109.5	149.7	125.0	248.5
June	188.1	267.4	111.8	150.9	127.7	254.1
September	186.6	269.4	112.1	155.3	128.5	251.6
December	189.3	270.8	112.3	156.5	128.5	249.3
<b>2010</b>						
March	191.3	274.3	107.5	158.8	126.8	261.1
June	190.7	290.6	107.5	159.7	128.0	266.8
September	189.8	299.5	109.0	163.3	129.0	264.8
December	194.0	301.8	106.9	164.3	128.2	261.7
<b>2011</b>						
March	199.6	305.0	106.1	166.4	126.2	271.9
June	202.4	307.0	108.7	167.1	128.1	277.4
September	201.9	308.6	110.3	170.2	128.4	274.6
December	198.9	311.3	109.7	170.9	128.5	271.2

(a) Unless otherwise specified, base of each index: 1989-90 = 100.0.

CPI GROUPS, Weighted average of eight capital cities—Index numbers(a) *continued*

<i>Period</i>	<i>Transport</i>	<i>Communication</i>	<i>Recreation and culture</i>	<i>Education</i>	<i>Insurance and financial services(b)</i>	<i>All groups CPI</i>
<b>2007-08</b>	165.2	111.2	135.7	275.6	109.4	161.4
<b>2008-09</b>	163.7	112.0	137.1	289.1	111.6	166.4
<b>2009-10</b>	164.9	112.4	137.7	305.4	109.3	170.3
<b>2010-11</b>	168.5	112.3	136.1	323.2	112.7	175.6
<b>2007</b>						
December	163.3	111.2	136.2	268.6	108.0	160.1
<b>2008</b>						
March	166.4	111.1	135.8	282.5	109.8	162.2
June	171.6	111.2	135.5	282.6	114.0	164.6
September	173.3	111.4	137.3	281.3	115.9	166.5
December	161.3	111.8	138.0	281.4	115.6	166.0
<b>2009</b>						
March	158.8	112.2	136.5	296.7	108.3	166.2
June	161.4	112.5	136.4	296.9	106.5	167.0
September	164.5	112.5	137.4	297.0	107.5	168.6
December	163.2	112.5	139.5	297.2	108.3	169.5
<b>2010</b>						
March	165.3	112.4	138.1	313.7	110.5	171.0
June	166.5	112.3	135.6	313.8	110.7	172.1
September	165.5	112.0	136.5	314.2	111.2	173.3
December	165.9	112.1	136.8	314.2	110.7	174.0
<b>2011</b>						
March	170.3	112.2	136.0	332.2	113.6	176.7
June	172.4	112.7	135.2	332.2	115.4	178.3
September	172.6	112.7	136.4	332.4	116.2	179.4
December	172.6	113.9	137.5	332.4	116.9	179.4

(a) Unless otherwise specified, base of each index: 1989-90 = 100.0.

(b) Base: June quarter 2005 = 100.0.

## CPI GROUPS, Weighted average of eight capital cities—Percentage changes

	<i>Food and non-alcoholic beverages</i>	<i>Alcohol and tobacco</i>	<i>Clothing and footwear</i>	<i>Housing</i>	<i>Furnishings, household equipment and services</i>	<i>Health</i>
PERCENTAGE CHANGE (from previous financial year)						
<b>2007-08</b>	3.1	3.8	0.8	5.2	-1.0	4.5
<b>2008-09</b>	4.9	5.5	0.8	6.0	1.4	5.1
<b>2009-10</b>	1.6	4.8	-0.3	5.8	2.3	4.8
<b>2010-11</b>	3.7	9.8	-2.0	4.9	-0.1	4.6
PERCENTAGE CHANGE (from corresponding quarter of previous year)						
<b>2007</b>						
December	1.2	3.6	1.6	4.8	-1.0	4.1
<b>2008</b>						
March	5.7	3.8	-0.5	5.7	-0.7	4.6
June	3.9	4.8	1.1	6.0	-0.6	4.8
September	3.4	5.8	0.0	6.8	0.9	5.1
December	5.6	5.8	0.2	6.5	0.4	4.9
<b>2009</b>						
March	5.7	5.7	2.1	5.5	1.9	5.3
June	4.8	4.7	1.3	5.2	2.4	5.2
September	2.5	4.0	2.3	5.5	4.0	4.4
December	1.9	3.1	2.1	5.5	3.6	4.7
<b>2010</b>						
March	0.7	3.5	-1.8	6.1	1.4	5.1
June	1.4	8.7	-3.8	5.8	0.2	5.0
September	1.7	11.2	-2.8	5.2	0.4	5.2
December	2.5	11.4	-4.8	5.0	-0.2	5.0
<b>2011</b>						
March	4.3	11.2	-1.3	4.8	-0.5	4.1
June	6.1	5.6	1.1	4.6	0.1	4.0
September	6.4	3.0	1.2	4.2	-0.5	3.7
December	2.5	3.1	2.6	4.0	0.2	3.6
PERCENTAGE CHANGE (from previous quarter)						
<b>2007</b>						
December	-0.1	1.3	0.2	1.1	0.8	-1.0
<b>2008</b>						
March	2.1	1.0	-2.4	1.9	-0.6	4.0
June	-0.1	1.9	3.0	1.1	1.6	2.4
September	1.4	1.4	-0.7	2.6	-0.9	-0.2
December	2.0	1.4	0.4	0.7	0.3	-1.2
<b>2009</b>						
March	2.2	1.0	-0.5	0.9	0.8	4.4
June	-0.9	0.9	2.1	0.8	2.2	2.3
September	-0.8	0.7	0.3	2.9	0.6	-1.0
December	1.4	0.5	0.2	0.8	0.0	-0.9
<b>2010</b>						
March	1.1	1.3	-4.3	1.5	-1.3	4.7
June	-0.3	5.9	0.0	0.6	0.9	2.2
September	-0.5	3.1	1.4	2.3	0.8	-0.7
December	2.2	0.8	-1.9	0.6	-0.6	-1.2
<b>2011</b>						
March	2.9	1.1	-0.7	1.3	-1.6	3.9
June	1.4	0.7	2.5	0.4	1.5	2.0
September	-0.2	0.5	1.5	1.9	0.2	-1.0
December	-1.5	0.9	-0.5	0.4	0.1	-1.2

	<i>Transport</i>	<i>Communication</i>	<i>Recreation and culture</i>	<i>Education</i>	<i>Insurance and financial services</i>	<i>All groups CPI</i>
PERCENTAGE CHANGE (from previous financial year)						
<b>2007-08</b>	4.6	0.4	1.4	4.2	6.2	3.4
<b>2008-09</b>	-0.9	0.7	1.0	4.9	2.0	3.1
<b>2009-10</b>	0.7	0.4	0.4	5.6	-2.1	2.3
<b>2010-11</b>	2.2	-0.1	-1.2	5.8	3.1	3.1
PERCENTAGE CHANGE (from corresponding quarter of previous year)						
<b>2007</b>						
December	5.6	0.4	1.0	4.1	4.9	3.0
<b>2008</b>						
March	6.8	0.1	1.4	4.3	6.8	4.2
June	6.9	0.0	1.7	4.2	9.9	4.5
September	8.7	0.2	1.6	4.7	9.5	5.0
December	-1.2	0.5	1.3	4.8	7.0	3.7
<b>2009</b>						
March	-4.6	1.0	0.5	5.0	-1.4	2.5
June	-5.9	1.2	0.7	5.1	-6.6	1.5
September	-5.1	1.0	0.1	5.6	-7.2	1.3
December	1.2	0.6	1.1	5.6	-6.3	2.1
<b>2010</b>						
March	4.1	0.2	1.2	5.7	2.0	2.9
June	3.2	-0.2	-0.6	5.7	3.9	3.1
September	0.6	-0.4	-0.7	5.8	3.4	2.8
December	1.7	-0.4	-1.9	5.7	2.2	2.7
<b>2011</b>						
March	3.0	-0.2	-1.5	5.9	2.8	3.3
June	3.5	0.4	-0.3	5.9	4.2	3.6
September	4.3	0.6	-0.1	5.8	4.5	3.5
December	4.0	1.6	0.5	5.8	5.6	3.1
PERCENTAGE CHANGE (from previous quarter)						
<b>2007</b>						
December	2.4	0.0	0.8	0.0	2.1	0.9
<b>2008</b>						
March	1.9	-0.1	-0.3	5.2	1.7	1.3
June	3.1	0.1	-0.2	0.0	3.8	1.5
September	1.0	0.2	1.3	-0.5	1.7	1.2
December	-6.9	0.4	0.5	0.0	-0.3	-0.3
<b>2009</b>						
March	-1.5	0.4	-1.1	5.4	-6.3	0.1
June	1.6	0.3	-0.1	0.1	-1.7	0.5
September	1.9	0.0	0.7	0.0	0.9	1.0
December	-0.8	0.0	1.5	0.1	0.7	0.5
<b>2010</b>						
March	1.3	-0.1	-1.0	5.6	2.0	0.9
June	0.7	-0.1	-1.8	0.0	0.2	0.6
September	-0.6	-0.3	0.7	0.1	0.5	0.7
December	0.2	0.1	0.2	0.0	-0.4	0.4
<b>2011</b>						
March	2.7	0.1	-0.6	5.7	2.6	1.6
June	1.2	0.4	-0.6	0.0	1.6	0.9
September	0.1	0.0	0.9	0.1	0.7	0.6
December	0.0	1.1	0.8	0.0	0.6	0.0

Quarters	Sydney	Melbourne	Brisbane	Adelaide	Perth	Hobart	Darwin	Canberra	Weighted average of eight capital cities
FOOD AND NON-ALCOHOLIC BEVERAGES									
<b>2009</b>									
December	189.0	187.5	190.8	199.6	187.4	185.5	183.3	191.8	189.3
<b>2010</b>									
March	191.7	188.6	193.6	201.1	189.5	186.3	185.8	193.0	191.3
June	190.7	188.6	192.3	200.6	189.4	185.7	186.2	191.6	190.7
September	189.9	187.4	191.0	200.7	188.4	186.0	185.2	191.2	189.8
December	194.8	192.0	195.8	203.8	189.5	189.3	186.2	195.6	194.0
<b>2011</b>									
March	200.6	197.0	202.4	209.7	195.0	193.0	191.0	202.4	199.6
June	202.5	200.0	204.5	212.7	200.6	195.4	193.0	206.8	202.4
September	202.1	199.7	203.3	212.6	199.6	195.9	194.5	206.9	201.9
December	198.7	197.4	200.5	208.4	197.0	193.5	189.6	201.7	198.9
ALCOHOL AND TOBACCO									
<b>2009</b>									
December	275.3	271.5	267.3	284.2	254.0	253.0	268.1	258.3	270.8
<b>2010</b>									
March	278.4	274.4	270.2	287.2	260.3	257.6	271.0	260.7	274.3
June	293.8	293.3	287.7	304.1	272.5	270.5	284.4	274.0	290.6
September	303.0	302.0	297.3	314.2	280.5	278.5	293.7	280.3	299.5
December	304.7	305.0	300.5	316.8	281.0	280.8	296.1	283.1	301.8
<b>2011</b>									
March	310.1	306.4	303.5	319.8	283.9	284.2	300.2	284.6	305.0
June	312.5	308.7	305.6	322.1	283.6	285.3	303.3	285.1	307.0
September	313.2	310.4	307.4	323.3	286.7	290.5	306.7	286.1	308.6
December	315.0	313.8	309.6	326.0	289.4	291.2	310.0	292.5	311.3
CLOTHING AND FOOTWEAR									
<b>2009</b>									
December	118.8	111.2	109.9	105.6	101.8	107.1	110.0	117.8	112.3
<b>2010</b>									
March	115.6	105.2	104.7	101.6	93.8	104.7	106.2	116.2	107.5
June	114.9	105.5	103.6	102.4	96.5	104.6	106.5	114.2	107.5
September	117.6	105.9	105.6	104.5	96.6	106.5	105.4	113.1	109.0
December	114.1	105.5	104.4	100.9	94.1	106.2	105.7	111.3	106.9
<b>2011</b>									
March	114.0	103.7	103.2	100.5	93.6	103.4	106.7	112.8	106.1
June	114.8	105.8	105.7	105.0	100.8	106.2	105.5	117.3	108.7
September	116.9	109.0	107.5	107.3	98.5	105.0	105.5	115.8	110.3
December	115.4	110.5	104.7	106.8	96.3	108.4	107.1	116.0	109.7
HOUSING									
<b>2009</b>									
December	162.7	137.3	175.4	150.0	162.6	158.1	190.2	165.8	156.5
<b>2010</b>									
March	164.1	141.5	176.7	152.0	164.1	158.9	193.1	167.0	158.8
June	165.0	142.1	177.5	151.8	166.7	159.7	194.1	168.1	159.7
September	168.8	144.8	182.5	155.4	170.0	164.1	197.9	170.6	163.3
December	170.1	145.8	183.4	156.2	170.5	164.4	199.4	171.3	164.3
<b>2011</b>									
March	171.9	149.2	184.2	160.4	170.8	167.4	200.3	172.7	166.4
June	173.4	149.4	185.2	159.1	171.6	167.9	200.5	173.1	167.1
September	177.4	151.8	186.5	163.5	174.3	171.8	202.6	176.8	170.2
December	178.8	151.6	187.1	165.4	175.7	172.2	203.2	177.8	170.9

(a) Unless otherwise specified, base of each index: 1989-90 = 100.0.



Quarters	Sydney	Melbourne	Brisbane	Adelaide	Perth	Hobart	Darwin	Canberra	Weighted average of eight capital cities
FURNISHINGS, HOUSEHOLD EQUIPMENT AND SERVICES									
<b>2009</b>									
December	124.5	128.6	135.7	130.1	126.0	137.9	123.0	136.3	128.5
<b>2010</b>									
March	122.1	127.4	133.0	128.4	125.7	137.4	123.8	135.6	126.8
June	123.5	127.6	134.8	130.1	127.4	138.0	123.6	136.6	128.0
September	124.8	129.1	135.4	131.2	127.3	139.3	122.8	138.3	129.0
December	123.6	128.5	135.5	129.2	127.0	137.3	122.0	138.6	128.2
<b>2011</b>									
March	121.6	126.5	133.4	127.8	124.6	136.3	122.7	136.7	126.2
June	123.5	127.8	135.8	129.7	126.7	136.9	122.1	138.1	128.1
September	124.3	128.1	135.3	130.9	126.6	137.6	121.8	138.7	128.4
December	123.8	129.2	134.9	129.8	126.8	137.5	121.8	139.5	128.5
HEALTH									
<b>2009</b>									
December	232.9	261.6	252.1	254.4	243.6	274.2	230.2	249.1	249.3
<b>2010</b>									
March	243.7	275.5	265.7	262.3	254.2	285.3	237.9	261.4	261.1
June	250.2	279.6	271.9	271.5	257.3	292.2	243.4	266.9	266.8
September	248.2	278.7	267.8	270.0	255.3	288.7	243.2	263.8	264.8
December	244.9	275.8	263.2	267.1	253.9	284.3	241.0	261.0	261.7
<b>2011</b>									
March	253.9	287.0	276.0	274.6	263.1	295.0	248.5	275.1	271.9
June	260.2	291.6	280.2	283.2	268.2	301.0	252.0	277.5	277.4
September	258.0	288.1	277.2	280.5	264.8	297.9	253.1	276.9	274.6
December	254.5	284.8	273.4	277.6	261.8	294.0	250.4	272.2	271.2
TRANSPORT									
<b>2009</b>									
December	162.0	162.4	167.8	165.9	163.1	157.7	155.3	161.8	163.2
<b>2010</b>									
March	164.2	164.0	171.4	167.8	165.1	158.6	157.1	163.4	165.3
June	164.3	165.8	174.2	168.5	167.0	159.7	156.6	162.4	166.5
September	163.8	164.2	173.6	166.4	165.6	159.5	157.2	162.1	165.5
December	163.8	165.3	174.4	168.0	164.7	157.2	157.5	163.4	165.9
<b>2011</b>									
March	168.6	169.1	178.6	172.5	169.9	160.8	160.6	167.3	170.3
June	170.2	170.8	181.4	175.6	171.7	164.1	164.6	170.3	172.4
September	170.7	170.9	182.0	176.1	171.1	163.7	165.5	169.9	172.6
December	169.9	170.4	183.4	177.8	171.1	163.7	166.4	172.2	172.6
COMMUNICATION									
<b>2009</b>									
December	112.0	112.0	116.4	114.1	110.8	113.6	104.1	111.2	112.5
<b>2010</b>									
March	111.9	111.9	116.2	114.0	110.7	113.5	104.0	111.1	112.4
June	111.9	111.8	116.2	113.9	110.7	113.5	104.1	111.0	112.3
September	111.6	111.4	116.0	113.8	110.6	113.3	104.0	110.7	112.0
December	111.6	111.4	116.0	113.8	110.6	113.4	104.1	110.7	112.1
<b>2011</b>									
March	111.8	111.5	116.2	114.0	110.8	113.6	104.3	110.9	112.2
June	112.3	112.0	116.7	114.5	111.3	114.1	104.7	111.4	112.7
September	112.2	112.0	116.6	114.4	111.3	114.1	104.7	111.4	112.7
December	113.4	113.1	117.9	115.6	112.5	115.3	105.8	112.6	113.9

(a) Unless otherwise specified, base of each index: 1989-90 = 100.0.

<i>Quarters</i>	<i>Sydney</i>	<i>Melbourne</i>	<i>Brisbane</i>	<i>Adelaide</i>	<i>Perth</i>	<i>Hobart</i>	<i>Darwin</i>	<i>Canberra</i>	<i>Weighted average of eight capital cities</i>
RECREATION AND CULTURE									
<b>2009</b>									
December	141.4	140.1	135.7	141.3	138.3	133.6	113.5	136.8	139.5
<b>2010</b>									
March	140.0	139.3	132.6	139.4	138.8	134.0	108.1	134.0	138.1
June	137.2	136.4	130.4	138.6	136.3	129.7	108.6	133.1	135.6
September	138.7	136.5	132.0	139.5	136.3	129.5	111.8	135.1	136.5
December	138.7	136.3	131.9	141.0	138.1	131.1	108.4	136.0	136.8
<b>2011</b>									
March	137.8	136.8	130.1	139.1	136.2	130.4	106.6	135.0	136.0
June	137.1	134.9	129.6	139.3	136.3	130.0	109.6	135.1	135.2
September	137.8	136.4	131.4	141.3	136.6	132.3	110.5	136.7	136.4
December	139.2	137.8	130.7	141.0	138.7	134.0	107.2	138.4	137.5
EDUCATION									
<b>2009</b>									
December	307.6	278.4	322.1	341.0	295.6	294.8	204.4	276.2	297.2
<b>2010</b>									
March	317.9	299.8	337.3	360.8	318.7	305.2	210.6	288.5	313.7
June	318.0	300.0	337.3	360.8	318.7	305.2	210.6	288.5	313.8
September	317.6	301.5	337.5	360.8	318.7	305.5	210.6	288.5	314.2
December	317.4	301.6	337.5	360.9	318.7	305.6	210.6	288.6	314.2
<b>2011</b>									
March	336.1	320.3	354.4	381.1	335.4	317.2	219.0	303.5	332.2
June	336.2	320.3	354.5	381.1	335.4	317.2	219.0	303.6	332.2
September	336.4	320.4	354.5	381.1	335.5	317.6	219.0	304.0	332.4
December	336.5	320.4	354.7	381.2	335.5	317.8	219.0	304.1	332.4
INSURANCE AND FINANCIAL SERVICES (b)									
<b>2009</b>									
December	109.0	106.6	108.9	108.7	108.5	109.6	105.2	110.5	108.3
<b>2010</b>									
March	111.3	108.8	111.4	110.1	111.3	112.0	108.1	113.1	110.5
June	111.1	109.1	112.0	110.4	111.1	112.2	109.1	113.6	110.7
September	110.9	109.9	113.7	111.7	111.1	113.7	109.8	114.6	111.2
December	110.4	109.7	113.3	111.4	110.3	113.6	109.4	112.4	110.7
<b>2011</b>									
March	113.5	112.5	116.0	114.1	113.1	116.2	112.1	115.3	113.6
June	115.5	113.8	117.6	116.2	115.4	118.2	114.0	117.1	115.4
September	115.5	114.8	118.2	117.6	117.4	118.0	116.4	119.2	116.2
December	116.5	114.9	119.7	118.7	117.7	117.7	118.2	120.4	116.9

(a) Unless otherwise specified, base of each index: 1989-90 = 100.0.

(b) Base: June quarter 2005 = 100.0.

<i>Group, sub-group and expenditure class</i>	<i>Sydney</i>	<i>Melbourne</i>	<i>Brisbane</i>	<i>Adelaide</i>	<i>Perth</i>	<i>Hobart</i>	<i>Darwin</i>	<i>Canberra</i>	<i>Weighted average of eight capital cities</i>
<b>Food and non-alcoholic beverages</b>	-0.51	-0.34	-0.42	-0.60	-0.37	-0.38	-0.65	-0.74	-0.44
Bread and cereal products	0.02	0.01	0.03	0.09	0.01	-0.01	0.00	0.03	0.03
Bread	0.01	0.00	-0.01	0.00	-0.01	0.03	0.02	0.03	0.00
Cakes and biscuits	0.02	0.02	0.00	0.07	0.01	-0.03	-0.01	0.01	0.02
Breakfast cereals	0.01	-0.01	0.03	0.02	0.00	0.02	0.00	0.00	0.01
Other cereal products	-0.01	-0.01	0.01	-0.01	0.01	-0.01	-0.02	-0.01	-0.01
Meat and seafoods	-0.04	-0.06	-0.03	-0.03	0.01	0.01	-0.07	-0.03	-0.03
Beef and veal	0.00	-0.01	0.00	-0.01	0.01	0.01	0.00	0.00	-0.01
Pork	-0.01	-0.02	-0.03	-0.01	-0.01	-0.01	-0.05	-0.01	-0.01
Lamb and goat	0.00	0.00	-0.01	-0.01	-0.02	0.01	-0.02	-0.01	-0.01
Poultry	-0.06	-0.01	-0.03	-0.02	0.01	0.01	-0.03	-0.02	-0.03
Other meats	0.02	-0.01	0.02	0.00	0.02	0.00	0.02	0.02	0.01
Fish and other seafood	0.01	-0.01	0.00	0.01	0.00	-0.01	0.00	0.00	0.01
Dairy and related products	-0.02	-0.01	0.01	0.01	0.02	0.01	-0.04	0.05	0.00
Milk	0.01	0.00	-0.01	0.01	0.00	-0.01	0.00	0.00	0.00
Cheese	-0.02	-0.01	0.00	-0.01	0.00	-0.01	-0.02	0.01	-0.01
Ice cream and other dairy products	0.00	0.01	0.01	0.00	0.02	0.02	-0.02	0.04	0.01
Fruit and vegetables	-0.55	-0.41	-0.48	-0.70	-0.35	-0.55	-0.51	-0.78	-0.50
Fruit	-0.39	-0.29	-0.41	-0.53	-0.30	-0.60	-0.29	-0.69	-0.38
Vegetables	-0.15	-0.12	-0.06	-0.18	-0.04	0.05	-0.22	-0.09	-0.11
Food products n.e.c.	-0.01	0.02	-0.01	-0.06	-0.05	0.05	-0.07	-0.02	-0.01
Eggs	0.01	0.00	0.00	-0.01	-0.01	0.00	0.00	0.00	0.00
Jams, honey and spreads	0.00	0.01	-0.01	0.00	0.00	0.01	-0.01	0.01	0.00
Food additives and condiments	0.00	0.00	0.00	-0.02	-0.01	0.01	-0.01	-0.01	-0.01
Oils and fats	0.01	0.01	0.00	0.00	0.00	0.01	0.00	0.00	0.00
Snacks and confectionery	-0.03	-0.01	-0.04	-0.05	-0.04	-0.03	-0.04	-0.06	-0.03
Other food products n.e.c.	0.02	0.02	0.03	0.02	0.00	0.06	-0.02	0.03	0.02
Non-alcoholic beverages	0.00	0.04	0.03	0.02	-0.04	0.02	0.02	0.00	0.01
Coffee, tea and cocoa	0.02	0.04	0.04	0.03	0.01	0.04	0.03	0.02	0.03
Waters, soft drinks and juices	-0.02	0.01	-0.01	-0.01	-0.05	-0.01	-0.01	-0.02	-0.01
Meals out and take away foods	0.08	0.07	0.03	0.08	0.01	0.09	0.01	0.01	0.07
Restaurant meals	0.05	0.06	0.01	0.06	0.01	0.04	0.01	0.02	0.04
Take away and fast foods	0.04	0.01	0.03	0.03	0.01	0.04	0.00	0.00	0.02
<b>Alcohol and tobacco</b>	0.07	0.13	0.10	0.11	0.13	0.04	0.16	0.25	0.11
Alcoholic beverages	0.04	0.09	0.06	0.08	0.10	0.02	0.13	0.22	0.07
Spirits	0.03	0.01	0.03	0.01	0.01	0.01	0.02	0.02	0.02
Wine	-0.01	0.00	0.01	0.04	0.01	0.02	0.03	0.02	0.00
Beer	0.03	0.08	0.02	0.02	0.08	0.00	0.09	0.17	0.05
Tobacco	0.04	0.05	0.04	0.04	0.02	0.01	0.04	0.03	0.04
Tobacco	0.04	0.05	0.04	0.04	0.02	0.01	0.04	0.03	0.04
<b>Clothing and footwear</b>	-0.09	0.09	-0.19	-0.04	-0.15	0.27	0.10	0.01	-0.04
Garments	-0.07	0.09	0.02	0.10	-0.05	0.19	0.04	-0.03	0.01
Garments for men	-0.01	-0.04	0.02	0.10	-0.04	0.05	0.02	-0.01	-0.01
Garments for women	-0.03	0.09	0.01	0.02	-0.02	0.11	-0.02	-0.01	0.02
Garments for infants and children	-0.04	0.04	-0.01	-0.02	0.01	0.02	0.03	-0.01	0.00
Footwear	-0.01	-0.01	-0.01	-0.02	0.04	0.01	0.07	-0.02	0.00
Footwear for men	0.02	0.00	0.00	-0.01	0.01	0.00	0.02	0.01	0.00
Footwear for women	-0.01	-0.02	-0.02	-0.01	0.03	0.00	0.04	-0.01	-0.01
Footwear for infants and children	-0.01	0.01	0.00	-0.01	0.00	0.00	0.00	0.00	-0.01
Accessories and clothing services	-0.01	0.01	-0.19	-0.12	-0.15	0.08	0.00	0.05	-0.05
Accessories	-0.01	0.02	-0.19	-0.11	-0.15	0.09	0.00	0.05	-0.05
Cleaning, repair and hire of clothing and footwear	0.00	0.00	0.00	0.00	0.00	0.00	0.00	0.00	0.00

<i>Group, sub-group and expenditure class</i>	<i>Sydney</i>	<i>Melbourne</i>	<i>Brisbane</i>	<i>Adelaide</i>	<i>Perth</i>	<i>Hobart</i>	<i>Darwin</i>	<i>Canberra</i>	<i>Weighted average of eight capital cities</i>
<b>Housing</b>	0.32	-0.04	0.12	0.43	0.31	0.07	0.13	0.21	0.19
Rents	0.21	0.05	0.08	0.10	0.12	0.02	0.05	0.21	0.12
Rents	0.21	0.05	0.08	0.10	0.12	0.02	0.05	0.21	0.12
New dwelling purchase by owner-occupiers	0.08	-0.01	0.02	0.02	0.11	0.03	0.04	-0.01	0.04
New dwelling purchase by owner-occupiers	0.08	-0.01	0.02	0.02	0.11	0.03	0.04	-0.01	0.04
Other housing	0.03	-0.05	0.03	0.00	0.03	0.02	0.04	0.00	0.00
Maintenance and repair of the dwelling	0.03	-0.05	0.02	0.00	0.04	0.01	0.03	0.01	0.00
Property rates and charges	0.00	0.00	0.00	0.00	0.00	0.00	0.00	0.00	0.00
Utilities	0.00	-0.02	0.00	0.33	0.04	0.00	0.00	0.00	0.03
Water and sewerage	0.00	0.00	0.00	0.00	0.00	0.00	0.00	0.00	0.00
Electricity	0.00	0.00	0.00	0.28	0.00	0.00	0.00	0.00	0.02
Gas and other household fuels	0.00	-0.02	0.00	0.04	0.04	0.00	-0.01	0.00	0.00
<b>Furnishings, household equipment and services</b>	-0.06	0.13	-0.04	-0.15	0.02	-0.01	0.01	0.12	0.01
Furniture and furnishings	0.01	0.10	-0.02	0.01	0.00	0.00	0.06	0.05	0.03
Furniture	0.01	0.10	-0.01	0.01	0.00	0.00	0.06	0.05	0.03
Carpets and other floor coverings	0.00	0.00	0.00	0.00	0.00	0.00	0.00	0.00	0.00
Household textiles	0.03	-0.01	-0.01	-0.07	0.07	0.03	-0.01	0.04	0.01
Household textiles	0.03	-0.01	-0.01	-0.07	0.07	0.03	-0.01	0.04	0.01
Household appliances, utensils and tools	-0.09	-0.07	-0.03	-0.07	-0.03	-0.02	-0.02	-0.03	-0.06
Major household appliances	-0.03	-0.05	-0.01	-0.05	0.00	0.04	-0.05	-0.04	-0.03
Small electric household appliances	-0.03	0.00	-0.01	-0.02	-0.02	0.02	0.00	0.00	-0.02
Glassware, tableware and household utensils	-0.04	-0.02	-0.02	0.00	-0.02	-0.07	0.02	0.01	-0.02
Tools and equipment for house and garden	0.00	0.00	0.01	0.00	0.00	0.00	0.01	0.00	0.00
Non-durable household products	-0.07	0.04	-0.06	-0.09	-0.10	-0.06	-0.13	-0.03	-0.04
Cleaning and maintenance products	0.00	-0.01	0.00	0.00	0.01	0.00	-0.01	0.01	0.00
Personal care products	-0.02	0.02	-0.04	-0.06	-0.04	-0.04	-0.04	-0.03	-0.02
Other non-durable household products	-0.05	0.02	-0.02	-0.02	-0.08	-0.03	-0.07	0.00	-0.03
Domestic and household services	0.06	0.06	0.07	0.04	0.09	0.04	0.10	0.07	0.06
Child care	0.04	0.02	0.04	0.02	0.03	0.01	0.07	0.04	0.04
Hairdressing and personal grooming services	0.01	0.01	0.01	0.01	0.02	0.01	0.01	0.03	0.02
Other household services	0.01	0.03	0.02	0.01	0.04	0.02	0.01	0.01	0.02
<b>Health</b>	-0.12	-0.11	-0.13	-0.12	-0.11	-0.12	-0.08	-0.17	-0.12
Medical products, appliances and equipment	-0.12	-0.10	-0.12	-0.13	-0.10	-0.14	-0.09	-0.08	-0.11
Pharmaceutical products	-0.11	-0.10	-0.11	-0.13	-0.10	-0.14	-0.08	-0.09	-0.11
Therapeutic appliances and equipment	0.00	0.00	0.00	0.00	0.00	0.00	0.00	0.00	0.00
Medical, dental and hospital services	-0.01	0.00	-0.01	0.02	-0.01	0.01	0.01	-0.09	-0.01
Medical and hospital services	-0.01	-0.01	-0.03	0.01	-0.02	0.01	0.00	-0.10	-0.02
Dental services	0.02	0.01	0.00	0.01	0.00	0.00	0.00	0.00	0.01
<b>Transport</b>	-0.09	-0.06	0.18	0.20	0.00	-0.01	0.12	0.31	0.00
Private motoring	-0.09	-0.06	0.17	0.21	0.00	-0.02	0.12	0.31	0.01
Motor vehicles	-0.11	-0.10	0.05	0.01	-0.10	-0.18	0.03	0.08	-0.07
Spare parts and accessories for motor vehicles	-0.01	0.02	0.01	0.02	0.00	-0.01	0.02	-0.02	0.00
Automotive fuel	0.03	0.01	0.08	0.07	0.05	0.13	0.05	0.20	0.05
Maintenance and repair of motor vehicles	-0.01	0.01	-0.01	0.06	0.03	0.00	0.02	0.07	0.01
Other services in respect of motor vehicles	0.01	0.01	0.02	0.03	0.00	0.03	0.00	0.00	0.01
Urban transport fares	0.00	0.00	0.00	0.00	0.01	0.02	0.00	0.00	0.00
Urban transport fares	0.00	0.00	0.00	0.00	0.01	0.02	0.00	0.00	0.00

<i>Group, sub-group and expenditure class</i>	<i>Sydney</i>	<i>Melbourne</i>	<i>Brisbane</i>	<i>Adelaide</i>	<i>Perth</i>	<i>Hobart</i>	<i>Darwin</i>	<i>Canberra</i>	<i>Weighted average of eight capital cities</i>
<b>Communication</b>	0.06	0.05	0.06	0.07	0.06	0.05	0.05	0.05	0.06
Communication	0.06	0.05	0.06	0.07	0.06	0.05	0.05	0.05	0.06
Postal services	0.00	0.00	0.00	0.00	0.00	0.00	0.00	0.00	0.00
Telecommunication equipment and services	0.06	0.05	0.06	0.06	0.06	0.05	0.05	0.05	0.06
<b>Recreation and culture</b>	0.21	0.24	-0.12	-0.06	0.37	0.32	-0.64	0.33	0.17
Audio, visual and computing equipment and services	-0.08	0.00	-0.14	-0.12	-0.04	-0.14	-0.09	-0.09	-0.07
Audio, visual and computing equipment	-0.12	-0.05	-0.13	-0.16	-0.10	-0.16	-0.15	-0.16	-0.10
Audio, visual and computing media and services	0.03	0.06	-0.01	0.05	0.06	0.02	0.06	0.06	0.04
Newspapers, books and stationery	0.02	0.00	0.00	-0.01	0.00	0.00	0.01	0.00	0.00
Books	0.00	0.00	0.00	-0.01	0.00	-0.01	0.00	0.00	0.00
Newspapers, magazines and stationery	0.01	0.00	0.00	0.00	0.00	0.00	0.01	0.00	0.00
Holiday travel and accommodation	0.29	0.27	0.10	0.08	0.35	0.34	-0.53	0.40	0.24
Domestic holiday travel and accommodation	0.30	0.39	0.20	0.24	0.46	0.52	-0.44	0.40	0.33
International holiday travel and accommodation	-0.01	-0.12	-0.11	-0.16	-0.12	-0.19	-0.08	0.00	-0.08
Other recreation, sport and culture	-0.01	-0.03	-0.06	-0.01	0.07	0.14	-0.03	0.03	-0.01
Equipment for sports, camping and open-air recreation	0.01	-0.01	-0.03	0.01	0.03	0.00	-0.01	-0.01	0.00
Games, toys and hobbies	-0.05	-0.04	-0.01	-0.06	-0.02	-0.05	-0.05	-0.01	-0.04
Pets and related products	0.01	0.01	0.00	0.00	0.02	0.01	0.01	0.02	0.01
Veterinary and other services for pets	0.00	0.00	0.00	0.00	0.04	0.00	0.00	0.01	0.01
Sports participation	0.00	0.01	-0.01	0.03	0.00	0.01	0.01	0.00	0.00
Other recreational, sporting and cultural services	0.00	0.01	0.00	0.00	0.00	0.18	0.00	0.01	0.01
<b>Education</b>	0.00	0.00	0.01	0.00	0.00	0.00	0.00	0.01	0.00
Education	0.00	0.00	0.01	0.00	0.00	0.00	0.00	0.01	0.00
Preschool and primary education	0.00	0.00	0.00	0.00	0.00	0.01	0.00	0.00	0.00
Secondary education	0.00	0.00	0.00	0.00	0.00	0.00	0.00	0.00	0.00
Tertiary education	0.00	0.00	0.00	0.00	0.00	0.00	0.00	0.00	0.00
<b>Insurance and financial services</b>	0.08	0.01	0.13	0.07	0.02	-0.02	0.13	0.09	0.07
Insurance	0.04	0.00	0.09	0.03	0.03	0.04	0.06	0.03	0.04
Insurance	0.04	0.00	0.09	0.03	0.03	0.04	0.06	0.03	0.04
Financial services	0.04	0.02	0.04	0.04	-0.01	-0.06	0.07	0.05	0.03
Deposit and loan facilities (direct charges)	0.00	0.00	0.00	0.00	0.00	0.00	0.00	0.00	0.00
Other financial services	0.04	0.01	0.04	0.05	-0.01	-0.06	0.07	0.06	0.02
<b>All groups CPI</b>	<b>-0.1</b>	<b>0.1</b>	<b>-0.3</b>	<b>-0.1</b>	<b>0.3</b>	<b>0.2</b>	<b>-0.7</b>	<b>0.5</b>	<b>0.0</b>

Group, sub-group and expenditure class	INDEX NUMBERS(a)			PERCENTAGE CHANGE		CONTRIBUTION TO TOTAL CPI (ALL GROUPS CPI INDEX POINTS)		CHANGE IN POINTS CONTRIBUTION
	Dec Qtr 2010	Sep Qtr 2011	Dec Qtr 2011	Sep Qtr 2011 to Dec Qtr 2011	Dec Qtr 2010 to Dec Qtr 2011	Sep Qtr 2011	Dec Qtr 2011	Sep Qtr 2011 to Dec Qtr 2011
<b>Food and non-alcoholic beverages</b>	194.0	201.9	198.9	-1.5	2.5	29.94	29.50	-0.44
Bread and cereal products	209.1	209.5	211.2	0.8	1.0	3.03	3.06	0.03
Bread	249.3	242.9	243.6	0.3	-2.3	1.02	1.02	0.00
Cakes and biscuits	192.5	196.2	198.8	1.3	3.3	1.31	1.33	0.02
Breakfast cereals	158.3	161.7	165.3	2.2	4.4	0.32	0.33	0.01
Other cereal products	175.1	178.1	176.4	-1.0	0.7	0.38	0.37	-0.01
Meat and seafoods	167.3	168.7	167.2	-0.9	-0.1	4.05	4.02	-0.03
Beef and veal	165.9	163.4	162.8	-0.4	-1.9	0.69	0.68	-0.01
Pork	171.7	171.3	167.4	-2.3	-2.5	0.64	0.63	-0.01
Lamb and goat	258.9	274.7	269.4	-1.9	4.1	0.45	0.44	-0.01
Poultry	108.3	107.7	104.5	-3.0	-3.5	0.87	0.84	-0.03
Other meats	186.8	193.9	197.7	2.0	5.8	0.68	0.69	0.01
Fish and other seafood	155.0	153.7	154.5	0.5	-0.3	0.72	0.73	0.01
Dairy and related products	208.1	198.7	198.4	-0.2	-4.7	2.04	2.04	0.00
Milk	216.2	194.2	194.3	0.1	-10.1	0.76	0.76	0.00
Cheese	196.8	200.3	196.3	-2.0	-0.3	0.61	0.60	-0.01
Ice cream and other dairy products	195.5	192.5	194.7	1.1	-0.4	0.68	0.69	0.01
Fruit and vegetables	189.8	230.1	208.1	-9.6	9.6	5.16	4.66	-0.50
Fruit	211.4	303.5	262.9	-13.4	24.4	2.82	2.44	-0.38
Vegetables	176.5	179.1	170.2	-5.0	-3.6	2.33	2.22	-0.11
Food products n.e.c.	213.6	216.2	215.7	-0.2	1.0	3.87	3.86	-0.01
Eggs	199.3	198.1	197.7	-0.2	-0.8	0.19	0.19	0.00
Jams, honey and spreads	209.7	213.2	213.9	0.3	2.0	0.26	0.26	0.00
Food additives and condiments	154.8	160.4	159.6	-0.5	3.1	0.55	0.54	-0.01
Oils and fats	195.5	190.7	193.4	1.4	-1.1	0.31	0.31	0.00
Snacks and confectionery	223.9	228.8	224.7	-1.8	0.4	1.73	1.70	-0.03
Other food products n.e.c.	169.5	168.9	172.8	2.3	1.9	0.84	0.86	0.02
Non-alcoholic beverages	176.0	179.9	181.1	0.7	2.9	2.03	2.04	0.01
Coffee, tea and cocoa	161.6	155.4	164.2	5.7	1.6	0.49	0.52	0.03
Waters, soft drinks and juices	180.2	186.9	185.2	-0.9	2.8	1.54	1.53	-0.01
Meals out and take away foods	203.5	208.3	209.7	0.7	3.0	9.75	9.82	0.07
Restaurant meals	203.5	207.9	209.6	0.8	3.0	5.03	5.07	0.04
Take away and fast foods	205.8	211.1	212.1	0.5	3.1	4.72	4.74	0.02
<b>Alcohol and tobacco</b>	301.8	308.6	311.3	0.9	3.1	12.66	12.77	0.11
Alcoholic beverages	203.5	204.3	206.0	0.8	1.2	8.46	8.53	0.07
Spirits	222.4	224.9	227.5	1.2	2.3	1.61	1.63	0.02
Wine	155.6	155.6	155.7	0.1	0.1	2.92	2.92	0.00
Beer	232.3	232.9	235.8	1.2	1.5	3.93	3.98	0.05
Tobacco	601.8	634.4	640.1	0.9	6.4	4.20	4.24	0.04
Tobacco	601.8	634.4	640.1	0.9	6.4	4.20	4.24	0.04
<b>Clothing and footwear</b>	106.9	110.3	109.7	-0.5	2.6	7.20	7.16	-0.04
Garments	104.4	105.4	105.6	0.2	1.1	4.52	4.53	0.01
Garments for men	103.5	104.7	104.3	-0.4	0.8	1.35	1.34	-0.01
Garments for women	103.6	105.2	105.8	0.6	2.1	2.62	2.64	0.02
Garments for infants and children	108.8	107.4	106.9	-0.5	-1.7	0.55	0.55	0.00
Footwear	93.6	93.7	93.3	-0.4	-0.3	1.11	1.11	0.00
Footwear for men	87.0	85.8	87.2	1.6	0.2	0.25	0.25	0.00
Footwear for women	97.0	96.6	95.6	-1.0	-1.4	0.64	0.63	-0.01
Footwear for infants and children	98.1	99.8	99.2	-0.6	1.1	0.23	0.22	-0.01
Accessories and clothing services(b)	118.2	132.8	128.6	-3.2	8.8	1.57	1.52	-0.05
Accessories(b)	99.4	114.6	110.4	-3.7	11.1	1.36	1.31	-0.05
Cleaning, repair and hire of clothing and footwear	209.1	212.9	214.0	0.5	2.3	0.21	0.21	0.00

(a) Unless otherwise specified, base of each index: 1989-90 = 100.0.

(b) Base: June quarter 1998 = 100.0

Group, sub-group and expenditure class	INDEX NUMBERS(a)			PERCENTAGE CHANGE		CONTRIBUTION TO TOTAL CPI (ALL GROUPS CPI INDEX POINTS)		CHANGE IN POINTS CONTRIBUTION
	Dec Qtr 2010	Sep Qtr 2011	Dec Qtr 2011	Sep Qtr 2011 to Dec Qtr 2011	Dec Qtr 2010 to Dec Qtr 2011	Sep Qtr 2011	Dec Qtr 2011	Sep Qtr 2011 to Dec Qtr 2011
<b>Housing</b>	164.3	170.2	170.9	0.4	4.0	40.48	40.67	0.19
Rents	190.5	197.6	199.6	1.0	4.8	12.11	12.23	0.12
Rents	190.5	197.6	199.6	1.0	4.8	12.11	12.23	0.12
New dwelling purchase by owner-occupiers(b)	174.8	176.8	177.3	0.3	1.4	15.44	15.48	0.04
New dwelling purchase by owner-occupiers(b)	174.8	176.8	177.3	0.3	1.4	15.44	15.48	0.04
Other housing(b)	170.3	175.3	175.3	0.0	2.9	6.04	6.04	0.00
Maintenance and repair of the dwelling	184.2	187.0	187.0	0.0	1.5	3.67	3.67	0.00
Property rates and charges(b)	194.4	204.6	204.6	0.0	5.2	2.37	2.37	0.00
Utilities	248.6	272.8	273.7	0.3	10.1	6.89	6.92	0.03
Water and sewerage(b)	216.2	234.7	234.7	0.0	8.6	1.74	1.74	0.00
Electricity	240.0	267.7	269.2	0.6	12.2	3.83	3.85	0.02
Gas and other household fuels	249.6	265.9	266.4	0.2	6.7	1.33	1.33	0.00
<b>Furnishings, household equipment and services</b>	128.2	128.4	128.5	0.1	0.2	16.27	16.28	0.01
Furniture and furnishings	141.6	140.0	141.4	1.0	-0.1	3.39	3.42	0.03
Furniture	136.4	134.5	136.0	1.1	-0.3	2.89	2.92	0.03
Carpets and other floor coverings	161.6	162.0	162.7	0.4	0.7	0.50	0.50	0.00
Household textiles	104.4	105.9	106.9	0.9	2.4	1.10	1.11	0.01
Household textiles	104.4	105.9	106.9	0.9	2.4	1.10	1.11	0.01
Household appliances, utensils and tools	102.1	102.7	100.1	-2.5	-2.0	2.56	2.50	-0.06
Major household appliances	101.4	100.1	96.7	-3.4	-4.6	0.89	0.86	-0.03
Small electric household appliances	95.5	95.8	92.5	-3.4	-3.1	0.43	0.41	-0.02
Glassware, tableware and household utensils	92.9	97.6	94.9	-2.8	2.2	0.79	0.77	-0.02
Tools and equipment for house and garden	118.5	115.8	116.4	0.5	-1.8	0.46	0.46	0.00
Non-durable household products	144.2	142.2	141.0	-0.8	-2.2	5.10	5.06	-0.04
Cleaning and maintenance products	133.4	136.3	136.7	0.3	2.5	0.53	0.53	0.00
Personal care products	144.9	141.9	140.8	-0.8	-2.8	1.97	1.95	-0.02
Other non-durable household products	156.2	153.7	152.0	-1.1	-2.7	2.61	2.58	-0.03
Domestic and household services	234.8	242.3	246.2	1.6	4.9	4.12	4.18	0.06
Child care	162.0	171.3	175.7	2.6	8.5	1.25	1.29	0.04
Hairdressing and personal grooming services	210.7	214.6	216.4	0.8	2.7	1.61	1.63	0.02
Other household services	266.9	275.6	279.8	1.5	4.8	1.25	1.27	0.02
<b>Health</b>	261.7	274.6	271.2	-1.2	3.6	9.34	9.22	-0.12
Medical products, appliances and equipment	156.0	165.5	157.4	-4.9	0.9	2.26	2.15	-0.11
Pharmaceutical products	157.8	167.3	158.0	-5.6	0.1	1.99	1.88	-0.11
Therapeutic appliances and equipment	151.8	159.7	159.5	-0.1	5.1	0.27	0.27	0.00
Medical, dental and hospital services	307.2	321.8	321.5	-0.1	4.7	7.08	7.07	-0.01
Medical and hospital services	314.9	331.7	330.9	-0.2	5.1	6.08	6.06	-0.02
Dental services	268.7	275.9	277.9	0.7	3.4	1.00	1.01	0.01
<b>Transport</b>	165.9	172.6	172.6	0.0	4.0	20.62	20.62	0.00
Private motoring	161.4	168.0	168.0	0.0	4.1	19.29	19.30	0.01
Motor vehicles	96.1	94.4	93.3	-1.2	-2.9	5.73	5.66	-0.07
Spare parts and accessories for motor vehicles	143.2	143.2	143.5	0.2	0.2	1.78	1.78	0.00
Automotive fuel	217.1	242.2	244.0	0.7	12.4	6.24	6.29	0.05
Maintenance and repair of motor vehicles	166.1	171.5	171.9	0.2	3.5	3.09	3.10	0.01
Other services in respect of motor vehicles	267.9	274.9	276.1	0.4	3.1	2.46	2.47	0.01
Urban transport fares	250.7	257.1	257.2	0.0	2.6	1.33	1.33	0.00
Urban transport fares	250.7	257.1	257.2	0.0	2.6	1.33	1.33	0.00

(a) Unless otherwise specified, base of each index: 1989-90 = 100.0.

(b) Base: June quarter 1998 = 100.0.

Group, sub-group and expenditure class	INDEX NUMBERS(a)			PERCENTAGE CHANGE		CONTRIBUTION TO TOTAL CPI (ALL GROUPS CPI INDEX POINTS)		CHANGE IN POINTS CONTRIBUTION
	Dec Qtr 2010	Sep Qtr 2011	Dec Qtr 2011	Sep Qtr 2011 to Dec Qtr 2011	Dec Qtr 2010 to Dec Qtr 2011	Sep Qtr 2011	Dec Qtr 2011	Sep Qtr 2011 to Dec Qtr 2011
<b>Communication</b>	112.1	112.7	113.9	1.1	1.6	5.43	5.49	0.06
Communication	112.1	112.7	113.9	1.1	1.6	5.43	5.49	0.06
Postal services	165.4	172.9	172.9	0.0	4.5	0.22	0.22	0.00
Telecommunication equipment and services	109.0	109.4	110.6	1.1	1.5	5.21	5.27	0.06
<b>Recreation and culture</b>	136.8	136.4	137.5	0.8	0.5	22.60	22.77	0.17
Audio, visual and computing equipment and services	47.9	43.8	43.2	-1.4	-9.8	4.40	4.33	-0.07
Audio, visual and computing equipment	13.8	11.6	11.2	-3.4	-18.8	2.68	2.58	-0.10
Audio, visual and computing media and services	92.7	90.4	92.5	2.3	-0.2	1.72	1.76	0.04
Newspapers, books and stationery	199.3	199.2	199.6	0.2	0.2	1.92	1.92	0.00
Books(b)	132.5	132.0	131.9	-0.1	-0.5	0.70	0.70	0.00
Newspapers, magazines and stationery(b)	136.8	136.9	137.4	0.4	0.4	1.22	1.22	0.00
Holiday travel and accommodation	150.1	151.3	155.5	2.8	3.6	8.77	9.01	0.24
Domestic holiday travel and accommodation	157.7	156.9	168.4	7.3	6.8	4.47	4.80	0.33
International holiday travel and accommodation	140.5	143.4	140.7	-1.9	0.1	4.29	4.21	-0.08
Other recreation, sport and culture	192.3	196.7	196.4	-0.2	2.1	7.52	7.51	-0.01
Equipment for sports, camping and open-air recreation(b)	84.8	80.7	80.7	0.0	-4.8	1.07	1.07	0.00
Games, toys and hobbies(b)	94.1	92.3	89.8	-2.7	-4.6	1.38	1.34	-0.04
Pets and related products	190.5	202.3	205.2	1.4	7.7	0.69	0.70	0.01
Veterinary and other services for pets	244.0	253.8	256.2	0.9	5.0	0.72	0.73	0.01
Sports participation(b)	180.7	186.7	187.1	0.2	3.5	1.71	1.71	0.00
Other recreational, sporting and cultural services(b)	174.7	182.5	182.8	0.2	4.6	1.95	1.96	0.01
<b>Education</b>	314.2	332.4	332.4	0.0	5.8	5.68	5.68	0.00
Education	314.2	332.4	332.4	0.0	5.8	5.68	5.68	0.00
Preschool and primary education(c)	177.0	187.1	187.4	0.2	5.9	0.94	0.94	0.00
Secondary education(c)	191.9	205.0	205.0	0.0	6.8	2.24	2.24	0.00
Tertiary education(c)	147.6	154.9	154.9	0.0	4.9	2.50	2.50	0.00
<b>Insurance and financial services(d)</b>	110.7	116.2	116.9	0.6	5.6	9.12	9.19	0.07
Insurance	331.2	350.2	354.9	1.3	7.2	2.57	2.61	0.04
Insurance	331.2	350.2	354.9	1.3	7.2	2.57	2.61	0.04
Financial services(e)	..	99.8	100.2	0.4	..	6.55	6.58	0.03
Deposit and loan facilities (direct charges)(e)	..	99.5	99.6	0.1	..	1.34	1.34	0.00
Other financial services(d)	112.3	114.3	114.9	0.5	2.3	5.21	5.23	0.02
<b>All groups CPI</b>	<b>174.0</b>	<b>179.4</b>	<b>179.4</b>	<b>0.0</b>	<b>3.1</b>	<b>179.4</b>	<b>179.4</b>	<b>0.0</b>

.. not applicable

(a) Unless otherwise specified, base of each index: 1989-90 = 100.0.

(b) Base: June quarter 1998 = 100.0

(c) Base: June quarter 2000 = 100.0.

(d) Base: June quarter 2005 = 100.0.

(e) Base: June quarter 2011 = 100.0.



## ANALYTICAL SERIES, Weighted average of eight capital cities(a)

	INDEX NUMBERS(b)			PERCENTAGE CHANGE		CONTRIBUTION TO TOTAL CPI (ALL GROUPS CPI INDEX POINTS)		CHANGE IN POINTS CONTRIBUTION
	Dec Qtr 2010	Sep Qtr 2011	Dec Qtr 2011	Sep Qtr 2011 to Dec Qtr 2011	Dec Qtr 2010 to Dec Qtr 2011	Sep Qtr 2011	Dec Qtr 2011	Sep Qtr 2011 to Dec Qtr 2011
<b>All groups CPI</b>	174.0	179.4	179.4	0.0	3.1	179.4	179.4	0.0
<b>All groups CPI, seasonally adjusted</b>	174.3	r179.2	179.5	0.2	3.0	..	..	..
<b>Underlying trend series</b>								
Trimmed mean(c)	r128.9	r131.4	132.2	0.6	2.6	..	..	..
Weighted median(c)	r131.4	r134.1	134.8	0.5	2.6	..	..	..
<b>International trade exposure series</b>								
Tradables(d)	124.9	128.6	127.1	-1.2	1.8	70.94	70.11	-0.83
Non-tradables(d)	160.5	165.6	166.8	0.7	3.9	108.42	109.24	0.82
<b>Goods and services series</b>								
Goods component	170.4	175.1	174.0	-0.6	2.1	104.23	103.60	-0.63
Services component	180.7	187.1	188.6	0.8	4.4	75.13	75.75	0.62
<b>All groups CPI including</b>								
Deposit and loan facilities (indirect charges)	174.0	179.4	179.4	0.0	3.1	..	..	..
<b>Market goods and services excluding 'volatile items'</b>								
Goods	161.7	162.4	162.2	-0.1	0.3	83.95	83.86	-0.09
Services	189.7	195.7	197.8	1.1	4.3	54.46	55.05	0.59
Total	170.2	172.8	173.4	0.3	1.9	138.41	138.91	0.50
<b>All groups CPI excluding</b>								
Food and non-alcoholic beverages	170.2	175.1	175.6	0.3	3.2	149.42	149.85	0.43
Alcohol and tobacco	165.8	171.1	171.0	-0.1	3.1	166.69	166.58	-0.11
Clothing and footwear	178.3	183.8	183.8	0.0	3.1	172.15	172.19	0.04
Housing	173.0	178.1	177.8	-0.2	2.8	138.88	138.68	-0.20
Furnishings, household equipment and services	180.7	186.8	186.8	0.0	3.4	163.08	163.07	-0.01
Health	170.0	175.1	175.2	0.1	3.1	170.02	170.13	0.11
Transport	175.3	180.4	180.4	0.0	2.9	158.74	158.73	-0.01
Communication	175.7	181.2	181.1	-0.1	3.1	173.92	173.86	-0.06
Recreation and culture	179.5	185.7	185.5	-0.1	3.3	156.76	156.58	-0.18
Education	172.1	177.2	177.2	0.0	3.0	173.68	173.67	-0.01
Insurance and financial services	182.4	187.7	187.6	-0.1	2.9	170.23	170.17	-0.06
Housing, Insurance and financial services	173.8	178.6	178.2	-0.2	2.5	129.75	129.50	-0.25
Medical and hospital services	170.6	175.8	175.8	0.0	3.0	173.28	173.29	0.01
Food and energy	165.5	169.1	169.5	0.2	2.4	143.05	143.46	0.41
'Volatile items'	181.4	185.4	185.9	0.3	2.5	167.96	168.40	0.44

.. not applicable

r revised

(a) Refer to paragraphs 11 and 12 of the Explanatory Notes for a description of these series.

(b) Unless otherwise specified, base of each index: 1989-90 = 100.0.

(c) Base: June quarter 2002 = 100.0.

(d) Base: June quarter 1998 = 100.0.

<i>Period</i>	<i>Australia</i>	<i>New Zealand</i>	<i>Hong Kong</i>	<i>Indonesia</i>	<i>Japan</i>	<i>Korea, Republic of</i>	<i>Singapore</i>	<i>Taiwan</i>	<i>Canada</i>	<i>United States of America</i>	<i>Germany</i>	<i>United Kingdom</i>
<b>2007-08</b>	163.8	143.2	171.2	763.5	107.3	223.2	134.2	144.4	145.8	161.8	138.7	162.4
<b>2008-09</b>	167.8	147.7	173.1	831.7	107.9	233.0	137.0	146.6	147.6	163.7	140.1	168.6
<b>2009-10</b>	171.1	150.5	175.5	862.2	105.9	238.8	138.6	146.6	149.5	166.0	141.2	175.4
<b>2010-11</b>	175.4	156.5	182.3	920.6	105.9	248.0	144.2	148.4	153.4	170.7	143.3	185.3
<b>2007</b>												
December	162.7	142.7	169.4	747.1	107.2	220.9	133.2	146.2	144.7	160.1	138.3	161.2
<b>2008</b>												
March	164.5	143.5	172.9	773.7	107.1	223.8	135.5	143.9	145.0	161.9	139.1	162.6
June	166.6	145.8	175.1	804.4	108.1	228.7	137.1	146.2	148.2	166.7	139.9	166.5
September	167.7	148.2	175.8	827.9	109.4	231.8	137.7	148.9	149.5	169.2	140.9	168.6
December	166.6	147.0	172.9	832.6	108.4	231.2	138.6	149.0	146.5	162.2	139.8	168.1
<b>2009</b>												
March	167.9	147.4	172.0	833.9	106.8	233.2	136.5	143.7	146.0	160.6	139.6	167.4
June	169.0	148.3	171.6	832.4	106.8	235.7	135.1	144.7	148.4	162.8	140.2	170.2
September	169.7	150.4	172.3	850.8	106.5	236.9	136.6	146.9	148.8	164.4	140.7	171.7
December	170.4	150.2	174.9	854.6	105.9	237.1	138.0	146.9	149.0	165.4	141.0	173.9
<b>2010</b>												
March	171.5	150.7	177.0	864.2	105.5	239.5	138.9	146.0	149.7	166.5	141.2	176.1
June	172.6	150.8	177.8	879.0	105.8	241.8	140.7	146.5	150.5	167.6	141.7	179.8
September	173.1	152.5	178.4	905.1	105.6	243.9	142.1	147.1	151.1	167.7	142.2	180.3
December	173.8	156.3	180.5	921.2	106.1	246.0	143.1	148.8	152.2	168.4	142.7	182.9
<b>2011</b>												
March	176.4	157.8	184.1	926.7	105.6	250.4	145.4	148.2	153.8	171.2	143.6	186.9
June	178.2	159.3	186.3	929.5	106.2	251.8	146.1	149.4	156.5	175.3	144.6	190.9
September	178.6	159.7	186.4	950.6	105.9	255.4	148.0	149.3	156.6	175.8	145.3	192.0
December	178.2	159.0	nya	nya	nya	nya	nya	151.2	nya	175.1	145.4	194.4

nya not yet available

(a) Base of each index: 1989-90 = 100.0.

<i>Period</i>	<i>Australia</i>	<i>New Zealand</i>	<i>Hong Kong</i>	<i>Indonesia</i>	<i>Japan</i>	<i>Korea, Republic of</i>	<i>Singapore</i>	<i>Taiwan</i>	<i>Canada</i>	<i>United States of America</i>	<i>Germany</i>	<i>United Kingdom</i>
PERCENTAGE CHANGE (from previous year)												
<b>2007-08</b>	2.5	2.6	3.9	9.0	0.8	3.6	5.0	4.3	1.4	4.0	2.7	3.0
<b>2008-09</b>	2.4	3.1	1.1	8.9	0.6	4.4	2.1	1.5	1.2	1.2	1.0	3.8
<b>2009-10</b>	2.0	1.9	1.4	3.7	-1.9	2.5	1.2	0.0	1.3	1.4	0.8	4.0
<b>2010-11</b>	2.5	4.0	3.9	6.8	0.0	3.9	4.0	1.2	2.6	2.8	1.5	5.6

PERCENTAGE CHANGE (from corresponding quarter of previous year)

<b>2007</b>												
December	2.2	2.8	3.1	7.1	0.7	3.4	4.1	6.2	1.8	4.4	3.1	2.6
<b>2008</b>												
March	3.5	3.0	4.9	8.9	1.2	3.8	6.1	4.9	0.9	4.6	3.0	3.1
June	3.3	3.7	5.7	13.2	1.6	4.9	6.8	4.2	1.6	5.2	2.5	4.3
September	3.8	5.3	5.0	13.6	2.6	5.6	5.0	5.4	2.8	6.8	2.6	5.9
December	2.4	3.0	2.1	11.4	1.1	4.7	4.1	1.9	1.2	1.3	1.1	4.3
<b>2009</b>												
March	2.1	2.7	-0.5	7.8	-0.3	4.2	0.7	-0.1	0.7	-0.8	0.5	3.0
June	1.4	1.7	-2.0	3.5	-1.2	3.1	-1.5	-1.0	0.1	-2.3	0.1	2.2
September	1.2	1.5	-2.0	2.8	-2.7	2.2	-0.8	-1.3	-0.5	-2.8	-0.1	1.8
December	2.3	2.2	1.2	2.6	-2.3	2.6	-0.4	-1.4	1.7	2.0	0.9	3.5
<b>2010</b>												
March	2.1	2.2	2.9	3.6	-1.2	2.7	1.8	1.6	2.5	3.7	1.1	5.2
June	2.1	1.7	3.6	5.6	-0.9	2.6	4.1	1.2	1.4	2.9	1.1	5.6
September	2.0	1.4	3.5	6.4	-0.8	3.0	4.0	0.1	1.5	2.0	1.1	5.0
December	2.0	4.1	3.2	7.8	0.2	3.8	3.7	1.3	2.1	1.8	1.2	5.2
<b>2011</b>												
March	2.9	4.7	4.0	7.2	0.1	4.6	4.7	1.5	2.7	2.8	1.7	6.1
June	3.2	5.6	4.8	5.7	0.4	4.1	3.8	2.0	4.0	4.6	2.0	6.2
September	3.2	4.7	4.5	5.0	0.3	4.7	4.2	1.5	3.6	4.8	2.2	6.5
December	2.5	1.7	nya	nya	nya	nya	nya	1.6	nya	4.0	1.9	6.3

PERCENTAGE CHANGE (from previous quarter)

<b>2007</b>												
December	0.7	1.3	1.2	2.5	0.6	0.6	1.6	3.5	-0.5	1.0	0.7	1.3
<b>2008</b>												
March	1.1	0.6	2.1	3.6	-0.1	1.3	1.7	-1.6	0.2	1.1	0.6	0.9
June	1.3	1.6	1.3	4.0	0.9	2.2	1.2	1.6	2.2	3.0	0.6	2.4
September	0.7	1.6	0.4	2.9	1.2	1.4	0.4	1.8	0.9	1.5	0.7	1.3
December	-0.7	-0.8	-1.6	0.6	-0.9	-0.3	0.7	0.1	-2.0	-4.1	-0.8	-0.3
<b>2009</b>												
March	0.8	0.3	-0.5	0.2	-1.5	0.9	-1.5	-3.6	-0.3	-1.0	-0.1	-0.4
June	0.7	0.6	-0.2	-0.2	0.0	1.1	-1.0	0.7	1.6	1.4	0.4	1.7
September	0.4	1.4	0.4	2.2	-0.3	0.5	1.1	1.5	0.3	1.0	0.4	0.9
December	0.4	-0.1	1.5	0.4	-0.6	0.1	1.0	0.0	0.1	0.6	0.2	1.3
<b>2010</b>												
March	0.6	0.3	1.2	1.1	-0.4	1.0	0.7	-0.6	0.5	0.7	0.1	1.3
June	0.6	0.1	0.5	1.7	0.3	1.0	1.3	0.3	0.5	0.7	0.4	2.1
September	0.3	1.1	0.3	3.0	-0.2	0.9	1.0	0.4	0.4	0.1	0.4	0.3
December	0.4	2.5	1.2	1.8	0.5	0.9	0.7	1.2	0.7	0.4	0.4	1.4
<b>2011</b>												
March	1.5	1.0	2.0	0.6	-0.5	1.8	1.6	-0.4	1.1	1.7	0.6	2.2
June	1.0	1.0	1.2	0.3	0.6	0.6	0.5	0.8	1.8	2.4	0.7	2.1
September	0.2	0.3	0.1	2.3	-0.3	1.4	1.3	-0.1	0.1	0.3	0.5	0.6
December	-0.2	-0.4	nya	nya	nya	nya	nya	1.3	nya	-0.4	0.1	1.3

nya not yet available

## EXPLANATORY NOTES

### BRIEF DESCRIPTION OF THE CPI

**1** The Consumer Price Index (CPI) measures quarterly changes in the price of a 'basket' of goods and services which account for a high proportion of expenditure by the CPI population group (i.e. metropolitan households). This 'basket' covers a wide range of goods and services, arranged in the following eleven groups:

- Food and non-alcoholic beverages
- Alcohol and tobacco
- Clothing and footwear
- Housing
- Furnishings, household equipment and services
- Health
- Transport
- Communication
- Recreation and culture
- Education
- Insurance and financial services.

**2** Capital city indexes used by the CPI are based on the 2006 Australian Standard Geographical Classification (ASGC) statistical divisions. The capital city indexes measure price movements over time in each city individually. They do not measure differences in retail price levels between cities.

**3** Further information about the CPI is contained in *Australian Consumer Price Index: Concepts, Sources and Methods, 2011* (cat. no. 6461.0). An updated version reflecting the changes made during the 16th series review was released on 19 December 2011.

### PRICES

**4** The frequency of price collection by item varies as necessary to obtain reliable price measures. Prices of some items are volatile (i.e. their prices may vary many times each quarter) and for these items frequent price observations are necessary to obtain a reliable measure of the average price for the quarter. Each month prices are collected at regular intervals for goods such as milk, bread, fresh meat and seafood, fresh fruit and vegetables, alcohol, tobacco, women's outerwear, project homes, motor vehicles, petrol and holiday travel and accommodation. For most other items, price volatility is not a problem and prices are collected once a quarter. There are a few items where prices are changed at infrequent intervals, for example education fees where prices are set once a year. In these cases, the frequency of price collection is modified accordingly.

**5** In order to facilitate a more even spread of field collection workload, the number of items for which prices are collected quarterly is distributed roughly equally across each month of each quarter. In all cases, however, individual items are priced in the same month of each quarter. For example, items for which prices are collected in the first month of the September quarter, July, are also priced in the first month of subsequent quarters, namely October, January and April.

### WEIGHTING PATTERN

**6** There are 87 expenditure classes (that is, groupings of like items) in the 16th series CPI and each expenditure class has its own weight, or measure of relative importance. In calculating the index, price changes for the various expenditure classes are combined using these weights.

**7** Changes in the weighting pattern have been made at approximately six yearly intervals to take account of changes in household spending patterns. The CPI now comprises sixteen series of price indexes which have been linked to form a continuous series. The current and historical weighting patterns for the CPI for the weighted average of the eight capital cities are published in *Consumer Price Index: Historical Weighting Patterns (1948 to 2011)* (cat. no. 6431.0). The 16th series weighting pattern for the weighted average of eight capital cities and for each of the eight capital cities, as well as each city's percentage contribution to the weighted average, are also published in the

## EXPLANATORY NOTES *continued*

### WEIGHTING PATTERN *continued*

*Consumer Price Index: 16th Series Weighting Pattern* (cat. no. 6471.0). Both publications are available on the ABS website <<http://www.abs.gov.au>>.

### ANALYSIS OF CPI CHANGES

**8** Movements in indexes from one period to another can be expressed either as changes in index points or as percentage changes. The following example illustrates the method of calculating changes in index points and percentage changes between any two periods:

All groups CPI: Weighted average of eight capital cities. Index numbers:

June Quarter 2011      178.3 (see Table 1)

less June Quarter 2010   172.1 (see Table 1)

Change in index points   6.2

Percentage change       $6.2/172.1 \times 100 = 3.6\%$  (see Table 2)

**9** Percentage changes are calculated to illustrate three different kinds of movements in index numbers:

- movements between consecutive financial years (where the index numbers for financial years are simple averages of the quarterly index numbers)
- movements between corresponding quarters of consecutive years
- movements between consecutive quarters.

**10** Table 7 provides a detailed analysis, for the weighted average of eight capital cities, of movements in the CPI since the previous quarter, including information on movements for groups, sub-groups and expenditure classes. It also shows the contribution which each makes to the total CPI. For instance, the dairy and related products sub-group contributed 2.04 index points to the total All groups index number of 179.4 for the December Quarter 2011. The final column shows contributions to the change in All Groups index points by each group, sub-group and expenditure class.

### ANALYTICAL SERIES

**11** Various series are presented in Table 8 in this publication to assist users analyse the CPI. Some of the analytical series are compiled by taking subsets of the CPI basket, and most are self explanatory, such as 'All groups CPI excluding Food and non-alcoholic beverages'. (A complete list of CPI groups, sub-groups and expenditure classes is contained in Tables 6 and 7). Other series and their composition are described below:

- *All groups CPI, seasonally adjusted*: Comprises all components included in the All groups CPI, seasonally adjusted where seasonality has been identified at the weighted average of eight capital cities level. Seasonal adjustment factors are calculated using the history of price changes up to the current quarter CPI and are revised each quarter.
- *Underlying trend series, 'Trimmed mean' and 'Weighted median'*: These are two analytical measures of trend inflation calculated from the June quarter 2002 using standard ABS seasonal adjustment techniques. For more information see the *Information Paper: Seasonal Adjustment of Consumer Price Indexes, 2011* (cat. no. 6401.0.55.003). The Trimmed mean and Weighted median are calculated using the distribution of expenditure classes each quarter derived as follows:
  - Where CPI expenditure classes are identified as having a seasonal pattern, quarterly price changes are estimated on a seasonally adjusted basis. In the 16th series, 62 out of the 87 expenditure classes are classified as seasonal. A description of which series are seasonal is published in Appendix 1 of the September quarter 2011 issue of *Consumer Price Index, Australia* (cat. no 6401.0).
  - The CPI expenditure classes are ranked from lowest to highest according to the seasonally adjusted percentage change from the previous quarter.
  - The seasonally adjusted relative weight of each expenditure class is calculated based on its previous quarter contribution to the All groups CPI.

## EXPLANATORY NOTES *continued*

### ANALYTICAL SERIES *continued*

- The 'Trimmed mean' is calculated by using a weighted average of percentage change from the previous quarter (seasonally adjusted) from the middle 70 per cent of the distribution.
- The 'Weighted median' is calculated using the percentage change from the previous quarter (seasonally adjusted) expenditure class at the 50th percentile of the distribution.
- *International trade exposure series, Tradables component*: Comprises all items whose prices are largely determined on the world market. For more information, see paragraph 12 below.
- *International trade exposure series, Non-tradables component*: Comprises all items not included in the Tradables component.
- *All groups CPI, goods component*: Comprises the Food and non-alcoholic beverages group (except Restaurant meals); Alcohol and tobacco group; Clothing and footwear group (except Cleaning, repair and hire of clothing and footwear); Furnishings, household equipment and services group (except Domestic and household services sub-group); Utilities, Audio, visual and computing equipment and services, and Newspapers, books and stationery sub-groups; and New dwelling purchase by owner-occupiers, Pharmaceutical products, Motor vehicles, Automotive fuel, Spare parts and accessories for motor vehicles, Equipment for sports, camping and open-air recreation, Games, toys and hobbies and Pets and related products expenditure classes.
- *All groups CPI, services component*: Comprises all items not included in the 'All groups CPI, goods component'. A description of which series are goods or services is published in Appendix 1 of the September quarter 2011 issue of *Consumer Price Index, Australia* (cat. no 6401.0).
- *All groups CPI including Deposit and loan facilities (indirect charges)*: One of the outcomes of the 16th series CPI Review was to remove the indirectly measured component of the Deposit and loan facilities index from the headline CPI but to include it in a new analytical series. This index includes the 16th series All groups CPI plus the indirectly measured component of the Deposit and loan facilities index.
- *Market goods and services excluding 'volatile items'*: in addition to the items excluded from the series 'All groups CPI excluding 'volatile items'', also excludes: Utilities, Property rates and charges, Child care, Health, Other services in respect of motor vehicles, Urban transport fares, Postal services, and Education.
- *All groups CPI excluding Insurance and financial services*: Reflecting the changing composition of the CPI, from the September quarter 1989 to the June quarter 1998, comprises the All groups CPI excluding house insurance, house contents insurance, vehicle insurance and mortgage interest charges and consumer credit charges; from the September quarter 1998 to the June quarter 2000 comprises the All groups CPI excluding house insurance, house contents insurance and vehicle insurance; from the September quarter 2000 to the June quarter 2005 comprises the All groups CPI excluding insurance services; from the September quarter 2005 to the June quarter 2011 comprises the All groups CPI excluding Financial and insurance services; from the September quarter 2011 comprises the All groups CPI excluding Insurance and financial services.

## EXPLANATORY NOTES *continued*

### ANALYTICAL SERIES *continued*

- *All groups CPI excluding Housing and Insurance and financial services*: Reflecting the changing composition of the CPI, from the September quarter 1989 to the June quarter 1998, comprises the All groups CPI excluding Housing, house contents insurance, vehicle insurance and consumer credit charges; from the September quarter 1998 to the June quarter 2000 comprises the All groups CPI excluding Housing, house insurance, house contents insurance and vehicle insurance; from the September quarter 2000 to the June quarter 2005 comprises the All groups CPI excluding Housing and insurance services; from the September quarter 2005 to the June quarter 2011 comprises the All groups CPI excluding Housing and Financial and insurance services; from the September quarter 2011 comprises the All groups CPI excluding Housing and Insurance and financial services.
- *All groups CPI excluding food and energy*: Comprises the All groups CPI excluding the Food and non-alcoholic beverages group (except Restaurant meals); Electricity, Gas and other household fuels; and Automotive fuel.
- *All groups CPI excluding 'volatile items'*: Comprises the All groups CPI excluding Fruit and vegetables and Automotive fuel.

**12** The International trade exposure series was reviewed and updated for the 16th series. There were five changes of classification. 'Cakes and biscuits' and 'Jams, honey and spreads' were reclassified from non-tradable to tradable. 'Waters, soft drinks and juices', 'Newspapers, magazines and stationery' and 'Pets and related products' were reclassified from tradable to non-tradable. A description of which series are tradable or non-tradable is published in Appendix 1 of the September quarter 2011 issue of *Consumer Price Index, Australia* (cat. no 6401.0). These changes are included from the September quarter 2011. The historical tradable and non-tradable series will not be revised.

### ROUNDING

**13** The published index numbers have been rounded to one decimal place, and the percentage changes (also rounded to one decimal place) are calculated from the rounded index numbers. In some cases, this can result in the percentage change for the total level of a group of indexes being outside the range of the percentage changes for the component level indexes. Seasonally adjusted estimates are calculated from rounded index numbers. The underlying trend estimates, Trimmed mean and Weighted median, are calculated from unrounded component series. The percentage changes for the seasonal and underlying series (rounded to one decimal place) are calculated from the rounded index numbers.

### SEASONALLY ADJUSTED INDEXES

**14** Seasonally adjusted estimates are derived by estimating and removing systematic calendar related effects from the original series. In most economic data these calendar related effects are a combination of the classical seasonal influences (e.g. the effect of the weather, social traditions or administrative practices such as government charges increasing on 1 July each year) plus other kinds of calendar related variations, such as Easter or the proximity of significant days in the year (e.g. Christmas). In the seasonal adjustment process, both seasonal and other calendar related factors evolve over time to reflect changes in activity patterns. The seasonally adjusted estimates reflect the sampling and non-sampling errors to which the original estimates are subject.

**15** The CPI uses a concurrent seasonal adjustment methodology to derive the adjustment factors. This method uses the original time series available at each reference period to estimate seasonal factors for the current and previous quarters. Concurrent seasonal adjustment is technically superior to the more traditional method of reanalysing seasonal patterns once each year because it uses all available data to fine tune the estimates of the seasonal component each quarter. With concurrent analysis, the seasonally adjusted series are subject to revision each quarter as the estimates of the seasonal factors are improved. In most instances, the only significant revisions will be to the combined adjustment factors for the previous quarter and for the same quarter in

## EXPLANATORY NOTES *continued*

### SEASONALLY ADJUSTED INDEXES *continued*

the preceding year as the reference quarter (i.e. if the latest quarter is September quarter 2011 then the most significant revisions will be to June quarter 2011 and September quarter 2010). The seasonal patterns are also reanalysed on an annual basis or when there are known changes to regular events. This can lead to additional revisions.

**16** The ABS applies seasonal adjustment to the expenditure class components of the CPI which are found to be seasonal, and then aggregates the seasonally adjusted and non-seasonally adjusted components to calculate the All groups CPI, seasonally adjusted, Trimmed mean and Weighted median estimates. The seasonally adjusted expenditure class components are available in Table 15 – CPI expenditure class, seasonally adjusted index numbers, weighted average of eight capital cities. The seasonal factors used to derive these seasonally adjusted indexes can be obtained by contacting the CPI section via email: [prices.statistics@abs.gov.au](mailto:prices.statistics@abs.gov.au). For more information about seasonal adjustment of the CPI please refer to *Information Paper: Seasonal Adjustment of Consumer Price Indexes, 2011* (cat. no. 6401.0.55.003).

### INTERNATIONAL COMPARISONS

**17** In analysing price movements in Australia, an important consideration is Australia's performance relative to other countries. However, a simple comparison of All groups (or headline) CPIs is often inappropriate because of the different measurement approaches used by countries for certain products, particularly housing and financial and insurance services. To provide a better basis for international comparisons, the 17th International Conference of Labour Statisticians adopted a resolution which called for countries to 'if possible, compile and provide for dissemination to the international community an index that excludes housing and financial services' in addition to the all-items index.

**18** Table 9 presents indexes for selected countries on a basis consistent with the above resolution and comparable to the Australian series 'All groups excluding Housing and Insurance and financial services' (see paragraph 11). However, other than Australia and New Zealand, the countries represented in this table are yet to develop indexes on this basis, so the indexes presented here are consistent with the series previously published for All groups excluding Housing. To facilitate comparisons, all indexes in this table have been converted, where necessary, to a quarterly basis and re-referenced to an index reference period of 1989–90 = 100.0. Index numbers and percentage changes are always published to one decimal place, and the percentage changes are calculated from the rounded index numbers. Index numbers for periods longer than a single quarter (e.g. for financial years) are calculated as the simple arithmetic average of the rounded quarterly index numbers.

**19** In producing Table 9, the ABS is grateful for the assistance of the relevant national statistical agencies which have either directly supplied indexes for all items excluding housing and insurance and financial services or data to enable their derivation.

### REVISIONS

**20** CPI original indexes are revised only in exceptional circumstances, such as to correct a significant error. As is the case with all price indexes, the index reference period (i.e. the period in which the index is set equal to 100.0) will be changed periodically. The index number levels for all periods will be changed by this process and it may also result in differences, due to rounding, between the percentage changes published on the old base and those on the new base. Seasonally adjusted indexes (including the Trimmed mean and Weighted median) for some quarters will be revised as extra quarters are included in the series analysed for seasonal influences (see paragraphs 14 to 16).

### RELATED PUBLICATIONS

**21** Current publications and other products released by the ABS are listed on the ABS website <<http://www.abs.gov.au>>. The ABS also issues a daily *Release Advice* on the website which details products to be released in the week ahead.

**22** Users may also wish to refer to the following publications and other data products that are available free of charge from the ABS website:



## EXPLANATORY NOTES *continued*

### RELATED PUBLICATIONS

*continued*

- *A Guide to the Consumer Price Index, 16th Series* (cat. no. 6440.0)
- *Australian Consumer Price Index: Concepts, Sources and Methods, 2011* (cat. no. 6461.0)
- *Information Paper: Introduction of the 16th Series Australian Consumer Price Index, 2011* (cat. no. 6470.0)
- *Information Paper: Outcome of the 16th Series Australian Consumer Price Index Review, Australia* (cat. no. 6469.0)
- *Consumer Price Index Commodity Classification, Australia, 16th Series, 2011* (cat. no. 6401.0.55.004)
- *Consumer Price Index: 16th Series Weighting Pattern* (cat. no. 6471.0)
- *Consumer Price Index: Historical Weighting Patterns (1948–2011)* (cat. no. 6431.0)
- *Analytical Living Cost Indexes and Pensioner and Beneficiary Living Cost Index: 16th Series Weighting Patterns* (cat. no. 6472.0)
- *Consumer Price Index: Concordance with Household Expenditure Classification, Australia* (cat. no. 6446.0.55.001)
- *Information Paper: Seasonal Adjustment of Consumer Price Indexes, 2011* (cat. no. 6401.0.55.003)
- *Information Paper: Experimental Price Indexes for Financial Services* (cat. no. 6413.0)
- *Information Paper: The Introduction of Hedonic Price Indexes for Personal Computers* (cat. no. 6458.0)
- *Analytical Living Cost Indexes for Selected Australian Household Types* (cat. no. 6463.0)
- *Pensioner and Beneficiary Living Cost Index* (cat. no. 6467.0)
- *House Price Indexes: Eight Capital Cities* (cat. no. 6416.0)
- *Producer Price Indexes, Australia* (cat. no. 6427.0)
- *International Trade Price Indexes, Australia* (cat. no. 6457.0)
- *Labour Price Index, Australia* (cat. no. 6345.0)

### DATA AVAILABLE

**23** As well as the statistics included in this publication, there is more detailed data for each capital city available on the ABS website. Inquiries should be made to the National Information and Referral Service on 1300 135 070.





## FOR MORE INFORMATION . . .

*INTERNET*      **www.abs.gov.au** the ABS website is the best place for data from our publications and information about the ABS.

### INFORMATION AND REFERRAL SERVICE

Our consultants can help you access the full range of information published by the ABS that is available free of charge from our website. Information tailored to your needs can also be requested as a 'user pays' service. Specialists are on hand to help you with analytical or methodological advice.

*PHONE*                      1300 135 070

*EMAIL*                      [client.services@abs.gov.au](mailto:client.services@abs.gov.au)

*FAX*                              1300 135 211

*POST*                              Client Services, ABS, GPO Box 796, Sydney NSW 2001

## FREE ACCESS TO STATISTICS

All statistics on the ABS website can be downloaded free of charge.

*WEB ADDRESS*      [www.abs.gov.au](http://www.abs.gov.au)