

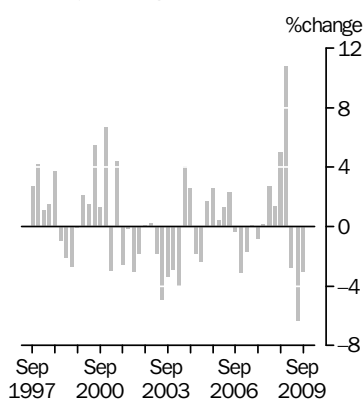
# INTERNATIONAL TRADE PRICE INDEXES

AUSTRALIA

EMBARGO: 11.30AM (CANBERRA TIME) FRI 23 OCT 2009

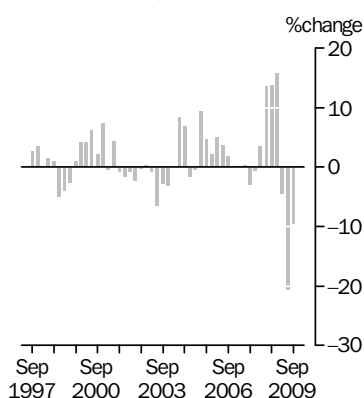
## IMPORT PRICE INDEX: all groups

Quarterly % change



## EXPORT PRICE INDEX: all groups

Quarterly % change



## KEY FIGURES

	Jun Qtr 09 to Sep Qtr 09 % change	Sep Qtr 08 to Sep Qtr 09 % change
<b>Import Price Index all groups</b>	<b>-3.0</b>	<b>-2.3</b>
Food and live animals	-6.3	4.2
Beverages and tobacco	-0.1	6.0
Crude materials, inedible, except fuels	-1.8	-27.6
Mineral fuels, lubricants and related materials	15.1	-38.3
Animal and vegetable oils, fats and waxes	-13.9	-14.4
Chemicals and related products, n.e.c.	-3.9	-4.4
Manufactured goods classified chiefly by material	-4.3	4.1
Machinery and transport equipment	-5.8	8.9
Miscellaneous manufactured articles	-6.9	11.3
Commodities and transactions, n.e.c.	-4.9	18.4
<b>Export Price Index all groups</b>	<b>-9.6</b>	<b>-20.7</b>
Food and live animals	-2.0	-10.5
Beverages and tobacco	-8.6	-5.7
Crude materials, inedible, except fuels	-10.4	-27.7
Mineral fuels, lubricants and related materials	-21.8	-35.3
Chemicals and related products, n.e.c.	-4.0	-2.0
Manufactured goods classified chiefly by material	8.7	-23.8
Machinery and transport equipment	-5.6	3.3
Miscellaneous manufactured articles	-2.6	1.4

## KEY POINTS

### IMPORT PRICE INDEX

- The Import Price Index decreased by 3.0% in the September quarter 2009. The decrease was driven mainly by the appreciation of the Australian dollar against all major trading currencies, as well as lower prices paid for general industrial machinery and equipment, n.e.c. and machine parts, n.e.c. (-7.4%). These falls were partly offset by rises in prices paid for petroleum, petroleum products and related materials (+15.1%). Through the year to September quarter 2009, the Import Price Index decreased by 2.3%.

### EXPORT PRICE INDEX

- The Export Price Index decreased by 9.6% in the September quarter 2009. The decrease was driven mainly by falls in prices received for coal, coke and briquettes (-34.2%) and metalliferous ores and metal scrap (-12.1%), as well as the appreciation of the Australian dollar against all major trading currencies. These falls were partly offset by rises in prices received for non-ferrous metals (+16.1%) and petroleum, petroleum products and related materials (+5.4%). Through the year to September quarter 2009, the Export Price Index decreased by 20.7%, the largest annual decrease since the current series began in September quarter 1974.

## INQUIRIES

For further information about these and related statistics, contact the National Information and Referral Service on 1300 135 070 or Lee Taylor on Canberra (02) 6252 6251.

# NOTES

## FORTHCOMING ISSUES

<i>ISSUE (Quarter)</i>	<i>RELEASE DATE</i>
December 2009	22 January 2010
March 2010	23 April 2010
June 2010	23 July 2010
September 2010	22 October 2010

.....

## CHANGES IN THIS ISSUE

When prices of export commodities are volatile, the export price index in this publication and the export implicit price deflator in the national accounts and the balance of payments can diverge significantly. An explanation of the difference between these two measures is outlined in paragraph 17 of the Explanatory Notes.

Both the Import Price Index and the Export Price Index have been reweighted in the September quarter 2009. This is in line with the ABS policy of reweighting these indexes annually in the September quarter, as explained in paragraphs 8–10 of the Explanatory Notes. The new weighting patterns are provided in an Appendix to this issue.

As a consequence of the annual reweighting, the points contribution data for June quarter 2009 shown in Tables 2, 8 and 17 differ from that published in the previous issue of this publication.

As foreshadowed in the June quarter 2009 issue, the content and format of Tables 14, 15, 17 and 19 (available on the ABS website <<http://www.abs.gov.au>>) have changed from September quarter 2009 to reflect the contemporary industrial classification (ANZSIC 2006). Further information can be found in the Appendix to the March quarter 2009 issue of this publication, as well as in *Information Paper: Update on ANZSIC 2006 Implementation for Producer and International Trade Price Indexes, Australia, 2009* (cat. no. 6427.0.55.002).

## ROUNDING

Any discrepancies between totals and sums of components are due to rounding.

## DATA REFERENCES

Data referenced in the Key points are available from the tables shown in this publication, or in the corresponding tables of this publication on the ABS website <<http://www.abs.gov.au>>.

.....

## ABBREVIATIONS

ABS	Australian Bureau of Statistics
ADP	automatic data processing
AHECC	Australian Harmonised Export Commodity Classification
ANZSIC	Australian and New Zealand Standard Industrial Classification
BEC	Classification by Broad Economic Categories
f.o.b.	free on board
HTISC	Harmonized Tariff Item Statistical Classification
n.e.c.	not elsewhere classified
SITC	Standard International Trade Classification

Brian Pink  
Australian Statistician

## LIST OF TABLES

page

### INTERNATIONAL TRADE PRICE INDEXES

<b>1</b>	Import price index: All groups, index numbers and percentage changes . . . . .	4
<b>2</b>	Import price index: SITC contribution to all groups index . . . . .	5
<b>3</b>	Import price index: Selected SITC sections . . . . .	6
<b>4</b>	Import price index: Consumption goods, balance of payments broad economic categories . . . . .	7
<b>5</b>	Import price index: Capital goods, balance of payments broad economic categories . . . . .	8
<b>6</b>	Import price index: Intermediate and other merchandise goods, balance of payments broad economic categories . . . . .	9
<b>7</b>	Export price index: All groups, index numbers and percentage changes . . . . .	11
<b>8</b>	Export price index: SITC contribution to all groups index . . . . .	12
<b>9</b>	Export price index: Selected SITC sections . . . . .	13
<b>10</b>	Export price index: Rural goods, balance of payments classification of exports . . . . .	14
<b>11</b>	Export price index: Non-rural goods, balance of payments classification of exports . . . . .	15

### ADDITIONAL TABLES AVAILABLE ON ABS WEBSITE

<b>12</b>	Import price index, by selected SITC division	
<b>13</b>	Import price index, by selected HTISC section	
<b>14</b>	Import price index, by selected ANZSIC industry of origin division	
<b>15</b>	Import price index, by selected ANZSIC industry of origin subdivision	
<b>16</b>	Import price index, by BEC category	
<b>17</b>	Export price index, AHECC and ANZSIC contribution to all groups index	
<b>18</b>	Export price index, by selected AHECC section	
<b>19</b>	Export price index, by selected ANZSIC industry of origin division and subdivision	

## IMPORT PRICE INDEX(a): All groups, index numbers and percentage changes

<i>Period</i>	<i>Index numbers</i>	<i>% change from previous period</i>	<i>% change from corresponding quarter of previous year</i>
<b>2005-06</b>	117.0	3.7	..
<b>2006-07</b>	115.7	-1.1	..
<b>2007-08</b>	115.0	-0.6	..
<b>2008-09</b>	129.7	12.8	..
<b>2004</b>			
December	113.1	-1.9	0.4
<b>2005</b>			
March	110.4	-2.4	2.2
June	112.3	1.7	-0.1
September	115.2	2.6	-0.1
December	115.7	0.4	2.3
<b>2006</b>			
March	117.2	1.3	6.2
June	119.9	2.3	6.8
September	119.5	-0.3	3.7
December	115.7	-3.2	0.0
<b>2007</b>			
March	113.7	-1.7	-3.0
June	113.8	0.1	-5.1
September	112.9	-0.8	-5.5
December	113.1	0.2	-2.2
<b>2008</b>			
March	116.2	2.7	2.2
June	117.8	1.4	3.5
September	123.7	5.0	9.6
December	137.0	10.8	21.1
<b>2009</b>			
March	133.2	-2.8	14.6
June	124.7	-6.4	5.9
September	120.9	-3.0	-2.3

.. not applicable

(a) Reference base of each index: 1989-90 = 100.0.

## IMPORT PRICE INDEX(a): SITC contribution to all groups index

Category	CONTRIBUTION TO ALL GROUPS (INDEX POINTS)		CHANGE IN POINTS CONTRIBUTION
	Jun Qtr 2009(b)	Sep Qtr 2009	Jun Qtr 2009 to Sep Qtr 2009
ALL GROUPS			
All groups	124.7	120.9	-3.8
SITC SECTIONS			
0 Food and live animals	5.18	4.85	-0.33
1 Beverages and tobacco	1.07	1.07	0.00
2 Crude materials, inedible, except fuels	1.18	1.16	-0.02
3 Mineral fuels, lubricants and related materials	14.19	16.33	2.14
4 Animal and vegetable oils, fats and waxes	0.35	0.30	-0.05
5 Chemicals and related products, n.e.c.	13.86	13.33	-0.53
6 Manufactured goods classified chiefly by material	14.74	14.10	-0.64
7 Machinery and transport equipment	51.28	48.30	-2.98
8 Miscellaneous manufactured articles	16.40	15.26	-1.14
9 Commodities and transactions, n.e.c.	6.49	6.17	-0.32
SELECTED SITC DIVISIONS			
03 Fish, crustaceans, molluscs and aquatic invertebrates and preparations thereof	0.81	0.71	-0.10
24 Cork and wood	0.34	0.30	-0.04
33 Petroleum, petroleum products and related materials	12.99	14.95	1.96
51 Organic chemicals	2.02	1.94	-0.08
52 Inorganic chemicals	1.00	1.01	0.01
59 Chemical materials and products, n.e.c.	1.34	1.24	-0.10
64 Paper, paperboard and articles of paper pulp, of paper or of paperboard	1.74	1.62	-0.12
65 Textile yarn, fabrics, made-up articles, n.e.c., and related products	1.52	1.37	-0.15
69 Manufactures of metals, n.e.c.	3.40	3.25	-0.15
71 Power generating machinery and equipment	3.31	3.04	-0.27
72 Machinery specialised for particular industries	4.92	4.57	-0.35
74 General industrial machinery and equipment, n.e.c., and machine parts, n.e.c.	7.37	6.83	-0.54
75 Office machines and ADP machines	5.44	5.07	-0.37
76 Telecommunications and sound-recording equipment and reproducing apparatus and equipment	6.84	6.34	-0.50
77 Electrical machinery, etc. and parts thereof	6.25	5.92	-0.33
78 Road vehicles (incl air-cushion vehicles)	13.22	13.03	-0.19
79 Other transport equipment	3.46	3.07	-0.39
87 Professional, scientific and controlling instruments and apparatus, n.e.c.	3.08	2.96	-0.12
89 Miscellaneous manufactured articles, n.e.c.	5.42	4.99	-0.43

(a) Reference base of each index: 1989-90 = 100.0.

(b) Differs from previously published June quarter 2009 due to annual reweighting.

## IMPORT PRICE INDEX(a): SITC sections

<i>Period</i>	<i>Food and live animals (0)</i>	<i>Beverages and tobacco (1)</i>	<i>Crude materials, inedible, except fuels (2)</i>	<i>Mineral fuels, lubricants and related materials (3)</i>	<i>Animal and vegetable oils, fats and waxes (4)</i>	<i>Chemicals and related products, n.e.c. (5)</i>	<i>Manufactured goods classified chiefly by material (6)</i>	<i>Machinery and transport equipment (7)</i>	<i>Miscellaneous manufactured articles (8)</i>	<i>Commodities and transactions, n.e.c. (9)</i>
<b>2005-06</b>	125.9	132.5	121.4	288.0	160.9	117.9	126.7	95.4	112.3	142.3
<b>2006-07</b>	123.8	122.3	125.6	280.2	167.0	118.8	135.1	92.4	109.3	163.7
<b>2007-08</b>	126.2	122.8	138.8	353.7	197.8	120.7	130.0	85.2	101.1	185.1
<b>2008-09</b>	147.1	131.6	174.1	332.7	245.0	142.4	151.8	95.4	122.5	241.0
<b>2004</b>										
December	119.4	128.0	114.4	200.1	143.6	116.6	123.2	99.1	112.0	115.8
<b>2005</b>										
March	117.7	124.4	112.6	188.2	135.5	115.7	122.4	96.2	110.1	110.8
June	123.2	129.4	116.1	228.7	141.4	117.5	122.5	95.2	109.8	112.2
September	124.9	133.3	118.4	268.9	141.1	118.2	123.1	95.5	110.8	116.8
December	125.6	133.9	120.6	270.1	156.7	118.3	124.8	95.5	111.7	132.0
<b>2006</b>										
March	126.3	132.8	122.2	289.2	164.2	117.3	127.0	95.3	113.4	151.2
June	126.8	129.8	124.4	323.7	181.7	117.9	132.0	95.2	113.2	169.3
September	125.3	120.6	127.6	320.5	174.5	118.7	136.1	94.4	111.5	164.6
December	124.5	124.8	127.2	266.5	165.7	118.0	136.5	93.2	110.9	161.2
<b>2007</b>										
March	124.7	123.9	123.2	250.8	164.8	117.2	134.9	92.0	109.2	167.0
June	120.6	120.0	124.5	282.9	162.9	121.4	132.7	89.8	105.7	161.9
September	124.6	121.8	131.4	290.6	176.1	120.6	132.0	87.5	104.0	162.2
December	122.0	122.5	131.3	330.9	178.0	119.1	129.0	85.3	100.6	178.6
<b>2008</b>										
March	128.8	123.7	139.9	367.4	209.6	120.4	129.4	85.1	101.3	207.0
June	129.3	123.3	152.6	425.9	227.6	122.8	129.5	82.7	98.6	192.4
September	131.9	126.8	171.3	477.3	228.3	134.7	135.8	83.6	102.0	198.3
December	158.4	128.4	223.0	356.8	260.0	157.5	160.1	98.8	129.7	240.5
<b>2009</b>										
March	151.5	136.6	175.6	241.0	264.8	143.5	163.3	102.6	136.3	278.2
June	146.7	134.5	126.4	255.7	226.9	134.0	147.8	96.6	121.9	247.0
September	137.4	134.4	124.1	294.3	195.4	128.8	141.4	91.0	113.5	234.8

(a) Reference base of each index: 1989-90 = 100.0.

## BALANCE OF PAYMENTS BROAD ECONOMIC CATEGORIES - CONSUMPTION GOODS

	<b>Consumption goods total</b>	<i>Food and beverages, mainly for consumption</i>	<i>Household electrical items</i>	<i>Non-industrial transport equipment</i>	<i>Textiles, clothing and footwear</i>	<i>Toys, books and leisure goods</i>	<i>Consumption goods n.e.c.</i>
<b>2005-06</b>	<b>119.0</b>	134.9	82.3	148.0	104.1	119.3	113.6
<b>2006-07</b>	<b>116.5</b>	130.3	75.3	146.0	102.7	114.2	113.0
<b>2007-08</b>	<b>112.6</b>	131.5	65.9	143.8	96.1	103.8	110.0
<b>2008-09</b>	<b>126.9</b>	150.4	72.1	151.1	119.8	124.0	122.4
<b>2004</b>							
December	<b>119.9</b>	127.2	85.9	153.8	104.8	118.9	116.1
<b>2005</b>							
March	<b>117.6</b>	125.5	84.6	151.3	101.0	117.3	113.9
June	<b>117.8</b>	131.3	82.7	149.5	100.8	117.2	113.4
September	<b>119.0</b>	133.2	84.4	149.4	101.9	118.0	114.7
December	<b>118.7</b>	134.7	83.3	147.7	103.7	119.4	112.6
<b>2006</b>							
March	<b>119.0</b>	135.6	81.5	147.0	105.6	119.6	113.2
June	<b>119.2</b>	136.0	79.9	148.0	105.3	120.3	113.7
September	<b>118.1</b>	132.3	77.7	147.0	106.3	116.9	113.3
December	<b>116.9</b>	131.1	75.5	145.4	104.3	115.2	113.2
<b>2007</b>							
March	<b>116.3</b>	130.9	75.1	146.0	101.6	114.6	112.6
June	<b>114.5</b>	126.7	72.7	145.4	98.5	110.0	113.0
September	<b>113.4</b>	130.2	69.9	142.7	98.5	107.7	112.5
December	<b>112.0</b>	127.8	66.7	142.5	96.4	103.8	110.4
<b>2008</b>							
March	<b>113.1</b>	134.0	64.9	145.6	96.6	104.4	109.0
June	<b>111.8</b>	133.9	62.2	144.4	93.0	99.4	108.2
September	<b>114.1</b>	136.5	65.6	143.9	97.8	103.5	110.2
December	<b>131.4</b>	159.4	74.6	150.1	126.5	132.6	127.5
<b>2009</b>							
March	<b>134.8</b>	155.6	76.3	155.9	134.4	137.4	130.1
June	<b>127.3</b>	150.0	71.8	154.4	120.3	122.6	121.7
September	<b>121.3</b>	142.2	67.5	152.3	110.5	112.7	116.7

(a) Reference base of each index: 1989-90 = 100.0.

## IMPORT PRICE INDEX(a): Capital goods

## BALANCE OF PAYMENTS BROAD ECONOMIC CATEGORIES - CAPITAL GOODS

<i>Period</i>	<b>Capital goods total</b>	<i>Machinery and industrial equipment</i>	<i>ADP equipment</i>	<i>Telecommunications equipment</i>	<i>Civil aircraft</i>	<i>Industrial transport equipment n.e.c.</i>	<i>Capital goods, n.e.c.</i>
<b>2005-06</b>	<b>93.9</b>	129.3	19.9	38.9	145.0	159.1	121.2
<b>2006-07</b>	<b>90.0</b>	129.2	16.9	35.3	146.0	156.1	115.4
<b>2007-08</b>	<b>83.0</b>	123.8	13.3	30.1	132.2	152.4	108.4
<b>2008-09</b>	<b>95.5</b>	148.6	14.3	32.5	168.4	166.8	122.4
<b>2004</b>							
December	<b>98.2</b>	129.9	22.8	46.1	137.3	164.5	123.8
<b>2005</b>							
March	<b>95.3</b>	128.6	21.4	40.4	133.5	162.8	123.5
June	<b>94.2</b>	128.2	20.6	39.8	137.2	158.9	121.9
September	<b>94.2</b>	127.3	20.7	39.5	140.0	160.0	121.9
December	<b>94.4</b>	128.7	20.3	39.8	144.6	161.1	122.4
<b>2006</b>							
March	<b>93.5</b>	129.6	19.6	38.2	147.0	158.1	120.9
June	<b>93.4</b>	131.6	18.8	38.2	148.4	157.2	119.5
September	<b>92.1</b>	129.9	18.3	36.5	149.2	159.0	117.8
December	<b>91.1</b>	130.2	17.4	36.0	148.3	156.5	117.8
<b>2007</b>							
March	<b>89.5</b>	128.7	16.6	35.0	146.2	154.8	114.3
June	<b>87.4</b>	127.9	15.4	33.5	140.4	154.2	111.7
September	<b>85.3</b>	125.4	14.6	31.5	137.0	153.6	111.4
December	<b>83.3</b>	124.8	13.4	29.9	131.8	154.2	107.8
<b>2008</b>							
March	<b>82.7</b>	123.1	13.0	30.2	132.4	153.3	107.7
June	<b>80.6</b>	121.8	12.0	28.7	127.6	148.5	106.8
September	<b>81.2</b>	124.6	12.0	28.6	132.1	150.5	101.9
December	<b>100.0</b>	154.5	15.4	35.0	177.5	168.4	128.3
<b>2009</b>							
March	<b>104.1</b>	162.8	15.6	34.8	190.6	177.9	134.9
June	<b>96.5</b>	152.5	14.0	31.7	173.4	170.3	124.5
September	<b>89.8</b>	140.5	12.7	29.3	152.2	168.5	120.8

(a) Reference base of each index: 1989-90 = 100.0.



## IMPORT PRICE INDEX(a): Intermediate and other merchandise goods

## BALANCE OF PAYMENTS BROAD ECONOMIC CATEGORIES - INTERMEDIATE AND OTHER MERCHANDISE GOODS

<i>Period</i>	<b>Intermediate and other merchandise goods total</b>	<i>Intermediate and other goods total excluding non- monetary gold</i>	<i>Food and beverages, mainly for industry</i>	<i>Primary industrial supplies, n.e.c.</i>	<i>Fuels and lubricants</i>	<i>Parts for transport equipment</i>	<i>Parts for ADP machinery</i>	<i>Other parts for capital equipment</i>	<i>Organic and inorganic chemicals</i>
<b>2005-06</b>	<b>127.9</b>	127.9	121.3	122.0	341.4	129.2	15.8	87.4	113.9
<b>2006-07</b>	<b>129.2</b>	129.2	130.1	125.6	331.8	132.1	13.5	86.5	115.1
<b>2007-08</b>	<b>136.2</b>	135.6	162.1	143.1	420.2	123.7	10.6	80.1	122.8
<b>2008-09</b>	<b>152.2</b>	149.8	207.5	190.2	388.9	143.1	11.5	92.0	161.4
<b>2004</b>									
December	<b>114.5</b>	114.8	117.7	119.6	235.7	127.9	18.2	89.9	108.6
<b>2005</b>									
March	<b>111.7</b>	112.0	112.7	113.3	221.4	124.7	17.1	87.1	110.4
June	<b>117.1</b>	117.4	119.1	114.3	270.2	124.5	16.4	86.5	114.3
September	<b>123.2</b>	123.5	119.1	118.4	318.5	126.2	16.5	86.8	113.0
December	<b>124.6</b>	124.8	119.6	121.5	319.6	127.6	16.2	87.2	114.9
<b>2006</b>									
March	<b>128.6</b>	128.5	121.6	122.4	343.0	131.1	15.6	87.7	113.3
June	<b>135.0</b>	134.8	124.7	125.5	384.5	131.9	15.0	87.9	114.5
September	<b>135.6</b>	135.6	124.8	130.1	380.5	133.4	14.6	88.2	115.3
December	<b>128.1</b>	128.0	128.6	129.8	315.1	133.0	13.9	87.3	112.6
<b>2007</b>									
March	<b>124.9</b>	124.8	133.4	121.7	296.3	132.8	13.2	86.4	112.1
June	<b>128.2</b>	128.2	133.7	120.9	335.3	129.1	12.2	84.2	120.3
September	<b>128.5</b>	128.1	145.1	130.4	344.7	126.0	11.6	82.6	120.6
December	<b>131.7</b>	131.2	148.4	133.4	393.7	122.1	10.7	80.1	119.3
<b>2008</b>									
March	<b>138.9</b>	137.5	169.8	144.1	435.6	124.8	10.4	79.6	124.9
June	<b>145.6</b>	145.6	185.2	164.3	506.8	121.7	9.5	77.9	126.3
September	<b>157.7</b>	158.3	191.6	188.9	563.4	124.8	9.6	79.3	153.5
December	<b>163.4</b>	161.9	229.0	250.3	413.5	148.2	12.5	95.7	173.0
<b>2009</b>									
March	<b>148.6</b>	143.7	210.0	188.0	279.8	154.6	12.8	99.4	169.3
June	<b>139.1</b>	135.3	199.2	133.5	299.0	144.8	11.2	93.4	149.8
September	<b>145.3</b>	135.9	181.2	132.0	345.8	137.3	9.9	89.1	146.3

(a) Reference base of each index: 1989-90 = 100.0.

BALANCE OF PAYMENTS BROAD ECONOMIC CATEGORIES -  
 INTERMEDIATE AND OTHER MERCHANDISE GOODS *continued*

<i>Period</i>	<i>Paper and paperboard</i>	<i>Textile yarn and fabric</i>	<i>Iron and steel</i>	<i>Plastics</i>	<i>Processed industrial supplies, n.e.c.</i>	<i>Non- monetary gold</i>
<b>2005-06</b>	94.0	105.9	143.4	128.8	134.2	142.5
<b>2006-07</b>	95.1	106.2	158.6	132.2	141.9	163.9
<b>2007-08</b>	91.4	102.1	159.6	125.2	136.6	185.2
<b>2008-09</b>	98.2	122.5	201.8	161.8	163.3	241.3
<b>2004</b>						
December	93.9	105.8	138.6	121.2	126.1	115.9
<b>2005</b>						
March	92.7	103.5	143.5	121.9	124.9	110.9
June	92.7	102.8	145.3	124.6	127.5	112.3
September	93.9	103.4	143.4	126.3	128.6	116.9
December	94.6	106.4	143.6	127.1	131.7	132.2
<b>2006</b>						
March	93.6	106.9	140.7	131.1	135.4	151.4
June	93.9	107.0	145.7	130.6	141.2	169.5
September	94.4	107.1	152.5	134.2	143.7	164.8
December	95.5	107.4	158.1	134.6	143.7	161.4
<b>2007</b>						
March	96.5	105.0	164.3	130.2	140.5	167.2
June	94.1	105.2	159.6	129.9	139.6	162.0
September	92.6	102.8	165.6	128.1	136.2	162.3
December	92.7	101.3	158.5	123.3	132.8	178.8
<b>2008</b>						
March	90.3	102.4	155.5	124.3	137.6	207.2
June	89.9	101.8	158.7	124.9	139.9	192.6
September	93.3	106.7	178.0	135.9	150.9	198.5
December	97.4	132.3	227.6	180.5	182.1	240.7
<b>2009</b>						
March	102.6	131.9	226.5	173.2	166.5	278.5
June	99.3	119.2	174.9	157.7	153.5	247.3
September	92.6	106.9	175.4	147.3	143.9	235.1

(a) Reference base of each index: 1989-90 = 100.0.

## EXPORT PRICE INDEX (a): All groups, index numbers and percentage changes

<i>Period</i>	<i>Index numbers</i>	<i>% change from previous period</i>	<i>% change from corresponding quarter of previous year</i>
<b>2005-06</b>	136.0	16.8	..
<b>2006-07</b>	146.8	7.9	..
<b>2007-08</b>	149.6	1.9	..
<b>2008-09</b>	196.5	31.4	..
<b>2004</b>			
December	113.6	-1.6	14.1
<b>2005</b>			
March	113.0	-0.5	13.5
June	123.5	9.3	14.4
September	129.3	4.7	12.0
December	132.1	2.2	16.3
<b>2006</b>			
March	138.7	5.0	22.7
June	143.7	3.6	16.4
September	146.4	1.9	13.2
December	146.7	0.2	11.1
<b>2007</b>			
March	146.7	0.0	5.8
June	147.2	0.3	2.4
September	142.8	-3.0	-2.5
December	142.0	-0.6	-3.2
<b>2008</b>			
March	146.9	3.5	0.1
June	166.8	13.5	13.3
September	189.8	13.8	32.9
December	219.9	15.9	54.9
<b>2009</b>			
March	209.8	-4.6	42.8
June	166.5	-20.6	-0.2
September	150.5	-9.6	-20.7

.. not applicable

(a) Reference base of each index: 1989-90 = 100.0.

## EXPORT PRICE INDEX(a): SITC contribution to all groups index

Category	CONTRIBUTION TO ALL GROUPS (INDEX POINTS)		CHANGE IN POINTS CONTRIBUTION
	Jun Qtr 2009(b)	Sep Qtr 2009	Jun Qtr 2009 to Sep Qtr 2009
ALL GROUPS			
All groups	166.5	150.5	-16.0
SELECTED SITC SECTIONS			
0 Food and live animals	19.00	18.63	-0.37
1 Beverages and tobacco	2.39	2.18	-0.21
2 Crude materials, inedible, except fuels	43.01	38.54	-4.47
3 Mineral fuels, lubricants and related materials	47.63	37.23	-10.40
5 Chemicals and related products, n.e.c.	7.03	6.75	-0.28
6 Manufactured goods classified chiefly by material	15.90	17.28	1.38
7 Machinery and transport equipment	12.40	11.71	-0.69
8 Miscellaneous manufactured articles	4.38	4.28	-0.10
SELECTED SITC DIVISIONS			
00 Live animals other than animals of division 03	0.89	1.08	0.19
01 Meat and meat preparations	6.01	6.24	0.23
02 Dairy products and birds' eggs	2.11	2.01	-0.10
03 Fish, crustaceans, molluscs and aquatic invertebrates and preparations thereof	0.86	0.81	-0.05
04 Cereals and cereal preparations	5.08	4.51	-0.57
05 Vegetables and fruit	1.28	1.22	-0.06
11 Beverages	2.28	2.08	-0.20
21 Hides, skins and furskins, raw	0.51	0.62	0.11
26 Textile fibres and their wastes	2.26	2.27	0.01
28 Metalliferous ores and metal scrap	37.50	32.97	-4.53
32 Coal, coke and briquettes	31.58	20.79	-10.79
33 Petroleum, petroleum products and related materials	9.28	9.75	0.47
52 Inorganic chemicals	0.57	0.54	-0.03
54 Medical and pharmaceutical products	3.57	3.51	-0.06
61 Leather, leather manufactures, n.e.c., and dressed furskins	0.25	0.25	0.00
67 Iron and steel	2.17	1.90	-0.27
68 Non-ferrous metals	10.43	12.09	1.66
71-75 Power-generating, general industrial and other specialised machinery and equipment	5.03	4.82	-0.21
76-77 Telecommunications equipment, sound-recording apparatus and electrical machinery, n.e.c.	2.43	2.30	-0.13
78 Road vehicles (incl. air-cushion vehicles)	3.44	3.21	-0.23
79 Other transport equipment	1.49	1.38	-0.11
89 Miscellaneous manufactured articles, n.e.c.	1.90	1.89	-0.01

(a) Reference base of each index: 1989-90 = 100.0.

(b) Differs from previously published June quarter 2009 due to annual reweighting.

## EXPORT PRICE INDEX(a): Selected SITC sections

<i>Period</i>	<i>Food and live animals (0)</i>	<i>Beverages and tobacco (1)</i>	<i>Crude materials, inedible, except fuels (2)</i>	<i>Mineral fuels, lubricants and related materials (3)</i>	<i>Chemicals and related products, n.e.c. (5)</i>	<i>Manufactured goods classified chiefly by material (6)</i>	<i>Machinery and transport equipment (7)</i>	<i>Miscellaneous manufactured articles (8)</i>
<b>2005-06</b>	112.0	124.8	121.3	254.0	118.8	139.8	89.8	94.4
<b>2006-07</b>	117.3	119.0	147.3	229.5	125.5	187.0	88.7	94.7
<b>2007-08</b>	132.5	105.0	148.0	250.1	115.2	170.1	85.1	87.3
<b>2008-09</b>	162.6	101.9	178.6	492.3	128.0	142.2	96.8	96.9
<b>2004</b>								
December	106.2	125.5	98.7	174.5	106.2	119.7	88.3	88.7
<b>2005</b>								
March	105.5	124.4	98.6	174.3	106.4	119.7	87.0	88.3
June	106.8	126.6	115.0	213.6	112.2	124.1	88.5	89.2
September	108.7	126.3	116.7	248.4	110.5	123.0	89.0	92.9
December	110.2	126.5	118.0	250.9	115.3	127.3	89.7	94.0
<b>2006</b>								
March	112.8	127.2	124.2	259.0	120.7	144.1	90.3	95.1
June	116.3	119.3	126.3	257.7	128.6	164.6	90.2	95.7
September	113.3	119.3	140.8	247.5	128.9	178.6	88.9	96.0
December	117.9	119.6	144.4	233.5	126.2	185.8	89.3	95.5
<b>2007</b>								
March	120.6	119.6	148.0	222.3	126.1	186.1	89.1	94.8
June	117.4	117.4	155.8	214.7	120.9	197.4	87.5	92.5
September	117.3	111.9	146.3	216.4	119.1	179.2	87.3	89.8
December	121.4	102.0	138.7	230.4	113.3	167.0	85.1	87.7
<b>2008</b>								
March	140.0	104.5	139.0	235.6	111.3	165.2	85.1	87.1
June	151.3	101.5	168.0	318.1	117.2	169.0	83.0	84.6
September	160.4	97.3	179.5	453.0	122.0	166.3	87.1	90.1
December	181.0	103.9	205.0	569.3	134.1	161.3	102.1	102.2
<b>2009</b>								
March	162.5	105.8	185.1	571.7	131.4	124.4	102.8	101.3
June	146.5	100.4	144.9	375.1	124.5	116.6	95.3	93.8
September	143.6	91.8	129.8	293.3	119.5	126.7	90.0	91.4

(a) Reference base of each index: 1989-90 = 100.0.

## BALANCE OF PAYMENTS CLASSIFICATION OF EXPORTS

<i>Period</i>	<i>Rural goods total</i>	<i>Meat and meat preparations</i>	<i>Cereal grains and cereal preparations</i>	<i>Wool and sheepskins</i>	<i>Other rural</i>
<b>2005-06</b>	<b>97.5</b>	136.4	87.8	63.0	121.2
<b>2006-07</b>	<b>102.4</b>	134.2	100.2	72.1	124.5
<b>2007-08</b>	<b>118.2</b>	140.3	142.6	81.9	137.3
<b>2008-09</b>	<b>135.6</b>	178.5	182.3	69.8	149.8
<b>2004</b>					
December	<b>96.8</b>	138.7	85.7	71.6	116.3
<b>2005</b>					
March	<b>95.3</b>	136.0	84.5	68.0	115.6
June	<b>96.2</b>	135.5	84.3	66.7	118.9
September	<b>97.4</b>	140.7	84.0	64.9	120.4
December	<b>97.1</b>	135.5	87.7	60.6	121.6
<b>2006</b>					
March	<b>97.2</b>	133.7	89.9	60.2	121.7
June	<b>98.1</b>	135.7	89.5	66.2	121.0
September	<b>96.3</b>	131.2	86.6	65.6	120.3
December	<b>101.0</b>	137.9	96.9	66.0	123.4
<b>2007</b>					
March	<b>106.2</b>	138.7	108.7	76.3	125.8
June	<b>105.9</b>	129.1	108.7	80.4	128.3
September	<b>106.7</b>	127.8	112.4	80.6	128.9
December	<b>110.1</b>	126.0	125.3	81.2	132.2
<b>2008</b>					
March	<b>124.4</b>	142.0	159.0	85.7	143.2
June	<b>131.5</b>	165.4	173.7	80.1	144.8
September	<b>137.4</b>	186.2	175.9	76.7	149.4
December	<b>149.1</b>	199.7	206.7	72.3	162.8
<b>2009</b>					
March	<b>133.5</b>	171.2	184.5	65.4	149.7
June	<b>122.2</b>	156.7	162.0	64.6	137.4
September	<b>120.2</b>	162.5	143.9	66.7	136.2

(a) Reference base of each index: 1989-90 = 100.0.

## BALANCE OF PAYMENTS CLASSIFICATION OF EXPORTS

<i>Period</i>	<i>Non-rural goods total (excl. non-monetary gold)</i>	<i>Metal ores and minerals</i>	<i>Coal, coke and briquettes</i>	<i>Other mineral fuels</i>	<i>Metals (excl. non-monetary gold)</i>	<i>Machinery</i>	<i>Transport equipment</i>	<i>Other manufactures</i>	<i>Other non-rural</i>	<i>Non-monetary gold</i>
<b>2005-06</b>	<b>153.1</b>	158.1	208.2	352.4	148.7	80.2	111.7	109.5	83.2	144.6
<b>2006-07</b>	<b>165.6</b>	196.3	174.7	360.6	211.2	79.8	109.1	109.1	85.2	166.2
<b>2007-08</b>	<b>162.9</b>	188.7	166.5	466.0	189.4	77.7	102.6	105.2	74.9	187.8
<b>2008-09</b>	<b>219.2</b>	231.9	441.3	522.2	151.6	87.7	118.0	112.5	89.2	244.4
<b>2004</b>										
December	<b>122.7</b>	117.4	128.2	283.2	123.9	78.8	110.2	107.1	71.9	117.5
<b>2005</b>										
March	<b>122.7</b>	120.0	133.2	269.1	124.7	78.1	108.1	105.1	71.5	112.5
June	<b>137.6</b>	143.8	171.2	308.6	128.3	79.4	110.0	107.8	75.8	113.8
September	<b>145.3</b>	145.4	205.2	339.7	127.1	79.5	111.1	109.2	77.0	118.6
December	<b>148.3</b>	150.5	211.7	329.5	132.5	79.6	112.5	110.6	79.6	133.9
<b>2006</b>										
March	<b>156.6</b>	165.1	213.2	356.5	154.4	80.4	112.7	108.5	85.0	153.5
June	<b>162.2</b>	171.5	202.8	383.7	180.8	81.3	110.6	109.8	91.0	172.2
September	<b>167.1</b>	191.1	189.2	386.2	199.2	79.7	109.8	111.1	88.8	167.2
December	<b>166.2</b>	194.8	178.5	364.2	210.2	80.1	110.3	109.1	86.6	163.7
<b>2007</b>										
March	<b>163.9</b>	196.3	171.0	343.7	210.2	80.1	109.6	108.6	84.4	169.6
June	<b>165.2</b>	203.1	160.1	348.2	225.0	79.3	106.5	107.6	81.1	164.4
September	<b>158.5</b>	189.9	155.6	368.0	201.3	79.3	106.0	106.2	75.6	164.6
December	<b>155.0</b>	175.8	146.1	451.2	185.6	77.3	103.4	105.8	71.6	181.3
<b>2008</b>										
March	<b>155.2</b>	173.6	143.3	479.8	182.5	77.7	102.3	105.0	74.2	210.0
June	<b>182.7</b>	215.6	220.9	565.0	188.2	76.3	98.8	103.8	78.2	195.3
September	<b>212.6</b>	232.2	374.9	590.9	184.2	80.8	102.0	108.0	80.7	200.9
December	<b>248.3</b>	268.9	511.7	598.9	172.8	91.9	125.5	119.8	93.6	243.7
<b>2009</b>										
March	<b>235.4</b>	242.1	538.4	514.6	127.3	92.2	127.1	115.3	95.6	282.3
June	<b>180.5</b>	184.5	340.2	384.2	121.9	85.7	117.3	106.7	86.7	250.6
September	<b>159.8</b>	162.6	223.9	393.8	135.4	81.8	109.2	103.7	80.7	238.1

(a) Reference base of each index: 1989-90 = 100.0.

## EXPLANATORY NOTES

### INTRODUCTION

**1** This publication contains indexes measuring changes in the prices paid for imports of merchandise that are landed in Australia each quarter and prices received for exports of merchandise that are shipped from Australia each quarter. The import price indexes are in tables 1–6 and the export price indexes are in tables 7–11.

**2** The indexes are calculated on the reference base 1989–90=100.0.

### SCOPE

**3** The import price index excludes the following items (representing less than 5% of the value of merchandise imported during the weighting period) because of the inherent difficulties in pricing the items to constant quality (see paragraph 15 below)

- live animals (not for food)
- jewellery and other articles of precious metal, n.e.c.
- military equipment
- commodities not classified according to kind
- works of art, collectors' pieces, antiques
- railway vehicles
- ships of various types.

**4** The export price index includes re-exports of merchandise (i.e. goods which are imported into Australia and exported at a later date without physical transformation).

### CLASSIFICATIONS

**5** Index numbers for selected sections of the Standard International Trade Classification (SITC) are provided in table 3 (import price index) and table 9 (export price index). The SITC (Revision 4) used from the September quarter 2008 onwards is the United Nations' updated version, replacing SITC (Revision 3). SITC (Revision 4) retains the overall structure of SITC (Revision 3) and consists of the same number of sections, divisions and groups. Changes to the classification labels and components were made at levels lower than those used in the Import and Export Prices Indexes. As a result, there has been no material impact on the indexes, which remain comparable across the changes in classification.

**6** The import price index is also presented by Balance of Payments Broad Economic Categories in tables 4–6, which have been disaggregated into balance of payments groupings of consumption goods, capital goods and intermediate and other merchandise goods. From the September quarter 2008 onwards, the previous heading of Classification of Broad Economic Categories (BEC) End Use, has been replaced with Balance of Payments Broad Economic Categories. This is simply a name change, with the series remaining comparable to previously published series.

**7** The export price index is also presented by balance of payments classification of exports groupings in tables 10 and 11.

### ITEMS AND WEIGHTS

**8** The import price index and export price index are annually reweighted chained Laspeyres indexes. This method of weighting was introduced in the September quarter 2000 and replaces the 'fixed-base' method of weighting in which the weighting patterns are updated infrequently (generally once every 5 or 10 years).

**9** The annual reweighting and chaining process involves a number of steps in order to provide new weights each year. The current weighting basis for the import price index was derived from the average value of import items during 2008–09. This differs slightly from the export price index which has used the average value of export items during 2007–08 and 2008–09, due to the greater volatility associated with the value of export items. These weights were revalued to reflect link period (June quarter 2009) price levels. This means, for example, that the weights for the import price index are effectively determined using quantities from 2008–09 and prices from June quarter 2009. Indexes derived by using the new weights for the September quarter 2009 were then linked to the already published June quarter 2009 (link period) levels which were derived using the previous series weights. Using this methodology, long-term chain



## EXPLANATORY NOTES *continued*

### ITEMS AND WEIGHTS *continued*

linked series can be constructed over time on a consistent reference base for continuity and user convenience, but using annually refreshed weights. The reference base for each index series continues to be 1989–90=100 even though the weights are being updated each year.

**10** The commodities directly represented in each index (the index items) were selected on the basis of the significance of their import and export values in the period 2008–09 for imports and 2007–08 and 2008–09 for exports. All significant commodities were selected for pricing. The weights for minor commodities which are not directly priced are included with those of comparable directly priced items where prices are likely to move in a similar way.

### PRICE MEASUREMENT

**11** In general, prices of individual shipments are obtained from major importers and exporters of the selected items and relate to the quarter in which the imported goods physically arrive in Australia and the exported goods physically leave Australia.

**12** Imports are priced on a 'free on board' (f.o.b.), country of origin basis. Therefore freight and insurance charges involved in shipping goods from foreign to Australian ports are excluded from the prices used in the index, as are Australian import duties and taxes. Similarly, exports are priced on a f.o.b. basis at the main Australian ports of export. Exports are exempt from taxes on products.

**13** As the prices used in the indexes are expressed in Australian currency, changes in the relative value of the Australian dollar and overseas currencies can have a direct impact on price movements for the many commodities that are bought and sold in currencies other than Australian dollars. Prices reported in a foreign currency are converted to Australian dollars using relevant exchange rates. Where imports or exports are transacted in prices expressed in terms of a foreign currency and forward exchange cover is used, the prices in the indexes exclude the forward exchange cover.

**14** The main pricing methodology used is specification pricing, under which a manageable sample of precisely specified products is selected, in consultation with each reporting business, for repeat pricing. In specifying the products, care is taken to ensure that they are fully defined in terms of all the characteristics which influence their transaction prices. As such, all the relevant technical characteristics need to be described (e.g. make, model, features) along with the unit of sale, type of packaging, conditions of sale (e.g. delivered, payment within 30 days), etc. The goods are also specified by country and market in order to lessen the impact of price variations attributable solely to changes over time in the mix of countries, or markets.

**15** When the quality or specifications of an item being priced change over time, adjustments are made to the reported prices so that the index captures only pure price change. That is, any element of price change attributable to a change in quality is removed. If there is an increase (decrease) in the quality of an item, then the price index is adjusted downwards (upwards) to reflect the 'worth' of the quality change. This technique is known as pricing to constant quality.

**16** Wherever possible, prices from volume selling products being traded with predominant countries, or markets, are obtained to ensure specifications have a good chance of being re-priced over time and index series are representative of overall price movements. Individual product weights and weights between markets and countries are regularly reviewed to keep the indexes up to date.

## EXPLANATORY NOTES *continued*

### DIFFERENCES BETWEEN EPI AND EXPORT IPD

**17** There are differences between the export price index (EPI) presented in this publication, and the export implicit price deflator (IPD) presented in *National Income, Expenditure and Product* (cat. no. 5206.0) and *Balance of Payments and International Investment Position* (cat. no. 5302.0). The differences are mainly due to the completeness of the dataset used and the source of the data. Complete data for the third month of the quarter are not available for some components of the EPI due to the timing of its release. Further, the EPI is calculated from predominantly sampled provider data, whereas the export IPD is calculated from predominantly international merchandise trade data supplied by Customs. These differences can result in significant divergences between the measures when prices of commodities, which form a large proportion of exports, are volatile.

### INDEX NUMBERS

**18** Index numbers for financial years are simple averages of the relevant quarterly index numbers.

### ANALYSIS OF INDEX CHANGES

**19** Care should be exercised when interpreting quarter-to-quarter movements in the indexes as short-term movements do not necessarily indicate changes in trend.

**20** Movements in indexes from one period to another can be expressed either as changes in 'index points' or as percentage changes. The following example illustrates the method of calculating index points changes and percentage changes between any two periods:

Export price index, All groups index number:

September quarter 2009	150.5 (see table 7)
less September quarter 2008	189.8 (see table 7)
Change in index points	-39.3
Percentage change	$-39.3/189.8 \times 100 = 20.7\%$

**21** Tables 2 and 8 provide analyses of the contribution which SITC sections and divisions make to the All groups import price index and export price index, respectively. For example, imports of mineral fuels, lubricants and related materials contributed 16.33 index points to the All groups import price index number of 120.9 for September quarter 2009 and 2.14 index points to the net change of -3.8 index points between June 2009 and September 2009 quarters.

### FURTHER INFORMATION

**22** For further information on price indexes in the ABS refer to the following publications:

*Information Paper: Producer and International Trade Price Indexes; Concepts, Sources and Methods 2006*, (cat. no. 6429.0)

*Information Paper: An Analytical Framework for Price Indexes in Australia*, (cat. no. 6421.0)

*Information Paper: Producer Price Index Developments*, (cat. no. 6422.0)

*Information Paper: Review of the Import Price Index and Export Price Index, Australia*, (cat. no. 6424.0)

*Information Paper: Price Indexes and The New Tax System*, (cat. no. 6425.0)

*Information Paper: Changes to the Weights of the Price Indexes for the Output of the General Construction Industry, Australia*, (cat. no. 6406.0)

*Information Paper: Update on ANZSIC 2006 Implementation for Producer and International Trade Price Indexes, Australia, 2009*, (cat. no. 6427.0.55.002)

### RELATED PUBLICATIONS

**23** Users may also wish to refer to the following related publications, which are

## EXPLANATORY NOTES *continued*

---

### RELATED PUBLICATIONS

*continued*

available from the ABS website:

*Producer Price Indexes, Australia*, (cat. no. 6427.0)

*Consumer Price Index, Australia*, (cat. no. 6401.0)

*Labour Price Index, Australia*, (cat. no. 6345.0)

*Australian National Accounts, Input–Output Tables*, (cat. no. 5209.0)

*Balance of Payments and International Investment Position, Australia*,  
(cat. no. 5302.0)

**24** Current publications and other products released by the ABS are listed in the *Catalogue of Publications and Products*, (cat. no. 1101.0.) The Catalogue is available from any ABS office or the ABS website <<http://www.abs.gov.au>>. The ABS also issues a daily Release Advice on the website which details products to be released in the week ahead.

## APPENDIX INDEX STRUCTURES AND WEIGHTING PATTERNS

### COMPOSITION

Both the Import Price Index and the Export Price Index have been reweighted in the September quarter 2009. It is ABS practice to reweight these indexes annually each September quarter, as explained in paragraphs 8–10 of the Explanatory Notes. The new weighting patterns for both the Import Price Index and Export Price Index, based on the Standard International Trade Classification (SITC) (Revision 4), are presented in this Appendix.

All SITC sections and divisions are included in the reweighted index structure for completeness. However, indexes for some of the lower weighted SITC sections and divisions are not constructed separately and so are not available for publication.

Corresponding new weighting patterns based on classification by Broad Economic Categories (BEC), Harmonized Tariff Item Statistical Classification (HTSIC) and Australian and New Zealand Standard Industrial Classification (ANZSIC) for the Import Price Index and Australian Harmonised Export Commodity Classification (AHECC) and ANZSIC for the Export Price Index can be made available on request.

### IMPORT PRICE INDEX GROUPED BY SITC (REVISION 4) (a)(b)

SITC	PERCENTAGE CONTRIBUTION	
	Division to Sections	All Groups
<b>0 Food and live animals</b>	<b>100.00</b>	<b>4.15</b>
01 Meat and meat preparations	6.74	0.28
02 Dairy products and birds' eggs	5.42	0.23
03 Fish (not marine mammals), crustaceans, molluscs and aquatic invertebrates, and preparations thereof	15.64	0.65
04 Cereals and cereal preparations	10.28	0.43
05 Vegetables and fruit	18.75	0.78
06 Sugars, sugar preparations and honey	3.11	0.13
07 Coffee, tea, cocoa, spices and manufactures thereof	14.09	0.58
08 Feeding stuff for animals (not including unmilled cereals)	6.87	0.28
09 Miscellaneous edible products and preparations	19.10	0.79
<b>1 Beverages and tobacco</b>	<b>100.00</b>	<b>0.86</b>
11 Beverages	84.58	0.73
12 Tobacco and tobacco manufactures	15.42	0.13
<b>2 Crude materials, inedible, except fuels</b>	<b>100.00</b>	<b>0.95</b>
21 Hides, skins and furskins, raw	0.07	0.01
22 Oil-seeds and oleaginous fruits	2.21	0.02
23 Crude rubber (including synthetic and reclaimed)	3.52	0.04
24 Cork and wood	28.39	0.27
25 Pulp and waste paper	8.91	0.08
26 Textile fibres (other than wool tops and other combed wool) and their wastes (not manufactured into yarn or fabric)	6.81	0.06
27 Crude fertilisers (excluding those of Division 56) and crude minerals (excluding coal, petroleum and precious stones)	9.62	0.09
28 Metalliferous ores and metal scrap	27.31	0.26
29 Crude animal and vegetable materials, n.e.c.	13.16	0.12
<b>3 Mineral fuels, lubricants and related materials</b>	<b>100.00</b>	<b>11.38</b>
32 Coal, coke and briquettes	0.09	0.01
33 Petroleum, petroleum products and related materials	91.53	10.42
34 Gas, natural and manufactured	8.38	0.95
<b>4 Animal and vegetable oils, fats and waxes</b>	<b>100.00</b>	<b>0.28</b>
41 Animal oils and fats	6.31	0.02
42 Fixed vegetable fats and oils, crude, refined or fractionated	83.19	0.23
43 Animal or vegetable fats and oils, processed; waxes of animal or vegetable origin; inedible mixtures or preparations of animal or vegetable fats or oils, n.e.c.	10.50	0.03

(a) Standard International Trade Classification (Revision 4).

(b) Indexes for some lower weighted sections/divisions are not available for publication.

## APPENDIX INDEX STRUCTURES AND WEIGHTING PATTERNS *continued*

### IMPORT PRICE INDEX GROUPED BY SITC (REVISION 4)(a)(b) *continued*

SITC	PERCENTAGE CONTRIBUTION	
	<i>Division to Sections</i>	<i>Divisions and Sections to All Groups</i>
<b>5 Chemicals and related products, n.e.c.</b>	<b>100.00</b>	<b>11.11</b>
51 Organic chemicals	14.57	1.62
52 Inorganic chemicals	7.25	0.80
53 Dyeing, tanning and colouring materials	2.91	0.32
54 Medicinal and pharmaceutical products	38.93	4.33
55 Essential oils and resinoids and perfume materials; toilet, polishing and cleansing preparations	8.17	0.91
56 Fertilisers (other than those of group 272)	5.19	0.58
57 Plastics in primary forms	7.00	0.78
58 Plastics in non-primary forms	6.29	0.70
59 Chemical materials and products, n.e.c.	9.69	1.07
<b>6 Manufactured goods classified chiefly by material</b>	<b>100.00</b>	<b>11.81</b>
61 Leather, leather manufactures, n.e.c., and dressed furskins	0.49	0.06
62 Rubber manufactures, n.e.c.	11.44	1.35
63 Cork and wood manufactures (excluding furniture)	2.79	0.33
64 Paper, paperboard and articles of paper pulp, of paper or of paperboard	11.79	1.39
65 Textile yarn, fabrics, made-up articles, n.e.c., and related products	10.34	1.22
66 Non-metallic mineral manufactures, n.e.c.	11.80	1.39
67 Iron and steel	20.89	2.47
68 Non-ferrous metals	7.39	0.87
69 Manufactures of metals, n.e.c.	23.07	2.73
<b>7 Machinery and transport equipment</b>	<b>100.00</b>	<b>41.11</b>
71 Power-generating machinery and equipment	6.46	2.66
72 Machinery specialised for particular industries	9.59	3.94
73 Metalworking machinery	0.90	0.37
74 General industrial machinery and equipment, n.e.c., and machine parts, n.e.c.	14.38	5.91
75 Office machines and automatic data processing machines	10.61	4.36
76 Telecommunications and sound-recording and reproducing apparatus and equipment	13.33	5.48
77 Electrical machinery, apparatus and appliances, n.e.c., and electrical parts thereof (including non-electrical counterparts, n.e.c., of electrical household-type equipment)	12.19	5.01
78 Road vehicles (including air-cushion vehicles)	25.79	10.60
79 Other transport equipment	6.75	2.78
<b>8 Miscellaneous manufactured articles</b>	<b>100.00</b>	<b>13.15</b>
81 Prefabricated buildings; sanitary, plumbing, heating and lighting fixtures and fittings, n.e.c.	3.03	0.40
82 Furniture and parts thereof; bedding, mattresses, mattress supports, cushions and similar stuffed furnishings	10.78	1.42
83 Travel goods, handbags and similar containers	2.83	0.37
84 Articles of apparel and clothing accessories	20.59	2.71
85 Footwear	5.20	0.68
87 Professional, scientific and controlling instruments and apparatus, n.e.c.	18.78	2.47
88 Photographic apparatus, equipment and supplies and optical goods, n.e.c.; watches and clocks	5.75	0.76
89 Miscellaneous manufactured articles, n.e.c.	33.04	4.34
<b>9 Commodities and transactions not classified elsewhere in the SITC</b>	<b>100.00</b>	<b>5.20</b>
97 Gold, non-monetary (excluding gold ores and concentrates)	100.00	5.20

(a) Standard International Trade Classification (Revision 4).

(b) Indexes for some lower weighted sections/divisions are not available for publication.

## APPENDIX INDEX STRUCTURES AND WEIGHTING PATTERNS *continued*

### EXPORT PRICE INDEX GROUPED BY SITC (REVISION 4)(a)(b)

SITC		PERCENTAGE CONTRIBUTION	
		<i>Divisions and Sections to</i>	
		<i>Division to Sections</i>	<i>All Groups</i>
0	<b>Food and live animals</b>	<b>100.00</b>	<b>11.41</b>
00	Live animals other than animals of Division 03	4.67	0.53
01	Meat and meat preparations	31.64	3.61
02	Dairy products and birds' eggs	11.11	1.27
03	Fish (not marine mammals), crustaceans, molluscs and aquatic invertebrates, and preparations thereof	4.51	0.52
04	Cereals and cereal preparations	26.72	3.05
05	Vegetables and fruit	6.75	0.77
06	Sugars, sugar preparations and honey	6.33	0.72
07	Coffee, tea, cocoa, spices and manufactures thereof	1.26	0.14
08	Feeding stuff for animals (not including unmilled cereals)	4.45	0.51
09	Miscellaneous edible products and preparations	2.56	0.29
1	<b>Beverages and tobacco</b>	<b>100.00</b>	<b>1.43</b>
11	Beverages	95.37	1.36
12	Tobacco and tobacco manufactures	4.63	0.07
2	<b>Crude materials, inedible, except fuels</b>	<b>100.00</b>	<b>25.83</b>
21	Hides, skins and furskins, raw	1.18	0.30
22	Oil-seeds and oleaginous fruits	1.00	0.26
23	Crude rubber (including synthetic and reclaimed)	0.02	0.01
24	Cork and wood	2.58	0.67
25	Pulp and waste paper	0.48	0.12
26	Textile fibres (other wool tops and other combed wool) and their wastes (not manufactured into yarn or fabric)	5.26	1.36
27	Crude fertilisers (excluding those of Division 56) and crude minerals (excluding coal, petroleum and precious stones)	1.73	0.44
28	Metalliferous ores and metal scrap	87.18	22.52
29	Crude animal and vegetable materials, n.e.c.	0.57	0.15
3	<b>Mineral fuels, lubricants and related materials</b>	<b>100.00</b>	<b>28.60</b>
32	Coal, coke and briquettes	66.31	18.97
33	Petroleum, petroleum products and related materials	19.42	5.55
34	Gas, natural and manufactured	14.27	4.08
4	<b>Animal and vegetable oils, fats and waxes</b>	<b>100.00</b>	<b>0.29</b>
41	Animal oils and fats	68.80	0.20
42	Fixed vegetable fats and oils, crude, refined or fractionated	28.58	0.08
43	Animal or vegetable fats and oils, processed; waxes of animal or vegetable origin; inedible mixtures or preparations of animal or vegetable fats or oils, n.e.c.	2.62	0.01
5	<b>Chemicals and related products, n.e.c.</b>	<b>100.00</b>	<b>4.22</b>
51	Organic chemicals	2.05	0.09
52	Inorganic chemicals	8.11	0.34
53	Dyeing, tanning and colouring materials	7.26	0.31
54	Medicinal and pharmaceutical products	50.79	2.14
55	Essential oils and resinoids and perfume materials; toilet, polishing and cleansing preparations	7.00	0.30
56	Fertilisers (other than those of Group 272)	4.07	0.17
57	Plastics in primary forms	4.84	0.20
58	Plastics in non-primary forms	4.46	0.19
59	Chemical materials and products, n.e.c.	11.42	0.48
6	<b>Manufactured goods classified chiefly by material</b>	<b>100.00</b>	<b>9.55</b>
61	Leather, leather manufactures, n.e.c., and dressed furskins	1.54	0.15
62	Rubber manufactures, n.e.c.	1.32	0.13
63	Cork and wood manufactures (excluding furniture)	0.84	0.08
64	Paper, paperboard and articles of paper pulp, of paper or of paperboard	3.43	0.33
65	Textile yarn, fabrics, made-up articles, n.e.c., and related products	1.92	0.18
66	Non-metallic mineral manufactures, n.e.c.	6.20	0.59
67	Iron and steel	13.63	1.30
68	Non-ferrous metals	65.56	6.26
69	Manufactures of metals, n.e.c.	5.56	0.53

(a) Standard International Trade Classification (Revision 4).

(b) Indexes for some lower weighted sections/divisions are not available for publication.

## APPENDIX INDEX STRUCTURES AND WEIGHTING PATTERNS *continued*

### EXPORT PRICE INDEX GROUPED BY SITC (REVISION 4)(a)(b) *continued*

SITC		PERCENTAGE CONTRIBUTION	
		<i>Division to Sections</i>	<i>Divisions and Sections to All Groups</i>
7	<b>Machinery and transport equipment</b>	<b>100.00</b>	<b>7.45</b>
71-75	Power-generating, general industrial and other specialised machinery and equipment	40.59	3.02
76-77	Telecommunications equipment, sound-recording apparatus and electrical machinery, n.e.c.	19.62	1.46
78	Road vehicles (including air-cushion vehicles)	27.78	2.07
79	Other transport equipment	12.01	0.90
8	<b>Miscellaneous manufactured articles</b>	<b>100.00</b>	<b>2.63</b>
81-82	Prefabricated buildings, building fittings and furniture and parts thereof	5.47	0.14
83	Travel goods, handbags and similar containers	0.52	0.01
84	Articles of apparel and clothing accessories	4.31	0.11
85	Footwear	0.99	0.03
87	Professional, scientific and controlling instruments and apparatus, n.e.c.	38.87	1.03
88	Photographic apparatus, equipment and supplies and optical goods, n.e.c.; watches and clocks	6.40	0.17
89	Miscellaneous manufactured articles, n.e.c.	43.44	1.14
9	<b>Commodities and transactions not classified elsewhere in the SITC</b>	<b>100.00</b>	<b>8.59</b>
93	Special transactions and commodities not classified according to kind	8.38	0.72
96	Coin (other than gold coin), not being legal tender	2.63	0.23
97	Gold, non-monetary (excluding gold ores and concentrates)	88.99	7.64

(a) Standard International Trade Classification (Revision 4).

(b) Indexes for some lower weighted sections/divisions are not available for publication.

## FOR MORE INFORMATION . . .

*INTERNET*      **www.abs.gov.au** the ABS website is the best place for data from our publications and information about the ABS.

### INFORMATION AND REFERRAL SERVICE

Our consultants can help you access the full range of information published by the ABS that is available free of charge from our website. Information tailored to your needs can also be requested as a 'user pays' service. Specialists are on hand to help you with analytical or methodological advice.

*PHONE*                      1300 135 070

*EMAIL*                      [client.services@abs.gov.au](mailto:client.services@abs.gov.au)

*FAX*                              1300 135 211

*POST*                              Client Services, ABS, GPO Box 796, Sydney NSW 2001

## FREE ACCESS TO STATISTICS

All statistics on the ABS website can be downloaded free of charge.

*WEB ADDRESS*      [www.abs.gov.au](http://www.abs.gov.au)