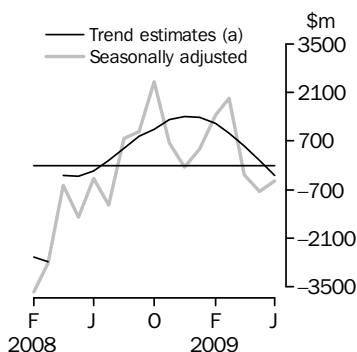


INTERNATIONAL TRADE IN GOODS AND SERVICES

AUSTRALIA

EMBARGO: 11.30AM (CANBERRA TIME) WED 5 AUG 2009

Balance on Goods and Services



(a) A trend break of \$2,725m has been applied to April 2008.

KEY FIGURES

	April 2009	May 2009	June 2009	May 09 to Jun 09 %
	\$m	\$m	\$m	change
BALANCE ON GOODS AND SERVICES				
Trend estimates	549	142	-288	..
Seasonally adjusted	-280	-737	-441	..
CREDITS (Exports of goods & services)				
Trend estimates	21 874	21 086	20 446	-3
Seasonally adjusted	21 425	20 087	20 397	2
DEBITS (Imports of goods & services)				
Trend estimates	21 326	20 945	20 734	-1
Seasonally adjusted	21 705	20 825	20 838	—

.. not applicable

— nil or rounded to zero (including null cells)

KEY POINTS

BALANCE ON GOODS AND SERVICES

- The trend estimate of the *balance on goods and services* was a deficit of \$288m in June 2009, a turnaround of \$430m on a revised surplus in May 2009.
- In seasonally adjusted terms, the *balance on goods and services* was a deficit of \$441m in June 2009, a decrease of \$296m (40%) on a revised deficit in May 2009.

CREDITS (EXPORTS OF GOODS & SERVICES)

- Seasonally adjusted, *goods and services credits* rose \$310m (2%) to \$20,397m. *Other goods* rose \$156m (13%) with the *non-monetary gold* component up \$164m (17%). *Non-rural goods* rose \$135m (1%), *rural goods* rose \$22m (1%) while *services credits* fell \$3m.

DEBITS (IMPORTS OF GOODS & SERVICES)

- Seasonally adjusted, *goods and services debits* rose \$13m to \$20,838m. *Intermediate and other merchandise goods* rose \$247m (4%) with the *fuels and lubricants* component up \$234m (13%). *Consumption goods* rose \$207m (4%), *capital goods* rose \$35m (1%) and *services debits* rose \$27m (1%).
- These rises were partly offset by a fall in *other goods*, down \$502m (48%), mainly due to a fall in the *non-monetary gold* component, down \$336m (45%).

INQUIRIES

For further information contact Selvi Sekhar on Canberra (02) 6252 5540 for goods, and Karen McGuigan on Canberra (02) 6252 5415 for services.

NOTES

FORTHCOMING ISSUES

ISSUE	RELEASE DATE
July 2009	3 September 2009
August 2009	6 October 2009
September 2009	5 November 2009
October 2009	9 December 2009
November 2009	7 January 2010
December 2009	3 February 2010

REVISIONS

Revisions have been made to incorporate the latest available data relating to merchandise trade and international trade in services. In original terms, these revisions have:

- decreased the surplus on goods and services for May 2009 by \$140m
- decreased the surplus on goods and services for the 11 months to May 2009 by \$182m
- decreased the deficit on goods and services for 2007-08 by \$2m.

INFORMATION PAPERS

The *Information Paper: Revisions to international standards in quarterly Balance of Payments and International Investment Position statistics from September 2009* (cat. no. 5302.0.55.002) was released on 22 July 2009 and describes the changes to the international standards and the impact on statistics presented in the quarterly *Balance of Payments and International Investment Position, Australia* (cat. no. 5302.0). The paper further advises timing of the proposed changes and provides access to mock-ups of the proposed publications and the related spreadsheets that will be available from the ABS web site. The related time series spreadsheets will be re-released on 27 October 2009 with new time series identifiers (IDs).

The *Information Paper: Implementation of revised international statistical standards in ABS National and International Accounts* (cat no. 5310.0.55.002) is expected to be released at the end of September 2009 and will describe the impact of the international standards on Australia's macro economic accounts including key aggregates for the balance of payments and international investment position. Technical information included in this paper will describe the most significant changes in more detail.

TREND ESTIMATES

Caution should be used when interpreting recent trend estimates as they may be affected by unusual economic factors. For more details on trend estimates, please see paragraph 10 of the explanatory notes.

IRON ORE AND COAL PRICES

See page 4 - *Commodity prices adjustment*, for details of adjustments made to the value of iron ore exports for June 2009 in the Balance of Payments series.

CHANGES IN FORTHCOMING ISSUE

See page 5 - *Changes in July issue* and page 7 - *Changes in time series spreadsheets*.

Brian Pink
Australian Statistician

CONTENTS

page

Commodity prices adjustment	4
Changes in July issue	5
Changes in time series spreadsheets	7
Time series data	9

ANALYSIS

Analysis and comments	10
---------------------------------	----

TABLES

INTERNATIONAL TRADE IN GOODS AND SERVICES – BALANCE OF PAYMENTS BASIS

1 Goods and services, summary, seasonally adjusted and trend estimates	14
2 Goods and services, summary, original	15
3 Goods credits, original	16
4 Goods debits, original	17
5 Goods credits, seasonally adjusted	18
6 Goods debits, seasonally adjusted	19
7 Goods credits, trend estimates	20
8 Goods debits, trend estimates	21
9 Services, summary, original	22
10 Services, summary, seasonally adjusted and trend estimates	23
11 Services, original, quarterly	24

INTERNATIONAL MERCHANDISE TRADE – RECORDED TRADE BASIS

12 International merchandise exports, by commodity	25
13 International merchandise imports, by commodity	28
14 International merchandise trade, by country and country groups	31
15 International merchandise trade, by state	32

OTHER TABLES

16 Period average exchange rates per Australian dollar	33
---	----

OTHER INFORMATION

Explanatory Notes	34
Appendix – Related articles	39

COMMODITY PRICES ADJUSTMENT

PRICES ADJUSTMENT

Recorded trade exports data presented for recent months in tables 12-15 of this publication are based on information initially reported by exporters to the Australian Customs and Border Protection Service. At the time of initial reporting to Customs the final prices may not be known for some commodities. Therefore, the information recorded for recent months for commodities like iron ore and coal can include a variety of prices including previous or current contract prices and the prevailing spot prices. New contract prices that have been recently negotiated, or are still being negotiated, are not fully reflected in the data first reported to Customs. As with commodity price changes in previous years, it is expected that the decreased prices resulting from the negotiation of new contracts will be updated progressively in revised information reported to Customs and then reflected in recorded trade data.

IRON ORE

The balance of payments data in this publication for June 2009 include an adjustment for the anticipated price decreases for iron ore exports from April 1. As progressive revisions to the recorded trade prices are reported to Customs and then provided to the ABS they will be incorporated into the balance of payments series and the adjustment reduced accordingly.

The balance of payments series has been reduced by a \$150m adjustment to June 2009. However, the adjustments made to April and May 2009 iron ore exports announced in the previous issue of this publication have been removed as revised reporting to Customs appears to reflect new contract prices. In the unadjusted recorded trade series, the value of iron ore and concentrates decreased by 5% between May 2009 and June 2009 with prices up 2%. In the adjusted balance of payment series, the value of the comparable item decreased 11%, with prices down 5%.

COAL

On a recorded trade basis, the June 2009 prices for metallurgical coal fell 13% and prices for non-metallurgical coal (bituminous coal) fell 8% compared to May 2009. Because of these falls in price, and historical patterns showing that adjustments to coal prices occur progressively, no adjustments have been made to the balance of payments series. This will be reviewed as future data are observed.

CHANGES IN JULY ISSUE

CHANGES TO STATISTICS PRESENTED ON AN ANZSIC 2006 BASIS

From the July 2009 issue, there will be changes to the industry classification of statistics presented on a recorded trade basis in time series spreadsheets. The changes result from the inclusion of data on an ANZSIC 2006 basis.

The changes to be made to statistics presented on a recorded trade basis include:

- all data for June 2005 and earlier will be presented only according to ANZSIC 1993
- data from July 2005 to June 2009 will be presented according to both ANZSIC 1993 and ANZSIC 2006. These series will continue to be revised according to the ABS revisions policy until December 2009
- from January 2010 no further revisions will be made to data presented on an ANZSIC 1993 basis and at that time, ANZSIC 1993 data will only be available up to the June 2009 reference month. Also from January 2010, from the July 2009 reference period onwards, industry statistics will only be available on an ANZSIC 2006 basis
- time series tables will be added to include data on an ANZSIC 2006 basis:
 - Table 32a Merchandise Exports, Industry (ANZSIC 2006), FOB Value
 - Table 35a Merchandise Imports, Industry (ANZSIC 2006), Customs Value
- time series tables containing data on an ANZSIC 1993 basis will be available in:
 - Table 32b Merchandise Exports, Industry (ANZSIC 1993), FOB Value
 - Table 35b Merchandise Imports, Industry (ANZSIC 1993), Customs Value.

For further details about the introduction of ANZSIC 2006 and information on correspondences, refer to the *Information paper: Changes to International Trade in Goods Industry Statistics, July 2009* (cat. no. 5368.0.55.011).

Time series IDs for the new tables are listed on page 7 - *Changes in time series spreadsheets*.

These changes in presentation will not change the statistics presented on a Balance of Payments basis nor result in revisions to the total value of goods or services credits and debits.

CHANGES TO STATISTICS PRESENTED ON A COUNTRY BASIS

From the July 2009 issue, there will be changes to the ABS trade country classification which will impact on time series spreadsheets. The changes result from the recognition of new countries by the United Nations and the Australian Department of Foreign Affairs and Trade.

Three new countries will be added to the time series tables containing all countries:

- French Southern Territories
- Serbia, and
- Montenegro.

The country 'Serbia and Montenegro' will cease. These changes will be backdated to apply from the January 2009 reference month.

Time series affected in this publication are: Tables 14a, 14b, 36a–36j and 37a–37h.

Note that Table 14 of this publication showing data for selected countries on a merchandise trade basis will not be changed.

Changes will also be made to the ABS trade overseas port and ABS trade Australian port classifications, however, there will be no changes to publication tables and time series spreadsheets. Port data are available via tailored user pays consultancies.

CHANGES IN JULY ISSUE *continued*

CHANGES TO STATISTICS
PRESENTED ON A
COUNTRY BASIS *continued*

For further details about the introduction of new ABS country and port classifications refer to the *Information paper: Changes to International Trade in Goods Statistics - Countries and Ports* (cat. no. 5368.0.55.013) released on 9 July 2009.

Time series IDs for the new countries are not yet available but will be included in Table 1 'New ABS Trade Country Codes' of the above information paper on 18 August 2009. They will also be published in the July 2009 issue of this publication. These changes will not affect the statistics presented on a Balance of Payments basis.

CHANGES IN TIME SERIES SPREADSHEETS

CHANGES IN TIME SERIES SPREADSHEETS

There will be two changes in the time series spreadsheets in the July 2009 issue of this publication:

- Title change for Tables 32 and 35:
 - Table 32b Merchandise Exports, Industry, (ANZSIC 1993), FOB Value will replace the existing Table 32
 - Table 35b Merchandise Imports, Industry, (ANZSIC 1993), Customs Value will replace the existing Table 35.
- New tables, Tables 32a and 35a, on an ANZSIC 2006 basis will be added with time series IDs shown below:

TABLE 32a

MERCHANDISE EXPORTS, INDUSTRY (ANZSIC 2006), FOB VALUE

- A3343647V – Agriculture
- A3343648W – Aquaculture
- A3343649X – Forestry and Logging
- A3343650J – Fishing, Hunting and Trapping
- A3343651K – Agriculture, Forestry and Fishing Support Services
- A3343652L – Coal Mining
- A3343653R – Oil and Gas Extraction
- A3343654T – Metal Ore Mining
- A3343655V – Non-Metallic Mineral Mining and Quarrying
- A3343657X – Food Product Manufacturing
- A3343658A – Beverage and Tobacco Product Manufacturing
- A3343659C – Textile, Leather, Clothing and Footwear Manufacturing
- A3343660L – Wood Product Manufacturing
- A3343661R – Pulp, Paper and Converted Paper Product Manufacturing
- A3343662T – Printing (including the Reproduction of Recorded Media)
- A3343663V – Petroleum and Coal Product Manufacturing
- A3343664W – Basic Chemical and Chemical Product Manufacturing
- A3343665X – Polymer Product and Rubber Product Manufacturing
- A3343666A – Non-Metallic Mineral Product Manufacturing
- A3343667C – Primary Metal and Metal Product Manufacturing
- A3343668F – Fabricated Metal Product Manufacturing
- A3343669J – Transport Equipment Manufacturing
- A3343670T – Machinery and Equipment Manufacturing
- A3343671V – Furniture and Other Manufacturing
- A3343700V – Publishing (except Internet and Music Publishing)
- A3343733R – Sum of items not readily classified and those which are confidential and cannot be more specifically classified
- A3343646T – ANZSIC 2006 data not available before July 2005
- A3343735V – Total (Australian New Zealand Standard Industry Classification 2006 (Trade version))

TABLE 35a

MERCHANDISE IMPORTS, INDUSTRY (ANZSIC 2006), CUSTOMS VALUE

- A3343737X – Agriculture
- A3343738A – Aquaculture
- A3343739C – Forestry and Logging
- A3343740L – Fishing, Hunting and Trapping

CHANGES IN TIME SERIES SPREADSHEETS *continued*

TABLE 35a *continued*

MERCHANDISE IMPORTS, INDUSTRY (ANZSIC 2006), CUSTOMS VALUE *continued*

- A3343741R – Agriculture, Forestry and Fishing Support Services
- A3343742T – Coal Mining
- A3343743V – Oil and Gas Extraction
- A3343744W – Metal Ore Mining
- A3343745X – Non-Metallic Mineral Mining and Quarrying
- A3343747C – Food Product Manufacturing
- A3343748F – Beverage and Tobacco Product Manufacturing
- A3343749J – Textile, Leather, Clothing and Footwear Manufacturing
- A3343750T – Wood Product Manufacturing
- A3343751V – Pulp, Paper and Converted Paper Product Manufacturing
- A3343752W – Printing (including the Reproduction of Recorded Media)
- A3343753X – Petroleum and Coal Product Manufacturing
- A3343754A – Basic Chemical and Chemical Product Manufacturing
- A3343755C – Polymer Product and Rubber Product Manufacturing
- A3343756F – Non-Metallic Mineral Product Manufacturing
- A3343757J – Primary Metal and Metal Product Manufacturing
- A3343758K – Fabricated Metal Product Manufacturing
- A3343759L – Transport Equipment Manufacturing
- A3343760W – Machinery and Equipment Manufacturing
- A3343761X – Furniture and Other Manufacturing
- A3343790K – Publishing (except Internet and Music Publishing)
- A3343823V – Sum of items not readily classified and those which are confidential and cannot be more specifically classified
- A3343736W – ANZSIC 2006 data not available before July 2005
- A3343825X – Total (Australian New Zealand Standard Industry Classification 2006 (Trade version))

COUNTRIES

In addition, three extra countries will be added into the merchandise trade tables. This will impact the time series in Tables 14a, 14b, 36a–36j and 37a–37h. The new time series IDs for these countries are not currently available but will be included in Table 1 'New ABS Trade Country Codes' on the *Information paper: Changes to International Trade in Goods Statistics – Countries and Ports* (cat. no. 5368.0.55.013) on 18 August 2009.

TIME SERIES DATA

TIME SERIES DATA

Data available free on the ABS web site include longer time series of tables in this publication and the additional spreadsheets and data cubes listed below.

- 31 Merchandise exports by Broad Economic Category (BEC)
- 32 Merchandise exports by industry of origin (ANZSIC)
- 33 Merchandise imports by Broad Economic Category (BEC)
- 34 Merchandise imports by Balance of Payments Broad Economic Category (BoPBEC)
- 35 Merchandise imports by industry of origin (ANZSIC)
- 36 Merchandise exports, state by country and country groups
- 37 Merchandise imports, state by country and country groups
- 91 Monthly seasonal adjustment factors and forward factors for 12 months.

TRADE IN SERVICES DATA CUBES

Trade in Services data are usually updated on an annual basis - with the March issue of this publication for calendar year (cat. no. 5368.0.55.004) and with the September issue for financial year (cat. no. 5368.0.55.003).

The following tables are included in both sets of data cubes:

- 1 International trade in services, credits, state by year
- 2 International trade in services, credits, year by state
- 3 International trade in services, debits, state by year
- 4 International trade in services, debits, year by state
- 5 International trade in services, credits, year by country and service
- 6 International trade in services, credits, service by year and by country
- 7 International trade in services, debits, year by country and service
- 8 International trade in services, debits, service by year and by country
- 9 International trade in services, credits and debits, year by detailed service
- 10 International trade in services, credits, year by country and travel service
- 11 International trade in services, debits, year by country and travel service

In addition, the following table is available on a calendar year basis and will be available on a financial year basis from the September 2009 issue.

- 12 International trade in services, credits, education related travel, by educational sector, by type of expenditure by year.

ANALYSIS AND COMMENTS

BALANCE ON GOODS AND SERVICES

The trend estimate of the balance on goods and services was a deficit of \$288m in June 2009, a turnaround of \$430m on a revised surplus in May 2009.

In seasonally adjusted terms, the balance on goods and services was a deficit of \$441m in June 2009, a decrease of \$296m (40%) on a revised deficit in May 2009.

The sum of the seasonally adjusted balances for the three months to June 2009 was a deficit of \$1,458m, a turnaround of \$5,305m on the surplus of \$3,847m for the three months to March 2009. However, if the seasonal factors used in compiling quarterly Balance of Payments are applied, the June quarter 2009 deficit was \$1,667m, a turnaround of \$5,934m on the revised March quarter 2009 surplus of \$4,267m.

2008-09 SITUATION

For 2008-09, the balance of goods and services was a surplus of \$5.8b. This is a turnaround of \$29.4b on the 2007-08 deficit resulting from a \$51.8b (22%) increase in exports offset by a \$22.5b (9%) increase in imports of goods and services.

Exports of non-rural and other goods were up \$45.0b (29%) and rural goods were up \$3.9b (15%) compared to 2007-08.

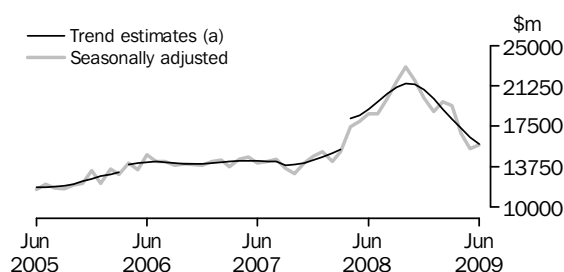
EXPORTS OF GOODS AND SERVICES

Between May 2009 and June 2009 the trend estimate of goods and services credits fell \$640m (3%) to \$20,446m.

In seasonally adjusted terms, goods and services credits rose \$310m (2%) to \$20,397m. Other goods rose \$156m (13%), non-rural goods rose \$135m (1%) and rural goods rose \$22m (1%). Services credits fell \$3m.

Exports of goods

GOODS CREDITS



(a) Trend breaks of \$500m to April 2006 and \$2,725m to April 2008 have been applied.

RURAL GOODS

In trend terms, exports of rural goods fell \$46m (2%) to \$2,411m.

In seasonally adjusted terms, export of rural goods rose \$22m (1%) to \$2,366m.

The main component that contributed to the increase in the seasonally adjusted estimates was cereal grains and cereal preparations, up \$87m (15%).

In original terms, exports of rural goods fell \$230m (9%) to \$2,240m.

NON-RURAL GOODS

In trend terms, exports of non-rural goods fell \$457m (4%) to \$11,984m.

In seasonally adjusted terms, exports of non-rural goods rose \$135m (1%) to \$12,065m.

ANALYSIS AND COMMENTS *continued*

Exports of goods *continued*

NON-RURAL GOODS *continued*

The main components contributing to the rise in seasonally adjusted estimates were:

- other mineral fuels, up \$75m (6%)
- transport equipment, up \$54m (25%)
- metals (excl. gold), up \$48m (6%)
- machinery, up \$37m (6%).

Partly offsetting these increases were:

- metal ores and minerals, down \$71m (2%)
- other non-rural, down \$31m (3%).

An adjustment has been made to the value of the metal ores and minerals component for June 2009, for details see page 4 - *Commodity prices adjustment*.

In original terms, exports of non-rural goods fell \$179m (1%) to \$11,789m.

OTHER GOODS

In trend terms, exports of other goods fell \$161m (10%) to \$1,423m.

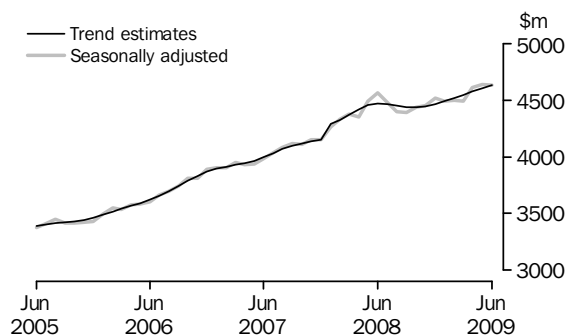
In seasonally adjusted terms, other goods rose \$156m (13%) to \$1,333m.

The main component contributing to the rise in seasonally adjusted estimates was non-monetary gold, up \$164m (17%).

In original terms, exports of other goods rose \$156m (13%) to \$1,332m.

Exports of services

SERVICES CREDITS



In trend terms, services credits rose \$24m (1%) to \$4,628m.

In seasonally adjusted terms, services credits fell \$3m to \$4,633m.

The main component contributing to the fall in the seasonally adjusted estimates was transportation services, down \$10m (2%).

This was partly offset by the other services component, up \$9m (1%).

In seasonally adjusted terms, tourism related services credits fell \$8m to \$3,022m.

IMPORTS OF GOODS AND SERVICES

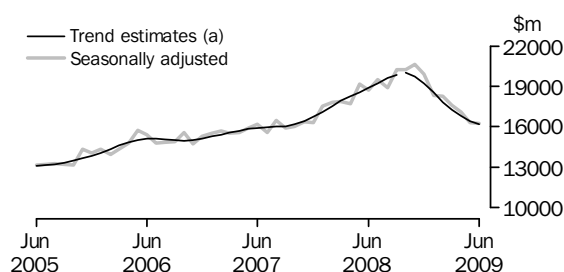
Between May 2009 and June 2009 the trend estimate of goods and services debits fell \$211m (1%) to \$20,734m.

In seasonally adjusted terms, goods and services debits rose \$13m to \$20,838m. Intermediate and other merchandise goods rose \$247m (4%), consumption goods rose \$207m (4%), capital goods rose \$35m (1%) while other goods fell \$502m (48%). Services debits rose \$27m (1%).

Preliminary analysis shows that, in seasonally adjusted terms, goods imports volumes decreased about 1.9% during the June quarter 2009 and the implicit price deflator fell 7.2%. In original terms, the Chain Laspeyres price index fell about 6.1% while the implicit price deflator fell 7.6%. The final volume and price outcomes will be published in the June quarter 2009 issue of *Balance of Payments and International Investment Position, Australia* (cat. no. 5302.0).

Imports of goods

GOODS DEBITS



(a) A trend break of \$167m has been applied to Capital goods, n.e.s. debits and related aggregates in October 2008.

CONSUMPTION GOODS

In trend terms, imports of consumption goods rose \$41m (1%) to \$5,086m.

In seasonally adjusted terms, imports of consumption goods rose \$207m (4%) to \$5,222m.

The main component contributing to the increase in the seasonally adjusted estimates was non-industrial transport equipment, up \$220m (26%).

In original terms, imports of consumption goods rose \$388m (9%) to \$4,931m.

CAPITAL GOODS

In trend terms, imports of capital goods fell \$82m (2%) to \$3,669m.

In seasonally adjusted terms, imports of capital goods rose \$35m (1%) to \$3,665m.

The main component contributing to the increase in the seasonally adjusted estimates was machinery and industrial equipment, up \$129m (10%).

Partly offsetting this increase was the capital goods n.e.s. component, down \$118m (12%).

In original terms, imports of capital goods rose \$270m (8%) to \$3,762m.

ANALYSIS AND COMMENTS *continued*

Imports of goods continued

INTERMEDIATE AND OTHER MERCHANDISE GOODS

In trend terms, imports of intermediate and other merchandise goods fell \$58m (1%) to \$6,653m.

In seasonally adjusted terms, imports of intermediate and other merchandise goods rose \$247m (4%) to \$6,843m.

The main component contributing to the increase in the seasonally adjusted estimates was fuels and lubricants, up \$234m (13%).

In original terms, imports of intermediate and other merchandise goods rose \$338m (5%) to \$6,653m.

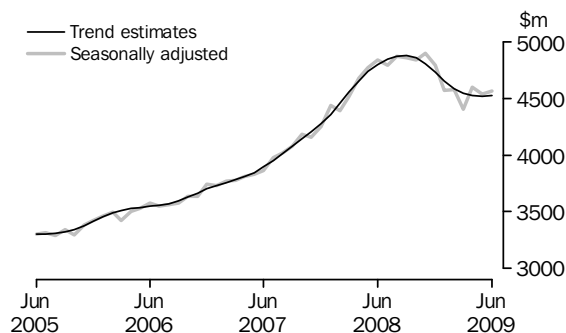
OTHER GOODS

In trend terms, imports of other goods fell \$118m (13%) to \$805m.

In both original terms and seasonally adjusted terms, other goods debits fell \$502m (48%) to \$546m. The components contributing to this decrease were non-monetary gold, down \$336m (45%) and goods for processing, down \$170m.

Imports of services

SERVICES DEBITS



In trend terms, services debits rose \$8m to \$4,522m.

In seasonally adjusted terms, services debits rose \$27m (1%) to \$4,563m.

All components contributed to the rise in the seasonally adjusted estimates with:

- other services, up \$11m (1%)
- transportation services, up \$9m (1%)
- travel services, up \$6m.

In seasonally adjusted terms, tourism related services debits rose \$13m (1%) to \$2,367m.

GOODS AND SERVICES(a), Summary: Seasonally Adjusted and Trend Estimates

Months	BALANCE	CREDITS					DEBITS					
	On goods and services	Total goods and services	Total goods	Rural goods(b)	Non-rural and other goods(b)	Total services	Total goods and services	Total goods	Con-sumption goods	Capital goods	Inter-mediate and other goods	Total services
	\$m	\$m	\$m	\$m	\$m	\$m	\$m	\$m	\$m	\$m	\$m	\$m
SEASONALLY ADJUSTED												
2008												
April	-581	21 815	17 462	2 425	15 037	4 352	-22 396	-17 722	-4 955	-3 821	-8 946	-4 674
May	-1 498	22 437	17 949	2 454	15 496	4 488	-23 935	-19 163	-5 294	-3 945	-9 925	-4 772
June	-371	23 211	18 646	2 280	16 366	4 565	-23 582	-18 742	-5 191	-4 224	-9 326	-4 840
July	-1 134	23 151	18 673	2 222	16 452	4 477	-24 285	-19 494	-5 135	-4 027	-10 332	-4 791
August	766	24 493	20 100	2 314	17 786	4 394	-23 727	-18 859	-5 046	-4 257	-9 556	-4 868
September	974	26 072	21 683	2 253	19 430	4 388	-25 097	-20 237	-5 103	-4 432	-10 702	-4 860
October	2 401	27 470	23 034	2 564	20 470	4 436	-25 069	-20 229	-5 223	-4 434	-10 572	-4 840
November	651	26 192	21 741	2 471	19 269	4 452	-25 541	-20 644	-5 329	-4 402	-10 913	-4 897
December	-47	24 640	20 127	2 526	17 601	4 514	-24 687	-19 895	-5 430	-5 218	-9 247	-4 793
2009												
January	477	23 365	18 876	2 464	16 412	4 489	-22 888	-18 315	-5 153	-4 403	-8 759	-4 573
February	1 440	24 260	19 762	2 547	17 215	4 498	-22 819	-18 246	-4 468	-4 737	-9 040	-4 574
March	1 930	23 932	19 445	2 782	16 663	4 487	-22 002	-17 597	-5 167	-4 219	-8 211	-4 406
April	-280	21 425	16 816	2 450	14 366	4 609	-21 705	-17 106	-5 089	-4 174	-7 843	-4 598
May	-737	20 087	15 451	2 344	13 107	4 636	-20 825	-16 289	-5 015	-3 630	-7 644	-4 536
June	-441	20 397	15 764	2 366	13 398	4 633	-20 838	-16 275	-5 222	-3 665	-7 389	-4 563
TREND ESTIMATES (c)												
2008												
April(d)	-284	22 622	18 202	2 308	15 894	4 419	-22 906	-18 254	-5 128	-4 002	-9 124	-4 652
May	-311	22 967	18 513	2 323	16 190	4 454	-23 278	-18 544	-5 101	-4 042	-9 400	-4 735
June	-152	23 511	19 044	2 321	16 722	4 468	-23 663	-18 867	-5 073	-4 100	-9 693	-4 797
July	151	24 245	19 783	2 321	17 462	4 463	-24 095	-19 251	-5 069	-4 174	-10 009	-4 843
August	491	24 998	20 549	2 331	18 218	4 449	-24 507	-19 637	-5 114	-4 248	-10 275	-4 870
September	835	25 580	21 142	2 358	18 784	4 438	-24 746	-19 870	-5 174	-4 291	-10 405	-4 876
October(e)	1 038	25 899	21 463	2 408	19 055	4 436	-24 862	-20 007	-5 214	-4 431	-10 362	-4 855
November	1 318	25 850	21 405	2 473	18 932	4 445	-24 532	-19 726	-5 216	-4 376	-10 135	-4 805
December	1 412	25 386	20 920	2 530	18 390	4 466	-23 974	-19 242	-5 173	-4 328	-9 741	-4 732
2009												
January	1 378	24 572	20 081	2 559	17 522	4 491	-23 194	-18 541	-5 099	-4 209	-9 233	-4 652
February	1 201	23 624	19 108	2 558	16 550	4 516	-22 424	-17 838	-5 034	-4 082	-8 723	-4 585
March	922	22 723	18 180	2 535	15 644	4 543	-21 801	-17 258	-5 004	-3 964	-8 290	-4 543
April	549	21 874	17 301	2 500	14 801	4 574	-21 326	-16 804	-5 014	-3 853	-7 937	-4 522
May	142	21 086	16 483	2 457	14 025	4 604	-20 945	-16 430	-5 045	-3 751	-7 634	-4 514
June	-288	20 446	15 818	2 411	13 407	4 628	-20 734	-16 212	-5 086	-3 669	-7 458	-4 522

(a) For sign conventions, see paragraph 11 of the Explanatory Notes.

(b) For all time periods, estimates for sugar, sugar preparations and honey are included in Non-rural and other goods.

(c) Caution should be used when interpreting recent trend estimates as they may be affected by unusual economic factors. For more details on trend estimates, please see paragraph 10 of the explanatory notes.

(d) A trend break of \$2,725m has been applied to Non-rural and other goods credits and related aggregates in April 2008.

(e) A trend break of \$167m has been applied to Capital goods, n.e.s. debits and related aggregates in October 2008.

GOODS AND SERVICES(a), Summary: Original

	BALANCE	CREDITS					DEBITS					
	<i>On goods and services</i>	<i>Total goods and services</i>	<i>Total goods</i>	<i>Rural goods(b)</i>	<i>Non-rural and other goods(b)</i>	<i>Total services</i>	<i>Total goods and services</i>	<i>Total goods</i>	<i>Consumption goods</i>	<i>Capital goods</i>	<i>Inter-mediate and other goods</i>	<i>Total services</i>
	\$m	\$m	\$m	\$m	\$m	\$m	\$m	\$m	\$m	\$m	\$m	\$m
FINANCIAL YEAR												
2006-07	-12 757	215 695	169 514	25 075	144 439	46 181	-228 452	-184 024	-54 913	-41 765	-87 346	-44 428
2007-08	-23 561	233 853	182 818	25 480	157 338	51 035	-257 414	-205 164	-59 371	-45 351	-100 442	-52 250
2008-09	5 805	285 701	231 728	29 343	202 385	53 973	-279 896	-223 514	-61 426	-51 693	-110 395	-56 382
MONTHS												
2008												
April	-1 255	21 146	16 700	2 432	14 268	4 446	-22 401	-17 878	-4 958	-3 748	-9 172	-4 523
May	-689	22 467	18 096	2 626	15 470	4 371	-23 156	-18 608	-5 016	-3 821	-9 771	-4 548
June	-160	22 628	18 408	2 172	16 236	4 220	-22 788	-17 912	-4 769	-4 224	-8 919	-4 876
July	-1 319	23 405	18 858	2 149	16 709	4 547	-24 724	-19 764	-5 284	-4 048	-10 432	-4 960
August	1 556	25 145	20 644	2 288	18 356	4 501	-23 589	-18 752	-5 073	-4 208	-9 471	-4 837
September	-452	25 979	21 765	2 217	19 548	4 214	-26 431	-21 153	-5 578	-4 555	-11 020	-5 278
October	1 488	28 869	24 275	2 678	21 597	4 594	-27 381	-22 206	-6 135	-4 809	-11 262	-5 175
November	248	26 363	21 832	2 508	19 324	4 531	-26 115	-21 399	-5 793	-4 753	-10 853	-4 716
December	126	25 576	21 103	2 618	18 485	4 473	-25 450	-20 384	-5 528	-5 517	-9 339	-5 066
2009												
January	-514	21 859	17 449	2 195	15 254	4 410	-22 373	-17 549	-4 846	-4 046	-8 657	-4 824
February	2 371	23 151	18 603	2 523	16 080	4 548	-20 780	-16 805	-4 040	-4 152	-8 613	-3 975
March	2 763	24 593	19 973	2 970	17 003	4 620	-21 830	-17 643	-4 944	-4 344	-8 355	-4 187
April	-49	20 975	16 251	2 487	13 764	4 724	-21 024	-16 569	-4 731	-4 007	-7 831	-4 455
May	423	20 145	15 614	2 470	13 144	4 531	-19 722	-15 398	-4 543	-3 492	-7 363	-4 324
June	-836	19 641	15 361	2 240	13 121	4 280	-20 477	-15 892	-4 931	-3 762	-7 199	-4 585
FINANCIAL YEAR TO DATE												
12 months ended June												
2008	-23 561	233 853	182 818	25 480	157 338	51 035	-257 414	-205 164	-59 371	-45 351	-100 442	-52 250
2009	5 805	285 701	231 728	29 343	202 385	53 973	-279 896	-223 514	-61 426	-51 693	-110 395	-56 382

(a) For sign conventions, see paragraph 11 of the Explanatory Notes.

(b) For all time periods, estimates for sugar, sugar preparations and honey are included in Non-rural and other goods.

GOODS CREDITS: Original

							12 MONTHS ENDED JUNE		Change %
	2006-07	2007-08	2008-09	Apr 2009	May 2009	Jun 2009	2008	2009	
	\$m	\$m	\$m	\$m	\$m	\$m	\$m	\$m	
Total goods credits	169 514	182 818	231 728	16 251	15 614	15 361	182 818	231 728	26.8
<i>Rural goods</i>	25 075	25 480	29 343	2 487	2 470	2 240	25 480	29 343	15.2
Meat and meat preparations	7 078	6 540	7 458	560	627	544	6 540	7 458	14.0
Cereal grains and cereal preparations	4 171	4 976	6 882	689	587	614	4 976	6 882	38.3
Wool and sheepskins	3 065	2 796	2 321	187	187	149	2 796	2 321	-17.0
Other rural(a)	10 761	11 168	12 682	1 051	1 069	933	11 168	12 682	13.6
<i>Non-rural goods</i>	131 813	143 140	182 280	12 230	11 968	11 789	143 140	182 280	27.3
Metal ores and minerals	35 315	41 339	51 745	3 642	3 517	3 471	41 339	51 745	25.2
Coal, coke and briquettes	21 928	24 599	54 802	3 548	3 067	2 968	24 599	54 802	122.8
Other mineral fuels	15 642	18 889	20 658	1 164	1 157	1 258	18 889	20 658	9.4
Metals (excl. non-monetary gold)	14 820	14 038	12 384	819	876	930	14 038	12 384	-11.8
Machinery	8 422	8 792	8 951	660	673	685	8 792	8 951	1.8
Transport equipment	4 648	5 719	5 089	252	230	242	5 719	5 089	-11.0
Other manufactures	16 268	17 000	17 641	1 321	1 455	1 367	17 000	17 641	3.8
Other non-rural (incl. sugar and beverages)	14 770	12 764	11 010	824	993	868	12 764	11 010	-13.7
<i>Other goods</i>	12 626	14 198	20 105	1 534	1 176	1 332	14 198	20 105	41.6
Goods for processing	417	276	879	105	94	92	276	879	. .
Repairs on goods	90	103	86	4	5	3	103	86	-16.5
Goods procured in ports by carriers	1 379	1 547	1 631	100	99	95	1 547	1 631	5.4
Non-monetary gold	10 740	12 272	17 509	1 325	978	1 142	12 272	17 509	42.7

. . not applicable

(a) For all time periods, estimates for sugar, sugar preparations and honey are included in Other non-rural.

GOODS DEBITS(a): Original

	12 MONTHS ENDED JUNE								
	2006-07	2007-08	2008-09	Apr	May	Jun	2008	2009	Change
	\$m	\$m	\$m	\$m	\$m	\$m	\$m	\$m	%
Total goods debits	-184 024	-205 164	-223 514	-16 569	-15 398	-15 892	-205 164	-223 514	8.9
<i>Consumption goods</i>	-54 913	-59 371	-61 426	-4 731	-4 543	-4 931	-59 371	-61 426	3.5
Food and beverages, mainly for consumption	-7 182	-7 840	-8 858	-696	-639	-675	-7 840	-8 858	13.0
Household electrical items	-4 525	-5 051	-5 489	-458	-487	-481	-5 051	-5 489	8.7
Non-industrial transport equipment	-14 894	-16 872	-13 247	-871	-832	-1 174	-16 872	-13 247	-21.5
Textiles, clothing and footwear	-6 805	-7 051	-8 288	-667	-528	-553	-7 051	-8 288	17.5
Toys, books and leisure goods	-4 328	-4 561	-5 277	-384	-452	-430	-4 561	-5 277	15.7
Consumption goods n.e.s.	-17 179	-17 996	-20 267	-1 655	-1 605	-1 618	-17 996	-20 267	12.6
<i>Capital goods</i>	-41 765	-45 351	-51 693	-4 007	-3 492	-3 762	-45 351	-51 693	14.0
Machinery and industrial equipment	-15 330	-16 480	-18 493	-1 345	-1 144	-1 319	-16 480	-18 493	12.2
ADP equipment	-7 008	-7 074	-7 263	-613	-530	-644	-7 074	-7 263	2.7
Telecommunications equipment	-5 315	-5 790	-6 431	-521	-505	-524	-5 790	-6 431	11.1
Civil aircraft(b)	-1 667	-2 691	-1 524	na	na	na	-2 691	na	na
Industrial transport equipment n.e.s.	-6 454	-7 554	-6 562	-299	-316	-370	-7 554	-6 562	-13.1
Capital goods n.e.s.(b)	-5 991	-5 762	-11 420	-1 229	-997	-905	-5 762	-11 420	98.2
<i>Intermediate and other merchandise goods</i>	-79 923	-90 693	-96 326	-7 045	-6 315	-6 653	-90 693	-96 326	6.2
Food and beverages, mainly for industry	-819	-923	-1 187	-96	-88	-80	-923	-1 187	28.6
Primary industrial supplies n.e.s.	-1 552	-1 477	-1 902	-88	-78	-121	-1 477	-1 902	28.8
Fuels and lubricants	-21 470	-29 772	-28 159	-1 794	-1 749	-1 983	-29 772	-28 159	-5.4
Parts for transport equipment	-8 355	-8 833	-8 602	-637	-564	-588	-8 833	-8 602	-2.6
Parts for ADP equipment	-1 620	-1 115	-1 067	-82	-83	-87	-1 115	-1 067	-4.3
Other parts for capital goods	-11 780	-11 990	-14 313	-1 274	-1 145	-1 177	-11 990	-14 313	19.4
Organic and inorganic chemicals	-4 406	-4 673	-5 384	-406	-363	-371	-4 673	-5 384	15.2
Paper and paperboard	-2 368	-2 359	-2 403	-161	-149	-149	-2 359	-2 403	1.9
Textile yarn and fabrics	-1 366	-1 334	-1 343	-100	-93	-92	-1 334	-1 343	0.7
Iron and steel	-3 817	-3 721	-5 528	-340	-236	-251	-3 721	-5 528	48.6
Plastics	-2 957	-3 064	-3 026	-215	-193	-194	-3 064	-3 026	-1.2
Processed industrial supplies n.e.s.	-17 794	-20 013	-21 893	-1 632	-1 485	-1 487	-20 013	-21 893	9.4
Other merchandise goods(b)	-1 619	-1 419	-1 519	-220	-89	-73	-1 419	-1 519	7.0
<i>Other goods</i>	-7 423	-9 749	-14 069	-786	-1 048	-546	-9 749	-14 069	44.3
Goods for processing	-507	-233	-837	-1	-171	-1	-233	-837	. .
Repairs on goods	-131	-117	-204	-15	-18	-20	-117	-204	74.4
Goods procured in ports by carriers	-1 468	-1 771	-1 725	-113	-113	-115	-1 771	-1 725	-2.6
Non-monetary gold	-5 317	-7 628	-11 303	-657	-746	-410	-7 628	-11 303	48.2

. . not applicable

na not available

(a) For sign conventions, see paragraph 11 of the Explanatory Notes.

(b) From December 2008, the Civil aircraft series and commodities subject to a 'no commodity details' or 'no value details' restriction are included in Capital goods n.e.s.. From September to November 2008 commodities with these restrictions are included in Civil aircraft and for earlier periods are included in Other merchandise goods.

GOODS CREDITS: Seasonally Adjusted

	Sep 2008	Oct 2008	Nov 2008	Dec 2008	Jan 2009	Feb 2009	Mar 2009	Apr 2009	May 2009	Jun 2009
	\$m	\$m	\$m	\$m	\$m	\$m	\$m	\$m	\$m	\$m
Total goods credits	21 683	23 034	21 741	20 127	18 876	19 762	19 445	16 816	15 451	15 764
<i>Rural goods</i>	2 253	2 564	2 471	2 526	2 464	2 547	2 782	2 450	2 344	2 366
Meat and meat preparations	629	721	654	631	603	652	629	579	593	572
Cereal grains and cereal preparations	377	506	476	618	563	594	834	618	568	655
Wool and sheepskins	217	240	202	187	181	194	182	174	167	161
Other rural(a)	1 031	1 097	1 139	1 090	1 116	1 107	1 138	1 079	1 016	977
<i>Non-rural goods</i>	17 911	18 665	17 655	16 049	14 761	14 753	14 336	12 824	11 930	12 065
Metal ores and minerals	5 535	4 973	4 300	3 933	4 243	4 345	4 291	3 821	3 612	3 541
Coal, coke and briquettes(b)	5 492	6 409	6 280	5 485	4 451	4 355	4 110	3 600	3 011	3 011
Other mineral fuels(c)	1 892	2 098	2 074	1 919	1 728	1 660	1 509	1 337	1 275	1 350
Metals (excl. non-monetary gold)(c)	1 276	1 287	1 193	1 009	873	893	824	858	819	867
Machinery	745	798	872	754	692	771	763	685	668	705
Transport equipment	526	619	466	480	421	359	359	273	214	268
Other manufactures	1 524	1 543	1 554	1 506	1 450	1 483	1 490	1 390	1 397	1 419
Other non-rural (incl. sugar and beverages)	920	937	916	964	903	888	990	860	935	904
<i>Other goods</i>	1 519	1 805	1 614	1 552	1 652	2 462	2 327	1 542	1 177	1 333
Goods for processing(d)	36	100	52	47	79	110	93	105	94	92
Repairs on goods(d)	8	5	8	12	7	7	8	4	5	3
Goods procured in ports by carriers(c)	162	172	157	135	133	133	117	108	100	96
Non-monetary gold(d)	1 313	1 528	1 397	1 358	1 433	2 212	2 109	1 325	978	1 142

(a) For all time periods, estimates for sugar, sugar preparations and honey are included in Other non-rural.

(b) Only a length-of-month effect has been applied to this component.

(c) In using these seasonally adjusted series, care should be exercised because of the difficulties associated with reliably estimating the seasonal pattern.

(d) This component is not seasonally adjusted.

GOODS DEBITS(a): Seasonally Adjusted

	Sep 2008	Oct 2008	Nov 2008	Dec 2008	Jan 2009	Feb 2009	Mar 2009	Apr 2009	May 2009	Jun 2009
	\$m	\$m	\$m	\$m	\$m	\$m	\$m	\$m	\$m	\$m
Total goods debits	-20 237	-20 229	-20 644	-19 895	-18 315	-18 246	-17 597	-17 106	-16 289	-16 275
<i>Consumption goods</i>	-5 103	-5 223	-5 329	-5 430	-5 153	-4 468	-5 167	-5 089	-5 015	-5 222
Food and beverages, mainly for consumption	-735	-751	-749	-778	-758	-679	-792	-735	-735	-759
Household electrical items	-410	-445	-477	-436	-463	-390	-422	-496	-526	-545
Non-industrial transport equipment	-1 272	-1 200	-1 164	-1 228	-1 002	-790	-886	-895	-856	-1 076
Textiles, clothing and footwear	-651	-702	-733	-770	-744	-637	-795	-722	-675	-672
Toys, books and leisure goods	-430	-444	-446	-465	-447	-379	-470	-460	-465	-448
Consumption goods n.e.s.	-1 605	-1 681	-1 760	-1 753	-1 739	-1 593	-1 804	-1 780	-1 759	-1 723
<i>Capital goods</i>	-4 432	-4 434	-4 402	-5 218	-4 403	-4 737	-4 219	-4 174	-3 630	-3 665
Machinery and industrial equipment	-1 538	-1 600	-1 645	-1 652	-1 564	-1 512	-1 752	-1 454	-1 252	-1 381
ADP equipment	-594	-749	-680	-653	-591	-585	-580	-587	-531	-556
Telecommunications equipment	-557	-572	-545	-481	-554	-585	-592	-528	-526	-514
Civil aircraft(b)(c)	-512	-185	-265	na	na	na	na	na	na	na
Industrial transport equipment n.e.s.	-744	-667	-606	-593	-493	-441	-407	-329	-332	-343
Capital goods n.e.s.(b)	-488	-662	-659	-1 838	-1 200	-1 614	-888	-1 277	-989	-871
<i>Intermediate and other merchandise goods</i>	-9 476	-9 556	-9 130	-8 264	-7 488	-7 141	-6 922	-7 057	-6 596	-6 843
Food and beverages, mainly for industry	-104	-107	-119	-108	-106	-96	-99	-97	-88	-91
Primary industrial supplies n.e.s.(d)	-152	-168	-252	-185	-189	-100	-134	-96	-105	-130
Fuels and lubricants(c)	-3 145	-3 295	-2 407	-2 053	-1 823	-1 871	-1 704	-1 794	-1 749	-1 983
Parts for transport equipment	-810	-813	-840	-718	-678	-621	-658	-643	-598	-605
Parts for ADP equipment	-87	-90	-118	-92	-90	-87	-90	-86	-78	-80
Other parts for capital goods	-1 152	-1 198	-1 302	-1 279	-1 262	-1 157	-1 230	-1 246	-1 192	-1 190
Organic and inorganic chemicals	-490	-512	-598	-515	-447	-416	-358	-401	-365	-403
Paper and paperboard	-223	-223	-223	-205	-206	-190	-189	-177	-168	-166
Textile yarn and fabrics	-117	-130	-123	-123	-114	-105	-112	-107	-97	-93
Iron and steel	-571	-622	-581	-648	-454	-442	-325	-352	-282	-271
Plastics	-279	-301	-283	-263	-233	-232	-246	-225	-201	-207
Processed industrial supplies n.e.s.	-1 978	-1 997	-2 213	-1 984	-1 805	-1 732	-1 707	-1 612	-1 585	-1 551
Other merchandise goods(b)(c)	-366	-101	-70	-90	-83	-90	-71	-220	-89	-73
<i>Other goods</i>	-1 226	-1 016	-1 783	-983	-1 271	-1 899	-1 289	-786	-1 048	-546
Goods for processing(c)	-1	-1	-139	-1	-170	-1	-195	-1	-171	-1
Repairs on goods(c)	-16	-11	-17	-22	-11	-25	-27	-15	-18	-20
Goods procured in ports by carriers(c)	-202	-156	-156	-157	-105	-105	-105	-113	-113	-115
Non-monetary gold(e)	-1 007	-848	-1 471	-803	-985	-1 768	-962	-657	-746	-410

na not available

- (a) For sign conventions, see paragraph 11 of the Explanatory Notes.
- (b) From December 2008, the Civil aircraft series and commodities subject to a 'no commodity details' or 'no value details' restriction are included in Capital goods n.e.s.. From September to November 2008 commodities with these restrictions are included in Civil aircraft and for earlier periods are included in Other merchandise goods.

(c) These components are not seasonally adjusted.

- (d) In using these seasonally adjusted series, care should be exercised because of the difficulties associated with reliably estimating the seasonal pattern.
- (e) From October 1995, this component is not seasonally adjusted.

GOODS CREDITS(a): Trend Estimates

	Sep 2008	Oct 2008	Nov 2008	Dec 2008	Jan 2009	Feb 2009	Mar 2009	Apr 2009	May 2009	Jun 2009
	\$m	\$m	\$m	\$m	\$m	\$m	\$m	\$m	\$m	\$m
Total goods credits	21 142	21 463	21 405	20 920	20 081	19 108	18 180	17 301	16 483	15 818
<i>Rural goods</i>	2 358	2 408	2 473	2 530	2 559	2 558	2 535	2 500	2 457	2 411
Meat and meat preparations	637	648	654	650	639	624	611	600	591	582
Cereal grains and cereal preparations	473	477	510	559	606	638	653	657	655	645
Wool and sheepskins	216	214	208	200	191	184	179	174	170	166
Other rural(b)	1 032	1 069	1 101	1 120	1 123	1 112	1 092	1 068	1 042	1 018
<i>Non-rural goods</i>	17 242	17 441	17 215	16 562	15 607	14 616	13 776	13 060	12 441	11 984
Metal ores and minerals(c)	4 840	4 751	4 594	4 415	4 249	4 126	4 031	3 913	3 782	3 657
Coal, coke and briquettes(d)	5 449	5 751	5 773	5 504	5 008	4 446	3 957	3 560	3 227	2 992
Other mineral fuels	1 959	1 970	1 958	1 899	1 787	1 645	1 514	1 408	1 325	1 269
Metals (excl. non-monetary gold)	1 263	1 219	1 142	1 047	957	892	854	835	826	830
Machinery	775	786	789	781	762	742	723	708	695	691
Transport equipment	540	529	507	472	424	375	330	291	260	234
Other manufactures	1 505	1 518	1 524	1 514	1 493	1 469	1 447	1 429	1 414	1 404
Other non-rural (incl. sugar and beverages)	911	917	927	930	927	922	919	916	913	909
<i>Other goods</i>	1 542	1 615	1 717	1 829	1 915	1 934	1 869	1 741	1 584	1 423
Goods for processing	49	57	65	73	81	88	94	98	101	101
Repairs on goods	8	8	8	8	8	7	7	5	4	4
Goods procured in ports by carriers	161	159	154	146	136	126	117	110	103	97
Non-monetary gold	1 324	1 390	1 489	1 601	1 689	1 712	1 650	1 527	1 376	1 221

- (a) Caution should be used when interpreting recent trend estimates as they may be affected by unusual economic factors. For more details on trend estimates, please see paragraph 10 of the explanatory notes.
- (b) For all time periods, estimates for sugar, sugar preparations and honey are included in Other non-rural.
- (c) A trend break of \$725m has been applied to metal ores and minerals, and related aggregates in April 2008. This trend break will be reassessed with the annual seasonal reanalysis to be incorporated with results to be published in the August 2009 issue. Trend estimates from April 2008 should be used with caution.
- (d) A trend break of \$2,000m has been applied to coal, coke and briquettes, and related aggregates in April 2008. This trend break will be reassessed with the annual seasonal reanalysis to be incorporated with results to be published in the August 2009 issue. Trend estimates from April 2008 should be used with caution.

GOODS DEBITS (a)(b): Trend Estimates

	Sep 2008	Oct 2008	Nov 2008	Dec 2008	Jan 2009	Feb 2009	Mar 2009	Apr 2009	May 2009	Jun 2009
	\$m	\$m	\$m	\$m	\$m	\$m	\$m	\$m	\$m	\$m
Total goods debits	-19 870	-20 007	-19 726	-19 242	-18 541	-17 838	-17 258	-16 804	-16 430	-16 212
<i>Consumption goods</i>	-5 174	-5 214	-5 216	-5 173	-5 099	-5 034	-5 004	-5 014	-5 045	-5 086
Food and beverages, mainly for consumption	-729	-741	-749	-752	-750	-746	-743	-743	-745	-746
Household electrical items	-420	-432	-439	-439	-439	-443	-456	-477	-500	-524
Non-industrial transport equipment	-1 295	-1 241	-1 170	-1 085	-1 001	-940	-904	-892	-900	-918
Textiles, clothing and footwear	-667	-693	-716	-733	-737	-730	-720	-709	-698	-686
Toys, books and leisure goods	-430	-437	-440	-442	-442	-442	-445	-449	-454	-457
Consumption goods n.e.s.	-1 633	-1 671	-1 701	-1 721	-1 730	-1 733	-1 737	-1 743	-1 749	-1 754
<i>Capital goods</i>	-4 291	-4 431	-4 376	-4 328	-4 209	-4 082	-3 964	-3 853	-3 751	-3 669
Machinery and industrial equipment	-1 568	-1 591	-1 613	-1 626	-1 616	-1 582	-1 531	-1 473	-1 415	-1 364
ADP equipment	-636	-657	-663	-652	-627	-600	-578	-564	-554	-547
Telecommunications equipment	-526	-536	-543	-549	-553	-554	-553	-548	-540	-533
Civil aircraft(c)	-334	-313	-283	-6	na	na	na	na	na	na
Industrial transport equipment n.e.s.	-728	-685	-629	-565	-503	-449	-403	-365	-335	-313
Capital goods n.e.s.(c)(d)	-499	-649	-645	-931	np	np	np	np	np	np
<i>Intermediate and other merchandise goods</i>	-9 227	-9 110	-8 804	-8 346	-7 826	-7 372	-7 054	-6 850	-6 711	-6 653
Food and beverages, mainly for industry	-101	-106	-110	-110	-106	-102	-98	-94	-92	-90
Primary industrial supplies n.e.s.	-184	-192	-193	-184	-167	-146	-126	-113	-105	-105
Fuels and lubricants	-3 032	-2 809	-2 528	-2 234	-1 991	-1 838	-1 774	-1 768	-1 788	-1 822
Parts for transport equipment	-813	-801	-776	-740	-700	-666	-640	-622	-609	-604
Parts for ADP equipment	-92	-95	-97	-97	-94	-91	-87	-84	-81	-80
Other parts for capital goods	-1 155	-1 201	-1 238	-1 255	-1 251	-1 236	-1 221	-1 210	-1 201	-1 196
Organic and inorganic chemicals	-508	-522	-521	-501	-467	-431	-402	-383	-372	-371
Paper and paperboard	-219	-219	-217	-212	-204	-194	-186	-178	-171	-166
Textile yarn and fabrics	-119	-122	-122	-120	-117	-112	-107	-103	-100	-96
Iron and steel	-560	-589	-590	-560	-504	-440	-380	-331	-291	-258
Plastics	-282	-280	-274	-264	-252	-240	-229	-221	-213	-208
Processed industrial supplies n.e.s.	-1 987	-2 019	-2 014	-1 968	-1 882	-1 784	-1 697	-1 629	-1 574	-1 544
Other merchandise goods(c)	-174	-155	-127	-102	-90	-94	-107	-114	-116	-112
<i>Other goods</i>	-1 178	-1 252	-1 331	-1 395	-1 407	-1 351	-1 235	-1 087	-923	-805
Goods for processing	-41	-42	-53	-70	-86	-94	-93	-88	-79	-74
Repairs on goods	-13	-14	-16	-18	-19	-20	-20	-20	-20	-19
Goods procured in ports by carriers	-186	-173	-156	-138	-123	-114	-110	-108	-108	-109
Non-monetary gold	-938	-1 022	-1 106	-1 169	-1 178	-1 122	-1 012	-871	-716	-602

na not available

np not available for publication but included in totals where applicable, unless otherwise indicated

(a) For sign conventions, see paragraph 11 of the Explanatory Notes.

(b) Caution should be used when interpreting recent trend estimates as they may be affected by unusual economic factors. For more details on trend estimates, please see paragraph 10 of the explanatory notes.

(c) From December 2008, the Civil aircraft series and commodities subject to a 'no commodity details' or 'no value details' restriction are included in Capital goods n.e.s.. From September to November 2008 commodities with these restrictions are included in Civil aircraft and for earlier periods are included in Other merchandise goods. Trend estimates for the Capital goods n.e.s. series from December 2008 have been suppressed due to the change in the composition of the series.

(d) A trend break of \$167m has been applied to Capital goods, n.e.s. debits and related aggregates in October 2008.

SERVICES (a)(b), Summary—Original

							12 MONTHS ENDED JUNE		Change
	2006-07	2007-08	2008-09	Apr 2009	May 2009	Jun 2009	2008	2009	
	\$m	\$m	\$m	\$m	\$m	\$m	\$m	\$m	
Services credits	46 181	51 035	53 973	4 724	4 531	4 280	51 035	53 973	5.8
Transportation services	8 617	9 247	8 126	621	583	574	9 247	8 126	-12.1
Passenger(c)	4 237	4 118	3 705	281	243	234	4 118	3 705	-10.0
Freight	609	637	588	38	38	37	637	588	-7.7
Other	3 771	4 492	3 833	302	302	303	4 492	3 833	-14.7
Travel services	25 161	28 252	30 959	2 810	2 655	2 415	28 252	30 959	9.6
Other services	12 403	13 536	14 888	1 293	1 293	1 291	13 536	14 888	10.0
Services debits	-44 428	-52 250	-56 382	-4 455	-4 324	-4 585	-52 250	-56 382	7.9
Transportation services	-15 360	-16 380	-15 874	-1 051	-1 038	-1 103	-16 380	-15 874	-3.1
Passenger(c)	-6 876	-7 278	-6 336	-442	-481	-527	-7 278	-6 336	-12.9
Freight	-8 036	-8 600	-8 933	-563	-504	-521	-8 600	-8 933	3.9
Other	-448	-502	-605	-46	-53	-55	-502	-605	20.5
Travel services	-15 934	-20 153	-22 161	-1 865	-1 748	-1 900	-20 153	-22 161	10.0
Other services	-13 134	-15 717	-18 347	-1 539	-1 538	-1 582	-15 717	-18 347	16.7
Memorandum items:									
Tourism related service credits(d)	29 398	32 370	34 664	3 091	2 898	2 649	32 370	34 664	7.1
Tourism related service debits(d)	-22 810	-27 431	-28 497	-2 307	-2 229	-2 427	-27 431	-28 497	3.9

(a) For sign conventions, see paragraph 11 of the Explanatory Notes.

(b) For more detailed trade in services components, see table 11.

(c) Passenger services includes agency fees and commission receipts for air transport.

(d) For a more detailed explanation of tourism related services, see paragraphs 18 and 19 of the Explanatory Notes.

	Sep 2008	Oct 2008	Nov 2008	Dec 2008	Jan 2009	Feb 2009	Mar 2009	Apr 2009	May 2009	Jun 2009
	\$m	\$m	\$m	\$m	\$m	\$m	\$m	\$m	\$m	\$m
SEASONALLY ADJUSTED										
Services credits	4 388	4 436	4 452	4 514	4 489	4 498	4 487	4 609	4 636	4 633
Transportation services	745	674	687	691	661	636	617	635	629	619
Passenger(b)	318	302	314	326	324	300	285	297	289	283
Freight(c)	60	53	53	50	40	41	40	40	39	38
Other(c)	367	319	320	315	297	295	291	298	300	297
Travel services	2 408	2 526	2 523	2 572	2 614	2 635	2 645	2 713	2 740	2 739
Other services(c)	1 236	1 235	1 242	1 250	1 214	1 228	1 225	1 262	1 266	1 275
Services debits	-4 860	-4 840	-4 897	-4 793	-4 573	-4 574	-4 406	-4 598	-4 536	-4 563
Transportation services	-1 464	-1 478	-1 503	-1 418	-1 283	-1 216	-1 191	-1 138	-1 100	-1 109
Passenger(b)	-584	-568	-548	-511	-504	-510	-490	-490	-475	-482
Freight	-838	-853	-897	-844	-730	-657	-652	-601	-572	-572
Other(d)	-42	-58	-58	-62	-49	-49	-49	-46	-53	-55
Travel services	-1 871	-1 847	-1 867	-1 839	-1 791	-1 838	-1 689	-1 912	-1 879	-1 885
Other services(c)	-1 525	-1 514	-1 528	-1 536	-1 499	-1 520	-1 526	-1 549	-1 558	-1 569
Memorandum items:										
Tourism related service credits(e)	2 726	2 828	2 837	2 898	2 938	2 935	2 930	3 010	3 030	3 022
Tourism related service debits(e)	-2 455	-2 415	-2 414	-2 350	-2 295	-2 348	-2 179	-2 402	-2 354	-2 367

TREND ESTIMATES (f)

Services credits	4 438	4 436	4 445	4 466	4 491	4 516	4 543	4 574	4 604	4 628
Transportation services	727	707	688	671	657	645	635	627	621	617
Passenger(b)	319	317	315	314	311	305	299	293	287	283
Freight	59	56	52	48	44	42	40	39	39	38
Other	349	334	321	310	302	298	296	296	295	296
Travel services	2 476	2 491	2 521	2 561	2 603	2 637	2 668	2 697	2 723	2 743
Other services	1 236	1 237	1 236	1 233	1 232	1 234	1 240	1 249	1 259	1 268
Services debits	-4 876	-4 855	-4 805	-4 732	-4 652	-4 585	-4 543	-4 522	-4 514	-4 522
Transportation services	-1 480	-1 468	-1 438	-1 387	-1 321	-1 251	-1 191	-1 145	-1 108	-1 085
Passenger(b)	-581	-560	-541	-525	-512	-501	-493	-487	-482	-479
Freight	-850	-856	-842	-807	-755	-699	-648	-608	-576	-555
Other	-49	-52	-54	-55	-54	-51	-50	-50	-50	-51
Travel services	-1 874	-1 863	-1 845	-1 825	-1 811	-1 809	-1 819	-1 835	-1 854	-1 875
Other services	-1 521	-1 523	-1 523	-1 520	-1 520	-1 524	-1 532	-1 542	-1 552	-1 561
Memorandum items:										
Tourism related service credits(e)	2 795	2 808	2 836	2 875	2 913	2 943	2 966	2 989	3 011	3 026
Tourism related service debits(e)	-2 455	-2 424	-2 386	-2 350	-2 323	-2 310	-2 312	-2 322	-2 336	-2 354

- (a) For sign conventions, see paragraph 11 of the Explanatory Notes.
- (b) Passenger services includes agency fees and commission receipts for air transport.
- (c) In using these seasonally adjusted series, care should be exercised because of the difficulties associated with reliably estimating the seasonal pattern.

- (d) This component is not seasonally adjusted.
- (e) For a more detailed explanation of tourism related services, see paragraphs 18 and 19 of the Explanatory Notes.
- (f) Caution should be used when interpreting recent trend estimates as they may be affected by unusual economic factors. For more details on trend estimates, please see paragraph 10 of the explanatory notes.

	CREDITS				DEBITS			
	Sep Qtr	Dec Qtr	Mar Qtr	Jun Qtr	Sep Qtr	Dec Qtr	Mar Qtr	Jun Qtr
	2008	2008	2009	2009	2008	2008	2009	2009
	\$m	\$m	\$m	\$m	\$m	\$m	\$m	\$m
Services	13 262	13 598	13 578	13 535	-15 075	-14 957	-12 986	-13 364
Transportation services	2 261	2 106	1 981	1 778	-4 480	-4 682	-3 520	-3 192
Passenger(c)	949	987	1 011	758	-1 887	-1 611	-1 388	-1 450
Freight	201	166	108	113	-2 467	-2 893	-1 985	-1 588
Other	1 111	953	862	907	-126	-178	-147	-154
Travel services	7 352	7 610	8 117	7 880	-6 044	-5 580	-5 024	-5 513
Business	704	640	711	632	-775	-753	-692	-622
Personal	6 648	6 970	7 406	7 248	-5 269	-4 827	-4 332	-4 891
Education-related	4 181	3 729	4 196	4 478	-309	-175	-177	-156
Other	2 467	3 241	3 210	2 770	-4 960	-4 652	-4 155	-4 735
Communication services(d)	297	252	204	228	-324	-375	-318	-417
Construction services	42	27	21	30	—	—	—	—
Insurance services	186	186	186	189	-243	-243	-243	-240
Financial services	270	270	270	270	-162	-162	-162	-162
Computer and information services	453	462	426	477	-399	-426	-399	-441
Royalties and license fees	231	174	195	231	-876	-870	-903	-891
Other business services	1 761	2 103	1 761	2 046	-1 842	-2 124	-1 863	-2 022
Merchandising and other trade-related	219	243	276	342	-63	-57	-45	-42
Operational leasing	30	33	30	36	-183	-216	-201	-195
Miscellaneous business, professional and technical	1 512	1 827	1 455	1 668	-1 596	-1 851	-1 617	-1 785
Legal, accounting, management consulting and public relations	342	396	339	303	-150	-204	-144	-159
Advertising, market research and public opinion polling	90	111	93	27	-27	-42	-51	-81
Research and development	159	165	132	156	-60	-87	-60	-66
Architectural, engineering and other technical services	420	468	390	588	-468	-564	-393	-399
Agriculture, mining and on-site processing	84	72	66	81	-246	-267	-180	-171
Services between affiliated enterprises n.i.e.	237	396	231	285	-267	-279	-228	-246
Other	180	219	204	228	-378	-408	-561	-663
Personal, cultural, and recreational services	195	207	201	189	-513	-282	-351	-246
Audiovisual and related services	39	45	45	24	-483	-237	-276	-219
Personal, cultural and recreational services	156	162	156	165	-30	-45	-75	-27
Government services n.i.e.	214	201	216	217	-192	-213	-203	-240
Memorandum items:								
Tourism related services(e)	8 301	8 597	9 128	8 638	-7 931	-7 191	-6 412	-6 963

— nil or rounded to zero (including null cells)

(a) For sign conventions, see paragraph 11 of the Explanatory Notes.

(b) For more information see paragraphs 15 and 16 of the Explanatory Notes.

(c) Passenger services includes agency fees and commission receipts for air transport.

(d) Communications services includes other services n.i.e.

(e) For a more detailed explanation of tourism related services, see paragraphs 18 and 19 of the Explanatory Notes.

	Apr 2009	May 2009	Jun 2009	Per cent of total merchandise exports(b)	12 MONTHS ENDED JUNE	
					2008	2009
					\$m	\$m
MAJOR COMMODITIES (c)						
011 Meat of bovine animals	366	413	363	2.4	4 414	5 052
041 Wheat and meslin	523	407	489	3.2	2 886	4 936
268 Wool and other animal hair	164	164	132	0.9	2 488	2 010
281 Iron ore and concentrates	2 371	2 356	2 243	14.6	20 511	34 234
283 Copper ores and concentrates	280	271	401	2.6	4 155	3 523
285 Aluminium ores and concentrates	395	393	355	2.3	5 903	6 125
321 Coal, not agglomerated	3 524	3 045	2 943	19.1	24 416	54 557
333 Crude petroleum oils	450	497	558	3.6	9 597	8 228
334 Refine petroleum oils	177	201	162	1.1	3 601	2 751
343 Natural gas	563	480	564	3.7	5 854	10 095
682 Copper	125	233	268	1.7	3 256	2 786
684 Aluminium	352	313	336	2.2	5 461	5 261
781 Motor vehicles for transport of people	94	50	87	0.6	3 362	2 668
971 Gold, non-monetary	1 261	946	1 115	7.2	12 046	16 894

SECTION AND DIVISION OF THE SITC

0	Food and live animals					
00	Live animals other than fish, crustaceans, molluscs and aquatic invertebrates	86	100	94	0.6	943 1 171
01	Meat and meat preparations	560	627	544	3.5	6 542 7 458
02	Dairy products and birds' eggs	204	181	155	1.0	2 622 2 572
03	Fish (not marine mammals), crustaceans, molluscs and aquatic invertebrates, and preparations thereof	87	92	75	0.5	1 066 1 148
04	Cereals and cereal preparations	689	587	614	4.0	4 973 6 882
05	Vegetables and fruit	165	198	166	1.1	1 333 1 671
06	Sugars, sugar preparations and honey	13	27	15	0.1	226 257
07	Coffee, tea, cocoa, spices, and manufactures thereof	24	25	23	0.2	257 294
08	Feeding stuff for animals (excl. unmilled cereals)	118	105	91	0.6	834 1 330
09	Miscellaneous edible products and preparations	49	55	45	0.3	505 647
	<i>Total Food and live animals</i>	<i>1 997</i>	<i>1 995</i>	<i>1 821</i>	<i>11.8</i>	<i>19 303 23 429</i>
1	Beverages and tobacco					
11	Beverages	190	227	222	1.4	2 831 2 646
12	Tobacco and tobacco manufactures	12	11	8	0.1	130 132
	<i>Total Beverages and tobacco</i>	<i>201</i>	<i>239</i>	<i>230</i>	<i>1.5</i>	<i>2 961 2 778</i>
2	Crude materials, inedible, except fuels					
21	Hides, skins and furskins, raw	40	43	37	0.2	699 637
22	Oil-seeds and oleaginous fruits	98	51	13	0.1	351 649
23	Crude rubber (incl. synthetic and reclaimed)	1	1	1	—	8 12
24	Cork and wood	80	97	101	0.7	1 302 1 226
25	Pulp and waste paper	16	16	17	0.1	266 253
26	Textile fibres and their wastes (not manufactured into yarn or fabric)	207	229	193	1.3	2 995 2 562
27	Crude fertilizers (excl. those of Division 56) and crude minerals (excl. coal, petroleum and precious stones)	13	25	27	0.2	465 348
28	Metalliferous ores and metal scrap	3 629	3 492	3 595	23.3	40 405 51 635
29	Crude animal and vegetable materials, n.e.s.	18	17	23	0.1	209 242
	<i>Total Crude materials, inedible, except fuels</i>	<i>4 102</i>	<i>3 972</i>	<i>4 006</i>	<i>26.0</i>	<i>46 701 57 565</i>
3	Mineral fuels, lubricants and related materials					
32	Coal, coke and briquettes	3 548	3 067	2 968	19.3	24 597 54 803
33	Petroleum, petroleum products and related materials	628	700	722	4.7	13 219 10 996
34	Gas, natural and manufactured	628	547	627	4.1	7 037 11 113
	<i>Total Mineral fuels, lubricants and related materials</i>	<i>4 804</i>	<i>4 314</i>	<i>4 316</i>	<i>28.0</i>	<i>44 853 76 912</i>

— nil or rounded to zero (including null cells)

(a) Some SITC sections and divisions exclude commodities subject to a confidentiality restriction. These are included in Division 98. For more information see paragraph 17 of the Explanatory Notes.

(b) Per cent of total merchandise is calculated for the most recent month.

(c) The 'Major commodities' section lists commodities at the SITC Rev 4 3-digit level which are the most significant (by value) or are of particular interest. Abbreviated descriptors have been used. The list of 'Major commodities' is reviewed annually.

	Apr 2009	May 2009	Jun 2009	Per cent of total merchandise exports(b)	12 MONTHS ENDED JUNE	
					2008	2009
					\$m	\$m
SECTION AND DIVISION OF THE SITC						
4	Animal and vegetable oils, fats and waxes					
41	23	23	31	0.2	375	324
42	11	16	14	0.1	109	179
43	Fats and oils (processed), waxes and inedible mixtures or preparations, of animal or vegetable origin, n.e.s.					
	3	1	1	—	14	13
	36	40	45	0.3	498	516
5	Chemicals and related products, nes					
51	11	15	12	0.1	175	168
52	38	43	44	0.3	867	561
53	58	70	66	0.4	605	617
54	303	362	369	2.4	3 948	4 028
55	Essential oils and resinoids and perfume materials; toilet, polishing and cleansing preparations					
	50	48	49	0.3	562	611
56	17	32	32	0.2	296	720
57	22	20	19	0.1	356	292
58	37	53	34	0.2	343	420
59	77	79	70	0.5	888	1 075
	612	723	695	4.5	8 040	8 492
6	Manufactured goods classified chiefly by material					
61	23	26	18	0.1	372	274
62	21	19	18	0.1	261	254
63	13	13	15	0.1	159	165
64	Paper, paperboard, and articles of paper pulp, of paper or of paperboard					
	56	62	54	0.4	707	680
65	28	27	22	0.1	401	353
66	64	58	84	0.5	772	889
67	82	60	65	0.4	1 424	1 348
68	737	816	865	5.6	12 611	11 035
69	95	97	83	0.5	1 091	1 097
	1 119	1 179	1 223	7.9	17 799	16 094
7	Machinery and transport equipment					
71	58	61	75	0.5	1 185	891
72	151	151	156	1.0	1 736	1 938
73	11	11	14	0.1	210	184
74	General industrial machinery and equipment, n.e.s. and machine parts, n.e.s.					
	158	154	147	1.0	1 711	1 889
75	77	84	78	0.5	1 119	1 187
76	Telecommunications and sound recording and reproducing apparatus and equipment					
	78	76	82	0.5	908	1 098
77	Electrical machinery, apparatus and appliances, parts (incl. non-electrical counterparts of electrical domestic equip)					
	123	132	128	0.8	1 872	1 717
78	160	140	166	1.1	4 591	3 676
79	92	90	76	0.5	1 129	1 413
	908	900	922	6.0	14 462	13 994

— nil or rounded to zero (including null cells)

(b) Per cent of total merchandise is calculated for the most recent month.

(a) Some SITC sections and divisions exclude commodities subject to a confidentiality restriction. These are included in Division 98. For more information see paragraph 17 of the Explanatory Notes.

	Apr 2009	May 2009	Jun 2009	Per cent of total merchandise exports(b)	12 MONTHS ENDED JUNE	
					2008	2009
					\$m	\$m
SECTION AND DIVISION OF THE SITC						
8	Miscellaneous manufactured articles					
81						
	8	12	12	0.1	136	142
82	Furniture, parts thereof; bedding, mattresses, mattress supports, cushions and similar stuffed furnishings					
	7	8	7	—	110	123
83	Travel goods, handbags and similar containers					
	2	3	2	—	30	31
84	Articles of apparel and clothing accessories					
	18	18	14	0.1	255	237
85	Footwear					
	3	3	3	—	45	49
87	Professional, scientific and controlling instruments and apparatus, n.e.s.					
	180	194	159	1.0	1 887	2 220
88	Photographic apparatus, equipment and supplies and optical goods, n.e.s.; watches and clocks					
	28	30	25	0.2	323	367
89	Miscellaneous manufactured articles, n.e.s.					
	159	159	152	1.0	2 361	2 217
	<i>Total Miscellaneous manufactured articles</i>	<i>406</i>	<i>427</i>	<i>2.4</i>	<i>5 149</i>	<i>5 386</i>
9	Commodities and transactions not classified elsewhere in the SITC					
93	Special transactions and commodities not classified according to kind					
	171	164	167	1.1	1 197	1 769
95	Gold coin whether or not legal tender, and other coin being legal tender					
	64	32	27	0.2	228	617
96	Coin (excl. gold coin), not being legal tender					
	—	—	—	—	—	1
97	Gold, non-monetary (excl. gold ores and concentrates)					
	1 261	946	1 115	7.2	12 046	16 894
98	Combined confidential items excl. some of SITC 280 (exports only) and some of SITCs 510 and 520 (imports only)					
	527	594	470	3.0	7 620	6 028
	<i>Total Commodities and transactions not classified elsewhere in the SITC</i>	<i>2 023</i>	<i>1 736</i>	<i>11.5</i>	<i>21 091</i>	<i>25 309</i>
	Total merchandise exports	16 208	15 524	100.0	180 857	230 474
	Balance of Payments Adjustments	43	90	—	1 961	1 254
	Goods credits (exports) on a Balance of Payments Basis	16 251	15 614	15 361	182 818	231 728

.. not applicable

— nil or rounded to zero (including null cells)

(a) Some SITC sections and divisions exclude commodities subject to a confidentiality restriction. These are included in Division 98. For more information see paragraph 17 of the Explanatory Notes.

(b) Per cent of total merchandise is calculated for the most recent month.

				Per cent of total merchandise imports(b)	12 MONTHS ENDED JUNE	
	Apr 2009	May 2009	Jun 2009		2008	2009
	\$m	\$m	\$m	%	\$m	\$m
MAJOR COMMODITIES (c)						
333 Crude petroleum oils	869	973	1 046	6.7	16 767	14 419
334 Refined petroleum oils	711	725	845	5.4	12 044	12 205
542 Medicaments	648	685	670	4.3	6 513	7 393
641 Paper and paperboard	131	122	121	0.8	2 010	2 002
723 Civil engineering and contractors' plant and equipment	236	134	144	0.9	3 889	3 356
751 Office machines	144	142	159	1.0	1 876	1 957
752 Automatic data processing machines	511	429	520	3.3	5 511	5 863
761 Televisions	254	299	327	2.1	3 120	3 025
764 Telecommunications equipment	598	571	614	3.9	6 783	7 348
781 Motor vehicles for the transport of people	771	764	1 098	7.0	15 082	11 618
782 Motor vehicles for the transport of goods	232	192	270	1.7	6 080	4 985
784 Parts and accessories of motor vehicles	182	161	163	1.0	2 665	2 443
971 Gold, non-monetary	657	570	410	2.6	7 316	11 251

SECTION AND DIVISION OF THE SITC

0	Food and live animals					
00	Live animals other than fish, crustaceans, molluscs and aquatic invertebrates	10	8	4	—	130 103
01	Meat and meat preparations	46	44	57	0.4	422 577
02	Dairy products and birds' eggs	48	41	40	0.3	613 589
03	Fish (not marine mammals), crustaceans, molluscs and aquatic invertebrates, and preparations thereof	99	80	94	0.6	1 134 1 285
04	Cereals and cereal preparations	66	69	66	0.4	653 824
05	Vegetables and fruit	124	125	122	0.8	1 530 1 674
06	Sugars, sugar preparations and honey	20	24	23	0.1	229 266
07	Coffee, tea, cocoa, spices, and manufactures thereof	93	91	88	0.6	959 1 182
08	Feeding stuff for animals (excl. unmilled cereals)	27	50	30	0.2	503 588
09	Miscellaneous edible products and preparations	138	129	140	0.9	1 393 1 556
	<i>Total Food and live animals</i>	671	661	663	4.2	7 564 8 645
1	Beverages and tobacco					
11	Beverages	110	82	87	0.6	1 315 1 476
12	Tobacco and tobacco manufactures	32	27	27	0.2	189 246
	<i>Total Beverages and tobacco</i>	142	110	114	0.7	1 504 1 723
2	Crude materials, inedible, except fuels					
21	Hides, skins and furskins, raw	—	—	—	—	3 2
22	Oil seeds and oleaginous fruits	5	5	4	—	56 59
23	Crude rubber (incl. synthetic and reclaimed)	10	8	9	0.1	189 178
24	Cork and wood	41	38	46	0.3	661 596
25	Pulp and waste paper	9	11	13	0.1	294 268
26	Textile fibres and their wastes (not manufactured into yarn or fabric)	10	10	12	0.1	139 134
27	Crude fertilisers (excl. those of Division 56) and crude minerals (excl. coal, petroleum and precious stones)	13	10	17	0.1	279 461
28	Metalliferous ores and metal scrap	8	8	30	0.2	542 556
29	Crude animal and vegetable materials, n.e.s.	26	23	26	0.2	302 353
	<i>Total Crude materials, inedible, except fuels</i>	124	114	157	1.0	2 465 2 607
3	Mineral fuels, lubricants and related materials					
32	Coal, coke and briquettes	1	3	1	—	16 28
33	Petroleum, petroleum products and related materials	1 639	1 748	1 924	12.3	29 377 27 347
34	Gas, natural and manufactured	232	105	148	0.9	1 161 2 548
	<i>Total Mineral fuels, lubricants and related materials</i>	1 872	1 856	2 073	13.2	30 553 29 922

— nil or rounded to zero (including null cells)

(a) Some SITC sections and divisions exclude commodities subject to a confidentiality restriction. These are included in Division 98. For more information see paragraph 17 of the Explanatory Notes.

(b) Per cent of total merchandise is calculated for the most recent month.

(c) The 'Major commodities' section lists commodities at the SITC Rev 4 3-digit level which are the most significant (by value) or are of particular interest. Abbreviated descriptors have been used. The list of 'Major commodities' is reviewed annually.

	Apr	May	Jun	Per cent	12 MONTHS	
	2009	2009	2009	of total	ENDED JUNE	
	\$m	\$m	\$m	merchandise	2008	2009
				imports(b)		
				%	\$m	\$m
SECTION AND DIVISION OF THE SITC						
4	Animal and vegetable oils, fats and waxes					
41	7	2	2	—	31	39
42	36	40	31	0.2	439	515
43	4	5	4	—	57	65
	<i>Total Animal and vegetable oils, fats and waxes</i>					
	46	47	37	0.2	527	619
5	Chemicals and related products, n.e.s.					
51	273	234	267	1.7	3 463	3 430
52	133	130	104	0.7	1 215	1 960
53	50	43	45	0.3	632	689
54	831	811	804	5.1	7 988	9 081
55	154	140	136	0.9	1 635	1 809
56	164	125	81	0.5	1 558	1 750
57	114	95	91	0.6	1 765	1 609
58	101	98	103	0.7	1 300	1 418
59	175	146	156	1.0	1 893	2 163
	<i>Total Chemicals and related products, n.e.s.</i>					
	1 996	1 821	1 788	11.4	21 449	23 909
6	Manufactured goods classified chiefly by material					
61	14	10	10	0.1	182	167
62	233	203	193	1.2	2 517	2 706
63	51	40	45	0.3	663	692
64	195	182	187	1.2	2 731	2 837
65	204	187	177	1.1	2 501	2 595
66	213	189	197	1.3	2 481	2 792
67	340	236	251	1.6	3 721	5 529
68	89	108	119	0.8	2 075	1 934
69	414	365	426	2.7	4 842	5 712
	<i>Total Manufactured goods classified chiefly by material</i>					
	1 754	1 519	1 605	10.2	21 714	24 964
7	Machinery and transport equipment					
71	458	340	337	2.2	4 448	5 355
72	589	488	525	3.3	7 858	7 960
73	56	44	52	0.3	771	755
74	958	884	1 015	6.5	9 722	12 086
75	745	664	775	4.9	8 613	9 016
76	934	960	1 017	6.5	11 150	11 647
77	806	773	796	5.1	9 051	10 163
78	1 312	1 225	1 656	10.6	26 079	21 196
79	126	162	121	0.8	5 812	3 418
	<i>Total Machinery and transport equipment</i>					
	5 985	5 540	6 294	40.2	83 503	81 596

— nil or rounded to zero (including null cells)

(b) Per cent of total merchandise is calculated for the most recent month.

(a) Some SITC sections and divisions exclude commodities subject to a confidentiality restriction. These are included in Division 98. For more information see paragraph 17 of the Explanatory Notes.

				Per cent of total merchandise imports(b)	12 MONTHS ENDED JUNE	
	Apr 2009	May 2009	Jun 2009		2008	2009
	\$m	\$m	\$m		\$m	\$m
SECTION AND DIVISION OF THE SITC						
8	Miscellaneous manufactured articles					
81	Prefabricated buildings; sanitary, plumbing, heating and lighting fixtures and fittings, n.e.s.	70	64	56	0.4	696 829
82	Furniture, parts thereof; bedding, mattresses, mattress supports, cushions and similar stuffed furnishings	218	196	204	1.3	2 568 2 842
83	Travel goods, handbags and similar containers	64	51	56	0.4	670 828
84	Articles of apparel and clothing accessories	464	347	368	2.3	4 585 5 524
85	Footwear	91	80	91	0.6	1 184 1 404
87	Professional, scientific and controlling instruments and apparatus, n.e.s.	397	394	436	2.8	4 426 5 009
88	Photographic apparatus, equipment and supplies and optical goods, n.e.s.; watches and clocks	113	107	110	0.7	1 351 1 497
89	Miscellaneous manufactured articles, n.e.s.	961	884	841	5.4	9 666 11 354
	<i>Total Miscellaneous manufactured articles</i>	<i>2 378</i>	<i>2 122</i>	<i>2 163</i>	<i>13.8</i>	<i>25 146 29 286</i>
9	Commodities and transactions not classified elsewhere in the SITC					
93	Special transactions and commodities not classified according to kind	4	4	4	—	42 57
95	Gold coin whether or not legal tender, and other coin being legal tender	—	—	—	—	5 5
96	Coin (excl. gold coin), not being legal tender	—	—	—	—	1 1
97	Gold, non-monetary (excl. gold ores and concentrates)	657	570	410	2.6	7 316 11 251
98	Combined confidential items excl some of SITC 280 (exports only) and some of SITCs 510 and 520 (imports only)	578	364	362	2.3	518 4 881
	<i>Total Commodities and transactions not classified elsewhere in the SITC</i>	<i>1 239</i>	<i>938</i>	<i>776</i>	<i>4.9</i>	<i>7 881 16 195</i>
	Total merchandise imports	16 208	14 728	15 671	100.0	202 307 219 466
	Balance of Payments Adjustment	361	670	221	. .	2 857 4 048
	Goods Debits (imports) on a Balance of Payments Basis	16 569	15 398	15 892	. .	205 164 223 514

. . not applicable

— nil or rounded to zero (including null cells)

(a) Some SITC sections and divisions exclude commodities subject to a confidentiality restriction. These are included in Division 98. For more information see paragraph 17 of the Explanatory Notes.

(b) Per cent of total merchandise is calculated for the most recent month.

	EXPORTS				IMPORTS (b)				BALANCE OF MERCHANDISE TRADE	
	2008-09	Jun 2009	12	12	2008-09	Jun 2009	12	12	2008-09	2009
			Months Ended June 2008	Months Ended June 2009			Months Ended June 2008	Months Ended June 2009		
	\$m	\$m	\$m	\$m	\$m	\$m	\$m	\$m	\$m	
Belgium	1 301	40	1 327	1 301	1 719	108	1 727	1 719	-418	-418
Brazil	1 484	63	936	1 484	1 041	50	1 041	1 041	443	443
Canada	1 519	111	1 620	1 519	2 439	141	2 187	2 439	-920	-920
China	39 302	3 537	27 034	39 302	37 047	2 602	30 994	37 047	2 255	2 255
Denmark	176	11	177	176	1 070	84	895	1 070	-894	-894
Egypt(c)	452	50	310	452	33	2	17	33	419	419
Fiji	375	25	380	375	160	13	122	160	215	215
Finland	592	9	1 138	592	978	61	945	978	-386	-386
France	1 721	132	1 500	1 721	4 656	323	4 989	4 656	-2 935	-2 935
Germany	2 184	127	1 450	2 184	11 107	803	10 576	11 107	-8 923	-8 923
Hong Kong (Sar of China)	3 196	221	2 838	3 196	1 425	112	1 380	1 425	1 771	1 771
India	15 434	1 307	9 328	15 434	2 121	141	1 606	2 121	13 313	13 313
Indonesia	4 305	429	3 957	4 305	5 032	396	4 585	5 032	-727	-727
Iran	662	36	164	662	95	2	54	95	567	567
Iraq	194	16	94	194	31	—	23	31	163	163
Ireland	134	11	241	134	2 399	234	2 006	2 399	-2 265	-2 265
Israel	257	10	254	257	715	45	685	715	-458	-458
Italy	1 559	38	1 456	1 559	5 339	427	4 895	5 339	-3 780	-3 780
Japan	52 547	2 833	34 967	52 547	17 840	1 488	19 679	17 840	34 708	34 708
Korea, Republic of	19 207	1 233	14 240	19 207	6 520	669	6 163	6 520	12 687	12 687
Kuwait	428	26	577	428	426	44	363	426	2	2
Malaysia	3 720	293	3 426	3 720	8 325	655	8 081	8 325	-4 605	-4 605
Mexico	901	94	551	901	1 324	91	1 238	1 324	-423	-423
Netherlands	3 173	121	2 864	3 173	1 771	120	1 555	1 771	1 401	1 401
New Zealand	8 553	615	9 529	8 553	7 042	515	7 044	7 042	1 511	1 511
Pakistan	478	32	491	478	181	11	154	181	297	297
Papua New Guinea	1 612	110	1 616	1 612	3 009	204	2 748	3 009	-1 397	-1 397
Philippines	1 410	58	1 280	1 410	605	43	763	605	805	805
Saudi Arabia	2 252	105	2 247	2 252	933	16	908	933	1 319	1 319
Singapore	5 508	363	5 226	5 508	13 462	793	13 685	13 462	-7 954	-7 954
South Africa	2 063	74	2 408	2 063	1 258	76	1 497	1 258	805	805
Spain	615	41	902	615	1 732	125	1 996	1 732	-1 117	-1 117
Sweden	566	22	445	566	2 442	179	2 461	2 442	-1 875	-1 875
Switzerland	660	86	944	660	2 481	202	2 129	2 481	-1 821	-1 821
Taiwan	8 156	433	6 479	8 156	4 084	224	4 127	4 084	4 072	4 072
Thailand	4 939	471	4 645	4 939	10 752	779	8 846	10 752	-5 813	-5 813
Turkey	814	36	655	814	507	28	404	507	307	307
United Arab Emirates	3 611	149	3 133	3 611	1 925	191	2 542	1 925	1 686	1 686
United Kingdom	11 510	574	8 309	11 510	9 024	474	8 498	9 024	2 486	2 486
United States of America	11 598	654	10 602	11 598	25 341	1 618	24 325	25 341	-13 743	-13 743
Viet Nam	1 232	131	1 814	1 232	4 381	325	5 133	4 381	-3 148	-3 148
Other Countries(b)	10 074	684	9 305	10 074	16 698	1 259	9 241	16 698	-6 624	-6 624
Total	230 474	15 412	180 857	230 474	219 466	15 671	202 307	219 466	11 008	11 008
APEC	169 073	11 661	131 015	169 073	151 730	10 894	143 827	151 730	17 343	17 343
ASEAN	21 259	1 758	20 471	21 259	43 623	3 020	42 219	43 623	-22 364	-22 364
Developing Countries	124 431	9 569	95 171	124 431	106 768	7 662	97 810	106 768	17 663	17 663
Least Developed Countries	2 151	233	1 637	2 151	281	29	243	281	1 870	1 870
European Union(d)	24 005	1 161	20 462	24 005	45 406	3 193	43 226	45 406	-21 401	-21 401
OECD	119 708	6 812	93 496	119 708	110 061	8 061	107 367	110 061	9 647	9 647

— nil or rounded to zero (including null cells)

(a) See Time series spreadsheets for details of all countries.

(b) From September 2008 imports data with confidentiality restrictions 'no commodity details' or 'no value details' are included in Other countries.

(c) Exports of Alumina to Egypt are excluded from country total and included in the 'Other Countries' category.

(d) The European Union includes 27 member countries.

	2008-09	Jun 2009	12 MONTHS ENDED JUNE	
			2008	2009
			\$m	\$m
EXPORTS (a)				
New South Wales	38 730	2 630	30 091	38 730
Victoria	20 409	1 448	20 539	20 409
Queensland	56 318	3 531	35 318	56 318
South Australia	9 516	634	10 338	9 516
Western Australia	86 790	5 793	68 843	86 790
Tasmania	3 489	281	3 635	3 489
Northern Territory	6 304	419	4 544	6 304
Australian Capital Territory	11	1	4	11
State not available for publication(b)	797	46	895	797
Re-exports	8 110	630	6 650	8 110
Total	230 474	15 412	180 857	230 474
IMPORTS				
New South Wales	78 992	5 935	75 906	78 992
Victoria	56 456	3 832	56 058	56 456
Queensland	33 946	2 611	32 360	33 946
South Australia	6 868	458	7 342	6 868
Western Australia	33 121	2 129	27 355	33 121
Tasmania	956	48	691	956
Northern Territory	4 353	294	2 581	4 353
Australian Capital Territory	7	—	14	7
State not available for publication(c)	4 767	362	—	4 767
Total	219 466	15 671	202 307	219 466

— nil or rounded to zero (including null cells)

(a) State in which the final stage of production or manufacture occurs.

(b) Exports of Alumina to Bahrain, Egypt and Iceland are excluded from the state totals and included in 'State not available for publication'.

(c) From September 2008 imports data with confidentiality restrictions 'no commodity details' or 'no value details' are included in State not available for publication.

PERIOD AVERAGE EXCHANGE RATES (a): Per Australian dollar

<i>Period</i>	<i>United States dollar</i>	<i>UK pound sterling</i>	<i>Euro</i>	<i>Japanese yen</i>	<i>Trade-weighted index of value of the A\$(b)</i>
FINANCIAL YEAR					
2006-07	0.7863	0.4066	0.6018	93.21	64.8
2007-08	0.8968	0.4479	0.6099	98.63	69.7
2008-09	0.7456	0.4621	0.5414	73.99	60.2
MONTHS					
2008					
April	0.9298	0.4695	0.5899	95.30	70.0
May	0.9491	0.4828	0.6098	98.90	72.2
June	0.9508	0.4840	0.6116	101.75	72.8
July	0.9625	0.4840	0.6102	102.71	73.3
August	0.8810	0.4668	0.5890	96.33	68.6
September	0.8205	0.4558	0.5700	87.49	64.9
October	0.6894	0.4070	0.5173	69.20	56.1
November	0.6557	0.4279	0.5155	63.55	54.4
December	0.6690	0.4480	0.4973	61.02	54.6
2009					
January	0.6784	0.4678	0.5095	61.37	55.4
February	0.6490	0.4503	0.5074	59.97	54.2
March	0.6646	0.4680	0.5093	64.92	56.0
April	0.7122	0.4846	0.5398	70.24	59.1
May	0.7626	0.4954	0.5596	73.72	61.7
June	0.8023	0.4898	0.5721	77.39	64.2

- (a) These exchange rates and the trade-weighted index are derived using rates provided by the Reserve Bank of Australia in respect of each trading day.
- (b) May 1970 = 100. The Trade-weighted index is reweighted annually on 1 October and on special occasions as required.

EXPLANATORY NOTES

INTRODUCTION

1 This publication presents preliminary estimates of Australia's international trade in goods and services on a balance of payments basis and merchandise import and export statistics on a recorded trade basis.

2 Merchandise trade statistics on a recorded trade basis are compiled from information submitted by exporters and importers or their agents to the Australian Customs and Border Protection Service. Adjustments for coverage, timing and valuation are made to recorded trade data to convert them to a balance of payments basis. The main source for services data is the quarterly Survey of International Trade in Services.

3 More comprehensive quarterly estimates of Australia's trade in goods and services, together with comprehensive details of Australia's balance of payments are included in the quarterly publication, *Balance of Payments and International Investment Position, Australia* (cat. no. 5302.0). Detailed monthly statistics on merchandise trade are available on Time Series Spreadsheets or by subscription to tailored services.

CONCEPTS, SOURCES AND METHODS

4 The conceptual framework used in compiling Australia's merchandise trade statistics can be found in *International Merchandise Trade, Australia: Concepts, Sources and Methods, 2001* (cat. no. 5489.0).

5 The conceptual framework used in compiling Australia's balance of payments statistics is based on the Fifth Edition of the International Monetary Fund's *Balance of Payments Manual* (BPM5,1993). Descriptions of the underlying concepts and structure of the balance of payments and the sources, methods and terms used in compiling the estimates are presented in *Balance of Payments and International Investment Position, Australia: Concepts, Sources and Methods, 1998* (cat. no. 5331.0). To bring merchandise trade statistics on a recorded trade basis to a balance of payments basis, timing adjustments are made to ensure that the transaction is recorded in the period in which ownership changed, rather than in the period in which the transaction was recorded by Customs. Adjustments are also made to account for the change of ownership of goods not included in merchandise trade statistics. Chapter 6 of cat. no. 5331.0 provides more detail on the relationship between statistics on international merchandise trade on a recorded trade basis and on a balance of payments basis.

6 Both of the Concepts, Sources and Methods publications are available to download for free from the ABS website. Select *Methods, Classifications, Concepts & Standards*, then choose *ABS concepts, classifications and statistical standards* and then the catalogue numbers as above.

SEASONAL ADJUSTMENT

7 The estimates of international trade in goods and services on a balance of payments basis are seasonally adjusted, however the merchandise exports and imports statistics on a recorded trade basis are not. Monthly original estimates are volatile, being subject to calendar-related and large irregular influences. Seasonally adjusted estimates are derived by estimating and removing from the original series systematic calendar related effects, such as seasonal, trading day, length of month and moving holiday influences. Seasonal adjustment does not aim to remove the irregular or non-seasonal influences which may be present in any particular month. These irregular influences may reflect both random economic events and difficulties of statistical recording.

8 The seasonally adjusted statistics in this publication use the concurrent seasonal adjustment technique and Autoregressive Integrated Moving Average (ARIMA) Modelling to estimate factors for the current and previous months. Under concurrent seasonal adjustment, the estimates of seasonal factors are fine tuned as new original estimates become available each period. The seasonally adjusted estimates are subject to revisions at each reference month as the estimates of seasonal factors are improved. For more information on seasonal adjustment methods, see *Information Paper: An Introductory Course on Time Series Analysis, Jan 2005* (cat. no. 1346.0.55.001), *Time Series Analysis*

EXPLANATORY NOTES *continued*

SEASONAL ADJUSTMENT

continued

Frequently Asked Questions, 2003 (cat. no. 1346.0.55.002), alternatively contact the Assistant Director, Time Series Analysis on (02) 6252 6345 or e-mail <time.series.analysis@abs.gov.au>.

ARIMA MODELLING

9 ARIMA modelling relies on the characteristics of the series being analysed to project future period data. ARIMA modelling is used on a case-by-case basis where it results in reduced revisions to seasonally adjusted series when subsequent data become available. The projected values are temporary, intermediate values, that are only used internally to improve the estimation of the seasonal factors. The projected data do not affect the original estimates and are discarded at the end of the seasonal adjustment process. The ARIMA model is assessed as part of the annual reanalysis and, following the 2008 annual re-analysis, 41 of the 42 directly seasonally adjusted trade in goods and services time series use an ARIMA model. For more information on the details of ARIMA modelling see *Feature article: Use of ARIMA modelling to reduce revisions* in the October 2004 issue of *Australian Economic Indicators* (cat. no. 1350.0).

TREND ESTIMATES

10 The month-to-month movements of the seasonally adjusted estimates may not be reliable indicators of trend behaviour because they include irregular or non-seasonal movements. Trend estimates are derived by applying a 13-term Henderson moving average to the seasonally adjusted series. The use of a 13-term Henderson average can result in revisions to the estimates for the most recent six months as additional observations become available. Revisions can also occur because of changes in the original data and as a result of the re-estimation of the seasonal factors. For more information on trend estimates methods, see *Information Paper: A Guide to Interpreting Time Series—Monitoring Trends* (cat. no. 1349.0), alternatively contact the Assistant Director, Time Series Analysis on (02) 6252 6345 or e-mail <time.series.analysis@abs.gov.au>.

SIGN CONVENTION

11 In keeping with balance of payments conventions, where statistics are on a balance of payments basis, credit entries (exports) are shown without sign and debit items (imports) are shown as negative entries. For statistics on a recorded trade basis, both imports and exports are shown without sign. The calculation of percentage changes on balance of payments debit items are made without regard to sign. References to balance of payments debit items in Key Figures, Key Points, and Analysis and Comments are also made without regard to sign.

COMMODITY BREAKDOWNS OF GOODS

12 For details of the classifications used to present goods exports (credits) and imports (debits) on a balance of payments basis, see tables 6.6 and 6.7, respectively, in *Balance of Payments and International Investment Position, Australia: Concepts, Sources and Methods, 1998* (cat. no. 5331.0).

13 The correspondences used to compile statistics on a Balance of Payments basis were updated in the July 2008 issue with estimates for all time periods recompiled on the basis of the revised correspondences to maintain consistency in the time series.

14 The recorded trade statistics shown in tables 12 and 13 are classified by the Standard International Trade Classification (SITC). Imports and exports of goods at a more detailed level are available from the Time Series spreadsheets. All data from July 2005 are presented according to SITC Rev 4 and data prior to July 2005 are presented according to SITC Rev 3. For details refer to the July 2008 issue of this publication.

COMMODITY BREAKDOWNS OF SERVICES

15 The quarterly detailed services data published in table 11 are consistent with the monthly aggregates shown in table 9.

EXPLANATORY NOTES *continued*

COMMODITY BREAKDOWNS OF SERVICES *continued*

16 Monthly indicators for many of the services components that are only surveyed quarterly are not available. In particular, the Freight and Other transportation components of Total services credits are not available for publication on a monthly basis. The estimates for these items shown in table 9 are therefore derived by dividing the quarterly estimate by three. Where quarterly survey data are not available, freight debits are derived directly from imports data for the reference month as a difference between total merchandise cost, insurance and freight (CIF) and free on board (FOB), adjusted to reflect timing and processing adjustments. For freight credits and other transportation credits and debits, estimates are derived by extrapolating the last month's data by an average of movements for the same month over the three previous years.

CONFIDENTIALITY OF MERCHANDISE TRADE STATISTICS

17 The release of statistics for certain merchandise trade commodities is restricted in order to prevent the identification of the activities of an individual business, where this is requested by the business concerned. These restrictions do not affect the total value of exports and imports, but they can affect statistics at the country, state and commodity levels. Imports data that have the confidentiality restrictions 'No commodity details' or 'No value details' are aggregated into a single confidential commodity code. For data prior to September 2008, these data are added back into the appropriate state total and country total (i.e. these totals show the correct level of trade). From September 2008 these confidential data are not added back. Instead the confidential data are published as 'No country details' in the country totals and 'State not available for publication' in the state totals. Therefore, country and state totals from September 2008 may not represent the actual amount of trade in each country/state but only the trade in commodities without a 'No commodity details' or 'No value details' restriction. For information on the confidentiality restrictions applied to the merchandise trade statistics in this publication, refer to the current *International merchandise trade: Confidential Commodities List (CCL)* (cat. no. 5372.0.55.001) which can be accessed from ABS web site.

TOURISM RELATED SERVICES

18 The tourism related services memorandum items provide timely indicators of the movements in tourism related activities, not an absolute measure of the level of these activities. These series are not compiled on a balance of payments conceptual basis. However, they do provide a reasonable approximation of world tourism related activities.

19 The memorandum items have been derived by re-aggregating relevant components of the international trade in services series of the balance of payments accounts. The tourism related indicator has been derived by combining total travel services (business, education-related and other personal travel) and passenger transportation services (which includes agency fees and commission receipts for air transport).

SERVICES BY STATE AND BY PARTNER COUNTRY

20 Annual services data by state and by partner country are released twice yearly. Calendar year data are usually released with the March issue of this publication and financial year data are released with the September issue. Refer to Time series data for details.

21 Services credits are classified by the state of provision, while services debits are classified by the state of consumption. The state allocations for transportation, travel and communication services are based on a number of indicators including merchandise trade statistics by state, overseas passenger arrivals and departures by state of clearance and data provided by the Department of Education, Science and Training. The allocation for other services (about 25% of all trade in services) is primarily based on the location of the business reporting the information, which serves as a proxy for the state of provision/consumption of that service. The data should be used with care but are considered suitable for analysis over time.

EXPLANATORY NOTES *continued*

SERVICES BY STATE AND BY PARTNER COUNTRY *continued*

22 A comprehensive explanation of the data sources used and the methodology applied in the compilation of partner country statistics is provided in Chapter 17 of *Balance of Payments and International Investment Position, Australia – Concepts, Sources and Methods* (cat. no. 5331.0). Approximately 7% of total services credits and 5% of total services debits for both 2006–07 and 2007–08 are either confidential, or unable to be allocated to individual countries.

ABS DATA AVAILABLE

23 More detailed balance of payments and recorded merchandise trade data, including forward seasonal factors are available as time series spreadsheets or data cubes from the ABS website.

24 More detailed merchandise trade data by commodity, country and state, and statistics included in this and related publications are available on request. Inquiries should be made to the National Information and Referral Service as shown on the back of this publication.

RELATED PRODUCTS AND PUBLICATIONS

25 Users may also wish to refer to the following publications which can be downloaded free of charge from the ABS web site:

- *Balance of Payments and International Investment Position, Australia* (cat. no. 5302.0) – issued quarterly
- *International Merchandise Imports, Australia* (cat. no. 5439.0) – issued monthly
- *International Trade Price Indexes, Australia* (cat. no. 6457.0) – issued quarterly
- *Balance of Payments and International Investment Position, Australia: Concepts, Sources and Methods* (cat. no. 5331.0)
- *Information Paper: Quality of Australian Balance of Payments Statistics* (cat. no. 5342.0)
- *International Merchandise Trade, Australia: Concepts, Sources and Methods* (cat. no. 5489.0)
- *A Guide to Australian Balance of Payments and International Investment Position Statistics* (cat. no. 5362.0.55.001).

26 Current publications and other products released by the ABS are available from the *Statistics View*. The ABS also issues a daily *Release Advice* on the web site which details products to be released in the week ahead.

CAUTIONARY NOTE

27 The tables in this publication are presented on two bases. Tables 1–11 contain estimates of Australia's international trade in goods and services which have been adjusted for coverage, valuation and timing to a balance of payments basis. Tables 12–15 contain estimates of merchandise exports and imports based on Australian Customs Service records. Paragraph 5 of the Explanatory Notes provides an explanation of the difference between these bases.

ROUNDING

28 Where figures have been rounded, discrepancies may occur between sums of the component items and totals. Percentage movements are calculated from data at the level of precision presented in this publication (i.e. \$m) except for international merchandise trade tables.

EXPLANATORY NOTES *continued*

ABBREVIATIONS

\$b	billion (thousand million) dollars
\$m	million dollars
ABS	Australian Bureau of Statistics
APEC	Asia Pacific Economic Co-operation
ASEAN	Association of South-East Asian Nations
n.e.s.	not elsewhere specified
n.i.e.	not included elsewhere
OECD	Organisation for Economic Co-operation and Development
SAR	Special Administrative Region
SITC	Standard International Trade Classification

APPENDIX RELATED ARTICLES

<i>Article</i>	<i>Source(a)</i>	<i>Issue</i>
Investment		
Foreign ownership of equity	5302.0	Sep qtr 2007
Kangaroo bonds	1301.0	2006
Foreign currency exposure	5308.0	Mar qtr 2005
Gross external debt	5302.0	Sep qtr 2003
Balance of payments		
International comparison of balance of payments statistics	(b)5363.0	1998–99
Merchandise trade		
Characteristics of Australian Exporters	5368.0.55.006	2007–08
Export and import invoice currencies, 2006	5368.0	Dec 2007
100 years of international trade statistics	5368.0	Oct 2007
New methodology for deriving counts of Australian exports	5368.0	Feb 2006
Australia's Importers, 2003–04	5368.0	Nov 2004
Australia's Exporters, 2003–04	5368.0	Oct 2004
Australia's trade with the USA	5368.0	Mar 2004
Foreign ownership of Australian exporters and importers	5496.0.55.001	2002–03
Major commodities traded by Australia, 1991 to 2000	(b)5422.0	Dec qtr 2000
Trade in services		
International trade in services by partner country, 2006, preliminary	5368.0	Dec 2006
Changes to International trade in services statistics, August 2006	5368.0	Aug 2006
Changes to International trade in services travel statistics	5368.0	Aug 2005
Finance		
Impact of the farm season on Australian production in 2002–03 and 2003–04	1301.0	2005
Recent trends in construction and first home buyers finance	5609.0	Mar 2002
Household sector data in the financial accounts	5232.0	Mar qtr 2002
Technical information		
Changes to International Trade in Goods Statistics - Countries and Ports	5368.0.55.013	Jul 2009
Revisions to international standards in quarterly Balance of Payments and International Investment Position statistics from September 2009	5302.0.55.002	2009
Revisions to international standards in monthly international trade in goods and services statistics from August 2009	5368.0.55.012	2009
Changes to International Trade in Goods Industry Statistics, July 2009	5368.0.55.011	Dec 2008
Technical note 1 - Income on debt	5302.0	Jun qtr 2008
Technical note 2 - Use of CDI data	5302.0	Jun qtr 2008
Impact of introducing Revision 4 of the Standard International Trade Classification	5368.0.55.010	2008
Changes to international trade statistics July 2008	5368.0.55.009	2007–08
Introduction of revised international standards in ABS economic statistics in 2009	5310.0.55.001	2007
Changes on 1 January 2007 to Statistical Codes in the AHECC and the Customs Tariff	1233.0.55.001	Nov 2006
ABS implementation in January 2007 of revisions to international trade classifications, 2007	5368.0.55.005	Jun 2006
Revised treatment of Goods for Processing in Merchandise Trade and Balance of Payments Statistics	5368.0	May 2006
Impact of Customs and ABS changes on import statistics from October 2005	5439.0	Oct 2005
ABS management of the impact of the implementation of the imports component of the New Customs System	5439.0	Aug 2005
Changes to country and port classifications	5368.0	May 2003
Implementation of New Customs Systems	5368.0	Aug 2004
The effect of customs changes on export statistics	5422.0	Jun qtr 2002
Data confidentiality	5422.0	Dec qtr 1999

- (a) In the ABS web site home page, select Statistics; By Catalogue Number; and click on the specified catalogue number and issue. Note: in some instances, a particular issue of the publication can be found in the Past & Future Releases page of the catalogue.
- (b) This article can be found in pdf format by referring to the Downloads page of the specified issue of this publication on the ABS web site.

FOR MORE INFORMATION . . .

INTERNET **www.abs.gov.au** the ABS website is the best place for data from our publications and information about the ABS.

INFORMATION AND REFERRAL SERVICE

Our consultants can help you access the full range of information published by the ABS that is available free of charge from our website. Information tailored to your needs can also be requested as a 'user pays' service. Specialists are on hand to help you with analytical or methodological advice.

PHONE 1300 135 070

EMAIL client.services@abs.gov.au

FAX 1300 135 211

POST Client Services, ABS, GPO Box 796, Sydney NSW 2001

FREE ACCESS TO STATISTICS

All statistics on the ABS website can be downloaded free of charge.

WEB ADDRESS www.abs.gov.au