



June 1997

EMBARGO: 11:30 AM (CANBERRA TIME) TUES 30 SEPT 1997

Labour Force Status and Other Characteristics of Families

Australia

Statistics

NOTES

SYMBOLS AND OTHER USAGES

ABS	Australian Bureau of Statistics
LFS	Labour Force Survey
RSE	relative standard error
*	subject to sampling variability too high for most practical uses. See page 40 of the Technical Notes.
..	not applicable

Where estimates have been rounded, discrepancies may occur between sums of the component items and totals.

INQUIRIES

For further information about statistics in this publication and the availability of related unpublished statistics, contact:

Don Clark	Telephone	(02) 6252 6018
	Facsimile	(02) 6252 7784
	Email	don.clark@abs.gov.au

For State office contact numbers see the Supplementary Surveys listing in the back of this publication.

For information about other ABS statistics and services, refer to the back of this publication.

PREFACE

ABOUT THIS PUBLICATION

This publication presents information about the labour force status of persons in June 1997, according to the types of families to which they belong, and their relationships within their households. Information is also provided on the number and age of children in the household.

Relationship in household and family type data are only collected for civilians aged 15 or more who are usual residents of private dwellings where all the usual residents are present and within the scope of the survey. Certain classes of families are excluded by these rules (for example, families which include a member in the permanent defence forces). The estimates in this publication thus represent some 94% of the civilian population aged 15 or more.

ABOUT THIS SURVEY

The information is collected as part of the monthly Labour Force Survey conducted in June each year.

While relationship in household and family type are collected each month in the Labour Force Survey and published in *Labour Force, Australia* (Cat. no. 6203.0), only the June survey collects information about the number of children aged 0-4, 5-9, and 10-14 in families.

W. McLennan
Australian Statistician



CONTENTS

		Page
	Notes	2
	Preface	3
	Summary of findings	7
TABLES		
Relationship in household	1 Labour force status of persons aged 15 and over, June 1996 and June 1997	12
	2 Labour force status of persons aged 15 and over, proportions, June 1996 and June 1997	13
All families	3 Family type, number of dependants and number of family members employed, June 1996 and June 1997	14
	4 Family type, number and labour force status of family members	15
	5 Number and labour force status of family members	16
	6 Family type, number and age of dependants and labour force status of husband, wife or family head	17
	7 Dependants: family type, total number and age of dependants and labour force status of husband, wife or family head	17
	8 Family type, number of children aged under 5 years and labour force status of husband, wife or family head	18
	9 Family type, number of children aged 5 to 9 years and labour force status of husband, wife or family head	18
	10 Family type, number of children aged 10 to 14 years and labour force status of husband, wife or family head	19
	11 Families with one or more members unemployed: family type, labour force status of family members and whether dependants present	19
Couple families	12 Labour force status of husband and wife and number of dependants	20
	13 Labour force status of husband and wife and age of dependants	21
	14 Labour force status of husband and wife and age of youngest dependant	22

		Page
Couple families <i>continued</i>	15 Husband in the labour force: labour force status, age of wife and age of dependants	23
	16 Wife in the labour force: labour force status, age of husband and age of dependants	24
	17 Husband unemployed: duration of unemployment of husband and labour force status of wife	25
	18 Wife unemployed: duration of unemployment of wife and labour force status of husband	25
One parent families	19 Labour force status of parent and age of dependants	26
	20 Labour force status of parent and age of youngest dependant	26
	21 Male parent: labour force status and age of parent	27
	22 Female parent: labour force status and age of parent	27
	23 Parent employed: full-time/part-time status of parent and number of dependants	27
	24 Parent unemployed: duration of unemployment of parent	27
Relationship in household	25 Labour force status of persons aged 15 and over	28
	26 Labour force status and age of persons 15 and over	29
	27 Full-time and part-time workers and weekly hours worked	31
	28 Unemployed persons: unemployment rates and proportional distribution, June 1996 and June 1997	32
	29 Unemployed persons: duration of unemployment	33
ADDITIONAL INFORMATION	Explanatory notes	34
	Technical notes	40
	Glossary	44

SUMMARY OF FINDINGS

OVERVIEW

The data in this publication are based on those people in the June 1997 Labour Force Survey for whom family status could be derived (see paragraphs 7 and 8 of the Explanatory Notes for more detail).

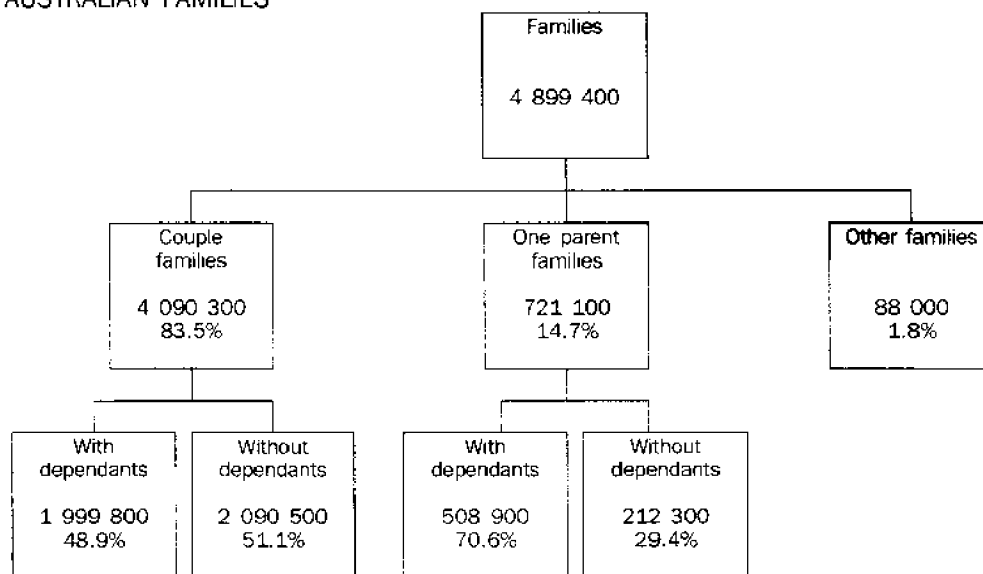
The data therefore cover 13,713,200 people, or 94% of the civilian population aged 15 and over. Of these people, 83% or 11,335,900 were members of an estimated 4,899,400 families. Of the remaining 2,377,300 people who were not members of a family, 64% lived alone.

As can be seen from the diagram, the large majority of families were *couple families*, with slightly less than half of these having dependants present.

By comparison, more than two-thirds of *one parent families* had dependants present. Of the 721,100 one parent families, 84% had a female parent.

An estimated 24% of *all families* had no family member employed; 27% had one family member employed; and 49% had two or more family members employed.

AUSTRALIAN FAMILIES



Source: Table 3

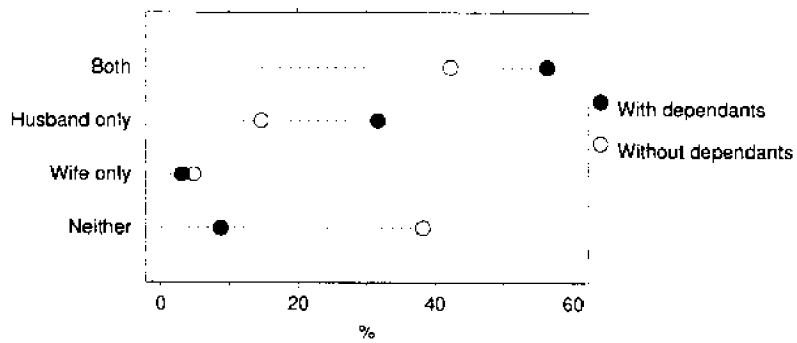
COUPLE FAMILIES

Over the last six years, the percentage of *couple families* with one or both partners employed has remained relatively stable, only varying slightly in line with the economic cycle. In June 1997 the percentage was 76%.

The percentage of couple families with both partners employed rose steadily from 46% in June 1993 to 49% in June 1997.

Almost a quarter of couple families had neither partner employed, unchanged from the previous two years. Retired couples may contribute substantially to this group.

COUPLE FAMILIES: EMPLOYMENT STATUS OF PARTNER/S



Source: Table 12

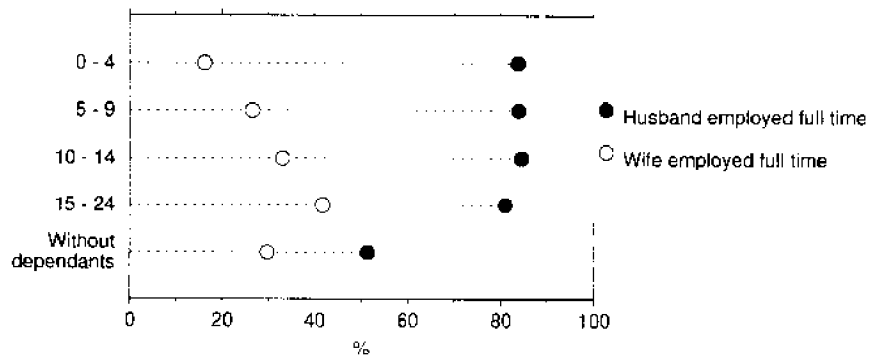
COUPLE FAMILIES WITH DEPENDANTS PRESENT

One or both partners were employed in 91% of all *couple families with dependants present*. This percentage has increased only slightly from the low of 89% recorded in June 1993.

The husband was employed full time in 83% of couple families with dependants present. In comparison, the wife was employed full time in only 26% of these families.

The percentage of wives employed full time increased as the age of the youngest dependant present increased.

COUPLE FAMILIES BY AGE OF YOUNGEST DEPENDANT: PARENT/S EMPLOYED FULL TIME



Source: Table 14

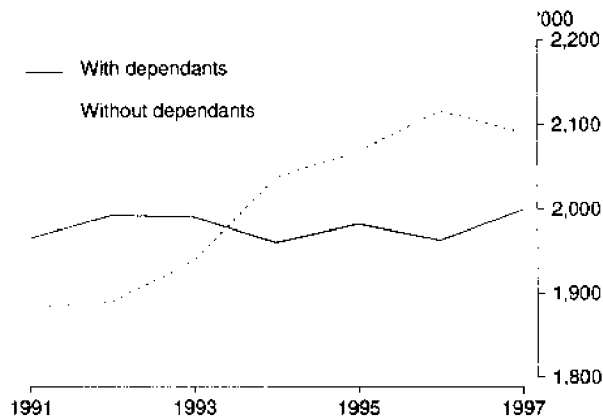
There were 82,200 couple families with dependants where the husband was unemployed and the wife was either unemployed or not in the labour force. In 44% of these families, the husband had been unemployed for 52 weeks or more, compared with 36% in June 1996.

The percentage of couple families with dependants with one or both parents unemployed was 10.7% in June 1993, but has since declined to 7.8% in June 1997.

COUPLE FAMILIES WITHOUT DEPENDANTS PRESENT

The number of *couple families without dependants present* has been increasing steadily over the last six years. Since June 1994 there have been more couple families without dependants than with dependants.

COUPLE FAMILIES

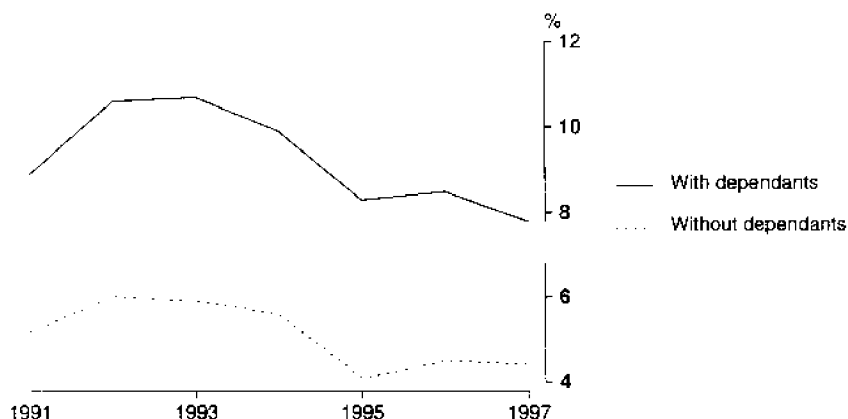


Source: Table 3

One or both partners were employed in 62% of families without dependants present. The husband was employed full time in 51% of families without dependants present, compared with 30% of wives in these families.

The percentage of these families where one or both partners were unemployed generally reflects the pattern of changes in the overall level of unemployment. This percentage has remained relatively steady over the last three years, and stood at 4.3% in June 1997.

COUPLE FAMILIES: ONE OR BOTH PARTNERS UNEMPLOYED

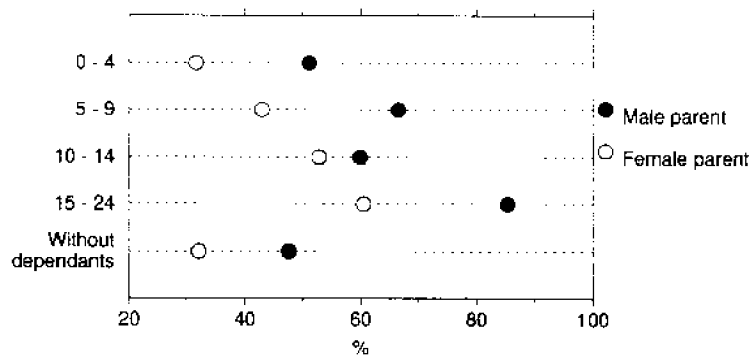


Source: Table 12

ONE PARENT FAMILIES

In June 1997, there were 721,100 *one parent families*, making up 15% of all families. Of the 508,900 one parent families with one or more dependants, 443,900 (87%) had a female parent. The parent was not in the labour force in half of one parent families. Of these families, 36% had no dependants present (non-dependent adult children may be part of the family).

ONE PARENT FAMILIES BY AGE OF YOUNGEST DEPENDANT:
PARENT EMPLOYED



Source: Table 20

In 7% (52,600) of one parent families, the parent was unemployed. In 21,300 (40%) of these families, the parent had been unemployed for 52 weeks or more.

ONE PARENT FAMILIES WITH
DEPENDANTS PRESENT

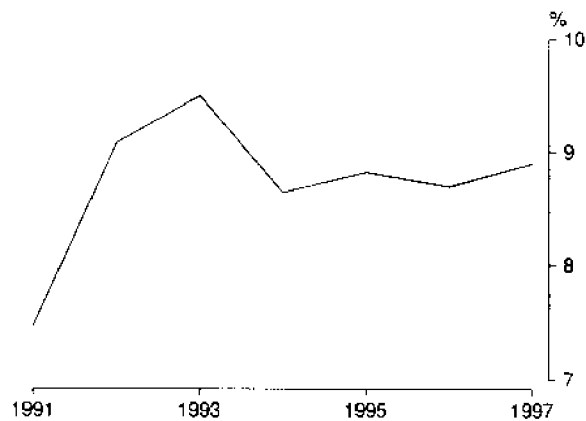
In 47% of *one parent families with dependants present*, the parent was employed. The percentage of one parent families with the parent employed generally increased as the age of the youngest dependant increased.

In 22% of such families with a female parent, the parent was employed full time, with the same proportion employed part time. For those with a male parent, that parent was employed full time in 55% of families, while in 12% the parent was employed part time.

The percentage of one parent families with dependants where the parent was unemployed rose steadily from 6.6% in June 1990 to peak at 9.5% in June 1993. After falling to 8.6% in 1994, the proportion has remained relatively steady over the last three years, to stand at 8.9% in June 1997.

The number of children aged 0-14 who were in one parent families where the parent was not employed has increased 10% over the last year, to 423,600 in June 1997.

ONE PARENT FAMILIES WITH DEPENDANTS: PARENT UNEMPLOYED



Source: Table 20

PERSONS WHO WERE NOT MEMBERS OF A FAMILY

Lone persons comprised 11% of the population where relationship was determined. Some characteristics of these persons in June 1997 were:

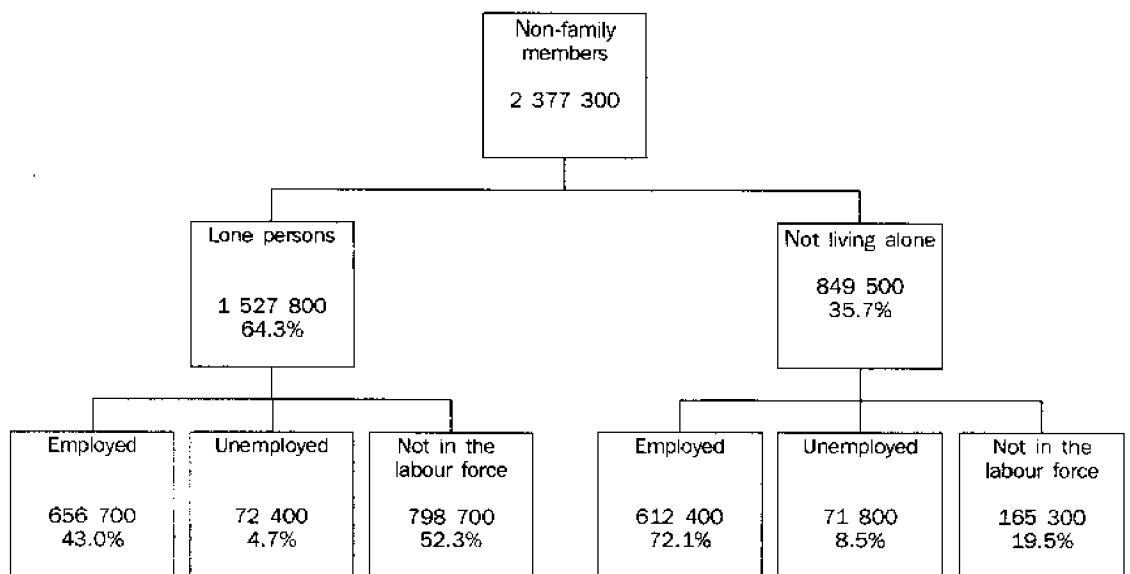
- Over half (54%) were females, about half of whom were aged 65 years or more. Of the males living alone, 40% were aged 25-44 years, and 24% were aged 65 years and over.
- While 43% of all lone persons were employed, 57% of lone males were employed, compared with 31% of females living alone, reflecting the older age profile of females in this group compared to the males.

Selected characteristics of persons who were not members of a family and were *not living alone* in June 1997:

- In contrast to lone persons, 58% were men.
- Compared with lone persons, those not living alone had a much younger age profile, with 75% younger than 35 years (only 19% of lone persons were under 35 years of age). Men and women not living alone had similar age distributions.
- A large proportion (72%) were employed, with the proportion slightly lower for females than for males. The vast majority of both employed males (84%) and employed females (73%) were working full time.

Of the 1,527,800 lone persons, 52% were not in the labour force, whereas only 19% of those individuals not living alone were not in the labour force. The difference can be explained partly by the older age profile of lone persons.

LABOUR FORCE STATUS OF NON-FAMILY MEMBERS



Source: Table 1

TABLE 1. PERSONS: RELATIONSHIP IN HOUSEHOLD AND LABOUR FORCE STATUS OF PERSONS AGED 15 AND OVER, JUNE 1996 AND JUNE 1997
(*000)

	<i>Employed</i>		<i>Unemployed</i>		<i>Not in the labour force</i>		<i>Civilian population aged 15 and over</i>	
	<i>June 1996</i>	<i>June 1997</i>	<i>June 1996</i>	<i>June 1997</i>	<i>June 1996</i>	<i>June 1997</i>	<i>June 1996</i>	<i>June 1997</i>
MALES								
Family member	3,860.9	3,855.4	317.2	327.6	1,383.9	1,409.4	5,562.0	5,592.4
Husband	2,987.3	2,991.0	171.7	165.6	971.4	980.7	4,130.4	4,137.3
With dependants	1,769.7	1,797.9	107.9	105.6	126.0	137.7	2,003.5	2,041.3
Without dependants	1,217.6	1,193.1	63.8	60.0	845.4	843.0	2,126.8	2,096.1
Lone parent	63.1	65.4	6.7	8.2	31.4	38.5	101.2	112.1
With dependants	43.1	43.5	4.2	5.9	13.9	16.2	61.2	65.7
Without dependants	20.0	21.9	* 2.5	* 2.3	17.5	22.2	40.0	46.4
Dependent student(a)	139.8	147.0	28.6	31.9	256.2	260.4	424.5	439.4
Non-dependent child(b)	586.8	567.8	92.9	105.7	73.5	78.4	753.2	752.0
Other family person	84.0	84.2	17.3	16.0	51.5	51.3	152.7	151.6
Non-family member	741.1	765.1	93.7	91.4	329.5	335.6	1,164.3	1,192.2
Lone person	362.5	403.5	48.7	44.3	243.3	255.3	654.5	703.1
Not living alone	378.6	361.6	45.0	47.1	86.3	80.4	509.9	489.1
<i>Total</i>	<i>4,602.0</i>	<i>4,620.5</i>	<i>410.9</i>	<i>419.0</i>	<i>1,713.4</i>	<i>1,745.0</i>	<i>6,726.3</i>	<i>6,784.5</i>
Usual resident of a household where relationship was not determined	73.7	72.3	9.8	7.4	28.5	26.6	112.0	106.3
Total usual residents of private dwellings	4,675.7	4,692.8	420.7	426.4	1,741.9	1,771.6	6,838.3	6,890.8
Visitors to private dwellings	21.3	25.7	6.7	4.0	20.1	19.0	48.0	48.7
Persons enumerated in non-private dwellings	54.7	63.9	4.8	6.0	115.3	154.7	174.8	224.5
<i>Total</i>	<i>4,751.6</i>	<i>4,782.4</i>	<i>432.1</i>	<i>436.4</i>	<i>1,877.4</i>	<i>1,945.3</i>	<i>7,061.1</i>	<i>7,164.1</i>
FEMALES								
Family member	2,939.4	2,989.4	236.1	247.8	2,484.7	2,506.4	5,660.2	5,743.5
Wife	2,115.3	2,142.6	119.4	113.3	1,810.1	1,783.2	4,044.8	4,039.1
With dependants	1,147.6	1,176.7	74.5	68.3	728.3	734.3	1,950.3	1,979.3
Without dependants	967.8	965.9	44.9	45.0	1,081.8	1,048.9	2,094.4	2,059.8
Lone parent	224.9	243.8	41.6	44.1	300.6	314.9	567.2	602.7
With dependants	176.2	193.2	36.7	39.4	194.3	210.9	407.3	443.6
Without dependants	48.7	50.6	4.9	4.6	106.3	103.9	160.0	159.1
Dependent student(a)	181.4	187.5	29.0	34.5	218.4	242.3	428.9	464.4
Non-dependent child(b)	363.7	351.6	38.1	44.2	49.8	50.8	451.6	446.6
Other family person	54.0	63.8	8.0	11.8	105.7	115.1	167.7	190.8
Non-family member	535.6	503.9	48.8	52.8	601.8	628.4	1,186.1	1,185.2
Lone person	260.0	253.2	22.1	28.2	525.0	543.4	807.1	824.8
Not living alone	275.5	250.8	26.8	24.6	76.7	85.0	379.0	360.4
<i>Total</i>	<i>3,475.0</i>	<i>3,493.3</i>	<i>284.9</i>	<i>300.6</i>	<i>3,086.4</i>	<i>3,134.8</i>	<i>6,846.3</i>	<i>6,928.7</i>
Usual resident of a household where relationship was not determined	79.6	80.5	8.0	7.7	51.3	51.2	139.0	139.4
Total usual residents of private dwellings	3,554.6	3,573.8	293.0	308.3	3,137.8	3,186.0	6,985.3	7,068.1
Visitors to private dwellings	14.9	14.9	3.5	* 3.3	31.6	33.0	50.0	51.2
Persons enumerated in non-private dwellings	33.0	47.1	* 2.0	* 2.7	211.2	224.8	246.1	274.6
<i>Total</i>	<i>3,602.4</i>	<i>3,635.8</i>	<i>298.4</i>	<i>314.4</i>	<i>3,380.5</i>	<i>3,443.8</i>	<i>7,281.4</i>	<i>7,393.9</i>
PERSONS								
Family member	6,800.3	6,844.8	553.3	575.4	3,868.5	3,915.7	11,222.2	11,335.9
Husband or wife	5,102.6	5,133.6	291.1	278.9	2,781.5	2,763.9	8,175.1	8,176.5
With dependants	2,917.2	2,974.6	182.4	173.9	854.3	872.0	3,953.9	4,020.6
Without dependants	2,185.4	2,159.0	108.7	105.0	1,927.2	1,891.9	4,221.3	4,155.9
Lone parent	288.0	309.2	48.4	52.3	332.0	353.3	668.4	714.8
With dependants	219.3	236.8	41.0	45.4	208.2	227.2	468.4	509.3
Without dependants	68.7	72.5	7.4	6.9	123.8	126.2	200.0	205.5
Dependent student(a)	321.2	334.6	57.6	66.5	474.6	502.7	853.4	903.7
Non-dependent child(b)	950.5	919.3	131.0	149.9	123.3	129.3	1,204.8	1,198.5
Other family person	138.0	148.1	25.3	27.8	157.1	166.5	320.4	342.4
Non-family member	1,276.6	1,269.0	142.5	144.2	931.3	964.1	2,350.5	2,377.3
Lone person	622.5	656.7	70.8	72.4	768.3	798.7	1,461.6	1,527.8
Not living alone	654.1	612.4	71.7	71.8	163.0	165.3	888.9	849.5
<i>Total</i>	<i>8,076.9</i>	<i>8,113.8</i>	<i>695.8</i>	<i>719.6</i>	<i>4,799.8</i>	<i>4,879.8</i>	<i>13,572.6</i>	<i>13,713.2</i>
Usual resident of a household where relationship was not determined	153.3	152.7	17.8	15.1	79.9	77.8	251.0	245.7
Total usual residents of private dwellings	8,230.2	8,266.5	713.6	734.8	4,879.7	4,957.6	13,823.6	13,958.9
Visitors to private dwellings	36.2	40.6	10.1	7.3	51.7	52.0	98.0	100.0
Persons enumerated in non-private dwellings	87.7	111.0	6.8	8.7	326.5	379.5	421.0	499.1
<i>Total</i>	<i>8,354.1</i>	<i>8,418.1</i>	<i>730.5</i>	<i>750.8</i>	<i>5,257.9</i>	<i>5,389.1</i>	<i>14,342.5</i>	<i>14,558.0</i>

(a) Excludes persons aged 20-24 attending school. Also excludes sons or daughters aged 15-24 who are classified as husbands, wives or lone parents. (b) Aged 15 and over.

**TABLE 2. PERSONS: RELATIONSHIP IN HOUSEHOLD AND LABOUR FORCE STATUS OF PERSONS AGED 15 AND OVER(a),
JUNE 1996 AND JUNE 1997
(Per cent)**

	<i>Employed</i>		<i>Unemployed</i>		<i>Not in the labour force</i>		<i>Civilian population aged 15 and over</i>	
	<i>June 1996</i>	<i>June 1997</i>	<i>June 1996</i>	<i>June 1997</i>	<i>June 1996</i>	<i>June 1997</i>	<i>June 1996</i>	<i>June 1997</i>
MALES								
Family member	83.9	83.4	77.2	78.2	80.8	80.8	82.7	82.4
Husband	64.9	64.7	41.8	39.5	56.7	56.2	61.4	61.0
With dependants	38.5	38.9	26.3	25.2	7.4	7.9	29.8	30.1
Without dependants	26.5	25.8	15.5	14.3	49.3	48.3	31.6	30.9
Lone parent	1.4	1.4	1.6	2.0	1.8	2.2	1.5	1.7
With dependants	0.9	0.9	1.0	1.4	0.8	0.9	0.9	1.0
Without dependants	0.4	0.5	* 0.6	* 0.5	1.0	1.3	0.6	0.7
Dependent student(b)	3.0	3.2	7.0	7.6	14.9	14.9	6.3	6.5
Non-dependent child(c)	12.8	12.3	22.6	25.2	4.3	4.5	11.2	11.1
Other family person	1.8	1.8	4.2	3.8	3.0	2.9	2.3	2.2
Non-family member	16.1	16.6	22.8	21.8	19.2	19.2	17.3	17.6
Lone person	7.9	8.7	11.9	10.6	14.2	14.6	9.7	10.4
Not living alone	8.2	7.8	10.9	11.3	5.0	4.6	7.6	7.2
Total	100.0	100.0	100.0	100.0	100.0	100.0	100.0	100.0
FEMALES								
Family member	84.6	85.6	82.9	82.4	80.5	80.0	82.7	82.9
Wife	60.9	61.3	41.9	37.7	58.6	56.9	59.1	58.3
With dependants	33.0	33.7	26.1	22.7	23.6	23.4	28.5	28.6
Without dependants	27.8	27.6	15.8	15.0	35.0	33.5	30.6	29.7
Lone parent	6.5	7.0	14.6	14.7	9.7	10.0	8.3	8.7
With dependants	5.1	5.5	12.9	13.1	6.3	6.7	5.9	6.4
Without dependants	1.4	1.4	1.7	1.5	3.4	3.3	2.3	2.3
Dependent student(b)	5.2	5.4	10.2	11.5	7.1	7.7	6.3	6.7
Non-dependent child(c)	10.5	10.1	13.4	14.7	1.6	1.6	6.6	6.4
Other family person	1.6	1.8	2.8	3.9	3.4	3.7	2.4	2.8
Non-family member	15.4	14.4	17.1	17.6	19.5	20.0	17.3	17.1
Lone person	7.5	7.2	7.7	9.4	17.0	17.3	11.8	11.9
Not living alone	7.9	7.2	9.4	8.2	2.5	2.7	5.5	5.2
Total	100.0	100.0	100.0	100.0	100.0	100.0	100.0	100.0
PERSONS								
Family member	84.2	84.4	79.5	80.0	80.6	80.2	82.7	82.7
Husband or wife	63.2	63.3	41.8	38.8	57.9	56.6	60.2	59.6
With dependants	36.1	36.7	26.2	24.2	17.8	17.9	29.1	29.3
Without dependants	27.1	26.6	15.6	14.6	40.2	38.8	31.1	30.3
Lone parent	3.6	3.8	7.0	7.3	6.9	7.2	4.9	5.2
With dependants	2.7	2.9	5.9	6.3	4.3	4.7	3.5	3.7
Without dependants	0.9	0.9	1.1	1.0	2.6	2.6	1.5	1.5
Dependent student(b)	4.0	4.1	8.3	9.2	9.9	10.3	6.3	6.6
Non-dependent child(c)	11.8	11.3	18.8	20.8	2.6	2.6	8.9	8.7
Other family person	1.7	1.8	3.6	3.9	3.3	3.4	2.4	2.5
Non-family member	15.8	15.6	20.5	20.0	19.4	19.8	17.3	17.3
Lone person	7.7	8.1	10.2	10.1	16.0	16.4	10.8	11.1
Not living alone	8.1	7.5	10.3	10.0	3.4	3.4	6.5	6.2
Total	100.0	100.0	100.0	100.0	100.0	100.0	100.0	100.0

(a) Civilians who were residents of households where family status was determined. For further details see paragraphs 7 and 8 of the Explanatory Notes. (b) Excludes persons aged 20-24 attending school. Also excludes sons or daughters aged 15-24 who are classified as husbands, wives or lone parents. (c) Aged 15 and over.

**TABLE 3. ALL FAMILIES: FAMILY TYPE, NUMBER OF DEPENDANTS, AND NUMBER OF FAMILY MEMBERS EMPLOYED,
JUNE 1996 AND JUNE 1997
(*000 families)**

Number of dependants	None employed		One employed		Two or more employed		Total	
	June 1996	June 1997	June 1996	June 1997	June 1996	June 1997	June 1996	June 1997
COUPLE FAMILY								
None	707.4	718.0	413.0	383.9	996.0	988.6	2,116.5	2,090.5
One or more	137.1	150.6	628.6	625.2	1,197.3	1,223.9	1,963.0	1,999.8
One	45.4	54.3	177.9	192.0	410.6	444.1	633.9	690.5
Two	48.0	53.7	271.3	259.4	512.0	509.5	831.4	822.7
Three	24.4	27.1	126.4	125.1	218.8	210.9	369.6	363.1
Four or more	19.4	15.5	53.0	48.7	55.8	59.4	128.2	123.5
Total	844.5	868.7	1,041.7	1,009.2	2,193.3	2,212.4	4,079.5	4,090.3
ONE PARENT FAMILY WITH A MALE PARENT								
None	8.6	9.9	15.4	19.6	16.9	18.3	40.8	47.7
One	10.6	11.9	24.8	18.7	6.0	6.1	41.4	36.7
Two	3.7	4.8	9.1	14.6	* 1.5	* 2.2	14.2	21.6
Three or more	* 1.5	* 2.3	* 2.4	3.6	* 1.0	* 0.8	5.0	6.8
Total	24.4	28.9	51.7	56.5	25.4	27.4	101.4	112.8
ONE PARENT FAMILY WITH A FEMALE PARENT								
None	40.4	43.1	74.1	70.4	49.5	51.0	163.9	164.5
One	91.2	102.2	83.3	91.2	26.8	26.1	201.3	219.5
Two	69.4	74.0	56.7	58.3	14.6	15.9	140.7	148.2
Three	29.2	35.1	13.0	17.8	3.5	5.2	45.8	58.2
Four or more	13.1	13.3	5.0	3.8	* 0.7	* 0.9	18.8	17.9
Total	243.3	267.8	232.1	241.5	95.1	99.1	570.6	608.4
ONE PARENT FAMILY: TOTAL								
None	49.0	53.0	89.5	90.0	66.3	69.3	204.8	212.3
One	101.8	114.1	108.1	109.9	32.9	32.2	242.7	256.2
Two	73.1	78.8	65.7	72.9	16.1	18.1	155.0	169.8
Three	30.4	36.9	14.6	20.4	4.2	6.1	49.2	63.4
Four or more	13.5	13.8	5.8	4.8	* 1.0	* 0.9	20.3	19.5
Total	267.7	296.7	283.8	297.9	120.5	126.5	672.0	721.1
OTHER FAMILY								
None	22.8	24.5	24.6	24.8	35.1	38.7	82.5	88.0
Total	22.8	24.5	24.6	24.8	35.1	38.7	82.5	88.0
TOTAL								
None	779.2	795.5	527.1	498.7	1,097.4	1,096.6	2,403.7	2,390.8
One or more	355.9	394.3	823.0	833.2	1,251.5	1,281.1	2,430.3	2,508.6
One	147.2	168.4	286.0	301.9	443.5	476.3	876.6	946.6
Two	121.1	132.6	337.1	332.3	528.1	527.6	986.3	992.5
Three	54.7	64.0	141.1	145.5	223.1	216.9	418.8	426.5
Four or more	32.9	29.3	58.8	53.4	56.8	60.3	148.5	143.0
Total	1,135.0	1,189.8	1,350.1	1,331.9	2,348.9	2,377.7	4,834.0	4,899.4

TABLE 4. ALL FAMILIES: FAMILY TYPE, NUMBER AND LABOUR FORCE STATUS(a) OF FAMILY MEMBERS, JUNE 1997
(^{'000 families})

Number of family members of any age	None employed			One employed			Two or more employed			Total		
	None unemp-loyed	One or more unemp-loyed	Total	None unemp-loyed	One or more unemp-loyed	Total	None unemp-loyed	One or more unemp-loyed	Total	None unemp-loyed	One or more unemp-loyed	Total
COUPLE FAMILY												
Two	641.7	35.1	676.7	258.6	35.2	293.9	674.4	..	674.4	1,574.6	70.3	1,644.9
Three	48.4	37.0	85.3	224.3	32.4	256.7	483.1	24.4	507.5	755.8	93.8	849.6
Four	23.5	35.9	59.4	238.3	35.4	273.8	598.4	47.2	645.6	860.3	118.5	978.7
Five	12.5	16.5	29.0	116.0	16.7	132.7	256.9	30.9	287.8	385.4	64.1	449.5
Six or more	7.6	10.7	18.2	45.6	6.6	52.2	84.1	13.0	97.1	137.3	30.3	167.5
Total	733.6	135.1	868.7	882.7	126.4	1,009.2	2,096.9	115.5	2,212.4	3,713.3	377.0	4,090.3
Average family size	2.2	3.5	2.4	3.4	3.4	3.4	3.3	4.3	3.4	3.1	3.7	3.2
ONE PARENT FAMILY WITH A MALE PARENT												
Two	12.1	6.5	18.6	28.6	5.7	34.3	15.0	..	15.0	55.7	12.2	67.9
Three or more	7.3	* 3.0	10.3	18.9	* 3.3	22.1	11.0	* 1.4	12.5	37.2	7.7	44.9
Total	19.4	9.5	28.9	47.5	9.0	56.5	26.0	* 1.4	27.4	92.8	19.9	112.8
Average family size	2.6	2.6	2.6	2.5	2.6	2.5	2.5	3.4	2.6	2.5	2.6	2.6
ONE PARENT FAMILY WITH A FEMALE PARENT												
Two	97.9	31.3	129.2	125.5	9.2	134.7	38.9	..	38.9	262.3	40.5	302.8
Three	66.1	18.4	84.5	69.0	8.6	77.6	33.1	* 3.3	36.4	168.3	30.3	198.6
Four	30.9	7.0	37.9	19.2	* 3.0	22.2	14.0	* 1.6	15.6	64.1	11.7	75.8
Five or more	12.7	* 3.4	16.1	5.5	* 1.4	6.9	5.7	* 2.5	8.2	23.9	7.3	31.2
Total	207.6	60.1	267.8	219.3	22.2	241.5	91.7	7.4	99.7	518.6	89.8	608.4
Average family size	2.8	2.7	2.8	2.6	2.9	2.6	2.9	4.1	3.0	2.7	2.9	2.7
ONE PARENT FAMILY: TOTAL												
Two	110.0	37.8	147.8	154.1	14.9	169.0	53.9	..	53.9	318.0	52.7	370.7
Three	70.8	19.5	90.3	82.9	10.1	93.0	42.6	4.1	46.7	196.3	33.7	230.0
Four	32.4	8.5	40.9	22.9	4.8	27.6	15.0	* 2.2	17.2	70.2	15.5	85.7
Five or more	13.8	3.9	17.7	6.9	* 1.4	8.2	6.3	* 2.5	8.8	27.0	7.8	34.7
Total	227.0	69.6	296.7	266.7	31.2	297.9	117.7	8.8	126.5	611.5	109.7	721.1
Average family size	2.8	2.7	2.8	2.6	2.8	2.6	2.8	4.0	2.9	2.7	2.8	2.7
OTHER FAMILY												
Two	18.1	4.0	22.1	15.2	8.1	23.3	34.2	..	34.2	67.5	12.0	79.5
Three or more	* 2.3	* 0.1	* 2.4	* 1.0	* 0.5	* 1.6	* 3.2	* 1.3	4.5	6.5	* 2.0	8.5
Total	20.4	4.1	24.5	16.2	8.6	24.8	37.4	* 1.3	38.7	74.0	14.0	88.0
Average family size	2.1	2.0	2.1	2.1	2.1	2.1	2.1	3.0	2.1	2.1	2.1	2.1
TOTAL												
Two	769.8	76.8	846.6	427.9	58.2	486.2	762.4	..	762.4	1,960.1	135.1	2,095.2
Three	121.1	56.6	177.7	308.2	43.1	351.3	528.8	29.8	558.6	958.1	129.5	1,087.6
Four	56.1	44.4	100.5	261.2	40.2	301.4	613.6	49.4	663.0	930.9	134.0	1,064.9
Five	23.0	18.9	41.9	121.9	17.2	139.1	262.5	32.8	295.3	407.4	68.9	476.3
Six or more	10.9	12.2	23.1	46.5	7.5	54.0	84.8	13.6	98.4	142.2	33.3	175.5
Total	981.0	208.8	1,189.8	1,165.7	166.2	1,331.9	2,252.0	125.7	2,377.7	4,398.7	500.7	4,899.4
Average family size	2.4	3.2	2.5	3.2	3.2	3.2	3.3	4.3	3.3	3.1	3.5	3.1

(a) Labour force status refers to persons aged 15 and over only.

TABLE 5. ALL FAMILIES: NUMBER AND LABOUR FORCE STATUS(a) OF FAMILY MEMBERS, JUNE 1997
(^{'000 families})

Number of family members of any age	None employed			One employed			Two or more employed			Total		
	None unemp-loyed	One or more unemp-loyed	Total	None unemp-loyed	One or more unemp-loyed	Total	None unemp-loyed	One or more unemp-loyed	Total	None unemp-loyed	One or more unemp-loyed	Total
FAMILIES WITH ALL MEMBERS IN THE LABOUR FORCE												
Two	..	32.8	32.8	71.4	58.2	129.6	762.4	..	762.4	833.8	91.0	924.8
Three	..	15.4	15.4	49.3	21.7	70.9	405.4	29.8	435.3	454.7	66.9	521.6
Four	..	10.3	10.3	12.4	26.6	39.0	443.2	32.4	475.6	455.6	69.2	524.8
Five	..	* 2.2	* 2.2	* 2.1	9.2	11.3	169.5	18.8	188.3	171.6	30.1	201.8
Six or more	..	* 1.5	* 1.5	* 0.0	* 2.3	* 2.3	42.3	6.5	48.8	42.3	10.2	52.6
Total	..	62.1	62.1	135.1	118.0	253.1	1,822.9	87.4	1,910.3	1,958.0	267.6	2,225.6
Average family size	..	2.8	2.8	2.6	3.0	2.8	3.1	4.0	3.1	3.1	3.3	3.1
FAMILIES WITH ONE MEMBER NOT IN THE LABOUR FORCE												
Two	70.4	44.0	114.4	356.5	..	356.5	426.9	44.0	470.9
Three	51.1	23.9	75.0	156.7	21.4	178.2	123.4	..	123.4	331.2	45.3	376.5
Four	23.8	25.9	49.7	207.0	8.2	215.1	133.1	17.1	150.2	363.9	51.1	415.0
Five	8.1	13.2	21.3	98.5	4.0	102.5	65.3	11.3	76.6	171.9	28.5	200.4
Six or more	* 2.6	6.0	8.6	36.6	* 3.3	39.9	25.8	3.9	29.7	65.0	13.1	78.2
Total	155.9	113.0	268.9	855.3	36.9	892.2	347.6	32.2	379.8	1,358.9	182.1	1,541.0
Average family size	2.9	3.3	3.0	3.2	3.7	3.2	4.0	4.7	4.1	3.4	3.6	3.4
FAMILIES WITH TWO OR MORE MEMBERS NOT IN THE LABOUR FORCE												
Two	699.4	..	699.4	699.4	..	699.4
Three	70.1	17.2	87.3	102.2	..	102.2	172.3	17.2	189.5
Four	32.3	8.2	40.6	41.9	5.4	47.3	37.2	..	37.2	111.4	13.7	125.1
Five	14.9	3.5	18.4	21.3	4.0	25.3	27.6	* 2.8	30.4	63.8	10.2	74.1
Six or more	8.3	4.7	13.0	9.9	* 1.9	11.8	16.7	* 3.3	19.9	34.9	9.9	44.8
Total	825.1	33.7	858.8	175.3	11.3	186.6	81.5	6.0	87.5	1,081.8	51.1	1,132.9
Average family size	2.3	4.0	2.3	3.7	4.7	3.7	4.9	5.8	4.9	2.7	4.3	2.8
TOTAL												
Two	769.8	76.8	846.6	427.9	58.2	486.2	762.4	..	762.4	1,960.1	135.1	2,095.2
Three	121.1	56.6	177.7	308.2	43.1	351.3	528.8	29.8	558.6	958.1	129.5	1,087.6
Four	56.1	44.4	100.5	261.2	40.2	301.4	613.6	49.4	663.0	930.9	134.0	1,064.9
Five	23.0	18.9	41.9	121.9	17.2	139.1	262.5	32.8	295.3	407.4	68.9	476.3
Six or more	10.9	12.2	23.1	46.5	7.5	54.0	84.8	13.6	98.4	142.2	33.3	175.5
Total	981.0	208.8	1,189.8	1,165.7	166.2	1,331.9	1,252.0	125.7	2,377.7	4,398.7	500.7	4,899.4
Average family size	2.4	3.2	2.5	3.2	3.2	3.2	3.3	4.3	3.3	3.1	3.5	3.1

(a) Labour force status refers to persons aged 15 and over only.

TABLE 6. ALL FAMILIES: FAMILY TYPE, NUMBER AND AGE OF DEPENDANTS AND LABOUR FORCE STATUS OF HUSBAND, WIFE OR FAMILY HEAD, JUNE 1997
(*000 families)

	<i>No dependent students</i>				<i>Some dependent students</i>				<i>Total</i>
	<i>Number of children under 15 years</i>				<i>Number of children under 15 years</i>				
	<i>None</i>	<i>One</i>	<i>Two or more</i>	<i>Total</i>	<i>None</i>	<i>One</i>	<i>Two or more</i>	<i>Total</i>	
Couple family	2,090.5	477.9	939.6	3,508.0	295.7	180.0	106.6	582.3	4,090.3
One or both spouses unemployed(a)	91.9	39.1	83.3	214.3	16.3	11.6	5.9	33.8	248.0
Husband employed, wife unemployed	26.9	12.7	25.0	64.6	4.4	4.4	* 2.3	11.0	75.6
Husband unemployed, wife employed	20.2	5.1	9.0	34.3	3.7	* 2.2	* 1.3	7.2	41.5
Husband unemployed, wife unemployed	13.4	5.2	8.7	27.3	* 1.2	* 1.0	* 0.2	* 2.4	29.7
Husband unemployed, wife not in the labour force	26.2	15.2	38.6	79.9	6.5	3.5	* 2.0	12.1	92.0
Neither spouse unemployed	1,998.7	438.8	856.3	3,293.7	279.4	168.4	100.7	548.5	3,842.3
Husband employed, wife employed	881.6	258.2	483.4	1,623.2	200.0	122.6	62.6	385.1	2,008.4
Husband employed, wife not in the labour force	280.6	144.2	330.5	755.3	48.6	33.9	28.9	111.3	866.6
Husband not in the labour force, wife employed	81.6	11.3	16.4	109.3	9.2	* 2.8	* 1.4	13.4	122.7
Husband not in the labour force, wife not in the labour force	754.8	25.1	26.0	805.9	21.7	9.0	8.0	38.7	844.5
One parent family	212.3	191.5	180.4	584.2	82.5	36.3	18.0	136.9	721.1
Parent unemployed	7.2	18.5	15.5	41.2	7.0	* 2.8	* 1.5	11.3	52.6
Male parent unemployed	* 2.3	* 3.3	* 1.1	6.7	* 0.4	* 0.8	* 0.2	* 1.4	8.1
Female parent unemployed	4.9	15.3	14.4	34.5	6.6	* 2.0	* 1.3	9.9	44.5
Parent not unemployed	205.0	173.0	164.9	543.0	75.5	33.5	16.5	125.6	668.6
Male parent employed	22.7	13.0	13.2	48.8	13.4	* 2.9	* 0.8	17.1	65.9
Female parent employed	52.7	71.9	58.5	183.1	40.4	17.0	5.9	63.2	246.3
Male parent not in the labour force	22.8	7.9	4.5	35.1	* 1.9	* 1.2	* 0.6	3.7	38.8
Female parent not in the labour force	106.9	80.3	88.8	276.1	19.9	12.5	9.3	41.6	317.6
Other family	88.0	88.0	88.0
Family head unemployed	6.1	6.1	6.1
Family head not unemployed	81.9	81.9	81.9
Family head employed	49.2	49.2	49.2
Family head not in the labour force	32.7	32.7	32.7
Total	2,390.8	669.4	1,120.0	4,180.3	378.2	216.4	124.6	719.2	4,899.4

(a) Includes a small number of families with husband not in the labour force and wife unemployed.

TABLE 7. DEPENDANTS: FAMILY TYPE, TOTAL NUMBER AND AGE OF DEPENDANTS, AND LABOUR FORCE STATUS OF HUSBAND, WIFE OR FAMILY HEAD, JUNE 1997
(*000 dependants)

	<i>Children under 15 years</i>			<i>Total</i>	<i>Dependent students</i>	<i>Total all dependants</i>
	<i>0-4 years</i>	<i>5-9 years</i>	<i>10-14 years</i>			
	<i>years</i>	<i>years</i>	<i>years</i>			
Couple family	1,119.9	1,061.6	1,031.8	3,216.5	737.0	3,953.5
One or both spouses unemployed(a)	102.0	93.4	78.9	274.4	42.0	316.3
Husband employed, wife unemployed	22.6	29.7	28.0	80.3	13.3	93.6
Husband unemployed, wife employed	9.5	11.8	10.9	32.2	9.2	41.3
Husband unemployed, wife unemployed	9.1	10.8	8.2	28.2	* 3.0	31.2
Husband unemployed, wife not in the labour force	59.4	38.6	28.7	126.7	14.8	141.4
Neither spouse unemployed	1,017.9	968.2	952.9	2,942.1	695.0	3,637.2
Husband employed, wife employed	457.9	579.2	632.7	1,672.6	495.6	2,168.3
Husband employed, wife not in the labour force	507.5	328.0	252.9	1,088.7	134.7	1,223.4
Husband not in the labour force, wife employed	14.6	19.6	22.2	56.5	16.1	72.6
Husband not in the labour force, wife not in the labour force	37.9	41.4	45.1	124.3	48.6	172.9
One parent family	205.6	248.7	252.2	706.8	163.1	869.8
Parent unemployed	15.3	23.7	21.9	60.9	12.5	73.4
Male parent unemployed	* 2.0	* 1.7	* 3.0	6.8	* 1.4	8.2
Female parent unemployed	13.3	22.0	18.9	54.2	11.1	65.2
Parent not unemployed	190.3	225.0	230.3	645.9	150.6	796.4
Male parent employed	5.4	16.6	25.9	47.9	20.3	68.1
Female parent employed	58.8	82.1	94.4	235.3	75.3	310.6
Male parent not in the labour force	* 2.8	7.4	10.9	21.1	4.3	25.4
Female parent not in the labour force	123.3	118.9	99.0	341.6	50.8	392.4
Total	1,325.5	1,310.2	1,284.0	3,923.3	900.1	4,823.3

(a) Includes a small number of families with husband not in the labour force and wife unemployed.

TABLE 8. ALL FAMILIES: FAMILY TYPE, NUMBER OF CHILDREN AGED UNDER 5 YEARS AND LABOUR FORCE STATUS OF HUSBAND, WIFE OR FAMILY HEAD, JUNE 1997
(*000 families)

	Number of children aged 0-4			Total
	None	One	Two or more	
Couple family	3,242.9	595.8	251.6	4,090.3
One or both spouses unemployed(a)	172.6	51.9	23.5	248.0
Husband employed, wife unemployed	57.6	13.8	4.2	75.6
Husband unemployed, wife employed	33.6	6.5	* 1.4	41.5
Husband unemployed, wife unemployed	21.7	7.0	* 1.1	29.7
Husband unemployed, wife not in the labour force	51.8	23.7	16.6	92.0
Neither spouse unemployed	3,070.3	543.9	228.0	3,842.3
Husband employed, wife employed	1,635.7	291.7	81.0	2,008.4
Husband employed, wife not in the labour force	508.8	221.5	136.3	866.6
Husband not in the labour force, wife employed	111.6	7.7	3.5	122.7
Husband not in the labour force, wife not in the labour force	814.3	23.0	7.3	844.5
One parent family	550.6	138.4	32.1	721.1
Parent unemployed	39.3	11.7	* 1.6	52.6
Male parent unemployed	6.1	* 2.0	* 0.0	8.1
Female parent unemployed	33.2	9.7	* 1.6	44.5
Parent not unemployed	511.3	126.7	30.5	668.6
Male parent employed	61.2	4.3	* 0.4	65.9
Female parent employed	195.2	43.8	7.2	246.3
Male parent not in the labour force	36.2	* 2.2	* 0.3	38.8
Female parent not in the labour force	218.7	76.3	22.6	317.6
Other family	88.0	88.0
Family head unemployed	6.1	6.1
Family head not unemployed	81.9	81.9
Family head employed	49.2	49.2
Family head not in the labour force	32.7	32.7
Total	3,881.5	734.2	283.7	4,899.4

(a) Includes a small number of families with husband not in the labour force and wife unemployed.

TABLE 9. ALL FAMILIES: FAMILY TYPE, NUMBER OF CHILDREN AGED 5 TO 9 YEARS AND LABOUR FORCE STATUS OF HUSBAND, WIFE OR FAMILY HEAD, JUNE 1997
(*000 families)

	Number of children aged 5-9			Total
	None	One	Two or more	
Couple family	3,296.5	549.4	244.4	4,090.3
One or both spouses unemployed(a)	180.1	46.2	21.7	248.0
Husband employed, wife unemployed	54.4	13.9	7.3	75.6
Husband unemployed, wife employed	32.5	6.5	* 2.6	41.5
Husband unemployed, wife unemployed	22.3	4.9	* 2.5	29.7
Husband unemployed, wife not in the labour force	63.8	19.3	8.8	92.0
Neither spouse unemployed	3,116.3	503.2	222.7	3,842.3
Husband employed, wife employed	1,570.1	308.3	130.1	2,008.4
Husband employed, wife not in the labour force	625.3	162.4	79.0	866.6
Husband not in the labour force, wife employed	108.0	10.0	4.8	122.7
Husband not in the labour force, wife not in the labour force	813.0	22.6	8.9	844.5
One parent family	526.1	146.3	48.6	721.1
Parent unemployed	33.9	14.1	4.6	52.6
Male parent unemployed	6.5	* 1.4	* 0.2	8.1
Female parent unemployed	27.3	12.7	4.4	44.5
Parent not unemployed	492.3	132.3	44.0	668.6
Male parent employed	52.8	9.9	* 3.2	65.9
Female parent employed	180.8	50.3	15.1	246.3
Male parent not in the labour force	32.5	5.3	* 1.0	38.8
Female parent not in the labour force	226.1	66.8	24.7	317.6
Other family	88.0	88.0
Family head unemployed	6.1	6.1
Family head not unemployed	81.9	81.9
Family head employed	49.2	49.2
Family head not in the labour force	32.7	32.7
Total	3,910.7	695.8	293.0	4,899.4

(a) Includes a small number of families with husband not in the labour force and wife unemployed.

TABLE 10. ALL FAMILIES: FAMILY TYPE, NUMBER OF CHILDREN AGED 10 TO 14 YEARS AND LABOUR FORCE STATUS OF HUSBAND, WIFE OR FAMILY HEAD, JUNE 1997
(*000 families)

	Number of children aged 10-14			Total
	None	One	Two or more	
Couple family	3,313.8	544.5	231.9	4,090.3
One or both spouses unemployed(a)	191.0	37.9	19.2	248.0
Husband employed, wife unemployed	55.5	13.3	6.9	75.6
Husband unemployed, wife employed	33.8	4.5	* 3.2	41.5
Husband unemployed, wife unemployed	23.7	3.9	* 2.1	29.7
Husband unemployed, wife not in the labour force	70.8	14.9	6.3	92.0
Neither spouse unemployed	3,122.9	506.6	212.7	3,842.3
Husband employed, wife employed	1,530.3	335.8	142.3	2,008.4
Husband employed, wife not in the labour force	678.3	129.9	58.4	866.6
Husband not in the labour force, wife employed	105.6	12.7	4.4	122.7
Husband not in the labour force, wife not in the labour force	808.7	28.2	7.6	844.5
One parent family	524.4	146.6	50.1	721.1
Parent unemployed	35.8	12.3	4.5	52.6
Male parent unemployed	5.5	* 2.1	* 0.5	8.1
Female parent unemployed	30.3	10.2	4.0	44.5
Parent not unemployed	488.6	134.4	45.6	668.6
Male parent employed	46.0	14.3	5.6	65.9
Female parent employed	171.8	56.3	18.2	246.3
Male parent not in the labour force	29.3	8.5	* 1.0	38.8
Female parent not in the labour force	241.5	55.3	20.8	317.6
Other family	88.0	88.0
Family head unemployed	6.1	6.1
Family head not unemployed	81.9	81.9
Family head employed	49.2	49.2
Family head not in the labour force	32.7	32.7
Total	3,926.3	691.1	282.0	4,899.4

(a) Includes a small number of families with husband not in the labour force and wife unemployed.

TABLE 11. FAMILIES WITH ONE OR MORE MEMBERS UNEMPLOYED: FAMILY TYPE, LABOUR FORCE STATUS(a) OF FAMILY MEMBERS AND WHETHER DEPENDANTS PRESENT, JUNE 1997
(*000 families)

	None employed			One employed			Two or more employed			Total		
	Two or more		Total	Two or more		Total	Two or more		Total	Two or more		Total
	One unemp-loyed	more unemp-loyed		One unemp-loyed	more unemp-loyed		One unemp-loyed	more unemp-loyed		One unemp-loyed	more unemp-loyed	
Couple family	102.7	32.4	135.1	117.9	8.5	126.4	106.8	8.7	115.5	327.4	49.6	377.0
With dependants	65.1	18.3	83.4	68.3	5.2	73.5	70.6	6.1	76.7	204.0	29.7	233.6
Without dependants	37.5	14.1	51.6	49.7	* 3.3	52.9	36.3	* 2.5	38.8	123.5	19.9	143.4
One parent family	62.0	7.6	69.6	29.1	* 2.1	31.2	7.7	* 1.2	8.8	98.9	10.8	109.7
Other family	* 2.3	* 1.8	4.1	8.4	* 0.3	8.6	* 1.3	* 0.0	* 1.3	11.9	* 2.1	14.0
Total	167.0	41.8	208.8	155.4	10.8	166.2	115.9	9.8	125.7	438.3	62.5	500.7
With dependants	111.4	23.4	134.8	81.9	6.5	88.4	74.9	7.0	81.9	268.2	36.9	305.1
Without dependants	55.6	18.4	74.0	73.5	4.3	77.8	40.9	* 2.9	43.8	170.0	25.6	195.6

(a) Labour force status refers to persons aged 15 and over only.

**TABLE 12. COUPLE FAMILIES: LABOUR FORCE STATUS OF HUSBAND AND WIFE
AND NUMBER OF DEPENDANTS, JUNE 1997**
(*000 families)

Number of dependants	Wife employed			Wife unemployed	Wife in the labour force	Wife not in the labour force	Total
	Full time	Part time	Total				
HUSBAND EMPLOYED FULL TIME							
None	539.4	275.4	814.7	21.9	836.7	236.7	1,073.4
One or more	461.8	609.9	1,071.7	45.8	1,117.6	551.9	1,669.5
One	187.2	186.3	373.5	14.7	388.2	169.5	557.7
Two	195.9	269.9	465.8	22.2	488.0	223.6	711.6
Three	68.2	116.3	184.5	7.8	192.3	113.2	305.5
Four or more	10.5	37.4	47.9	* 1.2	49.0	45.7	94.7
Total	1,001.2	885.3	1,886.5	67.8	1,954.3	788.6	2,742.8
HUSBAND EMPLOYED: TOTAL							
None	569.9	311.7	881.6	26.9	908.5	280.6	1,189.1
One or more	489.1	637.7	1,126.8	48.7	1,175.5	585.9	1,761.5
One	198.6	196.7	395.4	16.1	411.5	182.7	594.2
Two	205.7	278.3	484.1	22.6	506.6	233.1	739.7
Three	73.0	123.1	196.1	8.0	204.1	119.6	323.6
Four or more	11.8	39.5	51.3	* 2.0	53.3	50.6	103.9
Total	1,059.0	949.4	2,008.4	75.6	2,084.0	866.6	2,950.6
HUSBAND UNEMPLOYED							
None	10.8	9.4	20.2	13.4	33.6	26.2	59.8
One or more	7.4	13.9	21.3	16.4	37.6	65.8	103.4
One	3.6	4.5	8.1	5.9	13.9	20.7	34.6
Two	* 2.5	5.0	7.5	7.4	14.9	24.6	39.5
Three	* 1.1	3.7	4.8	* 1.9	6.7	13.2	19.9
Four or more	* 0.2	* 0.7	* 0.8	* 1.2	* 2.1	7.3	9.4
Total	18.2	23.3	41.5	29.7	71.2	92.0	163.2
HUSBAND IN THE LABOUR FORCE							
None	580.7	321.1	901.8	40.2	942.1	306.8	1,248.9
One or more	496.5	651.5	1,148.1	65.1	1,213.2	651.8	1,864.9
One	202.2	201.3	403.5	22.0	425.4	203.5	628.9
Two	208.2	283.3	491.6	29.9	521.5	257.7	779.1
Three	74.1	126.8	200.9	9.9	210.8	132.8	343.6
Four or more	12.0	40.2	52.2	* 3.3	55.4	57.9	113.3
Total	1,077.2	972.6	2,049.9	105.3	2,155.2	938.6	3,113.8
HUSBAND NOT IN THE LABOUR FORCE							
None	39.2	42.4	81.6	5.2	86.9	754.8	841.7
One or more	18.8	22.3	41.1	4.0	45.1	89.7	134.8
One	8.0	10.4	18.4	* 1.2	19.5	42.0	61.6
Two	7.3	8.6	15.8	* 1.4	17.3	26.2	43.5
Three	* 2.6	* 2.9	5.4	* 0.7	6.1	13.4	19.5
Four or more	* 1.0	* 0.5	* 1.5	* 0.7	* 2.1	8.1	10.2
Total	58.1	64.6	122.7	9.2	131.9	844.5	976.5
TOTAL							
None	620.0	363.5	983.5	45.5	1,028.9	1,061.6	2,090.5
One or more	515.4	673.8	1,189.2	69.1	1,258.2	741.5	1,999.8
One	210.2	211.6	421.8	23.2	445.0	245.5	690.5
Two	215.5	291.9	507.4	31.4	538.8	283.9	822.7
Three	76.7	129.6	206.3	10.6	216.9	146.2	363.1
Four or more	12.9	40.7	53.6	3.9	57.5	66.0	123.5
Total	1,135.3	1,037.3	2,172.6	114.5	2,287.2	1,803.1	4,090.3

TABLE 13. COUPLE FAMILIES: LABOUR FORCE STATUS OF HUSBAND AND WIFE
AND AGE OF DEPENDANTS, JUNE 1997
(*000 families)

	Wife employed			Wife unemp- loyed	Wife in the labour force	Wife not in the labour force	Total
	Full time	Part time	Total				
HUSBAND EMPLOYED							
Families with dependants	489.1	637.7	1,126.8	48.7	1,175.5	585.9	1,761.3
Age of dependants							
0-9 only	157.9	270.3	428.2	22.0	450.2	337.9	788.0
0-4 only	72.5	125.1	197.6	9.0	206.6	187.9	394.5
5-9 only	45.0	62.9	107.9	6.3	114.2	37.1	151.3
0-4 and 5-9	40.4	82.3	122.6	6.7	129.4	112.9	242.2
10-14 only	60.0	72.0	132.0	9.2	141.2	49.4	190.6
15-24 only	117.4	82.5	200.0	4.4	204.3	48.6	252.9
0-9 and 10-14	64.4	114.8	179.2	6.6	185.8	85.6	271.4
0-4 and 10-14	5.9	8.9	14.8	* 0.8	15.6	14.2	29.8
5-9 and 10-14	53.0	88.9	141.9	5.2	147.1	43.9	191.0
0-4, 5-9 and 10-14	5.5	17.0	22.5	* 0.6	23.1	27.5	50.6
0-9 and 15-24	9.7	9.3	18.9	* 2.2	21.2	11.1	32.3
5-9 and 15-24	6.5	6.7	13.2	* 1.3	14.4	3.8	18.2
10-14 and 15-24	66.7	64.0	130.6	3.6	134.2	34.4	168.6
0-9, 10-14 and 15-24	12.4	23.8	36.2	* 0.9	37.0	19.0	56.0
5-9, 10-14 and 15-24	9.0	17.8	26.8	* 0.9	27.7	10.9	38.6
Families without dependants	569.9	311.7	881.6	26.9	908.5	280.6	1,189.1
Total	1,059.0	949.4	2,008.4	75.6	2,084.0	866.6	2,950.6
HUSBAND UNEMPLOYED							
Families with dependants	7.4	13.9	21.3	16.4	37.6	65.8	103.4
Families without dependants	10.8	9.4	20.2	13.4	33.6	26.2	59.8
Total	18.2	23.3	41.5	29.7	71.2	92.0	163.2
HUSBAND IN THE LABOUR FORCE							
Families with dependants	496.5	651.5	1,148.1	65.1	1,213.2	651.8	1,864.9
Age of dependants							
0-9 only	161.2	275.5	436.7	31.1	467.8	375.8	843.6
0-4 only	73.7	127.5	201.2	13.6	214.8	206.0	420.8
5-9 only	45.7	64.1	109.8	8.8	118.6	44.0	162.6
0-4 and 5-9	41.8	83.9	125.7	8.7	134.4	125.8	260.1
10-14 only	61.0	73.5	134.6	10.6	145.1	53.4	198.5
15-24 only	118.9	84.7	203.6	5.6	209.2	55.1	264.3
0-9 and 10-14	65.1	117.2	182.3	9.9	192.2	97.4	289.6
0-4 and 10-14	6.0	9.0	15.0	* 1.5	16.5	18.6	35.2
5-9 and 10-14	53.6	90.9	144.5	7.1	151.6	47.3	198.8
0-4, 5-9 and 10-14	5.5	17.3	22.8	* 1.4	24.1	31.5	55.6
0-9 and 15-24	9.9	10.3	20.2	* 2.2	22.5	11.3	33.8
5-9 and 15-24	6.7	7.0	13.7	* 1.3	15.0	4.1	19.0
10-14 and 15-24	67.4	65.0	132.4	4.6	136.9	38.2	175.1
0-9, 10-14 and 15-24	12.4	24.2	36.6	* 1.1	37.7	20.5	58.2
5-9, 10-14 and 15-24	9.0	18.2	27.2	* 1.1	28.3	11.6	39.9
Families without dependants	580.7	321.1	901.8	40.2	942.1	306.8	1,248.9
Total	1,077.2	972.6	2,049.9	105.3	2,155.2	958.6	3,113.8
HUSBAND NOT IN THE LABOUR FORCE							
Families with dependants	18.8	22.3	41.1	4.0	45.1	89.7	134.8
Age of dependants							
0-14 only	12.1	15.6	27.7	* 2.9	30.6	50.7	81.4
Other	6.8	6.6	13.4	* 1.0	14.4	39.0	53.4
Families without dependants	39.2	42.4	81.6	5.2	86.9	754.8	841.7
Total	58.1	64.6	122.7	9.2	131.9	844.5	976.5
TOTAL							
Families with dependants	515.4	673.8	1,189.2	69.1	1,258.2	741.5	1,999.8
Age of dependants							
0-9 only	167.2	283.5	450.7	32.6	483.3	405.4	888.8
0-4 only	76.0	131.4	207.5	14.0	221.5	219.5	441.0
5-9 only	47.7	66.5	114.3	9.6	123.9	50.7	174.7
0-4 and 5-9	43.4	85.6	129.0	9.0	137.9	135.2	273.1
10-14 only	64.6	77.7	142.3	10.8	153.1	64.0	217.2
15-24 only	123.1	89.8	212.9	6.0	218.9	76.8	295.7
0-9 and 10-14	67.6	120.6	188.2	11.1	199.3	107.8	307.1
0-4 and 10-14	6.4	9.3	15.7	* 1.8	17.4	20.3	37.7
5-9 and 10-14	55.0	93.8	148.8	7.7	156.5	53.5	210.0
0-4, 5-9 and 10-14	6.2	17.6	23.8	* 1.6	25.4	34.0	59.3
0-9 and 15-24	10.4	10.6	20.9	* 2.2	23.2	13.9	37.0
5-9 and 15-24	7.1	7.3	14.4	* 1.3	15.6	6.2	21.8
10-14 and 15-24	68.8	66.1	134.9	5.2	140.0	47.2	187.2
0-9, 10-14 and 15-24	13.2	24.4	37.6	* 1.1	38.7	26.2	64.9
5-9, 10-14 and 15-24	9.8	18.4	28.2	* 1.1	29.3	14.7	44.0
Families without dependants	620.0	363.5	983.5	45.5	1,028.9	1,061.6	2,090.5
Total	1,135.3	1,037.3	2,172.6	114.5	2,287.2	1,803.1	4,090.3

**TABLE 14. COUPLE FAMILIES: LABOUR FORCE STATUS OF HUSBAND AND WIFE
AND AGE OF YOUNGEST DEPENDANT, JUNE 1997**
(*000 families)

	<i>Wife employed</i>			<i>Wife unemp-loyed</i>	<i>Wife in the labour force</i>	<i>Wife not in the labour force</i>	<i>Total</i>
	<i>Full time</i>	<i>Part time</i>	<i>Total</i>				
	HUSBAND EMPLOYED FULL TIME						
Families with dependants	461.8	609.9	1,071.7	45.8	1,117.6	551.9	1,669.5
Age of youngest dependant							
0-4	121.3	233.0	354.3	17.1	371.5	338.0	709.5
5-9	107.1	168.9	276.0	12.5	288.5	89.4	377.9
10-14	121.4	129.0	250.4	11.9	262.3	79.0	341.3
15-24	111.4	78.1	189.4	4.4	193.8	45.3	239.1
Families without dependants	539.4	275.4	814.7	21.9	836.7	236.7	1,073.4
<i>Total</i>	<i>1,001.2</i>	<i>885.3</i>	<i>1,886.5</i>	<i>67.8</i>	<i>1,954.3</i>	<i>788.6</i>	<i>2,742.8</i>
	HUSBAND EMPLOYED: TOTAL						
Families with dependants	489.1	637.7	1,126.8	48.7	1,175.5	585.9	1,761.5
Age of youngest dependant							
0-4	130.9	241.8	372.7	18.1	390.8	357.8	748.6
5-9	113.5	176.3	289.8	13.6	303.4	95.7	399.1
10-14	126.7	136.0	262.7	12.7	275.4	83.7	359.1
15-24	117.4	82.5	200.0	4.4	204.3	48.6	252.9
Families without dependants	569.9	311.7	881.6	26.9	908.5	280.6	1,189.1
<i>Total</i>	<i>1,059.0</i>	<i>949.4</i>	<i>2,008.4</i>	<i>75.6</i>	<i>2,084.0</i>	<i>866.6</i>	<i>2,950.6</i>
	HUSBAND UNEMPLOYED						
Families with dependants	7.4	13.9	21.3	16.4	37.6	65.8	103.4
Age of youngest dependant							
0-4	* 2.6	5.3	7.9	8.1	16.0	40.2	56.2
5-9	* 1.6	3.8	5.4	4.7	10.1	11.2	21.3
10-14	* 1.7	* 2.6	4.3	* 2.4	6.7	7.8	14.5
15-24	* 1.5	* 2.2	3.7	* 1.2	4.9	6.5	11.4
Families without dependants	10.8	9.4	20.2	13.4	33.6	26.2	59.8
<i>Total</i>	<i>18.2</i>	<i>23.3</i>	<i>41.5</i>	<i>29.7</i>	<i>71.2</i>	<i>92.0</i>	<i>163.2</i>
	HUSBAND IN THE LABOUR FORCE						
Families with dependants	496.5	651.5	1,148.1	65.1	1,213.2	651.8	1,864.9
Age of youngest dependant							
0-4	133.6	247.1	380.6	26.1	406.8	398.0	804.7
5-9	115.1	180.1	295.2	18.3	313.4	107.0	420.4
10-14	128.4	138.5	266.9	15.1	282.1	91.6	373.6
15-24	118.9	84.7	203.6	5.6	209.2	55.1	264.3
Families without dependants	580.7	321.1	901.8	40.2	942.1	306.8	1,248.9
<i>Total</i>	<i>1,077.2</i>	<i>972.6</i>	<i>2,049.9</i>	<i>105.3</i>	<i>2,155.2</i>	<i>958.6</i>	<i>3,113.8</i>
	HUSBAND NOT IN THE LABOUR FORCE						
Families with dependants	18.8	22.3	41.1	4.0	45.1	89.7	134.8
Age of youngest dependant							
0-4	5.0	6.1	11.2	* 1.2	12.4	30.3	42.6
5-9	4.6	5.8	10.5	* 1.5	11.9	18.1	30.1
10-14	5.0	5.2	10.2	* 0.9	11.1	19.7	30.8
15-24	4.2	5.1	9.2	* 0.4	9.7	21.7	31.4
Families without dependants	39.2	42.4	81.6	5.2	86.9	754.8	841.7
<i>Total</i>	<i>58.1</i>	<i>64.6</i>	<i>122.7</i>	<i>9.2</i>	<i>131.9</i>	<i>844.5</i>	<i>976.5</i>
	TOTAL						
Families with dependants	515.4	673.8	1,189.2	69.1	1,258.2	741.5	1,999.8
Age of youngest dependant							
0-4	138.6	253.2	391.8	27.3	419.1	428.3	847.4
5-9	119.7	186.0	305.7	19.7	325.4	125.1	450.5
10-14	133.4	143.8	277.2	16.0	293.2	111.2	404.4
15-24	123.1	89.8	212.9	6.0	218.9	76.8	295.7
Families without dependants	620.0	363.5	983.5	45.5	1,028.9	1,061.6	2,090.5
<i>Total</i>	<i>1,135.3</i>	<i>1,037.3</i>	<i>2,172.6</i>	<i>114.5</i>	<i>2,287.2</i>	<i>1,803.1</i>	<i>4,090.3</i>

**TABLE 15. COUPLE FAMILIES WITH HUSBAND IN THE LABOUR FORCE:
LABOUR FORCE STATUS, AGE OF WIFE AND AGE OF DEPENDANTS, JUNE 1997
(*000 Families)**

	<i>Wife employed</i>			<i>Wife unemployed</i>	<i>Wife in the labour force</i>	<i>Wife not in the labour force</i>	<i>Total</i>
	<i>Full time</i>	<i>Part time</i>	<i>Total</i>				
WIFE AGED 15-34							
Families with dependants	120.1	211.6	331.7	26.3	358.0	329.4	687.4
Age of dependants							
0-9 only	96.8	170.6	267.4	21.2	288.6	279.4	568.0
0-4 only	53.5	98.1	151.6	10.8	162.4	170.9	333.3
5-9 only	17.2	22.8	40.0	3.8	43.8	22.6	66.4
0-4 and 5-9	26.2	49.6	75.8	6.5	82.3	86.0	168.3
10-14 only	5.7	6.4	12.1	* 0.8	12.9	5.6	18.5
15-24 only	* 1.2	* 0.0	* 1.2	* 0.0	* 1.2	* 0.3	* 1.5
0-9 and 10-14	12.2	30.0	42.2	4.2	46.5	38.2	84.7
0-4 and 10-14	* 1.8	* 3.2	5.1	* 1.0	6.0	8.8	14.8
5-9 and 10-14	8.7	19.6	28.3	* 2.5	30.8	12.2	43.0
0-4, 5-9 and 10-14	* 1.7	7.2	8.8	* 0.8	9.6	17.2	26.8
10-14 and 15-24	* 1.9	* 1.6	3.6	* 0.0	3.6	* 0.4	4.0
Other(a)	* 1.8	* 2.7	4.5	* 0.1	4.6	5.5	10.2
Families without dependants	257.5	59.3	316.8	17.1	333.9	29.0	362.9
Total	377.6	270.9	648.5	43.3	691.9	358.4	1,050.3
WIFE AGED 35-44							
Families with dependants	249.7	326.5	576.2	27.6	603.8	236.7	840.5
Age of dependants							
0-9 only	60.1	99.7	159.9	8.1	168.0	90.6	258.6
0-4 only	19.9	29.1	49.0	* 2.3	51.2	33.4	84.7
5-9 only	24.8	37.2	62.0	4.0	66.0	17.4	83.4
0-4 and 5-9	15.4	33.4	48.9	* 1.9	50.7	39.8	90.5
10-14 only	39.4	50.7	90.1	7.4	97.5	30.9	128.4
15-24 only	39.6	26.0	65.6	* 2.1	67.7	17.3	85.0
0-9 and 10-14	47.5	82.8	130.3	4.2	134.5	54.8	189.3
0-4 and 10-14	4.2	5.8	10.0	* 0.5	10.5	9.6	20.1
5-9 and 10-14	39.7	66.9	106.6	* 3.4	109.9	31.6	141.6
0-4, 5-9 and 10-14	3.6	10.1	13.8	* 0.3	14.1	13.6	27.7
10-14 and 15-24	44.8	39.5	84.3	* 2.8	87.1	21.3	108.4
Other(a)	18.2	27.2	45.4	* 2.9	48.4	21.8	70.2
Families without dependants	84.4	37.5	121.8	5.8	127.6	28.6	156.1
Total	334.1	364.0	698.1	33.3	731.4	265.2	996.6
WIFE AGED 45 AND OVER							
Families with dependants	126.7	113.4	240.1	11.2	251.4	85.7	337.0
Age of dependants							
0-9 only	4.2	5.2	9.5	* 1.8	11.3	5.8	17.0
0-4 only	* 0.3	* 0.3	* 0.6	* 0.5	* 1.1	* 1.7	* 2.9
5-9 only	3.7	4.1	7.8	* 1.0	8.8	4.1	12.8
0-4 and 5-9	* 0.2	* 0.9	* 1.0	* 0.3	* 1.3	* 0.0	* 1.3
10-14 only	15.9	16.4	32.3	* 2.4	34.7	16.9	51.6
15-24 only	78.1	58.7	136.9	3.5	140.4	37.5	177.9
0-9 and 10-14	5.3	4.4	9.7	* 1.5	11.3	4.4	15.6
0-4 and 10-14	* 0.0	* 0.0	* 0.0	* 0.0	* 0.0	* 0.3	* 0.3
5-9 and 10-14	5.2	4.4	9.6	* 1.2	10.8	3.5	14.2
0-4, 5-9 and 10-14	* 0.2	* 0.0	* 0.2	* 0.3	* 0.5	* 0.6	* 1.1
10-14 and 15-24	20.7	23.8	44.5	* 1.7	46.2	16.5	62.8
Other(a)	* 2.3	4.6	6.9	* 0.3	7.2	4.4	11.6
Families without dependants	238.8	224.3	463.2	17.4	480.6	249.2	729.8
Total	365.5	337.7	703.3	28.7	731.9	334.9	1,066.8
TOTAL							
Families with dependants	496.5	651.5	1,148.1	65.1	1,213.2	651.8	1,864.9
Age of dependants							
0-9 only	161.2	275.5	436.7	31.1	467.8	375.8	843.6
0-4 only	73.7	127.5	201.2	13.6	214.8	206.0	420.8
5-9 only	45.7	64.1	109.8	8.8	118.6	44.0	162.6
0-4 and 5-9	41.8	83.9	125.7	8.7	134.4	125.8	260.1
10-14 only	61.0	73.5	134.6	10.6	145.1	53.4	198.5
15-24 only	118.9	84.7	203.6	5.6	209.2	55.1	264.3
0-9 and 10-14	65.1	117.2	182.3	9.9	192.2	97.4	289.6
0-4 and 10-14	6.0	9.0	15.0	* 1.5	16.5	18.6	35.2
5-9 and 10-14	53.6	90.9	144.5	7.1	151.6	47.3	198.8
0-4, 5-9 and 10-14	5.5	17.3	22.8	* 1.4	24.1	31.5	55.6
10-14 and 15-24	67.4	65.0	132.4	4.6	136.9	38.2	175.1
Other(a)	22.3	34.5	56.8	* 3.3	60.2	31.8	92.0
Families without dependants	580.7	321.1	901.8	40.2	942.1	306.8	1,248.9
Total	1,077.2	972.6	2,049.9	105.3	2,155.2	958.6	3,113.8

(a) Comprises all other combinations of dependants aged 0-24.

**TABLE 16. COUPLE FAMILIES WITH WIFE IN THE LABOUR FORCE:
LABOUR FORCE STATUS, AGE OF HUSBAND AND AGE OF DEPENDANTS, JUNE 1997**
(*000 families)

	<i>Husband employed</i>		<i>Husband unemployed</i>	<i>Husband in the labour force</i>	<i>Husband not in the labour force</i>	<i>Total</i>
	<i>Full time</i>	<i>Total</i>				
HUSBAND AGED 15-34						
Families with dependants	224.6	235.5	12.6	248.1	11.2	259.3
Age of dependants						
0-9 only	194.7	204.2	10.3	214.5	9.1	223.6
0-4 only	122.0	127.3	5.6	132.9	4.8	137.7
5-9 only	22.3	23.4	* 2.1	25.5	* 1.9	27.4
0-4 and 5-9	50.4	53.6	* 2.6	56.1	* 2.4	58.5
10-14 only	7.3	7.3	* 0.7	7.9	* 0.1	8.1
15-24 only	* 0.8	* 0.8	* 0.0	* 0.8	* 0.0	* 0.8
0-9 and 10-14	17.4	18.3	* 0.9	19.3	* 1.7	20.9
0-4 and 10-14	* 2.3	* 2.3	* 0.1	* 2.4	* 0.3	* 2.7
5-9 and 10-14	11.2	11.9	* 0.6	12.5	* 0.6	13.1
0-4, 5-9 and 10-14	3.9	4.2	* 0.2	4.4	* 0.8	5.2
10-14 and 15-24	* 2.5	* 2.5	* 0.2	* 2.7	* 0.0	* 2.7
Other(a)	* 1.9	* 2.2	* 0.5	* 2.6	* 0.2	* 2.9
Families without dependants	266.3	283.1	10.1	293.2	7.1	300.3
Total	490.9	518.6	22.7	541.3	18.2	559.5
HUSBAND AGED 35-44						
Families with dependants	533.5	555.7	12.8	568.5	14.5	583.0
Age of dependants						
0-9 only	197.1	206.6	5.4	212.0	4.0	216.0
0-4 only	65.7	69.2	* 2.1	71.3	* 1.0	72.3
5-9 only	67.0	69.6	* 1.3	70.9	* 1.9	72.8
0-4 and 5-9	64.4	67.8	* 1.9	69.8	* 1.2	70.9
10-14 only	71.9	74.4	* 2.1	76.5	* 3.3	79.8
15-24 only	37.0	37.3	* 0.4	37.6	* 1.6	39.3
0-9 and 10-14	132.2	136.9	* 3.3	140.2	3.7	144.0
0-4 and 10-14	11.0	11.6	* 0.8	12.4	* 0.6	13.0
5-9 and 10-14	103.7	107.4	* 2.3	109.7	* 2.9	112.6
0-4, 5-9 and 10-14	17.5	18.0	* 0.2	18.2	* 0.2	18.4
10-14 and 15-24	56.5	59.9	* 1.3	61.2	* 0.8	62.0
Other(a)	37.8	39.7	* 0.3	40.0	* 1.0	41.0
Families without dependants	114.0	120.9	3.8	124.7	4.8	129.4
Total	647.6	676.6	16.6	693.2	19.3	712.4
HUSBAND AGED 45 AND OVER						
Families with dependants	359.4	384.3	12.3	396.6	19.4	416.0
Age of dependants						
0-9 only	36.2	39.3	* 2.0	41.3	* 2.4	43.7
0-4 only	9.6	10.1	* 0.5	10.6	* 0.9	11.5
5-9 only	19.7	21.2	* 1.0	22.2	* 1.5	23.7
0-4 and 5-9	6.8	8.0	* 0.5	8.5	* 0.0	8.5
10-14 only	55.3	59.6	* 1.2	60.8	4.5	65.3
15-24 only	156.1	166.3	4.5	170.8	8.1	178.9
0-9 and 10-14	27.7	30.5	* 2.2	32.7	* 1.7	34.4
0-4 and 10-14	* 1.8	* 1.8	* 0.0	* 1.8	* 0.0	* 1.8
5-9 and 10-14	25.2	27.8	* 1.6	29.4	* 1.5	30.9
0-4, 5-9 and 10-14	* 0.8	* 0.9	* 0.6	* 1.5	* 0.2	* 1.7
10-14 and 15-24	68.8	71.8	* 1.2	73.0	* 2.3	75.3
Other(a)	14.9	16.4	* 1.2	17.6	* 0.4	18.0
Families without dependants	456.3	504.4	19.7	524.2	75.1	599.2
Total	815.8	888.8	32.0	920.8	94.4	1,015.2
TOTAL						
Families with dependants	1,117.6	1,175.5	37.6	1,213.2	45.1	1,258.2
Age of dependants						
0-9 only	428.0	450.2	17.6	467.8	15.5	483.3
0-4 only	197.3	206.6	8.2	214.8	6.7	221.5
5-9 only	109.0	114.2	4.4	118.6	5.3	123.9
0-4 and 5-9	121.6	129.4	5.0	134.4	3.6	137.9
10-14 only	134.5	141.2	3.9	145.1	8.0	153.1
15-24 only	193.8	204.3	4.9	209.2	9.7	218.9
0-9 and 10-14	177.3	185.8	6.4	192.2	7.1	199.3
0-4 and 10-14	15.1	15.6	* 0.9	16.5	* 0.9	17.4
5-9 and 10-14	140.1	147.1	4.5	151.6	5.0	156.5
0-4, 5-9 and 10-14	22.1	23.1	* 1.1	24.1	* 1.2	25.4
10-14 and 15-24	127.8	134.2	* 2.7	136.9	* 3.1	140.0
Other(a)	54.7	58.2	* 2.0	60.2	* 1.7	61.9
Families without dependants	836.7	908.5	33.6	942.1	86.9	1,028.9
Total	1,954.3	2,084.0	71.2	2,155.2	131.9	2,287.2

(a) Comprises all other combinations of dependants aged 0-24.

TABLE 17. COUPLE FAMILIES WITH HUSBAND UNEMPLOYED: DURATION OF UNEMPLOYMENT OF HUSBAND AND LABOUR FORCE STATUS OF WIFE, JUNE 1997

	<i>Duration of unemployment of husband (weeks)</i>					<i>Total</i>	<i>Average duration</i>	<i>Median duration</i>
	<i>Under 4</i>	<i>4 and under 13</i>	<i>13 and under 26</i>	<i>26 and under 52</i>	<i>52 and over</i>			
	<i>— '000 families —</i>						<i>— weeks —</i>	
Couple family with husband unemployed	22.1	25.5	22.8	26.4	66.4	163.2	71.9	30
Wife in the labour force	11.2	14.5	9.8	10.8	25.0	71.2	60.8	26
Wife employed	9.3	10.0	5.3	6.1	10.9	41.5	45.4	17
Wife unemployed	* 2.0	4.5	4.5	4.7	14.0	29.7	82.4	44
Wife not in the labour force	10.9	11.1	13.1	15.5	41.4	92.0	80.4	35
With dependants								
Wife in the labour force	6.2	7.7	4.7	7.5	11.6	37.6	55.0	26
Wife employed	4.5	4.8	* 2.5	4.2	5.2	21.3	43.0	19
Wife unemployed	* 1.7	* 2.9	* 2.2	* 3.3	6.4	16.4	70.7	36
Wife not in the labour force	7.5	8.4	9.4	11.1	29.4	65.8	69.5	34
Without dependants								
Wife in the labour force	5.0	6.8	5.1	* 3.3	13.3	33.6	67.3	25
Wife employed	4.8	5.2	* 2.8	* 1.8	5.7	20.2	47.9	14
Wife unemployed	* 0.3	* 1.6	* 2.3	* 1.5	7.7	13.4	96.7	* 60
Wife not in the labour force	* 3.4	* 2.7	3.6	4.4	12.0	26.2	107.9	39

TABLE 18. COUPLE FAMILIES WITH WIFE UNEMPLOYED: DURATION OF UNEMPLOYMENT OF WIFE AND LABOUR FORCE STATUS OF HUSBAND, JUNE 1997

	<i>Duration of unemployment of wife (weeks)</i>					<i>Total</i>	<i>Average duration</i>	<i>Median duration</i>
	<i>Under 4</i>	<i>4 and under 13</i>	<i>13 and under 26</i>	<i>26 and under 52</i>	<i>52 and over</i>			
	<i>— '000 families —</i>						<i>— weeks —</i>	
Couple family with wife unemployed	21.5	25.4	20.2	13.4	34.0	114.5	53.9	19
Husband in the labour force	20.2	23.4	18.2	11.7	31.9	105.3	55.5	18
Husband employed	16.5	17.6	13.2	8.0	20.3	75.6	50.7	16
Husband not in the labour force	* 1.4	* 2.1	* 1.9	* 1.7	* 2.1	9.2	35.8	* 20
With dependants								
Husband in the labour force	13.3	15.8	10.3	6.6	19.0	65.1	48.3	16
Husband employed	11.2	11.9	7.6	4.8	13.4	48.7	44.1	14
Husband not in the labour force	* 0.6	* 0.8	* 1.1	* 0.8	* 0.8	4.0	* 32.1	* 19
Without dependants								
Husband in the labour force	6.9	7.6	7.9	5.1	12.9	40.2	67.1	21
Husband employed	5.4	5.7	5.6	* 3.2	6.9	26.9	62.7	18
Husband not in the labour force	* 0.8	* 1.3	* 0.9	* 0.9	* 1.3	5.2	* 38.6	* 23

TABLE 19. ONE PARENT FAMILIES: LABOUR FORCE STATUS OF PARENT AND AGE OF DEPENDANTS, JUNE 1997
(*000 families)

	<i>Families with dependants who are aged</i>					<i>Total families(b)</i>	<i>Families with any dependants who are aged(c)</i>		
	<i>0-9 only</i>	<i>10-14 only</i>	<i>15-24 only</i>	<i>0-9 and 10-14</i>	<i>Other(a)</i>		<i>0-9</i>	<i>10-14</i>	<i>15-24</i>
ONE PARENT FAMILY WITH A MALE PARENT									
Parent employed	9.3	11.0	13.4	5.6	4.0	65.9	15.6	19.9	17.4
Full time	6.3	9.3	12.3	4.2	3.5	56.1	11.2	16.4	15.8
Part time	* 3.0	* 1.6	* 1.1	* 1.4	* 0.5	9.8	4.4	3.5	* 1.6
Parent unemployed	* 2.8	* 1.4	* 0.4	* 0.2	* 1.0	8.1	* 2.9	* 2.6	* 1.4
Parent in the labour force	12.0	12.4	13.8	5.8	5.0	74.0	18.5	22.4	18.8
Parent not in the labour force	4.6	5.6	* 1.9	* 2.1	* 1.8	38.8	7.1	9.5	3.7
Total	16.6	18.1	15.7	7.8	6.7	112.8	25.6	31.9	22.5
ONE PARENT FAMILY WITH A FEMALE PARENT									
Parent employed	76.0	33.2	40.4	20.6	23.4	246.3	101.6	74.5	63.8
Full time	29.2	18.1	28.5	8.7	12.4	133.4	39.5	38.4	40.9
Part time	46.8	15.1	11.8	11.9	11.0	112.8	62.2	36.1	22.8
Parent unemployed	18.2	6.0	6.6	5.4	* 3.4	44.5	24.7	14.2	9.9
Looking for full-time work	10.0	4.0	5.5	3.8	* 1.5	28.5	14.3	9.2	7.0
Looking for part-time work	8.2	* 2.1	* 1.1	* 1.6	* 1.9	16.0	10.4	5.0	* 3.0
Parent in the labour force	94.2	39.3	46.9	26.0	26.8	290.7	126.3	88.7	73.7
Parent not in the labour force	108.1	27.3	19.9	32.6	22.7	317.6	152.8	76.1	42.6
Total	202.3	66.5	66.8	58.6	49.5	608.4	279.1	164.8	116.3
TOTAL									
Parent employed	85.2	44.2	53.7	26.2	27.4	312.2	117.2	94.4	81.2
Full time	35.5	27.5	40.8	12.9	15.9	189.5	50.6	54.8	56.7
Part time	49.8	16.8	12.9	13.2	11.6	122.6	66.6	39.6	24.5
Parent unemployed	21.0	7.5	7.0	5.5	4.3	52.6	27.6	16.8	11.3
Looking for full-time work	11.8	5.4	5.9	3.9	* 2.2	35.4	16.2	11.6	8.2
Looking for part-time work	9.2	* 2.1	* 1.1	* 1.6	* 2.1	17.1	11.4	5.2	* 3.1
Parent in the labour force	106.3	51.7	60.7	31.7	31.8	364.7	144.9	111.1	92.5
Parent not in the labour force	112.7	32.9	21.8	34.7	24.5	356.4	159.9	85.6	46.2
Total	219.0	84.6	82.5	66.4	56.2	721.1	304.8	196.7	138.7

(a) Comprises all other combinations of dependants aged 0-24. (b) Includes families without dependants. (c) Families with dependants in more than one group are included in each relevant group.

TABLE 20. ONE PARENT FAMILIES: LABOUR FORCE STATUS OF PARENT AND AGE OF YOUNGEST DEPENDANT, JUNE 1997
(*000 families)

	<i>Parent employed</i>			<i>Parent unemployed</i>	<i>Parent in the labour force</i>	<i>Parent not in the labour force</i>	<i>Total</i>
	<i>Full time</i>	<i>Part time</i>	<i>Total</i>				
ONE PARENT FAMILY WITH A MALE PARENT							
With dependants	35.6	7.6	43.2	5.8	49.0	16.0	65.0
Age of youngest dependant							
0-4	3.8	* 0.9	4.7	* 2.0	6.7	* 2.5	9.2
5-9	7.4	3.5	10.9	* 0.9	11.8	4.6	16.4
10-14	12.1	* 2.1	14.2	* 2.4	16.6	7.0	23.7
15-24	12.3	* 1.1	13.4	* 0.4	13.8	* 1.9	15.7
Without dependants	20.5	* 2.2	22.7	* 2.3	25.0	22.8	47.7
Total	56.1	9.8	65.9	8.1	74.0	38.8	112.8
ONE PARENT FAMILY WITH A FEMALE PARENT							
With dependants	97.0	96.6	193.6	39.6	233.2	210.7	443.9
Age of youngest dependant							
0-4	18.6	32.5	51.0	11.3	62.3	99.0	161.3
5-9	20.9	29.7	50.6	13.4	64.0	53.8	117.8
10-14	29.0	22.6	51.6	8.3	59.9	37.9	97.8
15-24	28.5	11.8	40.4	6.6	46.9	19.9	66.8
Without dependants	36.4	16.2	52.7	4.9	57.6	106.9	164.5
Total	133.4	112.8	246.3	44.5	290.7	317.6	608.4
TOTAL							
With dependants	132.6	104.2	236.8	45.3	282.2	226.7	508.9
Age of youngest dependant							
0-4	22.4	33.4	55.7	13.3	69.0	101.5	170.5
5-9	28.3	33.2	61.5	14.3	75.8	58.4	134.2
10-14	41.1	24.7	65.9	10.7	76.6	44.9	121.4
15-24	40.8	12.9	53.7	7.0	60.7	21.8	82.5
Without dependants	56.9	18.4	75.3	7.2	82.6	129.7	212.3
Total	189.5	122.6	312.2	52.6	364.7	356.4	721.1

TABLE 21. ONE PARENT FAMILIES WITH A MALE PARENT: LABOUR FORCE STATUS AND AGE OF PARENT, JUNE 1997
(*000 families)

	<i>Age of parent (years)</i>			<i>Total</i>
	<i>15-34</i>	<i>35-44</i>	<i>45 and over</i>	
Parent in the labour force	9.1	29.2	35.7	74.0
Parent employed	6.8	26.6	32.5	65.9
Parent unemployed	* 2.3	* 2.6	* 3.2	8.1
Parent not in the labour force	* 2.4	7.1	29.3	38.8
Total	11.5	36.3	65.0	112.8

TABLE 22. ONE PARENT FAMILIES WITH A FEMALE PARENT: LABOUR FORCE STATUS AND AGE OF PARENT, JUNE 1997
(*000 families)

	<i>Age of parent (years)</i>					<i>Total</i>
	<i>15-24</i>	<i>25-34</i>	<i>35-44</i>	<i>45-54</i>	<i>55 and over</i>	
Parent in the labour force	18.2	66.2	112.7	80.7	13.0	290.7
Parent employed	13.0	52.4	95.9	73.1	11.8	246.3
Parent unemployed	5.1	13.8	16.7	7.6	* 1.2	44.5
Parent not in the labour force	34.2	79.8	69.4	37.2	97.1	317.6
Total	52.4	145.9	182.0	117.9	110.1	608.4

TABLE 23. ONE PARENT FAMILIES WITH PARENT EMPLOYED: FULL-TIME/PART-TIME STATUS OF PARENT AND NUMBER OF DEPENDANTS, JUNE 1997
(*000 families)

<i>Number of dependants</i>	<i>Male parent employed</i>			<i>Female parent employed</i>		
	<i>Full time</i>	<i>Part time</i>	<i>Total</i>	<i>Full time</i>	<i>Part time</i>	<i>Total</i>
None	20.5	* 2.2	22.7	36.4	16.2	52.7
One	20.6	* 3.2	23.8	56.8	46.9	103.7
Two	12.5	* 2.5	15.0	30.5	37.1	67.6
Three or more	* 2.6	* 1.9	4.5	9.7	12.6	22.3
Total	56.1	9.8	65.9	133.4	112.8	246.3

TABLE 24. ONE PARENT FAMILIES WITH PARENT UNEMPLOYED: DURATION OF UNEMPLOYMENT OF PARENT, JUNE 1997

	<i>Duration of unemployment of parent (weeks)</i>				<i>Total</i>	<i>Average duration</i>	<i>Median duration</i>
	<i>Under 8</i>	<i>8 and under 26</i>	<i>26 and under 52</i>	<i>52 and over</i>			
	—'000 families —					— weeks —	
Male parent unemployed	* 0.9	* 2.2	* 1.0	4.0	8.1	96.3	* 39
Female parent unemployed	10.3	10.3	6.5	17.3	44.5	58.8	27
Total	11.2	12.6	7.5	21.3	52.6	64.6	29

**TABLE 25. PERSONS: RELATIONSHIP IN HOUSEHOLD, AND LABOUR FORCE STATUS
OF PERSONS AGED 15 AND OVER(a), JUNE 1997**

	<i>Employed</i>		<i>Unemployed</i>		<i>Labour force</i>	<i>Not in labour force</i>	<i>Civilian population aged 15 and over</i>	<i>Unemployment rate</i>	<i>Participation rate</i>	
	<i>Full-time workers</i>	<i>Part-time workers</i>	<i>Looking for full-time work</i>	<i>Total</i>						
	— '000 —						— per cent —			
MALES										
Family member	3,398.2	457.2	3,855.4	283.5	327.6	4,183.0	1,409.4	5,592.4	7.8	74.8
Husband	2,781.6	209.4	2,991.0	154.3	165.6	3,156.6	980.7	4,137.3	5.2	76.3
With dependants	1,704.1	93.8	1,797.9	99.5	105.6	1,903.5	137.7	2,041.3	5.5	93.3
Without dependants	1,077.5	115.6	1,193.1	54.9	60.0	1,253.1	843.0	2,096.1	4.8	59.8
Lone parent	55.6	9.8	65.4	7.0	8.2	73.6	38.5	112.1	11.2	65.7
With dependants	35.8	7.7	43.5	4.8	5.9	49.5	16.2	65.7	12.0	75.3
Without dependants	19.8	* 2.1	21.9	* 2.3	* 2.3	24.2	22.2	46.4	* 9.4	52.1
Dependent student(b)	3.7	143.3	147.0	5.1	31.9	178.9	260.4	439.4	17.8	40.7
Non-dependent child(c)	485.2	82.6	567.8	102.6	105.7	673.5	78.4	752.0	15.7	89.6
Other family person	72.1	12.1	84.2	14.5	16.0	100.2	51.3	151.6	16.0	66.1
Non-family member	661.4	103.7	765.1	85.7	91.4	856.5	335.6	1,192.2	10.7	71.8
Lone person	357.5	46.0	403.5	42.2	44.3	447.8	255.3	703.1	9.9	63.7
Not living alone	303.9	57.7	361.6	43.5	47.1	408.7	80.4	489.1	11.5	83.6
Total	4,059.7	560.9	4,620.5	369.3	419.0	5,039.5	1,745.0	6,784.5	8.3	74.3
FEMALES										
Family member	1,572.0	1,417.3	2,989.4	158.3	247.8	3,237.2	2,506.4	5,743.5	7.7	56.4
Wife	1,119.6	1,023.0	2,142.6	75.0	113.3	2,255.9	1,783.2	4,039.1	5.0	55.9
With dependants	510.9	665.8	1,176.7	39.0	68.3	1,245.0	734.3	1,979.3	5.5	62.9
Without dependants	608.7	357.2	965.9	36.0	45.0	1,010.9	1,048.9	2,059.8	4.5	49.1
Lone parent	131.6	112.2	243.8	28.1	44.1	287.9	314.9	602.7	15.3	47.8
With dependants	96.6	96.6	193.2	24.5	39.4	232.7	210.9	443.6	17.0	52.5
Without dependants	35.0	15.6	50.6	3.6	4.6	55.2	103.9	159.1	8.4	34.7
Dependent student(b)	* 2.5	185.0	187.5	4.6	34.5	222.1	242.3	464.4	15.5	47.8
Non-dependent child(c)	270.8	80.7	351.6	41.3	44.2	395.7	50.8	446.6	11.2	88.6
Other family person	47.5	16.4	63.8	9.3	11.8	75.6	115.1	190.8	15.6	39.7
Non-family member	371.4	132.5	503.9	47.8	52.8	556.7	628.4	1,185.2	9.5	47.0
Lone person	187.7	65.5	253.2	25.5	28.2	281.3	543.4	824.8	10.0	34.1
Not living alone	183.8	67.0	250.8	22.2	24.6	275.4	85.0	360.4	8.9	76.4
Total	1,943.5	1,549.8	3,493.3	206.1	300.6	3,793.9	3,134.8	6,928.7	7.9	54.8
PERSONS										
Family member	4,970.3	1,874.5	6,844.8	441.9	575.4	7,420.2	3,915.7	11,335.9	7.8	65.5
Husband or wife	3,901.2	1,232.4	5,133.6	229.4	278.9	5,412.5	2,763.9	8,176.5	5.2	66.2
With dependants	2,215.0	759.6	2,974.6	138.5	173.9	3,148.5	872.0	4,020.6	5.5	78.3
Without dependants	1,686.2	472.8	2,159.0	90.9	105.0	2,264.0	1,891.9	4,155.9	4.6	54.5
Lone parent	187.2	122.0	309.2	35.1	52.3	361.5	353.3	714.8	14.5	50.6
With dependants	132.4	104.3	236.8	29.3	45.4	282.1	227.2	509.3	16.1	55.4
Without dependants	54.8	17.7	72.5	5.8	6.9	79.4	126.2	205.5	8.7	38.6
Dependent student(b)	6.3	328.3	334.6	9.8	66.5	401.0	502.7	903.7	16.6	44.4
Non-dependent child(c)	756.0	163.3	919.3	143.9	149.9	1,069.3	129.3	1,198.5	14.0	89.2
Other family person	119.6	28.5	148.1	23.7	27.8	175.9	166.5	342.4	15.8	51.4
Non-family member	1,032.9	236.2	1,269.0	133.5	144.2	1,413.3	964.1	2,377.3	10.2	59.4
Lone person	545.2	111.5	656.7	67.7	72.4	729.1	798.7	1,527.8	9.9	47.7
Not living alone	487.7	124.7	612.4	65.8	71.8	684.2	165.3	849.5	10.5	80.5
Total	6,003.1	2,110.7	8,113.8	575.4	719.6	8,833.4	4,879.8	13,713.2	8.1	64.4

(a) Civilians who were residents of households where family status was determined. For further details see paragraphs 7 and 8 of the Explanatory Notes. (b) Excludes persons aged 20-24 attending school. Also excludes sons or daughters aged 15-24 who are classified as husbands, wives or lone parents. (c) Aged 15 and over.

TABLE 26. PERSONS: RELATIONSHIP IN HOUSEHOLD, LABOUR FORCE STATUS AND AGE
OF PERSONS 15 AND OVER(a), JUNE 1997
(*000)

	Age group (years)							Total
	15-19	20-24	25-34	35-44	45-54	55-64	65 and over	
MALES								
Family member	581.6	470.3	1,033.3	1,155.6	1,018.1	640.1	693.5	5,592.4
Husband with dependants	* 1.9	37.8	501.3	890.5	509.3	87.6	12.9	2,041.3
Employed	* 0.7	26.1	442.0	815.6	450.0	60.4	* 3.1	1,797.9
Not in the labour force	* 0.1	* 2.1	24.3	41.9	36.4	23.1	9.7	137.7
Husband without dependants	* 2.3	55.7	275.7	157.9	441.1	521.3	642.1	2,096.1
Employed	* 1.8	48.4	261.4	141.7	371.0	298.9	69.9	1,193.1
Not in the labour force	* 0.0	* 2.8	6.9	10.1	51.4	200.6	571.2	843.0
Lone parent with dependants	* 0.2	* 0.2	11.2	32.4	16.9	4.3	* 0.5	65.7
Employed	* 0.0	* 0.0	6.9	23.6	11.4	* 1.6	* 0.0	43.5
Not in the labour force	* 0.2	* 0.1	* 2.1	6.9	4.4	* 2.1	* 0.5	16.2
Lone parent without dependants	* 0.0	* 0.0	* 0.0	4.2	14.6	13.8	13.7	46.4
Employed	* 0.0	* 0.0	* 0.0	* 3.2	11.0	6.5	* 1.1	21.9
Not in the labour force	* 0.0	* 0.0	* 0.0	* 0.2	* 2.8	6.6	12.6	22.2
Dependent student(b)	376.6	62.7	439.4
Employed	116.1	30.9	147.0
Not in the labour force	232.4	28.0	260.4
Non-dependent child(c)	181.1	277.8	205.7	54.3	25.9	6.6	* 0.5	752.0
Employed	136.5	227.0	156.6	33.5	12.9	* 1.3	* 0.0	567.8
Not in the labour force	10.6	15.5	23.8	14.6	9.0	4.3	* 0.5	78.4
Other family person	19.4	36.1	39.3	16.1	10.3	6.5	23.9	151.6
Employed	8.2	23.9	31.3	11.6	6.0	* 2.5	* 0.7	84.2
Not in the labour force	8.3	6.2	3.9	* 2.5	3.9	3.5	23.1	51.3
Non-family member	36.6	182.5	332.3	204.2	147.6	110.5	178.4	1,192.2
Lone person	5.6	40.4	136.3	146.6	115.9	90.5	167.7	703.1
Employed	3.5	29.5	116.1	117.8	82.5	39.7	14.4	403.5
Not in the labour force	* 0.7	4.2	8.7	17.9	25.5	45.1	153.2	255.3
Not living alone	31.0	142.1	196.0	57.6	31.7	20.0	10.8	489.1
Employed	17.2	105.2	158.9	46.5	22.5	9.8	* 1.4	361.6
Not in the labour force	8.3	22.7	18.3	7.0	5.5	9.2	9.3	80.4
Total	618.2	652.8	1,365.6	1,359.7	1,165.7	750.5	871.9	6,784.5
Employed	284.0	491.0	1,173.2	1,193.5	967.4	420.7	90.7	4,620.5
Not in the labour force	260.6	81.7	88.2	101.1	138.9	294.4	780.1	1,745.0
FEMALES								
Family member	548.6	491.8	1,189.6	1,271.4	1,009.0	610.3	622.8	5,743.5
Wife with dependants	6.4	67.7	645.6	882.5	344.6	28.8	3.8	1,979.3
Employed	* 0.9	18.8	321.0	588.8	234.5	12.6	* 0.1	1,176.7
Not in the labour force	4.9	42.4	303.2	265.2	98.8	16.2	3.7	734.3
Wife without dependants	12.1	94.5	264.3	171.0	526.0	517.1	474.8	2,059.8
Employed	8.0	78.1	232.4	127.9	335.9	160.1	23.5	965.9
Not in the labour force	* 1.3	11.3	20.8	36.9	175.8	351.5	451.3	1,048.9
Lone parent with dependants	7.7	45.1	146.2	166.1	70.5	7.9	* 0.2	443.6
Employed	* 0.7	12.5	52.6	83.7	41.5	* 2.3	* 0.0	193.2
Not in the labour force	6.5	27.9	79.9	67.2	24.2	5.1	* 0.2	210.9
Lone parent without dependants	* 0.0	* 0.0	* 0.0	16.0	43.7	32.7	66.7	159.1
Employed	* 0.0	* 0.0	* 0.0	12.1	29.2	8.6	* 0.6	50.6
Not in the labour force	* 0.0	* 0.0	* 0.0	* 2.5	12.0	23.7	65.7	103.9
Dependent student(b)	398.3	66.0	464.4
Employed	152.3	35.2	187.5
Not in the labour force	216.0	26.3	242.3
Non-dependent child(c)	104.1	188.0	111.2	26.2	10.6	5.0	* 1.5	446.6
Employed	76.7	162.0	87.4	18.0	6.2	* 1.3	* 0.0	351.6
Not in the labour force	10.8	6.8	16.7	7.7	4.0	* 3.3	* 1.5	50.8
Other family person	20.0	30.5	22.3	9.5	13.7	18.8	75.9	190.8
Employed	5.9	20.4	17.8	7.2	7.4	3.9	* 1.3	63.8
Not in the labour force	11.1	6.0	* 3.0	* 1.4	4.8	14.3	74.5	115.1
Non-family member	44.7	141.5	192.3	111.0	122.3	131.7	441.7	1,185.2
Lone person	6.3	22.6	81.7	74.6	94.2	119.0	426.4	824.8
Employed	* 3.0	15.1	71.2	60.8	59.7	34.8	8.6	253.2
Not in the labour force	* 1.5	* 2.9	5.3	8.1	25.6	82.3	417.7	543.4
Not living alone	38.4	118.9	110.6	36.4	28.1	12.7	15.3	360.4
Employed	21.9	85.9	91.5	28.6	18.0	4.2	* 0.7	250.8
Not in the labour force	11.9	22.7	13.2	6.4	8.1	8.2	14.6	85.0
Total	593.4	633.4	1,381.9	1,382.3	1,131.3	741.9	1,064.5	6,928.7
Employed	269.3	428.3	873.9	927.1	732.2	227.7	34.8	3,493.3
Not in the labour force	264.0	146.3	442.0	395.4	353.2	504.8	1,029.1	3,134.8

For footnotes see end of table

**TABLE 26. PERSONS: RELATIONSHIP IN HOUSEHOLD, LABOUR FORCE STATUS AND AGE
OF PERSONS 15 AND OVER(a), JUNE 1997—continued**
(*000)

	Age group (years)							Total
	15-19	20-24	25-34	35-44	45-54	55-64	65 and over	
	PERSONS							
Family member	1,130.2	962.1	2,222.9	2,426.9	2,027.1	1,250.4	1,316.3	11,335.9
Husband or wife with dependants	8.3	105.5	1,146.9	1,773.0	853.9	116.4	16.6	4,020.6
Employed	* 1.6	44.9	763.1	1,404.4	684.5	72.9	* 3.2	2,974.6
Not in the labour force	5.0	44.6	327.5	307.0	135.2	39.4	13.4	872.0
Husband or wife without dependants	14.4	150.2	540.0	328.9	967.0	1,038.4	1,116.9	4,155.9
Employed	9.8	126.5	493.8	269.6	707.0	459.0	93.3	2,159.0
Not in the labour force	* 1.3	14.1	27.7	46.9	227.2	552.1	1,022.5	1,891.9
Lone parent with dependants	7.9	45.3	157.3	198.6	87.4	12.2	* 0.7	509.3
Employed	* 0.7	12.5	59.5	107.2	52.9	3.9	* 0.0	236.8
Not in the labour force	6.7	28.0	82.0	74.1	28.5	7.2	* 0.7	227.2
Lone parent without dependants	* 0.0	* 0.0	* 0.0	20.3	58.3	46.5	80.4	205.5
Employed	* 0.0	* 0.0	* 0.0	15.3	40.2	15.1	* 1.8	72.5
Not in the labour force	* 0.0	* 0.0	* 0.0	* 2.7	14.8	30.3	78.3	126.2
Dependent student(b)	775.0	128.7	903.7
Employed	268.4	66.2	334.6
Not in the labour force	448.4	54.3	502.7
Non-dependent child(c)	285.2	465.8	316.9	80.5	36.6	11.6	* 1.9	1,198.5
Employed	213.2	389.0	244.0	51.5	19.1	* 2.6	* 0.0	919.3
Not in the labour force	21.5	22.3	40.5	22.4	13.0	7.7	* 1.9	129.3
Other family person	39.4	66.6	61.7	25.7	24.0	25.3	99.7	342.4
Employed	14.1	44.3	49.1	18.8	13.3	6.4	* 2.1	148.1
Not in the labour force	19.4	12.2	6.9	3.9	8.6	17.8	97.7	166.5
Non-family member	81.4	324.0	524.6	315.2	269.9	242.1	620.1	2,377.3
Lone person	12.0	63.0	218.0	221.2	210.1	209.4	594.1	1,527.8
Employed	6.5	44.6	187.3	178.6	142.2	74.4	23.1	656.7
Not in the labour force	* 2.2	7.1	14.0	26.0	51.1	127.4	570.8	798.7
Not living alone	69.4	261.0	306.6	94.0	59.8	32.7	26.0	849.5
Employed	39.1	191.1	250.4	75.2	40.5	14.0	* 2.1	612.4
Not in the labour force	20.2	45.4	31.5	13.3	13.6	17.4	23.9	165.3
Total	1,211.6	1,286.2	2,747.5	2,742.1	2,297.0	1,492.5	1,936.5	13,713.2
Employed	553.3	919.2	2,047.1	2,120.6	1,699.6	648.4	125.6	8,113.8
Not in the labour force	524.6	228.0	530.2	496.5	492.1	799.2	1,809.2	4,879.8

(a) Civilians who were residents of households where family status was determined. For further details see paragraphs 7 and 8 of the Explanatory Notes. (b) Excludes persons aged 20-24 attending school. Also excludes sons or daughters aged 15-24 who are classified as husbands, wives or lone parents. (c) Aged 15 and over.

TABLE 27. PERSONS: RELATIONSHIP IN HOUSEHOLD OF EMPLOYED PERSONS: FULL-TIME AND PART-TIME WORKERS(a), AND WEEKLY HOURS WORKED, JUNE 1997
(*000)

	<i>Part-time workers</i>				<i>Average weekly hours worked</i>				
	<i>Full-time workers</i>	<i>Weekly hours worked</i>			<i>Total workers</i>	<i>By</i>		<i>Total</i>	
		<i>0(b)</i>	<i>1-14</i>	<i>15-34</i>		<i>full-time workers</i>	<i>part-time workers</i>		
MALES									
Family member	3,398.2	25.6	214.1	217.5	457.2	3,855.4	42.8	14.4	39.5
Husband	2,781.6	12.0	73.6	123.8	209.4	2,991.0	43.6	16.7	41.7
With dependants	1,704.1	5.7	28.8	59.3	93.8	1,797.9	43.9	17.8	42.5
Without dependants	1,077.5	6.3	44.8	64.5	115.6	1,193.1	43.2	15.9	40.6
Lone parent	55.6	* 0.5	3.9	5.4	9.8	65.4	43.3	16.8	39.3
With dependants	35.8	* 0.5	* 3.3	3.9	7.7	43.5	43.6	15.3	38.6
Without dependants	19.8	* 0.0	* 0.6	* 1.5	* 2.1	21.9	42.7	22.4	40.8
Dependent student(c)	3.7	8.3	106.6	28.4	143.3	147.0	32.2	9.2	9.8
Non-dependent child(d)	485.2	4.2	24.2	54.3	82.6	567.8	39.0	17.4	35.8
Other family person	72.1	* 0.6	5.9	5.6	12.1	84.2	38.3	14.2	34.8
Non-family member	661.4	6.1	40.3	57.3	103.7	765.1	41.4	16.1	38.0
Lone person	357.5	4.0	16.1	25.9	46.0	403.5	41.6	16.3	38.7
Not living alone	303.9	* 2.1	24.2	31.4	57.7	361.6	41.2	15.9	37.2
Total	4,059.7	31.7	254.5	274.7	560.9	4,620.5	42.6	14.7	39.2
FEMALES									
Family member	1,572.0	71.3	575.2	770.9	1,417.3	2,989.4	37.8	15.6	27.2
Wife	1,119.6	51.8	360.8	610.4	1,023.0	2,142.6	38.3	16.5	27.9
With dependants	510.9	26.2	237.0	402.6	665.8	1,176.7	37.9	16.5	25.8
Without dependants	608.7	25.6	123.8	207.8	357.2	965.9	38.5	16.4	30.4
Lone parent	131.6	5.3	45.1	61.8	112.2	243.8	37.3	16.0	27.5
With dependants	96.6	4.6	40.8	51.3	96.6	193.2	37.6	15.7	26.6
Without dependants	35.0	* 0.7	4.3	10.5	15.6	50.6	36.5	18.2	30.9
Dependent student(c)	* 2.5	10.1	140.0	34.9	185.0	187.5	38.4	9.1	9.5
Non-dependent child(d)	270.8	* 2.9	20.9	57.0	80.7	351.6	36.5	18.6	32.4
Other family person	47.5	* 1.2	8.3	6.9	16.4	63.8	35.4	13.1	29.7
Non-family member	371.4	10.3	50.4	71.9	132.5	503.9	38.1	16.2	32.4
Lone person	187.7	5.9	24.9	34.7	65.5	253.2	38.4	16.0	32.6
Not living alone	183.8	4.4	25.5	37.1	67.0	250.8	37.9	16.5	32.2
Total	1,943.5	81.5	625.6	842.8	1,549.8	3,493.3	37.9	15.6	28.0
PERSONS									
Family member	4,970.3	96.8	789.3	988.4	1,874.5	6,844.8	41.2	15.3	34.1
Husband or wife	3,901.2	63.8	434.4	734.2	1,232.4	5,133.6	42.1	16.5	35.9
With dependants	2,215.0	31.9	265.8	461.9	759.6	2,974.6	42.5	16.6	35.9
Without dependants	1,686.2	31.9	168.6	272.3	472.8	2,159.0	41.5	16.3	36.0
Lone parent	187.2	5.8	49.0	67.2	122.0	309.2	39.1	16.1	30.0
With dependants	132.4	5.1	44.1	55.1	104.3	236.8	39.2	15.7	28.8
Without dependants	54.8	* 0.7	4.9	12.0	17.7	72.5	38.7	18.7	33.8
Dependent student(c)	6.3	18.4	246.6	63.3	328.3	334.6	34.7	9.1	9.6
Non-dependent child(d)	756.0	7.0	45.1	111.2	163.3	919.3	38.1	18.0	34.5
Other family person	119.6	* 1.8	14.2	12.5	28.5	148.1	37.2	13.6	32.6
Non-family member	1,032.9	16.3	90.7	129.1	236.2	1,269.0	40.3	16.2	35.8
Lone person	545.2	9.9	41.0	60.6	111.5	656.7	40.5	16.1	36.4
Not living alone	487.7	6.4	49.8	68.5	124.7	612.4	40.0	16.2	35.1
Total	6,003.1	113.2	880.0	1,117.5	2,110.7	8,113.8	41.1	15.4	34.4

(a) Civilians who were residents of households where family status was determined. For further details see paragraphs 7 and 8 of the Explanatory Notes. (b) Persons who had a job in which they usually worked part time, i.e. less than 35 hours per week, but were not at work during the reference week. (c) Excludes persons aged 20-24 attending school. Also excludes sons or daughters aged 15-24 who are classified as husbands, wives or lone parents. (d) Aged 15 and over.

**TABLE 28. PERSONS: RELATIONSHIP IN HOUSEHOLD OF UNEMPLOYED PERSONS(a):
UNEMPLOYMENT RATES AND PROPORTIONAL DISTRIBUTION, JUNE 1996 AND JUNE 1997**

	<i>Males</i>		<i>Females</i>		<i>Persons</i>	
	<i>June 1996</i>	<i>June 1997</i>	<i>June 1996</i>	<i>June 1997</i>	<i>June 1996</i>	<i>June 1997</i>
	UNEMPLOYMENT RATE (per cent)					
Family member	7.6	7.8	7.4	7.7	7.5	7.8
Husband or wife	5.4	5.2	5.3	5.0	5.4	5.2
With dependants	5.7	5.5	6.1	5.5	5.9	5.5
Without dependants	5.0	4.8	4.4	4.5	4.7	4.6
Lone parent	9.6	11.2	15.6	15.3	14.4	14.5
With dependants	9.0	12.0	17.2	17.0	15.7	16.1
Without dependants	* 11.0	* 9.4	9.2	8.4	9.7	8.7
Dependent student(b)	17.0	17.8	13.8	15.5	15.2	16.6
Non-dependent child(c)	13.7	15.7	9.5	11.2	12.1	14.0
Other family person	17.1	16.0	12.9	15.6	15.5	15.8
Non-family member	11.2	10.7	8.4	9.5	10.0	10.2
Lone person	11.9	9.9	7.8	10.0	10.2	9.9
Not living alone	10.6	11.5	8.9	8.9	9.9	10.5
Total	8.2	8.3	7.6	7.9	7.9	8.1
	PROPORTIONAL DISTRIBUTION OF UNEMPLOYED PERSONS (per cent):					
Family member	77.2	78.2	82.9	82.4	79.5	80.0
Husband or wife	41.8	39.5	41.9	37.7	41.8	38.8
With dependants	26.3	25.2	26.1	22.7	26.2	24.2
Without dependants	15.5	14.3	15.8	15.0	15.6	14.6
Lone parent	1.6	2.0	14.6	14.7	7.0	7.3
With dependants	1.0	1.4	12.9	13.1	5.9	6.3
Without dependants	* 0.6	* 0.5	1.7	1.5	1.1	1.0
Dependent student(b)	7.0	7.6	10.2	11.5	8.3	9.2
Non-dependent child(c)	22.6	25.2	13.4	14.7	18.8	20.8
Other family person	4.2	3.8	2.8	3.9	3.6	3.9
Non-family member	22.8	21.8	17.1	17.6	20.5	20.0
Lone person	11.9	10.6	7.7	9.4	10.2	10.1
Not living alone	10.9	11.3	9.4	8.2	10.3	10.0
Total	100.0	100.0	100.0	100.0	100.0	100.0

(a) Civilians who were residents of households where family status was determined. For further details see paragraphs 7 and 8 of the Explanatory Notes. (b) Excludes persons aged 20-24 attending school. Also excludes sons or daughters aged 15-24 who are classified as husbands, wives or lone parents. (c) Aged 15 and over.

TABLE 29. PERSONS: RELATIONSHIP IN HOUSEHOLD OF UNEMPLOYED PERSONS(a): DURATION OF UNEMPLOYMENT, JUNE 1997

	Duration of unemployment (weeks)							Total	Average duration	Median duration
	Under 2	2 and under 4	4 and under 8	8 and under 13	13 and under 26	26 and under 52	52 and over			
	— '000 —							— weeks —		
MALES										
Family member	18.0	27.3	31.4	23.6	53.5	59.1	114.7	327.6	61.1	26
Husband	8.7	13.7	15.3	10.5	23.3	26.6	67.6	165.6	71.9	30
With dependants	5.4	8.4	10.0	6.3	14.8	18.8	41.9	105.6	64.3	30
Without dependants	* 3.3	5.3	5.3	4.2	8.5	7.7	25.7	60.0	85.3	34
Lone parent	* 0.2	* 0.5	* 0.2	* 0.4	* 1.9	* 0.9	4.1	8.2	97.6	* 39
With dependants	* 0.2	* 0.5	* 0.0	* 0.4	* 1.4	* 0.4	* 3.1	5.9	* 102.3	* 52
Without dependants	* 0.0	* 0.0	* 0.2	* 0.0	* 0.5	* 0.6	* 1.0	* 2.3	* 85.6	* 37
Dependent student(b)	* 3.3	4.7	4.3	3.8	7.1	5.7	* 3.0	31.9	18.8	12
Non-dependent child(c)	5.2	8.3	10.5	7.9	17.4	21.3	35.2	105.7	54.6	26
Other family person	* 0.6	* 0.0	* 1.0	* 1.1	3.7	4.7	4.9	16.0	58.4	32
Non-family member	4.7	6.2	6.5	8.2	18.2	14.8	32.7	91.4	61.1	26
Lone person	* 1.6	* 2.8	* 3.2	* 2.3	7.1	9.0	18.4	44.3	79.7	37
Not living alone	* 3.1	* 3.4	* 3.4	6.0	11.2	5.9	14.2	47.1	43.7	21
Total	22.8	33.4	37.9	31.9	71.7	73.9	147.4	419.0	61.1	26
FEMALES										
Family member	21.2	27.2	29.6	24.4	43.4	35.7	66.3	247.8	46.6	19
Wife	8.2	13.0	13.8	11.5	19.9	13.3	33.6	113.3	53.9	19
With dependants	5.0	8.8	9.1	7.3	11.3	7.3	19.7	68.3	47.3	17
Without dependants	* 3.2	4.3	4.7	4.3	8.6	6.0	13.9	45.0	63.8	22
Lone parent	* 2.6	* 3.0	4.6	3.8	6.5	6.5	17.0	44.1	59.2	26
With dependants	* 2.3	* 2.5	4.6	* 2.8	6.4	5.4	15.5	39.4	59.6	26
Without dependants	* 0.4	* 0.5	* 0.0	* 1.0	* 0.2	* 1.1	* 1.5	4.6	* 55.7	* 27
Dependent student(b)	6.4	5.5	4.8	* 2.9	5.3	5.3	4.4	34.5	18.5	8
Non-dependent child(c)	* 2.6	4.1	5.4	4.1	9.6	9.4	9.0	44.2	41.1	21
Other family person	* 1.4	* 1.6	* 1.1	* 2.1	* 2.2	* 1.1	* 2.3	11.8	33.2	* 11
Non-family member	* 1.4	4.4	3.8	5.6	8.5	12.0	17.1	52.8	48.5	26
Lone person	* 0.7	* 2.3	* 1.6	* 2.4	* 2.9	7.8	10.5	28.2	59.3	38
Not living alone	* 0.6	* 2.1	* 2.1	* 3.3	5.6	4.3	6.6	24.6	36.2	21
Total	22.6	31.6	33.4	30.0	51.9	47.7	83.4	300.6	47.0	21
PERSONS										
Family member	39.3	54.4	61.0	48.0	96.9	94.8	181.0	575.4	54.9	23
Husband or wife	16.9	26.8	29.0	22.0	43.2	39.9	101.2	278.9	64.6	26
With dependants	10.4	17.2	19.1	13.6	26.1	26.1	61.5	173.9	57.7	26
Without dependants	6.5	9.6	10.0	8.4	17.1	13.7	39.6	105.0	76.1	26
Lone parent	* 2.8	3.5	4.8	4.2	8.4	7.4	21.1	52.3	65.2	29
With dependants	* 2.5	* 3.0	4.6	* 3.2	7.8	5.8	18.6	45.4	65.2	28
Without dependants	* 0.4	* 0.5	* 0.2	* 1.0	* 0.7	* 1.6	* 2.5	6.9	65.6	* 35
Dependent student(b)	9.7	10.2	9.1	6.7	12.4	11.0	7.3	66.5	18.6	9
Non-dependent child(c)	7.8	12.4	15.9	12.0	27.0	30.7	44.2	149.9	50.6	25
Other family person	* 2.0	* 1.6	* 2.2	* 3.2	6.0	5.8	7.2	27.8	47.7	23
Non-family member	6.1	10.6	10.3	13.9	26.7	26.9	49.8	144.2	56.5	26
Lone person	* 2.3	5.1	4.8	4.6	10.0	16.7	29.0	72.4	71.8	37
Not living alone	3.7	5.5	5.5	9.3	16.8	10.1	20.8	71.8	41.1	21
Total	45.3	65.0	71.3	61.9	123.6	121.6	230.8	719.6	55.2	24

(a) Civilians who were residents of households where family status was determined. For further details see paragraphs 7 and 8 of the Explanatory Notes. (b) Excludes persons aged 20-24 attending school. Also excludes sons or daughters aged 15-24 who are classified as husbands, wives or lone parents. (c) Aged 15 and over.

EXPLANATORY NOTES

INTRODUCTION

1 In June 1997, details of the labour force status of family members and family composition were derived from the Labour Force Survey (LFS) component of the Monthly Population Survey.

2 Tables 1 and 2 summarise the *relationship in household of persons* aged 15 and over. Tables 3 to 24 show information about *couple, one parent and other families* — for example, number of dependants present, labour force status of husband, wife or family head — while tables 25 to 29 contain more detailed estimates of the *labour force status of persons* aged 15 and over classified by age, weekly hours worked and other variables.

THE POPULATION SURVEY

3 The population survey is based on a multi-stage area sample of private dwellings (currently about 32,000 houses, flats, etc.) and a list sample of non-private dwellings (hotels, motels, etc.) and covers about 0.5% of the usually resident civilian population aged 15 and over in Australia. The information is obtained from the occupants of selected dwellings by specially trained interviewers. The interviews for this survey were conducted during the two weeks beginning on Monday 9 June 1997. The information obtained relates to the week before the interview (i.e. the reference week).

SCOPE

4 The LFS includes all persons aged 15 and over except:

- members of the permanent defence forces;
- certain diplomatic personnel of overseas governments, customarily excluded from census and estimated populations;
- overseas residents in Australia; and
- members of non-Australian defence forces (and their dependants) stationed in Australia.

From July 1993, Jervis Bay Territory has been excluded from the scope of the survey. Before July 1993, it was included in estimates for the Australian Capital Territory.

COVERAGE

5 In the LFS, coverage rules are applied which aim to ensure that each person is associated with only one dwelling, and hence has only one chance of selection. The chance of a person being enumerated at two separate dwellings in the one survey is considered to be negligible.

6 Persons who are away from their usual residence for six weeks or less at the time of interview are enumerated at their usual residence (relevant information may be obtained from other usual residents present at the time of the survey).

7 Because of the coverage rules, persons who usually live with other members of their family may, at the time of the survey, be enumerated as not living with all the usual members of their family. This situation is more likely for persons who are enumerated as visitors to other private dwellings or as persons staying in non-private dwellings (hotels, caravan parks, hospitals, etc.). The determination of family structure and family characteristics in such cases is difficult. Thus for the family survey, scope was further restricted to usual residents of private dwellings and the following persons were excluded:

- all persons enumerated in non-private dwellings (including hotels, motels, hospitals and other institutions); and
- persons enumerated as visitors to (rather than usual residents of) private dwellings.

8 In addition, in those households where it was not possible to obtain information relating to all the usual residents, no family information was recorded. Thus persons living in households which include a member of the permanent defence forces, who is outside the scope of the population survey, are excluded from the family survey because family information could not be obtained from each usual resident. Similarly households which, at the time of the survey, have one or more of their usual residents away for more than six weeks, are excluded from the family survey. This also applies to households from which an incomplete or inadequate questionnaire was obtained for any usual resident in on scope and coverage. Table 1 summarises those persons for whom family information was obtained as well as those usual residents of private dwellings for whom complete family information could not be obtained, and those persons specifically excluded from the scope of the family survey. In June 1997, relationship in household and family type were determined for 94% of the usually resident civilian population aged 15 and over.

POPULATION BENCHMARKS

9 LFS estimates of persons employed, unemployed and not in the labour force are calculated in such a way as to add up to the independently estimated distribution of the usually resident civilian population aged 15 and over by age and sex. This procedure compensates for under-enumeration in the survey, and leads to more reliable estimates. Persons who, at the time of interview, are overseas for more than six weeks but for less than 12 months are included in the independent population statistics (benchmarks) and are thus provided for in the calculation of the estimates. The benchmarks are the latest available estimates at the time the LFS is conducted, but they usually differ from the official population estimates subsequently published in *Australian Demographic Statistics* (Cat. no. 3101.0) because they are derived from incomplete information about population changes.

REVISION OF POPULATION
BENCHMARKS

10 Survey estimates are not revised for the usually small amendments of population benchmarks arising from new data on deaths and overseas and internal migration. Revisions are made, however, after each Census of Population and Housing, and when population estimation bases are reviewed. These revisions affect original, seasonally adjusted and trend estimates. The last such revision was made in February 1994 to take account of the results of the 1991 Census of Population and Housing, which affected all the monthly estimates from January 1989 to January 1994.

11 Population benchmarks used in the estimation of LFS data are compiled according to place of usual residence. For an explanation of the conceptual basis of population estimates, see *Information Paper: Population Estimates: An Outline of The New Conceptual Basis of ABS Population Estimates* (Cat. no. 3216.0). Prior to October 1982, labour force estimates were based on a combination of place of enumeration and place of usual residence.

CHANGES IN FAMILIES
CLASSIFICATION

12 *Relationship in household* and *Family type* classifications were introduced in the March 1994 issue of *Labour Force, Australia* (Cat. no. 6203.0) to align with Australian Bureau of Statistics (ABS) standards. Most categories in the two classifications remain comparable with categories in the previous classifications. The cases in which there are breaks in comparability are discussed in the following paragraphs.

13 *Relationship in household*. This classification was previously referred to as *Family status*.

- *Lone parents* (previously referred to as *Sole parents*) now includes parents with non-dependent children (provided those children are without a spouse or children of their own). These *Lone parents without dependants* are shown separately in table 1 and there were 205,800 such persons in March 1994.
- *Dependent students* (previously *Full-time students aged 15-24*) now comprise sons or daughters (of a couple or a lone parent) aged 15-19 attending school or aged 15-24 attending a tertiary educational institution full time. Other related full-time students, who were also previously classified as *Full-time students aged 15-24* are now included in *Other family persons*. There were 24,200 such persons in March 1994.
- *Other family persons* now comprises the previous groups *Other family head*, excluding those now counted as *Lone parents* (79,200 persons in March 1994, the other related full-time students classified as *Full-time students aged 15-24* (see above; 24,200 in March 1994) and *Other relative of married couple or family head* (218,100 in March 1994).

CHANGES IN FAMILIES
CLASSIFICATION *continued*

14 *Family type*. This classification was previously referred to as *Type of family*. There are three types of families in the new classification, as follows:

- *Couple families* is the term used to describe families previously referred to as *Married-couple families*. Apart from the name change, the new category is otherwise exactly comparable with the old category.
- *One parent families* now includes those families in which there is a lone parent with only non-dependent children present. Such families were previously included in *Other families*. There were 208,400 of these families in March 1994.
- *Other families* now excludes those families in which there is a lone parent with only non-dependent children present (see above).

COMPARABILITY OF SERIES

15 Estimates for the June 1994 and later surveys are based on population estimates derived from the results of the 1991 Census of Population and Housing (adjusted for under-enumeration). Estimates for surveys conducted in June from 1989 to 1993 were based on 1986 Census results.

16 Commencing with the June 1989 issue, the category other families was split into one parent families and other families. Therefore these estimates are not strictly comparable with estimates in issues prior to June 1989. However, in June 1988, 98% of other families with dependants were one parent families. For definitions of these terms refer to the Glossary.

17 Estimates of the number of husbands and wives with dependants in June 1988, as published in selected tables in the June 1989 issue of this publication, are slightly higher than those published in the June 1988 issue. The estimates of the number of husbands and wives without dependants are correspondingly lower. This is due to a small error made at the computer processing stage of the production of family status estimates in the June 1988 issue of this publication.

18 For the July 1982 and previous surveys office imputation was undertaken to determine the family status of those persons enumerated in private dwellings where family information could not be obtained for all usual residents, and for those persons enumerated in non-private dwellings or as visitors to private dwellings where family information could not be obtained for each member of the family. Due to the increased demand for family data on a consistent and more regular basis, it was decided to change the processing methodology to eliminate office imputation and rely solely on the reported information. Consequently the scope of the July 1983 and subsequent surveys was narrowed to exclude those three groups of respondents for whom it is known that complete family information is difficult to collect (see paragraphs 7 and 8).

COMPARABILITY OF SERIES
continued

19 Surveys from July 1983 onwards are thus not strictly comparable with previous surveys since the persons excluded may have differing family and labour force characteristics to those persons included in the survey. Because of these exclusions the total number of persons with particular family characteristics will also differ between surveys conducted prior to July 1983 and those conducted from July 1983 onwards. Table 1 shows the number of persons excluded from the survey.

20 In the July 1985 and previous surveys, dependants (then described as dependent children) comprised all family members under 15 years of age and all family members aged 15-20 who were full-time students, except those classified as husbands, wives or other family heads. The current definition is given in the Glossary. Tables 24, 25 and 31 of the June 1986 issue of this publication provide an indication of the differences between the student component of the old and new definitions.

21 Since the July 1985 survey was conducted, the definition of employed persons has been extended to include persons who worked without pay between 1 and 14 hours per week in a family business or on a farm (i.e. contributing family workers). This new definition aligns the Australian labour force concepts with a set of changed international definitions adopted by the International Labour Organisation at the 13th Conference of Labour Statisticians in October 1982.

22 Previously, such persons who worked 1-14 hours or who had such a job but were not at work were defined as either unemployed or not in the labour force, depending on whether they were actively looking for work. The changes in definition resulted in original (unadjusted) estimates of employment for March 1986 increasing by 34,900 and unemployment decreasing by 5,800.

23 Estimates of the number of families in June 1986 and subsequent years have been calculated differently to those for earlier years. This is due to the adoption of a new weighting procedure where the family weight is determined using an average of all family members responding to the LFS. Previously, the family weight used to publish estimates of the number of families was determined by nomination of a proxy 'head of household' as representative of the family.

24 For these reasons, estimates for the June 1986 and subsequent surveys are not strictly comparable with those for earlier surveys. Although comparisons may generally be made, users should be aware of the above differences.

RELIABILITY OF THE
ESTIMATES

25 Since the estimates in this publication are based on information obtained from occupants of a sample of dwellings, they may differ from the figures that would have been produced if the information had been obtained from occupants of all dwellings. More information is given in the Technical Notes.

NEXT SURVEY

26 The ABS plans to collect this information again, as part of the June 1998 LFS.

RELATED PUBLICATIONS

27 Other ABS publications which may be of interest include:

Labour Force, Australia (Cat. no. 6203.0) — issued monthly

Australian Social Trends, 1996 (Cat. no. 4102.0)

Children in Australia: A Social Report (Cat. no. 4119.0)

Child Care, Australia, June 1993 (Cat. no. 4402.0)

Information Paper: Measuring Employment and Unemployment
(Cat. no. 6279.0)

Information Paper: Questionnaires used in the Labour Force Survey (Cat. no. 6232.0)

28 Current publications produced by the ABS are listed in the *Catalogue of Publications and Products* (Cat. no. 1101.0). The ABS also issues, on Tuesdays and Fridays, a *Release Advice* (Cat. no. 1105.0) which lists publications to be released in the next few days. The Catalogue and Release Advice are available from any ABS office.

TECHNICAL NOTES

ESTIMATION PROCEDURE

Estimates of families and persons are derived from the population survey by use of a ratio estimation procedure, which ensures that estimates of persons conform to an independently estimated distribution of the population by age and sex, rather than to the age and sex distribution within the sample itself.

RELIABILITY OF THE ESTIMATES

Two types of error are possible in an estimate based on a sample survey: sampling error and non-sampling error. The *sampling error* is a measure of the variability that occurs by chance because a sample, rather than the entire population, is surveyed. Since the estimates in this publication are based on information obtained from occupants of a sample of dwellings, they, and the movements derived from them, are subject to sampling variability; that is, they may differ from the estimates that would have been produced if all dwellings had been included in the survey. One measure of the likely difference is given by the *standard error*, which indicates the extent to which an estimate might have varied by chance because only a sample of dwellings was included in the survey. There are about two chances in three that a sample estimate will differ by less than one standard error from the estimate that would have been obtained if all dwellings had been included in the survey, and about nineteen chances in twenty that the difference will be less than two standard errors. Another measure of sampling variability is the *relative standard error* (RSE) which is obtained by expressing the standard error as a percentage of the estimate to which it refers. The RSE is a useful measure in that it provides an immediate indication of the percentage errors likely to have occurred due to sampling, and thus avoids the need to refer also to the size of the estimate.

Space does not allow for the separate presentation of the standard errors of all estimates in this publication. Standard errors of estimates should be determined by using table T1, if necessary in conjunction with the factors given on page 41.

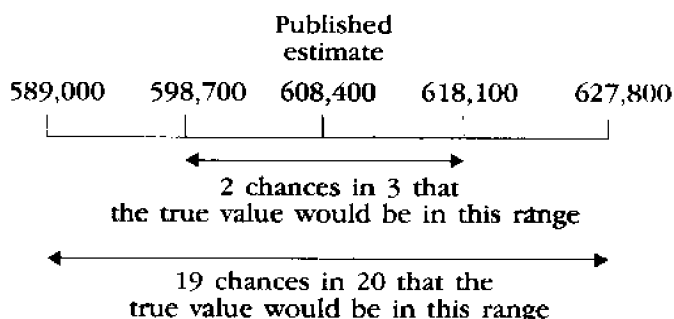
The size of the standard error increases with the level of the estimate, so that the larger the estimate the larger is the standard error. However, it should be noted that the larger the sample estimate the smaller will be the standard error in percentage terms. Thus, larger sample estimates will be relatively more reliable than smaller estimates.

As the standard errors in table T1 show, *the smaller the estimate the higher is the RSE*. Very small estimates are thus subject to such high RSEs (relative to the size of the estimate) as to detract seriously from their value for most reasonable uses. In the tables in this publication, only estimates with RSEs of 25% or less, and percentages based on such estimates, are considered sufficiently reliable for most purposes. However, estimates and percentages with larger RSEs have been included and are preceded by an asterisk (e.g. *3.4) to indicate they are subject to high standard errors and should be used with caution. The derivation of RSEs for some estimates is discussed further below.

The annual movement in the level of an estimate is also subject to sampling variability. The standard error of the movement depends on the levels of the estimates from which the movement is obtained rather than the size of the movement. Standard errors of all annual movements can be obtained by multiplying the figures in table T1 by 1.3. When using table T1 to calculate standard errors of annual movements, refer to the larger of the two estimates from which the movement is derived.

An example of the calculation and use of standard errors is given below:

- From table T1 it will be seen that the estimate of 608,400 one parent families with a female parent in June 1997 has a standard error of about 9,700. Therefore, there are about two chances in three that the actual number of one parent families was within the range 598,700 to 618,100 and about nineteen chances in twenty that it was within the range 589,000 to 627,800.



The RSEs of estimates of *average family size*, *average hours worked*, *average duration of unemployment* and *median duration of unemployment* are obtained by first finding the RSE of the estimate of the total number of persons or families contributing to the estimate (see table T1) and then multiplying the figure so obtained by the following relevant factors:

- average family size: 0.3
- average hours worked: 0.7
- average duration of unemployment: 1.3; and
- median duration of unemployment: 2.0.

The levels at which these and other labour force estimates have a RSE of 25% are shown in table T2.

An example of the calculation of standard errors by the use of these factors follows.

In June 1997 the estimate of median duration of unemployment for husbands of couple families was 30 weeks and the number of families with the husband unemployed was estimated as 163,200. From table T1 it can be calculated that this estimate has a standard error of about 5,700 and therefore a RSE of about 3.5%. The RSE of the estimate of median duration of unemployment is calculated by multiplying this figure by the appropriate factor shown in the previous paragraph (in this case 2.0): $3.5 \times 2.0 = 7.0\%$. The standard error of this estimate of

median duration of unemployment is therefore 7.0% of 30, i.e. about 2.1. Therefore there are about two chances in three that the median duration of unemployment for unemployed husbands was within the range 27.9 to 32.1 weeks and about nineteen chances in twenty that it was within the range 25.8 to 34.2 weeks.

Proportions and percentages (for example, participation rates) formed from the ratio of two estimates are also subject to sampling error. The size of the error depends on the accuracy of both the numerator and denominator. The formula for the RSE of a proportion or percentage is given below:

$$\text{RSE } (x/y) = \sqrt{[\text{RSE } (x)]^2 - [\text{RSE } (y)]^2}$$

Standard errors contained in table T1 are designed to provide an average standard error applicable for all monthly LFS estimates. Analysis of the standard errors applicable to particular survey estimates has shown that the standard errors of estimates of employment are generally equivalent to those shown in table T1, while standard errors of estimates of unemployment and not in the labour force are approximately 3% and 11% higher respectively. Standard errors of estimates of numbers of families are approximately the same as those for numbers of persons. Standard errors of estimates of persons born in Australia are approximately the same as those shown in table T1. For aggregate estimates of persons born outside Australia the standard errors are about 14% higher. The standard errors vary for individual countries of birth, but are on average about 7% higher.

The imprecision due to sampling variability, which is measured by the standard error, should not be confused with inaccuracies that may occur because of imperfections in reporting by respondents, errors made in collection such as in recording and coding data, and errors made in processing the data. Inaccuracies of this kind are referred to as the *non-sampling error*, and they may occur in any enumeration, whether it be a full count or a sample. Every effort is made to reduce the non-sampling error to a minimum by careful design of questionnaires, intensive training and supervision of interviewers and efficient operating procedures.

T1 STANDARD ERRORS OF ESTIMATES

Size of estimate (persons)	NSW	Vic.	Qld	SA	WA	Tas	NT	ACT	Aust.	
	no.	no.	no.	no.	no.	no.	no.	no.	no.	RSE (%)
100	90	100	80
200	210	180	200	130	140	120	190	95.0
300	320	290	260	220	250	160	170	140	240	80.0
500	420	380	340	290	310	210	210	180	320	64.0
700	500	450	400	340	370	240	250	210	390	55.7
1 000	590	540	480	400	440	290	290	240	480	48.0
1 500	720	670	590	490	530	350	350	290	590	39.3
2 000	830	770	680	560	610	400	400	330	690	34.5
2 500	930	860	750	620	670	440	440	360	780	31.2
3 000	1 000	940	820	670	730	470	480	390	860	28.7
4 000	1 150	1 100	940	770	830	530	540	440	990	24.8
5 000	1 300	1 200	1 050	850	920	580	600	490	1 100	22.0
7 000	1 500	1 400	1 200	980	1 050	660	700	560	1 300	18.6
10 000	1 750	1 650	1 400	1 150	1 250	750	830	640	1 600	16.0
15 000	2 100	2 000	1 700	1 350	1 500	870	1 000	760	1 900	12.7
20 000	2 400	2 250	1 950	1 550	1 650	960	1 150	840	2 200	11.0
30 000	2 850	2 700	2 300	1 800	1 950	1 100	1 400	990	2 650	8.8
50 000	3 550	3 300	2 850	2 250	2 450	1 250	1 750	1 200	3 400	6.8
70 000	4 100	3 800	3 250	2 550	2 800	1 400	2 050	1 350	3 950	5.6
100 000	4 750	4 400	3 750	2 900	3 200	1 550	2 450	1 550	4 600	4.6
150 000	5 600	5 200	4 400	3 400	3 750	1 700	2 950	1 750	5 500	3.7
200 000	6 200	5 800	4 950	3 750	4 150	1 800	3 400	1 950	6 200	3.1
300 000	7 300	6 700	5 800	4 350	4 850	1 950	...	2 250	7 300	2.4
500 000	8 800	8 100	7 000	5 200	5 800	2 200	9 000	1.8
1 000 000	11 300	10 400	8 900	6 600	7 400	11 800	1.2
2 000 000	14 300	13 100	11 300	8 200	9 400	15 200	0.8
5 000 000	19 300	17 600	15 300	21 000	0.4
10 000 000	26 500	0.3

T2 LEVELS AT WHICH LABOUR FORCE ESTIMATES HAVE A RELATIVE STANDARD ERROR OF 25 PER CENT(a)

	NSW	Vic.	Qld	SA	WA	Tas.	NT	ACT	Aust.
Estimates(b) of									
Average family size	400	350	260	180	220	100	100	80	300
Average hours worked	2 700	2 300	1 800	1 300	1 500	700	700	500	1 900
Average duration of unemployment	8 600	7 500	5 800	4 000	4 600	2 100	2 100	1 500	6 800
Median duration of unemployment	18 800	16 500	12 600	8 600	9 900	4 400	4 700	3 200	15 800
All other estimates	5 300	4 600	3 500	2 400	2 900	1 300	1 300	1 000	4 000

(a) See Technical Notes page 40.

(b) The entries in this table refer to the number of families or persons contributing to the estimate.

GLOSSARY

Actively looking for work	Includes writing, telephoning or applying in person to an employer for work; answering a newspaper advertisement for a job; checking factory or Commonwealth Employment Service noticeboards; being registered with the Commonwealth Employment Service; checking or registering with any other employment agency; advertising or tendering for work; and contacting friends or relatives.
Aggregate hours worked	The total number of hours a group of employed persons has actually worked during the reference week, not necessarily hours paid for.
Average duration of unemployment	For any group of unemployed persons, the aggregate duration of unemployment divided by the number of persons in the group.
Average family size	For any group of families, the total number of family members divided by the number of families in the group.
Average hours worked	Aggregate hours worked by a group divided by the number of persons in that group.
Couple families	Families in which there are two married persons and these persons are husband and wife. See Marital status.
Dependants	All family members under 15 years of age; family members aged 15–19 attending school or aged 15–24 attending a tertiary educational institution full time (except those classified as husbands, wives or lone parents).
Dependent student	In couple or one parent families, sons or daughters aged 15–19 attending school or aged 15–24 attending a tertiary educational institution full time (except those classified as husbands, wives or lone parents).
Duration of unemployment	The period from the time a person began looking for work or was stood down, to the end of the reference week. Thus the survey measures current (and continuing) periods of unemployment rather than completed spells. For persons who may have begun looking for work while still employed, the duration of unemployment is defined as the period from the time the person last worked full time for two weeks or more to the end of the reference week.
Employed	Persons aged 15 and over who, during the reference week: <ul style="list-style-type: none">▪ worked for one hour or more for pay, profit, commission or payment in kind in a job or business, or on a farm (comprising employees, employers and self-employed persons); or▪ worked for one hour or more without pay in a family business or on a farm (i.e. contributing family workers); or

- Employed** *continued*
- were employees who had a job but were not at work and were: on paid leave; on leave without pay for less than four weeks up to the end of the reference week; stood down without pay because of bad weather or plant breakdown at their place of employment for less than four weeks up to the end of the reference week; on strike or locked out; on workers' compensation and expected to be returning to their job; or receiving wages or salary while undertaking full-time study; or
 - were employers, self-employed persons or unpaid family helpers who had a job, business or farm, but were not at work.

Family Two or more related persons (*relationship* includes relationships by blood, marriage or adoption) usually resident in the same household at the time of the survey. A family comprises a married couple or a family head as defined, together with any persons having any of the following relationships to them:

- sons or daughters of any age, if not married and with no children of their own present;
- other relatives if not accompanied by a spouse, sons or daughters, or parents of their own; or
- any children under 15 years of age who do not have a parent present.

Family head Any person without a spouse present:

- with a son or daughter aged under 15 present; or
- without a son or daughter aged under 15 present, but with a son or daughter aged 15 or over present (provided that the son or daughter has no spouse, son or daughter of his/her own present).

Where a family has no person falling into either of these categories, the family head is generally defined to be the eldest person in the family.

No family head is determined for a couple family.

Full-time workers Employed persons who usually worked 35 hours or more a week (in all jobs) and others who, although usually working less than 35 hours a week, worked 35 hours or more during the reference week.

Household A group of one or more persons in a private dwelling who consider themselves to be separate from other persons (if any) in the dwelling, and who make regular provision to take meals separately from other persons, i.e. at different times or in different rooms. Lodgers who receive accommodation but not meals are treated as separate households. Boarders who receive both accommodation and meals are not treated as separate households. A household may consist of any number of families and non-family members.

Labour force	For any group, persons who were employed or unemployed, as defined.
Labour force status	A classification of the civilian population aged 15 and over into employed, unemployed or not in the labour force, as defined. The definitions conform closely to the international standard definitions adopted by the International Conferences of Labour Statisticians.
Lone parent	The head of a one parent family.
Lone person	A person who is the sole member of a household.
Main English-speaking countries	The United Kingdom, Ireland, Canada, the United States of America, New Zealand and South Africa.
Marital status	Persons are classified as married (husband and wife) if they are reported as being married (including de facto) and their spouse was a usual resident of the household at the time of the survey. The not-married category comprises persons who have never married, or are separated, widowed or divorced, as well as those who, although reported as being married, did not have a spouse who usually lived in the household.
Median duration of unemployment	The duration which divides unemployed persons into two equal groups, one comprising persons whose duration of unemployment is above the median and the other, persons whose duration is below it.
Non-dependent child	In couple or one parent families, sons or daughters aged 15 and over not attending school or a tertiary institution full time (except those classified as husbands, wives or lone parents).
Non-family member	A person who is not related to any other member of the household in which they are living.
Not in the labour force	Persons who were not in the categories employed or unemployed, as defined. They include persons who were keeping house (unpaid), retired, voluntarily inactive, permanently unable to work, persons in institutions (hospitals, gaols, sanatoriums, etc.), trainee teachers, members of contemplative religious orders, and persons whose only activity during the reference week was jury service or unpaid voluntary work for a charitable organisation.
One parent families	Families in which there is a family head together with at least one son or daughter of his/her own.
Other countries	All countries outside Australia other than the main English-speaking countries defined previously.
Other families	Families which are not couple families or one parent families, as defined. They include families in which there is no parent, for example a family head living with a brother or sister.
Participation rate	For any group, the labour force expressed as a percentage of the civilian population aged 15 and over in the same group.

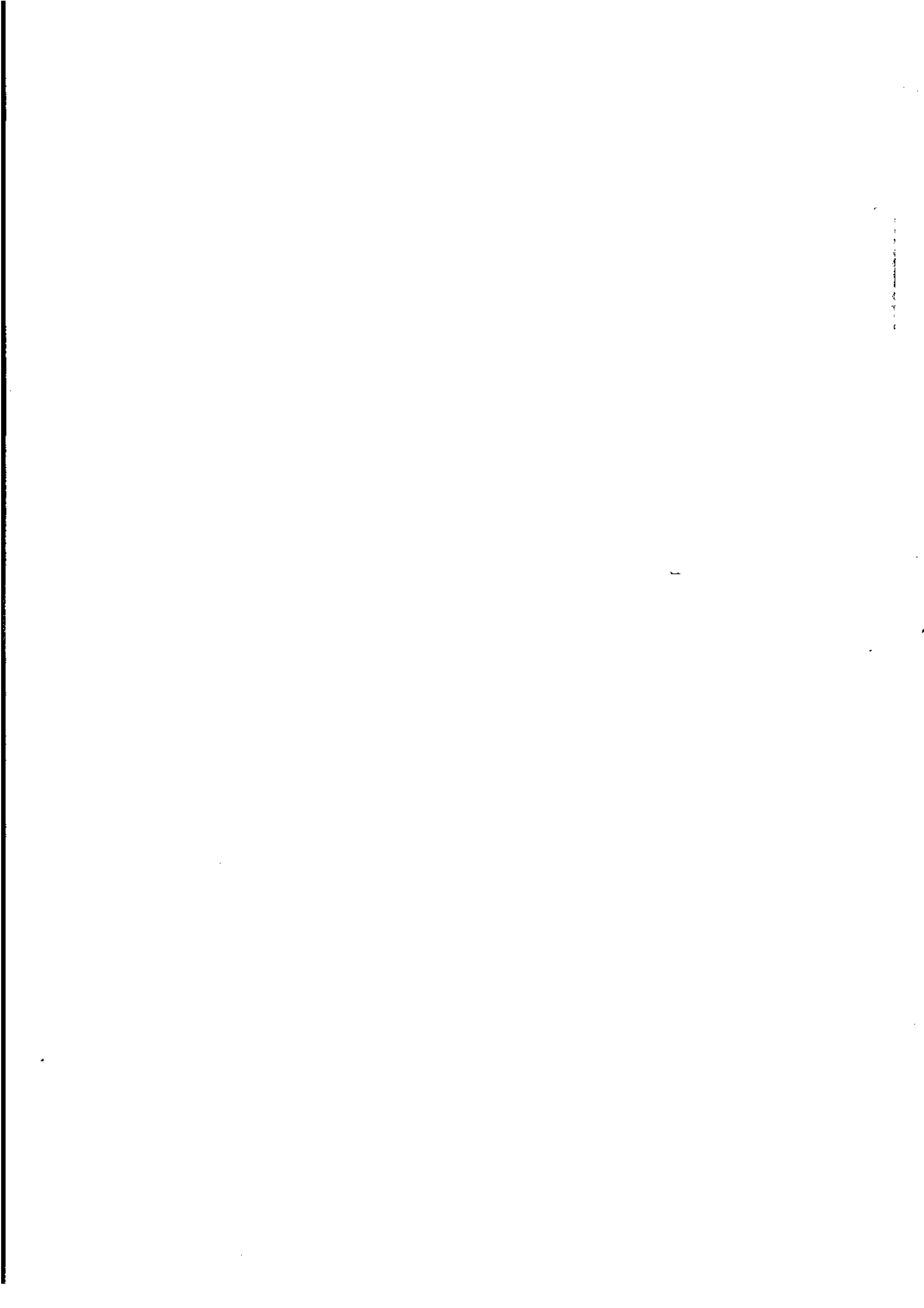
Part-time workers Employed persons who usually worked less than 35 hours a week and who did so during the reference week.

Unemployed Persons aged 15 and over who were not employed during the reference week, and:

- had actively looked for full-time or part-time work at any time in the four weeks up to the end of the reference week and:
- were available for work in the reference week, or would have been available except for temporary illness (i.e. lasting for less than four weeks to the end of the reference week); or
- were waiting to start a new job within four weeks from the end of the reference week and would have started in the reference week if the job had been available then; or
- were waiting to be called back to a full-time or part-time job from which they had been stood down without pay for less than four weeks up to the end of the reference week (including the whole of the reference week) for reasons other than bad weather or plant breakdown.

Unemployed looking for full-time work Unemployed persons who actively looked for full-time work or were to resume a full-time job, from which they had been stood down.

Unemployment rate For any group, the number of unemployed persons expressed as a percentage of the labour force in the same group.



SUPPLEMENTARY SURVEYS

The supplementary and special surveys collect data on particular aspects of the labour force. The following is an historical list of supplementary and special labour force surveys. The data is available in publication form, by subscription or on request. It may be possible to order unpublished data on the following supplementary and special surveys by contacting the ABS.

TITLE	CATALOGUE NUMBER
■ Career Experience. Irregular. Latest issue November 1996	6254.0
■ Career Paths of Persons with Trade Qualifications. Irregular. Latest issue 1993	6243.0
■ Child Care. Irregular. Latest issue March 1996	4402.0
■ Employment Benefits. Irregular. Latest issue August 1994	6334.0.40.001
■ Job Search Experience of Unemployed Persons. Annual. Latest issue July 1996	6222.0
■ Labour Force Experience. Two-yearly. Latest issue February 1997	6206.0
■ Labour Force Status and Educational Attainment. Final issue February 1994	6235.0
■ Labour Force Status and Other Characteristics of Families. Annual. Latest issue June 1996	6224.0
■ Labour Force Status and Other Characteristics of Migrants. Irregular. Latest issue November 1996	6250.0
■ Labour Mobility. Two-yearly. Latest issue February 1996	6209.0
■ Multiple Jobholding. Irregular. Latest issue August 1994	6216.0.40.001
■ Participation in Education. Annual. Latest issue September 1996	6272.0
■ Persons Employed at Home. Irregular. Latest issue September 1995	6275.0
■ Persons Not in the Labour Force. Annual. Latest issue September 1996	6220.0
■ Persons Who had Re-entered the Labour Force. Irregular. Latest issue July 1995	6264.0.40.001
■ Persons Who Have Left the Labour Force. Irregular. Latest issue September 1994	6267.0.40.001
■ Retirement and Retirement Intentions. Irregular. Latest issue November 1994	6238.0.40.001
■ Successful and Unsuccessful Job Search Experience. Two-yearly. Latest issue July 1996	6245.0
■ Superannuation. Irregular. Latest issue November 1995	6319.0
■ Trade Union Members. Two-yearly. Latest issue August 1996	6325.0
■ Training and Education Experience. Irregular. Latest issue 1993	6278.0
■ Transition from Education to Work. Annual. Irregular. Latest issue May 1996	6227.0
■ Underemployed Workers. Annual. Latest issue September 1996	6265.0
■ Weekly Earnings of Employees (Distribution). Annual. Latest issue August 1995	6310.0.40.001
■ Working Arrangements. Irregular. Latest issue August 1995	6342.0.40.001

FORTHCOMING SUPPLEMENTARY SURVEYS

Topic	Survey month	Release
Job Search Experience of Unemployed Persons	July 1997	December 1997
Retrenchments and Redundancies	July 1997	January 1998
Weekly Earnings of Employees (Distribution)	August 1997	January 1998
Working Arrangements	August 1997	February 1998

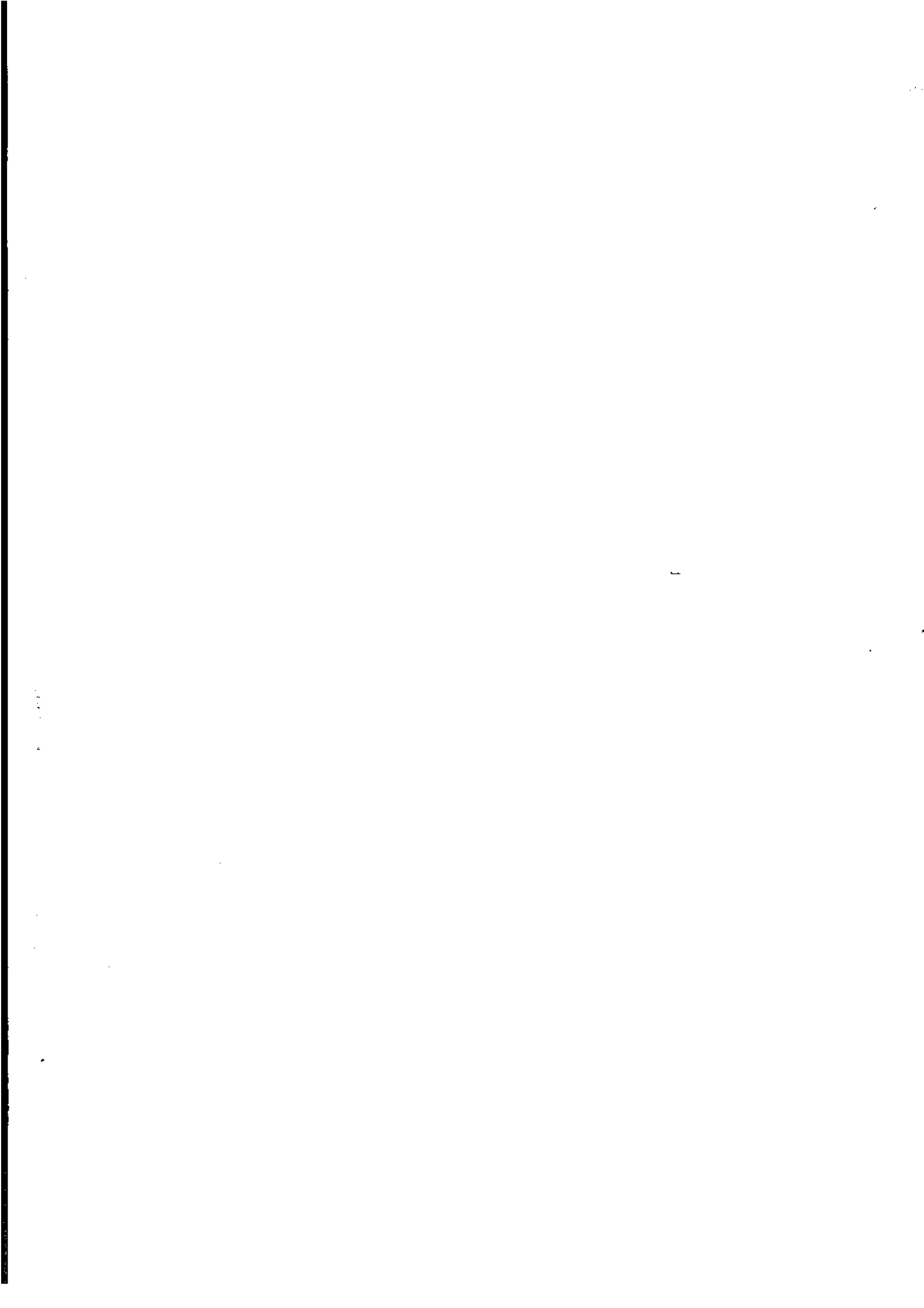
INQUIRIES

Central Office: (02) 6252 6504

Regional Offices:

SYDNEY	(02) 9268 4493	ADELAIDE	(08) 8237 7365
MELBOURNE	(03) 9615 7677	HOBART	(03) 6222 5841
BRISBANE	(07) 3222 6351	DARWIN	(08) 8943 2150
PERTH	(08) 9360 5943	CANBERRA	(02) 6207 0823





For more information . . .

The ABS publishes a wide range of statistics and other information on Australia's economic and social conditions. Details of what is available in various publications and other products can be found in the ABS Catalogue of Publications and Products available from all ABS Offices.

ABS Products and Services

Many standard products are available from ABS bookshops located in each State and Territory. In addition to these products, information tailored to the needs of clients can be obtained on a wide range of media by contacting your nearest ABS Office. The ABS also provides a Subscription Service for standard products and some tailored information services.

National Dial-a-Statistic Line

0055 86 400

Steadycom P/L: premium rate 25c/20 secs.

This number gives 24-hour access, 365 days a year, for a range of important economic statistics including the CPI.

Internet

<http://www.abs.gov.au>

A wide range of ABS information is available via the Internet, with basic statistics available for each State, Territory and Australia. We also have Key National Indicators, ABS product release details and other information of general interest.

Sales and Inquiries

client.services@abs.gov.au

National Mail Order Service
Subscription Service

(02) 6252 5249
1800 02 0608

Information Inquiries

CANBERRA	(02) 6252 6627
SYDNEY	(02) 9268 4611
MELBOURNE	(03) 9615 7755
BRISBANE	(07) 3222 6351
PERTH	(09) 360 5140
ADELAIDE	(08) 8237 7100
HOBART	(03) 6222 5800
DARWIN	(08) 8943 2111

Bookshop Sales

(02) 6252 0326
(02) 9268 4620
(03) 9615 7755
(07) 3222 6350
(09) 360 5307
(08) 8237 7582
(03) 6222 5800
(08) 8943 2111



Client Services, ABS, PO Box 10, Belconnen ACT 2616

Produced by the Australian Bureau of Statistics
© Commonwealth of Australia 1997

Recommended retail price: \$19.00



2622400006970

ISSN 1031-0401