

SELECTED CHARACTERISTICS

	<i>Population mid-1995 (million)</i>	<i>Participation rate – annual average 1994(a) %</i>	<i>Unemployment rate – annual average 1994 %</i>
Australia	18.0	73.3	9.2
Canada	29.6	76.1	10.3
France	58.1	67.0	12.4
Italy	57.7	57.9	11.3
Japan	125.2	76.4	2.9
Sweden	8.9	79.3	7.8
United Kingdom	58.6	62.7	9.2
USA	263.2	79.0	6.1

(a) ILO/OECD definition.

Source: 1995 World Population Data Sheet, Population Reference Bureau, Inc.; OECD Labour Force Statistics; UK Department of Employment Gazette.

The ABS publishes a wide range of statistics and other information on Australia's economic and social conditions. Details of what is available in various publications and other products can be found in the *ABS Catalogue of Publications* (1101.0) available at all ABS offices (see below for contact details).

Information Consultancy Service

Information tailored to special needs of clients can be obtained from the Information Consultancy Service available at ABS Offices (see below for contact details).

ABS products

A large number of ABS publications is available from ABS bookshops (see below for contact details). The ABS also provides a subscription service. You can telephone the ABS Subscription Service Australia-wide toll free on 1800 02 0608.

Electronic Data Services

A large range of data is available via on-line services, diskette, magnetic tape, tape cartridge and CD ROM. For more details about these electronic data services, contact any ABS office (see below).

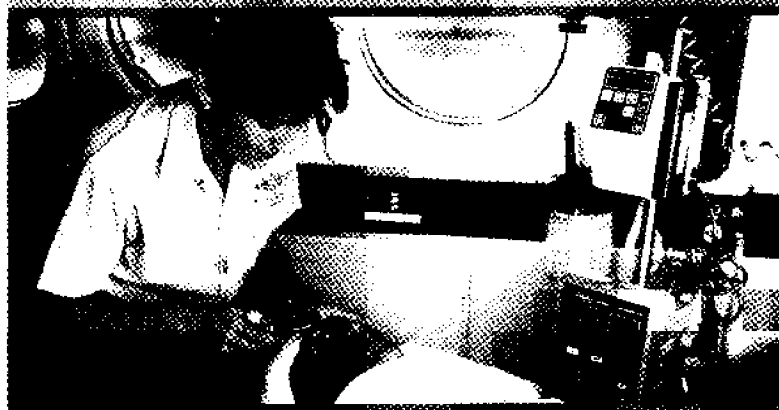
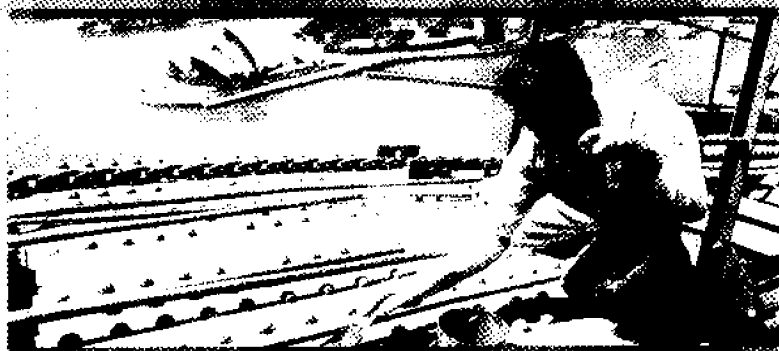
Sales and Inquiries

SYDNEY	(02) 268 4611	ADELAIDE	(08) 237 7100
MELBOURNE	(03) 9615 7755	HOBART	(002) 20 5800
BRISBANE	(07) 3222 6351	CANBERRA	(06) 252 6627
PERTH	(09) 360 5140	DARWIN	(089) 43 2111

Information services, ABS, PO Box 10, Belconnen ACT 2616

(ABS Catalogue No. 6104.0)

LABOUR STATISTICS IN BRIEF



AUSTRALIA 1996

		Annual average	
		1985	1995
CIVILIAN POPULATION			
Aged 15 and over	million	12.0	14.1

LABOUR FORCE PARTICIPATION			
Participation rates			
- males	%	75.8	74.0
- females	"	46.3	53.8
- persons	"	60.8	63.7

EMPLOYMENT			
- males	'000	4126.4	4689.3
- females	"	2571.1	3545.6
- persons	"	6697.5	8234.9
- full-time	%	82.1	75.5
- part-time	"	17.9	24.5
Employment/population ratio	"	55.8	58.3

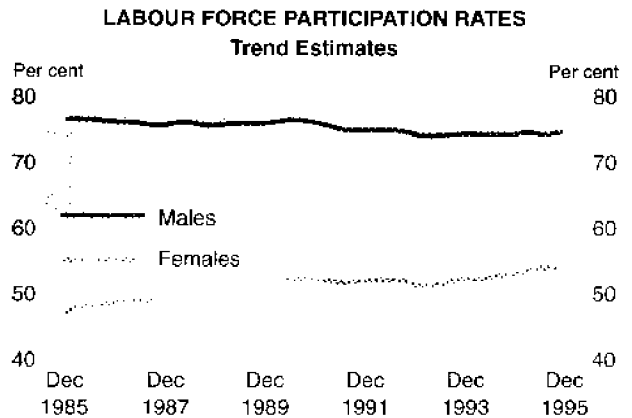
UNEMPLOYMENT			
Unemployed persons	'000	602.9	766.3
Unemployment rate	%	7.9	8.8
- males	"	8.8	8.1
- females	"	8.3	8.5
- persons	"	20.3	20.6
- aged 15-19	"	47.5	54.8
Average duration, persons	weeks	47.5	54.8

HOURS OF WORK			
Average weekly hours worked			
by employed persons	hours	34.5	34.7
- full-time	"	38.8	40.9
- part-time	"	15.0	15.3
Average overtime hours			
per employee	"	1.3	1.1

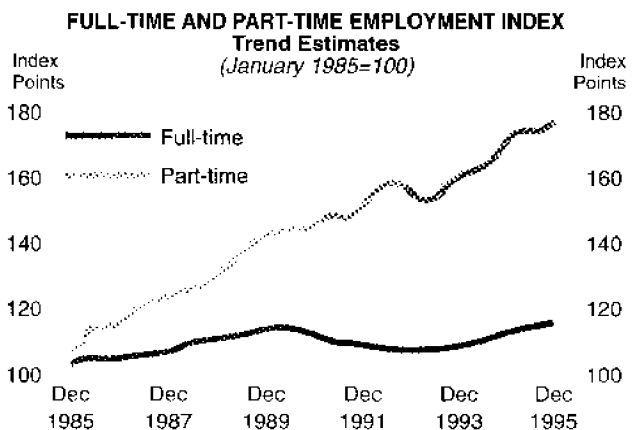
INDUSTRIAL RELATIONS			
		12 months ended December	
		1985	1995
Industrial disputes-			
Working days lost per	no.	237	91
thousand employees			
Working days lost	'000	1294.9	627.0

		August	
		1994	1995
Trade union members	'000	2283.4	2251.8

CHANGE IN WAGES AND PRICES			
		12 months	10 years
		to 1995	to 1995
		%	%
Average weekly earnings			
full-time adults	Aug.	4.6	67.6
Award rates of pay index,			
full-time adults	Nov.	1.5	39.4
Consumer price index,			
All groups	Dec. qtr.	5.1	63.0



Source: *The Labour Force, Australia (6203.0)*.



Source: *The Labour Force, Australia (6203.0)*.

WAGE AND SALARY EARNERS PRIVATE AND PUBLIC SECTORS, February 1995

	'000	%
Private (a)	4414.9	74.1
Public-		
Commonwealth	361.1	6.0
State	1030.7	17.3
Local	154.2	2.6
Total	1546.0	25.9
Total(a)	5960.9	100.0

(a) Excludes private sector employees in Agriculture forestry, fishing and hunting.

Source: *Employed Wage and Salary Earners, Australia (6248.0)*.

EMPLOYED PERSONS: INDUSTRY
Annual average 1995

	'000	%
Agriculture forestry and fishing	411.1	5.0
Mining	84.7	1.0
Manufacturing	1114.7	13.6
Electricity, gas and water supply	83.9	1.0
Construction	601.3	7.3
Wholesale trade	507.1	6.2
Retail trade	1199.9	14.6
Accommodation, cafes and restaurants	388.1	4.7
Transport and storage	385.3	4.7
Communication services	150.7	1.8
Finance and insurance	314.0	3.8
Property and business services	785.4	9.6
Government administration and defence	372.3	4.5
Education	574.0	7.0
Health and community services	743.8	9.1
Cultural and recreational services	193.5	2.4
Personal and other services	307.2	3.7

Source: The Labour Force, Australia (6203.0).

EMPLOYED PERSONS: OCCUPATION
Annual average, 1995

	'000	%
Managers and administrators	866.8	10.5
Professionals	1144.3	13.9
Para-professionals	468.1	5.7
Tradespersons	1188.5	14.5
Clerks	1354.6	16.5
Salespersons and personal service workers	1372.1	16.7
Plant and machine operators, and drivers	582.9	7.1
Labourers and related workers	1239.8	15.1

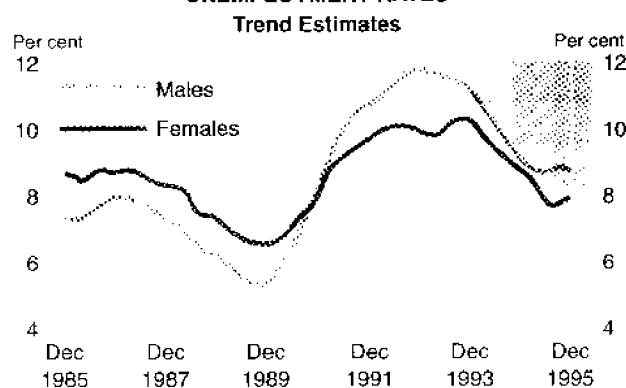
Source: The Labour Force, Australia (6203.0).

JOB VACANCIES: INDUSTRY ('000)

	18 Nov. 1994	17 Nov. 1995
Manufacturing	10.8	5.8
Wholesale trade; Retail trade	15.9	9.0
Accommodation, cafes and restaurants	4.7	4.1
Finance and insurance; Property and business services	8.5	13.6
Education; Health and community services	8.5	8.7
Other	17.6	14.7
Total all industries	66.0	56.1

Source: Job Vacancies and Overtime, Australia (6354.0).

UNEMPLOYMENT RATES



Source: The Labour Force, Australia (6203.0).

UNEMPLOYED PERSONS BY AGE AND WHETHER LOOKING FOR FULL-TIME OR PART-TIME WORK
Annual average 1995 ('000)

Age group	Looking for full-time work	Looking for part-time work	Total
Males			
15-19	50.8	28.7	79.5
20 and over	352.4	23.1	375.5
Total	403.2	51.8	455.0
Females			
15-19	42.3	33.3	75.6
20 and over	172.1	63.6	235.8
Total	214.4	97.0	311.4
Persons			
15-19	93.1	62.0	155.1
20 and over	524.5	86.8	611.3
Total	617.6	148.8	766.3

Source: The Labour Force, Australia (6203.0).

UNEMPLOYED PERSONS DURATION OF UNEMPLOYMENT ('000)

Duration of unemployment (weeks)	Annual average	
	1994	1995
Under 52	547.0	520.8
Less than 4	123.7	123.3
4 and under 13	161.5	162.4
13 and under 52	261.7	235.2
52 and over (long-term unemployed)	308.6	245.5
Total	855.5	766.3

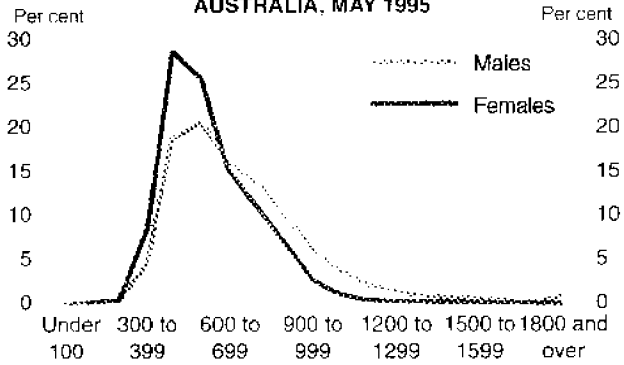
Source: The Labour Force, Australia (6203.0).

AVERAGE WEEKLY TOTAL EARNINGS (\$)

	August	
	1994	1995
Full-time adults -		
Males	712.70	746.90
Females	566.50	593.00
Persons	661.00	691.20

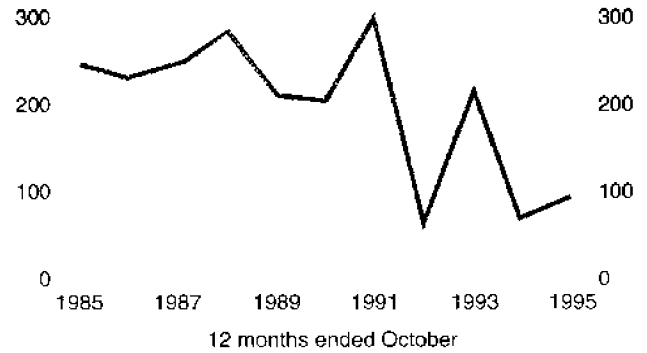
Source: Average Weekly Earnings, States and Australia (6302.0).

DISTRIBUTION OF FULL-TIME ADULT NON-MANAGERIAL EMPLOYEES BY LEVELS OF WEEKLY TOTAL EARNINGS, AUSTRALIA, MAY 1995



Source: Distribution and Composition of Employee Earnings and Hours, Australia, Preliminary (6305.0).

INDUSTRIAL DISPUTES: WORKING DAYS LOST PER THOUSAND EMPLOYEES



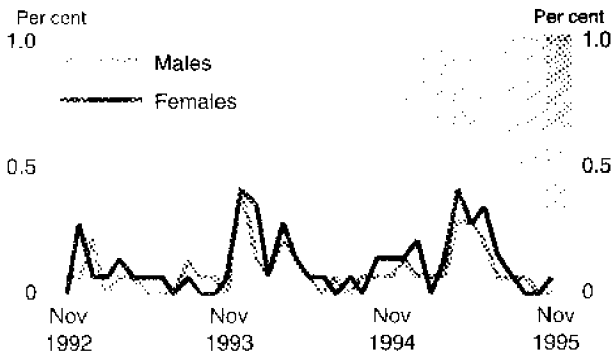
Source: Industrial Disputes, Australia (6321.0).

LABOUR COSTS PER EMPLOYEE (\$)

	1991-92	1993-94
Earnings	27404	28958
Other labour costs	3401	3797
Superannuation	1521	1829
Payroll tax	1079	1131
Workers' compensation	582	598
Fringe benefits tax	219	240
Total labour costs	30805	32755

Source: Labour Costs, Australia (6348.0).

WEEKLY AWARD RATES OF PAY INDEXES FULL-TIME ADULTS Change from previous month



Source: Award Rates of Pay Indexes, Australia (6312.0).

EDUCATIONAL ATTAINMENT OF PERSONS AGED 15 TO 64 WHO WERE EMPLOYED IN MAY 1995

	'000	%
With post-school qualifications	3886.6	47.9
Without post-school qualifications(a)	4032.5	49.7
Completed highest level of school	1436.1	17.7
Did not complete highest level of school	2592.7	32.0
Still attending school	190.6	2.4
Total	8109.7	100.0

(a) Includes persons who never attended school.

Source: Transition from Education to Work, Australia (6227.0.40.001).