



August 1996

EMBARGOED UNTIL 11:30 AM MON 19 AUGUST 1996

Business Indicators

Australian Capital Territory

Statistics ■

A small grid of numbers, likely a statistical table, with a diagonal line running from the top-left to the bottom-right.

NOTES

FORTHCOMING ISSUES

<i>ISSUE</i>	<i>RELEASE DATE</i>
September 1996	23 September 1996
October 1996	21 October 1996

SYMBOLS AND OTHER USAGES

n.a.	not available
n.p.	not available for publication
p	preliminary
—	nil or rounded to zero

INQUIRIES

For further information about statistics in this publication and the availability of related unpublished statistics, contact Kingsley Green on Canberra (06) 207 0286 or any ABS State office.

For information about other ABS statistics and services, please contact Information Services on Canberra (06) 252 627, or 252 007 or any ABS State office.

Dalma Jacobs
Statistician Australian Capital Territory

SUMMARY OF FINDINGS

UPDATED SERIES

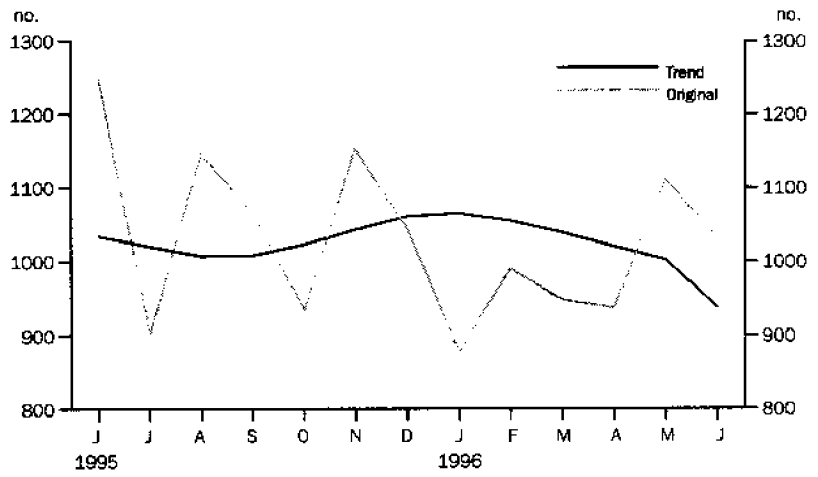
Series updated since the July 1996 issue are: labour force, industrial disputes; housing finance, building approvals, building commencements; consumer price index; retail turnover; new motor vehicle registrations; engineering construction; and business expectations. A feature article on motor vehicle census in the ACT is included on page 6.

NOTABLE MOVEMENTS

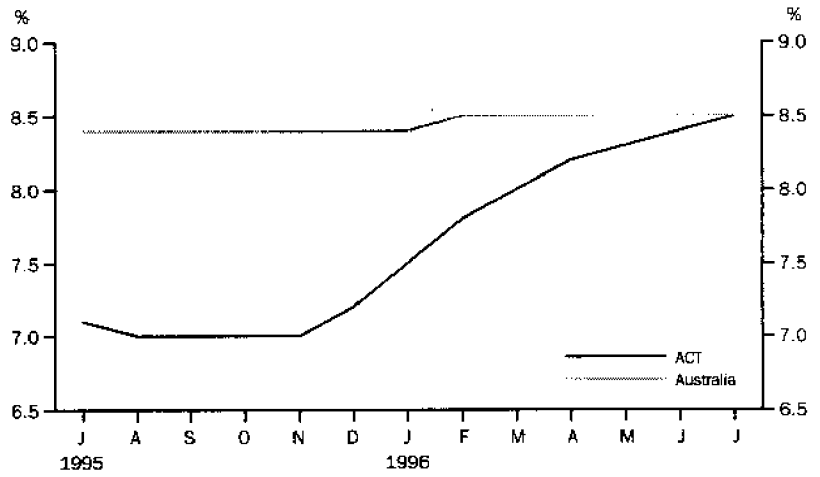
- Unemployment** The trend number of persons employed in the ACT has fallen for each of the last eight months from a peak of 159,300 persons in November 1995 to 155,300 persons in July 1996 (an overall fall of 4,000 persons or -2.5%). Over the same period, the trend unemployment rate has steadily increased from 7.0% to 8.5% and the trend participation rate has decreased from 74.1% to 72.9%.
- Industrial disputes** In April 1996, there were 25 working days lost per 1,000 employees in the ACT compared with 90 working days lost per 1,000 employees nationally.
- Housing and construction** The trend number of dwelling units financed (includes refinancing) in the ACT has fallen for each of the last 5 months from a peak of 879 dwellings units financed in December 1995 to 734 dwellings units financed in May 1996 (an overall fall of 16.5%). The trend estimate for the value of commitments in the ACT in May 1996 was \$72.5 million, a decrease of -5.4% on the previous month.
- The trend number of dwelling units approved in the ACT increased by 5.8% in June 1996 to 146. This is the first positive increase since November 1995. Nationally the total number of dwelling units approved fell by -0.3% to 10,262.
- The number of new residential housing commencements in the ACT decreased by -43.6% in the March quarter 1996 to 217. Nationally the number of new residential housing commencements fell by -21.6% to 19,072. The ACT also recorded a decrease of -2.3% in the value of building commencements, nationally there was a fall of -0.6% for the March quarter 1996.
- Prices** The ACT had an increase of 0.5% for the All groups CPI between the quarters March 1996 and June 1996, resulting in an annual increase to June quarter 1996 of 3.2%.
- Retail turnover** The trend estimate for retail turnover in the ACT for June 1996 was \$192.5 million, up slightly on the previous month's figure of \$191.1 million. Nationally trend retail turnover has increased by 4.8% over the last 12 months compared to 4.7% for the ACT.
- Motor vehicle registrations** The trend estimate for new motor vehicle registrations for the ACT in June 1996 was 988, a decrease of 1.4% over May 1996, and 4.4% lower than for June 1995. Nationally, the trend for total new registrations has shown consecutive rises since October 1995, with June 1996 recording a slight increase.

SELECTED BUSINESS INDICATORS

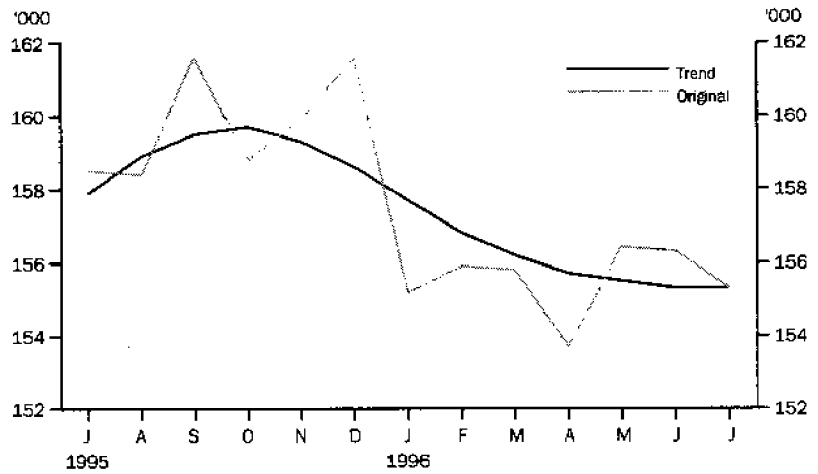
NEW MOTOR VEHICLE REGISTRATIONS — ACT



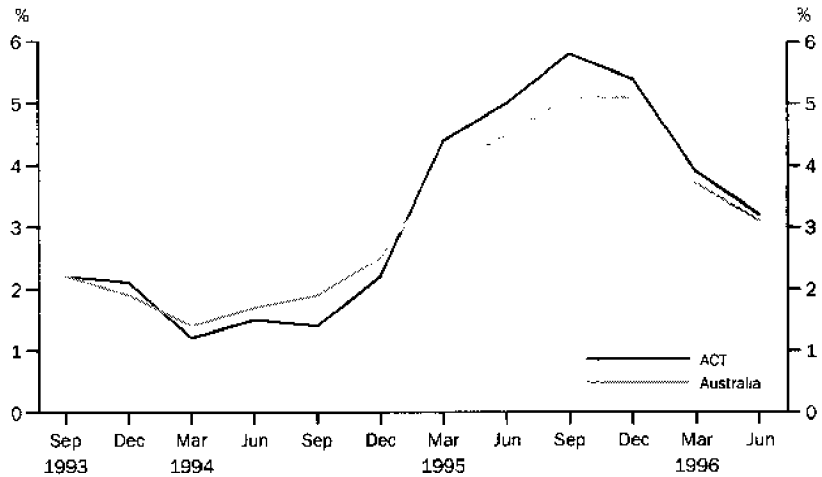
LABOUR FORCE — TREND UNEMPLOYMENT RATE



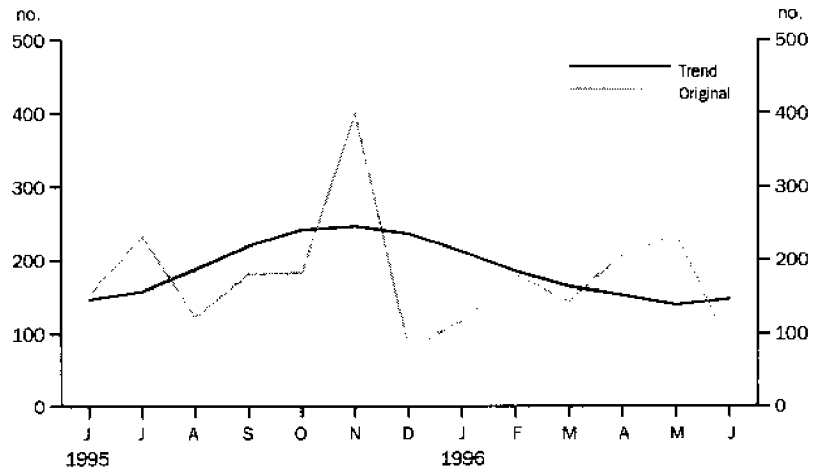
LABOUR FORCE — EMPLOYMENT



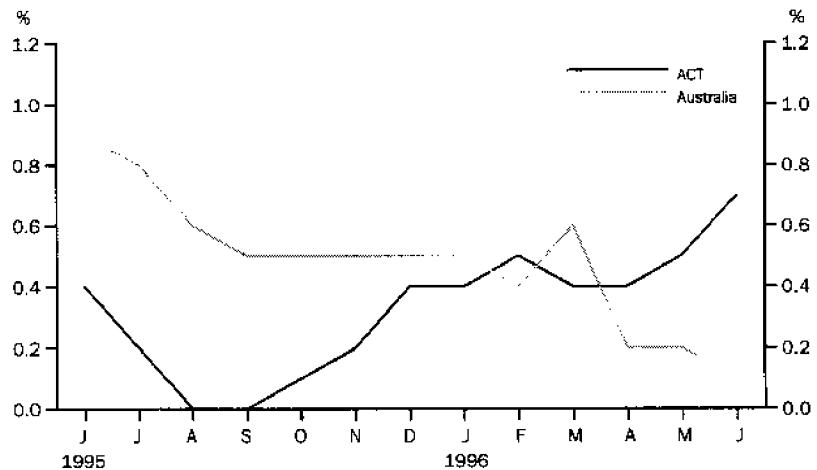
CONSUMER PRICE INDEX,
ALL GROUPS —
PERCENTAGE CHANGE
FROM CORRESPONDING
QUARTER OF PREVIOUS
YEAR



BUILDING APPROVALS —
DWELLING UNITS APPROVED



RETAIL TURNOVER —
TREND PERCENTAGE
CHANGE FROM PREVIOUS
MONTH



MOTOR VEHICLE CENSUS, AUSTRALIAN CAPITAL TERRITORY, AS AT 31 MAY 1995

The number of motor vehicles (excluding motor cycles, plant and equipment, caravans and trailers) on register in the ACT at 31 May 1995 was 178,770, representing a net increase of 7,061 vehicles (2.1% per year) since the previous census at 30 June 1993. There were 4,985 motor cycles registered in the ACT, an increase of 1.8% since 1993.

The number of passenger vehicles on register in the ACT increased by 6,545 (2.3% per year) to 156,573. Increases were also recorded for articulated trucks (4.5%) and light commercial vehicles (2.5%). Registrations of buses and rigid trucks both decreased (-5.0% per year and -4.0% per year respectively).

Between 30 September 1991 and 30 June 1993 there were 18,494 new registrations (approximately 881 per month). This compares to 22,916 (or 996 per month) between 30 June 1993 and 31 May 1995. However, during the 1991-93 period, 3,449 vehicles had registration lapses (164 per month), compared with 8,794 between 1993 and 1995 (382 per month).

At 31 May 1995, there were 604 vehicles per 1,000 estimated resident population, up from 591 as at 30 June 1993, an increase of 13 registrations per thousand population.

The average age of the vehicle fleet in the ACT experienced a slight increase, rising from 9.8 years as at 30 June 1993 to 9.9 years at 31 May 1995. The oldest vehicle types for the ACT were non-freight carrying trucks, with an average of 15.5 years and light commercial vehicles (10.0 years). Buses (7.2 years) and Articulated trucks (8.8 years) recorded the lowest average ages. Passenger vehicles had an average age of 9.9 years.

The number of petrol powered vehicles using unleaded petrol (50.2%) now exceeds those using leaded petrol (40.8%). Since the 1993 census, the number of vehicles using unleaded petrol has increased at a rate of 13.1% per year, while the number using leaded petrol has decreased by 7.3% per year.

MOTOR VEHICLE CENSUS AS AT 31 MAY 1995

	ACT	Australia
	no.	no.
Motor vehicles on register by type of vehicle		
Passenger vehicles	156 573	8 628 806
Light commercial vehicles	17 517	1 527 212
Rigid trucks	2 682	336 046
Articulated trucks	296	59 697
Non-freight carrying trucks	781	46 971
Buses	921	52 170
Total motor vehicles (excl. motor cycles etc)	178 770	10 650 902
Other vehicles on register		
Motor cycles	4 985	296 628
Plant and equipment	998	101 195
Caravans	1 373	265 374
Trailers	22 570	1 735 873

Source: Motor Vehicle Census, Australia, May 1995 (9309.0).

1**AUSTRALIAN BUSINESS EXPECTATIONS: SALES, SEPTEMBER QUARTER
1996/JUNE QUARTER 1997, EXPECTED AGGREGATE CHANGE**

<i>Period</i>	<i>Australian Capital Territory %</i>	<i>Australia %</i>
Short-term		
June qtr 1995–Sept. qtr 1995	0.8	1.3
Sept. qtr 1995–Dec. qtr 1995	2.0	2.1
Dec. qtr 1995–Mar. qtr 1996	0.5	-0.2
Mar. qtr 1996–June qtr 1996	1.8	2.3
June qtr 1996–Sept. qtr 1996	0.4	1.6
Medium-term		
June qtr 1995–June qtr 1996	-0.8	2.3
Sept. qtr 1995–Sept. qtr 1996	3.1	3.4
Dec. qtr 1995–Dec. qtr 1996	3.8	4.4
Mar. qtr 1996–Mar. qtr 1997	2.3	4.1
June qtr 1996–June qtr 1997	1.4	3.6

Indicator	Unit	Australian Capital Territory			Australia		
		Latest figure	Previous period	Same period previous	Latest figure	Previous period	Same period previous
POPULATION, VITAL AND LABOUR							
POPULATION December qtr 95	'000s	304.9	—	1.1	18 173.6	0.3	1.3
Natural increase	no.	964	37.3	22.3	30 744	4.9	-7.6
Net migration	no.	-927	-1 216.9	50.7	28 428	-8.6	223.1
Total increase	no.	37	-95.3	-78.6	59 172	-2.1	40.6
LABOUR FORCE, July 96							
Original series							
Employed	'000s	155.3	-0.6	-2.0	8 379.9	0.3	1.0
Unemployed	'000s	13.2	6.5	18.9	731.6	0.2	3.1
Unemployment rate ¹	%	7.9	0.6	1.4	8.0	—	0.1
Participation rate ¹	%	72.4	-0.2	-1.2	63.4	0.1	-0.3
Long-term unemployed (June 96)	no.	2 579	1.5	-4.7	202 399	-1.5	-16.7
Long-term unemployed as percentage total unemployed (June 96)	%	20.9	2.1	-4.2	27.7	0.6	-5.8
Trend series							
Employed	'000s	155.3	—	-1.6	8 330.6	0.1	0.9
Unemployed	'000s	14.4	0.7	19.0	771.8	-0.7	2.2
Unemployment rate ¹	%	8.5	0.1	1.4	8.5	—	0.1
Participation rate ¹	%	72.9	-0.1	-0.8	63.4	—	-0.3
JOB VACANCIES, May 96	'000s	0.8	-50.0	-38.5	53.6	-16.1	-0.2
INDUSTRIAL DISPUTES IN PROGRESS, April 96							
Working days lost	'000s	—	—	—	68.7	-21.4	136.9
Days lost per '000 employees (year ended April 96)	no.	25.0	-3.8	400.0	90.0	5.9	21.6
BUILDING AND CONSTRUCTION							
HOUSING FINANCE, May 96							
Secured commitments to individuals for							
Original series							
Construction of dwellings	\$m	6.1	10.9	-10.3	528.9	8.1	-8.9
Purchase of new dwellings	\$m	8.5	-2.3	-34.6	194.2	0.4	5.1
Purchase of established dwellings	\$m	43.8	-13.6	-4.4	3 325.1	19.1	14.6
Total housing commitments	\$m	77.8	-3.1	1.0	4 048.1	16.5	10.4
Seasonally adjusted series							
Total housing commitments	\$m	65.2	-16.3	-3.7	3 600.4	-2.2	10.6
Trend series							
Dwelling units financed	no.	734	-4.7	9.6	37 870	-0.7	10.4
Total housing commitments	\$m	72.5	-5.4	8.5	3 683.3	-0.7	10.8
BUILDING APPROVALS, June 96							
Original series							
Dwelling units	no.	77	-67.0	-49.7	9 666	-20.0	-20.8
Value of new residential	\$m	8.3	-65.6	-47.5	905.5	-28.7	-17.3
Value of residential alterations and additions	\$m	3.2	-22.0	—	180.3	-11.2	-2.3
Value of non-residential	\$m	59.4	-45.7	386.9	849.7	-24.1	-19.1
Value of total building	\$m	70.9	-48.4	128.0	1 935.6	-25.4	-16.9
Trend series							
Dwelling units	no.	146	5.8	—	10 262	-0.3	-11.2
BUILDING COMMENCEMENTS, Mar. qtr 96							
New houses	no.	217	-43.6	-34.0	19 072.0	-14.5	-21.6
Value of houses commenced	\$m	24.5	-45.6	-36.7	2 007.8	-11.7	-15.4
Value of non-residential building commenced	\$m	99.3	70.9	78.9	2 610.6	4.5	-8.7
Value of total commencements	\$m	149.5	-2.3	14.7	6 074.8	-0.6	-11.3
PRICE INDEXES							
Established house price index, Mar. qtr 96	(1989-90=100.0)	127.0	-1.2	-2.9	112.2	-0.2	-0.9

For footnotes see end of table.

Indicator	Unit	Australian Capital Territory			Australia		
		Change from			Change from		
		Latest figure	Previous period	Same period previous	Latest figure	Previous period	Same period previous
PRICES, WAGES AND CONSUMER SPENDING							
CONSUMER PRICE INDEX, June qtr 96	(1989-90=100.0)						
Food		119.6	0.3	2.5	117.1	1.0	3.0
Housing		112.5	0.3	1.6	106.3	0.6	1.5
Transportation		129.9	1.9	6.4	123.8	1.1	4.2
All groups		121.4	0.5	3.2	119.8	0.7	3.1
AVERAGE WEEKLY EARNINGS, February 96							
Original series							
Males	\$	759.7	1.4	7.3	668.1	0.8	2.8
Females	\$	525.9	1.9	2.6	439.4	2.2	2.0
Total persons	\$	639.7	1.2	4.8	562.6	1.5	2.6
Trend series							
Males	\$	760.9	1.6	7.7	665.0	0.5	2.6
Females	\$	520.9	0.3	3.0	434.6	0.4	1.6
Total persons	\$	638.6	0.9	5.7	558.4	0.7	2.4
RETAIL TURNOVER, June 96							
Original series							
Food retailing	\$m	76.6	-5.8	7.3	3 934.5	-5.3	6.2
Department stores	\$m	21.9	-7.2	-3.5	882.9	-8.3	-2.6
Hospitality and services	\$m	27.9	-5.1	0.7	1 674.0	-2.2	3.3
All other retailing	\$m	56.1	-4.4	4.7	3 161.6	-4.3	2.3
Total	\$m	182.5	-5.4	4.0	9 653.0	-4.8	3.5
Trend Series							
Food retailing	'000s	80.7	1.3	9.1	4 150.8	0.5	8.0
Department stores	\$m	22.8	-1.3	-4.6	924.0	-1.5	-3.7
Hospitality and services	\$m	29.4	—	-1.7	1 775.5	-0.1	3.3
All other retailing	%	59.6	1.2	6.2	3 338.1	—	4.2
Total	'000s	192.5	0.7	4.7	10 188.4	0.1	4.8
TOURISM AND TRANSPORT							
HOTELS, MOTELS AND GUEST HOUSE ACCOMMODATION, Dec. qtr 95							
Original series							
Room nights	'000s	216.0	2.6	0.1	9 293.5	-0.1	2.7
Takings at current prices	\$m	19.2	1.1	4.3	873.6	2.6	9.6
Takings at 1989-90 prices	\$m	16.0	0.6	-1.2	737.5	1.8	4.4
Room occupancy rate (Mar. qtr 96) ¹	%	59.8	-4.8	-5.6	59.0	-0.7	0.9
Seasonally adjusted series							
Room nights	'000s	202.3	-2.8	-0.8	9 106.2	1.1	2.8
Takings at current prices	\$m	18.1	-6.2	2.3	841.8	1.3	9.7
Takings at 1989-90 prices	\$m	15.1	-6.8	-2.6	710.6	0.6	4.5
Trend series							
Room nights	'000s	200.4	-5.6	-4.1	9 081.2	0.8	2.8
Takings at current prices	\$m	18.1	-6.7	-1.6	841.1	1.7	9.7
Takings at 1989-90 prices	\$m	15.5	-4.3	-4.3	711.0	1.2	5.1
NEW MOTOR VEHICLE REGISTRATIONS, June 96							
Motor vehicles	no.	1 032	-7.0	-17.2	63 687	10.1	6.5
Seasonally adjusted motor vehicles	no.	953	-6.7	-13.4	61 545	18.5	13.7
Trend motor vehicles	no.	988	-1.4	-4.4	56 938	1.4	4.4

For footnotes see end of table.

Indicator	Unit	Australian Capital Territory			Australia		
		Change from		Latest figure	Change from		
		Latest figure	Previous period		Previous period	Same period previous	
AGGREGATE INDICATORS							
STATE ACCOUNTS, Mar. qtr 96 ²							
Original series							
Gross State product at av. 1989-90 prices	\$m	1 951	-12.2	1.2	104 318	-8.1	4.0
Gross State product at current prices	\$m	2 330	-11.1	2.7	117 876	-7.2	6.8
State final demand at av. 1989-90 prices	\$m	2 770	-8.4	3.9	101 583	-8.2	4.1
Private final consumption expenditure	\$m	1 346	-8.4	5.2	73 492	-7.3	7.4
Private gross fixed capital expenditure	\$m	174	-24.0	-11.7	17 394	-14.1	0.6
Trend series							
Gross State product at av. 1989-90 prices	\$m	2 102	0.4	0.9	107 825	1.0	3.4
Gross State product at current prices	\$m	2 496	1.3	2.8	121 678	1.6	6.1
State final demand at av. 1989-90 prices	\$m	2 938	1.0	2.7	107 068	0.9	3.1
Private final consumption expenditure	\$m	1 420	1.2	5.0	76 476	1.5	6.8
Private gross fixed capital expenditure	\$m	207	5.6	-5.5	19 074	0.0	-1.0

¹ Change shown in terms of percentage points.

² State estimates are not comparable to national estimates for June quarter 1995 due to revised aggregates in *Australian National Accounts, State Accounts* (5242.0).

Source: ABS Catalogue Nos: 3101.0, 5242.0, 5609.0, 6202.0, 6203.0, 6302.0, 6321.0, 6354.0, 6401.0, 6408.0, 6416.0, 8501.0, 8634.0, 8635.8, 8731.0, 8752.0, 9214.0, 9301.0.

3

ACT IN RELATION TO THE REST OF AUSTRALIA

Indicator	Unit	Latest period	NSW	Vic.	Qld	SA	WA	Tas.	NT	ACT	Aust.
POPULATION											
'000s		Dec. qtr 95	6 155.0	4 521.8	3 316.5	1 475.9	1 747.0	473.2	176.7	304.9	18 173.6
LABOUR FORCE											
Employed persons (trend)	'000s	July 96	2 782.9	2 076.1	1 535.7	663.2	837.3	200.6	82.8	155.3	8 330.6
Unemployment rate (trend)	%	July 96	7.9	8.4	9.2	9.2	7.7	10.9	6.6	8.5	8.5
STATE ACCOUNTS¹											
Gross State product at 1989-90 prices (trend)	\$m	Mar. qtr 96	36 672	28 647	17 453	7 467	11 759	2 182	1 224	2 102	107 825
Gross State product at current prices (trend)	\$m	Mar. qtr 96	42 126	32 019	19 447	8 786	12 689	2 552	1 292	2 496	121 678
BUILDING APPROVALS											
Dwelling units approved	no.	June 96	3 174	1 877	2 590	436	1 195	195	122	77	9 666
Dwelling units approved (trend)	no.	June 96	3 541	1 968	2 676	440	1 212	200	155	146	10 262
Value of non-residential building approved	\$m	June 96	272.3	171.5	204.4	26.9	72.1	11.6	31.3	59.4	849.7
Value of all buildings approved	\$m	June 96	664.8	396.7	461.7	71.8	193.4	31.3	45.1	70.9	1 935.6
ENGINEERING CONSTRUCTION											
Value of engineering construction work done	\$m	Mar. qtr 96	1 218.9	604.9	688.8	198.8	584.3	78.2	42.5	29.8	3 446.2
AVERAGE WEEKLY EARNINGS											
Full-time adult ordinary time (trend)	\$	Feb. qtr 96	694.90	658.00	615.30	623.10	683.60	619.80	663.30	771.30	664.80
RETAIL TRADE											
Retail turnover (trend)	\$m	June 96	3 652.3	2 310.8	1 863.1	773.4	1 029.1	249.8	117.3	192.5	10 188.4
HOTELS, MOTELS & GUEST HOUSE ACCOMMODATION											
Room nights occupied (trend)	'000s	Dec. qtr 95	3 128.3	1 473.3	2 388.0	509.2	811.5	274.8	295.8	200.4	9 081.2
NEW MOTOR VEHICLE REGISTRATIONS											
Trend	no.	June 96	19 878	13 323	11 398	3713	5 864	1 106	669	988	56 938
CONSUMER PRICE INDEX (1989-90=100.0)											
Food	Unit	Latest period	Syd.	Melb.	Bris.	Adel.	Perth	Hob.	Dar.	Canb.	Aust.
Housing	—	June qtr 96	117.7	115.4	117.8	118.4	117.8	118.4	118.6	119.6	117.1
Transportation	—	June qtr 96	110.0	100.4	112.5	103.9	101.6	107.6	121.7	112.5	106.3
All Groups	—	June qtr 96	124.2	123.5	122.1	125.3	123.9	119.8	119.3	129.9	123.8
Average retail prices (cents)	—	June qtr 96	119.9	119.2	120.4	122.0	117.9	120.6	120.8	121.4	119.8
Milk, carton, supermarket sales	1 litre	Mar. qtr 96	113.0	120.0	114.0	114.0	120.0	120.0	111.0	106.0	n.a.
Bread, white loaf, sliced, supermarket sales	680 g	Mar. qtr 96	185.0	164.0	179.0	152.0	170.0	152.0	190.0	179.0	n.a.
Beef, rump steak	1 kg	Mar. qtr 96	1 307.0	1 150.0	1 101.0	1 122.0	1 091.0	1 177.0	1 230.0	1 143.0	n.a.
Chicken, frozen	1 kg	Mar. qtr 96	277.0	337.0	269.0	350.0	333.0	340.0	380.0	310.0	n.a.
Potatoes	1 kg	Mar. qtr 96	96.0	112.0	101.0	72.0	117.0	88.0	124.0	93.0	n.a.
Coffee, instant (jar)	150 g	Mar. qtr 96	575.0	572.0	584.0	552.0	556.0	638.0	581.0	586.0	n.a.
Scotch nip, public bar	30 ml	Mar. qtr 96	313.0	269.0	249.0	318.0	376.0	218.0	306.0	270.0	n.a.
Private motoring petrol, leaded	1 litre	Mar. qtr 96	72.5	71.9	64.1	73.6	75.2	76.0	76.9	75.6	n.a.
Private motoring petrol, unleaded	1 litre	Mar. qtr 96	70.5	69.8	62.1	71.3	73.1	74.0	74.9	73.5	n.a.

¹ State estimates are not comparable to national estimates for June quarter 1995 due to revised aggregates in Australian National Accounts, State Accounts (5242.0).

4

ACT IN RELATION TO THE REST OF AUSTRALIA — PERCENTAGE CHANGES

Indicator	Latest period	NSW	Vic.	Qld	SA	WA	Tas.	NT	ACT	Aust.
POPULATION	Dec. qtr 95	0.3	0.2	0.6	0.1	0.4	—	1.1	—	0.3
LABOUR FORCE										
Employed persons (trend)	July 96	0.1	—	0.3	0.2	0.3	-0.1	0.1	—	0.1
Unemployment rate (trend) ¹	July 96	-0.1	-0.1	—	-0.1	—	0.1	-0.3	0.1	—
STATE ACCOUNTS²										
Gross State product at 1989-90 prices (trend)	Mar. qtr 96	1.0	1.4	0.6	0.9	1.1	0.9	0.3	0.4	1.0
Gross State product at current prices (trend)	Mar. qtr 96	1.6	1.8	0.8	1.5	1.6	0.8	0.5	1.3	1.6
BUILDING APPROVALS										
Dwelling units approved	June 96	-29.7	-8.1	-15.2	-13.7	-15.8	11.4	-16.4	-67.0	-20.0
Dwelling units approved (trend)	June 96	0.6	-0.2	1.3	-1.2	-4.7	-1.6	4.0	6.0	-0.3
Value of non-residential building approved	June 96	-9.9	-33.8	44.7	-81.3	-38.6	-64.1	112.9	-45.7	-24.1
Value of all buildings approved	June 96	-25.7	-22.9	-10.2	-63.0	-25.0	-36.8	50.3	-48.4	-25.4
ENGINEERING CONSTRUCTION										
Value of engineering construction work done	Mar. qtr 96	-5.4	5.3	-18.0	17.9	-20.1	15.9	-29.9	-23.0	-8.6
AVERAGE WEEKLY EARNINGS										
Full-time adult ordinary time (trend)	Feb. qtr 96	0.7	0.8	0.2	0.9	1.8	0.8	—	1.1	0.8
RETAIL TRADE										
Retail turnover (trend)	June 96	-0.2	0.1	0.4	0.8	-0.4	0.4	-0.3	0.7	0.1
HOTELS, MOTELS & GUEST HOUSE ACCOMMODATION										
Room nights occupied (trend)	Dec. qtr 95	0.7	0.5	1.3	1.4	0.9	1.0	2.7	-5.6	0.8
NEW MOTOR VEHICLE REGISTRATIONS										
Trend	June 96	1.9	1.0	2.6	-0.6	1.2	-1.3	0.9	-1.4	1.4

	Latest period	Syd.	Melb.	Bris.	Adel.	Perth	Hob.	Dar.	Canb.	Aust.
CONSUMER PRICE INDEX (1989-90=100.0)										
Food	June qtr 96	0.9	1.6	0.7	0.2	0.8	0.3	1.0	0.3	1.0
Housing	June qtr 96	0.7	0.6	0.4	—	0.4	0.4	1.2	0.3	0.6
Transportation	June qtr 96	1.1	1.3	1.3	1.1	0.6	0.7	1.2	1.9	1.1
All Groups	June qtr 96	0.7	0.8	0.7	0.3	0.7	0.4	0.8	0.5	0.7
Average retail prices (cents)										
Milk, carton, supermarket sales	Mar. qtr 96	1.8	2.6	1.8	—	3.4	—	1.8	—	n.a.
Bread, white loaf, sliced, supermarket sales	Mar. qtr 96	-0.5	—	-0.6	2.7	2.4	-1.3	0.5	—	n.a.
Beef, rump steak	Mar. qtr 96	-0.3	2.8	-3.0	-0.7	-0.9	5.7	3.6	-0.7	n.a.
Chicken, frozen	Mar. qtr 96	-1.1	3.7	0.7	5.7	1.2	5.3	6.1	2.3	n.a.
Potatoes	Mar. qtr 96	-27.8	-36.7	-33.1	-46.3	-2.5	-5.4	-18.4	-31.6	n.a.
Coffee, instant	Mar. qtr 96	-2.7	-3.1	-2.7	—	-3.6	-0.9	1.6	0.7	n.a.
Scotch nip, public bar	Mar. qtr 96	—	1.1	1.2	0.3	0.5	1.4	—	-6.3	n.a.
Private motoring petrol, leaded	Mar. qtr 96	0.8	-1.5	—	-0.5	-0.7	-3.2	-0.3	-0.7	n.a.
Private motoring petrol, unleaded	Mar. qtr 96	0.9	-1.7	—	-0.6	-0.8	-3.3	-0.3	-0.8	n.a.

¹ Change shown in terms of percentage points.

² State estimates are not comparable to national estimates for June quarter 1995 due to revised aggregates in *Australian National Accounts, State Accounts (5242.0)*.



For more information . . .

The ABS publishes a wide range of statistics and other information on Australia's economic and social conditions. Details of what is available in various publications and other products can be found in the ABS Catalogue of Publications and Products available from all ABS Offices.

ABS Products and Services

Many standard products are available from ABS bookshops located in each State and Territory. In addition to these products, information tailored to the needs of clients can be obtained on a wide range of media by contacting your nearest ABS Office. The ABS also provides a Subscription Service for standard products and some tailored information services.

National Dial-a-Statistic Line

0055 86 400

Steadycom P/L: premium rate 25c/21.4 secs.

This number gives 24-hour access, 365 days a year, for a range of important economic statistics including the CPI.

Internet

<http://www.statistics.gov.au>

A wide range of ABS information is available via the Internet, with basic statistics available for each State, Territory and Australia. We also have Key National Indicators, ABS product release details and other information of general interest.

Sales and Inquiries

Keylink STAT.INFO/ABS
X.400 (C:Australia,PUB:Telememo,O:ABS,FN:STAT,SN:INFO)
Internet stat.info@abs.telememo.au

National Mail Order Service (06) 252 5249
Subscription Service 1800 02 0608

	Information Inquiries	Bookshop Sales
SYDNEY	(02) 9268 4611	(02) 9268 4620
MELBOURNE	(03) 9615 7755	(03) 9615 7755
BRISBANE	(07) 3222 6351	(07) 3222 6350
PERTH	(09) 360 5140	(09) 360 5307
ADELAIDE	(08) 8237 7100	(08) 8237 7582
CANBERRA	(06) 252 6627	(06) 207 0326
HOBART	(002) 205 800	(002) 205 800
DARWIN	(08) 8943 2111	(08) 8943 2111



Client Services, ABS, PO Box 10, Belconnen ACT 2616

Produced by the Australian Government Publishing Service
© Commonwealth of Australia 1996

Recommended retail price: \$13.00



2130380008964

ISSN 1320-808X