

CHAPTER 4

UNEMPLOYMENT

The unemployment statistics presented in this chapter have been derived from ABS sources, primarily the ABS Monthly Labour Force Survey and associated supplementary surveys. Some summary statistics on job vacancies, which are an indicator of the demand for labour, are also included in this chapter.

For a full definition of unemployed as it relates to the labour force survey, see the Glossary of this publication. Broadly speaking, a person is considered to be unemployed if he or she satisfies three criteria—not employed, available for work, and taking active steps to find work. The employed and the unemployed together make up the labour force.

Measures of unemployment provide an indicator of the unused capacity in the labour force. The two most important measures are the number of unemployed persons and the unemployment rate. The unemployment rate for any group is the number unemployed expressed as a percentage of the labour force in the same group. Characteristics of the unemployed presented in this chapter include their demographic composition, duration of unemployment, educational qualifications and difficulties experienced in finding work. The unemployment characteristics of families, i.e. unemployment rates of different family members and number of families with some unemployment are also shown.

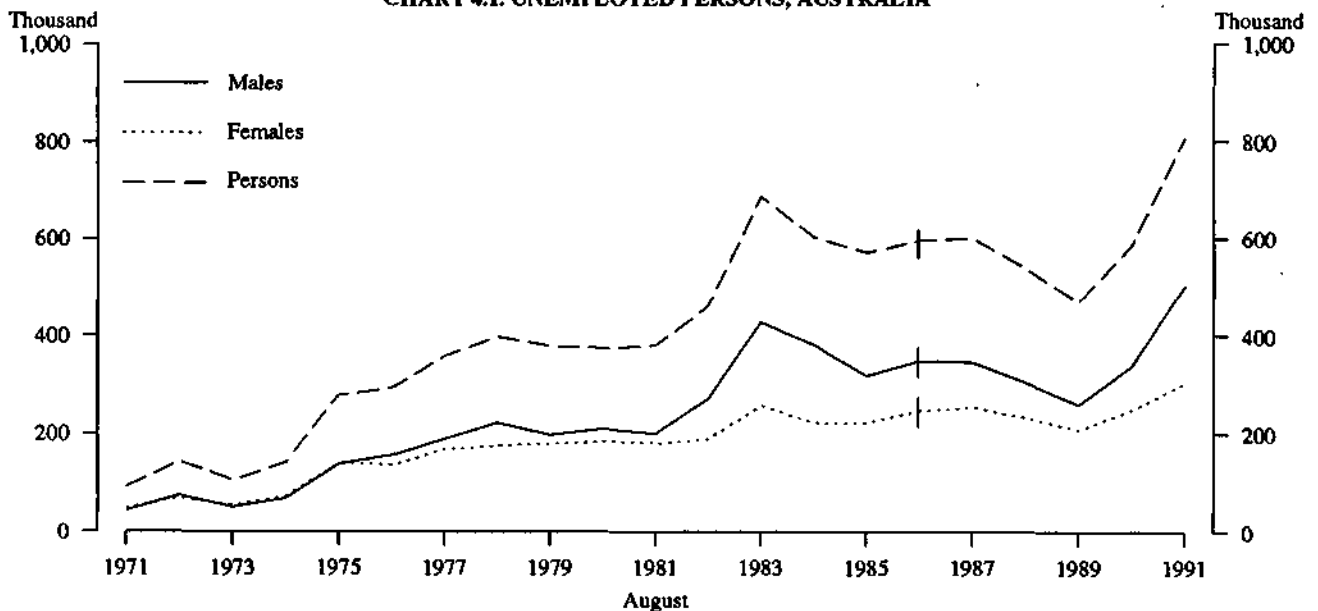
Unemployment

There were 806,000 unemployed persons in Australia in August 1991, of whom 502,600 were males and 303,400 were females. About 85 per cent of unemployed persons were looking for full-time employment. From August 1981 to August 1983, the estimated number of unemployed persons increased by 306,200. Between August 1983 and August 1990, the estimated number of unemployed persons fell by 99,400, but then rose by 218,600 in the twelve months to August 1991.

The unemployment rate for persons has risen by 3.9 percentage points from 5.6 per cent in August 1981 to 9.5 per cent in August 1991. In August 1991 the unemployment rate for males aged 15 to 19 years was 22 per cent, while for females aged 15 to 19 years the unemployment rate was 20 per cent.

The average duration of unemployment rose from 35 weeks in August 1981 to 49.5 weeks in August 1985, peaked at 51.3 weeks in August 1988 and has fallen to 43 weeks in August 1991. The median duration of unemployment in August 1991 was 25 weeks, compared with 15 weeks in 1990.

CHART 4.1. UNEMPLOYED PERSONS, AUSTRALIA



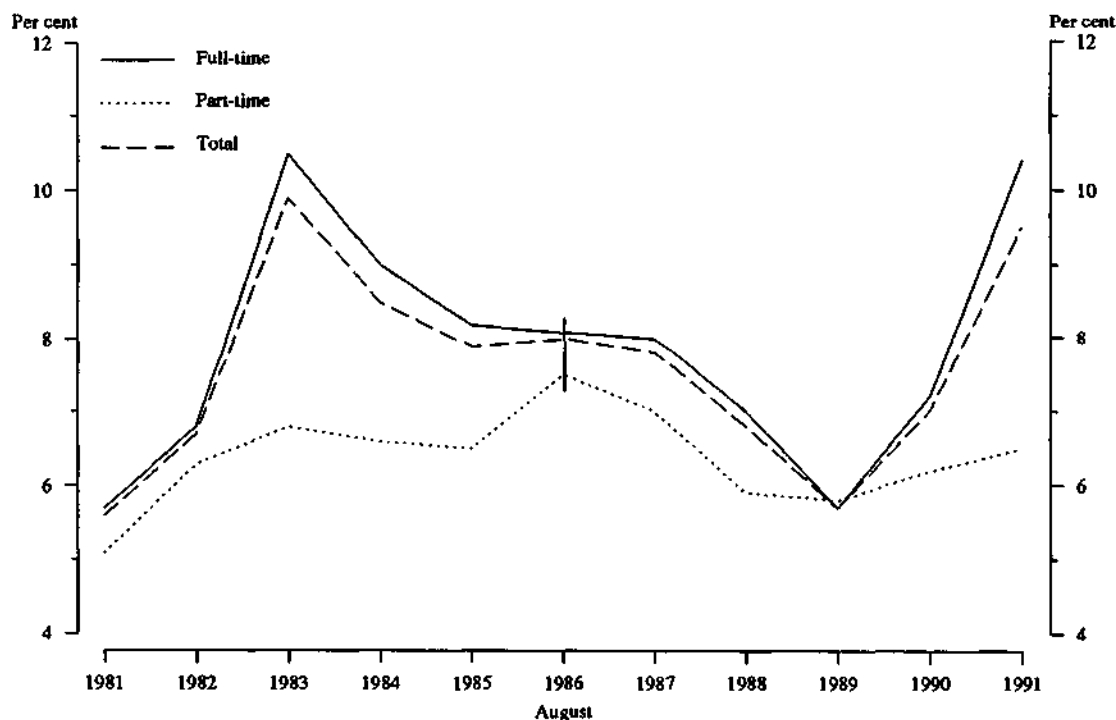
Indicates break in series. Estimates from August 1986 are based on a revised definition introduced in April 1986. See the Technical Notes for further information.
Source: *The Labour Force, Australia (6203.0)*.

TABLE 4.1. UNEMPLOYED PERSONS : WHETHER LOOKING FOR FULL-TIME OR PART-TIME WORK, AUSTRALIA, AUGUST 1981 TO AUGUST 1991

August	Males		Females			Persons			Total
	Looking for full-time work	Looking for part-time work	Total	Looking for full-time work	Looking for part-time work	Total	Looking for full-time work	Looking for part-time work	
NUMBER ('000)									
1981	187.8	12.7	200.4	135.9	44.2	180.1	323.7	56.9	380.6
1982	250.4	21.3	271.7	137.2	52.5	189.7	387.6	73.8	461.4
1983	409.5	20.2	429.7	197.9	59.3	257.1	607.4	79.5	686.8
1984	358.6	22.6	381.2	165.0	57.9	222.8	523.5	80.5	604.0
1985	325.4	23.7	349.1	162.7	60.9	223.6	488.0	84.7	572.7
1986(a)	320.9	28.3	349.3	170.9	77.5	248.4	491.8	105.8	597.6
1987	317.2	29.8	347.1	177.8	77.1	255.0	495.1	107.0	602.0
1988	279.9	25.8	305.7	165.5	67.4	233.0	445.4	93.3	538.7
1989	230.7	30.0	260.7	139.4	69.3	208.7	370.1	99.3	469.4
1990	305.1	32.8	338.0	173.2	76.3	249.5	478.3	109.1	587.4
1991	465.4	37.2	502.6	221.6	81.8	303.4	687.0	119.1	806.0
UNEMPLOYMENT RATE (per cent)									
1981	4.7	5.4	4.7	8.3	5.0	7.2	5.7	5.1	5.6
1982	6.2	8.1	6.3	8.4	5.8	7.5	6.8	6.3	6.7
1983	10.1	7.7	9.9	11.7	6.5	9.9	10.5	6.8	9.9
1984	8.7	8.4	8.7	9.6	6.0	8.3	9.0	6.6	8.5
1985	7.8	8.5	7.8	9.2	6.0	8.0	8.2	6.5	7.9
1986(a)	7.6	9.2	7.7	9.2	7.0	8.4	8.1	7.5	8.0
1987	7.4	8.6	7.5	9.4	6.5	8.3	8.0	7.0	7.8
1988	6.4	7.8	6.5	8.4	5.4	7.3	7.0	5.9	6.8
1989	5.2	7.8	5.4	6.9	5.2	6.2	5.7	5.8	5.7
1990	6.7	8.2	6.9	8.2	5.5	7.1	7.2	6.2	7.0
1991	10.3	8.4	10.2	10.4	5.8	8.6	10.4	6.5	9.5

(a) Estimates from August 1986 are based on a revised definition introduced in April 1986. See the Technical Notes for further information.
Source: *The Labour Force, Australia* (6203.0).

CHART 4.2 UNEMPLOYED PERSONS: WHETHER LOOKING FOR FULL-TIME OR PART-TIME WORK, UNEMPLOYMENT RATES, AUSTRALIA

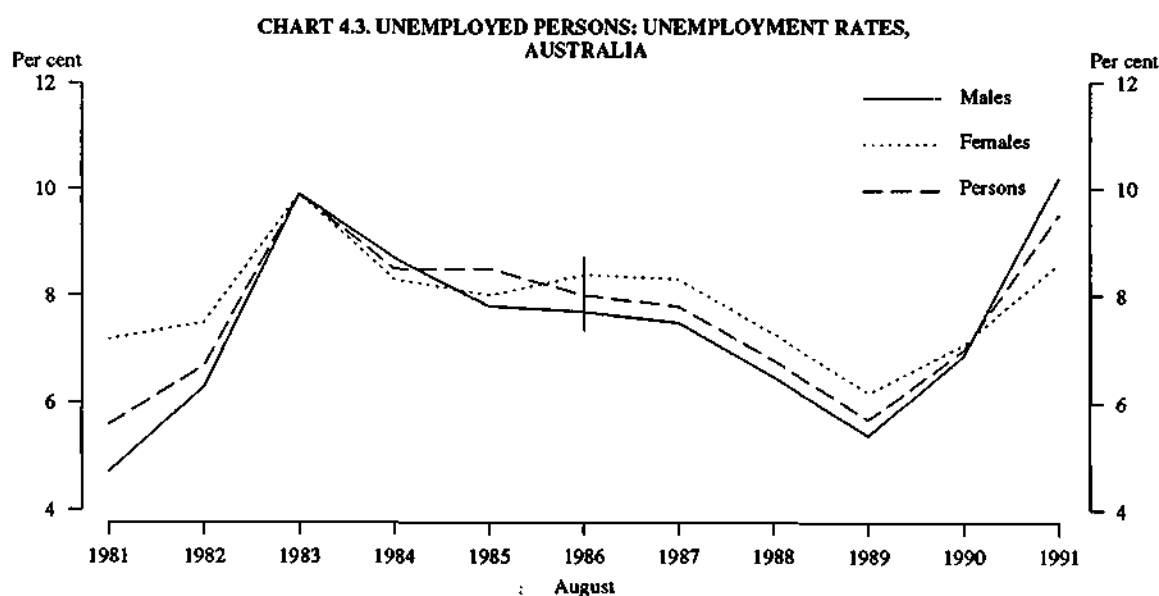


Indicates a break in series. Estimates from August 1986 are based on a revised definition introduced in April 1986. See the Technical Notes for further information.
Source: *The Labour Force, Australia* (6203.0).

TABLE 4.2. UNEMPLOYED PERSONS : UNEMPLOYMENT RATES, BY AGE, AUSTRALIA, AUGUST 1981 TO AUGUST 1991
(per cent)

August	Age group						Total
	15-19	20-24	25-34	35-44	45-54	55 and over	
MALES							
1981	11.2	8.3	4.1	2.4	2.8	3.5	4.7
1982	16.3	11.2	5.5	3.6	3.6	3.3	6.3
1983	23.0	17.3	9.1	6.0	5.9	6.5	9.9
1984	22.1	14.2	7.6	5.0	5.7	5.8	8.7
1985	19.3	12.4	7.2	4.4	4.8	6.7	7.8
1986(a)	18.7	12.3	6.8	4.6	5.5	5.5	7.7
1987	18.0	12.6	7.0	4.8	4.2	5.5	7.5
1988	15.1	10.8	5.6	3.8	4.5	6.3	6.5
1989	12.9	8.0	5.1	3.5	3.0	5.0	5.4
1990	16.6	12.1	7.0	3.8	3.2	5.7	6.9
1991	21.8	16.3	9.9	7.4	6.0	8.9	10.2
FEMALES							
1981	17.0	8.7	6.3	4.4	3.1	2.2	7.2
1982	17.0	8.8	6.9	4.8	3.6	2.7	7.5
1983	22.2	11.5	9.5	6.8	4.8	2.5	9.9
1984	19.7	10.3	7.1	5.6	4.6	2.6	8.3
1985	17.1	10.4	7.5	5.3	4.4	2.7	8.0
1986(a)	19.5	9.9	7.6	6.0	4.5	3.1	8.4
1987	19.4	10.5	7.5	6.1	4.5	2.2	8.3
1988	15.9	10.9	6.6	4.8	3.9	2.7	7.3
1989	14.6	7.9	5.8	3.9	4.1	2.4	6.2
1990	16.5	9.6	7.1	4.7	4.0	2.8	7.1
1991	20.2	12.9	7.8	5.5	5.7	3.9	8.6
PERSONS							
1981	13.9	8.5	4.9	3.1	2.9	3.2	5.6
1982	16.6	10.2	6.0	4.0	3.6	3.1	6.7
1983	22.6	14.7	9.2	6.3	5.5	5.5	9.9
1984	20.9	12.5	7.4	5.3	5.3	5.0	8.5
1985	18.2	11.5	7.3	4.7	4.7	5.7	7.9
1986(a)	19.1	11.2	7.1	5.2	5.1	4.9	8.0
1987	18.7	11.6	7.2	5.3	4.3	4.6	7.8
1988	15.5	10.9	6.0	4.2	4.2	5.3	6.8
1989	13.7	8.0	5.4	3.6	3.4	4.4	5.7
1990	16.5	11.0	7.1	4.2	3.5	4.9	7.0
1991	21.0	14.7	9.0	6.6	5.9	7.5	9.5

(a) Estimates from August 1986 are based on a revised definition introduced in April 1986. See the Technical Notes for further information.
Source: *The Labour Force, Australia* (6203.0).



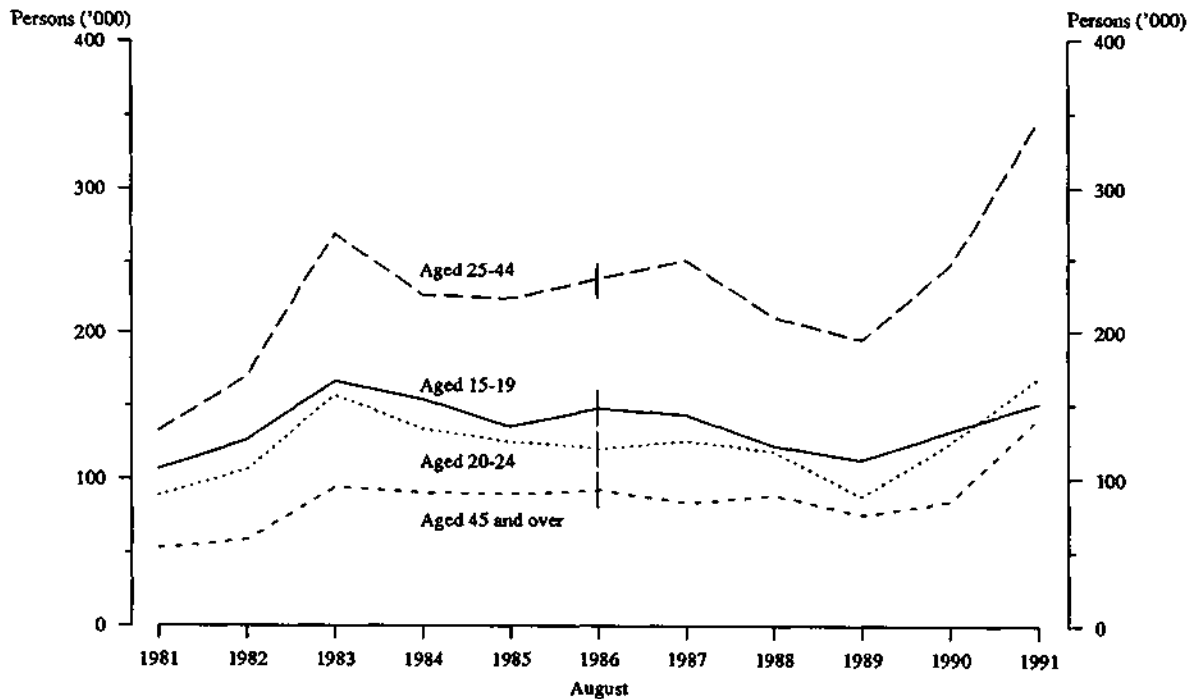
Indicates break in series. Estimates from August 1986 are based on a revised definition introduced in April 1986. See the Technical Notes for further information.
Source: *The Labour Force, Australia* (6203.0).

TABLE 4.3. UNEMPLOYED PERSONS: BIRTHPLACE BY AGE, AUSTRALIA, AUGUST 1991

	Number unemployed ('000)			Unemployment rate (per cent)		
	Males	Females	Persons	Males	Females	Persons
BORN IN AUSTRALIA						
Total	334.7	215.2	549.9	9.2	8.1	8.7
Looking for full-time work	308.2	157.2	465.3	9.4	10.0	9.6
Looking for part-time work	26.5	58.0	84.6	7.8	5.3	5.9
Aged 15-19	69.2	61.7	130.9	20.7	19.5	20.1
Aged 20 and over	265.5	153.4	419.0	8.1	6.5	7.4
20-24	82.1	56.4	138.5	15.5	12.5	14.1
25-34	89.5	46.5	136.0	9.0	6.7	8.0
35-44	47.5	31.0	78.6	5.5	4.7	5.2
45-54	23.3	16.4	39.7	4.3	4.2	4.2
55 and over	23.1	* 3.1	26.3	6.6	* 2.0	5.2
Aged 15-64	334.0	215.2	549.1	9.4	8.1	8.8
BORN OUTSIDE AUSTRALIA						
Total	167.9	89.2	256.2	12.7	10.3	11.7
Looking for full-time work	157.2	64.4	221.6	12.9	11.6	12.5
Looking for part-time work	10.7	23.8	34.5	10.2	7.9	8.5
Aged 15-19	11.3	8.5	19.8	31.7	27.8	29.9
Aged 20 and over	156.6	79.7	236.3	12.1	9.7	11.2
20-24	18.1	11.8	29.9	21.9	15.1	18.6
25-34	41.7	25.0	66.6	12.6	11.3	12.1
35-44	43.7	21.3	65.0	11.6	7.6	9.9
45-54	29.3	16.5	45.8	9.0	8.3	8.9
55 and over	23.7	5.2	28.9	13.5	9.0	12.4
Aged 15-64	167.5	88.2	255.7	12.8	10.4	11.9
TOTAL						
Total	502.6	303.4	806.0	10.2	8.6	9.5
Looking for full-time work	465.4	221.6	687.0	10.3	10.4	10.4
Looking for part-time work	37.2	81.8	119.1	8.4	5.8	6.5
Aged 15-19	80.5	70.3	150.8	21.8	20.2	21.0
Aged 20 and over	422.1	233.2	655.3	9.2	7.3	8.4
20-24	100.2	68.2	168.4	16.3	12.9	14.7
25-34	131.1	71.5	202.6	9.9	7.8	9.0
35-44	91.3	52.3	143.6	7.4	5.5	6.6
45-54	52.6	32.8	85.5	6.0	5.7	5.9
55 and over	46.9	8.3	55.2	8.9	3.9	7.5
Aged 15-64	501.5	303.4	804.9	10.3	8.7	9.6

Source: The Labour Force, Australia (6203.0).

CHART 4.4. UNEMPLOYED PERSONS BY AGE, AUSTRALIA



Indicates break in series. Estimates from August 1986 are based on a revised definition introduced in April 1986. See the Technical Notes for further information.

Source: The Labour Force, Australia (6203.0).

TABLE 4.4. UNEMPLOYED PERSONS : DURATION OF UNEMPLOYMENT, AUSTRALIA, AUGUST 1981 TO AUGUST 1991

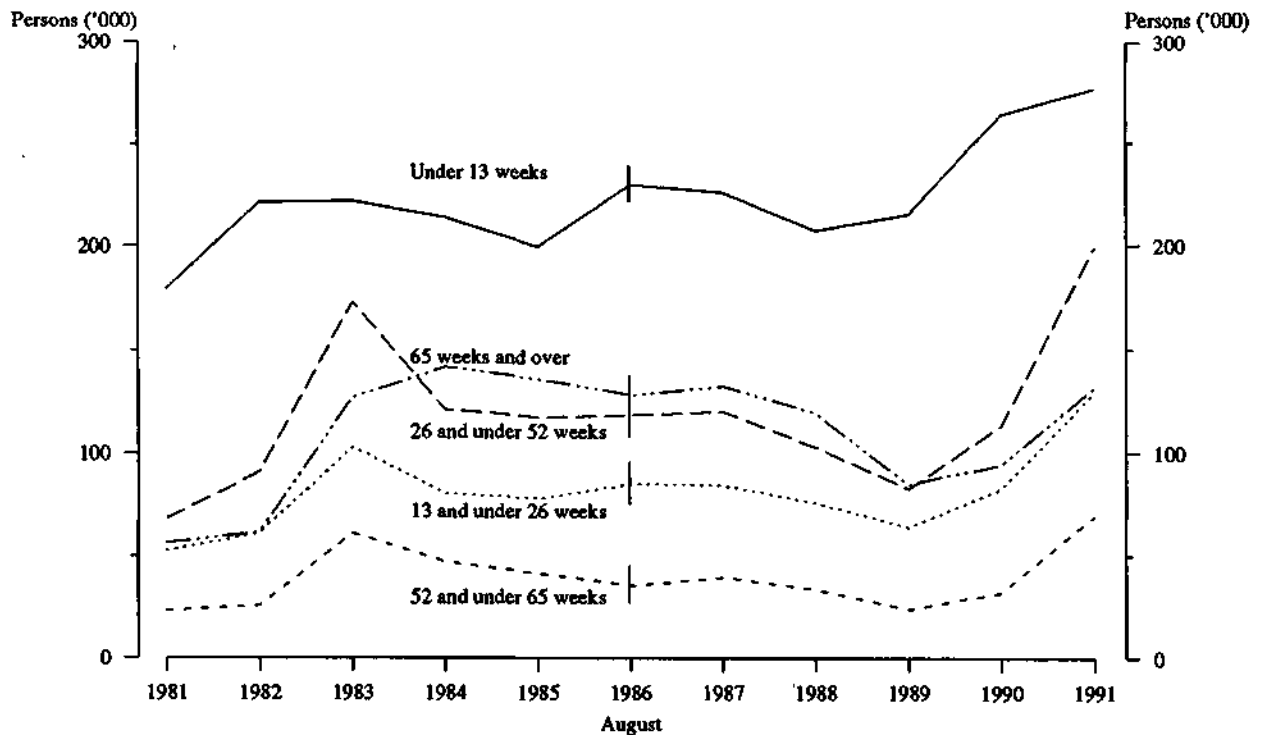
Duration of unemployment (weeks)	August										
	1981	1982	1983	1984	1985	1986(a)	1987	1988	1989	1990	1991
	—'000—										
Under 2	33.9	38.7	32.4	34.2	38.8	47.3	41.7	41.3	47.3	40.3	39.7
2 and under 4	41.5	58.2	49.7	56.8	55.6	56.7	59.6	54.9	54.8	68.2	66.8
4 and under 8	58.4	72.4	73.9	64.0	57.6	67.3	67.9	60.6	68.8	88.0	87.5
8 and under 13	45.9	52.3	65.9	58.8	47.6	58.4	56.4	50.6	44.6	67.5	82.5
13 and under 26	52.8	61.2	103.1	80.5	78.2	85.3	84.2	75.7	63.8	82.9	129.4
26 and under 39	53.2	73.3	123.5	94.9	87.9	91.3	94.6	78.3	62.5	89.3	144.7
39 and under 52	15.0	17.8	49.6	26.2	29.7	27.6	25.5	24.4	19.9	24.3	54.4
52 and under 65	23.4	25.7	61.3	46.9	41.3	35.7	39.6	33.6	23.7	32.3	69.1
65 and under 104	15.8	18.6	43.3	49.2	30.7	32.1	36.7	29.7	19.4	24.6	49.7
104 and over	40.8	43.4	84.2	92.4	105.1	96.1	95.7	89.6	65.1	70.2	82.2
Total	380.6	461.4	686.8	604.0	572.7	597.6	602.0	538.7	469.4	587.4	806.0
	—weeks—										
Average duration	34.9	32.6	41.4	45.5	49.5	48.6	48.3	51.3	44.5	43.7	43.0
Median duration	13	13	26	26	26	21	23	22	15	15	25

(a) Estimates from August 1986 are based on a revised definition introduced in April 1986. See the Technical Notes for further information.

Note: Estimates for average and median durations of unemployment refer to current period of unemployment, not completed periods. See the Glossary for further information.

Source: *The Labour Force, Australia* (6203.0).

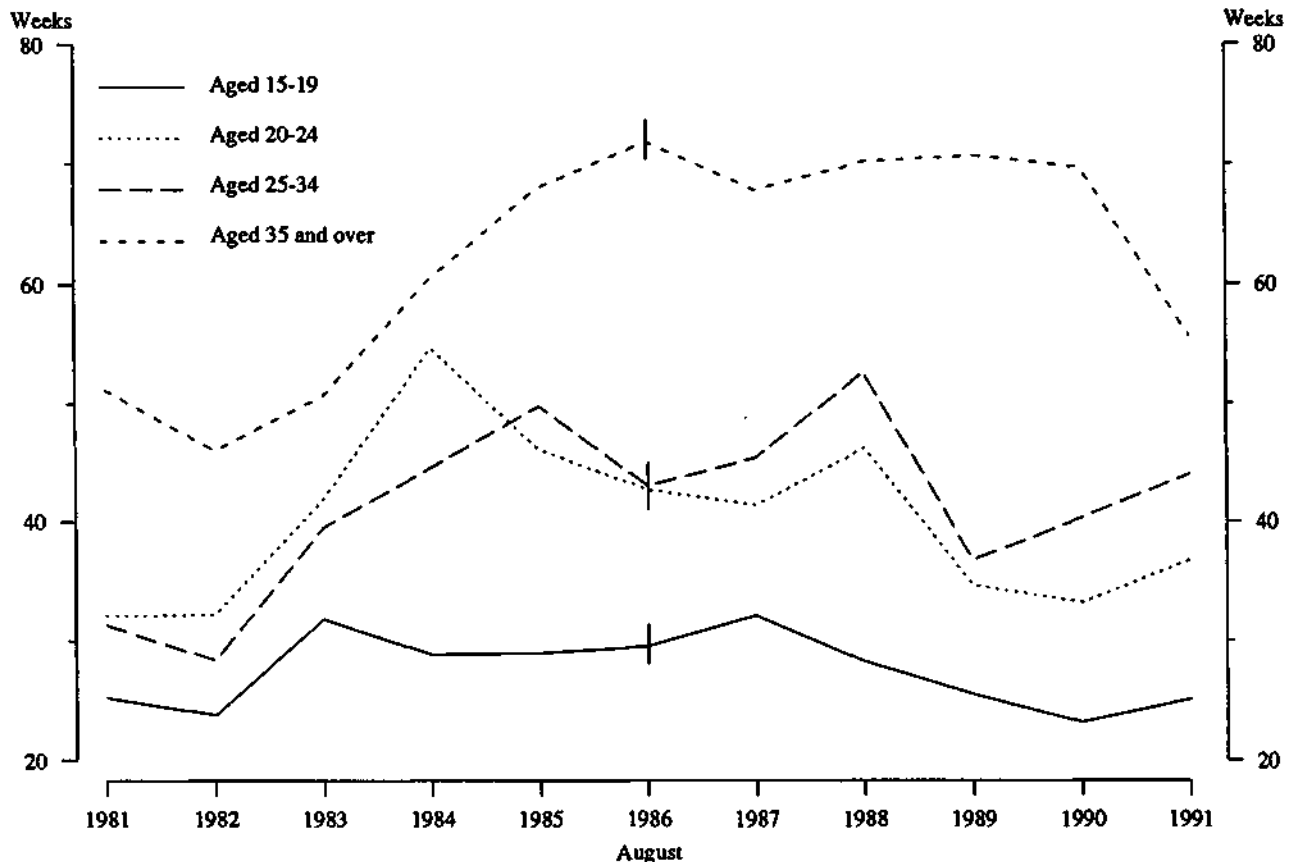
CHART 4.5. UNEMPLOYED PERSONS: DURATION OF UNEMPLOYMENT, AUSTRALIA



Indicates break in series. Estimates from August 1986 are based on a revised definition introduced in April 1986. See the Technical Notes for further information.

Source: *The Labour Force, Australia* (6203.0).

CHART 4.6 UNEMPLOYED PERSONS: AVERAGE DURATION OF UNEMPLOYMENT AND AGE, AUSTRALIA



Indicates break in series. Estimates from August 1986 are based on a revised definition introduced in April 1986. See the Technical Notes for more information.
 Note: Estimates for average duration of unemployment refer to current periods of unemployment, not completed periods. See the glossary for further information.

Source: *The Labour Force, Australia* (6203.0).

TABLE 4.5. UNEMPLOYED PERSONS: DURATION OF UNEMPLOYMENT, AGE, MARITAL STATUS AND WHETHER LOOKING FOR FULL-TIME OR PART-TIME WORK, AUSTRALIA, AUGUST 1991

Duration of unemployment (weeks)	Age group				Total(a)	Married	Not married	Looking for—	
	15-19	20-24	25-34	35-54				Full-time work	Part-time work
	—'000—								
Under 2	9.2	8.5	8.4	11.3	39.7	17.5	22.2	24.0	15.7
2 and under 4	16.4	11.8	16.1	18.2	66.8	28.5	38.4	47.5	19.4
4 and under 8	18.0	20.0	22.5	22.3	87.5	35.0	52.5	70.3	17.2
8 and under 13	16.7	19.0	20.0	23.2	82.5	35.7	46.8	73.8	8.7
13 and under 26	23.3	28.0	33.3	39.0	129.4	53.8	75.6	117.3	12.0
26 and under 39	36.3	33.5	34.2	34.5	144.7	53.4	91.3	124.3	20.4
39 and under 52	11.7	9.2	15.2	14.4	54.4	23.1	31.3	48.8	5.6
52 and under 65	9.5	14.2	19.3	22.8	69.1	32.3	36.8	60.3	8.8
65 and under 104	5.4	10.2	13.9	14.1	49.7	20.9	28.8	46.0	3.7
104 and over	4.3	14.0	19.8	29.1	82.2	41.8	40.4	74.7	7.5
Total	150.8	168.4	202.6	229.1	806.0	341.9	464.2	687.0	119.1
	—weeks—								
Average duration	25.1	36.8	44.0	49.0	43.0	46.8	40.3	45.6	28.5
Median duration	20	23	26	26	25	26	24	26	10

(a) Includes persons aged 55 and over, details for whom are not shown separately.

Source: *The Labour Force, Australia* (6203.0).

TABLE 4.6. UNEMPLOYED PERSONS: REASON FOR UNEMPLOYMENT, AUSTRALIA

Month	Reason for unemployment						Per cent of unemployed				
	Job loser	Job leaver	Stood down	Looking for first job	Former workers	Total	Job loser	Job leaver	Stood down	Looking for first job	Former workers
	—'000—						—per cent—				
<i>1989—</i>											
August	149.9	104.8	11.1	79.5	124.1	469.4	31.9	22.3	2.4	16.9	26.4
<i>1990—</i>											
August	219.0	127.8	14.3	91.5	134.8	587.4	37.3	21.8	2.4	15.6	22.9
September	235.4	128.4	21.7	93.3	148.9	627.7	37.5	20.5	3.5	14.9	23.7
October	242.0	114.9	20.3	94.4	135.4	607.0	39.9	18.9	3.3	15.6	22.3
November	247.5	125.5	16.9	101.3	138.4	629.5	39.3	19.9	2.7	16.1	22.0
December	263.1	125.6	15.9	162.0	138.0	704.6	37.3	17.8	2.3	23.0	19.6
<i>1991—</i>											
January	307.4	137.1	22.5	158.0	142.6	767.7	40.0	17.9	2.9	20.6	18.6
February	325.2	150.4	21.3	141.6	173.6	812.2	40.0	18.5	2.6	17.4	21.4
March	330.9	149.9	22.0	137.5	184.4	824.6	40.1	18.2	2.7	16.7	22.4
April	359.7	158.4	34.4	136.1	167.8	856.3	42.0	18.5	4.0	15.9	19.6
May	352.1	148.6	18.3	126.2	166.9	812.2	43.4	18.3	2.3	15.5	20.5
June	337.7	135.9	24.1	109.0	157.5	764.1	44.2	17.8	3.2	14.3	20.6
July	363.8	136.7	18.2	120.8	162.2	801.7	45.4	17.1	2.3	15.1	20.2
August	381.8	131.4	21.2	110.6	161.0	806.0	47.4	16.3	2.6	13.7	20.0

Source: *The Labour Force, Australia (6203.0)*.

TABLE 4.7. UNEMPLOYED PERSONS: INDUSTRY AND OCCUPATION OF LAST FULL-TIME JOB, AUSTRALIA AUGUST 1991

	Number unemployed ('000)			Unemployment rate (per cent)		
	Males	Females	Persons	Males	Females	Persons
<i>Had worked full time for two weeks or more in the last two years</i>	363.7	149.5	513.2	7.6	4.4	6.3
<i>Industry division or subdivision —</i>						
Agriculture, forestry, fishing & hunting	20.7	8.2	28.9	6.7	6.5	6.6
Agriculture & services to agriculture	17.6	8.2	25.7	6.2	6.6	6.3
Forestry & logging, fishing & hunting	* 3.2	* 0.0	* 3.2	* 12.6	* 0.0	* 11.3
Mining	6.0	* 0.3	6.2	6.4	* 3.5	6.1
Manufacturing	100.7	28.7	129.4	11.2	8.5	10.5
Food, beverages and tobacco	20.3	4.5	24.8	14.7	6.6	12.0
Metal products	16.7	* 2.5	19.2	10.2	* 9.7	10.1
Other manufacturing	63.8	21.6	85.4	10.7	8.8	10.2
Electricity, gas and water	* 3.1	* 0.3	* 3.4	* 3.2	* 2.4	* 3.1
Construction	79.6	* 1.9	81.5	15.1	* 3.0	13.8
Wholesale and retail trade	61.3	42.3	103.6	6.5	5.6	6.1
Wholesale trade	18.4	8.1	26.5	5.3	5.1	5.3
Retail trade	42.9	34.2	77.1	7.2	5.8	6.5
Transport and storage	22.8	3.8	26.6	6.7	4.5	6.2
Communication	* 1.5	* 1.4	* 2.9	* 1.5	* 3.6	* 2.2
Finance, property & business services	21.7	18.0	39.7	4.5	4.0	4.3
Public administration and defence	9.3	4.4	13.7	4.3	2.8	3.7
Community services	13.6	17.8	31.4	2.6	1.8	2.1
Recreation, personal & other services	23.5	22.4	45.9	8.1	6.2	7.1
<i>Occupation group —</i>						
Managers and administrators	17.8	3.9	21.8	2.7	1.8	2.5
Professionals	12.4	8.4	20.9	2.0	1.9	2.0
Para-professionals	9.9	6.0	15.9	3.7	2.7	3.2
Tradespersons	104.6	6.5	111.1	9.2	5.3	8.8
Clerks	14.5	40.5	54.9	4.5	3.8	4.0
Salespersons and personal service workers	26.2	44.2	70.4	6.0	5.6	5.7
Plant and machine operators, and drivers	50.1	11.6	61.7	9.6	11.2	9.8
Labourers and related workers	128.2	28.4	156.6	15.1	6.8	12.4
<i>Other</i>	131.8	139.8	271.6
Looking for first job	55.8	54.8	110.6
Looking for full-time work	37.2	33.5	70.7
Former workers	76.0	85.0	161.0
Stood down	7.1	14.2	21.2
Total	502.6	303.4	806.0	10.2	8.6	9.5

Source: *The Labour Force, Australia (6203.0)*.

Job Search Experience of Unemployed Persons

In June 1991, the labour force numbered 8,480,800 persons, of whom 740,100 were unemployed persons taking active steps to find work. Of these, 86 per cent were persons looking for full-time work.

The most frequently reported difficulty in finding work was the belief that there are 'no vacancies at all'. The number of persons reporting this as the main difficulty had risen from 17 per cent in July 1990 to 33 per cent in June 1991, which is the highest level since July 1978 (38%).

There were 183,700 persons (25 per cent of total unemployed) whose current period of unemployment (at June 1991) was one year or more. For this group the most frequently reported main difficulties in finding work were 'no vacancies at all', 'no vacancies in line of work', 'considered too young or too old by employers', and 'lacked the necessary skills/education'.

TABLE 4.8. UNEMPLOYED PERSONS : MAIN DIFFICULTY IN FINDING WORK, AUSTRALIA
JULY 1982 TO JUNE 1991

	July 1982	July 1984	June 1986	July 1988	July 1990	June 1991	
<i>Main difficulty in finding work</i>	— per cent —						('000)
Own ill health or disability	3.8	4.1	5.8	6.6	6.7	3.8	28.3
Considered too young or too old by employers	15.3	15.5	16.3	16.5	15.3	11.7	86.5
Unsuitable hours	4.0	2.8	4.0	3.6	3.4	2.2	16.6
Too far to travel/transport problems	4.7	4.9	5.7	6.9	5.2	3.6	26.7
Lacked necessary skills/education	7.3	10.5	10.0	12.0	13.4	8.9	66.2
Language difficulties	2.4	2.8	2.1	3.2	4.4	2.2	16.1
Insufficient work experience	9.7	9.8	10.1	10.9	9.3	7.9	58.6
No vacancies in line of work	16.3	16.0	16.0	12.0	14.5	18.4	136.4
No vacancies at all	26.9	23.8	19.0	16.1	16.7	33.4	247.0
Other difficulties(a)	5.5	5.3	5.0	6.1	5.5	5.1	37.9
No difficulties reported	4.0	4.4	6.1	6.2	5.6	2.7	19.8
Total	100.0	100.0	100.0	100.0	100.0	100.0	740.1

(a) Includes persons who reported difficulties with ethnic background.

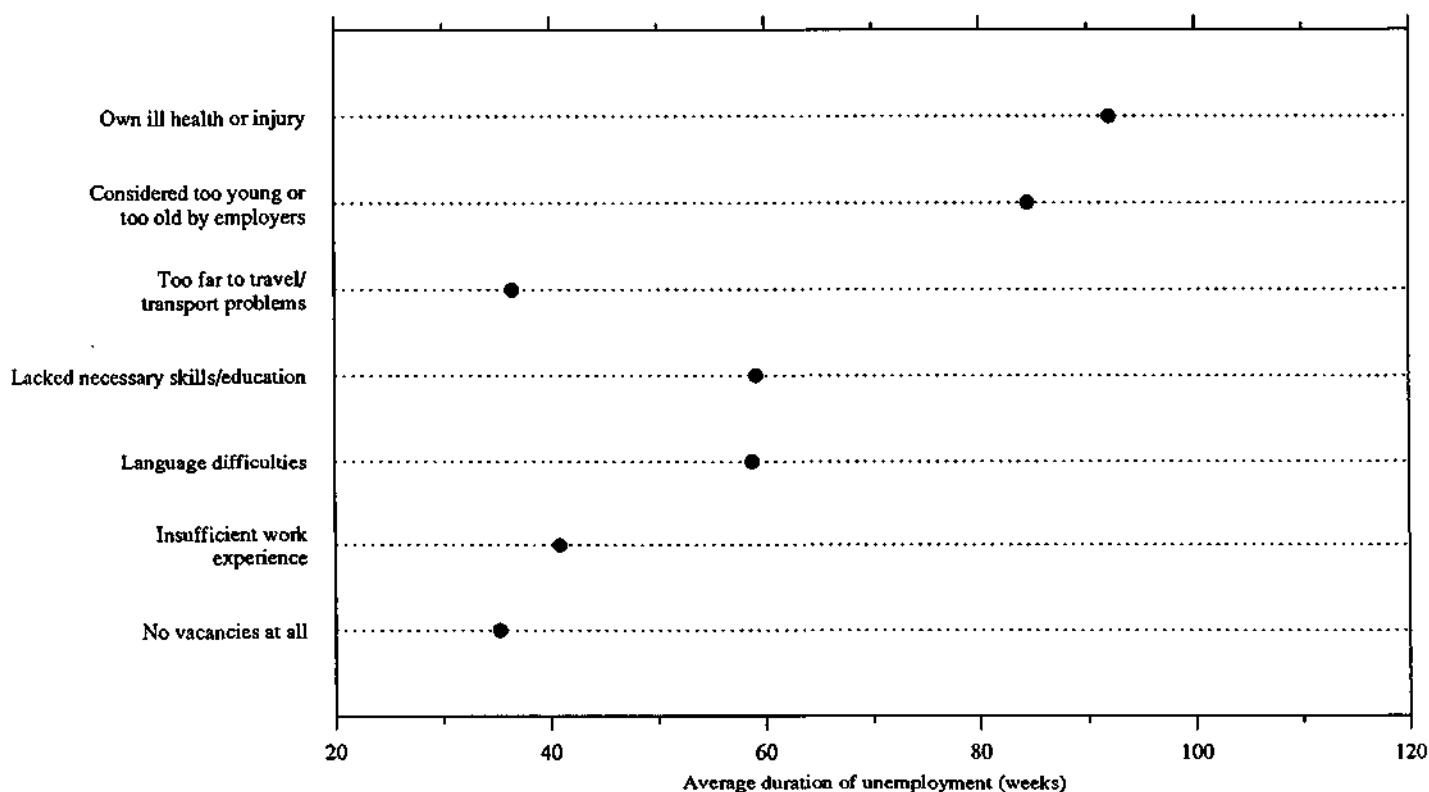
Source: *Job Search Experience of Unemployed Persons, Australia, June 1991 (6222.0)*.

TABLE 4.9. UNEMPLOYED PERSONS : ACTIVE STEPS TAKEN TO FIND WORK, AUSTRALIA
JULY 1982 TO JUNE 1991

	July 1982	July 1984	June 1986	July 1988	July 1990	June 1991	
<i>Active steps taken to find work</i>	— per cent —						('000)
Registered with the CES and—							
Took no other active steps	0.8	1.3	1.5	1.4	1.5	0.6	4.4
Contacted prospective employers	66.9	73.8	70.4	71.7	69.7	74.5	551.3
Took other active steps	84.0	6.7	6.9	6.1	4.7	3.4	25.2
Total	72.7	81.8	78.8	79.2	75.8	78.5	580.8
Not registered with the CES and—							
Contacted prospective employers	24.8	16.4	19.3	19.0	22.2	19.5	144.5
Took other active steps	2.5	1.8	1.9	1.8	2.0	2.0	14.8
Total	27.3	18.2	21.2	20.8	24.2	21.5	159.3
Total	100.0	100.0	100.0	100.0	100.0	100.0	740.1

Source: *Job Search Experience of Unemployed Persons, Australia, June 1991 (6222.0)*.

CHART 4.7. UNEMPLOYED PERSONS: AVERAGE DURATION OF UNEMPLOYMENT BY SELECTED MAIN DIFFICULTIES IN FINDING WORK, AUSTRALIA, JUNE 1991



Source: Job Search Experience of Unemployed Persons, Australia, June 1991 (6222.0).

TABLE 4.10. UNEMPLOYED PERSONS : WHETHER WOULD MOVE INTERSTATE OR INTRASTATE IF OFFERED A SUITABLE JOB, AUSTRALIA, JULY 1982 TO JUNE 1991

	July 1982	July 1984	June 1986	July 1988	July 1990	June 1991	
							(^{'000})
— per cent —							
WHETHER WOULD MOVE INTERSTATE IF OFFERED A SUITABLE JOB							
Would move interstate	27.9	26.9	26.0	24.9	24.7	28.9	213.6
Would not move interstate	60.4	61.2	63.0	63.3	65.1	58.3	431.2
Moving interstate would depend—							
On job conditions	4.0	5.4	4.0	5.1	4.1	5.0	36.9
On other conditions	5.4	4.4	4.9	4.3	4.2	5.2	38.8
Total	9.4	9.8	8.9	9.5	8.3	10.2	75.7
Undecided	2.2	2.2	2.1	2.3	2.0	2.7	19.7
Total	100.0	100.0	100.0	100.0	100.0	100.0	740.1
WHETHER WOULD MOVE INTRASTATE IF OFFERED A SUITABLE JOB							
Would move intrastate	41.1	40.5	37.2	37.4	38.4	42.6	314.9
Would not move intrastate	46.2	45.5	49.8	48.5	49.5	43.3	320.1
Moving intrastate would depend—							
On job conditions	3.3	5.7	3.8	4.6	4.0	4.7	34.6
On other conditions	7.8	6.6	7.4	7.5	6.5	7.5	55.5
Total	11.0	12.2	11.2	12.1	10.5	12.2	90.1
Undecided	1.7	1.8	1.9	2.0	1.7	2.0	15.0
Total	100.0	100.0	100.0	100.0	100.0	100.0	740.1

Source: Job Search Experience of Unemployed Persons, Australia, June 1991 (6222.0).

Successful and Unsuccessful Job Search Experience

In July 1990 there were an estimated 1,880,300 persons who had started a job for wages or salary (lasting two weeks or more) in the previous twelve months. Of these persons, 1,069,000 had been out of work before starting their job, while 811,300 persons changed employer to start the job.

There were a further 515,600 persons who had looked for, but not started, a job for wages or salary in the last year.

Of the persons who started a job for wages or salary, 35 per cent (649,700) obtained their job by approaching the employer without prior knowledge that the job was available, while 40 per cent (757,500) approached the employer to obtain a job they knew was available. The remaining 25 per cent (473,200) of jobs had been obtained as a result of the employer approaching the jobseeker.

Persons aged 20 years and over were more likely to have started a job in their preferred occupation (73%) than persons aged 15 to 19 years (62%). Persons who changed employer to start their job were far more likely to be working in their preferred occupation (81%) than those who were out of work prior to starting the job (63%). This was the case for all age groups tabulated.

TABLE 4.11. PERSONS WHO STARTED A JOB FOR WAGES OR SALARY DURING THE PREVIOUS TWELVE MONTHS: METHOD OF JOB ATTAINMENT AND WHETHER OUT OF WORK PRIOR TO STARTING JOB, AUSTRALIA, JULY 1990 ('000)

Method of job attainment	Out of work prior to starting job			Changed employer to start job			Total		
	Males	Females	Persons	Males	Females	Persons	Males	Females	Persons
Jobseeker approached employer	417.7	423.4	841.1	301.3	264.8	566.1	719.0	688.1	1,407.2
Had no prior knowledge that job was available	199.3	201.5	400.8	127.5	121.3	248.8	326.8	322.9	649.7
First step taken —									
Tendered/advertised for work	4.2	4.5	8.7	4.5	4.3	8.8	8.7	8.8	17.5
Contacted likely employers	137.4	138.3	275.7	89.0	77.7	166.7	226.4	216.0	442.4
Other	57.7	58.7	116.4	34.0	39.4	73.3	91.7	98.0	189.7
Had prior knowledge that job was available	218.4	221.8	440.2	173.8	143.4	317.2	392.2	365.3	757.5
Through CES	37.9	26.8	64.7	9.6	7.4	17.1	47.6	34.2	81.8
Through private employment agency	5.3	7.0	12.3	*2.9	4.9	7.8	8.2	11.9	20.1
Through school programs	*3.2	*2.0	5.2	4.4	*2.2	6.6	7.6	4.2	11.8
Through newspaper advertisements	73.0	81.6	154.7	68.5	56.4	124.9	141.5	138.1	279.6
Through friends, relatives, company contacts	87.6	87.4	175.0	76.0	60.4	136.4	163.6	147.8	311.4
Through other sources	11.4	17.0	28.3	12.4	12.0	24.4	23.8	29.0	52.7
Employer approached jobseeker	92.7	135.3	227.9	142.9	102.4	245.2	235.5	237.6	473.2
Total	510.4	558.6	1,069.0	444.2	367.1	811.3	954.6	925.8	1,880.3

Source: Successful and Unsuccessful Job Search Experience, Australia, July 1990 (6245.0).

TABLE 4.12. PERSONS WHO STARTED A JOB FOR WAGES OR SALARY DURING THE PREVIOUS TWELVE MONTHS: AGE, WHETHER OUT OF WORK PRIOR TO STARTING JOB AND WHETHER JOB STARTED WAS IN PREFERRED OCCUPATION, AUSTRALIA, JULY 1990 ('000)

Age group	Out of work prior to starting job			Changed employer to start job			Total		
	Job was		Total(a)	Job was		Total(a)	Job was		Total(a)
	in preferred occupation	not in preferred occupation		in preferred occupation	not in preferred occupation		in preferred occupation	not in preferred occupation	
15-19	164.3	57.3	287.7	113.4	22.7	160.2	277.6	80.0	447.9
20-24	139.8	45.0	217.3	135.2	17.5	166.0	275.0	62.4	383.3
25-34	188.8	54.3	286.4	209.5	22.3	248.9	398.3	76.6	535.3
35-44	112.4	36.9	174.5	131.9	14.4	157.8	244.3	51.3	332.2
45-54	48.6	15.4	77.1	47.8	7.6	60.5	96.3	23.0	137.6
55 and over	17.5	3.8	26.1	15.8	*0.0	17.9	33.3	3.8	44.0
Total	671.4	212.6	1,069.0	653.5	84.5	811.3	1,324.9	297.1	1,880.3

(a) Includes persons who did not have a preferred occupation.

Source: Successful and Unsuccessful Job Search Experience, Australia, July 1990 (6245.0).

TABLE 4.13. PERSONS WHO STARTED A JOB FOR WAGES OR SALARY DURING THE PREVIOUS TWELVE MONTHS, AND PERSONS WHO HAD LOOKED FOR, BUT NOT STARTED, A JOB FOR WAGES OR SALARY DURING THE PREVIOUS TWELVE MONTHS: COMPARATIVE PROFILE, AUSTRALIA, JUNE 1986 AND JULY 1990 ('000)

	Persons who started a job for wages or salary during the previous twelve months						Persons who had looked for, but not started, a job for wages or salary during the previous twelve months	
	Out of work prior to starting job		Changed employer to start job		Total		June 1986	July 1990
	June 1986	July 1990	June 1986	July 1990	June 1986	July 1990		
Age group—								
15-19	255.6	287.7	175.6	160.2	431.2	447.9	135.0	102.2
20-24	209.6	217.3	164.9	166.0	374.5	383.3	89.8	85.0
25-34	241.5	286.4	214.4	248.9	455.9	535.3	141.7	130.0
35-44	147.7	174.5	125.9	157.8	273.6	332.2	113.7	98.0
45-54	59.2	77.1	49.3	60.5	108.5	137.6	64.1	59.6
55 and over	27.5	26.1	14.4	17.9	41.9	44.0	37.3	40.7
Educational attainment—								
With post-school qualifications	314.8	386.7	340.9	392.8	655.7	779.5	159.2	155.7
Degree	56.4	75.6	81.9	99.0	138.3	174.6	21.7	23.5
Trade qualification/apprenticeship Certificate or diploma	238.6	102.0	248.1	107.3	486.7	209.3	127.9	48.3
Other	19.8	8.1	10.9	6.7	30.7	14.8	9.6	7.0
Without post-school qualification(a)	568.3	594.0	366.7	380.0	935.0	974.0	378.2	325.9
Attended highest level of secondary school available	156.6	186.1	120.1	142.0	276.7	328.0	74.1	71.7
Did not attend highest level of secondary school available	410.2	405.3	245.9	235.3	656.1	640.6	300.7	250.9
Left at age—								
18 and over	8.0	10.2	4.9	7.2	12.9	17.5	6.4	5.5
16 or 17	175.4	190.4	116.8	116.4	292.3	306.8	106.2	88.9
14 or 15	208.6	189.2	117.2	105.0	325.8	294.2	162.9	139.5
13 and under	18.1	15.5	6.9	6.6	25.0	22.1	25.3	17.0
Still at school	57.9	88.3	36.9	38.5	94.9	126.8	44.2	34.0
Active steps taken to find work in preferred occupation in the previous twelve months/active steps taken to find work in occupation being sought in the previous twelve months—								
Had a preferred occupation	806.0	884.0	685.7	738.0	1,491.7	1,622.0	388.0	314.1
This job was in preferred occupation	611.8	671.4	599.7	653.5	1,211.5	1,324.9
This job was not in preferred occupation	194.2	212.6	86.0	84.5	280.2	297.1
Registered with the CES and—								
Took no other active steps	11.2	7.6	*1.7	*2.6	12.9	10.2	15.3	12.1
Contacted prospective employers	68.2	74.7	13.6	12.6	81.8	87.3	177.4	147.3
Took other active steps	15.8	14.8	*3.4	*2.5	19.2	17.3	34.1	27.6
Total	95.1	97.1	18.8	17.6	114.0	114.7	226.8	187.0
Not registered with the CES and—								
Took only inactive steps	13.9	13.1	10.1	10.0	24.0	23.1	23.8	9.9
Contacted prospective employers	35.1	51.8	24.7	25.1	59.8	76.8	104.5	92.2
Took other active steps	16.7	17.3	7.9	10.8	24.6	28.1	29.0	23.6
Total	65.7	82.2	42.7	45.8	108.4	128.0	157.4	125.6
Had not looked for work in preferred occupation	33.4	33.4	24.5	21.0	57.9	54.4	3.9	*1.5
Did not have a preferred occupation	135.1	185.0	58.9	73.3	194.0	258.3	193.6	201.4
Labour force status—								
In the labour force	831.2	937.9	700.1	766.9	1,531.3	1,704.8	425.7	391.7
Employed	705.0	793.1	681.1	736.6	1,386.1	1,529.7	40.2	32.2
Unemployed	126.1	144.8	19.0	30.3	145.1	175.1	385.5	359.5
Not in the labour force	109.9	131.2	44.4	44.4	154.4	175.6	155.9	123.8
Sex—								
Males	447.3	510.4	399.6	444.2	846.9	954.6	296.7	260.9
Females	493.7	558.6	345.0	367.1	838.7	925.8	284.8	254.6
Total	941.1	1,069.0	744.5	811.3	1,685.6	1,880.3	581.6	515.6

(a) Includes persons who never attended school and those for whom secondary school qualifications could not be determined.

Source: Successful and Unsuccessful Job Search Experience, Australia, July 1990 (6245.0).

Labour Force Experience

An estimated 1,748,700 persons looked for work at some time during the year ending March 1991. The proportion of males who looked for work at some time during that year increased from 13 per cent in 1990 to 16 per cent in 1991 and for females there was a small increase to 13 per cent.

Of the 1,748,700 persons who looked for work during 1991, 80 per cent had only one spell of looking for work — on average, this spell lasted 19 weeks.

CHART 4.8. ALL PERSONS : PROPORTION WHO HAD LOOKED FOR WORK AT SOME TIME IN THE PREVIOUS TWELVE MONTHS, AUSTRALIA



Source: Labour Force Experience, Australia (6206.0).

TABLE 4.14. PERSONS IN THE LABOUR FORCE AT SOME TIME DURING THE YEAR ENDING MARCH 1991: PROPORTION WHO LOOKED FOR WORK AT SOME TIME, AGE AND MARITAL STATUS, AUSTRALIA (Per cent)

Age group	Married			Not-married			Total		
	Males	Females	Persons	Males	Females	Persons	Males	Females	Persons
15-19	*63.4	52.0	54.5	41.8	40.7	41.3	42.0	41.1	41.5
20-24	29.7	22.0	25.0	29.9	27.7	28.9	29.9	26.2	28.1
25-34	15.9	15.8	15.9	24.5	23.3	24.0	19.1	18.1	18.7
35-44	11.0	12.3	11.6	19.9	20.7	20.3	12.6	13.9	13.2
45-54	9.3	8.7	9.0	16.8	21.3	19.0	10.4	11.2	10.7
55-59	12.1	7.6	10.7	19.0	*9.2	14.5	13.1	8.0	11.4
60-69	10.1	*1.7	8.3	21.7	*5.2	14.4	11.9	*2.9	9.6
Total	12.6	13.0	12.7	29.1	28.2	28.7	18.9	19.1	19.0

Source: Labour Force Experience, Australia, During the Year Ending March 1991 (6206.0).

Educational Attainment

As a percentage of the total unemployed, persons with post-school qualifications rose from 26 per cent to 34 per cent between February 1986 and February 1991. In contrast, the proportion of total unemployed persons who were without post-school qualifications fell from 68 per cent to 61 per cent. Persons without post-school qualifications who had not attended the highest level of secondary schooling available fell from 53 per cent of total unemployed persons in February 1986 to 44 per cent in February 1991. In 1991, 5.6% of unemployed persons were still at school

The unemployment rate for persons with post-school qualifications fell from 5.3 per cent to 4.4 per cent between February 1986 and February 1990 then increased significantly in February 1991 to 6.7 per cent. For persons with a degree, the unemployment rate rose from 3.9 per cent in February 1986 to 4.8 per cent in February 1991. Between February 1990 and February 1991 the unemployment rate for persons without post-school qualifications increased from 8.8 to 11.5 per cent.

TABLE 4.15. UNEMPLOYED PERSONS AGED 15 TO 69 : EDUCATIONAL ATTAINMENT AND UNEMPLOYMENT RATES, AUSTRALIA, FEBRUARY 1986 TO FEBRUARY 1991

February	With post-school qualifications				Without post-school qualifications		Total(b)	Total(c)
	Degree	Trade qualification	Certificate or diploma	Total(a)	Attended highest level of secondary school	Did not attend highest level of secondary school		
UNEMPLOYED ('000)								
1986	27.9	128.3		169.1	97.6	344.7	444.4	649.6
1987(d)	25.4	64.2	85.3	178.1	109.1	355.2	468.0	687.3
1988	27.2	61.8	89.5	181.8	97.2	308.2	410.9	633.0
1989	32.3	46.6	83.6	165.9	96.9	283.8	384.8	588.0
1990	37.5	46.3	80.5	168.3	96.6	277.2	377.4	581.8
1991	44.2	88.2	131.2	269.3	132.8	350.8	486.4	800.7
UNEMPLOYMENT RATE (per cent)								
1986	3.9	5.4		5.3	10.3	11.1	10.9	8.8
1987(d)	3.6	5.0	6.2	5.2	11.0	11.6	11.5	9.0
1988	3.6	4.8	6.1	5.1	8.5	10.2	10.0	8.1
1989	4.0	3.6	5.3	4.5	9.0	9.2	9.2	7.3
1990	4.3	3.6	5.0	4.4	8.3	9.0	8.8	7.0
1991	4.8	6.6	7.6	6.7	10.8	11.7	11.5	9.5
AVERAGE DURATION OF UNEMPLOYMENT (weeks)								
1986	23.1	37.8		35.6	29.5	52.3	47.5	42.6
1987(d)	37.0	54.6	29.2	39.3	30.9	57.9	51.8	46.4
1988	24.9	47.5	33.9	37.8	27.7	57.3	50.5	44.4
1989	23.4	63.6	31.7	39.4	22.5	59.1	50.1	44.8
1990	27.6	37.4	33.5	33.1	23.5	48.0	41.9	37.4
1991	17.9	36.0	30.0	30.2	20.5	49.7	41.7	36.3
MEDIAN DURATION OF UNEMPLOYMENT (weeks)								
1986	8	11		11	10	20	16	13
1987(d)	11	15	10	12	11	24	18	14
1988	7	15	8	9	9	24	17	13
1989	8	19	8	9	8	18	13	11
1990	8	8	7	8	6	13	10	9
1991	8	13	11	11	9	18	13	13

(a) Includes persons with other post-school qualifications. (b) Includes persons who never attended school and those for whom secondary school qualifications could not be determined. (c) Includes persons aged 15 to 20 still at school. (d) Prior to February 1987 the data now published in the Educational attainment categories "Trade qualifications" and "Certificate or diploma" were published as "Trade, technical or other certificate".

Source: Labour Force Status and Educational Attainment, Australia, February 1991 (6235.0).

TABLE 4.16. UNEMPLOYED PERSONS AGED 15 TO 69 : AGE AND EDUCATIONAL ATTAINMENT, AUSTRALIA, FEBRUARY 1991

Educational attainment	Age						Total	
	15-19	20-24	25-34	35-44	45-54	55-69		(per cent)
	—'000—							
MALES								
With post-school qualifications(a)	4.2	29.1	51.7	35.0	18.3	16.2	154.4	33.2
Degree	* 0.1	4.7	7.8	5.2	* 2.0	* 1.3	21.2	4.6
Trade qualifications or apprenticeship	* 1.2	14.3	26.1	18.5	11.1	10.0	81.2	17.5
Certificate or diploma	* 2.3	9.4	15.9	10.8	4.8	4.3	47.6	10.2
Without post-school qualifications(b)	64.2	69.9	69.7	40.5	20.8	22.1	287.2	61.8
Attended highest level of secondary school available	25.4	21.4	11.1	6.4	* 2.8	* 3.1	70.1	15.1
Did not attend highest level of secondary school available	38.8	48.3	58.2	33.8	17.8	19.0	215.9	46.4
Left at age—								
16 and over	22.3	27.8	27.6	9.6	* 3.2	* 2.2	92.8	20.0
14 or 15	16.2	19.0	27.9	19.9	9.9	11.7	104.7	22.5
13 and under	* 0.3	* 1.4	* 2.6	4.2	4.7	5.1	18.5	4.0
Never attended school	* 0.0	* 0.0	* 0.0	* 0.2	* 0.3	* 0.0	* 0.4	* 0.1
Secondary school qualifications not determined	* 0.0	* 0.2	* 0.4	* 0.1	* 0.0	* 0.0	* 0.7	* 0.2
Still at school	23.3	* 0.0	* 0.0	* 0.0	* 0.0	* 0.0	23.3	5.0
Total	91.8	98.9	121.4	75.5	39.1	38.3	465.0	100.0
FEMALES								
With post-school qualifications(a)	10.8	23.2	40.4	25.8	12.5	* 2.1	114.9	34.2
Degree	* 0.0	5.0	11.2	4.5	* 2.1	* 0.3	23.0	6.9
Trade qualifications or apprenticeship	* 0.4	* 1.9	* 2.1	* 1.7	* 0.8	* 0.1	7.0	2.1
Certificate or diploma	10.3	16.2	27.0	19.4	9.0	* 1.8	83.6	24.9
Without post-school qualifications(b)	57.7	38.1	44.5	34.2	20.7	3.9	199.1	59.3
Attended highest level of secondary school available	30.8	15.3	9.9	5.2	* 1.1	* 0.3	62.7	18.7
Did not attend highest level of secondary school available	26.8	22.3	34.3	28.6	19.5	* 3.3	134.9	40.2
Left at age—								
16 and over	15.8	12.0	17.1	10.2	4.8	* 0.8	60.6	18.0
14 or 15	10.7	10.3	16.6	16.0	10.7	* 1.8	66.1	19.7
13 and under	* 0.3	* 0.0	* 0.6	* 2.4	4.0	* 0.8	8.2	2.4
Never attended school	* 0.0	* 0.0	* 0.0	* 0.2	* 0.0	* 0.3	* 0.5	* 0.1
Secondary school qualifications not determined	* 0.1	* 0.5	* 0.3	* 0.2	* 0.1	* 0.0	* 1.1	* 0.3
Still at school	21.7	* 0.1	* 0.0	* 0.0	* 0.0	* 0.0	21.8	6.5
Total	90.2	61.3	84.9	60.0	33.2	6.1	335.7	100.0
ALL PERSONS								
With post-school qualifications(a)	15.1	52.3	92.1	60.8	30.8	18.3	269.3	33.6
Degree	* 0.1	9.7	19.0	9.7	4.1	* 1.6	44.2	5.5
Trade qualifications or apprenticeship	* 1.6	16.2	28.1	20.2	12.0	10.2	88.2	11.0
Certificate or diploma	12.6	25.6	42.9	30.2	13.8	6.1	131.2	16.4
Without post-school qualifications(b)	121.9	107.9	114.2	74.7	41.6	26.1	486.4	60.7
Attended highest level of secondary school available	56.3	36.6	21.0	11.6	3.9	* 3.4	132.8	16.6
Did not attend highest level of secondary school available	65.6	70.6	92.5	62.4	37.3	22.4	350.8	43.8
Left at age—								
16 and over	38.1	39.9	44.7	19.8	8.0	* 3.0	153.4	19.2
14 or 15	26.9	29.3	44.6	35.9	20.6	13.5	170.8	21.3
13 and under	* 0.6	* 1.4	* 3.2	6.7	8.8	5.9	26.6	3.3
Never attended school	* 0.0	* 0.0	* 0.0	* 0.4	* 0.3	* 0.3	* 0.9	* 0.1
Secondary school qualifications not determined	* 0.1	* 0.7	* 0.6	* 0.3	* 0.1	* 0.0	* 1.8	* 0.2
Still at school	45.0	* 0.1	* 0.0	* 0.0	* 0.0	* 0.0	45.1	5.6
Total	182.0	160.3	206.2	135.5	72.3	44.4	800.7	100.0

(a) Includes persons with other post-school qualifications. (b) Includes persons who never attended school and those for whom secondary school qualifications could not be determined.

Families

In June 1991, of the 515,300 families with one or more members unemployed, 38 per cent had no member employed, 38 per cent had one employed and 25 per cent had two or more employed. Dependents were present in 59 per cent of the 515,300 families with one or more members unemployed.

Unemployment rates varied from 17 per cent for full-time students aged 15-24 to 14 per cent for sole parents to 6 per cent for husband or wife in married couple families. For persons who were not a member of a family the unemployment rate was 10 per cent. The average duration of unemployment for husbands or wives who were members of a family was 46 weeks. For sole parents it was 39 weeks and for those who were not members of a family, 48 weeks (living alone 66 weeks, not living alone 37 weeks).

TABLE 4.17. FAMILIES WITH ONE OR MORE MEMBERS UNEMPLOYED: TYPE OF FAMILY, LABOUR FORCE STATUS^(a) OF FAMILY MEMBERS AND WHETHER DEPENDENTS PRESENT, AUSTRALIA, JUNE 1991
(*000 families)

	None employed			One employed			Two or more employed			Total		
	Two or		Total	Two or		Total	Two or		Total	Two or		Total
	One unemployed	more unemployed		One unemployed	more unemployed		One unemployed	more unemployed		One unemployed	more unemployed	
Married-couple families	108.2	31.7	139.8	145.7	13.0	158.7	111.4	7.3	118.7	365.3	52.0	417.2
With dependents present	63.3	18.6	81.9	90.0	8.0	98.0	66.3	4.5	70.9	219.7	31.1	250.8
Without dependents present	44.8	13.1	57.9	55.7	5.0	60.7	45.0	* 2.8	47.8	145.6	20.8	166.4
One-parent families	30.7	* 3.4	34.2	11.1	* 1.1	12.2	3.6	* 0.0	3.6	45.4	4.5	50.0
Other families	13.9	6.0	19.9	21.5	* 2.0	23.5	4.4	* 0.4	4.8	39.8	8.3	48.1
All families	152.8	41.1	193.8	178.3	16.1	194.4	119.4	7.7	127.1	450.5	64.8	515.3
With dependents present	95.0	22.4	117.5	101.4	9.1	110.5	70.0	4.5	74.5	266.4	36.1	302.5
Without dependents present	57.7	18.7	76.4	76.9	7.0	83.9	49.4	* 3.1	52.6	184.1	28.8	212.8

(a) Labour force status refers to persons aged 15 and over only.

Source: Labour Force Status and Other Characteristics of Families, Australia, June 1991 (6224.0).

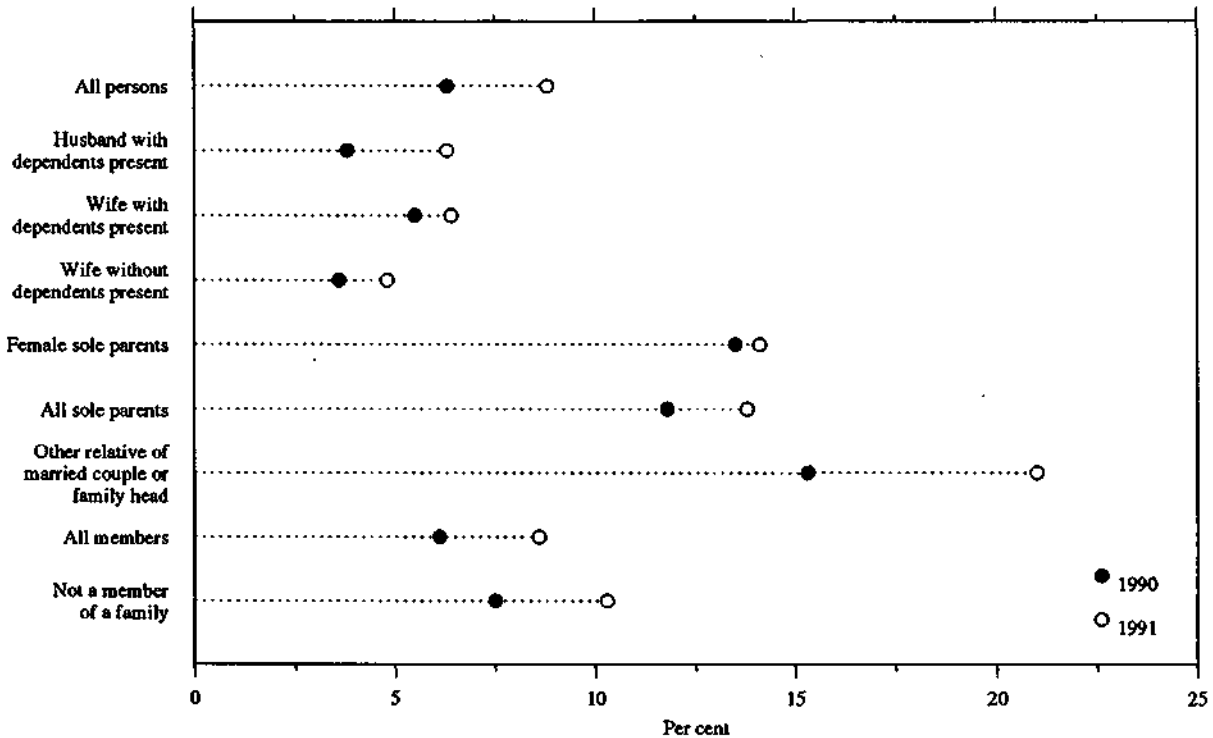
TABLE 4.18. FAMILY STATUS OF UNEMPLOYED PERSONS^(a) : UNEMPLOYMENT RATES, AUSTRALIA, JUNE 1989 TO 1991
(per cent)

	Males			Females			Persons		
	June 1989	June 1990	June 1991	June 1989	June 1990	June 1991	June 1989	June 1990	June 1991
Member of a family	5.0	5.6	8.8	6.3	6.7	8.2	5.5	6.1	8.6
Husband or wife	3.7	3.6	6.2	4.4	4.7	5.7	4.0	4.1	6.0
With dependents present	3.9	3.8	6.3	5.0	5.5	6.4	4.3	4.5	6.3
Without dependents present	3.4	3.3	5.9	3.6	3.6	4.8	3.5	3.4	5.5
Sole parent	*6.2	*4.2	12.7	10.7	13.5	14.1	9.9	11.8	13.8
Other family head	*5.4	8.2	13.0	8.2	9.2	7.9	7.0	8.8	9.9
Full-time student aged 15-24 ^(b)	12.9	14.3	17.8	14.0	10.4	15.9	13.5	12.1	16.8
Other child ^(c) of married couple or family head	8.4	11.5	16.7	9.2	10.4	13.6	8.7	11.1	15.5
Other relative of married couple or family head	9.7	13.6	21.5	15.7	17.9	20.2	12.0	15.3	21.0
Not a member of a family	6.3	7.4	10.8	7.2	7.7	9.5	6.6	7.5	10.3
Living alone	6.1	7.2	10.4	6.0	6.7	8.0	6.1	7.0	9.4
Not living alone	6.4	7.5	11.2	7.9	8.5	10.6	7.0	7.9	10.9
Total	5.2	5.9	9.1	6.4	6.8	8.4	5.7	6.3	8.8

(a) Civilians who were residents of households where family status was determined. See the Technical Notes for further information. (b) Excludes persons aged 20-24 attending school. Also excludes full-time students aged 15-24 who are classified as husbands, wives, sole parents or other family heads. (c) Aged 15 and over

Source: Labour Force Status and Other Characteristics of Families, Australia, (6224.0).

CHART 4.9. UNEMPLOYED PERSONS: FAMILY STATUS, UNEMPLOYMENT RATES, AUSTRALIA, JUNE 1990 AND JUNE 1991



Source: Labour Force Status and Other Characteristics of Families, Australia, June 1991 (6224.0).

TABLE 4.19. FAMILY STATUS OF UNEMPLOYED PERSONS(a): DURATION OF UNEMPLOYMENT, AUSTRALIA, JUNE 1991

	Duration of unemployment (weeks)							Total	Average duration	Median duration
	Under 2	2 and under 4	4 and under 8	8 and under 13	13 and under 26	26 and under 52	52 and over			
	— '000 —								— weeks —	
Member of a family	34.6	53.0	62.8	62.0	129.3	113.8	141.1	596.6	41.5	21
Husband or wife	20.5	31.9	30.8	29.7	61.5	51.4	78.6	304.4	45.8	21
With dependents present	14.7	20.8	21.0	17.6	38.5	32.5	49.5	194.7	42.6	21
Without dependents present	5.8	11.1	9.8	12.1	22.9	18.9	29.1	109.7	51.5	21
Sole parent	* 1.7	* 2.6	* 3.2	* 2.8	6.4	5.4	6.8	28.9	39.3	18
Other family head	* 0.7	* 0.3	* 1.6	* 1.3	* 1.4	* 1.8	4.4	11.5	65.8	* 27
Full-time student aged 15-24(b)	4.7	6.6	6.5	4.4	14.9	8.0	5.6	50.8	19.9	17
Other child(c) of married couple or family head	6.3	10.8	19.3	19.2	40.9	41.0	42.1	179.6	40.1	24
Other relative of married couple or family head	* 0.6	* 0.8	* 1.4	4.6	4.2	6.2	3.6	21.4	32.8	22
Not a member of a family	3.9	9.2	12.7	13.2	25.2	22.0	31.4	117.6	48.3	23
Living alone	* 1.6	* 2.7	4.2	4.1	10.8	8.0	15.9	47.4	65.8	26
Not living alone	* 2.2	6.5	8.5	9.1	14.4	14.0	15.5	70.2	36.6	19
Total	38.5	62.2	75.5	75.2	154.5	135.7	172.6	714.2	42.6	21.1

(a) Civilians who were residents of households where family status was determined. (b) Excludes persons aged 20-24 attending school. Also excludes full-time students aged 15-24 who are classified as husbands, wives, sole parents or other family heads. (c) Aged 15 and over.

Source: Labour Force Status and Other Characteristics of Families, Australia, June 1991 (6224.0).

Job Vacancies

A job vacancy is a job available for immediate filling on the survey reference date and for which recruitment action has been taken. For a full definition of a job vacancy refer to the Glossary. Vacancies available only to persons already employed by the organisation are excluded.

The number of job vacancies in Australia at November 1991 were estimated at 24,900 — a decrease of 9,200 since November 1990.

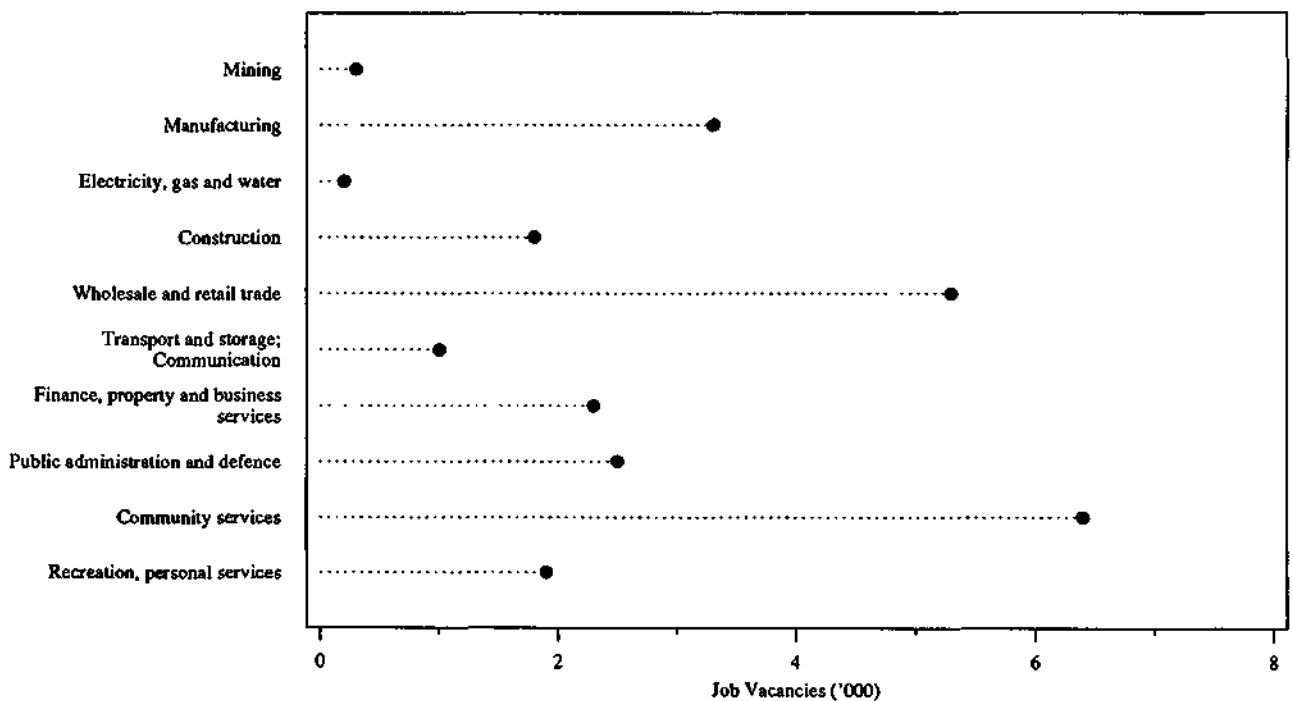
The greatest decreases in numbers of vacancies since November 1990 were recorded in the Community services (1,800) and Finance, property and business services (3,900) industries.

TABLE 4.20. JOB VACANCIES : INDUSTRY, AUSTRALIA, NOVEMBER 1986 TO NOVEMBER 1991
(*000)

Industry	November					
	1986	1987	1988	1989	1990	1991
Mining	0.8	1.5	0.7	0.4	0.3	0.3
Manufacturing	10.5	10.0	15.1	11.7	3.7	*3.3
Electricity, gas and water	0.4	0.5	0.8	0.7	0.4	0.2
Construction	1.7	2.0	3.5	3.3	1.1	1.8
Wholesale and retail trade	9.1	12.3	15.5	14.1	6.0	5.3
Transport and storage; Communication	1.4	1.6	2.0	2.3	*1.0	*1.0
Finance, property and business services	6.9	4.4	7.5	6.4	4.1	2.3
Public administration and defence	4.6	3.8	4.3	4.9	3.7	2.5
Community services	13.7	12.6	13.2	12.8	10.3	6.4
Recreation, personal and other services	2.7	3.5	4.0	6.1	3.4	1.9
Total all Industries	51.9	52.2	66.6	62.7	34.1	24.9

Source: Job Vacancies and Overtime, Australia (6354.0).

CHART 4.10. JOB VACANCIES: INDUSTRY, AUSTRALIA, NOVEMBER 1991



Source: Job Vacancies and Overtime, Australia (6354.0).