

NEW MOTOR VEHICLE REGISTRATIONS

AUSTRALIA
PRELIMINARY

EMBARGO: 11:30AM (CANBERRA TIME) FRI 25 JULY 1997

JUNE KEY FIGURES

TREND ESTIMATES

	Jun 97	monthly % change	annual % change
Total new motor vehicle registrations	59 248	1.1	10.1
Passenger vehicles	50 147	1.3	11.8
Other vehicles	9 101	0.1	1.5

SEASONALLY ADJUSTED

	Jun 97	monthly % change	annual % change
Total new motor vehicle registrations	62 892	13.6	4.1
Passenger vehicles	53 388	14.3	4.8
Other vehicles	9 504	9.6	0.6

ORIGINAL ESTIMATES

	Jun 97	monthly % change	annual % change
Total new motor vehicle registrations	67 666	15.4	6.2
Passenger vehicles	55 598	13.6	6.8
Other vehicles	12 068	24.6	3.9

JUNE KEY POINTS

TREND ESTIMATES

- The trend for total new vehicle registrations increased in June 1997 for the ninth consecutive month, with the rate of increase weakening in recent months. All States and Territories recorded rises in June 1997 with the exception of Victoria. Passenger vehicle registrations rose 1.3% and other vehicle registrations rose by 0.1% compared with the previous month.

TAKE CARE!
Trend estimates are revised as new monthly data become available.

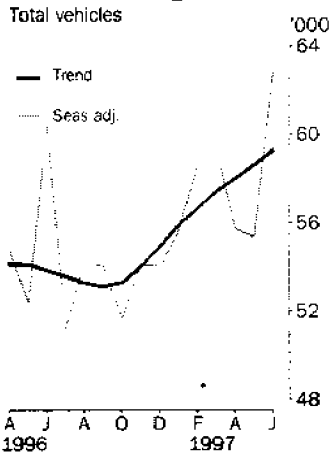
SEASONALLY ADJUSTED ESTIMATES

- Total new motor vehicle registrations for June 1997 increased by 13.6% compared with the previous month. Passenger vehicles showed the greatest increase with 14.3%, while other vehicles increased 9.6%. All States and Territories had increases except for very minor falls in Victoria, Tasmania and the Northern Territory.

ORIGINAL ESTIMATES

- Total new motor vehicle registrations for June 1997 showed an increase of 15.4% compared with May 1997. All States and Territories recorded increases except for Tasmania. Light commercial vehicle registrations rose by 29.3%.

New vehicle registrations



INQUIRIES

- For further information about these and related statistics, contact Clare O'Loughlin on 07 3222 6180, or any ABS Office.

NOTES

FORTHCOMING ISSUES

ISSUE	RELEASE DATE
July 1997	29 August 1997
August 1997	26 September 1997
September 1997	31 October 1997

CHANGES IN THIS ISSUE

There are no changes in this issue.

TREND REVISIONS

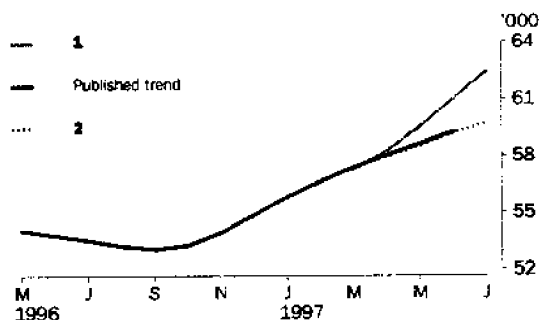
The most recent trend estimates are likely to be revised when new seasonally adjusted estimates become available.

The graph below presents the effect of two possible scenarios on the previous trend estimates:

- 1 The July seasonally adjusted estimate for total vehicle registrations is higher than the June seasonally adjusted estimate by 5.1%.
- 2 The July seasonally adjusted estimate for total vehicle registrations is lower than the June seasonally adjusted estimate by -5.1%.

The percentage change of 5.1% was chosen because the average absolute percentage change, based on the last 11 years, has been 5.1%.

TAKE CARE!
Trend estimates are revised as new monthly data become available.



An increase of 5.1% in the total seasonally adjusted new motor vehicle registrations in July 1997 would result in the revised trend showing an acceleration in the rate of increase from March 1997.

A 5.1% fall in the July 1997 seasonally adjusted figure would result in a continuation in the rate of increase in the revised trend from May 1997 to the current trend.

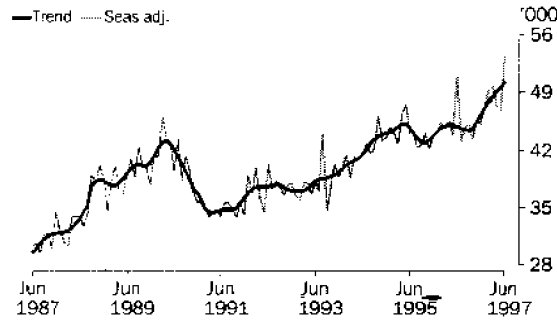
W. McLennan
Australian Statistician

VEHICLE REGISTRATIONS BY TYPE

SEASONALLY ADJUSTED AND TREND

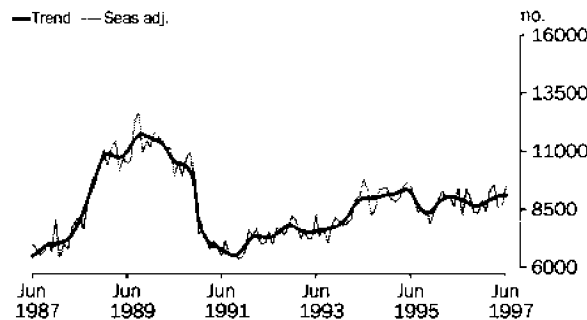
PASSENGER VEHICLES

The trend level estimate for passenger vehicles in June 1997 is the highest recorded in the past 12 years. There has been a steady rise since September 1996 and the trend level is now 11.2% above the previous high in April 1996.



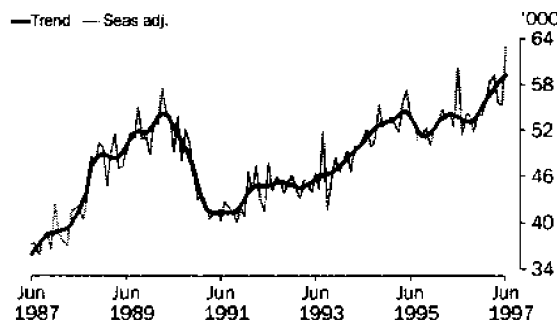
OTHER VEHICLES

The trend level for other vehicle registrations has remained essentially flat since April 1994. The June 1997 level is 22.3% below the October 1989 peak and 40.3% above the low of September 1991.



TOTAL VEHICLES (EXCLUDING MOTOR CYCLES)

The trend for total new motor vehicle registrations has shown consecutive increases for the last 9 months. The trend level is now 9.4% above the high of April 1990 and 43.8% above the low in September 1991.



A break in series occurred in December 1990 — see paragraph 2 of Explanatory Notes.



NEW MOTOR VEHICLES, Registrations by Type: All series

Month	Passenger vehicles	Other vehicles	Total
ORIGINAL			
1996			
April	41 606	8 461	50 067
May	47 713	10 131	57 844
June	52 082	11 611	63 693
July	45 971	9 027	54 998
August	45 574	8 783	54 357
September	42 893	8 210	51 103
October	47 131	8 613	55 744
November	45 253	8 355	53 608
December	46 165	8 423	54 588
1997			
January	39 604	6 566	46 170
February	46 563	8 308	54 871
March	46 366	8 628	54 994
April	47 959	9 162	57 121
May	48 932	9 689	58 621
June	55 598	12 068	67 666
SEASONALLY ADJUSTED			
1996			
April	45 573	9 107	54 680
May	43 762	8 624	52 387
June	50 950	9 449	60 398
July	43 012	8 219	51 231
August	44 716	9 405	54 121
September	45 057	9 001	54 058
October	43 292	8 403	51 694
November	45 785	8 320	54 105
December	45 129	8 914	54 043
1997			
January	47 213	8 381	55 594
February	49 231	9 349	58 580
March	49 766	9 579	59 345
April	47 191	8 537	55 728
May	46 696	8 672	55 368
June	53 388	9 504	62 892
TREND ESTIMATES(a)			
1996			
April	45 095	9 043	54 137
May	45 058	9 021	54 080
June	44 863	8 966	53 829
July	44 626	8 915	53 541
August	44 407	8 845	53 252
September	44 338	8 745	53 083
October	44 610	8 668	53 278
November	45 314	8 663	53 977
December	46 166	8 715	54 881
1997			
January	47 016	8 811	55 827
February	47 737	8 918	56 655
March	48 378	9 007	57 385
April	48 957	9 054	58 010
May	49 528	9 087	58 615
June	50 147	9 101	59 248

(a) Trend estimates for December 1996 to May 1997 have been revised.

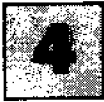
NEW MOTOR VEHICLES, Registrations by Type: Original

Month	Passenger vehicles	Light commercial vehicles	Rigid trucks	Articulated trucks	Non-freight carrying trucks	Buses	Total (excludes motor cycles)	Motor cycles
1996								
April	41 606	7 082	725	247	74	333	50 067	1 810
May	47 713	8 531	876	278	79	367	57 844	1 893
June	52 082	9 994	834	295	63	425	63 693	1 578
July	45 971	7 361	831	306	174	355	54 998	1 760
August	45 574	7 236	793	304	105	345	54 357	1 653
September	42 893	6 890	727	238	72	283	51 103	1 562
October	47 131	7 100	777	307	96	333	55 744	2 052
November	45 253	6 814	833	275	95	338	53 608	2 389
December	46 165	6 893	851	255	128	296	54 588	2 002
1997								
January	39 604	5 506	515	157	55	333	46 170	1 881
February	46 563	7 069	674	186	58	321	54 871	1 926
March	46 366	7 227	772	241	94	294	54 994	1 913
April	47 959	7 567	886	298	58	353	57 121	1 868
May	48 932	8 067	897	276	96	353	58 621	2 111
June	55 598	10 430	905	303	65	365	67 666	1 781

NEW MOTOR VEHICLES, Registrations by State: All series

Month	New South Wales	Victoria	Queensland	South Australia	Western Australia	Tasmania	Northern Territory	Australian Capital Territory	Australia
ORIGINAL									
1996									
April	18 348	11 519	9 471	3 286	5 072	818	616	937	50 067
May	19 411	14 868	10 388	3 792	6 252	1 202	823	1 108	57 844
June	23 395	14 355	13 157	3 932	6 030	994	798	1 032	63 693
July	18 861	13 478	10 585	3 457	5 692	1 341	637	947	54 998
August	18 213	12 880	10 903	3 569	5 753	1 336	599	1 104	54 357
September	17 335	12 553	9 789	3 437	5 338	1 348	535	768	51 103
October	18 877	14 098	10 298	3 365	6 296	1 307	561	942	55 744
November	18 455	13 399	9 823	3 515	5 677	1 267	610	862	53 608
December	17 793	13 737	10 544	3 582	5 903	1 737	501	791	54 588
1997									
January	16 047	10 975	8 552	2 942	5 397	935	519	803	46 170
February	18 926	13 958	9 823	3 827	5 961	898	551	927	54 871
March	19 390	13 559	10 619	3 627	5 224	958	704	913	54 994
April	19 916	14 167	10 521	3 716	5 886	1 047	852	1 016	57 121
May	20 717	14 508	10 546	3 640	6 164	1 211	773	1 062	58 621
June	24 180	14 945	13 960	4 434	6 727	1 126	873	1 421	67 666
SEASONALLY ADJUSTED									
1996									
April	19 594	12 774	10 018	3 738	5 749	1 090	637	1 080	54 680
May	17 185	13 165	9 674	3 621	5 835	1 207	688	1 011	52 387
June	22 129	13 521	12 783	3 668	5 646	1 055	647	949	60 398
July	17 577	12 693	9 079	3 384	5 761	1 299	551	886	51 231
August	18 086	12 572	11 351	3 459	5 740	1 264	627	1 027	54 121
September	18 746	13 194	10 300	3 431	5 776	1 232	571	808	54 058
October	18 025	12 970	9 166	3 077	5 884	1 150	526	895	51 694
November	17 875	13 758	10 749	3 456	5 447	1 344	626	850	54 105
December	18 534	13 553	10 123	3 563	5 739	1 169	573	790	54 043
1997									
January	19 426	13 714	9 928	3 673	5 919	1 215	728	991	55 594
February	20 232	14 533	10 813	4 012	6 234	1 093	664	999	58 580
March	20 602	15 529	11 206	3 750	5 414	1 165	662	1 018	59 345
April	18 917	13 503	10 040	3 935	6 222	1 270	822	1 019	55 728
May	18 918	13 580	10 364	3 600	5 934	1 236	692	1 043	55 368
June	22 410	13 530	13 427	4 062	6 258	1 221	684	1 301	62 892
TREND ESTIMATES(a)									
1996									
April	18 267	13 060	10 635	3 709	5 675	1 129	650	1 012	54 137
May	18 157	13 039	10 687	3 658	5 758	1 149	641	990	54 080
June	18 052	12 991	10 648	3 576	5 792	1 174	626	970	53 829
July	18 006	12 949	10 579	3 479	5 775	1 205	606	942	53 541
August	17 989	12 954	10 459	3 389	5 734	1 231	587	910	53 252
September	18 026	13 003	10 283	3 344	5 727	1 244	576	880	53 083
October	18 198	13 162	10 151	3 357	5 729	1 239	578	864	53 278
November	18 526	13 457	10 123	3 437	5 748	1 222	594	868	53 977
December	18 854	13 820	10 165	3 554	5 776	1 202	624	886	54 881
1997									
January	19 189	14 111	10 274	3 674	5 817	1 187	656	918	55 827
February	19 502	14 246	10 431	3 769	5 873	1 185	686	964	56 655
March	19 798	14 242	10 671	3 828	5 934	1 191	706	1 015	57 385
April	20 068	14 132	10 968	3 860	5 995	1 202	718	1 066	58 010
May	20 351	13 956	11 312	3 881	6 059	1 215	723	1 119	58 615
June	20 611	13 780	11 729	3 899	6 101	1 235	725	1 169	59 248

(a) Trend estimates for December 1996 to May 1997 have been revised.



NEW PASSENGER VEHICLES, Selected Make/Models: **Original** — June 1997

Make/Model	New South Wales	Victoria	Queensland	South Australia	Western Australia	Tasmania	Northern Territory	Australian Capital Territory	Australia
Ford									
Falcon/Fairmont	2 139	1 782	1 342	416	718	87	42	248	6 774
Festiva	472	307	350	115	89	15	7	18	1 373
Laser	368	257	186	71	77	8	5	18	990
Other	443	361	195	98	146	11	9	27	1 290
Total	3 422	2 707	2 073	700	1 030	121	63	311	10 427
Holden									
Commodore/Calais	2 091	1 451	1 391	447	494	109	35	194	6 212
Barina	225	162	111	49	57	13	..	21	638
Statesman/Caprice	128	150	90	32	60	10	3	12	485
Other	308	234	150	79	80	23	..	15	889
Total	2 752	1 997	1 742	607	691	155	38	242	8 224
Hyundai									
Excel	1 079	627	504	147	322	60	18	60	2 817
Lantra	503	269	282	63	164	31	14	22	1 348
Sonata	247	139	136	32	89	14	10	5	672
Other	55	36	37	7	25	1	..	2	163
Total	1 884	1 071	959	249	600	106	42	89	5 000
Mazda									
323	423	235	156	58	96	23	7	19	1 017
121	319	192	200	60	128	7	5	12	923
626	64	38	26	8	9	1	..	7	153
Other	24	20	20	4	11	2	81
Total	830	485	402	130	244	31	12	40	2 174
Mitsubishi									
Magna	871	754	435	551	250	58	42	149	3 110
Lancer	418	320	268	97	77	22	19	36	1 257
Mirage	520	130	131	30	42	13	3	15	884
Other	480	276	273	66	160	20	19	12	1 306
Total	2 289	1 480	1 107	744	529	113	83	212	6 557
Nissan									
Pulsar	417	229	360	52	85	8	54	54	1 259
Patrol	119	61	96	33	84	3	8	4	408
Maxima	77	52	43	9	19	2	2	..	204
Other	189	136	207	25	41	4	10	10	622
Total	802	478	706	119	229	17	74	68	2 493
Toyota									
Corolla	907	421	510	127	221	42	42	54	2 324
Camry	734	493	537	127	225	38	71	25	2 250
Vienta	674	332	214	79	96	16	8	12	1 431
Other	1 227	519	762	215	367	44	113	46	3 313
Total	3 542	1 765	2 023	548	929	140	234	137	9 318

EXPLANATORY NOTES

INTRODUCTION

1 This publication presents monthly data for registrations of new motor vehicles.

2 The statistics in this publication use the Vehicle Identification Number (VIN), adopted by the State and Territory motor vehicle registration authorities. The information contained in the VIN allows more accurate classification of vehicles. In the case of some States, data processed using the VIN are not strictly comparable with data processed prior to December 1990.

SCOPE AND COVERAGE

3 Motor vehicle registration statistics are obtained from State and Territory motor vehicle registration authorities. The statistics reflect information recorded in registration documents. With the exception of Queensland, the statistics do not depart significantly from actual registrations during the period. In the case of Queensland, a number of registrations processed in a month actually relate to vehicles registered prior to that month.

4 New motor vehicle registrations are obtained from New South Wales, Victoria, Queensland and Western Australia registration authorities on a weekly basis. Other registries provide data for each calendar month. The ABS processes the weekly registration data provided for the above-mentioned States and includes data for the relevant month in this publication. Data referring to the next month are withheld and included in the next month's publication. In some months, the ABS processes five weeks of data for the above States, while other months include four weeks of data. In months where five weeks of data are processed and depending on the actual pattern of registration processing, it is possible that there will be a greater number of registrations recorded because the carry forward from the previous month is likely to be greater than the carry over to the next month.

5 The scope of the statistics:

- includes:
 - passenger vehicles
 - light commercial vehicles
 - trucks
 - buses
 - motorcycles (note: not included in totals)
 - vehicles with diplomatic and consular plates
 - State and Commonwealth owned vehicles.
- excludes:
 - vehicles belonging to the defence forces
 - recreation vehicles such as trail bikes and sand dune buggies (in those States where registration is required).

SEASONAL ADJUSTMENT

6 Seasonal adjustment is a means of removing the estimated effects of normal seasonal variation from the series so that the effects of other influences can be more clearly recognised.

7 Seasonal adjustment does not remove from the series the effect of irregular or non-seasonal influences (e.g. the introduction of new models, processing delays, industrial disputes).

EXPLANATORY NOTES

SEASONAL ADJUSTMENT *continued*

8 Irregular influences that are highly volatile can make it difficult to interpret the series even after adjustment for seasonal variation.

9 Extreme care should be exercised in using the seasonally adjusted series for new motor vehicle registrations in Tasmania, the Northern Territory and the Australian Capital Territory. The small numbers and volatile nature of these data makes reliable estimation of the seasonal pattern very difficult.

10 Seasonally adjusted series are calculated for the 'Passenger vehicles', 'Other vehicles' and 'Total vehicles' series for each State and Territory and are aggregated to obtain the total for Australia.

11 Seasonal adjustment factors are analysed and revised as necessary annually.

TREND ESTIMATES

12 The smoothing of seasonally adjusted series to create trend estimates reduces the impact of the irregular component of the seasonally adjusted series. The trend estimates are derived by applying a 13-term Henderson-weighted moving average to the respective seasonally adjusted series. These trend series are used to analyse the underlying behaviour of the series over time.

13 While this smoothing technique enables trend estimates to be produced for the latest month, it does result in revisions to the trend estimates for the most recent months as data for subsequent months become available. Generally subsequent revisions become smaller and after three months, usually have a negligible impact on the series. Changes in the original data and re-estimation of seasonal factors may also lead to revisions to the trend. For further information, see *A Guide to Interpreting Time Series — Monitoring Trends: an Overview* (1348.0) or contact the Assistant Director, Time Series Analysis on (06) 252 6345.

RELATED PUBLICATIONS

14 For a more detailed break-up of the monthly figures presented here, inquiries should be made to Clare O'Loughlin on 07 3222 6180 or to any ABS office. Data on total vehicle registrations, both new and re-registrations, is available in *Motor Vehicle Census, Australia, 31 May 1995* (9309.0).

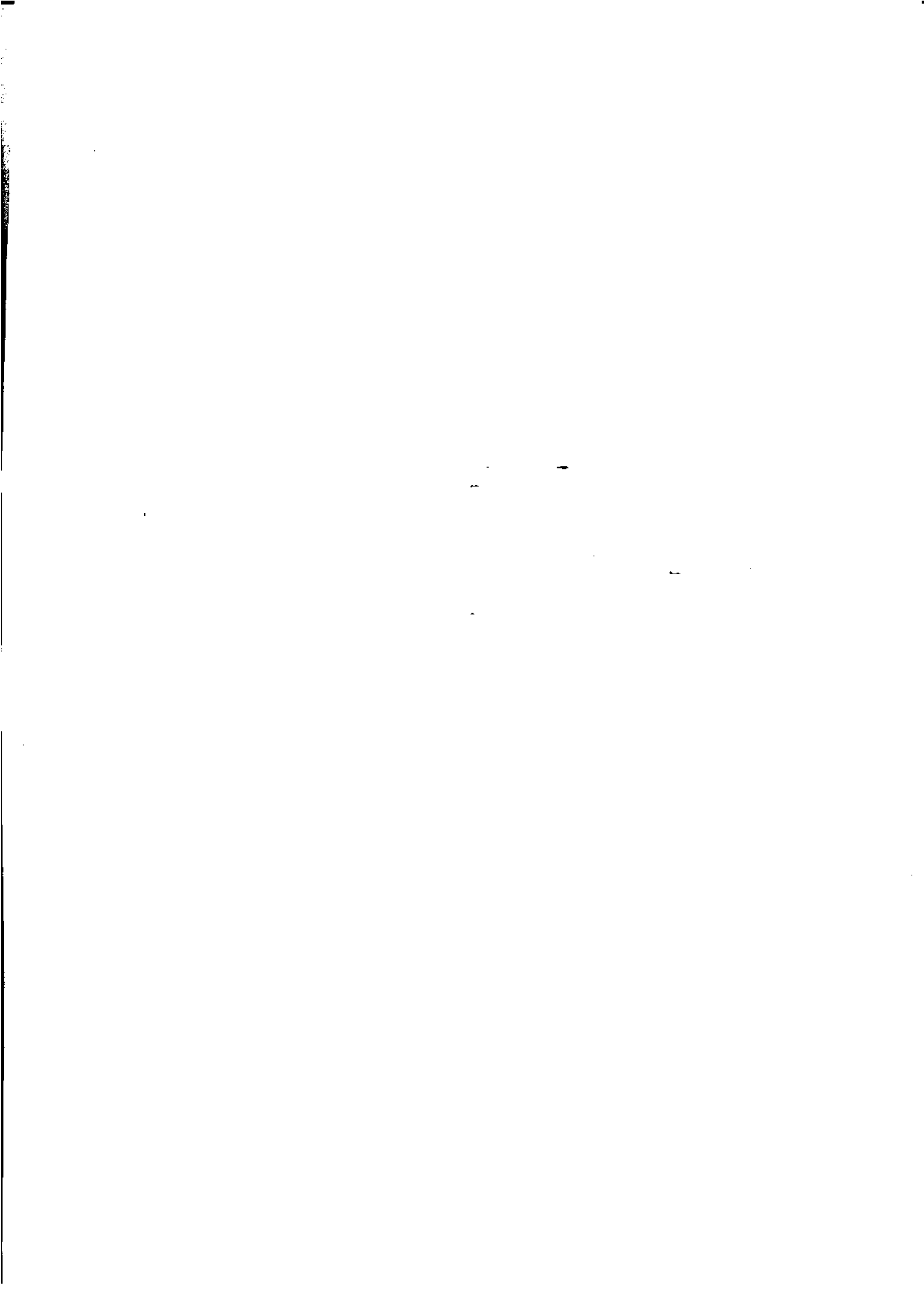
SYMBOLS AND OTHER USAGES

n.p. not available for publication, but included in totals.

G L O S S A R Y

.....

- Articulated trucks** Vehicles constructed primarily for load carrying consisting of a prime mover having no significant load carrying area but with a turn table device which can be linked to a trailer. With or without a trailer the gross combination mass will be 3.5 tonnes or more.
- Buses** Vehicles constructed for the carriage of passengers. Included are all passenger vehicles with 10 or more seats, including the driver's seat.
- Light commercial vehicles** Describes goods carrying vehicles less than 3.5 tonnes gross vehicle mass. Included are utilities, panel vans, cab-chassis and forward control vehicles (whether four-wheel drive or not).
- Motor cycles** Includes 2 and 3 wheeled mopeds, scooters, motor tricycles and motor cycles with side cars.
- Non-freight carrying trucks** Includes specialist vehicles such as ambulances, mobile cranes or vehicles fitted with special purpose equipment and having no goods carrying capacity.
- Passenger vehicles** Includes cars, station wagons, four-wheel drive passenger vehicles and forward control passenger vehicles with up to nine seats (including the driver).
- Registrations** This includes all registrations processed by the motor vehicle registration authorities in the States and Territories during the relevant period.
- Rigid trucks** Vehicles constructed primarily for load carrying with a gross vehicle mass of 3.5 tonnes or more.
- VIN** The Vehicle Identification Number (VIN) uniquely identifies each vehicle. Embedded in the number are details of make and model together with other relevant information about the vehicle. The VIN is collected by the motor vehicle registration authorities at the time of registration.





FOR MORE INFORMATION

The ABS publishes a wide range of information on Australia's economic and social conditions. A catalogue of publications and products is available from any of our offices (see below).

INFORMATION CONSULTANCY SERVICES

Information tailored to special needs of clients can be obtained from the Information Consultancy Service available at ABS Offices (see below).

ABS PRODUCTS

A large number of ABS products is available from the ABS Bookshops (see below). The ABS also provides a subscription service - you can telephone the ABS Subscription Service Australia wide toll free on 1800 0206 08.

ELECTRONIC SERVICES

A large range of data is available via on-line services, diskette, magnetic tape, tape cartridge and CD ROM. For more details about our electronic data services, contact any ABS office (see below) or e-mail us at:

- client.services@abs.gov.au

GENERAL SALES AND INQUIRIES

- Sydney 02 9268 4611
- Melbourne 03 9615 7755
- Brisbane 07 3222 6351
- Perth 08 9360 5140
- Adelaide 08 8237 7100
- Hobart 03 6222 5800
- Darwin 08 8943 2111
- Canberra 06 252 6627
- Information Services, ABS
PO Box 10, Belconnen ACT 2616



2930100006979

ISSN 1323-4528

RRP \$15.00

© Commonwealth of Australia 1997

Produced by the Australian Bureau of Statistics