



EMBARGO: 11:30 AM (CANBERRA TIME) FRI 28 FEB 1997

Australia

Australia

NOTES

SYMBOLS AND OTHER USAGES

n.a. not available
* subject to sampling variability too high for most practical uses
. . . not applicable

ESTIMATION PROCEDURE

Because estimates have been rounded, discrepancies may occur between sums of the component items and totals.

INQUIRIES

For further information about statistics in this publication and the availability of related unpublished statistics, contact:

Kirrilie Horswill	Telephone	(06) 252 7204
	Facsimile	(06) 252 7784

For state office contact numbers see the Supplementary Surveys listing in the back of this publication.

For information about other ABS statistics and services, refer to the back cover of this publication.

CONTENTS

	Page
Preface	4
Persons not in the labour force: conceptual framework	5
Summary of findings	6

TABLES

Overview	1	Civilian population: labour force status, September 1991 to September 1996	10
Persons not in the labour force	2	Selected characteristics and whether marginally attached, September 1996	11
	3	Main activity when not in the labour force and age, September 1996	14
Persons with marginal attachment	4	Main reason for not actively looking for work, September 1991 to September 1996	15
	5	Main reason for not actively looking for work, intention to enter the labour force in the next 12 months and preference for full-time or part-time work, September 1996	17
	6	All reasons for not actively looking for work, intention to enter the labour force in the next 12 months and preference for full-time or part-time work, September 1996	19
Discouraged jobseekers	7	Selected characteristics, September 1991 to September 1996	21
Persons with childcare responsibilities	8	Persons wanting to work but not actively looking due to childcare reasons: selected characteristics, September 1996	23
Last job	9	Selected characteristics of last job and whether looked for work, September 1996	24
Populations	10	State or Territory of usual residence, September 1996	27

ADDITIONAL INFORMATION

Explanatory notes	30
Technical notes	33
Glossary	36

PREFACE

ABOUT THIS PUBLICATION

This publication presents information about persons not in the labour force. Data from this survey are used to measure the potential supply of labour not reflected in employment and unemployment statistics, and in particular to measure the number and characteristics of discouraged jobseekers and others marginally attached to the labour force.

Statistics in this publication were obtained from the Australian Bureau of Statistics (ABS) survey, Persons Not in The Labour Force.

ABOUT THIS SURVEY

The Persons Not in The Labour Force survey was conducted throughout Australia in September 1996 as a supplement to the ABS monthly Labour Force Survey. This survey collected data about labour force aspirations of persons aged 15–69 years who were not in the labour force.

The survey determines whether respondents have marginal attachment to the labour force by asking about reasons not actively looking for work and availability for work.

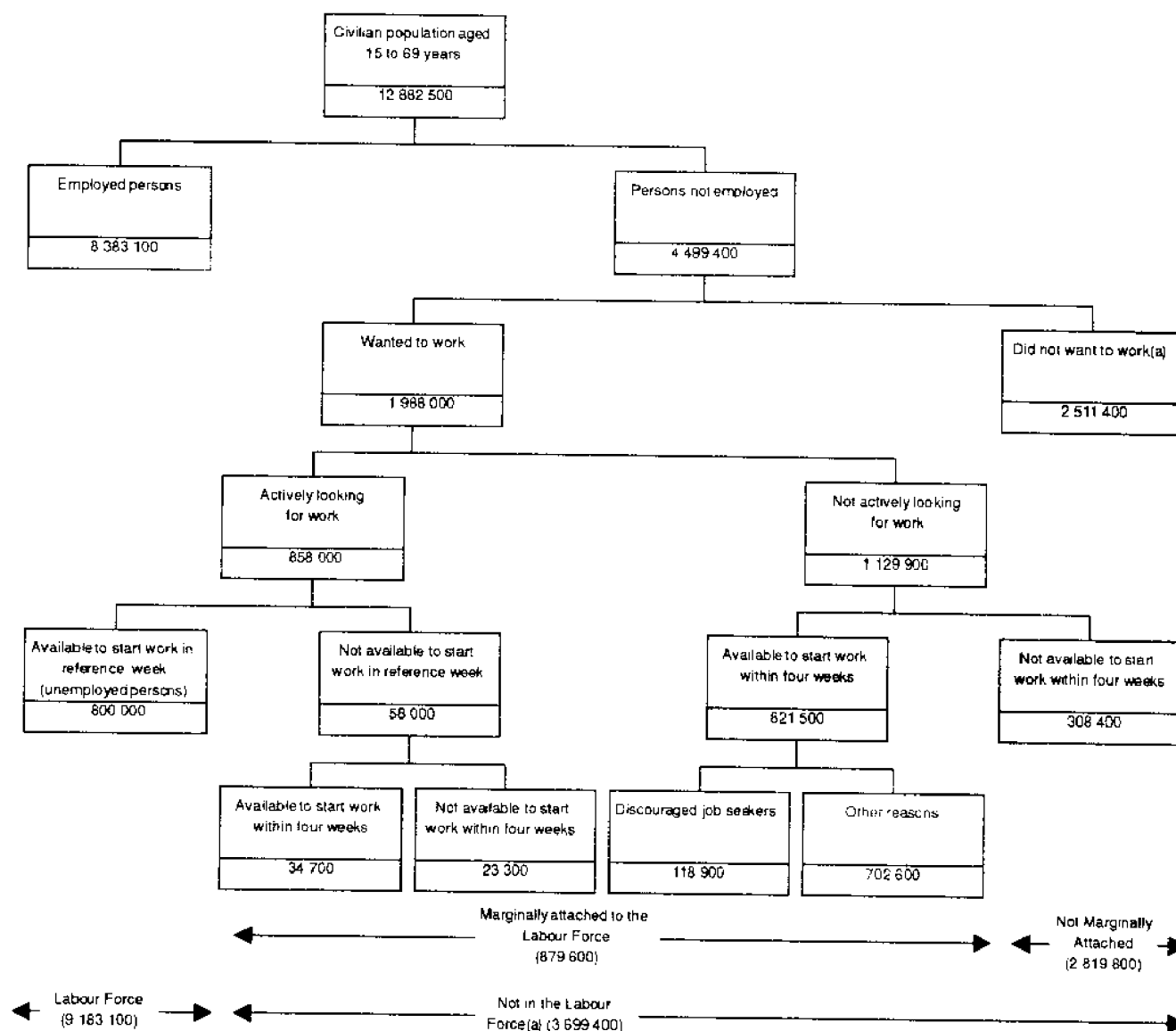
Questions were asked about main activity while not in the labour force, whether would prefer full-time or part-time work and the reason for ceasing last full-time job.

W. McLennan
Australian Statistician

Australian Bureau of Statistics
February 1996

PERSONS NOT IN THE LABOUR FORCE: CONCEPTUAL FRAMEWORK

The following chart illustrates the framework within which Persons Not In the Labour Force are classified. It presents the broad categories of those in the labour force (employed persons and those actively looking for work and available to start work in the reference week, i.e. unemployed persons) and detailed categories of those not in the labour force as at September 1996. Some persons not in the labour force can be classified as having marginal attachment, i.e. they have a closer association with the labour force because they want to work and in some cases are looking or are available for work. This group includes people who were actively looking for work but unavailable to start work in the reference week, as well as those not actively looking for work but who are available to start work within four weeks.



(a) Includes 84,000 institutionalised persons and boarding school pupils and a further 98,600 persons permanently unable to work.

SUMMARY OF FINDINGS

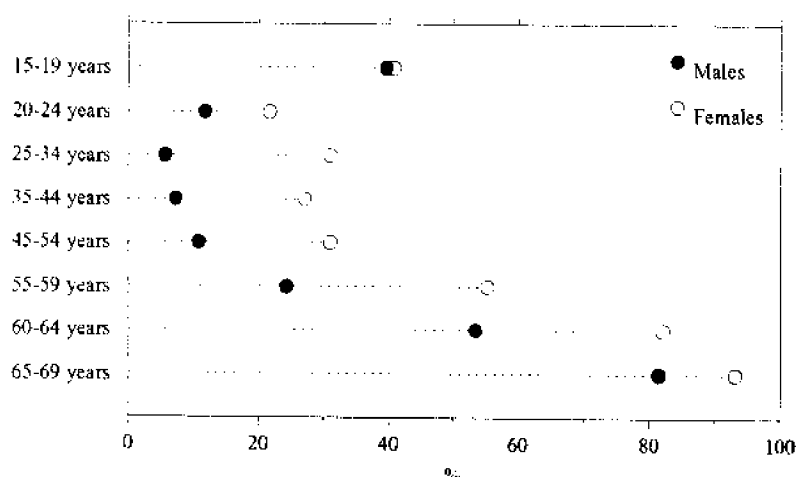
OVERVIEW

In September 1996, the number of persons not in the labour force (excluding those in institutions and boarding school pupils) was 3,615,400 persons, representing 28% of the civilian population. Since 1991 the number of persons not in the labour force has fluctuated, with a high of 3,677,500 persons in 1993, and a low of 3,553,400 persons in 1991. The proportion of males and females not in the labour force over this period has remained relatively constant in September 1996 33% were male and 67% were female.

The proportion of persons not in the labour force generally rises with age for both males and females. The exceptions are the 15–19 years age group with high levels of educational participation, and females during the main child bearing years of 25–34 years.

There were also more females than males in all age groups. The proportion of females not in the labour force ranged from 22% for the 20–24 years age group to 93% for the 65–69 years age group. For males, the proportion ranged from 22% for the 25–34 years age group, to 81% in the 65–69 years age group.

PROPORTION OF PERSONS NOT IN THE LABOUR FORCE BY AGE, SEPTEMBER 1996



MARGINAL ATTACHMENT

Of the 879,600 persons marginally attached to the labour force in September 1996, 93% were not actively looking for work but available to start within four weeks, and 7% were actively looking for work but unavailable to start in the reference week.

Some 25% of females and 21% of males not in the labour force were marginally attached to the labour force. The number of females with marginal attachment to the labour force increased by one percentage point since September 1995 (the number of males remained at a similar level).

Of males not actively looking for work, 63% intended to enter the labour force in the next 12 months while 21% did not intend to enter. The remainder (16%) reported they might enter or did not know whether they would enter the labour force in the next 12 months. Of females not actively looking for work, 48% intended to enter the labour force in the next 12 months, while 28% did not intend to. The remainder (24%) might enter or did not know whether they would enter the labour force in the next 12 months.

Of females not actively looking for work, 66% would have preferred to work part-time while only 17% would have preferred to work full-time. Preferences for full and part-time work were more equally distributed for males, with 42% preferring part-time and 39% preferring full-time work.

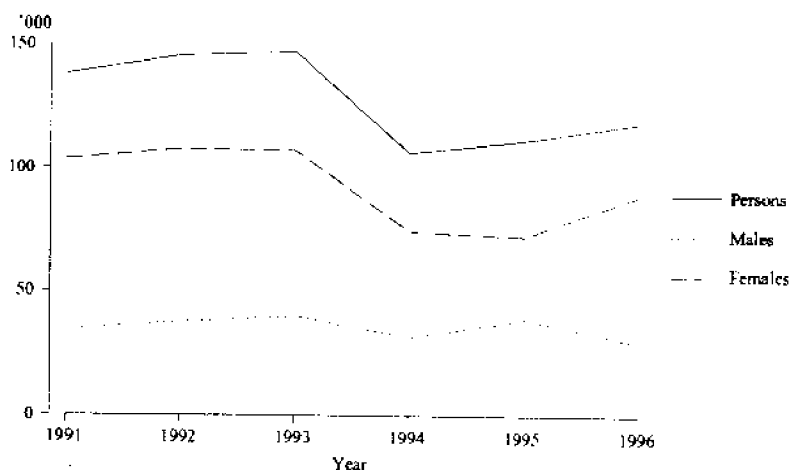
Main reason for not actively looking for work

Some 93% of persons marginally attached to the labour force were not actively looking for work. The main reason for not actively looking for work most commonly reported by males was 'attending an educational institution' (19%) and 'own ill health/physical disability' (35%). In contrast, for females, the most commonly reported reasons were 'childcare', (31%), 'attending an educational institution' (12%) and 'other family considerations' (11%).

Discouraged jobseekers

The number of discouraged jobseekers at September 1996 was estimated at 118,900, a slight increase (0.2%) from September 1995. A decrease in the number of male discouraged jobseekers (9,500) was more than offset by an increase in the number of female discouraged jobseekers (16,500) in the same period.

DISCOURAGED JOBSEEKERS, SEPTEMBER 1991 TO SEPTEMBER 1996



The majority of female discouraged jobseekers were aged 25-54 years (60%). In contrast the majority of male discouraged jobseekers were aged 55-69 years (70%).

Of male discouraged jobseekers, 53% intended to enter the labour force in the next 12 months. Of females, 63% intended to look for work or enter the labour force in the next 12 months.

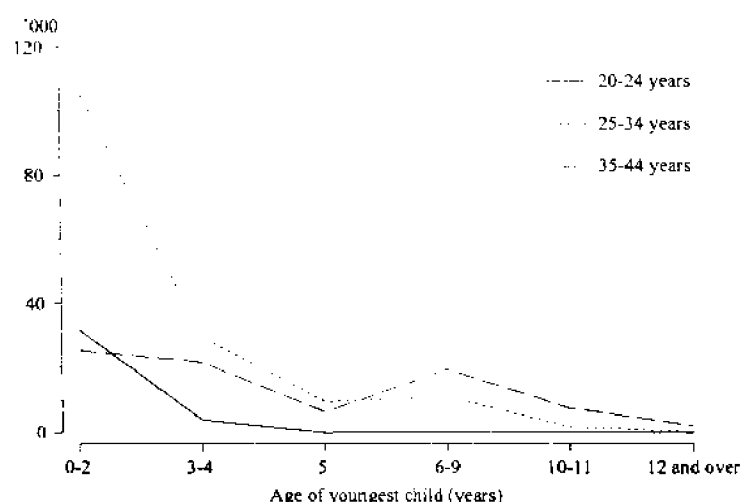
The proportion of male discouraged jobseekers to total male unemployed decreased from 8% in 1995 to 6% in 1996. Since 1991 this proportion has remained fairly constant for males, peaking in 1995. In comparison, for females the proportion increased from 24% in 1995 to 27% in 1996.

The main reasons for not actively looking for work reported by discouraged jobseekers reflect their job search experience. Discouraged jobseekers most commonly reported 'considered too young or too old by employers' (39%) and 'no jobs in locality or line of work' (24%).

Persons not in the labour force for child-care reasons

Of those marginally attached to the labour force, 35% (304,600) wanted to work but were not in the labour force for childcare reasons. Some 96% were female, representing 12% of all females in the civilian population aged 15–69 years. The majority of these were aged 25–34 years (54%) with a further 28% aged 35–44 years. Some 67% of females in the 25–34 years age group, the age of peak fertility, had children aged 0–2 years. The median age of mothers at the birth of their child was 29.1 years in 1995.

FEMALES NOT IN THE LABOUR FORCE FOR CHILDCARE REASONS BY AGE OF YOUNGEST CHILD, SEPTEMBER 1996



PERSONS WITHOUT MARGINAL ATTACHMENT

The majority of those without marginal attachment to the labour force did not want to work (2,511,400 persons). This includes those permanently unable to work, and persons in institutions.

However, some of those without marginal attachment did want to work, but were not actively looking for work, and were not available to start within four weeks (308,400 persons). Some 70% were female, 27% were aged 25–34 years, and 44% reported their main activity as 'home duties/childcare'.

MAIN ACTIVITY WHEN NOT
IN THE LABOUR FORCE

The most commonly reported main activity of all persons not in the labour force was 'home duties/childcare' (44%), followed by 'retired/voluntarily inactive' (20%) and 'attending an educational institution' (19%).

The activity most commonly reported by males in younger age groups (15-34 years) was 'attending an educational institution' (80%). For males aged 35-59 years the most commonly reported activity was 'own illness/injury/or own disability/handicap' (48%). In the older age groups (60-69 years) for males, the most common response was 'retired/voluntarily inactive' (76%).

In comparison, for females across all age groups, except for 15-19 years, the most commonly reported response was 'home duties/childcare' (70%). Females aged 15-19 years most commonly reported 'attending an educational institution' as their main activity when not in the labour force (92%).

PREVIOUS JOB

Some 82% of persons who were not in the labour force had previously had a job.

Of females, 43% had their last job within the last five years, and 39% had not had a job for 10 years or more. This is related to the age distribution of females not in the labour force. The two largest age groups are the 25-34 years and the 45-54 years age group.

Of males, 57% had their last job within the last five years, 24% had their last job between five and 10 years ago, and 19% had their last job 10 or more years ago.

Some 63% of persons who previously had a job reported they had left their last job, and 37% had lost their last job. The most commonly reported reasons for leaving the last job were 'pregnancy/to have children' (27%) and 'retired/did not want to work any longer' (25%). The most commonly reported reasons for losing the last job were 'own ill health or injury' (51%) and 'retrenched' (33%).

TABLE 1. CIVILIAN POPULATION: LABOUR FORCE STATUS
(^{'000})

	<i>Sept.</i> <i>1991</i>	<i>Sept.</i> <i>1992</i>	<i>Sept.</i> <i>1993</i>	<i>Sept.</i> <i>1994</i>	<i>Sept.</i> <i>1995</i>	<i>Sept.</i> <i>1996</i>
MALES						
<i>Civilian population aged 15 to 69 years —</i>	<i>6,158.6</i>	<i>6,230.5</i>	<i>6,287.9</i>	<i>6,292.7</i>	<i>6,371.9</i>	<i>6,462.4</i>
Persons in the labour force	4,986.0	5,007.1	5,049.5	5,057.5	5,164.0	5,212.2
Employed	4,463.1	4,441.2	4,483.7	4,573.3	4,700.3	4,746.7
Unemployed	522.8	565.9	565.8	484.2	463.7	465.5
Persons not in the labour force	1,172.6	1,223.4	1,238.4	1,235.1	1,207.9	1,250.2
With marginal attachment to the labour force	220.5	246.7	247.1	215.3	261.8	262.0
Wanted to work and were actively looking for work	23.6	29.4	28.1	25.1	30.9	28.6
Were available to start work within four weeks	10.7	16.0	16.3	15.1	13.7	15.8
Were not available to start work within four weeks	12.9	13.3	11.8	10.0	17.3	12.8
Wanted to work but were not actively looking for work and were available to start work within four weeks	196.9	217.3	219.0	190.2	230.9	233.3
Discouraged jobseekers	34.5	37.8	40.0	31.7	39.0	29.5
Other	162.4	179.5	179.0	158.5	191.9	203.9
Without marginal attachment to the labour force	952.1	976.8	991.3	1,019.8	946.1	988.2
Wanted to work but were not actively looking for work and were not available to start work within four weeks	77.5	89.0	98.6	100.7	95.0	92.4
Did not want to work	787.4	817.8	813.1	787.6	768.6	784.2
Permanently unable to work	32.5	30.6	35.0	58.2	41.2	63.9
Persons in institutions	54.8	39.3	44.6	73.4	41.3	47.7
FEMALES						
<i>Civilian population aged 15 to 69 years —</i>	<i>6,076.8</i>	<i>6,155.2</i>	<i>6,213.1</i>	<i>6,251.6</i>	<i>6,326.0</i>	<i>6,420.1</i>
Persons in the labour force	3,605.6	3,640.5	3,695.1	3,818.0	3,893.0	3,970.9
Employed	3,262.4	3,281.1	3,321.3	3,471.4	3,593.4	3,636.4
Unemployed	343.2	359.4	373.8	346.5	299.6	334.5
Persons not in the labour force	2,471.3	2,514.7	2,518.0	2,433.7	2,433.0	2,449.2
With marginal attachment to the labour force	598.8	599.7	660.7	558.0	601.0	617.6
Wanted to work and were actively looking for work	23.0	29.7	30.2	36.2	32.9	29.4
Were available to start work within four weeks	13.4	17.8	18.5	23.3	19.1	18.9
Were not available to start work within four weeks	9.6	11.9	11.7	13.0	13.7	10.5
Wanted to work but were not actively looking for work and were available to start work within four weeks	575.8	570.0	630.4	521.8	568.1	588.2
Discouraged jobseekers	103.7	107.8	107.4	74.8	72.9	89.4
Other	472.1	462.2	523.1	447.0	495.2	498.8
Without marginal attachment to the labour force	1,872.5	1,915.0	1,857.4	1,875.6	1,832.0	1,831.6
Wanted to work but were not actively looking for work and were not available to start work within four weeks	199.6	166.0	172.4	188.8	205.7	216.0
Did not want to work	1,621.6	1,698.3	1,636.6	1,622.3	1,573.5	1,544.5
Permanently unable to work	15.5	14.2	14.0	32.1	19.6	34.7
Persons in institutions	35.7	36.5	34.3	32.4	33.2	36.3
PERSONS						
<i>Civilian population aged 15 to 69 years —</i>	<i>12,235.4</i>	<i>12,385.7</i>	<i>12,501.0</i>	<i>12,544.3</i>	<i>12,697.9</i>	<i>12,882.5</i>
Persons in the labour force	8,591.5	8,647.5	8,744.6	8,875.5	9,057.0	9,183.1
Employed	7,725.5	7,722.2	7,804.9	8,044.7	8,293.7	8,383.1
Unemployed	866.0	925.3	939.6	830.8	763.3	800.0
Persons not in the labour force	3,643.9	3,738.1	3,756.4	3,668.8	3,640.9	3,699.4
With marginal attachment to the labour force	819.3	846.4	907.8	773.3	862.8	879.6
Wanted to work and were actively looking for work	46.7	59.1	58.3	61.4	63.8	58.0
Were available to start work within four weeks	24.1	33.8	34.8	38.4	32.8	34.7
Were not available to start work within four weeks	22.5	25.3	23.5	22.9	31.0	23.3
Wanted to work but were not actively looking for work and were available to start work within four weeks	772.7	787.3	849.5	712.0	799.0	821.5
Discouraged jobseekers	138.2	145.6	147.4	106.5	111.9	118.9
Other	634.5	641.7	702.0	605.5	687.1	702.6
Without marginal attachment to the labour force	2,824.6	2,891.7	2,848.7	2,895.5	2,778.1	2,819.8
Wanted to work but were not actively looking for work and were not available to start work within four weeks	277.1	255.0	271.0	289.6	300.7	308.4
Did not want to work	2,409.0	2,516.1	2,449.7	2,409.9	2,342.1	2,328.7
Permanently unable to work	48.1	44.8	49.1	90.3	60.8	98.6
Persons in institutions	90.5	75.8	78.9	105.8	74.6	84.0

TABLE 2. PERSONS NOT IN THE LABOUR FORCE (a): SELECTED CHARACTERISTICS, SEPTEMBER 1996
(*000)

	With marginal attachment to the labour force				Without marginal attachment to the labour force				Total not in the labour force	Proportion not in the labour force (%)
	Wanted to work and were actively looking for work	Wanted to work but were not actively looking for work and were available to start work within four weeks		Total	Wanted to work but neither looking nor available for work	Did not want to work	Total(b)			
		Discouraged jobseeker	Other							
MALES										
State of usual residence —										
New South Wales	9.3	8.3	61.9	70.2	79.4	28.9	279.0	340.5	419.9	19.4
Victoria	6.6	7.0	51.1	58.1	64.7	23.4	194.9	234.5	299.2	18.7
Queensland	6.0	6.1	35.5	41.7	47.6	14.3	138.7	157.7	205.3	17.4
South Australia	* 2.7	* 3.1	22.7	25.8	28.5	7.8	72.1	82.7	111.2	21.5
Western Australia	* 3.2	* 3.3	19.1	22.4	25.5	11.0	66.3	78.6	104.1	16.6
Tasmania	* 0.3	* 0.7	7.0	7.7	8.0	3.3	18.9	26.6	34.7	21.2
Northern Territory	* 0.1	* 0.5	* 2.2	* 2.7	2.8	* 1.5	5.9	7.8	10.5	17.2
Australian Capital Territory	* 0.6	* 0.5	4.3	4.8	5.4	2.3	8.4	12.1	17.5	16.1
Age group (years) —										
15-19	8.1	* 2.1	77.3	79.4	87.5	25.6	142.0	168.0	255.5	39.7
20-24	7.1	* 1.2	24.3	25.5	32.6	8.8	38.2	49.9	82.5	11.7
25-34	* 4.1	* 0.7	22.6	23.3	27.4	11.9	32.3	52.2	79.7	5.6
35-44	* 4.8	* 2.4	26.0	28.4	33.2	15.9	42.7	65.9	99.1	7.2
45-54	* 1.8	* 2.4	19.3	21.7	23.6	15.7	72.4	103.2	126.8	10.8
55-59	* 1.5	* 2.5	10.0	12.5	14.0	7.3	66.6	87.1	101.1	24.3
60-64	* 0.9	10.7	14.9	25.7	26.6	* 4.2	150.8	164.5	191.1	53.3
65-69	* 0.3	7.4	9.4	16.8	17.0	* 2.9	239.3	249.6	266.7	81.4
Relationship in household —										
Family member	19.2	22.9	163.9	186.8	206.1	71.2	630.3	748.8	954.9	18.6
Husband	6.5	17.4	59.6	77.0	83.4	36.4	427.9	496.9	580.3	15.6
With dependants	* 3.8	* 3.7	24.0	27.7	31.5	19.7	67.0	97.3	128.8	6.3
Without dependants	* 2.7	13.7	35.6	49.3	52.0	16.7	360.9	399.6	451.6	26.7
Lone parent	* 0.2	* 1.9	9.0	10.9	11.2	* 0.9	14.0	16.7	27.9	30.2
With dependants	* 0.2	* 1.3	8.0	9.3	9.5	* 0.5	6.2	7.8	17.4	27.4
Without dependants	* 0.0	* 0.6	* 1.0	* 1.6	* 1.6	* 0.4	7.8	8.9	10.5	36.4
Dependent student	9.7	* 1.6	74.2	75.8	85.5	22.9	139.3	162.6	248.1	54.9
Non-dependent child	* 2.6	* 1.7	17.4	19.0	21.6	* 5.1	27.5	42.4	64.0	8.6
Other family person	* 0.3	* 0.3	* 3.8	* 4.1	* 4.4	5.9	21.6	30.3	34.7	25.5
Non-family member	6.6	6.2	27.3	33.5	40.0	17.7	116.8	149.1	189.1	18.4
Lone person	* 3.8	* 5.6	14.2	19.8	23.6	10.7	78.7	99.4	122.9	23.6
Not living alone	* 2.8	* 0.6	13.1	13.7	16.5	7.0	38.1	49.7	66.2	13.1
Not determined	* 2.8	* 0.4	12.6	13.0	15.9	* 3.5	37.0	42.6	58.5	24.3
Birthplace										
Born in Australia	20.4	17.1	159.4	176.5	197.0	58.3	519.3	622.2	819.2	17.5
Born outside Australia	8.2	12.4	44.4	56.8	65.0	34.0	264.9	318.3	383.3	22.1
Born in main English speaking countries	* 3.5	* 5.3	15.3	20.7	24.1	8.6	75.4	89.2	113.4	16.7
Born in other countries	* 4.7	7.0	29.1	36.1	40.9	25.5	189.4	229.1	269.9	25.6
Time since last job										
Had had a job	21.6	26.8	133.3	160.1	181.7	64.9	627.4	746.4	928.1	n.a.
Under 12 months	13.5	* 4.1	55.6	59.7	73.2	21.1	84.4	107.1	180.3	n.a.
1 and under 3 years	* 4.1	6.2	30.1	36.2	40.3	20.1	114.8	140.8	181.1	n.a.
3 and under 5 years	* 1.9	6.7	18.4	25.1	27.0	8.2	120.7	139.0	166.1	n.a.
5 and under 10 years	* 1.5	7.1	17.7	24.9	26.3	8.8	170.1	195.1	221.5	n.a.
10 and under 20 years	* 0.7	* 2.4	10.8	13.2	13.9	* 5.5	112.1	129.6	143.5	n.a.
20 years or more	* 0.0	* 0.4	* 0.5	* 0.9	* 0.9	* 1.3	25.3	34.7	35.6	n.a.
Had never had a job	7.0	* 2.7	70.6	73.3	80.3	27.4	156.8	194.1	274.3	n.a.
Main activity when not in the labour force										
Home duties/childcare	* 3.3	* 4.0	20.6	24.6	27.9	* 3.4	31.6	37.7	65.6	n.a.
Attending an educational institution	14.0	* 3.7	99.2	102.9	116.9	39.2	195.7	236.3	353.1	n.a.
Retired/voluntarily inactive	* 1.1	17.3	26.4	43.7	44.8	8.2	369.5	387.0	431.8	n.a.
Own illness/injury/own disability/handicap	* 3.8	* 1.3	35.6	36.8	40.6	34.9	138.9	222.4	263.0	n.a.
Looking after ill/disabled person	* 0.2	* 0.0	* 1.8	* 1.8	* 2.0	* 1.5	12.6	14.5	16.4	n.a.
Travel/moving house/holiday	* 1.1	* 0.4	7.0	7.4	8.6	* 2.0	10.5	12.5	21.1	n.a.
Worked in unpaid voluntary job	* 0.5	* 0.6	* 4.0	* 4.6	* 5.1	* 0.8	14.1	15.3	20.4	n.a.
Other	* 4.7	* 2.2	9.3	11.5	16.2	* 2.4	11.3	14.8	31.1	n.a.
Total	28.6	29.5	203.9	233.3	262.0	92.4	784.2	940.5	1,202.5	18.7

(a) Excludes students boarding at school, patients in hospitals and sanatoriums and inmates of reformatories, gaols, etc. (b) Includes permanently unable to work.

TABLE 2. PERSONS NOT IN THE LABOUR FORCE (a): SELECTED CHARACTERISTICS, SEPTEMBER 1996 ('000)

	With marginal attachment to the labour force				Without marginal attachment to the labour force				Total not in the labour force	Proportion not in the labour force (%)
	Wanted to work and were actively looking for work	Wanted to work but were not actively looking for work and were available to start work within four weeks		Total	Wanted to work but neither looking nor available for work	Did not want to work	Total(b)			
		Discouraged jobseeker	Other							
FEMALES										
State of usual residence —										
New South Wales	9.1	34.2	150.9	185.1	194.3	78.1	553.3	649.8	844.1	39.3
Victoria	* 6.2	23.3	133.4	156.7	162.8	49.9	380.6	437.9	600.8	37.4
Queensland	7.8	14.3	93.1	107.4	115.2	39.7	275.1	317.8	433.0	37.0
South Australia	* 2.4	8.2	39.1	47.3	49.7	15.4	126.9	144.0	193.7	37.8
Western Australia	* 2.3	6.5	50.9	57.4	59.6	20.1	142.0	163.0	222.7	36.2
Tasmania	* 0.9	* 1.5	17.6	19.1	20.0	5.4	40.7	48.3	68.2	42.1
Northern Territory	* 0.2	* 0.7	4.0	4.7	4.9	3.1	10.6	13.8	18.7	30.8
Australian Capital Territory	* 0.6	* 0.8	9.7	10.5	11.1	4.3	15.4	20.7	31.8	28.9
Age group (years) —										
15-19	6.3	* 3.5	62.2	65.7	72.0	36.0	142.2	178.8	250.8	40.8
20-24	5.8	* 3.2	48.4	51.6	57.4	25.5	64.3	90.9	148.3	21.6
25-34	9.0	9.9	164.9	174.8	183.8	70.8	184.1	258.2	442.1	31.0
35-44	* 4.2	21.0	122.2	143.2	147.4	44.5	182.7	231.8	379.2	27.0
45-54	* 3.3	23.1	67.0	90.2	93.4	23.0	227.8	262.1	355.6	31.0
55-59	* 0.5	11.2	20.0	31.2	31.7	7.7	178.3	190.9	222.6	55.2
60-64	* 0.2	9.6	8.9	18.5	18.7	6.3	263.9	274.8	293.5	82.1
65-69	* 0.0	7.9	* 5.1	13.0	13.0	* 2.3	301.2	307.8	320.8	93.1
Relationship in household —										
Family member	23.3	75.5	457.6	533.2	556.5	191.8	1,299.6	1,517.3	2,073.8	39.1
Wife	9.7	59.0	301.2	360.2	369.9	119.8	991.4	1,128.4	1,498.3	40.0
With dependants	6.9	26.7	238.4	265.1	272.0	94.3	347.2	444.3	716.4	36.3
Without dependants	* 2.8	32.3	62.7	95.1	97.8	25.5	644.2	684.1	781.9	44.1
Lone parent	6.4	11.7	90.0	101.7	108.1	31.2	115.1	150.3	258.4	46.6
With dependants	6.4	9.4	86.0	95.4	101.8	29.0	70.8	102.0	203.8	46.3
Without dependants	* 0.0	* 2.3	* 4.0	6.3	6.3	* 2.2	44.3	48.3	54.7	47.6
Dependent student	* 4.4	* 2.1	50.8	52.9	57.3	31.2	132.1	163.2	220.5	48.5
Non-dependent child	* 2.4	* 1.7	10.8	12.5	14.9	5.7	22.5	31.7	46.6	10.6
Other family person	* 0.5	* 1.0	* 4.9	5.9	6.3	* 4.0	38.5	43.6	49.9	42.8
Non-family member	* 3.5	10.7	23.9	34.6	38.2	12.9	187.6	207.8	246.0	29.5
Lone person	* 1.5	9.7	14.6	24.3	25.8	7.3	153.5	165.3	191.1	42.1
Not living alone	* 2.1	* 1.0	9.3	10.3	12.4	* 5.6	34.0	42.5	54.9	14.4
Not determined	* 2.5	* 3.2	17.2	20.4	22.9	11.3	57.4	70.2	93.1	38.9
Birthplace —										
Born in Australia	22.3	53.2	365.5	418.6	440.9	141.2	1,045.5	1,210.9	1,651.8	35.2
Born outside Australia	7.1	36.3	133.3	169.6	176.7	74.9	499.1	584.4	761.1	45.1
Born in main English speaking countries	* 2.8	10.7	50.7	61.4	64.2	21.6	157.2	182.3	246.5	38.0
Born in other countries	* 4.4	25.5	82.6	108.1	112.5	53.2	341.8	402.1	514.5	49.6
Time since last job —										
Had had a job	25.4	79.2	423.8	503.0	528.4	170.4	1,300.4	1,497.4	2,025.8	n.a.
Under 12 months	13.3	7.5	98.9	106.4	119.7	57.3	146.9	204.4	324.1	n.a.
1 and under 3 years	6.6	14.5	104.5	119.0	125.5	40.0	157.4	199.0	324.6	n.a.
3 and under 5 years	* 2.2	11.9	54.8	66.8	69.0	21.2	132.3	155.7	224.7	n.a.
5 and under 10 years	* 2.5	21.0	90.9	111.9	114.4	26.9	222.1	254.7	369.0	n.a.
10 and under 20 years	* 0.8	15.5	54.9	70.4	71.3	18.4	268.9	294.6	365.9	n.a.
20 years or more	* 0.0	8.7	19.8	28.5	28.5	6.6	372.8	389.0	417.5	n.a.
Had never had a job	* 3.9	10.3	75.0	85.3	89.2	45.6	244.1	297.9	387.1	n.a.
Main activity when not in the labour force -										
Home duties/childcare	12.5	65.9	367.9	433.8	446.3	131.2	943.4	1,082.8	1,529.1	n.a.
Attending an educational institution	11.0	* 5.2	82.2	87.4	98.4	52.4	195.0	248.1	346.6	n.a.
Retired/voluntarily inactive	* 0.1	9.8	10.3	20.1	20.2	5.9	267.6	276.3	296.5	n.a.
Own illness/injury/own disability/handicap	* 1.1	* 0.3	13.5	13.8	15.0	16.2	64.6	101.9	116.9	n.a.
Looking after ill/disabled person	* 0.4	* 1.3	7.7	9.0	9.4	6.0	38.6	45.6	55.0	n.a.
Travel/moving house/holiday	* 2.1	* 1.0	7.7	8.7	10.9	* 2.6	7.4	10.1	20.9	n.a.
Worked in unpaid voluntary job	* 0.5	* 4.8	6.1	10.9	11.4	* 0.8	21.9	23.1	34.5	n.a.
Other	* 1.5	* 1.2	* 3.3	* 4.5	6.0	* 0.8	6.0	7.4	13.4	n.a.
Total	29.4	89.4	498.8	588.2	617.6	216.0	1,544.5	1,795.3	2,412.9	37.8

(a) Excludes students boarding at school, patients in hospitals and sanatoriums and inmates of reformatories, gaols, etc. (b) Includes permanently unable to work.

TABLE 2. PERSONS NOT IN THE LABOUR FORCE (a): SELECTED CHARACTERISTICS, SEPTEMBER 1996
('000)

	With marginal attachment to the labour force				Without marginal attachment to the labour force				Total not in the labour force	Proportion not in the labour force (%)
	Wanted to work and were actively looking for work	Wanted to work but were not actively looking for work and were available to start work within four weeks			Total	Wanted to work but neither looking nor available for work	Did not want to work	Total(b)		
		Dis-couraged jobseeker	Other	Total						
PERSONS										
State of usual residence										
New South Wales	18.4	42.5	212.8	255.3	273.7	107.0	832.3	990.3	1,264.0	29.3
Victoria	12.7	30.3	184.5	214.8	227.5	73.2	575.5	672.4	900.0	28.1
Queensland	13.8	20.4	128.7	149.1	162.8	54.0	413.8	475.5	638.3	27.2
South Australia	5.0	11.3	61.8	73.1	78.2	23.2	199.0	226.7	304.9	29.6
Western Australia	5.4	9.7	70.0	79.7	85.2	31.1	208.3	241.6	326.8	26.3
Tasmania	* 1.2	2.2	24.6	26.8	28.0	8.7	59.6	74.9	102.9	31.6
Northern Territory	* 0.4	* 1.1	6.2	7.3	7.7	4.6	16.5	21.6	29.2	24.0
Australian Capital Territory	* 1.2	1.3	14.0	15.3	16.5	6.6	23.8	32.8	49.3	22.6
Age group (years) —										
15-19	14.4	5.7	139.4	145.1	159.5	61.6	284.2	346.8	506.3	40.2
20-24	12.9	* 4.4	72.7	77.1	90.0	34.3	102.5	140.8	230.8	16.6
25-34	13.1	10.6	187.5	198.2	211.3	82.8	216.5	310.5	521.7	18.4
35-44	9.0	23.4	148.2	171.6	180.6	60.4	225.3	297.7	478.3	17.2
45-54	* 5.1	25.5	86.3	111.9	117.0	38.6	300.2	365.3	482.3	20.8
55-59	* 2.1	13.6	30.1	43.7	45.8	15.0	244.9	278.0	323.7	39.5
60-64	* 1.1	20.3	23.8	44.2	45.3	10.5	414.7	439.3	484.6	67.7
65-69	* 0.3	15.3	14.5	29.8	30.1	* 5.2	540.6	557.4	587.5	87.4
Relationship in household										
Family member	42.6	98.4	621.6	720.0	762.6	263.0	1,929.9	2,266.2	3,028.7	29.0
Husband or wife	16.1	76.4	360.8	437.1	453.3	156.2	1,419.3	1,625.3	2,078.6	27.8
With dependants	10.7	30.3	262.4	292.8	303.5	114.0	414.2	541.6	845.2	21.1
Without dependants	* 5.4	46.0	98.3	144.4	149.8	42.2	1,005.1	1,083.7	1,233.5	35.6
One parent	6.6	13.6	99.0	112.6	119.3	32.0	129.1	167.0	286.3	44.2
With dependants	6.6	10.7	94.0	104.7	111.3	29.5	77.0	109.8	221.1	43.9
Without dependants	* 0.0	* 2.9	* 5.1	7.9	7.9	* 2.6	52.1	57.2	65.1	45.3
Dependent student	14.0	* 3.8	125.0	128.7	142.7	54.1	271.3	325.8	468.6	51.7
Non-dependent child	* 5.0	* 3.4	28.1	31.5	36.6	10.8	50.0	74.1	110.6	9.4
Other family person	* 0.7	* 1.3	8.6	10.0	10.7	9.9	60.1	73.9	84.6	33.5
Non-family member	10.1	16.9	51.2	68.1	78.2	30.6	304.4	356.9	435.1	23.4
One person	* 5.3	15.2	28.8	44.1	49.3	18.0	232.2	264.7	314.0	32.2
Not living alone	* 4.9	* 1.7	22.4	24.0	28.9	12.6	72.2	92.2	121.1	13.7
Not determined	* 5.3	* 3.6	29.8	33.5	38.8	14.9	94.4	112.8	151.6	31.6
Birthplace										
Born in Australia	42.7	70.3	524.9	595.2	637.9	199.5	1,564.8	1,833.1	2,471.0	26.4
Born outside Australia	15.3	48.6	177.7	226.4	241.7	108.9	763.9	902.7	1,144.4	33.4
Born in main English speaking countries	6.2	16.1	66.1	82.1	88.4	30.2	232.7	271.6	359.9	27.1
Born in other countries	9.1	32.6	111.7	144.2	153.3	78.7	531.2	631.1	784.4	37.5
Time since last job										
Had had a job	47.1	106.0	557.1	663.0	710.1	235.3	1,927.9	2,243.8	2,953.9	n.a.
Under 12 months	26.8	11.5	154.5	166.0	192.9	78.4	231.3	311.6	504.4	n.a.
1 and under 3 years	10.6	20.7	134.6	155.2	165.9	60.2	272.3	339.8	505.7	n.a.
3 and under 5 years	* 4.1	18.6	73.3	91.9	96.0	29.4	253.0	294.8	390.8	n.a.
5 and under 10 years	* 3.9	28.2	108.6	136.8	140.7	35.7	392.2	449.8	590.5	n.a.
10 and under 20 years	* 1.5	17.9	65.8	83.7	85.2	23.9	381.0	424.2	509.4	n.a.
20 years or more	* 0.0	9.1	20.4	29.4	29.4	7.9	398.1	423.6	453.1	n.a.
Had never had a job	11.0	13.0	145.5	158.5	169.5	73.1	400.9	492.0	661.5	n.a.
Main activity when not in the labour force										
Home duties/childcare	15.8	69.9	388.5	458.4	474.2	134.6	975.1	1,120.6	1,594.7	n.a.
Attending an educational institution	25.0	8.9	181.4	190.3	215.3	91.6	390.7	484.4	699.7	n.a.
Retired/voluntarily inactive	* 1.2	27.1	36.7	63.8	65.0	14.2	637.0	663.3	728.3	n.a.
Own illness/injury/own disability/handicap	* 4.9	* 1.6	49.1	50.7	55.6	51.2	203.5	324.3	379.9	n.a.
Looking after ill/disabled person	* 0.6	* 1.3	9.5	10.8	11.4	7.6	51.3	60.1	71.4	n.a.
Travel/moving house/holiday	* 3.3	* 1.4	14.7	16.2	19.4	* 4.6	18.0	22.6	42.0	n.a.
Worked in unpaid voluntary job	* 1.0	* 5.4	10.1	15.5	16.5	* 1.6	36.0	38.4	54.9	n.a.
Other	6.2	* 3.4	12.6	16.0	22.2	* 3.2	17.2	22.2	44.5	n.a.
Total	58.0	118.9	702.6	821.5	879.6	308.4	2,328.7	2,735.8	3,615.4	28.2

(a) Excludes students boarding at school, patients in hospitals and sanatoriums and inmates of reformatories, gaols, etc. (b) Includes permanently unable to work.

**TABLE 3. PERSONS NOT IN THE LABOUR FORCE: MAIN ACTIVITY WHEN NOT IN THE LABOUR FORCE
AND AGE, SEPTEMBER 1996**
(^{'000})

Main activity when not in the labour force	Age group (years)								Total
	15-19	20-24	25-34	35-44	45-54	55-59	60-64	65-69	
MALES									
Home duties/childcare	* 1.4	* 1.3	9.3	14.4	15.5	* 5.5	9.1	9.0	65.6
Attending an educational institution	246.5	60.0	27.6	13.2	* 4.4	* 0.9	* 0.5	* 0.0	353.1
Retired/voluntarily inactive	* 0.8	* 2.7	* 1.6	8.6	28.1	41.2	127.2	221.6	431.8
Own illness/injury or disability/handicap	* 3.3	10.7	27.3	47.4	65.5	44.5	42.0	22.3	263.0
Looking after ill/disabled person	* 0.0	* 0.0	* 0.4	* 2.3	* 5.0	* 2.9	* 3.4	* 2.5	16.4
Travel/moving house	* 0.5	* 2.8	* 5.5	* 3.8	* 2.6	* 1.6	* 2.3	* 2.0	21.1
Worked in unpaid voluntary job	* 0.8	* 0.7	* 1.3	* 2.8	* 3.2	* 2.1	* 2.8	6.6	20.4
Other	* 2.3	* 4.3	6.7	6.6	* 2.6	* 2.3	* 3.7	* 2.6	31.1
Total	255.5	82.5	79.7	99.1	126.8	101.1	191.1	266.7	1,202.5
FEMALES									
Home duties/childcare	13.3	79.1	390.8	317.6	261.8	138.8	160.5	167.2	1,529.1
Attending an educational institution	231.8	57.3	26.3	19.6	7.0	* 2.8	* 1.0	* 0.9	346.6
Retired/voluntarily inactive	* 0.6	* 0.2	* 2.1	* 2.9	24.7	43.2	95.2	127.6	296.5
Own illness/injury or disability/handicap	* 2.3	5.7	13.6	23.0	32.5	17.6	12.5	9.8	116.9
Looking after ill/disabled person	* 0.0	* 1.0	* 1.8	7.8	17.3	13.0	9.3	* 4.8	55.0
Travel/moving house	* 1.5	* 3.6	* 2.8	* 2.6	* 3.8	* 1.7	* 3.8	* 1.2	20.9
Worked in unpaid voluntary job	* 0.5	* 0.5	* 0.8	* 4.6	6.2	* 3.1	10.0	8.7	34.5
Other	* 0.9	* 1.0	* 3.8	* 1.1	* 2.3	* 2.5	* 1.2	* 0.6	13.4
Total	250.8	148.3	442.1	379.2	355.6	222.6	293.5	320.8	2,412.9
PERSONS									
Home duties/childcare	14.7	80.4	400.2	332.0	277.3	144.3	169.7	176.2	1,594.7
Attending an educational institution	478.3	117.3	53.9	32.7	11.4	* 3.7	* 1.5	* 0.9	699.7
Retired/voluntarily inactive	* 1.4	* 2.9	* 3.8	11.5	52.7	84.4	222.4	349.2	728.3
Own illness/injury or disability/handicap	* 5.5	16.3	40.8	70.5	98.0	62.1	54.5	32.2	379.9
Looking after ill/disabled person	* 0.0	* 1.0	* 2.1	10.1	22.3	15.9	12.7	7.4	71.4
Travel/moving house	* 2.0	6.4	8.3	6.4	6.3	* 3.3	6.2	* 3.2	42.0
Worked in unpaid voluntary job	* 1.3	* 1.2	* 2.1	7.4	9.4	* 5.2	12.9	15.4	54.9
Other	* 3.2	* 5.2	10.5	7.7	* 4.8	* 4.9	* 4.9	* 3.2	44.5
Total	506.3	230.8	521.7	478.3	482.3	323.7	484.6	587.5	3,615.4

TABLE 4. PERSONS WITH MARGINAL ATTACHMENT TO THE LABOUR FORCE: MAIN REASON FOR NOT ACTIVELY LOOKING FOR WORK
(*000)

	Sept. 1991	Sept. 1992	Sept. 1993	Sept. 1994	Sept. 1995	Sept. 1996
MALES						
Wanted to work and were actively looking for work	23.6	29.4	28.1	25.1	30.9	28.6
Wanted to work but were not actively looking for work and were available to start work within four weeks	196.9	217.3	219.0	190.2	230.9	233.3
<i>Main reason for not actively looking for work --</i>						
Discouraged jobseeker	34.5	37.8	40.0	31.7	39.0	29.5
Considered too young or too old by employers	12.6	12.0	12.9	17.1	17.2	15.3
Lacked necessary schooling, training, skills or experience	*2.8	*1.7	*2.2	*1.5	*2.1	*1.5
Difficulties because of language or ethnic background	*1.8	*1.5	*1.5	*2.6	*0.8	*2.2
No jobs in locality or line of work	*5.4	10.3	11.8	10.9	7.6	8.1
No jobs at all	*1.6	8.9	9.4	7.9	*4.0	*2.4
Had a job to go to(a)	7.3	8.5	8.3	8.6	10.7	13.6
Personal reasons	130.9	146.4	145.3	120.4	144.5	160.2
Own ill health/physical disability	29.4	33.4	36.0	32.8	42.6	49.2
Attending an educational institution	79.8	89.0	88.1	70.3	76.1	90.4
Had no need to work	10.6	11.3	11.0	9.6	7.6	9.5
Give others a chance	*0.8	*0.9	*1.0	*0.3	*0.2	*0.5
Welfare payments or pension may be affected	*3.6	*3.6	*5.5	*3.6	*2.7	*4.4
Moved house or holidays	6.1	5.8	6.4	7.5	6.6	6.2
Family reasons	7.3	8.5	7.4	11.8	12.6	14.8
Ill health of other than self	*1.3	*1.8	*2.9	*2.1	*3.3	*2.0
Childcare	*2.7	*2.8	*3.2	*3.3	6.4	8.2
Other family considerations	*1.3	*2.8	*2.4	*1.9	*2.0	*4.5
No jobs in suitable hours	*2.6	*2.2	*1.1	*0.2	*2.1	*1.0
Other reasons(b)	13.5	13.0	16.1	15.4	21.1	11.3
Did not know	*0.8	*0.9	*0.9	*2.1	*0.8	*3.0
Total	220.5	246.7	247.1	215.3	261.8	262.0
FEMALES						
Wanted to work and were actively looking for work	23.0	29.7	30.2	36.2	32.9	29.4
Wanted to work but were not actively looking for work and were available to start work within four weeks	575.8	570.0	630.4	521.8	568.1	588.2
<i>Main reason for not actively looking for work --</i>						
Discouraged jobseeker	103.7	107.8	107.4	74.8	72.9	89.4
Considered too young or too old by employers	16.8	25.2	33.7	24.0	29.6	31.8
Lacked necessary schooling, training, skills or experience	11.6	13.9	18.6	15.8	13.7	17.2
Difficulties because of language or ethnic background	5.8	7.6	6.2	7.7	6.9	10.4
No jobs in locality or line of work	38.1	33.3	31.3	18.3	17.8	20.3
No jobs at all	31.4	27.9	17.6	9.0	*5.0	9.8
Had a job to go to(a)	18.8	16.3	13.5	17.9	22.7	14.8
Personal reasons	165.2	172.5	193.4	161.3	178.8	166.9
Own ill health/physical disability/pregnancy	35.6	38.1	43.4	49.3	43.8	44.3
Attending an educational institution	75.3	79.3	90.8	68.8	78.0	76.9
Had no need to work	30.2	30.7	32.8	20.7	29.7	26.1
Give others a chance	7.0	6.8	6.6	*4.0	*3.3	*3.6
Welfare payments or pension may be affected	8.0	10.0	8.8	9.4	10.9	6.4
Moved house or holidays	9.1	7.6	11.1	9.1	13.1	9.6
Family reasons	247.2	241.0	275.5	237.9	257.4	279.8
Ill health of other than self	12.2	12.1	16.5	16.1	19.3	20.7
Childcare	193.7	200.1	213.9	170.9	185.3	192.0
Other family considerations	41.3	28.8	45.2	51.0	52.7	67.1
No jobs in suitable hours	10.8	10.6	6.9	7.4	7.1	8.8
Other reasons(b)	24.5	18.0	26.9	17.1	25.5	20.9
Did not know	*5.6	*3.9	6.8	*5.3	*3.6	7.6
Total	598.8	599.7	660.7	558.0	601.0	617.6

TABLE 4. PERSONS WITH MARGINAL ATTACHMENT TO THE LABOUR FORCE: MAIN REASON FOR NOT ACTIVELY LOOKING FOR WORK
(*000) — *continued*

	<i>Sept. 1991</i>	<i>Sept. 1992</i>	<i>Sept. 1993</i>	<i>Sept. 1994</i>	<i>Sept. 1995</i>	<i>Sept. 1996</i>
PERSONS						
Wanted to work and were actively looking for work	46.7	59.1	58.3	61.4	63.8	58.0
Wanted to work but were not actively looking for work and were available to start work within four weeks	772.7	787.3	849.5	712.0	799.0	821.5
<i>Main reason for not actively looking for work —</i>						
Discouraged jobseeker	138.2	145.6	147.4	106.5	111.9	118.9
Considered too young or too old by employers	28.8	38.1	50.8	41.2	50.4	47.1
Lacked necessary schooling, training, skills or experience	13.3	16.1	20.1	17.9	16.1	18.7
Difficulties because of language or ethnic background	7.3	9.1	8.8	8.5	8.2	12.6
No jobs in locality or line of work	48.4	45.1	42.2	25.9	28.3	28.4
No jobs at all	40.3	37.3	25.5	13.0	8.8	12.2
Had a job to go to(a)	26.1	24.9	21.9	26.6	33.4	28.3
Personal reasons	296.1	318.9	338.7	281.7	323.4	327.1
Own ill health/physical disability/pregnancy	65.0	71.5	79.5	82.2	86.3	93.5
Attending an educational institution	155.1	168.3	178.8	139.1	154.0	167.3
Had no need to work	41.5	41.7	42.4	28.3	43.0	35.6
Give others a chance	7.9	7.8	6.9	*4.2	*4.2	*4.2
Welfare payments or pension may be affected	11.6	15.5	12.4	12.1	15.8	10.7
Moved house or holidays	14.9	14.0	18.6	15.7	20.0	15.8
Family reasons	254.5	249.5	282.9	249.7	270.0	294.6
Ill health of other than self	14.0	15.0	18.6	19.4	22.3	22.8
Childcare	196.5	203.3	217.2	177.3	192.7	200.2
Other family considerations	44.1	31.2	47.1	53.0	55.1	71.6
No jobs in suitable hours	13.4	12.8	8.0	7.6	9.3	9.8
Other reasons(b)	38.0	31.0	43.0	32.5	46.6	32.2
Did not know	6.4	*4.7	7.7	7.4	*4.4	10.6
Total	819.3	846.4	907.8	773.3	862.8	879.6

(a) Includes persons who had a job but, up to the end of the reference week, had been away from work without pay for four weeks or longer and had not been actively looking for work. (b) Includes 'On a job-related training program' in the 1994 to 1996 surveys.

**TABLE 5. PERSONS WITH MARGINAL ATTACHMENT TO THE LABOUR FORCE:
MAIN REASON NOT ACTIVELY LOOKING FOR WORK AND INTENTION TO ENTER THE LABOUR FORCE
(FULL TIME OR PART TIME) IN THE NEXT TWELVE MONTHS, SEPTEMBER 1996
(^{'000})**

	Intention to enter the labour force in the next twelve months				Full time or part time preference		Total(a)	%
	Intended to enter	Might enter	Did not intend to enter	Did not know	Full time	Part time		
MALES								
Wanted to work and were actively looking for work	28.6	20.8	7.2	28.6	..
Were available to start work within four weeks	15.8	11.8	* 3.7	15.8	..
Were not available to start work within four weeks	12.8	9.0	* 3.5	12.8	..
Wanted to work but were not actively looking for work and were available to start work within four weeks	138.1	31.0	54.3	9.9	90.5	97.6	233.3	100.0
Main reason for not actively looking for work ---								
Discouraged jobseeker	11.7	* 3.9	13.1	* 0.8	6.5	9.9	29.5	12.6
Considered too young or too old by employers	* 3.7	* 2.3	8.8	* 0.5	* 2.3	* 4.4	15.3	6.5
Lacked necessary schooling, training, skills or experience	* 0.4	* 0.8	* 0.3	* 0.0	* 0.3	* 0.6	* 1.5	* 0.6
Difficulties with language or ethnic background	* 1.1	* 0.4	* 0.5	* 0.3	* 1.2	* 0.5	* 2.2	* 0.9
No jobs in locality or line of work	* 5.1	* 0.2	* 2.8	* 0.0	* 2.2	* 3.3	8.1	3.5
No jobs at all	* 1.4	* 0.3	* 0.8	* 0.0	* 0.4	* 1.2	* 2.4	* 1.0
Had a job to go to(b)	13.0	* 0.1	* 0.3	* 0.1	8.3	* 4.3	13.6	5.8
Personal reasons	93.8	23.2	35.6	7.6	62.3	71.1	160.2	68.6
Own ill health/physical disability	21.2	8.1	15.8	* 4.1	17.6	17.7	49.2	21.1
Attending an educational institution	62.7	13.5	11.7	* 2.6	38.7	46.7	90.4	38.7
Had no need to work	* 3.2	* 1.5	* 4.3	* 0.5	* 0.6	* 4.9	9.5	4.1
Give others a chance	* 0.0	* 0.0	* 0.5	* 0.0	* 0.2	* 0.0	* 0.5	* 0.2
Welfare payments/pension may be affected	* 0.9	* 0.1	* 2.9	* 0.5	* 0.5	* 0.9	* 4.4	* 1.9
Moved house/holidays	5.8	* 0.0	* 0.4	* 0.0	* 4.7	* 1.0	6.2	2.6
Family reasons	7.6	* 2.3	* 4.1	* 0.8	6.6	* 5.4	14.8	6.3
Ill health of other than self	* 0.4	* 0.9	* 0.8	* 0.0	* 0.0	* 0.8	* 2.0	* 0.9
Childcare	* 4.0	* 1.0	* 2.8	* 0.5	* 4.5	* 2.7	8.2	3.5
Other family considerations	* 3.2	* 0.4	* 0.4	* 0.4	* 2.1	* 1.9	* 4.5	* 1.9
No jobs in suitable hours	* 1.0	* 0.0	* 0.0	* 0.0	* 0.3	* 0.7	* 1.0	* 0.4
Other reasons	8.5	* 1.5	* 1.1	* 0.2	* 5.5	* 4.3	11.3	4.9
Did not know	* 2.5	* 0.0	* 0.1	* 0.4	* 1.1	* 1.8	* 3.0	* 1.3
Total	166.7	31.0	54.3	9.9	111.3	104.8	262.0	..
FEMALES								
Wanted to work and were actively looking for work	29.4	11.7	15.5	29.4	..
Were available to start work within four weeks	18.9	7.2	10.4	18.9	..
Were not available to start work within four weeks	10.5	* 4.5	* 5.1	10.5	..
Wanted to work but were not actively looking for work and were available to start work within four weeks	269.8	115.3	172.8	30.4	100.0	387.7	588.2	100.0
Main reason for not actively looking for work -								
Discouraged jobseeker	36.9	19.1	30.5	* 2.9	15.2	45.1	89.4	15.2
Considered too young or too old by employers	6.9	6.4	17.8	* 0.8	* 1.9	12.4	31.8	5.4
Lacked necessary schooling, training, skills or experience	7.6	* 5.4	* 3.7	* 0.5	* 3.9	11.0	17.2	2.9
Difficulties with language or ethnic background	6.1	* 1.5	* 2.1	* 0.7	* 4.8	* 3.1	10.4	1.8
No jobs in locality or line of work	11.3	* 4.4	* 4.3	* 0.3	* 2.1	12.9	20.3	3.4
No jobs at all	* 5.1	* 1.4	* 2.6	* 0.6	* 2.4	5.7	9.8	1.7
Had a job to go to(b)	13.4	* 0.9	* 0.5	* 0.0	5.9	7.1	14.8	2.5
Personal reasons	89.8	25.3	43.7	8.1	33.2	101.2	166.9	28.4
Own ill health/physical disability	19.0	7.0	15.2	* 3.2	9.2	23.8	44.3	7.5
Attending an educational institution	53.9	11.1	9.8	* 2.1	20.5	50.0	76.9	13.1
Had no need to work	6.3	* 4.3	14.2	* 1.3	* 1.5	15.0	26.1	4.4
Give others a chance	* 0.1	* 0.9	* 2.0	* 0.7	* 0.0	* 2.2	* 3.6	* 0.6
Welfare payments/pension may be affected	* 2.2	* 1.6	* 2.2	* 0.4	* 0.3	* 3.7	6.4	1.1
Moved house/holidays	8.3	* 0.5	* 0.3	* 0.5	* 1.7	6.6	9.6	1.6
Family reasons	108.0	63.7	91.0	17.1	40.1	209.5	279.8	47.6
Ill health of other than self	9.3	* 4.1	6.4	* 0.9	* 3.5	12.2	20.7	3.5
Childcare	73.1	46.5	61.0	11.4	26.7	151.2	192.0	32.6
Other family considerations	25.6	13.1	23.5	* 4.8	9.8	46.1	67.1	11.4
No jobs in suitable hours	6.0	* 1.3	* 1.0	* 0.4	* 1.0	7.2	8.8	1.5
Other reasons	12.4	* 3.8	* 3.7	* 1.0	* 3.4	13.6	20.9	3.5
Did not know	* 3.4	* 1.0	* 2.3	* 0.9	* 1.2	* 4.0	7.6	1.3
Total	299.2	115.3	172.8	30.4	111.7	403.2	617.6	..

**TABLE 5. PERSONS WITH MARGINAL ATTACHMENT TO THE LABOUR FORCE:
MAIN REASON NOT ACTIVELY LOOKING FOR WORK AND INTENTION TO ENTER THE LABOUR FORCE
(FULL TIME OR PART TIME) IN THE NEXT TWELVE MONTHS, SEPTEMBER 1996
(*000) continued**

	Intention to enter the labour force in the next twelve months				Full time or part time preference			
	Intended to enter	Might enter	Did not intend to enter	Did not know	Full time	Part time	Total(a)	%
PERSONS								
Wanted to work and were actively looking for work	58.0	32.5	22.7	58.0	..
Were available to start work within four weeks	34.7	19.0	14.1	34.7	..
Were not available to start work within four weeks	23.3	13.5	8.6	23.3	..
Wanted to work but were not actively looking for work and were available to start work within four weeks	407.9	146.3	227.1	40.3	190.5	485.3	821.5	100.0
Main reason for not actively looking for work -								
Discouraged jobseeker	48.6	23.0	43.7	* 3.6	21.6	55.0	118.9	14.5
Considered too young or too old by employers	10.6	8.6	26.5	* 1.3	* 4.2	16.7	47.1	5.7
Lacked necessary schooling, training, skills or experience	8.0	6.2	* 4.0	* 0.5	* 4.2	11.5	18.7	2.3
Difficulties with language or ethnic background	7.1	* 1.9	* 2.6	* 0.9	6.1	* 3.6	12.6	1.5
No jobs in locality or line of work	16.4	* 4.6	7.0	* 0.3	* 4.4	16.2	28.4	3.5
No jobs at all	6.4	* 1.7	* 3.4	* 0.6	* 2.8	6.9	12.2	1.5
Had a job to go to(b)	26.4	* 1.0	* 0.8	* 0.1	14.1	11.4	28.3	3.4
Personal reasons	183.6	48.5	79.3	15.7	95.5	172.3	327.1	39.8
Own ill health:physical disability	40.1	15.1	31.0	7.3	26.8	41.4	93.5	11.4
Attending an educational institution	116.6	24.6	21.5	* 4.6	59.2	96.7	167.3	20.4
Had no need to work	9.5	5.8	18.5	* 1.8	* 2.1	19.8	35.6	4.3
Give others a chance	* 0.1	* 0.9	* 2.5	* 0.7	* 0.2	* 2.2	* 4.2	* 0.5
Welfare payments/pension may be affected	* 3.1	* 1.7	* 5.1	* 0.9	* 0.8	* 4.6	10.7	1.3
Moved house:holidays	14.1	* 0.5	* 0.8	* 0.5	6.4	7.6	15.8	1.9
Family reasons	115.6	66.0	95.1	17.9	46.6	214.9	294.6	35.9
Ill health of other than self	9.7	* 5.0	7.2	* 0.9	* 3.5	13.1	22.8	2.8
Childcare	77.0	47.4	63.9	11.9	31.2	153.9	200.2	24.4
Other family considerations	28.9	13.6	24.0	* 5.2	11.9	48.0	71.6	8.7
No jobs in suitable hours	7.0	* 1.3	* 1.0	* 0.4	* 1.4	7.9	9.8	1.2
Other reasons	20.8	* 5.4	* 4.8	* 1.2	8.9	17.9	32.2	3.9
Did not know	5.9	* 1.0	* 2.4	* 1.3	* 2.3	5.8	10.6	1.3
Total	465.9	146.3	227.1	40.3	223.0	508.0	879.6	

(a) Includes those persons who had 'no preference' to full-time or part-time work. (b) Includes persons who had a job but, up to the end of the reference week, had been away from work without pay for four weeks or longer and had not been actively looking for work.

**TABLE 6. PERSONS WITH MARGINAL ATTACHMENT TO THE LABOUR FORCE: ALL REASONS NOT ACTIVELY
LOOKING FOR WORK AND INTENTION TO ENTER THE LABOUR FORCE (FULL TIME OR PART TIME),
IN THE NEXT TWELVE MONTHS, SEPTEMBER 1996**
(^{'000})

	Intention to enter the labour force in the next twelve months				Full time or part time preference			
	Intended to enter	Might enter	Did not intend to enter	Did not know	Full time	Part time	Total(a)	%
MALES								
Wanted to work and were actively looking for work	28.6	20.8	7.2	28.6	..
Were available to start work within four weeks	15.8	11.8	* 3.7	15.8	..
Were not available to start work within four weeks	12.8	9.0	* 3.5	12.8	..
Wanted to work but were not actively looking for work and were available to start work within four weeks	138.1	31.0	54.3	9.9	90.5	97.6	233.3	..
All reasons for not actively looking for work								
Discouraged jobseeker	15.3	* 4.8	15.9	* 0.8	8.5	13.1	36.7	15.7
Considered too young or too old by employers	* 5.2	* 3.4	11.8	* 0.5	* 3.4	5.8	20.9	9.0
Lacked necessary schooling, training, skills or experience	* 1.9	* 0.8	* 1.2	* 0.0	* 1.0	* 1.6	* 3.9	* 1.7
Difficulties with language or ethnic background	* 1.8	* 0.7	* 0.5	* 0.3	* 1.9	* 0.9	* 3.3	* 1.4
No jobs in locality or line of work	7.6	* 0.5	6.3	* 0.3	* 3.6	* 5.4	14.8	6.3
No jobs at all	* 1.7	* 0.3	* 1.4	* 0.0	* 0.4	* 1.5	* 3.3	* 1.4
Had a job to go to(b)	13.0	* 0.1	* 0.3	* 0.1	8.3	* 4.3	13.6	5.8
Personal reasons	96.8	24.4	37.1	7.9	63.8	73.9	166.2	71.2
Own ill health/physical disability	21.5	8.5	16.2	* 4.1	17.6	18.3	50.2	21.5
Attending an educational institution	65.1	14.5	12.3	* 2.6	40.0	49.0	94.4	40.4
Had no need to work	* 4.6	* 1.7	* 4.7	* 0.6	* 1.0	5.9	11.7	5.0
Give others a chance	* 0.0	* 0.0	* 0.9	* 0.0	* 0.2	* 0.0	* 0.9	* 0.4
Welfare payments/pension may be affected	* 1.3	* 0.7	* 3.7	* 1.3	* 1.1	* 2.4	7.0	3.0
Moved house/holidays	6.6	* 0.3	* 0.5	* 0.2	* 4.9	* 2.1	7.7	3.3
Family reasons	8.6	* 2.6	* 4.3	* 0.8	6.9	6.4	16.3	7.0
Childcare	* 5.0	* 1.0	* 3.1	* 0.5	* 4.9	* 3.4	9.5	4.1
Ill health of other than self	* 0.4	* 1.1	* 0.8	* 0.0	* 0.3	* 0.8	* 2.3	* 1.0
Other family considerations	* 4.2	* 0.4	* 1.1	* 0.4	* 2.6	* 2.8	6.1	2.6
No jobs in suitable hours	* 2.3	* 0.5	* 1.0	* 0.0	* 1.1	* 2.5	* 3.8	* 1.6
Other reasons	10.8	* 2.3	* 1.7	* 0.2	6.5	* 5.5	15.0	6.4
Did not know	* 2.5	* 0.0	* 0.1	* 0.4	* 1.1	* 1.8	* 3.0	* 1.3
FEMALES								
Wanted to work and were actively looking for work	29.4	11.7	15.5	29.4	..
Were available to start work within four weeks	18.9	7.2	10.4	18.9	..
Were not available to start work within four weeks	10.5	* 4.5	* 5.1	10.5	..
Wanted to work but were not actively looking for work and were available to start work within four weeks	269.8	115.3	172.8	30.4	100.0	387.7	588.2	..
All reasons for not actively looking for work —								
Discouraged jobseeker	48.4	23.5	41.6	6.5	19.0	64.3	120.0	20.4
Considered too young or too old by employers	10.7	9.2	22.7	* 2.1	* 3.8	19.3	44.7	7.6
Lacked necessary schooling, training, skills or experience	13.0	8.5	10.1	* 2.3	7.1	18.8	33.9	5.8
Difficulties with language or ethnic background	9.3	* 2.1	5.9	* 0.7	6.8	6.8	17.9	3.1
No jobs in locality or line of work	20.8	7.9	8.4	* 1.6	* 4.7	25.1	38.8	6.6
No jobs at all	7.3	* 2.2	* 3.4	* 1.2	* 2.4	8.5	14.1	2.4
Had a job to go to(b)	13.4	* 0.9	* 0.5	* 0.0	5.9	7.1	14.8	2.5
Personal reasons	103.3	33.1	53.8	9.9	36.9	124.1	200.0	34.0
Own ill health/physical disability	23.3	9.5	19.9	* 3.4	10.9	31.9	56.2	9.5
Attending an educational institution	61.1	12.2	10.8	* 2.5	22.1	56.8	86.6	14.7
Had no need to work	8.8	8.8	17.8	* 1.4	* 1.5	22.6	36.8	6.3
Give others a chance	* 1.2	* 2.2	* 3.3	* 1.0	* 0.0	* 5.2	7.7	1.3
Welfare payments/pension may be affected	* 3.9	* 3.0	* 5.2	* 1.5	* 1.3	7.6	13.7	2.3
Moved house/holidays	11.0	* 1.4	* 0.4	* 0.5	* 2.4	9.5	13.3	2.3
Family reasons	123.4	69.5	97.6	19.3	45.5	231.2	309.7	52.7
Childcare	88.2	54.2	68.6	14.2	32.3	174.2	225.2	38.3
Ill health of other than self	12.3	* 5.6	8.1	* 1.0	* 3.7	16.9	26.9	4.6
Other family considerations	34.8	20.0	31.4	7.7	14.4	67.5	93.9	16.0
No jobs in suitable hours	11.9	* 4.4	* 3.4	* 1.2	* 1.8	17.0	21.0	3.6
Other reasons	17.4	7.6	6.9	* 1.3	* 5.4	22.3	33.2	5.7
Did not know	* 3.4	* 1.0	* 2.3	* 0.9	* 1.2	* 4.0	7.6	1.3

**TABLE 6. PERSONS WITH MARGINAL ATTACHMENT TO THE LABOUR FORCE: ALL REASONS NOT ACTIVELY
LOOKING FOR WORK AND INTENTION TO ENTER THE LABOUR FORCE (FULL TIME OR PART TIME),
IN THE NEXT TWELVE MONTHS, SEPTEMBER 1996**
(^{'000}) -continued

	Intention to enter the labour force in the next twelve months				Full time or part time preference			
	Intended to enter	Might enter	Did not intend to enter	Did not know	Full time	Part time	Total(a)	%
PERSONS								
Wanted to work and were actively looking for work	58.0	32.5	22.7	58.0	..
Were available to start work within four weeks	34.7	19.0	14.1	34.7	..
Were not available to start work within four weeks	23.3	13.5	8.6	23.3	..
Wanted to work but were not actively looking for work and were available to start work within four weeks	407.9	146.3	227.1	40.3	190.5	485.3	821.5	..
<i>All reasons for not actively looking for work —</i>								
Discouraged jobseeker	63.7	28.3	57.4	7.3	27.5	77.4	156.7	19.1
Considered too young or too old by employers	15.9	12.5	34.6	* 2.6	7.2	25.1	65.6	8.0
Lacked necessary schooling, training, skills or experience	14.9	9.4	11.3	* 2.3	8.2	20.4	37.8	4.6
Difficulties with language or ethnic background	11.1	* 2.8	6.4	* 0.9	8.7	7.7	21.3	2.6
No jobs in locality or line of work	28.5	8.5	14.8	* 1.9	8.3	30.6	53.6	6.5
No jobs at all	9.0	* 2.4	* 4.8	* 1.2	* 2.8	10.1	17.4	2.1
Had a job to go to(b)	26.4	* 1.0	* 0.8	* 0.1	14.1	11.4	28.3	3.4
Personal reasons	200.1	57.4	90.9	17.7	100.8	198.1	366.2	44.6
Own ill health/physical disability	44.7	18.0	36.2	7.5	28.5	50.1	106.4	13.0
Attending an educational institution	126.1	26.7	23.1	* 5.0	62.1	105.7	180.9	22.0
Had no need to work	13.4	10.5	22.5	* 2.0	* 2.4	28.5	48.5	5.9
Give others a chance	* 1.2	* 2.2	* 4.2	* 1.0	* 0.2	* 5.2	8.6	1.0
Welfare payments/pension may be affected	* 5.2	* 3.7	8.9	* 2.9	* 2.5	10.0	20.7	2.5
Moved house/holidays	17.6	* 1.7	* 0.9	* 0.7	7.4	11.6	21.0	2.6
Family reasons	131.9	72.1	101.9	20.1	52.4	237.6	326.0	39.7
Childcare	93.2	55.2	71.7	14.6	37.2	177.6	234.7	28.6
Ill health of other than self	12.7	6.7	8.9	* 1.0	* 4.0	17.7	29.3	3.6
Other family considerations	39.0	20.4	32.5	8.0	16.9	70.3	100.0	12.2
No jobs in suitable hours	14.3	* 4.9	* 4.4	* 1.2	* 2.9	19.4	24.8	3.0
Other reasons	28.2	9.9	8.6	* 1.6	11.9	27.9	48.3	5.9
Did not know	5.9	* 1.0	* 2.4	* 1.3	* 2.3	5.8	10.6	1.3

(a) Includes those persons who had 'no preference' to full-time or part-time work. (b) Includes persons who had a job but, up to the end of the reference week, had been away from work without pay for four weeks or longer and had not been actively looking for work.

TABLE 7. DISCOURAGED JOBSEEKERS: SELECTED CHARACTERISTICS
(*000)

	Sept. 1991	Sept. 1992	Sept. 1993	Sept. 1994	Sept. 1995	Sept. 1996
MALES						
<i>Age group (years) —</i>						
15-19	7.3	*4.2	5.8	*3.0	*3.6	*2.1
20-24	*3.1	*2.0	*3.3	*1.6	*1.3	*1.2
25-34	*2.3	*2.2	*3.6	*1.9	*2.5	*0.7
35-44	*1.4	*4.7	*2.5	*0.9	*2.4	*2.4
45-54	*4.1	*5.1	*3.3	*1.1	*3.3	*2.4
55-59	*2.2	*4.0	*4.5	*4.8	*3.2	*2.5
60-64	7.0	8.9	10.0	8.8	12.9	10.7
65-69	7.1	6.6	7.1	9.6	9.7	7.4
<i>Whether looked for work in the last twelve months —</i>						
Had looked for work	14.7	19.0	19.8	13.8	18.1	9.9
Less than 13 weeks ago	11.6	13.8	16.6	9.9	13.3	7.3
13 to 25 weeks ago	*0.8	*1.3	*2.0	*1.4	*1.9	*0.6
26 to 52 weeks ago	*2.3	*4.0	*1.3	*2.5	*2.9	*2.1
Had not looked for work	19.8	18.8	20.2	17.9	20.9	19.5
<i>Whether intended to enter the labour force in the next twelve months —</i>						
Intended to enter	25.3	27.5	29.5	17.8	22.9	15.6
Did not intend to enter	9.2	10.3	10.6	13.9	16.1	13.9
<i>Time since last job —</i>						
Had had a job	28.5	33.7	34.6	28.3	35.1	26.8
Under 12 months	9.7	9.3	9.2	*4.9	6.7	*4.1
1 and under 3 years	8.6	11.3	12.8	10.3	8.9	6.2
3 and under 5 years	4.6	5.8	5.0	5.9	7.4	6.7
5 and under 10 years	*4.2	*4.5	5.9	*5.2	7.4	7.1
10 and under 20 years	*1.4	*1.9	*1.7	*2.0	*2.8	*2.4
20 years or more	*0.0	*1.0	*0.0	*0.0	*1.7	*0.4
Had never had a job	6.0	*4.1	5.4	*3.3	*3.9	*2.7
<i>Total</i>	<i>34.5</i>	<i>37.8</i>	<i>40.0</i>	<i>31.7</i>	<i>39.0</i>	<i>29.5</i>
FEMALES						
<i>Age group (years) —</i>						
15-19	7.3	6.8	*2.4	*3.2	*1.9	*3.5
20-24	*4.0	*4.2	*2.6	*3.3	*0.4	*3.2
25-34	17.0	13.4	13.0	7.8	11.5	9.9
35-44	26.6	28.7	29.0	18.1	16.1	21.0
45-54	26.1	27.0	28.0	20.5	19.4	23.1
55-59	11.5	12.4	17.8	8.3	10.7	11.2
60-64	7.8	7.6	8.5	8.0	8.2	9.6
65-69	*3.3	7.7	6.2	5.7	*4.8	7.9
<i>Whether looked for work in the last twelve months —</i>						
Had looked for work	41.9	36.9	32.8	21.0	25.4	27.8
Less than 13 weeks ago	31.1	28.8	25.5	15.2	19.6	21.7
13 to 25 weeks ago	5.4	*2.6	*2.8	*3.6	*1.0	*2.8
26 to 52 weeks ago	5.4	5.6	*4.5	*2.2	*4.9	*3.3
Had not looked for work	61.8	70.9	74.6	53.9	47.5	61.6
<i>Whether intended to enter the labour force in the next twelve months —</i>						
Intended to enter	69.3	67.2	65.6	43.0	40.4	56.0
Did not intend to enter	34.4	40.7	41.7	31.8	32.5	33.4
<i>Time since last job —</i>						
Had had a job	93.6	98.4	100.3	68.5	67.5	79.2
Under 12 months	15.6	15.5	13.9	6.8	8.8	7.5
1 and under 3 years	21.3	24.4	20.1	12.9	*4.6	14.5
3 and under 5 years	11.7	11.1	15.2	9.4	13.7	11.9
5 and under 10 years	18.3	20.3	21.2	17.7	15.6	21.0
10 and under 20 years	15.8	17.9	19.0	12.1	15.3	15.5
20 years or more	10.9	9.2	10.9	9.6	9.7	8.7
Had never had a job	10.1	9.5	7.1	6.3	5.4	10.3
<i>Total</i>	<i>103.7</i>	<i>107.8</i>	<i>107.4</i>	<i>74.8</i>	<i>72.9</i>	<i>89.4</i>

TABLE 7. DISCOURAGED JOBSEEKERS: SELECTED CHARACTERISTICS
(*000) -- continued

	Sept. 1991	Sept. 1992	Sept. 1993	Sept. 1994	Sept. 1995	Sept. 1996
PERSONS						
<i>Age group (years) —</i>						
15-19	14.5	11.1	8.2	6.2	*5.5	5.7
20-24	7.2	6.2	5.7	*4.9	*1.7	*4.4
25-34	19.3	15.6	16.7	9.7	14.1	10.6
35-44	28.0	33.4	31.4	19.0	18.5	23.4
45-54	30.2	32.2	31.3	21.6	22.7	25.5
55-59	13.7	16.4	22.3	13.1	13.9	13.6
60-64	14.8	16.4	18.5	16.8	21.0	20.3
65-69	10.4	14.3	13.2	15.2	14.6	15.3
<i>Whether looked for work in the last twelve months —</i>						
Had looked for work	56.6	56.0	52.6	34.8	43.5	37.7
Less than 13 weeks ago	42.7	42.5	42.0	25.1	32.9	29.0
13 to 25 weeks ago	6.1	*3.9	*4.8	5.0	*2.9	*3.4
26 to 52 weeks ago	7.8	9.5	5.8	*4.7	7.7	*5.4
Had not looked for work	81.6	89.6	94.8	71.8	68.4	81.2
<i>Whether intended to enter the labour force in the next twelve months —</i>						
Intended to enter	94.6	94.7	95.1	60.8	63.3	71.6
Did not intend to enter	43.6	51.0	52.3	45.7	48.6	47.3
<i>Time since last job</i>						
Had had a job	122.1	132.1	134.9	96.9	102.6	106.0
Under 12 months	25.3	24.7	23.1	11.7	15.5	11.5
1 and under 3 years	29.9	35.7	32.9	23.2	13.5	20.7
3 and under 5 years	16.4	16.8	20.2	15.3	21.1	18.6
5 and under 10 years	22.5	24.8	27.0	22.9	23.0	28.2
10 and under 20 years	17.1	19.8	20.7	14.2	18.1	17.9
20 years or more	10.9	10.2	10.9	9.6	11.4	9.1
Had never had a job	16.1	13.6	12.5	9.6	9.3	13.0
Total	138.2	145.6	147.4	106.5	111.9	118.9

TABLE 8. PERSONS NOT IN THE LABOUR FORCE FOR CHILDCARE REASONS WHO WANTED TO WORK BUT WERE NOT ACTIVELY LOOKING FOR WORK: SELECTED CHARACTERISTICS, SEPTEMBER 1996

('000)				
	<i>Not actively looking for work for reasons including childcare but available to start within four weeks</i>		<i>Not actively looking for work and not available to start work within four weeks for childcare reasons</i>	
	<i>Childcare main reason for not actively looking for work</i>	<i>Total</i>		<i>Total</i>
FEMALES				
<i>Age group (years) —</i>				
15-19	3.5	*4.2	*1.2	*5.4
20-24	25.2	29.3	7.4	36.7
25-34	102.3	117.1	42.7	159.8
35-44	56.6	68.5	14.9	83.3
45-54	*4.0	5.8	*1.4	7.1
55-69	*0.4	*0.4	*0.6	*1.0
<i>Age of youngest child (years) —</i>				
0-2	107.8	120.8	48.6	169.4
3-5	50.7	61.1	12.3	73.4
6-11	29.8	38.9	6.5	45.4
12-14	*3.0	*3.7	*0.8	*4.5
Not coded(a)	*0.6	*0.6	*0.0	*0.6
<i>Relationship in household —</i>				
Family member	187.0	219.4	65.5	284.9
Wife	138.7	159.7	54.5	214.2
With dependants	138.5	159.5	54.1	213.6
Without dependants	*0.2	*0.2	*0.4	*0.6
Lone parent	48.3	59.6	11.0	70.6
Non-family member	*0.3	*0.3	*0.0	*0.3
Not determined	*4.6	*5.5	*2.6	8.1
<i>Birthplace —</i>				
Born in Australia	143.0	166.7	44.7	211.3
Born outside Australia	49.0	58.5	23.5	82.0
Born in main English speaking countries	16.1	18.9	6.6	25.5
Born in other countries	32.9	39.6	16.9	56.5
<i>Total</i>	<i>19.20</i>	<i>225.2</i>	<i>68.1</i>	<i>293.3</i>
PERSONS				
<i>Age group (years) —</i>				
15-19	3.5	*4.2	*1.2	*5.4
20-24	25.4	29.5	7.4	36.9
25-34	105.0	120.3	43.3	163.6
35-44	60.2	72.5	15.1	87.5
45-54	5.7	7.9	*2.3	10.2
55-69	*0.4	*0.4	*0.6	*1.0
<i>Age of youngest child (years) —</i>				
0-2	110.0	123.5	49.0	172.4
3-5	52.1	62.7	12.5	75.2
6-11	33.4	43.1	7.3	50.4
12-14	*4.1	*4.8	*1.0	5.8
Not coded(a)	*0.6	*0.6	*0.0	*0.6
<i>Relationship in household —</i>				
Family member	195.3	228.9	67.2	296.1
Husband or Wife	143.1	164.9	55.7	220.7
With dependants	142.9	164.7	55.3	220.1
Without dependants	*0.2	*0.2	*0.4	*0.6
Lone parent	52.1	64.0	11.5	75.4
Non-family member	*0.3	*0.3	*0.0	*0.3
Not determined	*4.6	*5.5	*2.6	8.1
<i>Birthplace —</i>				
Born in Australia	149.5	174.3	45.7	220.1
Born outside Australia	50.7	60.4	24.1	84.5
Born in main English speaking countries	17.6	20.6	6.8	27.4
Born in other countries	33.1	39.8	17.3	57.1
<i>Total</i>	<i>200.2</i>	<i>234.7</i>	<i>69.8</i>	<i>304.6</i>

(a) Not coded for visitors to a private dwelling

**TABLE 9. PERSONS WHO PREVIOUSLY HAD A JOB: SELECTED CHARACTERISTICS OF LAST JOB
AND WHETHER LOOKED FOR WORK IN THE LAST TWELVE MONTHS, SEPTEMBER 1996**
(*000)

	Last job less than 20 years ago						Total	Last job 20 or more years ago	Total
	Status in employment in last job			Full-time or part-time worker in last job					
	Emp- loyers	Own account workers(a)	Emp- loyees	Full-time	Part-time	Varied/ did not know			
MALES									
Reason for ceasing last job —									
Job loser	16.8	47.1	445.7	432.6	70.4	6.6	509.6	28.5	538.1
Retrenched	* 1.2	* 4.1	149.7	130.5	23.8	* 0.6	154.9	* 2.2	157.1
Job was temporary or seasonal and did not leave to return to studies	* 0.2	* 2.2	35.0	14.5	21.5	* 1.5	37.5	* 0.0	37.5
Own ill health or injury	12.1	33.0	257.1	275.8	22.3	* 4.2	302.3	26.4	328.6
Business closed down for economic reasons	* 3.2	7.8	* 3.9	11.8	* 2.8	* 0.3	15.0	* 0.0	15.0
Job leaver	13.5	39.7	329.8	310.6	68.5	* 3.9	383.0	7.1	390.0
Unsatisfactory work arrangements	* 0.0	* 0.2	19.6	12.7	6.7	* 0.5	19.8	* 0.2	20.0
Job was temporary or seasonal and left to return to studies	* 0.0	* 0.3	29.1	15.0	14.1	* 0.3	29.3	* 0.0	29.3
Retired/did not want to work any longer	6.3	23.0	174.7	188.3	14.4	* 1.3	204.0	* 3.2	207.2
Returned to studies	* 0.2	* 1.7	38.7	21.6	18.7	* 0.2	40.6	* 0.1	40.7
To get married	* 0.0	* 0.0	* 0.0	* 0.0	* 0.0	* 0.0	* 0.0	* 0.0	* 0.0
To look after family, house or someone else	* 0.9	* 3.1	20.6	20.7	* 3.8	* 0.0	24.5	* 0.9	25.4
To have holiday/to move house/spouse transferred	* 0.4	* 3.4	25.0	21.6	* 5.5	* 1.6	28.7	* 0.7	29.4
Business closed down for other reasons	* 4.4	7.4	6.0	16.8	* 1.0	* 0.0	17.8	* 0.4	18.1
Other	* 1.4	* 0.8	16.1	13.9	* 4.3	* 0.0	18.2	* 1.4	19.7
Occupation in last job —									
Managers and administrators	* 5.2	14.1	34.8	50.8	* 2.9	* 0.5	54.2	..	54.2
Professionals	* 2.4	* 5.4	80.6	72.1	15.7	* 0.5	88.3	..	88.3
Associate Professionals	8.6	13.2	65.4	82.0	* 4.5	* 0.7	87.1	..	87.1
Tradespersons and related workers	7.6	30.7	148.5	168.0	16.6	* 2.2	186.8	..	186.8
Advanced clerical and service workers	* 0.4	* 0.6	6.5	6.5	* 1.0	* 0.0	7.5	..	7.5
Intermediate clerical, sales and service workers	* 0.6	* 2.6	69.7	60.6	11.4	* 0.9	72.9	..	72.9
Intermediate production and transport workers	* 2.9	9.1	149.2	139.3	20.3	* 1.6	161.3	..	161.3
Elementary clerical, sales and service workers	* 1.4	* 3.7	51.6	29.5	26.5	* 0.8	56.8	..	56.8
Labourers and related workers	* 1.1	7.4	169.2	134.3	40.0	* 3.3	177.7	..	177.7
Whether looked for work in the last twelve months									
Had looked for work	* 2.7	9.9	104.9	79.4	35.4	* 2.7	117.5	* 0.3	117.8
Less than 13 weeks ago	* 2.1	7.2	72.7	57.6	22.7	* 1.8	82.0	* 0.0	82.0
13 to 25 weeks ago	* 0.3	* 2.2	12.3	9.1	* 5.3	* 0.3	14.8	* 0.0	14.8
26 to 52 weeks ago	* 0.3	* 0.5	19.9	12.7	7.5	* 0.6	20.7	* 0.3	21.0
Had not looked for work	27.5	76.9	670.6	663.8	103.5	7.7	775.0	35.3	810.3
Total	30.2	86.8	775.5	743.2	138.9	10.4	892.5	35.6	928.1

**TABLE 9. PERSONS WHO PREVIOUSLY HAD A JOB: SELECTED CHARACTERISTICS OF LAST JOB
AND WHETHER LOOKED FOR WORK IN THE LAST TWELVE MONTHS, SEPTEMBER 1996**
(*000)—continued

	Last job less than 20 years ago						Last job 20 or more years ago	Total	
	Status in employment in last job			Full-time or part-time worker in last job					
	Emp- loyers	Own account workers(a)	Emp- loyees	Full-time	Part-time	Varied/ did not know			
FEMALES									
Reason for ceasing last job —									
Job loser	10.2	30.7	468.8	265.9	234.8	8.9	509.7	47.6	557.3
Retrenched	* 1.8	5.8	188.5	97.7	95.1	* 3.2	196.1	10.9	207.0
Job was temporary or seasonal and did not leave to return to studies	* 0.4	* 2.7	94.4	31.5	63.8	* 2.2	97.5	* 3.6	101.1
Own ill health or injury	* 4.2	10.7	180.1	122.9	69.1	* 3.0	195.0	32.2	227.2
Business closed down for economic reasons	* 3.8	11.5	5.8	13.8	6.8	* 0.5	21.1	* 1.0	22.1
Job leaver	26.9	61.2	1,010.5	649.5	431.1	18.0	1,098.6	369.9	1,468.5
Unsatisfactory work arrangements	* 0.5	* 2.0	63.6	27.3	37.9	* 0.9	66.0	* 0.1	66.2
Job was temporary or seasonal and left to return to studies	* 0.0	* 0.1	22.6	8.0	14.3	* 0.3	22.7	* 0.0	22.7
Retired/did not want to work any longer	9.4	16.7	199.8	138.8	84.3	* 2.8	225.9	38.4	264.3
Returned to studies	* 0.0	* 1.0	48.6	17.8	30.6	* 1.2	49.6	* 0.0	49.6
To get married	* 0.8	* 0.0	26.8	22.2	* 5.0	* 0.5	27.7	114.0	141.6
Pregnancy/to have children	* 1.8	5.7	364.1	257.2	110.2	* 4.3	371.7	127.4	499.1
To look after family, house or someone else	* 2.9	6.5	110.6	58.2	59.6	* 2.2	120.0	72.7	192.7
To have holiday/to move house/spouse transferred	* 1.3	6.6	128.6	72.6	61.3	* 2.5	136.4	11.1	147.5
Business closed down for other reasons	8.9	17.8	10.5	26.3	8.7	* 2.2	37.2	* 2.8	40.0
Other	* 1.3	* 4.8	35.4	21.0	19.2	* 1.2	41.4	* 3.4	44.8
Occupation in last job									
Managers and administrators	* 2.8	9.8	15.7	23.3	* 4.3	* 0.7	28.3	..	28.3
Professionals	* 0.6	5.7	146.9	89.6	59.5	* 4.1	153.3	..	153.3
Associate Professionals	16.6	25.8	86.3	103.7	22.9	* 2.1	128.6	..	128.6
Tradespersons and related workers	* 3.2	6.3	63.4	44.2	26.7	* 2.0	72.9	..	72.9
Advanced clerical and service workers	* 3.3	* 5.2	123.0	88.5	41.4	* 1.6	131.4	..	131.4
Intermediate clerical, sales and service workers	* 3.0	11.2	371.0	218.5	162.0	* 4.7	385.2	..	385.2
Intermediate production and transport workers	* 1.3	* 3.8	99.3	74.4	28.1	* 2.0	104.5	..	104.5
Elementary clerical, sales and service workers	* 4.8	12.8	282.0	129.2	166.7	* 3.7	299.6	..	299.6
Labourers and related workers	* 1.4	11.4	291.8	144.2	154.3	6.1	304.6	..	304.6
Whether looked for work in the last twelve months —									
Had looked for work	* 2.6	8.5	190.7	99.8	98.7	* 3.2	201.7	* 4.2	205.9
Less than 13 weeks ago	* 1.2	* 5.2	124.7	66.9	62.4	* 1.7	131.1	* 3.3	134.4
13 to 25 weeks ago	* 0.7	* 0.8	24.0	9.3	16.0	* 0.0	25.4	* 0.2	25.6
26 to 52 weeks ago	* 0.7	* 2.6	42.1	23.6	20.3	* 1.5	45.3	* 0.6	45.9
Had not looked for work	34.5	83.5	1,288.6	815.6	567.2	23.7	1,406.5	413.3	1,819.9
Total	37.0	91.9	1,479.3	915.4	665.9	27.0	1,608.3	417.5	2,025.8

**TABLE 9. PERSONS WHO PREVIOUSLY HAD A JOB: SELECTED CHARACTERISTICS OF LAST JOB
AND WHETHER LOOKED FOR WORK IN THE LAST TWELVE MONTHS, SEPTEMBER 1996**
(^{'000})—continued

	Last job less than 20 years ago						Last job 20 or more years ago	Total	
	Status in employment in last job			Full-time or part-time worker in last job					
	Emp- loyers	Own account workers(a)	Emp- loyees	Full-time	Part-time	Varied/ did not know			
PERSONS									
Reason for ceasing last job —									
Job loser	26.9	77.8	914.6	698.5	305.2	15.5	1,019.3	76.1	1,095.4
Retrenched	* 3.0	9.8	338.2	228.3	118.9	* 3.8	351.0	13.0	364.0
Job was temporary or seasonal and did not leave to return to studies	* 0.6	* 4.9	129.4	46.0	85.3	* 3.7	135.0	* 3.6	138.6
Own ill health or injury	16.3	43.7	437.2	398.6	91.4	7.2	497.2	58.6	555.8
Business closed down for economic reasons	7.0	19.3	9.8	25.6	9.6	* 0.9	36.1	* 1.0	37.0
Job leaver	40.3	101.0	1,340.3	960.0	499.6	21.9	1,481.6	376.9	1,858.5
Unsatisfactory work arrangements	* 0.5	* 2.2	83.2	40.0	44.5	* 1.3	85.8	* 0.3	86.1
Job was temporary or seasonal and left to return to studies	* 0.0	* 0.4	51.6	23.0	28.4	* 0.6	52.0	* 0.0	52.0
Retired/did not want to work any longer	15.7	39.8	374.5	327.1	98.8	* 4.1	429.9	41.6	471.5
Returned to studies	* 0.2	* 2.6	87.4	39.4	49.3	* 1.4	90.2	* 0.1	90.3
To get married	* 0.8	* 0.0	26.8	22.2	* 5.0	* 0.5	27.7	114.0	141.6
Pregnancy/to have children	* 1.8	5.7	364.1	257.2	110.2	* 4.3	371.7	127.6	499.3
To look after family, house or someone else	* 3.8	9.6	131.2	78.9	63.4	* 2.2	144.5	73.5	218.1
To have holiday/to move house/spouse transferred	* 1.7	9.9	153.5	94.2	66.9	* 4.0	165.1	11.8	176.9
Business closed down for other reasons	13.3	25.2	16.5	43.1	9.7	* 2.2	55.0	* 3.1	58.1
Other	* 2.6	* 5.5	51.5	34.9	23.6	* 1.2	59.6	* 4.8	64.4
Occupation in last job —									
Managers and administrators	8.0	23.9	50.5	74.1	7.2	* 1.1	82.4	..	82.4
Professionals	* 3.1	11.1	227.5	161.7	75.2	* 4.7	241.6	..	241.6
Associate Professionals	25.1	39.0	151.6	185.7	27.4	* 2.7	215.8	..	215.8
Tradespersons and related workers	10.8	37.0	212.0	212.2	43.3	* 4.2	259.7	..	259.7
Advanced clerical and service workers	* 3.7	5.8	129.4	95.0	42.4	* 1.6	138.9	..	138.9
Intermediate clerical, sales and service workers	* 3.6	13.8	440.7	279.1	173.5	* 5.5	458.1	..	458.1
Intermediate production and transport workers	* 4.3	12.9	248.6	213.7	48.4	* 3.6	265.8	..	265.8
Elementary clerical, sales and service workers	6.2	16.5	333.6	158.6	193.2	* 4.5	356.4	..	356.4
Labourers and related workers	* 2.5	18.8	461.0	278.5	194.4	9.4	482.3	..	482.3
Whether looked for work in the last twelve months —									
Had looked for work	* 5.3	18.4	295.6	179.2	134.2	5.9	319.3	* 4.5	323.7
Less than 13 weeks ago	* 3.4	12.3	197.4	124.5	85.0	* 3.5	213.1	* 3.3	216.4
13 to 25 weeks ago	* 0.9	* 2.9	36.3	18.5	21.3	* 0.3	40.1	* 0.2	40.3
26 to 52 weeks ago	* 1.0	* 3.1	62.0	36.3	27.8	* 2.0	66.1	* 0.9	67.0
Had not looked for work	62.0	160.3	1,959.2	1,479.3	670.7	31.5	2,181.5	448.6	2,630.2
Total	67.3	178.7	2,254.8	1,658.6	804.9	37.4	2,500.8	453.1	2,953.9

(a) Includes persons who were contributing family workers and unpaid voluntary workers.

TABLE 10. POPULATIONS BY STATE OR TERRITORY OF USUAL RESIDENCE, SEPTEMBER 1996
(*000)

	NSW	Vic.	Qld	SA	WA	Tas.	NT	ACT	Aust.
	MALES								
<i>Population 1:</i> All persons not in the labour force aged 15 to 69(a)	436.7	306.8	219.3	113.9	108.8	35.3	11.7	17.6	1,250.2
<i>Population 2:</i> Persons not in the labour force	419.9	299.2	205.3	111.2	104.1	34.7	10.5	17.5	1,202.5
<i>Population 3:</i> Persons not in the labour force who wanted to work	108.4	88.1	61.9	36.2	36.6	11.3	4.3	7.7	354.4
<i>Population 4:</i> Persons not in the labour force with marginal attachment to the labour force	79.4	64.7	47.6	28.5	25.5	8.0	2.8	5.4	262.0
<i>Population 5:</i> Persons not in the labour force who wanted to work but were not actively looking for work and were available to start work within four weeks	70.2	58.1	41.7	25.8	22.4	7.7	* 2.7	4.8	233.3
<i>Population 6:</i> Persons not in the labour force who were discouraged jobseekers	8.3	7.0	6.1	* 3.1	* 3.3	* 0.7	* 0.5	* 0.5	29.5
<i>Population 7:</i> Persons not in the labour force who wanted to work but were not actively looking for work and not available to start work within four weeks	28.9	23.4	14.3	7.8	11.0	3.3	* 1.5	2.3	92.4
<i>Population 8:</i> Persons not in the labour force for childcare reasons who wanted to work but were not actively looking for work	* 3.3	* 1.4	* 3.8	* 1.7	* 0.8	* 0.3	* 0.0	* 0.0	11.2
<i>Population 9:</i> Persons not in the labour force who previously had a job	322.7	222.5	162.4	87.0	85.9	28.0	7.0	12.7	928.1

TABLE 10. POPULATIONS BY STATE OR TERRITORY OF USUAL RESIDENCE, SEPTEMBER 1996
(^{'000})—continued

	<i>NSW</i>	<i>Vic.</i>	<i>Qld</i>	<i>SA</i>	<i>WA</i>	<i>Tas.</i>	<i>NT</i>	<i>ACT</i>	<i>Aust.</i>
	FEMALES								
<i>Population 1:</i> All persons not in the labour force aged 15 to 69(a)	862.0	606.5	438.9	195.4	226.9	69.0	18.8	31.8	2,449.2
<i>Population 2:</i> Persons not in the labour force	844.1	600.8	433.0	193.7	222.7	68.2	18.7	31.8	2,412.9
<i>Population 3:</i> Persons not in the labour force who wanted to work	272.3	212.7	154.9	65.1	79.7	25.4	8.0	15.4	833.6
<i>Population 4:</i> Persons not in the labour force with marginal attachment to the labour force	194.3	162.8	115.2	49.7	59.6	20.0	4.9	11.1	617.6
<i>Population 5:</i> Persons not in the labour force who wanted to work but were not actively looking for work and were available to start work within four weeks	185.1	156.7	107.4	47.3	57.4	19.1	4.7	10.5	588.2
<i>Population 6:</i> Persons not in the labour force who were discouraged jobseekers	34.2	23.3	14.3	8.2	6.5	* 1.5	* 0.7	* 0.8	89.4
<i>Population 7:</i> Persons not in the labour force who wanted to work but were not actively looking for work and not available to start work within four weeks	78.1	49.9	39.7	15.4	20.1	5.4	3.1	4.3	216.0
<i>Population 8:</i> Persons not in the labour force for childcare reasons who wanted to work but were not actively looking for work	101.8	70.3	54.2	20.5	28.0	10.8	* 2.6	5.1	293.3
<i>Population 9:</i> Persons not in the labour force who previously had a job	689.2	496.8	375.9	167.2	198.0	59.0	13.0	26.7	2,025.8

TABLE 10. POPULATIONS BY STATE OR TERRITORY OF USUAL RESIDENCE, SEPTEMBER 1996
(*000)—continued

	NSW	Vic.	Qld	SA	WA	Tas.	NT	ACT	Aust.
	PERSONS								
<i>Population 1:</i> All persons not in the labour force aged 15 to 69(a)	1,298.7	913.3	658.2	309.3	335.7	104.3	30.5	49.4	3,699.4
<i>Population 2:</i> Persons not in the labour force	1,264.0	900.0	638.3	304.9	326.8	102.9	29.2	49.3	3,615.4
<i>Population 3:</i> Persons not in the labour force who wanted to work	380.7	300.8	216.8	101.3	116.3	36.7	12.3	23.1	1,188.0
<i>Population 4:</i> Persons not in the labour force with marginal attachment to the labour force	273.7	227.5	162.8	78.2	85.2	28.0	7.7	16.5	879.6
<i>Population 5:</i> Persons not in the labour force who wanted to work but were not actively looking for work and were available to start work within four weeks	255.3	214.8	149.1	73.1	79.7	26.8	7.3	15.3	821.5
<i>Population 6:</i> Persons not in the labour force who were discouraged jobseekers	42.5	30.3	20.4	11.3	9.7	2.2	* 1.1	1.3	118.9
<i>Population 7:</i> Persons not in the labour force who wanted to work but were not actively looking for work and not available to start work within four weeks	107.0	73.2	54.0	23.2	31.1	8.7	4.6	6.6	308.4
<i>Population 8:</i> Persons not in the labour force for childcare reasons who wanted to work but were not actively looking for work	105.1	71.7	58.0	22.2	28.8	11.1	* 2.6	5.1	304.6
<i>Population 9:</i> Persons not in the labour force who previously had a job	1,011.9	719.3	538.3	254.2	283.9	87.0	20.0	39.4	2,953.9

(a) Includes persons in institutions.

EXPLANATORY NOTES

INTRODUCTION

1 This survey was conducted as a supplement to the Monthly Labour Force Survey (MLFS). Respondents to the Labour Force Survey who fell within the scope of the supplementary survey were asked further questions.

2 For further information about the Labour Force Survey, see *Labour Force, Australia* (6203.0). This monthly publication contains information about survey design, sample redesign, scope, coverage and population benchmarks relevant to the monthly Labour Force Survey, which also apply to supplementary surveys. It also contains definitions of demographic and labour force characteristics and information about telephone interviewing relevant to both the monthly Labour Force Survey and supplementary surveys.

SCOPE

3 In addition to those already excluded from the monthly Labour Force Survey, students at boarding schools, patients in hospitals, residents of homes (e.g. retirement homes, homes for the handicapped), and inmates of prisons are further excluded from all supplementary surveys.

4 For this survey, persons aged 70 years and over, and persons who were in the labour force were also excluded.

RELIABILITY OF THE ESTIMATES

5 Estimates in this publication are subject to sampling and non-sampling errors.

- Sampling error is the difference between the published estimate and the value that would have been produced if all dwellings had been included in the survey. For further information on sampling error, refer to the Technical Notes on page 33.
- Non-sampling errors are inaccuracies that occur because of imperfections in reporting by respondents and interviewers and errors made in coding and processing data. These inaccuracies may occur in any enumeration, whether it be a full count or a sample. Every effort is made to reduce the non-sampling error to a minimum by careful design of questionnaires, intensive training and supervision of interviewers and efficient processing procedures.

SEASONAL FACTORS

6 The estimates are based on information collected in the survey month and, due to seasonal factors, may not be representative of other months of the year.

CHANGES IN CLASSIFICATIONS

7 From August 1996, occupation data are classified according to the second edition of the Australian Standard Classification of Occupation (ASCO). For more detailed information see *ASCO — Australian Standard Classification of Occupations, Information Paper* (1221.0). A concordance between the new and the old versions of ASCO is not yet available.

COMPARABILITY OF TIME
SERIES

8 Revisions are made to population benchmarks for the Labour Force Survey after each five-yearly Census of Population and Housing. The last such revision was made in February 1994 to take account of the results of the 1991 Census of Population and Housing. Estimates from supplementary surveys conducted after February 1994 are therefore based on revised population benchmarks.

9 Until July 1994, supplementary surveys were conducted in all dwellings selected in the Labour Force Survey. Since August 1994 the sample for supplementary surveys has been restricted to seven-eighths of the Labour Force Survey sample. This reduction in sample size means that the standard errors for this survey differ from those applicable to previous surveys.

10 Persons Not In the Labour Force surveys conducted up to and including September 1987 included all persons aged 15 years and over. From September 1988, the survey excluded all persons aged 70 years and over.

COMPARABILITY WITH
MONTHLY LABOUR FORCE
SURVEY STATISTICS

11 Due to differences in the scope and sample size of this supplementary survey and that of the monthly Labour Force Survey, the estimation procedure may lead to some small variations between labour force estimates from this survey and those from the Labour Force Survey.

12 Estimates as at September 1996 of:

- the civilian population;
- persons in the labour force (employed and unemployed); and
- persons not in the labour force (State/Territory, sex, relationship in household)

appear in this publication, as well as in the September 1996 edition of *Labour Force, Australia* (6203.0), released 31 October 1996. Estimates of persons not in the labour force include estimates of persons who are permanently unable to work and persons in institutions (e.g. boarding schools, hospitals, prisons, retirement homes, homes for the handicapped). These estimates were collected in the MLFS conducted in September 1996 in regard to persons aged 15 years and over.

13 The difference between the estimates appearing in each publication is chiefly the result of excluding persons aged 70 years and over from estimates appearing in this supplementary survey publication. This is in line with the scope of this supplementary survey. Over one-quarter (28.5%) of the civilian population aged 15 years and over who were not in the labour force were excluded from answering questions from this supplementary survey because they were aged 70 years and over.

14 Further information on persons not in the labour force is available in *Labour Force, Australia* (6203.0). Note that this information refers to all persons aged 15 years and over, and includes State capital city breakdowns; and attendance at a tertiary institution for those aged 15–24 years.

PREVIOUS SURVEYS

15 *Persons Not In the Labour Force* was first collected in May 1975 and then in May 1977. The survey was collected twice a year (March and September) from 1979, and annually since 1988. Results of previous annual surveys have been published in:

- *Persons Not in The Labour Force, Australia, September 1988, September 1989, September 1990, September 1991, September 1992, September 1993* (6220.0).
- *Persons Not in The Labour Force, Australia, September 1994, September 1995* (6220.0.40.001).

NEXT SURVEY

16 The ABS plans to conduct this survey again in September 1997.

RELATED PUBLICATIONS

17 Other publications which may be of interest include:

- *Job Search Experience of Unemployed Persons, Australia* (6222.0)
- *Labour Force, Australia* (6203.0)
- *Labour Force Experience, Australia* (6206.0.40.001)
- *Persons Who Have Left the Labour Force, Australia* (6267.0)
- *Successful and Unsuccessful Job Search Experience, Australia* (6245.0)
- *Underemployed Workers, Australia* (6265.0)

18 Current publications produced by the ABS are listed in the *Catalogue of Publications and Products* (1101.0). The ABS also issues, on Tuesdays and Fridays, a *Release Advice* (1105.0) which lists publications to be released in the next few days. The Catalogue and Release Advice are available from any ABS office.

TECHNICAL NOTES

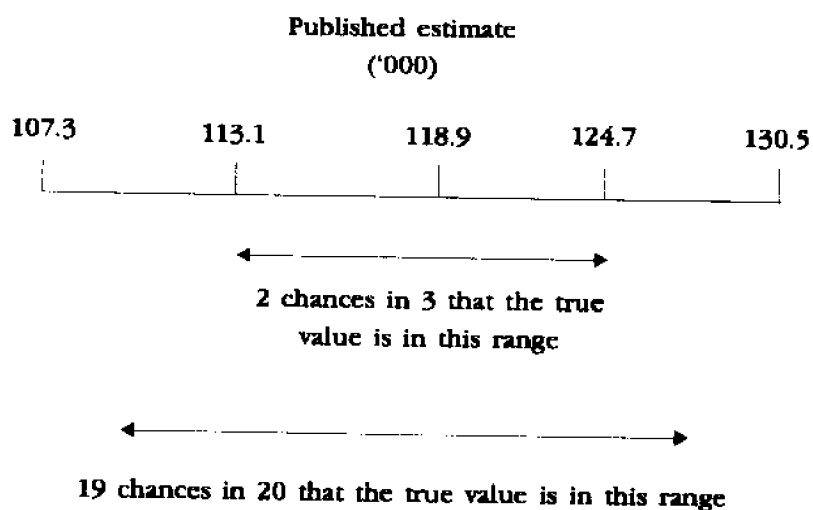
INTRODUCTION

1 Since the estimates in these tables are based on information obtained from occupants of a sample of dwellings, they are subject to sampling variability, that is, they may differ from those that would have been produced if all dwellings had been included in the survey. One measure of the likely difference is given by the *standard error*, which indicates the extent to which an estimate might have varied by chance because only a sample of dwellings was included. These are about two chances in three that a sample estimate will differ by less than one standard error from the number that would have been obtained if all dwellings had been included, and about 19 chances in 20 that the difference will be less than two standard errors. Another measure of the likely difference is the *relative standard error*, which is obtained by expressing the standard error as a percentage of the estimate.

2 Space does not allow for the separate indication of the standard errors of all estimates in these tables. A table of standard errors for general application is given on page 35. Since they are averages based on calculations for a limited number of past surveys over a wide range of labour force characteristics these numbers will not give a precise measure of the standard error of a particular estimate but they will provide an indication of its magnitude.

CALCULATION OF STANDARD ERROR

3 An example of the calculation and the use of standard errors in relation to estimates of persons is as follows. Table 2 shows the estimated number of persons in Australia who were discouraged jobseekers was 118,900. Since this estimate is between 100,000 and 150,000 the table of standard errors show the standard error for Australia will be between 5,450 and 6,500 and can be approximated by interpolation as 5,850 (rounded to the nearest 50). Therefore, there are about two chances in three that the value that would have been produced if all dwellings had been included in the survey will fall in the range 113,100 to 124,700 and about 19 chances in 20 that the value will fall within the range 107,300 to 130,500. This example is illustrated in the following diagram.



PROPORTIONS AND PERCENTAGES

4 As can be seen from the *standard error table*, the smaller the estimate the higher is the relevant standard error. Very small estimates are thus subject to such high standard errors (relative to the size of the estimate) as to detract seriously from their value for most reasonable uses. In these tables, only estimates with relative standard errors of 25% or less and percentages based on such estimates are considered sufficiently reliable for most purposes. However, estimates and percentages with larger relative standard errors have been included and are preceded by an asterisk (e.g. *3.4) to indicate they are subject to high standard errors and should be used with caution.

5 Proportions and percentages formed from the ratio of two estimates are also subject to sampling errors. The size of the error depends on the accuracy of both the numerator and the denominator. A formula to approximate the relative standard error (RSE) of a proportion is:

$$RSE (x/y) = \sqrt{[RSE (x)]^2 + [RSE (y)]^2}$$

6 Considering the example from paragraph 3, of the 118,900 persons who were discouraged jobseekers, 29,500 or 24.8% were males. The standard error of 29,500 is approximately 3,100 so the RSE is 10.5%. The RSE for 118,900 is 4.9%. Applying the above formula, the RSE of the proportion is $\sqrt{(10.5)^2 + (4.9)^2}$ or 9.3%, giving a standard error for the proportion (24.8%) of 2.3 percentage points. Therefore, there are about two chances in three that the proportion of discouraged jobseekers who were males was between 22.5% and 27.1% and 19 chances in 20 the proportion was within the range 20.2% to 29.4%.

DIFFERENCES

7 Published estimates may also be used to calculate the difference between two survey estimates (of number or percentages). Such an estimate is subject to sampling error. The sampling error of the difference between two estimates depends on their standard errors and the relationship (correlation) between them. An approximate standard error (SE) of the difference between two estimates (x-y) may be calculated by the following formula:

$$SE (x/y) = \sqrt{[SE (x)]^2 + [SE (y)]^2}$$

8 While this formula will only be exact for differences between separate and uncorrelated characteristics or subpopulations it is expected to provide a good approximation for all differences likely to be of interest in these tables.

NON-SAMPLING ERROR

9 The imprecision due to sampling variability, which is measured by the SE, should not be confused with inaccuracies that may occur because of imperfections in reporting by interviewers and respondents and errors made in coding and processing data. Inaccuracies of this kind are referred to as the *non-sampling error*, and they may occur in any enumeration, whether it be a full count or a sample. Every effort is made to reduce the non-sampling error to a minimum by careful design of questionnaires, intensive training and supervision of interviewers and efficient operating procedures.

STANDARD ERRORS OF ESTIMATES

Size of Estimate Persons	NSW no.	Vic. no.	QLD no.	SA no.	WA no.	Tas. no.	NT no.	ACT no.	Aust.	
									no.	Relative standard error %
100	110	..	100	..	150.0
200	240	210	230	160	210	130	230	115.0
300	380	340	300	260	290	200	250	160	290	96.7
500	490	450	390	340	370	260	310	200	380	76.0
700	580	540	460	400	430	310	370	240	460	65.7
1 000	700	650	550	480	510	370	430	280	560	56.0
1 500	850	790	670	580	620	440	520	330	700	46.7
2 000	980	910	770	660	710	500	590	380	820	41.0
2 500	1 100	1 000	850	750	800	550	650	400	900	36.0
3 000	1 200	1 100	950	800	850	600	700	450	1 000	33.3
4 000	1 350	1 300	1 050	900	950	650	800	500	1 200	30.0
5 000	1 500	1 400	1 200	1 000	1 050	750	900	550	1 300	26.0
7 000	1 750	1 650	1 350	1 150	1 250	850	1 050	650	1 550	22.1
10 000	2 100	1 950	1 600	1 350	1 450	950	1 250	750	1 850	18.5
15 000	2 500	2 350	1 950	1 600	1 700	1 100	1 500	850	2 300	15.3
20 000	2 850	2 650	2 200	1 800	1 950	1 200	1 700	950	2 600	13.0
30 000	3 400	3 150	2 600	2 150	2 300	1 350	2 050	1 150	3 150	10.5
40 000	3 800	3 600	2 950	2 400	2 600	1 500	2 350	1 250	3 650	9.1
50 000	4 200	3 950	3 200	2 650	2 850	1 600	2 600	1 350	4 000	8.0
100 000	5 550	5 250	4 250	3 450	3 700	1 950	3 600	1 750	5 450	5.5
150 000	6 550	6 150	5 000	4 000	4 350	2 150	4 400	2 050	6 500	4.3
200 000	7 300	6 850	5 600	4 450	4 850	2 300	5 000	2 250	7 350	3.7
300 000	8 550	8 000	6 550	5 150	5 650	2 500	..	2 550	8 700	2.9
500 000	10 300	9 650	7 900	6 200	6 800	2 750	10 700	2.1
1 000 000	13 250	12 350	10 150	7 800	8 650	14 000	1.4
2 000 000	16 800	15 550	12 850	9 750	11 000	18 100	0.9
5 000 000	22 700	20 850	17 350	24 950	0.5
10 000 000	31 400	0.3

GLOSSARY

Actively looking for work	<p>Those persons who were taking active steps to find work. Active steps comprise:</p> <ul style="list-style-type: none">■ writing, telephoning or applying in person to an employer for work;■ answering a newspaper advertisement for a job;■ checking factory or Commonwealth Employment Service notice boards;■ being registered with the Commonwealth Employment Service;■ checking or registering with any other employment agency;■ advertising or tendering for work; and■ contacting friends or relatives.
Available to start work within four weeks	<p>Those persons who were available to start work within four weeks or could start work if childcare were available.</p>
Discouraged jobseekers	<p>Persons with marginal attachment to the labour force who wanted to work and were available to start work within the next four weeks but whose main reason for not actively looking for work was that they believed they would not find a job for any of the following reasons:</p> <ul style="list-style-type: none">■ considered to be too young or too old by employers; or■ lacked necessary schooling, training, skills or experience; or■ difficulties with language or ethnic background; or■ no jobs in their locality or line of work; or■ no jobs available at all.
Employed	<p>Persons aged 15–69 years who, during the reference week:</p> <ul style="list-style-type: none">■ worked for one hour or more for pay, profit, commission or payment in kind in a job or business, or on a farm (comprising employees, employers and own account workers); or■ worked for one hour or more without pay in a family business or on a farm (i.e. contributing family workers); or■ were employees who had a job but were not at work and were: on paid leave; on leave without pay for less than four weeks up to the end of the reference week; stood down without pay because of bad weather or plant breakdown at their place of employment for less than four weeks up to the end of the reference week; on strike or locked out; on workers compensation and expected to be returning to their job; or receiving wages or salary while undertaking full-time study; or■ were employers, own account workers or contributing family workers who had a job, business or farm, but were not at work.

Family	Two or more related persons (<i>relationship</i> includes relationships by blood, marriage or adoption) usually resident in the same household at the time of the survey. A family comprises a married couple or a family head as defined, together with any persons having any of the following relationships to them: <ul style="list-style-type: none"> ▪ sons or daughters of any age, if not married and with no children of their own present; or ▪ other relatives if not accompanied by a spouse, sons or daughters, or parents of their own; or ▪ any children under 15 years of age who do not have a parent present.
Family reasons for not actively looking for work	Includes ill health of other than self, childcare reasons and other family considerations.
Full-time work	Work involving 35 or more hours a week.
Had a job to go to	Includes persons who had a job but, up to the end of the reference week, had been away from work without pay for four weeks or longer and had not been actively looking for work.
Job	Any employment, full time or part time, lasting two weeks or more.
Job leavers	Persons who voluntarily ceased their last job.
Job losers	Persons who involuntarily ceased their last job.
Main English-speaking countries	Comprises United Kingdom, Ireland, Canada, South Africa, United States of America and New Zealand.
Marginal attachment to the labour force	Persons who were not in the labour force in the reference week, wanted to work and <ul style="list-style-type: none"> ▪ were actively looking for work but did not meet the criteria to be classified as unemployed; or ▪ were not actively looking for work but were available to start work within four weeks or could start work within four weeks if childcare was available. <p>The criteria determining those in the labour force are based on activity (i.e. working or looking for work) during the reference week. The criteria associated with marginal attachment to the labour force, in particular the concepts of wanting to work, reasons for not actively looking for work and availability to start work, are more subjective. Hence, the measurement against these criteria is affected by the respondent's own interpretation of the concepts used. An individual respondent's interpretation is affected by such factors as the respondent's work aspirations, as well as family, economic and other commitments.</p>

Occupation of last job	Classified according to the <i>ASCO — Australian Standard Classification of Occupations (1221.0)</i> .
Part-time work	Work involving less than 35 hours a week.
Personal reasons for not actively looking for work	Includes own ill health/physical disability, pregnancy, attending an educational institution, had no need to work, give others a chance, welfare payments/pension may be affected, moved house or on holidays.
Persons in institutions	Includes persons in general and other hospitals, convalescent homes, homes for the aged, retirement homes, homes for the handicapped, orphanages, boarding schools and inmates in prisons.
Persons in the labour force	Persons aged 15–69 years who meet the criteria that would enable them to be classified as being in the labour force, that is, either <i>employed</i> or <i>unemployed</i> .
Persons not in the labour force	Persons who do not meet the criteria that would enable them to be classified as being in the labour force. To be classified as being in the labour force, a person must be aged 15–69 years and be either <i>employed</i> or <i>unemployed</i> . Persons not in the labour force, therefore, include all persons aged 15–69 years who are not employed, who want to work but do not meet the criteria to be classified as unemployed; who did not want to work; or are permanently unable to work. This group excludes institutionalised persons and boarding school pupils.
Persons not in the labour force for child-care reasons who wanted to work	Persons who wanted to work and: <ul style="list-style-type: none"> ▪ were not actively looking for work due to reasons including childcare but were available to start work within four weeks; or ▪ were not actively looking for work and were not available to start work within four weeks for childcare reasons.
Relationship in household	See <i>family</i>
Time since last job	The elapsed time since leaving their last job and the reference period for those who previously had a job.
Unemployed	Persons aged 15–69 years who were not employed during the reference week and <ul style="list-style-type: none"> ▪ had actively looked for full-time or part-time work at any time during the reference week and <ul style="list-style-type: none"> * were available for work in the reference week, or would have been available except for temporary illness (i.e. lasting for less than four weeks to the end of the reference week); or * were waiting to start a new job within four weeks from the end of the reference week and would have started in the reference week if the job had been available then; or

- were waiting to be called back to a full-time or part-time job from which they had been stood down without pay for less than four weeks up to the end of the reference week (including the whole of the reference week) for reasons other than bad weather or plant breakdown.

Wanted to work Persons Not In the Labour Force who

- in the four weeks up to the end of the reference week had *actively looked* for work but did not meet the criteria to be classified as *unemployed*; or
- although claiming to have looked for work (in the four weeks up to the end of the reference week), had not taken active steps to find work; or
- in the four weeks up to the end of the reference week had not looked for work but in the survey answered 'yes' or 'maybe' to the question 'Even though you have not been looking for work would you like a full-time or part-time job?'; or
- in the four weeks up to the end of the reference week, had not looked for work but were responsible for children under 12 years of age and answered 'yes' or 'maybe' to the question 'If you had suitable childcare arrangements for child(ren) under 12, would you like a job?'; or
- were employees who had a job but had been away from work without pay for four weeks or more.



**Australian
Bureau of
Statistics**

**Available
Now On
Request**

SURVEY INQUIRIES

Ph: (06) 252 7204

Fax: (06) 252 7784

More information is always available

**We've got the answers ...
we just can't fit them all into this publication!**

Is there more information you would like about this topic or other supplementary survey topics?

The good news is that the information is available. In fact, we have volumes of detailed information that can not placed into the publications but can provide you with a more in-depth insight into the area of interest to you.

We do have the answers

More often than not, the publications are pointers to a much larger collection of information - the publications provide a handy reference to the main findings from a survey. More detailed information can assist you in your decision making and research and that's where our consultants can help you!

**Meeting your needs with
a customised approach**

We can mix and match from our extensive data holdings to give a complete statistical picture for your policy, planning and commercial analysis needs.

Detailed information from every supplementary survey is available - that's where we can help. Contact one of our consultants to discuss your needs; after all, it's free. They will provide you with the best

possible option to solve your data requests in a written quote, clearly setting out all the costs and time frames.

We can supply you with your requested information in a variety of formats to best suit your needs. Printed tables, on spreadsheets, via on-line services or on floppy disk in a variety of formats to suit your specific software packages are available.

**Tailored to your
specifications**

To help you to identify your needs, please have a look at the list of population and data items in the following pages. Depending on what you need, these data items can be cross-classified to suit your specifications. The cost of information for your solution will depend on what you selected and their degree of detail. Payment for this information may be made by credit card or by invoice.

**More information is
available**

Contact Kirrilie Horswill on (06) 252 7204 to talk about any inquiries you may have about the information in this publication or your to order your special data requirements.

POPULATIONS AND DATA ITEMS AVAILABLE FROM THIS SURVEY

POPULATIONS

- POPULATION 1:** All persons not in the labour force aged 15 – 69 years (including institutionalised persons and boarding school pupils).
- POPULATION 2:** Persons not in the labour force (excluding institutionalised persons and boarding school pupils).
- POPULATION 3:** Persons not in the labour force who wanted to work.
- POPULATION 4:** Persons not in the labour force with marginal attachment to the labour force.
- POPULATION 5:** Persons not in the labour force who wanted to work but were not actively looking for work, and were available to start work within four weeks.
- POPULATION 5A:** Persons not in the labour force who wanted to work but were not actively looking for work due to childcare reasons, and were available to start work within four weeks.
- POPULATION 6:** Persons not in the labour force who were discouraged jobseekers.
- POPULATION 7:** Persons not in the labour force who wanted to work but were not actively looking for work and were not available to start work within four weeks.
- POPULATION 7A:** Persons not in the labour force who wanted to work but were not actively looking for work and were not available to start work within four weeks due to childcare reasons.
- POPULATION 8:** Persons not in the labour force for childcare reasons who wanted to work but were not actively looking for work.
- POPULATION 9:** Persons not in the labour force who previously had a job.

DATA ITEM	POPULATIONS	DATA ITEM	POPULATIONS
1 STATE OR TERRITORY OF USUAL RESIDENCE	ALL	5 MARITAL STATUS	ALL
New South Wales		Married	
Victoria		Not married	
Queensland			
South Australia		6A RELATIONSHIP IN HOUSEHOLD (1)	ALL
Western Australia		Family member	
Tasmania		Husband or wife	
Northern Territory		With dependants	
Australian Capital Territory		Without dependants	
		Lone parent	
2 AREA OF USUAL RESIDENCE	ALL	With dependants	
Capital City		Without dependants	
Balance of State/Territory		Dependent student	
		Non-dependent child	
3 REGION OF USUAL RESIDENCE	ALL	Other family person	
Standard labour force dissemination regions		Non-family member	
		Lone person	
4 SEX	ALL	Not living alone	
Males		Not determined	
Females			

DATA ITEM	POPULATIONS	DATA ITEM	POPULATIONS
6B RELATIONSHIP IN HOUSEHOLD (2)	ALL	8 AGE	ALL
Family member		15-19	
Husband or wife		20-24	
With children under 15		25-34	
Without children under 15		35-44	
Lone parent		45-54	
With children under 15		55-59	
With dependent students but without children under 15		60-64	
Without dependants		65-69	
Dependent student			
Non-dependent child		9 PERSONS NOT IN THE LABOUR FORCE	
Other family person		SUMMARY VARIABLE	1-2,9
Non-family member		Persons not in the labour force	
Lone person		With marginal attachment to the labour force	
Not living alone		Wanted to work and were actively looking for work	
Not determined		Were available to start work within four weeks	
		Were not available to start work within four weeks	
7A BIRTHPLACE AND PERIOD OF ARRIVAL	2-9	Wanted to work but were not actively looking for work and were available to start work within four weeks	
Born in Australia		Discouraged jobseekers	
Born outside Australia		Other	
Arrived before 1961		Without marginal attachment to the labour force	
Arrived 1961-1970		Wanted to work but were not actively looking for work and were not available to start work within four weeks	
Arrived 1971-1980		Did not want to work	
Arrived 1981-1990		Permanently unable to work	
Arrived 1991 to survey date		Institutionalised persons and boarding school pupils	
7B BIRTHPLACE (1)	2-9		
Born in Australia		10 WHETHER WANTED TO WORK	2,9
Born outside Australia		Wanted to/might want to work	
Born in main English-speaking countries		Wanted to work	
Born in other countries		Might want to work	
		Did not want to work/did not know	
7C BIRTHPLACE (2)	2-9	Did not want to work	
Born in Australia		Did not know	
Born outside Australia			
Oceania		11 WHETHER LOOKED FOR WORK IN THE LAST 12 MONTHS	2-9
New Zealand		Had looked for work	
Europe and the former USSR		Less than 5 weeks ago	
Germany		5 and less than 8 weeks ago	
Greece		8 and less than 13 weeks ago	
Italy		13 to 52 weeks ago	
Netherlands		13 and less than 26 weeks ago	
UK and Ireland		26 and less than 39 weeks ago	
Former Yugoslav Republics		39 to 52 weeks ago	
The Middle East and North Africa		Had not looked for work	
Lebanon			
Southeast Asia			
Malaysia			
Philippines			
Viet Nam			
Northeast Asia			
China			
The Americas			
Other			
India			

DATA ITEM	POPULATIONS
12 MAIN ACTIVITY WHEN NOT IN THE LABOUR FORCE	2-9
Home duties/childcare	
Attending an educational institution	
Retired/voluntarily inactive	
Own illness/injury or disability/handicap	
Looking after ill/disabled person	
Travel/moving house/holiday	
Worked in unpaid voluntary job	
Other	
13 TIME SINCE LAST JOB	2-9
Had had a job	
Under 12 months	
1 and under 4 weeks	
4 and under 8 weeks	
8 and under 13 weeks	
13 and under 26 weeks	
26 and under 39 weeks	
39 and under 52 weeks	
1 and under 3 years	
3 and under 10 years	
3 and under 5 years	
5 and under 10 years	
10 years or more	
10 and under 20 years	
20 years or more	
Had never had a job	
14 REASON FOR CEASING LAST JOB	2-9
Had had a job	
Job loser	
Retrenched	
Job was temporary or seasonal and did not leave to return to studies	
Own ill health or injury	
Business closed down for economic reasons	
Job leaver	
Unsatisfactory work arrangements/pay /hours	
Job was temporary or seasonal and left to return to studies	
Retired/did not want to work any longer	
Returned to studies	
To get married	
Pregnancy/to have children	
To look after family, house or someone else	
To have holiday/to move house/spouse transferred	
Business closed down for other reasons	
Other	
Had never had a job	

DATA ITEM	POPULATIONS
15 OCCUPATION IN LAST JOB	2-9
Last job less than 20 years ago	
Managers and administrators	
Professionals	
Associate Professionals	
Tradespersons and Related Workers	
Advanced Clerical and Service Workers	
Intermediate Clerical, Sales and Service workers	
Intermediate Production and Transport workers	
Elementary Clerical, Sales and Service workers	
Labourers and related workers	
Last job 20 or more years ago	
Had never had a job	
16 STATUS IN EMPLOYMENT IN LAST JOB	2-9
Last job less than 20 years ago	
Employer	
Own account worker	
Employee	
Contributing family worker	
Unpaid voluntary worker	
Last job 20 or more years ago	
Had never had a job	
17 FULL-TIME OR PART-TIME STATUS IN LAST JOB	2-9
Last job less than 20 years ago	
Full-time	
Part-time	
Varied/did not know	
Last job 20 or more years ago	
Had never had a job	
18A INTENTION TO ENTER THE LABOUR FORCE	2-9
Intended to/might enter the labour force	
Intended to enter the labour force	
Might enter the labour force	
Did not intend to enter the labour force /did not know	
Did not intend to enter the labour force	
Did not know	
Permanently unable to work	
18B INTENTION TO ENTER THE LABOUR FORCE IN THE NEXT 12 MONTHS	2-9
Intended to/might enter the labour force in the next 12 months	
Intended to enter the labour force in the next 12 months	
Might enter the labour force in the next 12 months	
Did not intend to enter the labour force in the next 12 months/did not know	
Did not intend to enter the labour force in the next 12 months	
Did not know	

DATA ITEM	POPULATIONS
19 TYPE OF WORK PREFERRED	3-8
Full-time	
Part-time	
No preference	
20 MAIN REASON FOR NOT ACTIVELY LOOKING FOR WORK	4,5-5A
Wanted to work and were actively looking for work	
Were available to start work within four weeks	
Were not available to start work within four weeks	
Wanted to work but were not actively looking for work and were available to start work within four weeks	
Discouraged jobseeker	
Considered too young or too old by employers	
Lacked the necessary schooling, training, skills or experience	
Difficulties with language or ethnic background	
No jobs in locality or line of work	
No jobs at all	
Had a job to go to(a)	
Personal reasons	
Own ill health/physical disability/ pregnancy	
Attending an educational institution	
Had no need to work	
Give others a chance	
Welfare payments/pension may be affected	
Moved house/holidays	
Family reasons	
Ill health of other than self	
Childcare	
No childcare in locality	
No childcare available at all	
Cost/too expensive	
Booked out/no places available	
Children too young/too old	
Prefers to look after children	
Quality of childcare unsuitable	
Other	
Other family considerations	
No jobs in suitable hours	
Other reasons	
Did not know	

(a) Includes persons who had a job but up to the end of the reference week, had been away from work without pay for four weeks or longer and had not been actively looking for work.

DATA ITEM	POPULATIONS
21 ALL REASONS FOR NOT ACTIVELY LOOKING FOR WORK	5-5A
Discouraged jobseeker	
Considered too young or too old by employers	
Lacked necessary schooling/training skills or experience	
Difficulties with language or ethnic background	
No jobs in locality or line of work	
No jobs at all	
Had a job to go to(a)	
Personal reasons	
Own ill health/physical disability/ pregnancy	
Attending an educational institution	
Had no need to work	
Give others a chance	
Welfare payments/pension may be affected	
Moved house/holidays	
Family reasons	
Ill health of other than self	
Childcare	
Other family considerations	
No jobs in suitable hours	
Other reasons	
Did not know	

(a) Includes persons who had a job but up to the end of the reference week, had been away from work without pay for four weeks or longer and had not been actively looking for work.

DATA ITEM	POPULATIONS
22 REASON NOT AVAILABLE TO START WORK WITHIN FOUR WEEKS	7-7A
Personal reasons	
Own ill health/physical disability	
Pregnancy	
Studying/returning to studies	
Moved house/holidays	
Family reasons	
Ill health of other than self	
Unable to find suitable childcare	
Children too young/preferred to look after children	
On a job related training program	
Other reasons	
23 MARGINAL ATTACHMENT SUMMARY VARIABLE	4
Persons who wanted to work and were actively looking for work	
Were available to start work within four weeks	
Were not available to start work within four weeks	
Persons who wanted to work but were not actively looking for work and were available to start work within four weeks	
Discouraged jobseekers	
Other	

DATA ITEM	POPULATIONS
24 AGE OF YOUNGEST CHILD	5A, 7A, 8
0 - 2 years	
3 - 4 years	
5 years	
6 - 9 years	
10 - 11 years	
12 years and over	
Not coded	
25 NUMBER OF CHILDREN	5A, 7A, 8
Aged 0 - 2 years	
Aged 3 - 4 years	
Aged 5 years	
Aged 6 - 9 years	
Aged 10 - 11 years	

Supplementary Surveys

The supplementary and special surveys collect data on particular aspects of the labour force. The following is an historical list of supplementary and special labour force surveys. The data are available in publication form, by subscription or on request. It may be possible to order unpublished data on the following supplementary and special surveys by contacting the ABS.

<i>Title of Survey</i>	<i>Catalogue No.</i>
	6254.0
Career Paths of Persons with Trade Qualifications. Irregular. Latest issue 1993	6243.0
	4402.0
Employment Benefits. Irregular. Latest issue August 1994	6334.040.001
Job Search Experience of Unemployed Persons. Annual. Latest issue July 1996	6222.0
Labour Force Experience. Two-yearly. Latest issue February 1995	6206.0.40.001
Labour Force Status and Educational Attainment. Final issue February 1994	6235.0
Labour Force Status and Other Characteristics of Families. Annual. Latest issue June 1996	6224.0
Labour Force Status and Other Characteristics of Migrants. Irregular. Latest issue Sept. 1993	6250.0
Labour Mobility. Two-yearly. Latest issue February 1996	6209.0
	6216.0
Participation in Education. Annual. Latest issue September 1995	6272.0
Persons Not in the Labour Force. Annual. Latest issue September 1996	6220.0
Persons Who Have Left the Labour Force. Irregular. Latest issue September 1994	6267.0.40.001
Successful and Unsuccessful Job Search Experience. Two-yearly. Latest issue July 1996	6245.0
Trade Union Members. Two-yearly. Latest issue August 1996	6325.0
Transition from Education to Work. Annual. Irregular. Latest issue May 1996	6227.0
Weekly Earnings of Employees (Distribution). Annual Latest issue August 1995	6310.0.40.001

Forthcoming Supplementary Surveys

<i>Topic</i>	<i>Survey month</i>	<i>Release</i>
Underemployed Workers	September 1996	March 1997
Career Experience	November 1996	May 1997
Labour Force Status of Migrants	November 1996	May 1997
Labour Force Experience	February 1997	July 1997

Inquiries

Central Office:	(06) 252 6504		
Regional Offices:			
SYDNEY	(02) 9268 4212	ADELAIDE	(08) 8237 7365
MELBOURNE	(03) 9615 7677	HOBART	(03) 6222 5841
BRISBANE	(07) 3222 6068	DARWIN	(08) 8943 2150
PERTH	(09) 360 5943	CANBERRA	(06) 207 0283

For more information . . .

The ABS publishes a wide range of statistics and other information on Australia's economic and social conditions. Details of what is available in various publications and other products can be found in the ABS Catalogue of Publications and Products available from all ABS Offices.

ABS Products and Services

Many standard products are available from ABS bookshops located in each State and Territory. In addition to these products, information tailored to the needs of clients can be obtained on a wide range of media by contacting your nearest ABS Office. The ABS also provides a Subscription Service for standard products and some tailored information services.

National Dial-a-Statistic Line

0055 86 400

Steadycom P/L: premium rate 25c/20 secs.

This number gives 24-hour access, 365 days a year, for a range of important economic statistics including the CPI.

Internet

<http://www.abs.gov.au>

A wide range of ABS information is available via the Internet, with basic statistics available for each State, Territory and Australia. We also have Key National Indicators, ABS product release details and other information of general interest.

Sales and Inquiries

Keylink STAT.INFO/ABS
X.400 (C:Australia,PUB:Telememo,O:ABS,FN:STAT,SN:INFO)
Internet stat.info@abs.telememo.au

National Mail Order Service (06) 252 5249
Subscription Service 1800 02 0608

	Information Inquiries	Bookshop Sales
SYDNEY	(02) 9268 4611	(02) 9268 4620
MELBOURNE	(03) 9615 7755	(03) 9615 7755
BRISBANE	(07) 3222 6351	(07) 3222 6350
PERTH	(09) 360 5140	(09) 360 5307
ADELAIDE	(08) 8237 7100	(08) 8237 7582
CANBERRA	(06) 252 6627	(06) 207 0326
HOBART	(03) 6222 5800	(03) 6222 5800
DARWIN	(08) 8943 2111	(08) 8943 2111



Client Services, ABS, PO Box 10, Belconnen ACT 2616

Produced by the Australian Government Publishing Service
© Commonwealth of Australia 1997

Recommended retail price: \$16.00



2622000009968

ISSN 0819-9914